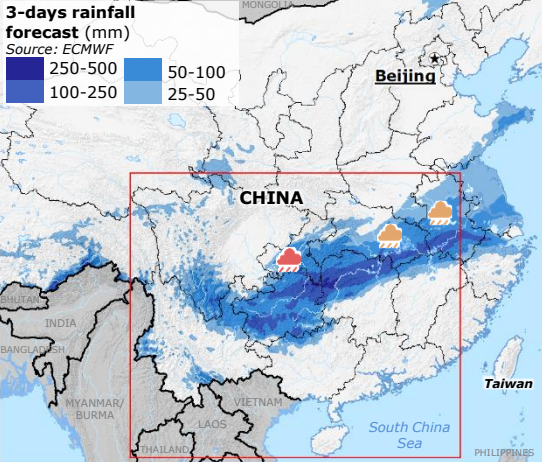
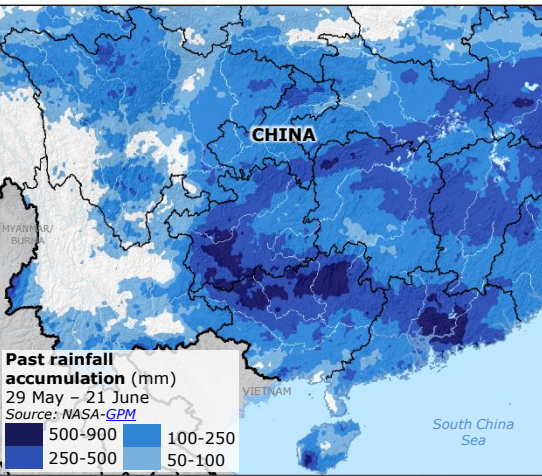
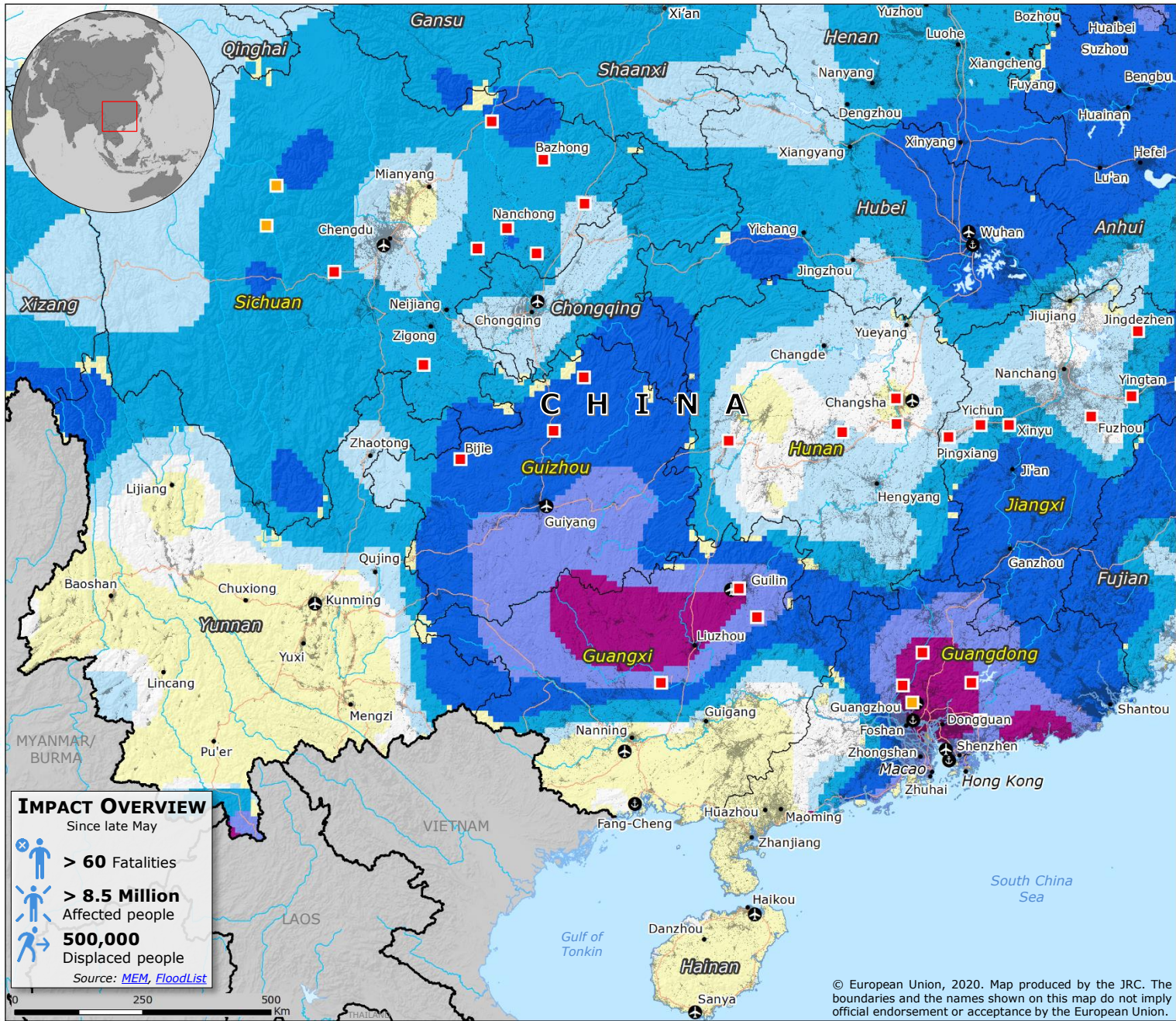


China | Recent floods and landslides



Rainfall anomaly (mm)
19 May – 17 June
Source: NOAA-CPC

- +300 to +500
- +200 to +300
- +100 to +200
- +50 to +100
- +10 to +50
- 10 to +10
- < -10

Weather warnings
22 June
Source: CMA

- Red warning for heavy rain
- Orange warning for heavy rain

Legend:

- Settlements
- Main city
- Province border
- Country border
- Main airport
- Main port

Prov Most affected provinces
Source: MEM

IMPACT OVERVIEW
Since late May

- > 60** Fatalities
- > 8.5 Million** Affected people
- 500,000** Displaced people

Source: MEM, FloodList

© European Union, 2020. Map produced by the JRC. The boundaries and the names shown on this map do not imply official endorsement or acceptance by the European Union.