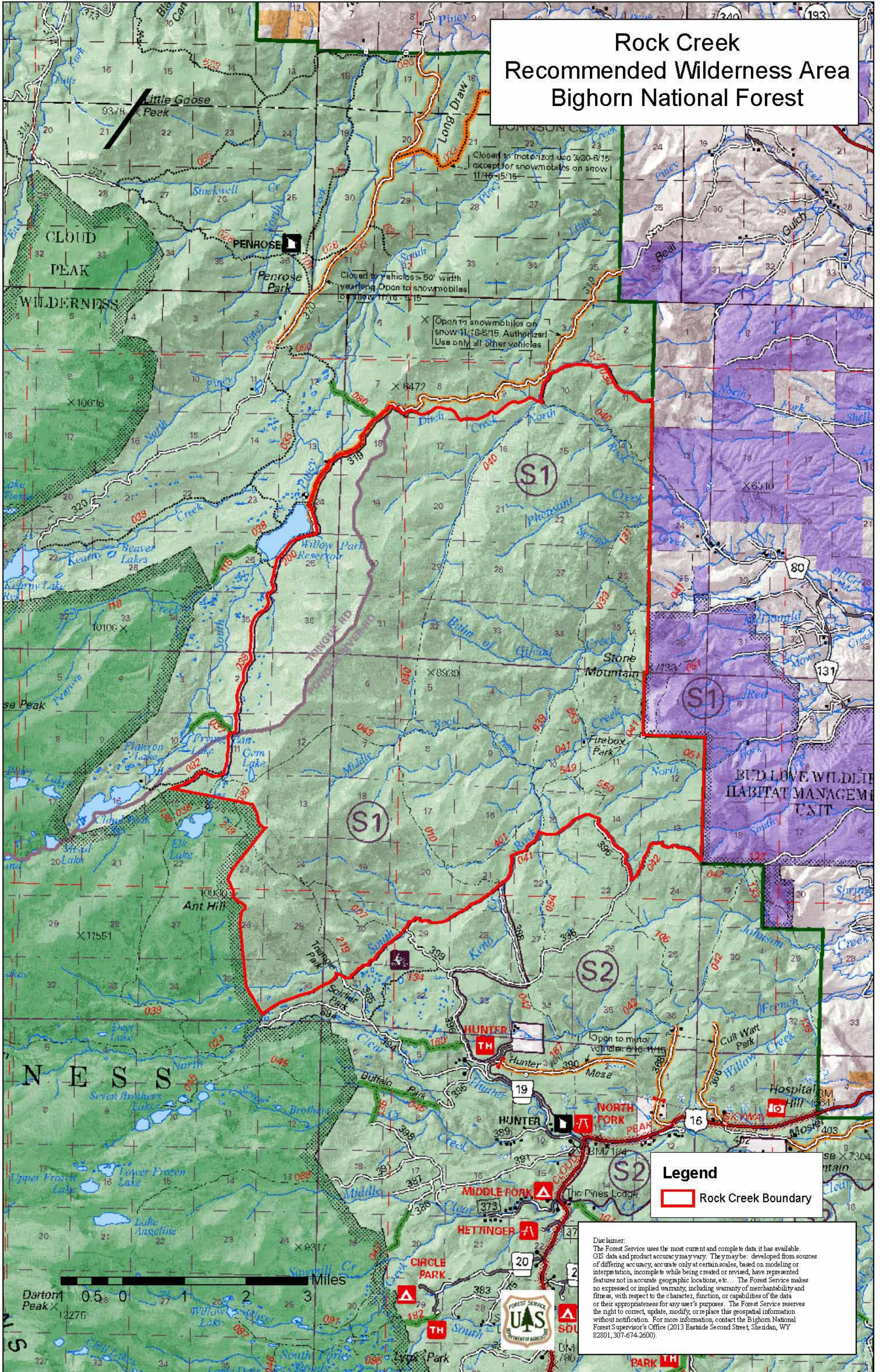


Rock Creek Recommended Wilderness Area Bighorn National Forest



Closed to motorized use 3/30-6/15
except for snowmobiles on snow
11/16-15/15

Closed to vehicles > 50' width
year long Open to snowmobiles
on snow 11/16-15/15

Open to snowmobiles on
snow 11/16-15/15. Authorized
Use only all other vehicles

Open to motor
vehicles 6/16-11/15

Legend
 Rock Creek Boundary

Disclaimer:
 The Forest Service uses the most current and complete data it has available. GIS data and product accuracy may vary. They may be developed from sources of differing accuracy, accurate only at certain scales, based on modeling or interpretation, incomplete while being created or revised, have represented features not in accurate geographic locations, etc. The Forest Service makes no expressed or implied warranty, including warranty of merchantability and fitness, with respect to the character, function, or capabilities of the data or their appropriateness for any user's purposes. The Forest Service reserves the right to correct, update, modify, or re-place this geospatial information without notification. For more information, contact the Bighorn National Forest Supervisor's Office (2013 Eastside Second Street, Sheridan, WY 82801, 307-674-2600).

