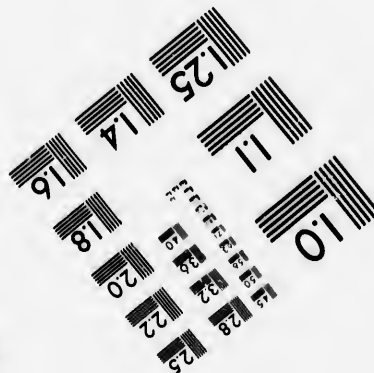
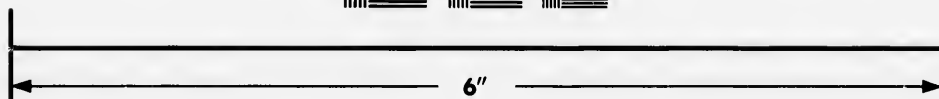
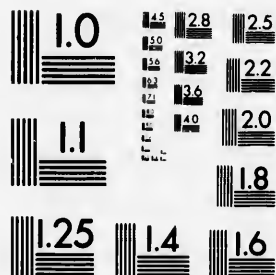


**IMAGE EVALUATION
TEST TARGET (MT-3)**



**Photographic
Sciences
Corporation**

23 WEST MAIN STREET
WEBSTER, N.Y. 14580
(716) 872-4503



**CIHM/ICMH
Microfiche
Series.**

**CIHM/ICMH
Collection de
microfiches.**



Canadian Institute for Historical Microreproductions / Institut canadien de microreproductions historiques



© 1982

Technical and Bibliographic Notes/Notes techniques et bibliographiques

The Institute has attempted to obtain the best original copy available for filming. Features of this copy which may be bibliographically unique, which may alter any of the images in the reproduction, or which may significantly change the usual method of filming, are checked below.

L'Institut a microfilmé le meilleur exemplaire qu'il lui a été possible de se procurer. Les détails de cet exemplaire qui sont peut-être uniques du point de vue bibliographique, qui peuvent modifier une image reproduite, ou qui peuvent exiger une modification dans la méthode normale de filmage sont indiqués ci-dessous.

- Coloured covers/
Couverture de couleur
- Covers damaged/
Couverture endommagée
- Covers restored and/or laminated/
Couverture restaurée et/ou pelliculée
- Cover title missing/
Le titre de couverture manque
- Coloured maps/
Cartes géographiques en couleur
- Coloured ink (i.e. other than blue or black)/
Encre de couleur (i.e. autre que bleue ou noire)
- Coloured plates and/or illustrations/
Planches et/ou illustrations en couleur
- Bound with other material/
Relié avec d'autres documents
- Tight binding may cause shadows or distortion along interior margin/
La reliure serrée peut causer de l'ombre ou de la distorsion le long de la marge intérieure
- Blank leaves added during restoration may appear within the text. Whenever possible, these have been omitted from filming/
Il se peut que certaines pages blanches ajoutées lors d'une restauration apparaissent dans le texte, mais, lorsque cela était possible, ces pages n'ont pas été filmées.
- Additional comments:/
Commentaires supplémentaires:

- Coloured pages/
Pages de couleur
- Pages damaged/
Pages endommagées
- Pages restored and/or laminated/
Pages restaurées et/ou pelliculées
- Pages discoloured, stained or foxed/
Pages décolorées, tachetées ou piquées
- Pages detached/
Pages détachées
- Showthrough/
Transparence
- Quality of print varies/
Qualité inégale de l'impression
- Includes supplementary material/
Comprend du matériel supplémentaire
- Only edition available/
Seule édition disponible
- Pages wholly or partially obscured by errata slips, tissues, etc., have been refilmed to ensure the best possible image/
Les pages totalement ou partiellement obscurcies par un feuillet d'errata, une pelure, etc., ont été filmées à nouveau de façon à obtenir la meilleure image possible.

This item is filmed at the reduction ratio checked below/
Ce document est filmé au taux de réduction indiqué ci-dessous.

10X	14X	18X	22X	26X	30X
<input type="checkbox"/>	<input type="checkbox"/>	<input checked="" type="checkbox"/>	<input type="checkbox"/>	<input type="checkbox"/>	<input type="checkbox"/>
12X	16X	20X	24X	28X	32X

The co
to the

The im
possibl
of the
filming

Original
beginn
the las
sion, o
other o
first pa
sion, a
or illus

The las
shall c
TINUED
whiche

Maps,
differen
entirely
beginni
right an
require
method

The copy filmed here has been reproduced thanks to the generosity of:

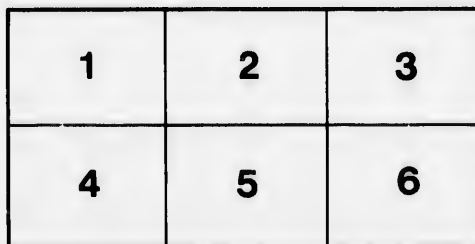
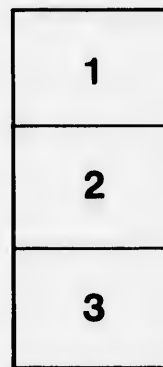
Library of the Public
Archives of Canada

The images appearing here are the best quality possible considering the condition and legibility of the original copy and in keeping with the filming contract specifications.

Original copies in printed paper covers are filmed beginning with the front cover and ending on the last page with a printed or illustrated impression, or the back cover when appropriate. All other original copies are filmed beginning on the first page with a printed or illustrated impression, and ending on the last page with a printed or illustrated impression.

The last recorded frame on each microfiche shall contain the symbol → (meaning "CONTINUED"), or the symbol ▼ (meaning "END"), whichever applies.

Maps, plates, charts, etc., may be filmed at different reduction ratios. Those too large to be entirely included in one exposure are filmed beginning in the upper left hand corner, left to right and top to bottom, as many frames as required. The following diagrams illustrate the method:



L'exemplaire filmé fut reproduit grâce à la générosité de:

La bibliothèque des Archives
publiques du Canada

Les images suivantes ont été reproduites avec le plus grand soin, compte tenu de la condition et de la netteté de l'exemplaire filmé, et en conformité avec les conditions du contrat de filmage.

Les exemplaires originaux dont la couverture en papier est imprimée sont filmés en commençant par le premier plat et en terminant soit par la dernière page qui comporte une empreinte d'impression ou d'illustration, soit par le second plat, selon le cas. Tous les autres exemplaires originaux sont filmés en commençant par la première page qui comporte une empreinte d'impression ou d'illustration et en terminant par la dernière page qui comporte une telle empreinte.

Un des symboles suivants apparaîtra sur la dernière image de chaque microfiche, selon le cas: le symbole → signifie "À SUIVRE", le symbole ▼ signifie "FIN".

Les cartes, planches, tableaux, etc., peuvent être filmés à des taux de réduction différents. Lorsque le document est trop grand pour être reproduit en un seul cliché, il est filmé à partir de l'angle supérieur gauche, de gauche à droite, et de haut en bas, en prenant le nombre d'images nécessaire. Les diagrammes suivants illustrent la méthode.

aire
s détails
ques du
t modifier
iger une
e filmage

ées

ire

oy errata
ed to

ent
ne pelure,
açon à

PAGE
AY
4120
N6
B34
1824

THE
FARMER'S
ALMANACK,

FOR THE YEAR OF OUR LORD

1824;

Being Bissextile or Leap Year,

CALCULATED FOR THE MERIDIAN OF HALIFAX IN NOVA-SCOTIA,

But will serve for any part of the Province.

AND CONTAINING AMONG OTHER USEFUL MATTER

A TIDE TABLE,

By means of which, the time of High Water at the principal ports in America and in the Bay of Fundy, may be ascertained with accuracy.

ALSO,

The Rising and Setting of the Sun—Sun's Declination—Length of Days, and Days Increase in hours and minutes—Equation of Time—Moon's Southing—Moon's Age, and time of rising and setting—High Water at Halifax—Aspects, Holidays and Weather—Farmer's Calendar and the Eclipses for the present Year.

For Sale wholesale and retail, at the Bookstore of C. H. Belcher, and at the Free Press Office, Halifax, N. S.

Directions for coming up Halifax Harbour, taken from the printed Directions in the Custom-House at Halifax.

SAMBRO island and light house is in latitude 44 deg. 30 min. N. and longitude 63 deg. 32 min. W.

From the westward, bring the light to bear N. E. if it bears more easterly, stretch to the southward till it bears N. E. and as much northerly as you please, there being no shoal or ledge to the southward; then keep it open on your larboard bow: give it more than a mile and a half birth as much more as you please.

Note —The western ledges lie from the light S W distant two miles, the other W S W about one league; the eastern ledges lie in a range nearly, some above water; the outermost one mile and a half from the light bearing from it E N E.

When the light bears north distant about 2 miles, run N E 4 miles, then north will carry you to Chedabucto Head at a proper distance clear of all danger.

When a breast of Chedabucto Head, run N. $\frac{1}{2}$ W for the south point of George's Island.

When within half a mile of George's island you may enter the harbour west of it in 18 fathoms, or east of it in 15.

In passing between Sandwich point and Meagher's beach run nearest the point to shun a shoal which runs off S W from the beach.

There is also a shoal lying one mile south of Sandwich point.

Coming from the eastward, run for the light and you cannot fail seeing Chedabucto Head as you open Halifax Harbour; the light being 4 miles distant from the Head to the S W.

Signals made at Fort George when vessels are coming up the harbour.

One ball close for one square rigged vessel.	A do under a ball for six do
One ball half hoisted for two do.	A do over a do half hoisted for 7 do
Two balls close for three do	A do under 2 do close for 8 do
Two balls separated for four do	A do between 2 do separated for 9 do
A pendant of any colour for five do	A flag of any colour for 10 or more do

[The above are hoisted at the east or west yard arm, according to the quarter the vessel first appears in, with the addition of a ball at the centre of the yard until the vessel can be seen, when one or more of the following descriptive colours will be hoisted at the mast head.]

An Union for a Flag-Ship, with or without a Squadron.	A blue Pendant for a Merchant Ship
Do with a Red Pendant over it, for a Two ^d decker.	A red Pendant for a Merchant Brig
Do with a blue Pendant over it for a Frigate.	A white Pendant for a Topsail schr. or Sloop.
Do with a white Pendant over it for a small armed Vessel.	A blue and white flag horizontally divided Neutral Fleet
A red flag pierced white for a Packet	White and blue Pendant Neutral Man of War
	Blue Flag Neutral Merchant Ship.

A red wh
my's F
A red flag
An Union
my's S
prize.

Made on
Vesse

A red Flag
A red and
A red Pen
rope
A white at
Canary
A blue Fa
A blue Pe
or Turk
A blue and
A white f

For a squ
A ship—
A brig—a
A lozenge
Do do hal

J & M T
Geo Gras
Deblois S
Alexande
Frasers S
Jesse W
John Bro
Hartshot

William
J W Me
A Cua
Belcher
Wm Pr
Collins
Pcter G
M Rich
Geo N

taken from the
Halifax.

30 min. N. and

ears more east-
as much north-
uthward; then
and a half birth

two miles, the
a range nearly,
the light bear-

E 4 miles, then
nce clear of all

south point of

er the harbour

un nearest the

int.

not fail seeing

being 4 miles

the harbour.

ix do

ted for 7 do

or 8 do

rated for 9 do

10 or more do

according to

of a ball at

re or more of

st head.]

erchant Ship

chant Brig

opsail schr.

izontally di-

ant Neutral.

ant Ship.

A red white and Blue Flag an Ene-
my's Fleet

A red flag an Enemy's merchantman

An Union Jack over Neutral or Ene-
my's Signals Vessel is detained or
prize.

A white Flag over any Signal Ves-
sel bears a Flag of Truce

A ball at the mast head—Vessel is on
shore or in distress; should im-
mediate aid be necessary guns to
be fired.

Explanation of Signals

Made on the Ensign Staff at Fort George to denote the Part which
Vessels entering the Harbour of Halifax have arrived from.

A red Flag from Great Britain

A red and white do the Mediterranean

A red Pendant the Continent of Eu-
rope

A white and red Pendan, Madeira,
Canary or Western Isles

A blue Flag, West Indies

A blue Pendant Bermudas Bahamas
or Turk's Islands

A blue and white Flag United States

A white Flag Newfoundland

A red and white flag horizontally di-
vided, Quebec or Gulf of St. Law-
rence

A blue and white Flag horizontally
divided, New Brunswick or Bay
of Funday

A white and blue Pendant—Vessel
has an English Mail on board

A white Pendant—Coasts of Nova-
Scotia and Cape Breton.

Repeat from Out Ports at Fort George.

For a square rigged vessel—two balls of a size.

A ship—A large ball at the end of the yard, with a small ball in the centre.

A brig—a small ball at the end of the yard with a large ball in the centre

A lozenge in the centre close up—a sloop or schooner

Do do half hoisted—two or more schooners.

Merchants' Private Signals, Port of Halifax.

J & M Tobin. A red flag crossed white

RED, &c.

Geo Gracie & Co. Do crossed white diagonally

Deblois & Mitchell. A do centre a white square

Alexander Mitchell. Do centre 2 blue balls in a white square

Frasers & Co. Red and white, white next the mast

Jesse Woodward. A red Burgee

John Brown Do centre letter B

Hartshorne, Boggs & Co. A chequered flag, red and white, red Upper-
most.

William Storey A blue Petre

BLUE, &c.

J W Morris A blue Petre centre a blue ball

A Cuuard & Son blue flag centre a star

Belcher & Binney Do crossed white

Wm Pryor blue and white flag blue uppermost

Collins & Allison A blue Burgee

Peter Grant A blue do centre letter G

M Richardson blue and red flag

Geo N Russell white and blue flag

J Stayner A yellow flag with a blue half moon in a white square
 John Clark A blue Burgee crossed white diagonally
 T & L Piers A yellow flag centre a blue ball
 John Witham a yellow blue and yellow flag.

GREEN, &c.

Law Doyle A green burgee centre a kerp.

WHITE, &c.

John Starr Do centre a star
 John Tremain Do with blue cross
 R Tremain Do with a red cross
 J Lyons Red and white flag, white uppermost
 Wm Strachan White red and white do
 Wm M'Herron A white burgee with a blue fly
 W K Reynolds Ditto with a red cross
 Fiddes, May and Robertson Red and white flag, red uppermost

The above signals are worn at the main. Upon a vessel arriving in sight from the Light House so wearing her signal, a similar one is hoisted on the Telegraph Staff, or at yard arm of the Signal Staff at Fort George, with a Pendant under it, descriptive of the class of vessel she belongs to.

PROVINCE OF NOVA-SCOTIA.

Lieutenant Governor and Commander in Chief of the Province of Nova Scotia and its Dependencies, and Commander of the Forces in Nova Scotia, New Brunswick, Prince Edward Island, &c. &c. &c.—His Excellency Lieutenant-General Sir JAMES KEMPT, Knight Grand Cross of the Most Honourable Military Order of the Bath, &c. &c. &c.

HIS MAJESTY'S COUNCIL.

Honorable SAMPSON SALTER BLOWERS, President.

Hon. and Right Rev Robert, Lord Bishop of Nova Scotia—Hon Michael Wallace, Charles Hill, Richard J Uniacke, Charles Morris, James Stewart, Thomas N Jeffrey, Brentou Haliburton, Hiberit N Binney, Enos Collins, Sir Rupert D George Bt. Clerk. William Hill, Esq. Deputy Clerk Mr S Greenwood, Messenger.

HOUSE OF ASSEMBLY.

S. B. Robie, Esq. Speaker.

COUNTY OF HALIFAX—S G W Archibald, William Lawson and George Smith Esqrs. Thomas Ritchie and J Campbell Esqrs.—County of Annapolis Thomas Roach and Richard Blair, Esq.—County of Cumberland W A Bishop and Samuel Bishop, Esq.—King's County W H O Haliburton and Wm O'Brien, Esq.—County of Hants John Biagay and

John M'K...
 Freeman, E...
 Esqrs.—Co...
 Esqrs.—Cou...
 County of C...
 Fown of Ha...
 Instow Ja...
 Annapolis...
 James Mor...
 Esq—Wind...
 J J Chipman...
 Barrington...
 Kuenburg...
 Sergeant at...
 Ferrester ;

Surveyor...
 Treasurer of...
 vince, Sir E...
 Chancellor...
 Sampson Sa...
 Hon James...
 H H Cogsw...
 Supreme Co...
 C

Advo...
 Judge, I...
 General, S...
 Hon Charl...
 Stephen De...
 Court—Me...

Commis...
 George, B...

Chief J...
 H H Bur...
 Ho. Peter...
 Simon B...
 Haliburto...
 Province,

White square

REEN, &c.

HITE, &c.

permost

essel arriving in
similar one is
Signal Staff at
class of vessel

A.

vince of Nova
forces in Nova
&c.—His Ex.
Grand Cross
&c.

Hon Michael
orris. James
ibert N
William Hill,

and George
nty of An-
of Cumber-
y W H O
Biagay and

John M'Kinnon, Esqrs.—County of Shelburne Snow Parker and Joseph
Freeman, Esqrs.—Queen's County John Heckman and Lot Church,
Esqrs.—County of Lunenburg John G Marshall and Thomas Dickson,
Esqrs.—County of Sydney R J Uniacke and Law. Kavanagh, Esqrs.—
County of Cape Breton John Aibro and Charles R Fairbanks, Esqrs.—
Town of Halifax Wm Dickson, Esq—Truro Robert Dickson, Esq—
Inslow James Fleming, Esq—Londonerry John Robertson, Esq—
Annapolis T Ruggles, Esq—Granville Wm H Roach, Esq—Digby
James Morse, Esq—Amherst S Dennison, Esq—Horton—William Fraser,
Esq—Windsor Wm Young Esq—Falmouth H Wier, Esq—Newport
J J Chipman, Esq—Shelburne S. S Poole Esq—Yarmouth B Serjeant—
Barrington James R Dewolt, Esq—Liverpool Edward James Esq—
Lunenburg Clerk J B Franklin, Esq Chatham, Rev John Inglis, D. D.
Sergeant at Arms, Mr John Boyd Sergeant of the Gallery, Mr. Matthew
Forrester; Messenger, Mr John Gibbs.

Provincial Officers.

Surveyor General of Lands for the Province, Hon. Charles Morris.
Treasurer of the Province, Hon. Michael Wallace. Secretary of the Pro-
vince, Sir Rupert D George Bt. Deputy Secretary, William Hill, Esq.

Court of Chancery.

Chancellor, His Excellency Sir James Keapt. Master of the Rolls, Hon.
Sampson Salter Bowers Masters in Chancery, Hon Brenton Haliburton,
Hon James Stewart, Peleg Wiswell and J G Marshall, Esqrs Registrar,
H H Cogswell, Esq Counsellors and Solicitors, The Attorneys of the
Supreme Court.

Courts of Error, and of Marriage and Divorce.

HIS MAJESTY'S COUNCIL.

Advocates and Proctors, The Attorneys of the Supreme Court.

Court of Vice Admiralty.

Judge, Hon S S Bowers Advocate General, R J Uniacke Solicitor
General, Simon B Robie, Esq Registrar, L Pennel, Esq Dep Registrar,
Hon Charles Morris. Marshal, James Putnam, Esq Dep Marshal, Mr
Stephen Debus Advocates and Proctors, The Attornies of the Supreme
Court—Messenger, Mr S Greenwood.

Court of Escheats and Forfeitures.

Commissioner, Honourable Michael Wallace Registrar, Sir Rupert D.
George, Bt.

Court for the Probate of Wills,

And granting Letters of Administration.

Sarrogate General, Honourable Charles Morris.

Supreme Court.

Chief Justice, Hon Sampson S Bowers Paise Judges, Hon Brenton
Haliburton, Hon James Stewart, Hon Lewis M Wilkins Associate Judge,
Hon Peleg Wiswall Attorney General, Hon R J Uniacke Solicitor Gen.
Simon B Robie, Esq King's Counsel, S G W Archibald, Esq W H O
Haliburton, Esq. Clerk of the Crown and Prothonotary throughout the
Province, William Thompson, Esq Deputy, J W Nutting Esq.

Barristers and Attornies at Law of the Supreme Court
residing in the Province.

COUNTY OF HALIFAX.

Halifax—H H Cogswell, D S Clarke, S G W Archibald, John G Marshall, J J Chipman, R J Uniacke, Jr J W Nutting, William Hill, C I Fairbanks, J W Johnson, W L Sawers, William B Bliss, Beamish Murdock, Alexander Primrose, James Scot Treman, N W White, Charles Twining and James Uniacke, Esqrs.

Pictou—N P Olding, Robert Hatton, Thomas Dickson, Jonathan Blanchard, Esquires

Truro—Jonathan Masters, James W Chandler, Esquires

Annapolis—Thomas Ritchie, T C Haliburton, H Goldsmith Esquires

Digby, Co. of Annapolis—G L Nichols, Bailey, Esqrs

Amherst, Co. of Cumberland—J S Morse, A F W Desbarres, Alexander Sewert, J B Buchanan, Charles D Roach Esquires.

Horton King's Co.—John Whidden L M Wilkins, Esquires.

Windsor Co. Hants—W H O Haliburton William Fraser D D Stewart H Emerson Esquires.

Shellburne Colin Campbell Esq *Antigonish* John T Hall Esquire

Yarmouth John Lawson Jr. and John Forman Esqrs.

Guy'sboro' F W Desbarres Esq *Liverpool* William Sterns and S P Fairbanks, Esquires *Arichat* Wm Delancy Esq *Lunenburg* John Creighton and G F Solomon, Esqrs *Sydney* E Crawley Esq

Commissioners for taking Special Bail in the Country

On Actions depending in the Supreme Court.

Annapolis William Winniett Esquire

Cumberland Charles Baker and Thomas Roach Esqrs.

King's Co—S L Alhson Esq *Cornwallis* *Horton*—S

Dennison Esq *Hants*—Patrick Wright Esq *Colechester*—J Fulton Esq

Pictou—W Patterson, Esq *Sydney*—Alexander M'Donald Esq *Shelburne*—Colin Campbell Esq *Lunenburg*—F J Rudolf Esq

Clergy of the Established Church in Nova-Scotia.

Honourable the Right Reverend ROBERT, Lord Bishop of Nova Scotia, New Brunswick and their Dependencies.

Halifax—Rev John Inglis D D Ecclesiastical Commissary and Rector of St Paul's Rev J Thomas Twining Curate, Rev Benjamin G Gray Missionary to Germans *Sackville*—Rev T Parsons

Newport—Rev C Porter D D *Windsor*—Rev W C King, Rev F Salt,

Falmouth—Rev W Cochran D D *Cornwallis*—Rev Robert Norris *Horton*—Rev ——— Wright *Wilmot*—Rev A Galpin *Aylesford*—Rev E

Galpin *Granville*—Rev G Best *Annapolis*—Rev J Mulledge *Digby*—

Rev R Viets *Yarmouth*—Rev J A Grautham *Shelburne*—Rev T Row-

land *Lunenburg*—Rev Roger Atkin *Liverpool*—Rev W Twining *Ches-*

ter—Rev J Shreve *Manchester*—Rev C Weeks *Sydney, C B.*—Rev

H Binney *Parsons*—Rev Geo Morris *Amherst*—Rev Wm Gray *Raw-*

don—Rev ——— *Windsor* *Truro*—Rev J Burneyeat Visiting Missionary

Rev J Burneyeat.

Halifax

Mr Sygou

Grace

Grant

St. M

As

Min

Halifax

Rev M L

Inch D

Cumberla

Rev Mr

Halifax

William

B. Strong

Richey

A Dresbr

Lunenburg

John F

Dimoe J

mock Ro

Elder Ge

Harris H

His E

hop of I

A Vice

Attorney

the Rev

lesiastic

Presi

Coehra

D A

Rev W

J Porto

Cochra

ACADEMY under the direction of the Governors of King's College,
Principal Rev Mr Salt.

Dalhousie College Halifax.
Patron His Majesty THE KING,

Governors ;

The Right Hon GEORGE Earl of Dalhousie His Excellency Sir
James Kempt K C B Hon and Right Rev Robert Lord Bishop of Nova
Scotia Hon Sampson Salter Blowers, Hon, Michael Wallace Simon
Bradstreet Robie Esq and the President

Professors of Greek and Latin Classics

Professors of Mathematics Natural and Expe-
rimental Philosophy.

} Are not yet filled up

Pictou Academy.

Governed by twelve Trustees who are to profess either the Presbyteri-
an system of Religion or that of the Church of England.

Trustees, S B Robie Esq, L L D S G Archibald, Esq L L D
Duncan Ross, Thomas M'Colloch, D D Thomas Davison, George
Smith, Ro. Lowden, William Patrick, James M'Gregor, D D Archi-
bald Gray, D D James Roman, and James Robson. Head Master,
Rev Thomas M'Colloch, D D Assistant, Rev Jas M'Gregor D D.

National School, Halifax.

Master, Abel S Gore, Esq.

Acadian School, Halifax.

Master, Walter Bromley, Esq.

Justices of the Peace throughout the Province.

Right Rev Robert, Lord Bishop of Nova Scotia. Hon Sampson, S
Blowers, Michael Wallace, Charles Hill, R J Uniacke, Charles Mor-
ris, James Stewart, T N Jeffery, Brenton Haliburton, Hibbert
N. Binney, Eras Collins, S B Robie, Esq. Speaker of the House
of Assembly.

*Memo. The sittings of Courts, names of Officers, &c will be found
arranged under the respective Counties to which they belong.*

COUNTY OF HALIFAX.

Town and District of Halifax.

High Sheriff of the County. J J Chipman Esq.

Supreme Court sits at Halifax,

On the 2d Tuesday of January, 1st Tuesday of April, 2d Tuesday of
July, and 2d Tuesday of October.

On the 2
edges, Hon

Commissi
William Mi

Ope
Justices J
D S Clarke

Sits on th
J

John G P
Creighton
muel Head
ler M'Nab
Cunard Jo
John D Ha
D S Clark C

Hon R J U

John Dou
Captain Se

Hon R I U
Stayner, Ja
Archibald C

James For

R
Hon H M
Andrew
John Ru
Robert H

g's College,

Inferior Court,

On the 2d Tuesday of March, June, September and December.
Judges, Hon. Michael Wallace, James Foreman, John Howe, & W.
Lawson, Esqrs.

Commissioners' Court,

xcellency Sir
Bishop of Nos
Wallace Simon

Meets in February, May, August and November
Commissioners, James Forman, James Tobin, Richard Tremain,
William Minns and John Liddell, Esqs Clerk, D S Clarke Esq
Police Office,

t yet filled up

Open every day throughout the year except Holidays
Justices John G Pyke John Liddell and John Howes sen Esqs Clerk
D S Clarke

e Presbyteri-
gland.

Esq L L D
son, George
D D Archi-
head Master,
or D D.

Sessions of the Peace,

Sits on the 1st Tuesday of March June September and December

Justices of the Peace of and for the County

Residing in the District of Halifax

John G Pyke Custos Rotulorum Theophilus Chamberlain James
Creighton James Forman John Howe Sen Rufus Fairbanks Sa-
muel Head John Liddell Richard Tremain Henry Yeomans Pe-
ter M Nab J M Greer William Lawson Samuel Albro Samuel
Cunard John Starr John Albro Michael Tobin M Richardson
John D Hawthorn Thos Holland Isaac Rayne and H Y Mott Esqs
D S Clark C P

nce.

Sampson, S
Charles Mor-
on, Gilbert
of the House

Commissioners of the Revenue.

Hon R J Uniacke Hon M Wallace Simon B Robie and Wm Law-
son Esqrs. William Newton Clerk

Commissioners for Light Houses,

John Douglas Esq Master Attendant Samuel Cunard Esq and
Captain Scott R N.

Commissioners for visiting the Poor House.

Hon R I Uniacke, J G Pyke, Esq Hon Charles Morris, Mr John
Stayner, James Forman Esq. Hon T N Jeffrey, R Tremain, Esq. Rev
Archibald Gray, D D; Henry Yeomans Esq. and Hon Charles Hill.

ill be found
ong.

Commissioners of the Streets, &c.

James Forman John Albro Michael Tobin, Frederic Major and S Cu-
nard Esquires.

Register of Deeds &c, Sir R D George, Bt.

Officers of the Provincial Revenue.

Hon H N Binney, Collector of Impost and Excise
Andrew Richardson, Guager and Weigher
John Rule, Shipping Officer
Robert Hodges, Land Waiter

Tuesday of

Chas Ross, James Barret, Waiters
Wm Cleaveland, Collector of License Duty;
Edward Duckett, Collector of Light Duty

District of C

Officers of His Majesty's Customs.

Hon T N Jeffrey Collector
John Wallace Esq. Comptroller
J Purvis, J W Watson Weighers and Searchers
Robert Dimmet, Richard B Young, Tide Surveyors
W M Sweeney, Earl Boyd, Tidesmen.

Collector of
ise and Pro
hester, Ro

Officers of His Majesty's Naval Yard.

A F Jones Esq. Master Shipwright. Mr. James Ritchie, Clerk, Mr
Matthews, Gate Porter.
Coroner of the County -Mr. Samuel Greenwood,

District o

District o
Robert Pat
Flemming, S

COUNTY OF HALIFAX.

Districts of Colchester and Pictou.

Supreme Court sits at Pictou on the last Tuesday of May, and this
Tuesday of September.

H

At Truro on the 1st Tuesday of June, and 4th Tuesday of Sept.
Inferior Court.

Sits at Pictou 1st Tuesday of February, and 4th Tuesday of July
Judges, Hugh Devoon, A M'Donald, George Smith, Robert Lowden
and M'Cara Esqs: Mr Walter Patterson Deputy Prothonotary.

Sits at A
of Septembe
At Digby
ber. Judges
Wm. F. Bou

At Truro on the 1st Tuesday of January, and the 1st Tuesday of
July Judges, John Fulton, James Archibald, and J M'Curdy Esqs
Mr. George Dill Deputy Prothonotary.

Sessions of the Peace.

Sits at Truro and Pictou at the same time with the Inferior Court
Justices of the Peace.

J. Jones,
Wm. Winn

Of and for the County residing in the Districts of Colchester & Pictou
James Fulton, Hugh Devoon, John Stewart, James Archibald, Robert
Lowden, Samuel Tupper, Wm Cotting, Joshua Marsh John Dickson,
William M'Kay, George Roy, Mathew Archibald, Wentworth Taylor,
John Allen, James Skinner, Robert Dickson, James M'Curdy, James
Keot, George Smith, James Beuvie, Adam Archibald, John Fraser,
Nathanial Masters, Thomas J Brown, James Fleming, J Mahon W
Currie, W Mattheson, D M'Lean R M'Kay, Andrew M'Cara, W
Field, E S Blanchard, Jas Carmichael, Jno Olding, and Wm Mortimer.

dolf T. Lov
Bayard Joh
kinson. Joi
John Wiswa
Charles Jo
Campbell V
Ebenezer C

Surrogate Judges of the Court for the Probate of Wills.

District of Colchester, S G W Archibald Esq. District of Pictou,
George Smith Esq.

William
James R L

Registrars of Deeds, &c.

District of Colchester, Wm. Dickson, Esq. District of Pictou, Geo. Smith, Esquire.

District of Pictou.

Collector of Light Duties, R Corbett. Collector of Impost and Excise and Pro Collector, Hugh Denoon, Esq. Ditto for District of Colchester, Robert Dixon, Esq.

Deputy Sheriffs.

District of Colchester Mr. Blair. District of Pictou, Mr. Harris.

Commissioners of Land Board.

District of Pictou—George Smith, Robert Lowden, John Skinner, Robert Patterson. District of Colchester—Robert Dickson, James Hemming, Sam Tupper, Edward Blanchard.

COUNTY OF ANNAPOLIS.

High Sheriff for the County, William Winniet, Esq.

Supreme Court.

Sits at Annapolis, on the 21 Tuesday of June, and the 2d Tuesday of September.

At Digby on the 1st Tuesday of July; and 3d Tuesday of December. Judges, Josiah Jones, E. Merton, Andrew Snodgrass, C U Jones, Wm. F. Bonnell, Esqrs.

Sessions of the Peace,

At the same time with the Inferior Court.

Justices of the Peace.

Inferior Court J. Jones, Custos Rotulorum. Andrew Snodgrass, Edward Thorn, Wm. Winniet, Simon Jones, Stephen Jones, Moses Shaw, R T. Ran-
chester & Pictou, J. Lovell sen. Benjamin Dodge John Ruggles E Merton S V
Chibald, Robert Bayard John Whitman Phineas Lovett John Morchouse Robin Han-
John Dickson, kinson, John M. Segoyne, W Jones Thomas Ritchie Joseph Quequay
Curtis Taylor, John Wiswall Jun. Elias Wheelock, W F Bonnell, C. Jones John Reed
Curtis, James Charles Jones J F Randolph W Bent Pardon Sankes Wm Delancy Sam.
John Fraser, Campbell W Roach Chas. Hannah Sam. I Chesley Sam. Hail and
J. Mahon W. Ebenezer Cutler Esqrs. C. P.

Surrogate Judge of the Court for the Probate of Wills.

William Winnett, Esq.

Registrar of Deeds.

William Winniett, Esq. Coroners—Silvanus Snow Wm Young and James R Lovett Esqrs.

Collector of Light Duty W Winnett Esq: Collector of Impost and Excise T Ritchie Esq. Pro Collector H Goldsmith Esq.

Commissioners of Land Board.

Eastern District—Thomas Ritchie Henry Goldsmith D J Ditman
Western District—Cerenno U Jones Charles M'Carthy Samuel Campbell, Esqrs.

COUNTY OF CUMBERLAND.

High Sheriff for the County, Charles H, Chandler, Esq.

Supreme Court,

Sits at River Philip on the 2d Tuesday of June.

Inferior Court,

Sits at Amherst, on the last Tuesday of June and 1st Tuesday of November. Judges Charles Baker Henry Purdy Thomas Roach and Richard Blair, Esquires. Silas Morse, Esq. Dep. Prothonotary.

Sessions of the Peace,

Sits at Amherst, the same time with the Inferior Court:

Justices of the Peace.

Charles Baker Esq. Custos Rotulorum. Henry Purdy Gilbert Purdy Edward Baker Thomas Roach C H Chandler Gabriel Purdy D M'Farlane William Baker John Black Wm. White Richard Blair Gains Lewis John Morse George Bergman James M'Nab Thomas Cooke and Stephen Oxley Esqrs. J S Morse, Esq.

Surrogate Judge of the Court for the Probate of Wills.

Charles Baker Esq. Registrar of Deeds, &c. Charles Baker Esq. Collector of Impost and Excise. Thomas Chapman Pro Collector Michael Gordon.

Commissioners of Land Board.

Richard Blair Thomas Roach James S Morse Thomas Cooke, Esqrs

COUNTY OF KING'S,

High Sheriff for the County, George Chipman, Esq.

Supreme Court,

Held at Horton on the 1st Tuesday of June, and the 3d Tuesday of September.

Inferior Court,

Sits at Horton on the 3d Tuesday of May, and 2d Tuesday of October—Judges, John Chipman E Dewolf Wm Campbell D Whidden and C R Prescott, Dep. Prothy. Samuel L Allison Esq.

Sessions of the Peace.

Held at the same time with the Inferior Court:

John Campbell
bell David
ford, Dan
J Wells,
Lockhart,
rington, V

H V Busk
Coroner
Surrog

Collector
lectors.

High

Sits at Win

Sits at W
Tuesday of
D. D. D

H

ningham Jo
Walker Ca
Scott John
McKay J A

W H O

H Shey s
Court for t
Deputy
Impost and

W Fraser, I

Director of Impos
Smith Esq.

with D J Ditman
by Samuel Com

D.
andler, Esq.

f June.

t Tuesday of N
omas Roach a
othoutary.

ior Court:

y Purdy Gilber
r Gabriel Purd
e Richard Blh
M'Nab Thoma

te of Wills.
les Baker Esc
n Pro Collecto

s Cooke, Esqrs

n, Esq.

3d Tuesday o

sdnesday of Octobe
Whidden and C

ourt:

Justices of the Peace.

John Chipman Custos Rotulorum, Elisha Dewolf, Wm. Camp-
bell David Whidden, James Kerr, Wm. A. Chipman, J. Ratch-
ford, Daniel Dewolf Simon Fitch James Harris, Samuel Bishop
J Wells, Alexr. Walker, S Denuison James Allison, Daniel
Lockhart, Fullerton J Lewis, J D Harris, W Chipman jr. H Har-
rington, Wm. Chipman, C P.

Commissioners of Land Board:

H V Buskirk, David Whidden, Geo Chipman, J Johnson, Esqs.

Coroners—W S Morse, D Dewolf, John Allison, Esqs.

Surrogate Judge of the Court for the Probate of Wills &c.

William Campbell, Esq.

Deputy Registrar of Deeds, &c.

William Campbell, Esq.

Collector of *Impost and Excise*—D Whidden, Esq. *Pro Col-
lectors. For Horton*—E Dewolf, Esq. *For Cornwallis*—D
Whidden, Esq.

COUNTY OF HANTS.

High Sheriff for the County, Patrick Wright, Esq.

Supreme Court,

Sits at Windsor on the last Tuesday of May, and the 4th Tues-
day of September.

Inferior Court,

Sits at Windsor on the 1st Tuesday of January, and the 1st
Tuesday of July.—Judge R Cunningham Esq. Rev W Cochran,

D. D. Dep. Prothy. Patrick Wright, Esq.

Sessions of the Peace.

Held at the same time with the Inferior Court.

Justices of the Peace.

— Cust. Rot. G. Church, John Emerson Richard Cun-
ningham John Clarke Wm Smith Shubal Dimock Wm Salter J
Walker Caleb Smith W H Shey James Whidden John Smith A
Scott John Parker Benjamin Dewolf W O'Brien J Withrow J
McKay J Allison J Garby John Dimock John Elder, Esqrs.

Commissioners of Land Board.

W H O Haliburton, Joseph Sentell, Benjamin Dewolfe, Wm
H Shey and Richard Smith, Esqs. Surrogate Judge of the

Court for the Probate of Wills—Wm Fraser Coroner,

Deputy Registrar of Deeds

Impost and Excise

Collector of

Pro Collectors, Windsor

Douglas, R Dickson Esq.—Surrogate Judge

W Fraser, Esq.

COUNTY OF SHELBURNE.

High sheriff for the County, John Bingay, Esq.

Supreme Court,

Held at Shelburne on the 2d Tuesday of July.

Inferior Court,

Sits at Shelburne on the 1st Tuesday of April, and 1st Tuesday of October, Judges G White J Sargeant J V Buskirk and as Dewolf Crowell Esqrs. Dep. Prothy. Robt Bingay.

For the District of Yarmouth.

Sits at Tuskett Village on the 1st Tuesday of March, and at Yarmouth on the the last Tuesday of October. Judges, S S Pool J Lent J N Bond B Dentremont and H G Farish, Esqrs. Dep. Prothy.—M Huntington.

Sessions of the Peace,

Held at the same time with the Interior Court.

Justices of the Peace.

Gideon White Custos Rotulorum, John Sargeant, Samuel Poole, B Bernard B Dentremont Jacob V Buskirk, James Dor J N Bond James Lent, Ebenezer Crowell, H G Farish, Th Crowell, John Bingay Gabriel V Norden, Anthony Landres, Kelly B Bingay M Huntington J McKinnon Colin Campbell, Barclay, Esqrs. Robert. Bingay, C P.

Commissioners of Land Board.

Eastern District— Colin Campbell, Jacob Van Buskirk, John Bingay and B Sarjeant. Western District, Samuel S. Poole, G Farish, John M'Kinnon and Gabriel Van Norden Esqs. Conner, George Bingay.

Surrogate Judge of the Court for the Probate of Wills—*Distri* John Pern
of Argyle, C Campbell, Esq. *Dist. of Yarmouth* S S Pool E John Eva

Dep Registrar of Deeds—Colin Campbell Esq. Collectors John Hea
Impost and Excise.—*Yarmouth* H G Farish *Shelburne* J doll, C P.
Buskirk *Weymouth* R Hankinson Pro Collectors—*Shelburne*
A S Bruce Esqr. *Yarmouth* J N Bond Esq *Weymouth* John P.
Hankinson Esq. *Barrington* Joseph Homer. Surroga

COUNTY OF QUEEN'S.

High Sheriff for the County, Nathan Tupper Esq.

Supreme Court

Held at Liverpool on the 1st Tuesday of July.

Inferior Court

Sits at Liverpool on the 2d Tuesday of April and 2d Tuesday of November. Judges, Joshua Newton, Joseph Freeman Sno Parker Benjamin Knaut, Jas Dewolf Esqrs. Dep Prothy. Jara Rogers Esq.

E.
ngay, Esq.

y of July.

l, and 1st Tuesd
V Buskirk and as

uth.

March, and at Ya
udges, S S Poo

rish, Esqrs. De

ior Court.

argeant, Samuel
kirk, James Dor

l G Farish, Th
thony Landres,

olia Campbell,

d.
an Buskirk, Jo

muel S. Poole,
den Esqs. Cor

f Wills—Distri
uth S S Pool E

Esq Collectors
Shelburne J doll, C P.

ectors—Shelbur
sq Weymouth

pper Esq.

of July.

and 2d Tuesde
h Freeman Sno

ep Prothy, Jam

Sessions of the Peace

Held at the same time with the Inferior Court.

Justices of the Peace.

Joshua Newton, Custos Rotulorum, Joseph Barss, Nathan Tupper, Isaac Dexter, Joseph Freeman, Snow Parker, Benjamin Knaut, Robert Barry, Jas Gorham, J R Dewolf, John Barss, V Buskirk and as Dewolf, Esqrs.

Commissioners of Land Board.

os Freeman, Benj Knaut, Nathan Tupper, James Gorham Esqrs

Surrogate Judge of the Court for the Probate of Wills, &c.

Joshua Newton, Esq.

Collector of Impost and Excise—Jos. Newton Esq. Pro Collector—Jos. Newton, Esq. Coroner—W Freeman.

COUNTY OF LUNENBURG.

High Sheriff for the County, Henry Kaulback Esq

Supreme Court

Held at Lunenburg on the last Tuesday of June.

Inferior Court

sits at Lunenburg on the 2d Tuesday of April and 21 Tuesday of October. Judges, John Creighton, J Pernet, Garret Millar, Ed James Esqrs. Dep Proth. John Owen Esq.

Sessions of the Peace

Held at the same time with the Inferior Court.

Justices of the Peace.

Ed James, Custos Rotulorum, F J Etter, John Creighton,

John Pernet, D W Crandall, James Walker, John C Rudolf,

John Evans, Ed Enright, Garret Millar, Wm Alexander,

John Heckman John Owen G S Wells, Esqrs.—F C Ru-

Shelburne J doll, C P.

Commissioners of Land Board. .

John Pernette D M Crandle John Heckman Garret Miller,

Surrogate Judge of the Court for the Probate of Wills, &c:

J Pernette, Esq.

Deputy Register of Deeds &c.—Philip Rudolf Esq

Collector of Impost and Excise—John Owen Esq. Pro Col-

lector John Owen Esq. F J Rudolf Esq. Coroner.

COUNTY OF SYDNEY.

High Sheriff for the County, David McQueen, Esq:

Supreme Court.

Held at Dorchester on the 2d Tuesday of September,

Inferior Court

Sits at Dorchester on the 1st Tuesday of May and at Guysborough on the 2d Tuesday of November. Judges, Thos Cutler Dep Regr W Hierlihy Joseph Marshall, John Cunningham and Benjamin Ogden, Esqrs. Dep. Prothy. Alex McDonald.

Sessions of the Peace,

Held at the same time with the Inferior Court:

Justices of the Peace.

Thomas Cutler Custos Rotulorum, Joseph Marshall, Richard Canningham, Wm Atwater Christ. Muller, Robert Mulleson Cutler, Joseph H Marshall Wentworth Taylor, Patrick Lanigan, Alex McDonald J Mc Donald C Archibald Robert Murray D Archibald W McKien T Glenross D Campbell A McDonald R Hartshorne Jno Newton Jos Maxwell Esqrs.

Commissioners of Land Board.

Lower District—Robert Cutler, Joseph Marshall, Robert Hartshorne, and John Newton. Upper District—Rev T Trotter, B Ogden J Hierlihy, [John Cunningham, John McDonald, and Robert Henry Esqs.

Coroner—Peter Frost.

Surrogate Judge of the Court for the Probate Wills, &c.

Thomas Cutler Esq.

Deputy Registrar of Deeds, &c.

Thos Cutler and John Cunningham, Esqrs.

COUNTY OF CAPE BRETON.

High Sheriff for the County, C R Ward, Esq.

Supreme Court

Held at Sydney on the last Tuesday of August and at Arichat on the 1st Tuesday of September.

Inferior Court

Sits at Sydney on the 2d Tuesday of January, and the 2d Tuesday of July and at Arichat on the 2d Tuesday of February and the 2d Tuesday of August.

Inferior Court.

J G Marshall Chief Justice of the Inf. Court of Common Pleas Judges, Thos Crawley, Lawr. Kavanagh, John Leaver, C. Hubert, and Frederick B Tupper Esqs. Surveyor General of Lands — Thomas Crawley. Collector of Impost and Excise—Charles E Leonard.

John G Me
ey, Rienc
Leonard, I
John Jones
Cameron,
Fatti, P D
Angus Gr
Watts, Wil
Madden,
and Jno M
Actin
Collecto
Charles
Thon
LEFT I
month. S
Sun. Fou
n hours a
the Sun is
too fast.
n days.
Moon's so
Twelfth, h
RIGHT
cond, Asp
Calendar.
Dominical
Golden N
Epact

and at Guysborough, surrogate Judge for the Probate of Wills—Thomas Crawley; Thos Cutler Dep Regr. of Deeds, North District—Charles R Ward. South and Benjamin District—James Turnbull Esqrs.

Sessions of the Peace.

Held at the same time with the Interior Court,

Justices of the Peace.

Court:
 John G Marshall Custos Rotulorum, Archd. Dood, Thos Crawley, Ricnd Gibbons, Clement Habert, John Leaver, Charles Leonard, Rowd. McKinnon, Peter H Clarke, Lawr. Kavanaugh, Robert Mulleson, John Jones, Chs. Mc Nabb, John Campbell, James Dodd, John Patrick Lanigan, Cameron, Geo. Syrrat, Ferd. B Tupper, John B Giles, David Robert Murray D'Alti, P Dumeresque, John Higgins, John Leaver, H Ingraham, A McDonald R Angus Grant, Samuel Plant, George Cosset, W Gammel Wm. Watts, William Bannerman, James Ball, George Brown, Andw. Madden, James Doffus, Theophilus Greenwood, H McDonald and Jno Mc Keau Esqs.
 Acting Collector and Comptroller—John Warde Benn.
 Collector of *Impost and Excise.*—

Collectors of Excise and Light Duty,

Charles C Leonard. *Arischat.* James Turnbull Esquires.

Superintendent of King's Mines

Thomas Crawley, Esq. Coroner—John Smith Esq.

Explanation of the Calendnr Pages.

LEFT HAND PAGE.—*First Column* shows the days of the month. *Second* the days of the week. *Third* the rising of the Sun. *Fourth* the setting of the Sun. *Fifth*, the length of days in hours and minutes. *Sixth*, shows how much faster or slower the Sun is than the real time, in minutes. S Sun slow; F, Sun too fast. *Seventh*, Sun's declination. *Eighth*, the Moon's age in days. *Ninth*, the Moon's rising or setting. *Tenth* the Moon's southing. *Eleventh*, the Moon's place in the signs. *Twelfth*, high water at Halifax.

RIGHT HAND PAGE.—*First column*, days of the month. *Second*, Aspects, Holidays, and Weather. *Third*, the Farmer's Calendar.

Chrononological Cycles, for 1824,

Dominical Letter	D. C.	Solar Cycle	13
Golden Number	1	Roman Indiction	12
Epact	0	Juban Period	6537

JANUARY bath XXXI Days.

There is nothing of which we are so liberal as of advice.

We may give advice; but we cannot give conduct.

We pass often from love to ambition; but we seldom return from ambition to love.

New Moon 1st Day, 3 h, 49 m. Morning.

First Quarter 9th Day, 8 h, 49 m. Morning.

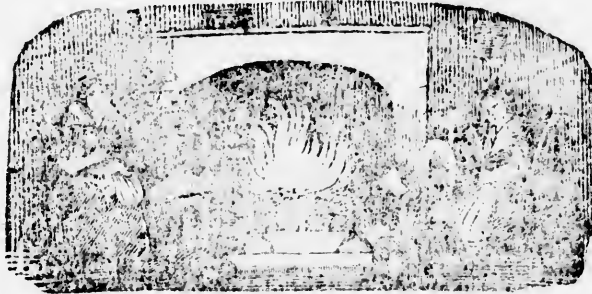
Full Moon 16th Day, 4 h. 33 m. Morning.

Last Quarter 22d Day, 9 h. 29 m. Evening.

New Moon 30th Day, 11 h. 31 m. Evening.

D	D	☉	☽	Days	S	Sun	☽	☾	RIS.	Moon	☾	FULL	D
M	W	RISES	SETS	length	SL	hrs	A	& SETS	South	PL	SEA	M	
1	Th	7 32 4	28	8 56	4 23	4	♂	SETS	0 18	♄	7 32	1	☾
2	Fr	7 31 4	29	8 58	4 22	59	1	5 59	1 5 21	♄	8 19	2	H.
3	S	7 31 4	29	8 58	5 22	54	2	7 0	1 49	♄	9 3	3	D
4	D	7 30 4	30	9 0	5 22	48	3	8 0	2 32 17	♄	9 46	4	24 S
5	M	7 39 4	30	9 0	5 22	42	4	9 1	3 13 29	♄	10 27	5	
6	Fr	7 29 4	31	9 2	6 22	35	5	10 1	3 53	♄	11 7	6	Epip
7	W	7 29 4	31	9 2	6 22	28	6	11 2	4 33 23	♄	11 47	7	24 S
8	Th	7 28 4	32	9 4	7 22	21	7	MORN.	5 16	♄	0 30	8	
9	Fr	7 28 4	32	9 4	7 22	13	8	0 7	6 0 18	♄	1 14	9	♀ r
10	S	7 27 4	33	9 6	8 22	4	9	1 12	6 49 8	♄	2 3	10	Low
11	D	7 26 4	34	9 8	8 21	55	10	2 22	7 42 14	♄	2 56	11	1st
12	M	7 25 4	35	9 10	8 21	46	11	3 32	8 41 28	♄	3 55	12	
13	Tu	7 25 4	35	9 10	9 21	36	12	4 43	9 43 0	♄	4 57	13	
14	W	7 24 4	36	9 12	9 21	26	13	5 46	10 46 27	♄	6 0	14	♂
15	Th	7 23 4	37	9 14	10 21	15	14	6 39	11 49 5	♄	7 3	15	
16	Fr	7 22 4	38	9 16	10 21	4	15	RISES	MORN	♄	7 40	16	☾
17	S	7 22 4	38	9 16	10 20	53	16	6 44	0 49	♄	8 13	17	Ver
18	D	7 21 4	39	9 18	11 20	41	17	8 3	1 45 28	♄	8 59	18	h
19	M	7 20 4	40	9 20	11 20	29	18	9 19	2 38 02	♄	9 52	19	Gr
20	Tu	7 19 4	41	9 22	11 20	17	19	10 31	3 28 27	♄	10 42	20	☾
21	W	7 18 4	42	9 24	11 20	4	20	11 42	4 16 22	♄	11 30	21	Lo
22	Th	7 17 4	43	9 26	12 19	50	21	MORN	5 5 25	♄	0 10	22	Vn
23	Fr	7 16 4	44	9 28	12 19	37	22	0 59	5 54 00	♄	1 8	23	Lo
24	S	7 15 4	45	0 30	12 19	23	23	1 57	6 43 20	♄	1 57	24	♂
25	D	7 14 4	46	9 32	13 19	8	24	3 1	7 34 4	♄	2 48	25	3d
26	M	7 13 4	47	9 34	13 18	53	25	3 59	8 25 15	♄	3 39	26	24
27	Fr	7 12 4	48	9 36	13 18	38	26	4 49	9 16 27	♄	4 30	27	
28	W	7 11 4	49	9 38	13 18	23	27	5 33	10 5 58	♄	5 19	28	♂
29	Th	7 9 4	51	9 42	13 18	7	28	6 10	11 53 21	♄	6 7	29	G
30	Fr	7 8 4	52	9 44	14 17	51	♂	SETS	11 38	♄	6 52	30	D
31	Sa	7 7 4	53	9 46	14 17	35	1	5 43	EVEN 20 14	♄	7 35	31	H

D M
1 ☾
2 H.
3 D
4 24 S
5
6 Epip
7 24 S
8
9 ♀ r
10 Low
11 1st
12
13
14 ♂
15
16 ☾
17 Ver
18 h
19 Gr
20 ☾
21 Lo
22 Vn
23 Lo
24 ♂
25 3d
26 24
27
28 ♂
29 G
30 D
31 H



return from am.

ing.
ing.
ing.
ing.

Month	PL	FULL SEA
18	7	32
5	8	19
49	9	3
32	9	46
13	10	27
53	11	7
33	11	47
16	0	30
0	1	14
49	2	3
42	2	56
41	3	55
43	4	57
46	6	0
49	7	3
27	7	40
49	8	13
45	8	59
38	9	52
28	10	42
16	11	30
5	0	19
51	1	8
43	1	57
34	2	48
25	3	39
16	4	30
5	5	19
53	6	7
38	6	52
20	7	35

D	REMARKABLE Days, &c.
1	Orn ☉ perig.
2	H. tid. ♂ ☉ ☿
3	☽ apogee.
4	2d Sunday after Ch.
5	
6	Epiphany.
7	☿ S. 11h. 8 m. e.
8	
9	♀ r. 3h. 54 m. m.
10	Low tides.
11	1st S. after Epiphany
12	[Asia. 1817.
13	
14	♂ ☽ ☿
15	
16	☽ per. Decl. visible
17	Very High tides
18	☿ station
19	Gr. elong. ☽
20	☉ enters ♉
21	Louis xvii. Oct. '93
22	Vincent
23	Low tides
24	♂ stationary
25	3d Sunday after Epiphany
26	☿ sou 9h 38m. eve.
27	
28	♂ ☉ ☿
29	Geo III. died 1820.
30	☽ apr. [Æ 81.
31	Hi tid. ♂ ☉ ♀

Farmer's Calendar.

On the first day of January, every year, have a complete reckoning with yourself; your books all posted up, your accounts of more than one year's standing, all balanced, your controversies with all men settled; and you will have good neighbours, and complain less of hard times than some do. Improve the long evenings in useful reading. The Letters of Agricola costs only 12s 6d and are loaded with information for the agriculturalist. It is not best to be too full of new schemes; but when real improvements are made in the science of farming, it is well to know what they are, and to derive benefit from them if you can.

Timber cut now will be more durable than if cut in summer when full of sap. Finish killing your pork. If it has been well fattened and your wife is a good manager, my word for it, you will have pork next hay time, whether you kill it in the old of the moon or the new. Finish thrashing your grain as soon possible, that it may not be destroyed by the rats. Let your cattle receive an early visit; feed them twice in

FEBRUARY hath XXIX Days.

Those who apply themselves too much to little things, commonly become incapable of great ones.

Few things are impracticable in themselves; and it is for want of application, rather than of means, that men fail of success.

Avarice often produces contrary effects. There are many people who sacrifice their whole fortunes to dubious and distant expectations; there are others who contend great for little present advantages.

First Quarter 7th Day, 10 h. 46 m. Evening.

Full Moon 14th Day 3 h. 7 m. Evening.

Last Quarter 21st Day, 0 h. 58 m. Evening.

New Moon 29th Day, 6 h. 21 m. Evening.

D	M	S	S	Days	S	Sun's	D	C	RIS	Moon	C	FULL	SEA	D	
														M	R
		R	SETS	length	decl	S	A	&	SETS	South	PL				
1	D	7	6.4	51.9	48.14	17.18	2	6	44	1	3.26	8	17		
2	M	7	5.4	55.9	59.14	17.1	3	7	44	1	44.38	3	59	♂	♂
3	Tu	7	4.4	58.9	52.14	16.43	4	8	47	2	25.20	9	39		
4	W	7	2.1	58.9	56.14	16.26	5	9	49	3	6.00	10	20	♀	ri. 4
5	Th	7	1.4	59.9	58.14	16.8	6	10	51	3	50.15	11	4	□	♂
6	F	7	0.5	0.10	0.14	15.50	7	MORN.		4	36.27	11	50	24	sq.
7	S	6	59.5	1.10	2.14	15.31	8	0	2	5	26.8	0	40	5th	S.
8	D	6	57.5	3.10	6.15	15.13	9	1	8	6	20.23	1	31	Low	ti
9	M	6	56.5	4.10	8.15	14.54	10	2	16	7	19.11	2	33	♀	so
10	Tu	6	55.5	5.10	10.15	14.34	11	3	21	8	20.21	3	34	♂	O
11	W	6	54.5	6.10	12.15	14.15	12	4	18	9	23.26	4	37		
12	Th	6	52.5	8.10	16.15	13.55	13	5	9	10	24.20	5	38)	per
13	F	6	51.5	9.10	18.15	13.35	14	5	49	11	22.00	6	36	Valent	
14	S	6	50.5	10.10	20.15	13.15	15	RISES		micro	20	7	31	♀	sta
15	D	6	48.5	12.10	24.15	12.55	16	6	47	0	17.00	8	0		
16	M	6	47.5	13.10	26.14	12.34	17	3	3	1	10.21	8	24		
17	Tu	6	46.5	14.10	28.14	12.14	18	9	18	2	1.00	9	15		
18	W	6	44.5	16.10	32.14	11.53	19	10	31	2	52.20	10	6	⊙	en
19	Th	6	43.5	17.10	34.14	11.31	20	11	41	3	43.11	10	57		
20	F	6	41.5	19.10	38.14	11.10	21	MORN.		4	31.17	11	48	24	son
21	S	6	40.5	20.10	40.14	10.49	22	0	48	5	26.29	0	40	S-x	S
22	D	6	39.5	21.10	42.14	10.27	23	1	50	6	18.4	1	32	Low	
23	M	6	37.5	23.10	46.14	10.5	24	2	45	7	11.21	2	25		
24	Tu	6	36.5	24.10	48.14	9.43	25	3	31	8	1.00	3	15	♂	set
25	W	6	34.5	26.10	52.13	9.21	26	4	9	8	49.18	4	3	♂)
26	Th	6	33.5	27.10	54.13	8.59	27	4	43	9	36.29	4	50)	ap
27	F	6	32.5	28.10	56.13	8.36	28	5	19	10	20.00	5	34	Gr	el
28	S	6	30.5	30.11	0.13	8.14	29	5	36	11	3.23	6	17	Quin	
29	D	6	29.5	31.11	2.13	7.51	30	SETS		11	44.38	6	58		

D
M

R

4th S

♂

♀ ri. 4

□ ♀

24 sq.

5th S.

Low ti

♀ so

♂ O

) per

Valent

♀ sta

⊙ en

24 son

S-x S

Low

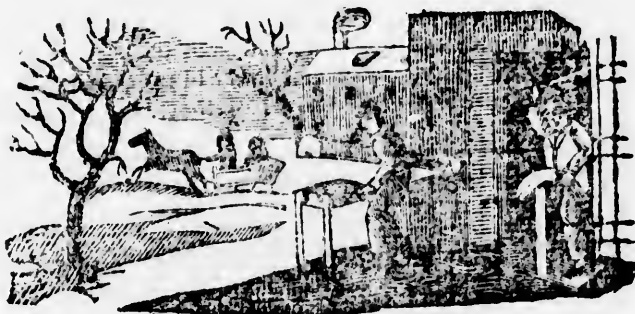
♂ set

♂)

) ap

Gr el

Quin



, commonly
for want of
people
expectations;
advantages.

ing.

ing.

PL	SEA
3	26 8 17
4	3 59
5	20 9 39
6	7 10 20
7	15 11 4
8	27 11 50
9	8 0 40
10	23 1 34
11	2 33
12	3 34
13	4 37
14	20 5 32
15	6 36
16	30 7 31
17	8 0
18	21 8 24
19	9 15
20	10 6
21	10 57
22	17 11 48
23	29 0 40
24	1 32
25	2 25
26	3 15
27	18 4 3
28	29 4 50
29	5 34
30	23 6 17
31	6 58

D M	REMARKABLE Days, &c.
1	4th S after Epiph.
2	♂ ☉ ♀ Purifica B V M.
3	
4	
5	♂ ri. 4h 28m mor.
6	☐ ♃ ☉
7	♃ sq. 8h 45m evening.
8	5th S. aft Epi.
9	Low tides.
10	♀ so 6h 22m morning
11	♂ O ♃
12	
13) per Swartz died 1798
14	Valentine
15	♀ stat ♂ stat
16	
17	
18	
19	☉ en ♃ Luth died 1546
20	
21	♃ sou 7 47m evening
22	Sex Sun
23	Low tides
24	
25	♃ sets 1h 32m evening
26	♂) ♂ ♃ sta,
27) apogee
28	Gr elonga ♀
29	Quinqua Sun

Farmer's Calendar.

the morning and twice at night, and never give them quite as much as they would eat. Look at your cattle yourself, if you would have them thrive; trust them not entirely to the young and inexperienced. Let not your horses be harnessed too often in the pleasure sleigh; and when they are, see that they are not driven too fast, nor permitted to stand uncovered. Trust them not to those who will abuse them.

Now look to your barns, visit them often, let them be kept clean; a neat, well regulated barn is a beautiful sight. This is the time to give out your poorest hay; cattle will eat it better than in fall or spring; sprinkle a little brine on it, if you would have them gentle, use them kindly; take care of them supply their wants, and they will amply repay you. Make an estimate on the quantity of your hay; but whether you have enough to last till the tenth of May, or not, keep your cattle, at present, in good heart especially your cows and ewes. Finish dressing your flax.

MARCH hath XXXI Days.

In love there are two sorts of constancy: one arises from our continually finding in the favourable object fresh motives to love; the other, from making it a point of honour to be constant.

The greatest of all cunning is, to seem blind to the snares laid for us; men are never so easily deceived as while they are endeavouring to deceive others.

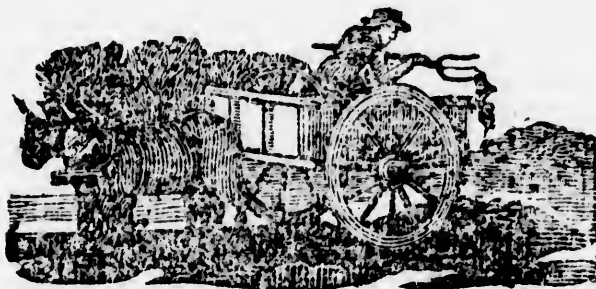
First Quarter 8th Day, 9 h. 52 m. Morning,
Full Moon 15th Day 1 h. 20 m Morning.
Last Quarter 22d Day, 6 h 54 m Morning.
New Moon 30th Day, 10 h 45 m Morning.

D	D	S	S	Days	S	Sun's	()	RIS.	Moon)	FULL						
M	W	R	R	length	SL	dist	S	A	& SETS	South	PL	SEA						
1	M	6	27	5	33	11	6	13	7	28	1	6	39	evn	25	17	7	39
2	Tu	6	26	5	31	11	8	12	7	5	2	7	44	1	7	29	8	21
3	W	6	24	5	36	11	12	12	6	42	3	8	49	1	51	☾	9	5
4	Th	6	23	5	37	11	14	12	6	19	4	9	57	2	37	24	9	57
5	F	6	22	5	38	11	16	12	5	56	5	11	3	3	26	☽	10	40
6	S	6	20	5	40	11	20	11	5	33	6	morn	4	5	18	20	11	32
7	C	6	19	5	41	11	22	11	5	10	7	0	9	5	14	☐	0	28
8	M	6	17	5	43	11	26	11	4	46	8	1	14	6	13	17	1	27
9	Tu	6	16	5	44	11	28	11	4	23	9	2	13	7	13	☾	2	27
10	W	6	14	5	46	11	32	10	3	59	10	3	4	8	12	15	3	26
11	Th	6	13	5	47	11	34	10	3	33	11	3	46	9	10	29	4	24
12	F	6	12	5	48	11	36	10	3	12	12	4	23	10	6	☽	5	20
13	S	6	10	5	50	11	40	10	2	49	13	4	56	10	59	29	6	13
14	C	6	9	5	51	11	42	9	2	25	14	5	24	11	51	☽	7	5
15	M	6	7	5	53	11	46	9	2	1	15	rises				29	7	57
16	Tu	6	6	5	54	11	48	9	1	38	16	8	11	0	43	☽	8	26
17	W	6	4	5	56	11	52	8	1	14	17	9	26	1	35	27	8	49
18	Th	6	3	5	57	11	54	8	0	50	18	10	37	2	28	☽	9	42
19	F	6	1	5	59	11	58	8	0	27	19	11	42	3	22	25	10	36
20	S	6	0	6	0	12	0	8	s	3	20	morn		4	16	☽	11	30
21	C	5	58	6	2	12	4	7	n	20	21	0	40	5	9	29	0	23
22	M	5	57	6	3	12	6	7	0	43	22	1	32	6	1	☽	1	15
23	Tu	5	55	6	5	12	10	7	1	7	23	2	14	6	51	☽	2	5
24	W	5	54	6	6	12	12	6	1	31	24	2	50	7	39	26	2	53
25	Th	5	53	6	7	12	14	6	1	51	25	3	20	8	24	☽	3	33
26	F	5	51	6	9	12	18	6	2	18	26	3	46	9	7	20	4	21
27	S	5	50	6	10	12	20	5	2	41	27	4	9	9	19	☽	5	3
28	C	5	49	6	11	12	22	5	3	5	28	4	37	10	31	14	5	45
29	M	5	47	6	13	12	26	5	3	28	29	4	55	11	13	☽	6	27
30	Tu	5	46	6	14	12	28	4	3	51	30	5	67	11	57	☽	7	11
31	W	4	44	6	16	12	32	4	4	15	31	7	55	evn	42	21	7	56

D	M	
1		
2		Shro
3		Ash
4		
5	♀	r
6	24	s
7		
8	♂	s
9	♂	
10		Low
11		
12	♂	
13		Pla
14	2d	
15		
16		Hi
17		St
18	2	
19		
20	☉	
21	3d	
22	☐	
23		
24		
25	♂	
26		
27	♀	
28		
29		
30		
31		F



from our con-
love; the o-
nares laid for
endeavouring



ng,
g.
ig.

Day	Mo	FL	FULL SEA
25	17	7	39
7	29	8	21
51	7	9	5
37	24	9	57
26	8	10	40
18	20	11	32
14	□	0	28
13	17	1	27
13	5	2	27
2	15	3	26
0	29	4	24
6	8	5	20
9	29	6	13
1	17	7	5
29	7	7	57
3	2	8	26
5	27	8	49
3	11	9	42
2	25	10	36
7	11	11	30
20	0	12	23
15	1	13	15
14	2	14	5
26	2	15	53
22	3	16	33
20	4	17	21
16	5	18	8
14	5	19	46
23	6	20	27
11	7	21	11
21	7	22	56

D M	REMARKABLE Days, &c.
1	
2	Shrove Tuesday
3	Ash Wednesday
4	
5	♀ ri 4h 50m morning
6	♂ son 6h 56m evening
7	
8	♂ so 1h 20m morning
9	♂ ☽ ♃
10	Low tides
11	
12	☽ per
13	Planet ♃ disc. 1791
14	2d S. in Lent
15	
16	High tides.
17	St Patrick
18	♂ so 6h 16m evening
19	
20	☽ enters ♍
21	3d S in Lent
22	☽ ☽ ♃
23	
24	☽ ☽ ♂
25	♃ apog An of B V. Ma
26	
27	♃ sets 9h 52m evening
28	
29	
30	
31	High tides.

Farmer's Calender.

Green Wood. It is said that a cord of green wood weighs about fifty-six hundred weight; a cord of dry, thirty-eight hundred weight. If then a farmer consumes thirty cord's yearly, and sleds it green, he sleds twenty-seven tons of water more than his neighbour who sleds it dry. The farmer who sleds his wood half a mile up hill, will think of this. Besides, if this wood is burned green, it requires wood enough, in addition, to evaporate twenty seven tons of water, to obtain the same quantity of heat. Add to this the vexation of making a fire of green wood some of these cold mornings at day break, and it appears that there is a great saving of labour and expense, and trouble, in using dry wood.

This is a fine season to be treasuring up that information which will fit you for the stations of usefulness and trust to which the agriculturalist is often called.

Now lay your plans for the season. See that your ploughs, hoes, carts, harrows, &c. are ready for the opening of the spring. Prepare rails and posts for setting. Attend to

APRIL hath XXX Days.

None but the contemptible are apprehensive of contempt.
 Cunning and treachery proceed from want of capacity
 It as is easy to deceive ourselves without our perceiving it, as it
 difficult to deceive others without their perceiving it.
 Decency is the least of all laws, but the most strictly observed.
 Flattery is a sort of bad money, to which our vanity gives currency

First Quarter 6th Day, 6 h 1 m Evening,
 Full Moon 13th Day, 11 h 30 m Morning.
 Last Quarter 21st Day, 1 h 53 m Morning.
 New Moon 28th Day, 11 h 41 m. Evening.

D	D	S	S	Days	S	Sun's	☉	☽	RIS.	Moon	☽	Full	
M	W	RISES.	SETS.	length	SL	decl	N	A	& SETS	South.	A	SE	
1	Th	5 43 6	17 12	34	4	4 38	2	9	0	1 31	8	4 1	
2	F	5 42 6	18 12	36	4	5 1	3	10	9	2 23	17	9 3 2	
3	S	5 40 5	20 12	40	3	5 24	4	11	14	3 18	II	10 3 3	
4	C	5 39 6	21 12	42	3	5 47	5	MORN.		4 16	14	11 3 4	
5	M	5 37 6	23 12	46	3	6 9	6	0	16	5 15	27	0 2 5	
6	Th	5 36 6	24 12	48	2	6 32	7	1	8	6 13	☽	1 2 6	
7	W	5 34 6	26 12	52	2	6 55	8	1	53	7 10	25	2 2 7	
8	Th	5 33 6	27 12	54	2	7 17	9	2	30	8 4	☽	3 1 8	
9	F	5 32 6	28 12	57	2	7 40	10	3	2	8 56	☽	4 1 9	
10	S	5 30 6	30 13	0	1	8 2	11	3	32	9 48	☽	5 1 10	
11	C	5 29 6	31 13	2	1	8 24	12	3	58	10 38	23	5 5 11	
12	M	5 27 6	33 13	6	1	8 46	13	4	23	11 29	☽	6 4 12	
13	Th	5 26 6	34 13	8	0	9 7	14	RISES		MORN.	22	7 3 13	
14	F	5 25 6	35 13	10	0	9 29	15	8	24	0 22	m	8 4	
15	Th	5 23 6	37 13	14	FA	9 51	16	9	29	1 16	19	8 3 15	
16	F	5 22 6	38 13	16	0	10 12	17	10	33	2 10	↑	9 2 16	
17	S	5 21 6	39 13	18	1	10 33	18	11	29	3 5	15	10 1 17	
18	C	5 19 6	41 13	22	1	10 54	19	MORN.		3 58	28	11 1 18	
19	M	5 18 6	42 13	24	1	11 15	20	0	16	4 52	☽	0 0 19	
20	Th	5 17 6	43 13	26	1	11 35	21	0	54	5 39	22	0 5 20	
21	W	5 15 6	45 13	30	1	11 56	22	1	27	6 26	☽	1 4 21	
22	Th	5 14 6	46 13	32	2	12 16	23	1	54	7 9	16	2 2 22	
23	F	5 13 6	47 13	34	2	12 36	24	2	18	7 52	28	3 0 23	
24	S	5 11 6	49 13	38	2	12 56	25	2	24	8 33	☽	3 4 24	
25	C	5 10 6	50 13	40	2	13 15	26	3	4	9 15	22	4 2 25	
26	M	5 9 6	51 13	42	2	13 35	27	3	27	9 58	☽	5 1 26	
27	Th	5 8 6	52 13	44	3	13 54	28	3	52	10 43	17	5 5 27	
28	W	5 6 6	54 13	48	3	14 13	29	3	SETS	11 32	☽	6 4 28	
29	Th	5 5 6	55 13	50	3	14 32	30	1	8	2	EVEN	7 3 29	
30	F	5 4 6	56 13	52	3	14 50	31	2	9	9	1 16	26	8 3 30



contempt.
 capacity
 perceiving it, as it
 it.
 strictly observed.
 nity gives currenc
 euing,
 orning.
 lorning.
 vening.

Day	Moon South.	Day	Full SE	Day	Full SE	REMARKABLE Days, &c.	Farmer's Calender,
0	1	31	8	8	41		
9	2	23	17	9	32	♀ ris. 4h 39m morn.	your young cattle, keep them in good heart. Give cows and ewes, a little meal and a few potatoes. Feed your poultry. Cut scious for grafting and put them in your cellar. Have your empty cider casks cleansed. Thrash and put up indian corn for summer's use. Keep your cattle away from your fruit trees, currant bushes &c. and out of your garden and door yard.
4	3	18	II	10	33	5h S in Lent.	Maple Sugar, if made with care, is of a superior quality to much that is imported. It should gratify our love of country too, to spread our table with the fruits of our own soil, for which we are dependant on none but our Maker, and which were reared by our own industry. Be ready to improve the season for making sugar, as soon as it arrives, and with as little expense of wood as may be.
6	5	15	27	11	34	☐ ☉ ♃ ♄ ☽ ♆	
8	6	13	25	1	26	☽ perigee	
3	7	10	25	2	27		
0	8	4	20	3	18		
2	8	56	24	4	19		
2	9	48	22	5	10		
8	10	38	23	5	51	6h S in Lent	
3	11	29	22	6	42	Sup ♄ ☉ ♃	
4	0	22	17	7	33	♄ so 16h 27m even	
9	1	16	19	8	35	High tides.	
3	2	10	1	9	216	Good Friday	
9	3	5	15	10	137		
7	3	58	28	11	148	Easter Day	
6	4	52	19	0	19	E Mon ☉ en ♄	
4	5	39	22	0	520	E Tues ♃ sta.	
7	6	26	22	1	401		
4	7	9	16	2	222	☽ apogee	
8	7	52	28	3	63	St George	
4	8	33	22	3	474		
4	9	15	22	4	295	1st S aft East.	
7	9	58	22	5	1216		
2	10	43	17	5	5717	☽ sets 11h 42 m. even.	
11	32	8	6	6	4518		
2	EVEN	22	13	7	3719		
0	1	16	26	8	3420		

your young cattle, keep them in good heart. Give cows and ewes, a little meal and a few potatoes. Feed your poultry. Cut scious for grafting and put them in your cellar. Have your empty cider casks cleansed. Thrash and put up indian corn for summer's use. Keep your cattle away from your fruit trees, currant bushes &c. and out of your garden and door yard.

Maple Sugar, if made with care, is of a superior quality to much that is imported. It should gratify our love of country too, to spread our table with the fruits of our own soil, for which we are dependant on none but our Maker, and which were reared by our own industry. Be ready to improve the season for making sugar, as soon as it arrives, and with as little expense of wood as may be.

Look about the house, see if any panes of glass are wanting. Rags and old hats in your windows will make the traveller think you are intemperate. See if the utensils in common use by the females of your family are in a state of repair. Do

MAY hath XXXI days.

A good grace is to the body, what good sense is to the mind.
 When our hatred is violent, it sinks us even beneath those we hate
 Every one speaks well of his heart, but no one dares to speak well
 of his head.

The head is always the dupe of the heart:

The head cannot long act the part of the heart.

All the passions make us commit faults; but love makes us guilty
 of the most ridiculous ones.

First Quarter 5th day, 11 h. 58 m. evening

Full Moon 12th day 10 h 17 m. evening

Last Quarter 20th day, 8h. 20m, evening

New Moon 28th day, 10 h. 46 m. morning

D.	D.	S.	S.	Days	S.	Sun's	D.	D.	RIS.	Moon	PL	FULL	D.	M.
M.	W.	RISES	SETS	length	FA	decl N	A	&	SETS	South		SEA		
1	S	5 36	57 13	54	3 15	8	3	10	15	2	16	□	9	30
2	C	5 16	59 13	58	3 15	26	4	11	9	3	15	24	10	29
3	M	5 07	0 14	0	3 15	44	5	11	57	4	14	☽	11	28
4	Tu	4 59	7 14	2	3 16	1	6		MORN.	5	9	22	0	25
5	W	4 58	7 14	4	4 16	19	7	0	36	6	5	☽	1	20
6	Th	4 56	7 14	8	4 16	36	8	1	8	6	57	20	2	12
7	F	4 55	7 14	10	4 16	52	9	1	38	7	47	18	3	2
8	S	4 54	7 14	12	4 17	9	10	2	5	8	36	18	3	50
9	C	4 53	7 14	14	4 17	25	11	2	32	9	26	☽	4	40
10	M	4 52	7 14	16	4 17	40	12	2	59	10	16	17	5	30
11	Tu	4 51	7 14	18	4 17	56	13	3	29	11	8	m	6	22
12	W	4 50	7 14	20	4 18	11	14		RISES				7	16
13	Th	4 49	7 14	22	4 18	26	15	8	20	0	2	37	8	0
14	F	4 48	7 14	24	4 18	41	16	9	20	0	56	4	8	9
15	S	4 47	7 14	26	4 18	55	17	10	9	1	50	23	9	4
16	C	4 46	7 14	28	4 19	9	18	10	52	2	43	v	9	57
17	M	4 45	7 14	30	4 19	22	19	11	27	3	33	18	10	47
18	Tu	4 44	7 14	32	4 19	36	20	11	66	4	22	☽	11	35
19	W	4 43	7 14	34	4 19	49	21		MORN.	5	6	12	0	20
20	Th	4 42	7 14	36	4 20	1	22	0	22	5	49	24	1	3
21	F	4 41	7 14	38	4 20	14	23	0	45	6	30	☽	1	44
22	S	4 40	7 14	40	4 20	26	24	1	8	7	9	17	2	25
23	C	4 39	7 14	42	4 20	37	25	1	29	7	52	☽	3	3
24	M	4 39	7 14	42	4 20	48	26	1	53	8	36	12	3	50
25	Tu	4 38	7 14	44	3 20	59	27	2	20	9	22	25	4	36
26	W	4 37	7 14	46	3 21	10	28	2	49	10	12	8	5	26
27	Th	4 36	7 14	48	3 21	20	29	3	26	11	6	22	6	20
28	F	4 35	7 14	50	3 21	30	0		SETS				7	20
29	S	4 34	7 14	50	3 21	39	1	9	2	1	4	19	8	18
30	C	4 34	7 14	52	3 21	48	2	9	52	2	5	5	9	20
31	M	4 33	7 14	54	3 21	57	3	10	33	3	3	18	10	17

to the mind.
 with those we hate
 cares to speak we

makes us guilty

evening
 ing
 ing
 rning



Moon
 South

PL	FULL SEA	D M
2 16 □	9 30	1
3 15 24	10 29	2
4 14 25	11 28	3
5 9 22	0 25	4
6 5 20	1 20	5
7 57 20	2 12	6
8 47 12	3 2	7
9 36 18	3 50	8
10 26 2	4 40	9
11 16 17	5 30	10
12 8 m	6 22	11
13 14	7 16	12
14 2 37	8 0	13
15 56 7	8 9	14
16 50 23	9 4	15
17 43 13	9 57	16
18 33 18	10 47	17
19 22 22	11 35	18
20 6 12	0 20	19
21 49 24	1 3	20
22 30 30	1 44	21
23 9 17	2 25	22
24 52 11	3 3	23
25 36 12	3 50	24
26 22 25	4 36	25
27 12 8	5 26	26
28 6 22	6 20	27
29 4 11	7 20	28
30 4 19	8 18	29
31 5 25	9 20	30
32 3 18	10 17	31

REMARKABLE
 Days, &c.

Farmer's Calendar.

2d Sunday after East.
 ☽ D ♃
 ☽ sta.
 ☽ perigee.
 ♀ rises 4h 6m morning
 3d S after East.
 Gr. Elonga. ☽
 ☽ sou 8h 25m even
 High tides
 4th S after East
 ☽ ☉ ♃
 Dark day, '80
 ☽ en II ♃ ap.
 Low tides.
 ☽ stationary
 5th Sunday after East.
 ♃ sets 10h 14m ev.
 Ascension day
 High tides
 ☽ D ♃

every thing to render their labours easy and to render them happy, and they will repay you by their kind attention. Have you provided your family with means of knowledge? Do you take regularly some newspaper, which gives you and your family a view of all that is doing in the religious, political, and literary world; and which will afford your children amusement, enlarge their minds, and prepare them for active and useful life!

Fences.—As soon as possible put your fences in thorough repair. Some Farmers have a knack at teaching their cattle to jump over or shove down fences. They begin with a weak fence three poles high or thereabouts. As soon as their cattle have learnt to leap over or throw down such a fence, then another pole, and now and then a prop or a stake, which the animals soon learn to make nothing of. The farmer then does what he ought to have done in the first instance, makes a good five or six pole fence. But his cattle, having by this time found out their own strength and agility, are not to be stopped by such

JUNE hath XXX days,

A great genius will sincerely acknowledge his defects as well as his perfections; it is a weakness not to own the ill as well as the good that is in us.

Had we no faults ourselves, we would take less pleasure in observing those of others.

First Quarter 4th day, 4h. 52 m. morning

Full Moon 11th day, 10 h. 31 m. morning

Last Quarter 19th day, 1h. 4 m. evening

New Moon 26th day, 7 h 22 m. evening.

M	D	☉	☽	Days	S	Sun's	☉	☽	RIS	Moon	☽	FULL
D	W	RISES.	SETS.	length	F	dec	N	A	&STS	South	h	SEA
1	T	4 33	7 27	14 54	3	22 5	4	11	9	4 0	♈	11 14
2	W	4 32	7 28	14 56	2	22 13	5	11	40	4 55	♈	0 7
3	T	4 32	7 28	14 58	2	22 21	6	MORN		5 43	♈	0 57
4	F	4 31	7 29	14 58	2	22 28	7	0	8	6 32	♈	1 46
5	S	4 31	7 29	14 58	2	22 34	8	0	34	7 20	♈	2 34
6	C	4 30	7 30	15 0	2	22 41	9	0	59	8 9	♈	3 23
7	M	4 30	7 30	15 0	2	22 47	10	1	28	8 59	♈	4 13
8	T	4 29	7 31	15 2	1	22 52	11	2	0	9 51	♈	5 5
9	W	4 29	7 31	15 2	1	22 57	12	2	36	10 45	♈	5 59
10	T	4 29	7 31	15 2	1	23 2	13	3	19	11 38	♈	6 52
11	F	4 28	7 32	15 4	1	23 7	14	RISES		MORN	♈	7 15
12	S	4 28	7 32	15 4	1	23 10	15	8	46	0 31	♈	8 0
13	C	4 28	7 32	15 4	0	23 14	16	9	23	1 23	♈	8 37
14	M	4 27	7 33	15 6	0	23 17	17	9	53	2 11	♈	9 25
15	T	4 27	7 33	15 6	s	23 20	18	10	20	2 57	♈	10 11
16	W	4 27	7 33	15 6	0	23 22	19	10	44	3 40	♈	10 54
17	F	4 27	7 33	15 6	0	23 24	20	11	5	4 42	♈	11 36
18	F	4 27	7 33	15 6	1	23 25	21	11	28	5 2	♈	0 16
19	S	4 27	7 33	15 6	1	23 26	22	11	50	5 43	♈	0 57
20	C	4 27	7 33	15 6	1	23 27	23	MORN		6 24	♈	1 38
21	M	4 27	7 33	15 6	1	23 27	24	0	14	7 9	♈	2 22
22	T	4 27	7 33	15 6	2	23 27	25	0	42	7 55	♈	3 9
23	W	4 27	7 33	15 6	2	23 27	26	1	15	8 47	♈	4 1
24	T	4 27	7 33	15 6	2	23 26	27	1	55	9 43	♈	4 57
25	F	4 27	7 33	15 6	2	23 24	28	2	45	10 42	♈	5 56
26	S	4 27	7 33	15 6	2	23 22	29	♂	SETS	11 43	♈	6 57
27	C	4 27	7 33	15 6	3	23 20	30	1	8	12 45	♈	7 59
28	M	4 27	7 33	15 6	3	23 17	31	2	9	1 43	♈	8 57
29	T	4 28	7 32	15 4	3	23 14	32	3	9	2 39	♈	9 52
30	W	4 28	7 32	15 4	3	23 11	33	4	10	3 32	♈	10 46

D	R
1	♂ ri
2	
3	Inf.
4	Geo
5	♂ ♀
6	Whit
7	
8	Whit
9	
10	♂ se
11	St. E
12	Hight
13	Trun
14	
15	♂ st
16	D ap
17	
18	Bat.
19	Low
20	1st S
21	♂ e
22	
23	
24	Nat
25	
26	♂
27	♂
28	Ge
29	St.
30	

ets as well as his
ell as the good
ure in observing

ng
ing
g
g.

oon (FULL
uth pi SEA

0	∞	11	14
53	17	0	7
43	∞	0	57
32	15	1	46
20	29	2	34
9	∞	3	23
59	27	4	13
51	m	5	5
45	23	5	59
38	f	6	52
RN	19	7	15
31	v	8	0
23	14	8	37
11	26	9	25
57	∞	10	11
40	20	10	54
42	∞	11	36
13	14	0	16
24	26	0	57
24	γ	1	38
55	∞	2	22
17	8	3	9
13	11	4	1
12	14	4	57
13	28	5	56
5	∞	6	57
3	28	7	59
1	∞	8	57
2	27	9	53
2	27	10	46



D	REMARKABLE
M	Days &c.
1	☽ ris. 3h 46m.
2	
3	Inf. ☽ ☽ ☽
4	Geo III. born 1738.
5	☽ ☽ ☽
6	Whit Sunday
7	
8	Whit Tuesday
9	
10	☽ sets 9h 20m even.
11	St. Barnabas.
12	High Tides
13	Trinity Sunday
14	
15	☽ stationary
16	☽ apogee
17	
18	Bat. Waterloo, 1815
19	Low tides
20	1st S aft. Trin.
21	☽ enters ☽
22	
23	
24	Nativ. St John the Bapt.
25	
26	☽ set ☽) ☽
27	☽ ☽ ☽
28	Gr. elonga ☽
29	St. Peter
30	☽ perigee

Farmer's Calendar.

trifles and if they do not become quite so nimble as the cow that jumped over the moon and as hard to confine as Baron Trenck, they take all occasions to shew how badly they were brought up and their owner loses property as well as credit by his neglect of early discipline.

Two farmers who were neighbours had their crops of early peas killed by the frost. One of them came to condole with the other on their misfortune. 'Ah!' cried he, 'how unfortunate we have been, neighbour! Do you know I have done nothing but fret ever since. But bless me! you seem to have a fine healthy crop coming up just now. What are these?' 'These,' cried the other, 'Why these are what I sowed immediately after my loss.' 'What coming up already?' cried the fretter. 'Yes, while you were fretting. I was working!' 'What, and don't you fret when you have a loss?' 'Yes, but I always put it off until I have repaired the mischief.' 'Lord, why then you have no need to fret at all.' 'True,' replied the industrious gardener, 'and that's the very reason; in truth, it is very pleasant to have no longer reason

bar present
at of distri-
t nobody of



g.

PL	SEA
11	37
0 26	0 26
1 13	1 13
2 5	2 5
2 56	2 56
3 48	3 48
4 41	4 41
5 31	5 31
6 26	6 26
7 14	7 14
8 3	8 3
8 46	8 46
9 28	9 28
10 9	10 9
10 49	10 49
11 30	11 30
0 11	0 11
0 57	0 57
1 45	1 45
2 38	2 38
3 35	3 35
4 34	4 34
5 36	5 36
6 37	6 37
7 35	7 35
8 32	8 32
9 25	9 25
10 17	10 17
11 9	11 9
11 59	11 59

D M	REMARKABLE Days, &c.
1	☉ apogee
2	☐ ☉ ♂
3	Low tides
4	
5	☽ ☉ ♀
6	
7	♀ rises 4h 2m morn.
8	
9	
10	☽ ecl visible.
11	4th S aft Tr
12	Erasmus died 1536
13	
14	☽ ap. Fr. rev. '89
15	♂ ☉ ♀
16	☽ se 10h. 54m evening
17	
18	♂ ♀ ♀
19	Gen. IV crowned 1821
20	Marga.
21	♂ ☽ ♀
22	☉ enters ♋.
23	
24	
25	Dog days begin
26	Sa Time
27	☽ perigee
28	
29	Sup ☽ ☉ ☽
30	
31	

Farmer's Calendar.

to think of misfortunes: and it is astonishing how many might be repaired by a little alacrity and energy.

Clear the door yards on every side of your house, of every thing that will make manure, and put it in your compost. It is better for health, pleasure and profit, to clean your wood yard, every year. Plant cucumbers in June. Calculate this year to make some improvements in husbandry. Get Reports of Agricultural Societies. Mark your cattle with a branding iron, near the top of the horn, and your sheep on the ear, and have these marks recorded. "Always have work prepared for a rainy day." Put your barns, carts, scythes, rakes, forks, every thing, in perfect order for haying and harvest. Burn limestone under the eatepillars on your fruit trees. Rise early and hear the music of the birds. It is better for land, to plough it and hoe it while the dew is on, than later in the day. Do not calculate to get the weeds out of your gardens and cornfields, but keep them out. Be in the field with your sons, when

AUGUST hath XXXI Days.

He who is pleased with nobody, is much more unhappy than he with whom nobody is pleased.

Most men, like plants, have secret properties, which chance discovers.

There are reproaches that praise, and praises that reproach.

It is not enough to have great qualities, we must also have the management of them.

First Quarter 1st Day, 5 h. 38 m. Evening.

Full Moon 9th Day, 3 h. 15 m. evening.

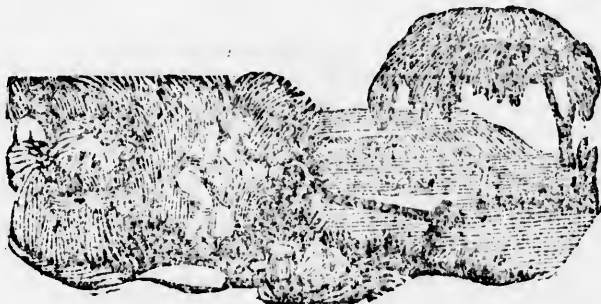
Last Quarter 17th Day, 4 h. 15 m. Evening.

New Moon 24th Day, 10 h. 10 m. Morning.

First Quarter 31st Day, 4 h. 17 m. Morning.

D	D	S	S	Days	S	Sun's	Q	Q	RIS.	Moon	Q	FULL
M	W	RISES	SETS.	length	SL.	decl N	A	&	SETS	South	PL	SEA
1	C	4 51	7 9	14 18	6	18 0	6	10	30	5 36	☾	0 50
2	M	4 52	7 8	14 16	6	17 44	7	11	9	6 28	☾	1 43
3	Tu	4 53	7 7	14 14	6	17 29	8	11	54	7 23	☾	2 36
4	W	4 54	7 6	14 12	6	17 13	9	MORN		8 15	☾	3 29
5	Th	4 55	7 5	14 10	6	16 57	10	0	45	9 6	☾	4 21
6	F	4 57	7 3	14 6	6	16 40	11	1	42	9 57	☾	5 12
7	S	4 58	7 2	14 4	5	16 23	12	2	40	10 45	☾	5 59
8	C	4 59	7 1	14 2	5	16 7	13	3	42	11 30	☾	6 44
9	M	5 07	0 14	0	5	15 49	14	rises		morn	☾	7 27
10	Tu	5 16	59	13 58	5	15 32	15	7	12	0 13	☾	8 0
11	W	5 26	58	13 56	5	15 14	16	7	34	0 54	☾	8 8
12	Th	5 46	56	13 52	5	14 56	17	7	57	1 35	☾	8 49
13	F	5 56	55	13 50	5	14 38	18	8	17	2 16	☾	9 30
14	S	5 66	54	13 48	4	14 20	19	8	43	2 57	☾	10 12
15	C	5 76	53	13 46	4	14 1	20	9	12	3 41	☾	10 55
16	M	5 96	51	13 42	4	13 42	21	9	43	4 28	☾	11 42
17	Tu	5 106	50	13 40	4	13 23	22	10	22	5 17	☾	0 32
18	W	5 116	49	13 38	4	13 3	23	11	13	6 9	☾	1 24
19	Th	5 136	47	13 34	3	12 44	24	morn		7 8	☾	2 23
20	F	5 146	46	13 32	3	12 24	25	0	10	8 7	☾	3 20
21	S	5 156	45	13 30	3	12 4	26	1	19	9 7	☾	4 20
22	C	5 166	44	13 28	3	11 44	27	2	34	10 6	☾	5 20
23	M	5 186	42	13 24	2	11 24	28	3	53	11 4	☾	6 18
24	Tu	5 196	41	13 22	2	11 3	29	sets		11 59	☾	7 14
25	W	5 206	40	13 20	2	10 42	1	7	0	EVEN	☾	8 7
26	Th	5 226	38	13 16	2	10 22	2	7	30	1 46	☾	9 0
27	F	5 236	37	13 14	1	10 1	3	8	2	2 40	☾	9 54
28	S	5 246	36	13 12	1	9 19	4	8	36	3 34	☾	10 48
29	C	5 266	34	13 8	1	9 39	5	9	13	4 27	☾	11 42
30	M	5 276	33	13 6	0	8 57	6	9	58	5 22	☾	0 36
31	Tu	5 286	32	13 4	0	8 35	7	10	48	6 16	☾	1 30

D	RE
1	Lamm
2	Low T
3	♀ rets
4	
5	
6	Transf
7	Queen
8	
9	
10	ap S
11	
12	G. o I
13	h ri.
14	
15	Assun
16	
17	
18	
19	
20	
21	24 ris
22	10th S
23	☾
24	☾
25	☾
26	
27	
28	St A
29	St J
30	☾
31	



D *REMARKABLE*
M *Days, &c*

Farmer's Calendar

1	Lammias Day
2	Low Tides
3	☽ sets 10h 6m even
4	
5	
6	Transfigura of Christ
7	Queen Caroline died 1821.
8	
9	
10	☽ ap St Lawrence
11	
12	Geo IV born 1762
13	☽ ri. 11h 30m eve.
14	
15	Assumption.
16	
17	
18	
19	
20	
21	☽ ris 2h 51m morn
22	10th S after Pc.
23	☽ enters ♍
24	☽ perigee
25	
26	
27	
28	St Augustine
29	St John Bapt beheaded
30	☽ ♏ ½
31	

ver it is practicable, not to rule them with the rod of a tyrant, but to cheer and encourage them, and show them that you are willing to share in their labours. Walk with them as if your farm was common property to them and you, do not always say my oxen, my horses; but our oxen, our horses, and tell them your plans respecting the management of your farm. Ask their advice, that you may bring their minds to be active as well as their bodies. By tyrannizing over them and keeping them in ignorance, you will fit them only to be ignorant and softless as long as they live.

Now give every attention to your dairy. Vessels of lead, copper, and brass contain poisonous qualities; and should not be used much for milk. Look to your summer schools and let the instructress to whom you commit your little ones, teach them by her example to be good. Remember the poor widow and orphan, and impart to them a portion from your stores.

Much hard work is to be done this month. Drink neither too much hot rum, or cold water. Make

tbau lie
ce dis-
ave the
FULL
SEA
0 50
1 43
2 36
3 29
4 21
5 12
5 59
6 44
7 27
8 0
8 8
8 49
9 30
10 12
10 55
11 42
0 32
1 24
2 23
3 20
4 20
5 20
6 18
7 14
8 7
9 0
9 54
10 48
11 42
0 36
1 30

SEPTEMBER hath XXX Days.

No man can answer for his courage who has never been in danger.
 When our vices have left us, we flatter ourselves that we have left them.

Prosperity is a stronger trial of virtue than adversity.

The virtues are lost in interest, as rivers are in the sea.

To the honour of virtue it must be acknowledged, that the greatest mistortunes befall men from their vices.

Self love is more artful than the most artful of men.

Full Moon 8th Day, 7 h. 22 m Morning.

Last Quarter 16th Day, 3 h 0m Morning.

New Moon 22d Day, 6 h 10 m evening.

First Quarter 29th Day, 7 h. 15 m. evening.

D	D	S	S	Days	S	Sun's	●	RES.	Moon	PL	FULL
M	W	RISES.	SETS	length	FA	decl N	A	& SETS	South.		SEA
1	W	5 30	6 30	13 0	0	8 13	8	11 42	7 9	22	2 23
2	Th	5 31	6 29	12 58	1	7 52	9	MORN.	7 0	19	3 14
3	F	5 32	6 28	12 56	1	7 30	10	0 41	8 48	17	4 2
4	S	5 34	6 26	12 52	1	7 7	11	1 42	9 35	28	4 49
5	C	5 35	6 25	12 50	2	6 45	12	2 44	10 18	37	5 32
6	M	5 37	6 23	12 46	2	6 23	13	3 44	11 0	22	6 14
7	Tu	5 38	6 22	12 44	2	6 0	14	4 46	11 42	16	6 56
8	W	5 40	6 20	12 40	3	5 38	15	RISES	MORN.	16	7 37
9	Th	5 41	6 19	12 38	3	5 15	16	6 32	0 23	28	8 0
10	F	5 42	6 18	12 36	3	4 52	17	6 56	1 4	19	8 18
11	S	5 44	6 16	12 32	4	4 29	18	7 22	1 48	22	9 2
12	C	5 45	6 15	12 30	4	4 6	19	7 53	2 32	8	9 47
13	M	5 47	6 13	12 26	4	3 43	20	8 20	3 20	17	10 35
14	Tu	5 48	6 12	12 24	5	3 20	21	9 14	4 12	11	11 27
15	W	5 49	6 11	12 22	5	2 57	22	10 8	5 6	13	0 20
16	Th	5 51	6 9	12 18	5	2 34	23	11 9	6 3	26	1 20
17	F	5 52	6 8	12 16	6	2 11	24	MORN.	7 2	28	2 19
18	S	5 54	6 6	12 12	6	1 48	25	0 21	8 0	24	3 13
19	C	5 55	6 5	12 10	5	1 24	26	1 38	8 57	16	4 12
20	M	5 56	6 4	12 8	7	1 1	27	2 55	9 53	23	5 7
21	Tu	5 58	6 2	12 4	7	0 37	28	4 13	10 46	12	6 0
22	W	5 59	6 1	12 2	7	0 14	29	5 SETS	11 40	23	6 55
23	Th	6 1	5 59	11 58	8	S 8	1	6 8	EVEN	33	7 48
24	F	6 2	5 58	11 56	8	0 32	2	6 40	1 28	23	8 42
25	S	6 4	5 56	11 52	8	0 55	3	7 18	2 23	17	9 38
26	C	6 5	5 55	11 50	9	1 19	4	8 2	3 20	22	10 34
27	M	6 6	5 54	11 48	9	1 42	5	8 50	4 16	11	11 30
28	Tu	6 8	5 52	11 44	9	2 6	6	9 49	5 11	18	0 25
29	W	6 9	5 51	11 42	10	2 29	7	10 43	6 3	1	1 20
30	Th	6 11	5 49	11 38	10	2 52	8	11 43	6 56	13	2 7

D	RE
M	
1	
2	
3	
4	24 ris.
5	Dog d.
6	
7	⊙ ap.
8	
9	High t
10	
11	
12	13th S
13	24 ris.
14	
15	
16	Low t
17	Lambe
18	Old st
19	⊙ staf
20	⊙ pe.
21	Sr Mar
22	⊙ ente
23	High t
24	
25	⊙ sets
26	St Cy
27	
28	
29	St Mi
30	St Jer

SEPTEMBER, ninth Month, 1821.

danger.
ave left

greatest



FULL
SEA

D M	REMARKABLE Days &c.	Farmer's Calendar.
2 23	1	not haying and harvest an excuse
3 14	2	for intemperance, but eat and drink
4 2	3	in order to live, and not live merely
4 49	4	to eat and drink. Rise before the
5 32	5	sun, and mow while the dew is on ;
6 14	6	mow morning and evening, and
6 56	7	make hay and get it in while the
7 37	8	sun shines. Be regular, temperate
8 0	9	industrious, but not violent—and
8 18	10	your harvest will be gathered earli-
9 2	11	er and better than your neighbour
9 47	12	Thirsty's ; and when harvest is o-
10 35	13	ver you will not have the rheuma-
11 27	14	tism. Let your corn be hoed the
0 20	15	third time before it is spindled ; do
1 20	16	not make too high hills around it,
2 19	17	lest you keep off the sun and rain
3 13	18	from the roots. Put a handful of
4 12	19	ashes around every hill, previous to
5 7	20	the second hoeing. If weeds are
6 0	21	going to seed in your barnyards and
6 55	22	gardens, cut them up and put them
7 48	23	into your compost.
8 42	24	Mothers may see that herbs are
9 38	25	gathered white in their bloom. Say
10 34	26	what you will, a bowl of herb drink
11 30	27	with a mother's care, will often
0 25	28	save you from a fever, and the ex-
1 20	29	pense of a doctor's bill.
2 7	30	

sets 6h 36m. even.

St Cyprian.

St Michael

St Jerome

OCTOBER hath XXXI Days.

The defects of the mind, like those of the face, grow worse as we grow old.

Man's chief wisdom consists in knowing his follies.

Wisdom is to the mind what health is to the body.

Youth is continual intoxication. It is the fever of reason.

Titles instead of exalting, abase those who act not up to them.

How can we expect that another should keep our secret, when it is more than we can do ourselves.

Full Moon 7th Day 11 h. 39 m. Evening.

Last Quarter 15th Day, 0 h. 8 m. Evening.

New Moon 22d Day, 3 h. 46 m. Morning.

First Quarter 29th Day, 1 n. 45 m. Evening.

D	D	S	S	Days	S	Sun's	D	Q	RIS	Moon	C	FULL		
M	W	Rises	SETS	length	FA	Decl	S	A	& SETS	South	PL	SEA		
1	F	6	12 5	48	11	36	10	3	16 9	MORN.	7	41 25	2 55	
2	S	6	13 5	47	11	34	11	3	39 10	0	45	8 25	3 39	
3	C	6	15 5	45	11	30	11	4	2 11	1	43	9 8	4 22	
4	M	6	16 5	44	11	28	11	4	25 12	2	47	9 49	5 3	
5	Tu	6	18 5	42	11	24	12	4	49 13	3	47	10 30	5 44	
6	W	6	19 5	41	11	22	12	5	12 14	4	47	11 10	6 25	
7	Th	6	21 5	39	11	18	12	5	35 15	RISES	11	55 19	7 9	
8	F	6	22 5	38	11	16	13	5	58 16	5	35	morn 19	7 53	
9	S	6	24 5	36	11	12	13	6	20 17	6	6	0 39	8 0	
10	C	6	25 5	35	11	10	13	6	43 18	6	40	1 28	8 42	
11	M	6	26 5	34	11	8	13	7	6 19	7	22	2 18	9 32	
12	Tu	6	28 5	32	11	4	14	7	29 20	8	13	3 12	10 26	
13	W	6	29 5	31	11	2	14	7	51 21	9	12	4 8	23 11	22
14	Th	6	30 5	30	11	0	14	8	14 22	10	19	5 4	5 0	18
15	F	6	32 5	28	10	56	14	8	36 23	11	32	6 1	20 1	15
16	S	6	33 5	27	10	54	14	8	58 24	MORN.	6	56 8	2 10	10
17	C	6	35 5	25	10	50	15	9	20 25	0	45	7 49	18 3	3
18	M	6	36 5	24	10	48	15	9	42 26	2	0	8 42	ny 3	56
19	Tu	6	37 5	23	10	46	15	10	4 27	3	15	9 34	17 4	48
20	W	6	39 5	21	10	42	15	10	25 28	4	31	10 26	2 5	40
21	Th	6	40 5	20	10	40	15	10	47 29	5	48	11 20	17 6	34
22	F	6	42 5	18	10	36	15	11	8 30	8	♂	SETS EVN	13 13	7 28
23	S	6	43 5	17	10	34	16	11	30 1	5	58	1 9	16 8	24
24	C	6	44 5	16	10	32	16	11	50 2	7	44	2 8	1 9	22
25	M	6	46 5	14	10	28	16	12	11 3	6	39	3 5	13 10	19
26	Tu	6	47 5	13	10	26	16	12	32 4	8	37	3 59	26 11	13
27	W	6	48 5	12	10	24	16	12	52 5	9	38	4 51	12 12	5
28	Th	6	50 5	10	10	20	16	13	12 6	10	39	5 40	21 12	54
29	F	6	51 5	9	10	18	16	13	32 7	19	40	6 26	1 40	
30	S	6	52 5	8	10	16	16	13	52 8	MORN	7	9 15	2 23	
31	C	6	54 5	6	10	12	16	14	12 9	10	42	7 50	27 3	4

D	REMARKS
1	Rema
2	Inf. d
3	16th s
4) apo
5	□ ⊙
6	
7	h rise
8	
9	
10	17th s
11	♀ sta
12	
13	24 sou
14	
15	Low t
16	
17	Burg
18	⊙ pe
19	Gr ele
20	
21	
22	High
23	⊙ en
24	19th s
25	Crisp
26	♂ ♀
27	♀ set
28	St. Si
29	
30	Low
31	20th



		REMARKABLE	
		Days &c.	Farmer's Calendar.
D	1	Remigias	<p>Hog-Str. This building should contain one apartment in which the swine shall be perfectly dry, and well provided with straw for their bed. Another part of it should be open and without a wooden floor; for swine will not well bear to be wholly secluded from the weather. Besides this open part may be extended so as to afford a fine place for making manure. It should be lowest in the middle, and no water should ever run from it. With proper care, many loads of valuable manure will be made every year, where these animals are kept. The trough should be made fast at the upper side; and if the edges are covered with iron, it will be well. There should be stakes before it so thick that only one swine can get his head between any two of them. The keeping of swine is very profitable to the farmer. Indian corn is the best food for them, but it should be ground or boiled till it is soft. Like human creatures however, they require some variety in their food. Boiled potatoes may be given them with much advantage.</p> <p>Lay up a rich store of winter ap-</p>
M	2	Inf. ♂ ☉ ♂	
	3	16th Sun aft. Tr.	
	4	☽ apogee	
	5	☐ ☉ ☿	
	6		
	7	☽ rises 0h 46m morn	
	8		
	9		
	10	17th Sunday aft. Trin	
	11	☽ stationary	
	12		
	13	☽ sou. 3h 11m morn	
	14		
	15	Low tides	
	16		
	17	Burg. sur. '77	
	18	☉ perigee	
	19	Gr elonga ♀	
	20		
	21		
	22	High tides	
	23	☉ ent m	
	24	19th Sun aft Tr	
	25	Crispin	
	26	♂ ☉ ♀	
	27	☽ sets 6h 17m	
	28	St Simon and St Jude	
	29		
	30	Low tides	
	31	20th Sun after Tr	

NOVEMBER hath XXX. Days.

Advice is seldom welcome, and those who want it the most, always like it the least.

A great action will always meet with the approbation of mankind, and the inward pleasure which it produces is not to be expressed.

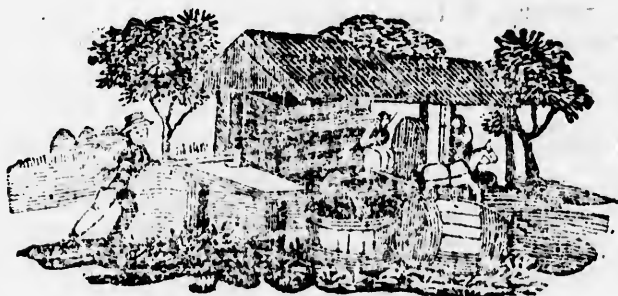
Every man has a natural right to his liberty; and whoever endeavours to ravish it from him, deserves death more than the robber who attacks us for our money on the highway.

Full Moon 6th Day 3 h. 15 m evening.
 Last Quarter 13th Day, 8 h. 0 m evening,
 New Moon 20th Day, 3 h. 44 m evening.
 First Quarter 28th Day, 10 h. 38 m. Morning

D	D.	S	S	Days	S	Sun's	☉	☽	RIS.	Moon	☽	FULL	
M	W.	RISES.	SETS.	length	FA	decl	S	☽	& SETS	South	PL	SEA	
1	M	6	56 5	5	10	16	14	31	10	1	42	8 31	3 45
2	Tu	6	56 5	4	10	8 16	14	50	11	2	42	9 12	21 4 26
3	W	6	57 5	3	10	6 16	15	9	12	3	42	9 54	9 5 8
4	Th	6	59 5	1	10	2 16	15	27	13	4	43	10 33	16 5 53
5	F	7	0 5	0	10	0 16	15	46	14	6	45	11 26	23 6 40
6	S	7	1 4	50	9	53 16	16	4	15	RISES	MORN	3 7	30
7	C	7	2 4	58	9	56 16	16	22	16	5	23	0 16	23 8 0
8	M	7	4 4	56	9	52 16	16	39	17	6	12	1 8	21 8 23
9	Tu	7	5 4	55	9	50 16	16	56	18	7	9	2 5	20 9 19
10	W	7	6 4	54	9	48 16	17	13	19	8	14	3 2	19 10 16
11	Th	7	7 4	53	9	46 16	17	30	20	9	22	3 58	17 11 12
12	F	7	8 4	52	9	44 16	17	46	21	10	33	4 53	15 0 7
13	S	7	9 4	51	9	42 15	18	2	22	11	47	5 46	14 1 0
14	C	7	10 4	50	9	40 15	18	18	23	MORN.	6	37	29 1 51
15	M	7	11 4	49	9	38 15	18	34	24	1	2	7 28	27 2 42
16	Tu	7	12 4	48	9	36 15	18	49	25	2	14	8 16	27 3 31
17	W	7	14 4	46	9	32 15	19	4	26	3	27	9 8	26 4 22
18	Th	7	15 4	45	9	30 15	19	18	27	4	41	9 59	26 5 14
19	F	7	16 4	44	9	28 14	19	32	28	5	55	10 55	25 6 9
20	S	7	17 4	43	9	26 14	19	46	☽	SETS	11	50	21 7 4
21	C	7	18 4	42	9	24 14	19	59	1	5	21	EVEN	47 8 1
22	M	7	19 4	41	9	22 14	20	12	2	6	19	1 45	21 8 58
23	Tu	7	19 4	41	9	22 13	20	25	3	7	20	2 37	19 9 51
24	W	7	20 4	40	9	20 13	20	37	4	8	22	3 27	17 10 41
25	Th	7	21 4	39	9	18 13	20	49	5	9	24	4 15	23 11 29
26	F	7	22 4	38	9	16 12	21	0	6	10	25	4 59	23 0 13
27	S	7	23 4	37	9	14 12	21	1	7	11	25	5 41	23 0 55
28	C	7	24 4	36	9	12 12	21	22	8	MORN.	6	22	21 1 36
29	M	7	25 4	35	9	10 11	21	32	9	0	25	7 2	17 2 16
30	Tu	7	25 4	35	9	10 11	21	42	10	1	24	7 43	20 2 57

D	M	R
1		☉ ap.
2		All sou
3		
4		☐ ☉
5		Powder
6		
7		21st s.
8		☽ rises
9		
10		
11		st Mart
12		
13		Tides n
14		☉ peri
15		
16		
17		☽ sou.
18		Great
19		
20		♂ ♀ M
21		sup. ☉
22		Cecil.
23		St Cle.
24		
25		♀ sets
26		♀ ☉
27		
28		Advent
29		24 stat
30		St And

NOVEMBER, eleventh Month 1924.



st, always
markind,
ressed.
ver ended-
lber who

g

D PL	FULL SEA
3	45
21	4 26
4	5 8
16	5 53
28	6 40
3	7 30
23	8 0
11	8 23
20	9 19
8	10 16
17	11 12
5	0 7
14	1 0
29	1 51
12	2 42
27	3 31
8	4 22
26	5 14
13	6 9
21	7 4
7	8 1
21	8 58
19	9 51
17	10 41
29	11 29
10	0 13
23	0 55
11	1 36
17	2 16
20	2 57

D M	REMARKABLE Days, &c.
1	☉ ap. All Saints
2	All souls
3	
4	☐ ☉ ♃
5	Powder Plot, 1605
6	
7	21st s. aft Tr
8	♃ rises 10h 35m eve
9	
10	
11	st Martin
12	
13	Tides not very low
14	☉ perigee
15	
16	
17	♃ sou. 0h 44m morn
18	Great earthquake 1765
19	
20	♂ ♀ ♃
21	s. ap. ☉ ☐ ♃
22	Cecl. ☉ on ♃
23	St Cle. ♂ ♃ ♀
24	
25	♀ sets 6h 31m eve
26	♀ ☉ ♃ eve
27	
28	Advent ☉ ap
29	♃ stationary
30	St Andrew

Farmer's Calender.

ples; let them not be bruised in picking. Pile up stones to be removed by sledding. Look to your poultry if you would have a fat turkey on your table at Christmas. Possibly you will like two, to present one to your minister, if he visits his people. —Do not cut your corn before it is ripe unless it is bitten by the frost, in which case cut it up by the roots and stack it. —It will be cheaper to husk your corn with your own workmen than to make a huskiog.

Carefully lay up tools that have been used in the autumn. Be posting up your books, and settle all accounts the first day of January. Many farmers are very negligent in keeping their accounts. Hence they do not know how much property they really possess, their expenditures are suffered to exceed their income; and if they are suddenly removed from life, their property is left in confusion, their estates vanish under the hands of executors; & their children who perhaps have been trained up delicate, are left poor and dependant.

In these long evenings you want

DECEMBER. hath XXXI days:

A proper secrecy is the only mystery of able men; mystery is the only secrecy of weak and cunning ones.

Smooth your way to the head through the heart. The way of reason is a good one; but it is commonly something longer, and perhaps not so sure.

Knowledge may give weight; but accomplishments only give lustre; and many more people see than weigh.

Full Moon 6th Day, 6 h 8 m Morning.

Last Quarter 13th Day, 3 h 27 m Morning.

New Moon 20th Day, 6 h 12 m. morning.

First Quarter 28th Day, 3h 1 m morning,

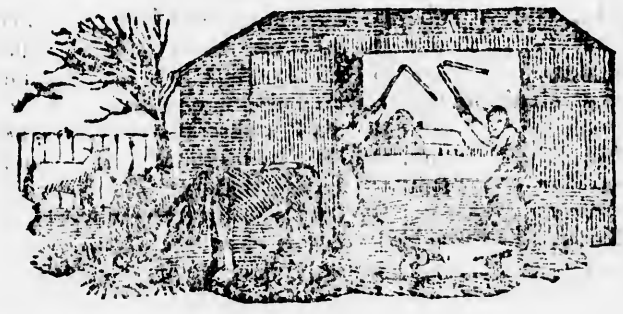
D	M	S	S	Days	S	Sun's	D	D	RIS.	Moon	M	FULL
	W	RISES	SETS	length	ra	decl	S	A	& SETS	South	PL	SEA
1	W	7 26	4 34	9 8	11	21	52	11	2 23	8 26	☾	3 40
2	Th	7 27	4 33	9 6	10	23	1	12	3 26	9 10	☾	4 24
3	F	7 27	4 33	9 6	10	22	9	13	4 28	9 59	☾	5 13
4	S	7 28	4 32	9 4	9	22	17	14	5 35	10 52	☾	6 6
5	C	7 29	4 31	9 2	9	22	25	15	6 40	11 47	☾	7 1
6	M	7 29	4 31	9 2	9	22	32	16	RISES	MORN	☾	7 58
7	Th	7 30	4 30	9 0	8	22	39	17	5 53	0 44	☾	8 0
8	W	7 30	4 30	9 0	8	22	46	18	7 4	1 42	☾	8 56
9	Th	7 31	4 29	8 58	7	22	52	19	8 16	2 39	☾	9 53
10	F	7 31	4 29	8 58	7	22	57	20	9 29	3 33	☾	10 47
11	S	7 31	4 29	8 58	6	23	2	21	10 43	4 26	☾	11 46
12	C	7 32	4 28	8 56	6	23	7	22	10 55	5 16	☾	0 30
13	M	7 32	4 28	8 56	5	23	11	23	MORN.	6 5	☾	1 19
14	Th	7 32	4 28	8 56	5	23	15	24	1 7	6 54	☾	2 8
15	W	7 33	4 27	8 54	4	23	18	25	2 18	7 44	☾	2 58
16	Th	7 33	4 27	8 54	4	23	21	26	3 30	8 36	☾	3 50
17	F	7 33	4 27	8 54	3	23	23	27	4 40	9 30	☾	4 44
18	S	7 33	4 27	8 54	3	23	25	28	5 47	10 24	☾	5 39
19	C	7 33	4 27	8 54	2	23	26	29	6 46	11 19	☾	6 34
20	M	7 33	4 27	8 54	2	23	27	0	SETS	EVEN	☾	7 28
21	Th	7 33	4 27	8 54	1	23	27	1	5 56	1 6	☾	8 20
22	W	7 33	4 27	8 54	1	23	27	2	6 58	1 55	☾	9 9
23	Th	7 33	4 27	8 54	0	23	27	3	7 59	2 40	☾	9 54
24	F	7 33	4 27	8 54	s	23	26	4	9 0	3 23	☾	10 37
25	S	7 33	4 27	8 54	1	23	24	5	9 59	4 5	☾	11 19
26	C	7 33	4 27	8 54	1	23	22	6	10 59	4 45	☾	11 59
27	M	7 33	4 27	8 54	2	23	20	7	11 58	5 25	☾	0 39
28	Th	7 33	4 27	8 54	2	23	17	8	MORN.	6 6	☾	1 20
29	W	7 32	4 28	8 53	3	23	13	9	0 58	6 48	☾	2 3
30	Th	7 32	4 28	8 53	3	23	10	10	1 59	7 35	☾	2 49
31	F	7 32	4 28	8 53	4	23	5	11	3 2	8 24	☾	3 38

D	M
1	
2	h r
3	☾
4	
5	2 s
6	Nick
7	
8	Com
9	2 s
10	
11	
12	☺
13	
14	
15	
16	
17	☽
18	
19	4th
20	S e
21	O c
22	
23	
24	☽
25	Ch
26	St
27	St
28	Im
29	Lo
30	
31	Gr

y is the
way of
and per-
ive lus-

DECEMBER, twelfth Month

1824



FULL
SEA

3 40
4 24
5 13
6 6
7 1
7 58
8 0
8 56
9 53
10 47
11 46
10 30
1 19
2 8
2 58
3 50
4 44
5 39
6 34
7 28
8 20
9 9
9 54
10 37
11 19
11 59
0 39
1 20
2 3
2 49
3 38

D	REMARKABLE
M	Days, &c
1	
2	1/2 ris 9h 21m
3	☾ 8h
4	
5	2 s. in Adv
6	Nicholas
7	
8	Conception of B V M
9	☽ sets 6h 49m eve
10	
11	
12	☽ perigee
13	
14	
15	
16	
17	☽ so 10h 21m eve.
18	
19	4th Sun in Adv
20	☽ eclip invisible
21	☽ enters ♍
22	
23	
24	☽ 3 3 2
25	Christmas
26	St. Stephen ☽ ap
27	St John
28	Innocents
29	Low tides
30	
31	Gr elong ☽

Farmer's Calender.

the company of friends. (and the best are your own family) of a well edited Newspaper, and a book. Furnish your children with books that will be so interesting that they cannot refrain from reading them.

The Jarewell.—Let us cease to look abroad for sources of sudden wealth—let each of us attend to his farm understandingly—know his own plan and pursue it steadily.—Let him do his work well and in season—See that all is in order and fit for what is designed—Contribute cheerfully to objects of usefulness and public improvement, regarding with anxious care the interests of his church and schools—Let him discountenance idle and vicious habits, and promote good conduct and vital piety in the circle around him by his own example—Let him in short, strive earnestly to discharge his duty to himself, his neighbours and his God, and he cannot fail of success; but with an approving conscience, and the smiles of Heaven he will secure to himself the fruits of an honest, intelligent, and independent man.

TIDE TABLE for the American Coast.

Amelia Island	add 1	00	Machias	add 3	30
Boston Harbour	add 4	00	Martha's Vineyard	add 0	07
Bell Island Strs	add 1	45	Nantucket	add 0	07
Bermuda In.	sub. 0	30	Nanaganset Bay	add 0	07
Cape Fear	add 0	30	New York	add 1	24
Cape Charles	add 0	15	Ovacock In.	add 1	30
Cape May & Haplopn.	add 1	15	Pussamaquoddy	add 4	00
Cape Roman	add 0	30	Penobscot Bay	add 3	15
Cape Sable	add 0	30	Philadelphia	add 6	57
Charleston Bar	sub. 0	15	Portland	add 3	15
Chebucto Bay	0	00	Prismth. & Newbrprt.	add 3	45
Florida Keys	add 1	20	Quebec	add 0	30
Fundy Bay	add 1	15	Sundy Hook	subt. 0	53
Hell Gate	add 1	54	Savannah	add 0	45
Kennebeck entr	add 3	15			

The times in the above Table are to be added to or subtracted from the time of high water at Halifax, according to the directions there given. Example—To find the time of high water at Quebec May 1 1824. The time of high water at Halifax May 1 by the Almanack is 9h 30m. To this add 30m (the time set against Quebec in the Table) and you have the time of high water at Quebec 10h.

ECLIPSES IN THE YEAR 1824.

<p>I. Jan. 16 Moon eclipsed visible.</p> <table border="0" style="width: 100%;"> <tr> <td style="width: 15%;"></td> <td style="width: 15%; text-align: center;">h. m.</td> <td style="width: 10%;"></td> <td style="width: 15%;"></td> <td style="width: 15%;"></td> <td style="width: 15%;"></td> </tr> <tr> <td>Beginning,</td> <td>2 34</td> <td rowspan="4" style="font-size: 3em; vertical-align: middle;">}</td> <td rowspan="4" style="vertical-align: middle;">Apparent time morning.</td> <td>Beginning,</td> <td>10 41</td> </tr> <tr> <td>Middle,</td> <td>3 59½</td> <td>Middle,</td> <td>11 25</td> </tr> <tr> <td>Ecliptic ♂,</td> <td>4 5½</td> <td>Ecliptic ♂,</td> <td>11 36</td> </tr> <tr> <td>End,</td> <td>5 25</td> <td>End,</td> <td>0 9</td> </tr> <tr> <td>Duration</td> <td>2 51</td> <td></td> <td></td> <td>Duration,</td> <td>1 28</td> </tr> <tr> <td>Digits eclipsed</td> <td>9° 22¼' on ☽'s north limb,</td> <td></td> <td></td> <td>Digits eclipsed</td> <td>1° 37¼' on ☽'s south limb.</td> </tr> </table>		h. m.					Beginning,	2 34	}	Apparent time morning.	Beginning,	10 41	Middle,	3 59½	Middle,	11 25	Ecliptic ♂,	4 5½	Ecliptic ♂,	11 36	End,	5 25	End,	0 9	Duration	2 51			Duration,	1 28	Digits eclipsed	9° 22¼' on ☽'s north limb,			Digits eclipsed	1° 37¼' on ☽'s south limb.	<p>III. July 10. Moon eclipsed, visible.</p> <table border="0" style="width: 100%;"> <tr> <td style="width: 15%;"></td> <td style="width: 15%; text-align: center;">h. m.</td> <td style="width: 10%;"></td> <td style="width: 15%;"></td> <td style="width: 15%;"></td> <td style="width: 15%;"></td> </tr> <tr> <td>Beginning,</td> <td>10 41</td> <td rowspan="4" style="font-size: 3em; vertical-align: middle;">}</td> <td rowspan="4" style="vertical-align: middle;">Apparent time, evening. morning.</td> <td>Beginning,</td> <td>10 41</td> </tr> <tr> <td>Middle,</td> <td>11 25</td> <td>Middle,</td> <td>11 25</td> </tr> <tr> <td>Ecliptic ♂,</td> <td>11 36</td> <td>Ecliptic ♂,</td> <td>11 36</td> </tr> <tr> <td>End,</td> <td>0 9</td> <td>End,</td> <td>0 9</td> </tr> <tr> <td>Duration,</td> <td>1 28</td> <td></td> <td></td> <td>Duration,</td> <td>1 28</td> </tr> <tr> <td>Digits eclipsed</td> <td>1° 37¼' on ☽'s south limb.</td> <td></td> <td></td> <td>Digits eclipsed</td> <td>9° 22¼' on ☽'s north limb.</td> </tr> </table>		h. m.					Beginning,	10 41	}	Apparent time, evening. morning.	Beginning,	10 41	Middle,	11 25	Middle,	11 25	Ecliptic ♂,	11 36	Ecliptic ♂,	11 36	End,	0 9	End,	0 9	Duration,	1 28			Duration,	1 28	Digits eclipsed	1° 37¼' on ☽'s south limb.			Digits eclipsed	9° 22¼' on ☽'s north limb.
	h. m.																																																																								
Beginning,	2 34	}	Apparent time morning.	Beginning,	10 41																																																																				
Middle,	3 59½			Middle,	11 25																																																																				
Ecliptic ♂,	4 5½			Ecliptic ♂,	11 36																																																																				
End,	5 25			End,	0 9																																																																				
Duration	2 51			Duration,	1 28																																																																				
Digits eclipsed	9° 22¼' on ☽'s north limb,			Digits eclipsed	1° 37¼' on ☽'s south limb.																																																																				
	h. m.																																																																								
Beginning,	10 41	}	Apparent time, evening. morning.	Beginning,	10 41																																																																				
Middle,	11 25			Middle,	11 25																																																																				
Ecliptic ♂,	11 36			Ecliptic ♂,	11 36																																																																				
End,	0 9			End,	0 9																																																																				
Duration,	1 28			Duration,	1 28																																																																				
Digits eclipsed	1° 37¼' on ☽'s south limb.			Digits eclipsed	9° 22¼' on ☽'s north limb.																																																																				
<p>II. June 26, Sun eclipsed, chiefly invisible.</p> <p>Eclipse will begin at 7h 25m ev Sun sets 7h 33m, ♄ 6h 55m.</p>	<p>IV. December 20 Sun eclipsed invisible.</p> <p>♄ 5h 56m morning, ☽'s latitude 9¼' S.</p>																																																																								

☿ The Planet Venus will be morning star till July 29th then evening star through the year.

Most arts require long study and application ; but the most useful art of all, that of pleasing, requires only the desire.

■ Nova - Sc

Lieut. G
Lieut. Col.
Capt York
F Lennox 6
Lt RU How
Harris Dep
resford Dy
Bazalgette
Haden Esq
dolph Viet
of Accts. J
Oliver Gol
William
Swiney, E
Gentls -
of Hosps.
the Forces
to the For
Dy Brk M
Brk Mstr.
& Harris h
of Militia.

Garr

Lt M'Colla
T Twining

Royal Art

Lt Col. F
mand

Capt Mos
Lieute A

Griffith
and Ce

Rl Engin
Lieuts Vin

Royal Ar
Bru

Capt John
Lieut Ru

Royal Ar
Bru

Capt Bar

STAFF OF THE ARMY.

■ Nova-Scotia, New-Brunswick and their Dependencies, under the Command of His Excellency

Lieut. Genl. Sir JAMES KEMPT, G. C. B &c. &c &c.

Lieut. Col. Couper Military Secy *New Brunswick.*

Capt Yorke 52d Foot Esqn Lord His Excellency Sir HOWARD

F Lennox 62d do Aides de Camp DOUGLAS, Lt Governor.

Lt R U Howe Ast Mil Sec Lt Col Aide-de Camp

Harris Dep Adj Gen Lt Col Bes Alexr Boyle, Staff Surgeon R

resford Dy Qr Mstr Genl Maj Leslie, John Ball, Hospital Assis-

Bazalgette Major Brigade F W tants. Thos Price Esq. Asst Com

Haden Esq Dy Comy Genl A-Gen. Ch A Clarke H C Darling

dolph Vieth, Esq Dep Com Genl Wm Plant, T M Marsters, Esqrs.

of Accts. Jos Charlier, Jas Slade, Dp Asst Comy Gents. A Phair

Oliver Goldsmith, Willm Lowe, Asst Bark Mstr General. Lieut.

William Milliken, George Gallaher, Town Major Frederic

Swiney, Esqrs. Depy Asst Com. Rev R Willis Officg Chap

Gents - - Forbes Dy Insp. at St John. Rev Jerome Ailey.

of Hosps. Thos Dunain Sur: to St Andrews.

to the Forces. J Carter Esq Apoth *Prince Edward Island.*

Dy Brk Mstr Gen. J Blair Esq His Excellency CHARLES D SMITH

Brk Mstr. Lt. Cols Wodehouse. Lieutenant Governor.

& Harris Inspecting Field Officers J F Holland Barrack Master. Lt.

of Militia. Lane Town Major. Benjot St.

Garrison of Halifax. Croix Hosptl Mate. Rev Thosop

Lt M'Colla Town Major Rev J Desbrisay Officiating Garrison

T Twining Off Chaplain.

OFFICERS OF THE ARMY.

<i>Royal Artillery Halifax</i>	74th Regiment of Foot	Thos Mannin
Lt Col. Foster Com-	Colonel	A H Pattison
manding	Hon Sir C Colville G	Lieutenants
Capt Mosse	C B	Jason Hassard
Lieute A Duncan Adj	Lieut Colonel	John Alves
Griffith Lyster Q M	John A Mein	Chas King
and Cernelins	Majors	Wm Graham
<i>Rl Engineers Halifax</i>	Dav Stewart	Sam Herron
Lieuts Finling Pooley,	Wm Moore	A Atkinson
<i>Royal Artillery New</i>	Captains	Ja Fleetwood
<i>Brunswick</i>	D Macqueen	Rob Barker
Capt Johnston	G Hillier	R Davies
Lieut Runnacles	Eyre J Crabb	Wm Black
<i>Royal Engineers New</i>	Fra Ansell	Ross Flood
<i>Brunswick</i>	Joshua Wilson	Ensigns
Capt Barry	Thomas Jones	L M Pherson

C A Campbell	J M Wardrop	E T Thomson
George Gore	<i>Captains</i>	Henry Dixon
Annesley Eyre	Rich Cole	Chas Oakley
Thos Gordon	R Pilkington	Wm Hall
Aug F Ansell	J Duval	<i>Ensigns</i>
Ch Aymer Vallancey	Chas French	John Browne
<i>Pay</i> J Hassard	G W Horton	It Hamilton
<i>Adj</i> R Flood	Mont Cairnes	Philip Splaine
Q M Don Fraser	Sam Jenkins	P G Marsh
<i>Surg</i> C Grant	C E Maclean	Wm M Donald
A S R Ranken	<i>Lieutenants</i>	Jas Douglass
81st Regiment of Foot	K Montgomery	<i>Pay</i> A Thompson
<i>Colonel</i>	J Sisson	<i>Adj</i> J Sisson
Sir J Kempt G C B	Tho Manoing	Q M J Roberts
<i>Lt Colonel</i>	T C Wheat	<i>Surg</i> Wm Cogan
And Creagh	Geo Smyth	A S Jas Ewing
<i>Majors</i>	J A Lutman	
P C Taylor	David Duval	

List of SHIPS on the North American Station.

Rear Admiral W C FAHIE Esq C B.

SALISBURY 58 guns	Mastr Sml Tuck	Purs Jas Ozzard
Capt W Maude	Surg Mich Goodsir	ARGUS 13 guns
Lts Wm Picking	Asst Wm Folds	Capt J B Dundas
Geo Dunsford	Purs John Walter	Lts D B Innis
Jos R Thomas	NIEMAN 23 guns	Wm N Taylor
Edw Belcher	Capt Ed R Sibly	Mastr Ed Porter
J D Mercer F L	Lts R Aug Bradshaw	Surg W S Thomas
Capt Mar J S Pilcher	Gas H Coulson	Asst Wm Irwin
1st Lt G Thompkins	Mastr Ed Sibbon	Purs Thos Archer
Mastr Peter Parker	Surg Jas Gilchrist	SPARROWHAWK
Surg Aug Gemmell	Asst Jos Kerr	18 guns
Asst Rt Marshall	Purs Thos Godfrey	Cpt Hon R S Dundas
Chap C Hardy	DOTTFREL 13 guns	Lts R Stewart
Purs John Bryan	Capt Ren Hoare	R Hussey
A HOL 28 guns	Lts C Bucknole	Mastr Alex Smith
Capt H Burchier	Wm Preston	Surg Wm Donnelly
Lts J P D Lardom	Mastr John Jones	Asst Alex Lane
Rt Leman	Surg David Finlay	Purs Thos Woodman.
L T Jones	Asst Wm F O'Keane	

DIRECTIONS FOR MEASURING CATTLE ;

So as to ascertain their Weight while Living.

This is of the first utility for all those who are by no means experienced judges enough by the eye, or others who have a beast above the common weight of the species; and by which

means, fol

within a m
Take a
behind
inches he
string mea
with the h
back to th
on the foot
gures in th

Which mu
again mult
to each S
more than
Again s
in girth an

Which mu
multiplied
square foo
makes 44

Again s
ches and 3

Which mu
superficial
ber of pou
more than

Again s
7 feet 3 in

Which mu
Then mult
allowed to
9 and more

The dim
calves or h
necessary
Stock, an

means, following these directions, they will come to the mark, within a mere trifle.

Take a string, put it round the beast, standing square, just behind the shoulder blade, measure on a foot rule the feet and inches he is circumference, this is called the girth; then with the string measure from that bone of the tail which plumbs the line with the hinder part of the buttock; direct the line along the back to the fore-part of the shoulder blade; take the dimensions on the foot rule as before, which is the length, and work the figures in the following manner;

Girth of an ordinary bullock	6	4
Length along the back	5	3

Which multiplied together, make 31 square superficial feet, that again multiplied by 23 (which is the number of pounds allowed to each Superficial foot, of all cattle measuring less than 7 and more than 5 feet in girth) makes 713 pounds;—

Again suppose a pig, or any small beast should measure 2 feet in girth and 2 feet long.

Girth of a small pig	2	0
Length along the back	2	0

Which multiplied together makes 4 0 Square feet. That again multiplied by 11 (which is the number of pounds allowed for each square foot of all cattle measuring less than 3 feet in girth,) makes 44 pounds.

Again suppose any hog, calf, &c. should measure 4 feet 6 inches and 3 feet 9 inches in length say.

Girth	4	6
Length	3	9

Which multiplied together makes $16\frac{1}{2}$ square feet. The square superficial feet and inches multiplied by 16, (which is the number of pounds allowed to all cattle measuring less than 5 and more than 3 feet in girth) makes 264 pounds;

Again suppose a beast measures 8 feet 4 inches in girth, and 7 feet 3 inches in length, to know how much he mus. weigh, say

Girth of a large Ox	8	4
Length along the back	7	3

Which multiplied together, makes 57 square superficial feet. Then multiply the feet by 30 (which is the number of pounds allowed to each superficial foot of all cattle measuring less than 9 and more than 7 feet in girth) makes 1767.

The dimensions of the girth and length of black cattle, Sheep, calves or hogs, may be as exactly taken this way as is at all necessary for any computation, or for the purpose of valuation of Stock, and will answer to the four quarters, sinking the offal

and which every man who can get even a bit of chalk, may easily perform.

N B.—A deduction must be made for a half fatted beast of 14 pounds to 280, from that of a fat one: and for a cow that has had calves, 14 pounds must be allowed, and 14 more for not being properly fat.

Roads to the Principal Towns in the Province from Halifax, with the names of Innkeepers.

<i>Halifax to</i>					
	Gay's River	Corbet	3	Prask's beaver R.	14
Bedford Inn	3	Field's	3½	Parry's Yarmouth	
Rockingham	3	Sibley's	5	Lakes	8
Holland's	3	Goarley	1	Smith's & Richan's	
Foltz's Inn	3	Stewjack—Polly	3	Yarmouth Church	5
Michell's Inn	3	Clark's	6	Blauvelt's Tusket	
Holtz ½ way house	6	Truro—Witter's	6	Village	10
Fitzmaurice new do	1½	Blanchards—6	62	Nickerson's Apublic	
Pence's Farm	3½	Onslow—Gourley's	5	River	8
M. Lellan's 30m	4½	Londonderry—R		Spioney's Apublic	
Mason's Arms	5	Flemming	7	Bay	5
Dalhousie Arms	1	Low Village Yewitt	7	Larkin's Publico r.	10
Wilcox, Windsor	9	Foot of Cob Moun-		Kenrick's Barring-	
Falmouth bridge	6	tain Clark's	6	ton	13
Chipmen's	1	Sutherland's	4	Powell's Clyde R.	5
Morton's ½ way inn	5	Top of Cob Moun.		Putts Shelburne	16
Gaspereau Martin's	5	tain J Purdy	6		
Horton—Fowler's	6	River Philip—Haw-		Whole distance	164
Graham's		son	9	From Halifax to Lu-	
Horton Corner—		Stewart's	10	nenburgh	
Hamilton's		Blusk's	2	To nine mile house	9
Bragg's	6	Amherst—Bents	3	Hamishe's head of	
Sharp's inn	7	Fort Cumberland—		St Margarets bay	22
Aylesford—Crane's	8	Witherhead 7—	134	Church's Chester	16
Harris's	1	From Annapolis to		Crandle's head of	
Wilmot—Gibbons	12	Shellburne.		Chester bason	5
Leonard's	10	From Annapolis to		Zwickor's head of	
Hick's Bridge	5	Clements Church	9	Mahone bay	15
Kents	8	Bear river bridge	8	Heckman's	6
Annapolis, Chandler	7	Raggles Digby	9		
		Everets's Weymouth		Whole distance	73
	129	road	13	From Lunenburg to	
Fultz's inn	12	Cosmon's Weymouth		Liverpool	
Fletcher's	6	Church	6	To Maguir's terry,	
Summerfield Schulz	5	Journe's Sissiboo r.	4	Lunaveriver	7
Hall's	3	Whites, Clare	4	Drew's Inn	7
Keys's	6	Terrian's Montagan		Conrod's ferry Port	
Atkeen	3½	Cove	15	Medway	7

M
Ball's
Co
M^oLe

W
To C
P
Wind
Parrs
Cie

Lewt
Moor
Mac
lon
Read
Napa
Amb

Wh
del
W

Dies
Arch
Ri

T
whic
notes
the f
sea.
heig

F

T
mas
per
from
o'cl
twic

M Vicar's inn	3	Stewarts'	9	<i>From Halifax to Antigonishe.</i>
Ball's Inn Herring Cove	8	M'Connel's	3	To Blanchard's W
M'Lean's Liverpool	2	M George Pictou	10	River Pictou 92
Whole distance	34	Whole distance	98	Archibald's middle River Pictou 5
To Cumberland via Parrsborough.		To Pictou via Musquodoboit.		Campball's East River Pictou 4
Windsor	45	Dartmouth Ferry	1½	Sutherland's 7
Parrsboro' (by water)		Preston, Bradley's	6	Smith's Merigomish 6
Claue's	30	Punnam's farm	5	Ferguson's 7
Lewis's	9	Hart's	5	M'Queen's Antigonishe 16
Moore's	1	M Keen's	11	Whole distance 137
Macan bridge, Farlongs	8	Lecko's	13	
Read's Macan R.	4	Robert Archibald's	4	
Napan Parslev's	5	Robert Geddes'	4	
Amherst Embree	7	Henry's	4	
—Bent's	2	Dunbar's W branch		<i>Road to the Gulf Shore.</i>
Whitthehead & Yan-dell's Fort Cumb	7	E. river Pictou	26	To Fergusons 121
Whole distance	118	W M Kay	8	Priest M'Donald's 8
To Pictou.		John Fraser's	7	M Queen's Antigonishe 16
Dixon's Tenro	62	Across the harbour to Walsely court house	1	Whole distance 145
Archibald Salmon River	14	Whole distance	95½	
		* Cross roads from Archibald's to Scott's	20	

Time of going through the Falls.

THE Falls are level (or still water) about three hours and an half on the Flood and about two hours and an half on the ebb which makes it passable four times in 24 hours about 10 or 15 minutes each time.—No other rule can be given, as much depends on the floods in the River St John and the time of high water or full sea, which is often hastened by winds, and in proportion to the height of them.

To Travellers.

For the information of Travellers between Windsor and Parrsborough, &c.

THE Parrsborough Packet sails regularly between Windsor and Parrsborough every week from the first April to Christmas, viz.—leaves Parrsborough on Monday; wind and weather permitting so as to be at Windsor on Tuesday; and will sail from thence the first high water that happens at or after eight o'clock in the morning of that day; the Packet frequently goes twice or three times a week when business requires it.

and
 sily
 pot
 cal
 per
 R

 Bed
 Roo
 Hol
 Folt
 Mies
 Haly
 Puzi
 Pent
 M-L
 Masc
 Dalh
 Wilc
 Falm
 Chipt
 Mort
 Gaspe
 Hort
 Gr
 Hort
 Hami
 Bragg
 Sharp
 Ayles
 Harrie
 Wilme
 Leona
 Hick's
 Kents
 Annap

 Fultz's
 Fietch
 Spru
 Hall's
 Keys's
 M'Keen

MANURE. The substances which make excellent manure are much more numerous than seems to be generally supposed by farmers. Among many others are the following; putrified flesh, bones, woollen rags, fish, leather, soap suds, urine of all animals, brine, dung of all kinds, scrapings of door yards and streets, rubbish of old houses, lime, plaster of Paris; mud from ponds; rivers, swamps and the sea; shells, turfs, ashes, earth that has been long under cover, weeds that grow in gardens, fields, ponds, rivers, the sea, &c. refuse hay, ferns or brakes, leaves of trees, moss, rotten wood, &c. &c. All these substances, whenever they can be obtained, should be collected together in a compost, which is one of the most essential requisites to good husbandry.

Barn-yard. As this yard is the most favourable place on the farm, to make manure, the outer parts of it should be so much higher than the middle, that no manure shall be washed out of it by the greatest rains. As many of the barns and out houses as is practicable, should stand on this yard, that the manure and rubbish which they afford, may be easily conveyed into it. The yard should be considerably large, to afford sufficient room for making manure; and should have several apartments into which sheep, calves, &c. may be put, as occasion requires.

In November secure your cellars from frost. Fasten loose clap boards, shingles, &c. Secure a good school master, a man of learning and good moral principles. Better give twenty dollars for a good man, than have a poor one for nothing. Supply your children with books; and let them know that you respect their teacher, and place a high estimate on the privileges they enjoy under his instructions, and that they will find you steadfast in maintaining good government at school; as well as in your own family. Be grateful to the God who is crowning the year with his goodness.

CLEMENT H. BELCHER

HAS constantly for Sale at his Store, opposite the Province Building, an excellent assortment of School Books, Stationary, &c. &c.

the excellent ma-
ms to be good,
others are the
rags, fish, lea-
pine, dung of all
ets, rubbish of
from ponds; ri-
ashes, earth
at grow in gar-
fuse hay, ferns
wood, &c. &c.
n be obtained,
st, which is one
usbandry.

favourable place
parts of it should
no manpre shall
s. As many of
e, should stand
lk which they af-
e yard should be
oom for making
ents into which
ion requires
a frost. Fasten
e a good school
moral principles.
an; than have a
ren with books;
eir teacher, and
they enjoy under
you steadfast in
il; as well as in
od who is crown-

HER
opposite the Pro-
of School Books,

