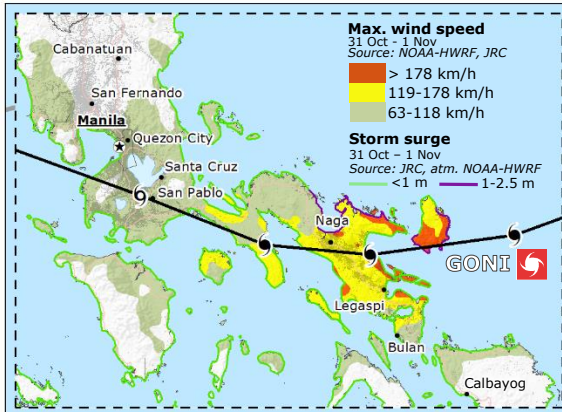


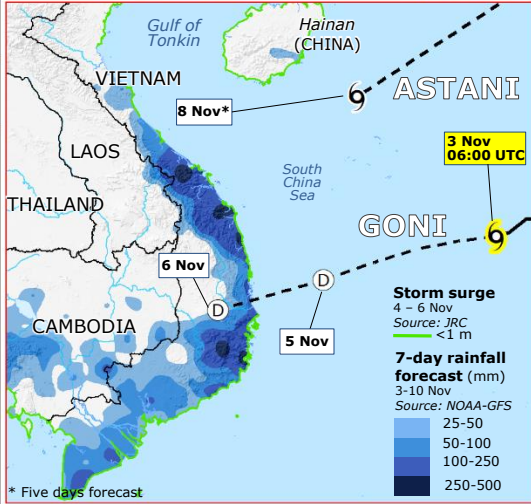
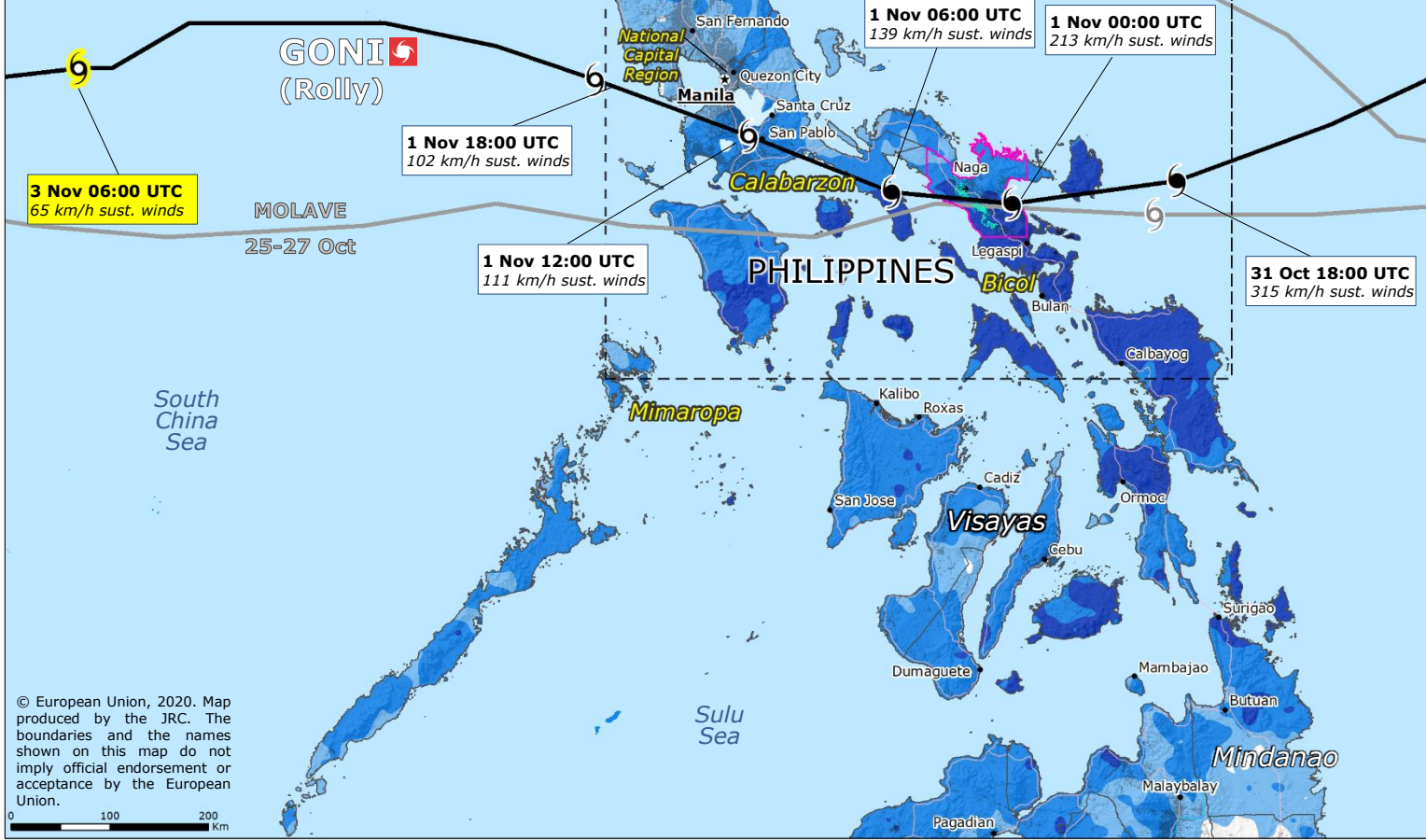
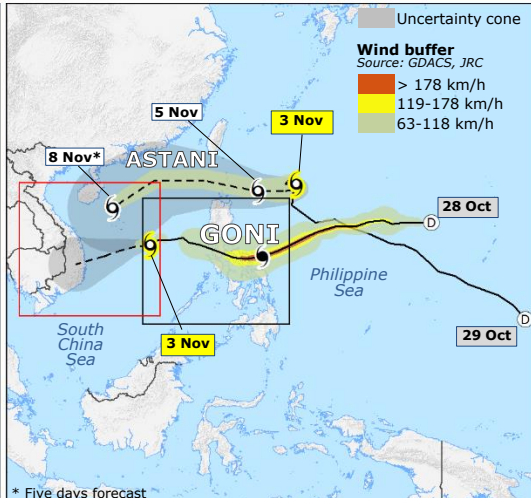
Philippines | Tropical Cyclone GONI



Impact overview

- 17 Fatalities
- 2 Injured people
- 1,612,893 Affected people
- 333,868 Sheltered people
- 4,346 Evacuation centres

Source: NDRRM as of 3 Nov



Tropical Cyclone
Source: GDACS, JTWC

- Yellow circle: Current position
- Dashed line: Forecast track
- Solid line: Past track
- SAUDEL and MOLAVE

Intensity

- (D) < 63 km/h Tropical depression
- 63-118 km/h Tropical storm
- > 119 km/h Typhoon

UNOSAT-UNITAR
Activation on 1 Nov

- Pink area: Analysis extent
- Green area: Flooded area

Past 7-day rainfall accumulation (mm)
27 Oct - 3 Nov
Source: NASA-GPM

- 25-50
- 50-100
- 100-250
- 250-500

Legend:
 - Grey line: Region limit
 - Green area: Affected region
 - Grey area: Built-up area (Source: JRC-GHSL)
 - Orange line: Main roads

GDACS red alert

© European Union, 2020. Map produced by the JRC. The boundaries and the names shown on this map do not imply official endorsement or acceptance by the European Union.