

THE

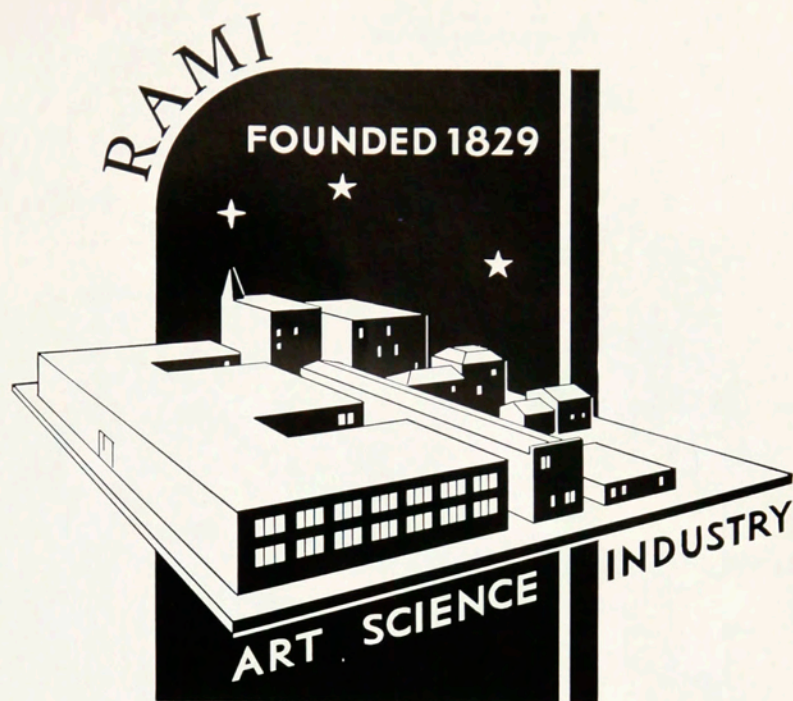
RAMIKINE

1941



MARK ELLINGSON





THE RAMIKIN

1941

Published by

THE RAMIKIN STAFF

for

THE ROCHESTER ATHENÆUM
and MECHANICS INSTITUTE

Volume Thirtieth

ROCHESTER, NEW YORK



CONTENTS



Views

Administration

Classes

Organizations

Athletics

Features





FOREWORD

AS the 1941 issue of the Ramikin goes to press, most of the world is engulfed in war. In Europe, the energies of young men and women are regimented for destruction: death is common, tragedy impends for the living. Here in the United States of America, freedom and democracy are active forces. The youth of the nation is constructing and building for a better existence instead of another Dark Age.

The Rocheser Athenaeum and Mechanics Institute is training men and women to participate with a trained and vital intelligence in preserving and improving the American way of life. Despite grim overtones of a world conflict these following pages fully attest that formal education, avocations, friendly yet competitive sports, and good fellowship are vigorously encouraged and developed by the tolerant wisdom of a fine faculty and board of directors. May this book be a recording of our life in the Institute.

BOARD OF DIRECTORS OF THE ROCHESTER ATHENAEUM AND MECHANICS INSTITUTE

ARTHUR W. BEALE

Vice-Pres. and Treas., Beale Const. Co.

JOHN P. BOYLAN

Pres. and Gen. Mgr., Roch. Telephone Corp.

HERBERT W. BRAMLEY*

Vice-Pres., Sibley, Lindsay & Curr Co.

THEODORE C. BRIGGS

Vice-Pres., Lawyers Co-operative Publishing Co.

KENDALL B. CASTLE

Attorney, Castle & Fitch

ALBERT K. CHAPMAN*

Asst. Vice-Pres. and Prod. Mgr., Eastman Kodak Co.

BRACKETT H. CLARK

Sec., Cochrane-Bly Co.

GEORGE H. CLARK*

*Treas., Rochester Athenaeum and Mechanics Institute
Dir., Eastman Kodak Co.*

W. DEWEY CRITTENDEN

Chairman, Board of Directors, Genesee Valley Trust Co.

A. EDWIN CROCKETT

Mgr. Industrial Management Council, Chamber of Commerce

MRS. C. SCHUYLER DAVIS

Dir., Public Health Nursing Association

M. HERBERT EISENHART*

Pres., Bausch & Lomb Optical Co.

MARK ELLINGSON*

Pres., Rochester Athenaeum and Mechanics Institute

CHARLES K. FLINT

Gen. Mgr., Kodak Park Works, Eastman Kodak Co.

FRANK E. GANNETT

*Pres., Gannett Co., Inc.
Publishers, The Gannett Newspapers*

JAMES E. GLEASON*

Pres., Gleason Works

EDWARD A. HALBLEIB*

*First Vice-Chairman, Rochester Athenaeum and Mechanics Institute
Gen. Mgr., Delco Appliance Division, General Motors Corporation*

EZRA A. HALE

Sec., Lawyers Co-operative Publishing Co.

CARL S. HALLAUER

*Vice-Pres., Bausch & Lomb Optical Co.
Pres., Bausch & Lomb Optical Co., Ltd., of Canada*

MRS. ALFRED HART

Pres., Jewish Children's Home

SOL HEUMANN

Chairman, Board of Directors, Timely Clothes, Inc.

ARTHUR H. INGLE

Pres., Consolidated Machine Tool Corp.

P. RICHARD JAMESON

Vice-Pres., Taylor Instrument Companies

VERNER C. KREUTER

Vice-Pres., American Laundry Machine Co.

MRS. WILLIAM BREWSTER LEE

Board of Managers, Rochester Friendly Home

FRANK W. MOFFETT*

Vice-Pres., General Railway Signal Co.

OSCAR H. PIEPER

First Vice-Pres., Ritter Dental Manufacturing Co.

JOHN D. PIKE

Pres., John B. Pike & Son, Inc.

HERMAN RUSSELL*

*Second Vice-Chairman, Rochester Athenaeum and Mechanics Institute
Pres., Rochester Gas & Electric Corporation*

BENJAMIN G. STALLMAN

General Contractor, H. Stallman Sons

HARRY C. STEVENSON

Pres., Rochester Folding Box Co.

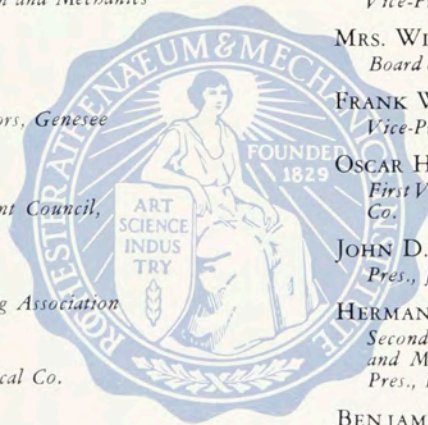
ALBERT F. SULZER*

*Secretary, Rochester Athenaeum and Mechanics Institute
Vice-Pres. and Asst. Gen. Mgr., Eastman Kodak Co.*

RAYMOND L. THOMPSON

Treas., University of Rochester

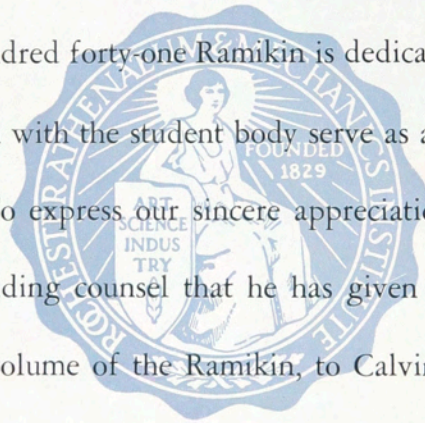
*MEMBER OF EXECUTIVE COMMITTEE





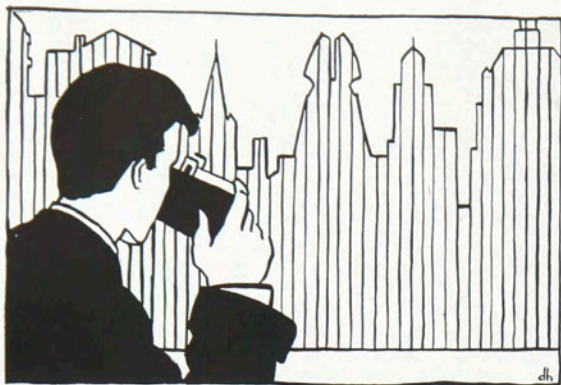
DEDICATION

THE nineteen hundred forty-one Ramikin is dedicated to a man whose years of association with the student body serve as a source of strength and inspiration. To express our sincere appreciation for the constant friendship and guiding counsel that he has given to us, we dedicate this, the thirtieth volume of the Ramikin, to Calvin C. Thomason.





CALVIN C. THOMASON



VIEWS

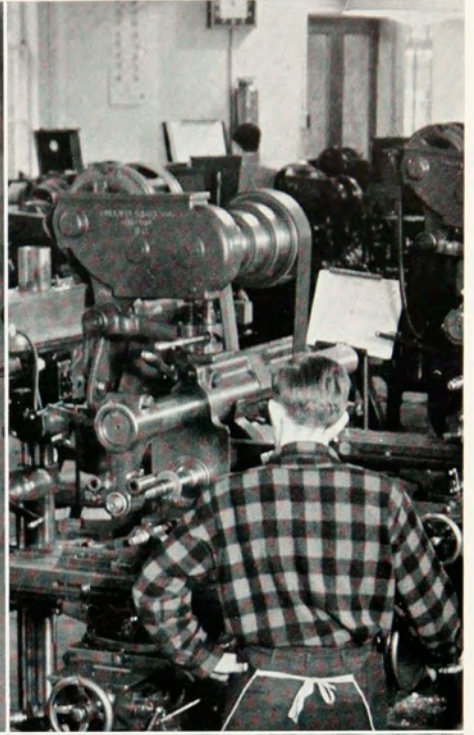
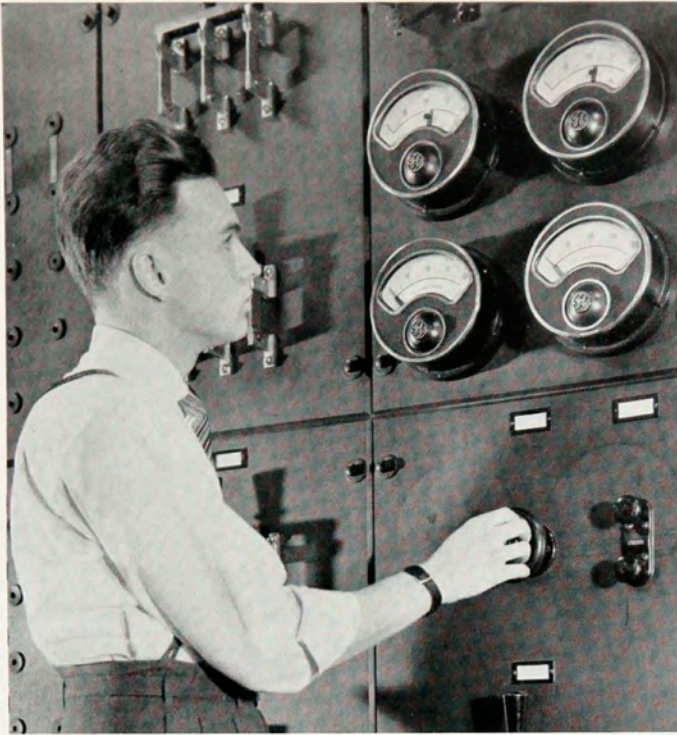
ON the following pages we will try to show what we as students of the Institute do with our time here. First, we show where we go to school. Our campus is unimportant but what is contained in these buildings is very important because it is from here that we secure our education. Next we show some of the things we do in school. This illustrates in some cases how we put our studies to practice in our laboratories. Since we also work on cooperative jobs in businesses in the fields in which we are studying we show you some of the tasks we perform on the job. It is here that we apply to real life what we have studied and practiced at the Institute. We also have some spare time away from school and the job, so now we show you how we sometimes use our spare time. Since we are training in so many different fields we thought you would be interested in knowing the names of some of the companies where we work, so finally, we show you in their own styling the names of many of our cooperative employers. We work here as students and we hope to continue here when we graduate. This is a brief picture of our year in school.



OUR SCHOOL



WHAT WE DO IN SCHOOL



HOW WE WORK



WHEN WE PLAY

THE NIAGARA FALLS MEMORIAL HOSPITAL
NIAGARA FALLS, N. Y.

Wyoming County Community Hospital
Warsaw, N. Y.

HILLS, McLEAN & HASKINS
INCORPORATED
BINGHAMTON, N. Y.

Rochester Gas and Electric Corporation
Rochester - New York

S.F. Iszard Co.
NEW YORK

CLINTON AVENUE SOUTH
ROCHESTER-NEW YORK

Spencer Lens Company
Buffalo, N. Y.

BOARD OF EDUCATION
13 FITCHBURGH STREET SOUTH
ROCHESTER, NEW YORK

MOORE STEAM TURBINE DIVISION
WELLSVILLE, NEW YORK

GHAFLEX
ROCHESTER, N. Y.
DIVISIONS OF EASTMAN KODAK COMPANY

SUCCESSORS TO CENTURY FOLMER & SCHWING
FOLMER GHAFLEX CORP.

ROCHESTER PRODUCTS DIVISION
GENERAL MOTORS CORPORATION
ROCHESTER, N. Y.

CUTLER UNION
UNIVERSITY of ROCHESTER
THE COLLEGE FOR WOMEN
Rochester, New York

WESTINGHOUSE ELECTRIC & MANUFACTURING COMPANY
1132 SENECA STREET, BUFFALO, N. Y.

DEFENDER PHOTO SUPPLY COMPANY INC.

WORTHINGTON PUMP AND MACHINERY CORPORATION
ROCHESTER, N. Y.

SIBLEY, LINDSAY & CURR CO.
THE COLUMBIA SCHOOL
ROCHESTER, N. Y.

NEW YORK STATE Electric and Gas Corporation
Successor To
Elmira Light, Heat and Power Corporation
201-203 State Street
Elmira, New York

ECLIPSE MACHINE DIVISION
BENDIX AVIATION CORPORATION
ELMIRA, NEW YORK

Columbian Rope Company
MANUFACTURERS OF
Cordage
Auburn, New York
The Cordage City

SEARS, ROEBUCK AND CO.
ROCHESTER, N. Y.

Houde Engineering Corporation
Division of Houdaille-Hershey Corporation
MAKERS OF FINE PRECISION MECHANISMS
Buffalo, New York

Warsaw Elevator Co.
Manufacturers of
ELEVATORS.
Warsaw, N. Y.

Taylor Instrument Companies

J.N. Adam & Co.
300-303 MAIN STREET
BUFFALO, N. Y.

GENERAL RAILWAY SIGNAL COMPANY

HENS & KELLY COMPANY
DEPARTMENT STORE
MAIN AT HOWARD
BUFFALO

HOTEL CADILLAC
THROUGH
CHESTNUT AT ELM
ROCHESTER, N. Y.

NEW YORK CENTRAL SYSTEM

THE ROCHESTER GENERAL HOSPITAL
ROCHESTER, NEW YORK

Rathbun Molding Corporation
MOLDERS OF PLASTIC PORES WITH TRIPLEX STRING HINGES

Adam, Meldrum & Anderson Co.
Buffalo, N. Y.

MOUNT MORRIS TUBERCULOSIS HOSPITAL
MOUNT MORRIS, N. Y.

L.A. WITHERILL
DEPARTMENT STORE
SOUTH SALINA ST. WEST FAYETTE ST.
SYRACUSE, N. Y.

Gretchen's Kitchen
Washington Square
on Washington Street
Jamestown, New York

BAUSCH & LOMB OPTICAL CO.
ESTABLISHED 1853
ROCHESTER, NEW YORK

DELCO APPLIANCE DIVISION
GENERAL MOTORS CORPORATION
ROCHESTER, N. Y.

E.W. Edwards & Son
ESTABLISHED 1832
ROCHESTER, NEW YORK

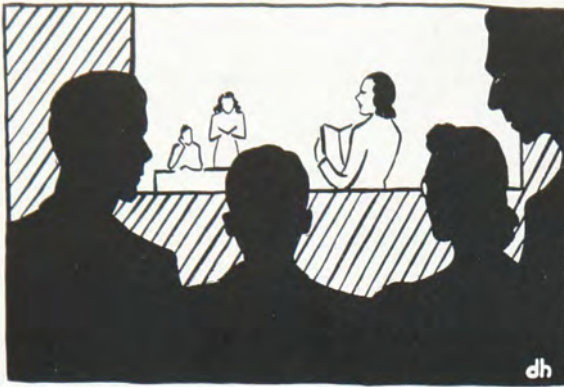
HIGHLAND HOSPITAL OF ROCHESTER
INCORPORATED
SOUTH AVENUE AT BELLEVUE DRIVE
ROCHESTER, N. Y.

RETSON Mining Company
SUBSIDIARY INTERNATIONAL SALT CO. INC.
SCRANTON, PA.
MINERS OF ROCK SALT
Retsof, N. Y.

UNION FREE SCHOOL DISTRICT No. 1
TOWN OF TOMAWANDA
KENMORE, N. Y.

The Win. Hengeler Co.
37 NORTH WASHINGTON STREET
BUFFALO

WHERE WE WORK



ADMINISTRATION

AN important part of our school is the administration of its affairs. On the following pages we will picture by word and illustration the members of the staff of the Institute. Their training and experience cover all sections of the country and varied occupations. Thus we feel that they are very capably training us for our future professions. They have gained for us a fine reputation for ability in teaching and training us to be efficient performers in our chosen fields.



DR. MARK ELLINGSON

MARK ELLINGSON, our president and constant friend. Under his guidance, the Institute has grown tremendously as a truly outstanding educational institution. He shows an inspiring interest in our efforts to gain a valuable education and steadily improves the facilities for our studies. He is widely recognized as a leader in the development of progressive vocational education.



CLIFFORD M. ULP



HORN



SINCLAIR



WYMAN

APPLIED ART



AVERY

INDIVIDUALIZED education, which has always been essential in the teaching of art, makes the art program effective and useful in this day of art in industry, commerce and education. The courses offer comprehensive experience and training in both commercial and cultural art. The department is one of the oldest in the Institute.



BOND

MR. CLIFFORD M. ULP graduated from the Institute and studied at the Art Students' League in New York City. He did advertising and illustration in New York and in Rochester. ALLING CLEMENTS graduated from the Institute also, and after a year's study at the Art Students' League and in Europe, free lanced in New York. CHARLES HORN attended Pratt Institute and the New York School of Fine and Applied Art. He studied painting under Charles Woodbury and Herbert Barnett. RALPH AVERY graduated from the Institute and studied painting under Charles Woodbury and Leith-Ross. He is the curator of the Rundel Art Gallery. ARTHUR N. SINCLAIR was an art student at the Institute, and a student of photography at the Winona School of Photography. MILTON BOND graduated from the University of Rochester and from the Institute. He was art director of the Munsell Research Laboratory. MINNIE WYMAN attended Boston Normal School, Corcoran Art School, New York School of Fine and Applied Art and was a pupil of Hugh Breckenridge. FRED A. WELLS is a new member of the faculty this year.



CLEMENTS



WELLS



A. DAVIS



W. DAVIS



HOWLAND



CALVIN C. THOMASON

SOCIAL SCIENCES

THE Department of Social Sciences contrives to combine a cultural background with specialized department courses. Classes in philosophy, psychology, economics, social problems or current events are included in all curricula. Open discussion is the rule rather than the exception in these classes.

MR. CALVIN C. THOMASON, B. A., counselor, attended the University of California, University of Oregon, University of Wisconsin, and Columbia University. Mr. Thomason at one time held the position of travel editor, U. S. Navy, Washington, D. C., and before coming to the Institute, was connected with the Idaho Technical Institute. **ALFRED DAVIS**, M. A., attended Salem College and Syracuse University. He was employed in the industrial efficiency department of Bausch and Lomb. **WARREN C. DAVIS**, Ed. D., attended State Normal College, Idaho, Columbia University, University of Rochester, University of Buffalo, and was an instructor at Brigham Young University. **HAZEL HOWLAND**, M. A., attended the University of Rochester. **MARGARET JAMESON** received her B. A. from Vassar, and was an instructor at Chautauqua Summer School. **MARIE KINNEAR** graduated from the Boston School of Physical Education, and was director of health education at the Rotary Sunshine Camp for Crippled Children. **MILTON McCULLOUGH**, B. S., M. A., attended Kent State University and Ohio State. **BURTON STRATTON**, B. S., graduated from the Mechanics Institute Electrical Course, and also attended Ohio State, University of Minnesota, and Syracuse University.



JAMESON



KINNEAR



MC CULLOUGH



STRATTON



GEORGIE C. HOKE



TERK



THURBER



LONG

FOOD ADMINISTRATION

THE individualized curricula of the foods department offers to students training in two professional fields: hospital dietetics and commercial management. The students in dietetics secure hospital internship as cooperative work, and those in management serve their cooperative apprenticeship in commercial establishments.



FREER

MRS. GEORGIE HOKE, counselor, is a graduate of Hyannis State Normal School, and for a time was director of health education in the Public Schools of Walden, Mass. **RICHARD FREER**, M. S., is the instructor of chemistry and bacteriology in the department. He graduated from the University of Vermont. **GLADYS LONG**, assistant director of the cafeteria, attended Drexel Institute and Columbia University Teachers College. She was cafeteria manager at Washington State, and a teacher in the schools of Youngstown, Ohio. **VELMA PURINTON**, cafeteria manager, was granted the degree of Bachelor of Science from the University of Vermont, and received her M. A. from Columbia. **JEANE SYME** received her B. S. from Iowa State and has been connected with Memorial Union Cafeteria in Washington. **LOIS TERK** joined the staff of the Institute this year. After attending the Institute, she received her degree from Columbia University. **BERTHA THURBER** is in charge of catering. She attended Buffalo State Normal and the Institute. Before coming here as an instructor, she was on the staff of the Corning Public Schools.



PURINTON



SYME



BREHM



COLTON



DOBBS



C. B. NEBLETTE

PHOTOGRAPHIC TECHNOLOGY

THE Department of Photographic Technology was organized in 1930 as a two-year course, and in 1936 the course was extended from two to three years. In 1940, a color course was added to the curriculum. The department is recognized as one of the leading photographic schools in the country.

MR. C. B. NEBLETTE, counselor, graduated from Illinois College. He is the author of *Photography, Principles and Practice* and is a charter member of the Photographic Society of America, as well as a Fellow of the Royal Photographic Society of Great Britain. **FREDERICK W. BREHM** attended the University of Rochester and Cornell University. **HOWARD C. COLTON** was granted a B. S. degree from Harvard in 1933, worked in color photography studios in New York City, and joined the Institute staff in 1939. **WALLACE E. DOBBS**, B. S., is a graduate of Ohio State University and Managing Secretary and Treasurer of the Photographer's Association of America. **CHARLES A. SAVAGE**, owner and operator of Savage Photo Studio, attended the Institute and the Winona School of Photography. **SILAS M. THRONSON** received his M. A., from Massachusetts Institute of Technology, and was an instructor at the University of Florida. **MARTHA BONKOWSKI WIEHN** served an apprenticeship with Hal Sefton and was connected with Bausch and Lomb.



SAVAGE



THRONSON



WIEHN



BYRON G. CULVER



DE WITT



GILLILAND

PUBLISHING AND PRINTING

THE Department of Publishing and Printing, youngest of the Institute's educational departments, offers courses planned on a technical level comparable to that of the other departments at the Institute. A purely professional course is offered, and it is one of the most completely equipped schools in the United States.



PROVINS

MR. BYRON G. CULVER, counselor and instructor in layout, graduated from the Institute. **FRANK DE WITT**, instructor in hand composition and estimating, graduated from Middlebury College, and also attended Carnegie Tech and the Chicago School of Printing. He was production manager for the Otter Valley Press Company of Middlebury, Vermont, before joining the Institute staff. **ADAM GILLILAND** is a part-time instructor in hand composition and teaches monotype operation. **LE ROY PROVINS** teaches writing and publishing, and history of printing. **DONALD L. RITCHIE** is a graduate of Oswego State Normal, and was superintendent of printing, Rochester Museum of Arts and Sciences, before he came to the Institute. **JOSEPH F. SORACE**, instructor of machine composition, attended Brown Business College in New York City, and has worked on many newspapers.



RITCHIE



SORACE



BECKLEY



FRITZ



EDWINA B. HOGADONE

RETAILING

FOR several years, courses in buying, selling, sales promotion, store manager, personnel administration and customer service have been offered at the Institute. The courses are co-operative, and practical experience is effectively combined with theoretical training. Today, graduates hold executive and supervisory positions in retail establishments throughout the country.

MISS EDWINA B. HOGADONE, M. A., counselor, graduated from the University of Michigan. She studied at the Research Bureau for Retail Training at the University of Pittsburgh. Miss Hogadone has been counselor since 1936. DONALD K. BECKLEY, M. S., attended Columbia University and the School of Retailing of New York University. DOROTHEA M. FRITZ, B. S., graduated from the University of Minnesota. HORACE W. KOCH, M. S., attended Morningside College and the School of Retailing of New York University. BERNICE MOHLENHOFF, M. A., is a graduate of Iowa State Teachers' College, and attended Iowa State and Columbia Universities. JEAN M. STAMPE is a graduate of the School of Applied Art of the Institute, and the New York School of Fine and Applied Art. She also studied at the New York School of Display.



KOCH



MOHLENHOFF



STAMPE



EARLE E. MORECOCK



FRIBANCE



KARKER

ELECTRICAL

THE curricula of the Electrical Department provides co-operative training with the student progressing at his own rate toward professional standards.



MINZNER



TUITES

MR. EARLE MORECOCK, B. S., counselor, graduated from Clemson College. He was an electrical engineer at West Virginia Engineering Co., and consulting engineer at Delco Appliance Co. He is a licensed professional engineer of New York State. **JAMES H. GOULD**, B. S., graduated from the Institute and University of Michigan. He is employed at Bausch & Lomb Optical Co. **AUSTIN FRIBANCE**, M. S., is on leave of absence, serving as Captain in the United States Army. **EARL KARKER**, M. S., was employed with the Installation, Commercial Engineering and Employee Training Divisions of General Railway Signal Company before coming to the Institute. **WALTER MINZNER**, M. S., is a graduate of Northeastern University and attended Texas Agricultural and Mechanical College. **CLARENCE TUITES**, B. S., graduated from Clarkson and was connected with the Westinghouse Electrical and Manufacturing Company and the Commonwealth Power Corporation.



BRADEN



VAN PEURSEM



ALFRED A. JOHNS

INDUSTRIAL CHEMISTRY

CHEMISTRY is one of the most important fields in modern industry, and consequently, the demand for trained men is great. Because of constant expansion of industrial requirements, the course of study is revised continuously.

MR. ALFRED JOHNS, counselor, received his M. A. from the University of Rochester. He attended the Massachusetts Institute of Technology. **RALPH H. BRADEN**, M. S., attended Baldwin-Wallace College and the University of Chicago. **MARIE GILLARD** is a graduate of Mechanics Institute. **RALPH L. VAN PEURSEM**, Ph. D., graduated from Iowa State College, and was connected with the Engineering Department of Eastman Kodak.



STRICKLAND

GENERAL HOME ECONOMICS

THE General Home Economics course offers training in home management and develops competency in household production of food, clothing, and home furnishing.

MISS MAY D. BENEDICT, counselor, received her Bachelor of Science from Columbia University. **EUNICE STRICKLAND** attended the Janet Hill Summer School and the Institute.



MAY D. BENEDICT



HERMAN MARTIN



DONALDSON



ELBERFELD



HAGBERG

MECHANICAL AND CONSTRUCTION



BIEHLER

THE addition of new equipment of modern design has greatly expanded the courses offered in the Mechanical and Construction Department. To a progressive student, the curriculum of this course has unlimited possibilities.



BRODIE

MR. HERMAN MARTIN, counselor, graduated from the Institute in 1904. He was a draftsman and designer at the Gleason Tool Co., and for a time was connected with the Stromberg-Carlson Company. **RAYMOND BIEHLER**, B. S., was granted his degree from Ohio State University. **HAROLD J. BRODIE** attended the Institute. **WILLIAM CLARK**, B. S., is a graduate of Massachusetts Institute of Technology. **MURLAN CORRINGTON**, B. S., M. S., was graduated from the South Dakota School of Mines, and was assistant in physics at Ohio State University. **CYRIL DONALDSON**, B. Sc., M. S., attended the University of Texas, and Ohio State University. **JOHN ELBERFELD** received his B. S., M. S. from Harvard Engineering School. **GEORGE LE CAIN**, B. S., graduated from Tufts College. **BRAINARD PLEHN**, M. S., M. A., attended the University of Nevada, the University of Berlin, and Columbia University. **DUNCAN SEAVEY**



CLARK



CORRINGTON



LE CAIN



PLEHN



SEAVEY



SPEIDEL

received his B. S. from Tufts College. **CHARLES SPEIDEL** attended the University of Rochester, and was chief electrical engineer of Camera Works. **SHERMAN HAGBERG**, B. S., has been employed at the Union Tool Co. and the Camera Works and has been in charge of the Institute machine shop for several years. **HERBERT BOHACKET**, A. I. A., attended Lowel School of Design and has been associated with several leading architects in the East.



BOHACKET

ADMINISTRATION



MARY C. HAVENS
Librarian

LENA W. KARKER, R. N.
Medical Department



FLORENCE J. IRVING
Publicity

FREDERICK J. KOLB
Comptroller



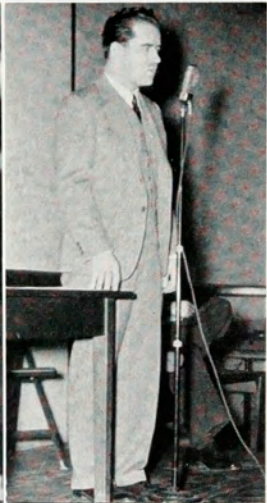
LAWRENCE L. JARVIE, Ph. D.
*Chairman of
Educational Research*

FLORANCE M. MEYER, B. S.
*Director of
Residence Hall*



FACULTY

- AVERY, RALPH H.
Applied Art
- BECKLEY, DONALD K.
Retailing
- BENEDICT, MAY D.
Counselor, Home Economics
- BIEHLER, RAYMOND M.
Mechanical
- BOHACKET, HERBERT H.
Construction
- BOND, MILTON E.
Applied Art
- BRADEN, RALPH H.
Chemical
- BREHM, FREDERICK W.
Photographic Technology
- BRODIE, HAROLD J.
Mechanical
- CLARK, WILLIAM A.
Construction
- CLEMENTS, ALLING M.
Applied Art
- COLTON, HOWARD C.
Photographic Technology
- CORRINGTON, MURLAN S.
Mechanical
- CULVER, BYRON G.
Counselor, Publishing and Printing
- DALE, LOUISE H. (Mrs.)
Home Economics
- DAVIS, ALFRED L.
Liberal
- DAVIS, WARREN C.
Liberal
- DEWITT, FRANK
Publishing and Printing
- DOBBS, WALLACE E.
Photographic Technology
- DONALDSON, CYRIL
Mechanical
- ELBERFELD, JOHN
Mechanical
- FOSS, CLARENCE
Publishing and Printing
- FREER, RICHARD
Food Administration
- FRIBANCE, AUSTIN E.
Electrical
- FRITZ, DOROTHEA M.
Retailing
- GILLARD, MARY E.
Chemical
- GILLILAND, ADAM
Publishing and Printing
- GOULD, JAMES H.
Electrical
- HAGBERG, SHERMAN
Mechanical
- HAVENS, MARY C.
Librarian
- HOGADONE, EDWINA B.
Counselor, Retailing
- HOKE, GEORGIE C. (Mrs.)
Counselor, Food Administration
- HORN, CHARLES C.
Applied Art
- HOWLAND, HAZEL P.
Liberal
- IRVING, FLORENCE J.
Publicity
- JAMESON, MARGARET O.
Liberal
- JARVIE, LAWRENCE L.
*Chairman,
 Educational Research*
- JOHNS, ALFRED A.
Counselor, Chemical
- KARKER, EARL C.
Electrical
- KINNEAR, MARIE
Liberal
- KOCH, HORACE W.
Retailing
- LECAIN, GEORGE
Mechanical
- LONG, GLADYS F.
Food Administration
- MCCULLOUGH, MILTON W.
Liberal
- MARTIN, HERMAN
Counselor, Mechanical
- MEYER, FLORANCE
Director, Residence Hall
- MINZNER, WALTER R.
Electrical
- MOHLENHOFF, BERNICE M.
Retailing
- MORECOCK, EARLE M.
Counselor, Electrical
- NEBLETTE, CARROL B.
*Counselor,
 Photographic Technology*
- PLEHN, BRAINARD
Mechanical
- PROVINS, LEROY
Publishing and Printing
- PURINTON, VELMA
Cafeteria Manager
- RITCHIE, DONALD L.
Publishing and Printing
- SAVAGE, CHARLES A.
Photographic Technology
- SEAVEY, DUNCAN W.
Mechanical
- SINCLAIR, ARTHUR N.
Applied Art
- SMITH, LEO F.
Educational Research
- SORACE, JOSEPH F.
Publishing and Printing
- SPEIDEL, CHARLES
Mechanical
- STAMPE, JEAN M. (Mrs.)
Retailing
- STRATTON, BURTON E.
Supervisor, Evening School
- STRICKLAND, EUNICE
Home Economics
- SYME, JEANE S. (Mrs.)
Food Administration
- TERK, LOIS
Food Administration
- THOMASON, CALVIN C.
Head, Dept. of Social Sciences
- THRONSON, SILAS M.
Photographic Technology
- THURBER, BERTHA
Food Administration
- TUITES, CLARENCE E.
Electrical
- ULP, CLIFFORD M.
Counselor, Applied Art
- ULP, RUTH HUNTLEY (Mrs.)
Applied Art
- VAN PEURSEM, RALPH L.
Chemical
- WELLS, FRED A.
Applied Art
- WIEHN, MARTHA B.
Photographic Technology
- WIGREN, EINO
Publishing and Printing
- WYMAN, MINNIE R.
Applied Art





CLASSES

WITH a slight increase in enrollment over last year's figures, another school year brings to the end the schooling careers of many and the beginning of others. Enrollment this year for the day school was approximately 877 students. In addition to this there were 77 special students, bringing this total above the 900 mark, an unprecedented figure in the history of the Institute.

About 236 Seniors will be graduated this year. The school year just completed at the Institute has certainly been successful for all concerned, both in the fulfillment of educational requirements and the enjoyment received through the various social and athletic activities.

Congratulations should be in order for the members of the Senior Class, who during their school years at the Institute have proved themselves hard-workers and have engineered several of the school's most successful projects, and social events. They will long be remembered for the things they have accomplished while here and our only hope is that success will be an assured factor in the future for all of them.

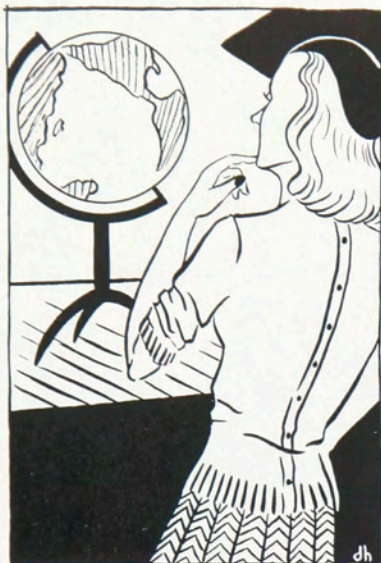
The Junior and Freshmen classes, which outnumber the Senior class are also proving themselves to be an ambitious and cooperative group. Already they have been responsible for numerous activities in the social calendar in addition to upholding the traditions of the Institute.

STUDENT BODY



GEORGE KUPFERSCHMID, *President*

YOU and I are reaching another milestone on the highway of life. To all of us, Convocation will mark an especially important step in our formal education. Whatever special meaning it may have for each one of you, it is pleasant to realize that events cast their shadows before them. May your Convocation be an indication of future success, and may your appreciation and respect for the Institute grow as your life here passes from reality into retrospect.



CLASS
of
1941

THE class of 1941 is recording its final acts on the pages of Time with but one regret—that the years spent at the Institute have passed too swiftly.

Our first year found us looking and listening to the upperclassmen, but in 1940 we came of age, and sponsored our first big dance, the Junior Prom. The Sagamore Hotel's Starlight Roof was the scene of the dance.

This year, the class held a "Gay Nineties" party in the Bevier Gallery. Flora-dora girls, Barber-shop quartets, and "Seniors only" were the order of the evening. At the Sagamore on March 22, we had our formal Dinner Dance. The last social event to be sponsored by the class is the Senior Ball, which is to be held in the Masonic Ballroom. An extra-smooth band and a roomy floor guarantee its success.

Convocation will take place on May 17. Then, with our experience at the Institute behind us, we set forth on a new career, the course of which is controlled by ourselves and by Destiny, and hidden within the pages of time.

SENIOR EXECUTIVE COMMITTEE

WILLIAM DELLENBACK Photo Tech *President*

RICHARD EISENBERG Mechanical *Vice-President*

JOHN BOWLLAN Applied Art *Secretary and
Treasurer*

WARREN DAVIS *Faculty Adviser*

FRANK OSIKA Chemical

STANLEY LIESCARBOURA Construction

BETTY SEARS Foods

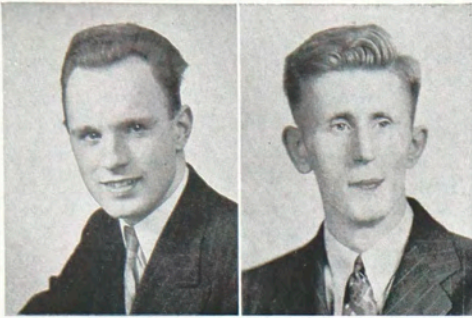
GEORGE KUPFERSCHMID Retailing

CLAYTON OLNEY Electrical

JAMES TOBIN Instrument Maker



*Tobin, Osika, Olney
Eisenberg, Sears, Bowllan*



Lawrence B. Adams

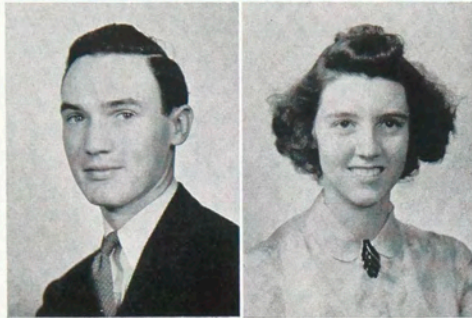
Electrical
Springville, N. Y.

Baseball 1, 2, 3; Band 3; Glee Club 1, 2; Fencing 3.

George W. Agan

Chemical
Mohawk, N. Y.

Glee Club 2; Open House 3.



Robert G. Aldinger

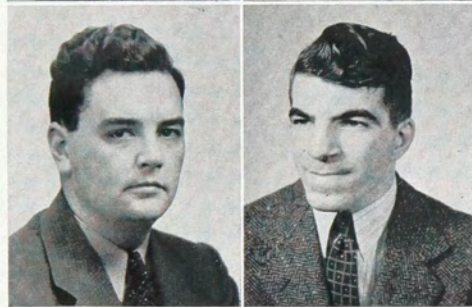
Instrument Maker
Rochester, N. Y.

Glee Club 1, 2; Reporter Psimar M. S. A. 1, 3; Gargoyles 1; Fencing 3; Riding 3; Football.

Janet I. Alexander

Retailing
Buffalo, N. Y.

Bowling 1, 2, 3; Swimming 2, 3; Tennis 1; Phi Upsilon Phi 1, 2, 3; Inter-Sorority Council 3; Gargoyles 1; Dormitory Council 3; Chairman Faculty Tea 3; Retailers' Association 3.



William J. Ambuske

Electrical
Salamanca, N. Y.

Inter-Department Softball 1, 2; Bowling 1, 2.

Wilton Amo

Mechanical
Ogdensburg, N. Y.

M. S. A. 1, 2, 3; Bowling 1, 2, 3; Wrestling 2; Touch Football 2.

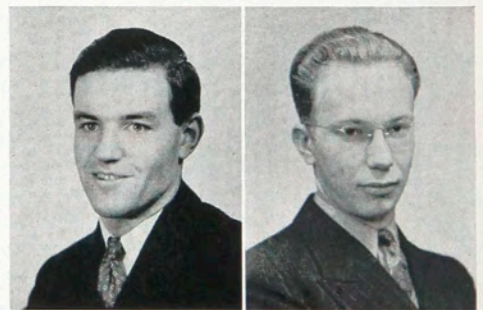
Tom Andrews

Publishing and Printing
New Bethlehem, Pa.

Pi Club; Psimar.

Milton Angle

Instrument Maker
Rochester, N. Y.



Charles Archer

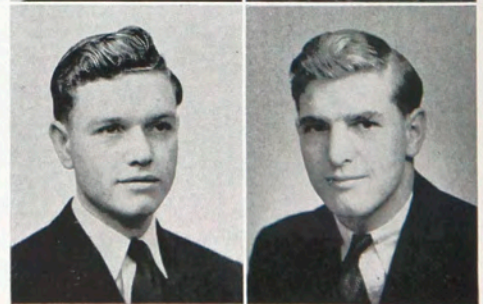
Illustration
Churchville, N. Y.

Art League 1, 2, 3; Fencing 3; President of Freshman Class; Psimar 2; Sketch Club 1, 2, 3.

Richard Ardell

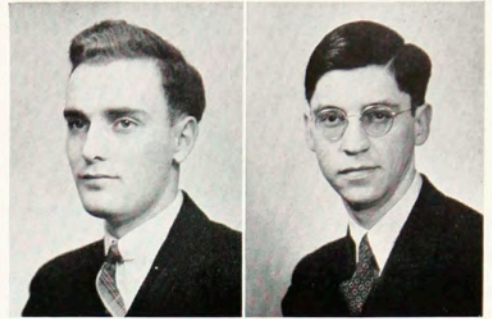
Chemical
Canandaigua, N. Y.

Bowling; MICA.



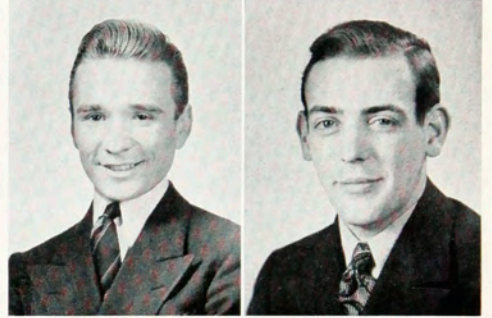
Roger Bacon
Mechanical
 Groton, N. Y.
 M. S. A. 1, 2, 3.

Harold Ballard
Photo-Tech
 Penn Yan, N. Y.
 Camera Club 1, 2, 3.



Metro Bastuk
Applied Art
 Rochester, N. Y.
 Art League; Bowling.

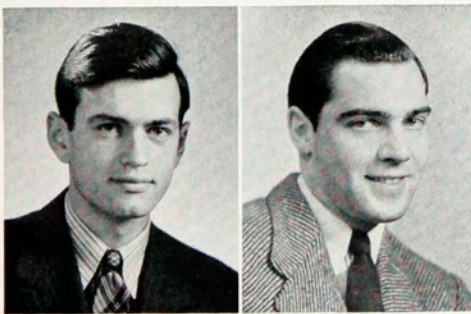
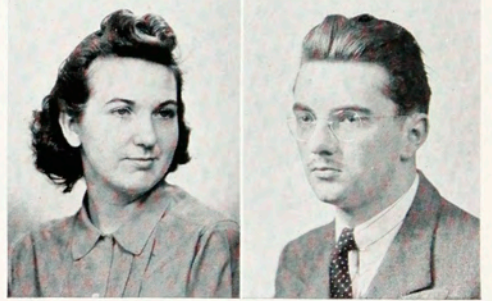
Francis J. Beaty
Mechanical
 North Greece, N. Y.
 Basketball 1, 2, 3; "M" Club
 2, 3; M. S. A. 1, 2, 3; Soft-
 ball 1, 2, 3; Football 1, 2, 3.



Fay Bellinger
Food Administration
 Rochester, N. Y.

Harold A. Bentley
Chemical
 Hudson Falls, N. Y.
 MICA; Glee Club.

Sigma Kappa Delta 1, 2, 3;
 Inter-Sorority Council 3;
 Swimming 1, 2, 3; Bowling
 1, 2, 3.



Charles F. Biggs
Electrical
 Rochester, N. Y.
 Intramural Softball and Foot-
 ball.

Roscoe Bills
Instrument Maker
 Auburn, N. Y.
 M. S. A. 1, 2, 3; Phi Sigma
 Phi 1, 2, 3.



Marion Blood
Food Administration
 Nunda, N. Y.
 Alpha Psi Sorority; Bowling.

Frank Bonanno
Photo-Tech
 Cambridge, Mass.
 Camera Club.



Betty Booden

Food Administration
Rochester, N. Y.

Delta Omicron 1, 2, 3; Inter-Sorority Council 2; Vice-Pres. of Delta Omicron 3; Junior Prom Committee 2; Inter-Sorority Dance Committee 2; Bowling 1, 2, 3; Swimming 3; Tennis 1, 2.

John Bowllan

Applied Art
Rochester, N. Y.

Art League 1, 2, 3; Golf 1; Tennis 1; Bowling 2; Student Council 3; Psimar 2; Sketch Club 1, 2; Sec.-Treas. of Senior Class; Social Chairman of Art League; Chairman of House Committee.

William Bowman

Mechanical
Ilion, N. Y.

Wrestling 1; M. S. A. 1, 2, 3; Vice-Pres. 3; Bowling 3.

Roy E. Brockman

Chemical
Rochester, N. Y.

MICA.

Eleanor L. Brockmyre

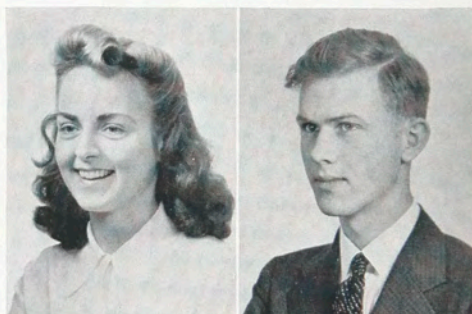
Applied Art
Canandaigua, N. Y.

Gargoyles 1; Glee Club 1; Art League 1, 2, 3; Student Council 2; Class Officer 2; Dormitory Council 2; Swimming 1; Riding 1; Sketch Club 1; Social Chairman Dormitory 3; Bowling 1, 3.

Russell C. Brostedt

Instrument Maker
Rochester, N. Y.

Fencing 3; Glee Club 1, 2; Psimar 3; Bowling; Riding; M. S. A. 1, 2, 3; Publicity Mgr. Touch Football 2, 3.



Jean Bruce

Home Economics
Rochester, N. Y.

Clifford Bumpus

Mechanical
Victor, New York



Jane A. Burkardt

Food Administration
Webster, N. Y.

Student Council 1; Student Representative 2; Basketball Captain 2; Basketball 1, 2, 3; Swimming 1, 2, 3; Junior Prom Committee 2; Senior Ball Committee 3.

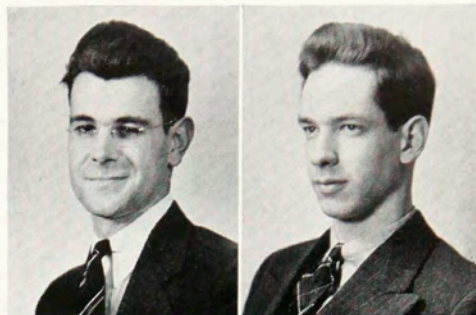
Rosalie M. Canepa

Home Economics
Rochester, N. Y.



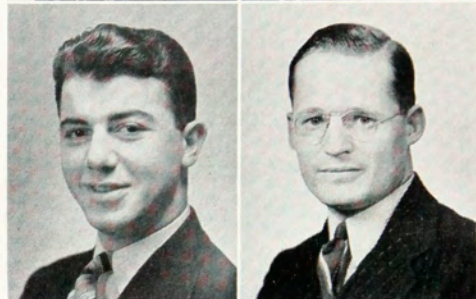
Thomas V. Casselman
Chemical
 Clayton, N. Y.
 MICA; Newman Club.

Donald Francis Campbell
Instrument Maker
 York, N. Y.
 M. S. A. 2, 3.

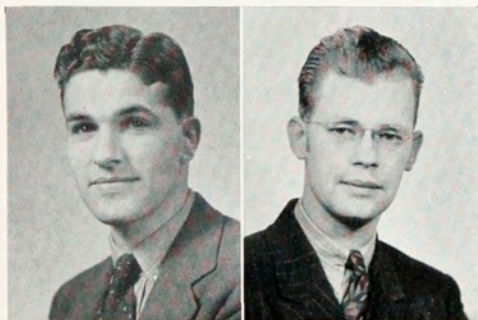


Nick Christakas
Chemical
 New Bedford, Mass.

Hinton G. Clabaugh, Jr.
Photo-Tech
 Winnetka, Ill.



Riding 1, 2, 3; Tennis 1, 2, 3; MICA 1, 2, 3; Gargoyles 2, 3; Glee Club 1, 2, 3; Wrestling 2; Bowling 1, 2.



Wilbur G. Cofield
Instrument Maker
 Piffard, N. Y.
 Glee Club; M. S. A.

Howard G. Coleman
Mechanical
 Naples, N. Y.
 Orchestra 1, 2; Band 3;
 M. S. A. 1, 2, 3.



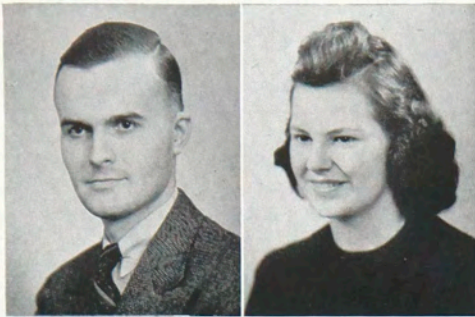
Dorothy Conklin
Retailing
 Canandaigua, N. Y.
 Riding 3.

Jeanne Conrad
Illustration
 Rochester, N. Y.
 Art League.



Carmela Costanzo
Illustration
 Rochester, N. Y.
 Basketball 1, 2, 3; Art League 1, 2, 3; Secretary 3; Bowling 1, 2, 3; Glee Club 1; Assistant Librarian 1, 2, 3; Town-Dorm League 1.

W. Leslie Cowper
Photo-Tech
 Temiskaming, Quebec,
 Canada.
 Camera Club 1, 2, 3.



Robert Craig Culbertson

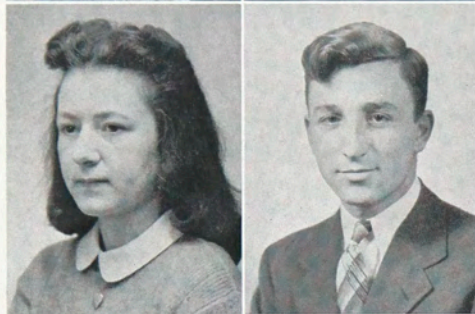
Electrical
Rochester, N. Y.

Phi Sigma Phi.

Natalie Cummings

Food Administration
Rochester, N. Y.

Delta Omicron 2, 3; Inter-Sorority Representative 3; Bike Hike 1, 2, 3; Bowling 1, 2, 3; Tennis 1, 2; Secretary, Inter-Sorority Council 3; Newman Club 3; Swimming 1, 2.



Wanda Mary Daetsch

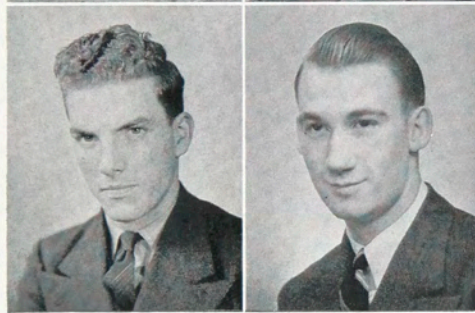
Applied Art
Hamburg, N. Y.

Delta Omicron 1, 2, 3; Pres. 3; Glee Club 1; Riding 1; Art League 1, 2, 3; Bowling 1.

A. D'Amico

Electrical
Rochester, N. Y.

Baseball 2, 3.



John Dalton

Mechanical
Rochester, N. Y.

M. S. A.

John J. Darby

Chemical
Perry, N. Y.

MICA; Bowling.

Robert C. Davis

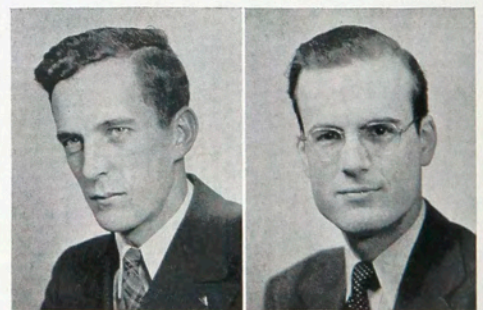
Mechanical
Somerville, N. J.

Glee Club; M. S. A.

W. H. Dellenback

Photo-Tech
Chicago, Ill.

Camera Club 1; Senior Class Officer; Chi Delta Phi.



Merritt Deutzman

Construction
Smithtown Br., L. I., N. Y.

Student Builders 1, 2, 3.

J. H. Dickinson

Chemical
Chazy, N. Y.

Glee Club; MICA.



Helen Domras

Retailing

East Rochester, N. Y.

Phi Upsilon Phi 2, 3; Retailers' Association 1, 2, 3; Golf 2.

Miriam Drewery

Food Administration

Kenmore, N. Y.



Mary L. Edgerton

Food Administration

New Berlin, N. Y.

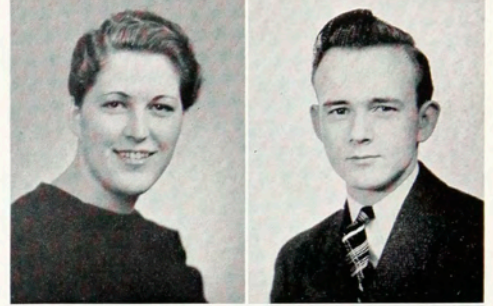
Bowling; Swimming; Glee Club.

John B. Eischen

Printing and Publishing

Batavia, N. Y.

Pi Club.



Richard F. Eisenberg

Mechanical

Rochester, N. Y.

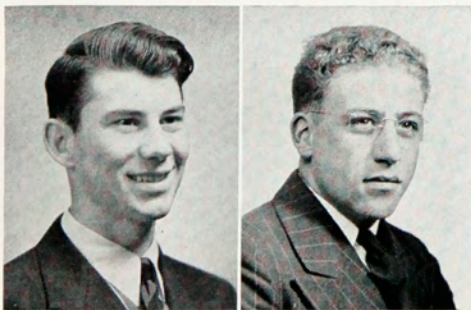
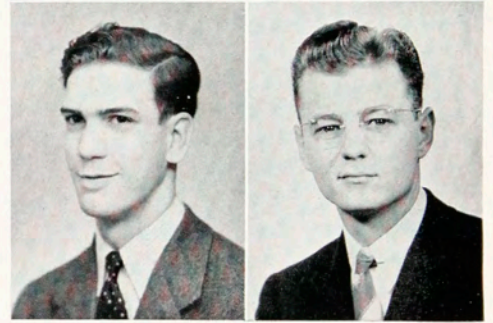
Vice-President of Senior Class; M. S. A.

Joseph E. Eisenhart

Design

Horseheads, N. Y.

Chi Delta Phi 1, 2, 3; Art League 1, 2, 3; Softball 1, 2, 3.



Harry Etzel

Instrument Maker

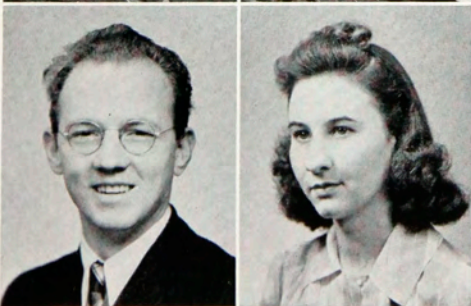
Brockport, N. Y.

M. S. A.; Band.

H. Experson

Construction

Batavia, N. Y.



G. Field

Mechanical

Hartwick Seminary, N. Y.

Wrestling.

Phyllis Frank

Food Administration

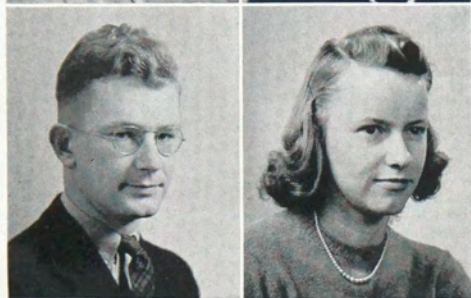
Rochester, N. Y.

Delta Omicron.



Clarice Fuller
Home Economics
 Lockport, N. Y.
 Glee Club.

Laura M. Funnell
Retailing
 Trenton, Ontario, Canada
 Tennis 1, 3; Golf 2; Delta
 Omicron 1, 2, 3.



John Gillis
Electrical
 Rochester, N. Y.
 Gargoyles 1, 2, 3; Bowling 1.

Elizabeth Gilman
Home Economics
 Rochester, N. Y.

Doris Gordon
Home Economics
 Geneva N. Y.
 Bowling; Swimming.

Arthur Grabb
Mechanical
 Rochester, N. Y.



Doris Gray
Food Administration
 Rochester, N. Y.
 Bowling 1, 2, 3; Glee Club 1,
 2, 3; Delta Omicron 2, 3.

Carl Greene
Mechanical
 Lima, N. Y.
 Band 3.



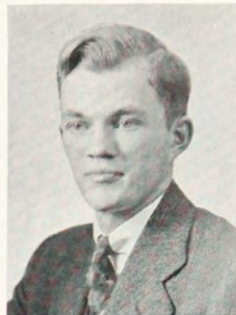
Edith Groh
Food Administration
 Kenmore, N. Y.
 Phi Upsilon Phi 2, 3; Bowl-
 ing 1, 2, 3; Tennis 2, 3; Rid-
 ing 2; Basketball 1, 2.

M. Grossfeld
Photo-Tech
 Brooklyn, N. Y.
 Camera Club.



R. Halligan
Chemical
 Girard, Ohio
 MICA.

Melvin Hamann
Chemical
 Rochester, N. Y.
 MICA; Bowling.



Francis J. Hart
Chemical
 LeRoy, N. Y.
 MICA.

Jane Hathaway
Retailing
 Niagara Falls, N. Y.
 Bowling; Student Council 1;
 Swimming; Freshmen Execu-
 tive Committee; Phi Upsilon
 Phi 1, 2, 3.



Don Hemming
Chemical
 Oriskany, N. Y.
 MICA; Band.

John W. Herring
Retailing
 Newton, Mass.
 Retail Bulletin 1, 2, 3; Busi-
 ness Manager 2; Glee Club 1.



Elmer Hess
Mechanical
 Fairport, N. Y.
 Basketball 1, 2; M Club 2, 3;
 M. S. A. 1, 2, 3; Bowling 1.

G. Hadecker
Chemical
 Rensselaer, N. Y.
 MICA 2, 3.



Ray Hobson
Mechanical
 Irondequoit, N. Y.

William Hobson
Electrical
 Solvay, N. Y.
 Wrestling.



Charles W. Hodge

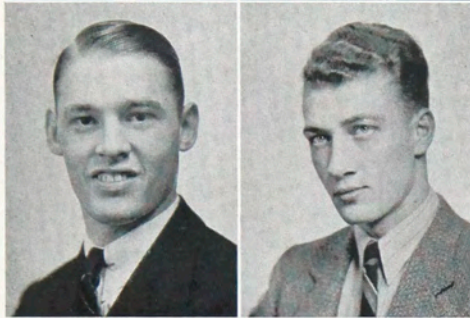
Photo-Tech
Springfield, Ill.

Glee Club 1, 2, 3; Camera Club 1, 2, 3.

Alfred Hodgson

Electrical
Orchard Park, N. Y.

Softball.



Vernon C. Hogeland

Mechanical
South Renova, Penna.

M. S. A. 1, 2, 3; Bowling 2, 3.

Horace Holliday

Mechanical
Ilion, N. Y.

Wrestling 1, 2; Bowling 3; M. S. A. 1, 2, 3; Secretary 3.



Dorothy Holt

Illustration
Fulton, N. Y.

Psimar 1, 2, 3; Art League 1, 2, 3; Ramikin 3; Dormitory Council 2; President 3; Sketch Club 1, 2, 3; Student Librarian 1, 2, 3; Chairman, Publicity Dorm Formal 1; Town-Dorm League 1; Co-chairman 2.

Albert Honeck

Mechanical
Rochester, N. Y.

Basketball 1; M. S. A. 1, 2, 3; Bowling 1, 2.

Russell C. Hopcraft

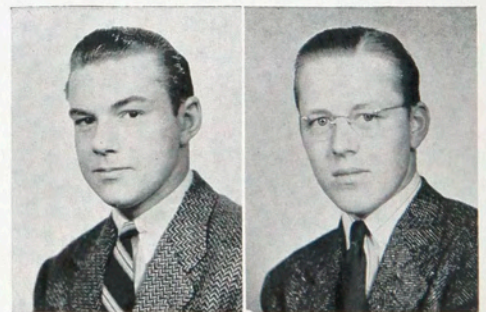
Publishing and Printing
Rochester, N. Y.

Glee Club; Associate Editor M. I. Typographer; Pi Club.

Glenn Hause

Instrument Maker
Groton, N. Y.

M. S. A. 1, 2, 3; Softball; Football.



Mary Ingersoll

Home Economics
Rochester, N. Y.

Deforest Inkley

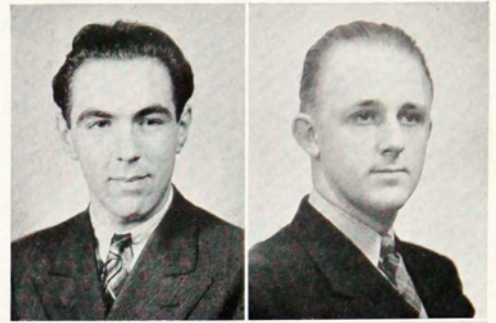
Photo-Tech
Randolph, N. Y.

Camera Club; Band 3.



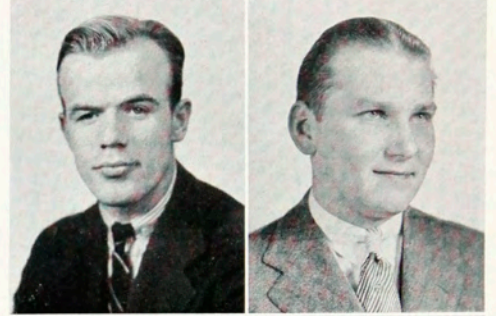
Raymond Johnson
Chemical
 Rochester, N. Y.

Alfred A. Johns, Jr.
Electrical
 Rochester, N. Y.
 Assembly Committee 1, 2;
 Ramikin 1, 2; Ass't Business
 Mgr. 1; Co-Editor 2; Open
 House 3.



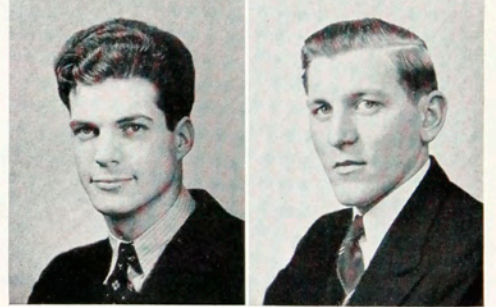
Lee Kaminske
Chemical
 Rochester, N. Y.
 MICA.

Oliver Kasiske
Instrument Maker
 Rochester, N. Y.
 M. S. A. 1, 2, 3; Softball;
 Football.



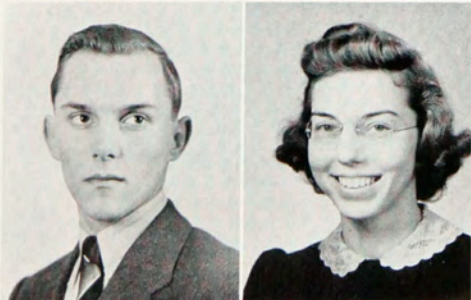
Charles Kastriner
Photo-Tech
 Cleveland Heights, Ohio
 Bowling; Camera Club;
 Band 3.

Stanley A. Keller
Publishing and Printing
 Rome, N. Y.
 1; Editor 2; Glee Club 2;
 Newman Club 1, 2; M. I. Ty-
 pographer, Circulation Man-
 ager 2.



Dorothy Jean Kemp
Retailing
 Livonia, N. Y.
 Retailers' Association 1, 2, 3;
 Phi Upsilon Phi 2, 3; Riding 1.

W. Kennedy
Electrical
 Naples, N. Y.
 Softball; Bowling.



Robert Kesel
Mechanical
 East Rochester, N. Y.
 M. S. A.

Virginia Kitchen
Retailing
 Elmira, N. Y.
 Glee Club 1, 2, 3; Riding 1;
 Tennis 1, 2, 3; Bowling 3;
 Retailers' Association 1, 2, 3.



Frank J. Kovarik
Publishing and Printing
 Binghamton, N. Y.
 Psimar; Pi Club; Bowling.

Julian S. Kubit
Publishing and Printing
 Cleveland, Ohio
 Pi Club; Newman Club.

Charles Kupferschmid
Electrical
 Rochester, N. Y.
 Tennis; Fencing 3.

George J. Kupferschmid
Retailing
 Rochester, N. Y.
 Retail Bulletin 2, 3; Student Council 2; President 3; Retailers' Association 1, 2, 3; Freshman Executive Committee 1; Junior Executive Committee 2; Senior Executive Committee 3.

Jack C. Lafferty
Publishing and Printing
 Utica, N. Y.
 Pi Club.

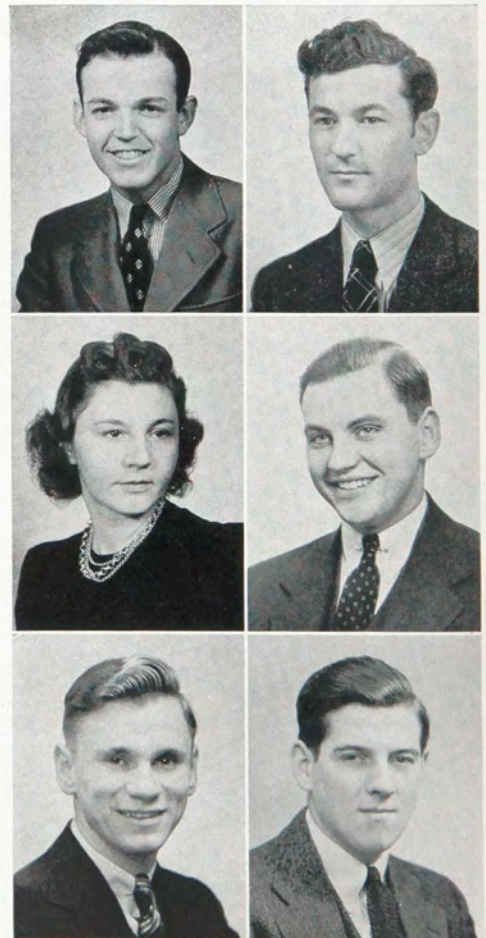
Armand J. LaMay
Applied Art
 Rochester, N. Y.
 Art League 1, 2, 3; Sketch Club 1, 2, 3; Psimar 2.

Martha Lapham
Food Administration
 Rush, N. Y.
 Riding 1, 2, 3; Tennis 1, 2; Bowling 1, 2, 3; Golf 1; Swimming 3; Inter-Sorority Council 1, 2; Vice-President Sigma Kappa Delta 3; President Inter-Sorority Council 3; Psimar 2, 3.

William E. Lartz
Publishing and Printing
 Sharon, Pa.
 Business Manager Psimar; Ramikin 1; Editor 2; Pi Club.

Frank Leidecker
Mechanical
 Rochester, N. Y.
 Wrestling Varsity 2, 3; Bowling Team 1, 2; Touch Football 3; M. S. A. 1, 2, 3; Secretary 2; Vice-President 3.

Mortimer Linscott
Retailing
 Brockport, N. Y.
 Retail Bulletin 1, 2; Retailers' Association 1, 2, 3.



Margaret Linsin

Retailing

Rochester, N. Y.

Phi Upsilon Phi 1, 2, 3; Associate President 3; Inter-Sorority Council 3; Vice-President 3; Retailers' Association 1, 2, 3; Senior Representative 3; Retail Bulletin 2, 3; Bowling 1; Chairman of Inter-Sorority Dance 2.

Clyde Livermore

Mechanical

Coopers Plains, N. Y.

Bowling 1, 2, 3; M. S. A.



Marie Loewenguth

Food Administration

Rochester, N. Y.

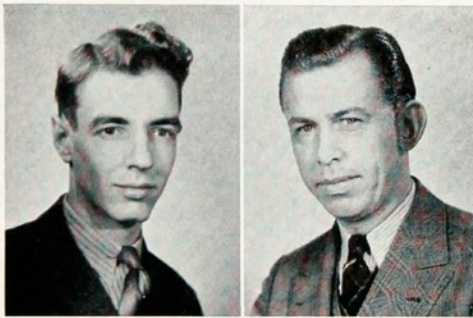
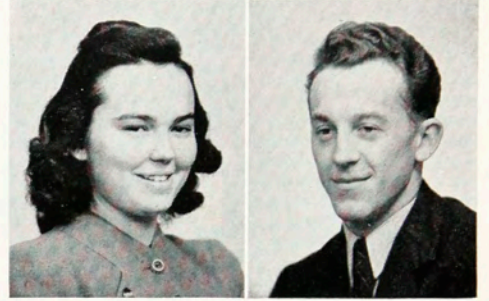
Delta Omicron; Newman Club; Town-Dorm League.

Harold Lugert

Electrical

Hudson, N. Y.

Wrestling Squad.



Jack Lund

Mechanical

Buffalo, N. Y.

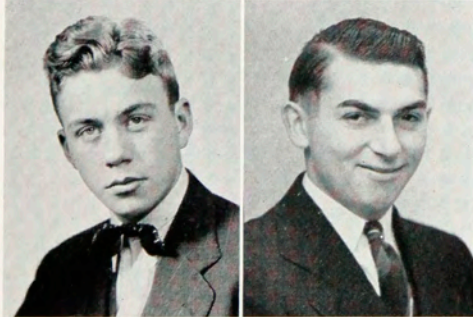
M. S. A. 1, 2, 3; Treasurer 3.

S. Manning

Mechanical

Rochester, N. Y.

M. S. A. 1, 2, 3; Newman Club 2, 3; Bowling 3.



Merton S. Marshall

Construction

Chili Center, N. Y.

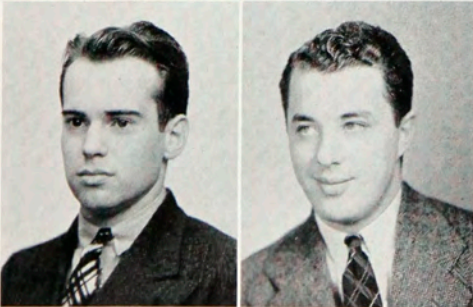
Student Builders Society 1, 2, 3; President 2; Bowling 1, 2, 3; Glee Club 1, 2.

Bernard Martin

Publishing and Printing

Newark, N. Y.

M. I. Typographer; Pi Club.



Robert E. Matthews

Publishing and Printing

East Rochester, N. Y.

Pi Club; Glee Club; Psimar.

Scott Mathews

Chemical

Bloomington, Ind.

MICA.



Laurence G. Mayne
Chemical
 Corfu, N. Y.
 MICA.

Sigmund Mazur
Construction
 Batavia, N. Y.
 Student Builders Society 1, 2, 3; Bowling.



Harold J. McKinley
Photo-Tech
 Detroit, Mich.
 Camera Club.

Archie McLeod
Applied Art
 Rochester, N. Y.
 Art League 1, 2, 3; Social Chairman 2; President 3; Sketch Club 1, 2; Art League 1, 2.



Anthony J. Mele
Mechanical
 Fancher, N. Y.
 Bowling 1, 2, 3; M. S. A.;
 Membership Committee 3.

Clifford Minard
Chemical
 Rochester, N. Y.
 MICA.

Virginia A. Moesel
Retailing
 Kenmore, N. Y.

Bowling; Golf; Phi Upsilon Phi.

Lois Mosher
Food Administration
 Westfield, N. Y.

Alpha Psi.

Frank J. Nazzaro
Photo-Tech
 Jamestown, N. Y.

Camera Club Treasurer 3; Ramikin, Photographic Editor 3; Softball.

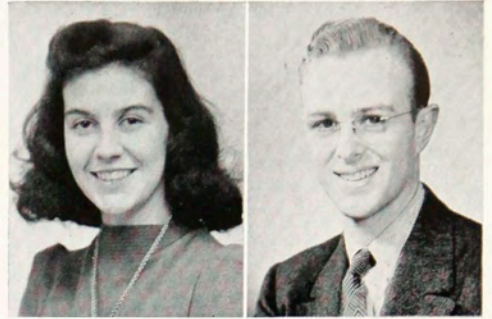
Eleanor Nolan
Food Administration
 Rochester, N. Y.

Delta Omicron 3; Tennis 1, 2; Swimming 1; Newman Club 3.



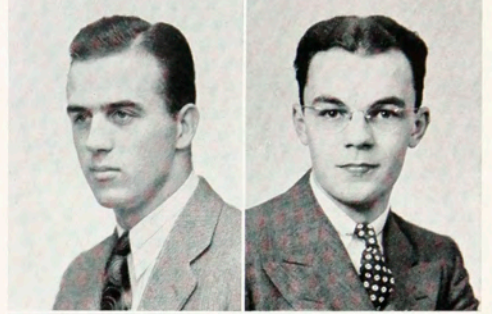
Virginia Lee Norris
Home Economics
 Rochester, N. Y.

Don Dale Nibbelink
Photo-Tech
 Kalamazoo, Mich.
 Camera Club.



Joseph P. Navik, Jr.
Mechanical
 Rochester, N. Y.
 M. S. A.

Raymond A. O'Connor
Electrical
 Rochester, N. Y.
 Tennis; Band 3.

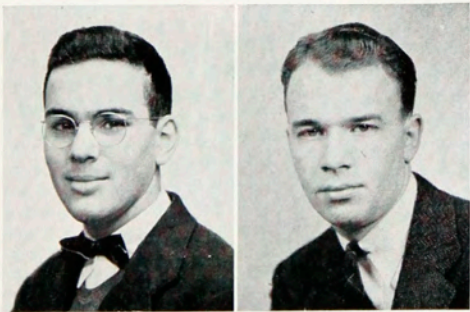
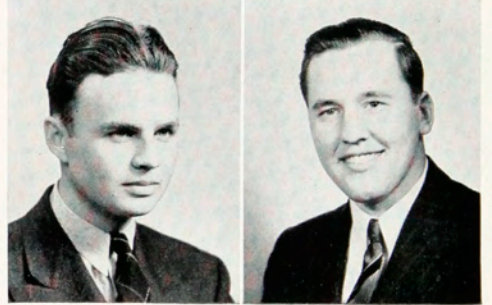


Clayton H. Olney
Electrical
 Macedon, N. Y.

Student Council 2, 3; Budget
 Committee 3; Band 3; Rami-
 kin 2; Glee Club 1.

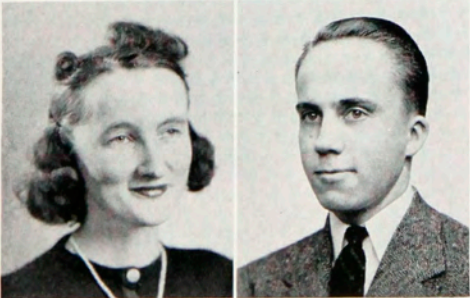
Frank Osika
Chemical
 Utica, N. Y.

Wrestling; Student Council;
 MICA.



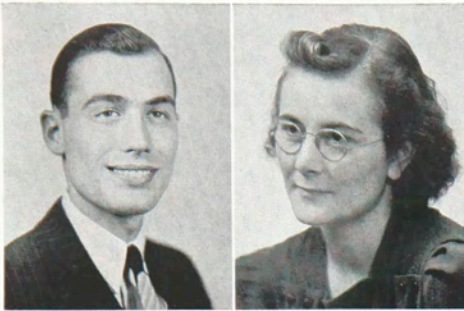
Henry J. Pape
Publishing and Printing
 Tenafly, N. J.
 Psimar; Pi Club.

Robert Parker
Photo-Tech
 Columbus, Ohio
 Camera Club; Softball; Foot-
 ball.



Shirley Patterson
Retailing
 Pittsford, N. Y.
 Gargoyles 1, 3; Retailing
 Bulletin 2, 3; Retailers' Asso-
 ciation 1, 2, 3; Treasurer 3.

Bion Paver
Publishing and Printing
 Belleville, N. Y.
 Ramikin.



Paul Pavlock

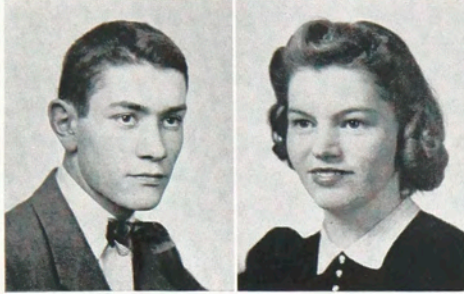
Electrical
Salamanca, N. Y.

Glee Club; Phi Sigma Phi;
Bowling; Softball.

Elizabeth Pedley

Food Administration
Bradenton, Fla.

Swimming.



John E. Person, Jr.

Publishing and Printing
Williamsport, Pa.

Pi Club.

Janet A. Perry

Illustration
Ithaca, N. Y.

Delta Omicron; Riding;
Bowling.

Avery Piersons

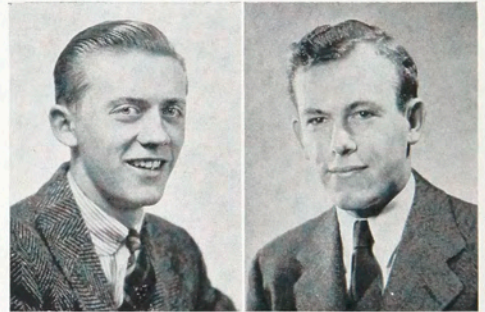
Publishing and Printing
Jamestown, N. Y.

Glee Club; Typographer;
Psimar; Pi Club; Softball.

Don Pinckney

Photo-Tech
Seneca Falls, N. Y.

Camera Club.



Mason W. Place

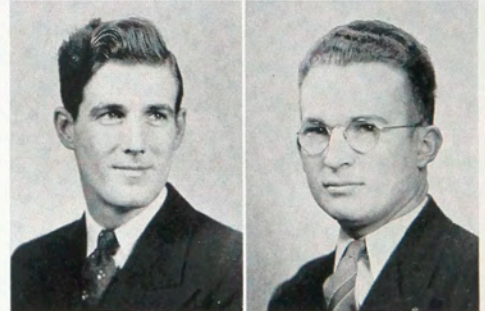
Instrument Maker
Oswego, N. Y.

Bowling 2, 3; M. S. A. 1, 3.

Beekman Platner

Photo-Tech
Ghent, N. Y.

Chi Delta Phi, Vice-President.



Arvilla Pomeroy

Food Administration
Bernhards' Bay, N. Y.

Alpha Psi; Inter-Sorority
Council; Bowling.

Francis C. Pratt

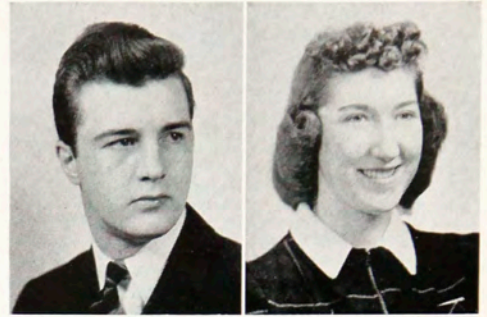
Photo-Tech
Hamburg, N. Y.

Camera Club 1, 2, 3; Wres-
tling 2, 3; Senior Ramikin
Portraits.



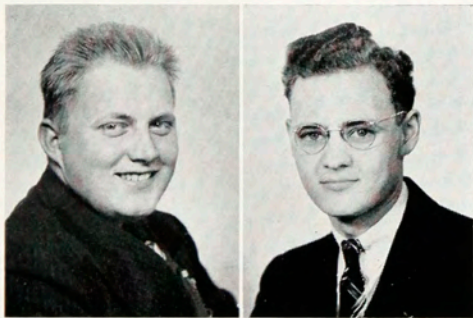
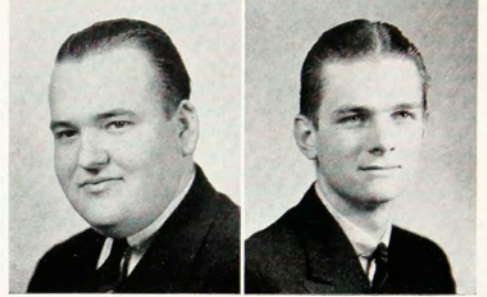
Paul H. Preo
Photo-Tech
 Berlin, N. H.
 Camera Club.

Jean Randall
Retailing
 Batavia, N. Y.
 Retailers' Association 1, 2, 3;
 Representative 2; Phi Upsilon
 Phi 1, 2, 3; Bowling 2, 3;
 Dorm Council 3; Music Com-
 mittee Chairman Dorm For-
 mal.



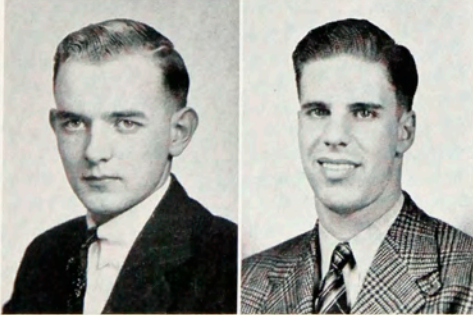
Albert R. Rahm
Design
 Rochester, N. Y.
 Art League.

A. Redfield
Chemical
 Shortsville, N. Y.
 MICA 1, 2, 3; Bowling 1;
 Glee Club 1.



H. Rebeschke
Mechanical
 Rochester, N. Y.

Burt Reeves
Instrument Maker
 Rochester, N. Y.
 M. S. A. 1, 2, 3.



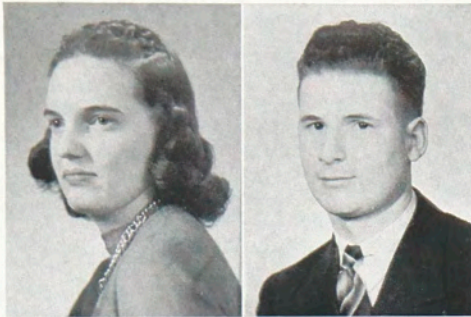
Harry Edwin Reynolds
Electrical
 Springville, N. Y.
 Glee Club 1, 2; Band 3; Base-
 ball 1, 2, 3.

Robert J. Ripple
Publishing and Printing
 Johnstown, Pa.
 Riding 1, 2; Executive Com-
 mittee 1, 2; Glee Club 1, 2;
 Pi Club 1, 2; Chi Delta Phi
 2; Psimar 2; Softball.



Janet Mason Roberts
Retailing
 Utica, N. Y.
 Glee Club 1, 2, 3; Phi Upsi-
 lon Phi 1, 2, 3; Gargoyles 1;
 Bowling 1, 2, 3; Golf 1;
 Swimming 1.

Paul Robinson
Retailing
 Machias, N. Y.
 Glee Club 1, 2; Retail Bulle-
 tin 2, 3; Art Editor 2; Gar-
 goyles 1, 2, 3; Cheerleader 2,
 3; Chi Delta Phi, Treasurer
 3; Retailers' Association 1, 2,
 3; Bike Hike 1, 2, 3; Ram-
 ikin 1, 2.



Barbara Rudd

Food Administration
Illion, N. Y.

Phi Upsilon Phi 1, 2, 3; Executive Committee 1; Student Council 2; Dormitory Council 3; Bowling 1, 2; Golf 1; Tennis 1, 2; Psimar 1.

Frederick J. Ruh

Instrument Maker
Rochester, N. Y.

M. S. A. 1, 2, 3; Softball; Football.



Louis Ruiz

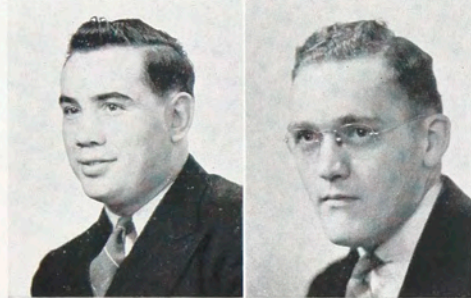
Publishing and Printing
Niagara Falls, N. Y.

Pi Club 1, 2; Softball 1, 2; Touch Football 1; M. I. Typographer 1; Editor, M. I. Typographer 2; Chairman, Assembly Committee 2.

Donald C. Ryon

Photo-Tech
Fairport, N. Y.

Camera Club.



Benjamin Saggese

Electrical
Warsaw, N. Y.

Wrestling 1, 2, 3; Glee Club; Newman Club; Bowling; M Club.

Will W. Saile

Mechanical
Rochester, N. Y.

M. S. A.

Mary H. Sangster

Food Administration
Canandaigua, N. Y.

Alpha Psi.

Jean Schaeffer

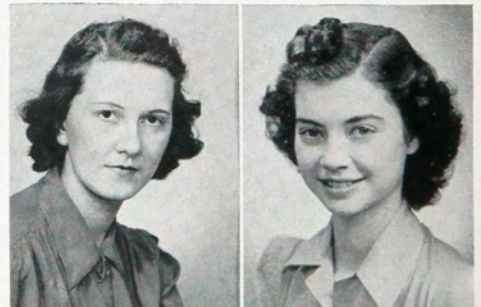
Retailing
Rochester, N. Y.

Retailers' Association 1, 2, 3; Phi Upsilon Phi; Golf 1; Swimming 1, 2.

Betty Sears

Food Administration
Rochester, N. Y.

Delta Omicron 1, 2, 3; Secretary 1, President 2; Inter-Sorority Council President 2; Inter-Sorority Ball Chairman 1; Bowling 1, 2, 3; Riding 1, 2; Swimming 1, 2, 3; Basketball 1; Tennis 1, 2, 3; Golf 1, 2; Student Council Secretary 2; Senior Class Committee 2.



Edward A. Scharf

Photo-Tech
Jamaica, N. Y.

Camera Club.

Wallace L. Seawell

Photo-Tech
Sarasota, Fla.

Camera Club.

Betty Shafer

Retailing
Rochester, N. Y.

Retailers' Association 1, 2, 3;
Gargoyles 2, 3; Golf 1, 2;
Bowling 3.



Miriam Shafer

Food Administration
Rochester, N. Y.

Riding; Golf; Tennis.

Hubert W. Sheffer

Publishing and Printing
Flint, Mich.

Bowling; Pi Club; Softball;
M. I. Typographer.



P. Short

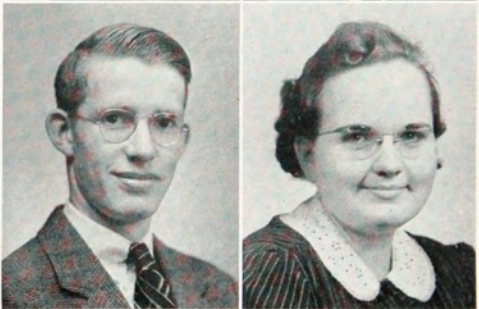
Chemical
Penn Yan, N. Y.

MICA 1, 2, 3; Glee Club 1,
2, 3; Bowling 1, 2.

Esther Shumway

Food Administration
Rochester, N. Y.

Alpha Psi 2, 3; Secretary 3;
Golf 1, 2, 3; Band 3.



Edward Sloman

Retailing
Pittsburgh, Pa.

Ramikin 3; Tennis 1, 2; Re-
tail Bulletin 2, 3; Gargoyles 2.

Lena Slusser

Food Administration
Castile, N. Y.



Harry Smith

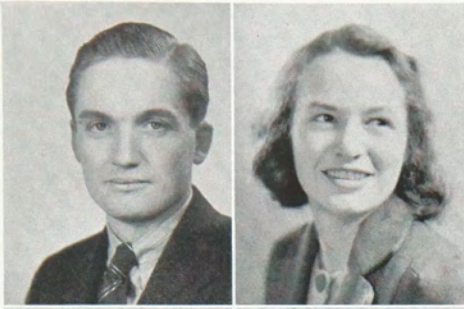
Chemical
Webster, N. Y.

MICA; PSIMAR; Bowling.

Marilyn F. Smith

Retailing
Elmira, N. Y.

Glee Club 1, 2, 3; Riding 1;
Bowling 3; Retailers' Associ-
ation 1, 2, 3; Dorm Council 3.



Richard G. Smith
Mechanical
 Preble, N. Y.
 M. S. A.; Wrestling.

Helen Stoddard
Food Administration
 Rochester, N. Y.
 Delta Omicron 1, 2, 3; Property Manager 2, Social Chairman 3; Bowling 1, 2, 3; Swimming, 1, 2, 3; Tennis 2.

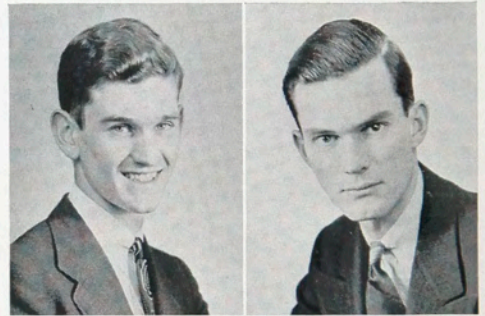


Dorothy Sutfin
Illustration
 Elmira, N. Y.

Dorothy Symonds
Food Administration
 Rock Stream, N. Y.
 Glee Club; Gargoyles.

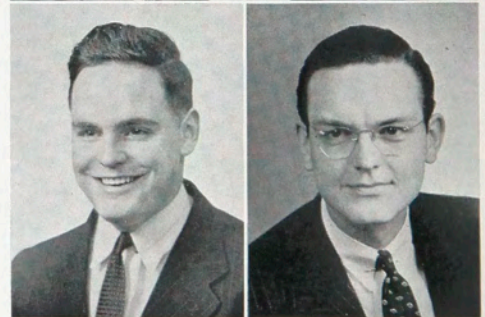
Frederick B. Talbot
Construction
 Hopewell Junction, N. Y.
 Bowling 1, 2; Wrestling 1; Glee Club 1; Students Builders Society 1, 2, 3; Vice-President 2, President 3.

James Tobin
Instrument Maker
 Addison, N. Y.
 Student Council, Vice-President; Senior Executive Committee; M. S. A., President.



Ross Townsend
Publishing and Printing
 Bridgeport, Conn.
 Pi Club 1, 2; President 2; Ramikin 2; Glee Club.

Clarence A. Tripp
Photo Tech
 Denton, Texas.
 Camera Club.



Genevieve Truesdell
Home Economics
 Youngstown, N. Y.
 Bowling.

John Tweedy
Illustration
 Binghamton, N. Y.
 Art League.



Henry Unger

Instrument Maker
Rochester, N. Y.
M. S. A.

Marion Van Dellon

Retailing
Gloversville, N. Y.
Bowling 1, 2, 3; Phi Upsilon
Phi 1, 2, 3; Tennis 2.

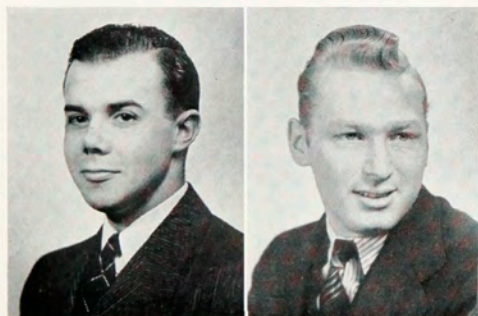


Kirke Van Stone

Electrical
Rochester, N. Y.
Phi Sigma Phi.

Christine Varallo

Applied Art
Rochester, N. Y.
Bowling 1, 2; Art League 1,
2, 3; Riding 2, 3; Glee Club
1; Swimming 1.



Robert C. Venner

Photo Tech
Gloversville, N. Y.
Softball; Camera Club.

John Vollertsen

Mechanical
Rochester, N. Y.
Open House 3.

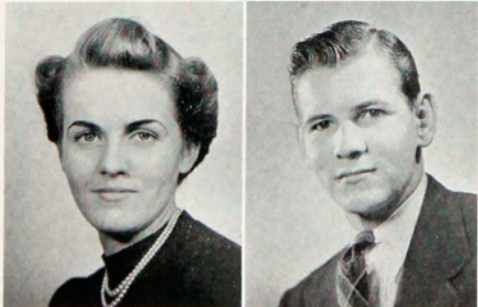


Doris Ward

Home Economics
Greece, N. Y.
Bowling; Glee Club.

Don Warren

Photo-Tech
Chicago, Ill.
Wrestling 1, 2, 3; Cheerleader
1, 2; Camera Club 1, 2, 3;
Glee Club 1, 2, 3, Treasurer
3; Chi Delta Phi.

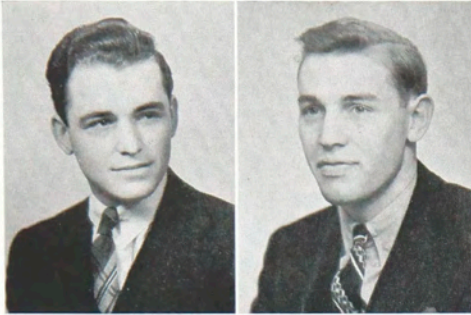


Pauline H. Weir

Retailing
Dunkirk, N. Y.
Chairman Big-Little Sister 3;
Exec. secretary Student Council
3; Co-editor Retail Bulletin 3;
Bowling 2, 3; Swimming 2, 3;
Retailers' Association 2, 3.

Whitney Williams

Photo Tech
Rochester, N. Y.
Camera Club.



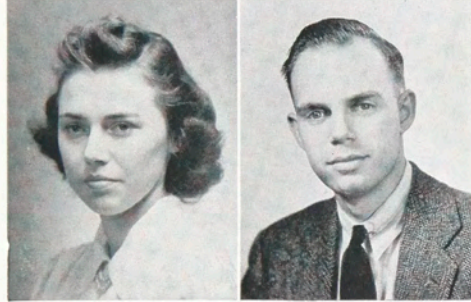
Morbert Willig
Instrument Maker
 Rochester, N. Y.
 Tennis Team; M. S. A.

Merton C. Wohlers
Mechanical
 Greece, N. Y.
 M. S. A.



Frances R. Wolf
Illustration
 Rochester, N. Y.
 Art League 1, 2, 3; Riding 1, 3; Bowling 1, 3.

F. Ellsworth Wood
Electrical
 Le Roy, N. Y.



Patricia Eleanor Woodard
Food Administration
 Corning, N. Y.
 Phi Upsilon Phi, Social Chairman; House Chairman of Dormitory; Bowling.

Wesley G. Woodman
Instrument Maker
 Rochester, N. Y.
 M. S. A. 1, 2, 3; Riding 3; Glee Club 2, 3.

Martha Wright
Retailing
 Rochester, N. Y.
 Glee Club; Riding; Swimming.

Mary Frances Zimmerman
Retailing
 Rochester, N. Y.
 Retailers' Association 1, 2, 3; Phi Upsilon Phi 1, 2.



Richard Howard Zogg
Construction
 Syracuse, N. Y.
 Wrestling, Manager 1, 2, 3; Student Builders Society 1, 2, 3, Treasurer 3.



SENIORS

WHOSE PICTURES DO NOT APPEAR

JOAN CARPENTER
Home Economics
Rochester, N. Y.

CYNTHIA HOGLE
Home Economics
Pittsford, N. Y.

DONALD SWEET
Mechanical
Bainbridge, N. Y.

PETER CORSON
Publishing and Printing
Lockport, N. Y.

DOUGLAS HOWLAND
Applied Art
Lisle, N. Y.

RICHARD VAN DONGEN
Applied Art
Rochester, N. Y.

MILFRED CRAFT
Mechanical
Rochester, N. Y.

HERBERT MARQUARDT
Mechanical
Rochester, N. Y.

ROBERT WADE
Mechanical
Geneseo, N. Y.

LELAND DE KING
Mechanical
North Rose, N. Y.

PATRICIA NIXON
Home Economics
Rochester, N. Y.

L. WALKER
Chemical
Rochester, N. Y.

HARVEY GESELD
Electrical
Rochester, N. Y.

ADOLF POLLAK
Mechanical
Henrietta, N. Y.

JOHN WEATHERBY
Mechanical
Ithaca, N. Y.

K. HALBLEIB
Chemical
Rochester, N. Y.

RICHARD REDMAN
Electrical
Rochester, N. Y.

C. WHETEN
Chemical
Rochester, N. Y.

JEAN HARGRAVE
Home Economics
Rochester, N. Y.

HELEN REYNOLDS
Home Economics
Rochester, N. Y.

HAROLD WHITE
Mechanical
LeRoy, N. Y.

CECIL HAYES
Home Economics
Rochester, N. Y.

MARY ROCK
Home Economics
Rochester, N. Y.

DOROTHY WINSHIP
Retailing
Lockport, N. Y.

MARY HAYES
Home Economics
Rochester, N. Y.

PHILIP SILVERAL
Mechanical
Rochester, N. Y.

L. ZITO
Chemical
Rochester, N. Y.

JOHN HOFFMAN
Mechanical
Rochester, N. Y.

EDWIN SOBUS
Mechanical
Rochester, N. Y.



CLASS
of
1942

SEPT., 1939—We were then mere Freshmen at Mechanics, all filled with that lost feeling until after our Freshmen Mixers at which we became more acquainted with our fellow students. This first month we elected someone from each group to represent his class on the Student Council and Executive Committee.

Nov., 1939—The officers with the aid of some of their classmates and adviser Mr. Biehler planned a roller skating party. This proved to be a great success with majority of the Freshmen Class and their guests attending.

Feb., 1940—Due to the successful skating party, we felt that we would like another get-together so we gave a Barn Dance. This was held at the Old Red Barn and refreshments were served.

Jan., 1941—Every Junior was excited about the Junior Prom which was held at the Masonic Ballroom, January 25. Tom Jennings, president of the Junior Class was the general chairman and Louise Emes, Rita Greenwood, Bill Scanlon, Ozzie Button, Jack DeLelys and Jorg Ball headed the various committees. We are proud of the fact that we were able to have the Institute's first big band, namely, Al Kavelin and his Cascading Chords. The favors were good luck charms engraved with an M. I.

Now as the end of our second year of school draws near we are all looking forward to another successful year.

JUNIOR EXECUTIVE COMMITTEE

OFFICERS

THOMAS JENNING *Applied Art* President
GEORGE BALL *Photo Tech* Treasurer
RAYMOND BIEHLER Faculty Adviser

GENE PAULDINE *Chemical*
CARL LAMB (Section A) *Retailing*
RITA GREENWOOD (Section B) . . . *Retailing*
WILLIAM SCANLON *Mechanical*
MARGARET EMES (Section A) . . . *Food Administration*
CHARLOTTE GOTTLOBER (Section B) *Food Administration*
OSWALD BUTTON *Electrical*



*Scanlon, Jennings
Button, Emes, Greenwood, Pauldine*

JUNIOR



*Eldridge, Shoemaker, Elsenbeimer, Gould, Brockway, Stroebel, Abell, Hersey, Liberman
Horn, Jennings, Gore, Simonds, Austin, Thomas, Greenwood, Proseus, Rother
Hartman, Collins, Gurian, Robde, Pierce*



*Strunk, Wilson, Renter, Mikoda, DeLelys, Swanson, Hogeland, Chase, Taylor
Ostrander, Roeller, Kotte, Shiels, Kage, Woodward, Sozzi, Kaplan, Jenkins
Baer, Croll, Natale, Gibson, Morrison*

CLASS



*Anderson, Alderman, Briggs, Ball, Britt, DeMers, Herz
Pulvin, Pettit, Brizdle, Wagner, Steffen, Doerr, Gray, Rushmore
Clarke, Greenfield, Rice*



*Pavledes, Becker, Silcox, Kleps, Wilferth
Clerks, Ausberger, Fox, Covert, Schelleman, Castle, Aroeste
McIver, Bull, Brinkerhoff*

JUNIOR



*Parkusch, Burton, Taylor, Till, Weeks, Orman
Warden, Hilarski, Dudley, Smart, Kelly, Schantz, Tunison, Hehn, Grippo
Pierce, Tarplie, Lambert*



*Bahn, Chapman, Zurich, Piotraschke, Landinck, Button, Sills
French, Baker, Robinson, Humnick, Burr, Rollins, Davis
Thornton, Zingerline*

CLASS



*Frati, Keller, Pauldine, Schreiber, Kelso, Burke, Wright, Mesick, Huckzermeier
Schmid, Tierney, Mattison, Buchanan, Moore, Jones, Bordonavo, Wolff, Ladd
Wilferth, Austin, Barry*



*Johnson, Haskins, Reisert, Smith, Griffith, Johnson, Schutte
Gates, Emes, Doerr, Crowe, Brothers, Callan, Brayer
Baglio, Lamb*

JUNIORS

WHOSE PICTURES DO NOT APPEAR

JEROME ANDERSEN <i>Photo-Tech</i>	ADRIAN FODGE <i>Electrical</i>	HOWARD KIEFER <i>Electrical</i>	GORDON PERKINS <i>Electrical</i>	FREDERICK SMITH <i>Mechanical</i>
ETHEL APOSTAL <i>Retailing</i>	MILTON FORD <i>Photo-Tech</i>	WILLIAM KLOESZ <i>Retailing</i>	FORREST PFAUTZ <i>Art</i>	D. S. SMYTH <i>Chemical</i>
JANE AUGUST <i>Retailing</i>	CHARLES FORSTER <i>Electrical</i>	FRANCIS KOHLMIER <i>Mechanical</i>	G. B. PIER <i>Chemical</i>	H. STANFORD <i>Chemical</i>
ROSS BAGLIO <i>Art</i>	ROBERT FRAIZE <i>Mechanical</i>	METRO KOWILICH <i>Electrical</i>	BEN PIETRANTONIO <i>Art</i>	RAY STANKIEWICZ <i>Mechanical</i>
MARVIN BALDWIN <i>Electrical</i>	RICHARD GABEL <i>Mechanical</i>	MILDRED KUEBLER <i>Foods</i>	ROBERT PLUNKETT <i>Electrical</i>	JAMES STEG <i>Art</i>
RICHARD BENDER <i>Electrical</i>	NORMAN GIBSON <i>Mechanical</i>	B. F. KUHN <i>Chemical</i>	DOROTHY PRUDOM <i>Retailing</i>	CARL STEGNER <i>Foods</i>
HAYS BLESSING <i>Chemical</i>	FRANK GILLETTE <i>Mechanical</i>	PETER KULCZYCKY <i>Mechanical</i>	MILFORD ROSS <i>Electrical</i>	MARTIN SUTER <i>Mechanical</i>
JOHN BOCK <i>Photo-Tech</i>	CARLTON GOEBEL <i>Electrical</i>	HARRY KURCHYN <i>Mechanical</i>	ROBERT RENNER <i>Mechanical</i>	HARRIET THAYER <i>Foods</i>
MARCELLE BRIDGES <i>Retailing</i>	J. GUGEL <i>Chemical</i>	MARTIN LAIDA <i>Mechanical</i>	HELEN REYNOLDS <i>Art</i>	DOROTHY THOMSEN <i>Retailing</i>
JOHNSTON BRODIE <i>Electrical</i>	BERNICE GOLDSTEIN <i>Foods</i>	JANE LANCTOT <i>Retailing</i>	NANNETTE RIESS <i>Retailing</i>	JOHN TIGHE <i>Mechanical</i>
J. BURKARDT <i>Chemical</i>	CHARLOTTE GOTTLOBER <i>Foods</i>	PAUL LANDROCK <i>Mechanical</i>	K. B. RILEY <i>Chemical</i>	BARTON TOMLINSON <i>Mechanical</i>
RUTH BUSH <i>Retailing</i>	HELEN GOULD <i>Retailing</i>	ELVERA LANGBEIN <i>Retailing</i>	MARJORIE ROBERTS <i>Retailing</i>	ANNA TRIVELLI <i>Art</i>
ARTHUR CLARK <i>Mechanical</i>	MONA HAMMOND <i>Retailing</i>	ELINER LAROSE <i>Electrical</i>	CHARLES ROGERS <i>Art</i>	JAMES TRYON <i>Electrical</i>
HOWARD CLARK <i>Electrical</i>	HENRY HANSEN <i>Electrical</i>	EMILY LARSON <i>Retailing</i>	DONALD ROSS <i>Electrical</i>	W. C. VANDEMARK <i>Electrical</i>
ELSIE CORBIN <i>Art</i>	HAROLD HATCH <i>Mechanical</i>	MEETY LEFKO <i>Mechanical</i>	SARA ROSS <i>Foods</i>	SALLY VERGO <i>Art</i>
MARY LOIS CORNELL <i>Retailing</i>	RENE HECKLER <i>Electrical</i>	RICHARD LEWIS <i>Mechanical</i>	JOSEPH RYAN <i>Electrical</i>	LORRAINE WALDMAN <i>Foods</i>
CHARLES COSTELLO <i>Electrical</i>	JOHN HENDRICK <i>Electrical</i>	ROBERT MCCONNELL <i>Electrical</i>	ROBERT SANDRECYKI <i>Electrical</i>	CHARLES WALKER <i>Mechanical</i>
THOMAS COTTONE <i>Retailing</i>	EDWIN HILARSKI <i>Mechanical</i>	MARY McCUNE <i>Retailing</i>	EDWARD SANGIACOMO <i>Art</i>	RAY WALVOORD <i>Electrical</i>
JAMES COX <i>Retailing</i>	JUNE HILL <i>Foods</i>	ALOUZO MEBBEI <i>Chemical</i>	P. SAUNOR <i>Chemical</i>	ROBERT WARFIELD <i>Mechanical</i>
ROBERT CRIDDLE <i>Art</i>	J. D. HOOD <i>Chemical</i>	LEROY MINER <i>Photo-Tech</i>	WILLIAM SCANLON <i>Mechanical</i>	ELEANOR WELLS <i>Foods</i>
WILLIAM CULTER <i>Photo-Tech</i>	PAUL HOWE <i>Photo-Tech</i>	FRANK MISKE <i>Electrical</i>	ROBERT SCHAEFFER <i>Mechanical</i>	MARY WHITE <i>Retailing</i>
J. J. DEMARLE <i>Chemical</i>	WALLACE HOWLAND <i>Mechanical</i>	ELAINE MOORE <i>Foods</i>	EARL SCHMIDT <i>Mechanical</i>	RICHARD WIGHTMAN <i>Mechanical</i>
MARCELLINE DEMPSEY <i>Retailing</i>	THAD IWAN <i>Mechanical</i>	DEVORAH NEIVERT <i>Retailing</i>	JOHN SCHULTZ <i>Mechanical</i>	JAY NEIL WILDE <i>Electrical</i>
ELEANOR DENFORD <i>Retailing</i>	LUCY JACKSON <i>Retailing</i>	ALYCE PAGE <i>Foods</i>	A. J. SCHWIND <i>Electrical</i>	WINONA WILLIAMS <i>Foods</i>
EVELYN EAGAN <i>Retailing</i>	WILLIAM KEELER <i>Art</i>	THEODORE PECK <i>Mechanical</i>	EDWARD SEIDEWAND <i>Mechanical</i>	ELLSWORTH WOOD <i>Electrical</i>
EMILIE FINDLEY <i>Art</i>	ROY KERN <i>Art</i>	P. PELLETT <i>Chemical</i>	ALICE SILCOX <i>Art</i>	CHARLES YACKIW <i>Mechanical</i>
KING FLEEK <i>Retailing</i>	F. J. KEYMEL <i>Chemical</i>	SARAH PENN <i>Art</i>	BEULAH SMITH <i>Foods</i>	VIRGIL ZETTERLIND <i>Photo-Tech</i>

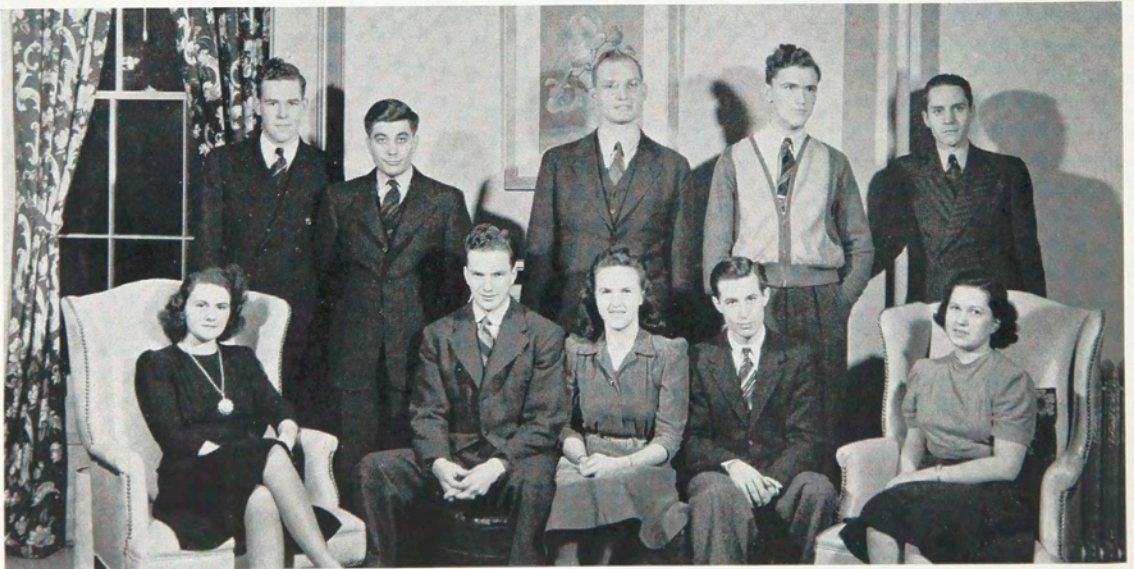


FRESHMAN EXECUTIVE COMMITTEE

OFFICERS

ROBERT PERRY *Photo-Tech* President
 MAX CASE *Electrical* Secretary
 GUY PERKINS *Electrical* Secretary (alternate)
 JOHN WHITMAN *Printing* Treasurer
 MILTON McCULLOUGH Faculty Adviser

MARY CUNNINGHAM *Foods*
 PATRICIA HOLMES *Retailing*
 RAY BLOOM *Chemical*
 ELAINE FEINBERG *Applied Art*
 NORMAN SIMMONS *Mechanical*
 WALTER HARNISH *Mechanical*



*Case, Whitman, Perry, Harnish, McCullough
 Holmes, Perkins, Feinberg, Bloom, Cunningham*

CLASS
of
1943



JANET ADAMS <i>Art</i>	MARIE BALIAN <i>Foods</i>	CONSTANCE BOUCHARD <i>Retailing</i>	WASYL CHOMYN <i>Mechanical</i>
JANET ALEXANDER <i>Foods</i>	BURL BAREIS <i>Electrical</i>	RUTH BOWN <i>Foods</i>	BARBARA COE <i>Art</i>
GEORGE ALKENBRECKER <i>Retailing</i>	DORIS BAUER <i>Foods</i>	ALICE BRADY <i>Retailing</i>	CHARLES COLE <i>Mechanical</i>
PHILBROOK ALLEN <i>Photo-Tech</i>	JOHN BEATY <i>Mechanical</i>	ROBERT BRYAN <i>Mechanical</i>	NAOMI COLE <i>Retailing</i>
THOMAS ALVORD <i>Retailing</i>	J. ARMOND BECKWITH <i>Electrical</i>	VIRGINIA BURKHARDT <i>Retailing</i>	LOIS COLEMAN <i>Retailing</i>
W. J. ALTPETER <i>Chemistry</i>	CHARLES BEDELL <i>Photo-Tech</i>	ARTHUR BURLEW <i>Electrical</i>	KATHERINE COLLINS <i>Retailing</i>
E. LARUE ANDERSON <i>Electrical</i>	BARBARA BEENEY <i>Retailing</i>	MARGUERITE BURRELL <i>Retailing</i>	EDMUND CONANT <i>Mechanical</i>
J. B. ANDREWS <i>Chemistry</i>	ELVIN BERNDT <i>Mechanical</i>	HARRY BUSS <i>Electrical</i>	EDWARD CONNELL <i>Mechanical</i>
WALTER ANDRUS <i>Mechanical</i>	MARJORIE BICKSLER <i>Foods</i>	LUCILLE CADY <i>Foods</i>	LAWRENCE CONWAY <i>Photo-Tech</i>
GRANT ARDELL <i>Photo-Tech</i>	MARY BIRDSALL <i>Retailing</i>	FRANK CARLTON <i>Photo-Tech</i>	DOUGLAS COOK <i>Electrical</i>
ADELAIDE ARK <i>Retailing</i>	DORIS BLACKLOCK <i>Retailing</i>	DOROTHY CARSON <i>Foods</i>	SIDNEY COX <i>Photo-Tech</i>
DEAN ARLIDGE <i>Mechanical</i>	DONALD BLACKWELL <i>Printing</i>	MAXWELL CASE <i>Electrical</i>	THERESA COZZA <i>Retailing</i>
LOIS ATCHISON <i>Foods</i>	RAY BLOOM <i>Chemistry</i>	SENATRO CASTELLANO <i>Photo-Tech</i>	G. BOYD CRABTREE <i>Photo-Tech</i>
HAROLD ATKINS <i>Photo-Tech</i>	WARD BLOSSOM <i>Printing</i>	MARIAN CHAPMAN <i>Foods</i>	WENDELL CRATER <i>Mechanical</i>
VICTORIA AUCLAIR <i>Art</i>	CHARLES BODINE <i>Mechanical</i>	PAUL CHAPMAN <i>Mechanical</i>	BRUCE CRAWFORD <i>Printing</i>
W. J. BAKER <i>Chemistry</i>	SAMUEL BONDELL <i>Mechanical</i>	RADCLIFFE CHOATE <i>Photo-Tech</i>	C. ROBERT CREDE <i>Mechanical</i>

CLASS of 1943

RONALD CUDWORTH <i>Mechanical</i>	ROBERT DURWARD <i>Mechanical</i>	DARIEL GRAHAM <i>Art</i>	WILLIAM JACOB <i>Art</i>
MARY CUNNINGHAM <i>Foods</i>	HOWARD EDDY <i>Mechanical</i>	RAYMOND GRAY <i>Electrical</i>	MARION JAMESON <i>Retailing</i>
FRANKLIN DAIGLER <i>Mechanical</i>	STANTON EISENBERG <i>Photo-Tech</i>	R. H. GREENBERG <i>Chemistry</i>	EMRYS JENNINGS <i>Mechanical</i>
DORIS DAVIE <i>Foods</i>	GEORGE ELBERFELD <i>Electrical</i>	GERALD GREGORY <i>Photo-Tech</i>	DONALD JOHNS <i>Mechanical</i>
DONALD DAVIS <i>Mechanical</i>	ROBERT ELDER <i>Electrical</i>	DOROTHY GRIFFITHS <i>Retailing</i>	GEORGE JONES <i>Photo-Tech</i>
MADELAINE DAVIS <i>Art</i>	RAYMOND ELLIS <i>Mechanical</i>	ANN GUSTIN <i>Foods</i>	LEON KAPLOW <i>Photo-Tech</i>
PAUL DAVIS <i>Photo-Tech</i>	JAMES ELSEN <i>Mechanical</i>	ROBERT HAINES <i>Photo-Tech</i>	MARION KAUFMAN <i>Foods</i>
LOUISE DAYTON <i>Retailing</i>	K. MAE ERNST <i>Art</i>	OLINDA HAMEL <i>Art</i>	JAMES KEATING <i>Mechanical</i>
JOHN DEAN <i>Mechanical</i>	F. F. ESTRICH <i>Chemistry</i>	WALTER HARNISH <i>Mechanical</i>	LYNN KELLER <i>Photo-Tech</i>
EDMUND DEFFENBOUGH <i>Mechanical</i>	EDWARD EVERSON <i>Mechanical</i>	S. J. HARTMAN <i>Electrical</i>	RICHARD KELLY <i>Mechanical</i>
MABEL DEGROOT <i>Retailing</i>	PHILIP FALLON <i>Electrical</i>	ALLEN HASKINS <i>Electrical</i>	DORIS KENT <i>Foods</i>
JEAN DELANO <i>Foods</i>	ANGELA FARINELLA <i>Foods</i>	EUGENE HEID <i>Mechanical</i>	EDNA KETCHAM <i>Foods</i>
CHARLES DELLES <i>Mechanical</i>	LORNA FARLEY <i>Art</i>	ERNEST HENEHAN <i>Mechanical</i>	ROBERT KINDT <i>Mechanical</i>
GEORGE DEMMERT <i>Mechanical</i>	DOROTHY FEARNLEY <i>Retailing</i>	NELSON HERRON <i>Mechanical</i>	BEATRICE KING <i>Retailing</i>
CARL DENNSTEDT <i>Mechanical</i>	ELAINE FEINBERG <i>Art</i>	PATRICIA HEWITT <i>Foods</i>	RICHARD KINGSBURY <i>Photo-Tech</i>
M. A. DENNY <i>Chemistry</i>	JOHN FERRARA <i>Mechanical</i>	C. G. HILBERER <i>Chemistry</i>	OLIVE KINGSLEY <i>Foods</i>
ROBERT DERMODY <i>Electrical</i>	LYNN FOGG <i>Mechanical</i>	WILBUR HILFIKER <i>Mechanical</i>	JEAN KINSELLA <i>Retailing</i>
JEANNE DEVOLDER <i>Art</i>	HENRY FORD <i>Mechanical</i>	ROBERT HISCOCK <i>Electrical</i>	FRANCIS KIRBY <i>Mechanical</i>
JOHN DOYLE <i>Chemistry</i>	DONALD FOX <i>Mechanical</i>	MICHAEL HOEY <i>Electrical</i>	HELENE KIRK <i>Foods</i>
EUGENE DIXON <i>Mechanical</i>	RICHARD FOX <i>Mechanical</i>	ROBERT HOFFMAN <i>Mechanical</i>	DOROTHY KITZING <i>Retailing</i>
SHIRLEY DOERSAM <i>Art</i>	CHARLES FRIBLEY <i>Photo-Tech</i>	PATRICIA HOLMES <i>Retailing</i>	DONALD KNAPP <i>Mechanical</i>
GILBERT DORMANDY <i>Mechanical</i>	NORMAN FRIEDMAN <i>Mechanical</i>	KENNETH HOOD <i>Mechanical</i>	ALFRED KNEBEL <i>Art</i>
C. F. DOWER <i>Chemistry</i>	LORENZO GAMBACORTA <i>Printing</i>	JACK HOOKER <i>Photo-Tech</i>	JOHN KOLODCZAK <i>Mechanical</i>
NEIL DRAFT <i>Mechanical</i>	ALBERT GANTERT <i>Mechanical</i>	JACK HORST <i>Electrical</i>	RUTH KRATZER <i>Retailing</i>
EARL DRAKE <i>Electrical</i>	FRANCIS GEREGA <i>Mechanical</i>	WILLIAM HOWE <i>Electrical</i>	GERE KRUSE <i>Photo-Tech</i>
KAY DRAPER <i>Art</i>	ROBERT GOLDSTEIN <i>Photo-Tech</i>	ROBERT HULL <i>Mechanical</i>	EDWARD KULANKA <i>Mechanical</i>
RUSSELL DREWS <i>Mechanical</i>	JAMES GORDON <i>Mechanical</i>	B. A. HUMPHREY <i>Chemistry</i>	JOHN LANCTOT <i>Mechanical</i>

CLASS of 1943

RICHARD LEMPERLE <i>Electrical</i>	GEORGE MIKEL <i>Printing</i>	ROBERT PERRY <i>Photo-Tech</i>	SHIRLEY RUPRIGHT <i>Photo-Tech</i>
ANN LEVIN <i>Art</i>	DOUGLAS MINER <i>Art</i>	JACQUELINE PFLEGER <i>Retailing</i>	RAYMOND RUSSELL <i>Mechanical</i>
MARTHA LORSCHIEDER <i>Art</i>	MARY MILES <i>Art</i>	GUENTHER PFEFFER <i>Electrical</i>	JEAN RUTLEDGE <i>Foods</i>
N. V. LUSH <i>Chemistry</i>	EUGENE MILLER <i>Mechanical</i>	JEAN PHILLIPS <i>Art</i>	DANIEL RYAN <i>Mechanical</i>
GEORGE LYON <i>Retailing</i>	FRANCIS MILLER <i>Mechanical</i>	LEONARD PHILLIPS <i>Mechanical</i>	FRANCIS RYCK <i>Mechanical</i>
WILLIAM MADDREN <i>Mechanical</i>	JOHN MILLER <i>Photo-Tech</i>	STUART PIERCE <i>Mechanical</i>	WARREN ST. JOHN <i>Photo-Tech</i>
PAT MALARA <i>Printing</i>	JAMES MONOHAN <i>Mechanical</i>	NIDA J. PITTARD <i>Foods</i>	CLAYTON SCHARPING <i>Electrical</i>
BOB MARSHALL <i>Printing</i>	ROSWELL MONROE <i>Retailing</i>	MARY E. POCH <i>Retailing</i>	F. SCHICKER <i>Chemistry</i>
FREDERICK MARTIN <i>Mechanical</i>	IRA MOORE <i>Mechanical</i>	ROBERT POOLE <i>Mechanical</i>	GEORGE SCHILLER <i>Mechanical</i>
JOHN MARTIN <i>Mechanical</i>	HARRIE MOORE <i>Mechanical</i>	SHERMAN POOLE <i>Photo-Tech</i>	PAUL SCHLEGEL <i>Photo-Tech</i>
KENNETH MATHEWS <i>Mechanical</i>	RICHARD MORSE <i>Mechanical</i>	JEAN POSSON <i>Retailing</i>	MARIAN SCHULMEISTER <i>Retailing</i>
WALTER MATSUI <i>Printing</i>	DONALD MOSHER <i>Electrical</i>	GEORGE POTTER <i>Mechanical</i>	DAVID SCHULTZ <i>Photo-Tech</i>
RICHARD MATTLER <i>Electrical</i>	JACOB MUHA <i>Printing</i>	RUTH PRENS <i>Retailing</i>	HENRY SEAGER <i>Mechanical</i>
BARBARA MAULBETSCH <i>Retailing</i>	J. MUNGER <i>Chemistry</i>	J. W. PROCTOR <i>Chemistry</i>	HARRIS SEGELIN <i>Art</i>
RICHARD MAXWELL <i>Mechanical</i>	JACQUELINE MYERS <i>Art</i>	DON PUNNETT <i>Electrical</i>	CATHERINE SEREFINE <i>Foods</i>
GERLAD MCAVOY <i>Mechanical</i>	JOHN NORTH <i>Photo-Tech</i>	JOSEPH QUINLAN <i>Art</i>	ELIZABETH SHAMBLE <i>Foods</i>
A. McCANDLESS <i>Chemistry</i>	VETE NOWIK <i>Mechanical</i>	HELEN REICHERT <i>Retailing</i>	LORMA SHAW <i>Retailing</i>
G. MCCARTHY <i>Chemistry</i>	GEORGE OBERLIES <i>Mechanical</i>	WILLIAM REINHARD <i>Photo-Tech</i>	RUTH SIEBERT <i>Art</i>
FREDERICK MCGUILDWIN <i>Mechanical</i>	PAUL OLIVER <i>Mechanical</i>	HARRY RENNELL <i>Photo-Tech</i>	NORMAN SIMMONS <i>Mechanical</i>
ELIZABETH MCLEOD <i>Foods</i>	CAROL PAGE <i>Retailing</i>	RICHARD RENNER <i>Mechanical</i>	MARY SKIVINGTON <i>Retailing</i>
H. MARR MCNEAL <i>Chemistry</i>	MORTON PARSONS <i>Mechanical</i>	HOWARD RICARD <i>Photo-Tech</i>	C. SLEIGHT <i>Chemistry</i>
JANE MCNEILLY <i>Foods</i>	GAILEY PASK <i>Mechanical</i>	JANE RILEY <i>Foods</i>	CAROLYNE SMITH <i>Retailing</i>
MARY MCNULTY <i>Retailing</i>	ALBERT PATRICK <i>Mechanical</i>	ROBERTA ROBINSON <i>Foods</i>	DONALD SMITH <i>Photo-Tech</i>
AL MEAKER <i>Printing</i>	BRUCE PATT <i>Retailing</i>	JANET ROBSON <i>Foods</i>	HELEN G. SMITH <i>Retailing</i>
JOSEPH MEYER <i>Photo-Tech</i>	HAROLD PENDER <i>Printing</i>	JOSEPH ROE <i>Mechanical</i>	MARILYN SMITH <i>Retailing</i>
NICHOLAS MICKET <i>Mechanical</i>	GUY PERKINS <i>Electrical</i>	BETTIE JUNE ROSE <i>Foods</i>	R. C. SMITH <i>Chemistry</i>
J. MICKLES <i>Chemistry</i>	LEONARD PERRY <i>Mechanical</i>	LOUISE ROSENARKER <i>Foods</i>	WAYNE SMITH <i>Photo-Tech</i>

CLASS of 1943

JAMES SNOW
Photo-Tech

MARGARET SOVIE
Retailing

DAVID SPARKS
Photo-Tech

H. SPAULDING
Photo-Tech

LOREN SPERO
Photo-Tech

ROBERT SPRIGGS
Printing

W. J. STAGEMAN
Chemistry

ELIZABETH STARK
Art

JOHN STEVE
Mechanical

F. J. STEVENS
Chemistry

D. STEVENSON
Chemistry

BETTY JANE STILLMAN
Foods

JOHN STOCKING
Mechanical

WARD STOEPKER
Electrical

VIRGINIA STONE
Retailing

MARJORIE STORY
Foods

CARLTON STRAUB
Electrical

CHARLES STRAUBING
Mechanical

M. H. STULL
Chemistry

SAMUEL STURGIS
Photo-Tech

GLENN SULLIVAN
Art

EDWIN SWEENEY
Mechanical

PHILIP SYDNEY
Photo-Tech

DONALD SYKES
Mechanical

ROY TAKASAWA
Photo-Tech

MARGARET TAYLOR
Art

G. A. THIRTLE
Chemistry

MARCEA THOMPSON
Retailing

KENNETH THOMSON
Mechanical

MARY LOUISE TRAVIS
Foods

BERNARD TROMPETER
Mechanical

JANET TUNISON
Foods

G. W. TURCOTT
Chemistry

DONALD TYRRELL
Mechanical

JAMES UNDERWOOD
Photo-Tech

JANE UTTER
Retailing

R. E. VAIL
Foods

DORIS VANDERMEID
Foods

CHARLES VAN DONGEN
Mechanical

CLAIRE VAN WINKLE
Foods

GRACE VARY
Retailing

CARL VERMILYA
Photo-Tech

NELLIE VIDALE
Retailing

LAUREL WAGNER
Art

ROGER WARDEN
Mechanical

BETTY WARNER
Retailing

THELMA WEHLING
Foods

JOHN WELLENHOFFER
Printing

ZERAH WESTBROOK
Photo-Tech

GERALD WHEAT
Photo-Tech

WILLIAM WHIPPLE
Electrical

JOHN WHITMAN
Printing

FLORENCE WILBOR
Retailing

ROBERT WILEY
Retailing

BARBARA WILL
Art

PHYLLIS WILLIAMS
Retailing

CHARLES WILSON
Mechanical

ROBERT WILSON
Photo-Tech

NANCY WOOD
Retailing

SHIRLEY WRAPE
Foods

C. C. WYAND
Chemistry

RUTH YENDES
Foods

JACK YOUNG
Mechanical

MARION YOUNG
Retailing

LORNA ZASTROW
Retailing

L. T. ZASTROW
Chemistry

JANE ZOGG
Foods

ANN ZUTES
Retailing



STUDENT LIFE

THIS year the Student Council dedicated the building formerly known as the Student Center to Mr. George H. Clark for his sincere interest in the Institute. It is now called Clark Union.

Our Clark Union has afforded us a most pleasant spot and has absorbed many of our spare hours. It has provided a place where the students could find pleasant recreation. Organizations and classes have sponsored parties and occasional dances in the large and well furnished rooms of Clark Union. A bridge club was formed and held its weekly meetings every Thursday night. A series of weekly concert programs inspired by a gift of a recording set and six hundred records presented by the Carnegie Foundation were fully appreciated by all who attended.

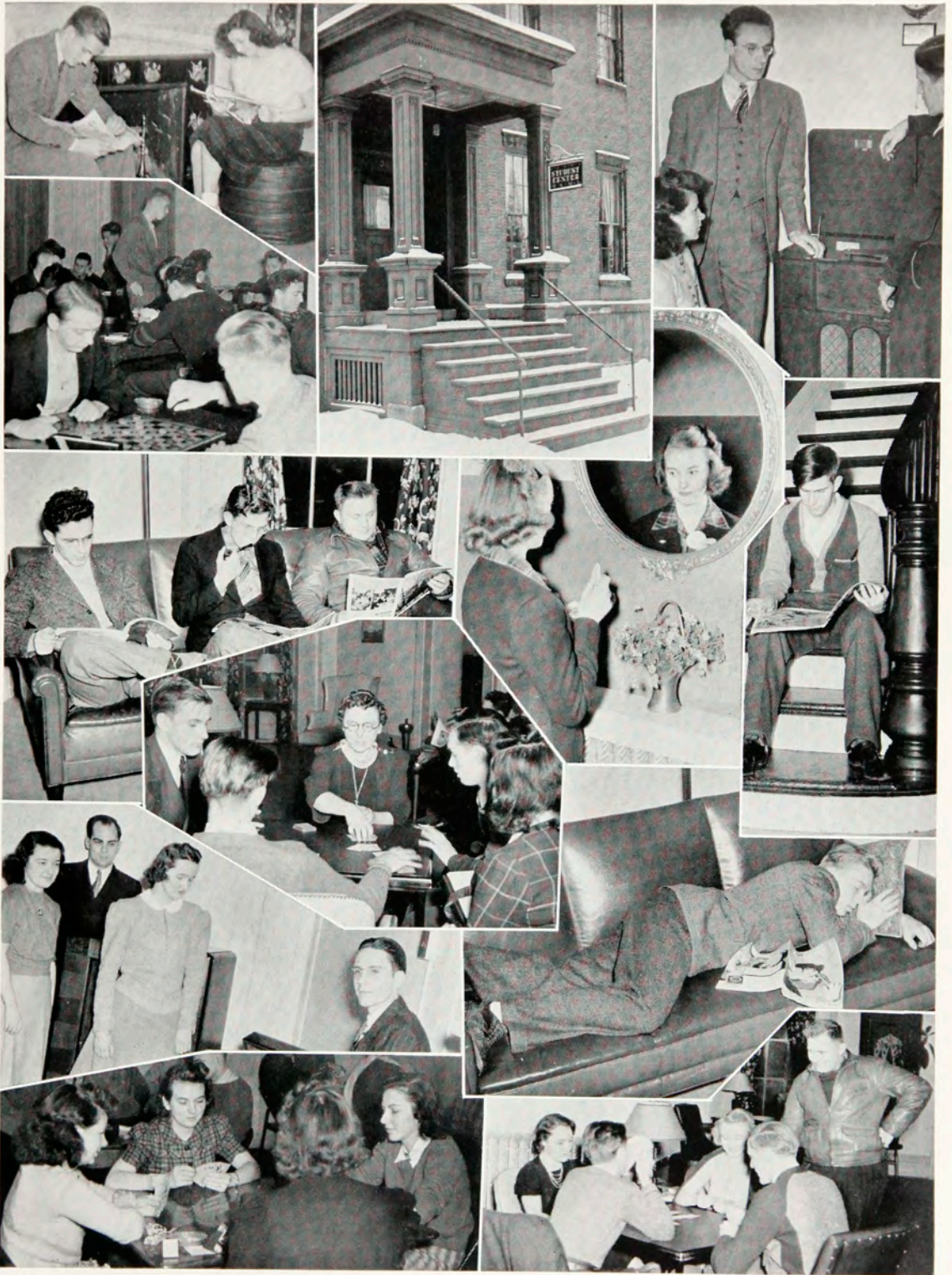
Clark Union has solved the problem of where the many organizations sponsored by the Student Association might hold their meetings. The Ramikin, Psimar, and Student Council staffs have welcomed having private offices in which to carry on their work. The Glee Club and Gargoyles were grateful for an assigned room for their meetings and rehearsals. Department clubs have enjoyed larger attendance and more fun at their meetings held at the Union. It has provided the fraternities and sororities with a place for their meetings and social events.

Its spacious game room, smoking facilities, lounges, and meeting rooms have made Clark Union the point of interest for Institute students.

We extend our appreciation to Mrs. Caroline Thomason for her many kindnesses shown us as counselor of the Union.



MRS. CAROLINE THOMASON



STUDENT COUNCIL

THE governing power of the student body is vested in the Student Council. The Council is made up of six members from each class. These elected students meet bi-monthly on Tuesday to discuss and decide current student problems. All matters of student interest are considered with a view to furthering sportsmanship, promoting self-government, and encouraging student activity.

One of the most important functions of the Council each year is the appropriation of student funds for extra-curricular activity. In compliance with student requests, several activities were added this year. The student Band was re-established as an activity. Fencing was introduced for the first time and Dancing instruction was provided. The Council also appropriated a sum of money toward the Institute Endowment Campaign.

The major student project during the year 1939-40, was the further establishment of the Student Center. This year the Student Council voted unanimously to dedicate that building to Mr. George H. Clark for his constructive interest in education. The building is now known as Clark Union.

Early in the spring, the Student Council received an invitation to send delegates to the regional Convention of Student Unions which was held at Cornell University. Several members attended the Convention.

The closing months of the year found Council members engrossed in promoting a campaign on student government. All students were informed about the organization of the student government in order that they might have more thorough knowledge of how it operates and serves them.

The awards assembly was held late in the year in accordance with the usual custom and awards were given in recognition of what they contributed to students through some extra-curricular work. To the many faculty members who spend time and energy helping students with these extra-curricular projects, we offer our thanks in the name of the student body. The Student Council is especially grateful to Mr. Burton Stratton and Mr. Alfred Davis for their helpful counsel through the school year.

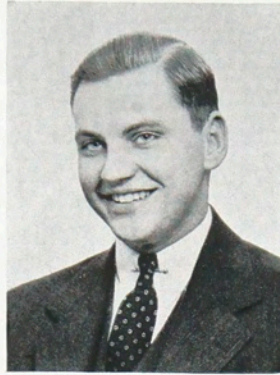
STUDENT COUNCIL

OFFICERS

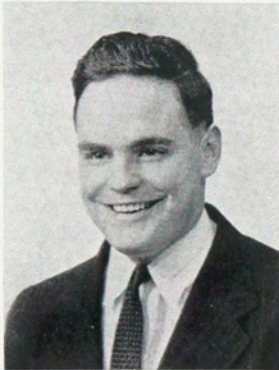
GEORGE KUPFERSCHMID	<i>President</i>
JAMES TOBIN	<i>Vice-President</i>
BETTY SEARS	<i>Secretary</i>
BURTON E. STRATTON	<i>Faculty Adviser</i>
ALFRED L. DAVIS	<i>Faculty Adviser</i>



*Bloom, Ball, Smith, Tobin, Grabb, Olney
Stratton, Natale, Lamb, Jones, Bowllan, Briggs, Brown, Davis
Feinberg, Holmes, Funnell, Cunningham, Wells, Sears, Kupferschmid*



WILLIAM LARTZ
Editor-in-Chief



ROSS TOWNSEND
Business Manager



FRANK NAZZARO
Photo Editor

WITHIN the covers of this book the Ramikin Staff of nineteen hundred forty-one, with the cooperation of the student body and administration, has endeavored to accurately depict in a literary and pictorial manner this year's life and activity of the Rochester Athenaeum and Mechanics Institute in miniature. It is the sincere wish of the members of the staff that this book will preserve the memories of pleasant and well-spent days of our years at the Institute. So it is hoped that this thirtieth volume of the Ramikin may be a source of pride and lasting enjoyment to the administration, to the alumni, and to the under-graduates to whom it is presented as another chapter in the splendid history that is hers.

RAMIKIN STAFF

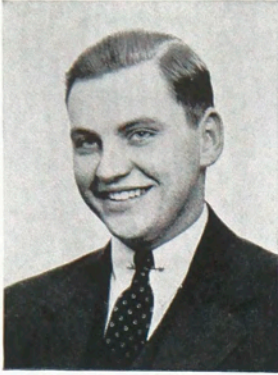
WILLIAM LARTZ	<i>Editor-in-Chief</i>
RUTH THOMAS	<i>Associate Editor-in-Chief</i>
ROSS TOWNSEND	<i>Business Manager</i>
FRANK NAZZARO	<i>Photographic Editor</i>
LOUIS PAVLEDES	<i>Associate Photographic Editor</i>
DOROTHY HOLT	<i>Art Editor</i>
HORACE W. KOCH	<i>Faculty Adviser</i>

MEMBERS

BION PAVER
SHIRLEY DOERSOM
NORMAN GORE
EDWARD SLOMAN
PAULINE WEIR



*Pavledes, Paver, Townsend, Doersom, Nazzaro
Gore, Holt, Lartz, Thomas*



WILLIAM LARTZ
Business Manager



STANLEY KELLER
Editor

PSIMAR

THE Psimar, the student publication of the Institute, has continued to live up to the standards set up by former editorial staffs in furnishing the student body with a complete coverage of student activity.

During the present school year the Psimar editorial staff made and adopted an editorial style manual which it hopes will serve as a guide for future editors and reporters of the school publication.

The Psimar continued to improve typographically and it may be said that it went modern and became "streamlined". The school paper is edited and printed in the school, the department of Publishing and Printing continuing to produce the printed publication.

The year's staff wishes to thank everyone connected with the school paper for their efforts and cooperation throughout the year and wish the future staffs the greatest possible success.

PSIMAR STAFF

STANLEY KELLER	<i>Editor</i>
JOHN WHITEMAN	}	<i>Business Managers</i>
WILLIAM LARTZ		
AVERY PIERSONS	<i>Circulation Manager</i>
FRANK DEWITT	<i>Faculty Adviser</i>

REPORTERS

LARRY ADAMS
 RUSSELL BROSTEDT
 ROBERT ALDINGER
 BOYD CRABTREE
 SHIRLEY DOERSOM
 DOTTIE HOLT
 VIRGIL ZETTERLIND
 DON D. NIBBELINK

LYLE BRIGGS
 JOHN NORTH
 SARAH PENN
 ROBERT RIPPLE
 BETTY SEARS
 HARRY SMITH
 LOREN SPERO
 JAMES STEG



*Rennell, Chase, Piersons, Ripple
 Brostedt, Aldinger, Sears, Holt, Keller, Zetterlind, Penn, Doersom, Spero*



MISS MEYER



MISS LEE

WOMEN'S RESIDENCE HALL

EXECUTIVE COUNCIL

OFFICERS

DOROTHY HOLT	<i>President</i>
MIRIAM DREWERY	<i>Vice-President</i>
BARBARA COE	<i>Secretary</i>
BARBARA MAULBETSCH	<i>Treasurer</i>
JANET ALEXANDER	} <i>Senior Representatives</i>
MARILYN SMITH	
JEAN RANDALL	
MARGARET AUSTIN	} <i>Junior Representatives</i>
ROSEMARY DOERR	
RITA GREENWOOD	
NICOLETTA SOZZI	
LOIS ATCHISON	} <i>Freshman Representatives</i>
BARBARA COE	
BARBARA MAULBETSCH	

THE Executive Council is composed of representatives of Freshmen, Junior and Senior classes. This group acts as the governing body of the house, and its goal is to promote harmony and good fellowship among the girls, and to provide social activities for them. Each year, the Council revises the rules and regulations. Many innovations in government have been made from suggestions of Dr. Charters of the advisory board.

As usual, the highlight of the year was the annual Dorm Formal, held in the Hotel Seneca on November 18. Besides the regular faculty teas, birthday dinners and buffet suppers, the Dorm sponsored a Harvest Carnival in October and a Valentine Tea Dance in February.

The friendly spirit and cheerful atmosphere of the Dormitory is due largely to the cooperation of the director of the Residence Hall, Miss Florance Meyer, and her new assistant, Miss Grace Lee. Without their help, the Council could not have accomplished what it did this year.



*Holt, Maulbetsch, Alexander, Greenwood
Drewery, Austin, Doerr, Coe, Smith, Sozzi*



MECHANICAL STUDENTS' ASSOCIATION

OFFICERS

BLOCK A

STEWART PRICE	<i>President</i>
FRANK LIEDECKER	<i>Vice-President</i>
RALPH THORNTON	<i>Secretary</i>
JACK LUND	<i>Treasurer</i>

BLOCK B

JAMES TOBIN	<i>President</i>
WILLIAM BOWMAN	<i>Vice-President</i>
HORACE HOLLIDAY	<i>Secretary</i>
DONALD ELSENHEIMER	<i>Treasurer</i>
CYRIL DONALDSON	<i>Faculty Adviser</i>

IN 1940-41, the Mechanical Students' Association enjoyed one of its finest years since its inception in 1925 as an organization for developing good fellowship and widening the education of the Mechanical students through presentation of technical subjects pertaining to their field.

Enrollment this year was unusually large due to the activity of the membership committee and a large freshmen representation.

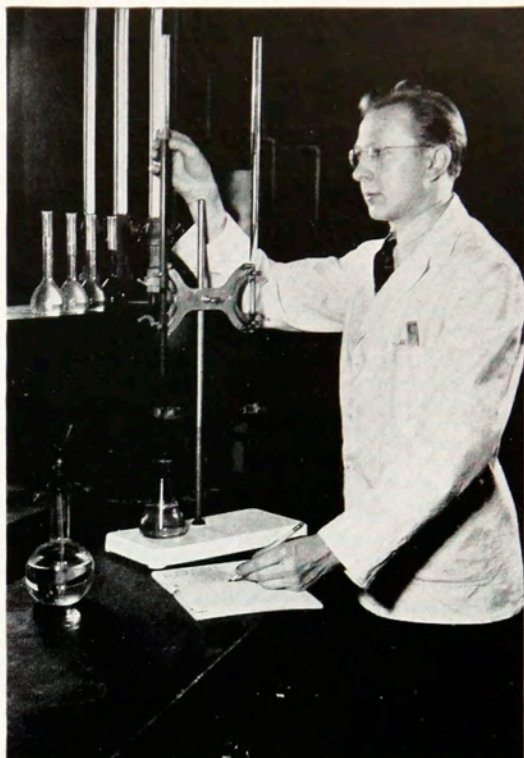
According to custom, officers were elected for both blocks in order to better carry out the affairs of their particular block.

Among the activities enjoyed this year were the annual picnic at South Park, an illustrated lecture on Aviation Engines by Mr. Cyril Donaldson, the Boilermakers' Brawl, talks on the History of Firearms by Mr. Raymond Biehler, District Steam Heating by Mr. Landis S. Smith of the Rochester Gas & Electric Corp., and Automatic Screw Machines by Mrs. L. D. Spense of the Brown and Sharpe Co. The Annual Banquet was held at the Roosevelt Apartments with Mr. Landis S. Smith as the speaker.

MICA

OFFICERS

SCOTT MATHEWS	<i>President</i>
GLENN WRIGHT	<i>Vice-President</i>
ROBERT WOLF	<i>Secretary</i>
NICK CRISTAKOS	<i>Sgt. at Arms</i>
MALCOLM STULL	<i>Treasurer</i>
RALPH H. BRADEN	<i>Faculty Adviser</i>



ORGANIZED IN 1932, the Mica Club has grown to a membership which includes all day school students enrolled in the Chemical department. The Club is under the able guidance of Mr. Ralph H. Braden. Meetings have been held every two weeks with speakers present at frequent intervals to discuss products and processes of Rochester industries engaged in the chemical field.

Besides the business meetings the Mica Club has had two important social affairs of the '40-'41 semester consisting of a party in October at Clark Union, and a banquet in March at the Manhattan Restaurant.

With the year coming to a close, the officers are affiliating the Mica Club with the American Chemical Society to insure greater successes in the future for the Mechanics Institute Chemical Association. This last feat is hailed as a step not only for the benefits of its members, but also connects the Institute with the largest organization of its kind in the United States making a possible outlet for future students.

PUBLISHERS AND PRINTERS

ALTHOUGH the "Pi" Club is the youngest and smallest organization in the Institute, it is among the most active. The club was organized in 1937 by the students of the Publishing and Printing Department and is affiliated with the National Student Graphic Arts Society.

Several social events were sponsored this year, including the annual Christmas party, outings, and a senior banquet. A softball team was formed which carried on active competition with members of other departments of the school.

The Club publishes and prints a monthly booklet edited by Louis Ruiz, known as the "Typographer". It has a circulation of 600, and is distributed to printers, schools, and press organizations throughout the United States.



OFFICERS

ROSS TOWNSEND	<i>President</i>
HUBERT SHEFFER	<i>Vice-President</i>
JOHN WELLENHOFFER	<i>Secretary</i>
BERNARD MARTIN	<i>Treasurer</i>
JOSEPH F. SORACE	<i>Faculty Adviser</i>

THE PHOTO TECH CAMERA CLUB

Since Photo Techs live, eat, sleep, and practically breathe photography, it follows naturally a worth while addition to the already crowded daytime hours of the regular course is actively supported. The Camera Club is increasingly proving a tremendously valuable supplement to the school's course of study in photography, in presenting an organized channel for individual expression, practical experience in making and exhibiting pictures, and a chance for additional learning experience in variegated phases of photography.

This year has seen the addition of a weekly bulletin of news and articles contributed by members. The plan, of bringing well-known photographers from various parts of the United States to speak and demonstrate before the group, has been continued and developed. The monthly competitive exhibits hung in the school cafeteria have attracted more interest and support than ever before. Winning students are presented medals and have their names engraved on a trophy which remains in the school from year to year.

Finally, the year's activities are brought to a close in the spring with the Annual Banquet, at which the passing Seniors are feted.



EXECUTIVE COMMITTEE

WILLIAM DELLENBACK	FRANK NAZARRO
DON D. NIBBELINK	DEFORST INKLEY

BULLETIN STAFF

ROBERT PERRY	SHIRLEY RUPRIGHT
ROBERT WILSON	DICK RICE
ROBERT GOLDSTEIN	RUTH THOMAS
MARTY GROSSFELD	GENE SIMONDS



RETAILERS' ASSOCIATION

EXECUTIVE COMMITTEE

JANET ALEXANDER	JAMES COX
SHIRLEY PATTERSON	RACHAEL SMITH
GEORGE KUPFERSCHMID	STANLEY SCHUTTE
MARGARET LINSIN	ROBERT WILEY
PAULINE WEIR	ANN ZUTES

DOROTHY THOMSEN

Students in the retailing department have an opportunity to give vent to their executive and managing abilities in the Retailers' Association. The purpose of the organization is to further good fellowship among the retailers outside of school, and to further knowledge of retailing as a career by bringing speakers here at different times.

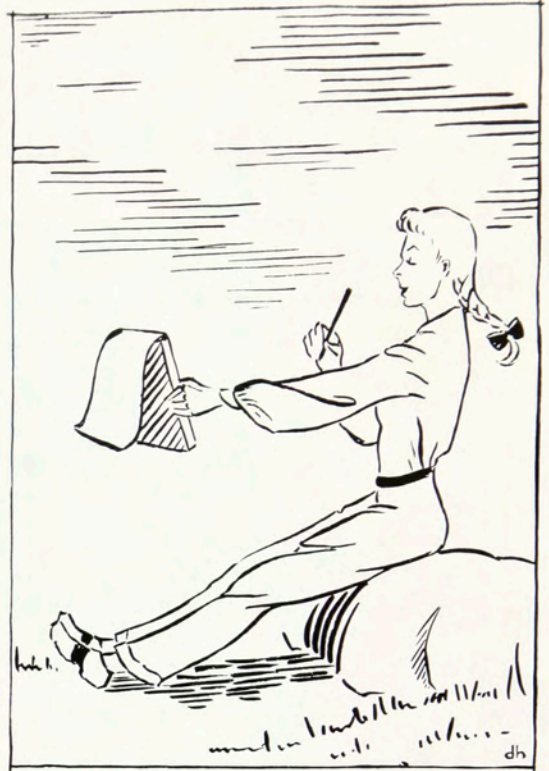
This year the Association has heard Marguerite Loos, distributive education supervisor of Ohio; Sally Franklin, a former student who is the cooking school commentator from Edwards; and Harold Woodworth, another former student and buyer of men's furnishings at Edwards.

In the fall, the Association sponsored a get-together for the purpose of introducing the freshmen to the upperclassmen. An annual affair of the Retailers' Association is the big picnic, held in May.

ART LEAGUE

OFFICERS

ARCHIE McLEOD	<i>President</i>
RAY KERN	<i>Vice-President</i>
ARMOND LA MAY	<i>Treasurer</i>
JOHN BOLLAN	<i>Social Chairman</i>
CARMELA COSTANZO	<i>Secretary</i>



Early in September, twenty-three freshmen were pushed, pulled or carried through the halls of Bevier building on a bewildering cruise known as the annual Art League initiation. To the accompaniment of stern commands from upperclassmen, the group delivered a solemn oath of allegiance to Algy, patron saint of the Art League, and then dashed off to Cutali's for a spaghetti dinner.

In October, the League sponsored a Spook Show in the Student Center, and in January, a sleighride, followed by dancing and refreshments, in Naas' barn, at Scottsville.

In March, to weird chants and the mournful tones of a flute, the new skeleton, Ah-men, was christened. The League closed a very successful year with another of its famous cabin parties at Powder Mill Park.

The Art League is an organization which provides not only social functions, but also a Sketch night every Tuesday, for which various members pose in costume and offers a chance for self-expression to the students.

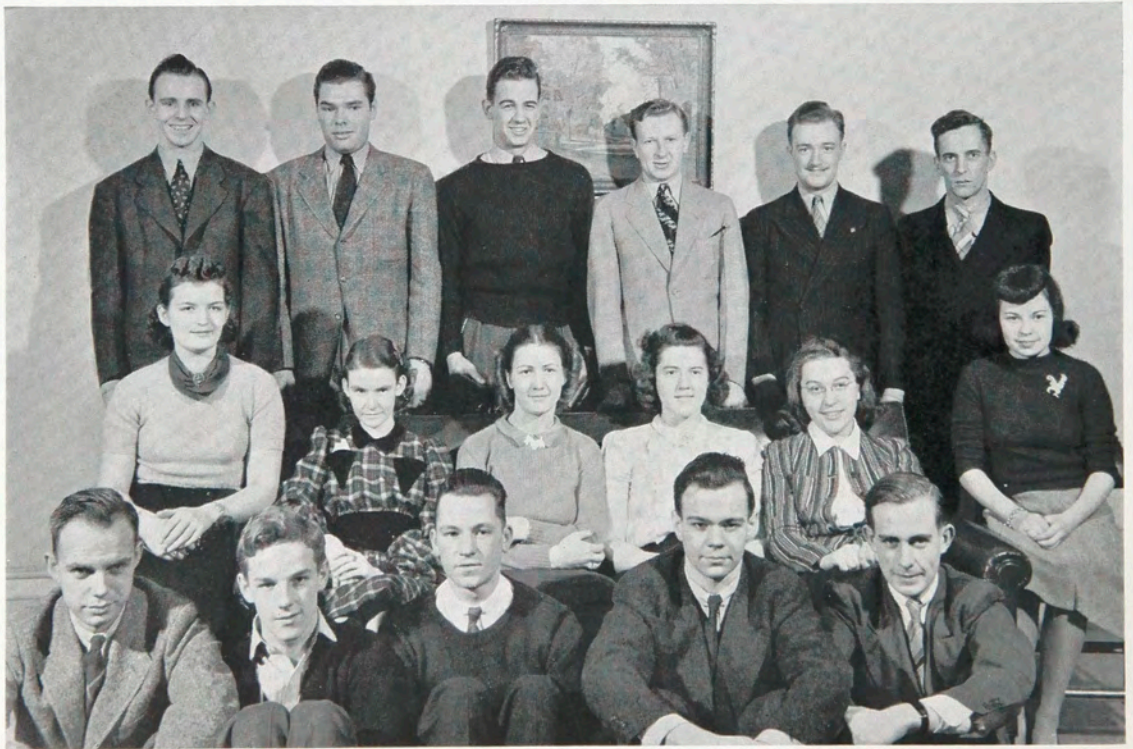
GLEE CLUB

OFFICERS

PAUL PAVLOCK	<i>President</i>
MARCELLINE DEMPSEY	<i>Vice-President</i>
MARGARET AUSTIN	<i>Secretary</i>
DONALD WARREN	<i>Treasurer</i>
EUGENE NATALE	<i>Librarian</i>
MR. CHESTEEN B. KENDALL	<i>Director</i>
MRS. GILBERT QUINN	<i>Accompanist</i>
MR. ALFRED DAVIS	<i>Faculty Adviser</i>
MRS. HAZEL P. HOWLAND	<i>Faculty Adviser</i>

The Glee Club, an organization conducted for the purpose of furthering the enjoyment and interests of the student body socially as well as musically, has completed the year 1940-41 with a program filled with performances and entertainments for one of the largest group associations in the Institute.

The first highlight on the season's program was a welcome party. The Glee Club doors were swung open to the student body for the purpose of acquainting them with the Glee Club activities. All who wished to share in its functions were invited to become active members.



*Warren, Durward, Wilfryth, Johnson, Greenfield, Davis
Cady, Thomas, Paige, Wagner, Kuebler, Phillips
Woodman, Sturgis, Phillips, Stevenson, Humphrey*

After two months of faithful rehearsals, the group sponsored its first public performance, the Glee Club Assembly. It was held in the First Presbyterian Church, and the student body was entertained by a program of Christmas songs and melodies.

Following the Christmas Assembly, the members held their annual Christmas Party in Clark Union. Gifts were exchanged by everyone present. Refreshments and group singing were enjoyed in the season's yuletide spirit.

The M. I. singers next sponsored a hay ride party at Scott's on Chili Road. After an enjoyable two hour ride, they returned to Scott's home where dancing was held and refreshments served.

The next event was a feature program of a combined nature. For the first time in the history of the school, the Glee Club and the M. I. Band presented to the public a joint concert in Eastman Hall. The Glee Club participated in the first half of the program, and featured singing consisting of folk songs, spirituals and popular songs by the chorus.

Bringing to a close the Glee Club activities for the school year, a banquet was held at the Normandie Apartments where the members celebrated a successful year.

We, the Glee Club of 1940-41, wish to see this success carried on through the years to come and at the same time hope that the musical performances of the Institute will be an outstanding, anticipated event.



*Cunningham, Posson, Morrison, Brinkerhoff, Pavlock, Poole
Covert, Silcox, Austin, Wagner, Lorscheider, Hill
Herron, Anderson, Smith, Walvoord*

GARGOYLES

OFFICERS

PATRICIA BRAYER	<i>President</i>
FREDERICK BROCKWAY	<i>Vice-President</i>
GENE E. SIMONDS	<i>Secretary-Treasurer</i>
BERNICE MOHLENHOFF	<i>Faculty Adviser</i>
DR. LEONARD G. HEECH	<i>Director</i>

During the past year the Gargoyles, the dramatic club, have had many interesting and profitable programs at their meetings.

As all theatre work is based upon speech, we first studied the voice and its control.

Realizing the full need of make-up behind the footlights we spent several meetings learning the correct technique in applying the grease stick and lining pencil—creating many interesting characters.

Other programs consisted of general discussions of the psychology of audiences and the study of pantomime. Radio night was given an interesting turn when some of the members came to the meeting with original scripts.

During the year several plays were cast and practiced.

Our annual party was held at Clark Union and everybody enjoyed the hilarious games, dancing, cider and doughnuts.

We have an organized point system by which members are awarded the Gargoyles pin for outstanding activity.

The Gargoyles extend to all students a cordial invitation to attend the meetings that will be held next year.



*Sykes, Robinson, McNeal, Harnish, Crabtree, Zetterlind, Cox, Wilson
Johns, Kinsella, Rupright, Johnson, Patterson, Sbafer, Pflieger, Christy
Mohlhoff, Gustin, Simonds, Brayer, Griffiths, Maulbetsch*

INTERSORORITY COUNCIL

OFFICERS

MARTHA LAPHAM . . . *President* ARVILLA POMEROY . . . *Treasurer*
MARGARET LINSIN . . . *Vice-President* NATALIE CUMMINGS . . . *Secretary*

MEMBERS

MARION VAN DELLON WANDA MARY DAETSCH FAY BELLINGER
BETTY BOODEN MARGARET AUSTIN RITA GREENWOOD
MARIAN BLOOD HAZEL SCHILLEMEN NATALIE FOSTER
JUNE HILL

JEAN M. STAMPE . . . *Adviser* LENA W. KARKER . . . *Counselor*
BERTHA THURBER . . . *Counselor* MARGARET O. JAMESON . . . *Counselor*

Intersorority Council, the uniting factor of the four sororities, is composed of a counselor and three representatives from each group. It is the governing agent over the individual sororities.

In September and October Intersorority held its annual evening receptions to help freshman girls to become acquainted with upperclassmen and with freshmen in other departments.

As in former years the Intersorority Ball was held at the Rochester Club on April 19. The Intersorority Scholarship Trophy was presented to the group maintaining the highest average for the past year.

This year a Journal explaining the sororities and their histories was drawn up to acquaint the freshmen with the activities and values of the various sororities before they pledge.

In May the 1941-42 officers were elected.

Each year the Council takes another step toward unison in social and business aspects.



*Booden, Linsin, Pomeroy, Hill, Blood, Daetsch, Austin, Cummings
Jameson, Thurber, Stampe, Karker, Lapham, Van Dellon*

ALPHA PSI SORORITY



OFFICERS

JUNE HILL	<i>President</i>
ARVILLA POMEROY	<i>Vice-President</i>
ESTHER SHUMWAY	<i>Secretary</i>
MILDRED KUEBLER	<i>Treasurer</i>
MISS BERTHA THURBER	<i>Faculty Adviser</i>

HONORARY MEMBERS

Miss Dorothea Fritz	Miss May Gillard
Miss May D. Benedict	Miss Jean Northrup

SORORES

1941	1942	1943
Marion Blood	Bernice Goldstein	Marie Kage
Lois Mosher	Charlotte Gottlober	Nellie Kottee
Arvilla Pomeroy	June Hill	Mildred Kuebler
Mary Sangster	Marjorie Jones	Norma Roeller
Esther Shumway		Helen Smith

Alpha Psi was organized in 1921 with thirteen charter members. The express purpose has been to promote friendship, scholarship, and fair play.

Social events of the season have included a highly successful rush party at the Edith Hale house, a formal pledge dinner at the Rochester Hotel, an informal gathering at the Frontenac Apartments, and a novel "penny party" at which the future was foretold for the sorority members. These happy predictions for the future include a most successful house party at Conesus Lake as a climax for the social season.

As a parting word to our Senior members we extend wishes for great success and incomparable achievements following their years of training at the Institute and their inspiring associations with sister members in Alpha Psi.



DELTA OMICRON SORORITY



WANDA MARY DAETSCH	<i>President</i>
BETTY BOODEN	<i>Vice-President</i>
HARRIET THAYER	<i>Treasurer</i>
WILMA STEFFEN	<i>Secretary</i>
ELEANOR WELLS	<i>Property Manager</i>
HELEN STODDARD	<i>Social Chairman</i>
BEULAH SMITH	<i>Corresponding Secretary</i>
MRS. LENA W. KARKER	<i>Faculty Adviser</i>

HONORARY MEMBERS

MISS VELMA PURINTON

MISS BERNICE MOHLENHOFF

MRS. MARIE VICK

SORORES

1941		1942		1943
Helen Stoddard	Janet Perry	Wilma Steffen	Jane Lancot	Jane Riley
Betty Sears	Natalie Cummings	Helen Mattison	Eleanor Wells	Marie Balian
Betty Booden	Laura Funnell	Nannette Riess	Harriet Thayer	Marion Chapman
Phyllis Frank	Doris Gordon	Winona Williams	Louise Emes	Doris Kent
Wanda Mary Daetsch	Virginia Norris	Alice Silcox	Dorothy Callan	Doris Van Der Meid
Marie Lowenguth	Eleanor Nolan	Emily Larson	Beulah Smith	Jane Zogg
Doris Gray	Dorothy Conklin	Ann Griffith	Rose Bordonaro	Marion Jameson
		Elaine Moore		Olive Kingsley
				Betty Shamble

Since its founding in 1921 by eight girls Delta Omicron has grown to a membership of thirty-eight and has continued to uphold its high ideals of scholarship and loyalty. During the year friendships are encouraged through social activities. This year such activities were buffet suppers, a Hallowe'en dance, a rush party and a pledge dinner dance. To climax the year a house party was held at the Karker Camp in Canada.



PHI UPSILON PHI SORORITY



NATALIE FOSTER	<i>President</i>
RITA GREENWOOD	<i>Vice-President</i>
HELEN DOMRAS	<i>Recording Secretary</i>
JANET ROBERTS	<i>Corresponding Secretary</i>
ETHEL APOSTAL	<i>Treasurer</i>
MRS. JEAN MACCARGO STAMPE	<i>Faculty Adviser</i>

HONORARY MEMBERS

DR. MARK ELLINGSON MRS. LULU SCOTT BACKUS MRS. MINNIE RANKIN WYMAN

SORORES

	1941			1942
Natalie Foster	Margaret Linsin	Virginia Moesel	Ethel Apostal	Evelyn Gates
Dorothy Kemp	Patricia Woodard	Jean Randall	Margaret Austin	Helen Haskins
Jean Schaeffer	Miriam Drewery	Barbara Rudd	Marcelle Bridges	Mona Hammond
Janet Alexander	Helen Domras	Janet Roberts	Eleanor Denfor	Rachael Smith
	Jane Hathaway	Edith Groh	Rita Greenwood	Lucy Jackson
		1943		
Jeanne Adams	Lois Coleman	Patricia Holmes	Jacqueline Pfleeger	Marion Young
Barbara Coe	Dorothy Griffiths	Dorothy Kitzing	Ruth Seibert	Ann Zutes
Lois Atchison	Dariel Graham	Betty McLeod	Mary Skivington	

Phi Upsilon Phi, the oldest sorority in the Institute was organized in 1919. This sorority was founded on the basis of friendship and unity.

A Rush Dinner was held at Hotel Rochester in the form of a "coming of age" party in January. In February, Mrs. Stampe held a dinner for the active members at the Roosevelt Apartments. Later in February the Pledge Dinner was held at Rochester Club at which time fourteen girls were pledged.

As has always been the custom a picnic given by the new members for the upper-classmen and a House Party held Memorial Day week-end brought the school year to a glorious close.



SIGMA KAPPA DELTA SORORITY



OFFICERS

FAY BELLINGER	<i>President</i>
MARTHA LAPHAM	<i>Vice-President</i>
DOROTHY PRUDOM	<i>Secretary</i>
HAZEL SCHILLEMAN	<i>Treasurer</i>
MISS MARGARET JAMESON	<i>Faculty Adviser</i>

HONORARY MEMBERS

MISS EDWINA B. HOGADONE	MR. AND MRS. CALVIN C. THOMASON
MISS MARY C. HAVENS	MR. AND MRS. ALFRED DAVIS

SORORES

1941	1942	1943
Fay Bellinger	Dorothy Prudom	Doris Davie
Martha Lapham	Hazel Schilleman	Ann Gustin
Rose Poletto		Betty McLoed
		Ruth Kratzer
		Janet Tunnison
		Bettie June Rose
		Shirley Wrape

Sigma Kappa Delta Sorority was founded in 1926 by nine charter members. It represents a great development of friendship and cooperation. The purpose of this organization is to build character, to establish a high scholastic standard in the student body of the Institute, and to bring into closer contact the girls of all departments, thus establishing a more friendly feeling.

This year the Sorority attempted a new form of rushing; namely, colonization, a method whereby girls with high qualities of leadership were pledged. Sigma Kappa Delta held its Rush Party at the home of Martha Lapham in Rush, N. Y. The freshmen were drafted, and lived army life for a night.



CHI DELTA PHI FRATERNITY



WILLIAM DELLENBACK *President*
BEEKMAN PLATNER *Vice-President*
LOUIS PAVLEDES *Secretary*
PAUL ROBINSON *Treasurer*

FACULTY ADVISERS

BRAINERD PLEHN HORACE KOCH RAYMOND BIEHLER

Since its organization at the Institute twenty-six years ago, Chi Delta Phi has been noted for its fine scholastic spirit and ability, its cooperation and participation in school activities, and its opportunities for increased friendship among students of the same and different departments.

The fraternity's membership has comfortably increased this year to a new high of thirty. As a result, increased and improved activities have consisted of two rush dinners, several bowling parties, the Interfraternity Fall Frolic, a successful dance party at Clark Union, many dinner meetings, and the concluding and high-lighting event of the year—the annual Spring Formal Dinner Dance on May 3 at Oak Hill Country Club.



PHI SIGMA PHI FRATERNITY



ROScoe BILLS *President*
ROBERT GREENFIELD *Vice-President*
HOMER WILSON *Secretary*
ROBERT MOUNT *Treasurer*

FACULTY ADVISERS

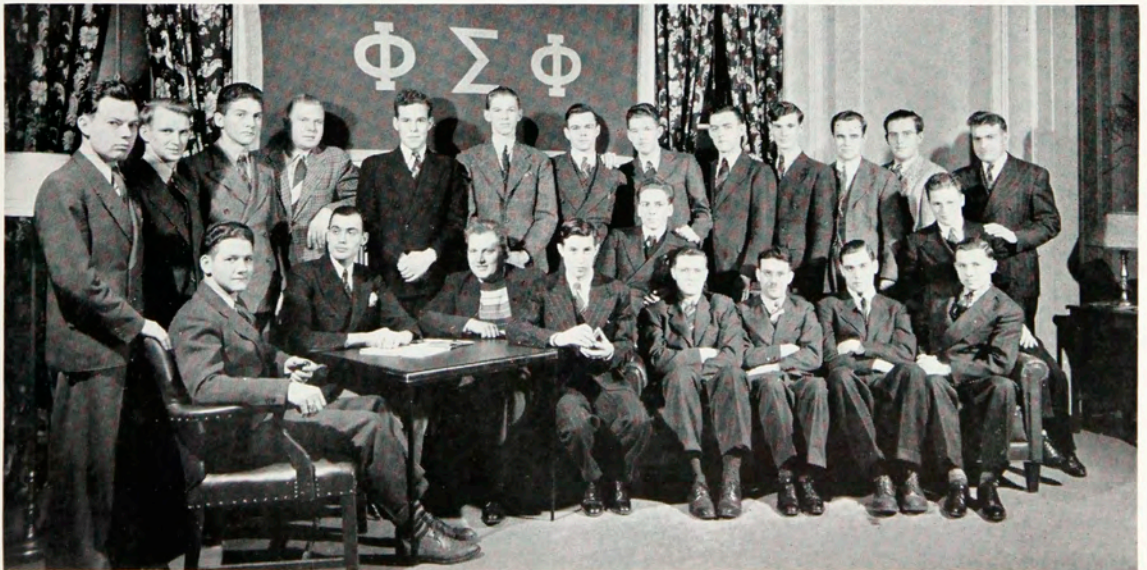
CLARENCE E. TUTTES

BURTON E. STRATTON

Phi Sigma Phi, the oldest fraternity at the Institute, was organized in 1901 and has stood for brotherhood, high ideals, and scholarship ever since.

In 1937, Pi Kappa Gamma, Chi Epsilon Phi, and Phi Sigma Phi merged and formed the present Phi Sigma Phi fraternity.

Among the social events of this season were: The Interfraternity Ball, the pledge dinner at the Home Dining Room, numerous smokers, and several parties at Clark Union. On March 29, the highlight of the season, the Annual Dinner Dance was held at Oak Hill Country Club.



ATHLETICS

SPORTS at the Institute for the past year have placed their records high on the ladder of athletic success. In many cases the records show a gain over those in the past years.

Our basketball team turned in one of the best records in many years under the watchful eye of Coach Leo Fox. A good deal of difficulty was encountered when the time came to select the varsity because all of the men were rated very high as prospective tossers. Although many of last year's first string men were graduated, several freshmen were quick to seize the chance to obtain a berth on the squad.

Our wrestling team under the careful guidance of Coach Pike not only won most of their matches but certain members of the team journeyed to Cleveland to represent the Institute in the Eighth Annual Interstate Invitational Championships. Three of last year's most valuable men were graduated leaving the team greatly handicapped but freshmen were soon able to compete for the Institute.

A great deal of interest was taken in tennis by both men and women. Coach Toporcer instructed and picked a team which he hopes will win all matches to come. Following the constant increase in tennis, it is hoped that in the near future it may soon become one of the major sports at the Institute.

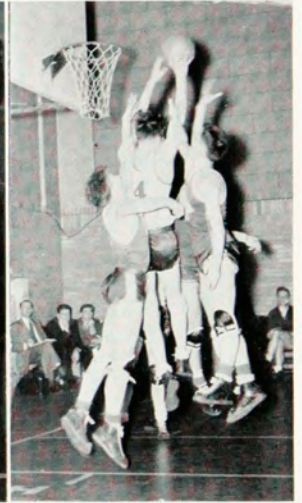
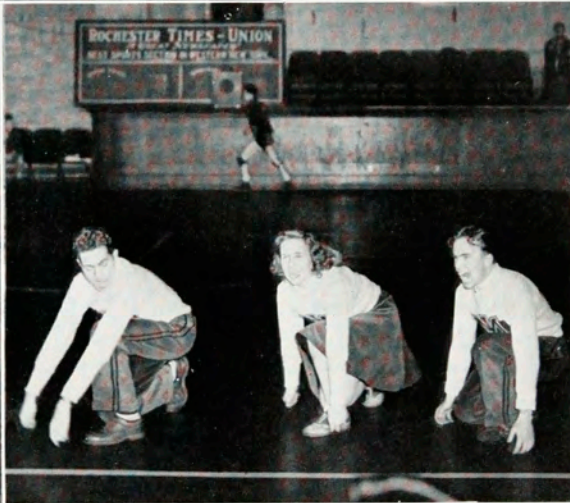
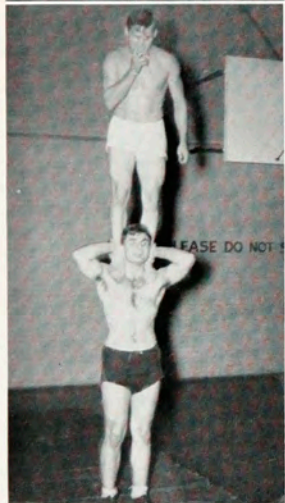
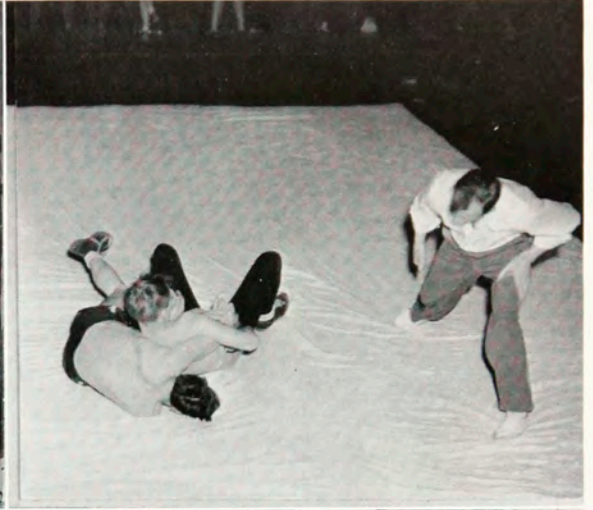
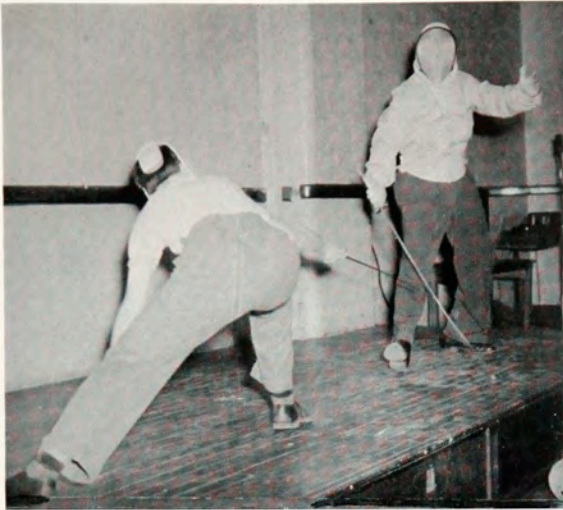
Swimming at the Rochester Natatorium and basketball at the Brick Church were two of the activities at the Institute enjoyed by women students.

Golf instruction for both men and women was provided during the winter months and was greeted with much anxiety and determination to develop swing, strokes, and ability to follow through. The annually increasing turnout of students interested in learning to play a good game of golf gives evidence that it may become one of our more important sports.

Riding is considered one of the most exciting sports at the Institute and is enjoyed by an increasing number of students each year. During the spring and fall, riding is enjoyed out-of-doors. What could be more exciting than to canter over the hills and through the woods early in the morning or late in the afternoon. Steak roasts and Cabin parties were held with many students enjoying themselves to the full extent. When winter set in, riding was carried indoors to the Marsh Road Riding Stables where they worked diligently to attain skill in horsemanship which they proudly demonstrated at the Annual Gymkhana in May.

Bowling began early in the fall, with one evening and two afternoons reserved at the Brick Church for Institute bowlers. Although no perfect games were bowled, each student agreed that he enjoyed bowling in friendly competition.

At the close of this year's athletics and sporting activities we students believe that we have made great strides in sportsmanship.



BASKETBALL

The 1940-41 basketball team has turned in the best season since 1930, having won more games than we lost. Leo Fox, in his first season at the Institute, did a fine job; and, to show the fine spirit of the squad, the team presented Coach Fox with an Athletic Blanket at the award assembly.

Because most of last year's squad were unable to turn out for the team because of the pressure of their work, Coach Fox began the season with only four men who had had previous experience with M. I. teams: Frank Beaty, Roy Kelso, Charlie Walker, and Don Sweet. Frank "Fireman-save-my-child" Beaty was appointed as permanent co-captain, the other co-captaincy being rotated weekly. Beaty was outstanding throughout the year, not only for being the high-ranking scorer with 224 points, but also for his defensive work and for his exceptional "ball-hawking" under both baskets. It was a common sight to see Frank smash through the defense on a nice cut, fight his way to underneath the basket, and there recover the ball to pass out to a teammate or to score himself.

Kelso was used as a pivot man in the team's offensive system and was the "ball-handler" in most of the team's scoring plays. Ray had the best average from the foul line of any member on the team, the large number of shots which he collected from there being a tribute to his aggressiveness on rebounds. Charlie "The Wolf" Walker, although not as flashy a scorer as during his freshman year, played an exceptional passing game, and at the same time augmented his fine floor game with enough baskets to become second high scorer for the season with 115 points. If Charlie escapes the draft, he and Roy are expected to be the nucleus for next season's team. Two freshmen, "Long Jim" Andrews and Fred "I-Beat-off-the-Ladies" Martin rounded out the first five. Jim was outstanding for his ball handling and for his rebound work under either basket, and has well managed to score a good number of points for himself, being high scorer for the Institute in several games with a total of 114 points. Fred was usually given the very tough assignment of guarding the opponents' high scorer—a job which he accomplished in fine style, and at the same time managed to work very well into the team play as well as score himself. Don Sweet cavorted around the court in an inimitable manner when called upon as a substitute on many occasions. Two more freshmen, "Smiling Ed" Connell and Russ "The Razor" Drews, became increasingly better as the season progressed with the result that for several of the last games they were supplanting the members of the starting five, and contributing most ably to the play of the team. Ed and Russ should be a useful addition to next year's aggregation.

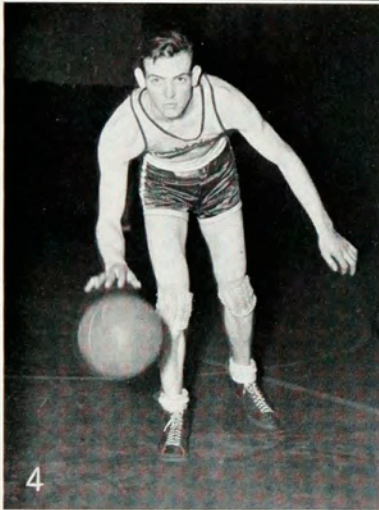
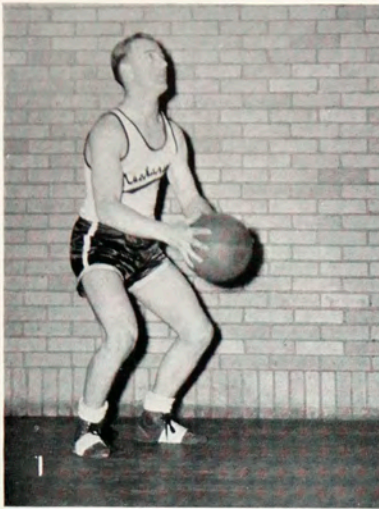
This year, a reserve team was organized for the purpose of giving the members of the squad an opportunity to obtain some sorely needed experience. Several men from the reserve team should be able to make the varsity players hustle for their positions next year.



FOX
Coach

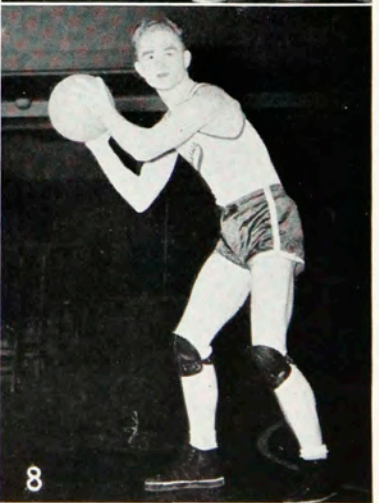


BRODIE
Faculty Manager



SCHEDULE

<i>Mechanics</i>	Opponents	
29	Oswego Teachers	33
40	Alliance College	31
55	Plattsburg Teachers	53
45	Ontario College	44
44	Fredonia Teachers	48
40	Oswego Teachers	38
39	Brockport Teachers	31
35	Ithaca College	53
37	Brockport Teachers	33
55	Geneseo Teachers	41
44	Alliance College	56
26	Fredonia Teachers	36
52	Mansfield Teachers	53
49	Geneseo Teachers	32
34	Plattsburg Teachers	48
26	Mansfield Teachers	25



1. WALKER

4. BEATY

2. DREWS

3. CONNELL

6. SWEET

7. KELSO

5. ANDREWS

8. MARTIN

WRESTLING

Facing stronger opposition than at any time in recent years, the wrestling team of Rochester Athenaeum and Mechanics Institute chalked up a good record during the 1940-41 season by winning three meets, dropping three and tying one.

The wrestlers showed up well in all of the meets, and in most cases losses in individual bouts were close ones. New on the schedule were Kent State University and St. Lawrence University. Both schools had been dropped previously because they were considered too strong for the R. A. M. I. men.

Coach Ed Pike is optimistic about prospects for the coming season. Although four men will be lost through graduation, the squad as a whole will be more experienced. The reserve men are shaping up well and should replace the seniors without any serious difficulty.

Men who wrestled for the Blue and Grey for the last time this year are Captain Harry Lugert, who was defeated only once during regular meets, George Field, 121-pounder, Ben Saggese, heavyweight, and Raymond Hobson, reserve.

The Institute matmen competed at the eighth annual Interstate Invitational Championships at Cleveland. Although the team failed to take a first place, Lugert took a second place in the 155-pound class, Saggese was third in the heavyweight class, and Bob Renner placed fourth in the 175-pound spot.

SQUAD

GEORGE FIELD	WILLIAM TARPLEE
RAY BLOOM	ROBERT RENNER
CHARLES COSTELLO	BENJAMIN SAGGESE
GEORGE JONES	FRANCIS PRATT
WAYNE SMITH	JOHN KOLODCZAK
FRANK LEIDECKER	RAYMOND HOBSON
MILTON FORD	ROBERT HAINES

HARRY LUGERT



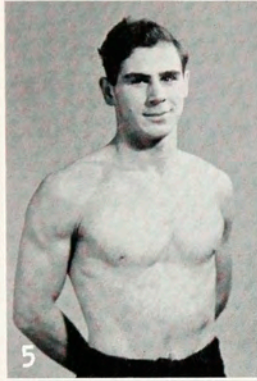
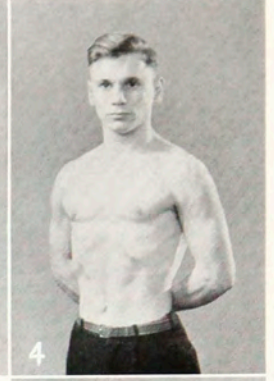
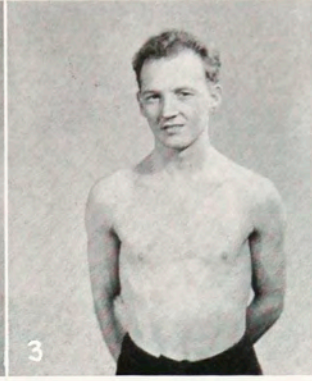
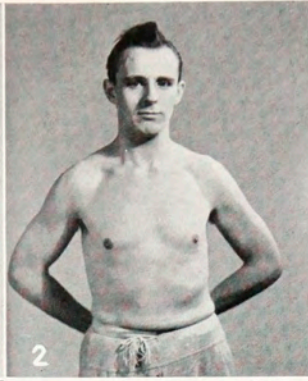
ZOGGE
Student Manager



PIKE
Coach

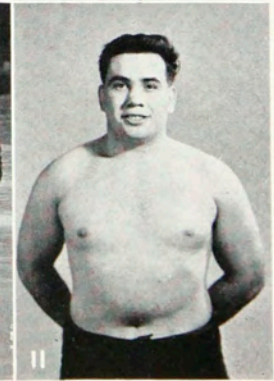
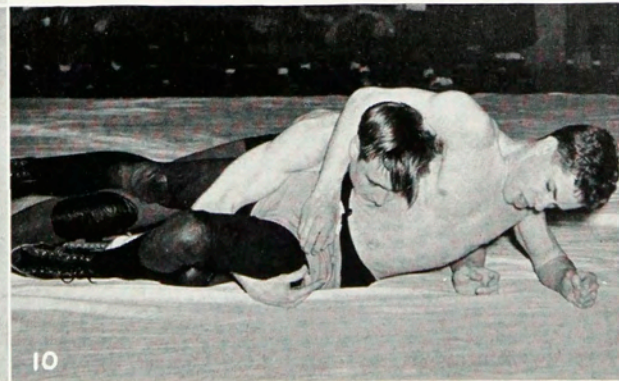
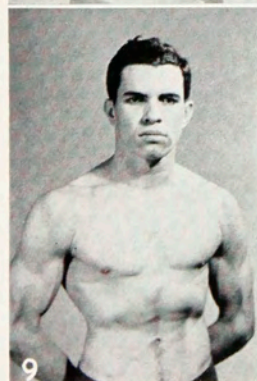
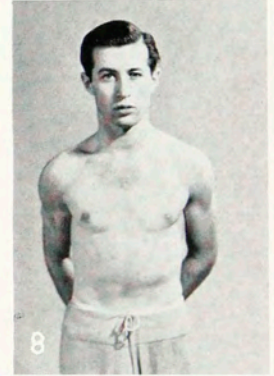
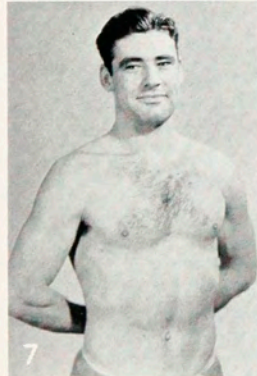
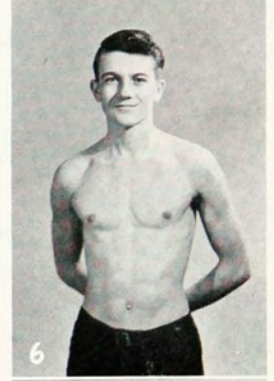


HAGBERG
Faculty Manager



SCHEDULE

<i>Mechanics</i>		<i>Opponents</i>
28	Buffalo University	6
16	Alfred University	14
28	Baldwin-Wallace	6
11	Case School	22
14	St. Lawrence University	14
13	Syracuse University	15
5	Kent State University	25
<hr/>		<hr/>
115		102



1. Lugert

2. Warren

3. Fields

4. Leidecker

5. Renner

6. Haines

9. Costello

7. Tarplee

8. Bloom

10. Costello and opponent

11. Saggese

THE BAND

OFFICERS

WILLIAM RUSHMORE	<i>President</i>
RICHARD RICE	<i>Vice-President</i>
HARRY DAVIS	<i>Librarian</i>
MR. WILLIAM POPOWYCH	<i>Conductor</i>

A new organization, the band, was formed in the fall and is composed of both students and faculty members. An appropriation was made by the Student Council to cover rental of instruments, the purchase of music, and the hiring of a conductor. A present membership of thirty assembles every Wednesday night in the gym to play marches, light concert music and school songs. Early in the season the organization of the band was made official by the election of officers. A committee consisting of these officers and the conductor award letters to the band members for good attendance and improved instrumental performance.

During the indoor sports season, the band gave the school entertainment at all home played athletic competitions. In the spring the band with the Glee Club sponsored a concert. It gave a very good performance and played a lively session of overtures, novelties, marches and selections.

The band is very grateful to Mr. William Popowych for the organization has developed rapidly under his able supervision.

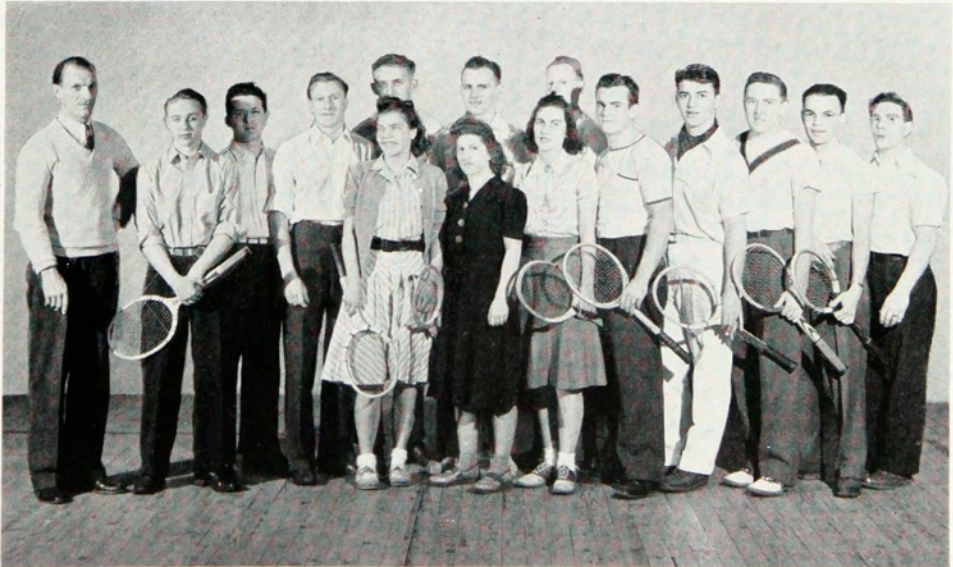


TENNIS

MR. WILLIAM TOPORCER	<i>Coach</i>
MR. WARREN DAVIS	<i>Faculty Adviser Boys</i>
MRS. MARIE KINNEAR	<i>Faculty Adviser Girls</i>
JOSEPH RYAN	<i>Attendant</i>

While the winter was in full swing the tennis fans of the Institute realized that the basic ideas and techniques should be clear in hand and mind before attempting to go on the court. Therefore, tennis practice started early in March in the school gym under the thorough instruction of William Toporcer, the well-known expert of the court. With the opening of the courts on Fitzhugh Street in the spring, the squads continued their practice out of doors.

Teams for both the boys and girls were picked and several matches were held with outside teams. It is hoped that the enthusiasm and interest shown in tennis will continue, and next year's students are cordially invited to join the present group of tennis fans.



BOWLING

This has been a bigger and better year for the pin and ball fans. Enthusiasm for bowling grew this year among both the boys, under the guidance of Mr. Duncan Seavey, and the girls, coached by Miss Eleanor Rehberg. Many new students at the game turned out in droves in the opening blocks of school, and have developed their skill to match and sometimes surpass the "veterans".

The Brick Church Institute alleys have been reserved one night and two afternoons a week for the Institute bowlers. High scores for the boys have hovered around 225 and the girls' scores have occasionally reached 150. Competition is always keen in the various groups, but they vie for skill and mastery of form as well as for high scores.

We hope to see more students in there knocking the pins over next year.



RIDING

EXECUTIVE COMMITTEE

BARBABA MAULBETSCH

MARTHA LORSCHIEDER

JACK DELELYS

BOB RIPPLE

NICK CHRISTY

LLOYD SWANSON

CLAYTON SCHARPING

MISS DOROTHEA FRITZ, *Faculty Adviser*

The Riding Club started out with a bang early in the fall with one of its monthly social functions. Late in September after riding we held a picnic on Cobb's Hill. We had lots of fun singing songs around the camp fire. October found us on a Hayride in Scottsville and our only complaint was of cramped legs. In November we were all dressed like farmers for the Barn Dance at Elser's Barn, Barbara Maulbetsch being the farmer hostess. During the cold month of December we tried to keep warm with a Cabin Party at Powder Mill. A Sweater Hop at Clark Union was the March event. Clayton Sharping was chairman of our Annual Banquet held at the Old Farm. Our final function of the year was a Horse Show held at the Marsh Road Riding Stables. After the show a party was held for members and their dates. We give all the credit of managing the Horse Show to Virgil Zetterlind. The Horse Show was the climax of the year's events.

In the fall we started riding at the Culver Road Armory but due to defense measures we were compelled to find a new place. Now you'll find us riding at the Marsh Road Riding Stables. Some of our rides were at East Bloomfield. After many months of riding we have started to jump and find it great sport. Some of the most pleasant experiences were the long rides on the bridle trails around Pittsford.





FEATURES

REFLECTIONS of the many good times we have had while here at the Institute make us wish that they could be repeated again. We have all worked hard in the classrooms and laboratories endeavoring to prepare ourselves for careers. But at the same time we have enjoyed many social functions which will always be remembered. They have been just as much a part of our education as any other factor.

We have attended dances, athletic matches and other outside events. Many of us have participated in inter-department sports, such as softball and touch football. Friendships have been formed which will never be broken. Clark Union has afforded us a place to meet, relax, and enjoy our school life even more. All these factors have combined themselves to make this year never to be forgotten.

The Ramikin herewith presents pictorially some of the happenings which have made this year one of the happiest.











CALENDAR 1940-1941

Sept. 13 Student Reception	Feb. 3 Alpha Psi Rush Party
Sept. 27 Camera Club Party	Feb. 15 Glee Club Sleigh Ride
Sept. 29 Dorm Faculty Tea	Feb. 22 Phi Sigma Phi Pledge Dinners
Oct. 4 Delta Omicron Dance	
Oct. 11 Student Mixer	Feb. 28 Gay Nineties Party (Seniors)
Oct. 12 M. I. C. A. Party	
Oct. 18 Interfraternity Dance	Mar. 1 Chi Delta Phi Party
Oct. 19 Dorm Harvest Carnival	Mar. 4 M. I. C. A. Club Banquet
Oct. 24 Chi Delta Phi Rush Party	Mar. 8 Sweater Hop
Oct. 25 Sigma Kappa Delta Skating Party	Mar. 14 Glee Club and Band Concert
Oct. 26 Riding Club Hay Ride	Mar. 15 Hard Times Party (Juniors)
Nov. 1 Glee Club Hay Ride	
Nov. 3 Newman Club Picnic	Mar. 19 Glee Club Banquet
Nov. 8 Riding Club Barn Dance	Mar. 22 Senior Dinner Dance
Nov. 9 Newman Club Dance	Mar. 29 Phi Sigma Phi Party
Nov. 16 Dorm Formal	Apr. 4 Easter Fantasy (Freshmen)
Nov. 25 Phi Sigma Phi Pledge Dinner	Apr. 5 Riding Club Banquet
Nov. 30 M. S. A. Party	Apr. 19 Intersorority Dance
Dec. 6 Alpha Psi Party	Apr. 26 Dorm Spring Festival
Dec. 14 Pi Club Banquet	May 2 Horse Show
Jan. 13 Delta Omicron Rush Party	May 3 Chi Delta Phi Dinner Dance
Jan. 20 Phi Upsilon Phi Rush Party	May 16 Senior Ball
Jan. 25 Junior Prom	
Jan. 27 Sigma Kappa Delta Rush Party	May 18 { Convocation Dorm Tea Alumni Banquet

ALMA MATER

*O, Alma Mater, day by day
We strive to hold thine honor bright,
And pledge anew our loyalty,
Defend thy name with all our might.*

*We rise in gratitude to thee
For sweet the message thou hast taught,
A message crowned with love and pow'r,
Resplendent through thy service wrought.*

*Thy noble founders heard the cry
That surges o'er the world to-day,
Their dauntless spirit sends us forth,
That we their precepts may obey.*

