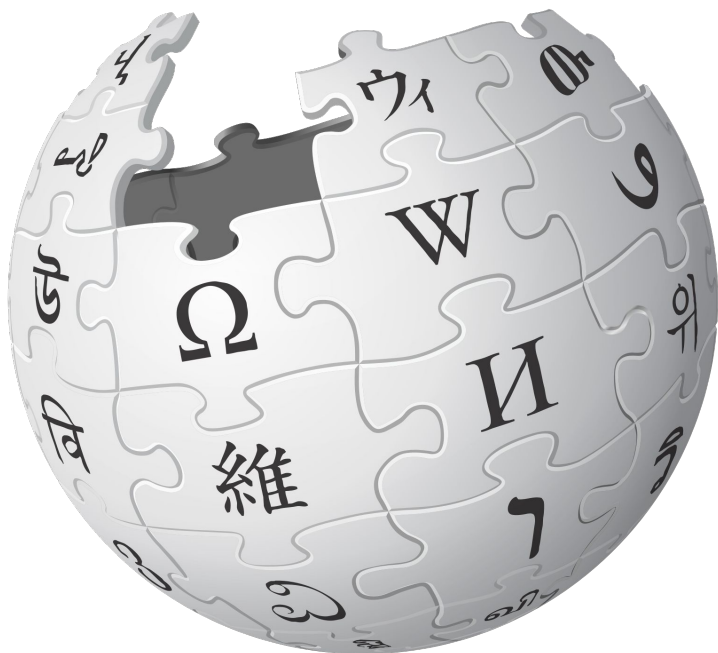


#itwikicon2017

Wikidata e i linked data

the ground of Free knowledge



L'enciclopedia libera
con circa 1.400.000
voci (in italiano)
che chiunque può
modificare

WIKIPEDIA
L'enciclopedia libera



VIKIDAT

La **base di conoscenza**
libera con più di
38.000.000 di elementi
che chiunque può
modificare



Ma stavamo scrivendo un'enciclopedia per raccogliere il sapere umano, **perché Wikidata?**

MULTILINGUA



in: [Communications technology](#), [Linguistics](#)

Universal translator

The **universal translator** (also referred to as a "**UT**" or **translator circuit**) was a device used to decipher and interpret alien [languages](#) into the native language of the user. (ENT: "[Fight or Flight](#)", "[Vanishing Point](#)"; TNG: "[Home Soil](#)")

On [Earth](#), the universal translator was invented shortly before [2151](#), and was still experimental at the time of the launch of [Enterprise NX-01](#). (ENT: "[Broken Bow](#)") Despite its being able to translate alien languages in relatively short order, due to the UT's experimental nature, the use of a skilled linguist – in [Enterprise's](#) case, [Hoshi Sato](#) – was still required, notably in situations where reading alien languages on the control panels, hatches, and displays were involved. (ENT: "[Sleeping Dogs](#)", "[Vox Sola](#)") A new language could quickly be translated in person-to-person encounters by having one speak his or her language until the universal translator gathered enough data to build a [translation matrix](#). Sato also created the [linguacode](#) translation matrix in order to anticipate and speed up the translation of new and unknown languages. (ENT: "[In a Mirror, Darkly](#)")

The actual universal translator, which was used for deciphering unknown languages on the fly, was a handheld device with a keypad and display to which a [communicator](#) could attach at the top. (ENT: "[Precious Cargo](#)") The communicator



A [Starfleet](#)-issued universal translator from the [2150s](#)



A universal translator in [2155](#)

<https://www.wikidata.org/wiki/Wikidata:Statistics/Wikipedia>

STRUTTURATA

Douglas Adams

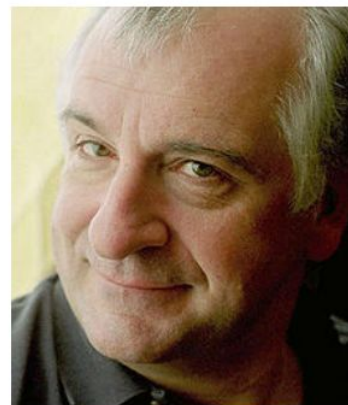
Scrittore Inglese

᠄A



🌐 *Disambiguazione* – Se stai cercando il linguista statunitense, vedi **Douglas Q. Adams**.

Douglas Noël Adams (Cambridge, 11 marzo 1952 – Santa Barbara, 11 maggio 2001) è stato uno scrittore, sceneggiatore e umorista britannico. È ricordato in particolare per la serie di romanzi *Guida galattica per gli autostoppisti*, nata nel 1978 come radio commedia della BBC, prima di diventare una *trilogia di cinque romanzi*^[1], che ha venduto più di 15 milioni di copie, oltre ad essere anche una serie televisiva, fumetto, gioco per computer e fino a diventare nel 2005 un film.



Douglas Adams.

☰ **Indice** ▾

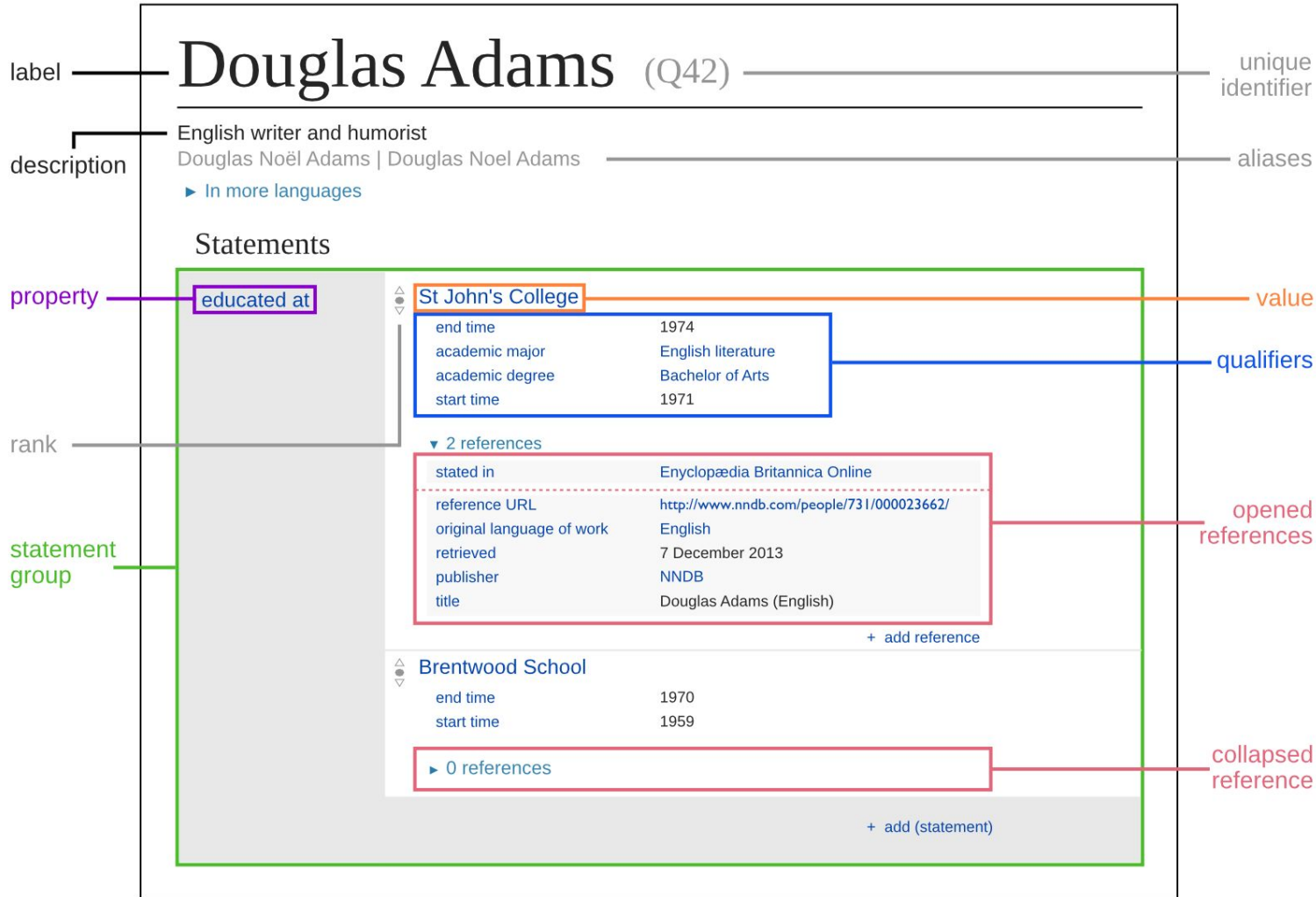
^ **Biografia**

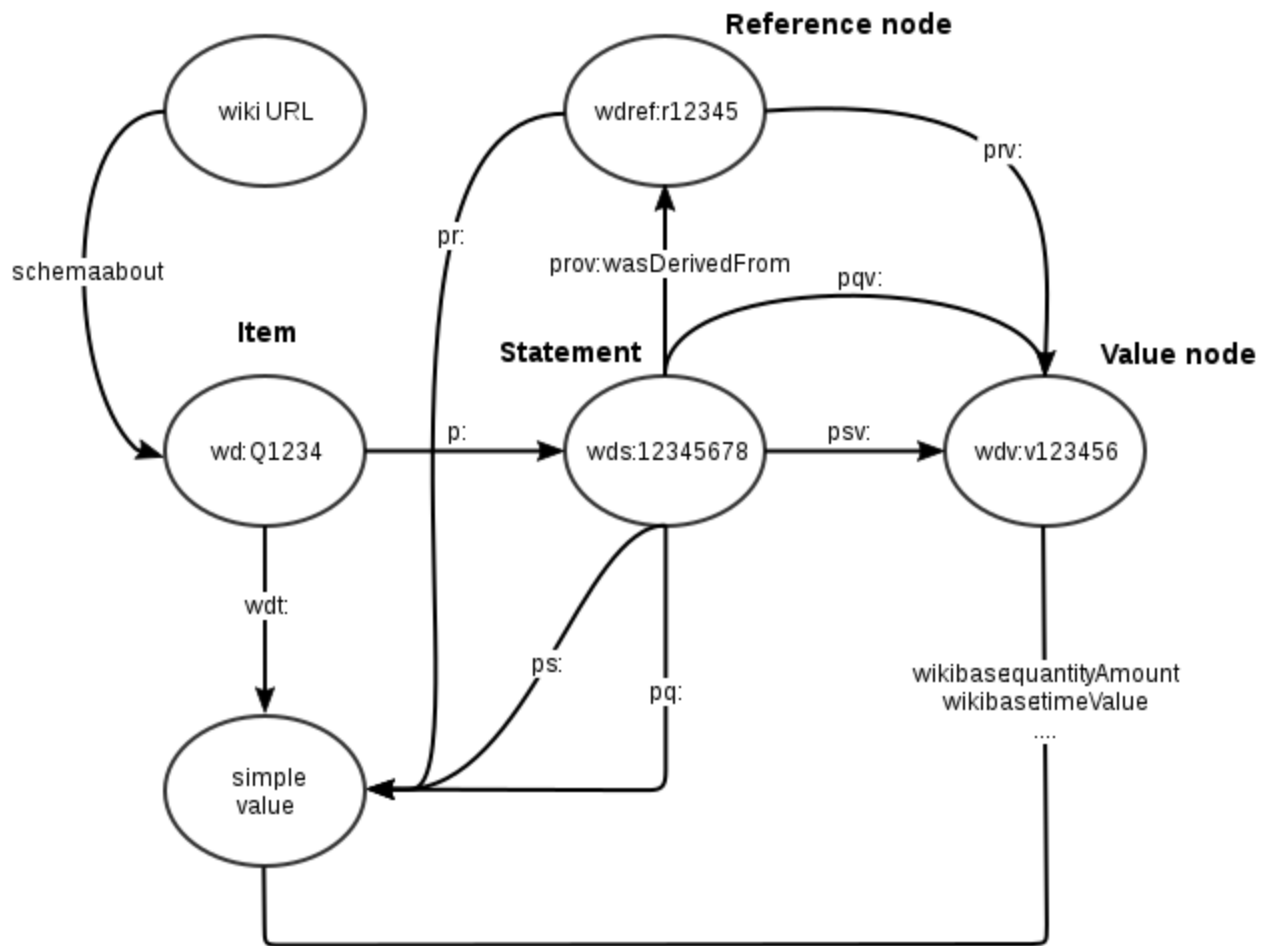


I primi anni



Nato a **Cambridge** l'11 marzo 1952 da Janet Donovan (1927-2016) e Christopher Douglas Adams (1927-1985), visse con entrambi i genitori e la sorella Susan fino al 1957, quando a causa del divorzio, la madre si trasferì con il bambino dai nonni materni a **Brentwood**,





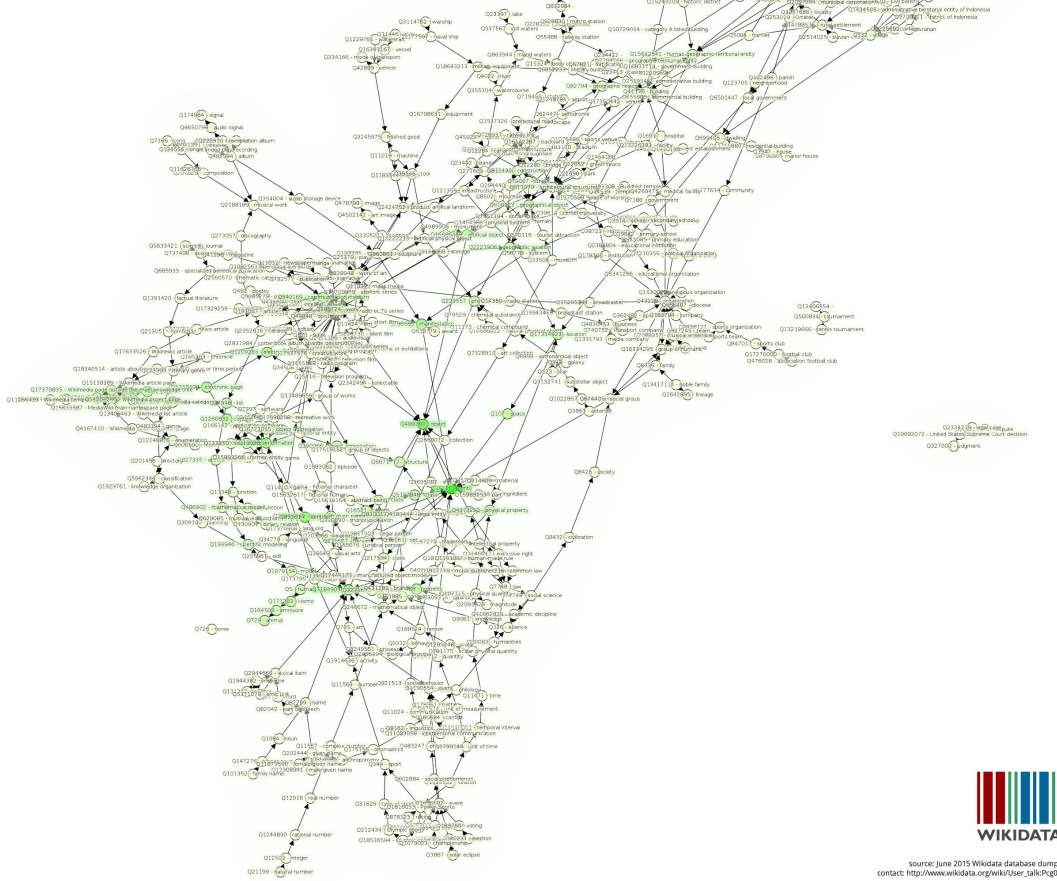
https://www.wikidata.org/wiki/Wikidata:Showcase_items

Wikidata Subclass Taxonomy

0 instances of 13 million instances of

Wikidata items with subclass of r/n relationships. Only classes with greater than 5000 cumulative instances of are shown, limiting the graph to 0.2% of the total 210000 classes on Wikidata. Cumulative instance counts are calculated as the sum of all subclass instances of for any given class.

Note that there are not any widely followed methods for assembling the taxonomy (cf. Wikipedia Categories) and although most subclasses make sense in isolation, in the wider view however holes and unorthodox relationships can be spotted. Additionally, there are alternative taxonomy systems alive within Wikidata, including the biological taxonomy, that are not effectively represented by this graph (See Horse (q916) in the bottom left, which managed to make the graph as a leaf-level class anyway largely because of use of prominent non-biological subclasses including rice horse (q196262) and horse breed (q196262).)



<http://bit.ly/2eDMyPi>

<https://tools.wmf.org/hay/prop/browse/>



WIKIDATA

source: June 2015 Wikidata database dumps
contact: <http://www.wikidata.org/wiki/User:Pg01>

Quality processes in Wikidata

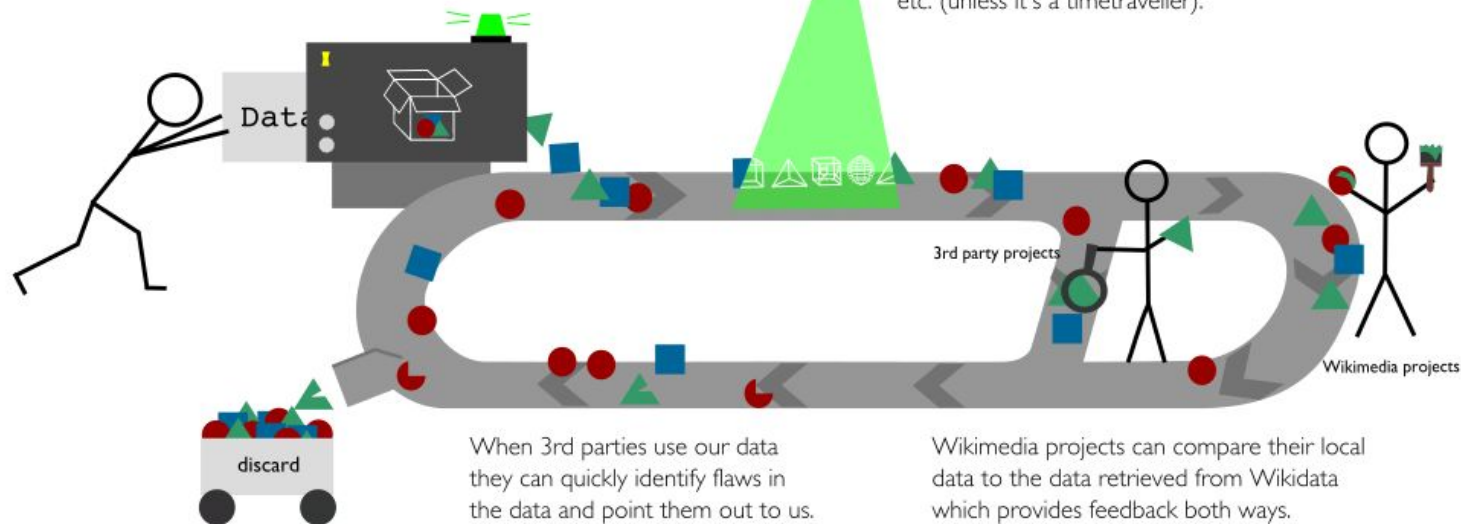
Here are the different processes we use to maintain and improve data quality over time. These are the ways in which this is achieved.



New data is compared to existing data and thus differences can be identified.

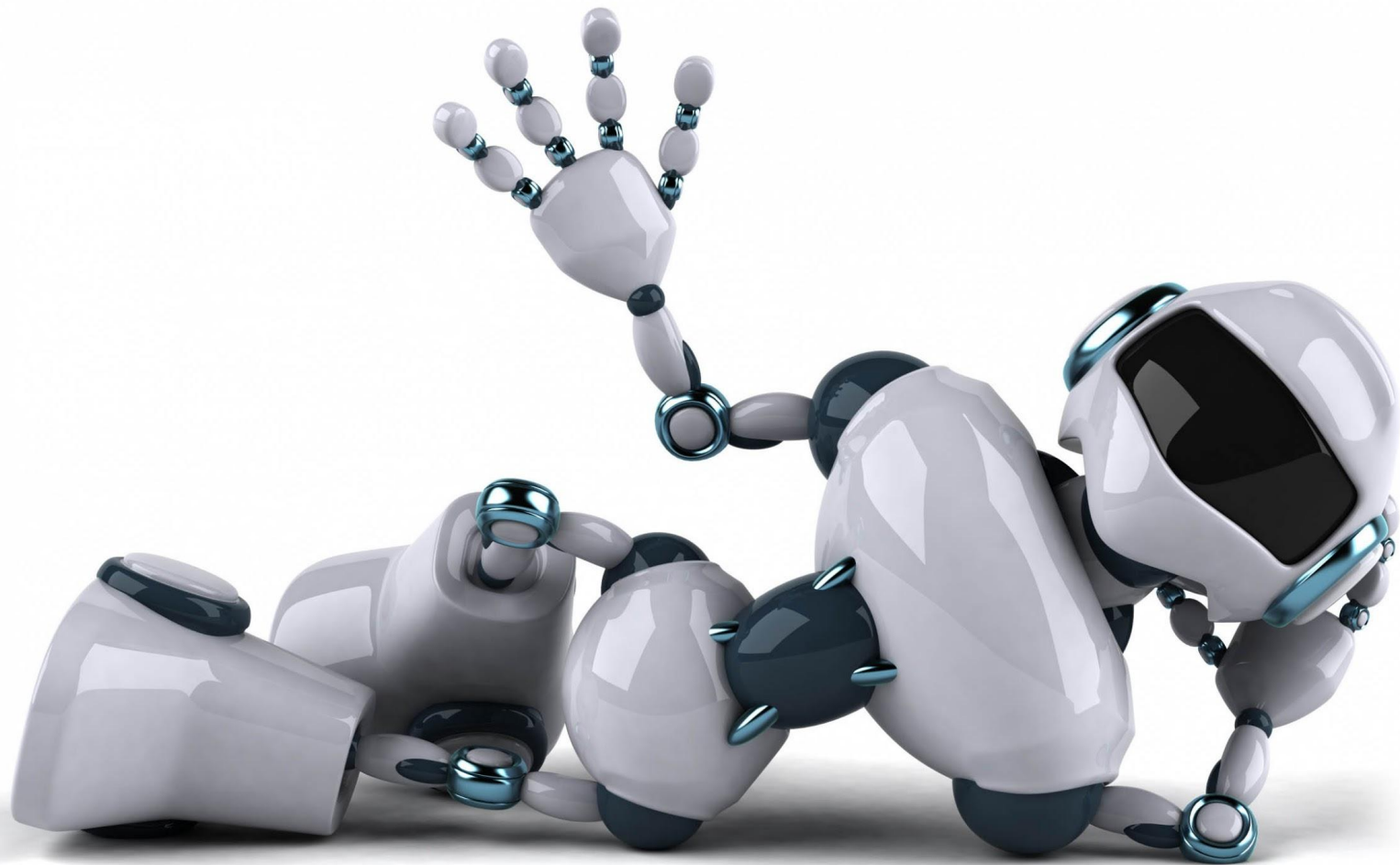


Once inside, all data is checked with a tool called **WikibaseQuality**. It checks for constraint violations of properties and items. For example a birth date must come before a date of death etc. (unless it's a timetraveller).



When 3rd parties use our data they can quickly identify flaws in the data and point them out to us.

Wikimedia projects can compare their local data to the data retrieved from Wikidata which provides feedback both ways.



**Quali sono le più grandi città del
mondo con un sindaco donna?**



**Quali sono le università dove hanno
studiato gli autori dei principali
linguaggi di programmazione?**



**Quali opere d'arte hanno come
soggetto la Tour Eiffel?**



COLLEGATA

Legend

Cross Domain

Geography

Government

Life Sciences

Linguistics

Media

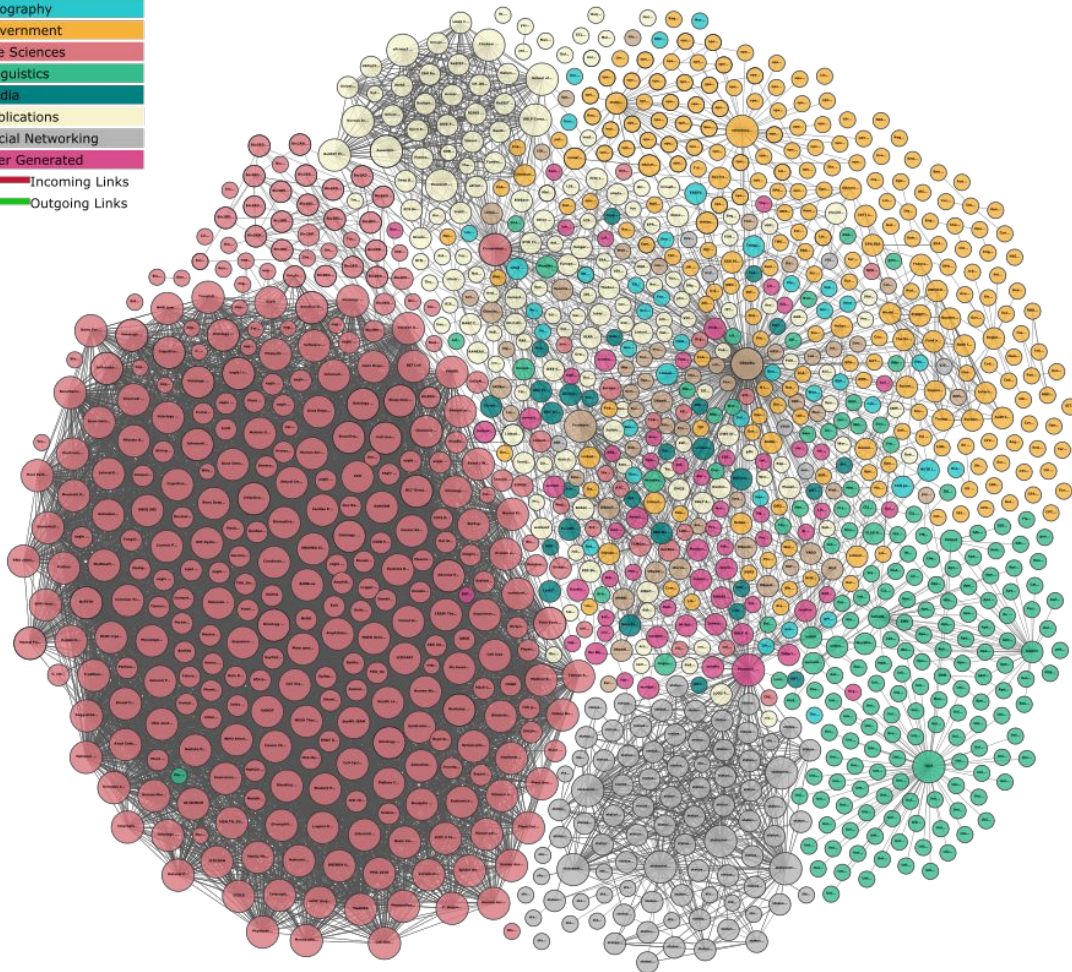
Publications

Social Networking

User Generated

Incoming Links

Outgoing Links





```
1 #Public sculptures in Paris
2 SELECT DISTINCT ?item ?Titre ?createur (year(?date) as ?AnneCreation) ?image ?coord
3 WHERE {
4   ?item wdt:P31/wdt:P279* wd:Q860861.           # sculpture
5   ?item wdt:P136 wd:Q557141 .                 # genre : art public
6   {?item wdt:P131 wd:Q90.}                   # ... située dans Paris
7   UNION
8   {?item wdt:P131 ?arr.}                      # ... ou dans un arrondissement de Paris
9   ?arr wdt:P131 wd:Q90. }
10  ?item rdfs:label ?Titre filter (lang(?Titre) = "fr"). # Titre
11
12  OPTIONAL {?item wdt:P170 ?Qcreateur.}       # créateur/créatrice (option)
13  ?Qcreateur rdfs:label ?createur filter (lang(?createur) = "fr") .}
14  OPTIONAL {?item wdt:P571 ?date.}           # date de création (option)
15  OPTIONAL {?item wdt:P18 ?image.}           # image (option)
16  OPTIONAL {?item wdt:P625 ?coord.}          # coordonnées géographiques (option)
17 }
```

Press [CTRL-SPACE] to activate auto completion. Data last updated: 12:26:01 PM GMT+1, Mar 18, 2016

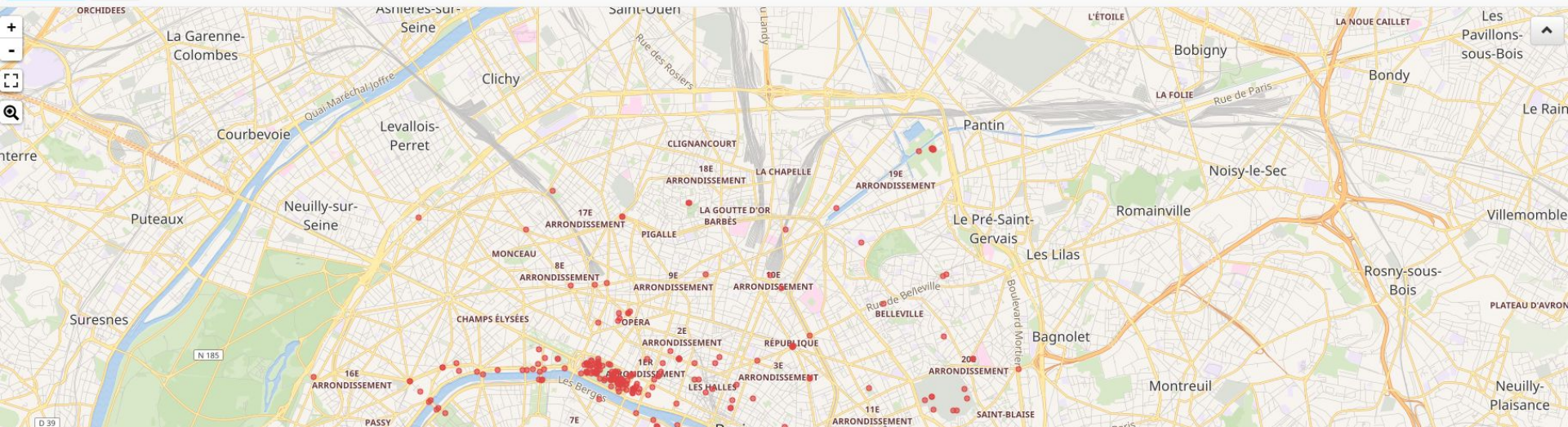


▶ Execute Clear 556 Results in 778 ms

Display

Download

Link





<https://query.wikidata.org/>

Quali sono le più grandi città del mondo con un sindaco donna?



<http://tinyurl.com/zhnlof5>

**Quali sono le università dove hanno
studiato gli autori dei principali
linguaggi di programmazione?**



<http://bit.ly/2dVFyOU>

**Quali opere d'arte hanno come
soggetto la Tour Eiffel?**



<http://bit.ly/2eQejTB>

Imagine a world in which
everyone can freely share in
the sum of all knowledge.

Imagine a world in which
everything can freely
share in the sum of all
structured knowledge.