

F  
129  
.B8B18



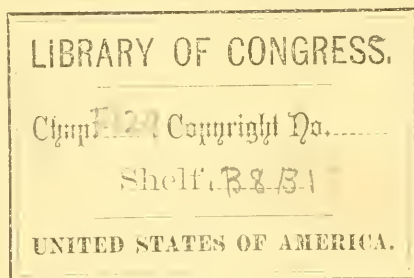
COMPLIMENTS OF  
BUFFALO REAL ESTATE EXCHANGE.

SEE PAGES 8, 46 AND 93.

# HOPKINS & HUMBURCH, REAL ESTATE BROKERS

Room 2, Austin Building. - BUFFALO, N. Y.

NELSON K. H  
WALTER G. H  
FRED C. HUM



PHONE 893.

CHOICE RESIDENCES A SPECIALTY.


~~~~~  
DEPEW, TONAWANDA AND NIAGARA FALLS ACREAGE.

SEND FOR LIST.

~~~~~

REFERENCES: ANY BANKING HOUSE IN BUFFALO, BUFFALO MERCHANTS' EXCHANGE, BUFFALO REAL ESTATE EXCHANGE.

# D. F. CALLAHAN, THE ELECTRIC INVESTOR



---

---

INVESTORS wishing to purchase the choicest acreage IN or around BUFFALO will find it to their advantage to CALL AND SEE ME before buying elsewhere. Acreage north of the Park fronting Delaware and Elmwood Avenues a specialty. . . . .



LOANS NEGOTIATED.

---

---

REFERENCES: The Queen City Bank of Buffalo and all Commercial Agencies.

---

---

D. F. CALLAHAN, 404 Main St., BUFFALO, N. Y.

THORNE & ANGELL,  
REAL ESTATE

No. 15 NIAGARA ST.,

o \_\_\_\_\_ BUFFALO, N. Y.

TELEPHONE 997.



WE SELL INSIDE PROPERTY ONLY.

# BUFFALO

1893

A DESCRIPTIVE AND STATISTICAL SKETCH

..... OF THE .....

## CITY OF BUFFALO AND ITS SUBURBS

BY GEORGE M. BAILEY,

AUTHOR OF

"BUFFALO, THE CITY OF DESTINY,"  
..... 10,000 COPIES.

"TEN YEARS IN BUFFALO,"  
..... 500,000 COPIES.

"ILLUSTRATED BUFFALO,"  
..... 90,000 COPIES.

"GREATER BUFFALO,"  
..... 100,000 SOLD TO AUG. 1.

SUPPLEMENTED BY A CLASSIFIED LIST OF ITS

WHOLESALE, JOBBING AND MANUFACTURING INTERESTS, WITH  
NAMES OF BANKS AND MONETARY INSTITUTIONS, RAIL-  
ROADS, PRINCIPAL HOTELS AND DAILY NEWSPAPERS.

.... AND ....

MEMBERS OF THE BUFFALO REAL ESTATE EXCHANGE.

Entered according to Act of Congress, in the year 1893, by ROWLAND & Co.,  
in the Office of the Librarian of Congress at Washington.

LIBRARY OF CONGRESS  
JUL 8 1893  
WASHINGTON  
302604

## PREFACE.

---

We take pleasure in presenting "Buffalo, 1893," to the public, feeling assured that the data it contains will prove valuable to any one desiring full information concerning this city. Pains have been taken to make the classified lists commencing on page 41 show the extent and variety of Buffalo's interests, while the sketch from the pen of Geo. M. Bailey, Esq., clearly states the marvelous progress made by the city during the past few years and outlines the rapid growth that is sure to follow in the next decade.

We desire to call particular attention to the announcement of the Real Estate Exchange on page 46, and to thank our patrons who have assisted by their contributions in the publication of this work.

Anyone desiring a copy of "Buffalo 1893" will receive same by applying to the Secretary of the Real Estate Exchange.

Respectfully,

THE PUBLISHERS.

BUFFALO, N. Y., June 21, 1893.

# INDEX TO ADVERTISEMENTS

PAGE.	PAGE.
Ahrhart Chas.....opp Real Est	Lincoln Geo I.....opp Real Est
Am Ex Bank of Buffalo.....back cover	Little F P Elec Cons & Supply Co 66
Bain D..... 82	McDonnell & Sons ..... 64
Baker H H & Co..... 72	McMichael G H.....inside back cover
Bidwell Clinton..... 66	Mackellar, Smiths & Jordan Fdry 68
Booth Geo M..... 58	Marine Bank ..... 42
Bork Wm H ..... 74	Mersman F..... 76
Bradley C W..... 78	Mey F H C..... 52
Brunswick-Balke-Collender Co..... 84	Morgernstern J ..... 84
Buffalo Barrel Co..... 62	National Eng Co ..... 78
Buffalo Brick Mfrs Assoc..... 50	Oakes F S..... 46
Buffala Electrotpe & Eng Co..... 48	Oatman Le Roy S Produce Co..... 54
Buffalo Fruit Auction Co..... 82	Onink C J & Co..... 88
Buffalo & Medina Cut Stone Co..... 72	Provoost's D Sons & Co..... 72
Butts & Adams ..... 62	Purviance L K.....opp Real Est
Callahan D F..... 3	Queen City Bank ..... 44
Delahunt E & Son ..... 80	Queen City Eng Co.....opp Pumps
Delaney Forge & Iron Co..... 80	Queen City Mfg Co..... 88
Domedion A ..... 82	Reeb M A..... 74
Dufner B..... 84	Richman & Taylor..... 60
Fox & Fox ..... 70	Rieman Henry..... 74
Fox & Holloway ..... 60	Ross J H..... 64
Gentner V Jr.....opp inside back cover	Sanford Bros.....opp Wire Works
Green & Wicks.....opp 41	Schack W G..... 68
Hart H L..... 84	Scheuneman A..... 82
Hatch M P..... 80	Schwartz L & Co..... 56
Hein F X.....opp inside back cover	Sikes F G & G R..... 58
Hill Bros.....back cover	Smith Premier Type Writer.....opp 41
Hopkins & Humburch..... 2	Starbird G B ..... 88
Howard Iron Works ..... 56	Strauss & Rogers ..... 74
Keasby R A..... 76	Thorne & Angell..... 4
Kruse H W..... 88	Tift Geo W Sons & Co...inside back cov
Lang G..... 76	Tilden J H..... 74
Lavery W..... 70	Williams H & Co ..... 84
Lee James .....opp Pumps	Yost Type-writing Machine Co..... 70

# BUFFALO REAL ESTATE EXCHANGE

---

*HENRY S. HILL, President.*

*GEO. H. SICKELS, JR., Secretary,*

*WALTER G. HOPKINS, Vice-President.*

*T. J. MAHONEY, Treasurer.*

*ELMER C. BARNES, Ass't Secretary.*



## DIRECTORS:

*HENRY S. HILL.*  
*WALTER G. HOPKINS.*  
*GEO. H. SICKELS, JR.,*

*T. J. MAHONEY.*  
*BYRON P. ANGELL.*  
*VAN HORN ELY.*

*FRANK L. DANFORTH.*  
*HARRISON D. FOLINSBEE.*  
*EDWARD C. BURKHARDT.*

---

16 to 22 Erie Street, BUFFALO, N. Y.

(FOR LIST OF MEMBERS SEE PAGE 93.)



# SKETCH OF BUFFALO.

BY GEO. M. BAILEY.

People who marvel at the wonderful growth and development of Buffalo might as well be astonished because the man who yesterday was a beardless youth to-day wears a heavy beard. The whiskers were there all the while, but it wasn't time for them to appear. It does no good now to shave them off. Nature is pushing the whiskers. When the proper time came, this hidden proof of manhood and power came forth.

Buffalo "had no whiskers" until 1880. The city was in its callow youth, exhibiting all the traits of provincialism. Everyone knew everybody, and the few progressive citizens did not have hold of things. But Buffalo was budding into manhood. Nature had given the city the elements of a metropolis, and these elements were breaking through the skin. It will do no good now to shave off this growth. Nature is pushing the whiskers!

What these elements were that forced themselves into view, most of us know. There are many things which Buffalo has in common with many other American cities. But no city equally possesses so many of these potent elements of greatness, so permanently established. This is not a general statement, but a particular one. Study any growing American city and you will find three or four superior advantages for trade and commerce operating to cause its growth. Study Buffalo and you will find these causes by the score. We can only touch upon the better known causes in a business man's book like this. The lesser known but potent causes we will study more at length.

Everyone knows our natural advantages of climate, situation, soil, water supply, drainage and food-producing environs. These are superior possessions, but of common observation. Our commercial growth need not be shown by tiresome statistics. But a few figures will perhaps pin your attention more closely to these pages and win you to a greater loyalty to Greater Buffalo. Therefore let us take up an entirely new study of Buffalo's growth, under the head of

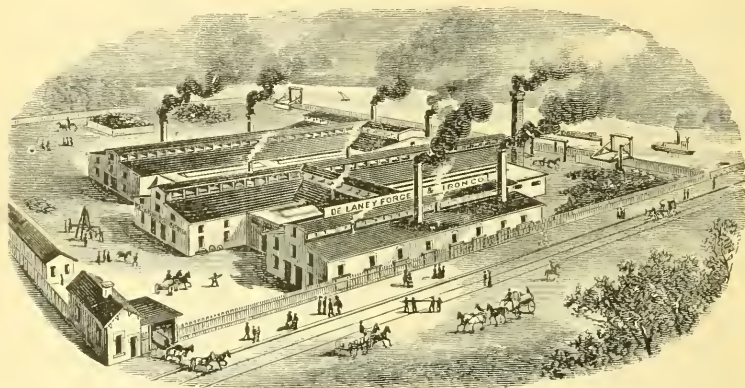
## OUR INDUSTRIAL CAPITALIZATION.

A corporation is simply a co-partnership wherein many persons join together to accomplish a purpose, requiring money or labor, and each partner's interest in the business is represented by shares. The receipt issued to each partner showing the amount of the business owned by him is called a certificate of stock, and is saleable the same as any other property.

The popularity of this method of doing business is increasing. In Buffalo the corporation plan is well understood, especially in the purchase and sale of

## SKETCH OF BUFFALO.

land and in manufacturing. Every year millions of dollars are invested in Buffalo, in shares of these business corporations, and the actual volume and extent of the business is a new index of the city's wonderful development. The writer has made a very careful examination of every document on file in the office of the County Clerk bearing upon this subject for the ten years from 1883 to 1893, including articles of incorporation or association, supplementary certificates and annual reports, and the result is very interesting.



THE DE LANEY FORGE AND IRON CO.'S WORKS.

Classifying these corporations into producers and non-producers, or civil and beneficiary organizations, he finds that the total number of corporations of all kinds formed in the decade was 1,195, with a total capital stock of \$46,347,416.00. Of this number 1,033 were for business and 162 were social clubs, church societies and beneficiary organizations. But not all of this vast capital, represented by shares of stock, was paid for in money or property. Many of the corporations were formed to float visionary schemes, and did not live. Others died of mismanagement or neglect. It is safe to say that many of the companies have all of their shares paid in, but have neglected to file a certificate to that effect as required by law. Judging only by the public records, the

### CAPITAL STOCK

of the companies which did not survive is vast, and is a reflection upon our laws, which allow bodies of individuals to attempt to do business and incur debts upon a fictitious showing of capital. It also illustrates an American characteristic—love of big figures. Until all business corporations are sub-

*SKETCH OF BUFFALO.*

jected by the State to the same scrutiny that banks now receive, shares of industrial corporations will not find a popular sale outside of those immediately employed by or in touch with the books and affairs of the corporation. Beyond this circle satisfaction with an investment in an industrial corporation rests mostly upon confidence felt toward the personal integrity of the managers. Few stockholders avail themselves of their statutory right to inspect at any time the books of the companies whose shares they hold.

Under the present general statute a new corporation must first file a certificate stating that 10 per cent. of its proposed capital stock has in good faith been subscribed for, and 10 per cent. of that amount paid into its treasury. Before commencing any business it must certify that one-half of its capital stock has been subscribed for, and 10 per cent. of that proportion paid in. At the end of one year one-half of the total capital stock must be paid in, and at the end of two years the whole amount must be paid in. Upon filing the first certificate a State tax of one-eighth of one per cent. of the whole capital stock must be paid to the State Treasurer. If this has been complied with in the case of Buffalo corporations, this tribute paid by our city to the State has amounted to the large sum of \$59,934.27 since 1883.

The following table shows the number of corporations formed each year, with the amount of capital stock attempted to be sold, the amount of increase of capital stock found to be necessary by the growth of previously existing corporations, and the amount of capital actually fully paid in by all corporations. In this last column belong those who have paid in full but have not certified to the fact:

YEAR.	CAPITAL STOCK SUBSCRIBED.	INCREASE BY OLDER COMPANIES.	FULL PAYMENT OF CAPITAL STOCK.
1883.....	\$ 1,150,000	\$ 150,000	\$ 362,000
1884.....	4,201,700	75,000	505,000
1885.....	4,800,100	160,000	1,454,500
1886.....	3,223,600	663,000	1,415,000
1887.....	5,919,500	939,500	2,006,500
1888.....	3,910,700	351,000	998,700
1889.....	3,349,000	594,000	1,896,500
1890.....	3,927,400	2,081,000	3,036,200
1891.....	5,892,266	2,484,000	2,015,800
1892.....	9,973,150	1,032,642	6,252,500
	\$46,347,416	8,531,142	\$19,942,700

State tax, \$57,934.27.

## SKETCH OF BUFFALO.

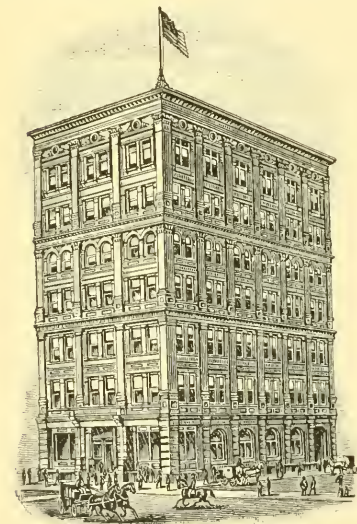
It is safe to say that one-half of all the subscribed capital stock of Buffalo corporations has been paid in.

The above figures tell a very interesting story. The relative amount of paid up and of increased capital invested each year is flattering to Buffalo's future, and shows itself directly in increased population. It is estimated by federal census experts that for each thousand dollars actually invested in manufacturing, one workman is employed, and for each one so employed four others are dependant. It is, therefore, simply a matter of arithmetic to deter-

mine the growth of Buffalo from its industrial capitalization. True, some of the corporations were non-employing land companies, but their proportion could quickly be determined. They are fully offset by the immense amount of capital invested in Buffalo business enterprises during the ten years by private individuals and firms, and by corporations organized under the laws of other states and not of record here.

### VOICES IN THE AIR.

The development of our city not directly reflected by a study of its industrial capitalization can perhaps best be shown by quoting from "Greater Buffalo," by the writer of this sketch: "A new and golden era is certainly dawning upon Buffalo. Today, through all of her arteries of trade and commerce new blood is flowing, indicating a larger life and a quickening strength. Her



BUILDERS' EXCHANGE.

prominent lines of development are scrolls of prophecy that foretell of Greater Buffalo. These lines shall cease to ascend when Pennsylvania's miners cease to labor; when the forests of the upper lake regions are felled; when the iron and copper of the Lake Vermillion and Superior regions is all taken out; when the vast wheat fields of the Northwest are barren, and when cattle shall no longer graze upon the boundless prairies—for all of these products of the labor of millions of men pay tribute to Buffalo.

### THE TRIBUTE OF SMOKELESS FUEL.

"It seemed very strange, a few short years ago, to use natural gas, piped 90 miles to Buffalo. Little did we dream, then, of the inexhaustible supply of

## SKETCH OF BUFFALO.

---

this dustless, smokeless fuel that lay at our doors. But we quickly accustomed ourselves to its use, and now the vast Canadian field, with its scores of gas wells of tremendous pressure and volume, is connected by pipe lines to Buffalo, with new wells drilling daily, and great stores of the fuel just discovered under our suburb of West Seneca. Competition will soon cheapen this now necessary article, especially when cheap electric power comes in, to challenge gas and coal. Natural gas is helping Buffalo greatly, by adding to her attractiveness as a residence city, and the three present sources of supply, with rival companies already in the field, promise, soon, fuel cheaper than coal for factories.

### THE TRIBUTE OF THE CATARACT.

“There will be no more wonder, no more discussion, no more opposition to the introduction of electric power from Niagara, a few months hence, than there was when natural gas knocked at our doors for admission. The first thing we know this electricity will be here, lighting our homes and streets, driving countless factory wheels, running a hundred miles of street railroad, and performing a thousand labor-saving services. We little dream of the transformation that is to be wrought in Buffalo during the next decade, by the tunnel power. The whole Niagara frontier will be changed.

“Will there not be an exodus to Buffalo when the proclamation is made that Niagara power can be bought here for one-fourth the cost of steam-power elsewhere; for one-half the price of cheapest water-power elsewhere; when it is known that the source of the new energy is in the everlasting cataract, and its permanence is in the five great inland seas? Will not thousands of men who make manufacturing their pursuit flock to this new Eldorado? What was it that determined the location of the monster mills at Minneapolis, the million looms at Lowell and Paterson? What called the great paper mills to Hoyoque, Lowell and Lawrence? It was cheap water-power—nothing else. And from each of these mills now comes the cry: “Our water is giving out. The dry season is growing longer every year, as the forests are being cut down at the headwaters of our streams, and we must soon look elsewhere for permanent power.” Where will they look? Not all to Niagara Falls, though she will get many industries. Pulp mills, that need both clean water and power will go there. But hundreds of factories in which cost of power is a vital point in production, also depend as greatly upon superior transportation facilities, good banking accommodations, and nearness to kindred industries, and these will be glad to pay a trifle more for Niagara power delivered in Buffalo, in the heart of all of these other great facilities, than to go to a smaller city. Buffalo, then, will be not only the mistress of an inland empire, by reason of her lake commerce, but she will also be the Manchester of America, by reason of her cheap raw material, fuel and power.

## SKETCH OF BUFFALO.

### HOW WESTERN GRAIN BUILDS BUFFALO.

“A comparison of quantities with areas enables the mind to take in larger sums better than when the quantities are stated in abstract figures. Hence, when we read that Buffalo’s grain imports for the year just closed (1892) were 184,000,000 bushels, we do not realize that this is a larger quantity of grain than the *combined* annual average grain crops of England, Ireland, Wales, Canada, Egypt, Bavaria, Holland, Greece, Sweden, Norway and Switzerland; that this one year’s grain receipts would fill a bin 10 feet wide, 5 feet deep and 750 $\frac{1}{2}$  miles long!



BUFFALO LIBRARY BUILDING.

“There are millions of acres of wheat lands in the Great West and Northwest that never have felt the plough-share. What will be Buffalo’s grain receipts when these vast areas are added to the lands now producing grain?

### THE WORLD COMES HERE FOR SHEEP.

“Buffalo is the largest sheep market in the world. Some idea of what this fact has to do with the growth of this city, aside from the slaughtering of the animals, is found in knowing that one establishment alone at East Buffalo tans 400,000 sheep skins a year and from the pelts takes more than 1,000,000 lbs. of wool.

## SKETCH OF BUFFALO.

---

### A PROCESSION OF PORKERS.

“To show how the bristly porker assists in building up Buffalo, we should be told that if the hogs received last year had started to walk here in single file, close together, the procession would have been more than 3,503 miles long. Most of this vast herd of swine was slaughtered and packed in Buffalo, giving employment to thousands of men, and putting hundreds of thousands of dollars into circulation.

### THE COAL MINERS' TRIBUTE.

“Buffalo's coal supply, and her shipments, come from the vast Pennsylvania fields. If you are familiar with coal mines you know that miners work in leads or tunnels, following the vein of coal. Down in the dark chambers of these mines a veritable army of brawny, begrimed toilers are picking and blasting out this coal for Buffalo. And this army is just as surely building up Buffalo as are the masons and bricklayers on our new million-dollar bank building, because every ton they take out has to be handled here, and the land, machinery, coal chutes and pockets to handle this business represent an investment of nearly \$10,000,000, and employ several thousand men.

“Can you imagine how big a hole in the ground these miners must dig to get out last year's Buffalo coal? Supposing the vein of coal was six and a half feet thick, and that the tunnel was four feet wide, it would have to be 564 miles long to contain the 2,366,895 tons of coal shipped from Buffalo last year by lake, not counting the city's own enormous consumption, nor the shipments out from Buffalo by rail and canal. These items would doubtless add a hundred miles to the tunnel, or make it reach from Buffalo to Hudson Bay, or nearly to St. Louis, in an air line. And last year was not much of a year for coal, either, for Buffalo.

### THE TRIBUTE THE FORESTS PAY TO BUFFALO.

“During the past 15 years the lumbermen have made Buffalo and her little suburban port of Tonawanda the largest lumber market in the world. The combined lumber receipts of Buffalo and Tonawanda last year (1892), if cut into boards 12 inches wide and an inch thick, would reach from the earth nearly to the moon. The bulk of Tonawanda's lumber interest is owned by Buffalo men.

### OUR WONDERFUL INCREASE IN WEALTH.

“The assessors say that real property in Buffalo is now increasing in value at the rate of \$7,000,000 a year, and upon this basis they fix the amount of the annual tax levy. All the banks in Buffalo, today, after many years of industry and frugality, have together accumulated a capital and surplus aggregating \$7,000,000.

## SKETCH OF BUFFALO.

“This fact about Buffalo’s rapid increase in wealth, put in another way, for better comprehension, means that if the reader had borrowed this \$7,000,000 at 6 per cent. interest, it would cost him \$47.40 every hour for its use, counting 24 hours a day and 365 days a year. Is Buffalo prospering, if her annual increase in real property means a sum so vast as this? And the asses-



ERIE COUNTY SAVINGS BANK.

sors do not give the actual value of real estate by fully one-third, nor the personal property by fully \$100,000,000.

“Something happened in 1877, as you will see by the diagram. A new law went into effect, calling for a new appraisal, and as a result the total value jumped from \$39,968,105 to \$111,995,955. Taxpayers made loud complaints. The newspapers championed them. The Mayor, in his annual message, demanded a reduction, and it was forced down to \$88,876,545 in 1878. Since that time it has been climbing up rapidly, but steadily. Yet in spite of this



## SKETCH OF BUFFALO.

fact our average tax rate has been lower than that of any other American city of our size. The total value of real and personal property in 1892, by the assessors' approximation, is \$186,957,350. If a man had this wealth in money invested at 6 per cent. his income would be \$21.19 a minute.

"This annual increase of \$7,000,000 is not made by speculators. It is real value, and does not come without cause. Land without people has no value. If one man has land, is forced to sell, and there is but one buyer, the buyer makes the price. If there are two or more buyers the seller makes the price. Population makes land values. If Buffalo is adding to her population every year a city as large as Lockport, while her limits remain the same (about 22 square miles), it stands to reason that there must be more people who wish to buy land than of those who have land for sale. Hence the increase in value, which is made permanent by new fixtures upon the land, in the way of houses and other buildings that produce rent, as against vacant land that usually brings no income, but is a tax-eater. The amount of substantial building in Buffalo during the past few years has been something tremendous, and it is to be regretted that there is no accurate method of getting at its value.

"The increase in value of real and personal property in Buffalo, as assessed in 1882 and 1892, shows an average gain of  $9\frac{1}{2}$  per cent. a year during that decade—a pretty safe investment for anybody's money. We are the second largest live-stock and probably the second largest horse market in the world.

### POPULATION CONFIRMS STORIES OF TRIBUTE.

"The imperfect Federal census of 1890 showed that Buffalo had increased  $66\frac{1}{2}$  per cent. in population during the previous decade, which was a growth three times more rapid than that made by New York City during the same period. The 100,530 people added to Buffalo from 1880 to 1890 would of themselves make a city as large as Denver or Indianapolis, or Allegheny, Pa., or of our own proud and prosperous capital of Albany! An analysis of the city directory shows that during the first years after 1880 our annual increase averaged about 10,000, while the latter years showed it to be at the rate of 14,000. But the directories for 1890 and 1891, and sure indications for the present year (1893), show that our average annual increase now is more than 17,000, which is the same as to say that there is dropped down into our midst every 12 months a city as large as Lockport or Jamestown, N. Y., or Concord, N. H., or busy Hamilton, O. In February, 1892, an official State census was taken, showing a growth of 30,000 inhabitants in the twenty months between the taking of the Federal and State enumerations.

SKETCH OF BUFFALO.

---



VIEW UP MAIN STREET.

## SKETCH OF BUFFALO.

### INCREASE IN POPULATION BY DECADES.

1800 to 1810 (first Federal census).....	1,508
1810 to 1820.....	587
1820 to 1830.....	6,558
1830 to 1840.....	9,560
1840 to 1850.....	24,048
1850 to 1860.....	38,868
1860 to 1870.....	36,585
1870 to 1880.....	37,410
1880 to 1890.....	<b>100,330</b>

“These facts should make owners of Buffalo real estate feel very well satisfied with their investments. It ought, also to bring to Buffalo the money money which has heretofore sought investment in Denver and other “phenomenal” towns, through ignorance of opportunities existing right here in our midst for equally profitable and far safer investments. Buffalo is a “phenomenal town” beyond comparison with any woolly western upstart. Invest your money here, using ordinary common sense in placing it, and you will make money. Our city limits can stand more suburban stretching in some directions, though at the eastern line, several years ago, population spilled over into the country towns. Our northern and western boundaries will soon be lost among pretty streets and homes.

### OUR PROPHECIES OF GREATER BUFFALO.

“The writer has carefully analyzed the annual reports of each department of our city government, as far back as they are obtainable, and it proved that growth-charts could be made showing the rapidity with which our paved streets, sewers, water-mains, and other improvements have been put in, to keep pace with this wonderful advance in population and prosperity; also showing that in the provision of schools and fire and police protection the growth has been equally marked. Churches have multiplied as cottage roofs increased in our suburbs. Our vital statistisc show a wonderful increase of births over deaths, and in other ways prove with certainty the uniform healthfulness of our situation. Our homes receive pure health-laden air and pure water from the lake, and our topography permits of perfect drainage, especially in the residence sections.

“The voice of the postoffice—that institution which, better than any other, feels the daily pulse of the city—cries out to Greater Buffalo the most prophetic greetings of all. She not only tells that there was an increase of 287 per cent. in the number of pieces of mail matter handled between 1880 and

SKETCH OF BUFFALO.



VIEW ON NORTH DIVISION STREET.

## SKETCH OF BUFFALO.

1890, but that this phenomenal ratio has kept on increasing throughout 1890-91, and up to date. The total postoffice receipts of Buffalo for 1891 were \$552,342.93, which was a gain of \$60,513.69 over the previous year. There was also a great increase in our money-order business, the total volume of which was \$2,256,840.35 last year—a sum that would take a man eleven years and ten months to count in silver dollars, picking up \$1 every minute, and working ten hours a day. The city's mail was distributed by 36 carriers in 1880; to-day it keeps 116 carriers hustling. Seven new banks have been born in our midst during the past eighteen months, making our total possession nineteen. New factories are springing up almost daily in our suburbs, the most notable of these being the big copper smelting works of the Calumet & Hecla Mining Co, owners of the richest copper mines in the world. This plant will cover fifteen acres of laud on the Niagara river at Black Rock, and will cost several millions of dollars. The New York Central Railroad Company, the Gould Automatic Car Coupling Company, and several allied corporations, aggregating millions of capital, have large manufacturing plants employing about 6,000 men, costing more than \$4,000,000, at a point in the environs of Buffalo, near Grimesville, to make it a model industrial city, like Pullman,

“The Clearing House reports show a wonderful gain in the volume of our annual banking business, and the last three years have seen our street railroad service not only doubled in mileage, but improved a thousand fold in speed and efficiency. New railroads are knocking to come in, though we have twenty-six lines entering here now, besides our lake and transportation facilities. It is a remarkable fact that a fleet bringing to Buffalo 2,000,000 bushels of grain, all arriving in one day, can be unloaded and re-loaded with coal inside of twenty-four hours.

“Should not all of these prophecies of Greater Buffalo inspire us with more pride in our queenly city, and with more determination to tell of her beauties abroad? Should they not knit together in a more aggressive body all of the commercial and trade forces of the city? Chicago is great because she is a unit. Buffalo might be greater than she is if her business men were more unitedly aggressive. There are men living who were born before Buffalo had any existence whatever, yet last year the famine-smitten Czar of Holy Russia received grain from Buffalo, a city with as many inhabitants as the Eternal City of Rome.

GEO. M BAILEY.

*SKETCH OF BUFFALO.*

---



ST. PAUL'S CHURCH.

SKETCH OF BUFFALO.

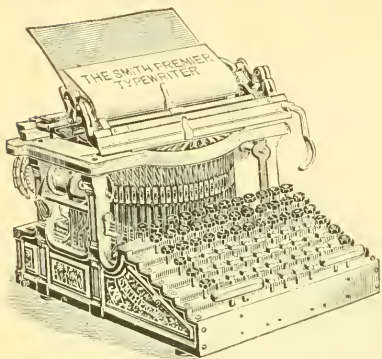
---



REAL ESTATE EXCHANGE BUILDING.

(Now in course of erection.)

*“Improvement the Order of the Age.”*



THE great reputation achieved by the SMITH PREMIER TYPEWRITER in the three years that it has been on the market, can be explained by the fact that it is a perfect writing machine and therefore has proved a boon to Typewriter users throughout the world.

Call and examine one before purchasing, or write for Catalogue and Price List.

## THE SMITH PREMIER TYPEWRITER CO.,

HOME OFFICE AND FACTORY,  
SYRACUSE, N. Y., U. S. A.

61 Niagara Street, BUFFALO, N. Y.

---

# GREEN & WICKS, ARCHITECTS,

110 Franklin Street,

- -

BUFFALO, N. Y.

◆ ◆ ◆ ◆

— ARCHITECTS OF —

*BANK OF COMMERCE BUILDING,*

*BUFFALO REAL ESTATE EXCHANGE BUILDING,*

*UNION CENTRAL LIFE INSURANCE BUILDING.*



# BUFFALO, 1893.

Following is a list of the Manufacturers, Wholesalers and Jobbers of Buffalo, arranged according to their principal business, together with the names of banks, railroads, transportation companies, and members of the Real Estate Exchange. (Names starred \* thus are inserted only when contracted for.)

## Acid Manufacturers.

Atlas Works, Elk c Babcock

## \*Acme Cement Plaster.

REEB M A, 599 Michigan (page 74)

## Agricultural Implements.

Abell Bros. 401 Ellicott

Loegler & Ladd, 564 Washington

Pitt Agricultural Works, 238 4th

Squier Geo L Mfg Co. 424 Niagara

## Alcoholene Manufacturers.

Buffalo Alcoholene Co, 4th nr Penn

## Ales and Porter.

(See also Brewers.)

Moffat H C. 143 W Morgan

## Alkali Manufacturers.

Sterling Mfg Co, Abbott rd nr Bridge

Ammonia Manufacturers — Aqua and Anhydrous.

AMMONIA COMPANY OF BUFFA-

LO THE, D Bain, Agent, 557 Main

(see page 82)

## \*Antique Finishing.

STRAUSS & ROGERS, 12 Perry

(see page 74)

## \*Architects.

GREEN & WICKS, 110 Franklin (see page 40)

## \*Architectural Iron.

KELLOGG IRON WORKS, 7 and 8 Builders' Exch

## \*Art Stained Glass.

QUEEN CITY STAINED GLASS WORKS, Geo M Booth, 67 Franklin (see page 58)

## Artesian Wells.

Woodring James, 265 Babcock

## Artificial Limbs.

Buffalo Artificial Limb Co, 9 W Eagle  
HERMANN HENRY, 605 Main

## Artists' Materials.

Buffalo Paint & Color Co, 609 Main

Deuther & Beck, 50 Niagara

Hoddick & Co, 620 Main

Josephs J & Son, 106 Main

Lorenz John, 70 Genesee

Pease F S, 12 W Mohawk

Post John C Sons, 52 S Division

Viergiver J & Co, 16 Swan

## Asbestos.

Asbestos Specialty M'g Co, 205 Main

Bickford & Francis Belting Co, 53 Exchange

Case W A & Son, Ohio c Washington

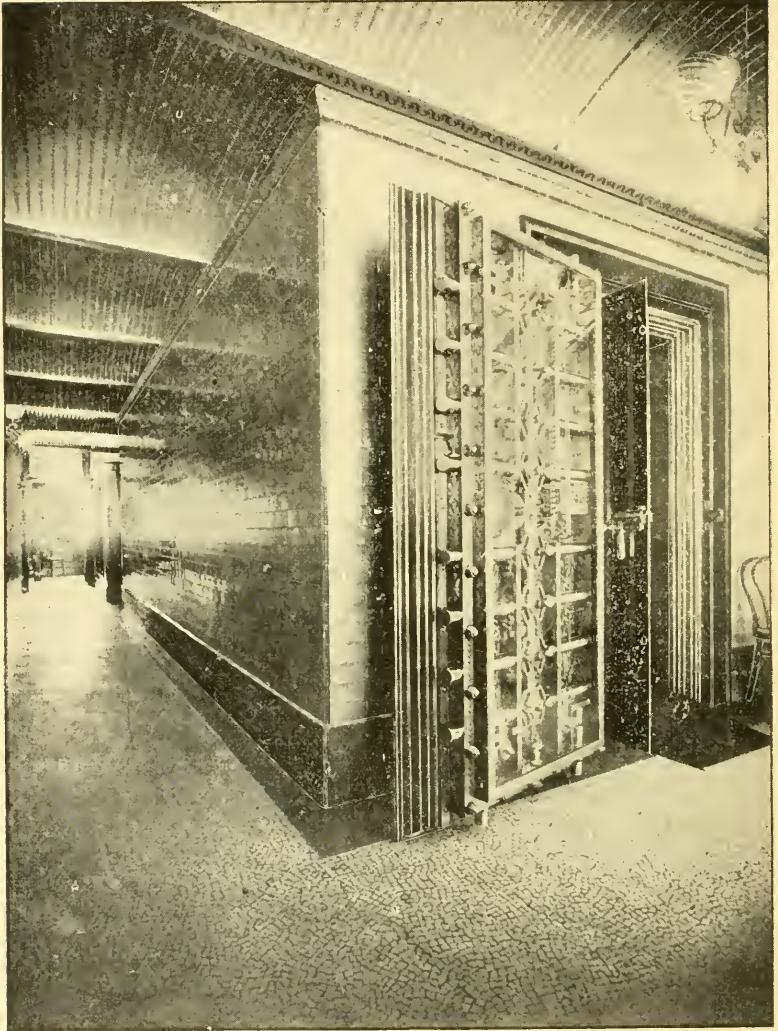
Guy Louis W, 31 Main

KEASBEY ROBERT A (m'nig), A. B. Penfield manager, 119 Franklin (see page 76)

## \*Asphalt Walks, Floors and Drives.

WILLIAMS H & C, 250 Pearl (see adv)

SAFE DEPOSIT DEPARTMENT



OF THE  
**MARINE BANK OF BUFFALO.**  
CAPITAL, \$200,000. (INCORPORATED 1850) SURPLUS, \$500,000.

**\*Assayer.**

The Vandenberg Laboratory of Chemical Industry, 31-34 Lewis Blk

**\*Auctioneers and Appraisers.**

**AHRHART CHARLES**, 14 E Eagle (see page opp. Real Estate)

**\*Auction—Fruit and Vegetable.**

**BUFFALO FRUIT AUCTION CO**, 104-106 W Market (see page 82)  
Consolidated Fruit and Produce Dealers' Auction Co, 164 Michigan

**Automatic Sprinklers.**

Manuf'rs Automatic Sprinkler Co, 54 Court

**Awning, Tent, Flag and Sail Makers.**

Buffalo Awning and Tent Co. 10 N. Division

Elliott James & Son, 388 Washington  
Ewing S F, 10 N Division  
Parish G H & Co, 11 Main

**PROVOOST'S D SONS & CO**, 18 to 26 Terrace (see page 72)

Rogers, Patrick, cor Swan and Washington

Stark Bros, 139 E Genesee

Williams Bros, 30 E Genesee

**Axle Manufacturers.**

Buffalo Steam Forge, H B Stimson, across Ohio st bridge on Buffalo river

**DeLANEY FORGE AND IRON CO**, 306 Perry (see page 80)

Gould Coupler Co, Austin, at Belt Line R R crossing

**Axle Grease Manufacturers.**

**QUEEN CITY MFG CO** (Uncle Sam's Favorite), 84 Terrace (see page 86)

Shining Light Mfg. Co, 90 Main

**\*Badges of All Kinds.**

**GENTNER V JR**, 141 Ellicott (see opp inside back cover)

**Bag Holders.**

**HAYMAN'S SELF-ADJUSTING BAG HOLDER**, 156-158 Terrace

**Bakers' Machinery.**

Ruger J W & Co. Chicago cor Perry

**Baking Powder Manufacturers.**

Cole Alexander, 48 Morton place  
Favorite Mfg Co, 1069 Niagara  
Granger & Co, Broadway cor. Ellicott  
Plimpton, Cowan & Co, 50 E Swan  
Queen City Chemical Co, 77 Main

**Banks and Bankers.**

(For Facts and Figures see Sketch )

(See also Investment Companies and Trust Companies.)

**AMERICAN EXCHANGE BANK OF BUFFALO**, 14-16 W Seneca (see back cover)

Bank of Buffalo, 236 Main

Bank of Commerce, 188 Main

Buffalo Commercial Bank, 24 W Seneca

Citizens Bank of Buffalo, 563 William City Bank The, 319 Main

Columbia National Bank The, 103 Seneca

Farmers and Mechanics Bank of Buffalo, 198 Main

German-American Bank of Buffalo, 440 Main

German Bank of Buffalo The, Main c Lafayette

Hydraulic Bank of Buffalo, Seneca c Hydraulic

Manufacturers & Traders Bank The, Main c W Seneca

**MARINE BANK OF BUFFALO THE**, 220 Main (see page opp)

Merchants' Bank of Buffalo, 208 Main  
Metropolitan Bank, 485 Main

Niagara Bank of Buffalo, 71 W Forest  
Peoples' Bank of Buffalo, 257 Wash

**QUEEN CITY BANK**, 347-351 Main (see page 44)

Third National Bank of Buffalo, 273 Main

Tucker Henry C & Co. 17 W Swan

Union Bank. 496 Main

**SAVINGS.**

Buffalo Loan, Trust & Safe Deposit Co, 449 Main

# QUEEN CITY BANK

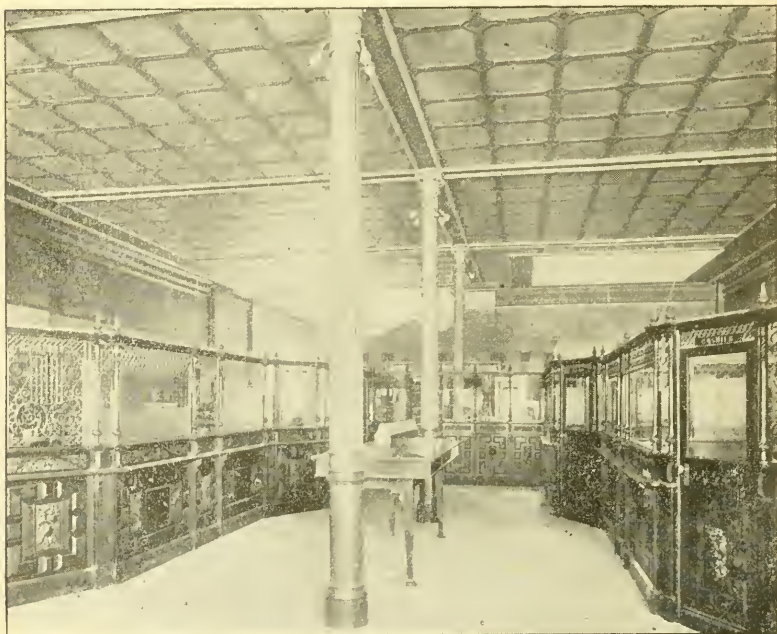
CAPITAL - \$600,000.

W. H. JOHNSON, PRESIDENT.  
D. CLARK RALPH, CASHIER.

F. C. M. LAUTZ, VICE-PRESIDENT  
WALTER H. JOHNSON, ASS'T CASHIER.

## DIRECTORS:

J. N. ADAM,	C. M. FARRAR,	F. M. INGLEHART,	F. C. M. LAUTZ,
S. S. SPENCER,	J. I. PRENTISS,	WALTER G. ROBBINS,	W. H. JOHNSON,
HIRAM WALTZ,	E. C. WARNER.	NATHAN WOLFF.	



## INTERIOR VIEW

Executors, Trustees of Estates, Religious and Benevolent Institutions, Individuals and Firms, will find with us a safe and convenient depository for money, and liberal and courteous treatment in all business relations. Collections made and promptly remitted for. Foreign drafts and letters of credit for use in all parts of the world. Interest paid on special deposits. We invite correspondence or personal interviews.

**BANKS AND BANKERS.**

Buffalo Savings Bank, Washington  
 c Lafayette  
 Empire State Savings Bank, 308 Main  
 Erie County Savings Bank, Main c  
 Niagara  
 Fidelity Trust & Guaranty Co, Erie  
 County Savings Bank Building  
 Western Savings Bank, Main c Court

**Bank Associations.**

Bankers' Association of Buffalo, W C  
 Cornwell secretary, 236 Main  
 Buffalo Clearing House, Hayen Build-  
 ing, Main c W Seneca

**\*Bar Fixtures.**

BERNHARD M J, 718 Jefferson  
 Hertkorn A & Son, 344 Oak  
 HEIN F X, 38 Elm, factories 41 Elm  
 and 35-45 Henry (see opp inside  
 back cover)

**Barbers' Supplies.**

DOMEDION ANDREW (only exclus-  
 ive house), 104 Broadway (see page  
 82)  
 Kayser Oscar, 463 Broadway

**Barrel Manufacturers.**

(See also Coopers.)

BUFFALO BARREL MFG CO, 1390  
 West av (see page 62)

**Barrel Machinery.**

Holmes E & B, 59 Chicago

**\*Barrel Elevators.**

MEY F H C, 64-68 Columbia (page  
 52)

**Basket Manufacturers.**

Kirkholder & Rausch, 49 Seneca  
 Kraebel Jacob, 35 Roeder  
 Rechin Christian, 36 Durrenburger pl  
 Rheinlaender Nicholas, 108 Lemon  
 Weber Jacob, 125 Rose  
 Weber Peter, 94 Lemon

**Batting Manufacturers.**

Buffalo Batting Mill, 214 Terrace

**BICYCLE TOOLS.****Bedstead Manufacturers.**

Buffalo Brass and Iron Bedstead Co,  
 105 Barton  
 McGrath & Bisgood, 88 Pearl

**\*Beer Cooler Manufacturers.**

Bernard M J, 718 Jefferson

**Beer Pump Manufacturers.**

Engel George, 705 Michigan  
 Holz Bernhard, 87 Maple  
 Meyer August (agt), 303 Broadway

**Bellows Manufacturers.**

Churchyard's Joseph Sons, 650 Clinton

**Belting Manufacturers and Dealers.**

Bickford & Francis Belting Co, 55  
 Exchange  
 Buffalo Rubber Co, 90 Pearl  
 Goodyear Rubber Co, 240 Main  
 Hoffeld, R & Co, 336 Washington  
 MEY F H C, (chain) 64 Columbia (see  
 page 52)  
 Revere Rubber Co, 74 Pearl

**Bicycle & Triecyle Manufacturers.**

Atherton & Funnell, 640 Linwood av  
 Buffalo Cycle Works, Kensington  
 Buffalo Wheel Co, Jewett av and N Y  
 C Belt Line  
 Bowen E N, 879 Main

CLINTON CYCLE WORKS, (Globe  
 Safety), Penseyres & Haberer,  
 Props, 114 Clinton

East Side Cycle Co, 417 Madison  
 Gibson & Prentiss Cycle Co 500 Wash  
 Martin H C & Co, 588 Main  
 M'NUTT RANDOLPH, 163 Swan  
 Pierce G N & Co, 8 Hanover  
 Pratt & Letchworth, 189 Tonawanda  
 Queen City Cycle Co, 550 Main

SCHACK W G, 875 Main  
 And 20 dealers

**\*Bicycle Tools.**

SHAMP GEO W, 78 Washington

# BUFFALO REAL ESTATE EXCHANGE.

---

## COMMITTEE ON IMPROVEMENTS:

GEO M. BAILEY, FRANK S. OAKES, Chairman,  
WM. B. CUTTER.

---



This Committee has been organized for the purpose of promoting the interests of Manufacturers desiring to locate in the City of Buffalo and vicinity. Its services are at the disposal of any new industry seeking an eligible site or requiring the enlistment of additional capital. Statistics concerning the price of lands, cost of power, transportation facilities, or any other facts relating to Buffalo as a manufacturing and financial center, will be cheerfully and promptly furnished on application. *We solicit correspondence.*

FRANK S. OAKES,  
*Chairman*

44 NIAGARA ST., BUFFALO, N. Y.

**BILLIARD TABLE MANUFACTURERS.****Billiard Table Manufacturers.**

**BRUNSWICK - BALKE - COLLENDER CO THE**, over 587 and 589 Main (see page 84)

**Bird Cage Manufacturers.**

Heinz & Mnnchauer, Superior e Randall  
Jewett John C Mfg Co, 51 N Division  
Pierce Geo N & Co, 8 Hanover

**Blacking Manufacturers (Shoe).**

Hebblewhite Mfg Co, 24-32 Staats  
**QUEEN CITY MFG CO**, 84 Terrace (see page 86)  
Shining Light Mfg Co, 90 Main  
Stinson & Peacock, 50 Mechanic

**Bluing Manufacturers.**

**AMERICAN BLUING CO**, 58 Mulberry  
Favorite Mfg Co, 1069 Niagara

**Boat and Ship Builders.**

Bell David (iron). Evans e Norton  
Dimmers Charles, Lloyd st bridge  
Hingston William & Son, foot Jersey  
Marvel Henry (clinker), towpath opp Hudson  
Murphy William, foot Baker  
Notter T J, foot Virginia  
O'Grady & Maher, foot Church  
Union Dry Dock Co (iron), opp foot Chicago

**Boiler Manufacturers.**

Bell David, Evans e Norton  
Buffalo Engineering Co, 228 Pearl  
Buffalo Machinery Co, agts, 24 Burrell pl  
Dempster Engine Works, 34 Washington  
Eagle Boiler Works, Mary nr Indiana  
Farrar & Trefts, 54-66 Perry  
Howard & Roberts, 58 Fulton  
Kehr & Duffy, 79 Washington  
King Iron Works, 226 Ohio  
Lake Erie Boiler Works, 244 Perry  
Nelson Charles, Le Conteulx nr Canal  
Phœnix Boiler Works, 21 Indiana

**BOOKS AND STATIONERY.—Wholesale.**

Pierce Steam Heating Co, McPherson near Belt Line R R  
**QUEEN CITY ENGINEERING CO**, Perry e Washington (see opp pumps  
Tift George W Sons & Co, 35 Wash

**\*Boiler and Steam Pipe Covering.**

**KEASBEY R A**, 119 Franklin (see page 76)

**\*Bolt Cutting Machinery.**

**HOWARD IRON WORKS**, 287 Chicago (see page 56)

**Bolts and Nuts.**

Fowler & Sons, 106 Carroll  
Parkes John, 204 Chicago  
Plum, Burdick & Barnard, 637 Clinton

**Book Binders and Blank Book Manufacturers.**

Adams & White, 209-213 Main  
Baker, Jones & Co, 222 Washington  
Barth George H, 269 Washington  
Besser Ernst & Bro., 544 Main  
**BORK WILLIAM H**, 445 Washington (see adv)  
**COURIER CO**, 197 Main  
Garretson, Cox & Co, 365 Seventh  
Hinkley & Co, W Seneca e Terrace  
Hopmans & Schlagter, Terrace e W Seneca  
Hutchison R & Co, 19 W Mohawk  
Kingsley & McCormick, 12 Brown's Building  
Knebel Simon, 59 William  
**MATTHEWS-NORTHRUP CO**, 179 Washington  
Northrop C E, 191 Main  
**PAUL PETER & BRO**, 420 Main  
Schottin F C, 62 E Huron

**\*Book Binders' Machinery.**

**HOWARD IRON WORKS**, 287 Chicago (see page 56)

**Books and Stationery—Wholesale.**

Adams & White, 209 Main  
Lockwood & Ough, 328 Washington  
Otis H H & Sons, 288 Main  
Paul Peter & Bro, 420 Main



SEND  
FOR OUR PRICES  
ON  
HALF TONE  
WORK.

# BUFFALO ELECTROTYPE & ENGRAVING



WOOD, WAX AND  
METAL ENGRAVING.  
ZINC ETCHING.

Proprietors  
Wm. Wilhelm  
A. R. Kochler  
A. G. Thum



BOOKS AND STATIONERY.—Wholesale.

The Buffalo News Co, 16 W Mohawk  
Ulbrich Otto, 395 Main  
Vosburg, Whiting & Co, 104 Seneca  
Williamson Law Book Co. 50 W Eagle

**Boot and Shoe Manufacturers.**

Arstill Aldis (babies'), 711 Clinton  
Argus Joseph, 33 to 37 W Chippewa  
Bening Louis & Son, 952 Michigan  
Blocher M'fg Co, 14 to 24 Wells  
Bommer P & Son, Washington c  
Perry

Buffalo Shoe Co, 41-43 Perry  
Ebberts John, 465 Hickory  
Einsfield & Emig, 61 to 69 Carroll  
Forbush & Brown, 103-105 Main  
Koehler John (slippers), 1228 Genessee  
Levy Bennett (slippers), 135 William  
McClure & Eggert, 61 to 69 Carroll  
Niagara Shoe M'fg Co, 14 Wells  
Schauroth & Wohlers, 181 to 189  
Pratt

Strootman Bros, c Carroll and Wells  
Strootman John, 65 Carroll  
Toulmin William B, 16 Seneca  
Weissenberger P (children's), 16 Reed

**Boots and Shoes—Wholesale.**

Ramsdell O P Sweet & Co, 215 Wash-  
ington  
Rice E R (rubbers), 206 Main  
Walker William H & Co, 83 Pearl  
Witte, Neff & Danner, 50-52 Exchange  
And 175 retail houses

**\*Boot and Shoe Uppers.**

FRALICK F G, 72 Exchange

**Bottlers—Beer.**

(See also Brewers )

Beck M Bottling Works, 467 N Division  
Eagle Beer Co, 624 Washington  
LANG G BOTTLING WORKS, 581  
Genessee (see page 76)  
Pabst Brewing Co (Branch), 141  
Washington  
Weyand & Weigel, 814 Main

**Bottlers—Carbonated Beverages.**

Adolff Charles A (cider), 491 Wash-  
ington  
Buffalo Soda and Mineral Water Co,  
877 Seneca

BOX MANUFACTURERS.

Cleveland John S, 16 Pearl  
Geneva Mineral Water, 471 Main  
Gentsch Emil, 395 Hickory  
House Jacob & Sons, 104 E North  
House J Bottling Works, 679 Ellicott

**HOWELL'S JOHN SONS**, 9 to 15  
Centre

Hudor Co (mineral water), 54 to 60  
Terrace

Jardin John P, 1885 Main  
Koch Augustus P, 197 Pearl  
Krieger George, 374 Broadway  
Miller's Bottling Works, 1237 Genessee  
Millring Henry, 466 Eagle  
Neville Thomas F, Hamburg c  
Mackinaw

Niagara Cider and Vinegar Works,  
197 Pearl

Spitznagel Frank X, 437 Ellicott  
Standard Bottling Works, 462 Wash-  
ington

Stauch J & Son, 329 Genessee  
Stephan Philip G, 20 to 24 Broadway  
Temar Vincent, 159 Thompson  
Western Bottling Co, 299-301 William  
Young A, 390 Broadway

**Box Manufacturers.**

CIGARS.

Doebert Louis, 350 Pratt  
Riesterholz Charles, 149 Oak  
Sauer & Hanbach, 506-508 Genessee

PACKING.

Buffalo Box Factory, 230 Perry  
Holmes E & B, 187 Michigan  
International Box and Heading Co,  
foot Hertel av  
Lee, Holland & Co, Court c Wilkeson  
Stephan Bros, 2084 Niagara  
Terrace Box Factory, 39 Mechanic

PAPER.

Burt Fred N (folding), 457 Wash-  
ington  
Cooper Paper Box Works, 569 Wash-  
ington

**DRESCHER C J & SON**, 106-110  
Broadway

Finch William D, 18-20 Nichols pl  
**JUENGLING E**, (successor to Buffalo  
Paper Box Co) 198-200 Terrace

The Buffalo Brick 

Manufacturers Association.

WM. H. BRUSH, AGENT.

GEO. W. SCHMIDT, TREAS.

WARREN H. BRUSH, SEC'Y.

---




DEALERS IN

PRESSED STOCK 

AND

 COMMON BRICK.

---



OFFICES:

No. 927 CLINTON STREET AND No. 2 BUILDERS' EXCHANGE.

BUFFALO, N. Y.

TELEPHONE No. 133 N.

**BOX MANUFACTURERS.**

Nichols Silas C, 56 Seneca  
 Roop Edward M (jeweler's), 42 Keil  
 Ward James A, 56 Seneca

**TIN.**

Shepard Sidney & Co, 145 Seneca

**TRUNK.**

Preisch George, 431 Seventh

**Brass Founders.**

Allen & Forbes, 124 Washington  
 Buffalo Brass Foundry, 146 Virginia  
 Buffalo Register Works, 150 Virginia  
 Deck Bros, 20 Indiana  
 Eagle Brass Foundry, Washington c  
 Perry

**FRIES & CO**, 89-93 Main

Greenough & Tummelty, 16 Elk

Holz Bernard, 87 Maple

Krueger Louis W, 45 Genesee

McCutcheon C H, 18 Ohio.

**QUEEN CITY ENGINEERING CO**,

Perry c Washington (see page opp pumps)

Schmall John H, 411 Ellicott

Sherwood Mfg Co, 34 Washington

Sturn Christian, 25 E Huron

Washington Iron Works, 417-427  
 Broadway

**Brass Grills.**

**QUEEN CITY WIRE WORKS**, 193  
 Seneca (see page opp wire works)

**\*Brass Signs.**

**BRINKWORTH C E**, 331 Main

**Brewers.**

Beck's M Brewing Co, 467 N Division  
 Broadway Brewing and Malting Co,  
 797 Broadway

Buffalo Co-operative Brewing Co,  
 High c Michigan

Buffalo Weiss Beer Co, 90 Raze

Clinton Co-operative Brewing Co, 18  
 W Bennett

East Buffalo Brewing Co, 300 Emslie

Gambrinus Brewing Co, 650 Broad  
 way

German-American Brewing Co, High  
 c Main

**BRICK MANUFACTURERS.**

Germania, Waldron av nr Broadway  
 International Brewing Co, 1088 Niag-  
 ara

Kaltenbach Brewing Co, Pratt bet  
 Eagle and Clinton

Lake View Brewing Co, Lakeview av  
 c Porter av

**LANG GERHARD**, Best c Jefferson  
 (see page 76)

Lion Brewery, 1017 Jefferson

Moffat Henry C (ales), Mohawk c  
 Morgan

Rochevot George, 1035 Jefferson

Roos Co-operative Brewing Co, 95  
 Roos

Schusler John Brewing Co, 143 Emslie

Star Brewery, Spring c Cherry

Weyand Christian Brewing Co, 789  
 Main

Ziegele Brewing Co, 845 Washington

**Brewers' Supplies.**

**BAIN DONALD**, 557 Main (page 82)

Holz Bernard (faucets), 87 Maple

Kast Copper and Sheet Iron Co, 93  
 Main

Krull S J, 534 Genesee

Rathmann Henry, 143 Elmwood av  
 Schmidt O B, 21½ E Huron

**\*Brick Manufacturers.**

**BUFFALO BRICK MFGRS' ASSO-  
 CIATION**, comprising

**BRUSH BROS**, 2 Builders' Exchange  
 and 927 Clinton

**BERRICK CHARLES & SONS**, 127  
 Swan and 1445 Clinton

**DIETSCHLER HENRY & SON**, Weiss  
 nr Clinton

**HAAKE FRED**, 1472 Clinton

**KIRKOVER LOUIS**, 1343 Clinton

**SCHMIDT GEORGE W**, 295 Bailey  
 av and

**SCHUSLER & CO**, Weiss nr Clinton,  
 Wm Brush, Agent, 2 Builders' Ex-  
 change (see page 50)

Buffalo Star Brick Co, Ltd, 13½ Swan  
 Hall & Sons (fire), 69 Tonawanda

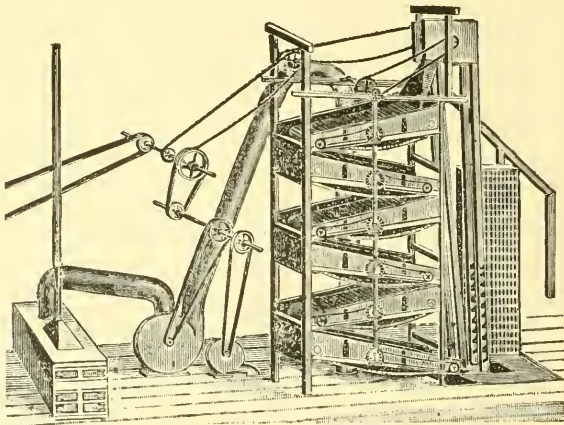
Lancaster Brick Co (dealers), 95  
 Franklin

# F. H. C. MEY

## Chain-Belting Engineering Works

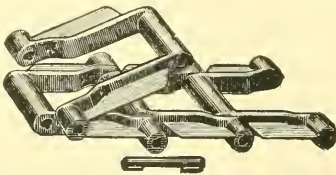
APPROVED APPLIANCES FOR

*Elevating, Conveying and Transmission of Power.*



Builder of Dryers for Grain, &c., and

Manufacturer of ELEVATOR BUCKETS.



Mey Detachable Chain Belt, Patented Feb. 7, 1888.



Nos. 64 to 68 Columbia St., BUFFALO, N. Y.

**BRICK MANUFACTURERS.****CARRIAGE AND WAGON MANUFACTURERS.**

ROSS J H (dealer), 141 Erie (see page 64)

Shawmut & Co, 56 Coal & Iron Exchange

**\*Brick—Fireproof.**

KEASBEY R A, 119 Franklin (see page 76)

**Bridge Builders.**

Buffalo Bridge and Iron Works, Bailey av nr Seneca

Clark Henry, 176 Pearl

KELLOGG IRON WORKS, 7 and 8 Builders' Exchange

Union Bridge Co, 23 Hayen Building

**Broom Manufacturers.**

Braeunlich Martin L, 969 Genesee  
Blodgett E C, c Puffer and Humbolt pkwy

Carroll Michael, 442 13th

Cronk Wm, S Hampton

English Patrick, 13 Troup

Ernewein F M, Genesee opp Walnut

Deigman Wm, 238 Madison

Kellogg & McDougall, 347 Main

Kohn Adam, 1754 William

Purell John, 290 Clinton av

Schultz Edward G, 554 Glenwood av

Seyler Henry, 134 Spruce

**Broom Makers' Supplies.**

RIEMAN HENRY, 99-103 Grey (see page 74)

**Brush Manufacturers.**

Buffalo Wire Brush Co, 45 Clinton

Ellman Frank, 428 Emslie

Young B J & Bro, 39 Cherry

Young Valentine & Son, 323 Br'dway

WURTZ & SON, 22 Lloyd

**Butchers' Tools and Supplies.**

Dopp Wm H & Son, 462 Ellicott

Smith John E & Sons, 50 Broadway

Weils' Butchers & Bakers' Supply Co, 385 Michigan

**Button Manufacturers.**

Casler Robert, 458 Main

Shantz, J Y & Sons, 14 Wells

**Calcium Lights.**

Buffalo Calcium Light Co, 70 Elm

**Canned Goods Packers.**

American Preserves Co, 95 Ohio

Erie Preserving Co, 41-43 Exchange

Race & Kinsley, 80 W Market

**Can Manufacturers (Tin).**

Ball Bros Glass M'fg Co, 52 Terrace

Erie Preserving Co, 41 Exchange

Niagara Stamping and Tool Co, Superior c Randall

Shepard, Sidney & Co, 145 Seneca

Stark Machine and Tool Co, Hudson c 7th

**\*Canvas.**

BAKER, HOWARD H & CO, 18-26 Terrace (see page 72)

**Car Builders.**

Buffalo Car M'fg Co, Clinton c Babcock

Wagner Palace Car Co, 1770 Br'dway

**Car Couplings.**

Gould Coupler Co, Austin and N Y C R R

**Car Seals and Presses.**

Buffalo Seal and Press Co, 7th and Hudson

**Car Wheels.**

Niagara Car Wheel Co, Coal and Iron Exchange

New York Car Wheel Works, 12 German Insurance Bldg

Rood & Brown Car Wheel Works, Howard c Thomas

**\*Carbonated Beverages.**

(See also Bottlers.)

HOWELL'S SONS JOHN, 9-15 Centre

**Carpets, Oil Cloths and Linoleums.**

Adam, Meldrum & Anderson, 396 Main

Barnes, Hengerer & Co, 256 Main

Morgan D E, Son & Allen, 536 Main

**Carriage and Wagon Manufacturers.**

Bosche Bros, 918 Main

Braids Wm, 447 Ellicott

Brunn Henry, 1140 Main

Buffalo Carriage Co, 1226 Broadway

# LE ROY S. OATMAN PRODUCE CO.

166 & 168 MICHIGAN STREET.

(Incorporated under the Laws of the State of New York.)

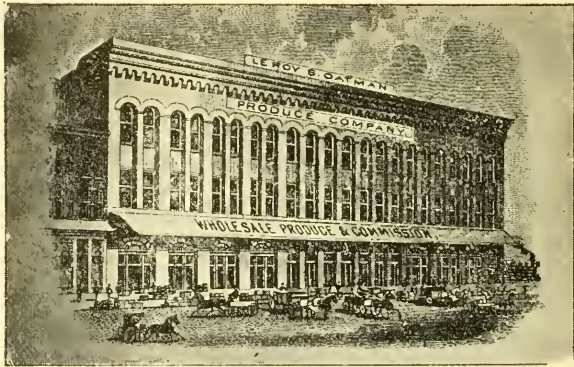
---

## OFFICERS AND DIRECTORS:

LEROY S. OATMAN, PRESIDENT.  
GEORGE BALTZ, TREASURER.

BENJAMIN FENTON, VICE-PRESIDENT  
GEO. M. BAILEY, SECRETARY.

BERNARD F. GENTSCH.



## WHOLESALE PRODUCE AND COMMISSION.

CONSIGNMENTS SOLICITED.

## BUTTER, EGGS, CHEESE, POULTRY

AND ALL FARM PRODUCE.

## APPLES AND POTATOES IN CAR LOTS.

---

*NEW STORE. ALL MODERN IMPROVEMENTS. OVER 12,000 SQUARE FEET FLOOR CAPACITY.*

Shippers and buyers of produce are stockholders in the company, thus making it in a measure co-operative. A limited amount of stock for sale. Address as above.

## LE ROY S. OATMAN PRODUCE CO.,

BUFFALO, N. Y.

CARRIAGE AND WAGON MFR'S.

CHILDREN'S CARRIAGE MFR'S.

Chambers J W, 13 Strauss  
 Clark & Hill Mfg Co, 18 Bradley  
 Duchmann's Jacob Sons (wagons), 860 Seneca  
 Empire State Wagon Co The, DeWitt c Bradley  
 Fisher & Korn, 111 Clinton  
 Grad A J (wagons), 718 Broadway  
 Harvey John C (estate), 104 Terrace  
 Hofheins Alexander, 291 Seneca  
 Kirwen Philip, 267 Ellicott  
 Lalloz Adolph, 113 Carroll  
 Lesswing Peter, 54 Broadway  
 Merchant Wagon Works, 182 Elk  
 Meyer A & A F, 820 Broadway  
 Miller J A, 317 Ellicott  
 Perren A E Co, 124 Pearl  
 Rieman D F Jr, 73 S Division  
 Reiman F J (wagons), 95 Elm  
 Strasser Wagon Works, 243 Abbott rd  
 Stratton C H Carriage Co, 39 Court  
 Sudrow Wm & Son, 633 Broadway  
 Weller Alexander, 184 W Mohawk  
 Werner George, 559 Main  
 And 80 others

**Carriage Hardware.**

Fowler & Sons, 102 Carroll  
 Pratt & Letchworth, 189 Tonawanda  
 Taylor H D, 103 Oak

**Carriage Specialties.**

East Mfg Co, 24 Staats

**Carriage Springs and Gear.**

American Gear & Spring Co, Niagara  
 Buffalo Spring & Gear Co, 1502 Niagara  
 Empire State Wagon Co, DeWitt c Bradley  
 King Spring Co, 1410 Niagara

**Carriage Tops and Trimmings.**

BUFFALO TOP CO, 80-84 Terrace  
 McKinnon Dash & Hardware Co, 250 Amherst  
 Niagara Top Co, DeWitt c Bradley

**\*Cement.**

(See Lime, Plaster and Cement.)

REEB U A, 599 Michigan (see page 74)  
 ROSS J H, 121 Erie (see page 64)

STANDARD CEMENT CO, 200 Main  
 UNION AKRON CEMENT CO, 121 Erie

**\*Cemetery Work.**

M'DONNELL & SONS, 858-860 Main  
 (see page 64)

**\*Chain Belting.**

Mey F H C, 64-68 Columbia (see page 52)

**Chain and Chain Link Manufacturers.**

Mann James & Sons, 621 Grant  
 Mason & Bradney, 806 Seneca

**Chair Manufacturers.**

Sikes Chair Co, 500 Clinton

**Chandeliers—Refinishing.**

STRAUSS & ROGERS, 12 Perry (see page 74)

**Chairs and Settees.**

QUEEN CITY WIRE WORKS, 193 Seneca (see opp wire works)

**Charcoal.**

Bourgnon Peter J, 312 Walnut

**Cheese.**

(See also Wholesale Grocers and Commission Produce.)

Hasselbeck Martin, 594 Jefferson  
 Huber Bernard & Co, 242 Terrace  
 MERSMAN F, (Swiss and Limburger), 556-560 Broadway (see page 76)  
 Onetto & Terrile, 137 Broadway  
 Strasser B, 821 Genessee  
 Strasser George, 833 Michigan

**Chemical Manufacturers.**

Buffalo Chemical Works, Abbott road  
 Crocker Fertilizer and Chemical Co, 56 Pearl  
 Graves & Wing, 32 Board of Trade Bldg  
 Kimmel Christian, 1020 Seneca  
 Schoellkopf Aniline and Chemical Works, the Abbott road

**Children's Carriage Manufacturers.**

Haugh Thomas & Son, 223 Massachusetts ave

# L. SCHWARTZ & CO.,

MANUFACTURERS OF

ARTISTIC WOOD MANTELS. SPECIAL DESIGNS FROM  
ARCHITECTS' DRAWINGS A SPECIALTY.

*TILES, FIRE PLACES, GRATES, MOSAICS.*

---

SOLE AGENTS FOR

Boynton's Latest Improved Warm Air and Hot Water Furnaces,  
RICHMOND AND JEWETT RANGES AT FOUNDRY PRICES.

---

SALESROOMS:  
89 AND 91 SENECA ST.

FACTORY:  
160, 162, 164 ELK ST.

---

# HOWARD IRON WORKS,

BUFFALO, N. Y.

---

MANUFACTURERS OF

# ELEVATORS

FOR . . .

PASSENGERS AND FREIGHT.



**CARRIAGE AND WAGON MFR'S.**

**COAL MINERS AND SHIPPERS.**

Heinz & Munschaner, Superior c  
 Randall  
 Pieffer Theo H, 578 Genessee  
 Sweet George C, 299 Niagara  
 Wolff Nathan, 620 William

**Cigar Manufacturers.**

(Employing 20 Men and Over.)

Barth John F, 179 Orange  
 Bauer & Miller, 91 William  
 Beyer & Rupprecht, 19-21 Terrace  
 Brautigam & Behringer, 235 Sycam<sup>e</sup>  
 Breitweiser Bros, 454 Main  
 Ellicott John, 65 Main  
 Flierl Conrad W, 496 William  
 Fuchs Bros, 502-506 Main  
 Fuchs Edwin G, 96 Broadway  
 Goldberg Paul, 145 Cedar  
 Jankowski Joseph, 226 Townsend  
 Kaderabeck Stanislaus, 306 Hickory  
 Kiekebusch Otto, 499 Main  
 Klugherz Adolph, 319 Walnut  
 Kretschner Ernst, 761 William  
 Loesh E. C, 211 Krettner  
 Palaicio J C, 259 Washington  
 Schiferle Stephen G, 232 Broadway  
 Upper & Donovan, 76 Pearl  
 And 135 others

**Civil Engineers.**

SIKES F G & G R, 122 Pearl c Erie  
 (see page 58)

**Clothing Manufacturers.**

(See also Overalls and Pants.)

Altman & Co, 68 Seneca  
 Brock & Wiener, Columbia Bldgs  
 Brown & Friend, 57 Seneca  
 Cohen B. L & Co, Washington  
 Cohn, Frank & Levy, 36 Pearl  
 Desbecker, Weill & Co, 44 Pearl  
 Geismer M & Son, 48 Pearl  
 Marens L & Son, 38 Pearl  
 Nathan Abraham, 18 Exchange  
 Warner Bros & Co, 30-34 Pearl  
 Wile Bros & Co, 37 Pearl  
 Zingsheim M, 35 W Seneca  
 And 65 retail houses

**Coal Miners, Shippers and Wholesale Dealers.**

Acme Mining Co, 16 Coal and Iron  
 Exchange

Andrews Bros & Co, 77 White Bldg  
 Ball J H & W H, 11-12 White Bldg  
 Bell, Lewis & Yates Coal Mining Co,  
 18-21 Coal and Iron Exchange  
 Brinker & Jones, 43 Coal and Iron  
 Exchange  
 Cant Bros & Co, 63 Coal and Iron  
 Exchange  
 Chisholm Robert W, 31-32 Coal and  
 Iron Exchange  
 Dakin Charles S, 17 Niagara  
 Delaware & Hudson Canal Co (Joseph  
 C. Batchelor, sales and shipping agt),  
 offices 11 Erie County Bank Bldg  
 Delaware, Lackawanna & Western R.  
 R. Co (J. J. McWilliams, western  
 sales agent), foot Erie  
 Donnelly, Dunham & Co, 69 Erie  
 County Bank Bldg  
 Drill J M, 12 Erie County Bank Bldg  
 Fairmount Coal and Coke Co, 40 Coal  
 and Iron Exchange  
 Falls Creek Coal Co, 67 Coal and Iron  
 Exchange and 5 Hayen Bldg  
 Hall Charles T, 7 White Bldg  
 Hedstrom E L, 17-18 White Bldg  
 Heylman J W, 45 Coal and Iron Ex  
 Howard G H & Co, 22 W Swan  
 Linderman H W & Co, 57 Erie County  
 Bank Bldg  
 Mendson Thomas H, 8 White Bldg  
 Morris Coal Co, 16 Chapin Block  
 Northwestern Coal and Iron Co, 40  
 Coal and Iron Exchange  
 Oak Ridge Mining Co, 67 Coal and  
 Iron Exchange  
 Packard Mark, 129 Erie County Bank  
 Bldg  
 Penna Coal Co (Thomas Hodgson  
 Superintendent), 26 Coal and Iron  
 Exchange  
 Philadelphia & Reading Coal and  
 Iron Co, 19-23 Swan  
 Port Royal Coal and Coke Co (W T  
 Clark), 30 White Bldg  
 River View Coal and Mining Co, 22  
 W Swan  
 Shipman C N (wholesale), 71 Coal and  
 Iron Exchange  
 Smith Henry E, 23 W Swan  
 Springer Henry C Coal Co, 10-16 Coit  
 Block

# F. G. & G. R. SIKES,

## Civil Engineering and Contracting.

---

Surveys made, Plans and Specifications prepared and bids submitted for all kinds of engineering projects, Steam and Electric Rail Roads, Bridges, Docks, Trestles, etc.  
Rough estimates made without charge. Correspondence Solicited.

---

OFFICES:

SECOND FLOOR 122 PEARL STREET, CORNER ERIE.

BUFFALO, N. Y.

---

QUEEN

CITY



PLATE <sup>AND</sup> SHEET GLASS.  
CHURCH AND HOUSEHOLD ART  
STAINED GLASS.

*CLEAR LEADED GLASS. BEVEL PLATE.*

---

## GEO. M. BOOTH,

67 FRANKLIN ST., - BUFFALO N. Y.

TELEPHONE 774.

ESTIMATES GIVEN.

**COAL MINERS AND SHIPPERS.**

The Shawmut Coal Co, 56 Coal and Iron Exchange  
 Underhill & Stillman, 64 Erie County Bank Bldg  
 Wick H C & Co (inc.) 65 Erie County Bank Bldg  
 Williams Frank & Co, 67 Coal and Iron Exchange  
 Williams & Peters (sales agents, N Y L E & W R R), 298 Main

**Coffee Extract Manufacturers.**

Bachert, Philip, 174 Genesee  
 Mersman F, 560 Broadway

**Coffee Roasters.**

Bogner Louis, 36-38 Washington  
 Eckhardt Jacob, 314 Elm  
 Jamison & Mayback, 45 Clinton  
 Jamison & Wagner, Elm nr Broadway

**Coke.**

Bell, Lewis & Yates Coal Mining Co, 18 Coal and Iron Exchange  
 Brinker & Jones, 42 Coal and Iron Exchange  
 Cant Bros & Co, 63 Coal and Iron Exchange  
 Chisholm Robert W, 31 and 32 Coal and Iron Exchange  
 Donnelly, Dunham & Co, 69 Erie County Bank Building  
 Drill J M, 12 Erie County Bank Bldg  
 Elias G & Bro, 955 Elk  
 Hall C T, 7 White Building  
 Hedstrom E L, 17 White Building  
 Heylman, J Willard, 45 Coal and Iron Exchange  
 Linderman H W & Co, 57 Erie County Bank Bldg  
 Loomis Thomas & Co, 71 Erie County Bank Bldg  
 Oak Ridge Mining Co, 67 Coal and Iron Exchange  
 Palen & Burns, 275 Washington  
 Smith Henry E, 23 West Swan  
 Schwartz Bros, 12 Court  
 Williams F & Co, 67 Coal and Iron Exchange

**Commission—Grains and Forwarding.**

Allen Henry & Co, 9 Board Trade Bldg  
 Bartlett S C & Co, 30 Board Trade Bldg

**COMMISSION—GRAINS AND FORWARDING.**

Baxter B & E, 16 W Seneca  
 Beadle Frank, 14 W Seneca  
 Brown Selden S, 13 Board Trade Bldg  
 Bruce Benjamin F, 50 Board Trade Bldg  
 Buck Roswell R, 42 Board Trade Bldg  
 Burns Henry V, 25 Board Trade Bldg  
 Carpenter, Doran & Co, 74 Pearl  
 Case Niles, Spankling's Exchange  
 Chaddock & Prentice, 14 W Seneca  
 Coon H J & Co, 59 Board Trade Bldg  
 Connelman C & Co, 50 Board Trade Bldg  
 Crittenden M L & Co, 59 Board Trade Bldg  
 Curtiss C G, 41 Board Trade Bldg  
 Demary, Heintz & Lyman, 11 Board Trade Bldg  
 Downer & Eagle, 46 Board Trade Bldg  
 Eames Edward W, 26 Board Trade Bldg  
 Egather Andrew & Co, 89 Pearl  
 Finn Sidney H, 39 Pearl  
 Fosbinder Harris, 14 W Seneca  
 Gallagher Edward, 23 Board Trade Bldg  
 Gallagher William B, 23 Board Trade Bldg  
 Guthrie S S & Son, 62 Board Trade Bldg  
 Haddock Joseph E, 4 Board Trade Bldg  
 Harvey W P & Co, 43 Board Trade Bldg  
 Heath J S & Co, over 39 W Seneca  
 Heinhold & Rodebaugh, 53 Board Trade Bldg  
 Homer Adam, 4 Board Trade Bldg  
 Jones Bros & Co, 57 Board Trade Bldg  
 Kennedy Charles, 66 Board Trade Bldg  
 Mann Charles J, 41 Board Trade Bldg  
 Meadows William & Co, 42 Board Trade Bldg  
 Moon G Q & Co, 51 Board Trade Bldg  
 Morse Henry, over 89 Pearl  
 Newell Robert & Co, 4 Board Trade Bldg  
 Newhall Daniel E, 17 Board Trade Bldg  
 O'Brien Thomas J, 44 Board Trade Bldg  
 Patten Bros, 52 Board Trade Bldg  
 Pratt & Co, 44 Board Trade Bldg

CHAS. F. RICHMAN.

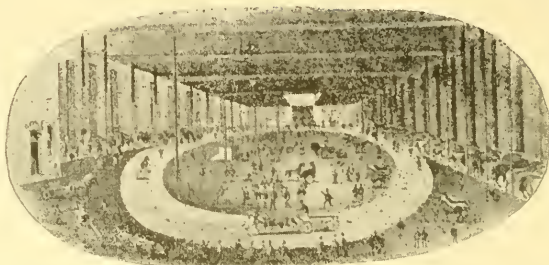
O. P. TAYLOR.

# RICHMAN & TAYLOR.

AUCTION SALE EVERY  
TUESDAY & WEDNESDAY.

O. P. TAYLOR,

AUCTIONEER



SPECIAL ATTENTION  
GIVEN TO THROUGH  
HORSES.  
A HIGH CLASS OF SALE HORSES  
CONSTANTLY ON HAND.

Commission Dealers in Horses and Mules.

BRAINARD HOUSE STABLES.

ACCOMMODATION FOR 600 HORSES.

BRAINARD HOUSE,  
C. F. RICHMAN, PROP. EAST BUFFALO, N. Y.

## FOX & HOLLOWAY,

DEALERS IN . . . . .

# - - SAND.

### YARDS ON FOURTH STREET,

Between WILKESON and COURT STREETS, in rear of Lee, Holland  
& Co.'s Plaining Mill, and on

‡ SCAJAQUADA CREEK, ‡

At junction with Niagara Street, near Forest Avenue.

Sand delivered to any part of the City, and by boat on any line  
of water communication.

OFFICE: 252 PEARL ST., BUILDERS' EXCHANGE.

YARD TELEPHONE No. 380 A. OFFICE 380 D.

COMMISSION—GRAINS AND FORWARDING.

Ratliffe S M & Son, 34 Board Trade Bldg  
 Richards C W, 23 Board Trade Bldg  
 Ryan Thomas M, foot W Ferry  
 Sandrock George, 13 Board Trade Bldg  
 Sawyer Frank J, 16 Board Trade Bldg  
 Simons & Co, 48 Board Trade Bldg  
 Spann & Chandler, 28 Board Trade Bldg  
 Spaven T G, 46 Board Trade Bldg  
 Sternberg Charles F, 56 Board Trade Bldg  
 Truscott & Heathfield, 63 Board Trade Bldg  
 Waters & Seymour, 54 Board Trade Bldg  
 Whitney & Gibson, 15 Board Trade Bldg  
 Wilber Everett B, 14 Board Trade Bldg

**Commission, Fruit and Produce.**

Batterson & Co, 167 Scott  
 Brennisen F & Son, 158 Michigan  
 Gail John H, 94 W Market  
 Gleason & Eacker, 159 Michigan  
 Lennox & Co, 56 W Market  
 Mackey & Williams, 62 W Market  
 Myers, Woodward & Drake, 46 W Market

**OATMAN LE ROY S COMMISSION CO**, 166-168 Michigan (see page 54)

Potter & Williams, 144 Michigan  
**REA & POWELL**, 142 Michigan  
 Wattles G M & Co, 152 Michigan  
**WHITE J J**, 68 W Market  
 Will & Jones, 58 W Market  
 And 65 others

**Commission—Live Stock.**

(See Live Stock Commission.)

**\*Condensers—Steam.**

**ALBERGER J L** (Worthington), Franklin c Terrace

**Confectioners—Wholesale and Manufacturing.**

Burt & Sindele, 79 Main  
 Hood Bros & Gould, 296 Connecticut  
 Luttet Candy Co, 25 Ellicott  
 Menker Henry A, 565 Main  
 Robinson M N, 110 Seneca

COPPERSMITHS.

Schabaacker & Zittel, 85-87 Seneca  
 Sibley & Holmwood, 94-96 Pearl

**\*Contractors.**

**BUFFALO AND MEDINA GUT STONE CO** (stone), 18 Maryland, (see page 74)

**SIKES F G & G R** (engineering), 122 Pearl c Erie (see page 58)

**STRAUB WILLIAM P** (mason), 10 Builders' Exchange

**TILDEN J H** (building), 12-14 Henry (see adv)

**Contractors' Tools and Supplies.**

**BAKER HOWARD H & CO**, 18-26 Terrace (see page 72)

Contractors' Plant Mfg Co, 129 Erie  
 McConnell Angus D, 73 W Eagle

**\*Conveyors.**

**MEY F H C**, 64-68 Columbia (see page 52)

**Coopers.**

(See also Barrel Manufacturers.)

Adolf George, 864 Broadway

Beck John, 342 Watson

**BUFFALO BARREL CO**, Babcock nr W N Y & P R R

**BUFFALO BARREL MFG CO**, 1390 West av (see page 62)

Debus, August, 59 Peckham

Freischlag Frederick W, 519 Clinton

Freischlag Jacob, 388 William

Glor & Gridley, 247 Amherst

Hitschler Henry, 428 Genesee

Kraus Joseph, 16 Peckham

Pieill Peter, 223 Madison

Schmidt Adam, 342 Sycamore

Seitz Bros, 345 East

And 30 others

**Coopers' Stock and Supplies.**

Clark S C, 202 Main

Holmes E & B, 187 Michigan

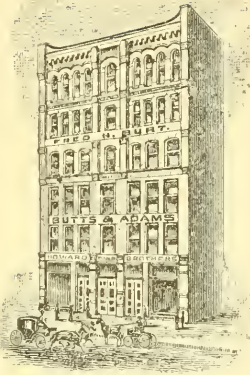
Tindel, Thomas & Co, 1318 Niagara

**Coppersmiths.**

Aldrich & Ray Mfg Co, 1489 Niagara

Bean, Schermerhorn & Co, 69 Main

Case W A & Son, Ohio c Washington



TELEPHONE 1838.

PROFESSIONAL AND AMATUER

# PHOTOGRAPHERS

Can obtain all the latest and most desirable styles of

**CAMERAS**    †    †  
 —    AND    —  
 †    †    **SUPPLIES**  
**AT THE LOWEST PRICES**

FROM

**BUTTS & ADAMS,**

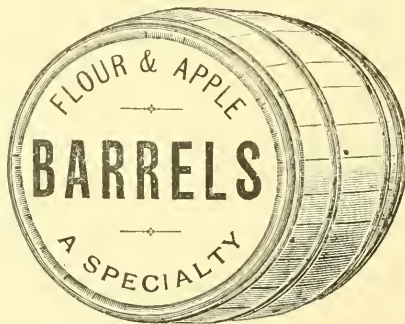
457 & 459 Washington Street, - BUFFALO, N. Y.



## BUFFALO BARREL MANUFACTURING CO.

MANUFACTURERS OF ALL KINDS OF SLACK WORK.

OFFICE:  
 1390 WEST AVENUE.



MANUFACTORY:  
 Cor. West and Forest Avenues.

All Orders will receive prompt attention. Prices reasonable. Apple Barrels constantly on hand. Address us for prices.

Eggart Chas, 836-838 Washington  
 Kast Copper & Sheet Iron Co, 93 Main  
 McBean, Edge & Co, 33 Main  
 McCutcheon C H, 18 Ohio  
 Queen City Metal Co, 16 Elk  
 Ruckel J H & Co, 81 Main

## \*Cordage.

BAKER HOWARD H & CO, 18-26  
 Terrace (see page 72)

## Cork Manufacturers.

Lowell G H & Co, 549 Washington

## \*Cotton Duck.

BAKER HOWARD & CO, 18-26 Ter-  
 race (see page 72)

## Cracker Manufacturers.

Mugridge George A & Son, 10 Elk  
 Ovens R (Branch U S Baking Co), 159  
 Elliott

Crockery, China and Glassware —  
 Wholesale.

Glenny W H Sons & Co, 251 Main  
 Newman George E, 444 Main  
 Saunders C E, 146 Seneca  
 Winkler F M & Bro, 172 Genesee  
 And 15 retail houses.

## \*Cut Stone.

(See also Stone.)

BUFFALO & MEDINA CUT STONE  
 CO, 10 Maryland (see page 74)

## \*Dealers' Paste.

QUEEN CITY MFG CO (ebony and  
 jet black), 80-84 Terrace (page 82)

## Dental Instrument Manufacturers.

Buffalo Dental Mfg Co, 587 Main

## \*Designs, Illustrations and Sketches.

BRADLEY C W, Tucker Bldg (see  
 page 78)

NATIONAL ENGRAVING CO (suc-  
 cessors to Glasgow & Palmer) 534  
 Main (see page 78)

## Desk Manufacturers.

Cutler A & Son, 460 Main

## Die Sinkers.

BRINKWORTH CHASE (stationery),  
 331 Main

Johnson J G & Co (soap and steel  
 stamps), 29 Seneca  
 Niagara Stamping and Tool Co (cut-  
 ting), Superior & Randall  
 Oliver Wm W (jewelers), 430 Niagara

## Distillers.

(See Also Wines and Liquors.)

Cook E N & Co, 86 Main

## \*Drive Chain.

MEY F H C, 64-68 Columbia (see  
 page 52)

## Druggists—Wholesale.

Hubbard F S & Co, 263 Washington  
 Laverack G E, 230 Washington  
 Plimpton, Cowan & Co, 50 E Swan  
 Stoddard Bros, 84 Seneca  
 And 125 retail houses

## Druggists' Sundries.

Briggs F W & Co, 16 Exchange  
 Buffalo Rubber Co, 90 Pearl  
 Goodyear Rubber Co, 240 Main

## Dry Boats.

Mills R & Co, ft Chicago  
 Union Dry Dock Co, ft Chicago

## Dry Goods—Wholesale.

Adam J N & Co, 387 Main  
 Adam, Meldrum & Anderson, 396 Main  
 Barnes, Hengerer & Co, 256 Main  
 Bettinger's Sons S, 521 Main  
 And 130 retail houses

## \*Dynamite.

(High Explosives.)

BIDWELL CLINTON, 14 W Swan  
 (see page 66)

## Electrical Contractors.

LITTLE F P ELECTRICAL CON-  
 STRUCTION AND SUPPLY CO  
 THE, 135 Seneca (see page 66)

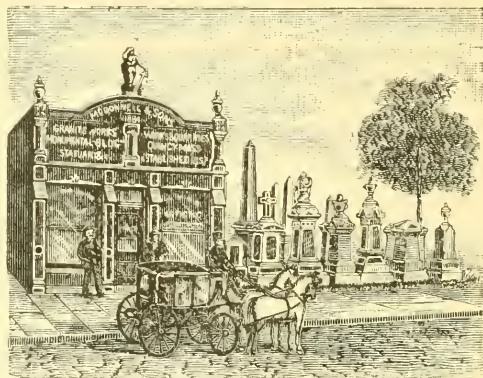
## Electrical Instruments and Supplies.

American Electrical Supply Co, 226  
 Pearl

# McDONNELL & SONS, GRANITE QUARRY OWNERS,

ARCHITECTS AND BUILDERS.

MONUMENTS



MAUSOLEUMS

858 TO 860 MAIN STREET, - - BUFFALO, N. Y.

*Works and Quarries at QUINCY, MASS.*

JAMES H. ROSS.

CHARLES W. ADAMS.

## J. H. ROSS,

MANUFACTURERS OF

### "BUFFALO" QUICK LIME AND STATE LAND PLASTER.

MANUFACTURERS' AGENT FOR

Akron Star Brand Cement and "Best" Ohio Sewer Pipe.

WHOLESALE AND RETAIL DEALER IN

IMPORTED PORTLAND CEMENTS, CALCINED PLASTER, OHIO  
WHITE LIME, PLASTERING HAIR, MARBLE DUST, FIRE-  
BRICK, FIRE-CLAY, SOAPSTONE FINISH, ETC.

+ OFFICE: 141 BRIB STREET. +

CEMENT WAREHOUSE, Foot Genesee St., Erie Basin Elev.  
• QUICK LIME WAREHOUSE 213 Perry St. •

## BUFFALO, N. Y.



Buffalo Engineering Co, Erie County Bank Bldg

Buffalo Electric Co, 225 Pearl

Buffalo General Electric Co, 40 Court Darrin David H, Erie County Bank Bldg

Electric Mfg Co, 215 Main

Electric Service Co, Erie County Bank Bldg

Flach Theodore H & Son, 70 W Genesee

Jaynes Electrical Co, 35 Eagle

Jones F P & Co, 255 Pearl

**LITTLE F P ELECTRICAL CONSTRUCTION AND SUPPLY CO THE**, 135 Seneca (see page 66)

McCreary James B, Main e Seneca

Plumb Charles Electric Works, 89 Erie

Singer Fire Alarm Co, 59 Chapin Blk

#### Electrical Manufacturers.

(Lamps, Dynamoes, Etc.)

**LITTLE F P ELECTRICAL CONSTRUCTION AND SUPPLY CO THE**, 135 Seneca (see page 66)

#### Electrotypers.

**BUFFALO ELECTROTYPE & ENGRAVING CO**, 14-24 Wells (see page 48)

Courier Co The, 197 Main

Gies & Co, 111 Swan

Matthews-Northrup Co, 179 Wash

**ONINK C J & CO**, 18 Ellicott (see page 74)

Warren's Sons J D, Washington e N Division

#### \*Elevators—Barrel.

**MEY F H C**, 64-68 Columbia (see page 52)

#### \*Elevator Buckets.

**MEY F H C**, 64-68 Columbia (see page 52)

#### \*Elevator Chain.

**MEY F H C**, 64-68 Columbia (see page 52)

#### \*Elevators—Clay.

**MEY F H C**, 64-68 Columbia (see page 52)

#### \*Elevators—Grain.

Total Storage Capacity, 15,000,000 Bushels.)

Bennett Elevator, 15 and 17 Joy

Brown Elevator, opp foot Lloyd

Buffalo Elevating Co, 67 Board of Trade Bldg

Chicago Transfer Elevator, Blackwell Canal and Peck's slip

City B, Ohio foot Chicago

City Elevator, Ohio foot Michigan

C J Wells Elevator, Ohio e Indiana

Coatsworth Elevator, S Michigan bel Ganson

Connecting Terminal R R Elevator, Blackwell Canal opp Main

Cyclone Elevators, office 49 Board of Trade Bldg

Dakota Elevator, Blackwell Canal

Erie Basin Elevator, nr foot W Genesee

Erie Canal Elevator, 202 Main

Erie Railway, Ohio foot Louisiana

Evans Elevator, Norton e Water

Exchange Elevator, Erie Basin n river

Frontier Elevating Co, 32 Board of Trade Bldg

International Elevator, Niagara e Wayne

Kellogg & McDougall, opp foot Mississippi

Lake Shore Elevator, Scott e Hamburg

Lyon Elevator, opp foot Main

Marine Elevator, opp foot Mississippi

National Mills Elevator, 272 Erie

Niagara Elevating Co A B and C, foot Chicago, office 64 Board of Trade Bldg

Queen City Elevator, foot Bouck av

Richmond Elevator, opp foot Main

Schreck Elevator, 368 Ohio

Sternberg A and B Elevators, Ohio nr Michigan

Sturges Elevator, Ohio e Columbia

Swiftsure Elevator, Norton st and Evans' slip

Watson Elevator, Buffalo Creek junc Blackwell Canal

Western Transit Elevator, opp foot Michigan

# POWDER.

---

CLINTON BIDWELL,

GENERAL AGENT

DU PONT POWDER.

14 WEST SWAN STREET. BUFFALO, N. Y.

---

BLASTING, RIFLE AND SPORTING

POWDER

ATLAS POWDER (HIGH EXPLOSIVE).

DYNAMITE OF ALL GRADES.

*Electric Blasting Apparatus and Blasting Material of every description.*

---

## General Electrical Supplies.

Contracts taken for Electrical and Steam Plants Complete.

MANUFACTURERS OF

# ARC LAMPS,

FOR ANY CIRCUIT

---

## ALTERNATING FAN MOTORS

. . . AND . . .

## GENERAL ELECTRICAL SPECIALTIES.

Repair work promptly done at our Factory. Information readily given.  
Send for Catalogues and Circulars.

❖ THE F. P. LITTLE ELECTRICAL CONSTRUCTION & SUPPLY CO. ❖

135 SENECA ST., BUFFALO, N. Y.

ELEVATORS—GRAIN.

Wheeler Elevator, Ohio opp N Y C R  
R freight house  
Wilkeson Elevator, Ohio e Indiana  
William Wells Elevator, Water foot  
Commercial

\*Elevators—Hand.

MEY F H C, 64-68 Columbia (see  
page 52)

\*Elevators—Water.

MEY F H C, 64-68 Columbia (see  
page 52)

\*Elevator Enclosures.

QUEEN CITY WIRE WORKS, 193  
Seneca (see opp wire works)

Elevator Supplies.

Case W A & Son, Ohio e Washington  
Gay Louis W, 31 Main  
MEY F H C, 64-68 Columbia (see  
page 52)

Elevators—Hoisting.

Buffalo Engineering Co, Erie County  
Savings Bank Bldg  
HOWARD IRON WORKS, 287 Chi-  
cago (see page 56)

Engine Builders.

Bell David, Evans e Norton  
Dempster Engine Works, 34 Wash  
Eagle Iron Works, Mississippi e Perry  
Farrar & Trefts, 54 Perry  
Kehr & Duffy, 97 Washington  
King Iron Works, 226 Ohio  
Lake Erie Engineering Works, Perry  
e Chicago  
Noye John T Mfg Co, 50 Lakeview av  
Sutton Bros, 38 LeCouteulx  
TIFFT GEORGE W SONS & CO, 15-  
35 Washington (see inside back  
cover)

Engines and Boilers.

DAY JOHN W, 9 Quay  
Dempster Wm (agt), 24 Burrell pl

\*Engineers.

QUEEN CITY MFG CO, Perry e  
Washington (see page 82)

EXPRESS COMPANIES.

Engineers' Supplies.

Austin J C, 43 Main  
Case W A & Son, Ohio e Washington  
DAY JOHN W, 9 Quay  
Gay Louis W, 31 Main  
Kendall Mfg Co, 227 Vermont  
Greenough & Tummelty, 16 Elk  
McBean, Edge & Co, 33 Main  
McCutcheon C H, 18 Ohio  
Newman W H H & Co, 78 Main  
QUEEN CITY MFG CO, Perry e  
Washington (see page 82)  
Ruckel J H & Co, 81 Main  
Russell & Watson, 139 Main  
Sherwood Mfg Co, 34 Washington

\*Engravers.

BRINKWORTH C E (steel and copper  
plate), 331 Main

PHOTO.

BUFFALO ELECTROTYPE AND  
ENGRAVING CO, 14-24 Wells (see  
page 48)  
NATIONAL ENGRAVING CO (suc-  
cessors to Glasgow & Palmer), 534  
Main (see page 78)

WAX.

BUFFALO ELECTROTYPE AND  
ENGRAVING CO, 14-24 Wells (see  
page 48)

WOOD.

BUFFALO ELECTROTYPE AND  
ENGRAVING CO, 14-24 Wells (see  
page 48)  
NATIONAL ENGRAVING CO (suc-  
cessors to Glasgow & Palmer), 534  
Main (see page 78)

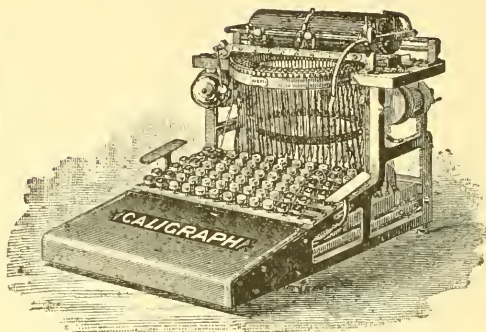
Envelope Manufacturers.

BORK WILLIAM H, 445 Washing-  
ton (see adv)  
Burdick Envelope Mfg Co, 10 Lock  
Niagara Envelope M'itory, 34 Ellicott

Express Companies.

American, 241-243 Main  
Canadian, 354 Main  
National, 354 Main  
United States, 276 Main  
Wells, Fargo & Co, 353 Main

IT STANDS AT THE HEAD.



## THE CALIGRAPH.

W. G. SCHACK, 875 MAIN ST.

Agent Western New York.

Full Line of Supplies.

---

• BUFFALO TYPE FOUNDRY •  
(BUFFALO BRANCH)

83 & 85 ELLICOTT ST., - BUFFALO, N. Y.

**MACKELLAR, SMITHS & JORDAN FOUNDRY.**

HERBERT L. BAKER, MANAGER.

☉ **TYPE** ☉

PRESSES, CUTTERS, WIRE STITCHERS AND  
PRINTING MACHINERY.

Complete stock of Cases, Stands, Cabinets, Furniture, Inks, and  
other Printing Material.

Orders for Complete Outfits promptly filled. Estimates cheerfully furnished when desired.

**BEST GOODS—LOWEST PRICES.**

**FANCY GOODS—Wholesale.****Fancy Goods—Wholesale.**

Lepper, Wilson & Ellwood, 338 Wash-  
ington

**Fences, Iron and Wood.**

**QUEEN CITY WIRE WORKS**, 193  
Seneca (see page opp wire works)

**Flavoring Extracts.**

Abwender Emil E, 289 Cedar  
Clough V H, 943 Main  
Favorite Mfg Co, 1069 Niagara  
Lowell G H & Co, 549 Washington  
Pickering Mfg Co, 67 Main  
Shufeldt Bros, 153 Main

**Fertilizers.**

Crocker Fertilizer and Chemical Co,  
56 Pearl  
Harris Jesse, 1461 Elk  
Milson Rendering and Fertilizing Co,  
963 William  
Oakfield Fertilizer Co, 17 Ellicott

**File Manufacturers.**

Carter John, 165 Dewitt  
Jetter Mfg Co, 861 Jefferson  
Maischoss Bros, 59 Chicago

**Filter Manufacturers.**

Heinz & Munschauer, Superior e Ran-  
dall  
Jewett John C Mfg Co, 51 N Division  
McConnell Filter Co, 13 Niagara  
Pierce G N & Co, 8 Hanover  
Shepard Sidney & Co, 145 Seneca  
Vogt P A, 81 Broadway

**Fire Clay Brick.**

Buffalo Sewer Pipe Co (dealers), Ton-  
awanda nr Niagara  
Diamond Fire Clay Co (dealers), 124  
Ellicott  
Great Western Fire Clay Co (manu-  
facturers), Court e Franklin  
Hall & Sons (manufacturers), 69 Ton-  
awanda  
**LYTH JOHN & SON** (manufacturers),  
48 W Eagle  
**ROSS J H**, 141 Erie (see page 64)  
Urchville Fire Clay Co (dealers), 130  
Franklin

**FORGES.****Fire Extinguishers.**

Automatic Fire Appliance Co, 54  
Court  
Walworth Mfg Co, 44 N Division

**Fish and Oysters—Wholesale.**

Buffalo Fish Co, limited, Columbia e  
Scott  
Davis S H & Co, 76 Main

**Flour and Feed—Wholesale.**

(See also Commission-Producer.)

Cutter & Bailey, 143 Washington  
Harvey & Henry, 15 Ellicott  
Langner J D & Bro, 775 Seneca

**Flour Mills.**

Banner Milling Co, Seneca e Pearl  
Buffalo City Flour Mills (Harvey &  
Henry, 107 Chicago), office 15-19  
Ellicott  
Central Milling Co, 33 Board Trade  
Bldg  
Dodge, Leonard (Roller Mills), 50  
Board Trade Bldg  
Duluth Imperial Mill Co, 47 Board  
Trade Bldg  
Engle Albert A, 368 Ohio  
Globe Mills (Thornton & Chester),  
office 7 Board Trade Bldg  
Husted E H & Co (Market Mills), 53  
E Market  
National Mills (Thornton & Chester),  
7 Board Trade Bldg  
Niagara Mills Co (Schoellkopf &  
Mathews, 19 Board Trade Bldg  
Northwestern Consolidated Milling  
Assn. Potter Bldg  
Schoellkopf & Mathews, 19 Board  
Trade Bldg  
Urban & Co, 324 Oak  
Wallace Frederick W (Cataract Mill-  
ing Co), 73 Board Trade Bldg

**Forges.**

Buffalo Drop Forging Co, 1430 Ni-  
agara  
Buffalo Forge Co (portable), 482  
Broadway  
Crummish Hugh (portable), 80 Vir-  
ginia

The Latest Triumph in Writing Machines.

# THE NEW YOST

The New "Yost" Writing Machine is made at its own Factory in  
Bridgeport, Conn., the Largest, Best Equipped Typewriter  
Factory in the World

**BUFFALO AGENCY - 31 NIAGARA ST.**

SUPPLIES OF ALL KINDS FURNISHED.

Established  1882.



WE DEFY COMPETITION

**WE LEAD, OTHERS FOLLOW**

**FOX AND FOX**

THE LARGEST SHOW-CARD & LABEL-FINISHING COMPANY IN THE WORLD.

TRADE MARK

TELEPHONE 455  
BUFFALO N.Y.

SOLELY BY THE

SOLELY BY THE

**FORGES.**

**DE LANEY FORGE & IRON CO,**  
300 Perry (see page 86)  
Gould Coupler Co, Austin, N Y C R R  
Belt Line  
Sizer Wm S, Jefferson c Mill

**Founders' Supplies.**

**QUEEN CITY WIRE WORKS, 193**  
Seneca (see page opp Wire Works)  
Whitehead Bros Co, 72 Columbia

**\*Frames.**

**FOX & FOX, 127 Erie** (see page 70)

**Fruit—Wholesale.**

(See Commission.)

**Fruit—Auction.**

**BUFFALO FRUIT AUCTION CO,**  
104-106 W Market (see page 74)

**\*Furnaces.**

**SCHWARTZ L & CO, 89-91 Seneca**  
(see page 56)

**Furnishing Goods—Wholesale.**

Abrams & Co, 104 Pearl  
Adam J N & Co, 387 Main  
Altman & Co, 68 Seneca  
Barnes, Hengerer & Co, 256 Main  
Barnum S O & Son, 265 Main  
Bean, La Dne & Clawson, 74 Exch  
Ellwood Wm, Washington  
Kessel & Richert, 511 Main  
Lepper, Wilson & Ellwood, 338 Wash  
Masten W I & Co, 185 Washington  
Mennig J G, 457 Washington  
Sulbach, Levi & Lempert, 256 Wash  
Strauss B W, 40 Pearl  
And 55 retail houses

**Furniture Manufacturers.**

Blecher & Kratz, 504 Carlton  
Buffalo School Furniture Co, 824  
Seneca  
Colie & Son, 5-12 Front ave  
Cutting & Thomas, 164-168 Wash-  
ington  
Hersee & Co, 247-255 Ellicott  
Hertkorn A & Son, 344-346 Oak  
McGrath & Bisgood (bedsteads) 88  
Pearl  
Metz & Meyer, 292 Elm

**GLASS—Plate and Window.**

Morgan D E & Son, c Main, Huron  
and Pearl  
Sikes Chair Co, 500 Clinton  
Stent & Thurman (tables), 278 John-  
son  
And 75 dealers

**Furs—Manufacturers.**

Comstock G W, 249 Washington  
Faul & Son, 271 Main  
Georger C & F, 510 Main  
Rayner A S, 293 Main  
Ruppersburg C F, 383 Main

**Galvanized Iron and Cornice Workers.**

Machwirth Bros, 92 Broadway  
Menze Fred A, 484 Genesee  
Peters G H & Son, 297 Elm

**\*Gas Burners.**

(For Furnaces, Stoves, Ranges and Grates.

**SEAMANS I M, 448 Niagara, res 377**  
Maryland

**Galvanized Iron Workers.**

Machwirth Bros, 92 Broadway  
Menge F A, 482 Genesee  
Peters G H & Son, 297 Main

**Gelatine Manufacturers.**

American Gelatine Works, Main e E  
Ferry  
Exclusive Gelatine Works, 117 Frank-  
lin  
Ribbel Bros, Person nr Broadway

**German Delicacies.**

**MERSMANN F, 556-560 Broadway**  
(see page 76)

**Glass (Plate and Window).**

Becker, Philip & Co, 468 Main  
Buffalo Paint & Color Co, 609 Main  
Georger, Harries & Co, 43 Pearl  
Lorenz John, 70 Genesee  
Post John C Sons, 52 S Division  
**QUEEN CITY STAINED GLASS**  
**WORKS** (Geo M Booth), 67 Frank-  
lin (see page 58)  
**REID WILLIAM, 451-453 Washing-**  
ton  
Simplex Glass Co, 100 White Bldg  
Viergiver J & Co, 16 Swan

HOWARD H. BAKER & CO.

---

▲ ▲ ▲

# SHIP CHANDLERS

---

▼ ▼ ▼

NOS. 18, 20, 22, 24 & 26 TERRACE, BUFFALO, N. Y.

Our Mammoth Store is located between Commercial and Pearl Sts.  
Fronting Terrace Square. Near Liberty Pole.

---

MILTON H. PROVOOST.

WM. T. PROVOOST.

HOWARD H. BAKER.

**D. PROVOOST'S SONS & CO.,**

ESTABLISHED 1849.

SAIL MAKERS AND MANUFACTURERS OF

**Tents, Awnings, Horse Covers.**

Canvas, 17 to 84 Inches Wide, Wholesale and Retail. Manufacturers  
of FLAGS of all Descriptions.

18 to 26 Terrace, Cor. Pearl St., BUFFALO, N. Y.

---

**The Buffalo & Medina Cut Stone Co., Ltd.**

DEALERS IN

**MEDINA, PORTAGE AND OHIO CUT SANDSTONE**

FOR BUILDING PURPOSES.

Also Curbing, Crosswalk and Flagging.

OFFICE AND YARD:

No. 18 Maryland St., Cor. Erie Canal, BUFFALO, N. Y.

Telephone No. 936.

Estimates Furnished and Correspondence Solicited.

◀ DIRECTORS ▶

CHAS. E. WILLIAMS, Prest. CHAS. A. GORMAN, Vice-Prest. FRANK L. BAPST Secy.  
P. B. McNAUGHTON, Treas. A. J. HOFFMEYER, Managing Director.



## BEVELED.

Queen City Mirror, Plate and Beveling Works, 6 Lock

## STAINED.

Buffalo Stained Glass Works, 29 Pearl  
**QUEEN CITY STAINED GLASS WORKS** (Geo M Booth), 67 Franklin (see page 58)

**Glove and Mitten Manufacturers.**

Baker L, 432 Niagara  
 Nevin Thomas, 16 Exchange  
 Niagara Glove Co, 12 Exchange  
 Orr George, 12 Exchange  
 Orr Wm, 12 Exchange  
 Queen City Glove Co, 47 Exchange  
 Schmidt & Ripple, 41 Exchange

**Glucose Manufacturers.**

American Glucose Co, Scott nr E Mkt

**Glue Manufacturers.**

Buffalo Glue Works, 372 Hamburg  
 Couch B T & Co, White's Corners rd  
 Evans Richard & Son, 389 Abbott rd

**Gold Cure Institutes.**

**M'MICHAEL INSTITUTE**, Niagara Falls, N Y, (George H McMichael, M D, spt), Buffalo office 75 W Tupper (see inside back cover)

**Gold and Silver Leaf Manufacturers.**

Kemp S T, 427 Seneca

**\*Gold, Silver and Nickel Platers.**

ROYLE T M (successor to C Rushbridge), 453-455 Washington  
**STRAUS & ROGERS**, 12 Perry (see page 82)

**\*Grain Dryers.**

MEY F H C, 64-68 Columbia (see page 52)

**\*Grates.**

**SCHWARTZ L & CO**, 89-91 Seneca (see page 56)

**Grind Stone and Emery Wheel Manufacturers.**

(See also Hardware.)

Eureka Emery Wheel Co, 37 Builders' Exch

**Grocers—Wholesale.**

Becker Philip & Co, 468 Main  
 Cumpson E, 163 Scott  
 Doelman L & Co, 503 Seneca  
 Glauber & Hunkemoeller, 544 Broadway  
 Granger & Co, Broadway e Ellicott  
 Granger Wm H, 96 Seneca  
 Heinold C J, 313 Broadway  
 Illingworth Wm E, 8 Wells  
 Kreinheider H J & Co, 458 Wash  
 Langner J D & Bro, 7-1 Seneca  
 Laverack George E, 230 Washington  
 Mahaney D & Son, 73 E Market  
 Miller Frank J, 74 W Market  
 Miller, Greiner & Co, 341 Washington  
 Plimpton, Cowan & Co, 50 E Swan  
 Prentiss J I & Co, 98 W Market  
 Race & Kingsley, 80 W Market  
 And over 1,100 retail houses

**\*Gunners.**

**FOX & FOX**, 127 Erie (see page 70)

**Guns, Ammunition and Sporting Goods.**

Barnum S O & Son, 267 Main  
 Blake & Planz, 219 Main  
 Buffalo Arms Co, 17 S Division  
 Burnside & Dorntge, 6 E Huron  
 LeValley S G, 189 Main

**\*Half-Tones.**

**BUFFALO ELECTROTYPE & ENGRAVING CO**, 12-24 Wells (see page 48)  
**NATIONAL ENGRAVING CO** (successors to Glascow & Palmer), 36 Morgan Bldg (see page 78)

**\*Hair—Plasterers.**

REEB M A, 599 Michigan (see page 74)  
 ROSS J H, 141 Erie (see page 64)

**Hardware—Wholesale.**

Beals & Co, 44 Terrace  
 Shepard Sidney & Co, 147 Seneca  
 Walbridge & Co, 317 Washington  
 Weed & Co, 284 Main

**Hardware and Tool Manufacturers.**

American Bit Brace Co, 122 Wash

# HENRY RIEMAN,

DEALER IN

## — BROOM CORN —

AND BROOM MANUFACTURERS' SUPPLIES.

OFFICE AND WAREHOUSE:

Nos. 99; 101 and 103 Grey St., - BUFFALO, N. Y.

---

STRAUSS & ROGERS,

## Gold Silver and Nickel Plating.

Antique Finishing, Oxidizing and Polishing.

SPECIAL ATTENTION GIVEN TO CLEANING AND REFINISHING

CHANDELIERS AND BRASS WORK.

12 PERRY STREET, BUFFALO, N. Y.

---

M. A. REEB,

MANUFACTURER OF

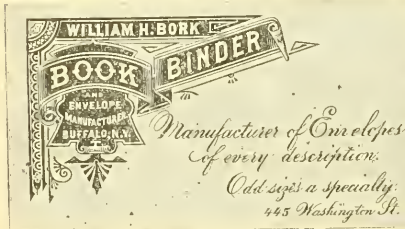
## QUICK LIME.

Dealer in CALCINED PLASTER, PLASTERING HAIR, PORTLAND AND OTHER CEMENT,  
MARBLE DUST, MORTAR COLOR ETC. Also Agent for  
ACME CEMENT PLASTER,

599 Michigan St, near Sycamore, - BUFFALO, N. Y.

Telephone 326.

---



WILLIAM H. BORK  
BOOK BINDER  
ENVELOPE MANUFACTURER  
BUFFALO, N.Y.

Manufacturer of Envelopes  
of every description.  
Odd sizes a specialty.  
445 Washington St.

J. H. TILDEN,  
BUILDER AND CONTRACTOR

OFFICE:

14 Henry St., Near Erie Canal.

Residence, 198 Franklin St.

**HARDWARE AND TOOL MANUFACTURERS.**

**HOTELS.**

Anidon Tool Corp, 1547 Niagara  
Buffalo Hammer Co, 1541 Niagara  
Buffalo Hardware Co, 557 Swan  
Clark Mfg Co, cross-cut junction Belt  
Line R R

Francis Axe Co, 357 7th  
Mann James & Sons, 621 Grant  
Niagara Screw Co, Washington e  
Chippewa

Saxton E R, 31 Lloyd  
White L & I J J, 143 Perry

**Hardware Specialties—Manufacturers.**

Buffalo Specialty Mfg Co, 24 Staats  
Clark Mfg Co, Cross Cut June Belt  
Line R R

Deuther T F, 196 Chicago  
Frontier Mfg Co, 97 Washington  
Jetter Mfg Co, 861 Jefferson

**Harness—Wholesale and Manufacturing.**

Becker & Wickser, 9 Court  
Crandall & Co, 965 William  
Melville John, 142 Niagara  
National Harness Co, 124 Seneca  
Shifferens & Sons, 102 Broadway  
Simmons Harness Co, 264 Fenton  
Stone Truman, 340 Washington  
And 40 retail houses

**\*Harness Oil.**

**QUEEN CITY MFG CO**, 80-84 Terrace (see page 82)

**Hat Manufacturers and Wholesale.**

Billings W F (ladies), 11 E Mohawk  
Cohen Solomon (wholesale), 124 Seneca

Comstock Geo W (wholesale), 249 Main

Fox & Whiting (straw), 385 Wash  
Georger & Co (wholesale), 508 Main  
Reischel & Weimar (silk), 335 Wash  
Tweedy Wm S & Co (wholesale), 50 Exchange

Vickers John W (silk), 283 Main  
And 50 retail houses

**Heating—Steam and Hot Water.**

Barnsd & Geiger, 11 E Mohawk  
Buffalo Forge Co, 480 Broadway

Clark & Co, 54 Court  
Cook E H & Co, limited, 102 17th  
Cook Edward L, 199 Pearl  
Danforth J W, 228 Pearl  
Gay Louis W, 31 Main  
Hardwicke Heating Co, 44 N Division  
Harrington James, 494 West av  
Irbacker & Davis, 533 Main  
Irr George, 517 Washington  
Irr & Son, 19 Wadsworth  
Kelsey, Schutt & Co, 879 Main  
Pierce Steam Heating Co, Cross Cut  
June Belt Line R R  
Smith John D, 51 Pearl

**Hides, Wool and Pelts.**

(See also Tanners.)

Geissler Leopold, 43 Carroll  
Hoeffeld R & Co, 65-67 Carroll  
Krauss A & Co, 17-23 Quay  
Wolf Nathan, 32-38 Lloyd

**\*High Explosives.**

**BIDWELL CLINTON**, 14 W Swan  
(see page 66)

**\*Hoisting Machinery.**

**HOWARD IRON WORKS**, 287 Chicago (see page 56)

**\*Hops.**

**BAIN D**, 557 Main (see page 82)

**Horse Collar Manufacturers.**

(See also Harness Manufacturers.)

Bippert Frederick, 1391 Fillmore av  
Scharmack & Franks, e Erie and Canal  
Dorries & Co, 102 Pearl  
Smith John H & Son, 57 Terrace

**Horse Sale Stables—Commission.**

Crandall & Co, 965 William  
**RICHMAN & TAYLOR** (Brainard House), William, East Buffalo (see page 60)

**\*Hotels.**

Arlington, Exchange e Wells, \$2  
**BRAINARD HOUSE** (C F Richman propr), William, East Buffalo (see page 60)  
Broezel, Seneca e Wells, \$3  
Carlton, Exchange e Washington, \$2  
Continental, Exchange e Michigan, \$2  
Genesee, Main e Genesee, \$3

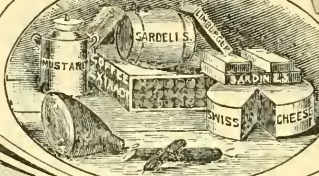
# FRED MERSMANN,

MANUFACTURER AND DEALER IN

WESTFALIA HAMS  
HOLSTEINER & CERVELAT  
SAUSAGES.

FISH  
OF ALL KINDS ETC.

MUSTARD  
AND COFFEE  
EXTRACT

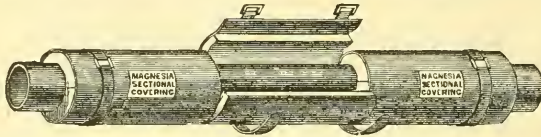


SWISS & LIMBURG  
**CHEESE**

560 BROADWAY

364 MADISON ST.

Buffalo, N.Y.



ROBERT A. KEASBEY.

MAGNESIA SECTIONAL COVERINGS

119 Franklin St., - BUFFALO, N. Y.

A. B. PENFIELD, MANAGER.

ALSO AGENTS FOR THE RARITAN HOLLOW & POROUS BRICK CO.

DRINK

*LANG'S*  
CELEBRATED BOTTLED  
*BEER.*

*For Family, Hotel and Club use.*

## HOTELS.

Gruener (German), Washington e  
Huron, \$2  
Iroquois Main e Eagle, \$4  
Mansion, Main e Exchange, \$2.50  
New Tift, 467 Main, \$3  
Niagara, Pofter av e 7th, \$3.50  
Stafford, Washington and Carroll,  
\$2.50  
Tucker's, Exchange e Michigan, \$2  
And 75 others

### \*House Thermostats.

SEAMANS I M, 448 Niagara, res 377  
Maryland

### \*House Furnishing Goods.

SCHWARTZ L & CO, 89-91 Seneca

### Ice Cream—Wholesale.

Hood Bros & Gould, 296 Connecticut  
Koch Frederick, 89 High  
Richter H, 142 Seneca  
Smith, Collins & Co, 376 Michigan  
Wheat's Ice Cream Co, 72 Elm

### Ice Machines.

Buffalo Refrigerating Machine Co,  
Washington e Ohio

### Improvement Companies.

BUFFALO REAL ESTATE EX-  
CHANGE [Committee on Improve-  
ments], (see page 46)

### Ink Manufacturers.

Buffalo Printing Ink Co, Brace e Erie  
Gramp Ludwlg, 560 Oak

### \*Insurance Agents.

HILL BROS, 122 Pearl (see back  
cover)  
LINCOLN GEORGE I, 120 Pearl  
(see opp real estate)

### Insurance Companies—(Home.)

Buffalo German Ins Co, Main e  
Lafayette  
Erie County Mutual Ins Co, 440 Main  
Harmonia Mutual Fire Insurance Co,  
57 Genesee  
Union Fire Insurance Co, 426 Main

### Iron—Builders.

WURTZ & SON, 22 Lloyd

## IRON WORKS—FOUNDERS.

### Iron Buildings.

Buffalo Portable Steel House Co, 322  
Exchange  
KELLOGG IRON WORKS, 7-8 Build-  
ers' Exch

### Iron Fences and Railings.

Buffalo Folding Iron Gate Co, 10  
Coal and Iron Exchange  
Ernst Charles F, 311 Walnut  
FEINE AUGUST, 20 Lock  
Jones George H Sons, 314 Terrace  
STARBIRD GEORGE B, 208 Terrace  
(see page 88)  
WURTZ & SON, 22 Lloyd

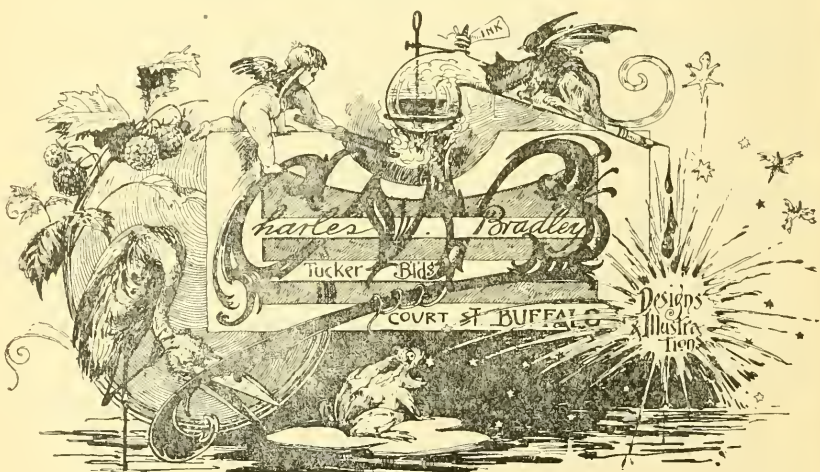
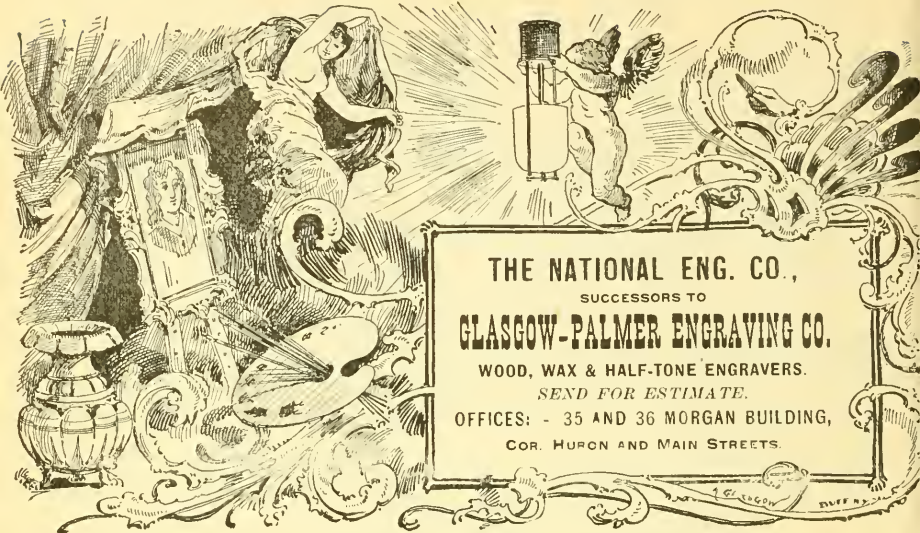
### Iron Manufacturers—Pig.

Buffalo Furnace Co, ft of Hamburg

### Iron Works—(Founders.)

Bell David, Norton e Evans  
Bingham & Taylor, 234 W Genesee  
Broadway Foundry Co, 1192 B'dway  
Buffalo Cast Iron Pipe Co, Box av  
near Belt Line  
Buffalo City Iron Works, 174 Fulton  
Buffalo Forge Co, 480 Broadway  
Buffalo Hardware Co, 559 Swan  
Buffalo Malleable Iron Works, 189  
Tonawanda  
Clark & Co, McPherson near Belt  
Line Railroad  
Delaney Forge and Iron Co, 300  
Perry  
Eagle Iron Works (R Dunbar & Son),  
Perry e Mississippi  
East Buffalo Iron Works, Belt Line  
Railroad near Broadway  
Farrar & Trefts, 54 Perry  
Fillmore Avenue Foundry, Fillmore  
av near Clinton  
Ginther's Jacob & Sons, Broadway  
e Pratt  
Harrower Horatio C, 35 Court  
Holmes E & B, 56 Chicago  
HOWARD IRON WORKS, 287 Chi-  
cago (see page 56)  
Howard Street Foundry, 575 Howard  
Jewett Sherman S & Co, Perry e  
Mississippi  
Jones' George H Sons, 314 Terrace

HALF-TONE, ZINC & WOOD ENGRAVERS.



## IRON WORKS—FOUNDERS.

**QUEEN CITY ENGINEERING CO,**  
Perry c Washington (see page opp  
pumps)  
Ruger J W & Co, 222 Chicago  
Pratt & Letchworth (malleable) 139  
Tonawanda  
**TIFFT GEORGE W & SONS,** 35 Wash-  
ington (see inside back cover)  
Trout H G & Co, 226 Ohio

### Iron Specialties—(Wrought.)

**FEINE AUGUST,** 20 Lock  
**STARBIRD GEORGE B,** 208 Terrace  
(see page 88)

### Iron and Steel.

Andrews Bros & Co, 77 White Bldg  
Beals & Co, 44-50 Terrace  
Carnegie Steel Co (Ltd) The, 9 German  
Insurance Bldg  
**DE LANEY FORGE AND IRON CO,**  
300 Perry (see page 80)  
Ditzel Richard R (pig), 39 Coal and  
Iron Exchange  
Fowler & Sons, 102 Carroll  
Hedstrom E L (pig iron) White Bldg  
Newman W H H & Co, 70 Main  
Park Bros & Co (Ltd), 355 Seneca  
Rogers, Brown & Co (pig iron), 70  
Coal and Iron Exchange  
Smith T Guilford, 9 German Insur-  
ance Bldg  
Tonawanda Iron and Steel Co, 70  
Coal and Iron Exchange

### Isinglass Manufacturers.

Pfeffer Louis & Sons, 380 Puffer

### Jewelers' Cases.

Apel H (trays), 25 Desmond place  
Roop Edward M (paper) 42 Keil  
Springfels Mfg Co, 46-48 Broadway  
Weil J M & Bros, 79-85 Ellicott

### Jewelers—Manufacturing.

Dann Charles F, 345 Main  
**GENTNER VALENTINE, JR,** 141  
Ellicott (see opp inside back cover)  
Heintz Bros, 64 S Division  
King & Eisele, Washington c S  
Division  
Schneider & Betz, 338 Washington  
Volk & Weiland, 327 Washington

## LEAD MANUFACTURERS.

Weil J M & Bros (findings), 79-85  
Ellicott

### Jewelers' Tools—Manufacturers.

Oliver W W, 1485 Main  
Stark Machine and Tool Co, Hudson  
c Seventh

### Jewelers—Wholesale.

Ansteth & Reinsch, 214 Main  
Block Bros, Court c Pearl  
Empire Jewelry Co, 56 Elmwood av  
Freedman Joseph, 202 Main  
Guggenheim & Alkan, c Court and  
Pearl  
Stradlinger John R, 333 Main  
Strauss C & Co, Pearl c Court  
Warner & Warner, 802 Main  
Weill Lasare E. c Court and Pearl  
And 90 retail houses

### \*Labels.

**FOX & FOX,** 127 Erie (see page 70)

### \*Label Cutters.

**FOX & FOX,** 127 Erie (see page 70)

### Ladders.

Walker Louis A, 21 Michigan

### \*Land Companies.

**GATLING TOWNSITE CO,** 24 Erie

### \*Last Makers.

Buffalo Last Works, Perry c Bur-  
well place  
Kingston John C, 25-45 Henry

### Law Books.

Williamson Law Book Co, 50 W  
Eagle

### Lawyers.

(A few prominent firms.)

Lewis, Moot & Lewis, 13 Court  
McMillan, Gluck & Poole, 24 W Seneca  
Marshall, Clinton & Wilson, Erie  
County Bank Bldg  
Quinby, Meads & Rebadow, 404 Main  
Rogers, Locke & Milburn, Erie c Swan  
Sprague, Morey, Sprague & Brownell,  
Erie County Bank Bldg

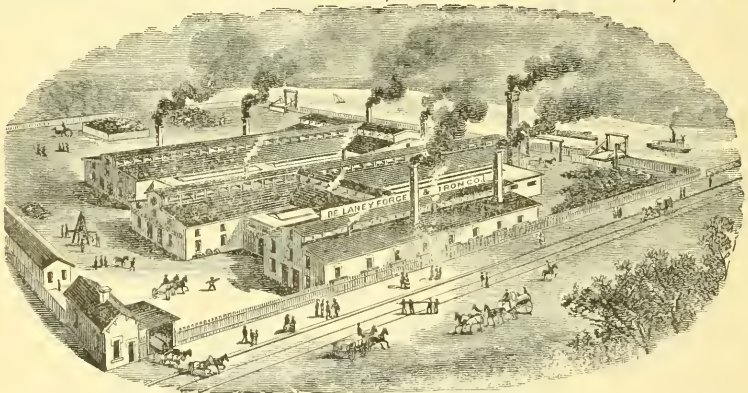
### Lead Manufacturers.

National Lead Co, Oak c Clinton

**MARION P. HATCH**  
**REAL ESTATE**  
 13 NIAGARA ST. BUFFALO N.Y.  
 CITY MAP MAILED FREE

ESTABLISHED 1850.

**DE LANEY FORGE & IRON CO., - BUFFALO, N. Y.,**



**IRON AND STEEL.**

Manufacturers of **LIGHT** and **HEAVY** FORGINGS, **HAMMERED SHAPES** of every description.

Proper facilities for rough machining or fully finishing.

C. A. DE LANEY.

JOHN SLOTE.

JOSEPH HOWARD.

**FIRST-CLASS  
 LAND INVESTMENTS**

✧ ✧ **LOTS AND ACREAGE.**

**E. DELAHUNT & SON,**

18 West Swan Street,

- **BUFFALO, N. Y.**



**Leather and Shoe Findings.**

Bloeser Jacob, 13 Ellicott  
**FRALICK F G**, 72 Exchange  
 Keener Charles, 280 Genesee  
 Kibbittz Frank, 164 William  
 Sherman David B & Son, 18 Exchange  
 Steffan's M Sons, 813 Main

**Lime, Plaster and Cement.**

Akron Cement Works, 36 Coit Blk  
 Buffalo Builders' and Contractors'  
 Supply Co, 153 Elk  
 Buffalo Cement Co (Limited), 110  
 Franklin  
 Buffalo Sewer Pipe Co, Tonawanda  
 near Niagara  
 Calkins & Co, 476 Louisiana  
 Consumers' Lime Co, 480 Hamburg  
 Cumming's Cement Works, 200 Main  
 Newman E J & Co, 50 River  
**REEBM A**, 599 Michigan (see page 74)  
**ROSS JAMES H**, 141 Erie (see  
 page 64)  
 Standard Cement Co, 200 Main  
 Union Akron Cement Co, 141 Erie  
 Williamsville Quicklime Co, 126 P'dway

**Linseed Oil Manufacturers.**

Kellogg & McDougall, 347 Main  
 Mann Bros & Co, 340 Ohio

**Liquors.**

(See Wines and Liquors.)

**Lithographers.**

Cosack & Co, 94-100 Lakeview av  
 Courier Lithographing Co The, 197  
 Maia  
 Dunston George H, W Seneca e Ter-  
 race  
**FOX & FOX**, 127 Erie (see page 70)  
 Gies & Co, 111 Swan  
 Matthews-Northrup Co, 179 Wash'gtn  
 Richmond Lithograph Co, Niagara nr  
 Hudson

**Live Stock Commission.**

Benstead Lawrence, 762 Elk  
 Besch Charles, 2695 Main  
 Block Solomon, 7 Live Stock Exchg  
 Blue R & Co, 16 Live Stock Exchg  
 Burke John J, 563 Howard  
 Burriss J H, 568 Howard

Burriss Lancelot G & Co, 17 Live  
 Stock Exchange  
 Cushing Thomas W, 862 Babcock  
 Doty & Watkins, 16 Live Stock Ex  
 Dunning & Stevens, 1 Live Stock Ex  
 Farthing & Colburn (milk cows),  
 Babcock near William  
 Gillice John, 15 Live Stock Exchg  
 Grobe Gohn, 15 Depot  
 Harrison, Meeks & Johnson, 3 Live  
 Stock Exchg  
 Huddleston, Hubbard & Co, 17 Live  
 Stock Exchg  
 Hulbert P, 15 Live Stock Exchg  
 Kelder Frederick, 49 Lewis  
 Kerr Louis & Co, 11 Live Stock Ex  
 Kerr M & Son, 7 Live Stock Ex  
 Leins Henry C, 1043 William  
 Levi Moses, 137 Eagle  
 Matheson Live Stock Commission Co,  
 965 William  
 Meyer Meyer, 13 Nevada av  
 Milsom Walter, 21 Live Stock Exchg  
 Nute E S, 28 Live Stock Exchg  
 Pfeiffer & Windsor Bros, 963 William  
 Polley & Dodge, 19-21 Lewis  
 Rice & Whaley, 14 Live Stock Exchg  
 Reinhardt, Irey & Co, 18 Live Stock  
 Exchg  
 Sadler J F & Co, 2 Live Stock Exchg  
 Smith James, 30 Casey  
 Smith Patrick, 30 Casey  
 Staey, Bement & Sedwick, 10 Live  
 Stock Exchg  
 Strauss Emanuel, 253 Eagle  
 Swope, Hughes, Walz & Benstead,  
 997 William  
 Upton James H, 1135 William  
 Weil Gustav, 561 Genesee  
 Weil Henry, 827 Jefferson  
 Williamson, Ransom & Mansfield, 8  
 Live Stock Exchg  
 Zimmer & Robe, 19 Live Stock Exchg

**Loans.**

(See Real Estate.)

**Lock Manufacturers.**

Buffalo Lock Mfg Co, 432 Niagara

**Lumber.**

Bemis & Knox, 202 Main  
 Betts Charles M & Co, foot Hertel av

❖ DONALD BAIN, ❖

DEALER IN

## HOPS AND BREWERS' SUPPLIES.

ALSO AGENTS FOR THE AMMONIA COMPANY OF BUFFALO,

Manfs. of Anhydrous and Aqua Ammonia.

No. 557 Main Street, - BUFFALO, N. Y.

---

J. H. SEWARD.

W. C. REA.

J. W. POWELL.

BUFFALO FRUIT AUCTION CO.,

104 & 106 WEST MARKET ST.,

For the Sale of Florida and California Oranges,

And Small Fruits, Pineapples, Coconuts, Bananas, Lemons,  
Cabbage, Potatoes, Apples, Tomatoes and all Foreign  
and Domestic Fruits and Vegetables

— AT AUCTION. —

---

ANDREW DOMEDION,

DEALER IN ALL KINDS OF

## ❖ BARBERS' SUPPLIES. ❖

Agent for KOCH'S PATENT BARBERS' CHAIRS AND FURNITURE.

104 BROADWAY, - - BUFFALO, N. Y.

Concaving Razors and Sparpening Clippers a Specialty. Try one of my  
Buffalo Razors, best in the world. Also Try Domedion Russian  
Egg Shampoo Cream.

---

A. SCHEUNEMAN,

WOOD, METAL AND MODEL

*PATTERN MAKER,*

198 TERRACE, BUFFALO, N. Y.

## LUMBER.

Boller & Recktenwalt, Chicago c  
Carroll  
Brown Willard W. 202 Main  
Buffalo Hardwood Lumber Co, 175  
Louisiana  
Carr Lumber Co, 45 Agency Bldg  
Cartwright Lumber Co, 56 Coal and  
Iron Exchg  
Churchyard Joseph's Sons, 654 Clinton  
Colie Eugene A. 110 River  
Cowper H M, 484 Richmond av  
Crosthaite William S. Ganson near  
S Michigan  
Dodge Cneesman, 16 W Seneca  
Elias G & Bro, 955 Elk  
Fleming Emmet, Louisiana near Ohio  
basin  
Goodyear F H & C W, 27-28 Coal and  
Iron Exchg  
Haines & Co. 255 Erie  
Hazard W B, 44 Niagara  
Holland Graves & Montgomery, foot  
Hertel av  
Holmes E & B. 187 Michigan  
Hull William, 103 White Bldg  
Hurd Bros, Ganson near S Michigan  
Hurd & Hauenstein, office 50 Main  
Knox & Folger, 292 Main, yard 69  
Le Roy av  
Empire Lumber Co, 1142 Seneca  
Lapeock Lumber Co, 7-5 Builders'  
Exchg  
Lee, Holland & Co, Court c Wilkeson  
Leslie Donald Y. 92 River  
Mead Edgar N, 649 N Division  
Mixer & Co, 287 Elk, Ohio basin slip  
Noyes & Sawyer, Ganson near S  
Michigan  
Palen & Burns, 275 Washington  
Poole & Hotchkiss, 270 W Genesee  
Proctor Lumber Co The (Ltd), foot  
Hertel av  
Read Alexander, 22 Lewis Block, 13½  
Swan  
Reid & Underhill Co, over 186 Main  
Scratcher & Son, 471 Louisiana  
Shepard C H, Seneca c Michigan  
Stengel & Cook, 9 Builders' Exchange  
Stewart Bros, 128 Church  
Sullivan T & Co, c Perry and Louisiana  
Superior Lumber Co, Tift Farm  
Taylor & Crate, 259 Elk

## MACHINISTS.

Tyler H M & Co, foot Hertel av  
Underhill F J, 61 Pearl  
Weisner Axel H & Son, 367 Seneca  
and 316 Rhode Island  
Zimmermann George, 309 Pine

## Machinists.

Allen & Forbes, 124 Washington  
Buffalo Machinery Co, 24 Burrell pl  
Carter C H, 436 Niagara  
Contractors' Plant Mfg Co, 129 Erie  
**DAY JOHN N**, 9 Quay  
Dempster Engine Works, 34 Wash'gn  
Dick James, 1286 West av  
Dopp H W & Son, 462 Ellicott  
Dunbar R & Son, Perry c Mississippi  
Farrar & Trefts, 54 Perry  
Feine August, 20 Lock  
Fischer & Bookser, 327 Washington  
Fox A R, 86 Maryland  
Frank & Co, 176 Terrace  
Ginther's Jacob Sons, B'dway c Pratt  
Griffin P H Machine Works, Forest  
av c Niagara  
Heiser William, 116 Clinton  
Holmes E & B, 59 Chicago  
Holz Bernard, 87 Maple  
Howard Iron Works, 287 Chicago  
Jetter Mfg Co, 861 Jefferson  
Joseph Mfg Co, 80 Washington  
Justin's A A Sons, 1892 Niagara  
Kehr & Duffy, 97 Washington  
King Iron Works, 226 Ohio  
Niagara Machine Co, Erie Railway,  
Kensington Station  
Niagara Stamping and Tool Co, Su-  
perior c Randall  
**QUEEN CITY ENGINEERING CO**  
Perry c Washington (see opp pumps)  
Queen City Metal Co, 16 Elk  
Ross Josiah, 1459 Niagara  
Ruger J W & Co, 222 Chicago  
Sand Paul, 33 Washington  
Schmall John H, 411 Ellicott  
**SHAMP GEORGE W** (special), 78  
Washington  
Smith John E & Son, 50 Broadway  
Squier George L Mfg Co, 424 Niagara  
Star Machine Co, 198-200 Terrace  
Starbird George B, 208 Terrace  
Stark Machine and Tool Co, Seventh  
c Hudson

**JACOB MORGENSTERN,**  
**REAL ESTATE** *IN ALL ITS BRANCHES.*

*BUFFALO, TONAWANDA, GRAND ISLAND AND NIAGARA FALLS*  
 ———ACRE PROPERTY———

ON EASY TERMS.

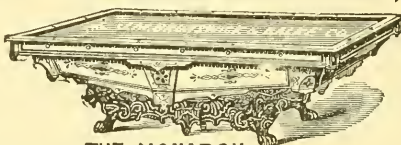
*Resident of Buffalo 42 years.*

*Appaiser of Land Values.*

*Eight years' Experience in Real Estate.*

**THE BRUNSWICK-BALKE-COLLENDER CO.,**  
 MANUFACTURERS OF **Billiard and Pool Tables.**

**BEST SEASONED  
 MATERIAL,  
 PERFECT  
 WORKMANSHIP.**



**LOWEST PRICES  
 AND  
 SATISFACTORY  
 TERMS.**

◆ ◆  
**THE MONARCH**  
 Salesroom, 587 and 589 Main St.,

◆ ◆  
**BUFFALO, N. Y.**

H. WILLIAMS. C. B. JAMESON.  
 TELEPHONE 137.

**H. WILLIAMS & CO.,**

SUCCESSORS TO  
 H. D. Hodge and Original Warren Roofing Co.,

◆ **ROOFERS,** ◆

MANUFACTURERS AND DEALERS IN  
 ROOFING MATERIALS,  
 ROCK ASPHALT FLOORS, DRIVES, WALKS.

Office, 250 Pearl St., Builders' Exchange.  
**BUFFALO, N. Y.**

**BERNHARD DUFNER,**

MANUFACTURER OF

—Orchestrions,

FLUTE INSTRUMENTS  
 FOR PRIVATE HOUSES.

**108 GOODELL ST., BUFFALO, N. Y.**

**HENRY L. HART,**

MANUFACTURER OF **PRINTERS' ROLLERS,**  
**PADDING GLUES AND STEAM PASTE.**

Our Rollers are used by all the leading houses here, including Matthews-Northrup Co., Gies & Co., Kittinger Printing Co., *Daily News, Daily Times* and *Daily Enquirer*, which alone is a guarantee for our goods.

Our Padding Glues are superior to anything in the market, and our Steam Paste, par excellence. After a trial you will use no other.

**10 LOCK ST., BUFFALO, N. Y. 107 N. WATER ST., ROCHESTER, N. Y.**

**MACHINISTS.**

Sutton Bros, 38 Le Contenlx  
 Taber Benjamin F, 70 Terrace  
 The S & L Mfg Co, 78 Washington  
 Stinson H B, 137 Washington  
 Throop Perforating Co, 80-84 Terrace  
**TIFT GEORGE W SONS & CO, 35**  
 Washington (see adv)  
 Whitman & Co, 178 Ohio

**Machinery—Printing.**

**MACKELLAR, SMITHS & JORDAN**  
**FOUNDRY** (Buffalo Branch). H L  
 Baker, Manager, 83-85 Ellicott (see  
 page 68)

**Maltsters.**

(See also Brewers.)

Braner John P, 992 Michigan  
 Broadway Brewing and Malting Co,  
 797 Broadway  
 Bullymore Richard (estate), 2212  
 Niagara  
 Curtis Charles G, 41 Board of Trade  
 Bldg  
 Diehl Henry, 406 Niagara  
 Fisher Bros & Co, 285 W Genesee  
 Gilbert E, 60 Board of Trade Bldg  
 Kam John Malting Co, 377 Genesee  
 Kleinschmidt Theo, 193 Pratt  
 Kreiner & Lehr, 467 Spring  
 Manning J B & Sons, office 23 White  
 Bldg  
 Meyer John, 1061 Genesee  
 Moffat Henry C, 143 W Mohawk  
 New York and Brooklyn Malting Co,  
 Seneca  
 Polley James H, 16 Lewis Block  
 Schaefer & Bro, 178 Main  
 Scheu Augustus F, Hudson e Fourth  
 Sloan William W, 684-702 Carroll  
 Voltz C G & J S, 1721 Niagara  
 Weigand John M, 162 Carlton  
 Weppner Jacob, 983 Jefferson  
 Wheeler Joel & Co, 283 Perry  
 White & Crafts, Lakeview av e Jersey

**Mantels, Grates and Tiles.**

Cooper W T & Bro, 885 W Delavan av  
 Day Alvin W, 568 Main  
 Elseser John, 1183 Niagara  
 Lautz & Co, 861 Main  
 Morgan Eurniture Co, 58 Grange

**MEATS—Wholesale.**

Nason & Hay, 178 Vermont  
 Rees & Grawitz 317 Northampton  
**SCHWARTZ L & CO, 89-91 Seneca**  
 and 160-170 Elk (see page 56)  
 Thayer Eli & Co, 39 Henry  
 Wolsey John A, 606 Main

**Map Mounters.**

**FOX & FOX, 127 Erie** (see page 70)

**Marble and Granite Works.**

Allenbrandt Edward, 9 Walden av  
 Bechtold Daniel, 584 Swan  
 Benemann Henry J, 562 Genesee  
 Cooper W T & Bro, 885 W Delavan av  
 Crawford John & Son, 1420 Dela-  
 ware av  
 Elseser John, 1183 Niagara  
 Frank Peter, 373-375 Elm  
 Hagen Michael, 93-95 Broadway  
 Hughes David L, 1628 Main  
 Johanns Frank P, 1195 Genesee  
 Lautz & Co (onyx), 861 Main  
 Lytle Robert W, 393 Michigan  
 McDonald Arthur, 328 Ohio  
**M'DONNELL & SONS, 858-860 Main**  
 (see page 64)  
 Mock & Co, 238 Lemon  
 Wegenaar L & Son, 502 Washington

**Mattress Manufacturers.**

Chaney N P & Co, 818 Main  
 Colie & Son, 5 Front av  
 McGrath & Bisgood, 88 Pearl

**Meats—Wholesale.**

(See also Pork Packers.)

Becherer Ferdinand E, 751 Seneca  
 Beck August, 186 Genesee  
 Bishop & Son (mutton) 20 Elk Street  
 Market  
 Danahy Packing Co, Clinton e Metcalf  
 Dold Jacob Packing Co, 745 William  
 Holl Peter, 223 Adams  
 Klinek Bros, 105 E Market  
 Klinek Christian, 11-15 Elk Street Mkt  
 Miller George, 235 Peckham  
 Milsom Alfred, 85 Elk Street Market  
 New England Dressed Meat and Wool  
 Co, Babcock e Howard  
 Roland Joseph, 79 E Market  
 Sahlen & Roland, Howard e Detroit  
 Schafer Conrad, 234 Watson



HARNESS DRESSING,  
FRENCH AND AMERICAN  
SHOE BLACKING.

THE BEST GOODS are always the cheapest, and when the best are sold at the same price as the inferior, is it not true business policy to select them, and then recommend the same to your customers? We make the best goods in our line produced, and if you will try them you must be convinced this is a fact.

THIS IS OUR LINE:

JET BLACK WATERPROOF PARISIAN AND IMPERIAL SHOE DRESSING, PARISIAN TAN PASTE, EBONY AND JET BLACK STOVE PASTE POLISH, JET BLACK ENAMEL AND AJAX LIQUID STOVE POLISH, UNCLE SAM'S FAVORIT AXLE GREASE,



Send us trial order. We guarantee all our goods.  
SEND FOR PRICE LIST AND TERMS.

QUEEN CITY MANUFACTURING CO.,

80, 82, 84 TERRACE,

BUFFALO, N. Y.

Anyone desiring a copy of

**"BUFFALO, 1893,"**

Will receive same by applying to the Secretary  
of the REAL ESTATE EXCHANGE,

BUFFALO, N. Y.

Schwarzott Adam, 354 Johnson  
 Schwarzott Lorenz, 838 Genesee  
 Summers & Schintzius (beef), 87 E  
 Market  
 Thompson Packing Co, 36 Lewis  
 Wagner Jacob, 1472 Genesee  
 Weimert John (mutton), 18 Elk Street  
 Market  
 Weppner's A Sons, Sycamore e Guil-  
 ford  
 Wertheimer Isaac, 618 Howard  
 Wertheimer Samuel, 114 Lewis  
 Western Beef Co, 72 River  
 And 425 Meat Markets

## \*Metals—Old.

HAYMAN MICHAEL & CO, 154-158  
 Terrace

## Mill Supplies.

Bickford & Francis Belting Co, 53-55  
 Exchange  
 Buffalo Mill Supply and Machinery  
 Co. Childs  
 Buffalo Rubber Co, G D Barr, 90 Pearl  
 and 363 Main  
 Goodyear Rubber Co, 240 Main and 9  
 W Seneca  
 Hoffeld R & Co, 322-336 Washington  
 Whittet Barrett & Co, 59 Main

## Millinery—Wholesale.

Hamilton John, Washington

## \*Monuments.

M'DONNELL & SONS, 858-860 Main  
 (see page 64)

## \*Mortar Color.

REEB M A, 599 Michigan (see page 74)

## Monnters.

FOX & FOX, 127 Erie (see page 70)

## Music and Musical Instruments.

Denton, Cottier & Daniels, 269 Main  
 And 20 retail houses

## Newspapers—Daily.

Buffalo Commercial, Washington e  
 N Division  
 Buffalo Courier, 197 Main  
 Buffalo Enquirer, 509 Main  
 Buffalo Evening News, 218 Main

Buffalo Morning Express, 179 Wash-  
 ington  
 Buffalo Freie Presse, 500 Main  
 Buffalo Times, 193 Main  
 Buffalo Volks-Freund, 48 Broadway  
 And 34 weeklies, 4 semi-weeklies and  
 35 monthlies

## \*Nickel Platers.

STRAUSS & ROGERS, 12 Perry (see  
 page 74)  
 Thorne F S, 91 Main  
 Ward C H & Co, 93 Main

## Office Fixtures.

HEIN F X, 38 Elm (see opp inside  
 back cover)

## Oils.

Brooks Oil Co, 52 Terrace  
 Buffalo Refining Co, 55 Main  
 Commercial Oil Co, 71 Main  
 Dudley & Co, Swan e Washington  
 Enterprise Oil, Main e Ohio  
 Genesee Oil Works, 159 Seneca  
 Holmes A S Refining Co, 47 White Bldg  
 Kellogg & McDougall (linseed) 351  
 Main  
 McCutcheon C H, 18 Ohio  
 Mann & Bros (lin-seed) 340 Ohio  
 Merchants' Refining Co, 107 Seneca  
 Pease F S Oil Co, 65 Main  
 Rice, Robinson & Foggan, 251 Seneca  
 Standard Oil Co of New York (Star  
 Oil Works), 17-19 Swan

## Oil Refiners.

Atlas Works, Elk e Babcock  
 Buffalo Refining Co, 55 Main  
 Commercial Oil Co, 17 Main  
 Genesee Oil Works, 159 Seneca  
 Holmes A S & Co The, 47 White Bldg  
 Merchant's Refining Co, 107 Seneca  
 Star Oil Works, 17-19 Swan

## \*Opera House Chairs.

M'NUTT RANDOLPH, 163 Swan  
**Optical Instrument Manufacturers.**  
 Fox Optical Co, 461 Main  
 Spencer & Smith Optical Co, 365  
 Seventh

**EMPIRE IRON RAILING WORKS**

IRON FENCES GATES  
STAIRS CRESTING & FIRE ESCAPES

Special Attention Given to  
**ORNAMENTAL WROUGHT IRON WORK**  
FROM ARCHITECTS' DESIGNS

WROUGHT IRON GRILLES SCREENS ANDIRONS FENDERS &c.

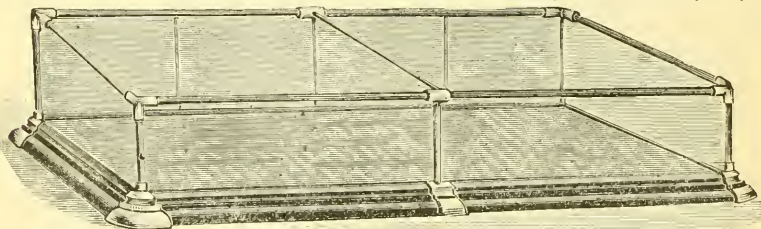
**G. B. STARBIRD 208 TERRACE BUFFALO N. Y.**



**H. WM. KRUSE,**

STEAM MANUFACTURER OF

Show Cases,



A COMPLETE AND FULL ASSORTMENT OF  
SHOW CASES CONSTANTLY ON HAND.

104 AND 106 OAK STREET,  
→ → BUFFALO, N. Y.

C. J. ONINK.  
W. J. ONINK.

**C. J. Onink & Co.**

ELECTROTYPERS

18 Ellicott Street. **BUFFALO, N. Y.**



**ORCHESTRION BUILDER.****Orchestraion Builder.**

**DUFNER BERNARD**, 108 Goodell  
(see adv)

**Ordnance Manufacturers.**

**GATLING ORDNANCE CO**, 24 Erie  
(Works Gatling, N Y)

**Organ Builders.**

House Garrett (church) 122 Clinton  
Kent William J (reed) 629 Prospect av

**Overalls and Pants Manufacturers.**

Abrams & Co, 104 Pearl  
American Overall and Shirt Mfg Co,  
604 William  
Bean, La Due & Clawson, 74 Exchange  
Beyer Bros, 106 Genesee and 76 Pearl  
Cohn & Co, 187 Washington  
Gerstman Louis, 1146 Broadway  
Haenlein A & Co, 40 Pearl  
Jellinek E, 42 Pearl  
Kempner & Lewin, 52 Pearl  
Lyon W H, Main c Terrace  
Masten W I & Co, 187 Washington  
Seelbach, Levi & Lempert, 226-228  
Washington

**\*Oxidizing and Polishing.**

**STRAUSS & ROGERS**, 12 Perry (see  
page -74)

**Paint Manufacturers.**

Kellogg Oil, Paint and Varnish Co,  
351 Main  
Warren Paint Co, 52 Terrace

**Paints, Oils and Glass—Wholesale.**

Baitz Louis, 665 Clinton  
**BAKER HOWARD H & CO**, 18-26  
Terrace (see page 72)  
Becker Philip & Co, 468 Main  
Bergman S, 334 Elk  
Buffalo Paint and Color Co, 609 Main  
Coppins F T, 338 Niagara  
Josephs J & Son, 186 Main  
Kellogg Oil, Paint and Varnish Co,  
347 Main  
Laverack George E, 230 Washington  
Lorenz John, 70 E Genesee  
Post Henry, 1247 Niagara  
Post's John C Sons, 52 S Division

**PAVING CONTRACTORS.**

Viergiver & Co, 16 E Swan  
And 40 retail houses

**\*Paper Cutters.**

**HOWARD IRON WORKS**, 287 Chi-  
cago (see page 56)

**Paper Hangings—Manufacturers.**

Birge M H & Sons, Niagara c Mary-  
land

**\*Paper Stock and Metals.**

**HAYMAN MICHAEL & CO**, 154-158  
Terrace

**Paper—Wholesale.**

Adams & White, 209 Main  
Courier Co The, 197 Main  
**DRESCHER C J & SON**, 106-110  
Broadway  
Gebhard R H, 224 Washington  
Irish George, 84 Pearl  
Single John Paper Co (Ltd), 540  
Washington  
Thompson R H, 225 Washington  
Wex Lawrence, 355 Washington  
Willis C L, 98 Pearl

**Paste—(Paperhangers and Printers.)**

**HART H L**, 10 Lock (see page 84)

**Pattern and Model Makers.**

Bauman Otto, 186 Seneca  
Bell Francis, 97 Washington  
**COLSON FREDERICK A** (tel 277)  
Howard Iron Works Bldg, 285  
Chicago  
Gibson R A, 16 Perry  
Joseph Mfg Co, 80 Washington  
**QUEEN CITY ENGINEERING CO**,  
Perry c Washington (see opp pumps)  
**SCHUNEMAN A** (wood and metal)  
198 Terrace (see page 82)  
**SHAMP GEORGE W**, 78 Washington

**Paving Contractors.**

Barber Asphalt Paving Co, 17 Chapin  
Block  
Brady & Maltby (stone), 21 Maryland  
Buffalo Ferrolithic Paving Co, 3  
Builders' Exchg  
Buffalo Granolithic Paving Co, 73 W  
Eagle

PAVING CONTRACTORS.

Buffalo Medina Stone and Paving Co,  
194 Main  
Buffalo Vulcanite Asphalt Co, 13½  
Swan  
Cockburn Bros & Co, 37 Court  
German Rock Asphalt and Cement Co,  
12 Kremlin Hall  
Kramer & Herman, 177 Clinton  
Queen City Paving Co, 73 W Eagle  
Williams Charles (stone), Pearl & Eagle

Perforating—Metal.

**THROOP PERFORATING CO THE,**  
80-82 Terrace

Photographic Supplies.

Buffalo Argentic Paper Co, 206 Chester  
**BUTTS & ADAMS,** 457-459 Wash-  
ington (see page 62)  
Tucker David, 37 Court

Physicians' Supplies.

**JEFFREY & GOTSHALL,** 311 Main  
and 11 S Division

Piano Manufacturers.

**KURTZMANN C & CO,** Niagara &  
Pennsylvania  
And 15 retail warerooms

Pickle, Sauce and Mustard Manu-  
facturers.

Gentsch B F & Sons, 329 Broadway  
Heinz H J & Co, 77 Main  
Kimberly John L, 392 Fourth  
Klipfel Gustave, 137 E Tupper  
Klipfel W & G, 648 Michigan

Picture Frame Manufacturers.

Denther Mfg Co, Court & Wilkeson  
Hoddick & Co, 620 Main  
Mutter Charles F, 672 Clinton  
Pfeffer Theodore H, 578 Genesee  
Pincus D & W, 252 Seneca  
Schnur & Co, 539 Main  
Sutor William A F, 17 Exchange  
Tiffany W C, 241 Seneca  
Tucker David, 37 Court

Planing Mills and Sash, Doors and  
Blinds.

Boller & Recktenwalt, Chicago & Car-  
roll

PORK PACKERS.

Churchyard's Joseph Sons, 650 Clinton  
Clabeau Bros, 471 Clinton  
Fischer & Klaus, 920 Seneca  
Hager & Feist, 141 Eln  
**HAMILTON CHARLES J,** Erie &  
Terrace

Henrich William & Son, 193 Spring  
Hoeffler Bros, Masten & Puffer  
Holmes E & B, 187 Michigan  
Jaekle & Co, 915 Genesee  
Klaus Joseph, 330 Howard  
Kreinbender & Flierl, 1356 Genesee  
Kunz William, 364 Massachusetts  
Lee, Holland & Co, Court & Wilkeson  
Metz & Meyer, 292 Elm  
Parks' Sash & Door Works, 10 Build-  
ers' Exch

Reulin G Henry, 769 Clinton  
Schreiner Bernard J, 115 Ash  
Schuele Jacob & Sons, 1500 Jefferson  
Smith & Miller, 407 Rhode Island  
Tonawanda Street Planing Mill Co,  
Ltd, 581 Tonawanda  
Ubelhoer Jacob & Sons, 200 Cherry  
Walkham, Dohn & Fischer, 1340 Ni-  
agara

\*Plaster.

**ROSS J H,** 141 Erie (see page 64)  
**REEB M A,** 599 Michigan (page 74)

Plumbers' Supplies.

Cook Edward L, 199-201 Pearl  
Dixon & Ballou, Wells & Carroll  
Gay Louis W, 31 Main  
Irlbacker & Davis, 529-533 Main  
Jewett John C Mfg Co (baths), 51 N  
Division  
Schafer E J G & Bros, 294 Wash  
Shepard Sidney & Co, 145 Seneca  
Smith John D, Estate, 51 Pearl

Polish Manufacturers.

Hebblewhite Mfg Co, 24 Staats  
Hosmer & Bertling, 90 Main  
**QUEEN CITY MFG CO,** 80-84 Ter-  
race (see page 86)  
Shining Light Mfg Co, 10 Main  
Stinson B F & Co, 50 Mechanic

Pork Packers.

Danahy Packing Co, Clinton & Met-  
calfe

**PORK PACKERS.**

Dold Jacob Packing Co, 745 William  
Klinec Bros, 105 E Market  
Klinec Christian, 11 Elk st market  
Weppner A Frank, 5 Hanover

**Potash Manufacturers.**

Rockelein Michael, 254 Lemon

**Potteries.**

Betz Henry & Bros, 824 Genesee  
Mittler Lorenz, 626 Genesee

**Powder.**

**BIDWELL CLINTON**, 14 W Swan  
(see page 66)

**Preserving Companies—Fruit.**

American Preservers Co, 95 Ohio  
Erie Preserving Co, 41-43 Exchange

**Printers.**

(See Publishers and Printers.)

**Printers' Finishers.**

**FOX & FOX**, 127 Erie (see page 70)

**Printers' Materials.**

(Courier Co The, 197 Main  
Driscoll & Fletcher (machinery), 32  
Ellicott  
Gebhard Adam F, 224 Washington  
**HART HENRY L**, 10 Lock (see page  
84)

Hempel & Dingens, 333 Main  
**MACKELLAR, SMITHS & JORDAN**

**FOUNDRY** (Buffalo branch, H L  
Baker mgr, machinery and supplies),  
83-85 Ellicott (see page 68)

Nesbet Robert (rollers), W Swan c Terrace

Roche R J (cases), 71 Lloyd  
Thompson R H, 225 Washington

**Printers' Rollers Manufacturers.**

**FOX & FOX**, 127 Erie (see page 70)  
**HART HENRY L**, 10 Lock (see page  
84)

Nisbet R, W Swan c Terrace

**Produce.**

(See Commission Produce.)

**PUBLISHERS AND PRINTERS.**

**Publishers and Printers.**

Adams & White, 209 Main  
Baker, Jones & Co, 222 Washington  
Beach & Walker, 335 Washington  
Buell & Wilgus (maps), 179 Wash'gtn  
Buffalo Catholic Publication Co,  
Franklin c Erie

Buffalo Volksfreund, 46-48 Broadway  
Burdick E L Co, 10-14 Lock  
Callahan & Connealy, 404 Main  
Chamberlain R Rruce, 13½ Swan  
City Press Printing House, 83 Ellicott  
Cossack & Co, 94-100 Lakeview av  
Cross & Dowdall, 18 Fornes' Block  
Courier Co The, 197 Main

Enterprise Printing Co, 82 Terrace  
Fairbairn & Landes, 51 Swan  
Garretson, Cox C Co, 365 Seventh  
Grant, The Printer, 359 Main  
Haas & Klein, W Seneca c Terrace

Hausaner & Plogsted, 483 Wash'ngn  
Hartman & De Coursey, Wex Bldg  
Hutchinson E H & Co, 71-73 W Eagle  
Hutchinson R & Co, 19 W Mohawk  
Johnson Willis L, 322 Rhode Island

Kittinger Printing Co, 365 Seventh  
Kraft & Stern, Wex Bldg  
Landsittel A W, 473 William  
Laughlin John, 195 Main

Lockwood & Ough (law blanks), 326  
Washington  
Martin K I, 41 Franklin

McFaul Thomas, 22 W Seneca  
McGerald S, 457 Washington  
Matthews-Northup Co, 179 Wash-  
ington

Matthews George E & Co, 179 Wash-  
ington

Moulton C W, 39 Court  
Otis H H & Sons, 288 Main  
Paul Peter & Bro, 420 Main  
Reinecke & Zesch, 500 Main

Russell C B & Bro, 198 Terrace  
Sutton George & Co, 374 Seneca  
Times Printing House, 193 Main  
Tovey Alfred E, 1724 Niagara

Volger Printing Co, Wex Bldg  
Wagonis V, 1019 Broadway  
Warren's James D Sons, Washington  
c N Division

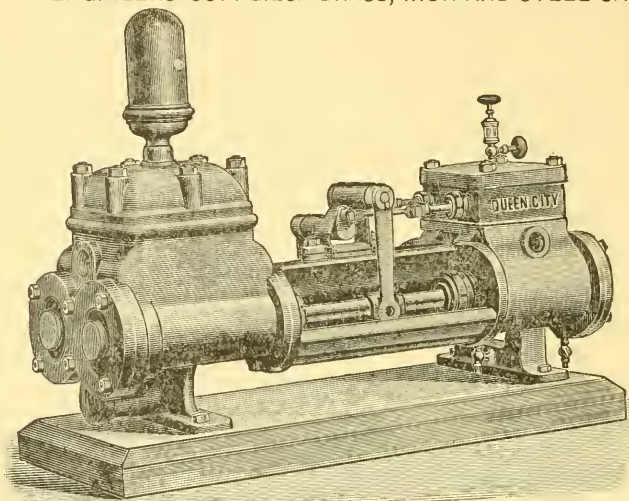
Webster C H, 83 Ellicott

# QUEEN CITY ENGINEERING CO.,

MANUFACTURERS OF AND DEALERS IN

Steam Pumps, Pumps and Receivers, Oil Pumps,  
ENGINEERS' SUPPLIES. BRASS, IRON AND STEEL CASTINGS.

BRASS AND IRON RAILING AND ORNAMENTAL WORK.



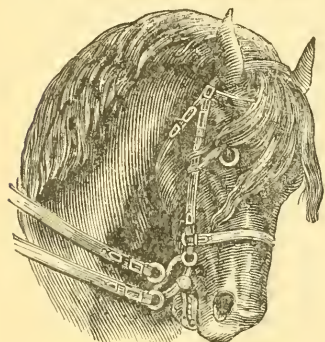
WOOD AND METAL PATTERNS TO ORDER.

GENERAL JOBBING AND REPAIRING.

Agents for Atlas Engine Works. Plain and Automatic Engines, Boilers, Etc.

CORNER PERRY AND WASHINGTON STREETS.

TELEPHONE 1510.



**JAMES LEE,**  
**Boarding and Livery Stables**

COACHES TO ORDER.

131 Erie St., 93 Franklin St.,  
BUFFALO, N. Y.

Wenborne-Sumner Co The, 135-137  
Main  
Wieckman C, 131 Broadway  
Wright W H, 18 Ellicott  
and others.

**Pump Manufacturers and Dealers.**

ALBERGER J L (Worthington  
steam), Terrace e Franklin  
Buffalo Steam Pump Co, 118 Church  
Meyer A F (dealer), 393 Brodway  
**QUEEN CITY ENGINEERING CO**  
(steam), Perry e Washington (see  
opp pumps  
Ruckel J H, 81 Main  
Snow Steam Pump Works, Roesser e  
Snow av  
Taber B F (rotary), 70 Evans

**Pumps and Receivers.**

**QUEEN CITY ENGINEERING CO,**  
Perry e Washington (see opp pumps)

**Quarry Owners.**

**M'DONNELL & SONS,** 858-860 Main  
(see page 64)

**Radiator Manufacturers.**

Standard Radiator Co, 12 Porter

**\*Railings—Bank and Office.**

**QUEEN CITY WIRE WORKS,** 193  
Seneca (see opp wire works)

**Railroads—With Depots.**

Buffalo, Rochester & Pittsburgh Ry,  
Exchange opp Wells  
Buffalo & Southwestern (branch Erie  
Ry), Michigan e Exchange  
Delaware, Lackawanna & Western,  
foot of Main  
Grand Trunk Ry, Michigan e Exch  
Lake Shore & Michigan Southern, Ex-  
change opp Wells  
Lehigh Valley (Reading system), Mich-  
igan e Exchange  
Michigan Central, Exchange opp Wells  
N Y C & H R R R, Exchange opp Wells  
New York, Chicago & St. Louis (Nickel  
Plate), Michigan e Exchange  
N Y, L E & W (Erie Ry), Michigan e  
Exchange

Northern Central (N Y C depot), Ex-  
change e Wells  
West Shore, Exchange opp Wells  
Western N Y & Penna (N Y C depot),  
Exchange opp Wells

**Railroad Supplies.**

Benjamin Gus, 66 Exchange  
Carnegie Steel Co, limited, 9 German  
Insurance Co Bldg  
Curtiss W L (ties), 183 Franklin  
Ginsburg R L & Son, Sycamore nr  
Belt Line  
Smith T G (rails, etc), 9 German In-  
surance Co Bldg  
Wheeler & Holden (ties and timber).  
13 Swan

**\*Ranges.**

(See also Stoves and Ranges.)

**SCHWARTZ L & CO,** 88-91 Seneca  
(see page 56)

**Real Estate.**

(Members Buffalo Real Estate Exchange.)

**AHRHART CHARLES,** 14 E Eagle  
(see page 94)  
Allen Cyrus A, 31 W Eagle  
Allen Daniel W, 21 W Eagle  
Atwater William T, 47 White Bldg  
**BAILEY GEORGE M,** 24 Erie  
Bell & Ely, 12 Eagle  
Boechat Frank P, 23 W Swan  
Box Henry W, 24 Erie Co Bank  
Brandel Charles P, 47 Seneca  
Brown Wilmer, Lockport, N Y  
Buell Franklin S, 84 Exchange  
Burkhardt Bros, 21 W Eagle  
Busch Frederick, 95 Franklin  
Buehl Louis H, 348 Main  
**CALLAHAN D F,** 404 Main (see opp  
inside front cover)  
Clement Lucius B, 73 W Eagle  
Close Charles J, 230 Pearl  
Close Emory P, 276 Main  
Cutter William B, 19-20 White Bldg  
Daly J C W, 68 White Bldg  
Danforth Frank L, 93 White Bldg  
Danforth Frederick W, 351 Main  
Dayton & Stevens, 1-2 Agency Bldg  
DeCeu & Little, 35-36 Agency Bldg

REAL ESTATE.

LOANS. . .

INSURANCE.

**GEORGE I. LINCOLN,**

No. 120 PEARL STREET,

• • BUFFALO, N. Y. • •

HOUSES RENTED. .

INTERESTS OF NON-

RESIDENTS .

RENTS COLLECTED.

ATTENDED TO. .

BUSINESS AND  
RESIDENCE  
PROPERTY.  
CITY LOTS.

L. K. PURVIANCE,

DEALER IN

**Real Estate & Securities**

INSURANCE, LOANS,  
NOTARY PUBLIC.

162 Pearl Street, BUFFALO, N. Y.

ACREAGE  
AND  
MANUFACTURING  
SITES.

**CHARLES AMRMART,**

— LICENSED —

**Auctioneer • and • Appraisor,**

REAL ESTATE, LOAN AND INSURANCE BROKER.

Rooms 5 and 6, over 14 East Eagle Street, BUFFALO, N. Y.

TELEPHONE 995.

## REAL ESTATE.

DELAHUNT EDWARD, 18 W Swan  
(see page 80)  
Dennison Louis O, 25 Builders' Exch  
Doyle Henry B, 16 N Division  
Dorr Samuel G, M D, 300 Jefferson  
Duncan Elmer L, 36 Niagara  
Embry Herbert H, 4 Chapin Block  
Eaton Henry, 78 Agency Bldg  
Folinsbee H D, 1 Brown's Bldg  
Gilmour Charles B, 15 Niagara  
Grist F Stephen, 126 Franklin  
Hartwell Wesley G, 33 White Bldg  
HATCH MARION P, Laird Bldg (see  
page 80)  
Hazard Willett B, 18 Agency Bldg  
HILL CHARLES B, 122 Pearl  
HILL HENRY S, 122 Pearl (see back  
cover)  
Hodge Charles J, 56 Niagara  
Hodge William C, 60 Hodge av  
HOPKINS & HUMBURCH, 2 Austin  
Bldg (see inside front cover)  
Howard George R, 19 Erie County  
Bank Bldg  
Hubbard Frank S, 263 Washington  
Hughes & Hunt, 30 Agency Bldg  
Holmes James S, 26 Law Exch  
Hoff Francis L, 62 Erie County Bank  
Bldg  
Ingham Clark L, 155 Pearl  
Inglehart Fred M, 31 Erie County  
Bank Bldg  
Johnson Arthur A, 52 Erie County  
Bank Bldg  
JOHNSON WILLIAM H, 351 Main  
Kingsley S S, 39 Niagara  
Kittinger Joseph, 125 Erie County  
Bank Bldg  
Klas & Weyand, 36 Niagara  
Knight Erastus C, 121 Franklin  
Koons H & E L, 474 Main  
LEE GEORGE A, 7 Swan  
Lyon & Morgan, 160 Pearl  
LINCOLN GEORGE I, 120 Pearl (see  
opposite)  
Mahoney T J, 9 Niagara  
Mayer Joseph B, 42 Builders' Exchg  
Metcalf George S, 34-35 Erie County  
Bank Bldg  
Millinowski Arthur, 70 Coal and Iron  
Exchg

## REAL ESTATE.

Miller Charles W, 377 Main  
Mitchell & McNally, 36 Niagara  
Montillon & Nicholson, 176 Pearl  
Mooney James, 20 Arcade Bldg  
MORGENSTERN JACOB, 366 Main  
(see page 84)  
McCann John A, 195 Main  
McNamara F R, 73 Erie County Bank  
Bldg  
Norris & Norris, 74 Erie County Bank  
Bldg  
Otto John & Sons, 24 W Seneca  
O'Brian John, 356 Main  
Pfohl & Smith, 46 Niagara  
Potter Russell H, 54 Niagara  
Preston Austin R, 16 Court  
PURVIANCE LOUIS K, 162 Pearl  
(see page opp)  
RICH & OAKES, 9-10 Agency Bldg  
Ricker & Wing, 111 White Bldg  
Roberts Frank K, 378 Main  
Roberts James A, 404 Main  
Roehner A J, 356 Main  
Sickels Frank E, 9 Niagara  
SICKELS GEORGE H JR, 9 Niagara  
SIKES F G & G R, 122 Pearl (see  
page 58)  
Sirrett William B, 10 Coal and Iron  
Exchange  
Slater Charles A, 404 Main  
Sniggs Robert F, 15 Niagara  
Stanton Patrick E, 76-77 Erie County  
Bank Bldg  
Stevenson C P, 58 Erie County Bank  
Bldg  
Strasmer William F, 30 Hayden Bldg  
Sweet D B & D C, 7 Swan  
Teller George R, 66 White Bldg  
Tennant Willis H, 47 Erie County  
Bank Bldg  
Thomas & Walker, 36 Niagara  
THORNE & ANGELL, 15 Niagara  
(see opp title page)  
Voght Henry H, 10 West Eagle  
Wadsworth Henry C, 8 Lewis Block  
Warren M F, Bank of Commerce  
Watson Henry M, 178 Main  
Watson Henry W, 104 White Bldg  
Weill Henry, 96 Erie County Bank  
Bldg  
Weill Louis, 12 Builders' Exchange

Wells A Judson, 73 Erie County Bank Bldg  
 White George I, 56 Niagara  
 White W W, 2 Masonic Temple  
 Wiedrick John W, 162 Pearl  
 Wightman George B, 19-20 White Bldg  
 Williams Frank F, 158 Erie County Bank Bldg  
 Willoughby John, 4 Kremlin Hall  
 Wilson Clarence W, 53 White Bldg  
 Zink & Hatch, 52 Niagara

#### Refrigerator Manufacturers.

Buffalo Refrigerating Machine Co, Ohio c Washington  
 Case Refrigerating Machine Co, Ohio c Washington  
 Heinz & Munschauer, Superior c Randall  
 Jewett John C Mfg Co, 51 N Division  
 Pierce G N & Co, 8 Hanover  
**SCHWARTZ L & CO**, 89-91 Seneca (see page 56)  
 Vogt P A, 81 Broadway

#### Register and Ventilator Manufacturers.

Buffalo Register Works, 432 Niagara  
 Washington Iron Works, 417 Bdwy

#### \*Rings and Diamonds.

**GENTNER VALENTINE JR**, 141 Ellicott (see opp inside back cover)

#### Roiled Oats.

Hower Co, 20 Exchange

#### Roller Composition.

**HART H L**, 10 Lock (see page 84)

#### Roofers and Roofers' Materials.

Fisher Martin Jr, 7 W Huron  
 Grove Roofing Co, 13 Niagara  
 Machwirth Bros, 92 Broadway  
 Peters G H & Son, 297 Main  
 Smith D L, 5 Brown's Bldg  
 Walsh John, Van Rensselaer c Carroll  
**WILLIAMS H & CO**, 250 Pearl (see adv)  
 And 8 others.

#### Rubber Goods.

Brickford Francis Belting Co, 53 Exchange

Buffalo Rubber Co, 90 Pearl  
 Goodyear Rubber Co, 240 Main  
 Hoffeld R Co, 332 Washington  
 Revere Rubber Co, 74 Pearl

#### Saddlery Hardware.

Blakeslee Harvey D, 337 Washington  
 Dorries & Co, 102 Pearl  
 Hull James D, 18 S Division  
 Pratt & Letchworth (manufacturers) 189 Tonowanda  
 Smith John H & Son, 57 Terrace

#### \*Safe Deposit Vaults.

**MARINE BANK OF BUFFALO THE**, 220 Main (see page 42)

#### Safe and Vault Manufacturers.

Cary Safe Co (Ltd), 250 Chicago  
 Ernst C F, 311 Walnut  
 Jones George H & Sons, 316 Terrace

#### Sail Makers.

(See Awnings, Etc.)

**PROVOOST'S D SONS & CO**, 18-26 Terrace (see page 72)  
 Williams Bros, 11 Main

#### Sand.

Batt Nicholas, 205 Maple  
 Carroll Bros, Fourth c Virginia  
**FOX & HOLLOWAY**, Builders' Exchange, 252 Pearl (see page 60)  
 Freitas John, foot S Michigan  
**ROSS J H**, 141 Erie (see page 64)

#### \*Sanitariums.

**M'MICHAEL INSTITUTE**, Niagara Falls, N Y, George H McMichael, MD, Superintendent. Buffalo office 75 W Tupper (see inside back cover)

#### Sash, Doors and Blinds.

(See Planing Mills.)

#### Scale Manufacturers.

Buffalo Scale Co, Scott c Illinois  
 Fairbanks Co, 210 Main  
 Weeks John, 365 7th

#### School Furniture and Supplies.

Buffalo School Furniture Co, 824 Seneca  
**M'NUTT RANDOLPH**, 163 Swan



SCREENS—Coal and Sand.

**\*Screens—Coal and Sand.**

**QUEEN CITY WIRE WORKS**, 193 Seneca (see opp wire works)

**Seeds.**

**CLARK O W & SON**, 59 Seneca

Harvey & Waters, 15 Ellicott

Jones Wm D, 352 Niagara

Kester, Irving & Co, 103 Main

Long D B, 495 Washington

Lytte A T, 20 Exchange

Weidman Thomas, 1084 Broadway

**Sewer and Drain Pipe.**

Buffalo Sewer Pipe Co, Tonawanda nr Niagara

Diamond Fire Clay Co, 124 Ellicott

Great Western Fire Clay Co, Court c Franklin

**LYTH JOHN & SONS**, 48 W Eagle

**ROSS J H**, 141 Erie (see page 64)

Urichsville Fire Clay Co, 130 Franklin

**Shafting, Hangers and Pulleys.**

**HOWARD IRON WORKS**, 287 Chicago (see page 56)

**TIFFT GEO W SONS & CO** 35 Washington (see inside back cover)

**Shingle Manufacturers.**

Thompson Thomas, 29 Tonawanda

**Ship Chandlers.**

**BAKER HOWARD H & CO**, 18-26 Terrace (see page 72)

Connelly Bros & Co, 165 Ohio

Montgomery John H, 109 Ohio

Parrish George H & Co, 11-13 Main

**\*Shipsmiths.**

**WURTZ & SON**, 22 Lloyd

**Shirt Manufacturers.**

Bean, La Due & Clawson, 74 Exch

Buffalo Shirt Co, 481-489 Wash

Gerstman Louis, 1146 Broadway

Hofeld M (Hannel), 459 Washington

Oberkircher Edward, 313 Mortimer

Queen City Shirt Co, 27-35 Chippewa

**Shoe Dressing Manufacturers.**

**IMPERIAL.**

**QUEEN CITY MFG CO**, 80-84 Terrace (see page 86)

SPICES AND SPICE MILLS.

**JET BLACK AND WATERPROOF.**

**QUEEN CITY MFG CO**, 80-84 Terrace (see page 86)

**PARISIAN AND PARISIAN TAN SHINE.**

**QUEEN CITY MFG CO**, 80-84 Terrace (see page 86)

**\*Shoe Manufacturers' Supplies.**

**FRALICK F G**, 72 Exchange

**Show Case Manufacturer.**

**KRUSE H W**, 105-106 Oak (see page 88)

**\*Silver Platers.**

**STRAUSS & ROGERS**, 12 Perry (see page 74)

**Skylight Covers.**

**QUEEN CITY WIRE WORKS**, 193 Seneca (see opp wire works)

**Snuff Manufacturers.**

Bresling Frederick, 950 Michigan

Ignatz Andrew, 545 Genesee

Swartz Julius, 381 Walnut

**Soap Manufacturers.**

Bell R W Mfg Co, 77 Washington

Dingman Soap Co, 2 Lock

Edson & Dye, Cazenovia near Seneca

Gowans & Stover, 215 Chicago

Harris Jabesh Mfg Co, 371 Ellicott

Hoefner Anselm, 162 Van Rensselaer

Kibbe Charles M (soft), 29 Rickert

Larkin J D & Co, 659-667 Seneca

Lautz Bros & Co, 24-44 Hanover

McComb John, 176 Strauss

Roper William, 1391 Niagara

**Soda Fountain Manufacturers.**

Low's Art Tile Soda Fountain Co, 104 Pearl

**Spices and Spice Mills.**

(See also Grocers.)

Bishop Charles F, 93 Seneca

Bogner Louis, 36 Washington

Eckhardt Jacob, 314 Elm

Granger William H, 96 Seneca

Hlingworth W E, Carroll

Jamieson & Co, e Elm and Broadway

Jamieson & Maybach, 45 E Clinton

Weil's Butchers' and Bakers' Supply Co, 385 Michigan

**SPORTING GOODS.****Sporting Goods.**

(See Guns, Ammunition and Sporting Goods.)

**Spring Bed Manufacturers.**

**BUFFALO SPRING BED MFG CO,**  
10-12 Lock

Chaney N P & Co, 818 Main  
McGrath & Bisgood, 88 Pearl

**Spring Gear Manufacturers.**

American Gear & Spring Co, 1445  
Niagara  
Buffalo Spring & Gear Co, 1502 Niag-  
ara  
Empire State Wagon Co, Bradley c  
DeWitt  
King Spring Co, 1424 Niagara

**Stained Glass.**

(See also Glass Stained.)

**QUEEN CITY STAINED GLASS**  
**WORKS** (G W Booth propr), 67  
Franklin (see page 58)

**Stamped Ware Manufacturers.**

Aldrich & Ray Mfg Co, 1489 Niagara  
Ball Bros Glass Mfg Co, 52 Terrace  
Buffalo Stamping Works, 191 Clinton  
Ehle F G O & Co, 124 Washington  
Niagara Stamping & Tool Co, Super-  
ior c Randall  
Shepard Sidney & Co, 145 Seneca  
Star Stamping Works, 316 Terrace

**Starch Manufacturers.**

American Glucose Co, Graves Branch,  
202 Perry  
National Starch Mfg Co, 50 Oneida

**Staves and Heading.**

Clarke Stephen C, 202 Main  
Holmes E & B, 187 Michigan  
Tindle Thomas & Co, 1318 Niagara

**Surveyors.**

**SIKES F G & G R,** 122 Pearl c Erie  
(see page 58)

**Rubber Stamps and Stencils.**

Buffalo Rubber Type Foundry, 14  
Exchange  
Edmonds John B, 16 Seneca  
Gibson A C, 203 Main  
Johnson J G & Co, 29 Seneca

**STORE FIXTURES.**

Potter W W, 47 Seneca  
Shepard William C, 40 Niagara

**Stone Works and Dealers.**

(See also Marble and Granite Workers )

Names marked with a \* are Cut Stone  
Works.

Ambrose Elijah, 2135 Fillmore av  
Ambrose R, E Delaware c Fillmore av  
Armbruster Joseph, 314 Broadway  
\*Brady & Maltby, 21 Maryland  
Buffalo Bldg Stone Co, Fillmore av  
\***BUFFALO & MEDINA CUT STONE**  
**CO,** 18 Maryland (see page 72)  
Buffalo & Medina Stone Paving Co,  
194 Main

Buffalo Sawed Stone Co, foot Church  
Buffalo Stone Co, 1151 Main  
\*Collingwood & Donaldson, foot Jersey  
Cutter & Bailey, 143 Washington  
\***FOGELSONGER D R & H,** 215 Oak  
Friedman Xavier, 185 High  
Gesl John & Co, 319 Leroy av  
\*Hartke Henry, 412 Niagara  
Kabel Martin, 2543 Main  
\*Kehr A P, E Huron c Oak  
\*Reinheimer C E, 890 Washington  
\*Straub P G, 1161 Main  
Yamethal Stone Co, 117 Franklin

**Storage Warehouses.**

American Storage Warehouse, 308  
Main  
Buffalo Bonded Warehouse Co, 632  
Washington  
Buffalo Storage & Carting Co, 356  
Seneca  
Buffalo Storage Co, 143 Washington  
Central Storage Warehouse, 492 Wash  
Doty C B, Glenwood av nr Main  
Merchants' Storage & Carting Co, 137  
Washington  
Niagara Storage Co, 220 Niagara

**\*Stove Paste.**

**QUEEN CITY MFG CO,** 80-84 Ter-  
race (see page 86)

**\*Stove Polish.**

**QUEEN CITY MFG CO,** 80-84 Ter-  
race (see page 86)

**Store Fixtures.**

**HEIN F X,** 38 Elm (see page 102)

STORE FRONTS.

TOY MANUFACTURERS.

**Store Fronts.**

HEIN F X, 38 Elm (see page 102)

**Stove and Range Manufacturers.**

Broadway Foundry Co, 1192 Broad'y  
Buffalo Co-Operative Stove Co, Am-  
herst c Tonawanda

Jewett Sherman S & Co, Perry c Mis-  
sissippi

McBean, Edge & Co, 33 Main

Russell & Watson, 139 Main

**Surgical Instruments.**

Hermann Henry, 605 Main

Jeffrey & Gotshall (dealers), 311 Main

Stoddard Bros, 84 Seneca

**\*Tackle Blocks.**

BAKER HOWARD H & CO, 18-26  
Terrace (see page 72)

**Tailors' Trimmings.**

Cohen S & Co, 56 Pearl

Cohn Bros & Rubenstein, 11 N Divis'n

Fornes C V & Co, Court c Pearl

Rubenstein S, 408 Clinton

**Tanners and Curriers.**

Lamb George & Son (harness) 1051  
Clinton

Mason S L, 10 S Division

Moffatt Bros, 69 Carroll

Root & Keating (sole), 14 Wells

Rumsey A & Co (sole), 78 Exchange

Schoellkopf J F Sons, 39 Hudson

Schoellkopf & Co (sheep skin) 103  
Mississippi

Steffan's M & Sons, 813 Main

Strauss Mathias (sheep skin) 781  
William

Zeller G F & Son (harness), 272 Howard

**\*Tar.**

BAKER HOWARD H & CO, 18-26  
Terrace (see page 72)

**Tax and Title Searching Companies.**

Buffalo Abstract Guaranty Co (Ltd)

Erie County Bank Bldg

Erie County Guaranty Search Co,  
103 Franklin

People's Guaranty Search Co, 18 E  
Mohawk

**Telegraph and Telephone Companies.**

Bell Telephone Co, 14 W Seneca

Postal Telegraph Cable Co, 207 Main

Western Union Telegraph Co, Main c  
Seneca

**Terra Cotta.**

Buffalo Star Brick Co, Lewis Block

Hall & Sons, 69 Tonawanda

ROSS J H, 131 Erie (see page 64)

**Timers' Japanners.**

FOX & FOX, 127 Erie (see page 70)

**Timers' Tools and Supplies.**

Newman W H H & Co, 70 Main

Niagara Stamping & Tool Co, Super-  
ior c Randall

Shepard Sidney & Co, 147 Seneca

Stark Machine & Tool Co, 7th c Hudson

**Tobacco Leaf.**

Breitweiser Bros, 454 Main

Hanna & Boasberg, 101 Broadway

Moulter Charles, Ash nr Broadway

Rew F W, 399 Genesee

**Tobacco and Cigars—Wholesale.**

Boyet Charles, 22 Seneca

Breitweiser Bros, 454 Main

Cochrane E C (cigars), 474 Main

Montague A H (broker) 416 Howard  
av

Riehl Frederick, 166 Seneca

Upper & Donovan, 76 Pearl

Wagner Matthew, 196 Pearl

Winship E L, 11 Terrace

**Tool Manufacturers.**

American Bit Brace Co, 122 Wash

Amidon Tool Co, 1459 Niagara

Buffalo Hammer Co, 1541 Niagara

Dopp W H & Son, 462 Ellicott

Jetter Mfg Co, 861 Jefferson

Krasselt Wm, 101 Ash

Niagara Screw Co, 569 Washington

Oliver W W, 1485 Niagara

Parr Frank, 96 Georgia

Stark Machine & Tool Co, 7th c Hudson

White L & I J, 143 Perry

**Toy Manufacturers.**

Buffalo Toy Co, 230 Perry

Pratt & Letchworth, 189 Tonawanda

THE  
**BAILEY LAND** ✦  
**INVESTMENT Co.**  
OF BUFFALO, N. Y.

---

---

CAPITAL STOCK, \$100,000. - - INCORPORATED 1892.

---

---

**BUYS** Real Estate FOR CASH.

**BUYS** Bonds, Mortgages and other securities FOR CASH.

**SELLS** Real Estate for cash, or on time to responsible buyers.

**SELLS** Real Estate on Commission for other owners; collects rents and manages estates.

**DEVELOPS** Suburban Real Estate by opening streets, putting in sewers, water mains and pavements, planting trees and building dwelling-houses and stores.

**DEVELOPS** New Manufacturing Establishments by giving or securing land for factory sites, placing stock, and organizing companies.

**INVESTMENTS SOLICITED.**

**CORRESPONDENCE ATTENDED TO PROMPTLY.**

---

---

No. 24 Erie Street, - BUFFALO, N. Y.

TRANSPORTATION—Water.

**Transportation (Water.)**

American Transit Co (canal), 58 Main  
 Anchor Line (Atlantic Dock), Water  
 Buffalo and Niagara River Naviga-  
 tion Co, 60 Main  
 Canal and Lake Steamboat Co, Water  
 foot Evans  
 Cleveland and Buffalo Transit Co,  
 Ohio c Illinois  
 Clover Leaf Line, 101 Ohio  
 Crescent Transportation Co, 101 Ohio  
 Crystal Beach Steamboat and Ferry  
 Co, Main c Perry  
 Erie Boatmen's' Transportation Co,  
 72 Pearl  
 Hollister Transportation Co, 202  
 Main  
 Inland Transportation Co (canal), 56  
 Main  
 Lackawanna Transportation Co, foot  
 Main  
 Lake Erie Transportation Co, 58  
 Main  
 Lehigh Valley Transportation Co,  
 56 Main  
 Merchants' Western Line, 67 Coal and  
 Iron Exchg  
 Northern Steamship Co, 56 Main  
 Red Star Line Steamers, 202 Main  
 Union Steamboat Co, 50 Main  
 Union Transit Co, 50 Main  
 Western Transit Co, 47 Main

**Trunk and Valise Manufacturers.**

RUNCIE S HENRY, 204 Terrace

**Truss Manufacturers.**

American Silver Truss Co, 200 Main  
 Hermann Henry, 605 Main  
 Klinger Herman, 22 W Genesee  
 Koehler & Randle, 684 Michigan

**Trust Companies.**

Buffalo Loan, Trust & Safe Deposit  
 Co, 449 Main  
 Fidelity Trust & Guaranty Co, Erie  
 County Bank Bldg

**Type Founders.**

**MACKELLAR, SMITHS & JORDAN**  
**FOUNDRY**, Buffalo Branch, Her-  
 bert L Baker Mgr, 83-85 Ellicott  
 (see page 68)

WATER HEATERS—Automatic.

**Type Writers and Supplies.**

**CALIGRAPH TYPE WRITERS &**  
**SUPPLIES**, W G Schack, 895 Main  
 (see page 68)  
 Hammond Type Writer, 59 Pearl  
 Parks H J, (Munson) 16 E Eagle  
**SCHACK W G**, Caligraph, 875 Main  
 (see page 68)  
**SMITH PREMIER TYPE WRITER**  
**CO**, W H Slayton, Manager, 61  
 Niagara (see opp page 41)  
 Wyckoff, Seamans & Benedict, 58  
 Niagara  
**YOST WRITING MACHINE CO**,  
 William Larery, 31 Niagara (see  
 page 70)

**Undertakers' Supplies.**

Buffalo Casket Co, 459 Washington  
 Central Mfg Co, 50 Chicago  
 Farwell Henry D, 51 Niagara

**Upholsterers' Supplies.**

Morgan D E Son & Allen, c Main,  
 Huron & Pearl  
 Utley C H, 82 Pearl

**Varnishes.**

FOX & FOX, 127 Erie (see page 70)

**Varnish Manufacturers.**

Buffalo Mfg Co, 196 Chicago  
 Kellogg, Oil, Paint and Varnish Co,  
 347 Main  
 Mather Varnish Co, 262 Elk

**Vinegar Manufacturers.**

Gentsch B F & Sons, 329 Broadway  
 Heinz H J & Co, 77 Main  
 Kimberly John L, 392 Fourth  
 Klipfel Gustave, 147 E Tupper  
 Klipfel W & G, 648 Michigan  
 Niagara Cider and Vinegar Works,  
 197 Pearl

**Vise Manufacturers (Bench.)**

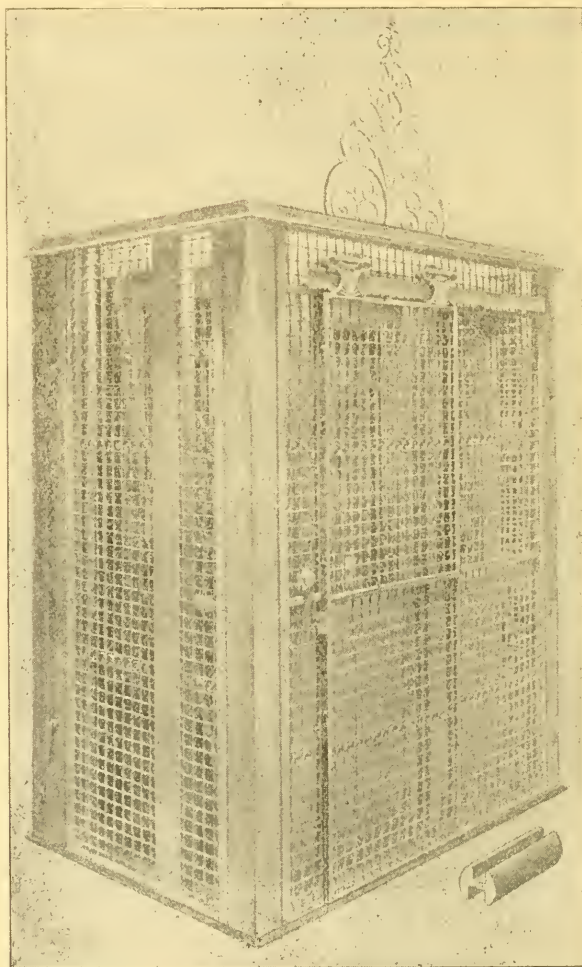
HOWARD IRON WORKS, 287 Chi-  
cago (see page 56)

**\*Water Heaters—Automatic.**

SEAMANS I M, 448 Niagara, res  
377 Maryland

# SANFORD BROS., QUEEN CITY WIRE WORKS

MANUFACTURERS OF WIRE WORK AND WIRE CLOTH  
— OF EVERY DESCRIPTION —



BANK, OFFICE AND DESK RAILINGS.  
— TELEPHONE No. 1890. —

193 Seneca Street,

- BUFFALO, N. Y.

**WELL DRILLERS.****Well Drillers.**

Rust Well Machine Co, 20 Lock  
Woodring James, 265 Babcock

**Whip Manufacturers.**

Buffalo Glove & Whip Factory, 436  
Niagara  
Niagara Whip Co, 12 Exchange  
Queen City Glove & Whip Co, 47 Exch

**White Lead Manufacturers.**

National Lead Co, Oak c Clinton

**\*Window Glass.**

**QUEEN CITY STAINED GLASS  
WORKS** (Geo M Booth), 67 Frank-  
lin (see page 58.)

**\*Windsor Cement.**

**ROSS J H**, 141 Erie (see page 64)

**Wines and Liquors—Wholesale.**

(\*R\* Indicates Rectifier.)

Adolf C A (R), 491 Washington  
Baetzhold August (R), 567 Michigan  
Becker Philip & Co, 468 Main  
Bernhardt Bros, 273 Washington  
Bon & Fluviat (R), 564 Main  
Callahan M & Co (R), 122 Seneca  
Carroll N A, 742 Seneca  
Cochrane E C, 474 Main  
Cook E N & Co (distillers), 86 Main  
Craig Wm (R), 48 Lloyd  
Crooker S O, 548 Michigan  
Dingens M, 333 Main  
Eagan S F (R), 141 Seneca  
Faxon, Williams & Faxon, 391 Main  
Fisher C J, 181 Main  
Fornes M A (R), 533 Washington  
Fuchs Bros (R), 502 Main  
Glauber & Hunkemoeller, 544 Bro'd'y  
Granger & Co, Broadway c Ellicott  
Harvey F E S (R), 393 Washington  
Heinold C J, 269 Broadway  
Holzbom & Fuchs, 445 Washington  
Hubbard F S & Co, 263 Washington  
Kamper's Charles Sons (R), 92 W  
Market  
Kempff Bros (R), 357 Genesee  
Kerr A T & Co, 99 Seneca  
Laverack G E, 230 Washington  
Malone J F, 148 Main  
Merritt J M (R), Washington c Perry

**YACHT SUPPLIES.**

Miller, Greiner & Co, 341 Washington  
Millett P C, 245 Main  
Moesch Adolph (R), 384 Broadway  
Moesch August & Sons, 935 Broadw'y  
Murray Hubert (R), 19 Terrace  
Omphalius & Phillips (R), 367 Ellicott  
Persons' Charles Sons (R), 390 Elm  
Plimpton, Cowan & Co, 50 E Swan  
Rothschild Bros (R), 40 Pearl  
Walsh Bros (R), 351 Elk

**Wall Paper and Window Shades—  
Wholesale.**

(See Paints, Oils and Glass.)

Neupert A & Co, 485 Washington

**\*Wire Cloth.**

**QUEEN CITY WIRE WORKS**, 193  
Seneca (see opp wire works)

**\*Wire Rope.**

**BAKER HOWARD H & CO**, 18-26  
Terrace (see page 72)

**Wire Works.**

**QUEEN CITY WIRE WORKS**, 193  
Seneca (see opp wire works)  
Scheeler & Sons, 145 Main

**Wood-Working Machinery.**

**DAY JOHN W**, 9 Quay  
Frank & Co, 176 Terrace  
Holmes E & B., 59 Chicago  
Ross Josiah, 1459 Niagara  
Sniggs & Co, 39 Clinton

**Wood and Willow Ware.**

Chapin O W (washboards), 228 Myrtle  
Kirkholder & Rausch, 49 Seneca

**Wool.**

(See Hides, Pelts and Wool.)

**Woolens.**

Fornes C V & Co, Court c Pearl  
Spiegel Marcus, 319 Washington

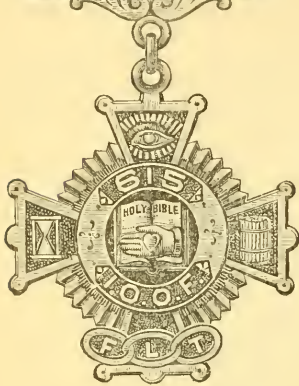
**\*Woven Wire Mattresses.**

**BUFFALO SPRING BED MFG CO**,  
10-14 Lock

**\*Yacht Supplies.**

**BAKER HOWARD H & CO**, 18-26  
Terrace (see page 72)

SCARQUADA



VALENTINE GENTNER, JR.,  
MANUFACTURING  
JEWELER

DIAMONDS AND RINGS.

CORNER  
ELLICOTT  
AND EAGLE  
STREETS,  
BUFFALO, N. Y.



BADGES OF ALL KINDS MADE TO ORDER.

**J. & H. Heist**  
MANUFACTURER OF  
*Office Store & Bar Fixtures*  
ALL KINDS OF  
HARDWOOD INTERIORS  
& CARPENTER WORK

PLAN & ESTIMATES FURNISHED

41 ELM ST.  
BUFFALO, N.Y.

OFFICE, 38 ELM ST.  
FACTORY, 35 TO 45 HENRY ST.



GEO. W. TIFFT, SONS & CO.

---

IRON WORKS,

• • • BUFFALO, N. Y. • • •

---

ENGINES \_\_\_\_\_

*Of all classes, plain to AUTOMATIC and CORLISS. 5 Hp. to 500 Hp.*

BOILERS \_\_\_\_\_

*All sizes and styles.*

MACHINERY, SHAFTING, PULLEYS, ETC.

---

SEND FOR CATALOGUE.

---

McMICHAEL INSTITUTE, \_\_\_\_\_

NIAGARA FALLS, N. Y.



We have the best Record of any  
Gold Cure Institute in the world.

---

DOUBLE CHLORIDE OF GOLD REMEDIES

FOR THE . . .

Liquor, Morphine and Tobacco Habits.

SANITARIUM TREATMENT.

Correspondence strictly confidential. - - - Terms, etc., upon application.

GEORGE H. McMICHAEL, M. D.,

MEDICAL SUPERINTENDENT.

BUFFALO OFFICE, 75 W. Tupper St., near Delaware Ave. Office Hours, 10 A. M. to 12 M.



HILL BROTHERS

# REAL ESTATE

• • AND • •

# INSURANCE,

122 Pearl Street,

BUFFALO, N. Y.

---

American Exchange Bank of Buffalo

14 and 16 W. SENECA ST.

**CAPITAL, - - \$200,000**

**SURPLUS, - - \$100,000**

JOHN L. WILLIAMS, President.  
BETH W. WARREN, Cashier.

RUFUS L. HOWARD, Vice-President.  
ALBERT B. BRIGGS, Assistant Cashier.

*A general Banking Business transacted.*

*Letters of Credit for Foreign Travellers  
furnished upon application.*

*Interest on Deposits by Special Arrangements.*

**CALL AND SEE US.**