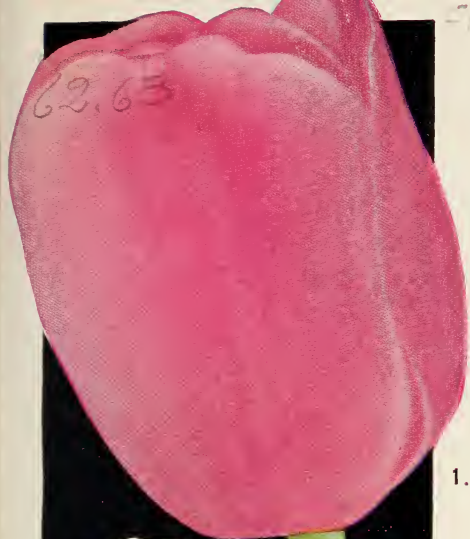
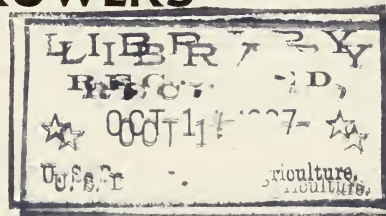


5/25/2

Bulbs

FROM the
WORLD'S
BEST
GROWERS



1.



2.



3.

Cover Collections

Made up of the Three Outstanding Tulips illustrated here.

No. 1 COLLECTION

12 Bulbs (4 Bulbs of each —
a \$1.55 value) for - Postpaid **\$1.25**

No. 2 COLLECTION

36 Bulbs (12 Bulbs of each —
a \$3.30 value) for - Postpaid **\$2.75**

1. Princess Mary
2. Zwanenburg
3. Sir Trevor Lawrence

Job P. Wyatt & Sons Co.

• • Seedsmen • •

RALEIGH, NORTH CAROLINA

Wyatt's Tulips

IN this list we are offering to the flower lovers and gardeners of the South the very best selection of bulbs obtainable for southern culture. All of the finer new varieties are included and every bulb is top size—no better can be bought at any price. The most discerning gardener may select his planting material from this catalog with every assurance that his garden will be most satisfying in every respect.

1000 bulbs at nine times the "per 100" price. Unless otherwise specified, all bulbs and seeds are prepaid at the prices shown herein. No C.O.D. shipments



Keizerskroon



De Wet—Single Early

Fantasy



Clusiana



Eichelri

NOVELTIES

FANTASY (Illustrated). 24 in. Fantastically frilled, this Parrot Tulip is the same soft salmon pink as the exquisite Clara Butt Darwin. Fantasy grows to an immense size, often 5 to 6 in. across. **3 bulbs 35c., 6 for 65c., 12 for \$1.25, 100 for \$8.75, postpaid.**

CLUSIANA (The Lady Tulip). 12 in. Cherry red stripes on white self. Clusiana is one of the most fascinating and beautiful of Tulips and is well adapted and easily grown out-of-doors or in pots. **6 for 50c., 12 for 85c., 25 for \$1.60, 100 for \$6.00, postpaid.** (Illustrated.)

KAUFMANNIANA. This is a very choice subject for the rock garden. The soft shaded red, yellow and white flowers resemble Waterlilies and bloom very close to the ground. **3 bulbs 40c., 6 for 75c., 12 for \$1.25, 25 for \$2.25, postpaid.**

EICHLERI. 12 in. Glittering scarlet flowers marked with yellow. Gold and black at center. Especially good for rock work. **3 bulbs 25c., 6 for 45c., 12 for 75c., postpaid.** (Illustrated.)

MARJOLETTI. 16 in. Soft yellow self edged flame colored. A charming subject seldom seen in American gardens. Prefers a dry situation. **3 bulbs 25c., 6 for 45c., 12 for 85c., postpaid.**

BLUE CELESTE. 24 in. A large, early Double-flowering Darwin Tulip of violet blue. **3 bulbs 20c., 6 for 50c., 12 for 85c., 25 for \$1.50, postpaid.**

Double Early Tulips

MR. VAN DER HOEF. Pure yellow. Recommendable, sturdy variety.

PEACH BLOSSOM. Rose pink.

TEAROSE. Pale salmon yellow.

VUURBAAK. Orange scarlet.

MIXED DOUBLE EARLY VARIETIES.

6 bulbs 40c., 12 for 75c., 25 for \$1.35, 100 for \$4.95, postpaid.

The Job P. Wyatt & Sons Co. give no warranty, express or implied, as to description, quality, productiveness, or any other matter of any seeds, bulbs or plants they send out, and they will not be in any way responsible for the crop. If the purchaser does not accept the goods on these terms they are to be returned at once.

Single Early Tulips

The first Tulips to bloom in the Spring—noted for their brilliant colors.

KEIZERSKROON (Illustrated above). A particularly showy early Tulip of good size and form. The brilliant coloring of scarlet, edged yellow, is very attractive.

CHRYSOLORA. Pure canary yellow.

CRIMSON BRILLIANT. Deep crimson.

PINK BEAUTY. Glowing rose.

DE WET. 18 in. A most unusual Single Early Tulip, indeed. A goblet-shaped giant flower of golden yellow, flushed and stippled fiery orange scarlet. Our unreserved praise goes to De Wet which we heartily recommend to all gardeners. (Illustrated.)

SINGLE EARLY TULIPS, MIXED.

The varieties listed above represent the most beautiful and dependable of all the Single Early Tulips for the South. Our mixture contains all of these varieties and produces a combination of bright colors, most welcome early in the Spring before other Tulips bloom.

All Single Early Tulips listed above 3 bulbs 25c., 6 for 40c., 12 for 75c., 25 for \$1.35, 100 for \$4.95, postpaid.



the Finest Dutch-grown Bulbs

COTTAGE OR MAY-FLOWERING TULIPS

There are in this group scintillating whites, yellows, scarlets, in egg shape, round cup shape, vase shape. Many of the varieties are delightfully fragrant and many are among the very largest and most handsome of all Tulips.

ADVANCE. 30 in. A giant fiery red with purplish hue outside, dwarfs all other varieties, comes into bloom early and perhaps lasts longer than any other Tulip. **3 bulbs 65c., 6 for \$1.25, 12 for \$2.25, 25 for \$4.00, postpaid.**

HENRI CORREVEN. 28 in. Very bright Geranium red, white base. This is one of the varieties making such a furor among Tulip authorities and at Tulip shows. **3 bulbs 65c., 6 for \$1.15, 12 for \$2.00, 25 for \$3.50, postpaid.**

JEANNE DESOR. 28 in. Deep orange yellow with broad border of scarlet. A beautifully shaped, long flower carried on a tall, strong stem. **3 bulbs 35c., 6 for 60c., 12 for \$1.00, 25 for \$1.85, 100 for \$7.25, postpaid.**

MAYFLOWER. 30 in. One of the largest of the large new Tulips. Mayflower is domineering, standing erect on a tall, strong stem. Fiery scarlet, blue black base, early flowering. Mayflower is our choice for a sure winner at the shows next Spring. **3 bulbs 85c., 6 for \$1.50, 12 for \$2.75, 25 for \$5.00, postpaid.**

Wyatt's Triumph Tulips

This group of large flowering, bright hued Tulips is the result of a crossing of Darwin and Single Early Tulips. The Triumphs bloom slightly earlier than Darwins and on taller, stronger stems than the Single Early varieties. They combine the beautiful colorings of both groups.

ALGIBA. 24 in. An exquisite, clear heliotrope Tulip distinctly Darwin in size and shape.

TELESCOPIUM. 24 in. Magenta. Inside is wine red with a light yellow base. This is a very distinctive Tulip.

URSA MINOR. 24 in. Large, rich orange red flower bordered golden orange.

ZIMMERMAN. 24 in. Borne well on a strong stem Zimmerman is dark rose on cream ground. The center is white.

TRIUMPH TULIPS, MIXED. A mixture of the varieties named above. Plant a bed and become acquainted with this interesting group.

Any of above varieties, 3 bulbs 25c., 6 for 45c., 12 for 85c., 25 for \$1.50, 100 for \$5.50, postpaid

Cottage Tulips

AMBROSIA. 28 in. Very handsome, fragrant flower, typical cottage cup shape. Long-stemmed, very large, inside salmon orange, outside shaded lilac rose, yellow black base.

ARETHUSA. 28 in. Soft clear rich yellow.

DIDO. 28 in. One of the most beautiful of all Tulips. The very large flowers are long, cup-shaped, inside bright salmon orange, yellow base bordered with green. Outside orange red with carmine and orange shaded edges. A beautiful, fragrant flower.

GESNERIANA MAJOR. 28 in. Brilliant crimson scarlet.

INGLESCOMBE PINK. 26 in. Delicate salmon pink.

INGLESCOMBE YELLOW. 26 in. Canary yellow.

MOONLIGHT. 26 in. Soft pale yellow, oval shaped.

MRS. MOON (Illustrated). 26 in. Each year we find Mrs. Moon more popular. Its gracefully pointed petals of rich yellow form an exquisite flower for mass planting or cutting.

PICOTEE (Illustrated). 26 in. Another of the lovely Lily-flowering Tulips. Picotee is a shapely white flower margined carmine rose.

RED ROCKET (Illustrated). 28 in. A giant deep red flower with pointed petals.

ROSABELLA. 26 in. Exquisite light salmon rose.

SIRENE. 26 in. Rich cerise pink. Lily-flowering Tulip with slightly reflexed petals. Lovely.

VESTA. 28 in. Pure white, long stems.

COTTAGE TULIPS, MIXED. For general effect where size, color and height are desired we do not believe that your money can buy more Tulip value. Containing as it does liberal quantities of the new and better varieties this mixture will produce a bright spot in any garden.

All Cottage Tulips listed above, 3 bulbs 25c., 6 for 45c., 12 for 75c., 25 for \$1.25. 100 for \$4.50, postpaid.

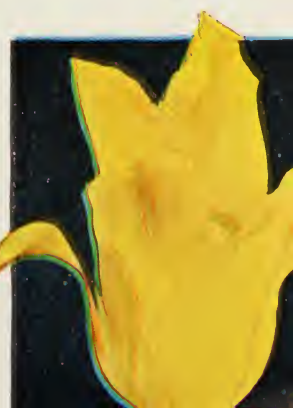
Picotee



Red Rocket



Mrs. Moon



32 MAJESTIC

Darwin Tulips

Prized for their wide range of color, their fine substance and their great size, the Darwin group maintains its place at the head of the entire Tulip family.

19 Giant Darwins at Bargain Prices

- AFTERGLOW.** 30 in. Rosy orange, salmon edges.
- ANTON MAUVE.** 30 in. An enormous cup-shaped flower, clear violet, turning to silvery lilac at the edges.
- BARONNE DE LA TONNAYE.** 28 in. Rose shaded blush.
- BARTIGON.** 26 in. Fiery red, good forcer.
- CENTENAIRE.** 28 in. Deep rose flushed claret.
- CLARA BUTT.** 26 in. Soft salmon rose.
- FARNCOMBE SANDERS.** 28 in. Beautiful clear scarlet.
- FAUST.** 28 in. Purple maroon nearly black, enormous flower.
- GIANT.** 30 in. Deep reddish purple shaded violet. Basewhite, blue markings. Very large; good color, texture, form, strong, tall stem.
- KING HAROLD.** 28 in. Deep crimson maroon.
- LA FIANCEE.** 30 in. Rosy mauve, edges light pink.
- MELICETTE.** 28 in. Rare shade of lavender. Inside of the flower is violet and the base blue.
- MRS. KRELAGE.** 28 in. Rose pink, tinted lilac.
- MRS. POTTER PALMER.** 28 in. Glowing purple.
- NAUTICUS.** 30 in. Rich deep, cerise rose. Extra.
- PEKING.** 28 in. A giant deep golden yellow.
- PRINCESS ELIZABETH.** 28 in. Soft lilac rose.
- PRIDE OF HAARLEM.** 28 in. Rich, deep rose.
- REV. H. EWBANK.** 26 in. Heliotrope lilac.
- The 19 super Darwin varieties listed above: 3 bulbs 25c., 6 for 40c., 12 for 65c., 25 for \$1.15, 100 for \$3.95, postpaid**

Special Offer

We offer the 5 magnificent Darwin Tulips reproduced in color on these two pages (4 and 5), until stocks are exhausted, as follows:

OFFER "A"

15 bulbs (3 each of the 5 varieties) — all labeled (\$1.40 value) \$1.15 postpaid

OFFER "B"

60 bulbs (12 each of the 5 varieties) — all labeled (\$3.75 value) \$3.25 postpaid



Rev. H. Ewbank



Bartigon

Tulip Celebrities of 1938

- ECLIPSE.** 28 in. The peer of all red Tulips, Eclipse is a brilliant deep crimson, with white edged blue base. A very large, attractive flower of fine form and texture borne on a tall, strong stem. **3 bulbs 50c., 6 for 85c., 12 for \$1.50, 25 for \$2.75, 100 for \$9.95, postpaid.**
- KATHLEEN PARLOW.** 30 in. A large, beautifully shaped Tulip of silvery rose with white center. Watch for Kathleen Parlow at the shows next Spring. Its fine size and color will make it a sure winner. **3 bulbs 35c., 6 for 65c., 12 for \$1.25, 25 for \$2.25, 100 for \$8.50, postpaid.**
- PRINCESS MARY.** 28 in. If you have looked for "something different" in a pink Darwin, plant Princess Mary. Your reward will be a lovely bed of brilliant rose, elegantly borne flowers shading to silvery rose at the petals' edge. **3 bulbs 50c., 6 for 85c., 12 for \$1.50, 25 for \$2.85, 100 for \$10.50, postpaid.**
- WHITE GIANT.** 30 in. This has been called the perfect white Tulip. Typically Darwin in shape, tall, strong stem, very showy. White Giant is pure white, the flower petals are thick and of good texture. **3 bulbs 65c., 6 for \$1.10, 12 for \$2.10, 25 for \$4.00, 100 for \$15.00, postpaid.**

WYATT'S MIXED DARWIN TULIPS

Of all Tulips the Darwins bloom in more different shades and colors than any other group or class. Our mixture of Darwin Tulips will produce flowers of almost every hue and shade. Considering that the bulbs are the finest quality that can be bought, they are priced most attractively. For best effect plant them in masses.

3 bulbs 25c., 6 for 40c., 12 for 65c., 25 for \$1.15, 100 for \$3.95, postpaid

BARGAIN COLLECTION DARWIN TULIPS

100 Giant Darwin Tulips \$4.50
Our Selection - - Postpaid

You get 10 top size Darwin Tulip bulbs of 10 varieties, all separately labeled, a regular catalog value of over \$6.00, for only \$4.50.



Clara Butt



Yellow Giant

Old Dutch or Breeder Tulips

ALICE KEITH. 26 in. Reddish orange with bronze margin and without a doubt the best Breeder in this color. The flower has good substance, a most attractive color and is a sturdy grower. **3 bulbs 35c., 6 for 55c., 12 for 95c., 25 for \$1.85, 100 for \$6.00, postpaid.**

DILLENBURG. 28 in. Bright salmon orange, shaded lilac rose edged bronze. The inside of this lovely flower is a glistening orange adding much to its attractiveness. **3 bulbs 35c., 6 for 55c., 12 for 95c., 25 for \$1.75, 100 for \$5.75, postpaid.**

INDIAN CHIEF. 36 in. The largest Tulip extant. Indian Chief is coppery red showing a faint sheen of purple. This variety as do all of the larger growing sorts of Tulips, much prefers a stiff clay soil that has been well fertilized since the past Spring with a liberal addition of bonemeal at planting time, followed by periodical applications of plant food, high in phosphoric acid after the foliage has shown in the Spring. **3 for 40c., 6 for 75c., 12 for \$1.25, 25 for \$2.25, 100 for \$8.50, postpaid.**

BENE EST. 30 in. Beautiful clear lemon yellow. Very effective when used in groups among other Tulips of richer colors. The flowers are shapely and borne on strong stems. **3 bulbs 25c., 6 for 45c., 12 for 75c., 25 for \$1.40, 100 for \$4.95, postpaid.**

CITY OF HAARLEM. 28 in. Most intense scarlet of all Tulips. This handsome flower has a blue base, bordered white. City of Haarlem is several shades lighter than Eclipse. **3 bulbs 35c., 6 for 55c., 12 for 95c., 25 for \$1.75, 100 for \$5.75.**

KING GEORGE V. 30 in. One of the very large Darwins, this cherry red Tulip has gained an immense popularity during the past few years. The large bulbs should be planted 6 in. deep. **3 bulbs 25c., 6 for 45c., 12 for 75c., 25 for \$1.40, 100 for \$4.95, postpaid.**

SIR TREVOR LAWRENCE. 32 in. Purplish violet, inside violet maroon with white base. A very large cup-shaped flower on a tall, strong stem and a most dependable variety. **3 bulbs 30c., 6 for 50c., 12 for 85c., 25 for \$1.50, 100 for \$5.25, postpaid.**

THE BISHOP. 30 in. An exquisite flower of pure violet borne on a long, strong stem. The outstanding Tulip of the blue shades. The Bishop will add grace and dignity to any garden. **3 bulbs 35c., 6 for 55c., 12 for 95c., 25 for \$1.75, 100 for \$5.75, postpaid.**

TURNER. 28 in. Very large, cherry rose flower showing a faint glow of garnet or purple. Extra. **3 bulbs 35c., 6 for 55c., 12 for 95c., 25 for \$1.75, 100 for \$5.75, postpaid.**

VENUS. 32 in. This appealing and beautiful flower finely modeled, is one of the most attractive of the pink Tulips. Deep, wild rose pink and very tall. **3 bulbs 35c., 6 for 55c., 12 for 95c., 25 for \$1.75, 100 for \$5.75, postpaid.**

YELLOW GIANT. 30 in. The last and finest yellow addition to the Darwins. Yellow Giant is a striking bright yellow, grows tall, and has a black base. **3 bulbs 30c., 6 for 50c., 12 for 85c., 25 for \$1.50, 100 for \$5.25, postpaid.**

ZWANENBURG. 30 in. A stately addition to the garden and when cut with other varieties it enhances their color many times over. It is a pure white, very tall and a strong grower. **3 bulbs 35c., 6 for 55c., 12 for 95c., 25 for \$1.75, 100 for \$5.75, postpaid.**

BACCHUS. 30 in. A well-shaped flower, violet with pale violet margin, borne on tall stems.

GOLDEN BRONZE. 28 in. A large flower on a tall stem. Outside old gold, inside deep golden bronze.

LOUIS XIV. 30 in. Purple, flushed golden bronze, large, globular form. This stately Tulip expresses much beauty and dignity.

YELLOW PERFECTION. 28 in. Bronze yellow, shaded deep golden.

Above four varieties, 3 for 25c., 6 for 45c., 12 for 75c., 25 for \$1.40, 100 for \$4.95, postpaid

BREEDER TULIP COLLECTION

3 each of the 7 popular Breeder Tulips listed above (a regular value of \$2.10) postpaid to you for only \$1.75



City of Haarlem



Paperwhite Narcissus

SOLEIL D'OR

Called the "Yellow Paperwhite". Is very fragrant and readily bloomed following Paperwhite cultural directions. **Extra size bulbs. 15c. each, 3 for 35c., 6 for 65c., 12 for \$1.25, 25 for \$2.25, postpaid.**

CHINESE SACRED LILY

The joss flower of the Orient and used to decorate the temples of worship of the Chinese. They will flower profusely grown in pebbles and water. **15c. each, 3 for 40c., 12 for \$1.25, postpaid**



Lily-of-the-Valley

Bloom these exquisite flowers in your home this Fall and Winter

WE REPEAT

Our 3-4-5 SPECIAL OFFER

For the past six years stocks of this special offer have been exhausted before the close of the season. Don't wait.

Order Your Collections NOW

3 FRENCH ROMAN HYACINTHS

4 LILY-OF-THE-VALLEY

5 PAPERWHITE NARCISSUS and

1 QT. WYATT'S BULB FIBRE

12 Bulbs (value \$1.46) for only \$1.00 postpaid.

WYATT'S PAPERWHITE NARCISSUS

The best known and most loved of all bulbous flowers for indoor culture. Our stocks are especially grown and selected for forcing in pots of pebbles, bulb fibre, or soil. Plant 2 inches apart in bowls, placing in a dark, cool place for 2 to 3 weeks, after which bring them to light and warmth gradually. Never allow them to become overheated. A temperature of 50 to 55 degrees for the first few weeks, gradually increased to 70 to 75 degrees indoors, allowing them to cool off to not over 60 degrees at night, is best.

Extra Large Forcing Bulbs. 3 for 25c., 6 for 45c., 12 for 75c., 25 for \$1.25, 100 for \$4.25, postpaid.

Large Size. 3 for 20c., 6 for 35c., 12 for 60c., 25 for \$1.00, 100 for \$3.75 postpaid.

WYATT'S LILY-OF-THE-VALLEY

One of the quickest, easiest and most delightful plants for pot culture. Their fragrance and grace charm everyone who grows them. Plant 1½ inches apart in Wyatt's Prepared Bulb Fibre, using pot with closed drain. Shade for 2 days then place in bright window indoors. Keep fibre moist. Wyatt's imported Valley Pips bloom in from 10 days to 2 weeks depending on varying conditions.

Extra Large Pips or Crowns. 6 for 55c., 12 for \$1.00, 25 for \$1.85, 50 for \$3.50, 100 for \$6.50, postpaid.

WYATT'S ROMAN HYACINTHS

French Roman Hyacinths direct from the finest fields in France! That's what you get when yours are from Wyatt's. Compare them! Our French grown bulbs of these dainty, exquisitely fragrant flowers are perfectly hardy for outdoor planting as well as pot culture. For indoor flowers plant 1½ inches apart in pot placing pot 3 to 4 inches under the soil outdoors for 4 to 5 weeks—bring indoors to a bright window 4 to 6 weeks before blooms are desired.

EARLY WHITE ROMAN HYACINTHS. Extra large bulbs. 15c. each, 3 for 40c., 12 for \$1.50, 25 for \$2.75, 100 for \$10.00, postpaid.

EARLY PINK ROMAN HYACINTHS. Extra size. 15c. each, 3 for 35c., 12 for \$1.25, 25 for \$2.50, 100 for \$9.50, postpaid.

EARLY BLUE ROMAN HYACINTHS. Extra size. 15c. each, 3 for 35c., 12 for \$1.25, 25 for \$2.50, 100 for \$9.50, postpaid.

FORCING

Try forcing your bulbs in soil this Winter. Use 1 inch of coarse material in the bottom of the pots for drainage and bury the pots out of doors with the top of the pot even with the ground, in a well-drained place, and heap soil or leaves 2 to 4 inches deep over them. Allow Narcissus and Sacred Lilies to stay 4 to 6 weeks, Roman Hyacinths 6 to 8 weeks, Large Hyacinths and Tulips, 8 to 12 weeks. When moving the pots indoors, rest them a week or two in the garage or shaded back porch, before taking them into the warm house. After pots are finally moved indoors never allow them to become overheated, too wet, nor too dry. Never over 75° during the day nor over 50° at night. Plenty of fresh air is necessary and moisture should be provided. An aquarium would serve this purpose. Lily-of-the-valley may be started indoors, inverting a pot over the pot they are planted in for two or three days. Remove the inverted pot and move the plants gradually to a light window. Never let them become dry.

Soleil d'Or Narcissus



White Roman Hyacinths





Anemones



Chionodoxa



Giant Mixed Crocus

Anemones (Windflower)

DE CAEN (Giant French Poppy-flowered Anemone). A mixture of rich colors that are found only in Anemones. **6 bulbs 30c., 12 for 50c., 100 for \$3.75, postpaid.**

ST. BRIGID (Semi-double). Mixture of brilliant colors all having the blue-black center. **6 bulbs 30c., 12 for 50c., 100 for \$3.75, postpaid.**

Wyatt's Crocus

One of the earliest flowers to bloom in the Spring outdoors. In the border plant them in groups of at least 25 of one color, setting the bulbs 3 inches deep and not more than 2 inches apart. Large mass plantings produce a gorgeous display of bright colors. Plant in October or early November. They will come again year after year.

KING OF THE WHITES. Pure white.

ALBION. Purple striped white.

BARON VON BRUNOW. Deep purple.

GOLDEN YELLOW. Golden.

KING OF THE BLUES. Large deep blue.

SIR WALTER SCOTT. White, striped lilac.

QUEEN OF THE BLUES. Clear lilac blue.

GIANT MIXED CROCUS.

6 bulbs 25c., 12 bulbs 40c., 25 bulbs 75c., 100 bulbs \$2.00, 100 bulbs \$17.50, postpaid

Chionodoxa

An early Spring flowering bulb for beds or borders. Deep blue with white center. **6 for 25c., 12 for 45c., 100 for \$3.25, postpaid.**

Eranthis

(Winter-aconite)

Attractive little plants with beautiful golden flowers. They thrive best in moist places under trees. **12 for 50c., 100 for \$3.00, postpaid.**

Fritillaria

The quite large, bell-shaped blooms are curiously marked in contrasting colors. **6 bulbs 30c., 12 bulbs 50c., 100 for \$3.75, postpaid.**

Miscellaneous Spring Bulbs

Wyatt's Freesias

One of the most beautiful of flowers for indoor culture possessing peculiar grace of form and a most delightful fragrance. They grow extremely well in pots of Bulb Fibre or black soil.

PURITY. White.

GENERAL PERSHING. Bronze pink.

CALIFORNIA. Pure yellow.

AMETHYST. Lavender.

DAFFODIL. Extra fine yellow and orange. Largest of all.

MRS. MARK PETERS. Beautiful salmon rose.

MIXED COLORS.

6 bulbs 25c., 12 bulbs 45c., 25 bulbs 85c., 100 bulbs \$3.00, postpaid

Grape-hyacinths

(Muscari)

These very curious and pretty little Hyacinths are perfectly hardy and of the easiest culture.

BLUE GRAPE-HYACINTHS. 6 bulbs 25c., 45c. per doz., \$3.50 per 100, postpaid.

WHITE GRAPE-HYACINTHS. 6 bulbs 25c., 45c. per doz., \$3.50 per 100, postpaid.

Ixias

For pot culture the Ixias are very desirable having long, slender spikes or blooms. **12 for 50c., 100 for \$3.50, postpaid.**

Oxalis

Charming little half trailing or bush plants particularly adapted for pot culture and hanging baskets, the foliage alone is very attractive and when in flower they are exceedingly pretty.

BERMUDA BUTTERCUP. The flowers are of the purest bright buttercup yellow. **5c. each, 40c. per doz., \$3.00 per 100, postpaid.**

GRAND DUCHESS. Extremely free flowering. **Prices for either White, Pink or Lavender, 5c. each, 40c. per doz., \$3.00 per 100, postpaid.**

Peonies

Wyatt's Peony Roots are carefully selected from the most hardy stock in the North and produce beautiful, double flowers of enormous size. Each root has 5 to 7 strong buds and makes a healthy, vigorous plant.

DOUBLE RED.

DOUBLE PINK.

DOUBLE WHITE.

35c. each, 3 for 85c., 12 for \$2.75, postpaid

Ranunculus Bulbs

Dwarf plants producing double flowers in many colors. Plant in a half shady place. **6 bulbs 30c., 50c. per doz., \$3.75 per 100, postpaid.**

Snowdrops

(Galanthus)

In the early Spring months there is nothing more beautiful than a sheet of the snowy, graceful blossoms of the Snowdrops. **6 bulbs 25c., 40c. per doz., \$3.00 per 100, postpaid.**

Snowflakes

(Leucojum)

Dainty white, bell-shaped, pendant flowers attractively tipped with green and gracefully arranged on a nodding stem 12 to 15 inches in length. **3 for 25c., 12 for 65c., 100 for \$4.50, postpaid.**

BULB FIBRE

Especially Prepared for the Cultivation of Bulbs Indoors

You can easily grow bulbs indoors during the Winter months in Wyatt's Prepared Bulb Fibre. The fibre can be used in any bowl or dish without drainage and the bulbs grow far better in the fibre than in soil or pebbles. It is clean and odorless and contains all the food the bulb needs during the growing period. Complete instructions telling how to use Wyatt's Prepared Fibre will be sent you with your order. **Qt. 15c., 2 qts. 25c., 4 qts. 45c., 8 qts. 80c., 16 qts. \$1.40, postpaid.**

DURING the last few years the gardening public has awakened to the versatility of this fascinating family of flowers. There is a Narcissus that grows for every purpose and many varieties that are useful in several ways. There are the Polyanthus, Poetaz and Trumpets for forcing; the small rockery types for the rock garden; the Poeticus and Barri varieties for naturalizing; all serve admirably in beds for display or in shrubbery borders; while, being good keepers and very fragrant, all are excellent for cutting. The Narcissus ranks amongst the very easiest of all flowers to grow, and under most circumstances, the bulbs multiply readily. The bulbs should be planted deep, 3 to 4 times the depth of the bulb, and early September and October are the best months.

They prefer a well drained, deep, loamy soil, but fortunately, will thrive almost anywhere. Sand or peat or both added to clay or heavy soils will improve the flowers.



Recurvus



Conspicuous

BARRI GROUP

NOBILITY. Perfectly proportioned in color, form and size, its soft, refined elegance and beauty are compelling and unforgettable. Its long, creamy, overlapping petals surround a large, flat glowing orange, scarlet rimmed cup. **3 bulbs 50c., 6 for 95c., 12 for \$1.75, 25 for \$3.25, 100 for \$12.50, postpaid.**

BATH'S FLAME. Yellow perianth, deep yellow cup with broad edge of orange red. Very long petals give the flower a distinct and outstanding character. A perfection in scarlet and gold. **3 bulbs 45c., 6 for 85c., 12 for \$1.50, 25 for \$2.50, 100 for \$9.75, postpaid.**

SEAGULL. Large, spreading pure white perianth, cup canary yellow edged apricot. A very charming flower, a vigorous and extremely hardy subject for your garden. **3 bulbs 25c., 6 for 45c., 12 for 85c., 25 for \$1.60, 100 for \$6.00, postpaid.**

BONFIRE. Bonfire is one of those that carve a deep impression on the mind. Long, ivory colored petals overlapping, surround a glowing orange scarlet cup of great beauty. Long stems, very free flowering. **3 bulbs 45c., 6 for 75c., 12 for \$1.25, 25 for \$2.25, 100 for \$8.00, postpaid.**

CONSPICUOUS. Excellent for naturalizing and very free flowering. Perianth yellow, flat, short cup edged orange scarlet. This is an old favorite and a worthy subject for any garden. **3 bulbs 25c., 6 for 45c., 12 for 85c., 25 for \$1.50, 100 for \$5.25, postpaid.**

LEEDSI VARIETIES

EVANGELINE. A delightful citron yellow cup resting on a firm, rounded, pure white perianth. Stem 20 in. Not new but still rated as one of the very best varieties. **3 bulbs 25c., 6 for 45c., 12 for 75c., 25 for \$1.25, 100 for \$4.25, postpaid.**

QUEEN OF THE NORTH. Broad, overlapping, pure white petals, pale primrose cup with finely crinkled edge. **3 bulbs 25c., 6 for 45c., 12 for 75c., 25 for \$1.25, 100 for \$4.25, postpaid.**

SOUTHERN GEM. Pure white petals and lemon yellow crown. Southern Gem is somewhat larger than most Leeds varieties of the same type and is a handsome flower indeed. **3 bulbs 45c., 6 for 75c., 12 for \$1.25, 25 for \$2.00, 100 for \$7.50, postpaid.**



Horace

DOUBLE VARIETIES

ALBA PLENA ODORATA. Pure white, delightfully fragrant flowers on long, strong stems. Prefer cool, semi-shaded situations. **3 bulbs 35c., 6 for 65c., 12 for \$1.10, 25 for \$2.00, 100 for \$7.00, postpaid.**

PRIMROSE PHOENIX. Pure yellow, large, rose-shaped flowers, long stems. **3 bulbs 45c., 6 for 85c., 12 for \$1.50, 25 for \$2.50, 100 for \$9.75, postpaid.**

POETAZ GROUP

ELVIRA. Three to four large, pure white, fragrant flowers with bright yellow eyes. One of the best of the Poetaz. **3 bulbs 25c., 6 for 45c., 12 for 85c., 25 for \$1.60, 100 for \$6.00, postpaid.**

CHEERFULLNESS. Three to four sparkling, cheerful, double flowers on a long, strong stem. While the general effect of the coloring is pure white, there is a suggestion of pale yellow at the base of the petals which seems to give character to the entire flower. Delightfully fragrant. **3 bulbs 45c., 6 for 85c., 12 for \$1.50, 25 for \$2.50, 100 for \$9.75, postpaid.**

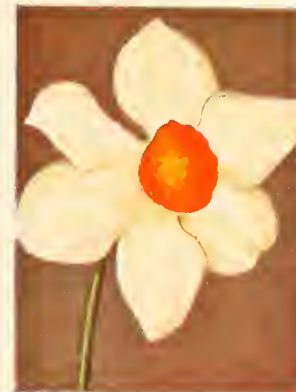
HELIOS. Delightful creamy yellow flowers with pure yellow cups; 5 to 8 large florets on each stem. This variety is readily forced. **3 for 45c., 6 for 75c., 12 for \$1.25, 25 for \$2.00, 100 for \$7.50, postpaid.**

WE WISH to repeat here our cordial invitation to flower lovers everywhere to visit our exhibit of Daffodils during next Spring's blooming season. The exhibit will be in our store, 327 South Wilmington Street. During past years we have exhibited upward of 160 varieties at a single showing and it is our desire to show a greater variety each Spring, weather permitting. Owing to variation in the date of blooming period we cannot state a definite date here but radio and newspaper announcements will be made prior to the time of the display.

POETICUS VARIETIES

RECURVUS. Popularly known as "Pheasanteye" or "Poet's Narcissus." Recurvus is extremely hardy, fragrant and beautiful. Perianth pure white, cup deep orange red. We recommend Recurvus and Horace above all other Daffodils for naturalizing. **3 bulbs 25c., 6 for 45c., 12 for 75c., 25 for \$1.40, 100 for \$5.00, postpaid.**

HORACE. Hardy free flowering variety with pure white perianth and conspicuous red cup. Horace has remained fresh in our exhibits 6 days after cutting. **3 bulbs 25c., 6 for 45c., 12 for 85c., 25 for \$1.50, 100 for \$5.25, postpaid.**



Bonfire



Cheerfulness

MISCELLANEOUS

SINGLE JONQUILS (Jonquilla Simplex)

That fragrant little gem of golden clusters. It comes from Southern France and is the original true Jonquil of ancient history. Pure golden flowers on rushlike foliage. Very fragrant.

3 bulbs 30c., 6 for 55c., 12 for 95c., 25 for \$1.75, 100 for \$6.75, postpaid

TRIANDRUS ALBUS

The "Angel's Tears" of old Portugal. A delightful rock garden subject. Creamy white flowers are about 3/4 inch long with trumpet pointing down and sharply recurved petals pointed up.

3 bulbs 45c., 6 for 85c., 12 for \$1.65, 25 for \$3.00, 100 for \$10.50, postpaid

MIXED DAFFODILS FOR NATURALIZING

A mixture of hardy sorts especially good for naturalizing. This mixture contains a wide variety of types and varieties.

12 bulbs 60c., 25 for \$1.10, 100 for \$3.95, 1000 for \$35.50, postpaid

INCOMPARABILIS GROUP

RICHARD M. TOBIN. This in our opinion, is the outstanding Narcissus introduction of recent years. The star-shaped flowers are immense, often measuring 5 in. across. Shapely petals of creamy white form the perianth which supports a medium cup of orange with a broad scarlet rim. Introduce this variety to your neighborhood or garden club next Spring. 25c. each, 3 for 60c., 6 for \$1.00, 12 for \$1.85, 25 for \$3.40, 100 for \$12.75, postpaid.

Mrs.
Krelage



King
Alfred

SIR WATKIN. One of the largest of the Incomps. An old favorite among gardeners and always sure to bloom. Perianth pale sulphur yellow, deep yellow cup. 3 bulbs 35c., 6 for 60c., 12 for \$1.10, 25 for \$1.95, 100 for \$7.25, postpaid.

LUCIFER. A lovely glowing orange fluted cup surrounded by long flowing white petals make Lucifer a showy messenger of Spring. Of decidedly cheerful appearance. 3 bulbs 30c., 6 for 55c., 12 for 95c., 25 for \$1.75, 100 for \$6.75, postpaid.

HOMESPUN. Perianth nicely rounded, each petal overlapping the other and of a soft yellow shade, crown beautifully frilled and of a richer tone. 3 bulbs 25c., 6 for 45c., 12 for 85c., 25 for \$1.50, 100 for \$5.50, postpaid.

GIANT TRUMPET
GROUP

ROBERT SYDENHAM. A giant flower of pure gold. The long, shapely petals, slightly curved form a wide perianth, supporting a superb, heavily frilled trumpet of golden yellow. The entire flower suggests rugged proportionate beauty. The length of the stem and the quality of the foliage strengthen the first impression. Entirely hardy and a free flowering variety. 3 bulbs 45c., 6 for 85c., 12 for \$1.50, 25 for \$2.75, 100 for \$10.00 postpaid.

KING ALFRED. Large golden yellow flower of very fine appearance. Our stock of King Alfred is from the finest fields of that variety and far superior to most offerings. 3 for 50c., 12 for \$1.65, 25 for \$3.00, 100 for \$11.00, postpaid.

EMPEROR. Large golden yellow. 6 bulbs 65c., 12 bulbs \$1.00, 25 for \$1.75, 100 for \$6.75, postpaid.

EMPRESS. White perianth, yellow trumpet. 6 for 65c., 12 for \$1.00, 25 for \$1.75, 100 for \$6.75, postpaid.

VAN WAVEREN'S GIANT. Large primrose perianth with bright yellow cup. One of the finest and largest Daffodils. 3 bulbs 60c., 6 for \$1.10, 12 for \$1.95, 25 for \$3.65, 100 for \$13.50, postpaid.

MRS. E. H. KRELAGE. An exquisite Narcissus. Large trumpet of lemon yellow with creamy white perianth. A new and extra good variety. 3 bulbs 60c., 6 for \$1.15, 12 for \$2.00, 25 for \$3.75, 100 for \$14.50, postpaid.

OLYMPIA. A giant flower with much strength of character and great beauty. With its wide perianth and deeply carved and fluted trumpet of medium length and pure rich gold coloring, it could be well called a glorified King Alfred. 3 bulbs 45c., 6 for 75c., 12 for \$1.25, 25 for \$2.25, 100 for \$7.75, postpaid.

Wyatt's Dutch Hyacinths

There can be no substitute in the home or garden for Hyacinths. Beds or borders without them are incomplete. Their perfect form, color and fragrance render them invaluable for formal or informal use in the garden and for pot culture in the home. Plant 5 inches apart and 5 to 6 inches deep outdoors.

For pot culture use one-half of Wyatt's Bulb Fibre mixed well with one-half of black soil. For best results bury the pot of Hyacinths out-of-doors in a well-drained place allowing them to remain there for 6 to 8 weeks, then move to a semi-dark cool place for a week or two before bringing them indoors.

EXHIBITION HYACINTHS

These extra size bulbs are imported by us especially for those who desire to produce extra large spikes of beautifully colored fragrant flowers.

GARIBALDI. Glowing crimson red.
GERTRUDE. Beautiful rose.
GRAND MAITRE. Deep lavender blue.
GRANDEUR A'MERVEILLE. Rosy white.
KING OF THE BLUES. Dark blue.
L'INNOCENCE. Pure white.
MENELIK. Purplish black.
MORENO. Bright pink.
ENCHANTRESS. Clear light blue.
ROI DES BELGES. Deep red.
SIR WM. MANSFIELD. Purplish mauve.
YELLOW HAMMER. Pure yellow.
20c. each, 3 bulbs 50c., 6 bulbs 90c., 12 bulbs \$1.65,
25 for \$3.00, 100 for \$11.50, postpaid

12 Exhibition Hyacinths

To acquaint you with the superb quality of our Hyacinths, we offer a limited number of collections consisting of one each of the 12 varieties named above (\$2.40 value) for only \$1.75, postpaid.

BEDDING HYACINTHS

This is the correct size bulb for outdoor planting. They produce magnificent spikes of beautifully colored fragrant flowers.

KING OF BLUES. Dark blue.
KING OF THE YELLOWS. Clear yellow.
L'INNOCENCE. Pure white.
MORENO. Bright rose.
ENCHANTRESS. Clear light blue.
ROI DES BELGES. Deep red.
MIXED BEDDING HYACINTHS.

15c. each, 3 bulbs 35c., 6 for 65c., 12 for \$1.25,
25 for \$2.00, 100 for \$7.50, postpaid

BLUEBELLS (Wood-hyacinths) (Scillas)

SIBIRICA. Most popular for bulb beds, borders and rockeries. Beautiful hardy Spring-flowering bulbs producing rich blue flowers in profusion. 6 bulbs 30c., 12 for 50c., 100 for \$3.75, postpaid.
CAMPANULATA ALBA. Very beautiful, large flowering white variety. 6 bulbs 30c., 12 for 50c., 100 for \$3.75, postpaid.
CAMPANULATA ROSEA. Graceful stems of fine large, clear pink flowers. 6 bulbs 30c., 12 for 50c., 100 for \$3.75, postpaid.
CAMPANULATA COERULEA. The true Bluebell of grandmother's garden. Deep porcelain blue flowers in profusion. Perfectly hardy. 6 bulbs 30c., 12 for 50c., 100 for \$3.75, postpaid.

Scilla—Campanulata rosea



SPANISH IRIS

One of the most inexpensive of bulbous flowers; easy to grow and most attractive for mass planting in borders and beds as well as for cutting.

KING OF THE YELLOWS
KING OF THE WHITES
A. VON HUMBOLDT. Clear blue.
6 bulbs 35c., 12 bulbs 65c.,
25 bulbs \$1.15,
100 bulbs \$4.00, postpaid.
MIXED SPANISH IRIS. Including many different sorts,
3 bulbs 20c., 12 bulbs 65c.,
25 bulbs \$1.00, 100 bulbs
\$3.50, postpaid.

DUTCH IRIS

This is a giant-flowering strain of the Spanish Iris, blooming two weeks earlier. Their large, showy blooms are carried upright on stiff, but slender stems. They are delicately sweet-scented and besides their value to the garden they are highly prized for cut flowers.

IMPERATOR. Blue. **D. HARINGH.** White.
YELLOW QUEEN. Yellow

3 bulbs 25c., 12 bulbs 75c., 25 bulbs \$1.25,
100 bulbs \$3.75, postpaid

MIXED DUTCH IRIS. 6 bulbs 35c., 12 bulbs 65c.,
25 bulbs \$1.15, 100 bulbs \$3.50, postpaid.

Hyacinth—Gertrude



Lilies for Your Garden

L. candidum ready for shipment in September— other varieties ready from late October to December

AURATUM (Golden-rayed Lily of Japan). Plant 10 to 12 in. deep where lower part of plant is shaded but not crowded by other roots. The enormous white flowers are gold banded with orange red spots. Blooms July-August, 4 to 6 ft. tall. **35c. each, 3 for 95c., 6 for \$1.75, 12 for \$3.25, postpaid.**

CANDIDUM (Madonna Lily). Down through the ages this Lily of all Lilies has been the emblem of heavenly purity. Hardy and of easiest cult ure, enduring sun or shade, Liliu candidum should be planted only an inch or two under the surface in a deep, well prepared and drained bed. Stately white flowers borne 8 to 12 on a 3- to 4-ft. stem, are deliciously fragrant. We offer only extra large bulbs imported directly from northern France. Blooms in June. **35c. each, 3 for 95c., 6 for \$1.75, 12 for \$3.25, postpaid.**

L. auratum



L. regale



L. henryi



HENRYI. Grows 6 to 8 ft. tall, bearing 15 to 20 rich orange yellow blooms. Plant 10 to 12 inches deep in peaty soil. Prefers partial shade. Blooms in July. **35c. each, 3 for 95c., 6 for \$1.75, 12 for \$3.25, postpaid.**

KRAMERI. Lovely, large, clear pink, funnel-shaped flowers. Grows 3 to 4 ft. tall. Likes partial shade. Plant 8 to 10 in. deep. Blooms in June. **35c. each, 3 for 95c., 6 for \$1.75, 12 for \$3.25, postpaid.**

MARTAGON. Strong, producing 20 to 30 light, spotted, purple flowers when established. Plant 6 to 8 in. deep. Blooms in June-July. **35c. each, 3 for 95c., 6 for \$1.75, 12 for \$3.25, postpaid.**

PHILIPPINENSE FORMOSANUM. The very long, trumpet-shaped flowers are pure white, shapely and delicately fragrant. Plant 6 to 8 in. deep. Blooms July-August. **25c. each, 3 for 65c., 6 for \$1.15, 12 for \$2.00, postpaid.**

REGALE (Regal or Royal Lily). Truly royal, this is one of the most beautiful and one of the hardiest Lilies in cultivation. Often 18 to 20 flowers flushed with yellow at center, shading to white at the outer edges. Grows 4 to 6 ft., likes loam and sunshine. Plant 9 in. deep, drain well and water copiously using liquid manure often. Delightfully fragrant, they bloom June-July. Extra large bulbs. **25c. each, 3 for 65c., 6 for \$1.15, 12 for \$2.00, postpaid.**

SPECIOSUM ALBUM. An exquisite Lily, the snow white petals having a golden green strip through the center. Likes rich, loamy soil. Plant 8 to 10 in. deep. Grows 3 ft. Blooms in August. **35c. each, 3 for 95c., 6 for \$1.75, 12 for \$3.25, postpaid.**

SPECIOSUM RUBRUM. One of the loveliest of the Lilies. The flowers are white, softly flushed and spotted rose. Plant 10 in. in rich, deep soil partially shaded. Blooms in August. **35c. each, 3 for 95c., 6 for \$1.75, 12 for \$3.25, postpaid.**

L. candidum (Madonna Lily)



Lilies generally dislike lime, must have ample moisture but must be well drained. Regardless of the depth at which the variety is planted the soil should be deep, rich, loamy and rather gritty than stiff clay. Avoid full sun and too dense shade. The ideal situation for Lilies being in the perennial or shrub border where the lower parts of the plants are shaded while the top of the plants and flowers have access to ample air and light. Avoid ordinary manure which may cause the bulbs to rot, using Peat Moss and Sheep Manure mixed well into the bed.

SUPERBUM. Fine specimens often reach a height of 8 to 10 ft., bearing 20 to 30 elegantly reflexed flowers arranged in a large, cone-shaped cluster. Likes effective drainage, partial shade, especially at plant's base, and ample moisture. Plant 4 to 6 in. deep. Blooms in July. **35c. each, 3 for 95c., 6 for \$1.75, 12 for \$3.25, postpaid.**

TIGRINUM. The large, shapely flowers are a rich, dark salmon orange spotted with glossy black. Easy to grow; it should be planted 9 to 10 in. deep, watered copiously and kept mulched. Grows 4 ft. tall and blooms in August. **25c. each, 3 for 65c., 6 for \$1.15, 12 for \$2.00, postpaid.**

TENUIFOLIUM. A small, charming, early flowering Lily with shapely, recurved, waxy petals of deep scarlet. Likes partial shade and a cool, damp loamy soil. Plant 7 in. deep. Grows 2 to 3 ft. Blooms in June. **20c. each, 3 for 50c., 6 for 85c., 12 for \$1.50, postpaid.**

UMBELLATUM. A very free flowering apricot orange Lily of easy culture. The flowers are borne in a great peak 3 to 4 ft. tall. Blooms in June. Endures lime. Plant 6 to 8 in. deep. **25c. each, 3 for 65c., 6 for \$1.15, 12 for \$2.00, postpaid.**

SPECIAL LILY OFFER

One bulb each of the 13 garden Lilies listed above (no Callas)—the 13 bulbs, all properly labeled, a \$4.00 value, for only \$3.00, postpaid.

CALLA LILIES

AETHIOPICA, or LILY OF THE NILE. The old favorite White Calla Lily makes a very pretty pot plant. Only one bulb should be put in each pot. **35c. each, \$2.65 per doz.**

ELLIOTTIANA. The golden yellow Calla. Extra large bulbs. **35c. each, \$2.75 per doz.**

PEAT MOSS

Large bales (at Raleigh).....\$3.00

SHEEP MANURE

25-lb. bag (at Raleigh).....\$1.00
100-lb. bag (at Raleigh).....\$2.50

L. tenuifolium



Wyatt's Tested Flower Seeds

Hardy Annuals and Perennials for Fall and Winter Sowing

Most perennials and a good number of our most popular annuals should be planted during the early Fall and Winter months. The varieties listed below are perfectly hardy and produce best results planted at this time of the year. We offer only new crop "Tested Seeds" and you are thereby assured of an excellent stand of your favorite flowers.

No. 1074—Aquilegia



No.	Pkt.	1/8 oz.	No.	Pkt.	1/8 oz.
1023— <i>Alyssum saxatile compactum</i> . Golden yellow flowers. 9 in.....	\$0.10	\$0.25	1600— <i>California Poppy</i> , Mixed.....	\$0.10	\$0.15
1037— <i>Anchusa italica</i> . Gentian blue. 4 ft. high.....	.15	.20	1605— <i>Euphorbia</i> (Snow-on-the-mountain).....	.10	.15
1078— <i>Aquilegia</i> (Columbine) <i>chrysantha</i> . Pale yellow. 2 ft.....	.10	.50	1630— <i>Gaillardia grandiflora</i> , Mixed. Also called Blanket-flower.....	.10	.25
1070— <i>Aquilegia</i> , Single Mixed. All colors, very fine....	.10	.25	1646— <i>Geum</i> , Mrs. Bradshaw. Orange red. 1 1/2 ft. high....	.15	.50
1074— <i>Aquilegia</i> , Wyatt's Long-spurred Hybrids. 3ft.....	.15	.75	1666— <i>Gypsophila paniculata</i> (Hardy Babysbreath). White. 3 ft.....	.10	.20
1085— <i>Arabis</i> (Rockcress). Pure white. 5 in.....	.10	.20	1679— <i>Hibiscus</i> (Mallow).....	.10	.20
1160— <i>Aster</i> (Hardy Mixed Michaelmas Daisy).....	.10	.85	1680— <i>Hollyhock</i> , Single Mixed.....	.10	.20
1197— <i>Bellis</i> (English Daisy) <i>Snowball</i> . Double white. 6 in.....	.10	.60	1681— <i>Hollyhock</i> , Newport Pink. 5 to 7 ft. high....	.10	.30
1199— <i>Bellis</i> , Longfellow. Dark rose. 6 in.....	.10	.60	1682— <i>Hollyhock</i> , Double Scarlet. Bright red. 5 to 7 ft.....	.10	.30
1200— <i>Bellis</i> , Wyatt's Double Mixed. All colors. Complete mixture.....	.10	.45	1683— <i>Hollyhock</i> , Double Yellow. 5 to 7 ft.....	.10	.30
1240— <i>Calendula</i> , Double Mixed. Orange and lemon shades.....	.10	.15	1684— <i>Hollyhock</i> , Double Salmon Rose. 5 to 7 ft....	.10	.30
1250— <i>Calliopsis</i> , Single. Yellow and maroon.....	.10	.15	1685— <i>Hollyhock</i> , Double Maroon. Very dark red. 5 to 7 ft.....	.10	.30
1275— <i>Candytuft gibraltaria</i> . Beautiful lilac flowers. 12 in.....	.10	.35	1686— <i>Hollyhock</i> , Double White. Pure white. 5 to 7 ft.....	.10	.30
1277— <i>Candytuft sempervirens</i> . Pure white. 10 in....	.10	.35	1690— <i>Hollyhock</i> , Wyatt's Special Mixture of Double Hollyhocks.....	.10	.25
1290— <i>Canterbury-bells</i> . Single mixed colors. 3 ft.....	.10	.35			
1300— <i>Canterbury-bells</i> . Double mixed. All colors....	.10	.35			
1330— <i>Carnation</i> , Chabauds Everblooming Mixed.....	.15	.60			
1366— <i>Centaurea cyanus</i> (Bachelor Buttons). Double rose.....	.10	.15			
1367— <i>Centaurea cyanus</i> . Double blue.....	.10	.15			
1370— <i>Centaurea cyanus</i> . Double mixed colors.....	.10	.15			
1371— <i>Centaurea candidissima</i> (Dusty-miller). Gray white foliage.....	.10	.25			
1420— <i>Chrysanthemum</i> , Wyatt's Hardy Oriental.....	.25			
1472— <i>Coreopsis lanceolata</i> . Single yellow flowers. 2 ft....	.10	.15			
1473— <i>Coreopsis</i> . New double yellow.....	.10	.35			
1543— <i>Delphinium</i> , Gold Medal Hybrids. Very choice.....	.15	.60			
1545— <i>Delphinium Bellamosum</i> . Dark blue. 3 ft.....	.10	.75			
1548— <i>Delphinium Belladonna</i> . Light blue. 3 ft.....	.10	.75			
1580— <i>Dianthus plumarius</i> (Pheasanteye Pinks). Single mixed. Hardy.....	.10	.20			
1581— <i>Dianthus plumarius</i> . (Double Scotch Pinks). Double mixed.....	.10	.45			
1583— <i>Dianthus</i> , Sweet Wivelsfield.....	.10	.50			
1590— <i>Digitalis</i> (Foxgloves). Mixed.....	.10	.25			
1591— <i>California Poppy</i> , Golden West. Flaming orange.....	.10	.15			
1592— <i>California Poppy</i> , Sunlight. Lemon yellow.....	.10	.15			

No. 1023—Alyssum, Saxatile



WYATT'S DOUBLE-FLOWERING IMPERIAL LARKSPUR

No.	Pkt.	1/8 oz.
1714— <i>Imperial White Spire</i> . Double pure snowy white.....	\$0.10	\$0.25
1716— <i>Imperial Carmine King</i> . Giant double, deep carmine rose.....	.10	.25
1727— <i>Imperial Exquisite Improved</i> . Your old favorite with its former beauty and charm magnified many times. Fluffy clear pink.....	.10	.25
1717— <i>Imperial Daintiness</i> . Double delicate lavender....	.10	.25
1719— <i>Imperial Lilac Spire</i> . An exquisite lilac, very double.....	.10	.25
1722— <i>Imperial Blue Spire</i> . Handsome, double, deep Oxford blue. An outstanding variety from a standpoint of size, color and form.....	.10	.25
1724— <i>Imperial Los Angeles Improved</i> . Immense very double flowers of brilliant rose or salmon borne on long spikes. Claimed the most beautiful Larkspur.....	.10	.25
1725— <i>Imperial Empress Improved</i> . Giant double, rich salmon rose.....	.10	.25
1726— <i>Imperial Blue Bell</i> . Delightful clear azure blue. Try a bed of this variety mixed with single Shirley wild rose pink Poppies....	.10	.25
1720— <i>Wyatt's Giant Imperial Mixed</i> . Beautifully blended mixture of the most handsome Larkspurs grown.....	.10	.20

No. 1682—Hollyhocks



No. 1543—Delphinium



WYATT'S TESTED FLOWER SEEDS—Continued

WYATT'S STOCK-FLOWERED LARKSPUR

No.	Pkt. 1/8 oz.
1731-Rosamond, Stock-flowered. Awarded the Gold Medal in the All-America Selections and the Award of Merit of the Royal Horticultural Society of England. The flowers are a pure deep rose, produced in great quantities on strong plants.....	\$0.10 \$0.20
1732-Stockflowered Sky Blue. Clear blue, very double flowers.....	.10 .20
1733-Stockflowered White. Large fluffy white flowers, very double.....	.10 .20
1730-Stockflowered Mixture. This mixture contains all of the attractive colors in the double stockflowered group....	.10 .20
1736-Lavender (Sweet Lavender).....	.10 .20
1739- <i>Linum perenne</i> , Blue. Hardy Flax with blue flowers.....	.10 .15
1743- <i>Lobelia cardinalis</i> (Cardinalflower). Beautiful scarlet flowers.....	.25 2.00
1751- <i>Lupinus polyphylus</i> (Mixed Perennial Lupines). 4 ft.....	.10 .15
1753- <i>Lychnis chalconica</i> (Jerusalem or Maltese Cross).....	.10 .20
1781- <i>Matricaria</i> (Feverfew). White.....	.10 .15
1782- <i>Matricaria</i> (Feverfew) Golden Ball. Golden yellow flowers.....	.15 .50
1885- <i>Pentstemon</i> (Beard-tongue). Fine mixed. 2 1/2 ft. high.....	.10 .85
1960- <i>Phlox drummondii</i> . Hardy annual. All colors mixed.....	.10 .25
1961- <i>Phlox decussata</i> (Perennial Phlox). Mixed colors. 3 ft. high.....	.25 .45
1970-Poppy, Single Shirley. Mixed.....	.10 .15
1976-Poppy, Wild French Scarlet.....	.10 .15
1977-Poppy, Oriental, Hardy. Mixed colors. 3 ft. high.....	.10 .30
1983-Poppy, Iceland. Mixed colors. 1 1/2 ft.....	.10 .35
1985-Poppy, Double Mixed.....	.10 .15
1995- <i>Portulaca</i> , Single Mixed.....	.10 .20
2000- <i>Portulaca</i> , Double Mixed.....	.10 .50
2007- <i>Primula veris</i> (Cowslip). 10 in. Mixed colors.....	.15 .75
2008- <i>Primula vulgaris</i> (English Primrose). 6 in. Yellow flowers.....	.10 .75

No.	Pkt. 1/8 oz.
2015-Pyrethrum, Single Fine Mixed. 2 ft. All colors.....	\$0.10 \$0.35
2037- <i>Salvia farinacea</i> (Perennial Sage). Pale blue. 4 ft.....	.15 .30
2051- <i>Scabiosa caucasica</i> (Blue Bonnet or Cushionflower). 2 1/2 ft.....	.15 .60

WYATT'S NEW CROP PANSY SEEDS

1869-Wyatt's New Super Giant Pansy. Borne in profusion on large, vigorous plants supporting long, strong stems. The rich coloring and great size of the flowers in addition to its prolonged blooming season will make this new variety a garden favorite. Pkt. 50c., 3 pkts. \$1.25.



No. 2331—Sweet Pea—Mary Pickford

1875-Swiss Giant Mixed. Wyatt's carefully blended mixture of Swiss Giant Pansies is outstanding for its wide range of rich coloring. The flowers are large and on tall stems. Pkt. 25c., 2 pkts. 40c., 1/4 oz. \$1.25
 1870-Wyatt's Fancy Exhibition. A blending of our own containing only the very choicest secured from the leading Pansy specialists; it can be relied upon to produce flowers of immense size, very heavy texture and of the most brilliant colors. Pkt. 25c., 2 pkts. 40c., 1/4 oz. \$1.00, 1/4 oz. \$1.75, oz. \$6.75.

WYATT'S NEW CROP PANSY SEEDS—Continued

1880-Trimardeau Giant Mixed. Trimardeau Pansies are distinguished by their magnificent varied colors and strong markings. Pkt. 10c., 3 pkts. 25c., 1/8 oz. 35c., 1/4 oz. 60c., oz. \$1.75.

SNAPDRAGONS

No.	Pkt. 1/8 oz.
1058-Canary Bird. Large clear canary yellow flowers crowded on the tall, strong stems. 3 ft.....	\$0.10 \$0.50
1053-Florist Pearl. A beautiful, pure white Snapdragon, extremely popular with florists. 3 ft.....	.10 .50
1055-Campfire. A clear luminous scarlet, free of orange. The yellow lip seems to add brilliance to the color. 3 ft.....	.10 .50
1054-Copper Shades. A blending of all the rich copper tones found in Snapdragons. 3 ft.....	.10 .50
1056-Loveliness. The finest pure soft rose pink variety. 3 ft.....	.10 .50
1060-University of California Mixture. A mixture of lovely colors in a flower famed above all else for its coloring. 3 ft.....	.10 .50

WYATT'S SPENCER SWEET PEAS

2314-Hercules. Pure pink.	
2315-Crimson King. Deep crimson.	
2316-Ambition. Exquisite lilac.	
2318-Elfrida Pearson. Shell pink.	
2319-Royal Scot. Orange scarlet.	
2321-Hebe. Bright rose.	
2323-Geo. Shawyer. Salmon rose.	
2324-King White. White.	
2325-Royal Purple. Rich purple.	
2327-Youth. White, pink picotee.	
2328-Pinkie. Deep rose pink.	
2329-Mrs. Tom Jones. Azure blue.	
2331-Mary Pickford. Cream pink.	
2332-Orange Picture. Sunproof orange.	
2339-Dobbies Cream. Deep primrose.	
2343-Hawlmart Pink. Rose pink.	
2344-Miss California. Cream pink.	
2348-Asta Ohn. Lavender.	
2355-Commander Godsell. Dark blue.	
2361-Warrior. Maroon chocolate.	
Any above varieties of Giant Spencer Sweet Peas: Pkt. 10c., oz. 25c., 1/4 lb. 75c., lb. \$2.50, postpaid	
2350-Wyatt's Superb Mixture of Spencer Sweet Peas. Pkt. 10c., oz. 20c., 1/4 lb. 60c., lb. \$2.00, postpaid.	

Wyatt's Tested Seeds for the Rock Garden

No.	Pkt.
1023-Alyssum saxatile compactum.....	\$0.10
1085-Arabis alpina (Rockcross). White.....	.10
1086-Arenaria montana.....	.25
1087-Armeria formosa. 1 ft.....	.10
1275-Candytuft gibraltaria. Lavender pink.....	.10
1276-Candytuft, Queen of Italy. Rose.....	.10
1277-Candytuft sempervirens. White.....	.10
1311-Campanula carpatica. Blue.....	.10
1401-Cerastium tomentosum (Snow-in-summer).....	.10
1582-Dianthus deltoides (Maiden Pink).....	.15
1668-Gypsophila repens (Trailing Babysbreath).....	.15
1737- <i>Linum flavum</i> . Showy yellow.....	.15
1754- <i>Lychnis viscaria splendens</i> . 1 ft.....	.10

No.	Pkt.
1811-Myosotis palustris semperflorens. 10 in.....	\$0.10
2007- <i>Primula veris</i> (Cowslip). 10 in.....	.15
2008- <i>Primula vulgaris</i> (English Primrose). 6 to 9 in.....	.10
2033- <i>Salvia pratensis</i> . Blue. 2 ft.....	.20
2039-Saponaria ocymoides.....	.10
2963-Sedum acre. 3 in.....	.25
2153- <i>Verbena venosa</i> (Hardy Verbena).....	.10
2164- <i>Veronica spicata</i> (Blue Speedwell). 1 1/2 ft.....	.15
2174- <i>Viola cornuta</i> . Mixed. 10 in.....	.15
2179-Wallflower, Siberian. 10-15 in.....	.10
2024-Mixture of Perennial Rock Garden Seeds. Large packet.....	.25
2025-Mixture of Annual Rock Garden Seeds. Large packet.....	.10

Wyatt's Tested Vegetable Seeds

For Fall and Winter Gardens

No. BEETS

- 121—Wyatt's Carolina Market.** Smooth, globe shaped, beautifully uniform deep blood red variety, best for Fall sowing. **Pkt. 10c., oz. 15c., ¼ lb. 35c., lb. \$1.00, 5 lbs. \$4.00, postpaid.**
- 123—Crosby's Egyptian.** Extra good early variety, medium size, globe shaped. **Pkt. 5c., oz. 10c., ¼ lb. 25c., lb. 85c., 5 lbs. \$3.50, postpaid.**
- 128—Detroit Dark Red.** Standard for all truckers. Old favorite. **Pkt. 5c., oz. 10c., ¼ lb. 35c., lb. 90c., 5 lbs. \$3.75, postpaid.**

CABBAGE

- 151—Early Jersey Wakefield.** The most popular variety. Small pointed heads. Earliest. **Pkt. 5c., oz. 20c., ¼ lb. 50c., lb. \$1.75, 5 lbs. \$8.00, postpaid**
- 152—Large Charleston Wakefield.** Slightly larger and later than Jersey Wakefield. **Pkt. 5c., oz. 20c., ¼ lb. 50c., lb. \$1.75, 5 lbs. \$8.00, postpaid**
- 158—Wyatt's All-Head.** The best second early cropper. A sure header and money maker. **Pkt. 5c., oz. 20c., ¼ lb. 50c., lb. \$1.75, 5 lbs. \$7.00, 10 lbs., \$12.50, postpaid.**
- 153—Large Late Flat Dutch.** The best large type for Fall and Winter planting. **Pkt. 5c., oz. 20c., ¼ lb. 50c., lb. \$1.75, 5 lbs. \$7.00, 10 lbs. \$12.50, postpaid.**
- 170—Drumhead Savoy.** The medium small heads are tight. Leaves wrinkled. Most cold-resistant. Best flavored. **Pkt. 5c., oz. 25c., ¼ lb. 60c., lb. \$2.00, 5 lbs. \$8.50, postpaid.**

CARROTS

- 183—Chantenay.** Deep orange coloring, half long. **Pkt. 5c., oz. 10c., ¼ lb. 25c., lb. 90c., postpaid.**
- 185—Danver's Half Long.** Smooth, tapering, half long variety. Good coloring. **Pkt. 5c., oz. 10c., ¼ lb. 25c., lb. 90c., postpaid.**
- 188—Scarlet Nantes.** Good early variety. Grows 6 to 7 in. long; smooth. **Pkt. 5c., oz. 10c., ¼ lb. 35c., lb. \$1.25, 5 lbs. \$5.00, postpaid.**

KALE

- 342—Extra Dwarf Blue Curled Scotch.** Very compact, low growing plants with beautifully curled leaves of a bluish green color. **Pkt. 5c., oz. 10c., ¼ lb. 30c., lb. \$1.00, 5 lbs. \$3.50, postpaid.**
- 341—Dwarf Green Curled Scotch.** **Pkt. 5c., oz. 10c., ¼ lb. 25c., lb. 75c., 5 lbs. \$3.00, postpaid.**
- 343—Siberian or German.** **Pkt. 5c., oz. 10c., ¼ lb. 25c., lb. 75c., 5 lbs. \$3.00, postpaid.**

MUSTARD

Sow 1 ounce to 100 feet of drill or plant 1½ to 2 lbs. to the acre

- 481—Wyatt's Fordhook Fancy.** Best variety for home or market. Upright growth and beautifully curled. **Pkt. 5c., oz. 10c., ¼ lb. 25c., lb. 75c., 5 lbs. \$3.00, postpaid.**
- 485—Southern Giant Curled.** The plants resemble Fordhook Fancy. **Pkt. 5c., oz. 10c., ¼ lb. 20c., ½ lb. 30c., lb. 50c., 5 lbs. \$1.90, postpaid.**
- 482—Chinese Broadleaf.** Large, round leaves, dark green, not curled. **Pkt. 5c., oz. 10c., ¼ lb. 20c., lb. 65c., 5 lbs. \$2.25, postpaid.**

No. ONIONS

- 506—Wyatt's Prizetaker.** The best all-round Onion in cultivation. Beautiful copper color, good keeper, hardy and often reach 1¼ lbs. per bulb. **Pkt. 5c., oz. 15c., ¼ lb. 45c., lb. \$1.50, 5 lbs. \$7.00, 10 lbs. \$12.50, postpaid.**
- 509—White Portugal or Silverskin.** **Pkt. 10c., oz. 20c., ¼ lb. 60c., lb. \$2.00, 5 lbs. \$8.50, postpaid.**
- 504—Yellow Globe Danvers.** **Pkt. 5c., oz. 15c., ¼ lb. 45c., lb. \$1.50, 5 lbs. \$6.50, postpaid.**
- 502—Large Red Wethersfield.** **Pkt. 5c., oz. 15c., ¼ lb. 45c., lb. \$1.50, 5 lbs. \$6.50, postpaid.**

ONION SETS

White Pearl Red Wethersfield
Yellow Danvers

Pt. 20c., qt. 35c., postpaid. Not pre-paid, pk. (8 lbs.) \$1.25, bus. (32 lbs.) \$3.75

Prices Subject to Change

No. SPINACH

- 694—Wyatt's Reselected Bloomsdale Savoy.** **Pkt. 5c., oz. 10c., ¼ lb. 15c., lb. 35c., 5 lbs. \$1.25, postpaid.**
- 699—Virginia Savoy.** **Pkt. 5c., oz. 10c., ¼ lb. 15c., lb. 35c., 5 lbs. \$1.25, postpaid.**
- 695—Broadleaved Flanders.** **Pkt. 5c., oz. 10c., ¼ lb. 15c., lb. 35c., 5 lbs. \$1.25, postpaid.**

TURNIPS

- 774—Early White Flat Dutch.**
- 776—Yellow or Amber Globe.**
- 777—Pomeranian White Globe.**
- 780—Large White Norfolk.**
- 781—Purple Top White Globe.**
- 783—Southern Seven Top.**
- 785—Early White Egg.**
- 787—Purple Top Rutabaga.**

Prices: All above varieties of Turnips: Pkt. 5c., oz. 10c., ¼ lb. 20c., lb. 65c., 5 lbs. \$2.50, all postpaid

No. 185—Danver's Half Long Carrot



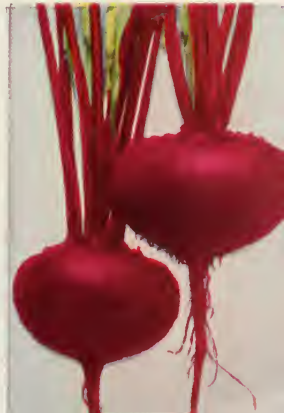
No. 151
Early Jersey Wakefield Cabbage



No. 781
Purple Top White Globe Turnip



No. 121—Carolina Market Beet



STAR BRAND *Roses*

For Your Garden

This fine stock is shipped dormant direct from the field. All strong, 2-year, field-grown plants. No Roses or other plants shipped C.O.D.

Note—Deduct 15 per cent quantity discount on orders for 12 or more Roses. All Roses postpaid.

AUTUMN. Burnt orange, shaded red. A charming new Rose. **\$1.00 each, 6 for \$5.00.**

BRIARCLIFF. Deep rosy pink. Excellent and very hardy. **75c. each, 6 for \$4.00.**

CHARLES K. DOUGLAS. HT. Scarlet crimson. **75c. each.**

ETOILE DE HOLLANDE. HT. Best crimson. **75c. each.**

RED RADIANCE. HT. Cerise red. **75c. each.**

CONDESA DE SASTAGO. HT. Copper and yellow. **\$1.00 each.**

PRESIDENT HOOVER. HT. Multicolored, scarlet yellow, cerise pink and flame. **75c. each.**

TALISMAN. HT. Orange yellow and red. **75c. each.**

DUCHESS OF WELLINGTON. HT. Golden orange. **75c. each.**

MRS. E. P. THOM. HT. Clear yellow. **75c. each.**

MRS. PIERRE S. DU PONT. HT. Golden yellow. **90c. each.**

SOEUR THERESE. HT. Daffodil yellow. **\$1.00 each.**

EDITH NELLIE PERKINS. HT. Salmon pink. **75c. each.**

EDITOR McFARLAND. HT. Deep pink. **90c. each.**

LADY ASHTOWN. HT. Carmine pink. **75c. each.**

RADIANCE. HT. Rose pink. **75c. each.**

KAISERIN A. VIKTORIA. HT. Cream white. **75c. each.**

LUNA. HT. Moonlight yellow opening white. **\$1.00 each.**

DWARF ROSE

TOM THUMB. A real rose plant 3 in. tall. Real red Rose buds the size of a grain of wheat. Perfectly hardy. **75c. each.**

HARDY CLIMBING ROSES

DR. W. VAN FLEET. Flesh pink. **65c. each.**

NEW DAWN. Everblooming Dr. Van Fleet. Flesh pink. **\$1.50 each.**

PAULS SCARLET CLIMBER. Vivid scarlet. **65c. each.**

SILVER MOON. Semi-double. Creamy white. **75c. each.**

SPANISH BEAUTY. Pearl pink. **75c. each.**

TRI-OGEN

Complete spray for Roses.
Small kit, **\$1.75 postpaid.**



WYATT'S "WONDERLAWN" LAWN GRASS

You will find something different in this Wyatt's "Wonderlawn" Lawn Grass and as the name implies it will produce a wonderful lawn and give entire satisfaction in the Southern States. It is a properly blended mixture of grasses adapted to our Southern soil and climate. All the grasses used in this "Wonderlawn" mixture are field ripened, sunured and double processed. By double processed we mean that all the weed seeds, chaff, dirt and other impurities have been removed.

Lb. 45c., 5 lb., \$2.00, 10 lbs. \$3.50, 25 lbs. \$8.00, 100 lbs. or over at 30c. lb., postage or freight prepaid.

SHADY NOOK LAWN GRASS

For shady places under trees you will find our Shady Nook Lawn Grass very satisfactory. In order to have a good lawn in damp and especially shady spots, a frequent application of agricultural lime is advised to prevent the soil from becoming sour.

Lb. 50c., 5 lbs. \$2.25, 10 lbs. \$4.00, 25 lbs. \$9.00, 100 lbs. \$32.00, postage or freight prepaid

KENTUCKY BLUE GRASS

A most highly desirable lawn grass that thrives best on a stiff, limestone soil. Plant 2 to 4 lbs. per 1000 square feet. During warm weather Bluegrass should never be clipped closer than 2 inches from the ground.

Lb. 35c., 2 lbs. 65c., 5 lbs. \$1.50 postpaid. Not prepaid, 10 lbs. \$2.50, 25 lbs. \$6.00, 100 lbs. \$22.50.

ITALIAN RYE GRASS

This is used both for pasture and lawns although you will have better results with Wyatt's "Wonderlawn" Lawn Grass for a permanent lawn. Sow 1 lb. to 100 square feet of lawn and 100 lbs. per acre for pasture.

Lb. 25c., 2 lbs. 45c., 5 lbs. 85c., postpaid. Not prepaid, 10 lbs. \$1.10, 25 lbs. \$2.50, 100 lbs. \$9.50

WHITE DUTCH CLOVER FOR LAWNS

We use this clover in our lawn grass mixtures, but some of our customers prefer an additional supply of clover. **1/2 lb. 30c., 1 lb. 55c., 5 lbs. \$2.50, 10 lbs. \$4.50 postpaid**



Etoile de Hollande



Autumn

Briarcliff

