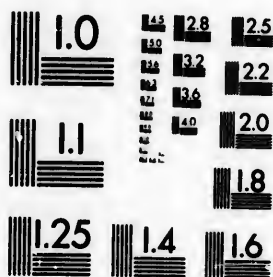


**IMAGE EVALUATION
TEST TARGET (MT-3)**



1.5
1.6
1.8
2.0
2.2
2.5
2.8

**CIHM/ICMH
Microfiche
Series.**

**CIHM/ICMH
Collection de
microfiches.**

01



Canadian Institute for Historical Microreproductions

Institut canadien de microreproductions historiques

1980

Technical Notes / Notes techniques

The Institute has attempted to obtain the best original copy available for filming. Physical features of this copy which may alter any of the images in the reproduction are checked below.

L'Institut a microfilmé le meilleur exemplaire qu'il lui a été possible de se procurer. Certains défauts susceptibles de nuire à la qualité de la reproduction sont notés ci-dessous.

Coloured covers/
Couvertures de couleur

Coloured pages/
Pages de couleur

Coloured maps/
Cartes géographiques en couleur

Coloured plates/
Planches en couleur

Pages discoloured, stained or foxed/
Pages décolorées, tachetées ou piquées

Show through/
Transparence

Tight binding (may cause shadows or distortion along interior margin)/
Reliure serrée (peut causer de l'ombre ou de la distortion le long de la marge intérieure)

Pages damaged/
Pages endommagées

Additional comments/
Commentaires supplémentaires

Bibliographic Notes / Notes bibliographiques

Only edition available/
Seule édition disponible

Pagination incorrect/
Erreurs de pagination

Bound with other material/
Relié avec d'autres documents

Pages missing/
Des pages manquent

Cover title missing/
Le titre de couverture manque

Maps missing/
Des cartes géographiques manquent

Plates missing/
Des planches manquent

Additional comments/
Commentaires supplémentaires

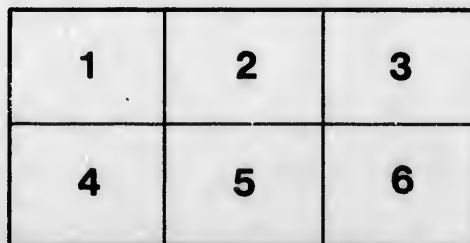
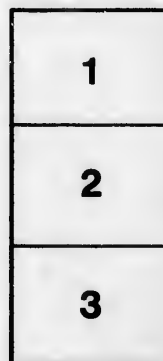
The images appearing here are the best quality possible considering the condition and legibility of the original copy and in keeping with the filming contract specifications.

The last recorded frame on each microfiche shall contain the symbol → (meaning "CONTINUED"), or the symbol ∇ (meaning "END"), whichever applies.

The original copy was borrowed from, and filmed with, the kind consent of the following institution:

Library of the Public
Archives of Canada

Maps or plates too large to be entirely included in one exposure are filmed beginning in the upper left hand corner, left to right and top to bottom, as many frames as required. The following diagrams illustrate the method:



Les images suivantes ont été reproduites avec le plus grand soin, compte tenu de la condition et de la netteté de l'exemplaire filmé, et en conformité avec les conditions du contrat de filmage.

Un des symboles suivants apparaîtra sur la dernière image de chaque microfiche, selon le cas: le symbole → signifie "A SUIVRE", le symbole ∇ signifie "FIN".

L'exemplaire filmé fut reproduit grâce à la générosité de l'établissement prêteur suivant :

La bibliothèque des Archives
publiques du Canada

Les cartes ou les planches trop grandes pour être reproduites en un seul cliché sont filmées à partir de l'angle supérieure gauche, de gauche à droite et de haut en bas, en prenant le nombre d'images nécessaire. Le diagramme suivant illustre la méthode :

PAAD
T
596
D9

A. McEwan & Bell. Perth. Scot. Cal. 1896

COLONIAL & INDIAN EXHIBITION



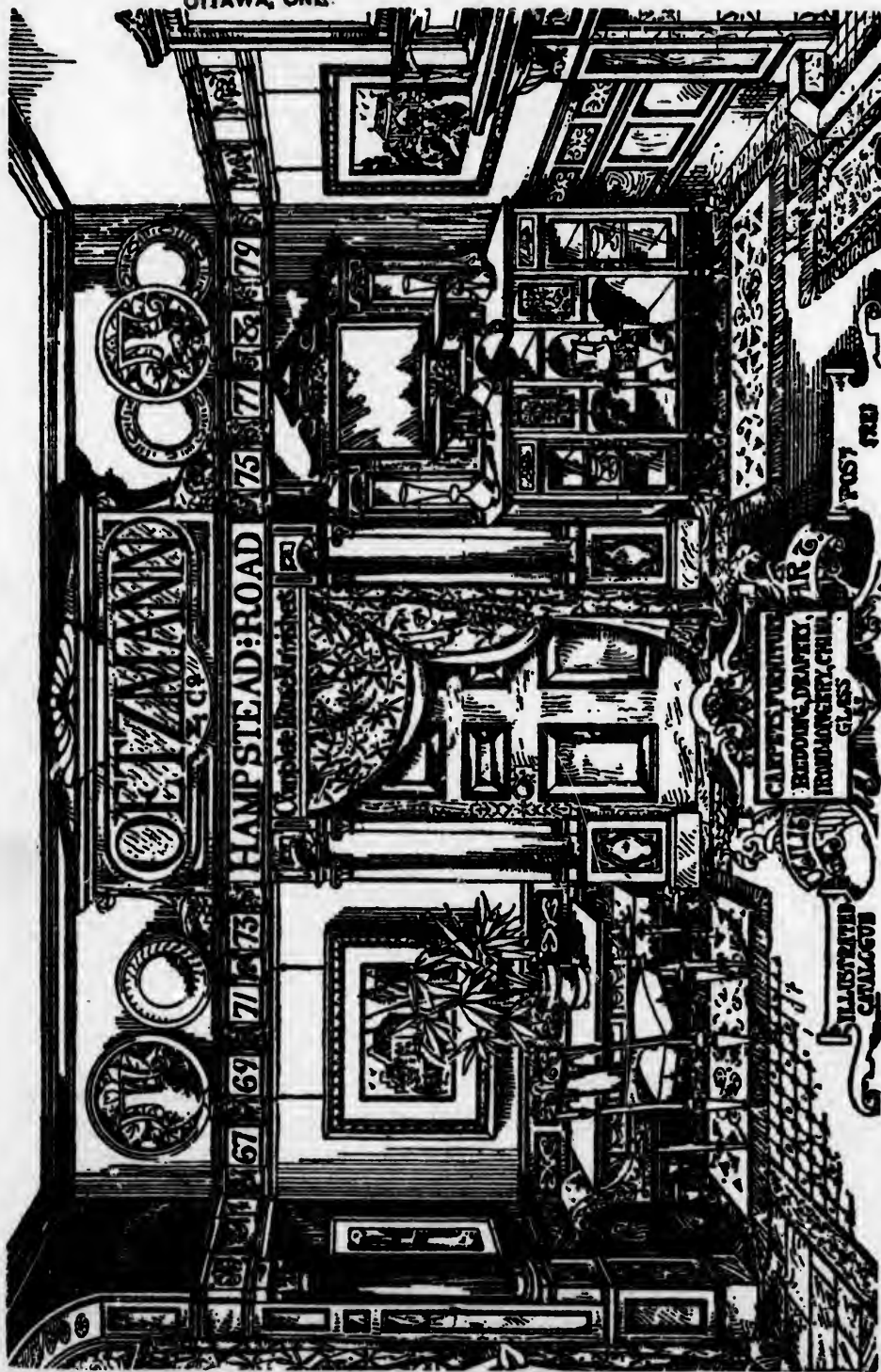
DAILY PROGRAMME

Music & **One Penny**

• LONDON • WILLIAM • CLOWES • & SONS • LIMITED •

LINLEY • SAMBOURNE • INV. ET. DELT.

BIBLIOTHEQUE,
ARCHIVES PUBLIQUES,
OTTAWA, ONT.



*A. Neubaurpelle
London Eng.*

DAILY PROGRAMME

1886. FRIDAY, AUGUST 27th. 1886.

ARRANGEMENTS FOR THE DAY, AFTERNOON.

	PLACE.	TIME.	PAGE.
LESSON ON HIGH CLASS } COOKERY.	Lecture Theatre	12.0 to 1.0	
ORGAN RECITAL .	Albert Hall .	1.0 " 2.0	ii
LESSON ON PLAIN } COOKERY.	Lecture Theatre	2.0 " 3.0	
ORGAN RECITAL .	Albert Hall .	3.0 " 4.0	ii
MOUNTED ARTILLERY .	Eastern Kiosk	3.0 " 5.0	iii
COLDSTREAM GUARDS .	Western Kiosk	5.0 " 7.0	iii

EVENING.

ORGAN RECITAL .	Albert Hall .	7.0 " 8.0	ii
MOUNTED ARTILLERY .	Eastern Kiosk	7.0 " 9.30	iv
GRENADIER GUARDS .	Western Kiosk	7.30 " 9.45	iv
INSTANTANEOUS } ILLUMINATION }	Gardens	8.0	
ILLUMINATED FOUNTAINS	Gardens	8.15	

*In the event of wet weather, the positions of the Bands may be altered.
Due notice of this will be placed in the Band Kiosks.*

GENERAL ITEMS.

THE NUMBER OF VISITORS to the Exhibition on Wednesday was 16,624, making a total since the opening of 2,917,348.

CAUTION TO SMOKERS. Smokers are earnestly requested to put out their matches before throwing them away.

AN ORCHESTRAL CONCERT will be given by the String Band of the Royal Artillery, in the Royal Albert Hall, to-morrow (August 28), from 5.0 to 7.0 p.m.

THE MALAY HOUSE is open to visitors on Wednesdays, from 10.0 a.m. to 7.0 p.m.

BATH CHAIRS are permitted to enter the Exhibition on Wednesdays only.

✕ THE DURBAR CARRIAGE, exhibited by His Highness the Maharajah of BHOW-NUGGER, will be drawn by the BULLOCKS, with full trappings, through the Upper Gardens at 2.0 p.m. daily, weather permitting, except on Wednesdays, when it is drawn at 12.0 (noon) and at 4.0 p.m. ✕

THE EMIGRATION OFFICE is situated at the East end of the South Promenade. Information concerning Emigration may be obtained daily between the hours of 10.0 a.m. and 1.0 p.m., and 2.0 to 6.0 p.m.

✕ A WASH-UP FOR DIAMONDS takes place daily between 3.0 and 4.0 p.m., in the Cape of Good Hope Court. The Diamond-Cutting and Polishing is carried on daily, from 10.30 a.m. to 1.0 p.m., from 2.0 to 6.0 p.m., and 6.45 to 8.0 p.m. ✕

✕ THE QUEENSLAND GOLD QUARTZ-CRUSHING MILL can be seen at work in the South Promenade daily, from 3.30 to 5.30 p.m. The Gold-Digger is at work with his Cradle, washing alluvial earth for gold, from 11.0 a.m. each day. ✕

MESSRS. GILLET & Co.'s PATENT CARILLON MACHINE, in "Old London," plays daily a variety of tunes on their bells at every hour, from 10.0 a.m. to 6.0 p.m.

MESSRS. WARNER'S BELLS, in the Upper Gardens, ring daily at 12.0, 3.0 p.m. and at closing-time.

✕ A COLLECTION OF COLONIAL AND INDIAN PAINTINGS is situated in the Gallery of the Royal Albert Hall. ✕

VISITORS FROM THE COLONIES AND INDIA are requested to leave their names and addresses at the office of the Secretary to the Royal Commission, and at the several Colonial and Indian Courts.

AN EXHIBITION COMMERCIAL EXCHANGE has been established for the use of

PRINTED IN THE BUILDING BY WILLIAM CLOWES AND SONS, LIMITED.



GENERAL ITEMS—*continued.*

Exhibitors and their Agents. Meetings at the rooms, No. 3, "Old London," from 12.0 till 1.0 p.m. daily, for the purpose of exchanging ideas on Products suitable for trade between Her Majesty's Possessions. Meetings of the Committee are held on Tuesdays, from 12.0 till 1.0 p.m. On Wednesdays the Committee will visit and inspect the Products of the various Courts. H. J. Scott, Chairman; G. L. Sait, Hon. Secretary.

× SPECIALLY-ARRANGED TOURS FOR COLONIAL AND INDIAN VISITORS IN GREAT BRITAIN AND IRELAND. The Offices of the Royal Commission for the issue of tickets for these Tours is open at No. 19, "Old London Street," from 10.0 a.m. to 9.0 p.m. ×

ROYAL COMMISSION COLONIAL AND INDIAN EXCHANGE, READING AND WAITING ROOMS, 9, "Old London Street." Files of Colonial and Indian Newspapers. Free to all visitors. Under the supervision of Thos. Cook & Son.

AMBULANCE STATION, No. 22, "OLD LONDON." A Station has been formed here by the St. John's Ambulance Association, for the use of the public, in case of accident or sudden illness. It is fitted with First Aid Appliances, and also with means of transport, should the latter be required for conveying persons to the hospital or to their own homes. A qualified attendant is present each day from the opening to the close of the Exhibition, and he is in telephonic communication with a doctor who can be instantly summoned in case of need. Acting Superintendent, J. K. Adams (late Sergeant Army Medical Staff); Hon. Surgeon, Mr. H. P. Potter, F.R.C.S.; Hon. Director, John Furley, Deputy-Chairman, St. John's Ambulance Association.

ORGAN RECITALS

By MR. EDWIN BENDING,

In the Royal Albert Hall. 1.0 p.m.—2.0 p.m.

- | | | | |
|----|---------------------------------------|-----------------------|--------------|
| 1. | SELECTION | "Lobgesang" | Mendelssohn. |
| 2. | MAGI PASTORALE | | Burgmein. |
| 3. | "THE HARMONIOUS BLACKSMITH" | | Handel. |
| 4. | FANTASIA | "Carmen" | Bizet. |
| 5. | { a. MELODIE | | Rubinstein. |
| | { b. SWEDISH MARCH | | Södermann. |
| 6. | SERFATA | | Braga. |
| 7. | GRAND CHEUR | | Verdi. |

3.0 p.m.—4.0 p.m.

- | | | | |
|----|--|-----------|-----------|
| 1. | PROCESSIONAL MARCH | | Carter. |
| 2. | MELODIE | | Pauer. |
| 3. | BERCEUSE | | Gounod. |
| 4. | { a. "WITH VERDURE CLAD" | | Haydn. |
| | { b. "ACHIEVED IS THE GLORIOUS WORK" | | |
| 5. | IMPROVISATION ON "NATIONAL AIRS" | | |
| 6. | "LES MOUSQUETAIRES" | | Bachmann. |
| 7. | OVERTURE | | Balfe. |

7.0 p.m.—8.0 p.m.

- | | | | |
|----|--------------------------------------|--------------------------|--------------|
| 1. | OVERTURE | | Auber. |
| 2. | "LIEDER OHNE WORTE" | | Mendelssohn. |
| 3. | { a. ANDANTE | | Batiste. |
| | { b. OFFERTOIRE | | |
| 4. | MELODIES | (Sullivan—Cowen—Molloy.) | |
| 5. | "REMINISCENCES OF BELLINI" | | |
| 6. | CAVATINA | | Raff. |
| 7. | WEDDING MARCH | | Mendelssohn. |

AFTERNOON CONCERT.

BAND OF THE MOUNTED ARTILLERY.

(BY KIND PERMISSION OF THE COMMANDING OFFICER.)

In the Eastern Kiosk. 3.0 p.m.—5.0 p.m.

- | | | | | |
|-----------------------------|-------|--|-------|-------------|
| 1. MARCH | . . . | " Militaire " | . . . | Gounod. |
| 2. OVERTURE | . . . | " Hungarian " | . . . | Ktler Béla. |
| 3. SELECTION | . . . | " Les Cloches de Corneville " | . . . | Planquette. |
| 4. VALSE . . . | . . . | " Sympathie Tone " | . . . | Strauss. |
| 5. FANTASIA . . . | . . . | " An Evening in Berlin " | . . . | Hartmann. |
| 6. " SOMMERNACHTSTÄNDCHEN " | . . . | . . . | . . . | Michaelis. |
| 7. SELECTION . . . | . . . | " Manteaux Noirs " | . . . | Bucalossi. |
| 8. POLACCA . . . | . . . | " The Picaroon " | . . . | T. Green. |
| | | <i>Piccolo Solo, Bombardier GENEVER.</i> | | |
| 9. FANTASIA . . . | . . . | " Le Jardin des Hesperides " | . . . | |

Conductor Mr. J. LAWSON.

BAND OF THE COLDSTREAM GUARDS.

(BY KIND PERMISSION OF COLONEL G. J. WIGRAM, C.B.)

In the Western Kiosk. 5.0 p.m.—7.0 p.m.

- | | | | | |
|-------------------------|-------|---------------------|-------|-------------------|
| 1. MARCH | . . . | " Victoria " | . . . | Burald. |
| 2. OVERTURE . . . | . . . | " La Dame Blanche " | . . . | Boieldieu. |
| 3. GRAND SELECTION. | . . . | " William Tell " | . . . | Rossini. |
| 4. VALSE . . . | . . . | " La Source " | . . . | Waldteufel. |
| 5. GAVOTTE . . . | . . . | " Louis XIII. " | . . . | Ghys. |
| 6. SELECTION . . . | . . . | " The Mock Doctor " | . . . | Gounod. |
| 7. VALSE . . . | . . . | " Visionen " | . . . | Gung'l. |
| 8. " UNGARISCHE TÄNZE " | . . . | . . . | . . . | Brahms. |
| 9. SELECTION . . . | . . . | " Robin Hood " | . . . | Sir G. Macfarren. |

Conductor Mr. C. THOMAS.

EVENING CONCERT.

BAND OF THE MOUNTED ARTILLERY.

In the Eastern Kiosk. 7.0 p.m.—9.30 p.m.

- | | | |
|---|--------------------------------|---------------------|
| 1. OVERTURE . . . | "Fingal's Cave" . . . | <i>Mendelssohn.</i> |
| 2. SELECTION . . . | "The Puritan's Daughter" . . . | <i>Balfe.</i> |
| 3. VALSE | "Casino Tänze" | <i>Gungl.</i> |
| 7. SELECTION | "Mignon" | <i>A. Thomas.</i> |
| 8. EUPHONIUM SOLO (Welsh Air) | | <i>Miller.</i> |
| Sergeant W. COLVERD. | | |
| 12. HUMOROUS POLKA "The Jolly Cobblers". | | <i>Lutz.</i> |
| Break of Day.—Cockcrow.—Morning Prayer.—Five o'clock.—The Cobblers go to Work, Hammering and Singing.—Six o'clock.—Rousing the Idle Apprentice, &c. | | |
| 13. "REMINISCENCES OF IRELAND" | | <i>F. Godfrey.</i> |

Conductor **Mr. J. LAWSON.**

BAND OF THE GRENADIER GUARDS.

(BY KIND PERMISSION OF COLONEL THE HON. W. D. S. HOME.)

In the Western Kiosk. 7.30 p.m.—9.45 p.m.

- | | | |
|---|---|--------------------|
| 4. MARCH | "Egypt" | <i>Le Thière.</i> |
| 5. OVERTURE | "The Merry Wives of Windsor" | <i>Nicolai.</i> |
| 6. VALSE | "Doctrinen" | <i>Strauss.</i> |
| 9. BALLET SELECTION "The Marble Maiden" | | <i>Adam.</i> |
| 10. CORNET SOLO | "L'Elégante" | <i>Damari.</i> |
| 11. VALSE | "Ma Charmante" | <i>Waldteufel.</i> |
| 14. FANTASIA | "Die Jungfrau von Belleville" | <i>Millöcker.</i> |
| 15. GALOP | "Down the Road" | <i>Harper.</i> |

GOD SAVE THE QUEEN.

Conductor **Mr. DAN GODFREY.**

BEST BRUSSELS CARPETS

AT REDUCED PRICES. 5s. 00 Bordered Carpets, all ready for laying down, in every variety of Pattern and Colouring, and in all sizes, made up from remnants, and sold at low prices.

TRELOAR & SONS, 68, 69, & 70, LUDGATE HILL.

ESTABLISHED 1832. Catalogues Post Free. TEN PRIZE MEDALS.

"LUXOR" BRAND

PURE
TURKISH
TOBACCO.



ALL
HAND
MADE.

CIGARETTES.

3 Qualities—Special, 1st, 2nd (Gold, Silver, Black).
ASK YOUR TOBACCONIST FOR THEM.

BRANSON'S GOLD MEDAL COFFEE

UNIVERSALLY USED.

Is supplied in the Exhibition by
SPIERS & POND at the "DUVAL,"
"CANTEEN," "TEMPERANCE,"
AND
Machinery Refreshment Rooms and Bars.

SOLD IN BOTTLES BY ALL GROCERS;
WHOLESALE BY CROSSE & BLACKWELL.

ASK FOR—
MAGNIVEN & CAMERON'S PENS.

THEY ARE SOLD EVERYWHERE.

The *STANDARD* says, "They are a Treasure."
"They come as a boon and a blessing to men,
The Pickwick, the Owl, and the Waverley Pen."

PRIZE MEDAL awarded at the Inventions
Exhibition, 1885.

SAMPLE BOX, WITH ALL THE KINDS, BY POST, 1/1.

23 to 33, Blair Street, Edinburgh. (Est. 1770.)
Penmakers to Her Majesty's Government Offices.

OPEN SHORTLY. AGRICULTURAL ADDISON ROAD STATION.

Apply for Particulars, KENSINGTON. St. Margaret's Offices, Victoria-st. S.W.

No. 1.
1/3 a lb.

SAVING ONE SHILLING A POUND.

WHY DRINK INFERIOR TEA?

Why pay unnecessary intermediate profits?
GRASP THIS STARTLING FACT!

No. 2.
1/6 a lb.

UNITED KINGDOM TEA COMPANY

SUPPLY

THE FINEST TEA IN THE WORLD

First-Hand, DIRECT from the MINCING LANE MARKET.
EFFECTING A CLEAR SAVING OF FULLY ONE SHILLING A POUND.

SAVING ONE SHILLING A POUND.

SAVING ONE SHILLING A POUND.

No. 1, **Hoyune and Assam**, 1/3 a pound.
Sound, Sweet, and of good quality.

No. 2, **Congon and Assam**, 1/6 a pound.
Thoroughly good Tea.

No. 3, **Oopack and Cachar Assam** - - - 1/9 a pound.
Recommended for Household Use.

*No. 4, **Splendid Kaisow and Darjeeling** - - 2/- a pound.

* This Tea is of exceptional value, and consists of the May pickings, covered with bloom. It has a rich ripe mellow flavour, and will give every satisfaction; to judge of its quality it should be compared with what is ordinarily retailed at 3/- a lb. and upwards.

These Teas, coming direct from the Mincing Lane Market, are better in quality and very considerably lower in price than can be obtained from any Civil Service or Co-operative Store.

Quantities of 7, 14, and 20 lb. cwt. packed in 40 cwt. casks, without extra charge.
The duty-paid Stores of THE UNITED KINGDOM TEA COMPANY, are fitted with MACHINERY worked by the most approved MODERN STEAM POWER, the MACHINERY being capable of mixing and turning out upwards of 3,000 pound weight of Tea per hour. The TEAS are not in any way touched by hand.
ADDRESS THE SECRETARY.

No. 3.
1/9 a lb.

UNITED KINGDOM TEA COMPANY,

Offices:—21, MINCING LANE, LONDON.

This Company have NO AGENTS or RETAIL SHOPS.

SAVING ONE SHILLING A POUND.

No. 4.
2/- a lb.

Southern Aspect—facing Sea.
Moderate Tariff.
Home Comforts.
French Cuisine.
Vintage Wines.

**QUEEN'S HOTEL,
EASTBOURNE.**

Hydraulic
Passenger Lift.
Electric Light.
Private Suites of Rooms.
Public Dining, Drawing,
Smoking, and Billiard Rooms.
J. STEINLE, Manager.

TO GENTLEMEN INTERESTED IN THE
NEW ZEALAND MEAT TRADE.

NELSON BROS., LIMITED,
WILL BE HAPPY TO SHOW THEIR
REFRIGERATING STORES,
Under Cannon Street Station.

UPON PRESENTATION OF CARD AT THE OFFICES OF
THE COMPANY—

15, DOWGATE HILL, CANNON STREET, E.C.

NELSON BROS., LIMITED,

Have already imported
OVER A QUARTER MILLION N. Z. SHEEP.

F. BESSON & CO.'S
CELEBRATED
'PROTOTYPE' Band Instruments,
40 MEDALS OF HONOR.
HIGHEST AWARD



SYDNEY, MELBOURNE, & CALCUTTA.
THE ONLY GOLD MEDAL at the
INVENTORIES for Quality of Tone
and General Goodness.

SPECIALITY FOR COLONIES.

Colonial Visitors invited to our Works.
Photos and Lists on application.

198, Euston Road, London.

Show Cases at Liverpool and Edinburgh Exhibitions.

BUTLER'S
MUSICAL INSTRUMENTS



OF EVERY DESCRIPTION.
VIOLINS. GUITARS.
BANJOES.
HARMONIUMS.
BAND INSTRUMENTS.
FLUTES.
CONCERTINAS.
MELODIONS.
STRINGS, VARIOUS.



G. BUTLER,
29, HAYMARKET,
LONDON.

Illustrated Price-List Post-free.

JOHN MORTLOCK & CO.,

THE OLD POTTERY GALLERIES,
Oxford Street, and Orchard Street, W.
Artists and Designers in

PORCELAIN AND GLASS

To Her Majesty; H.R.H. The Prince of
Wales; His Excellency the Viceroy of
India; and the Colonial Governors.

Oxford Street, and Orchard Street, W.

**FURNISH YOUR HOUSES,
CLUBS, HOTELS, OFFICES,
And INSTITUTIONS,**

OR
ALLAN & SCOTT'S
1, 2, OR 3 YEARS
HIRE-PURCHASE SYSTEM.

Best Wholesale Manufacturers to select from.

No fees or registration. Strictly private. Carriage
free. Call or write.

WHOLESALE SHIPPING PRICES FOR CASH.

OFFICES:—

46, Queen Victoria Street, E.C.
NO DEPOSIT NECESSARY.

"IDEAL" CORSET.

WORDS CANNOT DESCRIBE ITS EFFECT ON THINNEST
OR OTHER BUST.

If dresses say "IDEALS are out of date," or any excuse
to all others, be not deceived!



"IDEAL CORSET PATENTED" stamped on regulations.
Beware of "HEAVY THIRAL" or similar names.

SOFT PATENT REGULATORS (delightfully comfortable), laced
more or less closely, regulate any desired fineness and roundness of
"IDEAL" beauty, so exquisitely perfect and natural, as to defy
detection; little or much fineness instantly regulated, to please
wearer, or perfect any dress, impossible by any other Corset in the
World, or unnatural, (instantly detected) separate pads. Removing
part regulators charmingly beautifies fuller figures, and
ensures the most comfortable Corset ever worn.

Thousands delightedly worn it (with perfect secrecy) some years;
will never wear any other. If any difficulty, send for sample from
Warehouse, strictly on approval; plain parcel, post free. Corset-
waist size with P.O.O. conditionally, if not approved, money
instantly returned. Dove Colour only, 8/3; White or Black, 8/3,
10/9, 14/9; 13-in. deep.

BALE & EVANS,
52, ALDERMANBURY, LONDON.

FAMILY BOOT STRETCHER.



5/- SCREW ACTION. Three Brass Corn and Bunion Pieces, which will relieve pressure of all Boots and Shoes. If for personal use ONLY, state size of boot. POST FREE, 5s. 6d.

Complete. **H. H. LEVY,**
Bespoke Bootmaker, 72, Leadenhall Street,
LONDON, E.C. (OPPOSITE ALDGATE PUMP.)

**BURGOYNE'S
AUSTRALIAN
WINES.**

DOWGATE HILL VAULTS, CANNON STREET, E.C.,
AND OF ALL WINE MERCHANTS AND STORES.

ON THE ESPLANADE, FACING THE SEA,
PATRONISED BY THE ELITE OF
ENGLISH AND FOREIGN
SOCIETY.

HINTON'S ROYAL SPA HOTEL,
SHANKLIN, ISLE OF WIGHT.

REPLETE
WITH EVERY COMFORT.
FRENCH CUISINE. + GOOD WINES.
MODERATE PRICES. PROPRIETOR—MRS. HINTON.

Applications for Advertisement Space in this
PROGRAMME OF MUSIC,
and for the
OFFICIAL CATALOGUE, GUIDE, &c.,
should be sent to the Advertisement Department,
379a, STRAND
(Southampton Street Entrance.)

THE LION
Invalid Food Delicacies.

EDGE BROTHERS, LIMITED,
(Late London Manufacturing Company.)

17, Farringdon Road, London, E.C.

Pronounced by the Medical Press perfect Productions.
CHIEF SPECIALITY—PUT UP IN GLASS JARS—
therefore entirely free from all metallic taste.
FOR DETAILED ADVERTISEMENT SEE DAILY PAPERS.

COLONIAL
AND
INDIAN OUTFITS.
Patterns and Estimates
on application.

LEEKEY, BROWNE & CO.
Tailors and Breeches Makers.
149, REGENT STREET, LONDON, W.
Established over 60 years.
Best Materials, Style, and
Workmanship at
Moderate Prices.

THE

"CHALLENGE" IRON-FRAME PIANOS.

Highest Award Inventions Exhibition, 1885.
Gold Medal, Melbourne, 1880.
Medaille d'Honneur, Paris, 1878.
Gold Medal, S. Africa, 1877.
Prize Medal, London, 1862.

Are specially constructed for the "COLONIES and INDIA." Are DAMP-RESISTING, IN OT-PROOF, require but LITTLE TUNING, and possess every recognized modern improvement. In all sizes, from the PIANETTE to the UPRIGHT GRAND.

Illustrated Catalogue with Testimonials, Post Free.

CHALLENGE and SON, 46, Oxford Street, London.

ESTABLISHED 1804.

THE CAVENDISH HOTEL,
EASTBOURNE.

THE ROYAL VICTORIA HOTEL,
ST. LEONARD'S-ON-SEA.


THE OATLANDS PARK HOTEL,
WALTON-ON-THE-HILLS.

THE ROYAL ALBION HOTEL,
BRIGHTON.

These First Class Hotels are in communication, and for Position, Health, and Comfort cannot be surpassed. Charges moderate. For Tariffs, apply to the Managers.

TERMINUS HOTEL, LONDON BRIDGE STATION.
Convenient and Comfortable for Continental Travellers.

Manufactures Royales de Corsets.

TRADE-MARK  TRADE-MARK

P.D. P.D.

3 Silver Medals. 3 Gold Medals. 3 Diplomas of Honour.

ANTWERP International EXHIBITION 1886,
Diploma of Honour.


The **P.D. CORSET** is
UNRIVALLED
for perfect fit and beautiful finish, and can be obtained from all Principal Drapers and Ladies' Outfitters.

IZOD'S Patent Corsets

ARE THE BEST.

IZOD'S CORSETS Sold all over Europe and everywhere in India and Colonies. Name and Trade Mark Ancho on every pair and box. Prepared by a new and special scientific process. Medical opinion recommend them for the health. Public opinion all over the world unanimous that they are unsurpassed for comfort, fit, style, and durability. Ask your Draper or Outfitter for IZOD'S make; take no other, and see you get them, as bad makes are often sold for sake of extra profit. Write for our sheet of drawings.

E. IZOD & SON, 30, Milk Street, LONDON, E.C.
Manufactory: LANDPORT, HANTS



HIGHEST AWARD
International Exhibition, 1884.

THE CELEBRATED

"BECTIVE" BOOTS AND SHOES.

Highly recommended by the 'Queen,' 'Court Journal,' 'Court Circular,' 'Sanitary Record,' and the 'Boot and Shoe Trade's Journal,' &c., &c.

NONE ARE GENUINE UNLESS STAMPED—
"THE BECTIVE."

May be obtained of the leading Bootmakers in all important Towns in the United Kingdom, and the Colonies.

THE COURT AND SOCIETY REVIEW.

THE COURT & SOCIETY REVIEW

may be seen on the Tables in the Reading Rooms of the Exhibition by special arrangement.

THE COURT & SOCIETY REVIEW

contains Portraits of the leading personages connected with the Exhibition, drawn at sittings specially given, and reproduced by an artistic and effective process.

THE COURT & SOCIETY REVIEW

contains special Supplements, describing the leading features of the Exhibition.

THE COURT & SOCIETY REVIEW

may be had from all Newsagents and at the Bookstalls in the Exhibition.
It is the leading High-class Weekly Journal.

PRIOR SIXPENCE.

ADVERTISING, EDITORIAL, AND PUBLISHING OFFICES, 142, STRAND, W.C.
All communications should be addressed to the MANAGER.

PARIS AND THE CONTINENT.

THE SHORTEST AND CHEAPEST ROUTE IS VIA **NEWHAVEN, DIEPPE, AND ROUEN.**

TICKETS AND EVERY INFORMATION AT THE PRINCIPAL OFFICES:

West End General Enquiry and Booking Offices: 28, Regent's Circus, and 8, Grand Hotel Buildings.
City Office: Hays', 4, Royal Exchange Buildings.
Stations: London Bridge and Victoria.
(By Order) J. P. KNIGHT, General Manager.
London Bridge Terminus.

SEASIDE SEASON: THE SOUTH COAST.

+++++	
Brighton	Frequent Trains from Victoria and London Bridge.
Seaford	
Eastbourne	Trains in connection from Kensington (Addison Road Station).
St. Leonards	Return Tickets from London available for eight days.
Hastings	Improved Train Services.
Worthing	Pullman Car Trains between Victoria and Brighton.
Littlehampton	Steamers direct to Ryde in connection with fast Trains to Portsmouth.
Bognor	
Hayling Island	
Portsmouth	
Southsea	
The Isle of Wight	

PAINLESS & PERFECT DENTISTRY.

A NEW PAMPHLET BY **DR. GEO. H. JONES, F.R.S.L., F.R.M.S., &c.** SURGEON-DENTIST, OF **57 GREAT RUSSELL ST., LONDON** (Facing British Museum Entrance).

Contains a List of DIPLOMAS, GOLD and SILVER MEDALS, and other AWARDS obtained at the Great International Exhibitions, forwarded Gratis, and Post Free.

JOHN GLEN, Advertisement Agent, 39A, Strand, W.C.

HOLMES' OZONE RECS FLUID
PRODUCES **SNOW WHITE**
LINENS, LACE, MUSLINS, ETC., WITHOUT INJURY.
REMOVES MILDEW, WINE, TEA STAINS, ETC.
The most perfect Disinfectant in use.
BOLD EVERYWHERE, 6d., 9d., and 1s. per Bottle.
ORDERS THROUGH YOUR CHEMIST.
HEAD OFFICE: { **HOLMES' OZONE CO.,**
LONDON. } 18, ADAM STREET, ADELPHI, STRAND.

THE + MELBOURNE + ARGUS.

Leading Daily Paper in Australia, TWOPENCE.
→* THE AUSTRALASIAN, *←
Weekly, Sixpence.

÷ THE + SKETCHER, ÷
MONTHLY ILLUSTRATED, SIXPENCE.

All the above Papers are published in Melbourne.
For information respecting Advertisements, &c., apply to—

LONDON OFFICE, 80, FLEET STREET, E.C.
WILSON & MACKINNON, PROPRIETORS.

FURNISH ON THE "PRIVATE" HIRE SYSTEM.

MOST SIMPLE AND ECONOMICAL.
ONE, TWO, OR THREE YEARS.
Best Wholesale Firms to Select from.
If desired by purchaser, a "FREE" LIFE POLICY (taken out in the Life Association of Scotland), which secures Furniture in case of death, is given by the Company to the Hirer.

NO DEPOSIT NECESSARY. NO FEES. NO EXPENSES. STRICTLY PRIVATE.
APPLY TO

F. C. JEFFERSON, MANAGER,
PRIVATE HIRE FURNISHING (and Free Life Policy) CO.,
11, QUEEN VICTORIA ST., LONDON, E.C.

THE HOLBORN RESTAURANT.

ONE OF THE SIGHTS AND ONE OF THE COMFORTS OF LONDON.

LUNCHEONS AND SUPPERS.

The famous Table d'Hote Dinner,
At separate Tables, from 5.30 to 9.0.

PRICE 3/6.
ACCOMPANIED BY HIGH CLASS INSTRUMENTAL MUSIC.

NEW The "BOYS' OWN" TAILORS AND LADIES' AND GENTLEMEN'S TIME OUTFITTERS. HIGH CLASS TAILORS AND HOSIERS. STORES

190 & 192, EDGEWARE ROAD, W.

SOLE WEST END AGENTS FOR THE "FARMER'S FRIEND TWEED."

PEARS'SOAP

*Pears
Soap
for the
Complexion*

RECOMMENDED BY
M^{RS} LANCTRY
FOR IMPROVING
& PRESERVING
THE COMPLEXION

YOU DIRTY BOY!

