

ANTIQUÉ  
CHINESE SCULPTURE  
BRONZES, POTTERIES  
& MING PORCELAIN.

1923

THE  
JAMES A. THOMAS  
COLLECTION



DUKE UNIVERSITY LIBRARY  
DURHAM, N. C.

Date March 1, 1929

J. A. Thomas  
Donor







Digitized by the Internet Archive  
in 2017 with funding from  
Duke University Libraries



ANTIQUE  
CHINESE SCULPTURE,  
BRONZES, POTTERIES  
& MING PORCELAIN

*EXHIBITION*  
*NOVEMBER, 1923*

YAMANAKA & CO. LTD.  
127, NEW BOND STREET, LONDON, W. 1









33

Illustrated Catalogue  
of an Exhibition of

ANTIQUÉ CHINESE SCULPTURE,  
BRONZES, POTTERIES AND  
MING PORCELAIN

---

*WINTER, 1923*

---

138719

YAMANAKA & Co.,  
127, New Bond Street, London, W. 1

増巻 Plat IV である銅本 NO. 1459 のは、鑄造の、不向

「V」の金銀象嵌銅器「モリヤ」商標として時代

甚し、商標時代の水銀銅色を好む、動物物の形尤モ

「朝鏡金佛」及「石佛」マダ、般に嗜好心新之り

「唐、宋時代」中人形及動物「最早時代」選レ、不向

「天月」金銀、喜具上リ

「明、信」の折紙と稱する、壺、類、の、不向、心、不、ト、地、を、類、

「翻」の「何」ヨシ、明陶器、を、銘、の、之、類、(東)

「丸」の「丸」新、端、色、粉、の、サ、エ、リ、ヨ、リ、色、合、の、是、レ

又「元」の「元」新、端、色、粉、の、サ、エ、リ、ヨ、リ、色、合、の、是、レ

と「新」の「新」新、端、色、粉、の、サ、エ、リ、ヨ、リ、色、合、の、是、レ

2 Jan  
3/11/29  
The Thomas  
Benson

(B) 卅 卅

CHINESE EPOCHS.

The Patriarchal Period	...	...	3000-2205 B.C.
Hsia Dynasty	...	...	2205-1767 "
Shang "	...	...	1767-1122 "
Chou "	...	...	1122- 249 "
Ts'in "	...	...	249- 202 "
Han "	...	...	202 B.C.-221 A.D.

子  
" Brangur  
氏

SAN TAI—THREE STATES.

Wei	...	...	} 221-265 A.D.
Shu	...	...	
Wu	...	...	

LU-CHAO—SIX DYNASTIES.

Tsin	...	...	265-420 A.D.
Sung	...	...	421-479 "
Chi	...	...	480-502 "
Liang	...	...	503-557 "
Ch'en	...	...	558-589 "
Sui	...	...	590-620 "
T'ang Dynasty	...	...	621-907 "

子  
繪  
画  
交  
換  
條  
件

H'SIAO WU TAI—FIVE SMALL DYNASTIES.

Hou Liang	...	...	908-922 A.D.
" Tang	...	...	923-935 "
" Tsin	...	...	936-946 "
" Han	...	...	947-950 "
" Chou	...	...	951-959 "
Sung Dynasty	...	...	960-1279 "
Yuan "	...	...	1280-1368 "

件

MING DYNASTIES.

Hung Wu	...	...	1369-1398 A.D.
Chien Wên	...	...	1399-1402 "
Yung-Lo	...	...	1403-1424 "
Hsuan-Te	...	...	1426-1435 "
Ching Te	...	...	1450-1456 "
Ch'êng Hua	...	...	1465-1487 "
Hung Chih	...	...	1488-1505 "
Chêng Te	...	...	1506-1521 "
Chia Ching	...	...	1522-1566 "
Lung Ching	...	...	1567-1572 "
Wan Li	...	...	1573-1619 "
Tien Chi	...	...	1621-1627 "
Chung Chêng	...	...	1628-1644 "

五  
百  
年  
の  
五  
十  
年  
の  
五  
十  
年  
の  
五  
十  
年

138719

天  
天  
天  
天  
天







34



# CATALOGUE

## ANCIENT BRONZES

1. **Bronze Yen**, or Sacrificial Colander, well shaped upper half with two upright loop handles, the lower half on three circular legs with swelling lobes above, inside is a hinged strainer. Shang dynasty. 14 ins. high. PLATE IV.

- M. E. Spence*  
2. **Bronze Vessel**, shaped as a fish, the rough sides suggesting shark's skin, on top of the head is a hinged lid formed as a sitting bird, but the mouth of the fish being open, it is difficult to understand what it was intended to hold, the holes drilled in nose, tail and back, show it was for suspension.  $6\frac{3}{4}$  ins. long,  $3\frac{1}{4}$  ins. high. Chou dynasty. 古銅魚

- oo  
E 2291  
E 210 #0  
3. **Bronze Chüo**, or Sacrificial Wine Cup, double spouted, with two upright projections on the rim, an animal-headed handle on one side, and on three sword-blade legs; round the body a band of meander and nipple design. Chou dynasty.  $9\frac{1}{4}$  ins. high.

4. **Bronze Vase**, bulbous body on a circular foot, tall neck with a raised band in the middle, and swelling into a six-lobed bulb at the mouth; fine patina. Han dynasty. 15 ins. high.

PLATE IV.

5. **Bronze Po-shan-lu** or Hill Censor; standing in a circular saucer-shaped tray, it rises on a stem with four projecting leaves and shapes out as a cup, with a hinged cover forming a hill with a bird at the top. Han dynasty. Diameter at the base,  $3\frac{3}{4}$  ins.,  $5\frac{3}{4}$  ins. high.

PLATE IV.

6. **Bronze Hua-ping**, or Flower Vase, pear-shaped body with spreading neck and base, ribbed and fluted bands dividing the body from neck and base; very heavily gold plated.  $4\frac{3}{4}$  ins. high. Tang dynasty.

7. **Gilt Bronze Pricket Candlestick**, shaped as a dipper, on three legs, standing in a circular tray with flat rims. Tray  $4\frac{3}{4}$  ins. diameter;  $1\frac{3}{4}$  ins. high. Lu Chao period.



22



2



29

二  
中  
銅  
中  
一  
寸  
五  
分  
地  
八  
分  
合  
り  
の  
中  
に



銀牛

- 8. **Silver Ox**, very finely tooled over the whole surface, even to the tail, representing the hair of the animal and the wrinkles in its neck. Tang dynasty.  $5\frac{1}{4}$  ins. long,  $2\frac{1}{2}$  ins. high.

"

- 9. **Bronze Tsui-Ti**, shaped as a sitting Feng bird with a nozzle on the back, the feathers chased and some inlaid with gold. Han period. 4 ins. long,  $3\frac{1}{4}$  ins. high.

PLATE IV.

銅  
鳳

Mr. Prescott

- 10. **Sakya-muni**, gilt-bronze statuette, seated, right hand in the witness attitude, left hand in the preaching attitude, a very early form, retaining the sand core. Wei dynasty.  $4\frac{1}{8}$  ins. high.

65  
F2211  
天27

鎏金  
沙維  
佛

Mr. Raphael

- 11. **Curious gilt bronze figure** of Tien Nü, angels kneeling, playing the Pandean pipes, surrounded by a leafy and branching canopy. Lu Chao dynasty.  $4\frac{1}{4}$  ins. high.

25  
F2108  
天77

鎏金  
天  
人

12. **Gilt bronze Kuan-Yin** of very archaic form, standing, with hands in the attitude of an invitation to ask, and a promise to grant, before a vesica-shaped halo. Wei dynasty.  $5\frac{1}{4}$  ins. high.
13. **Gilt Bronze Tsui-Ti**, or water pot for the writing table, formed as a Monkey on a Bull, a satirical jibe at the Buddhist poem of the Boy and the Bull; on an oblong base. Lu Chao period.  $3\frac{1}{4}$  ins. high.
14. **Gilt Bronze Omi-to-fu**, seated in the adamantine pose on a tall pedestal with a lotus base, on a stepped octagonal plinth.  $4\frac{3}{4}$  ins. high. Lu Chao period.
15. **Silver model of an Empress's Coronet**, minutely carved and ornamented.
16. **Gilt Bronze Mi-lo Pou-sa** (Maitreya) of archaic form, seated with legs pendant, right hand in the witness attitude, left hand in preaching attitude, on oblong four-legged stand with inscription dated "Kai Huang Shih Pa Nien, 598 A.D.  $3\frac{1}{4}$  ins. high.

銅像

佛

佛  
水  
瓶

佛  
冠

佛  
冠

佛  
像

銅劍  
古

17. **Bronze Sword Guard**, oval, with raised figures of lions and rosettes on each side, and two other pieces of sword furniture of very early form. Yuan dynasty.

銅劍

18. **Gilt Bronze Shi-tzu**, standing, with feet on balls, bearing a joss-stick holder on its back. Lu Chao period. 2¼ ins. high.

鎏金  
佛像

19. **Bronze Charm Box**, circular, engraved, and with pricked designs on both sides; very fine green patina. Sung dynasty. 2¼ ins. diameter.

銅  
香盒

F2138  
大銅

20. **Bronze Octafoil Mirror**, with cavo-relievo band of birds and animals; Silver Beetle Pendant with articulated wings; and another Pendant Silver Charm; in a box. Lu Chao period.

古  
銅  
鏡  
等

F2332  
天七

銅劍

21. **Bronze Hair Ornament**, terminating in dragon's head with articulated tongue, 7 ins. long; and a pair of hardened Silver Shears, engraved blades on a stippled ground, 5¾ ins. long; in a box.

銀  
剪

銅鏡

22. **Bronze Mirror**, gilt, with two sunk circles of relief ornament known as sea-horses, Feng birds and grapes, a light floral scroll ornament on the outer edge, and a band of dotted ornament enclosing the central panel; Græco Bactrian. Han dynasty 8 ins. diameter. PLATE III.

大  
古  
鏡

23. **Silvered-Bronze Mirror**, the central panel bearing six circular designs in relief, with triangular ornaments between, surrounded by an inscription in archaic characters. Han dynasty. 7 ins. diameter.

古  
鏡

24. **Silvered-Bronze Mirror**, octagonal, in the central-sunk panel two Feng birds and two branches of lotus, surrounded by a detached floral pattern, all in low relief. Sung dynasty.  $8\frac{1}{4}$  ins. diameter.

25. **Silvered-Bronze Mirror**, circular, in the central panel a band of alternate figures and running mythological animals, surrounded by an inscription of archaic characters, on the sloping rim a scroll band and a dentated border in low relief. Han dynasty.  $7\frac{1}{4}$  ins. diameter.



山子銅色  
金  
子  
に



4



9



1



5



55



49



26. **Bronze Hsi Tsun**, a Sacrificial Wine Vessel, shaped in the form of a mythical rhinoceros, and bearing a beaker on its back, inlaid with silver and gold scrolls. Sung dynasty. 9 ins. high; from nose to tail,  $11\frac{1}{2}$  ins. PLATE V.

27. **Bronze San Hsi Ting**, or "Tripod of Three Victims," a Sacrificial Vessel, globular shape, with two upright handles, on the cover of which are three recumbent oxen, the circular handle of the cover with a pierced design of bats, the engraved design inlaid with gold and silver. Sung dynasty. Diameter across the handles, 10 ins.;  $8\frac{3}{4}$  ins. high. PLATE V.

28. **Bronze Ting**, or Sacrificial Food Vessel, circular, with recurved sides, two monster-headed handles, on three Garuda feet, the sides with vigorous archaic design and T'ao-t'ieh masks, inlaid gold, the cover with a dracontine band in relief on engraved meanders, inlaid, and with a circular pierced scroll handle. Sung dynasty. Diameter across the handles, 11 ins.; 10 ins. high. PLATE V.

29. **Gilt-Bronze Bowl**, compressed spherical form, with wide mouth and moulded rim, the sides engraved with twelve Buddhas all seated on tall lotus stems rising from water, all with haloes, and surrounded by clouds. Rare specimen of Corean Shiragi 8th-century period. Diameter,  $11\frac{3}{4}$  ins.;  $5\frac{1}{2}$  ins. high. PLATE III.

此碗  
以  
鐘  
錘  
金

30. **Omi-to-fu** (Amitabha), a gilt-bronze figure, seated on a stepped throne, his right hand in the preaching attitude, with vesica-shaped halo, and standing at either side two of the four guardians, with a priestly acolyte in the centre; on an octagonal open-work platform, with an inscription dated "Hsing An Yuan Nien," 454 A.D.  $11\frac{3}{4}$  ins. high. PLATE VI.

31. **Yao-chan**, "Medicine Spade," really a pre-historic bronze Axe from a burial place; and six ancient bronze Mandarins' Tallies. These consisted of two parts, the one fitting into the other; one was sent to the Seat of Government, and on the appointment of a new Governor, he was provided with the other part, and proved his authority and identity by the fitting of the part he carried. All these afterwards became of value, and the equivalents of money. Sung dynasty.

32. **Gilt-Bronze Vase or Bowl**, of the E class, for containing the Yun-ch'ang, or water and fragrant wine used in the sacrifices; inverted bell shape on a straight circular foot; quite plain, very heavy. Lu Chao period. Diameter,  $7\frac{1}{2}$  ins.;  $5\frac{1}{4}$  ins. high.

知不足齋

字

Figure 26  
Figure 27  
Figure 28



26



28



27



## SCULPTURES

33. **Important Wooden Figure** of Kuan Yin standing, right hand raised, left hand pendant by the side ; the figure of Amitabha in the crown, the Tien-ye, or celestial vestment, and other robes and ornaments painted in blue, green and red, the torso nude ; on a circular base, shaped as a lotus. Sung dynasty. 5 ft. 4 ins. high. PLATE I.

*M. Raphael*

34. **Fine Stone Head** of Kuan-Yin, with figure of Amitabha in the crown, with original colouring. 14½ ins. high. PLATE II.

觀音  
之  
頭

35. **Large Stone Head** of Sakya-muni, with very benign expression, the large curls and the *ushnisha* fully developed and coloured blue. Sui period. 14 ins. high. PLATE VI.

36. **Stone Figure** of Kuan-Yin, standing, the right hand raised, the left holding a vase by the side ; partly robed, and wearing a long necklace reaching almost to the ankles ; on a lotus pedestal. Sui period. 21 ins. high. PLATE VI.

50  
F1888  
大石

*Bluet & Son*

37. **Stone Stele**, the front carved with five horizontal bands of figures, each repeating the scene of an interview between two high officials seated vis-à-vis, and a band of mountains and wild animals below, all in cavo-relievo, within a band of ornament formed of diagonal lines. Han dynasty.  $17\frac{3}{4}$  ins. high. PLATE VII.

38. **Stone Figure** of Kuan Yin, standing, right hand upraised, left hand holding a vase, fully draped, and with long strings of beads crossed, in cavo relievo, on an arched block.  $15\frac{3}{4}$  ins. high by  $8\frac{1}{2}$  in. by  $3\frac{3}{4}$  in. Wei dynasty. PLATE VII.

39. **Stone Carving** of the Amitabha Triad, in the centre Omi-to-fo seated before a vesica shaped halo, and standing beside him Kuan Yin and Seisei, in alto relievo, on an arched block  $14\frac{1}{2}$  ins. high by  $10\frac{1}{2}$  ins. by  $5\frac{1}{2}$  ins. Wei dynasty. PLATE VII.

*Sir Sadler*

40. **Stone Head** of a Bodhisat, with curling locks, the ears elongated, and the lobes bifurcated. Sung period. 10 ins. high.

35  
F2092  
EX17

30  
F2192  
EX9



41. **Stone Head** of a Bodhisatva, with hair in a chignon. 4 ins. high.

42. **Stone Figure** of Kuan Yin standing, robed from head to feet, both fore-arms and the upper part of the halo broken off. Wei dynasty. 27 ins. high.

*Mrs Mellon*  
43. **Stone Figure** of a recumbent ox, on an oblong plinth. Lu Chao period. 4 ins. high, by  $6\frac{1}{2}$  ins. by  $3\frac{1}{2}$  ins.

10.10

F2251

t. 77

石  
牛  
像  
石

*Mrs Debenham*  
44. **Stone Figure** of a recumbent ox, lying half on its side, with its head resting on the ground; on an oblong plinth. Lu Chao dynasty.  $4\frac{1}{2}$  ins. high, by  $7\frac{3}{4}$  ins. by 5 ins.

10.10

F2250

t. 77

"

## HAN POTTERY

205 B.C.—220 A.D.

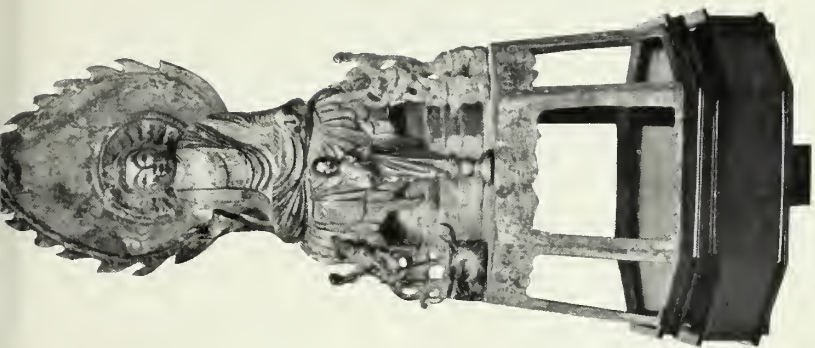
45. **Unglazed Vase**, bulbous body, broad outcurved neck with cup like rim fluted on the outside, the decoration is painted, but the design is almost hidden behind the corrosion of the surface, except two borders of palmated leaf design in burnished black round the shoulders and base, and a band of lozenges and circles around the rim. 15 ins. high.

*Mr. Emorfopolous* <sup>10</sup>/<sub>10</sub>  
 46. **Unglazed Vase** of square section with recurved sides, painted with a scrolled and foliated design in black and white, with square pyramidal cover <sup>10</sup>/<sub>10</sub>  
 15½ ins. high. <sub>10</sub>

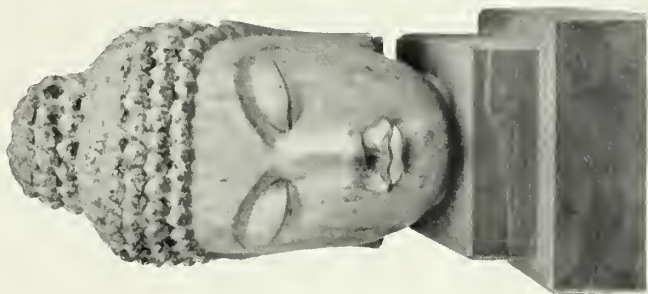
20  
 F2149  
 K17

47. **Censor**, circular tazza shaped base, the cover formed as a conical hill composed of six rows half circles, such as form the backs of sacred Buddhist figures, unglazed, but with traces of the original painting. 8 ins. high.

80  
31  
32



80



85



86



Mr. Rottler

法土器  
新色壺

48. Unglazed Vase, ovate, short neck, flat rim, the shoulders painted with a form of egg and tongue pattern outlined in black. 12 ins. high.

15  
F2159  
大行

49. Unglazed Vase, bulbous body on a circular base, broad slightly outcurved neck, on the shoulders two *kwei*-headed loop handles, the body ornamented with two divided oval panels in pale blue containing a *Feng* bird and *Chih-lung* in juxtaposition, in lake, and round the neck a border of spiked and scale design in the same colours. 18 3/4 ins. high. PLATE IV.

Mr. Eumyo Solow.

50. Unglazed Vase, ovoid, with short broad neck, the shoulders painted with green shells on a pink ground, the body with a pink branching design and conventionalised flowers, and an ornamental band below. 8 1/2 ins. high.

45  
F2154  
大107

法土器  
法土器  
古壺

51. Funerary Pottery, a large Jar, bulbous form, with wide mouth and flat rim, the body covered with fine silvery iridescence, tear drops on the rim, and on three spurs at the foot. 15 ins. high.

M Russell

- 85  
K2162  
天示
52. **Funerary Pottery**, another Jar of the same shape, with fluted lines around the top and bottom of the shoulders, the original green glaze decomposed into silvery iridescence.  $11\frac{1}{2}$  ins. high.

53. **Vase**, bulbous body on a curving foot, equal to the neck, with cup-like rim fluted on the outside, another fluted band around the shoulders, and sham handles of *Kwei* heads and rings in relief. Height,  $16\frac{1}{2}$  ins.

54. **Vase**, similar to the foregoing, the cup-like rim fluted, and with two bands of fluted lines and impressed half-circles on the neck and shoulders, two sham handles of *Kwei* heads and rings in relief, the whole surface covered with greenish silvery iridescent glaze. Height,  $17\frac{1}{2}$  ins.

55. **Shrine**, of narrow quadrangular form, standing on four feet, the two in front formed as squatting demons; the front is sub-divided into panels by raised bars and has an oblong opening for the insertion of a religious figure, and the top is covered by a sloping overhanging roof, the whole green glazed. Height, 20 ins. PLATE IV

## TANG DYNASTY POTTERY

621—907 A.D.

56. **Glazed Figure** of a Horse, the head slightly inclined to the right, the tail tied up in a bunch, body cream, the hair and harness brown, the saddle cloth and pendant ornaments green, standing on a square base. 22 ins. high. PLATE VIII.
57. **Glazed Figure** of a Horse with head slightly turned to the left, without tail, the hole for the hair tail, and along the ridge of the neck left hollow, cream glazed, with a little running manganese green in places, no harness but saddle and cloth which are in green and yellow, on a square base. 19 ins. high. PLATE VIII.
58. **Pair of Horses** standing with head harness, saddles and saddle cloths, the hair on the necks modelled, the tails short, glazed brown, the saddles in green, saddle cloths brown and green, on oblong bases.  $13\frac{1}{4}$  ins. high.

59. **White, Unglazed Figure** of a Horse, the head with harness, the neck hair modelled, the tail tied in a knot, the saddle painted orange on an uncoloured saddle cloth, on an oblong base.  $15\frac{1}{4}$  ins. high.
60. **Clay Figure** of a man Yüng, standing, the hands clasped across his waist hidden in the folds of his sleeves, and a long robe falling to his feet, white, but showing traces of the original colouring. 24 ins. high.
61. **Glazed Figure** of a Mandarin standing, in a long robe reaching to his feet, the hands hidden in the sleeves in the usual official manner, the robe glazed brown with edging of green, the face unglazed but painted.  $16\frac{1}{2}$  ins. high.
62. **Pair of Figures** of a noble man and lady, the man wearing a head-dress bearing a descending dove, the lady wearing a bi-lobed head-dress, each holding *hun* tablets as at an audience; the man's robes glazed yellow with blue edging, the lady's glazed blue with yellow edging, on rock work stands. 23 ins. high.





37

石  
 彫  
 座  
 五  
 斗  
 水  
 口  
 坊  
 子  
 形



39



38



63. **Pair of Figures** of Officials, each wearing a different head-dress, standing, with long robes reaching to the feet, the hands clasped on the waist and hidden in the folds of the sleeves, heads unglazed but coloured, robes glazed brown and green, on rock work bases.  $30\frac{3}{4}$  ins. high.
64. **Standing Figure** of cavalier in strident attitude, the head thrown back and hands clenched and raised, head unglazed and only the lips coloured, the robes consisting of a tunic over a double skirt reaching only to the knees, glazed green and brown, on square base.  $25\frac{1}{2}$  ins. high.

55. F2230 rock (B)
65. **Ewer**, of Sassanian form, ovoid body, with handle, the neck formed as a bird's head, within panels on the sides an archer on horseback shooting backwards, and a bird standing on a plant, in low relief, glazed with running green and brown.  $13\frac{1}{2}$  ins. high.

- Prof Sayce
66. **Ewer**, of Sassanian form, of the same mould as the foregoing, the panels on each side of the body being in blue, with the raised figures in combined yellow, blue and green.  $13\frac{1}{2}$  ins. high.

水底  
次  
#2

自  
水  
#5

0  
F2119  
水

67. **Funerary Jar**, compressed globular body, wide mouth and outcurved rim, on three curved legs, on the shoulders four bosses in relief, cream glazed and blotched with running brown and green.  $7\frac{1}{2}$  ins. diameter;  $7\frac{1}{4}$  ins. high.

- 30  
F2158  
大77
68. *Mr. Rawlow*  
**Funerary Jar**, almost globular, with wide mouth and curved rim, round the shoulders four masked bosses, glazed with yellow and green in running blotches. 8 ins. diameter,  $7\frac{1}{2}$  ins. high.

- 14  
F1844  
大77
69. **Pair of Clay Figures** of Yüing Men standing, in long skirts reaching to the feet, and half length tunics with pointed sleeves, each with hands one above the other as in the attitude of holding the Hun tablet, but tablets missing; unglazed, but have been painted. 9 ins. high.

70. **Clay Figure** of a Yüing in a turned up cap and coat, left arm pendant, right hand on his stomach, partly thin glazed and partly painted.  $9\frac{1}{2}$  ins. high.

71. **Clay Figure** of a Yüing Man with full whiskers, beard, and moustache, standing, wearing a swallow-tailed coat and short skirt, his hands clenched and held in front, robes green glazed.  $11\frac{1}{2}$  ins. high.

- 15  
Y1146  
大10 =
- Prof Jayce
72. **Head-rest**, quadrangular, hollowed at the top, formed of light pottery combed throughout with darker markings, forming a pattern on the outside over which, on top, green glaze has left circles.  $2\frac{3}{4}$  ins. high.
- 唐青釉  
小軟

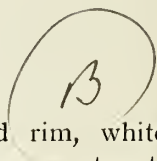
73. **Wine Cup**, compressed hemispherical shape, the outside with floral design in relief, yellow glazed, the inside yellow, green, and brown.  $1\frac{1}{2}$  ins. high.

- 15  
F 2088  
大77
- Prof Jayce
74. **Wine Cup**, with outcurved rim, cream glazed, with running blue splashes both inside and out; the base unglazed. 2 ins. high.
- 唐  
小地  
青釉

- m. Ezekiel*
75. Wine Cup, formed as a horn, curved, and terminating in a crocodile's head, cream glazed, with a green band around the rim, the head end dark brown, yellow, and green.  $5\frac{3}{4}$  ins. across.

76. Head-rest, pentagonal, the sides with a relief diaper design, green glazed, the top with a white flower between two green leaves, sgraffito on a black ground, edged with yellow.  $3\frac{3}{4}$  ins. high.

- 25 F558 7-27
77. Wine Cup, half oval with incurved rim, white glazed with running green, the lower part outside unglazed.  $2\frac{3}{4}$  ins. high.



25  
 F558  
 7-27

## SUNG DYNASTY POTTERY

960—1279 A.D.

78. **Bowl**, shallow, white glazed with a red flower, green leaves, and red double line border, extremely fine specimen. Hua-Ts'ai of T'zu-Chou Yao.  $5\frac{1}{4}$  ins. diameter.
79. **Bowl**, rather deeper, white glazed with a red flower, green leaves, and border of four red lines. Hua Ts'ai of T'zu Chou Yao. 6 ins. diameter.
80. **Bowl**, similar, white glazed, red flower, green leaves, and border of four circular lines. Hua Ts'ai of T'zu Chou Yao.  $6\frac{1}{8}$  ins. diameter.
81. **Bowl**, similar, white glazed, a flower and leaves in green outlined red, with broad and narrow line borders in red dotted green. Hua Ts'ai of T'zu Chou Yao. 7 ins. diameter.

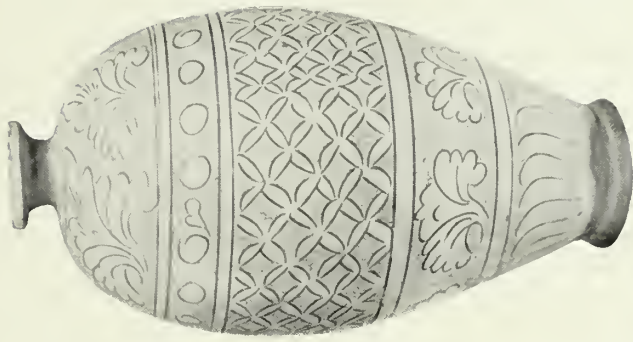
82. **T'zu-chou Vase**, light grey pottery, elongated oval body with short neck, the body decorated with horizontal bands of leaf, circles, and diaper designs, showing a dull red in the sgraffito lines on the grey glaze. 14 ins. high. PLATE VIII.
83. **T'zu-chou Vase**, inverted elongated egg-shape with three bands of ornament, at the top square panels with X-shaped designs, in the middle a foliated scroll and flower repeated, and at the base, upright leaves, on a dull drab ground scratched in and showing the pale grey glaze. 13 ins. high.
84. **T'zu-chou Vase**, ovate body, broad low rim, glazed white, with a sgraffito design of a flowing scroll between lines forming a band round the shoulders, the design in drab. Diameters : base,  $4\frac{1}{2}$  ins. ; mouth, 6 ins. ; body, 9 ins. ;  $9\frac{1}{2}$  ins. high.
85. **T'zu-chou Wine Pot**, eight-lobed sides, sloping shoulders, narrow neck, with handle and dragon-headed spout, around the shoulders in low relief, a floral scroll, and in each lobe of the body a foliated panel ; white glazed. 8 ins. high.



動物人物切摩



57



82



58

12

1

*Mr. Kent*

白釉  
五軸

30

F2156  
A.C.C.

86. T'zu-chou Vase, ovate, tapering downwards, short neck, the moulding of the body forming horizontal flutings, glazed white. 9 ins. high.

87. Pair of Ying Ching circular Dishes, the bases unglazed, the insides having a faint scrolled decoration under the glaze. 4½ ins. diameter.

*Mr. Raphael*

15

F2041  
A.C.C.

白釉  
小  
五軸

88. Cup of thin porcellanous ware, burnt red where unglazed, bell shaped on round foot with two Chih-Lung climbing up the sides as handles, pale celadon glazed. 3 ins. high.

89. Ying Ching Bowl, rim and base unglazed, white porcellanous ware, inside six panels of floral design, and centre in low relief showing white in the celadon glaze. 7½ ins. diameter.

*Mr. Schiller*

100

F2042  
A.C.C.

白釉  
五軸  
花  
五軸

90. Ying Ching Bowl, hexagonal flower-shaped rim, and straight sloping sides, with scratched diagonal pattern inside and lotus flower centre showing the deeper shades of the pale celadon glaze. 8¼ ins. diameter. 3 ins. high.

91 ~~70~~ F20437-9

Another Ying Ching Bowl, similar shape and decoration, but without the lotus centre, and shallow. 8 ins. diameter.  $2\frac{1}{4}$  ins. high.

(B)

銘  
字  
號

92. Shallow Ting Yao Dish, circular, white hard ware with fishes, water, and aquatic plants in low relief under a creamy white glaze, mounted with metal rim.  $7\frac{3}{4}$  ins. diameter.

~~(B)~~

50 ~~40~~ F21837-7

93. Vase, egg-shaped body short broad neck with outcurved rim, white hard ware with slightly green glaze, the lower part left unglazed. Ting type of Kang Si.  $11\frac{1}{4}$  ins. high.

(B)

大  
字  
號

94. Sepulchral Amphoraic Vase, ovoid body, tall, fluted neck with cup-like rim in the jaws of two dragon-heads whose bodies, falling to the shoulders, form handles, white hard ware covered with a slightly greenish glaze. 24 ins. high.

95. Sepulchral Amphoraic Vase, similar to the foregoing.  $20\frac{1}{2}$  ins. high.

96. T'zu-Chou Head-rest, shaped as a boy reclining on his side, his head resting on his arm, covered by a curved oval plaque decorated with a faint design of floral form, white glazed with parts in brown.  $4\frac{1}{2}$  ins. high.

97. T'zu-Chou Head-rest, lenticular, white glazed, with design of a peony growing in a vase in black, sgraffito, within a line frame.  $4\frac{1}{2}$  ins. high.

98. T'zu-Chou Head-rest, oblong quatrefoil, on the top a panel with a grey ground, and sgraffito design of lotus showing the same colour as the white glaze.  $5\frac{1}{2}$  ins. high.

18  
F2300  
tiny  
Schiller  
99. T'zu-Chou Head-rest, octagonal, with curving front side, white glazed, on top three panels with a dark brown ground, a stalk of flower and leaves in the centre, and leaves at each side showing white, with pale yellow veins. 4 ins. high.

枕  
高  
四  
寸

100. T'zu-Chou Head-rest, lenticular, white glazed round the sides brown scrolls, on the top a seated child with a bird on his finger; also in brown. 4 ins. high.

101. T'zu-Chou Head-rest, lenticular, white glazed, round the sides scrolls in brown, on top a Quail and leafy stems, and a semis of circles; also in brown. 3 ins. high.

102. Lung Chuan celadon Vase, shaped in form of a thistle flower on a pierced foot, the bulb with scrolled floral design in low relief, the petals with upright design, green glazed.  $5\frac{1}{2}$  ins. high.

PLATE XI.

*Prof Seligman*

10  
Y1227  
大正7

青磁  
枕  
小枕

## CHIEN YAO (TENMOKU).

103. Chien-yao Tea-bowl in shape of a Morning Glory, straight tapering side with a bluish green "hare's fur" splashed glaze. An extremely fine specimen of unusual size.  $7\frac{1}{2}$  ins. diameter,  $3\frac{1}{4}$  ins. high.
104. Chien-yao Tea-bowl, half-egg shaped with dark "hare's fur" splashed glaze, mounted with metal rim.  $2\frac{7}{8}$  ins. high.
- 60 D435 K 917 B
105. Chien-yao Tea-bowl, half-egg shaped, with dark green and brown "hare's fur" glaze, mounted with metal rim.  $2\frac{3}{4}$  ins. high.
106. T'zu-Chien Tea-bowl, with rounded sides, slightly contracted at the mouth and leaving a ridge below the rim, dark glaze, with four faint Chinese characters on the inside, "Life as old as the Mountains, Happiness wide as the Sea." Mounted with metal rim.  $2\frac{1}{2}$  ins. high.

建  
業  
天  
月

107. Chien-yao Mei-Hua Tea-bowl, half-egg shaped, brown glazed, with light splashes and darker branches of plum blossom on the inside, and mottled outside.  $2\frac{1}{4}$  ins. high.

- 25 F1169 大27  
108. Chien-yao Tea-bowl, half-egg shaped, with a moulding round the inside under the rim, brown glaze with dark alternate flowers and Feng birds inside, mottled outside.  $2\frac{1}{2}$  ins. high.

- 45 F349 大17  
109. Chien-yao Tai-Po Tea-bowl, shallow, widely sloping shape, yellowish glaze splashed aubergine inside, mottled outside.  $1\frac{7}{8}$  ins. high.

110. Chien-yao Tai-Po Tea-bowl, half-egg shaped, dark brown glaze with light coloured running splashes inside and out.  $2\frac{1}{8}$  ins. high.

111. Chien-yao Mei-Hua Tea-bowl, half-egg shaped, yellowish glaze with rabbit hair splashes, and dark branches of maple inside ; outside spotted.  $2\frac{1}{4}$  ins. high.



112. **Chien-yao Tai-Po Tea-bowl**, half egg-shaped, dark brown glaze with light-coloured "tongues of fire" splashes on the inside, and similar-coloured blotches outside. 2 ins. high.

113. **Chien-yao Mei-Hua Tea-bowl**, half egg-shaped, with moulding round the lip inside, black glaze, with a crudely-drawn branch of plum-blossom inside in white and brown.  $2\frac{1}{8}$  ins. high.

50

E 2558 大碗



114. **Chien-yao Tea-bowls** (4 pieces), conical form with straight sides, thick lustrous black and reddish brown glaze, each bowl has a design of a skeleton leaf of the sacred tree "P'u Ti Shu" expressed in frothy golden brown.

葉狀天月  
碗

150 B 3295 大碗



115. **Honan Chü-Hua Tenmoku Bowl**, hemispherical with a warm, brown glaze, cut by darker vertical bluish pointed lines inside, and a running glaze outside.  $8\frac{1}{4}$  ins. diameter,  $3\frac{1}{2}$  ins. high.

河南  
葉狀天月  
大碗

*Wm Schiller*

- 30  
F2213  
天レ
116. Honan Tenmoku Vase, slender form with re-  
curved sides, short straight neck, mirror black  
glaze with irregular brown splashes.  $7\frac{1}{2}$  ins. high.

55 F1452 天レ

- (B)
117. Chien type Wine Jug and cover, ovate body, slightly  
swelling neck, straight flat band handle and curved  
spout, very dark brown glaze leaving large patches  
but slightly glazed. 9 ins. high.

*Hon Charteris*

- 20  
F2060  
天レ
118. Honan Tenmoku Vase, drop shaped, narrow  
neck with outcurving rim, dark green glaze with  
a silvery sheen, leaving large reddish brown  
irregular markings.  $10\frac{3}{4}$  ins. high.

119. Honan Tenmoku Tea-Jar, bulbous shape, mirror  
black glaze, the cover very lightly glazed, with  
unglazed handle. Diameter of body 4 ins.  
 $3\frac{1}{2}$  ins. high.

120. **Honan Yu-Ti Tenmoku Cover** for a Vase, circular domed shape, black glazed, spotted like oil on water, on a wood base. 8 ins. diameter.
121. **Vase**, elongated barrel form with short nozzle, grey glazed stone ware with sgraffito design of horizontal bands and scrolls showing white. Hèi-T'zu Yao.  $12\frac{1}{2}$  ins. high.
122. **Vase**, ovate short neck with scrolled vertical handles, thick treacly purple glaze with sgraffito floral design on the shoulders, and round the body a number of figures, some human, some animal headed, showing brown through the darker glaze. Hèi-T'zu Yao.  $13\frac{1}{2}$  ins. high.

## MING DYNASTY

1369—1644 A.D.

123. **Coching Vase**, slender cylindrical body with trumpet-shaped mouth and moulded rim, enclosed by an outer globular body pierced with flowers and entwined stalks, green glazed, the flowers in brown.  $14\frac{1}{2}$  ins. high.

- Mr. Roschchild*
124. **Ming Jardinière**, hemispherical, on four feet, dark blue glaze, with lotus plants and flowers in low relief in drab, white, and turquoise, and a key-pattern border in turquoise under the rim. Diameter,  $9\frac{3}{4}$  ins. ;  $9\frac{1}{2}$  ins. high. PLATE IX.

125. **Ming Bowl**, hemispherical, with moulded rim, turquoise glaze, with a band of floral ornament in relief, the leaves aubergine, the flowers white. Diameter, 7 ins. ;  $3\frac{3}{4}$  ins. high. PLATE IX.

126. **Ming Vase**, tapering downwards, turquoise glaze with fish-roe crazing, decorated in black with three bands of floral scrolls.  $9\frac{1}{4}$  ins. high. PLATE XI.

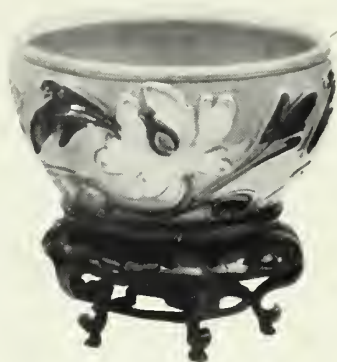
125  
Y1181  
K. 717 (天行)

明  
三  
水  
天  
行



124

三つ  
ト地  
三  
粉  
塗  
十  
草  
シ



125

三  
つ  
依



138



145



138

上  
粉  
塗  
不  
入



141



128



144



*Hon Charteris*

- 35  
F628  
K77
127. Ming Vase, tea-jar shaped, dark-blue glaze with etched design of cranes and clouds under the glaze. Chia Ching Mark. Incised.  $5\frac{1}{2}$  ins. high.

PLATE X.

35  
F628  
K77

128. Ming Vase, double-gourd shaped, mustard-yellow glaze with Aster and scroll design in blue. Chia Ching Mark with double rings.  $7\frac{1}{4}$  ins. high.

PLATE IX.

129. Ming Bowl with recurved sides, mustard-yellow glaze, with sgraffito designs, inside a dragon in green, outside Pine, Bamboo, and Plum, the stems forming the characters *Fu-Lu-Show* and signifying Long-life, Happiness, and Promotion, Chia Ching Mark. Diameter 7 ins. ;  $3\frac{1}{2}$  ins. high.

130. Ming Bowl, recurved sides, mustard yellow-glaze, inside a sgraffito design of the Fungus of Immortality in green, and outside four sages in a woodland seeking for the drugs to compound an Elixir of life, also in green. Chia Ching Mark. Diameter  $6\frac{1}{2}$  ins. 3 ins. high.

Mr. Love

- 15  
F735  
K17
131. Ming Dish, circular, apple-green glaze, with sgraffito dragons and clouds in yellow, inside and outside. Chia Ching Mark. In double rings.  $7\frac{3}{4}$  ins. diameter. PLATE X.

132. Pair of Ming Dishes, circular, chrome glaze, with sgraffito conventional flowers in green in the centre of the inside, and in a band outside. Chia Ching Mark.  $6\frac{1}{2}$  ins. diameter.

133. Ming Dish, circular, chocolate whole colour glaze with white patches in the centre. Chia Ching Mark in double rings.  $9\frac{1}{4}$  ins. diameter.

134. Ming Dish, circular, decoration in red, yellow and green, in the centre a dragon in waves, up the sides waves rolling and splashing against rocks, with inscription in blue Chia hsü Chün Mêng Chao Chai Tsao Yung, "made by Chao Chai in January of chia hsü year" 1574 and used. 10 ins. diameter.



高尾丸  
形が  
物  
ク  
中  
リ



147

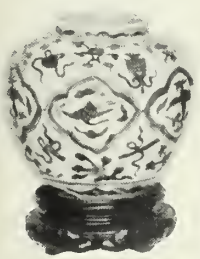


149



148

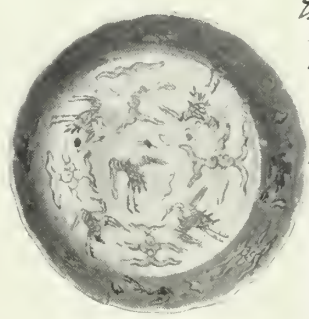
高尾丸  
ハ  
ヨシ  
大  
壺  
リ  
新  
丸  
ニ  
片  
ノ



151



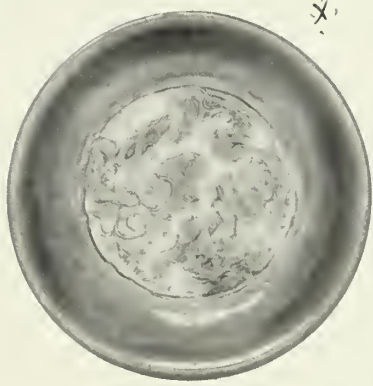
127



137



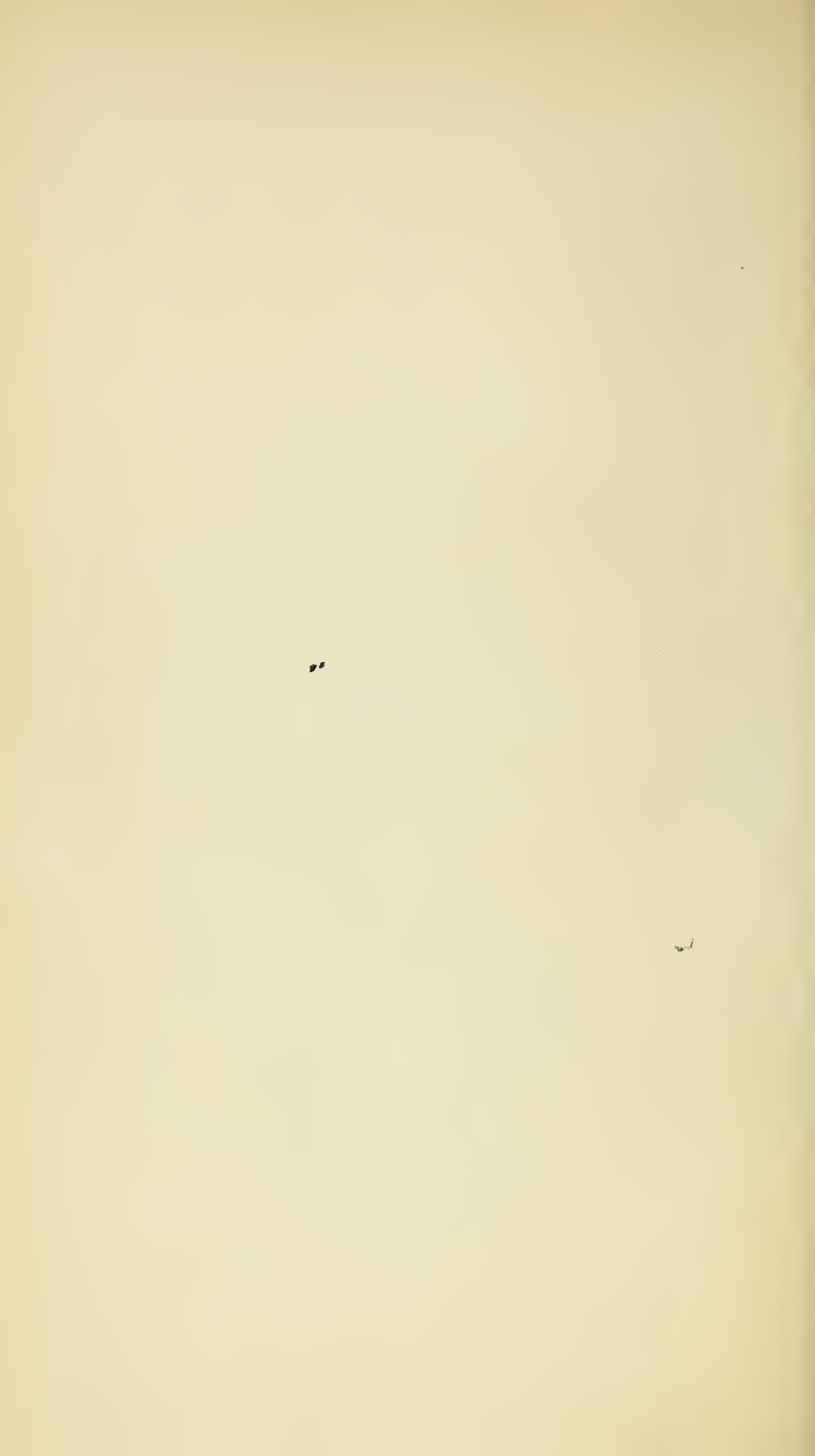
167



131



167



135. **Ming Dish**, circular, round the sloping sides four blue animals galloping around and clouds between, in the centre a blue kylin, pine tree, etc., all on a red ground with white circles. Wan Li Mark.  $9\frac{3}{4}$  ins. diameter.

136. **Pair of Ming Dishes**, circular, thin porcelain, white glaze with a red carp amid red, yellow, blue and green water-weeds within a circle inside, and four carp outside, Chia Ching Mark.  $6\frac{3}{4}$  ins. diameter.

30 F766 K98  
 137. **Ming Dish**, with deep upright sides, shaped rim, light brownish glaze with flying cranes and clouds pencilled in outline black, filled in yellow. Marked "Ta Ming Chia Ching Nien Chi." Diameter,  $6\frac{1}{4}$  ins. 2 ins. high. PLATE X.

138. **Pair of Ming Vases**, curved sides and broad necks, with moulded rims, the sides hexagonal, with curved piercing outlined red, the main parts of the bodies with red diaper designs on the white glaze. Chia Ching period. 7 ins. high.

PLATE IX.

Handwritten notes in Chinese characters on the right margin:  
 24  
 水  
 盤  
 新  
 新

139. **Ming Vase**, globular, broad mouth, white glaze, decorated in red and green, round the shoulders five circular panels, round the sides Pine and Plum branches, with a band below. Marked Wan Fu Yu Ting, "a Myriad happiness embrace all your affairs." As on a coin-shaped mark.  $5\frac{1}{2}$  ins. high.
140. **Ming Vase**, bulbous shape, narrow neck and broad mouth, white-glazed, with red, yellow and green decoration, round the shoulders a band of chevrons, on the sides octafoil panels of flowers and leafy branches between, and two bands of ornament below. Marked Fu Kuei Chia Chi, "Fine vessel for the rich and honourable." 7 ins. high.
141. **Ming Vase and Cover**, ovoid, broad neck bound with metal, white glaze, decorated in red and green, floral panels on the shoulders, on the sides two figure subjects, male and female. Ta Ming Nien Tsao in red mark. PLATE IX.
142. **Ming Vase**, bulbous shape, white glaze, round the shoulders a band of red, yellow and green floral ornament, round the sides two lengthy scrolled dragons in red, with green and yellow foliated scrolls, and an ornamental band below. Chia Ching mark.  $5\frac{1}{4}$  ins. high.

143. **Ming Vase**, bulbous shape, broad neck, white glaze, on the shoulders a band of scarf ends in red, yellow, blue and green, and on the sides a red and a blue dragon with balls of fire, etc., and round the base waves dashing against rocks Wan Li period.  $4\frac{1}{2}$  ins. high.
144. **Ming Vase**, tea-jar shape, broad mouth, white glaze, with red and blue bands round the neck and shoulders, on the sides the Eight Buddhist Emblems in yellow and red, blue lotuses, and green scrolls with a band below. Wan Li mark. 6 ins. high. PLATE IX.
145. **Ming Bowl** on a high stem, hemispherical, white glaze with red, green and yellow decoration, consisting of strings of beads and pendants joining circles and quatrefoils. Chia Ching period.  $5\frac{1}{4}$  ins. high. PLATE IX.
146. **Ming Wine Cup** on a tall stem, hemispherical, white glazed, the outside decoration blue dragons in a rolling sea of red and white. Hsüan Te Mark.  $4\frac{1}{4}$  ins. high.

*Prof Sayce*

147. Ming Wine Cup on a tall stem, recurved sides, inside white, outside blue with three brown fishes, Hsüan Te Mark.  $3\frac{1}{2}$  ins. high. PLATE X.

高  
931

20  
F836  
大32

*Prof Sayce*

148. Ming Wine Cup on a tall stem, recurved sides, white glaze inside, outside splashed liver colour. Hsüan Te Mark.  $3\frac{7}{8}$  ins. diameter,  $3\frac{3}{4}$  ins. high. PLATE X.

10  
F831  
大12

11

*Mr Harris*

149. Ming Wine Cup on a tall stem, recurved sides, white glazed with three fishes in peach bloom on the outside. Hsüan Te Mark.  $3\frac{3}{4}$  ins. diameter,  $3\frac{1}{2}$  ins. high. PLATE X.

18  
F837  
大32

11

*Mr Love*

150. Ming Bowl, recurved sides, whole colour blue glaze, in the centre is a standing figure of a man in turquoise robes, with a hole beneath it through which any liquid could pass away. Diameter  $3\frac{1}{2}$  ins.  $2\frac{1}{4}$  ins. high.

12  
F802  
大72

杯

151. **Ming Vase**, bulbous shape, broad mouth, white glaze, around the sides the Emblems of Happy Augury, and in octafoil panels various birds, in red, yellow, and green. Chia Ching Mark.  $3\frac{1}{2}$  ins. high. Plate x.

152. **Ming Bowl** with recurved sides, white glaze, decorated in red, green, yellow, and pale blue, inside two dragons with the *tama* and other Precious Things, and the same outside with waves round the foot, with inscription, Chia hsü Ch'un Méng Chao Chai Tsao Yung, "Made and used by Chao Chai in January of chia hsü, year," 1574. Diameter  $10\frac{7}{8}$  ins.  $5\frac{1}{2}$  ins. high.

50  
F1148  
1. 1. 7. 8  
153. **Vase**, drop shaped, trumpet shaped neck, blue and white, gong-shaped panels on the sides, and plaintain leaf band on the neck. Attributed to Yuan porcelain of Hung Wu period.  $10\frac{1}{2}$  ins. high. PLATE XI.

20  
F11441  
1. 1. 7. 8  
154. **Ming Ginger Jar**, sides tapering downwards, and cover, blue and white with pine, bamboo and plum. Hung Wu period.  $5\frac{1}{4}$  ins. high. PLATE XI.

初  
明

德  
法  
利  
斤

去  
斤

155. **Ming Cake Jar**, squat form, blue and white, with panels of conventional flowers on the sides. Chéng Hua period.  $3\frac{1}{4}$  ins. high. PLATE XI.
156. **Ming Vase**, bulbous body with short wide mouth, blue and white, a floral scroll round the shoulders, and panels of figure subjects representing the four seasons on the sides. Chia Ching Mark. Diameter of the body, 15 ins.  $13\frac{1}{2}$  ins. high.
157. **Ming Incense Burner**, hexagonal, on six feet, with two horned animal-head handles, blue and white with cranes and *Pa Kwa* trigrams in shaped panels. Wan Li Mark.  $6\frac{1}{2}$  ins. high.
158. **Ming New-Year Tea-jar**, Melon shaped with fluted sides, blue and white, with alternate figure and flower panels.  $5\frac{1}{2}$  ins. high. PLATE XI.





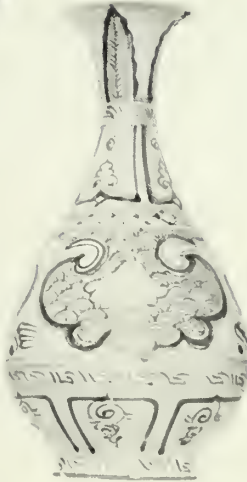
128



102



158



153



160



155



163



154



159. **Ming Vase**, broad shoulders, tapering sides, blue and white, a band of floral ornamentation on the shoulders, on the sides Pine, Bamboo and Plum and the characters *Fu Shou Kang Ning*, "Happiness, Long Life, Peace and Tranquillity." Chia Ching Mark. 8½ ins. high.

*Mr. K. Dickson*

22  
F1163  
九八  
160. **Ming New-Year Tea-jar**, blue and white, on the shoulders a band of ornament, on the sides four fishes swimming among lotus leaves and flowers. Cha'ng Ming fu Kuei, "Long Life, riches, and honours" as on a Coin shaped mark. 5½ ins. high.

PLATE XI.

法  
年  
角  
魚  
一  
記

161. **Ming Vase and Cover**, sides tapering downwards, blue and white, a mother and two children at play. 7 ins. high.

162. **Ming Cake Jar**, globular, blue and white, with flying cranes and clouds on the sides. Mark Wan fu Yu Tung, "A myriad happiness embrace all your affairs."

*Mr. Oppenheim*

- 10  
F681  
K17
163. Ming Vase, thistle shaped, blue and white, bands of plantain leaves inside and outside the neck, and two *Feng* birds and flowers on the sides. Mark Hsuan Te Nien Tsao. 4 ins. high. PLATE XI.

164. Ming Dish, circular, blue and white, a *Feng* bird and dragon inside, and the same forming a band outside. Chia Ching mark.  $7\frac{1}{2}$  ins. diameter.

*Brett & Son*

- 12  
F1168  
K78
165. Ming Wine Cup on a tall stem, hemispherical, blue and white, with fishes and water plants. Diameter,  $5\frac{1}{4}$  ins.,  $4\frac{1}{2}$  ins. high.

*Mr. Russell*

- 10  
F1446  
K17
166. Pair of Ming Cups, or small Bowls, blue and white, with fishes swimming, and water plants. Chia Ching mark.  $2\frac{1}{2}$  ins. high.

*Mr. Spink*

漆  
標  
有  
人  
物  
一  
個

167. Six Ming Small Bowls, blue and white, each with a different subject of a sage. Wan Li mark.

1 1/8 ins. high.

PLATE X.

25

F646

大12

168. Pair of Ming Cups with shaped rims, blue and white, with dragons coiled in circular form and flowers between. Chia Ching mark. 2 ins. high.

一個破損

169. Pair of small Ming Dishes, shaped rims, with white lotus flower design on a blue ground, Chia Ching Mark.

~~25~~  
5

F768 h127 一個裂 *Mr. Love*

漆  
標  
有  
清  
宮  
字  
樣  
一  
個  
四  
山  
茶  
標

*Mr. Spinkheim*

170. Pair of Ming small Bowls with very faint blue sprigs of flowers and berries. Hsüan Te Mark.

11

F1445

大12



BY APPOINTMENT TO  
H. M. THE KING  
J. MILES & CO. LTD.  
PRINTERS,  
68 & 70,  
WARDOUR ST.,  
LONDON,  
W.















709.51 Y19A 138719

Yaminaka

Illustrated Catalogue o  
of an exhibition ...

709.51 Y19A 138719

Duke University Libraries



D01475942W