

溝形鋼ノ強度表 (二)

本表ハ桁ノ一端ヲ固定シ他端支持セラレザル

トキ等布荷重ノ場合(第一圖)

第二圖ノ場合ハ本表ノ1/2倍トス

番 號	寸 法 A×B	面積 平方吋	每一 呎ノ 重量 听	抵抗 力率 吋 ³	徑 間 (呎) =											
					3'	4'	5'	6'	7'	8'	9'	10'	12'			
C 1	3×1½	1.549	5.27	1.329	1092	809	638	521	437	372	322	280	213			
C 2	3½×2	1.968	6.75	2.115	1562	1295	1024	839	706	605	529	461	358			
C 3	4×2	2.341	7.96	2.855	2355	1753	1388	1113	961	827	722	634	498			
C 4	5×2½	3.230	10.98	4.854	4011	2991	2373	1954	1652	1427	1251	1104	828			
C 5	6×2½	3.542	12.04	6.254	5174	3860	3067	2531	2142	1855	1650	1443	1156			
C 6	6×3	4.261	14.49	8.003	6623	4944	3929	3242	2748	2381	2094	1856	1492			
C 7	6×3	4.791	16.29	8.678	7180	5359	4258	3513	2975	2670	2266	2007	1610			
C 9	7×3	5.166	17.56	10.751	8909	6650	5289	4376	3706	3210	2830	2512	2026			
C 10	7×3½	5.950	20.23	12.728	10540	7876	6263	5173	4391	3810	3356	2980	2495			
C 11	8×2½	4.448	15.12	10.273	8511	6360	5061	4183	3502	3085	2719	2417	1956			
C 12	8×3	5.675	19.30	13.358	11068	8273	6584	5441	4621	4013	3540	3146	2547			
C 13	8×3½	6.682	22.72	15.941	13212	9874	7859	6495	5517	4792	4227	3758	3044			
C 14	8×4	7.569	25.73	18.504	15333	11463	9124	7544	6408	5568	4913	4369	3501			
C 15	9×3	5.696	19.37	14.484	12002	8975	7146	5908	5018	4365	3852	3428	2781			
C 16	9×3½	6.550	22.27	17.756	14724	11006	8767	7253	6167	5361	4736	4217	3426			
C 17	9×3½	7.496	25.39	19.572	16234	12131	9659	8003	6812	5913	5208	4639	3773			
C 18	9×4	8.396	28.55	22.590	18735	14006	11152	9225	7844	6820	6024	5362	4356			
C 19	10×3½	6.925	23.55	20.504	13020	12731	10143	8397	7145	6215	5494	4896	3987			
C 20	10×3½	8.296	28.21	23.592	19566	14628	11654	9644	8201	7135	6305	5616	4569			
C 21	10×4	8.871	30.16	26.143	21690	16220	12920	10690	9097	7915	6996	6204	5076			
C 22	11×3½	8.771	29.82	27.019	22411	16761	13361	11057	9412	8191	7243	6456	5262			
C 23	11×4	9.771	33.22	30.992	25721	19238	15309	12691	10798	9404	8316	7416	6048			
C 24	12×3½	7.675	26.10	26.440	21942	16421	13090	10843	9030	8041	7126	6349	5186			
C 25	12×3½	9.671	32.88	31.789	26392	19767	15729	13048	11123	9671	8534	7618	6228			
C 26	15×4	12.334	41.94	30.268	41764	31250	24924	20693	17659	15373	13686	12148	9969			

R=抵抗力率(吋³)

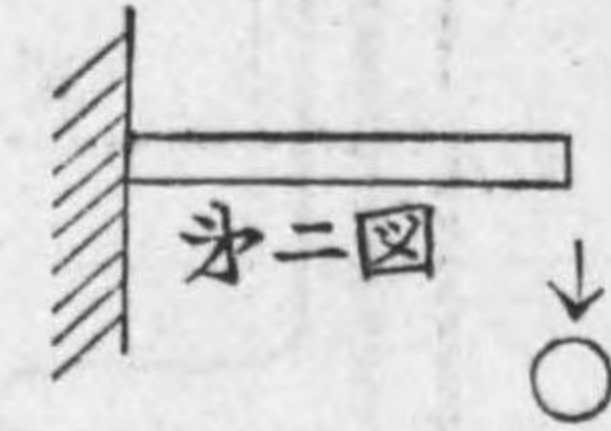
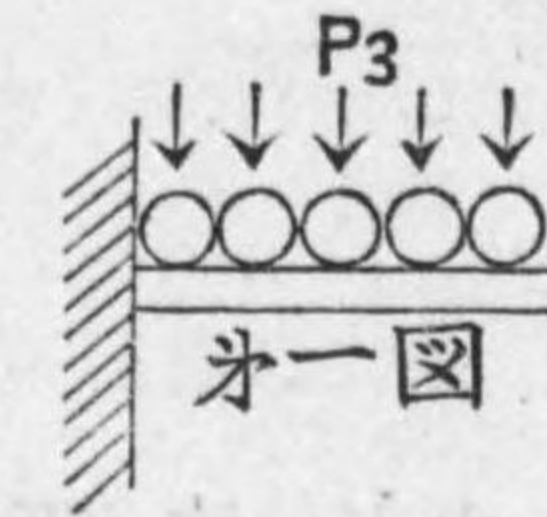
W=重量(听/呎)

l=徑間(吋)

F=最大應力(平方吋)

15000 听トス

P=荷重(听)



$$P_3 = \frac{2F}{l} R - Wl$$

$$P_4 = \frac{1}{2} P_3$$

應ズル安全荷重(听)

14'	16'	18'	20'	22'	24'	26'	28'	30'	32'	34'	36'	38'	40'	42'	44'	46'
163	123	90	61	35	12											
232	222	173	129	91	58	37										
497	318	353	197	147	105	79										
711	583	477	387	307	241	195	125	73	27							
945	783	653	541	442	361	304	219	158	102	47						
1222	1017	852	711	586	485	412	306	229	160	91	30					
1316	1396	913	759	612	511	433	316	231	155	79	11					
1663	1399	1178	993	829	697	601	465	365	276	188	109	31				
1982	1662	1405	1187	993	838	727	566	449	345	241	149	58				
1613	1361	1156	982	828	806	615	491	398	317	235	163	92	31			
2108	1776	1510	1283	1085	926	808	648	529	423	319	227	135	56			
2520	2124	1807	1539	1302	1113	975	783	641	516	390	281	173	93			
2934	2476	2109	1799	1525	1307	1144	927	763	620	475	349	225	118	70		
2307	1950	1665	1473	1211	1042	915	747	621	509	398	301	205	123	40		
2850	2414	2068	1754	1517	1312	1157	956	805	671	539	423	308	209	112	14	
3140	2652	2261	1939	1666	1429	1222	1037	869	717	576	445	323	208	99		
3622	3068	2627	2253	1925	1664	1467	1211	1018	848	678	530	383	258	132	9	
3324	2826	2430	2095	1801	1569	1392	1167	996	847	697	568	439	330	221	113	25
3806	3230	2772	2385	2046	1777	1572	1309	1112	937	766	611	461	334	207	80	
4231	3596	3092	2665	2291	1996	1769	1482	1265	1074	883	616	553	144	275	137	24
4410	3738	3219	2781	2397	2095	1861	1569	1347	1153	958	690	623	182	342	201	86
5152	4304	3710	3210	2772	2426	2160	1828	1575	1354	1133	1042	752	592	433	273	145
4342	3708	3206	2783	2414	2124	1897	1622	1411	1227	1043	888	726	595	464	332	227
5216	4441	3823	3316	2889	2522	2202	1918	1663	1431	1220	1024	842	672	511	359	215
8389	7190	6227	5445	4790	4230	3762	3332	2931	2616	2270	1991	1713	1564	1230	1011	803

溝形鋼支柱ノ強度表



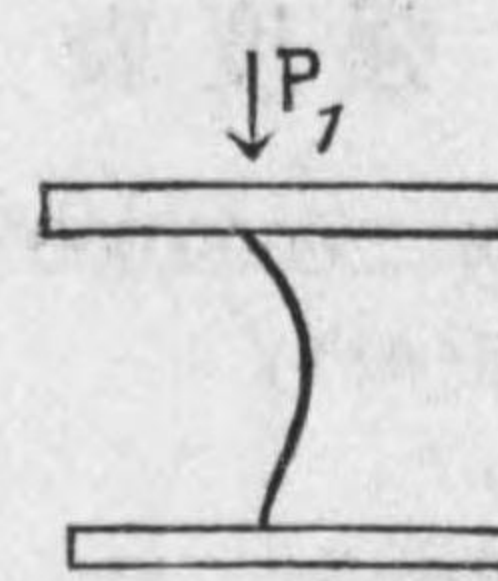
E=弾性係數 29,000,000
 I=物量力率(吋⁴)
 l=長さ(吋)
 C=安全係數=5

本表ハ柱ノ兩端ヲ固定セズシテ荷重ノ方向ヲ柱軸ノ方向ニ制限シタル場合(第一圖)

番號	寸法 A×B	面積 平方吋	最大荷重 噸	最大荷重ニ於ケル長さ 吋	物量力率 吋 ⁴	支柱ニ於				
						3'	4'	5'	6'	7'
C 1	3×1½	1.549	23.250	2.25	.286	13.150	7.400	4.736	3.289	2.416
C 2	3½×2	1.986	29.800	3.08	.713		17.830	11.410	7.927	5.824
C 3	4×2	2.341	35.100	3.09	.843		21.070	13.490	9.366	6.881
C 4	5×2½	3.230	48.400	3.80	1.774		44.350	28.380	19.714	14.480
C 5	6×2½	3.542	53.100	3.70	1.880		47.000	30.080	20.889	15.345
C 6	6×3	4.261	63.900	4.67	3.503			56.040	38.920	28.590
C 7	6×3	4.791	71.800	4.60	3.822			61.020	42.390	31.140
C 9	7×3	5.166	77.500	4.55	4.017			64.290	44.640	32.795
C 10	7×3½	5.950	89.300	5.30	6.498				72.170	53.020
C 11	8×2½	4.448	66.700	3.70	2.283	57.060	36.530	25.365	18.635	
C 12	8×3	5.675	85.000	4.50	4.329			69.280	48.110	35.340
C 13	8×3½	6.682	100.000	5.30	7.067				78.520	57.690
C 14	8×4	7.569	113.500	6.10	10.790					88.080
C 15	9×3	5.696	85.400	4.30	4.021		64.320	44.670	32.815	
C 16	9×3½	6.550	98.500	5.30	6.963			77.360	56.830	
C 17	9×3½	7.496	112.440	5.22	7.660			82.735	60.785	
C 18	9×4	8.396	126.000	6.07	11.635					94.980
C 19	10×3½	6.925	103.800	5.20	7.187			79.830	58.640	
C 20	10×3½	8.296	124.500	5.10	8.194			91.020	66.870	
O 21	10×4	8.871	133.000	6.00	12.018			133.530	98.120	
C 22	11×3½	8.771	131.500	5.00	8.421			93.580	68.750	
O 23	11×4	9.771	146.500	5.90	12.812			142.380	104.600	
C 24	12×3½	7.675	115.000	5.10	7.527			83.640	61.440	
C 25	12×3½	9.671	145.070	4.96	8.922			98.520	72.382	
C 26	15×4	12.334	185.010	5.61	14.554			136.197	100.063	

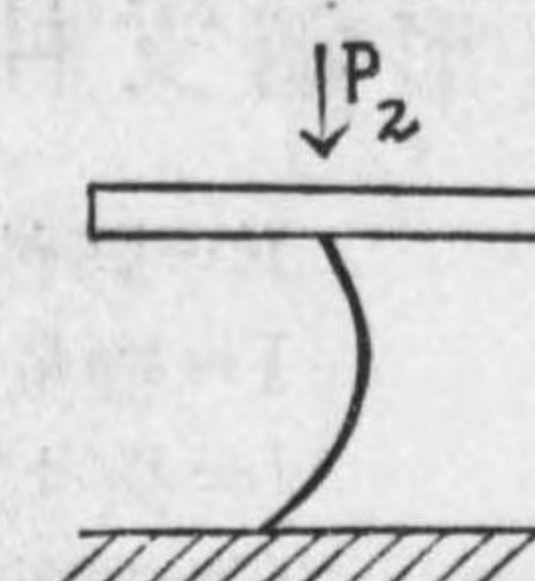
備考 最大荷重ハ許容應力ヲ断面平方吋ニ付 15000 噸トシテ計算シタルモノナリ
 最大荷重ノトキノ長さハ此最大荷重ヲ加ヘ得ベキトキノ柱ノ最大長さヲ云フ
 最大荷重ニ於ケル長さハ第二圖ノ場合ニハ上表ノ ½ 倍 第三圖ノ場合ニハ √2 倍 第四圖ノ場合ニハ上表ノ 2 倍トス

第一圖



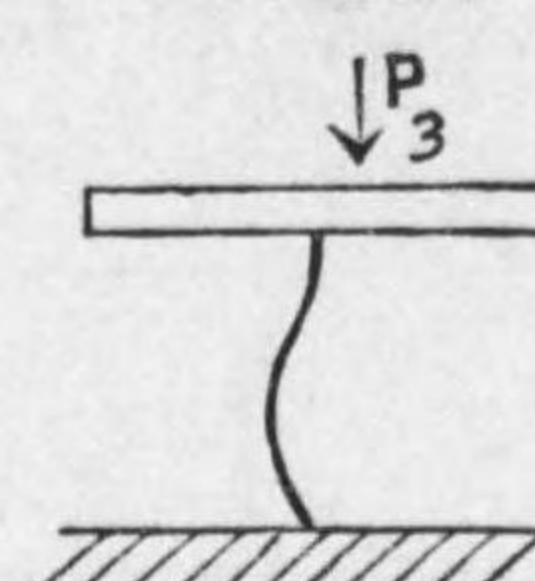
$$P_1 = \pi^2 \frac{EI}{Cl^2}$$

第二圖



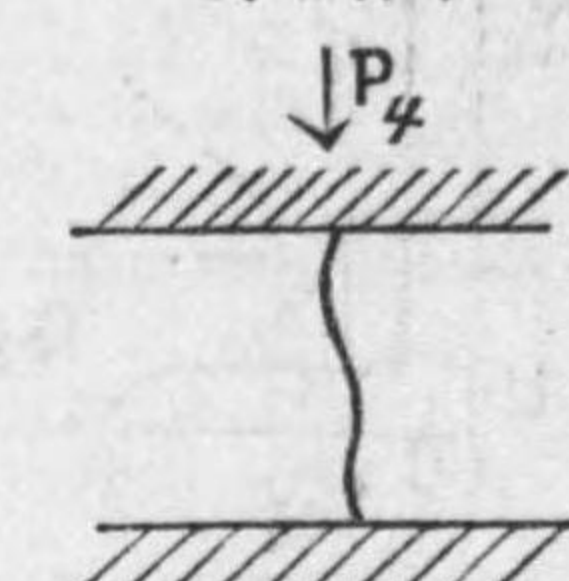
$$P_2 = \frac{1}{4} P_1$$

第三圖



$$P_3 = 2P_1$$

第四圖



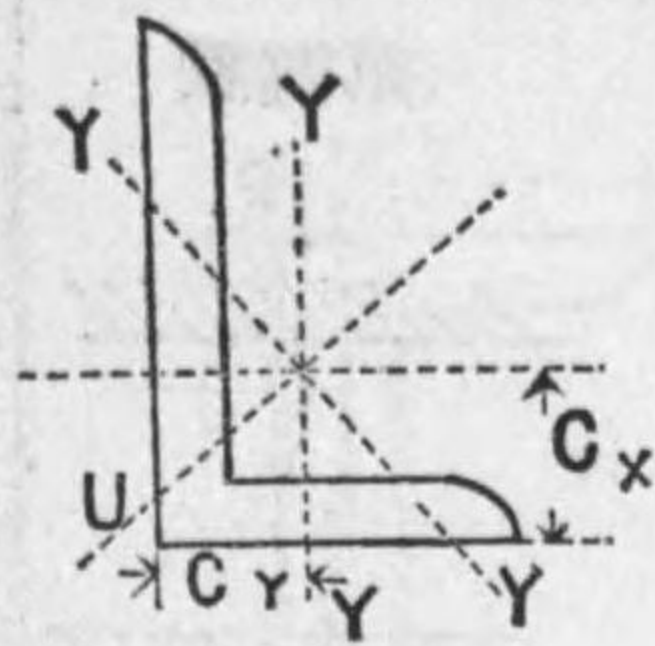
$$P_4 = 4P_1$$

ケル安全荷重(噸)

8'	9'	10'	11'	12'	14'	16'	18'	20'	24'	26'	28'	30'
1.850	1.462	1.184	978	822	604	462	365	296	205	185	150	131
4.459	3.523	2.854	2.358	1.981	1.456	1.114	881	713	495	447	364	317
5.268	4.162	3.372	2.786	2.341	1.720	1.317	1.040	843	585	528	430	374
11.087	8.762	7.097	5.865	4.928	3.621	2.772	2.190	1.774	1.231	1.112	905	455
11.749	9.284	7.520	6.214	5.222	3.837	3.328	2.320	1.880	1.305	1.178	959	835
21.890	17.296	14.010	11.578	9.730	7.149	5.473	4.325	3.508	2.432	2.195	1.787	1.556
23.840	18.840	15.260	12.610	10.595	7.786	5.961	4.710	3.815	2.649	2.391	1.946	1.695
25.110	19.840	16.070	13.280	11.160	8.200	6.278	4.960	4.018	2.790	2.518	2.050	1.785
40.590	32.070	25.980	21.470	18.040	13.254	10.150	8.019	6.495	4.510	4.071	3.314	2.886
14.268	11.272	9.132	7.546	6.341	4.659	3.567	2.817	2.283	1.585	1.431	1.165	1.015
27.055	21.378	17.318	14.310	12.024	8.836	6.764	5.342	4.329	3.006	2.714	2.209	1.924
44.165	34.900	28.270	23.360	19.630	14.420	11.040	8.725	7.067	4.907	4.429	3.605	3.140
67.430	53.280	43.160	35.660	29.970	22.020	16.860	13.320	10.790	7.492	6.763	5.492	4.795
25.120	19.850	16.080	13.288	11.165	8.204	6.282	4.963	4.020	2.792	2.520	2.051	1.786
43.510	34.380	27.850	23.010	19.335	14.208	10.878	8.596	6.962	4.834	4.364	3.552	3.094
46.538	36.771	29.785	24.615	20.684	15.196	11.635	9.193	7.450	5.171	4.406	3.799	3.309
72.720	57.460	46.540	38.460	32.315	23.745	18.180	14.364	11.634	8.080	7.293	5.936	5.170
44.900	35.475	28.740	23.745	19.952	14.660	11.225	8.870	7.185	4.989	4.506	3.665	3.193
51.200	40.450	32.770	27.080	22.750	16.718	12.800	10.115	8.192	5.689	5.135	4.179	3.640
75.120	59.360	48.080	39.730	33.380	24.530	18.780	14.840	12.020	8.347	7.534	6.132	5.341
52.630	41.590	33.690	27.840	23.390	17.185	13.159	10.398	8.422	5.648	5.279	4.297	3.743
80.090	63.280	51.260	42.360	35.590	26.150	20.020	15.820	12.814	8.899	8.032	6.538	5.695
47.040	37.170	30.110	24.880	20.905	15.360	11.760	9.293	7.528	5.227	4.718	3.840	3.345
55.418	43.787	35.467	29.312	24.630	18.096	13.854	10.947	8.867	6.158	5.247	4.524	3.941
76.611	60.532	49.031	40.521	34.049	25.016	19.153	15.133	12.258	8.512	7.253	6.254	5.448

第一圖 ハ柱ノ兩端ヲ固定セズシテ荷重ノ方向ヲ柱軸ノ方向ニ制限シタル場合
 第二圖 ハ柱ノ一端ヲ固定シ他端ヲ固定セズシテ之ニ荷重ヲ加ヘタル場合
 第三圖 ハ柱ノ一端ヲ固定シ他端ヲ固定セズシテ荷重ノ方向ヲ柱軸ノ方向ニ制限シタル場合
 第四圖 ハ柱ノ兩端ヲ固定シ荷重ノ方向ヲ柱軸ノ方向ニ制限シタル場合

山形鋼支柱ノ強度表



E=弾性係數 29,000,000
 I=物量力率(吋⁴)
 l=長さ(吋)
 C=安全係數=5

本表ハ柱ノ兩端ヲ固定セズシテ荷重ノ方向ヲ柱軸ノ方向ニ制限シタル場合(第一圖)

番 號	寸 法 A×B	面積 平方吋	物量 力率 吋 ⁴	最大 荷重 噸	最大荷 重ノト キ長さ 呎	支 柱 二				
						3'	4'	5'	6'	7'
EA 0	3/4×3/4	.17	.004	2550	.79	177	99	64	44	32
EA 1	1×1	.234	.008	3510	1.0	356	200	123	89	66
EA 2	1 1/4×1 1/4	.299	.014	4486	1.2	756	425	272	189	131
EA 3	1 1/2×1 1/2	.361	.031	5416	1.4	1378	778	496	344	239
EA 4	1 3/4×1 3/4	.583	.067	8745	1.7	3111	1675	1072	744	516
EA 5	2×2	.670	.101	10005	2.0	4488	2525	1616	1122	778
EA 6	2 1/4×2 1/4	.757	.146	11355	2.2	6489	3650	2336	1622	1125
EA 7	2 1/2×2 1/2	1.187	.278	17810	2.4	12355	6950	4448	3089	2143
EA 8	2 3/4×2 3/4	1.312	.377	19680	2.7	16755	9425	6032	4189	2905
EA 9	3×3	1.440	.495	21600	3.0		12372	7920	5500	3815
EA 10	3 1/2×3 1/2	2.011	.542	30170	3.5		23550	15070	10465	7260
EA 11	4×4	2.310	1.423	34660	3.9		34570	22720	15810	10965
EA 12	4 1/2×4 1/2	3.236	2.514	48550	2.9		37850	24225	16825	11669
EA 13	5×5	3.610	3.480	54140	5.1			38670		26820
EA 14	6×6	5.201	7.246	78020	5.9					55850
EA 15	7×7	6.755	12.842	101330	7.12					
EA 16	8×8	11.437	21.130	171560	7.02					

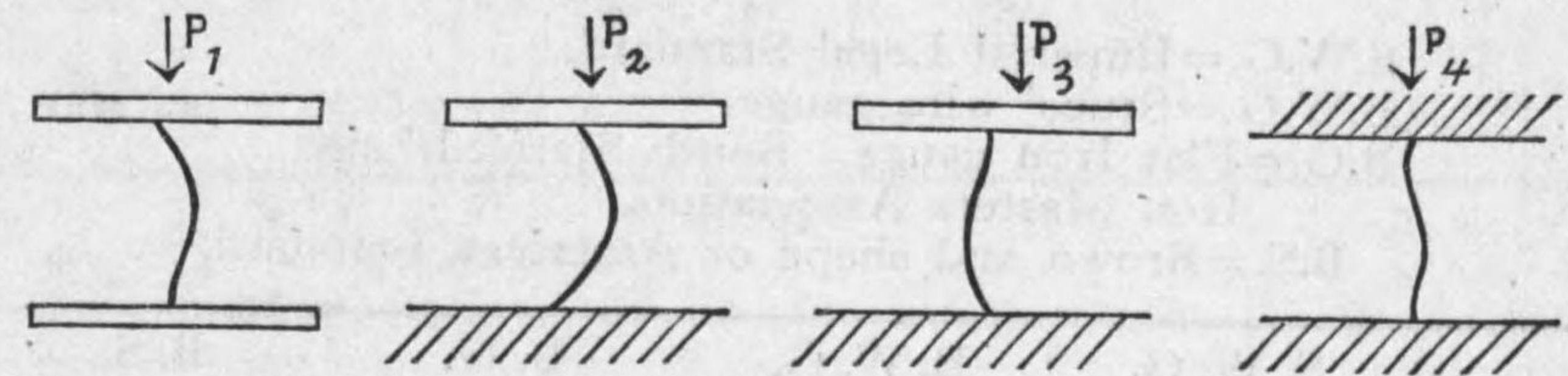
備 考 最大荷重ハ許容應壓力ヲ断面一平方吋ニ付15000 噸トシテ計算シタルモノナリ
 最大荷重ニ於ケル長さトハ此最大荷重ヲ加ヘ得ベキトキノ柱ノ最大長さヲ云フ
 最大荷重ニ於ケル長さハ第二圖ノ場合ニハ上表ノ 1/2 倍
 第三圖ノ場合ニハ上表ノ √2 倍 第四圖ノ場合ニハ上表ノ 2倍ナリトス

第一圖

第二圖

第三圖

第四圖



$$P_1 = \pi^2 \frac{EI}{Cl^2}$$

$$P_2 = \frac{1}{2} P_1$$

$$P_3 = 2P_1$$

$$P_4 = 4P_1$$

於 ケ ル 安 全 荷 重 (噸)

8'	9'	10'	12'	14'	16'	18'	20'	22'	24'	26'	28'	30'
25	20	16	11	8	6	5	4	3	3	2	2	2
50	39	32	22	16	11	9	8	6	5	4	4	3
106	84	68	47	34	24	21	17	14	11	10	8	7
194	153	124	87	64	45	38	31	25	21	18	15	13
419	331	268	186	137	96	87	67	54	46	39	35	30
631	499	404	281	206	144	125	101	85	70	59	51	45
913	721	584	406	298	208	180	146	121	101	86	74	65
1737	1373	1112	772	567	396	343	278	230	193	165	142	124
2356	1863	1508	1047	769	537	466	377	312	262	223	192	168
3093	2444	1980	1375	1010	705	611	495	409	344	293	253	220
5886	4651	3768	2616	1922	1342	1164	942	779	654	557	481	419
8894	7027	5692	3952	2904	2028	1757	1243	1176	988	842	726	632
9464	7477	6056	4206	3090	2158	1869	1514	1251	1051	846	773	673
21750	17185	13920	9667	7103	4960	4297	3480	2876	2417	2059	1775	1546
45290	35780	28990	20130	14790	10329	8948	7249	5990	5032	4288	3697	3220
79766	63025	51050	36161	26046	19941	15757	12763	10548	8863	7552	6512	5672
131246	103700	83997	58331	42860	32811	25925	20999	17355	14583	12426	10714	9333

第一圖ハ柱ノ兩端ヲ固定セズシテ荷重ノ方向ヲ柱軸ノ方向ニ制限シタル場合
 第二圖ハ柱ノ一端ヲ固定シ他端ヲ固定セズシテ荷重ヲ加ヘタル場合
 第三圖ハ柱ノ一端ヲ固定シ他端ヲ固定セズシテ荷重ノ方向ヲ柱軸ノ方向ニ制限シタル場合
 第四圖ハ柱ノ兩端ヲ固定シ荷重ノ方向ヲ柱軸ノ方向ニ制限シタル場合

ゲージ比較表

S.W.G.=Imperial Legal Standard.

B.W.G.=Stubs' wire gauge.

B.G.=Flat Iron gauge. South Staffordshire
Iron Masters Association.

B.S.=Brown and shape or American Standard.

No.	S. W. G.		B. W. G.		B. G.		B. S.	
	吋	耗	吋	耗	吋	耗	吋	耗
0/7	.500	12.700						
0/6	.464	11.785						
0/5	.432	10.973						
0/4	.400	10.160	.454	11.530			.460	11.684
0/3	.372	9.445	.425	10.800	.500	12.700	.410	10.414
0/2	.348	8.839	.380	9.650	.445	11.353	.365	9.271
0	.324	8.229	.340	8.636	.396	10.058	.325	8.255
1	.300	7.640	.300	7.640	.353	8.966	.289	7.340
2	.276	7.010	.284	7.213	.315	8.002	.258	6.553
3	.252	6.401	.259	6.579	.280	7.112	.229	5.816
4	.232	5.893	.238	6.046	.205	5.207	.204	5.181
5	.212	5.385	.220	5.588	.223	5.664	.182	4.623
6	.192	4.877	.203	5.154	.198	5.029	.162	4.115
7	.176	4.450	.180	4.572	.176	4.470	.144	3.658
8	.160	4.064	.165	4.191	.157	3.988	.128	3.251
9	.144	3.658	.148	3.759	.140	3.556	.114	2.896
10	.128	3.251	.134	3.404	.125	3.175	.102	2.591
11	.116	2.946	.120	3.048	.111	2.819	.091	2.311
12	.104	2.642	.109	2.769	.099	2.515	.081	2.057
13	.092	2.337	.095	2.413	.088	2.235	.072	1.815
14	.080	2.032	.083	2.108	.079	2.007	.064	1.626
15	.072	1.829	.072	1.829	.070	1.778	.057	1.448
16	.064	1.626	.065	1.651	.063	1.600	.051	1.295
17	.056	1.422	.058	1.473	.056	1.422	.045	1.143
18	.048	1.219	.049	1.245	.050	1.270	.040	1.016

ゲージ比較表

No.	S. W. G.		B. W. G.		B. G.		B. S.	
	吋	耗	吋	耗	吋	耗	吋	耗
19	.0400	1.016	.042	1.067	.0440	1.118	.0359	.912
20	.0360	.914	.035	.889	.0392	.996	.0320	.813
21	.0320	.813	.032	.813	.0349	.886	.0285	.724
22	.0280	.711	.028	.711	.0313	.795	.0253	.643
23	.0240	.610	.025	.635	.0278	.706	.0226	.574
24	.0220	.559	.022	.559	.0248	.630	.0201	.511
25	.0200	.508	.020	.508	.0220	.559	.0179	.455
26	.0180	.457	.018	.457	.0196	.498	.0159	.404
27	.0164	.417	.016	.406	.0175	.444	.0142	.361
28	.0148	.376	.014	.356	.0156	.396	.0126	.320
29	.0136	.345	.013	.330	.0129	.328	.0113	.287
30	.0124	.315	.012	.305	.0123	.312	.0100	.254
31	.0116	.295	.010	.254			.0089	.226
32	.0108	.274	.009	.229			.0080	.203
33	.0100	.254	.008	.203			.0071	.180
34	.0092	.234	.007	.178			.0063	.160
35	.0084	.213	.005	.127			.0056	.142
36	.0076	.193	.004	.102			.0050	.127
37	.0068	.173					.0045	.114
38	.0060	.152					.0040	.102
39	.0052	.132					.0035	.089
40	.0048	.122					.0031	.079

度量衡比較表

尺 度 比 較 表								
日 本			英 國			佛 國		
寸	尺	里	吋	呎	哩	耗	米	秆
1.	.1	.000077	1.19305	.099421	.0000188	30.30303	.030303	.0000303
10.	1.	.0000771	11.93054	.99421	.000188	303.0303	.303030	.000303
1.29600	.12960	1.		12884.99	2.440338			3.92727
.838185	.0838185		1.	.083333		25.3995	.0253995	
10.05822	1.005822		12.	1.		304.7945	.3047945	
	5310.739	.40978		5280.	1.		1609.315	1.609315
.033	.0033		.0393708	.0032809		1.	.001	.000001
33.	3.3	.0002546	39.37079	3.280899	.0006214	1000.	1.	.001
33000	3300	.25463	39370.79	3280.899	.6214	1000000.	1000.	1.
重 量 比 較 表								
日 本			英 國			佛 國		
匁	貫	斤	オンス	听	噸	瓦	斤	吨
1.	.001	.00625	.1322772	.0082673		3.75	.003756	
1000.	1.	6.25	132.2772	8.267325	.0036908	3750.	3.756217	.00375
160.	.16	1.	21.16435	1.322772		600.	.6	.0006
7.54675	.007546	.04725	1.	0.625		28.3495	.0283495	
120.958	.120958	.755988	16.	1.		453.592	.453592	
	270.946	1693.414		2240.	1.		1016.0475	1.016.0475
.266667	.000266	.0016667	.0352739	.0022046		1.	.001	
266.667		1.6667	35.2739	2.204629		1000.	1.	.001
	266.6667			2204.62	.984205		1000.	1.
單 價 比 較 表								
一斤 = 付 圓	一貫目 = 付圓	一听 = 付 圓	一英噸 = 付 圓	千斤 = 付 圓				
1.	6.25 (100/16)	.755988182	1693.41353	1666.666 (10/6)				
.16	1.	.120958109	270.9461646	266.6666 (8/30)				
1.322772	8.267325	1.	2240	2204.62				
.00590523	.00369077	.0004464286	1.	.984205357				
.006	.00375 (30/8)	.0004535929	1.016048117	1.				

度量衡換算表

糶	= 0.39371 吋	吋	= 2.53995 糶
米	= 1.093633 碼	碼	= 0.9143835 米
米	= 3.2808992 呎	呎	= 0.3047945 米
秆	= 0.613829 哩	哩	= 1.609315 秆
斤	= 2.20462 听	听	= 0.4535929 斤
吨	= 0.9842059 噸	噸	= 1.016048 吨
糶 ²	= 0.155006 吋 ²	吋 ²	= 6.45137 糶 ²
米 ²	= 10.7643 呎 ²	呎 ²	= 0.09289968 米 ²
糶 ³	= 0.06103 吋 ³	吋 ³	= 16.38617 糶 ³
米 ³	= 35.31658 呎 ³	呎 ³	= 0.0283153 米 ³
糶 ⁴	= .02403 吋 ⁴	吋 ⁴	= 41.62013 糶 ⁴
米斤	= 0.72331 呎听	呎听	= 0.1382525 米斤
斤/糶 ²	= 14.223 听/吋 ²	听/吋 ²	= 0.0703 斤/糶 ²
斤/耗 ²	= 0.63493 噸/吋 ²	噸/吋 ²	= 1.575 斤/耗 ²
斤/米 ²	= 0.2048 听/呎 ²	听/呎 ²	= 4.883 斤/米 ²
斤/米	= 0.672 听/呎	听/呎	= 1.488 斤/米
寸	= 30.30303 耗	耗	= 0.03333 寸
尺	= 0.9942119 呎	呎	= 1.005822 尺
尺	= 11.93054 吋	吋	= .8381849 尺
間	= 1.81812 米	米	= 0.55 間
間	= 1.988424 碼	碼	= 0.5029109 間
里	= 3.927273 秆	秆	= 0.2546296 里
里	= 2.440338 哩	哩	= 0.4097793 里
尺 ²	= 0.9884575 呎 ²	呎 ²	= 1.01167 尺 ²
尺 ²	= 0.0918273 米 ²	米 ²	= 10.89 尺 ²
間 ² (坪)	= 35.55447 呎 ²	呎 ²	= 0.281022 間 ² (坪)
間 ² (坪)	= 3.305782 米 ²	米 ²	= .3025 間 ² (坪)
尺 ³	= 0.02782647 米 ³	米 ³	= 35.937 尺 ³
間 ³ (立坪)	= 6.010518 米 ³	米 ³	= .166375 間 ³ (立坪)
間 ³ (立坪)	= 212.271 呎 ³	呎 ³	= .004711 間 ³ (立坪)
升	= 1.803907 リートル	リートル	= .55435 升

吋ノ分數ニ等シキ吋ノ小數

分數	小 數	分數	小 數	分數	小 數	分數	小 數
1/64	0.015625	17/64	0.265625	33/64	0.515625	49/64	0.765625
1/32	0.03125	9/32	0.28125	17/32	0.53125	25/32	0.78125
3/64	0.046875	19/64	0.296875	35/64	0.546875	51/64	0.796875
1/16	0.0625	5/16	0.3125	9/16	0.5625	13/16	0.8125
5/64	0.078125	21/64	0.328125	37/64	0.578125	53/64	0.828125
3/32	0.09375	11/32	0.34375	19/32	0.59375	27/32	0.84375
7/64	0.109375	23/64	0.359375	39/64	0.609375	55/64	0.859375
1/8	0.125	3/8	0.375	5/8	0.625	7/8	0.875
9/64	0.140625	25/64	0.390625	41/64	0.640625	57/64	0.890625
5/32	0.15625	13/32	0.40625	21/32	0.65625	29/32	0.90625
11/64	0.171875	27/64	0.421875	43/64	0.671875	59/64	0.921875
3/16	0.1875	7/16	0.4375	11/16	0.6875	15/16	0.9375
13/64	0.203125	29/64	0.453125	45/64	0.703125	61/64	0.953125
7/32	0.21875	15/32	0.46875	23/32	0.71875	31/32	0.96875
15/64	0.234375	31/64	0.484375	47/64	0.734375	63/64	0.984375
1/4	0.25	1/2	0.5	3/4	0.75	1	1.0

吋ニ等シキ呎ノ小數

吋	0	1/16	1/8	3/16	1/4	5/16	3/8	7/16
0	0.0000	0.0052	0.0104	0.0156	0.0208	0.0260	0.0313	0.0365
1	0.0833	0.0885	0.0937	0.0990	0.1042	0.1094	0.1146	0.1198
2	0.1667	0.1719	0.1771	0.1823	0.1875	0.1927	0.1979	0.2031
3	0.2500	0.2552	0.2604	0.2656	0.2708	0.2764	0.2813	0.2865
4	0.3333	0.3385	0.3437	0.3490	0.3542	0.3594	0.3646	0.3698
5	0.4167	0.4219	0.4271	0.4323	0.4375	0.4427	0.4479	0.4531
6	0.5000	0.5052	0.5104	0.5156	0.5208	0.5260	0.5313	0.5365
7	0.5833	0.5885	0.5937	0.5990	0.6042	0.6094	0.6146	0.6198
8	0.6667	0.6719	0.6771	0.6823	0.6875	0.6927	0.6979	0.7031
9	0.7500	0.7552	0.7604	0.7656	0.7708	0.7760	0.7813	0.7865
10	0.8333	0.8385	0.8437	0.8490	0.8542	0.8594	0.8646	0.8698
11	0.9167	0.9219	0.9271	0.9323	0.9375	0.9427	0.9479	0.9531

吋	1/2	9/16	5/8	11/16	3/4	13/16	7/8	15/16
0	0.0417	0.0469	0.0521	0.0573	0.0625	0.0677	0.0729	0.0781
1	0.1250	0.1302	0.1354	0.1406	0.1458	0.1510	0.1563	0.1615
2	0.2083	0.2135	0.2188	0.2240	0.2292	0.2344	0.2396	0.2448
3	0.2917	0.2969	0.3021	0.3073	0.3125	0.3177	0.3229	0.3281
4	0.3750	0.3802	0.3854	0.3906	0.3958	0.4010	0.4063	0.4115
5	0.4583	0.4635	0.4688	0.4740	0.4792	0.4844	0.4896	0.4948
6	0.5417	0.5469	0.5521	0.5573	0.5625	0.5677	0.5729	0.5781
7	0.6250	0.6302	0.6354	0.6406	0.6458	0.6510	0.6563	0.6615
8	0.7083	0.7135	0.7187	0.7240	0.7292	0.7344	0.7396	0.7448
9	0.7917	0.7969	0.8021	0.8073	0.8125	0.8177	0.8229	0.8281
10	0.8750	0.8802	0.8854	0.8906	0.8958	0.9010	0.9063	0.9115
11	0.9583	0.9635	0.9688	0.9740	0.9792	0.9844	0.9896	0.9948

吋ニ等シキ耗ノ表

分 數 吋	0	1	2	3	4	5	6	7	8	9	10	11	12
0	0.00	25.40	50.80	76.20	101.60	127.00	152.40	177.80	203.20	228.60	254.00	279.40	304.80
1/64	0.40	25.80	51.20	76.60	102.00	127.40	152.80	178.20	203.60	229.00	254.40	279.80	305.20
1/32	0.79	26.19	51.59	76.99	102.39	127.79	153.19	178.59	203.99	229.39	254.79	280.19	305.59
1/16	1.59	26.99	52.39	77.79	103.19	128.59	153.98	179.38	204.78	230.18	255.58	280.98	306.38
3/32	2.38	27.78	53.18	78.58	103.98	129.39	154.79	180.19	205.59	230.99	256.39	281.79	307.19
1/8	3.17	28.57	53.97	79.37	104.77	130.17	155.57	180.97	206.37	231.77	257.17	282.57	307.97
5/32	3.97	29.37	54.77	80.17	105.57	130.97	156.37	181.77	207.17	232.57	257.97	283.37	308.77
3/16	4.76	30.16	55.56	80.96	106.36	131.76	157.16	182.56	207.96	233.36	258.76	284.16	309.56
7/32	5.56	30.96	56.36	81.76	107.16	132.56	157.96	183.36	208.76	234.16	259.56	284.96	310.36
1/4	6.35	31.75	57.15	82.55	107.95	133.35	158.75	184.15	209.55	234.95	260.35	285.75	311.15
9/32	7.14	32.54	57.94	83.34	108.74	134.14	159.54	184.94	210.34	235.74	261.14	286.54	311.94
5/16	7.94	33.34	58.74	84.14	109.54	134.94	160.34	185.74	211.14	236.54	261.94	287.34	312.74
11/32	8.73	34.13	59.53	84.93	110.33	135.73	161.13	186.53	211.93	237.33	262.73	288.13	313.53
3/8	9.52	34.92	60.32	85.72	111.12	136.52	161.92	187.32	212.72	238.12	263.52	288.92	314.32
13/32	10.32	35.72	61.12	86.52	111.92	137.32	162.72	188.12	213.52	238.92	264.32	289.72	315.12
7/16	11.11	36.51	61.91	87.31	112.71	138.11	163.51	188.91	214.31	239.71	265.11	290.51	315.91
15/32	11.91	37.31	62.71	88.11	113.51	138.91	164.31	189.71	215.11	240.51	265.91	291.31	316.71
1/2	12.70	38.10	63.50	88.90	114.30	139.70	165.10	190.50	215.90	241.30	266.70	292.10	317.50
17/32	13.49	38.89	64.29	89.69	115.09	140.49	165.89	191.29	216.69	242.09	267.49	292.89	318.29
9/16	14.29	39.69	65.09	90.49	115.89	141.29	166.69	192.09	217.49	242.89	268.29	293.69	319.09
19/32	15.08	40.48	65.88	91.28	116.68	142.08	167.48	192.88	218.28	243.68	269.08	294.48	319.88
5/8	15.87	41.27	66.67	92.07	117.47	142.87	168.27	193.67	219.07	244.47	269.89	295.27	320.67
21/32	16.67	42.07	67.47	92.87	118.27	143.67	169.07	194.47	219.87	245.27	270.67	296.07	321.47
11/16	17.46	42.86	68.26	93.66	119.06	144.46	169.86	195.26	220.66	246.06	271.46	296.86	322.26
23/32	18.26	43.66	69.06	94.46	119.86	145.26	170.66	196.06	221.46	246.86	272.26	297.66	323.06
3/4	19.05	44.45	69.85	95.25	120.65	146.05	171.45	196.85	222.25	247.65	273.05	298.45	323.85
25/32	19.84	45.25	70.64	96.04	121.44	146.84	172.24	197.64	223.04	248.44	273.84	299.24	324.64
13/16	20.64	46.04	71.44	96.84	122.24	147.64	173.04	198.44	223.84	249.24	274.64	300.04	325.44
27/32	21.43	46.83	72.23	97.63	123.03	148.43	173.83	199.23	224.63	250.03	275.43	300.83	326.23
7/8	22.22	47.62	73.02	98.42	123.82	149.22	174.62	200.02	225.42	250.82	276.22	301.62	327.02
29/32	23.02	48.42	73.82	99.22	124.62	150.02	175.42	200.82	226.22	251.62	277.02	302.42	327.82
15/16	23.81	49.21	74.61	100.01	125.41	150.81	176.21	201.61	227.01	252.41	277.81	303.21	328.61
31/32	24.61	50.01	75.41	100.81	126.21	151.61	177.01	202.41	227.81	253.21	278.61	304.01	329.41

耗ニ等シキ吋ノ表

耗	吋	呎	吋	耗	吋	呎	吋	耗	吋	呎	吋
1	.0393		5/128"	300	11.811		11 13/16"	680	26.772		2'-2 49/64"
2	.0787		5/64"	310	12.205		1'-0 13/64"	690	27.166		2'-3 11/64"
3	.1181		15/128"	320	12.599		1'-0 19/32"	700	27.559		2'-3 9/16"
4	.1575		5/32"	330	12.992		1'-0 63/64"	710	27.953		2'-3 61/64"
5	.1968		25/128"	340	13.386		1'-1 25/64"	720	28.347		2'-4 11/32"
6	.2362		15/64"	350	13.780		1'-1 25/32"	730	28.740		2'-4 47/64"
7	.2756		35/128"	360	14.173		1'-2 11/64"	740	29.134		2'-5 9/64"
8	.3150		5/16"	370	14.567		1'-2 9/16"	750	29.528		2'-5 17/32"
9	.3543		45/128"	380	14.961		1'-2 31/32"	760	29.921		2'-5 59/64"
10	.3937		25/64"	390	15.354		1'-3 23/64"	770	30.315		2'-6 5/16"
20	.7874		25/32"	400	15.748		1'-3 3/4"	780	30.709		2'-6 45/64"
30	1.1811	1	3/16"	410	16.142		1'-4 9/64"	790	31.103		2'-7 7/64"
40	1.5748	1	37/64"	420	16.536		1'-4 17/32"	800	31.496		2'-7 1/2"
50	1.9685	1	31/32"	430	16.929		1'-4 53/64"	810	31.890		2'-7 57/64"
60	2.3622	2	23/64"	440	17.323		1'-5 21/64"	820	32.284		2'-8 9/32"
70	2.7559	2	3/4"	450	17.717		1'-5 23/32"	830	32.677		2'-8 43/64"
80	3.1496	3	23/32"	460	18.110		1'-6 7/64"	840	33.071		2'-9 5/64"
90	3.5433	3	33/64"	470	18.504		1'-6 1/2"	850	33.465		2'-9 15/32"
100	3.9370	3	15/16"	480	18.898		1'-6 57/64"	860	33.859		2'-9 55/64"
110	4.3307	4	21/64"	490	19.291		1'-7 19/64"	870	34.252		2'-10 1/4"
120	4.7244	4	23/32"	500	19.685		1'-7 11/16"	880	34.646		2'-10 41/64"
130	5.1181	5	1/8"	510	20.079		1'-8 5/64"	890	35.040		2'-11 3/64"
140	5.5118	5	33/64"	520	20.473		1'-8 15/32"	900	35.433		2'-11 7/16"
150	5.9055	5	29/32"	530	20.866		1'-8 55/64"	910	35.827		2'-11 53/64"
160	6.2992	6	19/64"	540	21.260		1'-9 17/64"	920	36.221		3'-0 7/32"
170	6.6929	6	11/16"	550	21.654		1'-9 21/32"	930	36.614		3'-0 39/64"
180	7.0866	7	3/32"	560	22.047		1'-10 3/64"	940	37.008		3'-1 1/64"
190	7.4803	7	31/64"	570	22.441		1'-10 7/16"	950	37.402		3'-1 13/32"
200	7.8741	7	7/8"	580	22.835		1'-10 53/64"	960	37.796		3'-1 51/64"
210	8.2678	8	17/64"	590	23.229		1'-11 15/64"	970	38.189		3'-2 3/16"
220	8.6615	8	21/32"	600	23.622		1'-11 5/8"	980	38.583		3'-2 37/64"
230	9.0552	9	35/64"	610	24.016		2'-0 1/64"	990	38.977		3'-2 63/64"
240	9.4489	9	29/64"	620	24.410		2'-0 13/32"	1000	39.370		3'-3 3/8"
250	9.8426	9	27/32"	630	24.803		2'-0 51/64"	2000	78.741		6'-6 47/64"
260	10.2363	10	15/64"	640	25.197		2'-1 13/64"	3000	118.11		9'-10 7/64"
270	10.6300	10	5/8"	650	25.591		2'-1 19/32"	4000	157.48		13'-1 31/64"
280	11.0240	11	1/32"	660	25.984		2'-1 63/64"				
290	11.4170	11	27/64"	670	26.378		2'-2 3/8"				

平方吋上听及噸ニ等シキ平方耗上肝ノ表

平方吋噸	平方吋听	平方耗肝	平方吋噸	平方吋听	平方耗肝	平方吋噸	平方吋听	平方耗肝	平方吋噸	平方吋听	平方耗肝
10.0	22.400	15.75	23.4	52.416	36.85	26.9	60.256	42.37	30.4	68.096	47.88
11.0	24.640	17.32	23.5	52.640	37.01	27.0	60.480	42.52	30.5	68.320	48.04
12.0	26.880	18.90	23.6	52.864	37.17	27.1	60.704	42.68	30.6	68.544	48.19
13.0	29.120	20.47	23.7	53.088	37.33	27.2	60.928	42.84	30.7	68.768	48.35
14.0	31.360	22.05	23.8	53.312	37.48	27.3	61.152	43.00	30.8	68.992	48.51
15.0	33.600	23.62	23.9	53.536	37.64	27.4	61.376	43.15	30.9	69.216	48.67
16.0	35.840	25.20	24.0	53.760	37.80	27.5	61.600	43.31	31.0	69.440	48.82
17.0	38.080	26.77	24.1	53.984	37.96	27.6	61.824	43.47	31.1	69.664	48.98
18.0	40.320	28.35	24.2	54.208	38.11	27.7	62.048	43.63	31.2	69.888	49.14
19.0	42.560	29.92	24.3	54.432	38.27	27.8	62.272	43.78	31.3	70.112	49.30
20.0	44.800	31.50	24.4	54.656	38.43	27.9	62.496	43.94	31.4	70.336	49.45
21.0	47.040	33.07	24.5	54.880	38.58	28.0	62.720	44.10	31.5	70.560	49.61
21.1	47.264	33.23	24.6	55.104	38.74	28.1	62.944	44.26	31.6	70.784	49.77
21.2	47.488	33.39	24.7	55.328	38.90	28.2	63.168	44.41	31.7	71.008	49.93
21.3	47.712	33.55	24.8	55.552	39.06	28.3	63.392	44.57	31.8	71.232	50.08
21.4	47.936	33.70	24.9	55.776	39.21	28.4	63.616	44.73	31.9	71.456	50.24
21.5	48.160	33.86	25.0	56.000	39.37	28.5	63.840	44.89	32.0	71.680	50.40
21.6	48.384	34.02	25.1	56.224	39.53	28.6	64.064	45.04	32.1	71.904	50.56
21.7	48.608	34.18	25.2	56.448	39.69	28.7	64.288	45.20	32.2	72.128	50.71
21.8	48.832	34.33	25.3	56.672	39.84	28.8	64.512	45.36	32.3	72.352	50.87
21.9	49.056	34.49	25.4	56.896	40.00	28.9	64.736	45.52	32.4	72.576	51.03
22.0	49.280	34.65	25.5	57.120	40.16	29.0	64.960	45.67	32.5	72.800	51.19
22.1	49.504	34.81	25.6	57.344	40.32	29.1	65.184	45.83	32.6	73.024	51.34
22.2	49.728	34.96	25.7	57.568	40.47	29.2	65.408	45.99	32.7	73.248	51.50
22.3	49.952	35.12	25.8	57.792	40.63	29.3	65.632	46.15	32.8	73.472	51.66
22.4	50.176	35.28	25.9	58.016	40.79	29.4	65.856	46.30	32.9	73.696	51.82
22.5	50.400	35.44	26.0	58.240	40.95	29.5	66.080	46.46	33.0	73.920	51.97
22.6	50.624	35.59	26.1	58.464	41.10	29.6	66.304	46.62	34.0	76.160	53.55
22.7	50.848	35.75	26.2	58.688	41.26	29.7	66.528	46.78	35.0	78.400	55.12
22.8	51.072	35.91	26.3	58.912	41.42	29.8	66.752	46.93	36.0	80.640	56.70
22.9	51.296	36.07	26.4	59.136	41.58	29.9	66.976	47.09	37.0	82.880	58.27
23.0	51.520	36.22	26.5	59.360	41.74	30.0	67.200	47.25	38.0	85.120	59.85
23.1	51.744	36.38	26.6	59.584	41.89	30.1	67.424	47.41	39.0	87.360	61.42
23.2	51.968	36.54	26.7	59.808	42.05	30.2	67.648	47.56	40.0	89.600	63.00
23.3	52.192	36.70	26.8	60.032	42.21	30.3	67.872	47.72			

平方耗上肝ニ等シキ平方吋上听及噸ノ表

平方 耗肝	平方 吋 听	平方 吋 噸	平方 耗肝	平方 吋 听	平方 吋 噸	平方 耗肝	平方 吋 听	平方 吋 噸	平方 耗肝	平方 吋 听	平方 吋 噸
10.0	14.220	6.35	42.5	60.460	26.98	60.0	85.350	38.10	77.5	110.200	49.21
12.0	17.070	7.62	43.0	61.160	27.30	60.5	86.060	38.41	78.0	110.900	49.52
14.0	19.910	8.89	43.5	61.880	27.62	61.0	86.760	38.73	78.5	111.600	49.84
16.0	22.760	10.16	44.0	62.590	27.94	61.5	87.470	39.05	79.0	112.300	50.16
18.0	25.600	11.43	44.5	63.300	28.26	62.0	88.190	39.36	79.5	113.100	50.48
20.0	28.450	12.70	45.0	64.010	28.57	62.5	88.900	39.68	80.0	113.800	50.80
22.0	31.290	13.97	45.5	64.720	28.89	63.0	89.610	40.00	80.5	114.500	51.11
24.0	34.140	15.24	46.0	65.420	29.21	63.5	90.320	40.32	81.0	115.200	51.43
26.0	36.980	16.51	46.5	66.140	29.52	64.0	91.030	40.63	81.5	115.900	51.75
28.0	39.850	17.78	47.0	66.860	29.84	64.5	91.740	40.95	82.0	116.600	52.06
30.0	42.670	19.05	47.5	67.560	30.16	65.0	92.450	41.27	82.5	117.300	52.38
30.5	43.360	19.36	48.0	68.280	30.47	65.5	93.160	41.59	83.0	118.000	52.70
31.0	44.080	19.68	48.5	68.990	30.79	66.0	93.880	41.90	83.5	118.700	53.02
31.5	44.800	20.00	49.0	69.700	31.11	66.5	94.600	42.22	84.0	119.400	53.34
32.0	45.510	20.32	49.5	70.400	31.45	67.0	95.290	42.54	84.5	120.200	53.65
32.5	46.210	20.63	50.0	71.120	31.75	67.5	96.000	42.86	85.0	120.900	53.97
33.0	46.920	20.95	50.5	71.840	32.06	68.0	96.700	43.17	85.5	121.600	54.29
33.5	47.640	21.27	51.0	72.550	32.38	68.5	97.420	43.49	86.0	122.300	54.60
34.0	48.360	21.59	51.5	73.260	32.70	69.0	98.130	43.81	86.5	123.000	54.92
34.5	49.060	21.90	52.0	73.970	33.01	69.5	98.850	44.13	87.0	123.700	55.24
35.0	49.800	22.23	52.5	74.680	33.33	70.0	99.560	44.45	87.5	124.400	55.56
35.5	50.500	22.54	53.0	75.400	33.65	70.5	100.300	44.76	88.0	125.100	55.88
36.0	51.210	22.86	53.5	76.100	33.97	71.0	101.000	45.08	88.5	125.800	56.20
36.5	51.900	23.17	54.0	76.810	34.28	71.5	101.700	45.40	89.0	126.500	56.51
37.0	52.620	23.49	54.5	77.520	34.60	72.0	102.400	45.71	89.5	127.300	56.83
37.5	53.310	23.80	55.0	78.240	34.92	72.5	103.100	46.03	90.0	128.000	57.14
38.0	54.050	24.13	55.5	78.950	35.24	73.0	103.800	46.35	91.0	129.400	57.78
38.5	54.770	24.45	56.0	79.590	35.53	73.5	104.500	46.66	92.0	130.800	58.42
39.0	55.460	24.76	56.5	80.370	35.87	74.0	105.200	46.98	93.0	132.200	59.04
39.5	56.190	25.08	57.0	81.080	36.19	74.5	105.900	47.30	94.0	133.700	59.69
40.0	56.900	25.40	57.5	81.800	36.51	75.0	106.700	47.62	95.0	135.100	60.32
40.5	57.610	25.71	58.0	82.500	36.82	75.5	107.400	47.93	96.0	136.500	60.96
41.0	58.320	26.03	58.5	83.220	37.14	76.0	108.100	48.25	97.0	137.900	61.59
41.5	59.030	26.35	59.0	83.820	37.46	76.5	108.800	48.57	98.0	139.400	62.22
42.0	59.740	26.67	59.5	84.640	37.78	77.0	109.500	48.89	99.0	140.900	62.86

听ヨリ吨ニ換算表
 使用法 例. 243 Lbs. 肝ニ換算セントスルニハ 200 Lbs. 140 Lbs.
 欄ノ交叉點(即240 Lbs.) / 108 Kgs. 86 1/3 Lbs. 欄ノ1 Kg. 36ヲ加
 算スベシ

听	0	10	20	30	40	50	60	70	80	90
0		4.53	9.07	13.61	18.14	22.68	27.22	31.75	36.29	40.82
1	0.45	4.99	9.53	14.06	18.60	23.13	27.67	32.21	36.74	41.28
2	0.91	5.44	9.98	14.52	19.05	23.59	28.12	32.66	37.19	41.73
3	1.36	5.90	10.43	14.97	19.50	24.04	28.58	33.11	37.65	42.18
4	1.81	6.35	10.89	15.42	19.96	24.49	29.03	33.57	38.10	42.64
5	2.27	6.80	11.34	15.88	20.41	24.95	29.48	34.02	38.56	43.09
6	2.72	7.26	11.79	16.33	20.87	25.40	29.94	34.47	39.01	43.54
7	3.17	7.71	12.25	16.79	21.32	25.85	30.39	34.93	39.46	44.00
8	3.63	8.16	12.70	17.24	21.77	26.31	30.84	35.38	39.92	44.45
9	4.08	8.62	13.15	17.69	22.23	26.76	31.30	35.83	40.37	44.91
100	45.360	49.900	54.430	58.970	63.500	68.040	72.570	77.110	81.650	86.180
200	90.720	99.800	108.860	117.940	127.000	136.060	145.120	154.180	163.240	172.300
300	136.080	149.700	163.290	176.890	190.490	204.090	217.690	231.290	244.890	258.490
400	181.440	199.600	217.720	235.880	254.040	272.200	290.360	308.520	326.680	344.840
500	226.800	249.450	272.100	294.750	317.400	340.050	362.700	385.350	408.000	430.650
600	272.160	299.700	326.590	353.180	380.570	407.960	435.350	462.740	490.130	517.520
700	317.520	349.050	380.580	412.170	443.760	475.350	506.940	538.530	570.120	601.710
800	362.880	399.400	435.160	472.620	508.180	544.590	581.000	617.410	653.820	690.230
900	408.240	449.750	487.670	523.080	564.490	605.900	647.310	688.720	730.130	771.540
1.000	453.593	498.943	544.293	589.643	634.993	680.343	725.693	771.043	816.393	861.743
1.100	498.952	544.302	589.652	635.002	680.352	725.702	771.052	816.402	861.752	907.102
1.200	544.311	589.661	635.011	680.361	725.711	771.061	816.411	861.761	907.111	952.461
1.300	589.671	635.021	680.371	725.721	771.071	816.421	861.771	907.121	952.471	997.821
1.400	635.030	680.380	725.730	771.080	816.430	861.780	907.130	952.480	997.830	1043.180
1.500	680.389	725.739	771.089	816.439	861.789	907.139	952.489	997.839	1043.189	1088.540
1.600	725.749	771.099	816.449	861.799	907.149	952.499	997.849	1043.199	1088.549	1133.900
1.700	771.108	816.458	861.808	907.158	952.508	997.858	1043.208	1088.558	1133.908	1179.260
1.800	816.467	861.807	907.157	952.507	997.857	1043.207	1088.557	1133.907	1179.257	1224.620
1.900	861.827	907.167	952.517	997.867	1043.217	1088.567	1133.917	1179.267	1224.627	1270.000
2.000	907.186	952.526	997.876	1043.226	1088.576	1133.926	1179.276	1224.636	1270.006	1315.360

听 = リ 底 = 換算表

听	0	10	20	30	40	50	60	70	80	90
0		4.53	9.07	13.61	18.14	22.68	27.22	31.75	36.29	40.82
1	0.45	4.99	9.53	14.06	18.60	23.13	27.67	32.21	36.74	41.28
2	0.91	5.44	9.98	14.52	19.05	23.59	28.12	32.66	37.19	41.73
3	1.36	5.90	10.43	14.97	19.50	24.04	28.58	33.11	37.65	42.18
4	1.81	6.35	10.89	15.42	19.96	24.49	29.03	33.57	38.10	42.64
5	2.27	6.80	11.34	15.88	20.41	24.95	29.48	34.02	38.56	43.09
6	2.72	7.26	11.79	16.33	20.87	25.40	29.94	34.47	39.01	43.54
7	3.17	7.71	12.25	16.79	21.32	25.85	30.39	34.93	39.46	44.00
8	3.63	8.16	12.70	17.24	21.77	26.31	30.84	35.38	39.92	44.45
9	4.08	8.62	13.15	17.69	22.23	26.76	31.30	35.83	40.37	44.91
2.100	952.545	957.081	961.617	966.153	970.689	975.225	979.761	984.297	988.833	993.368
2.200	997.904	1.002.440	1.006.976	1.011.512	1.016.048	1.020.584	1.025.120	1.029.656	1.034.192	1.038.728
2.300	1.043.264	1.047.800	1.052.336	1.056.871	1.061.407	1.065.943	1.070.479	1.075.015	1.079.551	1.084.087
2.400	1.088.623	1.093.159	1.097.695	1.102.231	1.106.767	1.111.303	1.115.839	1.120.374	1.124.910	1.129.446
2.500	1.133.982	1.138.518	1.143.054	1.147.590	1.152.126	1.156.662	1.161.198	1.165.734	1.170.270	1.174.806
2.600	1.179.342	1.183.877	1.188.413	1.192.949	1.197.485	1.202.021	1.206.557	1.211.093	1.215.629	1.220.165
2.700	1.224.701	1.229.237	1.233.773	1.238.309	1.242.845	1.247.380	1.251.916	1.256.452	1.260.988	1.265.524
2.800	1.270.060	1.274.596	1.279.132	1.283.668	1.288.204	1.292.740	1.297.276	1.301.812	1.306.348	1.310.883
2.900	1.315.419	1.319.955	1.324.491	1.329.027	1.333.563	1.338.099	1.342.635	1.347.171	1.351.707	1.356.243
3.000	1.360.779	1.365.315	1.369.851	1.374.386	1.378.922	1.383.458	1.387.994	1.392.530	1.397.066	1.401.602
3.100	1.406.138	1.410.674	1.415.210	1.419.746	1.424.282	1.428.818	1.433.354	1.437.889	1.442.425	1.446.961
3.200	1.451.497	1.456.033	1.460.569	1.465.105	1.469.641	1.474.177	1.478.713	1.483.249	1.487.785	1.492.321
3.300	1.496.857	1.501.392	1.505.928	1.510.464	1.515.000	1.519.536	1.524.072	1.528.608	1.533.144	1.537.680
3.400	1.542.216	1.546.752	1.551.288	1.555.824	1.560.360	1.564.896	1.569.431	1.573.967	1.578.503	1.583.039
3.500	1.587.575	1.592.111	1.596.647	1.601.183	1.605.719	1.610.255	1.614.791	1.619.327	1.623.863	1.628.399
3.600	1.632.934	1.637.470	1.642.006	1.646.542	1.651.078	1.655.614	1.660.150	1.664.686	1.669.222	1.673.758
3.700	1.678.294	1.682.830	1.687.366	1.691.902	1.696.437	1.700.973	1.705.509	1.710.045	1.714.581	1.719.117
3.800	1.723.653	1.728.189	1.732.725	1.737.261	1.741.797	1.746.333	1.750.869	1.755.405	1.759.940	1.764.476
3.900	1.769.012	1.773.548	1.778.084	1.782.620	1.787.156	1.791.691	1.796.228	1.800.764	1.805.300	1.809.836
4.000	1.814.372	1.818.908	1.823.443	1.827.979	1.832.515	1.837.051	1.841.587	1.846.123	1.850.659	1.855.195

听 = リ 底 = 換算表

听	0	10	20	30	40	50	60	70	80	90
0		4.53	9.07	13.61	18.14	22.68	27.22	31.75	36.29	40.82
1	0.45	4.99	9.53	14.06	18.60	23.13	27.67	32.21	36.74	41.28
2	0.91	5.44	9.98	14.52	19.05	23.59	28.12	32.66	37.19	41.73
3	1.36	5.90	10.43	14.97	19.50	24.04	28.58	33.11	37.65	42.18
4	1.81	6.35	10.89	15.42	19.96	24.49	29.03	33.57	38.10	42.64
5	2.27	6.80	11.34	15.88	20.41	24.95	29.48	34.02	38.56	43.09
6	2.72	7.26	11.79	16.33	20.87	25.40	29.94	34.47	39.01	43.54
7	3.17	7.71	12.25	16.79	21.32	25.85	30.39	34.93	39.46	44.00
8	3.63	8.16	12.70	17.24	21.77	26.31	30.84	35.38	39.92	44.45
9	4.08	8.62	13.15	17.69	22.23	26.76	31.30	35.83	40.37	44.91
4.100	1.859.731	1.864.267	1.868.803	1.873.339	1.877.875	1.882.411	1.886.946	1.891.482	1.896.018	1.900.554
4.200	1.905.090	1.909.626	1.914.162	1.918.698	1.923.234	1.927.770	1.932.306	1.936.842	1.941.378	1.945.914
4.300	1.950.449	1.954.985	1.959.521	1.964.057	1.968.593	1.973.129	1.977.665	1.982.201	1.986.737	1.991.273
4.400	1.995.809	2.000.345	2.004.881	2.009.417	2.013.952	2.018.488	2.023.024	2.027.560	2.032.096	2.036.632
4.500	2.041.168	2.045.704	2.050.240	2.054.776	2.059.312	2.063.848	2.068.384	2.072.920	2.077.455	2.081.991
4.600	2.086.527	2.091.063	2.095.599	2.100.135	2.104.671	2.109.207	2.113.743	2.118.279	2.122.815	2.127.351
4.700	2.131.887	2.136.423	2.140.958	2.145.494	2.150.030	2.154.566	2.159.102	2.163.638	2.168.174	2.172.710
4.800	2.177.246	2.181.782	2.186.318	2.190.854	2.195.390	2.199.926	2.204.461	2.208.997	2.213.533	2.218.069
4.900	2.222.605	2.227.141	2.231.677	2.236.213	2.240.749	2.245.285	2.249.821	2.254.357	2.258.893	2.263.429
5.000	2.267.965	2.272.500	2.277.036	2.281.572	2.286.108	2.290.644	2.295.180	2.299.716	2.304.252	2.308.788
5.100	2.313.324	2.317.860	2.322.396	2.326.932	2.331.468	2.336.003	2.340.539	2.345.075	2.349.611	2.354.147
5.200	2.358.683	2.363.219	2.367.755	2.372.291	2.376.827	2.381.363	2.385.899	2.390.435	2.394.971	2.399.506
5.300	2.404.042	2.408.578	2.413.114	2.417.650	2.422.186	2.426.722	2.431.258	2.435.794	2.440.330	2.444.866
5.400	2.449.402	2.453.938	2.458.474	2.463.009	2.467.545	2.472.081	2.476.617	2.481.153	2.485.689	2.490.225
5.500	2.494.761	2.499.297	2.503.833	2.508.369	2.512.905	2.517.441	2.521.977	2.526.512	2.531.048	2.535.584
5.600	2.540.120	2.544.656	2.549.192	2.553.728	2.558.264	2.562.800	2.567.336	2.571.872	2.576.408	2.580.944
5.700	2.585.480	2.590.015	2.594.551	2.599.087	2.603.623	2.608.159	2.612.695	2.617.231	2.621.767	2.626.303
5.800	2.630.839	2.635.375	2.639.911	2.644.447	2.648.983	2.653.518	2.658.054	2.662.590	2.667.126	2.671.662
5.900	2.676.198	2.680.734	2.685.270	2.689.806	2.694.341	2.698.878	2.703.414	2.707.950	2.712.486	2.717.021
6.000	2.721.557	2.726.093	2.730.629	2.735.165	2.739.701	2.744.237	2.748.773	2.753.309	2.757.845	2.762.381

听ヨリ疋ニ換算表

听	0	10	20	30	40	50	60	70	80	90
0		4.53	9.07	13.61	18.14	22.68	27.22	31.75	36.29	40.82
1	0.45	4.99	9.53	14.06	18.60	23.13	27.67	32.21	36.74	41.28
2	0.91	5.44	9.98	14.52	19.05	23.59	28.12	32.66	37.19	41.73
3	1.36	5.90	10.43	14.97	19.50	24.04	28.58	33.11	37.65	42.18
4	1.81	6.35	10.89	15.42	19.96	24.49	29.03	33.57	38.10	42.64
5	2.27	6.80	11.34	15.88	20.41	24.95	29.48	34.02	38.56	43.09
6	2.72	7.26	11.79	16.33	20.87	25.40	29.94	34.47	39.01	43.54
7	3.17	7.71	12.25	16.79	21.32	25.85	30.39	34.93	39.46	44.00
8	3.63	8.16	12.70	17.24	21.77	26.31	30.84	35.38	39.92	44.45
9	4.08	8.62	13.15	17.69	22.23	26.76	31.30	35.83	40.37	44.91
6.100	2.766.917	2.771.453	2.775.989	2.780.524	2.785.060	2.789.596	2.794.132	2.798.668	2.803.204	2.807.740
6.200	2.812.276	2.816.812	2.821.348	2.825.884	2.830.420	2.834.956	2.839.492	2.844.027	2.848.563	2.853.099
6.300	2.857.635	2.862.171	2.866.707	2.871.243	2.875.779	2.880.315	2.884.851	2.889.387	2.893.923	2.898.459
6.400	2.902.995	2.907.530	2.912.066	2.916.602	2.921.138	2.925.674	2.930.210	2.934.746	2.939.282	2.943.818
6.500	2.948.354	2.952.890	2.957.426	2.961.962	2.966.498	2.971.033	2.975.569	2.980.105	2.984.641	2.989.177
6.600	2.993.713	2.998.249	3.002.785	3.007.321	3.011.857	3.016.393	3.020.929	3.025.465	3.030.001	3.034.537
6.700	3.039.072	3.043.608	3.048.144	3.052.680	3.057.216	3.061.752	3.066.288	3.070.824	3.075.360	3.079.896
6.800	3.084.432	3.088.968	3.093.504	3.098.040	3.102.575	3.107.111	3.111.647	3.116.183	3.120.719	3.125.255
6.900	3.129.791	3.134.327	3.138.863	3.143.399	3.147.935	3.152.471	3.157.007	3.161.543	3.166.078	3.170.614
7.000	3.175.150	3.179.686	3.184.222	3.188.758	3.193.294	3.197.829	3.202.366	3.206.902	3.211.438	3.215.974
7.100	3.220.510	3.225.046	3.229.581	3.234.117	3.238.653	3.243.189	3.247.725	3.252.261	3.256.797	3.261.333
7.200	3.265.869	3.270.405	3.274.941	3.279.477	3.284.013	3.288.549	3.293.084	3.297.620	3.302.156	3.306.692
7.300	3.311.228	3.315.764	3.320.300	3.324.836	3.329.372	3.333.908	3.338.444	3.342.980	3.347.516	3.352.052
7.400	3.356.587	3.361.123	3.365.659	3.370.195	3.374.731	3.379.267	3.383.803	3.388.339	3.392.875	3.397.411
7.500	3.401.947	3.406.483	3.411.019	3.415.555	3.420.090	3.424.626	3.429.162	3.433.698	3.438.234	3.442.770
7.600	3.447.306	3.451.842	3.456.378	3.460.914	3.465.450	3.469.986	3.474.522	3.479.058	3.483.593	3.488.129
7.700	3.492.665	3.497.201	3.501.737	3.506.273	3.510.809	3.515.345	3.519.881	3.524.417	3.528.953	3.533.489
7.800	3.538.025	3.542.561	3.547.096	3.551.632	3.556.168	3.560.704	3.565.240	3.569.776	3.574.312	3.578.848
7.900	3.583.384	3.587.920	3.592.456	3.596.992	3.601.528	3.606.064	3.610.599	3.615.135	3.619.671	3.624.207
8.000	3.628.743	3.633.279	3.637.815	3.642.351	3.646.887	3.651.423	3.655.959	3.660.495	3.665.031	3.669.567

听ヨリ疋ニ換算表

听	0	10	20	30	40	50	60	70	80	90
0		4.53	9.07	13.61	18.14	22.68	27.22	31.75	36.29	40.82
1	0.45	4.99	9.53	14.06	18.60	23.13	27.67	32.21	36.74	41.28
2	0.91	5.44	9.98	14.52	19.05	23.59	28.12	32.66	37.19	41.73
3	1.36	5.90	10.43	14.97	19.50	24.04	28.58	33.11	37.65	42.18
4	1.81	6.35	10.89	15.42	19.96	24.49	29.03	33.57	38.10	42.64
5	2.27	6.80	11.34	15.88	20.41	24.95	29.48	34.02	38.56	43.09
6	2.72	7.26	11.79	16.33	20.87	25.40	29.94	34.47	39.01	43.54
7	3.17	7.71	12.25	16.79	21.32	25.85	30.39	34.93	39.46	44.00
8	3.63	8.16	12.70	17.24	21.77	26.81	30.84	35.38	39.92	44.45
9	4.08	8.62	13.15	17.69	22.23	26.76	31.30	35.83	40.37	44.91
8.100	3.674.102	3.678.638	3.683.174	3.687.710	3.692.246	3.696.782	3.701.318	3.705.854	3.710.390	3.714.926
8.200	3.719.462	3.723.998	3.728.534	3.733.070	3.737.605	3.742.141	3.746.677	3.751.213	3.755.749	3.760.285
8.300	3.764.821	3.769.357	3.773.893	3.778.429	3.782.965	3.787.501	3.792.037	3.796.573	3.801.109	3.805.644
8.400	3.810.180	3.814.716	3.819.252	3.823.788	3.828.324	3.832.860	3.837.396	3.841.932	3.846.468	3.851.004
8.500	3.855.540	3.860.076	3.864.612	3.869.147	3.873.683	3.878.219	3.882.755	3.887.291	3.891.827	3.896.363
8.600	3.900.899	3.905.435	3.909.971	3.914.507	3.919.043	3.923.579	3.928.115	3.932.650	3.937.186	3.941.722
8.700	3.946.258	3.950.794	3.955.330	3.959.866	3.964.402	3.968.938	3.973.474	3.978.010	3.982.546	3.987.082
8.800	3.991.618	3.996.153	4.000.689	4.005.225	4.009.761	4.014.297	4.018.833	4.023.369	4.027.905	4.032.441
8.900	4.036.977	4.041.513	4.046.049	4.050.585	4.055.121	4.059.656	4.064.192	4.068.728	4.073.264	4.077.800
9.000	4.082.336	4.086.872	4.091.408	4.095.944	4.100.480	4.105.016	4.109.552	4.114.088	4.118.624	4.123.159
9.100	4.127.695	4.132.231	4.136.767	4.141.303	4.145.839	4.150.375	4.154.911	4.159.447	4.163.983	4.168.519
9.200	4.173.055	4.177.591	4.182.127	4.186.662	4.191.198	4.195.734	4.200.270	4.204.806	4.209.342	4.213.878
9.300	4.218.414	4.222.950	4.227.486	4.232.022	4.236.558	4.241.094	4.245.630	4.250.165	4.254.701	4.259.237
9.400	4.263.773	4.268.309	4.272.845	4.277.381	4.281.917	4.286.453	4.290.989	4.295.525	4.300.061	4.304.597
9.500	4.309.133	4.313.668	4.318.204	4.322.740	4.327.276	4.331.812	4.336.348	4.340.884	4.345.420	4.349.956
9.600	4.354.492	4.359.028	4.363.564	4.368.100	4.372.636	4.377.171	4.381.707	4.386.243	4.390.779	4.395.315
9.700	4.399.851	4.404.387	4.408.923	4.413.459	4.417.995	4.422.531	4.427.067	4.431.603	4.436.139	4.440.674
9.800	4.445.210	4.449.746	4.454.282	4.458.818	4.463.354	4.467.890	4.472.426	4.476.962	4.481.498	4.486.034
9.900	4.490.570	4.495.106	4.499.642	4.504.177	4.508.713	4.513.249	4.517.785	4.522.321	4.526.857	4.531.393
10.000	4.535.929	4.540.465	4.545.001	4.549.537	4.554.073	4.558.609	4.563.145	4.567.681	4.572.216	4.576.752

Table Title

1	2	3	4	5	6	7	8	9	10	11
10.0	10.0	10.0	10.0	10.0	10.0	10.0	10.0	10.0	10.0	10.0
10.1	10.1	10.1	10.1	10.1	10.1	10.1	10.1	10.1	10.1	10.1
10.2	10.2	10.2	10.2	10.2	10.2	10.2	10.2	10.2	10.2	10.2
10.3	10.3	10.3	10.3	10.3	10.3	10.3	10.3	10.3	10.3	10.3
10.4	10.4	10.4	10.4	10.4	10.4	10.4	10.4	10.4	10.4	10.4
10.5	10.5	10.5	10.5	10.5	10.5	10.5	10.5	10.5	10.5	10.5
10.6	10.6	10.6	10.6	10.6	10.6	10.6	10.6	10.6	10.6	10.6
10.7	10.7	10.7	10.7	10.7	10.7	10.7	10.7	10.7	10.7	10.7
10.8	10.8	10.8	10.8	10.8	10.8	10.8	10.8	10.8	10.8	10.8
10.9	10.9	10.9	10.9	10.9	10.9	10.9	10.9	10.9	10.9	10.9
11.0	11.0	11.0	11.0	11.0	11.0	11.0	11.0	11.0	11.0	11.0

Table content text, including descriptive notes and data details.

541
78

終