

Historic, Archive Document

Do not assume content reflects current scientific knowledge, policies, or practices.

LIBRARY
RECEIVED
★ APR 2 1931 ★
U.S. Department of Agriculture



1931
Catalog



- SEEDS
- PLANTS
- BULBS
- SHRUBS
- TREES

PEONY--Karl Rosenfield

Peonies are the most lavish of the early summer flowers. Karl Rosenfield is unquestionably the finest red. See page 16.

Vegetable and Flowering Plants

House Plants for Your Home
Shrubs for Your Garden



KELLY PLANT GARDENS

E 4100 Sprague Avenue -- Spokane, Washington

Phone: Lakeview 0156

SEED COLLECTIONS

We offer a few bargains to stimulate the use of our seeds. These items are remarkable values. All prices postpaid.

ASTERS

1 Pkt. Asters Crego Lavender	\$.10
1 Pkt. Asters Crego White	\$.10
1 Pkt. Asters Crego Blue	\$.10
1 Pkt. Asters Crego Shell Pink	\$.10

Catalog price \$0.40
Special Offer of Above for \$0.25

SNAPDRAGONS

1 Pkt. Snapdragons Orchid	\$.10
1 Pkt. Snapdragons Copper	\$.10
1 Pkt. Snapdragons Pink	\$.10
1 Pkt. Snapdragons Yellow	\$.10

Catalog price \$0.40
Special Offer of Above for \$0.25

SPENCER'S SWEET PEAS

1 Pkt. Peas Hawmark Pink	\$.10
1 Pkt. Peas Hawmark Blue	\$.10
1 Pkt. Peas Scarlet	\$.10
1 Pkt. Peas Purple	\$.10
1 Pkt. Peas Lavender	\$.10

Catalog price \$0.50
Special Offer \$0.30

**ZINNIAS—Bodger's Giant
Dahlia—Flowered**

1 Pkt. Zinnia Exquisite Pink	\$.10
1 Pkt. Zinnia Golden State	\$.10
1 Pkt. Zinnia Crimson	\$.10

Catalog price \$0.30
Special Offer \$0.20

ANNUAL CLIMBERS

**Covering Porches, Verandas,
Rockeries, Walls, Etc.**

1 Pkt. Morning Glory	\$.10
1 Pkt. Nasturtium Tall	\$.10
1 Pkt. Scarlet Runner Bean	\$.10
1 Pkt. Wild Cucumber	\$.10

Catalog price \$0.40
Special Offer \$0.25

We will send all above collections for \$1.00 or three of your selection for 65c.

PARCEL POST RATES

Approximate carrying charges according to distance from KELLY PLANT GARDENS, SPOKANE, Wn. WEIGHT LIMIT FOR EACH PACKAGE 70 lbs.

FIRST AND SECOND ONE

TO ANY POSTOFFICE WITHIN 150 MILES, add to the weight of each package the numeral 6 which represents the parcel post carrying charges in cents.

THIRD ZONE

TO ANY POSTOFFICE WITHIN 150 to 300 MILES, multiply the weight by 2 and add 6 which equals amount in cents.

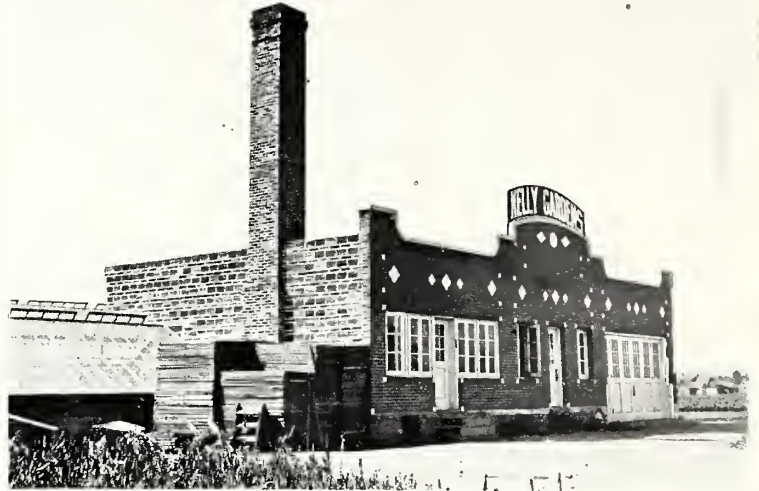
FOURTH ZONE

WEIGHT LIMIT 50 lbs. EACH PACKAGE. TO ANY POSTOFFICE WITHIN 300 to 600 MILES multiply the weight by 4 and add 5 which equals amount in cents.

WHEN ORDERING write name and address plainly. Order early in order to insure delivery of stock wanted. Remittance must accompany order. Stamps are accepted up to \$1.00. Money orders, express orders, bank drafts and certified checks preferred. Because our merchandise is extremely perishable, we do not ship C. O. D. Owing to the fact that there are invariable shortages of some varieties, we kindly ask that customers state their permission for us to substitute the nearest variety to the one ordered in case we should be sold out.

Because all of our business comes with a rush in an extremely short portion of the year, mistakes sometimes creep in. In case of complaint, please write us promptly. We will do all in our power to immediately and courteously rectify the error.

While we hold ourselves in readiness, on proper proof, to replace free of charge all stock that may prove untrue to label, or refund the amount paid, we give no warranty expressed or implied as to description, quality, productiveness or any other matter of any stock, seeds, bulbs, or plants we sell.



Our Service Plant

INDEX

Page	Page	Page	Page
Annual Flowering Plants..... 12-13	Dahlias 18	Herbs 7	Planting Helps 23
Antirrhinum 13	Delphinium 15	Hollyhocks 16	Poppy, Oriental 15
Asparagus 7	Decorative House Plants 20	Horseradish 7	Potted Plants 4
Asters 12	Derrisol 23	Hotcaps 23	Raspberries 4
Baby Breath (See Gypsophila) 14	Dewberries 4	Husk Tomatoes 5	Rhubarb 7
Begonia 20	Dill 7	Iris (Flags) 16	Roses 17
Blackberries 4	Egg Plant 5	Insecticides 23	Rubber Plants 20
Bleeding Heart 15	Evergreens 24	Individual Bands 4	Salpiglossis 13
Books 23	Ferns 20	Kale 6	Salvia 13
Boston Ivy 17	Ferns, Asparagus 20	Kohl Rabi 6	Shrubs, Ornamental 21 & 23
Cactus 20	Fertilizers 23	Lawn Grass Seed 10	Snapdragon (See Antirrhinum) 13
Cabbage 6	Plats 8	Leek 7	Stocks 13
Cannas 20	Flowering Plants, Perennial 14, 15	Lettuce 7	Strawberries 3
Canterbury Bell 14	Flower Seeds 11	Lilies 18	Sweet Irish Potato 8
Carnations 12	Foxglove 14	Lobelia 12	Sweet Pea, Perennial 14
Cauliflower 6	Fruit and Ornamental Trees 22	Loganberries 4	Seeds, Vegetable 9-10
Celery 6	Fuchsias 20	Muskmelon 8	Seeds, Flower 11
Celery Cabbage 6	Garlic 8	Onions 7	Swiss Chard 7
Chives 7	Geraniums 20	Onion Sets 13	Tobacco 7
Clematis 17	Glabdiolus 19	Pansies 8	Tomato 5
Climbing Plants 17	Gooseberries 4	Parsley 6	Tomato, Preserving 5
Climbing Vines 17	Grapes 4	Peonies 16	Trailing Plants 20
Coleus 20	Groundcherries 5	Peppers 5	Vegetable Seeds 9-10
Columbine 14	Gypsophila 14	Perennial Flowering Plants 14, 15, 16	Verbenas 13
Cucumber 8	Hedge Plants 21	Petunia 13	Vigoro 23
Currants 4	Heliotrope 20	Phlox 15	Water Cress 7
Collection Small Fruit 4		Pie Plant 13	Zinnias 13
		Plant Protectors 23	

KELLY'S EVERBEARING STRAWBERRIES

Think of picking ripe fruit ninety days from the setting of the plant and continually fruiting until the freezing of the fruit and plant prevents further growth, in the early winter.

You may send your entire order now. Will deliver when directed or when each variety is seasonable in your locality.

Fresh Ripe Strawberries
From June till December

MASTODON

A recent introduction that has created nation-wide interest as an extra large Everbearing Strawberry. The introducer claims it to be the equal of Superb in foliage, averages larger in fruit, almost as sweet as Progressive and much better plant maker.

Since the Inland Empire climate and soil are ideal for the production of Everbearing Strawberries, in fact is the highest producing section in the U. S., the Mastodon will surely be a money maker.

Order at once as stock is very limited.

Remember our MASTODON plants are direct from the originator. "BE SURE YOU START RIGHT."

Postpaid, doz., 50c; 25, \$1.00; 50, \$1.50; 100, \$2.75. Not prepaid, 200, \$4.50; 500, \$10.00; 1000, \$20.00.



KELLY'S MASTODON

SUPERB—The fruit is very large, very firm. We recommend it as the best variety everything considered, as a canning and shipping variety. Postpaid, doz., 50c; 25, \$1.00; 50, \$1.50; 100, \$2.50. Not prepaid, 200, \$4.00; 500, \$8.00; 1000, \$16.00.

Hope, Idaho, May 17, 1930.

Dear Sirs,—

My other plants arrived yesterday in excellent shape and are certainly fine looking plants. Thank you for your promptness.

Yours truly, MRS. C. W. T.

PROGRESSIVE—A prolific sweet berry. Is not as firm as Superb, but a popular berry for the home garden. Postpaid, doz., 50c; 25, \$1.00; 50, \$1.25; 100, \$2.25. Not prepaid, 200, \$3.00; 500, \$6.00; 1000, \$12.00.

Standard Varieties of STRAWBERRIES

Cultural Directions on Request.

NEW OREGON—A western variety and seemingly combines the splendid characteristics of the Hood River and Glen Mary types in its fruit. It is grown extensively with complete satisfaction.

GLEN MARY—A bright handsome standard sort, grows the country over.

MARSHALL—A well known popular berry.

Above Varieties—Postpaid, 25, 50c; 100, \$1.25. Not Postpaid, 500, \$4.25; 1000, \$8.50.

HOWARD NO. 17 or Premier—The plant growth is fine. Foliage very dark and healthy. Fruit firm and large. This is a good one to plant.

DR. BURRILL—A marvel of productiveness, quality, color, size and firmness.

CLARK SEEDLING—It is unsurpassed as a shipping variety.

HOOD RIVER—The leading standard shipping variety.

SEN. DUNLAP—Its color is a rich dark red.

WM. BELT—Nothing better for quality.

WARFIELD—A very popular variety. Above varieties, postpaid, 25, 50c; 100, \$1.25. Not prepaid, 500, \$3.75; 1000, \$7.50.

Colburn, Idaho, Oct. 23, 1930.

Kelly Plant Gardens,

Spokane, Wash.

Gentlemen,—

This spring I ordered 100 bulbs of Gladioli and was well pleased with the good collection.

Very sincerely,

MRS. F. H. B.

Fortine, Mont., May 22, 1930.

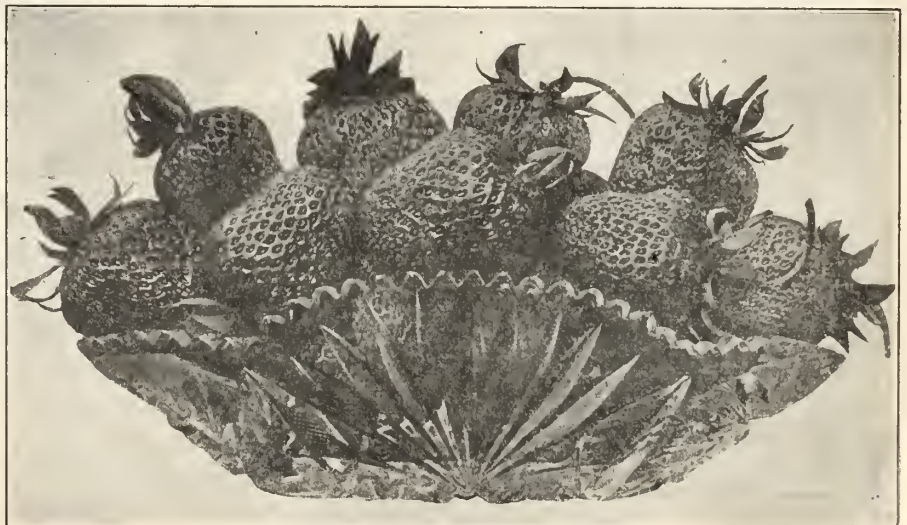
Kelly Plant Gardens,
Spokane, Wash.

Gentlemen,—

Received the plants I ordered from you and was well satisfied with them. I ordered some plants from other houses in and your plants were much better. If I had known about your plants sooner you would have received my entire order.

Yours truly,

G. E. Y.



HOWARD NO. 17 OR PREMIER

KELLY'S Small Fruit Plants

WRITE FOR PRICES ON QUANTITIES
CULTURAL DIRECTIONS ON REQUEST

The culture of small fruit has been very much neglected in our great north-west, consequently small fruit products are scarce and command fancy prices. Their culture and care is not more exacting than other similar products.

GRAPES

CONCORD—A large, black, well known grape. 2 year plants. Postpaid, each, 25c; 10, \$2.00.

WORDEN—Earlier, better quality and larger than Concord, equally hardy and healthy, but not as good a shipper. Best black grape for home use. Postpaid, each, 25c; 10, \$2.00.

MOORE'S EARLY—Earliest best grape for the Inland Empire and Rocky Mountain section. 2-year-old plant. Postpaid, each, 25c; 10, \$2.00.

NIAGARA—Earliest, best white grape. Postpaid, each, 25c; 10, \$2.00.

FLAME TOKAY—Large, handsome bunches; berries large, flame red. The Tokay is not as hardy as above varieties but should you have warm protected location you will be rewarded with the best table grapes. Postpaid, each, 30c; 10, \$2.50.

BLACKBERRIES

MERSEREAU—We consider this the very best. 2-year-old plants. Postpaid, each, 20c; 10, \$1.50.

SNYDER—This is the standard early blackberry for the North country. Postpaid, each, 20c; 10, \$1.50.

HIMALAYA GIANT—A strong, rampant, trailing plant; very productive. Hardy, and thrives even under severe conditions. Fruit large, handsome and fine quality. Postpaid, each, 20c; 10, \$1.50.

CORY THORNLESS—It is a strong, vigorous grower; bears prolific; the canes grow thick and stout. Postpaid, 20c each; 10 for \$1.50.



Concord Grape

KELLY'S SMALL FRUIT COLLECTION

An almost complete assortment of small fruit for a family garden that would ordinarily cost over \$4.00 for \$3.00 postpaid to your home.

50 Everbearing Strawberry Plants, 2 Everbearing Raspberries, 2 Blackberries, 2 Loganberries, 2 Currants, 2 Gooseberries, 2 Grapes.

Our advice on any horticultural problem is yours for the asking.

RASPBERRIES

EVERBEARING (St. Regis)—This is the best variety, particularly for home use, as it is in almost continuous bearing. Postpaid, each, 20c; 10, \$1.50.

Cuthbert—The very best market and home variety. 2-year-old plants. Postpaid, each, 20c; 10, \$1.50.

Cumberland—The best black cap. Postpaid, each, 20c; 10, \$1.50.

GREGG (Black Cap)—Of good size, fine quality, very productive and hardy. Postpaid, 20c each; 10 for \$1.50.

LOGANBERRIES

LOGANBERRY—This fruit partakes of the blackberry in shape and form and has the flavor of the blackberry and raspberry combined. 2 year old plants. Postpaid, ea. 20c; 10, \$1.50.

DEWBERRIES

DEWBERRIES (Lucretia)—Best variety for the Northwest. 2 year old plants. Postpaid, each, 25c; 10, \$2.25.

CURRANTS

CURRANTS (Perfection)—The largest and best red currant. 2 year old plants. Postpaid, each, 20c; 10, \$1.50.

GOOSEBERRIES

GOOSEBERRIES (Champion)—The best standard variety. 2 year old plants. Postpaid, each, 25c; 10, \$2.25.

NOTE—Owing to Federal Quarantine regulations, Currants and Gooseberries cannot be shipped after April 1 and before November 1.

Kettle Falls, Wash., Dec. 8, 1930.
Dear Kelly Garden Folk:

For a number of years we have purchased our garden plants from your firm and I am moved to tell you of the wonderful success we have always had in our production of vegetables, especially in the unusual things such as sweet potatoes, tobacco, peppers and celery.

The past season we harvested an exceptionally fine yield of sweet potatoes, the largest of which weighed exactly three pounds.

Tobacco was a fine yield and of good quality, and we even had good success with the growing of peanuts.

We feel that your careful selection and handling of plants shipped has a good deal to do with the final excellent results of crops obtained.

Most sincerely, I am,
MRS. W. E. V.

Attention—Gardeners, Greenhousemen, Nurserymen, and all growers. We will grow for you plants on contract as well as start seedlings very early, relieving you of the difficulties of the very early propagation by hot beds, etc. We do this for many gardeners very satisfactorily. We have over 20,000 sq. ft. of glass and equipment for plant propagation. We supply any variety that you desire or use your own seeds. Please write us.

POTTED PLANTS—For Frosty and Cold Locations

The positively sure method of success in maturing TOMATOES, EGG PLANT and PEPPERS in the short season localities so common in these northern latitudes is to set KELLY'S INDIVIDUALS. Thousands upon thousands of the KELLY INDIVIDUALS containing these semi-tropical plants are annually doing their duty in maturing their fruit under unfavorable conditions. The whole secret is in the strong, thrifty plant, well hardened, growing in a specially prepared soil and the plant and roots are not in the least disturbed when resetting takes place. With this form and method, plants that are perishable by frost or inclement weather can be held and easily protected while growing all the time, until conditions are favorable.

The additional cost of the KELLY INDIVIDUALS is a mere trifle when compared with the positiveness of the resultant crop.



PLANT BANDS—A specially prepared paper band for individual plant growing, 4x4x3 inches, 100 75c; 1000, \$5.00. 2½x2½x3 inches, 100, 60c; 1000, \$4.00.

Write For Special Quotations on Large Quantities



TOMATO Plants

Finest Transplanted
DOZEN 30c

KELLY'S EARLIANA is the best tomato for the Northwest. We have tested everything of promise to date. Kelly's Earliana is from selected fruit matured in the cool north.

DWARF CHAMPION or TREE—A strong, sturdy plant that produces solid and handsome fruit; its quality is unexcelled. It is later than our Earliana.

BURBANK—An exceptionally early sort, smooth and quite solid. Color, bright scarlet.

KELLY'S BONNY BEST—By selection we are offering this extremely fine fruit as a very close second to our Earliana in Earliness. The scarlet color and solid meat are desirable. Used extensively as a greenhouse forcing variety. Plants are ready in January and on.

Our Tomato Plants are not just ordinary plants. We begin by carefully producing our own seed in our own fields. Careful selection of fruit for seed purposes only has resulted to a very marked degree, earliness, shipping qualities and increased production. Our methods of propagation, due to 35 years of persistent application and with our modern equipment and facilities, has rendered a service for greater quality production, unequalled by any propagators anywhere.

FREE FOR TRIAL

Every customers who will add to their order: Please send free plant of the new

BREAK O' DAY TOMATO and advise us this fall of its behavior, we will be mightily pleased to comply. See description of this promising variety.

U. S. Dept. of Agriculture Development

BREAK O'DAY—An extremely important new variety that is of distinct interest to all tomato growers in this section. It is an early and is expected to reproduce the characteristics of form, color and solidity of the Marglobe and Bonny Best type and the earliness of Earliana. You should try this variety.

PLANTS, postpaid: Doz., 35c; 50, \$1.00; 100, \$1.75.

Not prepaid: 500, \$7.00; 1,000, \$13.00; wt. 4 lbs. per 100.

SEED, postpaid: Pkt., 25c; ¼ oz., 75c; ½ oz., \$1.25; 1 oz., \$2.00.

Plants	In Flats	Individuals
Prepaid	Not	Not
Doz. 30c	Prepaid	Prepaid
50 85c	1 Flat	Doz. 60c
100 \$1.25	About 65	20 - - \$1.00
Not Prepaid	Plants	
500 \$5.50	\$1.25	100 \$3.00
1000 \$10.00		

Tomatoes—Preserving

Postpaid, Doz., 30c; 50c; 85c

124—**YELLOW PEAR.** The most popular variety.
123—**RED PEAR.** Excellent variety.

GROUND CHERRIES

Husk Tomato

Unexcelled for canning, preserving, etc. Fruit of a yellow handsome color, easily grown. Postpaid.. Doz., 30c; 50, 85c.

Send us your order now. We will deliver when seasonable.

PRICES OF PEPPERS

Plants	In Flats	Individuals
Prepaid	Not	Not
Doz. 30c	Prepaid	Prepaid
50 75c	1 Flat	Doz. 60c
100 \$1.25	About 65	20 \$1.00
Not	Plants	
Postpaid	\$1.25	100 \$3.00
1000 \$7.00		

PEPPERS

NEOPOLITAN—Very early and a heavy producer. An upright growing variety. Fruit green at first, scarlet when ripe.

33—RUBY KING. A standard sweet variety, can be eaten raw like an apple.

34—PIMENTO PEPPERS. A delicious sweet flavored salad and stuffing pepper. Include this in your order.

36—TOMATO, RED PEPPER. Hot, pungent, ripens anywhere in this latitude.

BURPEES SUNNYBROOK—A most delicious sweet red pepper. Tomato shape. Include this in your order.

38—CHINESE GIANT. The largest, sweetest pepper in cultivation. Bullnose type, excellent for mangoes.

EGG PLANT

Black Beauty

EGG PLANT—Set May 15 to July 10. Set 2x3 feet. A very delicious vegetable-fruit. Succeeds best on a warm, sandy or gravelly soil that is fertile. If your soil is cold or season short use only our **INDIVIDUALS** or **FLATS**.

Prepaid, Doz., 30c; 50, 75c; 100, \$1.25. Not postpaid, 1000, \$7.00. Not prepaid, 1 flat, about 65 plants, \$1.25. Not prepaid—individuals, doz., 60c; 20, \$1.00; 100, \$3.00.

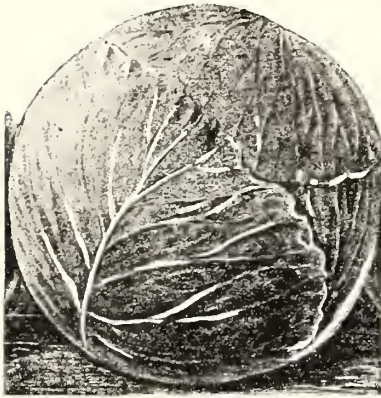


Egg Plant

BUY YOUR TOMATO PLANTS IN FLATS OR INDIVIDUALS

KELLY'S CABBAGE

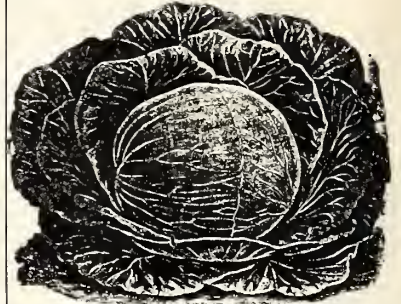
KELLY'S DANISH BALLHEAD



DANISH BALLHEAD—A leading variety for market or home use, maturing in 100 to 110 days. The shrewd market gardener now plants nothing else. It will make a head under the most unfavorable conditions; and scarcely exceeds 7 lbs. with the best conditions. For this reason it can be grown quite close and because of its solidity and uniform size it is preferred by the merchant and consumer. Postpaid, doz., 15c; 50, 50c; 100, 75c; not prepaid, 1000, \$5.00.



EARLY JERSEY WAKEFIELD—The heads are uniformly hard and solid, are cone-shaped, with but few outside leaves; the heart is solid and well blanched. Transplanted, postpaid, doz., 20c; 50, 75c; 100, \$1.00; not prepaid, 1000, \$7.00. Not transplanted, postpaid, doz., 15c; 50, 50c; 100, 75c; not prepaid, 1000\$5.00



COPENHAGEN MARKET—A new introduction from Denmark. It belongs to the second early class. It is a vigorous grower and yields as are all cabbages from Denmark, and an excellent keeper. Prepaid, doz., 25c; 50, 75c; 100, \$1.00; not prepaid, 1000.....\$5.00 Not transplanted. Doz., 15c; 50, 50c.

CABBAGE, FIELD GROWN—Field grown plants of all cabbage varieties, usually ready on June 15 and later. Prepaid, doz., 10c; 50, 35c; 100, 60c; not prepaid, 1000\$3.50

CABBAGE, RED, FOR PICKLING—Prepaid, doz., 15c; 50, 50c.

BRUSSELS SPROUTS—A very palatable cabbage vegetable. Very easily grown and profitable for the market gardener. Postpaid, doz., 15c; 50.....50c

PE TSAI or CELERY CABBAGE—An easily grown vegetable from China. Set plants same as cabbage. Delicious food. Served in any way that you would Cabbage, cauliflower or Asparagus. Postpaid, doz., 25c; 50.....85c

PARSLEY

PARSLEY (Moss Curled)—A bed of parsley is a requirement in the kitchen garden. The "chef" will find many uses in garnishing and flavoring. Prepaid, doz., 20c; 5050c

PARSLEY ROOTS—For winter forcing. Prepaid, doz., 50c; 100, \$2.00.

PARSLEY IN POTS—Place in your kitchen window and have green parsley all winter. Not prepaid, each pot, 25c.

KOHL RABI

KOHL RABI—An excellent, easily grown vegetable. When cooked has the flavor of turnips and cabbage, combined. Postpaid, doz., 20c; 50, 75c.

CELERY

KELLY'S CELERY (Golden Easy Bleaching)—It is dwarf to half dwarf, growing about 25 inches in height, wonderfully stocky, very heavy, perfectly solid, of delicate flavor and a very good keeper, ready for the table or market in 110 days. Added to these points is its great distinctive feature of being literally self-blanching. Our Spokane customers say "it is the best ever seen on this market."

Try this wonderful celery plant.

CELERY CULTURE ON REQUEST

GOLDEN SELF-BLANCHING—The money making celery. It is dwarf to half dwarf, growing 18 to 20 inches in height, wonderfully stocky, very heavy, perfectly solid, of delicate flavor and a very good keeper, ready for the table or market in 110 days.

PERFECTED WHITE PLUME—This is a magnificent celery and most easily grown; its clear whiteness makes it an ornament to the table, and its quality near perfect.

EASY BLANCHING—It is a rapid grower, does not require the exacting conditions of the Golden Self-Blanching. It bleaches to a beautiful white yellow and the best quality.

TRANSPLANTED—PRICES OF ALL CELERY PLANTS—Postpaid, doz., 25c; 50, 65c; 100, \$1.00. Not prepaid, 500, \$3.00; 1000, \$6.00. In Flats, not prepaid, each, \$1.25.

NOT TRANSPLANTED—Prepaid, 500, \$2.50; 1000, \$5.00.

TURNIP ROOTED CELERY—In this variety of celery the roots have been developed and not the leaf stalks. The edible root is easily grown in rich, moist soil. Excellent for soups, stews; makes a delicious salad. Postpaid, doz., 25c; 50, 75c.



Kelly's Golden Easy Blanching
44 lbs., 1 doz. stalks



KELLY'S SNOWBALL CAULIFLOWER

Cauliflower as easily grown as cabbage if you use KELLY PLANTS.

CAULIFLOWER SNOWBALL—For the early crop set during the first half of May. Late crops the most profitable, set May 10 to July 1. Matures in 80 to 100 days. Prepaid, doz., 30c; 50, \$1; 100, \$1.25; not prepaid, 1000.....\$7.00

CAULIFLOWER—Snowball in flats. Each \$1.25 by express, not prepaid.

KALE

KALE—Chicken and cow. A plant that will produce green succulent relishable food for poultry and cattle from July till January. As each leaf is plucked the younger leaves are excited to more rapid growth which results in a continuous cropping plant. Postpaid. Doz., 20c; 50, 65c; 100, \$1.00.

KALE—Chicken and cow in flats. By express, not prepaid. Each, \$1.25.



ASPARAGUS
KELLY'S PALMETTO

ASPARAGUS
A crop that is never overproduced. Cultural Directions on request.
The grower finds this vegetable about the first one that always finds ready sale at profitable prices, and the earliest income of his "out-in-the-open" crops. In addition it is so easily harvested and prepared for market that indeed it is a most acceptable crop. No garden, whether it be for the market or the home, is really complete without a bed of good roots.
PALMETTO—The best acquisition to our comparatively few varieties.
ARGENTEUIL—This comparatively new variety is becoming very popular.
WASHINGTON — Pedigreed. The new rust resistant variety. Our strain from the Department of Agriculture of the U. S. tested seeds.

Not Prepaid.
PRICES: Asparagus Roots—All varieties.
1 year: Doz., 25c; 25, 40c; 50, 75c; 100, \$1.00; 1000, \$6.00.
2 year: Doz., 40c; 25, 50c; 50, 85c; 100, \$1.50; 1000, \$10.00.
3 year: Doz., 50c; 25, \$1.00; 50, \$1.50; 100, \$2.25; 1000, \$15.00.
By Parcel Post add 15c doz.; 50c 100.

SWISS CHARD

SWISS CHARD—A spinach beet top greens—an attractive vegetable and quite popular. Prepaid, doz., 20c; 50, 75c.

LETTUCE



KELLY'S WONDERFUL LETTUCE

LETTUCE, Wonderful—If you want a big solid head lettuce, let us supply your plants. Slow to run to seed. Postpaid, doz., 20c; 100, 60c; not prepaid, 1000, \$4.00.

RHUBARB OR PIE PLANT

Not prepaid.
RHUBARB (Victoria) — Strawberry color. The most popular variety grown. A good market sort, with beautiful red stalks, giving satisfaction everywhere.
1 year: Each, 10c; doz., \$1.00; 50, \$3.00; 100, \$5.00; 500, \$15.00; 1000, \$30.00.
2 year: Each, 20c; doz., \$1.50; 50, \$4.00; 100, \$8.00; 500, \$30.00; 1000, \$50.00
3 year: Each 35c; doz., \$3.00; 50, \$8.00; 100, \$15.00; 500, \$50.00; 1000, \$100.00.

We deliver free to your express or postoffice all plants of 100 or less, except Victoria Asparagus Roots, Rhubarb Roots, Individuals, Flats and Potted Plants and all items not prepaid.

TOBACCO PLANTS

Its value as an insect repeller in the garden and poultry house is well worth the time to produce it. Wise orchardists are producing their own tobacco for spraying, at a big saving.
BURLEY—The best variety for smoking or as an insecticide. Prepaid, doz., 25c; 50, 75c; 100, \$1.25.

ONION PLANTS

ONION—Big plants ready to set out and will produce a more tender green onion and earlier than from sets. Will mature big bulbs a month earlier than from seed. Plants much cheaper than sets and more reliable than seed sown. Prepaid, 100 plants, 35c; 1000 plants, \$2.00.

LEEK

LEEK—A close relation to the onion family. Mild and pleasing flavor. Easily grown with plants. Postpaid, 100, 35c; 500, \$1.50.

CHIVES

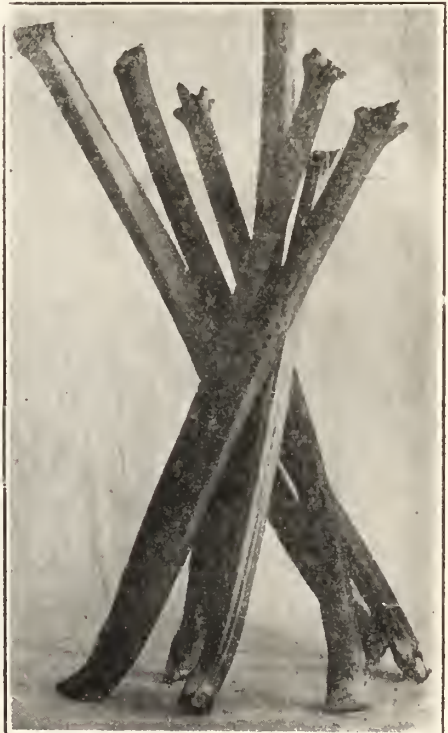
CHIVES (Schnittlauch)—An onion-like plant with finely grown leaves. Invaluable for flavoring soups, stews and salads. One setting will last for many years as the roots multiply rapidly. Postpaid, roots, 15c bunch; dozen bunches, \$1.25.

DILL

SEED, PKT., 10c; OZ., 25c
DILL—The plant that gives zest to dill pickles. Plants, prepaid. Doz., 20c; 100, \$1.00.

MATURED DILL—At pickle time. Prepaid. Bunch, 20c; doz. bunches, not prepaid, \$1.25.

CRESS (True Water)—A most delicious salad plant. While it can be grown in a very moist location, it thrives best when its roots are submerged in running water. Any suitable location should have a supply of water cress. Prepaid. Doz., 30c; 100, \$2.00.



KELLY'S VICTORIA STRAWBERRY RHUBARB

HERBS—Plants
SEEDS—Pkt., 10c
Access to a supply of green-growing aromatic and medicinal herbs aid greatly in the culinary art of the housewife.

BASIL (Sweet)—An aromatic annual. For soups and sauces. Doz., 25c.

CARAWAY—Seeds used for pastry, bread, etc. Leaves are used for colic in children. Doz., 25c.

MARJORAM SWEET—Leaves used for dressings, broths, etc. Dry the leaves for winter use. Doz., 25c.

SAVORY (Summer)—Used extensively for flavoring meats, stews, dressings, etc. Doz., 25c.

THYME—An aromatic perennial for seasoning. Its medicinal properties are highly recommended for sick and nervous headaches. All herbs, postpaid. Doz., 30c; 50, \$1.00.

MINT (Spearmint) Plants—The flavor is a lasting, agreeable one, for sauces, stews, etc. Very hardy, perennial. Prepaid, each, 10c; doz., 75c; 100, \$4.00.

SAGE (English Mammoth)—Perennial. So easily grown and most used for all herbs; every garden should have at least a dozen plants. Very hardy—indispensable for fowl dressing, winter sausage and head cheese.

SPRING PLANTS—Prepaid. Doz., 40c.
1 year roots. Not prepaid, Each, 20c; doz., \$1.50; 100, \$10.00.

HORSE RADISH

CULTURE—Plant sets, sloping cut end down, top of set one inch below surface. One foot apart in the row and rows 2 1/2 to 3 feet, or set 20 inches apart each way.

HUNGARIAN—One of the most profitable of garden crops. Smooth, nice roots always sell on any market. Prepaid, Doz., 30c; 50, \$1.00; 100, \$1.50; 1000\$10.00

Send us your order now. We will deliver when seasonable.

Sweet and Irish Potatoes

NORTHERN GROWN SEED

Healthy and Vigorous Seed Makes Profitable Yields

EARLY OHIO—This variety can always be depended on in every locality, and is grown throughout the country where an early variety is desired. Not prepaid.

EARLIEST OF ALL—A fine white-skinned early or late variety. Not postpaid.

IRISH COBBLER—One of the fine early of midseason white mealy varieties. Not prepaid.

NETTED GEM—Is the best main crop potato today and of the highest quality. Exceptionally fine for baking. Not prepaid.

Prices on Seed Potatoes

EARLY OHIO
EARLIEST OF ALL
IRISH COBBLER
NETTED GEM
No. 1, 10 lbs., 40c; 50 lbs., \$1.35; 100 lbs., \$2.50.
No. 2, 10 lbs., 35c; 50 lbs., \$1.15; 100 lbs., \$2.00.

ELISS' TRIUMPH—One of the favorites—a potato of fine merit and quality. Not prepaid. No. 1, 10 lbs., 40c; 50 lbs., \$1.35; 100 lbs., \$2.50. No. 2, 10 lbs., 35c; 50 lbs., \$1.15; 100 lbs., \$2.00.

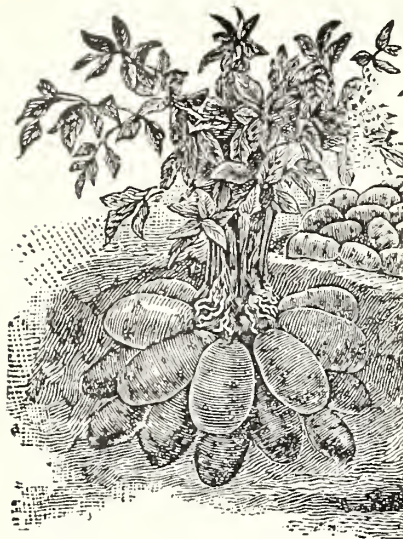
SWEET POTATO PLANTS AND SEEDS

CULTURE—Set plants about 18 in. apart. Protect plants for a few days against extreme heat, strong wind and cold nights. A warm soil with southerly exposure is the ideal. Hundreds of our customers are producing "sweets" under varied conditions of soil with KELLY'S hardy plants.

SWEET POTATO PLANTS (Kelly's Iowa Hall)—If Sweet Potatoes can be grown, you will succeed with these plants. Price of plants, postpaid: Doz., 30c; 50, \$1.00; 100, \$1.50. Not prepaid, 500, \$4.50; 1000, \$9.00.

Write for prices on SEED Sweet Potatoes.

Prices on seed potatoes are not guaranteed and are subject to change without notice.



ONION SETS

These very small onions are planted 3 or 4 inches apart in rows for the earliest "green onions." Postpaid, 1 lb., 25c. Write for quantity prices.

Egyptian Top Onion Sets

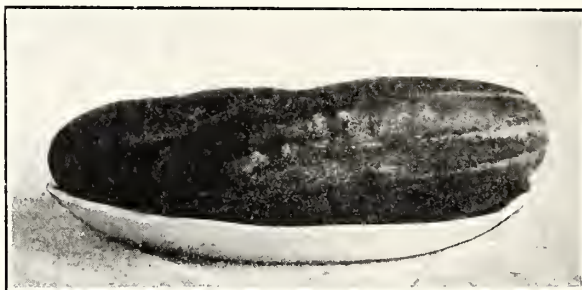
The earliest and hardiest green onion. Once planted, never without very early green onions. Postpaid, 1 lb., 30c.

GARLIC

Extensively used for flavoring meats, stews, etc. Separate the bulb into individual cloves which are the planting seed. Plant the same as onion sets or plants. Postpaid, ½ lb., 30c; 1 lb., 50c.

ATTENTION

Early fruit gets the best prices. For early Cucumbers and Muskmelons, use our plants and Hotcaps. See page 21.



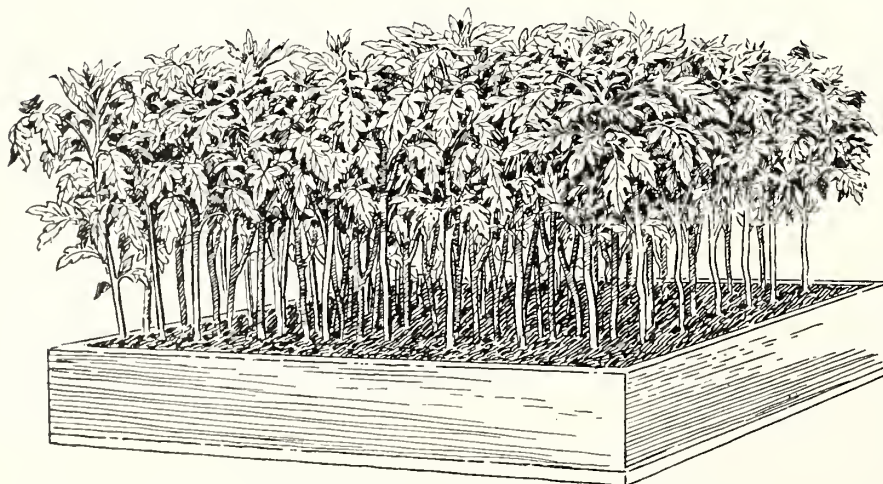
CUCUMBER

(Individuals). A hill of plants growing ready to set out, that will produce 'slicers' weeks in advance of the usual seed grown. Not prepaid. Doz., 75c; 100, \$4.00.

MUSKMELON HEARTS OF GOLD

Unquestionably the cream of all orange fleshed melons. In our INDIVIDUAL pots ready to set out. Mature weeks before seed sown and more crop sure. Not prepaid. Each, 10c; doz., \$1.00. Shipping weight about 1 lb. each. See POTTED INDIVIDUALS for MELONS, CUCUMBERS, TOMATO, Etc.—Page 4.

FLATS



FLATS or shallow boxes, containing about sixty growing plants, is the most positive way of securing a 100% stand and a maximum crop, excepting only our POTTED INDIVIDUALS. If for any reason you do not wish to set them out upon arrival they may be kept for weeks, growing steadily. The plants are spaced evenly so that you may cut a 1x2x3 inch cube of soil with each plant, preventing wilting or setback.

Hundreds of our customers prefer KELLY PLANTS IN FLATS for they are sure of a crop of vegetables and flowers.

We can supply FLATS of TOMATO, CABBAGE, KALE, PEPPERS, CELERY, CAULIFLOWER, EGG PLANT, PANSY, CARNATION, KOCHIA, ASTERS, SALVIA, Etc. Note—For your choice in variety refer to classified plants throughout the catalog.

FLATS, each \$1.25; not prepaid. Sent safely by express or parcel post. Shipping weight about 30 lbs.

KELLY'S SEED DEPARTMENT



The high degree of success that we have attained with our plants has been due largely to the selection of our seeds, both from the standpoint of carefulness in securing varieties true-to-name and the adaptability of particular varieties to our climatic conditions. In using our seeds, you have the assurance of these facts. Our seeds are of high germination test and carry our usual stamp of extra fine quality. At the prices listed, our seeds are sent prepaid to your door.

Vegetable Seeds

ASPARAGUS

PALMETTO—The standard variety the world over. Purplish green color, tender and beautiful heads. Pkt., 5c; oz., 15c; ¼ lb., 40c; 1 lb., \$1.00.

WASHINGTON MARTHA—This variety is the latest result of the U. S. Dept. of Agriculture in breeding a rust resistant variety. Finest quality and equal to Palmetto. Pkts., 10c; oz., 25c; ¼ lb., 85c; 1 lb., \$2.50.

BEANS—BUSH—PKT. 10c

GOLDEN WAX—Very popular, both for home garden and for market. The pods are of medium length, broad, flat, golden yellow, very fleshy, wax-like, and stringless. Postpaid, 1 lb., 40c; not prepaid, 10 lbs., \$3.50.

BLACK WAX—Pencil pod. A very productive wax bean with almost round pods, tender and delicious. Postpaid, 1 lb., 40c. Not prepaid, 10 lbs., \$3.50.

GREEN STRINGLESS—Pods are pale green, long and straight, round, meaty and of excellent flavor. Postpaid, 1 lb., 40c. Not prepaid, 10 lbs., \$3.50.

POLE BEAN

KENTUCKY WONDER—This variety is the most useful of the green podded pole bean. Suitable for use as snaps. Postpaid, 1 lb., 40c; not prepaid, 10 lbs., \$3.50.

BEETS

CROSBY'S EGYPTIAN—One of the earliest and best strains of Beets. Skin smooth and deep blood red, crisp flesh. Foliage sparse, hence small crown. Roots are round and with a very small tap-root. Pkt., 5c; oz., 15c; ¼ lb., 40c.

EARLY EGYPTIAN—Earliest of all Beets. Roots distinctly flat and with smooth surface. Color a very dark red. Being early it is grown successfully under glass. When young it is tender and crisp. Pkt., 5c; oz., 15c; ¼ lb., 40c.

DETROIT DARK RED—Globular-shaped Beet of rich dark red color, medium-sized, making the best beet for market and home use. Because of its uniform size it is canned extensively. Keeps its fine flavor even after it gets large. Pkt., 5c; oz., 15c; ¼ lb., 40c.

BEET (Stock)—MANGEL WURTELS (Long Red)—Heaviest cropping. Fine for cattle and poultry. Oz., 10c; ½ lb., 35c; 1 lb., 60c.

CABBAGE

EARLY JERSEY WAKEFIELD—The earliest best cabbage in existence. Pkt., 5c; oz., 25c; ¼ lb., 75c.

COPENHAGEN MARKET—The largest of the second early varieties. Pkt., 5c; oz., 35c; ¼ lb., 85c.

ALL HEAD EARLY—One of the earliest flat head types. Few outside leaves. Fine for early fall sales and kraut making. Pkt., 5c; oz., 25c; ¼ lb., 75c.

GOLDEN ACRE—Very much like All Head Early. It is a Washington State variety and gives good results. Pkt., 5c; oz., 50c; ¼ lb., \$1.25.

SAVOY—A crumpled leaf variety. Very delicious. Pkt., 5c; oz., 25c.

CHINESE or CELERY—PeTsai. A very popular salad cabbage much like Cos Lettuce. Pkt., 5c; oz., 25c.

DANISH BALL HEAD—The best late cabbage grown. Pkt., 5c; oz., 35c; ¼ lb., 85c.

RED ROCK—Best for pickling. Pkt., 5c; oz., 25c.

BRUSSELS SPROUTS—Grown for small heads that sprout from the main stem. Treat like late cabbage. Pkt., 5c; oz., 35c.

SEE CABBAGE and CAULIFLOWER in PLANT DEPT.

CAULIFLOWER

Seed Cauliflower to mature before or following the real hot season to get best results. Cauliflower will not mature properly during hot weather.

SNOWBALL—Leading and best variety for our section. Often attains a diameter of 12 in. European grown seed. Pkt., 15c; ¼ oz., 75c; oz., \$2.50.

CARROTS

DANVERS HALF LONG—The best Carrot for all uses. Almost cylindrical in shape, somewhat stump-rooted, and of rich, dark orange color. Fine flavor and grown extensively by market gardeners on account of its fine appearance bunched. Pkt., 5c; oz., 15c; ¼ lb., 40c.

OXHEART or GUERANDE—A thick Carrot, very blunt at the lower end making it very easy to be pulled. Tender and good flavor. Pkt., 5c; oz., 15c; ¼ lb., 40c.

CELERY

KELLY'S GOLDEN (Easy Bleaching)—It is dwarf to half dwarf, growing about 25 inches in height, wonderfully stocky, very heavy, perfectly solid, of delicate flavor and a very good keeper. Pkt., 25c; ¼ oz., \$1.00; 1 oz., \$3.50.

WHITE PLUME—Popular white variety. Pkt., 20c; oz., 35c.

GOLDEN SELF BLANCHING—A good fall and winter celery. Pkt., 20c; oz., 75c.

EASY BLANCHING—A new variety. Whitish-yellow heart with green leaves. Pkt., 15c; oz., 35c.

SEE CELERY PLANTS in PLANT DEPT.

SWEET CORN—PKT. 10c

GOLDEN BANTAM—This new sweet corn is described as the tenderest, sweetest and best sweet corn in existence. Postpaid, 1 lb., 30c; not prepaid, 10 lbs., \$2.90.

EARLY EVERGREEN—This variety is more largely planted than any other, being the general favorite with market gardeners for late use. Postpaid, 1 lb., 30c; not prepaid, 10 lbs., \$2.85.

COUNTRY GENTLEMAN—A favorite second early or main-crop variety with all private gardeners for its tenderness, delicacy, small, deep grains and sweetness. Postpaid, 1 lb., 30c; not prepaid, 10 lbs., \$2.85.

POPCORN, WHITE RICE—The best corn for popping and for the general market; early, white pointed kernels. 1 lb., 30c; postage paid. At purchaser's expense, 10 lbs., \$2.90.

TRUE WATER CRESS—Pkt., 15c.

CUCUMBERS

DAVIS PERFECT—The most popular Cucumber ever introduced. Ideal shape and perfect size for table or for market use. Rich dark green color and its flavor surpasses all other varieties. It is enormously productive. Pkt., 5c; oz., 15c; ¼ lb., 50c.

SNOW'S PICKLING—Cylindrical shaped with square ends, just the right size for bottling. Color dark green. Flesh is firm, crisp and tender. Pkt., 5c; oz., 15c; ¼ lb., 50c.

SEE POTTED CUCUMBER PLANTS

EGG PLANT

Few realize the results of growing this crop. Always a money-maker.

BLACK BEAUTY—The earliest and best variety for our section. Color jet black that does not fade at blossom end. Broad form making it extremely attractive. Pkt., 5c; oz., 50c.

KALE (Dwarf)—A fall and winter greens Pkt., 5c; oz., 30c.

KALE (Chicken and Cow)—This plant produces more green food for chickens and cattle than any other plant. Pkt., 10c; oz., 25c.

SEE KALE PLANTS IN PLANT DEPT.

KOHL RABI (Early Purple)—A relishable vegetable with the flavor of cabbage and turnip combined. Pkt., 10c.

LETTUCE

There is no crop that has as good average results as Lettuce.

GRAND RAPIDS—Best leaf lettuce for outdoor or forcing. Crisp, sweet delicious flavor. Pkt., 5c; oz., 30c.

NEW YORK OR WONDERFUL—Also known as **LOS ANGELES**. Finest head variety grown. It is grown now for commercial use than any other variety known. Heads are solid, large and of quality unsurpassed. Pkt., 5c; oz., 25c; ¼ lb., 90c.

ICEBERG—A good variety with fine flavor. Outside leaves have slightly reddish tinge on edges. Pkt., 5c; oz., 20c; ¼ lb., 50c.

MUSKMELONS

HEARTS OF GOLD—Unquestionably the cream of the yellow fleshmelons. Pkt., 5c; oz., 20c; ¼ lb., 60c.

MELON MUSK (Rocky Ford)—A deep netted standard variety. Pkt., 5c; oz., 25c.

SEE POTTED CANTELOUPES—PLANT DEPT.

ONION

PRIZETAKER—A large mild light yellow skin. Pkt., 5c; oz., 30c.

WHITE GLOBE—A large white good keeper. Pkt., 5c; oz., 30c.

DANVERS—YELLOW FLAT—The leading large yellow kind. Pkt., 5c; oz., 40c.

RED WETHERSFIELD—This is the standard red variety and a great favorite. Pkt., 5c; oz., 40c.

QUEEN—Small, silvery-white, for pickling. Pkt., 5c; oz., 30c.

BARLETTA—Small, silvery-white, for pickling. Pkt., 5c; oz., 30c.

SWEET SPANISH—A very mild large yellow onion with good keeping qualities. Pkt., 5c; oz., 40c; ¼ lb., \$1.00; 1 lb., \$3.50.

SEE ONION PLANTS AND SETS IN PLANT DEPT.

PARSNIPS (Hollow Crown)—The best variety. Pkt., 5c; oz., 20c.

PARSLEY (Moss Curled)—The leading variety. Pkt., 10c.
1 lb., 30c; not prepaid, 10 lbs., \$2.50.

GARDEN PEAS

Pkt., 10c.

ALASKA OR EARLIEST OF ALL—Earliest and best of all of the blue smooth varieties. Postpaid, 1 lb., 30c; not prepaid, 10 lbs., \$2.00.

SURPRISE—2 feet high, productive, the earliest pea of quality. Postpaid, 1 lb., 30c; not prepaid, 10 lbs., \$2.25.

AMERICAN WONDER—One of the earliest of the wrinkled and very sweet varieties. A favorite for family and market. Postpaid, 1 lb., 40c. Not prepaid, 10 lbs., \$3.00.

NOTTS EXCELSIOR—A most vigorous dwarf early well filled wrinkled pea. Will mature in 60 days. Prepaid, 1 lb., 40c. Not prepaid, 10 lbs., \$3.25.

GRADUS—A little later than the early sorts but with larger pods containing 8 to 10 large peas. Vines grow from 2 ft. to 2½ ft. Postpaid, 1 lb., 40c. Not prepaid, 10 lbs., \$3.00.

DWARF TELEPHONE—Probably the best variety for market. Very large pods filled with delicious peas. Grows 18 in. to 24 in. high. Postpaid, 1 lb., 40c; 10 lbs., \$3.00.

PEPPER

RUBY KING—Our Own Grown Private Stock. Vigorous and acclimated. The most popular pepper in cultivation. Pkt., 10c; 1 oz., 75c.

PIMENTO—A sweet mango variety. Pkt., 15c; oz., 30c.

CHINESE GIANT—The largest sweet pepper grown. Pkt., 10c; oz., 75c.

NEOPOLITAN—EARLIEST of all Sweet Peppers. Plant Neopolitan and enjoy peppers two weeks ahead of other varieties. Pkt., 10c; oz., 35c; ¼ lb., \$1.20.

SUNNYBROOK—A delicious sweet-meated variety. Round shaped, skin smooth, glossy. Scarlet in color. Very prolific. Pkt., 10c; ½ oz., 40c; 1 oz., 65c.

TOMATO HOT—Round Tomato-shaped pepper. Very hot. Pkt., 5c; oz., 50c.

CAYENNE (Long Red)—A very pungent Red Pepper. Early and prolific. Pkt., 5c; oz., 50c.

SEE PEPPER, EGG PLANT, GROUND CHERRY in PLANT DEPT.

PUMPKIN (Sugar)—The sweetest for pies. Pkt., 5c; oz., 25c.

RADISH

FRENCH BREAKFAST—Medium size, quick growth, crisp and tender. Very attractive. Pkt., 5c; oz., 15c; ¼ lb., 40c; 1 lb., \$1.00.

EARLY SCARLET TURNIP—The earliest and best. Pkt., 5c; oz., 15c.

WHITE ICICLE—The best of the long white. Pkt., 5c; oz., 15c; ¼ lb., 35c; 1 lb., 90c.

RHUBARB

Seed in shallow drill, 1 oz. to 150 ft. of row. Thin to stand 10 or 12 inches apart. Do not gather stalks until 2nd year.

VICTORIA—Best variety. Mammoth stalks and yields heavily. Pkt., 5c; oz., 25c; ¼ lb., 75c.

SALSIFY OR VEGETABLE OYSTER—Sandwich Mammoth. Pkt., 10c; oz., 35c.

SQUASH

GIANT CROCKNECK—Earliest and largest of summer varieties. Deep orange skin and salmon-orange flesh. Pkt., 5c; oz., 20c.

BOSTON MARROW—Hard shelled sort for fall and winter use. Pkt., 5c; oz., 20c.

HUBBARD—Best fall and winter variety. Flesh orange-yellow, dry and sweet. Pkt., 5c; oz., 20c.

TABLE QUEEN—Small, just right for family use. Flavor as good as Hubbard. Pkt., 5c; oz., 20c.

SPINACH

Always a money-maker.

BLOOMSDALE SAVOY—Thick, dark crumpled leaves. Perfectly hardy. Pkt., 5c; oz., 20c.

TOMATO

KELLYS EARLIANA—Our own grown private stock. By careful selection we have wonderfully improved this variety. This private stock is hand selected to maintain its characteristics. Pkt., 25c; ½ oz., \$1.00.

EARLIANA—Select stock from early maturing fruit. There is no better early and prolific variety nor vigorous strain. Pkt., 5c; oz., 35c.

JOHN BAER—Second early, scarlet-fruited variety. Flavor fine. Pkt., 5c; oz., 35c.

BURBANK—This variety is claimed to be the earliest variety. It resembles the Earliana. Pkt., 5c; oz., 50c; ¼ lb., \$1.75.

DWARF OR TREE—A sturdy, vigorous growing plant that produces the very best quality in fruit. Pkt., 10c; oz., 25c.

BONNY BEST—See description on Tomato Plant page. Packet, 5c; oz., 35c.

PEAR SHAPED YELLOW AND RED—For preserving. Pkt., 10c.

SEE TOMATO PLANTS in PLANT DEPT.

SWISS CHARD (Lucullus)—Delicious vegetable, easily grown. Oz., 15c.

RUTABAGA (Purpletop)—A superior yellow variety. Pkt., 5c; oz., 20c.

TURNIP

TURNIP (White Globe)—A fine quality. Best for market. Pkt., 5c; oz., 20c.

SNOWBALL—An early fine variety. Pkt., 5c; oz., 20c.

PURPLE TOP STRAPLEAF—Best known reliable variety. Pkt., 5c; oz., 20c.

KELLY'S LAWN GRASS SEED—Prices Postpaid by Us**BENT**

This wonderful grass produces positively the finest turf that can be formed. Its creeping stolon habit makes a close knit turf, choking all weeds. Bent thrives in an acid soil. If you want the best lawn and the least weed trouble use this seed. Our Bent seed is grown in Washington and is the true creeping type. There are several varieties and the cheaper kinds are not creeping. One pound of our seed sows about 500 or 600 sq. ft. of

lawn surface. 1 lb., \$2.00; 5 lbs., \$9.75; 10 lbs., \$19.00.

KENTUCKY BLUE GRASS—A hardy grass and found in all mixtures. It makes an excellent lawn. 1 lb., 60c; 5 lbs., \$2.75; 10 lbs., \$5.25.

CHEWINGS FESCUE—Small low growing grass forming a dense turf on all types of soils. 1 lb., 65c; 5 lbs., \$3.00; 10 lbs., \$5.75.

CLOVER, WHITE DUTCH—Excellent for lawns when mixed with grasses in right proportions. 1 lb., 65c; 5 lbs., \$3.00; 10 lbs., \$5.75.

KELLY'S FINEST MIXTURE

A well balanced blend that will produce a fine turf in a short time. Sow 1 lb. to about 300 sq. ft. 1 lb., 65c; 5 lbs., \$3.00; 10 lbs., \$5.75.

KELLY'S SHADY LAWN MIXTURE

This mixture is intended for and will thrive under conditions where there is partial or complete shade, such as under trees or in shadows of buildings. 1 lb., 60c; 5 lbs., \$2.80; 10 lbs., \$5.50.

KELLY'S FLOWER SEEDS—All Packets 10c Unless Otherwise Noted

AGERATUM—Annual—Pretty border blue flowers.

ALYSSUM (Sweet Alyssum) Annual—Used extensively for border or bedding flowers.

ALYSSUM (Saxatile) — Perennial yellow flowers. Pretty border plant.

AMARANTHUS—Combustion—Burbanks. An annual plant about 3 feet tall, furnace red color of foliage. His last creation. Pkt., 50c. See House Plants Section.

ANCHUSA—Perennial—A beautiful blue flowering plant about 3 feet.

ARABIS—Perennial (Rock Cross)—For rockery or edging.

ASTER (Crego's Giant) Annual—The finest of the aster family, producing immense flowers of a fluffy texture. Very fine for cutting. Pink, purple, rose, white, blue, lavender and all colors mixed.

ASTER—Heart of France—The purest red color and fluffy petals.

ASTER—Sunshine—A new sensation in asters. Mixed. Pkt., 25c.

ASTER—Perennial—Michaelmas Daisys. Attractive fall blooms blue.

BACHELOR BUTTON (Centaurea Cyanus)—Annual. Easily grown free blooming and pretty.

BLUE LACE FLOWER (Didiscus)—An extremely pretty light blue. Lace like florets.

CALLIOPSIS (Coreopsis) Annual—An excellent plant for cutting and massing, blooming all summer. Mixed colors.

CANDYTUFT, Annual—This flower makes a very attractive border or cut flower. Mixed.

CANTERBURY BELLS—Biennial. The seed may be planted where they are to bloom. All colors.

CALENDULA (Pot Marigold)—Very attractive yellow blooms.

CARNATION—A new strain in all colors from a French grower which produces blooms outside equal to the greenhouse grown. White, dark red, scarlet, yellow, rose and mixed.

CASTOR BEAN (Ricinus)—A very showy plant—highly ornamental.

CHRYSANTHEMUM — Very showy summer flowering annual.

CLARKIA—A hardy attractive flowering plant.

COCKSCOMB (Celosia)—One of the most interesting of plants. Chenille like and tufted.

COLUMBINE (Acquilegia)—Perennial. The long spurred varieties are beautiful tasty flowering plants. Separate colors and mixed. Pkt., 15c.

COSMOS—A fall blooming plant for showy borders or mass bedding.

COREOPSIS—Perennial. Large yellow flowers.

DAHLIA—It is very interesting to grow dahlias from seed and often secure a new Dahlia. Varieties do not reproduce true from seed, but bloom the first year. Double mixed. Pkts., 25c. CACTUS varieties mixed pkts., 50c.

DAISY—Perennial. English Daisy. Fine low growing, profuse blooming plants early. White and pink. Pkts., 15c.

DELPHINIUMS (Perennial Larkspur)—A perennial garden is incomplete without this highly attractive summer and fall flowering plant. Pudors' Glory and Vanderbilt's selected strains. All colors and mixed. Pkts., 75c.

Belladonna—Light blue, pkts., 15c.
Bellamosum—Dark blue, pkts., 15c.

FORGET-ME-NOT—Half hardy perennial. Neat and beautiful plants with star-like flowers.

FOXGLOVE (Digitalis) Perennial—Does not usually bloom until the second year. Produces brilliantly colored flowers. Plants three feet. All colors.

FOUR O'CLOCK—Bright flowers of many shades.

GAILLARDIA, Annual — Remarkable for the profusion, size and brilliancy of its flowers.

GAILLARDIA—Perennial — Grandiflora Maxima. Pkt., 15c.

GERANIUM — Interesting to grow for a new geranium may result with perhaps many double blooms. Pkt., 25c. Lady Washington, pkt., 35c; 50 seeds, \$1.50.

GEUM, Perennial—Mrs. Bradshaw. A scarlet bloom somewhat resembling the carnation. Pkt., 20c.

GYSOPHELIA (Baby's Breath)—Delicate free flowering little plants covered with small white star shaped little flowers.

HELICHRYSUM — Strawflower or Everlastings. Hardy annual easily grown. Cut when just about to open and hang up in a cool airy place heads down until well dried. Make the finest of winter bouquets.

HOLLYHOCKS, Double—A majestic old-fashioned favorite. Maroon, salmon, yellow, black, red, white. Pkt., 15c.

HUNNEMANIA—Yellow tulp poppy. Profuse blooming buttercup yellow.

KOCHIA (Mexican Burning Bush), Annual—Plants are rounded and globe-like which in the early fall are thickly set with small bright scarlet flowers. Grows three feet tall and is excellent for summer hedge. Pkt. 15c.

LARKSPUR (Delphinium), Annual—One of the best garden plants. Will bloom from late summer until frost. Pkt. 15c.

LOBELIA, Annual—Well adapted to bedding or edgings, being always completely covered with blue flowers. Height, six inches.

LUPINS, Annual — Produces long spikes of pea-shaped blooms. Pkt. 15c.

LUPINS, Perennial—Very fine border and should mingle with Delphinium for effect. Pkt. 25c.

LYCHNIS Jerusalem Cross—Brilliant red clusters of cross formed blooms. Pkt. 15c.

MARIGOLD, Annual—Well known free bloomer. African and French.

MIGNONETTE—A quick growing fragrant annual.

MIMOSA—Sensitive plant. Curious plant—when touched closes its leaves. Pkt. 15c.

MORNING GLORY, Dwarf—A rapid growing vine for quick covering of porches, rockeries, etc.

NASTURTIUM (Tall), Annual—Elegant and luxurious climbers for veranda pieces and trellises, etc. Mixed.

NASTURTIUM (Dwarf), Annual—Beautiful bedding plants. Mixed.

PANSY (Mastadon) Perennial — Plants may be started indoors and transplanted for late summer and fall blooming. They thrive best in cool, moist soil. Fine mixed. Pkt. 25c.

PEAS, Perennial—Very similar to the Sweet Peas, but continue without replanting. Plant where support is natural or artificial. Pkt. 15c.

PENSTEMON, Perennial — Beard Tongue. Magnificent bell-shaped flowers. In all colors and margined. Pkt. 15c.

PETUNIA—Bedding. Single. Probably the best known and universally grown flower for many purposes.

Var. Howard's Star—Crimson with white star. Pkt. 15c.

Gen. Dodds—Blood red. Pkt. 15c.

Rosy Morn—Fine pink. Pkt. 15c.

Elks Pride—Large purple blooms often 3 inches. Pkt. 50c.

Pride of Portland—Pink. Pkt. 50c.

Pink Glory—Pkt. 50c.

Deiner's—Ruffled monsters, single giant blooms. Pkt., 50c.

Deiners—Ruffled monsters, double fringed. Pkt. 50c.

PHLOX DRUMMONDI—One of the finest bedding plants grown. Blooms from early summer until frost. All colors mixed.

PINKS (Dianthus), Annual—One of the most popular old-fashioned flowers. Produces a wonderful variety of brilliant colors. Mixed.

POPPY, Annual, Shirley—All colors in a fine strain.

POPPY, Carnation—Double flowered resembling a fluffy aster.

POPPY, Double—Mixed. All colors.

POPPY, Perennial, Oriental—Great blooms of salmon and red. Pkt., 15c.

POPPY, Perennial, Iceland—Slender stems crowned with pretty blooms in several colors. Pkt. 15c.

PORTULACA (Moss Rose), Annual —Fine for massing or edging. Should be started indoors and planted in sunny location. Single mixed.

PYRETHRUM, Roseum, Perennial—Resemble the large daisy and deserve greater culture. Separate colors and mixed.

PYRETHRUM, Aureum, Golden Feather—A very pretty yellow leaved border plant. Fine for edging.

SALPIGLOSSIS (Painted Tongue) Annual—Produces beautiful orchid-like flowers. All colors mixed.

SALVIA (Scarlet Sage)—Tender perennial. Blooms the first season from seed. Blossoms are born on long stems in racemes or spikes and are very beautiful.

SHASTA DAISY, Perennial — Very attractive, large white flowers, four to five inches in diameter, broad, white petals and stems.

SNAP DRAGON (Antirrhinum), Annual—Very desirable for beds and edgings. Mixed.

SWEET WILLIAM, Perennial — Grows one to two feet tall and bears its sweet scented flowers at the ends of a stiff stem. It makes a beautiful bedding plant. Single mixed.

VERBENA, Annual—Verbenas thrive in almost any situation and in all good garden soils. They make attractive borders and beds, blooming profusely from June until October. Mixed.

SWEET PEAS — True Spencers — Nine separate beautiful colors and mixed. Pkts., 10c; oz., 40c.

ZINNIA—Giant Dahlia Flowered—Our seed direct from the introducer. Separate colors and mixed. Pkts., 25c; ½ oz., \$2.50. Description, see page 12.

ZINNIA—Robusto or Giant Double—Beautiful large flowers. Separate colors and mixed. Pkt., 15c; ½ oz., \$1.00.



Kelly's Crego Asters

AGERATUM—One of the best summer blooming plants. Their bright blue flowers are produced in the greatest profusion. Postpaid, doz., 30c; 50, 85c.

ALYSSUM—Little Gem, snow-white Carpet Plant. The plants, which are only a few inches high, grow so dense and are completely covered with snow-white blossoms. Postpaid, doz., 35c; 50, 85c. Flats, not prepaid, \$1.25.

AMARANTHUS (Burbanks Combustion)—The most gorgeous red foliage plant in existence. 3 to 4 ft. Potted plants. Not prepaid. Each, 25c; doz., \$2.50.

ARTEMISIA, Annual (Summer Fir)—Fornis pyramidal bush, 3 to 5 ft. tall; resembles Christmas tree. Postpaid, doz., 30c; 50, 85c.

ASPARAGUS, Ferns—See house plants.

BATCHELOR BUTTONS—A pretty well known plant. Postpaid, doz., 30c; 50, 85c.



Carnation

BEGONIA—See house plants.

CALLIOPSIS, Annual—A very pretty low growing profuse bloomer of dark reds, brown, yellow and variations. Postpaid, doz., 35c; 50, 85c.

CANDYTUFT—Candytufts are of fine habit and profuse bloomers. Postpaid, doz., 35c; 50, \$1.00.

CALENDULA (Pot Marigold)—One of the best and showiest free-flowering hardy annuals, growing in any good garden soil. Postpaid, doz., 30c; 50, 85c.

CASTOR BEAN PLANTS—Highly ornamental plants, valuable for tropical effects. Useful for large beds or borders along paths and drives. Doz., 50c.

CELOSIA (Coxcomb) Crested—Very popular annuals of easy culture, producing large, ornamental, comb-like heads like ruffled chenille. Prized for pots or summer flower beds. Postpaid, doz., 35c; 50, \$1.00.

CINERARIA, Dusty Miller—Thick, silvery white leaves, used for bedding purposes. Postpaid, doz., 35c; 50, \$1.00.

CHRYSANTHEMUM, Annual—A beautiful double all summer flowering plant in a wide range of colors. Postpaid, doz., 30c; 50, 85c.

COBAEA, Scandens Cathedral Bells—One of the handsomest and rapid growing climbers. Postpaid, doz., 50c.

COSMOS—This beautiful annual is one of the most showy and useful of our garden plants. Postpaid, doz., 35c.

DAHLIA CACTUS—Plants grown from Cactus Dahlia seed. It will be interesting and surprising to see the variations in these blooms. Postpaid, doz., 75c; each, 10c.

GAILLARDIA (Blanket Flower)—This will produce from early spring until late fall a continuous profusion of brilliantly colored flowers. Postpaid, doz., 35c.

GOETIA—An attractive hardy annual, deserving more extensive cultivation. Postpaid, doz., 30c.

GERANIUM, Lady Washington—A new variety would be very valuable. Postpaid, doz., \$1.25.

CARNATIONS

When the people throughout the country were vainly seeking for an appropriate flower acceptable to all, as our National Emblem, nature opportunely came to their assistance by presenting the improved Carnation—the product of American soil.

FRENCH—A new strain in all colors. Will produce greenhouse size blooms outside from our plants. Scarlet, pink, yellow, maroon, white, salmon. Postpaid, doz., 30c; 50, 85c.

Whitefish, Montana.

Kelly Plant Gardens.

Gentlemen,—

Plant received in good condition. Thank you very much. Check to cover charges enclosed.

These are one of our leading specialties, and we have spared neither pains nor expense in bringing our strain to the highest perfection.

CREGO—The greatest of all asters. Beautiful, graceful blooms of the chrysanthemum type. In pink, white, rose, lavender, purple and blue. In separate colors or mixed. Postpaid, doz., 30c; 50, \$1.00; 100, \$1.50.

IN FLATS—Each color separate or mixed. Not prepaid, \$1.25.

HEART OF FRANCE—The most beautiful dark red. Postpaid, doz., 35c; 50, 85c; 100, \$1.50. Not prepaid. Flats, \$1.25.

YELLOW ASTER—The seemingly impossible yellow color is being fixed by specialists. Postpaid, doz., 35c; 50, \$1.00.

SUNSHINE ASTER—A very new and rare type. Anemone flowered. Odd and beautiful. Pink, blue, white, lilac. Mixed only. Postpaid, doz., 50c; 50, \$1.25.

HELIOTROPE—Heliotrope is a universal favorite on account of its delightful fragrance and duration of bloom. Postpaid, doz., 35c.

HELICHRYSUM (Strawflower)—Postpaid, doz., 35c; 50, 85c; 100, \$1.50. Highly prized for winter bouquets.

LOBELIA—No garden is complete without an edging of blue Lobelia, and for a long season of bloom there is nothing that can take its place. Doz. 30c

LOBELIA TRAILING—Desirable for pots, hanging baskets. Flats, not prepaid, \$1.25; doz., 35c; prepaid, 50, \$1.00.

LYCHNIS (Jerusalem Cross)—Brilliant red clusters of cross-formed blooms. Postpaid, doz., 35c; 50, \$1.00.

IMPATIENS, Sultani—A fine plant for boxes or house. All shades of red. Postpaid, doz., 35c.

BLUE LACE FLOWERS—The umbrella-shaped flowers, 2 to 3 inches across, are of a rare and desirable shade. Postpaid, doz., 35c.

LARKSPUR—These handsome Larkspurs are very effective in borders and planted amongst shrubs. Postpaid, doz., 30c.



KOCHIA (Summer Cypress, Burning Bush)—This beautiful annual bush has rapidly come into prominence. It grows 2 to 2½ feet high and resembles a close-clipped ornamental evergreen. Postpaid, doz., 30c; 50, \$1.00.

MIGNONETTE—A delightfully fragrant flower blooming continuously. Postpaid, doz., 35c; 50, 85c.

MARIGOLD—African and French—Prepaid, Doz., 35c.

MIMOSA, Sensitive Plant—Curious and interesting, pinkish white flowers; the leaves close and droop when touched or shaken. Postpaid, doz., 40c.

MORNING GLORY, Imperial Japanese—Large fringed flowers in varied colors. Individuals, not prepaid, doz., \$1.00.



PANSIES

We use only Steele's famous Mastodon Pansies Private Stock Seed and produce the most showy, exquisitely marked and largest blooms grown. Any dozen plants will show more varieties in color than any rainbow ever seen.

PANSY—Mastodon, mixed colors. Postpaid, Doz., 50c; 25, 85c; 100, \$3.00. Seedlings—Doz., 30c; 50, 85c.

PANSY—Mastodon, mixed colors in FLATS. By express, not prepaid. Each, \$1.25.

PANSY—Mastodon in the INDIVIDUALS. All colors mixed or specify colors desired. Not prepaid. Each, 10c; doz., \$1.00; 25, \$1.60; 50, \$2.50; 100, \$4.00.

NASTURTIUM (Tall) Annual—Elegant and luxurious climbers for veranda pieces and trellises, etc.

NASTURTIUM (Dwarf) Annual—Beautiful bedding plants.

NASTURTIUM PLANTS—Doz., 25c; 50, 75c.

PETUNIAS

For freedom of bloom, variety of color and effectiveness they have no equal. Petunias will produce their handsome, sweet-scented flowers in their delicate and gorgeous colors throughout the whole summer.

RUFFLED MONSTERS MIXED—Flowers 5 to 7 inches in diameter. The handsomest Petunia in the world.

GIANT FLOWERING, DOUBLE FRINGED PETUNIA MIXED—All will not produce double flowers, but the singles will be unusually fine. See Potted Plants Individuals. Monsters and Double, each 10c; doz., \$1.00; not prepaid.

BALCONY PETUNIAS, Elks Pride—Beautiful purple blooms, 3 to 4 inches.

Pride of Portland—Magnificent pink.

Pink Glory—Light pink, wonderful blooms. Postpaid, doz., 35c; 50, \$1.00.

BEDDING PETUNIAS

ROSYMORN—Fine variety for all purposes. Soft carmine pink.

Gen. Dodds—Blood red.

Howards Star—Crimson with white star. Postpaid, doz., 30c; 50, 85c.

PHLOX—(Drummond)

For a splendid mass of color and constant display nothing excels this annual. Postpaid, doz., 30c; 50, 85c.

PORTULACA, SUN PLANT—Fine for massing in beds, edging or rock work. Doz., 35c; 50, 85c.

PYRETHRUM

AUREUM GOLDEN FEATHER—6 inches high. One of the best plants for edging; grown for its beautiful yellow foliage. Postpaid, doz., 30c; 50, 85c; 100, \$1.25.

SALPIGLOSSIS

Undoubtedly one of the most attractive annuals and should be in every garden. Postpaid, dozen, 30c; 50, 85c.

SCABIOSA (Mourning Bride)

Commonly known as the Pincushion plant. Postpaid, doz., 35c; 50, \$1.00.

ANTIRRHINUM

(Snapdragon)

SEPARATE COLORS OR MIXED

For gorgeous coloring few flowers can match Snapdragons. The flowers are of very large size, very fragrant and are produced on immense long spikes. Postpaid, doz., 35c; 50 \$1.00. Flats, not prepaid\$1.25

POPPIES



Double Carnation Flowered

Large sized flowers of several shades; it's beautiful. Prepaid, doz., 35c.

SHIRLEY—All colors; prepaid, doz., 35c.

DOUBLE MIXED—All colors. Postpaid, doz., 35c.

SUNFLOWER, Double—A real yellow chrysanthemum flowered bloom that will please. Postpaid, doz., 35c; 50, 85c.

STRAWFLOWERS—(See Helichrysum).

STOCKS

Large flowering dwarf German, 10 wks. Mixed colors. This class is a favorite for outdoor bedding. Postpaid, doz., 35c.

SWEET SULTAN, Centaurea—Blooms 3 to 4 inches across. Fragrant. Almost every color and shade. Postpaid, doz., 35c; 50, \$1.00.

SCHIZANTHUS, Butterfly Flower—A long lasting blooming plant of daintiest flowers. Postpaid, doz., 35c; 50, \$1.00.

WALL FLOWERS

It is very ornamental in the border or in forming groups. Colors are yellow, brownish, purple, etc. Doz., 35c.

WILD CUCUMBER—Probably the most rapid climbing plant grown. Fine for quick porch shade. Not prepaid. Potted. Each, 10c; doz., \$1.00.

VERBENAS

MAMMOTH MIXED—Producing in bandsome umbels flowers of large size in beautiful shades of white, rose, scarlet, blue, purple. Postpaid, doz., 35c; 50, 85c.

VINCAS—Very fine bedding plants and preferred by some to geraniums. Profuse bloomers. Postpaid, doz., 40c; 50, \$1.25.

ZINNIAS

GIANT DAHLIA FLOWERED—This splendid new and distinct race is without a doubt the greatest improvement in zinnias yet developed, and will greatly increase the popularity of this flower. The plants are of strong, vigorous habit, produce mammoth flowers 4 to 6 inches across.

In separate colors. Crimson, lavender, orange, gold, scarlet, white. Postpaid, doz., 35c; 50, \$1.00.

Mixed—All above colors. Doz., 25c; 50, 90c.

In flats, not prepaid, each \$1.25.



SALVIA (Scarlet Sage)

Doz., 35c; 50, \$1; Flats \$1.25

These salvias will delight every one by the profusion and distinctness of their red flowers during the whole summer until frost. The most attractive red flowering plant. Be sure to include these in your order.

Portland, Oregon.

Kelly Plant Gardens, Spokane, Wash.

Gentlemen,—

The seed come in good shape and is already planted, and I want to thank you for your kindness and promptness.

SISTERS' ACADEMY.

**CEMETERY PLANT**

ACHILLEA—Plant in sun or partial shade. Hardy. Grows 24 inches. Blooms in July and August. Flowers are pure white, perfectly double, produced in large sprays, fine for cemetery plant. Prepaid, 3 for 25c; doz., 75c.

ALYSSUM SAXATILE—An excellent perennial covered with masses of bright yellow flowers in early spring. 3 for 25c; doz., 75c.

ANCHUSA

A plant of beautiful blue color. Flowers the entire summer. Prepaid, 3 for 25c; doz., 75c.

ANTHEMIS

HARDY MARGUERITE—Hardy perennial bearing all summer daisy-like golden-yellow blossoms. Prepaid, 3 for 25c; doz., 75c.

ARABIS (Rock Cross)

ALPINA—Pure white, very useful for rock-garden or edging. 9 inches. April, May. Prepaid, 3 for 25c; doz., 75c.

ARMERIA

THRIFT—A plant of dwarf tufted habit, suitable for border or rock-garden. Extra fine for cut flowers. Flesh to deep rose. 9 in. June-July. 3 for 25c; doz., 75c.

COLUMBINE**LONG SPURRED HYBRID**

Thrives luxuriantly in any good soil; suitable for the open garden, permanent beds or borders or edges of shrubbery. Blooms during May and later when flowers are scarce. Plants grow 2 to 3 feet high.

Colors: Blue, white, rose, yellow. Prepaid, 3 for 25c; doz., 75c.

AUBRETIA

A wonderful carpet plant for borders and rockeries. A mass of blue flowers in April and May. 3, 25c; doz., 75c.

ARENARIA

Another valuable carpet plant having dainty white flowers in May. 3, 25c; doz., 75c.

ASTERS PERENNIAL

MICHAEL MASS DAISIES—Blue. Showy late flowering. 3 for 25c; doz., 75c.

BELLIS**DOUBLE ENGLISH DAISY**

Makes a fine display in the border. 6 inches. 3 for 25c; doz., 75c; 100, \$4.00.

CERASTIUM

SNOW IN SUMMER—Charming creeping plant, silver foliage, fine border, white flowers. 3 for 25c; doz., 75c.

COREOPSIS**LANCEOLATA GRANDIFLORA**

This is one of the finest of hardy plants with large, showy, bright yellow flowers produced in the greatest abundance from June till frost. 3 for 25c; doz., 75c.

DIANTHUS

PLUMARIUS (Clove Pinks)—The old favorite for borders, edgings and rockeries. Various shades of pink flowers on graceful stems. 3, 25c; doz., 75c.

DELTOIDES—Beautiful creeper for rockeries with crimson flowers in summer. 3, 25c; doz., 75c.

DORONICUM**LEOPARD'S BANE**

Large bright yellow flowers; one of the most effective early spring flowering perennials. 3 for 25c; doz., 75c.

GAILLARDIA**BLANKET FLOWER**

This will produce from early spring until late fall a continuous profusion of brilliantly colored flowers. 3 for 25c; doz., 75c.

GEUM

MRS. BRADSHAW—A splendid new variety, with large, double flowers of a fiery red, blooming nearly all summer. Peculiarly attractive. 18 inches. 3 for 25c; doz., 75c.

ORANGE QUEEN—The new Geum. Beautiful orange scarlet; a distinctive addition to this attractive perennial. Postpaid, 3 for 25c; doz., 75c.

GOLDEN GLOW

One of the most popular hardy plants. Grows six feet high, producing masses of large, double golden yellow flowers, shaped like a cactus dahlia. Postpaid, 3 for 25c; doz., 75c.

GYPSOPHILA**BABY BREATH**

Free flowering plants, the flowers of which are in great demand for cutting or combining with other flowers. 3 for 25c; doz., 75c.

LUPINUS (Lupines)

The Lupines produce beautiful long spikes of pea-shaped flowers a foot long on stems three feet high. 3 for 25c; doz., 75c.

LYCHNIS (Lampflower)

A very pretty easily grown summer flowering plant.

CHALCEDONIA (Jerusalem Cross)—Vivid scarlet and brightest in the garden. 3 for 20c; doz., 75c.

VISCARIA—Useful rockery plant with pink flowers. 3, 25c; doz., 75c.

PERENNIAL SWEET PEA

A vigorous climber. Suitable to cover unsightly places. Flowers all summer; excellent for cut flowers.

SEPARATE COLORS—Red, pink. Postpaid, 3 for 25c; doz., 75c.



FOXGLOVE (Digitalis)—Plant in sun or partial shade. Blooms June and July. The strong flower stalks, 4 to 6 feet high, rise from rich and luxuriant masses of leaves. Colors: Purple, white, rose, yellow. 3 for 25c; doz., 75c.

ERYNGIUM

Handsome ornamental plants about 2 feet high. Spring leaves with blue thistle-like flowers—fine for cutting. 3, 25c; doz., 75c.

PERENNIALS on this page are year old plants and will bloom profusely this season. Prices are prepaid. Write for prices on greater quantities.

CAMPANULA

CANTERBURY BELLS (Cup and Saucer)—This is one of the most popular and hardest forms. Single cup-shaped flower set in a saucer-like calyx. Entire flower of one color. 3 for 25c; doz., 75c.

HEUCHERA (Coral Bells)

Blooms in May, June. 12 to 18 inches. Flowers bright crimson; very fine flowering. Nice for cutting. Excellent for rock garden. 3 for 25c; doz., 75c.

DELPHINIUM
(Hardy Larkspur)



VANDERBILT, HYBRIDS (Perennial)—This is the freest and most continuous blooming Hardy Larkspur. Flowers from this strain are huge blooms in light and dark blue, royal purple tones of mauve with pink and lavender blendings. Postpaid, 3 for 25c; doz., 75c.

BELLADONNA—Among the very best light blue cut flowers.

BELLAMOSA—A dark blue type. Very attractive in the tall border. 3 for 25c; doz., 75c; 100, \$4.00.

CHINENSIS—A very pretty feathery foliage, intense light and dark blues and white. 12 to 18 in. high. 3 for 25c; doz., 75c.

SEDUM

A wonderful rockery plant. They quickly form a dense mass of foliage—most varieties bloom in midsummer.

ACRE—Leaves are small, light green in color, flowers bright yellow. 3 for 25c; doz., 75c.

SPURUM—Grows 6 in. high, pink flowers in July and August. 3 for 25c; doz., 75c.



BLEEDING HEART

BLEEDING HEART—Dozen, \$6.50.
(The Best Variety)

DIELYTRA SPECTABILIS—(Hardy. Grows 24 inches. Plant in sun or shade. Blooms in May.) These pretty spring bloomers with their graceful drooping sprays of heart-shaped pink and white flowers are very ornamental, and bloom freely early in the season. Fine for cemetery plant. Postpaid, each, 60c.

ALL PERENNIALS on this page are one year plants and will bloom profusely this season. Prices are prepaid. Write for prices on greater quantities.

LINIUM

PERENNIAL FLAX—A very pretty blue flowering plant that pleases. Spring plants, 3 for 20c; doz., 60c.

FLAVUM—Grows from 1 to 2 feet high and has masses of bright yellow flowers from June to September. A fine plant in a rockery. 3 for 25c; doz., 75c.

LINARIA

MACEDONICA—A pretty plant suitable for rockery or creeping purposes. Flowers have a yellowish color and resemble Snapdragons. 3 for 25c; doz., 75c.

MYOSOTIS

(FORGET-ME-NOT) — Beautiful, small blue flowers. Splendid for beds, borders and rockeries. 3 for 25c; doz., 75c.

PENSTEMON

BEARD TONGUE

A handsome plant with graceful, slender stems covered almost the entire length with bright colored flowers. Invaluable for cutting. 2-3 feet. 3 for 25c; doz., 75c.

PHYSALIS

Chinese Lantern Plant—Scarlet seed pods for winter bouquets. Pretty all summer. 3 for 25c; doz., 75c.

PLATYCODON

BALLOON FLOWER

Blue, 12 to 15 inches. July until late September. A beautiful dwarf species, with broad, thick foliage and large, deep violet-blue flowers. 3 for 25c; doz., 75c.

POPPY

Iceland Poppy—A neat dwarf-like plant, from which spring graceful leafless stems with charming cup-shaped flowers. 3 for 25c; doz., 75c.

ORIENTAL POPPY

Nothing in the hardy plant line can compare with the Oriental Poppy for brilliancy and beauty. With their large fiery scarlet flowers, they are conspicuous in any position. 3 for 25c; doz., 75c.

PYRETHRUM

PAINTED DAISY

Nothing can surpass the Pyrethrums in profusion of flowers during the summer. In White, Rose and Mixed, postpaid, 3 for 25c; doz., 75c.

ECHINOPS

(Globe Thistle)

Interesting thistle-like globular heads of metallic blue. Can be summer dried for winter bouquets. Postpaid, 3 for 25c; doz., 75c.

STATICE

Invaluable for cutting and floral work. Minute purplish flowers during June and August, 2 ft. Postpaid, 3 for 25c; doz., 75c.

TRITOMA

RED-HOT POKER, FLAME FLOWER OR TORCH LILY

The early, free and continuous blooming qualities of this variety have made it one of the great bedding plants. Hardy if given protection. Postpaid, 3 for 25c; doz., 75c.

VERONICA

Bushy plants about 2 feet high with dense spikes of deep blue flowers. A beauty in the garden.

SPICATA—One of the best. Postpaid, 3 for 25c; doz., 75c.



Hardy Sweet William

SWEET WILLIAMS

Hardy; grows 18 inches tall, plants multiply in size yearly. Large fragrant flowers of extreme richness and diversity of color.

SCARLET BEAUTY and **PINK BEAUTY**—All colors. 3 for 25c; doz., 75c.



PHLOX (Hardy Perennial)

The perennial phlox should have a place in every flower garden. Succeed in almost any soil with a minimum of care and are long continuous bloomers.

ECLAIREUR—Bright rosy carmine. **CHAMPS ELYSEES**—Red Magenta, beautiful.

RYNSTROOM—Rose pink, large and attractive.

R. P. STRUTHERS—Cherry red, diffused salmon.

BRIDESMAID—Pure white with crimson eye, extra tall.

ELIZABETH CAMPBELL—The most popular soft pink.

ROSENBERG—Reddish violet.

SPECIAL FRANCK—Deep crimson.

MICHAEL BUCKNER—Dark purple.

MRS. JENKINS—Flowers large pure white; early free bloomer.

LA VAGUE—Lavender-pink.

ALL PHLOX—Each, 25c; doz., \$2.50.

WATER LILY

Any garden may have a water lily pool and delight in the beauty that this plant affords. We can supply you with the lily bulbs and plants and our expert advice which costs nothing, will enable anyone to enjoy these beauties. White, each, \$1.50 and \$1.75; Pink, each, \$1.50 and \$1.75; Yellow, each, \$1.75; Red, each, \$4.00.

Additional Perennials



THE SHASTA DAISY

A much improved hardy daisy, bearing a profusion of large, white flowers from early summer until late in the fall. Fine for cut flowers. 3 for 20c; doz., 60c; 100. \$4.00.

**LAVENDULA
(True Sweet Lavender)**

Pretty blue flowers for many ornamental purposes. The leaves are used green or dry for their fragrant odor. 3 for 25c; doz., 75c.

**HARDY VIOLETS
(Sweet Scented)**

DOUBLE RUSSIAN—Not suited for forcing under glass, but is perfectly hardy, producing in early spring, large, double, deep purple flowers of exquisite fragrance. Postpaid, each, 25c.

VIOLA

JERSEY JEM—The newest and most handsome flower and plant of Violas. A beautiful blue. Spreading rapidly. 3 for 25c; doz., 75c.

PUCK—A pretty variation of Viola Cornuta—center yellow with outer edge of petal blue—a fine companion to Jersey Jem for borders and edgings. 3 for 25c; doz., 75c.

HOLLYHOCKS



This stately old plant is truly "King of the Garden." Hollyhocks inject so much of color and life and picturesqueness into tall backgrounds with their gorgeous, densely-set pillars ranging in height from 4 to 7 feet, ablaze throughout the summer.

DOUBLE FLOWERED—Large rosettes of paper-like tissue, very compactly layered. We offer them in the following separate colors: Crimson, black, yellow, white, maroon and pink. Postpaid, 3 for 25c; doz., 75c.

See page 5 for free trial offer.

ADDITIONAL PERENNIALS

SOME NEW ALL NATURE ARTISTS

DIANTHUS, Latifolius—A large double flowering Sweet William. Fine border plant. Each, 25c; doz., \$2.50.

SHAMROCK, True Irish—Imported stock. Potted. Each, 25c.

PACHYSANDRA, Terminalis, Japanese Spurge—A trailing plant 6 to 8 inches high forming broad mats of glossy green foliage and small spikes of flowers in early summer. Will grow in any shady situation and the only plant that will thrive under pine trees. Evergreen and hardy. Each, 30c; doz., \$3.00.

PRIMULA, Hardy Primrose—As beautiful as they are varied. Succeed in shady locations. 3 for 25c; doz., 75c.

SAXIFRAGA, Rockfoil—A great group of plants mostly used as rock-garden and Alpine with some as border plants. This family of plants should be well represented in the lovers rock and perennial gardens.

Triumph—The finest strain in cultivation. 3 for 25c; doz., 75c.

AIZOON—White flowers, leaves tufted in rosettes. Real Alpine rock plant. Prepaid. 3 for 25c; doz., 75c.

SAPONARIA-OCEYMOIDES—Brilliant masses of bright rose colored flowers during June and July. Excellent creeper for dry banks or poor soils. Doz., 50c; 50, \$1.25.

WALL FLOWER

SIBERIAN—A beautiful rock plant. Dazzling, fiery orange flowers on stems about 1 foot high. 3 for 25c; doz., 75c.

YUCCA 40c

(Adams Needle or Spanish Bayonet)
FILAMENTOSA—Among the most effective and striking for isolated positions on the lawn or on dry banks where few other plants thrive. Should be planted in spring. Postpaid, each, 40c; doz., \$3.50.

1-year plants, each, 20c; doz., \$2.00.

IRIS GERMANICA—Flag

Always satisfactory, never failing to bloom. A somewhat dry situation well exposed to the sun will be found best as they are all great sun-lovers. Do not plant too deep. Average height, 1½ to 2 feet.

FLORENTINE ALBA—Creamy white, flushed lavender.

PUMILA—Violet blue, blue and purple.

SAN SOUCI—Canary yellow, with brown.

PERFECTION—Standards fresh lavender, flecked with deeper shade.

SMOKESCREEN—Odd and curious.

WHITE SWAN—Variations white predominating.

SULTAN—A new variety in pretty form and colors.

PRICE OF ALL ABOVE IRIS
Postpaid. Each, 10c; doz., \$1.00; not prepaid, 100, \$5.00.

Plants for Vases, Hanging Baskets, Porch Boxes, Etc.

- Alysum, Sweet
- Achyranthus
- Anaryllis
- Asparagus Ferns
- Cannas
- Coleus
- Calceolaria
- Dracena
- Dusty Miller
- Ficus Rubber
- Plant
- Fuchsias
- Ferns
- Flowering Maple
- Geraniums, All Colors
- Geraniums, Ivy
- Geraniums, Lady Washington

- Godetia
- Heliotrope
- Ivy, Parlor
- Ivy, English
- Lantana
- Lobelia
- Marguerite
- Morning Glory
- Nasturtium
- Petunias
- Poppy Annuals
- Portulaca
- Smilax
- Umbrella Plant
- Vincas
- Verbena
- Wandering Jew

See Page 20.

DOUBLE PEONIES



Queen Victoria

A Peony of Much Merit

Plant peonies in deep, rich, well-prepared soil, covering the buds but an inch or two. Do not expect too much of them the first year as they are a little slow in establishing themselves. Many of the finest double varieties will bloom single or semi-double the first year, and will not always attain full perfection until the third year after transplanting. Plant in the fall or early spring. Figures indicate rating by American Peony Society. All peonies postpaid.

FELIX CROUSSE 8.4 (Crousse, 1881)—Very brilliant red. Medium to large. Globular, typical bomb shape; fragrant, strong growth. Each, 75c; doz., \$7.50.

QUEEN VICTORIA—6.8 bomb type, early full, compact bloom; opens flesh white, changing to pure white, center petals tipped with carmine spots. A grand white peony for any purpose. Keep well when cut. Each, 75c; doz., \$7.50.

FESTIVA MAXIMA 9.3 (Mieliez, 1851). Paper white, crimson markings in center. Very large and full, rose type; very tall, strong growth. Each, 75c; doz., \$8.00.

MASTERPIECE—Brilliant rose, rich solferino-red. Each, \$1.00.

EDULIS SUPERBA 7.6 (Lemon, 1834). Dark pink, even color; large, loose, flat crown when fully open. Very fragrant; upright growth; early bloomer. Each, 75c; doz., \$8.00.

DUCHESS OF ORLEANS—Fine, large flower, long stem, healthy grower, profuse bloomer; color, light flesh pink, with creamy yellow center. Rare and beautiful. Each, 75c.

MONS. JULES ELIE 9.2 bomb type, early mid-season. King of all peonies. Color an ideal glossy lilac-pink, shading to a deeper rose at the base, the entire flower overlaid with a sheen of silver. Ideal for cut flowers. Each, \$1.00; doz., \$10.00.

KARL ROSENFIELD 8.8. Very large flower, globular, semi-rose type. Extremely vigorous grower, tall, and free flowering. Dark velvety crimson. Each, \$1.50. See Front Cover.

SPECIAL—One each of the eight varieties. Postpaid, \$6.50.

EXTRA SPECIAL PEONIES

DOUBLE RED—Unnamed. Each, 50c; doz., \$5.00.

DOUBLE PINK—Unnamed. Each, 50c; doz., \$4.50.

DOUBLE WHITE—Unnamed. Each, 50c; doz., \$4.50.

FINE SELECTED VARIETIES

The Cream of American Grown Roses for the Pacific Northwest



Frau Karl Druschki

ROSES

The Queen of Flowers

Among all the flowering shrubs that make for beauty, grace and ornamentation, there is none that can compare with the rose. The wide range of color, shape and size of the blooms and the diversity and character of the foliage give it a wider range for decoration than any other single group of plants.

Write for our free booklet giving instructions for planting roses.

Special prices on lots of one dozen or more upon application. PRICES HERE QUOTED POSTPAID.

ROSE IN AMERICA

Newest information on varieties, culture, pest control. 233 pages. Postpaid, \$3.00.

FRAU KARL DRUSCHKI (H. P.)—Pure snow-white; long, pointed buds; large, full flowers; free and constant. Each, 2 yr., 75c; 1½ yr., 55c.

GENERAL JACQUEMINOT (H. P.)—The "Jack" Rose, a long time favorite. The fragrant, perfectly formed blossoms come early, are brilliant scarlet crimson, and are borne on long strong stems by a vigorous plant. Its dependability and ruggedness makes it popular. Each, 75c; doz., \$7.25.

DAME EDITH HELEN (H. T.)—A brand new variety of fine merit. A fragrant, full bodied rose of many substantial petals which curl back prettily, holding vividly to their vivid pink color. Each, 85c; doz., \$8.50.

PADRE H. T.—A rich copper scarlet just a little more intense than Herriot. A distinctive rose. 2 yr., 75c; 1½ yr., 50c.

SOUV. DeCLAUDIUS PERNET, H. T.—The sensation in a large yellow bloom perfectly formed. Glossy foliage. Strong grower. 2 yr., 85c; 1½ yr., 60c.

MME. EDOUARD HERRIOT, H. T.—Buds coral red shaded yellow at base developing into handsome blooms of same colors passing to rosy scarlet. No rose more beautiful in its color markings. 2 yr., 75c; 1½ yr., 55c.

CHARLES K. DOUGLAS (H. T.)—An English variety of vigorous, upright growth and liberal, fragrant bloom which is of fine form. Color a flaming scarlet, flushed with velvety crimson. Postpaid, grade 1, 75c each; grade 2, 50c.

AMERICAN BEAUTY (H. P.)—Rich carmine color, very large and fragrant. As a cut flower American Beauty has for years commanded the highest price of any rose on the market. 2 yr., 75c; 1½ yr., 50c.

PAUL NEYRON (H. P.)—Deep rose in color, of immense size and very fragrant. One of the largest roses in cultivation. Each, 2 yr., 75c; 1½ yr., 55c.

ETOILE DE FRANCE (H. T.)—Rich velvety-crimson, center ruby red, large and double. Likes hot weather. Each, 2 yr., 75c; 1½ yr., 55c.

LOS ANGELES (H. T.)—One of the finest roses ever introduced. The growth is very vigorous and produces a long-stemmed flower of a luminous flame-pink, toned with coral and shaded with translucent gold at the base of the petals. The buds are long and pointed. Each, 2 yr., 75c; 1½ yr., 55c.

GRUSS AN TEPLITZ (H. T.)—Bright crimson, white, fiery-red center; cup-shaped; semi-double flowers in clusters; so free in bloom as to present a blaze of scarlet. Each, 2 yr., 75c; 1½ yr., 50c.

ULRICH BRUNNER (H. P.)—Another reliable. Brilliant scarlet crimson, an old favorite and one of the best known roses in cultivation. Does well everywhere. Each, 75c; doz., \$7.25.

MME. CAROLINE TESTOUT (H. T.)—Beautiful blooms, borne abundantly all summer on strong, vigorous plants. The large, rounded flowers are bright, satiny rose, with darker center, and edges of petals are bordered with soft carmine pink. Each, 75c; doz., \$7.25.

GEORGE ARENDS (H. P.)—This is a pink variation of the popular white Frau Karl Druschki, possessing not only the exquisite form, large size and remarkable free flowering habit of its parent, but in addition to this it is highly perfumed. Each, 75c; doz., \$7.50.

CAPTAIN HAWYARD (H. P.)—A strikingly brilliant carmine rose, highly perfumed and of unusual form, for the center petals stand upright while the outer ones are reflexed, giving a peculiarly attractive appearance. The vigorous plant is of medium height, very hardy, and produces an abundance of blooms. Each, 75c; doz., \$7.50.

Secrets of Rose Culture on Request.

HARDY CLIMBING ROSES

DOROTHY PERKINS—This is unquestionably the thriest, showiest, and most practical of the older pink climbers. Each, 2 yr., 75c; 1½ yr., 50c.

PAUL'S SCARLET, H. W.—Vivid scarlet shaded crimson. It makes a brilliant display over a long period. Now considered one of the very best climbers. 2 yr., 75c; 1½ yr., 50c.

CLIMBING, AMERICAN BEAUTY—Strong grower, large flowers. Each, 75c.

CLIMBING, MME. TESTOUT—Large flowers, satin rose in color. Grade 1, 75c. each.

CLIMBING PLANTS AND VINES

With their variance in color, their beauty of foliage and blossom, their grace wherever used, these vines frequently provide the finishing touches of any planting. Some adhere to the masonry, some must be trained through lattice or trellis and others with their tendrils will cling tenaciously, unshaken by wind or weather.

CLIMBERS

See Perennial Sweet Peas, Morning Glory Nasturtium, Cobea Scandens.

AMPELOPSIS 50c

AMPELOPSIS, Boston Ivy—For covering cement, brick, stone or wood and clings to the smoothest surface. Beautiful foliage. Postpaid, each, 50c; doz., \$5.00.

ENGELMAN'S IVY OR WOODBINE (A. quinquefolia, var. Engelmanni)—A type of quinquefolia which has long been desired. It has shorter joints and smaller and thicker foliage. It is better equipped with tendrils, by which it will climb walls of stone or brick as closely as the Veitchil (Boston Ivy). It should be planted in the Northwestern states, in place of Veitchil, as it is perfectly hardy, withstanding heat and cold much better. Postpaid, each, 50c; doz., \$4.00.

MATRIMONY VINE—Strong growing woody vine producing small purple flowers in midsummer and numerous orange red fruits in the fall. Price, 50c each; per doz., \$5.00.

HONEYSUCKLE

HALL'S JAPAN—Color an intermingling of white and yellow. Extremely fragrant and most satisfactory. Postpaid, each 50c; doz., \$4.00.

BELGICA—Another form of this popular family of climbers. Satisfactory in every location and for every purpose. Flowers are yellow with touch of red, and are quite fragrant. Each, 60c; doz., \$5.85.

CLEMATIS

PANICULATA—Probably the most popular of the small flowering sorts; vine is a rapid grower with glossy green foliage; in September the flowers appear in a perfect mass of white, giving the appearance of a bank of snow; the fragrance is most delicious and penetrating. Postpaid, each, 50c.

JACKMANI—Immense flowers of an intense violet-purple color; bloom continually all summer. Perhaps the best known Clematis. Postpaid, each, \$1.25.

ENGLISH IVY 50c

The old Evergreen Ivy. Foliage thick. Postpaid, each, 50c; doz., \$5.00.

HOP ROOT 10c

HOP ROOTS—A leading climber for porches, veranda, etc. Rapid grower. Postpaid, each, 10c; doz., 75c; 100, \$5.00.

KUDZU VINE—Will grow 40 feet in one season from established roots. Postpaid, each, 25c; doz., \$2.25.

BIGNONIA RADICANS

(Trumpet Flower)—A robust, woody vine, twining tightly with roots along the stems. Its orange-scarlet, trumpet shaped flowers cluster at the tips of branches. The flowers are of large size, and are borne abundantly in the summer after the plants obtain a fair size. A fine climber for every purpose. Each, 50c; doz., \$4.85.

You may send your entire order now. Will deliver when directed or when each variety is seasonal in your locality.

DECORATIVE DAHLIAS

Decorative dahlias are intermediate between the show and cactus types. Petals usually are long, broad and open. The flowers are large.

MINA BURGLE—A glowing deep scarlet; large size, a favorite; florist's variety for cut flowers. Each, 35c; doz., \$3.00.

DELICE—The finest pink decorative dahlia. Its beautiful soft, yet lively color a glowing rose-pink, borne on long, stiff stems. Valuable as a cut flower. Price, each, 30c; doz., \$3.00.

SOUV. DOAZON—Giant flowers of brick red color. Stems very long and strong. Each, 30c; doz., \$3.00.

PRINCESS JULIANA—One of the finest white dahlias for cutting. Each, 30c; doz., \$3.00.

MAIART—A most beautiful orange yellow. Each, 25c; doz., \$2.50.

SHOW DAHLIAS

Show dahlias are large and round in shape. The outer petals in most cases reflex to the stem and form a perfect ball-shaped flower.

QUEEN EMMA—Large, perfect shaped flowers of a bright pink. A continuous bloomer. Each, 25c; doz., \$2.25.

FRANK SMITH—Maroon, almost black; often tipped and marked with white. Each, 30c; doz., \$2.50.

TILLAMOOK—Immense, quilled flowers of delicate blush, deepening to rose. Good stems. Each, 30c; doz., \$2.50.

MOLLALLA—Fine yellow, tipped white. Long, erect stems; extra fine. Each, 30c; doz., \$2.50.

FOR \$4.00 we will send, postpaid, one root each of the above 18 named extra choice dahlias.

You may send your entire order now. Will deliver when directed or when each variety is seasonable in your locality.

Dahlias



Mina Burgle—Decorative
The dahlia is of such easy culture with the mass of wealth of bloom that every home ground can be easily and cheaply decorated.

Special Offer!

In the digging and storing of DAHLIAS it frequently happens that the names are lost from the clumps of a few varieties and also we may have a surplus in other choice varieties, hence we are making a special offer while they last. All fine roots, but UNNAMED at 7 for \$1.00. Postpaid.

25 for \$3.00; 100 for \$10.00. Not Prepaid.

CACTUS DAHLIAS

Cactus dahlias have flowers which are loosely and artistically formed; some have long twisted petals, terminating in a point; others are gracefully incurved, while some have nearly straight petals.

KALIF—The largest scarlet Hybrid Cactus, a truly majestic flower, and one unsurpassed for exhibition or garden purposes. Each, 40c; doz., \$4.00.

CREPUSCLE—Large flowers with long petals, pale orange yellow, shaded fawn; each, 30c; doz., \$3.00.

AMAZONE—Large free flowering sort on erect stems; beautiful amaranth red, suffused purple. Each, 30c; doz., \$3.00.

J. H. JACKSON—A perfect gorgeous deep velvety blackish-maroon. Gigantic in size. Every dahlia lover should grow this variety. Price, each, 35c; doz., \$3.50.

COUNTRY GIRL—Incurved petals, golden yellow suffused at tips with salmon rose. Each, 30c; doz., \$3.00.

PEONY FLOWERED DAHLIAS

Peony flowered dahlias have broad, flat and quite irregular form of petals, semi-double; showing a beautiful golden-yellow center.

VAN DYCK—Large, a pleasing shade of salmon-rose. Its curling petals add to its attractiveness; a beauty. Each, 25c; 10, \$2.25.

ARTISTIC—Large flowers, faintly tinted lavender. Each, 35c.

GEISHA—Created a sensation when introduced. Scarlet and gold with blooms often 10 inches across. Each, 40c; doz., \$3.75.

PEACHES AND CREAM—Beautiful yellow. Tinted pink. Each, 35c.

**LILIES
Emblems of Purity**

HARDY LILIES—Postpaid. Lilies have always been looked upon as amongst the noblest of garden plants. Their conspicuous flowers, striking colors and their stately forms appeal strongly to the eye and to the imagination.

REGALE (The Regal Lily)—The flowers are white, slightly suffused with pink, with a beautiful shade of canary-yellow at the center, and extending part way up the trumpet. It is delightfully perfumed, reminding one of the Jasmine. Each, 40c; doz., \$4.00.

MADONNA OR ST. JOSEPH'S LILY (Candidum)—Flowers pure pearl-white, fragrant; one of the most ornamental species, 2 to 3 feet. June. Each, 40c; doz., \$3.50.

AURATUM (Golden-Banded Japan Lily)—Undoubtedly one of the finest. Its large, graceful, fragrant flowers are composed of six petals of a delicate ivory-white color, thickly studded with chocolate-crimson spots and striped through the center a golden yellow; 3 to 5 feet. July to September. Each, 40c; doz., \$3.50.

AURATUM (Macranthum)—This is a greatly superior Auratum. Flowers much larger, sometimes a foot across and plant growth 6 to 8 ft. Beautifully white, slightly spotted. P. P. each, 50c; doz., \$5.00.

TIGRINUM (Double Flowering Tiger Lily)—Very superior to the old common single tiger lily. Orange red and very double. Nice large bulbs. P. P. 30c; doz., \$3.00.

SPECIOSUM (Magnificum)—Very large flowers of rich deep red. The Speciosums are the most distinctive and important of all Japanese Lilies. P. P. Each, 50c; doz., \$5.50.

WASHINGTON, Mount Hood Lily—New. Native. Grows 4 ft. Flowers white shading to pink in the throat. Thrives anywhere. Requires little moisture. Each, 50c; doz., \$5.00.



Regal Lily

SPECIAL OFFER

For \$1.95 we will ship, postpaid, one each, Regale, Madonna, Auratum, Tiger, Speciosum, or 6 each for \$9.75.

LILY OF THE VALLEY

The Lily of the Valley will thrive and throw up its beautiful, modest, fragrant white bells in any kind of soil. It will make a carpet of refreshment in green. Clumps, each, 30c; dozen, \$3.00; single buds or pips, each, 5c; doz., 50c.

LEMON LILY

HEMEROCALLIS FLAVA—Few plants present a more striking appearance on the lawn or border than a large clump of this clear, lemon-colored Lily, which is produced in the greatest profusion, lasting in flower a long time. Each, 25c; doz., \$2.50.

HEMEROCALLIS FULVA—Fragrant orange-yellow blooms of the type described above. Each, 25c; doz., \$2.50.

GARDEN CINDERELLAS—By Helen M. Fox. This is the only complete and practical book on Lily growing for every Lily lover. Gives the names of every Lily in cultivation, its native habitat, season of blooming and so forth. It describes the diseases and pests and how to fight them. 269 pages, over 50 illustrations. Postpaid, \$5.00.

Kelly's Gladioli

ALICE TIPLADY—Primulinus type. Orange-salmon color.

	Each	Doz.	100
Price, large bulbs.....	\$.06	\$.50	\$3.75
2nd size05	.35	2.75

ANNA EBERIUS—Dark velvety purple, large and splendid.

	Each	Doz.	100
Price, large bulbs.....	\$.06	\$.50	\$3.75
2nd size05	.35	2.75

BYRON L. SMITH—A delicate lavender, one of the very finest grown.

	Each	Doz.	100
Price, large bulbs.....	\$.10	\$.75	\$5.75
2nd size06	.50	3.75

BUTTERFLY—Pretty orange, with peculiar markings suggesting its name.

	Each	Doz.	100
Price, large bulbs.....	\$.10	\$.85	
2nd size06	.50	

CARMEN SYLVA—Snow-white. Large flower, one of the few fine whites.

	Each	Doz.	100
Price, large bulbs.....	\$.06	\$.50	\$3.75
2nd size05	.35	2.75

E. J. SHAYLOR—Rose-pink. Ruffled sensation.

	Each	Doz.	100
Price, large bulbs.....	\$.06	\$.50	\$4.00
2nd size05	.35	2.75

EVELYN KIRTLAND—Rose-pink shading to light pink. Popular.

	Each	Doz.	100
Price, large bulbs.....	\$.06	\$.50	\$3.75
2nd size05	.35	2.50

GIANT NYMPH—New. Rose-pink with creamy throat. Perfect arrangement and tall spikes. A wonder.

	Each	Doz.	100
Price, large bulbs.....	\$.10	\$.75	\$5.50
2nd size06	.50	3.75

LONGFELLOW—A clear pink—new and without an equal in its color. Each, 15c; doz., \$1.40; 100, \$10.00.

LOS ANGELES—Shrimp pink with orange-carmine throat. Each, 6c; doz., 50c; 100, \$4.00.

MRS. H. E. BOTHEN—Light pink. heavily ruffled flame center. Each, 7c; doz., 60c; 100, \$4.50.

MRS. FRANK PENDLETON—Flushed salmon-pink crimson blotch in throat. One of the largest flowers.

	Each	Doz.	100
Price, large bulbs.....	\$.06	\$.50	\$3.75

MRS. LEON DOUGLAS—The largest flower and tallest spike in existence. Color a Begonia rose striped with scarlet and flame. Truly the monarch of the Glad garden.

	Each	Doz.	100
Price, large bulbs.....	\$.10	\$.75	\$5.00
2nd size06	.50	3.75

PRINCE OF WALES—Rich salmon, early, good forcer.

	Each	Doz.	100
Price, large bulbs.....	\$.06	\$.50	\$3.75
2nd size05	.35	2.75

MISS SPOKANE—Orange-red, evenly spaced on spike.

	Each	Doz.	100
Price, large bulbs.....	\$.06	\$.50	\$3.75
2nd size05	.35	2.50

MRS. D. R. NORTON—An exquisite flower. Flushed white, suffused pink, lower petals overlaid buff with red dust base.

	Each	Doz.	100
Price large bulbs.....	\$.06	\$.50	\$3.50
2nd size05	.35	2.75

MRS. F. C. PETERS—New—Rosylilac, soft crimson blotch. Large flowers.

	Each	Doz.	100
Price, large bulbs.....	\$.07	\$.60	\$4.00
2nd size05	.40	3.00

The most popular of summer blooming flowers on account of the beautiful color and shadings that ornate the delicately formed blossom and because of the unsurpassing keeping qualities that this splendid flower possesses. They seem to thrive on any soil and do not give trouble from insect pests. Plant about 3 or 4 inches deep and about 2 inches apart in the row. If planted in beds, set 4 to 6 inches apart each way. Prices postpaid: 6 at doz. rate, 50 at 100 rate.



Mrs. Frank Pendleton

EXTRA SPECIAL

ONE each of KELLY'S GLADIOLI BULBS (our selection) of fifteen named varieties, postpaid, 75c.

1910 ROSE—Early, rose-pink, very desirable

	Each	Doz.	100
Price, large bulbs.....	\$.06	\$.50	\$3.75
2nd size05	.35	2.75

ROSE-ASH—Ashes of Rose—A new color attracting much attention.

	Each	Doz.	100
Price, large bulbs.....	\$.10	\$.75	\$5.75
2nd size06	.50	3.75

PURPLE GLORY—Ruffled—Velvety Maroon-red. Vigorous grower.

	Each	Doz.	100
Price, large bulbs.....	\$.10	\$.80	\$5.50
2nd size06	.50	3.75

SCHWARTZ, EVA—A new introduction. Primulinus type, early bright scarlet. We cannot recommend this variety too highly. Each, 15c; doz., \$1.40; 100, \$10.00.

TYRIAN BEAUTY—Wonderful grower. Color Tyrian Rose. One of the finest Glads ever introduced.

	Each	Doz.	100
Price, large bulbs.....	\$.06	\$.50	\$3.75
2nd size05	.35	2.75

VIOLET PERFECTION—Rich deep violet, large flowers, early, velvety appearance.

	Each	Doz.	100
Price, large bulbs.....	\$.06	\$.50	\$3.75
2nd size05	.35	2.75

VIRGINIA—Intense scarlet, deeper throat, fine spike, early and much in demand.

	Each	Doz.	100
Price, large bulbs.....	\$.06	\$.50	\$3.50
2nd size05	.35	2.75

SPECIAL OFFER!

60 GLAD BULBS FOR \$2.25

10 Varieties

We will send you, postpaid, SIX fine Kelly's Gladiolus Bulbs in ten separate named varieties, YOUR OWN CHOICE of selection from the cream of 1931 Gladiolus listed on this page, making a total of sixty bulbs for \$2.25, or will mail to you thirty choice bulbs, your selection, in ten varieties for \$1.20.

MIXTURES—A well balanced mixture, giving a fine assortment of colors. Large bulbs, 12 for 35c; 100, \$2.50. Second size, 12 for 25c; 100, \$1.75; Small bulbs, but of blooming size, 12 for 15c; 100, 85c.

Bulbets in mixture, \$1.00 pint.

LANDSCAPE SERVICE

Window boxes, hanging baskets, porch boxes and tubs filled with your choice of hundreds of plants for homes, business houses and factory plants. Extensive growers of plants for these purposes. Can supply receptacles.

Please send us a sketch of your proposed plans for buildings, grounds, window or porch natural plant decoration and we will be pleased to submit prices.



The superiority of Kelly's products is evidenced by the above Gold Medal as an award for our exhibits at the Panama Pacific Exposition. Our products have won many similar awards and have gained the praising criticism of thousands of spectators at fairs and exhibitions.

Cut
Flowers

DECORATIVE HOUSE PLANTS

Bouquets
and
Designs

Bedding, Basket and Vase Plants

All plants in this department are potted and are NOT PREPAID. If wanted by parcel post add 10c to each for the smaller priced plants, add 25c for each priced from 50c to \$1.00 and 50c for the large potted plants. Any excess will be returned in cash or extra plants.

There are so many decorative house plants many of which may be used for bedding, porch boxes, hanging baskets, tubs, etc., that we would deem it a pleasure to be permitted to aid you in the selection if you will advise us of your desires.

FERNS

No foliage plant grows that presents so many varied charms or is so practical for all general house, table, hanging pot, floral or window decoration.

BOSTON or **SWORD**—The well known type. Each pot, 75c to \$2.50.

WHITMANI or **OSTRICH PLUME**—Fine cut leaves and erect. Each pot, 75c to \$2.50.

ASPARAGUS FERN

PLUMOSUS NANUS—The lace-like texture of its foliage outclasses Maiden Hair Fern for grace and daintiness; the long emerald sprays making a rich setting for cut flowers of all descriptions. Each, 25c to 75c.

SPRENGERI—Mostly used for hanging baskets where its long dense trails make a gleaming mass of green. Each, 25c to 75c.

ASPIDISTRA—A most desirable broad leaved dark green foliage plant for the living room. Will thrive under any condition even the extreme and lasts forever. Each, \$1.25.

HOUSE RUBBER PLANTS

ELASTICA (India Rubber Tree)—This is the old reliable thick leaved, substantial house plant which has ever patiently served its purpose, under abuse and neglect; its dark green, shiny foliage always handsome. Each, \$1.00.

ECHEVERIA (Mexican foliage rubber plant)—Each, 50c to \$2.00.

PALMS—*Kentia*—Nothing adds more to the inside beauty of the home than a stately **PALM**. Each, \$1.50 to \$3.00.

CYCLAMEN—Probably the most exquisite and showy pot plant in its class. In pink, red, salmon and carmine colors. Each, 75c to \$2.00.

CALCEOLARIA

Highly ornamental greenhouse or window plants, producing richly colored pocket-like flowers in abundance in the spring. All colors. Each, 25c.

UMBRELLA PLANT—A dainty house and window plant. Each, 25c.

ABUTILON (Flowering Maple)

Popular as pot plants, and for summer bedding vases and baskets. The flowers are deep bell-shaped in various colors. Each, 25c.

AMARYLLIS—A beautiful broad hyacinth-like leaf with very showy bloom in early summer. In 5 and 6 inch pots. Each, 75c to \$1.50.

BEGONIAS

Few families of house plants are so entirely satisfactory in every way as the Begonias. They are rich in color and beautiful in design, and all classes are easily handled under any condition. Each, 50c to \$1.00.

CACTUS (Christmas)

A beautiful variety of the Crab or Lobster Claw Cactus, with bright scarlet flowers of large size and unusually bright and showy. Each, 60c to \$2.00.

CACTUS, Globe—A very odd variety. Magnificent bloom. Each, 50c to \$2.00.

Bedding Plants

For your lawn beds, window boxes, porch baskets, tubs, etc. Foliage and blooming plants from our greenhouses. Bedding plants postpaid.

KELLY'S GIANT FLOWERING CANNAS

For bedding purposes, Cannas stand at the head of the list. One of the most beautiful and attractive settings for your home and lawn is a bed of CANNAS encircled with *Salvia* and bordered with *Lobelia*, *Pyrethrum*, *Dusty Miller*, etc.

SEVEN GRAND BEAUTIES

MRS. A. CONRAD—4 feet high. Salmon pink. Green foliage.

CITY OF PORTLAND—Warm rose-pink, green foliage. Prices on this sort only 35c each; doz., \$3.50, not postpaid.

WYOMING—7 feet. Orange. Bronze foliage.

KING HUMBERT—4 feet. Orange red. Bronze foliage.

THE PRESIDENT—4 feet. Scarlet. Green foliage.

YELLOW KING HUMBERT—4-5 ft. Green foliage.

BEACON—4 feet. Blood red. Green foliage.

CANNA roots must be started under glass for best results. Growing Potted Plants, Prepaid, Each, 30c; doz., \$3.00.

COLEUS

Broad-leaved, bushy foliage plants which are unmatched for brilliancy and unique arrangement of colors. Some of the fancier sorts are painted in designs as indescribable as the traceries of frost. Each, 25c; doz., \$2.50.

DRACENEA—For window boxes, hanging baskets or as a plant. Palm-like leaves. In 3-inch pots, Each, 30c. In 4-inch pots, each, 50c to 75c.

FUCHSIAS

Highly prized for winter blooming, also popular for summer beds in partially shaded situations and make excellent color-spots in porch boxes and baskets. Each, 25c.

PETUNIAS—Gorgeously blooming ruffled monsters. Each, 25c.

Geraniums

The Geranium probably stands closer to the lives of a great number of people than any other ornamental plant. For intensity of color and profusion of bloom, there is no flower to equal it. It can not be supplanted for window box, basket, cemetery or park planting.

ALPHONSE RICARD—Bright shade of vermilion, large trusses of double flowers. One of the best.

BEAUTE POITEVINE—For many years Poitevine has been the leading pink variety. In color a beautiful shrimp pink. Be sure to have this one.

EDMOND BLANC—Bright scarlet cerise. A good one.

HELEN MICHELL—Its enormous trusses bearing brilliant scarlet flowers makes it the universal favorite wherever planted.

MME. BUCHNER—Clear double white. This variety has a place wherever white color is wanted.

S. A. NUTT—Deep velvety crimson. No Geranium has ever surpassed the richness of its coloring.

Prices on all Geraniums, in 3-inch pots: Each, 25c; doz., \$2.50.

PELAGORIUMS (Lady Washington Geraniums)—A valuable class of house and garden plants related to the geraniums, resembling them closely in character, habit and treatment. Each, 30c; to 50c.

HELIOTROPE

This altogether delightful old plant has ever been a great favorite among those who enjoy and appreciate garden perfumes, and flowers of dainty type. Each, 25c.

LANTANA—Excellent for hanging baskets, porch boxes and bedding. Each, 25c.

PLANTS OF TRAILING HABIT

MYRTLE—A very fine trailing vine dark green glossy leaves for window, porch box or hanging basket. Each 30c.

TRADESCANTIA (Wandering Jew)—Beautiful trailing vines with thick, waxy, lance shaped foliage; very useful in baskets and window boxes. Each, 20c.

VINCA VARIEGATA—More of this used for baskets and vases than there is of any other two basket plants. Beautiful variegated green and white foliage; strong trailing habit of growth. Each, 25c; doz., \$2.50.

POTTING SOIL

POTTING SOIL—In our plant operations yearly tons of sand, alluvial soil, decomposed animal manures are graded, screened and mixed for our plant beds and boxes. We offer you this soil for your flowering or other plants. Not prepaid. 20 lbs., 40c; 50 lbs., 75c; 100 lbs., \$1.00.

Our advice on any problem is free to our friends and customers.

Hardy Ornamental Shrubs NOT PREPAID

Weights are given after each variety of shrub to help you estimate the cost of postage. See page 2 for parcel post rates. Include postage on shrubs in your remittance.



Hydrangea Paniculata

BERBERIS (Barberry)

THUNBERGI (Japan Barberry)—

Where a dwarf deciduous hedge is wanted nothing equals this beautiful Barberry. Requires but little pruning to keep in shape. The leaves are small, light green, and towards fall assume rich, brilliant colors, the fruit or berries becoming scarlet. Absolutely hardy. Plant 12 to 15 inches apart. 2 yr. each, 40c; 6 for \$2.00; 3 yr. each, 50c; fine large specimens, 75c to \$1.00.

BARBERRY (Purple Leaf)—A very handsome reddish purple leaf. Attractive anywhere. Large specimens, 75c. Wt. 5 lbs.

BUDDLEIA (Butterfly Bush)

Plants grow three to four feet and are covered with long racemes of lilac-like flowers in July. The best location is in good, rich, well drained soil in a sunny situation. It attracts the butterflies, and as many as fifty have been counted about a plant in a single afternoon. Each, 60c. Wt. 6 lbs.

DEUTZIA

PRIDE OF ROCHESTER—Dainty blooming bell or tassel flowers, born in wreaths along the branches in June and July. Outer petals tinged with pink. Fine specimen shrubs. Each, 75c. Wt. 5 lbs.

FORSYTHIA (Intermedia)

Among the first to bloom and their bright yellow flowers seem the very spirit of Spring, opening before the leaves appear. They attain an ultimate height of eight or ten feet. Fine specimen shrubs. Each, 75c. Wt. 5 lbs.

HONEYSUCKLE

TARTARIAN—A beautiful flowering shrub. One of the hardy growing hedge and screen plants. Probably the most rapid grower of all the hardy shrubs, often attaining a height of ten or more feet in a few years. Not prepaid. 2 to 3 feet, each, 75c; per 10, \$6.00; per 100, \$50.00. Wt. 5 lbs.

1 to 2 ft., each 50c; per 10, \$4.00; 100, \$30.00. Wt. 4 lbs.

KERRIA

JAPONICA — Double flowered. A fine shrub for most any location. Abundant double yellow flowers like half opened rose buds. Specimen plants. Each, 75c. Wt. 5 lbs.

Ornamental shrubs are the foundation of all landscape plantings. In selecting your shrubs, bear in mind their ultimate height of growth. Place tall growing varieties in the background or in corners where height is needed. Use medium height growing varieties between taller sorts and dwarf kinds, under windows and in front of the taller varieties.

Our advice on planting difficulties is available at all times. Write us. It's free.

HYDRANGEA

PANICULATA — A beautiful, tall shrub, with leaves of bright, shiny green; flowers borne in huge panicles from 8 to 12 inches long, light pink, changing to brown later in the fall; blooms in August and September; can be grown in tree form successfully and makes a very desirable lawn ornament. Height about 7 feet. Each, 75c; per 10, \$7.00. Wt. 5 lbs.

ARBORESCENS (Hills of Snow)—Conspicuously white and imposing Hydrangea. Mounds of snow white blooms July to September. Each, 75c. Wt. 5 lbs.

LILACS (Syringa)

COMMON PURPLE—A harbinger of spring shrub. Easily grown and admired. 3 ft., 50c; 4 ft., 75c; large specimens, \$1.00. Wt. 5 lbs.

PERSIAN PURPLE — Dwarf growing, slender branches, narrow leaves. Specimen plants. Each, 75c. Wt. 5 lbs.

PHILADELPHUS (Mock Orange)

VIRGINALIS—A magnificent new variety. The flowers are the largest, most fragrant and longest blooming immaculate white bloom, yellow stamens. Summer blooming. 3 ft., each, 75c. Wt. 5 lbs.

PRIVET

PRIVET (Ligustrum Vulgaris) — This hardy privet will make the most beautiful and lasting hedge. Used as a border it will complete the lasting and natural beauty of your home and grounds. Not prepaid. 2 to 3 feet, each, 50c; per 10, \$3.50; per 100, \$30.00. 1 to 2 ft., per 10, \$2.00; 100, \$15.00. One year plants per 10, \$1.25; 100, \$8.00.



Japan Barberry



Common Snowball

SPIREA

All the SPIREAS bloom in a riotous extravagance. Style and color differ in varieties which make this plant most acceptable to all.

ANTHONY WATERER — A fine dwarf Spirea with dark crimson flowers. Height 2 to 3 feet. 1 ft., 60c; 18 inches, 75c. Wt. 4 lbs.

VAN HOUTTEI—The grandest of all the Spireas, and one of the very best of all shrubs. A complete fountain of pure white bloom in May and June. 1 to 2 ft., each, 35c; 2 to 3 ft., 50c; 3 to 4 ft., 75c. Wt. 4 lbs.

PRUNIFOLIA (Bridal Wreath)—One of the earliest to bloom. Plum leaved foliage turning to brilliant red in fall. Double white clustered flowers. Each, 2 ft., 60c; 3 ft., 75c. Wt. 5 lbs.

SNOWBALL VIBURNUM

COMMON SNOWBALL (V. Opulus Sterilis)—Grows 6 to 8 feet high, the old-fashioned snowball; its large globular clusters of pure white flowers are produced in May and June and make a very attractive appearance. Very ornamental. Not prepaid. Each, 85c. Wt. 5 lbs.

OPULUS (Cranberry)—Grows 8 to 10 feet high. Bright crimson berries in clusters all winter. Flowers are in dense cymes about 4 inches across, pure white. Each, 85c. Wt. 5 lbs.

SCOTCH BROOM

A very attractive spring flowering shrub. The yellow blooms are a mass of color. Each, 50c. Wt. 3 lbs.

WEIGELIA

Very thrifty shrub with delightful blooms during summer, May to Sept. **EVA RATHKE**—Distinct and most attractive variety. Flowers deep carmine red. Each, 75c. Wt. 5 lbs.

ROSEA—Very popular. Pink flowers. Each, 75c. Wt. 5 lbs.

The following shrubs can be used for beautiful HEDGES and SCREENS.

PRIVET, BARBERRY, FORSYTHIA, HONEYSUCKLE, HYDRANGEA*, PHILADELPHUS, LILACS, SPIREAS.

HARDY ORNAMENTAL TREES

For Lawn, Street and Shade Planting

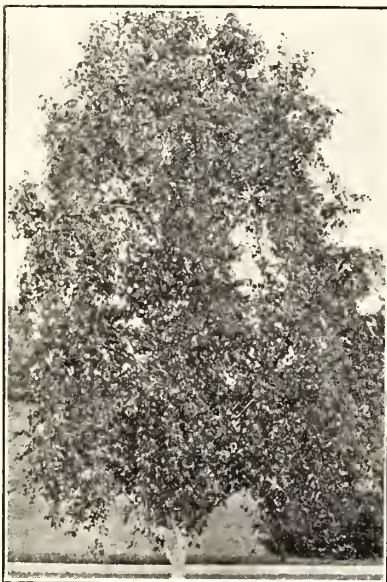
(Sent Only by Express)

ASH

EUROPEAN—Handsome small tree with pinnate foliage. White flowers in late spring followed by large clusters of attractive red berries all summer and fall. Nice for lawn or curb planting. Each, \$1.50 to \$2.50.

BIRCH

CUTLEAVED WEeping — Its graceful drooping habit vigorous growth and silvery bark with nicely cut foliage is rarely met with in a single tree. Each, \$2.50.



Weeping Birch

BOX ELDER

A well-known and popular tree that thrives in almost any location. Each, 75c to \$1.50.

CATALPA

SPECIOSO—A very rapid grower. Large heart shaped downy leaves and panicles of blooms. Each, \$2.50.

ELM

SIBERIAN or ASIATIC—A wonderfully rapid growing tree. Introduced by U. S. Government especially for the semi-arid sections. 25 feet tall and one foot in diameter in five years from planting is recorded. Each, \$1.50.

FLOWERING CHERRY

JAPAN—Double Pink. A very pretty dwarf tree with a mass of spring blooms. Each, \$2.00.

FLOWERING CRAB

BETHEL'S FLOWERING DOUBBLE—A medium sized tree of rather upright growth covered in early spring with large clusters of pink double flowers. Each, \$1.00 to \$1.50.

HAWTHORNE (English)

PAULS DOUBLE RED—Rich brilliant scarlet red flowering tree. Fine for lawns. Each, \$2.25 to \$3.00.

LINDEN

EUROPEAN—Used much for street and ornamental planting. Flowers fragrant and yellow. Each \$2.50.

LOCUST

BLACK—Native tree of large size. Fragrant small flowers. Fine for wind-breaks. Each, \$1.00 to \$2.00.

MAPLE

NORWAY—Probably the most suitable tree for street planting. Has a general recommendation by landscape architects and park departments. Each, \$2.50.

POPLAR

LUMBARDY—A slender erect columnar growing tree. One of the best for windbreaks and a beauty anywhere. Each, \$1.00 to \$1.50.

SYCAMORE

PLANE—A decidedly fine tree for shade and curb planting. Each, \$1.50.

WILLOW

WEeping—A graceful tree. Fresh green tint and wavy branches are very attractive. Each, \$1.25 to \$2.00.



Norway Maple

FRUIT TREES—Sent Only by Express

APPLES

Summer and Autumn

YELLOW TRANSPARENT — The earliest and best. White, tender, juicy, sub-acid. August maturing. Each, 75c; 10 for \$6.50.

RED JUNE—Red and a delicious early. Each, 75c; 10 for \$6.50.

GRAVENSTEIN — Considered the finest quality fall apple. Each, 75c; 10 for \$6.50.

Winter Varieties

Prices—All winter varieties, each, 75c; 10 for \$6.50.

JONATHAN — A vigorous grower and high quality fruit. Known everywhere.

DELICIOUS—Probably the most favored winter apple in America.

GRIMES GOLDEN—Rich golden yellow of best quality.

WAGNER—Deep red on sunside. Prolific and high quality on many soils.

BALDWIN—Crisp and fine flavor. A great winter keeper.

SPITZENBERG—Rich flavor never forgotten.

ROME BEAUTY—One of the most positive croppers of fine quality fruit.

WINESAP—Late winter. Dark red. A favorite.

CHERRY—Sweet

BING—Very large. Dark brown. Delicious. Each, 85c; 10, \$7.50.

LAMBERT—Heavy bearer. Black when dead ripe and rich quality. Each, 85c; 10, \$7.50.

ROYAL ANNE—A magnificent large yellowish fruit with reddish cheek. Popular everywhere. Each, 85c; 10, \$7.50.

BLACK REPUBLICAN—A fine dark cherry and a valuable pollener. Each, 85c; 10, \$7.50.

CHERRY—Sour

MONTMORENCY—A very large red productive fruit that has succeeded to the highest place in a canning or sauce fruit. Each, 85c; 10, \$7.50.

LATE DUKE—Large light red. Flesh tender, mildly acid and better quality than earlier sorts. One of the most popular sour cherries. Each, 85c; 10, \$7.50.

CRABAPPLES

SIBERIAN—Yellow with scarlet cheek. October. Each, 75c.

PEARS

BARTLETT—The king of early pears. Nothing better. Each, 75c.

FLEMISH BEAUTY—Very hardy. Juicy and productive. Each, 75c.

SECKLE—Small fruit. Highest flavored pear known. Used for pickling and dessert. Each, 75c.

APRICOTS

MOORPARK—The largest and best known variety. Deep orange color, very juicy. Each, 75c; 10, \$6.50.

PLUMS

Price—Each, 75c; 10, \$6.50.
BRADSHAW—Reddish purple skin. Flesh yellowish and juicy.

PEACH PLUM—Very large brownish red. Freestone. Well known.

YELLOW EGG—Deep golden color skin, best quality.

PRUNES

Price—Each, 75c; 10, \$6.50.
HUNGARIAN—Dark red, juicy and sweet.

ITALIAN—A large oval dark purple freestone. Flesh greenish yellow, best for canning and drying.

PEACHES

Price—Each, 75c; 10, \$6.50.
EARLY CRAWFORD—Freestone. A bright yellow with red cheek. Universally known.

ELBERTA—Freestone. Considered to be the best in peaches.

Hunters, Wash., March 30, 1930.
Gentlemen,—

A year ago I had you ship me a few apricot trees and I was quite well pleased with your stock as they were nice stock and grew well.

Very truly yours, J. M. G.

A Page of Accessories

FERTILIZERS Not Prepaid

Feeding plants is as essential as that of feeding animals. While most soils are provided with an abundance of the elements to produce crops, wise nature has so combined and locked up the natural fertilizer agents in the soil so that greedy man would not be able to rob them too hastily. The liberation of this plant food becomes a basic study for the producer. This involves keen judgment and much experimentation. This subject is merely presented to interest you sufficiently to cause some experimenting with the use of organic and inorganic fertilizers. You will find it very interesting and highly profitable. We may be able to assist you. Our service is FREE.

VIGORO

Specially prepared plant food

At last we have, in Vigoro, a complete plant food. Odorless, and easy to apply, it furnishes to plant life all the different elements necessary to normal, healthy growth. It is ideal for lawns and flowers, for shrubs and vegetable gardens. Complete directions contained with each bag.

PRICES—100-lb. bag, \$6.00; 50-lb. bag, \$3.75; 25-lb. bag, \$2.00; 5-lb. bag, 60c each.

AMMONIUM SULPHATE—One of the highest grade nitrogen fertilizers on the market. It tends to create an acid condition in the soil, which is especially desirable in lawns to discourage the growth of dandelions and other noxious weeds. Bent grass thrives on acid soil. Use Ammonium Sulphate liberally on your Bent Lawn. 1 lb., 10c; 10 lbs., 85c; 100 lbs., \$6.00.

BONE FLOUR—Rich in phosphorus. The use of which is a secret in securing beautiful lustre to flower blooms. 1 lb., 10c; 10 lbs., 60c; 100 lbs., \$4.00.

Germaco

Hotkaps



New Method of Plant Protection

A money-maker—matures crops earlier; shields plants from frost, wind and rain; protects them from insects; miniature "hot-houses." An amazing invention—**crop INSURANCE.**

Not Prepaid

50, \$1.00; 100, \$1.75; 500, \$6.00; 1000, \$11.50.

INSECTICIDES

The New Spray for Aphids



DERRISOL—Is an odorless non-poisonous liquid, which will control sucking insects such as Aphids, Thrips, Leaf-hoppers and Red Spiders. Also controls Currant worms and other leaf eating larvae.

One ounce makes six gallons spray, 35c; ½ lb. makes 50 gals., \$1.50; 1 lb. makes 100 gals. spray, \$2.50.

SEMESAN—The modern treatment for fungus diseases such as "Damping Off," and "Brown Patch," and for soil disinfection. 8 oz., \$1.60; 1 lb., \$2.75. Not available.

ARSENATE OF LEAD—For leaf and plant eating insects. 1 lb. makes 25 gals. spray, 45c. 4 lbs. makes 200 gals. spray, \$1.00. Not available.

BORDEAUX—9 lbs. to 50 gals of water. The most effective known remedy for plant protection from the fungous diseases. 1 lb., 40c; 4 lbs., \$1.00. Not available.

PARIS GREEN—A high grade poison effective against all chewing insects. ¼ lb., 20c; ½ lb., 40c; 1 lb., 60c; not available.

SPRAY PUMPS—We have a complete stock of spray pumps for every purpose. Consult us. Prices, 50c, \$1.00 to \$5.00 each.



Books for better Gardens

ALL BOOKS SENT POSTPAID

THE STANDARD CYCLOPEDIA OF HORTICULTURE—L. H. Bailey

The most universal and valuable authority on every horticultural question. 5000 illustrations; 3,637 pages; 3 volumes, \$25.00.

HOME FLOWER GROWING—E. C. Volz

Up-to-the-minute directions for growing every garden flower, also tells how to prepare exhibits for flower shows. \$3.50.

GLADIOLUS—F. F. Rockwell
Seventy-nine pages of instructions in detail of the culture of Gladiolus. Every Gladiolus lover should have this guide. \$1.00.

DAHLIAS—F. F. Rockwell
Tells how to grow, fertilize, control pests, harvest and store and propagate this wonderful flower. \$1.00.

ROCK GARDENS—F. F. Rockwell
Describes types of rock gardens, how to build them and what to plant for the effect you want. A wonderful help. \$1.00.

BOOK OF BULBS—F. F. Rockwell
Last word on bulbs and how to grow them. Includes Peonies, Iris, Dahlias, Gladioli, Tulips, Narcissi, Hyacinths—all true bulbs. 264 pages. \$3.00.

MANUAL OF GARDENING—L. H. Bailey

A complete guide for planting and landscaping of the home. Tells how to propagate, fertilize and transplant the different classes of fruits, vegetables and flowers. 350 illustrations. 539 pages. \$3.00.

ROSE IN AMERICA
Newest information on varieties, culture, pest controls. 233 pages. \$3.00.

ADDITIONAL SHRUBS

CORNUS (DOGWOOD)—Sibirica—Most valuable for their brilliant colored bark and foliage variations. They live the somber winter aspect of leafless shrubbery. Each, 75c; doz., \$7.95. Wt. each, 5 lbs.

CARAGANA ABORESCENS (Siberian Pea Shrub)—A double green leaved tasty plant and numerous clusters of yellow flowers followed by striking pea pods. This plant is fine for hedges. Hedge plants. Doz., \$2.00; 100, \$13.00. Wt. doz., 6 lbs; 100, 30 lbs.

Specimen Plants—Each, 65c; doz., \$6.60. Wt. each, 5 lbs.

BEAUTY BUSH (Kolkwitzia Amabilis)—A charming new shrub from China's High Mountains. Perfectly hardy. Has beautiful trumpet and bell shaped pink flowers with orange veins in June, July. Will be a great companion to our Spireas and a pink bloomer is really a prize in spring shrubs. Every lover of blooming shrubs should have this fine new plant. 1½ ft. to 2 ft. Each, \$1.25. Wt. packed 5 lbs.

BARBERRY - AMERICAN—This erect growing pretty shrub green leaved in summer turning to purplish shades in fall is a showy fine plant in any combination and in hedging. 3 ft. Each, 58c; doz., \$5.90. Wt. each 6 lbs.

BARBERRY (Red-Leaved)—A new introduction with red leaves followed by red berries. Each, 88c; doz., \$9.45. Wt. 5 lbs.

HYDRANGEA TREE—This beautiful shrub specially grown in our nursery for a small tree form is the most attractive lawn specimen plant and equally imposing as back ground for smaller shrub planting below its mass of white pink bronze and green flower plumes. 4 ft. specimen trees, each, \$1.25. Wt. 10 lbs. 5 ft. specimen trees, each, \$1.50. Wt. 11 lbs.

LILAC (French Grafted)—There is no comparison between our common Lilac, as pretty as they are, to those of the French Hybrids in the texture, size, color tones, mixture of shades, fragrance and luster of the blooms. The rather bad habit of succoring in the common Lilac is unknown in the French Lilacs.

BELLE DE NANCY—Double Satiny Rose White.

CHAS. JOLLY—Double Dwarf Violet Wine.

CHAS. X.—Single Purple.

DR. MASTER—Double Lavender.

MICHAEL BUCHNER—Double Lavender.

MARY LE GRAYE—Single Blue.

PRESIDENT GREY—Double Blue.

LUDWIG SPAETH—Single Purplish Red.

WM. ROBINSON—Single Violet Mauve.

3 ft. Each, \$1.25. 4 ft., \$1.50. Wt. 8 lbs.

Kelly's Evergreens

Evergreens, with their beautiful symmetry and their richness of color, add grace and dignity to the landscape design as no other nursery product can. Within the past few years, evergreens have gained in favor for the planting of the home so that now, the modern design calls for practically all evergreens. And this favor has been justly won for, in winter as well as summer, their wonderful shapeliness and their gorgeous hues inoculate their surroundings with a spirit of cheerfulness and satisfaction.

To flank an entrance, the taller growing varieties are particularly effective; for rock walls, terraces and rockeries, the prostrate types should be used. As single specimens out in the lawn, there is no more beautiful than the Colorado Blue Spruce. For windbreaks and backgrounds, use the Norway and Colorado Blue Spruce.

Remember our help and advice in beautifying your home is positively free, hence feel free to write us on any of these questions. We are sure that we can assist you.

All of our Evergreens are dug with a large ball of earth about the roots to insure safe transplanting. Crating and transportation are charged at cost.

THUJA

ARBOR VITAE (Pyramidalis)—The most compact and erect of the specie. Foliage a deep green retaining its color. Always beautiful and always admired. Each, 4 ft. over, \$8.00.

ARBOR VITAE (Globoso)—A globe form. Wonderfully attractive in pairs at home entrance or graceful and attractive in tubs or pots. Each, 2½ ft., \$5.00; 2 ft., \$4.00; 1½ ft., \$3.50; 1 ft., \$3.00.

BIOTA (Orientalis)—This is another type of THUJA or ARBOR VITAE. Grows erect somewhat pyramidal. Very robust, symmetrical tree and stately in its effect. Each, 4 ft. over, \$7.00.

ARBOR VITAE—American (Illustrated). The American Arbor Vitae is the mother tree from which more than 50 types have been developed. Broadly pyramidal, dense foliage, stands trimming well. Good deep green color. Perfectly hardy. 3 ft., ea. \$5.00; 4 ft., \$6.00.

ARBOR VITAE - BERKMAN'S GOLDEN—A very compact dense slow growing type. This conspicuous plant always attracts the eye. The flattened leaf surfaces always face edgewise and the yellow color merging with the green calls for admiration. 10 in. Each, \$2.79. 12 in., \$3.63. 14 in., \$4.60.



Savin Juniper



American Arbor Vitae

JUNIPER

CHINESE—One of the best in cultivation. It forms a compact pyramidal tree, bright green color. Rapid growth. Each, 2 ft. over, \$4.50; 3 ft. over, \$5.00.

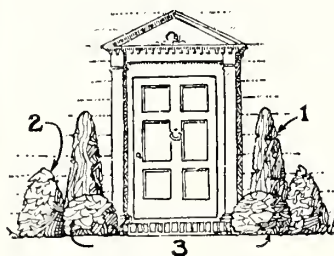
IRISH—Grows to 20 or more feet high and seldom over two feet in diameter. Bright glaucous green color. Fine for columnar architecture. Each, 4 ft. over, \$6.00; 5 ft. over, \$7.00.

PFITZER—Low broad type of irregular form. Used greatly as a filler between other taller growing varieties. Spread 2½ ft., ea. \$5.00.

SAVIN—(Illustrated.) Grows not more than 2 or 3 ft. high. It forms an excellent border to larger evergreens in the background. Dark green color. 12 to 18 inches. Each, \$3.50.

TAMARISCIFOLIA — A creeping dwarf variety. Average height about 1 ft., spreads 6 to 8 ft. Forms a perfect mat. Bluish and gray green. Each, 1 ft., \$2.00; 1½ ft., \$3.00.

VIRGINIANA—Red Cedar — Fine dense foliage, tips of which have pinkish tinge as winter approaches, making a beautiful picture. Has blunt conical habit of growth, makes a fine tree for planting on each side of an entrance. 3 ft., ea. \$4.50; 4 ft., \$6.50.



3

MAHONIA

ACQUIFOLIA (Holly Leaved)—An evergreen shrub with smooth, shining holly leaves changing their color capriciously during the year, from green to reds and bronze. Each, 3 ft. over, \$2.75.

RETINOSPORA

One of the most beautiful evergreens related to the cypress. Foliage and form quite distinct.

PLUMOSIS-AUREA (Globe form)—Bright green plume-like branches, yellow tinge on outer leaves. Handsome specimens. Each, 1½ ft., \$4.00;

PYRAMID AUREA—2½ ft., \$5.00.

PYRAMIDALIS—A pyramidal form. Beautiful feathery leaves. Distinctly beautiful. Each, 3 ft. over, \$6.50; 4 ft. over, \$7.50.

SPRUCE

COLORADO BLUE — Pyramidal form. Its steel blue foliage a sensation wherever grown. One of the showiest and most impressive evergreens. 2 ft., ea. \$7.00.

NORWAY—Open pyramidal habit. Its color is a good, rich dark green. Norway Spruce is commonly used for Christmas trees. 2 ft., ea. \$2.50; 3 ft., \$4.00.

JAPANESE SPURGE — A broad-leaved, evergreen ground cover, thriving in dense shade even where grass will not grow. It is splendid planted under trees and shrubs. Set 4 to 6 inches apart each way. Not prepaid, each, 30c; doz., \$3.00.



Irish Juniper

DOORWAY PLANTING

We offer the following Evergreens, which will make a splendid doorway planting, as follows:

- (1) 2 Juniper Irish, 4 ft. \$12.00
- (2) 2 Juniper Chinese, 2 ft. 9.00
- (3) 2 Arborvitae Globe, 1 ft. 6.00

Catalog price \$27.00
 Special Offer of Above for \$21.00
 Crating at cost.