

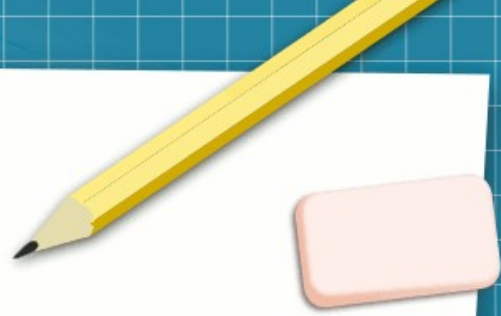
Blue Screen of Death

By TrainAndBus (Piotr Krupa)

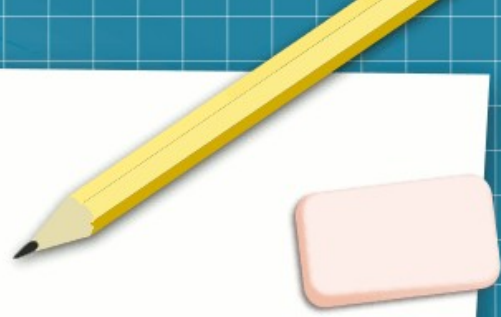
This licensed under a
Creative Commons Attribution-ShareAlike 4.0 & GFDL



Windows



- The blue screen of death (BSoD) is a critical stop screen displayed by the Windows and ReactOS operating systems in the event of a fatal system stop. It indicates a system crash, in which the operating system has reached a critical condition where it can no longer operate safely. Possible issues that can cause a BSoD include hardware failures, an issue with or without a device driver, or unexpected termination of a crucial process or thread.



Let's test out

A problem has been detected and Windows has been shut down to prevent damage to your computer.

UNMOUNTABLE_BOOT_VOLUME

If this is the first time you've seen this error screen, restart your computer. If this screen appears again, follow these steps:

Check to make sure any new hardware or software is properly installed. If this is a new installation, ask your hardware or software manufacturer for any Windows updates you might need.

If problems continue, disable or remove any newly installed hardware or software. Disable BIOS memory options such as caching or shadowing. If you need to use Safe Mode to remove or disable components, restart your computer, press F8 to select Advanced Startup Options, and then select Safe Mode.

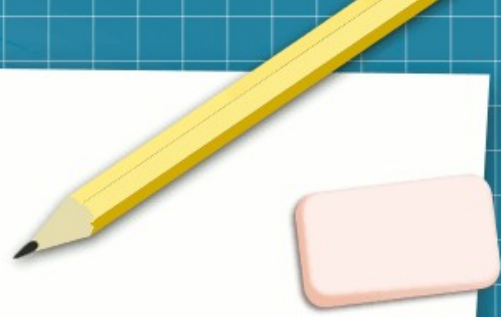
Technical Information:

*** STOP: 0x000000ED (0x80F128D0, 0xc000009c, 0x00000000, 0x00000000)

GLaDOS

- This was displayed behind Gabe Newell (from Valve Software) at the Game Choice Awards in 2008. I found the DOS font and remade this for my desktop. GLaDOS is a computer program in the video game Portal. Gabe Newell worked on the Half-Life series, Portal, Team Fortress and also co-founded the Steam game service.





Let's test out

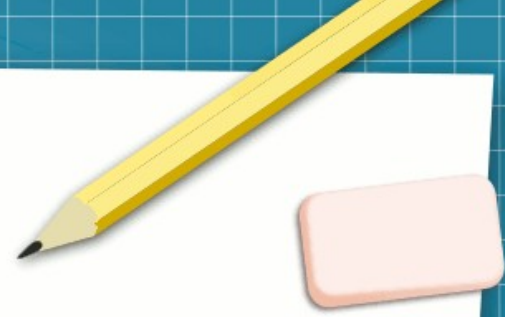
GLaDOS

A fatal exception E2 has occurred at E4E2:D7C5D5C4 in E4D 5E3(C9) .
D3C5C5C5. The current application will be terminated.

- * Press any key to flood the facility with deadly neurotoxins.
- * Press CTRL+ALT+DEL again to reinstate testing. You will lose any non-vital personnel and their progress through the current test.

Press any key to continue _

That's guy it!





This work is licensed under a Creative Commons Attribution-ShareAlike 3.0 Unported License. It makes use of the works of Mateus Machado Luna.

