



HIROSHIGE

廣重

YAMANAKA GALLERIES

254 FIFTH AVENUE

NEW YORK



Digitized by the Internet Archive
in 2016

<https://archive.org/details/hiroshige00ando>



MONKEY BRIDGE

CATALOGUE No. 115

HISTORY OF HIROSHIGE

Hiroshige was born at Yedo (Tokio) in the eighth year of Kwansei (1797). His professional name was known as Hiroshige and his family name Ando Tokutaro.

His father, Ando Gen-Yemon, held a small official position in the capacity of policeman and fireman, and by this connection he helped and encouraged his boy to develop the taste of nature, inborn. It is said, in the third year of Bunka (1806) the native officers from the Liu Kiu Islands visited Yedo; the boy then 11 years old thinking their hair dressing and costumes curious, made a skillful drawing of the procession. There was about that time, a great fad for Ukiyoe pictures mostly in figures such as actors, popular beauties and historic scenes, etc., which imbued him with a thirst for knowledge of paintings and of becoming more familiar with his work. From the very beginning he was desirous of becoming one of the great masters.

After the boy lost his father, he intended to take the customary apprenticeship with a master of the Ukiyoe school, and consequently sent his application to the famous Utagawa Toyokuni, who at the time was one of the best painters. Having been refused however, owing to Toyokuni's studio being already over-crowded and no vacancy could be made for a new pupil, he was referred to Utagawa Toyohiro, who had been a fellow-pupil of Toyokuni, but there, he met with the same result. After expressing his own ideas and showing his eagerness to learn, Toyohiro willingly received him as a regular pupil and in (1812) he received the professional name of Hiroshige—the first character of the pseudonym being taken from the character of his master's last name Toyo-hiro.

During the time he was in the studio, he studied very diligently and in fact never ceased to learn. Years later, he confined his painting mainly to landscape subjects.

By the death of his master, Toyohiro, in the twelfth year of Bunsei (1829) a great change took place in his life and work, and after seventeen years of study with

Toyohiro, he changed his professional name to Ichiryusai Hiroshige instead of Ichiyusai Hiroshige. In the following year, the first year of Tempo (1830) a customary ceremony was held by the Tokugawa Shogun, to present horses to the Emperor, and fortunately for him, he was enabled to accompany the officers from Yedo to Kioto, and while travelling with them, made many sketches of beautiful scenery, which later on were published as the "Fifty-three Views of Tokaido."

He was an intimate friend of Yeisen, and the famous set of sixty-nine views of Kiso-Kaido is claimed by both painters. He also specialized in flower and bird subjects and the study of fish life and form.

Among his works the following are most admirable:

- Set of 8 Yedo Kinko Hakkei.
- Set of 118 Meisho Yedo Hyakkei.
- Set of 55 Tokaido.
- Set of 8 Omi Hakkei.
- Set of 69 Kiso-Kaido.
- Set of 8 Kanazawa Hakkei.
- Set of 55 Gojusantsugi Meisho Zukai.
- Set of 10 Kyoto Meisho.
- Set of 36 Views of Mt. Fuji.
- Set of 69 Rokujuyoshu Meisho Zukai.
- Set of 3 Landscape of Kiso.
- Long print—Monkey Bridge.
- Set of 3 Awa-no-Naruto.
- Set of 3 Snow Scenes of Sumida River.
- Long print—Fuji River.
- Set of 6 Shokoku Mutsutamagawa.
- Set of 10 Fish Series.
- Flower and Bird Series.

Hiroshige died in the fifth year of Ansei (1858) in his sixty-third year, of cholera which swept all over Yedo, proving fatal to more than thirty thousand persons, and his work was then taken up by one of his pupils, Ichiyusai Shigenobu, who married his daughter and so became the second Hiroshige.

五高唐重子秋川春の
之祖豊春乃孫子一七
豊唐乃高唐なり今此世の
吾國画著し工浮世路して三人一
切の銭心もか者那も常に山吹のりき銭
揚も又あ故三辰の幸有りはま百糸所
のり目かお一其りも銭尾の物
撰又程きは野名河川舎銭撰も
代画銭我より共持くこ
ゆもはは出板搦土の男取ん人
きあもささも銭感竹せり抱所
いも丹の六り家のはさ切りまま
かゆ一持せりてさもかりれり年
六十七銭代母の別は先出の山吹へ積
ゆりれ感の井よありれもはさるるり
をりけと

五高唐重子秋川春の
之祖豊春乃孫子一七
豊唐乃高唐なり今此世の
吾國画著し工浮世路して三人一
切の銭心もか者那も常に山吹のりき銭
揚も又あ故三辰の幸有りはま百糸所
のり目かお一其りも銭尾の物
撰又程きは野名河川舎銭撰も
代画銭我より共持くこ
ゆもはは出板搦土の男取ん人
きあもささも銭感竹せり抱所
いも丹の六り家のはさ切りまま
かゆ一持せりてさもかりれり年
六十七銭代母の別は先出の山吹へ積
ゆりれ感の井よありれもはさるるり
をりけと

東 隆 (筆) 銭のひて

西のみ玉に

名とこうろ 銭
見 辨 唐 重

去ての老人あけと被銭
つけて筆は



No. 1

PORTRAIT OF HIROSHIGE
BY TOYOKUNI

MEMORIAL PORTRAIT
OF ICHIRYUSAI HIROSHIGE.

DRAWN BY THE SECOND TOYOKUNI (KUNISADA).

The portrait was issued in the month in which he died. The inscription, translated, reads as follows:

“Ryusai Hiroshige was a distinguished pupil of Toyohiro, who was a follower of Toyoharu, the founder of the Utagawa School. In recent times Hiroshige, Toyokuni (Kunisada), and Kuniyoshi are considered the three great masters of Ukiyoye with no others to equal them. Hiroshige was especially fond of landscape. In the dragon year (3rd) of the Ansei period (1856) he published the Yedo Hyakkei (100 views) which vividly present the scenery of Yedo to a multitude of admirers. About this time also appeared a monthly issue entitled ‘Kyoka Yedo Meisho Zuyē’ (‘Poems on Yedo Scenes,’) illustrated by Hiroshige, and displaying his wonderful skill with the brush to the admiration of the world. He breathed his last on the sixth day of the ninth month of this year at the ripe age of 62.”

He left behind a farewell poem:

“Azuma ji ni fude wo nokoshite tabi no sora; nishi no mikuni no nadokoro wo minu.”

Translation:

“Dropping my brush at Azuma (Eastern Capital), I go the long Journey to the pure land of the West (the Buddhist Heaven) to view the wonderful and different scenery there.”

This is written by Temmei Rojin.

Over the signature Toyokuni are the few characters in a running hand, reading:

“Omoi Kiya rakurui nagara.”

“While thinking of him we shed tears.”

Seal date: Horse Year, ninth month (which is equivalent to Ansei the fifth year, or the European year 1858).



No. 2

PRINT OF
 MEMORIAL MONUMENT OF HIROSHIGE
 BY THE 3RD HIROSHIGE
 CATALOGUE No. 2

PRINT OF MEMORIAL MONUMENT
OF ICHIRYUSAI HIROSHIGE.

Built by the 3rd Hiroshige's in the fourth year of
the Meiji Era (1871).

Ryusai Hiroshige 3rd built his master's Memorial Monument in the ground of Akiba Shrine, and at the same time issued the print in which the inscription, translated, reads as follows:

“Master Ryusai Hiroshige was a distinguished pupil of Toyohiro, who was a follower of Toyoharu, the founder of the Utagawa School. He entered his master's studio at the age of sixteen. After his master's death, not caring to study under another, he followed his own inclination, sketching scenes, etc., that truly represent the beauties of nature.”

Speaking of himself, he said: “I am not intelligent, nor am I a skilled painter, but I succeeded to the name of my master, which in public I wish to retain for the future. With the help of Matsumoto, a relative of my master's, and also others who were concerned, I had his farewell poem carved in the stone monument which was placed in front of the Akiba Shrine near the Sumida River as a memorial.”

April 15th, year of Meiji Era (1882).

“Azuma ji ni fude wo nokoshite tabi no sora; nishi no mikuni no nadokoro wo mimu.”



No. 3

CATALOGUE

PRINTS

1 PRINT.

Portrait of Hiroshige. By Toyokuni 2nd.
(*Illustrated*).

2 PRINT.

Stone Monument for Hiroshige.
Erected by the 2nd Hiroshige in the grounds
of Akiba Shrine in Mukojima. (*Illustrated*).

3 TRIPTYCH.

Famous Snow Scene of Kisoji-no Yama-Kawa.
Signed Hiroshige fude. (*Illustrated*).

4 TRIPTYCH.

Whirlpool of Awanonaruto.
Signed Hiroshige fude.

5 TRIPTYCH.

Moonlight Scene of Kanazawa Hakkei.
Signed Hiroshige fude.

6 TRIPTYCH.

Snow Scene on the Sumida River.
Signed Hiroshige gsau.

7 EIGHT PRINTS. OMI HAKKEI.

Eight Views of Omi.

Signed Hiroshige gasu. Yoko Oban.

A View of Welcome Home at Yabashi.

B “ Pine Tree in Rain at Karasaki.

(Illustrated).

C “ Sunset at Seta.

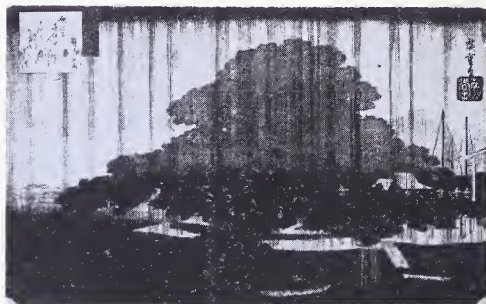
D “ Geese Alighting at Katata.

E “ Snow on Hira.

F “ Autumnal Moon at Ishiyama.

G “ After the Storm at Awatsu.

H “ Evening Bell at Miidera.



No. 7

8 SEVEN PRINTS. FROM THE SERIES OF YEDO KIN KO HAKKEI.

Signed Hiroshige gasu. Yoko Oban.

A View of After the Storm at Shibaura.

B “ Evening Bell at Ikegami Temple.

C “ Welcome Home at Gytoku.

D “ Autumn Moonlight on the Tamagawa.

E “ Sunset at Koganei.

F “ Snow at Asukayama.

G “ Night Rain at Adzumanomori .

9 TEN PRINTS. KYOTO MEISHO.

Ten Views of Kyoto.

Signed Hiroshige gasu.

- A View of Yase-no-Sato.
B “ Passenger Boat on the River Yodo
by Moonlight.
C “ Cherry Blossoms at Kiyomidzu
Temple.
D “ Kinkakuji, or Golden Pavilion and
Gardens.
E “ Shower in Tadasu.
F “ Night Picnic on the Shore of the
Shijo River.
G “ Entrance to Shimabara.
H “ Picnic Under Maple Trees at Tsu-
tenkyo.
I “ Snow Scene of Gion Temple.
J “ Arashiyama Rapids and Cherry

10 SIX PRINTS.

SHOKOKU MUTSU-TAMAGAWA.

Six Different Views of Tamagawa.

Signed Hiroshige gasu.

- A View of Mutsu- Noda.
B “ Omi Noji.
C “ Kii Koya.
D “ Musashi Chofu.
E “ Settsu Koromo Ushi.
F “ Yamashiro Ide.

SERIES OF HONCHO MEISHO.

11 PRINT.

Landscape and Cascade of Nunobiki (Kobe)
Sesshu. Signed Hiroshige gasu. Yoko Oban.

12 PRINT.

Landscape of Yenoshima Cave and Waves.
Signed Ichiryusai Hiroshige gasu. Yoko Oban.

13 PRINT.

Landscape, Sarashina and Reflection of the
Moon. Signed Hiroshige gasu. Yoko Oban.

14 PRINT.

Landscape of Hichiriga Hama in Soshu.
Signed Ichiryusai Hiroshige gasu. Yoko Oban.

SERIES OF TOKAIDO, 53 STATIONS.

15 PRINT.

Mitsuke.

16 PRINT.

Mariko.





No. 19

17 PRINT.

Landscape of Hama Matsu and Castle.
Signed Hiroshige gasu. Yoko Oban.

18 PRINT.

Notable Heavy Rain at Shono Pass.
Signed Hiroshige gasu. Yoko Oban.

(Illustrated).

19 PRINT.

Landscape, Snowfall at Night at Kambara.
Signed Hiroshige gasu. Yoko Oban.

(Illustrated).

20 PRINT.

Heavy Rain at Tsuchiyama.
Signed Hiroshige gasu. Yoko Oban.

SERIES OF KISOKAIDO, 69 STATIONS.

21 PRINT.

Wood Cutter and Big Pine Tree at Motoyama.
Signed Hiroshige gasu. Yoko Oban.



No. 22

22 PRINT.

Landscape, Moonlight at Nagakubo.
Signed Hiroshige gasu. Yoko Oban.

(Illustrated).

23 PRINT.

Snowfall at Oi.
Signed Hiroshige gasu. Yoko Oban.

24 PRINT.

Shower at Subara.
Signed Hiroshige gasu. Yoko Oban.

25 PRINT.

Landscape, Moonlight at Mochizuki.
Signed Hiroshige gasu. Yoko Oban.

26 PRINT.

Landscape, Moonlight at Semba.
Signed Hiroshige gasu. Yoko Oban.

(Illustrated).

27 PRINT.

Travelers at Karuizawa.
Signed Hiroshige gasu. Yoko Oban.



No. 26

SERIES OF TOKAIDO, 53 STATIONS.

28 PRINT.

Landscape of Hodogaya, Katabira River and Bridge.

Signed Hiroshige gasu. Yoko Oban.

(Illustrated).



No. 28

29 PRINT.

Landscape, Sea Cliff of Yui.

Signed Hiroshige gasu. Yoko Oban.

30 PRINT.

Landscape, Heavy Snow Scene at Mariko.

Signed Hiroshige gasu. Yoko Oban.

31 PRINT.

Landscape of Hama Matsu, Seashore.
Signed Hiroshige gasu. Yoko Oban.

(Illustrated).

32 PRINT.

Landscape, Heavy Snowfall at Seki.
Signed Hiroshige gasu. Yoko Oban.



No. 31

SERIES OF NANIWA MEISHO ZUKAI.

33 PRINT.

Great Pine Tree of Naniwaya at Osaka.
Signed Hiroshige gasu. Yoko Oban.

34 PRINT.

Landscape and Fish Market Scene, Zakoba
at Osaka.
Signed Hiroshige gasu. Yoko Oban.

SERIES OF KANAZAWA HAKKEI.

35 PRINT.

Eight Views of Kanazawa. Landscape, Snow-
fall at Uchigawa.

Signed Hiroshige gasu. Yoko Oban.

(Illustrated).

36 PRINT.

Eight Views of Kanazawa.
Landscape, Sunset at Nojima.

Signed Hiroshige gasu. Yoko Oban.



No. 35

SERIES OF YEDO MEISHO MITSU NO NAGAME

37 PRINT.

Nippon Bashi and Vicinity After a Snow-
storm.

Signed Hiroshige gasu. Yoko Oban.

SERIES OF TOTO MEISHO.

38 PRINT.

Winter Landscape at Massaki on the Sumida River.

Signed Hiroshige gasu. Yoko Oban.

39 PRINT.

Landscape, Moonlight, Nippon-Tsutsumi, Yoshiwara.

Signed Hiroshige gasu. Yoko Oban.

SERIES OF CHUSHINGURA, OF 47 RONINS.

40 PRINT.

Forty-seven Ronins Returning After Successfully Revenging Themselves.

Signed Hiroshige gasu. Yoko Oban.

SERIES OF YOSHITSUNE ICHIDAIKI.

41 PRINT.

History of Yoshitsune, who was a great general about the year 1185. This scene is one of his successful night attacks at Mikusayama.

Signed Hiroshige gasu. Yoko Oban.

SERIES OF MEISHO YEDO HYAKKEI.
HUNDRED VIEWS OF YEDO.

42 PRINT.

Heavy Shower and Ohashi.

Signed Hiroshige gasu. Tate Oban.

(Illustrated).



No. 42



No. 43

43 PRINT.

Huge Eagle Looking Down Fukagawa Sasaki.

Signed Hiroshige gasu. Tate Oban.

(Illustrated).

44 PRINT.

Landscape, Night Scene Near the Inari or Fox Shrine at Oji.

Signed Hiroshige gasu. Tate Oban.

45 PRINT.

Celebrated 100 Views in Yedo.

Tsukuda Island from Yeitai Bridge on a
Moonlight Night.

Signed Hiroshige gasu. Tate Oban.

46 PRINT.

View of the Sumida River from the Window.

Signed Hiroshige gasu. Tate Oban.

47 PRINT.

View of Rice Field and Crowds at Torinomachi
from a Veranda.

Signed Hiroshige gasu. Tate Oban.

48 PRINT.

Asakusa Kinryuzan, Gate with Large Lantern
and Pagoda in the Snow.

Signed Hiroshige gasu. Tate Oban.

SERIES OF ROKUJU-YOSHU MEISHO ZUKAI.

49 PRINT.

Fujiyama from Miho-no-Matsubara.

Signed Hiroshige gasu. Tate Oban.

50 PRINT.

Snow Scene of Shisaku in Iki.

Signed Hiroshige gasu. Tate Oban.

51 PRINT.

High Sea at Awa-Narutos.

Signed Hiroshige gasu. Tate Oban.

52 PRINT.

Moonlight Night on the Grounds of the Shin-
to Shrine in Izumo.

Signed Hiroshige fude. Tate Oban.

(*Illustrated*).



No. 52

SERIES OF MEISHO YEDO HYAKKEI.

53 PRINT.

Nakasu, Mitsumata on the Sumida River.
Signed Hiroshige fude. Tate Oban.

54 PRINT.

Fishing Boat at Night Near Tsukudajima.
Signed Hiroshige fude. Tate Oban.

SERIES OF SHOKOKU MEISHO HYAKKEI.

55 PRINT.

Daishoji Temple at Kanazawa.
Signed Hiroshige gasu. Tate Oban.

SERIES OF ROKUJU-YOSHU MEISHO ZUKAI.

56 PRINT.

Fujiyama from the Coast of Satta.
Signed Hiroshige gasu. Tate Oban.

SERIES OF GOJUSANTSUGI MEISHO ZUKAI.

57 PRINT.

Fujiyama and Nunadzu in Snow.

Signed Hiroshige gasu. Tate Oban.

FROM SERIES OF SUMIDA HAKKEI.
EIGHT VIEWS OF SUMIDA RIVER.

58 PRINT.

Rainy Night at Makura Bridge.

Signed Hiroshige gasu. Tate Oban.

59 PRINT. Uchiwa-ye, Unfolding Fan.

Fujiyama and Miho-no-Matsubara.

Signed Hiroshige, and seal Ichiriusai.

60 SMALL PRINT.

Landscape, Seashore and Fishermen.

Hakuri-Kaihin of Kadzusa.

61 SMALL PRINT.

Ayu Fish in the Rapids.

Signed Hiroshige gasu.

DESIGN FOR UCHIWA OR FOLDING FAN.

62 PRINT.

Morning Glory and Moon.

Signed Hiroshige fude.

63 PRINT.

Mother and Daughter Traveling Near Fuji-
yama.

Signed Hiroshige gasu.

64 PRINT.

Two Maidens on the Beach.

Signed Hiroshige gasu.

- 65 PRINT.
Jesters, Good and Bad.
Signed Hiroshige Tawamure-ni-gasu.
- 66 PRINT. Harimaze or Pictures of Many Subjects.
Beautiful Landscape Scene, with Sailboats,
Men, Women, Fans, Fish, etc.
Signed Hiroshige. Yoko oban.
- 67 PRINT. Blue and White, Harimaze, or several
designs.
Signed Hiroshige. Tate Oban.
- 68 TWO PRINTS. Black and White, Harimaze, or
several designs.
Landscape, Bamboo, Sparrows, Reeds, etc.
Signed Hiroshige, Tate-e.
- 69 SMALL PRINT.
Lady with Fan Standing Near a Lamp.
Signed Hiroshige gasu.
- 70 SMALL PRINT.
Two Dancers, Man and Woman at a Festival
Dance in July.
Signed Hiroshige fude.
- 71 PRINT.
Mouse Trap.
Signed Hiroshige Tawamure ni fudesu.
- 72 PRINT. Cartoon.
Signed Hiroshige Tawamure ni fudesu.
- 73 PRINTS. Diptych in Colors.
Flock of Cranes and Dashing of Waves.
Hiroshige fude and seal.

74 PRINT

Ayu Fish Swimming in a Stream.

Signed Hiroshige fude.

75 PRINT.

A Carp Leaping the Rapids.

Signed Hiroshige gasu. Yoko oban.

76 PRINT.

Amadai and Mouwo Fish and Mountain Horse-radish.

Signed Hiroshige fude. Yoko oban.

77 PRINT.

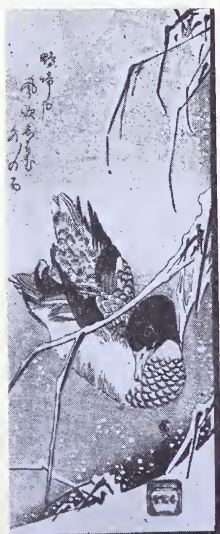
Mandarin Ducks Swimming in a Pond.

Signed Hiroshige fude.

78 PRINT.

Long-tailed Bird Perched on Plum Blossoms.

Signed Hiroshige fude and seal. Tate-e.



No. 79



No. 84

79 PRINT.

Pair of Ducks with Blue Heads Under a Weeping Willow Tree in Snow.

Signed Hiroshige fude Tate-chuban.

(Illustrated).

80 PRINT.

Pheasant and Young Pine Tree in the Snow.

Bird printed in colors. Tate-e.

Signed Hiroshige fude.

81 PRINT.

Pheasant on a Rock and Wild Chrysanthemum. Tate-e.

Signed Hiroshige fude and seal.

82 PRINT.

Hojiro and Camilia Blossoms. Tate-e.

Signed Hiroshige fude and seal.

83 PRINT.

Wild Camilia and Sparrow in the Snow. Tate-e.

Signed Hiroshige fude and seal.

84 PRINT.

Pair of Mandarin Ducks and Water Lilies.

Signed Hiroshige fude. Tateban.

85 PRINT.

Green Cuckoo and Peach Blossoms.

Signed Hiroshige fude. Tateban.

86 PRINT.

Hydrangea and Kingfisher.

Signed Hiroshige fude. Tateban.

- 87 PRINT.
Falcon on a Pine Tree Watching the Rising
Sun
Signed Hiroshige fude. Tateban.
- 88 PRINT.
White Heron and Iris.
Signed Hiroshige fude. Tateban.
- 89 PRINT.
Monkey with Red Coat Under a Cherry Tree
in Blossom.
Signed Hiroshige fude. Tateban.
- 90 PRINT.
Crane and Waves
Signed Hiroshige fude. Tateban.
- 91 PRINT.
Peacock and Peony.
Signed Hiroshige fude. Tateban.
- 92 PRINT.
Red Cuckoo on a Pine Tree.
Signed Hiroshige fude. Tateban.
- 93 PRINT. Blue and White.
Jay on a Biwa Tree. Tate-e.
Signed Hiroshige fude and seal.
- 94 PRINT.
Nightingale in the Rain.
Signed Hiroshige fude. Tate chuban.
(Illustrated).
- 95 PRINT.
Pair of Mandarin Ducks on the Ice.
Signed Hiroshige fude. Tate chuban.

- 96 PRINT.
Weeping Cherry Flowers and Small Bird.
Signed Hiroshige fude. Tateban.
- 97 PRINT.
Camilia Flowers and Sparrows in the Snow.
Signed Hiroshige fude. Tateban.
- 98 PRINT.
Weeping White Plum Blossoms and Uguisu.
Signed Hiroshige fude. Tateban.
- 99 PRINT.
Wren and Chrysanthemum Flowers.
Signed Hiroshige fude. Tateban.
- 100 PRINT.
Sparrow and Bamboo.
Very simple and artistic. Tate-e.
Signed Hiroshige fude and seal.
- 101 PRINT.
Wild Camilia Flowers and Buncho.
Signed Hiroshige fude. Tateban.
- 102 PRINT.
Falcon on a Pine Tree with Ivy Foliage En-
twined.
Signed Hiroshige fude. Tateban.
- 103 PRINT.
Long-tailed Blue Bird and Azalea.
Signed Hiroshige fude. Tateban.
- 104 PRINT.
Bird Perched on a Peony.
Signed Hiroshige fude and seal.

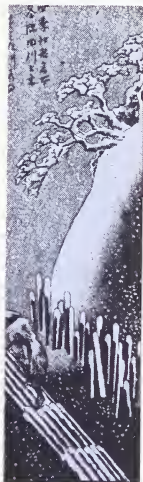
TWENTY-EIGHT MOON SERIES.

105 PRINT.

Monkey Bridge and Waterfall.

Yumihari-dzuki.

Signed Hiroshige fude. Tate-chu-ban.



No. 106



No. 112



No. 114

106 PRINT.

Sumida River and Embankment in Snow and
a Man on a Raft. Tate-e.

Signed Hiroshige gasu and seal.

(Illustrated).

107 PRINT.

Full Moon as Seen from Under the Ryogoku
Bridge Tate-e
Signed Hiroshige gasu and seal.

108 PRINT.

Autumn Outing, Looking Over the Yedo Bay.
Signed Hiroshige gasu.

TOTO MEISHO SERIES.

109 PRINT.

Kame-ido, Wistaria and Bridge. Tate-e.
Signed Hiroshige gasu and seal.

110 PRINT.

Landscape, Moonlight Night in Takanawa.
Signed Hiroshige gasu. Tate-chu-ban.

111 PRINT.

Landscape, Ryogoku Bridge and Fireworks.
Signed Hiroshige gasu. Tate-chu-ban.

112 PRINT.

Landscape, On the Way to Shin-Yoshiwara in
Autumn by Moonlight.
Signed Hiroshige gasu. Tate-chu-ban.
(Illustrated).

113 PRINT.

Landscape, Asakusa Temple and Vicinity in
the Rain.
Signed Hiroshige gasu. Tate-chu-ban.

- 114 PRINT. From the Series of Mutsu Tamagawa.
Landscape, Musashi Chofu, Bleaching Cotton
on the Tama River.
Signed Hiroshige gasu. Tate-chu-ban.
(Illustrated).
- 115 PRINT.
The Sarubashi or Monkey Bridge Over the
Rapids in the Province of Koshu by Moon-
light. Large Kakemonoye.
Signed Hiroshige fude, stamp Ichiryusai.
(Illustrated in Colors).
- 116 PRINT.
The Snow Gorge. A View of the Upper Fuji
River. Large Kakemonoye.
Signed Hiroshige fude.
- 117 PRINT.
A Falcon Perched on a Pine Tree in Snow.
Large Kakemonoye.
Signed Hiroshige fude, stamp Ichiryusai.
- 118 PRINT.
A Peacock Resting on a Point of Rock Sur-
rounded by Large Peony Flowers.
Large Kakemonoye.
Signed Hiroshige fude.

119 PRINT.

Tenmangu or Prince Sugawara Mitsuzane
Dressed in Court Costume and Seated on a
Cushion Under Pine and Plum Trees.

Large Kakemonoye.

Signed Hiroshige fude.

120 PRINT.

A Shop of Arimachi Shibori at Narumi, To-
kaido

Signed Ichiryusai Hiroshige Koreo Zusu.
Yoko Oban.

SKETCHES

121 PANEL. Sketch on Paper in Monochrome for
a Fan.

Fisherman with Net.

Signed by request Hiroshige and seal.

122 PANEL. Sketch on Silk in Color.

View of the Odawara Old Gate at Tokaido.

No signature.

123 PANEL. Sketch on Silk in Color.

Landscape of Yenoshima and Fujiyama from
Hichiriga hama.

Signed Hiroshige fude and seal.

124 PANEL. Sketch on Silk in Color.

View of Tama-gawa in Summer by Moonlight.

Signed Hiroshige fude.

(Illustrated).



No. 124

- 125 PANEL. Sketch on Silk in Color.
Landscape of Fude-sute-yama Sakano-Shita,
at Tokaido.
Signed Hiroshige and seal.
- 126 PANEL. Sketch on Silk in Color.
Landscape of Yedo Bay with Junks on a
Moonlight Night from Takanawa.
Signed Hiroshige and seal.
- 127 PANEL. Sketch on Silk in Color.
Landscape of the Famous Tama River in
Bushu and Fujiyama.
Signed Hiroshige and seal.
- 128 PANEL. Sketch on Silk in Color.
Landscape, Wild Field Near Hamamatsu at
Tokaido with the Castle in the Distance.
Signed Hiroshige and seal.
- 129 PANEL. Sketch on Silk in Color.
Landscape of the Famous Swamp Imba and
Fujiyama.
Signed Hiroshige and seal.

- 130 PANEL. Sketch on Silk in Color.
Landscape and Rapids at Kiso Kaido.
Signed Hiroshige and seal.
- 131 PANEL. Sketch on Paper in Color.
Landscape of Suruga Bay and Mihono-Matsubara.
Signed Hiroshige and seal.
- 132 PANEL. Sketch on Paper in Color.
Landscape of the Famous Swamp of Imba at Joshu.
Signed Hiroshige and seal.
- 133 PANEL. Sketch on Paper in Color.
Landscape of Ikao Hot Spring at Kodzuke.
Signed Hiroshige and seal.
- 134 PANEL. Sketch on Paper in Color.
Landscape of Futase goye at Kai.
Signed Hiroshige and seal.
- 135 PANEL. Sketch on Paper in Color.
Landscape, Fujiyama from Kiyomiga-seki at Suruga and a Large Fishing Net.
Signed Hiroshige and seal.
- 136 PANEL. Sketch on Paper in Color.
Fishing Boats with Torchlights Near Tsukuda Island from Ycitai Bridge.
Signed Hiroshige and seal.

(Illustrated).



No. 136

137 PANEL. Sketch on Paper in Color.

Landscape and Lighthouse at Tempozan, entrance to Osaka Harbor.

Signed Hiroshige and seal.

138 PANEL. Sketch on Paper in Color.

Landscape and Fujiyama from Satta Pass at Tokaido.

Signed Hiroshige and seal.

139 PANEL. Sketch on Paper in Color.

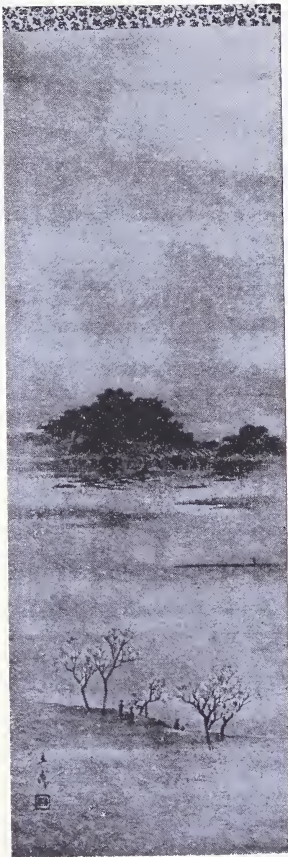
Landscape of Kiso-yama Pass and Valley at Shinshu.

Signed Hiroshige and seal.

- 140 PANEL. Sketch on Paper in Color.
Welcoming Home a Large Junk to Negishi-no
Sato, or Mississippi Bay Near Yokohama.
Signed Hiroshige and seal.
- 141 PANEL. Sketch on Paper in Color.
Landscape with Sailboats and Torii, at Miya-
jima.
Signed Hiroshige and seal.
- 142 PANEL. Sketch on Paper in Delicate Colors.
Landscape and Dashing Waves, Koyurugi-no-
hama at Soshu.
Signed Hiroshige and seal.
- 143 PANEL. Sketch on Paper in Delicate Colors.
Landscape, Kwan-on Pass at Kiso-Kaido.
Signed Hiroshige and seal.
- 144 PANEL. Painted on Silk in Color.
Landscape of Mountains and Rice Fields in
Moonlight.
One of the famous subjects by the artist
Tagoto-no-Tsuki, of Shinshu Province.
Signed "By request Hiroshige" and seal.

KAKEMONO

- 145 PAIR OF KAKEMONO. Painted on Silk in
Colors.
Right, Mimeguri Landing and Mukojima in
Full Blossom, and Swallows Flying. Left,
Yedo Bay with Junks and Full Moon Rising
at Takanawa.
Signed Rissai and seal.



No. 146 (Pair)

- 146 PAIR OF KAKEMONO. Painted on Silk in Colors.
Right, Matsuchiyama from Mukojima Across the Sumida River. Left, Mimeguri and Mukojima from Sanya Across the Sumida River by Moonlight.
Signed Rissai and seal.
(Illustrated).
- 147 KAKEMONO. Painted on Silk in Colors.
Ryogoku Bridge from Adzuma-bashi by Moonlight.
Signed Hiroshige and seal.
(Illustrated).
- 148 KAKEMONO. Painted on Silk in Colors.
Yama-mata-Yama, or Mountain After Mountain.
Signed Hiroshige and seal.
- 149 KAKEMONO. Painted on Paper in Monochrome with Indian Ink.
Famous Monkey Bridge.
Signed Hiroshige and seal.
- 150 KAKEMONO. Painted on Paper.
Snow Scene of Ochano-Midzu.
Signed Rissai fude and seal.
- 151 PAIR OF KAKEMONO. Painted on Silk in Colors.
Right, Takao seated near an Andon or lamp Composing a Poem while a Nightingale is flying over her. Left, View of Komakata on the Sumida River.
Signed Hiroshige and seal.



No. 147

- 152 **KAKEMONO.** Painted on Silk in Colors.
Geisha Girl Enjoying the Moonlight.
Signed Hiroshige and seal.
- 153 **KAKEMONO.** Painted on Paper in Colors.
Fujiyama from the Crossing on the Rokugo
River at Tokaido.
Signed Hiroshige and seal.
- 154 **KAKEMONO.** Painted on Silk in Colors.
Matsu chi-yama from Imado Bridge in a Sum-
mer shower.
Signed Hiroshige and seal.
- 155 **KAKEMONO.** Painted on Silk in Colors.
General Sasaki Takatssuna crossing Uji River
on horseback.
Signed Rissai fude and seal.
- 156 **KAKEMONO.** Painted on Paper in Monochrome.
Tai-Kobo, a Great Statesman, and Emperor
Si-Peh Discussing the Constitution of the
Chinese Empire, 1140 B.C.
Signed "By request Hiroshige fude" and seal.
- 157 **PAIR OF KAKEMONO.** Painted on Silk in
Colors.
Right, Sumida River and embankment. Left,
Sumida River with Miyako-dori and Mount,
Tsukuba in the distance.
Signed Hiroshige and seal.

The prices can be had on application.

MEMORANDUM

MEMORANDUM

