

AIRCRAFT ACTION REPORT

RESTRICTED
(Reclassify when filled out)

CONFIDENTIAL

I. GENERAL

(a) Unit Reporting VC-97 (b) Based on or at U.S.S. NARASSAR STRAIT (OVR-91) (c) Report No. 6
 (d) Take off: Date 13 April 1945 Time (LZT) 1200 (Zone); Lat. 25-16N Long. 128-22E
 (e) Mission D.S.G. IN SHINA (f) Time of Return 1545 (Zone)

II. OWN AIRCRAFT OFFICIALLY COVERED BY THIS REPORT.

| TYPE (a) | SQUADRON (b) | NUMBER | | | BOMBS AND TORPEDOES CARRIED (PER PLANE) (f) | FUZE, SETTING (g) |
|--------------|-----------------|----------------------|------------------------------|----------------------------|---|-----------------------------|
| | | TAKING OFF (c) | ENGAGING ENEMY A/C (d) | ATTACKING TARGET (e) | | |
| TBM-3 | | 8 | 0 | 8 | 4WT (10-100#G.P.) 4WT (4-500#G.P.) 6WT (8-5" HE Rockets 1000-50 Cal & 400-30 Cal Ammo. | .01 .01 Inst |
| | | | | | | |

III. OTHER U. S. OR ALLIED AIRCRAFT EMPLOYED IN THIS OPERATION.

| TYPE | SQUADRON | NUMBER | BASE | TYPE | SQUADRON | NUMBER | BASE |
|-------------|----------|--------|------|------|----------|--------|------|
| None | | | | | | | |
| | | | | | | | |

IV. ENEMY AIRCRAFT OBSERVED OR ENGAGED (By Own Aircraft Listed in II Only).

| (a) TYPE | (b) NO. OBSERVED | (c) NO. ENGAGING OWN A/C | (d) TIME ENCOUNTERED | (e) LOCATION OF ENCOUNTER | (f) BOMBS, TORPEDOES CARRIED; GUNS OBSERVED | (g) CAMOUFLAGE AND MARKING |
|-------------|------------------------|--------------------------------|----------------------------|---------------------------------|---|----------------------------------|
| None | | | (ZONE) | | | |
| | | | (ZONE) | | | |
| | | | (ZONE) | | | |

(h) Apparent Enemy Mission(s) _____
 Did Any Part of _____
 (i) Encounter(s) Occur in Clouds? _____ If so, Describe Clouds _____
(YES OR NO) (BASE IN FEET, TYPE AND TENTHS OF COVER)
 Time of Day and Brilliance _____
 (j) of Sun or Moon _____ (k) Visibility _____
(NIGHT, BRIGHT MOON; DAY, OVERCAST; ETC.) (MILES)

V. ENEMY AIRCRAFT DESTROYED OR DAMAGED IN AIR (By Own Aircraft Listed in II Only).

| (a) TYPE ENEMY A/C | (b) DESTROYED OR DAMAGED BY: | | | | (c) WHERE HIT, ANGLE | (d) DAMAGE CLAIMED |
|--------------------------|------------------------------|----------|-----------------|-----------|-------------------------|--------------------------|
| | TYPE A/C | SQUADRON | PILOT OR GUNNER | GUNS USED | | |
| None | | | | | | |
| | | | | | | |
| | | | | | | |
| | | | | | | |
| | | | | | | |
| | | | | | | |
| | | | | | | |
| | | | | | | |
| | | | | | | |

AIRCRAFT ACTION REPORT

(OMIT THIS SHEET IF NO ATTACK WAS MADE)

RESTRICTED
(Reclassify when filled out)
CONFIDENTIAL

REPORT No. 6

XI. ATTACK ON ENEMY SHIPS OR GROUND OBJECTIVES (By Own Aircraft Listed in II Only).

(a) Target(s) and Location(s) (See below) (b) Time Over Target(s) 1300-1445 (Zone) Item
(FOR SHIPS INCLUDE ALL IN AREA UNDER ATTACK)

(c) Clouds Over Target None
(BASE IN FEET, TYPE AND TENTHS OF COVER)

(d) Visibility of Target Good but hazy (e) Visibility 8
(CLEAR, HAZY, PARTIALLY OBSCURED BY CLOUDS, ETC.) (MILES)

(f) Bombing Tactics: Type glide Bomb Sight Used None
(LEVEL, GLIDE OR DIVE) (TYPE)

Bombs Dropped per Run 2 Spacing 15 Altitude of Bomb Release 1500
(NUMBER) (FEET) (FEET)

(g) Number of Enemy Aircraft Hit on Ground: Destroyed _____ Probably Destroyed _____ Damaged _____

| (h) AIMING POINT | (i) DIMENSIONS OR TONNAGE | (j) NO. A/C ATTACKING (k) SQUADRON | (l) BOMBS AND AMMUNITION EXPENDED, EACH AIMING POINT | (m) NO. HITS On Aiming Point | (n) DAMAGE (None, slight, serious, destroyed or sunk) |
|---------------------------|---------------------------|---------------------------------------|--|------------------------------|---|
| 1 Caves | See below | 877 VC 97 | 6-500 lb; 17-100 lb. 24 HP's, 300- 50 Cal. | Area hit | Unascertained |
| 2 Gun positions | See below | 877 VC 97 | 10-500 lb; 22-100 lb. 37 HP's, 700 50 Cal. | Area hit | Unobserved |
| 3 | | | | | |
| 4 | | | | | |
| 5 | | | | | |
| 6 | | | | | |
| 7 | | | | | |
| 8 | | | | | |

(o) RESULTS: (For all hits claimed on ship targets and for land targets of special interest, draw diagram, top or side view or both, as appropriate, showing type and location of hits. For all targets give location and effect of hits, and identify by numbers above. Use additional sheets if necessary).

1. Target No. 1 in TA 8335 (1000 yds. X 1000 yds.).
2. Target No. 2 in TA 8333A (200 yds. X 200 yds.).

Ref: Air Support Charts, Okinawa, of 64 Engr. Top. Bn. USAFEPFC, Dec. 1944.

(p) Were Photographs Taken? No Photographs of Damage, When Taken, Should Be Attached By Staple.
Photo attached taken by photo plane on 12 April 1945

AIRCRAFT ACTION REPORT

RESTRICTED
Reclassify when
filled out
CONFIDENTIAL

REPORT No. 6

XII. TACTICAL AND OPERATIONAL DATA. (Narrative and comment. Describe action fully and comment freely, following applicable items in check list at left. Use additional sheets if necessary.)

ENGAGEMENT WITH ENEMY

OWN AIRCRAFT

Disposition
Altitudes
Speeds
Approach Tactics
Use of Cover, Deception
Angles of Attack and
Their Effectiveness
Distance of Opening Fire
Defense Tactics and
Their Effectiveness

ENEMY AIRCRAFT

Method of Locating, Distance
Disposition
Altitudes
Speeds
Approach Tactics
Use of Cover, Deception
Angles of Attack
Distance of Opening Fire
Defensive Tactics

COMMENTS AND RECOMMENDATIONS

Own Weaknesses
Enemy Weaknesses
Offensive Tactics, Own
" " , Enemy
Defensive Tactics, Own
" " , Enemy
Flexible Gunnery, Own
Escort Tactics
Fighter Direction
Use of Radar
Night Fighting
Recognition, Aircraft

ATTACK

OWN TACTICS

Method of Locating Target
Approach to Target
Altitudes, Speeds
Approach
Dive
Pull-Out
Dive Angle
Strafing
Retirement
Defensive Tactics
Use of Jamming

DEFENSE, ENEMY

Evasive Tactics, Ships
Concealment
Searchlights
Night Fighter Tactics
Use of Jamming

COMMENTS AND RECOMMENDATIONS

Bombing Tactics
Torpedo Tactics
Effectiveness of
Bombs, Torpedoes
Selection of Targets
Fuzing
Strafing Tactics
Defensive Tactics
Use of Radar
Reconnaissance
Photography
Briefing

OPERATIONAL

Navigation
Homing
Rendezvous
Recognition, Ships
Communications
Flight Operations
Search and Tracking
Base Operations
Maintenance

Eight TBM's, led by Lieut. (jg) Franklin I. HEULE, USNR, attacked two targets: The first consisted of caves in TA's 8335 and 8435; the second consisted of gun positions in 8533A. Both targets were in Ie Shima.

Three glide bombing runs were made against the first target and hits were observed in the area. Because of the type of target, accurate observation of the damage done was impossible. Bombs were released at an altitude of around 1500 feet.

A combined bombing and rocket attack was made against the second target, and hits were observed in the area.

Ref: Air Support Chart, Okinawa, of 64 Engr. Top. Bat., USAFOPBC, Dec. 1944.

AIRCRAFT ACTION REPORT

RESTRICTED
Reclassify when
filled out
CONFIDENTIAL

REPORT No. 6

XIII. MATERIAL DATA. (Comment freely on performance or suitability, following check list at left.
Use additional sheets if necessary).

ARMAMENT

- Guns, Gunsights
- Turrets
- Ammunition
- Bombs, Torpedoes
- Bomb Sights
- Bomb Releases

COMMUNICATIONS

- Radio, Radar
- Homing Devices
- Visual Signals
- Codes, Ciphers

RECOGNITION

- IFF
- Signals
- Battle Lights
- Procedures

PROTECTION

- Armor; Points and Angles
of Fire Needing Further
Protection
- Leak Proofing

EMERGENCY EQUIPMENT

- Parachutes
- Life Belts, Life Rafts
- Safety Belts
- Emergency Kits
- Rations, First Aid

NAVIGATIONAL EQUIPMENT

- Compasses
- Driftsights
- Octants
- Automatic Pilots
- Charts
- Field Lighting

INSTRUMENTS

- Flight
- Power Plant

OXYGEN SYSTEM

**CAMOUFLAGE AND
DECEPTION DEVICES**

STRUCTURE

- Airframe
- Control Surfaces
- Control System
- Dive Flaps
- Landing Gear
- Heating System
- Flight Characteristics
At Various Loadings

POWER PLANT

- Engines
- Engine Accessories
- Propellers
- Lubricating System
- Starters
- Exhaust Dampers

HYDRAULIC SYSTEM

ELECTRICAL SYSTEM

- Auxiliary Plant
- Lights

FUEL SYSTEM

FLIGHT CLOTHING

MAINTENANCE

BASE FACILITIES

- Plane Servicing Equipment
- Personnel Facilities

No Comments.

REPORT PREPARED BY:

APPROVED BY:

APR 13 1945

W. W. BRADEN, Jr. **Lieut. USNR, AGO Officer**

H. F. WHITTIER, Lt. Condr., USNR

11 April 1945

SIGNATURE

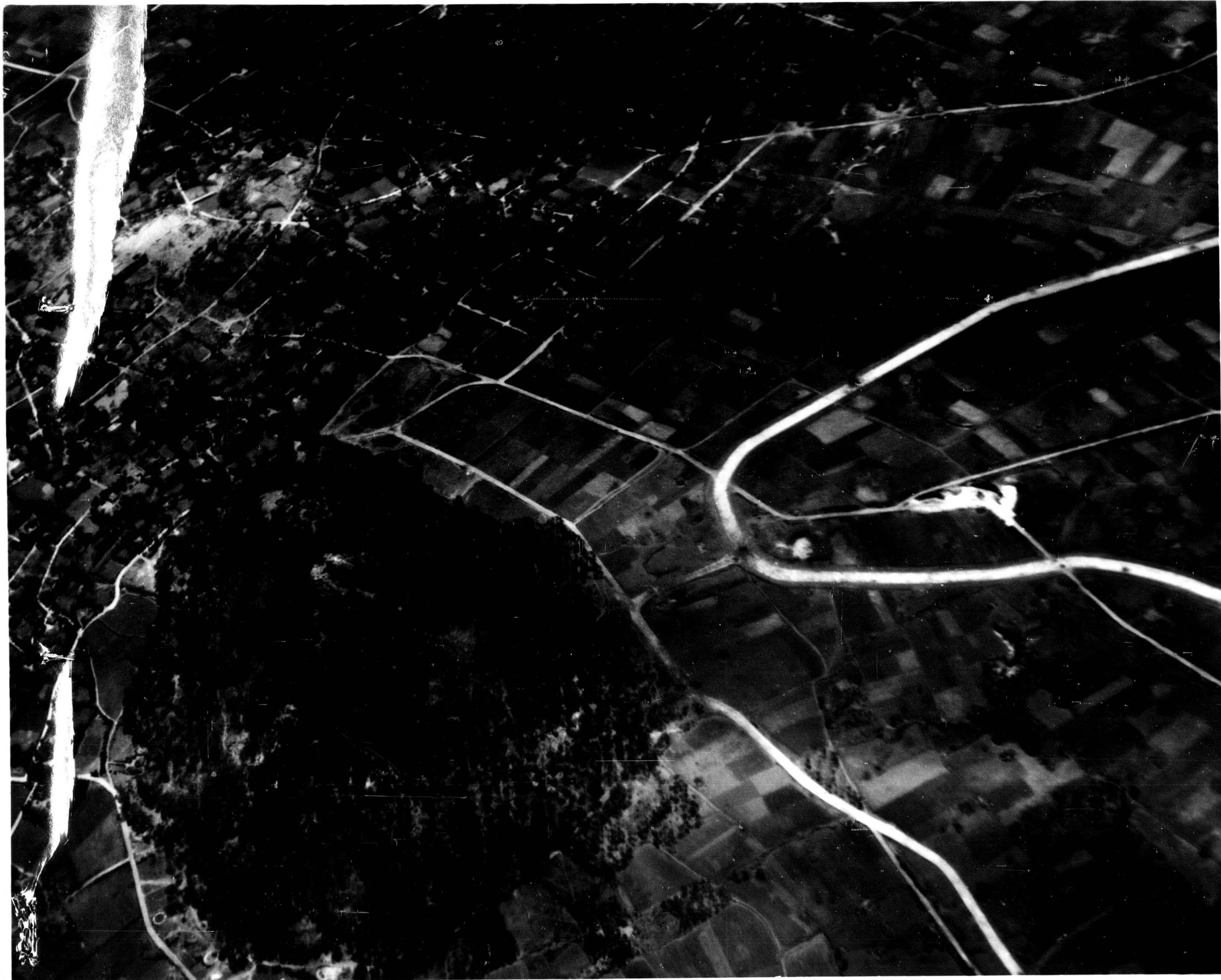
RANK AND DUTY

SIGNATURE

RANK AND DUTY

DATE

Commanding Officer.



IE SHIMA

4-12-45

(OVER)

NOTE: CAVES ON HILL APPEAR IN SOUTHERN PART OF ISLAND,
REPORTED GUN EMPLACEMENTS IN CAVES. HEIGHT OF
CAVES APPROX. 558!