

時雨猿蓑

綠亭可山

207
982

猿蓑藏
可山



国立国会図書館 時雨猿蓑 3巻 207-982

ガラス使用

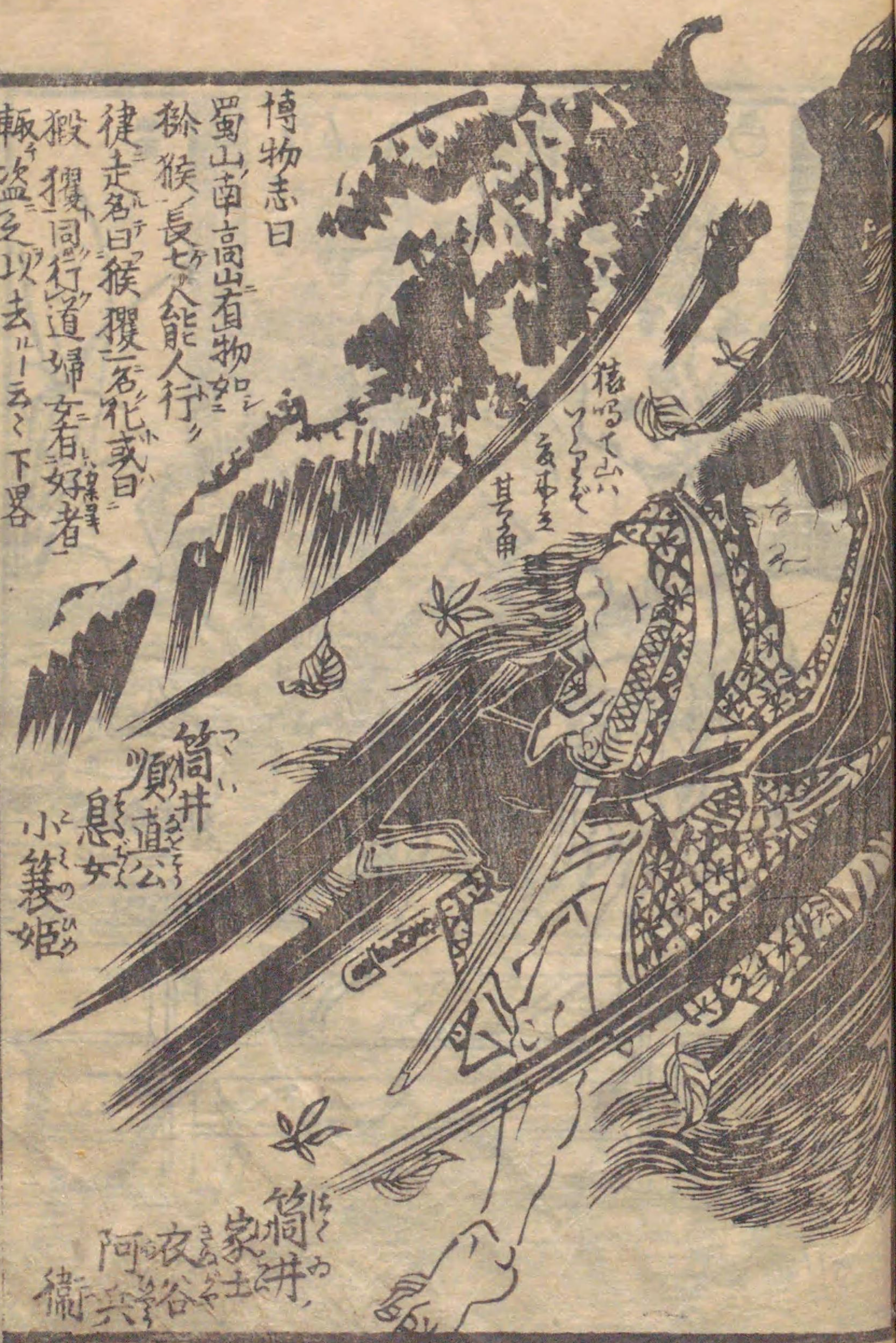




自序
 神史と芭蕉翁の著する
 猿蓑とくする本の神史は初時
 百も小巻とりげらるる
 句を種々院奉のおはまひ
 まふが急暮と其速て内角
 の猿蓑と唱はるる二本は
 らぬ戯作者のさるる可笑
 むかろしは洋刺とく栄あふは
 画板元と備南とく僕侍やんは
 文政三巻 緑多可山



博物志曰
 蜀山南高山有物如
 狨猴長七尺能人行
 捷走名曰狨猴石花或曰
 狨猴同行道婦人有好者
 輒盜之以去ル云々下畧



筒井
 順直公
 息女
 小篾姫

筒井
 家士
 阿波谷
 衛兵衛

梅屋
 其用



和州三輪之
 山中住
 狨猴
 夫木集
 之内容
 月形が
 月形が
 月形が
 月形が





奈良里
呉服商人
野郎平
袴八
女房
於組

三輪百姓
袴八

坊馬
蘭







Handwritten Japanese text in vertical columns, likely a narrative or commentary related to the illustration above.



Handwritten Japanese text in vertical columns, positioned above the illustration of the man and woman.

Handwritten Japanese text in vertical columns, positioned below the illustration of the man and woman.



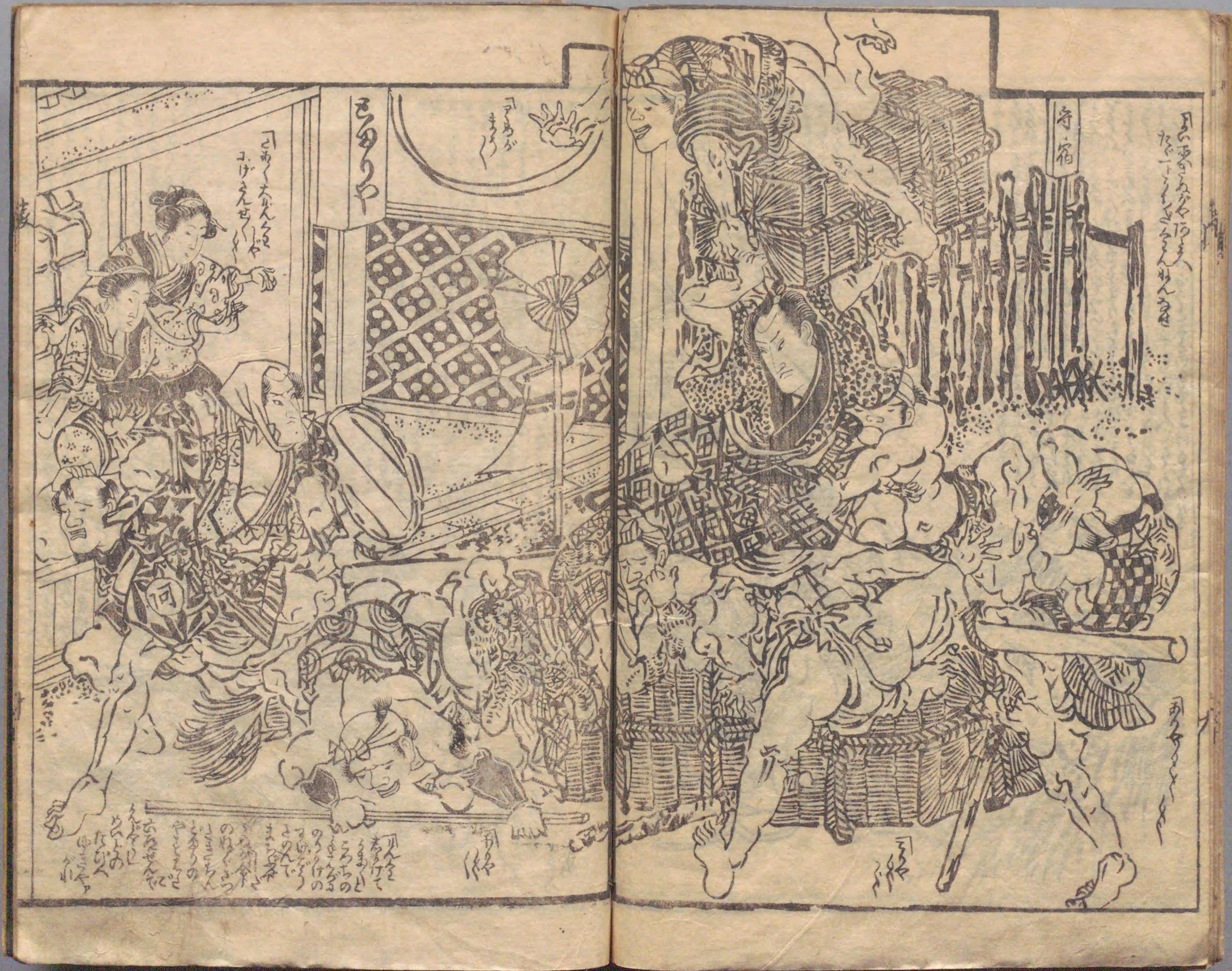


Handwritten text in vertical columns on the left page, likely a chapter introduction or commentary. The text is written in a cursive style (sōsho) and includes characters such as 時雨 (Shigure) and 猿蓑 (Saru-ino).



Handwritten text in vertical columns on the right page, continuing the narrative or commentary. The text is written in a cursive style (sōsho).











Handwritten text in vertical columns, likely a narrative or commentary related to the illustration. The text is written in a cursive style (sōsho).



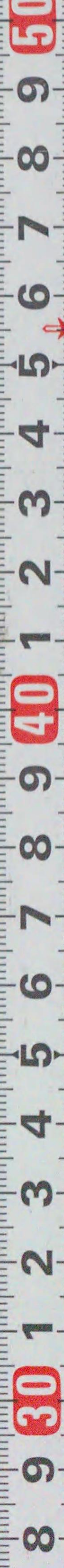
Small handwritten text located at the bottom left of the illustration, possibly a signature or a specific note.

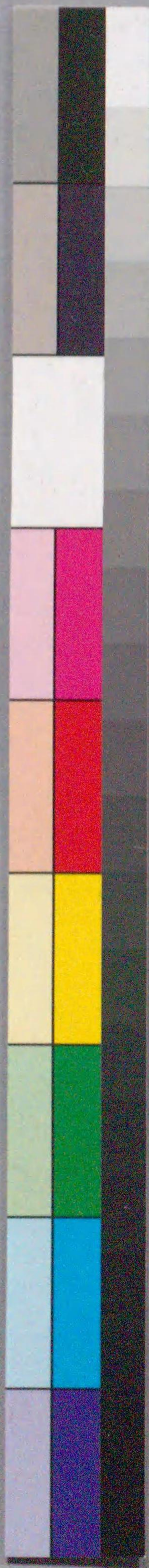
Handwritten text in vertical columns, continuing the narrative or commentary from the left page.



Small handwritten text located at the bottom right of the illustration, possibly a signature or a specific note.







国立国会図書館 時雨猿蓑 3巻 207-982

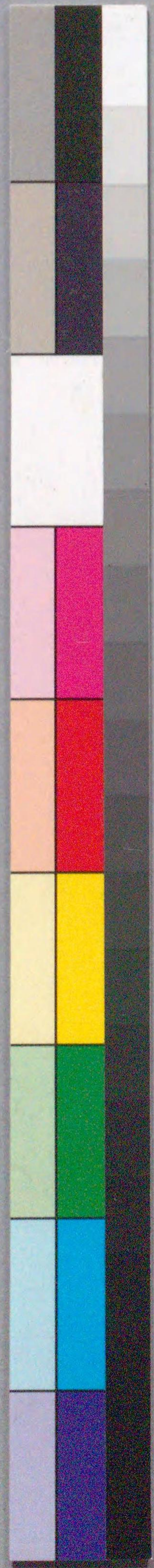
ガラス使用

207
982

国立国会図書館 時雨猿蓑 3巻 207-982

ガラス使用

8 9 30 1 2 3 4 5 6 7 8 9 50



国立国会図書館 時雨猿蓑 3巻 207-982



ガラス使用

