

## **Historic, Archive Document**

Do not assume content reflects current scientific knowledge, policies, or practices.



62.79

INDEXED

1 9 3 2

# NURSERY STOCK

LIBRARY  
RECEIVED  
★ MAY 17 1932 ★  
U. S. Department of Agriculture

*Hardy Plants from  
the Black Hills*

## GATES NURSERY

*Rapid City, South Dakota*



R. F. D. No. 2 - ONE MILE EAST OF  
RAPID CITY, SOUTH DAKOTA

Telephone 4F3 or 4F4



## To Our Friends and Customers:

Again I wish to present you with one of our new catalogs. I believe that you will agree with me when I say it is an improvement over the one we had last year. There are several things that I wish to call your attention to:

First is the improvement of cover design which you no doubt have already noticed; second, we have added



E. A. GATES  
Proprietor Gates Nursery

several new cuts to the catalog from photographs taken in the nursery last summer; third, there has been added a number of new varieties to our lists, making it easier to select desirable kinds for your wants; fourth, we are offering many bargains and most stock at a greatly reduced price over last year. We believe that this will enable you to buy where otherwise you would not feel that you could spare the money. You will be enabled to take advantage of some of our offers and beautify your place by planting perennials, ornamentals and trees. You can set out an orchard at a small cost. We do not claim to undersell other nurseries. We cannot produce stock as cheaply as nurseries that grow their stock in the south. Please keep this in mind whenever you buy nursery stock that it is not the first cost that counts so much, but the results

you get. **Buy acclimated stock whenever possible** from a home nursery. Remember our stock is thrifty, well rooted and acclimated. We invite you to come and see for yourselves.

Another new feature of our catalog this year is the increased space devoted to commercial fertilizer. More and more people are using some form of commercial fertilizer, in their yards, gardens and around their shrubbery and trees. Try a little and see the results for yourselves. We believe that VERT is the best on the market and that is the reason we are handling it.

### OUR GUARANTEE

When you purchase your nursery stock from us and give it the proper attention at planting time and afterward, we will guarantee for one year with free replacement. Proper proof should be furnished before asking replacement. We send out free planting instructions with each order.

### Transportation

We prepay all transportation charges on cash orders where cash is sent in previous to time of delivery, except on balled and burlapped evergreen stock, which is generally shipped by freight, F. O. B., Rapid City. All C. O. D. orders are shipped F. O. B. Rapid City. If left to our judgment we will adopt the best method of transportation, which will depend upon size of package, weight, distance and contents, whether it will go by parcel post, express or freight.

### Payment

May be made by check, money order, bank draft or cash with order. 25% down on C. O. D. orders, balance at time of delivery.

### Inspection

Our nursery has been inspected by the State Nursery Inspector as required by State Law and found free from all injurious insects and dangerous plant diseases.

### FREE! FREE! FREE!

With every cash order for nursery stock of \$5.00 or more we are giving away free this spring, one dozen gladiola bulbs. With every \$10.00 order or more you are entitled to two dozen gladiola bulbs or one of our beautiful 1932 Calendar and Thermometer combinations. Specify whether you desire the bulbs or calendar.

Postage or express prepaid for cash with order

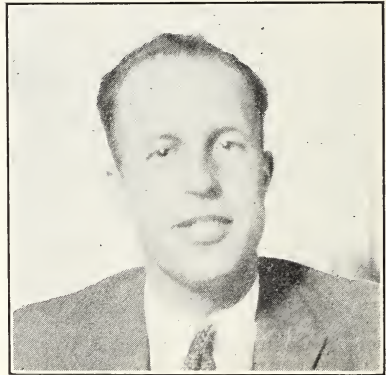
## Landscape Service, Tree Surgery and Spraying

Due to the efforts of Otis Dill our Landscape man and Tree Surgeon, we did considerable more landscaping and tree work during the past year than we ever did before. If you are interested in any of this work please get in touch with us. I am sure that we can give you satisfaction. We will be only too glad to give you references where landscaping work has been done, and you can write to these parties, or go and see for yourself. We will be glad to call upon you, at your request, and give you estimates as to costs. This information is given to you free.

Because of the demand in the last two or three years for spraying fruit trees and shrubs, we have purchased a good spray outfit and are now equipped to handle this kind of work. If insects and diseases are destroying your trees and bushes, get in touch with our nursery at once. We can, in most instances, tell you what is doing the damage and how to control it. The kind of spray that we use or recommend will depend upon the kind of insect or disease that is doing the damage and upon the type of vegetation to be sprayed. Most damage done to apples is by the coddling moth larvae or worm and this can generally be controlled by two sprays of arsenate of lead. The first spray is known as the calyx spray and should be applied when three-fourths or more of the petals from the blossoms have fallen off. The second spray should be applied two or three weeks later. These two sprays are all that is generally necessary, although sometimes a third spray is required where the insect is doing considerable damage. The curculio is the insect that does the most damage to plums. It is controlled by the same spray used with the coddling moth and can be applied at the same time. In combination with arsenate of lead we use lime-sulphur which controls scab or other fungus diseases which might be present. The elm leaf beetle is very prevalent in this territory and elms should be sprayed soon after the leaves come out in the spring and again in the summer when the young larvae begin to hatch. Plant lice or aphids are also very common and are controlled by means of contact sprays, Blackleaf 40 or kerosene emulsion. These are some of the more common insects and diseases, but there are a good many more that do considerable damage in Western South Dakota.

We spray at the rate of 15c per gallon of combination spray material. The spray will control all the common insects and diseases that might be present. If 25 or more gallons of spray material is used the charge will be 10c per gallon. Medium sized fruit trees cost about 50c each, and shade trees the same. Large shade trees usually cost about \$1.00 each sprayed. We do not spray any job less than \$1.00. We do not sell spray material but will be glad to give you directions for obtaining poisons, mixing, applying, etc.

We sell tree tanglefoot at 75c per pound with directions for application. Tree tanglefoot is banded about trees to prevent crawling insects from climbing up the trunks and depositing their eggs. It is also used for waterproofing cuts and wounds of trees. It can be used as a substitute for grafting wax and requires no special heating when applied. Directions sent with each pound can.



OTIS DILL  
Landscape Architect and Tree Surgeon

## Fruit Trees

We have a great number of fruit trees this year and we are going to give our customers an opportunity to plant out an orchard at a small cost. Or we will plant it for you. We have planted several orchards in our vicinity during the past two or three years, with very good success. Write us a letter, telling us about how large an orchard you are considering planting and if your place is not too far away we will call upon you and make you a price for the trees and their planting. Now is the time to plant an orchard. If you will look around your neighborhood you will notice that the old orchards are pretty well "shot," mostly due to lack of care.

### HARDY APPLES AND CRABS

We grow only those varieties that we think suitable for this territory. Good, hardy, thrifty, low headed trees.

#### Summer Varieties

**Yellow Transparent**—Early variety, ripening to a yellow in August. Good eating, being tender and juicy when ripe. Markets well. Tree upright in growth.

**Duchess**—Old standard hardy summer variety. Large apple streaked with red. Ripens the first of September.

**Anoka**—One of Dr. Hansen's productions. Tree dwarfish in habit, producing apples very often the second year after planting. Fruit resembles Duchess in many ways.

**Red Bird or Crimson Beauty**—Early apple of bright red color and very attractive. Good quality and flavor and fine for market purposes. Originated in Canada.



THE GATES FAMILY

Left to right, in foreground—Ed Gates, proprietor Gates Nursery; Clyde Gates, Charles Gates, on tricycle. In background—O. B. Gates, father, deceased; Mary F. Gates, Mrs. E. A. Gates, Olive Gates, Mrs. O. B. Gates, mother, holding David Gates, and Mary E. Gates at right.

#### Winter Varieties

**Wealthy**—Standard apple for the northwest. Fruit medium in size, red striped, juicy. Bears annual heavy crops. Good marketing, cooking and eating apple.

**McIntosh Red**—Fruit medium to small in size, beautiful crimson. High quality for marketing and home use. Keeps until mid-winter or later.

**North Western Greening**—Fine apple for the market. Keeps until mid-winter. Fruit large, yellowish green. Tree medium hardiness.

**Hibernal**—Tree very hardy with spreading habit of growth. Fruit large, yellowish red. Fine for cooking but too tart for eating unless real ripe.

**Red Delicious**—Considered by many to be the best of apples. It can be grown in this climate but fruit tends to be small and immature due to shortness of season.

**Haroldson**—A new apple from the Minnesota Experiment Station. Strong upright tree, bearing a fine red apple that will keep until string. Tree has proved very hardy with us.

**Lobo**—This apple was originated in Ottawa, Canada. We believe that this is one of the best apples for this section. Being a cross with the McIntosh, it has the McIntosh quality and flavor.

**Goldo**—Another of Dr. Hansen's apples, that keeps well into the fall. It can be used as a substitute for the Grimes Golden which is not hardy in this climate.

**Crab Apples**

**Whitney**—Ripens in August. Red-striped, tender and juicy. Good for pickling, cooking and eating.

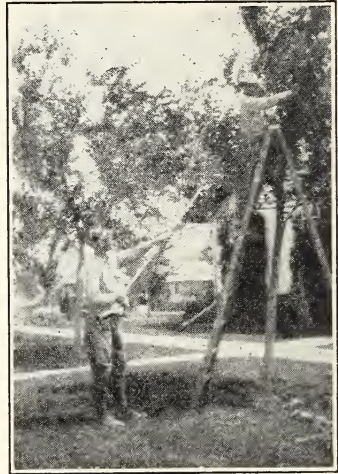
**Transcendent**—Fruit ripens in September. Fine for pickling and canning. Fruit medium in size, bright red.

**Dolgo**—Originated at South Dakota Experiment Station. Tree hardy, vigorous, upright grower. Fruit medium to small, rich in flavor, bright red in color. Fine for pickling or jelly.

**Red Flesh Crab**—A red flowering, red-leaved and red fruited crab to the core. Fruit medium to small. Originated by Dr. Hansen.

Prices for Apple trees:	Each	Doz.
4 to 6 feet, choice of any assortment.....	\$ .80	\$ 8.00
3 to 5 feet, choice of any assortment.....	.50	5.00
2 to 3 feet, mostly whips, choice of assortment .....	.25	2.50
Extra select trees, 5 to 6 feet.....	1.00	10.00

(Write for prices on large assortments)



Otis Dill and John Thomas  
Trimming Trees

**Special Apple and Crab Collection**

Bargain list consists of six hardy outstanding varieties of apples and crabs suitable for the northwest, 3 to 5-foot size.

Whitney, Wealthy, Haroldson, McIntosh, Anoka, Yellow Transparent

Value \$3.00; Special Price **\$2.35 Prepaid**

**PEAR TREES**

We are offering four varieties of pears this year which we believe are worthy and suitable for planting. Whenever you send in an order for fruit trees better include an order for two or three pear trees.

Postage or express prepaid for cash with order



**Mendell**—Introduced by Mr. Pfaender, Jr. Tree large, thrifty and seems practically blight proof. Fruit above medium in size, sweet, juicy and of good flavor. Golden yellow when ripe.

**Minnesota No. 1**—Tree rapid grower and hardy. Fruit large and of very fine quality for market and home use.

**Patten**—Of Iowa origin. A very large, high quality fruit. One of the best for market and home use. Tree of medium hardness.

**Tait No. 1**—Slow growing, stocky, hardy tree. Fruit medium in size, of good quality, early maturing and free from grit. Originated in Canada.

Pr ces for pear trees:	Each	Doz.
4 to 5 feet trees .....	\$1.00	\$10.00
3 to 4 feet trees .....	.60	6.00

**PLUMS AND PLUM HYBRIDS**

The varieties listed below are those that we consider best for our part of the country. They are far superior to any wild plum both as to size and quality and therefore find a ready market and bring a good price. Usually start bearing the next year after planting.



William Coursen and E. A. Gates Budding Plum Trees

**Red Wing**—A production from the Minnesota Fruit Breeding Farm. Fruit large large flat, yellow, overlaid with red. Skin tender. Pit small and of the free-stone type.

**Underwood**—Another of the Minnesota plums. Equals in flavor any variety of the Japanese plums. Fruit large, dark red and sweet.

**Waneta**—One of Hansen's best plums. Fruit very large on young trees but on the older trees tends to become small on account of overbearing. A fine marketing and canning plum.

**Hanska**—From the South Dakota Experiment Station. Fruit large, reddish yellow. Apricot shape and flavor. Aromatic. Very good eating and marketing plum. Tree upright, hardy and vigorous.

**Kaga**—Fruit and tree similar to the Hanska except tree tends to bear a little younger and branches are perhaps a little finer.

**DeSota**—A native plum from Wisconsin. Very hardy variety, extremely productive and profitable. Tends to overbear. Skin yellow, overlaid with red. Flesh rich, solid and sweet.

**Tecomseh**—One of Hansen's hybrid plums. It is one of the best plums, because of its dark red color, earliness and size, which makes it valuable for marketing purposes. High quality plum.

**Waslesa**—Originated at the South Dakota Experiment Station. Tree heavy bearer of large, flat, yellow fruit overlaid with red. Very hardy variety.

**Opata**—Hansen plum sandcherry hybrid, budded on sandcherry. Fruit, medium, purplish green, growing in clusters, early maturing and an annual bearer. Tree dwarfish and spreading. Good canning and eating.

**Sapa**—Similar to Opata except flesh dark red instead of green. Not as heavy a bearer as Opata or quite as hardy. Budded on sandcherry and can be grown quite successfully upon shale and gumbo soils.

**Compass Cherry**—Originated in Minnesota many years ago and is still a favorite with many. Very hardy and prolific tree. Fruit good for preserving and canning.

	Each	Doz.
Prices for plums:		
4 to 6 feet, choice of any assortment.....	\$ .80	\$ 8.00
3 to 5 feet, choice of any assortment.....	.50	5.00
2 to 3 feet, mostly whips, choice of varieties.....	.25	2.50
Extra select trees, 5 to 6 feet.....	1.00	10.00

### Special Bargain for Best Plum Varieties

One each of the following hardy varieties:

Hanska, Opata, Underwood, Red Wing, Waneta and Compass Cherry

Value \$3.00; Special price **\$2.35 prepaid.**

### CHERRY AND CHERRY HYBRIDS

**Oka**—This is a seedling of the Champa Sandcherry, introduced in 1924 by Dr. N. E. Hansen. No doubt the outstanding Cherry Hybrid of recent years. Fruit dark, purplish red, black red fleshed, hangs well to tree, fine flavored and a good canner. Tree dwarfish and bushy.

**Zumbra**—Originated in Minnesota. It is a cross between the Pin Cherry and wild Sand Cherry of South Dakota. Tree quite hardy, spreading in habit. Fruit dark purplish red, fine for canning. Flesh green with free stone.

**Nicollet**—A new hybrid from the Minnesota Experiment Station. Fruit ripens later than the common pie cherry. Large sweet orange red cherry, very fine for pies and sauce. Tree upright, hardy and thrifty.

Prices for Oka, Zumbra and Nicollet Cherry:	Each	Doz.
3 to 4 feet .....	\$ .80	\$ 8.00
2 to 3 feet .....	.50	5.00

**Early Richmond**—The earliest of the sour pie cherries. Fruit dark red, medium in size. Tree vigorous and bears young. Does best on upland or sandy soil which is well drained.

**Montmorency**—Similar to Early Richmond except comes into bearing ten days later. Fruit large, red, fine for canning and pies.

Prices for E. Richmond and Montmorency:	Each	Doz.
4 to 5 feet, any assortment .....	\$ .80	\$ 8.00
3 to 4 feet, any assortment .....	.50	5.00

### Special Offer on Cherries

One each of the varieties listed above:

Oka, Zumbra, Nicollet, Early Richmond and Montmorency in the smaller sizes, for **\$1.90 prepaid.** Regular price \$2.50.

### TREE PROTECTORS

A good many trees are lost in South Dakota because of rabbits girdling young trees and because of sun-scald in the winter time. We have a wood veneer protector that will prevent loss from both these sources. They can be soaked in water a few minutes and then tied or wired about the base of the young tree.

Price 10c each; \$1.00 dozen.

Postage or express prepaid for cash with order

## Small Fruits

### SAND CHERRY

Native of this territory. Does exceptionally well under cultivation. Fruit dark purplish, fine for jelly and preserves and makes excellent pies. Tree dwarf and spreading.

	Each	Doz.
2-year transplanted stock, 2 to 3 feet .....	.25	\$2 .50
1 year seedlings .....		1.00

### GRAPES

**Beta**—Medium sized black grape. A very hardy rapid grower and heavy producer. Fruit fine for jellies, grape juice and preserves. When fruit is left on vine until after frost, it is very fine eating. Used quite extensively as screens on porches and trellises.

**Lucile**—This variety is next to Beta in hardiness. It is a very heavy producer of large red grapes of the best quality.

Prices:	Each	Doz.
Two and three-year vines .....	\$ .35	\$ 3.50
One-year vines .....	.20	2.00

### CURRENTS

Currents are one of the easiest small fruits grown. For best results they should be spaced about six feet away and given plenty of cultivation. They will bear annual crops of fruit that is unsurpassed for jellies.

**Cherry**—A strong vigorous plant. Fruit large, red, growing in short clusters, rather acid.

**Perfection**—Fruit borne in long clusters. Berries nearly as large as Early Richmond Cherries. Fine quality and flavor.



Berry Pickers and Field Men

**White Grape**—Berries hang in large white clusters. Excellent quality and quality and therefore find a ready market and bring a good price. Usually start bearing the next year after planting.

Prices:	Each	Doz.
2 and 3 year, any assortment .....	\$ .30	\$ 3.00
1 year, any assortment .....	.20	1.75

### GOOSEBERRY BUSHES

Gooseberries and currants are grown in the same manner. There is no other fruit that will bear as heavy for a given area than gooseberries. The fruit makes excellent pies and is fine for canning.

**Carrie**—Unequaled for flavor, productiveness and vigorous growth. Has very few thorns to interfere with picking. New and valuable variety for the northwest.

**Houghton**—Standard variety for this country. Bears a medium sized fruit and an abundant crop. Bushes hardy and thrifty.

**Josselyn**—Bears unusually large berries of the finest quality for market and home use. Bush thorny, upright and hardy.

Prices same as for currant bushes.

Special offer for two each of the three varieties of Currants and two each of the three varieties Gooseberries for **\$3.00**. Regular price would be \$3.60 for 2 and 3-year old bushes.

### RASPBERRY AND DEWBERRY PLANTS

Where these are grown in the open it is best to give some winter protection. This can be done by pulling the canes over and throwing 2 or 3 inches of dirt on them or throw about 18 inches of clean straw in among the canes. Our planting book which we send out with each order gives complete instructions for planting and care of raspberries, as well as other kinds of small fruit.



Marie Allen, Merle Roth, Virginia Tucker, Arline Charlton, Loretta Minton, Elsie Thomas, Mary Gates—Berry Pickers

bears abundantly the first year planted.

**Lucretia Dewberry**—Low growing trailing blackberry. Fruit large, sweet, ripening before raspberries. Fine for the table, marketing and canning. Because of its trailing habit, it is easy to cover for winter protection.

**Chief Raspberry**—Minnesota No. 223. Fruit large crimson, ripens ten days earlier than Latham. Considered to be superior in quality to Latham. A fine berry for early market.

Price for Chief: 20c each; \$1.50 dozen.

Price for Raspberries and Dewberries, except Chief:  
75c dozen; \$5.00 per 100.

### STRAWBERRY PLANTS

We send out only thrifty one-year old plants. Everyone should have a patch of strawberries in their garden. They thrive in most any kind of soil and by keeping them cultivated and watered you will have very little difficulty in growing nice berries. Plants are generally shipped by Parcel Post.

**Progressive Everbearing**—A heavy yielder, bearing heavily the first year and will keep bearing until the first heavy freeze.



Mrs. Gates Picking Everbearing Strawberries

**Mastadon Everbearing**—The new everbearing strawberry that has become very popular. Plant large, thrifty and quite hardy. Berries of unusual size which makes a valuable commercial sort.

**Beri Supreme**—A new everbearing strawberry recently introduced from Salt Lake City. Berries are far superior to other everbearing sorts because of its rich flavor and good shipping qualities.

**Senator Dunlap**—Old standard one-crop berry. Perfect flavoring. Medium early. Succeeds anywhere.

**Premier**—Earliest of the June bearing sorts. Plants not quite as thrifty or as hardy as the Sen. Dunlap. Berries roundish, firm and fine quality.

**Jumbo**—Similar to Sen. Dunlap, except bears a little earlier and berries run a little smaller. Plants more thrifty. A very good variety for this part of the country.

**Black Hills Wonder**—A new June bearing sort of our own introduction. This is an extremely large, high quality, crimson berry which ripens two weeks later than Sen. Dunlap. This plant is hardy, thrifty, producing runners two feet long between plants. Produces largest berry that we have ever grown. Fine berry for market.

Progressive Everbearing .....	\$2.00 per 100; \$15.00 per 1000
Mastadon Everbearing .....	3.00 per 100; 20.00 per 1000
Beri Supreme .....	\$1.00 per doz.; \$5.00 per 100
Sen. Dunlap .....	\$1.25 per 100; \$ 7.50 per 1000
Premier .....	1.25 per 100; 7.50 per 1000
Jumbo .....	1.25 per 100; 7.50 per 1000
Black Hills Wonder .....	\$1.00 per doz.; \$5.00 per 100



E. A. Gates Cultivating Strawberry Plants with Garden Tractor

SPECIAL: 100 plants each Progressive Everbearing, Mastadon Everbearing and Sen. Dunlap for **\$5.25**. Regular price \$6.25.

**BERRY BASKETS**

Standard American quart baskets .....	25c doz.; \$1.50 per 100
Standard American pint baskets .....	20c doz.; \$1.25 per 100

**ASPARAGUS PLANTS**

**Washington Rust Proof**—One of the earliest sorts. Purple tipped variety that is considered resistant to rust. Heavy yielder of large stocks.

1 year plants, 25 plants	50c; \$1.50 per 100
2 year plants, 25 plants	75c; \$2.50 per 100

**VICTORIA RHUBARB**

One of the best and largest of the seeded varieties. A heavy bearer, tender and juicy.

Large roots, **\$1.00** dozen

Postage or express prepaid for cash with order

## Evergreen Trees

There is no other tree as attractive as an evergreen, because they retain their leaves throughout the year and give color in the winter months when all other vegetation is bare. They are used for ornamental purposes, backgrounds and for windbreaks. All evergreen stock **BALLED AND BURLAPPED** unless otherwise indicated. You pay transportation on Balled and Burlapped stock.



View Showing Mrs. Gates and Some of Our Black Hills Spruce.

**Black Hills Spruce**—(*Picea Canadensis Albertana*). Native spruce of our own Black Hills area. One of the best evergreens for ornamental and windbreak planting because of its dense habits of growth and extreme hardiness. Prices: Balled and burlapped, nursery grown, transplanted stock—

**No. 1 Spruce**—\$1.00 per foot, above one foot up to five feet. Price range would be \$1.00 to \$5.00 each. 10% off where ten or more trees are ordered.

**No. 2 Spruce**—60c per foot, above one foot up to five feet. Price range would be 60c to \$3.00 each. 10% off where ten or more trees are ordered. No. 2 trees are those that are not very dense or that may be a little one-sided. (They are fine for shelter-belt purposes).



Some of our Black Hills Spruce Covered with Frost

**Extra Select Spruce** — \$1.50 per foot and runs in size from two to four feet in height. The price would range from \$3.00 to \$6.00 each. These trees are extra nice, symmetrical or bluish in color.

**8-12 inch Spruce**—Good stock transplanted, but not balled and burlapped.

Price: 35c each; \$3.50 doz.; \$25.00 per 100. Prepaid.

**Collected Spruce**—Fine for lining-out for windbreaks. Shipped after the first of May. (Not guaranteed to grow; take your own chances).

12-18 inches .....\$10.00 per 100—Not sold in less than 50. Prepaid.  
8-12 inches ..... 7.00 per 100—Not sold in less than 50. Prepaid.  
4-8 inches .....5.00 per 100—Not sold in less than 50. Prepaid.

**Red Cedar**—(*Juniperous Virginia*) One of our leading junipers for landscape work. A beautiful tall growing specimen; can be clipped and kept any height. Prices balled and burlapped:

4 to 5 ft., \$7.00 each; 3 to 4 ft., \$5.00 each; 2 to 3 ft., \$3.00 each  
18-24 inches, \$2.00 each

**Silver Cedar**—(*Juniperus scopulorum*). This is another native evergreen for this region. They are beautiful and can be clipped and used for foundation planting or they can be used as specimen trees or windbreaks. They naturally grow in rocky dry soil and consequently will stand the dryest weather. Prices balled and burlapped:

4 to 5 ft., \$8.00 each; 3 to 4 ft., \$6.50 each; 2 to 3 ft., \$4.00 each  
18-24 inches, \$2.50 each; 12-18 inches, \$1.00 each

**Bull Pine**—(*Pinus Ponderosa*) One of the best of native evergreens. Very valuable because of its rapid growth and hardiness. Cannot be beaten for windbreaks, groves, or as background for dwellings. Prices balled and burlapped:

4 to 5 ft., \$4.00 each; 3 to 4 ft., \$3.00 each; 2 to 3 ft., \$2.00 each  
18-24 inches, \$1.00 each

**Pfitzer Juniper**—(*Juniperus Pfitzeriana*) Broad spreading habit, gray-green foliage. Very free from diseases, succeeds over a wide territory. Best of round, spreading varieties. Fine for foundation plantings. Prices balled and burlapped:

2 to 2½ ft. spread, \$6.00; 18 to 24 in. spread, \$4.00

**Prostrate Juniper**—(*Juniperus communis depressa*) A fine native, dwarfish spreading evergreen. Greenish to red with silvery appearance underneath the branches. Very valuable for lawn and foundation planting as it will grow in any kind of soil and under the dryest climatic conditions. Prices balled and burlapped:

2 to 2½ ft. spread or more, \$5.00 each; 18 to 24 in. spread, \$3.00 each

**Colorado Blue Spruce**—(*Picea Pungens glauca*) Most popular evergreen novelty for the northwest states on account of its silvery blue appearance. Prices balled and burlapped:

12 to 15 inches, \$2.00 each; 15 to 18 inches, \$3.00 each

**We are glad to order larger specimens for our patrons**

**Mugho Pine**—(*Pinus Mughus*) This is an excellent dwarf pine, being globular shaped and erect branched. It is very attractive, especially in the spring when the new growth, which seems like miniature candles, completely cover the tree. Prices balled and burlapped:

18 to 24 inches, \$5.00 each; 12 to 15 inches, \$2.00 each

**Oregon Grape**—(*Western Mahonia*) Broad-leaf type evergreen shrub. One type of the holly plant. Prices balled and burlapped:

15 to 18 inches, \$3.00 each; 9 to 12 inches, \$2.00 each

**Balled and Burlapped Stock Not Prepaid**

#### Evergreen Collection

1 Black Hills spruce, 12-18 inches

1 Silver Cedar, 12 to 18 inches

1 Bull Pine, 18 to 24 inches

All transplanted stock, balled and burlapped for **\$2.25.**

Not prepaid, but guaranteed to grow

## Shade Trees

### PLANT A TREE FOR WASHINGTON

Join in the nation-wide movement to "plant a tree for Washington" in commemoration of the Bi-Centennial Celebration of the birth of George Washington this year.

We are ready to supply you with the finest, sturdiest varieties in good

size and of a quality which assures the successful growth of your "Washington Tree."

School children everywhere are planning on celebrating this event, either by planting their tree in the school yard or at home. We are making special offers to groups of school children. School Superintendents and teachers should write to us, giving us the number of trees they want and the amount of money they have to invest.



Reiford Charlton with a load of Shipping Orders

**American White Elm**—The king of shade trees. Attractive wide spreading branches. A long lived tree.

**Green Ash**—A slow growing but symmetrical and extremely hardy tree. Will stand considerable drought. Native of this region.

**Soft or Silver-Leaved Maple**—A fast growing shade tree that makes a suitable tree for parkings.

**Honey Locust**—A very fine tree, rapid grower, delicate foliage. Very fragrant flowers, followed by bean like pods. Thorny. Much more hardy than the Black Locust.

Prices on Elm, Ash, Maple and Locust trees:	Each	Doz.	100
1½ to 2 inch caliper .....	\$5.00		
8 to 10 ft. high .....	2.00	\$20.00	
6 to 8 ft. high .....	1.20	12.00	
4 to 6 ft. high .....	.60	6.00	
2 to 4 ft. high, transplanted .....	.25	2.50	\$20.00
18 to 24 inch, transplanted .....	.10		9.50
12 inch seedlings .....			3.00

**Chinese Elm**—A hardy rapid grower. Slender branches, compact habit of growth, with small attractive leaves. Highly recommended for dry climates. Grows well in heavy gumbo soils. Prices:

	Each	Doz.	
1½ to 2 inch caliper .....	\$8.00		
8 to 10 ft. ....	2.40	\$24.00	
6 to 8 ft. ....	1.60	16.00	
4 to 6 ft. ....	.80	8.00	
2 to 4 ft. ....	.25	2.50	
			Per 100
1 to 2 ft. high, transplanted .....			10.00
12-inch seedlings .....			5.00

**Silver Poplar**—The hardiest and best of the poplars for this territory. Seems to succeed in any type of soil. Very attractive because of its silvery leaves and bark.

**Norway Poplar**—Upright fast growing tree, which is used quite extensively for windbreaks. Prices for poplars:

	Each	Doz.	
8 to 10 ft. ....	\$1.60	\$16.00	
6 to 8 ft. ....	.80	8.00	
4 to 6 ft. ....	.40	4.00	
			Each Per 100
2 to 4 ft. ....	.20	15.00	

**Cottonwood**—A native fast growing tree, which is valuable for windbreaks.

Postage or express prepaid for cash with order



**Box Elder**—Another hardy native tree used for windbreaks. Prices for Cottonwood and Box Elder:

	Each	Doz.
8 to 10 ft. high .....	\$.80	\$ 8.00
6 to 8 ft. ....	.40	4.00
4 to 6 ft. tree .....	.25	2.50
		Per 100
2-4 ft., transplanted .....		10.00
12-inch seedlings .....		2.00

**Black Walnut**—Hardwood tree that grows well in this climate where the soil is not too heavy. Tree ornamental and will grow a fine crop of nuts in a few years. Produces the most valuable wood grown in the United States today. Prices:

2-year tree, 1 to 2 feet, 25c each; \$2.50 dozen  
Seedlings, 6 to 12 inch, 10c each; \$8.00 per 100

**Mountain Ash**—Upright growing, ornamental lawn tree. Its delicate summer foliage and red fruit clusters in the fall makes this a fine specimen tree. Prices: 8 to 10 ft., \$3.00 each; 6 to 8 ft., \$2.00 each; 5 to 6 ft., \$1.00 each.

**Hackberry**—Similar in appearance to the American Elm. Wide spreading branches, not subject to wind injury.

Prices: 5 to 6 ft., \$1.00 each; \$10 per dozen

**Russian Olive**—A fine tree for windbreaks or hedges. Silvery green leaves make it very attractive, as well as the berries which hang on in the fall.

Prices:	Each	Doz.
5 to 6 ft., trimmed .....	\$.80	\$ 8.00
		Per 100
3 to 4 ft., transplanted .....		18.00
1 to 2 ft., transplanted .....		9.00
9 to 12-inch seedlings .....		5.00

**Paper Birch**—Native of the Black Hills. Very attractive tree where planted on the lawn in groups. After tree is a few years old bark becomes white and papery. Prices:

8 to 10 ft. high, \$3.00 each; 6 to 8 ft., \$2.00 each; 5 to 6 ft., \$1.00 each

**Cut-leaved Weeping Birch**—Tall slender, vigorous growth, graceful drooping habit, silvery white bark, and decidedly cut foliage, presents characteristics rarely met in a single tree. Prices:

8 to 10 ft. tree, \$5.00 each; 5 to 6 ft., \$3.00 each

**Betula Flowering Crab**—A very attractive lawn tree because of its double pink flowers in the spring. Bushy and dwarf in habit. Prices:

3 to 4 ft., \$1.00 each; 2 to 3 ft., 60c each

**Caragania or Siberian Pea Tree**—This is one of the first trees to leave out in the spring. It has light green foliage and yellow bloom. A fine tree for windbreaks or hedging. Extremely hardy. Prices: See Caragania under hedges.

**Golden Willow**—Golden bark, green leaves. Because of its tendency to grow in bush form and its rapid growth, it makes a desirable windbreak.

Prices: 3 to 4 feet, \$9.00 per 100.

#### WIND BREAKS OR SHELTER BELTS

Farmers who are interested in planting a shelter belt or windbreak should write to the U. S. Department of Agriculture, Washington, D. C., and ask for Farmers Bulletin No. 1603. It will be mailed free. We would like to give you some suggestions in this catalog, but it would require too much space. With few exceptions there are no reasons why there shouldn't be some kind of trees on every farm in the northwest for protection from snow and wind. Perhaps it takes a little more time in this dry west river country to establish and maintain a windbreak than in some other parts of the west.

about the farmstead? If you will write us we will be glad to give you sug-  
 But stop and think. Is there anything else that you can do to increase the  
 valuation of your land more than to plant some trees and have them growing  
 gestions for the successful planting of a windbreak; distance apart, varieties  
 of trees, preparation of soil, planting and cultivation protection after plant-  
 ing. Or if you are not too far away one of our representatives will call upon  
 you and help you work out a plan if you desire.

**Special Windbreak Assortment**

100 Cargania for outside, 100 Russian Olive, 50 Chinese Elm next to  
 inside and 50 Black Hills Pine on inside of windbreak. Regular price  
 \$13.00. Special to you \$10.40 prepaid, and guaranteed.

**Shrubs**

**SPIREAS**

	Each	Doz.
<b>Spirea Van Houttii</b> —Bridal Wreath. The most popular of all hardy shrubs. Graceful drooping branches with white flowers. 3 to 4 feet .....	\$.80	\$ 8.00
2 to 3 feet .....	.40	4.00
12 to 18 inches .....	.20	2.00



Mrs. Gates Standing in Field of Bridal Wreath

<b>Spirea Billardi</b> —Large pink plumes which open in mid-summer. Should be protected in winter where exposed. 2-3 feet.....	.80	8.00
12 to 18 inches .....	.40	4.00
<b>Spirea Anthony Waterer</b> —Dwarf red spirea. Blooms from July until frost. 18 to 24 inches .....	.80	8.00
9 to 12 inches .....	.40	4.00
<b>Spirea Collosa Alba</b> —Dwarf grower, dark green foliage, free bloomer, white flowers. June to September. 12 to 18 in.....	.80	8.00
<b>Thunberg Spirea</b> —Low spreading shrub with spreading branches. Feathery bright green foliage. Snowy white flowers. April. 2 to 3 feet .....	.80	8.00
<b>Sorbaria Sorbifolia</b> —Ash Leaved-spirea. Immense trusses of feathery white flowers which bloom in midsummer. Good for shady places. Best to protect. 18 to 24 inches.....	.60	6.00
<b>Physocarpus Opulifolius</b> —Common Ninebark. 8 to 10 feet. Very hardy. White flowers in May and June followed by attractive brownish red pods. 3 to 4 feet .....	1.00	10.00

**HONEYSUCKLE OR LONICERA**

A tall growing shrub with beautiful, bright red berries in the fall. Blooms shortly after the Bridal Wreath. It makes a wonderful background shrub and is useful as a hedge.

	Each	Doz.
<b>Lonicera Tartarian</b> —Three varieties, the pink flowered, the red and the white flowered. Very hardy upright shrub.		
3 to 4 feet, in any color .....	\$.80	\$ 8.00
2 to 3 feet, in any color .....	.60	6.00
12 to 18 inches .....	.25	2.75
Per hundred .....		20.00

**LILACS OR SYRINGIA**

**Common Purple or Vulgaris**—Large purple flowers which bloom in May and June.

<b>Common White, Vulgaris alba</b> —Large white flowers. Paler foliage than the purple. Prices for 2 varieties above:		
3 to 4 feet .....	\$1.00	\$10.00
2 to 3 feet .....	.60	6.00
18 to 24 inches .....	.25	2.75
18 to 24 inches, per 100 .....		20.00
Sucker plants, per 100 .....		10.00

<b>Persian Purple Lilac—Persica.</b> Spreading habit. Spreading arching branches with small leaves. Pale lilac flowers May and June. 3 to 4 feet .....	1.00	10.00
2 to 3 feet .....	.60	6.00

<b>French Lilacs</b> —Named varieties: Chas. X. s. reddish purple; Mad. Abel Chatenay d. white; S. de Lud. Spath s. purple. 3 to 4 feet .....	1.50	
---	------	--

**PHILADELPHUS OR MOCK ORANGE**

Large graceful shrub of arching habit. Used in background. White flowers. Prolific bloomers. Semi-hardy.

<b>Philadelphus coronarius</b> —A popular well known shrub with white fragrant flowers in June and July. 3 to 4 feet.....	\$1.00	\$10.00
2 to 3 feet .....	.60	6.00

<b>Philadelphus virginal</b> —Medium grower. Very profuse bloomer with beautiful semi-double flowers. Starts blooming in May and blooms over long period. 2 to 3 feet .....	1.00	10.00
---	------	-------

**SNOWBERRY**

<b>Symphoricarpus vulgaris</b> —Coralberry. Red Snowberry. A very hardy shrub that succeeds anywhere. Coral red berries in autumn and winter. 2 to 3 feet .....	.80	8.00
18 to 24 inches .....	.40	4.00

<b>Symphoricarpus racemosus</b> —Common snowberry. White. Attractive foliage. Pink flowers in July. Beautiful white berries in fall. 2 to 3 feet .....	.80	8.00
18 to 24 inches .....	.40	4.00

**DOGWOOD OR CORNUS**

<b>Cornus Siberica</b> —Red branched Dogwood. Large green leaves with red branches. Showy white flowers. 3 to 4 feet clumps .....	\$1.00	\$10.00
2 to 3 feet .....	.60	6.00

<b>Cornus elegantissima</b> —Variegated Dogwood. Silver variegated leaves. Brighre red bark. Very attractive. 2 to 3 feet.....	1.00	10.00
--	------	-------

Postage or express prepaid for cash with order

	Each	Doz.
<b>Cornus stolonifera lutea</b> —Goldentwig. Distinct golden bark. Has fine winter effect. 3 to 4 feet .....	1.00	10.00

**WAHOO**

<b>Euonymus atropurens</b> —Burning Bush. Very compact green foliage in the summer, changing to red in the fall. 2 to 3 feet .....	\$1.00	\$10.00
---	--------	---------

**PRUNUS**

<b>Prunus Glandulosa</b> —Flowering Almond. Blooms early with double pink flowers. Very attractive. 2 to 3 feet..... 12 to 18 inches .....	\$1.00 .60	\$10.00 6.00
<b>Prunus Cistena</b> —Hansen's Purple Leaved Plum. A very hardy variety with rich purple red foliage. 3 to 4 feet .....	1.00	10.00
2 to 3 feet .....	.60	6.00

**Prunus Newport**—Hardy upright shrub with purple red leaves which have bright red tips. Prices same as *Prunus Cistena*.

**VIBURNUM**

<b>Viburnum Opulus</b> —Highbush Cranberry. Single white flowers in May and June, followed by scarlet fruit hanging on all winter. 2 to 3 feet .....	\$1.00	\$10.00
<b>Viburnum Opulus sterilis</b> —Common Snowball. Well known hardy shrub. Large double white flowers June and July. 2 to 3 feet .....	1.00	10.00



E. A. Gates Standing in rows of *Cargania*

**HYDRANGIA**

<b>Arborescens grandiflora</b> —Snowhill. Everblooming Snowball. Large double white flowers. July until frost. Should have some protection in exposed situations. 2 to 3 feet .....	1.00	10.00
--	------	-------

**YELLOW FLOWERING CURRANTS**

Grows 4 to 5 feet high. Small, yellow bell-shaped flowers. Cut-leaved foliage. 2 to 3 feet .....	1.00	10.00
---	------	-------

**BUTTERFLY BUSH BUDDLEIA**

A beautiful shrub, grows four to six feet in height. Lavendar blooms, remaining until frost. Should be cut back and covered with dirt in winter. No. 1 plants.....	.80	8.00
--	-----	------

Postage or Express prepaid for cash with order

**GOLDEN ELDER**

Each Doz.

<b>Canadensis aurea.</b> An excellent shrub for contrast. Leaves are golden yellow, with white flowers and black berries in fall.		
3 to 4 feet .....	1.00	10.00

**HEDGING**

A hedge can be used to advantage in many places, as a frame for dwellings, as a background or as a screen for an unsightly spot or view. Plants should be spaced 12 to 18 inches apart or closer to make a good dense hedge. We send out complete instructions for the planting and care.

<b>Buckthorn</b> —A dark green, dense shrub, ideal for a low hedge.		
3 to 4 foot clumps .....	.30	\$25.00
2 to 3 foot, branched .....	.20	18.00
12 to 18 inches .....	.10	9.00
9 to 12 inch seedlings .....		3.00

**Cargania**—Siberian Pea Tree. A hardy, fast growing shrub or tree with light green foliage. Yellow blossoms. Prices same as for Buckthorn.

<b>Cotoneaster</b> —A fast growing well branched shrub. Black berries in fall. Very suitable for this climate.		
18 to 24 inch clumps .....	.30	25.00
2 to 3 foot clumps .....	.45	40.00

<b>Russian Olive</b> —Makes a fine tall windbreak, screen or hedge. Silvery green foliage. Silvery berries in fall.		
4 to 6 foot bush .....	.40	35.00
3 to 4 foot bush .....	.20	18.00
18 to 24 inch bush .....	.10	9.00
9 to 12 inch seedlings .....		5.00

<b>Tartarian Honeysuckle</b> —A tall, hardy growing hedge. Very suitable for this climate. 18 to 24 inches .....	.25	20.00
--	-----	-------

<b>Common Purple Lilac</b> —Makes an excellent tall hedge for background. Very easy to keep trimmed. 18 to 24 inch clumps .....	.25	20.00
12 to 18 inch sucker plants .....	.12	10.00

All hedging sold 50 at 100 rate.

Special Shrub offer of the best and most popular shrubs grown in South Dakota. One each of the following varieties, 2 to 3 feet in size: Spirea Van Houttei, Purple Lilac, Mock Orange, White Snowberry, Prunus Cistena and Bush Honeysuckle. Total value \$3.20. Our price \$2.45 prepaid.

**VINES FOR PORCHES, TRELLISES, ETC.**

Each

<b>American Ivy</b> —A hardy, fast growing vine, suitable for a screen. Price.....	\$ .50
<b>Boston Ivy</b> —Veitchi—Clings tightly to stone or brick walls. Price .....	.80
<b>Engelman Ivy</b> —Fast growing, hardy, clinging vine. Price.....	.50
<b>Bitter Sweet</b> —A native vine of the Black Hills. Very attractive orange berry. Large plants .....	1.00
<b>Clematis Jackmani</b> —Large purple flower. Very beautiful in July and August. 2-year No. 1 plant .....	1.50
<b>Clematis Paniculata</b> —A very fragrant white flower in late summer. 2-year No. 1 .....	.75

Postage or express prepaid for cash with order

# Roses

## RAMBLERS

Climbing roses are not hardy in this climate, but should be grown in such a manner that they can be laid down and covered during the winter months.

**Crimson Rambler**—Clusters of bright red flowers in mid-summer.

**Dorothy Perkins**—Large pink blooms in smaller clusters.

**Baby Rambler**—Rosy crimson, blooming all summer, bushy.

**Seven Sisters**—Varies from rosy red to bluish white, bushy.

Prices for ramblers, 2-year, any assortment, 60c each; \$6.00 dozen

## HYBRID PERPETUAL

Fragrant continuous bloomers. Make fine cut flowers. Require winter protection.

**American Beauty**—Well known popular crimson variety. Fragrant.

**Frau Karl Druschki**—Large snow-white, free bloomers.

**Paul Neyron**—Deep rose, immense size.

**Gen. Jacqueminot**—Rich crimson-scarlet. Very fragrant.

Prices for Hybrid Perpetual 2-year No. 1, any assortment, 80c each; \$8.00 doz.

## TEA AND HYBRID TEA—EVERBLOOMING ROSES

**Grus en Teplitz**—Scarlet crimson. This is the best red that we have grown for continuous blooming.

**Killarney Brilliant**—Bright pink, almost red.

**Los Angeles**—Flaming pink, shaded to gold.

**Golden Emblem**—A beautiful rich yellow. Glossy foliage.

**Gen. McArthur**—Bright scarlet, free bloomer. Good foliage.

**Radiance Red**—Bright rosy red, continuous bloomer.

**Willowmere**—Rich shrimp pink. Extra fine.

Prices for above: 2-year No. 1, any assortment, 80c each; \$8.00 dozen

## RUGOSA, RUGOSA HYBRIDS AND MISCELLANEOUS

Profuse bloomers all summer; fragrant and require no winter protection. Vigorous growing, resistant to disease. Rugosa Roses have bright colored fruit in fall and winter. Characterized by glossy green leaves.

**F. J. Groetendorst**—Flowers double, bright crimson, borne in large clusters from June until November.

**Sir Thomas Lipton**—Double white, heavy bloomer.

**Conrad F. Meyer**—Large double, pink.

**Hansa**—Double red, continuous bloomer.

**Rugosa Rubra**—Single red, extremely hardy. Attractive foliage.

**Hugonis**—Not a rugosa type. Early blooming, covered with small semi-double yellow flowers. Hardy.

Prices for above: 2-year No. 1, any assortment, 80c each; \$8.00 dozen

Postage or express prepaid for cash with order

## Perennials

### PHLOX

- Mrs. Wm. Jenkins**—Early white and one of the best for propagation.
- Reinlander**—Mottled salmon pink with claret red eye.
- Mrs. Chas. Dorr**—Beautiful shade of lavender.
- Van Hoekberg**—Medium grower. Very prolific red bloomer.
- Marechal French**—New European introduction. Tall, erect, prolific with massive flower heads. Deep scarlet with blood red eye.  
 Price for Marechal French: 50c each.
- Iris**—Lavendar drooping petals, very fragrant.
- Europa**—A particularly strong, sturdy and distinct variety. White with pronounced crimson carmine eye.
- Lavendar Beauty**—Dark lavender with eye of carmine red.
- R. P. Struthers**—Carmine with claret red eye.
- Princess Elizabeth**—White with crimson eye.

Prices for Phlox, except as indicated: 30c each; \$3.00 doz., any assortment  
 Unnamed varieties and mixed Phlox, our selection: 25c each; \$2.50 doz.

### DIGITALIS OR FOX GLOVE

- Glosiniaeflora**—Thimble shaped flowers in immense spikes during July and August. Colors in White, Purple or Rose.  
 Price: 35c each; \$3.50 dozen

### DELPHENIUM OR LARKSPUR

- Belladonna**—A magnificent sort with spikes of the most delicate turquoise blue.
- Bellamosa**—Similar to Belladonna except dark blue spikes.
- Chinensis**—White delicate blooms over long period.  
 Price for Delpheniums: 30c each; \$3.00 dozen

### AQUILEGIA OR COLUMBINE—Sometimes Called Honeysuckle

- Canadensis**—Native Columbine. Scarlet and orange.
- Skinneri**—Standard red columbine. Prolific and conspicuous.
- California Hybrids**—Yellow with orange spurs.  
 Prices for Columbine, any assortment: 35c each; \$3.50 dozen  
 Our mixture, \$3.00 dozen

### ALTHEA ROSEA—HOLLYHOCK

	Each	Doz.
<b>Double Hollyhock</b> —In colors red, yellow, white, or rose. Any assortment .....	\$ .30	\$3.00
<b>Single Hollyhocks</b> —In mixed colors .....	.25	2.50

### SHASTA DAISY

<b>Ivory white, yellow eye and central portions. Grows 2½ feet high, starts blooming early and until frost .....</b>	.25	2.50
--	-----	------

### DICENTRA SPECTABILIS

<b>Bleeding Heart</b> —Well known hardy perennial. Should be grown in shade for best results .....	.75
--	-----

Postage or express prepaid for cash with order

**DIANTHUS BARBATUS**

	Each	100
<b>Sweet William</b> —Short dense perennial with large panicals of multitudinous colored flowers. Mixed colors .....	.30	3.00

**CAROPHYALLUS GRENADIN**

<b>Cluster Pinks</b> —This is the only variety of pinks that is truly hardy. In assorted colors .....	.35	3.50
---	-----	------

**GYPSOPHELIA**

<b>Paniculata compacta</b> —Baby Breath. Small dainty white flowers, used in winter bouquets. Price .....	.25	2.50
---	-----	------

**RUDBECKIA**

<b>Golden Glow</b> —Grows five to seven feet tall. Blooms in summer and lasts until frost. Double dahlia-like golden flowers.....	.25	2.50
---	-----	------

**LILIES**

<b>Lilium Tigrimin</b> —Single Tiger Lily. Orange red, spotted deep crimson .....	\$.25	\$2.50
<b>Lilium Regele</b> —Ivory white striped on outside with pink and brown .....	.50	5.00
<b>Lilium Elegans</b> —Reddish orange. Two feet tall .....	.40	4.00
<b>Lilium Tennifolium</b> —Narrow leaved variety from Siberia. Scarlet waxen flowers .....	.40	4.00
<b>Day Lily</b> —Herm. Flava. Bright yellow blossoms .....	.20	2.00
<b>Lily-of-the-Valley</b> —Small dainty, white flowers, requiring shade..	50c	a clump

**HARDY PERENNIALS FOR ROCK GARDENS**

<b>Yucca Filamentosa</b> —Evergreen like perennial. Large clusters of white flowers. Price: 2-year, 25c; 4-year, 50c each.		
<b>Black Hills Ferns</b> —Fronds grow two to three feet tall. Grow in shady places .....	.25	2.50
<b>Alyssum</b> —Rock Madwort. Low sprawling habit of growth, producing masses of yellow flowers .....	.35	
<b>Sedum</b> or Live-for-ever. Dwarf and spreading, thick waxy round foliage. Alubm—white; Aureum—yellow; Spurum Roseum—purple red .....	.25	2.50
<b>Arabis</b> —Rockcress. White flowers and foliage .....	.35	3.50
<b>Kinnikinic</b> —Native to Black Hills. Small green shiny leaves. Red berries .....	.35	

**IRIS GERMANICA**

<b>Floritania</b> —Dwarf. Clear white, late bloomer.	
<b>Gertrude</b> —Clear violet blue. Quite early.	
<b>Honorabilis</b> —Rich golden tinted with mahogany brown. Prices for German Iris, strong roots, 20c each; \$2.00 dozen	

**IRIS JAPONICA**

<b>Mahogany</b> —Deep mahogany red, large double flowers, latest to bloom. One of the prettiest of Iris.	One
<b>Purple and Gold</b> —Purple petals tipped with violet, golden throat.	
<b>Kami-No-Mori</b> —White shaded blue S. pure white margined blue. Price for Japanese Iris: 50c each; \$5.00 dozen	

Postage or express prepaid for cash with order



**PEONY**

	Each
<b>Couronne D'or</b> —A cream colored white compact bloom. A very desirable late variety .....	\$. 80
<b>Eudilis Superba</b> —Deep rose. Valued for its fragrance and number of blooms .....	.80
<b>Felix Crausse</b> —Mid-season variety of pleasing red, shading to lighter colors in late season .....	1.25
<b>Festiva Maxima</b> —High flowers born on long stiff stems. Purest white petals, slightly tipped with carmine .....	.80
<b>Floral Treasure</b> —Pink, large, full globular rose type .....	.80
<b>Francis Ortegard</b> —Semi-rose type, mid season, deep crimson blossoms with golden yellow anthers .....	.80
<b>Golden Harvest</b> —Bomb type, mid-season, bluish pink with creamy center, overlaid with carmine .....	.80
<b>Humani</b> —Large pink, excellent for cutting .....	.80
<b>Karl Rosenfield</b> —Semi-rose type, mid-season, rich velvety crimson.....	1.20
<b>Madam Guerin</b> —A pretty shade of deep red .....	1.00
<b>Mary Brand</b> —A large deep red. Mid-season. Supply of this variety is limited .....	2.00
<b>Mons Jules Elie</b> —Bomb type, early mid-season. King of peonies, largest of flowers, lilac pink .....	1.60
<b>Polissina Lilicini</b> —Early dark red with golden center .....	1.00
<b>Queen Victoria</b> —Bomb type, early mid-season. White with faint bluish tint .....	.80
<b>Richard Carvel</b> —Bright uniform shade of crimson. Very early.....	2.00
Our assortment of named Peonies 3-5 eye, labeled, per dozen postpaid....	\$6.00
Unnamed Peonies in three colors, red, pink and white, price 40c each; the three colors for \$1.00 postpaid.	
Unclassified varieties: Candida, Flora Plena, Rosea Careana Plena, Reinie de Fluor, Grand Rubra, NePlus Ultra.	
Price: 50c each; the five for \$2.00 postpaid	

**Bulbs**

**GLADIOLA BULBS—Spring Bulbs**

	Doz.
<b>Albania</b> —Excellent variety for cutting. Flowers pure silvery white, with petal edges daintily ruffled .....	\$. 80
<b>Baron J. Hulot</b> —Striking dark violet color .....	.80
<b>Catherina</b> —Orchid type. Beautiful light blue, lower petals a deeper color .....	1.00
<b>Claret</b> —Quite early, velvety purple bloom .....	.80
<b>Cracker Jack</b> —Early prim. type. Orange and red .....	.80
<b>Dr. F. E. Bennett</b> —Finest red. Wonderful cut flower .....	1.50
<b>Evelyn Kirkland</b> —Gorgeous coral pink blooms with darker edges.....	1.20
<b>Peach</b> —Extremely late variety. Peach pink color.....	1.00
<b>Gloriana</b> —Tall, pure salmon, shading to golden throat.....	2.50
<b>Gold Eagle</b> —Pure deep yellow, very early .....	2.00

Postage or express prepaid for cash with order

<b>Le Marechal Foch</b> —Large flowers of light pink .....	.80
<b>Mrs. Dr. Norton</b> —Flowers of cream and pink on long stems.....	1.00
<b>Mrs. Francis King</b> —Great spikes of flame pink .....	1.00
<b>Mrs. W. H. Phipps</b> —Large bright rose with strips of deeper pink.....	2.00
<b>Mrs. Frank Pendelton</b> —America's leading cut flower. Flowers rose-pink on white background, blood red blotch on lower petals .....	1.00
<b>Orange Brilliant</b> —Prim. type. Tall spike of brilliant orange .....	.80
<b>Peace</b> —Wonderful great white flowers. Most widely planted white va- riety .....	1.00
<b>Princepine</b> —Brilliant scarlet on white throat. Very large .....	1.00
<b>Purple Glory</b> —Ruffled, dark maroon red .....	2.00
<b>Schwaben</b> —Strongest growing and largest of yellows.....	.80
<b>Wilbrink</b> —Soft lavender pink with yellow blotch on lower petals. One of the earliest .....	.80

Prices: Our mixture No. 1 bulbs, 75c dozen; \$4.00 per 100 prepaid.  
Our mixture No. 2 bulbs, 40c dozen; \$2.00 per 100 prepaid.

**Special Offer**

One dozen each of the following varieties gladiolas: Albania, Cla-  
ret, Orange Brilliant, Cracker Jack and Mrs. Frank Pendelton, 60  
bulbs for \$2.50. Regular price \$4.20. Postpaid.



Gladiola Field, 1930, at Gates Nursery

**DAHLIAS—Spring Bulb  
Decorative Type**

- Sour de Gustave Doazon**—Large light red.
- Yellow Colosse**—Clear canary yellow.
- Sylvia**—Soft pink with lighter center.
- Princess Juliana**—Pure white.

Postage or express prepaid for cash with order

**Cactus Type**

- J. H. Jackson**—Deep maroon, almost black.
- Libelle**—A pure royal purple, freely flowering.
- Asprey**—Light lemon yellow.
- White Cactus**—White.

Prices named varieties Dahlia: 35c each; \$3.50 dozen—any assortment  
 Our mixture No. 1 tuber, 25c each; \$2.50 dozen—any assortment  
 No. 2 tuber, 15c each; \$1.50 dozen

**CANNAS—Spring Bulbs**

- Wintzers Colossal**—Scarlet bloom, green foliage. Height 5 feet.
- Yellow King Humbert**—Massive foliage, flowers of golden yellow, dotted red. Green leaves. Height 4 ft.
- Eureka**—Best white variety, strong grower, green foliage. Height 4 ft.  
 Prices: Any assortment, 25c each; \$2.50 dozen, postpaid

**TULIPS—Fall Bulbs**

**Darwin Varieties**

- Reverend Eubank**—Lavendar violet. Height 28 inches.
- Princess Elizabeth**—Deep pink. Height 22 inches.
- Pride of Harlem**—Carmine red with an enormous flower. Height 30 inches.
- Inglescomb Yellow**—A large solid yellow. Height 22 inches.

Prices for Darwin tulips: \$1.00 per dozen  
 Single mixed tulips, 60c dozen; \$4.00 per 100  
 Darwin mixed tulips, 80c dozen; \$5.00 per 100  
 Double mixed tulips, 80c dozen; \$5.00 per 100

**GRASS SEED**

We handle only the best high grade grass seed. It is of high germination and practically free from weed seed. We cannot guarantee grass seed to grow, because there are too many agencies that effect your stand, but we do guarantee it to be of high germination.

Kentucky Blue grass seed .....	35c per pound
White Clover .....	50c per pound
Red Top .....	25c per pound
Our mixture grass seed .....	35c per pound

Write for prices on quantity lots

**ARE YOUR TREES AND SHRUBS HUNGRY?**

Of course, you know that trees, shrubs, evergreens and other plants require moisture. But have you considered their need of food too? Often they fail to grow and develop as expected because of a lack of nourishment; that is, a shortage of available plant food in the soil.

The needed plant foods can best be supplied in the form of ARMOUR'S SPECIAL TREE FOOD. This special food for trees is a high analysis, all mineral mixture, supplying a complete ration of nitrogen, phosphoric acid and potash. It is made especially to feed trees, shrubs and evergreens. It is clean, practically odorless, and easy to apply.

**When to Apply Fertilizer**

Spring and summer are recognized as the best seasons of the year to fertilize trees, shrubs, and evergreens. Late summer and early fall feeding may cause soft growth which is more or less subject to winter damage.



## Planting Young Trees

In planting young trees mix 2 to 5 pounds of Armour's special tree food thoroughly with the fill-in soil. For small fruit or shade trees, 2 pounds are sufficient. For larger trees use more in proportion to size. Continue these treatments yearly, in increasing proportions for the first several years of growth.

## Established Trees

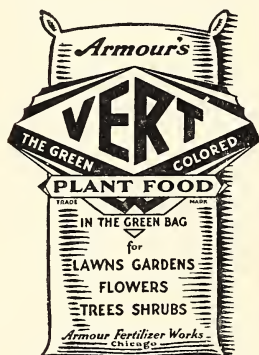
In fertilizing mature trees, use about 1 pound of Armour's special tree food per foot of height of the tree or about 2 pounds per inch of thickness of the trunk. For most effective application, drive holes 12 to 18 inches deep, spaced 15 to 18 inches apart, under the outer branches where the greatest number of feeding roots are located. Pour  $\frac{1}{4}$  to  $\frac{1}{2}$  pound of fertilizer in each hole, filling the hole with top soil and replacing the sod. If water is available let hose run until soil is thoroughly soaked to a considerable depth.

Armour's special tree food is packed in 100-lb. paper lined bags.

Price per 10-lb. bag: \$1.00; 100 lbs., \$7.00

## LAWNS AND GARDENS NEED PLANT FOOD

Beauty in plant life is an indication of a healthy condition. Plants are like animals in that they must have adequate nourishment if they are to develop properly. Fine lawns, pretty flowers, attractive shrubbery—these can be developed by intelligent care and proper feeding with the necessary plant food elements.



ARMOUR'S VERT is a complete, balanced food especially prepared for lawns, gardens, flowers, shrubs, etc. It is composed of the plant foods most needed to produce sturdy plants—plants that are larger, healthier, more luxuriant.

Use VERT to improve your old lawn; to start off a new lawn; to grow larger, prettier flowers; to develop shrubs and small trees; to grow more and better vegetables. There are many uses for VERT around the home grounds. Order a supply and keep it on hand for application as needed.

## How to Figure Your Needs

Space to be Fertilized (Feet)	Established Lawns (Pounds)	New Lawns, Flowers and Vegetables (Pounds)
10 x 10 .....	2 to 3	3 to 4
25 x 40 .....	20 to 30	30 to 40
40 x 75 .....	60 to 90	90 to 120
50 x 100 .....	100 to 150	150 to 200
100 x 200 .....	400 to 600	600 to 800
1 Acre .....	800 to 1200	1200 to 1600

Prices: 100-lb. bag, \$5.00; 50-lb. bag, \$3.00; 25-lb. bag, \$1.75;

5-lb. canister with sifter top 50c





**PLANT  
THIS  
SPRING**



**"IT'S NOT A HOME  
UNTIL IT'S PLANTED"**