

ARCHITECTURAL  
EXHIBITION • MCMX •  
CLEVELAND CHAPTER  
OF AMERICAN INSTITUTE  
OF ARCHITECTS AND  
CLEVELAND ARCHITECTURAL CLUB • • •

Book

NA  
2440  
C63  
STACK- A51  
1910

**Cornell University**

**Library**

OF THE

**College of Architecture**

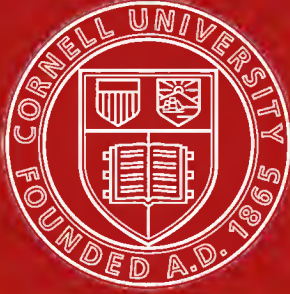
AN.625.

23.1717







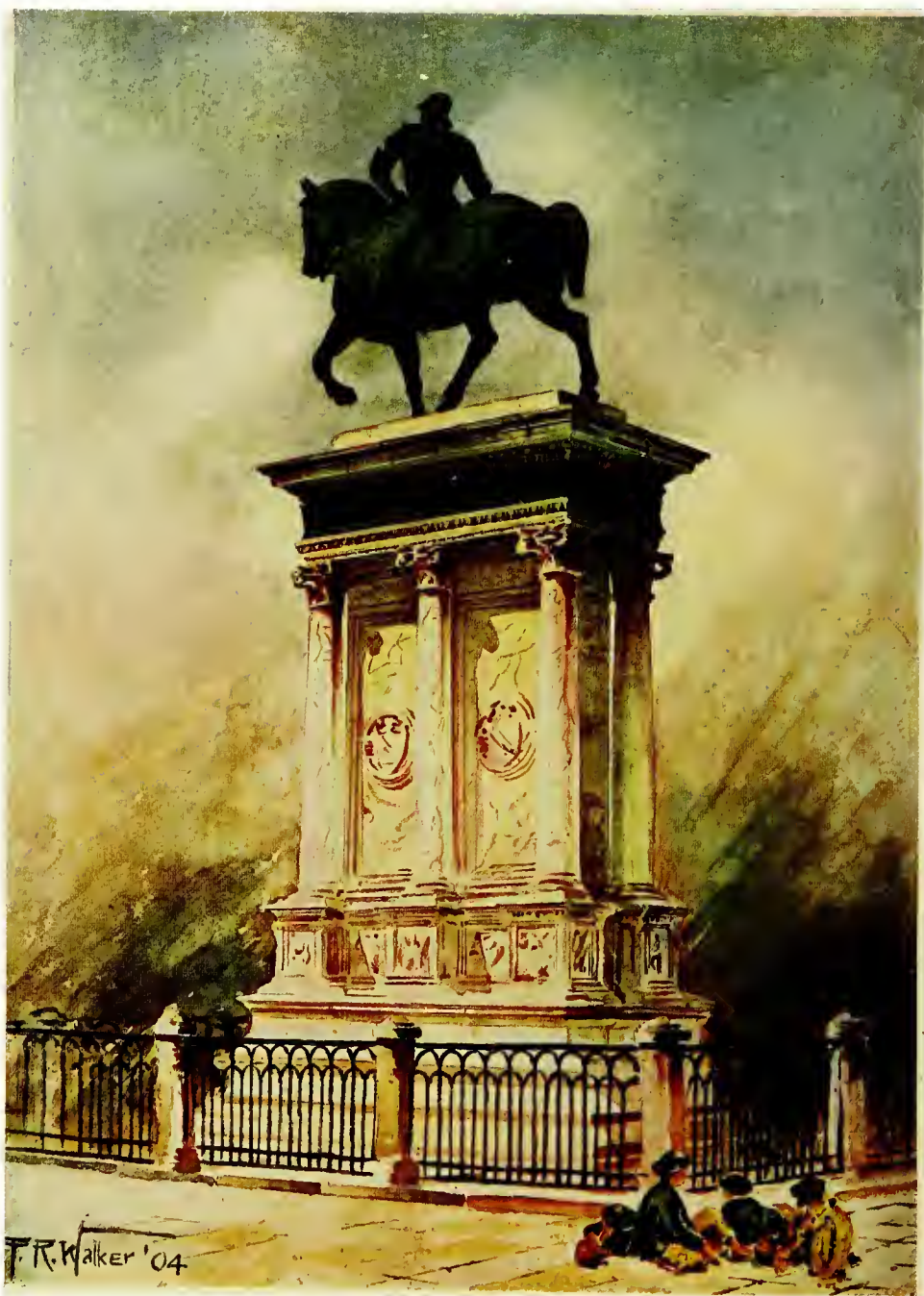


# Cornell University Library


The original of this book is in  
the Cornell University Library.

There are no known copyright restrictions in  
the United States on the use of the text.

<http://www.archive.org/details/cu31924015393741>



BARTOLOMEO COLEONO, VENICE  
SKETCH BY F. R. WALKER, CLEVELAND

ATALOGUE of the  
Architectural Exhi-  
bition of the Cleveland  
Chapter American Insti-  
tute of Architects and the  
Cleveland Archi-  
tectural Club

---

Held in the B. of L. E. Building  
December nineteenth to thirty-  
first, nineteen hundred and ten

625



**Caxton Building**  
**Cleveland**

## ACKNOWLEDGMENTS



THE purposes of the annual architectural exhibitions are for the education of the public to an appreciation of the art side of building and thereby benefitting the city, supplying the incentive for artistic achievement on the part of architects, artists and builders, and improving the quality of workmanship and materials.

That an exhibition of this kind shall be a success, a very great amount of intelligent effort and time are necessary. To Mr. William Robert Powell, who as manager of this exhibition has borne the burdens and labored conscientiously and ably, our first acknowledgment is due.

To the architects, artists and members of the allied industrial arts and crafts, who by their interest in civic improvement have allowed the use of valuable drawings and given liberal support and have co-operated by advertising and thereby furnished the financial aid necessary to meet the expenses connected with this exhibition, the officers and members of the Cleveland Chapter A. I. A. and the Cleveland Architectural Club desire to express their indebtedness, to the managers of the B. of L. E. Building for their courtesy in permitting the use of an entire floor for the accommodation of this exhibition, also to Mr. Charles S. Schneider, who designed the cover for the catalogue, and to Mr. Livingston Fewsmith, Jr., who designed the poster.

The Cleveland Chapter American Institute of Architects.  
Victor E. Thebaud, Secretary.

The Cleveland Architectural Club.  
Livingston Fewsmith, Jr., Secretary.

## Cleveland Chapter, A. I. A.

### Chapter Officers

CHARLES E. TOUSLEY, *President*

ALBERT E. SKEEL, *Vice President*

VICTOR E. THEBAUD, *Secretary and Treasurer*

### Honorary Member

Schofield, Levi T. . . . . 1400 Schofield Bldg.

### Active Members

Badgley, Sidney R. . . . . 6110 Euclid Ave.  
Bates, F. C. . . . . 2165 East 31st St.  
Barnum, F. S. . . . . Board of Education  
Beer, Geo. W. . . . . 307 Columbia Bldg.  
Benes, W. D. . . . . Citizens Bldg.  
Bohm, G. B. . . . . 933 Williamson Bldg.  
Bohnard, Wm. A. . . . . 510 Chamber of Commerce  
Briggs, H. B. . . . . 669 Rose Bldg.  
  
Corbusier, J. W. C. . . . . 309 Lennox Bldg.  
Dercum, Hermann . . . . . 307 Columbia Bldg.  
Dutton, W. S. . . . . 611 New England Bldg.  
Dyer, J. Milton . . . . . 825 Cuyahoga Bldg.  
  
Eisenman, J. . . . . 489 The Arcade  
Garfield, Abram . . . . . 915 Garfield Bldg.  
  
Hopkinson, C. W. . . . . 900 Rose Bldg.  
Hubbell, Benj. S. . . . . Citizens Bldg.  
Hubby, R. Germaine . . . . . 616 Caxton Bldg.  
  
Lougee, W. S. . . . . 306 American Trust Bldg.  
Meade, F. B. . . . . 1002 Garfield Bldg.  
  
Nelson, H. S. . . . . 669 Rose Bldg.  
Nicklas, Wm. H. . . . . 6110 Euclid Ave.  
  
Page, G. M. . . . . 309 Lennox Bldg.  
  
Schneider, C. S. . . . . 1111 Schofield Bldg.  
Skeel, A. E. . . . . 1069 Rose Bldg.  
Streibinger, F. W. . . . . 1215 New England Bldg.  
  
Thebaud, V. E. . . . . 406 Bangor Bldg.  
Tousley, C. E. . . . . 406 Bangor Bldg.  
  
Watterson, W. R. . . . . 1203 New England Bldg  
Warner, Franz C. . . . . 319 Citizens Bldg.

# The Cleveland Architectural Club

## Officers

ROBERT M. WRIGHT, *President*

ALBERT E. SKEEL, *Vice President*

LIVINGSTON A. BOHNARD, *Treasurer*

EDGAR STANLEY, *Librarian*

WILLIAM ROBERT POWELL, *Chairman Current Work Committee*

C. L. AIKEN, *Chairman Entertainment Committee*

## Members

Aiken, C. L . . . . .	3019 Woodbridge Ave. S. W.
Allen, Robert W. . . . .	1264 Riverbed Ave.
Andrews, Geo. W. . . . .	900 Rose Bldg.
Baird, Frederick . . . . .	218 American Trust Bldg.
Bartlett, B. . . . .	7502 Carnegie Ave. S. E.
Beer, Geo. W. . . . .	307 Columbia Bldg.
Benes, W. D. . . . .	Citizens Bldg.
Bohm, Gustave B. . . . .	933 Williamson Bldg.
Bohnard, Wm. A. . . . .	1792 East 24th St.
Bowman, James M. . . . .	Sterling & Welch Co.
Brady, Morton J. . . . .	109 Lennox Bldg.
Broemel, Carl F. . . . .	2165 East 31st St.
Coghlan, Owen . . . . .	2310 Denison Ave.
Collings, Clarence H. . . . .	1527 Prospect Ave.
Company, Roy J. . . . .	9515 Anderson Ave. S. E.
Dalton, B. . . . .	915 Garfield Bldg.
Davies, A. H. . . . .	Gas Fixture & Brass Co., High Ave. and East 4th St.
Dercum, Hermann . . . . .	307 Columbia Bldg.
Dickerson, R. W. . . . .	5516 Whittier Ave.
Fewsmith, Livingston, Jr. . . . .	2259 East 88th St.
Frary, Ira T. . . . .	Rorheimer-Brooks Studio, 1907-31 East 9th St.
Fox, Henry Willard . . . . .	4489 West 35th St.
Garfield, Abram . . . . .	915 Garfield Bldg.
Gill, Wm. . . . .	1028 Rose Bldg.
Gladwin, Stephen C. . . . .	1232 East 3rd St.
Gleichman, Morris . . . . .	410 Lennox Bldg.
Griffin, Perly H. . . . .	4401 Broadway Ave.



Heyd, E. . . . .	4503 Detroit Ave.
Hubby, R. G. . . . .	617 Caxton Bldg.
Hulett, Ralph . . . . .	365 Lennox Bldg.
Humpheries, C. A. . . . .	11301 Itasca Ave.
Jansen, J. H. . . . .	324 Caxton Bldg.
Jansen, W. C. . . . .	Bangor Bldg.
Klotz, A. . . . .	6311 Hawthorne Ave.
Klotzbach, Augustus . . . . .	625 Garfield Bldg.
Lauffer, Erwin . . . . .	625 Garfield Bldg.
Luzius, P. . . . .	2059 West 81st St.
Matzen, Herman . . . . .	Cleveland School of Art
McAllister, Colin . . . . .	2165 East 31st St.
Meade, Frank B. . . . .	1002 Garfield Bldg.
Murawsky, Alfred . . . . .	1263 East 114th St.
Parsson, Raymond . . . . .	509 Chamber of Commerce
Powell, Wm. R. . . . .	1106 Hippodrome Bldg.
Queisser, Robert L. . . . .	1237 Schofield Bldg.
Robinson, C. A. . . . .	32 Dartmore St., E. Cleveland
Schaefer, W. J. . . . .	55 Garfield Ave., Hinsdale, Ill.
Schneider, Chas. S. . . . .	1105 Schofield Bldg.
Shupe, Harry L. . . . .	1313 Schofield Bldg.
Sinz, Walter A. . . . .	Cleveland School of Art
Skeel, Albert E. . . . .	1028 Rose Bldg.
Skeel, F. D. . . . .	Euclid near East 55th St.
Stanley, Edgar . . . . .	1270 West 105th St.
Steffens, George H. . . . .	1228 Williamson Bldg.
Steffens, John F. . . . .	1228 Williamson Bldg.
Thebaud, Victor Emile . . . . .	Bangor Bldg.
Vinson, Lee C. . . . .	301 Caxton Bldg.
Warner, Franz C. . . . .	314 Citizens Bldg.
Watterson, Wm. R. . . . .	825 Cuyahoga Bldg.
White, Carl F. . . . .	1313 Schofield Bldg.
Wajohn, Erick . . . . .	1002 Garfield Bldg.
Wolf, Alex. . . . .	1002 Garfield Bldg.
Wright, Robert M. . . . .	825 Cuyahoga Bldg.
Yaeger, Ludwig . . . . .	Car J. H. Shipway & Bros., 136th St. and E. River St., New York, N. Y.
Zorchnick, Henry L. . . . .	1902 Brainard Ave.

# The Architectural League of America

ORGANIZED 1889



## Members

CLEVELAND ARCHITECTURAL CLUB

T SQUARE CLUB, PHILADELPHIA

TORONTO ARCHITECTURAL CLUB

PITTSBURG ARCHITECTURAL CLUB

WASHINGTON UNIVERSITY ARCHITECTURAL CLUB, ST. LOUIS

TWIN CITY ARCHITECTURAL CLUB

CHICAGO ARCHITECTURAL CLUB

BOSTON ARCHITECTURAL CLUB

DETROIT ARCHITECTURAL CLUB

ST. LOUIS ARCHITECTURAL CLUB

WASHINGTON ARCHITECTURAL CLUB

ARCHITECTS' CLUB, UNIVERSITY OF ILLINOIS

GEORGE WASHINGTON UNIVERSITY ARCHITECTURAL CLUB

SAN FRANCISCO ARCHITECTURAL CLUB

NATIONAL SCULPTURE SOCIETY, NEW YORK

NATIONAL SOCIETY OF MURAL PAINTERS, NEW YORK

**Exhibition Committee**

HERBERT B. BRIGGS, *Chairman*

HERMANN DERCUM

V. E. THEBAUD

ROBERT M. WRIGHT

LIVINGSTON FEWSMITH, JR.

EDGAR STANLEY

# **Index to Exhibits**



# Index of Exhibits

AIKEN, CLAYTON L.,

825 Cuyahoga Building.

- 1 Mausoleum.

AMES, MAY,

9315 Miles Avenue.

- 2 A Roman Gate, Palatine Hill, Rome.
- 3 The Lion Gate of Mycenae, Greece.

BADGLEY & NICKLAS,

6110 Euclid Avenue.

- 4 Study for Methodist Episcopal Church, Newton, Iowa.
- 5 Study for Presbyterian Church, Charleston, Ill.
- 6 Presbyterian Church, Winfield, Kan.
- 7 Alternate Study Humphrey Memorial Church.
- 8 Humphrey Memorial Church, Eugene, Ore.
- 9 First Christian Church, Springfield, Ill.
- 10 Residence of Geo. M. Skiles, Shelby, Ohio.
- 11 St. Paul's Methodist Episcopal Church, South Bend, Ind.
- 12 Residence of Mr. J. E. Metzger, Cleveland (Four Views).
- 13 Residence of Mr. H. M. Lucas, Cleveland (Four Views).
- 14 Methodist Episcopal Church, Zanesville, Ohio (Three Views).
- 15 Boulevard Presbyterian Church, Cleveland.
- 16 First Presbyterian Church, Wichita, Kan.
- 17 The A. M. McGregor Home for Aged People, Cleveland.
- 18 United Presbyterian Church, Richmond, Ind.
- 19 Public Library, St. Catherines, Ont.

BARNUM, F. S. & CO.—FRANK S. BARNUM, HARRY S. NELSON,  
HERBERT B. BRIGGS,

- 20 Views of First Unitarian Church, Cleveland.

BITTER, KARL,

44 West 77th Street, New York City.

- 21 Villard Memorial.

BOARD OF EDUCATION—F. S. BARNUM, ARCHITECT,

6th Street and Rockwell Avenue, Cleveland.

- 22 Cleveland Normal School.
- 23 Group of Schools (Photographs).

## INDEX OF EXHIBITS

---

- 24 Doan School.
- 25 Columbia School.
- 26 Watterson School.
- 27 Central School.
- 28 Technical High School.
- 29 Group of Schools (Photographs).

### BOHM, G. B.,

933 Williamson Building, Cleveland.

- 30 Residence, Lake Avenue.
- 31 Interior of Hall.

### BOHNARD & PARSON,

510 Chamber of Commerce, Cleveland.

- 32 Cottage for Clifton Park.
- 33 Seed Store of Mr. A. C. Kendel.
- 34 Residence of Mr. G. W. Grandin.
- 35 Residence of Mr. F. Zimmerman.
- 36 Residence of Mr. F. Zimmerman.
- 37 Residence of Mr. Julius F. Janes.
- 38 Residence of Mr. C. H. Beardslee.
- 39 Residence at Clifton Park.
- 40 Residence of Mr. Milo H. Evans.
- 41 Residence of Mr. Geo. Holloway.
- 42 Residence of Mr. Felix Hughes.
- 43 Highland Building.
- 44 Residence of Mrs. Zahnheiser.

### BRIGGS & NELSON,

669 Rose Building, Cleveland.

- 45 Views of Y. M. C. A., Steubenville, Ohio.
- 46 Views of Y. M. C. A., Steubenville, Ohio.

### BROWN, FRANK CHOUTEAU,

- 47 House at Springfield, Ill. (Rear).
- 48 House at Springfield, Ill. (Front).
- 49 Garden Front, House at Framingham, Mass.
- 50 House at Framingham, Mass.
- 51 Terrace, House at Framingham, Mass.
- 52 Detail of Portico, House at Dedham, Mass.
- 53 House in Dedham, Mass.
- 54 Garden Gateway, House in Dedham, Mass.



## INDEX OF EXHIBITS

---

### COLTMAN, ORA,

10310 Euclid Avenue, Cleveland.

- 55 City Gate, Rothenburg.
- 56 Old House on the Pegnitz.
- 57 Along the Canal.
- 58 Roofs of Nuremberg.
- 59 Roofs of Rothenburg.
- 60 Canareggio, Skyscrapers of Venice.
- 61 The Balustrade, Public Garden.
- 62 Gate and Tower, Burghausen.
- 63 German Window.
- 64 Lauferschlag, Turm, Nuremberg.
- 65 Mautner St. Burghausen.
- 66 Rio San Guiseppe.
- 67 In Austria.
- 68 Above the Lake of Garda.
- 69 On the Banks of the Isar.
- 70 Street of the Bead Stringers, Venice.
- 71 Marcusturm, Rothenburg.
- 72 Burghausen.
- 73 Roofs of Munich.

### COLUMBIA UNIVERSITY, SCHOOL OF ARCHITECTURE.

#### EHRICH GUGLER.

- 74 A Monumental Reservoir (Perspective).
- 75 A Monumental Reservoir (Elevation).
- 76 A Monumental Reservoir (Plan).

#### H. GOLDMAN.

- 77 A Monumental Reservoir (Perspective).

#### M. W. SCHEIBEL.

- 78 A Gothic Chapel (Elevation).
- 79 A Gothic Chapel (Plan).
- 80 A Gothic Chapel (Section):

#### W. L. BOTTOMLEY.

- 81 A Monument on a Dam, Graduate Design.

#### E. C. HALL.

- 82 A Romanesque Doorway.

## INDEX OF EXHIBITS

---

W. S. THOMPSON.

83 A Monumental Reservoir (Perspective).

J. W. INGLE, JR.

84 A Gothic Chapel (Elevation).

DANA L. CLARK.

85 A Terrace in a Park.

C. M. HIRSH.

86 An Arch of Triumph.

I. REH.

87 A Blank Wall and Fountain.

A. H. KNAPPE.

88 A Terrace in a Park.

G. A. KNAPP.

89 A Terrace in a Park.

W. N. ALBERTSON.

90 An Immigrant Station (Elevation).

P. M. STAUB.

91 A Gothic Chapel (Elevation).

92 A Gothic Chapel (Section).

L. L. SHENFIELD.

93 Doorway to a Museum.

H. T. CLINCH.

94 Doorway to a Museum.

F. J. HARTWIG.

95 A Gothic Cloister.

L. R. HOWITT.

96 A Small Courthouse (Plan).

97 A Small Courthouse (Elevation).

W. O. D. ISELIN.

98 A Blank Wall and Fountain.

## INDEX OF EXHIBITS

---

CORNELL UNIVERSITY, COLLEGE OF ARCHITECTURE,  
Ithaca, N. Y.

JOHN A. GRAHAM.

- 99 A Hotel on Long Island (Elevation).
- 100 A Hotel on Long Island (Plan).
- 101 A Hotel on Long Island (Section).

JOSEPH M. KELLOGG.

- 102 A Pantheon (Elevation).
- 103 A Pantheon (Plan).

W. G. SCHAEFFER.

- 104 A Railroad Station (Elevation).
- 105 A Railroad Station (Plan).
- 106 A Railroad Station (Section).

GEO. R. THOMPSON.

- 107 A Sanatorium.

CRAM, GOODHUE & FERGUSON,

Boston, Mass.  
309 Lennox Building, Cleveland.

PAGE & CORBUSIER (Associate Architects),

- 108 Euclid Avenue Presbyterian Church (Plan).
- 109 Euclid Avenue Presbyterian Church (Perspective).

THE D'ASCENZO STUDIOS—NICOLA D'ASCENZO,

1608 Ludlow Street, Philadelphia, Pa.

- 110 Sketch for Circular Window.  
("The Master Is Come and Calleth for Thee.")
- 111 Cartoon, Clearstory Window, St. Mark's Church, Frankford,  
Pennsylvania.
- 112 Cartoon, Clearstory Window, St. Mark's Church, Frankford,  
Pennsylvania.
- 113 Mural Decoration for Luzerne Courthouse.
- 114 Water Nymph, Painting.
- 115 Decoration for Cafe.
- 116 Decoration for Cafe.
- 117 Sketch for Window, St. Mark's Church, Frankford, Pa.
- 118 Easter, Pencil Drawing for Leaded Glass Window.

## INDEX OF EXHIBITS

---

- 119 Indianapolis Post Office and Courthouse Decoration.
- 120 Indianapolis Post Office and Courthouse Decoration.
- 121 Decoration for Cafe.
- 122 Sketch, Elevation of Chancel, St. Joseph's Church, Dayton, Ohio.
- 123 Elevation of Side Wall, St. Joseph's Church, Dayton, Ohio.

### DERCUM & BEER,

Columbia Building, Cleveland.

- 124 House in Lakewood.
- 125 House on 115th St.
- 126 Entrance Detail.
- 127 House on Lake Avenue.
- 128 Garage.
- 129 St. Mary's Church, Bedford, Ohio.
- 130 Cottage in Cleveland.
- 131 Bungalow.
- 132 Colonial Cottage.
- 133 Carter Residence.

### DUHRING, OKIE & ZIEGLER,

1218 Chestnut Street, Philadelphia, Pa.

- 134 House for Hon. Philander C. Knox, Valley Forge, Pa.
- 135 House for Hon. Philander C. Knox, Valley Forge, Pa.
- 136 House for Hon. Philander C. Knox, Valley Forge, Pa.
- 137 Fireplace for Chas. W. Henry, Memorial Chapel.
- 138 House for Mr. H. Gordon McCorich.
- 139 House for Davenport Plumber.
- 140 House for John D. McIlhenny.
- 141 Stable for John D. McIlhenny.
- 142 House for Miss Alice M. Patton, Rosemont, Pa.
- 143 House for Miss Alice M. Patten, Rosemont, Pa.
- 144 House for Miss Alice M. Patten, Rosemont, Pa.
- 145 House for W. Marriott Canby, Germantown, Pa.
- 146 House for W. Marriott Canby, Germantown, Pa.
- 147 House for Walter D. Blabon, Bryn Mawr, Pa.
- 148 House for Walter D. Blabon, Bryn Mawr, Pa.
- 149 House for Walter D. Blabon, Bryn Mawr, Pa.
- 150 House for Walter D. Blabon, Bryn Mawr, Pa.
- 151 Stable for Walter D. Blabon, Bryn Mawr, Pa.
- 152 Stable for Geo. C. Blabon.
- 153 House for Geo. B. Yarrow, Centerville, Pa.

## INDEX OF EXHIBITS

---

- 154 House for David B. Sharp, Berwyn, Pa.
- 155 House for A. Barker Mellor, St. Martins, Pa.
- 156 Stable for Henry Justice, Devon, Pa.

### DUTTON W. STILLMAN,

611 New England Building., Cleveland.

- 157 Travel Photograph.
- 158 Travel Photograph.
- 159 Travel Photograph.
- 160 Travel Photograph.
- 161 Travel Photograph.
- 162 Travel Photograph.
- 163 Law Building, Ohio State University.
- 164 A Bungalow at Gates Mill.
- 166 Bank and Office Building.

### DYER, J. MILTON,

825 Cuyahoga Building, Cleveland.

- 167 Library Competition, Ohio State University (Perspective).
- 168 Library Competition, Ohio State University (Basement Plan).
- 169 Library Competition, Ohio State University (Main Floor Plan).
- 170 Library Competition, Ohio State University (2nd Floor Plan).
- 171 Tuberculosis Sanitarium, Cleveland Farm Colony (Bird's Eye View).
- 172 Tuberculosis Sanitarium, Cleveland Farm Colony (Rear Elevation).
- 173 Tuberculosis Sanitarium, Cleveland Farm Colony (Plan).
- 174 Tuberculosis Sanitarium, Cleveland Farm Colony (Central Group Elevation).
- 175 Tuberculosis Sanitarium, Cleveland Farm Colony (Central Group Plan).
- 176 Tuberculosis Sanitarium, Cleveland Farm Colony (Central Group Elevation).
- 177 Tuberculosis Sanitarium, Cleveland Farm Colony (Doctors' Home).
- 178 Tuberculosis Sanitarium, Cleveland Farm Colony (Nurses' Home).
- 179 Tuberculosis Sanitarium, Cleveland Farm Colony (Administration Bldg. Shack, Plans).
- 180 Cleveland Athletic Club (Perspective).
- 181 Cleveland Athletic Club (6th Floor Plan).
- 182 Cleveland Athletic Club (7th Floor Plan).

## INDEX OF EXHIBITS

---

- 183 Cleveland Athletic Club (8th Floor Plan).
- 184 Cleveland Athletic Club 9th Floor Plan).
- 185 Cleveland Athletic Club (10th Floor Plan).
- 186 Cleveland Athletic Club (11th Floor Plan).
- 187 Cleveland Athletic Club (Gymnasium Floor Plan).
- 188 Cleveland Athletic Club (Gallery Floor Plan).
- 189 Cleveland Athletic Club (Bowling Alley Floor Plan).
- 190 Cleveland Athletic Club Longitudinal Section).
- 191 Cleveland Athletic Club (Transverse Section).
- 192 Residence of Mr. E. S. Burke, Jr. (Detail of Ornament).
- 193 Residence of E. S. Burke (Models).
- 194 Sketch for an Observatory. By F. R. Walker.

### EYRE, WILSON,

1003 Spruce Street, Philadelphia, Pa.  
41 E. 30th Street, New York.

- 195 House at Greenwich, Conn.
- 196 House at Greenwich, Conn.
- 197 House for Mr. H. W. Rogers, Spring Lake, N. J.

### FAHNESTOCK, W. W.,

308 W. 15th Street, New York.

- 198 Allegory Autumn, Color Sketch in Wax.

### FERNALD, GEORGE PORTER,

70 Kilby Street, Boston.

- 199 Illustrations to Lipari Islands.
- 200 Illustration to Lipari Islands.
- 201 Illustrations to Lipari Islands.
- 202 Illustrations to Lipari Islands.
- 203 Wall Decoration.
- 204 San Marco, Venice.
- 205 Entrance to La Favorita.

### FEWSMITH, JR., LIVINGSTON,

Cleveland.

- 206 Laborers' Dwellings.

### FLAGG, ERNEST,

35 Wall Street, New York City.

- 207 Chapel for Pomfret School.

## INDEX OF EXHIBITS

---

- 208 Reconstruction of Palace for Count Lazlo Szechenzi, Budapest, Hungary.
- 209 Residence for Mr. Charles Scribner, New York.

### FOUNTAIN, S. J.,

663 Rose Building, Cleveland.

- 210 The Pantheon, Paris.
- 211 A Market Street, Paris.
- 212 Saint Sulpice, Paris.
- 213 Portico of the Pantheon, Paris.
- 214 Boulevard St. Germain, Paris.
- 215 Interior of St. Germain-des-Pres., Paris.
- 216 Notre Dame, Paris.
- 217 Drawing Room, Wade Park House.
- 218 Library, House in Wade Park.
- 219 Sketch for Residence, Euclid Heights.
- 220 Sketch for Church.
- 221 Sketch for Residence.
- 222 Sketch for Terraces, Cleveland.
- 223 Residence, Cleveland Heights.
- 224 Residence, Cleveland Heights.
- 225 Residence, Wade Park Allotment.
- 226 Residence, Euclid Heights.

### FOURNIER, ALEXIS JEAN,

2601 Prospect Avenue, Cleveland.

- 227 Evening in Venice.
- 228 The Grand Canal, Venice (Morning).
- 229 Entrance to Grand Canal, Venice.
- 230 The Zattera, Venice.
- 231 Morning in Venice.
- 232 The Grand Canal, Venice.
- 233 A Festa in Venice.
- 234 The Rocky River Viaduct.
- 235 Evening in Venice.

### GLADWIN, S. C.,

1232 E. 3rd Street, Cleveland.

- 236 Model of Decorative Keystone.
- 237 Model of Marble Bracket "Ironworkers."  
Albert E. Skeel, Designer.



## INDEX OF EXHIBITS

---

### GLIDDEN, EDWARD H.,

- 238 The Marlborough.
- 239 The Washington.

### GRIFFIN, WALTER BURLEY,

1200 Steinway Hall, Chicago.

- 240 Club House Niles, Michigan—Study.
- 241 Dwelling, Kenilworth, Illinois—Study.
- 242 Two Flat Buildings, Chicago—Study.
- 243 Dwelling, Evanston, Illinois—Study.
- 244 Dwelling, Edwardsville, Illinois—Study.

### HEACOCK & HOKANSON,

1218 Chestnut Street, Philadelphia.

- 245 Township Building, Abington, Pa.
- 246 House at Llanerch, Pa.
- 247 House at Noble, Pa.
- 248 Bank Building at Jenkintown, Pa.

### HOPKINSON, CHAS. W.,

Rose Building, Cleveland.

- 249 Residence of James J. Tracy, Euclid Ave. (Drawing Room).
- 250 Residence of James J. Tracy (Reception Room).
- 251 Residence of James J. Tracy (Vestibule).
- 252 Residence of James J. Tracy (Ball Room).
- 253 Residence of F. W. Stecher, Lake Ave (General Exterior View).
- 254 Residence of F. W. Stecher (Drawing Room).
- 255 Residence of F. W. Stecher (Vestibule).
- 256 Residence of F. W. Stecher (Main Stair Hall).
- 257 Residence of F. W. Stecher (Library).
- 258 Residence of F. H. Adams (Exterior).
- 259 Residence of F. H. Adams (Drawing Room).
- 260 Residence of F. H. Adams (Library).
- 261 Residence of F. H. Adams (Dining Room).
- 262 Culbertson Monument, Girard, Pa.

## INDEX OF EXHIBITS

---

### HORNE, JOSEPH, CO.,

Pittsburgh, Pa.

- 263 Dining Room Decoration.  
H. F. Bryant, Designer.
- 264 Library.  
H. F. Bryant, Designer.
- 265 Living Room.  
H. F. Bryant, Designer.
- 266 Living Room.  
Wm. Whittle, Designer.

### HUBBEL & BENES,

Citizens Building, Cleveland.

- 267 Scale Model—Mausoleum.
- 268 Cleveland Museum of Art (North Elevation).
- 269 Cleveland Museum of Art (South Elevation).
- 270 Cleveland Museum of Art (Perspective).
- 271 Cleveland Museum of Art (Plan of Site).
- 272 Cleveland Museum of Art (Ground Floor Plan).
- 273 Cleveland Museum of Art (First Floor Plan).
- 274 Cleveland Museum of Art (Second Floor Plan).
- 275 Cleveland Museum of Art (Longitudinal Section).
- 276 Cleveland Museum of Art (Transverse Section).
- 277 Cleveland Museum of Art (Details).
- 278 West Side Market House.
- 279 West Side Market House, Corbels.
- 280 West Side Market House, Corbels.

### INGRAHAM, GEORGE HUNT,

2 A Park Street, Boston.

- 281 A Small Library.
- 282 Residence in Detroit.

### IZANT, CLARENCE S.,

711 Cuyahoga Building.

- 283 Cleveland Electric Illuminating Co. (Warehouse).
- 284 Cleveland Electric Illuminating Co. (Power House).
- 285 Cleveland Electric Illuminating Co. (Power House).
- 286 Cleveland Electric Illuminating Co. (Power House).
- 287 Cleveland Electric Illuminating Co. (Sub Station).
- 288 Residence for Mr. P. L. Cobb.

## INDEX OF EXHIBITS

---

### JANES, WALTER STUDIOS,

138 West 42nd Street, N. Y.

- 289 Nave Windows St. Michael's Church, Brooklyn, N. Y.  
R. F. Almirall, Architect.
- 290 Mauseoleum Window.  
H. Van B. Magonigle, Architect.
- 291 Dining Room Windows, Jas. Timpsons House.
- 292 Venetian Glass Mosaic.
- 293 Lyons Memorial, Antique Glass, W. E. Collegiate Church,  
N. Y.
- 294 Lyons Memorial Antique Glass.
- 295 Glass Mosaic Panel.
- 296 Head of Christ.
- 297 "Victory" Jakel Mauseoleum, Antique Glass.
- 298 Window in Yacht of Henry Tinker.
- 299 Window in Yacht of Henry Tinker.
- 300 Window in Yacht of Henry Tinker.

### JANSSEN & ABBOTT,

Renshaw Building, Pittsburgh.

- 301 Competition First Baptist Church of Pittsburgh.
- 302 Competition First Baptist Church of Pittsburgh.
- 303 Competition First Baptist Church of Pittsburgh.
- 304 Competition First Baptist Church of Pittsburgh.
- 305 Competition First Baptist Church of Pittsburgh.
- 306 Competition First Baptist Church of Pittsburgh.
- 307 Competition Western University of Penn., Plan.
- 308 Competition Western University of Penn., Section.
- 309 Commemorative Monument.

### JANSEN, JENS,

Steinway Hall, Chicago.

- 310 Entrance to Public Gardens, Garfield Park.
- 311 Lawn of H. Rubens, Glencoe, Ill.
- 312 Rose Gardens, Humboldt Park.
- 313 Entrance to Col. Scripps' Estate.
- 314 Gardens of H. Rubens, Glencoe, Ill.
- 315 Gardens of W. J. Chalmers, Lake Geneva, Wis.
- 316 Water Garden.

## INDEX OF EXHIBITS

---

KELLER, H. G.,

Cleveland School of Art.

- 317 The Old Wagon Shed.
- 318 Scene in Amsteradm.
- 319 Carrying up a Corner.
- 320 Out of the Barn.
- 321 In the Luggy Shed.
- 322 In the Horse Barn.
- 323 Cellar Way.
- 324 Quarries.
- 325 Watchman.
- 326 Industry.
- 327 Among the Old Settlers.

MASSACHUSETTS INSTITUTE OF TECHNOLOGY,

Boston, Mass.

K. E. CARPENTER,

- 328 A Southern Estate (Plan).
- 329 A Southern Estate (Block Plan).
- 330 A Southern Estate (Elevation).
- 331 A Court House (Plan).
- 322 A Court House (Elevation).
- 333 General Outlay for Aerodrome.

G. FOX,

- 334 Interior of Reception Room.

C. C. CLARK,

- 335 A Museum of Aeroplanes (Plan).
- 336 A Museum of Aeropalnes (Elevation).

H. S. GERITY.

- 337 A Church Entrance.

W. S. DAVIS.

- 338 A Church Entrance.

K. VONNEGUT.

- 339 Tribune of a Grand Stand.

R. D. JOHNSON.

- 340 A Church Entrance.

## INDEX OF EXHIBITS

---

S. N. WHITNEY.

341 Swimming Pool and Pavilion.

J. M. GRAY,

342 Column for a Public Garden.

E. H. KRUCKEMEYER,

343 Monumental Window in Station.

R. H. HANNAFORD.

344 A Railroad Station.

MEADE, FRANK B.,

1002 Garfield Building, Cleveland.

345 Residence of Mr. Howard P. Eells.

346 Residence of Mr. Howard P. Eells, Living Hall.

347 Residence of Mr. Paul Lawrence, Wade Park.

348 Residence of Mr. K. F. Gill, Ambler Heights.

349 Residence of Mr. Henry Everett.

350 Mayfield Club.

351 Residence for Mr. F. E. Drury.

352 Shoaff Bldg. and First National Bank.

James Hamilton, Associate Architect.

MILLS, DAISY B.,

1429 W. 81st Street, Cleveland.

353 Sketch of Lion.

MURAWSKY, ALFRED K.,

825 Cuyahoga Building, Cleveland.

354 Order Problem, A Loggia.

PAGE & CORBUSIER,

309 Lennox Building, Cleveland.

355 Residence of G. H. Gardner.

356 Residence of Mr. T. W. Larwood.

357 Residence of Mrs. J. R. Ranney.

358 Residence of H. W. Kessler.

359 Residence of Mr. P. Borton.

360 Residence of Mr. C. A. Nicola.

## INDEX OF EXHIBITS

---

- 361 Residence of Mr. H. C. Osborn (Interior).
- 362 Boulevard Presbyterian Church.
- 363 Boulevard Presbyterian Church.

### PARKER, H. HANLEY,

1710 Chestnut Street, Philaeldphia.

- 364 Decorative Figure Medallion, No. 1.
- 365 Decorative Figure Medallion No. 2.
- 366 Decoration Calvary M. E. Church, Philadelphia.
- 367 A Bungalow, New Jersey Coast.
- 368 Spring.
- 369 Sketch, Sermon on the Mount, Calvary M. E. Church, Phila.
- 370 The Dream Lady.
- 371 "The Ascension" Church of St. Judge and Nativity, Phila.
- 372 Hallway in City Residence.
- 373 Mantel in Library, Residence.

### PELL & CORBETT,

122 E. 25th Steret, N. Y.

- 374 Springfield Municipal Bldg.

### PENNSYLVANIA, UNIVERSITY OF, DEPARTMENT OF ARCHITECTURE,

#### JESSE F. LAUCK.

- 375 Rendering from Line Drawing.

#### GEORGE N. RAY.

- 376 A Maritime Custom House (Plan and Eleveation).

#### G. S. KOYL.

- 377 A Hotel (First Floor Plan and Elevation).
- 378 A Hotel (Second Floor Plan).

#### GRANT M. SIMON.

- 379 Rendering from Line Drawing.

#### H. B. REGISTER.

- 380 Casino of a Country Club (Plan).
- 381 Casino of a Country Club (Elevation and Section).

## INDEX OF EXHIBITS

---

### PITKIN & WEINRICHTER,

Cutler Building, Rochester.

- 382 Sketch of Garden and Grounds for Walter Howard, Esq., Geneva, N. Y.
- 383 House and Garden for Clement Studebaker, Jr., Esq., South Bend, Ind.

### POST, GEO. B., & SONS,

347 Fifth Avenue, N. Y. City.

1111 Schofield Building, Cleveland.

- 384 Interior of Central Portion Wisconsin State Capitol.
- 385 College of the City of New York, Main Building.
- 386 Residence of Mr. Joseph J. Russell, Cleveland.  
Charles S. Schneider, Designer.
- 387 Residences of Mr. Herbert L. Schneider and Mr. Nelson D. Foster, East Cleveland.  
Charles S. Schneider, Designer.
- 388 Entrance to Residence of Mr. Joseph G. Russell, Cleveland.  
Charles S. Schneider, Designer.
- 389 Residence of Mr. Stanley Motch, Lakewood, O.  
Charles S. Schneider, Designer.
- 390 Sketch of Studio for Mrs. Alice B. Ring, Cleveland.  
Charles S. Schneider, Designer.
- 391 Sketch showing alterations and additions to Residence of Mr. George H. Fish, Lakewood, O.  
Charles S. Schneider, Designer.
- 392 Residence for Mr. R. I. Wright, Wickliffe-on-the-Lake, O.  
Charles S. Schneider, Designer.
- 393 Suggestion for First Congregational Church, Lakewood, O.  
Charles S. Schneider, Designer.

### POWELL, WILLIAM ROBERT,

1106 Hippodrome Building, Cleveland.

- 394 Sketch near Rouen.
- 395 Street Scene, Rouen.
- 396 Street Scene, Chartres.
- 397 Street Scene, Aizay-le-Rideau.
- 398 Place de la Concorde, Paris.
- 399 Travel Sketch, Holland.
- 400 Travel Sketch, Holland.



## INDEX OF EXHIBITS

---

### ROGERS & MacFARLANE,

Detroit, Mich.

- 401 Church at Durand, Mich.

### SCHNEIDER, CHARLES S.

1111 Schofield Building, Cleveland.

- 402 Sketch, looking up "Hermit Lane."  
403 Sketch for a Home for Mr. Charles S. Schneider.  
404 Notre, Sketch made in Paris.  
405 Notre Dame, Sketch made in Paris.  
406 Drawing Submitted in "The Brickbuilder" Competition.  
407 Sketch, looking up "Hermit Lane."  
408 Sketches for Hermit Club Program.  
409 Sketch of Competition Drawing for the Mayfield Country Club House.  
410 Residence of Mr. J. H. Donahey, East Cleveland, O.  
411 Competitive Drawing for cover of this Catalogue (awarded first place).  
412 Sketch for Entrance to Home for Mr. Charles S. Schneider.  
413 Original Sketch for Residence of Mr. Stanley Motch, Lakewood, O.  
414 Sketch of Fire Place in Hermit Club.  
415 Sketch of Entrance to Hermit Club.  
416 Sketch of Grill Room of Hermit Club.  
417 Residence of Mr. Henry Steinbrenner, Cleveland.  
418 Suggestion to a Client.  
419 Frame of Sketches made in Europe.  
420 Sketch made in Paris Atelier.  
421 Sketch made in Paris Atelier.

### SHERWIN WILLIAMS CO., THE,

Cleveland.

- 422 The Model Cottage Bungalow on a Country Site.  
423 The Model Cottage Bungalow on a Shore Site.  
424 The Living Room, Model Cottage Bungalow.  
425 The Living Room, Model Cottage Bungalow.  
426 The Dining Room, Model Cottage Bungalow.  
427 The Owner's Room, Model Cottage Bungalow.

## INDEX OF EXHIBITS

---

SINZ, WALTER A.,

- 428 Archer.
- 429 Heroic Head.

SMITH, LUCIAN E.,

- 430 Proposed School of Art & Archaeology in Rome (Plan).
- 431 Proposed School of Art & Archaeology in Rome (Section).
- 432 Proposed School of Art & Archaeology in Rome (Prospective).
- 433 Measured Drawing of Organ in Sienna by Peruzzi.
- 434 Villa built for the Mrs. Dabney on the Lake of Albane, Italy.

SOCIETY OF BEAUX ARTS ARCHITECTS,

36 E. 32nd Street, N. Y. City.

C. E. HALL, Atelier Hornbostel.

- 435 A Country Inn (Class A 1 Project).
- 436 A Country Inn (Class A 1 Project).

G. S. KOYL, University of Pennsylvania.

- 437 Roman Catholic Church (Class A 11 Project).
- 438 Roman Catholic Church (Class A 11 Project).

J. MOSCOWITZ, Atelier Bosworth.

- 439 Hotel in a large City (Class A V Project.)
- 440 Hotel in a large City (Class A V Project).

C. H. NORTH, University of Pennsylvania.

- 441 Auto Garage (Class B 1 Project).
- 442 Auto Garage (Class B 1 Project).

A. F. ADAMS, Atelier Prevot, N. Y. City.

- 443 Interborough Trolley Station (Paris Prize Final).
- 444 Interborough Trolley Station (Paris Prize Final).
- 445 Interborough Trolley Station (Paris Prize Final).

L. E. LANGILLE, Washington Architectural Club.

- 446 South Portico U. S. Treasury Bldg. (Measured Dwg. Arch.).

V. DE MARI, Burnham & Company.

- 447 Palatial City Residence (Paris Prize, 2nd Preliminary).

## INDEX OF EXHIBITS

---

- F. LICHT, Atelier Licht.  
448 Entrance through a Dwelling (Class B 1 Analy.).
- B. HOYT, Atelier Ware.  
449 An Archive Building (Class B 111 Project).  
450 An Archive Building (Class B 111 Project).
- R. M. WRIGHT, Cleveland Architectural Club.  
451 Open Air Band Stand (Class A 1 Esq. Esq.).
- H. D. HUGHES, Atelier Hornbostel.  
452 An Immigrant Station (Warren Prize).
- E. P. CHRYSTIE, Atelier Hornbostel.  
453 Monumental Mantlepiece (Class A and B IV Archaeology).
- MISS WESTGATE, Cornell University.  
454 Waiting Room, Railroad Station.  
455 Waiting Room, Railway Station.  
456 Waiting Room, Railway Station.
- MR. ARLLANDO, Drexel Institute, Philadelphia.  
457 Bridge over a Castle Moat.
- MR. HAUPTLE, T. Square Club.  
458 Romanesque Doorway.
- MR. KEROCK, Atelier Ware, N. Y.  
459 A Grand Stairway.
- MR. GILBERT, Atelier Ware, N. Y.  
460 Shelter for a Statue.
- W. G. DISTIN, Columbia University, N. Y.  
461 A Lock Gate in the Tropics.
- MR. DE NARDO, University of Pennsylvania.  
462 Casino of Country Club.  
463 Casino of Country Club.
- R. W. DICKERSON, Cleveland Architectural Club.  
464 Order Problem.
- W. J. GILL, Cleveland Architectural Club.  
465 Order Problem.

## INDEX OF EXHIBITS

---

H. FOX, Cleveland Architectural Club.  
466 Order Problem.

P. LUZIUS, Cleveland Architectural Club,  
467 Order Problem.

R. PEAL, Cleveland Architectural Club.  
468 Order Problem.

### STEFFENS, GEORGE H.,

1229 Williamson Building, Cleveland.

469 Commercial Building for H. T. Loomis.  
J. F. Steffens, Designer.

470 Residence of Mr. Troxel, Elyria, O. Exterior.

471 Residence of Mr. Troxel, Elyria, O. Entrance.

### STRIEBINGER, FREDERICK WM.,

New England Building, Cleveland.

472 Residence, Euclid Heights Boulevard.

473 Residence, Euclid Heights Boulevard.

474 Residence, Shaker Heights.

475 Proposed L. S. & M. S. Railway Bridge over Lake Avenue.

476 Collinwood School Fire Memorial, Lakeview Cemetery.  
Herman Matzon, Sculptor.

### TOUSLEY & THEBAUD,

406 Bangor Building.

477 Study for Commercial Building.

478 Christ Church, Cleveland.

479 Residence on Forest Hill Allotment.

480 Sketch for Entrance to a Cemetery.

### VICTOR E. THEBAUD.

### WALKER, F. R.,

825 Cuyahoga Building, Cleveland.

481 Releve Bishops Chair in the Chancel of Saint Lorenzo.

482 Avignon from across River Rhone.

483 Fountain del Futone, Rome.

484 Interior Basilica Saint Lorenzo, Rome.

485 Sketch on Lagoon, Venice, St. Giorgie Maggiore in Distance.

486 Summer Sketch in Conn.

487 Grey Day in Venice.

488 Bartolomeo Coleono.

## INDEX OF EXHIBITS

---

### LLOYD GARRETT CO,

Philadelphia, Pa.

- 489 Electric Lighting Fixtures.
- 490 Electric Lighting Fixtures.
- 491 Electric Lighting Fixtures.
- 492 Electric Lighting Fixtures.
- 493 Electric Lighting Fixtures.
- 494 Electric Lighting Fixtures.

### SEVERANCE, JULIA,

Oberlin, Ohio.

- 495 Portrait in Low Relief.
- 496 Portrait Sketch (Bust).
- 497 Portrait in Low Relief.

### SKEEL, ALBERT E.,

1028 Rose Building.

- 498 Suburban Residence (Exterior).
- 499 Suburban Residence (Exterior).
- 500 Suburban Residence (Interior).
- 501 West Side Y. M. C. A. (Perspective).

### TOUSLEY & THEBAUD,

406 Bangor Building.

- 502 Terrace, East Cleveland.

### MEADE, FRANK B.,

1002 Garfield Building, Cleveland.

- 503 Willowick Club.
- 504 Willowick Club.
- 505 First National Bank





VICTORY, JOCKEL MAUSOLEUM,  
ANTIQUÉ GLASS

WALTER JANES STUDIOS, NEW YORK CITY



BUNGALOW  
DERCUM & BEER, ARCHITECTS, CLEVELAND

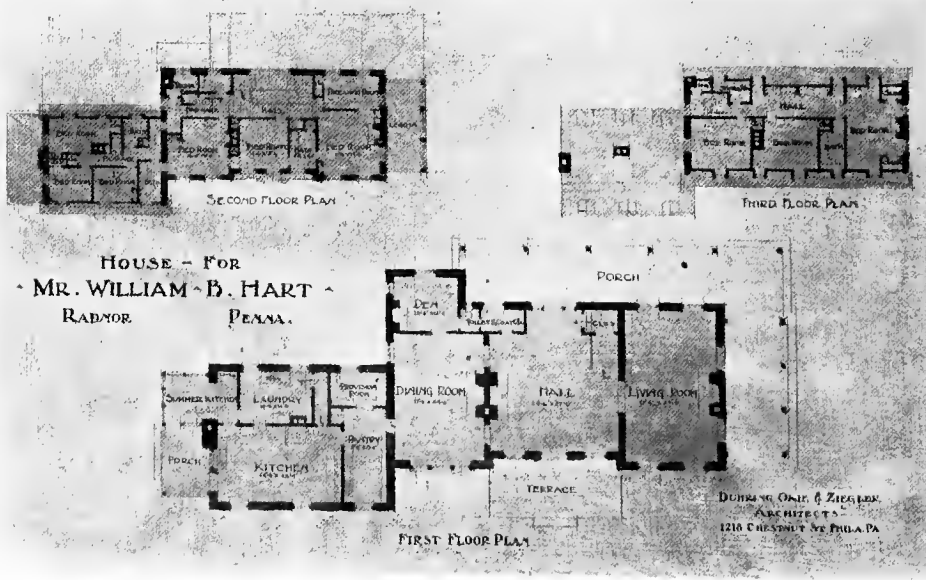




CULBERTSON MONUMENT, GIRARD, PA.  
CHARLES W. HOPKINSON, ARCHITECT



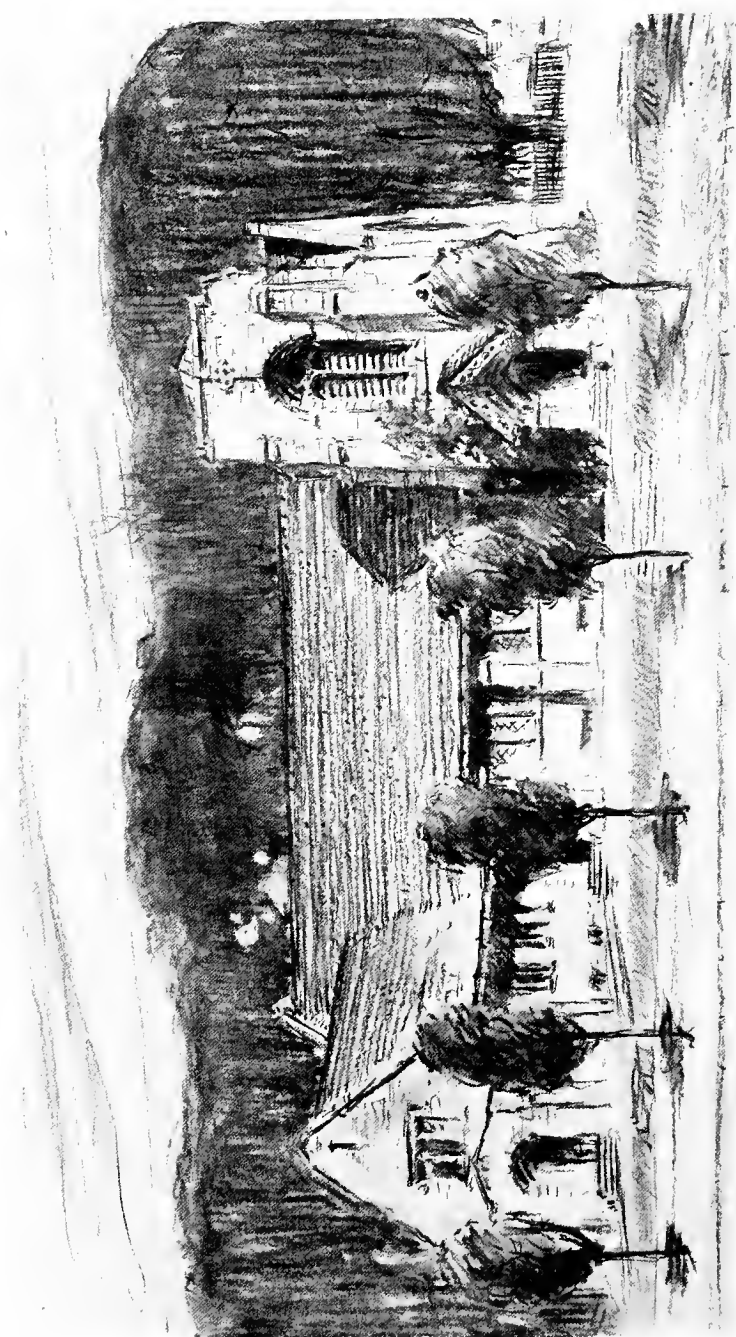
HOUSE FOR MR. W. B. HART, RADNOR, PA.  
 DUHRING, OKIE & ZIEGLER, ARCHITECTS, PHILADELPHIA





LIVING HALL, RESIDENCE OF MR. HOWARD P. EELLS,  
EUCLID HEIGHTS

FRANK B. MEADE, ARCHITECT, CLEVELAND



SUGGESTION TO FIRST CONGREGATIONAL CHURCH,  
LAKEWOOD, OHIO

GEO. B. POST & SONS, ARCHITECTS

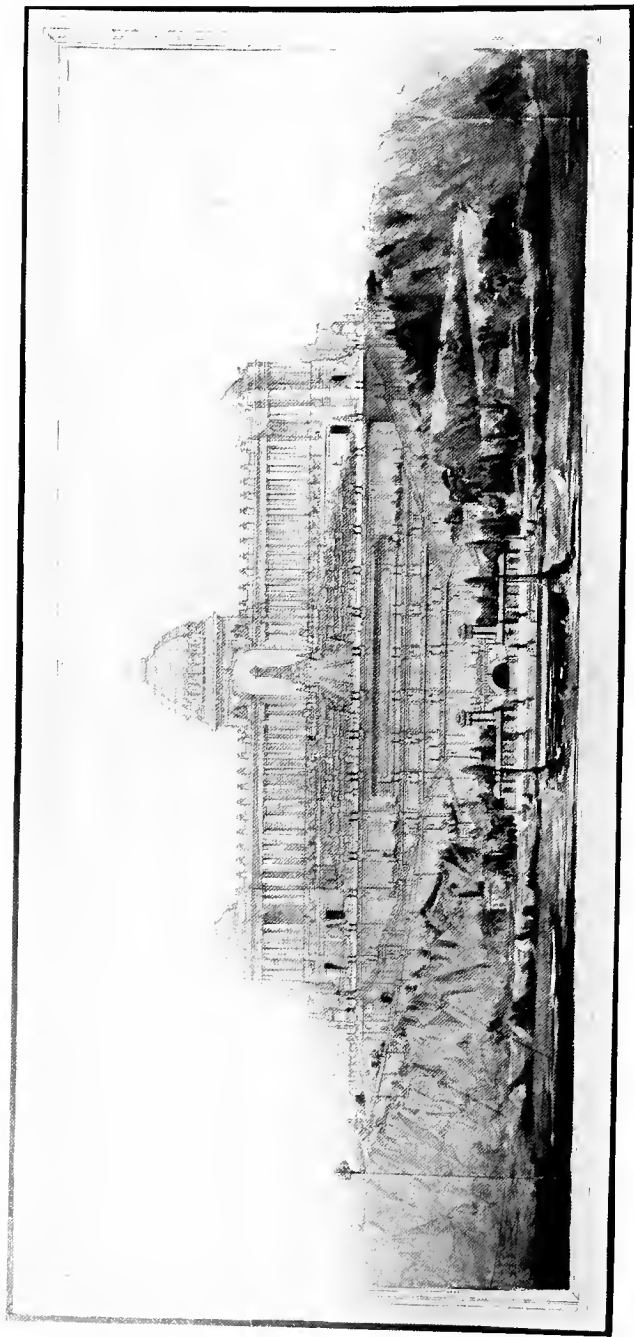
P. R. SIEGEL AND G. S. SCHNEIDER, ASSOCIATES



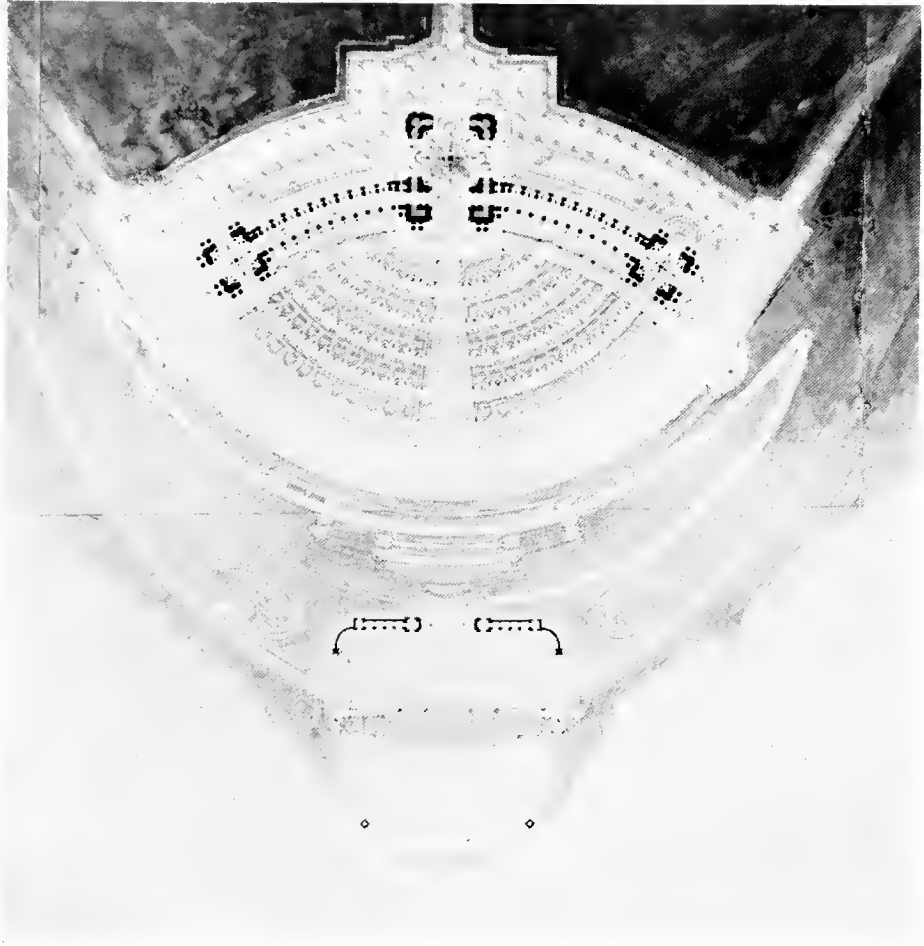
RESIDENCE OF MR. GEO. HOLLOWAY, RAVENNA, O.  
BOHNARD & PARSSON, ARCHITECTS, CLEVELAND



LIVING ROOM, RESIDENCE OF MR. GEO. HOLLOWAY  
BOHNARD & PARSSON, ARCHITECTS, CLEVELAND



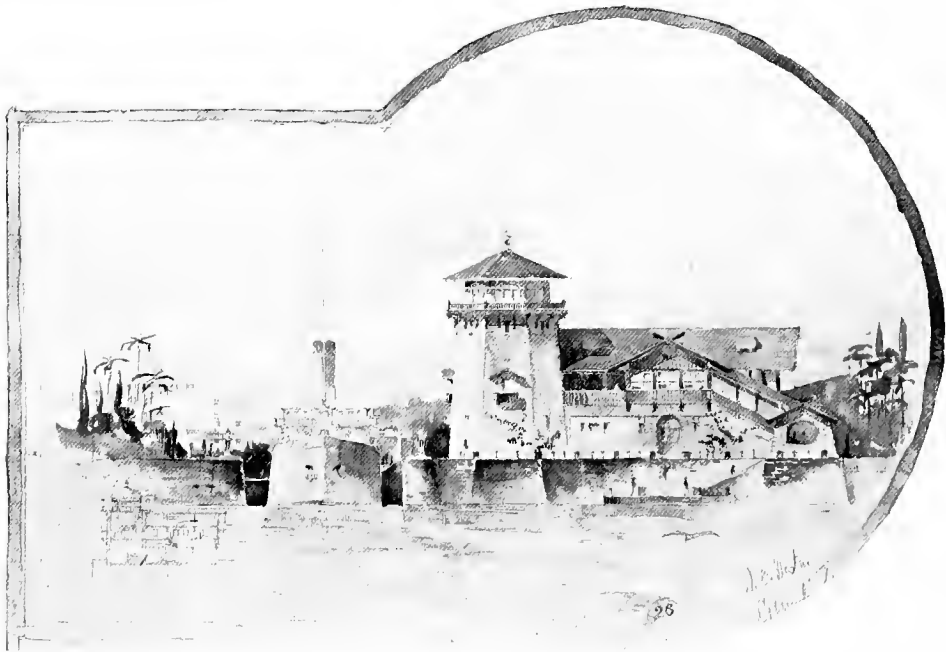
A PANTHEON ELEVATION  
JOS. M. KELLOG, CORNELL UNIVERSITY



A PANTHEON PLAN  
JOS. M. KELLOG, CORNELL UNIVERSITY

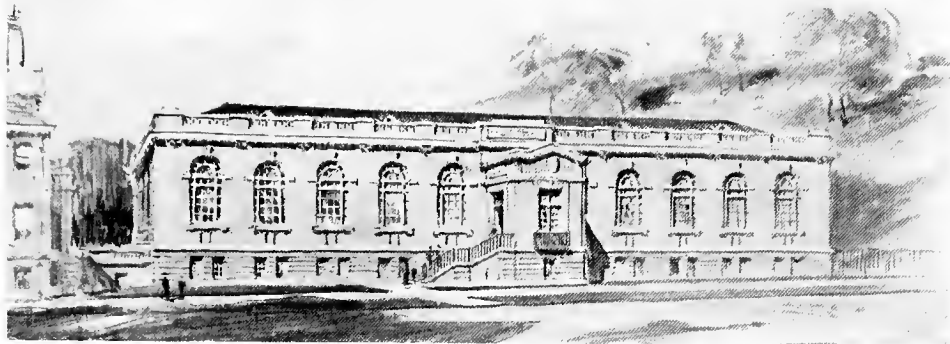


RESIDENCE, EUCLID HEIGHTS  
S. J. FOUNTAIN, ARCHITECT, CLEVELAND



LOCK GATE IN TROPICS  
W. G. DISTIN, SOCIETY OF BEAUX ARTS, ARCHITECTS, NEW YORK





ALTA PUBLIC LIBRARY  
GEO. B. POST & SONS, ARCHITECTS  
P. R. SIEGEL AND C. S. SCHNEIDER, ASSOCIATES



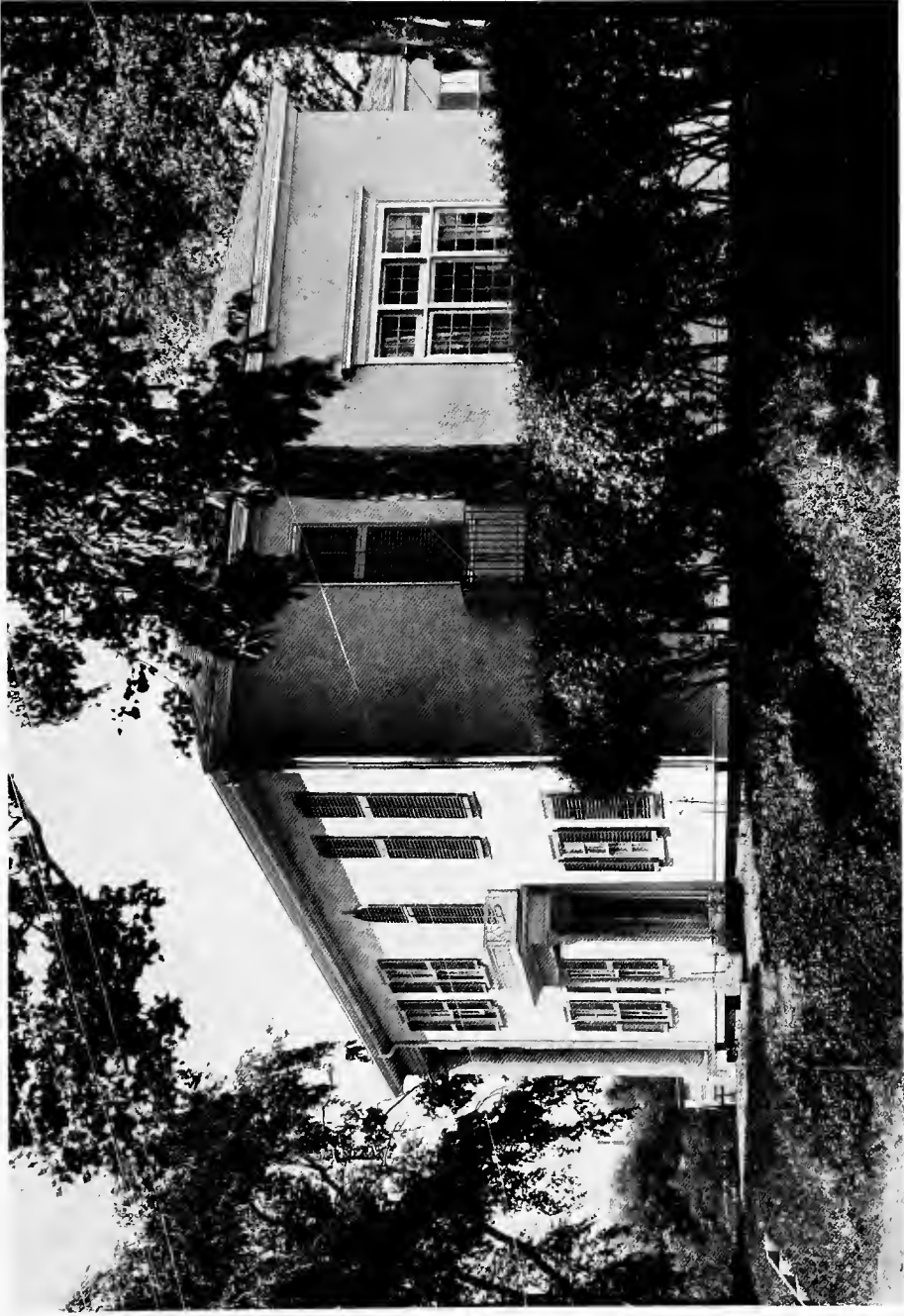
RESIDENCES FOR MESSRS. HERBERT L. SCHNEIDER AND NELSON  
D. FOSTER, EAST CLEVELAND  
GEO. B. POST & SONS, ARCHITECTS  
P. R. SIEGEL AND C. S. SCHNEIDER, ASSOCIATES



RESIDENCE FOR MRS. S. E. FENTON, EAST CLEVELAND  
DERCUM & BEER, ARCHITECTS, CLEVELAND



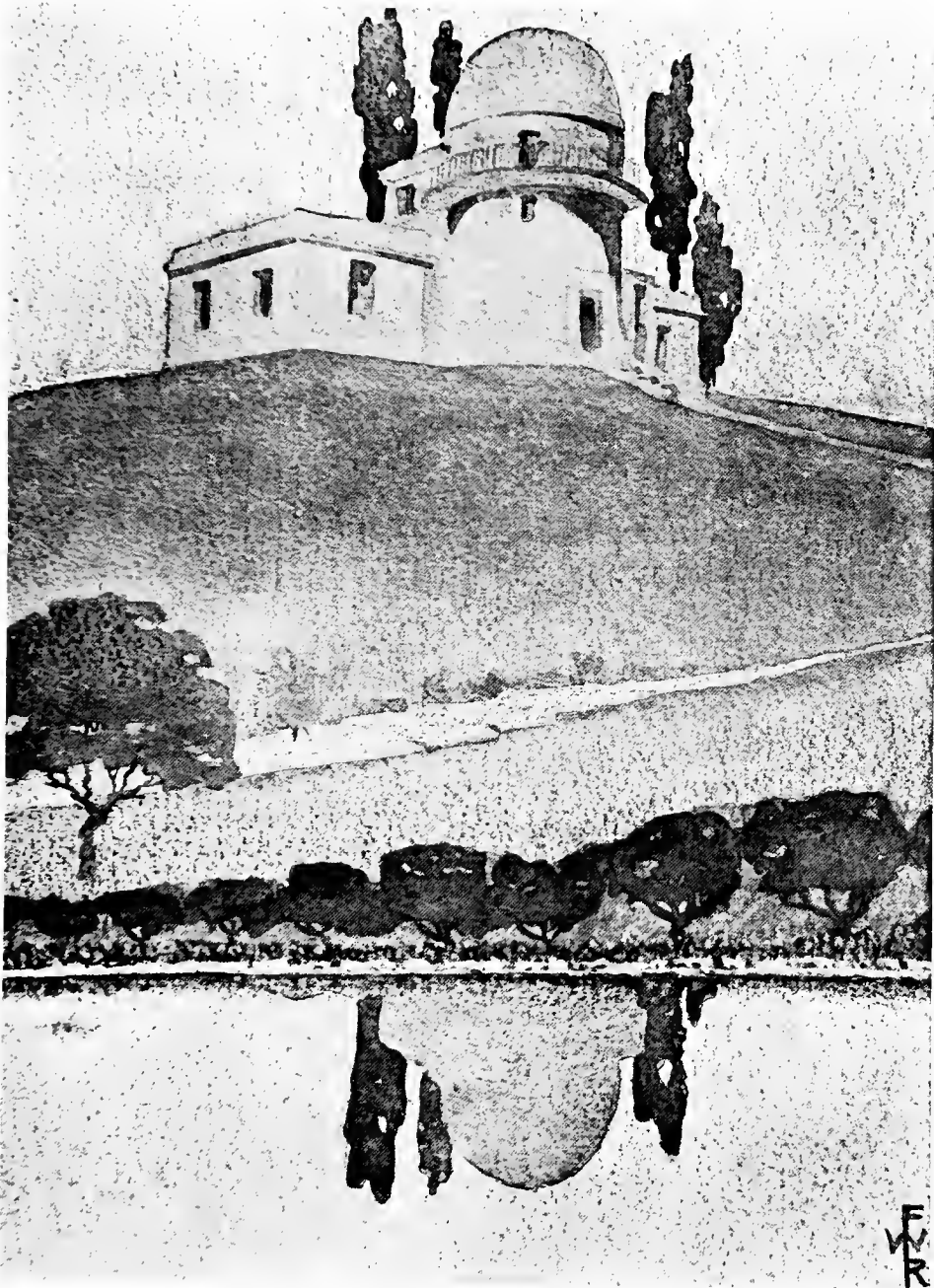
RESIDENCE OF MR. HOWARD P. EELLS, EUCLID HEIGHTS  
FRANK B. MEADE, ARCHITECT, CLEVELAND



HOUSE AT FRAMINGHAM, MASS.  
FRANK CHOUTEAU BROWN, ARCHITECT, BOSTON



SKETCH OF COMPETITION DRAWING FOR THE  
MAYFIELD COUNTRY CLUB  
CHARLES S. SCHNEIDER, ARCHITECT



SKETCH FOR AN OBSERVATORY BY F. R. WALKER  
J. MILTON DYER, ARCHITECT, CLEVELAND



RESIDENCE ON FOREST HILL ALLOTMENT  
TOUSLEY & THEBAUD, ARCHITECTS, CLEVELAND



RESIDENCE FOR MR. F. ZIMMERMAN  
BOHNARD & PARSON, ARCHITECTS, CLEVELAND



ENTRANCE TO LA FAVORITA  
GEORGE PORTER FERNALD, BOSTON





DETAIL OF RESIDENCE FOR MR. T. E. BORTON,  
SHAKER LAKES, O.

PAGE & CORBUSIER, ARCHITECTS, CLEVELAND





DETAIL OF ENTRANCE, RESIDENCE OF MR. GEO. HOLLOWAY  
BOHNARD & PARSSON, ARCHITECTS, CLEVELAND



RENDERING FROM LINE DRAWING  
JESSE F. LUCK, UNIVERSITY OF PENNSYLVANIA



INTERIOR OF CENTRAL PORTION WISCONSIN STATE CAPITOL  
GEO. B. POST & SONS, ARCHITECTS, NEW YORK, CLEVELAND



DR. ANGELL MEMORIAL  
KARL BITTER, SCULPTOR, NEW YORK



RESIDENCE OF MR. K. F. GILL, AMBLER HEIGHTS  
FRANK B. MEADE, ARCHITECT, CLEVELAND



RESIDENCE OF MRS. W. C. ZAHNISER  
BOHARD & PARSSON, ARCHITECTS, CLEVELAND



A GOTHIC CHAPEL  
M. W. SCHEIBEL, COLUMBIA UNIVERSITY





RESIDENCE, LAKE AVENUE  
G. B. BOHM, ARCHITECT, CLEVELAND



RESIDENCE FOR MRS. F. ZIMMERMAN  
BOIXARD & PARSSON, ARCHITECTS, CLEVELAND



RESIDENCE OF MR. PAUL LAWRENCE, WADE PARK  
FRANK B. MEADE, ARCHITECT, CLEVELAND





PORTICO OF PANTHEON, PARIS  
S. J. FOUNTAIN, CLEVELAND



SKETCH SHOWING ALTERATIONS TO RESIDENCE OF MR. J. H.  
DONAHEY, EAST CLEVELAND

GEO. B. POST & SONS, ARCHITECTS  
P. R. SIEGEL AND C. S. SCHNEIDER, ASSOCIATES



SCENE IN AMSTERDAM  
H. G. KELLER, CLEVELAND



TOUSLEY & THEBAUD - ARCHITECTS

TERRACE ON EUCLID AVENUE, EAST CLEVELAND  
 TOUSLEY & THEBAUD, ARCHITECTS, CLEVELAND



**C**OTTAGE, FOR MRS. A. H. BAKER  
 SHAKER HEIGHTS  
 DERCUM & BEER, - ARCHTS.  
 307-8 COLUMBIA BLDG., CLEVELAND

COTTAGE FOR MRS. A. H. BAKER, SHAKER HEIGHTS  
 DERCUM & BEER, ARCHITECTS, CLEVELAND



BUNGALOW AT GATES MILL  
W. STILLMAN DUTTON, ARCHITECT, CLEVELAND



ENTRANCE DETAIL HOUSE IN EAST CLEVELAND  
DERCUM & BEER, ARCHITECTS, CLEVELAND

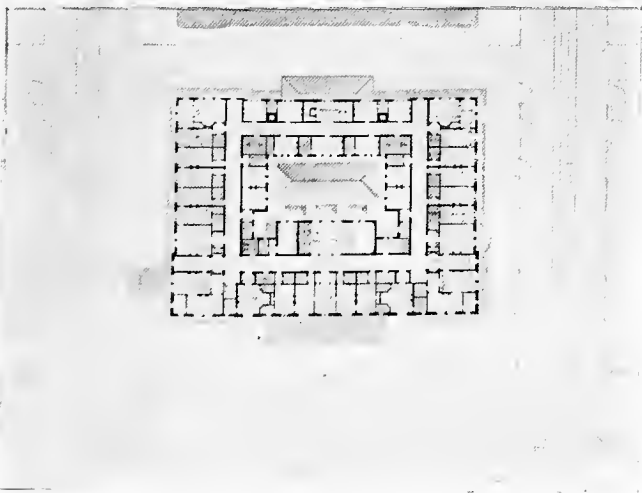


HOUSE AT GREENWICH, CONN.  
WILSON EYRE, ARCHITECT, PHILADELPHIA



RESIDENCE OF F. H. ADAMS  
CHAS. W. HOPKINSON, ARCHITECT, CLEVELAND



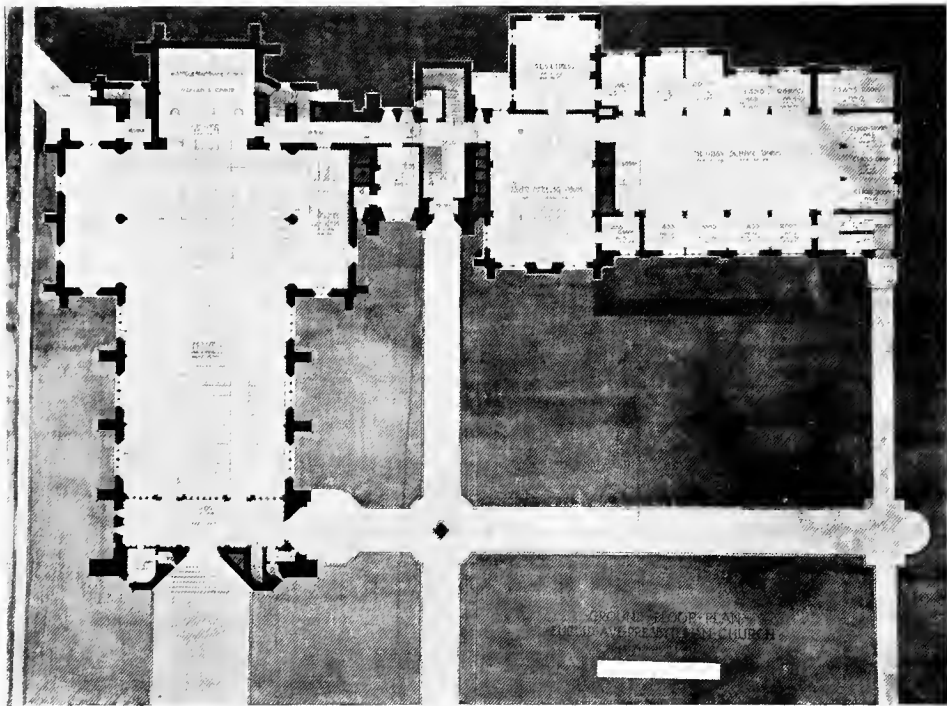


A HOTEL

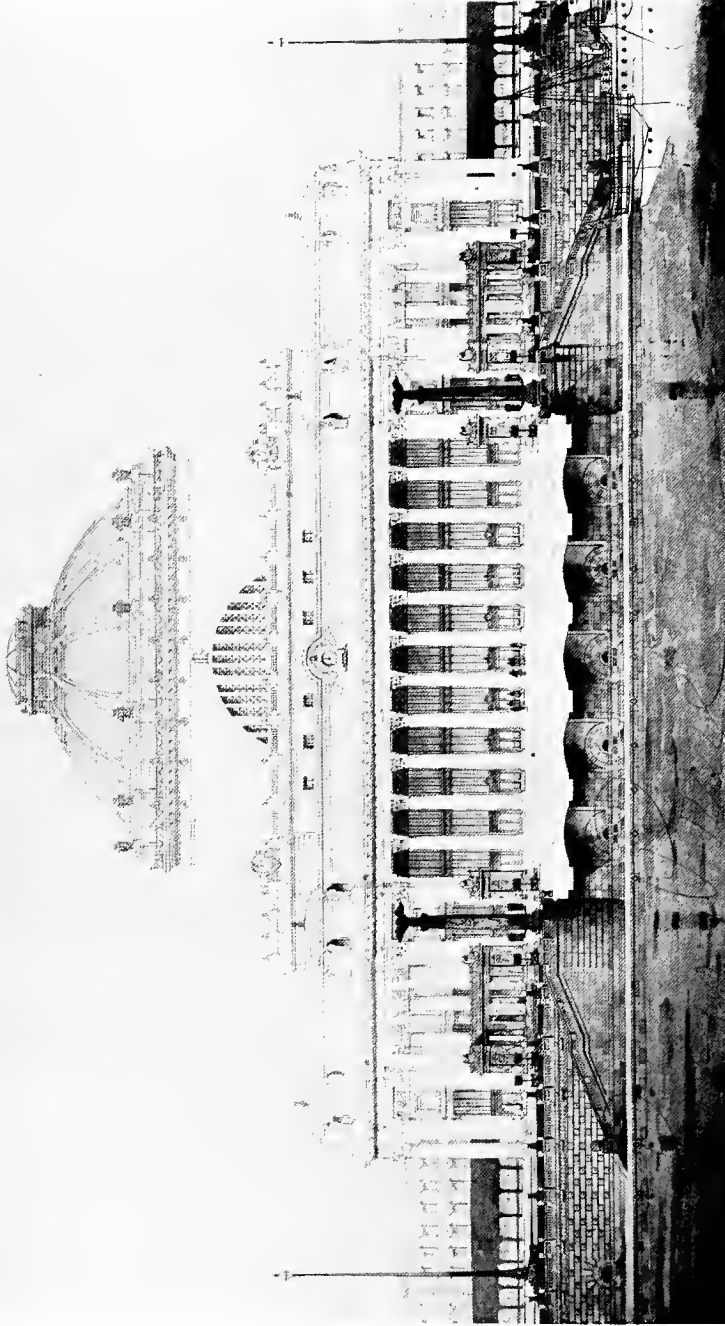
G. S. KOYL, UNIVERSITY OF PENNSYLVANIA, PHILADELPHIA



EVCLID AVENUE PRESBYTERIAN CHURCH  
CRAM, GOODHUE & FERGUSON, ARCHITECTS, BOSTON  
PAGE & CORBUSIER, ASSOCIATE ARCHITECTS, CLEVELAND

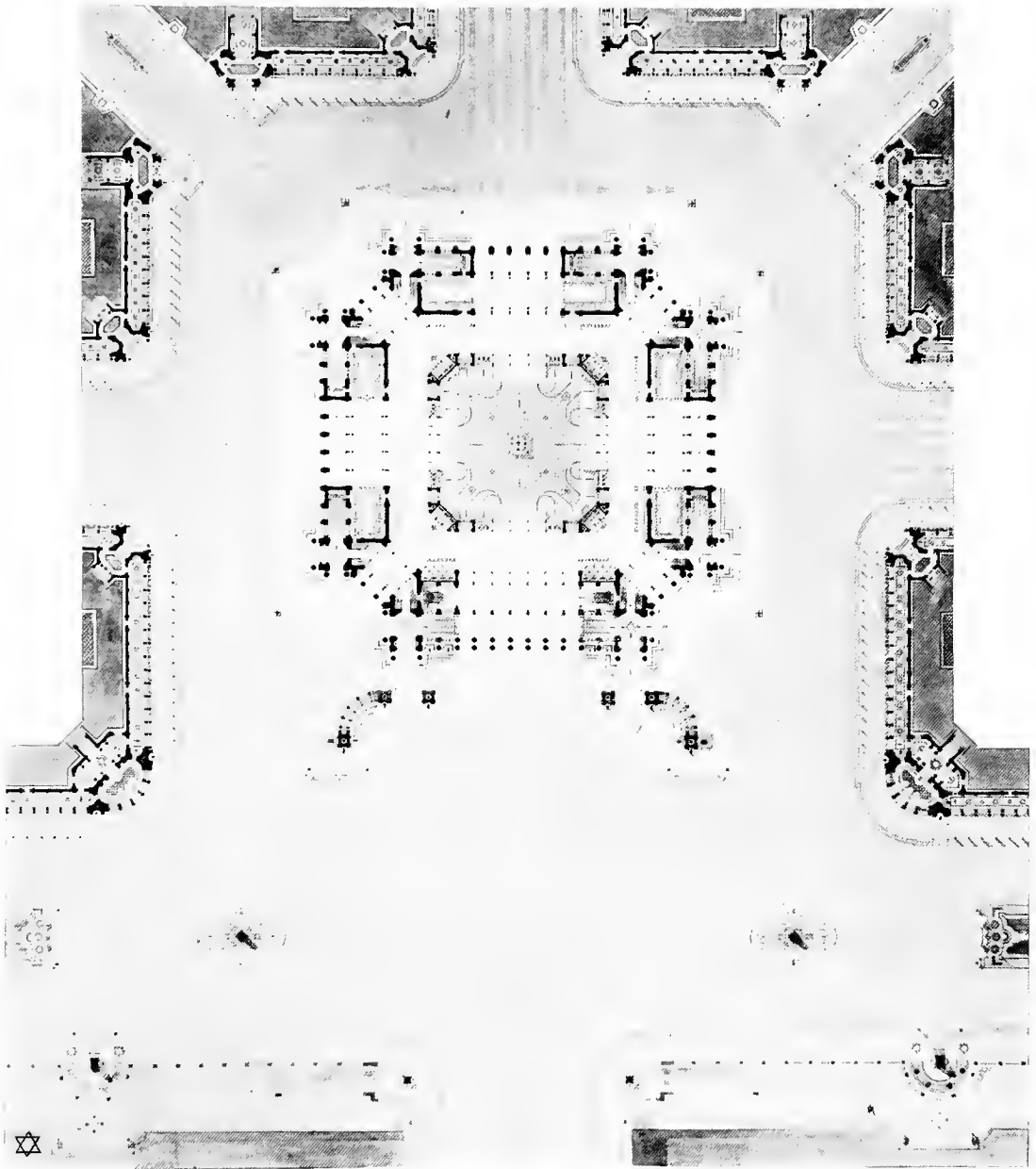


EUCLID AVENUE PRESBYTERIAN CHURCH  
CRAM, GOODHUE & FERGUSON, ARCHITECTS, BOSTON  
PAGE & CORBUSIER, ASSOCIATE ARCHITECTS, CLEVELAND



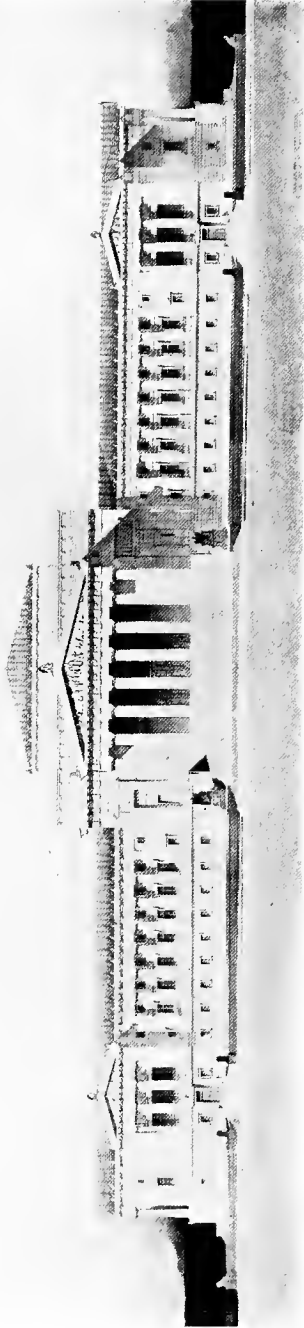
AN INTERBOROUGH TROLLEY STATION (Paris Prize).

A. F. ADAMS, ATELIER PREVOT, NEW YORK.

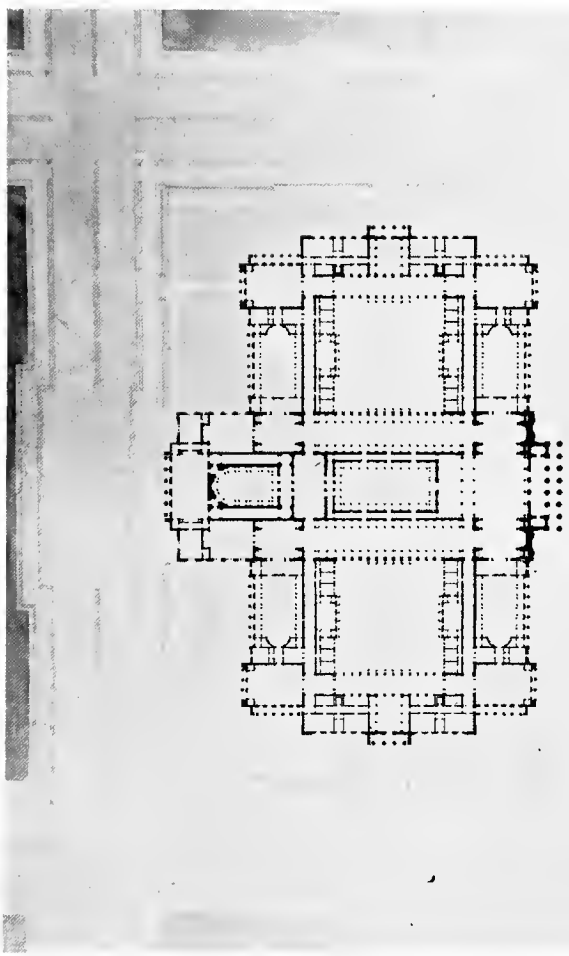


AN INTERBOROUGH TROLLEY STATION (Paris Prize).

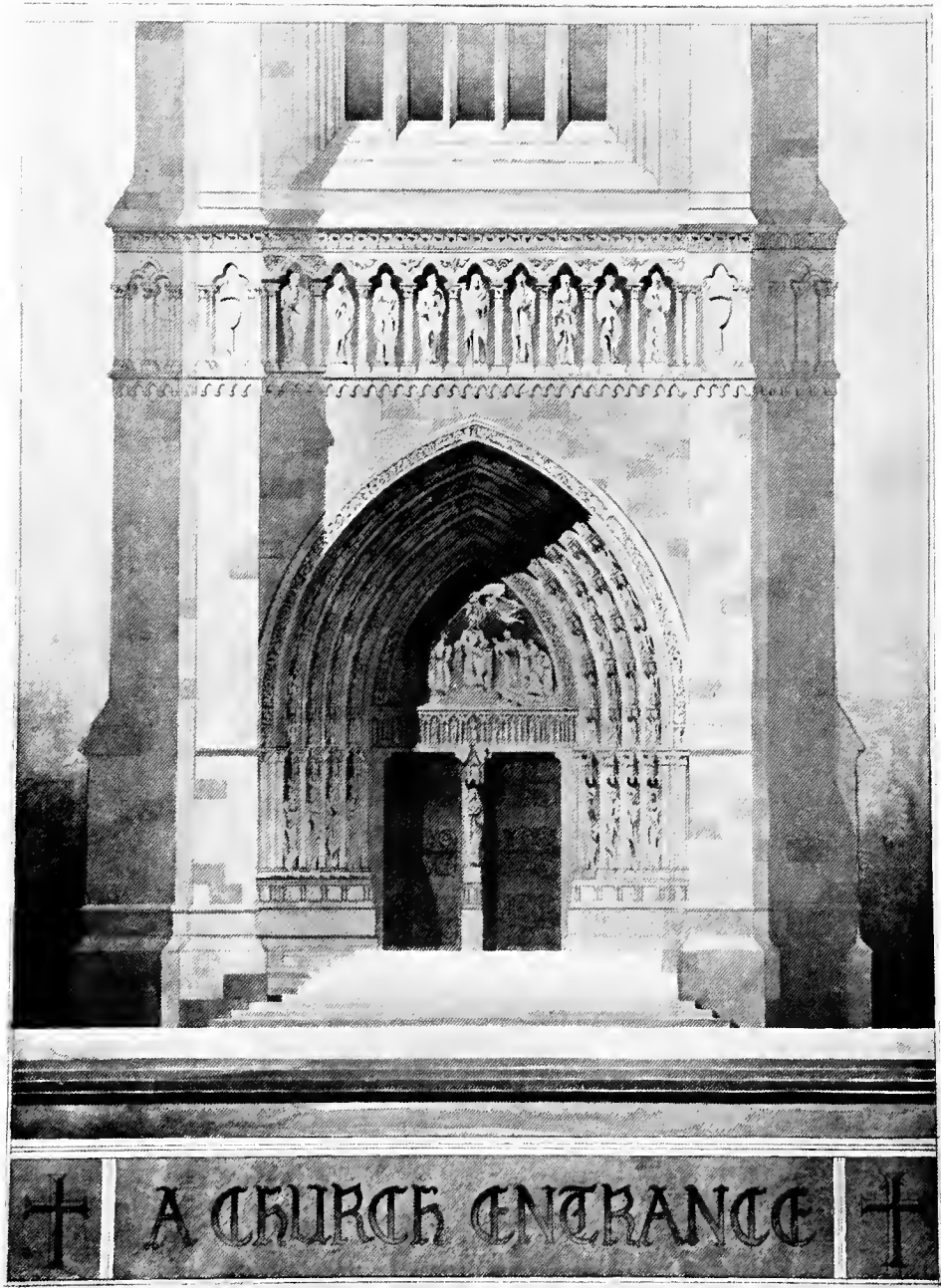
A. F. ADAMS, ATELIER PREVOT, NEW YORK.



A COURT HOUSE  
K. E. CARPENTER, MASSACHUSETTS INSTITUTE OF TECHNOLOGY

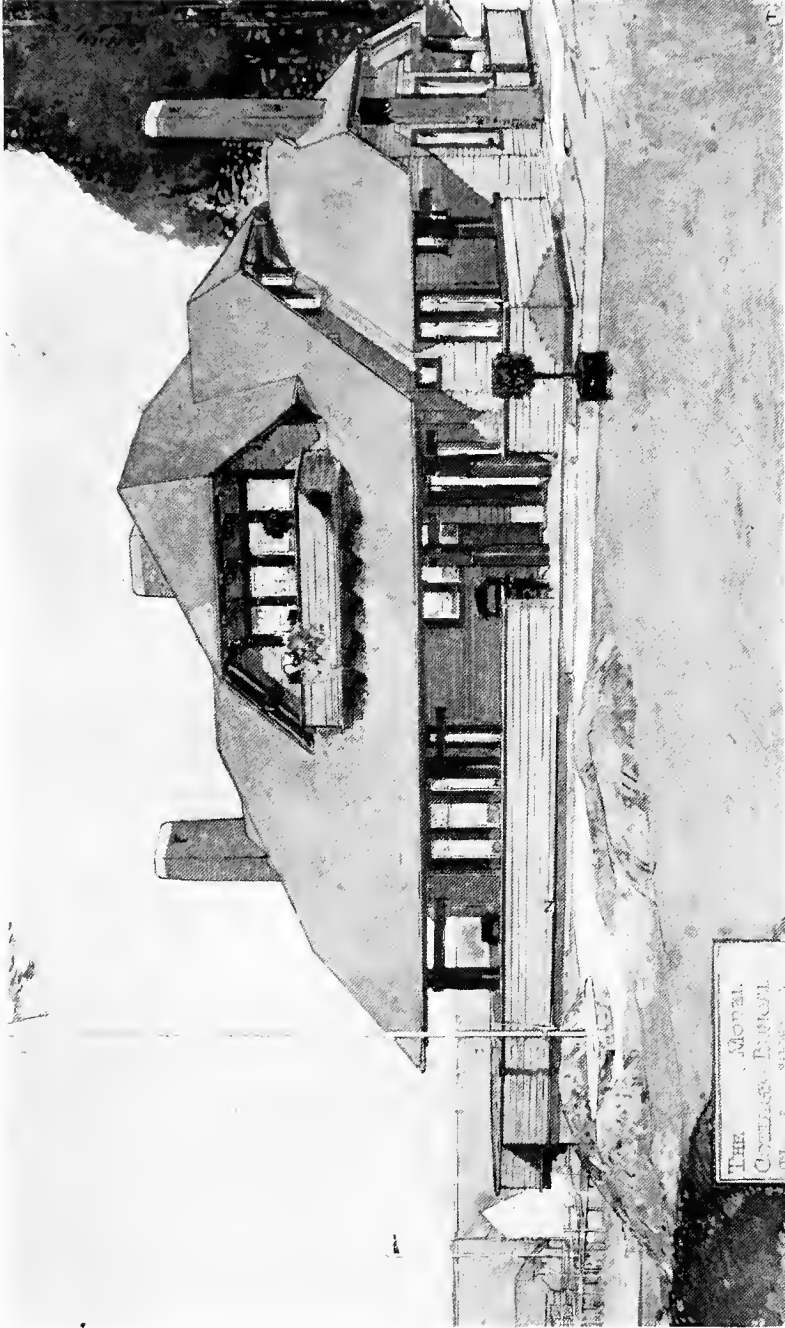


A COURT HOUSE  
K. E. CARPENTER, MASSACHUSETTS INSTITUTE OF TECHNOLOGY



A CHURCH ENTRANCE  
R. D. JOHNSON, MASSACHUSETTS INSTITUTE OF TECHNOLOGY, BOSTON





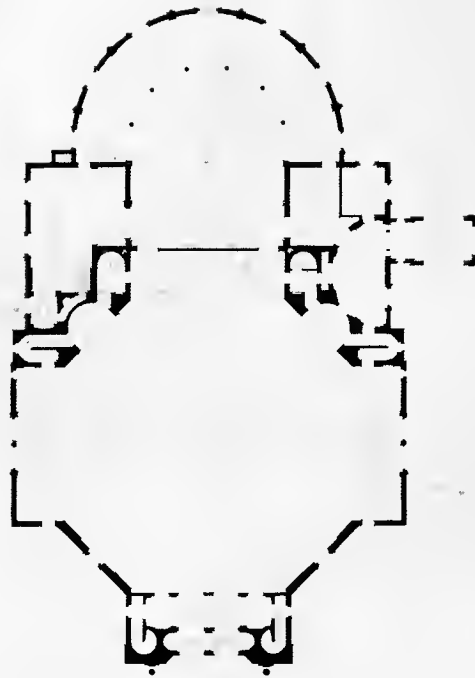
COTTAGE BUNGALOW  
THE SHERWIN-WILLIAMS Co., CLEVELAND



SUBURBAN RESIDENCE  
ALBERT E. SKEEL, ARCHITECT, CLEVELAND



SUBURBAN RESIDENCE  
ALBERT E. SKEEL, ARCHITECT, CLEVELAND



*Janssen & Abbott  
Pittsburgh  
Nov 5 1890*

COMPETITION, FIRST BAPTIST CHURCH, OF PITTSBURGH  
JANSSEN & ABBOTT, ARCHITECTS, PITTSBURGH



ELEVATION  
FIRST BAPTIST CHURCH OF PITTSBURGH

*Janssen & Abbott*  
1905

COMPETITION, BELLEFIELD AVE. ELEVATION,  
FIRST BAPTIST CHURCH OF PITTSBURGH  
JANSSEN & ABBOTT, ARCHITECTS, PITTSBURGH



HOUSE AND GARDEN FOR CLEMENT STUDEBAKER, JR.  
SOUTH BEND, IND.

PITKIN & WEINRICHTER, LANDSCAPE ARCHITECTS, ROCHESTER, N. Y.



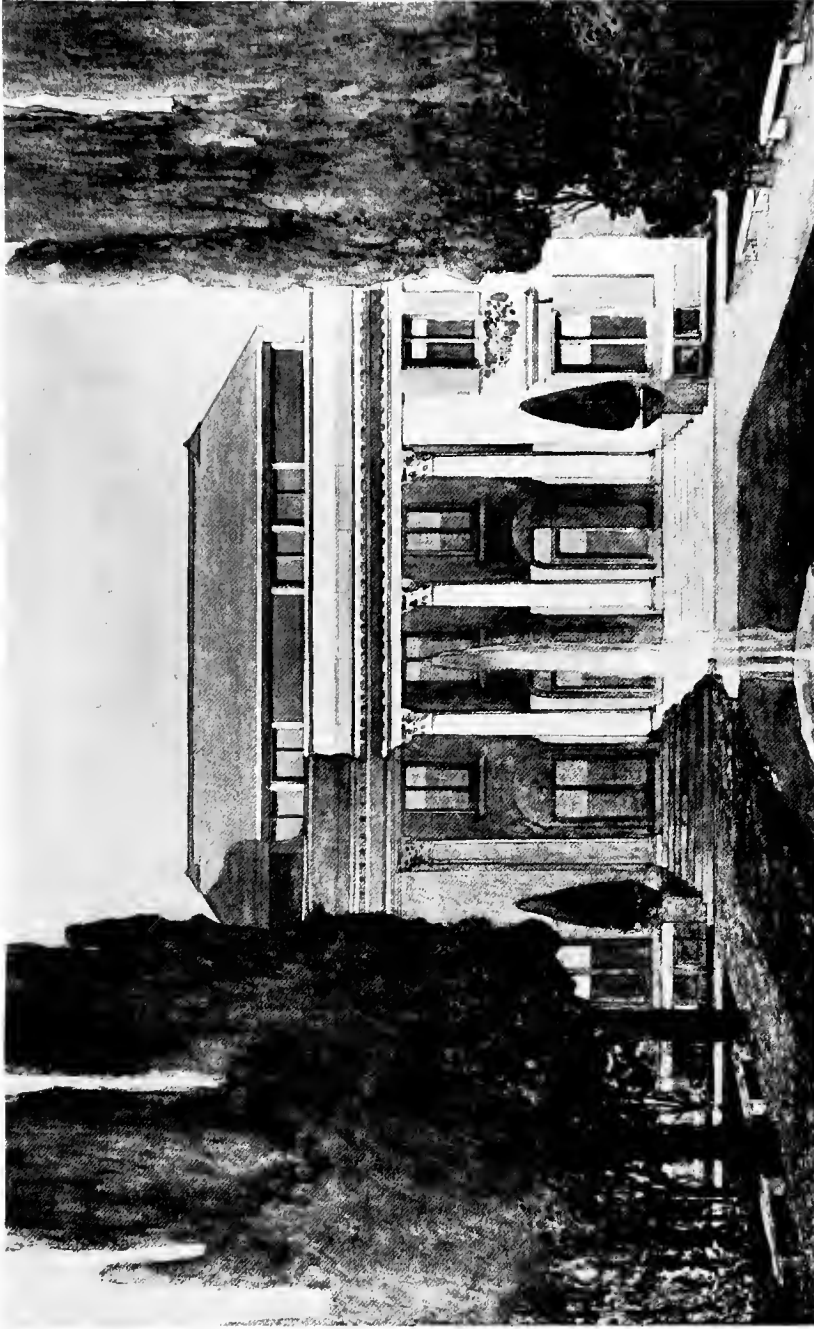
CLEVELAND ATHLETIC CLUB  
J. MILTON DYER, ARCHITECT, CLEVELAND





COLLINWOOD SCHOOL FIRE MEMORIAL LAKEVIEW CEMETERY.  
HERMANN MATZEN, SCULPTOR, CLEVELAND.





RESIDENCE, SHAKER HEIGHTS  
FREDERIC W. M. STRIEBINGER, ARCHITECT, CLEVELAND



HEAD OF CHRIST.  
WALTER JANES, STUDIOS, NEW YORK.

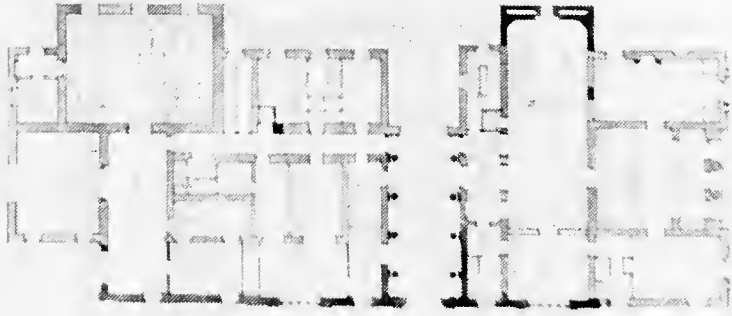
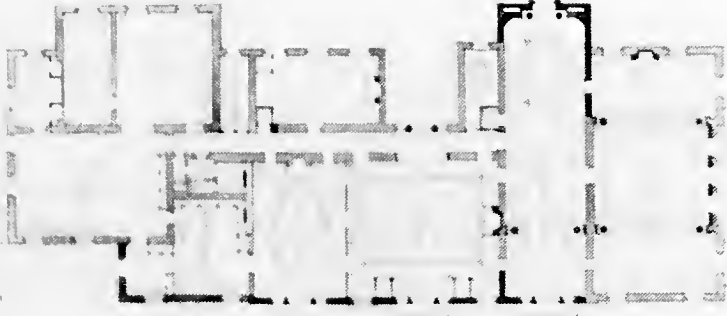


DECORATIVE FIGURE MEDALLION  
H. HANLEY PARKER, PHILADELPHIA



RECONSTRUCTION OF PALACE FOR COUNT LAZLO SZECHENZI  
BUDAPEST, HUNGARY.

ERNEST FLAGG, ARCHITECT, NEW YORK.



RECONSTRUCTION OF PALACE FOR COUNT LAZLO SZECHENZI  
BUDAPEST, HUNGARY.

ERNEST FLAGG, ARCHITECT, NEW YORK.



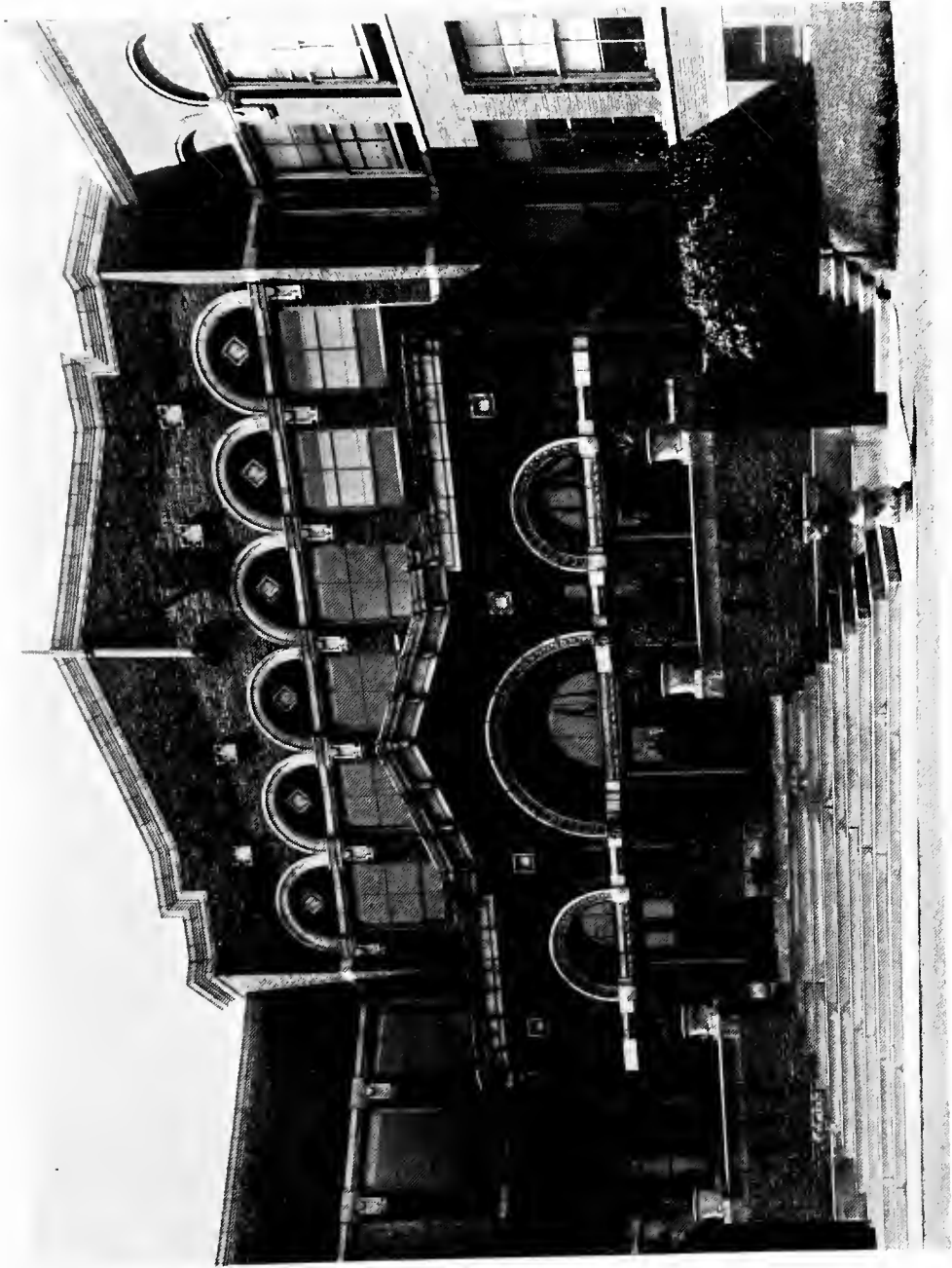
*2<sup>nd</sup> Medal*



Exhibition No.	EXHIBITION
Club No.	Cleveland Chapter, A. I. A.
Club Name	and Cleveland Architectural Club
Year	1910
Table No.	Table 2
Exhibitor	Robert M. Wright
Director	Walter Applegate
Club Address	1212 Broadway, Cleveland, Ohio
Return Address	1212 Broadway, Cleveland, Ohio
Value of Item	

Attach this Card to Exhibit.

AN OPEN AIR BAND STAND  
ROBERT M. WRIGHT, CLEVELAND ARCHITECTURAL CLUB, CLEVELAND



ENTRANCE TO WATTERSON SCHOOL  
F. S. BARNUM, ARCHITECT, CLEVELAND

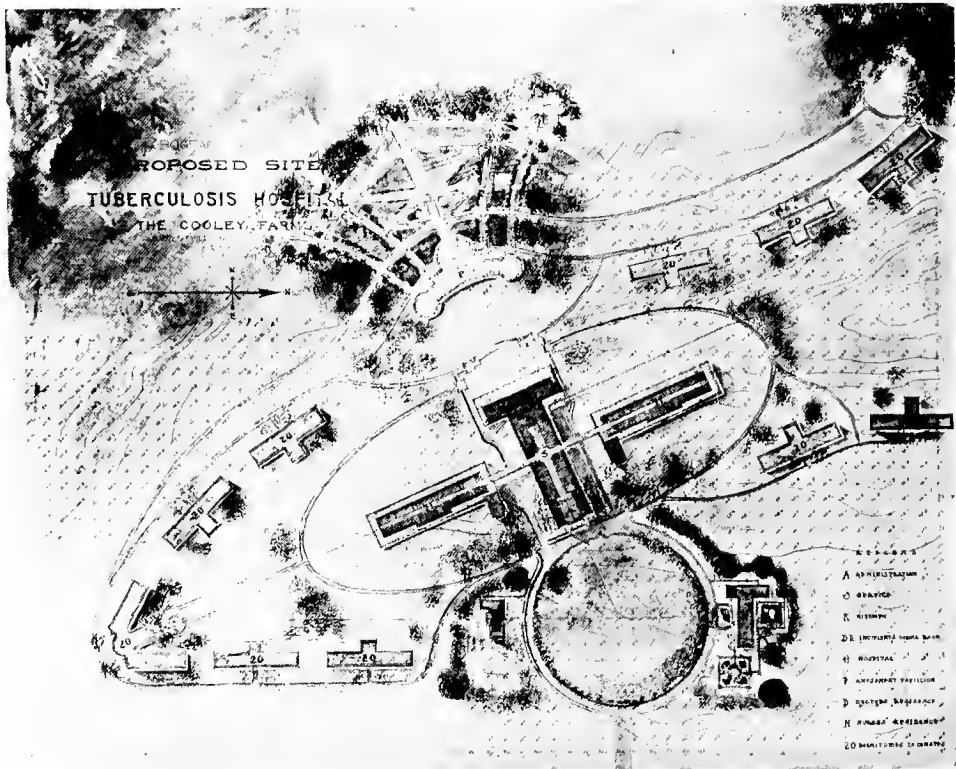


CHRIST CHURCH.  
TOUSLEY & THEBAUD, ARCHITECTS, CLEVELAND.

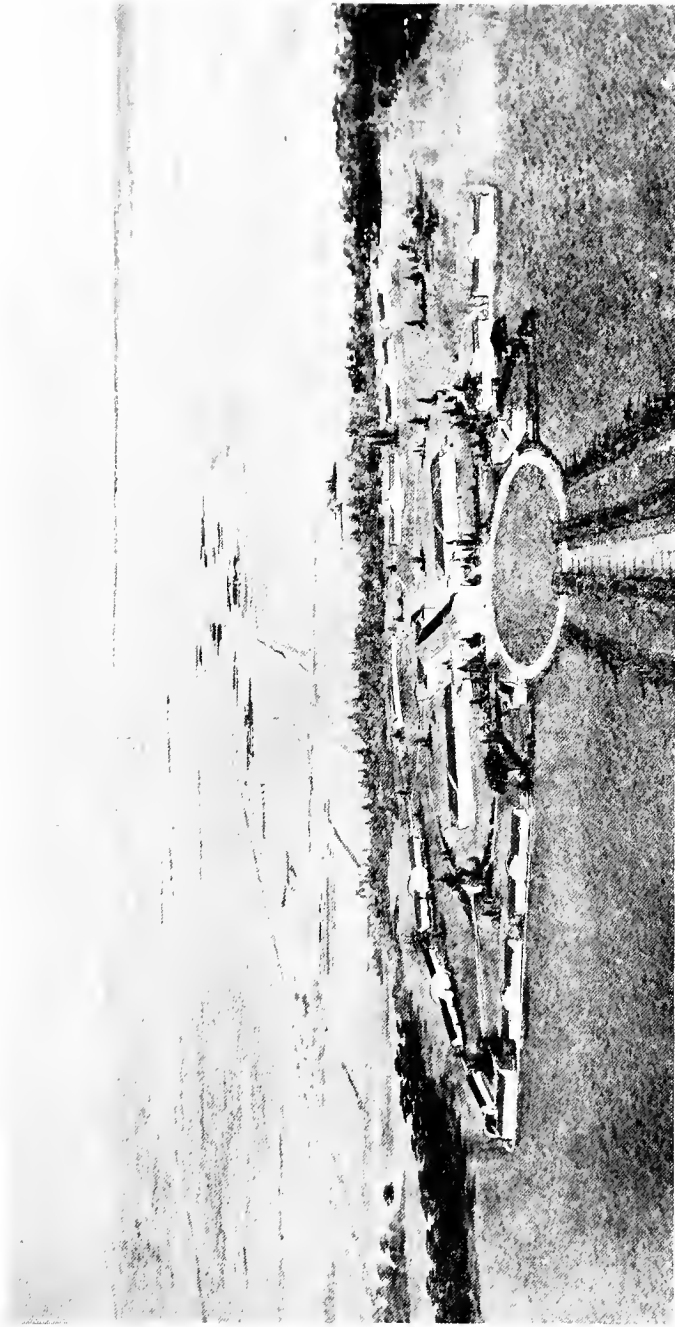




A MONUMENTAL RESERVOIR.  
EHRICH GUGLER, COLUMBIA UNIVERSITY.



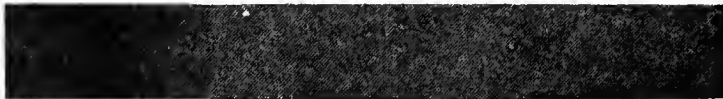
TUBERCULOSIS SANITARIUM, CLEVELAND FARM COLONY.  
J. MILTON DYER, ARCHITECT, CLEVELAND.



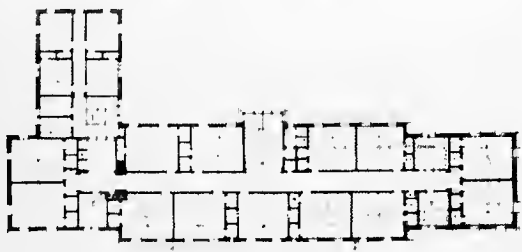
TUBERCULOSIS SANITARIUM, CLEVELAND FARM COLONY.

J. MILTON DYER, ARCHITECT, CLEVELAND.

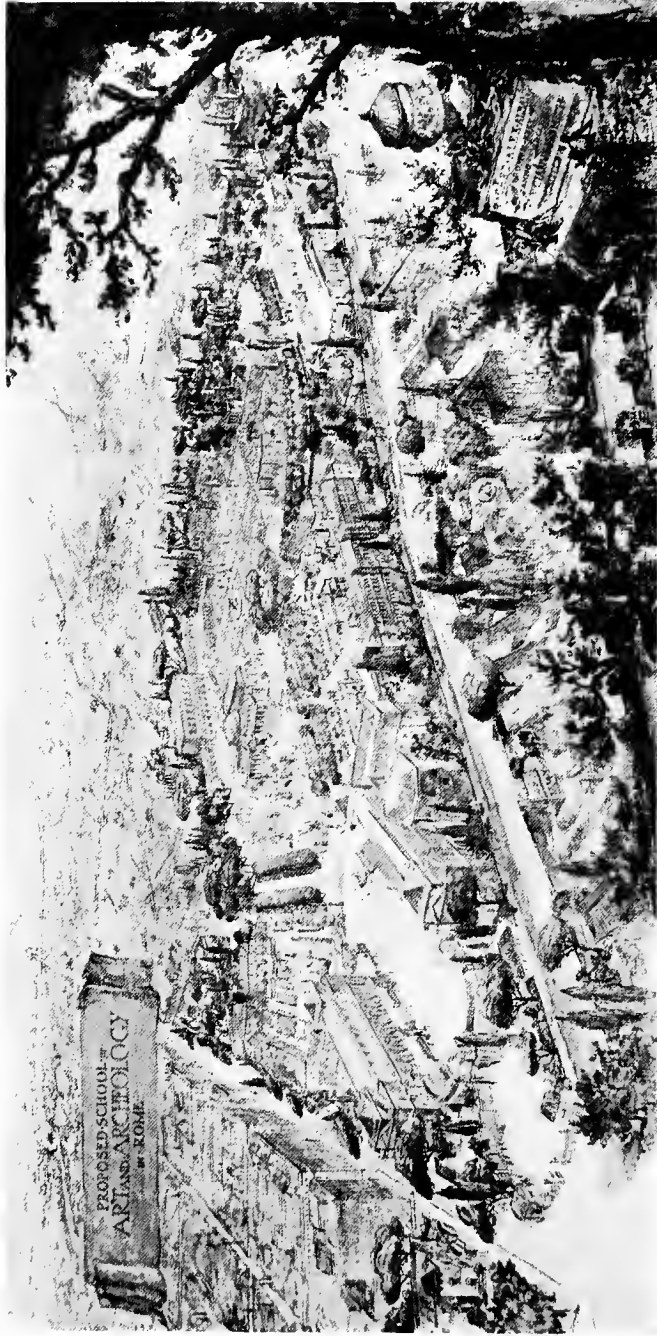




TUBERCULOSIS SANITARIUM, CLEVELAND FARM COLONY.  
DOCTOR'S HOME.  
J. MILTON DYER, ARCHITECT, CLEVELAND.

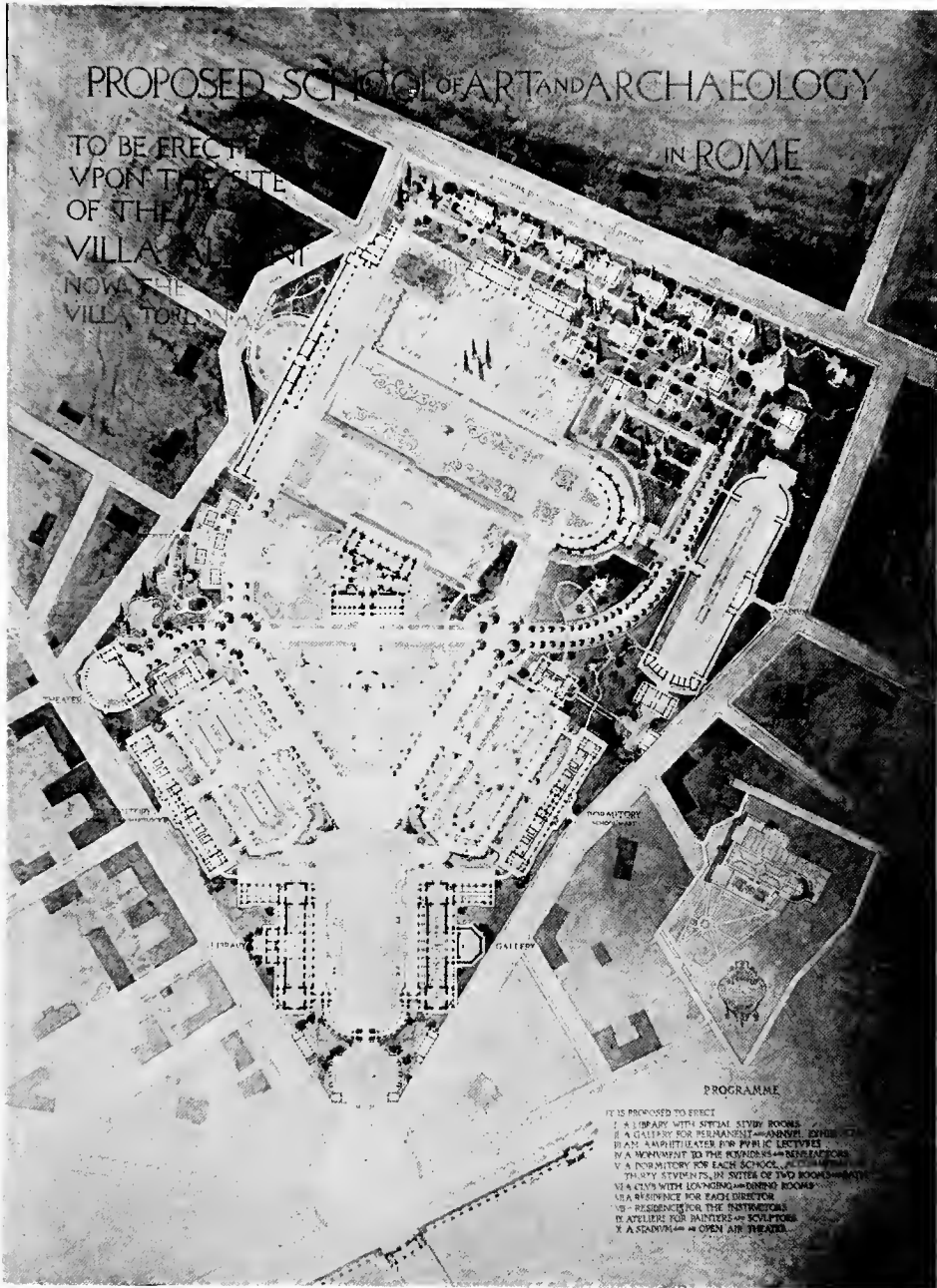


TUBERCULOSIS SANITARIUM, CLEVELAND FARM COLONY.  
NURSES HOME.  
J. MILTON DYER, ARCHITECT, CLEVELAND.



PROPOSED SCHOOL OF ART AND ARCHAEOLOGY IN ROME

Envoi of the McKim Fellowship  
LUCIAN E. SMITH, HOLDER, 1905-07



PROPOSED SCHOOL OF ART AND ARCHAEOLOGY IN ROME

Envoi of the McKim Fellowship

LUCIAN E. SMITH, HOLDER, 1905-07



RESIDENCE OF MR. TROXEL, ELYRIA, O.  
GEO. H. STEFFENS, ARCHITECT, J. F. STEFFENS, DESIGNER, CLEVELAND.

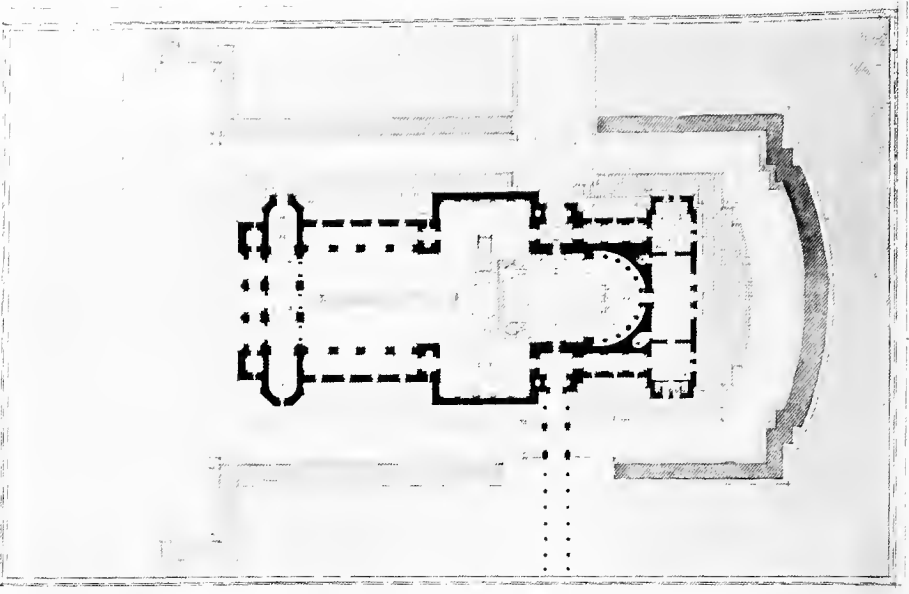


RESIDENCE OF MR. TROXEL, ELYRIA, O.  
GEO. H. STEFFENS, ARCHITECT, J. F. STEFFENS, DESIGNER, CLEVELAND.





COLLINWOOD SCHOOL FIRE MEMORIAL, LAKEVIEW CEMETERY.  
FREDERIC WM. STRIEBINGER, ARCHITECT, HERMANN MATZEN,  
SCULPTOR, CLEVELAND.

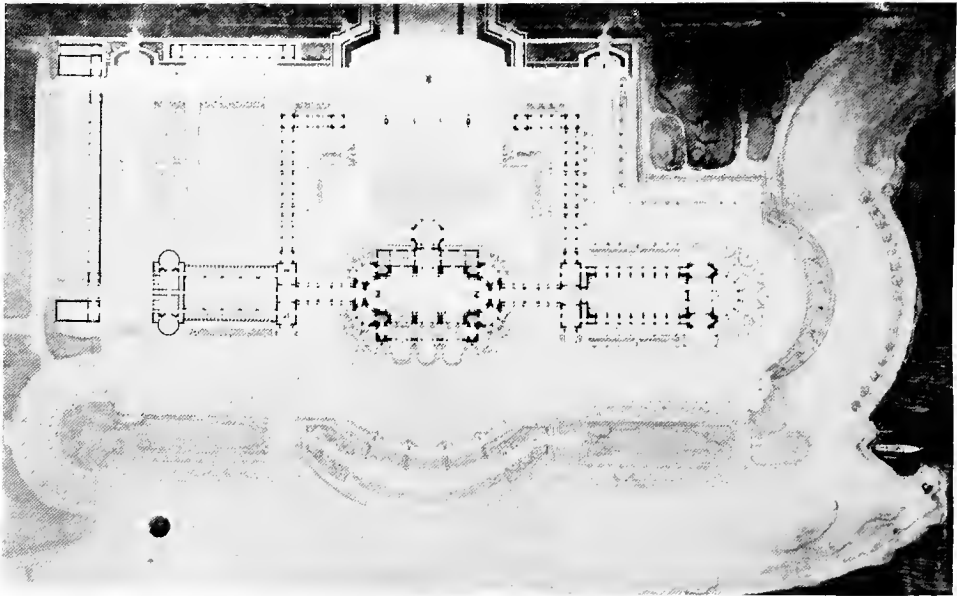


A ROMAN CATHOLIC CHURCH.  
G. S. KOYL, UNIVERSITY OF PENNSYLVANIA, PHILADELPHIA.



A MAUSOLEUM.  
CLAYTON L. AIKEN, CLEVELAND ARCHITECTURAL CLUB, CLEVELAND.

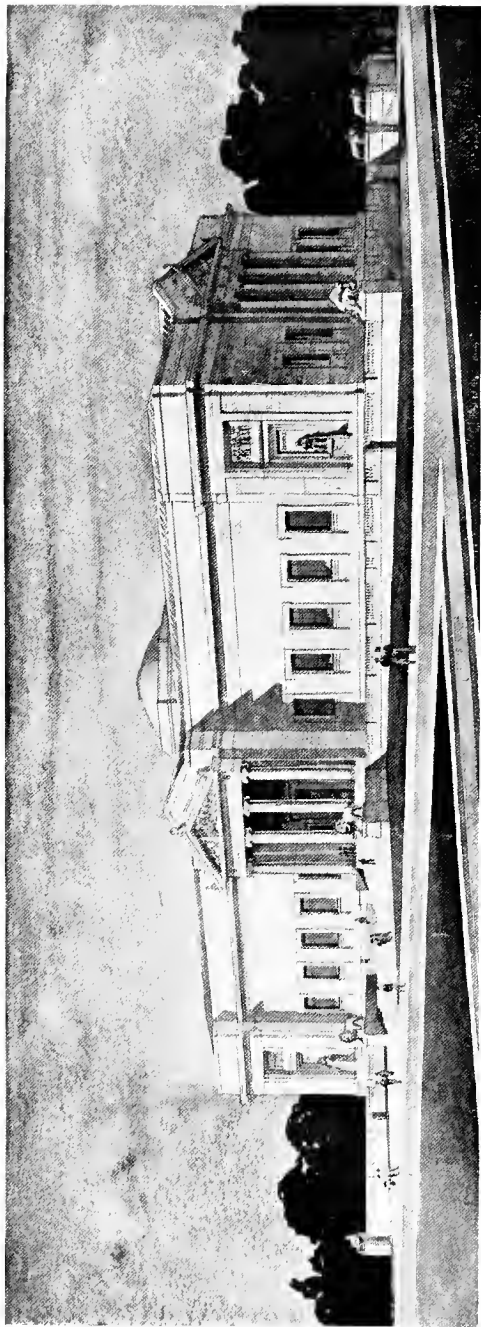
*Copyright of the Club  
Oct 25, 1911*



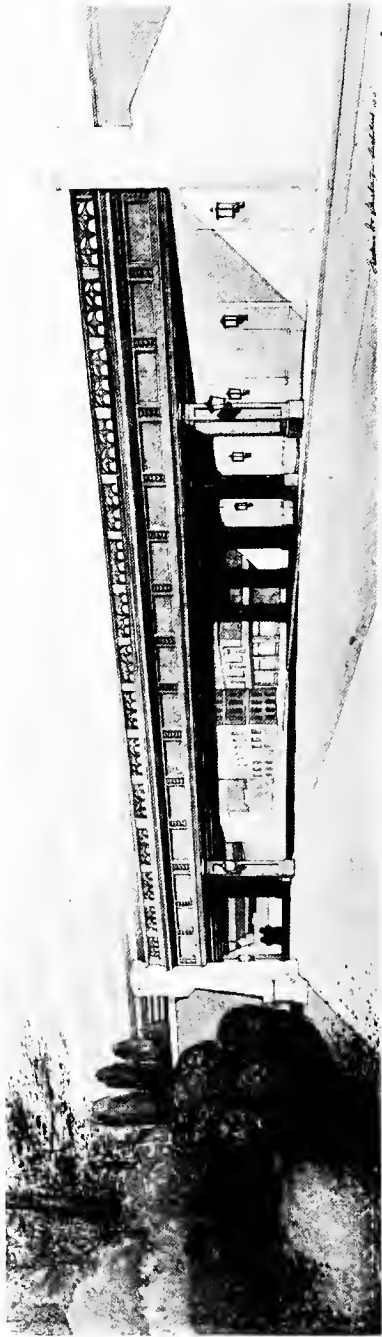
CASINO OF A COUNTRY CLUB.  
A. DE NARDO, UNIVERSITY OF PENNSYLVANIA.



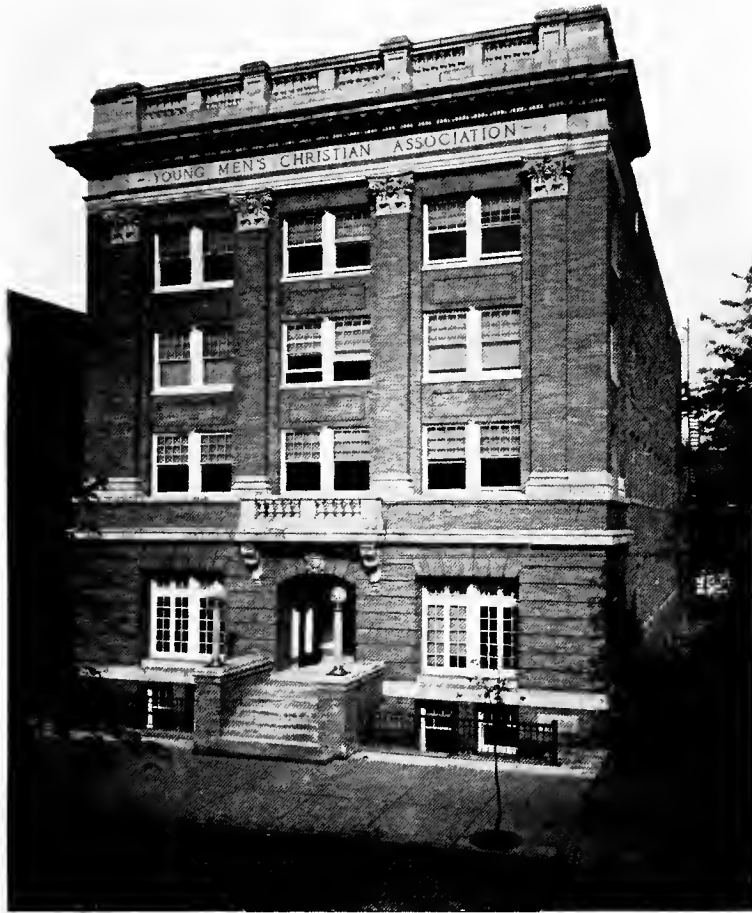
STABLE FOR MR. JOHN D. McILHENNY, GERMANTOWN, PA.  
DURING, ORIE & ZIEGLER, ARCHITECTS, PHILADELPHIA.



CLEVELAND MUSEUM OF ART  
HUBBEL & BENES, ARCHITECTS, CLEVELAND



PROPOSED L. S. & M. S. RAILWAY BRIDGE OVER LAKE AVENUE  
FREDERIC W.M. STRIEBINGER, ARCHITECT, CLEVELAND



Y. M. C. A. BUILDING  
STEBENVILLE, OHIO  
BRIGGS & NELSON, ARCHITECTS, CLEVELAND



IRONWORKER.

S. C. GLADWIN, SCULPTOR, ALBERT E. SKEEL, DESIGNER, CLEVELAND.



## **Index to Advertisers**

ARCHITECTURAL IRON AND  
BRONZE WORK

Gorham Co., The.....	60
Rose Iron Works Co., The.....	51
Tyler Co., The W. S.....	49

AUTOMATIC WINDOWS

Cleveland Automatic Window Co..	29
---------------------------------	----

BRICK

Alliance Clay Produce Co.....	6
Columbus Brick & Terra Cotta Co..	16
Darlington Brick & Mining Co.....	6
Federal Clay Products Co.....	3
Harbison-Walker Refractories Co..	4
Hydraulic-Press Brick Co.....	42
Kittanning Brick & Fire Clay Co...	15
Metropolitan Paving Brick Co.....	16
Tiffany Enamel Brick.....	5
Wadsworth Brick & Tile Co.....	2

BLUE PRINTS

City Blue Printing Co.....	53
----------------------------	----

BOILERS

Page Boiler Co., The Wm. H.....	46
"Wise" Gas and Coal Boilers.....	21

BUILDERS SUPPLIES

Carl D. Palmer.....	17-18-19-20-21
Cleveland Builders Supply Co.....	5-6-7-8-9-10-11-12
Fay, W. A.....	27
Hydraulic-Press Brick Co.....	42
Johns-Manville Co.....	57
Lake Erie Builders Supply Co.....	60
Ohio Clay Co.....	45
Queisser-Bliss Co., The.....	13-14-15-16
Stowe Fuller Co., The.....	31
Woodville Lime & Cement Co.....	27

CEMENT

Best Bros.....	4
Atlas Portland Cement Co.....	5
Huron Portland Cement Co.....	31

CEMENT COATING

Bay State Brick & Cement Coating.	4
Symentrex .....	13
Hydratite .....	13
Elaterite .....	21
R. I. W.....	31

CONTRACTORS

Bolton Pratt Co., The.....	53
Dautel & Son, L.....	52
Donley Bros .....	18
Euclid Plastering & Contracting Co., The .....	54
Hunkin-Conkey Construction Co., The .....	21
Harris, Herman, A.....	39
Libby, J. H.....	27
Masters & Mullen Construction Co., The .....	52

CORNER BEAD

Parker Steel Corner Bead .....	18
--------------------------------	----

DECORATORS (INTERIOR)

Rohreimer Brooks Studios Co., The .....	41
Sterling & Welch Co., The.....	39
Wilmot Co., The J. C.....	35

DRAWING MATERIAL

Soltman, E. G.....	48
--------------------	----

ELECTRICAL CONTRACTORS

Enterprise Electric Construtcion Co., The .....	52
Elliot Electric Co., S. K.....	26

ELECTRIC SUPPLIES		IRON (STRUCTURAL)	
Cleveland Electric Illuminating Co.,		Brooks, T. H. & Co.....	38
The .....	50	Forest City Steel & Iron Co., The..	39
FIRE DOORS		National Iron & Wire Co., The....	22
Peelle Co., The .....	20	Republic Structural Iron Works Co.	55
FIREPROOFING		LIGHTING FIXTURES	
Concrete Unit System Co.....	51	Cleveland Gas & Electric Fixture	
National Concrete Fire Proofing Co.,		Co., The .....	37
The .....	32	Collings Co., Clarence H., The....	22
FURNACE PIPE		Morreau Co., The.....	58
Perfection Furnace Pipe Co.....	19	LIME	
GLASS		Woodville Lime & Cement Co.....	27
Cleveland Window Glass & Door		LUMBER	
Co. ....	34	Martin-Barriss Co., The.....	40
Crane Glass & Manufacturing Co.,		Nicola, Stone & Myers Co., The....	46
The .....	48	MANTELS	
Pittsburgh Plate Glass Co.....	28	Collings Co., Clarence H., The....	22
GRANITE		Wadsworth-Adelson Co., The.....	37
Webb Pink Granite Co.....	38	MARBLE	
GYPSUM TILE		Batterson & Eisele.....	56
Pyrobar Gypsum Tile.....	44	METAL LATH	
HARDWARE		Bostwick Truss Loop Lath.....	18
Bingham Co., The.....	36	Cleveland Expanded Metal Lath....	36
Lockwood, Luetkemeyer, Henry Co.,		METAL WINDOWS AND DOORS	
The .....	23	Reister & Thesmacher Co.....	29
Worthington Co., Geo., The.....	25	MODELERS & SCULPTORS	
HARDWOOD FLOORS		Fisher & Jirouch.....	53
Shulkins & Co.....	37	PAINTS, OILS AND VARNISHES	
HEATING AND VENTILATING		Empire Varnish Co.....	24
Becker Seidel Co., The.....	22	National Lead Co.....	47
Mouat-Squires Co., The.....	33	Pratt-Lambert Co., The.....	34
INTERLOCKING TILE		Sherwin-Williams Co., The.....	35
Denison Interlocking Tile.....	45	Venderink Co., B. T., The.....	23

PLASTER

Euclid Plastering & Contracting Co.,  
 The ..... 54  
 Gifford, Ira S..... 53  
 Lennox-Haldeman Co., The..... 34  
 McNulty Bros. of Chicago..... 23  
 Cleveland Builders Supply Co..... 7

PLASTER BOARD

U. S. Gypsum Co..... 44

PLUMBING

Schneider Plumbing Co., The..... 51  
 Warden & Leese..... 55

PLUMBING SUPPLIES

Sanitary Co., The..... 59  
 Standard Sanitary Co., The..... 43

RADIATORS

National Radiator Co., The..... 28  
 Pressed Radiator Co. of America,  
 The ..... 32

RADIATORS

Jewett Refrigerator Co., The..... 41  
 McCray Refrigerator Co., The..... 28

ROOFING CONTRACTORS

Cuyahoga Roofing Co., The..... 41  
 Huntington & Son, Hugh..... 57  
 Kasch Roofing Co., The..... 55  
 Ohio Roofing Co., The..... 52  
 Reister & Thesmacher Co., The.... 29  
 Norton Bros..... 20

SHINGLE STAIN

Cabots ..... 6

STEEL WINDOWS

Fenestra ..... 13  
 Lupton Sons Co., The David..... 58

STONE

Indiana Quarries Co..... 24

TERRA COTTA

Northwestern Terra Cotta Co..... 14  
 Columbus Brick & Terra Cotta Co.. 16

TIN PLATE

Follansbee Bros. Co..... 38  
 Garry Iron & Steel Co., The..... 36  
 Osborn, J. M. & L. A..... 17

VENTILATORS

Ohio Blower Co., The..... 58  
 The Burt Ventilator..... 19

WEATHER STRIPS

Chamberlin Metal Weather Strip  
 Co., The..... 30

WINDOW SCREENS

Watson Mnfg. Co., The..... 30

WOOD WORK

Cleveland Window Glass & Door  
 Co., The ..... 34  
 Teachout Co., The A..... 48  
 Ohio Sash & Door Co..... 17

## The Cleveland Builders Supply Co.

Hollow Brick

Expanded Metal Lath—"Herringbone" and "Boston"

Coating—"Bay State" for protecting brick and cement

Lime—Hydrated or Bulk

Edson Pumps

V-Shaped Wall Ties, "McDonald's"

Excelsior Superfine Plaster

Lake Sand

Atlas Portland Cement

Nat-Co-Tile, a Construction Tile

Doors—"Pyrono" Fireproof

Brick—Facing and Fire Brick of all kinds

Universal Corner Bead

Insulating and Deafening Quilt, "Cabot's"

Lehigh Portland Cement

Drain Tile

Enamel Brick, "Tiffany"

Raggle Block

Shingle Stain, "Cabot's"

Stanchions, Cast and Wrought Iron, all sizes

Union "Outersite" Picture Moulding

Plaster, "We make it, so it's good"

Partition Tile

Lime Stone

Y's, Elbows, Half-Traps, Etc., Etc.

Construction Tile

Our Motto, "Quality and Service"



THE CLEVELAND BUILDERS SUPPLY CO

**W**E take advantage of this opportunity to thank the many architects of Cleveland and vicinity, who have so generously shown their appreciation of our successful efforts to develop a Shale Facing Brick, suitable for buildings of architectural beauty.

**The Wadsworth Brick and  
Tile Company**



THE CLEVELAND BUILDERS SUPPLY CO

# SPARTA GLAZED BRICK

Manufactured by  
The Federal Clay Products Co.  
Mineral City, O.



## King's Fibrous Plasterboard IMPROVED MODERN LATH

**Fireproof      Economical      Sound Deadener**

Produces Strong, Solid Walls and Ceilings

Insulator of Heat and Cold

Quick Drying Plastering

Saves Time in Construction

For Use as a Lath in Any Kind of Building

Size 32 x 36

THE CLEVELAND BUILDERS SUPPLY CO

# The Harbison-Walker Refractories Co.

Manufacturers of

## Face Brick

Beautiful Grays Buffs  
Pompeian Mottled Fire Clay



We Know of Nothing So  
Good as

## Best Bros.' Keene's Cement

That Is  
Why We Handle It



Capacity  
11,000,000 bbls.

Office  
703 Rockefeller bldg.  
Cleveland



A Fire Retarding  
Coating  
Bearing the  
Underwriters  
Label

# Bay State Brick & Cement Coating

For Coating  
Brick,  
Cement  
and  
Stucco Surfaces



THE CLEVELAND BUILDERS SUPPLY CO

BRICK AND TILE  
**TIFFANY**  
MOULDING - CHICAGO



Steger Building,  
Jackson Blvd. &  
Wabash Ave.,  
Chicago, Ill.

MARSHALL & FOX, ARCHITECTS  
Faced With Tiffany Enamel Brick  
Guaranteed Not to Craze : : :

## ATLAS-WHITE PORTLAND CEMENT

is a stainless white Portland cement for decorative purposes. Its strength both in tension and compression is the same as Atlas Portland Cement and we unreservedly claim that it will meet the requirements of the Standard Specifications for Portland Cement.

For the convenience of its users, we put up Atlas-White mixed with ground white Silica sand in three mixtures ready for use.

*Write us for descriptive circular.*

**ATLAS** PORTLAND CEMENT  
is pure and absolutely uniform in quality. Made from the finest raw materials. It is the cement bought by the U. S. government for the Panama Canal.

*Send for circular descriptive of our books.*

If your dealer cannot supply you with Atlas, write to

The **ATLAS** Portland **CEMENT** Co.  
30 Broad St. New York

*Largest output of any cement company in the world—over 50,000 bbls. per day.*

THE CLEVELAND BUILDERS SUPPLY CO

## ALLIANCE

(SHALE FACING BRICK)

We are proud of the many beautiful residences, churches, public buildings and apartments erected in Cleveland and vicinity of our product.

**The Alliance Clay Product Co.**



## Gray Devonshire

This is the name by which our latest product is known—a brick that must be seen enmasse to be fully appreciated.

Our agents everywhere will, upon request, furnish you with a list of reference buildings erected of this brick.

**The Darlington Brick &  
Mining Company**

PITTSBURG, PA.



## CABOTS

CREOSOTE SHINGLE STAINS

Unequaled in Quality and Durability

## CABOTS

SHEATHING QUILT

The warmest sheathing and most perfect sound deadner

CONTINUE TO SPECIFY THE BEST



LOOK FOR THE  
Signs of Quality and Service

• “BRIX” •  
IN THIS BUILDING FURNISHED  
BY  
• — THE —  
Cleveland Builders Supply Co.

• “Our Mix  
It Stix” •  
PLASTER IN THIS BUILDING  
FURNISHED BY  
• — THE —  
Cleveland Builders Supply Co.



## THE CLEVELAND BUILDERS SUPPLY CO.

### OUR WAREHOUSES

- |                                  |                           |
|----------------------------------|---------------------------|
| A, 2294 Scranton Avenue          | F, 4180 Merwin Avenue     |
| B, E. 67th near St. Clair Avenue | G, Sloane Ave., Lakewood  |
| C, E. 55th and Carnegie Avenue   | H, Lorain Ave. & N. Y. C. |
| D, Euclid and E. 117th Street    | & St. L. Railway          |
| E, Berea Road and Detroit Avenue | I, Broadway and Harvard   |

### OUR MOTTO

"Quality and Service"

### OUR OFFICES

Ninth Floor Hippodrome building

*"Who Supplied the Bricks?"*

	Main 786	Central 786	
	<b>The Queisser-Bliss Co.</b>		
	Office and Exhibition Rooms, 12th Floor Schofield Building		
<b>B R I C K S</b>	<b>Fenestra Solid Steel Windows</b>	<b>T E R R A C O T T A</b>	
	Antiseptine Shingle Stain		
	Cutler Mail Chute		
	Winslow's Ornamental Iron and Bronze		
	Covert's Fireplace Throat and Dampers		
	Revolving Doors		
	Nonpariel Cork Floor Tile		
	Mortar Colors		
	"Watertite" Ricketson's Q. B. Brand		
	McDonald-Wall Ties, V Shape		
Sidewalk Doors & Coal Hole Covers			
Hollow Tile Fireproofing			
	<b>Building Materials of Quality</b>		
<b>Waterproofing</b>			
No. 1 Dehydratine (furring compound) interior use			
No. 4 " (foundation " ) exterior use			
No. 2 " (colorless) cement and brick waterproofing			
SYMENTREX (Liquid Cement) all colors			
HYDRATITE (Dry Compound) makes Concrete Waterproof			
<b>LET US FIGURE YOUR WATERPROOFING</b>			

**THE QUEISSER-BLISS COMPANY**  
Schofield Building, Cleveland

*"Who Supplied the Bricks?"*

# The Northwestern Terra Cotta Company

CHICAGO, ILL.



Detail From Main Cornice  
STODDARD - DAYTON BUILDING, CHICAGO, ILL.  
Holabird & Roche, Architects

**ARCHITECTURAL TERRA COTTA**  
STANDARD GLAZED POLYCHROME GRANITE

**"Northwestern" Supplied in 1910 for**

The Cleveland Athletic Club  
The Halle (Pope) Building      The Plain Dealer Building  
The City Investment Building      The Wilbrand Building  
The Euclid-Huron Building      The Loomis Building  
The Normal School      The West Side Market  
The Euclid Avenue Temple

Represented by  
**THE QUEISSER - BLISS COMPANY**  
Schofield Building, Cleveland

*"Who Supplied the Bricks?"*

# The Kittanning Brick and Fire Clay Company

PITTSBURGH, PA.

## "MARTIN'S" KITTANNING BRICK

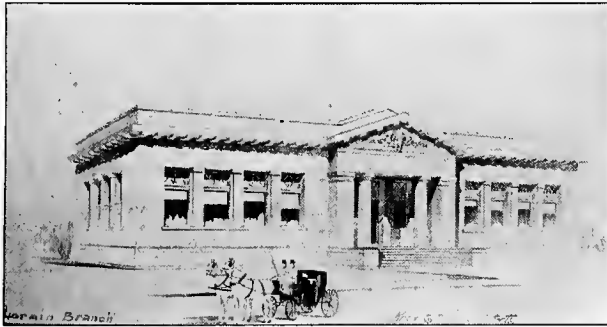
The Original and Genuine Kittanning

Yearly Capacity, 50 Millions

**White**      **Buff**      **Grey**      **Speckled**  
**Standard**      **Norman**      **Roman**

KITTANNING BRICK USED IN

J. H. Heiman Residence, Euclid and Chapman  
Anthony Carlin Bldg., Euclid and Prospect  
E. H. Janes Residence, Shaker Heights



LORAIN AVENUE CARNEGIE LIBRARY  
Knox & Elliott, Architects

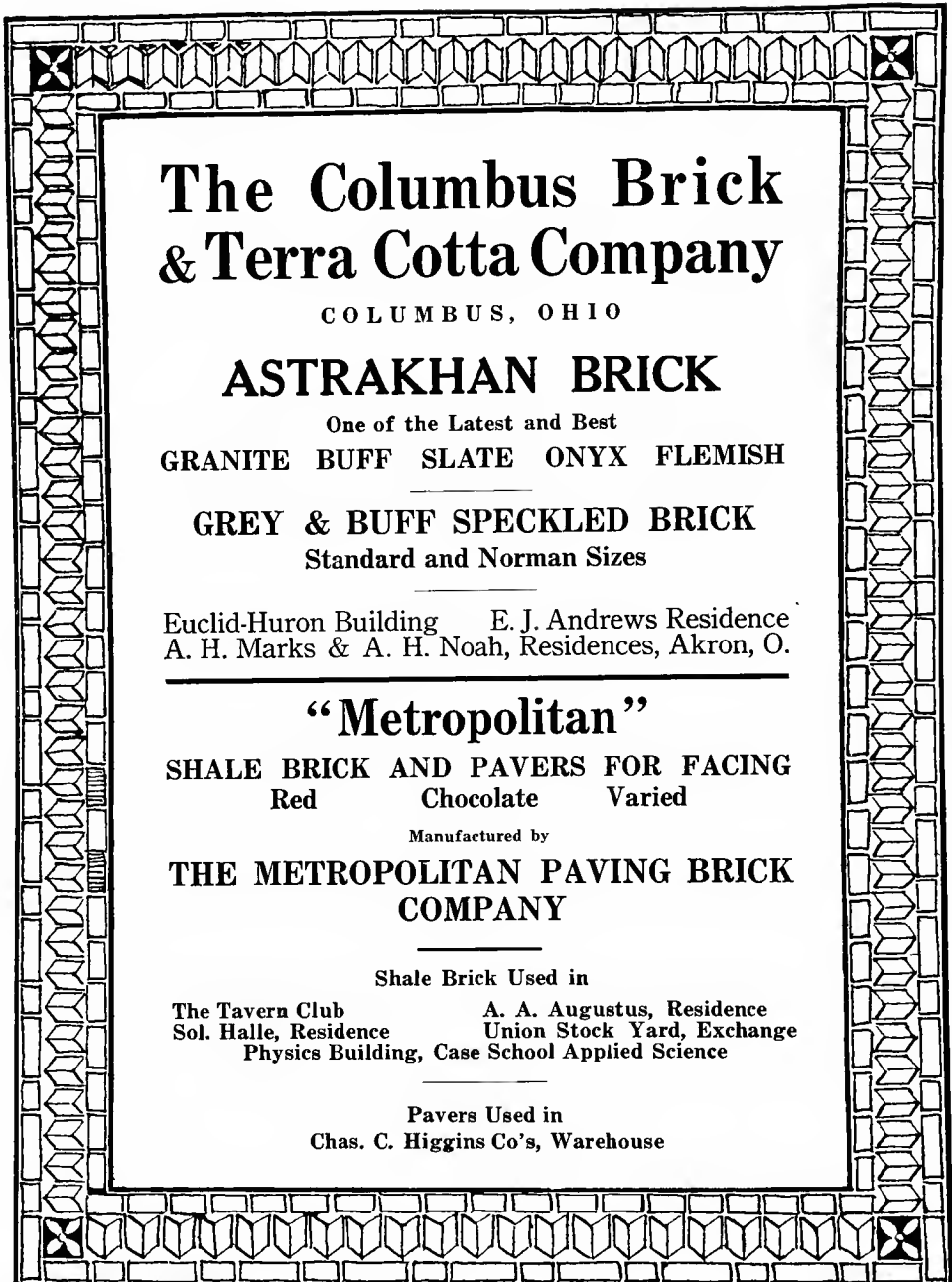
Represented by

**THE QUEISSER - BLISS COMPANY**

Schofield Building, Cleveland



*"Who Supplied the Bricks?"*



**The Columbus Brick  
& Terra Cotta Company**  
COLUMBUS, OHIO

**ASTRAKHAN BRICK**  
One of the Latest and Best  
**GRANITE BUFF SLATE ONYX FLEMISH**

**GREY & BUFF SPECKLED BRICK**  
Standard and Norman Sizes

Euclid-Huron Building      E. J. Andrews Residence  
A. H. Marks & A. H. Noah, Residences, Akron, O.

---

**"Metropolitan"**  
**SHALE BRICK AND PAVERS FOR FACING**  
Red      Chocolate      Varied  
Manufactured by  
**THE METROPOLITAN PAVING BRICK  
COMPANY**

---

Shale Brick Used in  
The Tavern Club      A. A. Augustus, Residence  
Sol. Halle, Residence      Union Stock Yard, Exchange  
Physics Building, Case School Applied Science

---

Pavers Used in  
Chas. C. Higgins Co's, Warehouse

Represented by  
**THE QUEISSER-BLISS COMPANY**  
Schofield Building, Cleveland



SEE  
"PALMER'S INDEX  
OF BUILDING  
MATERIAL"

*The*  
**J. M. & L. A. Osborn Company**

**TINNERS, ROOFERS AND  
FURNACE MEN'S SUPPLIES**

Wish to express their appreciation to the  
Architects for the recognition and use of  
these high grade brands of Roofing Tin



And welcome the Exposition as a means of  
bringing before the general public and  
building fraternity, the advantage of  
using only the best Roofing  
Tin and Building Materials

---

**KORELOCK DOORS?**

*of course*

*You Want Them!—No Building Complete Without Them!*

**BIRCH, OAK AND CALICO ASH**

All Kinds of Building Material

**The Ohio Sash and Door Co.**

703 to 821 Canal Road, Cleveland

**CARL D. PALMER**  
REPRESENTING MANUFACTURERS  
OF BUILDING SPECIALTIES TO  
ARCHITECTS & BUILDERS  
CLEVELAND

SEE  
"PALMER'S INDEX  
OF BUILDING  
MATERIAL"

# DONLEY BROTHERS

SALES AGENTS—CONTRACTORS

7309 AETNA ROAD

CLEVELAND

## The Slotted Steel Studding

**M**AKES Partitions and Ceilings which are fire proof. It combines lightness with rigidity, is economical in first cost and provides for the easy installation of wires, pipes, and the work of other trades. These partitions are non-conductors of heat and sound. The slip-joint extension stud provides for expansion in case of fire. Made to any length, without splicing, for walls up to 25 feet high. We carry stock of common lengths. Special lengths on short notice.

## Bostwick Truss Loop Lath

Trust Loop has every needed feature to stamp it as the best of all Metal Laths. *Weight of Metal, Rigidity of Sheet, Economy in Plaster and Labor, Perfection of Loop for Plaster Clinch.* Large Stock, Prompt Deliveries.

## Parker Steel Corner Bead

(Hot Galvanized)

Protects the Plaster Corners of a large majority of the new, modern, up-to-date Cleveland buildings. It is being used in nearly all fine residences, in stores, schools, churches and buildings of all kinds and description. Large stock in lengths of 6 ft, 7 ft, 7½ ft, 8 ft, 8½ ft, 9 ft, 9½ ft, 10 ft, 10½ ft, and 12 ft.

CARL D. PALMER  
REPRESENTING MANUFACTURERS  
OF BUILDING SPECIALTIES TO  
ARCHITECTS & BUILDERS  
CLEVELAND

SEE  
 "PALMER'S INDEX  
 OF BUILDING  
 MATERIAL"

# "PERFECTION"

DOUBLE

## Wall Pipe and Fittings

will please the most exacting Architect or Furnace man

Because—it is absolutely perfect in every detail.

It fits together so securely, so firmly. Every piece and section is made double, thereby insuring the consumer against fire from this source.

*Send for Catalog and Sample*

## THE PERFECTION FURNACE PIPE CO.

Toledo, Ohio

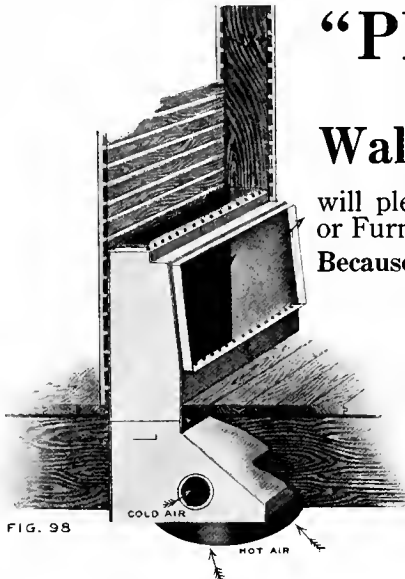
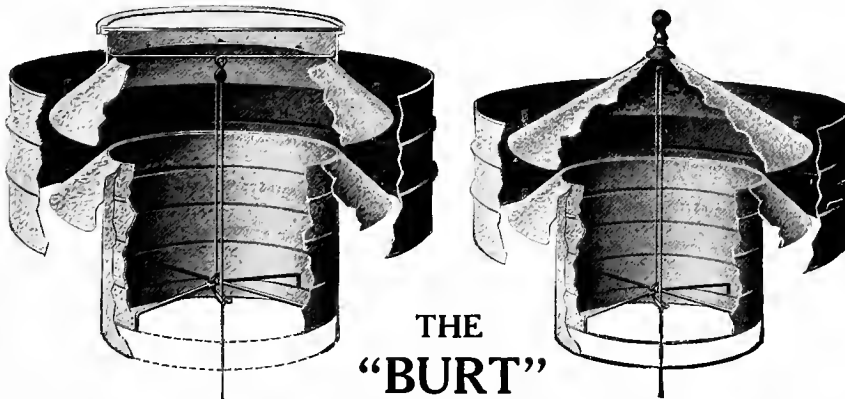


FIG. 98

Distributing Agents  
 The J. M. & L. A. Osborn Co.  
 Cleveland, Ohio

## THE "BURT" COMBINATION SKYLIGHT AND VENTILATOR

Guaranteed by the Manufacturer Perfect in Workmanship and Construction.



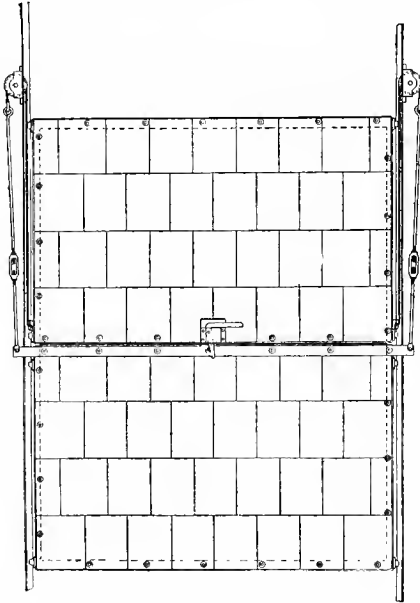
## THE "BURT"

Possesses features which are not obtained in other makes. It has the telescopic or sliding-sleeve damper. It is absolutely storm proof whether open or closed. Is a combination of Ventilator and Skylight. It has an unobstructed air shaft with no downward deflected air currents.

The J. M. & L. A. OSBORN COMPANY, Distributing Agents, Cleveland.

CARL D. PALMER  
 REPRESENTING MANUFACTURERS  
 OF BUILDING SPECIALTIES TO  
 ARCHITECTS & BUILDERS  
 CLEVELAND

SEE  
"PALMER'S INDEX  
OF BUILDING  
MATERIAL"



## The "Peelle Door"

Manufactured by

## The Peelle Co.

123 Liberty Street, New York City

HAS NO COMPETITOR  
HAS NO EQUAL FOR  
FREIGHT ELEVATORS



**NOTICE — No other Truckable Door  
Made.**

**See MR. PALMER,**  
1025 Citizens Building  
CLEVELAND

# NORTON BROTHERS

2667 East 69th Street

CLEVELAND

CONTRACTORS FOR

ASPHALT FLOORS

TAR-ROK SUB FLOORS

CORK OR WATERPROOF LITH

COLD STORAGE INSULATION

BARRETT SPECIFICATION ROOFING

CARL D. PALMER

REPRESENTING MANUFACTURERS  
OF BUILDING SPECIALTIES TO  
ARCHITECTS & BUILDERS  
CLEVELAND

SEE  
"PALMER'S INDEX  
OF BUILDING  
MATERIAL"

**LINOFELT for DEAFENING**

Manufactured by the Union Fibre Co. Winona, Minn. Cleveland Stock

**ELATERITE for WATERPROOFING**

Manufactured by The Des Moines Paint & Mfg. Co.  
Handled in Cleveland by Donley Bros., 7309 Aetna Rd.

**MAJESTIC & MODEL COAL CHUTES**

Manufactured by The Majestic Furnace & Foundry Co.  
Handled in Cleveland by Donley Bros., 7309 Aetna Rd.

**"WISE" GAS AND COAL BOILERS**

D. S. Bray, Local Mgr., Builders' Exchange

THE ABOVE ARE THE BEST I HAVE BEEN ABLE TO FIND  
IN THEIR RESPECTIVE LINES

**CARL D. PALMER**  
REPRESENTING MANUFACTURERS  
OF BUILDING SPECIALTIES TO  
ARCHITECTS & BUILDERS  
CLEVELAND

**The Hunkin-Conkey Construction Co.**

**GENERAL CONTRACTORS**

**Cuyahoga Building**

**CLEVELAND**

## The Clarence H. Collings Company

1527 and 1531 Prospect Avenue

C L E V E L A N D : O H I O

MANTELS  
TILES  
ELECTROLIERS

## THE NATIONAL IRON AND WIRE CO.

Structural and Builders—Iron work, Stair work and Fire Escapes

Sole Manufacturers of the  
NATIONAL STEEL JOIST HANGERS & POST CUPS.

Office & Works : Hamilton Ave. near 40th St. N. E. - Cleveland, O.

## The Becker-Seidel Co.

Steam and Hot Water

Heating

Power Piping

315-317 Champlain Avenue - Cleveland, O.



**Art Hardware,  
Gas and Electric  
Fixtures**

also

**House Furnishings**

---

**The Lockwood  
Luetkemeyer  
Henry  
Co.**

**725-735 Superior Avenue**

Central 2581-R

PHONES

Main 2137

**McNulty Bros.**

OF CHICAGO

Incorporated

432 Schofield Building,  
CLEVELAND

---

Architectural Sculptors and  
Plasterers

---

PHILADELPHIA      PITTSBURGH  
CHICAGO



EXCELLENT ARCHITECTURAL  
VARNISHES

*and*

IMPORTED WHITE ENAMEL PAINT

Called "Scotch Patinol"

**The B. T. Venderink Company,**  
Cleveland, Ohio

**Newark Varnish Works,**  
Newark, N. J.

# Indiana Quarries Company

Successors to

The Bedford Quarries Company

and

The Perry-Matthews-Buskirk Stone Company

## Buff and Blue Limestone

See Trinity Cathedral, Euclid Avenue—Chapel, Adelbert College  
Euclid Avenue Presbyterian Church

General Office, Marquette Bldg., Chicago, Ill.



Trade Mark

## "SQUARE DEAL"

### Architectural Varnishes

**Empire Preservative**—a high grade varnish for interior use, can be rubbed and polished.

**Empire Floor**—pre-eminent as a floor finish.

**Outside Spar**—for outside doors and other trying exposures

By using "SQUARE DEAL" Varnishes you get what the name implies

## "A SQUARE DEAL"

# Empire Varnish Company

Cleveland, Ohio





Post Office, Cleveland, O.

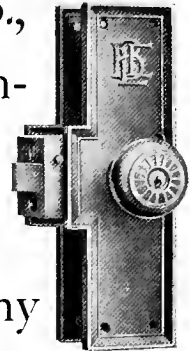


Cuyahoga County Court House, Cleveland, O.



Ostuni Design  
First National Bank Bldg.

The Yale & Towne Mfg. Co.,  
New York, and The Geo. Worth-  
ington Co., Cleveland, were  
associated in equipping these  
Cleveland buildings, among many  
others, with YALE HARDWARE



Jackson Design  
Brotherhood of Locomotive  
Engineers Bldg.



First National Bank  
Cleveland, O.



Brotherhood of Locomotive  
Engineers Bldg., Cleveland, O.

# The S. K. ELLIOTT Co.

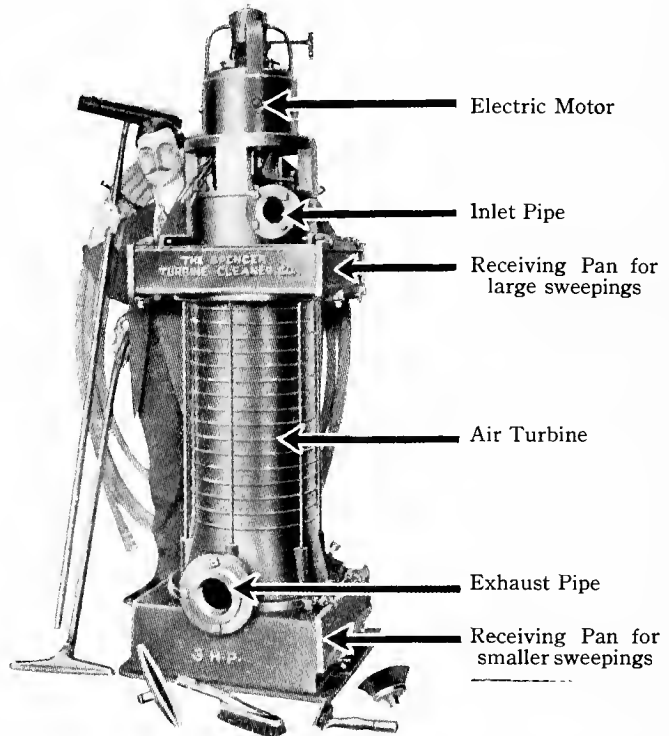
322-328 Champlain Ave., N. W.  
CLEVELAND, OHIO

AGENTS

## The SPENCER TURBINE CLEANER CO. FORT WAYNE ELECTRIC WORKS

### The Spencer Turbine Cleaner

consists of a vertical air turbine which acts as a powerful air pump, to the shaft of which is coupled the armature shaft of an electric motor. There are consequently no belts nor gears and no resultant noise and trouble. There are technical points about its design which enables it to do all we claim for it, and we will be pleased to give detailed, technical descriptions of its construction and operation to any who may request them.



**Complete Vacuum Cleaning  
Plants Installed**

The line of THE FORT WAYNE ELECTRIC WORKS is complete, covering all sizes of A. C. and D. C. Generators, Motors, Switchboards, Transformers, Etc.

*We have Facilities for handling Large Electrical Contracts*

**WE DO** { ELECTRICAL WIRING  
ELECTRICAL REPAIRING  
ARMATURE WINDING

**WE BUILD** { ARMATURE COILS  
FIELD COILS  
COMMUTATORS

*Our Customers' List reads like a Directory of American Industries*

# The Woodville Lime and Cement Company

Manufacturers of

## WHITE ENAMEL FINISH HYDRATED LIME

UNSURPASSED FOR EASY  
WORKING QUALITIES,  
SMOOTHNESS, WHITE-  
NESS & STRENGTH



Wholesalers of

### BUILDERS' SUPPLIES

Main Office: TOLEDO, OHIO

For Sale By

**The Lake Erie Builders' Supply Co.**  
CLEVELAND, OHIO

NIGHT SERVICE

Eddy, 1409  
Princeton, 1115-K  
Princeton, 130

TELEPHONES

Central, 205  
Main, 1132

## W. A. FAY BUILDERS' SUPPLIES

13th Floor Schofield Bldg.  
CLEVELAND

*Let us Figure on your*

FACING BRICK  
CEMENT LIME  
STONE—TILE FIRE-  
PROOFING, METAL  
PARTITIONS, and

*Everything else you need  
in our line*

**WE CAN SAVE YOU MONEY**

Office Phones { Main 568  
Cen. 1575  
Residence 1922 E. 81st St.  
Doan 188 J

GEO. J. FREY  
Residence 7709 Linwood  
Princ. 1653 L

## J. H. LIBBY CEMENT FLOORS DRIVES & WALKS

BUILDERS EXCHANGE

CHAMBER OF COMMERCE

## Solus and Novus

**R**ADIATORS are specified by the leading architects on account of their high quality, efficiency and attractive appearance.

¶ These radiators are being installed throughout the United States, Canada and foreign countries. They give perfect satisfaction everywhere.

¶ They are made in all heights and styles and are manufactured of cast iron throughout. Cast iron push nipples are used exclusively in assembling.

*We will be glad to send you our Art Catalog*

### National Radiator Co.

Johnstown, Pa.

## Pittsburgh Plate Glass Company

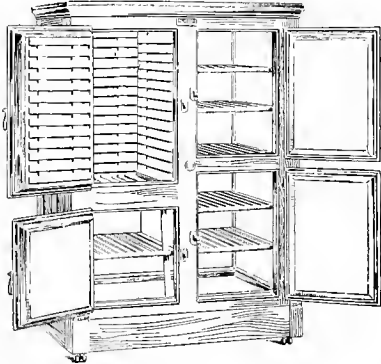
**Glass, Mirrors, Paints,  
Brushes, Varnishes**

*Contracts Taken for Glazing Work*

OFFICE and STORE  
1430-34 West 3rd Street

WAREHOUSE  
3849-69 Hamilton Avenue

**James J. Tanyan, : Local Manager**



## The Kind of Service The Refrigerator Gives

### Depends upon

1. How it is constructed
2. How it is installed

**McCray Refrigerators** in stock sizes and models can be "built-in" the same as McCray built-to-order Specials.

*Let us submit Plans and Specifications*

At Architect's option our expert workmen will make the installation. *Have you been supplied with our books?* If not, phone North 342, Central 8334-R, or write.

## McCRAY REFRIGERATOR COMPANY

924 Prospect Avenue, S. E.,

Cleveland, Ohio

General Offices and Works, Kendallville, Indiana

# The Riester & Thesmacher Company



## Specialists in Sheet Metal Cleveland



The New Way

The above illustration shows method of cleaning windows inside the building.

The K-W Automatic Device can be applied to any window, old or new, and overcomes all window troubles.

**SAVES TIME, MONEY, LABOR AND LIFE**

Our Ventilating Plan is also a very Desirable Feature.

**THE CLEVELAND AUTOMATIC WINDOW COMPANY**

1211 CITIZENS BUILDING

Main 2498

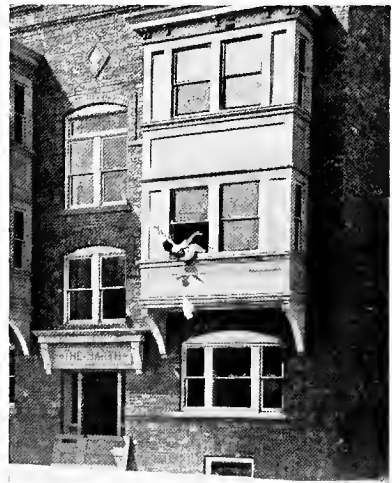
Central 5452-K

CLEVELAND, OHIO

## K - W Automatic Window

FOR

Residences, Apartment Houses,  
School and Office  
Buildings, Factories, Etc., Etc.



The Old Way

By using the K-W Device, accidents similar to the above cannot occur.

# CHAMBERLIN

“EXPANSION JOINT”

## METAL WEATHER STRIP

KEEPS OUT THE COLD AND DUST

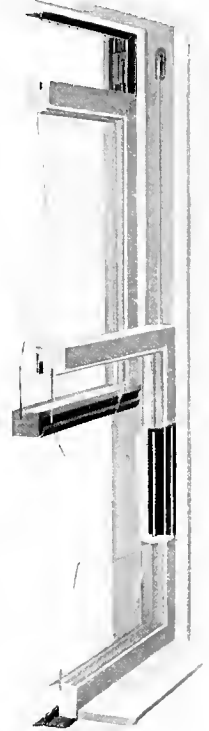
---

---

For all styles, sizes and conditions of windows and doors—old or new. We make a specialty of equipping single and double casement windows and French doors. Specified by all leading architects.

---

---



Chamberlin Metal Weather Strip Co.

---

Watson Metal and Wood  
Insect Screens  
for Windows  
and Doors.

J. J. RAUSCHER, Mgr.

Builders Exchange—Chamber of Commerce Building, Cleveland

Main 568 - - Central 1575

ESTABLISHED

-1848-

## Toch Brothers

Manufacturers of

**Technical and Scientific Paints :: Enamels,  
Varnishes : and : Dampproofing Compounds**

320 Fifth Avenue, New York, N. Y.

Works: Long Island City, N. Y.

**"R. I. W."**  
MEMBER T'S WATERPROOF  
**R. I. W.**

### DAMP RESISTING PAINTS

"R. I. W." No. 232: For dampproofing exposed brick walls before plastering.

"R. I. W." No. 110: For backing limestone to prevent staining.

"Tockolith" (Pat'd.) A cement paint for use as a shop coat on structural steel to prevent corrosion.

"R. I. W." No. 112: For painting structural steel to prevent electrolytic action.

"R. I. W." No. 49: For use on exposed steel, over "Tockolith".

"Liquid Konkerit" (Pat'd.) A brick and cement coating for exterior of cement, brick or stone walls.

"Cement Filler" and "Cement Floor Paint" (Pat'd.) By the combined use of these materials, cement floors will be made water, oil and dust-proof.

"Toxement" (Pat'd.) A waterproofing compound in powder form; two per cent of which added to Portland Cement, will waterproof cement-concrete.

## The Stowe-Fuller Co.

DISTRIBUTORS

1209 Rockefeller Bldg.

Cleveland, Ohio

## Huron

## Portland Cement Co.

1525 Ford Building

Detroit, Michigan

Mills at Alpena, Mich.

Some Cleveland work on which Huron Brand has been used:

Corrigan, McKinney & Company's New Blast Furnace, 40,000 Bbls.

B. of L. E. Building, 10,000 Bbls.

Rockefeller Building Annex 5,000 Bbls.

Upson Nut Company's New Steel Plant, 20,000 Bbls.

New Cuyahoga County Court House Floors.

## The Stowe-Fuller Co.

DISTRIBUTORS

1209 Rockefeller Bldg.

Cleveland, Ohio

# The Stowe-Fuller Company

## BUILDERS SUPPLIES

OFFICE AND EXHIBIT ROOMS

1209 Rockefeller Bldg.

Cleveland, Ohio

### REPRESENTING

Toch Bros., "R. I. W." Paints and Dampproofing Compounds

Huron Portland Cement Co.

Vulcanite Portland Cement Co.

Alpha Portland Cement Co.

LaFarge Non-Staining Portland Cement Co.

Sayre & Fisher Co., Face, Enamel and Porcelain Brick

Fallston Fire Clay Co., Face Brick

# FIRE BRICK A SPECIALTY

THE  
**NATIONAL**  
  
**CONCRETE FIRE PROOFING CO.**  
  
 INCORPORATED

GENERAL CONTRACTORS

*Reinforced Concrete Work a Specialty*

CITIZENS' BUILDING - - CLEVELAND, OHIO



*“On the wall—Off the Floor—  
 Out of the Way.”*

**K I N N E A R**  
**Pressed Radiators**

**Durable, Efficient, Light, Neat  
 Compact and Quick Acting**

**T**HESE are some of the advantages of Pressed Radiators. There are many more excellent features which you will not know until you try them yourself. *Call for them in your next specification.* It will pay you to have first hand knowledge of the most Modern Radiator on the market.

*The Pressed Radiator Company of America*

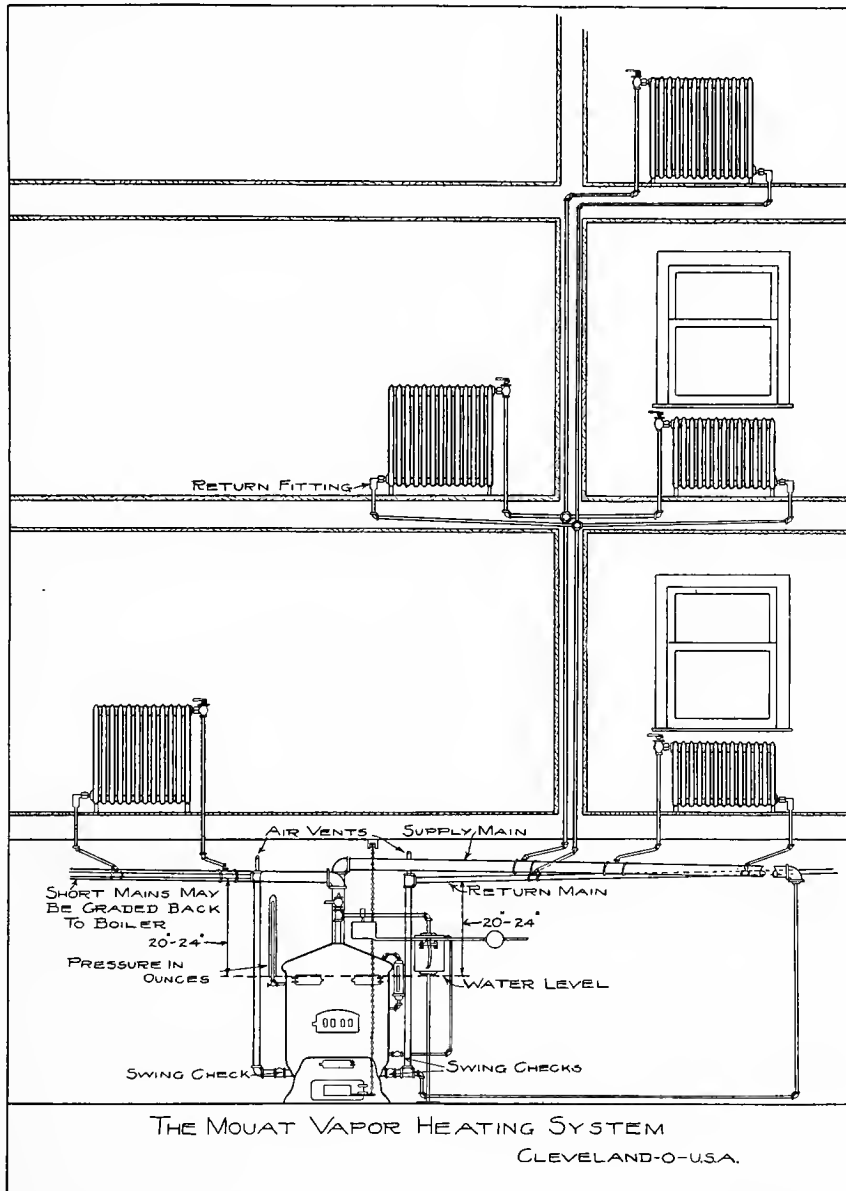
PITTSBURGH, PENNA.

J. L. BANCROFT, Cleveland Agent - - Citizens Bank Building



# The Mouat Vapor Heating System

with graduating supply valves capable of modifying the heat at each radiator



## The Mouat-Squires Company

Steam, Water and Vapor Heating

Cleveland, Ohio

# Pratt & Lambert

Incorporated

## Varnish Makers

### Factories

New York	Buffalo	Chicago
London	Paris	Hamburg
Bridgeburg, Canada		



## We Help Cleveland Grow

WITH the largest sash and door mill in Ohio, with special methods for quick service and very large stocks of frames, doors, sash and finish, we give quick delivery at all times.

Try us on a rush order.

Cleveland Window Glass & Door Company  
Woodwork Glass Paint  
South of Square

R. S. HALDEMAN, President

Established 1884  
Incorporated 1900

M. F. SHUGRUE, Sec. & Treas.

# LENNOX-HALDEMAN COMPANY PLASTERING

1101 Rector Building  
CHICAGO  
Telephone, Central 1758

512 Cuyahoga Building  
CLEVELAND, O.  
Telephone, Main 475

---

## CLEVELAND CONTRACTS

Cuyahoga County Court House

Cleveland Post Office Building

The Pope Building



## How To Make Your Home Attractive

Every house owner today is interested in the question of home decoration. The home is the place where we have to live and as a person's feelings are governed largely by the atmosphere by which he is surrounded, it is important that we should make the home as attractive and artistic as possible. With the large number of paints, stains, enamels and varnishes which are on the market today, this is not as much of a problem as it was to select attractive color schemes and in this way to give your home a pleasing and harmonious appearance. The problem, however, lies in selecting the *right finish* with which to do the work. We carry a full line of Sherwin-Williams Paints, Stains, Enamels, Varnishes and Stencil Materials which have stood for the highest quality for over forty years and are therefore suitable for your every requirement.

Come to our store and let us plan some color schemes together. We will be glad to talk this matter over with you at any time. The above illustration is an actual photograph of a room finished with Sherwin-Williams Products.

### Sherwin-Williams Specifications for the above room

**Ceiling**—S-W Flat-tone Cream, No. 382  
**Wall**—S-W Flat-tone System Effect, No. 16  
**Wall and Fabric Decoration**—S-W Stencil No. 18  
**Woodwork**—Birch: S-W Handcraft Stain, Mahogany, varnished and rubbed  
**Draperies**—Quality "A" Fabrics

**Floor**—S-W Mar-not Varnish  
**Mantel**—Knoxville Furniture Co., Modern Mantel, No. 1019  
**Wall Material**—Beaver Board, Rough or Smooth Plaster or Canvas  
**Electric Fixtures**—The Morreau Co., Cleveland, O.

## THE J. C. WILMOT COMPANY

72 PUBLIC SQUARE

::

::

::

CLEVELAND, OHIO

# Cleveland Expanded Metal Lath

---

OLD FASHIONED  
GALVANIZED CHARCOAL  
IRON SHEETS

GRIFFITHS' REGISTERED  
METAL CEILINGS

CHARCOAL IRON  
TIN PLATE

ARMOR PLATE—40 Lbs  
STORM KING—25 Lbs  
METAL SHINGLES

## The Garry Iron and Steel Company

N I L E S , - O H I O

---

BRANCH OFFICES:—CLEVELAND

NEW YORK

# CORBIN HARDWARE

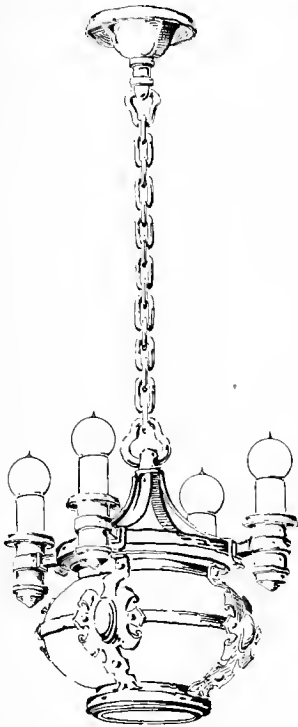
**C**Handled exclusively by us for  
over half a century ❁ ❁

Its use on a large proportion of our  
best residences and office buildings  
testifies to its artistic quality and  
durability. ❁ ❁ ❁ ❁ ❁

*The* W. BINGHAM COMPANY

748-750 SUPERIOR AVENUE, N. W.

CLEVELAND, OHIO



Originality  
Quality  
Service

## The Cleveland Gas & Electric Fixture Company

940 Prospect Avenue  
Cleveland

Makers of Lighting Fixtures

Bell, East 1396

LATEST CREATIONS IN  
FIRE PLACE WORK

Cuy. Princeton 566

## The Wadsworth-Adelson Company

SUCCESSORS TO C. J. WADSWORTH

WOOD MANTELS  
TILE BATH ROOMS  
TILE FLOORS  
TILE MANTELS  
QUARRY TILE PORCHES  
GAS LOGS AND ANDIRONS

6024 Euclid Avenue

CLEVELAND, OHIO

H. ADELSON, Manager

## Parquet and Hardwood Floors SCHULKINS & COMPANY

1607 Prospect Avenue

TELEPHONES : — Bell N. 642

Cuyahoga, Central 3274-W

# T. H. BROOKS & CO.

CLEVELAND, OHIO

## Structural and Ornamental Iron Work

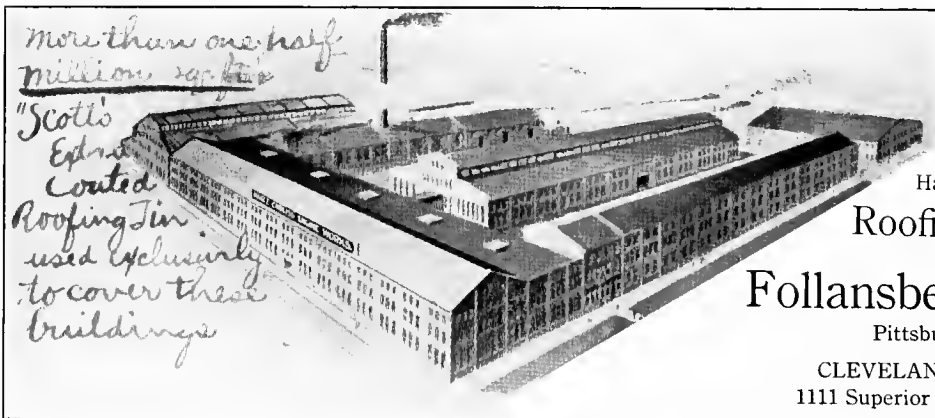
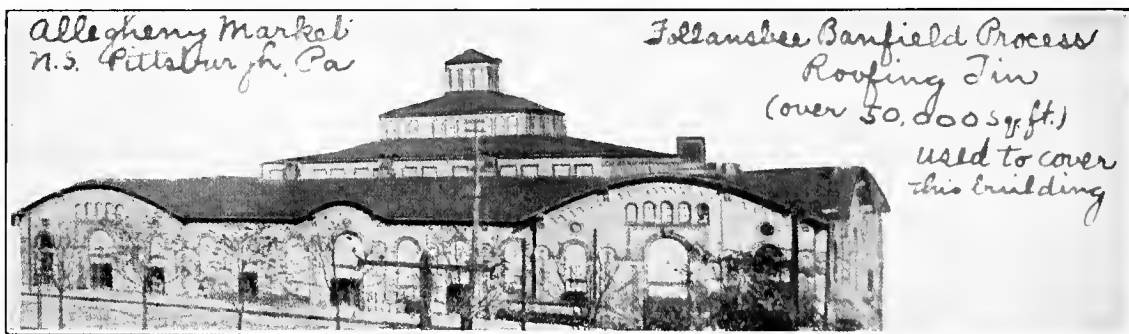
### The MILFORD PINK GRANITE

For the Cuyahoga County Court House and  
The First National Bank, at Cleveland, Ohio

WAS FURNISHED BY THE

WORCESTER and  
MILFORD, MASS.

## WEBB PINK GRANITE CO.



The only makers  
Hammered Open Hearth  
Roofing Tin (in America)

## Follansbee Bros. Co.

Pittsburgh, Pa.

CLEVELAND BRANCH  
1111 Superior Avenue Viaduct

WM. U. FOLLANSBEE, JR.

District Sales Manager

# The Forest City Steel & Iron Company

STRUCTURAL STEEL  
HEAVY WIRE WORK

R. L. WEBB, President  
C. B. ELLINWOOD, Vice Pres. & Treas.  
C. A. ELICKER, Sec'y  
C. G. ROBBINS, Engineer

CLEVELAND, OHIO

# HERMAN A. HARRIS

## Builder

HARDWOOD INTERIORS

Office and Mill, 1897 W. 3rd St.

CLEVELAND

## THE STERLING & WELCH CO.

*House Furnishers and Decorators*

*Designs and Estimates on all kinds of Interior Decorating  
and Furnishing prepared free of cost.*

***Carpets, Rugs, Furniture, Draperies, Lace Curtains,  
Lamps, Lighting Fixtures, Wall Paper, Interior Decorations.***

***1225 Euclid Avenue***

# THE MARTIN BARRISS COMPANY

---

---

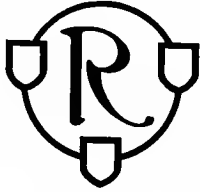
**I**MPORTERS and Manufacturers of  
Hardwood Lumber and Logs.

Offer a very complete assortment of Mexican, African and Cuban Mahogany, White Mahogany, Circassian Walnut, Satinwood, and all high grade, foreign and native Cabinet Woods, in logs, plank, boards and veneers.

TWENTY FORTY - EIGHT  
WEST THIRD STREET







**I**N designing and executing interiors, decorations, furniture and metal-work, we are glad to work with the architect

*The*  
**Rorheimer-Brooks Studios**  
*Decorators and Furnishers*  
**1931 East Ninth Street, Cleveland**

Residence  
Refrigerators  
*of* Individuality

Refrigerator Equipment of the highest possible efficiency for Institutions, Clubs and Hotels

*The* Jewett  
Refrigerator  
Company

BUFFALO, NEW YORK  
E s t a b l i s h e d 1 8 4 9

## The Cuyahoga Roofing Company

Slate and Tile Roofing

604 The Columbia Building Cleveland

**Q**UANTITY of slate and tile considered, we claim that **we do better work and that our prices are more reasonable** than those of any other firm in Cleveland.

**Our exceptional facilities** enable us to make good on this assertion.

As a proof that the merits of our claim are **recognized by the architects and builders** of Cleveland we point to the constantly **increasing and liberal patronage** we are receiving.

We invite all prospective builders to our office to see our samples and get our prices.

Room 604, 112 Prospect Avenue, corner E. 2nd  
Both Phones



Euclid Avenue Temple : Lehman & Schmitt, Architects

## “BOKHARA” BRICKS

used in the above building, embracing shades of Brown, Red, Blue, Maroon, Bronze and Gold.

Manufactured by  
**Hydraulic-Press Brick Company**  
900 Schofield Building, Cleveland, Ohio

# "Standard" Tiled-in Baths



"Carlisle", Plate P 167

are daily becoming more popular on account of their many noteworthy features. They have been specified for installation in many of the finest homes and especially the "better class" apartments and hotels, to which they are admirably adapted.

This type of bath is especially desirable where a shower is used in connection with the bath, as the tiled-in back and sides prevent any water that may splash out of the shower curtain from draining back of the tub, as is often the case with the ordinary fixture.

The "Standard" Tiled-in baths are pleasing in appearance, commodious, highly sanitary, convenient in use, thoroughly efficient, and, where recesses in the bath rooms must be utilized, are the only logical fixtures to install.

"Standard" Tiled-in Baths bear the "Standard" "Green and Gold" Guarantee Label, a mark of superior quality, and an assurance of perfect satisfaction and protection to both Architect and Owner.



"Malvern", Plate P 168

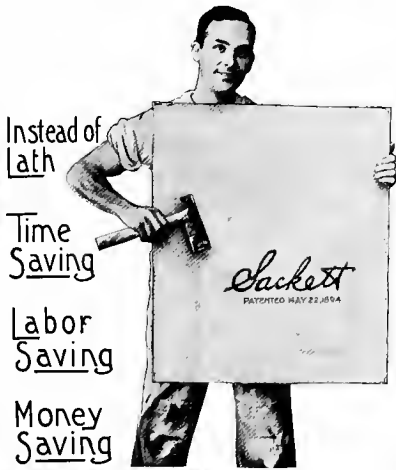
## Standard Sanitary Mfg. Co.

General Offices, Pittsburgh, Pa. Cleveland Showroom, 648-652 Huron Road, S. E.

### Offices and Showrooms:

New York.....	35-37 W. 31st Street	Louisville.....	319-323 West Main Street
Boston.....	John Hancock Building	Toronto, Can.....	59 Richmond Street, E.
Chicago.....	415 Ashland Block	Montreal, Can.....	215 Coristine Building
St. Louis.....	100-102 North Fourth Street	Houston, Tex.....	Cor. Preston and Smith Sts.
Philadelphia.....	1123 Walnut Street	New Orleans.....	Cor. Baronne and St. Joseph Streets
Pittsburgh.....	949 Penn Avenue	San Francisco, Cal.,	1303-04 Metropolis Bank Building
Cleveland.....	648-652 Huron Road, S. E.	Nashville, Tenn.....	315-317 Tenth Avenue, S.
		London, Eng.....	57-60 Holborn Viaduct, E. C.

# Sackett Plaster Board



*There is no feature in SACKETT Plaster Board that is not a profitable one to the Architect and the man who pays the bill.*

## TO YOUR CLIENT

**SACKETT Plaster Board means SAFETY, DURABILITY, COMFORT and ECONOMY.**

First used  
in 1891  
Perfected  
in 1908

## EFFICIENCY

is *active power* to effect a definite result—the power that *actually does* as distinguished from that which *may do*. The definite result of a perfect wall is obtained by using SACKETT Plaster Board instead of lath.

## We Say to You

That SACKETT Plaster Board will not burn and is an efficient fire stop—that it deadens sound—that it positively does not contract or expand, therefore prevents plaster cracks—that it affords a perfect plastering surface, insuring sharper wall expression—that it makes a building cooler in summer, and warmer in winter even to the extent of reducing fuel bills—that when applied direct to studding, etc., and plastered over according to our simple directions, makes walls so solid and substantial, so much better than the old way, that a building in which SACKETT Plaster Board is used, AND USED RIGHT, stands as a monument of prestige and excellence to the man who builds it.

These are some of the potent reasons why you should specify SACKETT Plaster Board instead of lath.

### ANOTHER IMPROVEMENT —

a masterpiece of efficiency and economy—is provided for you in PYROBAR GYPSUM TILE. Approved by National Board of Fire Underwriters. Has all the advantages of clay tile and *many other distinct advantages clay tile does not possess*. Composed of GYPSUM, the material which has taken its proper place in fireproof construction, as evidenced by the approval of fire underwriters and other official recognition.

**HERE ARE TWO IDEAL PRODUCTS**—materials which justly merit your approval and use. If you do not know their great value—of vital interest to you—let us help you to investigate them at once—*Both of us are losing until you know the facts.*

**ASK FOR OUR LITERATURE, OR A REPRESENTATIVE.**

## UNITED STATES GYPSUM COMPANY

New York

Cleveland

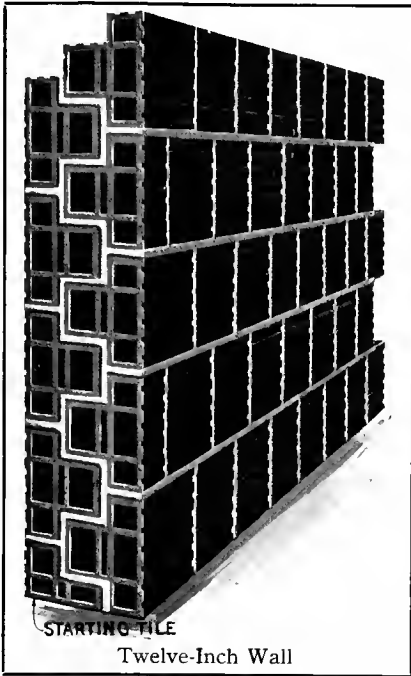
Chicago

Minneapolis

Kansas City

San Francisco





Twelve-Inch Wall

# THE DENISON INTERLOCKING TILE

☐ The best and most economical wall-building Tile on the market.

☐ For Stucco Houses, backing for Face Brick, Partitions, etc.

☐ Permissible load under Cleveland, Ohio, Building Code over Five Tons per square foot of wall area.

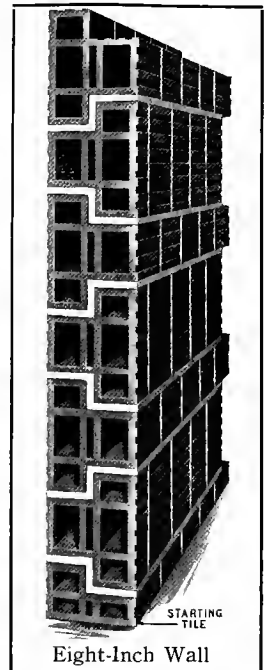
☐ Warm in winter, cool in summer, moisture-proof, sound-proof, vermin-proof.

*FOR FULL DESCRIPTIONS APPLY TO*

## The Ohio Clay Company

1337 Schofield Building

CLEVELAND



Eight-Inch Wall

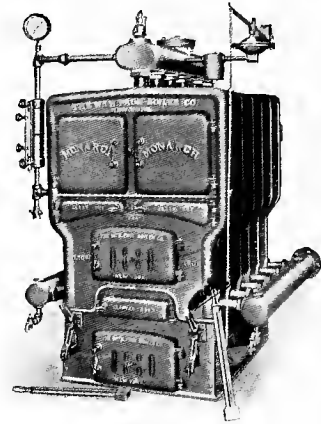


“VOLUNTEER”

FACTORIES  
Norwich, Connecticut  
Meadville, Pennsylvania

Cleveland Office  
BUILDERS EXCHANGE

CHAS. C. BAILEY  
Manager



“MONARCH”

# The Wm. H. Page Boiler Company

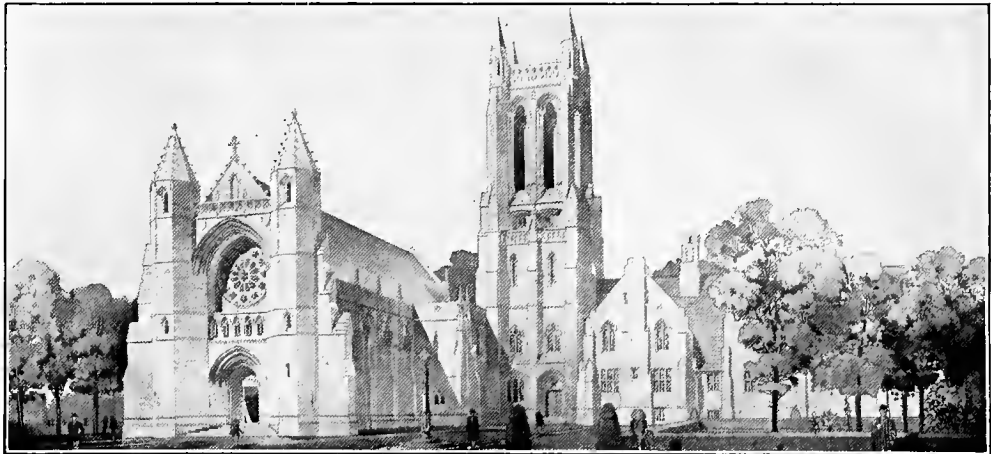
9-15 Murray Street, - New York

Branches: —Boston

Philadelphia

Chicago

Cleveland



The Euclid Avenue Presbyterian Church, Being Finished with Philippine Mahogany

Philippine Mahogany, A Most Beautiful and Durable Wood for Interior Finish  
and at comparatively moderate cost.

The Nicola, Stone & Myers Co. — The Lakewood Lumber Co.

(IMPORTERS)

Cleveland, - Ohio



BELL, MAIN 896

CUYAHOGA, CENTRAL 6124

THE CRANE GLASS AND MANUFACTURING COMPANY  
BEVELERS

Jobbers of POLISHED PLATE AND WINDOW GLASS

Manufacturers of Mirrors

AND

*The Crane Patent All-Glass Show Windows*

341 Hudson Street, NEW YORK CITY, N. Y.

204-214 St. Clair Ave. N. E., CLEVELAND, OHIO

*The A.*  
**TEACHOUT**  
*CO.*

SASH  
DOORS  
GLASS  
MANTELS



FRAMES  
FINISH  
PORCH AND  
STAIRWORK

CLEVELAND, OHIO.

Buy your Drawing Materials from

**E. G. SOLTMANN** (ESTAB. 1880)

125 E. 42d St. New York, After May 1st, 1911, T-Square Building,  
134-140 W. 29th St., Near Penn. Station

“IN-KO-GRAF” Reproductions of Typewritten Specifications.  
*Write for Samples and Prices*





BRONZE ENTRANCES

Hudson County Courthouse, Jersey City, N. J.

Hugh Roberts, Architect

**Bronze Doors**

**Entrances**

**Vestibules**

**Lamps**

**Stairs**

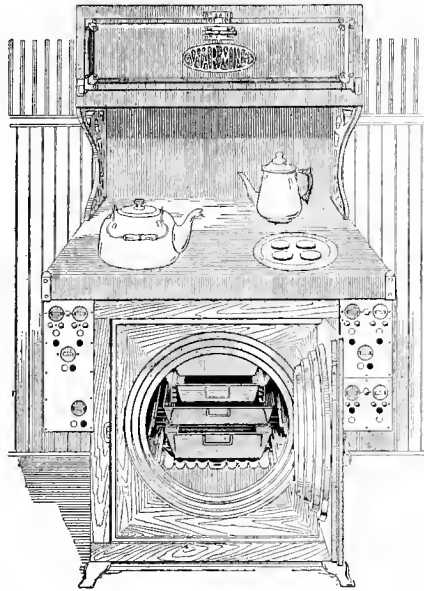
**Elevator Enclosures, Etc.**

Furnished complete by the W. S. Tyler Company

**Ornamental Iron and Bronze**

**THE W. S. TYLER COMPANY**

CLEVELAND, OHIO



**Y**OU can increase the value of your property—to yourself—to your family or to your tenant—by installing electricity. It is more convenient and more attractive than any other form of lighting. The cost is decidedly economical. It has no equal as a means for cooking. Special offer to houses using other illuminants. Heating and cooking devices sold and demonstrated.     •     •     •     •     •

---

---

## The Illuminating Company

SALES DEPARTMENT,

232 SUPERIOR AVENUE, N. E.

North 54

Central 3302-W

## The Schneider Plumbing Co.

2024 Euclid Avenue

For the Attention of Architects



AN IDEAL BATHROOM—(If properly Installed)

The cut represents the one in our Show Window and is at your disposal for measurements and inspection.

CUY. CENTRAL 107-W

MARTIN ROSE, Prop.

## The Rose Iron Works

Manufacturers and Designers of

**Ornamental Iron and Brass**



Railings, Fences, Gateways,  
Lamps, Brackets, Signs and  
Grille work of all kinds.



1916 Cherry Ave.

Cleveland, O.

Main 2802

Central 5043-W

# CONCRETE UNIT SYSTEM COMPANY

## Interchangeable Units

507-511 Champlain Ave.

CLEVELAND

☑ Metal (column, floor, wall and footing) Tie.

☑ Hand bending machines for bending reinforcing irons and U irons.

☑ Adjustable standards for holding up beam forms.

☑ A system that enables a contractor to erect any size column, beam and floor, without fitting or nailing.

☑ A complete system of lumber units.

☑ A positive system of metal bracing.

☑ A rapid method of erecting.

☑ An easy way of wrecking.

☑ Material can be used continuously on job after job — less than 15% waste.

☑ A great saving in labor.

☑ Let us demonstrate: full size working models at this exhibit.



Heating and Ventilating pipe work a specialty.

Contractors for all kinds of metal work, including Tin Clad Fire Doors.

# The L. Dautel & Son Company

***BUILDING CONSTRUCTION***

A. L. OPPENHEIMER, President-Manager

Enterprise Electrical Co.  
Established 1892, Incorporated, 1910

C. BERG, Secretary

## The Enterprise Electric Construction Co.

**Engineers Contractors Supplies**

5307 Euclid Avenue

:

:

CLEVELAND, OHIO

## The Masters & Mullen Construction Co.

**REINFORCED CONCRETE  
CONSTRUCTION**

Rose Building

:

CLEVELAND, OHIO

# The Bolton-Pratt Company

## GENERAL CONTRACTORS

### Mason Work *and* Reinforced Concrete

802 Columbia Building

:

CLEVELAND, OHIO

PHONE MAIN 2751

## BLUE PRINTS

---



---

Largest and best equipped  
plant in Cleveland. We  
make a specialty of *Solar*  
*and Electric Vacuum Printing*

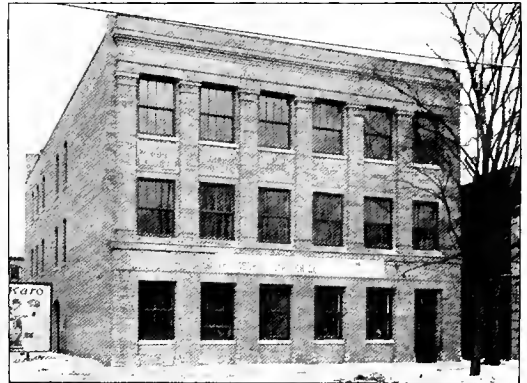
---



---

## City Blue Printing Co.

Williamson Building - Cleveland, O



Geo. J. Fischer, Pres. Frank L. Jirouch, Sect. & Treas.

We beg to announce that we are located  
in our new studio, 4821  
Superior Ave., N. E.

The Fischer & Jirouch Co.  
Decorative Sculptors

Both Phones

## IRA S. GIFFORD

### PLASTERING CONTRACTOR

1814 East 63rd Street

*Both Phones and The Builders Exchange*

**C. E. and A. Y. Gowen, Residences**  
Magnolia Drive  
**Hubbell & Benes, Architects**  
**E. S. Burke, Residence**  
Magnolia Drive  
**J. Milton Dyer, Architect**

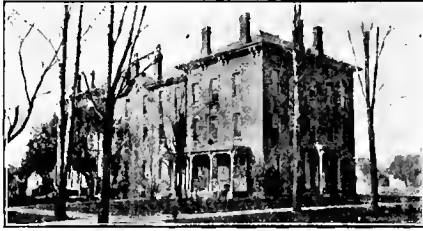
**M. A. Hanna, Residence**  
Cedar Road  
**Abram Garfield, Architect**  
**Infirmity Group**  
Warrensville Farm Colony  
**J. Milton Dyer, Architect**

**Wade Park Branch Bank**  
The Cleveland Trust Company  
**Geo. B. Post & Sons, Architects**  
**J. H. Wade, Country House**  
Gates Mill, Ohio  
**Hubbell & Benes, Architect**

# Old Buildings

(Brick or Frame)

## Made to Look Like New



German Wallace College, Berea  
Before Veneering



Same Building, with Addition Veneered by  
Us Seven Years Ago and in the  
Same Substantial Condi-  
tion Today

Old buildings like above cut with a rock face veneer and made to look like new buildings. Estimates cheerfully furnished. Write

## The Euclid Plastering & Contracting Co.

Member Builders Exchange

MR. JOHN MILLER, General Manager

305 Cuyahoga Building

Bell, Main 3122-J

Central 5853-R

Residence, Princeton 1884-W

A few of the buildings, the plastering of which we  
have completed :

Annex, Boys' School  
Carlin Building, Prospect Street  
Columbia School  
W. W. Chamberlain, Magnolia Drive  
Caine's, F. P., Residence  
Cobb's, P. L., Residence  
Columbia Apartments  
Cleve. Electric Illuminating Co.  
Euclid Bowling Alleys  
Fowler School Auditorium  
Fern Hall  
Glidden Varnish Co.  
Goodrich Rubber Co., Akron, O.  
Hippodrome Building  
Addition to Nottingham Convent

O'Neil Building, Akron  
Kirby Building  
Kinsman Ice Cream Co.  
Longwood School  
Mayflower School  
Miles School  
Milford School  
Morton's, W. C., Hotel  
National Carbon Co.  
Normal School  
Shauman Building  
Technical High School  
Town Hall, Chardon, O.  
Western Reserve College  
Willard School

TILE & SLATE ROOFING

AUTOMATIC FIRE DOORS

METAL WINDOWS

## THE KASCH ROOFING COMPANY

We manufacture puttyless skylights that do not leak  
1119 SUPERIOR AVENUE

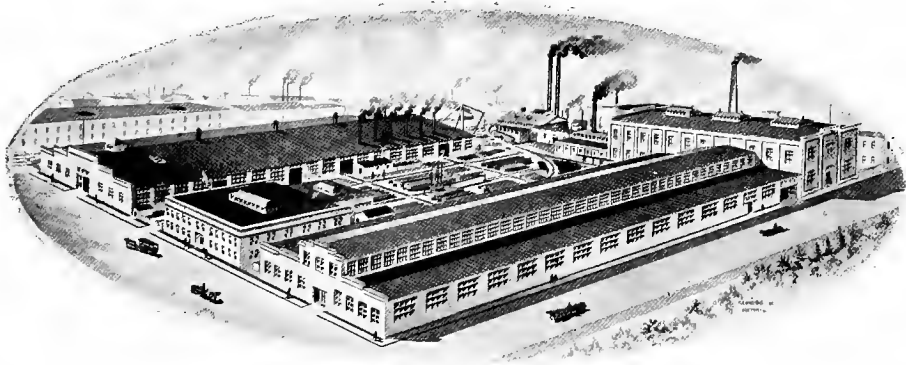
EXPANSION SEAM COPPER WORK

VENTILATORS

## Warden & Leese

1905 Prospect Ave., S. E.  
CLEVELAND

Plumbing, Heating, Gas Fitting, Sewage



## The Republic Structural Iron Works Co.

Structural and Ornamental Iron Works  
Floor and Sidewalk Lights

Lakeside Avenue and East 53rd Street,

CLEVELAND, OHIO



# Batterson & Eisele

Importers and Workers of

## Marble, Stone & Granite

Roman and Venetian Mosaics for Floors,  
Walls, Mantels, Etc.

**T**HE accompanying illustration is from a photograph of the banking room, First National Bank, Cleveland, Ohio. J. Milton Dyer, Architect.

Office  
Times Building, New York

Works  
Edgewater, N. J.



## J-M ASBESTOS ROOFING

"The Roofs of Many of the Most Prominent Factories in the Country are our Permanent Exhibits."

## KEYSTONE HAIR INSULATOR

"Architects specify it because of its Unrivalled Properties for Sound-Deadening and Insulation against Heat and Cold."

## J-M ASBESTOCEL PIPE COVERING

"Channels confining *Dead Air* run *around* (not lengthwise) the Pipes; hence *most efficient* for Medium Pressure and Hot Water Heating Systems."

AT YOUR SERVICE:

**H. W. JOHNS-MANVILLE O.**

NEW YORK

CLEVELAND

MILWAUKEE

Branches in all large cities



# Hugh Huntington & Son

JOHN HUNTINGTON  
Successor

Manufacturer of

# Shield Brand Roofing

257 The Arcade, Euclid Avenue

CLEVELAND

# The Morreau Co.

## Lighting Fixtures



Euclid Avenue and East Eighteenth Street  
Cleveland, O.

### "SWARTWOUT" ROTARY BALL-BEARING VENTILATOR (PATENT APPLIED FOR)



Removes  
**COLD  
FOUL  
AIR**

HANDLES 1-3 MORE  
AIR THAN  
STATIONARY  
TYPES

Rotates on ball bearings so that its direction always makes the gentlest breeze effective in removing air. Air current makes but ONE right angle turn. Easily supplied with glass top; but closing of dampers does not shut out light. Weather-proof, dust-proof, safe, easily operated.

**THE OHIO BLOWER CO.**  
CLEVELAND, OHIO

## David Lupton's Sons Company

PHILADELPHIA, PA.

**Lupton Rolled Steel Skylights**  
For all Buildings

**Lupton Hollow Metal Windows**  
With Underwriter's Laboratories Label

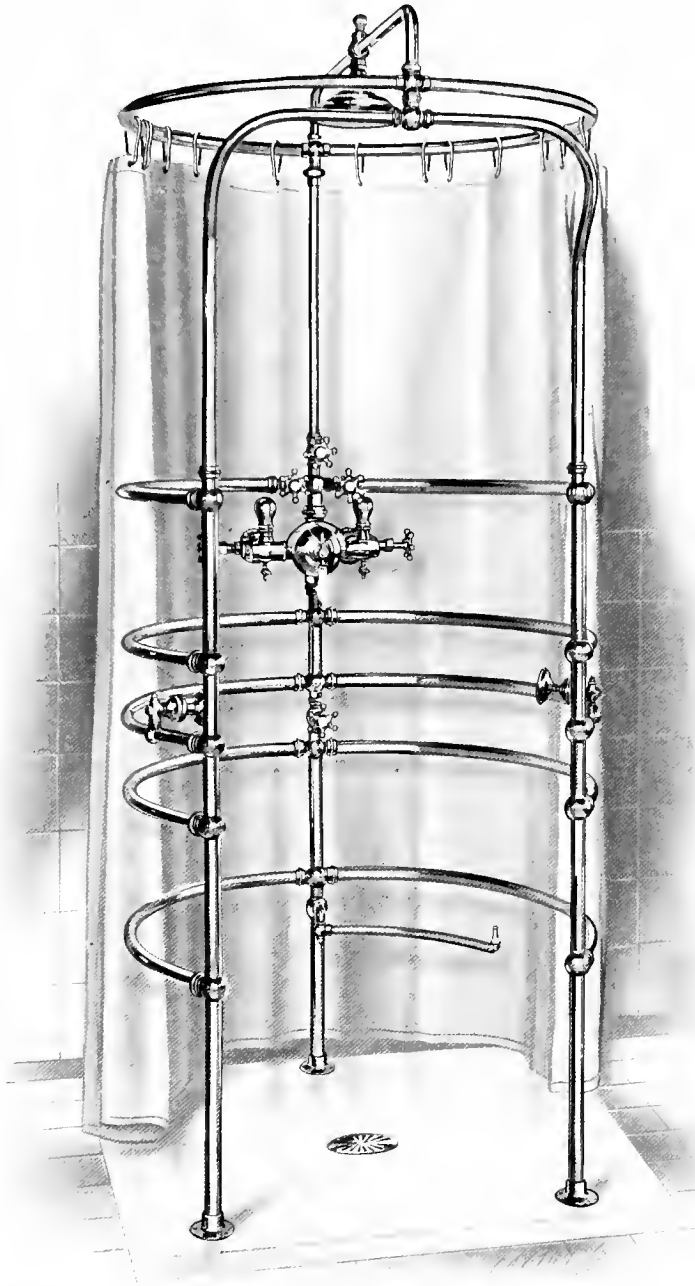
**Pond Operating Device**  
For all Types of Windows

**Pond Continuous Sash**  
For Monitor and Sawtooths

**Lupton Steel Sash**  
For Side Walls

---

A. G. HATHAWAY, Agent  
512 Cuyahoga Building  
CLEVELAND



The Sanitary Company  
Cleveland, O.



THE GORHAM COMPANY  
Architectural Bronze

FIFTH AVENUE  
NEW YORK



FOUNDRIES AND WORKS PROVIDENCE, R. I.







