

RX-4

90.25 - 2041 - Sumitomo Propellor Plant - Kanzaki - 22 Oct & 31 Oct '45.

(check with Lt. Sullivan for notes on dispersal, production, etc.)

Plant was largest producer of props in Empire. Well constructed plant. Steel framed. Multi story bldgs were steel frame well reinforced conc. floors. Office bldgs same.

Plant built in period between 1937 and 1941. Sumitomo mf'd props at Sakurajima Plant (263A) prior to this.

Plant destroyed (75%) in two fire raids (See Sullivan for complete info)

Use of wood blocks for paving over the conc. floors was contributing factor in its destruction by flames.

Hot flames produced by burning of blocks buckled the exposed steel and in several bldgs caused entire collapse of structure.

Aerial photos do not show inward buckling of outside walls and columns and collapse of roof ~~was~~ trusses.

Engine test cell bldg (for testing of props) was found and it was this that caused mistake identity of plant where it was 1st seen in photos.

Secondary roof built over platting area after main roof had burned off (bldg S-3) Never sheathed however and impossible to detect in air photos.

Adequate air raid shelters were spotted throughout the plant.

PHOTO-EVALUATION
KOBE-OSAKA AREA

31 October 1945

PIC-R-REPORT No. 4.

RX-4 - 90.25-2041 SUMITOMO PROPELLOR PLANT, KANZAKI.

This plant was the largest producer of propellers in the Empire. Well constructed, modern plant, built in the period between 1937 & 1941. Prior to this Sumitomo made propellers at the Copper works in the Sakurajimia plant (target 263A).

The plant was about 75% destroyed in two fire raids. Use of wood blocks for paving of floor areas was a contributing factor in its destruction. Hot flames, produced by the burning of floors, served to weaken the exposed steel framing causing its collapse. Aerial photos did not adequately show the inward buckling of the outside walls and columns and the collapse of roof trusses. Photographs taken on the scene will show this condition.

An attempt had been made to build a secondary roof over the plating area after the main roof had burned off. This was never sheathed however and it was impossible to distinguish in aerial photos.

Plans for dispersal were made as early as November of 1944. Dispersal of machine tools was subsequently carried out to Kainan, Hirono & Nishinomiya.

PIC-R-Report No. 1

18 October 1945

RX-1 90.25-263A Sumitomo Metal Co., Sakurajima Plant

This plant manufactured aluminum and duraluminum sheets and structural sections for the leading aircraft producers such as Mitsubishi, Kawasaki and Kawanishi. Some copper alloys were also produced.

The buildings on the SE edge of the property manufactured propellers and was known as the Sakurajima Propeller Plant.

Mr. Tahji, the plant manager, stated that the plant employed 10,000 people, but this figure dropped 30% to 50% after the fire raids. Skilled workers were scarce and a training school was maintained--located at the SW edge of property.

Mr. Tahji also stated that orders were received in January and February, from the government to start dispersal of manufacturing facilities. In April and May a quantity of machinery was moved to the sub-cellars of several department stores in Osaka. To avoid duplication this phase of investigation is being left to the Aircraft Team.

Bomb damage estimates appear conservative. For the most part, destruction of buildings was complete though no attempt was made to survey damage. It seems that aerial photographs adequately reveal the damage, but a knowledge of the effect of HE bombs would be required to assess it properly.

PIC-R-Report No. 1

18 October 1945

RX-1 90.25-263A Sumitomo Metal Co., Sakurajima Plant

This plant manufactured aluminum and duraluminum sheets and structural sections for the leading aircraft producers such as Mitsubishi, Kawasaki and Kawanishi. Some copper alloys were also produced.

The buildings on the SE edge of the property manufactured propellers and was known as the Sakurajima Propeller Plant.

Mr. Tahji, the plant manager, stated that the plant employed 10,000 people, but this figure dropped 30% to 50% after the fire raids. Skilled workers were scarce and a training school was maintained--located at the SW edge of property.

Mr. Tahji also stated that orders were received in January and February, from the government to start dispersal of manufacturing facilities. In April and May a quantity of machinery was moved to the sub-cellars of several department stores in Osaka. To avoid duplication this phase of investigation is being left to the Aircraft Team.

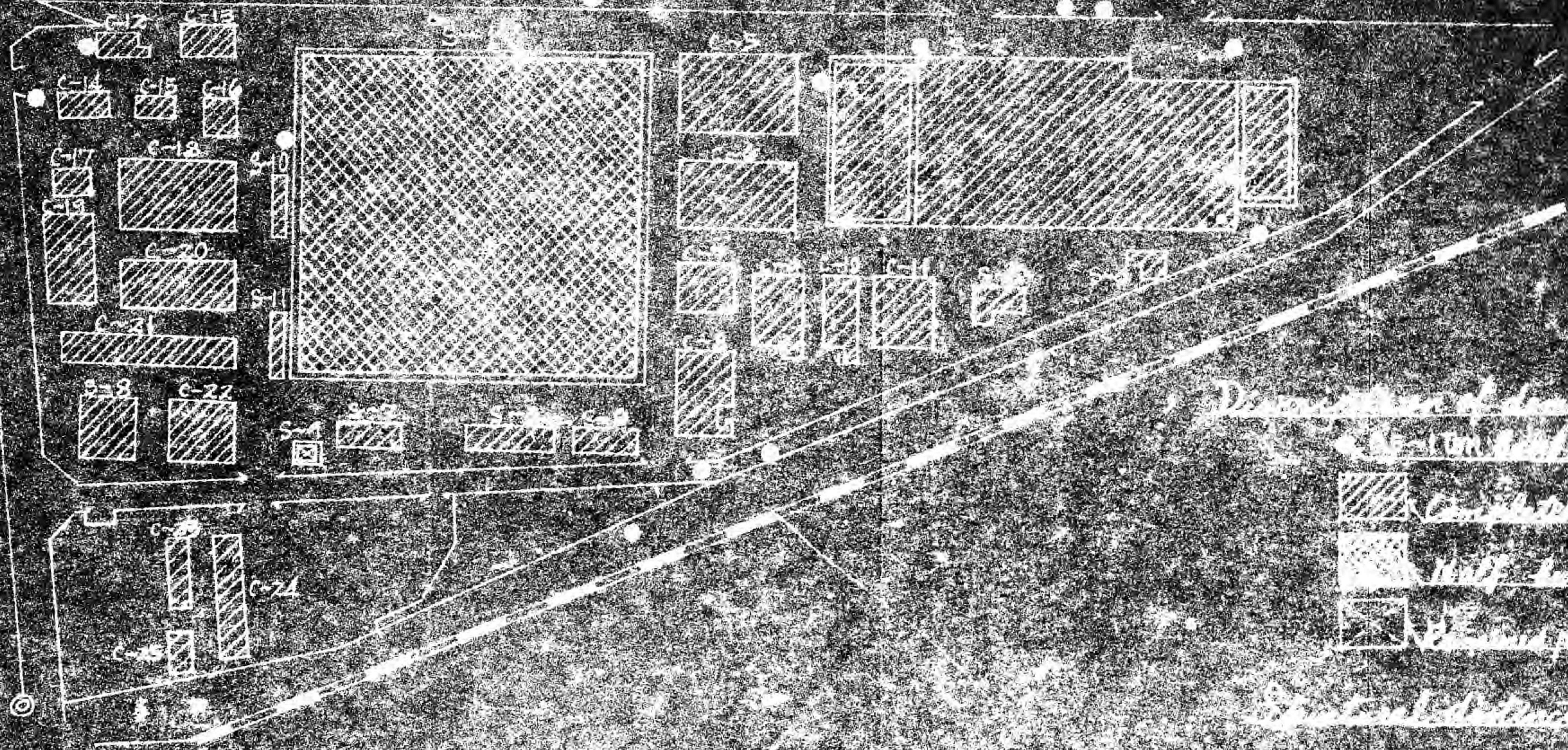
Bomb damage estimates appear conservative. For the most part, destruction of buildings was complete though no attempt was made to survey damage. It seems that aerial photographs adequately reveal the damage, but a knowledge of the effect of HE bombs would be required to assess it properly.

SAKURAZIMA PLANT (AT 6/1)

Building No.	Name of Building	Structure	Area (M2)	No of Machines Contained Damaged	Note
S - 1	Hub plant	Iron frame	16,173.8	404	
S - 2	Blade factory	Iron frame	7,616		
		Built of wood	3,333	76	
S - 3	Operation room	Built of wood	396	5	
S - 4	do	do	66		
S - 5	do	do	165		
S - 6	do	do	297		
S - 7	do	do	do		
S - 8	do	do	495		
S - 9	Transforming Sta.	Iron frame	132		
S - 10	Preperation suits room	Built of wood	165		
S - 11	do	do	do		
C - 1	Office	do	1,943.7		
C - 2	do	do	148.5		
C - 3	Preparation suits room	do	174.7		
C - 4	do	do	66		
C - 5	do	do	2,765.4		
C - 6	do	do	2,475		
C - 7	Tool shop	do	396		
C - 8	Office	do	1,115.4		
C - 9	Dining	do	523.6		
C - 10	do	do	422.4		
C - 11	do	do	633.6		
C - 12	Warehouse	do	343.2		
C - 13	Office	do	508.2		
C - 14	Gard room	do	356.4		
C - 15	Miscellaneous sales dept.	do	429		
C - 16	Time record room	do	264		
C - 17	Office	do	178		
C - 18	Preperation suits room	do	1,953.6		
C - 19	do	do	1,072.5		
C - 20	Dining room	do	1,557.6		
C - 21	Warehouse	do	1,570.8		
C - 22	Office	do	643.5		
C - 23	Warehouse	do	297		
C - 24	do	do	475.2		
C - 25	do	do	165		

Sakurajima plant

Air raid in 24th July



Distinction of damage

- Completely burned
- Half-burned
- Remained perfectly

Distinction of building

- Iron frame bldg.
- Wooden bldg.

RX-1

90.25-263A

SUMITOMO METAL CO.

18 October 1945

Manufactured aluminum and duraluminum sheets and structural sections for A/C producers such as Mitsubishi, Kawasaki, Kawanishi. Produced some copper alloys. Buildings at SE edge of property were Prop. plant and was first Sumitomo Propeller Plant prior to new factory at Kawazaki (2041).

Orders for dispersal received from Imperial Government in Jan. and Feb. of 1945. Actually dispersal did not start until April and May.

Dispersal points were sub-basements of several department stores in Osaka (Sago Dept. Store and Matsuayaka Dept. Store).

Bomb damage terrific! Ground photos will show this.

Plant built on filled land and typhoon of Sept. here flooded parts of plant property.

Talked with Mr. Takji - Plant manager.

Notes and photos of physical damage from P. Casamajor.

Wooden buildings on property have been entirely blown to pieces. Steel framed buildings for the most part had suffered 100% structural damage. ~~Members~~ near 4000 lb. bomb craters were bent and twisted beyond use. Machinery remaining in plant probably put out of commission judging from shrapnel hits. In some cases columns were torn from their footings and was major cause of truss collapse.

Main Mfg buildings were steel frame - covered over with corrugated metal siding. Concrete floors in all buildings.

Bomb plots and functional plans will be obtained from Phys. Damage Team.
(Check with Casamajor!)

Sumitomo has propeller plants at Kawazaki, Tsu (Near Nagoya) and Shizuoka.

Plant employed about 10,000 people - 30 to 50 % reduction after fire raids on Osaka. Skilled labor scarce - training school was maintained.

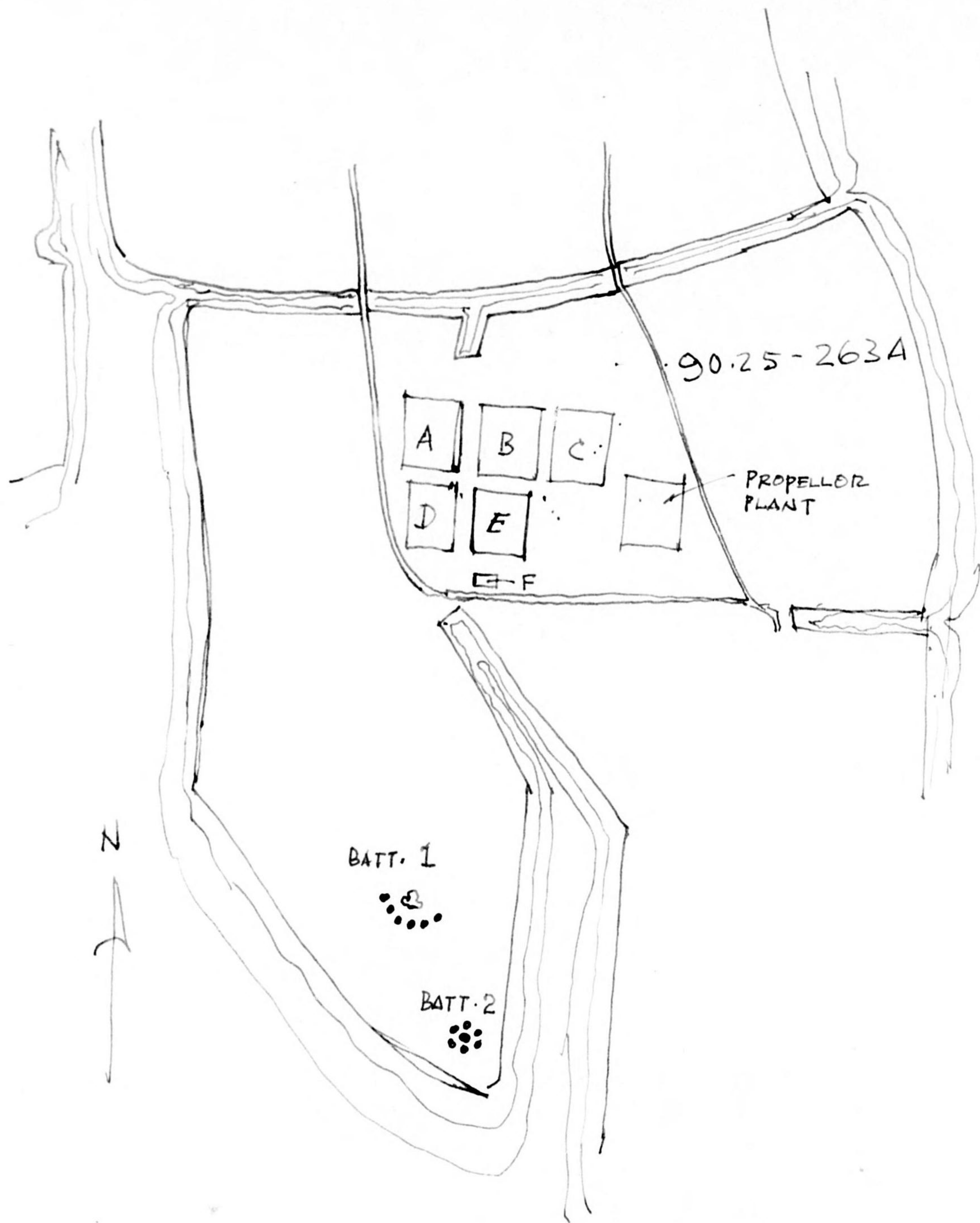
Impossible to access complete damage from aerial photos unless some knowledge of effects of HE are known.

Air raid precaution: Several spotters towers were used. Air raid shelters were built adjacent to production buildings. Holes or trenches were dug along some foundations walls of the buildings. These were covered over timber and earth.

Production suffered considerably in dispersion program.

Raw materials received by rail, barge and truck.

R-SKETCH-Nº 1



24



CONFIDENTIAL

SCALE IN FEET

1:3600



AC/AS INTELLIGENCE PHOTOGRAPHIC DIVISION
PHOTO INTELLIGENCE SECTION

**SUMITOMO PROPELLER
PLANT,
AMAGASAKI, JAPAN**

TARGET NO.
90.25/2041



PHOTOGRAPHY OF
28 JAN 1945

(3)

一、爆彈、落下場所及種類

Locations & types of dropped bombs :

九(五七) 試作工場 研究本館裏 back of Main Laboratory

九(五九) 保安課 労働課 五工場 南材木里場 Internal

Security, Labor, Lumber Yard areas

10(01) 男子更衣室、材木里場 Men's Locker, Lumber Yard

一、二、三工場 (No. 1, 2, 3,)

洞脂及引口トロロ炭素彈 七,000乃至八,000発
Incendiary bombs (7,000 to 8,000)

二、死傷者 casualties

死者 男二名 重傷者 男一名 軽傷者 若干

dead...2(male) seriously injured...1(male) slightly injured... some

三、日時 hour and date

昭和二十年六月十五日午前九時五十七分頃

June 15, 1945...9:57 a. m.

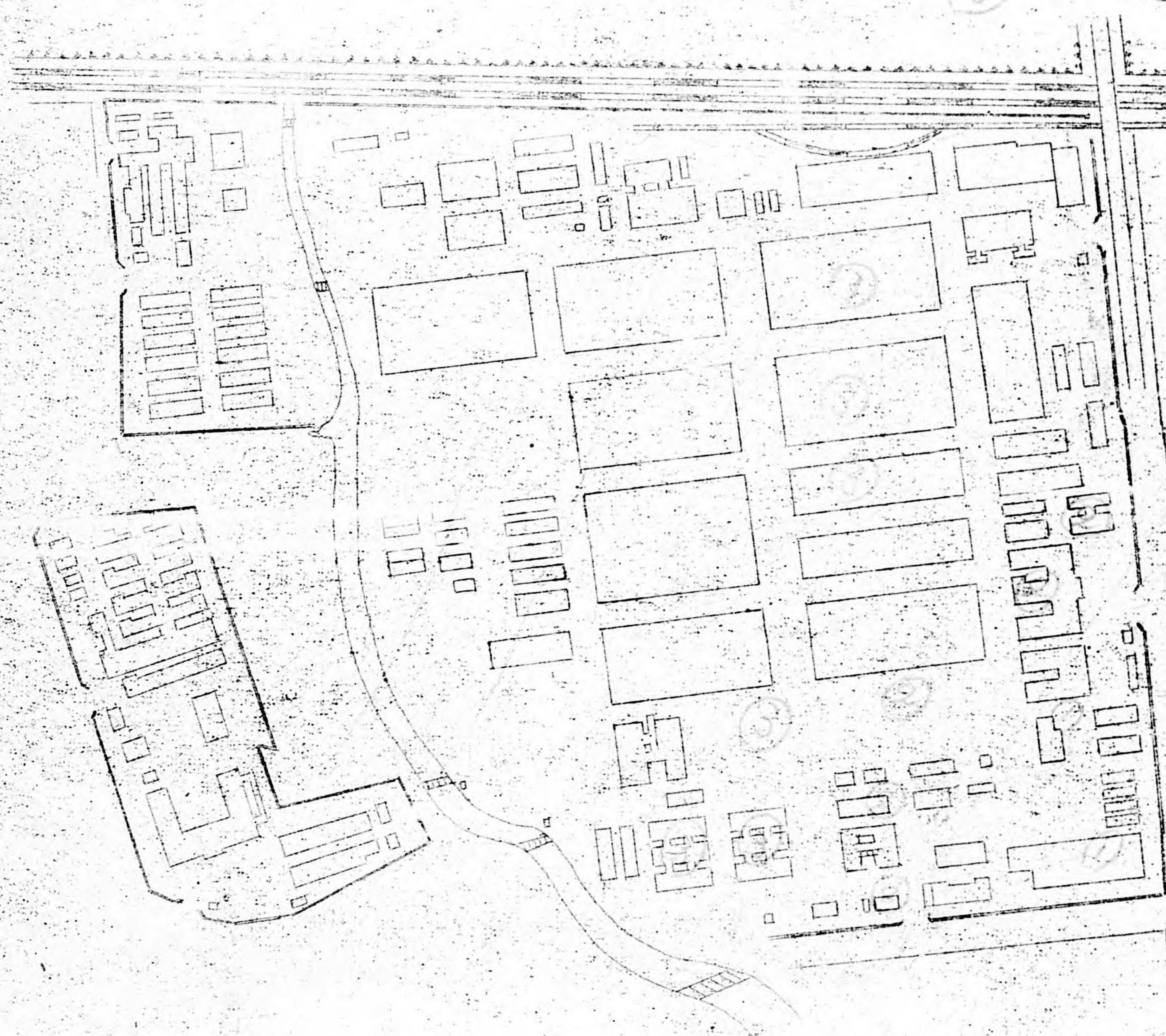
四、機数 number of planes

七機 (一機の十機) 計七十機

6 formations (one consisting of app. 10 planes)

3

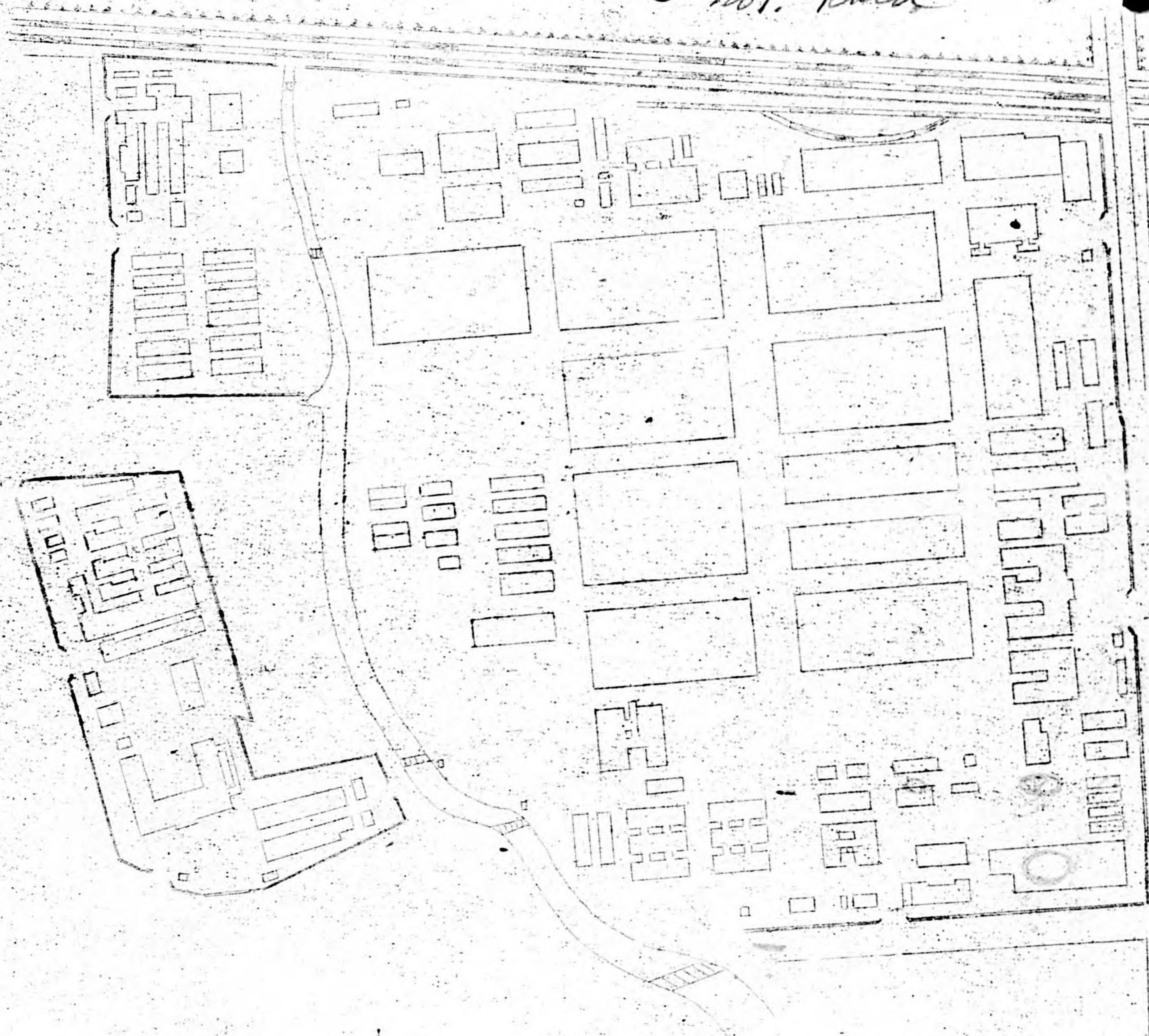
15 157



numbers indicate
the square
of rooms

No. 1. Raid

6/1/45



June 1, 1945
11 am
incidental



10/9

(1)

一、爆彈、落下場所及種類

The locations & types of dropped bombs

試作工場及加藤隊炊事場、女子更衣室

二、死傷者

ナシ

casualties none

* electron incendiaries 50
oil incendiaries 2

* Experimentation Factory, Kitchen (Kato Platoon),
Women's Locker

エレクトロン焼夷弾 五〇発 油筒焼夷弾 二発

三、日時

date & time

昭和二十年七月一日午前十一時頃

June 1, 1945..... 11 a. m.

四、飛行機数

number of planes

二十機

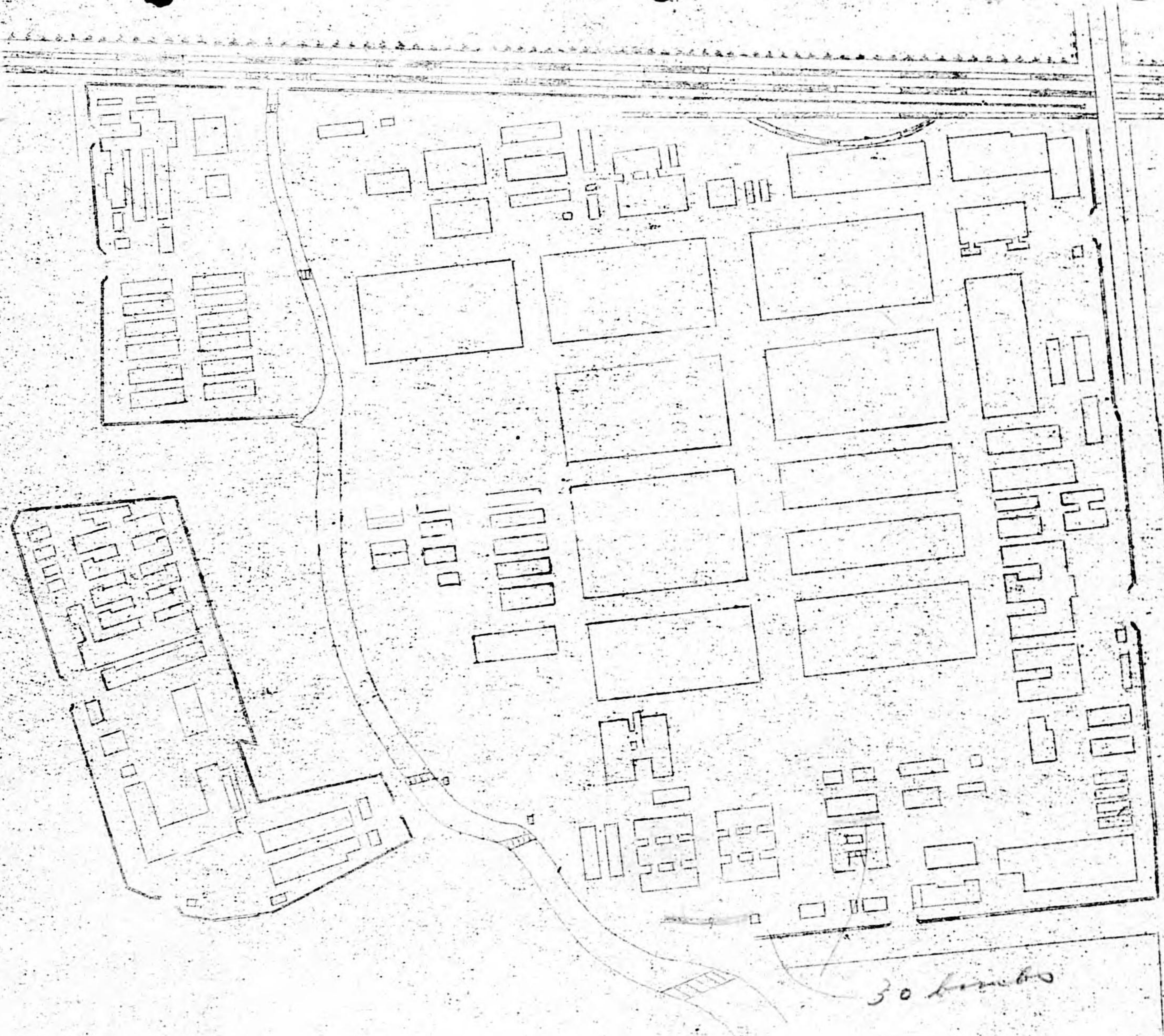
20



No 2 road

10/10/45

June 7, 1945
10 00 AM



PIC-AA-X6

27

(2)

一、爆彈ノ落下場所及種類

The locations & types of dropped bombs

勞務課南側及男子更衣室附近

* incendiary bomb

(app. 30)

* south of Labor Office and men's locker

二、死傷者

casualties

ナシ

none

三、日時

date & time

昭和二十年七月七日午前十時頃

June 7th, 1945.....10 a. m.

四、飛行機数

number of planes

十機

10

