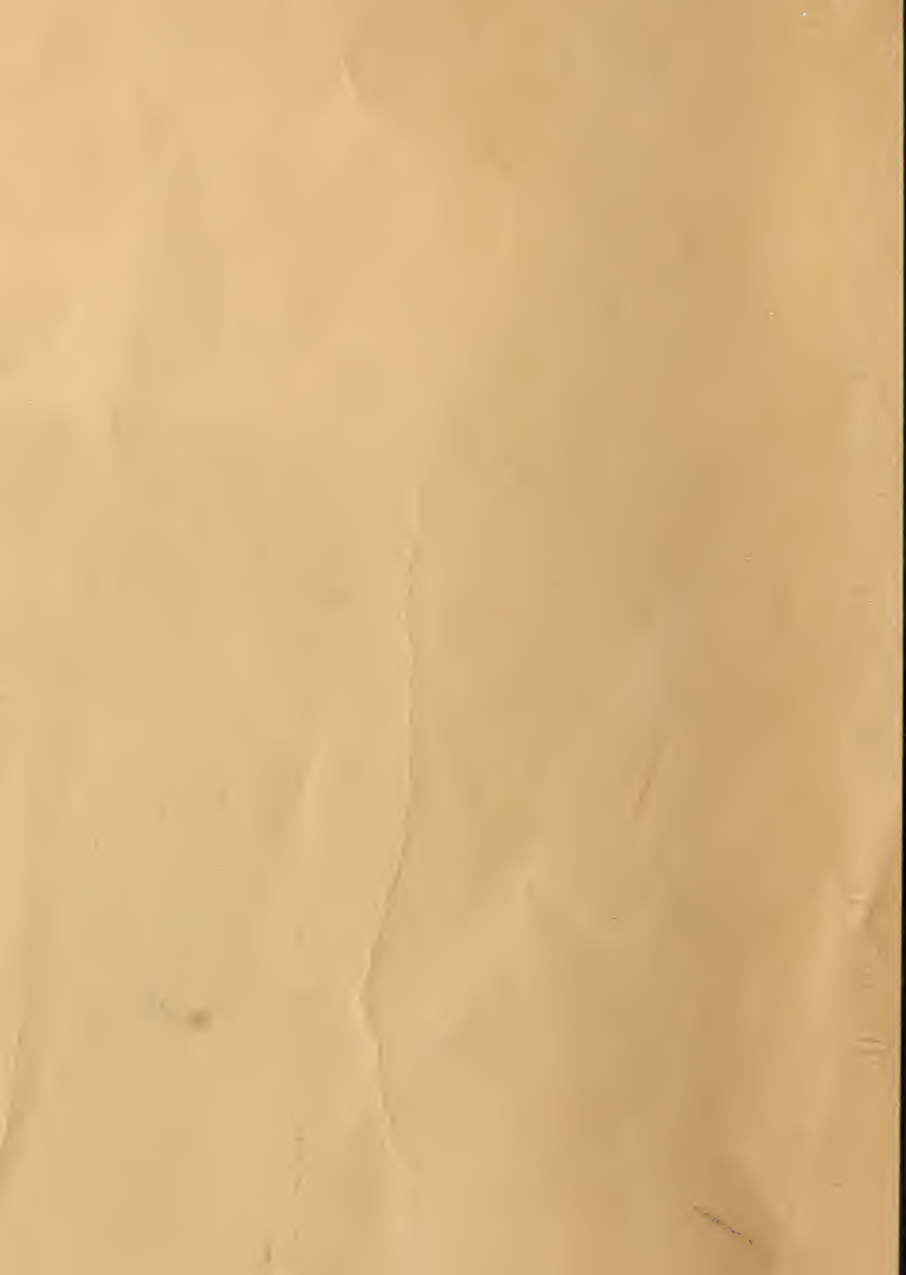


GV877

B94





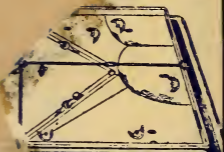
illy Sullivan

*The*  
*Baseball*  
*Guide*  
*1908*

*Published By*  
**ERWIN R. BURTON**  
1132 MASONIC TEMPLE  
CHICAGO, ILL.

**PRICE 10 CENTS**

COPYRIGHT



**PLAYS ALL THE FEATURES**

**Price \$3.00**

And what makes it so exciting and interesting is the fact that skill and judgment—not luck—decide the winner. Every fan—man, woman or boy—bound to have one sooner or later. It is great.

Yours truly, Edward M. Reulbach.

Playing the game has afforded me and my friends many hours of pleasure. "It is the goods," and sooner or later every fan must own one.

Yours truly, Napoleon Lajoie.

On it one can play all the fine points of base ball.

Yours truly, "Christy" Mathewson.

For Sale by all Toy, Department and Sports Goods Stores, or write to

**MATHER GAME CO**

Dept. B.

CANTON, OHIO

Wanted "Fan" Agents

# Burton's // Pocket Baseball Guide

---

1908

---

Review by President Johnson  
Hugh Jennings on the Cubs  
New World's Series Figures  
Schedules in Three Forms  
Method of Figuring Averages  
Other Special Features

Published by  
**IRWIN R. BURTON**  
1132 Masonic Temple  
**CHICAGO**

# Chicago's Popular Furnishers

G 1877  
304

Two Copies Received

APR 24 1908

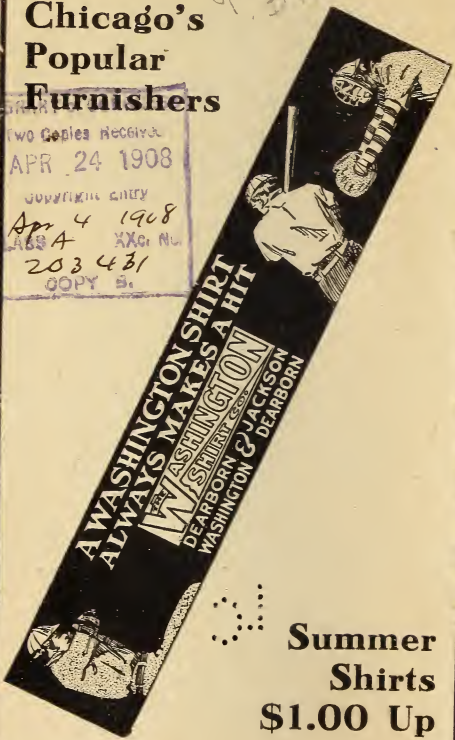
JOURNAL OF THE CITY

Apr 4 1908

CLASS A XXc. No.

203431

COPY 5.



**Summer  
Shirts  
\$1.00 Up**

CONTENTS.

1907's season - done

American Association—	
Averages 1907 .....	68-75
Series Schedule .....	113
American League—	
Averages for 1907.....	31-40
Championship Record .....	78
Calendar Schedule .....	43-62
1907 Championship Race.....	31
Series Schedule .....	63
Trip Schedule .....	62
Amateur Baseball Managers' League..	108
Amateur Baseball Leagues.....	109
Calendar Schedules of Major Leagues.	43-62
Editorial .....	8-10
Hugh Jennings' Letter.....	69
How to Figure Averages.....	41
President Johnson's Letter.....	7
Minor League Champions 1907.....	65
Minor League Draft Prices.....	66
National League—	
Averages .....	21-29
Calendar Schedule .....	43-62
Championship Race in 1907.....	21
Championship Record .....	77
Cubs for 1908.....	30
Series Schedule .....	64
Trip Schedule .....	62
Playing Field Diagram.....	78
Playing Rules—Official .....	79-105
Schedules—	
American Association—by Series..	113
American and National—by Trips	62
Eastern League—by Series.....	112
National League—by Series.....	64
Semi-professional Leagues .....	107
Western Association Averages.....	106
White Sox for 1908.....	42
World's Series of 1907.....	11-23

BURTON'S POCKET BASEBALL GUIDE.

---

COPYRIGHT, 1908.  
BY  
IRWIN R. BURTON



## PREFACE.

---

While the publishing of still another Baseball Guide may seem a hazardous venture when the market is already well supplied with literature of this character, it is believed this book will fill a long want—a desire for a guide that can be carried throughout the season without the inconvenience of the bulk of the ordinary baseball book.

Especial attention has been given to the scores of the World's Series of last year, pointing out many discrepancies in the figures as given out by the official scorers of these games and those furnished by a large number of baseball writers of the major league cities who covered the series for their respective papers.

Attention is also called to the comprehensive schedules shown of the National and American Leagues—the first a calendar schedule for the entire baseball season, showing all games, conflicting dates, holidays and other double game days; next, immediately following, will be found a "trip" schedule, showing starting and ending date of all sectional and inter-sectional games in both leagues. This is followed by the schedule by series, the official figures issued from the league headquarters, from which the preceding schedules are arranged.

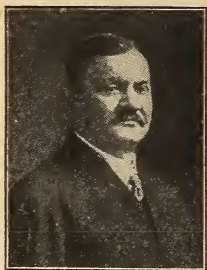
The policy of this publication will be absolutely neutral—trying best to serve the interests of the entire baseball world.

While this is the first appearance of Burton's Pocket Baseball Guide, the publisher already feels assured of its permanency.

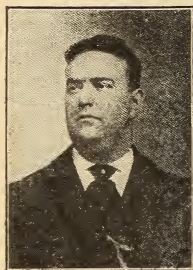
Very truly yours,

IRWIN R. BURTON,  
Publisher.

Chicago, April 10, 1908.



AUG. HERRMANN.



B. B. JOHNSON.



H. C. PULLIAM.

**NATIONAL BASEBALL COMMISSION.**

**BASEBALL—PAST AND PRESENT.**

---

**A Review of the Great Outdoor Pastime  
by the American League President.**

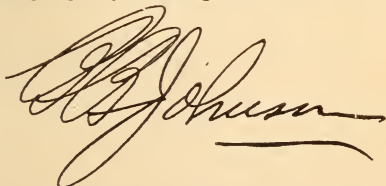
---

Last season was the banner year of baseball. The patronage at Major League games, and throughout the cities of the National Association, far exceeded the records of previous years. In the American League the returns were far beyond expectation, but this was due, in a great measure, to the phenomenal race.

The approaching campaign gives promise of events of equal interest. Six of the eight clubs in the American League are well balanced and evenly matched. In the National, a harder struggle may be looked for than marked the race of last season. Philadelphia and New York will surely crowd Chicago for the pennant.

In the American League, the New York, Cleveland and St. Louis clubs have been materially strengthened, and are sure to be prominent contenders with Detroit, Philadelphia and Chicago for the championship flag.

One of the chief incidents of the winter was the contract made by the Philadelphia American League Club for the construction of a mammoth baseball plant of steel and cement. The grandstand will be the largest in the country, having accommodations for 10,300 persons, and the total seating capacity of the grounds will exceed 30,000.



President American League.

# EDITORIAL

## THE SEASON OF 1908.

On the eve of the ushering in of another baseball season it can be said without the slightest fear of exaggeration that the year 1908 will witness the most bountiful prosperity the great national game has ever enjoyed, this in the face of the fact that our United States has just passed through a panic in the business world, which, it was feared by many, would extend far into the new year, and as a natural consequence, would have its effect in materially reducing the available supply of "baseball" currency. But with the call of "play" on next Tuesday it is a safe prediction that any thought of financial stringency in the mind of the "fan" will be relegated in his memory an equal distance with a ninth-inning defeat for his favorite team.

That the past season far outstripped its predecessor in the matter of enthusiasm and in returns to the promoters of our great outdoor sport will be no news to a follower of the game. The credit is due both to the business-like methods of the officers of the different baseball organizations and the hearty and enthusiastic support of the press.

\* \* \*

## THE NATIONAL COMMISSION.

The supreme court of baseball, the National Commission, is especially to be congratulated in the masterly handling of affairs under its jurisdiction during the past year. The deliberations of this body of men highest up in the world of baseball are followed closely by baseball patrons, who look upon their decisions as final.

---

**AMENDMENTS TO THE PLAYING  
RULES.**

---

The Joint Rules Committee, at its meeting in February, amended Rule 14, section , in regard to the soiling of new balls by the pitcher, striking out the words "except the pitcher," who has heretofore been permitted to rub gloss from a new ball in any manner he desired, the usual procedure being the rubbing of the ball on the grass or soil until the objectionable gloss entirely disappeared. The unnecessary time consumed by some pitchers in this manner forced action by the committee. While the rule will most likely meet the contingency required of it, considerable time may still be consumed in rubbing a new ball with the hands to get rid of its "shine," unless umpires enforce the rule to the letter.

Rule 85, section 5, in regard to sacrifice hits, was amended by the addition of the following: "A sacrifice hit shall also be credited to a batsman who, when no one is out or when one man is out, hits a fly ball that is caught, but results in a run being scored." It has been argued, also, that a batter who advances a runner from first to second or from second to third should also be credited with a sacrifice hit.

\* \* \*

**OFFICIAL SCORING.**

---

President Carson of the Central League a short time ago brought up the question of official scoring, in championship games, suggesting the appointment of officials for this work who would be put on a salary and governed by the league heads as umpires are at present, thereby giving uniformity of averages, scores, etc. While such an innovation may be needed in some cities, the baseball writers of a

large majority of cities follow the official scorer, who is almost invariably one of their number, thereby giving the public identical accounts of games.

It is regrettable, however, that, in the most important games of the year—the World's Series—when every player is striving to make for himself a name that will live in baseball history, uniformity in scoring is sadly lacking. Reference to this subject is made in detail under the heading "The World's Series."

\* \* \*

### **THE WORD "OFFICIAL" AS APPLIED TO BASEBALL GUIDES.**

---

While the word "official" does not appear as part of the title of this book, the averages, schedules and rules contained herein (unless otherwise specified) come from the same source as those printed in other publications of this character—viz., those given out by the headquarters of the different leagues to the Associated Press and other like dispensers of general news matter, and published in all metropolitan newspapers. As "it is but human to err," it is probably the wiser policy not to have mistakes which creep into such a publication as this made "official."

\* \* \*

### **THE BOTTLE-THROWING EVIL.**

---

On two occasions last season this weapon of the cowardly hoodlum was exposed to national gaze, a National and an American league park being the scene of trouble, the former in Brooklyn, the latter in St. Louis. While the Brooklyn incident was devoid of bloodshed, the affair in St. Louis came very near resulting in the death of Umpire Evans, who was struck on the head with a bottle by a boy. Making the throwing of a bottle onto the playing field at any time sufficient cause for ejection from the grounds should stamp out this evil. If not, then the selling of bottled goods should be discontinued.

**THE WORLD'S SERIES.**



Chas. W. Murphy,  
OWNER  
WORLD'S CHAMPIONS.

The Chicago National and Detroit American League teams, champions in their respective leagues, met to decide the winner of the world's championship immediately following the close of the season, the series starting on Tuesday, October 8, in Chicago.

The Cubs, winners of the championship of the National league two successive years, and breakers of the world's record for games won in 1906, were looked upon by their followers as sure winners of the world's title in their battles with the Tigers.

The Detroit fans, on the other hand, were just as confident the world's pennant would adorn Bennett Park. They had come to believe the pitching of Donovan, Mullin, Killian and Siever, with the powerful batting of Cobb and Crawford, who had been setting a terrific pace in the American league, would be irresistible. But they were doomed to bitter disappointment, as the Cubs' pitchers not only outpitched the Tiger boxmen, but also put a stop to the slugging of Cobb and Crawford, the former getting a batting percentage of only .200 in the series.

Only in fielding did Detroit surpass Chicago, then only by a small percentage, being outhit and outplayed in all other departments of the game.

The first game was probably the most exciting ever played in a world's series. Both Donovan and Overall pitched grand ball, but were handicapped by poor support, both teams seeming to be extremely nervous. Errors at critical times kept the spectators on the anxious seat, never knowing what to expect once the ball started in play. The hits were 10 to 9 in Chicago's favor,

but the Tigers had only 3 errors to 5 for the Cubs. The stolen bases were 7 to 2 in the Cubs' favor, but, strange to say, not one of Chicago's stolen bases resulted in a score, while both of Detroit's crossed the counting station. The game ended in a 3 to 3 tie at the end of twelve innings, a sensational catch of a line drive by Schaefer from Chance's bat, on which he easily doubled Sheckard off first, ending the game in semi-darkness.

The second game, at Chicago, was captured by the Cubs by a 3 to 1 score, stolen bases by Tinker and Slagle both counting in the scoring. Hits in this game were even—9 to 9. Each team made one error. Pfister and Mullin were both in good form, the Cub being steadier in tight situations.

The third game, at Chicago, resulted in the Tigers again being bested, entirely through hard hitting by the Cubs. Hits were 11 for Chicago to 5 for Detroit, errors even—1 each. Not even an attempt was made to steal a base by either team in this game. Reulbach had the Tigers completely at his mercy.

The fourth game, at Detroit, again saw the Cubs on top, this time the score being 6 to 1. This was the most uninteresting game of the series, rain and snow falling during the progress of the game. Donovan was pitted against Over-all, as in the first game, but the latter's support was good, while Donovan, while pitching a fair game, had bases on balls and errors to contend with, which decided the game against him.

The fifth and last game, at Detroit, settled all doubt of the superiority of the Cubs. Brown, the Cubs' star box artist, shut the Tigers out, the base running of Slagle and Evers, with timely hitting, bringing victory.

### **The Series Scores and Averages.**

Reference is made editorially to the lack of uniformity of daily newspaper and official scores in these games. In so important a series as the world's games it is but fair to players and public alike that the daily records and series averages should be brought to a point as nearly perfect as possible before being given out as final.



## WORLD'S SERIES.

While differences of opinion regarding certain plays often arise in ball games on hits, errors, etc., in this review but two references are made concerning such plays, the other exceptions noted being on plays allowed or disallowed in direct violation of the scoring rules. Scores taken from a majority of the daily papers of four cities which had special representatives at the games were carefully gone over and comparisons made with the official scores, the figures given below showing the official scores as given out, with corrections noted following each box score. The scoring rule which seems to have been disregarded in the official figures, appears in the official playing rules as Rule 84, Section 9.

### FIRST GAME.

TUESDAY, OCTOBER 8, AT CHICAGO.

Detroit—	AB.	R.	H.	TB.	SH.	SB.	P.	A.	E.
Jones, left field.....	5	1	3	3	0	1	3	1	0
Schaefer, second base	6	1	1	1	0	1	7	4	0
Crawford, center field	5	1	3	3	0	0	1	0	0
Cobb, right field....	5	0	0	0	0	0	0	0	0
Rossmann, first base..	4	0	0	0	0	0	9	3	0
Coughlin, third base.	5	0	0	0	0	0	1	0	1
Schmidt, catcher ...	5	0	2	2	0	0	12	3	2
O'Leary, shortstop..	4	0	0	0	1	0	0	3	0
Donovan, pitcher ...	5	0	0	0	0	0	3	3	0

Totals.....	44	3	9	9	1	2	36	17	3
-------------	----	---	---	---	---	---	----	----	---

Chicago—	AB.	R.	H.	TB.	SH.	SB.	P.	A.	E.
Slagle, center field..	6	0	2	2	0	2	2	0	0
Sheckard, left field.	5	0	1	1	0	1	2	0	0
Chance, first base...	4	2	1	1	0	1	15	0	0
Steinfeldt, third base	3	1	1	1	1	1	2	2	0
Kling, catcher .....	4	0	2	2	0	0	7	4	1
Evers, second base-ss	4	0	2	2	1	1	3	2	3
Schulte, right field..	5	0	1	1	0	0	2	0	1
Tinker, shortstop ...	3	0	0	0	0	0	3	6	1
Zimmerman, 2d base.	1	0	0	0	0	0	0	1	0
Overall, pitcher ....	3	0	0	0	0	0	0	3	0
Ruelbach, pitcher ..	2	0	0	0	0	0	0	0	0
*Howard .....	1	0	0	0	0	1	0	0	0

Totals.....	41	3	10	10	2	7	36	18	5
-------------	----	---	----	----	---	---	----	----	---

\*Batted for Tinker in ninth inning.

# BURTON'S POCKET BASEBALL GUIDE.

---

## FIRST GAME—(Continued).

Score by innings:

Detroit....	0	0	0	0	0	0	0	3	0	0	0	0—3
Chicago...0	0	0	1	0	0	0	0	0	2	0	0	0—3

Summary: Struck out—By Donovan, 11; by Overall, 5; by Ruelbach, 2. Bases on balls—Off Donovan, 4; off Overall, 2. Double plays—Evers-Tinker; Schaefer-Rossman. Left on bases—Detroit, 8; Chicago, 9. Hit by pitcher—Sheckard. Innings pitched—By Overall, 9; by Ruelbach, 3. Time—2:40. Umpires—O'Day and Sheridan. Attendance—24,377.

[Note.—Official scores allowed Jones two stolen bases and Rossman one. One "stolen" base credited to Jones was made on a double steal in which Schmidt was thrown out. The stolen base credited to Rossman was on a similar play with Schaefer. This score eliminates these two stolen bases.]

## SECOND GAME.

WEDNESDAY, OCTOBER 9, AT CHICAGO.

Detroit—	AB.	R.	H.	TB.	SH.	SB.	P.	A.	E.
Jones, left field.....	4	0	2	2	0	0	1	0	0
Schaefer, second base	4	0	1	1	0	0	2	3	0
Crawford, center field	4	0	0	0	0	0	1	1	0
Cobb, right field....	3	0	1	1	0	0	0	0	0
Rossman, first base..	4	1	3	5	0	0	12	1	0
Coughlin, third base.	4	0	0	0	0	0	2	1	0
Payne, catcher ....	4	0	1	1	0	1	5	1	1
O'Leary, shortstop..	2	0	1	1	0	0	0	6	0
Mullin, pitcher ....	3	0	0	0	0	0	1	2	0

Totals.....	32	1	9	11	0	1	24	15	1
-------------	----	---	---	----	---	---	----	----	---

Chicago—	AB.	R.	H.	TB.	SH.	SB.	P.	A.	E.
Slagle, center field..	3	1	2	2	0	2	3	0	0
Sheckard, left field..	3	0	1	2	1	0	2	0	0
Chance, first base...	3	0	1	1	0	1	6	0	0
Steinfeldt, third base	3	0	0	0	0	0	3	1	0
Kling, catcher .....	4	1	1	1	0	0	5	4	0
Evers, second base..	4	0	2	2	0	1	2	0	0
Schulte, right field... 4	0	1	1	0	0	1	1	1	0
Tinker, shortstop ...	2	1	1	1	0	1	5	4	1
Pfiester, pitcher ....	2	0	0	0	1	0	0	0	0

Totals.....	28	3	9	10	2	5	27	10	1
-------------	----	---	---	----	---	---	----	----	---

WORLD'S SERIES.

**SECOND GAME—(Continued).**

Score by innings:

Detroit .....	0	1	0	0	0	0	0	0	0—1
Chicago .....	0	1	0	2	0	0	0	0	*—3

Two base hit—Sheckard. Three base hit—Rossman. Struck out—By Pfister, 3; by Mullin, 5. Bases on balls—Off Pfister, 1; off Mullin, 3. Double plays—Tinker-Chance (2); Crawford-Schaefer. Left on bases—Detroit, 6; Chicago, 7. Hit by pitcher—Steinfeldt, Cobb. Time—2:15. Umpires—Sheridan and O'Day. Attendance—21,901.

[Note.—The official scorers did not allow Payne a stolen base in this game. He had a clean steal in second inning. Some scorers allowed an assist to Schaefer for the part he played in the "hidden ball" trick on Slague, while others did not.]

**THIRD GAME.**

THURSDAY, OCTOBER 10, AT CHICAGO.

Detroit—	AB.	R.	H.	TB.	SH.	SB.	P.	A.	E.
Jones, left field....	3	0	0	0	0	0	2	0	0
Schaefer, second base	4	0	1	1	0	0	0	4	0
Crawford, center field	4	0	1	1	0	0	3	1	0
Cobb, right field....	4	0	1	1	0	0	1	0	0
Rossman, first base..	4	0	2	2	0	0	9	0	0
Coughlin, third base.	3	0	0	0	0	0	4	1	0
Schmidt, catcher ...	3	0	0	0	0	0	1	2	0
O'Leary, shortstop ..	4	0	0	0	0	0	3	3	0
Siever, pitcher .....	1	0	0	0	0	0	1	0	0
Killian, pitcher ....	2	1	1	1	0	0	0	0	0
Totals.....	32	1	6	6	0	0	24	11	0
Chicago—	AB.	R.	H.	TB.	SH.	SB.	P.	A.	E.
Slagle, center field..	4	0	0	0	0	0	3	0	0
Sheckard, left field..	4	0	1	2	0	0	4	0	0
Chance, first base...	4	1	1	2	0	0	12	1	0
Steinfeldt, third base	3	1	2	3	0	0	0	2	0
Kling, catcher .....	3	1	1	1	1	0	2	0	0
Evers, second base..	4	0	3	5	0	0	3	2	1
Schulte, right field..	4	1	1	1	0	0	0	0	0
Tinker, shortstop ...	4	1	1	3	0	0	2	7	0
Ruelbach, pitcher ...	3	0	1	1	0	0	1	2	0
Totals.....	33	5	11	18	1	0	27	14	1

**THIRD GAME—(Continued).**

Score by innings:

Detroit .....	0	0	0	0	1	0	0	0	—1
Chicago .....	0	1	0	3	1	0	0	0	*—5

Two base hits—Steinfeldt, Evers (2), Sheckard, Chance. Three base hit—Tinker. Struck out—By Reulbach, 2; by Siever, 1; by Killian, 1. Bases on balls—Off Reulbach, 3; off Killian, 1. Double plays—Tinker (unassisted); Steinfeldt-Evers-Chance. Left on bases—Detroit, 7; Chicago, 6. Innings pitched—Siever, 4; Killian, 4. Time—1:35. Umpires—O'Day and Sheridan.

[Note.—Official scores gave Jones an error on a hard drive from Tinker's bat in fourth inning, which was barely touched by the fielder. Newspaper scorers were almost unanimous in allowing a three base hit to Tinker.]

**FOURTH GAME.**

FRIDAY, OCTOBER 11, AT DETROIT.

Chicago—	AB.	R.	H.	TB.	SH.	SB.	P.	A.	E.
Slagle, center field..	5	1	1	1	0	0	2	0	0
Sheckard, left field..	5	0	2	2	0	0	1	0	0
Chance, first base...	3	0	0	0	0	1	11	0	0
Steinfeldt, third base	4	0	2	2	0	0	3	2	0
Kling, catcher .....	4	0	0	0	0	0	6	0	0
Evers, second base..	4	1	0	0	0	0	0	2	0
Schulte, right field..	3	2	1	1	0	0	2	1	0
Tinker, shortstop ...	1	2	0	0	2	0	2	3	1
Overall, pitcher ....	2	0	1	1	2	0	0	3	0

Totals.....31 6 7 7 4 1 27 11 1

Detroit—	AB.	R.	H.	TB.	SH.	SB.	P.	A.	E.
Jones, left field.....	2	0	0	0	1	0	3	0	0
Schaefer, second base	3	0	0	0	1	0	2	3	0
Crawford, center field	4	0	0	0	0	0	2	0	0
Cobb, right field....	4	1	1	3	0	0	4	0	0
Rossman, first base..	4	0	2	2	0	0	9	0	0
Coughlin, third base.	4	0	3	3	0	0	1	1	0
Schmidt, catcher ....	3	0	0	0	0	0	3	4	0
O'Leary, shortstop ..	4	0	0	0	0	0	3	2	2
Donovan, pitcher ...	3	0	0	0	0	0	0	1	0

Totals.....31 1 6 8 2 0 27 11 2

WORLD'S SERIES.

**FOURTH GAME—(Continued).**

Score by innings:

Chicago	.....0	0	0	0	2	0	3	0	1—6
Detroit	.....0	0	0	1	0	0	0	0	0—1

Three base hit—Cobb. Struck out—By Donovan, Kling (2), Steinfeldt, Evers; by Overall, Schaefer (2), O'Leary, Coughlin, Crawford, Schmidt. Double play—Tinker (unassisted). Hit by pitcher—Chance. Time—1:45. Umpires—Sheridan and O'Day. Attendance—11,306.

[Note.—The official score allowed Rossman but one hit. His first hit was a single to left in the fourth inning; second hit, a fly which fell between Sheckard and Slagle in ninth inning, neither player touching it. A stolen base was allowed Slagle in official score on a double steal with Chance, on which the former scored, but resulted in Chance being thrown out at second.]

**FIFTH GAME.**

SATURDAY, OCTOBER 12, AT DETROIT.

Chicago—	AB.	R.	H.	TB.	SH.	SB.	P.	A.	E.
Slagle, center field..	4	1	1	1	0	1	3	0	0
Sheckard, left field..	4	0	0	0	0	0	1	0	0
Howard, first base..	4	0	1	1	0	0	10	1	0
Steinfeldt, third base	4	0	3	5	0	0	2	0	0
Kling, catcher .....	4	0	0	0	0	0	5	1	0
Evers, second base..	4	1	0	0	0	1	1	6	0
Schulte, right field..	4	0	1	1	0	1	1	0	1
Tinker, shortstop ...	3	0	1	1	0	1	3	3	0
Brown, pitcher .....	3	0	0	0	0	0	1	1	0

Totals.....34 2 7 9 0 4 27 12 1

Detroit—	AB.	R.	H.	TB.	SH.	SB.	P.	A.	E.
Jones, left field....	3	0	1	1	0	1	1	1	0
Schaefer, second base	4	0	0	0	0	0	1	8	0
Crawford, center field	4	0	1	2	0	0	0	0	0
Cobb, right field....	4	0	1	1	0	0	4	0	0
Rossman, first base..	4	0	2	2	0	0	13	0	1
Coughlin, third base.	4	0	2	2	0	1	1	2	1
Archer, catcher ....	3	0	0	0	0	0	4	1	0
O'Leary, shortstop ..	3	0	0	0	0	0	3	3	0
Mullin, pitcher .....	3	0	0	0	0	0	0	2	0
*Schmidt .....	1	0	0	0	0	0	0	0	0

Totals.....33 0 7 8 0 2 27 17 2

\*Batted for Archer in ninth inning.

# BURTON'S POCKET BASEBALL GUIDE.

## FIFTH GAME—(Continued).

Score by innings:

Chicago .....	1	1	0	0	0	0	0	0	0	0—2
Detroit .....	0	0	0	0	0	0	0	0	0	0—0

Two base hit—Crawford. Three base hit—Steinfeldt. Struck out—By Mullin, 2; by Brown, 4. Bases on balls—Off Mullin, 3; off Brown, 4. Left on bases—Chicago, 8; Detroit, 7. Time—1:50. Umpires—O'Day and Sheridan. Attendance—7,370.

[Note.—Official scores give Rossman stolen base. The only time Rossman reached second base was in the fourth inning, when he was advanced by a foul fly from Coughlin's bat, which Kling caught near the stand.]

### CHICAGO—BATTING.

	G	AB	R	H	TB	SH	SB	PCT
Steinfeldt .....	5	17	2	8	11	1	1	.471
Evers .....	5	20	2	7	9	1	3	.350
Slagle .....	5	22	3	6	6	0	5	.273
Schulte .....	5	20	3	5	5	0	1	.250
Sheckard .....	5	21	0	5	7	1	1	.238
Tinker .....	5	13	4	3	5	2	2	.231
Chance .....	4	14	3	3	4	0	3	.214
Kling .....	5	19	2	4	4	1	0	.211
Howard .....	2	5	0	1	1	0	1	.200
Overall .....	2	5	0	1	1	2	0	.200
Reulbach .....	2	5	0	1	1	0	0	.200
Pfiester .....	1	2	0	0	0	1	0	.000
Brown .....	1	3	0	0	0	0	0	.000
Zimmerman .....	1	1	0	0	0	0	0	.000
-----								
Totals.....	5	167	19	44	54	9	17	.263

### CHICAGO—FIELDING.

	G	PO	A	E	TC	PCT
Slagle, cf.....	5	13	0	0	13	1.000
Sheckard, lf.....	5	10	0	0	10	1.000
Chance, 1b.....	4	44	1	0	45	1.000
Howard, 1b.....	1	10	1	0	11	1.000
Steinfeldt, 3b.....	5	10	7	0	17	1.000
Reulbach, p.....	2	1	2	0	3	1.000
Overall, p.....	2	0	6	0	6	1.000
Brown, p.....	2	1	1	0	2	1.000
Zimmerman, 2b.....	1	0	1	0	1	1.000
Kling, c.....	5	25	9	1	35	.972

WORLD'S SERIES.

**CHICAGO—FIELDING—(Continued).**

	G	PO	A	E	TC	PCT
Tinker, ss.....	5	15	23	3	41	.927
Evers, 2b.....	5	9	12	2	23	.929
Schulte, rf.....	5	6	2	2	9	.800
Evers, ss.....	1	0	0	1	1	.000
Pfiester, p.....	1	0	0	0	0	.000
Totals.....	5	144	65	10	218	.954

**DETROIT—BATTING.**

	G	AB	R	H	TB	SH	SB	PCT
Killian .....	1	2	1	1	1	0	0	.500
Rossman .....	5	20	1	9	11	0	0	.450
Jones .....	5	17	1	6	6	1	2	.353
Payne .....	1	4	0	1	1	0	1	.250
Coughlin .....	5	20	0	5	5	0	1	.250
Crawford .....	5	21	1	5	6	0	0	.238
Cobb .....	5	20	1	4	7	0	0	.200
Schmidt .....	4	12	0	2	2	1	0	.167
Schaefer .....	5	21	1	3	3	0	1	.143
O'Leary .....	5	18	0	1	1	1	0	.050
Donovan .....	2	8	0	0	0	0	0	.000
Mullin .....	2	6	0	0	0	0	0	.000
Archer .....	1	3	0	0	0	0	0	.000
Siever .....	1	1	0	0	0	0	0	.000
Totals.....	5	173	6	37	43	3	5	.213

**DETROIT—FIELDING.**

	G	PO	A	E	TC	PCT
Jones, lf.....	5	10	2	0	12	1.000
Schaefer, 2b.....	5	12	21	0	33	1.000
Crawford, cf.....	5	7	2	0	9	1.000
Cobb, rf.....	5	9	0	0	9	1.000
Donovan, p.....	2	3	4	0	7	1.000
Mullin, p.....	2	1	4	0	5	1.000
Siever, p.....	1	1	0	0	1	1.000
Archer, c.....	1	4	1	0	5	1.000
Rossman, 1b.....	5	52	4	1	57	.983
O'Leary, ss.....	5	9	17	2	27	.929
Schmidt, c.....	3	16	9	2	27	.925
Coughlin, 3b.....	5	9	5	2	16	.889
Payne, c.....	1	5	1	1	7	.857
Killian, p.....	1	0	0	0	0	.000
Totals.....	5	138	70	8	215	.962

## WORLD'S SERIES.

### Base Stealing Records

As official records merely give number of bases stolen by each individual player, it will probably be interesting data to give the number of attempts at stealing, which will also tend to show effectiveness of catchers in the throwing department. In the following table will be noted, in order, "attempted steals," "stolen bases," and "outs":

Chicago—	AT.SB.O.			Detroit—	AT.SB.O.		
Slagle .....	7	5	2	Jones .....	3	2	1
Sheckard ....	3	1	2	Schaefer ....	4	1	3
Shulte .....	1	1	0	Cobb .....	1	0	1
Chance .....	3	3	0	Coughlin ....	1	1	0
Howard .....	1	1	0	O'Leary .....	1	0	1
Steinfeldt ....	1	1	0	Payne .....	1	1	0
Evers .....	4	3	1		—	—	—
Tinker .....	2	2	0	Totals .....	11	5	6
— — —							
Totals .....	22	17	5				

### Catchers' Records.

Showing attempted steals on each catcher, with percentage of runners thrown out:

Player—	AT.	SB.	O.	Pct.
Kling, Chicago .....	11	5	6	.545
Schmidt, Detroit .....	11	8	3	.273
Payne, Detroit .....	6	5	1	.166
Archer, Detroit .....	5	4	1	.250

Percentage runners thrown out by Detroit catchers, .227.

### TOTALS FOR THE SERIES.

Attendance at five games (paid)	78,086
Total receipts .....	\$101,728.50
Players' share .....	54,933.39
Club owners' share.....	36,622.26
National Commission's share..	10,172.85

### What the Cubs Received.

Percentage of receipts.....	\$32,963.34
Gift by President Murphy.....	7,039.66

Total.....\$40,000

### What the Tigers Received.

Percentage of receipts.....	\$21,973.36
Gift by Owner Yawkey.....	15,000.00

Total.....\$36,973.36



## NATIONAL LEAGUE AVERAGES.

### THE 1907 NATIONAL LEAGUE RACE.

The National league race ended, as expected, in an easy victory for Chicago. Getting a good start early in the race, this great aggregation went along at an easy gait, never having to extend themselves for any length of time. Pittsburg, Philadelphia and New York finished in the order named in the first division. Following is the team averages:

#### Standing of Clubs at End of Season.

	W.	L.	Pct.		W.	L.	Pct.
Chicago ....	107	45	.704	Brooklyn ..	65	83	.439
Pittsburg...	91	63	.591	Cincinnati..	66	87	.431
Philadelphia.	83	64	.566	Boston ....	58	90	.392
New York..	82	71	.536	St. Louis..	52	101	.340

#### Games Won and Lost—By Series.

CLUBS—	Chgo.	Pitts.	Phila.	N. Y.	Bklyn.	Cin.	Bost.	St. L.	Won,
Chicago .....	..	12	14	16	15	17	17	16	107
Pittsburg .....	10	..	8	12	16	12	13	20	91
Philadelphia ..	8	14	..	10	13	13	11	14	83
New York....	6	10	11	..	12	13	13	17	82
Brooklyn .....	5	6	8	10	..	15	7	14	65
Cincinnati ...	5	10	8	9	7	..	13	14	66
Boston .....	5	9	8	9	12	9	..	6	58
St. Louis ....	6	2	7	5	8	8	16	..	52
Games lost...	45	63	64	71	83	87	90	101	

#### INDIVIDUAL BATTING.

Name and Club—	G.	AB.	R.	H.	Pct.
Wagner, Pittsburg .....	142	515	98	180	.350
Magee, Pittsburg .....	139	503	75	165	.328
Beaumont, Boston .....	149	580	67	187	.322
Leach, Pittsburg .....	149	547	102	166	.303
McGann, New York.....	81	262	29	78	.298
Seymour, New York.....	126	473	46	139	.294
Chance, Chicago .....	109	382	58	112	.293
Mitchell, Cincinnati .....	148	558	64	163	.292

BURTON'S POCKET BASEBALL GUIDE.

**Individual Batting—(Continued).**

Name and Club—	G.	AB.	R.	H.	Pct.
Wolter, Cin.-Pitts.-St. Louis	17	63	5	18	.292
Clarke, Pittsburg	144	501	97	145	.289
McLean, Cincinnati	101	374	35	108	.289
Schulte, Chicago	92	342	44	98	.287
Kling, Chicago	100	334	44	95	.284
Lynch, Pittsburg-New York	19	39	3	11	.282
Paskert, Cincinnati	16	50	10	14	.280
Brain, Boston	133	509	60	142	.279
Hoffman, Boston	19	86	17	24	.279
Devlin, New York	143	491	61	136	.277
Osborne, Philadelphia	37	163	22	45	.276
Titus, Philadelphia	142	523	72	144	.275
Jordan, Brooklyn	143	485	43	133	.274
Sheehan, Pittsburg	67	226	23	62	.274
Tenney, Boston	149	554	83	151	.273
Schlei, Cincinnati	72	246	28	67	.272
Odwell, Cincinnati	84	274	24	74	.270
Hofman, Chicago	134	470	67	126	.268
Sheckard, Chicago	142	484	76	129	.267
Lumley, Brooklyn	118	454	47	121	.267
Steinfeldt, Chicago	151	542	52	144	.266
Shannon, New York	155	585	104	155	.265
Corcoran, New York	62	226	21	60	.265
Scanlon, Brooklyn	17	34	2	9	.265
Smith, H., Pittsburg	18	38	4	10	.263
Abbatichio, Pittsburg	147	496	63	130	.262
Murray, St. Louis	131	485	46	127	.262
Browne, G., New York	121	458	54	119	.260
Bates, Boston	119	447	52	116	.260
Bowerman, New York	90	311	31	81	.260
Doyle, New York	69	227	16	59	.260
Slagle, Chicago	136	489	71	126	.258
Storke, Pittsburg	102	357	24	92	.258
Nealon, Pittsburg	104	381	29	98	.257
Byrne, St. Louis	149	559	55	143	.256
Ritchey, Boston	144	499	45	127	.255
Knabe, Philadelphia	126	444	67	113	.255
Burch, St. Louis-Brooklyn	84	274	30	70	.255
Merkle, New York	15	47	0	12	.255
Ganzel, Cincinnati	143	531	61	135	.254
Howard, Boston-Chicago	89	335	30	85	.254
Sweeney, Chicago-Boston	57	201	25	51	.254
Lush, Philadelphia-St. L.	39	122	11	31	.254
Bresnahan, New York	104	328	57	83	.253
Mowrey, Cincinnati	138	448	43	113	.252
Strang, New York	95	306	56	77	.252

NATIONAL LEAGUE AVERAGES.

**Individual Batting—(Continued).**

Name and Club—	G.	AB.	R.	H.	Pct.
Konetchy, St. Louis.....	91	331	34	83	.251
Evers, Chicago .....	151	508	66	127	.250
Pfeffer, Boston .....	19	60	1	15	.250
Huggins, Cincinnati .....	156	561	64	139	.248
Lewis, Brooklyn .....	136	475	52	118	.248
Barry, St. Louis.....	81	294	30	73	.248
Kane, Cincinnati .....	75	262	40	65	.248
Hostetter, St. Louis.....	118	397	21	98	.247
Batch, Brooklyn .....	106	388	38	96	.247
Lobert, Cincinnati .....	147	537	61	132	.246
Courtney, Philadelphia ...	130	440	42	107	.243
Thomas, Philadelphia .....	121	419	70	102	.243
Grant, Philadelphia .....	74	268	26	65	.243
Burnett, St. Louis.....	59	206	18	49	.238
O'Hara, St. Louis.....	47	173	11	41	.237
Hummell, Brooklyn .....	97	342	41	80	.234
Alperman, Brooklyn .....	138	558	44	130	.233
Krueger, Cincinnati .....	96	317	25	74	.233
Bransfield, Philadelphia ...	92	348	25	81	.233
Casey, Brooklyn .....	138	527	55	122	.231
Holly, St. Louis.....	150	545	55	125	.229
Maloney, Brooklyn .....	144	502	51	115	.229
Davis, Cincinnati .....	70	266	28	61	.229
Hannifan, New York.....	49	149	16	34	.228
Moran, Chicago .....	59	198	8	45	.227
Clymer, Pittsburg .....	16	66	8	15	.227
Noonan, St. Louis.....	70	237	19	53	.224
Bennett, St. Louis.....	86	324	20	72	.223
Hallman, Pittsburg .....	84	302	39	67	.222
Tinker, Chicago .....	113	402	36	89	.221
Gibson, Pittsburg .....	110	382	28	84	.220
McCarthy, Brooklyn .....	25	91	4	20	.220
Bridwell, Boston .....	140	509	49	111	.218
McIntyre, Brooklyn .....	28	69	6	15	.217
Brown, C., St. L.-Philadel'a	30	79	8	17	.215
Jacklitsch, Philadelphia ...	65	202	19	43	.213
Overall, Chicago .....	36	94	6	20	.213
Phelps, Pittsburg .....	36	113	11	24	.212
Doin, Philadelphia .....	96	313	18	66	.211
Randall, Chicago-Boston ...	94	336	22	71	.211
Beckley, St. Louis.....	32	115	6	24	.209
Dahlen, New York.....	143	464	40	96	.207
Anderson, Pittsburg .....	121	413	73	85	.206
Pastorius, Brooklyn .....	28	73	6	15	.205
Doolin, Philadelphia .....	145	509	33	104	.204
Ritter, Brooklyn .....	89	271	15	55	.203

**Individual Batting—(Continued).**

Name and Club—	G.	P.O.	A.	E.	Pct.
Marshall, St. Louis.....	83	268	19	54	.202
McGlynn, St. Louis.....	45	125	8	25	.200
Swacina, Pittsburg .....	26	95	9	19	.200
Needham, Boston .....	79	260	19	51	.196
Weimer, Cincinnati .....	29	72	7	14	.194
Brown, S., Boston.....	65	208	17	40	.192
Flaherty, Boston .....	35	115	9	22	.191
Taylor, J., Chicago.....	18	47	2	9	.191
Shay, New York.....	24	79	10	15	.190
Kelly, St. Louis.....	52	197	12	37	.188
Mathewson, New York.....	41	107	8	20	.187
Phillippe, Pittsburg .....	35	65	5	12	.185
Mason, Cincinnati .....	25	44	1	8	.182
Fromme, St. Louis.....	23	55	5	10	.182
Karger, St. Louis.....	39	112	9	20	.179
Hitt, Cincinnati .....	21	56	6	10	.179
Burke, Boston .....	36	129	6	23	.178
McGinnity, New York.....	47	103	6	18	.175
Reulbach, Chicago .....	27	63	4	11	.175
Ames, New York.....	39	69	5	12	.174
Corridon, Philadelphia ....	38	97	6	16	.165
Young, Boston .....	40	80	2	13	.163
Richie, Philadelphia .....	25	43	3	7	.163
Bergen, Brooklyn .....	51	138	2	22	.159
Rucker, Brooklyn .....	37	97	6	15	.155
Ewing, Cincinnati .....	44	123	10	19	.154
Brown, Mordacei, Chicago.	35	85	6	13	.153
Leever, Pittsburg .....	31	73	3	11	.151
Stricklett, Brooklyn .....	30	81	9	12	.148
Leifield, Pittsburg .....	40	102	5	15	.147
Gleason, Philadelphia ....	35	126	11	18	.143
Pittinger, Philadelphia ....	16	36	3	5	.139
Willis, Pittsburg .....	39	103	3	14	.136
Hopkins, St. Louis.....	15	44	7	6	.136
Wiltse, New York.....	34	67	5	9	.134
Boultes, Boston .....	29	68	2	9	.132
Dorner, Boston .....	36	92	3	12	.130
Beebe, St. Louis.....	31	86	4	11	.128
Butler, Brooklyn .....	29	79	6	10	.127
Taylor, L., New York.....	29	48	3	6	.125
Lindaman, Boston .....	34	90	8	11	.122
Smith, F., Cincinnati.....	18	28	1	3	.107
Lundgren, Chicago .....	28	66	4	7	.106
Bell, Brooklyn .....	35	84	6	8	.095
Pfiester, Chicago .....	30	64	4	6	.094
Moren, Philadelphia .....	37	74	4	6	.081

# NATIONAL LEAGUE AVERAGES.

## Individual Batting—(Continued.)

Name and Club—	G.	PO.	A.	E.	Pct.
Coakley, Cincinnati .....	37	84	2	6	.071
Fraser, Chicago .....	22	45	4	3	.067
Ferguson, New York.....	15	18	0	1	.055
Camnitz, Pittsburg .....	31	60	2	3	.050
Sparks, Philadelphia .....	33	89	1	3	.034

## CLUB BATTING.

Club—	G.	AB.	R.	H.	TB.	SH.	SB.	Pct.
Pittsburg ..	157	4957	634	1261	1607	178	264	.254
New York..	155	4874	573	1222	1547	165	205	.251
Chicago ..	155	4892	571	1224	1521	195	235	.250
Cincinnati..	156	4966	524	1226	1577	195	158	.247
Boston ...	152	5020	503	1222	1552	133	118	.243
Philadel'a..	149	4725	514	1113	1441	130	154	.236
St. Louis..	155	5008	419	1163	1443	156	125	.232
Brooklyn ..	153	4895	446	1135	1457	197	121	.232

## INDIVIDUAL FIELDING.

### First Basemen.

Name and Club—	G.	PO.	A.	E.	Pct.
Hannifan, New York.....	29	248	13	1	.996
Swacina, Pittsburg .....	26	246	12	1	.996
McGann, New York.....	81	781	55	5	.994
Bowerman, New York.....	29	286	9	2	.993
Chance, Chicago .....	109	1129	80	10	.992
Ganzel, Cincinnati .....	143	1346	84	14	.990
Storke, Pittsburg .....	23	181	11	2	.990
Hofman, A., Chicago.....	18	204	4	2	.990
Tenney, Boston .....	149	1587	113	19	.989
Beckley, St. Louis.....	32	303	13	4	.988
Jordan, Brooklyn .....	143	1417	78	31	.980
Hostetter, St. Louis.....	27	263	18	6	.979
Nealon, Pittsburg .....	104	998	68	24	.978
Bransfield, Philadelphia ...	92	862	53	21	.978
Courtney, Philadelphia ....	48	426	29	10	.978
Konetchy, St. Louis.....	91	922	71	25	.975
Howard, Chicago .....	33	301	16	9	.972
Merkle, New York.....	15	122	7	7	.949

### Second Basemen.

Gleason, Philadelphia .....	26	72	67	3	.979
Ritchey, Boston .....	144	340	460	24	.971
Evers, Chicago .....	151	346	500	32	.964
Huggins, Cincinnati .....	156	353	443	32	.961
Knabe, Philadelphia .....	121	293	336	26	.960
Alperman, Brooklyn .....	115	298	378	33	.953
Abbaticchio, Pittsburg .....	147	320	380	36	.961

**Individual Fielding—(Continued).**

**Second Basemen.**

Name and Club—	G.	PO.	A.	E.	Pct.
Hummel, Brooklyn .....	44	106	129	12	.951
Bennett, St. Louis.....	83	175	208	25	.939
Corcoran, New York.....	62	108	183	19	.939
Hostetter, St. Louis.....	73	150	233	30	.927
Doyle, New York.....	69	128	158	26	.917

**Third Basemen.**

Steinfeldt, Chicago .....	151	161	307	16	.967
Casey, Brooklyn .....	138	176	274	21	.955
Sheehan, Pittsburg .....	57	55	137	12	.941
Devlin, New York.....	140	174	282	29	.940
Mowrey, Cincinnati .....	127	167	214	29	.929
Byrne, St. Louis.....	148	212	348	49	.920
Brain, Boston .....	130	191	323	47	.916
Grant, Philadelphia .....	74	106	145	23	.916
Courtney, Philadelphia ....	75	90	143	24	.907
Storke, Pittsburg .....	67	75	123	16	.884
Leach, Pittsburg .....	33	45	65	15	.880
Kane, Cincinnati .....	25	20	59	11	.878
Sweeney, Boston .....	23	36	52	13	.871

**Shortstops.**

Bridwell, Boston .....	140	325	437	47	.942
Dahlen, New York.....	143	292	426	45	.941
Lobert, Cincinnati .....	142	299	382	43	.941
Tinker, Chicago .....	113	215	390	39	.939
Wagner, Pittsburg .....	138	314	428	49	.938
Lewis, Brooklyn .....	136	277	372	43	.938
Doolin, Philadelphia .....	145	327	463	60	.929
Holly, St. Louis.....	147	317	474	62	.927
Hofman, A., Chicago.....	42	81	116	17	.921
Sweeney, Chicago-Boston...	18	21	44	10	.867

**Left Fielders.**

McCarthy, Brooklyn .....	25	38	0	0	1000
Hummell, Brooklyn .....	21	51	5	0	1000
Clarke, Pittsburg .....	144	298	15	4	.987
Magee, Philadelphia .....	139	297	13	7	.978
Shannon, New York.....	155	282	18	7	.977
Sheckard, Chicago .....	142	223	13	6	.975
Odwell, Cincinnati .....	76	172	6	5	.973
Howard, Boston .....	45	54	8	2	.969
Krueger, Cincinnati .....	26	67	3	3	.959
Kane, Cincinnati .....	38	81	6	4	.956
Burke, Boston .....	32	52	2	3	.947

# NATIONAL LEAGUE AVERAGES.

## Individual Fielding—(Continued.)

### Left Fielders.

Name and Club—	G.	PO.	A.	E.	Pct.
Randall, Boston .....	59	93	8	6	.944
Murray, St. Louis .....	124	225	24	18	.933
Batch, Brooklyn .....	81	152	8	12	.930
O'Hara, St. Louis.....	24	42	2	4	.917
Burch, Brooklyn .....	26	47	8	8	.873

### Center Fielders.

Osborne, Philadelphia .....	26	52	2	0	1000
Thomas, Philadelphia .....	121	274	15	6	.980
Leach, Pittsburg .....	109	278	15	6	.980
Krueger, Cincinnati .....	70	131	8	3	.979
Seymour, New York.....	126	300	8	8	.975
Paskert, Cincinnati .....	16	33	3	1	.973
Kelly, St. Louis.....	16	34	2	1	.973
Davis, Cincinnati .....	69	159	11	5	.971
Strang, New York.....	28	55	9	2	.970
Maloney, Brooklyn .....	144	336	18	12	.967
Hallman, Pittsburg .....	28	48	4	2	.963
Beaumont, Boston .....	149	296	30	13	.962
Slagle, Chicago .....	132	234	15	10	.961
Hofman, Chicago .....	23	63	5	3	.958
Burnett, St. Louis.....	59	98	8	5	.955
Anderson, Pittsburg .....	24	47	2	4	.925
Burch, St. Louis-Brooklyn..	53	93	11	9	.920
Hopkins, St. Louis.....	15	21	0	3	.875

### Right Fielders.

Batch, Brooklyn .....	20	26	5	0	1000
Bates, Boston .....	118	169	18	4	.979
O'Hara, St. Louis.....	23	36	3	1	.975
Schulte, Chicago .....	91	130	11	4	.972
Hallman, Pittsburg .....	45	63	3	2	.971
Kelly, St. Louis.....	36	51	5	2	.965
Mitchell, Cincinnati .....	143	256	39	11	.964
Anderson, Pittsburg .....	91	159	23	7	.963
Barry, St. Louis.....	81	94	11	4	.963
Lumley, Brooklyn .....	118	171	15	8	.959
Hofman, Chicago .....	35	48	7	3	.948
Browne, New York.....	121	146	14	10	.941
Titus, Philadelphia .....	142	198	21	17	.928
Strang, New York.....	41	56	4	5	.923
Clymer, Pittsburg .....	15	24	0	2	.923
Hoffman, Boston .....	15	20	3	3	.885
Randall, Chicago-Boston ...	33	57	4	8	.884

**Individual Fielding—(Continued).  
Catchers.**

Name and Club—	G.	PO.	A.	E.	Pct.
Bowerman, New York.....	62	320	70	4	.990
Kling, Chicago .....	98	499	109	8	.987
Bresnahan, New York.....	95	483	94	8	.986
Jacklitsch, Philadelphia ....	58	270	97	6	.984
Schlei, Cincinnati .....	67	277	111	8	.980
Phelps, Pittsburg .....	35	145	38	4	.979
McLean, Cincinnati .....	89	365	110	12	.975
Moran, Chicago .....	59	258	72	9	.973
Gibson, Pittsburg .....	110	499	125	18	.972
Brown, S., Boston.....	63	267	91	11	.970
Ritter, Brooklyn .....	89	391	103	16	.969
Bergen, Brooklyn .....	51	175	67	8	.968
Needham, Boston .....	78	281	101	13	.967
Doin, Philadelphia .....	94	436	123	24	.959
Marshall, St. Louis.....	83	374	142	26	.952
Noonan, St. Louis.....	70	369	98	24	.951
Butler, Brooklyn .....	28	106	34	8	.946
Smith, Pittsburg .....	18	46	16	4	.939

**PITCHERS' RECORDS.**

Name and Club—	G.	W.	L.	Pct.	Field. Av.
Ruelbach, Chicago .....	27	17	4	.810	.930
Brown, M., Chicago.....	34	20	6	.769	.990
Overall, Chicago .....	36	23	*8	.742	.968
Sparks, Philadelphia ...	33	22	8	.733	.938
Lundgren, Chicago .....	28	18	7	.720	.984
Mathewson, New York..	41	24	12	.667	.945
Willis, Pittsburg .....	39	21	11	.656	.972
Pittenger, Philadelphia ..	16	9	5	.643	1000
Camnitz, Pittsburg .....	31	13	8	.619	.982
Fraser, Chicago .....	22	8	5	.615	.942
Taylor, L., New York...	28	11	7	.611	.930
Leever, Pittsburg .....	31	14	9	.609	.956
Pfiester, Chicago .....	30	14	9	.609	.881
Ferguson, New York....	15	3	2	.600	.952
Taylor, J., Chicago.....	18	7	5	.583	1000
Pastorius, Brooklyn ...	28	16	12	.571	.971
Corridon, Philadelphia ..	37	*18	14	.563	.926
Phillippe, Pittsburg ...	35	14	11	.560	.984
Leifield, Pittsburg .....	40	20	16	.556	.949
Rucker, Brooklyn .....	37	15	13	.536	.918
Wiltse, New York.....	33	13	12	.520	.972
Coakley, Cincinnati ....	37	17	16	.515	.972



NATIONAL LEAGUE AVERAGES.

**Pitchers' Records—(Continued).** Field.

Name and Club—	G.	W.	L.	Pct.	Av.
McGinnity, New York...	47	18	*18	.500	.966
Richie, Philadelphia ....	25	6	6	.500	.943
Ewing, Cincinnati .....	41	17	19	.472	.961
Stricklett, Brooklyn ....	29	12	14	.462	.982
Karger, St. Louis.....	39	*16	19	.457	.954
Ames, New York.....	39	10	12	.455	.916
Brown, C., St. L.-Phila.	30	10	12	.455	.973
Flaherty, Boston .....	27	12	15	.444	.907
Weimer, Cincinnati ....	29	11	14	.440	.926
Dorner, Boston .....	36	12	16	.429	1000
Pfeffer, Boston .....	19	6	8	.429	.955
Scanlan, Brooklyn .....	17	6	8	.429	.880
Lindaman, Boston .....	34	11	15	.423	.949
Lush, Philadelphia-St. L.	28	10	15	.400	.941
Lynch, Pittsburg-N. Y..	19	5	8	.385	1000
Moren, Philadelphia ....	37	11	18	.379	.974
Hitt, Cincinnati .....	21	6	10	.375	.976
McGlynn, St. Louis.....	45	14	25	.359	.906
Boultes, Boston .....	24	5	9	.357	.945
Bell, Brooklyn .....	35	8	16	.333	.941
McIntyre, Brooklyn ....	28	7	15	.318	.913
Young, Boston .....	40	10	23	.303	.967
Mason, Cincinnati .....	25	5	12	.294	.980
Fromme, St. Louis.....	23	5	13	.278	.941
Beebe, St. Louis.....	31	7	19	.269	.941
Smith, Cincinnati .....	18	2	7	.222	.939

\*One forfeited game included.

## THE CHICAGO CUBS.

---

**President—CHARLES W. MURPHY.**

**Manager and Captain—Frank Chance.**

The World's Champions will start the coming season with the same players who went through the National League without greatly extending themselves in 1907. It is hoped the new season will uncover at least one team that will be able to push this fast bunch of West Siders, for a part of the season at least, to their limit. With two or more teams fighting for the lead in the National League the West Side park, with its greatly increased seating capacity, would be none too large to hold the fans.

The way the Cubs line up:

Slagle—Center field.

Sheckard—Left field.

Steinfeldt—Third base.

Chance—First base.

Kling, Moran, Campbell—Catchers.

Evers—Second base.

Schulte—Right field.

Tinker—Shortstop.

Brown, Overall, Reulbach, Lundgren,  
Pfiester, Fraser, Durbin, Donahue,  
Pitchers.

Utility—Hofman.

Season opens April 14 at Cincinnati.

First home game and National League  
Pennant Raising, April 22, with Cincinnati.

**THE 1907 AMERICAN LEAGUE RACE.**

The championship race in the younger league was more exciting, if possible, than any fight for the flag in its history, which has been replete with sensational battles for the coveted honor.

The Chicago White Sox, getting a start early in the race, were leaders for nearly two-thirds of the season, with Cleveland and Philadelphia close behind, always fighting to pull the Sox from the top of the heap. On several occasions during the season Cleveland loomed up as a championship possibility, being close up to the top a major portion of the year. Even up to the last two weeks this team of stars had a glorious chance. But it remained for a second division team to practically put them out of the running—a western team at that, losing the last series with St. Louis before going east.

Philadelphia, playing inconsistently in the earlier part of the season, braced up in mid-season and gradually worked its way up among the leaders, the great work of its pitching staff being the feature of the team's playing.

Detroit, looked upon as hardly of championship caliber early in the race, now loomed up as a contender for the highest honors in the league. With the steady work of the Tiger pitchers was combined the terrific hitting of Cobb and Crawford, the timely swats of these two players landing many a game that seemed lost.

It remained for the last eastern invasion to decide the championship, which was practically decided during the last series between Detroit and Philadelphia, although the Athletics still had a chance should the Tigers fall down in their last stand at St. Louis. But this they refused to do. Following are the team averages:

	W.	L.	Pct.		W.	L.	Pct.
Detroit . . . .	92	58	.613	New York..	70	78	.473
Philadelphia.	88	57	.607	St. Louis..	69	83	.454
Chicago ...	87	64	.576	Boston . . . .	59	90	.396
Cleveland ...	85	67	.559	Washington	49	102	.325

# BURTON'S POCKET BASEBALL GUIDE.

## Games Won and Lost—By Series.

CLUBS—	Det.	Phila.	Chgo.	Cleve	N. Y.	St. L.	Bost.	Wash	Won.
Detroit .....	..	11	9	11	13	14	16	18	92
Philadelphia ..	8	..	12	14	9	14	14	17	88
Chicago .....	13	10	..	10	12	16	11	15	87
Cleveland ....	11	8	11	..	15	12	13	15	85
New York....	8	10	10	7	..	8	12	15	70
St. Louis.....	8	6	6	10	14	..	12	13	69
Boston .....	6	8	10	8	8	10	..	9	59
Washington ..	4	4	6	7	7	9	12	..	49
Games lost..	58	57	64	67	78	83	90	102	

## INDIVIDUAL BATTING.

Name and Club—	G.	AB.	R.	H.	Pct.
Cobb, Detroit .....	150	605	97	212	.350
Kay, Washington .....	25	60	8	20	.333
Orth, New York.....	43	105	11	34	.324
Crawford, Detroit .....	144	582	102	188	.323
Stone, St. Louis.....	155	596	77	191	.320
Killian, Detroit .....	46	122	16	39	.320
Clymer, Washington .....	57	206	30	65	.316
Flick, Cleveland .....	147	540	78	166	.302
Nicholls, Philadelphia .....	124	460	75	139	.302
Lajoie, Cleveland .....	137	509	53	152	.299
Niles, St. Louis.....	120	402	65	142	.289
Anderson, Washington .....	87	333	33	96	.288
Chase, New York.....	125	498	72	143	.287
Oldring, Philadelphia .....	117	441	48	126	.286
McIntyre, Detroit .....	20	81	6	23	.284
McFarland, Chicago .....	52	138	11	39	.283
Congalton, Boston .....	133	518	46	146	.282
Hartsel, Philadelphia .....	143	507	93	142	.280
Collins, J., Philadelphia.....	141	523	51	146	.279
Milan, Washington .....	48	183	22	51	.279
Delahanty, Washington .....	141	499	52	139	.278
Rossmann, Detroit .....	153	571	60	158	.277
Moriarty, New York.....	126	437	51	121	.277
Lister, Cleveland .....	22	65	5	18	.277
Pickering, St. Louis.....	151	576	63	159	.276
Ganley, Washington .....	154	605	73	167	.276
Parent, Boston .....	114	409	51	113	.276

## AMERICAN LEAGUE AVERAGES.

### Individual Batting—(Continued).

Name and Club—	G.	AB.	R.	H.	Pct.
Hickman, Washington-Chi...	81	221	21	64	.276
Jones, Detroit	126	491	101	134	.273
Schreck, Philadelphia	101	356	30	97	.272
Seybold, Philadelphia	147	564	58	153	.271
Murphy, Philadelphia	124	469	51	127	.271
Elberfeld, New York	120	447	61	121	.271
Hart, Chicago	29	70	6	19	.271
Williams, New York	139	504	53	136	.270
Laporte, New York	130	470	56	127	.270
Dougherty, Chicago	148	533	69	144	.270
Altizer, Washington	147	540	60	145	.269
Clarke, Cleveland	120	390	44	105	.269
Davis, Philadelphia	149	582	84	155	.266
Donovan, Detroit	37	109	20	29	.266
Jones, Washington	121	437	48	110	.265
Spencer, St. Louis	71	230	27	61	.265
Kleinow, New York	90	269	30	71	.264
Jones, Chicago	154	559	72	146	.261
Donohue, Chicago	157	609	75	158	.259
Hemphill, St. Louis	153	603	66	156	.259
Schaefer, Detroit	109	372	45	96	.258
Wallace, St. Louis	147	538	56	138	.257
Warner, Washington	72	207	11	53	.256
Hahn, Chicago	156	592	87	151	.255
Unglaub, Boston	139	544	49	138	.255
Hoffman, New York	136	517	81	131	.253
Jones, St. Louis	155	549	53	137	.250
Bemis, Cleveland	65	172	12	43	.250
Owen, Chicago	11	16	0	4	.250
Sullivan, Boston	144	551	73	135	.245
Schmidt, Detroit	104	349	32	85	.244
Coughlin, Detroit	134	519	80	126	.243
Isbell, Chicago	125	486	60	118	.243
Barrett, Boston	106	390	52	95	.243
Lowe, Detroit	17	37	2	9	.243
Turner, Cleveland	142	524	57	127	.242
Ferris, Boston	143	561	41	135	.241
O'Leary, Detroit	139	465	61	112	.241
Tannehill, Chicago	33	108	9	26	.241
Yeager, St. Louis	123	430	32	104	.239
Davis, Chicago	132	486	59	111	.238
Hughes, Washington	36	80	6	19	.238
Howell, St. Louis	44	114	12	27	.237
Stovall, Cleveland	124	466	38	110	.236
Hartzell, St. Louis	60	220	20	52	.236
Birmingham, Cleveland	136	476	55	112	.235

BURTON'S POCKET BASEBALL GUIDE.

**Individual Batting—(Continued).**

Name and Club—	G.	AB.	R.	H.	Pct.
Conroy, New York.....	140	530	58	124	.234
Keeler, New York.....	107	423	50	99	.234
Bender, Philadelphia .....	45	100	10	23	.230
Nil, Cleveland .....	78	258	26	59	.229
Graham, Washington .....	26	48	7	11	.229
Welday, Chicago .....	24	35	2	8	.229
Hinchman, Cleveland .....	152	514	62	117	.228
Kitson, New York.....	16	31	3	7	.226
Blankenship, Washington ..	37	102	4	23	.225
Bradley, Cleveland .....	139	498	48	111	.223
Winter, Boston .....	35	94	6	21	.223
White, Chicago .....	48	90	12	20	.222
Butler, St. Louis.....	20	59	4	13	.220
Downs, Detroit .....	105	374	28	82	.219
Hoey, Boston .....	39	96	7	21	.219
Mullin, Detroit .....	70	157	16	34	.217
Young, Boston .....	45	125	10	27	.216
Hinchman, H., Cleveland... 15	51	3	11	.216	
Knight, Boston .....	138	499	37	107	.214
Rohe, Chicago .....	144	494	46	105	.213
Wagner, Boston .....	111	385	29	82	.213
Bell, New York .....	17	52	4	11	.212
Plank, Philadelphia .....	43	123	9	26	.211
O'Brien, Cleveland .....	82	270	15	58	.208
Chesbro, New York.....	29	72	1	15	.208
Moore, New York.....	15	29	3	6	.207
Cross, Philadelphia .....	77	248	37	51	.206
Glade, St. Louis.....	24	73	9	15	.205
Ball, New York.....	15	44	5	9	.205
Gehring, Washington .....	20	44	7	9	.205
Grimshaw, Boston .....	64	181	19	37	.204
Thielman, Cleveland .....	21	59	7	12	.203
Stephens, St. Louis.....	58	173	15	35	.202
Cross, Washington .....	41	161	13	32	.199
Shipke, Washington .....	64	189	17	37	.196
Smith, Chicago .....	42	92	11	18	.196
Tannehill, J., Boston.....	21	51	2	10	.196
Thomas, New York.....	80	208	20	40	.192
Shaw, Boston .....	76	198	10	38	.192
Quillin, Chicago .....	49	151	17	29	.192
Kahoe, Washington .....	17	47	3	9	.191
Harris, Boston .....	12	21	1	4	.190
Smith, Washington .....	51	139	12	26	.187
Rhoades, Cleveland .....	35	92	5	17	.185
Hayden, Washington .....	62	164	14	30	.183
Powers, Philadelphia .....	59	159	9	29	.182

AMERICAN LEAGUE AVERAGES.

**Individual Batting—(Continued).**

Name and Club—	G.	AB.	R.	H.	Pct.
Lord, Philadelphia .....	57	170	12	31	.182
Rickey, New York.....	52	137	16	25	.182
Brackett, New York.....	10	22	5	4	.182
Criger, Boston .....	75	226	12	41	.181
Altrock, Chicago .....	30	72	7	13	.181
Glaze, Boston .....	32	61	4	11	.180
Sullivan, Chicago .....	112	329	30	59	.179
Bay, Cleveland .....	34	95	14	17	.179
Berger, Cleveland .....	14	28	2	5	.179
Delahanty, F., Cleveland...	15	52	3	9	.173
Hogg, New York.....	27	64	5	11	.172
Perrine, Washington .....	44	146	13	25	.171
Dineen, St. Louis.....	29	59	4	10	.169
Pelty, St. Louis .....	36	95	4	16	.168
Coombs, Philadelphia .....	24	48	4	8	.167
Payne, Detroit .....	53	169	17	28	.166
Walsh, Chicago .....	57	154	7	25	.162
Liebhart, Cleveland .....	38	87	8	14	.161
O'Connor, St. Louis.....	25	89	2	14	.157
Pruitt, Boston .....	35	51	2	8	.157
Sievers, Detroit .....	38	91	5	14	.154
Vickers, Philadelphia .....	10	20	0	3	.150
Buelow, St. Louis.....	26	75	9	11	.147
Smith, Washington .....	37	84	5	12	.143
Falkenberg, Washington ...	33	86	7	12	.140
Block, Washington .....	24	57	3	8	.140
Doyle, New York.....	29	58	5	8	.138
Hess, Cleveland .....	19	29	4	4	.138
Wakefield, Cleveland .....	26	37	4	5	.135
Schlafly, Washington .....	24	74	10	10	.135
Powell, St. Louis.....	32	91	5	12	.132
Eubanks, Detroit .....	15	31	1	4	.129
Dygart, Philadelphia .....	42	94	11	12	.128
Patten, Washington .....	36	87	4	11	.126
Waddell, Philadelphia ....	43	97	4	12	.124
Archer, Detroit .....	18	42	6	5	.119
Joss, Cleveland .....	42	114	6	13	.114
Johnson, Washington .....	14	36	1	4	.111
Newton, New York.....	19	37	5	4	.108
Oberlin, Washington .....	24	31	0	3	.097
Patterson, Chicago .....	19	31	3	3	.097
Armbruster, Boston .....	24	63	2	6	.095
Bartley, Philadelphia .....	15	21	1	2	.090
Clarkson, Cleveland .....	22	35	2	3	.086
Morgan, Boston .....	26	55	2	4	.073
Keefe, New York.....	19	19	2	1	.053

**CLUB BATTING.**

	G.	AB.	R.	H.	Pct.
Detroit .....	153	5199	693	1383	.266
Philadelphia .....	150	5006	582	1280	.256
St. Louis .....	155	5220	542	1328	.254
New York .....	152	5051	605	1263	.250
Washington .....	154	5098	506	1239	.243
Cleveland .....	158	5078	529	1224	.241
Chicago .....	157	5097	588	1218	.239
Boston .....	155	5242	464	1230	.235

**INDIVIDUAL FIELDING.**

**First Basemen.**

Name and Club—	G.	PO.	A.	E.	Pct.
Donohue, Chicago .....	157	1846	140	12	.994
Unglaub, Boston .....	139	1504	84	22	.986
Altizer, Washington .....	50	579	24	14	.984
Jones, St. Louis.....	155	1687	103	31	.983
Stovall, Cleveland .....	122	1381	68	25	.983
Anderson, Washington ....	61	615	31	11	.983
Rossmann, Detroit .....	153	1478	62	30	.981
Davis, Philadelphia .....	149	1478	103	38	.977
Moriarity, New York.....	22	225	7	6	.975
Lister, Cleveland .....	22	219	10	6	.974
Chase, New York .....	121	1144	77	34	.973
Grimshaw, Boston .....	15	130	7	4	.973
Hickman, Wahs.-Chicago...	30	283	16	11	.965

**Second Basemen.**

Hartzell, St. Louis.....	15	36	40	2	.974
Lajoie, Cleveland .....	128	314	461	25	.969
Ferris, Boston .....	143	424	459	30	.967
Williams, New York.....	139	357	393	26	.966
Nill, Cleveland .....	32	60	84	5	.966
Murphy, Philadelphia .....	122	271	386	24	.965
Schaefer, Detroit .....	74	183	205	10	.961
Isbell, Chicago .....	119	276	384	30	.957
Niles, St. Louis.....	116	280	352	34	.949
Perrine, Washington .....	24	52	53	6	.946
O'Brien, Washington .....	17	28	55	5	.943
Delahanty, Washington ....	68	172	180	22	.941
Yeager, St. Louis.....	17	46	53	7	.934
Downs, Detroit .....	80	149	207	27	.930
Schlafly, Washington .....	24	67	49	9	.928
Nicholls, Philadelphia .....	28	41	69	10	.917
Rohe, Chicago .....	39	81	111	19	.910
Hinchman, H., Cleveland...	15	25	60	9	.904



# AMERICAN LEAGUE AVERAGES.

---

## Individual Fielding—(Continued).

### Third Basemen.

Name and Club—	G.	PO.	A.	E.	Pct.
Cross, L., Washington.....	41	38	98	3	.978
Shipke, Washington .....	63	57	127	11	.949
Bradley, Cleveland .....	139	164	278	29	.938
Yeager, St. Louis.....	91	108	194	20	.938
Coughlin, Detroit .....	133	163	233	30	.930
Tannehill, Chicago .....	31	21	82	10	.912
Hartzell, St. Louis .....	38	49	74	12	.911
Knight, Boston .....	132	178	293	49	.906
O'Brien, Washington .....	40	49	95	16	.900
Moriarity, New York.....	91	115	160	31	.899
Rohe, Chicago .....	73	58	161	25	.898
Laporte, New York.....	64	65	115	21	.986
Collins, J., Philadelphia....	139	143	257	47	.895
Delahanty, Washington ...	46	70	73	18	.888
Quillin, Chicago .....	48	45	103	22	.871

### Shortstops.

Cross, M., Philadelphia....	74	169	226	19	.954
Schaefer, Detroit .....	18	30	48	4	.951
Turner, Cleveland .....	141	258	477	39	.950
Davis, Chicago .....	132	223	485	38	.949
O Leary, Detroit .....	138	353	448	48	.948
Wallace, St. Louis.....	147	338	517	54	.941
Wagner, Boston .....	109	283	387	50	.931
Conroy, New York.....	38	95	94	14	.931
Nicholls, Philadelphia .....	82	178	258	33	.930
Elberfeld, New York.....	118	295	400	52	.930
Smith, Washington .....	51	99	141	21	.930
Altizer, Washington .....	71	155	251	32	.928
Perrine, Washington .....	18	36	59	7	.924
Rohe, Chicago .....	29	38	94	11	.923
Parent, Boston .....	43	80	155	20	.922
O'Brien, Washington .....	21	27	49	9	.894

### Outfielders.

McIntyre, Detroit .....	20	43	3	0	1000
Hahn, Chicago .....	156	182	24	2	.990
Altizer, Washington .....	26	54	0	1	.982
Parent, Boston .....	47	78	12	2	.978
Sullivan, Boston .....	143	296	16	8	.975
Oldring, Philadelphia .....	117	180	10	5	.974
Jones, Chicago .....	154	307	18	9	.973
Seybold, Philadelphia .....	147	201	19	6	.973

**Individual Fielding—(Continued).**

Name and Club—	G.	PO.	A.	E.	Pct.
Congalton, Boston .....	129	179	19	6	.971
Jones, Detroit .....	125	282	15	9	.971
Stone, St. Louis.....	155	276	12	9	.970
Keeler, New York.....	107	144	13	5	.969

**Outfielders.**

Bay, Cleveland .....	31	55	5	2	.968
Hartsel, Philadelphia .....	143	191	11	7	.967
Jones, Washington .....	111	226	6	8	.967
Anderson, Washington ....	26	56	2	2	.967
Barrett, Boston .....	99	183	14	7	.966
Grimshaw, Boston .....	23	27	1	1	.966
Crawford, Detroit .....	144	311	22	12	.965
Cobb, Detroit .....	150	238	30	11	.961
Nil, Cleveland .....	25	53	20	3	.961
Hinchman, Cleveland .....	148	231	18	11	.958
Hemphill, St. Louis.....	153	320	12	15	.957
Flick, Cleveland .....	147	219	22	11	.956
Hoffman, New York.....	135	286	20	15	.953
Conroy, New York.....	100	204	10	10	.951
Lord, Philadelphia .....	53	91	6	5	.951
Pickering, St. Louis.....	151	210	14	12	.949
Birmingham, Cleveland ...	134	273	33	17	.947
Dougherty, Chicago .....	148	209	19	13	.946
Ganley, Washington .....	154	276	23	19	.940
Welday, Chicago .....	15	13	2	1	.938
Downs, Detroit .....	20	39	3	3	.933
Milan, Washington .....	47	80	12	7	.929
Delahanty, Cleveland .....	15	19	3	2	.917
Laporte, New York.....	63	84	10	9	.913
Clymer, Washington .....	51	79	4	8	.912
Hickman, Wash.-Chicago...	21	25	4	3	.906
Bell, New York.....	17	35	0	4	.897
Hoey, Boston .....	21	24	0	4	.857
Rickey, New York.....	22	32	1	6	.846

**Catchers.**

Blankenship, Washington ..	22	87	25	1	.991
O'Connor, St. Louis.....	25	87	29	1	.991
Schreck, Philadelphia .....	99	640	145	12	.985
Sullivan, Chicago .....	109	477	117	10	.983
Powers, Philadelphia .....	59	313	80	7	.983
Buelow, St. Louis.....	25	77	36	2	.983
Payne, Detroit .....	46	205	55	5	.981
Criger, Boston .....	74	288	109	9	.978

AMERICAN LEAGUE AVERAGES.

---

**Individual Fielding—(Continued.)  
Catchers.**

Name and Club—	G.	PO.	A.	E.	Pct.
Kahoe, Washington . . . . .	15	61	19	2	.976
Archer, Detroit . . . . .	17	62	16	2	.975
McFarland, Chicago . . . . .	43	192	47	7	.972
Shaw, Boston . . . . .	73	294	106	12	.971
Warner, Washington . . . . .	64	271	64	10	.971
Kleinow, New York . . . . .	86	318	97	14	.967
Stephens, St. Louis . . . . .	56	200	63	9	.967
Clarke, Cleveland . . . . .	115	470	119	24	.961
Hayden, Washington . . . . .	57	247	52	12	.961
Spencer, St. Louis . . . . .	63	250	80	15	.957
Bemis, Cleveland . . . . .	51	180	42	10	.957
Hart, Chicago . . . . .	25	85	23	5	.956
Thomas, New York . . . . .	61	257	90	17	.953
Block, Washington . . . . .	21	59	16	4	.949
Schmidt, Detroit . . . . .	103	446	132	34	.944
Armbruster, Chicago . . . . .	22	89	37	8	.940
Wakefield, Cleveland . . . . .	11	37	3	3	.930
Rickey, New York . . . . .	11	56	11	9	.882

**CLUB FIELDING.**

	G.	PO.	A.	E.	Pct.
Chicago . . . . .	157	4209	2446	240	.965
Detroit . . . . .	153	4102	1957	246	.961
Cleveland . . . . .	158	4178	2206	267	.960
Philadelphia . . . . .	150	4057	1499	255	.960
St. Louis . . . . .	155	4131	2135	270	.959
Boston . . . . .	155	4230	2195	278	.959
Washington . . . . .	154	4050	1989	315	.950
New York . . . . .	152	4000	1993	338	.947

**PITCHERS' RECORDS.**

Name and Club—	G.	W.	L.	Pct.	Field.
Donovan, Detroit . . . . .	32	25	4	.862	.945
Joss, Cleveland . . . . .	42	27	11	.711	.982
Dygert, Philadelphia . . . . .	42	20	9	.690	.906
White, Chicago . . . . .	47	27	13	.675	.986
Bender, Philadelphia . . . . .	33	16	8	.667	.934
Smith, Chicago . . . . .	41	22	11	.667	.963
Killian, Detroit . . . . .	42	25	13	.658	.963
Siever, Detroit . . . . .	38	19	10	.655	.964
Plank, Philadelphia . . . . .	43	24	16	.600	.984

AMERICAN LEAGUE AVERAGES.

**Pitchers' Records—(Continued).**

Name and Club—	G.	W.	L.	Pct.	Field. Av.
Young, Boston .....	44	22	15	.595	.936
Waddell, Philadelphia ...	43	19	13	.594	.874
Glade, St. Louis.....	24	13	9	.591	.923
Hogg, New York.....	26	11	8	.579	.964
Thielman, Cleveland ....	20	11	8	.579	.927
Walsh, Chicago .....	56	24	18	.571	.985
Leibhart, Cleveland ....	38	18	14	.563	.962
Rhoades, Cleveland .....	35	15	14	.517	.950
Howell, St. Louis.....	42	16	15	.516	.982
Mullin, Detroit .....	47	20	20	.500	.961
Doyle, New York.....	29	11	11	.500	.943
Hess, Cleveland .....	17	6	6	.500	.941
Keefe, New York.....	19	4	4	.500	.913
Kitson, New York.....	16	3	3	.500	.913
Berger, Cleveland .....	14	3	3	.500	.917
Vickers, Philadelphia ..	10	2	2	.500	.950
Chesbro, New York.....	29	9	10	.474	.919
Tannehill, Boston .....	18	6	7	.462	.981
Powell, St. Louis.....	32	13	16	.448	.947
Winters, Boston .....	35	12	15	.444	.943
Morgan, Boston .....	26	8	11	.421	.940
Clarkson, Cleveland ....	22	5	7	.417	.930
Patten, Washington ....	36	12	17	.414	.854
Newton, New York.....	19	7	10	.412	.925
Glaze, Boston .....	32	9	13	.409	.960
Orth, New York.....	37	14	21	.400	.920
Altrock, Chicago .....	30	8	12	.400	.958
Coombs, Philadelphia ...	23	6	9	.400	.979
Patterson, Chicago .....	19	4	6	.400	1000
Eubanks, Detroit .....	15	2	3	.400	.944
Owen, Chicago .....	11	2	3	.400	1000
Pelty, St. Louis.....	36	12	21	.361	.943
Johnson, Washington ...	14	5	9	.357	.893
Hughes, Washington ...	34	7	13	.350	.985
Smith, Washington ....	36	11	21	.344	.946
Dineen, St. Louis.....	29	7	15	.318	.944
Gehring, Washington ...	14	3	7	.300	.957
Moore, New York.....	15	3	7	.300	.933
Graham, Washington ...	20	4	10	.286	.927
Falkenberg, Washington.	32	5	18	.217	.939
Pruitt, Boston .....	35	3	11	.214	.910
Oberlin, Washington ...	11	3	11	.214	.839
Bartley, Philadelphia ...	15	0	4	.000	.920
Harris, Boston .....	12	0	7	.000	.880

**HOW TO FIGURE AVERAGES.**

---

While the great majority of fans take a keen interest in the averages of players and teams as given out after the end of each baseball season, an even greater interest is manifested in the averages of the different teams and players as they appear daily and weekly in the metropolitan newspapers. In order to enlighten the baseball enthusiasts who may not be versed in the different methods of figuring such averages, the following is appended for their benefit:

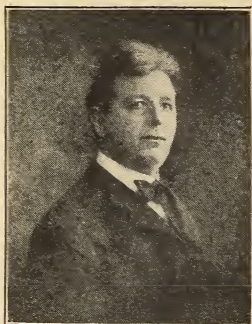
For the purpose of showing the batting average of a player take, for example, Lajoie's (American League) average in batting for 1907: The "A. B." column shows this player was "at bat" 509 times, making a total of 152 hits. Divide the number of hits by the number of times at bat, thus:  $152 \div 509 = .298$   $318/509$ . The fraction being more than  $\frac{1}{2}$ , the last figure is raised to 9, making .299, the figure given in the official averages. One more hit would have landed this player in the .300 class.

To find the correct fielding average of a team or player add the total number of chances offered ("put-outs," "assists" and "errors") and number of chances accepted ("put-outs" and "assists"); then divide the number of chances "accepted" by total number of chances "offered," which will give the correct fielding percentage. For example: Wagner, of Pittsburg, last year had 314 put-outs, 428 assists, and made 49 errors, a total of 791 chances, of which he accepted 742. Therefore,  $742 \div 791 = .938$ , the official average.

To get correct team percentages, add total games played, then divide the number won by this total. Example: Detroit last year won 92 and lost 58 games, a total of 150 being played; therefore,  $92 \div 150 = .613$ , the percentage of games won.

This method can also be followed in determining percentage of games won by pitchers.

**THE CHICAGO WHITE SOX.**



**CHARLES COMISKEY,**

**Owner of Chicago American League Team.**

The make-up of the Chicago White Sox of 1908 will be but slightly changed, Davis being shifted to second to replace "Izzy," now a Kansas magnate, and Fred Parent, formerly of Boston Americans, taking the former's position at shortfield. The team will be composed about as follows:

First base—"Jiggs" Donahue."

Second base—George Davis.

Third base—Lee Tannehill.

Shortstop—Fred Parent.

Right field—Eddie Hahn.

Center field—Fielder Jones.

Left field—Patrick Dougherty.

Pitchers—Walsh, White, Altrack, Smith, Owen, Fiene, Most, Olmstead, Manuel.

Catchers—Sullivan, Shaw, Armbruster, Weaver, Hart.

Substitutes—John Anderson, W. Purtell, Jake Atz.

Season opens April 14, at Chicago, with Detroit Tigers.

## AMERICAN AND NATIONAL LEAGUE CALENDAR SCHEDULES.

Beginning below and continuing to page 62 will be found (by calendar days) every game to be played in American and National Leagues for the entire season. Morning and afternoon games are scheduled in both leagues May 30, July 4, and September 7. When two games are to be played on days other than holidays they will be marked thus (2). When National and American League teams play in a city on the same day a black cross + will be noted.

### American.      Tuesday, April 14.      National.

Detroit at Chicago.	Chicago at Cincinnati.
St. Louis at Cleveland.	Pittsburg at St. Louis.
Washington at Boston.	New York at Philadel'a.
Philadelphia at New York.	Boston at Brooklyn.

### American.      Wednesday, April 15.      National.

Detroit at Chicago.	Chicago at Cincinnati.
St. Louis at Cleveland.	Pittsburg at St. Louis.
Washington at Boston.	New York at Philadel'a.
Philadelphia at New York.	Boston at Brooklyn.

### American.      Thursday, April 16.      National.

Detroit at Chicago.	Chicago at Cincinnati.
St. Louis at Cleveland.	Pittsburg at St. Louis.
Washington at Boston.	New York at Philadel'a.
Philadelphia at New York.	Boston at Brooklyn.

### American.      Friday, April 17.      National.

St. Louis at Chicago.	Chicago at Cincinnati.
Washington at Boston.	Pittsburg at St. Louis.
Cleveland at Detroit.	New York at Philadel'a.
Philadelphia at New York.	Boston at Brooklyn.

PLAYING SCHEDULES FOR 1908.

<b>American</b>	<b>Saturday, April 18.</b>	<b>National.</b>
St. Louis at Chicago.	Chicago at St. Louis.	
Cleveland at Detroit.	Pittsburg at Cincinnati.	
Philadelphia at Boston.	New York at Brooklyn.	
Washington at New York.	Boston at Philadelphia.	
<b>American.</b>	<b>SUNDAY, April 19.</b>	<b>National.</b>
St. Louis at Chicago.	Chicago at St. Louis.	
	Pittsburg at Cincinnati.	
<b>American.</b>	<b>Monday, April 20.</b>	<b>National.</b>
St. Louis at Chicago.	Chicago at St. Louis.	
Cleveland at Detroit.	Pittsburg at Cincinnati.	
Washington at New York.	New York at Brooklyn.	
Philadelphia at Boston (2)	Boston at Philadelphia.	
<b>American.</b>	<b>Tuesday, April 21.</b>	<b>National.</b>
Chicago at Cleveland.	New York at Brooklyn.	
St. Louis at Detroit.	Boston at Philadelphia.	
Washington at New York.		
Philadelphia at Boston.		
<b>American.</b>	<b>Wednesday, April 22.</b>	<b>National.</b>
Chicago at Cleveland.	Cincinnati at Chicago.	
St. Louis at Detroit.	St. Louis at Pittsburg.	
New York at Philadelphia.	Brooklyn at New York.	
Boston at Washington.	Philadelphia at Boston.	
<b>American.</b>	<b>Thursday, April 23.</b>	<b>National.</b>
Chicago at Cleveland	Cincinnati at Chicago.	
St. Louis at Detroit.	St. Louis at Pittsburg.	
New York at Philadelphia.	Brooklyn at New York.	
Boston at Washington.	Philadelphia at Boston.	
<b>American.</b>	<b>Friday, April 24.</b>	<b>National.</b>
Chicago at St. Louis.	Cincinnati at Chicago.	
Detroit at Cleveland.	St. Louis at Pittsburg.	
New York at Philadelphia.	Brooklyn at New York.	
Boston at Washington.	Philadelphia at Boston.	
<b>American.</b>	<b>Saturday, April 25.</b>	<b>National.</b>
Chicago at St. Louis.	Cincinnati at Chicago.	
Detroit at Cleveland.	St. Louis at Pittsburg.	
New York at Philadelphia.	Brooklyn at New York.	
Boston at Washington.	Philadelphia at Boston.	
<b>American.</b>	<b>SUNDAY, April 26.</b>	<b>National.</b>
Chicago at St. Louis.	Pittsburg at Chicago.	
	St. Louis at Cincinnati.	
<b>American.</b>	<b>Monday, April 27.</b>	<b>National.</b>
Chicago at St. Louis.	Pittsburg at Chicago.	
Detroit at Cleveland.	St. Louis at Cincinnati.	
Boston at New York.	New York at Boston.	
Washington at Philadel'a.	Philadelphia at Brooklyn.	



PLAYING SCHEDULES FOR 1908.

**American. Tuesday, April 28. National.**

Detroit at Cleveland.	Pittsburg at Chicago.
Boston at New York.	St. Louis at Cincinnati.
Washington at Philadel'a.	New York at Boston.
	Philadelphia at Brooklyn.

**American. Wednesday, April 29. National.**

Chicago at Detroit.	Pittsburg at Chicago.
Cleveland at St. Louis.	St. Louis at Cincinnati.
Boston at New York.	New York at Boston.
Washington at Philadel'a.	Philadelphia at Brooklyn.

**American. Thursday, April 30. National.**

Chicago at Detroit.	St. Louis at Chicago.
Cleveland at St. Louis.	Cincinnati at Pittsburg.
Washington at Philadel'a.	New York at Boston.
Boston at New York.	Philadelphia at Brooklyn.

**American. Friday, May 1. National.**

Chicago at Detroit.	St. Louis at Chicago.
New York at Washington.	Cincinnati at Pittsburg.
Boston at Philadelphia.	Philadelphia at N. Y.
	Brooklyn at Boston.

**American. Saturday, May 2. National.**

Chicago at Detroit.	St. Louis at Chicago.
Cleveland at St. Louis.	Cincinnati at Pittsburg.
Boston at Philadelphia.	Philadelphia at N. Y.
New York at Washington.	Brooklyn at Boston.

**American. SUNDAY, May 3. National.**

✚ Cleveland at Chicago.	✚ St. Louis at Chicago.
Detroit at St. Louis.	Pittsburg at Cincinnati.

**American. Monday, May 4. National.**

Detroit at St. Louis.	St. Louis at Chicago.
New York at Washington.	Pittsburg at Cincinnati.
Boston at Philadelphia.	Philadelphia at N. Y.
	Brooklyn at Boston.

**American. Tuesday, May 5. National.**

Cleveland at Chicago.	Chicago at Pittsburg.
Detroit at St. Louis.	Philadelphia at N. Y.
New York at Washington.	Brooklyn at Boston.
Boston at Philadelphia.	

**American. Wednesday, May 6. National.**

Cleveland at Chicago.	Chicago at Pittsburg.
Philadel'a at Washington.	Cincinnati at St. Louis.
New York at Boston.	Boston at New York.
	Brooklyn at Philadel'a.

PLAYING SCHEDULES FOR 1908.

<b>American.</b>	<b>Thursday, May 7.</b>	<b>National.</b>
St. Louis at Chicago.	Chicago at Pittsburg.	
Philadel'a at Washington.	Cincinnati at St. Louis.	
New York at Boston.	Boston at New York.	
	Brooklyn at Philadelphia	
<b>American.</b>	<b>Friday, May 8.</b>	<b>National.</b>
St. Louis at Chicago.	Chicago at Pittsburg.	
Detroit at Cleveland.	Cincinnati at St. Louis.	
Philadel'a at Washington.	Boston at New York.	
New York at Boston.	Brooklyn at Philadelphia	
<b>American.</b>	<b>Saturday, May 9.</b>	<b>National.</b>
St. Louis at Chicago.	Chicago at Pittsburg.	
Detroit at Cleveland.	Cincinnati at St. Louis.	
Philadel'a at Washington.	Boston at New York.	
New York at Boston.	Brooklyn at Philadelphia	
<b>American.</b>	<b>SUNDAY, May 10.</b>	<b>National.</b>
✚Cleveland at Chicago.	✚Pittsburg at Chicago.	
✚Detroit at St. Louis.	✚Cincinnati at St. Louis	
<b>American.</b>	<b>Monday, May 11.</b>	<b>National.</b>
Philadel'a at Washington.	Philadelphia at Chicago.	
New York at Boston.	Brooklyn at St. Louis.	
	Boston at Cincinnati.	
	New York at Pittsburg.	
<b>American.</b>	<b>Tuesday, May 12.</b>	<b>National.</b>
Chicago at Philadelphia.	Philadelphia at Chicago.	
St. Louis at Washington.	Brooklyn at St. Louis.	
Detroit at Boston.	Boston at Cincinnati.	
Cleveland at New York.	New York at Pittsburg.	
<b>American.</b>	<b>Wednesday, May 13.</b>	<b>National.</b>
Chicago at Philadelphia.	Philadelphia at Chicago.	
St. Louis at Washington.	Brooklyn at St. Louis.	
Detroit at Boston.	Boston at Cincinnati.	
Cleveland at New York.	New York at Pittsburg.	
<b>American.</b>	<b>Thursday, May 14.</b>	<b>National.</b>
Chicago at Philadelphia.	Philadelphia at Chicago.	
St. Louis at Washington.	Brooklyn at St. Louis.	
Detroit at Boston.	Boston at Cincinnati.	
Cleveland at New York.	New York at Pittsburg.	
<b>American.</b>	<b>Friday, May 15.</b>	<b>National.</b>
Chicago at Philadelphia.	Brooklyn at Chicago.	
St. Louis at Washington.	Boston at St. Louis.	
Detroit at Boston.	New York at Cincinnati.	
Cleveland at New York.	Philadelphia at Pittsburg	

## PLAYING SCHEDULES FOR 1908.

<b>American.</b>	<b>Saturday, May 16.</b>	<b>National.</b>
Chicago at Washington.		Brooklyn at Chicago.
St. Louis at Philadelphia.		Boston at St. Louis.
Detroit at New York.		New York at Cincinnati.
Cleveland at Boston.		Philadelphia at Pittsburg
<b>American.</b>	<b>SUNDAY, May 17.</b>	<b>National.</b>
No games scheduled.		Brooklyn at Chicago.
		Boston at St. Louis.
		New York at Cincinnati.
<b>American.</b>	<b>Monday, May 18.</b>	<b>National.</b>
Chicago at Washington.		Brooklyn at Chicago.
St. Louis at Philadelphia.		Boston at St. Louis.
Detroit at New York.		New York at Cincinnati.
Cleveland at Boston.		Philadelphia at Pittsburg
<b>American.</b>	<b>Tuesday, May 19.</b>	<b>National.</b>
Chicago at Washington.		Philadelphia at Pittsburg
St. Louis at Philadelphia.		
Detroit at New York.		
Cleveland at Boston.		
<b>American.</b>	<b>Wednesday, May 20.</b>	<b>National.</b>
Chicago at Washington.		Boston at Chicago.
St. Louis at Philadelphia.		New York at St. Louis.
Detroit at New York.		Philadel'a at Cincinnati.
Cleveland at Boston.		Brooklyn at Pittsburg.
<b>American.</b>	<b>Thursday, May 21.</b>	<b>National.</b>
Chicago at New York.		Boston at Chicago.
St. Louis at Boston.		New York at St. Louis.
Detroit at Washington.		Philadel'a at Cincinnati.
Cleveland at Philadelphia.		Brooklyn at Pittsburg.
<b>American.</b>	<b>Friday, May 22.</b>	<b>National.</b>
Chicago at New York.		Boston at Chicago.
St. Louis at Boston.		New York at St. Louis.
Detroit at Washington.		Philadel'a at Cincinnati.
Cleveland at Philadelphia.		Brooklyn at Pittsburg.
<b>American.</b>	<b>Saturday, May 23.</b>	<b>National.</b>
Chicago at New York.		Boston at Chicago.
St. Louis at Boston.		New York at St. Louis.
Detroit at Washington.		Philadel'a at Cincinnati.
Cleveland at Philadelphia.		Brooklyn at Pittsburg.
<b>American.</b>	<b>SUNDAY, May 24.</b>	<b>National.</b>
No games scheduled.		New York at Chicago.
		Philadelphia at St. Louis.
		Brooklyn at Cincinnati.
<b>American.</b>	<b>Monday, May 25.</b>	<b>National.</b>
Chicago at New York.		New York at Chicago.
St. Louis at Boston.		Philadelphia at St. Louis.
Detroit at Washington.		Brooklyn at Cincinnati.
Cleveland at Philadelphia.		Boston at Pittsburg.

PLAYING SCHEDULES FOR 1908.

<b>American.</b>	<b>Tuesday, May 26.</b>	<b>National.</b>
Chicago at Boston.		New York at Chicago.
St. Louis at New York.		Philadelphia at St. Louis.
Detroit at Philadelphia.		Brooklyn at Cincinnati.
Cleveland at Washington.		Boston at Pittsburg.
<b>American.</b>	<b>Wednesday, May 27.</b>	<b>National.</b>
Chicago at Boston.		New York at Chicago.
St. Louis at New York.		Philadelphia at St. Louis.
Detroit at Philadelphia.		Brooklyn at Cincinnati.
Cleveland at Washington.		Boston at Pittsburg.
<b>American.</b>	<b>Thursday, May 28.</b>	<b>National.</b>
Chicago at Boston.		Chicago at St. Louis.
St. Louis at New York.		Boston at Pittsburg.
Detroit at Philadelphia.		
Cleveland at Washington.		
<b>American.</b>	<b>Friday, May 29.</b>	<b>National.</b>
St. Louis at Cleveland.		Chicago at St. Louis.
Washington at Boston.		Cincinnati at Pittsburg.
Philadelphia at New York.		New York at Brooklyn.
		Boston at Philadelphia.
<b>American.</b>	<b>SATURDAY, May 30.</b>	<b>National.</b>
<b>(Morning and Afternoon Games.)</b>		
Chicago at Detroit.		Chicago at St. Louis.
St. Louis at Cleveland.		Cincinnati at Pittsburg.
Washington at Boston.		New York at Brooklyn.
Philadelphia at New York.		Boston at Philadelphia.
<b>American.</b>	<b>SUNDAY, May 31.</b>	<b>National.</b>
✚ Detroit at Chicago.		✚ Pittsburg at Chicago.
Cleveland at St. Louis.		St. Louis at Cincinnati.
<b>American.</b>	<b>Monday, June 1.</b>	<b>National.</b>
Chicago at St. Louis.		Pittsburg at Chicago.
Cleveland at Detroit.		St. Louis at Cincinnati.
Washington at Philadel'a.		New York at Boston.
Boston at New York.		Philadelphia at Brooklyn.
<b>American.</b>	<b>Tuesday, June 2.</b>	<b>National.</b>
Chicago at St. Louis.		Pittsburg at Chicago.
Cleveland at Detroit.		St. Louis at Cincinnati.
Washington at Philadel'a.		New York at Boston.
Boston at New York.		Philadelphia at Brooklyn.
<b>American.</b>	<b>Wednesday, June 3.</b>	<b>National.</b>
Chicago at St. Louis.		St. Louis at Pittsburg.
Cleveland at Detroit.		New York at Boston.
Washington at Philadel'a.		Philadelphia at Brooklyn.
Boston at New York.		

PLAYING SCHEDULES FOR 1908.

**American. Thursday, June 4. National.**

Boston at Detroit.  
New York at Cleveland.

Chicago at Boston.  
St. Louis at New York.  
Cincinnati at Brooklyn.  
Pittsburg at Philadelphia.

**American. Friday, June 5. National.**

Washington at Chicago.  
Philadelphia at St. Louis.  
Boston at Detroit.  
New York at Cleveland.

Chicago at Boston.  
St. Louis at New York.  
Cincinnati at Brooklyn.  
Pittsburg at Philadelphia.

**American. Saturday, June 6. National.**

Washington at Chicago.  
Philadelphia at St. Louis.  
Boston at Detroit.  
New York at Cleveland.

Chicago at Boston.  
St. Louis at New York.  
Cincinnati at Brooklyn.  
Pittsburg at Philadelphia.

**American. SUNDAY, June 7. National.**

Washington at Chicago.  
Philadelphia at St. Louis.

No games scheduled.

**American. Monday, June 8. National.**

Washington at Chicago.  
Philadelphia at St. Louis.  
Boston at Detroit.  
New York at Cleveland.

Chicago at Boston.  
St. Louis at New York.  
Cincinnati at Brooklyn.  
Pittsburg at Philadelphia.

**American. Tuesday, June 9. National.**

Philadelphia at Chicago.  
Washington at St. Louis.  
New York at Detroit.  
Boston at Cleveland.

Chicago at Brooklyn.  
St. Louis at Philadelphia.  
Cincinnati at Boston.  
Pittsburg at New York.

**American. Wednesday, June 10. National.**

Philadelphia at Chicago.  
Washington at St. Louis.  
New York at Detroit.  
Boston at Cleveland.

Chicago at Brooklyn.  
St. Louis at Philadelphia.  
Cincinnati at Boston.  
Pittsburg at New York.

**American. Thursday, June 11. National.**

Philadelphia at Chicago.  
Washington at St. Louis.  
New York at Detroit.  
Boston at Cleveland.

Chicago at Brooklyn.  
St. Louis at Philadelphia.  
Cincinnati at Boston.  
Pittsburg at New York.

**American. Friday, June 12. National.**

Philadelphia at Chicago.  
Washington at St. Louis.  
New York at Detroit.  
Boston at Cleveland.

Chicago at Brooklyn.  
St. Louis at Philadelphia.  
Cincinnati at Boston.  
Pittsburg at New York.

PLAYING SCHEDULES FOR 1908.

**American. Saturday, June 13. National.**  
 New York at Chicago. Chicago at Philadelphia.  
 Boston at St. Louis. St. Louis at Brooklyn.  
 Philadelphia at Detroit. Cincinnati at New York.  
 Washington at Cleveland. Pittsburg at Boston.

**American. SUNDAY, June 14. National.**  
 New York at Chicago. No games scheduled.  
 Boston at St. Louis.

**American. Monday, June 15. National.**  
 New York at Chicago. Chicago at Philadelphia.  
 Boston at St. Louis. St. Louis at Brooklyn.  
 Philadelphia at Detroit. Cincinnati at New York.  
 Washington at Cleveland. Pittsburg at Boston.

**American. Tuesday, June 16. National.**  
 New York at Chicago. Chicago at Philadelphia.  
 Boston at St. Louis. St. Louis at Brooklyn.  
 Philadelphia at Detroit. Cincinnati at New York.  
 Washington at Cleveland. Pittsburg at Boston.

**American. Wednesday, June 17. National.**  
 New York at Chicago. Chicago at Philadelphia.  
 Philadelphia at Detroit. St. Louis at Brooklyn.  
 Washington at Cleveland. Cincinnati at New York.  
 Pittsburg at Boston (2).

**American. Thursday, June 18. National.**  
 Boston at Chicago. Chicago at New York.  
 New York at St. Louis. St. Louis at Boston.  
 Washington at Detroit. Cincinnati at Philadel'a.  
 Philadelphia at Cleveland. Pittsburg at Brooklyn.

**American. Friday, June 19. National.**  
 Boston at Chicago. Chicago at New York.  
 New York at St. Louis. St. Louis at Boston.  
 Washington at Detroit. Cincinnati at Philadel'a.  
 Philadelphia at Cleveland. Pittsburg at Brooklyn.

**American. Saturday, June 20. National.**  
 Boston at Chicago. Chicago at New York.  
 New York at St. Louis. St. Louis at Boston.  
 Washington at Detroit. Cincinnati at Phila. (2)  
 Philadelphia at Cleveland. Pittsburg at Brookl'n (2)

**American. SUNDAY, June 21. National.**  
 Boston at Chicago. Pittsburg at Cincinnati.  
 New York at St. Louis.

**American. Monday, June 22. National.**  
 Philadelphia at Cleveland. Chicago at New York.  
 St. Louis at Boston.  
 Cincinnati at Pittsburg.  
 Philadelphia at Brooklyn.

PLAYING SCHEDULES FOR 1908.

**American. Tuesday, June 23. National.**  
 Washington at Boston. Cincinnati at Pittsburg.  
 New York at Philadelphia. Boston at New York.  
 Philadelphia at Brooklyn.

**American. Wednesday, June 24. National.**  
 Chicago at Cleveland. St. Louis at Chicago.  
 St. Louis at Detroit. Boston at New York.  
 Washington at Boston. Philadelphia at Brooklyn.  
 New York at Philadelphia.

**American. Thursday, June 25. National.**  
 Chicago at Cleveland. Cincinnati at Chicago.  
 St. Louis at Detroit. Pittsburg at St. Louis.  
 Washington at Boston. Boston at New York.  
 New York at Philadelphia. Philadelphia at Brooklyn.

**American. Friday, June 26. National.**  
 Chicago at Cleveland. Cincinnati at Chicago.  
 St. Louis at Detroit. Pittsburg at St. Louis.  
 Washington at Boston. Boston at New York.  
 New York at Philadelphia.

**American. Saturday, June 27. National.**  
 Chicago at Cleveland. Cincinnati at Chicago.  
 St. Louis at Detroit. Pittsburg at St. Louis.  
 Washington at Philadel'a. New York at Brooklyn.  
 Boston at New York. Philadelphia at Boston.

**American. SUNDAY, June 28. National.**  
 +Detroit at Chicago. +Cincinnati at Chicago.  
 +Cleveland at St. Louis. +Pittsburg at St. Louis.

**American. Monday, June 29. National.**  
 Washington at Philadel'a. Chicago at Cincinnati.  
 Boston at New York. Pittsburg at St. Louis.  
 New York at Brooklyn.  
 Philadelphia at Boston.

**American. Tuesday, June 30. National.**  
 Detroit at Chicago. Chicago at Cincinnati.  
 Cleveland at St. Louis. New York at Brooklyn.  
 Washington at Philadel'a. Philadelphia at Boston.  
 Boston at New York.

**American. Wednesday, July 1. National.**  
 Detroit at Chicago. Chicago at Cincinnati.  
 Cleveland at St. Louis. New York at Brooklyn.  
 Washington at Philadel'a. Philadelphia at Boston.  
 Boston at New York.

PLAYING SCHEDULES FOR 1908.

<b>American.</b>	<b>Thursday, July 2.</b>	<b>National.</b>
St. Louis at Chicago.		Chicago at Pittsburg.
Detroit at Cleveland.		Cincinnati at St. Louis.
New York at Washington.		Philadelphia at N. Y.
Boston at Philadelphia.		Brooklyn at Boston.

<b>American.</b>	<b>Friday, July 3.</b>	<b>National.</b>
St. Louis at Chicago.		Chicago at Pittsburg.
Detroit at Cleveland.		Philadelphia at N. Y.
New York at Washington.		Brooklyn at Boston.
Boston at Philadelphia.		

<b>American.</b>	<b>SATURDAY, July 4.</b>	<b>National.</b>
<b>(Morning and Afternoon Games.)</b>		
St. Louis at Chicago.		Chicago at Pittsburg.
Detroit at Cleveland.		Cincinnati at St. Louis.
New York at Washington.		Philadelphia at N. Y.
Boston at Philadelphia.		Brooklyn at Boston.

<b>American.</b>	<b>SUNDAY, July 5.</b>	<b>National.</b>
✚ Detroit at Chicago.		✚ Pittsburg at Chicago.
✚ Cleveland at St. Louis.		✚ Cincinnati at St. Louis.

<b>American.</b>	<b>Monday, July 6.</b>	<b>National.</b>
New York at Philadelphia.		Brooklyn at Chicago.
		Boston at St. Louis.
		New York at Cincinnati.
		Philadelphia at Pittsburg

<b>American.</b>	<b>Tuesday, July 7.</b>	<b>National.</b>
Chicago at Washington.		Brooklyn at Chicago.
St. Louis at Philadelphia.		Boston at St. Louis.
Detroit at New York.		New York at Cincinnati.
Cleveland at Boston.		Philadelphia at Pittsburg

<b>American.</b>	<b>Wednesday, July 8.</b>	<b>National.</b>
Chicago at Washington.		Brooklyn at Chicago.
St. Louis at Philadelphia.		Boston at St. Louis.
Detroit at New York.		New York at Cincinnati.
Cleveland at Boston.		Philadelphia at Pittsburg

<b>American.</b>	<b>Thursday, July 9.</b>	<b>National.</b>
Chicago at Washington.		Brooklyn at Chicago.
St. Louis at Philadelphia.		Boston at St. Louis.
Detroit at New York.		New York at Cincinnati.
Cleveland at Boston.		Philadelphia at Pittsburg

<b>American.</b>	<b>Friday, July 10.</b>	<b>National.</b>
Chicago at Washington.		Philadelphia at Chicago.
St. Louis at Philadelphia.		Brooklyn at St. Louis.
Detroit at New York.		Boston at Cincinnati.
Cleveland at Boston.		New York at Pittsburg.



PLAYING SCHEDULES FOR 1908.

<b>American.</b>	<b>Saturday, July 11.</b>	<b>National.</b>
Chicago at Philadelphia.	Philadelphia at Chicago.	
St. Louis at Washington.	Brooklyn at St. Louis.	
Detroit at Boston.	Boston at Cincinnati.	
Cleveland at New York.	New York at Pittsburg.	
<b>American.</b>	<b>SUNDAY, July 12.</b>	<b>National.</b>
No games scheduled.	Philadelphia at Chicago.	
	Brooklyn at St. Louis.	
	Boston at Cincinnati.	
<b>American.</b>	<b>Monday, July 13.</b>	<b>National.</b>
Chicago at Philadelphia.	Philadelphia at Chicago.	
St. Louis at Washington.	Brooklyn at St. Louis.	
Detroit at Boston.	Boston at Cincinnati.	
Cleveland at New York.	New York at Pittsburg.	
<b>American.</b>	<b>Tuesday, July 14.</b>	<b>National.</b>
Chicago at Philadelphia.	New York at Pittsburg.	
St. Louis at Washington.		
Detroit at Boston.		
Cleveland at New York.		
<b>American.</b>	<b>Wednesday, July 15.</b>	<b>National.</b>
Chicago at Philadelphia.	New York at Chicago.	
St. Louis at Washington.	Philadelphia at St. Louis.	
Detroit at Boston.	Brooklyn at Cincinnati.	
Cleveland at New York.	Boston at Pittsburg.	
<b>American.</b>	<b>Thursday, July 16.</b>	<b>National.</b>
Chicago at Boston.	New York at Chicago.	
St. Louis at New York.	Philadelphia at St. Louis.	
Detroit at Philadelphia.	Brooklyn at Cincinnati.	
Cleveland at Washington.	Boston at Pittsburg.	
<b>American.</b>	<b>Friday, July 17.</b>	<b>National.</b>
Chicago at Boston.	New York at Chicago.	
St. Louis at New York.	Philadelphia at St. Louis.	
Detroit at Philadelphia.	Brooklyn at Cincinnati.	
Cleveland at Washington.	Boston at Pittsburg.	
<b>American.</b>	<b>Saturday, July 18.</b>	<b>National.</b>
Chicago at Boston.	New York at Chicago.	
St. Louis at New York.	Philadelphia at St. Louis.	
Detroit at Philadelphia.	Brooklyn at Cincinnati.	
Cleveland at Washington.	Boston at Pittsburg.	
<b>American.</b>	<b>SUNDAY, July 19.</b>	<b>National.</b>
No games scheduled.	Boston at Chicago.	
	New York at St. Louis.	
	Philadel'a at Cincinnati.	
<b>American.</b>	<b>Monday, July 20.</b>	<b>National.</b>
Chicago at Boston.	Boston at Chicago.	
St. Louis at New York.	New York at St. Louis.	
Detroit at Philadelphia.	Philadel'a at Cincinnati.	
Cleveland at Washington.	Brooklyn at Pittsburg.	

PLAYING SCHEDULES FOR 1908.

<b>American.</b>	<b>Tuesday, July 21.</b>	<b>National.</b>
Chicago at New York.	Boston at Chicago.	
St. Louis at Boston.	New York at St. Louis.	
Detroit at Washington.	Philadel'a at Cincinnati.	
Cleveland at Philadelphia.	Brooklyn at Pittsburg.	
<b>American.</b>	<b>Wednesday, July 22.</b>	<b>National.</b>
Chicago at New York.	Boston at Chicago.	
St. Louis at Boston.	New York at St. Louis.	
Detroit at Washington.	Philadel'a at Cincinnati.	
Cleveland at Philadelphia.	Brooklyn at Pittsburg.	
<b>American.</b>	<b>Thursday, July 23.</b>	<b>National.</b>
Chicago at New York.	Brooklyn at Pittsburg.	
St. Louis at Boston.		
Detroit at Washington.		
Cleveland at Philadelphia.		
<b>American.</b>	<b>Friday, July 24.</b>	<b>National.</b>
Detroit at Cleveland.	Chicago at Brooklyn.	
	St. Louis at Philadelphia	
	Cincinnati at Boston.	
	Pittsburg at New York.	
<b>American.</b>	<b>Saturday, July 25.</b>	<b>National.</b>
Philadelphia at Chicago.	Chicago at Brooklyn.	
Washington at St. Louis.	St. Louis at Philadelphia	
New York at Detroit.	Cincinnati at Boston.	
Boston at Cleveland.	Pittsburg at New York.	
<b>American.</b>	<b>SUNDAY, July 26.</b>	<b>National.</b>
Philadelphia at Chicago.	No games scheduled.	
Washington at St. Louis.		
<b>American.</b>	<b>Monday, July 27.</b>	<b>National.</b>
Philadelphia at Chicago.	Chicago at Brooklyn.	
Washington at St. Louis.	St. Louis at Philadelphia	
New York at Detroit.	Cincinnati at Boston.	
Boston at Cleveland.	Pittsburg at New York.	
<b>American.</b>	<b>Tuesday, July 28.</b>	<b>National.</b>
Philadelphia at Chicago.	Chicago at Brooklyn.	
Washington at St. Louis.	St. Louis at Philadelphia	
New York at Detroit.	Cincinnati at Boston.	
Boston at Cleveland.	Pittsburg at New York.	
<b>American.</b>	<b>Wednesday, July 29.</b>	<b>National.</b>
New York at Detroit.	Chicago at Boston.	
Boston at Cleveland.	St. Louis at New York.	
	Cincinnati at Philadel'a.	
	Pittsburg at Brooklyn.	

PLAYING SCHEDULES FOR 1908.

<b>American.</b>	<b>Thursday, July 30.</b>	<b>National.</b>
Washington at Chicago.		Chicago at Boston.
Philadelphia at St. Louis.		St. Louis at New York.
Boston at Detroit.		Cincinnati at Philadel'a.
New York at Cleveland.		Pittsburg at Brooklyn.
<b>American.</b>	<b>Friday, July 31.</b>	<b>National.</b>
Washington at Chicago.		Chicago at Boston.
Philadelphia at St. Louis.		St. Louis at New York.
Boston at Detroit.		Cincinnati at Philadel'a.
New York at Cleveland.		Pittsburg at Brooklyn.
<b>American.</b>	<b>Saturday, Aug. 1.</b>	<b>National.</b>
Washington at Chicago.		Chicago at Boston.
Philadelphia at St. Louis.		St. Louis at New York.
Boston at Detroit.		Cincinnati at Philadel'a.
New York at Cleveland.		Pittsburg at Brooklyn.
<b>American.</b>	<b>SUNDAY, Aug. 2.</b>	<b>National.</b>
Washington at Chicago.		No games scheduled.
Philadelphia at St. Louis.		
<b>American.</b>	<b>Monday, Aug. 3.</b>	<b>National.</b>
Boston at Detroit.		Chicago at Philadelphia.
New York at Cleveland.		St. Louis at Brooklyn.
		Cincinnati at New York.
		Pittsburg at Boston.
<b>American.</b>	<b>Tuesday, Aug. 4.</b>	<b>National.</b>
Boston at Chicago.		Chicago at Philadelphia.
New York at St. Louis.		St. Louis at Brooklyn.
Philadelphia at Detroit.		Cincinnati at New York.
Washington at Cleveland.		Pittsburg at Boston.
<b>American.</b>	<b>Wednesday, Aug. 5.</b>	<b>National.</b>
Boston at Chicago.		Chicago at Philadelphia.
New York at St. Louis.		St. Louis at Brooklyn.
Philadelphia at Detroit.		Cincinnati at New York.
Washington at Cleveland.		Pittsburg at Boston.
<b>American.</b>	<b>Thursday, Aug. 6.</b>	<b>National.</b>
Boston at Chicago.		Chicago at Philadelphia.
New York at St. Louis.		St. Louis at Brooklyn.
Philadelphia at Detroit.		Cincinnati at New York.
Washington at Cleveland.		Pittsburg at Boston.
<b>American.</b>	<b>Friday, Aug. 7.</b>	<b>National.</b>
Boston at Chicago.		Chicago at New York.
New York at St. Louis.		St. Louis at Boston.
Philadelphia at Detroit.		Cincinnati at Brooklyn.
Washington at Cleveland.		Pittsburg at Philadelphia.
<b>American.</b>	<b>Saturday, Aug. 8.</b>	<b>National.</b>
New York at Chicago.		Chicago at New York.
Boston at St. Louis.		St. Louis at Boston.
Washington at Detroit.		Cincinnati at Brooklyn.
Philadelphia at Cleveland.		Pittsburg at Philadelphia.



PLAYING SCHEDULES FOR 1908.

<b>American.</b>	<b>Wednesday, Aug. 19.</b>	<b>National.</b>
Chicago at Philadelphia.		Boston at Chicago.
St. Louis at Washington.		Philadelphia at St. Louis.
Detroit at New York.		New York at Cincinnati.
Cleveland at Boston.		Brooklyn at Pittsburg.
<b>American.</b>	<b>Thursday, Aug. 20.</b>	<b>National.</b>
Chicago at Philadelphia.		Boston at Chicago.
St. Louis at Washington.		Philadelphia at St. Louis.
Detroit at New York.		New York at Cincinnati.
Cleveland at Boston.		Brooklyn at Pittsburg.
<b>American.</b>	<b>Friday, Aug. 21.</b>	<b>National.</b>
Chicago at Boston.		No games scheduled.
St. Louis at New York.		
Detroit at Washington.		
Cleveland at Philadelphia.		
<b>American.</b>	<b>Saturday, Aug. 22.</b>	<b>National.</b>
Chicago at Boston.		Boston at Chicago.
St. Louis at New York.		Philadelphia at St. Louis.
Detroit at Washington.		New York at Cincinnati.
Cleveland at Philadelphia.		Brooklyn at Pittsburg.
<b>American.</b>	<b>SUNDAY, Aug. 23.</b>	<b>National.</b>
No games scheduled.		Brooklyn at Chicago.
		Boston at St. Louis.
		Philadel'a at Cincinnati.
<b>American.</b>	<b>Monday, Aug. 24.</b>	<b>National.</b>
Chicago at Boston.		Brooklyn at Chicago.
St. Louis at New York.		Boston at St. Louis.
Detroit at Washington.		Philadel'a at Cincinnati.
Cleveland at Philadelphia.		New York at Pittsburg.
<b>American.</b>	<b>Tuesday, Aug. 25.</b>	<b>National.</b>
Chicago at Boston.		Brooklyn at Chicago.
St. Louis at New York.		Boston at St. Louis.
Detroit at Washington.		Philadel'a at Cincinnati.
Cleveland at Philadelphia.		New York at Pittsburg.
<b>American.</b>	<b>Wednesday, Aug. 26.</b>	<b>National.</b>
Chicago at New York.		New York at Pittsburg.
St. Louis at Boston.		
Detroit at Philadelphia.		
Cleveland at Washington.		
<b>American.</b>	<b>Thursday, Aug. 27.</b>	<b>National.</b>
Chicago at New York.		New York at Chicago.
St. Louis at Boston.		Brooklyn at St. Louis.
Detroit at Philadelphia.		Boston at Cincinnati.
Cleveland at Washington.		Philadelphia at Pittsburg.

PLAYING SCHEDULES FOR 1908.

<b>American.</b>	<b>Friday, Aug. 28.</b>	<b>National.</b>
Chicago at New York.		Philadelphia at Pittsburg
St. Louis at Boston.		
Detroit at Philadelphia.		
Cleveland at Washington.		
<b>American.</b>	<b>Saturday, Aug. 29.</b>	<b>National.</b>
Chicago at New York.		New York at Chicago.
St. Louis at Boston.		Brooklyn at St. Louis.
Detroit at Philadelphia.		Boston at Cincinnati.
Cleveland at Washington.		Philadelphia at Pittsburg
<b>American.</b>	<b>SUNDAY, Aug. 30.</b>	<b>National.</b>
No games scheduled.		New York at Chicago.
		Brooklyn at St. Louis.
		Boston at Cincinnati.
<b>American.</b>	<b>Monday, Aug. 31.</b>	<b>National.</b>
Chicago at St. Louis.		St. Louis at Chicago.
Cleveland at Detroit.		Pittsburg at Cincinnati.
Philadelphia at New York.		
Boston at Washington.		
<b>American.</b>	<b>Tuesday, Sept. 1.</b>	<b>National.</b>
Chicago at St. Louis.		St. Louis at Chicago.
Cleveland at Detroit (2)		Pittsburg at Cincinnati.
Philadelphia at New York.		New York at Boston (2)
Boston at Washington.		Brooklyn at Phila. (2)
<b>American.</b>	<b>Wednesday, Sept. 2.</b>	<b>National.</b>
Chicago at St. Louis.		St. Louis at Chicago.
Cleveland at Detroit.		Pittsburg at Cincinnati.
Philadelphia at New York.		New York at Boston.
Boston at Washington.		Brooklyn at Philadelphia
<b>American.</b>	<b>Thursday, Sept. 3.</b>	<b>National.</b>
Chicago at St. Louis.		St. Louis at Chicago.
Cleveland at Detroit.		Pittsburg at Cincinnati.
Philadelphia at New York.		New York at Boston.
Boston at Washington.		Brooklyn at Philadelphia
<b>American.</b>	<b>Friday, Sept. 4.</b>	<b>National.</b>
Cleveland at Chicago.		Chicago at Pittsburg.
Detroit at St. Louis.		New York at Philadel'a.
Washington at New York.		Boston at Brooklyn.
Philadelphia at Boston.		
<b>American.</b>	<b>Saturday, Sept. 5.</b>	<b>National.</b>
Cleveland at Chicago.		Chicago at Pittsburg.
Detroit at St. Louis.		St. Louis at Cincinnati.
Washington at New York.		New York at Philadel'a.
Philadelphia at Boston.		Boston at Brooklyn.
<b>American.</b>	<b>SUNDAY, Sept. 6.</b>	<b>National.</b>
✚ Cleveland at Chicago.		✚ Pittsburg at Chicago.
Detroit at St. Louis.		St. Louis at Cincinnati.

PLAYING SCHEDULES FOR 1908.

**American. MONDAY, Sept. 7. National.**

(Morning and Afternoon Games.)

Chicago at Cleveland.	Cincinnati at Chicago.
St. Louis at Detroit.	St. Louis at Pittsburg.
Washington at New York.	New York at Philadel'a.
Philadelphia at Boston.	Boston at Brooklyn.

**American. Tuesday, Sept. 8. National.**

Chicago at Detroit.	Cincinnati at Chicago.
St. Louis at Cleveland.	St. Louis at Pittsburg.
New York at Philadelphia.	Brooklyn at New York.
Boston at Washington.	Philadelphia at Boston.

**American. Wednesday, Sept. 9. National.**

Chicago at Detroit.	St. Louis at Chicago.
St. Louis at Cleveland.	Cincinnati at Pittsburg.
New York at Philadelphia.	Brooklyn at New York.
Boston at Washington.	Philadelphia at Boston.

**American. Thursday, Sept. 10. National.**

Chicago at Detroit.	Chicago at St. Louis.
St. Louis at Cleveland.	Cincinnati at Pittsburg.
Boston at Washington.	New York at Brooklyn.
	Philadelphia at Boston.

**American. Friday, Sept. 11. National.**

Chicago at Detroit.	Chicago at St. Louis.
St. Louis at Cleveland.	Brooklyn at New York.
Philadel'a at Washington.	Boston at Philadelphia.
New York at Boston.	

**American. Saturday, Sept. 12. National.**

Chicago at Detroit.	Chicago at St. Louis.
St. Louis at Cleveland.	Cincinnati at Pittsburg.
Philadel'a at Washington.	Brooklyn at New York.
New York at Boston.	Boston at Philadelphia.

**American. SUNDAY, Sept. 13. National.**

Cleveland at Chicago.	✚ Chicago at St. Louis.
✚ Detroit at St. Louis.	Pittsburg at Cincinnati.

**American. Monday, Sept. 14. National.**

Cleveland at Chicago.	Brooklyn at New York.
Detroit at St. Louis.	Boston at Philadelphia.
Philadel'a at Washington.	
New York at Boston.	

**American. Tuesday, Sept. 15. National.**

Cleveland at Chicago.	✚ Chicago at Boston.
Detroit at St. Louis.	St. Louis at New York.
✚ New York at Boston.	Cincinnati at Brooklyn.
Philadel'a at Washington.	Pittsburg at Philadelphia.

PLAYING SCHEDULES FOR 1908.

**American. Wednesday, Sept. 16. National.**  
 Cleveland at Chicago. Chicago at Boston.  
 Detroit at St. Louis. St. Louis at New York.  
 Cincinnati at Brooklyn.  
 Pittsburg at Philadelphia.

**American. Thursday, Sept. 17. National.**  
 Washington at Chicago. Chicago at Boston.  
 Philadelphia at St. Louis. St. Louis at New York.  
 New York at Detroit. Cincinnati at Brooklyn.  
 Boston at Cleveland. Pittsburg at Philadelphia.

**American. Friday, Sept. 18. National.**  
 Washington at Chicago. Chicago at Philadelphia.  
 Philadelphia at St. Louis. St. Louis at Brooklyn.  
 New York at Detroit. Cincinnati at Boston.  
 Boston at Cleveland. Pittsburg at New York.

**American. Saturday, Sept. 19. National.**  
 Washington at Chicago. Chicago at Philadelphia.  
 Philadelphia at St. Louis. St. Louis at Brooklyn.  
 New York at Detroit. Cincinnati at Boston.  
 Boston at Cleveland. Pittsburg at New York.

**American. SUNDAY, Sept. 20. National.**  
 Philadelphia at Chicago. No games scheduled.  
 Washington at St. Louis.

**American. Monday, Sept. 21. National.**  
 Philadelphia at Chicago. Chicago at Philadelphia.  
 Washington at St. Louis. St. Louis at Brooklyn.  
 Boston at Detroit. Cincinnati at Boston.  
 New York at Cleveland. Pittsburg at New York.

**American. Tuesday, Sept. 22. National.**  
 Philadelphia at Chicago. Chicago at New York.  
 Washington at St. Louis. St. Louis at Boston.  
 Boston at Detroit. Cincinnati at Philadel'a.  
 New York at Cleveland. Pittsburg at Brooklyn.

**American. Wednesday, Sept 23. National.**  
 Boston at Detroit. Chicago at New York.  
 New York at Cleveland. St. Louis at Boston.  
 Cincinnati at Philadel'a.  
 Pittsburg at Brooklyn.

**American. Thursday, Sept. 24. National.**  
 New York at Chicago. Chicago at New York.  
 Boston at St. Louis. St. Louis at Boston.  
 Philadelphia at Detroit. Cincinnati at Philadel'a.  
 Washington at Cleveland. Pittsburg at Brooklyn.



PLAYING SCHEDULES FOR 1908.

<b>American.</b>	<b>Friday, Sept. 25.</b>	<b>National.</b>
Boston at St. Louis.	Chicago at Brooklyn.	St. Louis at Philadelphia.
Philadelphia at Detroit.	Cincinnati at New York.	Pittsburg at Boston.
Washington at Cleveland.		
<b>American.</b>	<b>Saturday, Sept. 26.</b>	<b>National.</b>
New York at Chicago.	Chicago at Brooklyn (2)	St. Louis at Phila. (2)
Boston at St. Louis.	St. Louis at Phila. (2)	Cincinnati at N. Y. (2)
Philadelphia at Detroit.	Pittsburg at Boston.	
Washington at Cleveland.		
<b>American.</b>	<b>SUNDAY, Sept. 27.</b>	<b>National.</b>
Boston at Chicago.	St. Louis at Cincinnati.	
New York at St. Louis.		
<b>American.</b>	<b>Monday, Sept. 28.</b>	<b>National.</b>
Boston at Chicago.	St. Louis at Pittsburg.	Philadelphia at N. Y.
New York at St. Louis.	Brooklyn at Boston.	
Washington at Detroit.		
Philadelphia at Cleveland.		
<b>American.</b>	<b>Tuesday, Sept. 29.</b>	<b>National.</b>
Boston at Chicago.	Chicago at Cincinnati.	St. Louis at Pittsburg.
New York at St. Louis.	Philadelphia at N. Y.	Brooklyn at Boston.
Washington at Detroit.		
Philadelphia at Cleveland.		
<b>American.</b>	<b>Wednesday, Sept. 30.</b>	<b>National.</b>
Washington at Detroit.	Chicago at Cincinnati.	St. Louis at Pittsburg.
Philadelphia at Cleveland.	Philadelphia at N. Y.	Brooklyn at Boston.
<b>American.</b>	<b>Thursday, Oct. 1.</b>	<b>National.</b>
Washington at New York.	Chicago at Cincinnati.	+
+ Boston at Philadel'a.	+ New York at Phila.	Boston at Brooklyn.
<b>American.</b>	<b>Friday, Oct. 2.</b>	<b>National.</b>
Chicago at Cleveland.	Pittsburg at St. Louis.	+
+ Boston at Philadel'a.	+ New York at Phila.	Boston at Brooklyn.
St. Louis at Detroit.		
Washington at New York.		
<b>American.</b>	<b>Saturday, Oct. 3.</b>	<b>National.</b>
Chicago at Cleveland.	Chicago at Cincinnati.	Pittsburg at St. Louis.
St. Louis at Detroit.	+ New York at Phila.	Boston at Brooklyn.
+ Boston at Philadel'a.		
Washington at N. Y. (2)		
<b>American.</b>	<b>SUNDAY, Oct. 4.</b>	<b>National.</b>
+ Detroit at Chicago.	+ Pittsburg at Chicago.	St. Louis at Cincinnati.
Cleveland at St. Louis.		

## PLAYING SCHEDULES FOR 1908.

---

<b>American.</b>	<b>Monday, Oct. 5.</b>	<b>National.</b>
Detroit at Chicago.		Boston at New York.
Cleveland at St. Louis.		Brooklyn at Philadelphia
Philadel'a at Washington.		
New York at Boston.		

<b>American.</b>	<b>Tuesday, Oct. 6.</b>	<b>National.</b>
Detroit at Chicago.		Boston at New York.
Cleveland at St. Louis.		Brooklyn at Philadelphia
Philadel'a at Washington.		
New York at Boston.		

<b>American.</b>	<b>Wednesday, Oct. 7.</b>	<b>National.</b>
Philadel'a at Boston (2)		Brooklyn at Philadelphia
N. Y. at Washington (2)		Boston at New York.

<b>American.</b>	<b>Thursday, Oct. 8.</b>	<b>National.</b>
Philadelphia at Boston.		
New York at Washington.		

### TRIP SCHEDULES OF BOTH LEAGUES.

---

This "trip" schedule shows beginning and ending date of all sectional and intersectional games:

#### AMERICAN LEAGUE.

Intersectional Games.	Western Teams in East.	Eastern Teams in West.
April 14-May 11	May 12-May 28	
May 29-June 3		June 4-22
June 23-July 6	July 7-23	
July 24 (1 city)		July 25-Aug. 12
	Aug. 14-29	
Aug. 31-Sept. 16		Sept. 17-30
Oct. 1-8		

#### NATIONAL LEAGUE.

April 14-May 10		May 11-28*
May 28*-June 3	June 4-22†	
June 22†-July 5		July 6-23
	July 24-Aug. 11	
Aug. 12-14*		Aug. 14*-30
Aug. 31-Sept. 14	Sept. 15-26	
Sept. 27-Oct. 7		

\*Intersectional and eastern in west.

†Intersectional and western in east.





## MINOR LEAGUE CHAMPIONS OF 1907.

---

### NATIONAL ASSOCIATION OF PROFESSIONAL BASEBALL LEAGUES —CHAMPIONS OF 1907.

---

Following is a complete list of the minor league pennant winners for 1907:

League.	Champion.
American Association.....	Columbus, O.
Central League.....	Springfield, O.
Connecticut League.....	Holyoke, Mass.
Cotton States League.....	Mobile, Ala.
Eastern Illinois League.....	Mattoon, Ill.
Eastern League.....	Toronto, Ont.
Gulf Coast League.....	Lake Charles, La.
Indiana-Illinois-Iowa League....	Rock Island, Ill.
Interstate League.....	Bradford, Pa.
*Iowa State League.....	Waterloo, Ia.
Maine State League.....	Bangor, Maine
New England League.....	Worcester, Mass.
New York State League.....	Albany, N. Y.
Northern Copper-Country League.	Winnipeg, Man.
North Texas League.....	Corsicana, Tex.
Northwestern League.....	Aberdeen, Wash.
Ohio-Pennsylvania League.....	Youngstown, O.
Okla.-Arkansas-Kansas League....	Bartlesville, Ok.
Pacific Coast League.....	Los Angeles, Cal.
Penn.-Ohio-Maryland League....	Steubenville, O.
South Atlantic League.....	Charleston, S. C.
South Carolina League.....	Sumter, S. C.
Southern Association.....	Atlanta, Ga.
South Michigan League.....	Tecumseh, Mich.
Texas League.....	Austin, Tex.
Tri-State League.....	Williamsport, Pa.
Virginia League.....	Norfolk, Va.
Western Association.....	Wichita, Kas.
Western Canada League..	Medicine Hat, Alberta
Western League .....	Omaha, Neb.
Western Pennsylvania League.	Fairmount, W.Va.
Wisconsin-Illinois League.....	Freeport, Ill.

---

\*Iowa State League now Central Association.

## BURTON'S POCKET BASEBALL GUIDE.

---

### CLASSES AND DRAFT PRICES OF MINOR LEAGUES.

---

The following table shows amounts which must be paid for players drafted. National and American Leagues have first drafting period, then following league in their class order:

Leagues—	Class.	Draft Price.
American Association .....	A	\$1,000
Eastern League .....	"	"
Pacific Coast League.....	"	"
Southern Association .....	"	"
Western League .....	"	"
Central League .....	B	750
Connecticut League .....	"	"
Indiana-Illinois-Iowa League .....	"	"
New York State League.....	"	"
New England League.....	"	"
Northwestern League .....	"	"
Tri-State League .....	"	"
Northern Copper-Country League....	C	500
Ohio-Pennsylvania League .....	"	"
South Atlantic League.....	"	"
Texas League .....	"	"
Virginia League .....	"	"
Western Association .....	"	"
*Central Association .....	D	300
Cotton States League.....	"	"
Eastern Illinois League.....	"	"
Gulf Coast League.....	"	"
Interstate League .....	"	"
Maine State League.....	"	"
North Texas League.....	"	"
Oklahoma-Arkansas-Kansas League...	"	"
Pennsylvania-Ohio-Maryland League...	"	"
South Carolina League.....	"	"
South Michigan League.....	"	"
Wisconsin-Illinois League .....	"	"
Western Canada League.....	"	"
Western Pennsylvania League.....	"	"

\*Iowa State League in 1907.

**WHAT HUGH JENNINGS THINKS OF  
THE CUBS' PROSPECTS OF WIN-  
NING THE NATIONAL LEAGUE  
CHAMPIONSHIP WITHOUT  
MANAGER CHANCE.**

---

At a time when the injury to Captain Chance's foot threatened to lay him up for the coming season, Hugh Jennings, manager of the Detroit American League team was asked his opinion of the Cubs' chances for the National League championship in 1908 without their leader. He wrote as follows:

Hot Springs, Ark., March 21, 1908.

"On account of the confidence the Cubs will have due to being champions, I think they would win again, even though Chance may be unable to play this season.

"Donlin's return to the Giants, together with the acquisition of Tenney and Bridwell, will make the Giants a team to be feared, and the Cubs had better look to their laurels. Pittsburg and Philadelphia ought to be in the running to the end, with a possible chance of my old pal, Joe Kelley, bringing his team up with the leaders.

"HUGH JENNINGS."

BURTON'S POCKET BASEBALL GUIDE.

**AMERICAN ASSOCIATION AVERAGES.**

**Standing of Clubs at End of Season.**

	W.	L.	Pct.		W.	L.	Pct.
Columbus...	90	64	.584	Louisville...	77	77	.500
Toledo ....	88	66	.571	Indianapolis.	73	81	.473
Minneapolis.	80	84	.520	Milwaukee..	72	84	.460
Kansas City.	78	76	.510	St. Paul....	59	95	.383

**INDIVIDUAL BATTING.**

Name and Club—	G.	AB.	R.	H.	Pct.
Diehl, Toledo .....	22	84	14	34	.393
Beckley, Kansas City.....	100	378	65	138	.365
McCarthy, Kansas City....	49	177	23	60	.339
Freeman, J., Minneapolis..	143	528	80	117	.335
Hall, Columbus .....	17	42	5	14	.333
Gessler, Columbus .....	135	470	84	153	.325
Neal, Louisville .....	35	129	14	42	.325
Armbruster, Toledo .....	133	500	88	161	.322
Clarke, J., Toledo.....	154	557	94	179	.321
Roth, Milwaukee .....	83	334	51	107	.320
Flood, St. Paul.....	70	264	40	84	.318
Carr, Indianapolis .....	137	521	64	164	.315
Smoot, Toledo .....	141	541	84	169	.312
McCreery, Columbus .....	37	132	24	41	.311
Stovall, Louisville .....	99	417	57	128	.307
Perring, Toledo .....	153	499	78	150	.301
Freeman, Jay, Minneapolis.	153	484	64	175	.300
Huelsman, Kansas City....	149	566	91	168	.297
Hulswitt, Columbus .....	159	631	90	187	.296
Barbeau, Toledo .....	125	458	93	135	.295
Pokorney, Toledo .....	84	309	50	91	.294
Connors, Milwaukee .....	90	364	62	106	.291
Kinn, Columbus .....	158	573	81	165	.288
Geier, St. Paul-Milwaukee.	139	529	71	152	.287
Coulter, Minneapolis .....	155	567	85	162	.286
Frisk, St. Paul.....	147	568	89	162	.286
O'Neil, Minneapolis .....	146	591	96	169	.286
Friel, Columbus .....	159	662	104	189	.285
Stevens, Milwaukee .....	30	95	15	27	.284
Minnihan, St. Paul.....	16	53	3	15	.283
Criss, St. Paul.....	53	164	13	46	.281
Mertés, Minneapolis .....	115	425	76	119	.280
Fohl, Columbus .....	71	238	33	66	.279
Hemphill, Milwaukee .....	28	94	11	26	.277



AMERICAN ASSOCIATION AVERAGES.

Individual Batting—(Continued).

Name and Club—	G.	AB.	R.	H.	Pct.
Jude, Columbus	142	531	83	146	.275
Himes, Indianapolis	111	403	47	110	.273
Cromley, Indianapolis-K. C.	23	66	12	18	.273
Sullivan, S., Louisville	154	588	67	160	.272
McBride, Kansas City	151	550	67	148	.269
Lindsay, K. C.-Indianapolis	124	465	71	125	.269
Hartzell, St. Paul	39	156	19	42	.269
Burke, Kansas City	154	555	63	148	.267
Hill, Kansas City	152	604	80	161	.266
Krug, Indianapolis	98	361	29	96	.266
Beville, Milwaukee	102	393	32	104	.265
Dunleavy, St. Paul	149	599	72	159	.264
Kerwin, Louisville-K. C.	114	445	75	117	.263
Reagan, Toledo	69	236	26	62	.263
Brashear, Louisville	158	600	81	157	.262
Tiemeyer, St. Paul	141	520	55	136	.262
Cooley, Louisville	120	466	60	122	.262
Greminger, Minneapolis	147	536	55	140	.261
Nordyke, St. Paul	150	543	72	142	.261
Sugden, St. Paul	85	277	23	72	.260
Servatius, Columbus	46	182	27	47	.258
Woodruff, Louisville	158	580	81	149	.257
Land, Toledo	77	270	35	69	.256
Livingstone, Indianapolis	112	365	37	93	.255
Abbott, Toledo	95	330	37	84	.255
Green, Milwaukee	150	562	107	143	.254
Eells, Toledo	24	59	6	15	.254
Hopke, Indianapolis	155	534	43	135	.253
Cook, Indianapolis	81	304	49	77	.253
Clarke, W., Toledo	152	530	49	133	.251
McCormick, Milwaukee	150	538	54	135	.251
McChesney, Milwaukee	114	418	66	105	.251
Manske, Minneapolis	27	60	8	15	.250
Krueger, Kansas City	156	552	82	137	.248
Wrigley, Columbus	152	560	61	139	.248
Laughlin, St. Paul	65	228	12	56	.246
Howley, Indianapolis	62	204	17	50	.245
Towne, Minneapolis	26	94	9	23	.245
Robinson, Milwaukee	154	606	82	148	.244
Stanley, Louisville	154	589	84	142	.242
Seigle, Indianapolis	132	467	46	113	.242
Pietz, Louisville	101	348	35	84	.241
Leahy, Kansas City	46	145	17	35	.241
Quinlan, Louisville	156	583	65	140	.240
Jackson, Columbus	24	79	5	19	.240

BURTON'S POCKET BASEBALL GUIDE.

**Individual Batting—(Continued).**

Name and Club—	G.	AB.	R.	H.	Pct.
Upp, Columbus .....	42	122	11	29	.238
Lattimore, Toledo .....	32	98	8	23	.238
Oyler, Minneapolis .....	133	452	46	107	.237
Williams, St. Paul-Toledo..	95	336	49	79	.235
Blue, Columbus .....	99	348	24	82	.235
Puttmann, Louisville .....	49	155	14	36	.232
Dougherty, Milwaukee ....	96	341	32	78	.229
Kellum, Indianapolis .....	42	118	9	27	.229
Graham, G., Minneapolis..	103	338	36	77	.228
Koehler, St. Paul.....	148	517	55	117	.226
Reilley, Columbus .....	74	284	42	64	.225
Sullivan, J., Kansas City...	121	390	27	87	.223
Padden, St. Paul.....	52	179	24	40	.223
Geyer, Columbus .....	32	95	3	21	.223
Hughes, Louisville .....	89	289	38	64	.221
Williams, O., Indianapolis.	128	501	54	109	.217
Perrine, Minneapolis .....	70	255	35	54	.212
Robertaille, Columbus ....	38	118	11	25	.212
Curtis, Milwaukee .....	42	123	7	26	.211
Chech, Toledo .....	39	118	25	25	.211
Swan, Kansas City.....	45	112	10	23	.205
Buelow, Minneapolis .....	25	78	3	16	.205
Egan, Kansas City.....	37	94	11	20	.202
Gnadinger, Louisville .....	49	154	14	31	.201
Thomas, Minneapolis .....	31	96	6	19	.198
Frantz, K. C.-Louisville....	43	122	17	24	.197
Clark, H., Milwaukee.....	136	450	55	88	.196
LeRoy, St. Paul.....	40	120	5	23	.192
Dundon, Minneapolis .....	127	455	66	87	.191
Farris, St. Paul.....	40	111	8	21	.189
Wicker, Columbus .....	39	122	10	23	.189
West, Toledo .....	31	90	5	17	.189
Durham, L., Louisville....	37	109	9	20	.187
Demontreville, Toledo .....	28	107	10	20	.187
McCann, Milwaukee .....	36	131	10	24	.183
Kilroy, Minneapolis .....	35	104	10	19	.183
Essick, St. Paul.....	22	62	6	11	.178
Slagle, Indianapolis .....	41	113	5	20	.177
Bateman, Milwaukee .....	25	91	6	16	.177
Crutcher, Kansas City....	22	62	9	11	.177
Briggs, Indianapolis .....	33	91	3	16	.176
Mahoney, Milwaukee .....	33	132	12	23	.174
Sutthoff, Toledo .....	26	69	10	12	.174
Summers, Indianapolis ...	36	107	5	18	.169
Townsend, Columbus .....	26	68	4	11	.168

## AMERICAN ASSOCIATION AVERAGES.

### Individual Batting—(Continued).

Name and Club—	G.	PO.	A.	E.	Pct.
Goodwin, Milwaukee .....	47	145	10	23	.158
Gillen, Toledo .....	29	66	6	10	.152
Kenna, Louisville .....	17	42	5	6	.143
Durham, J., Louisville.....	38	115	12	16	.139
Shannon, Minneapolis ....	41	132	8	16	.121
Freeman, J., Minneapolis..	35	75	4	9	.120
Wilson, Milwaukee .....	28	60	2	7	.117
Schneiberg, Milwaukee ....	36	105	7	12	.114
Ford, Minneapolis .....	31	81	5	8	.099
Case, Kansas City.....	40	83	6	8	.096
Chenault, Indianapolis ....	18	30	3	2	.067
Brandon, Kansas City.....	18	44	2	2	.045

### CLUB BATTING.

	*Games.	AB.	R.	H.	SH.	SB.	Pct.
Toledo .....	156	5257	767	1468	197	223	.279
Columbus .....	159	5257	702	1421	239	185	.270
Kansas City ...	156	4899	641	1295	161	215	.264
St. Paul .....	157	4890	567	1278	130	163	.261
Indianapolis ...	156	4752	505	1210	197	149	.254
Louisville ....	159	5607	711	1414	156	208	.252
Minneapolis ..	153	4884	602	1230	136	159	.251
Milwaukee ....	154	4982	621	1198	123	197	.240

\*Tie games included in all except Milwaukee.

### INDIVIDUAL FIELDING.

#### First Basemen.

Name and Club—	G.	PO.	A.	E.	Pct.
Carr, Indianapolis .....	137	1348	147	14	.990
Kihm, Columbus .....	158	1725	72	19	.989
Clarke, Wm., Toledo.....	152	1556	107	21	.987
Beckley, Kansas City.....	100	1118	52	18	.985
Himes, Indianapolis .....	21	189	24	4	.985
Nordyke, St. Paul.....	150	1504	115	26	.984
Sullivan, S., Louisville....	58	613	43	12	.982
Lindsay, K. C.-Indianapolis	55	608	42	12	.981
Cooley, Louisville .....	87	848	62	26	.972
Freeman, J., Minneapolis.	151	1462	88	45	.971
Conners, Milwaukee .....	88	858	67	30	.968
Bateman, Milwaukee .....	23	200	18	8	.964
Beville, Milwaukee .....	32	315	18	13	.962

**Individual Fielding—(Continued).**

**Second Basemen.**

Name and Club—	G.	PO.	A.	E.	Pct.
Wrigley, Columbus .....	152	333	460	19	.976
Flood, St. Paul.....	69	207	197	16	.961
Perrine, Minneapolis .....	18	49	50	4	.961
Dundon, Minneapolis .....	121	340	338	27	.960
McCormick, Milwaukee ...	150	316	442	32	.959
Krueger, Kansas City.....	152	376	478	39	.956
Brashear, Louisville .....	158	458	494	46	.953
Padden, St. Paul.....	52	147	181	16	.953
Williams, C., St. Paul-Tol.	67	171	185	20	.946
Krug, Indianapolis .....	70	146	181	20	.942
Lindsay, Indianapolis-K. C..	69	160	179	24	.933
Seigle, Indianapolis .....	16	29	41	5	.933
Pokorney, Toledo .....	58	145	161	25	.924
Demontreville, Toledo ....	27	65	80	16	.900
Reagan, Toledo .....	17	29	32	7	.895

**Third Basemen.**

Williams, C., St. P.-Toledo.	15	16	46	3	.953
Hopke, Indianapolis .....	155	207	322	31	.944
Greminger, Minneapolis ...	147	181	283	32	.935
Perring, Toledo .....	135	172	266	31	.933
Friel, Columbus .....	159	180	304	36	.930
Sullivan, S., Louisville....	93	115	205	24	.930
Woodruff, Louisville .....	65	71	152	18	.925
Clark, H., Milwaukee.....	136	180	272	45	.909
Burke, Kansas City.....	154	189	356	57	.905
Pokorney, Toledo .....	26	40	44	13	.865
Tiemeyer, St. Paul.....	132	161	266	69	.860

**Shortstops.**

Quinlan, Louisville .....	156	331	493	56	.934
Hulswitt, Columbus .....	159	334	544	68	.928
Oyler, Minneapolis .....	133	326	399	61	.922
McBride, Kansas City.....	151	337	531	76	.919
Williams, O., Indianapolis.	128	248	383	59	.914
Krug, Indianapolis .....	28	68	60	13	.907
Geier, St. Paul .....	101	159	276	45	.906
Hartzell, St. Paul.....	25	43	68	12	.902
Robinson, Milwaukee .....	154	316	385	80	.897
Diehl, Toledo .....	22	46	78	15	.891
Barbeau, Toledo .....	125	212	360	80	.877

AMERICAN ASSOCIATION AVERAGES.

Individual Fielding—(Continued).

Outfielders.

Name and Club—	G.	PO.	A.	E.	Pct.
McCann, Milwaukee . . . . .	36	66	2	1	.985
Seigle, Indianapolis . . . . .	116	228	19	5	.980
Geier, St. P.-Milwaukee . . . . .	30	48	3	1	.980
Armbruster, Toledo . . . . .	133	185	30	6	.972
Hemphill, Milwaukee . . . . .	27	63	6	3	.972
Jackson, Columbus . . . . .	24	31	4	1	.972
Himes, Indianapolis . . . . .	90	126	17	5	.966
McCarthy, Kansas City . . . . .	49	76	7	3	.965
Clarke, Josh, Toledo . . . . .	154	279	23	12	.961
Coulter, Indianapolis . . . . .	155	298	15	13	.960
Gessler, Columbus . . . . .	135	232	12	10	.960
Reilley, Columbus . . . . .	74	162	4	7	.960
Cook, Indianapolis . . . . .	80	134	8	6	.959
Stanley, Louisville . . . . .	154	330	26	15	.959
Mertes, Minneapolis . . . . .	111	190	15	9	.957
Cooley, Louisville . . . . .	33	63	3	3	.956
O'Neill, Minneapolis . . . . .	146	298	21	15	.955
Hill, Kansas City . . . . .	152	356	34	20	.951
Koehler, St. Paul . . . . .	133	279	34	16	.951
Stevens, Milwaukee . . . . .	30	50	5	3	.948
McChesney, Milwaukee . . . . .	105	180	18	11	.947
Criss, St. Paul . . . . .	18	16	2	1	.947
Dougherty, Milwaukee . . . . .	61	135	24	9	.946
Smoot, Toledo . . . . .	141	254	25	16	.945
Woodruff, Louisville . . . . .	92	196	20	13	.943
Dunleavy, St. Paul . . . . .	149	192	55	16	.939
Freeman, J., Minneapolis . . . . .	142	180	14	13	.937
Green, Milwaukee . . . . .	150	211	10	15	.936
Huelsman, Kansas City . . . . .	149	234	11	17	.935
McCreery, Columbus . . . . .	37	76	4	6	.930
Frisk, St. Paul . . . . .	147	221	31	19	.929
Graham, G., Minneapolis . . . . .	18	34	4	3	.927
Servatius, Columbus . . . . .	46	85	6	8	.919
Stovall, Louisville . . . . .	97	128	12	13	.915
Gnadinger, Louisville . . . . .	49	68	8	7	.915
Reagan, Toledo . . . . .	47	83	4	8	.915
Mahoney, Milwaukee . . . . .	33	47	5	5	.912
Jude, Columbus . . . . .	142	213	11	23	.906
Kerwin, Louisville-K. C. . . . .	114	155	26	20	.900
Neal, Louisville . . . . .	30	41	2	5	.895
Perrine, Minneapolis . . . . .	33	59	5	8	.888

**Individual Fielding—(Continued).**

**Catchers.**

Name and Club—	G.	PO.	A.	E.	Pct.
Abbott, Toledo .....	87	426	117	8	.985
Livingstone, Indianapolis..	112	528	136	12	.982
Pietz, Louisville .....	85	334	87	10	.976
Blue, Columbus .....	99	453	107	16	.972
Hughes, Louisville .....	80	279	109	11	.972
Roth, Milwaukee .....	86	436	113	16	.971
Howley, Indianapolis .....	51	227	47	10	.971
Leahy, Kansas City.....	36	131	34	5	.970
Sullivan, J., Kansas City..	119	394	160	19	.966
Beville, Milwaukee .....	70	383	84	16	.966
Towne, Minneapolis .....	24	113	33	5	.966
Sugden, St. Paul.....	80	388	100	19	.962
Laughlin, St. Paul.....	65	299	83	15	.962
Land, Toledo .....	75	322	79	17	.959
Shannon, Minneapolis ....	41	173	79	11	.958
Fohl, Columbus .....	67	285	71	17	.954
Graham, G., Minneapolis..	73	330	103	22	.951
Buelow, Minneapolis .....	25	107	24	9	.935

**CLUB FIELDING.**

	*Games.	PO.	A.	E.	Pct.
Indianapolis .....	156	3918	1786	233	.960
Columbus .....	159	4194	2019	259	.959
Kansas City.....	156	4106	2366	326	.952
Louisville .....	159	4194	2075	322	.951
Toledo .....	156	4162	2115	339	.948
St. Paul .....	157	3894	1864	319	.947
Minneapolis .....	153	3958	1912	324	.947
Milwaukee .....	154	3958	1927	341	.945

\*Tie games included in all except Milwaukee.

**PITCHERS' RECORDS.**

Name and Club—	G.	W.	L.	Pct.	Field. Av.
Upp, Columbus .....	41	27	10	.730	.945
Chech, Toledo .....	39	25	11	.694	.943
Manske, Minneapolis ...	25	12	6	.667	.862
Kilroy, Minneapolis ....	35	19	10	.655	.926
West, Toledo .....	31	17	9	.654	1000
Sutthoff, Toledo .....	26	15	8	.652	.974
Lattimore, Toledo .....	31	13	8	.619	.971
Robertaille, Columbus ..	38	21	14	.600	.938
Crutcher, Kansas City...	20	7	5	.583	.978

AMERICAN ASSOCIATION AVERAGES.

Pitchers' Records—(Continued).

Name and Club—	G.	W.	L.	Pct.	Field. Av.
Durham, J., Louisville..	38	18	15	.545	.953
Geyer, Columbus .....	32	12	10	.545	.950
Wicker, Columbus .....	29	14	12	.538	.955
Briggs, Indianapolis ...	33	16	14	.533	.937
Swann, Kansas City.....	45	21	19	.525	.930
Criss, St. Paul.....	27	11	10	.524	.954
Puttmann, Louisville ...	45	21	20	.512	.937
Dougherty, Milwaukee ..	24	10	10	.500	.945
Gillen, Toledo .....	29	11	11	.500	.955
Kellum, Indianapolis ...	34	15	16	.484	.921
Slagle, Indianapolis ...	36	15	16	.484	.950
Egan, Kansas City.....	37	14	15	.483	.942
Goodwin, Milwaukee ...	46	21	23	.477	.903
Durham, L., Louisville..	37	16	18	.471	.896
Case, Kansas City.....	40	14	16	.467	.952
Summers, Indianapolis ..	36	14	16	.467	.958
Thomas, Minneapolis ...	31	14	16	.467	.975
Frantz, K. C.-Louisville.	31	13	15	.464	.980
Curtis, Milwaukee .....	42	18	21	.462	.924
Freeman, J., Minneapolis	35	12	14	.462	.929
Wilson, Milwaukee .....	28	9	11	.450	.924
Schneiberg, Milwaukee .	35	13	16	.448	.914
Ford, Minneapolis .....	31	12	15	.444	.932
Farris, St. Paul.....	34	13	18	.419	.931
LeRoy, St. Paul.....	40	14	22	.389	.938
Townsend, Columbus ...	26	7	11	.389	.986
Eells, Toledo .....	24	6	12	.333	.934

Records of less than twenty games not given.

# BURTON'S POCKET BASEBALL GUIDE.

## AMERICAN LEAGUE RECORD.

### Team Averages at End of Each Season for Past Eight Years.

Below will be found the correct team averages at end of season—1900 to 1907:

1900.	W.	L.	Pct.	1904.	W.	L.	Pct.
Chicago....	82	53	.607	Boston.....	95	59	.617
Milwaukee..	79	59	.577	New York..	92	59	.609
Indianapolis	71	64	.526	Chicago....	89	65	.578
Detroit....	71	65	.514	Cleveland..	86	65	.570
Kansas City	69	71	.496	Philadelphia	81	70	.536
Cleveland..	64	73	.463	St. Louis...	65	87	.428
Buffalo....	61	78	.439	Detroit....	62	90	.408
Minneapolis	54	85	.381	Washington	38	113	.251

1901.	W.	L.	Pct.	1905.	W.	L.	Pct.
Chicago....	83	53	.610	Philadelphia	92	56	.621
Boston.....	79	57	.581	Chicago....	92	60	.605
Detroit....	74	61	.548	Detroit....	79	74	.516
Philadelphia	74	62	.544	Boston.....	78	74	.513
Baltimore..	68	65	.511	Cleveland..	76	78	.494
Washington	61	72	.459	New York..	71	78	.477
Cleveland..	54	82	.397	Washington	64	87	.421
Milwaukee..	48	89	.350	St. Louis..	54	99	.354

1902.	W.	L.	Pct.	1906.	W.	L.	Pct.
Philadelphia	83	53	.610	Chicago....	93	58	.616
St. Louis..	78	58	.574	New York..	90	61	.596
Boston.....	77	60	.562	Cleveland..	89	64	.582
Chicago....	74	60	.552	Philadelphia	78	67	.538
Cleveland..	69	67	.507	St. Louis..	76	73	.510
Washington	61	75	.449	Detroit....	71	78	.477
Detroit....	52	83	.385	Washington	55	95	.367
Baltimore..	50	88	.362	Boston.....	49	105	.318

1903.	W.	L.	Pct.	1907.	W.	L.	Pct.
Boston.....	91	47	.659	Detroit....	92	58	.613
Philadelphia	75	60	.556	Philadelphia	88	57	.607
Cleveland..	77	63	.550	Chicago....	87	64	.576
New York:	72	62	.537	Cleveland..	85	67	.559
Detroit....	65	71	.478	New York..	70	78	.473
St. Louis..	65	74	.468	St. Louis..	69	83	.454
Chicago....	60	77	.438	Boston.....	59	90	.396
Washington	41	94	.314	Washington	49	102	.325



# BURTON'S POCKET BASEBALL GUIDE.

---

## NATIONAL LEAGUE RECORD.

### Team Averages at End of Each Season for Past Eight Years.

Below will be found the correct team averages at end of season—1900 to 1907:

1900.	W.	L.	Pct.	1904.	W.	L.	Pct.
Brooklyn...	82	54	.603	New York..	106	47	.693
Pittsburg...	79	60	.568	Chicago....	93	60	.608
Philadelphia	75	63	.543	Cincinnati..	88	65	.575
Boston.....	66	72	.478	Pittsburg...	87	66	.569
Chicago....	65	75	.464	St. Louis..	75	79	.422
St. Louis..	65	70	.464	Brooklyn...	56	97	.367
Cincinnati..	62	76	.450	Boston.....	55	98	.359
New York.	60	78	.435	Philadelphia	52	100	.342

1901.	W.	L.	Pct.	1905.	W.	L.	Pct.
Pittsburg...	90	49	.647	New York..	105	48	.686
Philadelphia	83	57	.593	Pittsburg...	96	57	.627
Brooklyn...	79	57	.581	Chicago....	92	61	.601
St. Louis..	76	64	.543	Philadelphia	83	69	.546
Boston.....	69	69	.500	Cincinnati..	79	74	.516
Chicago....	53	86	.381	St. Louis..	58	96	.377
New York..	52	85	.380	Boston.....	51	103	.331
Cincinnati..	52	87	.374	Brooklyn...	48	104	.316

1902.	W.	L.	Pct.	1906.	W.	L.	Pct.
Pittsburg...	103	36	.741	Chicago....	116	36	.763
Brooklyn...	75	63	.543	New York.	96	56	.632
Boston.....	73	64	.533	Pittsburg...	93	60	.608
Cincinnati..	70	70	.500	Philadelphia	71	82	.464
Chicago....	68	69	.496	Brooklyn...	66	86	.434
St. Louis..	56	78	.418	Cincinnati..	64	87	.424
Philadelphia	56	81	.409	St. Louis..	52	98	.347
New York.	48	88	.353	Boston.....	49	102	.324

1903.	W.	L.	Pct.	1907.	W.	L.	Pct.
Pittsburg...	91	49	.650	Chicago....	107	45	.704
New York.	84	55	.604	Pittsburg...	91	63	.591
Chicago....	82	56	.594	Philadelphia	83	64	.566
Cincinnati..	74	65	.532	New York.	82	71	.536
Brooklyn...	70	66	.515	Brooklyn...	65	83	.439
Boston.....	58	80	.420	Cincinnati..	66	87	.431
Philadelphia	49	86	.363	Boston.....	58	90	.392
St. Louis..	43	94	.314	St. Louis..	52	101	.340



# Official Playing Rules 1908

## **The Ball Ground.**

RULE 1. The ball ground must be enclosed. To obviate the necessity for ground rules, the shortest distance from a fence or stand on fair territory to the home base should be 235 feet and from home base to the grandstand, 90 feet.

## **To Lay off the Field.**

RULE 2. To lay off the lines defining the location of the several bases, the catcher's and the pitcher's position and to establish the boundaries required in playing the game of baseball, proceed as follows:

### **Diamond or Infield.**

From a point, A, within the grounds, project a straight line out into the field, and at a point, B, 154 feet from point A, lay off lines B C and B D at right angles to the line A B; then, with B as a center and 63.63945 feet as a radius, describe arcs cutting the lines B A at F and B C at G, B D at H and B E at I. Draw lines F G, G E, E H, and H F, which said lines shall be the containing lines of the Diamond or Infield.

### **The Catcher's Lines.**

RULE 3. With F as a center and 10 feet radius, describe an arc cutting line F A at L, and draw lines L M and L O at right angles to F A, and continue same out from F A not less than 10 feet.

### **The Foul Lines.**

RULE 4. From the intersection point, F, continue the straight lines F G and F H until they intersect the lines L M and L O, and then from the points G and H in the opposite direction until they reach the boundary lines of the ground, and said lines shall be clearly visible from any part of the diamond, and no wood or other hard substance shall be used in the construction of such lines.

### **The Players' Lines.**

RULE 5. With F as center and 50 feet radius, describe arcs cutting lines F O and F M at P and Q; then, with F as center again and

## OFFICIAL PLAYING RULES.

75 feet radius, describe arcs cutting  $FG$  and  $FH$  at  $R$  and  $S$ ; then, from the points,  $P$ ,  $Q$ ,  $R$  and  $S$ , draw lines at right angles to the lines  $FO$ ,  $FM$ ,  $FG$  and  $FH$ , and continue the same until they intersect at the points  $T$  and  $W$ .

### **The Coachers' Lines.**

RULE 6. With  $R$  and  $S$  as centers and 15 feet radius describe arcs cutting the lines  $RW$  and  $ST$  at  $X$  and  $Y$  and from the points  $X$  and  $Y$  draw lines parallel with the lines  $FH$  and  $FG$ , and continue same out to the boundary lines of the ground.

### **The Three-Foot Line.**

RULE 7. With  $F$  as a center and 45 feet radius, describe an arc cutting the line  $FG$  at 1, and from 1 to the distance of three feet draw a line at right angles to  $FG$ , and marked point 2; then from point 2, draw a line parallel with the line  $FC$  to a point three feet beyond the point  $G$ , marked 3; then from the point 3 draw a line at right angles to line 2, 3, back to and intersecting with  $FG$ , and from thence back along the line  $GF$  to point 1.

### **The Batsman's Lines.**

RULE 8. On either side of the line  $AFB$  describe two parallelograms six feet long and four feet wide (marked 8 and 9), their longest side being parallel with the line  $AFB$ , their distance apart being six inches added to each end of the length of the diagonal of the square within the angle  $F$ , and the center of their length being on said diagonal.

### **The Fitcher's Plate.**

RULE 9. Section 1.—With point  $F$  as center and 60.5 feet as radius, describe an arc cutting the line  $FB$  at line 4, and draw a line 5, 6, passing through point 4 and extended 12 inches on either side of line  $FB$ ; then with line 5, 6, as a side, describe a parallelogram 24 inches by 6 inches, in which shall be located the pitcher's plate.

Sec. 2.—The pitcher's plate shall not be more than 15 inches higher than the base lines or the home plate, which shall be level with the surface of the field, and the slope from the pitcher's plate to every base line and the home plate shall be gradual.

## OFFICIAL PLAYING RULES.

---

### **The Bases.**

RULE 10. Section 1.—Within the angle F, describe a five-sided figure, two of the sides of which shall coincide with the lines F G and F H to the extent of 12 inches each, thence parallel with the line F B  $8\frac{1}{2}$  inches to the points X and Y, a straight line between which, 17 inches, will form the front of the home base or plate.

Sec. 2.—Within the angles at G, I and H describe squares, the sides of which are 15 inches in length, two of such sides of which squares shall lie along the lines F G and G I, G I and I H, I H and H F, which squares shall be the location of the first, second and third bases, respectively.

RULE 11. The Home Base at F and the Pitcher's Plate at 4 must each be of whitened rubber, and so fixed in the ground as to be even with its surface.

RULE 12. The First Base at G, the Second Base at E, and the Third Base at H must each be a white canvas bag filled with soft material and securely fastened in place at the points specified in Rule 10.

RULE 13. The lines described in Rules 3, 4, 5, 6, 7, and 8 must be marked with lime, chalk or other white material, easily distinguishable from the ground or grass.

### **The Ball.**

RULE 14. Section 1.—The ball must weigh not less than five nor more than five and one-quarter ounces avoirdupois, and measure not less than nine nor more than nine and one-quarter inches in circumference.

Sec. 2.—Two regulation balls of the make adopted by the league of which the contesting clubs are members, shall be delivered by the home club to the umpire at or before the hour for the commencement of a championship game. If the ball placed in play be batted or thrown out of the grounds or into one of the stands for spectators, or, in the judgment of the umpire, become unfit for play from any cause, the umpire shall at once deliver the alternate ball to the pitcher and another legal ball shall be supplied to him, so that he shall at all times have in his control one or more alternate balls. Provided, however, that all balls batted or thrown out of the ground

## OFFICIAL PLAYING RULES.

or into a stand, shall when returned to the field be given into the custody of the umpire immediately and become alternate balls and so long as he has in his possession two or more alternate balls, he shall not call for a new ball to replace one that has gone out of play. The alternate balls shall become the ball in play in the order in which they were delivered to the umpire.

Sec. 3.—Immediately upon the delivery to him of the alternate ball by the umpire, the pitcher shall take his position and on the call of "Play" by the umpire, it shall become the ball in play. Provided, however, that play shall not be resumed with the alternate ball when a fair batted ball, or a ball thrown by a fielder goes out of the ground or into a stand for spectators until the base-runners have completed the circuit of the bases unless compelled to stop at second or third base in compliance with a ground rule.

### **Discolored or Damaged Balls.**

Sec. 4.—In the event of a ball being intentionally discolored by rubbing it with the soil or otherwise by any player,\* or otherwise damaged by any player, the umpire shall, upon appeal by the captain of the opposite side, forthwith demand the return of the ball and substitute for it another legal ball as hereinbefore described; and impose a fine of five dollars (\$5) upon the offending player.

[\*The words "except the pitcher" were stricken out by Rules Committee in February, 1908.]

### **Home Club to Provide Balls.**

Sec. 5.—In every game the balls played with shall be furnished by the home club, and the last in play shall become the property of the winning club. Each ball shall be enclosed in a paper box which must be sealed with the seal of the Secretary of the League and bear his certificate that he has examined, measured and weighed the ball contained therein, and that it is of the required standard in all respects. The seal shall not be broken by the umpire except in the presence of the captains of the contesting teams after "Play" has been called.

### **Reserve Balls on Field.**

Sec. 6.—The home club shall have at least a dozen (12) regulation balls on the field during

## OFFICIAL PLAYING RULES.

---

each championship game, ready for use on the call of the umpire.

### **The Bat.**

RULE 15. The bat must be round, not over two and three-fourths inches in diameter at the thickest part, nor more than 42 inches in length and entirely of hardwood, except that for a distance of 18 inches from the end, twine may be wound around or a granulated substance applied to the handle.

### **Number of Players in a Game.**

RULE 16. The players of each club, actively engaged in a game at one time, shall be nine in number, one of whom shall act as captain; and in no case shall more or less than nine men be allowed to play on a side in a game.

### **Positions of the Players.**

RULE 17. The players may be stationed at any points of the field their captain may elect, regardless of their respective positions, except that the pitcher, while in the act of delivering the ball to the bat, must take his position as defined in Rule 30; and the catcher must be within the lines of his position as defined in Rule 3 and within 10 feet of home base, whenever the pitcher delivers the ball to the bat.

### **Must Not Mingle With Spectators.**

RULE 18. Players in uniform shall not be permitted to occupy seats in the stands, or to mingle with the spectators.

### **Uniforms of Players.**

RULE 19. Every club shall adopt two uniforms for its players, one to be worn in games at home and the other in games abroad, and the suits of each of the uniforms of a team shall conform in color and style. No player who shall attach anything to the sole or heel of his shoe other than the ordinary baseball shoe plate, or who shall appear in a uniform not conforming to the suits of the other members of his team, shall be permitted to take part in a game.

### **Size and Weight of Gloves.**

RULE 20. The catcher or first baseman may wear a glove or mitt of any size, shape or weight. Every other player is restricted to the use of a glove or mitt weighing not over 10 ounces and measuring not over 14 inches around the palm.

## OFFICIAL PLAYING RULES.

---

### **Players' Benches.**

RULE 21. Section 1.—Players' benches must be furnished by the home club and placed upon a portion of the ground not less than twenty-five (25) feet outside of the players' lines. One such bench shall be for the exclusive use of the visiting team and the other for the exclusive use of the home team. Each bench must be covered with a roof and closed at the back and each end; a space, however, not more than six (6) inches wide may be left under the roof for ventilation. All players and substitutes of the side at bat must be seated on their team's bench, except the batsman, base-runners and such as are legally assigned to coach base-runners. Under no circumstances shall the umpire permit any person except the players and substitutes in uniform and the manager of the team entitled to its exclusive use to be seated on a bench.

### **Penalty for Violation.**

Sec. 2.—Whenever the umpire observes a violation of the preceding section he shall immediately order such player or players as have disregarded it to be seated. If the order be not obeyed within one minute the offending player or players shall be fined \$5.00 each by the umpire. If the order be not then obeyed within one minute, the offending player or players shall be debarred from further participation in the game, and shall be obliged to forthwith leave the playing field.

### **A Regulation Game.**

RULE 22. Every championship game must be commenced not later than two hours before sunset and shall continue until each team has had nine innings, provided, however, that the game shall terminate:

(1) If the side first at bat scores less runs in nine innings than the other side has scored in eight innings.

(2) If the side last at bat in the ninth inning scores the winning run before the third man is out.

(3) If the game be called by the umpire on account of darkness, rain, fire, panic or for other cause which puts patrons or players in peril.

### **Extra-Inning Games.**

RULE 23. If the score be a tie at the end of



## OFFICIAL PLAYING RULES.

nine (9) innings for each team, play shall be continued until one side has scored more runs than the other in an equal number of innings, provided, that if the side last at bat score the winning run before the third man is out in any inning after the ninth, the game shall terminate.

### **Drawn Games.**

RULE 24. A drawn game shall be declared by the umpire if the score is equal on the last even inning played when he terminates play in accordance with Rule 22, Section 3, after five or more equal innings have been played by each team. But if the side that went second to bat is at the bat when the game is terminated, and has scored the same number of runs as the other side, the umpire shall declare the game drawn without regard to the score of the last equal inning.

### **Called Games.**

RULE 25. If the umpire calls a game in accordance with Rule 22, Section 3, at any time after five innings have been completed, the score shall be that of the last equal inning played, except that if the side second at bat shall have scored in an unequal number of innings, or before the completion of the unfinished inning, at least one run more than the side first at bat, the score of the game shall be the total number of runs each team has made.

### **Forfeited Games.**

RULE 26. A forfeited game shall be declared by the umpire in favor of the club not in fault in the following cases:

Section 1.—If the team of a club fail to appear upon the field, or, being upon the field, refuse to begin a game for which it is scheduled or assigned, within five minutes after the umpire has called "Play" at the hour for the beginning of the game, unless such delay in appearing, or in commencing the game, be unavoidable.

Sec. 2.—If, after the game has begun, one side refuses to continue to play, unless the game has been suspended or terminated by the umpire.

Sec. 3.—If, after play has been suspended by the umpire, one side fails to resume playing in one minute after the umpire has called "Play."

Sec. 4.—If a team employ tactics palpably designed to delay the game.

## OFFICIAL PLAYING RULES.

---

Sec. 5.—If, after warning by the umpire, any one of the rules of the game be wilfully and persistently violated.

Sec. 6.—If the order for the removal of a player, as authorized by Rules 21, 58 and 64, be not obeyed within one minute.

Sec. 7.—If, because of the removal of players from the game by the umpire, or for any cause, there be less than nine players on either team.

Sec. 8.—If, when two games are scheduled to be played in one afternoon, the second game be not commenced within ten minutes of the time of the completion of the first game. The umpire of the first game shall be the timekeeper.

Sec. 9.—In case the umpire declares the game forfeited, he shall transmit a written report thereof to the president of the League, within twenty-four hours thereafter. However, a failure on the part of the umpire to so notify the president shall not affect the validity of his award of the game by forfeiture.

### **“No Game.”**

RULE 27. “No game” shall be declared by the umpire if he terminates play, in accordance with Rule 22, Section 3, before five innings are completed by each team. Provided, however, that if the club second at bat shall have made more runs at the end of its fourth inning than the club first at bat has made in five completed innings of a game so terminated, the umpire shall award the game to the club having made the greater number of runs, and it shall count as a legal game in the championship record.

### **Substitutes.**

RULE 28. Section 1.—Each side shall be required to have present on the field during a championship game a sufficient number of substitute players in uniform, conforming to the suits worn by their team-mates, to carry out the provisions of this code which requires that not less than nine players shall occupy the field in any inning of the game.

Sec. 2.—Any such substitutes may at any stage of the game take the place of a player whose name is in his team's batting order, but the player whom he succeeds shall not thereafter participate in that game.

## OFFICIAL PLAYING RULES.

---

Sec. 3.—A base-runner shall not have another player whose name appears in the batting order of his team run for him except by the consent of the captain of the other team.

### **Choice of Innings; Fitness of Field for Play.**

RULE 29. The choice of innings shall be given to the captain of the home club, who shall be the sole judge of the fitness of the ground for beginning a game after a rain; but, after play has been called by the umpire, he alone shall be the judge as to the fitness of the ground for resuming play after the game has been suspended on account of rain; and when time is so called the ground-keeper and sufficient attendants shall be under the control of the umpire for the purpose of putting them in proper shape for play, under penalty of forfeiture of the game by the home team.

### **THE PITCHING RULES.**

#### **Delivery of Ball to the Bat.**

RULE 30. Preliminary to pitching, the pitcher shall take his position facing the batsman with both feet squarely on the ground and in front of the pitcher's plate; and in the act of delivering the ball to the bat he must keep one foot in contact with the pitcher's plate defined in Rule 9. He shall not raise either foot until in the act of delivering the ball to the bat, nor make more than one step in such delivery.

#### **A Fairly Delivered Ball.**

RULE 31. A fairly delivered ball is a ball pitched or thrown to the bat by the pitcher while standing in his position and facing the batsman that passes over any portion of the home base before touching the ground, not lower than the batsman's knee, nor higher than his shoulder. For every such fairly delivered ball the umpire shall call one strike.

#### **An Unfairly Delivered Ball.**

RULE 32. An unfairly delivered ball is a ball delivered to the bat by the pitcher while standing in his position and facing the batsman that does not pass over any portion of the home base between the batsman's shoulder and knee or that touches the ground before passing home base, unless struck at by the batsman. For every unfairly delivered ball the umpire shall call one ball.

**Delaying the Game.**

RULE 33. Section 1.—If, after the batsman be standing in his proper position ready to strike at a pitched ball, the ball be thrown by the pitcher to any player other than the catcher when in the catcher's lines and within 10 feet of the home base (except in an attempt to retire a base-runner), each ball so thrown shall be called a ball.

Sec. 2.—The umpire shall call a ball on the pitcher each time he delays the game by failing to deliver the ball to the batsman for a longer period than 20 seconds, excepting that at the commencement of each inning, or when a pitcher relieves another, the pitcher may occupy one minute in delivering not to exceed five balls to the catcher or an infielder, during which time play shall be suspended.

**Balking.**

RULE 34. A balk shall be: Section 1.—Any motion made by the pitcher while in position to deliver the ball to the bat without delivering it, or to throw to first base when occupied by a base runner without completing the throw.

Sec. 2.—Throwing the ball by the pitcher to any base to catch the base-runner without stepping directly toward such base in the act of making such throw.

Sec. 3.—Any delivery of the ball to the bat by the pitcher while either foot is back of the pitcher's plate.

Sec. 4.—Any delivery of the ball to the bat by the pitcher while he is not facing the batsman.

Sec. 5.—Any motion in delivering the ball to the bat by the pitcher while not in the position defined by Rule 30.

Sec. 6.—Holding the ball by the pitcher so long as, in the opinion of the umpire, to unnecessarily delay the game.

Sec. 7.—Making any motion to pitch while standing in his position without having the ball in his possession.

Sec. 8.—Making any motion of the arm, shoulder, hip or body the pitcher habitually makes in his method of delivery, without immediately delivering the ball to the bat.

Sec. 9.—Delivery of the ball to the bat when the catcher is standing outside the lines of the catcher's position as defined in Rule 3.

## OFFICIAL PLAYING RULES.

If the pitcher shall fail to comply with the requirements of any section of this rule, the umpire shall call a "balk."

### **Dead Ball.**

RULE 35.—A dead ball is a ball delivered to the bat by the pitcher, not struck at by the batsman that touches any part of the batsman's person or clothing while he is standing in his position, or that before passing or getting beyond the control of the catcher touches any part of the clothing or person of the umpire while he is on foul ground.

### **Ball Not in Play.**

RULE 36. In case of a foul strike, foul hit ball not legally caught, dead ball, or a fair hit ball, touching a base-runner, the ball shall not be considered in play until it be held by the pitcher standing in his position, and the umpire shall have called "Play."

### **Block Ball.**

RULE 37. Section 1.—A block is a batted or thrown ball that is touched, stopped or handled by a person not engaged in the game.

Sec. 2.—Whenever a block occurs the umpire shall declare it, and the base-runners may run the bases without liability to be put out until the ball has been returned to and held by the pitcher in his position.

Sec. 3.—If the person not engaged in the game should retain possession of a blocked ball, or throw or kick it beyond the reach of the fielders, the umpire shall call "Time" and require each base-runner to stop at the base last touched by him until the ball be returned to the pitcher in his position and the umpire shall have called "Play."

## **THE BATTING RULES.**

### **The Batsman's Position.**

RULE 38. Each player of the side at bat shall become the batsman and must take his position within the batsman's lines (as defined in Rule 8) in the order that his name appears in his team's batting list.

### **The Order of Batting.**

RULE 39. The batting order of each team must be delivered before the game by its captain to the umpire, who shall submit it to the inspection of the captain of the other side. The batting order delivered to the umpire must be followed through-

## OFFICIAL PLAYING RULES.

out the game unless a player be substituted for another, in which case the substitute must take the place in the batting order of the retired player.

### **The First Batsman in an Inning.**

RULE 40. After the first inning the first striker in each inning shall be the batsman whose name follows that of the last man who completed his "time at bat" in the preceding inning.

### **Players Belong on Bench.**

RULE 41. When a side goes to bat its players must immediately seat themselves on the bench assigned to them as defined in Rule 21, and remain there until their side is put out, except when called to the bat or to act as coaches or substitute base-runners.

### **Reserved for Umpire, Catcher and Batsman.**

RULE 42. No player of the side "at bat," except the batsman, shall occupy any portion of the space within the catcher's lines as defined in Rule 3. The triangular space back of the home base is reserved for the exclusive use of the umpire, catcher and batsman, and the umpire must prohibit any player of the side "at bat" from crossing the same at any time while the ball is in the hands of the pitcher or catcher or passing between them while standing in their positions.

### **Fielder Has Right of Way.**

RULE 43. The players of the side "at bat" must speedily abandon their bench and hasten to another part of the field when by remaining upon or near it they or any of them would interfere with a fielder in an attempt to catch or handle a thrown or a batted ball.

### **A Fair Hit.**

RULE 44. A fair hit is a legally batted ball that settles on fair ground between home and first base or between home and third base, or that is on fair ground when bounding to the outfield past first or third base or that first falls on fair territory beyond first or third base or that touches the person of the umpire or a player while on fair ground.

### **A Foul Hit.**

RULE 45. A foul hit is a legally batted ball that settles on foul territory between home and first base or home and third base, or that bounds past first or third base on foul territory or that

## OFFICIAL PLAYING RULES.

---

falls on foul territory beyond first or third base or touches the person of the umpire or a player while on foul ground.

### **A Foul Tip.**

RULE 46. A foul tip is a ball batted by the batsman while standing within the lines of his position, that goes sharp and direct from the bat to the catcher's hands and is legally caught.

### **A Bunt Hit.**

RULE 47. A bunt hit is a legally batted ball, not swung at, but met with the bat and tapped slowly within the infield by the batsman. If the attempt to bunt result in a foul, not legally caught, a strike shall be called by the umpire.

### **Balls Batted Outside the Ground.**

RULE 48. Section 1.—When a batted ball passes outside the ground or into a stand the umpire shall decide it fair or foul according to where it disappears from the umpire's view.

Sec. 2.—A fair batted ball that goes over the fence or into a stand shall entitle the batsman to a home run unless it should pass out of the ground or into a stand at a less distance than two hundred and thirty-five (235) feet from the home base, in which case the batsman shall be entitled to two bases only. The point at which a fence or stand is less than 235 feet from the home base shall be plainly indicated by a white or black sign or mark for the umpire's guidance.

### **Strikes.**

RULE 49. A strike is: Section 1.—A pitched ball struck at by the batsman without its touching his bat; or,

Sec. 2.—A fair ball legally delivered by the pitcher at which the batsman does not strike.

Sec. 3.—A foul hit ball not caught on the fly unless the batsman has two strikes.

Sec. 4.—An attempt to bunt which results in a foul, not legally caught.

Sec. 5.—A pitched ball, at which the batsman strikes but misses and which touches any part of his person.

Sec. 6. A foul tip, held by the catcher, while standing within the lines of his position.

### **Foul Strikes.**

RULE 50. A "foul strike" is a ball batted by the batsman when either or both of his feet are upon the ground outside the lines of the batsman's position.

**When Batsman Is Out.**

RULE 51. The batsman is out: Section 1.—If he fail to take his position at the bat in the order in which his name appears on the batting list unless the error be discovered and the proper batsman replace him before a time "at bat" is recorded, in which case the balls and strikes called must be counted in the time "at bat" of the proper batsman. But only the proper batsman shall be declared out, and no runs shall be scored or bases run because of any act of the improper batsman. Provided, this rule shall not be enforced unless the out be declared before the ball be delivered to the succeeding batsman. Should the batsman declared out under this section be the third hand out and his side thereby put out, the proper batsman in the next inning shall be the player who would have come to bat had the players been put out by ordinary play in the preceding inning.

Sec. 2.—If he fail to take his position within one minute after the umpire has called for the batsman.

Sec. 3.—If he make a foul hit other than a foul tip, as defined in Rule 46, and the ball be momentarily held by a fielder before touching the ground; provided, it be not caught in the fielder's cap, protector, pocket or other part of his uniform, or strike some object other than a fielder before being caught.

Sec. 4.—If he make a foul strike, as defined in Rule 50.

Sec. 5.—If he attempt to hinder the catcher from fielding or throwing the ball by stepping outside the lines of the batsman's position, or in anyway obstructing or interfering with that player.

Sec. 6.—If, while first base be occupied by a base-runner, three strikes be called on him by the umpire, unless two men are already out.

Sec. 7.—If, while attempting a third strike, the ball touch any part of the batsman's person, in which case base-runners occupying bases shall not advance as prescribed in Rule 55, Section 5.

Sec. 8.—If, before two hands are out, while first and second or first, second and third bases are occupied, he hit a fly ball, other than a line drive, that can be handled by an infielder. In



## OFFICIAL PLAYING RULES.

such case the umpire shall, as soon as the ball be hit, declare it an infield or outfield hit.

Sec. 9.—If the third strike be called in accordance with Rule 49, Section 4 or 5.

Sec. 10.—If he steps from one batsman's box to the other after the pitcher has taken his position.

### BASE RUNNING RULES.

#### Legal Order of Bases.

RULE 52. The base-runner must touch each base in legal order, viz.: First, second, third and home bases; and when obliged to return while the ball is in play, must retouch the base or bases in reverse order. He can only acquire the right to a base by touching it, before having been put out, and shall then be entitled to hold such base until he has legally touched the next base in order, or has been legally forced to vacate it, for a succeeding base-runner. However, no base-runner shall score a run to count in the game ahead of the base-runner preceding him in the batting order, if there be such preceding base-runner who has not been put out in that inning.

#### When the Batsman Becomes a Base-Runner.

RULE 53. The batsman becomes a base-runner: Section 1.—Instantly after he makes a fair hit.

Sec. 2.—Instantly after "four balls" have been called by the umpire.

Sec. 3.—Instantly after "three strikes" have been declared by the umpire.

Sec. 4.—If, without making any attempt to strike at the ball, his person or clothing be hit by a pitched ball, unless, in the opinion of the umpire, he plainly make no effort to get out of the way of the pitched ball.

Sec. 5.—If the catcher interfere with him in or prevent him from striking at a pitched ball.

#### Entitled to Bases.

RULE 54. The base-runner shall be entitled, without liability to be put out, to advance a base in the following cases:

Section 1.—If, while the batsman, he becomes a base-runner by reason of "four balls" or for being hit by a pitched ball, or for being interfered with by the catcher in striking at a pitched ball.

Sec. 2.—If, while the batsman, a fair hit ball strike the person or clothing of the umpire or a base-runner on fair ground.

## OFFICIAL PLAYING RULES.

---

Sec. 3.—If the umpire awards to a succeeding batsman a base on four balls, or for being hit by a pitched ball, or being interfered with by the catcher in striking at a pitched ball and the base-runner be thereby forced to vacate the base held by him.

Sec. 4.—If the umpire call a "balk."

Sec. 5.—If a ball delivered by the pitcher pass the catcher and touch the umpire or any fence or building within ninety (90) feet of the home base.

Sec. 6.—If he be prevented from making a base by the obstruction of a fielder, unless the latter have the ball in hand ready to touch the base-runner.

Sec. 7.—If the fielder stop or catch a batted ball with his cap, glove or any part of his uniform while detached from its proper place on his person.

### **Returning to Bases.**

RULE 55. The base-runner shall return to his base without liability to be put out:

Section 1.—If the umpire declares any foul not legally caught.

Sec. 2.—If the umpire declares a foul strike.

Sec. 3.—If the umpire declares a dead ball, unless it be also the fourth unfair ball, and he be thereby forced to take the next base, as provided in Rule 54, Section 2.

Sec. 4.—If the person or clothing of the umpire interfere with the catcher in an attempt to throw or the umpire be struck by a ball thrown by the catcher or other fielder to intercept a base-runner.

Sec. 5.—If a pitched ball at which the batsman strikes, but misses, touch any part of the batsman's person.

Sec. 6.—In any and all these cases the base-runner is not required to touch the intervening bases in returning to the base he is legally entitled to.

### **When Base Runners Are Out.**

RULE 56. The base-runner is out: Section 1.—If, after three strikes have been declared against him while the batsman, the third strike ball be not legally caught and he plainly attempts to hinder the catcher from fielding the ball.

## OFFICIAL PLAYING RULES.

---

Sec. 2.—If, having made a fair hit while batsman, such fair hit ball be momentarily held by a fielder before touching the ground or any object other than a fielder; provided it be not caught in a fielder's hat, cap, protector, pocket or other part of his uniform.

Sec. 3.—If, when the umpire has declared "three strikes" on him while the batsman, the third strike ball be momentarily held by a fielder before touching the ground; provided, it be not caught in a fielder's cap, protector, pocket or other part of his uniform, or touch some object other than a fielder before being caught.

Sec. 4.—If, after three strikes or a fair hit, he be touched with the ball in the hand of a fielder before he shall have touched first base.

Sec. 5.—If, after three strikes or a fair hit, the ball be surely held by a fielder while touching first base with any part of his person before such base-runner touch first base.

Sec. 6.—If, in running the last half of the distance from home base to first base, while the ball is being fielded to first base, he run outside the three-foot lines, as defined in Rule 7, unless he do so to avoid a fielder attempting to field a batted ball.

Sec. 7.—If, in running from first to second base, from second to third base, or from third to home base, he run more than three feet from a direct line between a base and the next one in regular or reverse order to avoid being touched by a ball in the hands of a fielder. But in case a fielder be occupying a base-runner's proper path in attempting to field a batted ball, then the base-runner shall run out of direct line to the next base and behind said fielder and shall not be declared out for so doing.

Sec. 8.—If he fail to avoid a fielder attempting to field a batted ball, in the manner described in sections 6 and 7 of this rule, or in any way obstruct a fielder in attempting to field a batted ball, or intentionally interfere with a thrown ball; provided, that if two or more fielders attempt to field a batted ball, and the base-runner come in contact with one or more of them, the umpire shall determine which fielder is entitled to the benefit of the rule, and shall not decide the base-runner out for coming in contact with

## OFFICIAL PLAYING RULES.

---

a fielder other than the one the umpire determines to be entitled to field such batted ball.

Sec. 9.—If at any time while the ball is in play, he be touched by the ball in the hands of a fielder, unless some part of his person be touching the base he is entitled to occupy; provided, however, that the ball be held by the fielder after touching him, unless the base-runner deliberately knock it out of his hand.

Sec. 10.—If, when a fair or foul hit ball (other than a foul tip as defined in Rule 46) he legally caught by a fielder, such ball be legally held by a fielder on the base occupied by the base-runner when such ball was batted, or the base-runner be touched with the ball in the hands of a fielder, before he retouch such base after such fair or foul hit ball was so caught; provided, that the base-runner shall not be out in such case, if, after the ball was legally caught as above, it be delivered to the bat by the pitcher before the fielder hold it on said base, or touch the base-runner out with it; but if the base-runner, in attempting to reach a base, detach it from its fastening before being touched or forced out, he shall be declared safe.

Sec. 11.—If, when the batsman becomes a base-runner, the first base, or the first and second bases, or the first, second and third bases be occupied, any base-runner so occupying a base shall cease to be entitled to hold it, and may be put out at the next base in the same manner as in running to first base, or by being touched with the ball in the hands of a fielder at any time before any base-runner follow him in the batting order be put out, unless the umpire should decide the hit of the batsman to be an infield fly.

Sec. 12.—If a fair hit ball strike him before touching a fielder, and, in such case, no base shall be run unless necessitated by the batsman becoming a base-runner, but no run shall be scored or any other base-runner put out until the umpire puts the ball back into play.

Sec. 13.—If, when advancing bases, or forced to return to a base, while the ball is in play, he fail to touch the intervening base or bases, if any, in the regular or reverse order, as the case may be, he may be put out by the ball being held by a fielder on any base he failed to touch, or by being touched by the ball in the hand of a fielder

## OFFICIAL PLAYING RULES.

---

in the same manner as in running to first base; provided, that the base-runner shall not be out in such case if the ball be delivered to the bat by the pitcher before the fielder hold it on said base or touch the base-runner with it.

Sec. 14.—If, when the umpire call "Play," after the suspension of a game, he fail to return to and touch the base he occupied when "Time" was called before touching the next base; provided, the base-runner shall not be out, in such case, if the ball be delivered to the bat by the pitcher, before the fielder hold it on said base or touch the base-runner with it.

Sec. 15.—If, with one or no one out and a base-runner on third base, the batsman interferes with a play being made at home plate.

Sec. 16.—If he pass a base-runner who is caught between two bases, he shall be declared out immediately upon passing the preceding base-runner.

### **Overrunning First Base.**

Sec. 17.—The base-runner in running to first base may overrun said base after touching it in passing without incurring liability to be out for being off said base, provided he return at once and retouch the base, after which he may be put out as at any other base. If, after overrunning first base, he turn in the direction of or attempt to run to second base, before returning to first base, he shall forfeit such exemption from liability to be put out.

Sec. 18.—If, before two hands are out and while third base is occupied, the coacher stationed near third base shall run in the direction of home base on or near the base line while a fielder is making or trying to make a play on a batted ball not caught on the fly, or on a thrown ball, and thereby draws a throw to home base, the base-runner entitled to third base shall be declared out by the umpire for the coacher's interference with and prevention of the legitimate play.

Sec. 19.—If one or more members of the team at bat stand or collect at or around a base for which a base-runner is trying, thereby confusing the fielding side and adding to the difficulty of making such play, the base-runner shall be declared out for the interference of his team-mate or team-mates.

Sec. 20.—If he touch home base before a base-

## OFFICIAL PLAYING RULES.

---

runner preceding him in the batting order, if there be such preceding base-runner, lose his right to third base.

### **When Umpire Shall Declare an Out.**

RULE 57. The umpire shall declare the batsman or base-runner out, without waiting for an appeal for such decision, in all cases where such player be put out in accordance with any of these rules, except Sections 13 and 17 of Rule 56.

### **Coaching Rules.**

RULE 58. The coacher shall be restricted to coaching the base-runner only, and shall not address remarks except to the base-runner, and then only in words of assistance and direction in running bases. He shall not, by words or signs, incite or try to incite the spectators to demonstrations, and shall not use language which will in any manner refer to or reflect upon a player of the opposite club, the umpire or the spectator. Not more than two coaches, who must be players in the uniform of the team at bat, shall be allowed to occupy the space between the players' and the coaches' lines, one near first and the other near third base, to coach base-runners. If there be more than the legal number of coaches or this rule be violated in any respect the captain of the opposite side may, call the attention of the umpire to the offense, and thereupon the umpire must order the illegal coacher or coaches to the bench, and if his order be not obeyed within one minute, the umpire shall assess a fine of \$5.00 against each offending player, and upon a repetition of the offense, the offending player or players shall be debarred from further participation in the game, and shall leave the playing field forthwith.

### **The Scoring of Runs.**

RULE 59.—One run shall be scored every time a base-runner, after having legally touched the first three basis, shall legally touch the home base before three men are put out; provided, however, that if he reach home on or during a play in which the third man be forced out or be put out before reaching first base, a run shall not count. A force-out can be made only when a base-runner legally loses the right to the base he occupies and is thereby obliged to advance as the result of a fair hit ball not caught on the fly.

## OFFICIAL PLAYING RULES.

---

### UMPIRE AND HIS RULES.

#### **Power to Enforce Decisions.**

RULE 60. The umpire is the representative of the League and as such is authorized and required to enforce each section of this code. He shall have the power to order a player, captain or manager to do or omit to do any act which in his judgment is necessary to give force and effect to one or all of these rules, and to inflict penalties for violation of the rules as hereinafter prescribed.

RULE 61. There shall be no appeal from any decision of the umpire on the ground that he was not correct in his conclusion as to whether a batted ball was fair or foul, a base-runner safe or out, a pitched ball a strike or ball, or on any other play involving accuracy of judgment, and no decision rendered by him shall be reversed, except that he be convinced that it is in violation of one of these rules. The captain shall alone have the right to protest against a decision and seek its reversal on a claim that it is in conflict with a section of these rules.

#### **Must Not Question Decisions.**

RULE 62. Under no circumstances shall a captain or player dispute the accuracy of the umpire's judgment and decision on a play.

#### **Clubs Can Not Change Umpire.**

RULE 63. The umpire cannot be changed during a championship game by the consent of the contesting clubs unless the official in charge of the field be incapacitated from service by injury or illness.

#### **Penalties for Violations of the Rules.**

RULE 64. In all cases of violation of these rules, by either a player or manager, the penalty for the first offense shall be a fine by the umpire of \$5.00, and, for a second offense, prompt removal of the offender from the game or grounds, followed by a period of such suspension from actual service in the club as the president of the League may fix.

#### **Umpire to Report Violations of the Rules.**

RULE 65. The umpire shall within twelve hours after fining or removing a player from the game forward to the president a report of the penalty inflicted and the case therefor.

RULE 66. Immediately upon being informed by the umpire that a fine has been imposed upon

## OFFICIAL PLAYING RULES.

---

any manager, captain or player, the president shall notify the person so fined and also the club of which he is a member; and, in the event of the failure of the person so fined to pay to the secretary of the League the amount of said fine within five days after notice, he shall be debarred from participating in any championship game or from sitting on a players' bench during the progress of a championship game until such fine be paid.

**RULE 67.** When the offense of the player debarred from the game be of a flagrant nature, such as the use of obscene language or an assault upon a player or umpire, the umpire shall within four hours thereafter forward to the president of the League full particulars.

### **Warning to Captains.**

**RULE 68.** The umpire shall notify both captains before the game, and in the presence of each other, that all the playing rules will be strictly and impartially enforced, and warn them that failure on their part to co-operate in such enforcement will result in offenders being fined, and, if necessary to preserve discipline, debarred from the game.

### **On Ground Rules.**

**RULE 69.** Before the commencement of a game the umpire shall see that the rules governing all the materials of the game are strictly observed. He shall ask the captain of the home club whether there are any special ground rules, and if there be he shall acquaint himself with them, advise the captain of the visiting team of their scope and see that each is duly enforced, provided that it does not conflict with any of these rules.

### **Official Announcements.**

**RULE 70.** The umpire shall call "Play" at the hour appointed for the beginning of a game, announce "Time" at its legal interruption and declare "Game" at its legal termination.

### **Suspension of Play.**

**RULE 71.** The umpire shall suspend play for the following causes:

1. If rain fall so heavily as to cause the spectators on the open field and open stands to seek shelter, in which case he shall note the time of suspension, and should rain fall continually for



## OFFICIAL PLAYING RULES.

---

thirty minutes thereafter he shall terminate the game.

2. In case of an accident which incapacitates him or a player from service in the field, or in order to remove from the grounds any player or spectator who has violated rules, or in case of fire, panic or other extraordinary circumstances.

### **Call of Time.**

RULE 72. In suspending play from any legal cause the umpire shall call "Time"; when he calls "Time," play shall be suspended until he calls "Play" again, and during the interim no player shall be put out, base be run or run be scored. "Time" shall not be called by the umpire until the ball be held by the pitcher while standing in his position.

### **Decisions on Balls and Strikes.**

RULE 73. The umpire shall call and count as a "ball" any unfair ball delivered by the pitcher to the batsman. He shall also call and count as a "strike" any fairly delivered ball which passes over any portion of the home base, and within the batsman's legal range as defined in Rule 31, whether struck at or not by the batsman; or a foul tip which is caught by the catcher standing within the lines of his position, within 10 feet of the home base; or which, after being struck at not hit, strike the person of the batsman; or when the ball be bunted foul by the batsman; or any foul hit ball not caught on the fly unless the batsman has two strikes; provided, however, that a pitched ball shall not be called or counted a "ball" or "strike" by the umpire until it has passed the home plate.

RULE 74. If but one umpire be assigned, his duties and jurisdiction shall extend to all points and he shall be permitted to take his stand in any part of the field that in his opinion will best enable him to discharge his duties.

### **Field Rules.**

RULE 75. No person shall be allowed upon any part of the field during the progress of a game except the players in uniform, the manager of each side, the umpire, such officers of the law as may be present in uniform, and such watchmen of the home club as may be necessary to preserve the peace.

RULE 76. No manager, captain or player shall

## OFFICIAL PLAYING RULES.

---

address the spectators during a game except in reply to a request for information about the progress or state of the game.

RULE 77. Every club shall furnish sufficient police force to preserve order upon its own grounds, and in the event of a crowd entering the field during the progress of a game, and interfering with the play in any manner, the visiting club may refuse to play until the field be cleared. If the field be not cleared within 15 minutes thereafter, the visiting club may claim and shall be entitled to the game by a score of nine runs to none (no matter what number of innings has been played).

### **General Definitions.**

RULE 78. "Play" is the order of the umpire to begin the game or to resume it after its suspension.

RULE 79. "Time" is the order of the umpire to suspend play. Such suspension must not extend beyond the day.

RULE 80. "Game" is the announcement of the umpire that the game is terminated.

RULE 81. "An inning" is the term at bat of the nine players representing a club in a game and is completed when three of such players have been legally put out.

RULE 82. "A Time at Bat" is the term at bat of a batsman. It begins when he takes his position, and continues until he is put out or becomes a base-runner. But a time at bat shall not be charged against a batsman who is awarded first base by the umpire for being hit by a pitched ball or on called balls or when he makes a sacrifice hit or for interference by the catcher.

RULE 83. "Legal" or "Legally" signifies as required by these rules.

### **THE SCORING RULES.**

RULE 84. To promote uniformity in scoring championship games the following instructions are given and suggestions and definitions made for the guidance of scorers, and they are required to make all scores in accordance therewith.

#### **The Batsman's Record.**

RULE 85. Section 1.—The first item in the tabulated score, after the player's name and position, shall be the number of times he has been

## OFFICIAL PLAYING RULES.

---

at bat during the game, but the exceptions made in Rule 82 must not be included.

Sec. 2.—In the second column shall be set down the runs, if any, made by each player.

Sec. 3.—In the third column shall be placed the first base hits, if any, made by each player.

### **The Scoring of Base Hits.**

Sec. 4.—A base hit shall be scored in the following cases:

When the ball from the bat strikes the ground on or within the foul lines and out of the reach of the fielders.

When a fair-hit ball is partially or wholly stopped by a fielder in motion, but such player cannot recover himself in time to field the ball to first before the striker reaches that base or to force out another base-runner.

When the ball be hit with such force to an infielder or pitcher that he cannot handle it in time to put out the batsman or force out a base-runner. In a case of doubt over this class of hits, a base hit should be scored and the fielder exempted from the charge of an error.

When the ball is hit so slowly toward a fielder that he cannot handle it in time to put out the batsman or force out a base-runner.

In all cases where a base-runner is retired by being hit by a batted ball, unless batted by himself, the batsman should be credited with a base hit.

When a batted ball hits the person or clothing of the umpire, as defined in Rule 54, Section 2.

In no case shall a base hit be scored when a base-runner is forced out by the play.

### **Sacrifice Hits.**

Sec. 5.—In the fourth column shall be placed the sacrifice hits.

A sacrifice hit shall be credited to the batsman who, when no one is out or when but one man is out, advances a runner a base by a bunt hit, which results in the batsman being put out before reaching first, or would so result if it were handled without error.

\*A sacrifice hit shall also be credited to a batsman who, when no one is out or when one man is out, hits a fly ball that is caught, but results in a run being scored.

[\*This entire paragraph added by Rules Committee in February, 1908.]

## OFFICIAL PLAYING RULES.

---

### **Fielding Records.**

• Sec. 6.—The number of opponents, if any, put out by each player shall be set down in the fifth column. Where the batsman is given out by the umpire for a foul strike, or fails to bat in proper order, the put-out shall be scored to the catcher. In cases of the base-runner being declared "out" for interference, running out of line, or on an infield fly, the "out" should be credited to the player who would have made the play but for the action of the base-runner or the announcement of the umpire.

Sec. 7.—The number of times, if any, each player assists in putting out an opponent shall be set down in the sixth column. An assist should be given to each player who handles the ball in aiding in a run out or any other play of the kind, except the one who completes it.

An assist should be given to the player who makes a play in time to put a runner out, even if the player who could complete the play fail, through no fault of the assisting player.

And generally an assist should be given to each player who handles or assists in any manner in handling the ball from the time it leaves the bat until it reaches the player who makes the put-out, or in case of a thrown ball, to each player who throws or handles it cleanly, and in such a way that a put-out results, or would result if no error were made by a team-mate.

Assists should be credited to every player who handles the ball in the play which results in a base-runner being called "out" for interference or for running out of line.

### **Errors.**

Sec. 8.—An error shall be given in the seventh column for each misplay which prolongs the time at bat of the batsman or allows a base-runner to make one or more bases when perfect play would have insured his being put out. But a wild pitch, a base on balls, a base awarded to a batsman by being struck by a pitched ball, an illegal pitch, a balk and a passed ball, each of which is a battery and not a fielding error, shall not be included in the seventh column.

An error shall not be charged against the catcher for a wild throw in an attempt to prevent a stolen base, unless the base-runner advance an extra base because of the error.

## OFFICIAL PLAYING RULES.

---

An error shall not be scored against the catcher or an infielder who attempts to complete a double play, unless the throw be so wild that an additional base be gained.

In case a base-runner advance a base through the failure of a baseman to stop or try to stop a ball accurately thrown to his base, he shall be charged with an error and not the player who made such throw, provided there were occasion for it. If such throw be made to second base the scorer shall determine whether the second baseman or shortstop shall be charged with an error.

### **Stolen Bases.**

Sec. 9.—A stolen base shall be credited to the base-runner whenever he advances a base unaided by a base hit, a put-out, a fielding or a battery error.

### **The Summary.**

RULE 86. The summary shall contain: Section 1.—The score made in each inning of the game and the total runs of each side in the game.

Sec. 2.—The number of stolen bases, if any, by each player.

Sec. 3.—The number of two-base hits, if any, made by each player.

Sec. 4.—The number of three-base hits, if any, made by each player.

Sec. 5.—The number of home runs, if any, made by each player.

Sec. 6.—The number of double and triple plays, if any, made by each side and the names of the players assisting in the same.

Sec. 7.—The number of innings each pitcher pitched in.

Sec. 8.—The number of base hits, if any, made off each pitcher.

Sec. 9.—The number of times, if any, the pitcher strikes out the opposing batsmen.

Sec. 10.—The number of times, if any, the pitcher gives bases on balls.

Sec. 11.—The number of wild pitches, if any, charged to the pitcher.

Sec. 12.—The number of times, if any, the pitcher hits a batsman with a pitched ball.

Sec. 13.—The number of passed balls by each catcher.

Sec. 14.—The time of the game.

Sec. 15.—The name of the umpire.

# BURTON'S POCKET BASEBALL GUIDE.

## WESTERN ASSOCIATION AVERAGES.

STANDING OF CLUBS AT END OF SEASON.

	W.	L.	Pct.		W.	L.	Pct.
Wichita .....	98	35	.737	Joplin .....	71	64	.526
Okla. City...	86	54	.614	Webb City..	65	70	.481
Hutchinson ..	77	59	.566	Springfield	46	92	.333
Topeka .....	75	65	.536	Leavenw'rth.	29	108	.212

TEN LEADERS IN INDIVIDUAL BATTING.

	G.	AB.	R.	H.	Pct.
C. McFarland, Ok. City (P)	27	89	11	28	.314
Becker, Wichita .....	97	377	40	117	.310
Love, Okla. City.....	42	152	26	47	.309
Davis, Topeko .....	123	474	75	146	.308
Seabaugh, Springfield .....	25	82	10	25	.308
Holland, Wichita .....	130	483	51	148	.307
Wright, Webb City.....	44	153	13	47	.307
Milan, Wichita .....	114	428	86	130	.304
Root, Joplin .....	46	133	14	40	.301
Bayless, Wichita .....	128	485	75	144	.297

LEADERS IN INDIVIDUAL FIELDING.

	G.	PO.	A.	E.	Pct.
First base—					
Abbott, Topeka .....	119	1582	54	12	.993
Second base—					
E. Olson, Topeka.....	139	327	426	16	.979
Third base—					
Welter, Springfield .....	51	36	76	5	.958
Shortstop—					
White, Oklahoma City....	125	230	369	55	.916
Outfield—					
Harrington, Joplin .....	125	271	21	7	.977
Murray, Springfield .....	134	261	22	7	.976
Pettigrew, Hutchinson ...	125	218	14	7	.971
Pitcher—					
Burns, Webb City.....	28	13	59	0	1000
Catcher—					
Weaver, Wichita .....	119	719	145	19	.980

FIRST TEN WINNING PITCHERS.

Name and Club—	W.	L.	BB.	SO.	Pct.
Young, Wichita .....	29	4	56	179	.879
McFarland, Oklahoma City..	22	4	9	137	.846
Hofer, Oklahoma City.....	9	2	26	31	.818
Fleharty, Hutchinson .....	28	10	117	215	.739
Clark, Wichita .....	11	4	45	91	.733
Halla, Topeka .....	24	9	51	116	.727
Bandy, Oklahoma City.....	23	9	46	162	.719
Dick, Wichita .....	18	8	56	136	.692
Speer, Wichita .....	21	10	132	217	.679
Barber, Hutchinson .....	14	7	65	88	.667

**CHICAGO SEMI-PROFESSIONALS.**

In a later edition of this Guide special attention will be given to the make-up of the different teams of the semi-professional leagues. The co-operation of the members of the different organizations is desired to make this book the most complete of the kind ever published.

**The Park Owners' Association.**

President—Wm. Niesen.

Secretary-Treasurer—Willis Melville.

Directors—A. C. Anson, T. W. Sullivan, Edward Kelly, James J. Shalek, F. B. Geiger.

**TEAMS.**

Gunthers.  
Normals.  
West Ends.  
River Forest.  
Anson's Colts.  
Artesians.  
Lawndale.  
Rogers Park.

---

**Intercity Baseball League.**

President—Geo. W. McGurn.

Vice-President—Charles J. Murphy.

Secretary—John G. Brady.

Treasurer—J. P. Keary.

Press Representative—W. J. Mau.

Sergeant-at-Arms—L. Sternheim.

Directors—J. J. Callahan, Nick Daleiden, Dr. Persons, Ed Newman, Charles Finnegan, Ed St. Clair, E. Leverenz, W. G. Milan, R. Duffy.

---

**Chicago City League.**

President—Wm. H. Arthur.

Board of Directors—R. L. Welch, J. J. Callahan, J. P. Keary, T. W. Keelin.

**AMATEUR BASEBALL MANAGERS'  
LEAGUE.**

With the beginning of the present baseball year this league entered on its ninth year, with prospects of a more successful season, if possible, than ever before. Foremost in keeping the league in the front rank of the Chicago amateurs (and, for that matter, in the entire United States, as Chicago is not excelled in this respect) has been Al. Tearney, who is now entering on his ninth year of continuous service as its president. The league is indeed fortunate in having such an able executive, one who works for the good of the organization first, last and all the time. The league is no less well fixed in the make-up of its staff of officers—men who have the building up of the game at heart, and who receive no recompense other than the good will of the followers of our great outdoor sport. May it continue to prosper. The officers are as follows:

President—A. R. TEARNEY.

First Vice-President—N. T. KELLEY.

Second Vice-President—F. M. REDDY.

General Secretary—R. H. WHITE.

Financial Secretary—J. F. MUNGOVAN.

Recording Secretary—W. D. FOY.

Treasurer—A. HENRICKS.

Sergeant-at-Arms—H. WELCH.

Assistant Sergeant-at-Arms—F. McCARTY.

Press Agent—H. FISHER.

**BOARD OF DIRECTORS.**

Jos. E. White, Chairman.

South Side—Chas. Weil, Jno. Hopkins, Thos. M. Coverick, W. Weisel.

West Side—O. H. Vanderlip, C. E. Garrett, Jno. Kozlek, H. Woolrich.

North Side—G. M. Clark, Harry Radix, P. Gallagher, M. Simpson.

**UMPIRES' ASSOCIATION.**

This association is held directly responsible to the league for any acts which are not in keeping with its rules and regulations. Regular meetings are held for instruction in rules, etc.

President—JOS. E. WHITE.

Vice-President—JAMES MURPHY.

Secretary—E. C. KUHN.

Secretary-at-Arms—P. LAVIN.



**AMATEUR BASEBALL LEAGUES.**

---

As many teams are yet incomplete it was thought inadvisable to publish only partial rosters of teams. In a later edition of this Guide an effort will be made to include the lineups of all attached teams.

**Unattached Amateurs.**

With the issuance of a later Amateur Edition of this Guide more space will be given to the younger amateurs of Chicago. It is now the intention to publish the names and addresses of managers and the make-up of their teams. With the co-operation of these "future champions" we will be able to add a good many pages to carry the names. Send your line-ups by mail only and follow the manner they are here published. Here are a few teams for an example:

Oxford A. C. (formerly Jay's A. C.)—17 to 18.

Robert Miller, 4610 Evans avenue, manager; Earl Moseley, captain; Carl Carlson, p.; James Costello, ss.; Arthur Miller, lf.; Robert Miller, rf. or 2b.; W. J. Bryan, 1b.; B. Daggan, 3b.; Arthur Hanaford, 2b.; Chas. Whalen, cf.; Earl T. Moseley, c.; Phil. Collins, sub.

Old Rose—F. D. Hawkins, captain, 3808 Calumet avenue. Lawrence Garrett, R. Freiberg, p.

Paul Kephart, 1b.; Forrest Hawkins, 2d; Maurice Rosenweiger, ss.; Bob. Westvallen, 3b; Don McCurdy, lf.; Ed. Cooper, cf.; C. Rush, rf.; substitute, E. Martin.

Frisco Colts—Al. Klockzien, manager, 432 North

Francisco avenue; 15-16 years—Wentland, cf.; Cikanek, c.; Pergandy, p.; Spantikow, ss.; Klockzien, 1b.; Karnatz, lf.; Stoll, rf.; Theek, 3b.; Gardner, 2b.

# Two Earnest Workers for Amateur Baseball

These two young men, proprietors of the well-known Monarch Sporting Goods Mfg. Co., are to be found always working for the betterment of the great national pastime among the Chicago amateurs.



**Mathias A. Hansen**



**Fred J. Frydenlund**

**If a Baseball  
Player Made  
A Home Run  
Every Time He  
Came to Bat**

He would merely do what we do every time we make a suit or overcoat for \$35.00 to \$50.00.

**Heller & Benson**  
**Tailors**

**223-28 Monadnock Block  
CHICAGO**

# EASTERN LEAGUE SERIES SCHEDULE.

## EASTERN LEAGUE SCHEDULE, 1908.

For games to be played at Home read down the Column. For Games to be played out of Town read across.

CLUBS	AT MONTREAL.	TORONTO.	AT BUFFALO.	AT ROCHESTER.	AT PROVIDENCE.	AT JERSEY CITY.	AT NEWARK.	AT BALTIMORE.	
MONTREAL.....	June 14, 22, 113 July 9, 16, 111, 111 Sept. 10, 11, 112	May 20, *30, *30 July 16, 17, 118, 118 Sept. *7, *7, 8	June 1, 2, 7 July 1, *4, *4 Sept. 17, 18, 119, 119	June 1, 3, 4 July 3, *4, *4 Sept. 18, 19, 119	May 6, 7, 10, 110 June 28, 28, 127 Aug. 12, 4, 6	May 12, 4, 4 June 23, 23, 24 Aug. 18, 18, 118	April 28, 27, 28, 28 June 12, 12, 23, 24 Aug. 6, 7, 18	April 22, 23, 24, 126 June 15, 16, 17 Aug. 10, 11, 12	May 1, 12, 4, 6 June 16, 16, 17 Aug. 7, 18, 18
TORONTO ..	June 28, 29, 30 July 15, 6, 7, 8 Aug. 16, 17, 18	June 8, 9, 10 July *1, *1, 2 Sept. 3, 4, 15, 16	June 1, 2, 7 July 1, *4, *4 Sept. 17, 18, 119, 119	May 28, *30, *30 Sept. *7, *7, 8	April 28, 27, 28, 28 June 18, 19, 120 Aug. 10, 10, 11	April 23, 24, 126 June 28, 28, 127, 127 Aug. 4, 5, 6	May 6, 7, 8, 18 June 21, 22, 24 Aug. 16, 17, 18	May 1, 12, 4, 6 June 16, 16, 17 Aug. 7, 18, 18	May 1, 12, 4, 6 June 16, 16, 17 Aug. 7, 18, 18
BUFFALO .....	June 8, 9, 10 July *1, *1, 2 Sept. 3, 4, 15, 16	June 4, 6, 16, 18 July 13, 14, 16 Sept. 14, 16, 16	June 8, 9, 10 July *1, *1, 2 Sept. 3, 4, 15, 16	June 11, 12, 112 July 6, 7, 8 Aug. 17, 18, 19, 19	May 1, 12, 13, 4 June 114, 16, 17 Aug. 8, 7, 18	May 6, 7, 8, 19 June 18, 18, 120 Aug. 10, 11, 13, /	April 22, 23, 24, 126 June 28, 28, 127 Aug. 12, 4, 6	April 27, 28, 29, 30 June 13, 14, 15 Aug. 13, 14, 15	May 6, 7, 8, 19 June 28, 28, 127 Aug. 3, 4, 5
ROCHESTER.....	June 11, 12, 13, 14 July 13, 14, 16 Sept. 14, 16, 16	June 8, 9, 10 July *1, *1, 2 Sept. 3, 4, 15, 16	June 8, 9, 10 July *1, *1, 2 Sept. 3, 4, 15, 16	June 11, 12, 112 July 6, 7, 8 Aug. 17, 18, 19, 19	April 23, 24, 126 June 18, 19, 120 Aug. 12, 14, 15, 16	April 27, 28, 29, 30 June 20, 20, 117 Aug. 7, 18, 18	May 1, 12, 13, 4, 17 June 18, 19, 120 Aug. 10, 11	May 1, 12, 13, 13 July 3, 4, 5 Sept. 10, 11, 115, 112	May 6, 7, 8, 19 June 28, 28, 127 Aug. 3, 4, 5
PROVIDENCE..	May 11, 12, 13, 14 July 30, 31 Aug. 20, 21, 122	May 15, 116, 18, 19 July 21, 22, 20 Aug. 24, 25, 28	May 20, 26, 27 July 23, 24, 125, 125 Aug. 31 Sept. 1, 2	May 20, 21, 22, 123 July 20, 21, 22 Aug. 27, 28, 129	May 20, 21, 22, 123 July 20, 21, 22 Aug. 27, 28, 129	May 20, 21, 22, 123 July 20, 21, 22 Aug. 27, 28, 129	May 20, 21, 22, 123 July 20, 21, 22 Aug. 27, 28, 129	May 20, 21, 22, 123 July 20, 21, 22 Aug. 27, 28, 129	May 20, 21, 22, 123 July 20, 21, 22 Aug. 27, 28, 129
JERSEY CITY..	May 11, 12, 13, 14 July 30, 31 Aug. 20, 21, 122	May 15, 116, 18, 19 July 21, 22, 20 Aug. 24, 25, 28	May 20, 26, 27 July 23, 24, 125, 125 Aug. 31 Sept. 1, 2	May 20, 21, 22, 123 July 20, 21, 22 Aug. 27, 28, 129	May 20, 21, 22, 123 July 20, 21, 22 Aug. 27, 28, 129	May 20, 21, 22, 123 July 20, 21, 22 Aug. 27, 28, 129	May 20, 21, 22, 123 July 20, 21, 22 Aug. 27, 28, 129	May 20, 21, 22, 123 July 20, 21, 22 Aug. 27, 28, 129	May 20, 21, 22, 123 July 20, 21, 22 Aug. 27, 28, 129
NEWARK ..	May *25, *25, 26, 27 July 23, 24, 125 Aug. 27, 28, 129	May *25, *25, 26, 27 July 23, 24, 125 Aug. 27, 28, 129	May 11, 12, 13, 14 July 30, 31 Aug. 20, 21, 122	May 11, 12, 13, 14 July 30, 31 Aug. 20, 21, 122	May 11, 12, 13, 14 July 30, 31 Aug. 20, 21, 122	May 11, 12, 13, 14 July 30, 31 Aug. 20, 21, 122	May 11, 12, 13, 14 July 30, 31 Aug. 20, 21, 122	May 11, 12, 13, 14 July 30, 31 Aug. 20, 21, 122	May 11, 12, 13, 14 July 30, 31 Aug. 20, 21, 122
BALTIMORE....	May 21, 22, 23, 124 July 30, 31 Aug. 20, 21, 122	May *25, *25, 26, 27 July 23, 24, 125 Aug. 27, 28, 129	May 11, 12, 13, 14 July 30, 31 Aug. 20, 21, 122	May 11, 12, 13, 14 July 30, 31 Aug. 20, 21, 122	May 11, 12, 13, 14 July 30, 31 Aug. 20, 21, 122	May 11, 12, 13, 14 July 30, 31 Aug. 20, 21, 122	May 11, 12, 13, 14 July 30, 31 Aug. 20, 21, 122	May 11, 12, 13, 14 July 30, 31 Aug. 20, 21, 122	May 11, 12, 13, 14 July 30, 31 Aug. 20, 21, 122

\*Denotes Holiday  
#Denotes Saturday  
11Denotes Sunday

# AMER. ASSOCIATION SERIES SCHEDULE.

## OFFICIAL PLAYING SCHEDULE OF THE AMERICAN ASSOCIATION FOR 1908.

	At Columbia.	At Toledo.	At Indianapolis.	At Louisville.	At Milwaukee.	At Kansas City.	At St. Paul.	At Minneapolis.
COLUMBIA.....	May 24, 27, 28, 29 July 10, 11, 12 Sept. 9, 10, 11, 12	June 30, July 1, 2 Aug. 6, 7, 8, 9 Sept. 13, 15, 16, 14	May 16, 18, 20, 21 July 17, 18, 20 Aug. 26, 27, 28, 30	June 1, 2, 3, 4 July 3, 4, 5, 6, 8 Sept. 21, 22, 23, 25	May 12, 13, 14, 15 June 22, 23, 24, 25 Aug. 11, 12, 13, 14	May 9, 10, 11, 12, 13 June 15, 16, 17, 18 Aug. 8, 9, 10, 11, 12	May 14, 15, 16, 17 June 20, 21, 22, 23 Aug. 11, 12, 13, 14	May 14, 15, 16, 17 June 20, 21, 22, 23 Aug. 11, 12, 13, 14
INDIANAPOLIS.....	May 30, 30, 31 July 0, 7, 8, 9 Sept. 2, 3, 4	May 22, 23, 24, 25 July 0, 13, 14, 15 Aug. 30, 31, Sept 1	June 1, 2, 3, 4 July 8, 9, 10, 11 Sept. 8, 9, 10, 11	May 10, 11, 12, 13 June 17, 18, 19, 20 Aug. 6, 7, 8, 9	May 14, 15, 16, 17 June 20, 21, 22, 23 Aug. 11, 12, 13, 14	May 12, 13, 14, 15 June 15, 16, 17, 18 Aug. 8, 9, 10, 11, 12	May 14, 15, 16, 17 June 20, 21, 22, 23 Aug. 11, 12, 13, 14	May 14, 15, 16, 17 June 20, 21, 22, 23 Aug. 11, 12, 13, 14
LOUISVILLE.....	May 22, 23, 24, 25 July 0, 13, 14, 15, 16 Sept. 2, 3, 4	May 16, 30, 31, 31 July 0, 13, 14, 15 Aug. 30, 31, Sept 1	June 1, 2, 3, 4 July 8, 9, 10, 11 Sept. 8, 9, 10, 11	May 10, 11, 12, 13 June 17, 18, 19, 20 Aug. 6, 7, 8, 9	May 14, 15, 16, 17 June 20, 21, 22, 23 Aug. 11, 12, 13, 14	May 12, 13, 14, 15 June 15, 16, 17, 18 Aug. 8, 9, 10, 11, 12	May 14, 15, 16, 17 June 20, 21, 22, 23 Aug. 11, 12, 13, 14	May 14, 15, 16, 17 June 20, 21, 22, 23 Aug. 11, 12, 13, 14
MILWAUKEE.....	April 23, 24, 25 June 9, 10, 11 July 21, 22, 23, 24	April 20, 27, 28, 29 June 9, 10, 11 July 21, 22, 23, 24	April 16, 17, 18 June 10, 11, 12 July 20, 30, 31, Aug 1	April 10, 11, 12, 13 June 12, 13, 14, 15 Aug. 3, 4, 5, 6	June 1, 2, 3, 4 Aug. 6, 7, 8, 9 Aug. 20, 27, 28	June 1, 2, 3, 4 July 17, 18, 19, 20 Sept. 3, 4, 5, 6	June 1, 2, 3, 4 July 17, 18, 19, 20 Sept. 3, 4, 5, 6	June 1, 2, 3, 4 July 17, 18, 19, 20 Sept. 3, 4, 5, 6
KANSAS CITY.....	April 24, 27, 28, 29 June 9, 10, 11 July 23, 24, 25, 26	April 23, 24, 25, 26 June 9, 10, 11 July 21, 22, 23, 24	April 16, 17, 18 June 10, 11, 12 July 20, 30, 31, Aug 1	April 10, 11, 12, 13 June 12, 13, 14, 15 Aug. 3, 4, 5, 6	June 1, 2, 3, 4 Aug. 6, 7, 8, 9 Aug. 20, 27, 28	June 1, 2, 3, 4 July 17, 18, 19, 20 Sept. 3, 4, 5, 6	June 1, 2, 3, 4 July 17, 18, 19, 20 Sept. 3, 4, 5, 6	June 1, 2, 3, 4 July 17, 18, 19, 20 Sept. 3, 4, 5, 6
ST. PAUL.....	April 12, 14, 17, 18 June 15, 16, 17, 18 July 20, 30, 31, Aug 1	April 10, 20, 21, 22 June 15, 16, 17, 18 Aug. 2, 3, 4, 5, 6	April 27, 28, 29, 30 June 9, 10, 11, 12 July 20, 23, 24, 25, 26	April 20, 21, 22, 23 June 10, 11, 12, 13 July 20, 30, 31, Aug 1	April 10, 11, 12, 13 June 12, 13, 14, 15 Aug. 3, 4, 5, 6	June 1, 2, 3, 4 Aug. 6, 7, 8, 9 Aug. 20, 27, 28	June 1, 2, 3, 4 July 17, 18, 19, 20 Sept. 3, 4, 5, 6	June 1, 2, 3, 4 July 17, 18, 19, 20 Sept. 3, 4, 5, 6
MINNEAPOLIS.....	April 10, 20, 21, 22 June 15, 16, 17, 18 Aug. 2, 3, 4, 5, 6	April 10, 16, 17, 18 June 15, 16, 17, 18 July 20, 30, 31, Aug 1	April 27, 28, 29, 30 June 9, 10, 11, 12 July 20, 23, 24, 25, 26	April 20, 21, 22, 23 June 10, 11, 12, 13 July 20, 30, 31, Aug 1	April 10, 11, 12, 13 June 12, 13, 14, 15 Aug. 3, 4, 5, 6	June 1, 2, 3, 4 Aug. 6, 7, 8, 9 Aug. 20, 27, 28	June 1, 2, 3, 4 July 17, 18, 19, 20 Sept. 3, 4, 5, 6	June 1, 2, 3, 4 July 17, 18, 19, 20 Sept. 3, 4, 5, 6

For home games, read down column. Out of town games, across.

**Postponed Games—American League.**

BURTON'S POCKET BASEBALL GUIDE.

---

**Postponed Games—American League.**

BURTON'S POCKET BASEBALL GUIDE.

---

**Postponed Games—National League.**



BURTON'S POCKET BASEBALL GUIDE.

---

**Postponed Games—National League.**

BURTON'S POCKET BASEBALL GUIDE.

---

**Postponed Games—American Association.**

BURTON'S POCKET BASEBALL GUIDE.

---

**Postponed Games—American Association.**

BURTON'S POCKET BASEBALL GUIDE.

---

**Postponed Games—Eastern League.**

BURTON'S POCKET BASEBALL GUIDE.

---

**MEMORANDA.**

BURTON'S POCKET BASEBALL GUIDE.

---

**MEMORANDA.**

**MEMORANDA.**

BURTON'S POCKET BASEBALL GUIDE.

---

**MEMORANDA.**



### THE COVER DESIGN.

---

Half-tones of John Kling of the World's Champions and Wm. Sullivan of the Chicago White Sox will be used on the outside cover of this book during the present season. The Kling and Sullivan pictures will be divided equally on the copies printed and it may be interesting to know which of these two designs will be most called for by fans who are partial to either team. The decision, of course, cannot be announced until next spring.

Unless either photo is designated in orders for books, they will be divided equally.

Photos by Chicago "American" staff photographer.

---

### THE BOOK PRINTERS.

---

This book is printed and bound by the Rogers & Hall Co., 126-132 Market street, Chicago, and is mailed by the publisher.

Half-tones and zinc etchings by Barnes-Crosby Company, Chicago.

None other than union labor has been employed on any work in connection therewith.

IRWIN R. BURTON,  
Publisher.

When you want a clean, easy  
shave use

# Razorgo Strop Dressing

Guaranteed to put and keep Razors  
and Strops in perfect condition

Price 25c a package at barber shops  
and drug stores or by mail  
postage prepaid

**M. HALEY, Razorgo Mfr.**  
791 Madison St. Chicago, Ill.

J. Kraus

Telephone Main 3246

M. Perlstein

## J. Kraus & Co.

Wholesale and Retail Manufacturers  
and Jobbers in

### CIGARS

Tobacco and Smokers' Articles

"Strella" Our Leader

236 East Madison Street  
Near Franklin Street, Chicago

Branches

342 South Clark Street  
Near Harrison Street

126 Fifth Avenue  
Near Madison Street

N.W. "L" and  
Surface Lines

Phone  
Lake View 146

# The Glenwood

Mountain & Luecker, Props.

**1785 N. Clark Street**

Six Bowling Alleys

Billiards and Pool

American and Chop

Suey Restaurant

Dancing Pavilion

**Buffet: Vestibule Entrance  
Ladies' Parlor**

**OUR ADVERTISERS.**

---

While the advertising in this issue of the Guide is not heavy, due principally to the short notice on which the book was gotten together, we are nevertheless proud of the class of business we have. It will be easily understood a publication of this character could be crowded full of objectionable advertising at good rates, but, as such patronage works to the detriment rather than the success of a book of this kind, it was decided on as the best business policy to bar anything but the best.

The Monarch Sporting Goods Mfg. Co., outside cover page, is well known in Chicago and throughout the country. It has the patronage of thousands of amateurs and professionals throughout the middle west and southwest.

The Mather Game Co., inside front cover page, has had marvelous success for many years with its Indoor Base Ball Game. They are thoroughly reliable.

Edward J. Prindle, Brimfield, Mass., inside back cover, is entering on his fourteenth season of success in baseball books and his Baseball Curver. Thousands of young men throughout the United States have used his articles with satisfaction.

The Washington Shirt Co., Chicago, Ill., is too well known to dwell on at length.

Heller & Benson, tailors, in the Monadnock block, Chicago, would be pleased to fit you out perfectly—from \$35 to \$50.

The Glenwood Alleys, Mountain and Luecker's popular North Side establishment, is one of the best known of Chicago's many popular resorts. The proprietors are both bowlers of national reputation.

M. Haley, manufacturer of "Razorgo" Strop Dressing, 791 Madison street, needs no introduction of anyone living on the West Side of Chicago.

J. Kraus & Co., are well known downtown cigar manufacturers. Try their famous "Strella" brand.

## DOES THIS INTEREST YOU?

1. THE ART OF CURVE PITCHING.
2. THE ART OF BATTING.
3. THE ART OF ZIGZAG CURVE PITCHING.
4. THE ART OF BASE RUNNING.
5. BASEBALL, AND HOW TO PLAY IT.

The first four of these instructive little handbooks are too well known to require detailed description. They are simply *all right* and you will say so, too, when you read them. I have sold them for years and never heard of a dissatisfied customer. But **No. 5** is a later and better book, covering every department of the game and having in addition several special chapters not to be found in any other book. It tells how to become a professional and has a special chapter on Pitching which gives directions for throwing **three special curves**, which alone is worth more than the price of the book. Price of Nos. 1, 2, 3 and 4, 15 cents *each*—*the four at one time* for 50 cents in cash or 55 cents in stamps. Price of **No. 5**, 25 cents in cash or 30 cents in stamps.

### **THE MAGIC BASEBALL CURVER !!**

This is the fourteenth season I have sold this little mechanical wonder and it still enjoys a deserved and undiminished popularity with baseball pitchers. It is the greatest invention in baseball since the discovery of the "curve" and the pitcher who uses one has the batsmen at his mercy, for it is so *spinning* they cannot see it and they all wonder where those **awful curves** come from. **21** men struck out in 9 innings is its record. With it an amateur can soon beat most professionals. Price, 25 cents each, 2 for 40 cents, 3 for 50 cents. If stamps are sent, 5 cents additional to these prices.

**PREMIUM OFFER:** These goods all sent by mail, postpaid, on receipt of price. To anyone sending *direct to me* an order for *not less than 75 cents' worth* of these goods *at one time* I will give *free* any single article mentioned on this page. Name the premium desired.

**Address, EDWARD J. PRINDLE,  
22 Prospect St., Brimfield, Mass.**

Reasons for Our Unequaled Success Please

ION  
MIF

LIBRARY OF CONGRESS



0 029 604 654 1

APR 24 1908

Supporting and Athletic Goods are what we  
NOT the name or trade-mark. BUY GOODS.  
NOT LABELS.



We are proud of our reputation, but we don't  
charge you for it. Our trade-mark GUARAN-  
TEES satisfaction, and INSURES honest value.

Monarch Sporting Goods Mfg. Co.  
California Ave. and Point St. Dept. B.  
CHICAGO, ILLINOIS



LIBRARY OF CONGRESS



0 029 604 654 1