



**LINCOLN JUBILEE ALBUM**



**50th ANNIVERSARY  
OF OUR EMANCIPATION**



Held in Chicago August 22d  
to September 16th, 1915





## INTRODUCTION

It is the earnest hope of the Author that the following views will, in a pleasing and graphic manner, present to the tolerant mind an interesting and most suggestive phase of an humble, patient, yet maligned and sadly misunderstood people, whose natural instincts and skill are somewhat reflected in the various products of their minds and hands so illustrated, and whose souls are yearning for an equal opportunity for their development in the great family of nations, that they may take their rightful place in the material progress, place and happiness of society, as in the words of our beloved and immortal Lincoln the slogan is, "Keep step to the music of the Republic."

THE AUTHOR.

The Commissioners were:

Bishop Samuel Fallows, President

T. Wallace Swan, Secretary

Mr. Ford, Treasurer

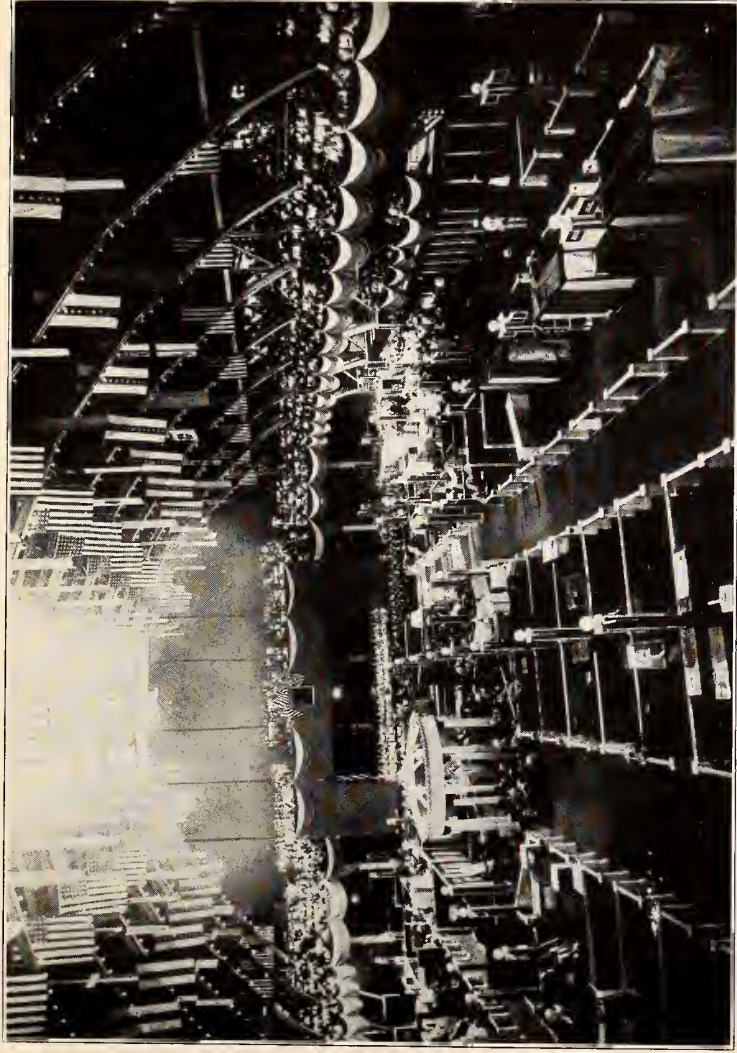
James Hale Porter, Field Agent

Rev. Carey            Major Jackson

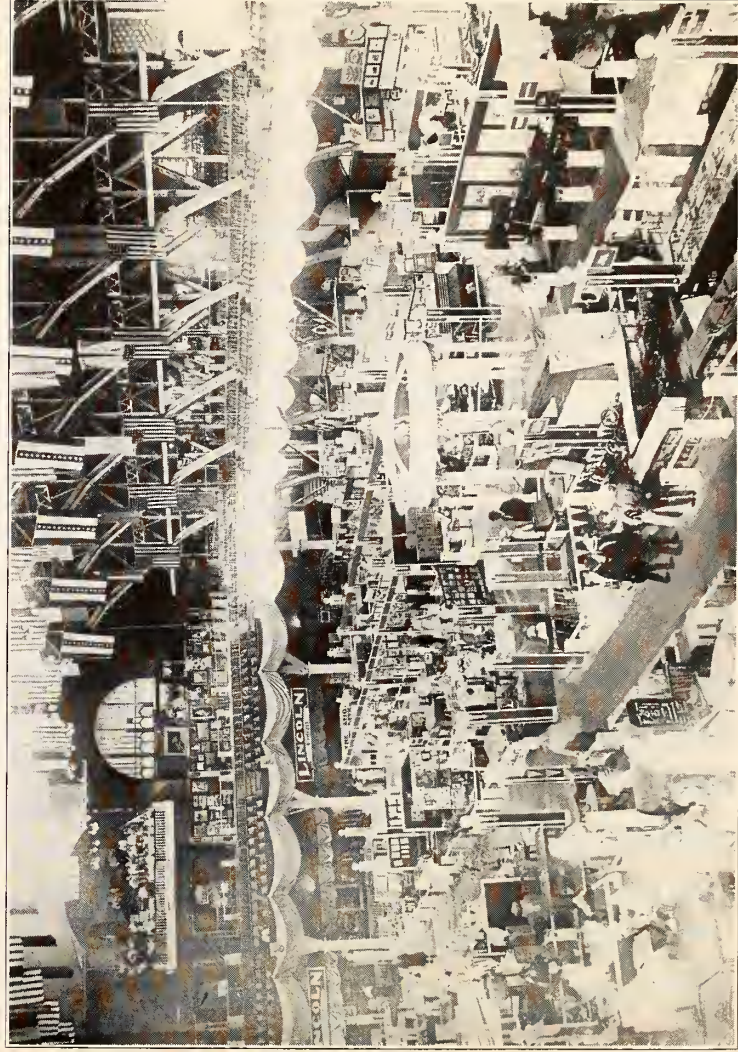
Mrs. Dr. Waring

Compiled by  
JOHN H. BALLARD  
OFFICIAL PHOTOGRAPHER LINCOLN JUBILEE  
**3341 South State Street, Chicago**

Copyright 1915  
By  
John H. Ballard

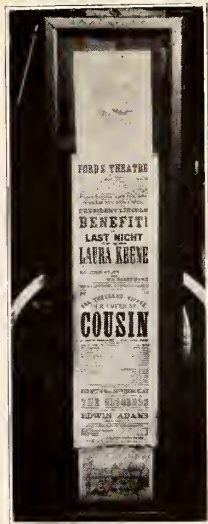


GENERAL VIEW LOOKING SOUTH.  
DEDICATION BY GOV. DUNNE, AUG. 22, 1915.



GENERAL VIEW LOOKING NORTH.





PROGRAM FROM FORD THEATRE.  
WASHINGTON, NIGHT OF  
ASSASSINATION.



APPOMATTOX—TABLE ON WHICH GEN. LEE SIGNED HIS SURRENDER TO  
GEN. GRANT.



SLAVE PLOW AND CHAIRS TAKEN FROM FORD THEATRE BOX  
WHICH LINCOLN OCCUPIED.



LOVEJOY'S PRINTING PRESS AND CIVIL WAR RELICS.



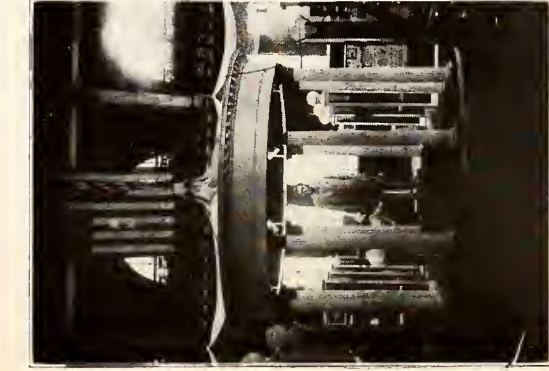




BED ABRAHAM LINCOLN DIED ON, ALSO PIANO HIS WIFE PLAYED.




STILL ON GUARD.



LINCOLN STATUE, CENTRAL FIGURE OF THE EXPOSITION.



WM. S. CHILDS, ONLY COLORED LIEUTENANT OF POLICE IN U. S. A.



Digitized by the Internet Archive  
in 2011 with funding from

The Institute of Museum and Library Services through an Indiana State Library LSTA Grant

<http://www.archive.org/details/lincolnjubileeal00ball>



EASTERN STAR.



HOUSEHOLD OF RUTH.



S. M. T.

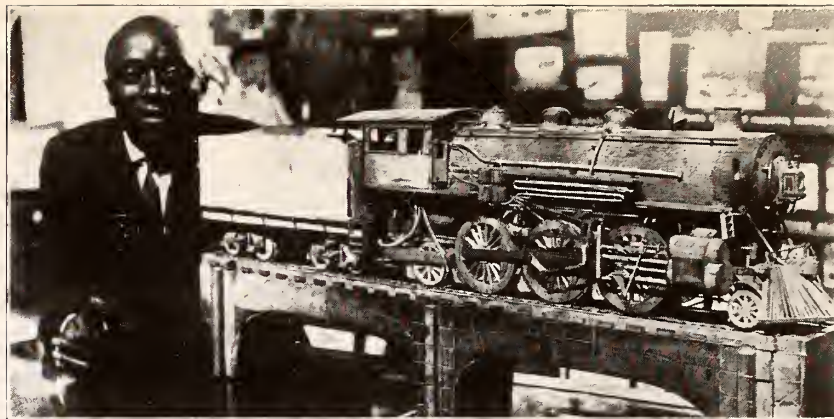


ANCIENT ORDER OF FORESTERS EXHIBIT.





UNIQUE PAINTING OF LOCOMOTIVE BY ARTIST IN PICTURE—ROCK BED BALLAST OF FINE CRUSHED STONE WORKED IN PICTURE.



PERFECT LOCOMOTIVE CARVED FROM WOOD BY PEN KNIFE. ALL PARTS MOVABLE.



AUTOMATIC MUSICAL CLOCK  
ELECTRIC LIGHTED, MUSIC PLAYS ON HOUR AND HALF HOUR.



AWAKENING OF ETHIOPIA BY FANNIE M. STOUT, WHO IS LEANING ON STATUE.

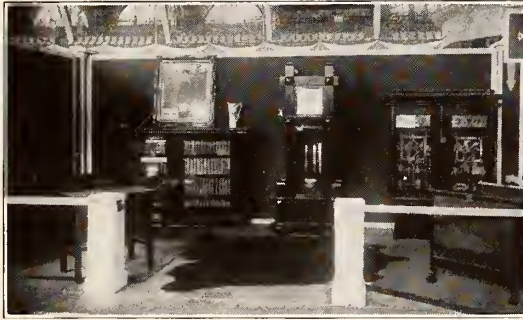




INSTITUTIONAL CHURCH EXHIBIT, NORA LEE,  
HAND PAINTED CHINA.



NEEDLEWORK EXHIBIT FROM ORME SCHOOL.



NAILLESS MASSIVE FURNITURE BY ADELBERT  
LEE.



SETTLEMENT LEAGUE, LILLIE DALE, CHICAGO.



PATTERSON SCHOOL OF NEEDLEWORK AND ART  
SHOWING \$100.00 BED SPREAD TO THE LEFT.



ANDERSON SCHOOL OF HAND PAINTED CHINA.







FEDERATION OF WOMEN'S CLUBS.

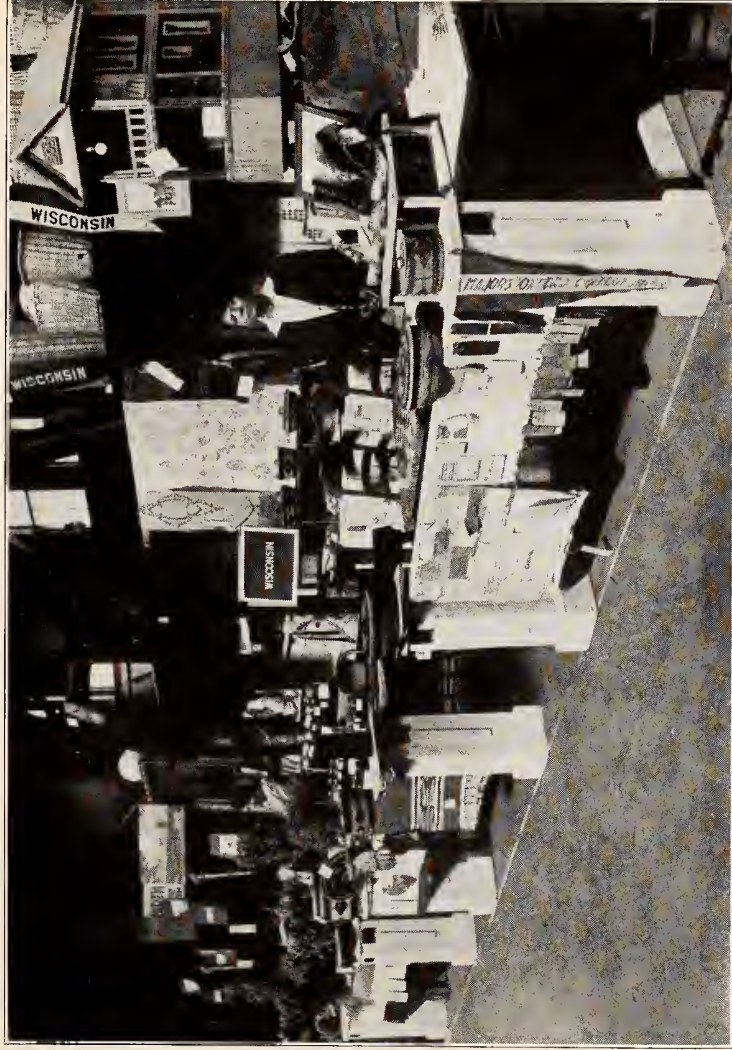


DEWMAINE, ILL., MINE RESCUE CORPS.



FINE MILLINERY.





WISCONSIN STATE EXHIBIT.



INDIANA STATE EXHIBIT.





MICHIGAN NEEDLEWORK EXHIBIT.



GENERAL VIEW OF MICHIGAN EXHIBITS.





MICHIGAN ART EXHIBIT SHOWING ABRAHAM LINCOLN AND SOJOURNER TRUTH IN THE BACKGROUND.



MICHIGAN EXHIBIT, INVENTOR MCCOY AND HIS DEVICES, LUBRICATING OIL CUPS.







WILBERFORCE UNIVERSITY FACULTY.



WIRELESS STATION IN OPERATION AT THE EXPOSITION. A FEW OF THE COMMISSION IN BACKGROUND.



PLOW MADE BY JAMES CROSS, WILBERFORCE EXHIBIT.

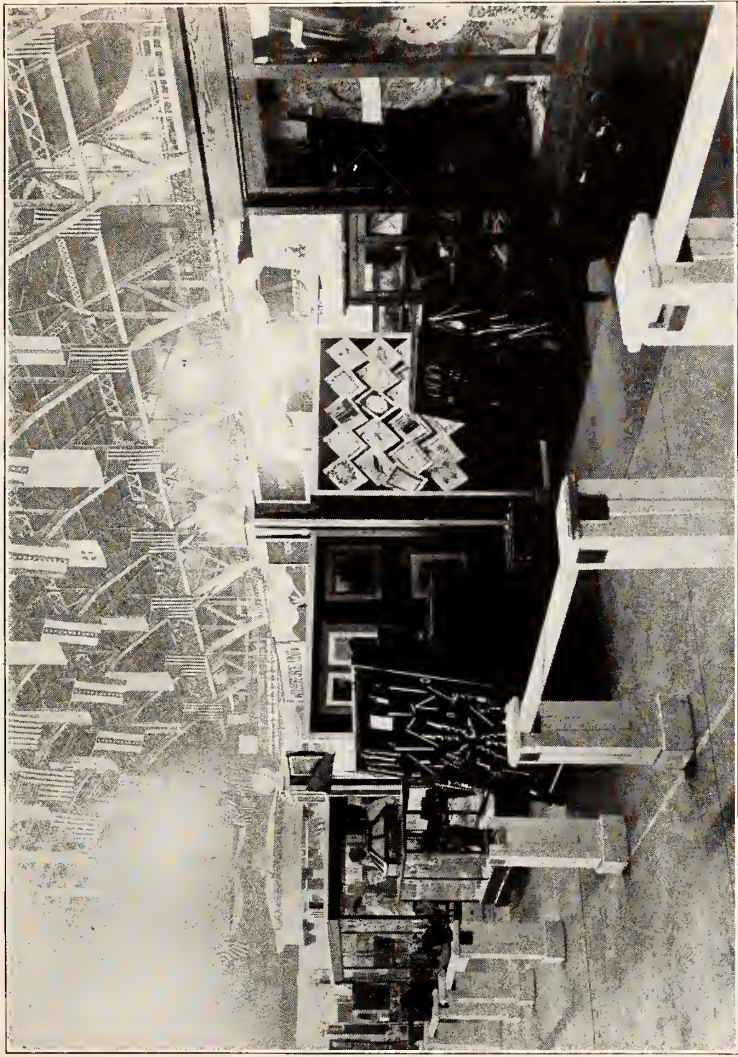


OHIO REGALIA EXHIBIT.

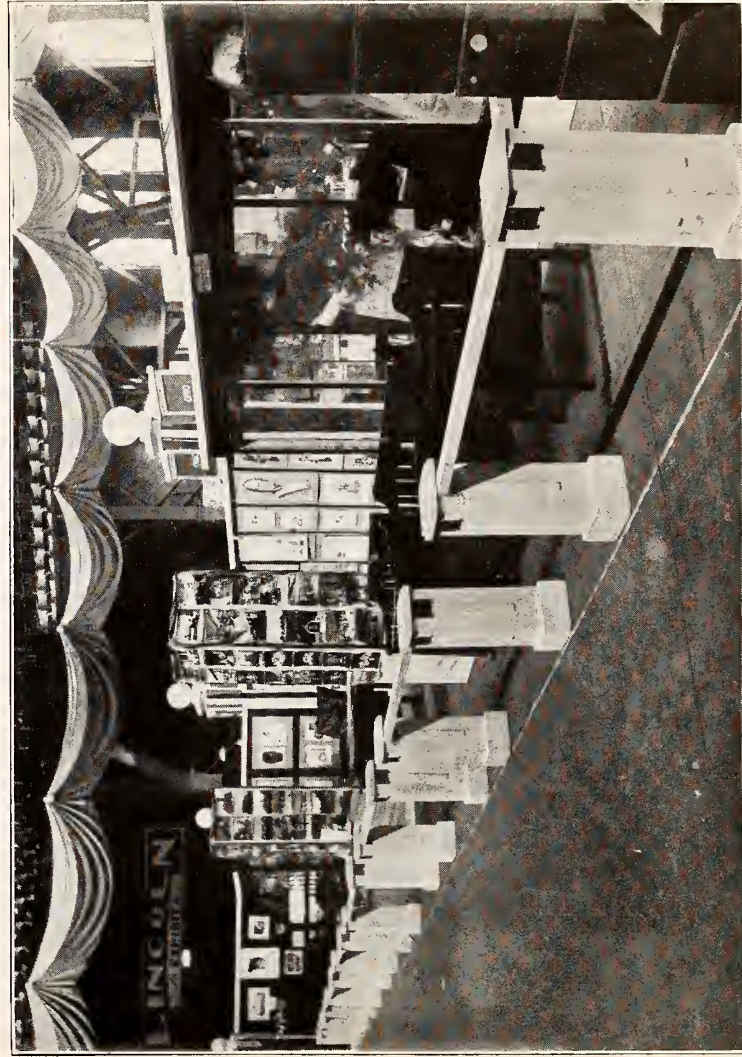


MORGAN NATIONAL SAFETY HOOD.





OHIO EXHIBIT—TOOLS AND NEEDLEWORK.



OHIO ART EXHIBIT.





MISSOURI EXHIBIT.



MISSOURI EXHIBIT, C. S. L. BAKER'S FRICTION HEATER.





EXHIBIT FROM BISHOP SCHOOL, TEXAS.



IOWA EXHIBIT.



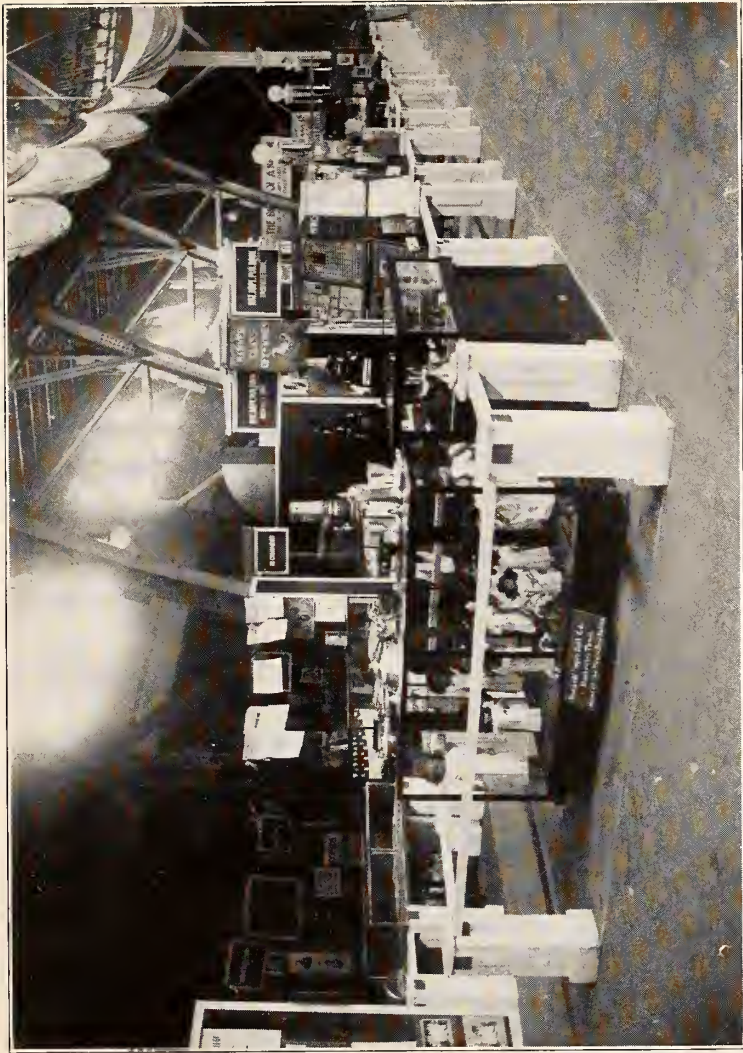
KENTUCKY EXHIBIT OF ARTISTIC NEEDLEWORK.



KANSAS EXHIBIT.







TENNESSEE EXHIBIT NATIONAL BAPTIST ASSOCIATION SHOWING COLORED DOLLS.



TENNESSEE EXHIBIT, MAHARA COLLEGE.



TENNESSEE EXHIBIT, NATIONAL BAPTIST ASSN. FOREIGN MISSIONS, NATIVE HUT AND NATIVE WOMAN.

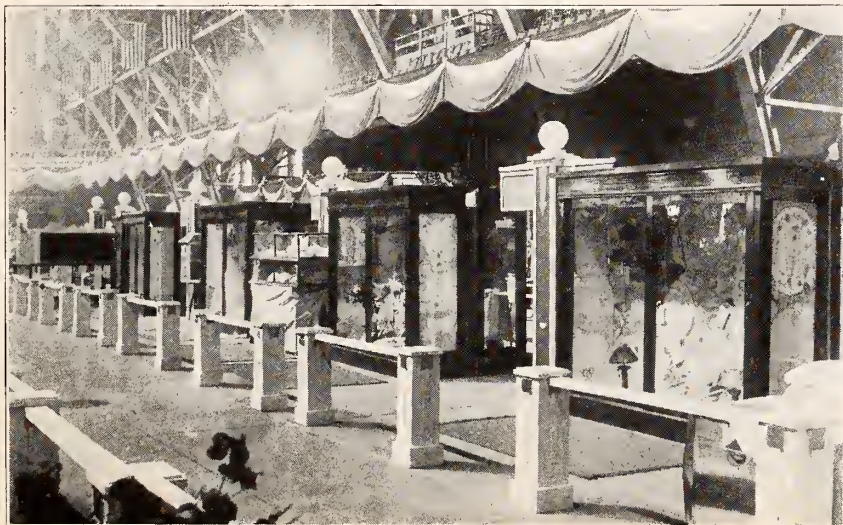




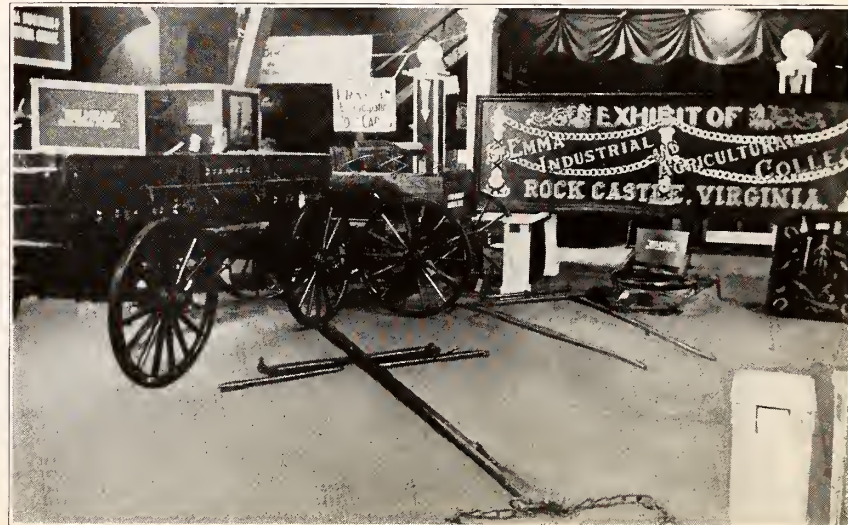
FATHER TOLTON, FIRST CATHOLIC PRIEST IN AMERICA.



EMMA CATHOLIC COLLEGE EXHIBIT.



NEEDLEWORK IN THE OBLATE CATHOLIC SISTERS' EXHIBIT.



EMMA CATHOLIC COLLEGE EXHIBIT.





PINEY WOODS SCHOOL, BRAXTON, MISS., ARKANSAS EXHIBIT.



MISSISSIPPI EXHIBIT SHOWING IN CENTER OF PICTURE REV. MONTGOMERY, A FORMER SLAVE ON JEFFERSON DAVIS' PLANTATION, WHO PURCHASED THE DAVIS ESTATE AND FOUNDED THE PRESENT COLONY KNOWN AS MOUND BAYOU.





BISHOP SCHOOL OF NEEDLEWORK, CHICAGO.

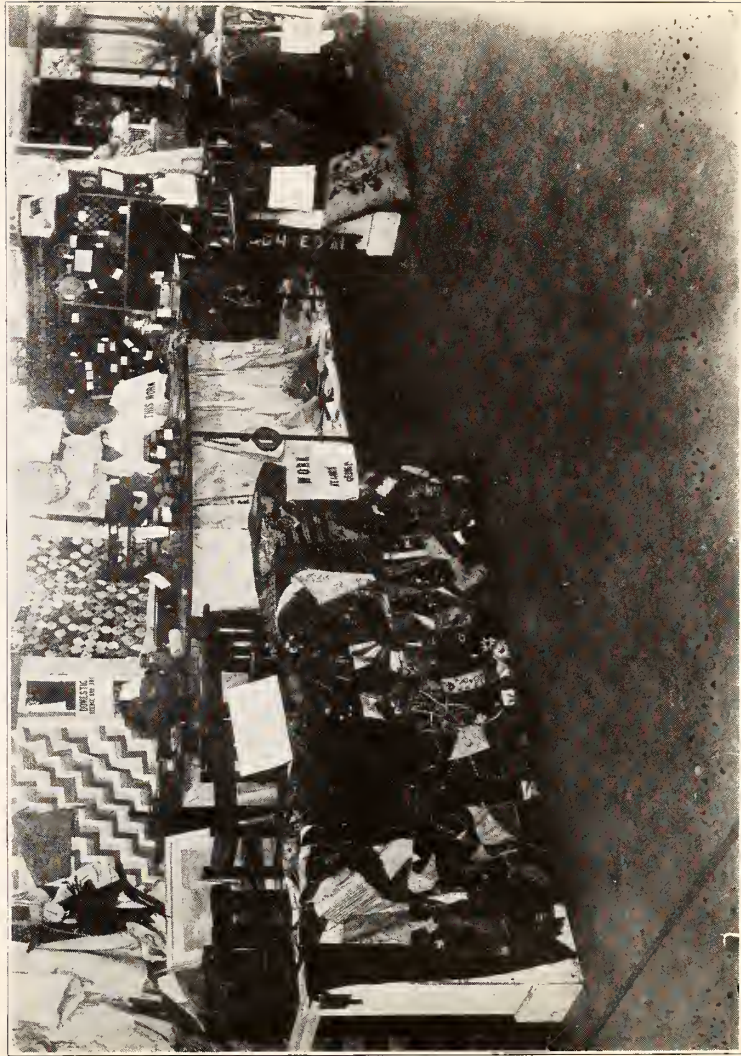


EXHIBIT FROM ATLANTA, GA.



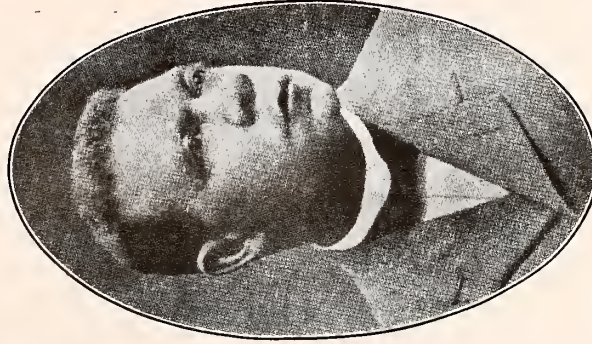




WARREN LOGAN  
TREASURER



EMMET J. SCOTT  
SECRETARY



BOOKER T. WASHINGTON  
FOUNDER AND PRINCIPAL



ROBERT R. TAYLOR  
DIRECTOR OF MECHANICAL  
INDUSTRIES.



JOHN H. WASHINGTON  
GENERAL SUPT. OF INDUSTRIES

VIEWS OF TUSKEGEE  
Being a collection of Panoramic  
Scenes, together with Short His-  
torical Statements of the Great Tus-  
kegee Normal and Industrial In-  
stitute.

IN MEMORIAM OF OUR BELOVED  
BENEFACTOR

DR. BOOKER T. WASHINGTON

We present these few selected  
views in commemoration of his won-  
derful achievements, believing they  
will meet with the approval of our  
many friends. Yours respectfully,  
Author.





STUDENTS AT WORK



FOUNDRY DIVISION.



A CORNER IN THE MACHINE SHOP.



PAINTING DIVISION—TUSKEGEE INSTITUTE, ALABAMA.





LINCOLN MEMORIAL GATES: ENTRANCE FROM MON-  
GOMERY AVENUE.

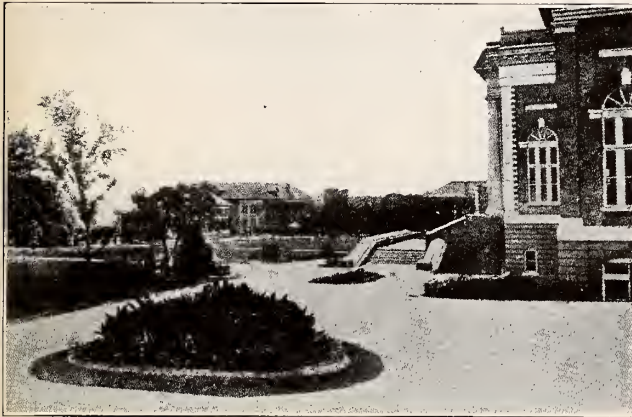


CARNEGIE LIBRARY—TUSKEGEE INSTITUTE, ALABAMA

CARNEGIE LIBRARY — TUSKEGEE IN-  
STITUTE, ALABAMA.



A GROUP OF STUDENTS FROM PORTO RICO.



A VIEW OF THE GROUNDS LOOKING TOWARDS DOUGLAS  
HALL SHOWING CORNER OF TOMPKINS HALL.



PRINCIPAL WASHINGTON ON A SPEAKING  
TOUR THROUGH THE STATE OF MISSISSIPPI.





LINCOLN JUBILEE CHOIR, CHORUS OF 650 VOICES.





# Anthem

## Praise God We Are Not Weary

Words by TOM BROWN

Music by TOM LEMONIER

Arr. by J. Wm. Coleman

Intro.

The piano introduction consists of two staves of music. The right hand plays a series of chords in a descending sequence, while the left hand provides a steady accompaniment. A dynamic marking of *f* (forte) is present at the beginning.

Voice

The vocal line begins with the lyrics: "With out a coun-try to call our own We wor-ship at our Oh King of Kings from Thy lof-ty place Look down on us an But aft-er years of earth-ly strife And aft-er pass-ing". The music is written on a single staff with a treble clef and a key signature of two flats. A dynamic marking of *p* (piano) is placed below the first line of the vocal staff.

*ten*

The vocal line continues with the lyrics: "Mas-ters throne lets raise our voi-ces to the sky to hum-ble race and give us strength to do and dare let through this life just faith in God will pay the price to". The music is written on a single staff with a treble clef and a key signature of two flats. Dynamic markings of *ten* (tenuto) are placed above the first and second lines of the vocal staff.

100-100



