

4.					
	Copper chloride	20k.		Fermic acid	2
	Fire extinguisher	1,200		Tanenkeke	1.5
	Fire extinguisher liquid	500		Chrome oxide	19
	Fire " bomb	515off		Mercuric iodate	5
	Ammonium sulphate	400k.		Mercury	6
	Sodium phosphate	20		Acid phosphate anhydrous	45
	Silicic acid anhydrous	10		Mercuric chloride	298
	Resine	18		Potassium iodate	13
	Potassium sulphate	40		Uranium nitrate	6
	Alum	1,500		Barium hydroxide	12
	Magnesium chloride	25		Bismuth iodate	8
	Zinc cyanate	100		Cuprous chloride ammonatel	46
	Iron sulphate	100		Silver cyanate	20
	Barium carbonate	20		Luminous paint	10
	Potassium ferricyanide	8		Ammonium bicromate	648
	Ferric oxide	517		Sodium nitrite	50
	Sodium aluminate	340		Cupric chloride	56
	Chromic acid anhydrous	450		Dimethyl glyoxide	6.5
	Tannine-ex	1,720		Brome	41
	Copper sulphate	97		Nickel sulphate	50
	Tannin acid	56		Tincter	78
	Lead stearate	10		Copper chloride ammon	50
	Tasteric acid	400		Mercurous nitrate	36
	Copper cyanate	50		Cadmium sulphate	44
	Sodium phosphate	1,800		Aluminium paste	3.5
	Chromic acid anhydrous	2		Barium chloride	15
	Acide perherate	20		Acid arsenic	14.5
	Ammonium iron sulphate	61		Cadmium chloride	50
	Sodium bismuthate	54		Potassium hydroxide	800
	Potassium carbonate	15		Acid oxalate	150
	Potassium permanganate	110		Lead chromate	29
	Ammonius nitrate	20		High pressure acite	272off
	Albbmine	9		Petroleum	5,600lt.
	Sodium nitrite	5		Benzele	5,600
	Lead nitrate	2		Ether	668k.
	Sodium formate	2		Carbite	10,125
	Codmium oxide	100		Calcium acide	900
	Magnesium chloride	50		Hydroquinon	34
	Alum	50		Flush powder	96
	Albumine	50		Motor benzol	1,448
	Ammonium chloride	100		Freezing oil	180
	Zinc acetate	100		No.2 turbine oil	720
	Dichlorae benzole	50		No.3 cylinder oil	126
	Precipitated calcium carbonate	140		No.3 turbine oil	1,930
	Manganese sulphate	50		Alcohol	956
	Aluminium sulphate	50		Refining agent of cepper	2,465
	Burnt alum	100		Grey paint	250
	Cuprous chloride	20		Dryer	370
				Hardening oil	720lt.
				Cup grease	565k.

5.				
Cutting oil	500lt.	Belemite		2000eff
No.4 machine oil	24	Dime stone		100t.
Iron acid oxide	200k.	Asbestos paint		260
Sulphurous acid		Rock wool tex beard		270
anhydrous	100	Rock wool plate		15
Machine oil	36	Rock wool tex cylinder	10,800	
No.4 grease	4,096	Rock wool tape		45
Aceton	500	Rock wool fiber		30
Telebin oil	1,000	Wall material of rock		
Decin	300	wool tex		20
Gryceline	450	Asbestos		200
Hydrofluesilicic acid	60	Silicon		20
Gear grease	800	Asbestos plate		1,500
Spe.mach. oil	10lt.	Rockwool tex		70
No.1 cyl. oil	1,800	Rockwool plate		10
No.2 lub. oil	200	Rockwool tape		30t.
Pine oil	5,800	Rockwool fiber		5
Heavy oil	1,600	Wall material of rockwool		3
No.3 spindle oil	1,400	Japan lacquer		2k.
Marine oil	4,000	Wax		150
No.3 petreleum	900	Zinc cynate		80
Amani oil	3,006	Oxalic acid		40
No.1 spindle oil	1,710	Nickel sulphide		80
Insulation oil	792	Nickel chloride		100
Glycerine	11,000	Mixed paint		180
Creesete	9,400	Rust prove paint		100
Air gasoline	2,000	Grey paint		25
Bean oil	34,000	Sheruek vernish		210
Water gauge glass	250sheet	Japan lacquer		850
Grinding stone	32eff	Potassium cyanate		20
Paint of flower zinc	140k.	Belt wax		45
Ammonium ferrous		Beil oil		160lt.
oxalate	45	Reef-true		5,000eff
Thick paint	150	Japanese cypress plate		4
Fire brick	352,000eff	Cryptomeria log		78
Coal	1,098t.	Special pine log		328
Cement	4	Hiragi		83
Asbestos packing code	2,000k.	Japanese cypress log		361
Tex	1lt.	Oak log		388
Bone carbon	1,000k.	Pine		68
Carbon pole	1,000eff	Zelkava log		36
Graphite powder	800k.	Oak log		27
Magnesium carbenate	200	Hemlock log		28
Ferric chloride	2,400	American pine		
Red lead	6,000	square timber		277
Vernish Japan	1,200	Zelkava log		277
Charcoal	122t.	Electric pole		2,532

6.			
Ink	1,037eff	Pretractor	60eff
Copyink	140	Switch box	210
Cloth	550coil	Ebonite plate	1,000k.
Binder	212off	Platform balance	5eff
Baikoche 4	422	Felt	1,000k.
Thread string	2,000	File hook	50eff
Rubber soled socks	2,065	Saw	37
Blanket	59sheet	Nail puller	26
Working dress	1,965set	Hammer	80
Sports shoes	1,400eff	Pressed lead	50eff
Silk katan string	6,000	Constant temperature	
Rubber boots	480set	vessel	100
Woman working dress	1,170eff	Automatic switch	350
Tube of automobile	203eff	Tape condenser	1,500
Working suit pants	505set	Handle file	1,000
Cloth for Yakune	3,400m.	Electric clock	20
Epron	338sheet	Wood hammer	560
Bleached cotton	2,640m.	Cotton cloth of	
Refined cotton	2,400k.	rem manufacture	2,000k.
Printing paper	79,000sheet	Compass	768eff
Imitation paper	98,000	Handle of hammer	200
"	5,000	Feather sweep	1,950
Victoria lawn	3,400m.	Hack saw text	600
Rough cloth	8,900	Tap	8eff
Wool tape	3,800	Inner pass	125
Wool	5k.	Beaklite plate	1,000k.
White staple fiber		Paint brush	1,500eff
serge	9,650m.	Handle of hammer	2,060
Shearunge red	4,100	Signal lamp	90eff
White silk string	680k.	Oiler	45
Red silk string	35	Special plane	130
Linen	1,536m.	Plane	250
Right blue cloth	2,350	Caliper	60
Leater	1,000k.	Chisel	200
Dry bread	2,265	Handle tap	360
Cotton grove	3,360set	Hand vise	200
Rubber epron	258sheet	"Kasugai"	400k.
Canvas thread	100k.	Rolling copying machine	1eff
Cotton tape	2,000m.	White hemp rope	7,000m.
Thick cloth hose	1,250	Hemp rope	3,000
Silk tape	3,600	Brush	200
Linen fibre	15k.	Sterilizer	1
Special steel	15coil	File brush	800
Glue	1,000k.	Compass	60
Silk cloth	90coil	Metal measure	900
Rain coat	50sheet	Deck brush	50
Tape of bag	200k.	Telephone parts	300
Cable	1,800k.	Case for ele. instrument	6
File	5,000eff	Wooden pulley	23
Mimeograph	5	Mat	430set
		Roller	1,000eff

7.

Gum plate	375k.	Charger	50off
Okonite plate	280sheet	Drill	500
Celycinite sheet packing	30	Drill	100
Chair	15off	Carpenter drill	300
Bench	6,300	Pincet	80
Small wire rope	285k	"Kuigiri"	50
Cutton	30	Pench	120
Cyzal rope	2,000m.	Drill	250
Special ele.bulb	2,000off	Paper scissor	200
Pinchers	44	Ph ner	12
Compound	440k.	Tin plate scissor	13
Gum packing	440	Spanner	13
	1500off	Hook saw	4
	2000k		
Steam sterilizer	4	Wood file	16
Pillow	450	Knife file	36
Circular saw	14	Screw driver	300
Fuse box	11,000	Drophone	212
Socket	300	Bulb	1,778
Linolium	600k.	Wing pump	14
Thin tube packing	200off	Fiber plate	25,000
Mosquito powder	270	Shovel	226
Glue	250	Stove	2
Cotton grinding wheel	700off	"Choseiki"	98
White card board	1,500sheet	Tie fat	10
Fatigul gloves	980off	Kettle	25
Wave carboard	70sheet	Electric bell	480
Silk packing	69	Distributing board	15
Dry battery	5,000off	Caliper	2
Rope	1,600m.	Plier	1,000
Gazeine	250k.	Broom	300
Fatigul slip	74off	Hand tap	1,800
Bamboo broom	100off	Small rope	250
Wool tape	200m.	Gem glove-s	90
Mosquito net	10set	Leather	800k.
Hemp	50k.	" belt	150
Hemp cloth	14t.	Gum Wrench	80off
Zelatine	2,200k.	Tape line	184
Fatigul coat	100off	Insulation pipe	150
Fatigul trouser	377off	Socket	200
Gum cement	50k.	"Mimiate"	150
Air hammer	150off	Wood fibre	50k.
Blind cloth	1,000m.	Needle for hemp cloth	2000
Gray felt	50m.	Hand reamer	100off
"Tanshikyo"	150off	Taper shank twisted	
Phone	178off	drill	1,127
Pneumatic drill	5		
Switch	400		
Relay	4		

Table No.5

Ferry boat, tag boat and motor car, etc.

<u>Kind</u>	<u>Tonnage</u>	<u>No.</u>	<u>Remark</u>
Ferry and tag boat	26.7	3	
"	104.7	1	
"	170.6	1	
"	97.5	1	
Power ship	270	1	
Motor boat	3	2	
Small motor boat	2.3	1	
Fire motor boat	18.0	1	
Floating crane	30 ton	1	
"	75 ton	1	
Freight		8	
Miscel. boat		13	
Motor car		10	
Small motor car		3	
Truck		25	
Dat San car		10	
Bus		4	
Fire car		10	
Miscel. car		23	

Table No. 6

Various boats and port equipments
attached to former Harbour Dept.

<u>Kinds</u>	<u>Tonnage</u>	<u>No.</u>	<u>Remarks</u>
Tag boat	300	1	
	150	1	
	100	1	
Ferry boat	20	1	
Miscell. use small boat		6	
Floating crane	30 ton	1	
4 ton buoy		4	
2 "		6	
1 "		8	
0.5 "		10	
Shackle for buoy	84mm.	5	
"	75 "	7	
"	66 "	10	
4 ton anchor		4	
3 ton and 2 ton anchor		10	
1 ton anchor		10	
0.5 ton "		10	
Buoy anchor 2 ton		5	
" 1 ton		8	
" 0.5 ton		10	
Steel wire rope		some	
Manila rope		some	

22-24, 29

OD-5 MACHINES, CARRIED BACK TO MAZIRUU FROM
FUKUCHIYAMA

Chart No. 1: Machines removed by administrative office
and school

<u>Code No.</u>	<u>Name of machine</u>	<u>Classifi- cation</u>	<u>Weight/kg</u>	<u>Remarks</u>
22-29-163	TESTING AND MEASURING MACHINE SPRING TESTING- COMPRESSION	3	500	
" 164	" HARDNESS TESTING-BRINELL	3	200	
" 165	" HARDNESS TESTING-VICKERS	3	400	
" 167	" CREEP TESTER-N.E.C.	2	500	
" 168	"	2	500	
" 169	"	2	500	
" 170	"	2	500	
" 171	"	3	500	
" 172	MISCELLANEOUS METAL WORKING EQUIPMENT.- HEAT TREATING FURNACE	3	200	
" 173	" HEAT FURNACE-ELECTRIC	2	300	
" 175	TESTING AND MEASURING MACHINE- STRENGTH OF MATERIAL- IMPACT	2	400	
22-24-1840	GRINDING MACHINE UNIVERSAL TOOL AND CUTTER	1	500	
" 1844	LATHE-N.E.C.	1	250	
" 1845	ENGRAVING MACHINE-N.E.C.	2	100	
" 1850	LATHE-N.E.C.	3	200	
" 1851	"	3	200	

2A

<u>Code</u>	<u>Name of Machine</u>	<u>Classifi- cation</u>	<u>Weight/kg</u>	<u>Remarks</u>
22-24-1852	LATHE-N.E.C.	3	200	
" 1853	"	3	200	
" 1854	"	3	200	
" 1855	"	3	200	
" 1856	"	3	200	
" 1857	"	3	200	
" 1858	"	3	200	
" 1859	"	3	200	
" 1860	"	3	200	
" 1861	"	3	200	
" 1862	"	1	30	
" 1863	"	1	30	
" 1864	"	1	200	
" 1865	"	1	200	
" 1866	"	1	200	
" 1867	"	1	200	
" 1868	"	1	200	
" 1869	"	1	200	
" 1870	"	1	200	
" 1871	"	1	200	
" 1872	"	1	200	
" 1873	"	1	200	
" 1874	MANUAL PRESS	1	40	
" 1877	"	1	400	
" 1878	MOTOR-ALTERNATING- INDUCTION	1	250	10HP

<u>Code No.</u>	<u>Name of Machine</u>	<u>Classifi- cation</u>	<u>Weight/kg</u>	<u>Remarks</u>
22-24-1879	PORTABLE GRINDER- ELECTRIC	1	10	
22-24-1880	ENGRAVING MACHINE	1	400	
22-24-1881	MOTOR-ALTERNATING- INDUCTION	1	400	40HP
" 1882	SHAPER AND S OTTER- HORIZONTAL	2	200	
TOTAL	45 MACHINES			

NON-REGISTERED MACHINES
 (BLUE PRINT MACHINE)
 (CUTTING MACHINE)

List No. 2: Machines Removed by Transferring Co.

<u>Code No.</u>	<u>Name of the Machine</u>	<u>Classifi- cation</u>	<u>Weight/kg</u>	<u>Remarks</u>
22-29-174	POWER BOILER-WATER TUBE	3	5.000	
22-24-1811	LATHE-ENGINE-STANDARD	2	2.000	
" 1812	"	2	1.500	
" 1813	"	2	1.500	
" 1814	"	2	1.300	
" 1815	"	2	1.500	
" 1816	"	2	1.500	
" 1817	"	2	1.500	
" 1818	"	2	1.500	
" 1819	"	2	1.500	
" 1820	"	2	1.500	

<u>Code No.</u>	<u>Name of Machine</u>	<u>Classifi- cation</u>	<u>Weight/kg</u>	<u>Remarks</u>
22-24-1822	DRILLING MACHINE SENSITIVE AND POWER FED UPRIGHT	2	2.000	
" 1825	"	1	700	
" 1830	MILLING MACHINE-KNEE TYPE HORIZONTAL-PLAIN	2	1.500	
" 1831	MILLING MACHINE-KNEE- TYPE HORIZONTAL- UNIVERSAL	2	1.500	
" 1832	MILLING MACHINE-KNEE TYPE VERTICAL-STANDARD	2	2.000	
" 1834	SHAPER AND SLOTTER- HORIZONTAL	2	1.000	
" 1836	"	2	1.000	
" 1837	"	2	1.000	
" 1838	"	2	3.000	
" 1841	SHAPER AND SLOTTER- VERTICAL	2	10.000	
" 1842	"	1	3.000	
" 1847	PLANER-DOUBLE HOUSING	2	6.500	
" 1848	"	1	5.000	
" 1849	LATHE-TURRET SADDLE TYPE-STANDARD	2	2.300	
" 1875	MANUAL PRESS	1	1.000	
" 1876	MANUAL PRESS-1-POINT VERTICAL-KNUCKLE JOINT	1	1.500	
TOTAL	27			

Jack J. Strollo
 JACK J. STROLLO
 1st Lt Inf
 KMGT, Maizuru Det.

FUNDAMENTAL PLAN OF THE ENTERPRISE
IN CONCERN WITH REACTIVATION OF
FACILITIES AT EX MAIZURU NAVY ERSENAL

IINO SANGYO KAISHA LTD.

No.14, 2-CHOME, MARUNOUCHI, TOKYO.

DECLASSIFIED E.O. 12958 SECTION 5.102/100-100

FUNDAMENTAL PLAN OF THE ENTERPRISE

IN CONCERN WITH REACTIVATION OF

FACILITIES AT EX MAIZURU NAVY ARSENAL

IINO SANGYO KAISHA LTD.

No.14, 2-CHOME, MARUNOUCHI,

TOKYO.

M.G.

BASIC: Ltr, Kyoto Mil Govt Team, subject: "Application for Additional Production", dtd 25 Oct 46.

AG 004 - BA 1st Ind EHN/md

Hq I Corps, APO 301, 29 OCT 1946

TO: CG, Eighth Army, APO 343

1. Forwarded to your headquarters in compliance with provisions of paragraph 2-h, Section III, Operational Directive No. 5/5, Headquarters Eighth Army, dated 24 September 1946.

9433

2. The Iino Sangyo Kaisha, Limited, has demonstrated an extremely aggressive spirit in the past, and has made repeated attempts to enlarge the field of operation in which it is authorized to engage under its present permit. If allowed to do so, the company would expand its present activities and operate the Maizuru Naval Yard on a permanent basis.

3. This headquarters concurs in the recommendation contained in paragraph 4, basic communication, that the application of the Iino Sangyo Kaisha, Limited, for authority to manufacture additional items under its present permit be denied.

FOR THE COMMANDING GENERAL:

Karl W. Marks
KARL W. MARKS
LT COL. AGO
ASST ADJ. GEN.

I Incl:
n/c

Ltr, Kyoto Mil Govt Team, subj: "Application for Additional Production", dtd 25 Oct 46.

14 NOV 1946

AG 004.04 (MG-Em) 2nd Ind.

Headquarters Eighth Army, APO 343.

TO: Commanding General, I Corps, APO 301.

1. The recommendation contained in paragraph 3 of the 1st indorsement is approved.

2. It is not advisable to allow plants that are destined for reparations to become important in the Japanese economy. The authorization to manufacture additional items as requested in inclosure 1 is not considered desirable.



BY COMMAND OF LIEUTENANT GENERAL EICHELBERGER:

R. Schaffer
R. SCHAFER
Lt. Col., AGD
Asst. Adjutant General

1 Incl:
n/c
16 w/d

B-mg
HQ. I CORPS
AG 004

NOV 8 1946

*Copy to
File
all*

BASIC: Ltr, Kyoto Mil Govt Team, subj: "Application for Additional Production", dtd 25 Oct 46.

AG 004 - BA

3rd Ind

EHV/ln

Hq I Corps, APO 301. 7 NOV 1946

TO: CO, Kyoto Mil Govt Team, APO 713

1. Your attention is directed to 2nd indorsement.

2. The application of the Iino Sangyo Kaisha Ltd, for permission to extend its activities in the former Maizuru Naval Yard, is denied.

BY COMMAND OF MAJOR GENERAL WOODRUFF:

Karl W. Marks
KARL W. MARKS
LT COL, AGO
ASST ADJ GEN

1 Incl:
n/c

22506

DECLASSIFIED E.O. 12958 SECTION 5.101, 102, 103, 104, 105, 106, 108, 109, 110, 111, 112, 113, 114, 115, 116, 117, 118, 119, 120, 121, 122, 123, 124, 125, 126, 127, 128, 129, 130, 131, 132, 133, 134, 135, 136, 137, 138, 139, 140, 141, 142, 143, 144, 145, 146, 147, 148, 149, 150, 151, 152, 153, 154, 155, 156, 157, 158, 159, 160, 161, 162, 163, 164, 165, 166, 167, 168, 169, 170, 171, 172, 173, 174, 175, 176, 177, 178, 179, 180, 181, 182, 183, 184, 185, 186, 187, 188, 189, 190, 191, 192, 193, 194, 195, 196, 197, 198, 199, 200

KYOTO MILITARY GOVERNMENT TEAM
APO 713 (Kyoto, Honshū)

14 Nov. 1946

SUBJECT: Request for Additional Production

TO : Commanding Officer, Maizuru Det. Kyoto Mil Govt Team, APO 713

Enclosed letter and copy of original petition forwarded for your information.

FOR THE COMMANDING OFFICER:

ENOS L. COMMONS JR
Capt., Ord.
Res & Ind Officer

Incl:
As mentioned above

DECLASSIFIED E.O. 12958 SECTION 1.4
KYOTO MILITARY GOVERNMENT TEAM
APO 713 (Kyoto, Honshu)

14 Nov. 1946

SUBJECT: Request for Additional Production

TO : Iino Sangyo Kaisha Ltd Maizuru

THRU : Kyoto Liaison Office

1. This is to inform you that your application for production of additional items, copy attached, had been denied by Commanding General, Eighth Army.

2. It is not deemed advisable at this time to allow plants that are destined for reparations to become important in the Japanese economy.

FOR THE COMMANDING OFFICER.

ENOS L. COMMONS
Capt., Ord.
Res & Insp Officer

ORIGINAL

SUPPLEMENTAL APPLICATION FOR CONVERSION OF

AND

REPORT ON INDUSTRIAL FACILITIES.

DATED: - 1ST JUL., 1946.

MAIZURU DOCK YARD & INDUSTRIAL WORKS,

(IINO SANGYO KAISHA, LTD.),

MAIZURU.

Original.

Incl 1'

THE IMPERIAL JAPANESE GOVERNMENT.

Jul. 8th, 1946.

TO: The Commander of Eighth Army.

FROM: - Ministry of Transportation.

Ministry of Commerce and Industry.

Ministry of Finance.

THRU: - Kyoto Liaison Office.

Subject: - Recommendation for Supplemental Application
dated 1st July, 1946 of Iino Sangyo K.K. (Maizuru
Dock Yard and Ind. Works).

After our thorough investigations on the Supplementary Application for various civilian essential productions, dated 1st Jul, 1946, submitted by Maizuru Dock Yard and Ind. works of Iino Sangyo Kaisha, Ltd., we considered to be necessary for present Japan.

We shall be infinitely happy if you are so good enough to immediately entertain the Work's enthusiastic desire.

We beg to remain,

(signed).

(signed)

(signed)

(Susumu Ose)

(Shun Ebine)

(Hachiro Kato)

Chief of Ship' Bureau,
Ministry of Transpor-
-tation.

Chief of Conversion
Section.
Ministry of Commerce
& Industry.

Chief of State Property
Bureau.
Ministry of Finance.

KYOTO PREFECTURAL OFFICE. Kyoto, 12, Jul., 1946.

SUBJECT: Supplementary Application for Permit on various civilian essential productions (from Maizuru Dock Yard & Ind. Works.)

To: - Commanding Officer of 103rd M. G. (Kyoto M.G. Team)

As fully described in the permit No. IG/313 (Revised) from the H.Q. of 1 Corps, dated 17th April, 1946, the Maizuru Dock Yard & Ind. was permitted for the reconversion from war production of essential civilian commodities. But this permit mainly constitutes repair of navy and merchant marine ships, salvaging and scrapping of them, all of which are mainly outdoor operations and its efficiency is liable to be badly handicapped by the rainy and snowy weathers prevailing in the districts.

We trust it is a very big loss for New Japan starting to restore its peaceful industry, that this works can carry on only the operations permitted by the H. Q. notwithstanding this works has an excellent skill and greater producing capacity, for there is not always any evenness of requirements for various vessels to be repaired, in this operation.

Under the circumstances, the works is extremely eager to contribute to the restoration of Democratic Japan and also to the increasing production of foods, by carrying out some other productions. We are always paying our deep consideration to this matter and shall greatly appreciate your permit to be granted for the additional production, as per the Supplemental Application, dated May 20th, 1946, which we consider very proper.

We beg to remain,

.....
(Toshiharu Nishida)
Chief of the Second Section of
Commerce and Ind.
Kyoto Prefecture.

(1)
Supplemental Application for Conversion of
and
Report on Industrial Facilities.

Serial No. of Report.

TO: Commander of the Eighth Army.
Thru: - Kyoto fu.

1st July, 1946.
(Chief of the Second Section)
(of Commerce & Industry.)

From: Maizuru Dock Yard and Ind. Works.
Amarube-Shimo, Maizuru, Kyoto-fu.
(Former Maizuru Navy Yard).

Section: 1. History of the Maizuru Dock Yard and Ind. Works.

Maizuru Dock Yard and Ind. Works is the converted facilities and installations of the former Maizuru Navy Yard for the civilian purposes under the permission for reconversion from war production and for resumption of production of essential civilian commodities which is issued by the Head Quarters 1 Copps, dated 17th April, 1946 (copy of the permit is annexed hereto).

In accordance with the Interim Permission mailed Mar. 26th, 1946, to use Maizuru Dock Yard issued by the said Coprs, copy of which is annexed hereto, the Maizuru Dock Yard and Ind. Works, is placed in operation since 1st April, 1946, by the Iino Sangyo Kaisha, Ltd., as its business branch at Maizuru City, As it is mentioned on the regular permission, Maizuru Dock Yard and Ind. Works, is authorized to use the installations and facilities of the former Maizuru Navy Yard to carry out the undermentioned productions(machinery list for the Yard is annexed hereto).

(2)

Production with Authorized Maximum monthly amounts.

Per Permit H. Q. 1 Corps dated 4 April, 1946 copy attached.

- (a). Repair of merchant marine and mine sweeping ships,
- (b). Salvaging of merchant and navy ships.....70,000. G.T.
- (c). Scrapping of merchant and navy ships..... 3,000. "
- (d). Construction and repair of freight cars..... 1,500. "

Iino Sangyo Kaisha, Ltd., also is authorized to manufacture mine sweeping equipments by Memorandum for the Imperial Japanese Government from the Supreme Commander dated 15th April, 1946 (cop attached) which was formerly being operated by the Former Navy People.

Production of mine sweeping equipments permitted by the memorandum dated 15th April, 1946 and issued by the Supreme Commander.

<u>Mine sweep equipments.</u>	<u>Manufacturers.</u>	<u>Quantity.</u>	<u>Completion Date.</u>
(1)Magnetic sweep type 3, Model 2.	Iino Ind.Co., Ltd.,Maizuru.	1,200.	31, Mar., 1947
(2) Magnetic sweep, type 5, mod. 2.	DO.	1,080.	DO.
(3).Drag Net.	DO.	1,200.	DO.

Section. 2.

Outline of the plant.

- 1). Name of Facilities: Maizuru Dock Yard and Ind. Works.
- 2). Location. Amarube, Shimo, Maizuru, Kyoto Prefecture.
- 3). Name of Manager. Shunkichi Etoh.
- 4). History (Maizuru Navy Yard).

- (a), Date of construction: 1890.
- (b). Date of first operation: 1894.

(c). 1935 - 41 Production(annual value in Yen: quantities of principal products by unit or weight).

Destroyer:Six(amounting to ¥30,000,000.)
 Machinery:1,400 tons(amounting to ¥20,000,000)
 Armaments:600 tons(amounting to ¥6,000,000)

5). Present capitalization, etc.

Maizuru Dock Yard and Ind. Works, is a production branch of Iino Sangyo Kaisha, Ltd., Tokyo which capitalization is ¥12,000,000.

(a). Change made in capital structure since 1955.....

(b). Name and address of parent company.

Iino Sangyo Kaisha, Ltd., No. 14, Marunouchi, 2 chome, Tokyo.

(c). No. of shares outstanding:.....

(d). No. of stock holders(give names of those owning 10% or more of total).....

5

(4)

(e). Funds received from Government (bounties, subsidies, etc.)

None.

(f). On reverse side, give outline sketch of plant with approximate dimensions.

Outline is shown in attached chart.

(6). Description - (a). Principal products.

(A) War time : Destroyer, Coast Defense Ship, auxiliary machineries, torpedoes, machine guns, etc.

(B). At present.

Repair of merchant marine and mine sweeping ships.

Salvaging of merchant and navy ships.

Scrapping of merchant and navy ships.

Construction and repair of Freight Cars.

(C). Planned for 1946/47.

This article will be fully mentioned in Section 3, Page 7

(b). Capacities.

(A). War time. 100%

B). At present. 10%

(C). 1946/47, 18%

(c). Number of Employees:

(A). War time. 25,500. approx.

(B). At present, 2,700. "

(C). 1946/47, 5,700 "

(5)

(7). Machinery and equipments in plant.

Ground area: approx. 480,000. Sq. Yards.

Shop Area: " 80,000. "

OFFICE Area: " 4,000. "

Numbers of Dry Docks: - 3

No. 1 Dock: - 75 metre long,

No. 2 " 199 " "

No. 3 " 235 " "

Number of slips: - 3

Number of workshop machineries: - 1,189.

Number of machineries in General: 1,401.

(8). Present stocks of raw materials, supplies and unfinished goods: -

Steel plates and bars: - 2,500 tons.

Pig iron: - 300 tons

Non-ferrous metal: 35 tons

Timber: 2,000 Cub. metres

Copper: - 5 tons

(9). Present stocks of finished goods.....

(10). Present stocks of fuel: -

Coal: approx. 300 tons.

(11). Additional machineries and equipments needed for maximum production: - 1946 - 47.....

(12). Raw materials and supplies monthly required: -

(a). For present capacity: -

Steel plates and bars: - 150 tons.

Paints: - 15 tons,

timbers: - 300 cub. metres,

7.

(6)

(b). For 1946/47.

- Steel plates and bars: - 300 tons.
- Paints: - 30 tons
- Timbers: - 500 cub. metres

(13). Fuel required monthly,

- Coal and Cokes: 2,500 tons.
- Heavy Oil: 150 tons.
- Gasoline: - 15 tons
- Mobile oil: 3 tons

(14). Additional personnel required: - 1,000.

(15). Prices(give current selling prices in Yen of principal products).

(16). Remarks:(include here any factors hampering productions not already mentionad and any recommendation you consider necessary).

This will be described fully together with the applications to get permission for additional productions: - Section 3.

SECTION 3.

(7)

Additional Application for permission on various productions for 1946 - 1947.

Snowy and rainy climate in Maizuru is tremendous handicap to carry out the outdoor works and repair of ships has its peculiarities that requirement for repairs of ships is uncertain(uneven throughout the year), sometime awfully busy but sometime not so busy, rather very little to do. Moreover no. of ships to be repaired, salvaged and scrapped, will be decreasing and therefore we are very desirous to carry out some additional productions to utilize our plant capacity and supply of skilled labour. As for the details, will you kindly understand our standpoint described in the attached enclosure. Additional productions and maximum production for each item which we hope to be authorized are as follows: -

Additional productions.

N.B. (a). Details for item marked with (X) will be mentioned in Annexed Enclosure.

(b). The following operations of the additional application are to be carried out within the limit of machines and facilities necessary for only repairing of ships, salvaging, scrapping, construction and repairs of freight cars, melting of destroyed war-implements and production of mine sweeping implements, which we were already authorized by the permits: that is to say, we are to carry out these operations by the machines which ~~we~~ have been used up to now, not using any other ones than the above.

(1). Construction & repairing of machines for fishing, tug and ferry boats under 350 tons and the parts which amount to 60 tons per month.

Diesel engine(Kaimuin type, etc.): - 1,200 H.P., 250 H.P., 210 H.P.
160 H.P., 120 H.P.

Hot Bulb Engine:Kaimuin type: - 200 H.P., 115 H.P., 75 H.P., 50 H.P.
25 H.P.

(8)

Parts: - crank, shaft, cylinder, cover, piston, bed, propeller, bearing, and accessories.

X. (2). Manufacturing and repairing civilian machineries which amount to about 60 tons, per month: - water pump, ore carrier, winch, tank, blower, paper mill, electric transmission tower, refrigerating machine, compressor, weaving machine, steam boiler, motor, transformer.

X. (3). Repairing 3 Locomotives per month, and manufacturing parts for cars which amount to about 50 tons per mon.

(4). Manufacturing of agricultural implements.: -

Hand carts,	2,000 carts per month,		
Flouer mills,	2,000 pcs.	"	"
Hose of various kinds,	500 pcs.	"	"
Shovels for agricultural use,	2,000 pcs.	"	"
Husks dismounting machine,	500 pcs.	"	"
Grass cutting machine,	300 pcs.	"	"

(5). Manufacturing of household utensils: -

Boiling and frying pans,	5,000 pcs. per month,		
Rice pans,	2,000 "	"	"
Baking stoves,	500 "	"	"

X. (6). Repairing 50 automobiles per month and making parts of Bus and Trucks.

X. (7). Making steel and wooden furnitures which amount to about 12 tons per month, respectively.

X. (8). Repairing of steam and water power plant merchandises.

X. (9). Repairing of cement, manure and salt plants.

X.(10). Making rivets, nails, and welding bars, which amount to about 30 tons per month, respectively.

(11). Manufacturing salt by electrical method which amounts to about 1 ton per day(for the welfare of the workers, etc.)

(12).Manufacturing oxygen gas for use of the yard, its daily production being about 100 bottles(41 litres at 150 atms.

(9)

each).

Certification by applicant.

I certify that the information contained herein, is true to the best of my knowledge and belief.

Signed:

.....
(Shunkichi Etoh)

Title: - General Manager
of
Maizuru Dock Yard and Ind. Works,

Action by Occupation Forces.

The Factory described in this application has been inspected and the following action taken: -

(a). Ordered to remain closed. Yes.....No.....

(b). Ordered to cease operation immediately
Yes.....No.....

(c). Authorized to produce at the following item.

to be manufactured Monthly quantity rate: -

Signature of Authorizing Officer

Designation of Authorizing Unit.

ANNEXED ENCLOSURE.

A.E. No.1.

X. (2). Manufacturing and repairing civilian machineries: -

water pump:	40 ton Washington pump,	8 sets	per month,	
	60 ton Centrifugal pump,	10	" " "	
	20 ton geared pump,	8	" " "	
	20 ton weirs pump,	6	" " "	
Ore Carrier:	$\frac{1}{2}$ ton capacity,	70 sets	" "	
winch: -	1 $\frac{1}{2}$ tons	4 sets	" "	
	3 tons	4 "	" "	
	5 tons	2 "	" "	
tank: -	various sizes,	25 tons,	" "	
blower: -	15 - 150 M3/min.	5 sets,	" "	
paper mill, repairing roller, gear and etc.		6 tons,	per month	
electric transmission tower,		15 tons,	per month,	
refrigerating machine;-	7000 b.t.u. unit,	3 sets	per mon.	
compressor:	50 atm. X 30m3/min. X 250HP,	3 sets	" "	
weaving machine:	50 in.	5 sets,	" "	
steam boiler;	4.5m dia. x 2.8m length, cylindrical type,	1 set,	per month	
motors to be repaired:-		30 sets,	" "	
transformers to be repaired,		50 sets,	" "	

X. (3). Repairing locomotive & manufacturing parts for cars: -

repair of locomotive,		3 sets	per month
manufacturing aprts: -	cylinder,	4 sets	" "
	piston,	6 sets	" "
	connecting rod,	8 sets,	" "
	piston ring,	12 sets	" "
	tender box,	1 set,	" "
	boiler proper,	2 sets	" "
	wheel casting,	20 t. p. m.	
	accessories,	10 tons	" "

X. (6). Repairing automobiles & making parts of bus & motor trucks: repairing: -

50 automobiles	per month,
making parts: -	mission gears, 10 sets, per month
	engine parts, 10 " " "
	driving gears, 10 " " "
	wheel parts, 20 " " "
	frame parts, 100 " " "

A E No.2.

body: -	15 sets, per month,
nacelle: -	15 " " "
gas producer,	50 " " "

X. (7) Making steel and wooden furnitures: -

Steel lockers,	50 sets per month,
duralmine locker,	200 " " "
steel desks,	20 " " "
steel tool,	30 " " "
steel high class desk,	5 " " "
wooden locker,	50 " " "
wooden desk,	40 " " "
wooden chair,	60 " " "

X. (8) Repairing of steam and water power plants: -

steam power plant, 20,000 K. W. 1/2 sets per month,
(3,000 man-hours p. m.)

water power plant, 20,000 K. W. 3/4 sets per month,
(3,000 man-hours p. m.)

X. (9) Repairing of cement, manure and salt plants.

Cement plant, 2,400 man-hours p. m.

manure plant, 3,600 man-hours p. m.

salt plant, 1,200 man-hours p. m.

X. (10) Making rivets, nails, and welding bars,

rivets, 3/8"	5 tons, per month,
" 1/2"	5 " " "
" 5/8"	10 " " "
" 3/4"	10 " " "

nails: - 1 1/2" length,	5 tons per month,
2"	5 " " "
2 1/2"	5 " " "
3"	10 " " "
3 1/2"	5 " " "

HEADQUARTERS I CORPS.

APO(Kyoto, Honshu).

GLE/HY

A G 004 - BA

Mailed March 26th, 1946.

subject; - Interim Permission to use Maizuru Dock Yards

TO: - Iino Sangyo Co., Ltd.,
Marunouchi 2 chome, No. 14,
Mitsubishi Naka II Bldg.,
Tokyo to.

(1). This Headquarters is advised by telephone that Headquarters, Eighth Army, has authorized issuance to your company of a permit to operate this Maizuru Dock Yards.

(2). Written authorization from Headquarters, Eighth Army, has not yet reached this Headquarters, and until it is received, a regular, permit cannot be issued.

(3). This letter will constitute interim permission to operate for a period ending 30 April, 1946.

(4). Before that date, it is presumed that a regular permit will have been issued to your company, authorizing operation without the imposition of any time limit.

FOR THE COMMANDING GENERAL:

H. B. Taylor,

Major, Infantry,

Actg. Asst. A. G.

HEADQUARTERS 1 CORPS
(APO. 301. KYOTO, HONSHU.)

GLS/
4, April, 1946.

Ref. : IG/313. AG. 004-BA.

SUBJECT: - Permit for the Reconversion from war Production and for Resumption of Production of Essential Civilian Commodities.

TO: - Iino Sangyo Kabushiki Kaisha, 14, Nichome, Marunouchi, Tokyo.

(1). (a) In accordance with paragraph (3) (b), Directive Number Three (3) from the Supreme Commander to the Imperial Japanese Government, dated 22 Sept., 1945, the Iino Sangyo Kabushiki Kaisha, (former Maizuru Navy Yard including Telephone Exchange Office and Saw-mill) and Automobile Repair Shop of 31st Navy Air Dept., Maizuru, Kyoto-fu, is permitted to immediately start production of (a) Repairs of Merchant Marine and Mine Sweeping Ships, (b) Salvaging and Scrapping Merchant and Navy Ships, (c) Freight Cars.

(b) Maximum productions currently authorized is (a) 70,000. Gr. Tons: (b) 3,000 Gr. Tons: (c) 1,500 tons.

(2). The acquisition of materials, parts and sub-assemblies as well as the disposition of finished goods(products), and the establishments of sales prices will be in accord with the regulations of the Imperial Japanese Government.

(3). Until otherwise directed by this Headquarters, a monthly report in English of each item, by name, type and quantity produced by each factory, sub-contractor subsidiary within this factory's control will be delivered to this office by the fifteenth(15) day of the following month.

(4). It is understood that this permit for reconversion is issued subject to any and all directives effecting reconversion, ultimate disposition or otherwise, which have been issued or may hereafter be issued by the Supreme Commander for the Allied Powers of by this Headquarters.

By COMMAND OF MAJOR GENERAL HUNT: -
(Paul Ood)
Colonel AGD.
Adjutant Gen.

Info copy to: -

SCAP(Attn: ESS).....1 (w/incl)
SCAP(" G-2)1 (w/incl)
C G(Eighth Army) (attn:Mil.Gov.).....1 (w/incl)
C G 1 Corps(attn: Mil. Gov.).....1 (w/incl)
Kyoto Liaison Office.....1
Gov. of Prefecture concerned.....1
CO 94th Mil. Gov. GP.....1

HEADQUARTERS I CORPS.

APO. 301. (Kyoto, Honshu).

GLS/FSN

REF: IG-313 (Revised.)

17, Apr., 1946.

AG. 004 - DA.

SUBJECT: - Permit for Reconversion from War Production and for Resumption of Essential Civilian Commodities.

TO: - Iino Sangyo Kabushiki Kaisha,
(name and address of Firm)
14, Nichome, Marunouchi, Tokyo.

(1) (a) In accord with Paragraph (3) (b) Directive Number Three(3) from the Supreme Commander to the Imperial Japanese Government, dated 22 Sept., 1945, the Iino Sangyo K. K. (Former Maizuru Navy Yard),
(Name of Firm)
is permitted to immediately start production of (a). Repairs of Merchant Marine & Mine Sweeping Ships, (b). Salvaging Merchant and Navy Ships, (c). Scrapping Merchant and Navy Ships, (d). Freight Cars.

(b). Maximum production currently authorized is (a). 70,000 Gross tons, (b). 3,000 Gr. Tons, (c). 1,500 gross tons.

(2). The acquisition of ~~finished~~ materials, parts and sub-assemblies as well as the disposition of finished products, and the establishment of sales prices will be in accord with the regulations of the Imperial Japanese Government.

(3). Until otherwise directed by this Headquarters, a monthly report in English of each item, by name, type, and quantity produced by each factory, sub-contractor subsidiary within this factory's control will be delivered to this office by the fifteenth(15) day of the following month.

(4). It is understood that this permit for reconversion, is issued subject to any and all directives affecting reconversion, ultimate disposition or otherwise, which have been issued or may hereafter be issued by the Supreme Commander for the Allied Powers or by this Headquarters.

By Command of Major General Woodruff: -

H. B. Taylor,

Major AGD.

Asst. Adj. Gen.

INFO COPY TO: f -

SCAP (attn: ESS).....1(w/incl)

SCAP (attn: G-2).....1(w/incl)

CG. Eighth Army(attn: Mil. Gov.).....1(w/incl)

CO. 94th MG. HQ. Group.....1

Kyoto Liaison Office.....1

Governor of Prefecture concerned.....1

(Kyoto).

HEADQUARTERS 1 Copps.

APO. 301. (Kyoto , Honshu).

Annex No. 1.

Permit No. Lg/313

Note: this permit authorizes use of only such part of the Maizuru installations as is necessary to carry out the instructions of the Supreme Commander for the Allied Powers to the Imperial Japanese Government contained in Memorandum dated 5 Dec., 1945, file AG. 388.. 5(5 Dec. 1945) GD. Subject:-
"Use of Maizuru and Ominato Navy Yards".

The Maizuru Navy Yard is one of the installations listed by Operational Directive No. 5, Headquarters Eighth Army, to be taken into custody and used for reparations purposes. As operators of this installation, you will be charged with responsibility or preservation in good condition of all the machinery and equipment in that portion of the yard under your control, and must be prepared to give up such machinery and equipment as is needed for reparations purposes at the time reparation removals are begun.

AC/476. (15 Apr., 1946) ESS/IN
(SCAPIN-1002-A)

APG/500
15 Apr., 1946.

Memorandum for: The Imperial Japanese Government.
Thru': Central Liaison Office, Tokyo.
Subject: - Manufacture of Mine Sweeping Equipemnts.

- (1) Reference is made to C.L.O. Letter No. 1430(P.M.) dated 28 Mar., 1946, subject: "Manufacture of Mine Sweeping Equipments".
- (2) Permission is granted to manufacture the following mine sweeping equipment in accordance with the above mentioned request.

<u>Mine sweeping equipment.</u>	<u>Manufacturers.</u>	<u>Quantity.</u>	<u>Completion Date.</u>
(1)Magnetic sweep type 3 model 2.	Iino Ind.Co., Ltd.,Maizuru.	1,200.	31 Mar.,1947.
(2)Magnetic sweep type 5 model 2.	Do.	1,080.	Do.
(3)Drag net.	Do.	1,200.	Do.
(4)Magnetizer of magnetic bar.	Tokyo Electric Apparatus Mfg. Co.,Ltd.	60.	31, Jul., 1946.
(5)Magnetic metre.	Tokyo Metres Mfg. Co.,Ltd.	30.	31, May,1946.

For the Supreme Commander.

(signed).

(B. M. Fitch)
Brigadier Gen. Agd.
Adjutant General.

TABLE NO. 1 Workshop Machinery.

Maizuru Navy Yard.

<u>Name of Machine.</u>	<u>Quantity.</u>	<u>Name of Machine.</u>	<u>Quantity</u>
shearing machine	3	(relieving lathe	1
vertical lathe	5	(saw sharpener	2
drilling machine	105	(band saw sharpener	1
el. drilling machine	6	(rivet forging machine	5
grove cutting machine	1	(screw cutting lathe	1
punching machine	9	(boiler tube bending machine	1
vertical milling machine	13	(bending machine	8
sawing machine	6	(bending machine(roller)	5
lathe	98	(straightening roll	7
type lathe	4	(metal circular sawing machine	3
middle type lathe	46	(screw press	2
small type lathe	106	(crank press	2
surface lathe	7	(oil press	1
turning lathe	1	(sawing machine	3
rotary shearing lathe	1	(small type drill	1
circular shearing machine	2	(el. grinder,	57
shearing machine,	10	(wood working band saw	12
rivet shearing machine	1	(wood working lathe,	5
bench drilling machine	32	(wood working drilling mach.	3
radial drilling machine	36	(planer	31
special drilling machine	1	(planing machine	6
el. grinder,	3	(hack sawing machine	2
grinders	72	(mill	1
portable tool grinders,	1	(roller mill	1
grinder,	11	(air grinder	138
tool grinders,	14	(emery cloth machine	1
special grinders,	2	(bench lathe	3
universal grinder	3	(jig boring machine	1
drill grinder	1	(spring making machine	2
multi-spindle drilling machine	2	(auto. Electrode making machine	1
drilling shearing machine	1	(wire cutting machine	3
boring machine	12	(wire washing machine	1
riveter	1	(auto cutting machine	2
sawing machine	3	(surface grinder	2
planer	16	(centerless grinder.	1
milling machine	31	(horizontal milling machine	3
plain milling machine	1	(rivet cutting machine	2
universal milling machine	16	(pipe cutting machine	2
small type milling machine	2	(straithtening machine	1
slotter	20		
boring machine	29		
shaper machine	20	(Total: -	<u>1,189</u>
surface cutting machine	4		
gear hobbing machine	19		
special milling machine	1		
metal band sawing machine	16		
rivet forging machine	1		
punching & shearing machine	11		
facar	2		
edge planing machine	2		
turret lathe	13		
oval lathe	1		
punching machine,	1		
universal machine	5		
thread cutting machine	28		
bebel gear cuttingmachine	7		

TABLE NO. 2. Machine in General. Maizuru Dock Yard.

Name of machine.	Quantity.	(Name of machine	Quantity
Fan engine	22	(amsler universal testing machine	1
el. blower	1	(drill tester	1
air hammer	7	(oil tester	1
blower	2	(chain tester	2
single air hammer	1	(water dynamo metre	5
air compressor	53	(balance	2
hydraulic pump	21	(static condenser	26
steam hammer	21	(motor car charge plate	2
drop hammer	1	(induction voltage regulator	7
el. hammer	1	(el. welding resistance	38
crane	96	(turbo blower	4
locomotive crane	6	(Mercury generator	11
el. welder	150	(oil cleaner	4
auto. welding machine	1	(cooling water pump	2
spot welder	3	(lubricating pump	52
hydrogen welder	1	(oil cooler	8
motor	352	(oil heater	6
motor generator	41	(feed heater	5
generator	11	(circulating pump	9
DC Reciprocating Eng. Generator	4.	(bilge pump	2
AC Turbo-generator	2	(feed water pump	25
DC Turbo-generator	4	(lubricating & water cooling pump	7
Portable gasoline generator	1	(ballast pump	1
elevator	3	(brine pump	1
el. hoist	10	(inject-air ejector	2
winch	19	(lead furnace	1
air winch	1	(cupola furnace	3
steam winch	5	(crucible furnace	1
el. winch	5	(turbine ventilator	2
battery carrier	23	(fire bilge pump	1
el. vehicle	11	(draining pump	2
auto, tricycle	4	(vacuum pump	1
battery locomotive	1	(stepping cutting machine	1
team locomotive	8	(steering engine	2
fire motor car	1	(high press. air pump	1
trucks	2	(hand pump	12
el. furnace	11	(air pump	36
reverberatory furnace	1	(pump	9
annealing furnace	5	(ice making machine	2
gas furnace	3	(el. capstan	2
hydraulic press	26	(oil burning pump	22
heating furnace	12	(internal combustion engine	2
coal furnace	7	(No. 51 diesel engine	12
heat treatment furnace	1	(10. HP semi-diesel engine	4
boiler	28	(petroleum engine	4
wire winding machine	2	(semi-diesel engine	9
breaker	1	("S" two stage air compressor	1
sand mixer	9	(Buda type internal combustion eng.	4
moulding machine	3	(80.h.p. petroleum engine	2
trimming press	2	(petroleum engine	2
mill	1	(ash conveyor	1
lead powder mixer	2	(ash elevator	1
balancing tester	2	(bucket coal conveyor	1xxxx
vibration tester	1	(caison	3
dynamo metre	1	(capstan	10
spring tester	3	(crane	3
material testing machine	2	(belt saw	7
creeping machine	1	(sawing machine	4

20

Table No. 2.

Total:..... 1,401.

TABLE NO: 3. Machine List. Kuratani Factory (Maizuru Dock Yd)

<u>Name of machines.</u>	<u>Quantity</u>
lathe	87
turret lathe	1
planer	3
grinding machine	11
shaper	10
slotter	14
drilling machine	37
boring machine	14
milling machine	33
hydraulic press	9
cupola	3
crucible furnace	1.
annealing furnace	1.
drying furnace	3.
gear-tooth inspection machine	1
shearing & punching machine	9
rolling machine	1
straightening roll	2
roll	1
el. furnace	1
travelling machine	15
air compressor	1
hydraulic pump	3
boiler	2
sand mixer	4
accumulator	2
wood lathe	3
" drilling machine	1
" saw	5
" planer	3
Total:	<u>271.</u>

ENCLOSURE

Maizuru Dock Yard & Industrial Works, Maizuru, Kyoto-fu.

July 1st, 1946.

SUBJECT: - Appeal with regard to the Supplementary Application on Conversion.

TO: - Headquarters of Kyoto Military Government Team.

Being permitted by the Eighth Army, the reconversion of the Former Naval Yard's Facilities and Installations, our works started to perform the following operations, since 1st April, 1946.

- (a). Repair of various kinds of vessels,
- (b). Salvaging of various kinds of vessels,
- (c). Scrapping of various kinds of vessels,
- (d). Repair and manufacturing of mine sweeping equipments.

Altho' we are carrying on the above business at this area, being recommended by the Imperial Japanese Government up to now, we have not been granted any special assistance and subsidy by the Government. Under these circumstances, we are to do our utmost to make its steady and progressive development really independently. We, however, are extremely anxious about the prospect of this important business not being so promising, for there are several handicaps and difficulties as follows: -

- (1) There are many natural factors hampering our works, i. e.,
 - (a) The place of this district is local and the convenience of traffic is not so good.
 - (b) In Summer-time, very frequent raining and in Winter-time, very heavy snowing.

Thus this district is very badly handicapped by the weathers.

- (2) Since the last spring, the repairs of Demobilization Vessels are considerably decreasing. In accordance with the progress of demobilization, it will furthermore decrease speedily and is expected to be almost nothing at the end of next Spring. To make matter worse, we are facing the economically difficult position,

Enclosure.

(No. 2.)

1/7/46

as the Government cut its budget heavily.

(3). Being greatly affected by such a heavy decrease of schedules of necessary navigations of Japanese vessels as about 700,000 tons, which means only 1/3 the previous one, the numbers of ships for repair and salvaging have been terribly lessened. Everybody concerned is exceedingly afraid the business records will become gradually lower, as a result of a heavily decreased budget.

(4). Altho' 3,480 sets of mine sweeping equipments have been expected to be made, until the end of Mar., 1947, we have been ordered recently by the Authorities to finish 900 sets of the same, until the end of Sept. After completion of these jobs, we cannot foresee the future business anymore.

(5). Owing to the workmen's frequent movements of the labour union, there is now a heavy burden for us economically, our expenditures having been increased by about 70%, as compared with the end of the last March. Furthermore we are greatly embarrassed by the frequent requirements of the Officials for promotion of their salaries.

(6). Re: - various materials necessary for operations: although we can secure them at present hardly, it is necessary to make a full arrangement for the future.

(7). Re: repairs of ships: - it is not quite economical, as there are a lot of idle labours always, because of there being remarkable irregularity of pressure of business, coming mainly from the character of works.

Under these circumstances, there will be great difficulties to perform our business and the special attention must be paid for its future.

Our important mission must be carried out as the big roll to

DECLASSIFIED E.O. 12958 SECTION 1.4
Encl: (No.3). 1/7/46

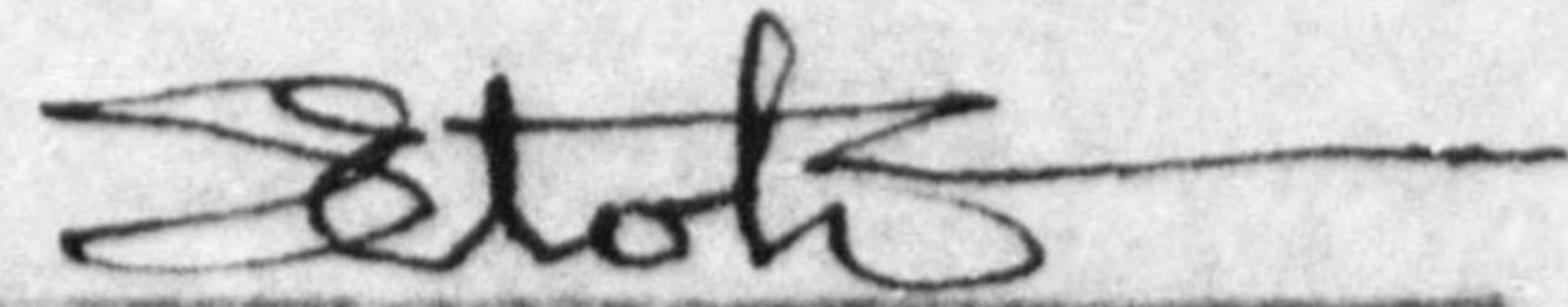
establish Democratic Japan, thus being of a big responsibility. In this sense, we are very eager to perform the items of new enterprises stated in our Supplementary Application, and replace every business decreasing in the near future by those promising ones. As this works has been decided for the reparations as O.D. No.5, we are not planning to increase the scale of works especially, but we have very heavy burden to give forever all the employees of over 2,600 persons, a stability of their livelihoods, and are very eager to contribute to reconstruction of Democratic Japan. Moreover we have another responsibility on the point that our Dock Yard is only one existing in the North Western area to carry out repairs of ships, etc.

You will understand that this application covers pretty wide ranges of productions of articles. This is mainly due to our being obliged to include therein full range of them, as it will not be in time to apply you every permit separately, negotiating with several Indentors their orders.

This is absolutely necessary for us to get everything much easier and smoother, and to carry out our enterprises, as there are many competitors on the markets, with whom we have to make keen competitions always.

For the above reasons, we shall be much obliged, if you will understand our special standpoint and afford us the permit on our supplementary application.

We, hereby, beg to remain,


(S. Etoh)
General Manager of
Maizuru Dock Yard & Ind. Works.
(Iino Sangyo Kaisha, Ltd.)

WAKAYAMA BAY

KANDA

MAIN YARD

HIGASHINAZARI

縮尺二十萬分之二
SCALE 1:200,000

樺見工場及製材工場 (附 3A, 4)
INSTRUMENT SHOP & TIMBER SHOP SCALE 1:6,000

OFFICE

TIMBER SHOP

MAIN YARD

OFFICE

INSTRUMENT SHOP
TIMBER SHOP

INSTRUMENT SHOP
TIMBER SHOP

馬尼拉港內船塢圖
縮尺一萬分之二

PLAN OF THE MANILA DOCK YARD
SCALE 1:20,000

本立場
MAIN YARD



馬尼拉港
MANILA DOCK YARD

縮尺
1:20,000



2/9/46

Capt Commons

KYOTO MILITARY GOVERNMENT TEAM
MAIZURU DETACHMENT
APO 713 (Maizuru)

20 September 1946

SUBJECT : Application to Lay Railroad Track

TO : C.O. Kyoto Military Government Team; APO 713.

1. Upon investigation by this office it is subject to approve attached application for the continuance of the operation already approved by SCAP.

2. As stated in application railroad tracks necessary for this proposed project are already in stock at the Kuratani Plant and only approval from higher headquarters is necessary for applicant to commence said project.

Wm. L. Bagni

Wm. L. BAGNI T/Sgt
KMGT, Maizuru Det.

Incl: 6 copies of
Application
2 Maps

1st Ind

Kyoto Military Government Team, APO 713 (Kyoto, Honshu) 1 Oct. 1946

TO: Maizuru Detachment, Kyoto Mil Govt Team, APO 713 (Maizuru, Honshu)

1. This application is approved. However, since all trackage in Maizuru Naval Yard was reported to I Corps as available for Japanese Railroad use, it is still subject to be called for by SCAP at a later date.

FOR THE COMMANDING OFFICER:

ENOS L COMMONS JR
Capt., Ord.
Res & Ind Officer

13

MAIZURU DOCK YARD & IND. WORKS,
IINO SHAGYO KAISHA, LTD.,
MAIZURU.

Ref.No.KMG/ 16

Sept. 18th, 1946.

SUBJECT: - Applications for Permit of Construction of new inside-tracks in our Kuratani Factory(Freight Car Repair Shop).

TO: - Commanding Officer of Kyoto Military Government Team.

As you fully know, we were authorized to carry on repairs of freight cars by H.Q. of I Corps, as per attached copy of Permit No. IG.313(Revised) for Reconversion from War Production & for Resumption of Essential Commodities.

With compliance to Lt. Colonel Hyland's instructions to immediately start this operation, we commenced this at Kuratani Factory from July, fixing the repair contract with the Osaka Office of Ministry of Transportation. Kindly note that we are now doing this outdoor of the factory, as there is no inside-tracks necessary for this in the Car-repair shops there, which will exceedingly influence the efficiency of operation. As the rainy and snowy season prevailing in these districts is coming shortly, we are extremely eager to do in-door works of this especially, in order to increase the efficiency, getting inside-tracks newly laid down in the above shops, and using 2,000 metres of 30 kg. rail-bars kept in our yard, as per the full details attached to our letter No. KMG/14 of the 3rd inst., copy of which is attached hereto. We also enclose herein drawings of the factory. As out-door works are impossible at all during the winter season, we are in urgent need of these tracks in the above yard.

We hereby solicit you to kindly entertain this application especially as soon as possible.

Maizuru Dock Yard & Ind. Works,

.....
General Manager.

ATTACHED SHEET TO KMG/14(dated 3. 9. 46.)

FULL PARTICULARS OF INSIDE TRACKS ALREADY LAID DOWN & NOW BEING USED.

Name of Factory.	Kind of rail-bars weight per metre	Total length of inside tracks.
Main factory at Nakamaizuru	30 kg. per met.	9,724 metres (which make a total of 19,448 met. in all of rail-bars.)
Saw mills at Nishimaizuru	30 kg. per met.	686 metres (which make a total of 1,372 met. in all of rail-bars)
<u>Total Quantity</u>	<u>30 kg. per met.</u>	<u>11,238 metres of tracks, which make a total length of 22,476 met. of rail-bars</u>

Full particulars of stocks of rail-bars for inside tracks to be newly laid down.

Name of Factory.	Kind of rail-bars weight per metre	Total length of rail-bars in stock.
Main factory at Nakamaizuru	50 kg. per met.	760 met.
Do.	30 kg. per met.	440 met.
Saw Mills at Nishimaizuru	-	-
Kuratani Factory at Nishi'ru	30 kg. per metre.	1,680. metres
<u>Total of</u>	<u>30 Kg. rail-bar</u>	<u>2,120. metres.</u> - amongst this quantity, 2,000 metres to be used for inside tracks in Kuratani Factory and 120 metres (balance) to be used for repairs of inside tracks and for replacement of same in our yards.
<u>Total of</u>	<u>50 kg. rail-bar</u>	<u>760 metres</u> - this quantity to be used for construction of a tower crane for No.2 Dock in our main yard, approx. 1,000 metres in all being necessary.

Headquarters I Corps.

APQ/301. Kyoto, Honshu.

GLS/FSN

17 April, 1946.

REF: NO: IG/313(Revised).

AG. 004. DA

SUBJECT: - Permit for reconversion from war production and for resumption of essential civilian commodities.

TO: - Iino Sangyo Kabushiki Kaisha,
(name and address of firm)
14, Nichome, Marunouchi, Tokyo

(1) (A). In accord with the paragraph (3)(B) Directive Number three (3) from the Supreme Commander to Imperial Japanese Government dated 22 Sept., 1945, the IINO SANGYO K. K. (Former Maizuru Navy Yard) (name of firm) is permitted to immediately start production of (A) Repairs of Merchant Marine and Mine Sweeping Ships, (B) Salvaging Merchant and Navy Ships (C) Scrapping Merchant and Navy ships, (D) Freight Cars.

(B). Maximum production currently authorized is (A) 70,000. G.T
(b). 3,000. G.T. (C) 1,500. G.T.

(2). The acquisition materials, parts and sub-assemblies as well as the disposition of finished products, and the establishment of sales-prices will be in accord with the regulations of the Imperial Japanese Government.

(3). Until otherwise directed by this Headquarters, a monthly report in English of each type, by name, type, and quantity produced by each factory, sub-contractor subsidiary within this factory's control, will be delivered to this offices by the fifteenth(15) day of the following month.

(4). It is understood that this permit for reconversion is issued subject to any and all directives affecting reconversion, ultimate disposition or otherwise, which have been issued or may hereafter be issued by the Supreme Commander for the Allied Powers or by this Headquarters.

By Command of Major General Woodruff: -
H.B. Taylor,
Major AGD
Asst. Adj. Gen.

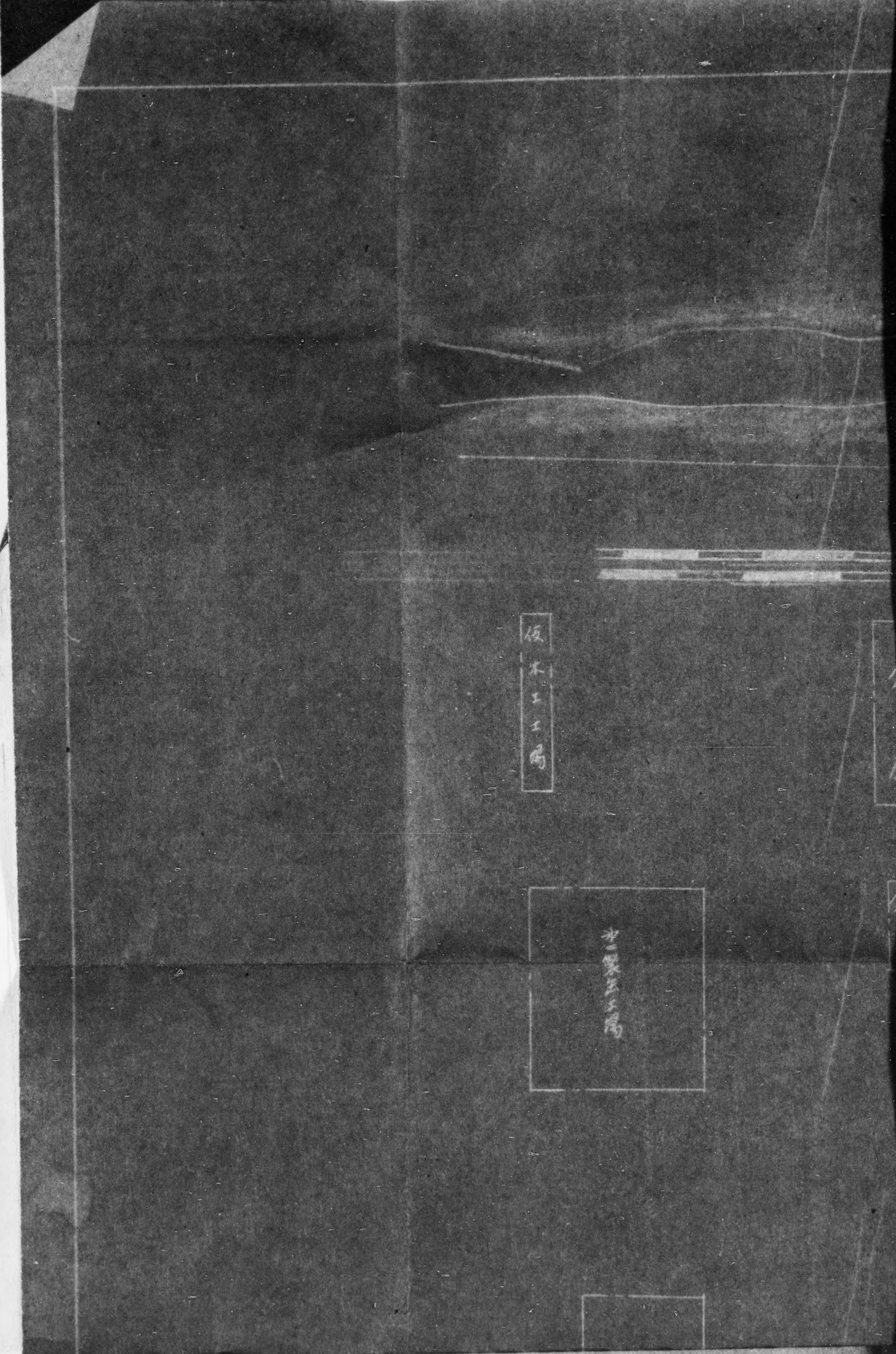
Info. copy to: -

SCAP(attn: ESS).....1 (w/incl)
SCAP(attn: G-2).....1 (do.)
CG Eighth Army(attn: Mil.Gov.).....1 (do.)
CC 94th M.G.H.Q. Group.....1
Kyoto Liaison Office.....1
Governor of Pref. concerned.....1
(Kyoto)

Iino Sangyo K. K.

Freight Car Repair Shops

at Kuratani Factory.



飯木工場

水三製茶工場

[Faint rectangular box]

RIVER ISAZU

ポイントホーム

倉庫

岩城工場

油倉庫

倉庫

倉庫

30m

120m

120m

120m

*

RIVER ISAZU

伊佐津川

外ホム

プロジェクトホム

図書

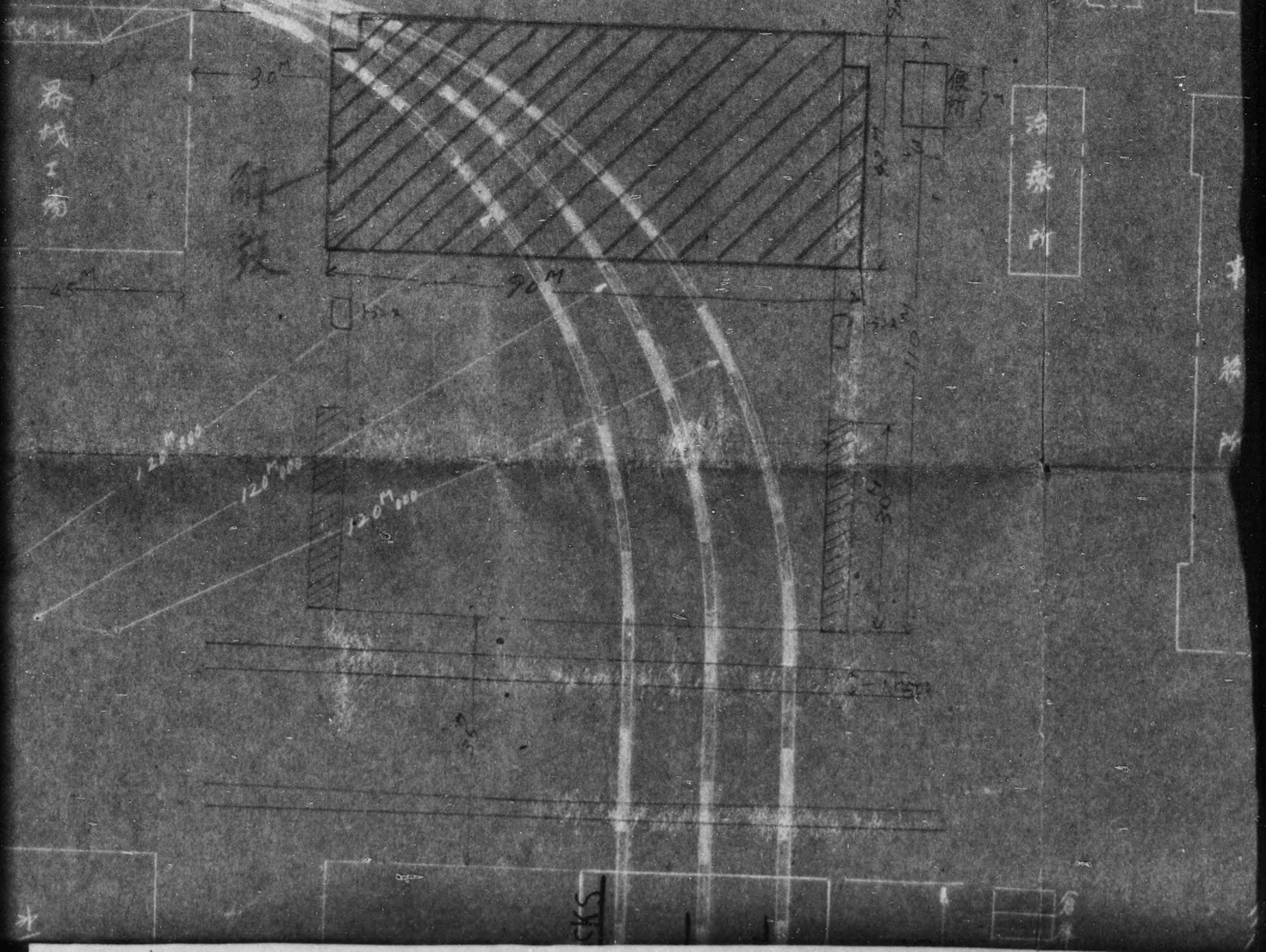
校

界伐工場

解致

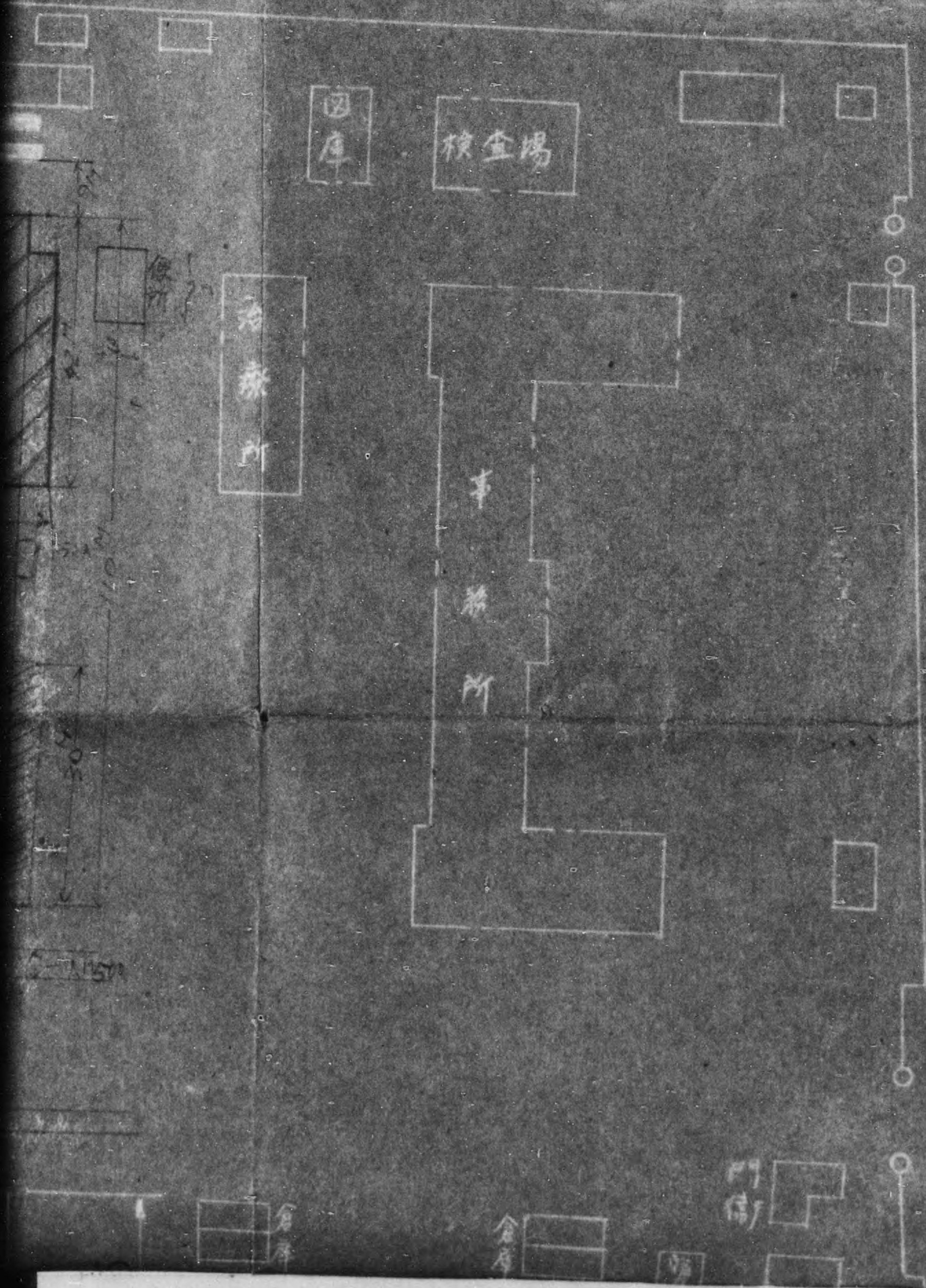
治療所

事務所



FUTATSU BRIDGE

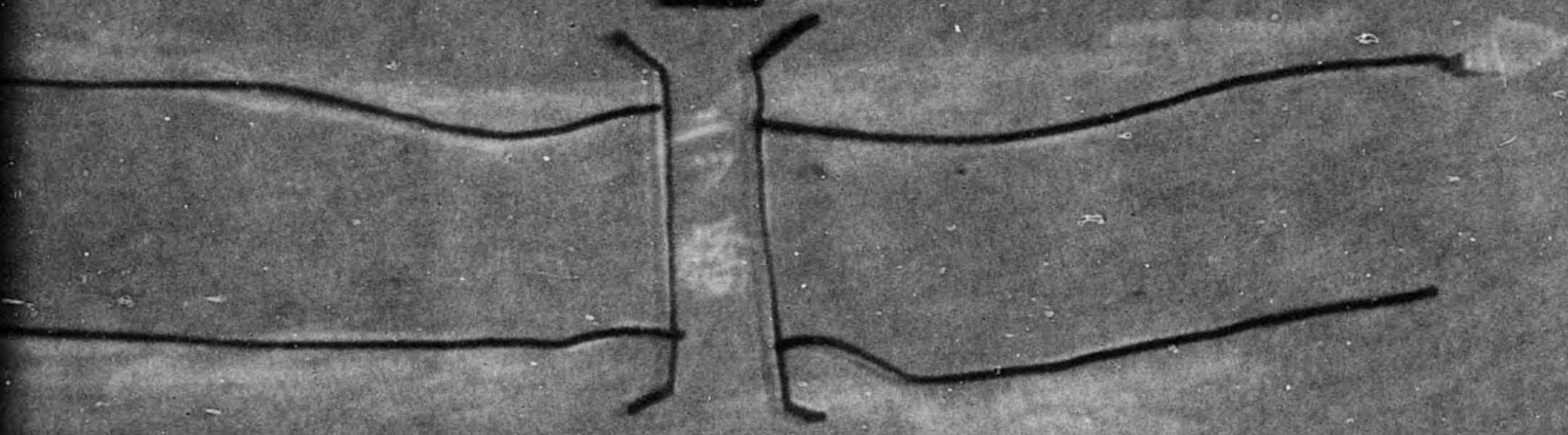
二ツ橋



MAP SHOWING
 OF INSIDE T
 IN KURATANI
 (IINO SANGYO)

記事
 一 宗着色部ハ新設カス

FUTATSU BRIDGE



MAP SHOWING PLAN

OF INSIDE TRACKS

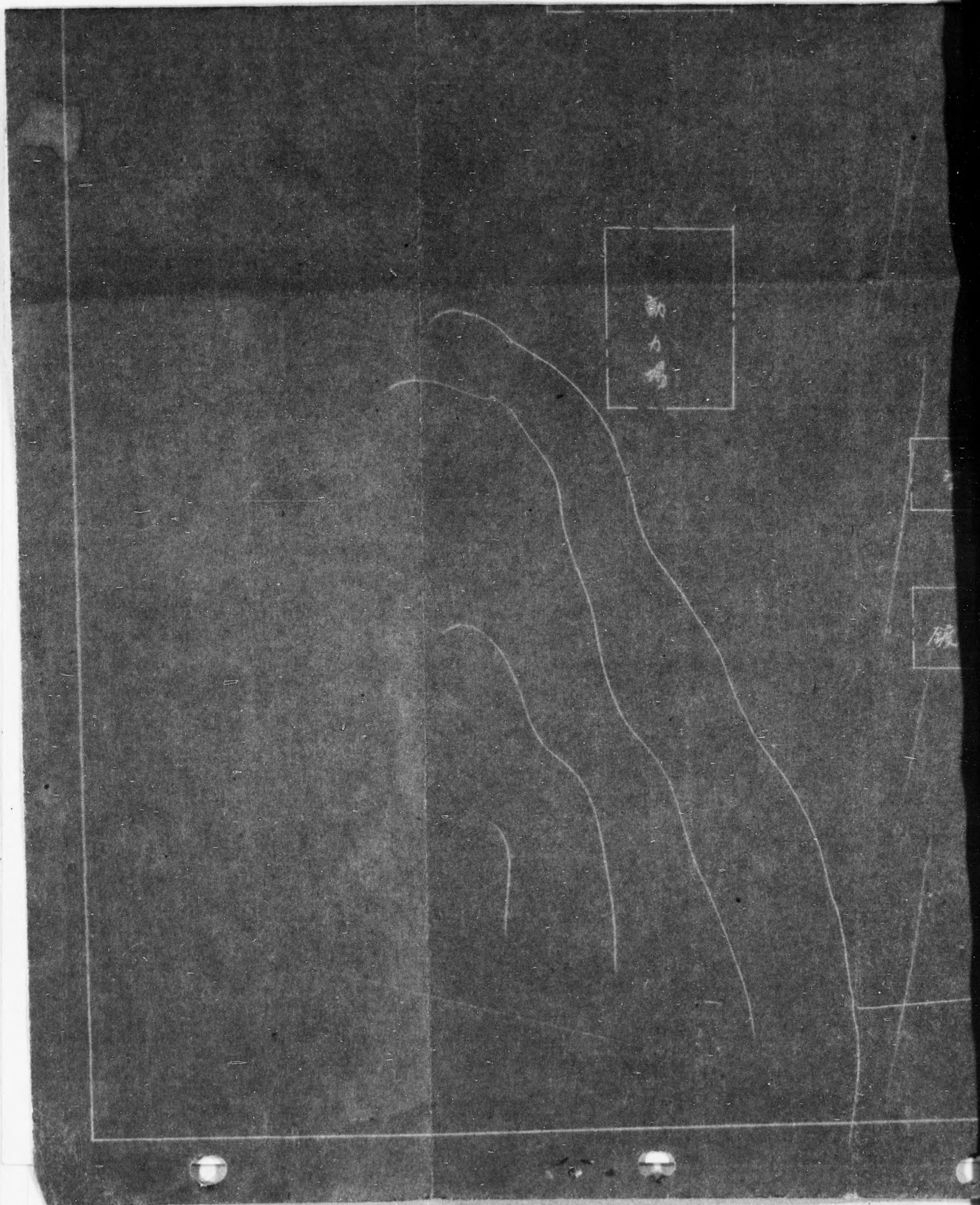
IN KURATANI FACTORY

(IINO SANGYO K. K.)

工場
一
二
三
四
五
六
七
八
九
十
十一
十二
十三
十四
十五
十六
十七
十八
十九
二十

FACTORY

車
輛
場
庫
二
三
四
五
六
七
八
九
十
十一
十二
十三
十四
十五
十六
十七
十八
十九
二十



動力場

?

廠

全庫

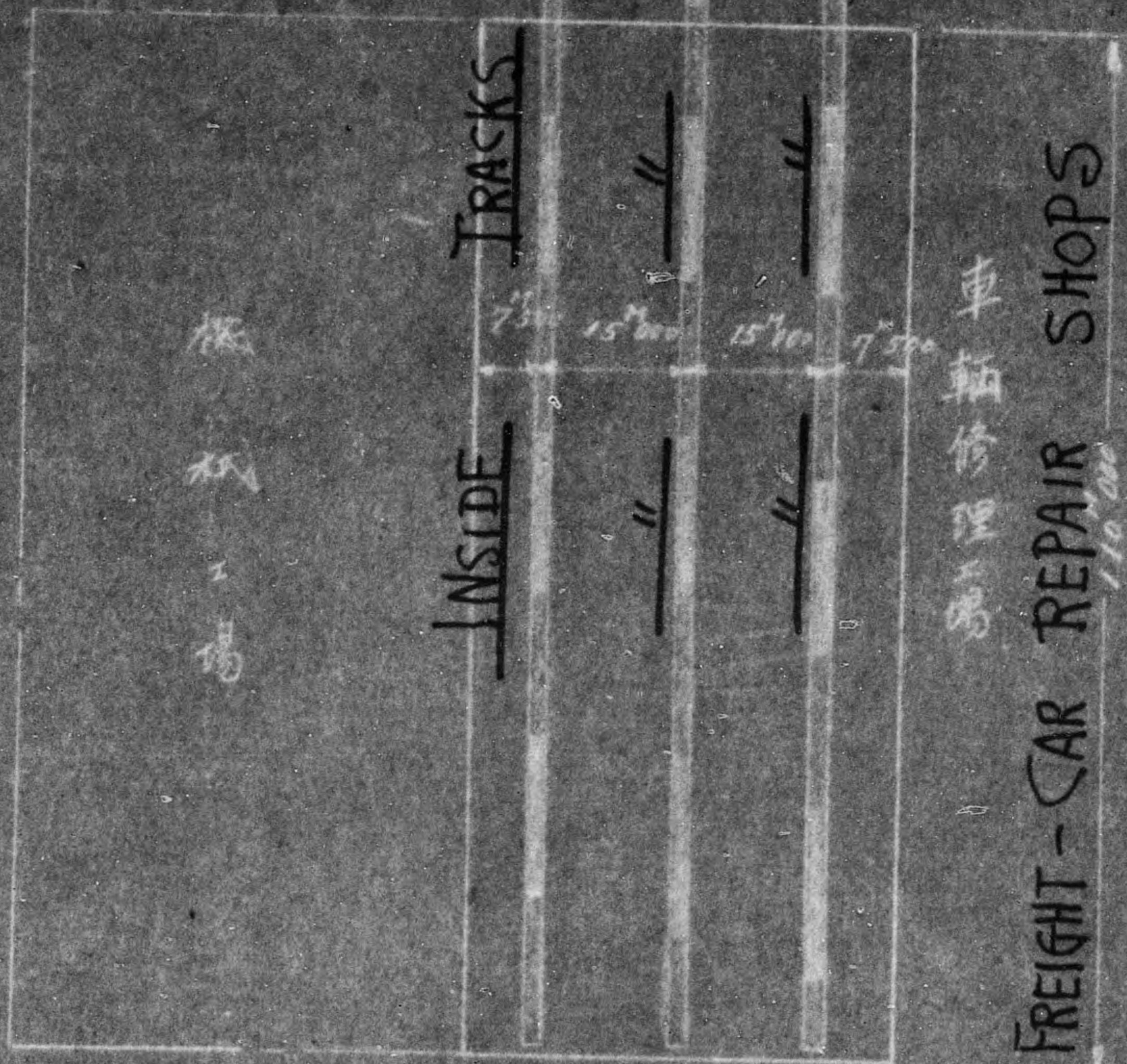
動力場

水架場

塔場

破産場

サトウキビ場



倉庫

車輛修理所

貯油所

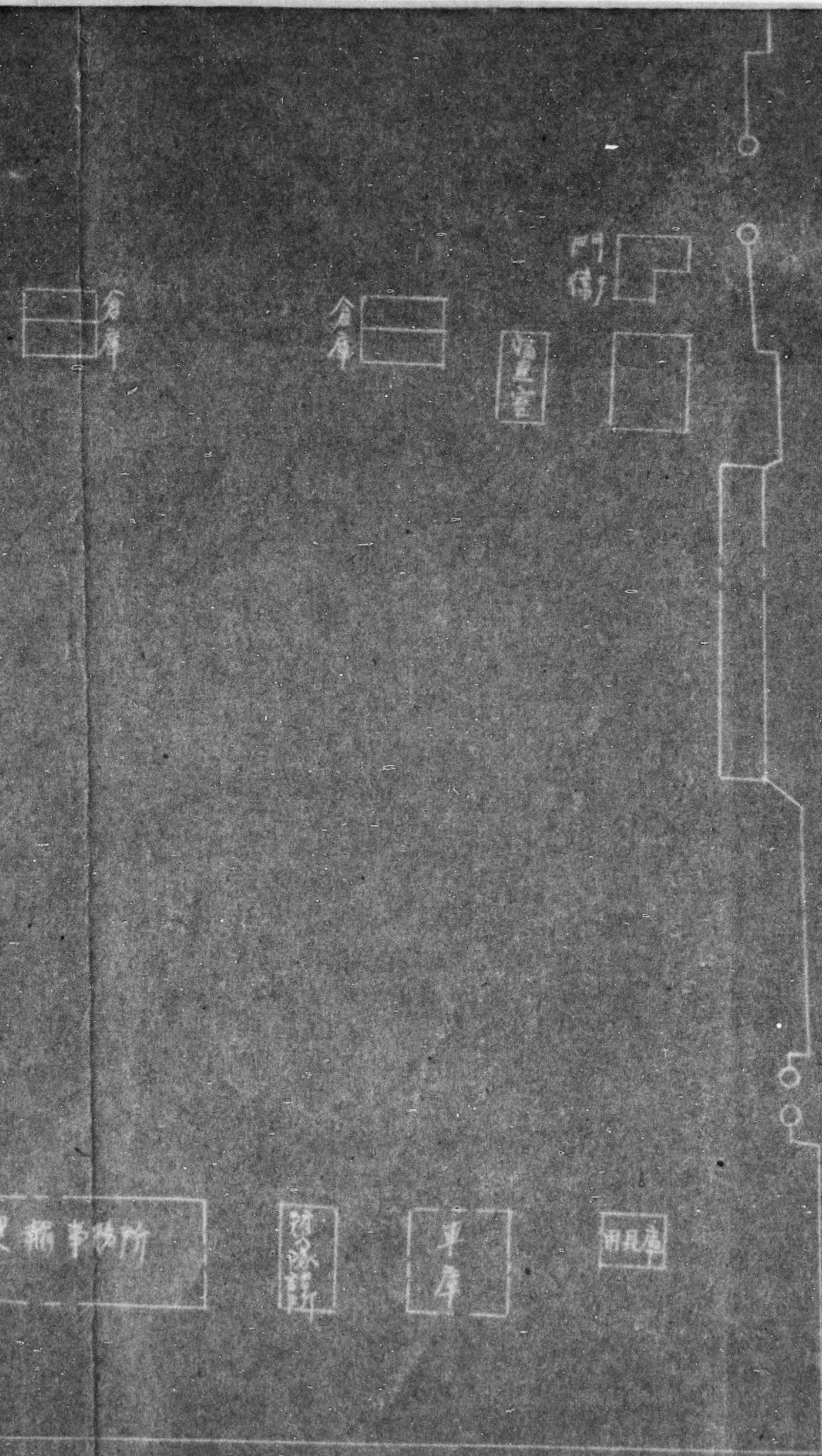
車輛工場

貯油所

場

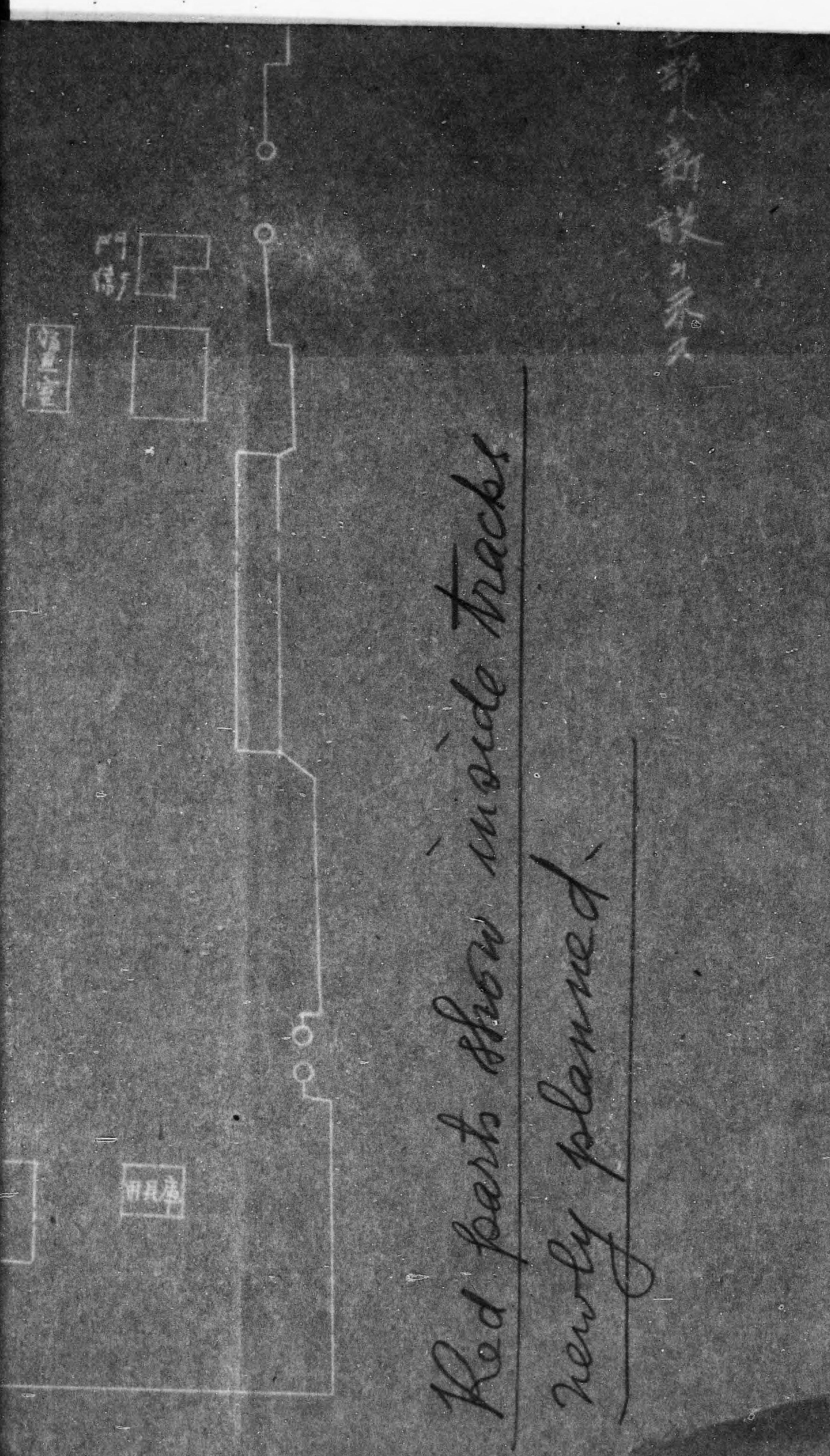
新設の工場

KUPATAYU FACTORY



*Red parts show inside tracks
newly planned.*

新設の工場
KUPATAYU FACTORY



Red parts show inside tracks newly planned.

新設の工場

KURATANI FACTORY

新設工場
引込線敷設要領書

尺度 1/1000
二番線
三番線

新設工場敷設要領書	課長	佐田
	係長	佐田
	係長	佐田
調製部	佐田	佐田
他	佐田	佐田
添	佐田	佐田
審	佐田	佐田

池子一五

19/9/46 2a.

MAIZURU DOCK YARD & IND. WORKS,
IINO SANGYO KAISHA, LTD.,
MAIZURU.


Ref. Letter NO: -
KMGT/# 15.

Sept. 13th, 1946.

SUBJECT: - Inclosure "2" to O. D. 28/12, HQ SA, 8/7/46.
TO: - Kyoto Mil'y. Gov't. Team, Maizuru Detachment.
THROUGH: - Maizuru Liaison Office.

According to your instructions, we now have the pleasure in submitting you the above documents in TRIPLICATE receipt of which please acknowledge and oblige us.

Maizuru Dock Yard & Ind. Works,
(Iino Sangyo Kaisha, Ltd.),

.....


(S. Etoh)
General Manager **EX**

*12

APPLICATION FOR RELEASE OF FORMER MILITARY INSTALLATION.

(1). Location of the property: -

Main Factory: - Amarube, Maizuru City, Kyoto Pref.
Mine sweeping equipment factory: - Kuratani, Maizuru City,
Kyoto Pref.
Saw Mills: - Aioi cho, Shimoagu, Maizuru City, Kyoto Pref.

(2) Acreage: -

Main Factory: - 87,884. sq. metres,
Mine Sweeping Equipment Factory: - 45,837. sq. metres,
Saw Mills: - 5,107. sq. metres.

(3). Number and type of buildings: -

<u>Main Factory:</u>	Wooden Built.....	35	Bldgs.,
	Iron-framed.....	23	"
	Iron-framed Brick Work.....	17	"
	Steel-concrete work.....	9	"
	Brick Work.....	14	"
<u>Mine Sweeping Equip't Factory:</u>	Wooden-built.....	23	bldgs.,
	Iron-framed.....	6	"
	Steel-concrete.....	2	"
<u>Saw Mills:</u>	Wooden-built.....	8	"
	Iron-framed Wooden Works....	1	"
	Steel-Concrete work.....	1	"

(4). General description of the whole installation: -

Detailed description of improvements: -
An Oxygen Gas Factory established in our main yard,
Amarube, Nakamaizuru, Maizuru City, using Japanese materials.

(5). Proposed use: -

Repairs of Merchant Marine and mine Sweeping Ships,
Salvaging of Merchant Marine and Navy Ships,
Scrapping of Merchant and Navy Ships,
Construction and Repairs of Freight Cars.

(6). Recommendation: -

DECLASSIFIED E.O. 12958 SECTION 5.102

APPLICATION FOR RELEASE OF FORMER MILITARY INSTALLATION.

(1). Location of the property: -

Main Factory: - Amarube, Maizuru City, Kyoto Pref.
Mine sweeping equipment factory: - Kuratani, Maizuru City,
Kyoto Pref.
Saw Mills: - Aioi cho, Shimoagu, Maizuru City, Kyoto Pref.

(2) 1 Acreage: -

Main Factory: - 87,884. sq. metres,
Mine Sweeping Equipment Factory: - 45,837. sq. metres,
Saw Mills: - 5,107. sq. metres.

(3). Number and type of buildings: -

<u>Main Factory:</u>	-	Wooden Built,.....	35	Bldgs.,
		Iron-framed,.....	23	"
		Iron-framed Brick Work.....	17	"
		Steel-concrete work.....	9	"
		Brick Work.....	14	"
<u>Mine Sweeping Equip't Factory:</u>	-	Wooden-built.....	23	bldgs.,
		Iron-framed.....	6	"
		Steel-concrete.....	2	"
<u>Saw Mills:</u>	-	Wooden-built.....	8	"
		Iron-framed Wooden Work....	1	"
		Steel-Concrete work.....	1	"

(4). General description of the whole installation: -

Detailed description of improvements: -
An Oxygen Gas Factory established in our main yard,
Amarube, Nakamaizuru, Maizuru City, using Japanese materials.

(5). Proposed uses: -

Repairs of Merchant Marine and mine Sweeping Ships,
Salvaging of Merchant Marine and Navy Ships,
Scrapping of Merchant and Navy Ships,
Construction and Repairs of Freight Cars.

(6). Recommendation: -

Incl. 2.

MAIZURU DOCK YARD & IND. WORKS,
(Iino Sangyo Kaisha, Ltd.)

APPLICATION FOR RELEASE OF FORMER MILITARY INSTALLATION.

(1). Location of the property: -

Main Factory: - Amarube, Maizuru City, Kyoto Pref.
Mine sweeping equipment factory: - Kuratani, Maizuru City,
Kyoto Pref.
Saw Mills: - Aioi cho, Shimoagu, Maizuru City, Kyoto Pref.

(2)1 Acreage: -

Main Factory: - 87,884. sq. metres,
Mine Sweeping Equipment Factory: - 45,837. sq. metres,
Saw Mills: - 5,107. sq. metres.

(3). Number and type of buildings: -

<u>Main Factory:</u>	-	Wooden Built,.....	35	Bldgs.,
		Iron-framed,.....	23	"
		Iron-framed Brick Work.....	17	"
		Steel-concrete work.....	9	"
		Brick Work.....	14	"
<u>Mine Sweeping Equip't Factory:</u>	-	Wooden-built.....	23	bldgs.,
		Iron-framed.....	6	"
		Steel-concrete.....	2	"
<u>Saw Mills:</u>	-	Wooden-built.....	8	"
		Iron-framed Wooden Work....	1	"
		Steel-Concrete work.....	1	"

(4). General description of the whole installation: -

Detailed description of improvements: -
An Oxygen Gas Factory established in our main yard,
Amarube, Nakamaizuru, Maizuru City, using Japanese materials.

(5). Proposed used: -

Repairs of Merchant Marine and mine Sweeping Ships,
Salvaging of Merchant Marine and Navy Ships,
Scrapping of Merchant and Navy Ships,
Construction and Repairs of Freight Cars.

(6). Recommendation: -

Incl. 2.

MAIZURU DOCK YARD & IND. WORKS,
(Iino Sangyo Kaisha, Ltd.)

17

Maizuru Dock Yard & Ind. Works,
Iino Sangyo Kaisha, Ltd.,
Maizuru.

Ref. No. REC IC/1 2

Sept. 12th, 1946.

SUBJECT: - Monthly report No: REC/2 . on operations
during Aug., 1946, according to the Permit
for Reconversion.

TO: - The Head Quarters of 1 Corps

THRU': - Kyoto Mil. Gov. Team, Maizuru Detachment.

We now have the pleasure in submitting you the
above report, receipt of which please acknowledge.

We beg to remain,

Maizuru Dock Yard & Ind. Works,

S. Takata
.....
Chief of Gen. Aff. Dept.

ORIGINAL

for

H.Q.

#11

Ref. No: - REC. IC/2 MAIZURU DOCK YARD & IND. WORKS,
IINO SANGYO KAISHA, LTD.,
MAIZURU.

Sept. 12th, 1946.

SUBJECT: * Monthly Report No. REC/2 on Operations during August, 1946 according to the permit for Reconversion from War Production & for Resumption of Essential Civilian Commodities.

TO: - The Headquarters of 1 Corps.

THRU' - Kyoto Mil. Gov't. Team, Maizuru Detachment.

(1) - Repairs of merchant marine and mine sweeping ships: -

Name of ships	Kinds of ships	Dis't . gross tonnage	Name of ships	Kinds of ships	Dis't. gross tonnage.
Shinnan	Demo'n ship	850	V 037	Demo'n boat	7,176
Special Sub Catcher 236	mine sweeper	135	M.S. Miharasan maru	Cargo Boat	880
Do 157	do	135			
Coast Def. ship 205	Demo'n ship	780	V 044	Demo'n boat	7,176
Yukaze	do	1,500	V 070	do	7,176
Mine Sweeper 21	do	630	V 069	do	7,176
Coast Def. Ship 85	do	850	M.S. Agata maru	Cargo Boat	884
Special Sub Catcher 57	mine sweeper	135	S.S. No.3 Amoi maru	Cargo "	446
Do 166	do	135			
Do 184	do	135	S.S. HIKACHI maru	Cargo "	2,069
Do 162	do	135			
Do 219	do	135			
Do 84	do	135			
V 007	Demo'n boat	7,176			
S.S. Miyo maru	Cargo Boat	1,455			
V 100	Demo'n boat	7,176			

(2) - Salvaging merchant and navy ships: -

- Name of the boat to be salvaged: - 15-ton crane boat belonging to the "Kasumi" Fishing Association, Hyogo Pref.
- Displacement Gross tonnage: - 180 tons.
- Place of disaster: - Off Tsuiyama, Minatomura, Kinosaki Gun, Hyogo Pref.
- Period: - 1.8.46. to 22.8.46.
- Position of operation: - The operation has been finished on

Aug. 22nd, 1946.

03

05

06

- (3) - Scrapping merchant and navy ships: - The former Navy Ship "YAKUMO" is now being scrapped: - its gross tonnage is 10,000 G.T., and total weight removed during August being 330 tons.
- (4) - Repairing of Freight Cars: - 10 freight cars has been repaired.

MAIZURU DOCK YARD AND IND. WORKS,

S. Takata

.....
Chief of Gen. Aff. Dept.

MAIZURU DOCK YARD & IND. WORKS,
IINO SANGYO KAISHA, LTD.,
MAIZURU.

Sept. 8th, 1946.

WEEKLY REPORT NO: CL/ 13.

ON

DETAILS OF EXPERIMENTS IN OUR CHEMICAL LABORATORY.
DURING PERIOD OF : Sept. 2nd to Sept. 8th.

TO: KYOTO MIL. GOV. TEAM, MAIZURU DETACHMENT.
(Attention: S/Sgt. Bagni).

Date.	Materials examined.	Description of exp't.	Purposes
2.9.46.	Silicon.	Analysis of composition	for use in our yard
Do.	Ingots of antimony.	Do.	Do.
3.9.46	Do.	Do.	Do.
4. 9.46	Do.	Do.	Do.
5. 9. 46	Lubrication oil.	Examination of water, salt & specific gravity	for use of S.S."HYUGAM aru"
Do.	Do.	Do.	DO.

Maizuru Dock Yard & Ind. Works,
Iino Sangyo Kaisha, Ltd.,

S. Takata
.....

for (Sub Manager)
Chief of Gen. Aff. Dept.

MAIZURU DOCK YARD & IND. WORKS,
IINO SANGYO KAISHA, LTD.,
MAIZURU.

Sept. 11th, 1946.

WEEKLY REPORT NO: MSE/ 10

ON

MAKING OF MINE SWEEPING IMPLEMENTS.

TO: KYOTO M. G. T., MAIZURU DET'T.

(Attention: to S/Sgt. Bagni)

(Kind of (mine sweep'g (implements.)	Quantity)ordered.	Quantity)made during)past week.	Total quantity)made up to)now.	Remarks.
(Sweep type (No. 5.	500 sets)	20 sets	290 sets.	
(Sweep Type (No. 3.	400 sets)	20 sets	203 sets.	

Maizuru Dock Yard & Ind. Works,
Iino Sangyo Kaisha, Ltd.,

S. Takahashi

.....
for (Sub Manager.)
Chief of Gen. Aff. Dept.

*Copy
File all*

00

00

MAIZURU DOCK YARD & INDUSTRIAL WORKS,
IINO SANGYO KAISHA, LTD.,
AMARUBE - MAIZURU.

FRIDAY, SEPT. 6TH, 1946.

WEEKLY REPORT NO; SHK/ W. 7.

ON
REPAIRING OF S/S "SHOKEI MARU" - GOV. RAILWAY FERRY BOAT
DURING THE PERIOD OF 30/8/46 - 5/9/46.

TO: KYOTO MIL'Y GOV'T TEAM, MAIZURU DETACHMENT.

(Attention: S/Sgt. Bagni)

(Name of Steamer.)	Period.	Cleaned %	Landed %	Repaired %	Reformed (altered) %
S.S. "SHOKEI M."	30.8.46	60 %	90 %	0.	0.
	to				
	5.9.46.				

Maizuru Dock Yard & Ind. Works,
Iino Sangyo Kaisha, Ltd.,

Bozo Iino

.....
(Bozo Iino)

Sub Manager.

11/2/46

MAIZURU DOCK YARD AND INDUSTRIAL WORKS,
(IINO SANGYO KAISHA, LTD.),
MAIZURU.

FRIDAY, SEPT. 6TH, 1946.

WEEKLY REPORT NO: YKM/W7.

ON

SCRAPPING & REMOVING OPERATIONS OF THE FORMER N. S. "YAKUMO"

DURING THE PERIOD OF : - Aug. 30th, 1946 - Sept. 5th, 1946.

TO: - Kyoto Mil'y. Gov't. Team, Maizuru Detachment.

(Attention: S/SGT. BAGNI)

Item (Dept.)	Weights landed during the period.	Total Weights landed, up to now, since operations commenced.	Original Standard Weights. Tons.(B)	Progressing Degree(%) of Opera- tions A/B x 100	Remarks: - Articles landed.
Hull, fittings, equipments, etc.	Tons. 23.2	Tons.(A) 281.6	7,350.	3.6 %	Casing of smoke -way (Centre upper-deck),
Engineering Dept.	0.3	106.4	2,400.	4.4 %	Steel Melting Furnace.
Electric Dept.	5.2	25.4	200.	2.7 %	Electric cables, El. armaments, Terminal boxes, Switch boxes,
Othes.	0.	0.9	50.	1.8 %	
Total:	28.7	414.3	10,000.	4.1 %	

Maizuru Dock Yard & Ind. Works,
(Iino Sangyo Kaisha, Ltd.),

G. Iino
.....
(Gozo Iino)
Sub Manager.

Cpl. J.

11

CO

Maizuru Dock Yard & Ind. Works,
Iino Sangyo Kaisha, Ltd.,
Maizuru.

Ref.No. REC IC/1

Aug. 16th, 1946.

SUBJECT: - Monthly report No: REC/. on operations
during Jul., 1946, according to the Permit
for Reconversion.

TO: - The Head Quarters of 1 Corps.

Thru: - Kyoto Mil. Gov. Team, Maizuru Detachment.

We now have the pleasure in submitting you the
above report, receipt of which please acknowledge.

We beg to remain,

Maizuru Dock Yard & Ind. Works,

.....*S. Takata*.....

Chief of Gen. Aff. Dept.,

Ref.No: - REC.IC/1.

MAIZURU DOCK YARD & IND. WORKS,
IINO SANGYO KAISHA, LTD.,
AMARUBE, MAIZURU.

Aug. 13th, 1946.

SUBJECT:- Monthly Report No. REC/1 on Operations during Jul., 1946
according to the permit for Reconversion from War Production
& for Resumption of Essential Civilian Commodities.

TO: - The Headquarters of 1 Corps.
THRU: - Kyoto Mil. Gov't. Team, Maizuru Detachment.

(1) - Repairs of merchant marine and mine sweeping ships: -

Name of ships	Kinds of Ships	Dis't. Gross Tonnage	Name of Ships.	Kinds of Ships.	Displ't. Gross Tonnage.
Coast Defense Ship No. 67	Demo'n Ship	852 T.	"Choko M"	Demo'n B.	1700 t.
"Shii"	Do.	1640 T.	"Shokei M"	Passenger B.	3600 t.
"Spec. Mine Sweeper 19"	Do.	214 T.	V.017.	Demo'n. Boat	7176 t.
DO. 20.	DO.	214 T.	V.053.	Do.	7176 t.
"Kaba"	DO.	214 T.	V.069.	Do.	7176 t.
"No. 2, Daikai"	Cargo Boat	1640 T.	V.068.	Do.	7176 t.
"No. V. 061"	Demon. Boat	1640 T.	V.070.	Do.	7176 t.
"Sumiyoshi M."	Cargo Boat	6868 T.	Miharasan	Cargo boat.	680 t.
"V. 045"	Demo'n. Boat.	7176 T.	V.086.	Demo'n. Boat	7176 t.
"Choki Maru"	Cargo Boat	2311 T.	V.100.	Do.	7176 t.
"Samaru Maru"	Do.	7176 T.	V.044.	Do.	7176 t.
No. 3 Anoi M.	Do.	926 T.	V.057.	Do.	7176 t.
No. 2 Shinko	Demo'n. Boat	4013 T.	V.053.	Do.	7176 t.
V. 026	DO.	446 T.	V.017.	Do.	7176 t.
		2600 T.	V.024.	Do.	7176 t.
		7176 T.			

(2) - Salvaging merchant and navy ships: -

- Name of the boat to be salvaged: - 15-ton-crane boat belonging to the "Kasumi" Fishing Association, Hyogo Pref.
- Displacement Gr. tonnage: - 180 tons.
- Place of disaster: - Off Tsuizayama, Minatomura, Kinisaki Gun, Hyogo Pref.
- Period: - 1.7.46. to 31.7.46.
- Position of operation: -
 - Sea-divers' survey on the damaged parts of boat: - 100%
 - Boring operation of sea-bottom, while the temporary repairs of holes by damages being done: 100%
 - Temporary repairs of the holes by damages: - 90 %
 - Water displacement arrangements for floating: - 20%

The boat is now under operation, having not been floated yet.

- Scrapping merchant and navy ships: - the former Navy Ship "YAKUMO" is now being scrapped: - its gross tonnage is 10,000 G.T., and total weight removed during July being 110 tons.
- Repairing of Freight Cars: - 10 freight cars are now being repaired, but not finished yet.

MAIZURU DOCK YARD AND IND. WORKS,
S. Takata
Chief of Gen. Aff. Dept.

Sgt S.

KYOTO MILITARY GOVERNMENT TEAM
MAIZURU DETACHMENT
APO 713 (Maizuru)

26 August 1946

SUBJECT : Maizuru Dockyard and Ind Works; Iino Sangyo Kaisha Ltd.

TO : C.O. Kyoto Military Government Team; APO 713.
Attention: Lt. Strollo

1. Since the occupation of the former Navy Yard in Maizuru by Iino Sangyo Kaisha Ltd. under the management of Mr. Etoh, this office has kept a close surveillance on said companies activities.

2. On several occasions recommendations have been made by this office for the improvement of operations in this yard with no noticeable action taken.

3. The management is constantly submitting applications to further its activities in producing of various implements and articles not befitting a shipyard giving one the impression that because of its extensive grounds and numerous buildings and machinery available to their use they are not capable of managing this installation to its fullest capacity.

4. Upon entering the grounds there is machinery of all descriptions visible that is not being properly kept and quantities of scrap iron and steel laying around in numerous piles.

5. On submitting its applications the management tries invariably to give the impression that they are doing something constructive whereas there has been no improvement made to show that they are fit people to be operating such an installation.

6. In its present stage Iino Shipyard would be more appropriately renamed Iino Junkyard and it is hoped by this office that a reprimand by higher headquarters be made.

7. It is highly recommended by this office that this installation be split up into (2) or (3) sections with responsible companies placed therein for a more accurate operation.

Wm. L. Bagni
Wm. L. BAGNI S/Sgt
KMGT Maizuru Det

* 11

20 August 1946

MEMO

A rough estimate of the machineries and inventory sheets in the Maizuru area may be listed as follows:

<u>Name of Plant</u>	<u>No. of Machineries</u>	<u>No. of Sheets Rec'd.</u>	<u>Bal. Required</u>
1. 3rd Powder Plant	2,000	4,000	2,000
2. Maizuru Naval Arsenal	7,000	500	20,500
3. 31st Aircraft Repair Depot	250	750	0
4. Port Controlling Depot	2,000	1,850	4,150
TOTAL	<u>11,250</u>	<u>7,100</u>	<u>26,650</u>

V Revised

SUPPLEMENTAL APPLICATION FOR CONVERSION OF
&
REPORT ON INDUSTRIAL FACILITIES.

DATED: 1ST JULY, 1946.

MAIZURU DOCK YARD & INDUSTRIAL WORKS,
AMARUBE SHIMO,
MAIZURU.

#8

KYOTO MILITARY GOVERNMENT TEAM
APO 713 (Kyoto, Honshu)

25 July 1946

SUBJECT: Supplemental Application for Reconversion
TO : CO, Maizuru Detachment, Kyoto MG Team

1. Inclosed application by Maizuru Dock Yard & Industrial Works was submitted indirectly to this headquarters in an apparant attempt to circumvent your office. It is suggested that this be called to the attention of the manager of this company to avoid repetition and further loss of time by all concerned.

2. In part, the plea of this company to engage in additional enterprise is valid. Many persons are employed, and to continue their employment and purchasing power is essential to a healthy Japan.

3. Your recommendations on each of the twelve supplemental activities described is requested. Further, your comments on company's allegations of the necessity for these added activities, including extreme climatic conditions in your area.

4. On the whole, this headquarters is inclined to approve such additional activities as salt manufacturing; auto, plant and equipment repairing, and oxygen manufacture for use in this repair-work. It is inclined to disapprove vague requests for "civilian machineries"; construction of fishing boats which is already under specific allocation; and manufacture of wood and steel furniture, already in largescale progress in your area.

5. It is recommended that no Navy Yard equipment not already under the control of this company be added to this firm's responsibility.

FRANKLIN PRAGER
1st Lt. T. C.
Industries Officer

Incl: Supplemental application (4cc)

THE IMPERIAL JAPANESE GOVERNMENT

July 8, 1946.

TO :- The Commander of Eighth Army
FROM:- Ministry of Transportation.
Ministry of Commerce & Industry.
Ministry of Finance.

THROUGH:- Kyoto Liaison Office

SUBJECT:- Recommendation for Supplemental Application dated 1st July, 1946, of Iino Sangyo K.K. (Maizuru D.Y. and Ind., Works)

After our thorough investigations on the Supplementary Application for various civilian essential productions, dated 1st July, 1946, submitted by Maizuru Dock Yard & Industrial Works, of Iino Sangyo Kaisha, Ltd., we considered to be necessary for present Japan.

We shall be infinitely happy if you are so good enough to immediately entertain the Works' enthusiastic desire.

We beg to remain,

(Susumu Ose)
Chief of Ship's Bureau,
Ministry of Transportation.

Shun Ebine
(Shun Ebine)
Chief of Conversion
Section,
Ministry of Commerce
and Industry.

H. Kato
(Hachiro Kato)
Chief of State property
Bureau,
Ministry of Finance.

S. Ose

KYOTO PREFECTURAL OFFICE.

Kyoto, 17 July, 1946.

SUBJECT: - Supplementary Application for Permit
on Various Civilian Essential Productions
(From Maizuru Dock Yard & Ind. Works).

TO: - *The Commanding Officer*
Kyoto office, 103 M. G. C.

As fully described in the Permit IG-313 from H. Q. I Corps, dated 17 April, 1946, *(Iino Sangyo K. K.)* Maizuru Dock Yard & Ind. Works, was permitted for the reconversion from war production and resumption of essential civilian commodities. But this permit constitutes repair of various ships, salvaging of them, and also scrapping, all of which are mainly outdoor operations and its efficiency is liable to be badly handicapped by the rainy and snowy weathers prevailing in this district.

We trust it is ^{sometimes} a very big loss for New Japan starting to restore its peaceful industry, that this works can carry on only the operations permitted by the Headquarters, notwithstanding this works has an excellent skill and greater producing capacity, for there is not always any evenness of requirements for various ships to be repaired, in this operation.

Under the circumstances, the works is extremely eager to contribute to the restoration of Democratic Japan and also to the increasing production of foods, by carrying out some another productions. We are always paying our deep consideration on this matter and shall greatly appreciate your permit to be granted for the additional production, as per the Supplementary Application of July 1st, 1946, which we consider very proper.

We beg to remain, Officer,

T. Nishida

(Toshiharu Nishida)
Chief of the Second Section
of
Commerce and Industry, Kyoto-fu.

(1)

Serial No. of Report.

SUPPLEMENTAL APPLICATION FOR CONVERSION OF
AND
REPORT ON INDUSTRIAL FACILITIES.

To: Commander of the Eighth Army,

1st July, 1946.

Thru: Kyoto-fu

T. Hishida
(Chief of the Second Section)
(of Commerce and Industry.)

From: Maizuru Dock Yard and Industrial Works,
Amarube Shimo, Maizuru, Kyoto Prefecture
(Former Maizuru Navy Yard).

Section: 1. History of the Maizuru Dock Yard and Industrial
Works.

Maizuru Dock Yard and Industrial Works is the converted facilities and installations of the former Maizuru Navy Yard for the civilian purposes under the permission for reconversion from war production and for resumption of production of essential civilian commodities which is issued by the Head Quarters I Corps dated 17th April, 1946 (copy of the permission is annexed herewith).

In accordance with the Interim Permission mailed March 26th, 1946, to use Maizuru Dock Yards issued by the said Corps copy of which is annexed hereto, the Maizuru Dock Yard and Industrial Works, is placed in ~~placed in~~ operation since 1st April, 1946, by the Iino Sangyo Kaisha, Ltd., as its business branch at Maizuru City. As it is mentioned on the regular permission, Maizuru Dock Yard and Industrial Works, is authorized to use the installations and facilities of the former Navy Yard to carry out the under-mentioned productions (Machinery list for the Yard is annexed hereto).

(2)

Production with Authorized Maximum Monthly Amounts

Per Permit H. Q. 1 Corps dated 4 April, 1946 (copy attached).

- (a) Repair of Merchant Marine and Mine Sweeping Ships,70,000 gr. tons
- (b) Salvaging of Merchant and Navy Ships..... 3,000 " "
- (c) Scrapping of Merchant and Navy Ships..... 1,500 tons
- (d) Construction and Repair of Freight Cars.

Iino Sangyo Kaisha, Ltd., is also authorized to manufacture mine sweeping equipments by the memorandum for the Imperial Japanese Government from the Supreme Commander dated 15th April, 1946, (copy attached) which was formerly being operated by the former Navy People.

Production of mine sweeping equipment permitted by the memorandum dated 15th April, 1946, and issued by the Supreme Commander.

<u>Mine sweeping equipments.</u>	<u>Manufacturers.</u>	<u>Quantity.</u>	<u>Completure Date.</u>
(1) Magnetic sweep, Type 3, Model 2.	Iino Ind. Co., Ltd. Maizuru.	1,200.	31 Mar., 1947.
(2) Magnetic sweep, Type 5, Model 2.	Do.	1,080.	Do.
(3) Drag Net.	Do.	1,200.	Do.

Section 2.

OUTLINE OF THE PLANT.

- 1). Name of Facility: Maizuru Dock Yard & Industrial Works.
- 2). Location. Amarube Shimo, Maizuru, Kyoto Prefecture.
- 3). Name of Manager. Shunkichi Etoh.
- 4). History(Maizuru Navy Yard.)
 - a). Date of construction: 1890.
 - b). Date of first operation: 1894.
 - c). 1935 - 41 Production(annual value in Yen; quantities of principal products by unit or weight).
 Destroyer:.....Six(amounting to ¥30,000,000.)
 Machinery:.....1,400 Tons(amounting to ¥20,000,000)
 Armament:.....600 Tons(amounting to ¥6,000,000)
- 5). Present Capitalization: etc.
 Maizuru Dock Yard & Ind. Werks is a production branch of Iino Sangyo Kaisha, Ltd., Tokyo which capitalization is ¥12,000,000.
 - a). Change made in capital structure since 1935.....
 - b). Name & address of parent company.
 Iino Sangyo Kaisha, Ltd., No. 14, Marunouchi 2 chome, Tokyo.
 - c). No. of shares outstanding.....
 - d). No. of stock holders(give names of those owing 10% or more of total.....

e). Funds received from Government (Bounties, subsidies, etc.)
None.

f). On reverse side give outline sketch of plant with approximate dimensions.

Outline is shown in attached chart.

6). Description - (a). Principal Products.

a). War time, Destroyer, Coast Defense Ship, auxiliary machineries, torpedoes, machine guns, etc.

b). At present:

Repair of Merchant Marine and Mine sweeping ships,

Salvaging of Merchant and Navy ships,

Scrapping of Merchant and Navy ships,

Construction and Repair of Freight Cars,

c). Planned for 1946 - 47.

This article will be fully mentioned in section 3, Page 7.

(b). Capacities.

a). War Time: 100%

b). At present: 10%

c). 1946-47: 18%

(c). Number of Employees:

a). War Time: 25,500. approximately.

b). At present: 2,700. "

c). 1946-47: 3,700. "

5.

7.) Machinery and Equipment. in Plant.

Ground Area: - approximately 480,000 square yards,

Shop Area: - " 80,000 " "

Office Area: - " 4,000 " "

Number of Dry Dock: - 3.

No.1 Dock: - 75 metre long,

No.2 " -199 " "

No.3 " -235 " "

Number of Ships: - 5.

Number of Workshop Machineries: - 1,189.

Number of Machineries in General: - 1,401.

8). Present stocks of Raw Materials, supplies and unfinished goods: -

Steel Plates and Bars: - 2,500 tons,

Pig Irons: - 300 tons,

Non-ferrous metal: - 55 tons,

Timber: - 2,000 cubic metres,

Copper: - 5 tons,

9). Present stocks of Finished goods: -

10). Present stocks of Fuel: -

Coal: - approximately 500 tons,

11). Additional Machineries and equipments needed for maximum production: 1946-47.....

12). Raw Materials and supplies monthly required: -

a). For present capacity: -

Steel Plates and Bars: - 130 tons,

Paints: - 15 tons,

Timber: - 300 cub. metres,

b). For 1946-47: -

6.

Steel Plates and Bars: - 300 tons,
Paints: - 30 tons,
Timber: - 500 cub. metres,

13). Fuel required monthly,

Coal and Cokes: - 2,500 tons,
Heavy Oil: - 150 tons,
Gasoline: - 15 tons,
Mobile Oil: - 3 tons,

14). Additional personnel required: - 1,000.

15). Prices (give current selling prices in Yen of Principal Products).

16). Remarks: (Include here any factors hampering productions not already mentioned and any recommendations you consider necessary).

This will be described fully together with the applications to get permission for additional productions: Section 3.

SECTION 3.

7.

Additional Application for Permission on various productions for 1946-1947.

Snowy and rainy climate in Meizuru is tremendous handicap carry out the outdoor works and repair of ships has its peculiarities on the points that supply of ships requiring is uncertain, sometime is awfully busy but sometime not so busy, rather very little to do. Moreover ships to be repaired, salvaged and scrapped, will be decreasing and therefore we are very desirous to carry out some additional productions to utilize our plant capacity and supply of skilled labour. As for the details will you kindly understand our standpoint described in the attached enclosure. Additional productions and maximum production for each item which we hope to be authorized are as follows: -

Additional Productions.

N.B. Details for marked item(X) will be mentioned in Annexed Enclosure.

(1) Construction & repairing machineries for fishing, tag, & ferry boats under 350 tons and the parts which amount to 60 tons per month.

Diesel Engine(Kaimuin type, etc.); -
1,200 H. P., 250 H. P., 210 H.P., 160 H. P., 120 H. P.,

Hot Bulb Engine(Kaimuin type);-
200 H. P., 115 H.P., 75 H. P., 50 H.P., 25 H. P.,

Parts: - crank, shaft, cylinder, cover, piston, bed, propeller, bearing, and accessories.

X(2) Manufacturing and repairing civilian machineries which amount to about 60 tons per month; -

water pump, ore carrier, winch, tank, blower, paper mill, electric transmission tower, refrigerating machine, compressor, weaving machine, steam boiler, motor, transformer.

X(3) Repairing 3 locomotives per month and manufacturing parts for cars which amount to about 50 tons per month.

8.

(4) Manufacturing of agricultural implements: -

Hand carts,	2,000 carts per month,
Flouer mills,	2,000 pes. " "
Hoes of various kinds,	500 " " "
Shovels for agricultural use,	2,000 " " "
Husks dismounting machines	500 " " "
Grass cutting machine,	300 " " "

(5) Manufacturing of household utensils: -

Boiling and frying pans,	5,000 pes. per month,
Rice pans,	2,000 " " "
Baking stoves,	500 " " "

X (6) Repairing 50 automobiles per month and making parts of bus and truck cars.

X (7) Making steel and wooden furnitures which amount to about 12 tons per month respectively.

X (8) Repairing of steam and water power plant merchandises.

X (9) Repairing of cement, manure and salt plants.

X (10) Making rivets, nails, and welding bars, which amount to about 30 tons per month, respectively.

(11) Manufacturing salt by electrical method which amounts to about 1 ton per day (for the welfare of the workers, etc.)

(12) Manufacturing oxygen gas for use of the Yard, its daily production being about 100 bottles (41 litres at 150 *atms* each)

(9)

Certification by applicant

I certify that the information contained herein is true to the best of my knoweldge and belief.

Signed



(Shunklohi Etoh)

Title: General Manager of the
Maizuru Dock Yard and Industrial Works,
Maizuru.

Action by Occupation Forces.

The Factory described in this application has been inspected and the following action taken: -

(a) Ordered to remain closed Yes.....No.....

(b) Ordered to cease operation immediately

Yes.....No.....

(c) Authorized to produce at the following item

to be manufactured Monthly Quantity rate: -

Signature of Authorizing Officer

Designation of Authorizing Unit

ANNEXED ENCLOSURE.

(1)

X (2) Manufacturing and repairing civilian machineries.

water pump:	40 ton Washinton pump,	8 sets per month,	
	60 ton Centrifugal pump,	10 sets	"
	20 ton geared pump,	8 sets,	"
	20 ton weirs pump,	6 sets	"
ore carrier:	$\frac{1}{2}$ ton capacity,	70 sets,	"
winhh,	1 $\frac{1}{2}$ ton,	4 sets,	"
	3 ton,	4 sets,	"
	5 ton,	2 sets,	"
tank,	various sizes,	25 tons	"
blower,	15-150 m ³ /min	5 sets,	"
paper mill, repairing roller, gear and etc.	5 tons	p. m.	
electric transmission tower,		15 tons	p.m.
refrigerating machine, 7,000 B.T.U. unit,		3 sets,	p.m.
compressor, 30 atm x 30 m ³ /min. x 250 H.P.		3 sets,	p.m.
weaving machine, 50 in.		5 sets,	p.m.
steam boiler, 4.5m. dia. 2.8 m length, cylindrical type,		1 set,	p.m.
motor, repair,		30 sets,	p.m.
transformer, repair,		50 sets,	p.m.

X(3) Repairing locomotive and manufacturing parts for cars: -

repairing locomotive,	3 sets,	p. m.
manufacturing parts, cylinder,	4 sets,	p. m.
piston,	6 sets,	p. m.
connecting rod,	8 sets,	p. m.
piston ring,	12 sets,	p. m.
tender box,	1 set,	p. m.
boiler proper,	2 sets,	p. m.
wheel casting,	20 tons,	p. m.
accessories,	10 tons,	p. m.

X(6) Repairing automobiles and making parts of bus and truck cars: -

repairing,	50 automobiles per month,
making parts,	mission gears, 10 sets, p. m.
	engine parts, 10 " " "
	driving gears, 10 " " "
	wheel parts, 20 " " "
	frame parts, 100 sets " " "
	body 15 sets, " "
	nacelle, 15 " " "
	Gas producer, 50 " " "

X(7) Making steel and wooden furnitures: -

steel locker,	50 sets,	p. m.
duralmin,))	200 "	p. m.
steel desk,	20 "	p. m.
steel stool,	30 "	p. m.
steel high class desk,	5 "	p. m.
wooden locker,	50 "	p. m.
wooden desk,	40 "	p. m.
wooden chair,	60 "	p. m.

X(8) Repairing of steam and water power plant steam power plant,

steam power plant, 20,000 K.W.	1/2 sets p. m.
	(3,000 man-hours p. m.)
water power plant, 20,000 K.W.	3/4 sets p. m.
	(3,000 man-hours p. m.)

X(9) Repairing of cement, manual and salt plant,

cement plant,	2,400 man-hours	p. m.
manual plant,	3,600 "	" "
salt plant,	1,200 "	" "

X(10) Making rivets, nails, and welding bars,

rivets, 3/8"	5 tons,	p. m.
" 1/2"	5 tons,	p. m.
" 5/8"	10 "	p. m.
" 3/4"	10 "	p. m.

(3)

nails,	1 1/2"	length,	5	tons,	p. m.
	2"	"	5	"	p. m.
	2 "	"	5	"	p. m.
	3"	"	10	"	p.m.
	3 1/2"	"	5	"	p. m.

welding bars,	2m/m dia,	5	tons,	p. m.
	3mm dia.	20	"	p. m.
	4m/m dia.	5	"	p. m.

HEADQUARTERS ICORPS.
APO(KYOTO, HONSHU)

AG.004 - BA.

GLS/HY
Mailed March 26th, 1946.

SUBJECT: - Interim Permission to Use Maizuru Dock Yards.

TO: - Iino Sangyo Co., Ltd.,
Marunouchi 2 chome, No. 14,
Mitsubishi Naka, 11 Bldg.,
Tokyo-to.

(1). This Headquarters is advised by telephone that Headquarters, Eighth Army, has authorized issuance to your company of a permit to operate this Maizuru Dock Yards.

(2). Written authorization from Headquarters, Eighth Army, has not yet reached this headquarters, and until it is received, a regular, permit cannot be issued.

(3). This letter will constitute interim permission to operate for a period ending 30 April, 1946.

(4). Before that date, it is presumed that a regular permit will have been issued to your company, authorizing operation without the imposition of any time limit.

FOR THE COMMANDING GENERAL:

H. B. Taylor,

Major, Infantry,
Actg. Asst. A. G.

HEADQUARTERS 1 CORPS.
APO 501.(Kyoto, Henshu).

GLS/
4 April, 1946.

Ref: IG-315. AG. 004 -BA.

SUBJECT: - Permit for the Reconversion from war Production and for Resumption of Productions of Essential Civilian Commodities.

TO: Iino Sangyo Kabushiki Kaisha, 14, Nichome, Marunouchi, Tokyo.

(1). (a). In accordance with paragraph (3)(b), Directive Number Three(3) from the Supreme Commander to the Imperial Japanese Government, dated 22 Sept., 1945, the Iino Sangyo Kabushiki Kaisha, (Former Maizuru Navy Yard including Telephone Exchange Office and Saw-mill) and Automobile Repair Shop of 31st Navy Air Dept., Maizuru, Kyoto-fu, is permitted to immediately start production of (a) Repairs of Merchant Marine & Mine Sweeping Ships, (b) Salvaging & Scrapping Merchant & Navy Ships. (c) Freight Cars.

(b). Maximum productions currently authorized is (a). 70,000.
Gross tons: (b). 3,000 gross tons: (c) 1,500 tons.

(2). The acquisition of material, parts and sub-assemblies as well as the disposition of finished products, and the establishments of sales prices will be in accord with the regulations of the Imperial Japanese Government.

(3). Until otherwise directed by this Headquarters, a monthly report in English of each item, by name, type and quantity produced by each factory, sub-contractor subsidiary within this factory's control will be delivered to this office by the fifteenth(15) day of the following month.

(4). It is understood that this permit for reconversion is issued subject to any and all directives effecting reconversion, ultimate disposition or otherwise, which have been issued or may hereafter be issued by the Supreme Commander for the Allied Powers or by this Headquarters.

BY COMMAND OF MAJOR GENERAL HUNT: -
(Paul God)
Colonel AGD.
Adjutant General.

Info copy to: -	
SCAP(Attn: E33)	1 (w/incl)
SCAP(Attn: G-2)	1 (Do.)
CG Eighth Army(Attn: Mil.Gov.)	1 (Do.)
CG 1 Corps(Attn: Mil.Gov.)	1 (Do.)
Kyoto Liaison Office.	1)
Gov. of Prefecture concerned.	1
CG.94th Mil. Gov. GP	1

HEADQUARTERS 1 CORPS.
APO 301. (Kyoto, Honshu).

GLS/FBN
17 April, 1946.

REF: IG-313 (REVISED).

AG. 004 -DA.

SUBJECT: - Permit for Reconversion from War Production and for Resumption of Essential Civilian Commodities.

TO: - Iino Sangyo Kabushiki Kaisha,
(Name and Address of Firm)
14, Ni-chome, Marunouchi, Tokyo.

(1). (a). In accord with Paragraph (3) (b) Directive Number Three(3) from the Supreme Commander to the Imperial Japanese Government, dated 22 Sept., 1945, the IINO SANGYO K.K. (Former Maizuru Navy Yard), is permitted to
(Name of Firm)

immediately start production of (a). Repairs of Merchant Marine & Mine Sweeping Ships, (b). Salvaging Merchant & Navy Ships. (c). Scrapping Merchant & Navy Ships, (d). Freight Cars.

(b). Maximum production currently authorized is (a). 70,000 Gross Tons, (b). 3,000 Gross Tons, (c). 1,500 Gross Tons.

(2). The acquisition of materials, parts and sub-assemblies as well as the disposition of finished products, and the establishment of sales prices will be in accord with the regulations of the Imperial Japanese Government.

(3). Until otherwise directed by this Headquarters, a monthly report in English of each time, by name, type, and quantity produced by each factory, sub-contractor subsidiary withing this factory's control will be delivered to this office by the fifteenth(15) day of the following month.

(4). It is understood that this Permit for reconversion, is issued subject to any and all directives affecting reconversion, ultimate disposition or otherwise, which have been issued or may hereafter be issued by the Supreme Commander for the Allied Powers or by this Headquarters.

By Command of Major General Woodruff: -

H. B. Taylor,
Major AGD.
Asst. Adg. Gen.

Info copy to:-

SCAP(Attn: E33)	1(w/incl)
SCAP(Attn: G-2)	1(Do.)
CG. Eighth Army(Attn:MIL.GOV.)	1(Do.)
CO. 94th MG.HQ. Group.	1
KYOTO LIAISON OFFICE.	1
GOVERNOR OF PREF. CONCERNED.	1
(Kyoto)	

HEADQUARTERS 1 CORPS.

APO 301.(Kyoto, Honshu).

Annex. No. 1.

PERMIT NO: IG - 313.

Note: - This permit authorizes use of only such part of the Maizuru installations as is necessary to carry out the instructions of the Supreme Commander for the Allied Powers to the Imperial Japanese Government contained in Memorandum dated 5 Decr., 1945, file AG. 388.3(5 Dec., 1945) GD. Subject: - "Use of Maizuru and Ominato Navy Yards".

The Maizuru Navy Yard is one of the installations listed by Operational Directive No. 5, Headquarters Eighth Army, to be taken into custody and used for reparations purposes. As operators of this installation, you will be charged with the responsibility or preservation in good condition of all the machinery and equipment in that portion of the yard under your control, and must be prepared to give up such machinery and equipment as is needed for reparations purposes at the time reparations removals are begun.

AG.476. (15. Apr., 1946.) BBS/IN. APO/500.
(SCAPIN - 1002-A). 15 Apr., 1946.

Memorandum for: - The Imperial Japanese Government.
Through: Central Liaison Office, Tokyo.
Subject: - Manufacture of Mine-sweeping Equipments.

- (1). Reference is made to C.L.O. Letter No. 1430(PM) dated 28, Mar., 1946, subject: "Manufacture of Mine-sweeping Equipment."
- (2). Permission is granted to manufacture the following mine-sweeping equipments in accordance with the above mentioned request.

<u>Mine-sweeping Equipments.</u>	<u>Manufacturers.</u>	<u>Quantity.</u>	<u>Completure Date.</u>
1).Magnetic Sweep, Type, 3, Mod. 2.	Iino Industrial Co., Ltd., Maizuru	1,200.	31 Mar., 1947
2). Magnetic Sweep, Type No.5, Model 2.	Iino Industrial Co., Ltd., Maizuru.	1,080.	31 Mar., 1947
3).Drag Net,	Iino Industrial Co., Ltd., Maizuru.	1,200.	31 Mar., 1947.
4).Magnetizer of Magnetic Bar.	Tokyo Electric Apparatus Mfg. Co., Ltd.	60.	31 Jul., 1946
5).Magnetic-metre.	Tokyo Metres Mfg. Co., Ltd.	30.	31 May, 1946.

For The Supreme Commander:

(B. M. Fitch.)
Brigadier General AGD.
Adjutant General.

Table No.1. WORKSHOP MACHINERY. MAIZURU NAVY YARD.

<u>ARTICLE.</u>	<u>QUANTITY.</u>	<u>ARTICLE.</u>	<u>QUANTITY.</u>
Shearing machine	3	Saw sharpener	2.
Vertical Lathe	5	Band saw sharpener	1
Drilling machine	105	Rivet Forging machine	5
El. Drilling machine	6	Screw cutting machine lathe	1
Grove Cutting machine	1	Boiler tube bedding machine	1
Punching machine	9	Bending machine	8
Vertical Milling machine	13	Bending machine(roller)	5
Sawing machine	6	Straightening roll	7
Lathe	98	Metal Circular sawing machine	3
Type lathe	4	Screw press	2
Middle type lathe	46	Crank press	2
Small type lathe	106	Oil press	1
Surface lathe	7	Sawing machine	3
Turning gear	1	Small type drill	1
Rotary shearing machine	1	Electric Grinder.	57
Circular shearing machine	2	Wood working band sawing machine	12
Shearing machine	10	Wood working lathe	5
Rivet shearing machine	1	Wood working drilling machine	3
Bench Drilling machine	32	Planer	31
Radial Drilling machine	36	Planing machine	6
Special Drilling machine	1	Hack sawing machine	2
Electric Grinder	3	Mill	1
Grinder	72	Roller mill	1
Portable Tool Grinder	1	Air grinders	138
Grinder	11	Emery Cloth Machine	1
Tool Grinder	14	Bench lathe	3
Special Grinder	2	Jig Boring machine	1
Universal Grinder	3	Spring Making machine	2
Drill Grinder	1	Automatic Electrode Making Machine	1
Multi-spindle drilling machine	2	Wire cutting machine	3
Drilling shearing machine	1	Wire washing machine	1
Boring machine	12	Automatic cutting machine	2
Riveter	1	Surface grinder	2
Sawing machine	3	Centerless grinder.	1
Planer	16	Horizontal Milling machine	3
Milling machine	31	Rivert cutting machine	2
Plan - Milling machine	1	Pipe cutting machine	2
Universal Milling machine	16	Straightening machine	1
Small type milling machine	2		
Plotter	20		
Boring machine	29		
Shaper machine	20		
Surface Cutting machine	4		
Gear Hobbing machine	19		
Special Milling machine	1		
Metal Band sawing machine	16		
Rivet Forging machine	1		
Punching & Shearing machine	11		
Facer	2		
Edge Planing machine	2		
Turret lathe	13		
Oval lathe	1		
Punching machine	1		
Universal machine	5		
Thread cutting machine	28		
Bebel Gear Cutting machine	7		
Relieving lathe	1		
		Total: -	1,189.

Table No. 2. MACHINE IN GENERAL

MAIZURU DOCK YARD & IND. WORKS

ARTICLE.	QUANTITY.	ARTICLE	QUANTITY
Fan Engine	22	Creeping machine	1
Electric Blower	1	Ansler Universal testing mach.	1
Air hammer	7	Drill tester	2
Blower	2	Oil tester	1
Single air hammer	1	Chain tester	2
Air compressor	53	Water dynamo metre	5
Hydraulic pump	21	Balance	2
Steam hammer	21	Static condenser	26
Drop hammer	1	Motor car charge plate	2
Electric hammer	1	Induction voltage regulator	7
Crane	96	Electric welding resistance	38
Locomotive crane	6	Turbo blower	4
Electric welder	150	Mercury generator	11
Automatic welding machine	1	Oil cleaner	4
Spot welder	3	Cooling water pump	2
Hydrogen welder	1	Lubricating pump	52
Motor	352	oil cooler	8
Motor generator	41	Oil heater	6
Generator	11	Feed Heater	5
D.C. Reciprocating Eng. Generator.	4	circulating pump	9
A.C. Turbo-generator	2	Bilge pump	2
D.C. Turbo-generator	4	Feed water pump	25
Portable gasoline generator	1	Lubricating & water cooling pump.	7
Elevator	3	Ballast pump	1
Electric Hoist	10	Brine pump	1
Winch	19	Inject-air Ejector	2
Air winch	1	Lead Furnace	1
Steam winch	5	Cupola furnace	3
Electric winch	5	crucible furnace	1
Battery carrier	23	turbine ventilator	2
Electric vehicle	11	fire bilge pump	1
Automatic Tricycle	4	Draining pump	2
Battery locomotive	1	Vacuum pump	1
Steam locomotive	8	stepping cutting machine	1
Fire motor car	1	steering engine	2
Trucks	2	High Press. Air Pump	1
Electric furnace	11	Hand Pump	12
Reverberatory furnace	1	Air Pump	36
Annealing furnace	5	Pump	9
Gas furnace	3	Ice making machine	2
Hydraulic press	26	Electric Capstan	2
Heating furnace	12	Oil Burning Pump	22
Coal furnace	7	Internal Combustion Engine	2
Heat treatment furnace	1	No. 51 Diesel Engine	12
Boiler	28	10.H.P. Semi-diesel Engine	4
Wire winding machine	2	Petroleum Engine	4
Breaker	1	Semi-diesel Engine	9
Sand mixer	9	"S" Two stage air compressor	1
Moulding machine	3	Buda Type Internal Combustion Engine.	4
Trimming press	2	80. H.P. Petroleum Engine	2
Mill	1	Petroleum Engine	2
Lead powder mixer	2	Ash Conveyer	1
Balancing tester	2	Ash Elevator	1
Vibration tester	1	Bucket Coal Conveyer	1
Dynamo Metre	1	Caision	3
Spring tester	3	capstan	10
Material Testing machine	2		

TABLE NO: 2. (continued). MACHINE IN GENERAL. Maizuru Navy Yd.

<u>ARTICLE.</u>	<u>QUANTITY.</u>
Crane	5.
Belt Saw	7
Sawing Machine 66666	4
<u>Total: -</u>	<u>1,401</u>

TABLE NO: 3. MACHINERY LIST. Kuratani Works, Maizuru Navy Yard.

<u>ARTICLES.</u>	<u>QUANTITY.</u>	<u>ARTICLES.</u>	<u>QUANTITY.</u>
Lathe	87.		
Turret lathe	1.		
Planer	3.		
Grinding machine	11.		
Shaper	10.		
Slotter	14.		
Drilling machine	37.		
Boring machine	14.		
Milling machine	53.		
Hydraulic press	9.		
Cupola	3.		
Crucible furnace	1.		
Annealing furnace	1.		
Drying furnace	3.		
Gear tooth inspection mach.	1.		
Shearing & punching mach.	9.		
Rolling machine	1.		
Straightening roll	2.		
Roll	1.		
Electric furnace	1.		
Travelling machine	15.		
Air compressor	1.		
Hydraulic pump	3.		
Boilers	2.		
Sand mixer	4.		
Accumulator	2.		
Wood lathe	3.		
" drilling machine	1.		
" saw	5.		
" planer	3.		
<u>Total: -----271</u>			

MAIZURU DOCK YARD AND INDUSTRIAL WORKS, KYOTO-FU.

Maizuru, July 1st, 1946.

SUBJECT; - Appeal with regard to the Supplementary Application on Conversion.

TO: - Headquarters of 108rd Military Government.

Being permitted the reconversion of the Former Naval Yard's Facilities and Installations, by the Eighth Army, our works started to perform the following operations, since 1st April, 1946.

- (a) Repair of various kinds of vessels,
- (b) Salvaging of various kinds of vessels,
- (c) Scrapping of various kinds of vessels,
- (d) Repair and manufacturing of mine sweeping appliances.

Altho' we are carrying on the above business at this area, being recommended by the Imperial Japanese Government up to now, we have not been granted any special assistance and subsidy by the Government. Under these circumstances, we are to do our utmost to make its steady and progressive development really independently. We, however, are extremely anxious about the prospect of this important business not being so promising, for there are several handicaps and difficulties as follows: -

- (1) There are many natural factors hampering our works, i.e.,
 - (a) The place of this district is local and the convenience of traffic is not so good.
 - (b) In summer time, very frequent raining and in winter time, very heavy raining.

Thus this district is very badly handicapped by the weathers.

- (2) Since the last spring, the repairs of Demobilization Vessels are considerably decreasing. In accordance with the progress of demobilization, it will furthermore decrease speedily and is expected to be almost nothing at the end of next spring. To make matter worse, we are facing the economically difficult position,