

DETACHED FLIGHT



THE BOOK OF
No. 1 B.F.T.S. Vol. V









DETACHED FLIGHT

VOLUME V

No. 1 British Flying Training School
Terrell, Texas
U. S. A.

PASSED BY R. A. F. AND U. S. CENSORSHIP





Foreword

This volume goes into print with the invasion of Northern France taking place and the long awaited second front being opened. The task ahead is a strenuous one and will require the utmost determination and cooperation of the British and American forces before final victory is achieved and the peace is won. We pride ourselves in this School on the knowledge that nowhere in the armed forces of these two great nations do the fighting men mix more and get on better than they do here. Lasting friendships have been made by the cadets which will stand our countries in good stead in the years to come.

With the graduation and departure of No. 19 Course we see, with regret, the last of the American cadets to be trained at this School. The training of these cadets together with our own has been a most interesting phase in the School's history and has done much to cement Anglo-American relationship.

No. 1 British Flying Training School celebrated its third anniversary on June 9, 1944, during this time many hundreds of cadets have been trained and they have since served in various theatres of this world war, many of them with distinction.

We owe a deep debt of gratitude to the American Government for giving us the facilities for carrying out this training and also to the Operating Company and its staff for their wholehearted enthusiasm and cooperation without which little success could have been attained. The R.A.F. staff and American staff are very proud of the School and of the pilots it produces and they know full well that every pilot that leaves will give a good account of himself wherever he may be.

The best of luck to you all.

*F. B. Tomkins, A.F.C.
Wing Commdr, Commanding
No. 1 BFTS. Terrell, Texas*

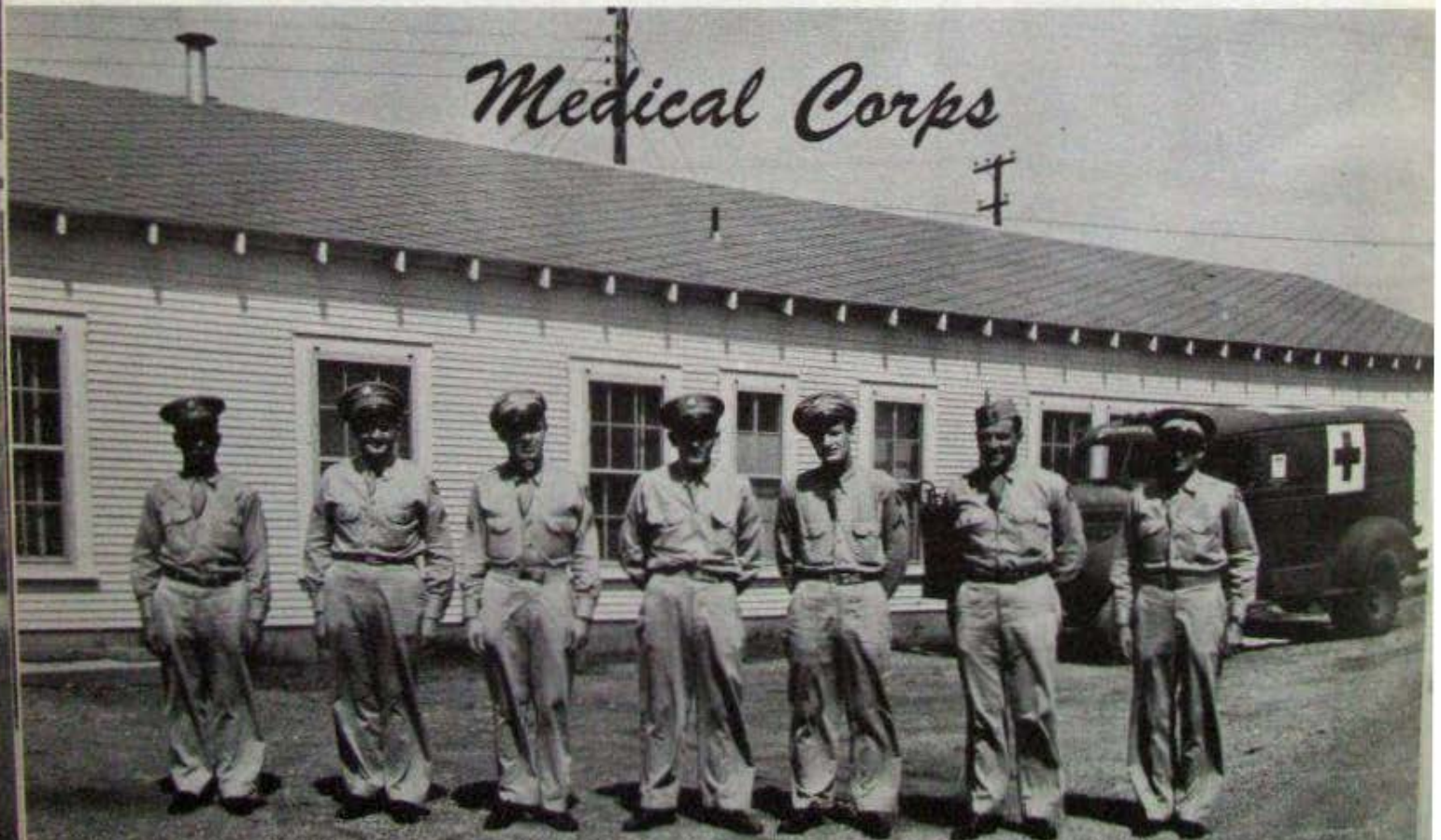


JOE L. STEVENS
Capt., M. C.
Surgeon



PAUL HERZOG
Capt., M. C.
Asst. Surgeon

Medical Corps





Warrant Officer
T. DAWSON
Signals



Flight Sergeant
F. G. MACINTYRE
Armament



Flight Sergeant
L. WALMSLEY
Armament

A. A. F.



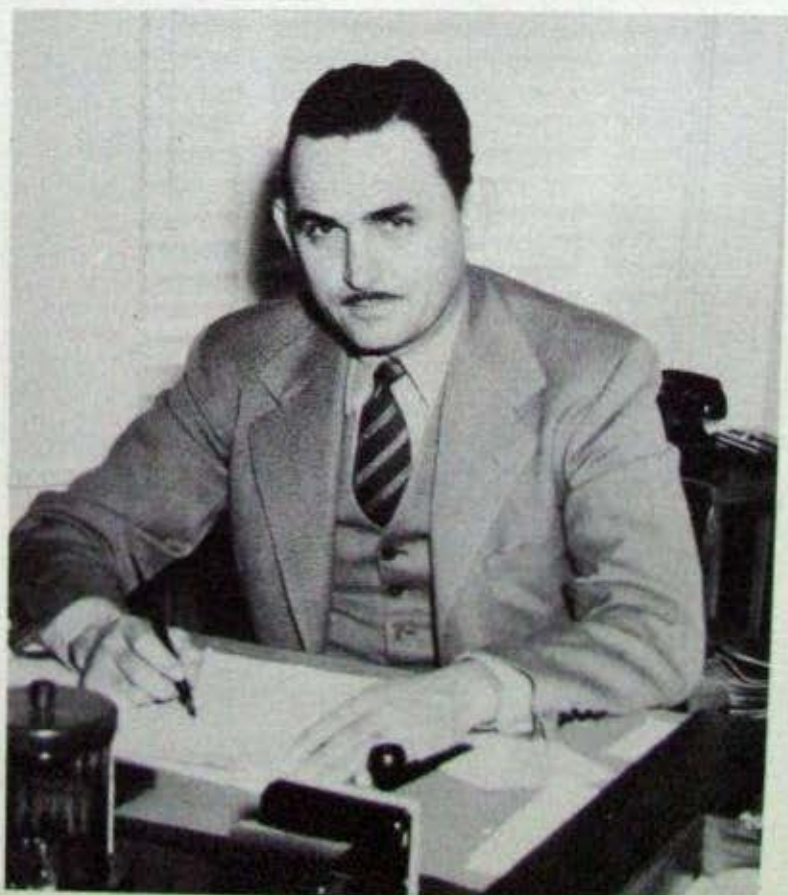
Corporal
A. A. GIDDINGS
Accounts



Corporal
W. BEESON
P. T. I.



*The Operator
Major W. F. Long*



*The Director
W. L. Luckey*



Harding L. Lawrence
Ass't. Director

W. E. Marshall
Director of Personnel



Weather Section



CAPT. W. SHALLERT
U.S.A.A.F.
Texas Weather Prophet! !



PREFLIGHT WEATHER BRIEFING



Front row, left to right: S/Sgt. R. Mitvalsky, M/Sgt. W. Moser, Cpl. L. Hewitt, Pvt. M. Whitman.
Rear line, left to right: Sgt. B. Cohan, Cpl. R. Dair, Capt. W. Schallart, Pvt. L. Fussell, Cpl. W. Meyer



WEATHER EN ROUTE

*Calling All
Departments*



CONTROL TOWER



LT. A. W. SWENSON
U. S. Army Supply



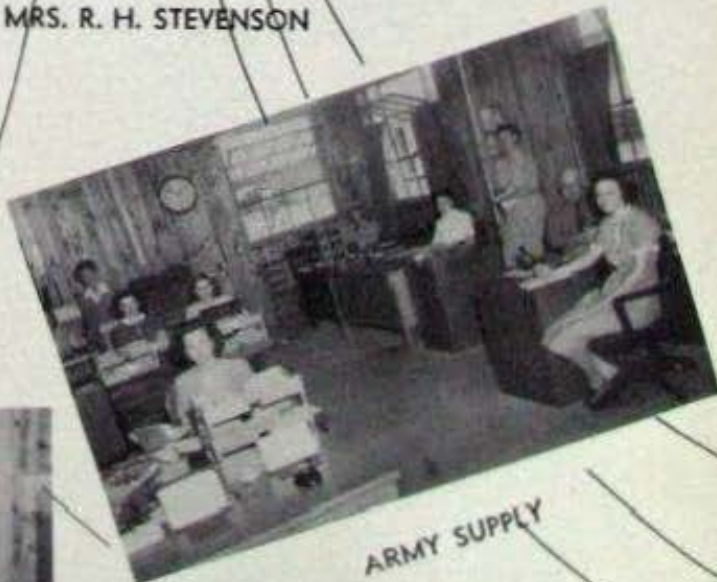
TIMES RECORDS



MRS. R. H. STEVENSON



JIMMY BROWN



ARMY SUPPLY



AUDITORS



MRS. MILDRED BARTON



MRS. F. W. PRATT

R. A. F.



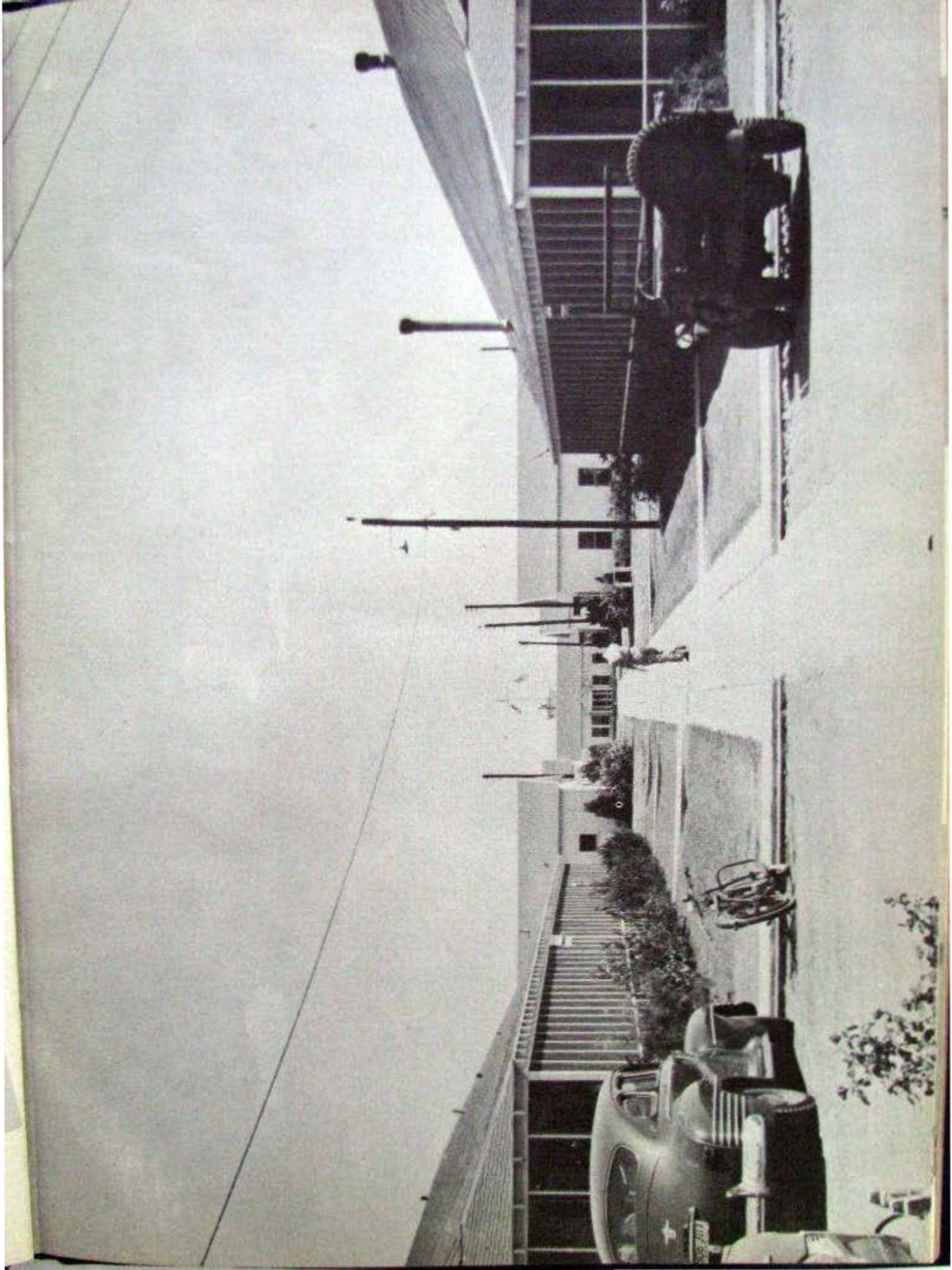
Office Staff



MRS. RUTH HOWIE



MISS MARY JANICE GARLAND





J. G. WILLIAMS, JR.
Chief Ground Instructor

Ground Instructors



T. B. GRIMES
Navigation



M. A. KRIEGER
Meteorology



W. H. BUSSARD
Navigation



N. R. BROWN
Airmanship



T. M. KENESSON
Signals



J. H. LLEWELLYN
Airmanship

School Activities



MR. BUSSARD EXPLAINS DALTON COMPUTON



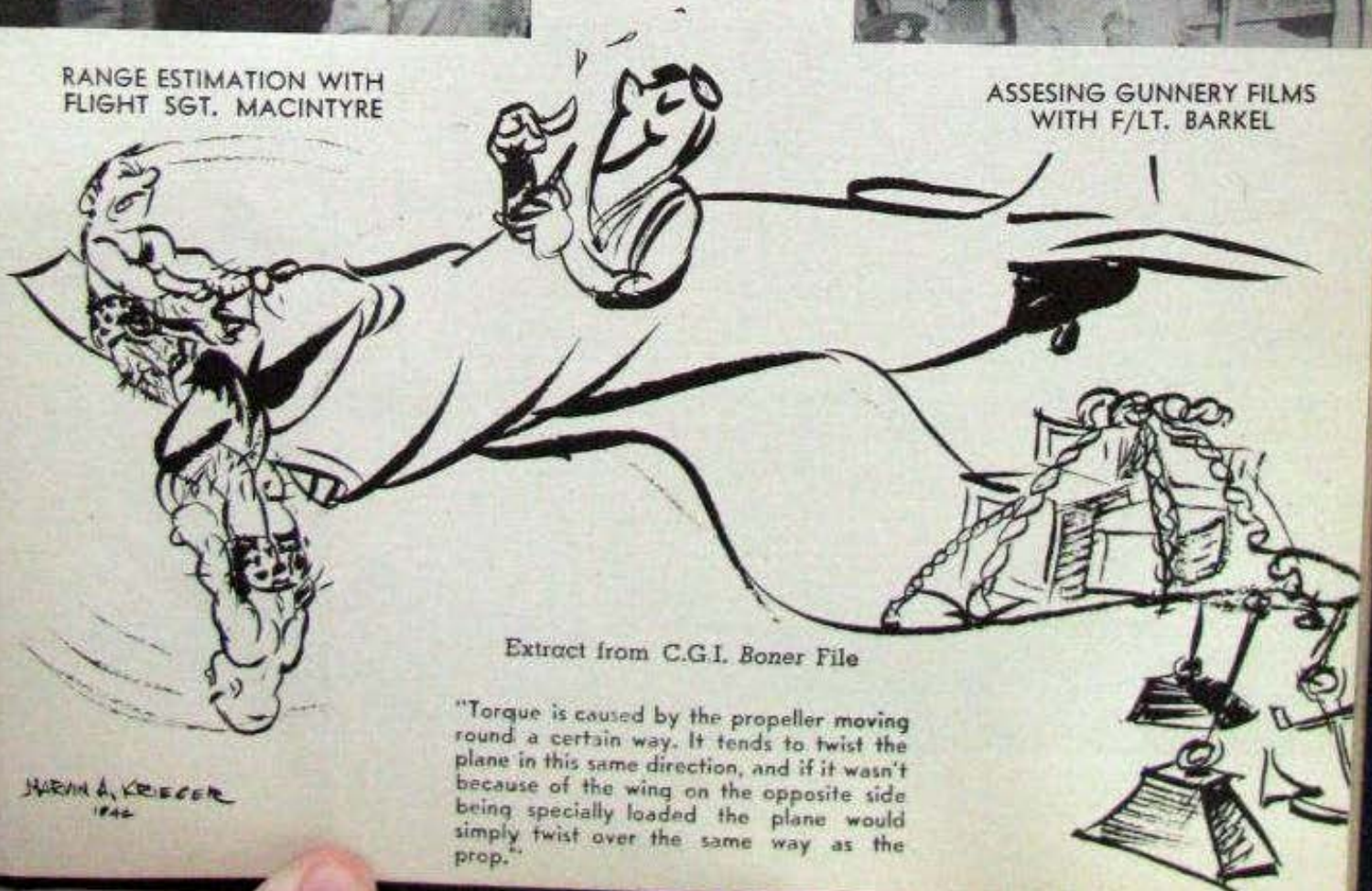
C. G. I. SECRETARY AND STATISTICS



RANGE ESTIMATION WITH FLIGHT SGT. MACINTYRE



ASSESSING GUNNERY FILMS WITH F/LT. BARKEL



Extract from C.G.I. Boner File

"Torque is caused by the propeller moving round a certain way. It tends to twist the plane in this same direction, and if it wasn't because of the wing on the opposite side being specially loaded the plane would simply twist over the same way as the prop."

MARVIN A. KRIEGER
1942

Link Trainer Section



NAVIGATION "SWEAT BOX"



SIMULATED DRIFT RECORDERS



Left to right, standing: James Weatherford, W. R. Robinson, James Gardner
Center row: Mrs. Rosvie Sullins, Mrs. Edna White, Virginia Patton, Mrs. Pauline Strickland
Front row: Mrs. Doris Algor, Ruth Knight, Pauline Bond, Mrs. Mattie Baker, Margaret Lindley

On the Field



"GAS" TRUCKS



THE RAMP



LEAVING OPERATIONS



PRIMARY TRAINERS



ADVANCED TRAINERS



USAAF POST TECHNICAL INSPECTION STAFF

7a



HEADS OF DEPARTMENTS



CADET OFFICERS

TRAIN

Conference



AIRMAN'S WELFARE

ine



ANOTHER NEW PROGRAM



C. W. RODERICK
Supervisor

Primary Flight



D. M. GOFF
Asst. Supervisor



Flight A

W. A. Lewis, L. P. Nolan, G. H. Raines, R. E. Thompson, C. G. Belford, J. W. Talley, H. S. Sternberg, E. W. Taylor, dispatcher



Flight B F/C D. W. Lantz, T. Thompson, E. A. Wolcott, J. H. Hinckley, R. L. Crosnoe, Johnson, E. R. Rogers, J. E. V. Johnson, J. E. Jean, dispatcher



Flight C F/C J. K. Curtis, J. C. Edge, M. D. Reeves, L. M. Simpson, N. N. Grisham, G. E. Robertson, C. F. Satterwhite, R. H. Klutts, dispatcher



Flight D F/C C. H. Sebenhausen, M. S. Norwood, M. E. Wheaton, G. T. Derrick, C. O. Neison, J. G. Barr, Bradford, A. H. Wilson, dispatcher

Advanced Flight



E. VAN LLOYD
Supervisor



M. M. JACOBY
Asst. Supervisor



E FLIGHT
E. E. ESCHENBRENNER

Flight Commanders



F FLIGHT
J. E. CASTLEMAN



G FLIGHT
W. CONNALLY



H FLIGHT
E. D. SMITH

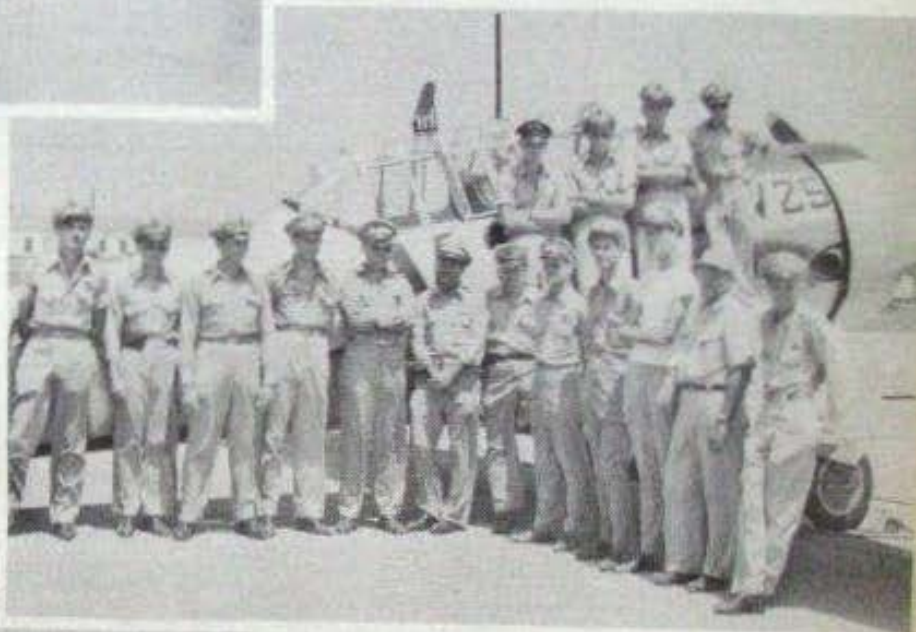


Flight E

Left to right, sitting: O. Clampitt, G. Moore, H. Rogers, S. Weil, A. Stahl. Standing: A. Meyers, A. Lane, J. Leazemby, W. Connally, F/C W. Brookover, T. Ables, dispatcher, R. Moore, T. Beasley

Flight F

Left to right, sitting: R. Flenniken, H. Hatton, R. White, F/C E. Smith. Standing: S. Oliver, dispatcher, R. Cowey, K. Withey, F. Algor, P. Engle, R. Walters, L. Wrenn, N. Naumovich



Flight G

Left to right, sitting: M. Myers, T. Hardy, N. Brooks, E. Pylant, S. Greathouse, dispatcher, F. Sproul, F/C E. Eschenbrenner. Standing: W. Sullivan, V. R. Foster, H. Smith, C. M. Toler, R. D. Greenley, F. McLain, S. Dohreff, L. Boyne, J. Smith, M. Douglas, J. More, O. H. Salyers

Flight H

Left to right, on plane: A. Kirk, S. R. Prince, J. Phillips, R. J. Followell. Standing: F/C J. E. Castleman, N. C. Howell, I. Brown, C. E. Bull, D. E. Strickland, E. Schlapak, C. D. Dömina, H. Vetter, A. E. Smith, R. D. Pettitt, R. D. Farnor, dispatcher, J. E. Lewis



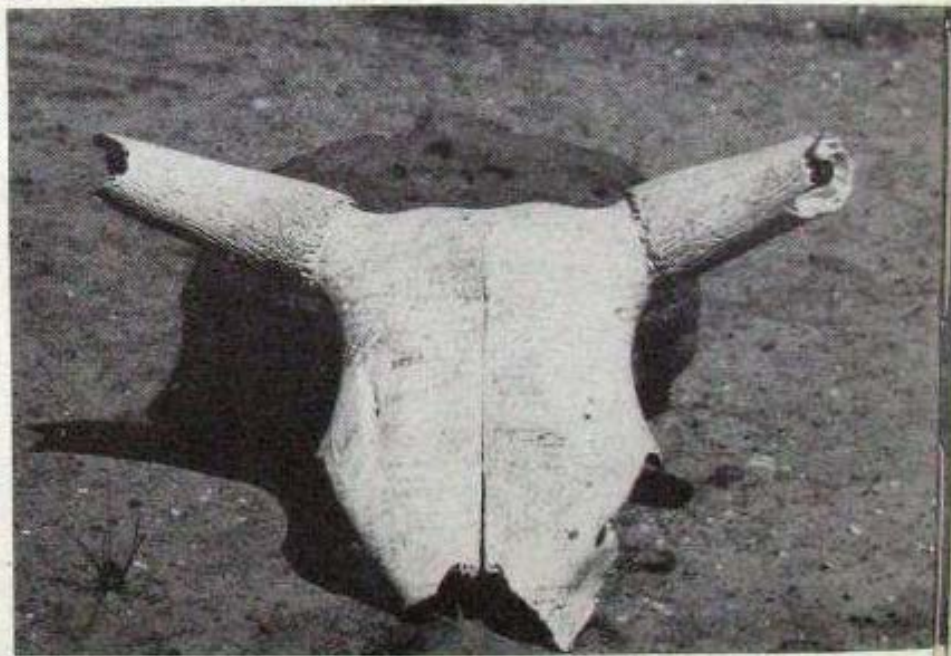
Auxiliary Field



TOWER GRIFFITH FIELD

HISTORICAL RECORD—TARVER FIELD

"BULLS HEAD"—TEXAS



AIRBORNE—TARVER FIELD

Up and Down Moore Ave.



ANOTHER ANGLE—TURNING ON BASE LEG



THE MAIN DRAG



Keeping Fit in Texas



ORGANIZED P.T.



R.A.F. SPIT FIRES



SOCCER TROPHIES



DINGHY DRILL

Off Duty



BEFORE THE BELL

A
F
T
E
R
N
O
O
N
B
R
E
A
K



THE BELL RINGS



A QUIET CORNER—RECREATION HALL



THE U.S.O. TERRELL



A CORNER IN THE U.S.O.

Before

Long Cross



BRIEFING THE ROUTE—
COMPARISON OF DISTANCE



BRIEFING—THE WEATHER



F/LT. CORNISH LEADS



A TEAM—1800 MILES TO GO

Country

During



TYPICAL SCENERY

ON ROUTE

After



BACK AT TERRELL—
FLYING TIME 13 HOURS



U. C. 64 C.O.'s "JUMBO."—CARRIER OF SPARES
AND THOSE WHO FALL BY THE WAYSIDE—NO
SERVICE REQUIRED. WELL DONE 20 COURSE.

THE ALLIED BOMBING OFFENSIVE
Intelligent Library

The War Fronts

PROGRESS OF THE WAR
WITH MAPS
WITH MAPS





Nº 1 BRITISH FLYING TRAINING SCHOOL HONOURS *and* AWARDS

F/SGT. A.L. AARON



D.F.M. Nº 6 COURSE

RANK	NAME	DECORATION	COURSE	RANK	NAME	DECORATION	COURSE
F/LT.	K.G. BICKERS	D.F.C.	Nº 4	F/O	I.K. CRAWFORD	D.F.C.	Nº 2
F/O	N. SHOTT	D.F.C.	Nº 5	F/O	A.A. VALE	D.F.C.	Nº 2
SGT.	J.A. CHRISTIE	D.F.M.	Nº 9	P/O	F.J. RICHARDSON	D.F.C.	Nº 5

Per Ardua Ad Astra



AC2.C K. F. ALLEN

AC2.C J. ABLETT

AC2.C K. ALLISON

AC2.C E. S. ALLARD

AC2.C D. J. ANDREWARTH



AC2.C L. T. N. ANDREWS

LAC M. M. M. ARDITI

AC2.C D. W. ASHBY

ASHMAN

AC2.C J. R. ATHERTON



AC2.C G. ATKINS

AC2.C A. W. AYRES

LAC E. C. BAKER

AC2.C J. S. BAKER

AV/C R. P. BAKER



AC2.C A. S. BALDWIN

AC2.C G. W. BANKS

AC2.C F. A. BARNES

LAC J. C. BARNES

CPL C. J. BARRETT



AC2.C I. W. BEESE

AC2.C B. R. BEEBEE

AC2.C R. J. BATTEN

AC1 W. J. BATES

AC2.C M. G. BATCHELDORE



AC1.C D. E. BENGEPFELD

LAC D. G. BENNETT

AC1.C M. F. J. BEREY

AC1.C R. BEYNON

AV/C L. J. BIANCHI



PVT H. A. BIDENKAP, JR.



LAC W. L. H. BINCE



CPL P. O. J. BJORKLUND



AC2C A. H. V. BLACK



AC2C W. G. B. BLACK



AC2C G. H. BLASDALE



AC2C L. J. BONEHAM



AC2C E. J. BONNEY-JAMES



LAC J. BOOCOCK



AC2C J. F. BOON



AC2.C A. G. BOURNE

AV/C G. G. BOWERS

PVT I. BOWEN

AC2.C T. BREAKWELL

AC2.C J. A. BRADLEY



AC2.C L. I. E. BRISSENDEN

AC2.C R. G. BROBYN

AC2.C P. O. BROOKE

LAC R. E. BROOM

AC2.C H. J. BUCKLEY



AV/C P. W. BUECHLER



AC2.C L. F. BUNGAY



AC2.C D. A. BURTON



AC2.C C. BURR



AC2.C R. J. BUTCHER



AC1.C A. J. CANNON



LAC A. CANTRILL



AC1.C C. A. CAUSLEY



AV/C B. J. CAYNAR



AC2.C R. J. CHALLINOR



AC2.C G. E. CHEETHAM



AC2.C H. B. CHENEY



AC2.C D. J. CLARE



AC2.C H. G. CLARK



AC2.C R. J. CLEMENTS



SGT A. W. CLEMENTS



AC2.C W. D. CLIFFE



AC2.C J. I. CODD



AC2.C D. J. COLWILL



AC2.C P. L. COOK



AC2.C N. COOK



AC2.C R. COOPER



S/SGT W. H. COOPER



AC2.C E. A. CORNELL



AC2.C W. J. COTTER



AC2.C R. W. COTTINGHAM



AC2.C C. J. COUCH



LAC L. COUPE



AC2.C R. E. COUPLAND



AC2.C D. F. CREW



AC2.C D. H. CRISP

AC2.C R. F. CROOK

AC2.C H. C. CROSBY

AC2.C E. CROSS

AC2.C P. J. CUDMORE



AC2.C D. H. CUTLER

AC2.C G. H. CUTTING

AC2.C E. T. DALE

LAC J. B. DAVIDSON

AC2.C L. B. DAWSON



AC2.C P. H. DELVES



AV/C D. S. DENNIS



AC2.C G. DEWS



AC2.C W. L. DEWSNAP



AC2.C G. W. DODSWORTH



AC2.C J. DAVIES



AV/C G. A. DONOHOE



AC2.C A. E. DREW



LAC C. J. DUSSEAU



AC2.C T. D. EDWARDS



LAC S. EDWARDS

F/SGT C. D. ELLIS

AC2.C R. W. ELLIS

AC2.C S. E. ELLIS

AC2.C V. R. ELLIS



AC2.C A. D. FALCONER

AC2.C D. W. FENNELL

LAC G. M. FILE

AC2.C E. R. FLACK

AC2.C H. E. FLETCHER



CPL A. S. J. FORD



AC2C E. FORD



AC2C A. F. FORDER



AC2C E. N. FOWEATHER



AC2C J. G. FOWLER



AC1C L. W. GALE



AC2C V. M. R. GARCIA-SALAS



AC2C H. G. GARDNER



AC2C W. L. GASH



LAC P. R. GATES



AC2.C E. GILL

AC2.C M. GILLESPIE

AV/C W. GLADSTONE

AC2.C A. C. GRANT

CPL A. E. GREEN



AV/C D. E. GRIFFITHS

AC2.C J. M. GRIFFIN

SGT D. C. HAGGIS

AV/C C. E. HALL

AC2.C W. H. HANDS



AC2.C C. J. HANSON



AV/C R. S. HARR



AC2.C K. G. HARRIS



AC2.C R. J. HARRISON



AV/C A. A. HART, JR.



AC2.C G. F. HARVEY



AC2.C H. G. C. HATTER



AC2.C J. P. HAYES



AC2.C K. A. HEAD



AC2.C J. F. HENDERSON



AC2.C J. J. G. HENNESSY



AC2.C W. S. HOLLETT



AV/C H. E. HOPP



CPL C. C. R. HUMPHREY



AC2.C H. IRONS



AC2.C G. A. WATT



S/SGT W. S. JACKSON



AC1.C H. I. JENNER



LAC J. A. JOHNSON



AC1.C J. B. JOHANSON



AC2C T. R. JOHNSON



AC2C A. H. K. JOHNSTON



CPL W. L. JONES



AC2C S. JOYCE



AC2C R. KAYE



AC2C F. J. KELLY



AC2C J. KELLY



AC1C G. J. A. KERR



AC2C R. W. KING



AC2C R. W. KIRK



AC2C W. J. KNIGHT



AC2C E. J. KNIGHT



AV/C D. A. KUEBLER, JR.



AC2C C. W. LAMBERT



AC2C W. L. LANE



AV/C H. H. LAWRENCE



LAC B. LATHAM



AC2C D. A. LAWRIE



AC2C F. A. LEAVER



LAC K. G. LEE



AC2.C B. W. H. LEWIN



AC2.C H. S. LEWIS



AV/C W. W. LITTLE



AC2.C F. R. LLOYD



AV/C F. J. LINARI



F/SGT J. L. LUMSDEN



AC2.C H. V. P. LUTHER



CPL T. L. LYONS



AC2.C L. MARTIN



CPL E. H. MARTIN



AC2.C D. MARTINDALE



LAC W. J. MATCHAM



S/SGT K. W. MATCHETT



AC2.C W. R. MATTHEWS



AC1.C J. McCREDDIE



AC2.C S. McLEAN



AC2.C D. F. McMURRAY



AC2.C R. MEARNS



CPL J. H. MERRETT



SGT G. MEYRICK



LAC W. R. MILLER



AC2C P. A. MILES



AC2C J. S. MILLWARD



AC2C G. E. MITCHELL



AC2C A. MITTON



AC1C C. W. J. MOORE



AC2C P. H. G. MORGAN



AC2C J. MONAGHAN



AC2C T. C. MONTGOMERY



AC2C R. H. MOORES



AC2.C J. D. W. NEAGLE

AC2.C W. F. MURPHY

LAC J. W. MURPHY

AV/C O. K. MORTON

CPL C. N. MORRIS



AC2.C D. R. OFFER

CPL A. E. OADES

AC2.C A. OADES

AC2.C R. W. NIMMO

AC2.C J. NEWTON



AC2.C L. OLDACRE

AC2.C A. F. ORGAN

AC2.C R. A. ORME

AC2.C C. G. O'SULLIVAN

AC2.C E. W. PACKMAN



AC2.C R. H. F. PALMER

AC2.C K. P. PARK

CPL W. H. PAUL

AC2.C R. W. PEMBLETON

AC2.C L. J. PENNEY



AV/C A. W. PETERSON

LAC G. S. PICKLES

CPL L. PILLING

AC2.C E. POOLEY

AC2.C K. A. G. PORTER



R. S. PORTER

AC2.C I. F. E. POWLEY

AC2.C J. PRIDDIN

CPL C. H. PRIOR

AC2.C W. W. J. FRITCHARD



AC1C K. R. PULIAN



AC2C R. L. PULLAN



AV/C D. C. RAMLOW



AC2C L. A. READ



AC2C I. A. REYNOLDS



AC1C J. R. ROBERTS



AC2C W. L. ROBINSON



CPL C. M. ROCHE



AV/C J. H. ROEDERSHEIMER



AC2C E. A. ROSS



AC2.C A. RUNDLE



LAC A. W. J. RUSSIL



AC2.C A. W. SCOTT



LAC C. V. SHEFFIELD



PVT H. E. SHELLENBARGER



LAC R. O. SHEPPARD



AC2.C J. F. S. SIMPSON



LAC J. S. SMALE



AC2.C D. H. J. SMITH



AC2.C W. SMITH



AC2.C G. SNOWDON



AC2.C D. J. SODEN



AC2.C S. G. SPEAKMAN



AC2.C R. V. SPITTLE



AC2.C H. STAPLETON



AC1 P. G. STEAD



AC2.C F. C. STEELE



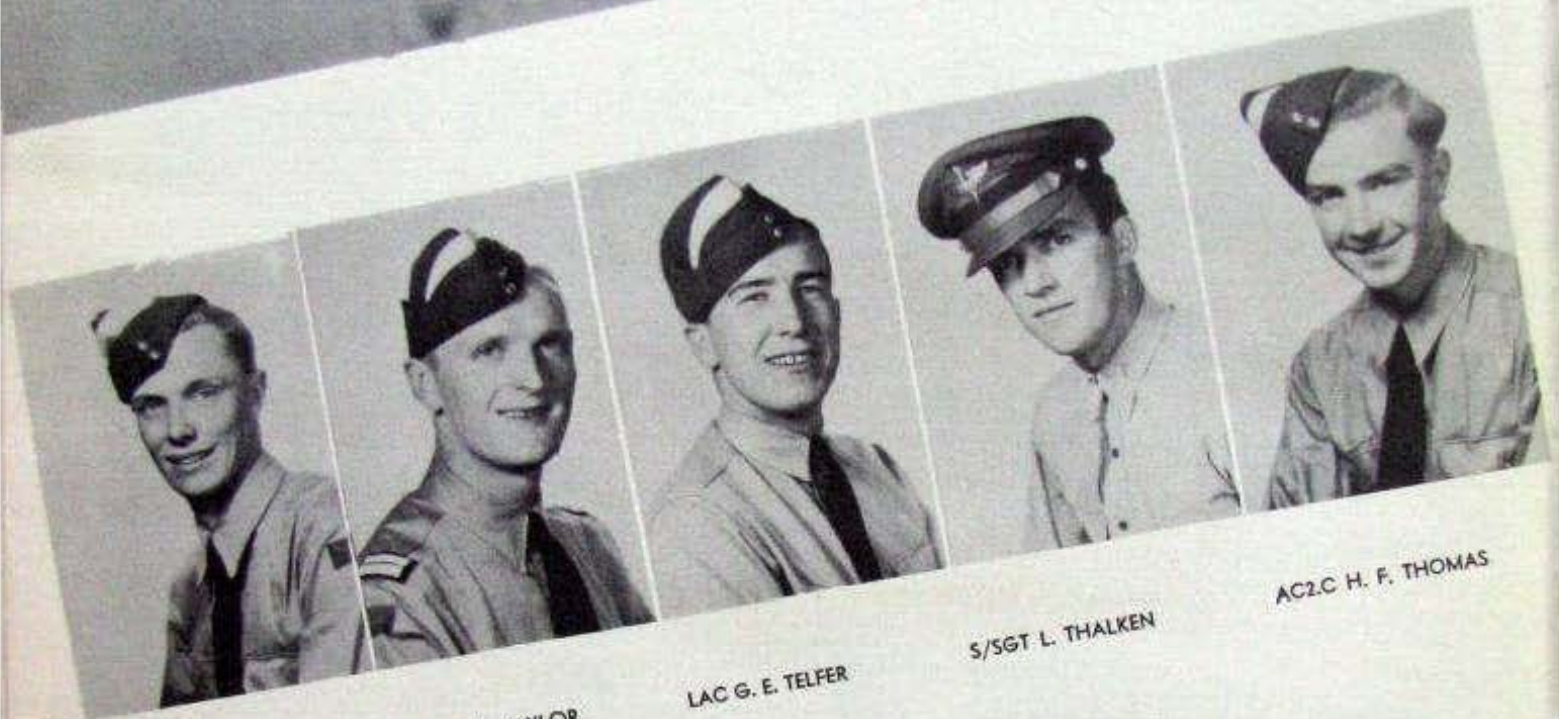
LAC C. R. STEVENSON



AC2.C J. STONES



AC2.C R. H. SUSSAMS



AC2.C K. J. TAYLOR

CPL W. A. TAYLOR

LAC G. E. TELFER

S/SGT L. THALKEN

AC2.C H. F. THOMAS



AC2.C R. D. THOMSON

AC1.C R. P. R. TRIGGOL

AC2.C R. J. TRUSSLER

LAC D. G. TWIST

AC2.C T. TWIST



AC1C J. TYMON



AC2C L. H. USHER



AC2C D. A. H. L. VANCE



AC2C G. L. VERRAN



AC1 A. F. WALKER



AC2C W. S. WARREN



AC2C J. WARWICK



AC2C R. E. WATT



AC2C R. WATSON



AC2C E. P. WILD



AC2.C F. H. E. WILLETT



AC2.C J. H. WHITE



AC2.C K. G. WHITESIDE



AC2.C E. WIGGAN



AC2.C C. WILKINSON



AC2.C N. J. WILLIAMS



AC2.C C. T. WILLIAMSON



AC2.C R. WILSON



AC2.C K. B. WILLS



AC2.C F. G. WISBY



SGT L. A. WOOD



AC2.C N. R. WOODHOUSE



AC2.C J. G. W. WOODROW



AC2.C R. A. WRIGHT



AC2.C P. A. YOUNG



J. PALMER



M. J. ROE



AV/C A. W. BOLTON



AC2.C E. E. W. BERRY



AC2.C R. C. HIGGINS

Distinguished Visitors



AIR VICE MARSHALL R. P. WILLOCK C. B., AND BRIG. GEN. MYERS



EMPIRE CENTRAL FLYING SCHOOL STAFF VISIT

Graduation Congratulations



BRITISH



AMERICAN

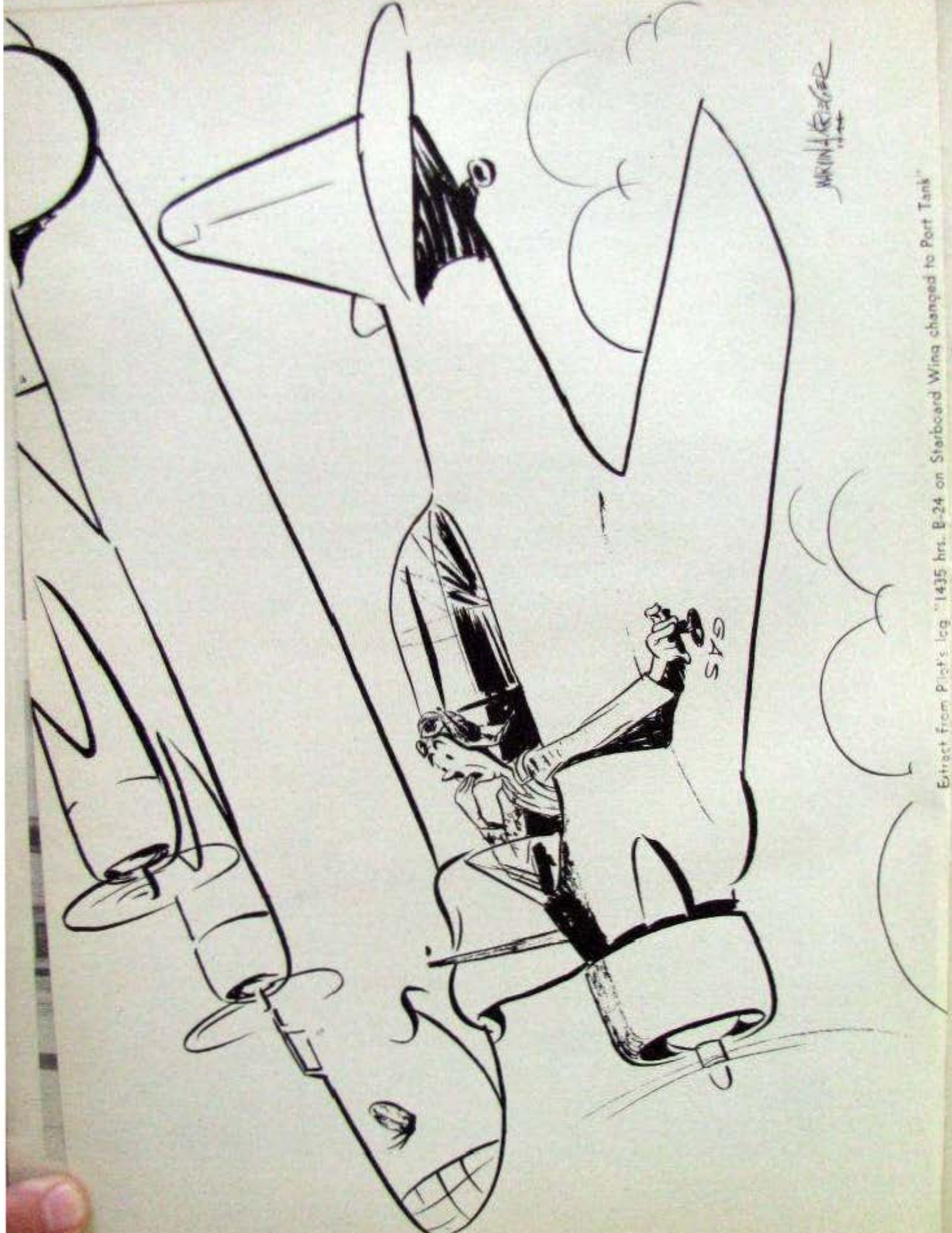
Distinction



MOST OUTSTANDING CADET
NO. 19 COURSE



AV. CADET W. H. COOPER
Receiving Silver Cigarette Case
From Major Long



MURKIN + RIEGER

Extract from Pilot's log "1435 hrs. B-24 on Starboard Wing changed to Port Tank"

