

CA2ALID 15

67 572

c.1

CA2 ALID 15 1967S72  
Survey of Edson.

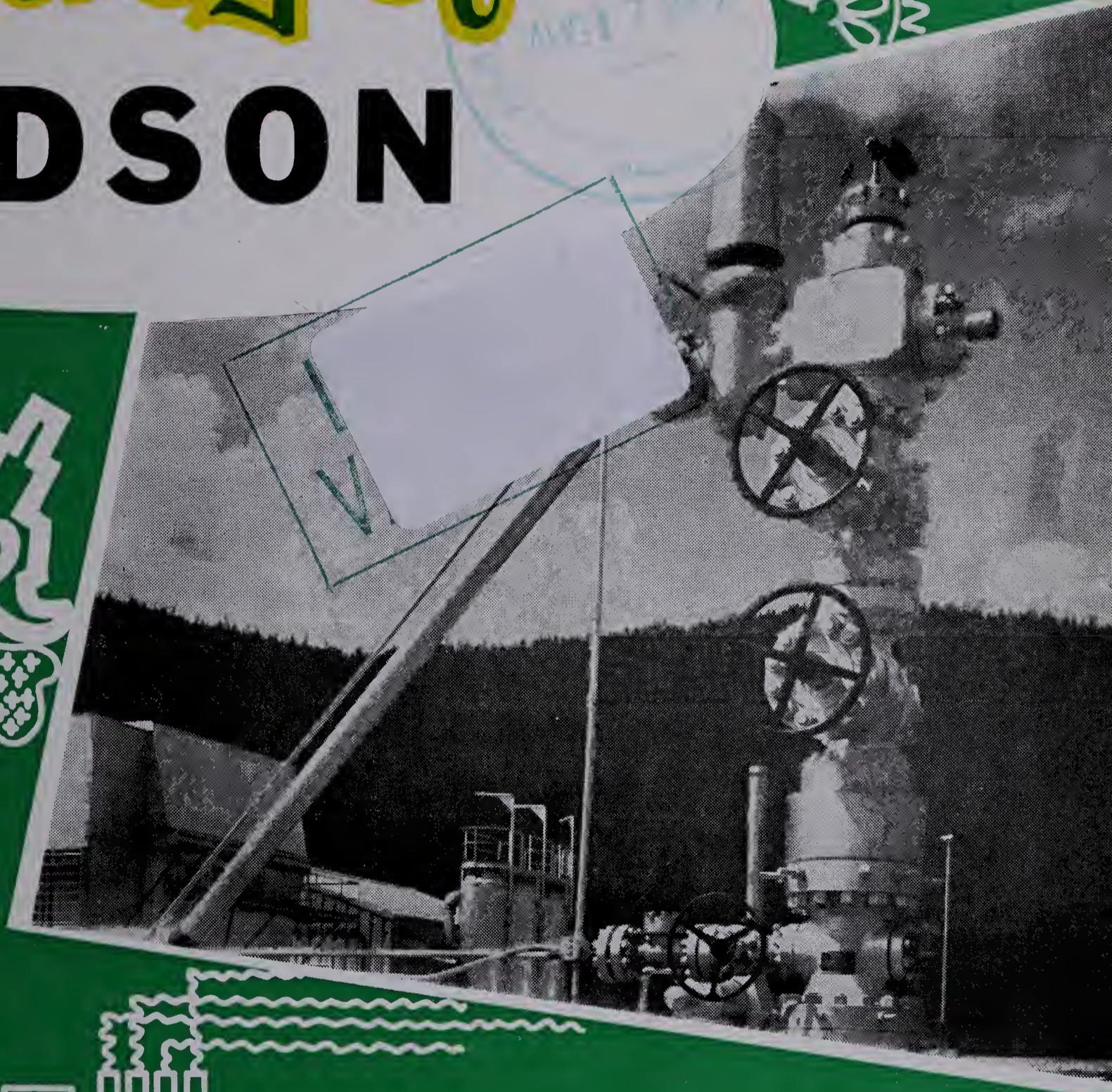


3 3398 00137 4387

# Survey of

# EDSON

APR 7 1967



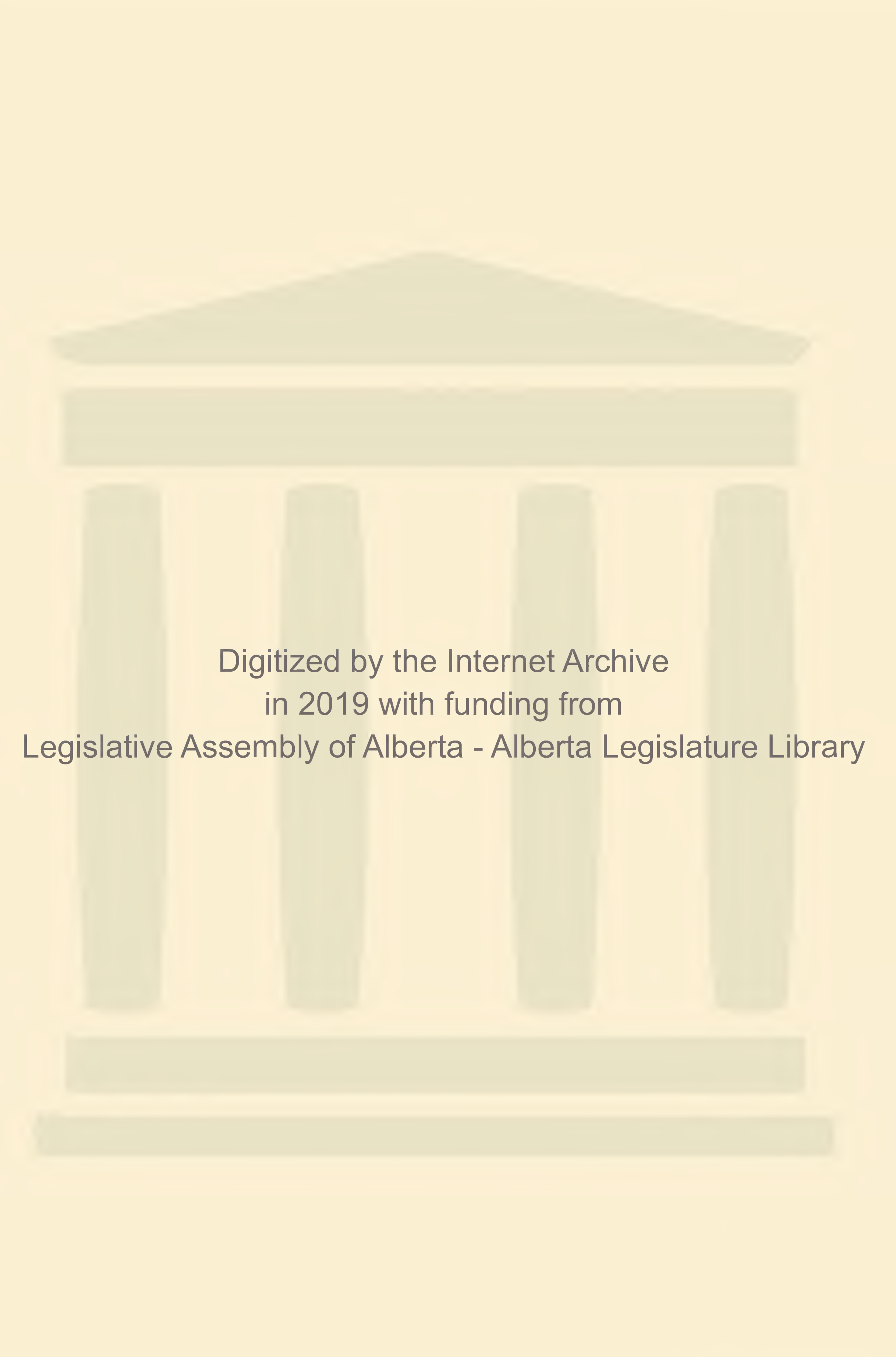
*Prepared By*

INDUSTRIAL DEVELOPMENT BRANCH

DEPARTMENT OF INDUSTRY & DEVELOPMENT

Government of the Province of Alberta





Digitized by the Internet Archive  
in 2019 with funding from

Legislative Assembly of Alberta - Alberta Legislature Library

# Town of Edson

(Revised June, 1967)

## 1. LOCATION

Section 15 - 53 - 17 - W5 in Census Division 14. This location is 130 miles west of Edmonton on Highway No. 16 (Yellowhead Route); and on the main line of the Canadian National Railway from Edmonton to Vancouver.

## 2. ALTITUDE

2,985 feet      Latitude - 53/35      Longitude - 116/25

## 3. TEMPERATURE

Mean summer temperature - 53 degrees F.

Mean winter temperature - 23 degrees F.

Mean yearly temperature - 36 degrees F.

(These averages cover a period of 22 years)

## 4. RAINFALL

Total annual precipitation - 20.27 inches.

(These averages cover a period of 37 years)

## 5. GEOLOGY

The underlying rocks in the Edson district are shales and sandstones which were deposited by streams in lakes and deltas. Fresh water in origin, they are several hundred feet thick in that area. The rocks are of the "Paskopoo Formation" and have an early Tertiary Age which began some fifty million years ago. Since these rocks were deposited, the North American Continent has been uplifted. Consequently the rocks have eroded and only a fraction of their original thickness remains. During the Ice Age, glaciers moved over this area depositing on the surface, boulder clay and similar glacial deposits. Many of the hills and smaller elevations in this area consist of glacial deposits.

## 6. SOIL

The soil in this district is of the Grey Wooded variety.

### Profile:

These soils have developed under humid soil moisture conditions. The surface horizons consist of a semi-decomposed leaf mold layer that may be absent if the area has been burned over; a thin (sometimes absent) lower horizon that may be grey-black, brown or grey-brown, and a severely leached and platy, greyish horizon, whose depth will average about six to eight inches.



The deeper horizons are heavier textured, compact and often darker in color than the top. The depth to lime is quite variable, often ranging from 30 to 50 inches.

**Fertility:**

Soils in this zone are relatively less fertile because of leaching; the deeper the leached layer, the less fertile. However, patches of transition soils are found within the zone.

**Vegetation:**

A mixed deciduous and evergreen woodland in which peats and muskegs frequently occur.

**Land Use:**

This is a mixed farming area in which legumes, hays and coarse grains are the most desirable crops. Rotations, including legumes, supplemented with fertilizers, where needed, have given the most satisfactory results.

**7. HISTORY**

The town of Edson was originally established as Heatherwood, but in 1911, it was renamed for Edson J. Chamberlain, vice-president and general manager of the Grand Trunk Pacific Railway.

The steel for the railroad was laid in 1910 and the first train arrived in July of that year. B. G. Latta, later chief express agent for the C.N.R., was the first station agent at Edson.



An aerial view of the business area of Edson



Wolf Creek, 10 miles east of Edson, was the original site for the town. Real estate brokers had acquired all the property with the idea of re-selling it to the rail company, but the G.T.P. refused to buy and so Edson was located as a divisional point on a site that included much muskeg.

Some of the early settlers in the district included W. H. Jellis, who came to Canada with the Barr colonists. He opened a hardware, lumber and construction business. Others were H. A. Switzer, who established a drug store; H. Spanner, who opened Spanner Bros. Store and later sold to another early settler, H. Goldstick; J. D. McKenzie, who opened a shoe store; M. Schwartz of Schwartz General Store; P. Robbins; W. Orr; W. Hope; John Leyden, customs officer; W. Bulten and Jerry Calahan, the first yard-masters for the railroad and also first liquor agent. Fulmer and Covert Real Estate, Swanson Grocery and Davies' Men's Wear were three of the earlier businesses in Edson.

The first postmaster in Edson was J. Griggs. C. C. Markam and Company opened a wholesale feed and grain business. J. H. Lloyd, Sr., was named first village reeve.

Edson was incorporated as a town in September, 1911 with G. Lawrence as mayor and H. Switzer, J. H. Lloyd, Sr., John Griggs and P. F. Robbins as councillors. The same year the Merchants Bank of Canada opened a branch in Edson which later was taken over by the Imperial Bank. That was the year Edson built a two-room school, too. The first school board was formed by F. Fulmer, chairman; W. Jellis, John Griggs and R. H. Bradley.

In 1911 the settlers of Edson, in keeping with the town's rapid progress, formed a 14-piece brass band which held sway in the town until 1918.

Religion came to town with the arrival of Rev. G. S. Provis of the Anglican Church and Rev. J. Whelan of the Methodist Church.

At one time Edson was the jumping-off point for the north and mail for Grande Prairie was taken over this road by stagecoach and horseback from 1911 to April, 1915. When the first mail left in July, 1911, Edson residents held a large celebration to salute the ever-increasing expansion of the northwest.

The Edson Leader, the town's first newspaper, was established in 1912 with W. C. R. Garrioch as editor. In 1914 Edson got a hospital through the work of the Victorian Order of Nurses. This hospital was later taken over by the Sisters of Service of Canada. The first doctor in the town was Dr. Cortiso. Appropriately enough, the first child born in Edson was christened Edson Reid.

Over the years, from its beginnings on an acre of muskeg, Edson has grown and is today 'home' for the men employed in the expanding timber, oil and gas industries.

## **8. LIVING CONDITIONS**

The town of Edson is situated in the foothills of the Rocky Mountains, 75 miles from the Jasper National Park gate and 105 miles from the town of Jasper, Alberta.

It is a busy centre with ties, lumber, pulp, gas, oil and sulphur development as the focal point. Numerous stores give excellent service to the populace. Edson schools instruct students from grades one to twelve and in addition offer such subjects as Home Economics, Industrial Arts, Music and business courses.

Recreationally speaking Edson is a sportsman's paradise. Good fishing and boating in streams and rivers within a short distance of the town offer family recreation. There is much wild life in the Edson district and hunters from many distant points arrive each fall to hunt duck, bush partridge, chicken, deer, moose, elk and bear.

Some 85 per cent of the homes in Edson are owner-occupied. House rentals run about \$75 for a four room home equipped with water, sewer, natural gas and lights and \$100 a month for five rooms with water, sewer, natural gas and lights.

## **9. ADMINISTRATION**

The town is governed by a mayor elected for a two year term and six councillors, two elected each year for a three year term. It is administered by a permanent secretary manager and staff.

## **10. LAWS AND REGULATIONS**

A zoning by-law divides the town into districts, prescribing the purpose for which buildings and land may be used. All plans for new buildings, alterations to buildings and the removal of buildings must be submitted to the Building Inspector who in turn issues a permit.

Sanitary regulations comply with Alberta Public Health Regulations.

The R.C.M.P. also has barracks in the town. The force consists of one corporal, three constables and a three-man highway patrol.

The town has its own police protection. There is a chief and four constables.

## **11. FIRE PROTECTION**

The fire brigade consists of a fire chief and 14 volunteer firemen.

Equipment — 1 1952 Chevrolet fire truck, 500 gpm pumper with a 500 gallon water tank, 2000 feet 2½ inch hose, 1000 feet 1½ inch hose, 500 feet 1 inch hose, extension and roof ladders, coats, boots, axes, helmets, etc.

Water is secured from six wells and is pumped into a 100,000 gallon ground reservoir or directly into the supply system and thence to a 500,000 gallon elevated steel reservoir and a 50,000 elevated steel tank.

There are 61 fire hydrants conveniently located throughout the town. A fire alarm system is connected to all firemen's homes.



## 12. TAX STRUCTURE

	<b>1967 Net Assessment</b>
Land, 100% of value	\$ 955,460.00
Improvements, 60% of value	4,192,630.00
	<hr/>
	\$5,148,090.00

Mill Rate - 1966: Municipal 29.05, School 32.56, Hosp. 3.39. Total 65 mills.

## 13. AREAS

Area of town - 1,397.34 acres.

Streets, lanes and highways - 120 acres.

Public parks and playgrounds - 50 acres.

Miles of roads, streets and lanes:

	<b>Asphalt</b>	<b>Gravel</b>	<b>Oil</b>	<b>Total</b>
Provincial Main	2.25			2.25
Public Lanes		7.25		7.25
Roads and Streets	1.00	5.75	9.46	16.21
				<hr/>
Total Miles				25.71

There are 12 $\frac{3}{4}$  miles of cement sidewalk, 1.65 miles of asphalt.

## 14. SEWER AND WATER MAIN MILEAGE

Sanitary sewers	16.30
Water mains	13.97
Storm sewers	1.47



One of Edson's newer residential areas



## 15. POWER

Three phase 60 cycle electrical power is supplied to the town by Calgary Power Ltd.

### **Domestic Service:**

Available only for lighting, cooking, domestic power and ordinary use in private houses and individual apartments used exclusively for residential purposes.

First 20 KWH (or less) per month - \$2.60 gross min., subject to 30c prompt payment discount, making \$2.30 net minimum.

Next 280 KWH per month @ 1½c KWH

Over 300 KWH per month @ 1½c KWH

Reconnection charge - \$4.60.

### **General Service:**

Available where other rates do not apply:

For first KW, or fraction thereof of billing demand, minimum monthly charge - \$2.30.

Monthly minimum \$2.30.

Monthly service charge per KW of demand - \$1.00.

First 40 KWH per KW of demand per month .05c per KW.

Next 70 KWH per month per KW of billing demand .03c per KW.

All additional KWH consumed per month - .0125c per KW.

All over 700 KWH per month in .03c block are at .0125c per KW.

### **Discount:**

The above charges for commercial and general service are net rates. For billing purposes the net bill will be increased by approximately 10% (but not less than 30c) in order to arrive at the gross amount. Bills are payable net within 10 days of date rendered.

### **Deposit:**

Twice the minimum monthly bill or at the company's option, twice the estimated bill.

### **Reconnection Charge:**

Twice the minimum monthly bill.

## 16. WATER

Water is obtained from five wells (108 feet to 316 feet deep). Average daily consumption in 1966 was 170,617 gallons. Water is pumped into a 100,000 gallon ground reservoir or direct into supply system and thence into a 500,000 gallon elevated steel ground reservoir or to a steel 50,000 gallon elevated tank. There are 941 service connections totally metered.

Total consumption 1966 65,275,400 gallons.



**Water Rates:**

First 1,000 gallons used per month - \$1.00 net per month.

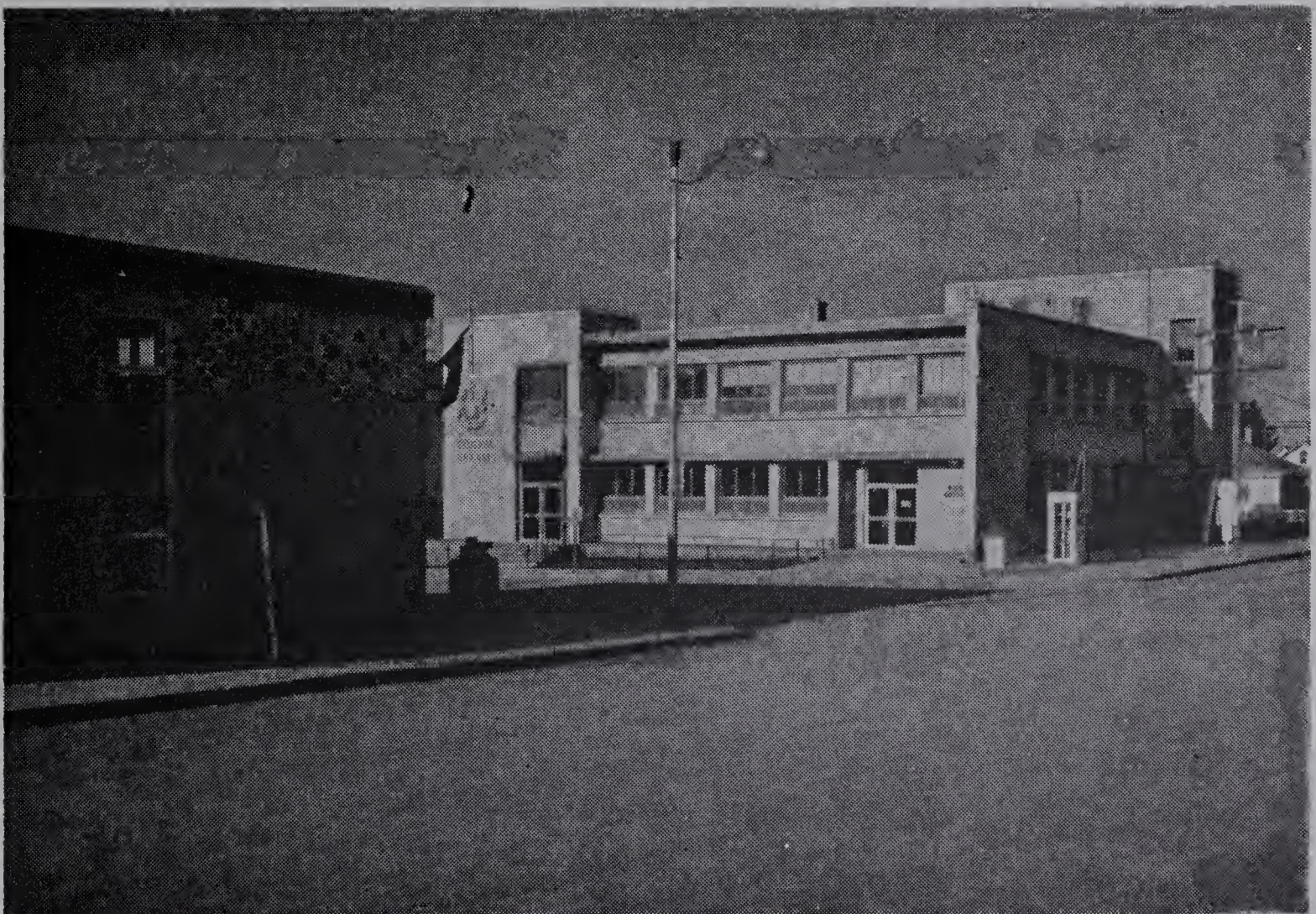
All additional gallons used per month - 50c per M gallons.

Minimum charge - \$3.00 net per month.

<b>Water Analysis</b>	<b>Parts per Million</b>
Total Solids	610
Ignition Loss	114
Hardness	120
Sulphates	55
Chlorides	2
Alkalinity	430
Nature of Alkalinity - Bicarbonate of Soda, Lime and Magnesium.	
Nitrites	Nil
Nitrates	Nil
Iron	0.08
Fluorine	0.22

**Remarks:**

Chemically this water is suitable. Soda content equals 23.0 grains per gallon. Will harm plants and corrode aluminum.



The Intersection of Main Street and 5th Avenue, Edson



## **17. GAS**

Natural gas is supplied to the town under a franchise to Northwestern Utilities Ltd.

### **General Rate No. 1:**

Available to all customers.

First 20 therms or less - \$2.50 per month.

All additional therms - 5.7c per therm.

Minimum monthly charge - \$2.50.

When accounts are not paid on or before the due date the charge per therm, other than the first 20 therms, shall be increased by .3c and the gross rate so arrived at shall apply.

### **Optional Rate No. 2:**

Available on annual contract to all customers where annual consumption is more than 31,000 therms.

Fixed charge - \$35.00 per month; plus

Commodity charge - 4.4c per therm.

Minimum monthly charge - \$35.00.

When accounts are not paid on or before the due date the charge per therm shall be increased 0.2c and the gross rate so arrived at shall apply.

This rate is available only on an annual contract, which shall continue from year to year thereafter until either party shall give to the other party, at least 30 days prior to the expiration of any such year a written notice of desire to terminate same, whereupon at the expiration of such year, it shall cease and determine.

## **18. L. P. GAS**

Heat value - 2,521 b.t.u. per gallon at 60 degrees F.

100 pound cylinder - \$5.50 F.O.B. Edson.

Bulk rate - .16c per gallon.

There is 10,000 gallon storage capacity at present in Edson.

## **19. DIESEL FUEL**

Heat value - 135,000 to 140,000 b.t.u. per gallon at 60 degrees F.

.19c per gallon.

Storage capacity - 26,000 gallons.

## **20. COAL**

None used in town.



## 21. LOCAL RESOURCES

Soft woods such as spruce, poplar and pine; clay for bricks; sand and gravel, marl, straw (hay), cereals, dairy products, poultry, eggs, etc., cattle, sheep, horses and hogs, honey, oil, gas, seed potatoes, vegetables.

## 22. GOVERNMENT OFFICES AND SERVICES

### Federal:

Post Office, Canada Manpower Centre, R.C.M.P. Barracks (Detachment, one corporal, three constables; Highway Patrol, 1 corporal, 2 constables), Meteorological 24 hr. Station.

### Provincial:

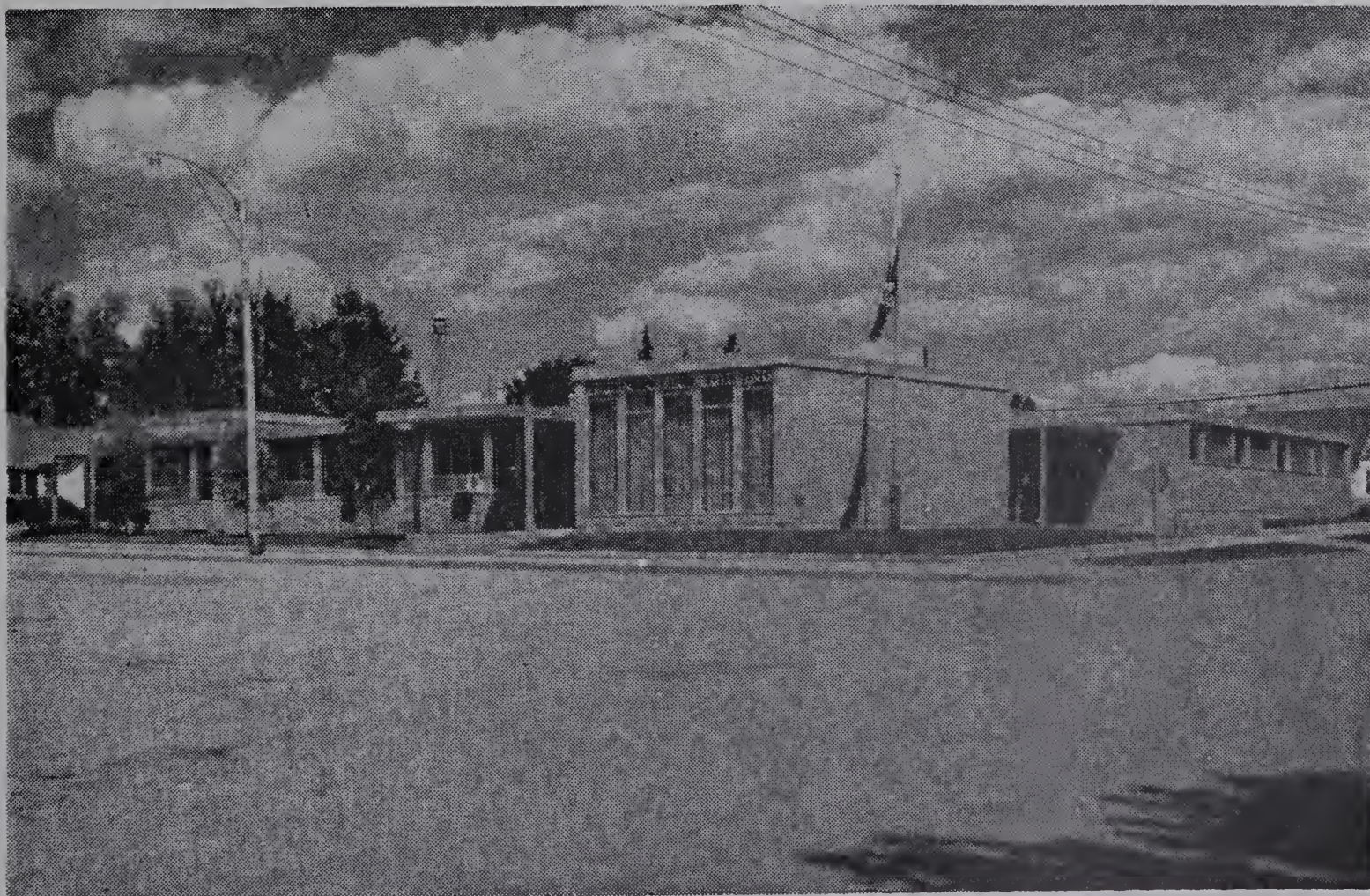
Court House, Resident Police Magistrate, Liquor Store, Treasury Branch, Alberta Government Telephones, Microwave Tower, Machinery Maintenance Depot, Resident District Road Engineer, District Superintendent of Schools, Improvement District I.D. 95-78-79-96, Department of Lands and Forests, Forest Superintendent, Radio Technician and Operator, Mechanical Foreman; Department of Welfare Officer, Fish and Wildlife Inspection Service Branch, Department of Public Works, Building Maintenance, Municipal Affairs.

A.R.D.A. Centre for Census Division Number 14.

### Municipal:

Civic Building - Town Secretary Manager and Staff, Superintendent of Works, Police Office, Fire Hall, Public Library (approximately 6,650 volumes).

Garbage collected weekly by town employees.



The Edson Civic Building



### 23. HEALTH SERVICES

The St. John's Hospital is operated by the Sisters of Service of Canada and is staffed by a superior administrator, 9 graduate nurses, six certified ward aides, one ward aide and two certified X-ray and Lab Technicians. The hospital contains 32 beds and five bassinets.

A new hospital is on the planning board.

There is an up-to-date clinic which houses the doctors and dentists. Each office has an examination room with the latest lighting and equipment.

#### Other Health Services:

- 3 doctors, M.S.
- 1 dentist
- 2 chiropractors
- 2 drug stores
- 1 ambulance service
- 1 funeral parlor

The Edson Health Unit with headquarters at Edson, serves an area from Drayton Valley and Evansburg west to Hinton. The unit is staffed by a doctor, health inspector, sanitary inspector, nurses and stenographer technician.

### 24. PROFESSIONAL AND SKILLED SERVICES

(Excluding Health Services)

Type of Service	Number of Establishments
Barristers and Lawyers	1
Beauty Parlors	4
Barber Shops	5
Watch Repairs	2

### 25. TRANSPORTATION

Main Line Canadian National Railways - Vancouver to Montreal via Edson.

Highway 16 - hard surface Lloydminster to Jasper via Edson.

Grey Bus Line - daily service east and west.

Daily truck service to Edmonton and return.

Two taxis - 5 cabs.

Ambulance service.

Airstrip - light craft only.

### 26. NEWSPAPERS

Edson Leader - weekly circulation 1,845.



## 27. COMMUNICATIONS

Canadian National Telegraphs.

Alberta Government Telephones (automatic microwave circuits and land line circuits.)

Teletype - and mobile radio.

Post Office.

Nearest radio stations - Edmonton - CJCA, CFRN, CHED, CHFA, CKUA, CBX.

Nearest television stations - Edmonton - CFRN-TV, CBX-TV, (CFRN and CBX-TV Rebroadcast Tower on Channel 12 and 9 at Whitecourt).

## 28. FINANCIAL FACILITIES

Canadian Imperial Bank of Commerce, Bank of Nova Scotia, Alberta Treasury Branch, Edson District Credit Union.

## 29. HOTELS

	No. of Rooms	Rates	Licensed
Commodore	35	\$4.00	yes
Edson Motor Hotel	53	\$6.50	yes

## 30. TOURIST CAMPS

	No. of Units	Grade
Sunset Motel	21	4 star
Totem Motel	11	4 star
Tourist Centre Motel	14	4 star
Yellowhead Motel	15	4 star
Oil Centre Motel	11	4 star

### Trailer Parks:

Sunset Trailer Park, Hitchin' Post Trailer Park, Poplar Place Trailer Park, Lions Tourist Reception Centre.

## 31. CHURCHES

Anglican, United, Pentecostal Tabernacle, Roman Catholic, Russian Greek Orthodox, Dutch Christian Reformed, Baptist, Jehovah's Witnesses, Grace Lutheran.

## 32. LODGES

Masonic, I.O.O.F., Eastern Star, Royal Purple, Rebekahs, Knights of Columbus, B.P.O.E.

## 33. SERVICE CLUBS

Chamber of Commerce, Canadian Legion, Kinsmen, Women's Auxiliary Canadian Legion, Lions, Optimist, Opti Mrs., Opt-eens, Kinettes.



### 34. SOCIETIES AND ASSOCIATIONS

Glenwood Community Club, Red Cross Society, Fish and Game Association, Civic Service Association, St. John's Hospital Auxiliary, Farmers' Union of Alberta, Tri-Service Rodeo Association, Edson Curling Club, Edson Golf Club and Home and School Association.

### 35. EDUCATION

The Edson School Divisional Board of the Edson School Division No. 12 operates a complete elementary, junior and senior high school system, providing all grades up to and including grade 12. A program of ungraded primary grouping which was introduced in the Edson Division in September, 1957, has proved to be most successful and is being extended in the upper elementary levels of instruction. Nearly all electives are taught in the junior and senior high schools, with home economics and shop providing a maximum number of courses. All units are provided with an audiovisual room either in auditoriums or in separate rooms. The school population is made up as follows:

	<b>Grades</b>	<b>No. of Teachers</b>	<b>No. of pupils</b>
Elementary	1 to 6	47	1065
Junior High	7 to 9	23.5	424
High (Senior)	10 to 12	17	290

All schools are heated by natural gas, have complete toilet facilities and each school has a large playground.

A 30-room Senior Vocational School, a 15-room Elementary School, and a 6-room addition to the Junior High School — all under construction 1967.



Edson Jubilee Junior High School



### 36. THEATRES AND HALLS

	Seating Capacity	Stage	Piano
Canadian Legion	350	yes	yes
Elks Hall	100	no	yes
Edson Motor Hotel	187	no	yes
Commodore Hotel	130	no	yes
Collin Property Hall	100	no	yes
Glenwood Community	100	yes	yes
Nova Theatre	514	yes	no
High School Auditorium	700	yes	yes
Junior Jubilee High School	1000	yes	yes
Drive-In Theatre	250 cars		

### 37. CULTURAL ACTIVITIES

Edson Public Library which contains 6650 volumes is in charge of the Library Board. The Library receives the usual provincial grant and is tax supported.

Two local, 5-piece orchestras.

Edson Craft Centre has established a shop and offers participation and classes in weaving, pottery, leather work, wood work and art.

Dance school.



Edson's Centennial Arena



### 38. YOUTH ACTIVITIES

Boys - Scouts, Wolf Cubs, Junior Forest Wardens, Army Cadets.  
Girls - Brownies, Guides, Opteens.

### 39. SPORTS

Baseball (senior and junior), Softball (men's and women's), Hockey, Curling, Skiing, Badminton, Rifle Range (pistol and rifle), Fishing, Swimming, Hunting, Skin Diving, Golfing and Figure Skating.

#### Sports Facilities:

Covered curling rink - four sheets artificial ice.

Covered hockey and skating arena - artificial ice.

Sports grounds - Swimming Pool 75x35 - Wading Pool 15x35.

Willmore Park - 1 mile west, 1 mile south of town.

Camp and picnic grounds.

Rodeo grounds and race track.

Ski Lift.

### 40. FAIRS

Agricultural Fair, two day stampede, two sports days held yearly.

### 41. HISTORIC SITES

Starting point of the old Grande Prairie Trail.

Original Yellowhead Pack Trail.



Teeing off at the Edson Golf Course



## 42. CO-OPERATIVES

Edson District Credit Union, Farmers' Union of Alberta.

## 43. BUSINESS AND INDUSTRY

Type of Industry or Business	No. of Establishments	Producer or Manufacturer	Wholesale	Retail	Type of Industry or Business	No. of Establishments	Producer or Manufacturer	Wholesale	Retail
Ambulance .....	1	—	—	—	Laundry - Dry Cleaners ..	2	—	—	2
Bakeries .....	2	—	2	2	Coin Laundry .....	1	—	—	—
Banks .....	3	—	—	—	Lumber Yards .....	3	—	3	3
Barbers .....	5	—	—	—	Lumber Mills.....	2	—	2	2
Bowling Alleys .....	1	—	—	—	Milk Distributors .....	2	2	2	2
Body Shops .....	2	—	—	2	Motels .....	7	—	—	—
Books and Stationery— See Drug Stores					Music Teachers .....	3	—	—	—
Butchers .....	4	—	4	4	Optometrists .....	1	—	—	—
Building Contractors .....	3	—	—	3	Oil Distributors .....	5	—	5	—
Building Supplies .....	2	—	2	3	Oil Companies .....	2	—	—	—
Cartage Delivery.....	1	—	—	2	Painters & Decorators .....	3	—	—	—
Clothing — Men's .....	3	—	—	2	Paint Shops .....	1	—	—	1
Clothing — Women's .....	4	—	—	1	Photographers .....	1	—	—	—
Chiropractors .....	2	—	—	—	Pipe Lines (Gas) .....	—	—	—	—
Confectionery .....	2	—	—	2	Plumbers .....	3	—	—	—
Cold Storage Lockers .....	1	—	—	1	Pool Rooms .....	1	—	—	—
Dentists .....	1	—	—	—	Printing Shops .....	1	—	—	1
Doctors .....	3	—	—	—	Produce Wholesale .....	1	—	1	1
Drug Stores .....	2	—	—	2	Propane Gas Agents .....	2	—	—	2
Dry Goods .....	1	—	—	1	Public Accountants .....	2	—	—	—
Electrical Appliances .....	3	—	—	3	Radio Repairs .....	3	—	—	3
Electrical Contractors .....	3	—	—	—	Restaurants .....	9	—	—	—
Funeral Parlors .....	1	—	—	—	Shoe Repairs .....	1	—	—	—
Feed Stores .....	1	—	—	1	Shoe Stores .....	2	—	—	2
Garages and Service Stations .....	11	—	—	11	Sign Writers .....	1	—	—	—
Groceries .....	6	—	—	6	Second Hand Stores.....	1	—	—	1
Hairdressers .....	4	—	—	—	Storage Plant.....	2	—	—	—
Hardware .....	6	—	1	6	Tailor Shops .....	1	—	—	1
Hotels .....	2	—	—	—	Theatres .....	1	—	—	—
Implements .....	1	—	—	1	Drive In .....	1	—	—	—
Insurance & Real Estate..	3	—	—	—	Tinsmiths .....	3	—	—	—
Jewelers .....	2	—	—	2	Transports .....	2	—	—	—
Law Offices .....	1	—	—	—	Variety Stores .....	2	—	—	2
					Welding and Machine Shops.....	1	—	1	1
					Woodworking.....	1	—	1	1

## 44. SITES

Choice industrial sites with adjacent trackage and highway facilities are available.



## 45. INDUSTRIAL DEVELOPMENT

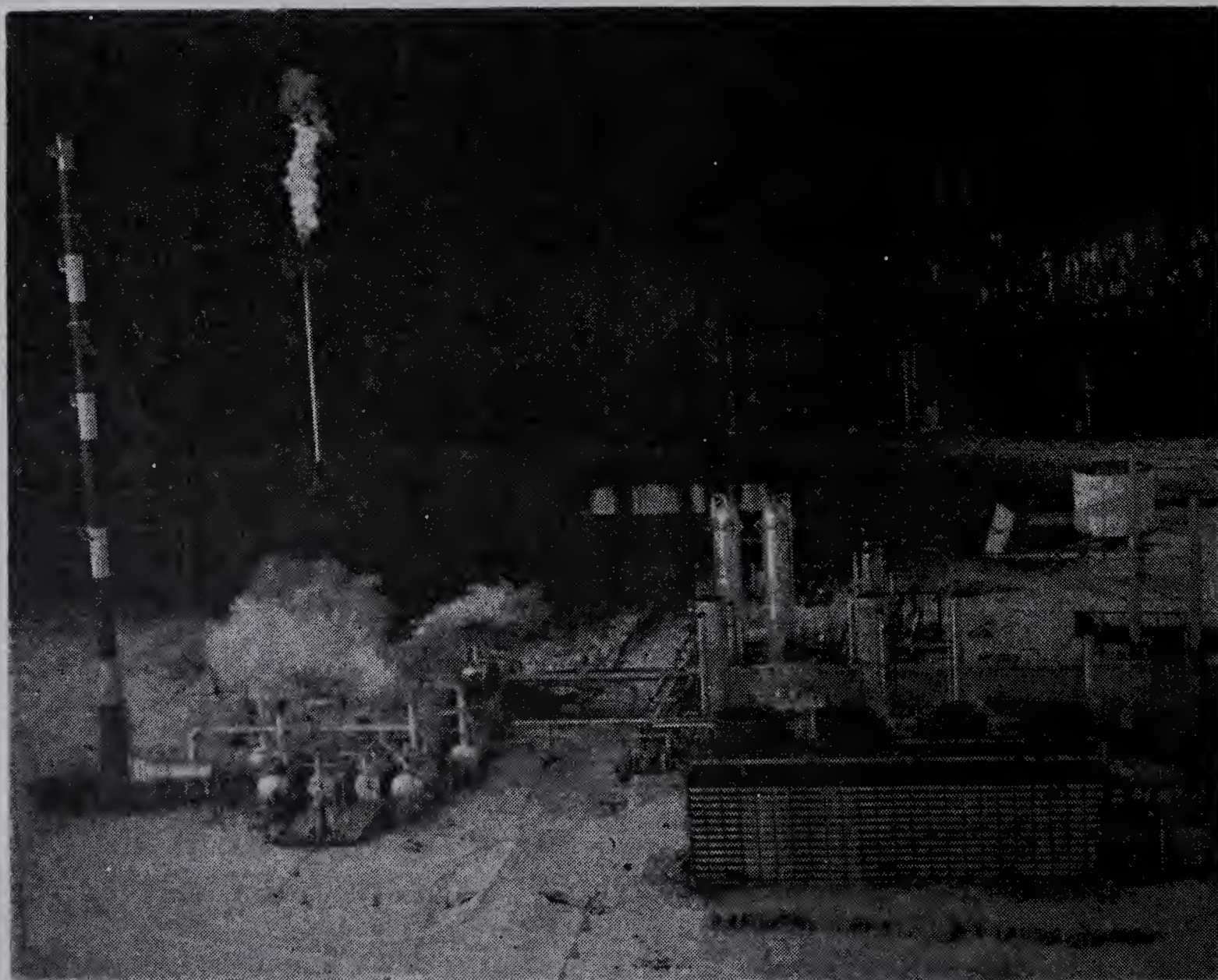
Edson, "Gateway to the Rockies", is a busy town with area headquarters for five federal and nine provincial departments area headquarters.

The major industry is the Hudson's Bay Gas Processing Plant three miles west of town. Employing 50 people, it has a capacity of 280 million cu. feet of gas per day; 225 tons of sulphur or three carloads; 2500 barrels of condensate. It is the terminal for the 30-inch pipeline which transports the plant's gas production to the Trans-Canada system at Carstairs 179 miles south.

Area office of Hudson's Bay Oil and Gas Company serves the Pine and Beaver Creek Gas Fields which provides the raw gas to the Windfall plant 45 miles north of Edson.

Trans-Mountain Pipelines Ltd. pumping station is an important terminal of the 36-inch oil line to Vancouver. Feeders to the line at the plant are Peace River pipeline, from the Sturgeon Lake field, 100 miles north; a condensate line from the Windfall Gas plant; and the small line from the Edson Gas plant. Several producing wells are connected by a 23-mile gathering line which yields over 180,000 barrels of light crude oil per year.

Alberta Gas Trunk Line Ltd., have a field headquarters in Edson serving the first section of the 1700 mile 30-inch gas line to California and the new gas line part way to Carstairs.



The Edson Gas Plant



A large highway construction firm is located at the junction of the Coal branch highway. This company is contracting on projects in central and northern Alberta.

A major trucking firm specializing in long-distance hauling of oil exploration equipment and drilling supplies, and general freight movement from the larger centres, is located here.

A centralized printing operation, for many weekly newspapers, is conducted by Edson Printers, with a modern rotary offset press.

A major wholesale firm has a multimillion dollar business serving the west central area of Alberta.

Forestry operations include pulp camps and contracted timber leases producing pulp logs for the North Western Pulp Mill, at Hinton. Fence post manufacturing has several small firms and individuals working on a contract basis. Sawmills in the area produce spruce, pine and poplar lumber and ties. Fire-killed timber has been a source for the dry-pulp industry and shipments have been made regularly for several years to mills in the mid-west U.S.

Through the efforts of ARDA (Agricultural Rehabilitation and Development Act) small farms are being encouraged to be consolidated into larger operations over a five-year period, to become self-sustained stock farms. Land not suitable for farming will be reforested.

The newly developed Lion's Park in Edson will serve as a focal point in the ever-expanding tourist industry with several Vacation Trails radiating from the town. The \$100,000 park has a Tourist Centre, picnic and tenting facilities, community centre, miniature railway, a model coal mine, wading pool, sand pit, a miniature fort, slides and playground. A fish pond will be stocked with rainbow trout for children's fishing only.

The Silver Summit Ski Development, 28 miles north of Edson, is now under construction, and will provide ideal skiing for Edmonton fans only 2½ hours drive from home. The proposed lodge will be circular with an area of 5000 square feet. The two-storey structure will have the recreation and observation areas on the second floor and eating facilities on the ground floor. Skiers will have swift rides to the top of the 4000 foot runs by a high-speed double lift and a smaller T-bar cable.

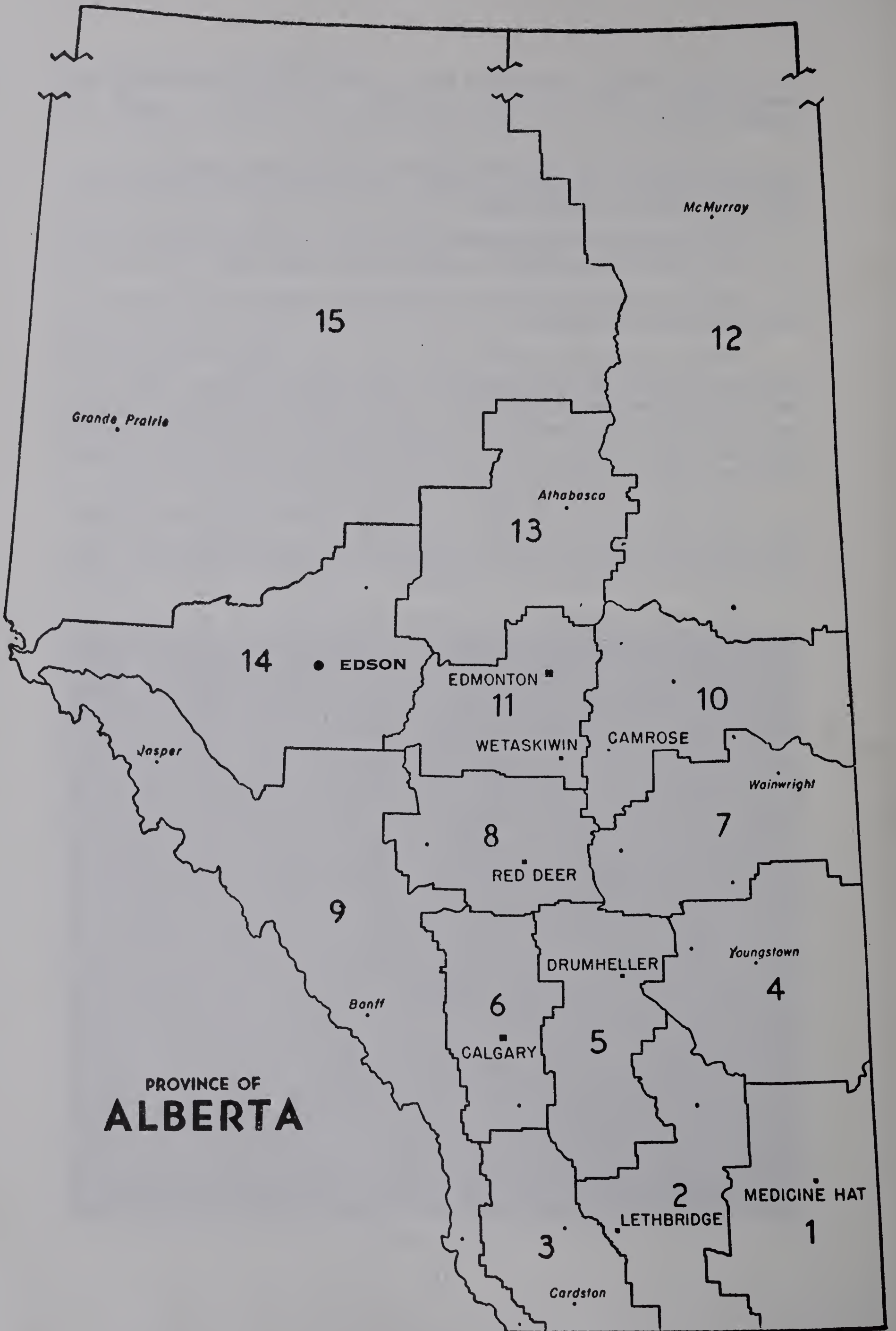
#### **46. TRADING AREA**

North for 35 miles, west for 60 miles, south to the McLeod River and east for 60 miles.

Town population, 1966 local census - 3,943.

Trading area population, 1967 - 13,000.





PROVINCE OF  
**ALBERTA**















