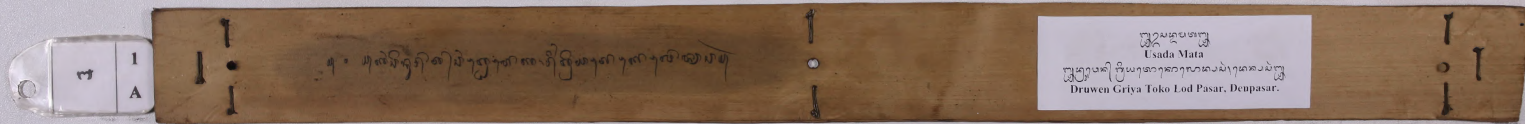
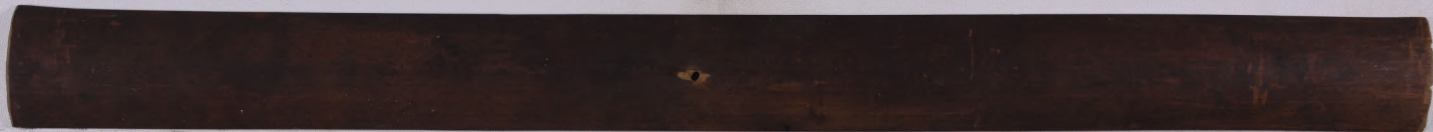


Usada Mata
Usada Mata
Druwen Griya Toko Lod Pasar, Denpasar.



Usada Mata
Usada Mata
Druwen Griya Toko Lod Pasar, Denpasar.

1
 Usada Mata
 Druwèn Griya Toko Lodi Pasar, Denpasar.

1 B	<p> 1. 4. 5. 6. 7. 8. 9. 10. 11. 12. 13. 14. 15. 16. 17. 18. 19. 20. 21. 22. 23. 24. 25. 26. 27. 28. 29. 30. 31. 32. 33. 34. 35. 36. 37. 38. 39. 40. 41. 42. 43. 44. 45. 46. 47. 48. 49. 50. 51. 52. 53. 54. 55. 56. 57. 58. 59. 60. 61. 62. 63. 64. 65. 66. 67. 68. 69. 70. 71. 72. 73. 74. 75. 76. 77. 78. 79. 80. 81. 82. 83. 84. 85. 86. 87. 88. 89. 90. 91. 92. 93. 94. 95. 96. 97. 98. 99. 100. </p>	<p> 1. 101. 102. 103. 104. 105. 106. 107. 108. 109. 110. 111. 112. 113. 114. 115. 116. 117. 118. 119. 120. 121. 122. 123. 124. 125. 126. 127. 128. 129. 130. 131. 132. 133. 134. 135. 136. 137. 138. 139. 140. 141. 142. 143. 144. 145. 146. 147. 148. 149. 150. 151. 152. 153. 154. 155. 156. 157. 158. 159. 160. 161. 162. 163. 164. 165. 166. 167. 168. 169. 170. 171. 172. 173. 174. 175. 176. 177. 178. 179. 180. 181. 182. 183. 184. 185. 186. 187. 188. 189. 190. 191. 192. 193. 194. 195. 196. 197. 198. 199. 200. </p>
--------	--	---

2 A	<p> 1. 1. 2. 3. 4. 5. 6. 7. 8. 9. 10. 11. 12. 13. 14. 15. 16. 17. 18. 19. 20. 21. 22. 23. 24. 25. 26. 27. 28. 29. 30. 31. 32. 33. 34. 35. 36. 37. 38. 39. 40. 41. 42. 43. 44. 45. 46. 47. 48. 49. 50. 51. 52. 53. 54. 55. 56. 57. 58. 59. 60. 61. 62. 63. 64. 65. 66. 67. 68. 69. 70. 71. 72. 73. 74. 75. 76. 77. 78. 79. 80. 81. 82. 83. 84. 85. 86. 87. 88. 89. 90. 91. 92. 93. 94. 95. 96. 97. 98. 99. 100. </p>	<p> 1. 101. 102. 103. 104. 105. 106. 107. 108. 109. 110. 111. 112. 113. 114. 115. 116. 117. 118. 119. 120. 121. 122. 123. 124. 125. 126. 127. 128. 129. 130. 131. 132. 133. 134. 135. 136. 137. 138. 139. 140. 141. 142. 143. 144. 145. 146. 147. 148. 149. 150. 151. 152. 153. 154. 155. 156. 157. 158. 159. 160. 161. 162. 163. 164. 165. 166. 167. 168. 169. 170. 171. 172. 173. 174. 175. 176. 177. 178. 179. 180. 181. 182. 183. 184. 185. 186. 187. 188. 189. 190. 191. 192. 193. 194. 195. 196. 197. 198. 199. 200. </p>
--------	---	---

Usada Mata
Buwun Griya Toko Lod Pasar, Denpasar.

4
B

Handwritten text in Balinese script on a palm leaf, consisting of two columns of text.

5
A

Handwritten text in Balinese script on a palm leaf, consisting of two columns of text.

Usada Mata
Druwen Griya Toko Lod Pasar, Denpasar.

6
B

Handwritten text in Balinese script on a palm leaf manuscript strip, divided into two columns by a central vertical line. The text is written in a traditional style.

7
A

Handwritten text in Balinese script on a palm leaf manuscript strip, divided into two columns by a central vertical line. The text is written in a traditional style.

Usada Mata
Druwen Griya Toko Lod Pasar, Denpasar.

10 B
Handwritten text in Balinese script on a palm leaf manuscript strip.

11 A
Handwritten text in Balinese script on a palm leaf manuscript strip.

爪哇文字
 Usada Mata
 爪哇文字 爪哇文字 爪哇文字 爪哇文字
 Druwen Griya Toko Lod Pasar, Denpasar.

11
 B

...
 ...
 ...
 ...

12
 A

...
 ...
 ...
 ...

13
 Usada Mata
 Dusun Griya Toko Lod Pasar, Denpasar.

13
 B

...
 ...
 ...
 ...
 ...

...
 ...

14
 A

...
 ...
 ...
 ...
 ...

...
 ...

Usada Mata
Druwen Griya Toko Lod Pasar, Denpasar.

16
B

Handwritten text in Balinese script on a palm leaf manuscript strip, divided into two columns. The text is written in a traditional style with small characters and some decorative elements.

17
A

Handwritten text in Balinese script on a palm leaf manuscript strip, divided into two columns. The text is written in a traditional style with small characters and some decorative elements.

Usada Mata
Druwen Griya Toko Lod Pasar, Denpasar.

19
B

Handwritten text in Balinese script on a palm leaf, likely a calendar or record. The text is arranged in two columns. On the right side of the leaf, there is a date marker: "19 B".

20
A

Handwritten text in Balinese script on a palm leaf, likely a calendar or record. The text is arranged in two columns. On the right side of the leaf, there is a date marker: "20 A".

Usada Mata
Druwen Griya Toko Lod Pasar, Denpasar.

22
B

Handwritten text in Balinese script on a palm leaf manuscript strip, consisting of two columns of text.

23
A

Handwritten text in Balinese script on a palm leaf manuscript strip, consisting of two columns of text.

Usada Mata
Druwen Griya Toko Lod Pasar, Denpasar.

23
B

Handwritten text in Balinese script on a palm leaf, consisting of two columns of text.

24
A

Handwritten text in Balinese script on a palm leaf, consisting of two columns of text.

Usada Mata
Druwen Griya Toko Lod Pasar, Denpasar.

25
B

Handwritten text in Balinese script on a palm leaf manuscript strip. The text is arranged in two columns. On the left side of the strip, there is a small handwritten number '25' and the letter 'B' inside a rectangular frame. The script is finely etched into the surface of the dried leaf.

26
A

Handwritten text in Balinese script on a palm leaf manuscript strip. The text is arranged in two columns. On the left side of the strip, there is a small handwritten number '26' and the letter 'A' inside a rectangular frame. The script is finely etched into the surface of the dried leaf.

Usada Mata
Druwen Griya Toko Lod Pasar, Denpasar.

31
B

Handwritten text in Balinese script on a palm leaf manuscript strip, numbered 31 B.

32
A

Handwritten text in Balinese script on a palm leaf manuscript strip, numbered 32 A.

Usada Mata
Druwen Griya Toko Lod Pasar, Denpasar.

32
B

Handwritten text in Balinese script on a palm leaf manuscript strip, labeled 32 B.

33
A

Handwritten text in Balinese script on a palm leaf manuscript strip, labeled 33 A.

爪哇古物
Usada Mata
Brouwen Griya Toko Lod Pasar, Denpasar.

33
B

Handwritten text in Balinese script on a palm leaf manuscript strip, divided into two columns.

34
A

Handwritten text in Balinese script on a palm leaf manuscript strip, divided into two columns.

Usada Mata
Druwen Griya Toko Lod Pasar, Denpasar.

36
B

Handwritten text in Balinese script on a palm leaf manuscript strip, divided into two columns.

37
A

Handwritten text in Balinese script on a palm leaf manuscript strip, divided into two columns.

Usada Mata
Druwen Griya Toko Lod Pasar, Denpasar.

37
B

Handwritten text in Balinese script on a palm leaf manuscript strip, divided into two columns.

38
A

Handwritten text in Balinese script on a palm leaf manuscript strip, divided into two columns.

爪哇文字
 Usada Mata
 爪哇文字 爪哇文字 爪哇文字 爪哇文字 爪哇文字
 Druwen Griya Toko Lod Pasar, Denpasar.

39
B

39 B
 爪哇文字 爪哇文字 爪哇文字 爪哇文字 爪哇文字 爪哇文字 爪哇文字 爪哇文字 爪哇文字 爪哇文字
 爪哇文字 爪哇文字 爪哇文字 爪哇文字 爪哇文字 爪哇文字 爪哇文字 爪哇文字 爪哇文字 爪哇文字
 爪哇文字 爪哇文字 爪哇文字 爪哇文字 爪哇文字 爪哇文字 爪哇文字 爪哇文字 爪哇文字 爪哇文字

40
A

40 A
 爪哇文字 爪哇文字 爪哇文字 爪哇文字 爪哇文字 爪哇文字 爪哇文字 爪哇文字 爪哇文字 爪哇文字
 爪哇文字 爪哇文字 爪哇文字 爪哇文字 爪哇文字 爪哇文字 爪哇文字 爪哇文字 爪哇文字 爪哇文字
 爪哇文字 爪哇文字 爪哇文字 爪哇文字 爪哇文字 爪哇文字 爪哇文字 爪哇文字 爪哇文字 爪哇文字
 爪哇文字 爪哇文字 爪哇文字 爪哇文字 爪哇文字 爪哇文字 爪哇文字 爪哇文字 爪哇文字 爪哇文字



Usada Mata
Druwen Griya Toko Lod Pasar, Denpasar.

33 43 B

Handwritten text on a palm leaf manuscript strip, likely containing a list or account in an ancient script.

34 44 A

Handwritten text on a palm leaf manuscript strip, continuing the list or account from the previous strip.

Usada Mata
Druwen Griya Toko Lod Pasar, Denpasar.

88 44
B

Handwritten text in Balinese script on a palm leaf manuscript strip, divided into two columns.

89 45
A

Handwritten text in Balinese script on a palm leaf manuscript strip, divided into two columns.

爪哇古文字
Usada Mata
Brouwen Griya Toko Lod Pasar, Denpasar.

46
B

Handwritten text in Balinese script on a palm leaf, divided into two columns. The text is written in a traditional style with dark ink on the natural brown color of the leaf.

47
A

Handwritten text in Balinese script on a palm leaf, divided into two columns. The text is written in a traditional style with dark ink on the natural brown color of the leaf.

Usada Mata
Druwen Griya Toko Lod Pasar, Denpasar.

47
B

Handwritten text in Balinese script on a palm leaf manuscript strip, divided into two columns. The text is written in a traditional style with dark ink on the natural brown color of the leaf.

48
A

Handwritten text in Balinese script on a palm leaf manuscript strip, divided into two columns. The text is written in a traditional style with dark ink on the natural brown color of the leaf.

Usada Mata
Druwen Griya Toko Lod Pasar, Denpasar.

49
B

Handwritten text in Balinese script on a palm leaf, consisting of two columns of text.

50
A

Handwritten text in Balinese script on a palm leaf, consisting of two columns of text.

Usada Mata
 Usada Mata
 Druwen Griya Toko Lod Pasar, Denpasar.

50
 B

Handwritten text in Balinese script on a palm leaf, consisting of two columns of text.

51
 A

Handwritten text in Balinese script on a palm leaf, consisting of two columns of text.

Usada Mata
 Bruwen Griya Toko Lod Pasar, Denpasar.

51
 B

Handwritten text in Balinese script on a palm leaf manuscript strip, divided into two columns.

52
 A

Handwritten text in Balinese script on a palm leaf manuscript strip, divided into two columns.

Usada Mata
 Bruwen Girya Toko Lod Pasar, Denpasar.

58
 B

Handwritten text in Balinese script on a palm leaf, consisting of two columns of text.

59
 A

Handwritten text in Balinese script on a palm leaf, consisting of two columns of text.

Usada Mata
Browen Griya Toko Lod Pasar, Denpasar.

art 61
B

Handwritten text on a palm leaf manuscript strip, divided into two columns. The script is Balinese. The left column begins with a small symbol resembling a crescent moon and a star. The right column ends with a similar symbol.

62
A

Handwritten text on a palm leaf manuscript strip, divided into two columns. The script is Balinese. The left column begins with a small symbol resembling a crescent moon and a star. The right column ends with a similar symbol.

Usada Mata
Brewen Griya Toko Lod Pasar, Denpasar.

62
B

Handwritten text in Balinese script on a palm leaf, consisting of two columns of text.

63
A

Handwritten text in Balinese script on a palm leaf, consisting of two columns of text.

63
 Usada Mata
 64
 Druwen Griya Toko Lod Pasar, Denpasar.

68
 64
 B

65
 64
 B

65
 64
 B

69
 65
 A

65
 65
 A

65
 65
 A

Usada Mata
Druwen Griya Toko Lod Pasar, Denpasar.

65
B

Handwritten text on a palm leaf manuscript strip, likely containing a list or account. The text is written in a traditional script and is organized into two columns. A small number '65' is written at the top left of the strip.

66
A

Handwritten text on a palm leaf manuscript strip, continuing the list or account. The text is written in a traditional script and is organized into two columns. A small number '66' is written at the top left of the strip.

Usada Mata
Brewen Gaya Toko Lod Pasar, Denpasar.

66
B

Handwritten text on the left side of palm leaf 66, starting with '...ယူယူ...'

Handwritten text on the right side of palm leaf 66, starting with '...ယူယူ...'

67
A

Handwritten text on the left side of palm leaf 67, starting with '...ယူယူ...'

Handwritten text on the right side of palm leaf 67, starting with '...ယူယူ...'

Usada Mata
Bruwen Griya Toko Lod Pasar, Denpasar.

67
B

Handwritten text in Balinese script on a palm leaf, divided into two columns. The script is finely etched and follows the natural curve of the leaf.

68
A

Handwritten text in Balinese script on a palm leaf, divided into two columns. The script is finely etched and follows the natural curve of the leaf.

Usada Mata
 Usada Mata
 Druwen Griya Toko Lod Pasar, Denpasar.

68
 B

Handwritten text in Balinese script on a palm leaf, consisting of two columns of text.

69
 A

Handwritten text in Balinese script on a palm leaf, consisting of two columns of text.

Usada Mata
Druwen Griya Toko Lod Pasar, Denpasar.

69
B

Handwritten text in Balinese script on a palm leaf, divided into two columns. The script is finely etched and follows the natural curve of the leaf.

70
A

Handwritten text in Balinese script on a palm leaf, divided into two columns. The script is finely etched and follows the natural curve of the leaf.

Usada Mata
Druwen Griya Toko Lod Pasar, Denpasar.

70
B

Handwritten text in Balinese script on a palm leaf manuscript strip.

71
A

Handwritten text in Balinese script on a palm leaf manuscript strip.

71
 Usada Mata
 Druwen Griya Toko Lod Pasar, Denpasar.

71
 B

...
 ...
 ...

...
 ...
 ...

72
 A

...
 ...
 ...

...
 ...
 ...

Usada Mata
 Druwen Griya Toko Lod Pasar, Denpasar.

73
 B

Handwritten text in Balinese script on a palm leaf manuscript strip.

74
 A

Handwritten text in Balinese script on a palm leaf manuscript strip, including a decorative diamond-shaped symbol on the left and a small rectangular box containing text.

Usada Mata
Brewen Griya Toko Lod Pasar, Denpasar.

74
B

Handwritten text in Balinese script on a palm leaf manuscript strip.

75
A

Handwritten text in Balinese script on a palm leaf manuscript strip.

Usada Mata
Druwen Griya Toko Lod Pasar, Denpasar.

75
B

Handwritten text on a palm leaf manuscript strip, likely containing a list or account of items and their prices.

76
A

Handwritten text on a palm leaf manuscript strip, continuing the list or account from the previous strip.

Usada Mata
Druwen Griya Toko Lod Pasar, Denpasar.

76
B

Handwritten text on a palm leaf manuscript strip, likely containing a list or inventory of items.

77
A

Handwritten text on a palm leaf manuscript strip, likely containing a list or inventory of items.

Usada Mata
Druwen Griya Toko Lod Pasar, Denpasar.

77
B

Handwritten text in Balinese script on a palm leaf manuscript strip.

78
A

Handwritten text in Balinese script on a palm leaf manuscript strip.

Usada Mata
 Druwen Griya Toko Lod Pasar, Denpasar.

លេខ	79
	B

Handwritten text on palm leaf 79B, consisting of two columns of text in Khmer script.

លេខ	80
	A

Handwritten text on palm leaf 80A, consisting of two columns of text in Khmer script.

Usada Mata
Druwen Griya Toko Lod Pasar, Denpasar.

81
B

Handwritten text in Balinese script on a palm leaf, consisting of two columns of text.

82
A

Handwritten text in Balinese script on a palm leaf, consisting of two columns of text.

Usada Mata
 Druwen Griya Toko Lod Pasar, Denpasar.

82
 B

Handwritten text on a palm leaf manuscript strip, likely containing a list or inventory of items.

83
 A

Handwritten text on a palm leaf manuscript strip, likely containing a list or inventory of items.

Usada Mata
Druwen Griya Toko Lod Pasar, Denpasar.

94
B

Handwritten text on a palm leaf manuscript strip, likely containing a list or inventory of items.

95
A

Handwritten text on a palm leaf manuscript strip, likely containing a list or inventory of items.

Usada Mata
 Druwen Griya Toko Lod Pasar, Denpasar.

95
 B

...
 ...
 ...
 ...
 ...

96
 A

...
 ...
 ...
 ...
 ...

Usada Mata
Druwen Griya Toko Lod Pasar, Denpasar.

96
B

Handwritten text in Balinese script on a palm leaf, divided into two columns. The left column begins with the character 'ꦩꦤ' (Ma-na) and contains approximately 10 lines of text. The right column contains approximately 10 lines of text. The script is finely etched into the surface of the dried leaf.

97
A

Handwritten text in Balinese script on a palm leaf, divided into two columns. The left column contains approximately 10 lines of text. The right column contains approximately 10 lines of text. The script is finely etched into the surface of the dried leaf.

Usada Mata
Druwen Griya Toko Lod Pasar, Denpasar.

97
B

Handwritten text in Balinese script on a palm leaf manuscript strip.

98
A

Handwritten text in Balinese script on a palm leaf manuscript strip.

Usada Mata
Druwen Griya Toko Lod Pasar, Denpasar.

98
B

Handwritten text on a palm leaf manuscript strip, likely containing a list or account. The text is written in a traditional script, possibly Balinese or Javanese, and is arranged in two columns. The left column begins with the characters '၂၀၂'.

99
A

Handwritten text on a palm leaf manuscript strip, continuing the list or account. The text is written in a traditional script, possibly Balinese or Javanese, and is arranged in two columns.

Usada Mata
 Usada Mata
 Druwen Griya Toko Lod Pasar, Denpasar.

99
 B

...
 ...
 ...
 ...

100
 A

...
 ...
 ...
 ...

Usada Mata
Usada Mata
Druwen Griya Toko Lod Pasar, Denpasar.

101
B

Handwritten text in Balinese script on a palm leaf. The text is arranged in two columns, with a small number '101' and the letter 'B' on a label to the left. The script is finely etched into the surface of the leaf.

102
A

A blank palm leaf with a small number '102' and the letter 'A' on a label to the left. The leaf shows signs of wear and has two small holes along its length.

Usada Mata
 Drawen Griya Toko Lod Pasar, Denpasar.

103
 B

Handwritten text in Balinese script on a palm leaf, divided into two columns. The script is finely etched and follows the natural curve of the leaf. The left column begins with a small circular symbol, and the right column ends with a vertical line.

104
 A

Handwritten text in Balinese script on a palm leaf, divided into two columns. The script is finely etched and follows the natural curve of the leaf. The left column begins with a small circular symbol, and the right column ends with a vertical line.

Usada Mata
Drauwen Griya Toko Lodi Pasar, Denpasar.

104
B

Handwritten text in Balinese script on a palm leaf manuscript strip, divided into two columns.

105
A

Handwritten text in Balinese script on a palm leaf manuscript strip, divided into two columns.

Usada Mata
Drauwengriya Toko Lodi Pasar, Denpasar.

105
B

Handwritten text in Balinese script on a palm leaf manuscript strip, likely containing a list or account of items.

106
A

Handwritten text in Balinese script on a palm leaf manuscript strip, likely containing a list or account of items.

Uśada Mata
Druwen Griya Toko Lod Pasar, Denpasar.

106
B

Handwritten text in Balinese script on a palm leaf manuscript strip, divided into two columns.

107
A

Handwritten text in Balinese script on a palm leaf manuscript strip, divided into two columns.

Usada Mata
Drauwengriya Toko Lod Pasar, Denpasar.

107
B

Handwritten text in Balinese script on a palm leaf, consisting of two columns of text.

108
A

Handwritten text in Balinese script on a palm leaf, consisting of two columns of text.

110
 Usada Mata
 Druwen Griya Toko Lodi Pasar, Denpasar.

110
 B

၁
 ဤစာပေသည် ဤအရာကို ဖော်ပြပါသည်။ ဤစာပေသည် ဤအရာကို ဖော်ပြပါသည်။
 ၂
 ဤစာပေသည် ဤအရာကို ဖော်ပြပါသည်။ ဤစာပေသည် ဤအရာကို ဖော်ပြပါသည်။

111
 A

၁
 ဤစာပေသည် ဤအရာကို ဖော်ပြပါသည်။ ဤစာပေသည် ဤအရာကို ဖော်ပြပါသည်။
 ၂
 ဤစာပေသည် ဤအရာကို ဖော်ပြပါသည်။ ဤစာပေသည် ဤအရာကို ဖော်ပြပါသည်။

Usada Mata
Brawen Griya Toko Lodi Pasar, Denpasar.

111
B

Handwritten text in Balinese script on a palm leaf manuscript strip, containing two columns of text.

112
A

Handwritten text in Balinese script on a palm leaf manuscript strip, containing two columns of text.

Usada Mata
Bruwen Griya Toko Lod Pasar, Denpasar.

114
B

1
2
3
4
5
6
7
8
9
10
11
12
13
14
15
16
17
18
19
20
21
22
23
24
25
26
27
28
29
30
31
32
33
34
35
36
37
38
39
40
41
42
43
44
45
46
47
48
49
50
51
52
53
54
55
56
57
58
59
60
61
62
63
64
65
66
67
68
69
70
71
72
73
74
75
76
77
78
79
80
81
82
83
84
85
86
87
88
89
90
91
92
93
94
95
96
97
98
99
100

1
2
3
4
5
6
7
8
9
10
11
12
13
14
15
16
17
18
19
20
21
22
23
24
25
26
27
28
29
30
31
32
33
34
35
36
37
38
39
40
41
42
43
44
45
46
47
48
49
50
51
52
53
54
55
56
57
58
59
60
61
62
63
64
65
66
67
68
69
70
71
72
73
74
75
76
77
78
79
80
81
82
83
84
85
86
87
88
89
90
91
92
93
94
95
96
97
98
99
100

115
A

1
2
3
4
5
6
7
8
9
10
11
12
13
14
15
16
17
18
19
20
21
22
23
24
25
26
27
28
29
30
31
32
33
34
35
36
37
38
39
40
41
42
43
44
45
46
47
48
49
50
51
52
53
54
55
56
57
58
59
60
61
62
63
64
65
66
67
68
69
70
71
72
73
74
75
76
77
78
79
80
81
82
83
84
85
86
87
88
89
90
91
92
93
94
95
96
97
98
99
100

1
2
3
4
5
6
7
8
9
10
11
12
13
14
15
16
17
18
19
20
21
22
23
24
25
26
27
28
29
30
31
32
33
34
35
36
37
38
39
40
41
42
43
44
45
46
47
48
49
50
51
52
53
54
55
56
57
58
59
60
61
62
63
64
65
66
67
68
69
70
71
72
73
74
75
76
77
78
79
80
81
82
83
84
85
86
87
88
89
90
91
92
93
94
95
96
97
98
99
100

Uda Mata
 Usada Mata
 Druwen Griya Toko Lodi Pasar, Denpasar.

123
 B

Handwritten text on a palm leaf manuscript strip, likely containing a list or account. The text is written in a traditional script and is organized into several columns. The first column contains a list of items, and the subsequent columns contain numerical values or prices. The text is written in a dark ink on a light brown palm leaf background.

124
 A

Handwritten text on a palm leaf manuscript strip, similar to the one above. It contains a list of items and numerical values, written in a traditional script. The text is organized into columns, with the first column listing items and the following columns providing numerical data. The script is consistent with the one on the previous strip.

Uda Mata
Druwen Griya Toko Lodi Pasar, Denpasar

125
B

Handwritten Balinese script on a palm leaf, consisting of two columns of text.

126
A

Handwritten Balinese script on a palm leaf, consisting of two columns of text.

Uda Mata
Uda Mata
Brawen Griya Toko Lodi Pasar, Denpasar.

135	B
-----	---

Handwritten text in Balinese script on a palm leaf, organized into two columns. The script is dense and appears to be a form of accounting or record-keeping.

136	A
-----	---

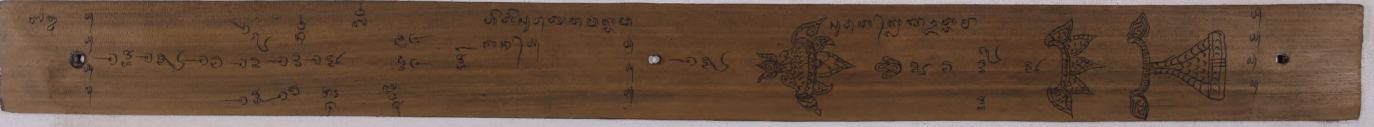
Handwritten text in Balinese script on a palm leaf, organized into two columns. The script is dense and appears to be a form of accounting or record-keeping.

Udada Mata
Usada Mata
Browen Griya Toko Lodi Pasar, Denpasar.

136
B



137
A



Uda Mata
Usada Mata
Druwen Griya Toko Lodi Pasar, Denpasar.

137
B

Handwritten musical notation on a palm leaf, featuring a series of notes and symbols along a horizontal line. The notation includes various rhythmic values and melodic contours. Above the line, there are several words in Balinese script, including "Uda Mata" and "Usada Mata".

138
A

Handwritten musical notation on a palm leaf, similar to the first leaf. It features a series of notes and symbols along a horizontal line. The notation includes various rhythmic values and melodic contours. Above the line, there are several words in Balinese script, including "Uda Mata" and "Usada Mata".

Uda Mata
Uda Mata
Browen Griya Toko Lodi Pasar, Denpasar.

140
B

140 B
Balinese script on palm leaf manuscript strip.

141
A

141 A
Balinese script on palm leaf manuscript strip.

Uda Mata
Druwen Griya Toko Lodi Pasar, Denpasar.

143
B

Handwritten Balinese script on a palm leaf. The text is arranged in two columns. In the center, there is a decorative illustration of a bird, possibly a Garuda, with its wings spread, perched on a branch. The script is finely etched into the surface of the leaf.

144
A

Handwritten Balinese script on a palm leaf. The text is arranged in two columns. The script is finely etched into the surface of the leaf.

Uda Mata
Usada Mata
Drauwu Griya Toko Led Pasar, Denpasar.

144
B

Handwritten text in Balinese script on a palm leaf manuscript strip, including a small number '13' at the top left.

145
B

Handwritten text in Balinese script on a palm leaf manuscript strip, featuring several circular symbols and vertical lines.

ꦱꦸꦢꦤ꧀ꦩꦠ
Usada Mata
ꦱꦸꦢꦤ꧀ꦩꦠ
Druwen Griya Toko Lodi Pasar, Denpasar.

ꦱꦸꦢꦤ꧀ꦩꦠ 145
A



