

Historic, Archive Document

Do not assume content reflects current scientific knowledge, policies, or practices.

FALL PLANTING



OUR FALL CATALOGUE is only half its usual size, but the cost of printing has advanced so enormously that we were compelled to reduce the size of our catalogue or advance the prices of our plants. In the interest of our customers we have made a smaller catalogue, but our list of varieties is as great as ever, and our plants and bulbs of the same superlative quality that has built up one of the largest retail nursery businesses in America, but many illustrations and special descriptions have been omitted.

We owe our customers an apology, or rather an explanation, for we did the best we could, for the way our business was handled last spring. Greatly increased business, scarcity of men, railway strikes and express embargoes, made prompt delivery impossible and we had, as one of our superintendents roughly described it, "a hell of a time."

The question is often asked: When is the better time to plant, fall or spring? The answer depends upon what is to be planted and when the question is asked. If it is asked in the summer or fall, then fall is undoubtedly the better time to plant all trees, shrubs, and herbaceous plants of unquestioned hardiness, and then the fall is a time of comparative leisure in gardening operations and the weather is more favorable and the soil is usually in better condition and pleasanter to work in than it is in our springs, wet and cold as they are nine years out of ten. It must be remembered, however, if the best results are wanted with hardy herbaceous plants, they should be planted early enough in the fall for them to become established before freezing weather sets in, otherwise they are apt to be thrown out of the ground by frost in winter time. This can be prevented by a mulching of stable manure, and the mulching is a benefit in any event. As far as possible, we would advise the planting of hardy plants in September or early in October, but, of course, many of them are not in condition to transplant until the fifteenth of October. Hardy Roses, Peonies, Iris, and many other hardy plants give best results when planted in the fall. Trees and shrubs may be planted from the fifteenth of October until the ground freezes. Magnolias, Rhododendrons, Azaleas, and many other things should be planted in the spring, so as to have a season's growth before having to endure a winter's severity; but when anything is ordered that should not be planted until spring, we do not ship until then.

ELLIOTT NURSERY

J. WILKINSON ELLIOTT, Owner

Nurseries:
SPRINGDALE, PENNA.

Magee Building, 336 Fourth Avenue
PITTSBURGH, PENNA.



KEIZERKROON TULIPS

The largest and showiest of Early-flowering Tulips (See page 5)



Narcissus, Golden Spur. See page 7

Dutch Bulbs

As a rule, we import bulbs to order only, but many of our customers neglect to send us their orders in time, and we are obliged to buy the stock in this country to fill these late orders, charge higher prices, and deliver inferior stock. We have imported a few varieties of the very choicest and most desirable bulbs in excess of our orders and offer them at the same prices as if imported to order. These fine things are described in this catalogue, but the prices quoted will be good only until the stock we have imported is exhausted. We cannot buy these bulbs in America and sell them at such low prices. Much of the stock described was personally selected this summer in Europe. We can not furnish Snowdrops, Scillas, Spanish, English or Dutch Iris, Chionodoxas, Ranunculi, Anemones, etc., because the importation of all bulbs except those offered in this catalogue are prohibited, although they are all similar and grown in the same soil under the same conditions.

Narcissus, Bicolor Empress (The Queen of Daffodils)

Very large flowers of pure white, with rich yellow trumpet, strikingly beautiful; fine for out of doors or for forcing. This is the finest of all Daffodils and one of the most beautiful hardy flowers grown. It should be planted where it can remain permanently. It will increase in size and beauty year after year. It really gives me great pleasure to offer this grand Daffodil at the following low prices, and it can now be planted by the hundreds and thousands, as it deserves to be. A few years ago it was selling in Holland at \$40 per hundred, when I thought it one of the most beautiful hardy flowers in cultivation—an opinion I still hold, after growing it in my garden ever since. It is an acquaintance that improves with age. The bulbs we offer are from one of the most famous growers in Holland, who has made a specialty of this Daffodil since its introduction. **Monster bulbs, \$1.15 per doz., \$8 per 100, \$70 per 1,000. Large, selected bulbs, 85 cts. per doz., \$5.50 per 100, \$50 per 1,000.**

Narcissus, Emperor

This is the largest and finest deep yellow trumpet-flowered Daffodil in cultivation, and is really superb, both in foliage and flower. A few years ago it was selling at \$25 per hundred, but a contract made in Holland this year enables us to offer enormous bulbs, which often bring four and five splendid flowers each, at the following prices: **\$1.15 per doz., \$8 per 100, \$70 per 1,000. First-size bulbs, 80 cts. per doz., \$5.75 per 100, \$50 per 1,000.**

A Great Tulip, Gesneriana (Hortensia)

For bedding out in masses it deserves to be largely grown. Height 18 to 24 inches. Flowers of enormous size, on long, graceful stems. Color rich crimson-scarlet, with glittering blue-black center. The demand for this grand Tulip has been so great that it is very difficult to get flowering bulbs. To be sure of getting bulbs that will bloom, we pay a premium in Holland for guaranteed bulbs. This makes them higher priced, but insures that our bulbs will bloom satisfactorily. **70 cts. per doz., \$4.75 per 100, \$44 per 1,000.**

Late Tulip, Blushing Bride

This is one of the largest, showiest and most beautiful Tulips in cultivation, blooming in May at the same time as Gesneriana. Beautiful rose-pink, slightly shaded white; fine form and extra large flower, held on stiff, strong stem, making it a feature in the garden. **60 cts. per doz., \$4 per 100.**

Late Tulip, Bouton d'Or

Very bright, deep, rich yellow flowers, carried on tall stems. The best late yellow Tulip in cultivation, and fine for cutting. Good for planting in mass or in contrast with the darker varieties of Tulips. **65 cts. per doz., \$4.25 per 100.**

Hyacinths

Mixed Hyacinths should never be used for house or greenhouse culture

The prices quoted include packing, and bulbs will be shipped by express or freight from Pittsburgh, charges to be paid by customer.

Single Mixed Hyacinths

	Each	Doz.	100
Red and Dark Red.....	\$0 10	\$1 00	\$7 50
Pink.....	10	1 00	7 50
Blush-White.....	10	1 00	7 50
Pure White.....	10	1 00	7 50
Dark Blue and Purple.....	10	1 00	7 50
Light Blue.....	10	1 00	7 50
Yellow.....	10	1 00	7 50
All Colors, Mixed.....	\$27 for 500..	1 00	7 50
Double, All Colors, Mixed.....	10	1 00	7 50

Single Named Hyacinths

The following Hyacinths are a selection of the best varieties for house culture. Bulbs of the best quality and size.

	Each	Doz.
Baroness Van Thuyll. Early; pure white.....	\$0 25	\$2 50
Cardinal Wiseman. Soft rose, carmine-striped; very large truss.....	27	3 00
Charles Dickens. Fine pink; extra-large spike.....	27	3 00
City of Haarlem. Pure yellow; grand spike.....	25	2 50
General Vetter. Blush-white.....	20	2 10
Gigantea. Blush; splendid truss.....	25	2 50
Grand Lilas. Azure-blue; perfect spike.....	25	2 50
Ida. Citron-yellow; large spike; one of the finest yellows in cultivation.....	25	2 50
King of the Blues. Finest very dark blue.....	25	2 50
Lady Derby. Light pink; fine.....	25	2 50
La Grandesse. Purest white; extra fine; best of all whites.....	25	2 50
La Victoire. Brilliant red; one of the earliest and by far the best of its color. A grand novelty.....	25	2 50
Lord Derby. One of the very finest blues.....	27	3 00
Paix de l'Europe. Very fine snow-white; very large truss.....	22	2 25
Perle Brilliante. Light blue; very large spike; fine... ..	25	2 50
Queen of the Blues. Light blue with silvery appearance; extra fine.....	25	2 50
Rosea maxima. Early; delicate rose; splendid.....	25	2 50
Willette. Pearl-gray-lilac—a new color in Hyacinths; distinct and lovely.....	30	3 00



Small bed of Single Hyacinths

Single Small Hyacinths for Forcing

These Single Hyacinths, planted on arrival from Holland, may be had in flower early in January. The bulbs and flowers of these small Hyacinths are about the same size as Roman Hyacinths, but much stronger, and the bells are larger, while they do not cost half the price of the Romans. Only those varieties which produce the fine flowers and force easily are selected for this purpose. They may be planted like Tulips in pots or boxes close together. Last season we sold large quantities, and our customers inform us that they are a great acquisition to succeed the Roman Hyacinths, blooming from January to April.

	Doz.	100
Dark Red.....	\$0 85	\$6 00
Pink.....	85	6 00
Pure White.....	85	6 00
Cream-White.....	85	6 00
Dark Blue.....	85	6 00
Light Blue.....	85	6 00
All Colors Mixed.....	85	6 00

Roman Hyacinths

Owing to the shortage of labor and crop, the prices of all French bulbs have sharply advanced this season, and only early orders will be certain of being filled.

	Doz.	100
White. Extra selected, 13 to 15 centimeters.....	\$1 25	\$8 00
Pink.....	1 25	8 00
Blue.....	1 25	8 00

Freesia

This charming flower is one of the most satisfactory bulbs that can be forced. It is certain to flower either in the conservatory or the house.

	Doz.	100	1,000
Improved Purity. Large bulbs.....	\$0 25	\$1 60	\$12 00
Selected bulbs.....	30	2 00	16 00
Mammoth bulbs.....	40	2 50	20 00

Rainbow, Fardel's Strain. A wonderfully improved stock of the colored Freesia, comprising a large number of beautiful shades of yellow, blue, violet, mauve, pink, lavender, etc. The flowers are as large as the best white type, and equally as fragrant. We offer them in mixed colors only..... 1 00 7 50

Lily-of-the-Valley

	100	1,000
Extra-selected Berlin pips. Ready in December.....	\$4 50	\$40 00
American pips. Ready in October. For outdoor planting only.....	3 00	23 00
Large clumps. Ready in Dec. Each, 60 cts., doz. \$6..		

Calla Lilies

White Calla (Richardia athiopica). The White Calla, or Lily-of-the-Nile, is a well-known plant of easy culture, and in winter is one of our best window plants. To aid profuse blooming keep them dormant from the middle of June until the last of August; replot in good, rich soil, using 6- to 8-inch pot; give water, light and heat in abundance.

	Each	Doz.	100
Good flowering bulbs.....	\$0 20	\$2 00	\$15 00
Extra-large bulbs.....	30	3 00	20 00



Darwin Tulips on the grounds of J. Wilkinson Elliott during the great Tulip Show last May

Tulips

Single Named Tulips

The letters A, B, and C indicate the proportional earliness of the varieties, if planted outdoors. A and B may be used together for bedding purposes, but those marked C are later. The numbers preceding names show the height of growth in inches. Those marked F after the name are best for forcing in the house or greenhouse. The following are the very best varieties of Single Tulips in cultivation, and all will be found extremely effective for bedding.

B 7 Albion (White Hawk). The finest pure white Tulip in cultivation.....	Doz.	100	1,000
B 8 Chrysolora . F. Large; golden yellow; best yellow for outdoors.....	\$0 75	\$5 50	\$52 00
C 6 Cottage Maid . White; edged with rose; extra fine; lovely; splendid for bedding	75	5 00	43 00
C 9 Couleur Cardinal . F. Cardinal-red; one of the best.....	80	5 50	45 00
Joost Von Vondel . Large; cherry-red and white; splendid	90	6 50	
B 9 Keizerkroon . F. Red and gold; large and fine. A grand Tulip.....	70	4 50	40 00
	75	5 00	46 00

Single Named Tulips, continued

B 9 La Reine (Queen Victoria). F. Rosy Doz. white; one of the best.....	100	1,000
A 8 Rembrandt . Scarlet; fine.....	\$0 75	\$5 00
B 8 Rosa Mundi . Rose and white.....	85	5 75
B 8 Rose Gris-de-Lin . F. Beautiful pink; splendid sort.....	65	4 50
B 8 Standard Silver . F. Crimson and white	80	5 50
B 8 Yellow Prince . F. Golden-yellow; sweet-scented. Not good for outdoors.....	70	4 75
	70	4 75

Mixed Tulips

Fine Mixed Single . Quality equals that generally sold.....	100	1,000
Extra-Fine Mixed Single . Extra selected.....	\$3 00	\$26 00
Extra-Fine Mixed Double . Extra selected.....	3 50	31 00
Extra-Fine Mixed Darwin Tulips . Late-flowering; very lovely. 55 cts. per doz.....	4 10	38 00
Special Mixture of Darwin Tulips . 65 cts. per doz..	3 75	35 00
	4 25	35 00

Parrot Tulips

Parrot Tulips sometimes do not bloom satisfactorily, owing to improper planting. They like a light, sandy soil, shallow planting and a sunny location.

Parrot Tulips do not receive the attention they deserve. They belong to the Late- or May-flowering Tulips and have immense, attractive flowers of singular and picturesque form, and brilliant varied colors. The petals are curiously fringed or cut, and the form of the flowers, especially before it opens, resembles the neck of a parrot. They form extravagantly showy flower-beds, are of endless variety of form and color, and should be grown in every flower-garden in quantities. The Parrot Tulips we import are from the most famous grower of these in Holland, and very superior to those usually sent out.

	Doz.	100
Fine Mixed\$29 per 1,000..	\$0 50	\$3 50
Perfecta . Yellow and scarlet.....	60	4 00
Cramoisi Brilliant . Scarlet; finest of all	60	4 00
Lutea major . Yellow; very fine.....	60	4 00

Double Named Tulips

The varieties of Double Tulips described below are the most showy bedding Tulips that can be planted, and continue for an unusually long time in perfection.

	Doz.	100	1,000
B 8 *Imperator Rubrorum . Brilliant scarlet; fine for forcing, and one of the grandest for bedding.....	\$1 00	\$7 00	
B 6 La Candeur . Pure white; a splendid bedding kind.....	70	5 00	\$44 00
B 6 *Murillo . Light pink; very early; splendid for forcing and bedding.....	75	5 25	45 00
B 10 Rubra maxima . Early; bright red; splendid bedder, taking the place of Rex Rubrorum.....	80	5 25	46 00
A 8 *Crown of Gold . Splendid yellow; fine for forcing.....	80	6 00	

Darwin Tulips

A handsome May-flowering class, and quite distinct in style of growth from other late-flowering sorts. Stately in appearance, attaining a height of 18 to 30 inches, and bearing on long stems beautiful, globular flowers of remarkably heavy texture, in a large range of colors, embracing almost every conceivable tint in rose, heliotrope, claret, crimson, maroon, and other rich and rare shades. In no class of Tulips has the improvement been so marked, and they are now of the most distinguished character and are unsurpassed, either in the garden or for cutting. **They are undoubtedly the most striking and beautiful of all Tulips.**

Darwin Tulips are most valuable for permanent planting. With deep planting, 4 to 5 inches in heavy soil and 6 inches in light soil, they will continue to bloom for years, and for this reason they are very valuable for planting in shrubberies and borders.

	Doz.	100
Baronne de la Tonnaye . Vivid pink.....	\$0 70	\$4 50
Clara Butt . Delicate salmon-pink; beautiful.....	65	4 50
Dream . Beautiful, delicate lilac.....	85	6 00
Farncombe Sanders . Immense flower of the most brilliant scarlet; one of the best Darwins.....	85	6 25
Gretchen . Delicate flesh-color; very lovely.....	70	5 00
Harry Veitch . Rich, brilliant red.....	60	4 00

Darwin Tulips, continued

	Doz.	100	
La Tulipe Noire . Comes nearest of all to black—dark rich purple; splendid; flowers of enormous size.....	10 cts. each..	\$1 00	\$7 00
Massachusetts . Light pink; large flower.....	85	6 00	
Painted Lady . Milk-white, on dark stem; an effective combination.....	70	5 00	
Pride of Haarlem . Carmine-pink; large.....	80	5 50	
The Sultan . Almost black; forms a brilliant contrast with the white Tulips.....	65	4 50	
Fine Mixed	\$39 per 1,000..	55	3 75
Special Mixed	\$35 per 1,000..	65	4 25

Breeder Tulips

Breeders, formerly listed among the Cottage Tulips, really form a distinct class by themselves, being unbroken forms of the old-time "Florists' Tulips." A long time we thought there would be no room for this class of Tulips next to the Darwins, the colors of which are so much brighter; but we have been greatly mistaken, for, more and more, the peculiar dull-toned bronze colors of the Breeders are becoming popular, and last year there was a very big demand for them.

It is these odd colors which form one of the chief characteristics of the Breeders. Outside of that, most of them produce flowers with great lasting qualities and with a sweet, agreeable fragrance.

The kinds which we list, with a few exceptions, are large-flowering ones, surpassing in height and size even the largest Darwins.

	Doz.	100	
Apricot . Dull, bronzy buff, shaded ruddy apricot above base.....	\$0 85	\$6 00	
Attraction . Light bluish violet, inside glowing purple, white base.....	1 00	7 00	
Bronze Queen . Soft buff, inside tinged golden bronze.....	1 00	7 50	
Cardinal Manning . Dark rosy violet.....	80	5 50	
Golden Bronze . Rich golden brown.....	1 40	10 00	
Lucifer . Bright terra-cotta orange, enormous flowers. New.....	18 cts. each..	2 00	15 00
Panorama . Deep orange-red, shaded mahogany; immense flower.....	2 40	18 00	

Select Named Crocuses

The Crocus is one of the first flowers to bloom in the spring, and it is no unusual sight to see the ground covered with snow and the Crocus in bloom at the same time. They are entirely hardy, do not deteriorate, and may be left undisturbed for years. It is a good plan to plant tulip and hyacinth beds full of them, as they bloom and are out of the way before the other bulbs flower. They are also fine for naturalizing in the grass, but the tops of the Crocus must have time to ripen before the grass is cut.

All named Crocuses, 30 cents per dozen

	Doz.	100	1,000
Baron von Brunow . Dark blue.....	\$0 36	\$2 50	\$23 00
Grand Lilas . Lilac; very early and fine.....	36	2 50	23 00
Large Yellow . Mammoth bulbs.....	36	2 75	25 00
Madame Mina . Light blue, striped very early; extra fine.....	36	2 50	23 00
Mont Blanc . White; best.....	36	2 50	23 00
Sir John Franklin . Large; dark purple....	36	2 50	23 00
Sir Walter Scott . Finest striped.....	36	2 50	23 00

Why Not Take Our Word?

The demand for the commonplace things is much greater than for the choicest and most beautiful—we suppose because the common things are well known and most people will only buy the varieties they know. During the great tulip show made on the grounds of Mr. Elliott in May there was a *Viburnum tomentosum* in bloom which was greatly admired by everyone and since the show we have been flooded with orders for it. Now we have been telling people for years that this was a splendid shrub but apparently they did not believe us as the demand was very small. Our descriptions are as correct as we can make them, and we tell the exact truth as nearly as possible. We prefer to sell choice varieties to poor ones and when it is considered that we have devoted a lifetime to the study of horticulture, not only in our own nurseries and garden, but in the nurseries and gardens throughout the temperate world, it might be well for our customers to give our advice more consideration.

Narcissi

Barrii conspicuus. Broad primrose petals and elegantly expanded crown, heavily stained orange-scarlet; extra fine.....	Doz.	100	1,000
	\$o 80	\$5 50	\$50 00
Incomparabilis, Cynosure. Large, sulphur-white petals; cup also sulphur-white, stained with orange-scarlet; very fine.....	65	4 50	40 00
Incomparabilis alba, Stella. Large white perianth, with yellow cup. A most charming and lovely variety, either for outdoor or forcing.....	70	4 75	42 00
Incomparabilis, Sir Watkin (The Welsh Giant Daffodil). Very large petals of a rich sulphur-yellow; large yellow cup, tinged with orange; immense flowers, sometimes 5½ inches across. One of the very finest.....	I 10	7 50	68 00
Jonquils, Campernelle. Yellow; sweet-scented.....	60	3 75	34 00
Jonquils, Campernelle rugulosus. Large; golden yellow; larger and finer than the old Campernelles.....	60	4 00	37 00
Jonquils, Double. Sweet-scented.....	65	4 50	40 00
Jonquils, Single. Sweet-scented.....	50	3 25	30 00
Poeticus (Pheasant's Eye). The well-known Poet's Narcissus. To insure blooming must be planted in a dry and thoroughly drained soil.....	60	4 00	35 00
Poeticus ornatus. Improved Poeticus. Can be forced earlier, and blooms earlier outdoors.....	60	3 75	32 00
Princeps (Giant Irish Daffodil). Primrose perianth, with yellow trumpet; extra fine..	75	5 00	
Sulphur or Silver Phoenix. Creamy white; beautiful flower; splendid. Now that this lovely variety can be had at a low price, it should be freely used.....	85	5 50	48 00
Von Sion (Double Yellow Daffodil). One of the best forcing sorts; extra-large, fine bulbs, and are not mixed with the inferior greenish flowered variety usually sold.....	85	5 00	46 00
Von Sion. Double-nosed bulbs.....	I 10	8 00	73 00

Narcissus, Bicolor Victoria

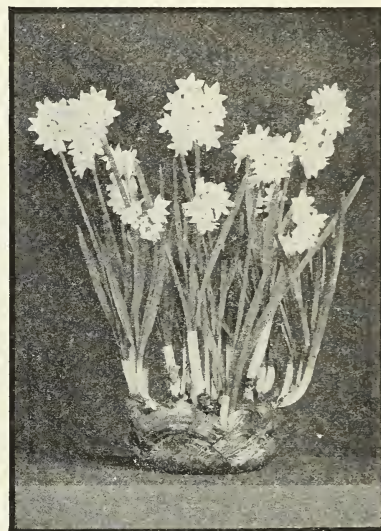
One of the newer varieties and the best of all the Bicolors. Perianth creamy white, trumpet rich yellow, delicately perfumed. Unsurpassed for pot culture or growing outdoors in the garden or the grass. Large, erect flowers of great substance. This splendid variety has given unequaled satisfaction to thousands of customers, and we do not believe we have ever had a complaint about it.

Large, selected bulbs of Bicolor Victoria, 85 cts. per doz., \$6 per 100, \$50 per 1,000.

Paper-White Narcissi

Splendid for growing in pots or water, and can be had in bloom for Christmas or earlier. This is really one of the most satisfactory bulbs for growing in the house. It can be had in bloom early in December, and in succession until spring. Large clusters of pure white, fragrant flowers. Cheaper and very superior to the Chinese Sacred Lily.

Paper-White Grandiflora, 45c. per doz., \$2.75 per 100, \$22 per 1,000. Paper-White Grandiflora, extra-sized bulbs, 55 cts. per doz., \$3.25 per 100, \$28 per 1,000.



Paper-White Narcissi

Special Offer of Golden Spur Narcissi

This is one of the most valuable of the Trumpet Narcissi, with magnificent deep yellow trumpet with brim expanding like Maximus, and large, spreading, full, deep yellow petals. It is free-flowering and splendid both for house culture and outdoors, and is one of the most desirable varieties for naturalizing. By contracting for 150,000 bulbs of this variety, we are enabled to offer them at the following prices, which are less than half the prices usually asked: **Large, selected bulbs, 80 cts. per doz., \$5.25 per 100, \$47 per 1,000.**

Special Offer of Superbum Lilies

We make an annual contract to have 25,000 bulbs of this grand Lily grown for us. This enables us to offer it at low prices, which makes it available for naturalizing in quantity. It is unquestionably one of the most satisfactory Lilies that can be planted either in the garden or in meadows, on the edge of woods or in any rough or wild parts of the grounds, where it will take care of itself without any attention whatever after planting. It will also thrive in wet or swampy places. It is a grand Lily, often growing over 8 feet high, and produces twenty to thirty beautiful orange-red flowers in July, when flowers are apt to be rather scarce.

Prices of extra-selected bulbs, \$2 per doz., \$3.50 for 25, \$13 per 100, \$30 for 250



Lilium superbum

Lilium candidum

Many people think that it is necessary to plant this lovely Easter or Annunciation Lily early in September. This is not true. We have repeatedly planted them in November, and with complete success. In the fall of 1918 we planted over 10,000 bulbs late in November. These bloomed splendidly the following June, and we sold the flowers in the wholesale cut-flower market for more than double the price of the bulbs. Owing to the demoralization of the transportation systems of the world, it is no longer possible to deliver Candidum Lilies by September 1, and people who insist on such early delivery are only depriving themselves of one of the loveliest of all garden Lilies. We have made arrangements for the earliest possible delivery, and, if these Lilies come in late, will not ship them to northern points where it is actually too late to plant them.

Large bulbs.....	Doz.	100
Selected bulbs.....	\$2 00	\$12 00
Monster bulbs.....	2 50	15 00
	3 00	19 00

Our bulbs of this splendid white Lily are the finest that come to America and are much larger than those usually sent out. We can supply bulbs from both southern and northern France.

Lilium Harrisii

True Bermuda Easter Lily

These Lilies are suitable for growing in greenhouse only.

	Doz.	100
Bulbs 5 to 7 inches in circumference.....	\$3 00	\$20 00
Bulbs 6 to 7 inches in circumference.....	4 00	30 00
Bulbs 7 to 9 inches in circumference.....	6 50	45 00

Lilium formosum

Japanese Easter Lily

An early-flowering variety of Longiflorum Lily, fine for forcing or planting outdoors. Large bulbs, 7 to 9 inches, \$6 per doz., \$45 per 100.



Lilium candidum

Native and American-Grown Lilies

October and November Delivery

Canadense flavum. Our dainty, beautiful native Lily. Graceful and charming yellow flowers.....	Doz.	100	\$1 60	\$11 00
Canadense rubrum. Red flowers.....	2 00	15 00		
Canadense, Mixed	1 50	10 00		
Davuricum. This beautiful Lily comes from the home of <i>L. tenuifolium</i> in Siberia. It resembles a native Philadelphicum. It is of easy culture, grows 2 to 3 feet high, and blooms in umbels of three to five upright scarlet flowers, dotted black.....	2 00	15 00		
Davuricum "Yellow Queen." Pure yellow.....	2 25	15 00		
Elegans, Leonard Joerg. Rich apricot, spotted.....	3 00	20 00		
Elegans, Orange Queen. Beautiful light orange with dark spots.....	.65 cts. each	6 00		
Elegans, Fine Mixed. The Elegans Lilies bloom in June, are of easy culture, and very desirable.....	2 00	13 00		

Hansonii. A handsome variety, flowering in June. Has bright rich yellow flowers. One of the best Lilies in cultivation. Bulbs sometimes remain dormant after planting, but will come up vigorously the next season.....	Doz.	100	\$7 50	
Henryi. A new Japanese Lily that has made a sensation in Europe. It has the same form and appearance as the Speciosum varieties, but the flowers are bright orange-yellow.....	.75 cts. each	7 00		
Philadelphicum. Native Lily. Orange-red, black spots.....	1 75	\$12 00		
Tigrinum simplex (The well-known Single Tiger Lily). Of easiest culture and worthy of general planting on account of stately habit and fine effect in the landscape.....	1 10	8 00		
Tigrinum splendens (Improved Single Tiger Lily)..	1 10	8 00		

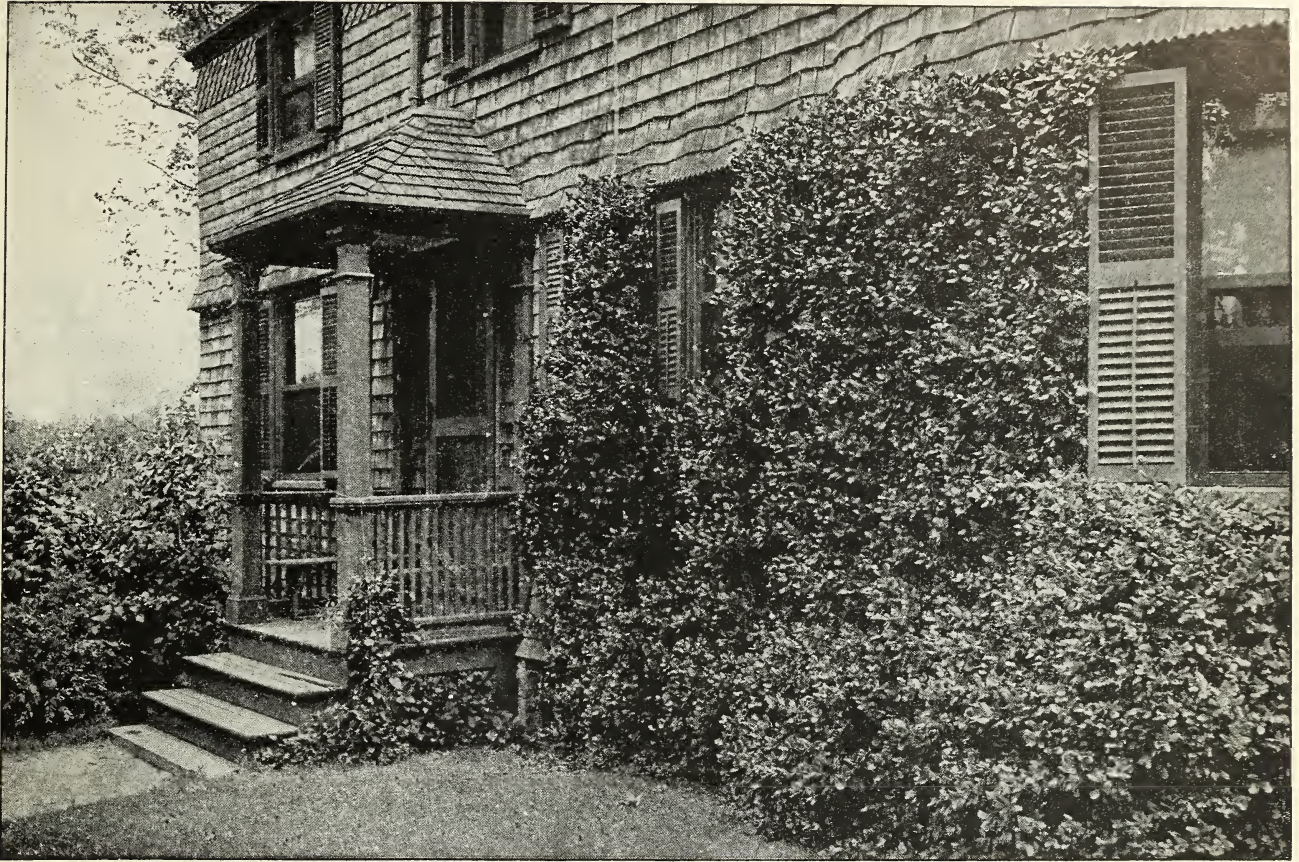
NOTE.—We have omitted California varieties of Lilies from our list. They are too difficult to grow in this climate

Japanese Lilies

Of the Japanese Lilies we have a limited stock of the Speciosum varieties growing in our nursery and until this is exhausted we can deliver these this fall. After that it and all other varieties of Japanese Lilies will be delivered early in the spring of 1921.

Auratum. (Gold-banded Lily of Japan). Each	Doz.	100
8 to 9 inches.....	\$0 35	\$3 50
9 to 11 inches.....	50	5 00
11 to 13 inches.....	60	6 50
Longiflorum. Ready in November. Has large, pure white, trumpet-shaped flowers like the Bermuda Easter Lily, but is perfectly hardy. 6 to 8 inches.....	30	3 00
7 to 9 inches.....	40	4 00
8 to 10 inches.....	50	5 00
Speciosum Melpomene. Similar to Roseum or Rubrum; more brilliant. 7 to 9 inches.....	35	3 50
9 to 11 inches.....	50	5 00

Speciosum album. White. 7 to 9 inches... Each	Doz.	100
9 to 11 inches.....	\$0 35	\$3 50
Speciosum rubrum or roseum.	50	5 00
7 to 9 inches.....	35	3 50
9 to 11 inches.....	50	5 00
Monsters.....	60	6 00
The Speciosum varieties are exceedingly beautiful and desirable and perfectly hardy and reliable.		
Brownii. Japanese bulbs. An extremely handsome hardy Lily, with large trumpet-shaped flowers like those of Longiflorum or Bermuda Easter Lily; pure white inside, but the outer part of the petals is a beautiful purplish brown. 75 cts. each, \$8 per doz.		

*Euonymus radicans vegetus*

The Best Evergreen Vine for America

"Is the Ivy the best vine in the world? Doubtless every Englishman will cry 'Yes!' because the European or English Ivy (*Hedera Helix*) is the oldest evergreen vine in cultivation and has made the deepest impression in literature, art, and history. But if your standard is merit, not associations, there is another vine which seems to me inherently better, viz., the Climbing *Euonymus*, or, as I now propose to call it, the 'Evergreen Bittersweet.' True, the form of its leaf is not unique, like that of ivy, but it has one overwhelming advantage in its gorgeous red berries, which are resplendent all winter against a noble background of evergreen foliage. And in many other ways it has greater value than ivy, even in regions where the ivy is hardy.

"The accompanying picture gives but a faint hint of the fivefold glories of the Evergreen Bittersweet. In the first place, it is evergreen, and therefore has an obvious advantage over deciduous vines in being beautiful 365 days of the year, instead of two weeks or seven months.

"Secondly, it is very accommodating as to soils, climate, exposures; is easy to grow; and will trail over the ground or climb to the noble height of 30 feet.

"Thirdly, it has immense advantage over ivy, in being much hardier, growing 20 feet high in New England where ivy can be grown only as a ground-cover.

"Fourthly, its superb red fruits, which closely resemble those of our common wild bittersweet, seem divinely appointed to redeem our American winters from their bleak, ugly and cheerless moods.

"And, fifthly, it promises to develop a strong American character, becoming universal and dear to the American heart. If I had a million dollars to spare I should like to plant an Evergreen Bittersweet against every stone, brick and concrete wall in America. The effect would be electrical, for it would add 100 per cent to the beauty of America and it would only be anticipating by a hundred years what will surely happen, for it is hardly possible that the world holds any plant with greater power to transform a house into a home. As in England every home and every church is enriched, dignified and ennobled by ivy, so every American home will come to be connected so closely with the Evergreen Bittersweet that it will be impossible to think of one without the other."—WILHELM MILLER, in the *Garden Magazine*, November, 1912.

We have known for several years of the great merit of the vine, *Euonymus radicans vegetus*, so enthusiastically described by Professor Miller, and have been steadily getting up a large stock of it, and now have several thousand plants. It is a sport from *Euonymus radicans*, but absolutely distinct from that vine.

Planted in rows and kept sheared, this vine makes a splendid evergreen hedge. It is also a splendid ground-cover plant for either sun or shade.

Perfectly hardy, but when planted in the fall should be protected with a mulching of 3 inches of stable manure, being careful not to cover the evergreen foliage. Very slow-growing at first, but when well established grows with great vigor.

Strong pot-plants, 50 cts. each, \$5 per doz., \$40 per 100; larger plants, 75 cts., \$1, and \$1.50 each



Hedge of Regel's Privet

The Best Hedges

Amoor River Privet

A more slender grower than the common Privet. Hardier than the California while the foliage is finer and of a lighter green, and retains better color during the winter. It makes a more satisfactory hedge than the California, and should be more extensively planted. We offer the true variety. The Privet generally sold in the South for Amoor River is *Ligustrum chinense*, and is not hardy in the North.

*While we are reading proof of this the temperature is about 20 degrees below zero over a wide range of country, which means that California Privet will be again killed to the ground. 30 cts. each, \$3 per doz., \$20 per 100.

*This was written in January, 1918. The following spring California Privet was found to be killed to the ground all over the country, even a hundred miles south of Washington City.

Regel's Privet

Regel's Privet, *Ligustrum Regelianum*, is not only the best Privet, but is also one of the very best shrubs for many purposes that we know of. Is perfectly hardy, of most beautiful, pendulous habit and splendid foliage. It is of vigorous growth and will thrive in either sun or shade. In good soil it will attain a height of 8 to 10 feet, and spread almost as great. It is fine as a specimen or for planting in masses in shrubbery, but its greatest value is for hedging. As a hedge-plant it is unsurpassed. It can be kept closely trimmed or trimmed but little, when it will preserve its natural drooping character which is most graceful and beautiful. A partially trimmed hedge of this Privet on the grounds of Mr. Clarence Byrnes, Sewickly, Pa., we think one of the handsomest hedges we have ever seen. On account of its spreading habit this Privet makes a hedge solid to the ground whether it is

sheared hard or not. We can not understand why people continue to plant California Privet, which is inferior in every respect and not reliably hardy. Regel's Privet is somewhat higher priced, but on account of its spreading habit it requires only half the quantity that it does of the California Privet to plant a hedge. For a hedge, plant Regel's Privet 18 inches apart in a single row. Strong plants, \$4 per doz., \$30 per 100.

Japanese Barberry

We are frequently asked to recommend the best shrub for hedge planting, and, after many years' experience, we are decidedly of the opinion that the **Japanese Barberry**, *Berberis Thunbergii*, is the best hedge-plant in existence, and either as an ornamental, defensive, trimmed or untrimmed hedge, it is unsurpassed. As an ornamental hedge it is beautiful throughout the year, its abundant crop of bright red berries making it even more attractive in the winter than in the summer. Its compact growth and thorny branches make a defensive hedge that will turn cattle after five years' growth. As an untrimmed hedge, it requires no attention except an occasional cutting of a few straggling branches. The natural growth is so dense and even that it forms a perfect hedge without shearing, but if a formal hedge is desired, by shearing, it can be made as even as a stone wall. The *Berberis* is absolutely hardy, of the easiest culture, and will grow in any soil or situation. It will stand considerable shade and can be grown under trees if not planted too close to the trunks. It is of slow, compact growth, but will eventually attain a height of 5 or 6 feet. It is one of the very best of shrubs for general planting. For a hedge, plant a single row, 18 inches apart in the row. We have a very large stock of fine plants which we offer at \$20, \$25, \$30 and \$35 per 100, according to size. Special prices quoted on lots of 1,000 to 10,000 on application.



Salix Salamonii

This is a variety of the Weeping Willow, but not nearly so pendulous as the common form, and we believe it to be the fastest-growing tree in the world, not excepting the eucalyptus, so much planted in California. We cut down one of these Willows in our nursery when it was seven years old, and it measured 13 inches through the trunk. It makes a very good-looking tree, as will be seen by the illustration above, and has the good qualities of leafing out very early in the spring, and of holding its foliage until late in the fall. This tree starts into growth quite early and should be planted as early as possible in the spring.

One-year-old trees, 75 cts. each, \$8 per doz., \$50 per 100; 2-year-old trees, \$1.25 each, \$13 per doz., \$90 per 100. Trees older than this are really too large to handle.

High-Grade Recleaned Lawn Seed

Our various mixtures are composed of the finest re-cleaned seed, and of the highest purity and germination in each instance. We might mention that **you can buy Lawn Seed at all Prices.** Our mixtures weigh 20 pounds to the bushel. We intend to carry only one grade, and that the **best.** We also consider, in making up our mixtures, the production of an **immediate** but **permanent** effect, by putting such varieties of grasses in our mixtures to produce this.

The best time for making a new lawn and sowing grass seed is in September.

One quart of Lawn Seed will sow from 250 to 300 square feet

SPRINGDALE VELVET LAWN SEED. A splendid mixture of fine-growing grasses suitable for a regular lawn.....	Qt.	2 qts.	4 qts.	Pk.	Bus.
	\$0 30	\$0 55	\$1 10	\$2 00	\$7 00
SPRINGDALE SHADY LAWN SEED. Suitable for shady places under trees, etc.....	40	70	1 25	2 25	8 00
SPRINGDALE TERRACE MIXTURE. Composed of varieties of grasses which make strong roots so as to bind the soil well and prevent it from washing out.....	35	65	1 25	2 25	8 00
WHITE CLOVER. For lawns, per 1/2 lb. 40 cts., lb. 75 cts.					

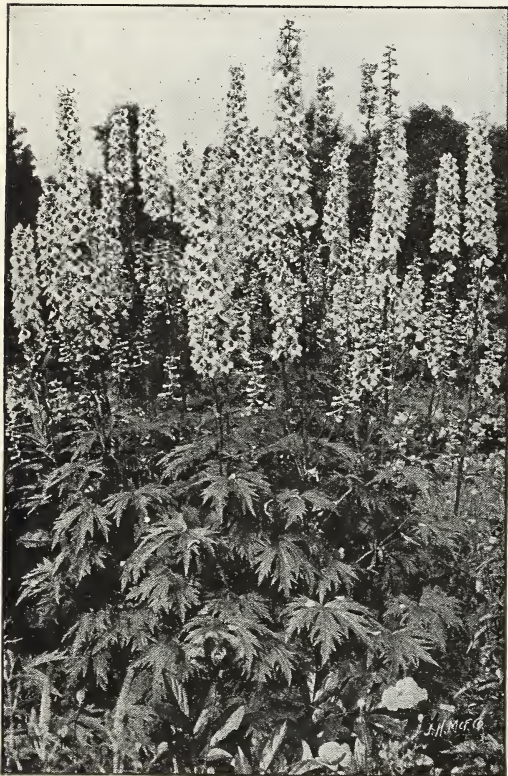
Lawn and Garden Fertilizers

Bone Meal (Pure). 5 lbs. 35 cts., 10 lbs. 65 cts., 50 lbs. \$2, 100 lbs. \$3.25.

PULVERIZED SHEEP MANURE. 2 lbs. 20 cts., 5 lbs. 35 cts., 10 lbs. 60 cts., 25 lbs. \$1, 50 lbs. \$1.75, 100 lbs. \$3.

Tall English Delphiniums

We are tempted to say that the Improved English Delphiniums are the most beautiful hardy plants in cultivation, but we are also tempted to say this of a score of other things, and, of course, it is impossible to say which is the most beautiful of hardy plants, for they have such an immense variety of beauty that the wonder grows that people continue to plant, by the million, bedding plants which have little or no beauty, are an annual expense, and cost quite as much as hardy plants whose first cost is their only cost, and which increase in size, in beauty, and often in quantity, year after year. These Delphiniums may not be the most beautiful hardy plants, but they are among the most beautiful, and nothing can be more distinct and satisfactory. They are stately and picturesque, some varieties growing 8 feet high in rich soil; they have immense spikes of most beautiful flowers of every imaginable shade of blue, and their season is a long one; in fact, they will bloom from spring till fall if properly treated.



Specimen Plant of Improved English Delphiniums

Culture of Delphiniums

The culture of Delphiniums is exceedingly simple, and the results out of all proportion to the slight amount of care necessary. They thrive in almost any position, and may be planted at any time of the year, provided that in summer the plants are not too forward, and that they be well watered if the weather be dry. The soil may be a rich, friable loam, which suits them finely; but any soil, even hot and sandy, if well watered and manured, will give excellent results. Dig deeply,—trenching is better,—add plenty of well-rotted manure, and plant about 2½ feet apart. Placed in lines, as a background to a border, or in groups of, say, three plants at intervals, the effect of the Delphinium is exceedingly fine. They look well in beds, also, arranged at the same distance apart each way. They are grand grown in masses of large groups of separate colors, and may be associated with shrubs with great advantage, succeeding well in shrubberies because of their robustness. A succession of flowers may be expected from spring to early autumn, especially if the spikes which have done flowering early be cut down to the ground; fresh growth will then be produced which will give blossom. Copious watering in summer will be attended by increased size of spike and flower; in fact, in seasons of prolonged drought, water is absolutely a necessity on many soils if the varieties are to exhibit themselves in their true size and beauty of flower and spike. Top-dressing is greatly recommended on certain soils, instead of the bare surface of the ground being left exposed to the sun. Some of the neater dwarf alpine and other hardy plants may be utilized to plant between and around Delphiniums. Coal ashes strewn over the crowns will protect the plants from slugs through winter and spring. As we have intimated, any garden soil suits the Delphiniums; it is, however, necessary to secure sorts such as are offered below in order to obtain an effect superior to that afforded by the old smaller-flowered varieties. No amount of liberal treatment will cause the smaller-flowered kinds of a few years back to develop into the gorgeous hybrids of today.

Special Offer of Improved English Delphiniums

I want everyone who receives this list to try these improved English Delphiniums, and to that end offer them at extremely low prices. I guarantee that they will give unqualified satisfaction in every instance and will be a revelation of beauty to most people.

	Doz.	100
Fine Mixed English , grown from seed of famous named sorts.....	\$2 50	\$15 00
Selected Varieties , selected from thousands of seedlings grown from choicest named sorts.....	3 50	23 00
Extra-selected Varieties	50 cts. each...	5 00

Standard Sorts

Belladonna. The freest and most continuous blooming of all, never being out of flower from the end of June until cut down by hard frost. The clear turquoise-blue of its flowers is not equaled for delicacy and beauty by any other flower. 25 cts. each, \$2.50 per doz., \$15 per 100.

Chinense. A very pretty variety, with fine, feathery foliage and intense gentian-blue flowers in open panicles. 20 cts. each, \$2 per doz., \$12 per 100.

Chinense album. A pure white form of the above. 20 cts. each, \$2 per doz., \$12 per 100.

Formosum. The old favorite dark blue with white center; 3 to 4 feet high. Very vigorous, free-flowering, and one of the best. 20 cts. each, \$2 per doz., \$12 per 100.

Formosum celestinum. Charming light blue variety of above; most exquisite shade of blue. 25 cts. each, \$2.25 per doz., \$14 per 100.

Superb Hardy Phlox

The beauty and usefulness of these grand border plants give to them a deservedly first place among hardy plants. For cutting, their large trusses go a long way in floral decoration. In color they range from pure white to the richest crimson and purple, and from soft rose and salmon to bright coral-red, all having a delicate fragrance. Perennial Phloxes succeed in almost any soil enriched with manure, but are much benefited by a mulching of decomposed manure in spring, and in hot weather an occasional soaking of water. If the first spikes of bloom are removed as soon as over, and the plants given a good soaking of water, they will produce a second supply of flowers, thus continuing the display until late in autumn. These later blooms are often finer than the first.

Field-grown plants, 25 cts. each, \$2.50 per doz., \$15 per 100

A. G. McKimmon. Early-flowering; purplish lilac; large truss.

Albion. Pure white, faint aniline-red eye.

Antonin Mercie. Light ground-color, one-half of each petal suffused bluish lilac.

Athis. Very tall, fine salmon.

Baron Van Dedem. Brilliant cochineal-red with salmon shading; a rich color.

B. Compte. Brilliant rich French-purple.

Champs Elysees. Fine, rich purplish crimson.

Duqueslin. Deep rose, edged lilac.

Eclairer. Bright purplish rose, light center; enormous flowers.

Europa. White with crimson eye; extra large, distinct and fine.

Elizabeth Campbell. This is the best Phlox introduced in recent years, and is destined to become very popular. Very bright salmon-pink, with lighter shadings and dark red eye; very beautiful.

Frau Antoine Buchner. The finest white yet introduced; largest truss and individual flower. Dwarf.

Goliath. Very tall; brilliant red.

Helena Vacaresco. A free, large-flowering dwarf white.

Independence. Fine, vigorous dwarf; white.

Miss Lingard. The best Phlox in cultivation. It produces immense heads of white flowers in June and blooms again in September and October. Splendid foliage and habit, and free from attacks of red spider. Better results will be had if old flowers are cut off.

Superb Hardy Phlox, continued

- Mrs. Jenkins.** White, immense panicles.
Splendens. Brilliant crimson.
S. Reichenauer. A very fine white.
Obergartner Wittig. Light rose, center lighter, red eye.
Paniculata. Rosy purple; fine for naturalizing in meadows.
Pearl. Pure white; very late.
Professor Schlieman. Salmon-rose with carmine eye.
Rijnstroom. A splendid improvement on Pantheon; color not unlike that of Paul Neyron rose; fine for massing.
Riverton Jewel. Lovely mauve-rose, illuminated by a carmine-red eye; large flower.
Siebold. Orange-scarlet; very brilliant; good habit; a great improvement on Coquelicot in every way.
Viking. A splendid new variety; very late; large, pyramidal heads of salmon-rose flowers.
W. C. Egan. One of the finest Phloxes yet introduced. Extra-large flowers and panicles. Delicate, pleasing shade of soft pink.
Widar. Violet-blue, white eye.

German Iris

In the Iris family the German varieties rank second in importance, the magnificent Japanese Iris being first, of course. They bloom profusely early in May, are of the greatest hardiness and easiest culture, and should be freely planted in every garden. These Irises are the "Flags" of the old-fashioned gardens. They are most effective when used as edging for a shrubbery or garden border.

Named varieties, 20 cts. each, \$1.75 per doz., \$10 per 100, unless otherwise noted. Mixed varieties, \$1 per doz., \$6 per 100

- Agnes.** Standards white, blotched and frilled lilac; falls edged violet.
Annie Grey. Standards light rose; falls deeper rose, heavily veined.
Annette. Standards clear yellow; falls light purple with yellow edge.
Aurea. A pure, rich, deep yellow, extra-large flower, distinct and beautiful. 30 cts. each, \$3 per doz.
Bridesmaid. Standards white shaded lilac; falls slightly marked with lilac.
Canary-Bird. Standards and falls pale yellow. 25 cts. each.
Carlotta Patti. Standards lemon-yellow; falls same, veined reddish brown; dwarf.
Cypriana. Pale blue, yellow beard.
Dalmatica. Delicate lavender. Tall, vigorous plant, with very large flower; one of the finest of all Irises. 35 cts. each, \$3.50 per doz.
Dalmatica, Khedive. Pale blue. 25 cts. each, \$2.50 per doz.
Darius. Yellow and lilac; large flowers.
Donna Maria. White, tinged lilac.
Emilie. Standards violet-blue; falls velvety violet-purple.
Empress Victoria. Standards white shaded light blue; falls violet-purple.
Florentina alba. Silvery white; early.
Florentina purpurea. Standards blue; falls velvety purple, upper half veined; beard bright yellow.
Fragrans. Lovely white, edged with violet.
Gagus. Standards yellow; falls reticulated white and crimson.
Gracchus. Standards yellow; falls crimson, reticulated white, with yellow margins. 25 cts. each.
Her Majesty. Lovely rose-pink; a variety of great distinction and beauty. 35 cts. each.
Honorable. Yellow; falls brownish maroon.
King of Iris. New. A striking novelty, with flowers of perfect form, the standards clear lemon-yellow; falls deep satiny brown, with a broad border of golden yellow. 50 cts. each.
La Tendre. Standards white, tinted lavender; falls light purple.
Lohengrin. New. Foliage and flowers of gigantic size, of a deep violet-mauve. 50 cts. each.
Lord Roseberry. Standards bronze, shot with rose; falls crimson-maroon.



Miss Lingard Phlox

- Loreley.** New. Perfect shaped flowers, falls of a deep ultra-marine-blue, more or less veined with creamy white and bordered sulphur-yellow; the standards are a pale sulphur-yellow, making a beautiful contrast. 50 cts. each.
Lucretius. Standards white, delicately shaded blue; falls velvety violet-purple.
Lygin. Standards pearl-white; falls pale blue.
Madame Chereau. Pearly white, daintily edged with lavender.
Maori King. Standards bright golden yellow; falls velvety maroon, margined yellow.
Mithras. New. Flowers of good size; standards pale yellow; falls violet, shaded with claret and yellow border. 50 cts. each.
Mrs. G. Darwin. Standards white; falls white, upper half penciled lilac; yellow beard; lovely.
Mrs. Reuthe. Standards white, shaded and veined blue; falls frilled, delicate blue.
Nibelungen. New. Standards fawn-yellow; falls violet-blue, with fawn margin; distinct and pretty. 50 cts. each.
Oldenharnevelt. Deep rose, light beard.
Oroya. Standards light purple; falls dark purple, upper half reticulated white.
Pallida. Large, light blue standards; falls shaded darker; beautiful. 25 cts. each.
Pearl. Standards clouded white; falls pale lavender.
Princess Victoria Louise. New. Standards pure sulphur-yellow; falls rich plum-color, with cream-colored edges. A new and distinct combination of colors. 50 cts. each.
Queen of May. Lovely rose-lilac. 25 cts. each.
Queen of the Gypsies. Standards bronze; falls light purple.
Rhein Nixe. Standards pure white; falls deep violet-blue, with white margins; will attain a height of 3 feet, with many-branched stems. 50 cts. each.
Souvenir. Standards yellow; falls elegantly reticulated reddish brown.
Stenophylla. White, delicately frilled violet.
Stylosa Innocenza. Exquisitely beautiful, almost pure white flowers, tinted with blue and yellow; a color never before obtainable in German Irises. 30 cts. each.
Viscounte de Brabant. Standards light purple; falls dark purple, upper half reticulated white.

Special Offer of German Iris.

When selections of varieties are left entirely to us, we supply named German Iris in good assortment at \$1.25 per doz., \$8 per 100, \$60 per 1,000.

Japanese Iris

Some years ago a set of Japanese Iris (*I. Kaempferi*) was sent to us from Japan to test. When these Irises were in bloom they excited the greatest admiration and enthusiasm, and it was hard to convince people that these unique and exquisitely beautiful flowers were as hardy as apple trees, and as easily grown as potatoes. They will thrive in any good garden soil, but if the soil is made very rich and deep, and flooded with water for a month before and during their blooming seasons, they will produce flowers of a wonderful size, sometimes 10 to 12 inches across. These Irises should be planted in full exposure to the sun. As the Japanese names are unintelligible and impossible to remember, we have renamed this collection.

Since the above collection was received we have annually added to it the newest varieties from Japan and new varieties selected from thousands of seedlings grown on our own grounds, until we now have what is unquestionably the finest and most complete collection of Japanese Iris in the world.

NAMED VARIETIES, described in the following list, 35 cents each, \$3.50 per dozen, \$25 per 100, except where noted.
UNNAMED, fine mixed (American-grown), \$1.75 per doz., \$12 per 100.

- Amethyst.** Single; very large, wavy petals; exquisite shade of lavender. 60 cts. each.
- Azure.** Single; immense flower; exquisite mauve-blue with darker halo surrounding the yellow blotch at base of petals. 75 cts. each.
- Colonel Thomson.** Double; violet, spotted rose. \$1 each.
- Delight.** Double; light blue penciled white, yellow center.
- Distinction.** Light lavender-pink, bright yellow blotches at base of petals; distinct and fine.
- Gold Bound.** Double; pure white; one of the finest.
- Mahogany.** Double; dark red, shaded maroon. 60 cts. each.
- Mrs. Henry L. Higginson.** Single; bright reddish maroon, center white.
- Mont Blanc.** Double; pure white; large and fine. One of the finest of the white varieties.
- Mount Hood.** Double; light blue shaded darker; bright orange center.
- Norma.** Double; exquisite lavender-pink; extra large and fine. 75 cts. each.
- Ondine.** Single; white, shaded light blue; extra large and graceful; an exquisitely beautiful variety. 60 cts. each, \$6 per doz.

- Oriole.** Double; plum shading to deep plum.
- Prince Camille de Rohan.** Double; light purple shaded violet, center dark purple.
- Pyramid.** Double; light blue, center of petal veined with white.
- Red Riding Hood.** Fine amaranth, veined and suffused white.
- Robert Craig.** Double; French grey, veined violet.
- Ruffled Monster.** Deep pinkish plum, heavily veined with white; ruffled; very large and striking. \$1 each.
- Templeton.** Double; light violet mottled reddish pink and white; very fine form.
- Victory.** Double; white veined purple, violet-purple center.
- Tora-odari** (No. 2). Pure white, faintly traced violet.
- Shiga-no-ura-nami** (No. 10). Six large petals forming a most beautiful flower; violet-purple veined with white, pure yellow star-like center surrounded by a white halo. 50 cts. each.
- Tuki-Yase** (No. 39). Six large petals, ground-color white, marbled with aniline-blue; a fine marbled variety.
- Ida.** Reddish plum, rich and velvety, narrow yellow band on base of petals. 50 cts. each.
- Moonlight.** Lovely white variety.

Siberian Iris

Vigorous, free-flowering varieties of the easiest culture; fine for the flower border, for naturalizing and for waterside planting.

- Alba.** White, yellow at base of petals. 20 cts. each, \$2 per doz., \$12 per 100.
- Baxteri.** Standards blue; falls white, veined and tipped blue. 20 cts. each, \$2 per doz.
- Blue King.** Standards blue; falls bright blue, handsomely marked at base. 20 cts. each, \$2 per doz.
- Distinction.** Standards blue; falls white, veined with blue. 20 cts. each, \$2 per doz.
- Sanguinea.** Rich violet-blue; buds are bright pink and very ornamental. 20 cts. each, \$2 per doz., \$12 per 100.
- Snow Queen.** An exquisite new hardy Iris; the flowers are of a snowy whiteness, large and well formed, produced in great abundance; foliage light and graceful. A gem for flower-border or waterside. 3 feet high. 20 cts. each, \$2 per doz.
- Superba.** Large, violet-blue flowers; handsome foliage. Fine border plant and a grand subject for planting near water, where it blooms profusely. 20 cts. each, \$2 per doz., \$12 per 100.

Dwarf Bearded Iris

These Irises have flowers similar to the German Iris, but are much dwarfer and bloom in April. They are extremely free-flowering and desirable.

- Socrates.** Bright claret-red, falls deeper claret, beard yellow. Very bright and handsome. 20 cts. each, \$2 per doz.
- Orange Queen.** Beautiful clear yellow, with orange beard. 20 cts. each, \$2 per doz.

Native Irises

- Pseudacorus.** Semi-aquatic variety; valuable for planting in swamps and on the edge of ponds; vigorous plant with lovely yellow flowers. 15 cts. each, \$1.50 per doz.
- Pseudacorus variegata.** Same as above with variegated foliage. 15 cts. each, \$1.25 per doz.
- Versicolor.** The common Blue Flag of our swamps and meadows; valuable for naturalizing. 10 cts. each, \$1 per doz., \$6 per 100.

Iris pumila

These beautiful little Irises do not grow over 4 inches high, and bloom in April and May. They are fine for bordering flower-beds or planting in front of the tall Irises.

- Alba.** Pure white. 35 cts. each.
- Atroviolacea.** Dark violet-blue.
- Eburnia.** Creamy white.
- Florida.** Citron-yellow.
- Formosa.** Dark blue.
- Gracilis.** Grayish white.
- Lutea.** Yellow.

Price, except where noted, 20 cts. each, \$2 per doz., \$14 per 100

Iris pumila hybrida

A cross between *I. pumila* and *I. germanica*. Very showy; early flowering. 10 to 12 inches high.

- Citrea.** Light and citron-yellow.
- Excelsa.** A splendid pale lemon-yellow.
- Schneekuppe.** A large, showy, pure white.
20 cts. each, \$2 per doz.; one of each for 50 cts.

Iris interregna

An interesting new type, the result of crossing *I. germanica* with *I. pumila hybrida*, and for which there promises to be a great future. They bloom earlier than the German Iris, and the flowers combine perfection of form with large size and clear, decided colors. The foliage is dwarf, and maintains its freshness throughout the season. The flower-stems are almost 18 inches high, holding the flowers well above the foliage.

- Brunette.** Primrose-yellow, bearded orange-yellow.
- Don Carlos.** Blue standards; falls velvety reddish purple.
- Dorothea.** Milk-white, shaded blue.
- Ingeborg.** Pure white; flowers 5 inches deep with petals 2 inches wide. A grand flower.
- Fritjof.** The upper petals are pure light lavender-blue, the drooping petals velvety violet.
25 cts. each, \$2.50 per doz.; set of 5 varieties for \$1

Peonies

It gives us great pleasure to see the increasing popularity of Peonies, for there is nothing more deserving, and, when the merit and beauty of the newer varieties are known, every garden will contain a large collection. All varieties of Peonies are good, even the commonest old-fashioned sorts, but there is no language to describe the glorious beauty of the finest of the newer varieties. In no other flower has there been such a marked improvement, and they actually surpass the rose in size, form and coloring, and their ease of culture and extreme hardiness are too well known to enlarge upon. Always having a keen appreciation of these superb flowers, we have for years collected all the varieties obtainable in the world, and now have the largest collection of varieties and the most extensive stock in America. Peonies planted in August or September will bloom the following season. We no longer offer large undivided clumps of Peonies, as we find that they do not give results that justify their cost. Peonies never bring satisfactory flowers the first season after planting and the second season ordinary sized plants will give just as good results as the large plants.

The merit and great beauty of Single Peonies has been largely overlooked. Planted in masses they are more effective than the double varieties, and fully equal them in the beauty of individual flowers. They come into bloom earlier and last longer.

Andre Lauries. Large, full flowers; anemone-shaped; Each violaceous-red; late.....	Doz. \$0 50	Doz. \$5 00	Madame Bucquet. Velvety black-amaranth; coloring Each extremely dark and rich.....	Doz. \$1 25	
Anemoneflora. Rich deep crimson; early.....	50	5 00	Madame Carpentier. Light carmine-pink, with silvery reflex.....	40	\$4 00
Armadine Mechin. Clear amaranth. Large, full; strong grower and full bloomer. Late midseason....	1 00	10 00	Madame Chaumy. Large flowers in cluster; rose- shaded silvery border; very late variety.....	60	6 00
Asa Gray. Large, full flower; imbricated; beautiful form; carnation-salmon, powdered with carmine-lilac.	2 50		Madame Coste. Large, blush guard petals, lemon center.....	60	6 00
Avalanche. Large flowers of perfect shape; milk-white, with creamy center, having a few carmine stripes; late and very free-flowering; splendid habit. A variety of great distinction and beauty.....	2 00		Madame Crousse. White, tinted pink, center car- mine bordered; very lovely.....	75	7 50
Baroness Schroeder. Ivory-white; a grand variety....	3 00		Madame de Verneville. Very pretty anemone flower; very full; collar of large petals, those of the center very close; carnation-white and sulphur, sometimes carmine; extra fine. Special price.....	60	6 00
Barton Elliott. Very large, white guard petals, center mass of light yellow petaloids changing to white....	3 00		Marguerite Gerard. Lovely light pink; one of the most exquisitely beautiful Peonies in cultivation....	1 50	15 00
Charlemagne. Large flower; creamy white, shaded chamois.....	50	5 00	Marie Lemoine. Sulphury white, carmine edge; grand; late.....	50	
Claire Dubois. Large, globular flowers; very full; most beautiful pink; glossy reflex. Very fine.....	2 50		Masterpiece. Brilliant Tyrian rose. Free bloomer; vigorous grower. Very distinct and beautiful.....	75	7 50
Couronne d'Or (Golden Crown). Large, imbricated white flower, yellow reflex, with stripe of carmine and golden stamens; extra fine. One of the very best lates, and fine for cutting.....	85	8 50	Mons. Charles Leveque. Soft rose and salmon-pink.	75	8 00
Delachei. Large, cup-shaped flower; deep amaranth; carried on long stems.....	40	4 00	Meissonier. Large flower; brilliant purple-amaranth..	60	6 00
Duchesse de Nemours. (Calot.) Very beautiful, cup- shaped flower; sulphur-white with green reflex; pretty bud; extra fine.....	60	6 00	Mons. Jules Elie. Considered the King of all Peonies. Immense globular flowers. Color an ideal glossy lilac-pink, shading to deeper rose. The entire flower overlaid with a sheen of silver.....	2 00	
Duke of Wellington. Sulphury white.....	40	4 00	Mons. Krelage. Deep currant-red; late.....	50	
Edouard Andre. Large, globular flower; deep crimson- red, shaded black, with metallic reflex; stamens golden yellow; magnificent coloring, producing grand effect.	1 50		Mrs. George Bunyard. Large; bright rose; sweetly scented.....	50	5 00
Eugene Verdier. Large, cup-shaped flower; flesh-pink, shaded yellow and salmon; extra fine.....	1 50		Ne Plus Ultra. Violet-rose, center mauve-rose, with lighter stripes.....	35	3 50
Faust. Anemone-flowered; guard petals soft lilac, center flesh, shaded chamois.....	50	5 00	Officinalis. Single white.....	60	6 00
Felix Crousse. Enormous flower; brilliant red; extra.	1 00	10 00	Officinalis rosea (Old Double Rose). Rich, bright, shining rose; very early.....	50	5 00
Fideline. Violaceous purple, edged silvery; large....	35	3 50	Officinalis rosea superba (Improved Old Double Pink). Bright, rich, velvety rose; very early.....	75	7 50
Festiva. Dwarf; pure white, center carmine-spotted, the same as Festiva maxima but dwarf; large flower; excellent.....	60	6 00	Old Double Crimson. Very effective when planted in masses; one of the earliest to bloom.....	50	5 00
Festiva maxima. Very large, pure white flowers, with some blood-red stains in center; tall stalks; beautiful foliage, free-flowering. One of the very best white Peonies in cultivation.....	75	8 00	Peace Offering. Semi-double; white guard petals, center light buff petaloids.....	1 00	10 00
Francois Ortegat. Large; deep crimson, shaded amaranth; brilliant yellow anthers.....	40	4 00	Petite Renee. Very large flowers in clusters; clear car- mine-purple, central petals very narrow, clear car- mine, striped white, golden extremities. Extra fine....	1 50	
Germaine Bigot. Large flowers; glossy flesh-color, shaded salmon-tea; of a delicate freshness.....	2 50		Pottsii plena. Fine crimson-purple.....	50	5 00
Henry Demay. Large, crimson flowers on branching stems.....	50	5 00	Princess Irene. Pink guard petals, yellow petaloids; distinct and lovely.....	75	7 50
Hon. B. F. Jones. Semi-double; outer petals white, center filled with yellow stamens, resembling a water- lily; very lovely.....	1 50		Prolifera tricolor. Guards flesh-white, sulphur-yellow petals, pale rose crown. Late.....	40	4 00
Humei. A splendid old sort, with extra-large, deep rose-pink flowers; one of the latest to bloom.....	40	4 00	Purpurea. Bright dark purple.....	35	3 50
Jeanne d'Arc. Large flowers of a soft rose, sulphur- white and lively rose, center being stained carmine; lovely, fresh coloring.....	1 00		Reevesiana plena. Large flower; beautiful rose-color; very fragrant.....	35	3 50
John A. Bell. (Japanese.) Color, a rose-red, stamin- oides same color, tipped yellow and white. Distinct and fine.....	1 00	10 00	Rosea elegans. Pale lilac-rose, collar cream-white....	35	3 50
John C. Slack. Broad pink guard petals; petaloids which vary; dainty and charming.....	1 50	16 00	Robra triumphans. Crimson-purple.....	40	4 00
Lady Leonora Bramwell. Silvery rose; fragrant....	40	4 00	Sea Breeze. Blush-pink guard petals, center blush- pink fading to white.....	50	5 00
La Tulipe. Very large, globular flower, rosy white center, outside of the flower lively carmine, center striped deep carmine; extra fine.....	75	8 00	Solfaterre. Collar of large, pure white petals, those of the center narrow and sulphur-yellow.....	50	5 00
L'Indispensable. Rosy pink, blush center; large....	60	6 00	Thorbeckii. Very large flower; beautiful silvery-rose.	40	4 00
Lottie Collins. (Kelway.) Deep purple; early.....	40	4 00	Triomphe de l'Exposition de Lille. Large, im- bricated flower; soft carnation-pink, with white reflex, carmine center; very fresh coloring. One of the best.	1 00	
Louis Van Houtte. Large flower of lively violet-red; very brilliant; a very beautiful variety.....	50	5 00	Van Dyck. Guards and center pure mauve. Collar cream white; lovely.....	60	6 00
Lutea variegata. Fleshy white, shaded yellow.....	35	3 50	Victoire de l'Alma. Large flower of perfect form; purplish violet-scarlet; silvery reflex; extra.....	50	5 00
Madame Bollet. Clear-rose, with silvery white reflex.	50	5 00	Victor Hugo. Brilliant carmine-red. One of the best reds. Very distinct; late.....	85	9 00
			Victor Lemoine. Dark blood-red.....	50	5 00
			Vittata. (Kelway.) Deep pink guard petals, center filled with bright pink and salmon ligules.....	35	3 50
			Water-Lily. Very large, single white flower, center filled with mass of yellow stamens, resembling a water-lily. Very lovely.....	1 25	12 00

Oriental Poppies

I remember very well the first time I saw an Oriental Poppy. I was a boy then, and it excited me wonderfully, and I thought it the most remarkable flower in the world; and now, after twenty-five years have gone by and I have seen almost all the known flowers of the world, I am still of the opinion that it is mighty fine, striking, and effective, and I have taken the trouble to gather and have grown a collection of several varieties. The foliage of Oriental Poppies dies away in the summer, and many think they are dead, but they will start into growth again in the fall. They are rather hard to establish, but once established, prove the most persistent perennial.

25 cts. each, \$2.50 per doz., \$18 per 100

Brightness. Rich, glowing salmon. Very large flowers.
Cerise Beauty. Soft salmon-red flowers, on long stems.

Bracteata. Brilliant crimson.
Mrs. Perry. Salmon-rose; lovely.

Mrs. Marsh.
Orientalis. The type; bright red.

New Lilacs on Their Own Roots

Of late years there has been a multitude of new varieties of Lilacs grown, and some of them are very beautiful, but, unfortunately, almost all the stock offered, both in this country and Europe, has been budded on privet and is practically worthless, for Lilacs grown on this are certain to die in a few years. Nurserymen bud Lilacs on privet because they can produce a large stock quickly and inexpensively; but one Lilac on its own roots is worth a score of budded plants. Fifteen years ago we bought all the available stock of choice named Lilacs on their own roots in Europe, and since then we have been both growing and buying until we have a very large and fine stock. On account of their starting into growth so early in the spring, Lilacs are best planted in the fall.

Price, except where noted, \$1.50 each, \$15 per doz.

Bertha Dammana. One of the very best whites; immense panicles.
Charles Joly. Double; blackish red; distinct and extra fine.
Charles Sargent. Immense panicles; flowers extremely large, violet-mauve, shaded metallic azure.
Charles X. Large, shining leaves and great trusses of reddish purple flowers. Small plants. \$1 each.
Count A. de Montebello. Double; dark azure-lilac, with deep blue center; very free-flowering.
Dr. Lindley. Large, compact panicles of purplish lilac flowers; dark red in bud.
Duc de Massa. Double; purplish violet; large carmine buds.
Geant des Batailles. Bright reddish lilac flowers in large trusses; very brilliant and effective. \$1 each.
Hippolyte Maringer. Double; large, compact trusses; purplish mauve. \$1.75 each.
Japonica. We have some extra-large plants of this July-flowering Lilac. Immense spikes of pure white flowers.
Jeanne d'Arc. Double; large-flowered; white. Small plants.
La Tour d'Auvergne. Double, purplish violet flowers borne in large trusses. Small plants.
Lemoinei. Double; white.
Lemoinei fl.-pl. Double; carmine-violet.

Leon Simon. Double; compact panicles; bluish crimson.
Marechal Lannes. Double; clear lilac-violet; buds carmine-violet.
Marie Legraye. Large panicles of white flowers. The best white lilac.
Michel Buchner. Dwarf plant; very double; pale lilac. \$1 each.
Miss Ellen Willmott. A splendid new double white. Small plants. \$2 each.
President Carnot. Double; lilac tint, marked in center with white; extra-large, fine truss. Small plants.
President Loubet. Large, purple flowers, with red buds.
Souvenir de Gaspard Calot.
Souvenir de Louis Spaeth. Most distinct and beautiful variety; trusses immense; very large, compact florets; deep purplish red.
Victor Lemoine. Double; malva-lilac.
Villosa. A late-flowering species, blooming a month later than other varieties, with deep pink flowers; extremely free-flowering and effective. Makes a large, splendid specimen.
William Robinson. Double, violaceous pink; extra-large trusses. A splendid vigorous variety.
Wilsonii. A splendid species from northern China. Reflexed lobes of flowers are a pale pink.

Special Offer. When selection of varieties is left entirely to us, will supply 12 fine Lilacs, in 12 distinct varieties, for \$12. We have many fine varieties not offered above, but not enough of a kind to catalogue.

Hardy Climbing Plants

	Each	Doz.	100
ACTINIDIA arguta	\$0 50	\$5 00	
AKEBIA quinata	35	3 50	
AMPELOPSIS quinquefolia (Virginia Creeper).....	35	3 50	
Veitchii (Boston Ivy). Pot-plants.....	35	3 50	\$25 00
Extra-strong pot-grown plants.....	50	5 00	
ARISTOLOCHIA Sippo (Dutchman's Pipe).....	1 00	10 00	
BERCHEMIA racemosa	35	3 50	
BIGNONIA grandiflora (Chinese Trumpet Creeper).....	40	4 00	
Madam Galen. Dark red; free bloomer... radicans (Native Trumpet Creeper). Orange-red.....	50	5 00	
Thunbergii. Scarlet.....	35	3 50	
CELASTRUS paniculata. From Japan. Very handsome, vigorous vine, with bright, clean foliage.....	40	4 00	
scandens (Bittersweet).....	50	5 00	
CLEMATIS crispa	35	3 50	
coccinea	40	4 00	
Flammula	40	4 00	
Henryii. Best large-flowered white.....	75	8 00	
Jackmanii	75	8 00	
paniculata. Splendid flowers in September	30	3 00	
virginiana	35	3 50	
Vitalba	40	4 00	
DOLICHOS japonicus (Japanese Hardy Bean). The fastest growing vine.....	50	5 00	
EUONYMUS radicans. A splendid evergreen vine of slow growth and elegant rich green foliage.....	30	3 00	16 00
radicans variegatus. Rich green foliage distinctly marked with white. Fine for low stone walls.....	30	3 00	16 00

	Each	Doz.	100
Euonymus radicans vegetus. A most beautiful evergreen vine of vigorous growth and perfect hardiness. Clings to stone or brick. Takes the place of ivy. (See, also, page 9).....	\$0 50	\$5 00	
HONEYSUCKLE (Lonicera.) Two-year or pot-grown. brachypoda or aureo-reticulata (Golden). Halliana Heckrottii. A superb and scarce sort... japonica (Evergreen).....	25	2 50	\$16 00
IVY, Hardy English	25	2 50	18 00
Extra strong.....	50	5 00	36 00
LYCIUM chinense (Matrimony Vine).....	35	3 50	
MENISPERMUM canadense (Moon-seed)	25	2 50	
PERIPLOCA græca (Silk Vine). A handsome, graceful climber, with fine foliage.....	50	5 00	
POLYGONUM Aubertii. A new and vigorous-growing climber. Very free-flowering; the small branchlets bear large panicles of pure white flowers.....	1 00		
SCHIZOPHRAGMA hydrangeoides (Climbing Hydrangea). A magnificent flowering vine of slow growth.....	1 00		
VITIS æstivalis (American Wild Grape)....	35	3 50	
odorata (Sweet-scented Wild Grape).....	35	3 50	
Riparia (American Wild Grape).....	35	3 50	
variegata. Beautiful variegated foliage... WISTERIA frutescens. Our native Wisteria; flowers in the summertime.....	50	5 00	
multijuga (Japanese Wisteria). Racemes of flowers often 3 feet long.....	50	5 00	
multijuga alba. White-flowered.....	50	5 00	
sinensis. Purple.....	50	5 00	
sinensis alba. White.....	50	5 00	

Hardy Herbaceous Perennials

Until hardy plants come into general use, we cannot hope for artistic, interesting, and beautiful gardens in this country. People of taste and culture are realizing the ugliness of the stereotyped bedding with lines of color, and will no longer allow their lawns to be daubed with a flower-garden like a colored lithograph, although many of our public parks are still guilty of this atrocious work. With the material offered in this list, the most beautiful and interesting gardens are to be made, gardens that increase in interest and beauty year after year; gardens that change their aspect with every change of season. To make a garden with hardy plants and shrubs requires far more taste and knowledge than it does to make one with a few varieties of bedding plants generally used, but the majority of gardeners do not have this knowledge, and have no idea of proper arrangement. But the garden of hardy plants has this advantage; the individual beauty of the plants themselves is so great that a garden cannot fail to be interesting and lovely, no matter how badly arranged, if the cultural skill is sufficient to bring them to perfection. One of the most effective ways of using hardy plants is to plant in a wide border in front of a hedge or shrubbery. The trouble with this arrangement is that the roots of the shrubs or hedge get into the border and rob the plants of a large share of their food. This can easily be prevented by placing a sunken wall of concrete between the hedge or shrubbery and border. This wall need be only 2 feet deep and 4 inches thick, and is inexpensively constructed of gravel and cement. Another very effective arrangement is two broad borders through the vegetable-garden, with a broad grass-walk between them. The effect will be enhanced by building trellises back of the borders and covering them with climbing roses or flowering vines.

Cultivation is of the simplest: beginning with any good garden soil, dig it deeply and enrich with old rotted stable manure. The best

time to plant hardy perennials is when they are just starting into growth in the spring or early in the fall. The soil should be comparatively dry when plants are set out. Avoid wet planting. Do not make the mistake of planting too thickly. The nearest approach to a rule which may be followed in planting is to set out plants which grow to a height of 2 feet or less, 12 inches apart, and all taller one-half their height. For example, Aquilegia and Coreopsis, which grow 2 feet high, may be planted 12 inches apart, while *Delphinium formosum* and Japanese Iris, which grow 3 feet high, should be 18 inches apart.

During the summer, the soil about the plants should be frequently stirred and weeds kept down. During hot, dry weather, or when it is not convenient to water, a mulch of any loose, light material is very beneficial in retaining the moisture and preventing the ground from baking. Grass clippings from the lawn are excellent material for this purpose.

About the middle of November, or later, when all soft growth has been killed and the plants are thoroughly ripened, the old hard-wooded stems should be removed and burned. Then cover the plants with 2 or 3 inches, not more, of loose, strawy stable manure. Care must be taken however not to cover the foliage of evergreen plants such as *Phlox subulata*, Hardy Pinks, and Candytufts, as such a covering would cause the foliage to rot and kill the plants.

Most hardy plants which flower during the spring or early summer months, such as Peonies, Anthericums, Dielytras, Funkias, German Iris, etc., are better left undivided and undisturbed for several years, but they should be given a liberal dressing of stable manure or other fertilizer every spring. The late-flowering plants, like Phloxes, Helianthus, Rudbeckias, Asters, Boltonias, Physostegias, etc., are better for being replanted at least every two years. The Japanese Anemones are an exception; they should be allowed to remain, undisturbed, for several years.

Special Offers of Hardy Plants in Variety

Plants in the following collections will be of the best and most desirable varieties and of the best quality, but in every instance the selection of varieties is to be made by us; but if purchasers will state the things they have, or don't wish, they will not be included in the selection. Sometimes people write asking for a list of the plants contained in these collections. This cannot be given, so please save us the unpleasantness of refusing by not asking for it.

Offer No. 1. 25 first-class Hardy Plants in variety for.....	\$4 00
Offer No. 2. 50 first-class Hardy Plants in variety for.....	7 50
Offer No. 3. 100 first-class Hardy Plants in varied assortment of best species and varieties.....	13 00
Offer No. 4. 500 Hardy Plants, same as above, but in larger variety, for.....	60 00
Offer No. 5. 1,000 Hardy Plants, same as above, but in much larger variety, for.....	110 00

In the following list, height and time of blooming are indicated as follows: Figures following the letter H indicate height in feet; figures following the letter F indicate the number of month or months the plants bloom in. This is only approximate, as height and time of flowering vary with soils and seasons.

Plants suitable for growing in the shade are marked *; for growing in partial shade are marked †

Prices quoted are for not less than half the quantities named, but single plants will be furnished at following low rates: Plants at \$1.75 and \$2 per doz., 20 cts. each; plants at \$2.50 per doz., 25 cts. each; plants at \$3 per doz., 30 cts. each; plants at \$4 per doz., 40 cts. each; plants at \$5 per doz., 50 cts. each.

ACANTHUS mollis. A striking foliage plant.....	Doz. 100	\$3 50
ACHILLEA ægyptica. Sulphur-yellow flowers; silvery gray foliage; very neat. H 1-3, F 6-8....	2 50	\$15 00
Millefolium roseum. Red flowers produced in profusion for a long season; little known here, but very popular in England. H 1-3, F 4-10....	2 50	15 00
Ptarmica, The Pearl. An improvement of <i>Ptarmica fl.-pl.</i> H 2, F 6-10.....	2 00	12 00
* ACONITUM Napellus (Monkshood). Beautiful but poisonous plant with blue flowers. H 2, F 7....	4 50	
Sparks' Variety. Darkest blue. F 6, 3-4.....	3 50	
Uncinatum. Tall panicles of blue flowers. F 7-8	3 50	
ÆGOPDIUM Podagraria variegata. A rapid-growing plant, with neat green and yellow variegated foliage, thriving in any soil; makes a fine border for a bed of shrubs or for covering waste ground. H 1.....	2 50	15 00
AGROSTEMMA coronaria. Beautiful rich crimson flowers. H 1½, F 7.....	2 25	14 00
coronaria alba. Pure white.....	2 25	14 00
coronaria atrosanguinea. Brilliant dark crimson	2 25	14 00
coronaria bicolor. White and red.....	2 25	14 00
Flos-Jovis. Extremely desirable rose-tinted flowers, fine for cutting. H 1½, F 7.....	2 25	14 00
AJUGA reptans atropurpurea. Large spikes of purplish blue flowers in May. Valuable plant for the rocky and for carpeting the ground in shady places where grass will not grow.....	2 00	13 00
ALYSSUM saxatile compactum. Masses of golden yellow flowers. Invaluable for spring flowering. H 1, F 4.....	2 50	15 00

* AMSONIA Tabernæmontana. Desirable perennial with lead-colored blue flowers. H 2, F 5-6....	Doz. 100	\$2 50	\$15 00
ANCHUSA italica, Dropmore. Exquisite blue flowers all summer. H 4-5.....	3 00	16 00	
myosotidiflora. Flowers like a forget-me-not. H 10-12 in., F 4-5.....	2 50	15 00	
† ANEMONE japonica alba. White. H 3-5, F 9-10	2 25	14 00	
† japonica, Autumn. Large, double pink flowers.	2 25	14 00	
† japonica, Lady Ardilaun. Pure white, broad, overlapping petals.....	2 25	14 00	
† japonica, Prince Henry. Crimson, very rich color, semi-double.....	2 25	14 00	
† japonica, Queen Charlotte. Large, semi-double flowers of lovely shade of pink.....	2 25	14 00	
† japonica rosea. Purplish rose. H 3-5, F 9-10....	2 25	14 00	
† japonica rosea elegans. Improved variety. H 3-5, F 9-10.....	2 25	14 00	
† japonica, Whirlwind. New semi-double variety. White, H 3-5, F 9-10.....	2 25	14 00	

These charming Japanese Anemones are among the most beautiful things in cultivation. They are perfectly hardy, and in a strong, rich soil will grow 4 to 5 feet high. They are a mass of beautiful white or pink bloom from late summer until heavy frosts. They should be in every garden, and on large places should be planted by the hundred. Plant early in September or spring in heavy soil and partial shade.

Anemone pennsylvanica. A beautiful native Anemone. Fine for naturalizing. H 1½, F 6....	Doz. 100	\$2 25	\$14 00
ANTHEMIS Kelwayi. Soft, clear yellow. H 1½, F 6-8.....	2 25	14 00	
ANTHERICUM Liliastrum (St. Bruno's Lily). Pure white, fragrant, graceful, lily-like plant, preferring partial shade.....	2 50		

Hardy Herbaceous Perennials, continued

	Doz.	100		Doz.	100
† AQUILEGIA alpina superba . Blue and white.	\$2 25	\$14 00	Robert Parker . Large sprays of beautiful lavender-blue flowers with yellow center. H 4, F 9.	\$2 50	100
cærulea (Rocky Mountain Columbine). The most beautiful of all Columbines; one of the most charming hardy flowers in cultivation. H 1½, F 4-5.	2 50	15 00	tataricus . Large flowers and very late. H 5-6, F 9-10.	2 50	\$15 00
cærulea lutea . New; large, light yellow flowers. H 1-2, F 4-5.	2 25	14 00	trinervius . White, with purple and yellow disc. H 3½, F 8-9.	2 50	
† californica . Large orange-yellow flowers.	2 25	14 00	turbineus alba . Pure white.	2 50	
† canadensis (native). Red and yellow. H 1, F 5.	2 00	13 00	White Queen . White flowers. H 4, F 9.	2 50	15 00
† canadensis nana . Very dwarf, distinct and pretty. H ½, F 5.	2 00	13 00	ASTILBE Arendsii . This new type is the result of crossing <i>A. Davidii</i> with <i>A. japonica compacta</i> , <i>A. astilboides</i> , and <i>A. Thunbergii</i> . The plants are of very vigorous growth, 2½ to 4 feet high, producing many-branched, feathery heads of flowers. They prefer a half-shady moist position in any ordinary garden soil.		
† chrysantha . Beautiful golden yellow flowers; blooms for two months. H 3-4, F 5-6.	2 50	15 00	Ceres . Delicate, light rose-colored flowers with peculiar silvery sheen.	30 cts. each.	3 00
† chrysantha alba . A white variety of the above.	2 25	14 00	Juno . Strong, upright grower; plumes of a deep violet-rose color.	30 cts. each.	3 00
† glandulosa . Splendid dwarf variety, with lovely blue and white flowers.	2 25	14 00	Pink Pearl . Bright silvery pink.	30 cts. each.	3 00
† jæschkani . Large yellow flowers, with reddish spurs.	2 50	15 00	Vesta . Very graceful plumes of light lilac-rose.	30 cts. each.	3 00
† Skinneri . Scarlet; handsome and distinct. H 3-4, F 5.	2 50	15 00	floribunda . Very fine flowering variety with white feathery flowers blooming in June. The <i>Astilbes</i> are also known as <i>Spires</i>	20 cts. each.	2 00
† truncata . Scarlet and yellow; dwarf; very early.	2 50	15 00	BAPTISIA australis (False Indigo). Dark green, deeply cut foliage and spikes of dark blue flowers. H 2, F 6-7.	2 00	12 00
† vulgaris . Old-fashioned double Columbine.	2 00	13 00	BELLIS perennis (Double Daisy). Assorted colors. H ½, F 4-5.	1 25	8 00
ARABIS alpina . Forms a dense carpet, completely covered with pure white flowers in early spring. Fine for rockwork and edging.	2 25	14 00	Single Wild English Daisy	1 25	8 00
alpina fl.-pl. Double form of the above; very lasting and beautiful.	2 50	15 00	BERGAMOT . See <i>Monarda</i> .		
† ARALIA . Splendid native foliage plants, growing 6 to 8 feet high; of striking effect.	2 50		BLEEDING-HEART . See <i>Dicentra</i> .		
cachemirica	2 50		BOCCONIA cordata . Large, broad, striking leaves; large plumes of white flowers; fine for subtropical effects. H 5-7, F 7-8.	2 50	15 00
cordata	2 50		Girald . A handsome new variety with large silvery gray foliage and bold heads of milky white flowers.	2 50	15 00
edulis	2 50		microcarpa	1 75	
ARENARIA balearica . Creeping plant, with dense moss-like foliage; white flowers in spring; fine for rockwork.	2 25	14 00	BOLTONIA asteroides . Pure white; very effective. H 3-4, F 9-10.	2 50	15 00
montana . Beautiful dwarf white-flowering plant which will thrive in a dry situation.	2 50	15 00	latisquama . Light pinkish blue flowers; very lovely; blooms late in fall. Highly recommended. H 3-4.	2 50	15 00
ARMERIA cephalotes	2 25	14 00	CALIMERIS incisifolia . A graceful little plant with finely cut foliage, and is the prettiest of all single white daisy flowers; blooms all summer and is distinct and fine.	2 25	13 00
dianthoides	2 25	14 00	CALLIRHOE involuocrata . Large crimson flowers; trailing habit; very showy.	2 25	12 00
formosa	2 25	14 00	CAMPANULA (Bellflower). The <i>Campanula</i> genus is one of the largest and choicest. The varieties are all of elegant habit and should be represented in every garden.		
maritima splendens (Thrift; Sea Pink). H ¼, F 5-7.	2 25	14 00	carpatia . Dwarf; light blue. H ¼, F 6.	2 25	
ARRHENATHERUM bulbosum variegatum . A neat and distinct new variegated grass which should prove very attractive in the rock-garden.	2 25	14 00	macrantha . Large blue flowers; one of the best.	2 25	
ARTEMISIA Abrotanum (Old Man; Southern Wood). Dark green, finely cut foliage; aromatic odor.	2 50		Mariesii compacta nana . A new improved dwarf variety of great beauty; large white or purple flowers.	2 50	15 00
Absinthium (Wormwood).	2 50		Mariesii grandiflora . Large white and purple flowers; desirable.	2 00	13 00
lactiflora . Stately plant with feathery white flowers. H 6-8, F 9-10.	3 50		Medium (Canterbury Bells). One of the showiest and prettiest of garden plants; but being only a biennial, dies after blooming. Should be planted in spring.	2 50	15 00
Stelleriana (Old Woman). Deeply cut silvery foliage; much used in carpet bedding. H 18 in.	2 50		persicifolia . Large blue flowers, almost as showy as Canterbury Bells. H 2, F 6.	2 50	
ASCLEPIAS incarnata . Rosy pink flowers; very desirable. H 2-3, F 7-9.	2 00	13 00	persicifolia alba . White flowers; a grand border plant. H 1-3, F 7.	2 50	
tuberosa . Orange-scarlet; one of the showiest and finest hardy plants grown. H 1-2, F 7-9.	2 50	15 00	pyramidalis . Very showy, tall variety. H 4-5, F 7.	2 50	
ASTER alpinus . Very dwarf variety with large showy purplish flowers in May and June.	2 50		pyramidalis alba . White flowers. H 4-5, F 7.	2 50	
alpinus alba . A variety of the above.	2 50		turbinata . Large, erect, blue flowers; fine.	2 00	14 00
Beauty of Tymardreath . A beautiful new Michaelmas Daisy; white flowers with golden disc changing to red.	2 50		turbinata alba . Charming white flowers. H ½-1, F 7-8.	2 50	14 00
Grandiflorus . Distinct in character and flower; very large flowers of a lovely violet-blue, and is the latest variety to bloom.	3 00		CANDYTUFT . See <i>Iberis</i>		
Harvardii . Full and strong blue flowers.	2 50		CANTERBURY BELLS . See <i>Campanula Medium</i> .		
novæ-angliæ rubra . The best of the American "Hardy Asters;" very showy. H 3-4, F 9-10.	2 25	14 00	CARDINAL FLOWER . See <i>Lobelia</i> .		
novæ-angliæ, Wm. Bowman . Large, rich rosy purple flowers, with deep golden bronze disc. Very showy. H 4-5, F 8-9.	2 50				
novi-belgii, Ella . Large delicate mauve flowers, with golden center; profuse bloomer; extra fine.	2 50				
novi-belgii, Enchantress . Small pinkish blue flowers.	2 50				
novi-belgii, Esme . White flowers, medium height.	2 50				
Ptarmicoides . Dwarf, early-flowering, hardy Aster blooming in July and August. Its charming white flowers are produced in the greatest profusion. Distinct and good.	2 50				
Purity . Pure white.	2 50				

Hardy Herbaceous Perennials, continued

CASSIA marilandica. Handsome pinnate foliage and numerous racemes of showy yellow flowers; extremely desirable plant of the easiest culture. H 4-5, F 7.....	Doz.	100	\$2 00	\$12 00
CENTAUREA babylonica. Showy yellow flowers; suitable for planting in shrubberies and large borders. H 6-10, F 7.....		2 25		
macrocephala. Yellow; very fine. H 3-5, F 7.....		2 25		
montana (Cornflower). Blue flowers. H 2, F 6..		2 25		
montana alba. White flowers.....		2 50		
CERASTIUM Biebersteinii. Very dwarf plant, covered with small white flowers; very desirable for carpeting or edging borders and beds; silvery white foliage, which is very attractive throughout the season.....		2 50	14 00	
tomentosum. Similar to above but inferior.....		2 50	14 00	
CHRYSANTHEMUM, Hardy Pompon Varieties. H 2-3, F 10-11.....		1 75	10 00	
Hardy Large-Flowered Varieties. These and the preceding varieties are the old-fashioned Chrysanthemums that used to be in every garden. They are perfectly hardy, and make a brave show of color late in the fall, after all other flowers are gone. H 3-4, F 10-11.....		2 50	15 00	
latifolium. Similar to the <i>C. maximum</i> but much better; one of the most satisfactory of hardy plants; highly recommended; fine for cutting. H 2, F 6-9.....		2 00	13 00	
leucanthemum (Shasta Daisy). Advertised as a California wonder.....		2 00		
maximum. Large, single, daisy-like flowers.....		2 00	13 00	
maximum filifera. A dwarf improved form of <i>C. maximum</i>		2 00	13 00	
maximum, Princess Henry. A variety with very large white flowers.....		2 00	13 00	
Speaker. The largest of the Maximum varieties; immense showy flowers.....		2 50		
CIMICIFUGA cordifolia. Most valuable by reason of its extreme late-flowering, beginning in September and attaining full perfection about the middle of October, a time when flowers are scarce. Its flowering stems are from 2½ to 3 feet high, terminated with a dense spike of white flowers, which when cut, last in perfection a long time.....		25 cts. each..	2 50	
racemosa simplex. Dense spikes of white flowers; very desirable. H 2½-3, F 9-10.....		3 00		
CLEMATIS recta. Large heads of pure white flowers.....		25 cts. each..	2 50	
Davidiana. This is an herbaceous plant instead of a climber, and has beautiful blue flowers and handsome foliage; very desirable.....		2 50		
integrifolia. Large purple flowers in great profusion in July and August.....		2 50		
CONVALLARIA majalis (Lily-of-the-Valley). Pips	40	3 00		
COREOPSIS grandiflora. An improved variety with large, bright yellow flowers; one of the best hardy plants in cultivation. Fine for cut flowers. H 2-3, F 5-7.....		1 50	9 00	
verticillata. Masses of small golden yellow flowers; finely cut foliage. H 2-3, F 7-8.....		2 00		
CORONILLA varia. Compact sheets of beautiful pink bloom. H 1, F 5-10.....		2 25		
CYPRIPEDIUM acaule. Pink.....		4 00		
pubescens. Large; yellow.....		4 00		
spectabile. The most beautiful hardy orchid, and one of the most lovely flowers in the world; does well in a shady location.....		50 cts. each..	5 00	
DAY LILY, WHITE. See Funkia.				
Yellow. See Hemerocallis.				
DELPHINIUM chinense. Dark blue, small-flowered; elegant and distinct dwarf species.....		2 00	12 00	
formosum. A splendid old hardy plant, with intense dark blue flowers. H 4-5, F 6-7.....		2 00	12 00	
formosum caelestinum. New; light, of great beauty.....		2 50		
Fine Mixed. Tall English. H 4-8, F 6-9.....		2 50	16 00	
DIANTHUS barbatus (Sweet William). Improved auricula-flowered.....		2 00	13 00	
deltoides. A creeping Pink of great beauty.....		2 25	14 00	
Her Majesty. A fine hardy white Pink.....		2 25	14 00	
Juliette. White, laced crimson.....		2 25	14 00	

Dianthus latifolius atrococcineus fl.-pl. (Ever-blooming Hybrid Sweet William). A beautiful summer bedding variety, producing masses of brilliant fiery crimson flowers during the entire season.....	Doz.	100	\$2 00	
plumarius (Pheasant's Eye; Hardy Pink).....		2 25	\$14 00	
plumarius semperflorens. One of the most beautiful Pinks in cultivation; blooms all season.....		2 25	14 00	
scoticus fl.-pl. (Double Scotch Pink). Desirable.....		2 25	14 00	
†DICENTRA spectabilis (Bleeding-Heart). H 1-2, F 4.....		4 00		
*eximia. Beautiful fern-like foliage; blooms all summer. H ¾-1½, F 4-8.....		2 50	15 00	
DICTAMNUS. The Dictamnus is one of the most satisfactory hardy plants in cultivation, both on account of splendid flowers and its rich, durable foliage.				
Fraxinella. H 2, F 5-7.....		3 50		
Fraxinella alba. H 2, F 7-8.....		3 50		
†DIGITALIS buxbaumii		2 50		
†gloxinæflora		2 00	13 00	
†grandiflora		2 50		
maculata superba		2 00	13 00	
†purpurea (Foxglove). H 4-7, F 7.....		2 00	13 00	
DORONICUM plantagineum excelsum. H 2-3..		2 50	15 00	
DRACOCEPHALUM Ruyschiana. Dark violet-blue; neat border plant. H 2, F 6.....		2 50		
EPIMEDIUM (Barrenwort). A genus of dwarf-growing plants with leathery foliage and panicles of lovely white, yellow and lilac-colored flowers. The foliage of all the varieties offered below assumes the most beautiful tints of color in autumn.				
lilacea. Beautiful lilac.....		2 50	15 00	
Musschianum. Creamy white.....		2 50	15 00	
niveum. Pure white.....		2 50	15 00	
sulphureum. Light yellow.....		2 50	15 00	
ERIANTHUS Ravenæ. A splendid tall-growing grass suitable for tropical effects, H 8-12, F 9-10		2 50	15 00	
ERYNGIUM eburneum (Sea Holly). Curious and beautiful plants.....		2 50		
ERYSIMUM pulchellum. Dwarf plant like a wall-flower.....		2 25		
EULALIA. The Eulalias are splendid grasses for making beds and groups for tropical effects.				
gracillima. Very graceful. H 5-7.....		2 00	12 00	
japonica. H 5-7.....		2 00	12 00	
japonica variegata. H 5-7.....		2 00	12 00	
EUPATORIUM purpureum. A splendid native plant, growing 6 to 10 feet high, with immense heads of purplish pink flowers; fine for naturalizing along streams and ponds, and for planting among shrubbery. F 7-9.....		2 00	13 00	
EUPHORBIA corollata. A choice native plant with white flowers; largely used by florists for cut-flowers.....		1 75	9 00	
EVENING PRIMROSE. See <i>Oenothera</i> .				

Hardy Ferns

Varieties marked (*) require shade; those marked (†) succeed in open border.

*Adiantum pedatum (Maidenhair Fern).	†Onoclea Struthiopteris (Ostrich Fern).
*Aspidium acrostichoides (Wood Fern)	†Osmunda gracilis (Flowering Fern).
*Aspidium marginale.	†Osmunda Claytoniana (Flowering Fern).
*Aspidium Goldieanum (Shield Fern).	†Osmunda cinnamomea (Cinnamon Fern).
†Asplenium Filix-femina (Lady Fern).	†Osmunda regalis (Royal Fern).
†Asplenium Thelypteris.	†Polypodium falcatum.
†Asplenium Trichomanes (Spleenwort).	*Woodsia obtusa.
†Dicksonia punctilobula (Gossamer Fern).	*Woodwardia angustifolia (Chain Fern).
†Onclea sensibilis (Sensitive Fern).	†Woodwardia virginica.

Any of the above Ferns 25 cts. each, \$2.50 per doz., \$14 per 100

Hardy Herbaceous Perennials, continued

	Doz.	100		Doz.	100
FESTUCA glauca. A very dwarf grass with pretty blue foliage; fine for edging.....	\$2 25	\$14 00	Hemerocallis Dumortieri. H 1½, F 6-7.....	\$2 00	\$13 00
FOXGLOVE. See Digitalis.			flava (Lemon Day Lily). H 2-3, F 6-7.....	1 50	10 00
*FUNKIA Aoki. Large glaucous green leaves.....	1 75	10 00	fulva (Orange Day Lily). H 2-3, F 6-7.....	2 00	13 00
*aurea maculata. Young foliage in early spring is of a bright yellow color.....	2 50		fulva fl.-pl. Double.....	2 00	13 00
*caerulea (Blue Day Lily). H 2½, F 7.....	1 75	10 00	graminea. Bright yellow; one of the best.....	2 00	13 00
Fortunei. Large glaucous green leaves; flowers mauve.....	2 00		Sieboldii. Clear, deep bright yellow. H 3, F 5-6.....	2 25	
*lancifolia albo-marginata. A very distinct variegated variety.....	2 50	14 00	Thunbergii. Bright yellow. H 3, F 7-8.....	2 00	
*Sieboldii. One of the finest of hardy plants on account of its splendid foliage. H 2-3, F 7-8.....	2 50	14 00	HERACLEUM giganteum (Giant Parsnip). A remarkable foliage plant.....	35 cts. each..	3 50
*subcordata (White Day Lily). H 1½, F 5-8.....	3 50		HESPERIS matronalis, Purple (Sweet Rocket). H 2-3, F 6-9.....	2 00	12 00
*variegata. Variegated foliage, blue flowers. H 1, F 5.....	2 50	15 00	Matronalis, White.	2 00	12 00
GAILLARDIA. Hardy varieties.....	2 50	15 00	HEUCHERA, Rain of Fire. A new and greatly improved variety.....	2 50	15 00
GILLENIA trifoliata. A strong-growing plant suitable for the border or shrubbery; handsome foliage and numerous white flowers tinged pink. H 3, F 7.....	2 00		sanguinea. Very choice, dwarf graceful plant with lovely crimson flowers; fine for cutting. H ¾-1½, F 7-9.....	2 00	13 00
GENTIANA Andrewsii (Blue Gentian). Pretty native species with blue flowers. H 1½, F 9.....	2 50		HIBISCUS Moscheutos. Bright pink.....	2 50	14 00
GEUM coccineum. Pretty border plants, growing 18 inches high and producing brilliant scarlet flowers throughout the summer.....	2 00		Moscheutos, Crimson Eye. White. H 3-6, F 8-10.....	2 50	14 00
atrosanguineum. Orange-scarlet.....	2 00		Mallow Marvels. Enormous single flowers of white, pink and crimson		
GYPSOPHILA paniculata (Baby's Breath). When in bloom in August and September it forms a symmetrical mass 2 to 3 feet in height and as much through, of minute white flowers having a beautiful gauze-like appearance.....	2 00		Separate Colors.	40 cts. each..	4 00 25 00
paniculata flore-pleno. Beautiful double variety of above.....	3 00		Mixed Colors.	20 cts. each..	2 00 12 00
scorzonerifolia. Beautiful rose-colored Baby's Breath.....	3 00		HIERACIUM aurantiacum. A low-growing rapid-spreading plant adapted for dry, sandy spots for covering steep banks; orange-red flowers....	1 50	
HELENIUM autumnale superbum. An improved variety of great beauty.....	2 50		HOLLYHOCKS, Best Double	2 50	15 00
Hoopesii. Bright orange flowers. H 2-3, F 7-8.....	2 50		Best Single	2 50	15 00
HELIANTHEMUM mutabile (Sun Rose). Charming dwarf evergreen plants with pink and white flowers. H ½, F 5-6.....	2 25	14 00	Allegheny	2 50	15 00
HELIANTHUS. The hardy Sunflowers are among the most desirable of hardy plants. They are free-flowering over a long season, are very decorative in the garden, and are fine for cutting. All have bright yellow flowers.			HONESTY. See Lunaria		
Buttaris.	2 00	13 00	HYACINTHUS candicans. Showy white flowers, blooming in summer; easiest culture.....	1 50	10 00
giganteus. Pale yellow flowers, 3 inches across; very elegant. H 4-5, F 8-9.....	2 00	13 00	IBERIS (Candytuft) corifolia. Large snow-white flowers. H ¾, F 5.....	2 50	15 00
H. G. Moon. One of the best. H 4, F 9-10.....	2 00	13 00	sempervirens (Hardy Candytuft). It covers the ground with a mat of pure white flowers. H ¾-1, F 4-5.....	2 50	13 00
laetiflorus. The best free-flowering variety; single yellow flowers; fine for cutting. H 4-5, F 7-8.....	2 00	13 00	sempervirens nana. Improved dwarf variety... 2 50	2 50	13 00
Maximilianii. Tall and very late; one of the most stately and elegant hardy plants in cultivation; best Sunflower to bloom in the fall. H 7-9, F 10-11.....	2 00	13 00	sempervirens, Queen of Italy. A new dwarf variety with violet flowers; very pretty.....	2 50	13 00
orgyalis. A very striking, tall Sunflower. H 5-6, F 6-10.....	2 00	13 00	INULA Helenium. Free-flowering border plants with yellow flowers. H 2, F 6-8.....	2 50	
Scaberrimus, Miss Mellish. Very large duplex flowers of exquisite shape and bright orange-yellow, freely produced during August and September. Grand for cutting. H 5.....	2 00	13 00	IRIS Kaempferi (Japanese Iris). See page 14.		
trachelifolius.	2 00	13 00	Pseudacorus variegata. Foliage beautifully variegated; flowers rich yellow; suitable for marshes and water-courses. H 3, F 5-6.....	1 50	
tuberosus (Jerusalem Artichoke). Very decorative; grows 12 feet high; also a desirable vegetable.....	1 50	9 00	germanica (German Iris). See page 13.		
Wolley Dod. The best of the September-flowering varieties. Deep yellow flowers; distinct and fine.....	2 00	13 00	sibirica alba. See page 14.		
HELIOPSIS, B. Ladhams. Broad-petaled, rich yellow flowers; the best of the Helioipsis. H 3, F 7-9.....	2 50		LATHYRUS latifolius albus (White Everlasting Pea). These Everlasting Peas are but little known in this country, but are great favorites in England. They are extremely showy and fine... 35 cts. each.. 3 50	3 50	
Pitcheriana. Similar to the hardy Sunflower, but blooming during a much longer season. H 3-6, F 8-10.....	2 00	13 00	latifolius splendens. Bright pink. 35 cts. each. 3 50	3 50	
HELLEBORUS niger (Christmas Rose).....	50 cts. each..	5 00	LAVENDER. The well-known garden herb.....	1 50	
HEMEROCALLIS aurantiaca. Large orange-yellow flower.....	2 50		LIATRIS pycnostachya. Striking hardy summer-blooming plant, with great rocket-like spikes of purple flowers. H 3-5, F 6-9.....	2 00	13 00
aurantiaca major. New and very beautiful. Needs protection in winter.....	3 50		callilepsis. A new variety of Liatris, similar to Pycnostachya, but dwarfer and blooms a month earlier. A valuable introduction. H 1½-2, F 6, 20 cts. each.. 2 00	2 00	13 00
			LINUM perenne (Flax). H 1½, F 6-8.....	2 25	14 00
			perenne album.	2 25	14 00
			perenne roseum.	2 25	14 00
			LOBELIA cardinalis. Native plant, with intensely brilliant cardinal flowers. H 2-3, F 7-9.....	2 50	15 00
			LUPINUS polyphyllus. An extremely showy plant with large, effective spikes of blue flowers; attractive but does better north of here, as it is partial to a cool climate. H 3, F 5-6.....	2 50	15 00
			LYCHNIS chalconica. Dense head of brilliant scarlet flowers; one of the best border plants. H 1½-3, F 5-8.....	2 25	13 00
			chalconica fl.-pl. A good double variety; fine for cutting.....	2 50	14 00
			japonica grandiflora. A new Japanese variety; lovely fringed apricot flowers.....	50 cts. each..	5 00
			viscaria splendens.	2 25	

Hardy Herbaceous Perennials, continued

	Doz.	100
LYSIMACHIA clethroides (Loosestrife). Semi-aquatic, with white flowers. H 2-3, F 7-9.....	\$2 25	
Nummularia aurea (Golden Moneywort). Fine for carpeting.....	2 00	\$10 00
punctata . Showy yellow flowers. H 4½-2, F 6.....	2 00	
LYTHRUM superbum roseum . Very showy; splendid for banks of streams and ponds. H 3-5, F 7-8.....	2 25	13 00
MALVA moschata alba . This lovely Mallow blooms profusely in June and July, and grows 18 to 24 inches high. The flowers are white; 2 inches across.....	2 25	
moschata rosea . Same as above with rose-colored flowers.....	2 25	
MERTENSIA virginica . A lovely blue flower, blooming in early spring. H 2, F 4.....	2 50	15 00
MONARDA didyma (Bergamot). Very showy crimson flowers. H 2, F 7-9.....	2 00	13 00
*didyma rosea	2 50	
*fistulosa (Wild Bergamot). Mixed colors. H 2-4, F 6-8.....	2 00	12 00
MYOSOTIS palustris semperflorens (Water Forget-Me-Not). Splendid for naturalizing on edge of ponds and streams; also for beds and borders.....	1 50	10 00
palustris semperflorens grandiflora . Improved form with larger flowers.....	1 75	11 00
ENOTHERA (Evening Primrose). The Evening Primrose is very effective in the garden on moon-light nights		
Lamarckiana . Large, sulphur-yellow flowers, lovely beyond description. H 4-5, F 7-8.....	2 50	
missouriensis . H ½, F 6-8.....	2 50	15 00
speciosa rosea . Dwarf; large white flowers tinted pink.....	2 50	
splendens . Splendid dwarf variety, blooming in the daytime.....	2 00	13 00
ONOPORDON Acanthium (Scotch Thistle). Noble plant, with striking foliage and showy purple flowers.....	2 50	
PACHYSANDRA terminalis . A trailing plant 6 to 8 inches high, forming broad mats of bright, glossy green foliage and small spikes of flowers during May and June; invaluable as a cover plant either in the sun or shade.....	2 00	15 00
terminalis variegata . A variegated variety of above.....	2 00	15 00
PANSIES, Best Strain . Plants for spring bedding.....	1 00	7 00
PAPAVER orientale (Great Oriental Poppy). Splendid. Assorted varieties. H 3, F 6.....	2 50	
PARDANTHUS chinensis (Blackberry Lily).....	2 00	13 00
PENNISETUM japonicum . This new Hardy Grass is very desirable. It grows 4 feet high, with slender, graceful foliage and showy plumes thrown well above the leaves. Most valuable for adding variety to the garden planting.....	2 50	
PENTSTEMON barbatus Torreyi . Brilliant crimson and orange flowers in July; one of the best hardy plants. H 3-5.....	2 25	14 00
pubescens . A very showy variety, with rosy purple flowers. F 7-8.....	2 50	
PEONIES, Good Varieties . Mixed.....	2 50	
PHLOX alba . Pure white.....	1 75	10 00
atropurpurea . Deep rosy purple.....	1 75	10 00
Bridesmaid . Purplish, tinted white.....	1 75	10 00
divaricata cœrulea	1 75	10 00
divaricata canadensis	1 75	10 00
divaricata Laphamii . Variety of <i>P. canadensis</i> , one of the finest hardy perennials adapted for the rockery, for the border and for naturalizing; remarkably free blooming, forms a somewhat shrubby plant, 18 inches in height, individual flowers much larger than <i>P. canadensis</i> ; the heads are large, and the petals not cleft as in the type.....	2 50	
G. F. Wilson . New; lovely light blue; distinct and fine.....	1 75	10 00
Little Dot . White with blue center; small flowers of dainty habit.....	1 75	10 00

Phlox, Model. Best pink variety..... \$1 75 \$10 00
subulata (Moss Pink). Rose-pink. Fine for covering banks; thrives in hot, dry situations, and blooms profusely..... 1 75 10 00

Arendsii. At the great International Exhibition held in London, May, 1912, where this new type of Phlox received an Award of Merit, no other plant in the Hardy Perennial class attracted such great attention. It originated through the successful crossing of the early-flowering popular *P. divaricata canadensis* with the showy hardy varieties of *P. decussata*. The plants are of vigorous, branching habit, growing, according to the variety, from 12 to 24 inches high. Coming into flower the latter part of May, they continue in good condition for nearly two months, producing a mass of flowers unknown in other types of Phlox.

Amanda. The dwarfest of the collection, 12 inches high, delicate lilac with deeper center. 25 cts. each. \$1 00 \$2 50

Louise. A strong growing variety, about 2 feet high; light lilac with carmine eye.. 25 cts. each. 2 50

Grete. Pure white, slightly tinted lilac..... 25 cts. each.. 2 50

Helene. Of a beautiful lavender-blue color; similar to *P. divaricata canadensis*; shapely plant. 15 to 18 inches high..... 25 cts. each.. 2 50

Fall Perennial. See page 12.

PHYSOSTEGIA virginica. Erect stems of pretty pink flowers. H 1½-2½..... 2 00 12 00

virginica alba. A beautiful white variety. H 2-3, F 7-8..... 2 00 12 00



Phlox divaricata

Hardy Herbaceous Perennials, continued

	Doz.	100		Doz.	100
PINK. See <i>Dianthus</i> .					
PLANTAIN LILY. See <i>Funkia</i> .					
PLUMBAGO <i>Larpenzæ</i> . A dwarf plant covering the ground completely with its foliage. In September it is a mass of beautiful deep blue flowers, which gradually change to violet.	\$2 25	\$13 00			
PLUME POPPY. See <i>Bocconia</i> .					
POLYGONUM <i>amplexicaule</i> (Mountain Fleece)	2 00				
<i>cuspidatum</i> (Giant Knotweed). Grows to 12 feet high; makes a splendid group for tropical effect	2 00				
*PRIMULA <i>Auricula</i>	2 50				
<i>Froncosa</i> . Rosy lilac flowers above silvery tufts of foliage. H $\frac{3}{4}$, F 4.	2 50				
<i>japonica</i> . Beautiful and desirable variety.	2 50				
<i>veris</i> (Polyantha). H $\frac{1}{2}$ - $\frac{3}{4}$, F 5-6.	1 75	10 00			
<i>vulgaris</i> (English Hardy Primrose). H $\frac{1}{2}$ - $\frac{3}{4}$, F 4-5.	2 50	15 00			
PULMONARIA <i>saccharata picta</i> . A splendid plant for shade or partial shade. Grows 10 to 12 inches high, and is loaded with bright blue flowers early in the spring, followed by a mass of striking variegated leaves which are effective until fall.	2 25				
PYRETHRUM, Double Varieties.	6 00				
Single Varieties. The Single Pyrethrums are among the loveliest hardy flowers grown. They are splendid for beds and borders, and nothing can be finer for cutting. Their single, daisy-like flowers, of all colors, are produced in the greatest profusion early in the spring and again in the fall.	2 50	15 00			
RANUNCULUS <i>acris fl.-pl.</i> (Bachelor's Buttons). A showy border plant with double yellow flowers in early summer.	2 00				
RHEUM <i>Collinianum</i> . Like the above, but foliage more deeply cut; splendid	4 00				
<i>emodi</i> . Grows 5 feet high; wrinkled leaved, with red veins; very effective.	4 00				
<i>giganteum</i> . A tall, vigorous variety of striking effect.	3 00				
<i>officinale</i> (Chinese Rhubarb). The immense leaves of this noble foliage plant produce a bold and striking effect. Robinson says this is the most effective foliage plant introduced for many years.	3 50				
<i>tanguticum</i> . Has fine foliage and is of rapid growth; distinct and striking.	4 00				
RODGERSIA <i>podophylla</i> . A stately plant, both in foliage and flower; planted in rich, deep soil, in a sunny situation, and liberally supplied with water, produces five-lobed leaves 2 $\frac{1}{2}$ to 3 feet in diameter, at first bright green, changing to a metallic-brown hue; flowers white, not unlike a spirea, and borne in large, fluffy, feathery sprays in midsummer.	.50 cts. each.				
<i>tabularis</i> . A rare Siberian species with attractive pale green foliage, which in established plants is borne on stems 3 to 4 feet high, and is fully 18 inches in diameter, retaining its fresh and stately appearance throughout the season. Its fluffy, feathery white flowers are borne on sprays 6 feet high during midsummer.	\$1.50 each.				
ROSEMARY. An old-fashioned plant with scented foliage.	1 75				
RUDBECKIA <i>hirta</i> . The "Black-Eyed Susan" of our meadows.	2 00	13 00			
<i>laciniata</i> , Golden Glow. Double Rudbeckia. Grows 10 to 12 feet high, and is undoubtedly one of the most effective plants in cultivation. It is becoming very popular. F 7-9.	2 00	12 00			
<i>nitida</i> . Pure yellow flowers.	2 00				
<i>purpurea</i> . Large crimson-maroon flowers; very distinct.	3 00				
<i>speciosa</i> . Native. One of the very best border plants in cultivation. A group of "Golden Glow" surrounded by this variety makes a splendid effect. H 2-3, F 7-9.	2 25	13 00			
<i>Rudbeckia subtomentosa</i> . Densely branched plant, 2 $\frac{1}{2}$ feet high, completely covered throughout the summer with a mass of brilliant lemon-colored flowers, with purple centers.	\$2 25	\$14 00			
RUTA <i>graveolens</i> (Rue). This is a well-known herb	75				
SAGE. The well-known herb.	75				
SALVIA <i>azurea</i> . Rocky Mountain. Pretty sky-blue flowers in greatest profusion. H 3-4, F 9	2 50				
<i>turkestanica</i> . Extremely decorative sweet-scented foliage and showy whorls of white flowers surrounded by pale pink. H 2, F 6.	2 50				
<i>virgata nemorosa</i> . Distinct and effective foliage with showy whorls of dark blue flowers. H 1 $\frac{1}{2}$, F 7-8.	2 50				
SAPONARIA <i>ocymoides splendens</i> . A charming little creeping plant covered with lovely bright crimson flowers during the month of June.	2 00				
<i>officinalis fl.-pl.</i> Beautiful plant growing about 2 feet high and blooming in August; large double flowers of a lovely soft rose-pink.	2 00				
SAXIFRAGA <i>cordifolia</i> . Large, shiny evergreen foliage and large panicles of bright pink flowers. H 1, F 4-5.	2 00				
SCABIOSA <i>caucasica</i> . Large head of pale blue flowers; one of the best hardy plants in cultivation; grows and flowers freely in any garden soil.	2 50				
<i>caucasica alba</i> . A white-flowered variety of the above.	2 50				
<i>japonica</i> . Lavender-blue flowers; very free-flowering from June to September; fine for cut-flowers; lovely.	2 50				
SEA HOLLY. See <i>Eryngium</i> .					
SEDUM <i>acre</i> . Fine for covering graves and for carpeting.	1 50	8 00			
<i>spectabile</i> . A fine fall-flowering plant with great heads of purple flowers. H 1 $\frac{1}{2}$, F 9-10.	2 25				
<i>stoloniferum</i> .	1 50				
SILPHIUM <i>perfoliatum</i> . Yellow flowers. H 4-8, F 7.	2 50				
*SPIRÆA <i>Aruncus</i> . A grand native sort, with great heads of white flowers. H 3-5, F 6-7.	2 50	15 00			
<i>astilboides floribunda</i> . A splendid white variety.	2 25				
<i>filipendula fl.-pl.</i> A beautiful dwarf variety, with elegant fern-like foliage. H $\frac{1}{2}$ -3, F 6-7.	2 25	13 00			
<i>kamtschatica rosea</i> . Stately plants 4 feet high, large heads of light pink flowers in July.	3 00				
<i>lobata</i> . One of the handsomest of the Spireas, with deep rosy carmine flowers. H 1 $\frac{1}{2}$ -3, F 6.	2 50				
<i>palmata</i> . Broad clusters of the most beautiful crimson flowers above splendid palmate foliage. H 2, F 7-8.	2 25	13 00			
<i>palmata elegans</i> . A lovely new variety with light pink flowers. H 2, F 7-8.	2 25	14 00			
<i>Ulmaria</i> .	2 25				
STACHYS <i>lanata</i> . White, woolly leaves and purple flowers; useful for edging. H 1, F 7.	2 25				
STATICE <i>latifolia</i> .	2 25				
STENANTHIUM <i>robustum</i> .	4 00				
SWEET WILLIAM. See <i>Dianthus barbatus</i> .					
TEUCRIUM <i>Chamædrys</i> . Evergreen shining leaves; purple flowers; will grow on barren soils.	2 25				
THALICTRUM <i>adiantifolium</i> . Beautiful foliage like maidenhair fern.	2 25				
<i>glaucum</i> . Bronzy yellow flowers, bluish foliage.	2 50				
<i>aquilegifolium</i> . All Thalictrums have handsome foliage, and this variety has quite showy flowers. H 3-4, F 6-7.	2 50	14 00			
THERMOPSIS <i>caroliniana</i> . Showy plant, with attractive yellow flowers.	2 25				
*TIARELLA <i>cordifolia</i> (Foam Flower). A most charming dwarf spring-flowering plant, with beautiful white flowers and lovely foliage.	2 00				

Hardy Herbaceous Perennials, continued

	Doz.	100		Doz.	100
* TRILLIUM erectum album	\$1 50	\$8 00	VERONICA amethystina	\$2 00	100
grandiflorum	1 50	8 00	longifolia . Spikes of deep bluish purple flowers; very handsome. H 2, F 8-9.....	3 00	
TRADESCANTIA virginiana (Spiderwort). Produces a succession of purple flowers all summer	1 75		spicata . Violet-blue flowers on long spikes; dwarf habit.....	2 00	
TROLLIUS . Desirable free-flowering plants producing their giant Buttercup-like blossoms on stems 1 to 2 feet high from May until August; succeed admirably in the border in a half-shady position in well-drained preferably light soil			VINCA cærulea . The well-known hardy Myrtle; fine for carpeting under trees where grass will not grow.....	1 50	\$10 00
Excelsior . Double orange flowers... 35 cts. each..	3 50		VIOLA cornuta . Flowers almost as large as a Pansy. This is the most desirable of hardy plants. Blooms continuously all season; blue flowers....	1 50	10 00
Orange Prince . Brilliant orange flowers.....	3 50		pedata bicolor . Deep purple flowers	1 75	10 00
Earliest of All . Bright clear yellow, flowering in April.....	5 00		WAHLENBERGIA grandiflora	2 00	
europæus superbus . Bright rich yellow, globular flower. H 1½-2.....	2 50		grandiflora alba	2 00	
TUNICA Saxifraga . A pretty tufted plant with light pink flowers, produced all summer; useful either for the rockery or the border.....	2 25		WALLFLOWER	1 75	12 00
UNIOLIA latifolia . A very useful ornamental grass	2 25		YUCCA angustifolia	2 50	15 00
VERBASCUM nigrum . Yellow flowers in long spikes; dwarfed habit.....	2 00		filamentosa (Spanish Bayonet; also known as the Mexican Soap Plant). Fine, strong plants; a stately decorative plant, with immense spikes of large white flowers; fine for the garden or lawn	2 50	15 00
olympicum . Bright yellow flowers; large woolly foliage; stately.....	2 50		VIOLETS, Single . In the varieties offered below, the Single Violets have been brought to such a high point of excellence that they are equal in favor with the double sorts, and, being much easier to grow and free from disease, we strongly recommend the amateur to confine himself to this class. By the use of a coldframe a fine crop of flowers can be had in the spring and in the fall.		
pannosum . Sulphur-yellow flowers. New species, with white foliage.....	3 00		California . The variety so popular in California. This is one of the best varieties... 25 cts. each..	2 00	13 00
phœniceum . Seedlings; crimson-rose, lilac and white; large and showy.....	3 00		Princess of Wales . A grand variety; very large flowers..... 25 cts. each..	2 00	13 00
VERBENA venosa . A hardy Verbena; very extensively used in England for bedding. It grows about 18 inches high, but if pegged down will cover the ground with heads of lovely purple-violet flowers throughout the season. Not quite hardy except on thoroughly well-drained soils..	2 00	12 00			



Border of Hardy Perennials

Ornamental Flowering Shrubs

Our stock of shrubs is unsurpassed in quality, but our prices will be found much lower than those made by most nurserymen. As a rule, shrubs are much more effective when planted in masses, and our low prices permit them to be used freely in this way. For a guide in planting, we have indicated the size the shrubs will eventually be, as follows: "H 3-4, S 3-4 June" which means "Height 3 to 4 feet, spread 3 to 4 feet, flowers in June." The sizes given can only be approximate as the size shrubs attain varies considerably with soils and climate.

Shrubs marked * can be grown in partial shade, but they will also thrive in full exposure to the sun.

Special Offer of Shrubs

We want to encourage the planting of shrubs. To be effective they should be planted in masses, but when dealers or nurserymen ask 50 cts. to \$1 each for easily grown shrubs there is not much encouragement to plant them freely. We have made arrangements by which we can supply our customers with well-grown shrubs in the best varieties at the extremely low prices quoted below, **but in every instance the selection of varieties must be left to us.** But in ordering, if it is stated that certain shrubs are not wanted they will not be sent. We guarantee these shrubs to be satisfactory in both quality and variety. We cannot give in advance of filling the order a list of varieties contained in these collections.

SPECIAL OFFER A— 50 shrubs in fine assortment of 15 varieties.....\$13 00
SPECIAL OFFER B—100 shrubs in fine assortment of 20 varieties..... 25 00

ALMOND, Dwarf Double-flowering Pink. Each Doz. 100	*BERBERIS japonica. Similar to <i>B. Thunbergii</i> , but more vigorous in habit. \$0 50 \$5 00	Each Doz. 100
H 3-5, S 4, May.....	<i>Thunbergii</i> . H 5-6, S 4-5.....	40 4 00
Dwarf Double-flowering White.	*Sieboldii. H 5-6, S 4-5.....	40 4 00
50 5 00	*Thunbergii (Japanese Barberry). One of the most desirable shrubs in cultivation on account of its habit, foliage and fruit; fine for an untrimmed hedge.....	35 3 50 \$25 00
ALTHÆA (Rose of Sharon), Buist's Variegated. Exceptionally fine for hedging purposes, as well as for producing marked contrasts in groups of mixed shrubbery. H 8-10, S 4-6, August, September.....	Small plants. H 4-5, S 4-5.....	25 2 25 15 00
60 6 00	*vulgaris (European Barberry). A magnificent shrub when it attains its full development; long racemes of yellow flowers in May followed by orange-scarlet berries which last all winter. H 6-8, S 6-8.....	50 5 00
Double. Fine distinct named varieties... 50 5 00 \$30 00	*vulgaris purpurea (Purple Barberry). H 5-6, S 5-6.....	50 5 00
Jeanne d'Arc. A new perfectly double, pure white-flowering variety, and a great acquisition. It supersedes all the so-called double white varieties, being entirely immaculate.....	The shipment of <i>B. vulgaris</i> is now prohibited to many states because it is said to injure the wheat crop. This does not apply to <i>B. Thunbergii</i> .	
50 5 00 30 00	BUDDLEIA. Little-known but very attractive summer-flowering shrubs. In this climate the tops usually kill to the ground in the winter, but the roots are perfectly hardy. A vigorous new growth which flowers freely, is produced every season. H 4-5, S 4-5.	Each Doz. 100
Seedlings. Mixed colors, single and semi-double; extra large plants.....	amplissima. Lilac; very fine flowering... \$0 50 \$5 00	
50 5 00 30 00	magnifica. Light blue.....	50 5 00
Single Dwarf White. Pure snow-white; fine. H 5-7.....	variabilis. Lilac flowers produced in dense terminal panicles 4 to 6 inches long....	50 5 00
50 5 00 30 00	Veitchiana. Pale Hortense-blue.....	50 5 00
Single-flowered Varieties. In white, blue and pink, very lovely and desirable	CALYCANTHUS floridus (Sweet-scented Shrub). H 5-6, S 4-5, June.....	50 5 00
Wm. R. Smith. Giant-flowered white variety.....	CARAGANA arborescens (Siberian Pea). Pale yellow pea-shaped flowers. H 8-10, S 8, May, June.....	50 5 00
1 00 10 00	CARYOPTERIS Mastacanthus (Blue Spirea). Not very hardy. H 2-3, S 2-3	50 5 00
AMELANCHIER Botryapium. H 8-10, S 6-8, May.....	CASSIA marilandica (Wild Senna). Pea-shaped yellow flowers. H 3-4, S 4-5....	35 3 50
60 6 00	CEANOTHUS americanus (Jersey Tea). Sweet-scented white flowers. H 2-3, S 3, July-September.....	50 5 00
canadensis (Juneberry). H 12-15, S 12, April, May.....	CEPHALANTHUS occidentalis (Button Bush). Curious round balls of white flowers in July. H 6-8, S 6.....	50 5 00
60 6 00	CERASUS virginiana. A large shrub with brilliant, showy fruit; very attractive. H 10-12, S 6-8.....	75 7 50
AMORPHA canescens. H 2-3, S 2, June.. 50 5 00	CERCIS canadensis (American Red-Bud, or Judas Tree).....	50 5 00
fruticosa (False Indigo). H 6-8, S 8, June 50 5 00	japonica (Japanese Red-bud; Judas Tree). Very showy pink flowers before the leaves appear in April. H 4-5, S 4-5....	1 25
ARALIA japonica. A distinct and most beautiful tall shrub with palm-like leaves and large heads of white flowers in August. H 8-12, S 5.....	CHIONANTHUS virginica (White Fringe). H 10-12, S 6-8, May, June.....	75 7 50
60 6 00	CLETHRA alnifolia (Sweet Pepper). Splendid summer-blooming shrub, with deliciously sweet-scented white flowers. H 3-5, S 4, July-September.....	50 5 00
pentaphylla. A shrub little known but very desirable. The effect of the luxuriant glossy foliage on the arching branches is very beautiful. H 5-7, S 5-6.....	COLUTEA arborescens (Bladder Senna). Rapid grower. H 7-8, S 6-8.....	50 5 00
50 5 00 30 00		
AZALEAS. Should always be planted in the spring or early in September. H 4-6, S 4, April, May.		
*arborescens. A strong-growing native species, with very fragrant white flowers. 12 to 18 inches; Fine plants.....		
1 50 15 00 100 00		
*calendulacea. A splendid native Azalea, with orange-colored flowers. Strong and vigorous in growth.....		
1 50 15 00 100 00		
canescens. A deep pink variety of <i>A. nudiflora</i>		
1 50 15 00		
Ghent. The most beautiful of all Azaleas. Make a wonderful show in May; colors range from pure white through all shades of pink, yellow to deep crimson.....		
2 00 22 00		
Kæmpferi. Bright orange-red flowers... 1 75 18 00		
mollis. 12 to 18 inches; with bloom buds; splendid plants.....		
1 50 15 00 100 00		
*nudiflora. A native species, with fragrant pink flowers.....		
1 25 12 00 85 00		
occidentalis. Blush-white, variety from California.....		
2 00 22 00 175 00		
*Vaseyi. Earliest; lovely pink flowers... 2 00 22 00		
viscosa. Native white-flowered variety, deliciously sweet-scented.....		
1 25 12 00 85 00		
ANDROMEDA mariana. Small shrub, with lovely pinkish white flowers. H 2-4, S 3. 50 5 00		

Ornamental Flowering Shrubs, continued

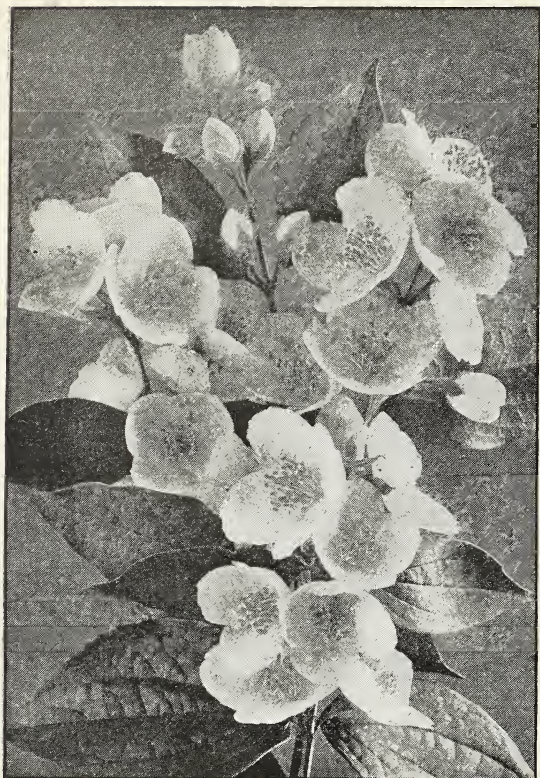
	Each	Doz.	100
COTONEASTER Simonsii. Dwarf shrub with attractive red fruit; not very hardy	\$0 50	\$5 00	
CORCHORUS japonicus (<i>Kerria japonica</i>). Single yellow; blooms freely in summer time. H 4-6, S 4.....	50	5 00	
japonicus fl.-pl. A superb summer-blooming shrub with showy double yellow flowers. H 4-6, S 3.....	50	5 00	
japonicus variegatus. A dwarf shrub, with beautiful, graceful foliage. A dainty, charming shrub that should be freely planted. H 3-4, S 3.....	50	5 00	
CORNUS (Dwarf or Shrubby Dogwood). Very valuable shrubs on account of their easy growth, luxuriant foliage, bright-colored bark, and showy fruits. Fine for massed and waterside planting.			
* alba sibirica (Red-twisted Dogwood). Fruit bluish white. H 6-8, S 6.....	40	4 00	\$25 00
alba Spaethii aurea. Yellow variegated foliage. H 3-4, S 4.....	60	6 00	
* alternifolia (Blue Dogwood). A large-growing shrub of most beautiful foliage and habit. Small white flowers in spring and showy fruit in the fall. H 6-8, S 6.....	75	7 50	
Kousa (Japanese Dogwood). A white-flowering variety of great beauty and rarity; grows into a small tree.....	I 50		
mas. (Cornelian Cherry). Very showy bright scarlet fruit. H 8-10, S 6-8.....	50	5 00	
* sanguinea (European Red Osier). Deep red bark; black berries. H 6-8, S 6.....	40	4 00	25 00
* sericea. Red bark, bluish fruit. H 8-10, S 6-8.....	40	4 00	25 00
* stolonifera (Red Osier; Cornel). Dwarf-spreading shrub; white berries. H 4-5, S 5.....	40	4 00	25 00
* stolonifera pendula. Pendulous variety of above; distinct and fine.....	40	4 00	25 00
CORYLUS americana (American Hazel-nut). H 8-10, S 6.....	50	5 00	
maxima purpurea (Purple Hazel). Rich purple foliage.....	60	6 00	
CRATÆGUS (Hawthorn). Very attractive spring-flowering shrubs. Very sweet-scented and showy. They are large shrubs and eventually grow into small trees, but the growth is slow. They are covered with attractive red berries in the summer and fall. H 10-20, S 10-20.			
coccinea (American Hawthorn).....	50	5 00	
Crus-galli. An American Hawthorn of great beauty.....	50	5 00	
Double-flowered Rose	I 00		
Double-flowered Scarlet	I 00		
Double-flowered White	I 00		
Oxyacantha (English Hawthorn).....	50	5 00	
Pyracantha Lalandii (Evergreen Thorn). One of the most beautiful Thorns. Covered with splendid scarlet fruits in fall and winter.....	75	7 50	
CYDONIA japonica (Japan Quince). Brilliant red. H 4-5, S 5.....	50	5 00	
CYTISUS Laburnum (Laburnum; Golden Chain).....	75	7 50	
DESMODIUM penduliflorum. An exceedingly graceful shrub-like plant covered with purplish red flowers in summertime when little else is in bloom; strikingly beautiful. H 3-4, S 4.....	40	5 00	
DEUTZIA candidissima. Double white flowers. H 6-8, S 6, May, June.....	40	4 00	
crenata fl.-pl. Double pink flowers. H 6-8, S 6.....	40	4 00	
gracilis. Single white flowers. H 2-3, S 3, May.....	40	4 00	
Lemoinei. A dwarf and exceedingly free-flowering shrub, with pure white single flowers. H 3, S 3, May.....	50	5 00	
parviflora. Pure white flowers. H 4-6, S 5.....	40	4 00	
Wellsii. Pure white double flowers. H 6-8, S 6, May.....	40	4 00	
DIERVILLA sessilifolia (Native Weigela). H 4-6, S 6.....	50	5 00	

	Each	Doz.	100
ELÆAGNUS angustifolia. Silvery gray foliage, like the Olive. H 10-12, S 8.....	\$0 60	\$6 00	
longipes. A new and handsome shrub with edible fruit. True variety. H 6-8, S 6.....	50	5 00	
umbellata. H 10-12, S 8.....	60	6 00	
EUONYMUS alatus (Winged Burning Bush). H 6-8, S 6.....	75	7 50	
atropurpureus (American Burning Bush). H 8-12, S 6.....	75	7 50	
europæus (European Burning Bush).....	60	6 00	
EXOCHORDA grandiflora (Pearl Bush). A rare Chinese shrub with pure white flowers. H 8-10, S 6.....	50	5 00	
FORSYTHIA Fortunei (Fortune's Golden Bell). Magnificent, vigorous-growing shrub, covered with yellow bell-like flowers before the foliage appears in the spring. Splendid for planting on steep banks, and especially above a retaining wall, as some of the branches grow upright while the remainder will hang down over the wall for several feet. H 6-8, S 5, April.....	40	4 00	\$25 00
Fortunei aurea. Yellow-foliaged variety of above.....	40	4 00	25 00
suspensa (Drooping Golden Bell). Long, pendulous branches which hang down over a wall like a vine.....	50	5 00	30 00
viridissima. This is the erect form of Forsythia. H 8-10, S 6.....	50	5 00	30 00
GENISTA elatior (Hardy Broom). A beautiful dwarf yellow-flowered shrub. H 3-4, S 4, June.....	50	5 00	
HALESIA tetraptera (Silver Bell). This is one of the most beautiful-flowering large shrubs in cultivation; pure white bell-shaped flowers. H 15-20, S 8.....	75	8 00	



Hydrangea arborescens (see page 26)

Ornamental Flowering Shrubs, continued



Philadelphus coronarius

	Each	Doz.	100
HAMAMELIS virginiana (Witch Hazel). Blooms in late fall and early winter. H 6-8, S 6.....	\$0 50	\$5 00	
HIPPOPHAE rhamnoides (Sea Buckthorn). H 8-10, S 8.....	50	5 00	
* HYDRANGEA arborescens . Native variety.	35	3 50	\$20 00
* arborescens grandiflora . New variety with immense heads of white flowers. H 3, S 3.....	50	5 00	
paniculata . Distinct from <i>P. grandiflora</i> . A very striking and elegant shrub. H 5-6, S 5.....	50	5 00	
paniculata grandiflora . The well-known hardy Hydrangea. H 4-5, S 4.....	50	5 00	
quercifolia (Oak-leaved Hydrangea). Very handsome. One of the most picturesque shrubs. H 3-4, S 4.....	75	8 00	
HYPERICUM densiflorum . Yellow flowers. H 2-3, S 3.....	50	5 00	
Moserianum . Extremely beautiful; large golden yellow flowers.....	50	5 00	
prolificum . H 2-3, S 2-3.....	50	5 00	
ILEX verticillata (Deciduous Holly). Valuable for its brilliant scarlet berries in fall and winter. Will grow in swampy ground, and the berries are very fine for interior decorations. H 8-10, S 6.....	50	5 00	
ITEA virginica . Sweet-scented white flowers in early summer. H 4-5, S 4.....	50	5 00	
LILAC (Syringa), Common Purple	40	4 00	25 00
Common White . 2 to 3 feet.....	50	5 00	30 00
Persian . White and purple; small flowers.	50	5 00	
Josikæa (Chionanthus-leaved Lilac). A very distinct and beautiful species from Hungary, with violet flowers, blooming in early summer. H 8-10, S 8.....	75	8 00	
japonica . A new and unique species from Japan, attaining the size of a small tree, with large panicles of white flowers; foliage very large, thick and deep green color; blooms a month later than other Lilacs. I 00	100	10 00	

	Each	Doz	100
Lilac, villosa . Another New Japanese species, with foliage resembling the White Fringe (Chionanthus), and producing immense panicles of pinkish flowers late in the season; splendid. H 8-12, S 8.....	\$1 00	\$10 00	
emodi . A wild species with large shining leaves; whitish flowers in June.....	75	8 00	
For best named Lilacs see page 16.			
LONICERA (Upright Honeysuckle). These are very vigorous free-growing shrubs that are very showy and desirable, both on account of their pink or white flowers which are freely produced in the spring and their bright red or orange fruit with which they are covered in the summer. H 8-10, S 6-8.....	50	5 00	
bella candida, rosea and albida . New and extremely beautiful in flower and fruit.....	50	5 00	\$35 00
fragrantissima . A very early sweet-scented species.....	50	5 00	
Morrowii . Flowers pure white; fruit red.	50	5 00	
Ruprechtiana	50	5 00	
tatarica . Pink flowers.....	50	5 00	
tatarica alba . White flowers.....	50	5 00	
Xylosteum (Fly Honeysuckle).....	50	5 00	
MYRICA cerifera (Wax Myrtle; Bayberry; Candleberry). H 4-6, S 5.....	75	8 00	
PAVIA macrostachya (Dwarf Horse-Chestnut). Beautiful spreading shrub with large heads of white flowers in June; fine for specimen on the lawn.....	I 50		
PHILADELPHUS (Syringa; Mock Orange). Vigorous growing with showy white and mostly sweet-scented flowers.			
areus . Yellow-leaved. H 4-5, S 4-5.....	50	5 00	
coronarius . Very sweet-scented white flowers. H 8-10, S 8.....	50	5 00	
Falconeri . Starry white flowers borne in great profusion. H 6-8, S 6.....	50	5 00	
grandiflorus . Large flowers, very showy. H 8-10, S 8.....	50	5 00	
Lemoinei . A new dwarf variety of wonderful beauty. H 4-5, S 5.....	50	5 00	
Mont Blanc . One of the newer dwarf sorts; large white flowers borne in the greatest profusion. H 4-5, S 5.....	50	5 00	
Sutzmannii . Large showy white variety. H 8-10, S 8.....	50	5 00	
POTENTILLA fruticosa	50	5 00	
PRIVET (<i>Ligustrum</i>), California . Very popular for hedging, but sometimes killed to the ground during very cold weather.			
1-year.....	15	1 50	4 00
2-year.....	20	2 00	6 00
3-year.....	25	2 50	8 00
* Amor River . True. Very hardy and desirable for hedges.....	25	2 50	15 00
aurea elegantissima . A splendid golden variegated Privet that holds its color throughout the season.....	30	3 00	
* Common . Desirable for hedging, and harder than California Privet.....	20	2 00	12 00
Media . A Privet of beautiful habit; fruits immensely.....	25	2 50	
Polish . Upright vigorous grower and absolutely hardy.....	35	3 50	25 00
* Regel's	35	3 50	25 00
PRUNUS maritima (Beach Plum). Dwarf bush Plum, which makes an extremely ornamental shrub on account of its flowers as well as its fruit, which is produced on bushes when only 2 feet high. The fruit is edible and makes an excellent preserve. H 5-8, S 6.....	50	5 00	
Pissardii (Purple-leaved Plum). Desirable on account of its rich purple foliage. H 10-12, S 8.....	60	6 00	
sinensis rubra . A dwarf Chinese Plum of great beauty. Double red flowers.....	60	6 00	
triloba . A desirable flowering Plum with double pink flowers; very beautiful.....	75	7 50	

Ornamental Flowering Shrubs, continued

	Each	Doz.	100
PYRUS arbutifolia (Choke Berry). A native shrub of great beauty and easy culture. Covered with white flowers in early spring, followed by bright red berries which last all winter. H 4-5, S 5.	\$0 50	\$5 00	
RHAMNUS cathartica (Buckthorn). Strong-growing shrub with black berries. H 8-10, S 8.	50	5 00	
RHODORA canadensis . Small shrub with very pretty purplish flowers which appear in the spring before the leaves come out; very attractive. H 1-2, S 2.	1 00	10 00	
RHODOTYPOS kerrioides . H 4-5, S 5.	50	5 00	
RHUS aromatica (Sweet-scented Sumac). H 4-6, S 5.	60	6 00	
copallina (Shining-leaved Sumac). H 4-6, S 5.	60	6 00	
Cotinus (Purple Fringe). H 8-10, S 8.	60	6 00	
Cotinus atropurpurea (Improved Purple Fringe)	60	6 00	
glabra laciniata (Cut-leaved Sumac). H 4-5, S 5.	75	7 50	
typhina (Common Sumac). H 10-12, S 6.	60	6 00	
typhina laciniata . New cut-leaved Sumac; very beautiful.	1 00		
RIBES aureum (Missouri Currant). H 4-5, S 5.	50	5 00	
Gordonianum . H 4-5, S 5.	50	5 00	
ROBINIA hispida (Rose-flowered Acacia). Extremely free-flowering and attractive. H 4-5, S 5.	50	5 00	
RUBUS odoratus (Thimble Berry). Splendid foliage and purplish flowers all summer. H 4-6, S 5.	40	4 00	
SAMBUCUS canadensis (Common Elderberry). Very striking when planted in rich soil. H 6-8.	40	4 00	
laciniata (Cut-leaved Elderberry).	60	6 00	
nigra aurea (Golden-leaved Elderberry).	50	5 00	
*pubens . This rare variety has bright red fruit in the spring, when the common Elderberry is in bloom; very showy.	50	5 00	
SPIRÆA arguta . Pure white flowers early in the spring. H 5-6, S 5.	50	5 00	
Billiardii . Pink spikes of flowers in the summer. H 5-6, S 5.	50	5 00	
Bumalda, Anthony Waterer . A beautiful dwarf flowering shrub of great popularity. "This is a seedling of that variety of <i>Spiræa japonica</i> which is known in gardens as <i>S. Bumalda</i> , and which is distinguished by its dwarf, compact habit, its persistent flowering, and bright red flowers. Anthony Waterer differs from its parent in the deeper, brighter, and more intense color of the flowers. As it begins to flower freely when only a few inches high and continues to produce its large, flat corymbs from July until frost appears, this shrub promises to be a capital addition to the rather short list of autumn-flowering hardy shrubs." H 2-3, S 3. Two-year-old plants.	50	5 00	\$33 00
callosa . Pink flowers all summer. H 3-4, S 4.	50	5 00	
carpinifolia . Flowers in white panicles. H 6-8, S 6.	50	5 00	
Douglasii . Deep pink spikes of flowers. Fine for masing. H 5-6, S 5. July, August.	50	5 00	
Froebelii (Froebel's Spirea). Free-blooming sort with pink flowers.	50	4 50	25 00
Lindleyana . Splendid foliage and flowers; very picturesque but not very hardy; needs a sheltered location and well drained soil. H 5-6, S 6.	75	7 50	
opulifolia aurea (Ninebark). Vigorous-growing variety with yellowish foliage; white flowers followed by showy seed-pods. H 8-10, S 6.	50	4 50	25 00
paniculata rosea . A vigorous grower with pink flowers in July.	50	4 50	25 00

	Each	Doz.	100
Spiræa Reevesii fl.-pl. Double white flowers in May. H 5-6, S 5.	\$0 50	\$4 50	\$25 00
Regeliana . Pink flowers in panicles. H 6-8, S 6.	50	4 50	25 00
salicifolia (Willow-leaved Spirea).	50	4 50	25 00
tomentosa . Pink flowers; hardy and distinct. H 5-6, S 5.	50	4 50	25 00
Thunbergii (Snow Garland). The first shrub to flower in the spring; pure white flowers in profusion. Very lovely. H 4-5, S 4.	50	4 50	25 00
Van Houttei . A very graceful variety. One of the best; by many people considered the most satisfactory shrub in cultivation; white flowers in the greatest profusion in May. H 6-8, S 6.	50	4 50	25 00
STAPHYLEA colchica . Extremely sweet-scented and free-flowering shrub; very desirable. H 7-8, S 6.	60	6 00	
STEPHANANDRA flexuosa . A very graceful shrub, with deeply cut, fern-like foliage. H 3-5, S 4.	50	4 50	
STEWARTIA pentagyna . A very rare shrub with exquisitely beautiful, large, single white flowers in July. H 6-8.	1 30		
STYRAX japonica . This rare gem is one of the most desirable shrubs known. When in bloom it is literally covered with cream-white bells. H 12-15, S 10.	60	6 00	
SYMPHORICARPOS . The Symphoricarpos are very desirable in the shade or under trees where nothing else will grow. They are covered with white or red berries in fall and winter.			
*racemosus (Snowberry). White-fruited. H 4-5, S 5.	35	3 00	20 00
*variegata . Beautiful variegated foliage. H 4-5, S 5.	35	3 00	20 00
*vulgaris (Indian Currant). Red-fruited. H 3-4, S 4.	35	3 00	20 00



Lonicera bella candida (See page 26)

Ornamental Flowering Shrubs, continued

	Each	Doz.	100		Each	Doz.	100
TAMARIX. Tall, slender shrubs with feathery foliage and large panicles of lovely pink flowers in late spring or early summer.							
<i>æstivalis hispida.</i> H 8-10, S 6.....	\$0 50	\$5 00		WEIGELA amabilis. Light pink. H 6-8, S 8.	\$0 50	\$5 00	
<i>africana.</i> H 8-10, S 6.....	50	5 00		<i>candida.</i> White. Decidedly the most desirable of its color. H 6-8, S 8.....	50	5 00	
<i>plumosus</i> (Japanese Tamarix). H 10-12, S 6.....	50	5 00		<i>floribunda.</i> Crimson. H 6-8, S 8.....	50	5 00	
VIBURNUM dentatum. A most beautiful and satisfactory shrub. H 6-8, S 6..	50	5 00		<i>hybrida, Conquete (Novelty).</i> Enormous flowers; deep rose.....	50	5 00	
Lantana. Showy red fruit. H 8-10, S 6..	50	5 00		<i>hybrida, Eva Rathke.</i> Very valuable everblooming variety; large crimson flowers. H 5-6, S 6.....	50	5 00	
macrocephalum. A rare variety of great beauty; immense heads of white flowers. H 8-10, S 8.....	I 50			<i>hybrida, Floreal.</i> Pale rose, shaded mauve, throat bright carmine; very showy.....			
Opulus nana. Very dwarf. H 1-2, S 2..	50	5 00			75 cts. each..		
Opulus sterile (Snowball). H 8-10, S 8..	50	5 00		<i>hybrida, Gracieux.</i> White, with sulphur throat, outside and buds salmon-pink.			
Oxycoccus (Cranberry Tree). Very showy red fruit. H 8-10, S 8.....	50	4 50	\$30 00		75 cts. each..		
plicatum (Japan Snowball). One of the choicest shrubs. H 8-10, S 10.....	75	7 50		<i>hybrida, Vestal.</i> One of the best early sorts; large horizontal flowers of a very pure cream-white.....			
tomentosum. Rare and choice. H 8-10, S 10.....	60	6 00			75 cts. each..		
VITEX Agnus-castus (Chaste Shrub)				Lavallei. Dark, purplish red flowers.....	50	5 00	
Blue	50	5 00		rosea. Pink flowers. H 6-8, S 8.....	50	5 00	
White	50	5 00		rosea nana variegata (Variegated-leaved). H 4-5, S 5.....	50	5 00	
				XANTHOCERAS sorbifolia. Beautiful... I	50		
				XANTHORRHIZA apiifolia	40	4 00	

Ornamental Deciduous Trees

With the exception of varieties marked with an asterisk (*), we do not grow trees. The following list of trees is selected from the best nurseries in the United States. Orders will be shipped from the nearest nursery that can supply the stock ordered, so as to save freight charges and secure quickest possible delivery; where stock is ordered in considerable variety, it is sometimes shipped from two or more nurseries to secure trees of the best quality. We always endeavor to secure the best stock in the market for our customers. The prices quoted are for trees of the most suitable size for transplanting; extra-large trees of many varieties can be supplied, but are not recommended. If quick results are desired they can be had by taking small- and medium-sized, but perfectly vigorous and healthy trees, and giving them liberal planting; for instance, dig a hole 3 feet deep and 5 feet in diameter for each tree, and fill with all good surface soil, mixed with one-fourth of its bulk of rotted stable manure.

It costs considerable to plant trees in this manner, but the results justify the expense, and people often pay from \$10 to \$50 each for larger trees, which always fail, generally dying outright within three years, and never making vigorous, healthy trees. Some kinds of trees may be safely planted much larger than others. Magnolias, Beeches, Tulip Trees, and white-leaved Lindens are difficult to transplant and small-sized trees of these should always be selected. Some varieties should always be planted in the fall, others in the spring, and we shall be glad to advise our customers on these and other points in regard to planting.

Lowest net prices will be quoted on trees by the 100 and 1,000 on application



Weeping Beech

	Each	Doz.
AILANTHUS glandulosa. Female trees which are almost free from disagreeable odor.....	I 75	\$18 00
ALDER, Cut-leaved	2 25	
European	I 50	13 00
ANDROMEDA arborea (Sorrel Tree). A scarce and extremely beautiful flowering small tree....	I 25	13 00
ASH, American White	I 25	13 00
English	2 00	22 00
BALM OF GILEAD. See Poplars.		
BEECH , the noblest of all trees, but of slow growth and difficult to transplant. Small trees should always be selected and well pruned when planted.		
American	2 50	
English	2 50	
*Purple-leaved	4 00	
*Weeping	4 50	
*BIRCH, American White	2 00	
European White	I 00	10 00
*Cut-leaved Weeping	I 50	
*Paper	2 00	
Red	2 00	
Sweet	2 00	
Plant Birches in the spring.		
BUTTONWOOD. See Sycamore.		
CATALPA Bungei (Indian Bean or Cigar Tree). Standard.....	2 00	22 00
Large specimens, \$4, \$5, \$7.50, and \$10 each. Umbrella-headed trees used for formal effects. Grafted at the ground.....	I 50	
speciosa. Our native variety.....	I 00	10 00
*CERCIS canadensis (American Judas Tree).....	50	5 00
japonica (Japanese Judas Tree).....	I 25	

Ornamental Deciduous Trees, continued

	Each	Doz.
*CHERRY, Double-flowered Pink.....	\$2 00	
*Double-flowered White.....	2 00	
*European Bird.....	1 50	\$10 00
*Rose-flowered (Weeping Japanese). Unique and beautiful flowering tree.....	4 00	
CLADRASTIS tinctoria (<i>Virgilia lutea</i>).....	2 00	
CRAB APPLE. The ornamental Crab Apples are undoubtedly the most beautiful small-flowering trees in cultivation; even more beautiful than the popular Magnolias. They are of the easiest culture, hardy, and bloom when quite small.		
*Bechtel's New Double-flowered.....	1 50	
*Common Wild (<i>P. coronaria</i>).....	1 50	
Double White (<i>P. spectabilis</i>).....	1 50	
*floribunda. Single-flowered, pink; one of the most beautiful.....	1 50	
*Parkman's (<i>Pyrus Parkmanii</i>).....	1 50	
*CYPRESS, Deciduous.....	2 50	
*DOGWOOD, Red-flowering.....	1 75	
*White-flowering.....	1 00	10 00
ELM, American.....	2 00	22 00
Camperdown Weeping.....	4 50	
English.....	2 50	
HONEY LOCUST, American.....	1 50	16 00
HORSE-CHESTNUT—		
Double White.....	4 00	
White-flowering.....	2 50	28 00
KENTUCKY COFFEE TREE (<i>Gymnocladus canadensis</i>).....	2 50	
KÆLREUTERIA paniculata.....	2 50	
*LARCH, European.....	1 25	12 00
LINDEN, American.....	2 50	28 00
European.....	2 50	
Large-leaved (<i>Tilia platyphylla</i>).....	3 50	
White-leaved Weeping. A splendid pendulous tree.....	5 50	
White, or Silver-leaved. A superb tree.....	3 50	
LIQUIDAMBAR styraciflua (Sweet Gum).....	2 50	
MAGNOLIA acuminata (Cucumber Tree).....	1 50	
*glauca (Sweet Bay).....	1 50	
*tripetala (Umbrella Tree).....	2 50	
MAGNOLIA, Chinese and Japanese—		
*conspicua. A superb, large-flowered White Magnolia.....	6 00	
*Lennei. A beautiful sort, with large purple flowers.....	5 00	
*purpurea (<i>M. obovata</i>). Purple.....	2 00	
*Soulangeana. White, pink center; a splendid sort that is literally covered with large flowers early in the spring. Specimens prepared for transplanting.....	4 00	
*stellata (<i>Halleana</i>). A dwarf white variety of exquisite beauty.....	1 50	
MAPLE, Ash-leaved (Box Elder).....	1 50	
*Norway.....	2 50	28 00
Red, or Scarlet.....	2 50	
Schwedler's Purple.....	3 00	
*Silver-leaved (Water, or Soft).....	1 50	16 00
Sugar.....	3 50	33 00
Sycamore.....	2 50	
Tartarian.....	3 00	
*Wier's Cut-leaved.....	2 50	24 00
MOUNTAIN ASH, European.....	2 00	
MULBERRY, Russian.....	75	8 00
Teas' Weeping.....	2 50	
White.....	75	8 00
NUTS, Chestnut, American.....	1 25	13 00
Spanish.....	1 50	
Filberts, American.....	75	8 00
English.....	1 00	10 00
Walnut, Black.....	1 00	11 00
English.....	1 00	11 00
Japanese.....	1 00	10 00

The Japanese and Spanish Chestnuts are thriving where the American variety has all been killed.

	Each	Doz.
OAK. The planting of Oaks for ornament has been done but little on account of their supposed slow growth. They grow quite as rapidly as other hardwood trees, and the Pin Oak is of very rapid growth, and one of the finest trees in cultivation.		
Burr, or Mossy Cup.....	\$3 00	
Scarlet. A grand tree with splendid coloring in fall.....	4 00	
Pin (<i>Quercus palustris</i>). One of the very finest trees for avenue or lawn planting, and of very rapid growth. The great demand for this tree has made it very scarce.		
6 to 7 feet.....	2 50	
8 to 10 feet.....	3 00	\$33 00
10 feet.....	4 00	
10 to 12 feet.....	6 00	
Red.....	3 00	
*PAULOWNIA imperialis (Empress Tree).....	1 00	10 00
PEACH, Double-flowering. Pink, white and crimson.....	85	8 50
PHOTINIA villosa. A very ornamental tree, covered with red berries in fall and winter.....	2 00	
PLANE. See Sycamore.		
PLUM, Purple-leaved (<i>Prunus Pissardii</i>).....	75	8 00
POPLAR, Balsam (Balm of Gilead).....	1 00	
Carolina.....	75	8 00
Golden.....	1 00	10 00
Lombardy.....	1 00	10 00
Pyramidal (<i>P. Bolleana</i>).....	1 75	18 00
SALISBURIA adiantifolia (Ginkgo; Maidenhair Tree). A quaint Japanese tree, with foliage like that of a Maidenhair Fern.....	2 50	
SORBUS. See Mountain Ash.		
SOPHORA japonica.....	2 50	
SYCAMORE, Oriental. A grand tree either for the lawn or street. Withstands smoke and soot well.....	2 50	28 00
THORNS. See Hawthorn, under head of Hardy Shrubs.		
*TULIP TREE (<i>Liriodendron Tulipifera</i>).....	2 00	22 00
WILLOW, Flame-colored.....	60	6 00
Golden-barked.....	60	6 00
Laurel-leaved. Very handsome.....	75	
Regal. White foliage.....	60	6 00
Salamonii. New Weeping Willow, of remarkably rapid growth.....	75	8 00
Weeping.....	75	8 00
YELLOW-WOOD. See Cladrastis.		



Avenue of Horse-Chestnut

Roses for Fall Planting

Dormant Hardy Roses can be supplied from October 25 to December 1

We have decided to offer Dormant Roses for fall delivery only, as we find many of our customers delay ordering in the spring until it is too late to plant. It is important in planting Dormant Roses to cut them well back; one-half the tops should be cut off when planted in the fall, and any wood that winter-kills should be cut off early in the spring.

The varieties of Roses now offered are innumerable, and this great list is added to every year by a host of new varieties which make an intelligent selection of varieties impossible to most buyers. We have reduced our lists to a few of the very best varieties, and no one can make a mistake in selecting any of the sorts offered.

Hybrid Tea and Tea Roses should be planted in the spring, and a selection of the best varieties is offered in our Spring Catalogue.

Best Hybrid Perpetuals

They are the hardiest of all Roses and make a great show of bloom in June.



Ulrich Brunner

Baron de Bonstetten. Velvety blackish crimson; very large, double, fragrant flowers; a strong grower.

Baroness Rothschild. A superb large Rose of pale satiny pink.

Captain Christy. Lovely peach color, deepening at center to rosy carmine; exquisite.

Captain Hayward. Light scarlet-crimson; fragrant.

Clio. Delightful satiny flesh; large, on long stems.

Mme. Gabriel Luizet. Light satiny pink; an exquisite Rose of fine form.

Frau Karl Druschki. This is the ideal hardy white Rose, pure in color, perfect in form; strong grower and remarkably free-flowering; superb in every way.

General Jacqueminot. Brilliant scarlet-crimson; an old favorite and one of the best-known Roses; does well everywhere.

Gross an Teplitz. This is a Rose for everybody, thriving under the most ordinary conditions. Color richest scarlet, shading to silvery crimson; vigorous and always in bloom; very hardy.

Magna Charta. Bright pink, suffused with carmine; a beautiful Rose, and a strong, vigorous grower; one of the best.

Mrs. R. G. Sharman-Crawford. Deep rosy pink, outer petals shaded with pale flesh; a beautiful Rose in every respect.

Mrs. John Laing. Soft pink; of beautiful form; exceedingly fragrant and remarkably free-flowering; always does well and stands very close to the top among the fine Roses.

Paul Neyron. Dark rose; of enormous size; perhaps the largest of all.

Prince Camille de Rohan. Deep velvety crimson-maroon, shaded scarlet; a magnificent dark Rose.

Ulrich Brunner. Bright cherry-red; flowers large and full; a good strong grower and always does well.

Extra-strong, dormant plants, \$1 each, \$10 per doz.; ready about October 25

Miscellaneous Roses

	Each	Doz.
Blanc Double de Coubert. A new semi-double Hybrid Rugosa Rose with all the good qualities of the species and the most exquisite white flowers.....	\$0 90	\$8 00
Blanche Moreau. (Moss.) Budded	90	8 00
Conrad Ferdinand Meyer. (Rugosa Hybrid.) Silvery rose; large and full; one of the best of the new Rugosas.	90	8 00
Crested Moss. (Moss.) Budded.....	90	8 00
Glory of Mosses. (Moss.) Budded.....	90	8 00
Harison's Yellow. (Austrian Brier).....	90	8 00
Marechal Niel. (Noisette).....	1 00	10 00
Mme. Georges Bruant. (Hybrid Rugosa).....	60	6 00
Mme. Plantier. (Hybrid Perpetual.) Pure white; splendid for hedges.....	90	8 00
Paul Fontaine. (Moss.) Budded.....	90	8 00
Perpetual White. (Moss.) Budded.....	90	8 00

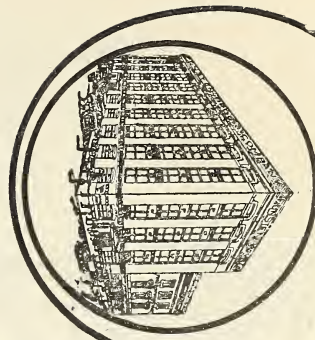
	Each	Doz.
Persian Yellow. (Austrian Brier).....	\$0 90	\$8 00
Salet. (Moss.) Budded.....	90	8 00
Tree Roses. (Not recommended.).....		30 00
ROSA carolina. (American Wild Rose.) Blooms in July.....	50	5 00
lucida. (Dwarf American Wild Rose).....	50	5 00
multiflora. (Japanese Rose.) An extremely beautiful Rose that can be used as a climber.....	50	5 00
rubrifolia. Beautiful reddish foliage contrasting well with its beautiful pink flowers; very striking and pretty in groups or planted among shrubbery.	75	8 00
rugosa alba	60	6 00
rugosa rubiginosa. (Genuine Scotch Sweetbrier) ..	\$25 per 100..	3 50
rugosa rubra	60	6 00

Lord Penzance's Hybrid Sweetbriers

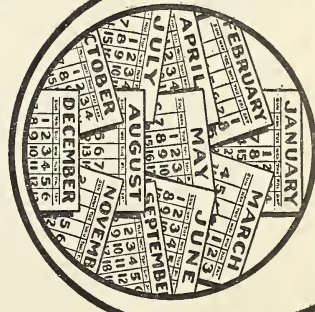
The Sweetbrier, or Eglantine, is acknowledged by all to possess one of the sweetest perfumes that nature has provided, and its delicious scent is the object for which it is usually cultivated. These new varieties are great improvements upon the old sorts. They are hybrids obtained between the common Sweetbrier and various old-fashioned garden Roses, and are possessed of the following advantages:

The flowers, which are borne in wondrous profusion, are varied in form and color from white, through several shades of pink, to very dark red or crimson. For vigor of growth there is scarcely anything in the Rose world equal to them. Plants three years old have now many shoots on them that rise to the height of 12 feet. \$1 each, \$10 per doz.

Deal with **Funsten** the year round



HIDES
ROOTS--WOOL
FUNSTEN BROS. & CO.
 INTERNATIONAL FUR EXCHANGE
 St. Louis, U. S. A. August 31, 1920



THE HIDE MARKET

The market is very weak, with practically few sales being reported. The leather situation is somewhat improved, although the large tanners believe this improvement is only a temporary one and they are not buying any hides as yet. Should the leather trade become more brisk there are still such enormous stocks of hides on hand throughout the country that better prices can hardly be expected for some time. We suggest that you SHIP NOW any hides you have on hand - and be sure to send them to FUNSTEN - St. Louis.

SALT ALL GREEN HIDES WELL as soon as they are taken off and again **BEFORE SHIPPING.**

GREEN CATTLE HIDES		Per Pound	HORSE, MULE AND DRY HIDES		Each
Green Salt (No. 1).....	\$.15 to	.14	Green Horse or Mule No. 1.....	\$6.00 to	\$5.75
Green Salt (No. 2).....	.14 to	.13	Green Horse or Mule No. 2.....	5.50 to	4.75
Green Calf Skins (Fine Haird, Soft Pels).....	.20 to	.18	Green Glue Horse or Mule.....	3.50 to	3.00
Green Calf Skins (Runners).....	.15 to	.13	Green Pony.....	3.50 to	3.00
Green Calf Side Branded.....	.12 to	.11	Green Colt.....	1.00 to	.75
Green Bull.....	.12 to	.10	Dry Horse or Mule.....	3.50 to	2.75
Green Glue (Tainted).....	.09 to	.07	Dry Cull Horse or Mule.....	1.75 to	1.50
Green or Uncured No. 1.....	.15 to	.14	Dry Flint.....	\$.27 to	.25
Fresh or Uncured No. 2.....	.14 to	.13	Dry Salted.....	.24 to	.22
			Dry Culls.....	.12 to	.10

A few Funsten suggestions that may help you get more money for your Hides

We always advise our shippers to salt their green hides as soon as they are taken off the animal, and again before shipping. By so doing you will prevent the hide becoming hair-shipped or tainted, which would make it a No. 2, or in some instances a glue hide. Salt is cheap and the using of a few extra pounds may net you a great deal more money for your hides. Use salt care possible in taking off the hide, as one small cut will make it a No. 2 hide. After the hide has been taken off the animal, take over the tail bone and sinew, spread the hide flat flesh side up, and cover it evenly and thoroughly with salt. See that the salt is well rubbed in so that it will take effect



THE WRONG WAY
 DOTTED LINES SHOW NECKS AND TAIL BONE AND SINEW NOT IN A WELL TAKEN OFF HIDE
 THE PARTS MARKED (A) IN

Shippers Check

Quantity

ARTICLES

Dollars Cent's

Am't. brought forward

ORDER SHEET

ELLIOTT NURSERY

NURSERYMEN AND SEEDSMEN

506 MAGEE BUILDING

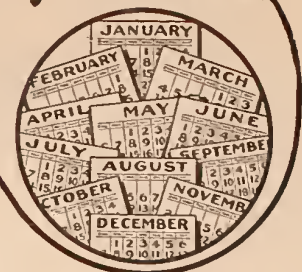
PITTSBURGH, PA.

NOTICE! PLEASE KEEP YOUR ORDER
SEPARATE FROM OTHER MATTERS YOU
WISH TO WRITE ABOUT.

REMARKS	REFERENCES	SUMMARY	
<i>Enclosed find</i>			
<i>Send to</i>			
<i>Street</i>			
<i>Post Office</i>			
<i>Express or Freight Office</i>			
<i>How Shipped</i>			
<i>To Mds.</i>			
<i>Please do not write in above spaces</i>			
		<i>Shipper's Check</i>	<i>Quantity</i>

Deal with

Funsten the year round



**HIDES
ROOTS -- WOOL**
FUNSTEN BROS. & CO.
INTERNATIONAL FUR EXCHANGE

St. Louis, U. S. A. August 31, 1920
THE HIDE MARKET

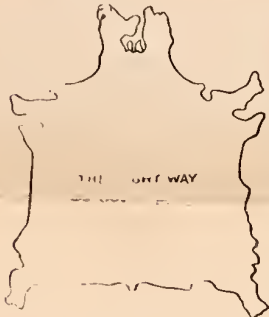
The market is very weak, with practically few sales being reported. The leather situation is somewhat improved, although the large tanners believe this improvement is only a temporary one and they are not buying any hides as yet. Should the leather trade become more brisk there are still such enormous stocks of hides on hand throughout the country that better prices can hardly be expected for some time. We suggest that you **SHIP NOW** any hides you have on hand - and be sure to send them to **FUNSTEN - St. Louis.**

SALT ALL GREEN HIDES WELL as soon as they are taken off and again **BEFORE SHIPPING.**

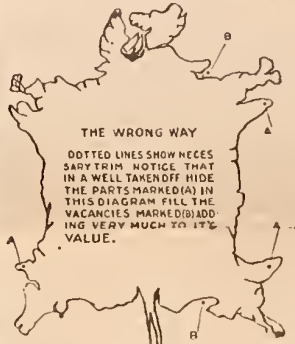
GREEN CATTLE HIDES	Per Pound
Green Salt (No. 1).....	\$.15 to .14
Green Salt (No. 2).....	.14 to .13
Green Calf Skins (Fine Haired, Soft Pelts).....	.20 to .18
Green Calf Skins (Runners).....	.15 to .13
Green Salt Side Branded.....	.12 to .11
Green Bull.....	.12 to .10
Green Glue (Tainted).....	.09 to .07
Fresh or Uncured No. 1.....	.15 to .14
Fresh or Uncured No. 2.....	.14 to .13

HORSE, MULE AND DRY HIDES	Each
Green Horse or Mule No. 1.....	\$6.00 to \$5.75
Green Horse or Mule No. 2.....	5.50 to 4.75
Green Glue Horse or Mule.....	3.50 to 3.00
Green Pony.....	3.50 to 3.00
Green Colt.....	1.00 to .75
Dry Horse or Mule.....	3.50 to 2.75
Dry Cull Horse or Mule.....	1.75 to 1.50
Dry Flint.....	Per Pound \$2.70 to .25
Dry Salted.....	.24 to .22
Dry Culls.....	.12 to .10

A few Funsten suggestions that may help you get more money for your Hides



We always advise our shippers to salt their green hides as soon as they are taken off the animal, and again before shipping. By so doing you will prevent the hide becoming hair-slipped or tainted, which would make it a No 2, or in some instances a glue hide. Salt is cheap and the using of a few extra pounds may net you a great deal more money for your hides. Use all care possible in taking off the hide, as one small cut will make it a No 2 hide. After the hide has been taken off the animal, take out the tail bone and sinews, spread the hide flat flesh side up, and cover it evenly and thoroughly with salt. See that the salt is well rubbed in so that it will take effect promptly. After salting, the hide should be allowed to lay at least twenty-four hours until it is cured, or until the salt draws the animal matter or blood out of the hide.



When ready to ship, shake out the salt or brine and sprinkle some fresh salt on the hide so that it will keep well in transit. Tie the hides up in bundles, hairside out, with a strong rope, and place a Funsten tag on the inside and outside of the bundle bearing your name and address plainly written in ink.

If you intend to dry your hides before shipping, then they should be hung up in the shade and stretched. Never bang hides in the sun to dry. In drying hides over a fence or pole, dry with the flesh or flint side out. If it can possibly be avoided, never tie green salt hides up in sacks unless they are thoroughly cured as they heat quicker in sacks than they do in bundles.

We usually advise shippers to send their hides by freight; they can, however, be sent by express from near-by points, if preferred. In shipping by freight, try to have your shipment contain at least one hundred pounds, as the freight charges on one hundred pounds will not be any more than the charges on a shipment weighing less than one hundred pounds.

If these instructions are always followed, your hides will reach us in good condition and bring the very top of the market. If there is any other information regarding hides wanted, write us and we will be glad to respond promptly.

SHIP US YOUR GOATSKINS AND PELTS TOO

We are large handlers of goats, pelts and lamb skins, also beeswax, tallow--in fact we handle large quantities of ALL goods listed below and have an excellent outlet here for them. You need not wait until you have accumulated a large lot--any of these commodities can be sent by parcel post (except green goatskins or pelts) in small quantities cheaper than by express.

GOATSKINS	Each
Goat Skins—Extra Large.....	\$0.90 to \$0.70
Goat Skins—Large.....	.70 to .55
Goat Skins—Medium.....	.50 to .40
Goat Skins Small.....	.40 to .25
Kid Goat Skins.....	.10 to .05

RABBIT SKINS	Per pound
Thoroughly dried and stretched.....	\$ 0.30 to .15
Cut and damaged skins.....	.15 to .05

Positively do not ship wet rabbit skins as they will spoil or taint in transit and reach us in a worthless condition.

SHEEP PELTS, BEESWAX, ETC.	Each
Sheep Pelts, (Green) Full Wool.....	1.60 to 1.25
Lamb Pelts (Green) Full Wool.....	1.25 to .60
Shearlings.....	.50 to .10
Dog Skins.....	.49 to .10
Wild Hog or Javelin Skins.....	.50 to .15
Sheep Pelts, (Dry Stock).....	Per pound .25 to .15
Beeswax, Prime.....	" " .32 to .30
Tallow, Cake.....	" " .15 to .13
Deerskins Dry No. 1.....	" " .70 to .20
Deerskins Dry No. 2.....	" " .25 to .15

NOTICE—The prices quoted in this price list are for prompt shipment, and reflect the market at present. We will pay these prices as long as the market justifies. If prices decline we will reduce our prices accordingly if they advance we will pay the advance. Our prices are quoted less 5% and freight or delivery charges when paid by us.

Any special instructions regarding your shipment **MUST ACCOMPANY SAME** -- otherwise we will not be held responsible.

ROOTS, HERBS, BARKS AND LEAVES

GINSENG

Other Names:—Sang, Fiva Fingers, Red Barry.

The root has a thick, pale, yellowish, or brownish bark, somewhat marked with wrinkles which transverse it. It has a slight aromatic odor, and a bitter sweet taste. The plant is from eight to fifteen inches high, bearing three leaves at the top, which consists of five thin, oval leaflets, pointed at the top and narrowed at the base, the three upper ones being larger. The flowers are yellowish green and are produced in a cluster of six to twenty during July and August. Ginseng is rarely found wild in damp places or where stagnant water is near. It is, however, sometimes found very close to running water. Ginseng must not be confused with Wild Parnip or Perley which resembles the root somewhat, but the plant is very much different.



GOLDEN SEAL

Other names:—Yellow Root, Eye Root, Eye Balm, Jaundice Root, Indian Dye, Yellow Puccoon.

Golden Seal has a short, yellow root stalk, which sends up in the early spring a solitary stem about a foot high, which seems to fork at the top, one branch bearing a large leaf, and the other a smaller one and a flower. A third leaf which is much smaller than the other two and stemless, is sometimes produced. The leaves are prominently veined and are five to nine lobed. The flowers are small and of a greenish white color, and appear on a short branch during April and May. This flower is of short duration, about five or six days, and is followed by a head of bright red berries, which, when ripe, contain a number of black shiny, hard seeds, from which the cultivated Seal is grown. Golden Seal grows best in open woodlands where there is good natural drainage, and an abundance of leaf mold.



BIG MONEY IN RAISING GINSENG AND GOLDEN SEAL

Ginseng and Golden Seal can be successfully cultivated from seed. Send for our book "Ginseng and Other Medicinal Plants," which tells how to grow and collect Ginseng, Golden Seal, and many other plants and roots of value. This book contains three hundred and sixty-seven pages and one hundred illustrations. Price, postpaid, \$1.25

HOW TO DRY AND PREPARE YOUR ROOTS FOR MARKET

All roots, herbs, barks and leaves should be absolutely dry before shipping. If they are packed and shipped green they are apt to heat or mold, and when received in this condition are of little value or worthless. Here is the correct way to prepare roots for the market:

First, wash the dirt from the roots thoroughly. To do this, spread them out on some clean surface and turn a hose on them, or stir them around in a tub of water for a few minutes. Do not let them soak up any more water than is absolutely necessary, because water-logged roots will not dry properly. After washing, spread the roots out loosely in some light, warm and dry place, turning them over every day or so until they are thoroughly dry. An attic or barn-ot floor, provided there is a free circulation of air, is a good place to let the roots dry on. Be careful to see that they are not exposed to the direct rays of the sun, although there should be plenty of light. When in doubt about correct name of roots you have collected, before shipping send us a sample for examination and prompt report. We handle all roots of value but only quote those especially wanted. We are now paying the following prices for good average roots

Per Lb

Per Lb.

Wild Ginseng—Northern	12.00 to 11.00
Wild Ginseng—Southern	10.50 to 10.00
Transplanted Ginseng	6.00 to 3.00
Cultivated Ginseng	3.00 to 1.50
Golden Seal	5.25 to 5.00
Seneca	.85 to .75
Golden Seal Tops	.50 to .40
Snake	.50 to .45
Echinacea, (Kansas Snake Root)	.40 to .37
Black Snake	.34 to .30
Star Root or Grub Root	.50 to .45
Wild Ginger	.24 to .22

Northern Pink	\$.85 to .75
Lady Slipper	.55 to .50
May Apple	.12 to .10
Blood Root	.17 to .15
Black Root	.16 to .14
Dandelion Root	.12 to .10
Burdock Root (Northern)	.65 to .03
Sassafras (Bark of Root)	.20 to .18
Wahoo (Bark of Root)	.38 to .35
Wahoo (Bark of Tree)	.20 to .18
Angelica	.20 to .18
Butterfly	.06 to .04
Scull Cap Leaves	.08 to .06
Jimson Leaves	.22 to .19

We have just received several large orders for WILD and CULTIVATED GINSENG, GOLDEN SEAL, and SENECA roots. SHIP IMMEDIATELY any roots you have on hand - we know we can send you MORE NET MONEY than you can possibly secure from any other house, regardless of quotations.

WOOL AND MOHAIR

MISSOURI, ILLINOIS AND SOUTHEAST IOWA

TEXAS, OKLAHOMA AND WESTERN STATES

Per Pound

Per Pound

Choice—Medium	\$.32 to .31
Choice—Medium Loose	.31 to .30
Low and Braid	.17 to .15
Slight Burry	.25 to .23
Hard Burry	.17 to .15
Light Fine (Long)	.38 to .35
Light Fine (Short)	.35 to .30
Heavy Fine	.28 to .26
Lamb's Wool	.30 to .28

Medium	\$.28 to \$0.25
Light Fine	.30 to .27
Heavy Fine	.22 to .20
Short Stubby	.20 to .15
Heavy Sandy	.19 to .16
Burry Medium	.20 to .18
Burry Hard	.14 to .12
Burry Fine	.16 to .12

ARKANSAS AND SOUTHERN STATES

Medium	\$.31 to .30
Loose	.30 to .29
Light Fine	.37 to .33
Heavy	.26 to .24
Slight Burry	.24 to .22
Hard Burry	.15 to .13

WISCONSIN, MINNESOTA, NORTHERN AND CENTRAL IOWA, KANSAS AND NEBRASKA

Bright—Medium	\$.30 to \$0.29
Dark	.26 to .23
Slight Burry	.23 to .21
Light Fine	.35 to .30
Heavy Fine	.26 to .20

TUBWASHED WOOL Per Pound

Tubwashed	\$.40 to \$0.32
Tubwashed—Burry	.30 to .26

MOHAIR Per Pound

Angora Goat—Long Lustrous	\$.025 to \$0.22
Angora Goat—Short Coarse	.20 to .18
Angora Goat—Slightly Burry	.17 to .14
Angora Goat—Hard Burry	.12 to .10

WOOL SACKS AND TWINE

New Wool Sacks, 7 1/2 feet long	Each \$8.5
New Wool Sacks, 6 feet long	Each .65
Glazed Wool Twine	per pound .27

BE SURE TO NOTIFY US OF ANY CHANGE IN YOUR ADDRESS.

FUNSTEN BROS. & CO.

INTERNATIONAL FUR EXCHANGE

St. Louis, U. S. A.

CORRECTED PRICES

Incorrect prices are given for the following items in our Fall Catalogue. The prices given here are correct:

All Crocus priced at \$2.50 per 100 should be \$2.60

	Doz.	100	1,000
Paper-White Narcissi Grandiflora	\$0.65	\$3.50	\$30.00
Extra-sized Bulbs	.70	4.00	35.00

Special Offer of Lilium Regale

One of the great authorities on Lilies says in a recent number of "London Gardening" that Lilium regale or myriophyllum is the most beautiful and valuable Lily introduced in the last twenty-five years. He might have gone further and said that it is one of the most exquisitely beautiful flowers in the world. We have long known this but have never offered this charming Lily on account of its scarcity and expensiveness. We have at last secured a large stock and can offer it at a price most people can afford to pay. It comes from China and is a vigorous grower with sturdy stems three to four feet high, densely covered with long, linear-lanceolate foliage, white trumpet-shaped flower, but shorter and broader than Lilium longiflorum. Center of flower flushed with yellow, shading to white at the outer edges; externally the flowers are streaked with brown, shaded through the almost translucent petals with a delightful pearly tint.

Prices: \$1.25 each, \$12 per doz., \$90 per 100

Six supplied at the dozen rate, and fifty at the hundred rate

ELLIOTT NURSERY

Magee Building

Pittsburgh, Pennsylvania

Climbing and Rambler Roses

Climbing and Rambler Roses are valuable for covering porches, verandas, side-walls, pillars, fences, etc. They are unequaled as ornamental plants and will be found as useful for this purpose as any other climber. They are hardy and require very little pruning.

Climbing American Beauty

A new Rose of great merit. A cross between American Beauty and an unnamed seedling. Color a rosy crimson, similar to its popular parent, and with the same exquisite fragrance, a quality rarely found in Climbing Roses. The plant is of strong habit of growth making shoots from 10 to 15 feet in one season, and as hardy as an oak. The flowers are from 3 to 4 inches in diameter, of fine form, and are produced in great profusion, not only in May and June, but there is a fair sprinkling of flowers throughout the growing season. 90 cts. each, \$9 per doz.

Climbing Rose, Lady Gay

A new Rambler variety of remarkably vigorous growth, with flowers of a delicate cerise-pink, passing to soft, tinted white. The effect of a plant in full bloom with the combination of the soft white flowers, cherry-pink buds, and the deep green of the foliage is indeed charming. Strong two-year-old plants, 90 cts. each, \$9 per doz.

New Rambler, Tausendschon

This is an entirely distinct break, not only in ramblers, but in climbing Roses generally. The individual flowers are very large for this type of Rose, being fully 3 inches across, and of a most elegant and graceful form, not stiff or unnatural, but as beautiful as a semi-double azalea. In color it is a most delightful shade of soft pink when first opening, changing to paler pink when fully expanded and finally to white. These are produced in trusses of from ten to fifteen flowers. 2-year-old plants, 90 cts. each, \$9 per doz.

American Pillar

A new single-flowering variety of great beauty, which appeals to everyone. The flowers are of enormous size, 3 to 4 inches across, of a lovely shade of pink, with a cluster of yellow stamens. These flowers are borne in immense clusters, and a large plant in full bloom is a sight not easily forgotten. They last in perfection a long time, and are followed by brilliant red hips or berries, which are carried late into the winter; and as the plant frequently retains its lovely green foliage until the end of November, it forms a beautiful decorative subject throughout the autumn months. Strong, two-year-old plants, 90 cts. each, \$9 per doz.

Aviateur Bleriot

(The New Yellow Rambler)

We have discarded the old Yellow Rambler in favor of this new variety, in which we have a strong-growing plant with beautiful glossy, insect- and disease-proof foliage, and bearing large clusters of medium-sized full double flowers of a saffron-yellow, deepening to an almost golden yellow at the center. 90 cts. each, \$9 per doz.

Dr. W. Van Fleet

A Rose, which on account of its dainty color and exquisitely shaped buds and flowers, appeals to everyone. The long pointed buds are of a rich flesh-pink on stems 12 to 18 inches long; splendid for cutting. 90 cts. each, \$9 per doz.

Crimson Rambler

It is strikingly beautiful, absolutely hardy and no Rose can be used for more purposes. As a climber it is unsurpassed, perhaps unequaled; as a pot-plant for forcing, the florists are finding it extremely popular. By keeping it cut down it makes a splendid bedding Rose, and a hedge of it is a most beautiful object. 90 cts. each, \$9 per doz.

Dorothy Perkins

This is a splendid new shell-pink climbing Rose. It attracted much attention at the Pan-American Exposition, where a bed of fourteen-months-old plants produced a show of bloom unequaled by any other variety. This new Rose is of the same strong habit of growth as Crimson Rambler, and the flowers are borne in clusters of 30 to 40, and sometimes even 50 to 60. The flowers are large for a Rose of this class, very double, sweet-scented and of a beautiful shell-pink. Raised from seed of *Rosa Wichuraiana* and crossed with that grand old Rose, Mme. Gabriel Luizet. Absolutely hardy. The individual flower is larger than the Crimson Rambler, and is a beautiful shell-pink in color. 90 cts. each, \$9 per doz., \$35 per 100.

Silver Moon

Flowers very large, 4½ inches and over in diameter, pure white in color, petals of great substance, beautifully cupped, forming a clematis-like flower. The large bunch of yellow stamens in the center adds to its attractiveness. These flowers are borne on strong stems 12 to 18 inches long, and are delicately scented. The plant is a strong grower, with large, glossy, bronze-green foliage. Although introduced some years ago, this Rose is still quite scarce. Strong pot-plants, 90 cts. each, \$9 per doz.

Hiawatha

Distinctly different from other Ramblers. Its small, single flowers—deep ruby-crimson, wonderfully bright—accentuated by a white eye—are uniquely borne on long trails of 40 to 50. This is a charming variety destined to become very popular among Rose-lovers. Lovers of single Roses will be delighted with it. In our opinion this Rose is the best and most attractive of all the recent *Wichuraiana* and Rambler hybrids, which have been so freely offered. 90 cts. each, \$9 per doz.

White Dorothy

Among Rambler Roses, none has justly gained greater popularity than the beautiful pink Dorothy Perkins. The White Dorothy is a duplicate, in all respects save its color, which is a clear, glistening white. A decided acquisition to this class of Roses. Among the multitude of new Roses offered this is one of the few worth planting. Strong, two-year-old plants, 90 cts. each, \$9 per doz.

Excelsa

(Red Dorothy Perkins)

This is a most beautiful Rose and we look to see it supersede Crimson Rambler as soon as it is better known. The color is a clear, bright crimson with no trace of magenta, and the foliage is always clean and glossy, with never any of the mildew which sometimes makes Crimson Rambler unsightly. 90 cts. each, \$9 per doz.

Newport Fairy

A strong, sturdy grower, with healthy, bright green foliage. Produces an abundance of lovely single flowers of deep pink color, shaded lighter in center. Charming. 90 cts. each, \$9 per doz.

Rosa Wichuraiana

In some respects this Rose, which is also known as the "Memorial Rose," is better than Crimson Rambler, although it lacks the brilliant color of its more advertised contemporary. As a climber for covering porches, trellises and arches, and as a creeper for covering steep banks or any ground needing covering, it is unequaled. The foliage is a lustrous shining green. In bloom the plant is literally covered with exquisitely beautiful single white flowers which are followed by an abundant crop of bright red hips or berries, which remain on the plant all winter. The Rose is entirely free from attacks of insects or disease, and is absolutely hardy, root and branch. Strong, two-year-old plants, 90 cts. each, \$9 per doz.

Rosa Wichuraiana Hybrids

WICHURAIANA RUBRA. Long, green branches; leaves medium size, glossy green; large clusters of single flowers, 1½ to 2 inches in diameter, bright scarlet petals tinted orange-red, white at the base; numerous orange-red stamens; flowers in June. 90 cts. each, \$9 per doz.

GARDENIA (*R. Wichuraiana* × *Perle des Jardins*). Strong grower, with large green foliage. Flowers produced singly on stems one-half to one foot long. When in bud, hardly distinguishable from *Perle des Jardins*. Bright yellow, and when open cream color; 3 to 3½ inches in diameter, incurving toward evening to perfect imitation of gardenia or cape jessamine as to shape and color, hence its name. Flowers are delightfully fragrant and produced freely. 90 cts. each, \$9 per doz.

ROSE-PINK ROAMER. This is a hybrid of the Sweetbrier, and carries its characteristics in bloom, while the growth, which is very rampant, partakes more of the *Wichuraiana*. The single flowers which are produced in close heads are nearly 2 inches in diameter, bright rich pink, with almost a white center which lightens up the orange-red stamens producing a fine effect. 90 cts. each, \$9 per doz.

Please Read Before Ordering

TERMS OF PAYMENT. Our terms of payment are invariably cash on delivery, which does not mean that we ship C. O. D., as we will not do so under any circumstances. We deliver the goods and mail bills at the same time, and expect payment within a few days. People unknown to us will please send cash or references with their order.

NO AGENTS EMPLOYED. It has been reported to us that swindlers have represented themselves as our agents in various parts of the country. We employ no agents whatever, but do an **exclusively retail business direct with our customers.**

PRICES AND PACKING. Prices in this list are made subject to stock offered being unsold when ordered, and include all charges for packing plants and bulbs. **The packing of trees and shrubs is charged at cost.**

Prices quoted are for not less than half the quantities named, but single plants will be furnished at following low rates: Plants at \$1 or less per doz., 10 cts. each; plants at \$1.25 and \$1.50 per doz., 15 cts. each; plants at \$1.75 and \$2 per doz., 20 cts. each; plants at \$2.50 per doz., 25 cts. each.

GUARANTEES. We guarantee all nursery stock furnished by us to be first-class, true to name.

We do not guarantee stock to grow, or results in any way. No complaint will be entertained that is not made immediately upon receipt of stock.

There are so many causes for failure over which we have no control that we can assume no responsibility after stock is delivered in good order. Poor soil, unfavorable weather, ignorant or careless culture—all contribute to failure and are beyond our control.

A catalogue as comprehensive as this must of necessity offer some varieties of difficult culture, and, when these are ordered, we presume the people ordering them have the knowledge needed for their culture. Successful gardening requires knowledge, enthusiasm and perseverance, and these we cannot supply, but we shall be glad to make selections for the "can't be killed" class of plants for people who wish them.

IMPORT ORDERS. Import orders are taken subject to failure of crops.

SHIPPING DIRECTIONS. Please give explicit shipping directions, stating whether stock is to be shipped by freight or express, and by what route. Early orders for trees, shrubs, and bulbs can generally be shipped safely by freight.

ORDERS. All orders are accepted subject to the following terms and conditions: Write plainly and give explicit directions as to address and mode of shipment.

INSPECTION AND FUMIGATION. Our stock is regularly inspected and certificate will be sent with each shipment. Stock will be fumigated when requested or when the state laws require it.

FORWARDING. Shipments will be forwarded exactly as directed; but when without instructions, we will use our best judgment and forward by shortest and safest route. We recommend that all herbaceous plants be shipped by express.

RISK. All goods are at purchaser's risk after they are delivered to the forwarding companies and we receive their receipt for the shipment in good condition.

CLAIMS FOR DAMAGE WHILE IN TRANSIT must be made to the delivering company. Have delivering agent note the damaged condition on the freight bill and promptly present your claim to the transportation company and send copies of all papers so we can help secure prompt settlement.

PARCEL POST. Small shipments can be sent advantageously by parcel post. All such shipments will be sent insured, insurance and postage to be paid by the customer.

ELLIOTT NURSERY

J. WILKINSON ELLIOTT, Owner

Nurseries:
SPRINGDALE, PENNA.

Magee Building, 336 Fourth Ave.
PITTSBURGH, PENNA.