



*Information Handbook*  
*Lowry Field*  
(AAF TRAINING COMMAND)

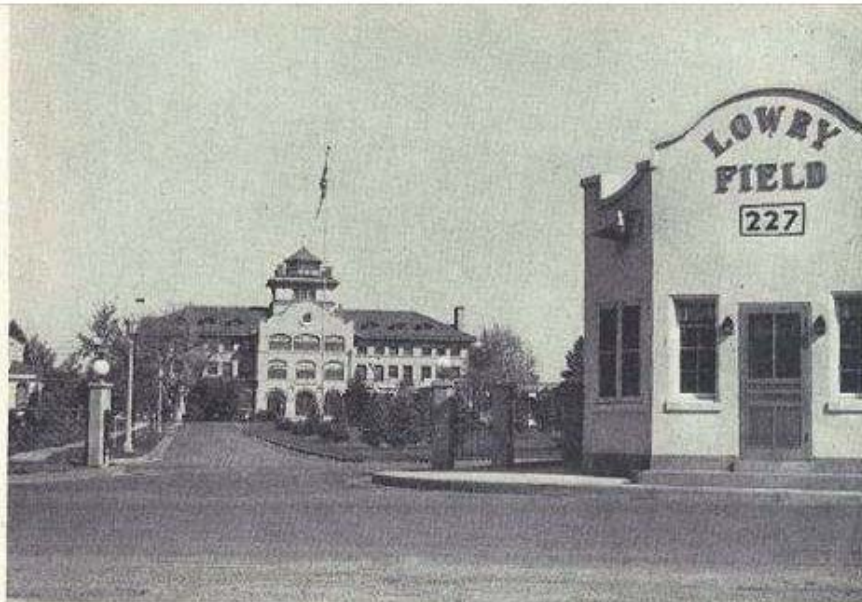
DENVER, COLORADO

*We hope this booklet will be helpful to both newcomers and veterans of Lowry Field. It was prepared in cooperation with the Lowry Field Public Relations Office which supplied all pictures and descriptive matter pertaining to the Field.*

*All pictures are Official Army Air Forces Training Command Photographs.*



Issued November, 1944  
Reprinted February, 1945, by  
**THE MOUNTAIN STATES TELEPHONE  
AND TELEGRAPH COMPANY**



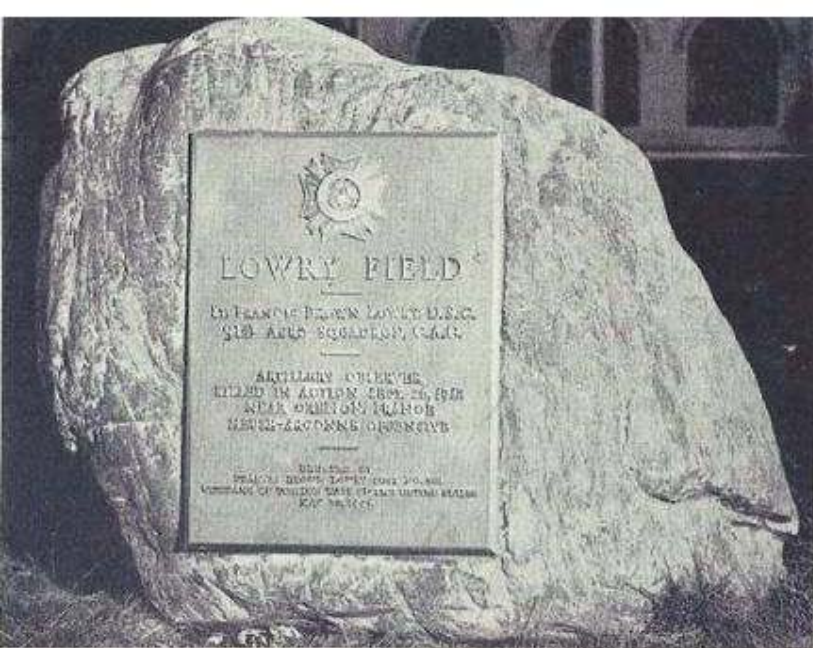
The Officers' Gate entrance to Lowry Field—well kept lawns and shrubbery set off the Post Headquarters Building in the background.

## *History of Lowry Field*

Lowry Field stands unique in that, while officially named in honor of one man, to the people of Denver it is a memorial to all of their sons who marched away and failed to return during World War I.

On March 2, 1938, the then Secretary of War, Harry H. Woodring, upon the recommendation of the then Chief of Staff, General Malin Craig, selected the name, Lowry Field, for the Denver branch of the Air Corps Technical School. Two factors guided army officials in their choice of a





name: Lieutenant Francis B. Lowry was the only Denver aviator killed in World War I, and was on a photographic mission when he met his death.

Lieutenant Lowry, who was born December 1, 1894, was the son of Mr. and Mrs. Walter B. Lowry, prominent Denver citizens. He was educated at Manual Training High School and the University of Michigan. He was flying as an observer with another American pilot to take pictures of the German positions along the Meuse River, preparatory to a big offensive, when his plane was shot down and he was killed instantly. A posthumous award of the Distinguished Service

Cross was made to him. The citation referring to the mission, which took place on September 26, 1918, reads:

"They realized the importance of the mission and chose to continue their course through a harassing anti-aircraft barrage. A shell made a direct hit on the plane and brought it down in fragments."

Three years after the Armistice, the young lieutenant's body was brought from France to Denver for final burial in Fairmount Cemetery, close to the field which now bears his name.

Lowry Field was activated on February 26, 1938. Since that time thousands of Air Force technicians have been trained here and are now serving with credit on every battle front of this worldwide conflict.

The establishment of this branch of the Technical Training Command in Denver is a tribute to the untiring efforts and far-sightedness of the Denver Chamber of Commerce and to the city fathers who labored long and diligently to effect the selection of Denver as the site for this school. The site of the school and a number of buildings now in use were originally the Agnes Phipps Memorial Sanitarium, which was purchased and presented to the Army as a result of a bond issue by the City of Denver.



The beautiful Service Club on Lowry No. 2—the acme of comfort for the GI in his off-duty hours. Roomy, relaxful, Lowry Field Service Clubs are soldiers' favorites after a day in the classroom.

## *General Information*

### **Lowry No. 1 and Lowry No. 2:**

For administrative purposes only, Lowry Field is divided into two parts, Lowry No. 1 and Lowry No. 2. Students are assigned depending on the type of training which they are to receive.

Facilities are practically the same on both Lowry No. 1 and Lowry No. 2.

### **Service Clubs:**

There are Service Clubs on Lowry No. 1, Building No. 483, and on Lowry No. 2, Building No. 865, with identical



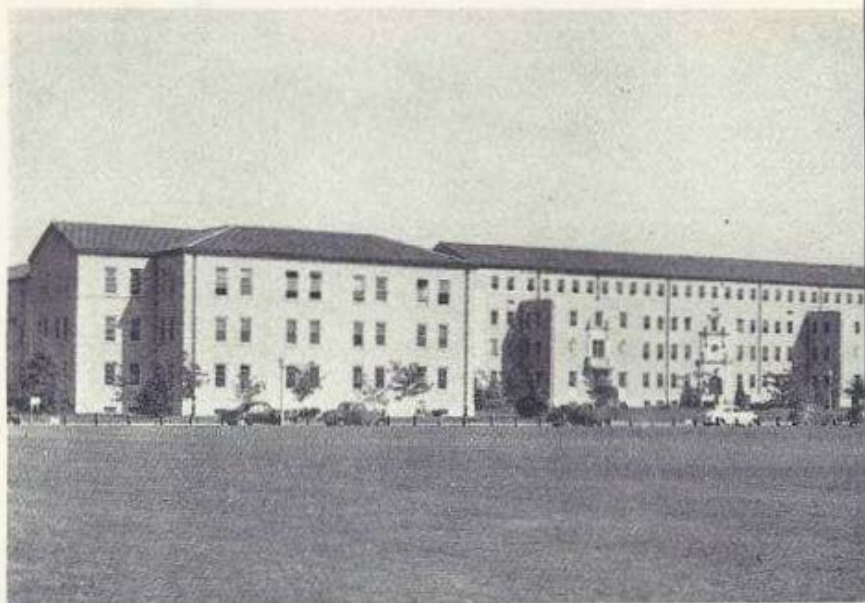
facilities. Each contains a cafeteria, soda fountain, a large recreation hall where dances, parties and entertainments are frequently held, a large library, and facilities for writing, reading, games. Service Club No. 3, Building No. 805, is located on Lowry No. 2.

The NCO Club, Building No. 270, is located on Lowry No. 1. Membership is open to the top three graders, with associate memberships available for the fourth graders.

### **Guest House:**

Adjacent to Service Club No. 1 is a guest house where the families of enlisted men may stay for a period not to exceed three days. The fees are nominal. The guest house hostess should be contacted as far in advance as possible for reservations.

**The spacious Brick Barracks for Enlisted Men—one of the finest dormitories of its kind and one of the largest GI barracks in the country.**





## Telephone Information

We're sorry when delays occur on your long distance calls. Ordinarily we would build more lines, but the materials needed are providing communications for our advancing forces on every front and helping speed the job here at home. We appreciate your patience and understanding.

*Now  
it's  
6 p. m.*



Reduced Rate Period on Long Distance Calls  
begins at 6 p.m. instead of 7 p.m.

\* \* \*

Reduced Rates also apply all day on Sundays.



## A Few Tips Which May Speed Your Service on Long Distance Calls

- 1** Call EARLY on Sundays. Rates are reduced all day.
- 2** If you can call a few days before or after pay day you'll avoid the stampede.
- 3** Call by number when you know it.
- 4** If you're sure you'll reach the person you want when you make your call, place a station-to-station call. It's cheaper. Just tell the operator the town you are calling and the number of the telephone you want. If you don't know the number, tell the operator how it is listed.
- 5** When you want to reverse the charges on a call to another town, please tell the operator you want the call placed "collect" as soon as you place the call with her.

Telephone Lounges are located in both Service Clubs.



## *For Your Convenience*

For your comfort and convenience in placing telephone calls, we have provided a number of facilities, conveniently located:

### **ON LOWRY NO 1:**

**Attended Telephone Lounge in Service Club No. 1,  
Building 483.**

**Telephone Shelter House No. 1, Building 475A,**  
located on Sixth Avenue immediately in front  
of the Post Office.

**Unattended Telephone Lounge, Station Hospital,  
Building 558.**

### **ON LOWRY NO. 2:**

**Attended Telephone Lounge in Service Club No. 2,  
Building 865.**

**Telephone Shelter House No. 2, Building 939A,**  
located at junction of 73rd and 82nd Streets,  
near Mess Hall (Building 939).

**Telephone Shelter House No. 3, Building 757,**  
located at junction of 72nd and 73rd Streets,  
near Mess Hall (Building 756).

The Attended Telephone Lounges connect directly with the Service Club Lounges. Operators are on duty from 0800 to 2200 to assist you in placing your calls, to answer your questions and to help in any way possible. Chairs, tables and stationery are furnished so that you may relax comfortably when there is a delay in completing your call. A public address system is also provided, so that if you prefer to wait in the Service Club Lounge you can be paged there when your call is ready.

The Shelter Houses, each equipped with a number of booths, are open 24 hours a day for your convenience.



## *George M. Brown*

*Telephone Company  
Manager  
at Lowry Field*

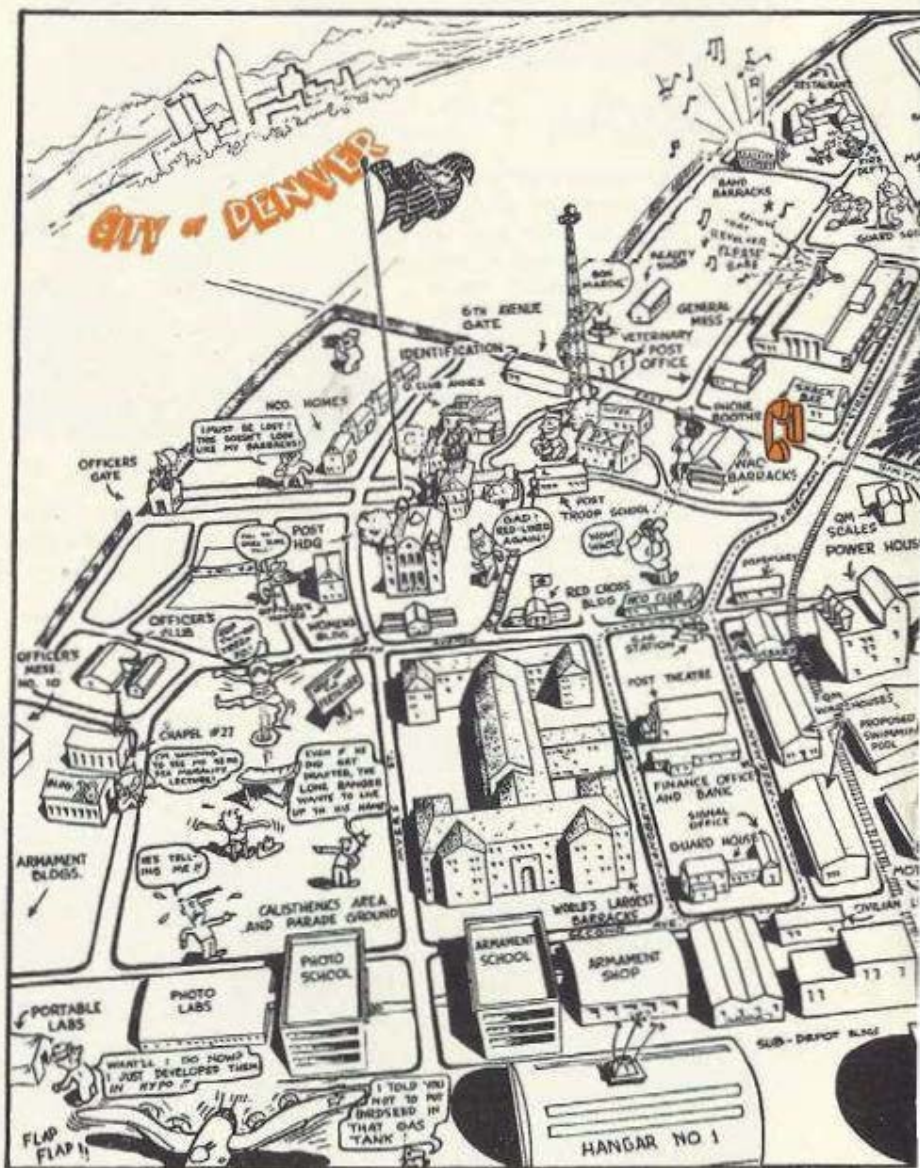
Telephone representatives on duty at the post are glad to help you in any way and to answer your questions. If you should have difficulty with any call placed from an unattended coin telephone, dial the Telephone Camp Manager — EA 0004. (Your coin will be returned.)



A section of the long distance switchboard in the downtown Denver Telephone Building, through which thousands of calls flow every day and night to points all over the United States. The daily load of long distance calls has increased steadily since Pearl Harbor. Telephone operators are doing their best to handle your calls, but when delays occur, your understanding is appreciated.













One of the many chapels on the post—this one is located at the far corner of Lowry No. 2. One of your first "musts" on arriving on Lowry Field should be to meet your chaplain.

### **Religious Services:**

There is a chaplain for each faith,—Protestant, Catholic and Jewish. Chapels are conveniently located on both Lowry No. 1 and Lowry No. 2. Complete schedules of chapel services may be obtained from your chaplain.

Remember, your chaplain is always ready to help with any kind of problem. Feel free to call on him.

### **Libraries:**

In addition to libraries in the service clubs, the main Post Library is located in the basement of the Big Brick Barracks on Lowry No. 1. All libraries contain the very latest in fiction, as well as a large variety of books on technical matters.



### **Post Exchanges and Snack Bars:**

There are post exchanges and PX snack bars located on both Lowry No. 1 and Lowry No. 2. High class merchandise at popular prices is available at all times.

### **Post Theaters:**

There are two theaters on Lowry Field: War Department Theater No. 1, Building No. 353, on Lowry No. 1, and War Department Theater No. 2, Building No. 900, on Lowry No. 2.

Three shows are given daily in each theater. See section bulletin boards for theater schedules. The very latest releases are featured.

### **Bowling:**

The base bowling alleys are open daily in the basement of the Big Brick Barracks, centrally located on Lowry No. 1.

**Students entering the Main Post Exchange on Lowry No. 1—everything from a ladies department to a clean, orderly restaurant is on the inside.**



### **War Information Center:**

The War Information Center at Lowry Field is located in Building No. 473, just south of General Mess No. 2.

In addition to the latest information contained on wall maps, the War Information Center has an INS news ticker which brings up-to-the-minute news, both national and international, during the morning, afternoon and evening hours.

A new War Information Center on Lowry No. 2 is being opened.

### **Banking Facilities:**

The Colorado National Bank of Denver maintains an office in a specially constructed building adjoining the Finance Office, Building No. 355. Banking facilities are available daily. Banking hours are from 10 a.m. to 3 p.m., Monday through Friday, and Saturday hours are from 10 a.m. to 12 noon.

### **Barber and Beauty Shops:**

There are several barber shops and a beauty shop at convenient locations throughout the field.

### **Red Cross:**

The American Red Cross has its headquarters in Building No. 259, Lowry No. 1, with a branch office on Lowry No. 2, Building No. 851. Any soldier who needs help can get friendly assistance at the Red Cross. The services are varied, and, having branches in every section of the country, it can serve the soldier and his family by direct contact when necessary.

Feel free to contact the Red Cross if confronted with difficulties in which the Red Cross might be helpful.

### **Glee Club:**

A glee club is maintained at all times. New students are cordially invited to join this activity. Frequent programs and occasional broadcasts are given by the glee club. Information may be secured at either of the service clubs.





The "eyes" of the Army Air Forces — that's what the Air Corps cameraman is called. And the photo technician on Lowry gets the training that keeps these "eyes" in the best of shape for any combat theater.

Here's how the top turret works — an instructor takes his class to one of the "mock-ups" on the line so that the students get a working knowledge of their power turret studies.







A busy schedule builds a big appetite—and Lowry mess personnel provide plenty of nutritious, tempting dishes for hungry GIs. This is an interior of Mess No. 2—the largest mess hall on the post.

Loading a practice bomb into a bomb bay—soon it won't be a "practice" bomb and soon it won't be Lowry Field, so this group of conscientious students is learning the "hows" and "whys" now.





Assembling and disassembling a machine gun—practical as well as theoretical instruction in Lowry classrooms equips the armorer to take his place on the world's battlefronts with complete confidence in his job.

#### **Newspaper:**

The Rev-Meter, a weekly newspaper, is published and distributed each Friday through the section day rooms in the interests of the personnel of Lowry Field. The distribution is free.

The daily Denver papers are available in the PXs and the Service Clubs.

#### **Tailor Shops:**

Tailor shops, with facilities for cleaning, pressing and laundry service, are located at convenient spots on both Lowry No. 1 and Lowry No. 2.

#### **Telephones:**

Booths with operators in attendance are located in both Service Club No. 1 and Service Club No. 2.

#### **Telegraph Service:**

Telegrams may be sent from the base Signal Office, Building No. 351. This office is open twenty-four hours a day.





Healthy, strong men make healthy, strong soldiers—and running an obstacle course, doing sit-ups and pull-ups, and taking care of the body keeps the Lowry GI in tip-top shape.

### **Transportation:**

Transportation to Denver is provided by bus service from the field which connects with streetcar service on Colfax Avenue and Poplar Street. Route No. 14 is the streetcar line running between downtown Denver and the Loop at Colfax and Poplar.

It is eight miles to the heart of the Denver business district.

Taxicab service may be secured at either the Sixth Avenue Gate, Lowry No. 1, or the gate at Lowry No. 2.

### **Athletics and Gymnasiums:**

In addition to the regular P T program, organized athletics are available, depending on the season,—touch football, basketball, baseball, boxing, wrestling and tennis. For information on participation in your favorite sport, see your P T instructor.

There are three large, well-equipped gymnasiums.





Getting set to jump from the three and five foot platforms. This is a phase of the Parachute Landing P. T. course.

Learning to guide and control parachute risers are these three students sitting in the harness trainer.





Simulating a parachute drop, these students are awaiting their turn while watching their instructor take his ride on the "landing trainer".

One of the wards at the station hospital—models of cleanliness and comfort, and staffed by the world's best doctors and nurses, members of the Army Medical Corps.



# 1945 Calendar

JANUARY	FEBRUARY	MARCH	APRIL
S M T W T F S .. 1 2 3 4 5 6 7 8 9 10 11 12 13 14 15 16 17 18 19 20 21 22 23 24 25 26 27 28 29 30 31 .. .. .	S M T W T F S .. .. . 1 2 3 4 5 6 7 8 9 10 11 12 13 14 15 16 17 18 19 20 21 22 23 24 25 26 27 28 .. .. .	S M T W T F S .. .. . 1 2 3 4 5 6 7 8 9 10 11 12 13 14 15 16 17 18 19 20 21 22 23 24 25 26 27 28 29 30 31	S M T W T F S 1 2 3 4 5 6 7 8 9 10 11 12 13 14 15 16 17 18 19 20 21 22 23 24 25 26 27 28 29 30 .. .. .
MAY	JUNE	JULY	AUGUST
S M T W T F S .. .. 1 2 3 4 5 6 7 8 9 10 11 12 13 14 15 16 17 18 19 20 21 22 23 24 25 26 27 28 29 30 31 .. ..	S M T W T F S .. .. . 1 2 3 4 5 6 7 8 9 10 11 12 13 14 15 16 17 18 19 20 21 22 23 24 25 26 27 28 29 30	S M T W T F S 1 2 3 4 5 6 7 8 9 10 11 12 13 14 15 16 17 18 19 20 21 22 23 24 25 26 27 28 29 30 31 .. .. .	S M T W T F S .. .. 1 2 3 4 5 6 7 8 9 10 11 12 13 14 15 16 17 18 19 20 21 22 23 24 25 26 27 28 29 30 31 ..
SEPTEMBER	OCTOBER	NOVEMBER	DECEMBER
S M T W T F S .. .. . 1 2 3 4 5 6 7 8 9 10 11 12 13 14 15 16 17 18 19 20 21 22 23 24 25 26 27 28 29 30 .. .. .	S M T W T F S .. 1 2 3 4 5 6 7 8 9 10 11 12 13 14 15 16 17 18 19 20 21 22 23 24 25 26 27 28 29 30 11 .. .. .	S M T W T F S .. .. . 1 2 3 4 5 6 7 8 9 10 11 12 13 14 15 16 17 18 19 20 21 22 23 24 25 26 27 28 29 30 .. .. .. .	S M T W T F S .. .. . 1 2 3 4 5 6 7 8 9 10 11 12 13 14 15 16 17 18 19 20 21 22 23 24 25 26 27 28 29 30 31 .. .. .

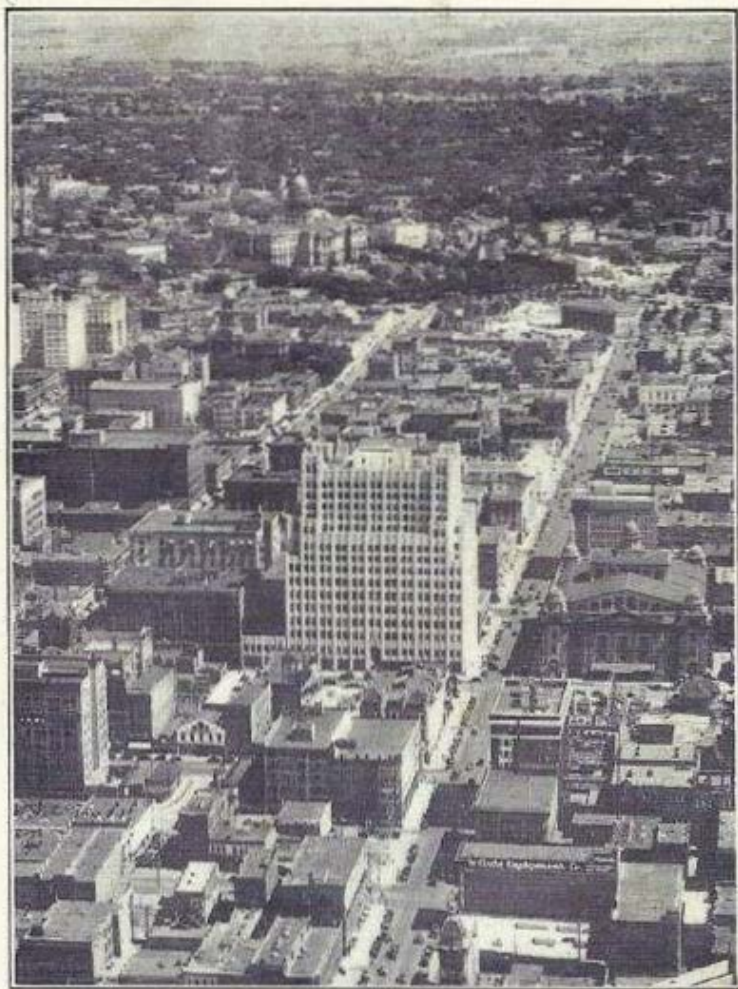
## HERE ARE A FEW RATES FOR 3-MINUTE CALLS

	STATION TO STATION	PERSON TO PERSON	
From Denver to:	Day except Sunday	Night and Sunday	Day except Sunday
	Night and Sunday	Day except Sunday	Night and Sunday
Atlanta, Ga. ....	\$2.60	\$1.80	\$3.45
Boston, Mass. ....	3.50	2.50	4.50
Chicago, Ill. ....	2.10	1.45	2.80
Cleveland, Ohio ....	2.60	1.80	3.45
Colorado Springs ....	.50	.35	.75
Dallas, Texas ....	1.60	1.15	2.15
Kansas City, Mo. ....	1.45	1.05	1.95
Los Angeles, Calif. ....	2.00	1.40	2.65
Minneapolis, Minn. ....	1.70	1.25	2.25
New Orleans, La. ....	2.40	1.65	3.20
New York City ....	3.25	2.25	4.25
Omaha, Neb. ....	1.35	.95	1.80
San Francisco ....	2.20	1.55	2.95
Seattle, Wash. ....	2.30	1.60	3.05
Salt Lake City ....	1.15	.75	1.55
Washington, D. C. ....	3.00	2.10	4.00

The above rates do not include Federal Tax.

The operator will be glad to notify you at the end of three or five minutes.





**Aerial view of downtown Denver with Capitol in background and the Telephone Building in the foreground.**