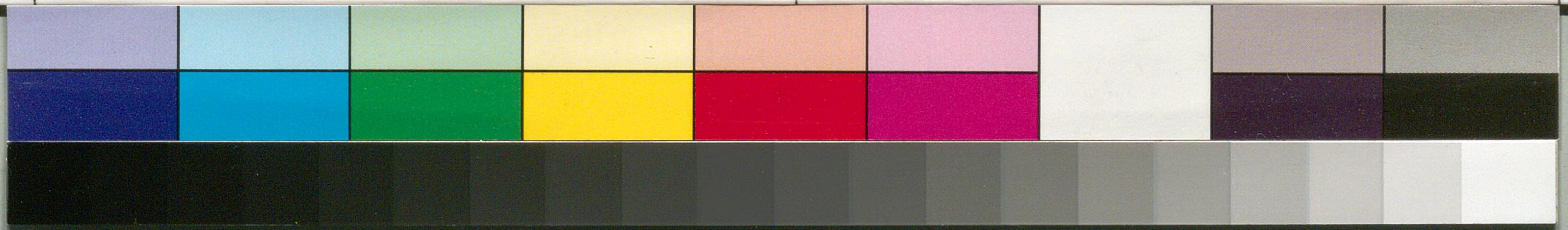
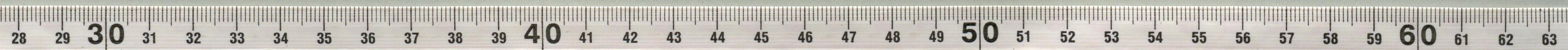


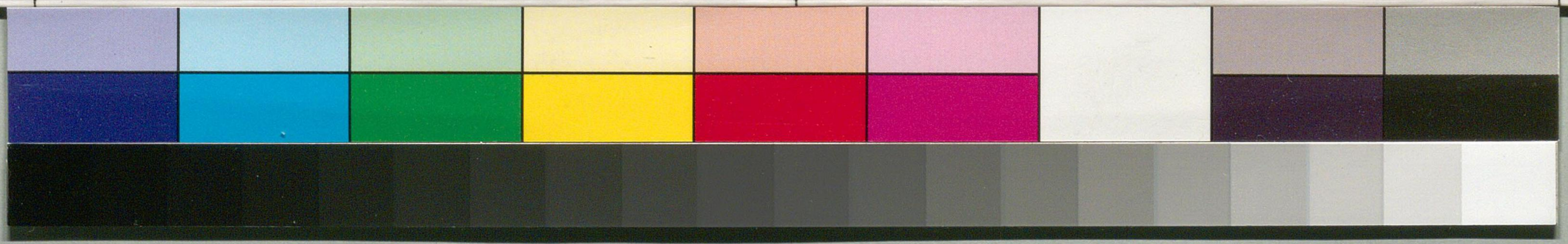
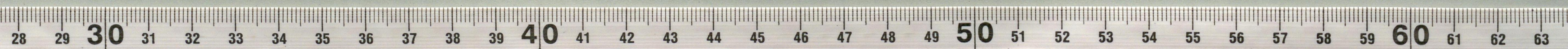
Handwritten Japanese text in the top row, consisting of approximately ten large, stylized characters or groups of characters, likely representing the beginning of a document.

Handwritten Japanese text in the bottom row, continuing the document's content with smaller, more densely packed characters.

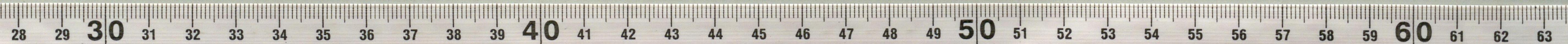


国立国会図書館 川村正平関係文書 197-14(1)

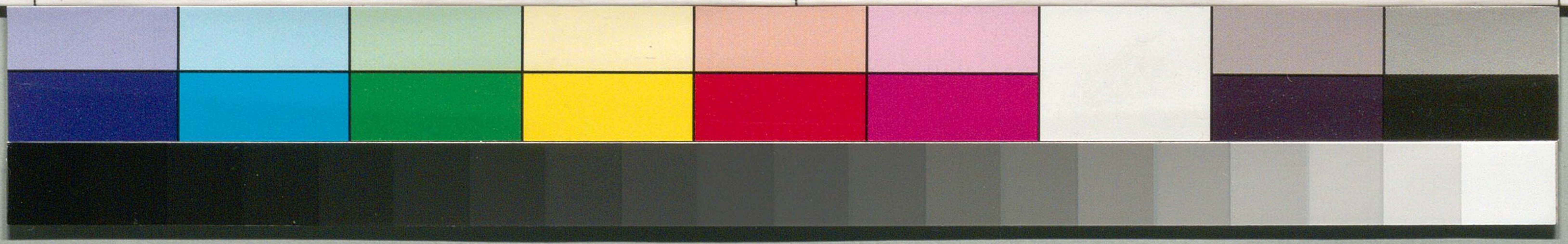
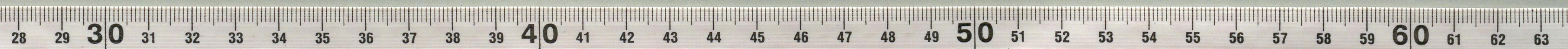
Handwritten Japanese calligraphy in cursive style (sōsho) on aged paper. The text is arranged in two horizontal rows. The top row contains approximately 10 vertical columns of characters, with some characters appearing to be '川', '村', '正', '平', '関', '係', '文', '書'. The bottom row contains similar vertical columns of characters, including '川', '村', '正', '平', '関', '係', '文', '書'. The paper shows signs of age, including discoloration and some faint blue ink bleed-through from the reverse side.



Handwritten Japanese calligraphy in cursive style (sōsho) on aged paper. The text is arranged in two horizontal lines. The top line contains approximately 10 characters, and the bottom line contains approximately 10 characters. The characters are highly stylized and fluid. There are faint blue ink markings or bleed-through visible in the background of the paper.



Handwritten Japanese calligraphy in cursive style (sōsho) on aged paper. The text is arranged in two horizontal rows. The top row contains several large characters, likely '母' (mother) and '子' (child), with smaller characters and annotations above them. The bottom row contains smaller characters, possibly '子' and '母', with annotations to the left. The paper shows signs of age, including creases and discoloration.



川村正平

一
川村正平

一
川村正平

一
川村正平

一
川村正平

一
川村正平

一
川村正平

一
川村正平

一
川村正平

一
川村正平

一
川村正平

一
川村正平

一
川村正平

一
川村正平

川村正平
川村正平

川村正平

川村正平

川村正平

川村正平

川村正平

川村正平

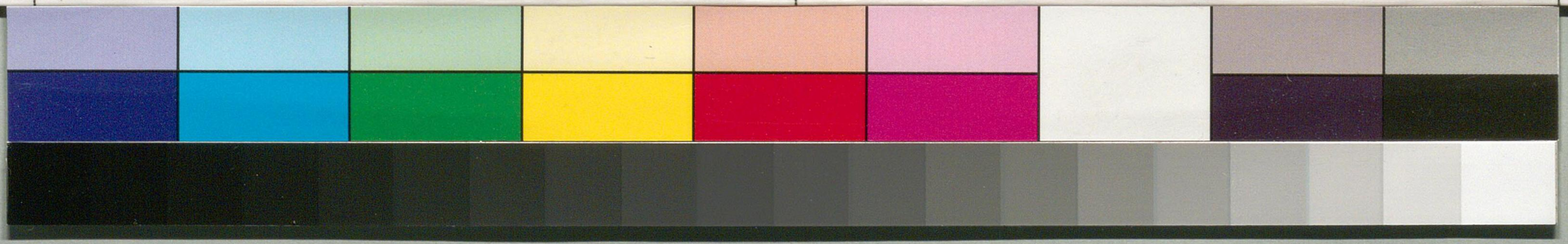
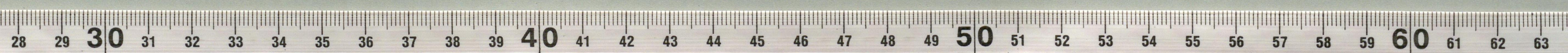
川村正平

川村正平

川村正平

一 二 三 四 五 六 七 八 九 十
 一 二 三 四 五 六 七 八 九 十
 一 二 三 四 五 六 七 八 九 十
 一 二 三 四 五 六 七 八 九 十

一 二 三 四 五 六 七 八 九 十
 一 二 三 四 五 六 七 八 九 十
 一 二 三 四 五 六 七 八 九 十
 一 二 三 四 五 六 七 八 九 十



十
五

川村
正平
手紙

一
二
三
四
五
六
七
八
九
十

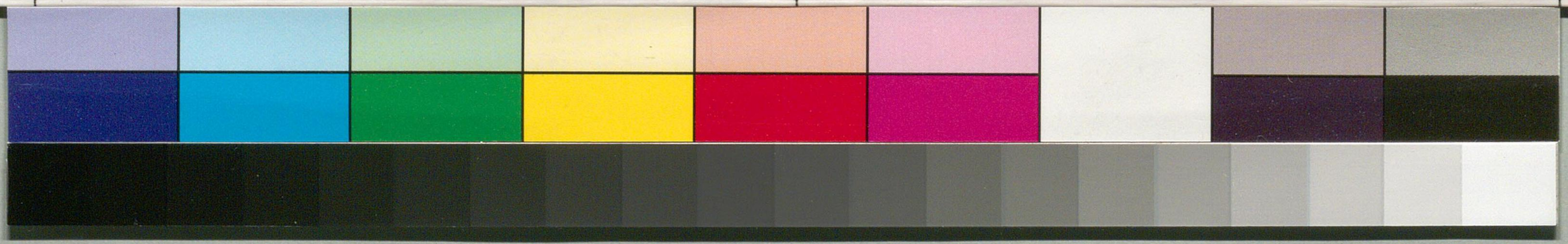
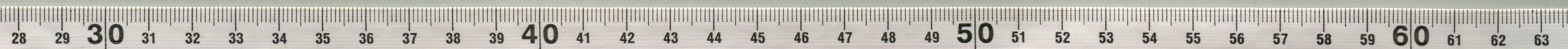
川村
正平

一
二
三
四
五
六
七
八
九
十

川村
正平
手紙

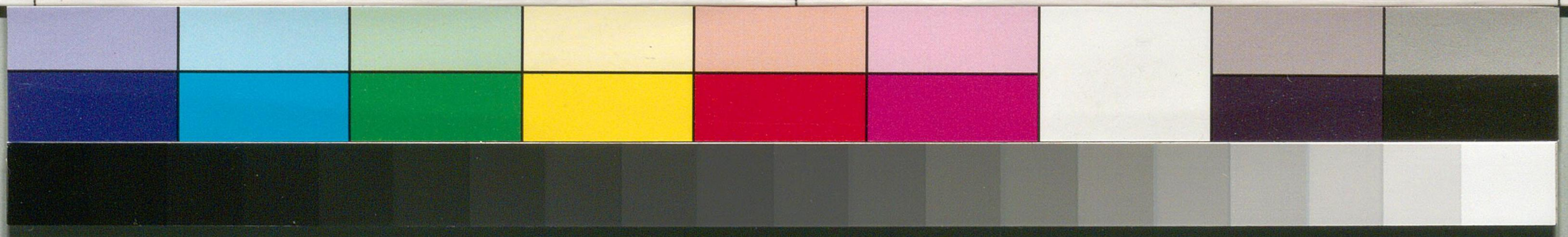
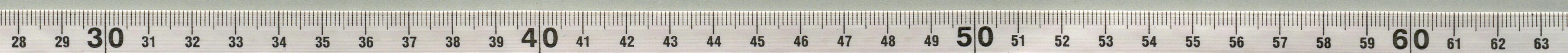
川村
正平

川村
正平



Handwritten Japanese calligraphy in cursive style (sōsho) on aged paper. The text is arranged in a horizontal line across the top of the page. The characters are fluid and connected, typical of the cursive script. There are approximately 15 main characters visible, with some smaller characters interspersed. The paper shows signs of age, including discoloration and faint blue ink bleed-through from the reverse side.

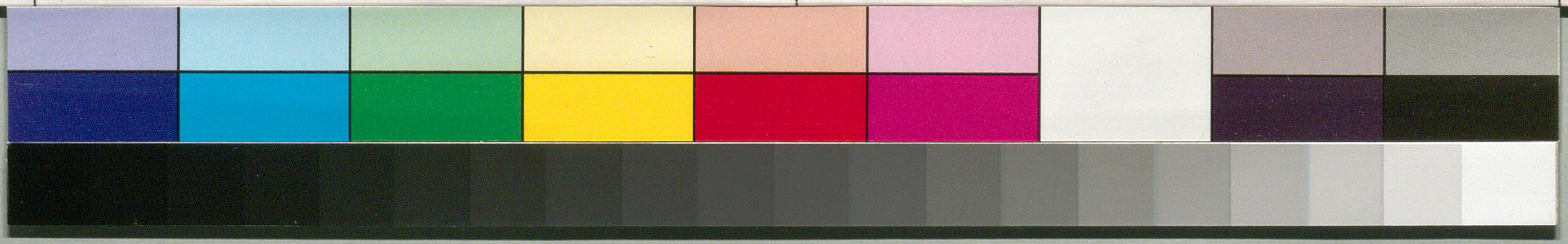
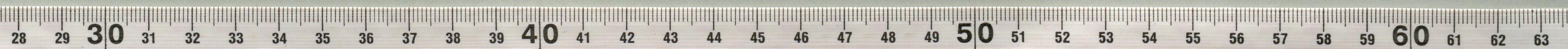
Handwritten Japanese calligraphy in cursive style (sōsho) on aged paper. The text is arranged in a horizontal line across the bottom of the page. The characters are fluid and connected, typical of the cursive script. There are approximately 15 main characters visible, with some smaller characters interspersed. The paper shows signs of age, including discoloration and faint blue ink bleed-through from the reverse side.



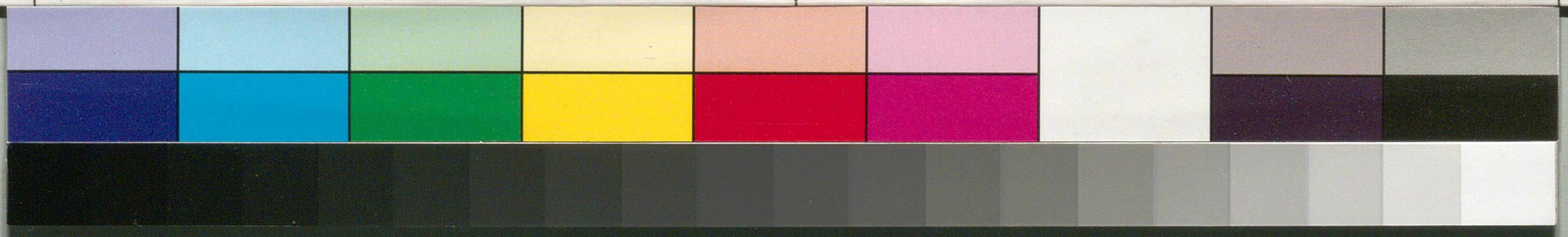
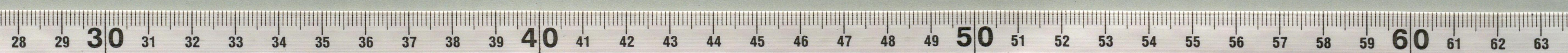
川村正平
字徳庵

一 二 三 四 五 六 七 八 九 十
[Calligraphic characters in cursive style]

[Calligraphic characters in cursive style]



Handwritten Japanese calligraphy in cursive style (sōsho) on aged paper. The text is arranged in two horizontal rows. The top row contains several large characters, some with small annotations above them. The bottom row contains smaller characters, some appearing to be variations or related forms of the top row's characters. The paper shows signs of age and wear.



一ノ母

三ノカ

三ノカ

一ノ母

三ノカ

一ノ母

三ノカ

一ノ母

一ノ母

三ノカ

一ノ母

三ノカ

一ノ母

一ノ母

三ノカ

一ノ母

方り亦也

一試也

七

一三

白川
字
上
下
中

解
方
上
下

金

七

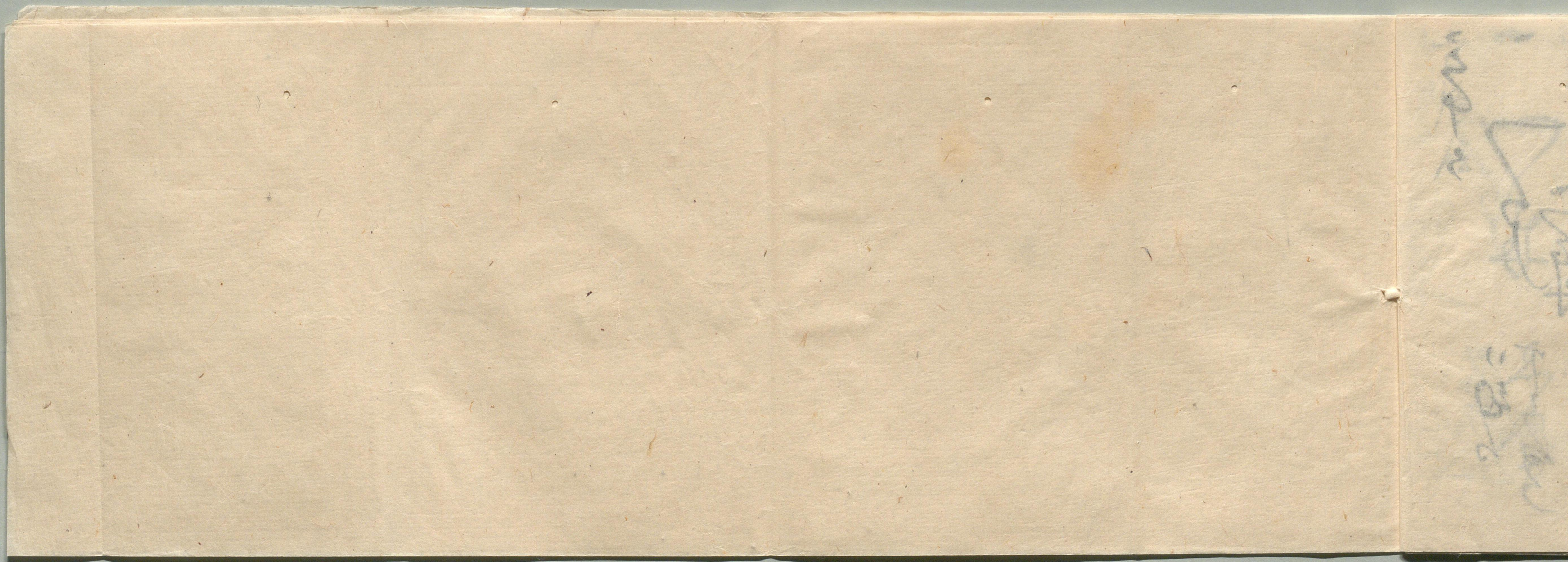
七

湯

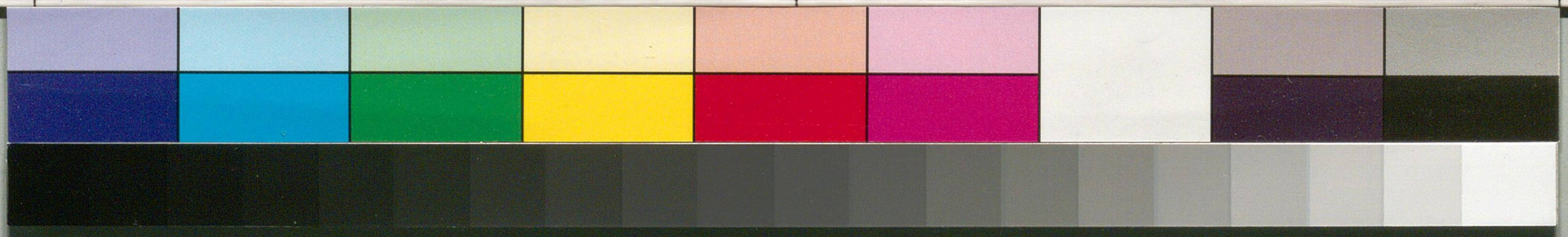
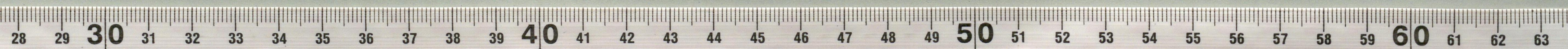
七

石

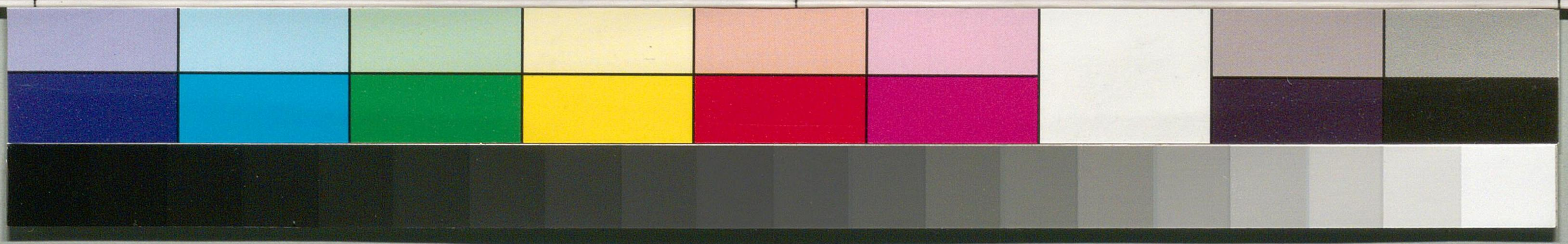
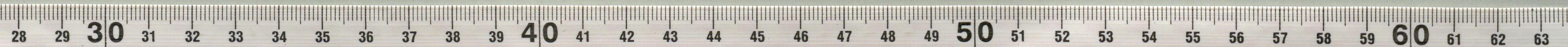
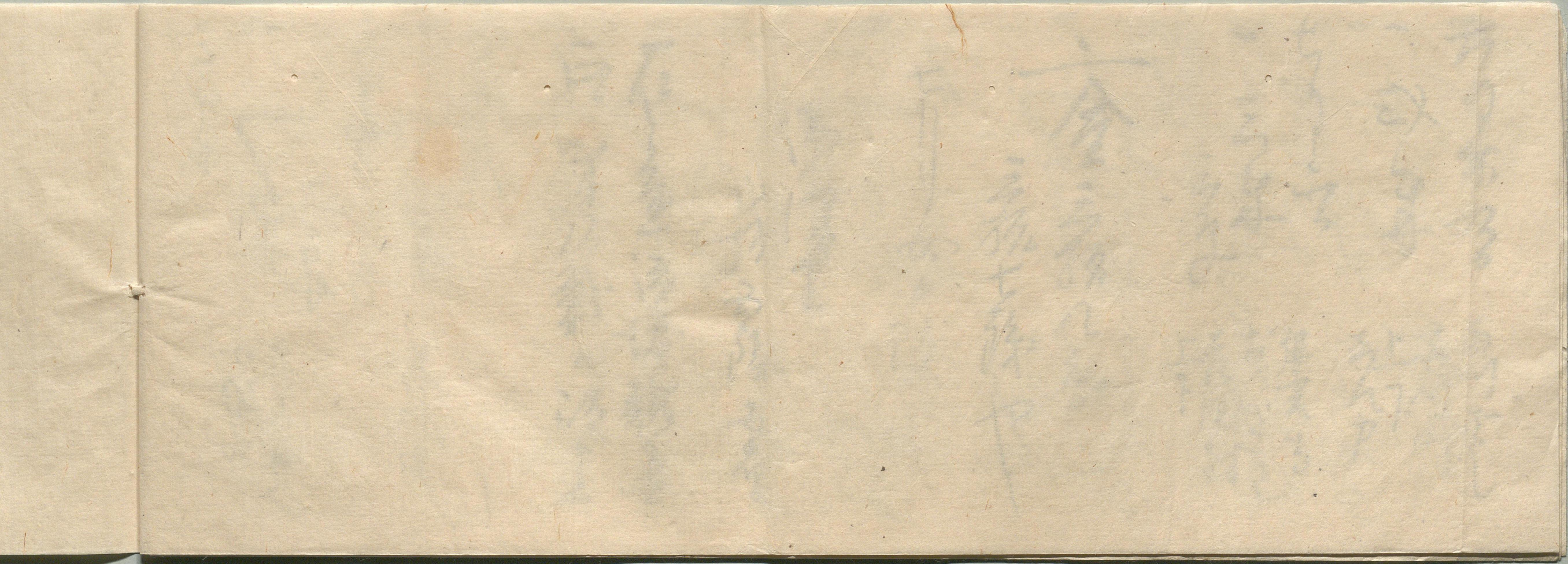
白



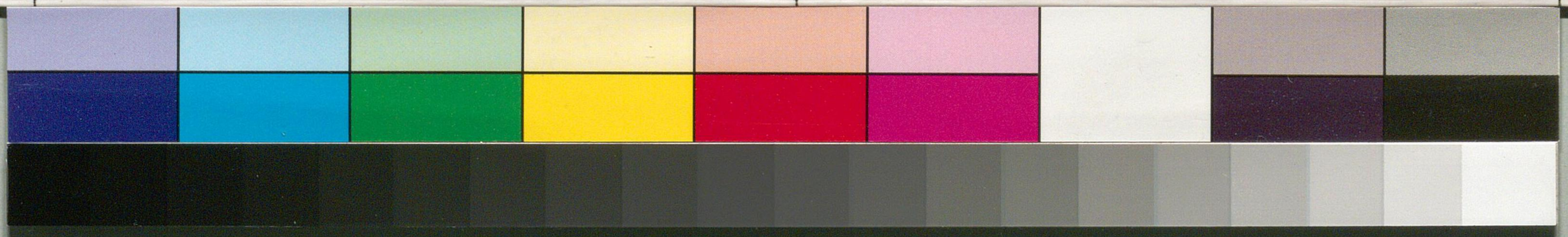
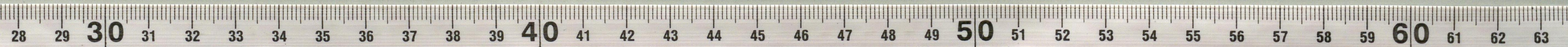
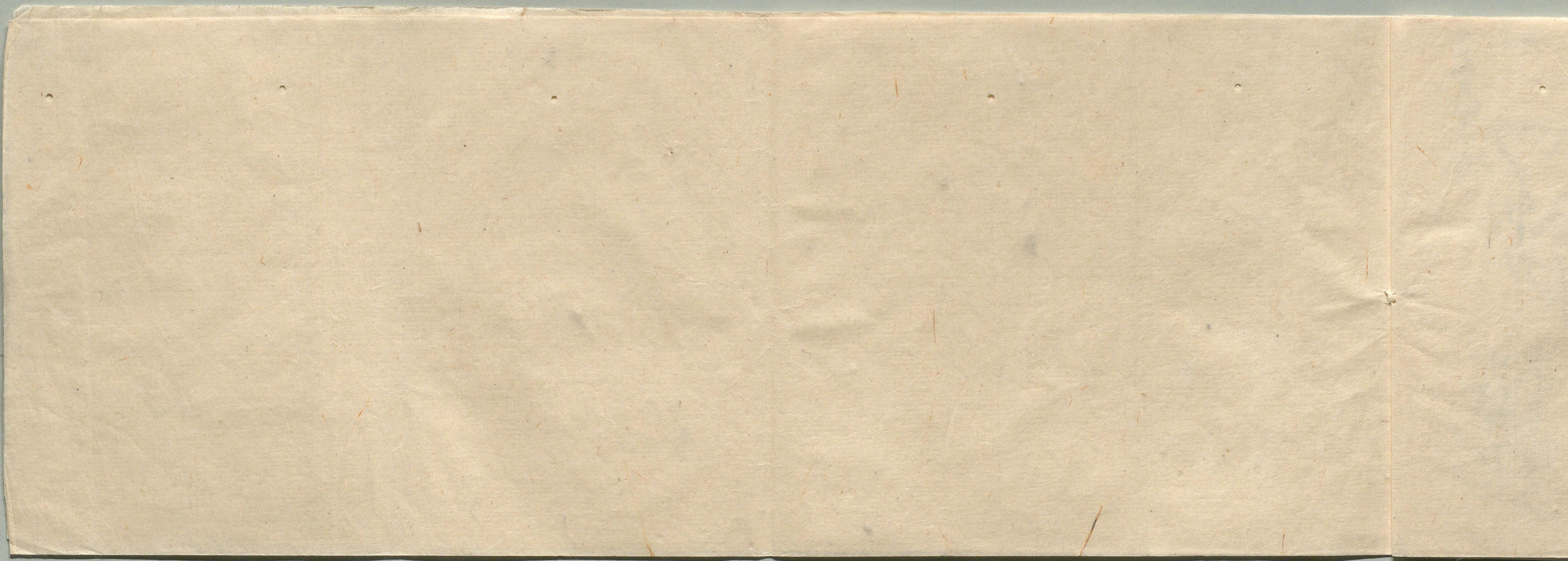
Handwritten markings on the right side of the paper, including a vertical line of text and a large, stylized character or symbol.



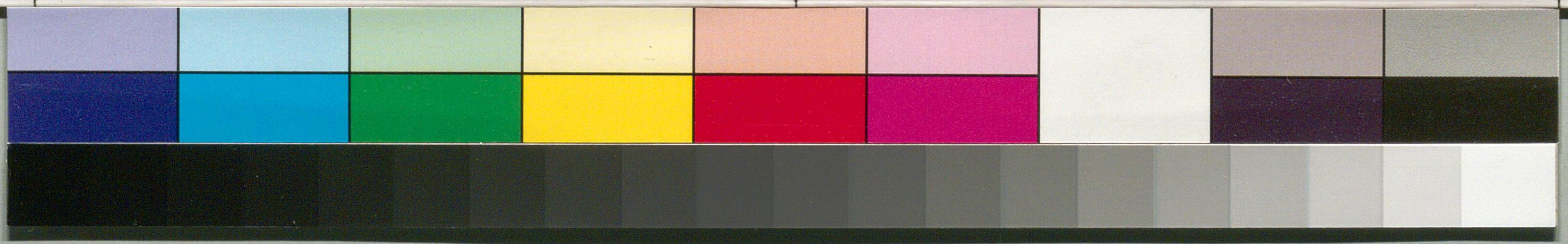
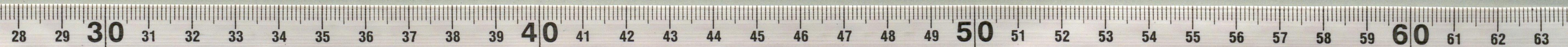
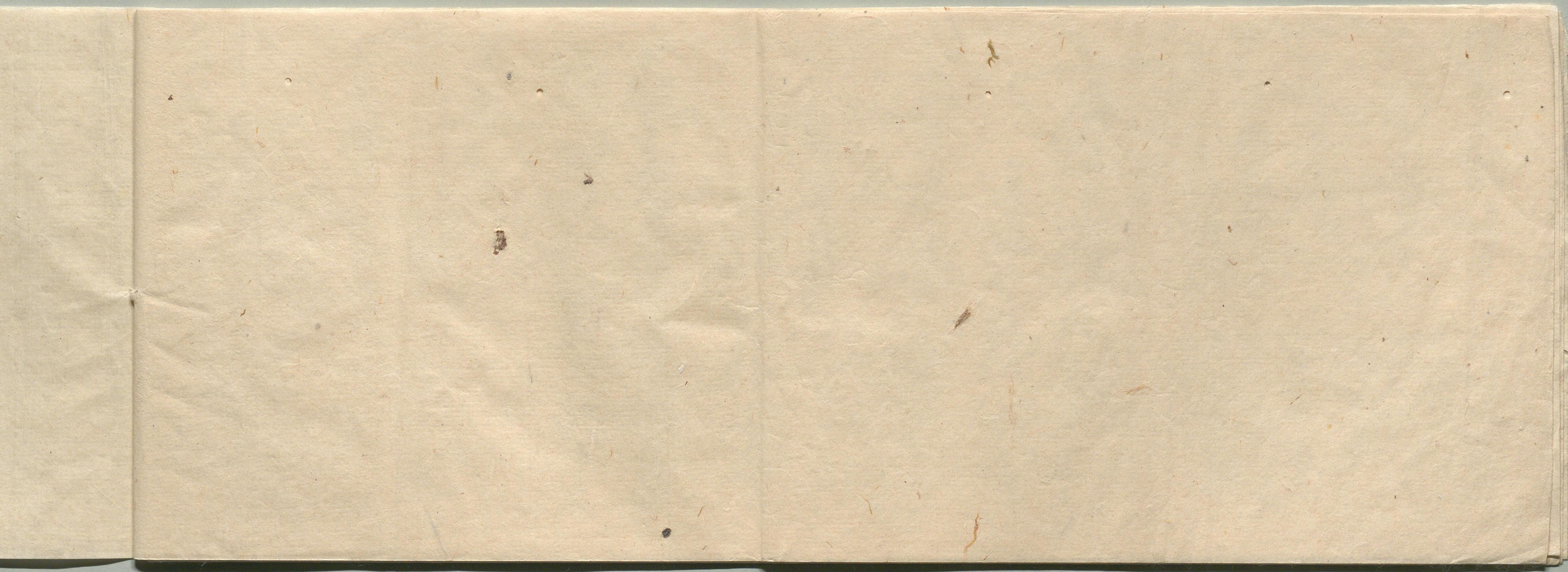
国立国会図書館 川村正平関係文書 197-14(1)



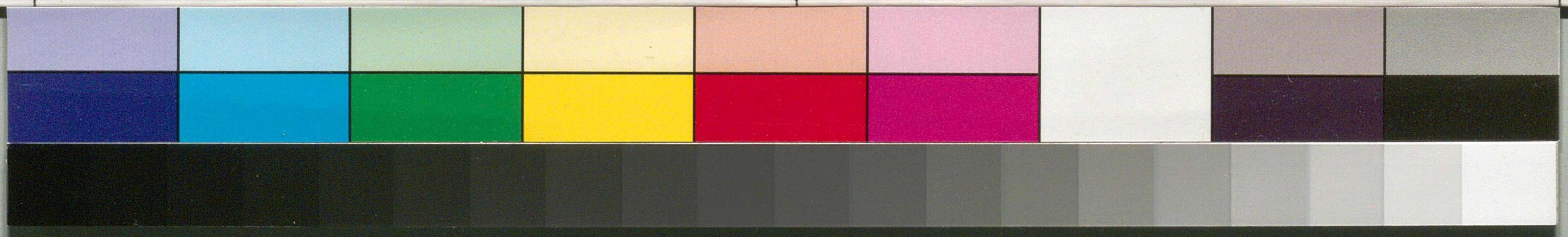
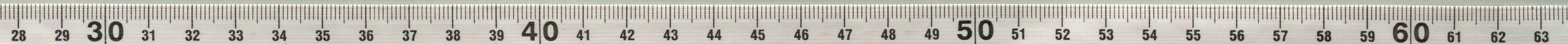
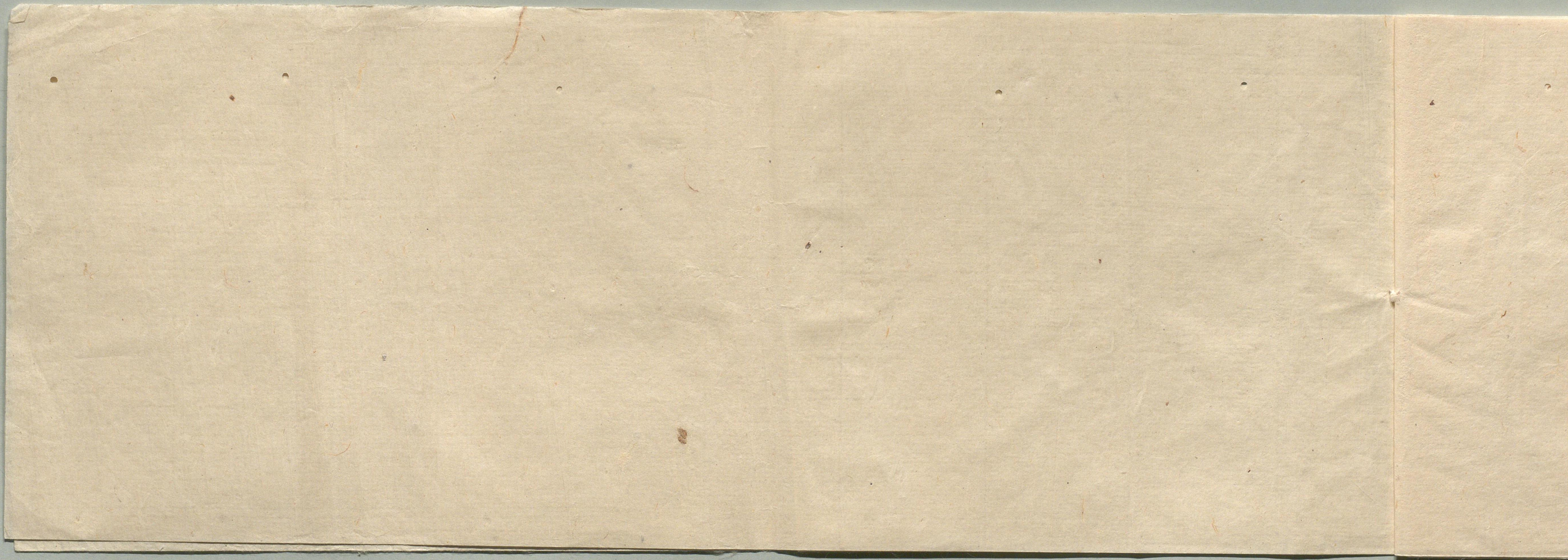
国立国会図書館 川村正平関係文書 197-14(1)



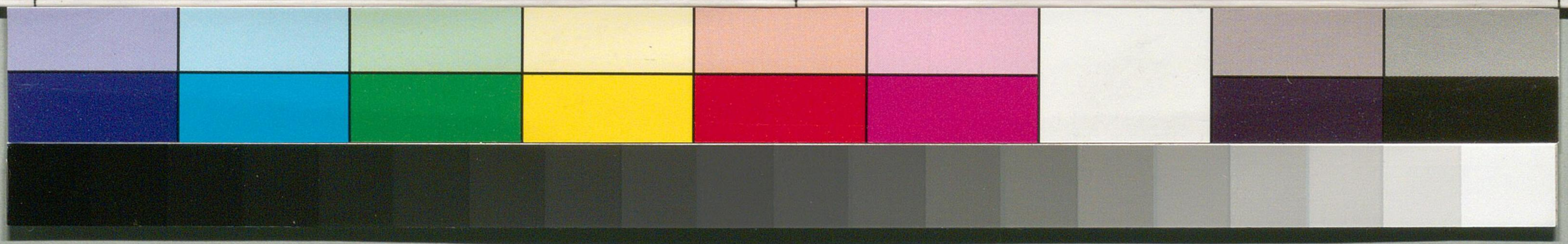
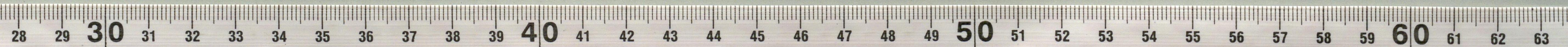
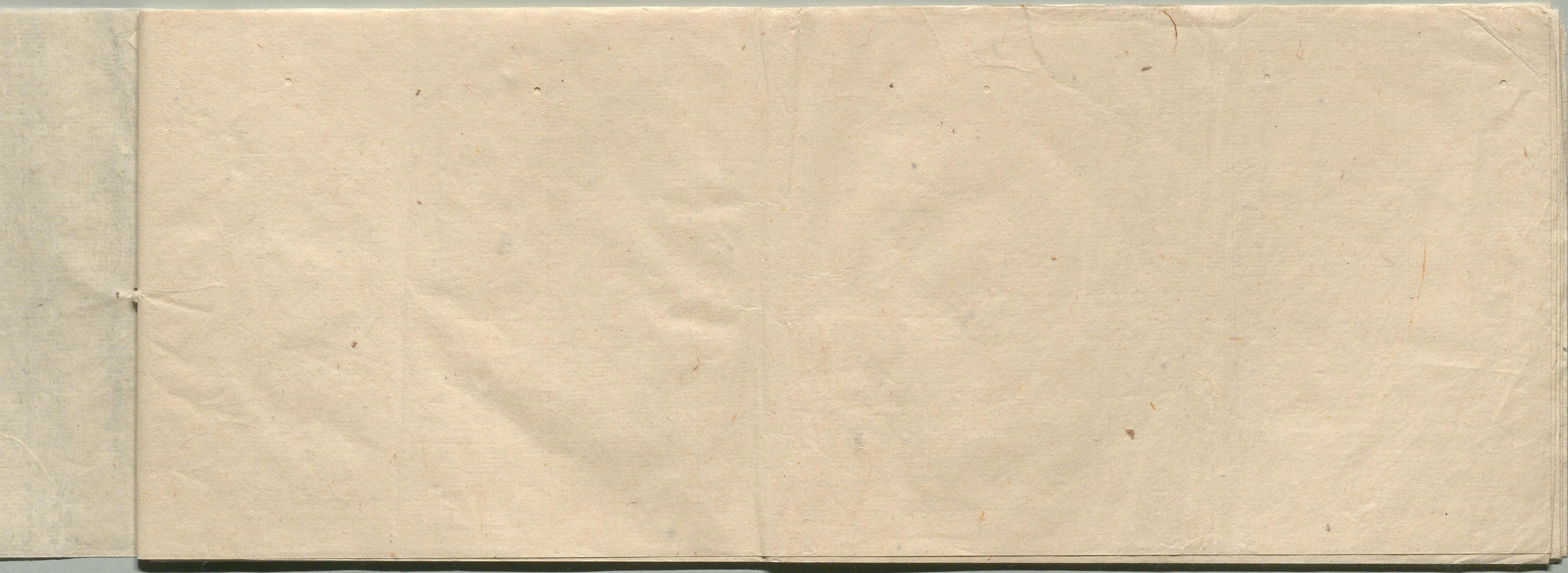
国立国会図書館 川村正平関係文書 197-14(1)



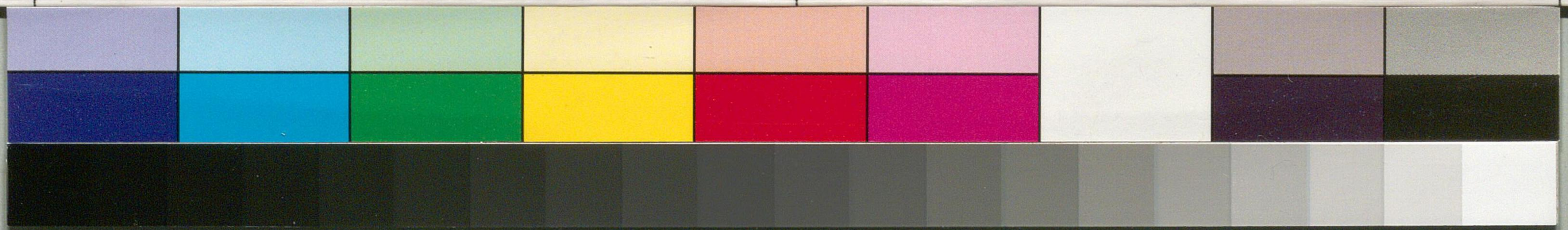
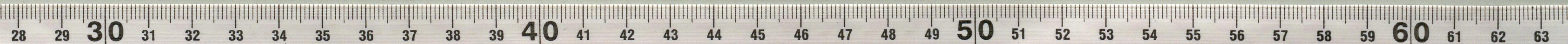
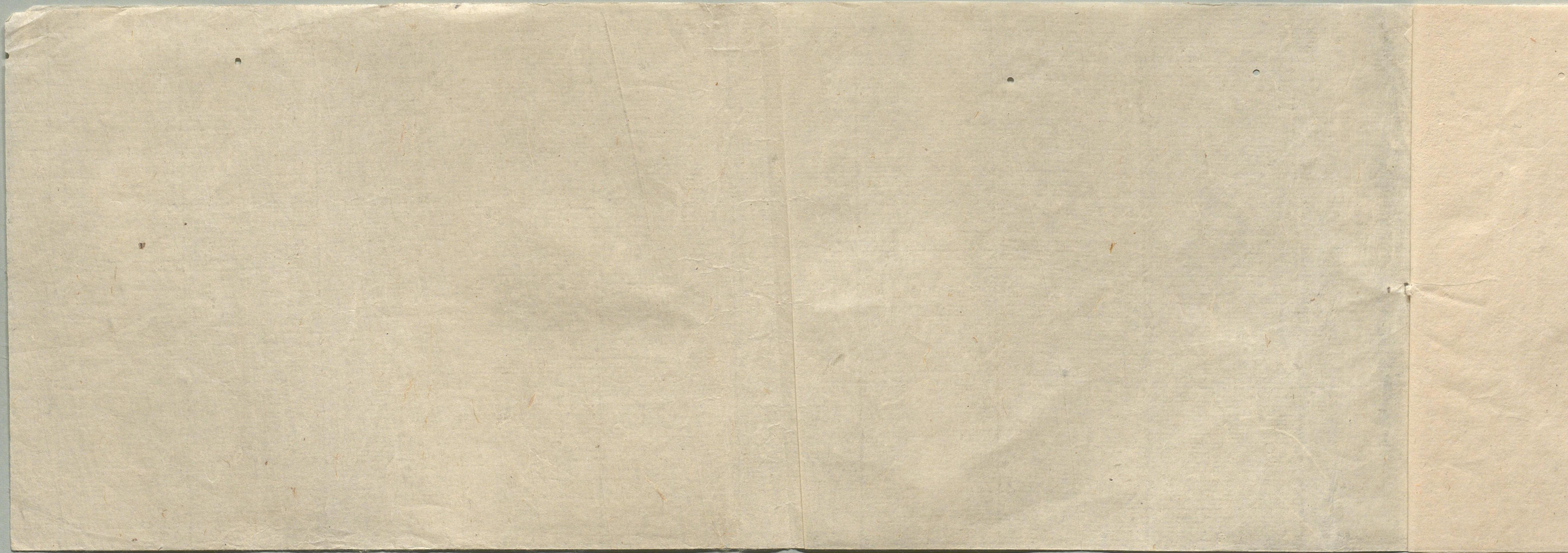
国立国会図書館 川村正平関係文書 197-14(1)



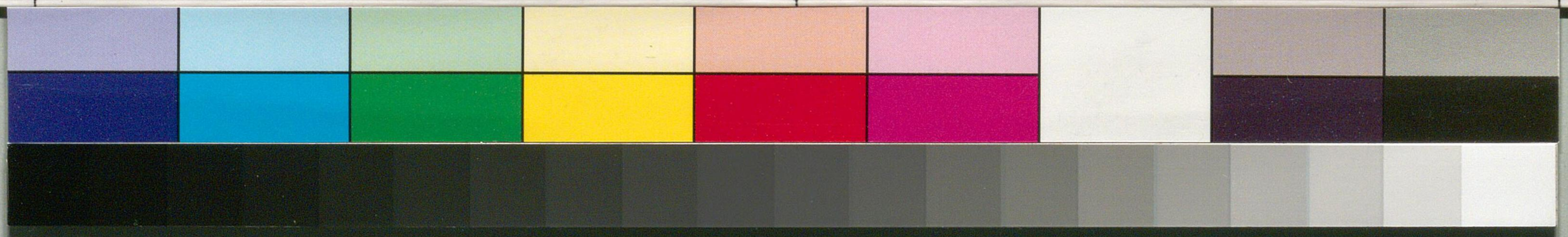
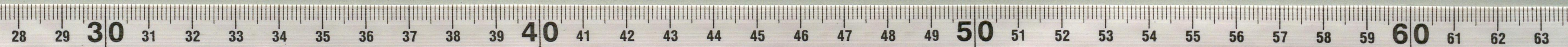
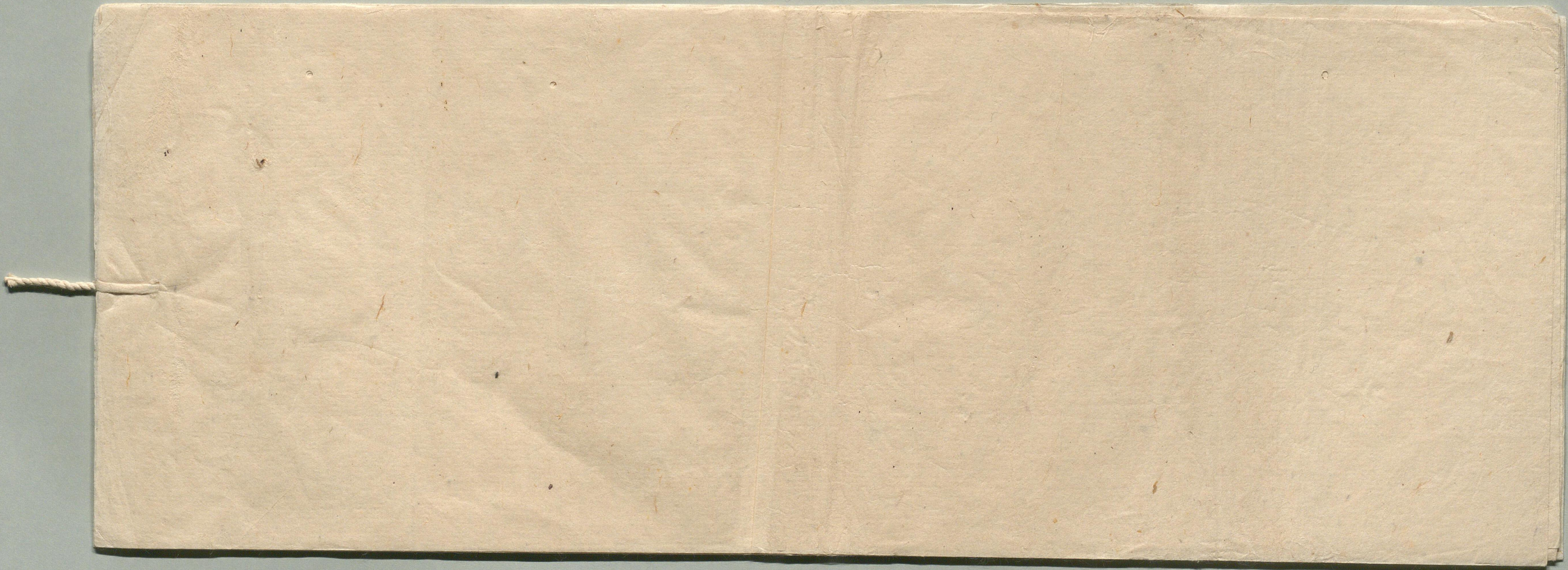
国立国会図書館 川村正平関係文書 197-14(1)



国立国会図書館 川村正平関係文書 197-14(1)



国立国会図書館 川村正平関係文書 197-14(1)



国立国会図書館 川村正平関係文書 197-14(1)