

Historic, archived document

Do not assume content reflects current scientific knowledge, policies, or practices.

65.43

LIBRARY
MAY 1 1935

1935

CATALOG

DAHLIAS

GLADIOLUS

PEONIES



See page 26.



GROWN AND OFFERED BY

J. V. EDLUND

12th St. and Division Ave.

White Bear Lake, Minnesota

Established 1910

TO OUR FRIENDS AND CUSTOMERS:

We take pleasure in presenting our 1935 Catalog, which we believe, fully on par with our previous offerings.

We wish to call your attention to the achievements of our Peony, Mrs. J. V. Edlund, which was awarded the gold medal of the American Peony Society and the American Home Achievement medal at the Century of Progress at Chicago, 1933, the price of which has been greatly reduced, and our Cosmos Sensation which is available for the first time this year. These Cosmos were displayed at the Century of Progress last Fall, and the inquiries for the seed has been beyond our expectation. We take great pride in these outstanding prize winners and take this opportunity to wish you a very successful season for 1935.

To our Twin City Customers, if it is more convenient you may leave your orders with Donaldson's Flower Department, Minneapolis, or the Golden Rule Flower Shop, St. Paul, where they may be charged to your regular accounts if so desired.

Sincerely yours,

J. V. EDLUND,

White Bear Lake, Minn.

GENERAL INFORMATION

We are always glad to give information or answer questions of any kind.

Order early, as the stock of some of our finest varieties is limited. Early orders are solicited to prevent disappointment in case the varieties selected should be sold out.

Discounts. On all orders received before March 1st, 1935, amounting to \$2.00 or more, we will allow extra bulbs, your selection equal to 10% of the order.

We do not substitute unless directed to do so.

Terms: Net cash before shipment, 25% deposit will hold your order until March 1st. Orders not fully paid will be sent C. O. D. for the balance.

Remittance may be made by postoffice order, bank draft, express money order or personal check.

We pay postage on all orders of \$1.00 or more; of less amounts add 25¢ to cover postage.

SIX BULBS OF ANY ONE VARIETY SOLD AT THE DOZEN RATE

At prices quoted ½ size Gladiolus bulbs will be sold at ½ price.

In comparing prices please bear in mind that quality bulbs and roots can not be produced and sold at cut rate prices.

If you do not find the varieties you want in this catalog, write us. We have many of which stock is too limited to list.

Wholesale orders. We are in a position to accept wholesale orders on quantity lots of many varieties listed. If interested write for quotations.

NON-WARRANTY

We guarantee the safe arrival of all stock by mail or express and will continue to use the same careful, painstaking methods in filling orders with stock of known vitality and of superior merit, but will not be responsible for future results or failures.

If for any reason you are dissatisfied with the stock, when received, return it and your money will be refunded.

Reference:

FIRST STATE BANK
White Bear, Lake, Minn.



Dahlias

HOW TO GROW AND CARE FOR DAHLIAS

Plant in an open, sunny situation if possible. Prepare the soil thoroughly by deep spading. Be moderate in the use of both manure and water. Never plant when the soil is wet. Lay the root flat on its side with the eye up and cover it four inches deep, pressing the soil firmly on the root. Keep the soil loose and mellow by frequent hoeing, drawing the soil to a slight hillock around the plant. Tall growing varieties may be kept fairly dwarf by pinching out the top when about one foot high. All varieties growing above four feet high should be tied to stout stakes to hold them in position; 3 by 3 is about the proper distance to plant apart. Keep all dead flowers trimmed off.

Dahlia blooms keep much better if cut in the evening or early in the morning and the less foliage taken off with the flowers, the better for both flower and plant.

After frost has killed the tops, dig the roots carefully, remove the soil from the roots, and store away in a box or barrel secure from frost. As a precaution it would be well to cover the roots with dried peat moss.

All clumps should be divided into several pieces before planting the following spring, never plant whole clumps.

GREEN PLANTS

The popularity of our green plants is growing fast, and we suggest that you give them a trial on your next order if you are buying the higher-priced varieties, as plants are about one-half of root price in most cases. Green plants when properly grown from healthy stock, give equal or better blooms than from roots.

Plants should be set a little deeper than roots, plant at least six inches deep, the lower leaves may be removed if necessary, the after-cultivation and care of plants should be the same as for roots. Our plants will be ready for shipment after May 20th.

Full Illustrated Cultural Directions furnished with each order.

-
- ASBURY PARK (Wood) F. D.**—This is a very vigorous growing variety. The color is a light coral pink and is one shade throughout the entire flower. The stems are as stiff as a rod and the blooms are usually produced at a pleasing angle to the stem.....Roots, **\$1.00**
- BAGDAD (Redfern) I. D.**—A new orange red of immense size. The most brilliantly colored Dahlia in existence; erect long stems.....Roots, **\$1.00**
- BUCKEYE BRIDE (Peck) F. D.**—This most beautiful Dahlia is geranium pink to soft salmon; a good cut flower variety.....Plants, **75¢**
- BUBBLES OF HILLCREST (Scott) I. D.**—The most unusual Dahlia we have ever grown; giant bloom; color an unusual shade of magenta.....Plants **\$2.50**
- BUCKEYE KING (Peck) F. D.**—A very large, clear glowing amber yellow, stems are long, flowers always facing.....Plants **\$2.50**



DOROTHY STONE (F. & M.) F. D.—A beautiful rose-pink that was a rival for Kathleen Norris last year. Many prefer this variety; it is a splendid grower, the foliage being tough and leathery in texture. The stems are good and the large flowers are produced freely.....Roots, **\$1.00**

FORT MONMOUTH (Kemp) I. D.—One of the giants of the Dahlia world. The color is a rich crimson maroon with a brightness unusual in the darker tones, just a faint tinge of bluish violet at tips of petals. Flowers are borne on long stems high above the foliage.....Roots, **\$1.00**

GOLDEN GOBLIN, I. D.—Golden yellow of great merit. Large flowers and good foliageRoots, **\$1.00**

GROVER WHALEN, F. D.—A fine autumn color of rich orange with tints of bronze. Especially fine for cutting on account of its good keeping qualities. Heavy leathery foliage.....Roots, **75¢**

HILLCREST FLUFFY RUFFLES (Scott) I. D.—A ruffled variety. Giant bloom. Color coral-bell.....Plants, **\$2.50**

HILLCREST MANDARIN (Scott) I. D.—A bi-color, Pirate and primrose with amber reverse; very large and flashy.....Plants, **\$2.50**

HILLCREST ROYALIST (Scott)—Color: One shade of Indiana red, with clover reversePlants, **\$1.50**

JANE COWL (Downs)—Decorative.

The outstanding Dahlia at every show. A consistent prize winner throughout the country. It is a large deep flower with colorings of warm buff and old gold, blending salmon at its perfect center. We consider this to be the best Dahlia to date.....Roots, 50¢

JANE DEW (Peck)—This is the clearest pink shade we have ever seen in a very large flower, the long stems and big flowers pushed from a dwarf to medium plant.

Plants \$1.50

JERSEY'S BEACON (Waite) F. D.—

A decided novelty of Chinese scarlet with a paler reverse, giving a two-toned effect. An exhibition flower of vigorous growth; excellent stem.....Roots, 75¢



JERSEY'S BEAUTY (Waite)—A beautiful erosine pink. Decorative of great size, the blooms are carried high above the foliage on long wiry stems, a perfect true pink, wonderful keeper when cut. Probably the most talked of Dahlia today.....Plants, 50¢

JERSEY'S GLORY (Waite) F. D.—The flowers are large and of good form, well placed on the stems. The color is best described as a yellow hue of orange. The stems are long and stiff, but sometimes arch gracefully.....Roots, 75¢

JIM MOORE (Loller) I. D.—One of the outstanding Dahlias of 1930. The color is a clear primrose yellow shading to gold, with tints and flushes of salmon throughout the flower; the stem is long and strong, holding blooms facingPlants, 75¢

JOSEPHINE G. (Ruschmohr) S. C.—Color, true rose pink, petals tipped pinard yellow. Its fluted petals, vivid coloring, proud upright blooms and splendid habits of growth make it a real addition to any collection.....Roots, \$1.00

KENTUCKY RED (I. D.)—A bright vivid scarlet that is very attractive and distinct in its color; the flowers are large and held erect on strong stiff stems. Blooms will not burn in the hottest sun.....Plants, \$1.00

LA MEXICANA (Fisher & Mason) S. C.—A difficult color to describe. Burnt orange toning to copper center of flower lighter in shade and tips of petals slightly tinged with gold; an extremely early and free bloomer. Roots \$1.00

MARMION (Tyler) I. D.—A pure golden yellow, with bronze suffusion on reverse of petals and a deeper bronzy tone on the high center, and outlining each petal. Vigorous growing bush and a good free bloomer.....Plants 75¢

MARY ELLEN (Loller) I. D.—The color of this new Dahlia is a lavender pink with considerably more pink than lavender. The flowers are held erect on the best of stems, well above the robust and prolific flowering bush, it has the best of keeping qualities.....Plants 75¢

MONMOUTH CHAMPION (Kemp) F. D.—A strong, vigorous grower producing extra large blooms of a brilliant orange flame. The stems are perfect and is a splendid exhibition flower.....Roots \$1.00

- MRS. I. DE VER WARNER (Marean) F. D.**—Very large, beautiful flowers of fine form and substance. Color is rich mauve. Stems long and rigid. Very attractive in the garden and one of the best for exhibition and cutting Roots **35¢**
- PAPILLON (Bessie Boston) I. D.**—This is a beautiful shade of old rose with golden lights, fine form and very free bloomer. A seeding of Geo. Walters and a great improvement on that favorite old variety.....Roots **75¢**
- PRINCE OF PANTOPS (Scott) I. D.**—A ruffled variety. Color, orange-peel. Not in the giant class, but very desirable.....Plants **75¢**
- SON OF COMMODORE (Scott) I. D.**—Another big fellow from West Virginia and a fine addition to the yellow class. Good keeper and long stems. Plants **\$2.50**
- SULTAN OF HILLCREST (Scott) F. D.**—A strontian yellow with sunrise yellow reverse Plants **\$2.50**
- THE COMMODORE (Scott) I. D.**—Lemon yellow. Covered with large blooms all the season. A free bloomer.....Plants **75¢**
- SANHICAN'S QUEEN (Fisher & Masson) F. D.**—An unusual color that is hard to describe. A blending of apricot with a feint brushing of carmine rose deepening towards the tight center. Plant has excellent habit of growth and medium height.....Roots **75¢**
- SUNNY SOUTH (Broomall)**—Cactus. A bright clear yellow without any shading of fine formation. The flowers are held high above the foliage.....Roots **\$1.00**
- TANG (Downs) I. D.**—Strikingly beautiful, with unusual color and style all its own. Bright tawny orange flame. Long petals that roll and twist and show a golden buff reverse to such a marked degree that the flower at first appears to have two colors.....Plants **75¢**
- THE WORLD (Dahliadel) F. D.**—The color of this variety is a rich deep rosy magenta overlaid garnet, and with silver shadings on the edges of the petals. The stems are perfect. Foliage heavy and resistant to insects. A thrifty grower and admired very much the past year.....Roots **75¢**
- THOS. A. EDISON (Dahliadel) F. D.**—Royal purple. A massive flower of distinct coloring and form, held erect on cane stiff stems. A strong sturdy grower of medium height.....Roots **\$1.00**

BEGINNERS COLLECTION OF DAHLIAS

We have quite a number of Dahlias in quantities too small to offer separately. If you will leave the selection to us, we will send you a collection of some of the very finest varieties adapted to this climate at real bargain prices.

- Collection No. 1—Six Named Giant Flowered Dahlias..... **\$2.50**
 Collection No. 2—12 Named Giant Flowered Dahlias..... **\$4.50**

Pompon Dahlias

This class is a miniature form of the show or ball Dahlias, having the same round, ball-like form, but much smaller in size. The plants are also smaller, of branching habit, producing the flowers in endless profusion. As they can be cut in sprays they are valuable for bouquets and particularly table decorations. They last a long time when cut.

We only offer tubers of these as we do not propagate green plants of this section.

- AMBER QUEEN**—Very fine deep amber.....Each **25¢**
BELLE OF SPRINGFIELD—One of the smallest and most popular of the exhibition table. Soft red.....Each **35¢**
DAINTY—Tiny pointed petals of white, shading to pink.....Each **25¢**
DARKEST OF ALL—A very dark maroon, one of the best.....Each **35¢**
GOLDIE—A tiny flower of pure gold color.....Each **25¢**
KLEIN DOMITEA—Bright golden terra-cotta, free bloomer.....Each **25¢**
SUNSET—A delightful orange color, one of the most popular.....Each **25¢**
JOE FETTE—The best and smallest white for exhibition or cutting.....Each **25¢**
YELLOW GEM—Canary yellow, small and good form.....Each **25¢**



How to Grow Gladiolus

Plant the bulbs in well-worked soil 5 to 6 inches deep. Deep planting will serve to protect the roots from the hot sun, keeping more moisture about the roots, and also serves to hold the heavy spike after it has grown to its full height.

The Gladiolus will thrive in almost any good garden soil, but seems best results are obtained in soil that is more or less sandy. Plant in a sunny location away from trees and large shrubs. The first planting may be made in the spring as soon as the ground is warm and in good workable condition. If a succession of blooms is desired throughout the summer, new plantings may be made about 10 days after the foliage of the previous planting show through the ground and additional plantings continued until the last week in June, which is about as late as is safe to make the last planting in order to secure flowers before frost.

Cultivate often and thoroughly; the more you cultivate the better they grow. Do not allow the ground to bake around the plants. The bulbs should be dug before the plants are too ripe and before hard frosts. Dig the bulbs and cut off the tops close to the bulbs. Dry well in the open air and sunshine, then put in dry airy place for two or three weeks to cure. Be sure to protect against frost. As soon as well dried the old bulbs, cormlets and roots can easily be removed.

Put bulbs in trays not over four inches deep. Store in cellar or basement where the temperature is uniform and around 40 or 45 degrees.

The Gladiolus

- ADAGIO (P. Pfister)**—A very large flower of a salmon buff color, tall and vigorous grower.....Each 15¢; Doz. \$1.00
- AFLAME (Hornberger)**—A large, brilliant, clear flame color. The largest flower we have yet seen with many open at one time. A good strong grower with good height and nice straight stem.....Each 15¢; Doz. \$1.00
- AMADOR (Kingsley)**—A new glowing red that does not burn in the sun. Tall and straight.....Each 40¢; Doz. \$4.00
- ANNA EBERIUS (Diener)**—A wonderful dark velvety purple red of distinctive color. Large flowers and vigorous grower.....Each 10¢; Doz. 75¢
- ANNIE LAURIE (Brown)**—A beautiful pink primulinus. Heavily ruffled and overlaid with light rose-pink with lavender lines in throat. The flowers are of medium size, with four to five open at one time.....Each 10¢; Doz. 75¢
- APRICOT GLOW (Palmer)**—This primulinus is of great merit. A beautiful apricot color, about the same color as that favorite Gloriana, but a much larger and more open flower. Many blooms open at one time.
Each 10¢; Doz. 75¢
- AVE MARIA (Pfister)**—Light blue with small purplish blotches. Sometimes flaked 7-8 large blooms open.....Each 10¢; Doz. 75¢
- BAGDAD (Palmer)**—Smoky old rose, deeper at edge of petals and lighter in throat. Blooms often six inches across.....Each 25¢; Doz. \$2.00
- BETTY NUTHALL (Salbach)**—The flower spikes are long and graceful, six to eight well expanded blooms open at one time. The color is a warm light coral with pale orange throat markings and light featherings of carmineEach 10¢; Doz. \$1.00
- BILL SOWDEN (Fallu)**—Very large, massive, deep blood red. Six to seven inches across; petals roll back.....Each 15¢; Doz. \$1.50
- BLUEBIRD**—Dark violet blue, one of the real good dark blues; a good strong growerEach 10¢; Doz. 75¢
- BLUE DANUBE (Pfitzer)**—Beautiful light blue, long spike with 6 to 8 open flowers; a very strong grower; the blue of blues.....Each 50¢
- BREAK O' DAY (Bill)**—One of the finest Glads we have ever seen. Massive spikes with several flowers opening at a time. Color is a soft La France pink; the pink is flushed over a cream ground and the shade is deeper at tips of petal. There is a zone of martius yellow on lower petals with delicate central lines of brazil red.....Each 10¢; Doz. 75¢
- BUTTERBOY (Kunderd)**—An extra tall, strong plant of buttercup yellow flowers, nicely spaced on the spike. A decidedly distinct showy Primulinus variety of much merit.....Each 10¢; Doz. 75¢
- BYRON L. SMITH (Kunderd)**—One of the very best. Most refined lavender pink on white ground. Exceptionally fine as a cut flower. Color equal to a very choice cattleya orchid.....Each 10¢; Doz. \$1.00
- CAROLUS CLUSIUS (Vel)**—Early light pink, a light rose pink, 6 to 8 blooms open at one time; very tall grower.....Each 15¢; Doz. \$1.00
- CATHERINE COLEMAN (Coleman)**—Clear salmon rose with splendid pencillings on lower petals. Several large well placed blooms open at one time. Tall plant.....Each 15¢; Doz. \$1.00
- CHAS. DICKENS (Pfitzer)**—A bright reddish-violet, tall, strong grower with many flowers open at one time.....Each 10¢; Doz. 75¢

- CARDINAL PRINCE (Kunderd)**—A magnificent self-colored cardinal. Flowers large and of splendid form and placement, six to eight open at a time. A good tall plant. An A-1 cardinal, perhaps superior to any other variety in this color. Destined to become very popular.....Each 10¢; Doz. 75¢
- COPPER BRONZE (Kunderd)**—Coppery-bronze. One of the most distinctly beautiful and artistic Prims.....Each 10¢; Doz. 75¢
- CORONATION (Palmer)**—Soft light salmon shading to cream and creamy yellow deep in throat; 7-8 large well placed blooms open on a moderately tall, strong stem. One of the good new ones.....Each \$1.00
- CORPHEE (Pfitzer)**—A very tall, strong growing variety, with eight to ten large well formed flowers of a heavy texture open at once. A soft light rose-pink color Each 15¢
- CREATOR (Bill)**—Rose color, tall plants with several blooms open; a good rose colored Glad.....Each 20¢; Doz. \$2.00
- CRINKLES (Kunderd)**—Deep peach blossom pink. Intensively ruffled.
Each 10¢; Doz. 75¢
- DESDEMONE (Vilmorine)**—A smoky-purple, cream color; very large flowers and tall grower.....Each 10¢; Doz. 75¢
- DR. F. E. BENNETT (Diener)**—Deep peach red overlaid with flame scarlet. Lip speckled ruby and white. Most fiery red imaginable. Flowers of the very largest size with many opening at once. Exceptionally well placed on the stem. Most perfect red we have ever seen.....Each 10¢; Doz. 75¢
- DR. MOODY (Kinyon)**—A beautiful true lavender color, light and silvery sheen, sometimes flaked darker lavender. A great show flower of large size, with eight to ten perfect large well placed blooms open at a time, and strong, tall, straight grower.....Each 10¢; Doz. 75¢
- DUCHESS OF YORK (Dames)**—Large flowers of a beautiful purple blue color. Erect stems, vigorous growth and firm substance of flower. Extra fine for a dark blue.....Each 10¢; Doz. \$1.00
- EDITH ROBSON (Brown)**—Light salmon rose with red blotch. Very tall, strong growing plant with huge spike of bloom; a real good new one from AustraliaEach 40¢; Doz. \$4.00
- EMMA (Velthuys)**—Dark pink, with a dark blotch, a strong grower. One of the good new ones.....Each 20¢; Doz. \$2.00
- EMILE AUBURN (Lemoine)**—A coppery bronze color, sometimes overlaid with slate, with a cherry-red blotch in throat. Many blooms open at one time. A very outstanding variety.....Each 10¢; Doz. 75¢
- EVELYN KIRTLAND (Austin)**—Beautiful shade of rose pink, darker at the edges, fading to a shell pink at the center with a brilliant scarlet blotch on lower petals. Tall straight spike.....Each 10¢; Doz. 75¢
- FATA MORGANA (Pfitzer)**—Salmon pink with cream throat, seven to eight open flowers, well placed on graceful spike.....Each 40¢
- FERN KYLE (Kunderd)**—Large ruffled flower of finest creamy white color.
Each 10¢; Doz. 75¢
- FLAMING SWORD (Holland)**—Very tall, straight spike with many flowers open at a time. Brilliant red overlaid with orange and very early.
Each 10¢; Doz. 75¢
- GERALDINE FARRAR (Diener)**—Pale lavender, violet with deep violet spot on the lip. Unlike other blue varieties. The growth is very strong and vigorous. This variety has made a big impression on all visitors to this placeEach 10¢; Doz. 75¢
- GERTRUDE ERREY (Errey Bros.)**—The color is exquisite, a light salmon or shell pink on the outer part of the flower shading off to almost white in the center, a deeper color in throat. Tall grower.....Each 10¢; Doz. 75¢

- GIANT NYMPH (Coleman)**—La France pink, with creamy yellow throat; very large wide-open flowers, long spike and flowers well arranged on the stems. This is one of the very best.....Each 8¢; Doz. 60¢
- GLORIANA (Betcher)**—Rich salmon with creamy blotch, many open. Extra strong grower. New.....Each 10¢; Doz. 75¢
- GOLDEN DREAM (Groff)**—This is the best deep clear yellow we have seen to date. A very strong, tall grower, a beautiful flower in every respect. Each 10¢; Doz. 75¢
- GOLD EAGLE (Austin)**—A new yellow, the blooms which are of good size, beautifully ruffled and of strong substance. A good early yellow. Each 10¢; Doz. 75¢
- GOLDEN FRILLS (Kunderd)**—A deep daffodil-yellow. Intensively ruffled, slight pink lines on lower petals; very choice.....Each 10¢; Doz. 75¢
- HEAVENLY BLUE (Pfitzer)**—Pale sky blue with lines on lip eight to ten good sized blooms open at a time. A wonderful color.....Each 10¢; Doz. 75¢
- HELEN PHIPPS (Diener)**—Very similar to W. H. Phipps, but is a rose pink and a much better propagator.....Each 10¢; Doz. 75¢
- HINEMOA (New Zealand)**—A deep pink ground color is flaked with dark chocolate crimson, a large, clean cut, clear yellow blotch standing out in strong contrast. Many immense wide winged flowers open at one time. In a class of its own.....Each 20¢
- JANE ADAMS (Prestgard)**—A soft lavender-pink with white throat; a very good growerEach 15¢; Doz. \$1.00
- JENNY LIND (Hoeg)**—Pure, soft apricot pink, throat pale yellow, the two colors blending to perfection. Many blooms open at one time. An exceedingly refined and attractive variety.....Each 10¢; Doz. \$1.00
- JEWEL (C. Zeetraten)**—A beautiful salmon pink with a clear golden throat. Wide open flowers that do not show the hooded form of the Primulinus type Each 5¢; Doz. 50¢
- JOERG'S WHITE (Joerg)**—Immense cream white. Makes a wonderful spike of bloom, though not a very tall grower.....Each 15¢; Doz. \$1.50
- KING ARTHUR (Arenius)**—Immense ruffled lavender, of a distinctive color and shape; a sensation of the new ones.....Each 60¢
- KIRCHOFF'S VIOLET (Kirchoff)**—A good blue-violet color with deeper throat markings, all grower and early.....Each 15¢; Doz. \$1.00
- KUNDERD'S VIOLET WONDER (Kunderd)**—Large clear yellow. Several open. A very good early mid-season yellow.....Each 10¢; Doz. \$1.00
- LA PALOMA (Dusinberre)**—A vivid clear orange, stands sun and rain better than most oranges, tall strong grower.....Each 10¢; Doz. \$1.00
- LILAC WONDER (Europe)**—A beautiful light lavender color; tall straight spike, with well placed flowers.....Each 10¢; Doz. 75¢
- LORICE (Kemp)**—A ruffled scarlet-red.....Each 15¢; Doz. \$1.50
- LOYALTY (Austin)**—Perfectly clear yellow about the shade of Golden Dream but larger. Very tall, strong grower with many blooms open at a time. Each 15¢
- MAID OF ORLEANS (Pfitzer)**—Beautiful milky white with cream throat; very tall grower with eight or more open at one time.....Each 35¢
- MAINE (Vos)**—Pure glistening white without a blemish except for very faint lavender featherings in throat. Tall, straight spikes. Flowers well open and of good substance.....Each 10¢; Doz. \$1.00
- MAMMOTH WHITE (United Bulb Co.)**—One of the largest of all Gladiolus, long, tall, straight spikes; color a pure paper white.....Each 25¢
- MARNIA (Kemp)**—Luminous orange shade, slightly tinged pink. Large spikes, a good cut flower variety.....Each 10¢; Doz. 75¢

- MARION KOCH (Austin)**—Needlepoint type. Pink on tips of petals, shading some lighter toward the center with a creamy blotch. This variety was very much admired the past season.....Each 10¢; Doz. 75¢
- MARMORA (Errey Bros.)**—An Australian variety in a class by itself. A gray color with pale purplish blotch in throat. A good strong grower with eight to ten blooms at a time.....Each 10¢; Doz. 75¢
- MARY FREY (Gelser)**—Lavender pink similar to Mrs. F. C. Peters, but much earlier. Tall straight grower with a nice willowy stem.....Each 10¢; Doz. 75¢
- MARY JANE (Kunderd)**—Silvery pink with light lavender sheen. A very beautiful variety Each 15¢
- MAURICE FULD (L. Merten Gage)**—A pinkish salmon with a blotch of tyrian rose on a pure white throat.....Each 10¢; Doz. 75¢
- MINUET (Coleman)**—Fine, tall, well built, strong erect grower, with lavender blooms well placed and faced.....Each 15¢; Doz. \$1.00
- MISS DES MOINES (Prestgard)**—Color pale-lilac shading to a darker color at edges of petals, light yellow in throat; tall, erect grower with well placed blooms Each 25¢
- MOORISH KING (Pfitzer)**—Extremely large and the most beautiful deep velvety red individual flower we have ever seen in this color.....Each 50¢
- MRS. F. C. HORNBERGER (Hornberger)**—A beautiful pure white without markings. Tall erect grower. Many large open flowers at a time. The best white we have ever seen.....Each 10¢; Doz. 75¢
- MRS. F. C. PETERS (Fisher)**—The color is a beautiful pure white without, with a crimson blotch, bordered with white on lower petals resembling an orchid in color. Flowers are of large size and many open at a time on a strong, perfectly straight spike.....Each 10¢; Doz. 75¢
- MRS. FRANK PENDLETON (Kunderd)**—One of the largest and most popular Gladiolus. Very large, delicate pink flowers with large blotch of blood red Each 8¢; Doz. 75¢
- MRS. LEON DOUGLAS (Diener)**—Ground color begonia rose, striped with flame and brilliant scarlet. Lip is pale lemon slightly speckled with ruby. The size of the flowers, we believe, is the largest in existence, and all are very open and well set on the long spikes. The spikes are extra long and have up to as many as seven side spikes on each main spike.
Each 10¢; Doz. 75¢
- MRS. P. W. SISSON (Coleman)**—Extra fine new pink. A seeding of wondrous beauty and shown for the first time at the A. G. S. exhibition in New York City, August, 1924.....Each 10¢; Doz. \$1.00
- MRS. S. A. ERREY (Errey)**—Very large orange salmon with orange red blotch, 8 to 10 immense blooms open at one time.....Each 10¢; Doz. \$1.00
- MRS. VAN KONYNENBURG (Pfitzer)**—Tall, clear medium light blue; a little darker than Geraldine Farrar, but a much better grower.....Each 10¢
- MURIEL (Velthuys)**—Pale violet blue; orchid blue with purplish blue blotch on lower petals; large open flowers. Excellent substance and tall and straight growerEach 10¢; Doz. 75¢
- MR. W. H. PHIIPPS (Diener)**—La France pink with light rose-salmon, lighter towards the center, lower petals faintly striped with ruby, blooms very large and all open at one time; very late.....Each 15¢; Doz. \$1.00
- OLIVE GOODRICH (Goodrich)**—White shading to pink at edges, pure yellow throat, several open at a time, tall strong grower; an improved Mrs. Dr. NortonEach 10¢; Doz. \$1.00

- ORANGE FLAME (Kunderd)**—Glowing vermilion orange. Very large and ruffled Each 10¢; Doz. 75¢
- ORANGE PRINCESS**—A vivid orange, of medium height.....Each 25¢
- ORANGE QUEEN (Pfitzer)**—Copper orange. Large open flowers. The only Gladiolus of this shade to date.....Each 10¢; Doz. 75¢
- ORCHID LADY (Spencer)**—A large, loose flower of lavender color, striped deeper, earlyEach 10¢; Doz. 75¢
- OTHELLO (Pfitzer)**—Purplish blue shaded mauve, with round flower. A very good new one of this color.....Each 25¢
- PARAMOUNT (Kunderd)**—A wonderful blending of pink and cream. Similar to Mrs. Dr. Norton.....Each 10¢; Doz. \$1.00
- PAUL PFITZER (Pfitzer)**—A glowing violet purple A good tall, strong grower with wide open bloom.....Each 10¢; Doz. \$1.00
- PEARL OF CALIFORNIA (Kingsley)**—Strong upright grower of excellent quality with large well set blossoms on long straight stems, spike contains from 20 to 32 buds with 8 to 10 open at one time. The large flower is of the clearest, softest La France pink ever put in a Glad, blending to a rosy white throatEach 10¢; Doz. \$1.00
- PELEGRINA (Pfitzer)**—Large deep blue, 6 or more open flowers, the best dark blue to date.....Each 50¢
- PFITZER'S TRIUMPH (Pfitzer)**—Immense glistening orange salmon, with small red spot on lip. One of the most beautiful colors and very showy; heavy propagatorEach 10¢; Doz. \$1.00
- PICARDY (Palmer)**—This variety has been the sensation of the Gladiolus world since its introduction; has won the blue ribbon in every class where it calls for a salmon pink; we consider this the best Gladiolus to date regardless of color..... Each 20¢
- PIRATE (Palmer)**—A beautiful dark rose red. Lighter in upper throat. Many immense wide open blooms at a time on well arranged strong, straight stems. A very distinct variety.....Each 25¢; Doz. \$2.00
- PUREST OF ALL (Pfitzer)**—A pure milky white of large size, nice spike with well placed blooms.....Each 10¢; Doz. 75¢
- PURPLE GLORY (Kunderd)**—A giant ruffled flower, with a very heavy long spike. The color is an intense reddish purple; a most wonderful flower.
Each 10¢; Doz. 75¢
- RADIANT QUEEN (Hornberger)**—A beautiful light orange color. Tall straight grower with many open flowers at one time.....Each 5¢
- RAMESSES (Stevens)**—Extremely tall growing plant with immense purple flowers, several open at one time, heavily waved and ruffled. A wonderful new Gladiolus Each 35¢
- RED FIRE (Kunderd)**—A pure self-bright red color. Tall straight grower with nearly all the flowers open at a time.....Each 10¢; Doz. 75¢
- RICHARD DIENER (Diener)**—Pure geranium pink with a slight sprinkling of ruby or creamy yellow center. Large flaring blossoms, rivaling an orchid in beauty. The acme of perfection in coloring. This variety has created a sensation wherever shown.....Each 10¢; Doz. 75¢
- RITA BECK (Fisher)**—A beautiful waxy shell pink color, with a scarlet line on tip. Very wide open large flowers with many open at a time. Tall, strong, straight grower..... Each 10¢
- ROSE MIST (Fisher)**—A crushed strawberry color with a buff line around the entire flower. A Primulinus variety of great merit. A nice tall, straight grower and a good bloomer.....Each 10¢; Doz. 75¢
- ROUGET DELISLE (Le Moine)**—Large reddish orange, a striking blotch of a purple or violet shade, bordered with chocolate, in center.
Each 15¢; Doz. \$1.00
- RUFFLED GOLD (Goodrich)**—Beautiful and heavily ruffled deep yellow with rose pink feather in the throat. Six or more perfectly placed blooms open at a time.....Each 15¢; Doz. \$1.00

- SCARLANO (Kunderd)**—A bright scarlet red with nicely ruffled blooms on tall slender stemsEach 10¢; Doz. 75¢
- SHASTA**—A very large pure white, excellent substance, fine placement of flowers; a very good white.....Each 10¢; Doz. \$1.00
- SENORITA (Salbach)**—Large wide open orange shading to salmon. Red pencillings on bright orange lower petals.....Each 10¢; Doz. 75¢
- SOUVENIR (Grazereau)**—A Primulinus of a golden yellow color. Good strong grower and big propagator.....Each 5¢; Doz. 50¢
- SULTAN (Crow)**—Color is of rosy red; 6 to 8 large ruffled well placed blooms open at a time with several more buds showing color. Tall, strong grower Each 50¢; Doz. 4.50
- THE ARISTOCRAT (Bill)**—Large, strong massive spikes of a pale saffron pink flaked deep orange with cream throat, with a feather marking. Slightly ruffled; very tall grower with several blooms open at a time.
Each 10¢; Doz. \$1.00
- TOBERSUN (Austin)**—Large clear yellow, tall strong grower, a high class yellow Each 15¢; Doz. \$1.00
- TRIUMPATOR (Krelage & Son)**—A very large light shade of red with just a faint dusting of white in throat. Immense large flower on a perfect spike. Tall and strong grower.....Each 15¢; Doz. \$1.50
- TYRIAN BEAUTY (Kunderd)**—American Beauty rose color, with dark markings on base of petal. A very tall and strong grower.....Each 10¢; Doz. 75¢
- VEILCHENBLAU (Pfitzer)**—Violet blue of a lovely blue shade, shading to a darker throat, well formed spike and strong grower for a variety of this colorEach 10¢; Doz. \$1.00
- VIRGINIA HALE (Kunderd)**—A beautiful creamy pink color deeper towards the edges of the petals. Good strong grower.....Each 10¢; Doz. 75¢
- WASAGA (Palmer)**—A glowing capucine buff with wide open somewhat ruffled blooms; color is clear, without throat markings or flecking.....Each \$1.50
- WHITE BUTTERFLY (Kunderd)**—The best white in the Primulinus; tall growing with many flowers open at one time; a good cut flower variety.
Each 10¢; Doz. 75¢
- WILLIAM G. BADGER (Metzner)**—A delicate coral, edged with darker coral tones, throat pale yellow, sprinkled dark coral on lower petals. The flowers are of perfect placement, on spikes five feet high.....Each 10¢; Doz. 75¢
- WURTEMBERGIA (Pfitzer)**—Fiery scarlet with white throat, immense blooms on a very tall, always straight spike.....Each 30¢; Doz. \$3.00
- GLADIOLI IN MIXTURE**—For those who just want flowers, we have put up lots of 100 bulbs, ranging in size from one inch and up, containing twenty to twenty-five varieties. A grand collection for a beginner. Sold in lots of 100 only. Postpaid anywhere in the United States and Canada.....\$3.00

Montbretias

One of the brightest of our late summer and fall flowering bulbs. They should be set out early in April. They should be planted and handled the same as Gladiolus. We offer only the variety *Crocsmiaeflora* which is a color of orange scarlet. Strong bulbs, per Doz. 75¢.

Wayzata Strawberries (Everbearing)

This new strawberry far surpasses any we have ever seen, planted early they will begin bearing about August 1st and continue until killed by heavy frost and again an early crop in the spring. Plant in rows three feet apart and one foot in the row and keep free from weeds and remove all blossoms until about July 1st, then give them a good dressing of well rooted manure and a good mulching of lawn clipping or straw. Doz. \$1.00 postpaid.



HYBRID DELPHINIUMS

Delphiniums are perfectly hardy; there has been a great revival of interest in them the past few years due to the wonderful improvements that have been made in them. Several famous hybridizers have been working on them and have produced new forms and types and beautiful colorings, many of them now having beautiful shades of pink, mauve and purple mingled with the various shades of blue and shades of white.

Our plants are grown from the finest seeds obtainable in England and France, which are in no comparison with the old common kinds; they can be planted in September or early spring and bloom the first year. We offer in assorted colors one year plants; each \$1.00; Doz. \$10.00.

We are also offering for spring delivery only, pot-grown plants of Delphiniums. These plants are the same that we will be using for our own planting. To those who have had difficulty in germinating the seed of Delphiniums, this is an opportunity to get these young unflowered plants, and thus get the initial benefit from them.

These plants will all bloom from August until frost, giving spikes from 3 to 4 feet in height and the following year they will be at their best.

Plants carefully packed and guaranteed to arrive safely, \$4.00 per Doz.

Peonies



Peonies are perfectly hardy, requiring no protection whatever, even in the most severe climate, and once planted, increase in beauty each year.

Planting—Peonies may be planted any time in the Fall, from September 1st until the ground freezes.

Size of Root—Making a specialty of growing Peonies and Gladiolus our progress depends entirely upon the results obtained from our roots and bulbs; for this reason we quote prices on 3 to 5 eye, or large divisions only.

Important! An important point to observe in the planting of Peonies is not to plant too deep. The roots should be placed so that the eyes are two inches below the surface, and the soil tightly packed about them.

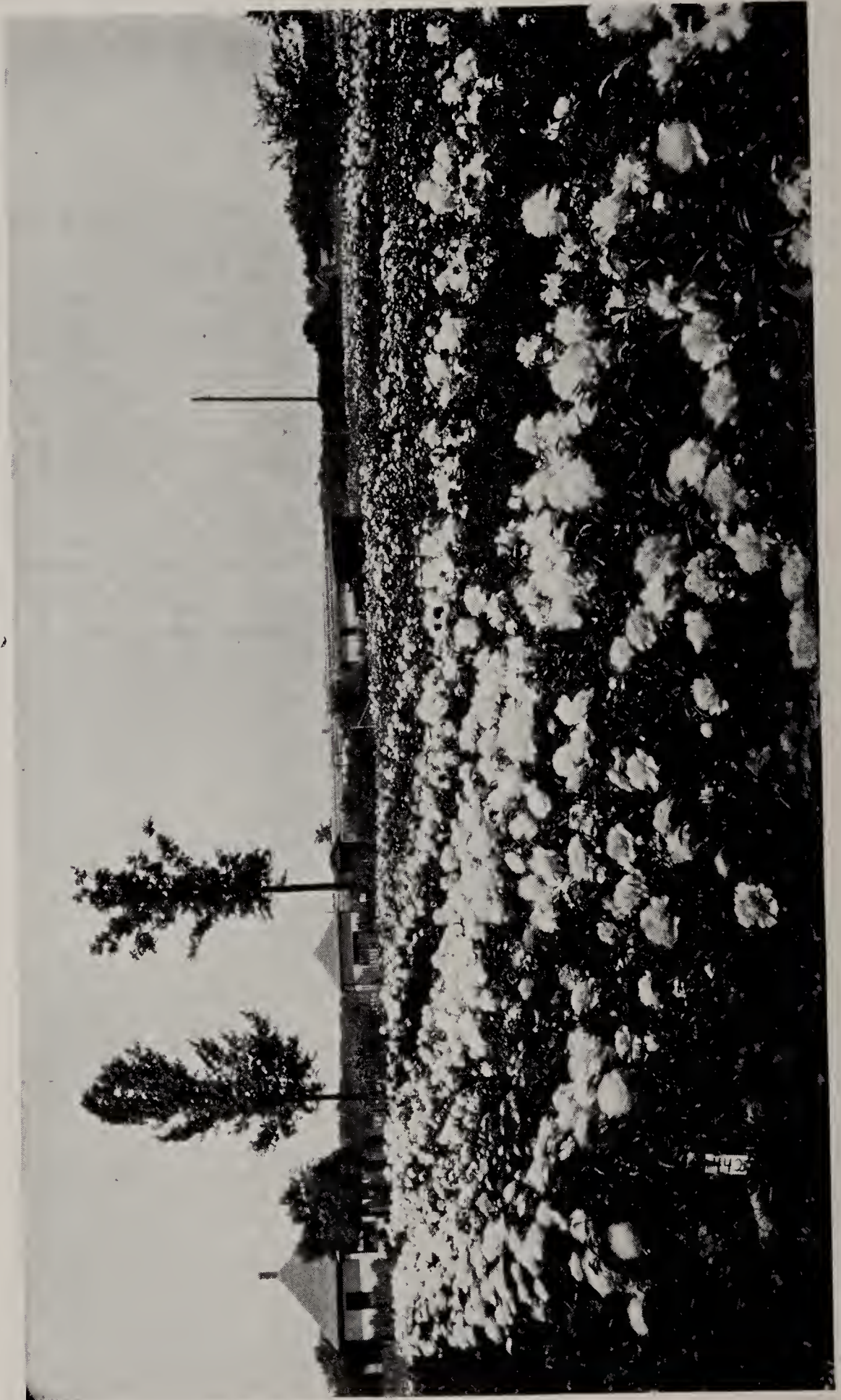
It will be noticed that we are not quoting any Peonies for less than \$1.00 as we cannot grow, care for our stock, dig, pack, label and supply our customers with good, strong plants and make a living profit for less than this amount.

Discounts—On all orders amounting to \$10.00 or more a discount of 10% will be allowed when cash accompanies the order.

The figures that follow the variety name denote the rating given by the American Peony Society. The valuation is based on a possible score of ten. Where no rating is shown, the variety is too new to have had sufficient votes to be properly judged.

ALICE HARDING (Lemoine)—This new Peony is classed as a white, but its guard petals are a pale pink, shading to white, or tinted yellow. Its growth is vigorous and its stems are the best. A very reliable bloomer.....Each \$10.00

- ALSACE LORRAINE (Lemoine) 8.8**—White semi-rose type, mid-season, the color of rich creamy white, the center of flowers is delicately tinted brownish yellow Each **\$1.00**
- A. M. SLOCUM (Franklin) 9.0**—A white, loosely built flower of rose type, central petal slightly edged crimson. Golden stamens inter-mixed throughout the petals, giving the flower a creamy effect. Good grower. Free bloomer Each **\$1.00**
- ARCHIE BRAND (Brand) 7.5**—A very large flower of even, deep shell pink, with silvery border; mid-season, medium height, profuse bloomer of charming beauty, with delicate rose scent.....Each **\$1.00**
- ARGENTINE (Lemoine) 8.6**—Color creamy white, and is a full double; a very strong grower with stiff stems, medium tall, late mid-season; another real good new variety.....Each **\$7.50**
- ASA GRAY (Crousse) 8.1**—Large compact flower, flesh sprinkled carmine, total effect, pale pink. Fragrant.....Each **\$1.00**
- AUGUST VILLAUME (Crousse)—7.3**—Rose. A very large flower of compact globular rose type. An even, rich violet color throughout. Fragrant. Late Each **\$1.00**
- AUNT ELLEN (Brand) 7.6**—Large, loose, semi-rose. A fine crimson, early free bloomer Each **\$1.00**
- AVALANCHE (Crousse) 8.7**—Very large, compact; globular rose-type, pure white with crimson flakes on the edge of center petals; very fragrant. Each **\$1.00**
- BALL O' COTTON (Franklin) 8.8**—Rose type, Chaste pure white. Fragrant. Flower resembles Le Cygne very much, but possesses more fragrance. Good grower. A very promising variety.....Each **\$1.00**
- BARONESS SCHROEDER (Kelway) 9.0**—White plume shaped flower with irregular shaped petals, opens blush changing to pure white. Strong grower and very free bloomer.....Each **\$1.00**
- CHESTINE GOWDY (Brand) 8.4**—Shell pink with rich cream color collar. The broad pink petals are splashed with crimson. Medium late. Very fragrant. A striking specimen of the cone shape Peony.....Each **\$1.00**
- CLEMENCEAU (Dessert) 8.5**—A very late, unusually large, full imbricated blooms. Color, carmine; slightly shaded amaranth with silvery tints and wide silvery border. Flowers open well and are very beautiful. (Originator's description) Each **\$1.00**
- COURONNE D'OR (Calot) 8.1**—White large blooms of perfect form, yellow and golden stamens showing between the petals. Very fragrant. A good late white Each **\$1.00**
- DE LACHEI (De Lachei) 7.1**—Late mid-season. Compact rose type. Deep purple crimson reflex. A very sure and free bloomer.....Each **\$1.00**
- DUCHESS DE NEMOURS (Calot) 8.1**—Crown type; early; a splendid cup shaped sulphur white flower, with greenish reflex that lights up the entire blossom, which changes to a pure white.....Each **\$1.00**
- EDULAS SUPERA (Lemoine) 7.6**—Large, loose flat crowned, bright mauve pink color, mixed light violet shadings. Fragrant. Very strong, upright grower Each **\$1.00**
- ELIZABETH BARRETT BROWNING (Brand) 9.2**—A fine, pure white of most attractive form and quality. Very soft pink when opening. Outer petals and center marked crimson. Very large, fragrant and good bloomer. Late Each **\$1.00**
- EUGENE VERDIER (Calot) 8.6**—Pink, semi-rose type, early. Pale pink center deeper, flecked crimson. Very large, flat, tall, strong grower. Fragrant. Mid-season Each **\$1.00**
- EDWIN C. SHAW (Thurlow) 9.1**—Clear shell pink. Outer petals broad and rounded; sometimes slightly edged crimson. The petals are nearly the same length except the extreme center petals which are short. This gives a very pretty cupped shape and the general effect is one of elegance of form Each **\$4.00**
- EDW. W. BECKER (Franklin) 8.5**—White, shaded flesh color. A very large, flat flower. Mild fragrance. Free bloomer. A very attractive semi-rose type flower Each **\$1.00**



ONE OF OUR PEONY FIELDS

- FELIX CROUSSE (Crousse) 8.4**—Large, compact, deep rose red, fragrant, strong grower. Called by many growers the best one color red in cultivation. Mid-season Each **\$1.00**
- FESTIVA MAXIMA (Meiller) 9.3**—Extra large full globular rose type, pure waxy white with bright carmine face on edge of center petals. Very fragrant and a very strong grower, with long stiff stems and very bright foliage Each **\$1.00**
- FLORENCE NIGHTENGAL (Brand) 8.1**—A magnetic white of pure peerless beauty. One of the world's best either old or new. White with an occasional faint tracing of red.....Each **\$1.00**
- FRANCIS WILLARD (Brand) 9.1**—Large, perfectly formed flowers with raised center. Opening bluish white with an occasional carmine touch, changing to pure white. Fragrant. One of Brand's best.....Each **\$1.00**
- FRANCOIS ORTEGAT (Par) 6.7**—Large flower of semi-rose type, dark red showing stamens plant of medium height. Mid-season.....Each **\$1.00**
- FRANKLIN'S PRIDE (Franklin)**—Very large full rose type, even pink, stiff stems, with leathery foliage, good bloomer, fragrant, late. We consider this to be one of the best of the late pinks.....Each **\$1.00**
- GEORGIANA SHAYLOR (Shaylor) 8.9**—Pink, mid-season, very large flowers with extremely broad petals. Color flesh pink, center of flower white. One of the best productions of Mr. Shaylor.....Each **\$2.00**
- GOLIATH (Hollis)**—Deep pink. An extra large globular compact rose type, with wide petals. Tyrian rose, slightly tipped, silver, fragrant, tall, strong grower, and a free bloomer, mid-season.....Each **\$1.00**
- GRACE LOOMIS (Saunders) 9.2**—Tall, strong stems bearing very full double flowers of clear white. Late. A fine variety.....Each **\$5.00**
- GRANDIFLORA (Richardson) 8.8**—Pink, very large flat rose type, blush white; very fragrant; tall, strong grower; very late.....Each **\$1.00**
- HANSINA BRAND (Brand) 9.1**—Pink. A flower of beautiful form and great size. The plant is very tall and strong, which enables it to hold great blooms erect. The color is a glistening, flesh pink with a salmon reflex shading deeper towards the base of petals.....Each **\$7.00**
- JEANNOT (Dessert) 9.2**—Large, imbricated, cup-shaped flower, perfect in form. Color flesh pink, slightly tinged purple and shaded salmon pink at base of petals, changing to silvery white. A variety of exquisite and delicate coloring Each **\$2.00**
- JUBILEE (Pleas) 7.9**—White rose type, mid-season, delicate pink entirely enveloped in a halo of angelic white. A variety difficult to describe.....Each **\$1.00**
- JUDGE ORR (Edlund) 1927**—Extremely large flat flowers of a beautiful pure pink of the old fashioned Duchess rose; petals long and narrow, giving the flower a feathery effect; plant very sturdy grower with dark green foliage; long stiff stems; fragrant; late.....Each **\$10.00**
- JUNE DAY (Franklin) 9.0**—Color light flesh, deepening toward center of flower. Rose type. Some of the center petals slightly edged with lavender. Delicate rose fragrance. Extra fine.....Each **\$1.00**
- KATHERINE HAVENMEYER (Thurlow) 9.0**—Large, rose type blooms of flesh pink; guard petals broad and rounded, somewhat notched at the ends; center petals narrow and fringed; full high center. Sweet fragrance. Mid-season to late..... Each **\$3.00**
- KARL ROSEFIELD (Rosefield) 8.8**—Very large globular compact, semi-rose type, dark crimson; very strong, tall and free bloomer. Mid-season. A very brilliant and favorite variety.....Each **\$1.00**
- KELWAY'S GLORIOUS (Kelway) 9.8**—Enormous full blooms of creamy white, with soft blush of rose. Very fragrant. A magnificent variety. Late mid-season Each **\$4.00**
- LADY A. DUFF (Kelway) 9.1**—Lovely French white, central flower of rather flattened circular form and the central petals have a touch of carmine; side flowers come in semi-double saucer shape form, exposing the anthers.
Each **\$1.00**

- LADY KATE (Vories)**—Pink. A large, flat, rose type flower of most perfect form. In color it is a uniform light mauve. The plant is very tall with strong stiff stems.....Each **\$5.00**
- LA LORRAINE (Lemoine) 8.6**—Wonderful globular blooms of creamy white, borne high above the foliage. Some golden stamens are visible, giving a golden light to the open flowers. Mid-season to late.....Each **\$2.50**
- LAKE O' SILVER (Franklin)**—Light pink silver tipped, golden antlers prominent throughout flower. Central petals darker pink. Large bloom seven to eight inches. Extremely free bloomer and desirable.....Each **\$1.00**
- LE FEE (Lemoine) 9.2**—A very large, compact, globular flower. Rose pink with creamy white collar. Tall, strong and free bloomer. Fragrant. Early Each **\$2.00**
- LILLIAN GUMM (Gumm)**—Pink. A very large flower, globular in form, rose type, with great broad petals, and a cupped center. The color is a uniform apple blossom pink with more brilliant shadings at the base of petals Each **\$2.00**
- LA PERLE (Crousse) 8.5**—Very light, pink, blush center, flecked carmine. Very large, cup shaped, compact, fragrant.....Each **\$1.00**
- LAVERNE CHRISTMAN (A. M. Brand) 8.9**—A large flower of rose type, loosely formed, with long, broad petals. In color it is a deep rose pink, shading lighter towards the ends of the petals. The plant is tall and vigorous Each **\$10.00**
- LE CYGNE (Lemoine) 9.9**—White rose type, mid-season, with good stiff stems and very large globular tight blooms. Petals very much incurved and fragrant. Finest of its color.....Each **\$3.00**
- LIVINGSTONE (Crousse) 8.1**—Very large compact, perfect rose type, beautiful soft lilac rose, with silver tips, center flaked carmine, odorless, strong grower of medium height, free bloomer; late; an extra good one.....Each **\$1.00**
- LONGFELLOW (Brand) 9.0**—Very large flower of a brilliant cherry crimson. One of the best red peonies in existence. Good bloomer.....Each **\$1.50**
- MABEL L. FRANKLIN (Franklin) 9.0**—Outer petals light pink toward center of flower. Short, creamy petals intermingled near the crown of the flower add greatly to its beauty. Inner petals slightly edged with lavender. Delightfully fragrant. This is one of Mr. Franklin's best originations and a prize winner. A splendid acquisition to any collection.....Each **\$1.00**
- MARY LOU KIMMEY (Edlund) 1927**—Light pink, rose type, very full flowers with yellow stamens among petals, splashes of carmine on central petals. Stiff upright stems and very tall; mid-season.....Each **\$5.00**
- MARGUERITE GERARD (Crousse) 8.4**—Large compact, semi-rose type, very pale, hydrangea pink, fading to nearly white, center petals minutely flaked dark carmine; very strong, medium height, free bloomer, late. An extra fine varietyEach **\$1.00**
- MARIE LEMOINE (Calot) 8.5**—Pure white with cream white center. Large, very compact, rose type, fragrant, medium height. Extra strong stems. Very late Each **\$1.00**
- MARTHA BULLOCH (Brand) 9.1**—Mammoth cup shaped blossoms, often nine to twelve inches across. The largest of the good Peonies, soft rose pink. Tall, strong grower, well formed, good substance, exquisitely beautiful and fragrant. Late Each **\$2.00**
- MILTON HILL (Richardson) 9.0**—Very large compact globular flower, rose type. Color lilac rose. Strong grower.....Each **\$2.00**
- MME. DE VERNVILLE (Crousse) 7.9**—Pure white center, tipped carmine. Very large, full bomb shape, medium height. Strong grower. Very free bloomer. Fragrant Each **\$1.00**
- MME. EMILE GALLE (Crousse) 8.5**—Pink, large compact, flat rose type, delicate shell pink with touches of heliothrope and lavender, medium tall, strong free bloomer, fine in the bud. Late.....Each **\$1.00**
- MME. EMILE LEMOINE (Lemoine) 8.9**—White semi-rose type, mid-season, large opening into very large imbricated round blossoms that completely cover the plant. Each petal overlapping the other on first opening; a glossy white with a sheen of satin pink, covered with lilac dots. When fully opened, it is a pure white.....Each **\$1.00**

- MME. GAUDICHAU (Millet) 8.2**—Next to M. Martin Cahuzac this is the darkest Peony in the world, and it has the distinction characteristic of having the most beautiful and luxuriant foliage of any Peony in our collection Each **\$1.50**
- MME. JULES DESSERT (Dessert) 9.4**—One of the finest of all the Peonies. The flowers are very large with broad petals. The color is a beautiful white, tipped with a very delicate pink and splashed with carmine, showing a few golden stamens which make a beautiful flower.....Each **\$1.50**
- MIKADO (Barr) 8.6**—A lilac purple, center yellow. Japanese type. Medium size in height. Mid-season.....Each **\$1.50**
- MRS. A. M. BRAND (A. M. Brand) 9.6**—A beautiful pure white flower of immense size. In form it is flat rose type with broad, copper guards and wide center petals of remarkable substance. The plant is vigorous with long stout stems Each **\$5.00**
- MRS. CHAS. S. MINOT (Minot) 9.2**—Rather dwarf plant with stiff stems and dark green foliage. Very large flowers finely formed, with broad petals. Guard petals faint shell pink, center of creamy white with golden lights at base of petals. A few splashes of crimson are apparent in some flowers. Late Each **\$2.50**
- MRS. EDWARD HARDING (Shaylor) 9.9**—A charming French white of very large size. Rare, elegant and aristocratic. Desirable in every way. One of the best of the newer originations.....Each **\$2.00**
- MR. L. VAN LEEUWEN (Nieuwenhuizen)**—A Holland variety of great merit. This is surely the largest red we have ever seen; the petals are large and of uniform size. The flower is extremely full. A clear dark. Strong, tall stems. We recommend it highly.....Each **\$4.00**
- MRS. JOHN M. KLEITSCH (Brand) 9.0**—The color is a violet rose with a distinct lavender cast. The petals are long, broad, pointed, and of great substance. Very late and fragrant.....Each **\$10.00**
- MARY BRAND (Brand) 8.7**—Flowers very large; semi-rose type. A profuse bloomer. The best dark red Peony in cultivation. Has no equal as a cut flower Each **\$1.00**
- MARY P. KING (Franklin) 8.7**—A light coral pink; deepening toward center of bloom. Center petals delicately margined with lavender. A prolific bloomer and good multiplier. Mild and pleasing fragrance. A charming flower Each **\$1.00**



MRS. J. V. EDLUND (Edlund) 9.4—We believe this to be one of the largest white Peonies in cultivation. A very tall plant with long stiff stems and dark green foliage; very large pure white flowers finely formed, with waxy broad petals without a trace of any other color. Fragrant and very late. Awarded the achievement medal and the gold medal of the American Peony Society for the best new Peony exhibited at the Century of Progress, June, 1933. Some of the best judges of Peonies predict this is the white you have been looking for..... Each **\$25.00**

MRS. SPRINGER BROOKS (Edlund) 1934—Another white, but our estimation of this Peony is very high. Yellow and orange stamens between the wide waxy petals reflect a yellow or orange light over the entire flower. The plant is of medium height with stiff stems, true rose type, mid-season, dark green foliage. Lovers of Peonies, watch this one.

Each **\$50.00**

- MONS DUPONT (Calot) 8.3**—An immense perfectly formed cup-shaped flower. Opening flat when in full bloom; glistening ivory white center petals bordered with lively carmine, golden stamens mingled with petals throughout the flower. Fragrant Each **\$1.00**
- MONS. JULES ELIE (Crousse) 9.2**—Very large, compact bomb type, large guard petals surrounding a great dome of incurved petals; glossy flesh pink shading to a deeper rose at the base. The entire bloom covered with a silver sheen. Fragrant Each **\$1.00**
- MONS. MARTIN CUHAZEC (Dessert) 8.8**—Rose, semi-rose type, mid-season; large, full, massive, well formed flowers; perfect, solid balls of deep maroon with garnet hues and brilliant luster; good, erect habit; free bloomer. r Each **\$1.00**
- OPAL (Pleas) 8.5**—Pink, rose type, mid-season, vigorous tall growing plant, profuse bloomer, guard petals delicate pink..... Each **\$1.00**
- PHILIPPE RIVOIRE (Rivoire) 9.2**—A very fine bright crimson, of good form and growth. The most fragrant of the red Peonies. Mid-season. Very scarce Each **\$2.50**
- PHYLLIS KELWAY (Kelway) 8.8**—Large pale pink flower with lighter center, delicately colored and very beautiful. Strong grower; mid-season. Each **\$2.50**
- PHOEBE CAREY (Brand) 8.8**—Large flat rose type flower. Color soft lavender pink with center several shades darker. Tall, strong, very fragrant and late Each **\$2.00**
- PONEMAH (Franklin)**—Even shade of most beautiful pink shading to lighter pink at edge of petals. Flower opens flat and of enormous size. Central petals lacinated. Outer rows of petals broad. Delightfully fragrant. Sturdy grower and bloomer. (Originator's description)..... Each **\$1.00**
- PRESIDENT WILSON (Thurlow) 9.3**—Shell pink with flesh tints in center. Very large. Extra fine..... Each **\$3.00**
- PRIDE OF ESSEX (Thurlow) 8.9**—Exceptionally broad petals of deep flesh pink, making a very large flower of good form. Stems long and stiff. Mid-season; a very desirable variety..... Each **\$2.00**
- PRIMEVERE (Lemoine) 8.6**—Large flat flower. Outer petals buff; center sulphur yellow. Tall, strong and free bloomer. Very fragrant; mid-season. Nearest approach to a yellow Peony..... Each **\$1.00**
- RACHEL (Terry) 7.9**—Medium size; semi-rose type; a bright crimson; plant of medium height; strong profuse bloomer..... Each **\$1.00**
- RED BIRD (Franklin) 8.6**—Bomb type, outer guard petals rose red, central petals lacinated and of a darker shade. Fragrant..... Each **\$1.00**
- RICHARD CARVEL (Brand) 8.8**—Immense globular bomb flowers, bright, all one shade of crimson; guard petals large, broad and prominent. Early, tall, very stout stems, profuse bloomer..... Each **\$1.00**
- REINE HORTENSE (Calot) 8.7**—Syn. Pres. Taft. Very large, compact, semi-rose type. Color light shell pink, center flecked crimson Tall, strong, stiff stems, fragrant, mid-season variety..... Each **\$1.00**
- ROSE HERE (Brand)**—A dark rose, solid color; seed pods green, tipped white. two rows of guard petals; wide and narrow petals in the center. Very attractive Each **\$1.00**
- RUBRA SUPERBA (Richardson) 7.2**—Rose type; very late; a beautiful dark crimson without stamens. A large, full fragrant flower. A rather shy bloomer until well established..... Each **\$1.00**
- RUTH BRAND (Brand) 8.1**—Very compact bomb, guard petals prominent. Two rows of guard petals; wide and narrow petals in the center. Splashed with deep lavender. Mid-season..... Each **\$1.00**
- SARAH K. THURLOW (Thurlow) 9.1**—Large size, broad, rounded guard petals of flesh white or pearly white, with deeper heart of soft blush with faint salmon shades. Fragrant. Stiff stems and good foliage..... Each **\$5.00**
- SARAH BERNHARDT (Lemoine) 9.0**—Large and fine texture. Apple blossom pink. Silver tipped petals. Very fragrant. Late, mid-season..... Each **\$1.00**

- SILVIA (Saunders) 8.7**—Light pink, semi-double, lighter towards the center. A very finished and decorative variety. A great bloomer. Rather dwarf and early. One of the very good new introductions.....Each **\$5.00**
- SOLANGE (Lemoine) 9.7**—Cream rose type, mid-season; full globular flower with a compact crested tuft in center; color is a deep orange salmon overlaid with a delicate tender reddish brown.....Each **\$2.00**
- SOUVENIR DE LOUIS BIGOT (Dessert) 9.1**—A very large convex bloom with imbricated petals; color a brilliant bengal rose slightly tipped carmine at the base turning to a salmon pink.....Each **\$2.00**
- THERESE (Dessert) 9.8**—Rose type, flowers of enormous size, in quantities on long stout stems. Color the most delicate rich satiny pink with glowy reflex. Mid-season Each **\$2.00**
- TOURANGELLE (Dessert) 9.4**—Very full, large, flat rose type flower. Flesh pink and salmon; strong grower; free bloomer. Late mid-season. A very desirable varietyEach **\$1.50**
- VICTOIRE DE LA MARNE (Dessert) 8.3**—A very attractive globular bloom of great size. Velvetish amaranth red, with silver reflex. A real show flower Each **\$1.00**
- WALTER FAXON (Richardson) 9.3**—Rose. Medium size of globular shaped flower, pure bright rose, deepening toward the center. Very distinct and delicate color. Tall, free bloomer. An outstanding variety in any collection Each **\$2.00**
- W. F. CHRISTMAN (Franklin) 8.8**—Color flesh pink. No stamens visible. An exceedingly attractive flower and delightfully fragrant. Outer guard petals broad and of splendid substance. Central petals narrower and lacinated. Full rose type. A strong grower and sure bloomer. Highly recommended Each **\$1.00**
- WM. PENN (Brand) 7.9**—Immense compact, semi-rose type; color light rose, changing to a more delicate rose at edge of petals. Edge of petals notched; plant of medium height; strong grower; lavish bloomer.....Each **\$1.00**

BEGINNERS COLLECTION OF PEONIES

For those who are not familiar with the different varieties of Peonies, we will send you eight roots, all different and labeled correctly, including the early to late blooming varieties for **\$5.00**. Our selection.

I r i s e s

Iris grow easier and multiply faster than any other perennial.

They should be planted in a sunny location that has good drainage. The bulb or rhizome should be planted just under the surface, not too deep. The roots should be spread out and the soil packed around them.

Bone-meal and ground limestone are good fertilizers. The best time for planting is July and August.

Following the name of each variety is given the exhibition rating of the flower as established on scale of 100 by the American Iris Society.

Originators' names have been abbreviated as follows:

Gey.—Geylenek, Gros.—Grosehner, G. & K.—Koenemann, Lem.—LeMoine, Mit.—Mitchel, Mor.—Morrison, Sturt.—Sturtevant, Verd.—Verdier, Vilm.—Vilmorine, Wmson.—Williamson.

S. means standards or upright petals; F.—Falls or lower petals; B.—Beard.

- AFTERGLOW (Sturt.)**—A soft gray-lavender shading to a rich pinard yellow, 36 inch.2 for **25¢**
- ALABASTER (M. M.)**—A pure white of exceptionally fine form and very good substance, 34 inch.....Each **25¢**
- AMBASSADEUR (Vilm.)**—Flowers very large, with smokey bronze standards, the falls being a rich velvety dark crimson-maroon of great substance, 45 inch Each **25¢**

- ASIA (Yeld.)**—Standards pale lavender, falls light violet purple. Both standards and falls are of immense size, 52 inch.....Each 25¢
- BALDWIN (H. P. Sass)**—One of the best of the dark blue purples that belongs in every good collection. A huge manganese violet self with an electric sheen in the falls, 40 inch.....Each 60¢
- BUTO (H. P. Sass)**—Intensity of color makes this Iris an outstanding variety. A rich dark purple bicolor with velvety nearly black falls of great size and a good bloomer, 30 inch.....Each 25¢
- CAROLINE E. STRINGER (J. Sass)**—In effect a beautiful pink tinted Iris, large beautifully ruffled with yellow at the haft and a yellow beard, 36 inch.....Each 25¢; 3 for 60¢
- CHALLENGER (J. Sass)**—Standards dull dark purple. Falls dark blackish violet, velvety, with a contrasting white beard tipped orange. Falls flaring. The largest flowering intermediate, 30 inch.....Each 25¢
- CHESTNUT (J. Sass)**—The brownest of all the plicates. S. ruffled cinnamon drab. F. cream dotted petunia violet with brown stripes on the yellow haft.....Each 25¢
- CITRONELLA (Bliss)**—Standards a beautiful, bright, clear golden brown, heavily lined carmine, 36 inch.....Each 25¢
- COPPERSMITH (Schull.)**—A handsome variety with large flowers growing on tall stems. S. Crimson-purple. F. Dahlia-Carmine. General appearance of the flower is a rich coppery-red, 42 inch.....Each 35¢
- CORONATION (Moore)**—A deep, rich golden yellow, 43 inch.....Each 40¢
- DEJAH (Perry)**—Standards dark silver blue, falls bright mauve-blue. Very tall and free flowering, 40 inch.....Each 25¢
- DOLLY MADISON (Wil.)**—An immense mauvette-lilac pink of most outstanding quality. One of the best, 36 inch.....Each 50¢
- DUKE OF YORK (Perry)**—A flower of great size. Plant vigorous, grows well, standards broad cupped, bluish lavender, falls, drooping, same color as standards, lit up by a bold orange beard. Tall.....Each 25¢
- ELIZABETH EGELBERG (Egelberg)**—The flowers are of enormous size. The general effect is pink. A vigorous grower.....Each 40¢
- EUPHONY (H. P. Sass)**—Standards mustard yellow tipped chamois, ruffled, falls spreading of same color, well marked with a large central zone of blue, 36 inch.....Each 40¢
- GERTRUDE**—This is an old one, but still very popular. Color deep blue, sweet scented and early. Tall.....2 for 25¢
- GERMAINE PERTHUIS (Millet)**—Standards violet-purple with an iridescence of a lighter shade of the same color, falls deep, rich bishop's violet, 36 inch.....Each 35¢
- GLAMOUR (Bliss)**—Standards heliotrope, tinged pale ochre-yellow, falls rich, red, Pansy violet shaded lighter toward the margins, 42 inch.....Each 25¢
- GRACE STURTEVANT (Bliss)**—A very rich velvety brown with a most brilliant golden beard, 36 inch.....Each \$1.00
- INDIAN CHIEF (Ayers)**—One of the finest red Iris. S. beautiful violet-red. F. deep rich glowing velvety red, 40 inch.....Each 50¢
- JUBILEE (J. Sass)**—A large ruffled flower of extra heavy substance. S. tinted with peach color, the haft and the edges of the flaring falls cream white, veined and dotted with bright brown, 30 inch.....2 for 25¢
- JUMBO (J. Sass)**—An enormous dark velvety bi-color with blue violet standards and dark red violet falls. Vivid yellow beard, 36 inch.....Each 25¢
- KING JUBA (H. P. Sass)**—The cleanest, clearest colored of the new large flowered variegatas, the brilliant contrast between the yellow standards and wide solid deep velvety red falls, making this a striking and much admired Iris, 36 inch.....Each \$1.50
- KING KARL (J. Sass)**—A beautiful plicata, deeply frilled. S. light pinkish cinnamon, F. cream sprinkled liseran-purple, 30 inch.....Each 25¢
- KING TUT (H. P. Sass)**—Large flowers of a striking color, S. cocoa brown, F. Hessian brown. General effect is a rich, deep red, 34 inch.....Each 75¢
- LABOR (Cayex)**—Standards brilliant red violet flushed copper, falls violaceous purple with an electric blue sheen, 36 inch.....Each 25¢

- LE CORREGE (Vilm.)**—A richly colored flower on the lines of *Ambassadeur*, but a deeper and more distinguished color, S. light bronze suffused violet, F. rich, velvety wine-red, 36 inch.....Each 75¢
- LOS ANGELES (M. & M.)**—Giant white flowers of fine shape and substance, the standards faintly edged pale blue. The light blue style adds a note of clear color in the center, 42 inch.....Each \$1.00
- MAGNIFICA (Vilm.)**—S. White flushed with violet-blue, F. deep reddish violet, immense blooms, 40 inch.....Each 25¢
- MARY BARNETT (Cumbler)**—A beautiful light lavender, with yellow beard and golden glow at the throat, 36 inch.....Each 35¢
- MIDGARD (H. P. Sass)**—An Iris of exquisite coloring and has firm, heavy substance. Both standards and falls yellow with a flush of clear pink. A strong grower and free bloomer, 30 inch.....Each 35¢
- MORNING SPLENDER (Schull)**—Standards petunia-violet, falls velvety raisin purple. Flowers large and of fine form and heavy substance. Very late, 36 inch Each 25¢
- MOUNT ROYAL (Morgan)**—A new and remarkable dark purple. Standards deep, bluish-violet, falls very velvety, rich red pansy violet.....Each 75¢
- NEBRASKA (H. P. Sass)**—The latest yellow Iris to bloom and one of the richest yellows in the entire yellow scale, S. ruffled apricot yellow, F. same color with brown veinings. Dark yellow beard, 34 inch.....Each 50¢
- OMAHA (H. P. Sass)**—Almost a red self, large blooms on sturdy stems. The rich golden and bright orange beard lends a luminous golden rose tone to the flower, 34 inch.....Each 50¢
- OPERA (Vilm.)**—A very bright violet-red bi-color that everybody admires. S. bright purple, F. rich deep red purple, 32 inch.....Each 25¢
- PIONEER (Bliss)**—A deep glowing red-purple, color solid without veining. A large strong grower, 36 inch.....Each 25¢
- PLUIE d' OR (Cayeux)**—A dark yellow Iris of merit. Deep chrome to cadmium yellow self. Rich orange beard. Many branched strong stems bearing pure yellow flowers, 36 inch.....Each \$1.25
- PRIMROSE (Sturt.)**—S. Amber yellow, F. a lighter yellow with center of flower a clear lemon yellow, 30 inch.....Each 25¢
- RAMESSES (H. P. Sass)**—A vigorous healthy grower in all parts of the country, a fast increaser and free bloomer. In color, pink and rose toned blend. S. light russet vinaceous with yellow glow at the center, F. flaring to drooping, tourmaline pink. Heavy apricot beard with a 36-inch stem Each \$2.00
- SENSATION (Cayex)**—An Iris of great merit, with enormous flowers of perfect form. a self of clear corn flower blue, 48 inch.....Each \$1.00
- SIR MICHAEL (Yeld)**—Standards clear lavender-blue, falls rich, red-purple strongly suffused red-brown. The flowers are large and massive. Highly recommended, 48 inch Each \$1.50
- SWAZI (Bliss)**—One of the finest of the Dominion seedlings. Magnificent flowers of the finest shape and size. S. bluish-violet, F. velvety blackish violet, 40 inch Each 75¢
- TENEBRAE (Bliss)**—One of the richest and darkest of the Dominion Strain Standards, a rich violet purple, tinged with dark maroon purple in the center, falls rich velvety black purple, 36 inch.....Each 25¢
- TROSTRINGER (H. P. Sass)**—A very lovely soft pink-toned variety that might almost be classed as a white, flushed pink, 36 inch.....Each 35¢
- WAMBLISKA (Jacob Sass)**—The largest, tallest, and finest of the really hardy blue white Irises. Snowy glittering white standards with a blue tint at the heart of the flower. Clear snow white falls with pale yellow beard and a few yellow veins at the haft, 38 to 45 inch.....Each \$1.50
- WHITE KNIGHT (Saunders)**—A fragrant, beautiful snow white of waxy texture. 24 inch Each 25¢
- WHITE STAR (Nicholls)**—A pure white without any markings. Flowers of medium size, 34 inch..... Each 25¢
- WM. MOHER (Moher)**—The ground color is pale lilac, standards flushed darker, the whole flower is beautiful veined manganese violet. One of the real good new ones, 24 inch.....Each 75¢
- YEOMAN (Bliss)**—A Dominion seedling. Rich blue toned flowers of large size. Standards a clear light bluish violet, falls a deep rich violet-blue—33 inch Each 25¢

A NEW EARLY Flowering Cosmos

These Cosmos have created a sensation (hence the name) wherever exhibited and in our own garden, the inquiries for the seed from our display of them at the Century of Progress and the Minnesota State Fair has been beyond our expectation. Anyone interested in growing flowers will be delighted with this new Cosmos, besides its value for garden display they will provide an abundant supply of cut flowers through the summer and until heavy frost. The seed we are offering was saved from selected plants in our own garden.



SENSATION

All other Cosmos are outclassed by these new giants, available for the first time this year; they surpass all existing strains of Cosmos in size of flowers; they bloom in about eight weeks from sowing and attain a size of from 4 to 6 inches across; long, strong stems add to their merit as cut flowers and keep a long time when cut; sold in mixture of pink and white; per packet, 25 seeds, 50¢.

French Lilacs

In your garden you derive continued enjoyment from a planting of French Lilacs. Unlike many other plants unusually beautiful, lilacs require little attention after they have been properly planted and last many years, rewarding your foresight time and again with a greater abundance of flowers.

French Lilacs can be planted in the Spring or Fall, but if planted in the Spring they should be planted very early before they start into bud.

If not convenient to plant in early Spring, the ideal time in October or early November. Our Lilacs are on their own roots.

It is well to dig around and mulch the plant in the fall with good manure and dig it in the spring, and every few years a good coat of bone-meal is beneficial.

ALPHONSE LAVALLE—Double. A tall robust growing variety that makes a very shapely bush. Panicles long, broad, shapely and compact. Open an intense blue, but as the florets develop it changes to a beautiful shade of lilac.....Own root plants, 3 to 4 feet **\$1.50**

BELLE DE NANCY—Double. Strong plant with slender graceful growth. profuse in bloom with panicles of nice shape and good size. One of the very best double lilacs of a delicate pink.....Own root plants, 3 to 4 feet **\$1 50**

CHARLES JOLY—Double. Purple red. We think this is one of the best of the dark double reds. Bush medium both in size and height with limbs growing very upright. Blooms rather large, and held erect and make a very striking appearance as they show well above the foliage.
Own root plants, 3 to 4 feet **\$1.50**

CHARLES TENTH—Single. One of the most dependable of the single red lilacs. A very thrifty growing bush that begins blooming very young, and blooming as two year old and produces a quality of bloom.
Own root plants, 4 to 5 feet **\$1.50**

HUGO KOSTER—Double. Lavender. One of the newer sorts and quite an improvement over older varieties of its color. Panicles very large, broad at base, and tapering nicely towards the top. Color a deep lavender with tracings of pink.....Own root plants, 3 to 4 feet **\$1.50**

JACQUES CALLOT—Double. Purple. A real good purple that we like to recommend, on account of its good growing habit.
Own root plants, 3 to 4 feet **\$1.50**

LAMARCK—Single. Light blue. A clear light blue of a most pleasing shade. The panicles are large and long, free bloomer, and good grower.
Own root plants, 3 to 4 feet **\$2.00**

MARIE LE GRAYE—(Single). Pure creamy white. The panicles are large and rather openly built. The plant is a young and profuse bloomer, often blooming as two year old and produces a quantity of bloom.
Own root plants, 3 to 4 feet **\$1.00**

MARECHAL DE BASSOMPIERRE—Double pink. A very pretty pink lilac with a large bloom, and a fast grower. A real pink.
Own root plants, 3 to 4 feet **\$2.00**

MME. ABEL CHATNEY—Double. White. Beautiful, great, round globe-shaped buds, which open very slowly into a very large bloom of pure white. A good double white.....Own root plants, 3 to 4 feet **\$1.50**

MME. CASIMER PERIER—Double. Creamy white. This is a very thrifty growing variety that produces a profusion of large sized panicles of very double creamy white flowers. The bush is medium height, compact, with bright green foliage.....Own root plants, 3 to 4 feet **\$1.00**

PRESIDENT CARNOT—Double. One of the most profuse bloomers of all. Panicles very large and regular in form, rather oblong and compact. Florets in the bud very large, back of floret deep reddish blue, center bluish violet. Plant very vigorous and one of the most dependable bloomers.
Own root plants, 4 to 5 feet **\$1.50**

PRESIDENT GREVEY—Double. Light blue. In this variety the panicles are very double, symmetrical, of great size and pleasing appearance. The color is clear soft delicate blue.....Own root plants, 3 to 4 feet **\$1.50**

PRESIDENT VIGER—Double. Lavender. Medium tall growing variety. Very shapely and vigorous plant. Color a light lavender. Very double flowers with long panicles.....Own root plants, 3 to 4 feet **\$2.00**