

Historic, archived document

Do not assume content reflects current scientific knowledge, policies, or practices.

62,23

1936

AMERICA'S GREATEST SEED SALE



Here Are

Save Big Money Now

Save 20% to 30% Now

We are offering you in this catalog the most outstanding bargains in the history of this Company. Most of these wonderful values are priced under wholesale and jobbing quotations. These low prices made to save our old customers money and gain thousands of new customers. Check our prices with offers of other seed dealers. You will be surprised at the big savings you can make in buying direct from us at wholesale. Every lot of seed in this book backed by our "Money Back Guarantee." Don't take any chances. Buy guaranteed tested seeds now while our stocks are complete.

Our motto is—"We are not satisfied unless you are"

TIMOTHY
Lot SILVER
\$1.80 PER BU.
See Page 14

CLOVER \$10.50 PER BU.
SAVE MONEY
BUY EARLY
See Page 5

WHITE SWEET
CLOVER \$2.80 PER BU.
Lot GOODLUCK
WONDERFUL
BARGAIN
See Page 8

GRIMM
ALFALFA \$10.60 PER BU.
See Page 13
OTHER GRIMM
Pages 12 and 33

TIMOTHY AND
CLOVER \$3.70 PER BU.
ECONOMICAL
COMBINATION
See Page 17

1/2 GRIMM
ALFALFA \$8.00 PER BU.
EXTRA HARDY
Verified Origin
See Page 12

Save On
ALSIKE \$7.80
THISTLE FREE
See Page 6

AMERICAN FIELD SEED CO. Founded 1915
CHICAGO, ILL.

**OUR
1936 SEED
BARGAINS**



**WORLD'S
GREATEST
VALUES**

**You Get
A Square Deal From Me**

Dear Friend: I consider it a great privilege each year to write this letter in our annual Catalog. I want to thank you thousands of customers who so kindly sent us your orders the past year. It was a real pleasure to receive the hundreds of letters from you telling of the success you had from sowing our good seeds, and what pleased me most were the many letters advising that you saved money in placing your order with us. Friends, we are giving you a greater opportunity to save more money in 1936. ¶ First, let us consider briefly the seed situation as it exists today. The main legume crops such as Alfalfa, Red Clover, Alsike and Sweet Clover, produced less seed this past year than the previous year. With the exception of Timothy seed, the grass crops were shorter than usual. Therefore, with smaller stocks of seeds and more money in the farmer's hand the result will be higher prices as we approach the seeding season. It is apparent you will save a lot of money by sending in your order as early as possible this year.

¶ I am a firm believer in doing a large volume of business on small profits.

It is easier to sell three bushels of seed at one dollar a bushel profit than one bushel at two dollars a bushel profit. This year I am going after several thousand new customers. I have marked prices right down to bedrock. You can save 20% to 30% on your order. ¶ My business policy is to save you money and make you a satisfied customer. Over 70% of our business comes from old satisfied customers. Some wholesalers and dealers don't like us because we undersell them. Some newspapers don't like us because we don't advertise in their paper. We are not in business to please them. We want to please you by saving you money and furnishing you seeds that will produce satisfactory crops. We buy direct from the producing sections. We have our own cleaning machinery. We sell direct to you. This cuts out the wholesalers and jobbers. No middlemen's profits to pay when you trade with us. ¶ We protect you. Our seeds are all sold on a Money Back Guarantee. I'll stand back of this guarantee a 100%. I want your seed business this year. Send in your order and I'll see you get a square deal. Let us satisfy and save you some money.

Sincerely yours, E. E. ELDER, President.



Better Seeds at Lower Prices

Reasons for Low Prices

As stated above by our President, Mr. Elder, we give you lower prices if you measure value by the quality offered. He has also suggested why our prices are lower. We believe you should know and understand these reasons.

There is the factor of financial ability which gives strength to our operations. It enables us to buy to advantage when many dealers have their hands tied because of the lack of funds. Our buying power is a strong lever that is used to the benefit of every customer.

Our location is a great help. We are helped by favorable freight rates in and out of Chicago. This great centrally located city is the natural gateway for seeds from the most important seed producing sections and seeds arrive in vast quantities.

Our building is a help because we are located right at a depot of the Chicago Junction Railway. We do not have to truck a single bag and that item alone gives us an edge on the average dealer.

The cleaning equipment with its modern devices enables us to make a finer quality than many can produce. Our experience has taught us how to run this efficiently.

Low operating expenses form another factor that helps tremendously in slicing the prices and improving the values.

We lack the space to go into detail on all these things. Each in itself is important, and when you combine all of these together, you can see how they work for the interest of the farmer who has to buy seeds.

Then to top it all off our direct selling makes only one profit necessary and that need only be small for the large volume of sales permits operating successfully on an unusually close margin.

After we have said all this it means nothing to you until you try our seed and test our values. We sell you only tested and guaranteed seeds. Try them. We have made them so you will want to reorder year after year. That's the kind of seed it pays to sow.



Harrisonville, Ohio.
Gentlemen: I find your seeds to be of splendid quality and true to name. I believe you are doing an honorable business in delivering seeds that are 100% what you claim them to be.

Respectfully,
(Signed) W. E. Jeffers.



Pontiac, Ill.
Gentlemen: I have been purchasing seed from the American Field Seed Company for about seven years, and have always found every order as represented, and have no hesitation in recommending them to anyone wishing anything in the way of field seed.

Respectfully,
(Signed) A. J. Farley.



The BEST SEEDS RAISE the BIG CROPS STAR BARGAINS

Good Seed Made Better

Part of our service to you is to take good country run seed and reclean and grade it. We have machinery, operated by experts, that enables us to make seed of greatly improved quality. Removing weed seeds, light stock and chaff makes smoother, more uniform and more valuable stock. The percentage of clean out is often astonishing. You may be able to buy country seed for a few cents less per acre but it is more to your interest to sow recleaned, tested seed.

Quality That Satisfies

We build our business by satisfying our customers. That is why we first satisfy ourselves that the seed has the ability to produce a good stock. You have the privilege of testing our seed further. Your money back if not pleased. See guarantee on page two. Old customers send in repeat orders. New comers join the fold. Business increases because our qualities and service satisfy. Compare grades of equal quality and you will find our prices lower.

DEPENDABLE QUALITY for EVERY POCKETBOOK

Seed quality is determined by color, size of berries, purity and germination tests and hardiness. All our grades are selected so as to give satisfactory germination, purity and hardiness. Yet one lot has a better color than others, another has larger berries or a slight variation in test. All lots are dependable for performances but not equal in appearance.

All customers do not have the same ideas of buying. One demands the very finest color, large berries and everything as near 100% as possible. Another considers the economy of lower priced grades and has found that they give good results. So we have different grades in some lines of seeds. You can secure from us just what you want and at prices that do save you money. Please study grade described below. Free samples sent on request. Prices are on page 32.

PINNACLE BRAND

Our top grade and an extra fancy quality. Beautiful color. Plump seed, smooth, uniform. This is the brand that satisfies the most critical customers. It is always a great value at our low price. Buy it, if you demand the very best.

UNIVERSAL BRAND

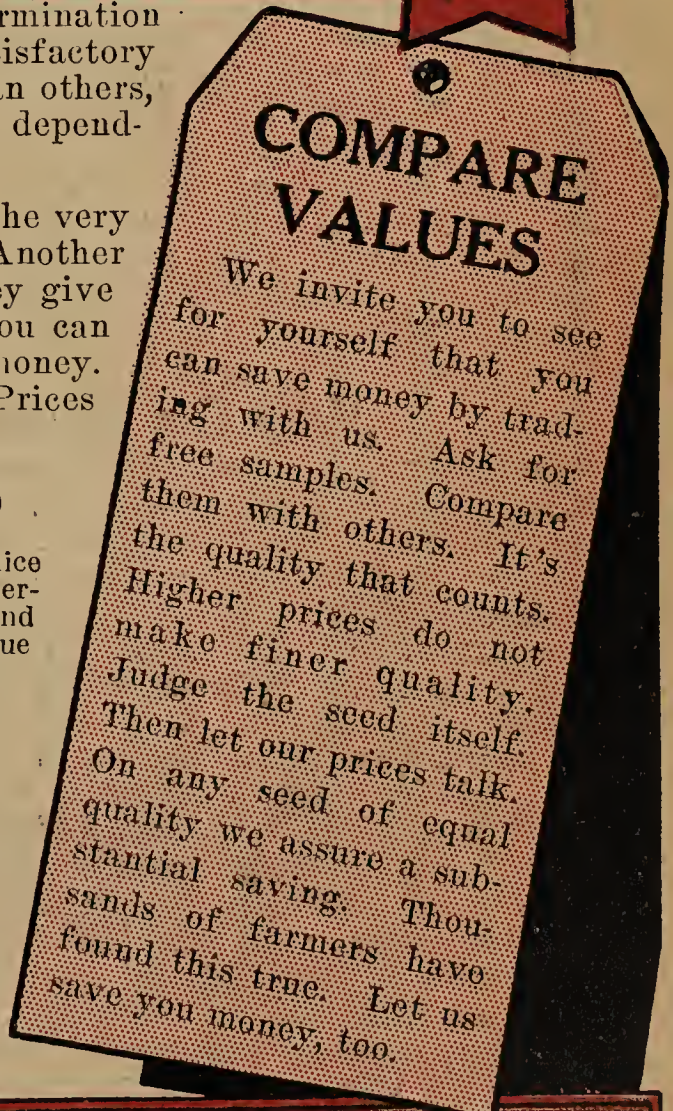
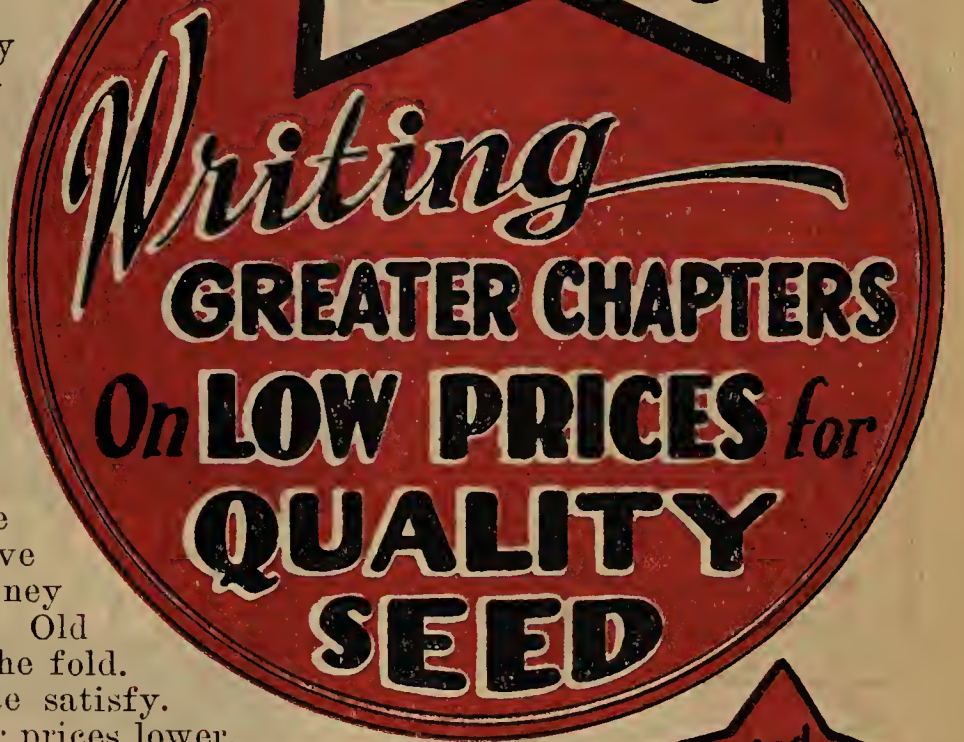
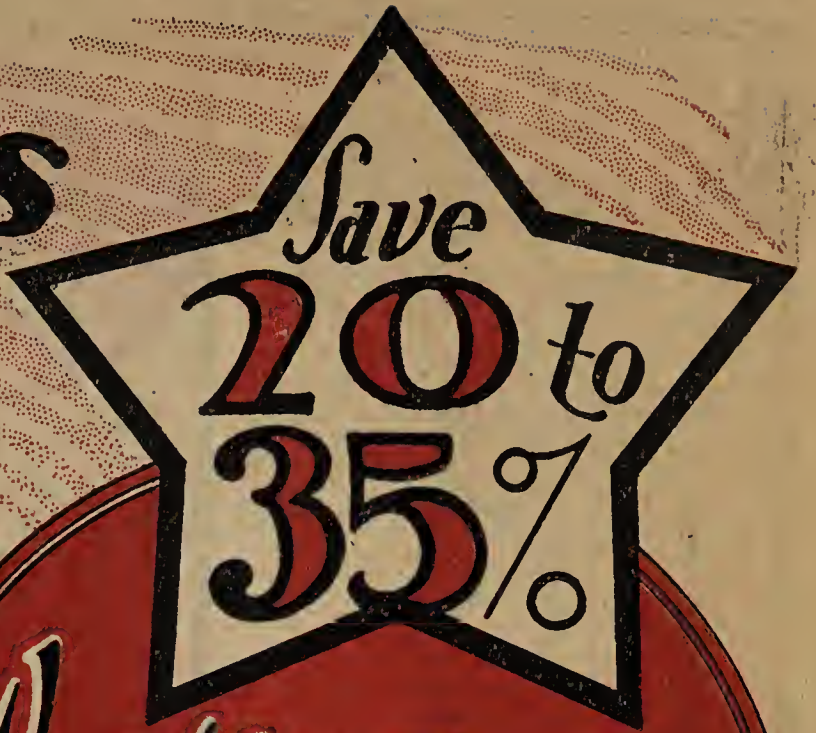
A very fancy quality running a shade under the Pinnacle in appearance. Will compare favorably with many of the "Best" grades. A sound, reliable type of stock priced at a nice saving in price.

ECONOMY BRAND

Good serviceable seed. Not as nice in color. Contains some smaller berries. Gives good performance and therefore pleases buyers. A real value for the price. See page 32.

SPECIALS

You will find other lots listed by different names. These are "specials," described in full particulars instead of being classified under a certain grade. All are extra values.



Newman, Ill.
Gentlemen:—For several years I have bought of the American Field Seed Company, Chicago, Illinois, from 40 to 80 bushels of the Pinnacle Brand of the Medium Little Red Clover seed; each year every bag opened has been true to grade and fine quality. No better seed found on the market. Our dealing has been agreeable and satisfactory.
(Signed) C. Rutherford.



McCredie, Mo.
Gentlemen:—Enclosed find four orders for myself and neighbors, also find check for \$277.55. We appreciate the prices you gave us on this order very much and they are saving several dollars to us. You can figure on a good trade from this locality. Respectfully (Signed) J. T. Wilkinson & Son, Per Ralph Wilkinson.

FINANCIAL STRENGTH

The American Field Seed Company was established in 1915. It has a financial backing of more than \$800,000.00. Many years of fair dealings have established them as leading seedsmen who sell direct to farmers. Quality seeds, low prices and honest methods have brought their just reward. Their business has grown and they are reputable and reliable.

The American Field Seed Company has business affiliation with the following banks and they will gladly answer any questions as to the ability of said Company to serve seed buyers in a manner that will give complete satisfaction to the purchaser.

First National Bank
Chicago

Drovers National Bank
Chicago

Terminal National Bank
Chicago



**EVERY
POUND IS GUARANTEED
TO
GROW**

Your Order Is Absolutely Safe

We are a well established firm and have been in business in the same location for over nineteen years. We use the government mails to sell our seeds and therefore make our statements true. Our methods are subject to state and U. S. Government investigation. Our future development depends entirely on how well we please you. All seed is sold on a guaranteed basis, see below. You will find our bank references in the opposite column. We serve over 100,000 farmers. We are specialists in farm seeds as we handle no other seeds. Years of experience, thousands of satisfied customers, strong financial and liberal guarantee all protect your interests.

We sell on a wholesale basis and save you money. Why buy at retail? Why buy from agents who often make statements that the house won't back up? Buy direct and save money. The savings are unusually large in our great Star Bargain Sale.



Our Seed Analyzed

Our business cannot grow unless our seeds grow and give satisfactory performance. We cannot afford to guess therefore we test for purity and germination. Thus we secure information which enables us to know whether the seed has the ability to produce satisfactory stands.

Consider how much more satisfactory it is to buy seed of predetermined quality than to choose stocks whose quality is guessed at. You of course have the privilege of having your seed retested by State or U. S. Government Agencies. We want you to be completely satisfied that you have received full value and saved money.

Why Our Prices Are Low

There are several reasons for our unusually attractive prices. We handle a large volume of seed. Sellers cater to us and make lower prices to get our business. Our operating expenses are kept down. We employ no salesmen and do not lose money on book accounts.

Our aim is to get a large volume of business by selling at lowest prices. A ten percent profit on \$3.00 worth of orders looks better to us than 20% on \$1.00. This makes our business grow because our customers are better satisfied.

Market Conditions

In many lines seed supplies are short of normal. Better moisture and financial conditions are creating an increased demand for seed. These factors combine to strengthen markets. Red Clover, Alsike, Alfalfa, Sweet Clover, Timothy and most all grasses have stronger markets. Further advances are certainly in prospect. I advise all who need seed to buy early. I am sure you will save money by doing so.

Our Seed All Hardy Type

You will find all of our seed extra winter hardy. We do not sell imported clovers. We do not sell clover from western Oregon or other sections which produce seed lacking in winter hardiness.

GUARANTEE

Your Money Back if Our
Seeds Fail to Please

We hereby give an explicit guarantee that the seeds shipped to you will be absolutely satisfactory. If they are, for any reason whatsoever, not satisfactory and you do not feel that they are worth more than you paid for them, you can return them at our expense and we will refund your money and any freight charges you have paid.

We cannot guarantee crops as that is past our control owing to climate conditions, accidents and unusual things that occasionally occur, but we give you 30 days' time, after you receive the seeds to test them in any way you wish and give you full protection on your seed purchases.

American Field Seed Co.
E. E. Elder, Pres. Chicago

Our Motto

"We are not satisfied
unless you are."



Gentlemen:

In reply to your favor of the 28th, ult., we wish to advise that your treatment of this situation was highly satisfactory. We appreciate such fine treatment, and assure you of our future patronage. It is indeed a pleasure to do business with a concern that stands back of its motto.

Yours very truly, (Signed) Streamvale Poultry Ranch.

By John L. Stream.

Antioch, Ill.

Satisfying Service

**QUICK
SAFE
DELIVERY**

LARGE STOCKS

We have one of the finest and largest stocks of seed in our warehouse that we have ever had since we have been in business. There was quite a heavy decline in the seed markets during the summer months of 1935. When seed crops started to move, markets were low. Our stocks of seed have all been bought to a very good advantage. After seeds were bought, markets firmed up. We could not replace any of these seeds at the price that we paid for them. We are, therefore, able to undersell our competitors.

Our Star Bargain Catalog prices will save you money and bring us a lot of new trade. Protect yourself by buying now when prices are low.

How to Order

It is easy to buy from us. Use an order sheet if you have one. If not, any kind of paper will do. Write your name and address clearly. Put down the kind and grade of seed that you want. Specify the amount you desire and enclose remittance to cover the price of same. Send your remittance in the form of Bank Draft, Cashier's Check, Postal or Express Money Order or personal check, which ever is most convenient.

If the place to which you want the seed shipped is different than your post office please mention that clearly. If there is no agent at that point send money to cover transportation charges. State whether you want the seed shipped by freight or express. If parcel shipment is desired, add enough to your remittance to cover postage.

Quick Service to All Sections Chicago Location Helps You

Our central location gives you quick service and low freight rates. Incoming as well as outgoing rates are favorable. This helps us to buy and sell seeds to the best advantage. You benefit by these savings as they are passed on to you in the way of lower prices.

Excellent Facilities

We are located at the freight house of the Chicago Junction Railroad. The road connects with all lines that go out of Chicago. Most seedsmen in large cities have to haul their seed to depots by truck and that is expensive in cities. We do not have to truck a single one of our shipments which makes another saving that benefits you.

Quick Shipments

We deliver a shipment to the Chicago Junction Railroad before noon and that same day it leaves Chicago and is on the way to you. There is not a seed house in the country that we know of that can get shipments moving and delivered so quickly. Those who are located in small towns have to take poky local service all the way to destination. There is so much freight moved out of Chicago that through cars are made up for most towns. Then even if we have only a single bag to ship it goes about as quick as a carload. There is no delay of several days switching on our shipments. They move quick and travel fast.

While this makes it ideal for late buyers it is not advisable to wait until the last minute to buy. Especially not this year when seeds are scarcer and the best quality sells first.

Wonderful Building and Modern Equipment

Not only are our shipping facilities ideal but we are located in a building that enables us to operate on a very extensive scale. This building is four stories and basement, 400 feet long, 60 feet wide, of fire proof construction. We are at 43d and Damen Avenue. (Formerly called Robey St.)

We also occupy a frame annex 60x160, giving us a large capacity. Offices are on second floor. Come and see us. Our cleaning plant is equipped with modern machinery. We have machines that many seedsmen do not have because they do not handle enough seed to justify the expense. It is this equipment that makes it possible for us to produce such a fine quality of seed. If it were not for our cleaning machinery we could not offer you such bargains as pack this book from cover to cover. You are profiting by our investment of thousands of dollars in this modern equipment. It makes possible better seed for less money and you know that better seed means better crops.

Farm Seeds Exclusively

We don't bother ourselves with garden or flower seeds or nursery stock or anything else but farm seeds. These things are all right and we advise big gardens and orchards and fixing up the farm with shrubbery and bulbs, etc. But we haven't time to spread our energies over all these lines. The farm seed business is a very vital and important one and we believe that by concentrating on one thing that we can serve our customers better. You are dealing with Farm Seed Specialists when you send your order to us and we take the very best possible care of your interests.

LOWER RATES ON FREIGHT

Grass and Clover seeds take third class rate. In Iowa the rate has been changed to 4th class. Rates may be lowered in other states. Grains and Corn are carried at 5th class rate except to west and northwestern states where the rate is 4th class. Your freight agent can give you rate from Chicago. Or write us for rates. Chicago rates are low. Add the freight to our prices and there is a big savings over your local dealer's prices. All our quotations include bags free.

EXPRESS or RUSH SHIPMENTS

Express is the best for quick arrival and if you are delayed and want seed at once you may desire express service. All seeds take the second class express rate. Express is about double the freight charges. It is advisable of course to order early so your seed can come by freight as that saves you considerable. On account of our superior freight service we can get freight shipments through much more quickly than most other houses.



RED CLOVER

GENUINE HOME GROWN

LOT
WORTH MORE

\$ **11**⁵⁰

PER BU.

EXTRA HARDY

A Value That Ex-
cels in Quality

SAMPLE ENCLOSED

Lot Worthmore a Superior Value

Examine the sample of Lot Worthmore. You can see yourself it is a mighty fine lot of Clover. It is dependable, safe seed to sow. The purity is high including a little crop seed like Alfalfa and Alsike. Around one to three percent. This accounts for the low price. Has strong germination. Quite free from bad weeds. Contains no Canada Thistle, Quack Grass and noxious weeds of that nature.

Lot Worthmore has been highly re-cleaned. It is big bright colored seed, home grown, nearly equal to our Pinnacle Brand. It is the grade most dealers sell as their best. It will sell fast at this price.

Well Adapted to Your Territory

This lot of seed is new crop, northern home grown. We do not sell imported seed. We do not sell seed that does not produce a hardy strain. Lot Worthmore is suitable for any part of the United States. Our business relations depend on the success you obtain from our seeds. No matter where you live, Lot Worthmore will prove it is a satisfactory seed for you to sow.

Big Supply Now But Will Sell Fast

We bought a large supply of this seed for our great Star Bargain Sale. Lot Worthmore is a genuine Star Value. Many retail dealers are asking \$1.50 to \$2.00 per bushel more for the same class of seed. Some will quote lower prices, but generally it is a cheaper grade of seed. Send it back and get your money if you don't figure you saved money in ordering. It will sell fast at this price. Order now.

Our High Grade Clovers Are Fine Bargains

On this page we offer Lot Worthmore which is one of our leading bargains. It contains a little crop seed, otherwise it would be equal to our Pinnacle Brand. Some dealers sell seed like Lot Worthmore as their best grade. We tell you the facts about our seed. We don't want to misrepresent.

Some of you might prefer one of our regular grades. On Page 1, we fully describe our different brands. If you are real critical and want the best in high quality, at lowest price, we urge you to buy our PINNACLE Brand. It is a most beautiful quality in every way. Our Price List on Page 32 proves our prices are lower. Some of you who are not so much interested in color and appearance will be interested in our other grades. Whether you buy Universal, Economy or Utility, you must be satisfied. Let us save you money. Regular grades priced on Page 32.

MAMMOTH CLOVER

LOT
SURPASS

\$ **12**⁰⁰

PER BU

Those who understand the Mammoth Clover seed situation will quickly appreciate the wonderful value in Lot Surpass. This seed is nearly all produced in the northern part of the United States. It is sown all over our country but is generally cut for hay or plowed under in all but the north. There is where the seed comes from. Seed production was a total failure in some of those sections and very light in others. This Star Bargain will save you \$1.50 to \$2.50 per bushel.

Guaranteed Quality We guarantee this lot to be free from Canada Thistle, Quack Grass, Dodder and other noxious weeds. We guarantee it of high purity and germination. You can buy it subject to any state or U. S. Government test. You do whatever you want to prove to your own satisfaction that this is a bargain. Investigate and compare. You will discover that our Star Bargain Sale is saving the farmers of this country thousands of dollars on their seed bill. This seed is high quality seed. It is only the price that is low.

When to Sow Mammoth

This clover grows larger than Medium Red and also somewhat coarser. It is often called sapling Clover. The yields of a crop of Mammoth are quite a bit heavier than of the Medium Red. The Mammoth, however, does not make as much second growth as the medium. It is also later in maturity. Many farmers prefer the Mammoth in a mixture with Timothy or Orchard Grass as the two mature more nearly at the same time.

If your seasons are too short for two crops of Medium Red it pays to sow Mammoth. If you are sowing clover mainly for the purpose of plowing under use Mammoth and you may prefer it for sowing in mixtures. Lot Surpass in truth surpasses all similar offers and anyone wishing to sow Mammoth Red Clover will make a wise purchase when he orders this lot. You want clean, pure, bright, plump, high colored, strong germinating seed, and you get all of those in Lot Surpass.



Gentlemen:

I have bought and sowed all my seeding from the American Field Seed Company for more than five years, and have always been well pleased. Will perhaps need more seed soon again.

(Signed) John O'Meara.

Monroe, Wisconsin.

Dear Sirs:

Received my clover seed, and am well satisfied with the quality and purity. I have had it analyzed and find it just as you advertise. Always had the seed tested, and found yours free from noxious weeds. This is more than I can say for some of the other firms I have dealt with. Truly yours, (Signed) Otto J. Klein.

Streator, Ill.



LOT DIAMOND RED CLOVER

Just What Many Farmers Want

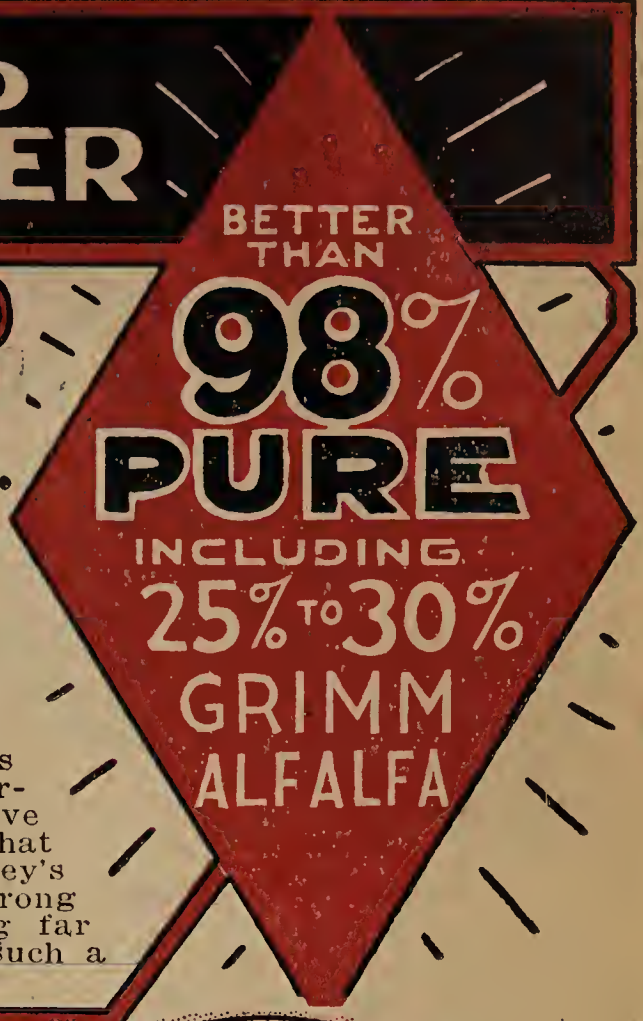
We certainly snapped at the opportunity to secure some of this seed for our customers. Good high quality Red Clover seed mixed with 25% to 30% Grimm Alfalfa. I know this lot will move fast because so many farmers have found this the ideal way of getting a good start of Alfalfa.

I know you can buy the seed separately and do your own mixing but that will cost you more money. This seed is mixed. It can't be separated. It has to be sold as a mixture. That's why the price is so low. You sure have a chance to make an extra big saving on Lot Diamond.

You'll Like the Quality

It's dandy good seed. Good purity and germination. No bad weeds in it. All fine winter hardy seed. If you have any doubts as to quality, send for a sample. That will show you this is a wonderful bargain. But get it at once. This Lot Diamond is going to move fast. I've been in the seed business for many years and I know what I'm talking about. Get your orders in early. You'll get your money's worth and then some when you buy this seed. Fine color, strong germination, high purity, nice berries. You'll receive something far better than our extremely low price indicates. That's why it is such a wonderful bargain.

\$10⁵⁰
Bu.



INOCULATION PAYS BIG DIVIDENDS

"ALL AUTHORITIES SAY INOCULATE Legume Seed"

Give Legumes a Chance to Work

Legumes are soil builders only when they have the right kind of bacteria working in its roots. Without them the crop cannot gather nitrogen from the air. If they can't do that they can't build up land. Neither can they produce at their best if they are not inoculated. To get the full benefit from a legume crop the inoculation must be present.

Cost of Inoculation Is Small

See prices of Humogerm and Tubercle Germ in next column. Figure it down to cost per acre and you will see it is low. We have been making investigations for several years to find an inoculant that would produce maximum results for the lowest possible cost. We now have two of the best inoculations, priced so low you cannot afford to sow legumes without inoculating the seed. The material can be placed in your bag of seed. It is easy to apply. Full directions are on each can. We guarantee inoculation so you take no chance on your investment.

Inoculation costs so little and means so much in getting a full heavy production, it hardly pays to take a chance. Play safe. Inoculate.

Different Strains of Bacteria

If you do your own inoculating be sure to specify what kind of seed you want to inoculate. Then we will send you the right kind of bacteria. Red Clover and Alsike need a different bacteria than that required by Sweet Clover and Alfalfa. Soybeans need still another kind, etc. The fact that one kind of a legume crop grows on your land is no sign it will grow other kinds. Play safe and inoculate all legume seeds.

McQUEEN'S
The ideal moist legume inoculant. Nationally used for years. Contains more nitrogen-fixing bacteria than other nationally advertised inoculants. These bacteria are prepared from special high-bred strains. McQueen's is fresh and cans dated for your protection. Fully guaranteed.

POSTPAID PRICES
For Clover and Alfalfa
1/2 bu. size 30c; 1 bu. size 50c;
2 1/2 bu. size \$1.00
Soy Beans, Cowpeas, Vetches,
Field Peas, Lespedeza
2 bu. size 50c; 5 bu. size \$1.00; 10 bu. size \$1.70; 20 bu. size \$2.75

Tubercle Germ
This is our own standard inoculation. Very popular and easy to apply. Guaranteed to make nodules on the roots of legume plants if applied according to the simple directions that come on each package. This is prepared exclusively for us by one of the foremost laboratories in the United States. We have set new low prices on our Tubercle Germ so that the cost is a very minor item. Considering the returns it gives it surely pays to use it. Often inoculation means the difference between success and failure. Our guarantee of inoculation protects you and assures you of getting a high quality product.

POSTPAID PRICES
Alfalfa and All Clovers
1/2 bu. size, 30c; 1 bu. size, 50c;
2 1/2 bu. size, \$1.00.
For Soy Beans, Cowpeas, Vetches,
Lespedeza and Field Peas
1 bu. size, 30c; 2 bu. size, 50c;
5 bu. size, \$1.00; 10 bu. size, \$1.65

Creston, W. Va.

Gentlemen:

Please inoculate my clover seed, as I enclosed 50c extra in my order. Ship as soon as possible. Have been ordering my seeds from you for 7 or 8 years. Like your seeds fine.

Sincerely yours,
(Signed) WIRT D. LEE, R.F.D.1



Roekdale, Ky.

Gentlemen: This has been the driest year that was ever known in Kentucky. A seed merchant told me he sowed 2 bushels of Alfalfa and did not have a dozen stalks in the whole field. I sowed your seed, inoculated, and have a good stand of both Alfalfa and Sweet Clover. Yours very truly,
(Signed) S. T. GLASS.



ALSIKE CLOVER

LOT WISCONSIN

\$1.200

PER BU.

BAGS
FREE

High Bright Color, Excellent Purity. Strong Germination. Shipment guaranteed fully equal to sample. An Extraordinary Star Bargain.

Saves You Money

Although the crop of Alsike seed is very short, this seed is most reasonably priced. The acre cost is low for a bushel sows 10 acres. It is almost as cheap to sow as Sweet Clover. A seeding lasts several years. Alsike has a higher feeding value than Red Clover. The hay is less dusty.

Many farmers practice sowing some Alsike with Red Clover. It adds to production and helps to do away with bare spots in the field. Alsike is less apt to winter kill and is generally a good producer.

Character of Seed

The quality of this lot makes the value. It is good clean high germinating Alsike. We bought it at a bargain price because it contained some White Dutch Clover and a sprinkle of Timothy. That doesn't hurt it for practical purposes at all. We snapped it up when it was offered to us because we knew our customers would be delighted with an opportunity to buy such seed at such

low figures. It's priced \$1.50 to \$2.00 per bushel too low. Your dollar does its duty when you invest it in Lot Wisconsin.

Easy to Get Started

Alsike Clover is one of the easiest to get to grow. This crop does not care much what kind of land you sow it on. It may be too sour for Red Clover or too wet and yet it will grow Alsike. It works well in pastures and meadows. If you have any trouble getting clover started use Alsike. It's a good plan to mix it with Red Clover if you are doubtful of success.

Lot Wisconsin Priced Low

This great Star Bargain deserves the attention of every buyer who wants to get all he possibly can for his money. You will not be disappointed. Since we secured this seed we haven't been able to find another like it at a similar price. The seed is all higher. The producers have all sold. We can offer this lot Wisconsin only so long as this lot lasts. Buy it now.

LOT NEVER-FAIL

\$11.50

PER BU.

Gold Mine Clover Mixture

An All Clover Mixture

About equal parts Red Clover, Alsike, Alfalfa, Korean, and Sweet Clover. Some of these seeds are grown mixed. Others get mixed in cleaning mills. We mix these lots together to make Gold Mine Clover Mixture. It is well re-cleaned. Sow 10 to 15 pounds per acre. Cost is low. Makes wonderful pasture or hay. Fine for soil building. Production is heavy. Grows anywhere. Price: \$11.50 per 100 lbs. See page 32 for prices on smaller quantities.

LOT THRIFT

\$7.80

PER BU.

A Bargain We Endorse Highly

This lot cuts your seeding cost 15% to 25%. It is mostly Alsike Clover. Balance Red Clover. This wonderful combination used for years. Most farmers prefer it mixed. We obtain some of this seed in grading Alsike and Red Clover. Some of it is grown mixed. When these clovers are mixed, they have to be sold at a discount. Alsike seeds are much smaller than Red Clover. About 7 lbs. of Never-Fail will seed as much as 9 or 10 lbs. of straight Red Clover. This makes an economical seeding. It is a sure crop.

A Wonderful Opportunity

This seed has been carefully re-cleaned. It is hardy Northern grown. The Alsike Clover Crop was below normal. It is an amazing bargain. No middleman's profit to pay. It is one of the outstanding offers in this catalog. The purity and germination is high. We'll be glad to send you a sample to compare quality and value. We guarantee it satisfactory or money refunded.

The Best Alsike Bargain

For those who want the strictest economy You stretch your seeding dollars to the limit when you buy this Lot Thrift. There is more Timothy in this seed than in Lot Wisconsin, but Alsike predominates as it runs over half Clover. It is a very nice looking lot of seed. Around 8 pounds to 10 pounds per acre makes a good seeding. You will be delighted with this bargain. It is one you can be proud to show your friends for it certainly gives you a lot of value for a small cost.

Thoroughly Re-cleaned

This Lot Thrift has been cleaned and graded with utmost care. It has been blended into a quality that is always economical. It germinates readily and grows a heavy crop of very fine hay. It makes a satisfactory and profitable seeding. See page 32 for prices on other grades.



Nashville, Ind.
Gentlemen: Enclosed herewith another order for Clover Alsike and Timothy mixed. The seed I bought from you before produced such a nice piece of grass that it is the talk of the neighborhood. They say it is the best piece that they have seen anywhere this year.

(Signed) E. B. Nisbet.



Newald, Wis.
Gentlemen: The Alsike that I bought from you in the spring was certainly fine and I have the best new seeding in the country. The Champion Beardless Barley that I bought from you were No. 1 and I have harvested it already.

Yours very truly,

(Signed) R. B. Rose.

SWEET

THE WONDER CROP



Save Most by Buying Now
Sweet Clover seed production is short. The demand for it is heavy. Higher prices are certain. Our present quotations are based on early purchases. Markets are now higher. Buy early and share in these extra values.

For FERTILIZERS PASTURE and MONEY MAKING

CLOVER

This Is a Sweet Clover Year

More land than ever is going to be sown to clovers and grass this year. Sweet Clover is a great favorite because it excels all in soil building and is the cheapest of all to buy. Seed supplies are not large. Already market advances show the tremendous demand for this crop. We bought large supplies early. As long as they last you can buy at our money saving prices. All seed has been thoroughly re-cleaned and scarified. It goes further and is the cheapest seed you can buy. We guarantee to satisfy you and save you money. Take advantage of our low prices and sow the most popular clover of the year.

Make Your Ground Easier to Work

We know that many of our customers, because of conditions, have been compelled to neglect proper rotations. The humus or decayed vegetable matter in the soil has run down. Such ground does not warm up so quickly in the spring. It stays wet longer and then dries up harder. It does not plow so easily and you have to get on it just at a certain time or you have trouble. The soil washes faster and gullies begin to form. When you grow Sweet Clover and plow under a good green growth you can correct this condition quickly and secure again that mellow, easily worked ground that produces the most profitable crops.

Increases Production

Besides improving the condition of the soil Sweet Clover adds a lot of nitrogen which it takes from the air. If you use Commercial fertilizer you know that nitrogen is the most expensive food element to buy. Sweet Clover gives you this nitrogen at practically no cost. Corn after Sweet Clover generally shows an increase of 25 bushels per acre.

It is not necessary to wait two years to get the benefits of this clover. Sow it in the spring. Pasture it or take a hay crop in the fall. Plow it under next spring and plant to corn the same year. It accomplishes wonders in a short time.

Greatest of Pasture Crops

You can depend on Sweet Clover taking care of at least twice as much stock per acre as your ordinary pastures. In many cases it will handle four times as much as native pastures. Even after you figure you have it stocked as heavily as it will stand you'll find it could handle still more and you may want to clip it to keep it from getting too big and coarse. If you clip it set the sickle bar high.

It grows so fast, it will amaze you. The feeding value, too, is exceptionally high. It is very rich in protein which is so expensive when you buy it in commercial feeds. It's good for livestock of all kinds. They thrive on it. Many use no other feed. If you do feed grain the stock will get more out of it if they have Sweet Clover pasture. The value of Sweet Clover can hardly be emphasized too much.

Also makes good hay the first year and the first cutting the second year is of excellent quality.

Make More Money

Get more out of your acres. Sweet Clover will help you do it. It will give you results quickly and at a low cost. Buy our Star Bargains. The seed is good and the prices are real bargains.

UNHULLED WHITE OR YELLOW BLOSSOM SWEET CLOVER

Nature's Way of Seeding

This is a beautiful bargain in seed in the same form as it falls from the plant in the fall. It is one of the surest and best ways of getting a stand. This should be sown during the early winter. The seed then becomes imbedded in the soil. The freezing and thawing prepare the seed for quick germination in the spring. Unhulled is not recommended for late spring seeding as it is slower in germinating. A good time to sow is January, February or first part of March, right on the snow or frozen ground.

Extra Nice Seed

Much unhulled seed that is offered is poorly cleaned and contains dirt and sticks. Our unhulled seed is clean fine quality throughout. It is a fine Star bargain. Supply of unhulled seed limited so order early and sow early. Can supply either white or yellow blossom.



UNHULLED
White \$1.60
Yellow \$1.70
PER BU.
30 LBS.



Gentlemen: I bought Sweet Clover from you last spring, and sowed it on a stock field, on very steep ground sloping to the west. I have a fine stand, pastured it through the dry months and it is now over knee high. I am well pleased with the Red-Tag Grimm Alfalfa seed bought from you last spring. (Signed) J. Ralph Meyer.



Gentlemen: Enclosed find another order for clover seed. This is my third year ordering clover from you. Am more than pleased with the last two clover seedings, both in price and quality. I had the only good piece of Sweet Clover seed in this neighborhood last summer. Yours truly, (Signed) Harvey M. Bode.



Circleville, Ohio.

LOT

CREAM

FINEST WHITE SWEET CLOVER

\$ **3.60**
Bu.

SAMPLE ENCLOSED**Finest White at Bargain Prices**

This lot of Sweet Clover will please the most critical buyer. It's the cream of the crop. Big berries and fine color. The highest purity and the strongest germination. Doubt if you can find anything finer. Lot Cream is better than the average best.

Priced to Save You Money

Lot Cream is strictly Pinnacle Brand quality. Pinnacle is the highest grade. High grade seed is always satisfactory and economical. Your local dealer could not give you better seed if he charged you \$2.00 more. Why pay long prices. Buy lot Cream and save money.

Our Seed Carefully Prepared

All of our seed is bought with care and cleaned with modern machinery. Our Sweet Clover is scarified by latest improved methods. You can depend on our seed as being good reliable stock. It must be good or we cannot expect your future business.

Grow Sweet Clover This Year

Build up your land. Grow better pastures and get larger yields of hay and grain. Sweet Clover will help you make more money. You cannot make a better purchase than lot Cream. Very few dealers handle seed of this quality. Order lot Cream. It will make us friends.

LOT
GOOD LUCK

\$ **2.80**
PER BU.

BAGS
FREE**A Paramount
BARGAIN****Lot Good Luck****Priced Extremely Low**

This is our lowest priced lot of seed, and a Star Bargain that excels all others. This unequalled bargain should bring Good Luck to those who order it. The seed is thoroughly cleaned, scarified, and germination is guaranteed. It will produce good results.

**Good Luck Is Common
Big White**

Just the kind you most generally see throughout the country. It ranks foremost in land building and is used very extensively for pasture. Usually makes a good hay crop in the fall of first year and is used either for hay or pasture and for plowing under the second year. Grows fast, produces heavily and it is one of the best of money making crops.

Very Serviceable Seed

Good Luck is a nicely cleaned lot of seed. Not quite as nice looking as our best grade. The seed runs a little smaller, and the color is not so uniform, and it contains a little yellow. We find that a lot of our customers are not so particular about the color and size of berry. What they want is seed that has satisfactory purity and germination at a real bargain price. You get exactly that kind of seed when you buy this lot. You have the privilege of shipping the seed back, and getting your money refunded if you don't like it.

Buy This Bargain NOW

Every customer who wants to get all the good seed that he can for the money he has to spend will find just what he wants in this big value. We advise early orders for there is no more seed like this on the market that we can get to sell at the present low price.

LOT
NOBLE

\$ **3.30**
PER BU.

**Lot Noble Is Sharply
Underpriced**

This is one of the big guns of our Sweet Clover special offers. You'll like this lot of seed. It is the kind of quality that is sometimes sold as the "best." It is not our best but it is very good seed. You will find it something after the order of our Universal Brand which is highly satisfying seed. The color is nice and the blending is uniform. The seed is clean and the germination very good. The seed runs larger than those of Lot Good Luck. If you want a dandy medium grade you will save money by ordering Lot Noble at once.

Save \$1 to \$1.50 Per Bushel

You can have a sample of this lot for the asking. Compared to retail prices for such quality our price will save you at least \$1.00 to \$1.50 per bushel. Our cleaning and scarifying processes are more scientific and more effective. No one uses greater care in the preparation of the seed than we do. Our accurate testing and labelling gives you an added measure of protection. We guarantee you the utmost value for your money. Remember our Slogan "We are not satisfied unless you are."

**WHITE
SWEET
CLOVER**

Mooresville, Ind.

Gentlemen: I wish to say to my brother farmers of the United States that after 4 years dealing with the American Field Seed Company, that I have saved on an average of \$2.00 per bushel on most seeds bought of them and also got a square deal in every respect.

(Signed) J. T. Brown, Ex-Co. Commissioner.

Milan, Mich.

Gentlemen: I have bought seeds from your company for my fertilizer customers for the past two years, and have ordered over 100 bushels of grass seed each year. I have never had a complaint from my customers.

Very truly yours,
(Signed) W. P. Craig.

STAR BARGAINS

SWEET CLOVER

GREATEST VALUES

HUBAM ANNUAL WHITE SWEET CLOVER

\$8.90 Per Bushel

Blooms, bears seed or makes a hay crop the same year it is sown. Lives only one year. Looks like other Sweet Clover only not quite as large. Fine for pasture or to plow under for fertilizer. Sow 15 pounds per acre. This crop is very popular because of its high value.

Big Money in Seed

The drouth caused a failure of Hubam with many growers. Therefore seed supplies are extremely short. It will take a year or two to get production back to normal. There is a big demand for Hubam. Seed prices should be good for producers. Seed yields of 300 to 500 pounds per acre are not unusual. May be sown 8 to 10 pounds per acre for seed production.

Stocks Small But Quality High

Our limited supplies of seed are of very fine quality. All new crop, of course, and thoroughly re-cleaned and scarified. Practically all Extra Fancy quality. We have just a very little of the Choice Grade. See page 32 for prices. Get your orders for Hubam in early.

**EXTRA HIGH QUALITY
EXTRA LOW
PRICE**

LOT JEWEL \$3.90

A Lavish Value in Biennial Yellow Blossom Sweet Clover. A Bargain That Stretches Your Dollars

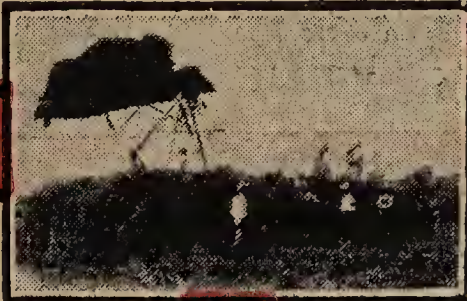
This Star Bargain glitters like a Jewel. It's a Jewel value. Very few dealers can match it. The Yellow Biennial Sweet Clover is not so plentiful as the White. It is becoming better known every year. It has finer stems and makes more leafy growth. We know where the best Yellow Blossom Sweet Clover is produced. It is a profitable seed crop. A few years ago a farmer 40 miles southwest of Chicago got returns of \$24.00 an acre from his Yellow Sweet Clover crop and \$18.00 per acre from his Corn crop.

Character of Seed

Lot Jewel is Pinnacle grade quality. That means the very best. It is fine, bright, clean, high colored seed. Free from noxious weeds and has high germination. If anyone talks to you about quality, get a sample of their seed. Compare it with sample of Lot Jewel. Nine times out of ten you will find our seed superior. It is strictly the highest quality.

Save Money

Retail dealers who sell the genuine Yellow Biennial Sweet Clover will no doubt ask you from \$1.00 to \$2.00 more for seed like Lot Jewel. Why pay more money? We sell you the seed on a guaranteed basis. Our Sweet Clover seed is carefully and scientifically prepared. If you pay \$2.00 per bushel more, we don't think you would get any better seed than Lot Jewel. Take advantage of this Star Bargain offer. Don't pay two profits when you can get high quality seed like Lot Jewel at this price.



LOT VICTORY

\$3.40

A Very Nice Quality of Biennial Yellow

Here again as in all of our other lots of Sweet Clover you discover what amazing values we are giving our customers this year. The lowest prices in history and the utmost measure of value. Bargains such as these are great Victories over depression. We know that this low price will put Biennial Yellow Sweet Clover on thousands of farms that have never had it before.

A Good Quality of Seed

Lot Victory is seed that will produce very satisfactory results. It is good clean seed. It has been well scarified. The germination is good. You will like it because it will do as much for you as higher priced seed. It's not so extra fancy in appearance, having somewhat smaller berries a little off colored. That is why you can buy it cheaper. If you are strong for looks buy Lot Jewel described above. If you don't care so much for looks but judge by results then you can make an extra saving by ordering Lot Victory. It is guaranteed to satisfy and it's just as nice in appearance as some seed that is sold as the best.

Good Time to Get Started

Biennial Yellow Sweet Clover at this price is cheap. This fine stemmed leafy variety is becoming more popular. Some sow it alone, others mix with white for pasture. You can sow Lot Victory on old pastures and increase the returns therefrom. May be sown broadcast early without covering or sown later and harrowed in lightly. As a soil builder and pasture plant this clover ranks high. You will appreciate its value more as you learn to know it better. Remember it's a bargain.

LOT HI-TEST

\$3.70

The Pinnacle of Quality In Grundy County Sweet

Like Lot Cream this Lot Hi-Test is the finest of quality only it's Grundy County instead of large white. It is truly beautiful seed. It is better than the average best seed. The farmer who is particular and "cranky" about his seed will want this extra fancy Star Bargain. This is the seed for the man who wants to make a microscopic examination of what he buys. Lot Hi-Test is pure and clean. It is a quick growing and high germinating Lot. The berries are uniform and the color is excellent. If you want only the finest buy Lot Hi-Test. You can't help but be pleased, and it's sharply under priced.

Grundy County in Demand

In some sections the common Big White grows too tall to suit growers. They want a smaller variety. Grundy County Sweet Clover fills that need. Seldom grows over 3 1/2 feet high. Matures seed more evenly. It is also earlier. The seed of Grundy is smaller and goes further. A bushel sows 5 acres as against four acres for the common. Therefore it is cheaper to sow.

Small dealers do not handle Grundy County but we are selling more and more of it. We don't ask you a premium for it either. This Lot of Hi-Test is one of our finest bargains. It's priced far under regular retail selling prices. Anyone wishing Genuine Grundy County Sweet Clover will save money on this Star Bargain.



KOREAN CLOVER LESPEDAZA

\$ 1.75
Bu.

BAGS
FREE

A Great Clover for Poor Thin Land or Fertilizer

Requires No Lime

Its popularity increases year after year. Very easy to get started. A phenomenal drought resister. High in food value. Extra fine summer pasture. Grows on the poorest land. Enriches soils and keeps them from washing. Tens of thousands of poor acres are being reclaimed by Korean Lespedeza.

Description

Korean is an annual. That is, it grows only one year. However, it reseeds itself very easily unless the season is too short to mature seed. The stands from re-seeding are generally much thicker than the original stand.

The stems are fine. The growth is not so tall but is very leafy. The feeding value is very similar to Alfalfa. In the latitude of Central Missouri it makes up to 3 tons per acre. In the north it is best for pasture. Korean is especially good in pasture mixtures because this clover does not make much growth in the spring. In the hot dry summer months it grows best. Pastures containing Korean do not dry up but continue to flourish until killing frosts.

SEEDING SUGGESTIONS

Your seed bed **Must** be firm and the seed **Not** be covered deeply. Broadcasting on winter grains is a good practice. Sow like Red Clover. Running a roller over the ground later helps both grain and the clover. When sown with spring grain, roll the ground thoroughly then sow Korean and roll again. Seed may be broadcast in early spring on thin pasture without any seed bed preparation. Write for free circular for detailed information on this crop.

Twelve to fifteen pounds per acre is the general rate of seeding. The seed is sold at 25 pounds per bushel.

Seed Quality and Prices

Practically all Korean seed is sold with the hulls on. Therefore all seed looks very much alike. There is, however, a lot of difference in quality. Some seed, because of weed content, is sold by producers at \$2.50 to \$3.50 per hundred below the quality of seed that we sell. Our supplies are from better fields and our seed is all thoroughly re-cleaned. Shipment guaranteed satisfactory in every way. See page 32. Here is an extra fine seed bargain. Save good money while present low prices are obtainable.

Sow Lespedeza This Year

Why try to get along with light thin pastures when you can thicken them up so easily with Korean? Why suffer from lack of pasture in dry hot mid-summer when Korean will give you a lot of feed at that time? Why stop using clovers when Korean will grow without lime or fertilizer even on the poorest ground? The cost of seeding is low and the benefits of this crop are many. Let us help you get started right with Korean Lespedeza.

SERICEA LESPEDEZA

A Tall Grower—A Perennial

This Lespedeza differs a great deal from Korean and Harbin. Instead of living through reseeding it comes up in the spring from buds that form on the roots in the fall. That starts it off earlier in the spring. Grows two to three times as high as Korean. Therefore it is much better for hay. It also has a larger, stronger root system and is a superior soil-builder. Has lived over winters in the latitude of the southern part of Wisconsin.

Nature of Growth

Sericea grows slowly the first year sending up a single stem. It throws out more stems from the crown each year. Thus it becomes finer and heavier producing year to year. The leaves are smaller than alfalfa and go all the way to the base of the stem. Should be cut before blooming for best hay. May be used for pasture.

The strong tap root of Sericea penetrates the stiffest soils. This tap root branches very freely and this extensive root system loosens up the heaviest land. In fact, it is on heavy, stiff land that it does best. Gives remarkable results on flat, poorly drained land.

Seeding

Sow only scarified seed. Does not stand as much frost as Korean, therefore do not sow too early. Use about 10 pounds per acre. It is vitally important to have a solid seed bed and not to cover deep. Use a roller after seeding if you can. That is good practice on all grass and clover seedings.

We guarantee to save you money on Sericea Lespedeza based on the quality of seed we sell. Our price is figured on a 25 pound bushel. See page 32 for quotation.

Small lots, postpaid, 1 lb., 60c; 5 lbs., \$2.50; 10 lbs., \$4.00.

HARBIN LESPEDEZA

For Northern Farmers

Harbin is a real early strain of Korean. It ripens seed in Canada and will reseed itself anywhere in the United States. Thus this remarkable clover becomes a practical crop for Northern farmers. It has the same ability to grow on poor lands and will do practically all that the Korean will do as explained above. Its growth is a little shorter.

How to Utilize Harbin

It should be kept in mind that Alfalfa and other clovers are generally more valuable than this lespedeza. However, some fields will not grow these clovers without an application of lime or fertilizer or both. On such land Harbin fills an important need: We recommend it for pasture rather than for hay. It is as a pasture that it shows superior qualities. Especially in mixed pastures. You secure a pasture in mid-summer when you need it most.

Money in Seed

Harbin is a very new crop in this country. Just a few years ago the seed was selling for \$50.00 a pound. Now it is quite reasonable. There is still money in growing it for a seed crop. Yields 4 to 600 pounds of seed per acre. Can be sown in rows, 3 pounds to the acre and cultivated, or drilled at the rate of 8 to 10 pounds per acre. It resembles Korean Clover in appearance.

Sow like Korean, on top of the ground or very shallow covering. Postpaid prices: 1 lb., 65c; 5 lbs., \$2.25; 10 lbs., \$3.75. Not prepaid: 25 lbs., \$7.25; 50 lbs., \$14.00.

Cicero, Indiana.

Gentlemen: In spite of the drought and heat, the Hubam Sweet Clover bought of you did exceptionally good. Hubam makes a fine crop to plow down for a corn crop. It also makes a fine fall pasture.

Yours very truly,
(Signed) T. E. Beals.

Centerville, Mich.

Gentlemen: Am interested in 2 bushels of northern grown Alfalfa and 2 bushels of Sweet Clover; prices to be good for 2 weeks. Might say that last year I purchased 2 bushels of medium Red Clover from you and it is the best I ever saw. Not a single plant of buckhorn in it. Thanking you, I am
(Signed) W. J. Kelley, R.F.D. 2.

ALFALFA

FOR THE CORN-BELT LOW COST HEAVY PRODUCTION



Corn-Belt Alfalfa has come into existence as a registered trade name for Alfalfa seed adapted to the corn belt as shown on the map below. A few progressive seed houses have determined after careful investigation that alfalfa seed produced anywhere in this section or northwest of it is adapted to any part of this section.

We have for example established beyond question that Alfalfa from the corn belt states does just as well in Wisconsin as Montana or Dakota common. It proves equal hardy, equally productive and this seed is obtainable at much lower cost.

Thoroughly Adapted

We have not made wild guesses but the fact of adaptation of such seed has been amply sustained by experiments made by state stations. It is further established by the experiences of our customers who have used seed from these sections for many years.

We would not recommend and indorse Corn-Belt Alfalfa if we were not absolutely convinced that it will serve the interests of our customers in the corn-belt in a most satisfactory manner.

Always Dependable

Now we can help you solve your seed problems more easily. You can select registered trade-mark Corn Belt Alfalfa with the assurance that you will always get seed of dependable character. It will have the hardiness and yielding quality you want at lower prices. There are only a few dealers "authorized" to use the special trade-mark stock. Always insist on genuine Corn-Belt stock.



Reg. U. S. Pat. Off.

Profitable Crops

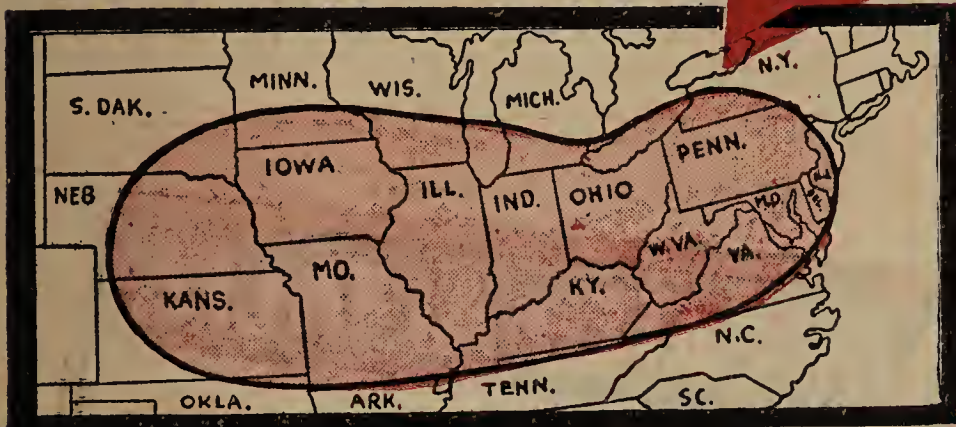
Alfalfa, whether Corn-belt, Grimm or any hardy strain, is the biggest money maker of general farm crops. Yields 3 to 4 tons of hay per acre. Is a matchless soil builder. Reduce cost of milk and meat production. Provides feed in the drier years. Turns loss into profit. You invest wisely when you start growing alfalfa.

It is not hard to grow this crop. Select a well drained field. Sow on a firm seed bed but not too early. Clover seed about half an inch. Roll if possible. Use a very light nurse crop or none at all. Inoculate your seed. Sow 15 lbs. per acre.

Corn-Belt alfalfa enables you to secure seed of hardy character and dependable quality at low cost. It eliminates premium payments for seed that will do no more for you. We have stocks of different origins all priced low as a comparison will show, but for the greatest dollar value we suggest Corn-Belt Common or Grimm. See Page 1 for description of grades and Page 32 for prices.

MANY FINE VALUES

We can generally supply alfalfa seeds from various designated states. You will find price on such stock on Page 32. Some of the special lots on the following pages are also individually described. You will find seed listed such as Idaho, Dakota, Nebraska, Kansas. If you don't find what you want in this book be sure to write us. We are specialists in alfalfa and give you what you want at real money saving prices. Get samples. Compare quality. Don't judge quality by price. Let the seed talk for itself. That will prove our values superior.



STATE REPORTS

We base our claims on the character of Corn-Belt Alfalfa on reports from our customers and on reports from state experiment stations that we have studied. In our neighboring state of Wisconsin we find that Nebraska seed does as well as Montana or other extreme northern seed. Authorities recommend Grimm for super hardiness, when that is needed, but the corn-belt common proved equal to any common.

For records on yields we find seed from our Corn-Belt section to equal or surpass others, and in some cases excel even Grimm in yields. These states include Massachusetts, Delaware, New York, New Jersey, Pennsylvania, Ohio, Michigan, Indiana, Iowa, South Dakota, Illinois, Nebraska and other eastern, western and southern states.

Our investigations have overwhelmingly convinced us that we would not be giving our customers the service they have a right to expect, if we did not show them this opportunity to save money on their seed bill.

U.S. VERIFIED ORIGIN

A Government Service for Your Protection

This is the way it is done. The U. S. Department of Agriculture designates certain dealers who have proper qualifications as authorized dealers in U. S. Verified Origin Alfalfa seed. These dealers must keep a set of records to show where the seed is produced and to whom that seed is sold. These records on all shipments of these "Authorized Dealers" are checked by government inspectors. Thus errors or intentional fraud are eliminated. These "authorized" dealers may put a red, white and blue Verification tag on all shipments. When such a tag is on your shipment you can be absolutely sure that the seed was grown where the test tag says it was.

We are "authorized" dealers and one of the very few such dealers who sell direct to farmers. We sell U. S. Verified Origin seed to you at real money saving prices.

ALFALFA



**MAKES
MORE
PROFIT
THAN
OTHER
CROPS**



LOT GRAND

**LOT
VIGOR
\$8.00
PER BU.**

**An Extra Bargain in
Super Hardy Seed**

1/2 GRIMM

If you want to be severely economical and yet get an extra hardy seeding of Alfalfa, you need just what you want, a low price and extra strong vitality. This bargain is another striking example of the efficient buying power of the American Field Seed Company. What dealer will sell you seed that is half Grimm and the rest hardy common Alfalfa at so low a price? It is a matchless value and a bargain that will please you. U. S. Verified origin seed.

Description

Lot Vigor is well re-cleaned. It has some off colored seed, but purity and germination tests are good. We have lots of testimonials from customers who have used Lot Vigor. The seeds are a little smaller than the average, so there are a whole lot more seeds in a pound than in higher priced seed. It's a real value and will save you a lot of money.

**\$7.00
PER BU.**

**A Big Value
at a Low Price**

Our trade uses a large quantity of this grade. It gives good satisfaction. Our customers like it. They come back for more and tell their friends of this big value.

You get a lot for your money in this seed. It produces good stands. Those stands yield fine crops. It is a hardy and productive as any common alfalfa. The crops are clean and vigorous.

Why so Low in Cost?

It is merely a matter of appearance. It is not as smooth or highly colored as our more expensive grades. It's a good bit like judging horses. One horse may not look as nice as another but he'll do just as much work and have just as good wind as a nicer looking one that sells for twice as much money.

An Economy Seeding

Our price on this alfalfa is so low this year that most anyone can get started with this great money making crop. This is the seed for the man who wants to hold his costs down to the lowest figure. We know that this seed sown at 15 lbs. per acre has the ability to produce good stands. The smaller berries in it make more seeds per pound and more seeds per square foot when sown. It is a great value sold subject to your approval. See guarantee, page 2.

**LOT ROCK BOTTOM
HARDY
NORTHERN GRIMM**

**\$9.00
BU.**

Here is a super star bargain in Grimm Alfalfa. The price is low because it contains discolored seeds. Most of the seeds are smaller than in the higher priced Grimm. Small seeds will produce just as large a plant as the large seeds. A lot of our customers ask for this quality. They don't care for fancy looking seed if it germinates and the price is right. The number of seeds in a hundred that germinate are less than in higher priced seed, but there are so many more thousands of seeds in a pound that it produces as many sprouts as the higher priced seed.

We have offered this quality of Grimm in the past and our customers have been pleased with it. It has been well cleaned for bad weeds. Will save you 25% to 30% on your Alfalfa bill. Sow fifteen pounds per acre for a good stand.

VARIEGATED ALFALFA

Highest Quality—Extra Hardy

Have you ever examined an Alfalfa field in bloom? If you find that some of the blossoms are of different colors you can be most sure that it is an extra hardy kind. There will be some bluish blossoms, some reddish, others perhaps white or yellow. That is what is called "Variegated Blossoms."

Such fields are considered by many to be Grimm because the crop looks like and performs like Grimm.

Big Saving at Present Prices

We have several extra fine lots of this Variegated Alfalfa seed. This is all Pinnacle Grade. You can secure in this seed. stock that we consider as hardy as any you can buy. The price is quite a lot lower. The quality is the very best. It is U. S. Verified origin seed and guaranteed to be absolutely satisfactory to the most critical buyers. Buy early for present prices.

\$11.50



Ravenswood, W. Va.
Gentlemen: I am much pleased with the Alfalfa and Red Clover got of you in March. The Alfalfa, sown in April, has withstood the worst drought ever known here. It is better than any grass, native or otherwise, and is still looking well. Send me your price list of seeds as usual.
Yours Sincerely, Chas. L. Brown (Ex-Senator).



Lawton, Mich.
Gentlemen: I am enclosing part of my order amounting to \$112.70. The balance will follow as needed. One man that was going to order with me has not the money right now, but will have it later. Your seeds always grow. Many thanks.
Yours respectfully,
(Signed) D. H. Kuhns.



DAKOTA No. 12

LOT DAKOTA
\$11.60
PER BU.

A Variety of Proven Hardiness Priced Extremely Low

Save \$2.00 to \$3.00 ON ALFALFA

GRIMM ALFALFA

Super-Hardy and a Super Bargain

LIBERTY
\$10.60
Bu.

U. S. Verified Origin Seed

Every practical and economical farmer will appreciate this bargain. Grimm Alfalfa at less than the price of some grades of common. Why so low in price? Because it isn't as high in color or as uniform in appearance. The purity is good. So is the germination. The seed is cleaned and graded by modern methods. The berries run a bit smaller in size. Requires no more seed per acre than the most expensive grades. The farmer who buys his seeds on the basis of results rather than for looks will find in this seed just what he wants.

Lot Liberty Is Reliable

Judge seed values by performance rather than by the price of the seed. This lot of seed will produce the same kind of a crop, the same kind of yields that higher priced seed will bring. There are no noxious weed seeds in it. It is simply that higher colored seed brings more money. You will find other lots of Grimm Alfalfa described and priced on the inside back cover of this book. They are more expensive although lower than other prices on the same kind of seed. Everyone of these offers is a bargain. In this Lot Liberty you get the most practical and serviceable seed for every dollar you spend. We do not have a great deal of this seed so you had better send your orders in as early as you can and avoid disappointment.

We offer this lot to our customers who demand extra hardy Alfalfa. It is Dakota 12, Dakota-Nebraska grown. Most everyone knows of the superior value of Dakota 12 Alfalfa. Any Alfalfa that withstands the ranges of Dakota Winters will do well most anywhere. Most dealers demand a big premium for Dakota 12 over common Alfalfa. The crop was real short in Dakota. Most dealers cannot match this quality and price. Our Low Price on this U. S. Verified Origin Seed will save you money.

A Fine Bargain

You are buying this seed at a very substantial reduction when you order Lot Dakota. You can return it and get your money back if you don't consider it a matchless bargain. The seed is of very fine quality. The purity and germination are extra high. Just a slight touch of a few off colored seed, but hardly enough to notice. It would pass as the best with most dealers. You would have to have our finest Pinnacle next to it to detect any difference at all. Lot Dakota will give you a start with Alfalfa of superior winter hardiness and at a price that eases the strain on the pocketbook. Investigate. Check up on us. Make comparisons. You'll find a big saving and a great value in this lot.

PINNACLE BRAND GRIMM Alfalfa

\$11.90
BU.

U. S. Verified Origin Seed Shipped in Sealed Bags

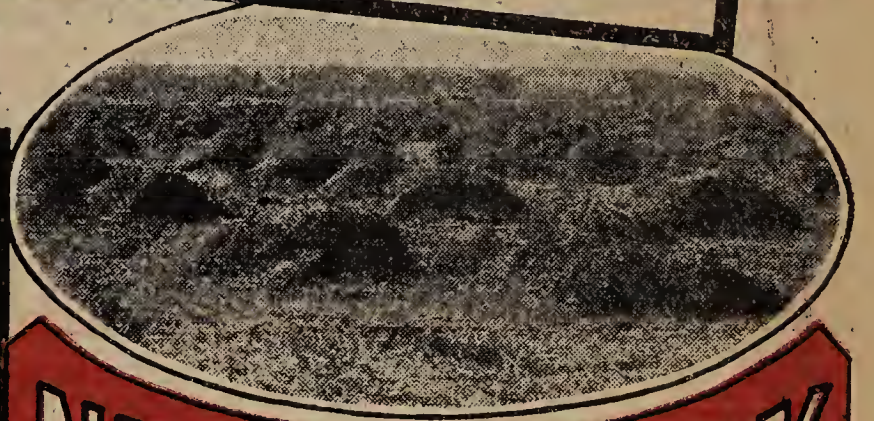
I want every one of our critical customers to give particular attention to this wonderful value. If you want a strictly high quality lot of Grimm Alfalfa you will find just what you desire in our Pinnacle Grimm. It has beautiful color, high purity and strong germination. Plump golden berries. A fine, smooth, uniform lot.

Every bag is sealed and carries an authorized red, white and blue U. S. Verified Origin Tag. I wish you could visit with me so I could explain the superior merit of this Pinnacle seed. You would have a fuller realization of the big savings that our customers make. Perhaps if we charged more money for such seed some people would think it was better. That's an old business trick that many dealers practice. I'm here to give you the greatest value possible. This seed is sharply under priced.

Sample Free Upon Request

We probably can't visit together but I will gladly send you a sample of this seed. You can see for yourself what a beautiful grade this is. It is super-hardy stock genuine Grimm. I am sure that compared with other seed of equal quality our price will save you \$2.00 to \$3.00 per bushel. I bought this seed to advantage and I want you to benefit by sharing in the savings so obtained.

May I urge you to act as promptly as possible for such extra fine Grimm at so close a price will certainly sell fast.



NEW COSSACK

A SUPER-HARDY VARIETY

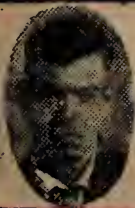
WITHSTANDS SEVEREST WINTERS AND THE MOST DAMAGING CONDITIONS

Our New Cossack ranks as the full equal of Grimm as regards winter killing. Some consider it even superior. It is unquestionably in front rank. Does your soil or your climate cause a lot of winter killing? If so, use Cossack or Grimm. You won't find anything that will do better. In the end it is the cheapest to sow. Makes heavier production and produces greater profits.

Our Cossack Extra Fine

This is our Pinnacle brand. It's the finest grade we sell and that is finer than most. It is top-notch in every way. You are guaranteed the best and you get the big, bright, clean, high germinating seed.

This is also U. S. Verified Origin seed. Our careful buying brings you this unequalled value. This is a very low price for seed of this character. If you need a super-hardy Alfalfa you will make no mistake in ordering our New Cossack. We know your dealer will ask you more money and talk about better quality. You won't get any better quality no matter what you pay. Buy direct during our Star Bargain Sale, and keep the extra dollars for other things. Postpaid, 1 lb., 50c; 5 lbs., \$1.80. Larger amounts, see price list on page 32.



Sheboygan Falls, Wis.
 Gentlemen: Your Alfalfa No. 12 is the best Alfalfa I saw yet. It is even better than some Grimm here and did not freeze out. We had 23 below zero 'n winter, so it sure is tough and produces a nice amount of hay each year.

(Signed)

Yours truly,
 Edgar H. Klemme.



Burgettstown, Pa.
 Gentlemen: Your seeds have always been very satisfactory and of good quality and have saved me money. I have a pretty good stand of Alfalfa on my wheat stubble from your seed, sowed last spring, and we did not have any rain for four months.

(Signed)

Yours truly,
 C. R. Fullerton.



TIMOTHY

BUY EARLY
for
LOWEST PRICES

FINE CLEAN
HIGH GERMINATING
SEED



Priced Exceedingly Low

Whoever finds it necessary to cut his seed costs to the very lowest figure and still wants a first class seeding, should select Lot Silver. The price is so low and the quality so fine that it makes the cheapest seed you can sow. The Timothy crop was normal this past season, so we have a nice big stock of Timothy and can take good care of your business.

99 1/4% Pure—Strong Germination

Lot Silver is new crop seed and strictly first class quality. It is Pinnacle Brand quality. If you are an old customer you know that means Extra Fancy or the best.

Send for samples. Compare quality and prices with your retail dealers. Considering quality, you will find our prices much lower. On account of low prices this year you can make a liberal seeding. You will find other grades of Timothy described on page 1 and prices on page 32.

Compare Quality and Value

Quality comes first. Of what value is seed that will not grow? It is expensive no matter how low the price. Our seed is all tested and is guaranteed to have good growing power. On the other hand, it is not necessary to pay any more than our direct prices for such quality seed. A higher price cannot make it any better. We are here to save you money and to give you satisfaction. Send us your Timothy seed order early.

LOT SILVER
TIMOTHY

\$ 1.80

PER BU.

Red Top

Easiest of All to Grow

Red Top thrives most anywhere on medium to heavy soils. It grows on a wider range of soil types and over a large variation of climates than any grass we know of. Poor soils grow Red Top even after other grasses fail. Medium soils produce it profitably. On rich land it makes a luxurious production. It grows under dry conditions and is the best grass for wet land or poorly drained soil. Red Top stops gully-washing as it makes a thick sod.

Use This Valuable Crop

The above characteristics will suggest uses for this crop on your farm. It makes a fine grass to have in permanent pasture and meadows. It is also fine for lawns. Red Top will catch where other grasses may fail. Using Red Top assures a fuller stand of grass and therefore greater returns from the land. We strongly advise its use.

Our Prices Save You Money

Compared with other grasses the acre cost of seeding is very low. Very economical to use. It only takes 10 to 12 lbs. per acre for a full seeding. In a mixture a little goes a long ways. Our seed is thoroughly re-cleaned and is high testing new seed. Our wholesale quotations are on page 32.
Smaller lots postpaid. 1 lb., 35c;
5 lbs., \$1.30; 10 lbs., \$2.25.
See page 32 for latest price list.

REED CANARY GRASS

This is a long lasting, heavy producing grass that has many exceptional qualities. First it does well on wet land and will stand a lot of overflow. It will establish a good heavy sod on land that is too wet to be pastured or mowed. Second, it resists drouth better than most grasses and yields of hay and pasture are sensational. Third, a seeding lasts for years. Some stands have been maintained for forty years.

This seed remains rather expensive because it is rather hard to save. It shatters when it is ripe. However, when sown in 18 inch rows it only requires a couple of pounds per acre. The seed germinates rather slowly, so land should be fairly clean and some cultivation should be given. Cover seed lightly. Half inch is plenty. Roll afterwards especially on loose soil or seed bed.

Postpaid price: 1 lb., 60c; 5 lbs., \$2.75; 10 lbs., \$5.25. See page 32 for quantity prices.

See Catalog Envelope and write for free circular on Reed's Canary Grass for further information.

ORCHARD GRASS

A Perennial Grass of High Merit

Orchard Grass grows on most soils. Makes a good hay crop. Excellent in permanent pastures. Keeps creek banks from washing. It is the best grass to grow in shady places. Makes a wonderful combination with Red Clover. Starts growing very early in the spring, and is on the job lots in the fall. It is nutritious, palatable and a good producer. Our customers are learning of the value of Orchard Grass and our sales are growing steadily.

Our Orchard Grass seed this year is very fine. It is nice bright seed. Purity and germination tests high. Sow about 25 to 30 lbs. per acre for full seeding. Can be reduced proportionately when mixed with other grasses.

See page 32 for greatly reduced Star Bargain Prices.
Small lots postpaid. 1 lb., 35c; 5 lbs., \$1.35; 10 lbs., \$2.50.



Gentlemen:
I have been ordering seeds from you several years and am always well pleased. I do not find as good quality elsewhere and your prices are always reasonable. Your shipments are prompt and I have recommended your seed to my neighbors who are ordering from you.
(Signed) R. S. Carpenter.



Gentlemen:
Please quote price on Red Clover, Alsike Clover and Timothy. I have used your Pinnacle Brand for several years and always found them O. K.
(Signed) Eldon Hagy.



Knightstown, Ind.

It will pay you to become well acquainted with the different grasses described on this page. They have been a revelation to many a farmer and they have added many dollars in profits to the farm income. They help you get the best production from your acres. Our Star Bargain prices on page 32 give you money saving quotations on each item.

DOMESTIC RYE GRASS

For Early Seeding and Quicker Crops

Do you need a quick hay or pasture crop this year? Something you can sow early? Domestic Rye Grass fills the bill. It starts quickly and keeps on the job all summer. And it produces a lot of feed too. It is a grass somewhat like Kentucky Blue Grass only it grows much taller

and the leaves are broader. In Europe they grow it for hay and get enormous yields running from 10 to 12 tons per acre. Production is lighter in this country, yet very satisfactory.

Requires No Nurse Crop

Domestic Rye Grass grows so fast that it is often used as a nurse crop in grass mixtures. Most lawn mixtures contain it so that a quick green turf is obtained. Of course it is cut frequently with a mower in a lawn and therefore never shows up so prominently but it shoots along mighty fast.

This grass is fine by itself or mixed with slower growing grasses or clovers. You can pasture a mixture with Domestic Rye Grass early while the others are getting started. Or you can take it off for hay.

Start the Crop This Year

Domestic Rye Grass is not a new crop. It is one of the most important tame grasses in this country. Farmers simply have not learned to use it extensively. The cost of this seed is low. Our seed is all American grown, new crop of fine quality.

Sow 20 to 25 pounds per acre when used alone. When sown in mixtures the amount may be reduced accordingly. On the next page we list some ready mixed seedings that contain this crop. Our America's Best Mixture described on the outside back cover also contains some of this grass.

Small lots, postpaid, 1 lb., 30c; 5 lbs., \$1.00; 10 lbs., \$1.75.

See page 32 or latest price list for quotations on larger lots.



BROMUS INERMUS

A great drought and cold resisting grass. A perennial that lasts many years. Very nutritious. Makes a heavy sod. Well suited either for hay or pasture. Comes on early in the spring. Remains green longer than most grasses. The seeds are quite large but very light in weight. Sow about twenty pounds per acre. Sow early in spring on a firm seed bed. Cover seed lightly and roll afterwards if possible. This valuable crop will solve many hay and pasture problems. Seed crop is short this year. Order early. See page 32 for our latest price list for quotations.

Postpaid, 1 lb., 40c; 5 lbs., \$1.40; 10 lbs., \$2.60.

ENGLISH BLUE GRASS

This is also commonly called Meadow Fescue. Does fine throughout the northern half of the United States. Grows 3 to 4 feet high. Excellent for both hay and pasture. Very valuable for wet land. It grows fast, keeps down coarser grasses and stands more tramping than Kentucky Blue or Timothy. Can be pastured very close. Produce very palatable feed. Will last for years. Especially recommended for hay where timothy does not do well. Sow 15 to 20 lbs. per acre.

The price list on page 32 gives you matchless value on this worth while crop. Save money by ordering early.

Small lots, postpaid, 1 lb., 40c; 5 lbs., \$1.25; 10 lbs., \$2.00.

KENTUCKY BLUE GRASS

Surpassing Quality—Star Bargain Prices

You know what Kentucky Blue Grass is, how valuable for pastures and lawns. It comes volunteer in many places, but it's a mistake to wait for volunteer growth. You lose too much. It's wasteful to let acres be cut in production. If you need Blue Grass sow the seed, you'll be money ahead in the end.

Our prices on Kentucky Blue Grass are very low. No item has been spared. Every price has been slashed terrifically. All our seed is new crop. We did not carry over old seed as so many dealers did. Our prices are on heavy weight re-cleaned high germinating seed.

See price list on page 32 for bargain quotations on this seed. It's the cheapest to sow.

Small lots, postpaid, 1 lb., 50c; 5 lbs., \$1.75; 10 lbs., \$3.00.

LAWN GRASS MIXTURES

Mixtures That Produce Beautiful Lawns

We have worked out several blends of grasses to produce healthy, compact, beautiful sods in a very short time. These mixtures are adapted to different soil and climatic conditions. All seed is re-cleaned high testing. You will find them thoroughly reliable and you will find them much more economical in the end than experimenting with untried or improperly blended mixtures.

American Fancy Lawn Mixture. Fine evergreen grasses mixed to fit the average soil and climatic conditions in the United States. Makes a fine sod in a short time and is highly satisfactory for most sections.

Postpaid, 1 lb., 50c; 2 lbs., 85c; 5 lbs., \$1.80; 10 lbs., \$3.40.

American Terrace Mixture. Keeps sloping places looking nice. Prevents washing.

American Shady Lawn Mixture. For lawns that have spots that are shaded most of the day.

Price, postpaid, above 2—1 lb., 50c; 2 lbs., 85c; 5 lbs., \$1.90; 10 lbs., \$3.60.

Not prepaid, any of above mixtures, 25 lbs., \$7.00.

WHITE DUTCH CLOVER

The famous pasture clover. Also used in lawns. Low growing, drought resistant and very nutritious. Adds greatly to pasture value. The seed is very small. 3 to 4 pounds sows an acre. One seeding lasts many years. May be sown in early spring on old pastures or with new seedings. In mixtures sow 1 to 2 pounds per acre.

Since it requires so little seed per acre the cost of using it is small. Use more White Dutch Clover. See page 32 for quantity prices.

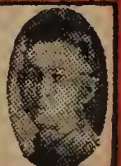
Small lots, postpaid, 1 lb., 60c; 5 lbs., \$2.50; 10 lbs., \$4.75.



Gentlemen: Spencer, Ind.
With many thanks for being prompt in sending out my shipment. I find the American Field Seed Company to be on the square, and the best of all that sells pure seed.
Yours very truly, Bruce H. Been.



Gentlemen: Selma, Ind.
All the seeds that I have purchased from you have been entirely satisfactory. Your prompt shipment and fair dealings have been above par.
(Signed) Cecil Freestone.



BEAT-EM-ALL | RED CLOVER ALSIKE QUICKEST GROWING AND TIMOTHY MIXED PASTURE MIXTURE

Quick Action at Low Cost

These mixtures, as described below are especially recommended for farmers needing some good early pasturage. Any of these mixtures may be sown early and can be pastured in a comparatively few weeks. The amount of pasturage continues to improve throughout the season and carries over into the following year. Thus high production and feeding value as well as low seeding cost will appeal to all farmers. Use them for new seeding or to thicken up thin pastures.

General Description

Each mixture is described below. The general base of our Beat-Em-All Pasture Mixture is a combination of Timothy, Domestic Rye Grass and clovers, either Korean or Sweet Clover or both. See page 15 for information on Rye Grass. Because of its rapid growth this grass requires no nurse crop. It starts quick and grows fast, thus giving protection to the clover seedlings as well as holding weeds in check. You can start to pasture this lightly very early. Then as the season progresses and the Clovers get a start you can increase the pasturing and work it hard.

Production for Two Years

The clovers add to the feeding value and build up the land. The Korean reseeds itself very readily even though pastured close. (See page 10.) The Sweet Clover is a two-year crop and comes on again early in 1937 when it may be pastured again, plowed under or used as a hay or seed crop or both.

Every customer who wants to make an early seeding for some quick pasture should sow some of our Beat-Em-All Pasture Mixture. If you wish you can let it stand for hay and get good results.

Order Now

We know that thousands who read this will need just such a seeding. The need is great and the seed cannot be duplicated at present prices. So please order early. State in your order which of the following Beat-Em-All mixtures you want. No. 1, No. 2 and No. 3.

**PRICE OF ANY OF THREE
BEAT-EM-ALL MIXTURES**

**\$1.60
PER BU.
25 LBS.**

Mixture No. 1

Timothy, Domestic Rye Grass and Korean Clover

This mixture is made up of one-fourth Timothy, one-fourth Domestic Rye Grass and one-fourth Korean

Clover. Sow 18 to 20 pounds per acre. The price is low for such a fine combination.

Mixture No. 2

Timothy, Rye Grass and Sweet Clover

This runs one-fourth Timothy, one-fourth Domestic Rye Grass and one-half Sweet Clover. All cleaned seed and a dandy mixture. It will cut your seeding cost. The rate of seeding, same as No. 1.

Mixture No. 3

Timothy, Rye Grass, Korean and Sweet Clover

This is one of our most popular mixtures. Contains one-fourth of each kind of seed. Gives you a four-way mixture that we believe will give you the most prolonged production and the longest total pasturage.



LOT MAJOR

**\$3.60 PER BU.
45 LBS.**

Contents 30-35% Clover

This makes a very fine and a very heavy producing combination for meadows. Also good for pastures. Contains just the right amount of clovers. It is a dandy rich mixture. It is carefully prepared to give the most satisfactory results. There is real quality seed in this mixture. Good purity and germination. It has the growing power you want.

Gives 50 Clover Seeds Per Square Foot

That's just what Lot Major will average when you sow 12 lbs. per acre. At 10 lbs. per acre you have 40 clovers per square foot and then there is the Timothy besides. Such a seeding can produce a stand as "thick as hair on a dog's back."

The yields are surprisingly heavy because the clovers help the Timothy and the Timothy helps the Clovers. We consider this one of our best seedings for more permanent results. The supplies of such seed are very short this year. We urge you to place your order early. Please do not think that we say this just to hurry your order. The situation is really serious.

Money Saving Prices

While these mixtures are quite a bit higher in price than a year ago yet our present prices are low. They are low compared with other prices on the same fine quality and the same clover content. These prices are low considering market conditions. If we don't save you money you can return the seed and get your money back. Let us take care of your seed business.

STANDARD GRADE PRICE \$2.90 PER BU.

Red Clover, Alsike and Timothy

This is just as fine a quality as our Lot Major excepting it contains less clover. The percentage in our Standard grade is 15% to 20%. That's plenty to please many farmers and saves you money on your seed bill. Many dealers do not sell a richer mixture than our Standard Grade. This seeding is an excellent value.

SPECIAL PASTURE AND MEADOW MIXTURES

25 lbs. \$3.15 50 lbs. \$6.15 100 lbs. \$12.00

These mixtures are the results of many years of experimenting. Our idea is to provide excellent permanent seedings at low cost. The meadow mixtures contain grasses and clovers that combine for heavy production and high feed value. The pasture mixtures provide not only yield and quality but a succession of growth to give a longer pasture season.

These Are Perennial Mixtures

One seeding will last for years but is easily eradicated if desired. Spread over a period of years the seeding cost is very low. Sow 20 to 25 lbs. per acre. These crops produce an abundant supply of palatable nutritious high quality feed. In making these blends we use seed from the following crops. Kentucky Blue Grass, Alsike and Red Clover, Orchard Grass, Red Top, Meadow Fescue, Rye Grass, Bromus, Alfalfa, Timothy. For your convenience in ordering we list by letter.

MEADOWS

- No. A. For average soil.
No. B. For wet or lowland.

PASTURES

- No. C. For average soil.
No. D. For wet or lowland.



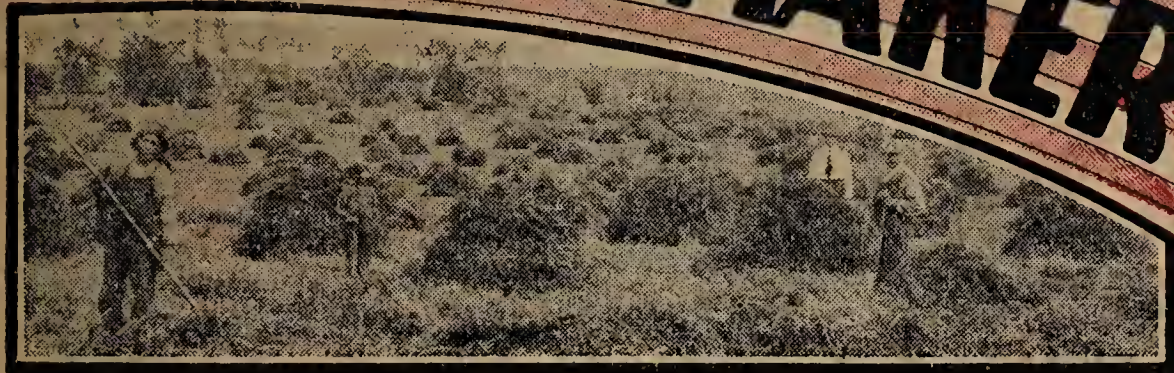
Tawas City, Mich.
Gentlemen: Your timothy and alsike seed and your America's Best Mixture which I have been sowing the past five years, has produced more hay than any seed I have sown. I am showing my seed to all my friends. Thanking you for your prompt shipments, I am
Yours truly,
(Signed) Otto Rempert.



Valparaiso, Indiana.
Gentlemen: I used your alsike and timothy seed mixture with oats and turned stock on as soon as seeded. I have done this before but never had a better stand of pasture grass. It looks like it might have been seeded a number of years.
Yours truly, (Signed) Howard Nash,
President, Indiana Farms Co.



EVERY MIXTURE A MONEY MAKER



LOT ROYAL
\$ **3 60**
PER BU.

Excellent Combinations at Practically Timothy Prices

ALSIKE and TIMOTHY MIXED

RED CLOVER and TIMOTHY MIXED

RICHER GRADE
\$ **3 70**
Bu.

30% to 35% Clover
An Old Stand-By

With seed scarce and markets advancing this is a real bargain. It is a quality seeding at a price that will save you money.

Practically every farmer in agricultural districts uses the Old Stand-By, Red Clover and Timothy mixed. It contains just the right percentage of clover to produce a heavy stand of pasture or meadow. It is richer in feeding value. It is a great soil builder. Stores plenty of nitrogen in the soil. When plowed under, will increase future crops of corn or grains 25% to 50%. Farmers are reducing the grain acreage and going back to their Old Stand-By, Clover and Timothy.

Fine Quality Seed

We buy a great many lots of this seed already mixed. Some timothy mixtures have quite a percentage of red clover. When thrashed the seed is mixed. We buy such seed mixed at a big discount. Cheaper than we could buy it separately and mix it. This permits us to offer a mixture of this kind at such a low price. Seeding 11 or 12 lbs. per acre, there are about 30 clover seeds to every square foot. This seed is thoroughly re-cleaned. Germination and purity tests are high, and seed guaranteed to satisfy you. You are practicing true economy when you buy this mixture. This Richer mixture is a great big value at a low price.

This Mixture Contains 30% to 35% Alsike

Another superior value. One that will save you money and give most gratifying results. Sow a bushel to four or four and a half acres. Produces heavy yields of rich nutritious hay. Grows on land too sour for Red Clover.

You should remember that Alsike seeds are less than half as large as those of Red Clover. This mixture gives you a much heavier seeding of Clover than you might think and it produces an unusually fine quality of hay.

Very Desirable Hay Crop

Alsike Clover has scarcely any hairs on the stems and is therefore less dusty than Red Clover. It also has a higher feeding value. Alsike Clover when grown alone often mats down and appears to make a shorter growth. When sown with Timothy the Alsike grows erect and is often taller than Red Clover. This mixture helps the growth of the Alsike, increases its production and improves its quality. Maturing at the same time it makes one of the finest natural mixtures of Clover and grass you can get. It has long been a favorite with our trade and it is in great demand.

Description

Lot Richer is very nice seed. This stock was grown mixed. It came from clean fields. It has been well cleaned. The purity and germination tests are high. The seed is nice bright stock. The blending has been carefully done. The Alsike is uniformly mixed with the Timothy. It is an all around smooth lot and a most remarkable bargain at this low price. You are getting the last penny in seed value when you buy this lot. It's easy to grow. Seldom fails and is guaranteed to please you.

ALSIKE and TIMOTHY Standard GRADE
\$ **2 90** PER BU.

Contains 20% to 25% Alsike

This is the same kind of mixture as we have quoted in former years as our No. 20 mixture of Alsike and Timothy. Like lot "Royal" described above, it is made up of seeds secured from mixed fields. It gives you the same number of Clover seeds as the 40% to 50% mixture of Red Clover. It is highly re-cleaned and germination high. It surely is a seeding that gives excellent satisfaction. Thousands and thousands of our customers have used this same mixture for years. We receive hundreds of testimonials every year regarding it. Our Standard grade gives you a great big value at a low price.

ALFALFA and TIMOTHY \$3 70 Bu.

Alfalfa, Red Clover, Alsike and Timothy, 30% to 35% Clovers
Nice bright re-cleaned seed blended into a smooth, uniform mixture. This combination is very popular and one of our best sellers. Produces big yields of fine hay. Helps start fields to growing Alfalfa. Builds up the land. Makes a very good pasture. Has a high feeding value. Seeding cost is reasonable. A bushel sows four acres. The returns you get from this mixture are highly satisfactory. Our customers praise it enthusiastically. It is a wise investment. You secure a liberal portion of clovers with clean nice Timothy at a price that gives you a worthwhile saving. Compare and see how low our prices really are.

Gentlemen:
I have used your seed for a number of years and am well pleased. I can save from one-fourth to one-third by buying from the American Field Seed Company. I can recommend your seed to my friends as I know they will save money.

(Signed) Joseph E. Guilbault.



LOWER PRICES High Quality SEED OATS

REGENERATED SWEDISH SELECT NORTHERN GROWN

A Sensational Producer

Superiority in Seed Oats is emphatically demonstrated in this great variety. This oat is a bigger, plumper and heavier kind. A large white variety with a yielding record that is sensational. Has exceeded 120 bushels per acre. There is money in growing such oats. You lose money when you sow inferior seed.

Our seed is northern grown. They are given a strenuous cleaning with an extra heavy air blast. The small, light, immature and shriveled grains are removed. The cleanout in this process is heavy and it gives you seed stock so far superior to the average farm run seed that there is no comparison. For seeding purposes these oats would be cheaper at double our price than most farm run stock would be as a gift. If you want to make money from oats sow this improved seed.

Description

Our Regenerated Swedish Select are medium early. Straw quite tall and stiff. Heads sprangled. Kernels large in size and white in color. Hulls thin. Percentage of meat large. Vigorous grower. Drought resistant. It is our most productive and best money making variety. It's a fine big white oat.

EXTRA PROFITS

Come From Sowing Better Seed

Whether you make or lose money on your oat crop depends largely upon how many bushels you produce per acre. The farmer using run down or poorly selected seed is almost sure to face a loss. You can generally change this into profit by sowing better seed. That means you spend a little more money at the start for better seed but it returns to you many times over at harvest time. The seed makes a whale of a lot of difference in the crop.

Selected Varieties

Variety is very important. Experiments have proven that so many times that no well posted farmer will question it. But even the best varieties deteriorate because of improper seed selection. They "run out" and fail to equal former production. Change of location also often adds to the vigor and vitality of the crop. We secure all of our medium maturing varieties from the north as we know they produce more profitable returns.

Our varieties are selected from the best of producers. We consider not only yield, but their ability to withstand unfavorable conditions. Besides the relentless cleaning given our seed makes it so distinctly superior in value that every farmer should realize its importance.

What You Receive

When you place an order for seed oats with us you secure the best of selected and proven varieties. You get heavy producers. Your seed will be heavy and clean.

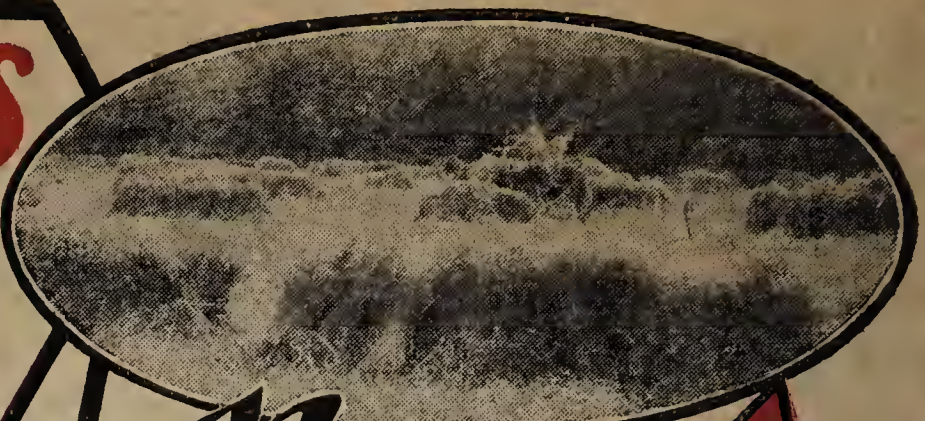
Our disease and drought resistant varieties will appeal to your neighbors. You can get a premium for the first year at least by selling your crop locally for seed. Do the wise thing this year. Discard your old stock. Make a new start. Reap better harvests and larger profits by sowing better seed.



Sheridan, Indiana.
Gentlemen: I have used the following seeds from your house: Red Clover, Mammoth Red Clover, Sweet Clover, Alsike and Barley. I have been well pleased with them all. I consider Pinnacle seeds as good as money can buy, and at a lower price.

(Signed)

Yours very truly,
C. B. Hunt.



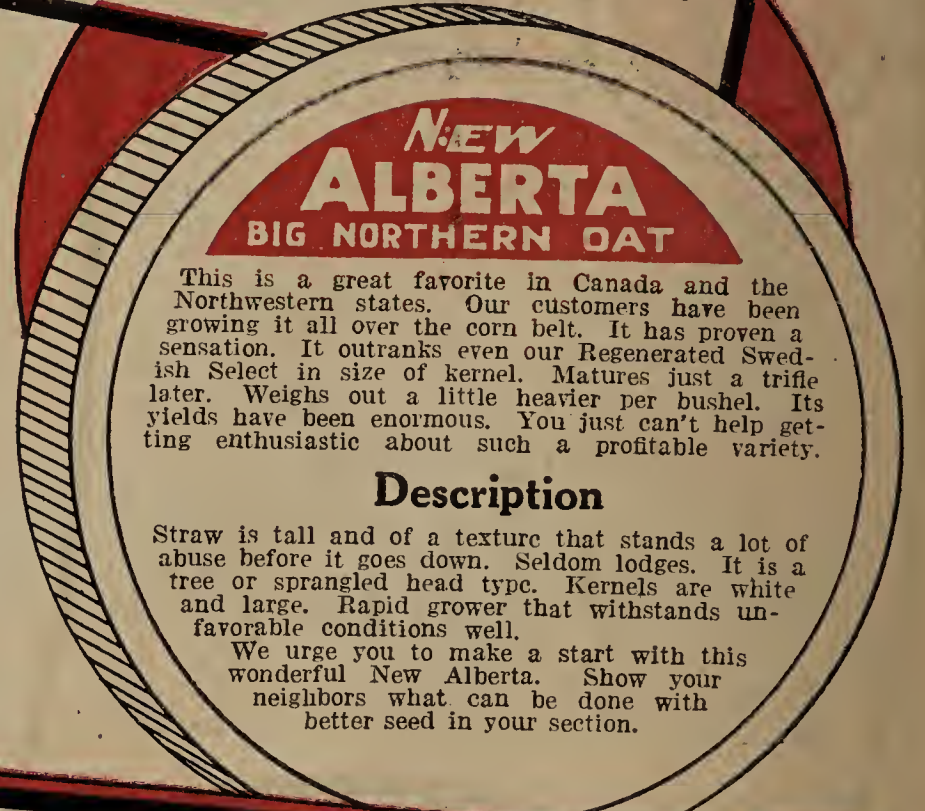
New VICTORY

Largest and Finest



An extra large heavy white oat. A magnificent variety. Beautiful seed stock. Weighs out around 45 lbs. per bushel. Northwestern grown new crop seed. A sensational producer. An eye opener to thousands of farmers. Ask for free sample. See those great oversize meaty kernels. Order some of this phenomenal stock and sow oats the like of which your neighbors may never have seen before. These oats have cost us a fancy premium. It has been expensive to bring them into Chicago, but we certainly are proud of them. You too will be proud of your purchase. Return shipment and get your money back if you do not find them the finest seed oats you ever owned.

The greatest profits from oats are secured by introducing new and superior varieties into a neighborhood. Farmers will often drive for miles and pay a good premium to secure some for seed. The first seeding cost is higher than most oats but the returns make the investment highly profitable. See page 32 for prices.



NEW ALBERTA BIG NORTHERN OAT

This is a great favorite in Canada and the Northwestern states. Our customers have been growing it all over the corn belt. It has proven a sensation. It outranks even our Regenerated Swedish Select in size of kernel. Matures just a trifle later. Weighs out a little heavier per bushel. Its yields have been enormous. You just can't help getting enthusiastic about such a profitable variety.

Description

Straw is tall and of a texture that stands a lot of abuse before it goes down. Seldom lodges. It is a tree or sprangled head type. Kernels are white and large. Rapid grower that withstands unfavorable conditions well.

We urge you to make a start with this wonderful New Alberta. Show your neighbors what can be done with better seed in your section.

FULGHUM OATS

Very Early, Extra Heavy Yielder

You will find these oats in a class by themselves. We do not know of a variety that is equally early which will outyield it. It has greater resistance against smut than any other variety. It has doubled and tripled yields of other good and well known kinds. Our Fulghums have yielded heavily under unfavorable conditions that practically caused a failure with ordinary varieties. There is only one thing this variety is particular about: it wants to be sown early.

Description

Color is golden yellow. Straw medium in height and very strong. Spreads at lower joints. Fine for rich ground and one of the best producers on poor land. Resists crown rust. It will take a lot of punishment and still come out on top with a record breaking yield. Kernels good size and makes fine feed. We recommend this variety to anyone who wants a highly productive early variety. Our seed is first class quality, cleaned, plump, bright seed. The kind that makes big yields. See page 32 for prices.

**IMPROVED
SEED OATS
MAKE
MONEY**

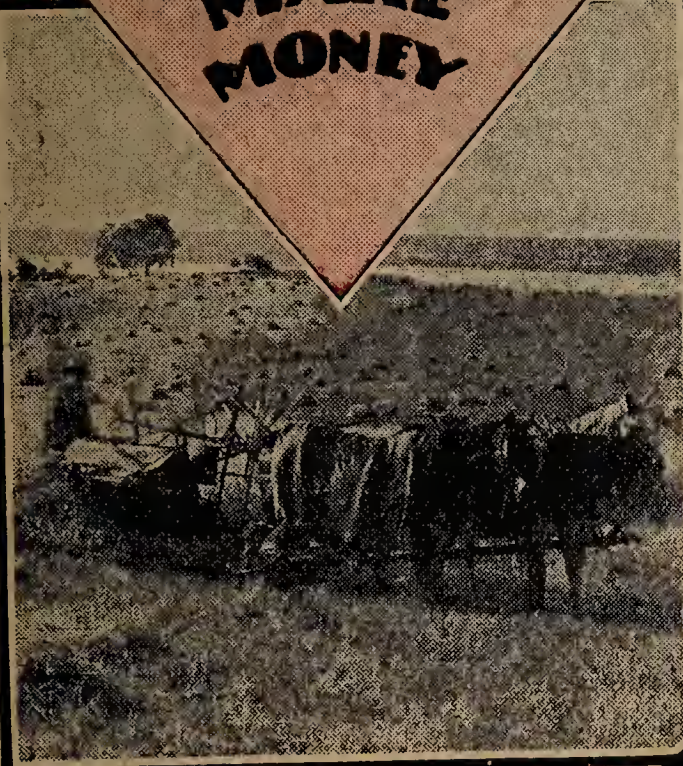
**OUR FAMOUS
GREEN MOUNTAIN
SEED OATS
A Great Favorite**

**STAR
OF THEM
ALL**

We have seen this oat make phenomenal records, in the corn belt. A field of Green Mountain Oats is sure to attract a lot of attention. One farmer living on a main road in Iowa had a 30 acre field of these oats. Their strong, vigorous growth and dark, healthy color caused a lot of men came along and stopped to examine them some thirty-five or forty at such a wonderful comment. During the time we stopped to express their astonishment. It weighed out 15 bushels more per hundred, making a yield by weight of 108 bushels per acre. It all sold for seed at \$1.00 per bushel at the farm.

Superior in Many Ways

A vigorous grower. Resistant to smut, blight, and rust. Large grains, color white, hulls very thin. Long bushy heads heavily loaded with grain. Stiff, fine textured straw. Will stand up longer after ripening. Prolific stooler. Requires less seed per acre. Quite early. Withstands adverse weather conditions. We cannot give a word picture of our Green Mountain that will do it justice. You'll never appreciate its remarkable quality until you grow them. Our seed supply is exceptionally fine this year and we know you will be delighted with your investment in this variety. See page 32 for prices.



**GOLDEN
RUST PROOF**

Some farmers have become discouraged with their oat crop because it seemed that unfavorable weather conditions so often caused a heavy reduction in yield. If you have encountered such conditions we ask you to try our Golden Rust Proof. They will stand more punishment and still come across with a good yield than any variety we know of. It is one of our heaviest producers and a big money maker. Has yielded well over 100 bushels per acre.

Description

Our Golden Rust Proof is a yellow oat. Medium sized kernels with thin hulls. Quite early. Medium length, strong textured straw. Our seed is re-cleaned and heavily fanned. Nice plump bright colored stock.

There is always a good local demand for better seed oats. Neighbors are quick to see superior quality and yields. They are willing to pay a premium for seed.

Be the one to start this revelation in your community. Lead the way to more profitable oat production. The leader gets the greatest financial benefit. An investment in such seed stock pays handsome returns.

**NEW
HULLESS**

**No Hulls—All
Meat**

This is radically different from ordinary varieties. The grain threshes out similar to rye only the grain is softer. No waste of hulls. Feeding value is higher. They will yield well often exceeding many of the better types of hulled oats in production. Considering the absence of hulls and increased food value the actual returns are large even though a smaller number of pounds are produced. You will like this remarkable variety.

**IOWA
103**

**The White
Kherson**

This variety is extremely early. Straw is short and grain heads unusually large and heavy. The standing crop looks like almost a solid mass of grain. Considering its early maturity it is the heaviest producer. The grain is of fine quality.

It is admirably suitable for a nurse crop because of its shorter straw and early maturity. Escapes hot weather damage. Does not shade clover seedlings too heavily. These White Kherson Oats are in our opinion the most profitable of the very early varieties. Our heavy producing strain of heavily cleaned stock is distinctly superior seed, and we urge its use, wherever a money making early white oat is desired.

ROYAL BANNER

Great big golden yellow beauties. Astonishingly heavy, weighing 40 to 45 pounds per measured bushel. Northwestern grown stock. Heavily productive. Similar to our New Victory in size but grains yellow instead of white. Medium maturity. Good length strong straw.

I am sure many of our customers have never grown, perhaps never seen such a marvelous oat. You should be able to sell much of your first crop for seed if you introduce them in your neighborhood. This stock has cost us a fancy premium but we are selling them on a close basis. See page 32 for prices. Our seed is re-cleaned and high quality. Guaranteed to satisfy you in every way. Return if not fully pleased.

**Good Seed
—Carefully
Prepared**

We select our seed carefully and get the best producing strain for you. Since the grain is soft it is a little more easily affected by smut. For that reason we treat our seed with copper carbonate which kills smut and thus produces clean high quality stands. You see we take special care to see that you get the finest seed that will give you the greatest possible yields of first quality grain. See page 32 for prices.

**YELLOW KHERSON
OR IOWA 105**

An early yellow oat that originated out in Iowa. A very heavy yielding early yellow variety. The Iowa Experiment Station at Ames, developed this and they have lot of reasons to be proud of their accomplishment. Its very early maturity helps it to escape the damage of hot weather that sometimes overtakes the later maturing kinds. It is largely grown throughout the corn belt. Straw somewhat short and very strong. One of the best varieties for very rich land.

We do not recall ever having had one complaint on the many thousands of bushels we have sold. The fine quality of this thin hulled oat plus its large production makes it a general favorite. Our seed is improved re-cleaned stock.

New Athens, Ill.
Gentlemen: Was certainly well pleased with the Alfalfa and other seeds purchased from you the past years. Used exactly as you described them in your seed catalogs and had splendid results from them. Hoping that you will continue to send me good seeds, I am
Yours respectfully,
Chas. R. Hanft.



BARLEY

VELVET

The Kind With Barbless Beards

This is one of the newer kinds of Barley. Not an experiment but definitely proven as the best all around producer yet developed. It will outyield any variety we know of. It will stand up under any unfavorable weather with the best of them. The straw is far superior to the old kinds because there are no barbs on the beards.

The beards act as a protector to the grain under unfavorable conditions. They are as smooth as the straw itself and thus radically different from the old kinds which have the worst barbs imaginable.

Increasing Barley Acreage

Thousands of farmers are again turning to Barley growing since this variety has come on the market. Barley is the heaviest producing small grain crop in the northern part of the United States. It yields more pounds of grain per acre and it is valuable feed.

Our Velvet Barley is being grown successfully over a large territory and is being used in sections where barley has not been generally grown. You'll be enthusiastic about it too after growing it. See page 32 for Sale Prices.

SEE PAGE 32 FOR PRICES



WISCONSIN PEDIGREE 38 TYPE

Improved Barbless Barley

This is an improved type of the Velvet Barley. On a four year test it made an average yield of over 50 bushels per acre; outyielded all well known varieties. It is a smooth awned, white six row barley. Has been introduced extensively the past two years in Illinois. In a few years it will be one of the most popular varieties grown. The barbs have been removed from the beards by a breeding process. No discomfort in harvesting and threshing this variety.

The Best for Malting and Brewing

A large brewing concern has made several tests and found the Pedigree 38 Type exceedingly fine for both malting and brewing purposes. Other Maltsters have made tests and predict this variety will become the great malting and brewing barley of the country.

It is to your advantage to buy this type of barley. It is practically free from disease. Yields from ten to forty percent more than other popular varieties.

Every farmer should grow barley. During the past two years it has been the best paying grain crop on the farm. We have talked to a good many farmers in our office about barley. Most of them claim they could not farm without barley. This is a nice big plump barley. Buy this variety and obtain an extra yield that will more than repay you for the cost of the seed.

ODERBRUCKER

One of the heaviest producers. An old variety that has been proven most reliable. In tests with other barleys of the same type it has excelled in yield per acre and quality of grain. Straw is very stiff. It has shown a marked superiority in drought resistance. Kernels a little larger than the average and weighed heavier per bushel. In feeding analysis it showed a higher protein test.

Here again we would emphasize the importance of good seed. You may be growing the same variety on your farm. Sow some of our selected and heavily cleaned seed along with it. Watch carefully and check results and yields carefully. You'll be astonished at the difference. You'll be convinced that better seed pays big returns.

VALUE OF BARLEY

It yields more than any other cereal. Pound for pound it is equal to corn in feeding value. It matures early, escaping hot weather. It is the best nurse crop for small grain. Barley does not lodge readily and withstands unfavorable conditions, especially well. Gives you greater returns per acre. Taken all in all it is a most satisfactory small grain crop and a money maker.

WHITE HULLLESS

IN A CLASS BY ITSELF
It Is Beardless and Hullless

There is no other variety quite like it. Looks more like wheat than like ordinary barley. Grain is about the size of wheat. Color white. It is sold on same bushel weight basis as barley (48 lbs.), but actually weighs out like wheat (60 lbs.). It is free from beards and is at times called Bald Barley.

Straw is quite leafy. Makes heavy crop of fine hay if cut while grain is in the dough stage. Yields up to 40 to 75 bushels per acre. Not quite so good for nurse crop as other barleys but in great demand because of its heavy production.

Superior Feed Value

This barley puts gains on livestock quickly and economically. Many feeders mix this with oats and grind together. It's a wonderful combination. Or use it with corn and it will excel corn alone in results. Plant some of this crop. Give your stock a change of feed and see how much better they will do. Our seed stock is first grade quality.

MANSHURY

A six rowed variety originally introduced from China. An old reliable kind and very extensively grown in the United States. Considered one of the best feeding barleys and a very good yielder. Our strain of Manshury has a plumper berry than the old type and will yield from 10 to 15 bushels more per acre. Our seed stock is plump, bright, clean heavy seed. This kind of seed is necessary for the largest yields. You are spending your money wisely when you purchase such seed.

MALTING QUALITY OF OUR VARIETIES

The varieties we offer are the very best for malting and feeding purposes. It is important that you sow good clean seed free from disease. You get larger yields and a higher grade of barley. Maltsters require clean undamaged grain of high quality. It has to be pure.

We have discontinued handling the regular Beardless Barley. We found it difficult to obtain high quality seed and it was not as satisfactory for malting purposes as the varieties we have listed on this page.

The Velvet or Barbless Types are superior for malting and cereal purposes. The Oderbrucker and Manshury are old well known varieties used a good many years for malting and feeding.



Gentlemen: Wish to say that the hundred pounds of America's Best Mixture I got of you last spring made one of the finest stands of grass. Any farmer that wants to build up his soil would do well to use it.

(Signed) Edw. E. Miller.

Sheldon, Ill.



Gentlemen: I have sown your seed for a few years and have splendid results. I am always glad to recommend your company as I have always found your seed as-represented.

Yours truly,
(Signed) John F. Mills.

Bridgeport, Ind.



3 Spring GRAINS at SALE PRICES

See page 32 for prices

SPELTZ

A Grain of Unusual Qualities

Speltz, also called Emmer, is quite different from the ordinary grain crop. It resembles Barley but is really a species of wheat. The grain is broader than Barley, and the kernels are not so tightly enclosed in the hull. The grain is softer. The shuck and grain both have good feeding value. It makes a rich feed that is palatable and relished by all kinds of live stock.

Characteristics

It is a Russian grain. It is very resistant against cold, being grown in the northern states, Alaska, and in semi-arid regions. You will find it a remarkable drought resister. Neither is it easily affected by rust or blight. The straw is pithy and strong. Maturity is very early. A fine nurse crop. Produces a grain crop under dry conditions that would cause a failure of other small grains. It seems to adapt itself to wide variations in climatic conditions. You will find it growing over a wide territory.

Fine Stock Feed

You can use it for poultry feed. Cows show a marked liking for it and it is often fed with bran and shorts to milk cows. Hogs thrive on it. It is a fattening grain and will put weight on hogs and cattle in a hurry. Speltz helps to cut down feed bills. It is good for pasture, fattens in the green state, and is a heavy stooler. We are sure you will like Speltz, and that it will prove a very profitable crop for you.

Easy to Grow

Prepare ground same as you would for any small grain crop. Sow 2 to 2½ bushels per acre. Drill or broadcast. Harvest when in hard dough stage. Thresh with ordinary grain thresher like wheat, but use fewer concaves.

Consider its resistance against disease and drought and cold; its early maturity; its heavy yields; its high feeding value and palatability. You will find it worthy of a trial and once tried we are sure you will always want some Speltz on the farm.



SPRING RYE

A Many Purpose Crop

Our spring Rye is just as different from winter rye as spring wheat is from winter wheat. You sow it in the spring only. It can be sown early. Grows rapidly. Can be used exclusively for a quick pasture or pasture it a while and then take your grain crop. May be cut in the soft dough stage for hay.

A Crop That Is Needed

This spring many a farmer is going to want some pasture or hay as quick as he can get it. Our Spring Rye fills that need admirably. Or if you need an early grain crop you again find this crop ready to meet your needs. The value of Rye for feed is well known. This variety produces heavy yields and makes a fine paying crop. You can use it, too, for fertilizing purposes. A good crop of Rye plowed under adds lots of humus.

Excellent Seed Stock

We are a little short of our usual supply of spring rye but can take good care of early orders. The seed is guaranteed first class quality and will please you in every way. You can return anything you receive from us if it does not please you and get your money back promptly.

Treatment for SMALL GRAIN

New Improved Ceresan only costs around 2 cents per bushel. It is applied dry. Half an ounce treats a bushel. Controls stinking smut of wheat, covered smut and stripe in Barley and loose and covered smut of oats. Increases stands and yields. Easy to apply. Full directions with each package. Profitable even on smut free seed. A wise investment. Use it this Year

Prepaid Prices:
1 lb., 75c;
5 lbs., \$3.00.

SPRING WHEAT

The Famous New Marquis

This early beardless spring wheat is a most satisfactory variety. It is very early. It occupies foremost rank as a yielder and produces a very fine milling wheat.

New Marquis matures a week to ten days earlier than the average. Thus it escapes hot weather damage and also can be sown farther south. It combines quality, productiveness and earliness in a degree we have never seen equaled. Being a smooth headed variety it is more pleasant to handle. The berries are quite hard, dark in color, fairly short, and exceedingly plump. New Marquis has taken some wonderful prizes at grain shows. Has a high percentage of gluten, better color and greater absorption.

Northern Seed Superior

You will get the biggest yields and best quality if you sow only northern grown seed. It has proven its superiority so often that we no longer handle any but the Northern stock. Our seed is beautiful. Fine colored, plump, sound berries. The seed is carefully cleaned, of course. It is the most paying kind to sow. Assure yourself of the best success by purchasing this seed. It will cost you more to start with but you'll be better satisfied.



Almond, Wis.
Gentlemen: I never received your March price list, but am enclosing another order for seed. I always get my seed from you and am always satisfied and have good luck with them. My Alfalfa field that I planted with your seed was surely a picture last fall. Yours truly,
(Signed) Ira H. Lamb.



Brant, Mich.
Gentlemen:
Enclosed another order for 200 lbs. of America's Best Mixture. I sowed this seed last year, and it was very satisfactory.
Yours very truly,
(Signed) M. Carstensen.



SEED CORN

It Pays to Plant Better Money Makers

There are two ways to look at this matter of Seed Corn. How much does it cost per acre? How much will it yield per acre? The answer to the second question is by far the most important. Our customers are producing more corn per acre because we are supplying them with better seed. Seed Corn from fields that were big profit makers.

The cost per acre is not a big item even with the most expensive seed. It's the yield that counts. We don't go in for show corn. What our customers want is more bushels of good corn. We help them to produce corn at a lower cost per bushel. The fame of our seed corn is spreading far and wide.

Order Seed Corn Early This Year

Supplies of good seed corn are short this year. Most corn carried too much moisture and was badly damaged in germination. Some corn that tested all right early will not test right now. Be sure that your seed has good growing power. Next get heavy producing strains. Good producers showing proper germination are not going to be plentiful. Protect yourself on seed corn by ordering early.

Fair Supplies on Hand

We take care of early orders on practically all varieties. Orders for seed corn started coming in December. There is going to be a big demand this season. Don't take chances on your seed. Don't wait till the last minute and take what is available. Select and order now. I'm not trying to scare you. I'm simply giving you facts.

CORN GUARANTEE

We guarantee our Seed Corn to be carefully graded and high germinating seed. It has been tested and you may test it again if you wish. If you fail to find our corn as represented, if it does not satisfy you or if for any reason whatsoever you do not want to keep it you may return it within thirty days after date you receive the shipment. We will promptly refund your money plus any freight charges you paid.

AMERICAN FIELD SEED CO.
Chicago, Ill.



**LOW
PRICES
ON
SELECTED
TESTED
SEED**

**MORE
BUSHELS PER
ACRE**

Illinois Special

This is a wonderful variety of heavy producing yellow corn. Maturity about 110-115 days. A heavy cropper. Illinois Special has been grown throughout Central Illinois for many years. In recent years it has brought its astonishing yields to farmers in widely spread territory. We do not hesitate to recommend it as the heaviest yielding variety we have.

Description

Ears 10 to 12 inches in length and 7½ to 8½ inches in circumference. They are well shaped, well filled with 16 to 18 rows. Fairly large cob. Kernels are rather dark yellow. Large germ making it a strong grower. This is a large type of corn that leads in production even under unfavorable conditions.

Stockman's Favorite

The feeding value is high. Contains more oil and carbohydrates. You get more real food value in every bushel. Helps you reduce costs on your feeders. Makes bigger gains per bushel. Successful feeders say it is the best "Cattle Corn" they ever had. Large yields and high feeding value makes Illinois Special a big profit builder. Such seed corn is good investment even at double our price. If you like big ears, and lots of them clattering into the wagon in the fall you'll like our Illinois Special.

See page 32 for Prices.

1 lb. postpaid 25c. Any variety in this catalog.

KRUGS IMPROVED DENT

Krug's Dent has made a name for itself in the corn belt. Wherever grown it has proven an extraordinary producer. It ranks right along with our Illinois Special and is a little earlier in maturing. This was developed by crossing Reid's Dent (smooth type) with the Gold Mine. We have records of a test of over a hundred varieties that was conducted over a four-year period. Krugs proved the best yielder of all.

Rich Color—Solid Ears

The ears are a little smaller than our Illinois Special but they are very solid and are produced in great abundance. The deep yellow color speaks for its superior feeding value. Krug's Dent gives you earliness plus heavy yields. This variety meets the needs of many corn belt farmers better than any other we know of.

Improved Seed Stock

We have a supply of very fine seed that we consider superior to most Krugs seed available. It has been carefully graded, shows a strong germination test and is surely great planting stock. Let us supply you with some of this tested seed. Prepare yourself for bigger yields per acre. Such seed is worth more than our low price. This acre cost is reasonable. See page 32 for quotations.



Gentlemen: Wish to tell you how pleased I am with all the seed bought from you. I have tried your Alfalfa, Clover and Timothy and some of your seed oats. I think that you have the finest seed on the market.

(Signed) John Yonker,

Hamilton, Mich.



Gentlemen: Please send a sample of Grundy County Sweet Clover, and Special Superior Sweet Clover, as I want some good Sweet Clover for spring sowing. You can tell the world that all seed I have purchased from you has been satisfactory.

Yours very truly,

(Signed) Roy Stoneburner.

Warsaw, Ind.



REID'S DENT

GOLDEN GLOW

An Old Stand-by Improved

We are sure that this is the best known variety of corn in the United States. It has won all manner of prizes at leading corn shows. Like many of the older varieties many strains have been developed. Everything that goes by the name of Reid's Yellow Dent is by no means all the same kind of corn.

Improved Reid's Dent

The strain of Reid's Dent that we have has been bred up for big yields of high quality corn. It's not show corn we care about but more bushels of sound corn per acre.

It is somewhat rougher than the average Reids and one which we believe will dry out quicker than the old smooth type. It is a better feeding corn as the kernels are not so flinty. The ears are 9 to 11 inches long. Cylindrical in shape. Well filled butts and tips and straight rows. Deep kernels. Light yellow color. Matures in around 110 days.

Plant American Reid's Dent

We consider our strain of Reid's Dent superior in yielding quality to any other on the market. Try it out. If you want a high grade heavy producer of medium early maturity you'll find this a leader in the open field pollinated class. We are proud of it and recommend it most highly.

The **ACRE**
COST *for*
IMPROVED
SEED CORN
IS
SMALL

Early Maturing—Heavy Producer

Golden Glow is a great favorite with northern corn growers and is popular wherever a big producing early yellow variety is desired. It grows a taller stalk than the average early kinds and matures a beautifully shaped ear, 7 to 9 inches long. There are 16 to 18 rows on a cherry red cob. The kernels are golden yellow and quite soft. It is hard to excel as a feeding corn.

This variety is used for husking in the southern parts of Minnesota, Wisconsin, and Michigan. It is very popular even in the northern parts of these states for ensilage purposes. A trifle earlier than Silver King and a little later than Minnesota 13.

A Very Profitable Corn

We recommend this as the best producer of the earlier types. It yields more bushels of good sound corn per acre. We know of nothing in its class that will equal it. As a money maker it stands out in front. Large production, high feeding value, excellent quality and good stalk growth. We have some extra good Golden Glow seed and will ship you some highly satisfactory stock.

Disinfectants

The farmer of today knows that corn is affected by certain diseases such as seedling blight, and rots of stalk and root. These diseases can be controlled by dusting the seed with scientific chemical compounds such as Merko. Such treatments also strengthen germination and permit earlier planting. The acre cost is low. A pound treats 6 bushels of seed. It pays to use it. Price of Merko: 4-oz. can, 50c; 1 lb., \$1.25; 5 lbs., \$5.50. Postpaid or express prepaid.

EARLY YELLOW DENT

This early corn was developed from the genuine early strain of Reid's Dent. Using that as a base we have by field selection secured a 100 day corn that is a very profitable producer. The ears are not quite so large as the Reid's, but it produces lots of them. It was originally prepared for our trade in Northern Iowa, and Illinois, Wisconsin, Michigan, Minnesota, and Dakotas.

We sell lots of this variety in these states. In recent years our eastern customers have found that they could grow it where they formerly thought only flint corn could be used. Our trade on it is growing steadily.

Description

This is a smooth true dent. The grain is somewhat harder than the parent strain. Has a somewhat flinty appearance. Stalk is thick and short. Cob quite small. Ears uniform as to length on stalk and size. We have some very fine seed in this variety.

See page 32.

LEGAL TENDER

The Choice of Many Growers

Many of the best corn growers maintain that this is the only variety to grow. It is a standard type that has been established for a good many years. Legal Tender shells out remarkably heavy, a bushel of ear corn often yielding 60 lbs. to the bushel of shelled corn. It is one of the extra heavy producers of the corn belt and has many points of superiority. As with other older varieties, there are a good many strains of it. You are interested of course in securing the one which yields the largest number of bushels of good corn per acre. We believe we have the most productive strains of Legal Tender to be had.

Description

The ear is quite large. It is considerably rougher than the average Reid's Dent. The grains are broader and deep. Medium sized cob with a small shank. Easy to husk. Ears are well shaped. Color light yellow. Maturity around 110 days. Foliage somewhat heavier than average. We have a first class high quality product in our Legal Tender that will make an enviable name for itself anywhere it may be planted in corn belt.

Get Our American Strain

To secure maximum production, requires the use of the best developed strains. You will find our Legal Tender a top notcher. The seed is carefully graded. The germination is strong. It's just the kind of seed critical farmers demand. Seed capable of producing the most profitable crops. See page 32 for our Star Bargain prices on Quality Seed Corn.



Fair Oaks, Ind.
Gentlemen: I have been very successful with your Alfalfa seed. Sowed Grimm last spring on ground that was said would not grow it, but had a good seed bed and it is almost ready to cut now. Sowed it with oats. Most all farmers around here have decided it was in good seed.
(Signed) W. Rohrabough.



Aurora, Ill.
Gentlemen: I have been more than pleased with every order of seeds bought of you for several years, especially as to quality and price. Have bought hundreds of dollars worth of seed, and always got good seed. I like your system of doing business.
(Signed) Levi Carr.



ILLINOIS IDEAL

The Great White Corn of the Corn Belt

This is one of the largest varieties of white corn that can be grown over a wide latitude. The farmer who is tired of small ears and wants a big white variety will find just what he is looking for in our Illinois Ideal. It is an enormous yielder yet early enough to mature in the main corn belt. It is without doubt the largest early maturing corn we have ever seen. Sometimes outyields common kinds by 35 to 40 bushels per acre. Its production is a sensation in most sections. If you want something big and profitable select this variety.

Description

Illinois Ideal is a white corn. Produces big ears often 11 to 13 inches long and often two ears on a stalk. Stalk is large and strong. Kernels are large, dented, and of medium length. Ears are quite cylindrical in shape and well filled. Rows are quite straight. Single ears will weigh as much as 1 to 2 lbs. It certainly is a wonderful corn.

You can show your neighbors something great in corn production by planting this variety. Such heavy yields naturally add to the profits of the grower.

We have fine and high in germ 32 for prices.

stock carefully graded ination. See page

A FEW CENTS MORE for SEED MAKES EXTRA DOLLARS IN PROFITS

SEE PAGE 32 FOR PRICES

BEST IMPROVED SILVER MINE

The Reliable Mortgage Lifter

Our Silver Mine is noted for its ability to produce paying crops even under adverse conditions. It has long been regarded as the corn that would meet nearly any conditions of soil, rainfall, temperature and tillage.

It stands up under abuse and responds wonderfully to good treatment. The deep root system of Silver Mine makes it an excellent drought resister. Its ability to mature in about 100 days insures producing sound corn even during trying years.

American Silver Mine is a white corn, worthy of our highest praise. It deserves its popularity as the "best-seller" in our white line. You'll understand if you grow it why so many farmers consider it the greatest corn they ever handled. There is no better kind for poor land and it ranks with the best on richer soil.

Description

Ears cylindrical. Small white cob. Kernels deep and rough. Color, creamy white. Stalk a little below the average in height. Root system stronger and more vigorous than most varieties.

This year we have a beautiful supply of our Improved Silver Mine. You will be perfectly satisfied for it sure has the quality. Seed comes from a heavy producing field. Germination is strong. Stock is carefully graded. It's real seed corn and we are selling it at very reasonable prices. See page 32.

SAINT CHARLES WHITE

The Great Ensilage Corn

The St. Charles White is distinguished by its red cob and chalky white kernels. In great demand by millers on account of its extreme whiteness. Makes extra fine meal. Usually sells at a premium to millers.

It is a very heavy grower producing a large amount of foliage as well as a big crop of large well shaped ears. It is one of the most desirable fodder crops, and for ensilage can hardly be surpassed.

If you are growing white corn for market you should be growing St. Charles White. If you want to fill a silo from the smallest possible acreage, select this variety. Will yield up to 40 to 50 tons of green feed per acre. Ears 9 to 12 inches long. Grains are medium rough and quite deep.

Our stock is the purest grade that has been carefully prepared for planting. Tests strong. The price we have on our St. Charles is a bargain price, considering the fine quality.

WOODBURN'S YELLOW DENT

Rapidly Gaining Favor

We have had so many calls for this Corn, we decided to offer it in our Catalog. It is one of the leading varieties of yellow corn grown in northern Ohio and Indiana. Farmers in northern part of Illinois who have grown this variety were well pleased. The Ohio Experiment Station recommends it highly as a heavy yielder and its ability to get out of the way of early frost. It ripened and fully matured this past year in the northern part of the Corn Belt, where Reid's Yellow Dent and other well known varieties failed. A dependable variety and heavy producer for the cattle feeders. Also profitable corn for the market.

Description

The ears are fully as large as Reid's Yellow Dent, running from 9 to 11 inches long. The grains are deep yellow color. The cob is medium size and has fairly long kernels. Matures in 100 to 110 days, depending on the season. An ear of Woodburn's Yellow Dent looks like a prize winner. See page 32 for quotation.



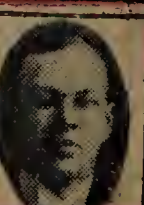
Oxford, Wis.
Gentlemen: Enclosed another order for \$56.10. The last two seasons I have bought my Clover and Alfalfa seed from you. Have never sown any that germinated as well as your Pinnacle Brand.

(Signed) L. M. Purdy.



Navarre, Ohio.
Gentlemen: We are enclosing another order and check for seed. We have always been very well pleased with your seeds and your prompt service.

(Signed) Russell D. Shetler.



OUR PRICES ON GUARANTEED SEED SAVE YOU MONEY

PRIDE OF THE NORTH

Our Pride of the North is a very popular variety. It ranks as a favorite not only with our northern customers, but with all who want a good producing early yellow variety. It is extensively used for late planting or where an early feeding corn is desired.

This variety has a smaller stalk growth and does not use as much space as required by larger kinds. It stands thicker planting. While the ears are a little smaller you will be surprised at the yields it produces by having four or five stalks to the hill. We have seen it outyield later varieties.

Characteristics—The ears are medium size, about 8 inches long, and quite large around in proportion to their length. The kernels are quite deep and of a rich yellow color. It has a pinched dent. The stalks, although short, are large and vigorous growers. We believe our Pride of the North is one of the best producing strains and our seed quality is excellent. Usually matures in 90 to 95 days.

EARLY RED WHITE CAP

This is also known as the Red 90 Day. A fine variety to plant for early feeding corn. Cattle feeders like it very much. Gives excellent feed supply before main crop matures. Saves on feed bills. Yields well. One of the best varieties for late replanting. A very hardy, strong grower. Succeeds under conditions when others fail to make profitable yields. It certainly deserves the wide popularity it has. Every farmer should try to include at least a few acres of this variety in his crop schedule for this year.

Description—The color is cherry red and on top of the kernel there is a white or light yellow cap. The white cob is of medium size. Ears are 8 to 9 inches long and usually have 14 rows of kernels. Stalks are of medium height, and the kernels are dented. This variety should make a good crop as far north as Minneapolis.

We have a carefully selected lot of this Red White Cap Corn. It is a strain that has been kept true to type, high in production and vigorous in growth. You will get a superior article when you order this variety of ours. See page 32 for prices on all varieties.

RAINBOW FLINT

Called Rainbow because of many different colored kernels on each ear. A strong vigorous grower. Resistant to unfavorable conditions. Makes a larger stalk growth than most flints. Matures later than most flints. Used extensively for ensilage in the north. Excellent yielder of fine solid ears where seasons are a little longer. Matures about like Golden Glow. Superior to other flints in forage production.

We have a very choice stock of high germinating seed for you. You will like this drought resisting and heavy producing flint.

Postpaid Price: 1 lb., any variety of corn in this catalog, 25c.

YELLOW WHITE CAP DENT

This variety is similar to our Red White Cap in many ways. It is even earlier than the Red. Kernels medium yellow color with a white cap. Ears quite long and well filled. Kernels of medium depth and dented. A good producer and an extra good yellow variety. We have yet to receive a complaint on our Yellow White Cap. Its earliness gives early feed and permits of late planting.

It is practically in a class by itself and we recommend it highly as a wonderful early variety.

LONG FELLOW FLINT

A very popular yellow flint variety. Ripens in 75 to 85 days. Very productive. Grown extensively in extreme north. Ears are long. Kernels large and wide.

Color rich glossy yellow. Cob very small. Stalks about 7½ feet high. Ears about 3 feet from ground. Our Longfellow flint is extra good seed and reasonably priced.

Sanford's Flint

This is a white flint maturing in 75 to 85 days and is a very productive variety. It gives excellent results in Minnesota, Dakotas, Wisconsin and all northern including the New England states. Stalks are quite leafy and is used for ensilage as well as mature crop. Widely grown where early feed is desired or real late planting is necessary in the corn belt.

Description

Eight rowed, white, ears 10 to 12 inches long and two and a half inches in diameter. Large broad kernels, stalks grow taller than the average flint. Grows two to three ears on a stalk. A standard flint of sterling qualities.

SILVER KING

This wonderful variety has been the means of extending the corn growing industry over a greater amount of new territory than has ever been done by any one variety. It is also known as Wisconsin No. 7. It is especially adapted to growing in Northern sections. It has produced phenomenal results in northern Iowa, Minnesota, Wisconsin and Michigan. It gives a good account of itself wherever grown.

Description

Ears are from 8 to 9 inches long, and run very uniform. Ears are well filled, and kernels are of good length, set in straight rows. In our opinion it is the greatest and earliest white dent and for the northern part of the corn belt it is a most profitable kind to grow. Our Silver King is fine.



Windsor, Ill.
Gentlemen: Regarding the seed corn, a few years ago I planted your seed corn in a cold wet spring. My neighbors planted crib corn and had to replant. I was the only one that had good solid corn. Yours very truly,
(Signed) C. W. Shumaker.

See page 32 for prices.

**BEST VARIETIES
LOW PRICED**

**SEE PAGE 32
FOR PRICES**

**WRITE FOR
PRICES ON
LARGE LOTS**



**Value of
Soy Beans**

This crop combines heavy production, high feeding value, and soil building power. It can be used for hay, for seed, for pasture, or simply as a fertilizer. And the finest thing about it you can grow the crop on very poor land. Even land that is sour will grow soy beans without lime. We know of thousands of acres of poor land that were changed from loss to profit acres by growing soy beans on them.

They make good hay if cut while the beans are well formed but before the leaves begin to drop. Yield 2 to 4 tons of hay per acre. Feeding value is equal to Alfalfa. Produces 20 to 30 bushels of ripe beans per acre. You can pasture when 8 inches high.

Easy to Grow

Soy beans are easy to start. Spring plowed land is generally best. Work up a good fine seed bed. Plant at corn planting time or after. Harrow a few times when small. Cultivate only when plants are dry.

The amount to plant depends upon variety and purpose you want them for. For seed crop in rows 1½ feet apart 25 to 35 pounds per acre. For hay or pasture in rows drilled 6 to 8 inches apart 1½ to 2 bushels per acre.

MANCHU

Very Popular

One of the best known and most popular varieties in the corn belt. Medium early (105 days). Holds seed well. Excellent for hogging off with early corn. Classified as a seed type but also grown extensively for hay. Grows erect. Has strong stems. Adapted to a wide range of soil. A heavy seed producer. Color of beans yellow. This is one of the best all around varieties. A bean that you can depend upon as a most satisfactory kind to grow.

SOY BEANS

CAREFULLY CLEANED SEED

ILLINI

A Bean of Extra Fine Quality

This is one of the best all purpose beans. An excellent seed producer. Good for hay in northern Illinois and points north. Matures in about 105 days. This is neither a big coarse or a small weak stemmed variety. It classifies as medium. Is generally known as a seed type bean. Beans are a light yellow color.

There is a heavy call for this variety as its valuable qualities have been proclaimed by many and farmers find them big money producers. We can recommend them highly and have a very fine supply of these Illini beans. Guaranteed to please. See page 32 for prices.

VIRGINIA

One of the Best Hay Varieties

This variety is what is generally known as a hay type bean. Makes a larger growth of vine and produces enormous crops of hay. Stems are slender, making it easier to cure and also giving a finer quality of hay. Will make more production on poor land than any bean we know of. Seed brownish in color and smaller than the average.

Takes less seed per acre. Not recommended for a seed crop north of central Illinois but extra good for hay. Grows on a wide range of soils. Medium late in maturity.

The demand for Virginias is generally greater than we can supply and therefore advise early ordering. The quality we have is fine and our prices are bargain prices. You will get a star value in each variety. See page 32.

DUNFIELD

One of the best yellow seeded all purpose varieties. Good both for hay and seed production. A heavy yielder. Fine for hogging down. Stands up well at maturity. Does not lose its seed readily. Adapted to rich, medium and poor land. Medium early (about 105 days). Stems, leaves and seed medium size. We consider the Dunfields as among the top of the list in the best money making varieties. A profitable kind for a wide range of soil and climate.

**WILSON
BLACK**

An excellent hay variety. Medium late about 122 days. Grows very extensively over a wide area for hay. Plants are slender tending to twine at the tips. A big producer on all soils. One of the best for poor lands. Seeds small, color black. Very nutritious. Good for planting with corn for ensilage. For a growth of fine hay you will like this kind.

BLACK EBONY

Good for Both Hay and Seed

This well known bean is adapted to a wide range of soil and climate. It is not easily affected by unfavorable conditions, and is one of the most dependable varieties. A heavy seed producer and an excellent hay variety as well. Plant grows quite erect, and of a bushy habit. Stems small, leaves medium large. Seed medium small, color black. This is a very fine bean, widely grown and very satisfactory. We recommend it highly. Our trade on Black Ebony is growing year by year.



La Porte, Ind.
Gentlemen: I would like to know the price you would make on Soy Beans, in 25, 50 and 100 bushel lots, and also 300 lbs. of Sudan Grass. As I sent you an order of \$160 last year on Soy Beans and seeds and I was well pleased.
(Signed) Harry Reinfurth.



Arthur, W. Va.
Gentlemen: Please send me samples of Alfalfa, Timothy and Alsike Clover. I need right smart seed this spring. I did get an awful good crop from your seed and it holds better than other grasses we get here.

(Signed) Carl Vanfleet.



Valuable Crops for Your Farm

SAND or HAIRY VETCH



These prices are bargain prices on the seed of a very valuable crop. It is a legume, a nitrogen gathering soil building crop. It is a heavy gatherer of root tubercles, and one of the best fertilizing crops you can grow. Vetch grows on poor lands where clover will fail. For sandy soil it does better than other legumes. Give it a good seed bed, and it will accomplish wonders.

Sand Vetch makes a fine growth through spring, summer and fall and remains green the greater part of the winter. The following spring it grows rapidly, maturing in the early summer. Supplies green feed over a long period. It is equal or superior to Alfalfa in food value. Sow it in spring or fall and it will produce the first bite of green next spring. The crop stands cold and drought.

Sow 20 to 25 lbs. per acre with small grain. Sow with rye or wheat if you sow it in the fall and cut them together for hay the next spring. The demand for Sand Vetch is growing. We urge you to grow it.

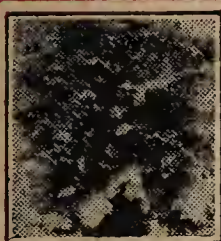
Spring Vetch

\$1.30 25 lbs. \$2.45 50 lbs. \$4.75 100 lbs.

Similar to Winter Vetch. Is an annual crop. Can be sown early. Grows anywhere. Is a soil builder. If you want quick summer pasture or hay crop, use Spring Vetch. It's an emergency crop. When sown alone use 50 to 60 lbs. per acre. Most farmers sow with Oats or Canada Field Peas or both. Sow about 30 to 40 lbs. Vetch and 1½ to 2 bushels oats per acre. Or sow about 25 lbs. Vetch, 20 lbs. Canada Field Peas with 1½ to 2 bushels of Oats. High germination and low price guaranteed.



DWARF ESSEX RAPE



\$1.60 25 lbs. \$3.00 50 lbs. \$5.75 100 lbs.

One of the most valuable forage crops grown in this country. Extra good for pasture. Exceedingly rich in protein. Enormously productive especially on moist rich soil. Phenomenal results have been secured by pasturing sheep and hogs on rape pasture. It is succulent and palatable.

Rape is economical to sow. Use about 8 lbs. per acre. Can be sown from early spring till in August. Many sow in corn at last cultivation. May be seeded alone or in small grain. Does its best in cool weather. Produces pasture weeks after other forage plants are killed by frost. Sometimes used for plowing under to add humus to the soil.

Rape will help you reduce the cost of growing live stock. Puts on a fine finish. Stock is ready for market in shorter time. It is fine for all animals, especially young ones and you can't beat it for hogs and sheep. Grow some rape pasture this year. It will pay you. We have cut our prices to bed rock. It will only cost you around 50c an acre for seed. Ours is the genuine Dwarf Essex variety and is bright, clean, high germinating and guaranteed to satisfy.

Canada Field Peas

½ bu., \$1.40; 1 bu., \$2.60;
5 bu., \$12.50

A crop that will give quick results. Sow them as early as you can work the ground. Disc in a bushel of peas with a couple of bushels of oats. Produces a big yield of excellent hay early. Can be pastured or fed green very early. Makes a fine feed. You can harvest oats and peas together for seed and separate them after threshing. Field Peas plowed under in full bloom makes a wonderful fertilizer.

This is just the crop that farmers will need this spring. Be sure to order early and get them in the ground early. They want cool weather and will stand considerable frost. We have the true northern grown Canada Field Peas and our seed quality will please particular buyers. It's thoroughly cleaned. Germination is high and our price is a real bargain. 60 lbs. to bu.

COW PEAS for FEED

SEE PAGE 32 FOR STAR BARGAIN PRICES

Cowpeas are legumes or soil builders. They make fine feed because they are rich in protein. They mature early. They will grow on poor soils and are especially well adapted to sandy or light clay loam. Like other crops they will yield more on rich land than poor but nevertheless make a profitable crop for poorer soils and make such soils richer.

The yields of hay are heavy, nutritious and palatable. Stock are very fond of Cowpeas for hay. You get more fertilizing benefit when you plow under a full crop but even with the crop removed as hay they help the land considerably.

Do not plant till the ground is warm. They are best drilled in at the rate of 1 to 1½ bushels per acre, closing every other spout in the drill, or may be put in wider rows with corn planter. Cut for hay when pods are full grown and beginning to turn. May be fed green or cut green and mixed with corn silage.

VARIETIES
Whip-poor-will—Medium early maturing and a popular variety. Brown speckled seed. A prolific yielder.
New Era—Very early (about 75 days). Easily handled by machinery. Often sown after small grain crop is taken off. Makes splendid hay.
Gray Goose—Grown in Northern Indiana. Prolific growers of hay and peas. Price same as Whippoorwill. See Page 32.
Mixed—Different varieties grown mixed together or accidentally mixed in transit or at country points. Very valuable for plowing under and extensively grown for hay.
Anyone wishing large quantities of cowpeas should write for the special reductions.






Rodden, Ill.

Gentlemen: I have bought seed of you since 1919 and am well pleased so far, and as long as I get the quality I have been I will continue.

Yours respectfully,
(Signed) Albert M. Taylor.



Milmine, Ill.

Gentlemen: I got 3 bushels of your Clover, Alsike and Timothy Mixed last year, and believe every seed grew, and I have a fine hay crop. I have ordered 3 bushels more of the same seed.

(Signed) Howard Virtue.

500 LBS.

\$19⁰⁰

PER 100 LB. BAG

\$3⁹⁰

BAGS FREE

50 LBS. ... \$2⁰⁰
25 LBS. ... \$1¹⁰

SUDAN GRASS

THE GREATEST OF ALL FORAGE CROPS

Every Farmer Should Grow It This Year

Our Price Very Low

There will probably be a wide variation in qualities of Sudan Grass seed this year. Insist on the highest quality new crop seed. Our stocks are bright and high germinating and considering the quality our prices are very low. At this very low figure you can afford to sow it liberally. No similar investment in any other crop can bring you the enormous production of Sudan Grass. All dairy farmers should have it and every stock grower who wants maximum production from reduced acreage.

Characteristics

Sudan belongs to the Cane family. It came originally from Africa. It was imported because of its drought resistance. In yield it excels cane, millet, kaffir and similar crops. Sudan is a free stoler and makes a fine quality of hay. Being a warm weather crop it should not be sown till corn planting time and any time from then on to early July. Yields average three cuttings in the central corn belt. Grows only one year. Sow 20 to 25 lbs. to the acre. Drill in or broadcast and harrow. May be used as a smother crop for weeds. Makes good ensilage and fine pasture and hay.

Consider Its Value

Why risk the danger of short pastures or hay when Sudan Grass gives so much. In spite of heat and drought it grows right along. Your milk cows will give more milk. Your horses and mules will be kept in good flesh. Your cattle will fatten on it. It will take no more fertility from the land than a crop of oats. The crop can be used for seed but its big value on the average farm is for hay and pasture. Cut for hay when in full bloom and handle like millet. May be cut before or after full bloom if desired. Some cut with a binder and cure in shocks claiming that is the easiest and best way to handle. It's a great crop, friends. You should be growing it.

Highest Quality New Crop Seed

Every pound of our seed is the finest grade, new crop, re-cleaned seed. It has strong germination and is free of bad seeds including Johnson Grass. You cannot buy better seed. Our Sudan Grass is a wonderful bargain. Be sure to sow some at this low price. Provide yourself with pasture that will flourish in the hot dry summer months. Use it for hay or green feed. It is one of the best money-making crops you can grow. The use of Sudan has been increasing rapidly in recent years and at our present astonishingly low bargain prices it will certainly sweep the nation. So easy to grow, so enormously productive, so highly palatable to live stock and such a phenomenal drought resister. Put some acres to work on Sudan and make fine extra profits.



CUTTING BILLION DOLLAR GRASS

BILLION DOLLAR GRASS

25 lbs., 85c; 50 lbs., \$1.50; 100 lbs., \$2.75

These are bargain prices on this money making forage crop. It is used for hay, pasture, silage, soiling and as a seed crop. An enormous producer yielding as high as 50,000 pounds of green feed per acre and 12,000 pounds of hay. Warmth, moisture and richness of soil regulate its growth which ranges from 5 to 8 feet. Will grow further north than Sudan and is a very popular crop in the northern and New England States as well as in the Corn Belt.

Billion Dollar Grass belongs to the Millet family, and is also known as Japan Millet. Sown about first of May it should be ready to cut for hay about the middle of July. May of course be sown later. It is a one-year crop. It yields heavily and is relished by cattle, young stock and sheep.

Makes good silage alone or mixed two parts Billion Dollar Grass and one part Soy Beans. Hay is higher in feed value than Timothy and seed is equal or superior to corn in value.

Our seed is fine and our price quality considered is low. Now is a good time to start with this great crop.

ANNUAL HOG PASTURE MIXTURE

100 LBS. \$3¹⁰
50 LBS. \$1⁶⁰
25 LBS. 85c

This quick growing combination produces a large amount of nutritious pasture in a short time. If you want a lot of extra feed this year sow some of this mixture. May be sown from early spring till the middle of the summer after small grain crops are removed. Sow 40 to 50 lbs. per acre.

This mixture is made up of annual crops only. Will provide both early and late pasture. This combination is designed to give you the heaviest yield and highest feed value. Contains peas, rape, Vetch, oats and other grains, millets, Sudan, etc. Plow up your feed lots and sow to this mixture. We are pricing our Annual Hog Pasture Mixture very cheaply. Anyone ordering some of this seed will receive a value that will help produce a wealth of feed in a short time. We urge you to try it.



Wonevoc, Wis.
Gentlemen: I have got seed from the American Field Seed Company many years, and always got good seed and a dandy stand. Will have an order for you again next year.

(Signed) Chas. Demaske.



Smicksburg, Pa.
Gentlemen: I am favorable to your seed for two reasons, first on account of the big savings and price on the high grade field seeds, and second the purity seems to be unexcelled by any other that I have ever bought. Other farmers here have used your seed with excellent results.

(Signed) Mr. J. E. Dickey.



MILLET

WHITE WONDER

A long headed, heavy producing, early maturing variety. This is a very fine type of Millet preferred by some over all others. The foliage is very heavy which accounts for its big yields. The long heads make prolific seed yields. It is a top-notch in yield of hay and seed. Leaves fairly broad. Cures readily. Seed light colored. A trial of this variety will prove its superior worth. Our seed quality is very fine. See page 32 for bargain prices.



GOLDEN or GERMAN MILLET

The genuine German or Golden Millet is a truly remarkable crop. This Millet is an enormous yielder both of hay and seed. Its tall dense growth affords a lot of fine feed in a short time. The crop is quick growing and a great drought resister. Seed yields run 40 to 50 bushels per acre. Can be sown as late as in July and make a fine crop. This fine leafy crop is certainly a great help to any farmer caught short on feed.

There is a lot of difference in Millet seed and we want you to be sure to try our stocks. Heavy producing stock is generally sold at premium prices. You will find our quotations on page 32 unusually attractive. This seed is cleaned, graded and distinctly a superior product. For feed or seed production our German Millet is a winner. Order your seed early and get the choicest stock.

PROSO

Broom Corn Millet

This variety also goes by the name of Hog Millet, a big seed producing Millet. It is not as good a hay variety as the others. The seed is considerably larger and is grown chiefly for seed. This is used in feeds of different kinds. Equal to small grains in fattening value for hogs. Poultry men have been praising its value highly, and they are largely responsible for the great interest in this crop, in the past few years.

CHARACTERISTICS

Proso Millet is one of the earliest maturing varieties, requiring about 65 to 75 days. Don't sow too early. It is partial to warm seed bed. Production 55 to 70 bushels of seed per acre is not uncommon. If small grain fails or you want a good cash-catch crop, sow Proso.

Siberian Millet

Very early. Grows somewhat smaller than the white or golden but has finer leaves. Very valuable for Northern states on account of earlier maturity. Grows two to four feet high. Seed has a reddish color. Sow 35 to 40 lbs. per acre. Makes an ideal catch crop. Fine feeding value. Anyone wishing a fine, quick growing, early maturing crop will like our Siberian Millet. Seed quality A 1. See page 32.

Hungarian Millet

Earlier than the German but not quite as early as Siberian. Very leafy and makes a good production of fine quality hay. Stools freely. This variety is widely grown. On account of its earliness it is especially good for northern states but its use is by no means confined to that section. In some places it is called Hungarian Grass. Seed runs mixed colors purple and golden. The use of this variety is increasing. Our seed is clean, bright, stock and we are pricing it very low. See page 32.

JAPAN MILLET SEE BILLION DOLLAR GRASS



CANE SEED

A Forage Crop You Should Know Better

You have probably heard about Cane most of your life, but do you know what it can do for you? It is one of the heaviest producing crops you can grow. Will produce 30,000 lbs. to 60,000 lbs. of green feed per acre with some yields as high as 80,000 lbs. The yields of cured hay 10,000 to 20,000 lbs. per acre with some records as high as 30,000 lbs. or 15 tons per acre. Seed production may vary from 30 bushels to 50 bushels to the acre with some reporting 60 bushels. Study these figures. Consider what an enormous production that is.

Other Valuable Characteristics

Cane roots deeply. For that reason it will make a better crop on poor land than corn. It gets at plant food that corn cannot reach. Its deep roots also make it a better drought resister, having a wonderful capacity in that respect. It withstands the onslaught of hot winds better. Cane is also alkaline resistant and a good crop for such land. Cane does not remove as much plant food proportionately as small grain.

How to Use Cane

For hay use 1 bushel to 1½ bushels per acre. The heavier seeding will not yield more but makes finer hay. For pasture an even heavier seeding is recommended. When used for fodder a lighter seeding rate is used depending upon the distance between the rows. Plow deeply for cane. Pulverize the seed bed well. Do not plant until after corn planting. Seed bed and weather must be warm.

Amber Cane

The earliest variety. Grown from Maine to California. Has slender stalks and narrow leaves. Suitable anywhere. We recommend it highly and should be selected by all northern customers.

Orange Cane

Somewhat later. More abundant leaves which are broader and stalks and seed heads heavier. On account of somewhat heavier yields is a favorite in the corn belt where a later cane is used.

MOLASSES CANE

Kept pure for making sorghum. Seed carefully handled but quality of sorghum is not guaranteed.

SILVER TIP—A strain of the Orange type. Produces light colored, deliciously flavored sorghum.

AMES SPECIAL—A strain of the Amber. Very juicy and productive. Quality of sorghum A No. 1.

Price postpaid, 1 lb., 30c; 5 lbs., \$1.00. Not prepaid, 5 lbs., 55c; 10 lbs., 90c; 50 lbs. or more, 7c per lb.



Little Genesee, N. Y.
Gentlemen: I just harvested 6 acres of new seeding that I seeded with your Alsike, Red Clover and Timothy seed. I got 20 tons of nice hay off of the 6 acres, and I have 6 acres more to cut of it and it is as good. It is the best seed I ever bought.
C. C. Giddings.



Winslow, Ill.
Gentlemen: I have been getting seed of your Company for the past several years, and think it is fine. Have been telling my neighbors and friends about your seeds. Below are some of their names.
Yours very truly,
(Signed) Geo. S. Robb.



Drought Resisting Grains at **LOW PRICES**

KAFFIR CORN

This is a sorghum grain crop. It differs from the regular sorghum cane in that the stalks are less juicy and the juice is not sweet. The stalks of Kaffir are stout and rather short. Joints are short and quite leafy. Seed heads are cylindrical and 10 to 15 inches long. The crop can be used for hay by sowing 60 to 75 lbs. per acre or drill in rows like corn for a grain crop using 5 to 7 lbs. per acre. When sown at a heavy rate the plants naturally are fine stemmed and the crop makes excellent forage. As a grain crop it will often produce at the rate of 40 to 50 bushels per acre. It makes excellent poultry feed and is suitable for all kinds of live stock if ground. Also good for humans if used as meal and cooked as mush. Must be cooked quite a lot longer than corn meal but otherwise fully equal and pleasantly flavored.

Good seed is of greatest importance. Seed may lose its germination readily if not harvested with care. We watch our Kaffir seed carefully and have first quality seed at bargain prices.

Varieties

We have the White Kaffir which is the Blackhull variety and the kind most commonly grown. It has stout stalks and grows taller than the average. Also the Red Kaffir is very similar to the Blackhull only has red seeds.

FETERITA

We judge this to be the best drought resisting crop that is grown for forage or seed in the United States. It has proven a great blessing to farmers in dry sections.

Resembles Kaffir and Milo being quite closely related to the latter. Seed heads are longer than Milo but more blocky than Kaffir. A big yielder of grain. Seeds are flattened, bluish white in color and larger than Milo. It matures much earlier than Kaffir. Feterita analyzes higher in protein. It is a free stooler and generally is sown at a lighter rate than other similar grains. Makes fine feed for live stock best results being obtained by grinding the seed somewhat. This is true of all the grain sorghums.

On account of its earliness Feterita is adapted to a larger territory than the Kaffir and is often planted late if Kaffir or corn for some reason fail. Plant in drills and cultivate like corn for grain. With rows $3\frac{1}{2}$ feet apart use 5 to 6 lbs. of seed. For hay in close rows or broadcast 75 lbs. per acre. See page 32 for Star Bargain Prices.



MILO MAIZE

This is also a member of the Sorghum family. The stalks are more slender than the Kaffir but have no juice in them. They grow taller and leaves are smaller. Milo is much earlier than Kaffir. The seed heads are much more compact and egg shaped. The seeds are flattened. Where seasons are short or a quick maturing kind is desired the Milo or Feterita should be your selection. Milo will also grow at higher altitude and with less moisture. Grain has good feeding value.

Milo, Kaffir, Feterita and all similar grains should not be planted until after the ground is thoroughly warm. A couple of weeks after corn planting is best. Spring plowing is preferable because it warms the land better.

BROOM CORN

There is a big demand this year for broomcorn to grow straw for brooms. The seed is scarce. We have a nice stock of very fine seed. It is the Standard Evergreen. See page 32 for prices. Postpaid, 1 lb., 30c; 5 lbs., \$1.00.

HEGARI

A sweet stalked sorgho that produces grain like Kaffir yet it is as sweet as cane. A great drought resister. May be used for hay, forage or ensilage. Also used for pasture. Very productive. Greatly relished by live stock. Plant for grain like Kaffir. For forage or ensilage double row about 18 pounds per acre. For hay use about 60 pounds. One of the newer crops and in great demand. See page 32 for prices.

GROHOMA

A cross of Cane and Kaffir. Remarkable drought resister. Excellent grain producer when planted at rate of 6 to 8 pounds per acre. Also used for hay drilled in at rate of 50 to 75 lbs. per acre. A prolific stooler. Makes very palatable feed of good value. This is a very popular sweet stalked hybrid. See page 32 for price.

Small lots either variety. Postpaid, 1 lb., 25c; 5 lbs., 75c.

FLAX SEED

This crop is grown in the United States chiefly for seed. Linseed oil is the main item and from this various products are made. The cake after pressing out oil is valuable stock food. Sow about April 10th to May 1st, further north later seeding is practiced. Use $\frac{1}{2}$ to $\frac{3}{4}$ bushels of seed per acre. Have land as clean as possible.

Use our wilt resistant seed as it helps to overcome losses from the worst flax disease. Flax is a good money crop. More profitable generally than any small grain. See page 32 for prices.

BUCKWHEAT

A quick maturing grain (10 to 12 weeks). Yields well, 20 to 40 bushels per acre. The best grain crop for poor soils. Does even better than Rye on poor land. Makes hard land mellow and friable. Can be used as a catch crop if small grain kills out. Good crop for new land. Excellent cover crop in orchards. Also used for bee pasture.

JAPANESE—The largest seeded variety. Very productive. Seeds brown and dark brown. Plants grow taller. Fine for corn belt.

SILVER HULL—Smaller seeded. Lighter colored hulls. Makes whiter flour. Plants smaller. The two are often mixed for increased production. See page 32 for prices.



Algonquin, Ill.
Gentlemen: I have used your clovers and grass seeds for a number of years and have been satisfied with the results. I have also saved considerable money in buying direct from you.

Yours truly,
(Signed) Henry Gehl.



Frederie, Wis.
Gentlemen: Regarding the Green Mountain Favorite Oats I bought from you I told you I got 87 bushels to the acre but found out later that they weighed out almost 100 bushels to the acre. You see, the thresher gave me a big bushel.

(Signed) Chas. Hedlund.

QUALITY STOCKS AT ROCK BOTTOM PRICES



SELECTED CHOICE NORTHERN GROWN INSPECTED SEED

SEED POTATOES

Prices Good For Early Orders

We have contracted for a good supply of potatoes and expect to be able to protect prices throughout the season. Our price for quality seed is low. This stock will sell fast. Please order early. Protect yourself on price and get the very best of our quality stocks.

\$ 1.35 PER BU.
 1/4 BU. 40¢
 1/2 BU. 70¢
IN LOTS OF 5 OR MORE BUSHELS \$ 1.25 PER BU.

Our seed stock is grown almost exclusively in the Red River Valley of Minnesota and North Dakota. We consider that this district produces the finest seed potatoes in the world. They have the quality, life and vigor needed for big production. Our seed is carefully sorted stock from selected seed. We will ship you a product distinctly superior to the average potato. They will make you money.

Northern Grown Seed of Proven Varieties

We handle the kinds that have established their worth. We make no preposterous claims for some little known variety. You will receive from us the kind of seed that will enable you to grow more bushels of better potatoes per acre. It pays to get this kind either for home use or market. We are selling such seed at bargain prices. Place your orders now. Shipment will be made in the spring as soon as weather conditions make it safe to ship.

Red River Early Ohios

This pink skinned potato is one of the finest, earliest and most productive varieties you can grow. Our northern grown seed will mature a crop at least a week earlier than your home grown seed. You will have a larger yield, and they will be smoother and larger sized potatoes. Up in the Red River Valley where our seed was produced they have developed this variety to a high state of perfection. No better seed can be found.

This potato has pure white flesh. Eyes are near the surface. Vines are sturdy. In yield and quality they are excellent. Most everyone likes the Early Ohio and you will be more partial to them than ever when you plant some of our improved seed.

Irish Cobblers

Also an early variety although not quite as early as the Red River. The heaviest producer in its class and a quality that is exceedingly fine. It was originally classified among the late varieties but extensive growing in the north and some selection for seed as to earliness has classified it as a medium early variety.

The skin and flesh are white. It cooks dry and is one of the best flavored varieties. Generally round in shape and somewhat oblong. Our Irish Cobbler is a great favorite with market gardeners as they find a ready sale for them, their customers calling for more. At the same time it is one of the most productive varieties. This Cobbler has been sold under other names at fancy prices and always made satisfied customers. Our selected northern grown seed is worth more to you than we are pricing them at.

Spaulding Rose

An excellent medium maturing variety. Quite a large potato, oblong in shape. It is a heavy producer. The quality is fine. Cooks white and mealy. Color is slightly red or pink. It is a good variety to select if you want a main crop type that matures earlier than the average. Vines are strong. It is a vigorous grower.

Banner

A distinctly superior variety of late potato and a general favorite with growers of main crop varieties. It is not very late and might better be classified as medium late. It is a vigorous grower and a remarkable drought resister. Goes down deep for moisture in dry years. Produces smooth, plump, handsome tubers, creamy white in color. Eyes strong, skin netted. Disease resistant. A splendid cooker. A high quality potato and an extra heavy producer.

Rural New Yorker

A standard main season variety and a very reliable one. Makes big, solid tubers of fine quality. Quite drought resistant. This potato is an excellent keeper. They remain in good shape until new potatoes come on. It ranks along with the best as a heavy yielder and is worthy of high praise.

Russet Rural

This is a variety similar to the Rural New Yorker. The skin is tougher and does not bruise as easily. Color depends somewhat on the kind of soil it is grown in. Golden Russet color on light soils, darker on heavier land. Skins somewhat netted. Stands close planting. Disease resistant and a very heavy producer.

Treatment for Potatoes

Use Corona P.D.7 or Dip Dust

Is a quick, safe method of treating potatoes to protect against losses from rhizoctonia, black scurf and scab. Costs little and very effective. Increases yields, improves quality. 4 oz. treats 6 to 8 bu. Directions on Can. Price 4 oz., 50c; 1 lb., \$1.25; sent express or parcel post prepaid.



Beaver, Pa.
 Gentlemen: Enclosed find check for \$62.20 for Alfalfa and other seeds. I bought 15 bushels of Cobbler Potatoes from you last year and they made a yield of 310 bushels—sold them at \$1.50 a bushel.
 Yours very truly,
 (Signed) F. H. Johnston.



Trivoli, Ill., March 8th.
 Gentlemen: The field seeds received and I am much pleased with the fine quality. I thank you for very generous treatment of my order, and will surely recommend your company to my neighbors.
 Yours very truly,
 (Signed) W. A. Cottingham.



REDUCED WHOLESALE PRICE LIST

**EVERY PRICE
A
BARGAIN**

**BUY NOW
AND
SAVE MOST**

**REDUCING
FROM
TOP
TO
BOTTOM**

All prices are F. O. B. Chicago. Bags are Free. Safe arrival and satisfactory quality are guaranteed. See page 2. All prices will be protected as long as our present stocks of seed last. Write promptly for free samples. We are glad to show quality.

**WE
GUARANTEE
SAVING
AND
QUALITY**

When judging prices remember that the quality back of it determines whether or not that price is a bargain. You can order our seed with this understanding. If you do not believe you have saved money you can return the seed and get your money plus freight refunded.

**PRICES
HIGHER
LATER
\$**

JANUARY-FEBRUARY-MARCH, 1936

ALFALFA

U. S. Verified or Certified and State Sealed—60 lb. bu.

	1 bu.	1/2 bu.	1/4 bu.
Utility Brand (Prime) Corn-Belt.....	\$7.60	\$3.85	\$2.00
Economy Brand (Choice) Corn-Belt.....	8.85	4.50	2.30
Universal Brand (Fancy) Corn-Belt.....	9.75	4.90	2.55
Pinnacle Brand (Extra Fancy) Corn-Belt...	10.60	5.35	2.75
Pinnacle (Extra Fancy) Northwestern Grown.	11.00	5.60	2.90
Pinnacle Brand, Nebraska Grown.....	10.90	5.50	2.80
Pinnacle Brand, Kansas Grown.....	10.30	5.20	2.65
Dakota No. 12 (Pinnacle Brand) N. Dak. Grown	11.70	5.90	3.00
Nebraska Grimm (Pinnacle Brand), sealed bags	11.80	6.00	3.10
Grimm (Pinnacle Br.), Northern, sealed bags	11.90	6.10	3.10
Montana Grimm (Pinnacle Br.), sealed bags	12.60	6.35	3.25
State Certified Blackfoot Grimm, 99 1/4 % pure	15.15	7.65	3.90
State Certified Grimm, Blue Tag, 99 1/2 % pure	14.50	7.30	3.70
Canada Variegated type (Pinn.Br.), North Gr.	11.50	5.85	3.00
Cossack (Pinnacle Br.), Northern, sealed bags	12.60	6.40	3.30

MEDIUM RED CLOVER

Utility Brand (Prime), 60 lb. bu.....	10.50	5.30	2.70
Economy Brand (Choice), 60 lb. bu.....	11.15	5.60	2.85
Universal Brand (Fancy), 60 lb. bu.....	11.75	5.90	3.00
Pinnacle Brand (Extra Fancy), 60 lb. bu....	12.15	6.10	3.15

MAMMOTH RED CLOVER

Economy Brand (Choice), 60 lb. bu.....	11.50	5.80	3.00
Universal Brand (Fancy), 60 lb. bu.....	12.10	6.10	3.10
Pinnacle Brand (Extra Fancy), 60 lb. bu....	12.60	6.40	3.25

ALSIKE CLOVER

Economy Brand (Choice), 60 lb. bu.....	11.60	5.85	3.00
Universal Brand (Fancy), 60 lb. bu.....	12.25	6.15	3.15
Pinnacle Brand (Extra Fancy), 60 lb. bu....	13.20	6.65	3.40

SWEET CLOVER

Best, White Blossom, Unhulled, 30 lb. bu....	1.60	.85	.50
Best, Yellow Blossom, Unhulled, 30 lb. bu.	1.70	.90	.50
Utility Br. White Blossom, Hulled, 60 lb. bu.	2.80	1.45	.75
Economy Br. White Blossom, Hulled, 60 lb. bu.	3.10	1.60	.85
Universal Br. White Blossom, Hulled, 60 lb. bu.	3.40	1.75	.95
Pinnacle Br. Ex. Fcy. Wh. Bl., Hulled, 60 lb. bu.	3.70	1.90	1.00
Biennial Yellow Blossom (Economy Br.) 60 lb. bu.	3.40	1.75	.95
Biennial Yellow Blossom (Pinnacle Br.) 60 lb. bu.	4.00	2.05	1.10
Grundy County Dwarf White (Pinn.Br.) 60 lb. bu.	3.80	1.95	1.00
Hubam, Annual White (Choice), 60 lb. bu..	7.80	4.00	2.10
Hubam, Annual White (Ex. Fancy), 60 lb. bu.	9.60	4.90	2.50

OTHER CLOVERS

Korean Lespedeza, 25 lb. bu.....	1.75	3.95	.55
Sericea Lespedeza, 25 lb. bu.....	7.75	3.90	2.00
White Dutch Clover, 60 lb. bu.....	17.70	9.00	4.60
Crimson or Giant Incarnate Clover.....	6.25	3.20	1.70

TIMOTHY, CLOVER and TIMOTHY MIXTURES—45 lb. bu.

Timothy, Utility Brand.....	1.60	.85	.55
Timothy, Economy Brand (Choice).....	1.75	1.00	.60
Timothy, Universal Brand (Fancy).....	1.85	1.00	.60
Timothy, Pinnacle Brand (Extra Fancy)....	2.00	1.05	.65
Alsiike & Timothy Mix. Standard, 20-25% Alsiike	3.90	1.55	.85
Alsiike & Timothy Mix. Royal, 30-35% Alsiike	3.60	1.85	1.00
Red Clo., Als. & Tim. Mix. Std., 15-20% Clo.	2.90	1.60	.90
Red Clo., Als. & Tim. Mix. Major, 30-35% Clo.	3.60	1.90	1.00
Red Clo. & Tim. Mix. Std., 20-25% Clovers	2.95	1.60	.90
Red Clo. & Tim. Mix. Richer, 30-35% Clover.	3.70	1.90	1.00
Alfalfa, Clo., Als. & Tim. Mix. 30-35% Clovers	3.70	1.95	1.05
Americas Best Mixture, 50% Clovers, 45 lb. bu.	4.10	2.15	1.15

GRASSES

	100 lbs.	50 lbs.	25 lbs.
Kentucky Blue Grass (Fancy).....	\$13.25	\$6.75	\$3.45
Kentucky Blue Grass, Pinnacle Br. (Ex. Fcy.)	14.25	7.25	3.70
English Blue Grass (Meadow Fescue).....	8.75	4.50	2.35
Bromus Inermis or Brome Grass.....	15.00	7.65	3.90
Orchard Grass.....	13.25	6.70	3.40
Red Top (Economy Choice).....	8.75	4.45	2.30
Red Top, Pinnacle Brand (Extra Fancy)....	10.00	5.15	2.65
English Rye Grass.....	9.50	4.80	2.50
Italian Rye Grass.....	8.00	4.10	2.10
Domestic Rye Grass.....	5.75	3.00	1.60
Reed's Canary Grass (Phalaris).....	35.40	17.85	8.95

GRASS MIXTURES and FORAGE CROPS

Beat-Em-All (See Catalog Page 16).....	6.25	3.15	1.65
America's Best Mixture (1/2 Clovers).....	9.00	4.60	2.40
Gold Mine Clover Mixture (All Clover Mix.)	11.50	5.80	3.00
Pasture and Meadow Mixture.....	12.00	6.15	3.15
Annual Hog Pasture Mixture.....	3.10	1.60	.85
Dwarf Essex Rape.....	5.75	3.00	1.60
Billion Dollar Grass.....	2.75	1.50	.85
Sudan Grass.....	3.90	2.00	1.10

SEED OATS

	15 bu.	5 bu.	1 bu.
Iowa 105 and Early Champion.....	\$.70	\$.80	\$.90
Iowa 103 or White Kherson.....	.70	.80	.90
Green Mountain Favorite (Northern Grown),	.90	1.00	1.05
Regenerated Swedish Select (Northwestern gr.)	.85	.95	1.00
Fulghum and Columbia.....	.85	.95	1.00
New Alberta (Northern grown).....	.85	.95	1.00
Golden Rust Proof and Silver Mine.....	.80	.90	.95
Royal Banner (Extra Fine).....	1.05	1.10	1.15
Hulless Oats (Copper Treated).....	1.65	1.75	1.80
New Victory.....	1.10	1.20	1.25

OTHER SEED GRAINS

Speltz, 40 lb. bu.....	1.15	1.20	1.25
Spring Rye, 56 lb. bu.....	1.25	1.30	1.35
New Marquis Spring Wheat, 60 lb. bu.....	1.85	1.90	1.95
Oderbrucker and Mansbury Barley, 48 lb. bu.	1.00	1.10	1.15
Wis. 38 Pedigree Barless Barley, 48 lb. bu..	1.20	1.25	1.35
Velvet Barley (Smooth Bearded), 48 lb. bu...	1.15	1.20	1.25
White Hulless Barley (Copper Treated).....	1.65	1.70	1.75
Buckwheat, Japanese and Silver Hull, 48 lb. bu.	1.20	1.25	1.30

SOY BEANS and COW PEAS

	5 bu.	1 bu.	1/2 bu.
Soy Beans, Dunfield, 60 lb. bu.....	\$ 1.30	\$ 1.40	\$.80
Soy Beans, Illini, 60 lb. bu.....	1.25	1.35	.80
Soy Beans, Manchu, 60 lb. bu.....	1.30	1.40	.80
Soy Beans, Black Wilson and Ebony, 60 lb. bu.	1.40	1.50	.85
Soy Beans, Virginia Brown, 60 lb. bu.....	1.40	1.50	.85
Cow Peas, Whippoorwill, 60 lb. bu.....	2.00	2.10	1.10
Cow Peas, New Era, 60 lb. bu.....	2.00	2.10	1.10
Cow Peas, Mixed, 60 lb. bu.....	1.90	2.00	1.10

FORAGE CROPS

Cane (Orange), 50 lb. bu.....	1.20	1.30	.70
Cane (Amber), 50 lb. bu.....	1.20	1.30	.70
Cane (Sorghum Syrup), 50 lb. bu.....	2.50	2.60	1.40
Hegari, for fodder, 50 lb. bu.....	1.75	1.85	1.00
Kaffir Corn, White, 56 lb. bu.....	1.50	1.60	.90
Milo Maize, and Feterita, 56 lb. bu.....	1.70	1.80	1.00
Grohoma, Great Fodder Crop, 50 lb. bu....	2.00	2.10	1.10
Canada Field Peas, 60 lb. bu.....	2.50	2.60	1.40
Sand, Hairy or Winter Vetch, 50 lb. bu....	6.20	6.30	3.20
Spring Vetch, 50 lb. bu.....	2.35	2.45	1.30
Flax, Fcy. Imp. (Wilt Resistant), 56 lb. bu.	3.15	3.25	1.70
Broom Corn (for Broom Straw), 50 lb. bu...	3.25	3.35	1.75

MILLETS

Japanese, 35 lb. bu.....	1.05	1.15	.65
German (Genuine) or Golden, 50 lb. bu....	1.15	1.25	.75
Siberian Millet, 50 lb. bu.....	1.20	1.30	.75
Proso, or Hog Millet, 50 lb. bu.....	1.15	1.25	.75
Hungarian (makes fine hay), 48 lb. bu.....	1.30	1.40	.80
White Wonder, 50 lb. bu.....	1.25	1.35	.75

SEED CORN

	1 bu.	1/2 bu.	1/4 bu.
XX Inbred Hybrid No. 1 Grade.....	\$ 10.75	\$ 5.40	\$ 2.80
Illinois Special.....	3.40	1.75	.95
Reid's Yellow Dent.....	3.20	1.65	.90
Legal Tender and Yellow Leaning.....	3.25	1.65	.90
Woodburn's Yellow Dent.....	3.25	1.65	.95
Early Yellow Dent and Pride of North.....	3.25	1.65	.95
Illinois Ideal.....	3.30	1.70	.90
Iowa Silver Mine.....	3.25	1.65	.85
St. Charles White—Ensilage.....	3.00	1.60	.90
Krugs Dent—big 100 day type.....	3.30	1.70	.90
Silver King or Wisconsin No. 7.....	3.35	1.75	.95
Red White Cap and Bloody Butcher.....	3.25	1.65	.95
White Cap Yellow Dent.....	3.25	1.70	.90
Golden Glow.....	3.50	1.80	.95
Rainbow Flint.....	3.25	1.65	.85
Longfellow Flint and Sanfords Flint.....	3.25	1.70	.90

SEED POTATOES

All varieties—Early Red River Ohio, Spaulding Rose, Russet Rural, Irish Cobbler, Rural New Yorker and Banner White—1/2 bu., 40c; 1/2 bu., 70c; 1 bu., \$1.35; 100 lb. bag, \$2.15; 5 bags (500 lb.), \$10.00.

GRIMM

ORIGIN VERIFIED

ALFALFA

LOT
SEALED
\$ 11.50
PER
BU.

Minnesota—North Dakota Grown
High Quality. Shipped in Sealed Bags
Carries U. S. Verified Origin Tag

I am always on the lookout for seed that will give our customers better and finer value for the money. It isn't often, however, that I am able to secure as fine a bargain as this lot "sealed." You can examine it from every angle, check it and compare it and you'll find it an astonishing value in genuine Grimm Alfalfa.

Description

This is a quality lot of Minnesota Grown Grimm with a little North Dakota grown seed in it. Seed from this section of the original Grimm field in the United States is sought by many buyers. It generally commands a premium price. I secured this lot at a deep cut price because it contained a little crop seed such as Red Clover. Only about 3%. That reduces the amount of alfalfa but including this crop seed it tests at 99% purity. The seed has fine color and germination and ranks A No. 1 in appearance and performance.

Save \$2.00 to \$3.00 per Bushel

Any comparison on genuine U. S. Verified Origin seed of Minnesota Grimm will show you the big savings possible on Lot Sealed. Such quality at so low a price is a bargain in anybody's town. If you want Grimm and need its super hardy qualities I can suggest nothing better than this value. You'll like this northern grown seed. The way it grows, the crops it produces and its staying power will certainly please you. I consider this Minnesota seed as stock of remarkable character. Let me send you a sample to show its sterling merit or buy it on my personal recommendation. If you don't agree it is a great buy you can return it and get your money plus freight refunded promptly.

Order It Now

I wouldn't know where to go to secure any more of this kind of seed. Certainly none is available at a price that makes our drastically low price possible. You are getting the benefit of our savings. Whether you plan to sow in the spring, summer or fall, get your order in now. Every buyer of Grimm Alfalfa should be interested in this lot "Sealed" Grimm Minnesota-Dakota grown Grimm Alfalfa seed.



BLACKFOOT
GRIMM

This is also State Sealed and Certified Grimm. It is all Idaho grown and has widespread popularity. The Blackfoot association who markets this seed have the authority to use their own special tag on all bags. The supply of this seed is distinctly limited. Any customer wanting Blackfoot Grimm should order as early as possible.

This seed is high quality seed. The price ranges somewhat higher than other State Sealed Grimm because of its popularity. Its merits and value are so well known that no one ever questions Blackfoot.

We urge you to compare prices. You will see that we can save you money. That is why we feel free to ask you for your trade. We buy this seed direct from the Blackfoot Association. It does not go first to a wholesaler, then a jobber, then a retailer. We sell direct to the farmer who uses the seed. Share in these savings by giving us your business. It is to your interest to do so.

See opposite page for prices

STATE SEALED and CERTIFIED GRIMM

Tests 99 $\frac{1}{4}$ % Pure
Grown, Harvested, Cleaned and Sacked
Under State Supervision

\$13²⁵
Per Bu.

Some customers tell me they want only State Sealed and Certified Grimm. They are willing to pay the necessary premium for the extra cost and expense involved in checking the production and cleaning of such stock. That is alright unless you have to pay too big a premium. I watch our purchases of State Sealed and Certified Grimm very closely. It doesn't all sell at the same price and by dealing with the proper sources at the right time, I was able to secure our State Sealed and Certified Grimm to exceptionally good advantage. I'm not adding a fancy profit to it either but giving our customers for such seed just as big a bargain as in any other line.

All High Grade Seed

I figure when a man wants State Sealed and Certified Grimm that he wants high quality seed. Some handle the off colored lots that will not pass the specifications set up for the quality lots. Our seed is of the fine character required for true graded lots. The color, size of berries, purity, germination and uniformity are all of high standards. Such seed pleases critical buyers. It is always economical and especially so at the low prices shown. I know we can save you money on State Sealed and Certified Grimm and ask for the privilege of taking care of your business. Why pay more than our low prices for quality seed?

**A RICH
ECONOMICAL
SEEDING**

**PRICED
EXTREMELY
LOW**

AMERICA'S BEST MIXTURE

**50%
CLOVERS**

**\$ 4¹⁰
Bu.
45 LBS.**

Balance
Timothy

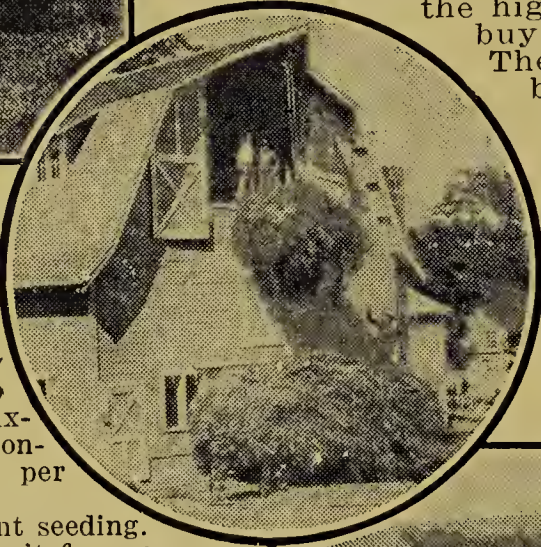
OUR MOST SENSATIONAL

5 bu.
\$20.00

BARGAIN



Here is the climax of all our bargains. A mixture containing 50% Clovers at such a price is a phenomenal value. The price is but a fraction of last year's quotations. Extra rich in clovers yet so low in cost that no one need neglect a clover seeding. You are practising the highest type of economy when you buy this mixture.



The quality of this seed is fine. Has been re-cleaned. Is bright color. Has good purity and germination. It will make a fine stand if it has half a chance. Thousands of our customers consider it the greatest seeding they ever made. We consider that it is the biggest money making mixture on the market today. Never before has there been a bargain to equal this wonderful seeding at this remarkably low price.

An Enormous Producer

America's Best Mixture outranks any of our mixtures in yields. We believe it to be the biggest producer of any seeding on the markets. Others try to imitate but when it comes down to the biggest yields of the best hay our mixture takes the lead. The high protein content of the hay makes it worth more per ton than the average similar seeding.

America's Best Mixture is a permanent seeding. It lasts for several years. You can use it for meadows or pastures. The clovers in it are Red Clover, Alfalfa, Alsike Clover and Sweet Clover. It is fully half or more clovers, the rest is Timothy. It's all quality seed.

You will find it practically equal to a pure clover seeding in its fertilizing value. It yields more than any single clover or grass hay will produce. It helps put your land in shape for Alfalfa. It is a wonderful seeding and will prove one of your biggest and best money crops.



Only \$1.00 an Acre An Economical Seeding

Compare that with anything else in its class. It is a sensational value. The economy of it will appeal to you if you are a thrifty buyer. The value of the crop will bolster up the profit in farming.

Twelve pounds per acre is enough seed. Sow it on winter wheat or with spring grain. Handle it like you usually do your regular grass or clover seedings. It's practically sure to make a stand. Our customers are enthusiastic about it. They have just cause to be. It gives them more feed per acre and it is a better feed.

**ALL
HARDY
HOME
GROWN
SEED**

Sow America's Best Mixture

More acres in grass and clover will help the farming situation. Sow fewer acres to grain and grow more bushels per acre. That will lower your cost per bushel and increase prices. The proper use of grass and clover seedings will help you turn the trick. With plenty of heavy yielding meadows and pastures such as this mixture will produce you can also lower the cost of producing live stock. Your pork, beef, and mutton will be matured quicker with less grain and they will be better finished. Just provide plenty of America's Best Mixture. It doesn't cost much to sow it.



America's Best Mixture Satisfies; Is Successful
Flat Rock, Ill.
Gentlemen: I have bought several hundred pounds of your America's Best Mixture and have had good success with it. Will try some more this next year.
(Signed) W. L. Dickinson.

Always Saves Money on Grass Seeds

Charlevoix, Michigan
Gentlemen: I have used your clovers and grass seeds for 12 years. They always have good germination and I saved some money on your seeds. I have a 200-acre farm.
(Signed) Ethan Jolliffe.

