

Historic, Archive Document

Do not assume content reflects current scientific knowledge, policies, or practices.

62,73

L.C. Transfer

LIBRARY RECEIVED
APR 7 1921
Agriculture

Burpee's RED LIST



WHOLESALE PRICES 1921
For Seedsmen
and Dealers

W. Atlee Burpee Co.
Wholesale Department
Seed Growers Philadelphia

W. Atlee Burpee Co.

Wholesale Department

Terms of Sale

PHILADELPHIA, January 1, 1921.

ALL invoices for purchases made after this date will be charged at the prices quoted herein, unless **special offers** are made by letter or telegram and referred to in the order.

The prices quoted are those ruling at this date. We expect to adhere to them through the spring, except where important changes compel us to advance or reduce our prices, in which case we shall be governed by the market.

Credit and Terms of Payment To **regular customers** and **well-known houses of established credit**, our terms are 60 days net (except where otherwise stated). Sixty days is the limit of time for payment of invoices for purchases from this catalog. All customers whose remittances have not been received 90 days after date of invoice will be drawn upon with sight drafts unless other arrangements were made by agreement.

Cash Discount **Grass Seed, Clover Seed and Onion Sets** are **Net Cash**. On all other purchases we allow 2 per cent discount for payment within 10 days from date of invoice. We cannot ship Onion Sets, Roots, or Bulbs C. O. D.

Packing We make no charge for packing or cartage, but **Bags and Cases** will be charged at **current cost**.

Ten pounds or more of a single variety will be invoiced at the rates per hundred pounds if ordered in **bulk**. Orders for sealed single pound packages in any quantity will be invoiced at the single pound rate; half pounds in any quantity at one-half the single pound rate; smaller quantities at a higher rate.

Retail Packets We will supply dealers with the many varieties listed in **Burpee's Annual for 1921** in retail packets as follows:

All Seeds in Packets at 50 per cent Discount } from retail price
500 Packets or more at 60 per cent Discount }

Ounces, except where priced herein, will be supplied at a discount of 40 per cent from retail prices.

Shipping Instructions The prices quoted in this catalog are f.o.b. Philadelphia. After delivering to forwarders in good order (as shown by Bill of Lading) our responsibility ceases. All goods ordered at Wholesale Prices or Discounts travel at expense of purchaser, and when sent by parcel post, the cost of postage will be added to the invoice.

Please give **complete shipping instructions** with **each order**. Insurance will be effected only when so directed. We cannot offer to ship dealers' orders direct to their customers.

We do not Commission Seeds

In response to hundreds of inquiries each year, we would state that we positively decline to send out any Seeds on Commission or Consignment.

Please Note

W. ATLEE BURPEE CO. gives no warranty, expressed or implied, as to Purity, Description, Quality, Productiveness, or any other matter of any Seeds, Bulbs, or Plants they send out, and will not be in any way responsible for the Crop. If the purchaser does not accept the goods on these terms, they are at once to be returned.

Cable Address, BURPEE, Philadelphia

MAR -3 1921

© CL A609729

Lower Prices

We are able now to produce seed of first quality at lower cost than during the War Period. We can, therefore, offer you Burpee's Seeds for 1921 at very reasonable prices—prices which, in view of the prevailing high cost of other commodities, we are sure will be most welcome.

Whether or not this low price level can be maintained another year we cannot say, but, while the opportunity is here, we are doing our part to bring down the high cost of living.

Moreover, we are going to be satisfied with a lower margin of profit than we have been accustomed to take in previous years and which, under normal conditions, we should have. Like all Americans who have the permanent welfare of this country at heart, we want to see prices for all commodities go back to normal. In order to bring this about, the leaders in every branch of industry are making sacrifices just as we are.

On the other hand, we want to assure you that Burpee's Seeds for 1921 have been grown with just as much care and attention to quality as ever. We are proud of our reputation for quality, and, regardless of cost and of profit, we mean to maintain it.

Burpee's Seeds for 1921 are the best that can be grown at any price

Burpee-Quality Seeds

Tried and Proved at Fordhook Farms

TO OUR WHOLESALE CUSTOMERS:

With every year, it becomes more evident that in seed it pays to handle only the best. The quality of most articles of commerce can be determined by inspection, but this is not so with seeds. The only safe policy is, therefore, to buy seeds from those houses of established reputation and high standards in whom you can place absolute confidence.

For over forty-four years we have devoted our efforts to the growing and selling of Quality Seeds. We have tried to do this one thing as well as we know how, and we are using more care today in selecting, harvesting and curing Burpee-Quality Seed than ever before. The Dealer handling Burpee's Seed has the satisfaction of knowing that he is supplying his customers with the best seeds that can be produced.

Burpee's Seeds are more widely advertised, locally and nationally, than any other kind. This, in addition to the sterling reputation they enjoy wherever planting is done, is responsible for the fact that, where any preference is shown, there are more calls for Burpee-Quality Seed than for any other kind. Other seeds are judged good, bad or indifferent, according as they approach, or fail to approach, the Burpee-Quality.

Our Trial Grounds at Fordhook Farms are the largest and most complete in America. In Burpee's Seeds, the element of chance has been removed so far as is humanly possible.

Burpee's Red List for 1921 is a strictly business catalog. There is no room for description, but we have put in heavy type the varieties which we particularly recommend. Should there be some varieties with which you are not familiar, we suggest that you refer to our retail catalog, BURPEE'S ANNUAL for 1921.

We look forward to a prosperous year in the seed business. There are many inferior stocks of Vegetable and Flower Seeds being offered, but the demand for seeds of real quality is strong, and there is good reason to believe that there will be more back-yard gardens planted than ever before.

We are prepared to render prompt service, but solicit you to order early to avoid disappointment and transportation delays.

Faithfully yours,

Wholesale Department

W. ATLEE BURPEE CO.

Non-Warranty Clause W. ATLEE BURPEE CO. gives no warranty, expressed or implied, as to Purity, Description, Quality, Productiveness, or any other matter of any Seeds, Bulbs or Plants they send out, and will not be in any way responsible for the crop. If the purchaser does not accept the goods on these terms, they are at once to be returned.

ARTICHOKE

Lb.

1 Large Green Globe \$ 7 50

ASPARAGUS SEED

3 Barr's Mammoth *50
 6 Giant Argenteuil 45
 8 Palmetto 45

ASPARAGUS ROOTS

3 Barr's Mammoth—one year old
 3 Barr's Mammoth—two years old
 6 Giant Argenteuil—one year old
 6 Giant Argenteuil—two years old
 8 Palmetto—one year old
 8 Palmetto—two years old

Write for Prices

BEANS—Bush, Snap—Green-Podded

NOTE.—Ten pounds or more will be supplied at 100-pound rates

	Lb.	100 lbs.
10 Burpee's STRINGLESS GREEN-POD	\$0 16	\$13 00
13 Early Bountiful	18	15 00
14 Extra-Early RED VALENTINE	15	12 00
15 Black Valentine	19	16 00
16 Early Yellow Six Weeks	13	10 00
17 Round Yellow Six Weeks	14	11 00
19 Late Refugee, or 1000 to 1	18	15 00
20 Keeney's Stringless Green Refugee	23	20 00
21 Extra-Early Refugee	14	11 00
22 Fordhook Favorite (White Seeded Stringless Green-Pod)	30	27 00
23 Giant Stringless Green-Pod	19	16 00

BUSH BEANS—Wax-Podded

33 Burpee's Brittle Wax	29	26 00
36 Prolific Dwarf Black Wax	16	13 00
41 Rust-Proof Golden Wax	16	13 00
44 Burpee's NEW KIDNEY WAX	19	16 00
45 Wardwell's Kidney Wax	18	15 00
48 Pencil-Pod Black Wax	17	14 00
49 SURE CROP Stringless Wax	18	15 00
50 Burpee's SADDLEBACK WAX	16	13 00
51 Hodson Wax	18	15 00
52 Currie's Rust-Proof Golden Wax	16	13 00
54 Stringless Refugee Wax	16	13 00
55 Burpee's Stringless White Wax	48	—
56 Davis' White Wax	18	15 00

BUSH SHELL BEANS

25 New ROBUST PEA (<i>Disease resistant</i>)	18	15 00
26 Dwarf Horticultural	16	13 00
28 Red Kidney	18	15 00
29 White Marrowfat	18	15 00
30 White Navy, or Boston Pea	15	12 00

POLE BEANS—Green- and Wax-Podded

NOTE.—Ten pounds or more will be supplied at 100-pound rates

72 Kentucky Wonder (Old Homestead)	<i>Sold out</i>	
73 Burger's Green-Pod Stringless (White-Seeded Kentucky Wonder)	22	19 00
74 White Creaseback	18	15 00
75 Lazy Wife	22	19 00
78 McCASLAN	18	15 00
79 Golden Cluster Wax	25	22 00
80 Kentucky Wonder Wax	<i>Sold out</i>	
91 Yard Long	85	—

POLE BEANS—Shell Varieties

	Lb.	100 lbs.
81 White Dutch Case Knife	\$0 22	\$19 00
83 Horticultural, Cranberry, or Wren's Egg	16	13 00
87 Scarlet Runner	16	13 00

LIMA BEANS—Bush Varieties

60 Burpee's Bush	25	22 00
63 Burpee-Improved	27	24 00
65 FORDHOOK BUSH	25	22 00
67 Henderson's Bush	22	19 00
68 Wood's Prolific	21	18 00
70 Soy Bean Lima "Haitu"	60	—

LIMA BEANS—Pole Varieties

96 Early Leviathan	23	20 00
97 Large White	17	14 00
98 Burpee's Giant-Podded	28	25 00
99 KING OF THE GARDEN	21	18 00
101 Challenger, or Drear's Improved	22	19 00
103 Carolina, or Sieva	21	18 00

GARDEN BEETS

NOTE.—Ten pounds or more will be supplied at 100-pound rates

	Lb.	100 lbs.
107 Burpee's Extra-Early Turnip	\$0 37	\$32 00
109 Extra-Early Flat Egyptian	35	30 00
111 CROSBY'S EGYPTIAN	32	27 00
112 Johnson's Defiance	<i>Sold out</i>	
113 Edmand's Early Turnip	32	27 00
115 DETROIT DARK RED	32	27 00
117 Burpee's COLUMBIA	28	23 00
120 True Dark Stinson (Burpee)	60	55 00
121 Burpee's Black-Red Ball	75	70 00
122 Crimson Globe	30	25 00
123 Early Model	32	27 00
124 ECLIPSE	32	27 00
128 Burpee's Improved Blood Turnip	35	30 00
130 Dewing's Improved Blood	30	25 00
131 Long Smooth Blood-Red	30	25 00
133 Early Yellow Turnip	<i>Crop failed</i>	
134 Burpee's New Half-Long	70	65 00

THE BURPEE STANDARD IN SEEDS is the highest it is possible to attain today, and yet we aim for still further betterment. PROGRESS is our watchword! Planters throughout the world, whether gardening for pleasure or profit, soon learn that "the best is the cheapest." These three sentences convey the principal "reasons why" the Burpee-Business grows steadily year by year. Shall we have the pleasure of serving you this season, or will you wait until importuned by some traveling salesman or storekeeper to buy other seeds claimed to be "just as good as BURPEE'S"? You may get as good, but you cannot get better seeds at any price!

SUGAR BEETS

	Lb.	100 lbs.
139 Danish Improved (Burpee)	\$0 48	\$43 00
141 Lane's Imperial	30	25 00
143 Wanzleben	30	25 00

HALF-SUGAR BEETS AND MANGELS

145 GIANT HALF-SUGAR ROSE	28	23 00
147 Golden Tankard	30	25 00
149 Golden Giant, or Yellow Leviathan	33	28 00
151 MAMMOTH PRIZE LONG RED	30	25 00
152 Brock's Red Intermediate	30	25 00

SWISS CHARD

136 Large-Ribbed White	42	37 00
137 Lucullus	40	35 00

BROCCOLI

		Lb.
155 St. Valentine		\$7 00

BRUSSELS SPROUTS

158 Long Island Improved	5	25
159 Perfection	1	15
161 Paris Market	1	00
162 Burpee's DANISH PRIZE	1	95

CABBAGE—Earliest Oblong-Headed

Our cabbage seed is Long Island or Danish Grown

	Lb.	100 lbs.
165 Extra-Early Express	\$1 35	\$130 00
167 Early Jersey Wakefield	2 65	255 00
168 Early Jersey Wakefield (Burpee's Special Stock, <i>Extra-Early</i>)	3 85	375 00
169 Charleston, or Large Wakefield	2 75	265 00
171 Early Winnigstadt	2 25	215 00

CABBAGE—Early and Second-Early

176 ENKHUIZEN GLORY	1 35	130 00
177 Burpee's ALLHEAD EARLY	2 25	215 00
178 COPENHAGEN MARKET, True (<i>Danish Grown</i>)	2 25	215 00
179 Early Stonehead, or Volga	2 25	215 00
180 Fordhook Mainstay-Early	2 25	215 00
183 Early Dwarf Flat Dutch	1 65	160 00
185 Early Summer	2 00	190 00
187 Henderson's Succession	2 25	215 00
188 Stein's Flat Dutch, or Acme	2 25	215 00
189 All Seasons	2 00	190 00
191 Fottler's Brunswick	1 45	140 00



Early Jersey Wakefield Cabbage



Danish Ballhead

CABBAGE—Winter Varieties

NOTE.—Ten pounds or more will be supplied at 100-pound rates

	Lb.	100 lbs.
194 Premium Late Flat Dutch.....	\$1 75	\$165 00
195 Burpee's Surehead.....	2 15	205 00
199 Burpee's Short-Stem Drumhead.....	3 85	375 00
201 Burpee's Late Stonehead.....	2 00	190 00
203 DANISH BALLHEAD (<i>Grown in Denmark</i>).....	2 25	215 00
205 DANISH ROUNDHEAD—Short Stem Danish Ballhead (<i>Grown in Denmark</i>).....	2 15	205 00
207 Autumn King, or World-Beater.....	2 25	215 00
209 Perfection Drumhead SAVOY.....	1 45	140 00
215 Large Red Drumhead, or Red Dutch.....	2 50	240 00
216 DANISH ROUND RED.....	2 75	265 00

CHINESE OR CELERY CABBAGE

NOTE.—Ten pounds or more will be supplied at 100-pound rates

211 Wong Bok.....	1 90	180 00
212 PE-TSAI (Extra Select Stock).....	1 15	110 00

GARDEN CARROTS

NOTE.—Ten pounds or more will be supplied at 100-pound rates

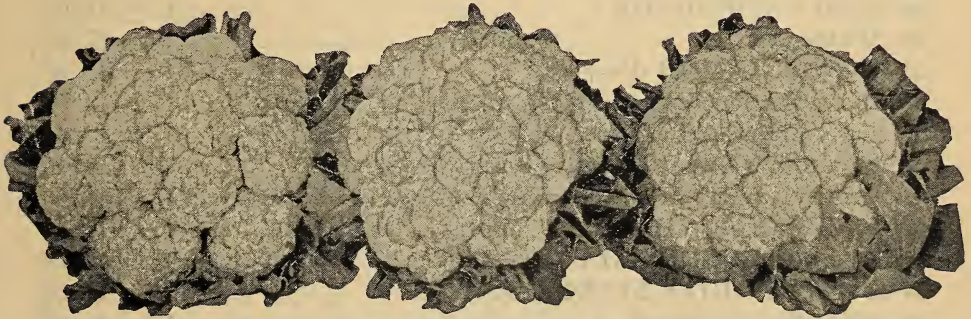
217 Early Golden Ball, or French Forcing.....	48	43 00
218 New AMSTERDAM FORCING.....	95	85 00
219 Short Horn, or Early SCARLET HORN.....	42	37 00
221 CHANTENAY, or Model.....	38	33 00
223 Burpee's Oxheart, or Guerande.....	50	45 00
225 Danvers Half-Long Orange.....	45	40 00
226 Half-Long Scarlet Nantes.....	42	37 00
229 Improved Long Orange.....	42	37 00
231 St. Valery, or New Intermediate.....	42	37 00

CARROTS FOR STOCK FEEDING

	Lb.	100 lbs.
235 Improved Short White	\$0 38	\$33 00
238 Large White Belgian	37	32 00
240 Large Yellow Belgian	37	32 00

CAULIFLOWER

	Lb.	100 lbs.
244 Burpee's BEST-EARLY		\$25 00
245 Burpee's DRY-WEATHER		18 00
247 Early SNOWBALL		16 50
249 Extra-Early Dwarf Erfurt		12 50
256 Algiers		4 00
258 Veitch's Autumn Giant		4 50



Burpee's Best-Early Cauliflower

CELERY

	Lb.	100 lbs.
260 Golden Self-Blanching (<i>American</i>)	\$4 00	\$390 00
262 GOLDEN SELF-BLANCHING (<i>French-Grown Seed</i>)	8 75	865 00
266 White Plume	1 95	185 00
267 EASY BLANCHING	2 25	215 00
269 Columbia	2 00	190 00
272 Fordhook Emperor	4 25	415 00
274 Winter King	2 50	240 00
275 Winter Queen	1 45	135 00
278 Evans' Triumph	1 75	165 00
282 GIANT PASCAL	1 40	130 00
284 Dwarf Golden Heart	1 40	130 00

CELERIAC—Turnip-Rooted Celery

293 Giant Smooth Prague	75	70 00
-------------------------------	----	-------

CHICORY

	Lb.	100 lbs.
295 Large-Rooted, or Coffee	\$0 75	
297 WITLOOF, or French Endive		95

COLLARDS

	Lb.	100 lbs.
299 Georgia, or Southern	\$0 48	\$43 00



Burpee's Golden Bantam Sweet Corn—engraved from a Photograph

SWEET CORN

NOTE.—Ten pounds or more will be supplied at 100-pound rates

	Lb.	100 lbs.
301 Burpee's GOLDEN BANTAM	\$0 17	\$14 00
302 Burpee's Earliest Catawba.....		<i>Sold out</i>
305 EARLY FORDHOOK	17	14 00
309 White Cory	15	12 00
310 HOWLING MOB (Burpee).....	18	15 00
311 Early Cosmopolitan (Burpee).....	17	14 00
313 Early Minnesota.....	15	12 00
314 Seymour's Sweet Orange (Burpee).....	20	17 00
315 Crosby's Early (Twelve-Rowed).....	15	12 00
328 Kendel's Early Giant.....	15	12 00
329 De Lue's GOLDEN GIANT	22	19 00
333 Burpee's WHITE EVERGREEN	15	12 00
335 Stowell's Evergreen	14	11 00
337 COUNTRY GENTLEMAN	15	12 00
340 Black Mexican	17	14 00

EARLY MARKET CORN

342 Trucker's Choice	20	17 00
345 Extra-Early Adams.....	11	8 00

POP CORN

353 Queen's Golden (Burpee).....	16	13 00
355 White Rice	12	9 00
359 California Yellow (Burpee).....	17	14 00

FIELD CORN

6020 Early Canada Yellow Flint.....	}
6022 Chester County Mammoth.....	
6023 Cloud's Yellow Dent	
6025 Luce's Favorite.....	
6026 Burpee's Golden Beauty	
6028 Hickory King.....	
6029 Johnson County White	
6030 New SUSSEX WHITE	
6032 Improved LEAMING	
6039 Eureka White Ensilage	
6042 Hundred Day Bristol (Improved White Cap Dent).....	
6045 Sugar Corn for Green Fodder	

Write for
Prices

CORN SALAD, or FETTICUS

	Lb.	
351 Large Round-Leaved (Large Seed)	\$1	35

CRESS

	Lb.	100 lbs.
364 Fine Curled (Pepper Grass)	\$0 35	\$30 00
366 True Water Cress	4 95	—

CUCUMBER

NOTE.—Ten pounds or more will be supplied at 100-pound rates

369 Early Russian	72	67 00
371 EARLY GREEN CLUSTER	62	57 00
373 Early Frame, or Early Short Green	72	67 00
375 Thorburn's Everbearing	68	63 00
377 Extra-Early Green Prolific	62	57 00
379 Burpee's EXTRA-EARLY WHITE SPINE	78	73 00
381 Improved Arlington White Spine	68	63 00
383 FORDHOOK WHITE SPINE (Burpee)	72	67 00
385 Extra-Long White Spine, or Evergreen	72	67 00
393 FORDHOOK FAMOUS (Burpee)	75	70 00
395 Fordhook Pickling (Burpee)	75	70 00
397 Cumberland Pickling	82	77 00
399 London or IMPROVED LONG GREEN	80	75 00
400 Davis' Perfect	95	90 00
401 EARLY FORTUNE	72	67 00
405 Burpee's Giant Pera	1 10	105 00
406 Japanese Climbing	90	85 00
409 West India Gherkin	95	90 00
413 English Frame, or Telegraph (<i>Packets only at 25 cts. each; 5 packets for \$1.00</i>)		

DANDELION

	Lb.	
414 Cultivated, or French Common	\$4	45
415 Improved Thick-Leaved	7	95

EGG PLANT

420 Burpee's BLACK BEAUTY	5	25
422 New York Improved Spineless	4	50
428 Early Long Purple	4	00

ENDIVE

	Lb.	100 lbs.
430 Green Curled	\$0 72	\$67 00
432 WHITE CURLED	60	55 00
434 Giant Green Fringed, or "Oyster"	75	70 00
436 Broad-Leaved Batavian (Escarolle)	75	70 00

GOURDS

	Lb.	
438 White Egg-Shaped, or Nest Egg	\$1	25
440 Sugar Trough	1	75
442 Dipper	1	35
444 Dishcloth, or Luffa	2	50

HORSE-RADISH ROOTS

1406 Maliner-Kren, or Improved Bohemian	}	Write for Prices
1405 Ordinary variety		

KALE, or BORECOLE

	Lb.	100 lbs.
446 Dwarf Green Curled	\$0 80	\$75 00
448 Dwarf Siberian	70	65 00
452 Tall Green Curled Scotch	85	80 00

KOHL-RABI

456 Early White Vienna—(<i>Select forcing strain</i>)	1 95	180 00
457 Early Purple Vienna	95	90 00
459 Large Green or White	72	67 00

LEEK

461 Broad London, or Large American Flag	1 68	163 00
462 Johnson's Giant	1 95	190 00
463 Monstrous Carentan	<i>Sold out</i>	
465 Long Mezieres	1 65	160 00

LETTUCE—Earliest and Forcing Varieties

467 White-Seeded Tennis Ball	72	67 00
469 Black-Seeded Tennis Ball	75	70 00
471 Yellow-Seeded Butter	63	58 00
473 Wheeler's Tom Thumb, b. s.	85	80 00
474 May King, w. s.	70	65 00
475 Big Boston, w. s.—(<i>Extra select stock</i>)	1 10	105 00
476 Burpee's Earliest WAYAHEAD, w. s.	63	58 00
477 Unrivalled, w. s.	85	80 00
478 Naumburger, or Tenderheart, b. s.	63	58 00
479 Black-Seeded Big Boston	63	58 00
483 Early Dutch Speckled Butter, w. s.	63	58 00
484 Mignonette, b. s.	85	80 00
485 Grand Rapids, b. s.	75	70 00

LETTUCE—Cutting Varieties

490 Early Curled Simpson, or Silesia, w. s.	65	60 00
493 Black-Seeded Simpson	75	70 00
494 The Morse, w. s. (Burpee)	70	65 00
496 Burpee's TOMHANNOCK, w. s.	63	58 00
497 Early Prize Head (Brown Cabbage), w. s.	65	60 00

LETTUCE—Butterhead Varieties

NOTE.—Ten pounds or more will be supplied at 100-pound rates

	Lb.	100 lbs.
498 Philadelphia Early White Cabbage, w. s.	\$0 65	\$60 00
504 THE DEACON , or San Francisco Market, w. s.	60	55 00
505 All Seasons , b. s.	63	58 00
508 California Cream-Butter , b. s. (Burpee).	72	67 00
511 Burpee's Hardhead, w. s.	70	65 00
514 Burpee's Butterhead , w. s.	60	55 00
516 SALAMANDER , b. s.	85	80 00
518 Mammoth Black-Seeded Butter.	60	55 00

LETTUCE—Crisp Head Varieties

522 HANSON (<i>Extra Fine Stock</i>), w. s.	65	60 00
524 New York , or Wonderful, w. s.	2 00	195 00
526 Denver Market , w. s.	75	70 00
528 Burpee's BRITTLE-ICE , w. s.	60	55 00
530 Iceberg, w. s. (Burpee).	75	70 00
533 Burpee's Giant Glacier, b. s.	85	80 00

LETTUCE—Cos, or Celery Varieties

535 Express, or Eclipse, w. s.	65	60 00
537 DWARF WHITE-HEART , w. s.	60	55 00
539 Paris White , or Trianon (Romaine) w. s.	75	70 00

MARTYNIA

541 Unicorn Plant (<i>M. proboscidea</i>).	2 15	—
--	------	---

MUSKMELON—Green-Fleshed Varieties

NOTE.—Ten pounds or more will be supplied at 100-pound rates

544 Burpee's NETTED GEM (<i>The Original Rocky Ford</i>). . .	65	60 00
546 Burpee's Matchless.	1 00	95 00
550 Old-Fashioned Jenny Lind	1 50	145 00
552 Large Hackensack, or Turk's Cap.		<i>Sold out</i>
554 Extra-Early Hackensack	75	70 00
555 HONEY DEW	95	90 00
556 Long Island Beauty.		<i>Sold out</i>
558 Burpee's Melrose.		<i>Sold out</i>
562 Montreal Green Nutmeg (Burpee).	75	70 00
566 Burpee's Champion Market.	1 00	95 00
568 Bay View (Burpee).	65	60 00
570 Acme, or Baltimore Market.	78	73 00

MUSKMELON—Salmon-Fleshed Varieties

NOTE.—Ten pounds or more will be supplied at 100-pound rates

	Lb.	100 lbs.
574 Burpee's FORDHOOK.....	\$0 85	\$80 00
575 EMERALD GEM (Burpee).....	80	75 00
576 Burrell Gem.....	82	77 00
577 Osage, or Miller's Cream.....	85	80 00
578 Burpee's Spicy Cantaloupe.....	1 50	145 00
579 Paul Rose, or Petoskey.....	65	60 00
580 POLLOCK NO. 25 (Pink Meat).....	80	75 00
584 Tip Top.....	95	90 00
585 Burpee's Golden Eagle.....	82	77 00
587 Banana (<i>Selected at Sunnybrook</i>).....	1 75	170 00

WATERMELON—Early Varieties

588 FORDHOOK EARLY (Burpee).....	45	40 00
590 Cole's Early.....	45	40 00
593 Burpee's BABY-DELIGHT.....	2 00	195 00

WATERMELON—Main Crop

NOTE.—Ten pounds or more will be supplied at 100-pound rates

596 Burpee's Cuban Queen.....	45	40 00
598 Mammoth Ironclad (Burpee).....		<i>Sold out</i>
601 Burpee's Sugar Stick.....	50	45 00
602 Dark Icing, or Ice Rind.....	50	45 00
606 Sweet Heart.....	45	40 00
608 Kleckley Sweets (grown by Kleckley).....	95	90 00
609 KLECKLEY SWEETS (Burpee).....	45	40 00
611 Burpee's HALBERT HONEY.....	42	37 00
613 TOM WATSON.....	50	45 00
614 Kolb's Gem.....	48	43 00
618 Dixie.....	45	40 00
620 McIVER SUGAR.....	45	40 00
624 Striped Gypsy, or Georgia Rattlesnake.....	45	40 00
625 Alabama Sweet.....	42	37 00
628 Florida Favorite.....	45	40 00
633 Shaker Blue, or White-Seeded Triumph.....	42	37 00
634 Ice Cream, or Peerless (white seed).....	45	40 00
644 Golden Sweet.....	50	45 00
645 Colorado Preserving Citron (green-seeded).....	65	60 00

MUSHROOM SPAWN

1411 American Pure Culture.....	17	14 00
---------------------------------	----	-------

MUSTARD

	Lb.	100 lbs.
647 FORDHOOK FANCY	\$0 55	\$50 00
648 Elephant Ear (Burpee)	40	35 00
653 Chinese	38	33 00
655 Southern Giant Curled	38	33 00

NASTURTIUM

659 Tall Mixed—for pickling.....	38	33 00
----------------------------------	----	-------

OKRA, or GUMBO

661 Dwarf Prolific	30	25 00
663 White Velvet	35	30 00
665 Lady Finger	30	25 00
666 Kleckley's Favorite	35	30 00
667 Perfected Perkins' Long Pod (<i>New Jersey Grown</i>)..	45	40 00

ONION SEED—American Varieties

NOTE.—Ten pounds or more will be supplied at 100-pound rates

669 Yellow Danvers Flat	1 00	95 00
671 Yellow Globe Danvers	1 15	110 00
677 Strassburg, or Yellow Dutch	1 00	95 00
679 Southport Large Yellow Globe	1 20	115 00
680 Burpee's "Special Stock" SOUTHPORT YELLOW GLOBE (<i>Connecticut Grown</i>).....	3 00	290 00
681 Prize-Taker (<i>American Grown</i>).....	1 20	115 00
685 Extra-Early Red	1 35	130 00
687 Large Red Wethersfield	1 35	130 00
689 Southport Large Red Globe	1 60	150 00
690 Burpee's "Special Stock" Southport Red Globe (<i>Connecticut Grown</i>).....	3 25	315 00
693 Australian Brown (Burpee).....	95	90 00
695 Southport Large White Globe	1 75	170 00
696 Burpee's "Special Stock" Southport White Globe (<i>Connecticut Grown</i>).....	4 50	440 00
697 White Portugal, or White Silverskin	1 50	145 00

ONION SEED—European Varieties

NOTE.—Ten pounds or more will be supplied at 100-pound rates

701 Earliest White Queen , or White Pearl.....	2 00	195 00
705 Giant White Italian Tripoli	1 15	110 00
707 Mammoth Silver King (Burpee).....	1 35	130 00
711 Burpee's Gigantic Gibraltar	2 65	255 00

ONION SETS

1423	Yellow (Best Philadelphia).....	} Write for Prices
1419	White (Best Philadelphia).....	
1417	Yellow Potato.....	
1421	White Multiplier.....	
1415	Egyptian, or Perennial Tree.....	

PARSLEY

		Lb.	100 lbs.
714	Plain or Single.....	\$0 48	\$43 00
717	Extra Curled Dwarf, or Emerald.....	68	63 00
719	Champion Moss Curled	68	63 00
721	Fern-Leaved	48	43 00
723	Turnip-Rooted, or Hamburg	45	40 00

PARSNIPS

724	OFFENHAM MARKET, Half-Long.....	45	40 00
725	Improved Guernsey.....	25	20 00
727	Long Smooth Hollow Crown.....	20	15 00
728	Early Short Round French.....	50	45 00

PEAS—Small Round Extra-Earlies

NOTE.—Ten pounds or more will be supplied at 100-pound rates

730	Market Surprise.....	20	17 00
731	Burpee's BEST EXTRA-EARLY	17	14 00
732	First and Best.....	15	12 00
737	Prolific Extra-Early	17	14 00
739	<i>Alaska (Extra Select Stock)</i>	15	12 00
740	Extra-Early Despatch.....	15	12 00
742	Extra-Early Pilot.....	23	20 00

PEAS—Extra-Early Wrinkled

745	Gradus (Prosperity).....	26	23 00
746	Thomas Laxton	26	23 00
749	Premium Gem.....	20	17 00
750	Sutton's Excelsior.....	23	20 00
751	American Wonder	21	18 00
753	Little Marvel	26	23 00
754	Burpee's Blue Bantam	29	26 00
755	Nott's Excelsior.....	21	18 00

PEAS—Second Early and Main Crop

758	Senator, Improved.....	20	17 00
759	McLean's Advancer.....	17	14 00
765	Burpee's PROFUSION	19	16 00
769	Everbearing.....		<i>Sold out</i>
773	Telephone	26	23 00
781	Yorkshire Hero.....	17	14 00
783	Boston Unrivald	28	25 00

PEAS—Second Early and Main Crop (Continued)

	Lb.	100 lbs.
784 Quite Content.....	\$0 38	\$35 00
785 Alderman.....	26	23 00
786 British Wonder.....	26	23 00
789 Potlatch, or Improved Stratagem.....	21	18 00
792 Discovery.....	22	19 00
793 Carter's Daisy (Dwarf Telephone).....	25	22 00
798 Royal Salute.....	17	14 00
799 Champion of England.....	20	17 00
800 Dwarf Champion, or Juno.....	18	15 00

PEAS—Marrowfat and Sugar Varieties

807 Dwarf White Marrowfat.....	15	12 00
809 Black-Eye Marrowfat.....	15	12 00
811 Dwarf Gray Sugar (Purple Blossom).....	20	17 00
815 Mammoth Melting Sugar.....		<i>Sold out</i>

PEPPERS

	Lb.
818 Neapolitan Large Early.....	\$3 60
819 Chinese Giant (Burpee).....	6 00
820 Burpee's Sweetmeat GLORY Pimiento.....	4 75
821 Ruby King (Burpee).....	4 25
822 Sweet Upright.....	4 50
823 Bull-Nose, or Improved Large Bell.....	4 00
824 Crimson Giant.....	4 00
825 Sweet Mountain.....	4 00
826 RUBY GIANT.....	4 65
827 Red Squash, Dwarf Early.....	3 75
828 Royal King.....	3 85
830 Burpee's Ruby Pearl.....	3 50
837 Extra-Long Red Cayenne.....	3 85
839 Red Chili (true).....	3 50
843 Golden Queen.....	5 75
847 Red Cluster.....	3 65
849 Fancy Wrinkled, Mixed.....	3 35
851 Celestial.....	3 25
853 Bird's Eye, or Creole.....	3 75
854 Coral Gem Bouquet.....	4 00
857 Tabasco (true McIlhenny strain).....	4 75

POTATOES

1434 Burpee's Extra-Early.....	} <i>Cannot Supply</i>
1442 True Early Rose.....	
1446 Irish Cobbler.....	
1448 Rural New Yorker No. 2.....	
1450 Green Mountain.....	
1451 Sir Walter Raleigh.....	
1454 Vermont Gold Coin (Burpee).....	

PUMPKIN

NOTE.—Ten pounds or more will be supplied at 100-pound rates

	Lb.	100 lbs.
861 Small Sugar	\$0 72	\$67 00
863 Big Tom, or Improved Large Field	50	45 00
865 Large Cheese	48	43 00
867 Burpee's Golden Oblong	75	70 00
869 Japanese Pie	80	75 00
870 White Cushaw	95	90 00
872 Green-Striped Cushaw	1 00	95 00
874 Yellow or Golden Cushaw	95	90 00
875 Genuine Mammoth, or Jumbo	1 35	130 00
1048 Winter Luxury, or Pie Squash	95	90 00

RADISH—Early Turnip-Shaped

NOTE.—Ten pounds or more will be supplied at 100-pound rates

877 Burpee's Earliest Scarlet Button	60	55 00
878 Burpee's RAPID-RED	75	70 00
879 Burpee's Hailstone	75	70 00
880 Non Plus Ultra	50	45 00
883 Vick's SCARLET GLOBE	45	40 00
885 Extra-Early Scarlet Turnip	45	40 00
886 Crimson Giant Globe	55	50 00
893 SCARLET TURNIP WHITE TIP	45	40 00
897 Early White Turnip	40	35 00
899 Philadelphia White Box	40	35 00

RADISH—Early Olive-Shaped

905 Burpee's Earliest White		<i>Crop failed</i>
907 French Breakfast	52	47 00
909 Bright Breakfast		<i>Crop failed</i>
913 Scarlet Olive-Shaped	50	45 00

RADISH—Early Long Varieties

928 Early Long Scarlet Short Top	45	40 00
930 Cincinnati Market	55	50 00
934 Half-Long Deep Scarlet	45	40 00
936 Long Cardinal (Brightest Scarlet)	55	50 00
938 WHITE ICICLE	45	40 00

RADISH—Summer Varieties

951 CHARTIERS, or Shepherd (Improved)	42	37 00
953 Long White Vienna (Lady Finger)	42	37 00
954 White Delicious		<i>Crop failed</i>
959 White Strassburg (Hospital)	45	40 00

RADISH—Winter Varieties

	Lb.	100 lbs.
963 White Chinese, or Celestial.....	\$0 40	\$35 00
965 California Mammoth White Winter.....	55	50 00
967 Chinese Rose	40	35 00
969 Round Scarlet China.....	<i>Crop failed</i>	
971 Long Black Spanish.....	48	43 00
973 Long White Spanish.....	65	60 00
975 Round Black Spanish	48	43 00

RHUBARB, or PIE PLANT

979 Myatt's Victoria (Seed).....	78	73 00
1464 Rhubarb Roots.....	<i>Write for prices</i>	

SALSIFY, or OYSTER PLANT

983 Sandwich Island Mammoth.....	92	87 00
----------------------------------	----	-------

SORREL

	Lb.	100 lbs.
987 Broad-Leaved French.....	\$1	75

SPINACH

NOTE.—Ten pounds or more will be supplied at 100-pound rates

	Lb.	100 lbs.
990 Long Season.....	\$0 20	\$15 00
991 VICTORIA (Burpee).....	23	18 00
993 Thick-Leaved Round	23	18 00
995 Long Standing (Enkhuizen).....	23	18 00
999 Norfolk Savoy-Leaved (Bloomsdale).....	23	18 00
1001 Prickly, or Winter	20	15 00
1005 New Zealand	52	47 00

SQUASH—Summer Varieties

1010 Early White Bush, Scalloped	90	85 00
1012 Mammoth White Bush.....	95	90 00
1014 Early Yellow Bush, Scalloped	85	80 00
1016 Mammoth Yellow Bush.....	80	75 00
1018 Golden Summer Crookneck	90	85 00
1020 Giant Crookneck	1 00	95 00
1030 Cocozelle Bush.....	1 00	95 00
1031 Long White Vegetable Marrow	1 00	95 00

SQUASH—For Summer and Winter Use

1032 FORDHOOK (Burpee).....	1 15	110 00
1034 Bush Fordhook (Burpee).....	95	90 00

SQUASH—Winter Varieties

1036 BOSTON MARROW	55	50 00
1038 True Hubbard	1 20	115 00
1040 Chicago Warted Hubbard	1 00	95 00

SQUASH—Winter Varieties—Continued

	Lb.	100 lbs.
1042 Red, or GOLDEN HUBBARD	\$0 85	\$80 00
1044 Essex Hybrid	55	50 00
1048 Livingston's Pie (Winter Luxury Pumpkin)	95	90 00
1052 The Delicious	1 15	110 00
1054 Delicata	90	85 00
1056 Mammoth Chili	80	75 00
1058 Mammoth Whale	1 35	130 00

TOMATO—Large Red-Fruited Varieties

1069 Livingston's Coreless	2 25	215 00
1074 STONE	1 95	185 00
1076 Livingston's Perfection	2 00	190 00
1078 Livingston's Favorite	2 25	215 00
1093 Dwarf Stone	2 50	245 00
1097 Burpee's SUNNYBROOK EARLIANA	4 00	390 00
1098 Trophy	1 85	175 00
1100 Sparks' Earliana	1 25	115 00
1101 CHALK'S EARLY JEWEL (<i>Grown at Fordhook</i>)	3 25	315 00
1105 Success	2 25	215 00
1108 Burpee's MATCHLESS (<i>Fordhook-Grown Seed</i>)	3 50	340 00
1120 Bonny Best	2 45	235 00

TOMATO—Forcing Varieties

1080 Market King	3 00	290 00
1122 Liberty Improved	3 25	315 00
1130 West's Peerless	3 00	290 00
1131 Carter's Sunrise	3 15	305 00
1134 Victoria Whole-Salad	3 00	290 00
1132 Holmes' Supreme	3 00	290 00
1133 Comet	3 15	305 00

TOMATO—Purple-Fruited Varieties

1066 Acme	2 25	215 00
1067 Livingston's GLOBE (<i>Grown at Fordhook</i>)	3 25	315 00
1070 Livingston's Beauty	2 25	215 00
1082 Turner Hybrid, or Mikado (Burpee)	2 85	275 00
1094 Dwarf Champion	2 25	215 00
1095 Burpee's DWARF GIANT	10 00	990 00
1102 FORDHOOK FIRST	2 85	275 00
1107 June Pink	2 45	235 00
1111 Burpee's Earliest Pink	<i>Sold out</i>	
1112 TRUCKER'S FAVORITE (<i>Grown at Fordhook</i>)	3 25	315 00
1114 Ponderosa (<i>Grown at Fordhook</i>)	7 25	715 00

TOMATO—Large Yellow Varieties

1136 Golden Queen (Sunrise)	3 95	385 00
1138 Golden Dwarf Champion (Burpee)	5 25	515 00

TOMATO—Small-Fruited Varieties

		Lb.	100 lbs.
1137	Yellow Plum.....	\$3 00	\$290 00
1139	Yellow Pear-Shaped.....	3 25	315 00
1141	The Peach.....	3 00	290 00
1143	Burbank Preserving (Burpee).....	3 50	340 00
1145	Yellow Cherry.....	3 25	315 00
1147	Red Cherry.....	2 85	275 00
1149	Red Pear-Shaped.....	3 50	340 00
1151	Strawberry, Winter Cherry, or Husk.....	3 00	290 00

TURNIPS

1155	Early White Flat Dutch, Strap-Leaved.....	32	27 00
1157	EARLY RED, or PURPLE-TOP, Strap-Leaved...	30	25 00
1159	Extra-Early White Milan.....	1 25	120 00
1161	Extra-Early Purple-Top Milan.....	1 25	120 00
1163	Red, or PURPLE-TOP WHITE GLOBE.....	35	30 00
1167	Large White Globe, Strap-Leaved.....	32	27 00
1169	WHITE EGG.....	32	27 00
1173	Cowhorn, or Long White.....	50	45 00
1177	Seven-Top.....	25	20 00
1179	Large Yellow, or AMBER GLOBE.....	30	25 00
1183	Golden Ball, or Orange Jelly.....	35	30 00
1185	Petrowski.....	52	47 00

RUTA BAGA, or SWEDE

1191	Improved American PURPLE-TOP YELLOW...	25	20 00
1192	Bangholm.....	24	19 00
1194	Golden Neckless (Burpee).....	40	35 00
1196	White-Fleshed Neckless.....	45	40 00
1197	Large White.....	30	25 00

HERBS

		Lb.	
1304	Anise (<i>Pimpinella anisum</i>).....	\$1 00	
1306	Balm (<i>Melissa officinalis</i>).....	3 50	
1307	Basil, Sweet (<i>Ocimum basilicum</i>).....	1 00	
1309	Bene (<i>Sesamum orientale</i>).....	85	
1311	Borage (<i>Borago officinalis</i>).....	2 25	
1313	Caraway (<i>Carum carvi</i>).....	1 00	
1315	Catnip, or Catmint (<i>Nepeta cataria</i>).....	2 50	
1317	Coriander (<i>Coriandrum sativum</i>).....	65	
1319	Dill (<i>Anethum graveolens</i>).....	50	
1321	Fennel, Sweet (<i>Anethum feniculum</i>).....	1 00	
1322	Florence Fennel (<i>Feniculum dulce</i>).....	95	

HERBS—Continued

		Lb.
1323	Horehound (<i>Marrubium vulgare</i>)	\$2 00
1325	Lavender, Ordinary (<i>Lavandula spica</i>)	3 00
1326	Lavender, True (<i>Lavandula vera</i>)	4 75
1327	Marjoram , Sweet (<i>Origanum majoram</i>)	2 65
1329	Rosemary (<i>Rosmarinus officinalis</i>)	8 00
1331	Rue (<i>Ruta graveolens</i>)	8 00
1333	Sage (<i>Salvia officinalis</i>)	7 50
1335	Savory , Summer (<i>Satureia hortensis</i>)	2 65
1337	Savory, Winter (<i>Satureia montana</i>)	6 50
1338	Tansy (<i>Tanacetum vulgare</i>)	4 50
1341	Thyme (<i>Thymus vulgaris</i>)	9 50
1343	Wormwood (<i>Artemisia absinthium</i>)	4 50

TOBACCO

1345	Connecticut Seed Leaf	4 75
1347	Lancaster County Broad Leaf	4 65
1349	Havana	7 50
1351	Bonanza	3 75
1353	General Grant	4 50
1355	Sterling	4 50
1357	White Burley, Improved	4 50
1359	Long Leaf Gooch	3 75
1361	Improved Yellow Oronoko	4 00
1363	Sweet Oronoko	3 75

FARM SEEDS

NOTE.—Prices on field seeds fluctuate with the market. Write us stating quantities required and we will quote best prices by return mail. We handle only one grade of field seeds—the best.

SPRING GRAINS

6055	Oats, Swedish Select	} Write for Prices
6060	Oats, White Tartar King	
6087	Wheat, Marquis Spring	

FIELD CORN

See page 8 for varieties. Write for Prices

CLOVER SEED

6100	Alfalfa (Kansas Grown)	} Write for Prices
6100a	Hardy Alfalfa (Grimm Type—Montana Grown)	
6101	Alsike	
6103	White Blossom Sweet, or Bokhara	
6105	Crimson, or Italian	
6107	Mammoth Red, or Pea Vine	
6109	Red Medium	
6113	Creeping White Dutch	

GRASS SEED

6114	Bermuda
6119	English, or Perennial Rye
6121	Hard Fescue
6125	Italian Rye
6126	Canada Blue
6127	Kentucky Blue, or June Grass
6129	Meadow Fescue, or English Blue
6131	Orchard
6133	Fancy Red Top, or Herd's Grass
6137	Sheep's Fescue
6138	Sudan Grass
6139	Timothy

Write for
Prices

BURPEE'S SPECIAL GRASS MIXTURES

6145	Fordhook Finest Lawn
6146	Sunny South Lawn
6149	Shady Nook Lawn
6144	Terrace Sod
6147	Golf Links
6143	Permanent Pasture
6148	Meadow or Hay Field
6150	Lowland Meadow

Write for
Prices

MISCELLANEOUS FARM SEEDS

6005	Broom Corn, Improved Evergreen
6007	Buckwheat, Japanese
6008	Buckwheat, Silver Hull
6010	Peas, Canada Field
6013	Chufas, or Earth Almonds
6016	Cow Peas, New Era
6017	Cow Peas, Whip-poor-will
6047	Kaffir Corn
6049	Millet, Golden
6050	Millet, Hungarian
6051	Millet, Japanese
6052	Millet, Pearl
6062	Peanuts, Mammoth Bush
6064	Peanuts, White Spanish
6066	Rape, Dwarf Essex
6069	Soy Beans, Mammoth Yellow
6071	Soy Beans, Black Wilson
6073	Sorghum or Sugar Cane, Early Orange
6075	Sunflower, Mammoth Russian
6077	Teosinte
6079	Vetch, Spring
6080	Vetch, Winter or Hairy

Write for
Prices

Burpee's Early-Flowering Sweet Peas

Four Grand Novelties for 1921

3366 Glitters (Burpee's)

It is giving this novelty scant praise when we say it is a "great flower." No variety we know of approaches GLITTERS in richness, brightness, and live fire effect. It is unique and outstanding, far ahead of all other orange-colored sweet peas. It glitters and scintillates, with a fire-like sheen radiating over the flowers. Magnificent by day, its color under artificial light is startling. We can only attempt to describe its flaming hue—to be fully appreciated it must be seen. The standard is a bright, fiery orange, and the wings are deep orange. The enormous flowers are of substantial texture, and hold up well after cutting. The individual flowers are of large size and both standard and wings are boldly waved. The flowers are artistically placed, usually in fours, on a long and strong stem. The sprays are majestic, but graceful withal, and make up into a most striking bunch. GLITTERS is a strong and vigorous grower, with healthy, deep green foliage, blooming profusely and continuously. Pkt. (12 seeds) 35 cts.; ½ oz. \$2.25; oz. \$4.00.

3360 Flamingo (Burpee's)

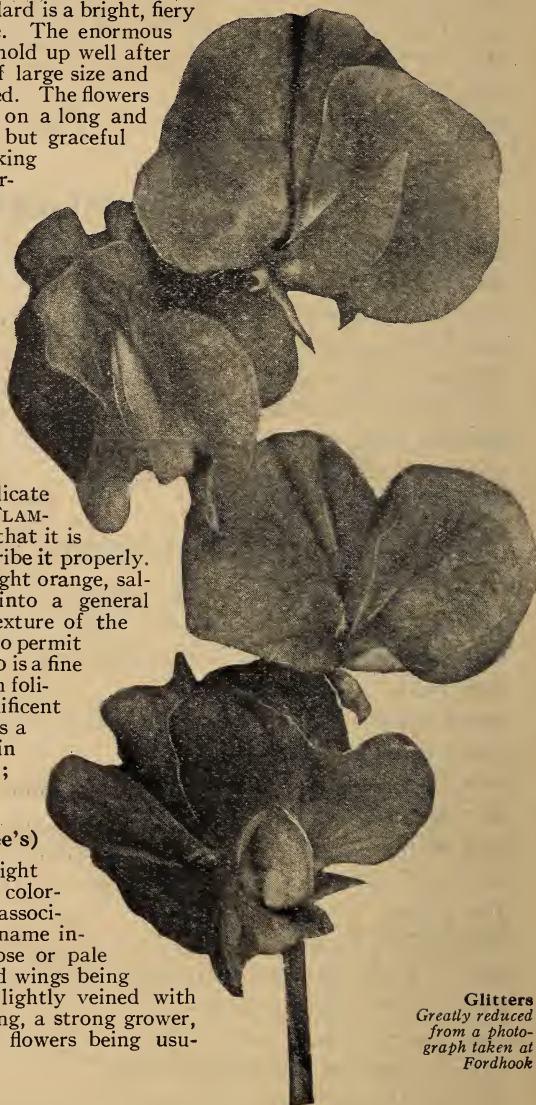
This is a distinct and charming variety, the color in particular being attractive and pleasing. The flowers are truly enormous in size, usually produced in threes and fours on very long, stiff stems. The broad and well-waved standard is light orange, with a suffusion of bright salmon, and the wings are a delicate shade of orange-pink. A bunch of FLAMINGO is of such rare and unique beauty that it is almost impossible to find words to describe it properly. It is a most charming combination of light orange, salmon, and orange-pink, which blends into a general effect of bright, light orange. The texture of the flowers is substantial, yet light enough to permit of the most graceful waving. FLAMINGO is a fine grower, with strong stems and rich green foliage, and, above all, it produces its magnificent sprays in great profusion. FLAMINGO is a splendid variety and should be included in every garden. Pkt. (12 seeds) 35 cts.; ½ oz. \$3.00; oz. \$5.00.

3375a Lemon Beauty (Burpee's)

This variety goes well with those of a bright cerise or fiery shade; in fact, the rich coloring of the latter is accentuated when associated with LEMON BEAUTY. As the name indicates, this novelty is a soft primrose or pale lemon-colored variety, the standard and wings being softly tinted amber, and sometimes lightly veined with rose-pink. Most attractive and pleasing, a strong grower, stems of great length, the immense flowers being usually borne three or four on a stem. Pkt. (12 seeds) 35 cts.

3382 Peach Blossom (Burpee's)

An altogether new and distinct color in sweet peas, and which may be described as a pale amaranth-pink which deepens somewhat around the edges of the standard and wings. A true self, standard and wings being of the same shade. The color becomes deeper as the days lengthen. A vigorous grower and free-flowering, with stems of great length. Pkt. (12 seeds) 35 cts.



Glitters
Greatly reduced
from a photo-
graph taken at
Fordhook

Burpee's Early- or Winter-Flowering Spencer Sweet Peas

The Winter-Flowering Spencer Sweet Peas are invaluable for greenhouse culture, blooming to perfection when grown indoors. If sown early in September, they come into flower by Christmas and may be had all Winter long from succession plantings.

For the year of 1921 we have a number of outstanding novelties to add to the comprehensive list of Burpee varieties in the Early- or Winter-Flowering type of Spencer Sweet Peas. These novelties are described at length on the preceding page. In the list below, we have given only a brief line of description to each sort, for our space in this catalog is limited. For illustrations and full descriptions, see pages 104-108 of Burpee's Annual for 1921.

Practically every desirable shade and color is represented in the Burpee list of Winter-Flowering Spencers. Many colors are included which have been much wanted and are not offered by any other Sweet Pea grower. The seed which we offer has all been grown on our Floradale Farms in California. Our stocks come true to color. We have not offered a variety to our customers until we were sure it would give satisfaction.

	Oz.	¼ lb.	Lb.
WHITE			
3392 Improved Snowstorm (Burpee). Immense pure white. The finest early-flowering white (½ oz., 45 cts.)	\$0 75	\$2 35	\$8 00
3390 Early Sankey (Burpee). Black-seeded	40	1 25	4 00
3332 Albatross (Burpee). Black-seeded; blush-white; large size (½ oz., 65 cts.)	1 10	3 50	12 00
CREAM			
3342 Canary Bird (Burpee). Rich cream or primrose self	40	1 25	4 00
3384 Primrose Beauty (Burpee). Deep primrose, flushed with rose	40	1 25	4 00
3375a Lemon Beauty (Burpee Novelty for 1921.) See page 22. (Packets only. Retail price, 35 cts. each.)	—	—	—
BLUSH			
3382 Peach Blossom (Burpee Novelty for 1921.) See page 22. (Packets only. Retail price, 35 cts. each.)	—	—	—
LIGHT PINK			
3376 Loveliness (Burpee). White suffused soft pink and picoteed rose-pink	40	1 25	4 00
3395 Sweet Briar (Burpee). Light pink with a soft, salmon suffusion	40	1 25	4 00
CREAM-PINK			
3348 Daybreak (Burpee). Rose-pink on cream; of largest size (½ oz., 35 cts.)	60	1 80	6 00
3386 Rising Sun (Burpee). Rose-pink on cream, keel light lemon-colored (½ oz., 40 cts.)	65	2 05	7 00
SALMON-PINK			
3364 Gypsy Maid (Burpee). Bright salmon-pink (½ oz., 45 cts.)	75	2 35	8 00
3363 Early Gem (Burpee). Rose-pink on cream, suffused amber and orange (½ oz., 65 cts.)	1 10	3 50	12 00
3394 Sunburst (Burpee). Rich pink, suffused salmon; lighter at base of petals	40	1 25	4 00
DEEP PINK			
3383 Pink Beauty (Burpee). Rose-pink on white ground (½ oz., 35 cts.)	60	1 80	6 00
3351 Enchantress (Burpee). Bright rose-pink, deeper at edges of standard and wings (½ oz., 35 cts.)	60	1 80	6 00
3350 Empress (Burpee). Deep rose-pink (½ oz., 35 cts.)	60	1 80	6 00
3378 Lustre (Burpee). Rose-pink with a coppery sheen (½ oz., 45 cts.)	75	2 35	8 00
ROSE AND CARMINE			
3387 Rosebud (Burpee). Bright shining rose of largest size (½ oz., 35 cts.)	60	1 80	6 00
3362 Fordhook Rose, Improved (Burpee). Rosy carmine	45	1 35	4 50
3393 Splendor (Burpee). Rich rose-crimson with a white blotch at base of standard and wings	40	1 25	4 00
SALMON			
3334 Apricot (Burpee). Deep salmon self, suffused orange (½ oz., 45 cts.)	75	2 35	8 00

ORANGE

3360 Flamingo (Burpee Novelty for 1921.) See page 22.	Oz.	¼ lb.	Lb.
(½ oz., \$3.00).....	\$5 00	—	—
3381 Orange Beauty (Burpee). An early Helen Lewis (½ oz., 45 cts.)	75	\$2 35	\$8 00
3349 Dazzler (Burpee). Standard rich orange, wings tinted rosy salmon (½ oz., 45 cts.).....	75	2 35	8 00

CERISE

3370 Gorgeous (Burpee). Soft salmon-cerise self (½ oz., 65 cts.)....	1 10	3 50	12 00
3344 Cherry Ripe (Burpee). Glowing cherry self (½ oz., 45 cts.)....	75	2 35	8 00
3373 Illumination (Burpee). Vivid salmon-cerise, suffused orange (½ oz., 75 cts.).....	1 25	4 15	14 00
3359 Fire King (Burpee). An early-flowering Fiery Cross (½ oz., 80 cts.).....	1 40	4 75	16 00

ORANGE-SCARLET

3366 Glitters (Burpee Novelty for 1921.) See page 22. (½ oz., \$2.25)	4 00	—	—
---	------	---	---

CRIMSON AND SCARLET

3388 Rosy Morn (Burpee). Rose with crimson-scarlet standard.....	40	1 20	3 75
3374 Early King (Burpee). The finest crimson, of large size.....	45	1 35	4 50

LAVENDER

3375 Lavender King (Burpee). Rich, true, deep lavender (½ oz., 35 cts.).....	60	1 80	6 00
3385 Princess (Burpee). Soft lavender, suffused mauve (½ oz., 35 cts.)	60	1 80	6 00
3399 Zephyr (Burpee). Pale, silvery lavender-blue (½ oz., 35 cts.)..	60	1 80	6 00

LIGHT BLUE

3338 Blue Bird (Burpee). A charming blue self (½ oz., 65 cts.)....	1 10	3 50	12 00
3396 True Blue (Burpee). True, light violet-blue. Outstanding (½ oz., 65 cts.).....	1 10	3 50	12 00

DARK BLUE

3340 Blue Jacket (Burpee). Rich dark navy-blue (½ oz., 35 cts.)....	60	1 80	6 00
---	----	------	------

MAUVE

3380 Mauve Beauty (Burpee). Rosy mauve, of immense size (½ oz., 35 cts.).....	60	1 80	6 00
---	----	------	------

PURPLE

3367 Glorious (Burpee). An early-flowering Royal Purple (½ oz., 35 cts.).....	60	1 80	6 00
---	----	------	------

MAROON

3377 Maroon Prince (Burpee). Deep, glowing reddish maroon (½ oz., 35 cts.).....	60	1 80	6 00
---	----	------	------

ART SHADES

3356 Fairy Queen (Burpee). Blush-pink, suffused salmon and veined with rose (½ oz., 45 cts.).....	75	2 35	8 00
---	----	------	------

PICOTEE EDGED

3346 Daintiness (Burpee). Pure white, edged rose.....	40	1 25	4 00
3352 Exquisite (Burpee). Soft primrose, picoteed deep rose-pink....	45	1 35	4 50

BICOLOR

3353 Early Fairy (Burpee). Rich cream standard, suffused pinkish apricot (½ oz., 45 cts.).....	75	2 35	8 00
3361 Fordhook Pink and White (Burpee). Blanche Ferry color; finest form.....	40	1 20	3 75
3358 Favorite (Burpee). Rosy pink standard, blush wings.....	45	1 35	4 50
3398 Yarrowa. Bright rose-pink with a clear, creamy base. Extra select stock.....	40	1 25	4 00
3379 Majestic (Burpee). Standard purplish maroon, wings rosy purple (½ oz., 35 cts.).....	60	1 80	6 00

STRIPED AND FLAKED

3345 Columbine (Burpee). White, striped and flaked rose (½ oz., \$2.25).....	4 00	—	—
3357 Fantasy (Burpee). Striped rose-pink on cream.....	40	1 25	4 00
3372 Harlequin (Burpee). Light heliotrope, striped with claret and chocolate (½ oz., 45 cts.).....	75	2 35	8 00
3335 Early Aurora. Cream-white, flaked orange-salmon (½ oz., \$2.00)	3 75	—	—

MIXED

3400 Sunrise Mixture. All colors carefully blended in the right proportion (100 lbs., \$275.00).....	30	95	2 85
3401 Special Mixture of Light Shades.....	40	1 10	3 50

Standard or Summer-Flowering Spencer Sweet Peas

We offer re-selected stocks—grown at Floradale Farms. Last year was the worst year for Sweet Peas in our growing experience. Most varieties were very short crop and of several we did not harvest sufficient seed to permit us to offer them except in small packets. We advise you to put your order in just as soon as possible to avoid disappointment. We will fill orders as long as our stocks last.

For full descriptions, please refer to pages 102 to 112 of BURPEE'S ANNUAL for 1921

	Oz.	¼ lb.	Lb.
WHITE			
3490 King White (Burpee). The finest white (½ oz., 45 cts.)	\$0 75	\$2 50	\$8 50
3435 Constance Hinton. Black-seeded (½ oz., 55 cts.)	90	3 00	10 25
CREAM			
3456 Floradale Fairy (Burpee). Rich cream, duplex (½ oz., 40 cts.)	65	2 05	7 00
3487 Isabel Malcolm. Black-seeded (½ oz., 40 cts.)	65	2 00	6 80
3554 Queen Victoria Spencer (Burpee). Deep primrose, flushed rose	40	1 30	4 25
BLUSH			
3449 Elegance. Blush-pink of largest size (½ oz., 65 cts.)	1 10	3 50	12 00
3404 Agricola. White, flushed lilac	35	1 00	3 40
3583 Valentine. Light shell-pink (½ oz., 90 cts.)	1 60	5 35	—
3432a Charm. Blush, shaded lilac	40	1 30	4 25
LIGHT PINK			
3428 Caress. Soft pink on cream. (Packets only. Retail price, 35 cts. each.)	—	—	—
3439 Daisybud. An improved Elfrida Pearson (½ oz., 80 cts.)	1 35	4 45	—
3450 Elfrida Pearson. Deep blush-pink (½ oz., 35 cts.)	60	1 80	6 00
3509 Mavis. Deep pink on white ground (½ oz., 35 cts.)	60	1 80	6 00
3432 Cis Wright. Pink on cream	50	1 55	5 25
CREAM-PINK			
3426 Bridesmaid. Rich salmon-pink on ivory-cream ground. (Packets only. Retail price, 35 cts. each.)	—	—	—
3498 Margaret Atlee. Deep pink on cream, suffused salmon	40	1 30	4 25
3499 Improved Margaret Atlee (Burpee). Richer in color. (Packets only. Retail price, 25 cts. each.)	—	—	—
3524 Mrs. Hugh Dickson. Apricot-pink on cream	60	1 80	6 00
3528 Mrs. Routzahn (Burpee). Buff, suffused delicate pink	35	1 00	3 40
3593 W. T. Hutchins. Creamy apricot-pink	70	2 25	7 65
SALMON-PINK			
3421 Beryl. Rich, soft salmon-pink, shaded buff (½ oz., 35 cts.)	60	1 80	5 95
3443 Doris Usher. Salmon-pink on cream	50	1 55	5 25
3495 Lillian. Pale salmon-pink, suffused amber	40	1 25	3 95
3548 Picture. Bright pink, flushed cream. (Packets only. Retail price, 35 cts. each.)	—	—	—
DEEP PINK			
3407 Annie Bownass. Bright pink, heavily suffused salmon on white ground	50	1 55	5 25
3438 Countmark Spencer. Soft rose-pink	40	1 30	4 25
3477 Thelma Pink. Standard bright salmon-pink; wings rose-pink (½ oz., \$1.00)	1 75	5 95	—
3484 Hercules. Rich pink; of magnificent size and form	50	1 50	5 10
ROSE			
3442 Decorator (Burpee). Rose overlaid with terra-cotta	50	1 50	5 15
3472 George Herbert. Bright rosy carmine	65	2 00	6 80
3567 Rosabelle. Large rose self with white blotch at base	50	1 50	5 10
3565 Rosalind (Burpee). Rose-crimson with a soft salmon suffusion. (Packets only. Retail price, 35 cts. each.)	—	—	—
SALMON			
3416 Barbara. Large salmon-orange self (½ oz., 40 cts.)	65	2 00	6 80
3575 Stirling Stent. Deep salmon, suffused orange	50	1 50	5 10

	Oz.	¼ lb.	Lb.
ORANGE			
3480 Helen Lewis. Standard crimson-orange; wings orange-rose	\$0 60	\$1 80	\$5 95
3566 Robert Sydenham. Glowing orange self	70	2 25	7 65
3580 Tangerine. New, deep orange. (Packets only. Retail price, 35 cts. each.)	—	—	—
ORANGE-SCARLET			
3578 The President. Dazzling orange-scarlet.	60	1 80	5 95
3581 Thomas Stevenson, Improved. Standard orange; wings rosy scarlet (½ oz., 65 cts.)	1 10	3 50	12 00
CERISE			
3455 Fiery Cross. Bright orange-cerise	60	1 95	6 50
3483 Hope. Scarlet-salmon-cerise self (½ oz., 50 cts.)	75	2 50	8 50
3485 Illuminator. Rich cerise-salmon	35	95	3 00
3523 Mrs. G. W. Bishop. Salmon-cerise, suffused orange	40	1 30	4 25
3573 Sincerity. Cerise self; largest size	50	1 50	5 10
CRIMSON			
3488 King Edward. Deep carmine-crimson	65	2 00	6 80
SCARLET			
3522 Mrs. C. P. Tomlin. Rich fiery scarlet; sunproof. (Packets only. Retail price, 35 cts. each.)	—	—	—
3587 Vermillion Brilliant. Intense scarlet self	50	1 50	5 10
LAVENDER			
3441 Don Alvar. Soft, silvery blue	40	1 30	4 25
3476 Hawlmark Lavender. True, clear light lavender. (Packets only. Retail price, 35 cts. each.)	—	—	—
3462 Florence Nightingale. Clear lavender with rose-pink sheen	60	1 80	6 00
3500 Margaret Madison. Azure-blue self	60	1 85	6 25
3539 Orchid. Deep lavender, suffused pink (½ oz., 55 cts.)	90	2 95	10 00
3564 R. F. Felton. Lavender, suffused mauve	70	2 25	7 65
BLUE			
3529 Mrs. Tom Jones. Bright Delphinium-blue. (Packets only. Retail price, 35 cts. each.)	—	—	—
3546 Phantom Blue. A pastel shade of blue	40	1 30	4 25
3589 Wedgwood. Deep azure-blue	50	1 50	5 10
DARK BLUE			
3425 Blue Monarch. Extra large, dark blue self	60	1 80	5 95
MAUVE			
3493 The Lady Eveline. Beautiful rosy mauve	40	1 30	4 25
PURPLE			
3569 Royal Purple. Rich, warm purple	50	1 50	5 10
3410 Arthur Green. Claret-colored self	50	1 50	5 10
MAROON			
3479 Hawlmark Maroon. Like polished mahogany. (Packets only. Retail price, 35 cts. each.)	—	—	—
3489 King Manoel. Deep chocolate-maroon (½ oz., 45 cts.)	75	2 50	8 50
3591 Warrior. Rich reddish maroon, flushed bronze	50	1 50	5 10
ART SHADES			
3427 Brocade. Satiny salmon, lavender and rose-pink (½ oz., 65 cts.)	1 10	3 50	12 00
3430 Charles Foster. Hydrangea pastel shades	50	1 50	5 25
3486 Irish Belle. Lilac, flushed pink	35	1 00	3 40
3547 Prince George. Pastel rosy lilac	35	1 00	3 40
3568 Rosina. Rich rosy heliotrope	40	1 30	4 25
3434a Constance Acomb. Creamy white, suffused mauve	50	1 50	5 10
PICOTEE			
3433 Cherub. Rich cream, edged with bright rose	35	1 00	3 40
3440 Dainty. Pure white, edged with rose-pink	35	1 00	3 40
3491a Jean Ireland. Cream, picoteed rose	40	1 30	4 25
3517 Mrs. A. G. Gentle. White, edged scarlet	35	1 00	3 40
3527 Mrs. J. Balmer. Cream, suffused reddish pink	35	1 00	3 40
3530 Mrs. Townsend. White with picotee edge of blue	35	1 00	3 40
3521 Mrs. Fred Kelly. White with narrow edge of violet-blue	40	1 30	4 25

BICOLOR

	Oz.	¼ lb.	Lb.
3422 Blanche Ferry Spencer. Rose standard; pinkish white wings..	\$0 50	\$1 50	\$5 00
3451 Elsie Edwards. Rich rose-pink on cream ground.....	35	1 00	3 40
3518 Mrs. Cuthbertson. Standard rose-pink; wings white (½ oz., 45 cts.)	75	2 50	8 50
3574 Sparkler. Standard bright rose; wings primrose. (Packets only. Retail price, 25 cts. each.)	—	—	—

STRIPED AND FLAKED

3406 America Spencer. Red flakes on white	50	1 50	5 00
3452 Empress Eugenie. Light gray, flaked with lavender	40	1 30	4 25
3496 Loyalty. Violet flake on white ground	40	1 30	4 25
3533 Mrs. T. W. Warren. White, veined bright blue	50	1 50	5 10
3532 Mrs. W. J. Unwin. White, flaked with orange-scarlet	50	1 50	5 10
3572 Senator Spencer. Claret stripes on heliotrope	40	1 30	4 25
3491 Jessie Cuthbertson. Cream, striped rose-pink	50	1 50	5 00

MIXTURES

3599 The Burpee Blend of Re-selected Spencers (100 lbs., \$165.00) .	25	60	1 75
3600 Burpee Special Mixture of Light Shades (100 lbs., \$215.00)...	25	75	2 25

DWARF CUPID SWEET PEAS

2540 Pink Cupid. Standard rose-pink; wings white, tinted rose.....	25	70	2 00
2545 White Cupid. Pure white	25	70	2 00
2549 All Colors, Mixed.	20	55	1 50

Concerning **Grandiflora Sweet Peas**, the introduction of the many new and improved Spencer Sweet Peas, particularly the Fordhook strains of Early-Flowering Spencers, has steadily restricted the demand for the old and less desirable Grandiflora type. Progressive planters are no longer using Grandiflora sorts. We discontinued growing them at Floradale Farms some time ago. The Spencer Sweet Peas are much better in every way.



Acres of Sweet Peas on Burpee's Floradale Farms, California

ASTERS

American Late Branching

	Oz.	Lb.
1571 Azure-Blue.....	\$0 70	\$7 50
1572 Dark Violet.....	1 00	11 00
1573 Crimson.....	70	7 50
1574 Dark Blue.....	75	8 50
1575 Lavender.....	70	7 50
1576 Invincible Pink.....	1 15	12 50
1578 Lavender-Pink.....	75	8 50
1579 Mary Semple (Shell-Pink).....	75	8 50
1580 Peach Blossom.....	85	9 50
1581 Purple.....	65	7 00
1582 Scarlet.....	85	9 50
1584 Rose-Pink.....	70	7 50
1585 Rosy Carmine.....	85	9 50
1586 White.....	70	7 50
1588 All Colors, Mixed.....	65	6 85

Improved Imperial or Daybreak

1591 Blue Bird.....	1 10	12 00
1593 Lavender.....	1 00	11 50
1594 Daybreak (Pink).....	1 10	12 00
1599 Purity, or White Daybreak.....	1 10	12 00
1600 Purple.....	1 00	11 00
1601 Rose-Pink.....	1 10	12 00
1603 Salmon.....	1 10	12 00
1605 All Colors, Mixed.....	85	9 50

Crego's Giant

1606 Shell-Pink.....	85	9 50
1607 Azure-Blue.....	85	9 50
1608 Purple.....	75	8 50
1609 Lavender.....	80	9 00
1610 Rose-Pink.....	85	9 50
1611 Crimson.....	85	9 50
1612 White.....	85	9 50
1613 Dark Blue.....	75	8 50
1614 All Colors, Mixed.....	70	7 50

King—Upright Type

1615 Crimson.....	1 00	11 00
1615a Lavender.....	1 00	11 00
1616 Pink.....	1 00	11 00
1616a Shell-Pink.....	1 00	11 00
1617 Rose.....	1 00	11 00
1618 White.....	1 00	11 00
1619 Violet.....	1 10	12 00
1621 All Colors, Mixed.....	85	9 50

Early Branching Royal

1636 Lavender.....	1 00	11 00
1637 Shell-Pink.....	1 00	11 00
1638 Purple.....	90	10 00
1639 White.....	1 10	12 00
1641 Rose-Pink.....	1 10	12 00
1642 All Colors, Mixed.....	85	9 50

Comet

1665 Giant Branching Comet, White.....	80	9 00
1667 " Mixed.....	70	7 50

Queen of the Market (American Grown)

1680 Crimson.....	75	8 00
1681 Lavender.....	75	8 50
1682 Shell-Pink.....	90	10 00
1683 Rose-Pink.....	90	10 00
1684 Purple.....	70	7 50
1685 Scarlet.....	75	8 50
1686 Dark Blue.....	75	8 50
1687 White.....	75	8 00
1688 Light Blue.....	90	10 00
1689 All Colors, Mixed.....	70	7 50

Burpee Beauty Type

1629 September Beauty..... (1/4 oz., 70 cts.)	2 10	—
1632 Lavender Beauty..... (1/4 oz., 70 cts.)	2 10	—
1633 American Beauty..... (1/4 oz., 45 cts.)	1 35	—
1634 Purple Beauty..... (1/4 oz., 55 cts.)	1 75	20 00

Other Asters

1590 Crimson Giant.....	1 00	11 00
1620 Mikado, or Rochester.....	90	10 00

	Oz.	Lb.
1622 White Mikado.....	\$0 90	\$10 00
1624 America (Enchantress).....	1 15	12 50
1625 Cardinal.....	1 15	12 50
1630 Peerless Pink..... (1/4 oz., 50 cts.)	1 45	16 50
1631 Sensation..... (1/4 oz., 50 cts.)	1 45	16 50
1635 Lavender Gem..... (1/4 oz., 50 cts.)	1 45	16 50

Asters in Mixture

1698 Truffaut's Peony-Flowered Perfection, Mixed.....	1 00	11 00
1706 European Victoria, Mixed.....	1 10	12 00
1735 Fordhook Favorites—Finest American Types, Mixed.....	65	7 00
1736 Fine Mixed, All Colors.....	45	4 50
2860 <i>Avena sterilis</i>	12	75
2906 Balloon Vine (<i>Cardiospermum halicacabum</i>).....	15	1 15

BALSAM

Burpee's Defiance Strain

1741 Chamois-Rose.....	40	4 00
1742 Burpee's Exquisite.....	50	5 00
1743 Pure Pink.....	40	4 00
1744 Rose, White Spotted.....	40	4 00
1745 Creamy Yellow.....	70	7 50
1746 Scarlet, White Spotted.....	40	4 00
1748 Royal Purple.....	40	4 00
1750 Shining Scarlet.....	45	4 50
1752 Violet, White Spotted.....	45	4 50
1754 Pure White.....	45	4 50
1756 White, Tinted Lilac.....	40	4 00
1761 Fordhook Fancy.....	50	5 00
1762 Fordhook Tricolor.....	50	5 00
1759 All Colors, Mixed.....	40	3 75
1763 <i>Camellia</i> -Flowered, Mixed.....	35	3 00
Balsam Apple—see <i>Momordica balsamina</i>		
Balsam Pear—see <i>Momordica charantia</i>		
1767 <i>Bartonia aurea</i>	40	4 00

BEDDING BEGONIAS

(*Begonia Semperflorens*)

1772 Duchess of Edinburgh..... (1/2 oz., \$4.50)	16 00	—
1774 <i>Gracilis Alba</i> (1/4 oz., \$2.00)	7 00	—
1776 " <i>Prima Donna</i> (1/2 oz., \$5.50)	20 00	—
1778 Vernon..... (1/4 oz., \$1.50)	5 00	—
1779 Snowball..... Sold out		—
1780 Vulcan (Burpee)..... (1/4 oz., \$3.75)	14 00	—
1781 <i>Alba</i> (1/4 oz., 50 cts.)	1 60	—
1784 Burpee's Special Mixture..... (1/4 oz., \$1.75)	6 00	—
3905 <i>Begonia</i> , Tuberous-Rooted, Single Mixed..... (100 seeds, 35 cts.; 1/40 oz., \$5.25)	—	—
3907 <i>Begonia</i> , Tuberous-Rooted, Double Mixed..... (500 seeds, 60 cts.; 1/40 oz., \$8.00)	—	—
3909 <i>Begonia</i> , Large-Leaved Rex (Small packet, 25 cts.)	—	—
3724 <i>Bellis perennis</i> (Double Daisy), Longfellow..... (3/4 oz., 75 cts.)	2 40	30 00
3725 " " Snowball..... (3/4 oz., 75 cts.)	2 40	30 00
3726 " " Fine Double, Mixed..... (1/4 oz., 40 cts.)	1 20	13 50
3727 " " Double Quilled, Mixed..... (3/4 oz., \$0 cts.)	2 50	32 00
3732 <i>Bocconia cordata</i>	35	3 00
1790 <i>Brachycome iberidifolia</i>	65	6 50
2863 <i>Briza maxima</i>	25	2 00
1793 <i>Browallia demissa</i> , Mixed.....	40	3 75
2908 <i>Bryonia</i> (<i>Bryonopsis</i>) <i>laciniosa</i> Crop failed		
2909 " <i>alba</i>	35	3 00
1796 <i>Calafia</i> (Tassel Flower), Mixed.....	40	3 75
3913 <i>Calceolaria hybrida</i> , Finest Mixed..... (1/40 oz., \$5.00)	—	—
1798 <i>Calendula</i> Nankeen.....	25	1 75
1799 " <i>Favorite</i>	15	85

W. ATLEE BURPEE CO. gives no warranty, expressed or implied, as to Purity, Description, Quality, Productiveness, or any other matter of any Seeds, Bulbs or Plants they send out, and will not be in any way responsible for the crop. If the purchaser does not accept the goods on these terms, they are at once to be returned.

	Oz.	Lb.
1800 <i>Calendula</i> , Lemon Queen.....	\$0 15	\$0 85
1801 " Oriole—Extra Fine.....	15	85
1802 " Orange King.....	15	1 00
1803 " Royal Trianon.....	15	1 00
1804 " Prince of Orange.....	20	1 25
1806 " Meteor.....	20	1 25
1805 " Double, Mixed.....	12	70

1809 <i>Calliopsis</i> (<i>Coreopsis</i>) <i>Drummondii</i> (Golden Wave).....	20	1 45
1813 " " Tall Mixed.....	15	1 15
3768 " " <i>grandiflora</i>	25	2 00

3733 <i>Campanula</i> , Medium, Single, Mixed.....	35	3 00
3734 " Medium, Double, Mixed.....	90	10 00

3735 " Medium calycan- thema, Blue.....	1 40	16 00
3737 " Medium calycan- thema, Rose.....	1 40	16 00

3739 " Medium calycan- thema, White.....	1 40	16 00
3741 " Medium calycan- thema, Mixed.....	1 10	12 00

3743 " <i>carpatica</i> , Blue.....	70	7 50
3744 " " White.....	70	7 50
3745 " <i>pyramidalis</i> , White.....	75	8 50
3747 " " Blue.....	75	8 50
3746 " <i>persicifolia</i> , Mixed.....	1 40	16 00

2911 <i>Canary Bird Flower</i> (<i>Tropæolum</i> <i>peregrinum</i>).....	25	2 00
<i>Canterbury Bells</i> —see <i>Campanula</i> .		

CANDYTUFT

Annual Varieties

1816 <i>Giant Hyacinth-Flowered</i>	30	2 50
1818 <i>Giant Empress</i>	25	2 25
1819 <i>Little Prince</i>	35	3 25
1820 <i>Snowflake</i> —Sweet-Scented.....	35	3 25
1824 <i>White Rocket</i>	20	1 25
1826 <i>Umbellata</i> , Dark Crimson.....	25	1 85
1827 " <i>Rose-Cardinal</i>	25	2 40
1828 " <i>Carmine</i>	25	1 95
1829 " <i>Lilac</i>	25	1 85
1830 " <i>Mixed</i>	20	1 45
1838 <i>Large-Flowered Dwarf Hybrids</i> , All Colors, Mixed.....	30	2 50

Perennial Candytuft

3829 <i>Iberis sempervirens</i> (¼ oz., 60 cts.)	1 90	—
1845 <i>Canna</i> Crozy's Large-Flowering, Mixed.....	25	2 15
2912 <i>Cardinal Climber</i>	1 00	11 00
<i>Cardiospermum</i> —see <i>Balloon</i> <i>Vine</i> .		
1848 <i>Carnation</i> , <i>Marguerites</i> , Mixed.....	65	7 00
3755 " <i>Choice Double</i> , Mixed.....	90	10 00
3757 " <i>Early Vienna</i>	1 10	12 00
3761 " <i>Fancy Picotee</i> , Extra Fine Mixed (1000 seeds, \$5.00)	—	—
3915 " <i>Perpetual or Tree</i> , Mixed, Very fine— Floradale grown (¼ oz., 30 cts., ¼ oz., \$1.00)	3 00	—

Castor-Oil Bean—see *Ricinus*.

CELOSIA

1853 <i>Pyramidalis</i> (<i>plumosa</i>), Dwarf Mixed.....	80	9 00
1855 " " Tall Mixed.....	35	3 00
1858 " <i>Triumph of the Expo- sition</i>	50	5 00
1860 " <i>Magnificent Carmine</i> (¼ oz., 45 cts.).....	1 40	16 00
1861 " <i>Magnificent Golden</i> <i>Yellow</i> (¼ oz., 45 cts.).....	1 40	16 00
1862 " <i>Magnificent Orange- Red</i> , (¼ oz., 45 cts.).....	1 40	16 00
1863 " <i>Magnificent Reddish</i> <i>Plum</i> (¼ oz., 45 cts.).....	1 40	16 00
1865 " <i>Magnificent Crimson- Scarlet</i> (¼ oz., 45 cts.).....	1 40	16 00
1864 " <i>Magnificent Mixed</i>	1 00	11 00
1859 <i>Childsii</i> (<i>Chinese Woolflower</i>), <i>Crimson</i> (¼ oz., 45 cts.)	1 40	—
1866 <i>Spicata</i>	35	3 00
<i>Celosia cristata</i> —see <i>Cockscomb</i> .		

CENTAUREA

	Oz.	Lb.
1869 <i>Imperialis</i> , White.....	\$0 40	\$3 50
1871 " <i>Purple</i>	40	3 50
1873 " <i>Golden West</i>	45	4 25
1876 " <i>Mixed</i>	30	2 50
1878 <i>Americana</i> (¼ oz., 30 cts.)	70	—
1882 <i>Cyanus</i> (<i>Cornflower</i>), Blue.....	25	1 75
1884 " <i>Single</i> , Mixed.....	20	1 50
1886 " <i>Double</i> , <i>Rose-Pink</i>	30	2 75
1887 " <i>Blue</i>	30	2 75
1885a " " <i>White</i>	40	4 00
1885 " " <i>Mixed</i>	25	1 75

1888 <i>Moschata</i> , <i>Marguerite</i> (¼ oz., 30 cts.).....	75	8 00
1889 <i>Candidissima</i> (<i>cineraria</i>) (¼ oz., 40 cts.).....	1 15	12 50

1891 <i>Gymnocarpa</i>	35	3 00
1893 <i>Moschata rosea</i>	65	6 50
3763 <i>Montana</i>	70	7 50

<i>Centaurea suaveolens</i> —see <i>Sweet</i> <i>Sultan</i> .		
3767 <i>Cerastium tomentosum</i> (¼ oz., 85 cts.).....	2 70	—
3765 <i>Cheiranthus Allionii</i>	45	4 50

3764 <i>Chelone</i> (<i>Pentstemon</i>) <i>barbata</i> <i>Torreyi</i>	45	4 50
--	----	------

CHRYSANTHEMUM

1896 <i>Annual Single</i> , Mixed.....	40	3 50
1903 <i>Coronarium</i> , <i>Double</i> , Mixed.....	20	1 35
1904 (<i>Matricaria</i>) <i>inodorum plenissimum</i>	55	5 75
3748 <i>Perennial Single</i> , Mixed.....		

3750 <i>Fordhook</i> <i>Early Single-Flowering</i> <i>Perennial</i> , Mixed (¼ oz., 90 cts.; ¼ oz., \$1.60)	6 10	—
3918 <i>Cineraria hybrida</i> , Mixed (¼ oz., \$2.25; ¼ oz., \$8.00)	28 00	—

3920 <i>Cineraria hybrida</i> , <i>Large-Flowered</i> , <i>Finest Mixed</i> (¼ oz., \$3.75; ¼ oz., \$27.50)	—	—
3919 " <i>hybrida grandiflora</i> , <i>Stella</i> (¼ oz., \$12.00)	—	—

1906 <i>Clarkia</i> , <i>Finest Mixed</i>	30	2 75
3766 <i>Clematis paniculata</i>	35	3 00
1909 <i>Cleome spinosa</i> (<i>pungens</i>) (<i>Giant</i> <i>Spider Plant</i>) <i>rose</i>	20	1 35

1910 " <i>spinosa</i> (<i>pungens</i>) <i>white</i>	25	1 85
2913 <i>Cobæa scandens</i>	30	2 50
1912 <i>Cockscomb</i> (<i>Celosia cristata</i>)		

1917 " <i>Giant Empress</i>	1 45	—
2868 <i>Coix Lacryma Jobi</i> (<i>Job's Tears</i>).....	—	25
1919 <i>Coleus</i> , <i>Irish Zulu</i>	—	Crop failed
1920 " <i>Rococco</i> (¼ oz., \$4.50)	30 00	—

1921 " <i>Sunset Large-Leaved</i> (¼ oz., \$5.75)	40 00	—
1923 " <i>Gigantic Copper-Leaved</i> (¼ oz., \$5.75)	40 00	—

1925 " <i>Fancy Fringed and Lacin- iated</i> . (¼ oz., \$6.50)	45 00	—
1927 " <i>Fine Mixed</i> .. (¼ oz., \$2.85)	10 00	—

<i>Columbine</i> —see <i>Aquilegia</i> .		
<i>Convolvulus</i> —see <i>Morning Glory</i> .		
<i>Coreopsis</i> —see <i>Calliopsis</i> .		

1928 <i>Corn</i> , <i>Ornamental</i> , <i>Burbank's Rain- bow</i>	10	60
---	----	----

COSMOS

1929 <i>Burpee's Crimson Ray</i>	25	2 00
1931 <i>White Ray</i>	25	2 00
1932 <i>Lady Lenox</i>	20	1 65
1933 <i>White Lady Lenox</i>	25	1 85

1937 <i>Large Early-Flowering</i> , <i>Crimson</i>	35	3 00
1939 " <i>Rose</i>	35	3 00
1941 " " <i>White</i>	35	3 00
1942 " " <i>Mixed</i>	30	2 50

1943 <i>Giant-Flowered</i> , <i>Pink</i>	20	1 45
1944 " <i>Crimson</i>	20	1 60
1945 " <i>White</i>	20	1 35
1947 " <i>Mixed</i>	20	1 20

1946 <i>Double Crested</i> , <i>Crimson King</i> (¼ oz., 70 cts.).....	2 15	—
1948 " <i>Pink Beauty</i> (¼ oz., 55 cts.).....	1 75	—

1949 " <i>White Queen</i> (¼ oz., 55 cts.).....	1 75	—
1950 " <i>Mixed</i> (¼ oz., 45 cts.).....	1 40	16 00

3924 <i>Cyclamen persicum giganteum</i> , Mixed..... (¼ oz., \$3.00)	10 00	—
2919 <i>Cypress Vine</i> (<i>Quamoclit</i>), <i>Scarlet</i>	35	3 00
2921 " <i>White</i>	40	3 50
2923 " <i>Mixed</i>	25	2 00

DAHLIA		Oz.	Lb.
1952	Decorative, Mixed	\$0 90	—
1953	Choice Large-Flowering Double, Mixed	1 15	—
1956	Choice Pompon, Mixed	75	—
1964	Cactus, Mixed	1 45	—
1965	Peony-Flowered, Mixed	60	\$6 00
1966	Collarete, Mixed	70	7 50
1967	Purpursii	45	4 50
1968	Superb Single, Mixed	40	3 75
1970	Striped Single, Mixed	30	2 85
3770	Daisy, Shasta	60	6 00
	Daisy, Double—see Bellis.		
1973	Datura meteloides (Wrightii)	25	2 00
1975	" fastuosa Cornucopia (1/4 oz., 45 cts.)	1 25	14 00
1977	" Golden Queen	90	10 00
1979	" Mixed	20	1 75
3772	Delphinium, Belladonna Seedlings (1/4 oz., 55 cts.)	1 75	20 00
3774	" Belladonna (True) (1/4 oz., \$1.10)	3 75	—
3776	" formosum (1/4 oz., 45 cts.)	1 35	—
3778	" Choice Mixed	40	3 75
	Delphinium ajacis—see Larkspur.		

DIANTHUS

(Annual Chinese and Japanese Pinks)

1981	Chinensis, Double, Mixed	40	3 50
1984	Diadematus, Double	55	5 50
1989	Ch. Heddeggigi, Single, Mixed	30	2 85
1994	" Double, Mixed	50	5 00
1996	" Mourning Cloak	70	7 50
1999	" Dwarf Fireball (1/4 oz., 35 cts.)	90	—
2001	" Dwarf Snowball (1/4 oz., 35 cts.)	90	—
2005	" Large-Flowered Dwarf Double Hybrids (Royal nobilis) (Pinks)	75	8 00
2027	" Imperialis, Double, Mixed	50	5 00
2008	Imperialis, Double, Mixed	40	4 00
2011	Ch. Laciniatus, Single, Mixed	40	4 00
2014	" Mirabilis (1/4 oz., 30 cts.)	75	8 00
2015	" Salmon Queen (1/4 oz., 30 cts.)	70	7 50
2016	" Vesuvius (1/4 oz., 30 cts.)	75	8 00
2021	" Double, Mixed	65	6 75
2031	Annual Varieties in Good Mixture	25	2 25
2032	Fordhook Favorites, Mixed—Extra Fine	60	6 50
Perennial Dianthus			
3782	Deltoides (Maiden Pink)	45	4 50
3783	Plumarius (Pheasant-Eye or Clove-Pink)	40	4 00
3785	" scoticus fl. pl. (Double Florist's Pink) (1000 seeds, \$3.50)	—	—
3784	Cæsius (Cheddar Pink)	45	4 50
	Dianthus barbatus—see Sweet William.		
	Dianthus Caryophyllus—see Carnation.		
2039	Diascia Barbara	75	—
2041	" Salmon Queen	90	—
3787	Digitalis (Foxglove) Fine Mixed	40	4 00

		Oz.	Lb.
3788	Digitalis Yellow	\$0 45	\$4 50
3789	" White	40	4 00
2038	Dimorphotheca aurantiaca	40	4 00
2033	" aurantiaca, New Hybrids	60	6 00
2040	Dolichos, Burpee's Bush	20	1 35
2927	" Darkness	25	2 00
2929	" Daylight	25	1 85
2931	" Lablab, purple	15	85
3793	Echinops sphaerocephalus	25	2 00
2870	Erianthus ravenne	25	2 00
3797	Erigeron speciosus superbus	45	4 50
3802	Eryngium planus	25	2 00

ESCHSCHOLTZIA

2042	Pure White (alba)	20	1 25
2043	Primrose Queen, Chrome	40	3 75
2044	Rose-Crimson	35	3 00
2047	Fire-Flame	20	1 25
2048	The Geisha	60	—
2049	Golden West	15	1 15
2050	Orange King	30	2 50
2051	Mandarin	25	1 85
2052	Rosy Queen	50	5 00
2053	Rose-Cardinal	35	3 00
2054	Vesuvius	40	4 00
2055	Sunset Mixture	20	1 35
2046	Douglasii	30	2 50
	Eschscholtzia, Bush—see Hunnemannia.		
2058	Euphorbia marginata (Snow-on-the-Mountain)	30	2 85
2060	" heterophylla	65	7 00
2854	Everlasting Flowers, Mixed. For other Everlastings—see Acroclium, Gomphrena, Helichrysum, Rhodanthe and Xeranthemum.	35	3 00
2064	Feverfew, double (Chrysanthemum Parthenium fl. pl.)	20	1 35
2070	Forget-Me-Not (Myosotis) alpestris, Blue	70	7 50
2071	" alpestris, Rose	70	7 50
2072	" alpestris, White	70	7 50
2073	" alpestris, Mixed	60	6 00
2076	" alpestris robusta grandiflora, Eliza Fonrobert	80	9 00
2068	" palustris (True) (1/4 oz., \$1.00)	3 00	—
2074	" palustris semperflorens (1/4 oz., 75 cts.)	2 40	—
	Four-O'Clock—see Mirabilis.		
	Foxglove—see Digitalis.		
3928	Fuchsia, Single and Double, Mixed (100 seeds, 40 cts.; 1000 seeds, \$3.50)	—	—
2084	Gaillardia (Blanket Flower), Fine Mixed	30	2 75
2086	" picta Lorenziana, Double Mixed	30	2 75
3805	" aristata (grandiflora), Perennial	30	2 50
	Geranium—see Pelargoniums.		
3806	Geum coccineum, Mrs. Bradshaw (1/4 oz., 35 cts.)	80	9 00
	Gillflower—see Ten Week Stock.		
2090	Gladiolus, Burpee's Fordhook Hybrids	75	8 50



A panoramic view of Florida showing the mountains in the distance. Some idea of the area cultivated may be had by comparing the ranch building at the left with the rest of the picture

	Oz.	Lb.
3955 <i>Gloxinia</i> , Giant-Flowered ($\frac{1}{32}$ oz., \$3.00; $\frac{1}{4}$ oz., \$20.00)	—	—
2088 <i>Godetia</i> , Fine Mixed	\$0 40	\$3 75
2838 <i>Gomphrena</i> <i>globosa</i> (Globe Amaranth), Mixed	25	2 00

GOURDS—ORNAMENTAL

2933 Spoon	20	1 50
2939 Hercules Club	20	1 65
2941 Miniature Bottle-Shaped	20	1 65
2945 Orange	20	1 35
2947 Pear-Shaped	20	1 35
2949 Melopepo, Flat, Striped	20	1 50
2951 Apple	20	1 35
2956 True Pipe, or Calabash	20	1 65
2934 Small Varieties, Mixed	15	1 00
2936 Large Varieties, Mixed	15	1 00
2953 All Varieties, Fine Mixed	15	90
2885 <i>Grasses</i> , Ornamental, Annual Varieties, Mixed	25	2 25
For other Ornamental Grasses— see <i>Agrostis</i> , <i>Avena</i> , <i>Briza</i> , <i>Coix</i> , <i>Erianthus</i> , <i>Gynerium</i> , <i>Hordeum</i> , <i>Pennisetum</i> and <i>Tricholena</i> .		
2874 <i>Gynerium</i> (<i>Cortaderia</i>) <i>argenteum</i> (Pampas Grass)	25	2 35
2091 <i>Gypsophila</i> <i>elegans</i> , White	15	80
2093 " " Rose	15	1 00
2092 " " Mixed	12	75
2094 " " Covent Garden	25	1 95
3807 " " <i>paniculata</i> (Perennial)	45	4 50
3809 <i>Helenium</i> <i>autumnale</i> <i>superbum</i> ($\frac{1}{4}$ oz., 55 cts.)	1 75	—
3808 <i>Helianthus</i>	45	4 50
For Annual Varieties of <i>Helianthus</i> —see <i>Sunflower</i> .		
2840 <i>Helichrysum</i> , Fire Ball	45	4 50
2842 " Golden Ball	45	4 50
2844 " Snow Ball	45	4 50
2847 " Rose Queen	45	4 50
2845 " Salmon Queen	50	5 00
2849 " Violet Queen	45	4 50
2846 " Mixed	40	3 50

HELIOTROPE

2100 Black King	($\frac{1}{4}$ oz., 50 cts.)	1 45	—
2104 Lady in White	($\frac{1}{4}$ oz., 50 cts.)	1 55	—
2106 Choice Mixed	($\frac{1}{4}$ oz., 35 cts.)	1 00	11 00
2109 Lemoine's Giant Hybrids (Ford- hook grown), Mixed ($\frac{1}{4}$ oz., 70 cts.)	2 10	—	—
2109a Lemoine's Giant Hybrid, Blue ($\frac{1}{4}$ oz., 70 cts.)	2 25	—	—
2109b Lemoine's Giant Hybrid, White ($\frac{1}{4}$ oz., 75 cts.)	2 40	—	—
3811 <i>Heuchera</i> <i>sanguinea</i> , Hybrids ($\frac{1}{4}$ oz., 55 cts.)	1 75	—	—
3812 <i>Hibiscus</i> Giant Mallow Marvels, Mixed	25	2 35	—

HOLLYHOCK (*Althea rosea*)

3814 Chater's Double, Light Pink	75	8 50	—
3815 " " Maroon	75	8 50	—
3816 " " Rose	75	8 50	—
3817 " " Scarlet	75	8 50	—
3818 " " Yellow	75	8 50	—
3819 " " Pure White	75	8 50	—
3823 " " Crimson	75	8 50	—
3822 " " Finest Mixed	70	7 75	—
3826 Double Allegheny, Mixed	65	7 00	—
3823 Single, Mixed	40	4 00	—
2876 <i>Hordeum</i> <i>jubatum</i>	30	2 50	—
2958 <i>Humulus</i> <i>japonicus</i>	35	3 00	—
2960 " " <i>variegatus</i>	40	3 75	—
2112 <i>Hunnemannia</i> <i>fumarifolia</i>	25	2 35	—
<i>Hyacinth Bean</i> —see <i>Dolichos</i> .			
3830 <i>Hyacinthus</i> <i>candicans</i> , <i>Iberis</i> —see <i>Candytuft</i> .	40	4 00	—
2116 Ice Plant (<i>Mesembryanthemum</i> <i>crystallinum</i>)	30	2 50	—
3831 <i>Incarvillea</i> <i>Delavayi</i> (Hardy <i>Gloxinia</i>).....($\frac{1}{4}$ oz., \$1.10)	3 35	—	—
2962 <i>Ipomoea</i> <i>setosa</i> (Brazilian Morn- ing Glory)	20	1 50	—
2964 " (Calonyction) <i>Bona Nox</i>	12	75	—
2966 " (Quamoclit) <i>coccinea</i>	12	75	—
2968 " <i>Fuchsia</i> -Flowered	15	1 00	—
2973 " Choice Mixed	12	65	—
<i>Ipomoea</i> <i>purpurea</i> —see <i>Morning</i> <i>Glory</i> .			
<i>Ipomoea</i> <i>Quamoclit</i> —see <i>Cypress</i> <i>Vine</i> .			
<i>Ivy</i> , Boston—see <i>Ampelopsis</i> .			
<i>Ivy</i> , Kenilworth—see <i>Linaria</i> .			
<i>Kniphofia</i> —see <i>Tritoma</i> .			

	Oz.	Lb.
2118 <i>Kochia</i> <i>tricophylla</i>	\$0 12	\$0 65
2119 " Giant Christmas	12	75
2974 Kudzu Vine, Japanese	30	2 75
2120 <i>Lantana</i> , Finest Mixed	30	2 75

LARKSPUR

2121 New Red	35	3 00
2122 Dwarf Rocket, Double, Mixed	30	2 65
2123 Tall Double Stock-Flowered, Rose	35	3 25
2123a Tall Double Stock-Flowered, Purple	35	3 00
2123b Tall Double Stock-Flowered, Flesh- Pink	40	3 50
2123c Tall Double Stock-Flowered, Lus- trous Carmine	40	4 00
2125 Tall Double Stock-Flowered, White	35	3 25
2127 Tall Double Stock-Flowered, Sky- Blue	40	3 75
2127a Tall Double Stock-Flowered, Dark Blue	40	3 75
2124 Tall Double Stock-Flowered, Mixed	25	2 00
2126 Emperor, Mixed	40	3 50
2128 Compact Blue (<i>Delphinium</i> <i>Chinense</i>)	70	7 50
2128a Compact White	65	7 00
<i>Larkspur</i> , Perennial—see <i>Del-</i> <i>phinium</i> .		
3833 <i>Lathyrus</i> <i>latifolius</i> (Perennial Pea), Pink Beauty	50	5 00
3835 " <i>latifolius</i> , Purple	50	5 00
3837 " Giant White	65	7 00
3839 " Mixed	40	4 00
<i>Lathyrus odoratus</i> —see <i>Sweet</i> <i>Peas</i> , pages 23-27.		
2129 <i>Lavatera</i> <i>trimestris</i> <i>alba</i> , Purity	30	2 85
2130 " <i>rosea</i> , Loveli- ness	35	3 00
3962 <i>Lemon Verbena</i> (<i>Lippia</i> <i>citriodora</i>) ($\frac{1}{4}$ oz., 60 cts.)	1 85	—
3840 <i>Lilium</i> <i>regale</i> (<i>myrophyllum</i>) ($\frac{1}{4}$ oz., \$1.00)	3 00	—
2131 <i>Linaria</i> <i>Cymbalaria</i> (Kenilworth <i>Livy</i>).....($\frac{1}{4}$ oz., 50 cts.)	1 55	—
2132 <i>Linaria</i> <i>maroccana</i> , Excelsior	35	3 00
2134 " <i>reticulata</i> <i>aurea</i> <i>purpurea</i>	30	2 75
2137 <i>Linum</i> <i>grandiflorum</i> <i>rubrum</i>	25	2 00
3841 " <i>perenne</i> <i>sibiricum</i> , Blue	25	2 40

LOBELIA

2146 <i>Erinus</i> <i>gracilis</i> , Blue	60	6 00
2143 " <i>compacta</i> , White ($\frac{1}{4}$ oz., 40 cts.)	1 10	12 00
2145 " " Crystal Palace ($\frac{1}{4}$ oz., 70 cts.)	2 25	—
2151 " " White Gem ($\frac{1}{4}$ oz., 45 cts.)	1 40	—
2147 <i>Erinus</i> Varieties, Fine Mixed	65	7 00
2155 <i>Tenulor</i> (<i>ramosa</i>).....($\frac{1}{4}$ oz., 35 cts.)	1 00	—
3843 <i>Cardinalis</i>($\frac{1}{4}$ oz., 75 cts.)	2 40	—
2975 <i>Lophospermum</i> (<i>Maurandia</i>), <i>scandens</i>($\frac{1}{4}$ oz., 35 cts.)	1 00	—
2158 <i>Lupinus</i> <i>subcarnosus</i>	35	3 00
2159 " <i>hirsutus</i> , Large Blue	15	1 00
2160 " " Large Rose	15	1 00
2161 " " Large White	15	1 00
2162 " Annual Varieties, Mixed	15	90
3844 " <i>polyphyllum</i> , White	25	2 00
3844a " " Rose	25	2 25
3845 " " Blue	25	1 75
3846 " " <i>Moerheimi</i> ($\frac{1}{4}$ oz., 35 cts.)	90	10 00
3842 " " Mixed	20	1 35
2164 <i>Lychnis</i> <i>chalconedica</i> , Scarlet	35	2 95
2165 " <i>Arkwrightii</i>	35	—
3846a " <i>viscaria</i> <i>spendens</i>	40	3 50
2167 " Many Varieties, Mixed	20	1 65

MARIGOLD

2172 Tall African, El Dorado	40	4 00
2174 " " Lemon Queen	40	4 25
2176 " " Lemon Ball	50	5 00
2178 " " Orange Ball	50	5 00
2170 " " Double, Mixed	40	3 50
2181 Dwarf French, Double, Brown Mar- ble	30	2 85
2183 " " Double, Pulchra	30	2 85
2185 " " Double, Orange Ball	35	2 95
2187 " " Double, Compact Gold Striped	30	2 85
2190 " " Double, Mixed	25	1 85
2194 " " Single, Legion of Honor	30	2 85
Marvel-of-Peru—see <i>Mirabilis</i> .		
2204 <i>Mathiola</i> <i>bicornis</i>	25	2 25

	Oz.	Lb.
2977 Maurandya Barclayana	(1/4 oz., 45 cts.)	\$1 35
2979 " Mixed	(1/4 oz., 45 cts.)	1 25
2208 Medicago (Snails), Mixed		20 \$1 65

MIGNONETTE (Reseda odorata)

2211 Allan's Defiance	30	2 85
2212 Giant Bouquet	35	3 00
2213 Giant-Flowered Machet (Bismarck)	50	5 00
2215 Giant-Flowered Red	35	3 00
2217 Golden Sunset	50	5 00
2218 Goliath	75	8 00
2220 Pure Machet (Extra Fine Strain)	40	4 00
2222 Golden Machet	55	5 50
2226 Pearl, or White Goliath		
2229 Red Monster	(1/4 oz., 35 cts.)	90
2232 Fordhook Finest, Mixed	(1/4 oz., 35 cts.)	90
2233 Common Sweet		35 3 25
2233		15 85
Mimosa pudica—see Sensitive Plant.		
2242 Mimulus tigrinus grandiflorus	(1/4 oz., 50 cts.)	1 55
2244 " moschatus	(1/16 oz., 45 cts.)	4 75
2196 Mirabilis (Four o' Clock, or Marvel-of-Peru) Tall, Mixed (100 lbs., \$45.00)		10 50
2198 " Tall Variegated-Leaved, Mixed		15 1 00
2200 " Dwarf (Tom Thumb), Mixed		20 1 25
2993 Momordica Balsamina (Balsam Apple)		20 1 65
2995 " Charantia (Balsam Pear)		20 1 65
2983 Moonflower, White-Seeded		30 2 75
2985 " Cross-Bred, or Hybrid		35 3 25
2986 " Giant Pink Hybrid		30 2 50
2987 " Early Blooming Sky-Blue		80
2991 " Sky-Blue		50 5 00

MORNING GLORY

Dwarf (Convolvulus tricolor)

2256 Mixed		10 50
Tall (Ipomoea purpurea)		
3000 Blue-Striped	10	50
3002 Rose-Striped	10	50
3009 Dark Blue	10	50
3011 Dark Red, or Imperial Crimson	10	50
3013 Light Blue	10	50
3015 Lilac	10	50
3016 Deep Rose	10	50
3017 Rose-Pink	10	50
3019 White	10	50
3020 White with Rose Center (Airy Fairy)	10	50
3021a Carmine	10	50
3021b Flesh-Pink	10	50
3021 Fine Mixed (100 lbs., \$32.00)	8	35
3024 Rochester	18	1 25
3026 Double White Tassel	35	3 00
3027 Double Snow Fairy	40	4 00
3028 Imperial Japanese, Mixed (100 lbs., \$75.00)	15	80
3965 Musa Ensete (Abyssinian Banana Tree) (100 seeds, 75 cts.; 1000 seeds, \$7.00)		
Myosotis—see Forget-Me-Not.		

NASTURTIUMS

Dwarf Variegated-Leaved, or Queens

2260 Chameleon Queen	20	1 50
2262 Crystal Queen	20	1 50
2264 Deep Orange-Scarlet	20	1 50
2266 Golden Yellow	20	1 50
2268 Golden Yellow, Marbled Red	20	1 50
2269 Queen Lady Bird	20	1 50
2270 Light Yellow, Spotted Brown	20	1 50
2272 Queen of Tom Thumbs (Crimson)	20	1 50
2274 Rosy Scarlet	20	1 50
2276 All Colors, Mixed	15	1 10

Dwarf Ivy-Leaved

2280 Golden Butterfly		Crop failed
2284 Mixed	15	95

Dwarf Spencer, or David Burpee Type

	Oz.	Lb.
2285 David Burpee	\$0 20	\$1 65
2287 Anna Groot	20	1 50
2289 Spencer Lady Bird	20	1 50
2291 Miss Mina Groot	20	1 50
2293 Riemke Groot	20	1 65
2295 All Colors, Mixed	15	95

Dwarf, or Tom Thumb

2300 Aurora	12	70
2302 Beauty	15	85
2306 Bronze Colored	15	85
2311 Chameleon	12	75
2313 Cloth of Gold	15	85
2315 Caruleum Roseum	15	85
2316 Dark Crimson	12	70
2319 Crystal Scarlet Gem	12	70
2322 Deep Scarlet	12	70
2324 Empress of India	12	75
2326 General Jacqueminot	15	85
2329 Golden King	15	85
2360 Golden Midnight	15	1 15
2331 Golden Queen	12	70
2333 King of Tom Thumbs	15	85
2335 King Theodore	12	75
2337 Lady Bird	12	70
2339 Pearl	15	85
2341 Prince Henry	15	85
2344 Ruby King	15	1 00
2346 Rudolph Virchow	12	75
2350 Vesuvius	12	70
2354 Burpee's Gorgeous Mixture (100 lbs. \$55.00)	10	60

Dwarf Lilliput

2357 Fairy King	20	1 25
2358 Baby Rose	20	1 25
2359a Cardinal-Rose	20	1 25
2359 Fairy Queen	20	1 25
2359a Fireball	20	1 25
2361 Lady Cherry	20	1 25
2362 Belgian Queen	20	1 45
2363 Othello	20	1 25
2364 Feltham Beauty	20	1 25
2365 Ruby	20	1 25
2366 Snow Queen	20	1 25
2367 Lilliputs, Mixed	15	95

Tall Variegated-Leaved, or Queens

3042 Variegated Queen (Original Variety)	15	1 00
3044 Queen Alexandra	15	1 00
3046 Queen Emma Dowager	15	1 00
3047 Queen Helena	15	1 00
3050 Queen of the Morning	15	1 00
3052 Queen of the North	15	1 00
3053 Queen of Holland	15	1 00
3054 Queen of Spain	15	1 00
3056 Queen Wilhelmina	15	1 00
3058 Queen of Fordhook	15	1 00
3060 Variegated, Mixed	15	90

Tall or Trailing

3061 Butterfly	15	80
3064 Dark Crimson	15	80
3067 Dunnett's Orange	15	95
3069 Fordhook Fashion	15	95
3072 Golden-Leaved Scarlet	15	90
3074 Hemisphericum	15	80
3076 King Theodore	15	80
3078 Midnight	15	95
3080 Moonlight	15	80
3082 Pearl	15	80
3084 Prince Henry	15	80
3088 Rose	15	80
3090 Salmon Queen	15	80
3092 Scarlet	15	90
3094 Scheuerianum Coccineum	15	80
3096 Sunlight	15	95
3097 Twilight	15	90
3101 Ruby	15	90
3108 Chameleon	15	80
3105 Hybrids of Madame Gunter	15	80
3103 Tall, Mixed (100 Lbs., \$50.00)	10	55
3110 Fordhook Favorite Mixture (100 Lbs., \$65.00)	12	70
3112 Giant-Flowered, Mixed (100 Lbs. \$70.00)	12	75
3143 Lobb's Finest, Mixed	10	60
3145 Trailing Tom Pouce, Mixed	15	1 00

Tall Ivy-Leaved

3154 Original Ivy-Leaved (Scarlet)	20	1 50
3156 Golden Gem	20	1 50
3158 Flamingo	20	1 50
3168 Ivy-Leaved, Mixed	15	95

	Oz.	Lb.
2371 <i>Nicotiana affinis</i> (alata grandiflora)	\$0 25	\$2 00
2372 " Hybrids.....	25	2 15
2374 " Sanderae, Hybrids.....	35	3 00
2375 " sylvestris.....	25	1 85
2382 <i>Nigella damascena</i> , Double, Mixed	15	85
2383 " Miss Jekyll.....	15	95
2385 <i>Nymphaea</i> , capensis zanzibarensis, Red and Blue, Mixed ($\frac{1}{16}$ oz., 30 cts.; $\frac{1}{4}$ oz., \$1.00)	3 00	—
2388 <i>Oenothera</i> (Evening Primrose), Mixed.....	15	1 00
2390 <i>Oxalis rosea</i>($\frac{1}{16}$ oz., 40 cts.; $\frac{1}{4}$ oz., \$1.35)	4 25	—
2392 " tropaeoloides (corniculata atropurpurea) ($\frac{1}{4}$ oz., 45 cts.)	1 30	—
2394 " valdiviensis.....	60	—

PANSIES

Bedding Varieties

2397 Pure White.....($\frac{1}{4}$ lb., \$4.75)	1 40	—
2398 Pure Yellow.....($\frac{1}{4}$ lb., 4.75)	1 40	—
2399 Orange.....($\frac{1}{4}$ lb., 5.35)	1 60	—
2402 Sky-Blue.....($\frac{1}{4}$ lb., 5.00)	1 50	—
2403 Dark Blue.....($\frac{1}{4}$ lb., 4.75)	1 40	—
2404 Light Blue and Violet($\frac{1}{4}$ lb., 4.75)	1 40	—
2405 Peacock-Blue.....($\frac{1}{4}$ lb., 4.75)	1 40	—
2407 Mauve.....($\frac{1}{4}$ lb., 5.00)	1 50	—
2408 Purple.....($\frac{1}{4}$ lb., 4.75)	1 40	—
2409 Wine-Red.....($\frac{1}{4}$ lb., 4.75)	1 40	—
2410 Bright Brown.....($\frac{1}{4}$ lb., 4.75)	1 40	—
2411 Bronze and Gold.....($\frac{1}{4}$ lb., 5.00)	1 50	—
2412 Black.....($\frac{1}{4}$ lb., 4.75)	1 40	—
2413 White with Violet Eye($\frac{1}{4}$ lb., 4.75)	1 40	—
2414 Yellow with Black Eye($\frac{1}{4}$ lb., 4.75)	1 40	—
2415 Odier or Blotched, Mixed ($\frac{1}{4}$ lb., 5.00)	1 50	—
2416 Striped, Mixed.....($\frac{1}{4}$ lb., 5.65)	1 65	—
2419 Good Quality, Mixed.....	85	9 50
2420 Fine Mixed.....	1 35	15 00

Giant or Trimardeau Varieties

2421 Snow Queen.....($\frac{1}{4}$ lb., \$7.75)	2 20	—
2423 Golden Queen.....($\frac{1}{4}$ lb., 7.75)	2 20	—
2427 Celestial.....($\frac{1}{4}$ lb., 7.75)	2 20	—
2429 Lord Beaconsfield.....($\frac{1}{4}$ lb., 7.75)	2 20	—
2430 Peacock.....	2 50	—
2431 Imperial Blue.....($\frac{1}{4}$ lb., 7.75)	2 20	—
2433 Andromeda.....($\frac{1}{4}$ lb., 7.75)	2 20	—
2435 Royal Purple.....($\frac{1}{4}$ lb., 7.75)	2 20	—
2437 Victoria.....($\frac{1}{4}$ lb., 7.75)	2 20	—
2441 Golden Bronze.....($\frac{1}{4}$ lb., 8.50)	2 40	—
2442 Meteor.....	2 50	—
2443 Black King.....($\frac{1}{4}$ lb., 7.75)	2 20	—
2445 President Carnot.....($\frac{1}{4}$ lb., 7.75)	2 20	—
2447 Lord Baltimore.....($\frac{1}{4}$ lb., 7.75)	2 20	—
2455 Striped and Mottled. ($\frac{1}{4}$ lb., 8.50)	2 40	—
2457 Trimardeau, Mixed.....	1 75	20 00

Improved Giant-Flowering Strains

2417 Orchid-Flowered, Mixed ($\frac{1}{4}$ lb., \$8.50)	2 40	—
2449 Hortense Rose.....	2 50	—
2450 Bridesmaid.....	2 85	—
2451 Madame Perret.....($\frac{1}{4}$ lb., 9.00)	2 50	—
2453 Auricula-Flowered.....($\frac{1}{4}$ lb., 7.75)	2 20	—
2459 Paris Improved Blotched ($\frac{1}{4}$ lb., 8.50)	2 40	—
2460 Cassier's Giant Odier. ($\frac{1}{4}$ lb., 12.25)	3 35	—
2461 Bugnot.....($\frac{1}{4}$ lb., 16.00)	4 25	—
2463 Masterpiece.....($\frac{1}{4}$ lb., 12.75)	3 45	—
2513 Burpee Blend of Giant and Fancy Types (Unsurpassed) ($\frac{1}{4}$ oz., 1.45)	4 75	—

3847 <i>Papaver</i> (Perennial Poppies), Mixed.....	65	6 50
3849 " nudicaule, Mixed.....	70	7 50
3851 " orientale.....	60	6 50
3852 " orientale Hybrids, Mixed.....	75	8 00
For Annual Varieties—see Poppies .		
3936 <i>Pelargonium zonale</i> , Choice Mixed	75	8 50
3937 " Floradale Fancy Strain ($\frac{1}{4}$ oz., 70 cts.)	2 10	—
3938 " Fancy, Mixed (Extra Fine) (100 seeds, \$1.10; 1000 seeds, \$9.50)	—	—
3942 " Apple Scented (1000 seeds, \$1.15; $\frac{1}{4}$ oz., \$6.00)	20 00	—
2879 <i>Pennisetum villosum</i> (longistyl- lum).....	30	2 50
2881 " Ruppelii.....	35	3 00

	Oz.	Lb.
3854 <i>Pentstemon</i> , Large-Flowered, Floradale Fancy Strain, Mixed ($\frac{1}{4}$ oz., 55 cts.)	\$1 75	—
Perennial Damas—see <i>Lathyrus</i> .		

PETUNIA HYBRIDA

2550 Dwarf Compact, Adonis.....	85	\$9 50
2551 " Baby Blue (Bur- pee).....	75	8 50
2552 " Brilliant Rose....	75	8 50
2559 " Snowball ($\frac{1}{4}$ oz., 50 cts.)	1 50	—
2554 " Inimitable.....	75	8 50
2556 " Enchantress Mix- ture.....	65	6 75
2560 Rosy Morn.....($\frac{1}{4}$ oz., 55 cts.)	1 65	—
2561 General Dodds.....	85	9 50
2558 Howard's Star.....($\frac{1}{4}$ oz., 50 cts.)	1 50	17 00
2564 Striped, Mixed.....	65	7 00
2565 Hybrid, Mixed.....	60	6 00
2553 Balcony Blue or Purple ($\frac{1}{4}$ oz., 85 cts.)	2 70	35 00
2555 " White.....($\frac{1}{4}$ oz., 95 cts.)	2 85	37 00
2557 " Rose.....($\frac{1}{4}$ oz., 85 cts.)	2 70	35 00
2568 Grandiflora, Victoria. ($\frac{1}{4}$ oz., \$4.65)	16 50	—
2571 " Mixed.....($\frac{1}{4}$ oz., \$2.85)	10 00	—
2569 Giants of California. ($\frac{1}{4}$ oz., \$5.50)	20 00	—
2567 Defiance, Largest-Flowering, Mixed ($\frac{1}{4}$ oz., \$6.50)	24 00	—
2574 Fordhook Fancy Fringed Double, Mixed (1000 seeds, \$1.65; $\frac{1}{6}$ oz., \$4.00)	—	—
2578 <i>Phacelia campanularia</i>	45	4 50

PHLOX DRUMMONDII

2583 Pure White (alba).....	85	9 50
2585 Blood-Red.....	85	9 50
2587 Brilliant.....	85	9 50
2589 Flesh-Pink (carnea).....	85	9 50
2591 Chamois-Rose.....	85	9 50
2592 Scarlet (coccinea).....	85	9 50
2595 Rose with White Eye (rosea alba oculata).....	85	9 50
2599 Red with White Eye (splendens).....	85	9 50
2601 Violet (violacea).....	85	9 50
2603 Primrose.....	85	9 50
2581 Fordhook Strain, Finest Mixed.....	65	7 00
2605 Fine Mixed.....	60	6 50
2607 Starred and Fringed, Mixed.....	65	7 00
2609 Dwarf Compact, Fireball ($\frac{1}{4}$ oz., 55 cts.)	1 75	—
2611 " Snowball ($\frac{1}{4}$ oz., 55 cts.)	1 75	—
2613 " Mixed.....	1 45	16 50
2615 Dwarf Large-Flowering Cecily, Mixed.....	1 45	16 50
Pinks—see <i>Dianthus</i> .		
3856 <i>Physalis Franchetii</i> (Chinese Lan- tern Plant).....	50	5 00
3857 <i>Platycodon grandiflorum</i> Mariesii, Dwarf Blue.....	85	9 50
3859 <i>Polyanthus</i> (Primrose), Large- Flowering, Mixed. ($\frac{1}{4}$ oz., 50 cts.)	1 60	—

POPPIES

(Single- and Double-Flowering Annual Varieties)		
2618 Shirley, Improved.....	25	1 85
2622 White Shirley.....	25	2 25
2624 Fire Dragon (<i>dubium laevigatum</i>).....	25	1 85
2625 Burbank's Silver Lining.....	20	1 65
2627 Somniferum (White Opium Poppy).....	15	1 15
2629 Tulip-Flowered (glaucum).....	30	2 75
2630 Double Shirley Hybrids.....	30	2 85
2631 Ryburgh Hybrids.....	35	3 00
2632 Cardinal, Double.....	25	2 25
2633 Danish Flag (Danebrog).....	15	1 00
2634 Burpee's Fairy Blush.....	35	3 25
2636 Fordhook Fairies, Mixed.....	35	3 00
2638 Mikado.....	25	2 15
2639 Shrimp-Pink (Burpee).....	25	2 00
2640 Snowdrift (True).....	25	2 00
2642 Double Carnation-Flowered, Mixed	10	55
2644 Double Peony-Flowered, Mixed.....	10	55
Poppy, California—see <i>Eschscholt- zia</i> .		
Poppy, Prickly—see <i>Argemone</i> .		
Poppy, Santa Barbara—see <i>Hunne- mannia</i> .		
Poppy, Perennial Varieties—see <i>Papaver</i> .		

PORTULACA		Oz.	Lb.
2646	Single, Orange.....	\$0 60	\$6 00
2648	" Red.....	60	6 00
2650	" White.....	60	6 00
2652	" Mixed.....	40	4 25
2653	Double, Orange..... (¼ oz., 85 cts.)	2 70	—
2655	" Red..... (¼ oz., 85 cts.)	2 70	—
2657	" White..... (¼ oz., 85 cts.)	2 70	—
2659	" Mixed..... (¼ oz., 65 cts.)	2 00	—
2662	Giant-Flowered Parana.....	60	6 00

PRIMULA		Oz.	Lb.
3861	Auricula, Mixed... (¼ oz., \$1.15)	3 65	—
3865	Acaulis (vulgaris)... (¼ oz., 55 cts.)	1 75	—
3987	Malacoides.....	7 50	—
3988	Obconica grandiflora, Mixed..... (¼ oz., \$4.25)	15 00	—
3969	Sinensis fimbriata, Alba Magnifica (¼ oz., \$2.00)	—	—
3971	Sinensis fimbriata, Blue (¼ oz., \$6.00)	—	—
3975	Sinensis fimbriata, Rosy Morn (¼ oz., \$3.00)	—	—
3977	Sinensis fimbriata, Bright Red (¼ oz., \$2.00)	—	—
3984	Sinensis fimbriata, Splendid Mixed (¼ oz., \$1.65)	6 00	—
3986	Sinensis fimbriata filicifolia, Mixed (¼ oz., \$1.95)	7 00	—
Evening Primrose—see (Ecnothera)			
3868	Pyrethrum (Chrysanthemum) Parthenium aureum (Golden Feather)...	35	3 00
3870	" (Chrysanthemum) roseum (¼ oz., 45 cts.)	1 35	15 00
Reseda odorata—see Mignonette.			
2850	Rhodanthe, Single, Mixed.....	35	3 00
2663	Ricinus (Castor Oil Bean), communis cambodgensis...	15	90
2665	" communis sanguineus...	12	65
2669	" Mixed.....	10	45
2671	" zanzibarensis	10	55
3872	Rocket, Sweet, Mixed (Hesperis matronalis)....	20	1 65
3872a	" " Violet.....	25	1 75
3872b	" " White.....	25	1 85
2673	Rudbeckia bicolor superba.....	20	1 50
3874	" speciosa (Newmannii) (¼ oz., 50 cts.)	1 60	—
2677	Salpiglossis, Large-Flowering, Mixed.....	65	6 50
2681	Salvia farinacea.....	55	5 50
2683	" patens..... (¼ oz., \$1.40)	4 50	—
2689	" splendens.....	1 90	22 00
2685	" Zurich.....	2 25	28 00
2687	" " Dark Blood-Red.....	1 90	22 00
3875	Saponaria ocyroides.....	-30	2 50
2699	Scabiosa, Dwarf Double, Mixed.....	30	2 75
2701	" Tall Azure Fairy.....	45	4 50
2702	" Azure Fairy Seedlings.....	30	2 75
2703	" Tall Double, Black.....	40	4 00
2705	" " Snowball.....	40	4 00
2707	" " " Mixed.....	35	3 00
3876	" caucasica, Lilac (¼ oz., 50 cts.)	1 60	—

		Oz.	Lb.
2694	Schizanthus wisetonensis (¼ oz., 45 cts.)	\$1 40	\$16 00
2709	Sensitive Plant (Mimosa pudica)	30	2 50
3878	Shamrock (True).....	12	75
3877	Silene maritima... (¼ oz., 45 cts.)	1 35	—
3991	Smilax (Asparagus asparagoides)...	40	3 75
Snapdragon—see Antirrhinum.			
3879	Statice (Limonium) latifolia.....	50	5 00
2713	Stevia (Piqueria) serrata (¼ oz., 35 cts.)	90	10 00

STOCKS

Large-Flowering Dwarf Ten Weeks			
2718	Pure White..... (¼ oz., 50 cts.)	1 60	—
2719	Canary-Yellow..... (¼ oz., 50 cts.)	1 60	—
2720	Golden Chamois..... (¼ oz., 60 cts.)	1 90	—
2721	Bright Pink..... (¼ oz., 50 cts.)	1 60	—
2722	Rose..... (¼ oz., 50 cts.)	1 60	—
2723	Blood-Red..... (¼ oz., 50 cts.)	1 60	—
2724	Coppery Brown..... (¼ oz., 60 cts.)	1 90	—
2725	Light Blue..... (¼ oz., 50 cts.)	1 60	—
2726	Mauve..... (¼ oz., 50 cts.)	1 60	—
2727	Purple..... (¼ oz., 50 cts.)	1 60	—
2730	Mixed.....	1 10	12 00

Mammoth Beauty of Nice

2731	Mont Blanc..... (¼ oz., 55 cts.)	1 75	—
2732	Monte Carlo..... (¼ oz., 55 cts.)	1 75	—
2733	Almond Blossom..... (¼ oz., 55 cts.)	1 75	—
2734	Beauty of Nice..... (¼ oz., 55 cts.)	1 75	—
2735	Beauty of Naples..... (¼ oz., 55 cts.)	1 75	—
2736	Abundance..... (¼ oz., 55 cts.)	1 75	—
2738	Monaco..... (¼ oz., 55 cts.)	1 75	—
2739	Queen Alexandra..... (¼ oz., 55 cts.)	1 75	—
2740	Cote D'Azur..... (¼ oz., 55 cts.)	1 75	—
2741	Summernight..... (¼ oz., 55 cts.)	1 75	—
2742	Violet of Parma..... (¼ oz., 55 cts.)	1 75	—

Perpetual, or Cut and Come Again

2744	White Perpetual or Princess Alice (¼ oz., 55 cts.)	1 75	—
2745	Cut and Come Again, Mixed.....	1 40	16 00

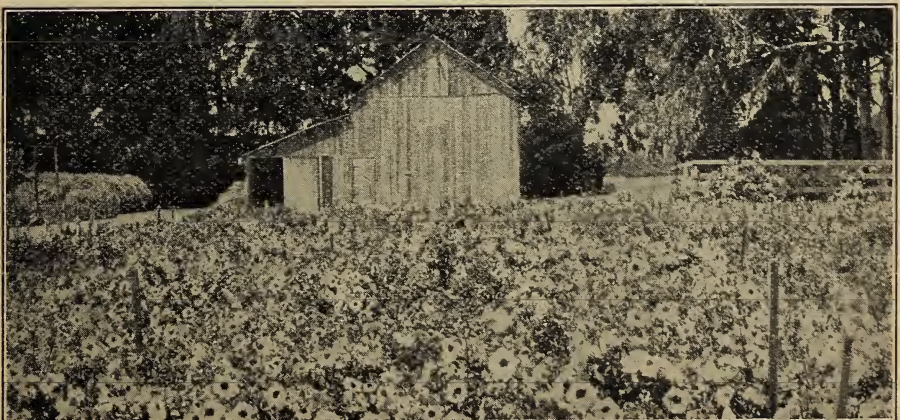
Large-Flowering Winter

3880	Emperor, Mixed..... (¼ oz., \$1.25)	3 95	—
3880a	Empress Elizabeth..... (¼ oz., \$1.35)	4 25	—

3882	Stokesia (lævis) cyanea, Blue....	1 00	—
3883	" " White.....	1 20	—
3999	Streptocarpus, New Hybrids (½ oz., \$1.75)	—	—

SUNFLOWER (Helianthus)

2756	Single Stella.....	20	1 45
2758	Seedlings of Stella.....	20	1 50
2760	Miniature.....	40	3 50
2762	New Red.....	40	3 50
2765	Double Chrysanthemum-Flowered	20	1 65
2767	Many-Flowered Double.....	15	1 15
Sweet Alyssum—see Alyssum.			
2752	Sweet Sultan (Centaurea moschata), Yellow...	50	5 00
2754	" " Finest Mixed.....	40	4 00



Giants of California Petunias on Burpee's Floradale Farms

	Oz.	Lb.
3884 Sweet William (Dianthus barbatus), Single, Mixed.....	\$0 40	\$3 75
3886 " " Pink Beauty.....	75	8 00
3888 " " Royal Irish (Auricula-Eyed).....	60	6 00
3890 " " Scarlet Beauty.....	75	8 00
3892 " " Double, Mixed.....	75	8 00
2755 " " New Annual, Mixed.....	70	7 50
Tagetes—see Marigold.		
3881 Thistle, Scotch.....	15	1 00
3700 Thunbergia alata, Mixed.....	60	6 00
2770 Torenia Fournieri. (1/4 oz., 60 cts.)	1 90	—
2772 " " alba (White Wings) (1/4 oz., 65 cts.)	2 00	—
3893 Tritoma, Early Perpetual-Flowering.....		Crop failed
Tropæolum peregrinum—see Canary Bird Flower.		
Tropæolum majus—see Nasturtiums.		
Trumpet Flower—see Datura.		
2883 Tricholæna rosea.....	30	2 50
3892a Tunica saxifraga.....	30	2 75
3898 Valerian (Centranthus), Red.....	50	5 00
3899 " " White.....	50	5 00
3899a Verbascum, Mixed.....	30	2 50

VERBENA HYBRIDA

2776 Mammoth Fordhook Famous, Mixed..... (1/4 oz., 45 cts.)	1 40	16 00
2778 Mayflower, Sweet-Scented.....	90	10 00
2780 Fine Mixed.....	65	6 50
2784 Auricula-Flowered.....	75	8 00
2785 Blue with White Eye.....	1 10	12 00
2794 Italian Striped.....	75	8 00
2795 Yellow (lutea).....	80	9 00
2786 Mammoth Pink Shades.....	90	10 00
2788 " " Purple and Blue Shades.....	80	9 00
2789 " " Scarlet Defiance.....	90	10 00
2791 " " Pure White.....	75	8 50

	Oz.	Lb.
3893a Veronica spicata, Mixed.....	\$0 90	\$10 00
2796 Vinca rosea Rose (Madagascar Periwinkle).....	70	7 50
2799 " " White with Pink Eye.....	65	7 00
2798 " " Pure White.....	65	7 00
2801 " " Mixed.....	60	6 00
2807 Viola cornuta, Finest Mixed (1/4 oz., 50 cts.)	1 60	—
2809 Virginian Stocks (Malcomia maritima), Mixed.....	15	95
3894 Wallflower, Fine Double, Mixed (1/4 oz., 75 cts.)	2 40	—
3895 " " Choice Single, Mixed.....	30	2 50
3897 " " Extra-Early Parisian.....	25	2 25
2915 Wild Cucumber Vine (Echinocystis lobata).....	20	1 35
2852 Xeranthemum, Mixed.....	45	4 50

ZINNIA ELEGANS

2812 Burpee's New Cactus-Flowered (Packets only. Retail price, 35 cts. each.)		
2811 Double Dwarf Lilliput, Mixed.....	40	3 50
2815 Pompon, Mixed.....	40	3 50
2817 Dwarf Fireball.....	45	4 75
2818 " " Salmon-Rose.....	60	6 00
2819 " " Snowball.....	45	4 75
2826 Mexicana Perfection Miniature.....	90	10 00
2823 Choice Double Mixed.....	30	2 50
2820 Curled and Crested, Mixed.....	70	7 50
2821 Giant Flesh-Pink.....	75	8 00
2822 " " Golden Yellow.....	80	9 00
2824 " " Primrose.....	80	9 00
2825 " " Scarlet.....	80	9 00
2827 " " White.....	80	9 00
2828 " " Crimson.....	75	8 50
2829 " " Purple.....	75	8 50
2830 " " Canary-Yellow.....	75	8 00
2813 " " Mixed.....	70	7 25
2832 " " Picotee, Mixed (1/4 oz., 50 cts.)	1 60	18 00
2834 Dahlia-Flowered, Mixed (1/4 oz., 65 cts.)	2 00	24 00

W. ATLEE BURPEE CO. gives no warranty, expressed or implied, as to Purity, Description, Quality, Productiveness, or any other matter of any Seeds, Bulbs or Plants they send out, and will not be in any way responsible for the crop. If the purchaser does not accept the goods on these terms, they are at once to be returned.



Acres of Sweet Peas on Burpee's Floradale Farms, California

Burpee's Bulbs and Roots

In the following list of Burpee's Bulbs and Roots, we have, as always, restricted each group to the best varieties in the class,—those which have been found to be most useful to the Florist and the Home Gardener. The selection and production of Burpee's Bulbs and Roots receive the same constant care that is given our seeds.

Unless otherwise specified, all the bulbs and roots listed herein are first size. All are strong and healthy, and, with good care, are practically certain to give satisfactory blooms. Nearly every variety can be easily handled, and, at the prices quoted in this Red List, provide for a wide margin of profit to the dealer.

Bulbs and roots require special packing, and, because of this, we ship them separate from seeds when an order calls for both. We do not ship bulbs or roots until freezing weather is past, unless ordered to do so, and then only at customer's risk.

For full descriptions of the varieties offered see our retail catalog, BURPEE'S ANNUAL for 1921.

NOTE: Three or more bulbs are supplied at the dozen rates; 25 or more at the hundred rates, and 250 or more at the thousand rates.

AMARYLLIS

	Doz.	Per 100
5000 (Sprekelia) formosissima (20 cts. each)	\$1 75	—
5001 (Hippeastrum) Johnsoni (55 cts. each)	5 00	—
5002 Hallii (Lycoris squamigera)	Sold out	
5005 (Hippeastrum) Hybrids, Mixed (55 cts. each)	5 00	—
5013 Apios tuberosa	35	\$2 45

BEGONIAS, TUBEROUS-ROOTED

5024 Single, White	1 85	12 00
5025 " Yellow	1 85	12 00
5026 " Orange	1 85	12 00
5027 " Pink	1 85	12 00
5028 " Deep Rose	1 85	12 00
5029 " Scarlet	1 85	12 00
5030 " All Colors, Mixed	1 40	9 50
5031 Double, White	2 35	15 00
5032 " Yellow	2 35	15 00
5033 " Orange	2 35	15 00
5034 " Pink	2 35	15 00
5035 " Deep Rose	2 35	15 00
5036 " Scarlet	2 35	15 00
5037 " All Colors, Mixed	1 95	12 75
5043 Frilled and Crested, Mixed	1 60	10 00
5049 Bravao geminiflora	60	4 00

	Doz.	Per 100
5067 <i>Caladium</i> esculentum (Colocasia) (9" to 11") (20 cts. each)	\$1 75	\$12 00
5068 " Fancy-Leaved, Mixed (20 cts. each)	1 65	11 00
5061 <i>Calla</i> (Zantedeschia) ethiopia (15 cts. each)	1 35	8 75
5062 " " Elliottiana (25 cts. each)	2 10	14 00

CANNAS

"The Finest Five"

5111 Fiery Cross	(30 cts. each)	2 65	18 00
5075 City of Portland	(25 cts. each)	2 35	15 00
5110 Favorite	(15 cts. each)	1 15	7 50
5109 Eureka	(25 cts. each)	2 15	14 50
5086 King Humbert	(15 cts. each)	1 00	7 00

Shades of Red—Green Foliage

5076 Dragon	1 15	7 50	
5105 Fanal	1 15	7 50	
5087 Lafayette	1 25	8 25	
5096 Wintzer's Colossal	1 15	7 50	
5112 The President	(30 cts. each)	2 75	17 50

Yellow and Orange—Green Foliage

5114 Cheerfulness	1 15	7 50
5078 Golden Gate	1 00	7 00
5103 Orange Bedder	1 00	7 00
5113 The Gem	90	6 00

	Doz.	Per 100
Rose and Pink—Green Foliage		
5084 Hungaria	\$1 20	\$8 00
5095 <i>Rosea Gigantea</i>	Sold out	
Variegated—Green Foliage		
5094 Gaiety	1 00	7 00
5090 <i>Souv. de Antoine Crozy</i>	80	5 25
Bronze and Dark-Leaved		
5100 <i>Dr. E. Ackerknecht</i>	90	6 00
5098 Wyoming	80	5 25
5116 <i>Varouna</i> (25 cts. each)	2 00	13 75
Mixed		
5115 Trial Grounds, Mixed	60	3 85
5118 Cinnamon Vine (1000 for \$29.50) For Dahlias—see pages 39 and 40.	45	3 20

	Doz.	Per 100
5271 <i>Funkia</i> (<i>Hosta</i>) subcordata	\$1 65	—
5272 " <i>Undulata</i> Variegata	95	\$6 50

GLADIOLI

Burpee's New *Primulinus* Hybrids

The most graceful in form, profuse in bloom, and artistic in color of all Gladioli. They have made a sensation wherever they have been exhibited and will be in tremendous demand for cut-flowers.

	Doz.	Per 100
5324 <i>Ada</i> . Dainty white flowers with red center	\$1 40	\$9 50
5325 <i>Queen Victoria</i> . Bright, glittering pink with silvery rose throat	1 65	10 50
5326 <i>Mrs. Grullemans</i> . Clear, true yellow	1 40	9 50
5327 <i>L'Unique</i> . Rich bronze with an orange-yellow center	1 40	9 50
5328 <i>Fire Queen</i> . Dazzling orange- vermillion with yellow throat	1 40	9 50
5329 <i>Violet Queen</i> . Velvety violet; very fine	1 40	9 50
5320 <i>Orange Brilliant</i> . Flaming orange; an early bloomer	1 65	10 50
5319 <i>Maiden's Blush</i> . Dainty Enchantress-pink. Extra early	1 65	10 50
5323 <i>Primulinus Hybrids, All Colors, Mixed</i> . This is extra fine; far superior to the ordinary mixture (1000 for \$32.00)	45	3 45

Standard Varieties

5275 <i>America</i> (1000 for \$35.00)	45	3 75
5277 <i>Baron Hulot</i>	85	6 75
5280 <i>Goliath</i>	60	5 25
5281 <i>Halley</i>	55	4 75
5282 <i>Kunderdi Glory</i>	60	5 25
5283 <i>Mrs. Frances King</i>	45	3 75
5305 <i>Mrs. Frank Pendleton, Jr.</i>	75	6 35
5285 <i>Mrs. Watt</i>	60	5 25
5287 <i>Niagara</i>	60	5 25
5307 <i>Panama</i>	75	6 35
5309 <i>Peace</i>	60	5 25
5290 <i>Principe</i>	60	5 25
5300 <i>Schwaben</i>	85	6 75

Gladioli in Mixture		Per 100	Per 1000
5316	Fine Mixed, First Size	\$2 40	\$21 50
5317	Fine Mixed, Second Size	1 75	15 50
5321	Special Light Shades, Mixed	2 95	27 00

Burpee's Fordhook Hybrid Gladioli

This distinct new race originated at Fordhook from numerous crosses of "Præcox" with the best varieties of "Gandavensis," "Childsi," "Nanceianus," "Lemoinei," and other types. The flowers frequently measure four to five inches in diameter and range in color from creamy white, lemon-yellow, soft salmon-pink, to bright red and deepest crimson, while there are also lovely light lavender or sky-blue shades and charming, rare pastel and art shades in wonderful combinations of rose, pink, salmon, and amber.

	Per 100	Per 1000
5318	First Size, Mixed (45 cts. doz.)	\$2 95 \$27 00
5318a	Second Size, Mixed (40 cts. doz.)	2 60 23 50

GLOXINIAS—Giant-Flowered

	Each	Doz.
5332	Queen Alexandra	\$0 30 \$2 50
5334	Scarlet, White Border	30 2 50
5335	King George V.	30 2 50
5336	Duchess of York	30 2 50
5337	Reading Purple	30 2 50
5338	White	30 2 50
5331	Mixed	— 2 15

	Doz.	Per 100
5343	Hemerocallis flava	\$0 95 \$6 50
5344	" Florham	95 6 50
5349	Hyacinthus (Galtonia) candicans	60 4 00

TALL BEARDED IRIS

5365	Florentina alba	75	5 00
5366	Mrs. H. Darwin	85	6 00
5367	Flavescens	85	6 00
5368	Aurea	1 15	7 50
5369	Queen of the May	1 15	7 50
5370	Speciosa	85	6 00
5371	Mme. Chereau	75	5 00
5372	Pallida Dalmatica	1 15	7 50
5373	Celeste	85	6 00
5374	Kochii	1 15	7 50
5376	Rhein Nixe	1 15	7 50
5377	Darius	85	6 00
5380	Parisiensis	75	5 00
5382	Honorabilis	75	5 00
5383	La Tendresse	75	5 00
5386	Fine Mixed (1000 for \$22.50)	40	2 50

JAPANESE IRIS

5388	Gold Bound	1 85	12 00
5389	Mount Hood	1 85	12 00
5390	Pyramid	1 60	10 00
5391	Victor	1 85	12 00
5392	New Seedlings, Mixed (1000 for \$35.00)	55	3 75

SIBERIAN IRIS

	Doz.	Per 100	
5393	Snow Queen	\$1 75	\$11 50
5394	Purple	1 60	10 00
5395	Blue King	1 75	11 50
5356	Ismene (Hymenocallis) calathina (15 cts. each)	1 10	7 50

HARDY LILIES

	Each	Doz.	
5396	Auratum (100 for \$17.00)	\$0 27 \$2 65	
5390	Batemannia	17	1 60
5391	Canadense	15	1 35
5398	Davuricum	12	1 15
5395	Hansonii	70	6 00
5396	Henryi	70	6 00
5399	Longiflorum giganteum (100 for \$17.00)	27	2 65
5406	Regale (myriophyllum)	1 15	10 00
5399	Speciosum Melpomene (100 for \$17.00)	27	2 65
5402	Speciosum rubrum (100 for \$17.00)	27	2 65
5392	Superbum	16	1 55
5404	Tigrinum Fortunei Giganteum	17	1 60
5394	" flore pleno	25	2 15
5411	Lily of the Valley—Field grown clumps	30	2 65

(NOTE: We do not handle Lily of the Valley pips for forcing.)

	Doz.	Per 100	
5418	Madeira Vine	\$0 50 \$3 50	
5425	Montbretia, Crocosmiaeflora	1 15	—
5446	Oxalis Deppei (1000 for \$5.75)	09	65
5448	" rosea—" Shamrock" (1000 for \$6.50)	12	75
5447	" lasiandra (1000 for \$5.75)	09	65

PEONIES

	Each	Doz.	
5612	Couronne d'Or	\$0 45 \$4 00	
5615	Duchesse de Nemours	35	3 00
5617	Eduis Superba	45	4 00
5618	Felix Crousse	55	5 00
5619	Festiva Maxima	30	2 75

HARDY PHLOX

	Doz.	Per 100	
5640	Eclairer	\$1 00	\$6 75
5643	Europa	1 00	6 75
5644	Riverton Jewel	1 00	6 75
5652	Mrs. Wm. Jenkins	1 00	6 75
5655	Rynstrom	1 00	6 75
5657	W. C. Egan	1 00	6 75
5486	Tritoma (Kniphofia) Pfitzeri	1 85	12 00
5487	" Early Perpetual-Flowering	2 00	13 00
5492	Tuberosa, Excelsior Pearl, First Size (1000 for \$27.50)	45	3 00
5493	" Excelsior Pearl, Mammoth bulbs (1000 for \$37.00)	60	4 00
5505	Zephyranthes candida	60	4 00
5506	" rosea	1 20	8 00

NOTE: Three or more bulbs or roots will be supplied at the dozen rates, 25 or more at the 100 rates, and 250 or more at the 1000 rates.

The Burpee Collection of Ready-Made Gardens of Vegetable and Flower Seeds

We frequently receive inquiries from dealers for discounts and terms on the BURPEE COLLECTIONS OF VEGETABLE AND FLOWER SEEDS AND BULBS—in particular those offered on pages 95 to 101 in BURPEE'S ANNUAL for 1921. We will supply any of these popular Collections in neat containers to dealers at a discount of 30% from the retail price; when 6 or more of any one Collection are ordered, at a discount of 33 $\frac{1}{3}$ %; and when 25 or more of a single Collection are ordered, at a discount of 40%.

Burpee's Dahlias

Dahlias are one of our specialties at Fordhook Farms, where we have developed many seedlings of outstanding merit, particularly in the Peony-flowered type.

The Burpee exhibit of Dahlias was awarded the Gold Medal at the Annual Show of the American Dahlia Society in 1918, 1919 and again in 1920.

A FEW OF THE NEWEST AND FINEST SORTS

5195 Coppersmith (Burpee Novelty for 1921)

A peony-flowered variety of extraordinary merit. Habit perfect. Blooms early, profusely and continuously until frost. Flowers light copper or bronze, with a glistening suffusion of salmon-yellow, the reverse of the petals reddish bronze, on long, stiff, wiry stems. Unsurpassed for cutting or general decorative work. Awarded Certificate of Merit by the Pennsylvania Horticultural Society, September, 1920.

Strong roots, \$1.65 each; 3 for \$4.25; 12 for \$15.50.

5209 Fordhook Maroon (Burpee Novelty for 1921) Sturdy, upright plants, producing flowers of great size. Rich maroon, shaded mahogany. Peony-flowered. **Strong roots, 75 cts. each; 3 for \$2.00.**

5177 Jean Kerr The most valuable of all white Decorative Dahlias. It is one of the first to flower and blooms continually until killed by frost. Of strong, compact growth, with pure, white blooms carried well above the foliage on long, strong stems. Awarded Certificate of Merit by The American Dahlia Society, September, 1916.

Strong roots, 65 cts. each; 3 for \$1.70; 12 for \$6.00.

5183 King of the Autumn This variety has attracted a great deal of attention. Of strong growth, producing freely large flowers of the long-petaled, Decorative type. Color, a blend of salmon-pink, gold and buff.

Strong roots, 55 cts. each; 3 for \$1.45; 12 for \$5.25.

5219 Orient Peony-flowered. Orange-scarlet, heavily flaked with bright yellow. Extremely free-flowering.

Strong roots, 75 cts. each; 3 for \$2.00.

5213 Golden Rose Peony-flowered. Yellow, suffused rose, each petal having a distinct picotee edge of rose. A free and continuous bloomer. **20 cts. each; 12 for \$1.65.**

5218 Lilac Queen Peony-flowered. Delicate lilac on white, base of petals suffused with bright yellow. Large flowers borne on long, strong stems. **40 cts. each; 3 for \$1.10; 12 for \$3.50.**

5244 Queen Elizabeth Peony-flowered. Large, well-formed flowers. Clear, bright pink and one of the best for cutting.

Strong roots, 45 cts. each; 3 for \$1.30; 12 for \$4.25.

5120 White Star Cosmos-flowered or Star type. Produces in the greatest abundance, attractive flowers of medium size with one to three rows of broad, pure white outer petals and a golden yellow center. **Strong roots, 20 cts. each; 12 for \$1.65.**

5171 Kalif A remarkable variety, producing gigantic flowers of perfect Cactus form on strong stems. Color bright, deep scarlet.

Strong roots, 65 cts. each; 3 for \$1.70; 12 for \$6.00.

5172 Wodan Hybrid Cactus type. Immense flowers, salmon-rose shading to old-gold in the center.

Strong roots, 45 cts. each; 3 for \$1.20; 12 for \$3.85.

5261 Queen Mary Decorative. Light, silvery pink flowers of enormous size on long, stiff stems. Free-blooming. **Strong roots, 35 cts. each; 3 for \$1.00; 12 for \$3.00.**



Coppersmith



Jean Kerr



Golden Rose

CHOICE PEONY-FLOWERED DAHLIAS

	1/4 doz.	Doz.
5201 Fordhook Beauty An outstanding variety. Bronzy red, suffused with salmon and yellow. Very free-flowering. (25 cts. each)	—	\$ 2 00
5206 Fordhook Cream Large and free-blooming. Cream, suffused yellow. (20 cts. each)	—	1 65
5207 Fordhook Salmon Salmon, suffused yellow and amber. (22 cts. each)	—	1 80
5200 Fordhook White Magnificent, pure white flowers of giant size, borne continuously on long stems well above the foliage. (18 cts. each)	—	1 50
5216 H. J. Lovink A delicate combination of white and lilac. Large flowers on exceptionally long stems. (20 cts. each)	—	1 65
5212 Hortulanus Budde Orange-scarlet, shading lighter toward the edges of the petals, with a glistening bronze or copper sheen. (40 cts. each)	\$1 10	—
5211 John D. Rockefeller Pinkish salmon-buff. Very early and free-flowering. (25 cts. each)	—	2 00
5198 Mrs. Hugh Dickson Exquisite rich salmon, suffused with light buff-pink. (25 cts. each)	—	2 00
5199 Mrs. W. E. Whineray A lovely rose, suffused clear yellow, deepening at the base of petals. (25 cts. each)	—	2 00
5210 Mrs. John Gribbel Light salmon-pink, heavily flushed amber and yellow. (22 cts. each)	—	1 80
5202 Mme. Von Bystein Large, elegantly formed blooms. Soft mauve shading lighter toward the outer edges of the petals. (40 cts. each)	1 10	3 50
5208 Romolo Piazzani Early and free-flowering. A delightful blend of rose, salmon and amber. Splendid for cutting. (22 cts. each)	—	1 80
5203 The Bride White with a blush suffusion toward the center. The petals are much twisted and gracefully curved. (40 cts. each)	1 10	3 50
5194 Hortulanus Witte Very large, free-flowering, pure white. (40 cts. each)	1 10	3 50
5214 Baron G. de Grancy Pure, waxy white of perfect form. A profuse bloomer. (20 cts. each)	—	1 65
5270 Peony-Flowered Dahlias in Mixture (100 for \$6.35)	—	90

SELECT DECORATIVE DAHLIAS

5241 Ayesha Clear, light yellow of largest size and finest form. (35 cts. each)	1 00	3 00
5247 Dr. Tyrrell Rich golden bronze shading to bronzy red at base of petals. (18 cts. each)	—	1 50
5204 Hortulanus Piet Rich salmon, suffused amber and yellow. Flowers of immense size. (70 cts. each)	1 90	—
5176 Jack Rose Brilliant crimson-red. Well established in popularity. (15 cts. each)	—	1 40
5250 John Wanamaker Deep lavender-pink. Very free-flowering. (40 cts. each)	1 10	3 50
5254 Melody Canary-yellow petals tipped with creamy white. Of large size. (15 cts. each)	—	1 40
5252 Minnie Burgle The finest red. Of large size, free-flowering. (35 cts. each)	1 00	3 00
5230 Minnie McCullough Soft golden yellow, tipped bronzy red. (15 cts. each)	—	1 40
5251 Mrs. C. H. Breck Soft yellow, deeply suffused carmine. Large flowers in profusion. (37 cts. each)	1 00	3 15
5189 Orange Beauty Deep, rich orange—an unusual shade. (35 cts. each)	1 00	3 00
5205 Yellow Giant (Jan Olieslagers) Rich, buttery yellow. Very free-flowering. (25 cts. each)	—	2 00

SUPERB CACTUS DAHLIAS

	1/4 doz.	Doz.
5122 Beaumont Beauty Buff, suffused amber. One of the finest exhibition varieties. (45 cts. each)	\$1 25	—
5123 Coronet Deep orange, shading to yellow at base. (40 cts. each)	1 10	\$ 3 50
5124 Dolly Crimson-scarlet, tipped with pure white. (20 cts. each)	—	1 65
5125 Dorothy Hawes Clear rosy purple. Extra large. (30 cts. each)	—	2 50
5126 Edith Carter Yellow, suffused carmine. Free-flowering. (25 cts. each)	—	2 00
5127 E. F. Hawes Clear salmon-pink. Early blooming. (25 cts. each)	—	2 00
5130 F. W. Fellows Orange-scarlet, of finest form. (40 cts. each)	1 10	3 50
5129 Glory of Wilts Clear yellow. Early and free-flowering. (25 cts. each)	—	2 00
5131 Graphic Dark purple, tipped with white. Odd but striking. (25 cts. each)	—	2 00
5133 H. L. Brousson Rich rose with white center. Large size and finest form. (40 cts. each)	1 10	3 50
5134 Homer Rich, bright maroon. One of the best dark varieties. (16 cts. each)	—	1 50
5135 Indomitable Lilac-mauve with lighter tips. (16 cts. each)	—	1 50
5145 Irresistible Yellow, suffused pale rose. (16 cts. each)	—	1 50
5146 Jenny Wren Yellow overlaid with pink. Early and free-flowering. (25 cts. each)	—	2 00
5147 John Riding Deep, rich crimson. Of largest size and perfect form. (52 cts. each)	1 40	4 65
5148 Milton Howard Rich pink, tipped white. A fine exhibition variety. (40 cts. each)	1 10	3 50
5149 Miss London Deep rose, tinged yellow. (25 cts. each)	—	2 00
5167 Mme. H. Cayeux Delicate pink, white at base and tips of petals. (16 cts. each)	—	1 50
5150 Mrs. H. Randle Rose, suffused cream; of finest form and good size. (40 cts. each)	1 10	3 50
5151 Nantwich Light bronzy orange. (16 cts. each)	—	1 50
5138 Pegasus A unique combination of colors. Pale yellow, splashed and spotted with red. (30 cts. each)	—	2 50
5137 Pierrot Deep amber, sometimes tipped white. Unique and outstanding. (52 cts. each)	1 40	4 65
5174 Reine Cayeux Bright scarlet; early and a profuse bloomer. (20 cts. each)	—	1 65
5152 The Quaker White, suffused flesh-pink. Exquisite. (30 cts. each)	—	2 50
5173 Cactus Dahlias in Mixture (100 for \$8.35)	—	1 25

UNIQUE COLLARETTE DAHLIAS

5259 Frogmore Scarlet, tipped yellow, with large yellow collar petals. (25 cts. each)	—	2 00
5260 Holyrood Bright red, tipped creamy white, with yellow collar. (20 cts. each)	—	1 65
5261 Maurice Rivoire Blood-red with white fringed collar (16 cts. each)	—	1 50
5263 Queen Anne Light scarlet, tipped and margined yellow. Finely fringed yellow collar (16 cts. each)	—	1 50
5268 Collarette Dahlias in Mixture (100 for \$7.50)	—	1 15

DAINTY POMPON DAHLIAS

5222 Bacchus Bright crimson-scarlet. (25 cts. each)	—	2 00
5220 Adrienne Crimson, tipped yellow. (20 cts. each)	—	1 65
5224 Dr. Jim Rosy purple (40 cts. each)	1 10	—
5229 Queen of White Pure white. (40 cts. each)	1 10	—
5233 Wee Gracie White, tipped and edged lavender. (45 cts. each)	1 25	—
5266 BURPEE'S TRIAL GROUND MIXTURE OF DAHLIAS (100 for \$5.50)	—	80

Burpee's Seeds Grow

FOR nearly fifty years Burpee's Seeds have set the standard by which all other seeds have been judged. Year in and year out Burpee's Seeds have been safe and dependable—always of the highest quality it has been possible to produce.

Such a record for reliability can be established and maintained only by constant attention to every detail, expert knowledge, and careful trials and tests. The whole Burpee Business—its organization and its policy—is built upon the one fundamental principle, the **Reliability of Burpee's Seeds**.

By far the greater part of Burpee's Seeds are selected and grown right on the Burpee Farms, in various parts of the United States—a greater proportion than that grown by any other American seedsman. And those not produced on our own Farms are grown by tried and experienced men under our direct supervision.

Burpee's Fordhook Farms

The largest and most complete trial grounds in America are located near Doylestown, Bucks County, Pennsylvania. It is at Fordhook Farms that we test and prove the quality, the vitality and purity, of every lot of seed sold by the House of Burpee. Each year over 15,000 germination tests are made in the greenhouses at Fordhook, and over 7,000 purity trials in the open trial grounds, in addition to the numerous plantings for stock seed selection. Here also are acres of Tomatoes, Phlox, Poppies, Salvia, Zinnia and many other Vegetable and Flower Seed crops.

Burpee's Sunnybrook Farm

The warm soils of Gloucester County, New Jersey, are particularly well adapted for the growing of some of the more tender crops. At Sunnybrook Farms we grow seed of Peppers, Egg Plants, Melons, and Cucumbers and the famous Sunnybrook strain of Earliana Tomato, as well as many other Vegetables and choice Flower seeds. And at Sunnybrook Farm we make our purity trials of Melons, Squashes, Pumpkins and other Vine crops.

Burpee's Floradale Farms

The many acres of this California Home of Flowers are devoted to the growing of selected stocks of the finest varieties of Flower seeds. For its Sweet Peas alone it is famous the world over. Alyssum, Snapdragon, Larkspurs, Calendulas, Marigolds and others, too numerous to mention, grow to perfection in the fertile climate of sunny Santa Barbara County. A visit to Floradale Farms when the Sweet Peas and other Flowers are in bloom is worth a trip across the continent.

The Burpee Idea

The work that is done at the Burpee Farms is the best kind of insurance that the reliance which is put in Burpee's Seeds will be well repaid. To maintain and improve the Burpee Quality, to lead in service and in enterprise, but, above all, to stand for **Absolute Reliability in Seeds**—that is the Burpee Idea.

Burpee's Seeds Grow

MAR 25 1921

Burpee's

RED LIST



WHOLESALE PRICES 1921
For Seedsmen
and Dealers

W. Atlee Burpee & Co.

Wholesale Department
Seed Growers Philadelphia