

SERIES 1501 AIR SHEET NJ 43-13 EDITION 2

POPULATED PLACES

Over 100,000	ISLAMABAD
50,000 to 100,000	QUETTA
10,000 to 50,000	Mianwali
2,000 to 10,000	Fatehjang
Less than 2,000	Alton
.....	District headquarters
.....	Gurāt

ROADS

Dual highway	4 LANES DUAL
All weather, hard surface	3 LANES
More than two lanes wide	2 LANES WIDE
Two lanes wide	ONE LANE WIDE
One lane wide	3 LANES
All weather, loose or light surface	2 LANES WIDE
More than two lanes wide	ONE LANE WIDE
Two lanes wide	ONE LANE WIDE
One lane wide	FAIR OR DRY WEATHER, LOOSE SURFACE
.....	TRACK ROAD
.....	ROUTE MARKER

RAILROADS

Normal gauge 1.52m (5')	Single track	Multiple track
Narrow gauge

BOUNDARIES

International
First-order administrative division
Reservation

OTHER FEATURES

Landmark
Horizontal control point
Level: Burial mound
Mine
Dam or lock, Sand
Dunes: Crescent, Lateral, Ripple

VEGETATION

None Shown

HYDROGRAPHY

Well: Perennial, Intermittent
Intermittent streams: Single, Double line
Disappearing stream: Swamp or marsh
Intermittent lake: Dry lake

TERRAIN ELEVATIONS

Spot elevation: normal, critical

HIGHEST KNOWN elevation is **23983** feet at the following coordinates:
 Geographic: 36°32'N, 72°00'E
 Grid: S44148

AERODROMES (Military or Civil)

Runway pattern known	EDNA/50's	725
EDNA - Name
50' - Length of longest runway to nearest hundreds of feet	s - Soft or unimproved surface	u - Unknown surface
725 - Elevation
Runway pattern unknown

HELIPORT/HELIPAD

HELIPORT/HELIPAD AT HOSPITAL

RADIO AIDS TO NAVIGATION

VHF OMNI RANGE (VOR)
VORTAC
TACAN
VOR with DME
Other facilities

RADIO FACILITIES

RADIO RANGE LF/MF	RNG - HUMAN
MULTIPLE RADIO FACILITIES	NDB-RNG - PARIS

CONTROLLED AIRSPACE

ADIZ - ATLANTIC ADIZ

VISUAL AIDS AND OBSTRUCTIONS

Obstruction	1108 (2591)
1108 - Elevation of obstruction top, above sea level	(259) - Elevation of obstruction top, above ground level
Group obstruction
Radio facility obstruction
Power transmission line
Visual ground sign	M
Aero light: Marine light

CAUTION

Vertical obstructions, including powerlines, have been extracted from the most reliable sources available. However, there is no assurance that all are shown, or that their locations or heights are exact.

CAUTION

AIR INFORMATION CURRENT THROUGH 11 MAY 1989

Consult NOTAMS and Flight Information Publications for the latest air information; the DOD Aeronautical Chart Updating Manual or MOD (U.K.) Aeronautical Chart Amendment document, for other chart revision information.

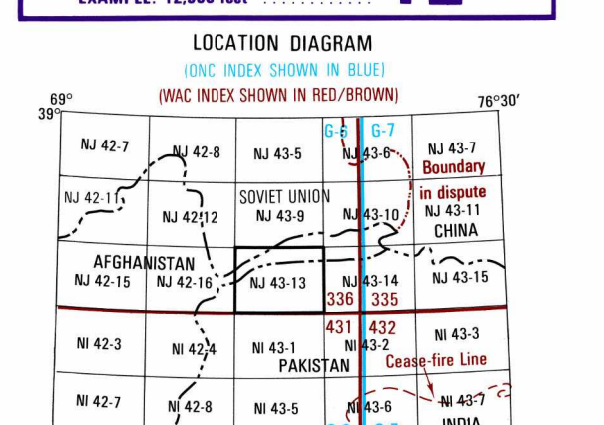
MAGNETIC VARIATION THROUGHOUT CHART AREA FOR 1985 IS APPROXIMATELY 2°30' EAST (Annual rate of change 2" increase)

ATTENTION

THIS CHART CONTAINS MAXIMUM ELEVATION FIGURES (MEF)

The Maximum Elevation Figures shown in quadrangles bounded by ticked lines of latitude and longitude are represented in THOUSANDS and HUNDREDS of feet above mean sea level. The MEF is based on information available concerning the highest known features in each quadrangle, including terrain and obstructions (trees, towers, antennas, etc.).

EXAMPLE: 12,500 feet **125**



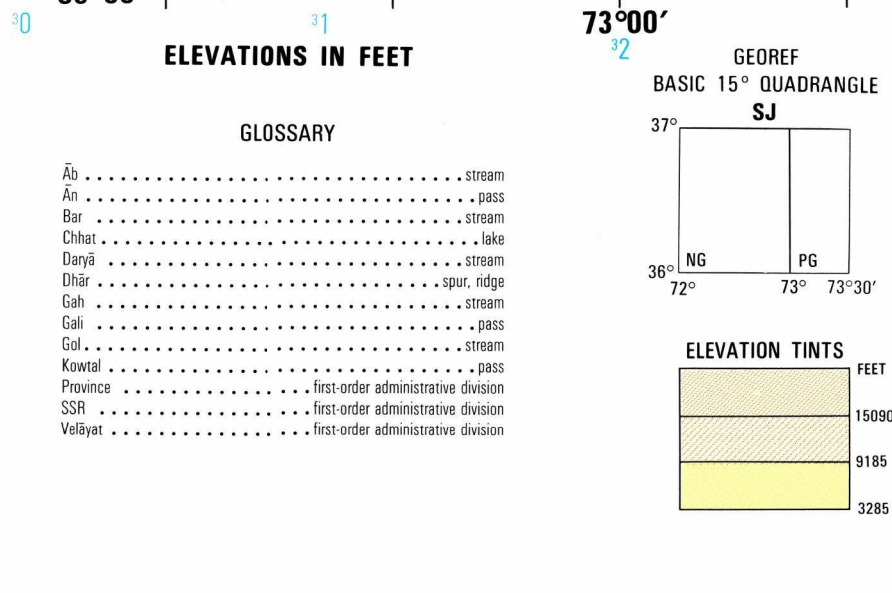
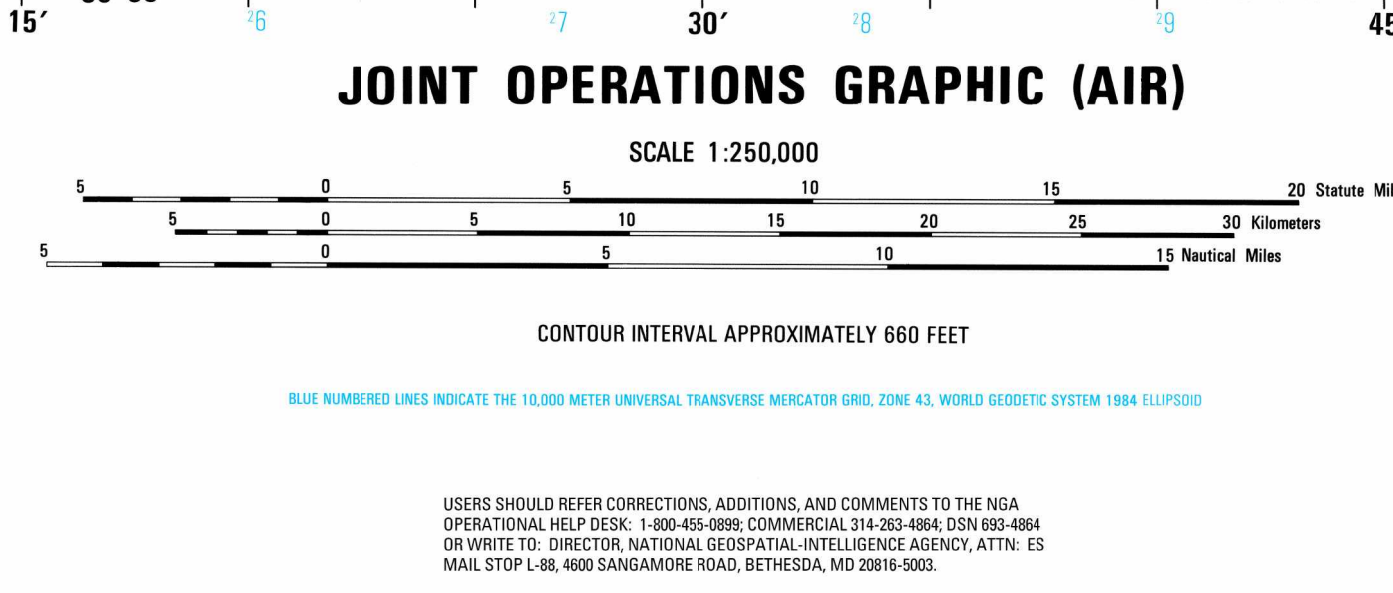
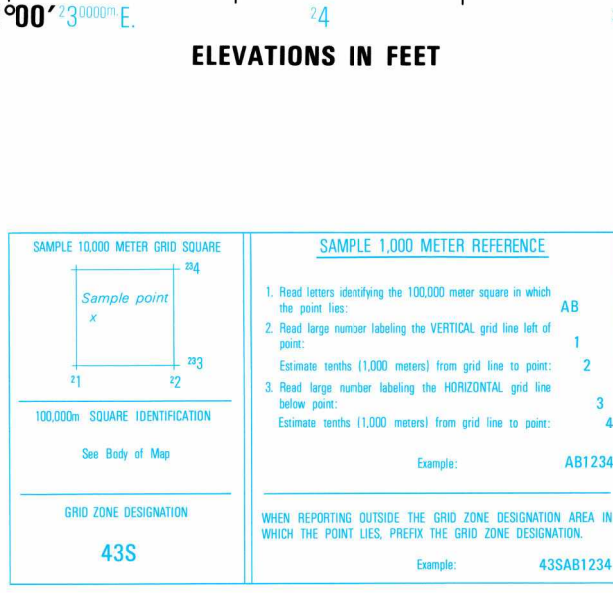
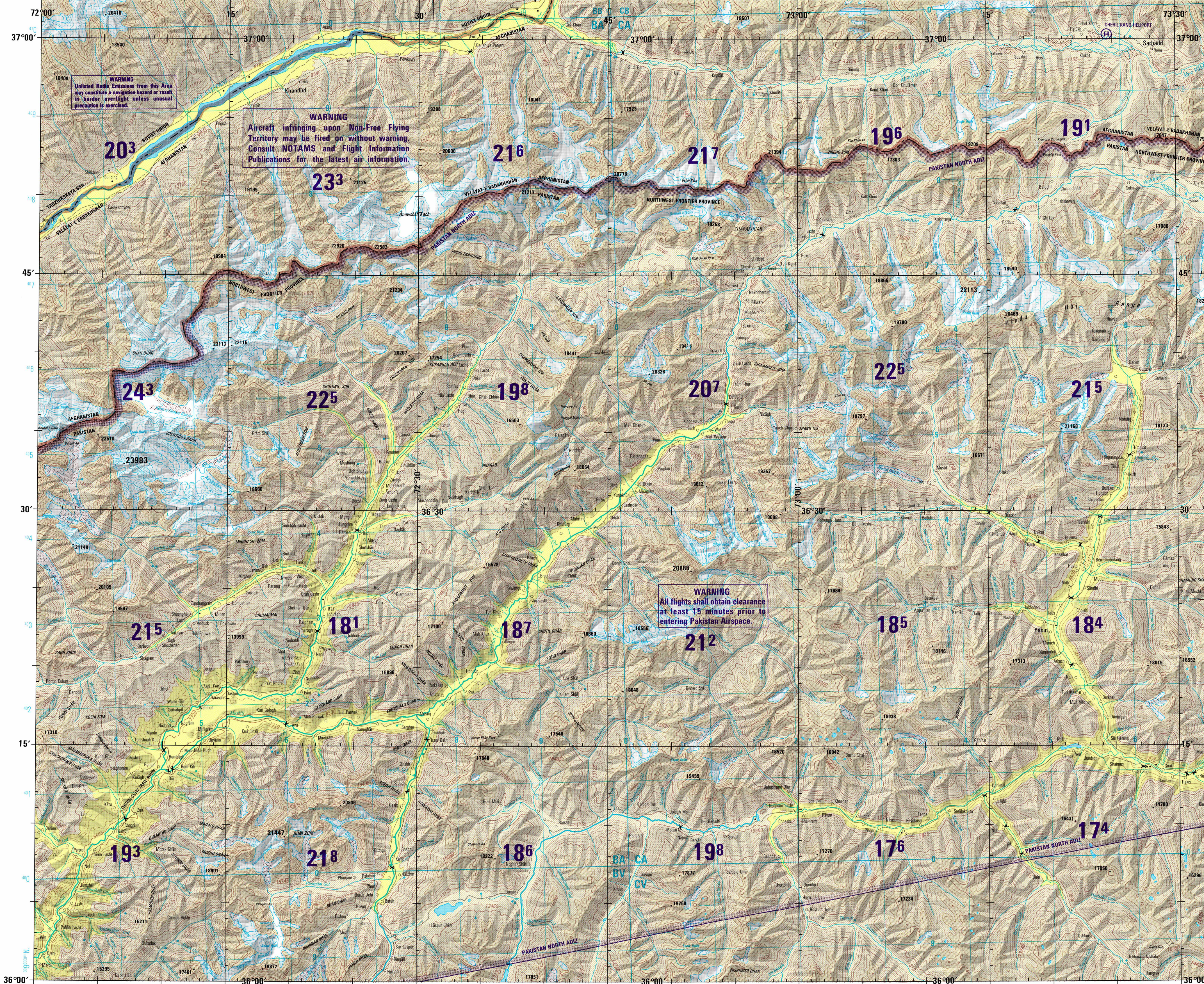
Prepared and published by the Defense Mapping Agency Aerospace Center, 3200 South Second Street, St. Louis, Missouri 63118-3399. Compiled May 1989.

CONVERSION OF ELEVATIONS

FEET	METERS	FEET	METERS
1000	305	10000	3048
900	274	9000	2743
800	244	8000	2438
700	213	7000	2134
600	183	6000	1829
500	152	5000	1524
400	122	4000	1219
300	91	3000	914
200	61	2000	610
100	30	1000	305

SCALE 1:250,000
 MASTUJ, PAKISTAN;
 AFGHANISTAN; SOVIET UNION

SERIES 1501 AIR SHEET NJ 43-13 EDITION 2



NOTES:

Powerlines are shown except within populated place limits. Other obstructions are shown if they are 200 feet or more above ground level. See caution note.

The representation of boundaries is not necessarily authoritative. Delineation of and terminology associated with international boundaries have been changed since the last edition.

UNCLASSIFIED

NSN 7641014102569
 NGA Ref No 1501ANJ4313