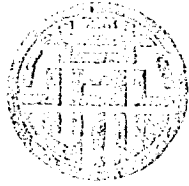


北平圖書館存覽

翁初白

一九三一年六月



燕大六年刊

The Yenchingian

燕京大學學生自治會出版

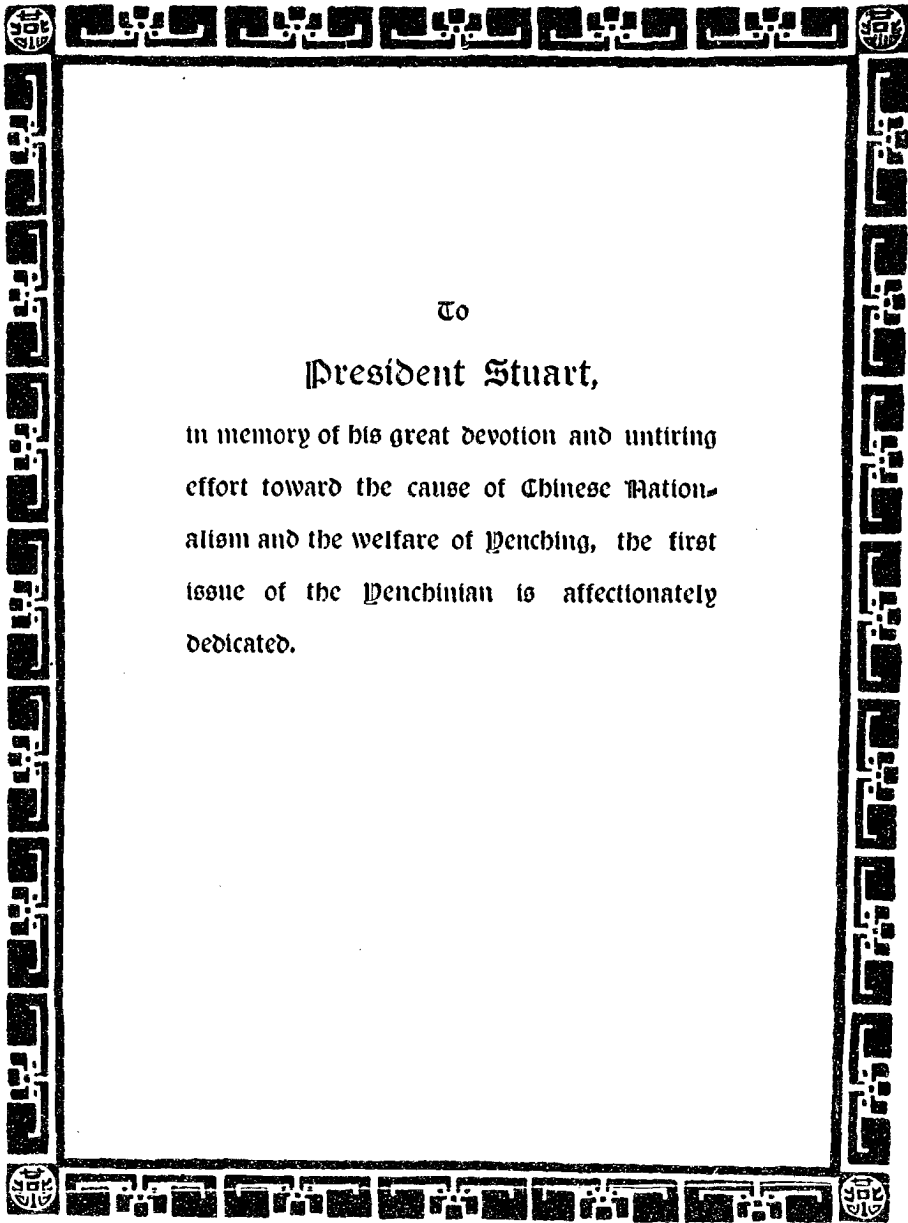
十七年六月

Published by

The Students' Self-Government Association,

Yenching University.

1928



To

President Stuart,

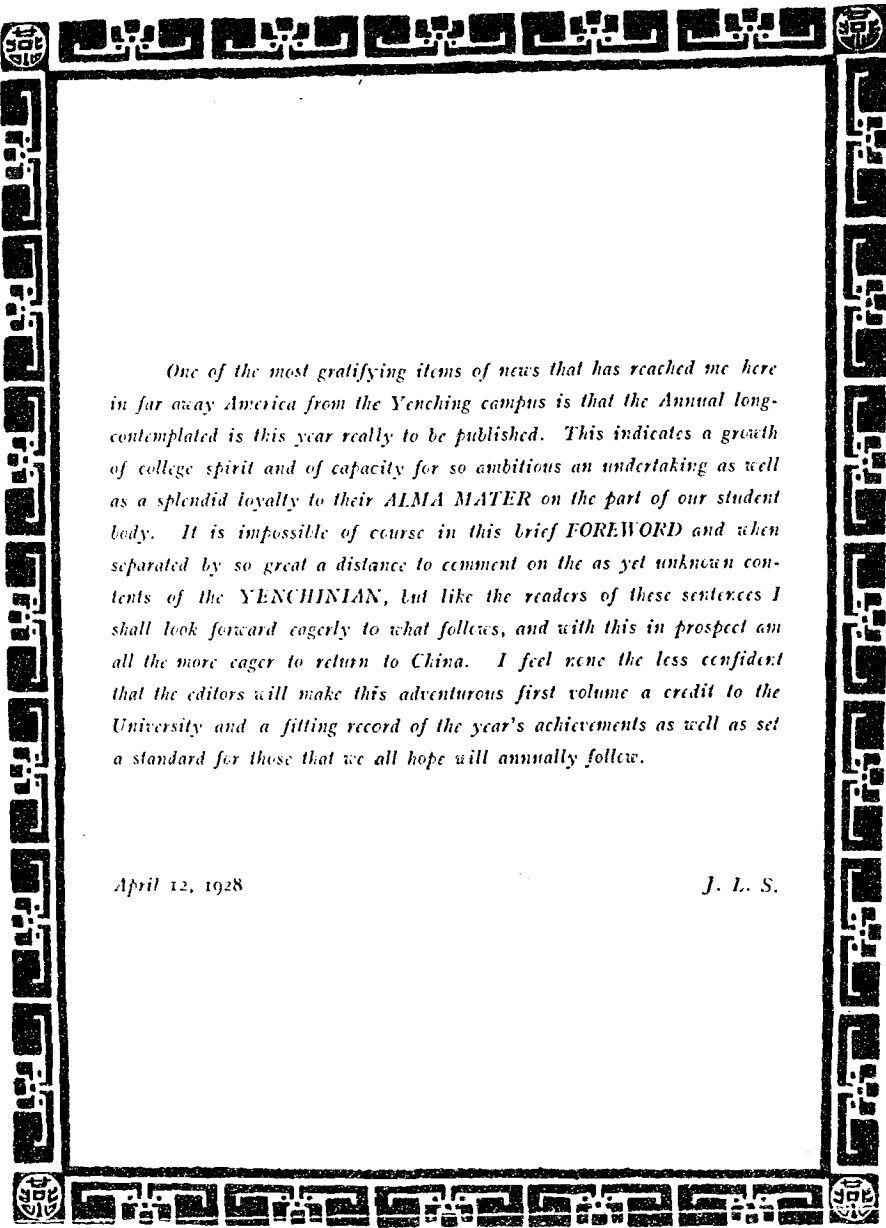
in memory of his great devotion and untiring effort toward the cause of Chinese Nationalism and the welfare of Peking, the first issue of the Pekingian is affectionately dedicated.

卷 首 語

我爰自合併女組成爲今日之「燕京大學」後，其本身歷史，不十稔，然於各方面之發展，則皆有長足之進步，爲一般人所驚嘆不置者，以是近年來，其地位確確在中國，即不客氣而言，在全世界之文化的社會裏，亦皆佔有相當之重要。雖其今日，猶呈見無量數之極顯著之缺點，未盡與吾人理想中之「燕京大學」相符合，第果使回首未遷移新渡前之七八年間之歷史陳迹，而略一比較之，則吾人足引以爲欣快者殊多矣。

茲者學生自治會因紀念其盛，特遴選委員二十餘人，籌辦是刊，用垂久遠。舉凡我校之一切現實的活動，與其過去的史略，均有所刊載，庶幾學校當局者覽之知益加策勵，使吾人理想中之「燕京大學」早日實現；已畢業之同學覽之，愈堅其援助及光大母校之念；未畢業之同學覽之，愈激發其愛護學校之志願，與認清其對於學校所應盡之義務；校外人覽之，尤明瞭我校之雖爲教會所創立，而最近數年，內容一變，實已完全脫離傳統之宗教思想與色彩，而爲一純粹講學之高等學府，而自一九二七年二月經教育部正式認可後，更已完全中國化矣，然則是刊之作，一言以蔽之，曰唯學生自治會愛護學校之真誠之表現，而其關係我爰前途之大，亦於斯焉可見。吾故表而出之，以告同志。

馮日昌



One of the most gratifying items of news that has reached me here in far away America from the Yenching campus is that the Annual long-contemplated is this year really to be published. This indicates a growth of college spirit and of capacity for so ambitious an undertaking as well as a splendid loyalty to their ALMA MATER on the part of our student body. It is impossible of course in this brief FOREWORD and when separated by so great a distance to comment on the as yet unknown contents of the YENCHINIAN, but like the readers of these sentences I shall look forward eagerly to what follows, and with this in prospect am all the more eager to return to China. I feel none the less confident that the editors will make this adventurous first volume a credit to the University and a fitting record of the year's achievements as well as set a standard for those that we all hope will annually follow.

April 12, 1928

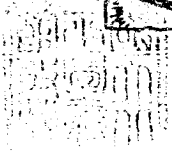
J. L. S.



校 訓

以 得 而
真 自 服
理 由 務

FREEDOM THROUGH TRUTH FOR SERVICE



校 歌

College Song

都 城 西 郊 燕 京 大 學 輪 奐 美 且 崇：
 良 師 益 友 如 琢 如 磨 情 志 每 相 同：
 Lift we high u - nit - ed voic - es, joy - ful - ly we sing:

人 文 符 萃 中 外 交 孚 獎 譽 滿 寰 中
 踴 躍 奮 進 探 求 真 理 自 由 生 活 豐
 Loud in praise of Al - ma Ma - ter, Glo - ri - ous Yen-Ching.

燕 京 燕 京 事 業 浩 瀚 規 模 更 恢 宏：
 Lured from ev' - ry part of Chi - na, Here's to old Pe - king,

人 才 輩 出 聲 譽 同 群 公 同 致 感 念
 We as one our Col - lege hon - or, Hail, O Hail, Yen-Ching

Brief History of Yenching

Origins. The beginnings may be traced to elementary schools established in Tungchow about 1867 in connection with the "American Board Mission", and to other elementary schools established about the same time in Peking by the Methodist Mission. These elementary schools gradually evolved to secondary school grade and in 1883-1889, both at Tungchow and in Peking, the missions concerned decided to establish institutions of college grade. In Peking the resulting institution was known as "Peking University", incorporated in New York (for in those days there was no method of incorporating in China) in 1889.

In connection with the Boxer disturbances of 1900 the buildings of both institutions were entirely destroyed and new buildings had to be provided. During the early months of reconstruction there were negotiations which had for their purpose the union of these two colleges, but these negotiations failed to achieve their object. Accordingly, Peking University was re-established in Peking and the "North China College" was re-established at Tungchow.

The "North China Educational Union." Although the negotiations already referred to failed, there was a movement for union in higher education, which developed gradually from 1904-1911. In this union movement were included the College for Men at Tungchow, the College for Women in Peking, the North China Union Medical College (before it was taken over by the Rockefeller Foundation) and a Union School of Theology.

In 1911 negotiations for a more complete union were resumed and these negotiations went on continuously until 1918 when the amalgamation of the Peking University and North China arts colleges for men marked the success of the movement.

Yenching University Established. Yenching University as a recognized and enlarged institution, therefore, dates from the year 1918. The institution (still known as Peking University) occupied temporary quarters at *K'uei Chia Chang* in Peking and a number of small Chinese buildings were remodeled and re-arranged to serve the purpose of the institution. In 1918 the faculty numbered only 19 and the student body, (consisting then of the three years of the Senior College, on the basis of the former school system), 75 students. A Preparatory Department, or *Yu K'e*, of three years was also conducted.

Dr. J. Leighton Stuart, first President. When the University was reorganized in 1918, Dr. H. H. Lowry of the former Peking University was Acting President. In December of that year a delegation appointed by the Board of Managers, went to Nanking waited upon Dr. J. Leighton Stuart and invited him to accept the position of president. After a few months, Dr. Stuart gave his consent and took up his duties in the late spring of 1919.

The Women's College. The Women's College which has already been mentioned as a part of the North China Educational Union, decided to cast in its lot with the reorganized university, and this step took place in the early winter of 1920. During the occupation of the temporary quarters in the city, the Women's College carried on its work at the *T'ung Fu*, some two miles distant from *K'uei Chia Chang*. Because of this inconvenience of location the coeducational enterprise was much handicapped during the early years.

The New Site. The new site north of Haitien was purchased in 1920 and immediately thereafter a campaign for funds was organized. The corner stone of the first building was laid in 1922. It was then the hope that not later than 1924 the university could remove to the new site. But the building program gradually grew in magnitude and for various reasons the buildings could not be ready until the autumn of 1926. At that time the university removed to the new site, although even then the buildings and the installations were unfinished. With the removal to the new site the University entered upon a new era of prosperity and achievement.

Then, now—and hereafter. Members of the university at the present time are conscious of many deficiencies and short-comings in the Yenching that is. But when the slow and gradual steps of evolution are taken into account and the Yenching of the present is compared with the crude institutions of the past, there is reason for much satisfaction over what has been accomplished and for much optimism with regard to the developments of the future.

Yenching University,
March, 1928.

Howard S. Galt

校 史

本大學之有歷史，源流甚遠。約當西歷一千八百六十七年，公理會在通州創辦小學多所，同時美以美會亦於北京建設同等之學校頗衆。兩處小學，後均漸改爲中學；於一千八百八十八年，各又議決改併爲大學。明年，北京匯文大學，通州協和大學，遂相繼成立。自一千八百八十九年至一千九百年，兩大學各自進展，規模略有可觀。

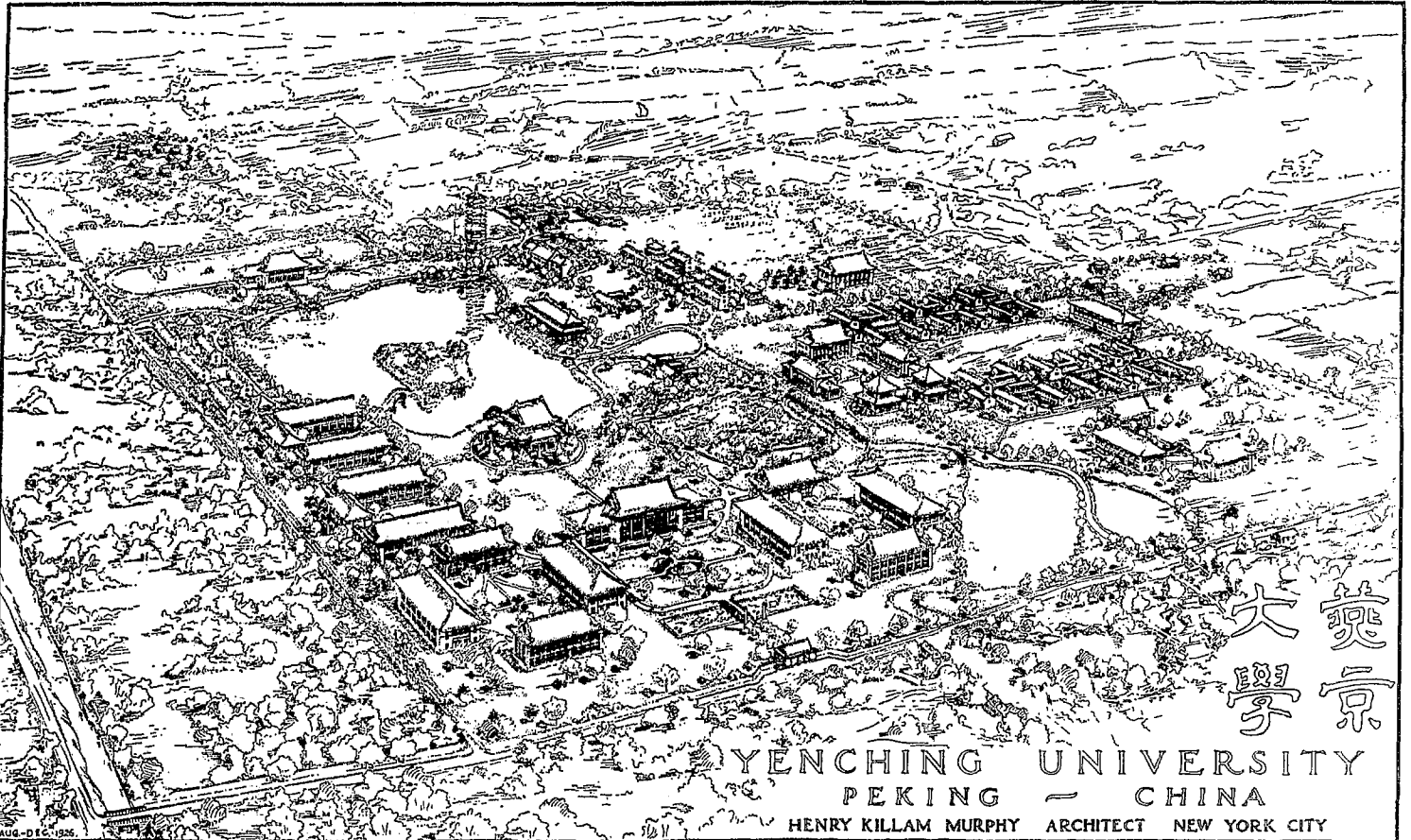
一千九百年，拳匪亂興，兩大學校舍全被焚燬。亂平後，重謀建築。當動工伊始，兩大學會協議合併，但無成功。未幾，新校舍落成，兩大學仍各自爲政。

一千九百零四年至一千九百十一年，合併運動復起。其時加入者，又有北京協和女子大學，前協和醫學校，匯文大學神學館三校。此項運動，醞釀數載，至一千九百十八年，乃先由北京匯文大學與通州協和大學實行合併，而爲今日之本大學。校址位於北京東城盤甲廠，房舍隘陋，經加工葺改後，乃可使用。當時教職員僅十有九人；三年大學本科與三年大學預科（舊制）之學生，總數亦不過七十五人而已。

本大學成立時，暫由前匯文大學校長劉海瀾博士代理校長職務，是年十二月，董事部委派代表赴南京，聘任司徒雷登博士爲正式校長。翌年（一千九百十九年）春末，司徒校長來本大學就職。

一千九百二十年，北京協和女子大學亦實行合併。校址暫設東城燈市口同福夾道距離盤甲廠，約二英里。男女兩校，因地勢間隔，名雖合併，而實際男女同校之原理，未能充分試驗施行。然自一千九百十八年來，本大學一方面不因校址之偏僻，與校舍之隘陋，即已積極講求課務之發展；又一方面，則覓購新校址，並籌集鉅款，以爲建築新校舍之用。兩項計畫，自一千九百十八年至一千九百二十六年，始終進行無懈。課務因積極講求之故，已逐漸改良擴張，而教職員學生之人數，亦有加無已。

一千九百二十年，海甸鎮北新校址購妥。一千九百二十二年，行建築第一座樓之奠基禮，並預料一千九百二十四年前，可以移居新校。其後以工程距完成之期尚遠，遷移未果。至一千九百二十六年夏間，爲環境驅迫，遂實行遷徙；同年秋，即在學校開課。是時建築工程，雖猶未完竣，但本大學自移來新址，已另闢一昌盛而有成功之新紀元矣。今則氣象蓬勃，視諸已往，頗堪自豪；對諸將來，尤抱無窮願望。

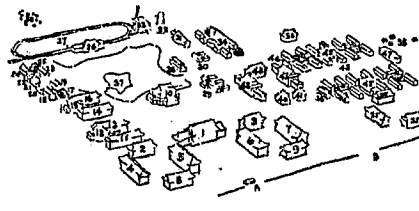


燕京大學

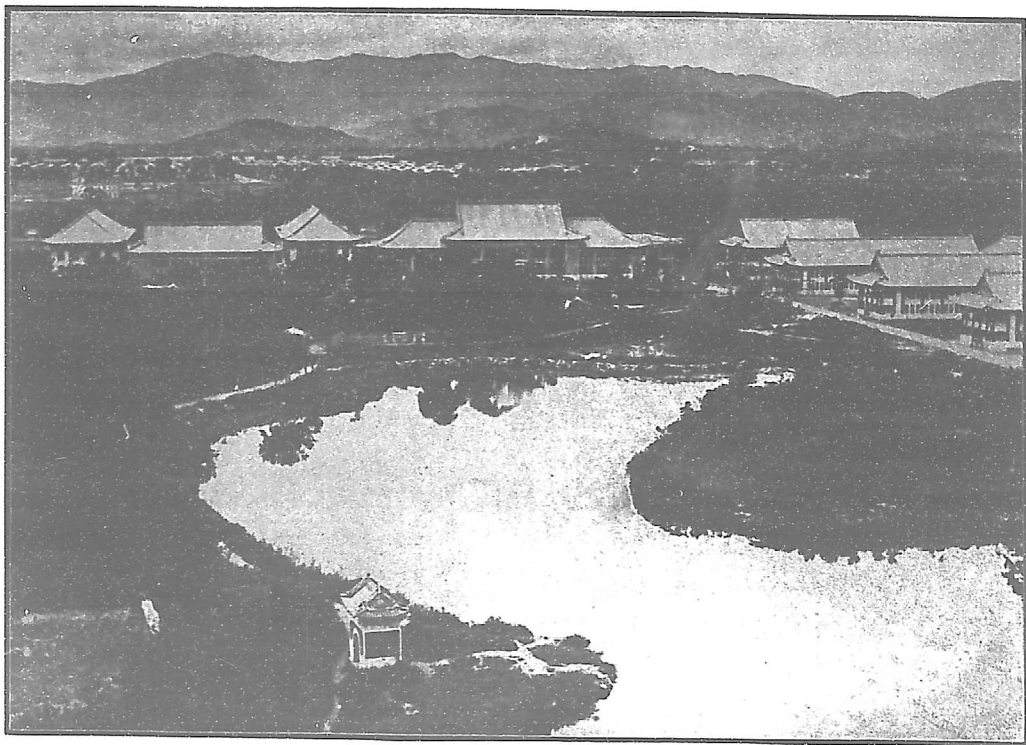
YENCHING UNIVERSITY
PEKING — CHINA
HENRY KILLAM MURPHY ARCHITECT NEW YORK CITY

AUG - DEC 1926

- A MAIN ENTRANCE GATE
- 1 ADMIN. ASSEMBLY (BASFORD MEMORIAL)
- 2 THEOLOGY BUILDING (NINDE MEMORIAL)
- 3 LIBRARY BUILDING (DEKLY MEMORIAL)
- 4 NORTH RECITATION BUILDING
- 5 SOUTH RECITATION BUILDING (H-BLIEL)
- 6 NORTH SCIENCE LABORATORY
- 7 SOUTH SCIENCE LABORATORY
- 8 NORTH FUTURE ACADEMIC BUILDING
- 9 SOUTH FUTURE ACADEMIC BUILDING
- 10 STUDENTS CENTRAL
- 11 MEN'S DORMITORY #1
- 12 MEN'S DINING HALL #1 (ROOZ MEMORIAL)
- 13 MEN'S DORMITORY #2 (GAMBLE MEMORIAL)
- 14 MEN'S DINING HALL #2 (FINLEY MEMORIAL)
- 15 MEN'S DORMITORY #3
- 16 MEN'S DORMITORY #4
- 17 MEN'S LAKEFRONT DORMITORY #1
- 18 MEN'S LAKEFRONT DORMITORY #2
- 19 MEN'S LAKEFRONT DORMITORY #3
- 20 MEN'S LAKEFRONT DINING HALL #1
- 21 MEN'S LAKEFRONT DORMITORY #4
- 22 MEN'S LAKEFRONT DINING HALL #2
- 23 MEN'S LAKEFRONT DORMITORY #5
- 24 MEN'S LAKEFRONT DORMITORY #6
- 25 MEN'S LAKEFRONT DORMITORY #7

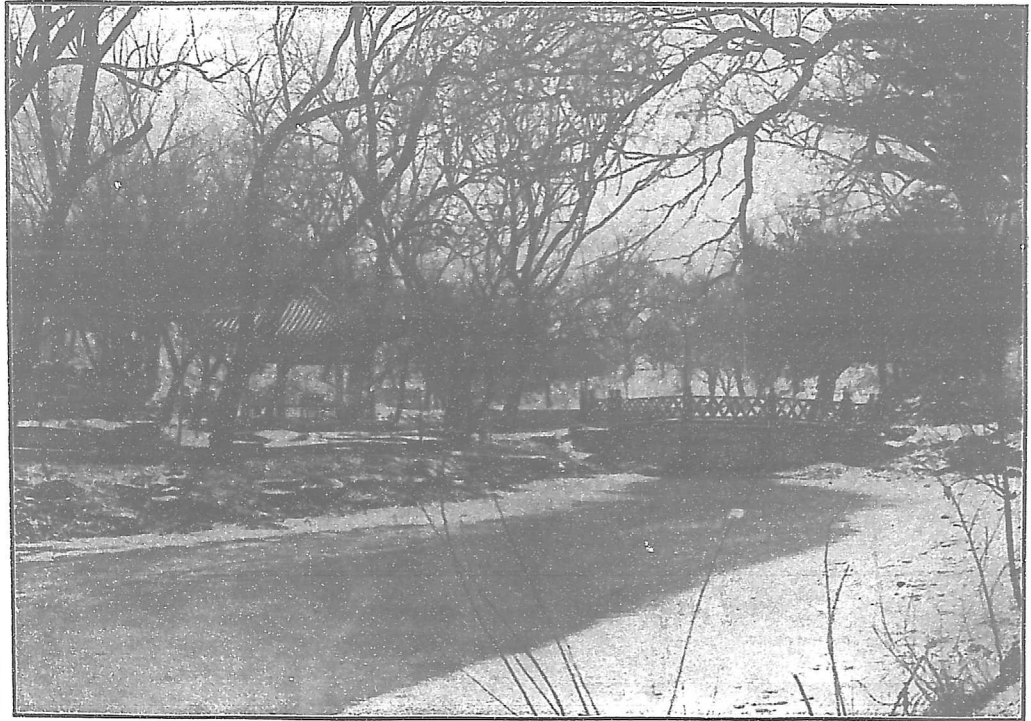


- 26 MEN'S GYMNASIUM (WARNER MEMORIAL)
- 27 ATHLETIC FIELD
- 28 UNIVERSITY CHAPEL (WHEELER MEMORIAL)
- 29 PRESIDENT'S HOUSE (CURRIE MEMORIAL)
- 30 GUEST HOUSE
- 31 INFIRMARY
- 32 WATER TOWER TOWER (POSTEL MEMORIAL)
- 33 POWER HOUSE
- 34 FUTURE MEN'S DORMITORY GROUP
- 35 FUTURE UNIVERSITY ACADEMIC BUILDINGS
- 36 AGRICULTURE BUILDING
- 37 RECREATION ISLAND
- 38 SOUTH COMPOUND FACULTY RESIDENCES
- 39 EAST COMPOUND FACULTY RESIDENCES
- WOMAN'S COLLEGE
- B PRIVATE ENTRANCE TO WOMAN'S COLLEGE
- 40 ADMINISTRATION BUILDING
- 41 DEAN'S RESIDENCE
- 42 NORTH ACADEMIC BUILDING
- 43 SOUTH ACADEMIC BUILDING
- 44 RECITATION BUILDING (SAGE MEMORIAL)
- 45 DORMITORIES AND DINING HALLS
- 46 FACULTY RECEPTION BUILDING
- 47 GYMNASIUM
- 48 ATHLETIC FIELD



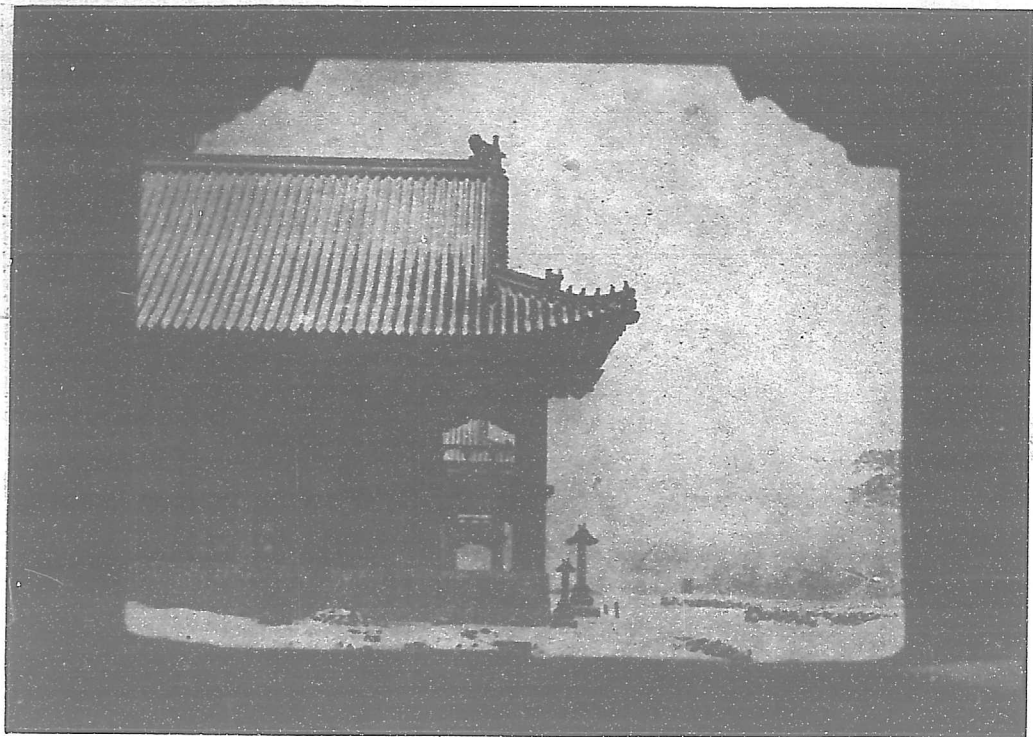
(说明)

泉玉接湖銀草芳



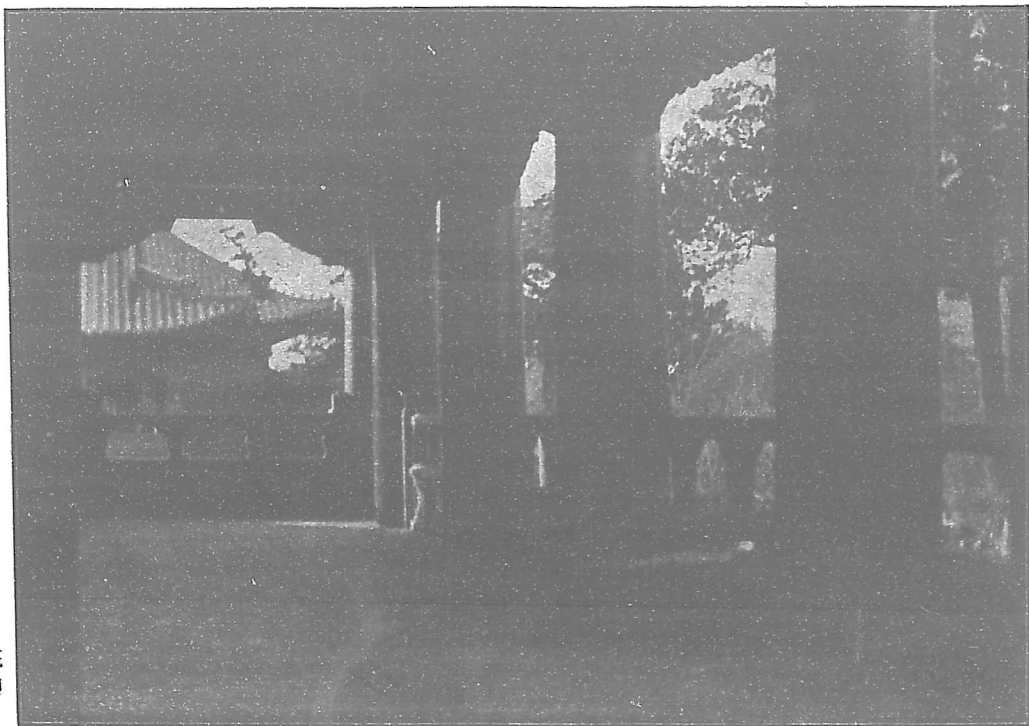
(說明)

雪壓紅橋不見人



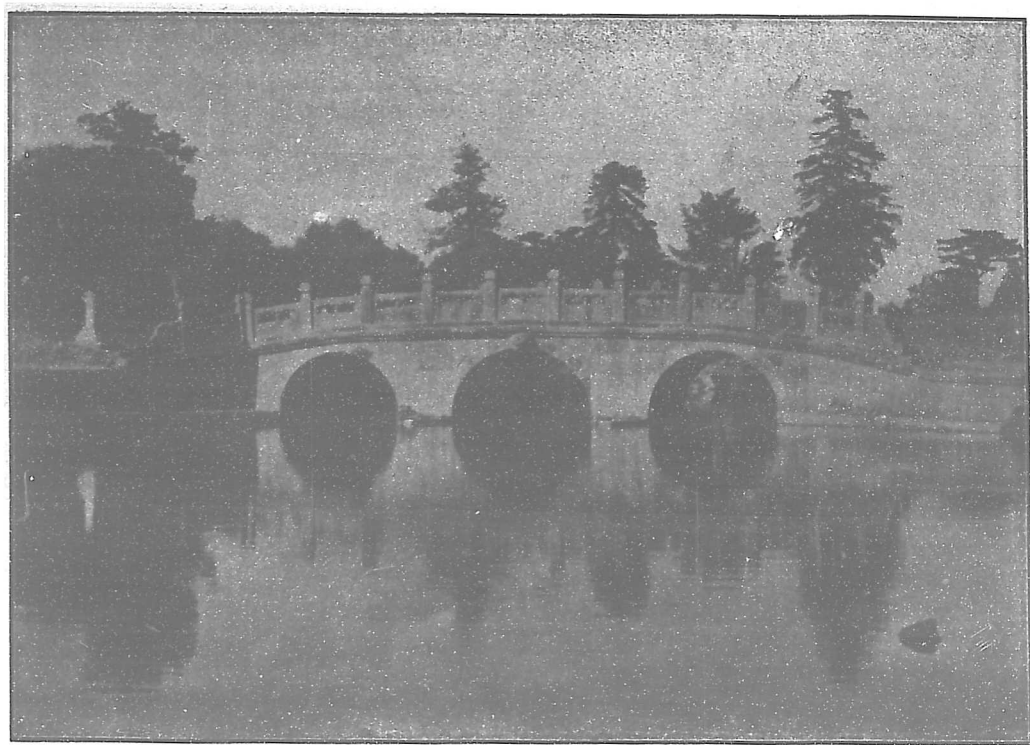
(說明)

天 雲 弄 樓 層 寂 寂



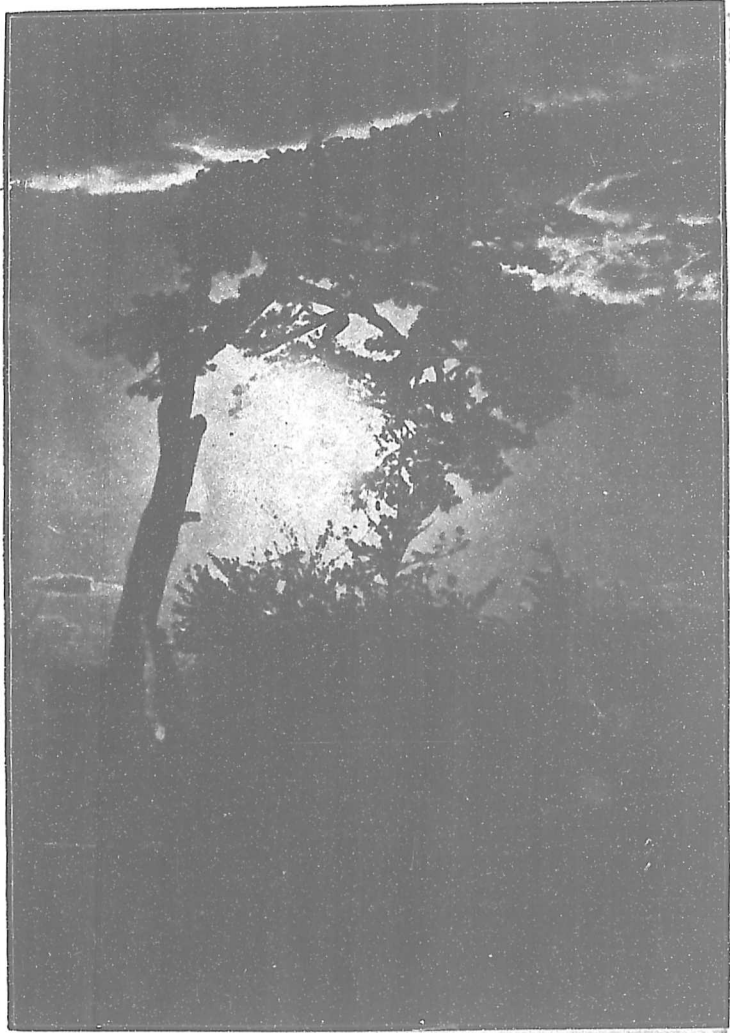
(悅明)

人靜書廊春晝暖



(說明)

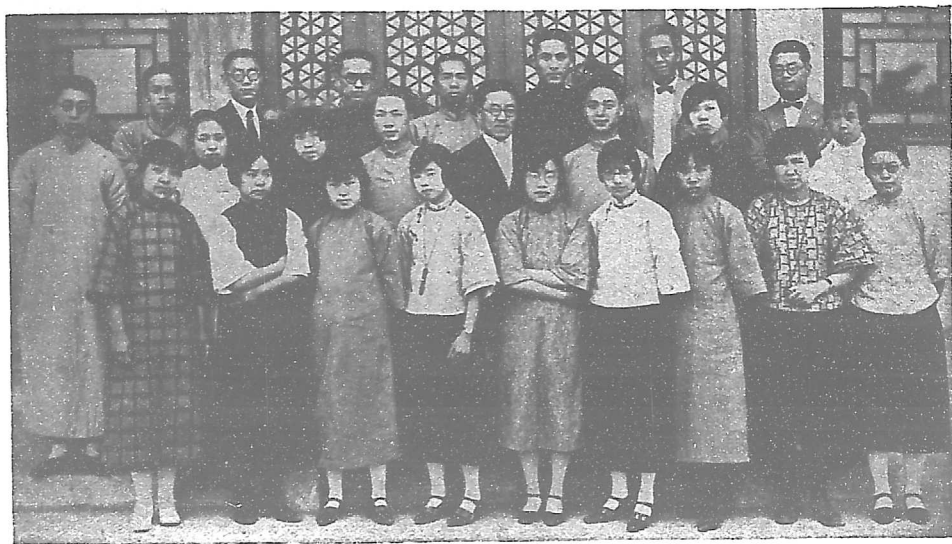
日午花香過石橋



(說明)

孤樹雲寒夜月中

本刊委員



羅裕鼎 夏晉熊 卓宜來 馮日昌 陳維德 程美泉 林其煌
顧敦錄 黃振球 潘懿則 陳雲豹 李獻琛 林悅明 劉席珍 劉耀真
黃慶厚 梁佩貞 陸慶 歐陽婉 關瑞梧 張瓊霞 陸瑞蘋 譚超英 江耀羣

本刊職員

委員會

主席：馮日昌 副主席：黃振球

文書：陳雲豹 文書：張瓊霞

梁佩貞	黃慶厚	劉席珍	潘懿則	江耀羣	譚超英
陸慶	劉耀真	趙繼振	關瑞梧	顧效鏞	夏晉熊
陳維德	韓慕章	林悅明	程美泉	李獻琛	林其煌
卓宜來	羅裕鼎	陸瑞蘋	周如松	歐陽婉	高佩貞

編輯股

主席：馮日昌

梁佩貞 譚超英
陸慶 陸瑞蘋
顧效鏞 夏晉熊

經濟股

主席：陳維德 副主席：黃慶厚

趙繼振 李獻琛
周如松

廣告股

主席：林其煌 副主席：關瑞梧

劉耀真 高佩貞
卓宜來

出版股

主席：韓慕章 副主席：黃振球

劉席珍 潘懿則
江耀羣 歐陽婉
羅裕鼎 程美泉
林悅明



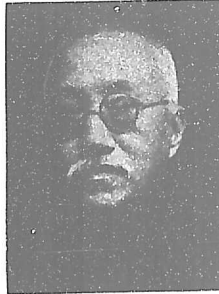
ADMINISTRATION

學校組織

部事董



Dr. J. L. Stuart



吳雷川先生



顏惠慶先生



周貽春先生



王厚齋先生



王景春先生



Miss I. F. Frantz



Rev. C. G. Sparham



丁淑静女士



Rev. A. P. Cullen



朱發祥夫人



周福全先生



費起鶴先生



孫玉祺先生



Mrs. M. S. Frame



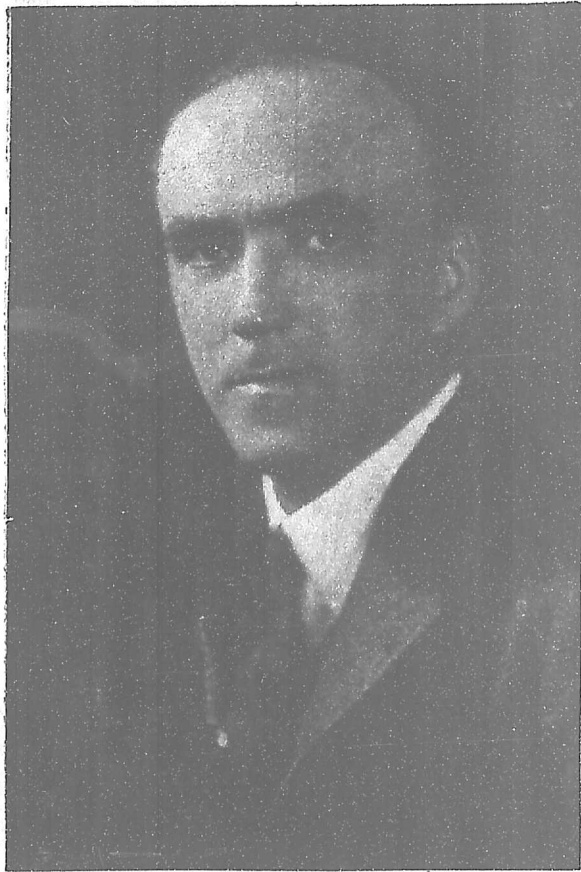
倪逢吉女士



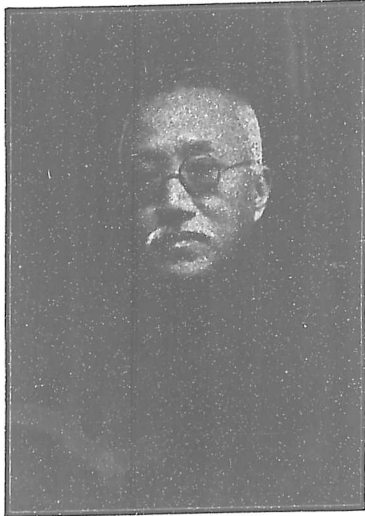
李榮芳先生



洪煥蓮先生



校長司徒雷登博士
President Stuart, D. D.



副校長兼代理校長

吳雷川先生

Mr. Wu Lei-Chuan

Vice-President and Acting-President

代理校長
高厚德博士
H. S. Galt, Ed. D.
Co-acting President





女校校務主任

費賓聞臣博士

Mrs. M. S. Frame, B. D., Litt. D.

Dean, Women's College

大學院教務委員會主席
兼本科教務委員會主席
徐淑希博士

Shuhsi Hsu, Ph. D.

*Chairman, Commission on
Studies & Graduate Studies.*





宗教學院院長李榮芳博士
J. F. Li, M. A., Th. D.
Dean of the School of Religion



校長辦公處總務主任全紹文先生
S. J. Chuan, B. A.
Assistant to the President



註冊部主任陳國梁碩士
K. L. Ch'en, M. A.
Registrar



男生輔導委員會主席陳在新博士
T. H. Ch'en, Ph. D.
Chairman, Commission on
Men Student's Welfare



圖書館代理主任田洪都先生
H. T. T'ien, B. A.
Acting Librarian



會計處副主任蔡一譔先生
S. I. O. Ts'ai, B. A.
Assistant Treasurer



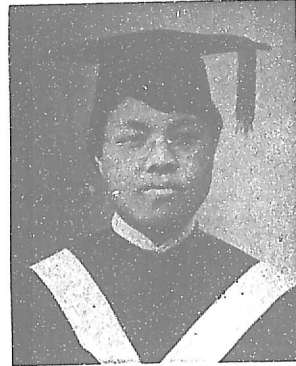
庶務處主任全希賢先生
H. H. Chuan
Business Manager



醫務處主任李術仁大夫
B. L. L. Learmonth, M. D.
University Medical Officer



女附中校監陳克明女士
Miss K. M. Ch'en, M. A.
Director, Girls Senior
Middle School



女附中主任梁李銘忠夫人
Mrs. Norman Liang, B. A., B. D.
Principal, Girls Senior
Middle School



男校體育主任熊大綸先生
T. L. Hsiung, B. S.
Athletic Director,
Men's College



女校體育主任陳彥融女士
Miss Y. J. Ch'en
Physical Director,
Women's College



女校校務主任辦公處助理李璿女士
Miss Li Kuan, B. A.
Assistant, Dean's office



教務處書記潘恩施女士
Miss B. P. Barnes, B. A.
Secretary, Dean's office



校長辦公處書記胡永華先生
Y. H. Hu
Secretary, President's office



註冊部助理劉偉民先生
W. M. Liu
Assistant, Registrar's office



會計處助理王漢章先生
H. C. Wang
Assistant, Treasurer's office



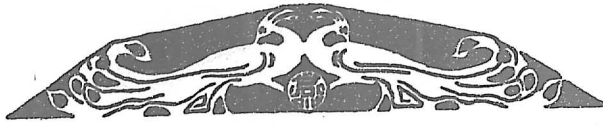
男生輔導委員會助理黃麟閣先生
L. K. Huang
Assistant, Commission on Men
Student's Welfare

General Faculty Executive Committee
大學執行委員會



Commission on Men Student's Welfare
男生輔導委員會



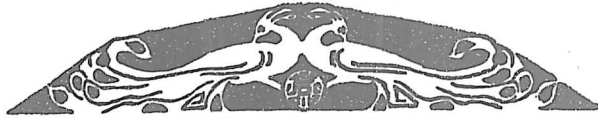


會計處 Staff of the Treasury



文牘處 Secretarial Bureau





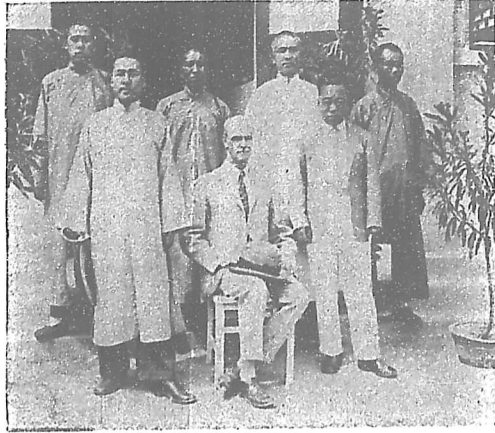
Business Staff
庶務處



Library Staff
圖書館



Medical Staff
醫務處



務教



心理學系主任陸志章博士
C. W. Luh, Ph. D.
Chairman, Department
of Psychology



生物學系主任胡經甫博士
C. F. Wu, M. A., Ph. D.
Chairman, Department
of Biology



地理地質學系主任達偉德碩士
W. W. Davis, M. S.
Chairman, Department
of Geography and Geology.



化學系主任拿爾巽博士
S. D. Wilson, A.B., A.M., Ph.D.
Chairman, Department
of Chemistry.



農學系主任劉和博士
H. H. Lew, Ph. D.
Chairman, Department of
Agriculture



家政學系主任劉何靜安碩士
Mrs. H. H. Lew, M. S.
Chairman, Department of
Home Economics



製革學系主任張銓先生
P. C. Chang, B. S.
Chairman, Department
of Leather Tanning



天算學系主任陳在薪博士
F. H. Ch'en, M. A., Ph. D.
Chairman, Department of
Mathematics and Astronomy



歐洲語學系主任吳路義博士
L. E. Wolferz, Ph. D.
Chairman, Department
of European Language



國文學系主任馬鑑碩士
K. Ma, M. A.
Chairman, Department
of Chinese



政治學系主任徐淑希博士
S. Hsu, Ph. D.
Chairman, Department
of Political Science



社會學系主任許仕廉博士
L. S. Hsu, M. A., Ph. D., LL. B.
Chairman, Department
of Sociology.



教育學系主任高厚德博士
H. S. Galt, Ed. D.
Chairman, Department
of Education.



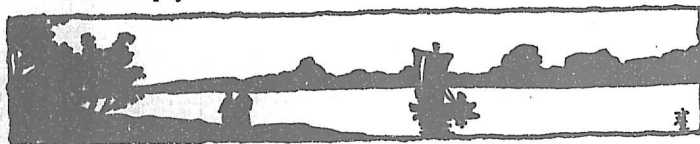
經濟學系主任李炳華碩士
B. H. Li, M. A.
Chairman, Department
of Economics.



哲學系主任徐寶謙碩士
P. C. Hsu, M. A.
Chairman, Department
of Philosophy



音樂學系主任蘇路德女士
Miss R. S. Stahl, B. M.
Chairman, Department
of Music





生物學系教授博愛理博士
Miss A.M. Boring, M.A., Ph. D.
Professor, Department
of Biology



生物學系教授李汝祺博士
J. C. Li, Ph. D.
Assistant Prof., Department
of Biology



生物學系教師盧開運先生
P. K. Y. Lu, B. A.
Instructor, Department
of Biology



生物學系教師陳子英碩士
T. Y. Chen, M. A.
Instructor, Department
of Biology



生物學系助理徐蔭祺先生
Y. C. Hsu, B. S.
Graduate Assistant, Department
of Biology



生物學系助理劉承紹先生
C. C. Liu, B. S.
Graduate Assistant, Department
of Biology



生物學系教授倪登博士
J. G. Needham, Ph.D., Litt. D.
Professor, Department
of Biology



心理學系教授劉廷芳博士
T. T. Lew, B. D., Ph. D.
Professor, Department of
Psychology



心理學系教授夏仁德碩士
R. C. Sailor, M. A.
Assistant Prof., Department of
Psychology



化學系教師曹敬盤先生
C. P. Ts'ao, B. A.
Instructor, Department of
Chemistry



化學系助理葛啟麟先生
C. L. Ko, B. S.
Graduate Assistant, Department
of Chemistry



化學系教師王贊卿先生
T. C. Wang, B. S.
Instructor, Department of
Chemistry



物理學系教授謝銘玉博士
Y. M. Hsieh, M. A., Ph. D.
Assistant Prof., Department
of Physics.



化學系助理王譽傳先生
Y. C. Wang, B. S.
Graduate Assistant, Department
of Chemistry



天算學系教授孫榮博士
J. Sun, M. A., M. S., Ph. D.
Associate Prof., Department of
Mathematics and Astronomy



物理學系助理吳敬寰先生
C. H. Wu, B. S.
Graduate Assistant, Department
of Physics



農學系教師于振周先生
C. C. Yü, B. A., B. S.
Instructor, Department
of Agriculture



農學系助理姜肅長先生
I. C. Chiang, B. S.
Graduate Assistant, Department
of Agriculture



農學系助理沈壽銓先生
S. T. Shen, B. S.
Graduate Assistant, Department
of Agriculture



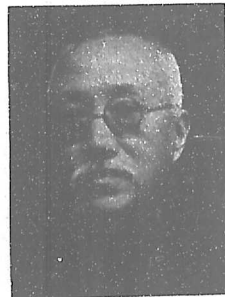
農學系助理范翊華先生
I. H. Fan, B. S.
Graduate Assistant, Department
of Agriculture



家政學系教師顧樂瑞女士
Miss L. Gooding, B. S.
Instructor, Department of
Home Economics



農學系助理姜允長先生
Y. C. Chiang, B. A.
Graduate Assistant, Department
of Agriculture



國文學系教授吳雷川先生
L. C. Wu
Professor, Department
of Chinese



製革學系助理韓宗明先生
T. M. Han
Assistant, Department
of Leather Tanning.



國文學系教授周作人先生
T. J. Chow
Associate Prof., Department
of Chinese



國文學系教授黃子通博士
L. T. Hwang, M. A., Ph. D.
Associate Prof., Department
of Chinese



國文學系教授郭紹虞先生
S. Y. Kuo
Assistant Prof., Department
of Chinese



國文學系教授容庚先生
K. Jung
Associate Prof., Department
of Chinese



國文學系講師蘇民生先生
M. S. Su
Lecturer, Department
of Chinese



國文學系教授沈士遠先生
S. Y. Shen
Associate Prof., Department
of Chinese



國文學系講師沈尹默先生
Y. M. Shen
Lecturer, Department
of Chinese



國文學系講師熊佛西碩士
F. H. Hsiung M. A.
Lecturer, Department
of Chinese



國文學系教師謝婉瑩碩士
Miss M. W. Y. Hsieh, M. A.
Instructor, Department
of Chinese



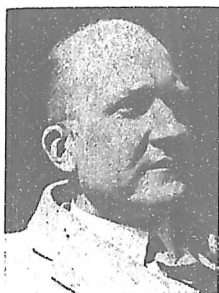
國文學講師黎錦熙先生
Li Jün-shi
Lecturer, Department
of Chinese



國文學系講師楊遇夫先生
Y. F. Yang
Lecturer, Department
of Chinese



國文學系講師俞平伯先生
P. P. Yu
Lecturer, Department
of Chinese



英文學系教師劉兆慧碩士
G. R. Loehr, M. A.
Instructor, Department
of English



國文學系講師劉盼遂先生
P. S. Liu
Lecturer, Department
of Chinese



英文學系教師桑美德女士
Miss M. B. Speer, B. A.
Instructor, Department
of English



英文學系教師畢施恩碩士
T. A. Bisson, M. A.
Instructor, Department
of English



社會學系教師倪逢吉碩士
Miss V. K. Nyi, M. A.
Instructor, Department
of Sociology



英文學系教師史威爾碩士
M. S. Stewart, M. A.
Instructor, Department
of English



政治學系講師刁敏謙博士
M. T. Z. Tyau, L. I. D.
Lecturer, Department of
Political Science



政治學系講師潘昌熙先生
C. Y. Pan
Lecturer, Department
of Political Science



政治學系教授郭因疇先生
M. Y. K. Kuo, L. I. B.
Associate Prof., Department
of Political Science



政治學系講師呂復先生
F. Lü
Lecturer, Department of
Political Science



歷史學系教授王桐齡碩士
T. L. Wang, M. A.
Professor, Department
of History



政治學系助理龍濟先生
C. Lung, B. A.
Graduate Assistant, Depart-
ment of Political Science



歷史學系教授陳垣先生
Y. Ch'en,
Associate Prof., Department
of History



歷史學系教授費賓閣夫人
Mrs. M. S. Frame, B. D., D. L.
Associate Prof., Department
of History



歷史學系講師張星煥先生
H. L. Chang, M. S.
Lecturer, Department of
History



歷史學系教授洪煥遠先生
W. Hung, M. A., S. T. B.
Associate Prof., Department
of History



歷史學系教師孟世傑先生
S. C. Meng
Instructor, Department
of History



歷史學系教師慶美鑫女士
Miss M. I. Cheney, M. A.
Instructor, Department
of History



歷史學系教師李瑞德先生
R. H. Ritter, B. A., B. D.
Instructor, Department of
History



歷史學系助理李崇惠先生
C. H. Li, B. A.
Graduate Assistant, Department
of History



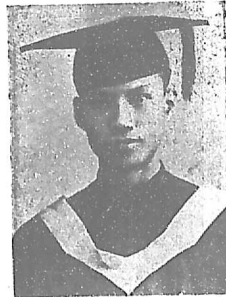
經濟學系教授王建祖博士
D. T. Wang, Ph. B., Litt. D.
Associate Prof., Department
of Economics.



經濟學系助理殷錫祺先生
H. C. Yin, B. A.
Graduate Assistant, Department
of Economics.



經濟學系講師宗植心先生
C. H. Tsung,
Lecturer, Department
of Economics



物理學系助理魏培修先生
P. H. Wei, B. S.
Graduate Assistant,
Department of Physics.



教育學系教授周學章博士
H. H. C. Chow, M. A., Ph. D.
Associate Prof., Department
of Education



教育學系教授王素意博士
Miss S. Wang, M. A., Ph. D.
Assistant Prof., Department
of Education



教育學系教師陳克明女士
Miss K. M. Ch'en, M. A.
Instructor, Department
of Education



教育學系教授博晨光博士
L. C. Porter, M. A., D.D., L.H.D.
Professor, Department
of Philosophy



哲學系教授馮友蘭博士
Y. L. Fung, Ph. D.
Associate Prof., Department
of Philosophy



宗教學院教授趙紫宸博士
T. C. Chao, M.A., B.D., Litt. D.
Professor, School
of Religion



宗教學院教授誠實怡博士
A.C.Y. Cheng, S.T.M., Ph. D.
Assistant Prof.,
School of Religion



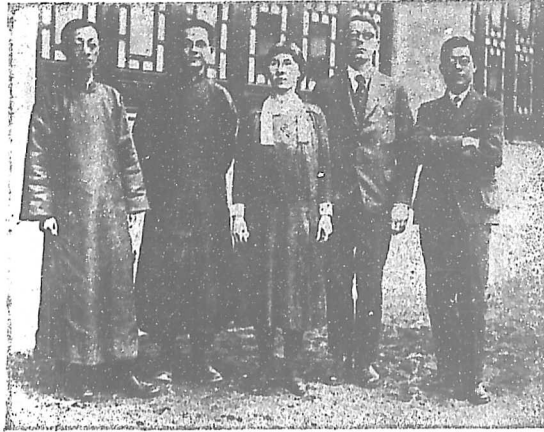
宗教學院教授許地山碩士
T. S. Hsu, M. A., B. D., B. Litt.
Assistant Prof.,
School of Religion

大學教務委員會
Commission on Graduate Studies





本科教務委員會
Commission on Studies



註冊部
Staff of the Registrar Office





況概系學
 宗教學院
 School of Religion



J. F. Li 李榮芳, M. A., Th. D. Dean and Associate Professor
 T. C. Chao 趙震宸, M. A., B. D., D. Litt Professor
 T. T. Lew 劉廷芳, B. D., Ph. D. (休假) Professor
 T. M. Barker 柏基根, M. A. Associate Professor
 William Hung 洪" 蓮, M. A., S. T. B. Associate Professor
 Philip de Vargas 王克私, Ph. D. Associate Professor
 A. C. Y. Cheng 誠質怡, S. T. M., Ph. D. Assistant Professor
 T. S. Hsu 許地山, M. A., B. D., B. Litt. Assistant Professor
 (Oxon.)
 B. M. Wiant 范天祥, B. A. Instructor
 Miss M. Wood 伍女士: Instructor

本學院建設底目的約有四端

- 一 爲養成國內基督教會底服務者,使具高深學識能勝佈教之任
- 二 爲造就基督教底文字宣傳人才,使他們具有高尚的思想,在學術界上能有相當的供獻。
- 三 爲培植宗教教育家,使他們能以最新穎的學理實施於教育方面。
- 四 爲訓練社會服務者,使他們能在男女青年會或其他宗教的社會服務團體內擔任一切關於社會公益底事業。

生物學系

Department of Biology.

Chenfu F. Wu 胡經甫, M. A., Ph. D. Associate Professor & Chairman
 Miss Alice M. Boring 博愛理, M. A., Ph. D. ... Professor
 J. C. Li, 李汝祺, Ph. D. Assistant Professor
 T. Y. Chen 陳子英, M. A. (on leave) Instructor
 Paul K. Y. Lu 盧開運, B. A. Instructor
 Mrs. J. C. Li 李江先羣, B. A. Instructor
 Y. C. Hsu 徐蔭祺, B. S. Graduate Assistant
 C. C. Liu 劉承詔, B. S. Graduate Assistant
 James G. Needham 倪登, Ph. D., Litt. D. Professor of Entomology,
 Cornell University, Honorary Lecturer 1927-28.

From 1917 to 1920 courses in Biology were taught by one instructor at Kw'ei Chia Ch'ang and from 1920 to 1925 courses were offered by two to three instructors separately at Kw'ei Chia Ch'ang and T'ung Fu in the City. In 1925 the pre-medical instruction of the Peking Union Medical College was transferred to Yenching University, the Department of Biology was formally organized, and courses in Biology were given in the Lockhart Hall, P. U. M. C. During the next year the University was moved out to its present site at Haitien and the Department has since occupied the whole second floor of the Biology-Physics Building. The following table shows the rapid growth of the Department since it was organized in 1925.

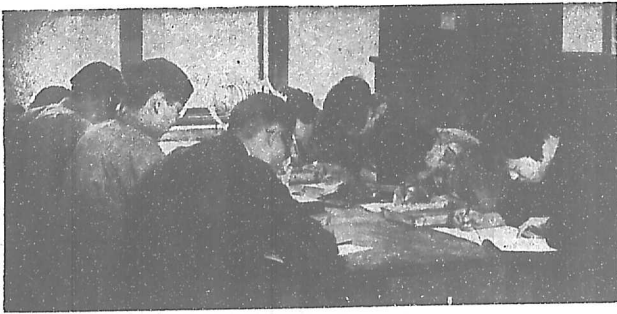
	<i>Annual Budget</i>	<i>Number of staff</i>	<i>Number of courses</i>	<i>Number of students</i>	<i>Number of semester hours</i>
1925-26	\$10188.00	4	11	67	266
1926-27	\$11778.00	5	17	143	419
1927-28	\$14598.00	7	19	181	664



實驗一：有脊椎動物解剖



試驗二：普通生物試驗



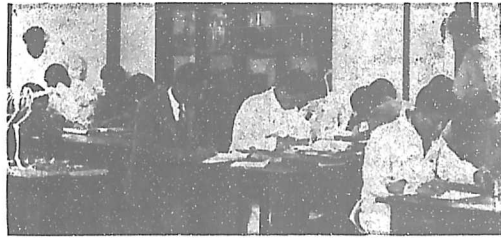
試驗三：有脊椎動物解剖



試驗四：刺猬解剖

The functions of the Department are (1) to provide the necessary courses which are fundamental to the professional curricula in Medicine, Nursing, Leather Tanning and Home Economics; (2) to provide a general course and a sequence of courses which will fulfill the University requirements for the Bachelor's degrees in Arts and Science respectively; (3) to train students for teaching Biology science in middle schools; (4) to prepare students for graduate research work in Biology; and (5) to offer graduate work leading to the degree of Master of Arts, in order to train students to become instructors in colleges.

The Department is at present already under-staffed, over-crowded in space, and financially handicapped. It is being planned that in the near future when the Department will have more under graduate students and when the Department will offer regular graduate work leading to the higher degrees, it will occupy a separate building by itself with a Departmental Museum and will have a larger annual budget for additional members on the staff and for more adequate library and laboratory facilities.



試驗五：有脊椎動物解剖



試驗六：蛙的研究

心理學系

Department of Psychology

C. W. Luh, 陸志章, Ph. D.....Professor and Chairman

R. C. Sailer, 夏仁德, M. A.....Assistant professor

Early in the year 1927 Dr. Luh Chih Wei came to Yenching from The National Southeastern University of Nanking, where he had been Head of the Department of Psychology and widely known for his writings and translations. Very many people feel that he is the leading psychologist in China today, and his coming means that Yenching will be known for its work in Psychology. Beginning next Fall, the Department will be housed in the east wing, upstairs, of the new recitation building. For its permanent quarters it will have a large laboratory, an office, a stock room and five small rooms for library, dark room, and place for individual experiment. At that time, Dr. T. T. Lew will return to Yenching as a member of the Department, though other duties will undoubtedly claim a share of his time.

Plans for the development of the Department have been printed, with schedule of courses, requirements and suggested curricula leading to the degree either of B. A. or B. S. It is neither expected nor desired that a large number of major students will be attracted to the Department, but the courses in General, Experimental and Social Psychology are proving popular for students whose main interest is along other lines. The elementary course in Experimental Psychology ranks as one of the required sciences, and laboratory equipment is being steadily collected. Books and Magazines are also growing in number, and it is hoped that before long they will be adequate to our needs.



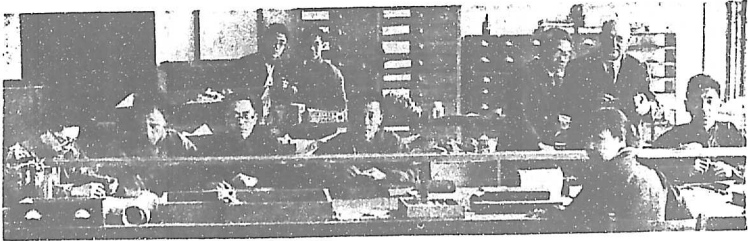
試驗：視覺的第三度空間試驗

地理地質學系

Department of Geography & Geology

W. W. Davis, 達偉德, M. S. Associate Professor, Chairman

G. B. Barbour, 巴爾博, M. A. Associate Professor



地質試驗

化 學 系

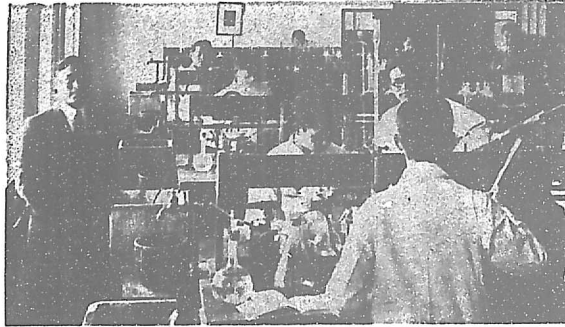
Department of Chemistry



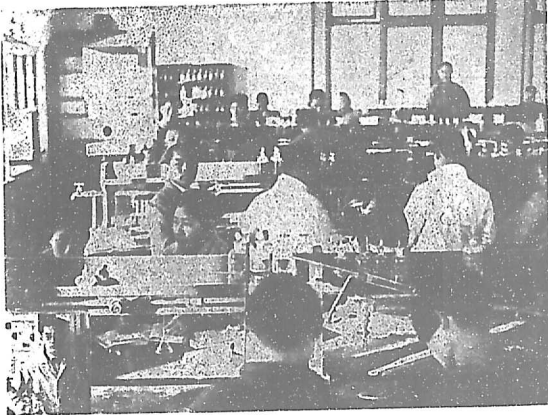
Stanley D. Wilson, 韋爾遜, A. B., A. M., Ph. D. ... Professor and Chairman
 E. O. Wilson, 衛爾遜, A. B., B. S., S. M..... Associate Professor
 C. P. Ts'ao, 曹敬盤, B. A..... Instructor
 T. C. Wang 王贊燭, B. S..... Instructor
 C. Y. Hsueh, B. S., M. S..... Instructor
 C. L. Ko, 葛啓麟, B. S..... Graduate Assistant
 L. S. Ts'ai 蔡維生 B. S..... Graduate Assistant
 Y. C. Wang, 王譽傳, B. S..... Graduate Assistant
 S. H. Jung, 戎志浩, B. S..... Graduate Assistant

The Chemistry Department was organized when the University was founded by the union of its constituent institutions. While the University was located in Peking the department was housed in very inadequate quarters and had inadequate supplies and equipment. Even under these conditions the enrollment in the department was large. Upon removal to the new campus the department occupied beautiful new quarters provided especially for its needs. It was thought that room had been provided for all expansion which would take place for many years to come. But there has been such a demand for the courses offered that already our space is crowded.

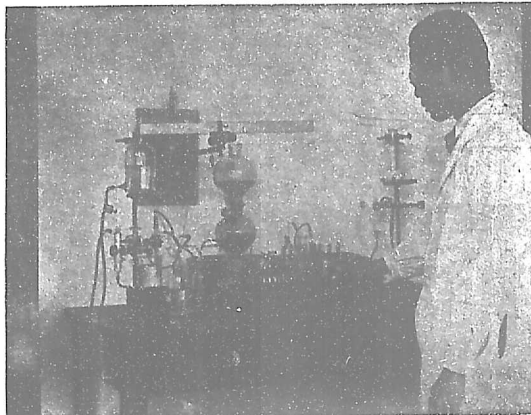
The department gives a series of courses adapted to the needs of the students who wish to learn something of the science and its contribution to the problems of China. Other courses are planned for the student who intends to major in Chemistry. Still another program of courses in the department is intended for students who are majoring in Home Economics, Pre-nursing, Premedicine or Leather. In addition to the above undergraduate work the department offers several courses for which graduate credit is allowed. It is hoped to extend the amount of graduate work as rapidly as there is need for it. Already some students are doing research for the master's degree. At present the Department is in position to offer research work in Organic and Physical Chemistry and also in a variety of fields in Applied Chemistry. It is planned that the work in Applied Chemistry shall be on problems connected with industries here in China.



試驗一：有機化學試驗



試驗二：無機化學試驗



試驗三：電氣化學試驗

物理學系

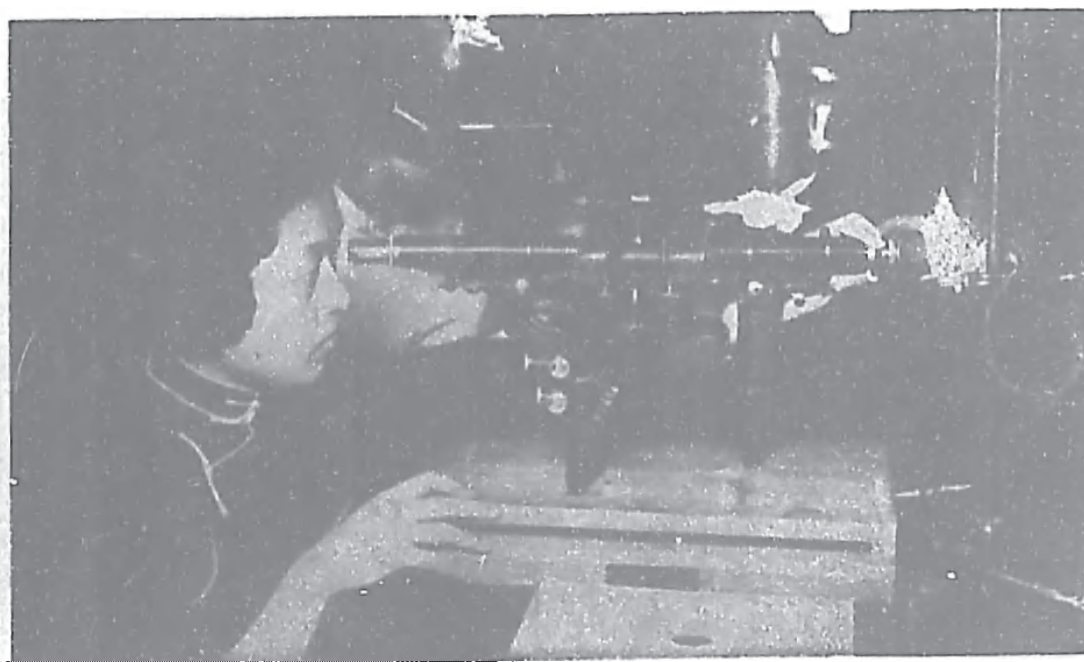
Department of Physics

Paul A. Anderson 安德生, Ph. D.....Assistant Professor, Chairman.
Y. M. Hsieh 謝玉銘, M. A., Ph. D.....Assistant Professor.
D. K. Yang 楊蔭卿, B. S., M.S.....Assistant Professor.
P. H. Wei 魏培華, B. S.....Graduate Assistant.
C. H. Wu 吳敬寰, B. S.....Graduate Assistant.
C. Y. Meng, B.S.....Graduate Assistant.
C. T. Wu, B. S.....Graduate Assistant.

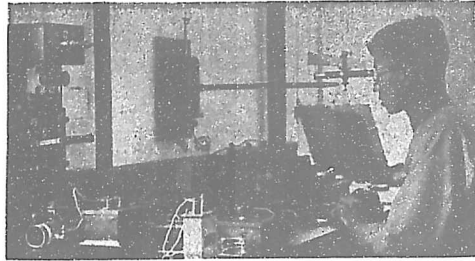
After the amalgamation of the constituent college in 1917 to form the present University, the Department of Physics was organized and courses were given by two instructors separately at K'wei Chia Ch'ang and Tung Fu in Peking. Pending the removal of the University to the new site, the Department was housed in one of the temporary buildings with very inadequate supplies and equipment. In accordance with the agreement between Yenching University and the Peking Union Medical College the physics departments of these two institutions were united at the beginning of the academic year 1923 and Professor C. H. Corbett served as head of the department. From that time on courses in College Physics were conducted in Lockhart Hall of the Peking Union Medical College until the end of the year 1925-1926. Upon the removal to the new site, the department occupied half of the north science building equipped especially for its needs.

The instructional work in physics is directed toward the following ends: (1) the training of premedical and pre-engineering students for professional work; (2) the training of general students in scientific methods of work and in the understanding of the place of physical science in the modern world; (3) the training of teachers of physics; (4) the training of research workers in physics.

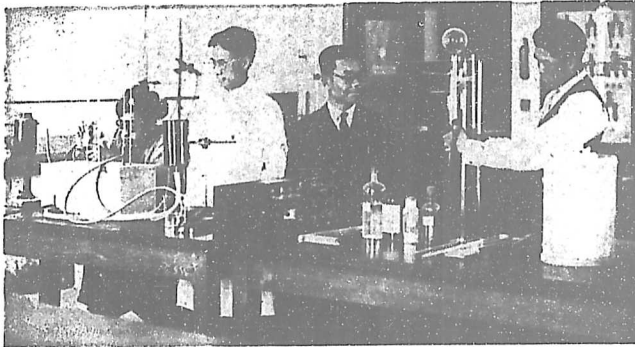
The plans of the Department for the future are directed toward the development of advanced work and graduate research. A definite beginning has been already made in this direction.



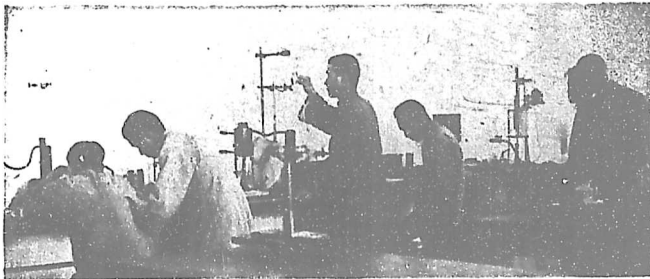
試驗一：光學試驗



試驗二 電學試驗



試驗三 高等物理試驗



試驗四 熱學試驗

農學系

Department of Agriculture



Homer H. Lew, 劉和, Ph. D.....Assistant Professor & Chairman
C. C. Yli 于振周, B.A., B.S.....Instructor
I. C. Chiang 姜雲長, B.S.....Graduate Student Assistant
Y. C. Chiang 姜允長, B.A.....Graduate Student Assistant
I. H. Fan 范胡翰, B.S.....Graduate Student Assistant
S. T. Shen 沈壽銓, B.S.Graduate Student Assistant
C. F. Chou 周景福, M.S.....Honorary Lecturer

1. 組織：一

- (a) 大學部—造就農業專門人才，學生五人。
- (b) 專修科—造就農村領袖，學生二十五人。

2. 工作：分六部進行，如下：一

- (a) 田藝部—選擇土產品，介紹西洋種籽。
- (b) 園藝部—罐頭製造，養蜂，選擇與介紹蔬菜，花果品種
- (c) 畜牧部—交配試驗，飼養試驗。
- (d) 推廣部—贈送種籽，刊行燕大農訊，舉行農產展覽會，答覆農事之詢問。
- (e) 教務部—管理專修科之一切教務事宜。
- (f) 售品部—售賣本學系農場各種農產品。

3. 設備及經濟：本學系各種產業，約值洋十萬元。試驗場共八十畝，旱地共一千七百三十畝，水地共十二畝，房屋共百餘間，現時尚須大宗款項，以便從事發展。

家政學系

Department of Home Economics

Mrs. H. H. Lew 劉何靜安, M. S. Instructor and Chairman

Miss L. Gooding 顧樂勤, B. S. Instructor

Miss C. Mills 密樂施, B. S. (休假) Instructor

美國歐瑞岡農業大學家政科科長梅蘭女士，于一九二二年，偕其高足密樂施女士來華遊歷，並調查中國家庭狀況。據女士觀察，中國家庭有必須改良之點甚多，而着手改良，尤須先培養有相當家政學識之人才，故乃殫思竭力，在本校創辦本學系。迨後女士返國，留密女士繼主其事。是時學生主修本學系課程者，凡十有餘人。

中國家庭制度與一切習俗，均與美邦相異；若以適宜於美邦之家政學識，盡量施諸中國，則又未免違反國情。因是本學系于一九二六年秋，聘何靜安女士（劉和夫人）來校講授。女士為本校理科畢業生，又曾留學美國，專研究家政學。其所講授，一方採用美國家政學之原理，一方注重現代中國家庭狀況之考察，使兩者能互相調和，而建成一切合中國實用之家政學。故近年來，本學系之發展殊速，不唯女生選讀家政學者日見加增，而本年第二學期，男生選讀食物學者亦有十四人之多。



食物學實踐情形

本學系課程，分家庭管理，家庭科學，家庭美術三部。主修家庭科學者，在大學第一二年，須多讀自然科學；畢業時領受理學士學位。主修家庭美術或家庭管理者，在大學第一二年，須多讀社會科學；畢業時領受文學士學位。

關於家庭管理，本學系為使學生得有實習之機會起見，特建築家事見習室一所。凡學生以家政學為主修或副修者，於大學第四年級時，可在該見習室居住一學期，輪流分任主婦，傭僕，廚師，幫廚等職務，以資練習。

本學系又以為草木花卉之栽植，家禽家畜蜜蜂等之飼養，亦為有管理家庭之責者所不可缺少之常識。因特商請本大學農學系，於本年第二學期，開授農業一課。



家庭農業班採種淨類菜情形

本學系因限于教員之不敷支配，未能盡量擴充。下學年密女士由美返校，而本校前畢業生陳意女士（現留美專習家政學）亦應本學系之請，將來校教授，則本學系在最近之將來，或有新的發展也。

本學系又擬於課程方面，增設關於製帽及大規模之飯廳管理法等課目。推廣事業，亦將着手進行。在本校附近之婦女工作，亦由本學系導助。至如京中各種婦女工作，本學系正謀與北京女青年會協商進行。

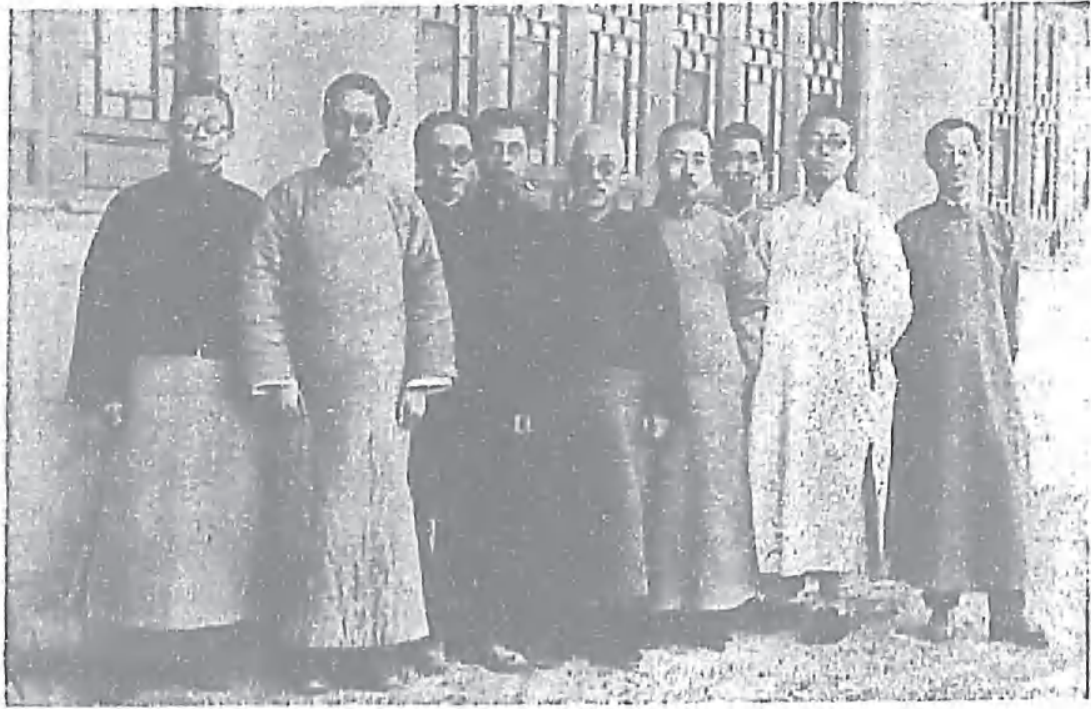
製革學系 Department of Leather Tanning

P. C. Chang 翁 登 B. S. Instructor and Chairman
T. M. Han 韓宗明 Instructor

據最近海關報告，我國每年出口之生皮，價值不下二千四百萬元；而入口之熟皮，則為一千五百萬元。年來人事遞進，恐猶不止此數。國人所用之皮革物品，如靴鞋手套提袋衣箱等等，皆仿效西式，用革之數，日多一日。國中製革工廠，多拘守舊法，不知研究改良。其用新法製革之工廠已設立者，又為數無幾；以致出口之皮，皆係生料，而入口之皮，則盡熟貨。利益外溢，漏卮不少。本大學有鑒於此，又以國內各大學尚無製革專科之設，爰於民國十年創設本學系，聘請溫森德博士主持一切。於課程有專門製革學之教授擔任，於實習則設備工廠及儀器，並與美國之著名革廠約定，不時派遣精明工師來校指導。惨淡經營，七載於茲，所造就製革人材，凡數十人；其出校後從事開設工廠經營皮革工業者，亦已有二十餘人。本學系今後更將努力，使國中此項人材之數目，有加無已，則於國家漏卮，或不無少補。

國 文 學 系

Department of Chinese



Ma Kiam 馬鑑, M. A.....	Associate Professor & Chairman
L. C. Wu 吳雷川	Professor
T. J. Chou 周作人.....	Associate Professor
L. T. Hwang 黃子通, M. A., Ph. D.....	„ „
Jung Keng 容庚	„ „
S. Y. Shen 沈士遠	„ „
S. Y. Kuo 郭紹虞	Assistant Professor
F. H. Hsiung 熊佛西, M. A.	Lecturer
T. T. Hsu 徐祖正	„
Ku Ming 顧名	„
Li Jiin-shi 黎錦熙	„
P. S. Liu 劉盼遂	„
Y. M. Shen 沈尹默	„
M. S. Su 蘇民生.....	„
Y. F. Yang 楊遇夫	„
P. P. Yu 平俞伯	„
Miss M. W. Y. Hsieh 謝婉登, M. A.....	Instructor

課程 本學系課程共分三類：（一）文學類；（二）文字學類；（三）學術思想類。共設課目三十二種；內有本科共同必修者四種；選修者二十四種；預科必修者三種。共分四十三班。每星期授課九十一小時

學員 研究生一人，本科主修生十四人；內有將在本學年畢業者七人。本科一二年必修生二百六十人，二三年選修生二百十五人，短期專修生八人，預科三十人，共五百二十八人。

教員 教授七人，講師九人（以授課時間平均計之，可比教授二人），助教一人，他系兼任教授二人。

將來之計畫 為畢業生多設高級專門課程，以資研究。本科共同必修課程，亦按文理科分別種類，以應各人之需要。其選修課程，則注重有系統之選習，以為專門研究之預備。並應推廣短期專修生學額，俾教會各中學現任國文教員得來校講習，以資深造。

天 算 學 系
Department of Mathematics & Astronomy



T. H. Ch'en 陳 在 新, M. A., Ph. D..... Professor & Chairman
 Miss E. L. Konantz 寇 恩 慈, M. A..... (休 假) Professor
 Miss E. M. Hancock 韓 筠 德, B. S..... Associate Professor
 J. Sun 孫 榮, M. A., M. S., Ph. D..... " "

音 樂 學 系
Department of Music



Miss R. S. Ttahl 薛 踏 德, B. M..... Assistant Professor and Chairman
 B. M. Wiant 范 天 祚, B. A..... Instructor

英文學系

Department of English



T. E. Breece 布多馬, M. A., B. S. Associate Professor, Chairman
 Miss G. M. Boynton 包貴鳳, M. A. Associate Professor
 L. W. Faucett 傅希德, M. A., Ph. D. " "
 Edgar Bentley 卜懿嘉, M. A. Assistant Professor
 T. A. Bisson 畢應鳳, M. A. Instructor
 Miss A. Cochran 柯慈喜, M. A. "
 G. R. Loehr 劉兆靈, M. A. "
 Miss M. B. Speer 聶美德, B. A. "
 M. S. Stewart 史曉爾, M. A. "

During a discussion early in 1919 concerning electives for students of English, a temporary teacher said, "I think we ought to have one course in prose and one in poetry". Although the suggestion was not adopted, it represented almost the entire ability of the English Department to offer electives. At that time there was only one permanent teacher of English.

In those days the infant department had to be cared for by whatever nurses could be cajoled into service. Some of these were faculty wives, who generously, though often unwillingly, gave their time. Others were wives of foreign business men, impecunious travelers who wished to stay in Peking a little longer, hirelings whose own the infant was not. Some of these Anglo-Saxon lovers of liberty felt perfectly free to leave at a moment's notice. In such cases more of their kind had to be found to complete the work of the year.

But circumstances have changed. The University authorities are now able to support the Department in practice as well as in theory. During the present year twelve trained, full or part-time teachers have taught over two hundred semester hours of English. Moreover, in order to improve the kind and quality of the work, several members of the Department have been collaborating in the writing of textbooks for the Freshman and Sophomore classes.

The present is satisfying, and prospects for the future are bright. Courses offered and planned cover training in the understanding, speaking, and writing of English; the fields of English, American, and European literatures; the various types of literary writings; phonetics; and the training of teachers of English. Furthermore, courses leading to higher degrees have been outlined, and only await financial support that they may be offered for graduate students.

歐洲-語學系
Department of European Languages



L. E. Wolferz 吳路義, Ph. D. Associate Professor & Chairman
Ed. H. de Tschärner 常安爾, M. A. Instructor
Mrs. P. de Vargas 王克私夫人, Bacc. Lit. Honorary Assistant Professor

The Department of European Languages was begun about the year 1917. From the beginning it has always ranked about midway in the list of departments arranged according to number of students. The prevailing interest has been for the study of French above that of German. The average number of students in any one year has been about seventy five. Most of our students are interested in French or German as an aid for further reading in their chosen subjects. Owing to the fact that as yet very little instruction in French or German is being offered in middle schools, very few of our students offer any credits in French or German at entrance. However, the time will come when most middle schools will offer courses in these languages. Then we will receive students prepared to do advanced work and we will also be in a position to train teachers of these languages for middle schools. We are encouraged at the growing number of those who are studying one or the other of these languages for their own sake and not merely as an aid to advanced reading in some other major subject.

The staff of the Department has consisted of three members. We are very fortunate in an arrangement with a Swiss Committee who for some time have been sending us representatives on a three year term to help us. The present representative of the Swiss Committee is Mr. Ed. H. de Tschärner, whose term is drawing to a close and whom we regret very much to see leaving us. Mrs. Ph. de Vargas, herself a native French-Swiss, has offered her time as an honorary member of the Department for these many years. From these two sources our students have had close contact with French culture and the French people and have derived much added benefit from their class-room study of French.

With the expansion of Yenching's various departments, especially in graduate study, we are finding an increased service requested of us in helping advanced students in these departments in their preparation for research reading. We look forward to an ever growing opportunity of contributing our share to the successful expansion and increased value of academic studies at Yenching.

社會學系 Department of Sociology

L. S. Hsu 許仕潔, M.A., Ph. D., L. L. B. Associate Professor & Chairman
J. S. Burgess, 步廣時, M. A. Associate Professor
Miss J. Dickinson, 狄克遜, M. A. Assistant Professor
G. C. Ch'en, M. A. Lecturer
Miss V. K. Nyies, 倪達亨, M. A. Instructor
T. C. Y. Chang, 張達平, B. A. Graduate Student Assistant

The Department of Sociology and Social Work, in cooperation with other social science departments in the University, has been trying to emphasize scientific studies of Chinese social conditions and social philosophy, to collect materials on Chinese sociology and to promote scientific study of social work. At the same time, efforts are being made to introduce systematically what the West can offer in the science of sociology and social ethics. We believe that a constructive social outlook, a thorough understanding of our own conditions and a sharpened technique of social study and social work will help fulfilling some fundamental needs in the present process of social reconstruction in China.

At present the Department has four full-time teachers and a number of part-time lecturers. The courses offered in the Department are divided into six groups, namely; I. Introductory Courses, II. Social Anthropology and Race Relations, III. Social Theory, IV. Social Problems, V. Social Work and Social Survey, and VI. Field Work. The work covers both undergraduate and graduate grade leading to (1) B. A. in sociology, (2) B. A. and Vocational Certificate in Social Work, (3) M. A. in sociology, (4) M. A. and Vocational Certificate in Social Work, and (5) Vocational Certificate in Social Work. In addition, there is a cooperative course with the School of Religion leading to B. D. and Vocational Certificate in Christian Social Work. There are also a Correspondence Reading Course leading to a certificate (in cooperation with the Women's College) and a One-year Short Course for Social and Religious Workers leading to a certificate (cooperating with the School of Religion).

Among the research projects under the direction and supervision of the Department, we may mention the population survey of Chengfu village (nearby the University), the crime survey in Peking, a sampling study of sex ratio in Chinese population, a church survey in Peking, a cost of living study of University employees, an illiteracy survey in Ting-hsien (helping the Mass Education Association), a study of rural credit cooperation in China, a survey of charitable institutions in Peking, a diagnoses of 3000 medical social cases in P.U.M.C., social thought of Sun Yat-sen, social thought of Hsun Tzu, social thought of Han Fei-tzu, etc.

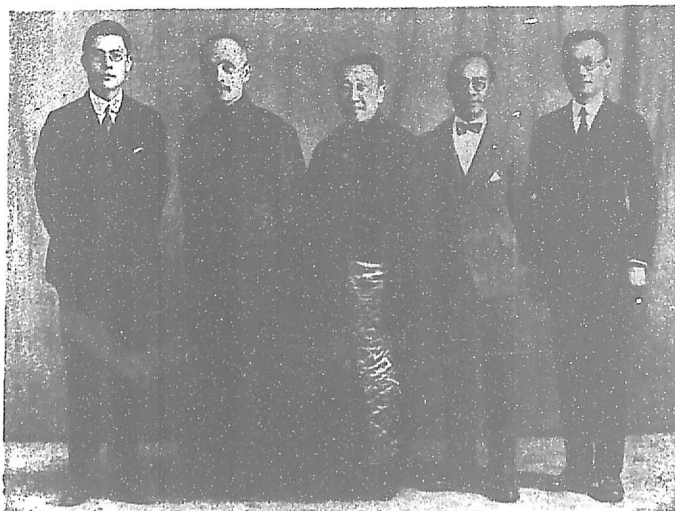
In addition, several foreign sociology books are being translated under the direction of the Department. Our field work this year covers industrial welfare work in Shanghai, social medical service with P.U.M.C., and correction work with the Government in Peking.

In regard to faculty research, Prof. Burgess is working on the *Chinese Guilds*. Dr. Newell is preparing jointly with Prof. E. A. Ross of Wisconsin on a book on *Sex Sociology*. Dr. Leonard Hsu has just completed his study of *Social and Political Philosophy of the Confucian School*, and the book will be published in London. His monograph on the *Population Problem in China* will be published by the Commercial Press. Prof. Hsu Ti-shan is organizing an anthropological expedition to Fukien to study the social condition of the Min aborigines there.

The second volume of the *Sociological World* has gone to the press. The *Sociological World*, an annual journal in Chinese, devoted to Chinese social thought and social problems, is at present the only scientific journal in sociology published in China.

With reference to the future program of the Department, as soon as financially possible, the Department will try (1) to develop a stronger graduate course both in theoretical sociology and in social work, (2) to launch a program in rural sociology, and (3) to build up a research library in sociology.

政治學系
Department of Political Science



Shushi Hsü 徐淑希 Ph.D..... Associate Professor & Chairman
 M. Y. K. Kuo, 郭閱喙, L. L. B..... Associate Professor
 F. K. Chen 陳復光..... Assistant Professor
 M. T. Z. Tyau 刁敏謙, L. L. D..... Lecturer
 C. Y. Pan 潘昌豐..... " "
 F. Lü 呂復..... " "
 J. C. Ch'ing 卿汝楫, B. A..... Graduate Student Assistant
 Lung Chien 龍齋..... " " "

The Department of Political Science is the youngest of the University Departments, being just in its third year of existence. It is the second largest department in point of major undergraduates and the largest in point of post-graduates. Since its establishment it has been financed mainly by an organization of the alumni of Princeton University.

It has at present on its staff Doctor Shushi Hsü, Judge Y. K. Kuo, Mr. Lü Fu, Judge Pan Chang hsü, Mr. I. R. O. Bevan and Doctor M. T. Z. Tyau, some as full-time professors and some as part-time lecturers. It is hoped that Professor E. S. Corwin, Chairman of the Department of Political Science, Princeton University, will join the Department as Visiting Professor next fall,

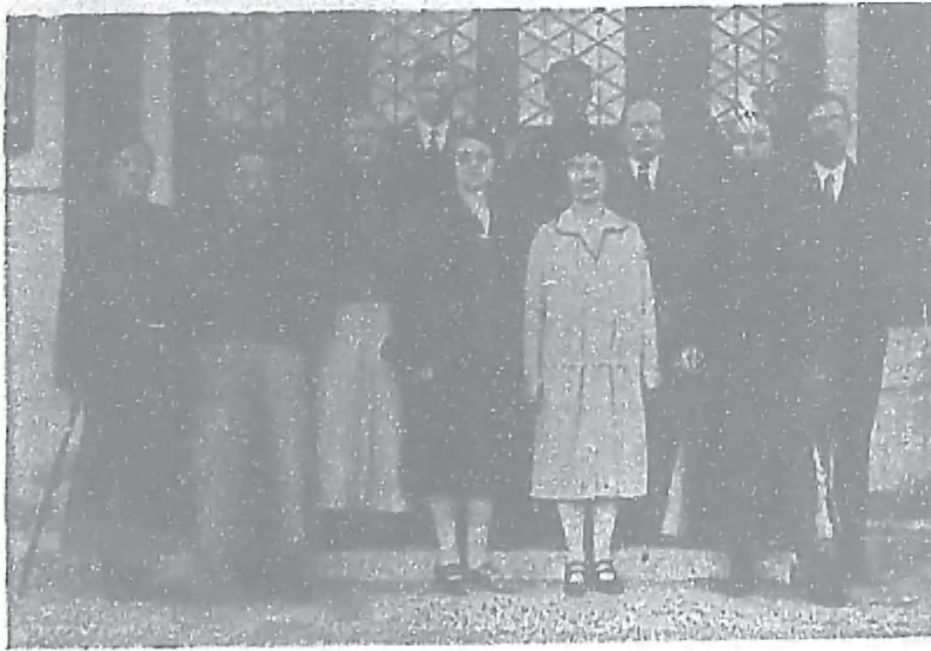
The object of the Department is three-fold:

1. To train citizens.
2. To train government experts in various lines—civil, diplomatic and judicial.
3. To train leaders in both the national and international spheres.

Just now it offers courses leading to the degrees of B. A. and M. A., and emphasizes three subjects: Chinese Government, International Law and Diplomacy, and Chinese Civil Law.

歷史學系

Department of History



H. E. Shadick, 謝迪克, B. A.....	Instructor and Acting Chairman
T. L. Wang 王桐齡, M. A.....	Professor
Ch'en Yuan 陳垣.....	Associate Professor
Mrs. M. S. Frame 費賓閣臣, B. D., D. Litt..
William Hung, 洪煥蘊, M. A., S. T. B.....
H. L. Chang 張星煥, M. S.....	Lecturer
Miss M. L. Cheney 慶美費, M. A.....	Instructor
S. C. Meng 孟世傑.....
R. H. Ritter 李瑞德, B. A., B. D.....
C. H. Li 李崇憲, B. A.....	Graduate Student Assistant
T. T. Chang 張天澤, B. A.....

The Department of History aims to provide courses which will give students of all departments an opportunity of obtaining a general introduction to History, Western and Chinese. Beyond this the Department offers major courses such that undergraduates may specialize either in Chinese History or Western History. Since many students who major in History become teachers emphasis is laid on methods of teaching History.

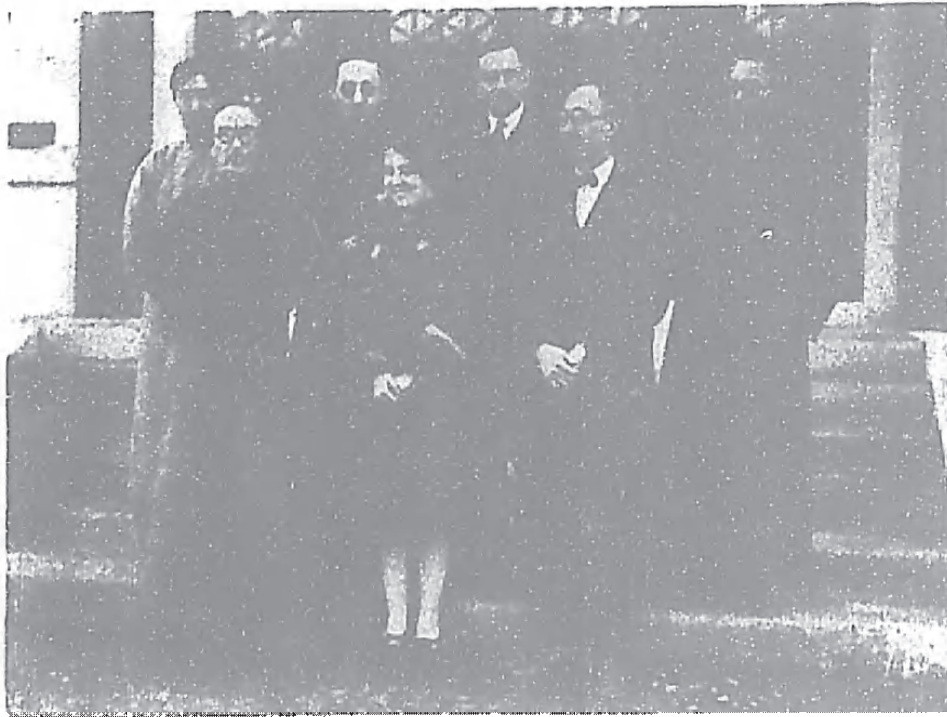
Advanced work for graduates includes training in the methods of historical research. The field of Chinese History is peculiarly rich and virgin soil for research and Yenching University should take its share in the work of applying modern critical methods to the vast store of available material.

Some considerable amount of work has already been done in a study of the historical remains on the university campus. Excavations have been made and some of the discoveries are mounted and on view in the university library. Members of the Department are serving on the advisory committee of the Peking National Historical Museum.

An important feature of the Department is the international character of the staff. At present it includes Chinese, Americans, one Swiss, and one Englishman. It is hoped that in the future representatives of other nations may be added, and contribute to a broad, sympathetic, and impartial spirit.

經 濟 學 系

Department of Economics



- B. H. Li 李炳華, M. A. Assistant Professor & Chairman
 J. B. Tayer 戴樂仁, M. S. Professor
 C. T. Wang 王建祖, Ph. B., Litt. D., . . . Associate Professor
 C. H. Tsung 宗植心 Lecturer
 Mrs. H. F. Shadick 謝迪克夫人 . . . Instructor
 H. L. Yi 邱昕庭 Instructor
 Miss A. Wagner, 文國箴 B. A. Instructor
 H. C. Ym, 殷錫祺, B. A. Graduate Student Assistant

Economics did not receive a great deal of attention in the Colleges which united to form Yenching. When the university was constituted, the department began with only one teacher. This was Mr. J. B. Tayer, and when he left on furlough after one session's teaching, no one was appointed to act as a substitute! Fortunately, however, the popularity of the subject with Chinese students, and its importance in the training of citizens, has led to steady expansion. Mr. B. H. Li, the present chairman, joined in 1922 and has rendered continuous service ever since except for the session 1925-6 which was devoted to advanced study in America and England. Since Mr. Li's coming we have been fortunate in receiving help from many quarters and during the present session there are three whole time and six part time teachers.

The growth of the department was slow at first. In 1922-3 there were only four seniors majoring in economics. Two years later this number had doubled, but in the present session it has jumped to 22. The total number of majors last session was 62 against 72 this. This is the largest number of majors in any department in the university. A similar expansion is seen in the number of credits offered which has risen from 50 last year to 73 this.

The department was one of the first to admit graduate students and plans are now being made for research and advanced study that will greatly increase the value of the department for students going on to higher studies.

For the last three years the Business Training course which started as an independent unit has been an integral part of the department. It is hoped to further staff this branch to provide for economic history as two of the next steps in development.

教育學系

Department of Education



H. S. Galt 高厚德, Ed. D.Professor & Chairman
 H. H. C. Chou 周學章, M. A., Ph. D.Associate Professor
 Miss Sui Wang 王素意, M. A., Ph. D.Associate Professor
 Miss K. M. Chen 陳克明, M. A.Instructor

The Department of Education has, for its purpose, the professional training of students in Yenching who expect to undertake educational work.

Like other departments in Yenching, the Department of Education has grown from a small beginning. In 1918 there was only one member of the department and he gave some of his time to teaching in mathematics and sociology.

Gradually other teachers were added to the department so that in 1925 there were six members -four men and two women.

Since that year, through absence or withdrawal of members, the staff has been reduced until at the present, it has only four members of whom two are men and two are women. It is the expectation that new members will soon be added to the staff and that it will become numerically stronger than at any time heretofore.



兒童學校



幼 稚 園

The members of the department recognize that their work is much weakened by the absence of training schools for the practice and observations of students in the department. From the beginning it has been the purpose of the department to provide these schools, but in the nature of the case it was impossible to establish these on the temporary premises in Peking. When the University moved to the present site there were contingencies which interfered with the establishment of these training schools and the department is conscious of this serious lack, but efforts are being made to supply the need as soon as possible.

Recent statistics show that about 40% of the graduates of Yenching enter some form of educational work. Education is not only a difficult art but has become a very involved science and the members of the department believe that all students who expect to enter educational work should seek some form of professional training. Just as lawyers and physicians do not enter upon their tasks without professional training so the department of education maintains that educators should seek special preparation. This preparation the department hopes to provide more and more efficiently.

Howard S. Galt,
Chairman.

哲學系

Department of Philosophy

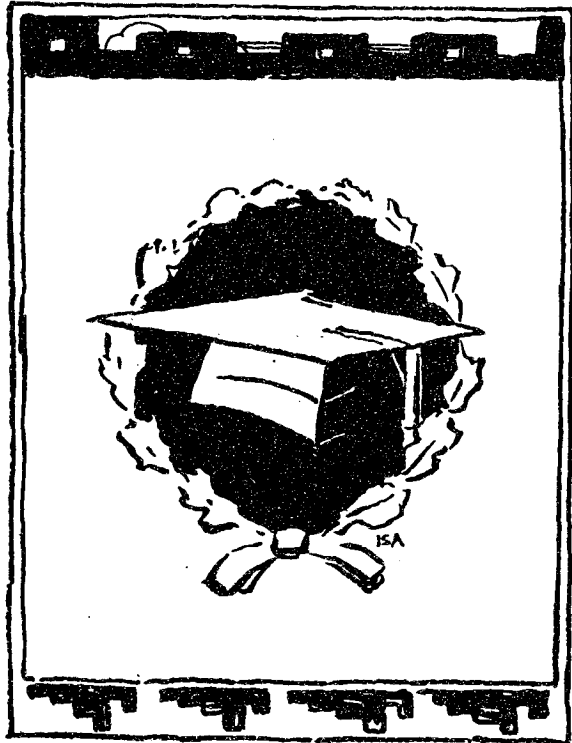


P. C. Hsu 徐賓謙, M. A.....Associate Professor & Chairman
L. C. Porter 傅晨光, M. A., D.D., I. H. D.....Professor
Y. L. Fung 馮友蘭, Ph. D.....Associate Professor

In 1918-19 the first year of the reorganized Peking University, which is now named Yenching University, the studies in philosophy were linked with those in psychology as a department of Psychology and Philosophy. There was one teacher only, Mr. Lucius C. Porter, and but few courses could be given. However, one course in the department, "The Philosopher's Compass", an introduction to the problems of philosophy, was required of every student in the sophomore year. Thus the department came in touch with all the students in the university. The other courses offered were general and advanced psychology, history of western philosophy, ethics and logic. In 1920 Dr. Timothy Lew joined the department and took over the work in psychology. Dr. Lew added to the courses in psychology, especially in the field of educational psychology. Some of the best students in the university in the years from 1920-22 were in the courses of the joint department. The department assisted in the inaugurating of postgraduate studies. The first M. A. degree of Yenching University was given to Mr. Ch'u Shih-ying 1922 for work in philosophy. In 1922 Dr. Lew became head of the joint department. Mr. Porter left for two years in America. Provision for the courses in philosophy was made by securing help from Rev. J. C. Keyte, while Mr. T. C. Van assisted in psychology. Rev. T. M. Barker joined the university at this time and took over work in philosophy in addition to other teaching. In 1924 the university council decided to establish psychology as an independent department, with Dr. Lew as its head. Mr. Porter was appointed head of the department of philosophy. By cooperation with the School of Religion a wider variety of courses was offered, especially in the

field of the philosophies of oriental peoples. The required course in philosophy had been discontinued, and the number of students in philosophy was not large. In the year 1925-26 Mr. P. C. Hsü, who had been taking classes in the school of religion, took over two classes in the department of philosophy. Mr. Barker took courses in ethics and in intensive study of phases of Greek philosophy. Mr. R. M. Bartlett taught a course in contemporary western philosophers. Mr. T. C. Van took a course in logic. Dr. Y. I. Fung joined the university staff at this time and offered courses in Chinese philosophy and in comparative philosophy. In 1926-27 Mr. P. C. Hsü became secretary of the department and the next year was appointed chairman. Dr. Fung and Mr. Porter are the other full-time members of the department. Mr. Barker continues to give courses in philosophy as his other work permits. Dr. L. T. Huang also gives courses in the department. The department is particularly fortunate in having this generous assistance from the members of other departments. By their help a wider variety of courses can be offered while the work of the department is related to that of other phases of the university work. Members of the department also assist in taking classes to help out other departments and other sections of the university intellectual life.

While the department has not had, in recent years, any large number of students there has been a group of earnest students constantly at work, and a regular succession of major and graduate students. The staff of the department works on in confidence that it fills a useful function in the university and that eventually a larger number of the thoughtful students will realize the necessity for that intensive and comprehensive study of human problems which philosophy offers.



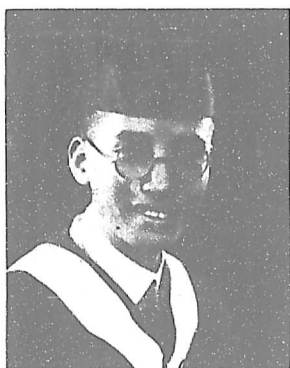
GRADUATES

畢業生

大 學 院



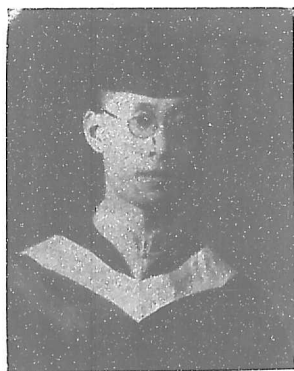
魏秀瑩 福建
福州華南大學文學士
國學



張天澤 福建
燕京大學文學士
歷史學



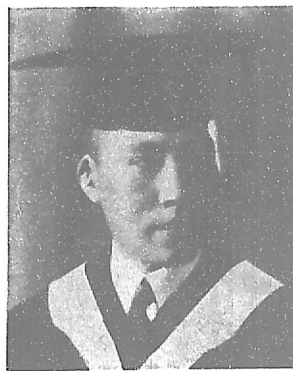
馮日昌 廣東
燕京大學文學士
國學



顧敦鏢 江蘇
杭州之江大學文學士
政治學



葉鵬年 廣東
蘇州東吳大學文學士
社會學



張鏡子 浙江
上海滬江大學文學士
社會學

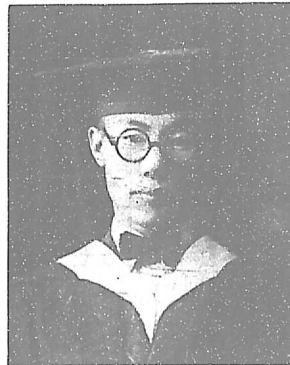
本科一九二七乙級



崔毓林 吉林
生物學



李淮林 直隸
經濟學



夏晉熊 浙江
經濟學



李炎玲 廣東
國學



何琦 浙江
生物學



葉新 江西
教育學

本科一九二八級



江兆菊 江西
醫學



于一峯 山東
化學



高仕鑾 福建
化學



梁季綺 廣東
家政學



吳頌年 京兆
化學



陳蜀生 福建
化學



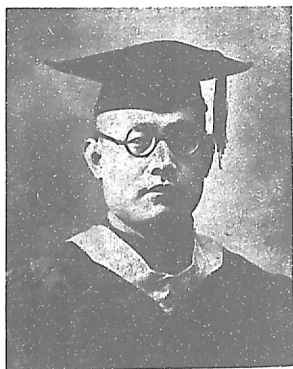
鄧家棟 廣東
化學



劉捷三 直隸
物理學



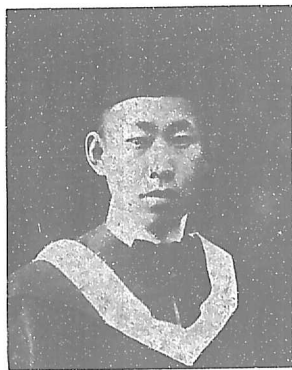
徐風 直隸
地理學



楊振聲 直隸
地理學



王宗和 福建
地質學



楊學英 山東
數學



李瑞啟 直隸
數學



韓熹章 直隸
農學



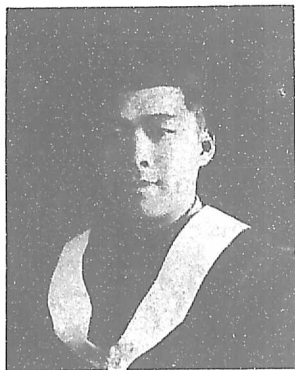
王致謙 奉天
農學



夏雲 湖南
心理學



沈揚 江蘇
國學



王明道 山西
國學



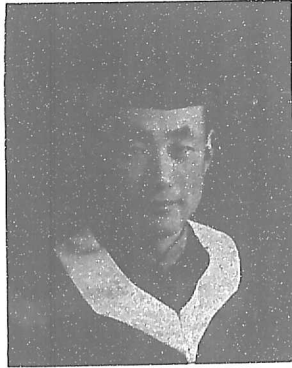
朱以書 江蘇
國學



高尚武 京兆
歐洲語學



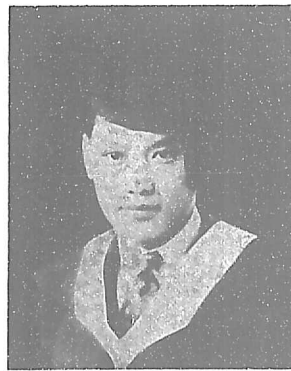
徐兆備 廣東
歐洲語學



韋智直
歐洲語學



吳登
四川
歐洲語學



任玲
廣東
歐洲語學



黃振球 廣東
社會學



吳高梓 福建
社會學



邊燮清 直隸
社會學





楊景循 廣東
社會學



嚴景耀 浙江
社會學



單貴娥 直隸
社會學



陳維德 江西
社會學



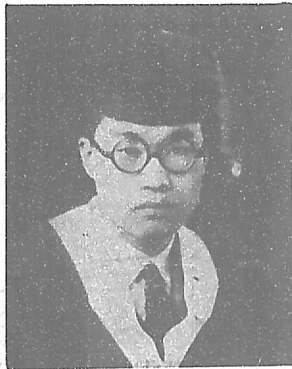
潘懿則 江蘇
社會學



陳利蘭 湖北
社會學



侯樹形 直隸
政治學



周嘉琳 山東
政治學



閻乘乾 綏遠
政治學



張文理 福建
政治學



王錦荃 江蘇
家政學



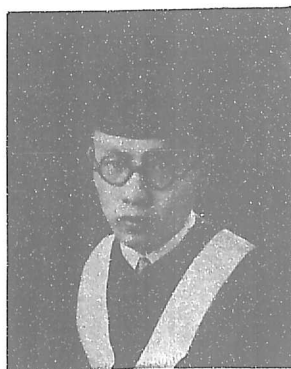
侯文魁 山東
政治學



方東 福建
政治學



宗維賢 江蘇
政治學



宋以忠 福建
政治學





丁順富 浙江
政治學



焦承志 直隸
政治學



陳雲豹 廣西
政治學



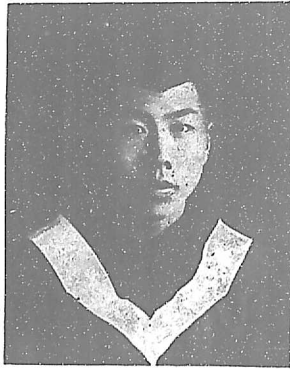
劉志廣 吉林
歷史數



朱士嘉 江蘇
歷史學



潘令華 江蘇
歷史學



田繼綜 直隸
歷史學



李蔭棠 奉天
歷史學



牟貴蘭 山東
歷史學



兆京 岐崇
歷史學



直隸 瀛慶
歷史學



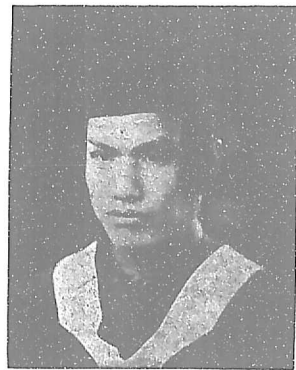
山東 昭金
歷史學



黃芹厚 湖南
歷史學



張德海 京兆
歷史學



許學謀 廣東
歷史學



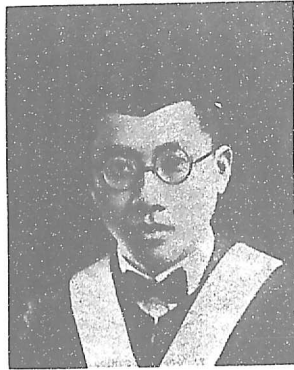
夏玉璋 山東
歷史學



鄭銘勳 京兆
歷史學



曲鵬 山東
歷史學



謝廷玉 廣東
歷史學



汪俊祥 江西
經濟學



楊士珍 直隸
經濟學



李獻琛 直隸
經濟學



王化興 山東
經濟學



朱伯光 京兆
經濟學



王應晞 福建
經濟學



古志安 廣東
經濟學



林貴池 福建
經濟學



紀維綱 直隸
經濟學



賀繩方 山東
經濟學



姜尚義 江蘇
經濟學



田寄生 山東
經濟學



潘智浩 浙江
經濟學



白洪恩 直隸
經濟學



趙錫名 京兆
濟經學



李穎 直隸
經濟學



姜履豐 京兆
教育學

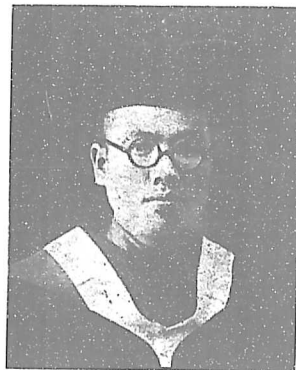




程美泉 廣東
教育學



李佩光 廣東
教育學



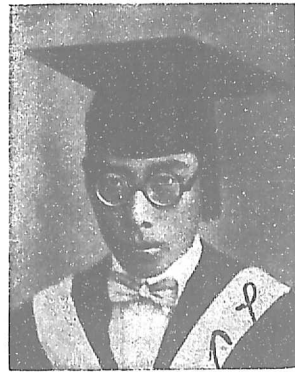
于振興 直隸
哲學



秦振興 直隸
經濟學



房福安 湖北
社會學



方兆楹 直隸
數學

醫學預科



魏淑貞 江蘇



徐星龢 江蘇



司徒展 廣東



汪紹訓 江蘇



黃宗暉 江西



吳瑞萍 江蘇



范日新 河南

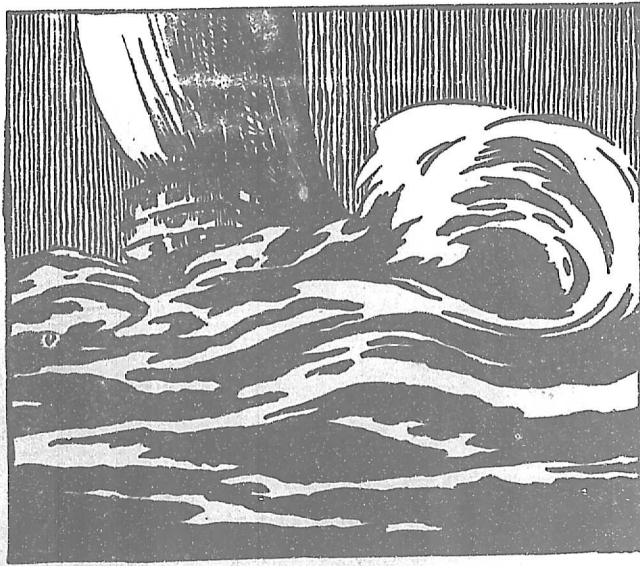


黄克维 江西



周恂 福建







專 修 科



高尚仁 京兆
教育



陳雅信 奉天
教育



王世儒 奉天
教育



徐廷麟 直隸
教育



張起澗 福建
教育



萬嗣康 福建
教育



李天庭 山東
製革





農學速成科



宗 教 事 業 與 社 會 服 務 科

附屬女子高級中學



趙巖聽 浙江



黃安禮 福建



陳蜀瓊 福建



陸瑞蘋 江蘇



王藹儀 浙江



歐陽婉 四川



鄭葆 江蘇



全廣瑛 京兆



全廣靖 京兆





黃瓊琰 廣東



王懿芳 廣東



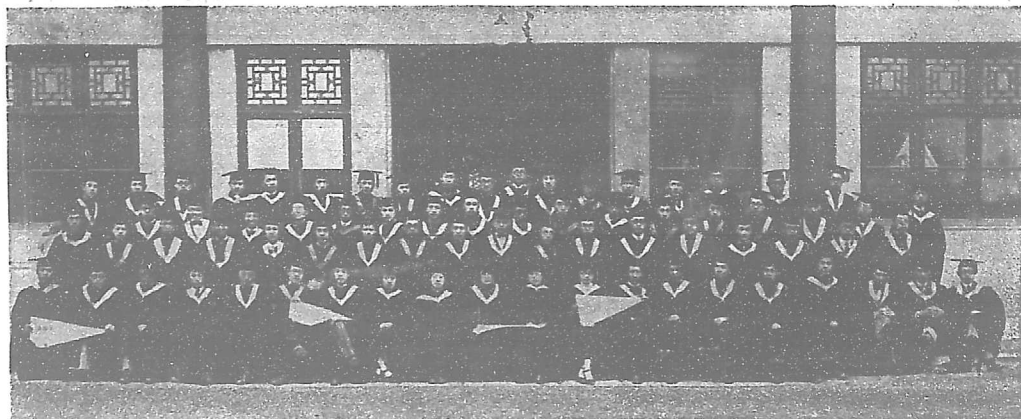
GLASVEU

班级



大 學 院 同 學 會

本同學會於十六年秋成立。蓋欲參加全校同學之團體活動，及促請學校正式組織大學院而設也。現有會員四十餘人，今年領得碩士學位者七人。



一九二八級

級訓： 敬業樂羣

我校男女同學合作，實自本級始。今日必修科目逐漸減少，本級於十四年時力爭最先。三一八，我級魏士毅女士殉於難，碧草豐碑，至今憑弔，猶似帶當年熱血也！



一九二九級

級訓： 努力

本級於十四年秋季誕生，舉凡校內一切活動，同人等無不踴躍參加；蓋欲養成合作精神，留作他年服務社會之資也。



一九三零級 級訓： 創造與奮鬥

本級之有歷史，自十五年秋季始，十六年全級同學通過新班憲，依委員制組織共同級會，開本校男女同學級會合組之先河。



一九三一級 級訓： 前進

去年秋本級誕生，級會亦同時成立。其宗旨在聯絡友誼，砥礪學行，發揚吾人合作與團結之精神，本學期曾開化裝交誼大會，本校未之前有也。



一九三三級

一九二九級醫預科

協和醫學預科歸併本大學辦理之議，醞釀已久，且漸有實現；惟本大學正式接收，則自本屆始。考協和醫學預科，成立十餘載，成績斐然；嗣以培植醫學人才，須並重自然科學與社會科學，而該校素無社會科學之設，因是乃有本大學醫預科之產生。

本班男女人數凡十，黃河，長江，珠江三流域，兼而有之。班友多融洽；男女無間隔。上課前，談笑風生，一羣野鴨也；聽講期，鴉雀無聲，一堆木偶也；試驗時，心目手足，不稍懈怠，則復為有智慧之機械也。試驗室之工作，幾將全部生活佔去，為苦為樂，本班同學亦莫能答。

本班之秉賦，為屬空前，故將來對於社會之貢獻，自當更大；此本班同學所以於今日尤不敢不兢兢互相勉勵，以無負厚我儕者焉。

教育專修科 小史

我班男女同學各居其半，雖只十人，而來自五省；按之實情，恰如兩手十指之相關，籍貫不同，方言各異，南腔北調，興趣時生。

到校甫兩週，即組織班會。於學業則切磋磨琢，以相互砥礪；於感情則盡事聯絡，以敦厚友誼。熙熙焉，攘攘焉，終朝聚首，[不知老之將至]云爾！

我班班旗，取黃白二色，含[熱心教育，潔身自守]之意。以[研究與啟發]作班訓，為我等在教育上之目標。

湖自來校，瞬息修業滿期；時勢所迫，行將各自東西。期年同窗，一旦分袂；依依之情，是所同具。惟願各乘所學，以啟迪中國少年為己任；庶不負當日襟懷，與師友之厚望焉。萬里羈程，前途須各珍重！

農學專修科一年級

雲高氣爽，林間蟬鳴，幾頃桑麻，一片禾黍，在此秋實垂垂，秋光滿漾之中，我們農學專修科一年級，遂於一九二七年九月十八日，誕生于燕京大學了。彼時同學十八人，後因事中途歸家者一人，寒假後復學者三人，遂餘十四人矣。但今春開學以來，來吾級選讀者，又有五人，其中且有女士二人。這是吾校女同學注意農學之始，是一個很好的現象，也是吾級無上的光榮。

吾同學遠自江南，近在燕北，濟濟跼跼，蒼萃一堂，可謂盛矣！在課室為書生，寓農事於學問；在農場為田夫，變資本為實習；既格物以致知，復犁雲而耕雨。值此國運多艱，民生凋敝之時，吾們之所以獨致力於農業者，並非闢田園之自然娛樂，亦正欲忍苦耐勞，努力工作，冀來日献身社會，輔導農民，改良鄉村，促進中國農業之發展，農產之增加，忠實地盡一份子國民之責任而已。這是吾們唯一的希望，也是我們共同的目標。

農學專修科二年級

吾校農學系之設專修科有年矣，然以中文教授，則實自吾一九二八年級始，此可為特書者也。吾儕皆志在求取實用之農業知識，深以中文教授，為得益更多，故欣然來學，蓋亦二年於茲矣。此二年中之經過，雖如白駒過隙，然學識之增進，則殊非淺渺；且教員皆循循善誘，尤使吾儕有學而不厭之趣。

本級同學，初為二十人。感情融洽，親愛如昆仲。中途十人因故輟學，今夏得以卒業者僅及半數，此可為慨惜也已。夫以中國幅員之大，可犁可牧之地正多，而學者對於此學已為數寥寥，今本級方幸有二十同志，可以同心戮力，啟導富源，而終又去其半數，抑何可嘆耶？雖然，吾儕因知所負責任之重而自勉矣。今後惟各就性之所近，各盡力之所能，分工合作，以求農業改良之實現。此於一方面，或尚有裨於國家；又一方面，則庶無負來學本大學之夙願也。

宗教事業與社會服務科

中國在這世界急進的潮流中，社會的情形，變化得很快，需要服務的人才，也格外的迫切。各地男女青年會等社會服務團體，有鑑于此，乃商請本大學添設本科，以爲訓練此等領袖人才之地。本大學當局認這個要求確爲重要，幾經籌劃，就定于一九二七年起，由宗教學院與社會學系合辦本科。請 Miss Jane Ward 董其事。這一科雖是短期科，但課程却很實質。大概都由“基督教與中國”這個大題目出發。誠以要使基督教有貢獻於中國社會，不可不對於基督教與中國這兩方面有相當的了解與認識。其他課目，也都照同學多數的需要而設，很能引起深長的興味。

我們同班的人數雖不多，而各人所從來的地域，却也不少：可以代表廣東，福建，江蘇，浙江，山東，安徽，湖北，四川，山西，直隸，奉天，等省，真是南北東西，荇菜一堂。我們志同道合，共宗一主。在課室中，就各地不同之情形與問題，比較討論，輒覺興趣橫生。課餘交際，感情亦極融洽。學校等於家庭，讀書不忘服務。這便是本班經過的小史，也是我們生活的斷片。



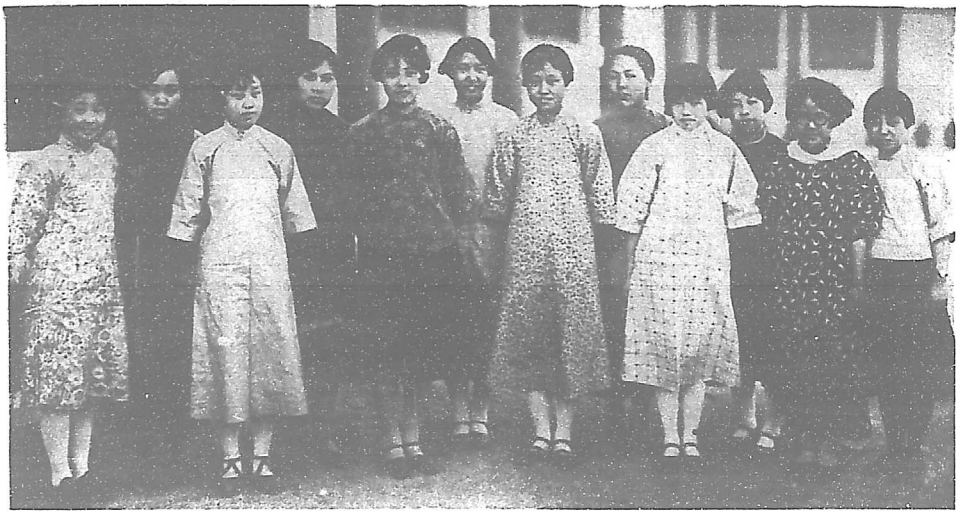
附屬女子高級中學三年級

本級於十五年開始，當時僅得九人，級會仍未設也。十六年秋季，人數倍增，級會始行成立。



附屬女子高級中學二年級

本級歷史，已有兩年。級會去年始立。本級同學，課餘有暇，輒從事運動。此次華北球類比賽，我校得佔優勝，同人與有勞焉。



附屬女子高級中學一年級

、本級之有歷史，於今一歲，同人到校月餘，即組織級會，互相切磋。去冬更成立文學會，練習辯才。今年華北球類比賽，同人參加，至形踴躍，錦標之奪，不無微勞也。





ORGANIZATION 學生團體

男校學生自治會

代表大會



主席：王成瑚 副主席：熊之孚

漢文文書：吳之淵 英文文書：周天沂

大學院同學會代表：馮日昌 黃正龍 灑 張鏡予

第四年級代表：張文理 韓慶廉 李蔭棠 焦承志 李獻琛 丁順富
子振清 宋思明 邊覺清 田繼綜

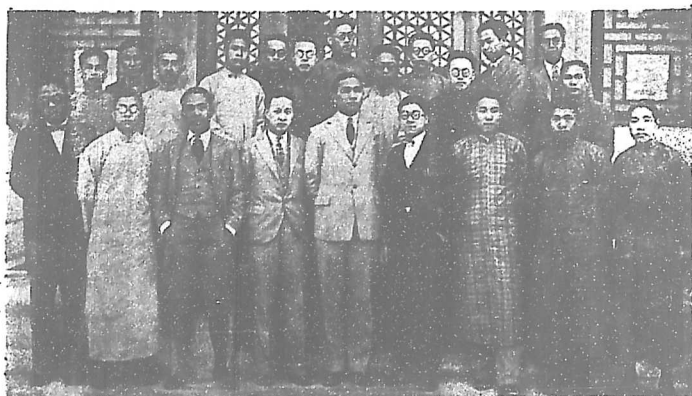
第三年級代表：李錫周 吳廣鈞 任守訓 唐炳亮 宋以信 于憲亨
熊之孚 吳之淵 胡慶青 趙恩源 崔玉瓚

第二年級代表：王成瑚 周天沂 賈純儒 張嵩山 周崇慶 張國棟
潘景煌

第一年級代表：韓叔信 吳夢蘭 杜宏修 楊詒詳 賈庭訓 蔡詠怡
張克丞

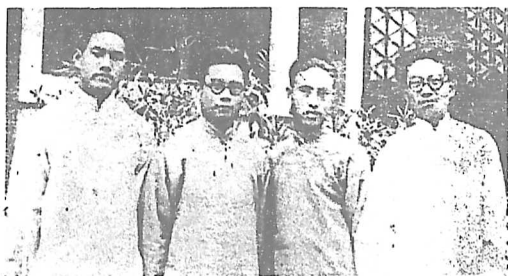
預科代表：劉震 姚潛 王玉振 聶家樂 張緝 顧書俊

執行委員會



主席：	張文理	副主席：	李錫周
文書部：	千振清	交際部：	宋以信
財政部：	徐 嵐	膳務部：	劉厚德
舍務部：	張文理	出版部：	劉長寧
服務部：	張嵩山	娛樂部：	戴天右
衛生部：	余秉常	交通部：	徐瑞清
體育部：	白 端	庶務部：	李錫周
	沈 揚		胡慶育
	宋思明		丁順富
	韓叔信		吳高梓
	李安宅		張信德
	陳雲章		吳夢蘭
	雷鎮邦		周崇慶

審監委員會



黃 正	主席	梁傳琴
黃文澧	(副主席)	紀維綱
邊燮清	(文書)	趙泉澄

小 史

一九一八年，當本大學成立伊始，教職員會對於男校學生，便發給一張特許狀，說：

[本大學男校文理科教職員會為增加學校福利，使學生有社會組織之練習，並發展自治之能力起見，予該科學生特別機會；希望藉此種機會，可以達到成人教育之效果，並可使學員在校時，因實地之經驗，養成有共和國民之資格。緣此，准許學生組織學生議會，担負所託付之責任，享受應有之利益，辦理第陸項內所列之事項。]

因為這種特許，本會也就在那年組織完成；並根據特許狀所開列的各項，草成憲法。一九二一年，經憲法修改委員會修改一次。兩次憲法所定，都是會長制。一九二四年，又再修改，採用評議，幹事，審理，募記，四部平行制。這種制度，有幾方面是比較從前進步些，但自合作方面說，每覺四部間精神不能聯絡。本大學移來新設址後，因環境變遷，尤感辦事棘手，因又於一九二七年冬，組織委員會，負責再將憲法修改，而成爲現在通行的新憲法。

本會依據新憲法，將組織分爲代表大會，執行委員會，審監委員會，三大機關。總括自從新憲法施行以來所進行的工作及所收的成效，簡單陳述如下：(一)食堂的改良；(二)便利交通：(a)規定官價洋車；(b)辦理校內郵政；(c)增設校內公用電話；(d)更換汽車行；(三)收回宿舍管理權；(四)提倡平民式的體育及收回辦理權；(五)注重公衆衛生；(六)預備發行刊物；(七)創設義務學校：(a)海甸平民日學；(b)海甸平民夜學；(c)海甸軍人夜學；(d)本大學車夫學校；(e)本大學工人學校；(八)公衆娛樂：(a)特別遊藝；(b)電影。

女校學生自治會



職 員

會長：劉席珍
會副：王秀英
書記：麥倩曾 陸慶
會計：潘令華
庶務：王秀英
交際股股長：張品蕙

宿舍股股長：高君哲 吳榆珍
服務股股長：印文郁
交通股股長：謝蘊華
體育股股長：李滿桂
娛樂股股長：盧淑羣
嘯嘯股股長：關瑞梧

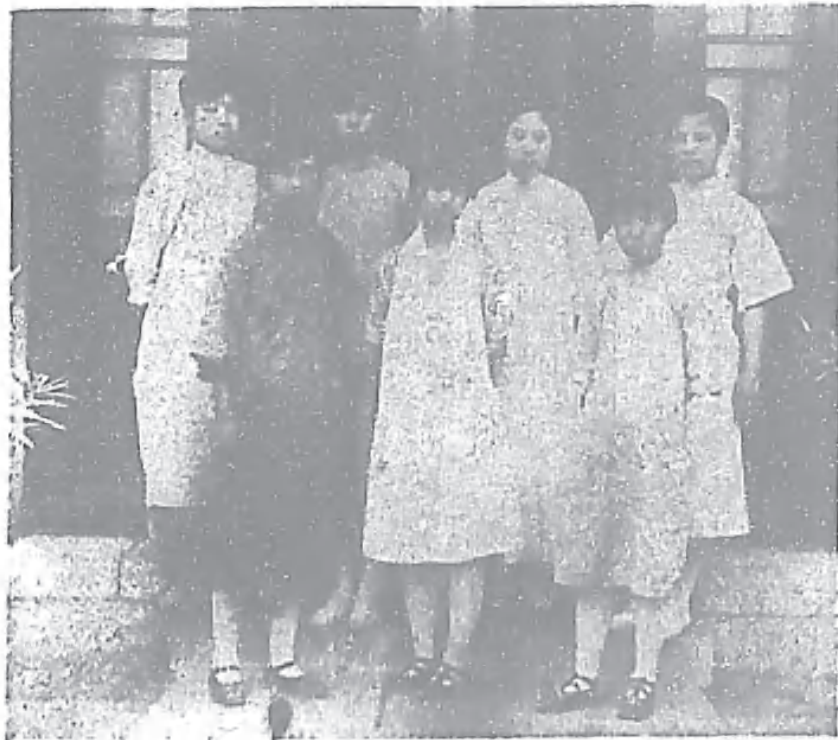
小 史

本大學女校就是從前的協和女子大學。在那個時代，並沒有什麼對外的學生組織與活動。直至五四運動發生，同學們感覺到外界新思潮的澎湃，與自身責任的迫切，才開始有學生會的組織。這個應運而生的嬰孩，便在充滿了生機的環境裏活潑地發展起來。牠一方面參加婦女聯合會與實際婦女運動；又一方面參加學生聯合會，共謀改良當時政治，擁護國家權利。不過牠的工作，只限於對外；至於對內，則另組有自治會，負責辦理一切。

本大學正式成立後，這種內外分始，兩權並立的制度，依然存在。當時的工作，如五卅，三一八等運動的參加，都有過很顯著的成績；而於自治方面，又曾極力謀同學生活的改善，與鼓勵後來者的前進。一九二六年秋，本大學移來海甸，始由全體同學通過，將學生會自治會合併而成爲現在的本會。自此後，本會便爲女校學生全體的對外對內的一個最高機關。

本會向取會長制度，當過會長的，有印文翠，錢忠會，杜聯誥，王敏儀，黃巧雲，管梅瑛，梁佩貞諸女士。

附屬女子高級中學學生自治會



職 員

評 議 部

部長：江兆艾 副部長：馬 彩

幹 事 部

部長：高佩貞

文牘股：楊光華 黃安禮 會計股：施國華 張振義

庶務股：宋寶第 陳 琦 糾察股：郝蔚文

交際部部長：楊月英 體育部部長：黃淑慎 娛樂部部長：江尊羣

小 史

本校為本大學教育學系所創辦，目的在提倡我國女子教育，造就優秀人才，而為女子中學之模範者也。本會根據此目的，又為發展個性起見，乃於一九二六年秋學校開辦之時，在教職員指導之下，正式成立。會內組織，最初分評議，幹事，體育，交際四部。評議部設正副部長各一人，其餘三部，各設部長一人。幹事部又自分文牘，會計，庶務，糾察四股。總計本會職員，全體二十五人，任期一學期為滿。

本會會章，於成立時，即已擬定。一九二七年，增設娛樂一部，

燕大月刊社



職員

總務部

部長：于惠亭 副部長：張光錄 文書：熊之孚 司庫：宋以信 黃芹厚

編輯部

部長：趙泉澄 副部長：麥倩曾 書記：于瑞人

副鑄總編輯：劉長寧

經理部

部長：邊燮清 副部長：劉席珍 交換贈閱：紀維綱 廣告：張世文

國內：許翹 國外：賀繩方

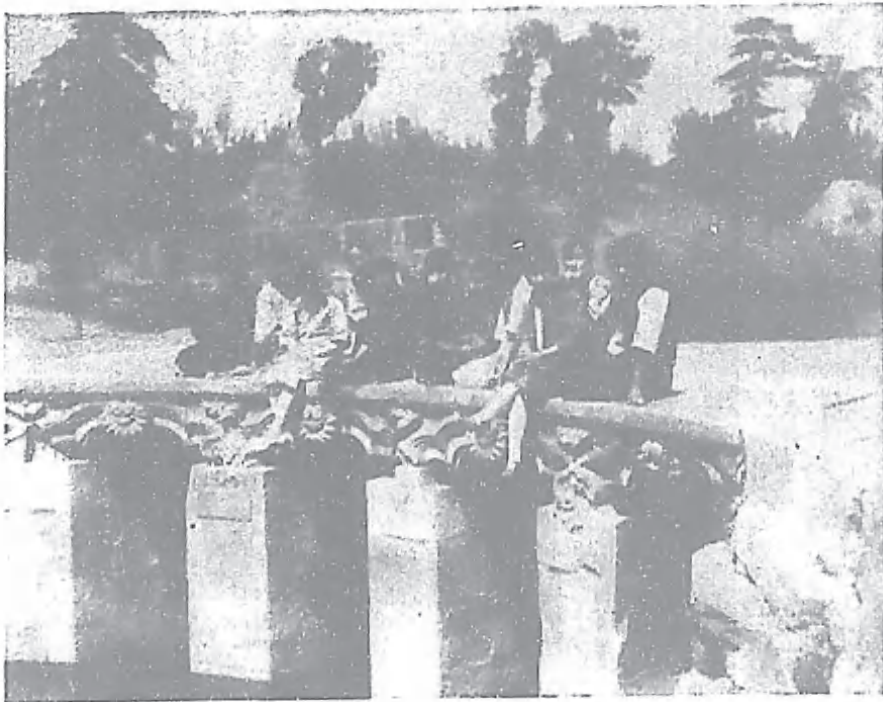
小史

本社原名週刊社，在一九二二年的冬天成立。第一期出版，是在一九二三年二月二十六日。發起的原因，不過因為幾個同學，覺得一個大學最少應該有一種出版物，便糾集三十多個同志，組織本社，這三十多個同志，就是那時的社員。他們多數對於文藝是有興趣的，所以週刊上的作品，也多數偏於文藝方面。社中經費，由社員担負，或向教職員勸捐。

社內組織，最初分編輯經理兩部，後來因為週刊銷路加廣，又增了一總務部一方面負徵求社員的責任，又一方面負籌募款項的責任。社員在一九二四年增加到三百餘人；籌款的方法，除向社員徵收社費外，有時演劇募捐，計演劇已有三四次，極得社會一般人的贊譽。這時本社的根基，已逐漸穩固；而週刊的內容，也不再注重文藝了。正刊外，又增設副刊，專記載關於學校同學的論評及新聞等稿件。

本社最初雖然為幾個人所創立，但他們的目的，是在擴充成為全校同學的組織。後來繼續辦理的人，都是依着他們的計畫進行。在城裏時候，這種計畫沒有完全成功，不過社員却一天多似一天。一九二六年秋天，本大學移來新校址，本社的發展，就迥然不同，前人的計畫，是終於成功了。一九二七年，經全體同學議決，將週刊改為月刊，副刊仍每星期單獨出版，而本社亦遂改用今名。

女校文學會



委員

林培志 藍韻清 黃振球

小史

本會歷史，由來已久，其始組織，凡本大學女校同學均須參加為會員。當時職員，有正副會長各一人，總管本會一切事務；書記一人，司理本會一切記錄，報告，及文件，又聘請教員中之對於文學有研究或發生興趣者一人，為本會顧問。

本會開會，例有定期，開會時，同學聚首一堂，各抒己見，互相切磋；藉以引起研究文學之興趣，發展個人之藝術天才，而期達到美的人生之表現。惟人之興趣，未必一致，故每當聚會，亦恒有意態索然者。因之本會精神，漸有懈怠散漫之傾向。

一九二四年，乃另行改組，任同學自由加入；並規定每學期每會員納費四角，以為本會經常費之用。是時會員人數，雖較以前為少，但精神則反見團結。

一九二五年，取消會費之規定。遇會中用款時，臨時向會員捐集。曾排演文藝多次，凡選擇劇本，扮演，導演，以及售票之責，均由會員自行擔負。演劇目的，一則為表現藝術的美，一則亦可將售票所得，購置關於文學類之書籍，或備為本會基金。

自本大學遷來新址，本會以校內有湖，可以蕩舟，乃移用基金，製一小艇，以助會員吟詠之樂，每當春秋佳夕，朗月懸空，會員等泛舟湖中，領略自然界之美景，有時對月吟詠，迎風高歌，飄飄乎真有「遺世獨立羽化登仙」之概。

本會自一九二七年改用委員制，至今已一年。

社會學會



職員

執行委員會：	總務：楊景循	各股股長：	研究：趙承信
	文書：吳高梓		交際：溫懿則
	經濟：黃振球		出版：張鏡予
	庶務：房福安		服務：徐錫齡
師生聯會代表：	嚴景耀 張光祿 于恩德		

小史

本會成立於一九二二年冬，會員四十六人；工作分討論演講兩項。一九二四年，會員增至五十餘人。一九二五年，會務偏重於各項問題之討論。校外名人參加討論者，有 Dr. A. J. Todd，陳翰笙教授，余天休博士等。一九二六年，本大學遷移海甸；會務日益發展，同學加入者亦日衆。

本會每兩星期舉行公開演講一次。又在黑山扈，掛甲屯，海甸，成府一帶作實地之社會調查，並創立公共衛生所，協助本大學附近村鎮辦理一切公共衛生事宜。於海甸附近，亦曾作大規模之平糶運動。本會又與本大學社會學系共同刊行社會學界及其他刊物，藉為交換國內研究社會學者對於社會各種問題之意見。本年會員增至七十餘人，工作仍照上述之計畫，繼續進行。

教育學會



職員

執行委員：主席：汪祥慶 書記：溫金銘 司庫：謝 球 盛建才 梁季芳
特別委員：平教委員：榮仁芳 高尚仁 吳廣鈞 姚菁英
問題討論委員：溫金銘 程美泉 王世宜 林培志
圖書委員：徐錫齡 胡肇椿 李福豐 劉持坤
參觀委員：尙文錦 李蔭棠 蔭毓蘭 司徒姝 牟貴蘭
演講委員：汪祥慶 李炎玲 馬慶選 李佩光
交際委員：謝 球 黃芹厚 盛建才 梁季芳

小 史

本會以聯絡對於教育有興趣之人員，共同研究教育上之各種問題為宗旨。自一九二二年秋成立後，每年之組織與工作如下：

一九二二年組織為委員制，工作分演講與參觀兩項。一九二三年至一九二四年，改用會長制，而工作則注重個人考察與個人研究。若會員中有欲研究關於教育上之某種問題，得由本會介紹於顧問，得其指導。但須將研究結果，報告會衆。一九二五年至一九二六年，仍為會長制，工作則更分隊調查海甸一帶之居民生活狀況與其需要，備作本大學教育學系將來舉辦初級中學之參考。

一九二七年，取消會長制，另行改組，以全體會員大會為最高機關，其下為執行委員會，又其下為特別委員會。特別委員會共分交際，平教，參觀，圖書，演講，與問題討論六股，六股各有專責，故一年來，工作尤進行順利。

演講股除請教育總長及馮銳博士各演講一次外，另有二次演講會之籌備。問題討論股舉行討論會三次，其題目為（一）燕大教育之得失；（二）公共學校教員與行政人員專業之準備；（三）關於智力測驗或社會教育之問題。平教股則與基督教團與工人部合辦本大學工人夜學。此本會之大概情形也。

生物學會



職員

導師：胡經甫	博愛理	李汝祺	盧開運
主席：李建藩		庶務：柯琦	
書記：劉廷蔚		採集股股長：劉承詔	
會計：陳國鈞		研究股股長：陳國傑	
交際：崔毓林		儲製股股長：韓蕙章	

小史

怎麼起的：在十六年夏，生物學系的幾個學生，都想做一點實地的工作，而且都需要合作與指導，因此聯合起來。已經畢業的同學，侯玉美，劉志光，林書顏，徐蘇恩，都是當時的發起人。胡經甫主任尤其熱心贊助，本會的宗旨，是利用課餘的時間，補助在課本以外的生物學上的知識。

過去的工作：胡經甫主任曾講授生物標本採集儲製法，是依系統學上的順序講下來，聽的人很踴躍。國內生物學家來本大學演講的，有胡先驥先生，秉農山先生，李順卿先生。

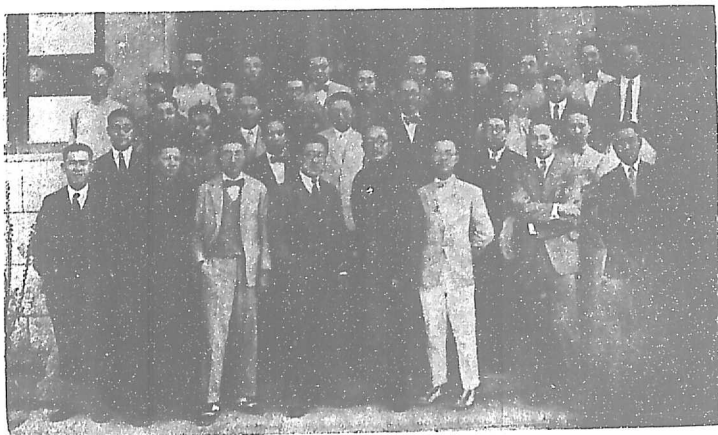
去夏曾全體出發，實地採集。胡主任作導率，在臥佛寺水泉得到新種。

現在的狀況：繼續致請生物學家來本大學演講。

胡主任的採集儲製法的講義在印刷中。

計畫全體動員，作大規模的採集。

經濟學會



委員會

李獻琛(主席)

文書股: 司徒壯(英文) 楊士珍(漢文) 討論股: 王應晞 李獻琛
出版股: 陳作樑 賀繩方 會計股: 林列撤 田寄生
交際股: 李繼先

小史

數年前，本大學原有經濟學會之設，後以故中輟。迨至客歲，有經濟學系同學數人，鑒於此會之重要，不容任其消滅；因之開始計畫恢復，並進行徵求會員。不數日間，同學踴躍加入者，實繁有徒。遂於民國十六年三月三十日開成立大會。

本會宗旨，係以互助之精神，研究一切經濟原理及關於經濟學上之種種問題會中組織，採取委員制，內分討論，出版，文書，會計，交際，五股。一年來，雖所有施設，未克按照預定計畫實行，但會員對於經濟學之興趣，與維護本會之精神，則殊有足多者。所幸重選在即，繼起有人，本會前途發展，未可限量也。

哲學研究會



委員會

于振清（主席）

施友忠

黃毅仁

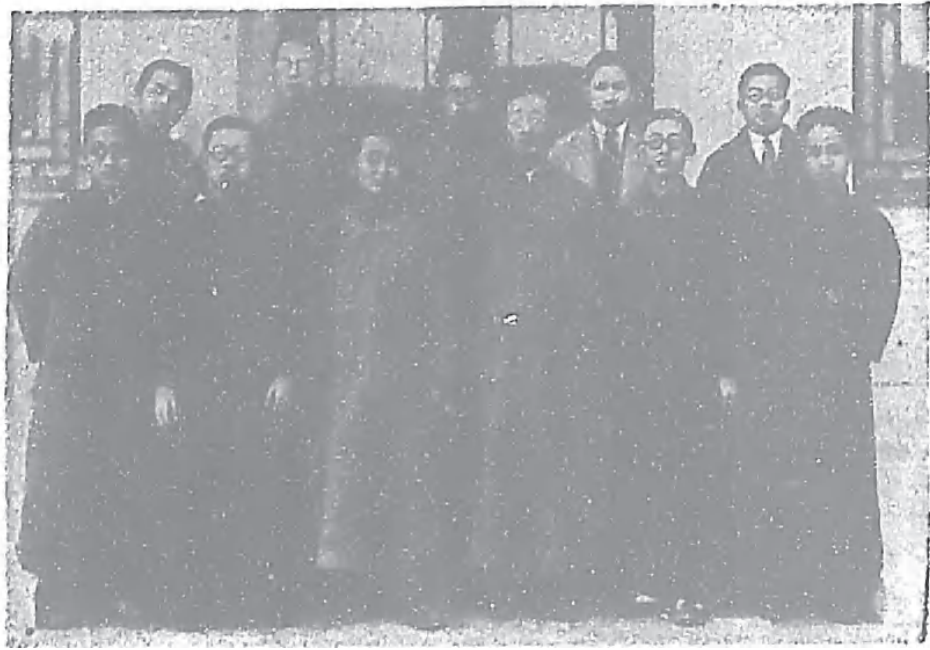
小史

本會的歷史，快到兩年了。自前年的秋杪，在玄學班上，楊枝嶸君和黃毅仁君曾對徐寶謙先生談起研究學問的問題來，那時我們覺得在學校裏研究哲學，沒有一個較大的團體，能使師生聚在一塊，共同討論，深以為憾。於是徐先生招集一會，當時赴會的人數十餘，師生參半。徐先生被選為會長，定名為哲學研究會，由師生合組之。每月開會一次，由教授或同學主領演講及討論。

到去年返學的時候，我們從事改組，採委員制，于振清君，施友忠君，黃毅仁君，當選為委員。這次會員人數略增；開會次數，每月改為兩次，專請本大學外之名流演講。會務進行，與前略同。

本會的目的，是研究學問。在這草創的期間，牠的工作，很難給我們十分的滿意。然而我們對牠的前途，實在抱着無窮的希望。

新聞學研究會



職 員

顧問：黃子通博士

主席：古志安

文書：郭燦然

會計：丁孝良

交際：章 進

庶務：王成瑚

小 史

本大學新聞學系自前年停辦後，同學中有志於研究新聞學者，咸感不便。故於去年秋間，特發起組織本會，徵求對於新聞學有興趣之同學，於課餘之暇，共同討論研究。然本會目的，尤在促請學校當局，從早恢復原有之新聞學系，使吾儕更得有系統之新聞學識。

本會現有會員二十餘人，服務於燕大月刊之編輯部者凡半。

醫 學 學 會



職 員

會 正： 周壽愷	衛生部主席： 吳士鐸
副會正： 黃家駟	副主席： 余伯廉
書 記： 魏淑貞	智力部主席： 汪凱熙
會 計： 程育和	副主席： 戴翰琛
社交部主席： 吳萍瑞	

小 史

本學會是在一九二五年本大學接辦北京協和醫學校預科的時候，由一九二八班同學所發起組織的。會員多數由前協和醫預轉學而來。這種組織的宗旨，不外增進醫學預科同學的感情，練習服務，及討論醫學上的智識。因此，本學會內部的組織，分社交，衛生，智力，三部。社交部主聯絡師生及男女同學間的感情；衛生部主改良學校衛生，提倡公共清潔事宜；智力部主聘請醫界名人或科學專家來本大學作公開的演講。

本學會成立已將兩載。因為首任會正郭秉寬君的熱誠服務，與其他職員的努力，會員的贊助，所以本學會的精神，能充分發揚；本學會的宗旨，能盡量光大。現任會正周壽愷君，與其他現任職員，仍繼續前進，以期本學會能達到光明燦爛之境。

家事學研究會

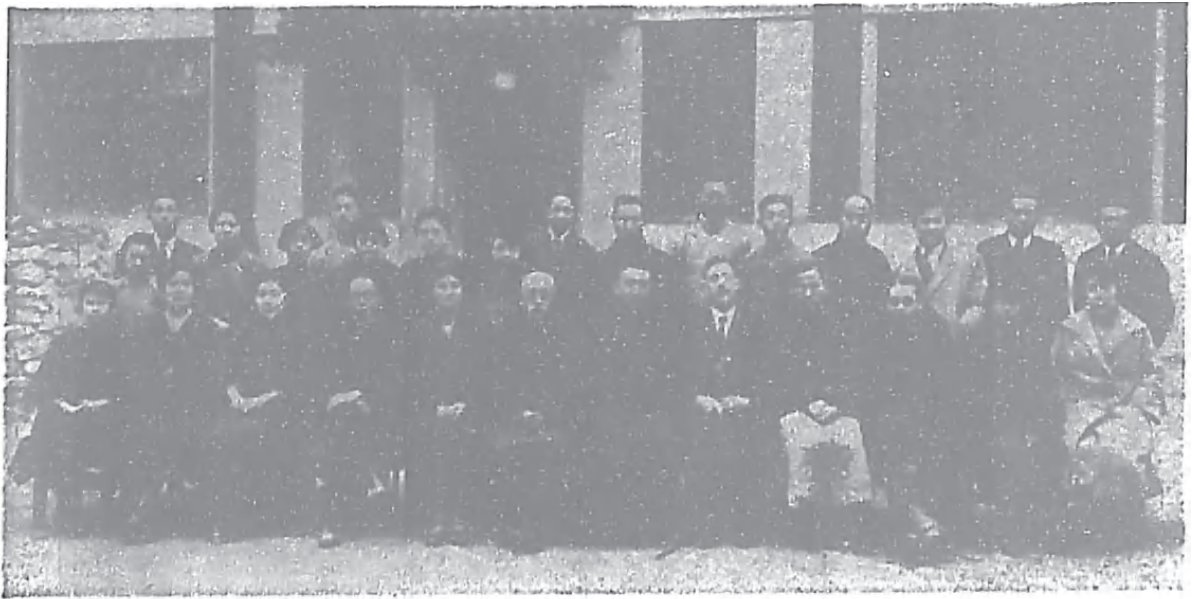


本會為讀家政學諸同學所組織，成立于一九二七年十一月，以研究及討論關於家庭一切問題與實習家庭工作為宗旨。現有會員十九人。

本會暫行簡章，業已擬妥，並經全體會員通過。本屆職員即于一九二八年三月時選出。

會內工作，幸得諸會員十分關懷，又承家政學系諸教授多方指導，故將來本會之進展，定有厚望。然改善家庭，吾會員尤不可不於今日講求此種準備，是又須吾會員本合作之精神，以互相勸勉而已。

會 學 景

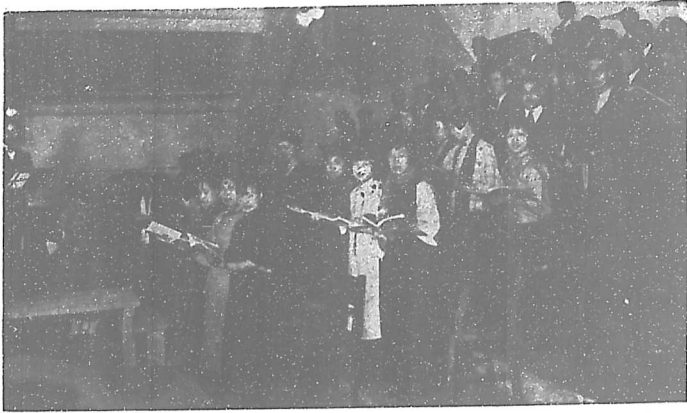


小 史

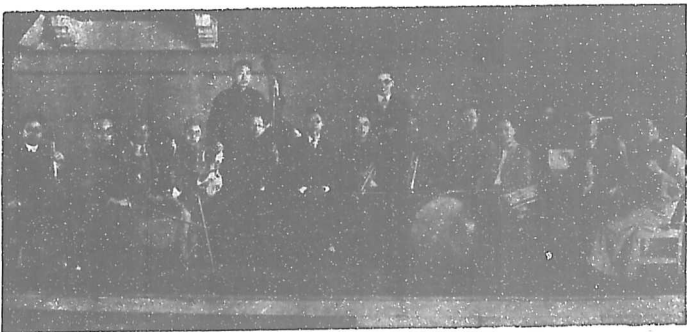
本會是在民國十三年春，由宗教學院教職員與學生共同發起而組成的。換句話說：本會會員，就是宗教學院的教職員與學生全體。牠的宗旨，是(1)討論中國教會問題；(2)促進教職員學生之精神團契；(3)研究經解上或其他學術上的難題；(4)解決其他關於公共生活或私人生活的各種問題。

本會每月舉行例會一次。例會中所討論之題目，以關於實際方面的佔多數，例如「中國本色教會問題」，「英美基督教最近之趨勢」等是。關於理論方面的，也有討論，如「理想的宗教學說」，「神學生與政治」，「基督教與中國文化」等是。

本會成立，雖然為時不久，但會中充滿自由空氣，使團體精神與宗教思想，都能得到很好的進展。將來如果能由中國學者擔任翻譯經本，用中國文化闡明基督教義，又或研究福音，如何可以使其實現于現代的中國，則本會的設立，便不算徒有其表。



歌 詠 團



樂 隊

基督教團契



小 史

本團契乃由本大學往年之四大團體：男青年會，女青年會，學生立志佈道團與團契，合併組成。以表彰耶穌基督之精神，共同練習團體服務為宗旨。凡贊成而願加入本團契者，無論為教員，為學生，為工人，皆得被認為契友。

現年組織，以執行委員會為最高機關，由教員，學生，工人，共同負責。團契內之學生組，又自有學生部，凡關於學生對校內校外各項事宜，均由此部負責辦理。此部更又分總務庶務兩股，積極進行工作。

本團契工作，分三大部：宗教部，服務部，交際部。宗教部又分宗教事業與証道團。宗教事業設有主日學六處，男女兩校晨會，討論班，詩歌翻譯與公共禮拜等。服務部為工人設備者，有千字課班，演說會，娛樂會；為鄉村服務設備者，有婦女工讀學校，貧民賑濟及公共衛生事業。交際部則設法使教員，生，工人，常有聯絡之機會。故每屆聖誕，復活等節，均舉行特別慶祝會以資聯絡。

編輯餘談

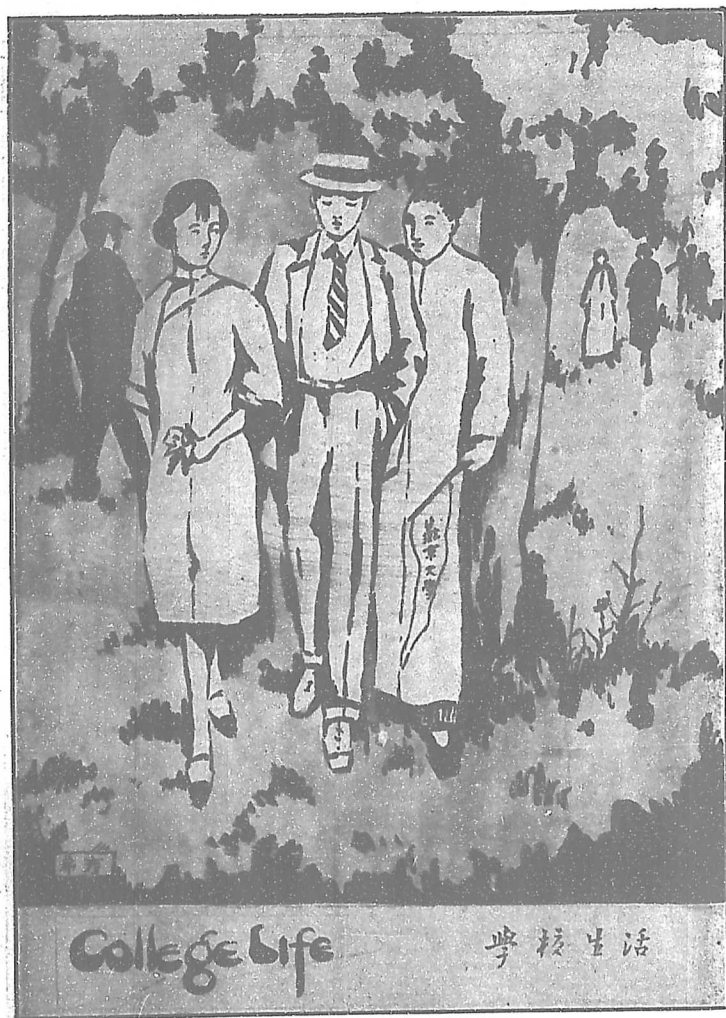
1. 本刊第一次徵稿函發出之後，曾經連續的催過好幾次，直至快放暑假，足足四個月，稿件才勉強的收到我們所希望的四分之三，其他四分之一，因為沒有時候，不能再等了。但這樣也就已經將原定的出版日期耽誤了不少，這是應該聲明並要請閱者諸君原諒的。

2. 許多團體交來牠們的文稿時，即聲明不願有所刪改，因此我們便不敢違命。但遇着有[必須]斟酌的地方，我們還是壯着胆子，替牠[斧削]一下。尤其是各級級史，因為篇幅不夠，一律刪短，仍希原諒。

3. 本刊原來還有[特別紀事]，[教職員錄]，[同學錄]，[畢業生錄]，以及各種統計，可惜所籌到的經費，不足我們所希望的三分之二，不得已只好[割愛]了。

4. 本刊稿件大概收齊時，暑假也放了。許多職員先生們，畢業離校的畢業離校，放假回家的放假回家，於是一切責任，都落在三四個留校的職員身上。自然，人數少，責任大，那能有好的成績做出來？關於這層，我們也誠懇的希望閱者諸君原諒。

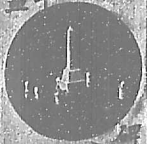
5. 本刊各項圖案，因原來負責人未曾辦妥，即已離校，承同學賈希彥君以個人資格幫忙，我們特別在此道謝。



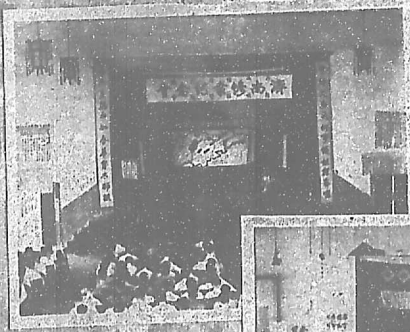
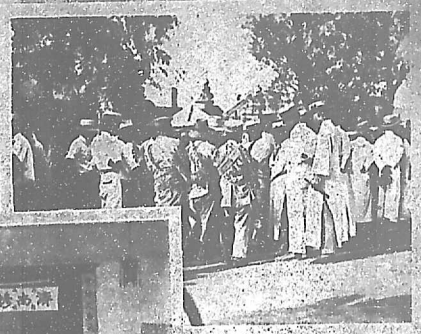
College life

学校生活

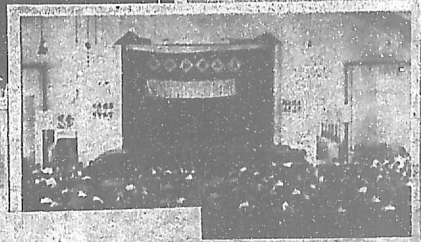
青年
習武
如何處

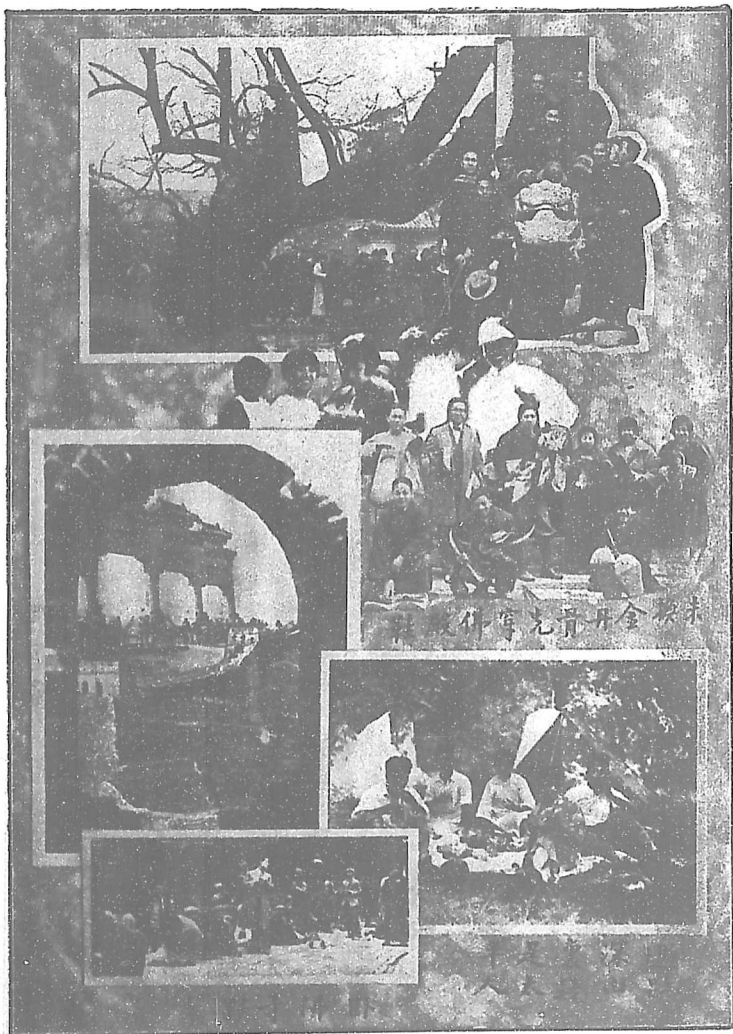


芳華
之輝



平軍北
上方抵
西花園
學此往
欣然同





新加坡九龍會館

Hockey Ground

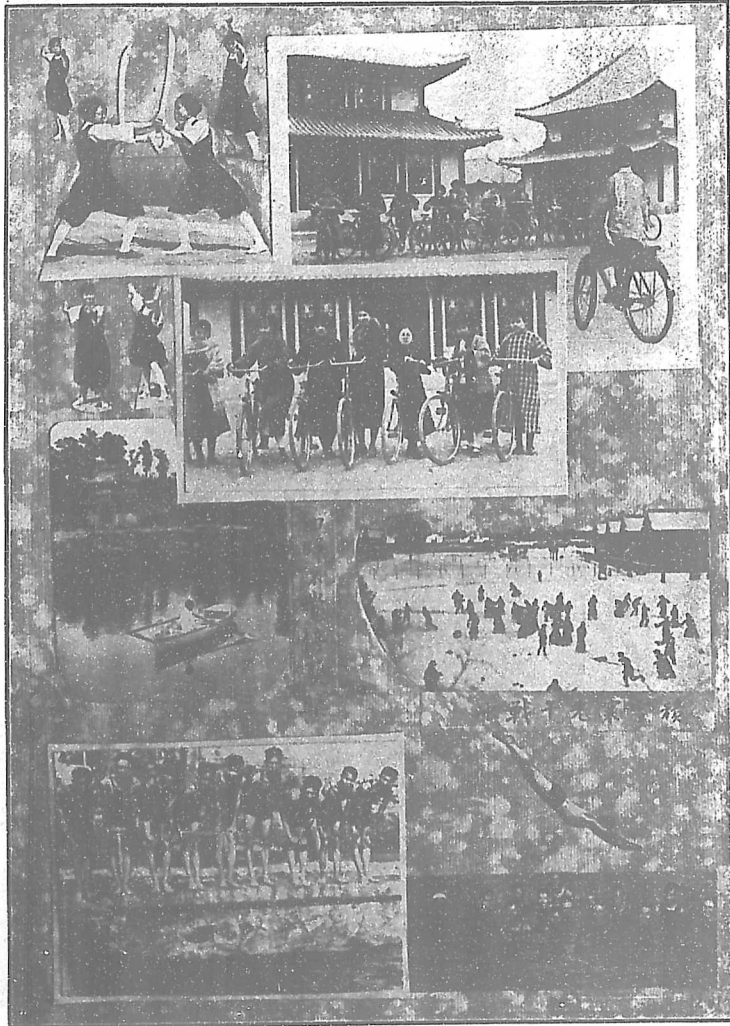


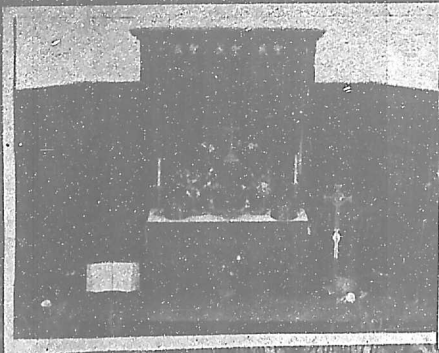
Skating Rink



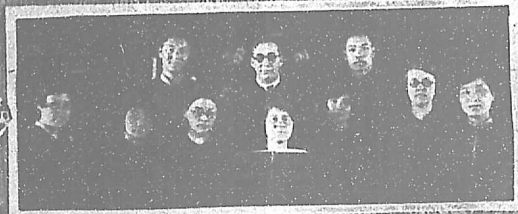
Ice Skating







節活演



班詩評



Easter Holiday

百美
同學

Columbia



Ohio

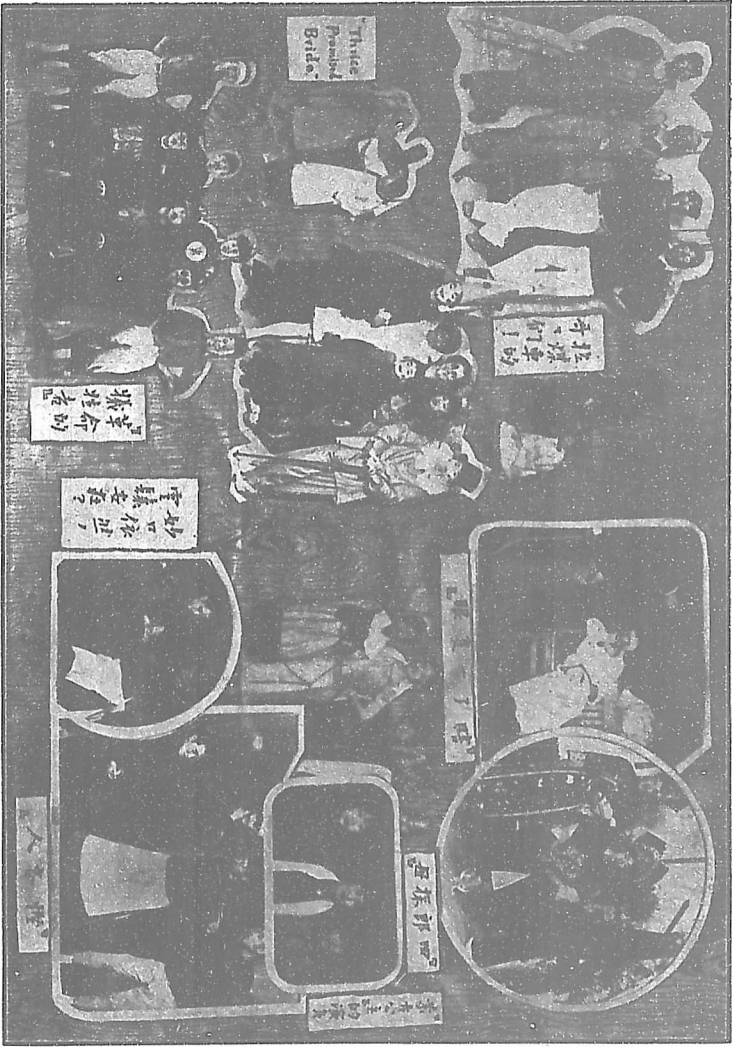


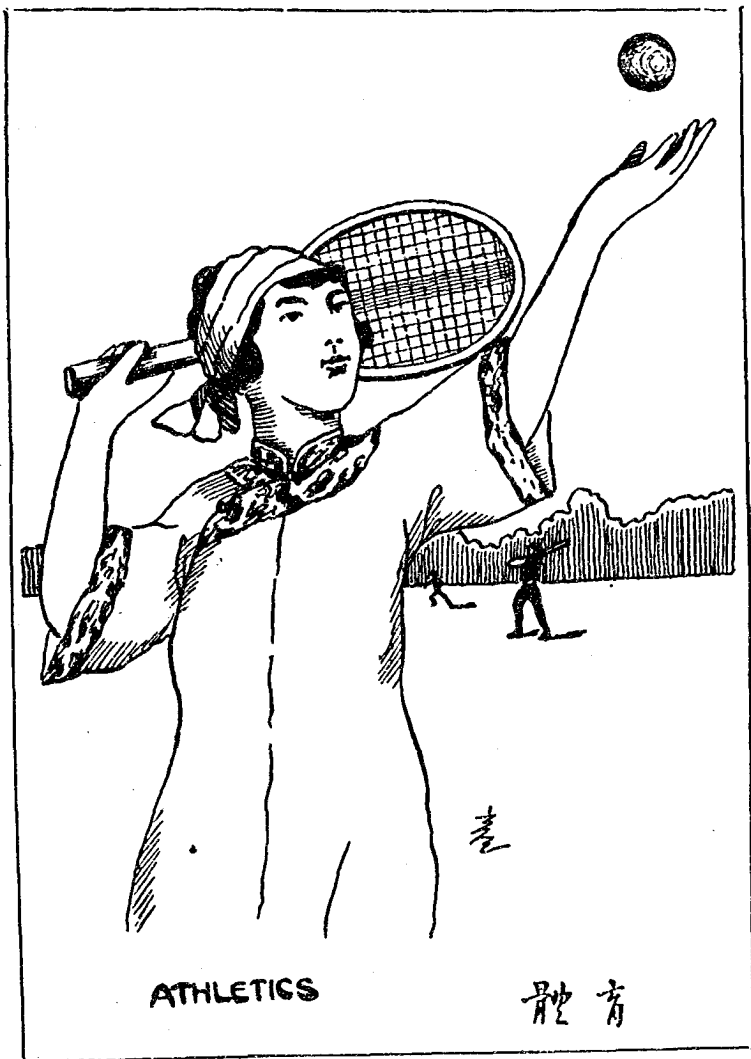
張愛一
青鶴城
張籍
陸曉

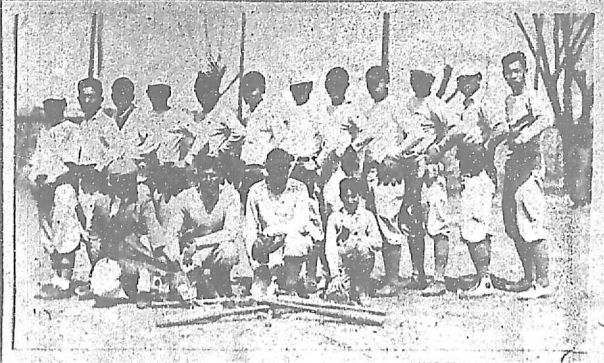


Michigan

Some members of the
New York Chapter



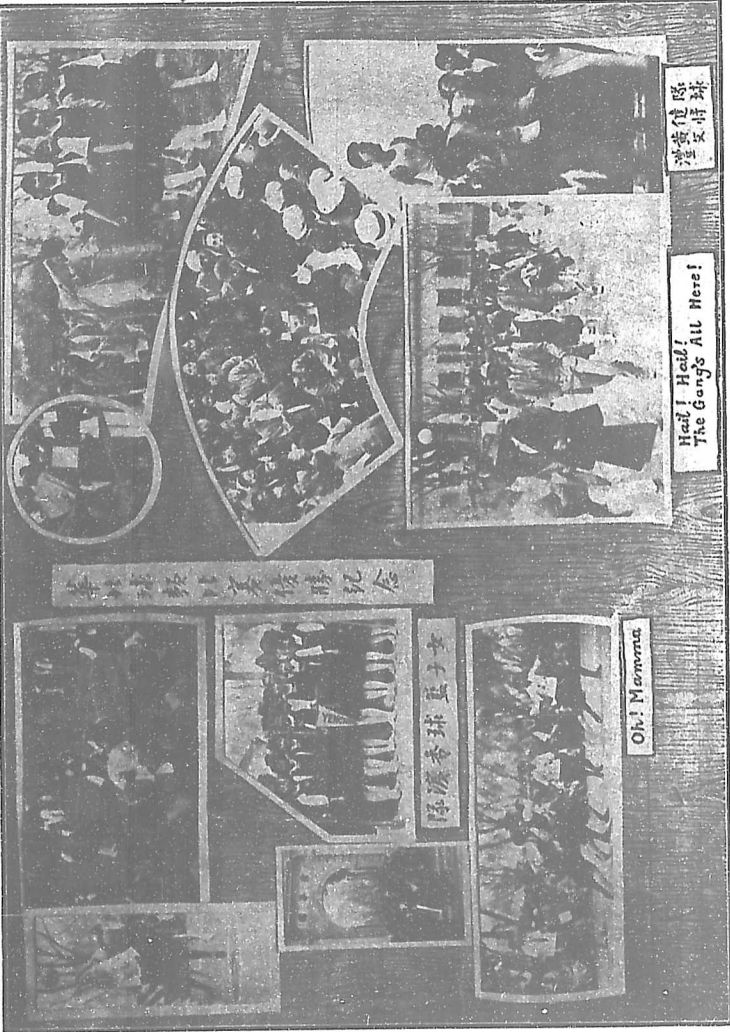




華北棒球隊優勝隊



華北籃球隊優勝隊



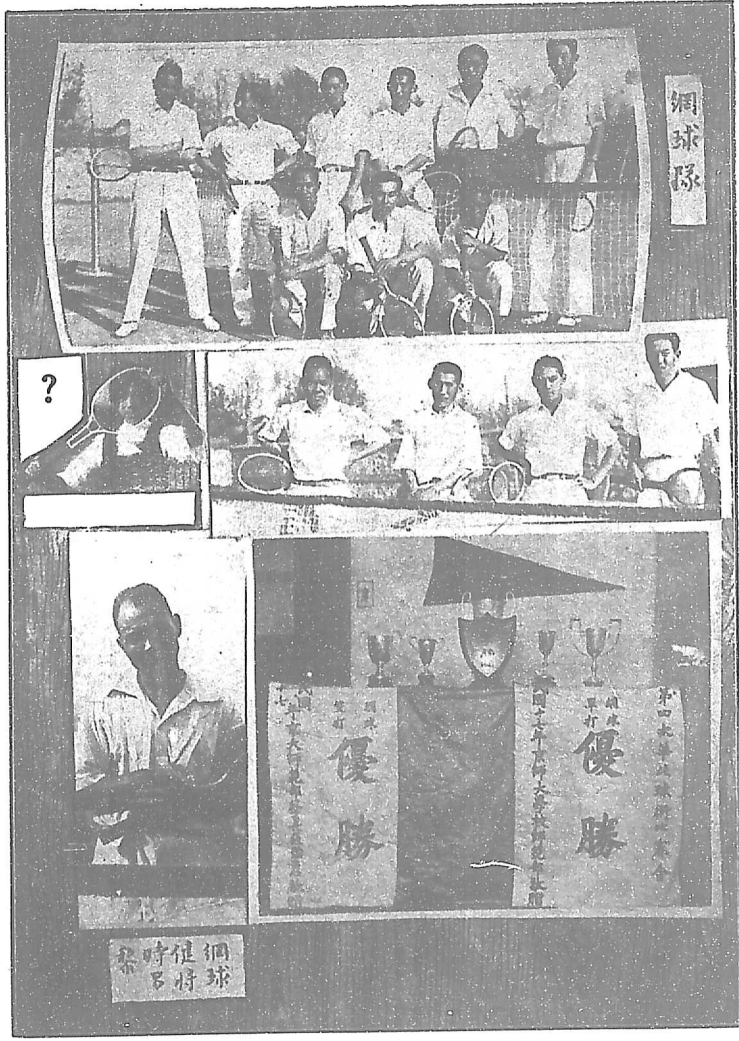
紀念

女子籃球香渡

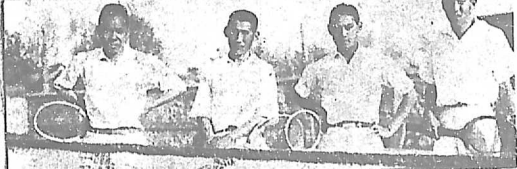
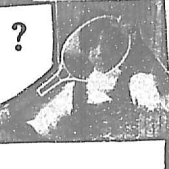
Memorata

Here! Heal!
The Gang's All Here!

球時互黃健



網球隊



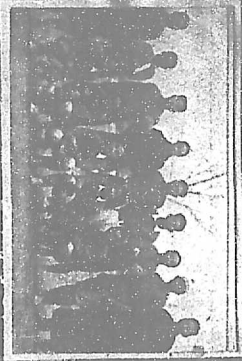
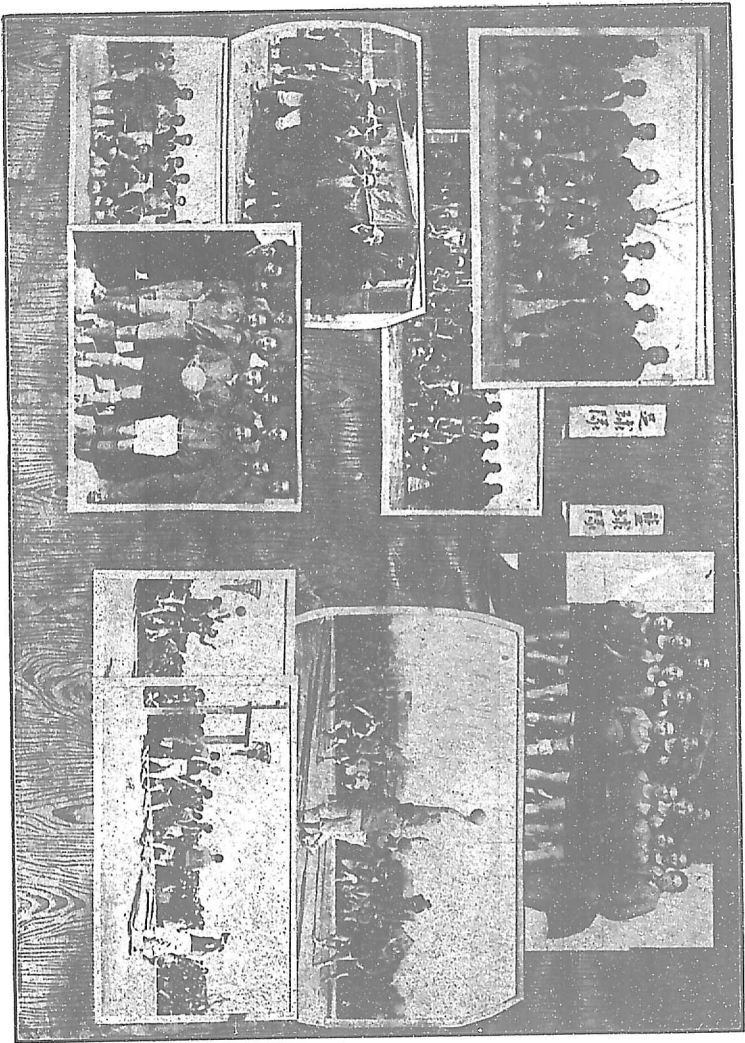
網球
部
時
時



You can
beat ice,
You can
beat cream,
But you
can't beat
**OUR BASKET
BALL TEAM.**

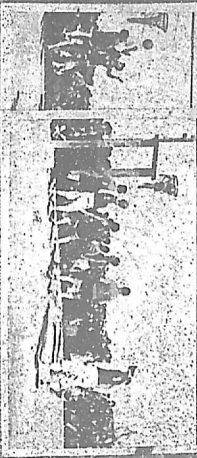
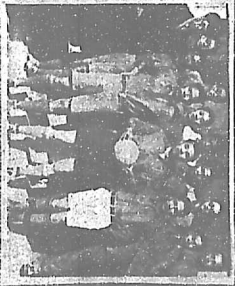
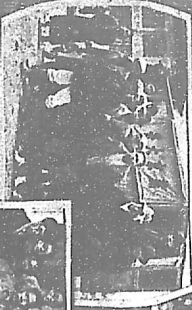
不要緊，
等明年
罷！也

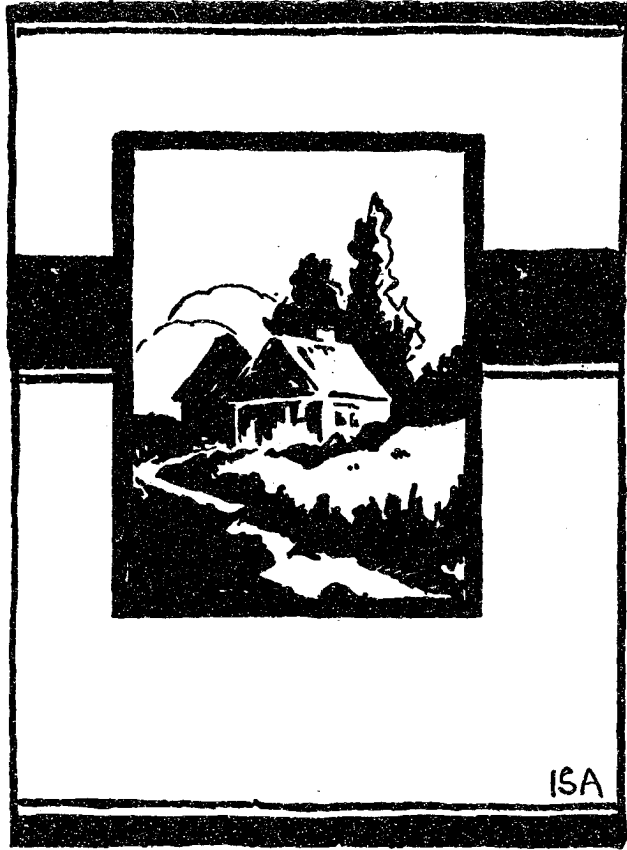




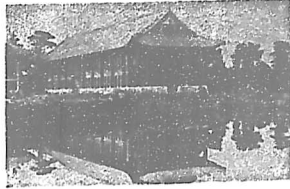
五
球
隊

五
球
隊





LANDSCAPE 建築 = 風景



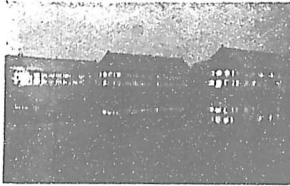
男生宿舍

Men's Dormitory



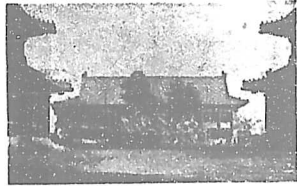
校友門

Alumni Gate



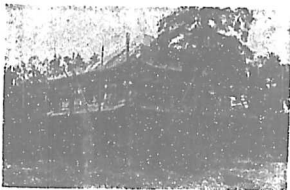
男生宿舍夜景

Men's Dormitory at night



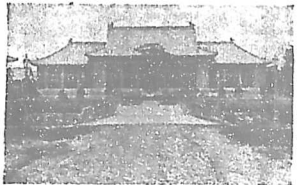
課室樓

Sage Hall



男生宿舍

Men's Dormitory



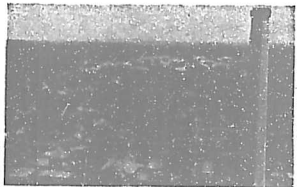
辦公大樓

Bashford Hall



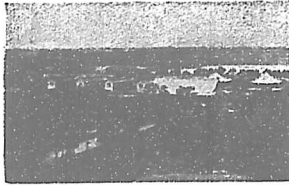
姊妹樓

Twin's Building



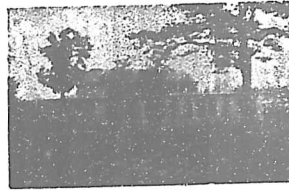
燕東園

East Compound



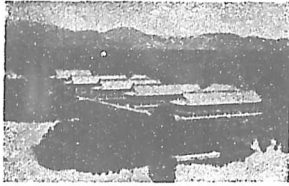
女生宿舍

Women's Dormitories



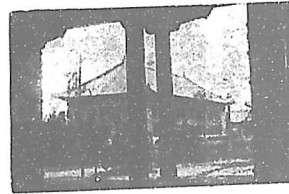
機器房

Power House



男生宿舍

Men's Dormitories



新課室樓(內樓)

McBrier Hall



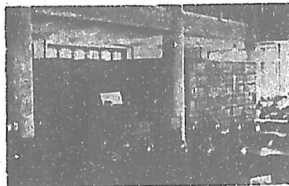
女校辦公樓

Miner Hall



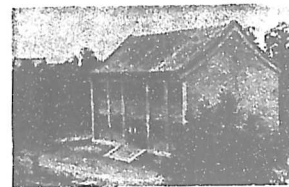
科學北樓(乙樓)

Biology and Physics Building



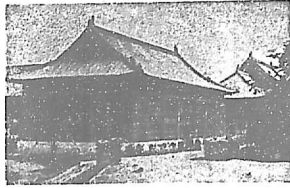
圖書館內部

Interior of the Library



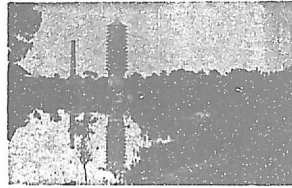
醫院

Hospital



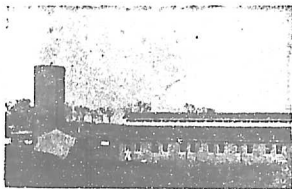
圖書館

Library



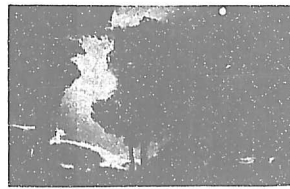
水塔

Water Tower



畜牧場

Dairy



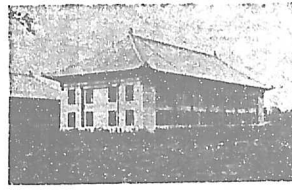
燕大風景

A Scene at Yenching



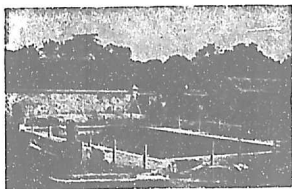
辦公大樓遺景

Administration Hall in Clouds



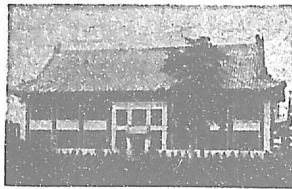
科學南樓(甲樓)

Chemistry and Geology Building



游泳池

Swimming Pool



宗教學院

Ninde Hall



追悼魏士毅女士

魏女士遺像

魏辭

魏嗣

魏女一

追悼魏士毅女士

魏女士

魏誠的家書

魏餘的哀跡

魏中印象最深的一

層的問題

魏上與魏下

魏院前魏後

魏院前魏後

魏院前魏後

魏院前魏後

魏院前魏後

魏院前魏後

魏院前魏後

魏院前魏後

魏院前魏後

魏院前魏後

魏院前魏後

魏院前魏後

魏院前魏後

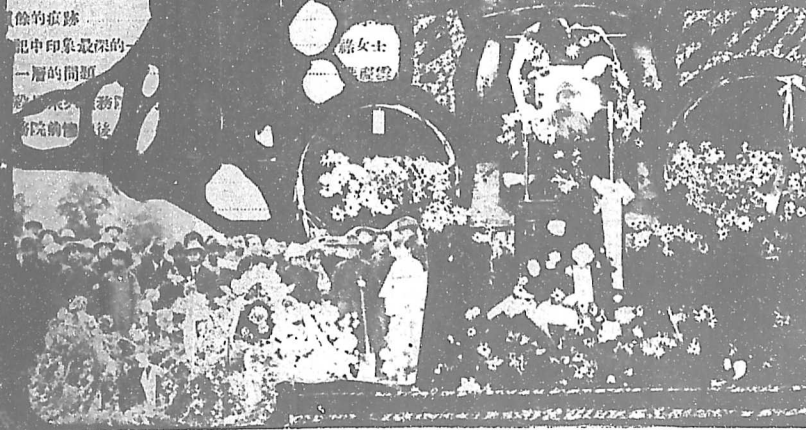
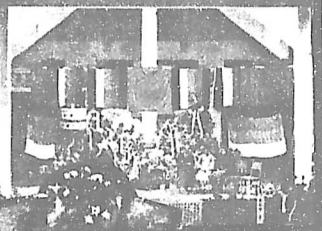
魏院前魏後

魏院前魏後

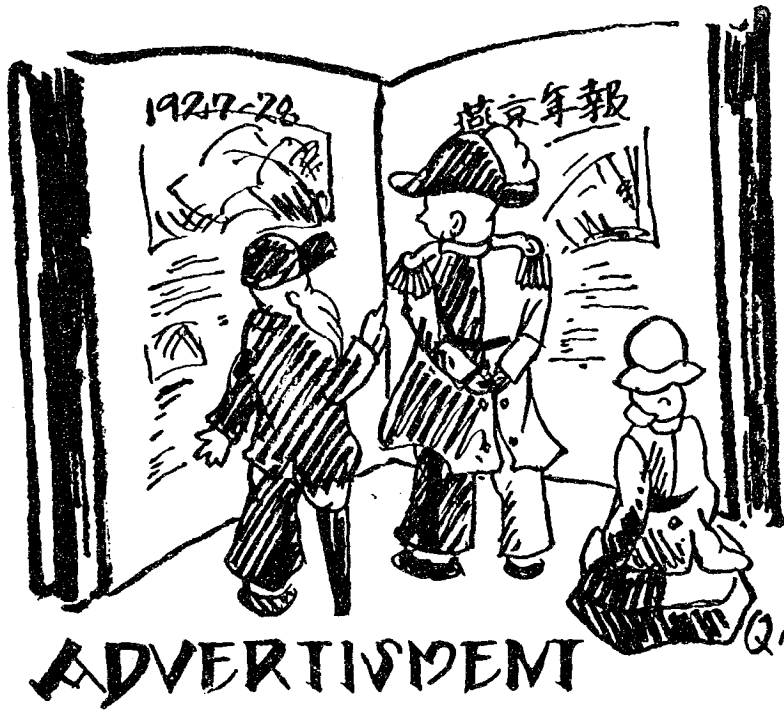
魏院前魏後

魏院前魏後

魏院前魏後



Peking Leader Press



ADVERTISEMENT

WHEN WRITING TO ADVERTISERS PLEASE MENTION THE YENCHINIAN

庭家樂快之海上在

韋廉士大醫生紅色補丸
治愈李見滄先生之夫人



孩輩疾病全愈肥胖活潑
嬰孩自己藥片使彼之小

李見滄先生係上海法界呂班路齊魯公學英文教員以上所刊之照片乃是彼之家庭也下列之證書乃是李君於民國十七年五月壹號寄至上海韋廉士大醫生藥局現下得其同意刊登於左其來函云敬啟者小兒世蜜時患胃不消化及腹瀉傷風感冒等症不免煩燥難得甜蜜之安睡日間嬉戲亦精神不振即以貴局所出之嬰孩自己藥片投之乃屢試屢驗前症盡消今竟不再煩燥難睡肥胖活潑次兒世

蝶亦投以

嬰孩自己

藥片因亦

強健可愛

貴局自己

藥片確為

小兒無上

聖藥家有

兒女者幸

常備之再

內人患血枯消瘦之症現以服用貴局之韋廉士大醫生紅色補丸身體日見強健鄰人家庭康健之幸福皆貴局良藥所賜也茲奉上一照片一張以表謝忱韋廉士大醫生紅色補丸乃是天下馳名補血健腦之聖藥凡經售西藥者均有出售或直向上海江西路六十號韋廉士大醫生藥局函購每一瓶大洋壹元五角每六瓶大洋八元郵力在內嬰孩自己藥片每一瓶大洋六角每六瓶大洋三元郵力在內

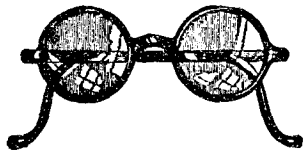


韋廉士大醫生紅色補丸

燕京大學農系畜牧組現有純種
 白色來航鷄 (White Leghorn),
 美國紅鷄 (Rhode Island Red),
 美國裴茂斯岩鷄 (Plymouth-
 Rock), 純種中波豬 (Poland-
 China), 布克沙爾豬 (Berkshire),
 混合種紅黑花豬 (Tamworth-
 Poland-China Cross), 及純種肉
 用牛今為推廣起見故特廉價出
 讓海內同志欲購者請先 惠函
 預定是荷

燕京大學農系畜牧組謹啟

THE VISION OF SUCCESS



Just remember that your eyes must
 serve you all through life.
 We help to care for them.

CHINESE OPTICAL Co.

中國精益眼鏡公司

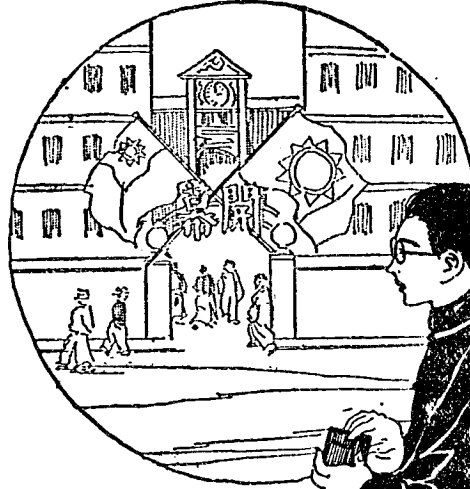
Up-to-date Optometrist and Optician.

PEKING BRANCH,
 48 Kwan Yin Szu Chieh,
 Chien Men Wai, Peking.

北京西直門外海甸北成府橫街
 德盛復麻刀鋪木號發賣各種藍
 磚瓦及紅磚等種類繁多不及備
 載並青白石灰木繩長短麻刀及
 清木繩山貨繩麻紙張等一概廉
 價發售

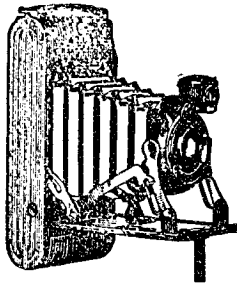
德盛復

“Kodak”



工商業欲表現其製造之精與出品之美非用柯達鏡箱與軟片爲之攝影宣傳不可因柯達鏡箱使用簡易人人會拍柯達軟片拍出之照精美絕倫無異專家所攝工商業如採用攝影宣傳營業必能蒸蒸日上可見柯達鏡箱裨益于工商一界亦深而大矣

(五三二)



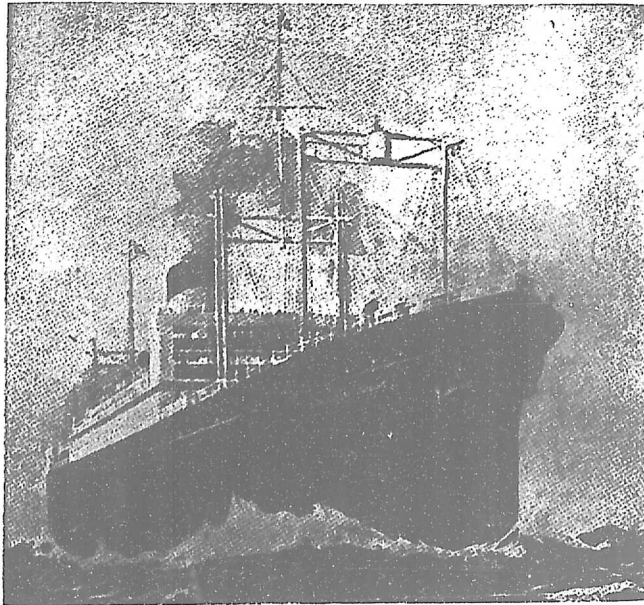
上圖爲第二類第一號A號柯達鏡箱
珍鏡箱輕便堅固攜帶便利鏡背有
自寫機關以誌拍照時日事物此種
特色祇柯達鏡箱有之

美商
柯達公司

上海江西路六十四號



**DOLLAR STEAMSHIP LINE
and
AMERICAN MAIL LINE**



Joint Service

A Sailing Every Week Across the Pacific
TRAVEL IN COMFORT ON THE PRESIDENT LINERS
TO SAN FRANCISCO via HONOLULU
"THE SUNSHINE ROUTE"
TO SEATTLE via VICTORIA "THE FAST SHORT ROUTE"
TO EUROPE and NEW YORK
Via Suez, Alexandria and the Mediterranean
"THE NEW ROUTE TO AMERICA"
Fortnightly sailings

For Bookings and Information Apply to

THE ROBERT DOLLAR CO.,

**3 Canton Road
Shanghai**

General Agents
**Robert Dollar Building
Tientsin.**

CHEN SHIEN TAI. TAILOR

FASHIONABLE GENERAL OUTFITTER
LATEST STYLES AT MODERATE PRICES

Importer of the World's Moderate Wools

SANITARY CLEANING, PRESSING, DYEING AND ALTERING

No. 274 Hatamen Street North of Y. M. C. A.
Telephone No. E. O. 3597

陳 森 泰 呢 絨 西 服 莊

電 話 東 局 三 五 七 號



開 設 崇 內 米 大 街 青 年 會 北 路 西 門 牌 二 百 七 十 四 號

自 運 各 國 絨 呢 嘜 嘜 羽 紗 洋 貨 承 做 海 陸 軍 裝 專 做 各 式 禮 服 時 裝 便 應 需 另 星 各 件 一 應 俱 全 承 蒙 賜 顧 定 價 格 外 克 己

正 老 牌 元 瓶 牛 肉 汁
開 胃 提 神 養 血 補 身



天 津 北 京
大 昌 和 經 理

TAYLOR & COMPANY DEPOT

For Peking and Tientsin

FOR

Valentine's Meat-Juice

"A DELICATE FOOD FOR THE SICK
WILL NOURISH AND SUSTAIN WHEN
OTHER FOODS FAIL"

MANUFACTURED BY

VALENTINE'S MEAT-JUICE COMPANY

RICHMOND, VA., U. S. A.

天 津 英 租 界 海 大 道

北 京 崇 文 門 大 街

● 糊塗一時 ●

王君肄業於北平A大學，見同學中
所用浴衣，被單，帳子，手帕等物，均非
新穎美觀，知係上海三友實業社出品，頗
欲來函購之，苦一時未便離校，躊躇
後復，會告之同學陳君，陳君曰：君誠聰明
一世，糊塗一時，何勿郵購，該社設有郵
售部，君豈不知耶？王君啞然失笑。

◀ 男女學生用品人人歡迎 ▶

小床被單	浴衣	洗面手帕	自由布	自由紗	中山裝	襯衫	領帶	自由襪	枕套	枕心
				學生裝	毛巾					

(郵售辦法詳載出品價目冊，函索即寄)

上海三友實業社

門市部 南京路浙江路東
郵售部

總行
分行

資本：總額二千萬元現收資本三百十萬零七千四百元
公積金：七十六萬九千餘元
業務：存款放款匯兌儲蓄不動產抵押放款發辦水
火保險行（發行鈔票隨時兌現）

中國實業銀行

天津英界領事道四號路
北京 天津 濟南 上海 漢口 揚州 唐山
其他各埠均有代理機關

北京分行設在西交民巷

中國旅行社

CHINA TRAVEL SERVICE

號四一一路川四海上

四六四二號掛報電 一四七八六話電

細 本 答	如 蒙 垂 詢 一 切 當 即 詳	出 發 各 項 手 續 極 爲 週 到	留 學 諸 君 特 別 招 待 代 辦	中 外 旅 行 支 票 對 于 出 洋	船 票 預 定 臥 舖 艙 位 發 行	本 社 經 售 中 外 火 車 票 輪
-------------	---	--	--	--	--	--

忠利號

C. L. CHANG,

SHOE-MAKER

316, MI Shih Ta Chieh

(opposite to Wai Chiao Pu Street)

Peking.

號六十一百三牌門西路街大市米

Telephone No. 4781.

一八七四局東話電

CHUNG YUEN AUTO-TRADING COMPANY

YENCHING UNIVERSITY GARAGE

Bus Services

Car Repairing and Services at moderate rate

Apply to No. 20 Tung-an-men Ta Chieh

Phone 3732 E. O.

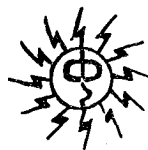
本商行代理燕京
大學汽車處兼營
各處長途出賃新
式蓬轎汽車並聘
專門機師代為修
理及配置零件定
價克己如蒙
賜顧無任歡迎
電話東局三七三
二號
東安門內大街二
十號
中原商行謹啓

廠造營築建榮廷杜臣寶董

地址 燕京大學工程處
電話 借用工程處六號

承包土木建築
測繪中外建築
修造橋梁道路
專作新式木器

本廠承辦歷有數年頗蒙中外各界
所贊許倘蒙惠顧無任歡迎



獨家經理

美國無線電業公司
收音器 真空管
美國永備電廠 各種電池
美國克勞斯來 各種收音器
美國無線電 各種零件

中國無線電業有限公司

總公司：天津馬家口
分公司：北京王府井大街八面槽



DURING THE HALF CENTURY THAT "THREE CASTLES" HAVE BEEN ON THE MARKET, THEIR POPULARITY HAS BEEN REFLECTED IN EVER-INCREASING SALES. IT IS THE OLDEST BRAND MANUFACTURED AND ITS LONG AND HONOURABLE RECORD SUGGESTS THAT THE WELL-KNOWN SLOGAN "Three Castles for Quality" IS NOT MERELY AN EMPTY PHRASE.

“
**Three
 Castles**”
 CIGARETTES

THE AMERICAN EXPRESS CO., INC.

STEAMSHIP AND RAILROAD TICKETS
RESERVATIONS SECURED TRANS-SIBERIA
AT REGULAR TARIFF RATES

TRAVELERS CHEQUES—LETTERS OF CREDIT
BAGGAGE AND ACCIDENT INSURANCE

WE BUY AND SELL

Travelers Cheques, Drafts, Money Orders
and Drafts on Letters of Credit.

At Current Rates of Exchange.

Shipments Forwarded to any Part of the World.

OFFICE IN

GRAND HOTEL DES WAGON-LITS.

Telephone E. 1213.

CHINA BOOKSELLERS LIMITED

(Incorporated in Hongkong)

Peking: 7 Rue Marco Polo. Telephone 1832 E.

Tientsin: 181 Victoria Road

PUBLISHERS & BOOKSELLERS

LARGE ASSORTED STOCK OF ENGLISH
AMERICAN—FRENCH & GERMAN PUBLICATIONS

Science—Philosophy, Psychology & Religion

History—Geography—Russian & French Literature

in English Translations—Business, Economics,

Sociology, Law—Language & Dictionaries—Orientalia—Travel—Biographies—

Juvenils—English Literature—Arts—Greek & Latin—Reference Books

Periodicals

Subscriptions taken for Foreign & Local magazines

Books not in stock ordered

Prices and lists of books sent on request.

Engravers and Copper-plate printers.

China Electric Company LIMITED

Head Office:

3 Hsi Tang Tze Hutung,

East City,

Peking

TELEGRAPH ADDRESS:

MICROPHONE

Codes Used

Lieber's (Standard)

A. B. C. 5th edition

Bentley's Phrase Code, Improved

Branch Offices:

Shanghai, Canton, Tientsin, Mukden, Hankow

Manufacturers of and Agents for various
Telephone, Telegraph Equipment, Power plant, Radio
and Electrical Apparatus of all kinds

SOLE AGENTS IN CHINA FOR:—

International Standard Electric Corporation
New York

Western Electric Company
New York

Nippon Electric Company, Limited
Tokyo

Standard Telephones & Cables, Limited
London

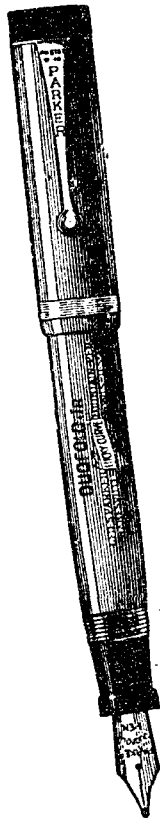
Bates Expanded Steel Truss Company
Chicago, Ill.

Templeton, Kenley Company
Chicago

The Gamewell Company
Newton, Upper Falls,
Mass.

United Incandescent Lamp & Electrical Company
Ujpest

Weston Electrical Instrument Corporation,
Newark, N. J.



Red and Black
Color Combination
Reg. Trade-Mark
U. S. Pat. Office

©1934 A. S. 28-1

It's a College-Trained Pen!

*More Students Use It than Any Other Kind—
and if you paid double you couldn't
improve on it*

Do you want a pen for lifelong use? With \$14 you can buy it. Pay \$10 for the Junior size or the Lady Duofold. Because of Parker's Non-Breakable Permanite Barrels, these pens have been thrown from airplanes 3,000 feet aloft without damage.

Do you want ease of writing? Parker Duofold's famous Pressureless Touch, due to a fine ink channel ground between the prongs of the point (bringing capillary attraction to the aid of gravity feed) is the greatest writing improvement in years.

The new barrel material—Parker Permanite—is Non-Breakable, and 28% lighter in weight than when made with rubber as formerly.

Why do most college students use it? Try it yourself and you will know.

Five flashing colors—three sizes for men and women—six graduated points, one of which will fit your hand exactly.

Look for the imprint "Geo. S. Parker DUCFOLD" on each pen and get the genuine. Fencils are also in colors to match the pens. See a Parker dealer now.

Sole Wholesale Agents:
DODGE & SEYMOUR (CHINA), LTD.
3 Canton Road, Shanghai

Parker

Duofold Jr. \$10

Over-size \$14 Lady Duofold \$10

A. B. C.

UNDERWEAR

司公生秋國美辦定接直
A. J. Reach, Wright & Ditson

運動器具

廉價定 ○ 美精貨

製精廠本

品出廠本

運動衣著



新式內衣

壁隔局郵路京南海上

司公衣內國中

路脫腦康設廠

價廉 奪目 新穎

美觀 舒適 涼爽

商務印書館

經售各國名廠出品

自來水筆 照相器具 運動器械 顯微鏡

本館經售德國德標老牌鋼筆，英國派克及華德門等名廠自來水筆，活動鉛筆，各式禮筆，種類繁多，價格低廉。德國伊卡爾相器，製造精良，冠絕一時。欲求攝影之滿意，藝術之進步，當以購用伊卡爾牌一途。現由本館經理。美國達生公司精製高等運動用品，種類繁多，久享盛譽。行銷之廣，莫與倫比。各國運動健將皆用達生出品。美國新發明顯微鏡及光學用品，均經多數專家慎重檢驗，認為最合應用。出品繁多，馳名遐邇。現由本館獨家經理。

本館發售 本館監製

原版西書 各式風琴 留聲機片 打字機器

本館發售原版西書，自兒童讀物，以至大學課本，悉考用會，各科專籍，無不備充足，售價低廉。本館自製，孔雀牌，樂府牌，各式風琴，裝璜精緻，木料乾燥，漆色歷久如新，每座自二十五元至二百六十元。本館監製國語留聲機片二套，由趙元任博士發音，零售每張三元五角，英語留聲機片一套，零售每張二元五角。本館創製新式華文打字機，每座定價二百四十元，經售各式西文打字機，手提打字機，價格比來低廉。



編譯 發售

學校課本 華英辭典 婦女用書 中西圖書 小說雜誌 兒童讀物 數百月品 印刷用品 畫片畫冊 紙張紙飾 幻燈影片

精製 承印

華英辭典 理化設備 兒童玩具 各種圖版 標本機型 鑒證獸草 中西書籍 五彩圖畫 屏聯交帳 學校年刊 證券章程 名片簿冊

本行經理之德國天德大葯廠規模極宏舉世無匹其出品之優美發明之精深早已震爍寰宇廠中聘有高等富有經驗之醫學化學葯學等各專家數千百人以及世界著名六〇六發明者醫學博士艾利氏等共同工作之結果是以時有驚人新葯之發明其精選良葯行銷各國者不下數百種如新洒爾佛散 Neosalvarsan 拜耳阿司匹靈 Aspirin Bayer 奴佛客因 Novocain 露藍密H藤 Pyramidon 握姆納丁 Omnadin 普泰哥等 Protargol 等久為環球各國醫葯界尊為惟一良葯惟邇來膺戲偽造之品紛然並起充斥市場購者失察誤服劣品危害非常茲將本廠商標列后以資識別而免受欺醫界諸公更希注意是幸

天津德商謙信洋行謹啟



總代理
北京雅利洋行

STANDARD OIL COMPANY OF NEW YORK

28 BROADWAY

NEW YORK



The Mark of Quality

SOCONY PRODUCTS

Illuminating Oils Lubricating Oils and Greases
Gasoline and Motor Spirits Fuel Oils
Asphaltums, Binders and Road Oils Paraffine Wax and Candles
Lamps, Stoves and Heaters

Branch Offices in the Principal Cities of

Japan Philippine Islands Turkey Indo-China Netherlands India Bulgaria
China Straits Settlements Syria Siam South Africa Greece
India Australasia Jugoslavia

戴 鏡 諸 君 !

您所配的眼鏡對光嗎？有半空而來的疲乏和頭暈嗎？
這樣的毛病全是因为鏡片的造法不完美的緣故。如果
所用的鏡片是老式的。鏡面的灣度和目力不相稱；
牠就沒有完全的能力來供給目力所需要的補助。牠的
缺點是：全鏡片的屈光力不同。僅鏡片的中心一小部
份與目力相和，週邊的屈光力能使目光暈花。愈近邊
處愈甚。從此處視物亦能引起頭轉的習慣。

近來市上所售的鏡片製造法是不精美的。灣度的計算
法是錯誤的。所以常有頭暈，目眩，及覺有不自然的
想像在神經上。要您脫離這幾種的痛苦。請用柴氏
鏡片廠所製的「朋克得」鏡片。牠的灣度計算法是根
據眼球的灣度。完全用科學的方法造成的。

經過各國醫士認為補助目力的利器。牠的優點是鏡片
的中心的屈光力和週邊的屈光力完全相同。既有這樣
大的益處。所以本院備有此種鏡片特介紹與世人。致
使目力不佳的諸君得到他的益處

你的目力視物不清嗎？
讀書的時候有頭痛嗎？

如有這樣的毛病。請駕臨

北京崇文門內美國同仁醫院

眼科他們能解

除這類的痛苦。

廠箱泰鴻
ORIENTAL LUGGAGE FACTORY
17 HATAMEN STREET, PEKING
TELEPHONE E. 4352

THE
LUGGAGE
OF
STYLE
AND
QUALITY



SHANGHAI OFFICE: 71 Broadway
TIENTSIN OFFICE: 288 Victoria Road

Peking Chung Hua Press, Ltd.

本館開設在宣武門外達智橋

不謬也

念特別克己請賜光顧始知

種印刷貨真價廉現屆三年紀

行簿記精製銅版照相鉛石各

承印清史稿各國証書及各銀

北京中華印字館廣告

會年青京北
行刊部年少

報 畫 年 少

生先識又舒
編 稿 主

◀ 色 特 大 六 ▶

(六)

此員優記少閱起一字刊美地方擇閱發取分故一會訂華京印磅印者者閱萃閱載年全內

(五)

利凡待等其書味時方物訂分面榮書揮材較每發其少價麗華由彩刷為為案光專重外中豐

(四)

益少會亦他為讀文而多定別除不之六清一份適日年低曼印北圖精限文書之刊閱等富

(三)

每份會年力對補本知筆擇於照專心集為畫收之在出無局最西字以能頭德重男報

(二)

收均優償小文取之君製年並分事料志報為刷外全事報印盛京報以富啟照德重男報

(一)

二可待選說字材士亦版文向赴圖之關既廉費讀城業為清名油用趣美片智文故女專

份會年力對補本知筆擇於照專心集為畫收之在出無局最西字以能頭德重男報

天 豐 煤 棧 售 煤 廣 告

本棧開設清華園車站分號海甸車庫胡
同做棧向由山西陽泉採辦大宗鏡面紅
煤並由京綏路大同府口泉採辦最高大
同塊煤大同末煤以及門頭溝塊煤末煤
大小煤球炸子無不應備倘蒙
賜顧價值從廉

天 豐 煤 棧 謹 啓

電話西二分局八十號

The Chinese American Bank of Commerce

Authorized Capital.....\$ 10,000,000.00
Paid-up Capital.....\$ 7,500,000.00
Reserve Funds.....\$ 1,425,000.00

HEAD OFFICE:

Hsi Chiao Min Hsiang,
Peking.

Mr. Shen Chi-fu, President
Mr. C. L. L. Williams, Vice President

BRANCHES:

Peking, Tientsin, Hankow,
Harbin, Shanghai, Tsinan.

All Banking & Exchange Business Transacted
And Savings Accounts Opened.

Correspondents throughout the World
including the Interior of China

PEKING BRANCH:

Telegraphic Address: "SINAMBANK"
Mr. Pan Chen-yeh, Manager
Mr. Tsui Lu-hua, Asst. Manager
Mr. Ni Pao-tien, Asst. Manager

額定資本 銀元壹千萬元
實收資本 銀元柒百伍拾萬元
公積金 銀元壹百肆拾貳萬五千餘元

總行 北京西交民巷
分行 北京 天津 漢口 哈爾濱 上海 濟南
通匯 (國內) 各省通都大邑
地點 (國外) 美英德法日等國及各大商埠

本行奉 財政部特准發行兌換券辦理銀行一切業務及各
種儲蓄存款

協理 沈化榮
衛家立

京行 副經理 崔景璋
潘承璋
田業

中 美
合 辦
北 京 中 華 懋 業 銀 行

莊 服 西 女 男 記 公 泰 森 同

(泰 森 同 * 泰 同)

TUNG TAI & WARY JELLY BELLY

Hsi Tan South Street PEKING Phone 1513 & 2274 S. O.

Naval and Military Tailors

GENERAL OUTFITTER

FOR

LADIES AND GENTLEMEN

SHANGHAI & PEKING

自 運 各 國
呢 絨 曝 曬
承 辦 海 陸
軍 裝 制 服
特 聘 著 名
工 師 監 製
維 新 西 服
禮 服 大 學
便 服 及 西
裝 物 品 一
應 俱 全 如
蒙 惠 顧 無
任 欣 迎 價
格 外 克 己

北 京 西 單 牌 樓 南 路 東

電 話 南 局 二 一 二 五 七 一 四 三 號



The End

本刊正誤補漏表

類別	第幾行	第幾字	誤或漏	正或補
卷首語	第二一行	第二十三字	不十稔	不過十稔
校史	第七行	第五字	會	會
全上	第九行	第二十五字	廳	廳
全上	第二十一行	第二十字	據	擴
吳路義先生 相片註			Language	Languages
黎錦熙先生 相片註			國文學	國文學系
全上			Jün	Jin
博長光先生 相片註			教育學系	哲學系
教務委員會			大學教務 委員會	大學院教 務委員會
心理學系 概況	第五行	第十五字	in	in
全上	第十七行	第十二字	Experimenta	Experimental
歐洲語學 系概況	第七行	第十四字	of	or
馮日昌 相片註			文學士	文學士
劉志廣 相片註			歷史數	歷史學
于振清 相片註			于振興	于振清
房兆楹 相片註			方兆楹	房兆楹
男校學生自 治會小史	第十行	第十九字	部	部

附註：標點符號錯誤及遺漏者甚多，不使一一補正，特此聲明。

