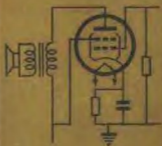


常用电子管电路手册

(修訂本)



刘同康 王印 徐榕娥 编

人民邮电出版社

第 III 部分

英美及其它各国的电子管

(按先字母、后数字编排)

編者的話

本手冊將我國、蘇聯及歐美各國生產的各種常用電子管和有關元件繪成實用電路圖，以簡明的符號和數據表示這些電子管的參數及典型工作電路，使讀者一目了然。本手冊對無線電裝配修理人員和業餘無線電愛好者都很適用。

鑒於近年來我國生產了許多新的電子管，並使用了新型號，因此修訂本重新編繪了第Ⅰ部分—國產電子管，增添了新生產的電子管，並按新型號排列。為了既能從新型號，又可以從舊型號查閱所需電子管電路圖起見，第一部分列有新型號目錄和舊型號目錄。這兩個目錄也可以作為新舊型號對照表。

修訂本改正了初版本第Ⅱ和第Ⅲ部分中的繪圖差錯，增加了國外生產的新型電子管二百餘種。

為不增加篇幅而擴大本手冊的使用範圍，在修訂本中，凡等效電子管僅繪出其中一個電子管的電路圖，另一電子管可從新增加的目錄中查出與某電子管等效及查閱頁數。

阻容耦合放大電路中的屏流，在修訂本的電路圖中不再繪出，而在圖右上角中以 I 註明。 I 表示不接負載電阻而直接接電源電壓時的數據，不是阻容耦合時的實際屏流值。

內容說明

本手册是根据世界各国常用电子管特性及其管座接綫图編繪而成。按照型号的字母及数字的排列順序，可找出各电子管的典型工作电路图，查出該管在典型工作状态下各极的电特性及其连接的电路元件（电阻、电容、电感等）的数值。

本手册分为三部分。第 I 部分为我国最新出品的电子管；第 II 部分是苏联电子管；第 III 部分为英美及其它国家出品的电子管。

由于一个电子管能在几种不同的情况下工作，因此分別繪出两个或更多的电路图。为了簡明起見，本手册中采用一些常用的外文字母及符号来代表。现将所用符号說明于后：



左图中所示各型号的电子管电极引綫，是以該管的底座自下向上观看为依据。某些特殊电子管是以箭头上下的方向表示电子管上下端的引綫。



左图表示該管灯絲工作电压或表示箭头两端的电压值（直流或交流有效值），单位均为伏。



左图表示該点与“地”間的电压值，单位为伏。



左图方格内的数值表示电路中电流的大小，除灯絲电流单位为安外，其它各极电流皆以毫安計。



左图三角形内的数值表示在該点的交流电压的有效值，单位为伏。



左图粗綫箭头表示工作电压或功率輸送的方向。



左图表示低频输出时，负载电阻为 8,000 欧，输出功率为 5 瓦。



左图分别表示电路中的电阻、电容，除特别注明外 (K 为千欧, M 为兆欧), 其单位分别为欧及微微法。

在电子管型号下面的小号字母说明该管的工作类型，

- | | |
|------------|-------------------------|
| G~变频 | O 或 OSC~振荡或接振荡器 |
| D~检波 | P~功率放大 |
| AF~低频电压放大 | Ph~相位变换 |
| HF~高频或中频放大 | R~整流 |
| HT~高压 | AVG~自动音量控制 |
| L~调谐指示管 | S _{sync} ~同步信号 |
| M~测量用电子管 | UHF~超高频 |

在上列字母后，常在括号内另注其它字母，它们分别表示：

- (FM)~调频
 (OTG)~专为超高频使用而设计的电子管
 (V)~可变互导管

(600兆周)等表示最高工作频率

(甲乙类)等表示功率放大的工作状态

特殊功用的电子管则直接注明，如调流管、显象管、电视、稳压等。

图的右上或右下方注有下列字母，分别表示：

- | | |
|----------------------------|-----------------|
| S~互导(毫安/伏) | ρ ~屏极内阻(欧) |
| S _v ~变频互导(毫安/伏) | D~渗透系数 |
| μ ~放大系数 | I~屏极电流(毫安) |

V~控制栅偏压。如有两个数值，则分别表示最小与最大值（伏）。

管内有阴影的为充气管。

部分电子管因使用范围需按实际情况决定，所以电路数据未加注明。

第 Ⅱ 部 分

英美及其它各国的电子管目录

型 号	頁 数	型 号	頁 数
AA61	1	AZ1	5
ABC1	1	AZ2	6
ABL1	1	AZ3	6
AB1	1	AZ4	6
AB2	1	AZ11	6
ACH1	1	AZ12	6
AC2	2	AZ31	6
AD1	2	AZ41	7
AD77 見 AM1	5	A50M 見 AF2	2
AF2 = A50M	2	GBC1	7
AF3	2	CBL1	7
AF7	2	CBL6	8
AH1	3	CBL31	8
AK1	3	CB1	8
AK2	3	CB2	8
AL1	3	GCH1	8
AL2	4	GCH2	8
AL3	4	CC2	9
AL4	4	C/EM2	9
AL5	4	CF1	9
AL60	5	CF2	10
AM1	5	CF3	10
AM2	5	CF7	10
AX1	5	CF50	11
AX50	5	CF51	11

型号	页数	型号	页数
CH1	11	DAH50	17
CK1	11	DA30	17
CK3	12	DA90見1A3	82
CK12AX	12	DBC21	18
CK502AX	12	DCC90見3A5	98
CK505AX	12	DCH11	18
CK520AX	13	DCH21	18
CK523AX	13	DCH22	18
CK551AXA	13	DCH25	18
CK568AX	13	DC25	18
CK569AX	13	DDD25	19
CK570AX	13	DFF50	19
CK605CX	14	DFF51	19
CK606BX	14	DF1	19
CL1	14	DF11	19
CL2	14	DF21=25F1D	19
CL4	14	DF22	20
CL6	15	DF23	20
CY1	15	DF25	20
CY2	16	DF26	20
CY31	16	DF31	20
DAC21	16	DF33 見 1N5 G/GT	91
DAC25	16	DF67=6008	21
DAF40	16	DF70	21
DAF41	16	DF91=1T4	21
DAF91=1S5	17	DF92=1L4	21
DAF92=1U5	17	DF96=1AJ4	21
DAF96=1AH5	17	DF97=1AN5	21
DAH50	17	DH63=6Q7	22

型号	页数	型号	页数
DK21	22	DN143 見 EBL21	30
DK22	22	DY30 見 1B3GT	83
DK31	22	EAA11	26
DK32	22	EAA91 = 6AL5	26
DK40	22	EABC80 = 6AK8	26
DK91 = 1R5	23	EAB1	26
DK92 = 1AC6	23	EAF41	27
DK96 = 1AB6	23	EAF42 = 6CT7	27
DLL21	23	EA40	27
DLL31	23	EA50	27
DL1	23	EBC1	28
DL2	24	EBC3	28
DL11	24	EBC11	28
DL21	24	EBC33	28
DL31	24	EBC41 = 6CV7	28
DL35 見 1C5GT	84	EBC51	28
DL36 = 1Q5GT	92	EBC90 見 6AT6	109
DL41	24	EBC91 見 6AV6	109
DL67 = 6007	25	EBF1	29
DL71	25	EBF2	29
DL72	25	EBF11	29
DL92 = 3S4	25	EBF15	29
DL93 = 3A4 = 1662	25	EBF21	29
DL94 = 3V4	25	EBF32 = 6B8	29
DL95 見 3Q4	100	EBF80 = 6N8	30
DL96 = 3C4	26	EBL1	30
DL98 見 3B4	98	EBL21 = DN134	30
DM70 = 1M3	26	EB1	30
DM71 見 DM70	26	EB2	31

型号	頁數	型号	頁數
EB ₁	31	ECL11.....	36
EB11	31	ECL80=6AB8	36
EB31	31	ECL81.....	36
EB40	31	ECL82=6BM8	36
EB41	31	EC2	36
EB91	32	EC50	36
ECC31.....	32	EC52	37
ECC34.....	32	EC53	37
ECC35.....	32	EC80=6Q4	37
ECC40.....	32	EC8J=6R4	37
ECC81 見 12AT7	145	EC90 見 6C4	115
ECC82 見 12AU7	145	EC92=6AB4	37
ECC83 見 12AX7	146	EDD11	37
ECC84=6CW7	32	EEP1	38
ECC85=6AQ8=(Ⅱ)6R3Π.....	33	EE50	38
ECC91 見 6J6	121	EFF50.....	38
ECF1	33	EFF51.....	38
ECF80=6BL8=(Ⅱ)6Φ1Π.....	33	EFM1	38
ECF82=6U8	33	EFM11	38
ECH2	33	EFF60.....	39
ECH3	33	EF1	39
ECH4	34	EF2	39
ECH11.....	34	EF3	39
ECH21.....	31	EF5	39
ECH33=ECH3	35	EF6	39
ECH35=ECH3	35	EF7	40
ECH41.....	35	EF8	40
ECH42=6CU7	35	EF9	40
ECH81=6AJ8=(Ⅱ)6H1Π	35	EF11	40

型号	页数	型号	页数
EF12	41	EL1	46
EF13	41	EL2	46
EF14	41	EL3	46
EF22	41	EL5	47
EF25	41	EL5G	47
EF36=OM5	42	EL6	47
EF37A	42	EL11	47
EF39=OM6	42	EL12	48
EF40	43	EL22	48
EF41=6CJ5	43	EL32	48
EF42=HF62	43	EL33	48
EF50	43	EL34=6CA7	48
EF51	43	EL35	49
EF54	44	EL36=6CM5	49
EF55	44	EL37	49
EF80=6BX6	44	EL38=6CN6	50
EF85=6BY7	44	EL39	50
EF86=6267	44	EL41=6CK5	50
EF89=6DA6	44	EL42	50
EF93 見 6BA6	111	EL44	51
EF94 見 6AU6	109	EL50	51
EF96 見 6AX5	107	EL51	51
EF96 見 6AG5	105	EL60=EL34	51
EH2	45	EL82=6DY5	51
EK1	45	EL84=6BQ5≈6Π14Π	51
EK2	45	EL86=6CW5	52
EK3	45	EL90 見 6AQ5	108
EK90 見 6BE6	111	EL95=6DL5	52
ELL1	45	EM1	52

型号	頁數	型号	頁數
EM2	52	E452T	56
EM4	52	E453	56
EM11	52	E455	57
EM34=6CD7	53	E462	57
EM35	53	E499	57
EM80=6BR5	53	FZ1	57
EQ40	53	GU50	57
EQ80=6BE7	53	GZ32	57
EW60	53	GZ34=5AR4	58
EY1	54	GZ40	58
EY51=6X2	54	HAA91 見 12AL5	144
EZ1	54	HBC90 見 12AT6	145
EZ2	54	HBC91 見 12AV6	145
EZ3	54	HP61=EF41	58
EZ4	54	HP62=EF42	58
EZ11	55	HP93 見 12BA6	146
EZ12	55	HK90 見 12BE6	147
EZ35=6X5/GT	134	HL92 見 50C5	167
EZ40=6BT4	55	HY90 見 35W4	163
EZ80 見 6V4	133	KBC1	58
EZ81 見 6CA4	114	KB2	58
EZ90 見 6X4	131	KCH1	59
E438	55	KC1	59
E442S	55	KC3	59
E444	55	KG4	59
E444S	56	KDD1	59
E446	56	KF2	59
E448	56	KF3	60
E449	56	KF4	60

型号	頁数	型号	頁数
KH1	60	OM6 見 EF39.....	42
KK2	61	PABC80=9AK8.....	65
KL1	61	PCC84=7AN7	65
KL2	61	PCC85=9AQ8	66
KL4	61	PCF80=9A8	66
KL5	61	PCF82=9U8	66
KTW61	62	PCL81.....	66
KTW63	62	PCL82($V_f=16, I_f=0.3$)見ECL82	
KT32	62	38
KT33C	62	PL36=25E5	66
KT41	62	PL81=21A6	66
KT61	62	PL82=16A5	67
KT63	63	PL83=15A6	67
KT66	63	PY80=19X3	67
L12	63	PY81=17Z3	67
L50	63	UAA11.....	67
L68	63	UAA91.....	67
ME4	63	UABC80=28AK8	68
ME6S	64	UAF41.....	68
MH4	64	UAF42.....	68
MHD4.....	64	UBC41.....	68
MHL4.....	64	UBC81.....	69
MKT4.....	64	UBF11.....	69
ML4	64	UBF15.....	69
MS4B	65	UBF80=17C8	69
MSP4	65	UBL1	69
MU14	65	UBL21=UBL21N	70
MX40	65	UBL21N 見 UBL21	70
OM5 見 EF36.....	42	UBL71.....	70

型号	頁数	型号	頁数
UCC85($V_r=26, I_r=0.4$)見PCC85		UFM11	76
.....	66	UR4001	76
UC2	70	UL1	76
UC92	70	UL2	76
UCF12	71	UL11	76
UCH4	71	UL12	77
UCH11	71	UL21	77
UCH21	71	UL41	77
UCH41	72	UL43	77
UCH42	72	UL44	77
UCH43	72	UL71	77
UCH71	72	UL84	78
UCH81	72	UM4	78
UCL11	73	UM11	78
UCL81	73	UM34	78
UEL11	73	UM35	78
UEL51	73	UM80	78
UEL71	73	UY1	79
UF9	73	UY2	79
UF11	74	UY3	79
UF14	74	UY4	79
UF15	74	UY11	79
UF21	74	UY21	79
UF41=12AC5	75	UY22	80
UF42	75	UY31	80
UF43	75	UY41	80
UF80	75	UY42	80
UF85	75	UY82=55N3	80
UF89	76	UY85=38A3	80

型号	页数	型号	页数
VR75/OA3	81	1D5GP	85
VR90/OB3	81	1D7G	85
VR105/OC3	81	1D8GT	85
VB150/OD3	81	1E4G	85
OA2	81	1E5GP	85
OB2	81	1E7GT	85
1AB5	82	1E8	86
1AB6 见 DK96	23	1F4	86
1AC5	82	1F5G	86
1AC6 见 DK92	23	1F6	86
1AD5	82	1F7G	87
1AH5 见 DAF96	17	1G4GT	87
1AJ4 见 DF96	21	1G5G	87
1AN5 见 DF97	21	1G6GT	87
1A8=DA90	82	1H4G	88
1A4P	82	1H5GT	88
1A5GT	82	1H6G	88
1A6	83	1J5G	88
1A7GT	83	1J6G	89
1B3GT=DY30	83	1LA4	89
1B5/25S	83	1LA6	89
1B7GT	83	1LB4	89
1B8GT	83	1LB6	89
1C4	84	1LC5	89
1C5GL≈DT35	84	1LC6	90
1C6	84	1LD5	90
1C7G	84	1LE3	90
1C8≈1E8	84	1LG5	90
1D4	84	1LH4	90

型号	頁数	型号	頁数
1LN5	90	2A3H	95
1L4	91	2A5	96
1M3 見 DM70	26	2A6	96
1N5G/GT=DF33	91	2A7	96
1N6G/GT	91	2B7	96
1N34	91	2C22	96
1N39	91	2C40	97
1N54	91	2E22	97
1P5G/GT	92	2E26	97
1Q6GT=DL36	92	2E30	97
1R5=DK91	92	2E35	97
1R5T	92	2W3	97
1SA6GT	92	2X2A	98
1SB6GT	92	3AL5 ($V_f=3.15, I_f=0.6$)	
1S4	93	見 12AL5	144
1S4T	93	3AU6 ($V_f=3.15, I_f=0.6$)	
1S5=DAF91	93	見 6AU6	109
1S5T	93	3AV6 ($V_f=3, 15, I_f=0.6$)	
1S6	93	見 6AV6	109
1T4	94	3A4	98
1T4T	94	3A5=DCC90	98
1T5GT	94	3A8	98
1T6	94	3B4=DL98	98
1U4	94	3B5GT	98
1U5=DAF92	94	3B7	99
1V	95	3CB6 ($V_f=3.15, I_f=0.6$)	
1V5	95	見 6CB6	114
1W5=1AD5	95	3C4 見 DL96	26
2A3	95	3C5GT	99

型号	页数	型号	页数
3D6	99	6AC5G/GT	103
3E6	99	6AC6G/GT	103
3LE4	99	6AC7=1852=(II)6JK4	103
3LF4	99	6AD5G	104
3Q4=DL95	100	6AD6G	104
3Q6GT	100	6AD7G	104
3S4=DL92.....	100	6AD7G+6F6	104
3S4T	100	6AE5G/GT	104
3V4=DL94	100	6AF6G	104
5AR4 見 GZ34	58	6AE7GT	105
5AZ4	100	6AF5G/GT	105
5R4	101	6AF6G	105
5T4	101	6AF7G	105
5U4G=(II)5U3C	101	6AG5=EP96	105
5U8($V_f=4.7, I_f=0.6$)見 ECF82	33	6AG6G	106
5V4G	101	6AG7	106
5W4.....	101	6AH5/G	106
5X3	101	6AH6	106
5X1G	102	6AH7/GT	106
5Y8G/GT	102	6AJ5	107
5Y4G/GT	102	6AJ7	107
5Z3	102	6AJ8 見 ECH81	35
5Z4	102	6AK5=EF95	107
6AB4 見 EC92	37	6AK6	107
6AB5	102	6AK8 見 EABC80	26
6AB6G	103	6AL5=EAA91	107
6AB8 見 ECL80.....	36	6AL6G	107
6AB7	103	6AQ5=EL90	108
		6AQ6	108

型号	頁数	型号	頁数
6AQ7GT	180	6BR5 見 EM80	53
6AQ8 見 ECC85	33	6BT4 見 EZ40	55
6AR5	108	6BX6 見 EF80	44
6AR6	108	6BY7 見 EF85	44
6AS6	109	6BY8	113
6AS7G	109	6B4G	113
6AT6 = EBC90	109	6B6G	113
6AU6 = EF94	109	6B7	113
6AV6 = EBC91	109	6B8 = EBF32	114
6AW5	109	6CA4 = EZ81	114
6AY8	110	6CA7 見 EL34	48
6A3	110	6CB6	114
6A5G	110	6CD7 見 EM34	53
6A6	110	6CJ5 見 EF41	43
6A7	110	6CK5 見 EL41	50
6A8	111	6CL6	114
6BA6 = EF93	111	6CM5 見 EL36	49
6BA7	111	6CN6 見 EL38	50
6BD6	111	6CT7 見 EAF 42	27
6BE6 = EK90	111	6CU7 見 ECH 42	35
6BE7 見 EQ80	53	6CV7 見 EBC 41	28
6BF6	112	6CW5 見 EL36	52
6BG6G	112	6CW7 見 ECC84	52
6BH6	112	6C4 = EC90	115
6BJ6	112	6C5 G/GT	115
6BL8 見 ECF80	33	6C6	115
6BM8 見 ECL82	36	6C7	116
6BN8	112	6C8G	116
6BQ5 見 EL34	51	6DA6 見 EF 89	44

型号	頁数	型号	頁数
6DL5 見 EL 95	52	6K7 G/GT	123
6DY5 見 EL 82	51	6K8 G/GT	123
6D4	116	6L5G	123
6D5G	116	6L6	123
6D6≈78	116	6L7	124
6D7	116	6M6G	125
6D8G	117	6M7G	125
6E5	117	6M8GT	125
6E6	117	6N5	125
6E7	117	6N6	125
6E8G	117	6N7 G/GT	125
6F5 G/GT	118	6N8 見 EBF80	30
6F6	118	6P5G/GT	126
6F7	119	6P7G	126
6F8G	119	6P8G	126
6G5=6U5	119	6Q4 見 EC80	37
6G6G	119	6Q6G	126
6H4/GT	120	6Q7=DH63	127
6H5=6G5	120	6Q8	127
6H6 G/GT	120	6R4 見 EC81	37
6H8G	120	6R6G	127
6H8MG	121	6R7	127
6J4	121	6SA7=(II)6A7	127
6J5=(II)6C2C	121	6SB7Y	127
6J6=ECC91	121	6SC7=(II)6H10C	128
6J7=(II)6X7	121	6SD7GT	128
6J8G	122	6SE7GT	128
6K5 G/GT	122	6SF5	128
6K6 G/GT	122	6SF7	129

型号	頁数	型号	頁数
6SG7=(II)6K4	129	6W5G	194
6SH7=(II)6K3	129	6W7G 見 6J7	121
6SJ7=(II)6K8	129	6X2 見 EY51	54
6SK7G/GT=苏 6K3	129	6X4=EZ90=(II)6U4Π	134
6SL7GT=(I)6N9P	130	6X5/GT=FZ35=(II)6U5C	134
6SN7GT=(I)6N8P	130	6X6G	135
6SQ7=(II)6Γ2	130	6Y3G	135
6SR7=(II)6Γ1	130	6Y5	135
6SS7	130	6Y6G	135
6ST7	130	6Y7G	135
6SU7GTY	131	6ZY5G	135
6SZ7	131	6Z3	136
6S6GT	131	6Z4	136
6S7	131	6Z5	136
6S8/GT	131	6Z6G	136
6TH8G	132	6Z7G	136
6T5	132	7AD7	137
6T6	132	7AF7	137
6T7G	132	7AG7	137
6T8	132	7AH7	137
6U5/6G5	133	7AJ7	137
6U6GT	133	7AK7	137
6U7G	133	7AN7 見 PCC84	65
6U8 見 ECF82	33	7AU7 ($V_r=6.3$, $I_r=0.6$) 見 12AU7	145
6V4=EZ80	133	7A4≈6J5	138
6V6G/GT=(II)6Π6C=(I) 6P6P	133	7A5	138
6V7G	134	7A6≈6H6	138
6W4GT	134	7A7≈6SK7	138

型号	頁數	型号	頁數
7B4≈6SF5	138	7X7	144
7B5≈6K6GT	138	7Y4	144
7B6≈6SQ7	139	7Z4	144
7B7	139	9AK8 見 PABC80	165
7B8	139	9AQ8 見 PCC85	166
7C4	139	9A8 見 PCF80	166
7C5≈6V6	139	9U8 見 PCF82	166
7C6	140	10	144
7C7≈6J7	140	12AC5 見 UF41	175
7D6	140	12AH7GT	144
7D7	140	12AL5 = HAA91	144
7E5	140	12AT6 = HBC90	145
7E6	140	12AT7 = ECC81	145
7E7	141	12AU6	145
7F7	141	12AU7 = ECC82	145
7F8	141	12AV6 = HBC91	145
7G7	141	12AW6	145
7G8	141	12AX7 = ECC83	146
7H7	142	12A5	146
7J7	142	12A6	146
7K7	142	12A7	146
7L7	142	12A8GT	146
7N7≈6F8G	142	12BA6 = HF93	146
7Q7≈6SA7	142	12BA7	147
7R7	143	12BD6	147
7S7	143	12BE6 = HK90	147
7T7	143	12BF6	147
7V7	143	12B7	147
7W7≈7V7	143	12B8GT	147

型号	頁数	型号	頁数
12C8	148	14AF7	153
12E5GT	148	14B6	153
12F5GT	148	14B8	153
12G7G/GT.....	148	14C5	153
12H6	148	14C7	154
12J5GT	149	14E6	154
12J7GT	149	14E7	154
12K7GT	149	14F7	154
12K8	149	14H7	154
12L8GT	149	14J7.....	155
12Q7GT	149, 150	14N7	155
12SA7	150	14Q7	155
12SC7=(Ⅱ)12H10C	150	14R7	155
12SF5	150	14S7.....	155
12SF7	150	14W7	155
12SG7=(Ⅱ)12K4.....	151	14Y4	156
12SH7	151	14Z3	156
12SJ7=(Ⅱ)12K8.....	151	15A6 見 PL83.....	67
12SK7=(Ⅱ)12K3.....	151	16A5 見 PL82.....	67
12SL7GT	151	17C8 見 UBF80	69
12SN7GT	151	17Z3 見 PY81.....	67
12SQ7=(Ⅱ)12Γ2	152	19.....	156
12SR7=(Ⅱ)12Γ1	152	19T8	156
12S8GT	152	19X3 見 PY80.....	67
12Z3	152	20J8.....	156
12Z5	152	21A6 見 PL81.....	68
13.....	152	21A7	156
14A5	153	21TH8.....	157
14A7	153	24/A	157

型号	頁数	型号	頁数
25AC5GT	157	31.....	161
25A6	157	31Z	162
25A7GT	157	32L7GT	162
25A8	157	33.....	162
25B5	158	34.....	162
25B6G.....	158	35/51	162
25B8/GT	158	35A5	162
25C6G.....	158	35B5	163
25D8GT	158	35C5	163
25E5 見 PL36.....	66	35L6GT	163
25L6G/GT.....	158	35W4 = HY90.....	163
25N6G≈25B5	159	35Y4	163
25X5	159	35Z3	163
25X6	159	35Z4/GT.....	164
25Y4	159	35Z5G/GT	164
25Y5	159	35Z6G	164
25Y6	159	36.....	164
25Z3	160	37.....	164
25Z4	160	38.....	164
25Z5	160	38A3 見 UY85.....	80
25Z6	160	40.....	165
26A7GT	160	40Z5/GT.....	165
26C6	160	41≈6K6GT	165
26D6	161	42.....	165
27.....	161	43.....	165
28AK8 見 UABC80.....	68	45.....	165
28D7	161	45Z3	166
28Z5	161	45Z5GT	166
30.....	161	46.....	166

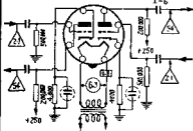
型号	頁数	型号	頁数
47.....	166	83V	171
48.....	166	84.....	171
49.....	166	85.....	171
50A5	167	101D	171
50B5	167	102P	171
50C5 = HL92	167	104D	172
50C8G	167	117L7GT	172
50L6GT	167	117M7GT	172
50X6	167	117N7GT	172
50Y6GT	168	117P7GT	172
50Z6GT/G	168	117Z3	172
50Z7G	168	117Z4GT.....	173
53.....	168	117Z6GT.....	173
55N3 見 UY82	80	135	173
57.....	168	139	173
58.....	168	142BT	173
59.....	169	292A	173
70A7GT	169	313C	174
70L7GT	169	717A	174
71A	169	801	174
75.....	169	802	174
76.....	169	803	175
77.....	170	804	175
78.....	170	805	175
79.....	170	806	175
80.....	170	807	176
81.....	170	809	177
82.....	170	810	177
83.....	171	811A	177

型号	頁數	型号	頁數
812A	178	2051.....	183
813	178	4033L	183
814	178	4074A	183
815	178	4610.....	183
816	179	4613.....	183
829A/B	179	4623.....	184
832	179	4624.....	184
833/A	179	4646.....	184
838	179	4652.....	184
866/866A	180	4654.....	184
872/872A	180	4670.....	184
884	180	4673.....	185
885	180	4682.....	185
954=(II)6K1K	180	4683.....	185
955=(II)6C1K	180	4684.....	185
956見(II)6K1K	(II)19	4686.....	185
957	181	4688.....	185
958-A	181	4690.....	186
1231.....	181	4694.....	186
1247.....	181	4696=EE1	186
1291=3B7	181	4699.....	186
1293.....	181	5654=EF95 見 6AK5	107
1625.....	182	6007 見 DL67.....	25
1629.....	182	6008 見 DF67.....	21
1851.....	182	6267見EF86	44
1875.....	182	7193.....	186
1877.....	182	8016.....	186
1878.....	182	9001.....	187
2050.....	183	9002.....	187

型号	頁数	型号	頁数
9003.....	187	9005.....	187
9004=(II)6Д4Ж.....	187	9006.....	187

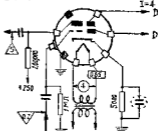
AA61 = ECC40
AF+AF

$S=28$
 $\rho=10,000$
 $\mu=32$
 $V=-56$
 $I=6$



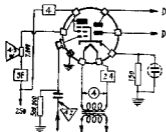
ABC1
D+AF

$S=2$
 $\rho=13,500$
 $V=-8$
 $I=4$

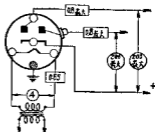


ABL1
D+P

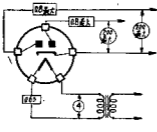
$S=9$
 $\rho=50,000$
 $V=-6$



AB1
D

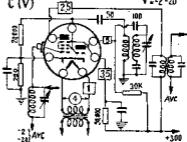


AB2
D

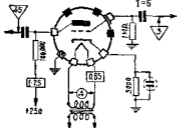


ACH1
C (V)

$S_c=0.75$
 $\rho=0.8 \text{ MR}$
 $V=-2-20$

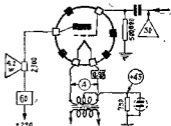


AC2
AF



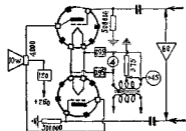
$S=2.5$
 $P=12,000$
 $V=-55$
 $I=6$

AD1
P



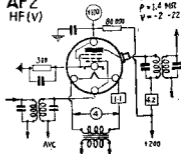
$S=6$
 $P=670$
 $V=-45$

AD1
P (甲类)



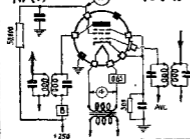
$S=6$
 $P=670$
 $Vg=-45$

AF2
HF (V)



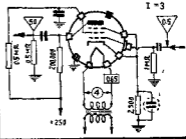
$S=2.5$
 $P=1.4 \text{ M}\Omega$
 $V=-2-22$

AF3
HF (V)



$S=1.8$
 $P=1.2 \text{ M}\Omega$
 $V=-5-55$

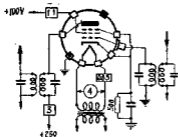
AF7
AF



$S=2.1$
 $P=2 \text{ M}\Omega$
 $V=-2$
 $I=3$

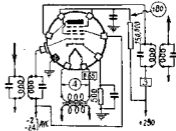
AF7
HF

$S=21$
 $p=2\text{MR}$
 $V=-2$



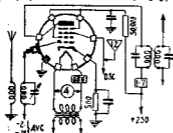
AH1
HF (V)

$S=18$
 $p=2\text{MR}$
 $V=-2.24$



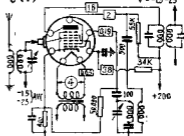
AH1
M(V)

$S=0.55$
 $p=2\text{MR}$
 $V=-2.24$



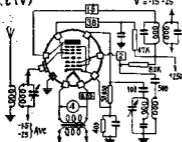
AK1
C (V)

$S=0.6$
 $p=16\text{MR}$
 $V=-15-25$



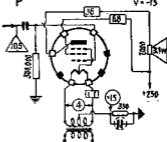
AK2
C (V)

$S=0.6$
 $p=10\text{MR}$
 $V=-15-25$



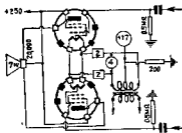
AL1
P

$S=2.8$
 $p=43.000$
 $V=-15$



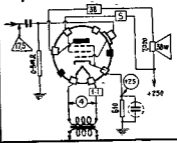
AL1
P(ㄨㄛㄟ)

S = 2.8
p = 43,000



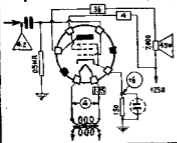
AL2
P

S = 2.6
p = 60,000
V = -25



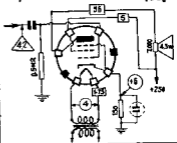
AL3
P

S = 9.5
p = 50,000
V = -6



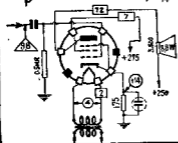
AL4
P

S = 9
p = 60,000
V = -8



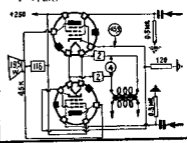
AL5
P

S = 8.5
p = 22,000
V = -14



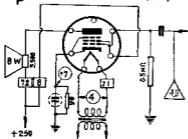
AL5
P(甲乙类)

S = 8.5
p = 22,000



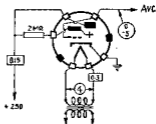
AL60
P

S = 85
P = 23,000
V = -7



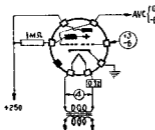
AM1
I

V = 0 - 5

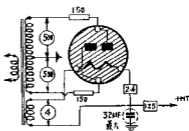


AM2
I

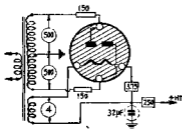
S = 2
P = 25,000
V = 0 - 6



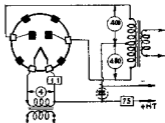
AX1 = 4852
R



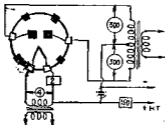
AX50
R



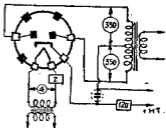
AZ1
R



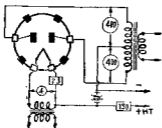
AZ2
R



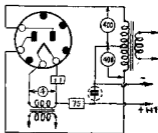
AZ3
R



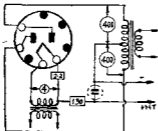
AZ4
R



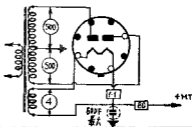
AZ11
R



AZ12
R

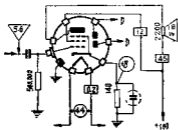


AZ31
R



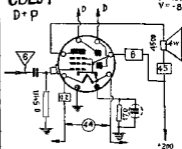
CBL6
D+P

S = 65
P = 20000
V = -8

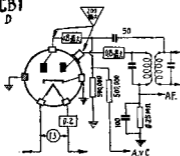


CBL31
D+P

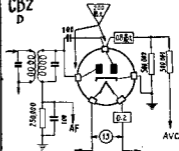
S = 8
P = 40000
V = -8.5



CB1
D

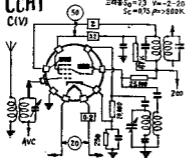


CB2
D



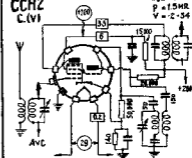
CCH1
C(V)

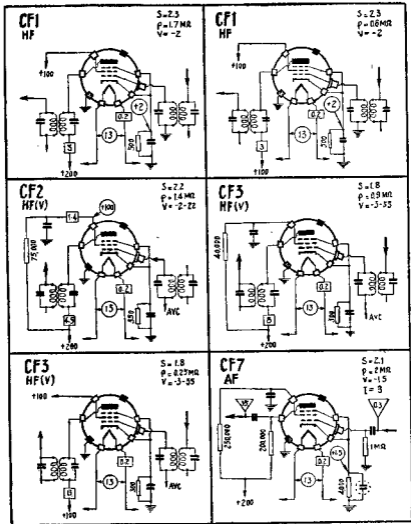
$S_0 = 23$ V = -2-20
 $S_c = 0.75$ P = 800K



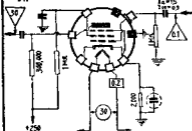
CCH2
C(V)

$S_c = 0.75$
P = 1.5HR
V = -2-54



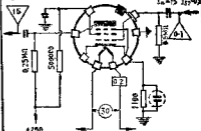


CF50
AF



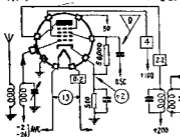
$S = 3.3$
 $P = 2.5 \text{ mW}$
 $V = -2$
 $I_a = 15$
 $I_{f1} = 0.3$

CF51
AF



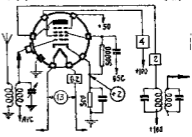
$S = 3.3$
 $P = 2.5 \text{ mW}$
 $V = -2$
 $I_a = 15$
 $I_{f1} = 0.3$

CH1
M(V)



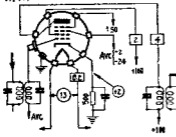
$S = 0.55$
 $P = 2 \text{ mW}$
 $V = -2-24$

CH1
M(V)



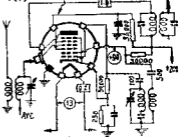
$S = 0.55$
 $P = 0.5 \text{ mW}$
 $V = -2-24$

CH1
HF(V)

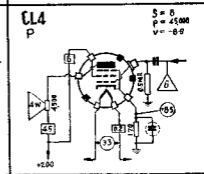
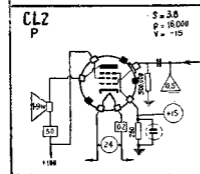
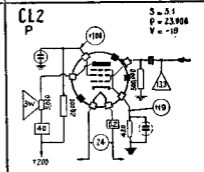
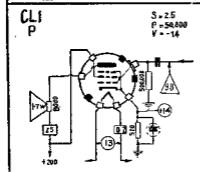
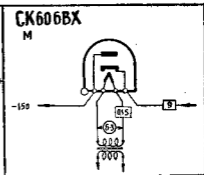
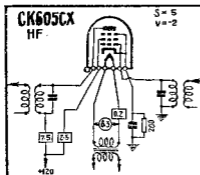


$S = 2$
 $P = 1.5 \text{ mW}$
 $V = -2-24$

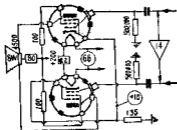
CK1
C(V)



$S = 0.0$
 $P = 1.5 \text{ mW}$
 $V = -15-25$

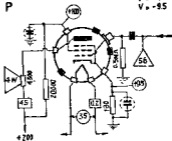


CL4
P(甲类)



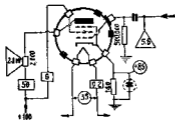
CL6
P

S = 8
P = 2000
V = -85

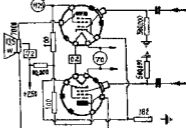


CL6
P

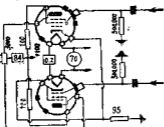
S = 8.5
P = 12000
V = -85



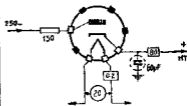
CL6
P(甲类)



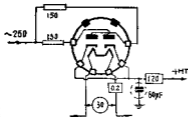
CL6
P(甲类)



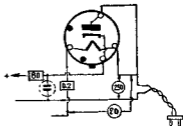
CY1
R



CY2
R

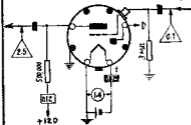


CY31
R



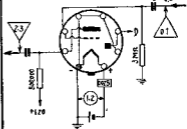
DAC21
D+AF

S = 0.4
P = 1 MR
V = 0
I = 0.75



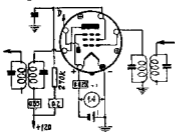
DAC25
D+AF

S = 0.35
P = 1.1 MR
V = 0
I = 0.6



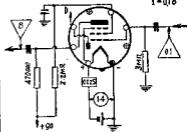
DAF40
HF + D

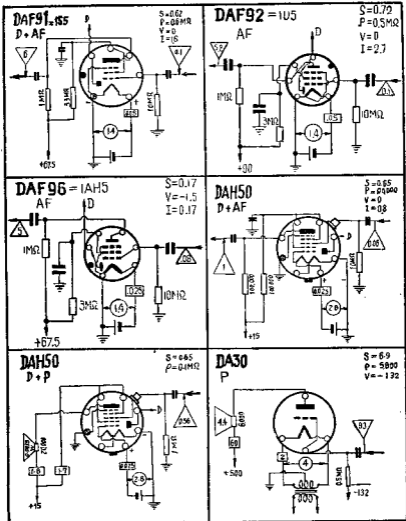
S = 0.7
P = 2.5 MR
V = 0



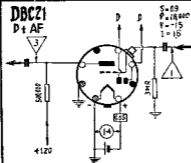
DAF41
D+AF

S = 0.6
P = 1.5 MR
V = 0
I = 0.18



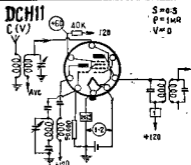


DBC21
D + AF



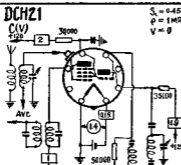
$S = 0.9$
 $\rho = 18000$
 $V = -15$
 $I = 15$

DCH11
C (V)



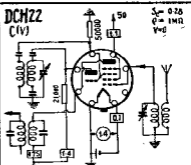
$S = 0.3$
 $\rho = 1M\Omega$
 $V = 0$

DCH21
C (V)



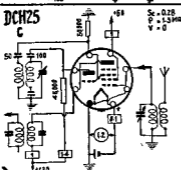
$S_s = 0.45$
 $\rho = 1M\Omega$
 $V = 0$

DCH22
C (V)



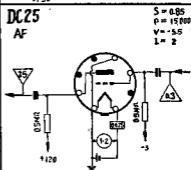
$S_s = 0.28$
 $\rho = 1M\Omega$
 $V = 0$

DCH25
C



$S_s = 0.28$
 $\rho = 1.3M\Omega$
 $V = 0$

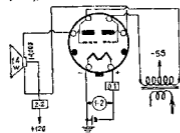
DC25
AF



$S = 0.85$
 $\rho = 15000$
 $V = -55$
 $I = 2$

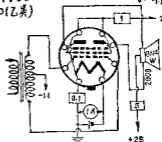
DD25
P(乙类)

S=12
P=12500
V=-55



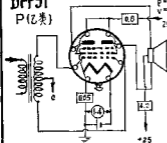
DFF50
P(乙类)

S=12
P=32500
V=-11



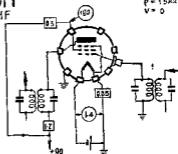
DFF51
P(乙类)

S=07
P=55000
V=0



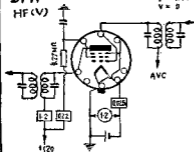
DF1
HF

S=075
P=15M2
V=0



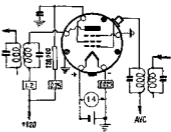
DF11
HF(V)

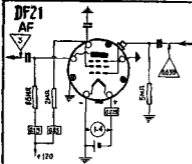
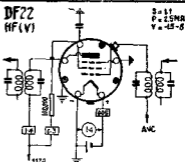
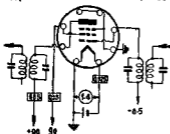
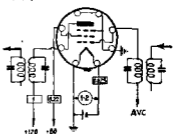
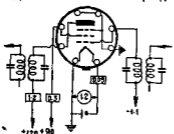
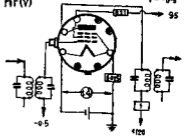
S=07
P=1M2
V=0



DF21
HF(V)

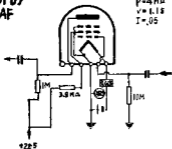
S=07
P=25M2
V=0-46



DF21**AF****DF22****HF (V)**
 $S = 11$
 $P = 2.5MR$
 $V = -45-0$
**DF23****HF**
 $S = 0.6$
 $P = 0.65MR$
 $V = -0.5$
**DF25****HF (V)**
 $S = 0.83$
 $P = 2.5MR$
 $V = 0-10$
**DF26****HF**
 $S = 0.75$
 $P = 1.4MR$
 $V = -1.1$
**DF31****HF (V)**
 $S = 0.65$
 $P = 3MR$
 $V = -0.5$


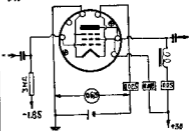
DF67
AF

$S=0.1$
 $P=4M\Omega$
 $V=1.15$
 $I=0.05$



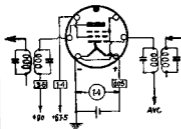
DF70
AF

$S=0.1$
 $P=2.5M\Omega$
 $V=1.9$



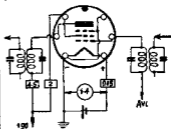
DF91 = 1T4
HF (V)

$S=0.9$
 $P=0.5MR$
 $V=0-15$



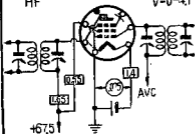
DF92 = 1L4
HF

$S=1.92$
 $P=6.35MR$
 $V=0-0$



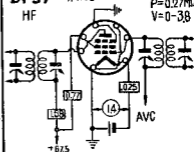
DF96 = 1AJ4
HF

$S=0.85$
 $P=0.7MR$
 $V=0-4.1$



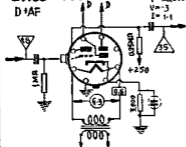
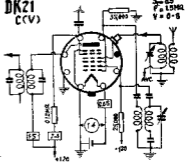
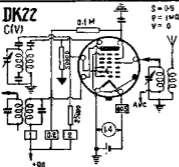
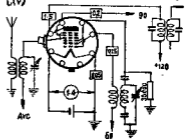
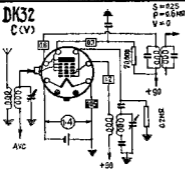
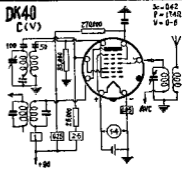
DF97 = 1AN5
HF

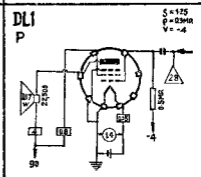
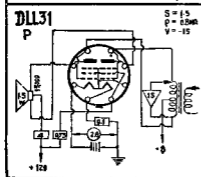
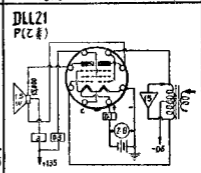
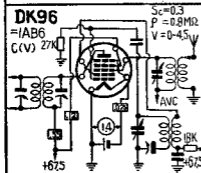
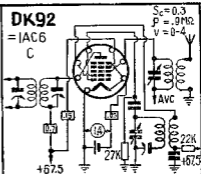
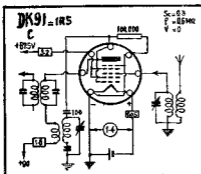
$S=0.84$
 $P=0.27MR$
 $V=0-3.8$

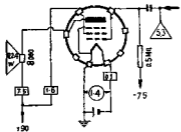
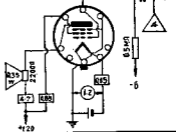
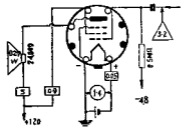
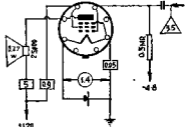
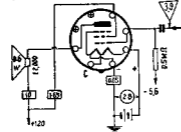
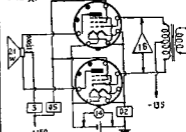


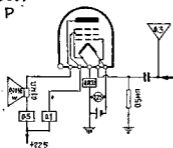
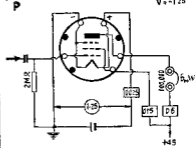
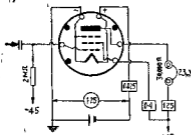
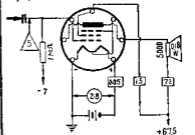
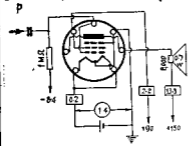
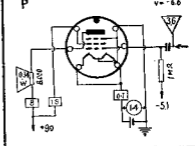
DH63 = 607

D+AF

 $S = 1.2$
 $P = 50,000$
 $V = -3$
 $I = 1-1$
**DK21**
C(V)
 $S = 0.5$
 $P = 1500$
 $V = 0-5$
**DK22**
C(V)
 $S = 0.5$
 $P = 150$
 $V = 0$
**DK31**
C(V)
 $S = 0.5$
 $P = 1500$
 $V = -7$
**DK32**
C(V)
 $S = 0.25$
 $P = 6600$
 $V = 0$
**DK40**
C(V)
 $S = 0.42$
 $P = 1740$
 $V = 0-5$


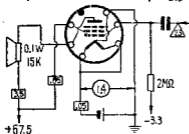


DL2**P**
 $S = 1.95$
 $P = 0.12 \text{ MW}$
 $V = -7.5$
DL11**P**
 $S = 1.1$
 $P = 0.5 \text{ MW}$
 $V = -6$
DL21**P**
 $S = 1.4$
 $P = 0.35 \text{ MW}$
 $V = -48$
DL31**P**
 $S = 1.4$
 $P = 0.35 \text{ MW}$
 $V = -48$
DL41**P**
 $S = 2.35$
 $P = 0.9 \text{ MW}$
 $V = -5.6$
DL41**P(乙类)**

DL67**P** $S = 0.41$
 $V = 0$ **DL71****P** $S = 0.5$
 $P = 0.35 \text{ mW}$
 $V = -1.25$ **DL72****P** $S = 0.5$
 $P = 0.225 \text{ mW}$
 $V = -4.5$ **DL92 = 3S4****P** $S = 1.425$
 $P = 0.1 \text{ mW}$
 $V = -7$ **DL93 = 3A4****P** $S = 1.9$
 $V = -0.4$ **DL94 = 3V4****P** $S = 2.2$
 $P = 1 \text{ mW}$
 $V = -6.6$ 

DL96 = 3C4

P

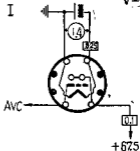
S=1.4
P=0.15MSΩ
V=-3.3

+67.5

DM70 = 1M3

I

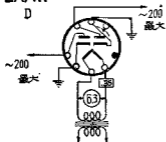
V=0-7



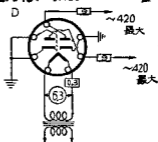
+67.5

EAA11

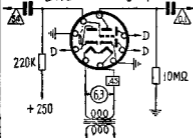
D

I_管=5~200
最大~200
最大**EAA91 = 6AL5**

D

I_管=9~420
最大~420
最大**EABC80 = 6AK8**

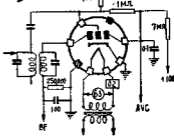
D+AF

S=1.2 P=56000
M=70 V=-3
I=1

+250

EAB1

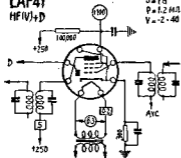
D

I_管=0.8mA

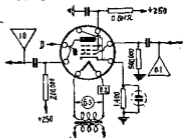
AVC

EAF41
HF(V)+D

$S=1.8$
 $P=1.2 \text{ MVA}$
 $V=2-40$

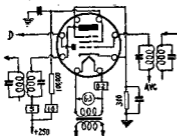


EAF41
AF+D



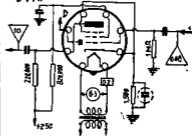
EAF42
HF+D

$S=2$
 $P=1.4 \text{ MVA}$
 $V=2-40$



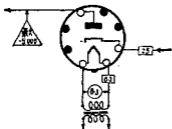
EAF42
D+AF

$I=5$



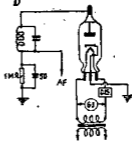
EA40
D (電報)

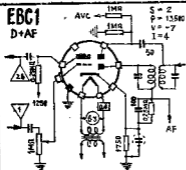
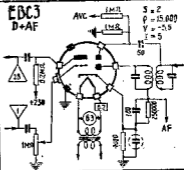
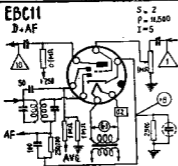
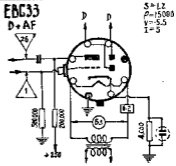
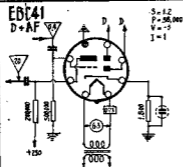
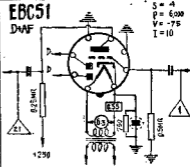
$P=300 \Omega$

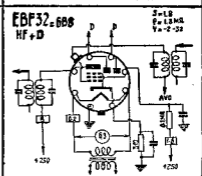
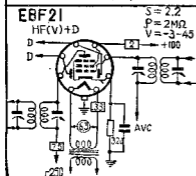
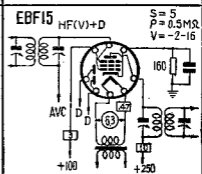
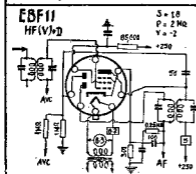
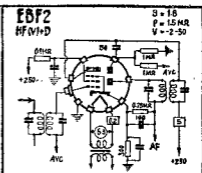
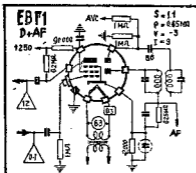


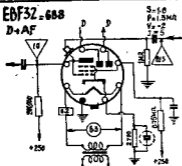
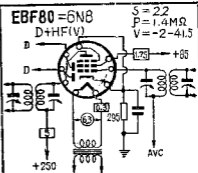
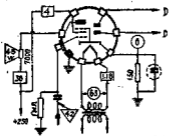
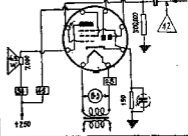
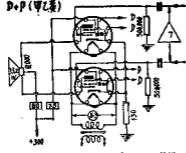
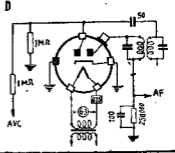
EA50
D

$I_{A1}=50 \text{ mA}$



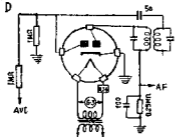
EBC1**D+AF****EBC3****D+AF****EBC11****D+AF****EBC33****D+AF****EBC41****D+AF****EBC51****D+AF**



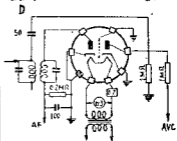
EBF32 = 688**D+AF****EBF80 = 6N8****D+HF(V)**
 $S = 2.2$
 $P = 1.4M\Omega$
 $V = -2-41.5$
**EBL1****D+P**
 $S = 9$
 $P = 50,000$
 $V = 0$
**EBL21 = 6N134****D+P**
 $S = 9$
 $P = 50,000$
 $V = 0$
**EBL21****D+P (甲乙表)****EB1****D**I_{max} = 28mA

EB2

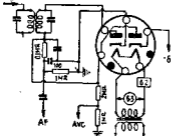
D

**EB4** $I_{g1} = 0.05\text{mA}$

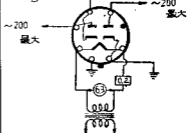
D

**EB11** $I_{g1} = 0.05\text{mA}$

D

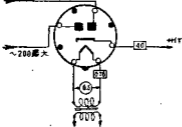
**EB34** $I_{g1} = 0.6$

D

**EB40**

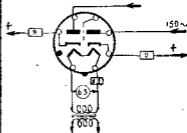
D(UHF)

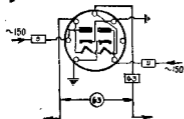
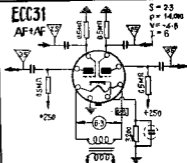
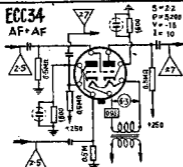
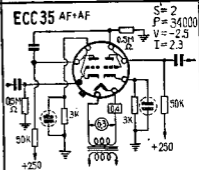
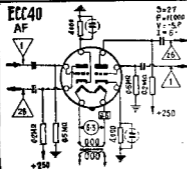
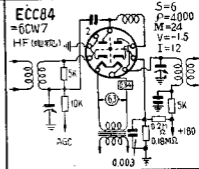
~200 最大

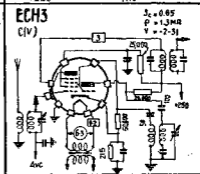
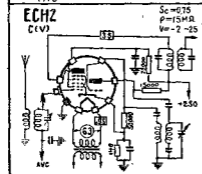
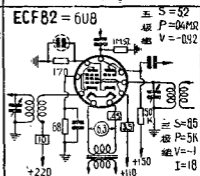
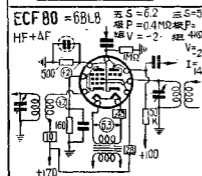
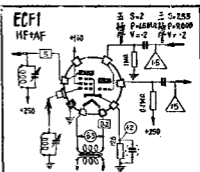
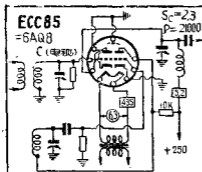
**EB41**

D

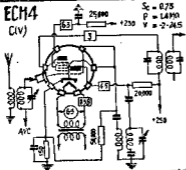
~150



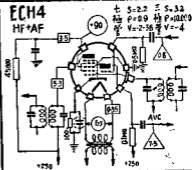
EB91**D****ECC31****AF+AF****ECC34****AF+AF****ECC35 AF+AF****ECC40****AF****ECC84****=6CW7****HF (6CW7)**



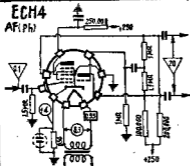
ECH4
C(V)



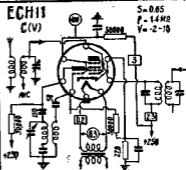
ECH4
HF+AF



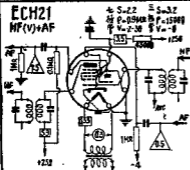
ECH4
AF(PH)



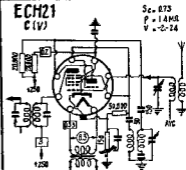
ECH11
C(V)



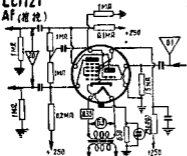
ECH21
HF(V)+AF



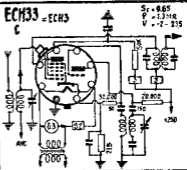
ECH21
C(V)



ECH21
AF (推挽)

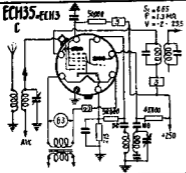


ECH33 = ECH3
C



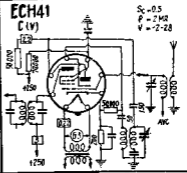
$S_c = 6.65$
 $P = 1.3 \text{ M}\Omega$
 $V = -2 - 235$

ECH35 = ECH3
C



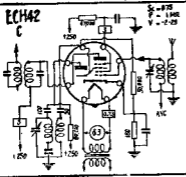
$S_c = 6.65$
 $P = 1.3 \text{ M}\Omega$
 $V = -2 - 235$

ECH41
C (V)



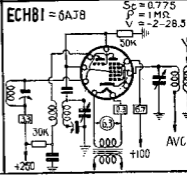
$S_c = 0.5$
 $P = 2 \text{ M}\Omega$
 $V = -2 - 28$

ECH42
C



$S_c = 0.75$
 $P = 1 \text{ M}\Omega$
 $V = -2 - 28$

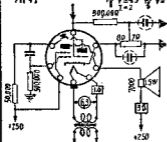
ECH81 = 6AJ8



$S_c = 0.775$
 $P = 1 \text{ M}\Omega$
 $V = -2 - 28.5$

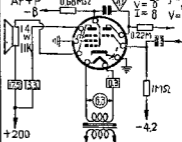
ECL11 AF+P

三極管 S=2 屏 S=0
種 P=310W 種 P=25.000
V=25 V=-6
I=2



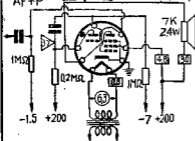
ECL80 = 6AB8 AF+P

三極管 S=1.9 五極管 S=3.3
M=20 P=0.13
V=0 V=-6
I=8



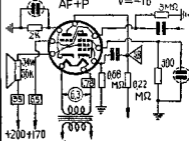
ECL81 AF+P

三極管 S=1.6 I=1.7 五極管 S=8.75
種 D=1.8% 種 P=22.000
V=-1.9 V=-7



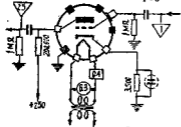
ECL82 = 6BM8 AF+P

S=6.4
P=20.000
V=-16



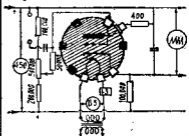
EC2 AF

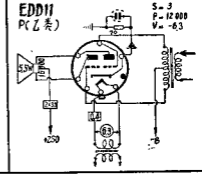
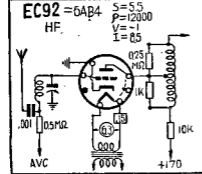
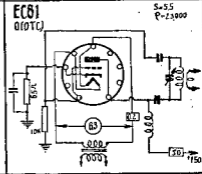
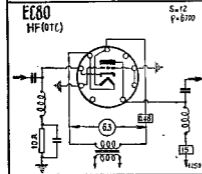
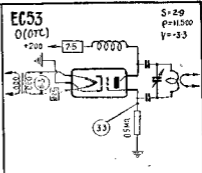
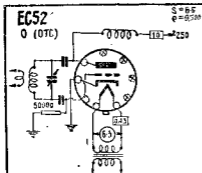
S=2.5
P=12.000
V=-5.5
I=6



EC50

F_{max} 150千赫

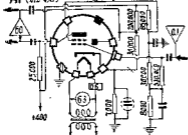




EEPI = EE1

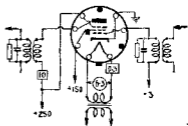
AF(推挽) 二次电子发射管

S = 17
P = 50W
V = 2.5



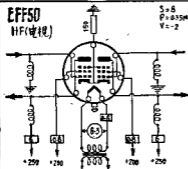
EE50
HF(电视)

S = 14
P = 75W
V = -3



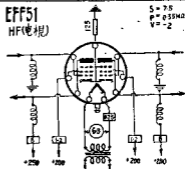
EFF50
HF(电视)

S = 8
P = 0.35W
V = -2



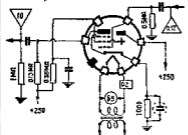
EFF51
HF(电视)

S = 7.5
P = 0.35W
V = -2



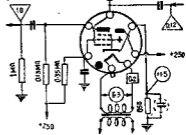
EFM1
AF+IV)

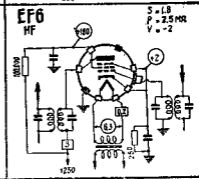
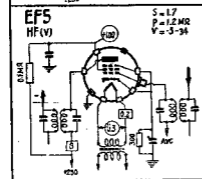
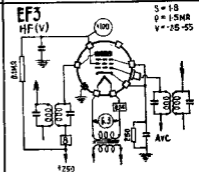
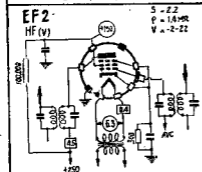
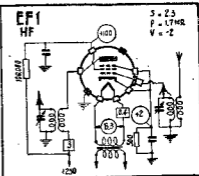
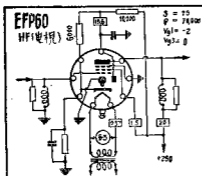
V_a = 2-20
I = 0.8



EFM11
AF+I

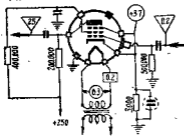
P = 0.7W
V_a = 1.5
I = 1





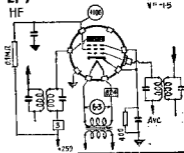
EF6
AF

S = 2
P = 2.5 MR
V = -2



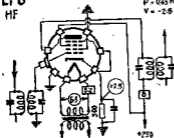
EF7
HF

S = 2-1
P = 24W
V = -15



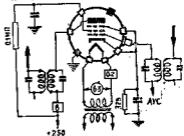
EF8
HF

S = 1.6
P = 0.45 MR
V = -2.6



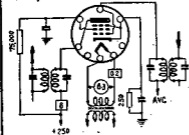
EF9
HF(V)

S = 2.2
P = 1.25 MR
V = -25-30



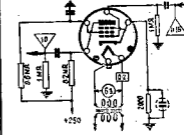
EF11
HF(V)

S = 2.2
P = 1.5 MR
V = -2-21



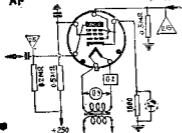
EF11
AF

S = 2.2
P = 2 MR
I = 6



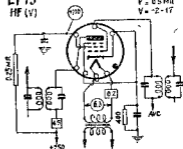
EF12
AF

S = 2.1
P = 1.8 MR
V = -2
I = 3 mA



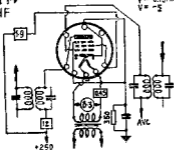
EF13
HF (V)

S = 2.3
P = 0.5 MR
V = -2-17



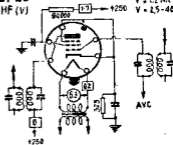
EF14
HF

S = 7
P = 0.18 MR
V = -5



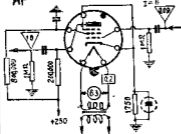
EF22
HF (V)

S = 2.2
P = 1.2 MR
V = 2.5-48



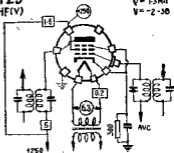
EF22
AF

S = 2.2
P = 1.2 MR
V = -2
I = 0



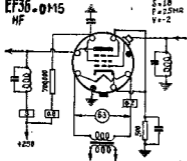
EF25
HF (V)

S = 1.8
P = 1.3 MR
V = -2-30

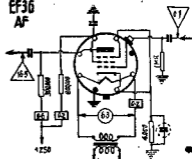


EF36-0M5
HF

$S=1.8$
 $P=2.5M\Omega$
 $V=-2$

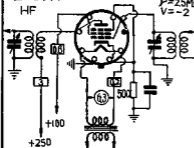


EF36
AF

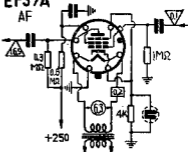


EF37A
HF

$S=1.8$
 $P=2.5M\Omega$
 $V=-2$

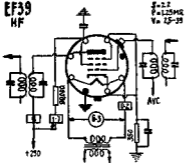


EF37A
AF

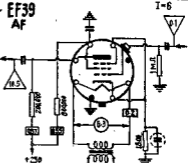


EF39
HF

$S=2.2$
 $P=1.25M\Omega$
 $V=1.5-3.5$

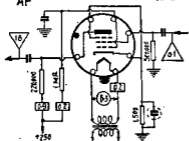


EF39
AF



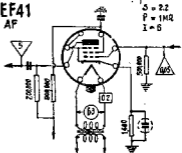
EF40
AF

$S = 185$
 $P = 25\text{MR}$
 $V = -2$



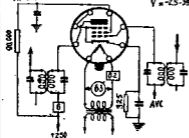
EF41
AF

$S = 2.2$
 $P = 1\text{MR}$
 $V = 6$



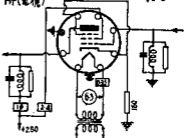
EF41
HF(V)

$S = 2.2$
 $P = 1\text{MR}$
 $V = -25-39$



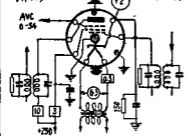
EF42
HF(电视)

$S = 9$
 $P = 15\text{MR}$
 $V = -2$



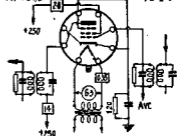
EF50
HF(V)

$S = 6.5$
 $P = 1\text{MR}$
 $V = -27-54$



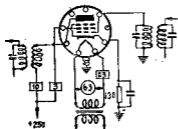
EF51
HF(电视)

$S = 6.5$
 $P = 0.8\text{MR}$
 $V = -2-6$



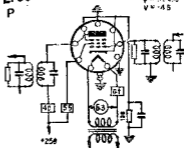
EF54
HF

S = 7.7
P = 0.5MR
V = -17



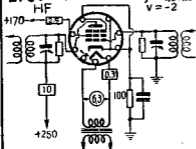
EF55
P

S = 12
P = 150MR
V = -45



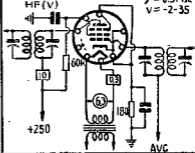
EF80 = 6BX6
HF

S = 7.4
P = 0.6MR
V = -2



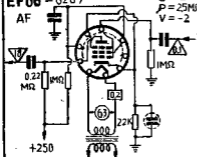
EF85 = 6BY7
HF(V)

S = 6
P = 0.5MR
V = -2-35



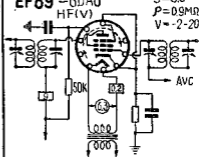
EF86 = 6267
AF

S = 2
P = 25MR
V = -2

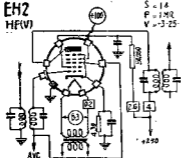


EF89 = 6DA6
HF(V)

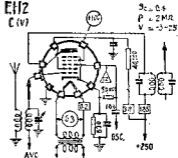
S = 3.6
P = 0.9MR
V = -2-20



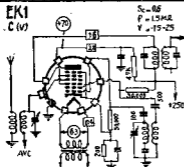
EH2 HF(V)



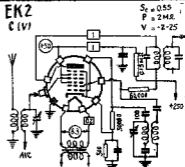
EH2 C(V)



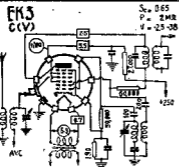
EK1 C(V)



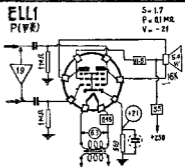
EK2 C(V)



EK3 C(V)

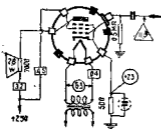


EL1 P(F)

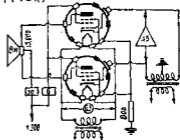


EL1
P

S = 26
P = 48W
V = -105

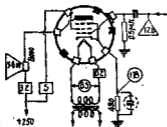


EL1
P(甲乙类)

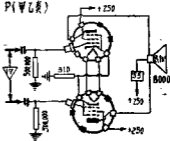


EL2
P

S = 2.8
P = 70.000
V = -10

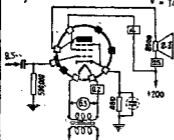


EL2
P(甲乙类)



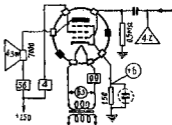
EL2
P

S = 23
P = 90.000
V = 14

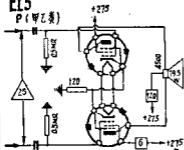


EL3
P

S = 9
P = 50.000
V = -6

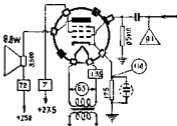


EL5
P (甲乙类)



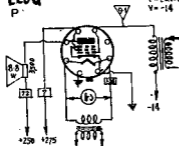
EL5
P

S = 8.5
P = 22.000
V = -14



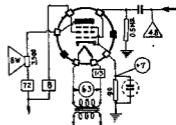
EL5G
P

S = 8.5
P = 22.000
V = -14



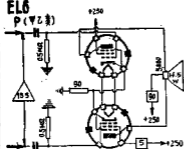
EL6
P

S = 15
P = 20.000
V = -7



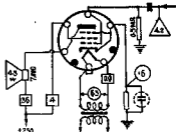
EL6
P (乙类)

+250



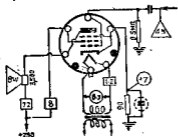
EL11
P

S = 9
P = 50.000
V = -8



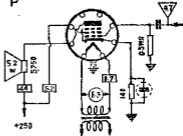
EL12
P

S = 15
P = 25,000
V = -7



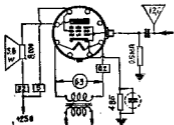
EL22
P

S = 0.6
V = -7



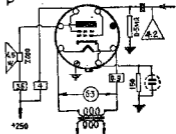
EL32
P

S = 2.8
P = 70,000
V = -18

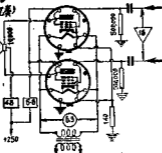


EL33
P

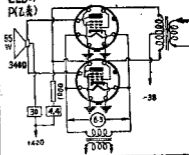
S = 9
P = 50,000
V = -6

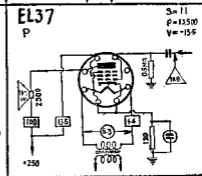
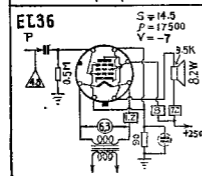
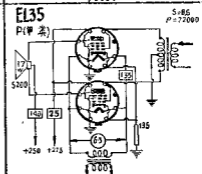
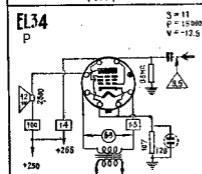
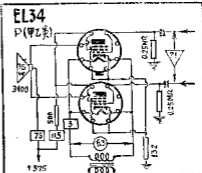
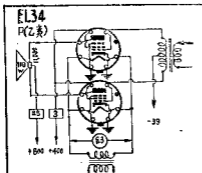


EL33
P(7Z表)



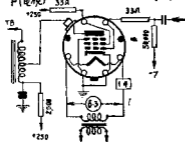
EL34
P(7Z表)



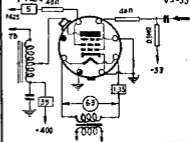


EL38

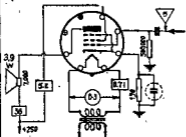
P(电视)

S=14.5
P=21000
V=-7**EL39**

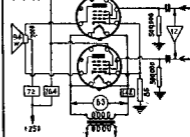
P(电视)

S=6
P=30000
V=-33**EL41**

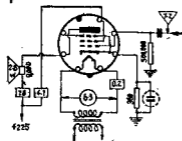
P

S=10
P=41100
V=-7**EL41**

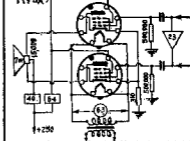
P(甲类)

**EL42**

P

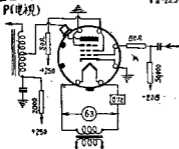
S=22
P=50000
V=-10.5**EL42**

P(甲类)

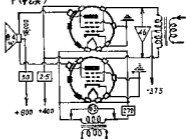


EL44

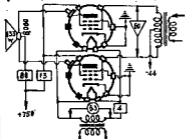
P(地线)

S = 5
V = -22.5**EL50**

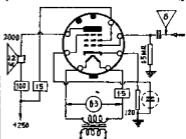
P(甲乙类)

S = 4
P = 50,000
V = -37**EL51**

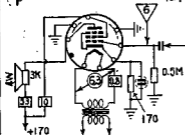
P(甲乙类)

S = 7
P = 55,000
V = -64**EL60 = EL134**

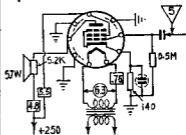
P

S = 11
P = 15,000
V = -13.5**EL82 = 6DY5**

P

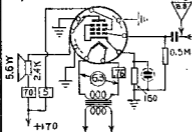
S = 9
P = 20,000
V = -10.4**EL84 = 6BQ5**

P

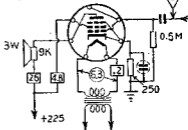
S = 11
P = 50,000
V = -7.5

EL86 = 6CW5

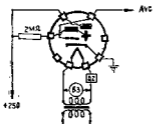
P

 $S = 10$
 $P = 2300$
 $V = -12.5$
**EL95 = 6DL5**

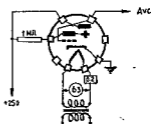
P

 $S = 5.5$
 $P = 75000$
 $V = -7.3$
**EM1**

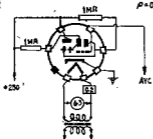
I

 $V = 0-5$
 $S = .65$
 $P = 0.1MR$
**EM2**

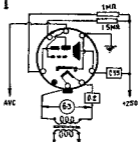
I

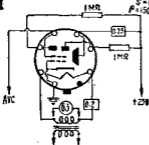
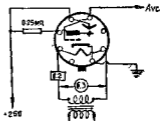
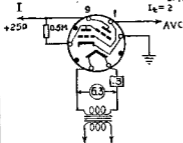
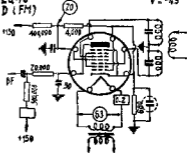
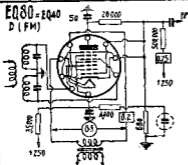
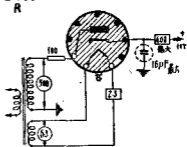
 $V = 0-4.5$
 $S = 2$
 $P = 25000R$
**EM4**

I

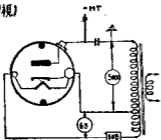
 $V = 0-16$
 $S = 0.2$
 $P = 0.15$
 MR
**EM11**

I

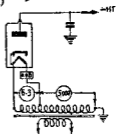
 $V = 0-16$
 $V_g = 0-5$
 $S = 0.15$
 $P < 60000$


EM34**I**
 $V = 0-16$
 $V_s = 0-5$
 $S = 0.2$
 $\mu = 150000\Omega$
**EM35****I**
 $V = 0-22$
 $S = 0.15$
 $\mu = 80000$
**EM80=6BR5****I**
 $V = 0-20$
 $I = 0.48$
 $I_k = 2$
**EQ40****D (FM)**
 $P = 3M\Omega$
 $V = -45$
**EQ80=EQ40****D (FM)****EW60****R**

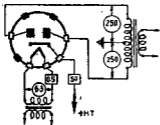
EY1
R(电视)



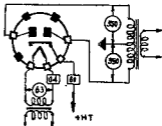
EY51
R(电视)



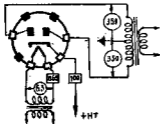
EZ1
R



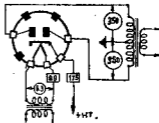
EZ2
R

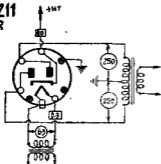
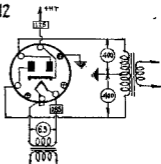
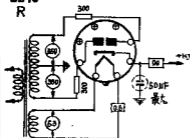


EZ3
R

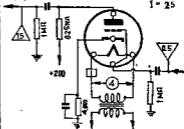


EZ4
R

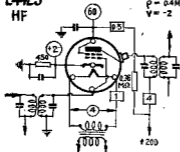


EZ11**R****EZ12****R****EZ40****R****E438****AF**

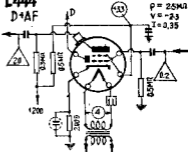
S = 1.5
 P = 35.000
 V = -25
 I = 25

**E442S****HF**

S = 1
 P = 0.4MH
 V = -2

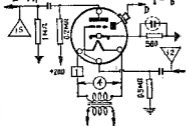
**E444****D+AF**

S = 3
 P = 25MVA
 V = -25
 I = 0.35



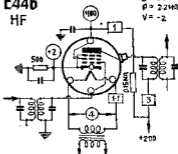
E444S
D+AF

$S = 2$
 $\rho = 1500$
 $V = -3.5$
 $I = 6$



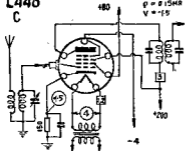
E446
HF

$S = 23$
 $\rho = 2.2M$
 $V = -2$



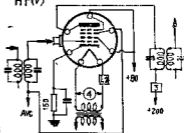
E448
C

$S_c = 0.50$
 $\rho = 0.15M$
 $V = -15$



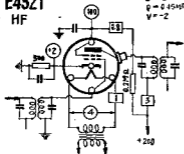
E449
HF(V)

$S = 15$
 $\rho = 0.45M$
 $V = -2.8$



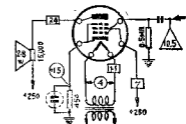
E452T
HF

$S = 2$
 $\rho = 0.45M$
 $V = -2$



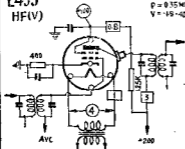
E453
P

$S = 25$
 $\rho = 7000$
 $V = -15$



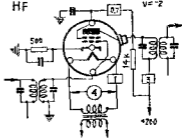
E455
HF(V)

$S = 2$
 $P = 0.35 \text{ WR}$
 $V = -18 - 40$



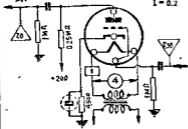
E462
HF

$S = 2$
 $P = 0.45 \text{ WR}$
 $V = -2$

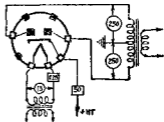


E499
AF

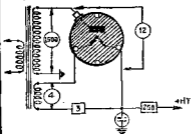
$S = 22$
 $P = 45000$
 $V = 0.6$
 $I = 0.2$



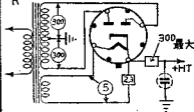
FZ1
R



GU50
R

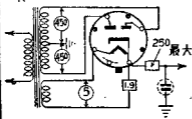


GZ32
R



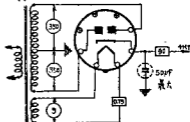
GZ34-5AR4

R



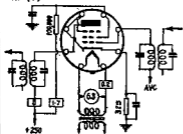
GZ40

R



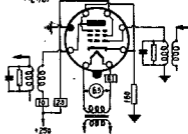
HF61, EF41
HF (V)

S=2.2
P=1MR
V=25-30



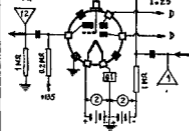
HF62, EF42
HF (電視)

S=8.5
P=0.44MR
V=2

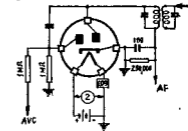


KBC1
D+AF

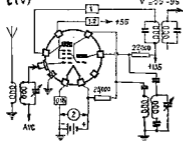
S=1
P=10.000
V=4.5
1.25



KB2
D

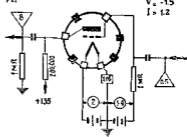


KCH1
C(V)



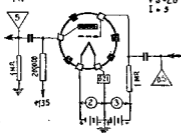
$S_c = 0.32$
 $P = 1.5 \text{ W}$
 $V = 95-95$

KC1
AF



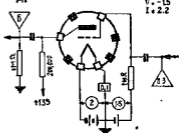
$S = 0.6$
 $P = 40,000$
 $V = -15$
 $I = 1.2$

KC3
AF



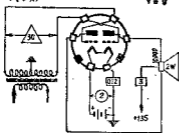
$S = 2.5$
 $P = 42,000$
 $V = -2.8$
 $I = 3$

KC4
AF



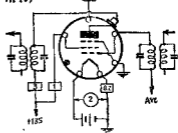
$S = 1.4$
 $P = 21,500$
 $V = -15$
 $I = 2.2$

KDD1
P(DS)



$S = 1$
 $P = 64,000$
 $V = 0$

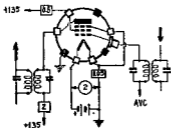
KF2
HF(V)



$S = 1.3$
 $P = 1 \text{ W}$
 $V = 0-16$

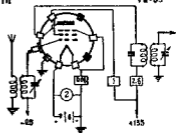
KF3
HF(V)

$S = 0.65$
 $P = 1.3 \text{ MR}$
 $V = 05 - 15$



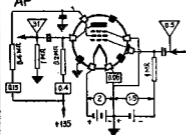
KF4
HF

$S = 0.8$
 $P = 1 \text{ MR}$
 $V = 05$



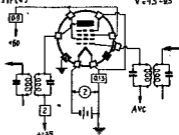
KF4
AF

$I = 2.6$



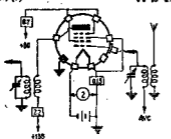
KH1
HF(V)

$S = 1.4$
 $P = 1.3 \text{ MR}$
 $V = 15 - 85$



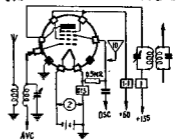
KH1
HF(V)

$S = 1.5$
 $P = 8.7 \text{ MR}$
 $V = 15 - 85$



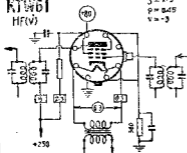
KH1
C(V)

$S_c = 0.45$
 $P = 11 \text{ MR}$
 $V = 15 - 85$



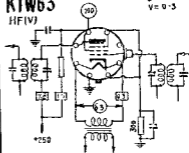
KTW61
HF(V)

$S=2.9$
 $\rho=0.45$
 $V=-3$



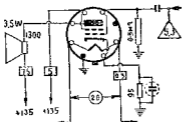
KTW63
HF(V)

$S=15$
 $V=0.5$



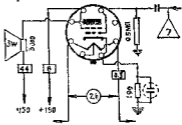
KT32
P

$S=9.9$
 $V=-7.5$



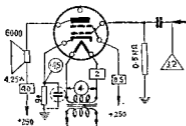
KT33C
P

$S=10$
 $V=-0.89$



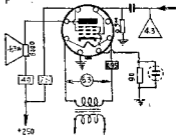
KT41
P

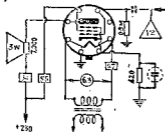
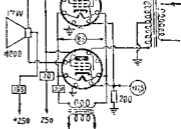
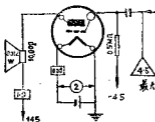
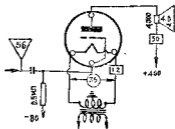
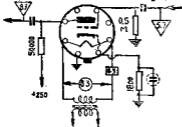
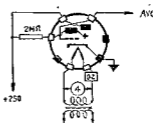
$S=10.5$
 $V=0.45$



KT61
P

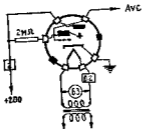
$S=10.5$
 $V=0.45$



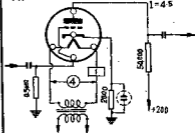
KT63**P**
 $S=25$
 $P=3200$
 $V=0-165$
**KT65****P(7L)**
 $S=33$
 $P=32500$
**L12****P**
 $S=0.0$
 $P=6000$
 $V=0-45$
**L50****P**
 $S=2.1$
 $P=1200$
 $V=-80$
**L63****AF**
 $\mu=20$
 $S=2.6$
 $P=7700$
 $V=-8$
 $I=P$
**ME4****I**
 $V=0-5$
 $I=1$


ME6S

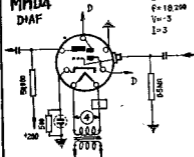
I

V=0-5
I=1.2**MH4**

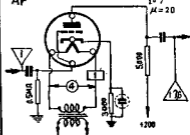
AF

S=3-6
P=11000
V=3
I=4-5**MHD4**

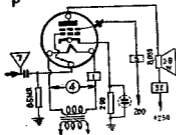
D1AF

S=2-2
F=18,200
V=3
I=3**MHL4**

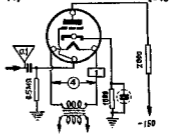
AF

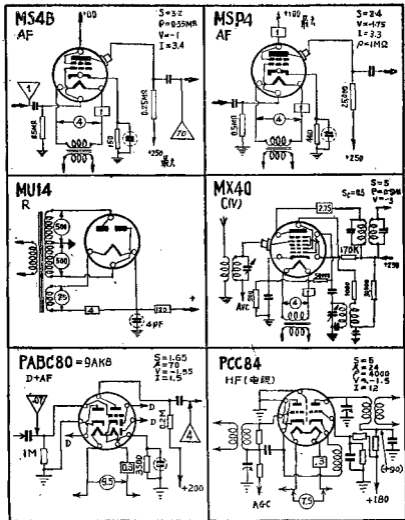
S=2-5
P=8000
V=8
I=7
μ=20**MKT4**

P

S=3
V=-11
P=2000**ML4**

AF

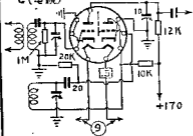
S=4-2
P=2800
V=8
I=13



PCC85 = 9AQ8

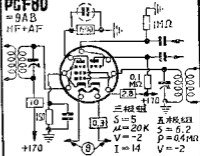
C (电视)

$S_c = 2.2$
 $P = 16000$
 $I = 4.8$



PGF80

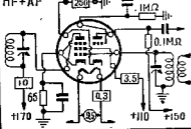
= 9AB
 HF+AF



PCF82

= 9UB
 HF+AF

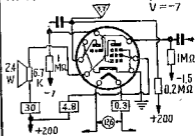
$S = 5.2$ $S = 8.5$
 $P = 0.4M\Omega$ $\mu = 5K$
 $V = -1$
 $I = 18$



PCL81

AF+P

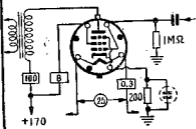
五极管
 $S = 8.75$
 $P = 22000$
 $V = -7$



PL36 = 25E5

P (电子枪)

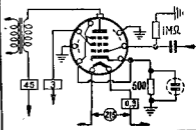
$S = 11$
 $P = 5.5K$
 $V = -21$



PL81 = 21A6

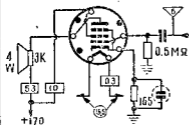
P (电子枪)

$S = 6.2$
 $P = 10K$
 $V = -22$

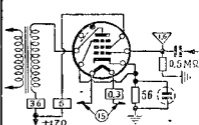


PL82 = 16A5

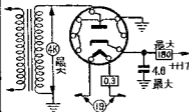
P

 $S = 9$
 $\rho = 20000$
 $V = -10.4$
**PL83 = 15A6**

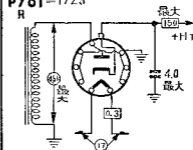
P (电视)

 $S = 10.5$
 $\rho = 0.1M\Omega$
 $V = -2.3$
**PY80 = 19X3**

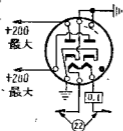
R

**PY81 = 17Z3**

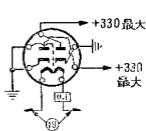
R

**UAA11**

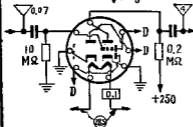
D

 $I_{\text{max}} = 5$ **UAA91**

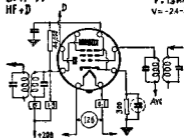
D

 $I_{\text{max}} = 9$ 

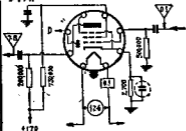
UABG80 = 28AK8
 D + AF
 $S = 1.2$ $I = 1$
 $P = 5400$
 $\mu = 70$
 $V = -3$



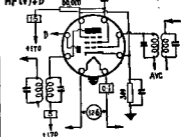
UAF41
 HF + D
 $S = 1.9$
 $P = 1300$
 $V = -24-34$



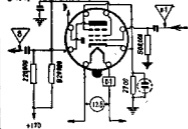
UAF41
 D + AF
 $I = 6$



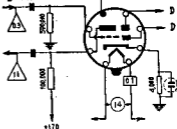
UAF42
 HF (V) + D
 $S = 2$
 $P = 0.80W$
 $V = -2-20$



UAF42
 D + AF
 $I = 5$

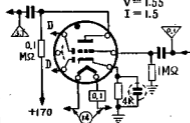


UBC41
 D + AF
 $I = 1.5$



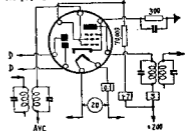
UBC81
D+AF

$S = 1.65$
 $P = 43000$
 $\mu = 70$
 $V = 1.55$
 $I = 1.5$



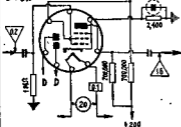
UBF11
HF(V)+D

$S = 1.8$
 $P = 15000$
 $V = -2-42$



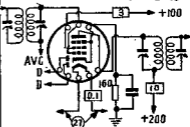
UBF11
D+AF

$I = 5$



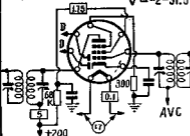
UBF15
HF(V)+D

$S = 5$
 $P = 0.5 M\Omega$
 $V = -2-16$



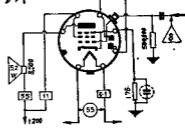
UBF80 = 17C8
HF(V)+D

$S = 2.2$
 $P = 1M\Omega$
 $V = -2-31.5$

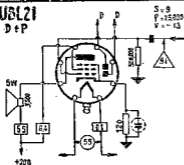


UBL1
D+P

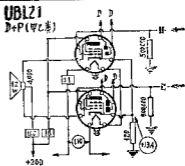
$S = 8.5$
 $P = 28,000$
 $V = -11.5$



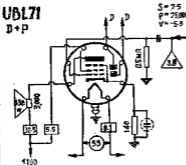
UBL21
D+P



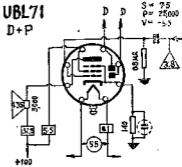
UBL21
D+P(アC巻)



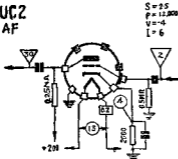
UBL71
D+P



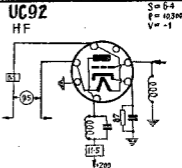
UBL71
D+P

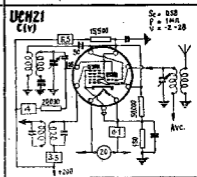
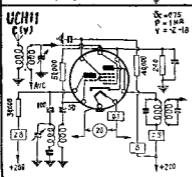
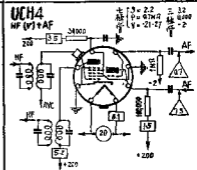
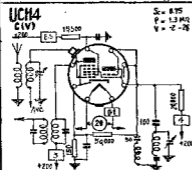
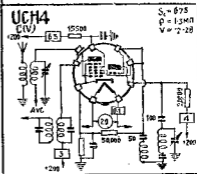
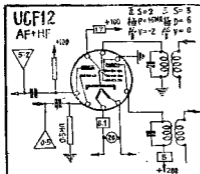


UC2
AF



UC92
HF

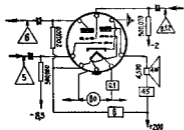




UCL11
AF+P

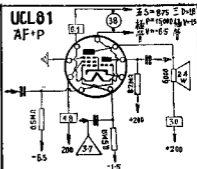
$S = 0$
 $P = 10,000$
 $V = -0.5$

$S = 2.1$
 $P = 50,000$
 $V = -2$



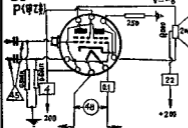
UCL81
AF+P

$S = 0.75$
 $P = 15,000$
 $V = -0.5$



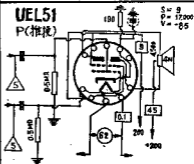
UEL11
P(甲球)

$S = 5.2$
 $P = 10,000$
 $V = -6$



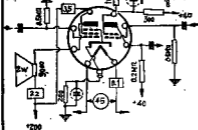
UEL51
P(推挽)

$S = 9$
 $P = 12,000$
 $V = -0.5$



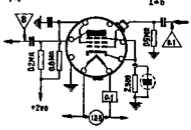
UEL71
AF+P

$S = 1.5$
 $P = 70,000$
 $V = -5.2$



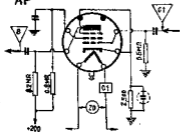
UF9
AF

$S = 2.2$
 $P = 40,000$
 $V = -2.5$
 $I = 6$



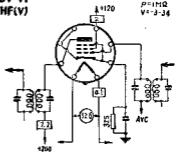
UF21
AF

$I = 8$



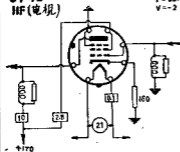
UF41
HF(V)

$S = 2.3$
 $P = 1M\Omega$
 $V = -3-34$



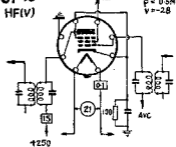
UF42
HF(电视)

$S = 0.5$
 $P = 0.5M\Omega$
 $V = -2$



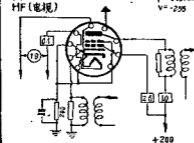
UF43
HF(V)

$S = 6.4$
 $P = 0.5M\Omega$
 $V = -2.8$



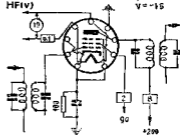
UF80
HF(电视)

$S = 2.1$
 $P = 0.55M\Omega$
 $V = -256$



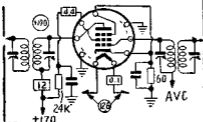
UF85
HF(V)

$S = 5.7$
 $P = 0.4M\Omega$
 $V = -15$

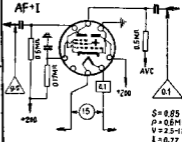


UF89
HF(V)

$S = 4.4$
 $\rho > 0.3M\Omega$
 $V = -1-20$



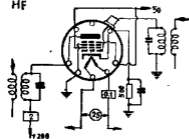
UFM11
AF+I



$S = 0.85$
 $\rho = 0.6M\Omega$
 $V = 2.5-18$
 $I = 0.77$

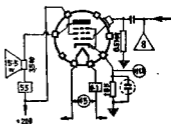
UH4001
HF

$S = 0.65$
 $V = -2$



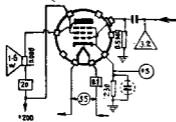
UL1
P

$S = 8.5$
 $\rho = 20000$
 $V = -115$



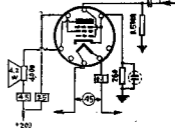
UL2
P

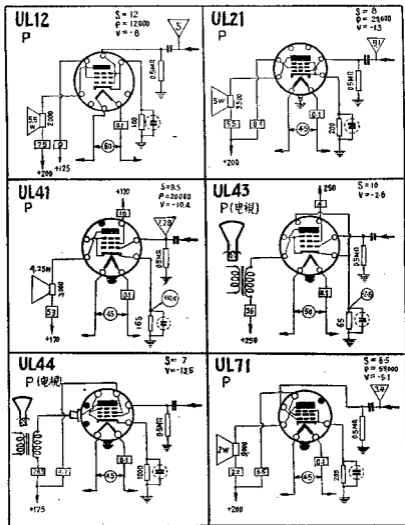
$S = 5.8$
 $\rho = 60000$
 $V = -5$

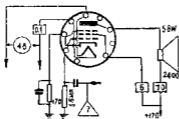
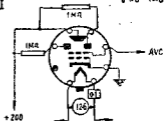
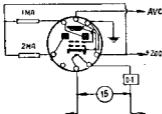
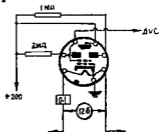
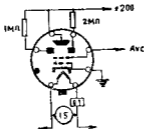
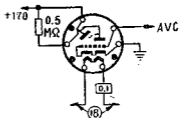


UL11
P

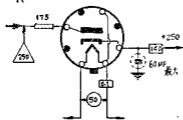
$S = 9$
 $\rho = 20000$
 $V = -14$



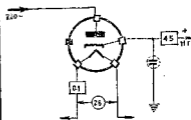


UL84**P**
 $S = 10$
 $P = 23000$
 $V = -12.5$
**UM4****I**
 $V = 0 - 4.2$
 $V' = 0 - 12.5$
**UM11****I**
 $V = 0 - 4$
 $V' = 0 - 20$
**UM34****I**
 $V = 0 - 4.2$
 $V' = 0 - 12.5$
**UM35****I**
 $V = 0 - 3$
 $V' = 0 - 20$
**UM80****I**
 $V = 0 - 13$
 $I = 0.325$
 $I_t = 2.1$


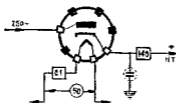
UY1
R



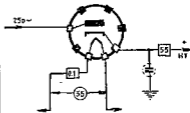
UY2
R



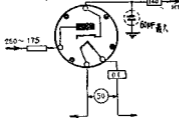
UY3
R



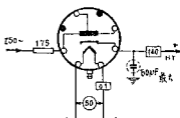
UY4
R



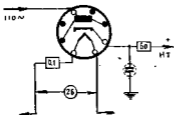
UY11
R



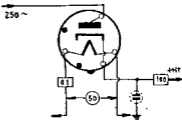
UY21
R



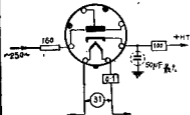
UY22
R



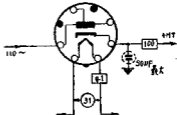
UY31
R



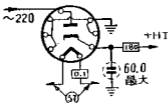
UY41
R



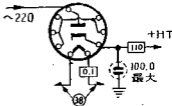
UY42
R



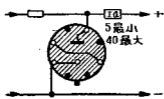
UY82 = 65N3
R



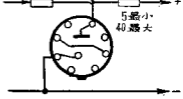
UY85 = 38A3
R



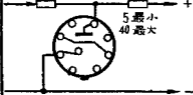
VR75/0A3 起輝电压 = 105
穩压



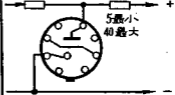
VR90/0B3 起輝电压 = 125
穩压



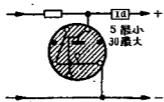
VR105/0C3 起輝电压 = 133
穩压



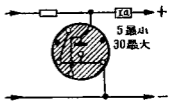
VR150/0D3 起輝电压 = 85
穩压



0A2 起輝电压 = 165
穩压

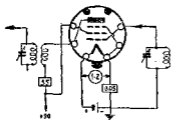


0B2 起輝电压 = 133
穩压



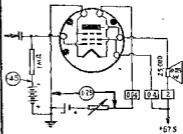
1A85
HF

$S = 1.10$
 $P = 275,000$
 $V = 0$



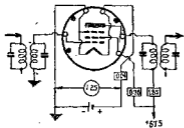
1A5
P

$S = 0.75$
 $P = 0.15M\Omega$
 $V = -45$

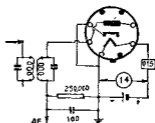


1A85
HF

$S = 0.735$
 $P = 0.7M\Omega$
 $V = 0$

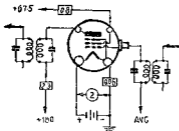


1A3
D



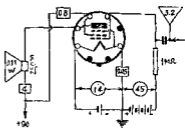
1A4P
HF(V)

$S = 0.76$
 $P = 1M\Omega$
 $V = -3-15$



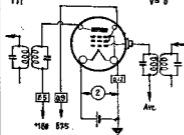
1A5GT
P

$S = 0.85$
 $P = 0.3M\Omega$
 $V = -45$



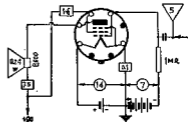
1C4
HF

S=1
P=1mW
V=0



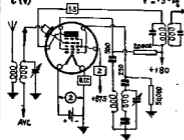
1C5GT=DL35
P

S=185
P=0.17mW
V=-25



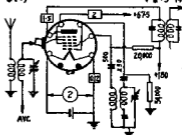
1C6
C(V)

S_c=0.325
P=0.7mW
V=-3-14



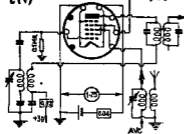
1C7G
C(V)

S_c=0.325
P=0.7mW
V=-3-14



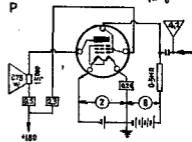
1C8=1E8
C(V)

S_c=0.1
P=0.3mW
V=0

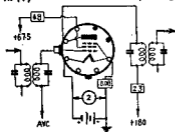


1D4
P

S=2.4
P=0.14mW
V=-6

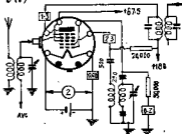


1D5GP
HF(V)



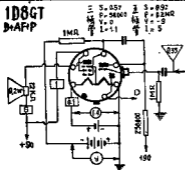
S = 075
P = 1MR
V = -3-15

1D7G
C(V)



S = 03
P = 05MR
V = -3-225

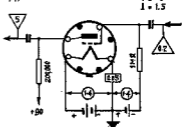
1D8GT
B+AFIP



S = 057
P = 54000
V = 0
L = 1.1

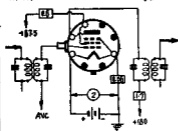
S = 092
P = 82MR
V = -9
L = 5

1E4G
AF



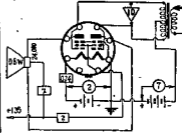
S = 0.8
P = 12000
V = -3
L = 1.5

1E5GP
HF(V)



S = 0.65
P = 1.5MR
V = -3-0

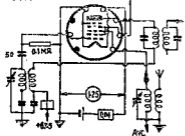
1E7GT
P



S = 1.4
P = 0.26MR
V = -7

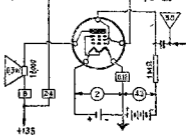
1E8
C(V)

+67.5 ← 20K [1.5]
 $S_c = 0.15$
 $P = 0.4 \text{ MR}$
 $V = 0-9$

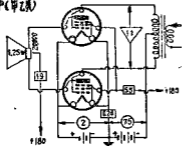


1F4
P

$S = 1.7$
 $P = 0.211 \text{ R}$
 $V = -4.5$

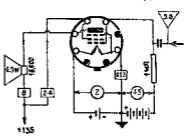


1F4
P(甲乙)

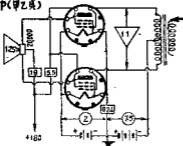


1F5G
P

$S = 1.7$
 $P = 0.2 \text{ MR}$
 $V = -4.5$

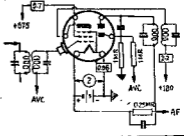


1F5G
P(甲乙)



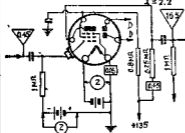
1F6
HF +D

$S = 0.55$
 $P = 1 \text{ MR}$
 $V = -15$



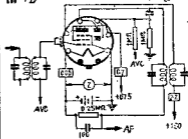
1F6
D+AF

S = 0.05
P = 1M
V = -2
I = 2.2



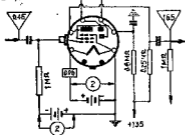
1F7G
IF+D

S = 0.65
P = 1M
V = -15



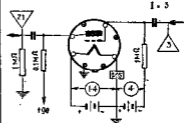
1F7G
D+AF

V = -2
I = 2.2



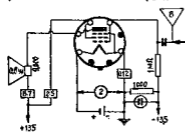
1G4GT
AF

S = 0.25
P = 10700
V = -6
I = 3



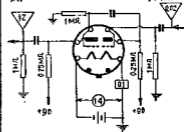
1G5G
P

S = 1.55
P = 0.16M
V = -135

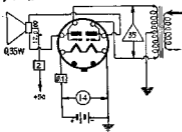


1G6GT
AF

S = 0.87
P = 48000
V = 0
I = 7mA

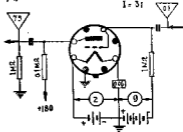


1G6GT P (乙类)

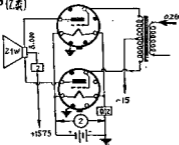


1H4G AF

$S = 0.9$
 $P = 0.30$
 $V = -13.5$
 $I = 31$

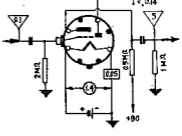


1H4G P (乙类)



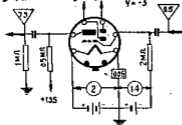
1H5GT D+AF

$S = 8.275$
 $P = 0.24$ MR
 $V = 0$
 $I = 0.14$



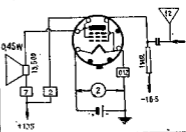
1H6G D+AF

$S = 0.575$
 $P = 55.000$
 $I = 0.8$
 $V = -3$



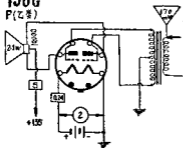
1J5G P

$S = 0.95$
 $P = 0.11$ MR
 $V = -16.5$

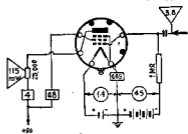


1J6G

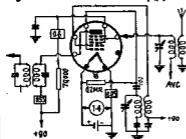
P(乙类)

**1LA4**

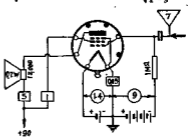
P

 $S = 0.85$
 $P = 0.3MR$
 $V_x = -4.5$
**1LA6**

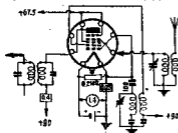
C

 $S_c = 0.25$
 $P = 0.75MR$
 $V_x = 0$
**1LB4**

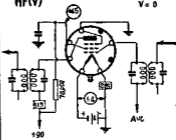
P

 $S = 0.923$
 $P = 0.2MR$
 $V_x = -9$
**1LB6**

C

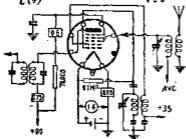
 $S_c = 0.1$
 $P = 2MR$
 $V_x = 0$
**1LC5**

HF(V)

 $S = 0.77$
 $P = 1.5MR$
 $V_x = 0$


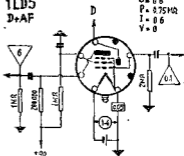
1LC6
C(V)

$S_c = 0.275$
 $P = 0.65 \text{ M}\Omega$
 $V = 0$



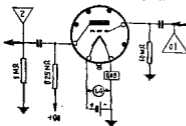
1LD5
D+AF

$S = 0.6$
 $P = 0.75 \text{ M}\Omega$
 $I = 0.6$
 $V = 0$



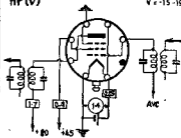
1LE3
AF

$S = 1.3$
 $P = 1.208$
 $V = -3$
 $I = 4.5$



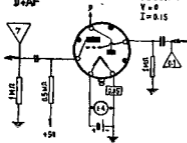
1LG5
HF(V)

$S = 1.15$
 $P = 0.5 \text{ M}\Omega$
 $V = -15 - 19$



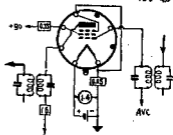
1LH4
D+AF

$S = 0.27$
 $P = 0.24 \text{ M}\Omega$
 $V = 0$
 $I = 0.15$



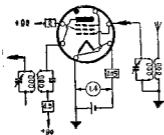
1LN5
HF(V)

$S = 0.8$
 $P = 1.1 \text{ M}\Omega$
 $V = 0 - 4.5$



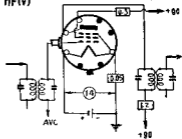
1L4
HF

S=1
P=0.35MΩ
V=0



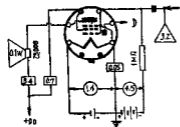
1N5G/GT=DF33
HF(V)

S=0.75
P=1.5MΩ
V=0-4

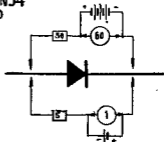


1N6G/GT
D+P

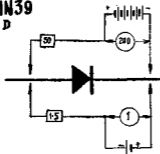
S=0.8
P=0.3MΩ
V=-4.5



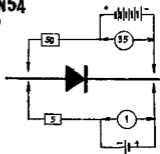
1N34
D



1N39
D

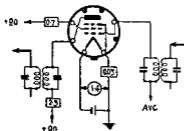


1N54
D



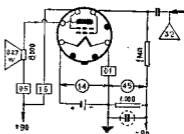
IP5G/GT
HF(V)

$S = 0.75$
 $P = 0.8 \text{ MW}$
 $V = 0 - 12$



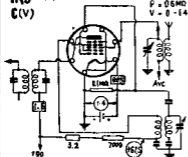
1Q5GT = DL36
P

$S = 2.2$
 $V = -4.5$
 $\rho = 75000$



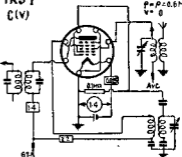
1R5 = DK91
C(V)

$S_c = 0.3$
 $P_c = 0.6 \text{ MW}$
 $V = 0 - 14$



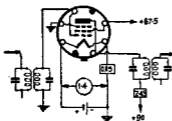
1R5T
C(V)

$S = 0.3$
 $P_c = 0.6 \text{ MW}$
 $V = 0$



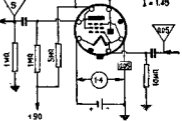
1SA6GT
HF

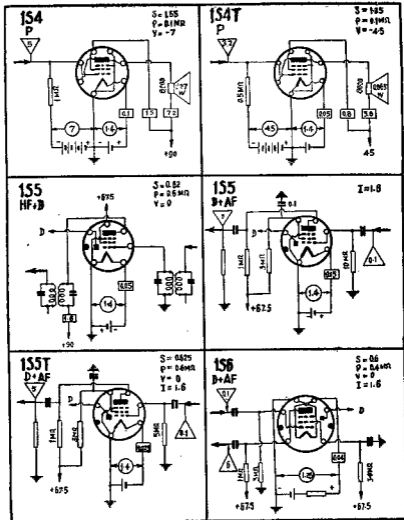
$S = 0.97$
 $P = 0.8 \text{ MW}$
 $V = 0$



1SB6GT
D+AF

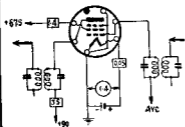
$S = 0.65$
 $P = 0.7 \text{ MW}$
 $V = 0$
 $I = 1.45$





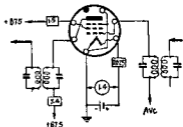
1T4
HF(V)

$S = 0.8$
 $P = 0.5 \text{ MW}$
 $V = 0-16$



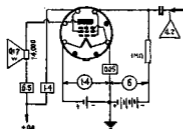
1T4T
HF(V)

$S = 1.05$
 $P = 0.25 \text{ MW}$
 $V = 0-16$



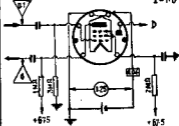
1T5GT
P

$S = 1.15$
 $V = -6$
 $P = 0.25 \text{ MW}$



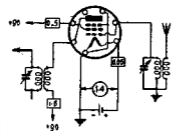
1T6
B+AF

$S = 0.8$
 $P = 0.4 \text{ MW}$
 $V = 0$
 $I = 1.6$



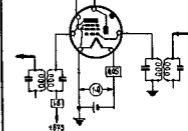
1U4
HF

$S = 0.9$
 $P = 1 \text{ MW}$
 $V = 0$



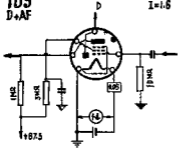
1U5
HF+D

$S = 0.02$
 $P = 0.04 \text{ MW}$
 $V = 0$

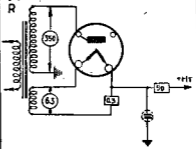


105
D+AF

I=1.6

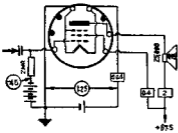


IV
R



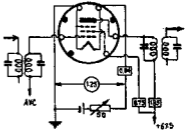
145
P

S = 0.75
P = 0.15MA
V = -4.5



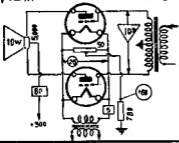
1W5 = 1AD5
HF

S = 0.75
P = 0.15MA
V = 0-6

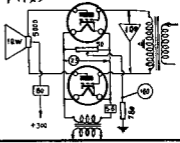


2A3
P(乙类)

S = 0.25
P = 0.00
V = -4.5

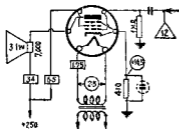


2A3H
P(甲类)

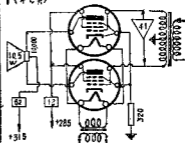


2A5
P

S = 2.5
P = 80000
V = 18.5

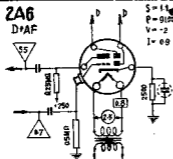


2A5
P (甲乙类)



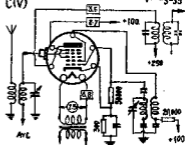
2A6
D+AF

S = 1.1
P = 91000
V = 2
I = 0.9



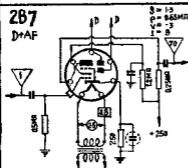
2A7
C(V)

S = 0.52
P = 0.36MN
V = 3-35



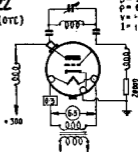
2B7
D+AF

S = 1.5
P = 8.65MN
V = 3-5
I = 9



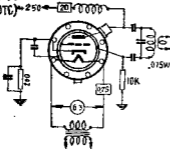
2C22
HF(OTC)

S = 3
P = 8509
V = 10.5
I = 11

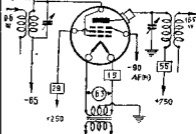


2C40

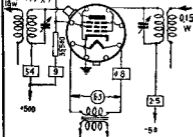
0(OTC)

**2E22**

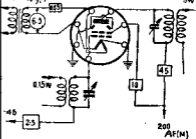
P(丙类)

**2E26**

P(丙类)

**2E30**

P(丙类)

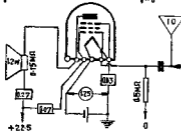
**2E35**

P

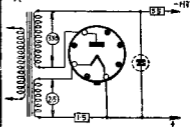
S=0.385

ρ=0.02MR

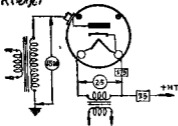
V=0

**2W3**

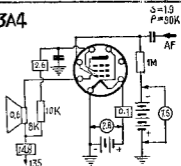
R



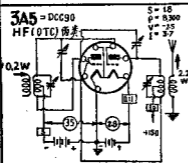
2X2A
R(电视)



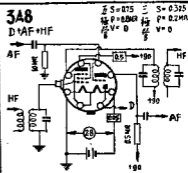
3A4



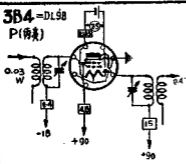
3A5 = DCC90
HF(OTC) 两类



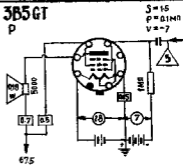
3A8



3B4 = DL9B
P(两类)

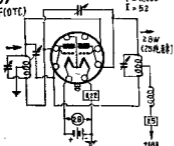


3B5GT
P



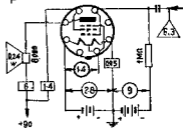
3B7
HF(OTC)

$S = 1.9$
 $P = 11,500$
 $I = 52$



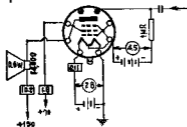
3C5GT
P

$S = 1.55$
 $V = -9$



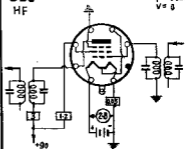
3D6
P

$S = 2.4$
 $V = -4.5$



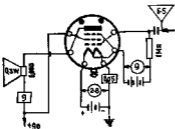
3E6
HF

$S = 1.7$
 $P = 0.32 \text{ MA}$
 $V = 0$



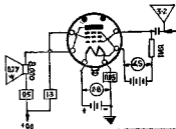
3LE4
P

$S = 1.6$
 $P = 0.1 \text{ MA}$
 $V = -8$



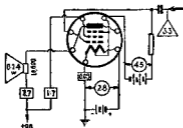
3LF4
P

$S = 2.2$
 $P = 7.5 \text{ MA}$
 $V = -4.5$



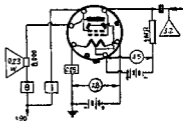
3Q4 = DL95
P

S = 2
P = 0.12MΩ
V = -45



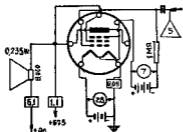
3Q5GT
P

S = 2
P = 0.0100
V = -45



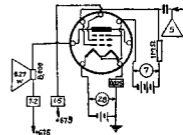
3S4 = DL92
P

S = 1.42
P = 0.1MΩ
V = -7



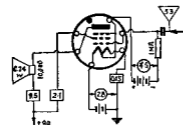
3S4T
P

S = 1.55
P = 0.1MΩ
V = -7

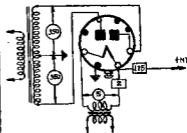


3V4
P

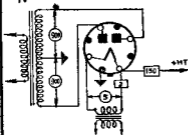
S = 2.15
P = 0.1MΩ
V = -45



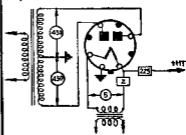
5A4Z
R



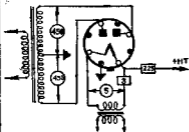
5R4
R



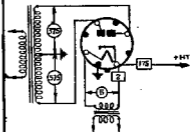
5T4
R



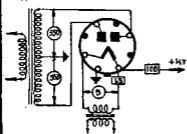
5U4G
R



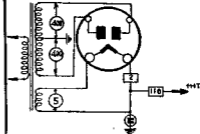
5V4G
R

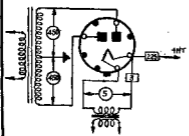
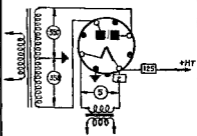
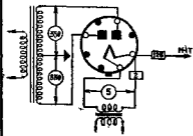
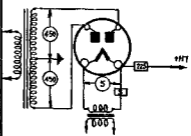
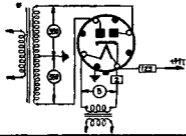
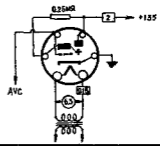


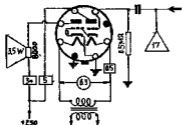
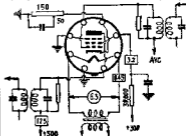
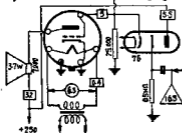
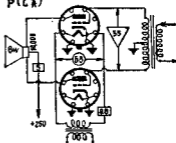
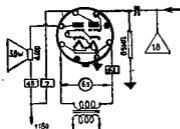
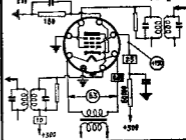
5W4
R



5X3
R

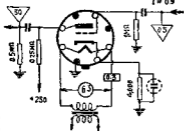


5X4G**R****5Y3G/GT****R****5Y4G/GT****R****5Z3****R****5Z4****R****6A85****I****V=0-10**

6AB6G**P**
 $S = 1.8$
 $P = 48,000$
 $V = 0$
**6AB7**
HF(V)
 $S = 5$
 $P = 0.7$
 $V = -3-22.5$
**6AC5G/GT****P**
 $S = 3.4$
 $P = 36,700$
 $V = +13$
**6AC5G/GT****P(2A)** $V = 0$ **6AC6G/GT****P**
 $S = 3$
 $P = 20,000$
 $V = 0$
**6AC7 = 1852****HF**
 $S = 9$
 $P = 11.2$
 $V = -2$


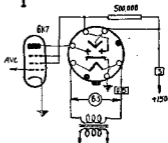
6AD5G AF

S = 1.5
P = 60,000
V = -2
I = 0.9



6AD6G I

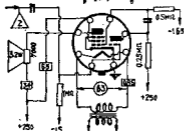
V = 0-50



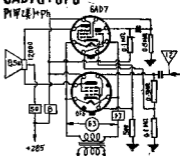
6AD7G AF+P

S = 0.3
P = 19,000
V = -25
I = 4

S = 2.5
P = 84,000
V = -16.5

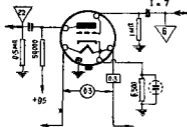


6AD7G+6F6 Ph



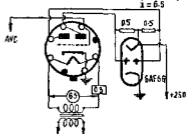
6AE5G/GT AF

S = 1.2
P = 3,500
V = -15
I = 7



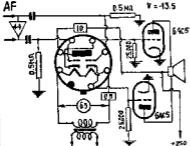
6AE6G

S = 1
P = 35,000
V = -15-35
I = 6.5

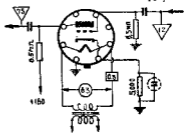


6AE7GT

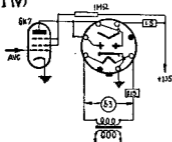
AF

 $S = 3$
 $P = 4650$
 $V = -13.5$
**6AF5G/GT**

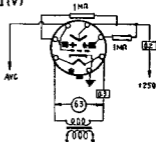
AF

 $S = 15$
 $P = 4,900$
 $V = -18$
 $I = 7$
**6AF6G**

I (V)

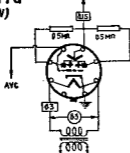
 $V = 0-80$ **6AF7G**

I (V)

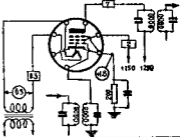
 $V = 0-19$ **6AF7G**

I (V)

+110

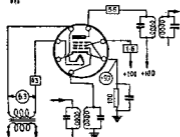
**6AG5**

HF

 $S = 5$
 $P = 0.8M\Omega$
 $V = -18$


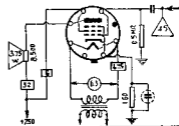
6AG5
HF

S = 4.7
P = 0.3 MR



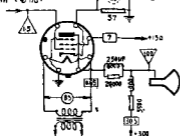
6AG6G
P

S = 10
P = 50,000
V = -6



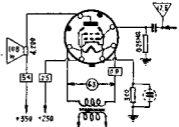
6AG7
HF (电视)

S = 11
P = 130,000
V = -5



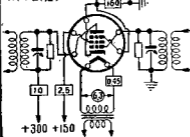
6AH5/G
P

S = 5.2
P = 35,000
V = -15



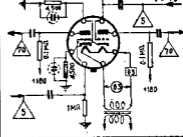
6AH6
HF (电子管)

S = 9
P = 0.5 MR
V = -2



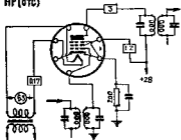
6AH7/GT
AF

S = 1.9
P = 8,400
V = -5.5
I = 76



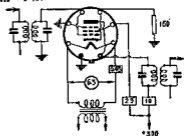
6AJ5
HF (OTC)

$S = 2.75$
 $P = 90,000$



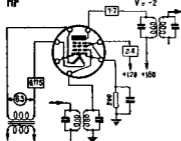
6AJ7
HF (电视)

$S = 9$
 $P = 1M\Omega$



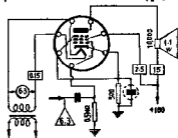
6AK5
HF

$S = 5.1$
 $P = 0.5M\Omega$
 $V = -2$

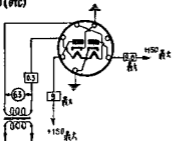


6AK6
P

$S = 2.5$
 $P = 0.2M\Omega$
 $V = -9$

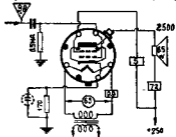


6AL5 = EAA9
D (OTC)



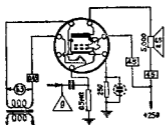
6AL6G
P

$S = 8$
 $P = 22,500$
 $V = -14$



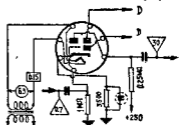
6A05
P

S = 4.1
P = 52,000
V = -12.5



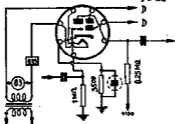
6A06
D+AF

S = 1.7
P = 58,000
V = -3
I = 1



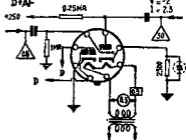
6A06
D+AF

S = 1.15
P = 81,000
V = -1
I = 0.8



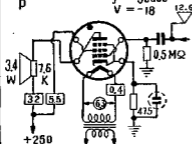
6A07GT
D+AF

S = 1.8
P = 44,000
V = -2
I = 2.3



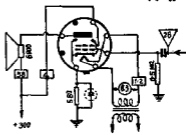
6AR5
P

S = 2.3
P = 90,000
V = -18

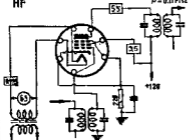


6AR6
P

S = 4.3
P = 21,000
V = -30

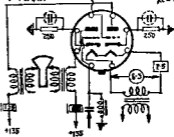


6AS6
HF



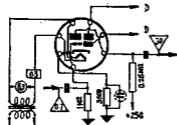
$S=35$
 $V=-2$
 $P=0.111\Omega$

6AS7G
P(电视)



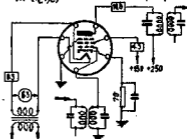
$S=75$
 $P=280$
 $\mu=2.1$

6AT6 = EBC90
D+AF



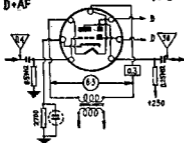
$S=17$
 $P=55,000\Omega$
 $V=-3$
 $\mu=1$

6AU6
HF(电视)



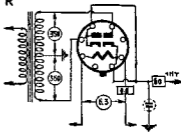
$S=52$
 $P=2400$
 $V=-1$

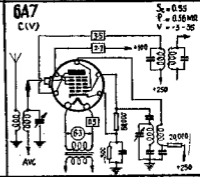
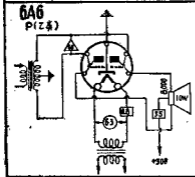
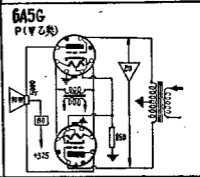
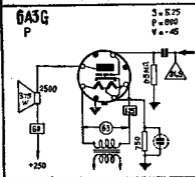
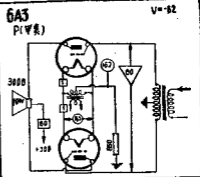
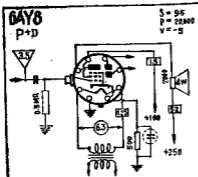
6AV6
D+AF



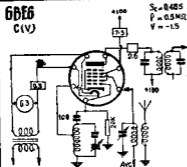
$S=16$
 $P=62,000$
 $V=-2$

6AW5
R

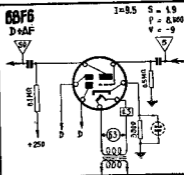




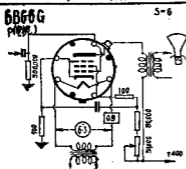
6BE6
C(V)



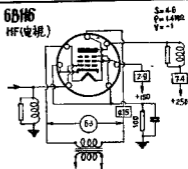
6BF6
D+AF



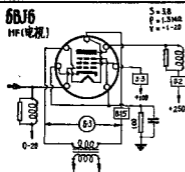
6BF6G
P(电视)



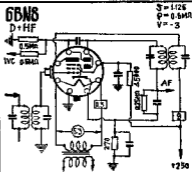
6BH6
HF(电视)



6BJ6
HF(电视)

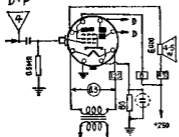


6BN6
D+HF

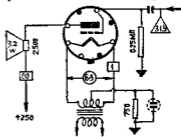


6BY8

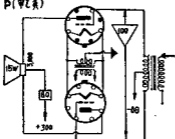
D+P

 $S=11$
 $P=90,000$
 $V=-4$
**6B4G**

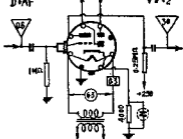
P

 $S=5.25$
 $P=600$
 $V=-45$
**6B4G**

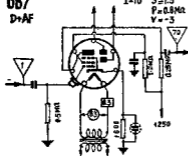
P(甲乙类)

**6B6G**

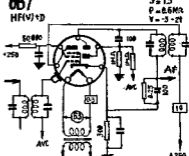
D+AF

 $S=1.1$
 $P=90,000$
 $V=-2$
**6B7**

D+AF

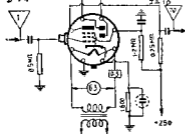
 $I=10$
 $S=1.5$
 $P=0.8M\Omega$
 $V=-3$
**6B7**

HF(V)+D

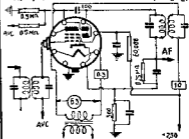
 $S=13$
 $P=0.6M\Omega$
 $V=-3-2\Omega$


6B8

D+AF

**6B8**

HF(V)+D

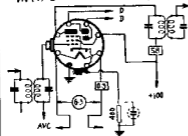
**6B8**

HF(V)+D

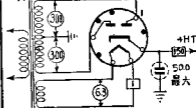
S=0.95

P=0.3MR

V=-3, 17

**6CA4 = EZ81**

R

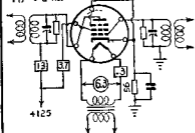
**6CB6**

HF(电视)

S=8

P=0.28MR

V=1

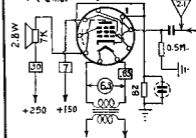
**6CL6**

P(电视)

S=11

P=90000

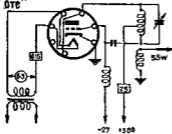
V=-3



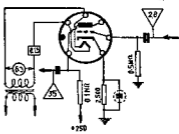
6C4 = EC90

D (调类)

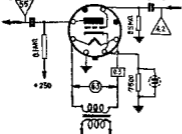
OTC

 $S = 2.2$ $P = 7.720$ $V = -0.5$ **6C4 = EC90**

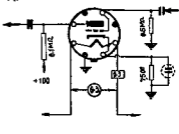
AF

 $S = 2.2$ $P = 7.720$ $V = -0.5$ **6C5G/GT**

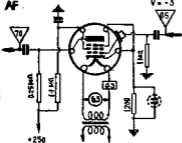
AF

 $S = 2$ $P = 10.000$ $V = -0.8$ $I = 0$ **6C5**

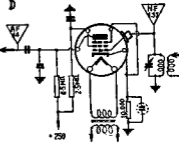
AF

 $I = 8$ **6C6**

AF

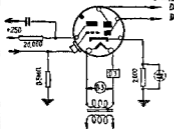
 $I = 2$ $S = 1.2$ $P = 1.000$ $V = -3$ **6C6**

D



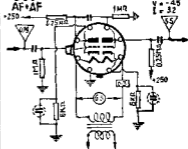
6C7
D+AF

S=1.25
P=15,000
V=-9
I=-45

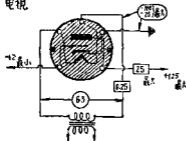


6C8G
AF+AF

S=1.6
P=22,500
V=-45
I=32

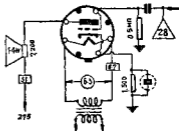


6D4
电视



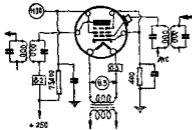
6D5G
P

S=2.1
P=2,250
V=-40



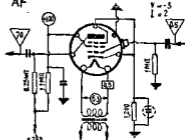
6D6
HF(V)

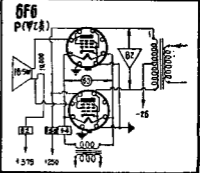
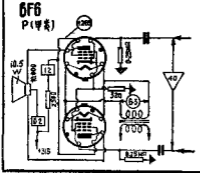
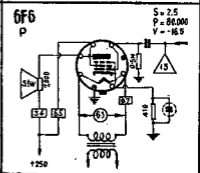
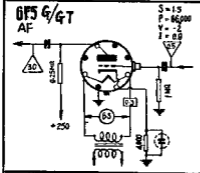
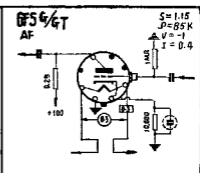
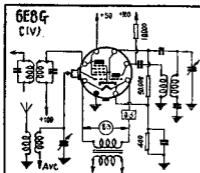
S=1.6
P=0.85M
V=-3.50

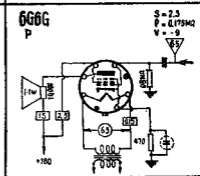
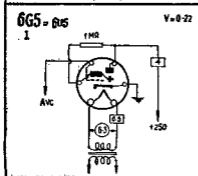
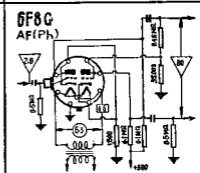
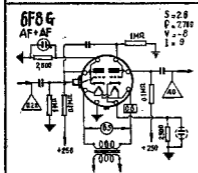
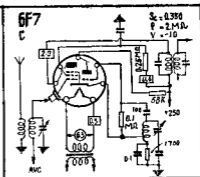
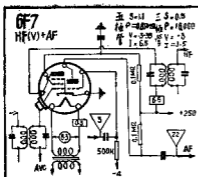


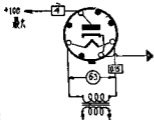
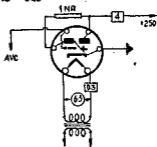
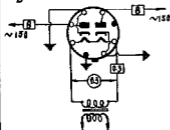
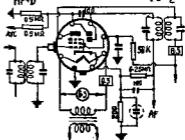
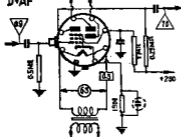
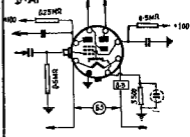
6D7
AF

S=1.2
P=1M
V=-5
I=2



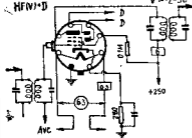




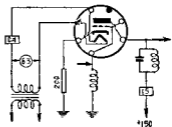
6H4/GT**D****6H5 = 6G5****I****V = 0-22****6H6 G/GT****D****6H8 G****HF+D****S = 0.05mA****P = 2-4****V = -2****6H8 G****D+AF****6H8 G****D+AF**

6H8MG

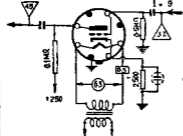
HF(V)·D

S = 1.8
P = 1.2 W
V = 2-50**6J4**

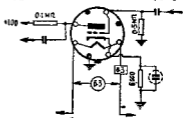
HF(電規)

S = 1.7
P = 4.50 W
V = -3**6J5**

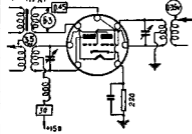
AF

S = 2.6
P = 2.70 W
V = -6
I = 9**6J5**

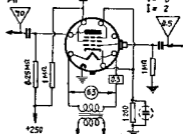
AF

S = 5
P = 6.70 W
V = -3**6J6**

HF(電規)

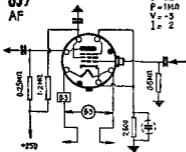
S = 5.3
P = 7.00 W
V = -10**6J7**

AF

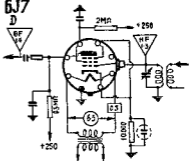
S = 1.22
P = 1.50 W
V = -3
I = 2

6J7

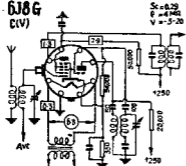
AF


 $S = 1.8$
 $P = 1M\Omega$
 $V = -3$
 $I = 2$
6J7

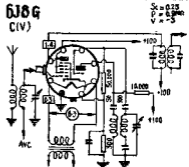
D

**6J8 G**

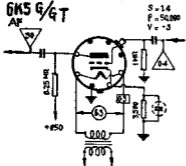
C(V)


 $S_c = 0.29$
 $P = 4M\Omega$
 $V = -5-20$
6J8 G

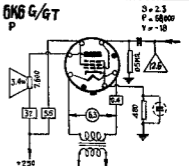
C(V)


 $S_c = 0.25$
 $P = 4M\Omega$
 $V = -5$
6K5 G/GT

AF

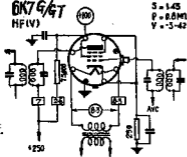

 $S = 14$
 $P = 50,000$
 $V = -3$
6K5 G/GT

P


 $S = 2.3$
 $P = 60,000$
 $V = -18$

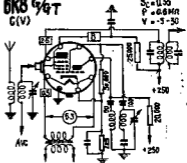
6K7 G/GT
HF(V)

S = 1.43
P = 0.8W
V = -3-42



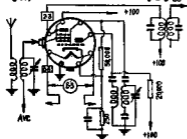
6K8 G/GT
C(V)

S = 0.35
P = 0.6W
V = -5-30



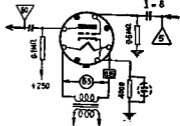
6K8 G/GT
C(V)

S = 0.32
P = 0.4W
V = -5-30



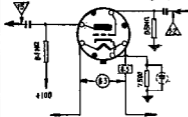
6L5 G
AF

S = 1.9
P = 0.8W
V = -9
I = 8



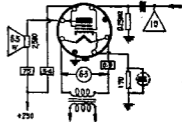
6L5 G
AF

S = 1.5
P = 10.0W
V = -5
I = 4



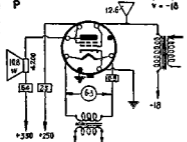
6L6
P

S = 8
P = 22.5W
V = -14

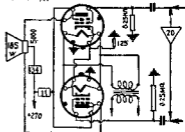


6L6

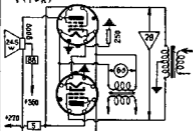
P

**6L6**

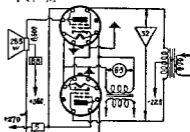
P(甲类)

**6L6**

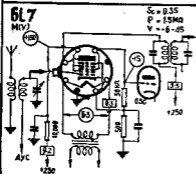
P(甲乙类)

**6L6**

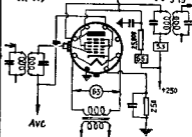
P(甲乙类)

**6L7**

M(V)

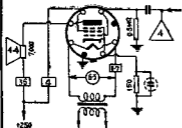
**6L7**

HF(V)



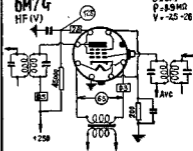
6M6G
(P)

S = 9.5
P = 54.000
V = -6



6M7G
HF(V)

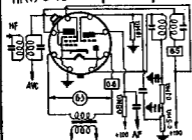
S = 3.4
P = 3.9MΩ
V = -25 -26



6M8GT
HF(V)+D+AF

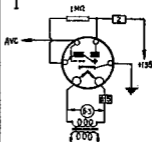
S = 1.9
P = 0.2
V = -3 -20

S = 1.1
P = 0.000
V = -1



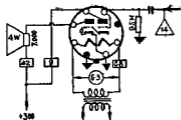
6N5
I

V = 0 -155



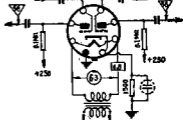
6N6
P

S = 2.4
P = 24.000
V = 0

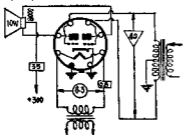


6N7G/GT
AF

S = 3.1
P = 11.000
V = -5
I = 6

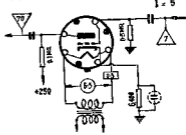


6N7
P(乙类)

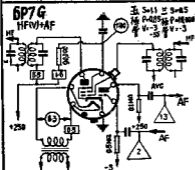


6P5 G/G T
AF

S = 1,450
P = 9,500
V = -13.5
I = 5

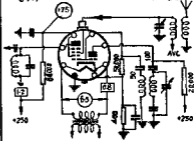


6P7 G
HF(V)+AF



6P8 G
C(V)

S_c = 0.5
P = 1M
V = -3-25

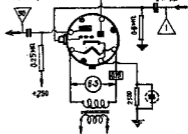


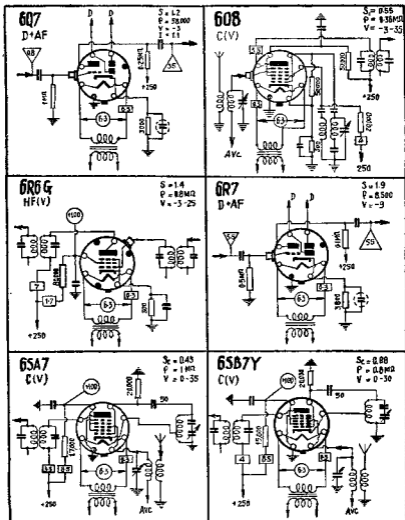
6Q4

见EC80

6Q6 G
D+AF

S = 1
P = 62,000
V = -3
I = 1.2

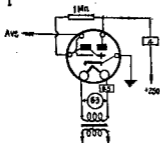




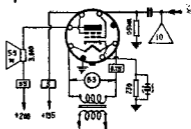
6U5/665

I

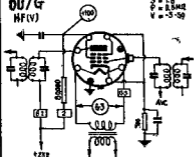
V-8-22

**6U6GT**

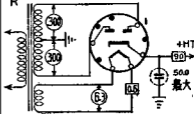
P

S=8.2
P=27.00K
V=-14**6U7G**

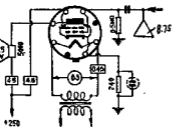
HF(V)

S=1.8
P=8.50K
V=-3.50**6V4 = EZ80**

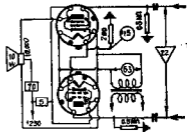
R

**6V6G/GT**

P

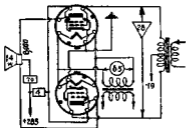
S=4.1
P=52.00K
V=-12.5**6V6G/GT**

P(甲乙类)

S=3.75
P=60 KSL
V=-15

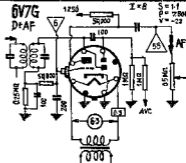
6V6 G/GT
P(甲乙类)

$S=36$
 $\rho=70K\Omega$
 $V=-19$

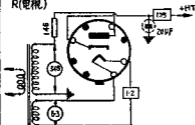


6V7G
D+AF

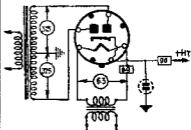
$I \times 8$
 $S=1:1$
 $\rho=2800$
 $V=-22$



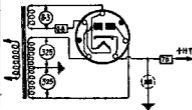
6W4GT
R(电视)



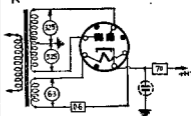
6W5G
R



6X4
R



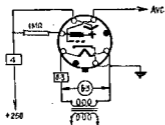
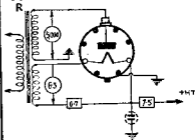
6X5
R



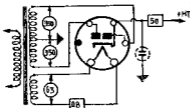
6X6G

I

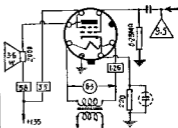
V=0-8

**6Y3G****6Y5**

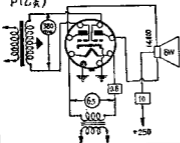
R

**6Y6G**

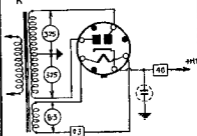
P

S = 7
P = 0.300
V = -1.5**6Y7G**

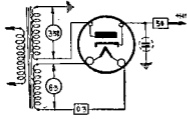
P(乙类)

**6ZY5G**

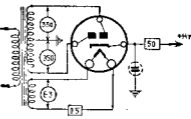
R



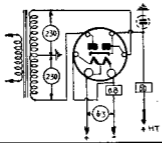
6Z3
R



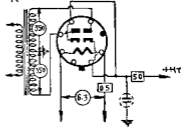
6Z4
R



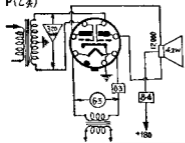
6Z5
R



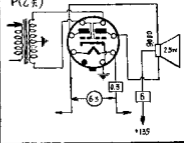
6Z6G
R

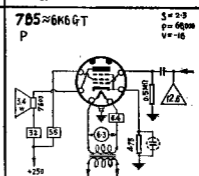
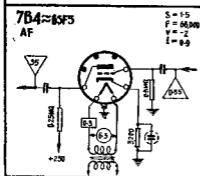
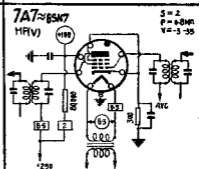
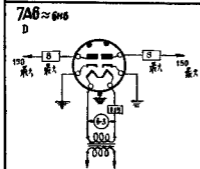
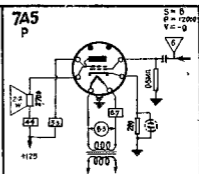
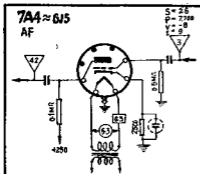


6Z7G
P(乙类)

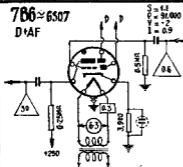


6Z7G
P(乙类)

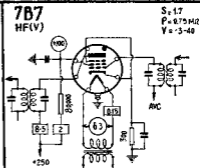




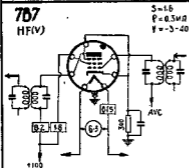
7B6 ≈ 6S07
D+AF



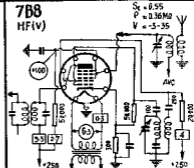
7B7
HF(V)



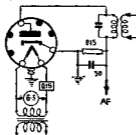
7B7
HF(V)



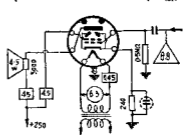
7B8
HF(V)

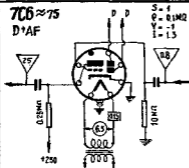


7C4
D(OTC)

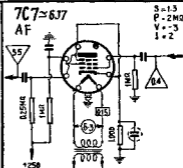


7C5 ≈ 6V6
P

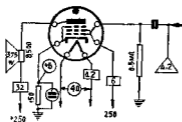


7C6 ≈ 7S**D⁺AF**

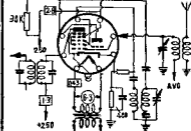
S = 4
P = 0.1MΩ
V = -1
I = 1.5

7C7 ≈ 6J7**AF**

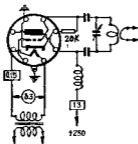
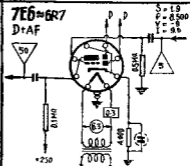
S = 1.3
P = 2MΩ
V = -3
I = 2

7D6**P**

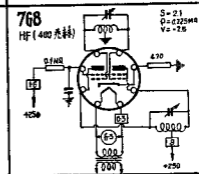
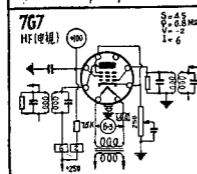
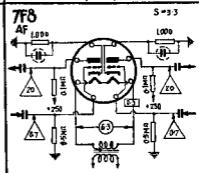
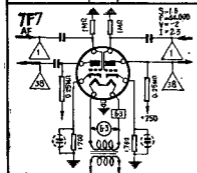
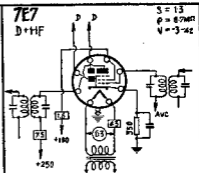
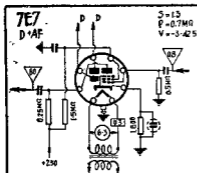
S = 10
P = 60000
V = -6

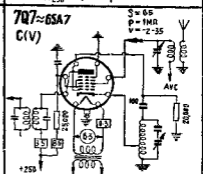
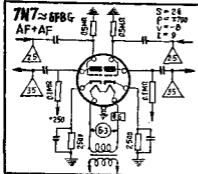
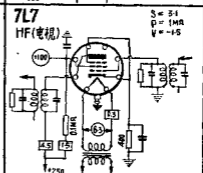
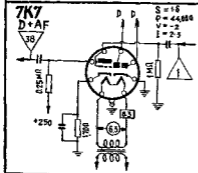
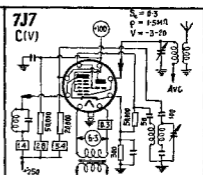
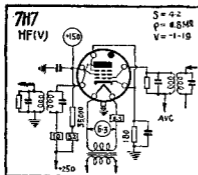
7D7**C(V)**

S_c = 0.275
P = 13MΩ
V = 0-3

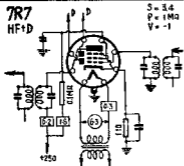
7E5**O(DTC)****7E6 ≈ 6R7****D⁺AF**

S = 1.9
P = 0.500
V = -8
I = 9.0



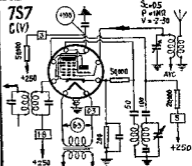


7R7
HF+D



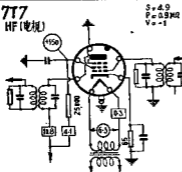
$S = 3.4$
 $P = 1M\Omega$
 $V = -1$

7S7
C(V)



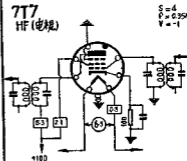
$S = 0.5$
 $P = 1M\Omega$
 $V = 2-3\theta$

7T7
HF(电视)



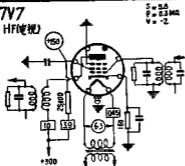
$S = 4.9$
 $P = 0.9M\Omega$
 $V = -1$

7T7
HF(电视)



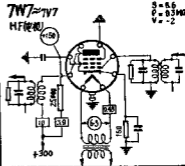
$S = 4$
 $P = 0.35M\Omega$
 $V = -1$

7V7
HF(电视)

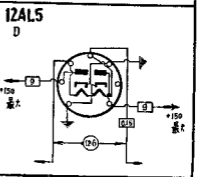
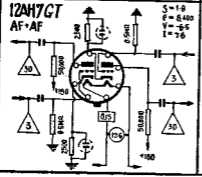
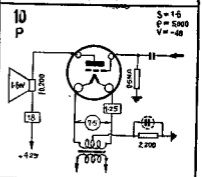
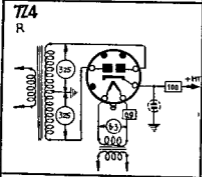
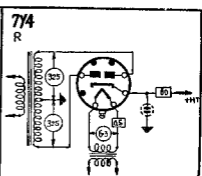
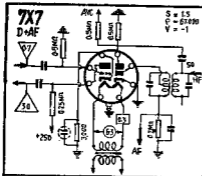


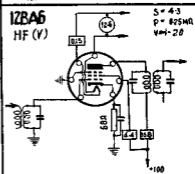
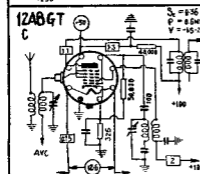
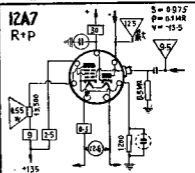
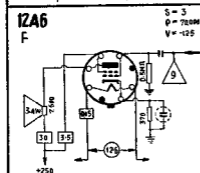
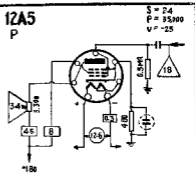
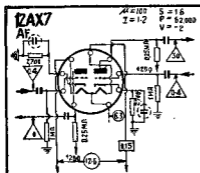
$S = 5.6$
 $P = 0.3M\Omega$
 $V = -2$

7V7≈7V7
HF(电视)



$S = 5.6$
 $P = 0.3M\Omega$
 $V = -2$

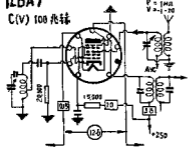




12BA7

C(V) 100 兆赫

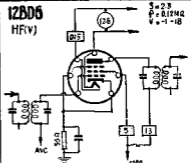
$S = 0.85$
 $P = 1 \text{ mW}$
 $V = 1-20$



12BD6

HF(V)

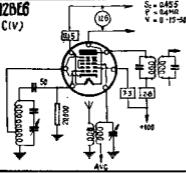
$S = 2.3$
 $P = 0.12 \text{ mW}$
 $V = -1-18$



12BE6

C(V)

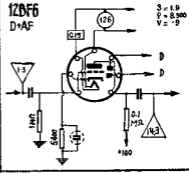
$S = 0.455$
 $f = 84 \text{ MHz}$
 $V = 8-15-50$



12BF6

D+AF

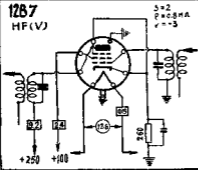
$S = 1.9$
 $P = 8.900$
 $V = -9$



12B7

HF(V)

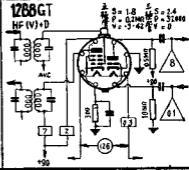
$S = 2$
 $P = 0.8 \text{ mW}$
 $V = -3$



12B8GT

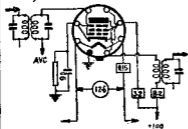
HF(V)+D

$S = 1.8$ $S = 2.4$
 $P = 0.2 \text{ mW}$ $P = 3.1000$
 $V = -3-42$ $V = 0$



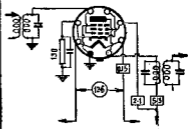
12SG7
HF(V)

$S = 41$
 $P = 0.25 \text{ M}\Omega$
 $V = -11.5$



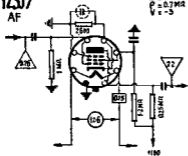
12SH7
HF

$S = 4$
 $P = 0.35 \text{ M}\Omega$
 $V = -1$



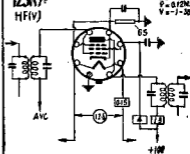
12SJ7
AF

$S = 1.5$
 $P = 0.7 \text{ M}\Omega$
 $V = -3$



12SK7
HF(V)

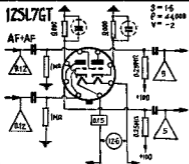
$S = 2.35$
 $P = 0.12 \text{ M}\Omega$
 $V = -7.30$



12SL7GT

AF+AF

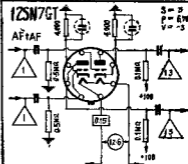
$S = 1.6$
 $P = 44,000$
 $V = -2$



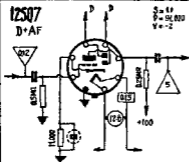
12SN7GT

AF+AF

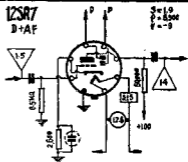
$S = 3$
 $P = 6 \text{ M}\Omega$
 $V = -3$



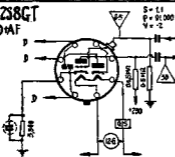
1Z507
D+AF



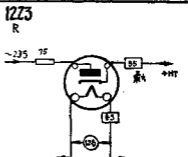
1Z5R7
D+AF



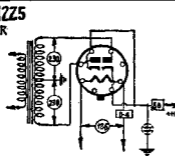
1Z58GT
D+AF



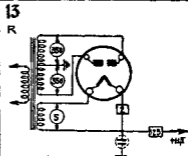
1Z73
R

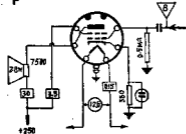
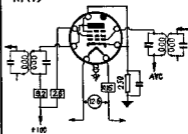
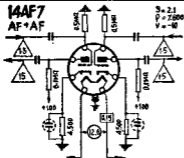
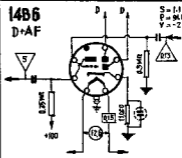
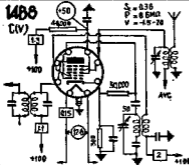
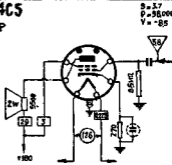


1Z75
R

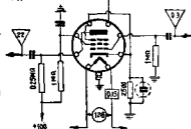


13
R



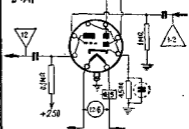
14A5**P**
 $S = 5$
 $P = 70,000$
 $V = -12.5$
**14A7****HF(V)**
 $S = 2$
 $P = 6.0$
 $V = -3-35$
**14AF7****AF+AF**
 $S = 2.1$
 $P = 7,000$
 $V = -40$
**14B6****D+AF**
 $S = 1.1$
 $P = 96,000$
 $V = -2$
**14B8****(V)**
 $S = 0.36$
 $P = 8.6 \text{ mA}$
 $V = -4.5-20$
**14C5****P**
 $S = 3.7$
 $P = 96,000$
 $V = -8.5$


14C7
AF



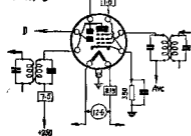
$S = 2.2$
 $P = 0.4 \text{ W}$
 $V = -5$

14E6
D+AF



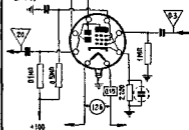
$S = 1.7$
 $P = 0.560$
 $V = -9$

14E7
HF(V)+D



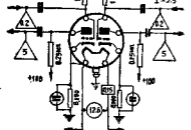
$S = 1.3$
 $P = 0.7 \text{ W}$
 $V = -3-425$

14E7
D+AF



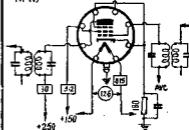
$S = 1.5$
 $P = 0.7 \text{ W}$
 $V = -3$

14F7
AF



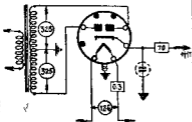
$S = 1.125$
 $P = 0.62000$
 $V = -1$
 $I = 2.3$

14H7
HF(V)

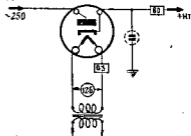


$S = 4$
 $P = 0.6 \text{ W}$
 $V = -1-12$

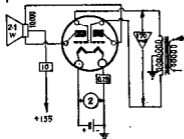
14Y4
R



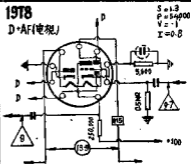
14Z3
R



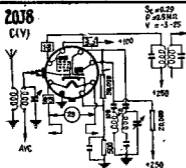
19Z136
P



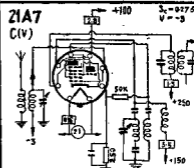
19T8
D+AF(电视)



20J8
C(V)

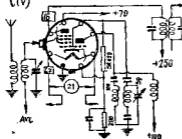


21A7
C(V)



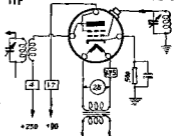
21TH8
C(V)

$S = 0.8$
 $P = 1 \text{ W}$
 $V = -3-28$



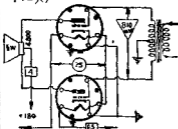
24/A
HF

$S = 1$
 $P = 0.61 \text{ W}$
 $V = -3$



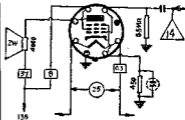
25AC5CT
P(乙类)

$S = 3.8$
 $P = 15 \text{ W}$



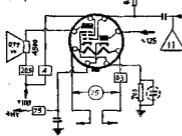
25A6
P

$S = 2.4$
 $P = 30 \text{ W}$
 $V = -20$



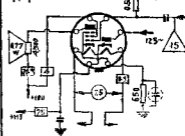
25A7GT
R+P

$S = 1.8$
 $P = 50 \text{ W}$
 $V = -15$



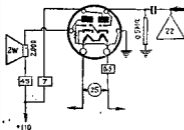
25A8
R+P

$S = 1.8$
 $P = 50 \text{ W}$
 $V = -15$



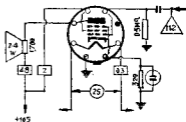
25B5
P

S = 2-2
P = 11,500
V = 9



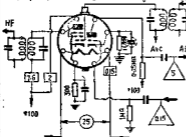
25B6G
P

S = 4.8
P = 15,500
V = 16



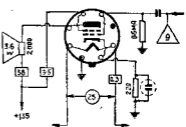
25B8/GT
HF(V) + AF

S = 2
P = 0.185W
V = -3-41
S = 1.5
P = 75,000
V = -1



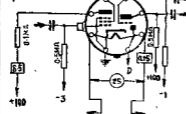
25C6 G
P

S = 7
P = 9,500
V = 13.8



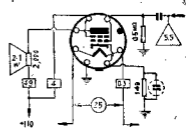
25D8GT
D + AF + P

S = 1.9
P = 200K
V = -1
I = 0.5
S = 1.1
P = 91,000
V = -1



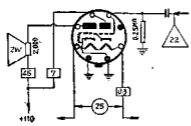
25L6 G/GT
P

S = 9
P = 13,000
V = 7.8

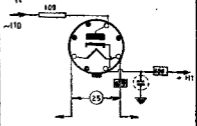


25N6G
P

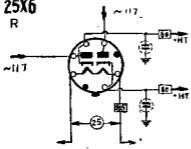
S = 2.2
P = 11.500
V = 0



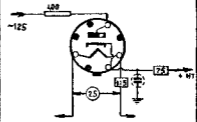
25X5
R



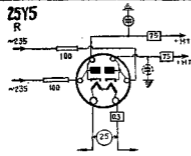
25X6
R



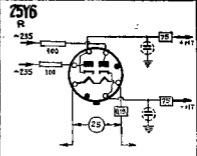
25Y4
R



25Y5
R

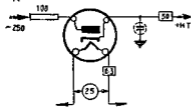


25Y6
R

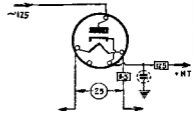


25Z3

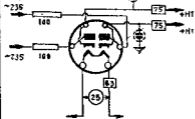
R

**25Z4**

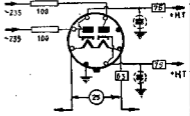
R

**25Z5**

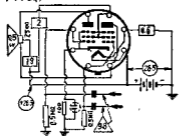
R

**25Z6**

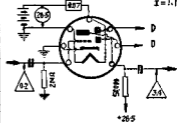
R

**26A7GT**

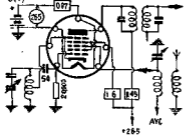
P(アツク)

 $S=5.5$
 $V_s=4.5$
 $P=2500$
**26C6**

D+AF

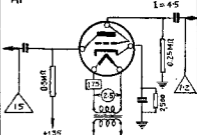
 $S=1.1$
 $P=15,000$
 $V=0$
 $I=1.1$


26D6
C(V)



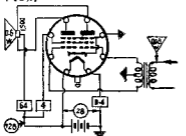
S = 0.77
P = 1.00
V = 4.5-30

27
AF



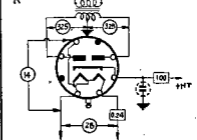
S = 1
P = 0.000
V = 9
I = 4.5

28D7
P(乙类)

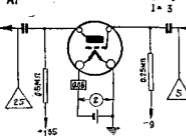


S = 3.4
P = 4.200
V = 0.4

28Z5
R

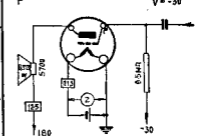


30
AF



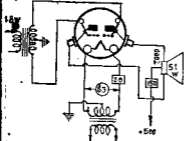
S = 0.9
P = 10.700
V = 9
I = 3

31
P



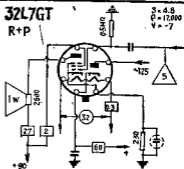
S = 1.05
P = 3.600
V = -30

31Z
P(Z类)



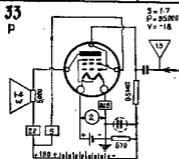
32L7GT
R+P

S=4.8
P=17,000
V=-7



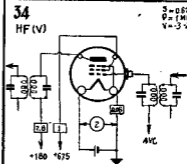
33
P

S=1.7
P=35,000
V=-18



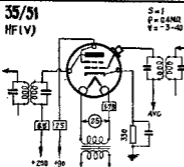
34
HF(V)

S=0.61
P=17,000
V=-3-22.5



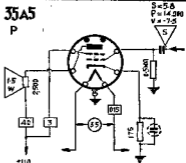
35/51
HF(V)

S=1
P=64,000
V=-3-40



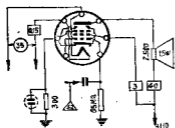
35A5
P

S=5.8
P=14,000
V=-7-5

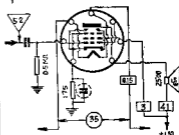


3585

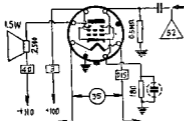
P

S = 5.8
V = -75**35C5**

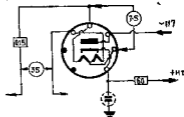
P

S = 5.8
Pa = 14,000
V = -25**35L6GT**

P

S = 5.8
Pa = 14,000
V = -7.5**35W4**

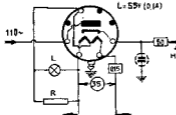
R

**35Y4**

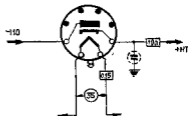
R

R = 300	I = 80
R = 150	I = 70
R = 100	I = 60
	I = 90

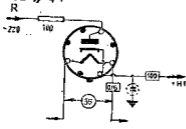
L = 55μ (0.4)

**35Z3 = 35Z4**

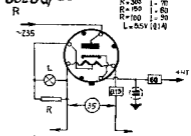
R



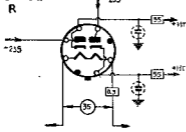
35Z4/GT



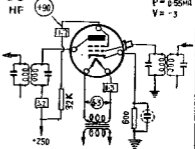
35Z5G/CT



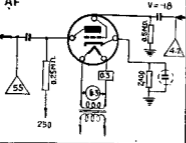
35Z6G



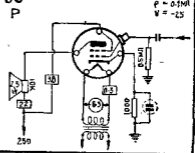
36

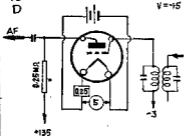
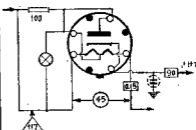
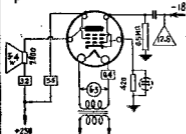
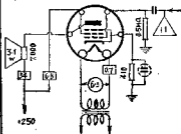
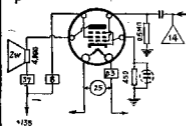
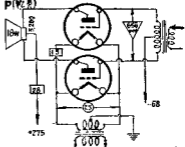


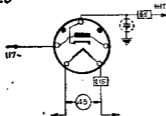
37



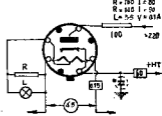
38



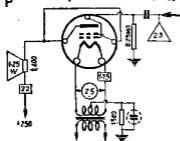
40**D**
 $S = 0.2$
 $\rho = 215 \text{ M}\Omega$
 $V = +15$
**40Z5/GT****R****41 ≈ 6K6GT****P**
 $S = 2.5$
 $\rho = 68000$
 $V = -165$
**42****P**
 $S = 2.5$
 $\rho = 80000$
 $V = -165$
**43****P**
 $S = 2.45$
 $\rho = 35000$
 $V = -20$
**45****P (V_{g2})** $S = 2$ 

45Z3**R****45Z5GT****R**

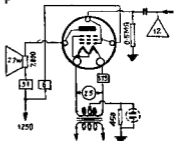
$R_{max} = 1 = 60$
 $R = 300 \quad I = 70$
 $R = 150 \quad I = 80$
 $R = 60 \quad I = 90$
 $L = 5.5 \quad V = 0.1A$

**46****P**

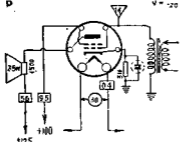
$S = 2.5$
 $P = 2.380$
 $V = 35$

**47****P**

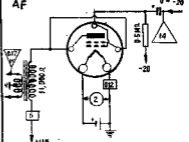
$S = 2.5$
 $P = 68.009$
 $V = 16.5$

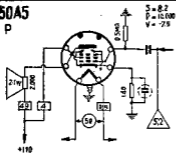
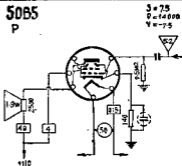
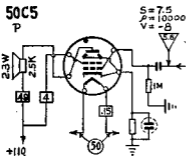
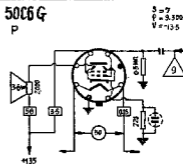
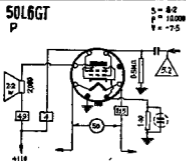
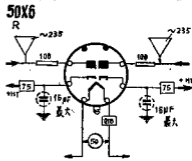
**48****P**

$S = 3.0$
 $P = 10.010$
 $V = 20$

**49****AF**

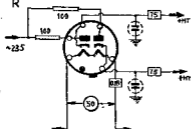
$S = 1.1$
 $P = 4.175$
 $V = 20$



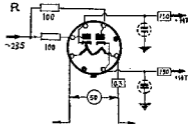
50A5**P****50B5****P****50C5****P****50C6G****P****50L6GT****P****50X6****R**

50Y6GT

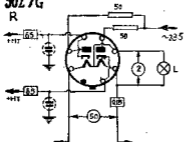
R

**50Z6GT/G**

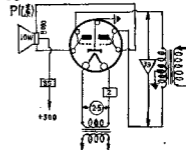
R

**50Z7G**

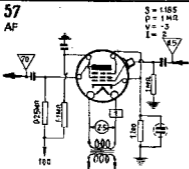
R

**53**

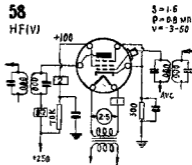
P(L)

**57**

AF

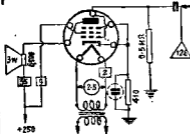

 $S = 1.185$
 $P = 1.14R$
 $V = -3$
 $I = 2$
58

HF(V)


 $S = 1.6$
 $P = 0.8 \text{ W}$
 $V = -3-50$

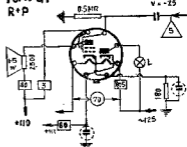
59
P

S = 25
P = 40,000
V = -18



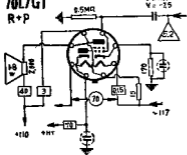
70A7GT
R+P

S = 58
P = 15,000
V = -25



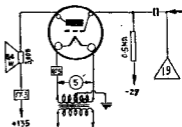
70L7GT
R+P

S = 7.5
P = 15,000
V = -25



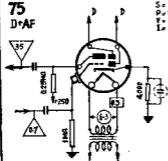
71A
P

S = 165
P = 1820
V = -27



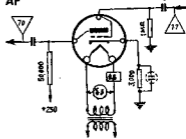
75
D+AF

S = 11
P = 90,000
V = -2
I = 89

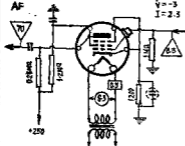


76
AF

S = 145
P = 8200
V = -11.5
I = 5

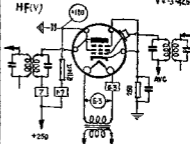


77
AF



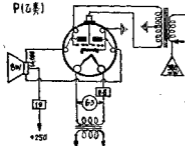
$V = 100$
 $V = 100$
 $V = -3$
 $I = 2.5$

78
HF(V)

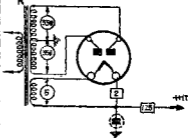


$I = 1.45$
 $V = 0.8$
 $V = -3.425$

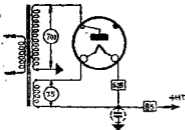
79
P(乙类)



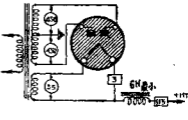
80
R



81
R

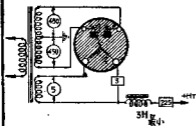


82
R



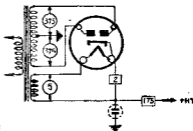
83

R



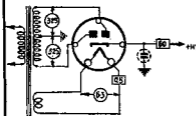
83V

R



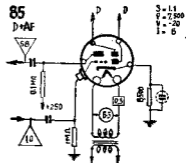
84

R



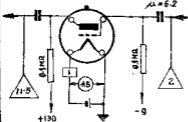
85

D+AF



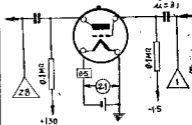
101D

AF

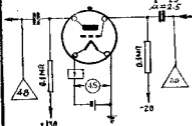


102F

AF

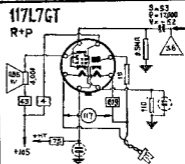


104D
AF



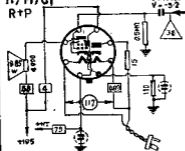
S = 118
P = 2100
V = -20
I = 25
M = 2.5

117L7GT
R+P



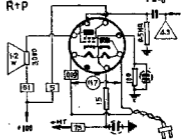
S = 53
P = 17000
V = -52

117M7GT
R+P



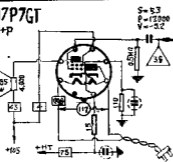
S = 2.3
P = 17000
V = -52

117N7GT
R+P



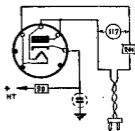
S = 7
P = 16000
V = -8

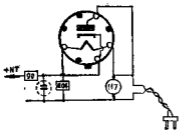
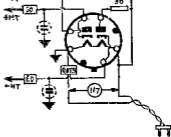
117P7GT
R+P



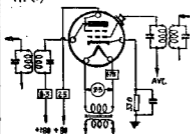
S = 5.3
P = 12000
V = -3.2

117Z3
R

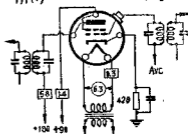


117Z4GT**R****117Z6GT****R****135-35****HF(V)**

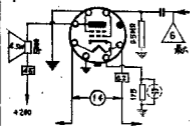
S = 1.82
P = 0.3MR
V = -3-40

**139****HF(V)**

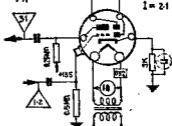
S = 1
P = 0.75MR
V = -3-42

**142BT****P**

S = 4.1
V = -85

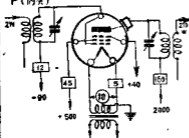
**292A****AF**

S = 0.66
P = 20,000
V = -8
I = 2.1



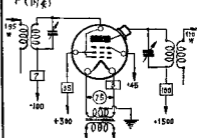
803

P(丙类)



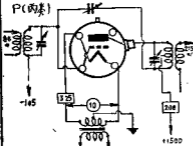
804

P(丙类)



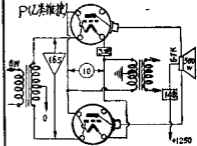
805

P(丙类)



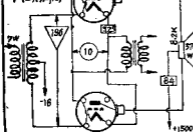
805

P(乙类推挽)



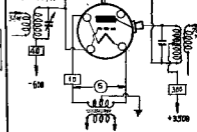
805

P(乙类推挽)



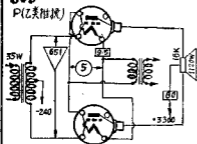
806

P(丙类)



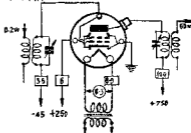
806

P(乙类推挽)



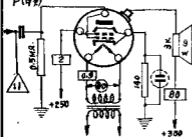
807

P(丙类)



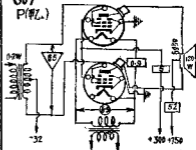
807

P(甲类)

S=6
V=-15

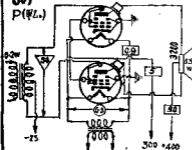
807

P(甲乙)



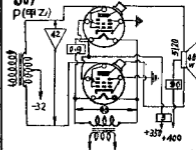
807

P(甲乙)



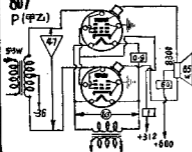
807

P(甲乙)



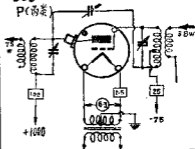
807

P(甲乙)



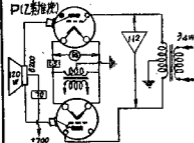
809

P(丙类)



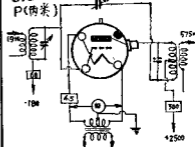
809

P(乙类推挽)



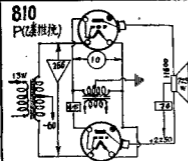
810

P(丙类)



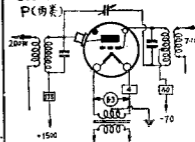
810

P(乙类推挽)



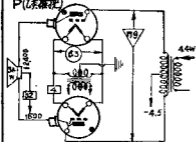
811A

P(丙类)

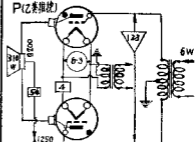


811A

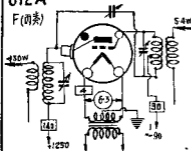
P(乙类推挽)

**811A**

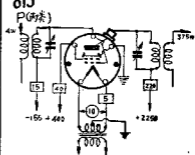
P(乙类推挽)

**812A**

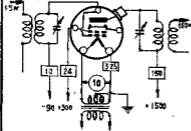
F(丙类)

**813**

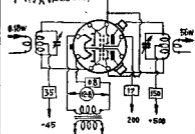
P(丙类)

**814**

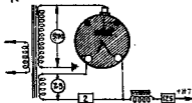
P(丙类)

**815**

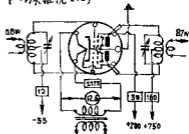
P(丙类推挽OTC)



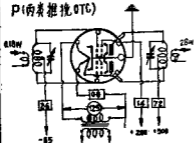
816
R



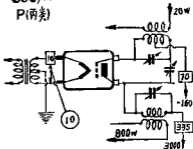
829 A/B
P (丙类推挽 OTC)



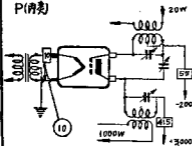
832
P (丙类推挽 OTC)



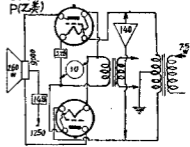
833/A
P (丙类)



833/A
P (丙类)

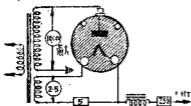


838
P (乙类)



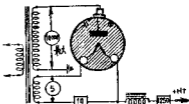
866/866A

R



872/872A

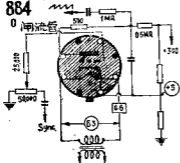
R



884

0

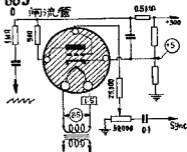
调流管



885

0

调流管



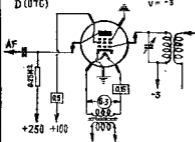
954

D (OTC)

S = 1:1

P = 1MA

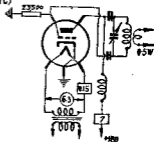
V = -3



955

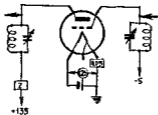
0 (OTC)

V = -35



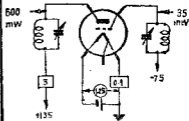
957
HF (OTC)

$S = 0.65$
 $P = 20800$
 $V = -5$



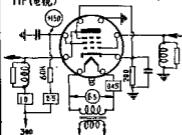
958-A
HF (OTC)

$S = 1.2$
 $F = 10.000$
 $V = -7.5$

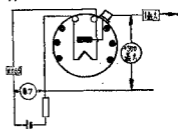


1231
HF (电视)

$S = 5.5$
 $P = 87MA$
 $V = -1.5$

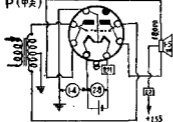


1247
M



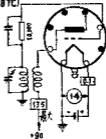
1291 = 5B7
P (甲类)

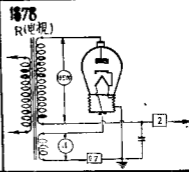
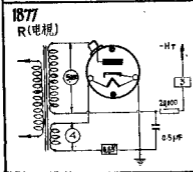
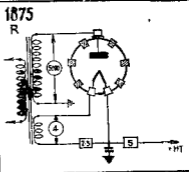
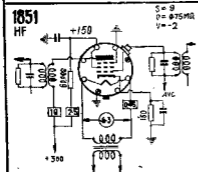
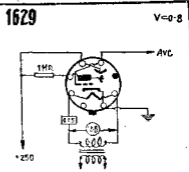
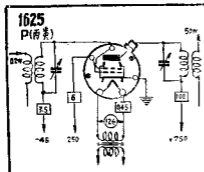
$S = 1.9$
 $P = 1050$



1293
θ (OTC)

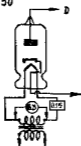
$S = 1.3$
 $V = 0$
 $P = 10750$
 $\mu = 14$





4623 ≈ EA50

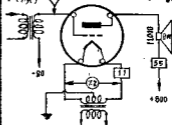
D (电视)



4624

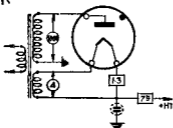
P (甲类)

S = 23
P = 3.0W
V = 80



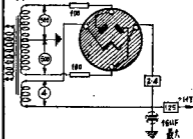
4646

R



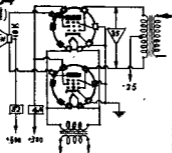
4652

R



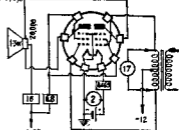
4654

P (乙类)



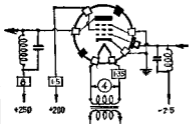
4670

P (乙类)



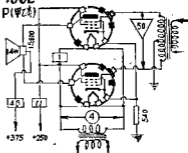
4673
HF

S = 5
p = 15MA
V = -25



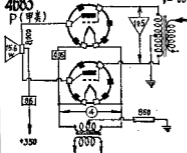
4682
P(甲类)

V = -32

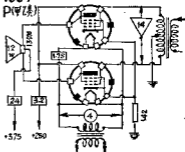


4683
P(甲类)

V = -65

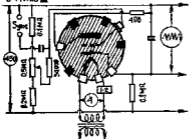


4684
P(甲类)

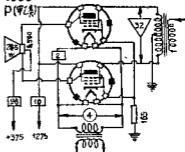


4686
0相3光敏

F_{max} = 50兆赫



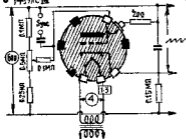
4688
P(甲类)



4690

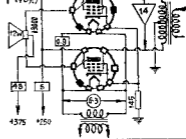
0 喇叭流圈

$F_{max} = 150$ 千赫



4694

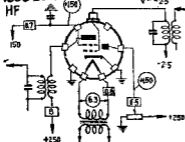
P(电类)



4696 - EE1

HF

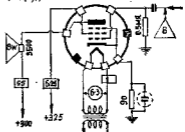
$S = 14$
 $P = 40000$
 $V = -2.5$



4699

P(甲类)

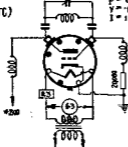
$S = 13$
 $P = 20000$
 $V = -12.2$



7193

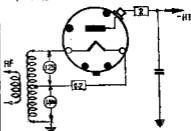
HF(OTC)

$S = 3$
 $P = 60000$
 $V = -18.5$
 $I = 11$



8016

R(电视)



缺187--末