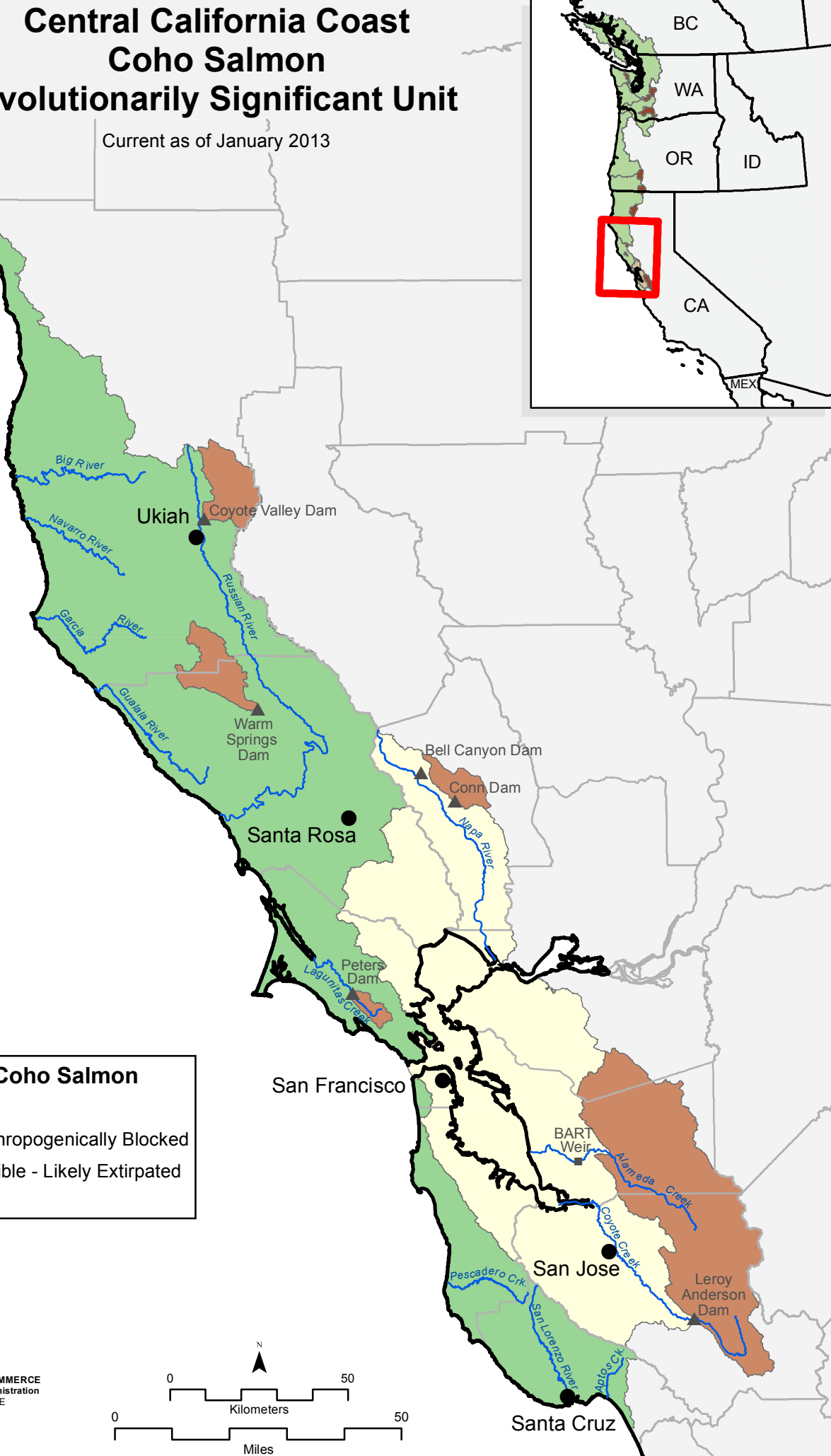
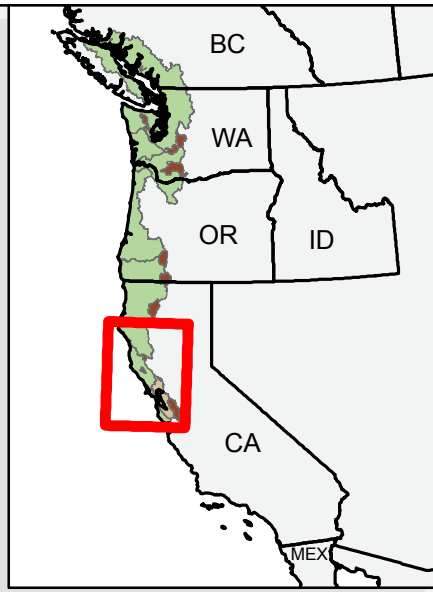




Central California Coast Coho Salmon Evolutionarily Significant Unit

Current as of January 2013



Central California Coast Coho Salmon

- ESU Boundary
- Historical Watershed: Anthropogenically Blocked
- Historical Habitat: Accessible - Likely Extirpated
- County Boundary

Map for general reference only
 UNITED STATES DEPARTMENT OF COMMERCE
 National Oceanic and Atmospheric Administration
 NATIONAL MARINE FISHERIES SERVICE
 HABITAT CONSERVATION DIVISION
 777 Sonoma Ave., Room 325
 SANTA ROSA, CALIFORNIA 95404

