

Doc
CA20NRI

-A55

ANNUAL REPORT

OF THE

(DEPARTMENT

ARIO (OF) REFORM INSTITUTIONS, Dept. 0

PROVINCE OF ONTARIO

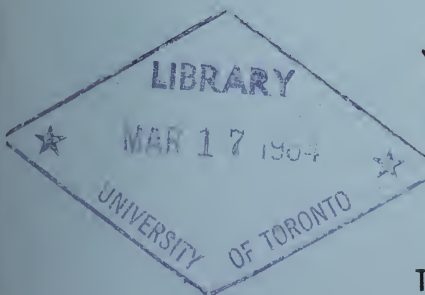
FOR THE YEAR ENDING 31st MARCH

1963

Part 1

REFORMATORIES, INDUSTRIAL FARMS
COMMON JAILS

PRINTED BY ORDER OF
THE LEGISLATIVE ASSEMBLY OF ONTARIO



ONTARIO

TORONTO

1964

CA-2017-
-155

ANNUAL REPORT
OF THE
DEPARTMENT
OF REFORM INSTITUTIONS

PROVINCE OF ONTARIO

FOR THE YEAR ENDING 31st MARCH

1963

Part 1

REFORMATORIES, INDUSTRIAL FARMS
COMMON JAILS

PRINTED BY ORDER OF
THE LEGISLATIVE ASSEMBLY OF ONTARIO
SESSIONAL PAPER No. 37, 1964



ONTARIO

TORONTO

1964

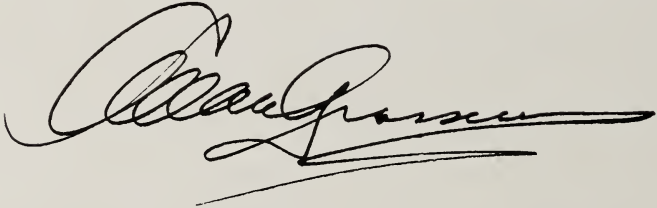
TO THE HONOURABLE WILLIAM EARL ROWE, P.C. (C.)

Lieutenant-Governor of the Province of Ontario.

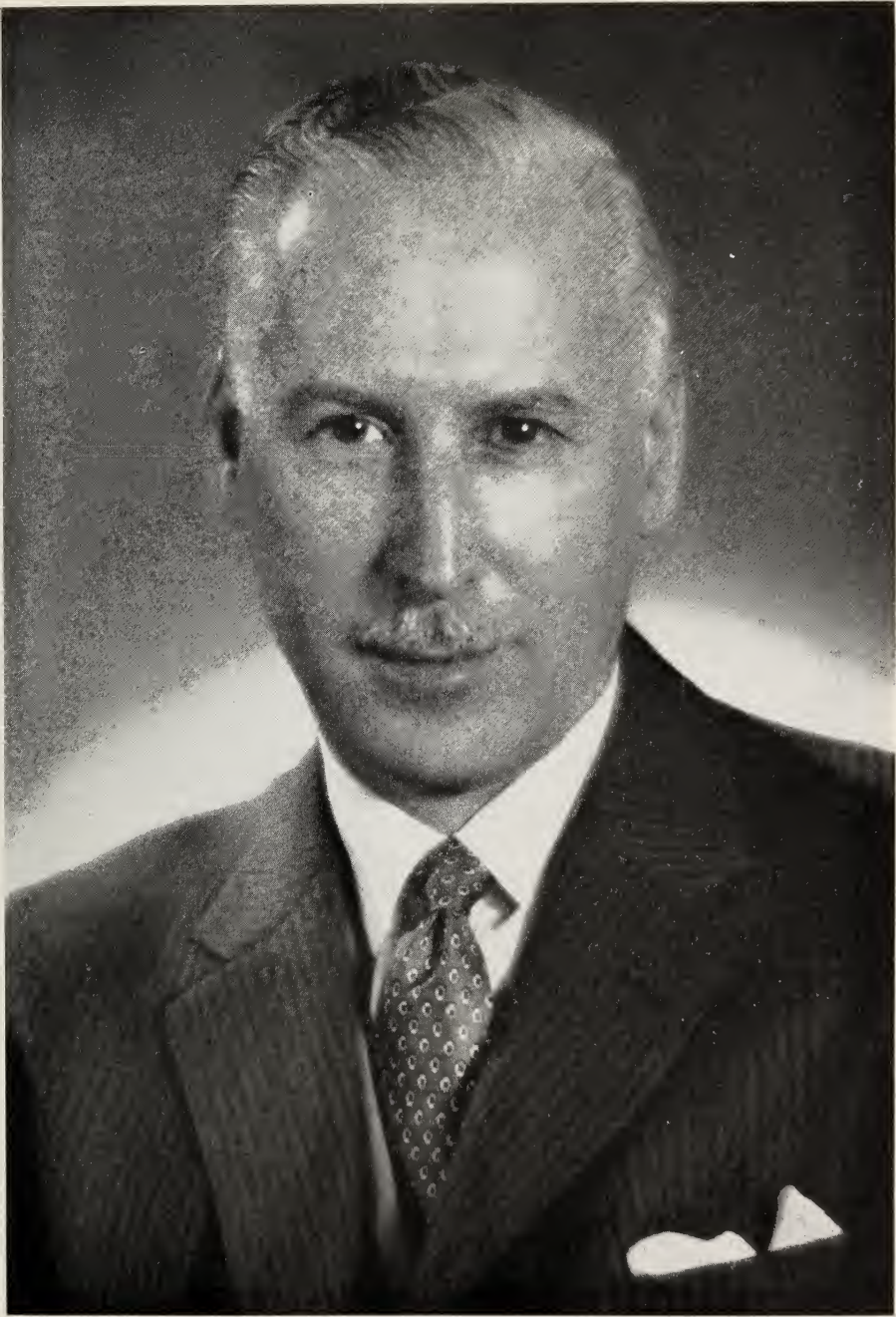
MAY IT PLEASE YOUR HONOUR:

The undersigned has the honour to present the Annual Report upon the Department of Reform Institutions of the Province of Ontario, Part 1, dealing with Reformatories, Industrial Farms and Common Jails for the year ending 31st March, 1963.


Respectfully submitted,

A handwritten signature in black ink, appearing to read 'W. E. Rowe', with a long horizontal flourish extending to the right.

Minister of Reform Institutions.



THE HONOURABLE IRWIN HASKETT
Minister of Reform Institutions
November 8, 1961 to August 14, 1963



Digitized by the Internet Archive
in 2017 with funding from
Ontario Council of University Libraries



THE HONOURABLE ALLAN GROSSMAN
Appointed Minister of Reform Institutions
August 14, 1963

INDEX

	PAGE
Introduction by the Deputy Minister.....	7-13

REFORMATORIES, INDUSTRIAL FARMS AND TRAINING CENTRES

Ages.....	16
Crimes.....	20-22
Criminal History.....	15
Educational Status.....	15
Employment of Prisoners in Institutions.....	18
Escapes.....	18
Expenditure, Revenue and Per Diem Costs.....	23-25
Farm Recoveries.....	28
Habits as to use of intoxicants and drugs.....	15
Industrial Production.....	26-28
Movement of Population.....	14
National Parole Report.....	32
Nationalities.....	15
Occupations.....	16
Officers, Number of.....	19
Ontario Board of Parole.....	29-31
Pictorial Study of Institution Activities.....	36-52
Rehabilitation Report.....	32
Salvation Army Report.....	33-35
Sentences, length of.....	17
Social Conditions.....	15

CITY, COUNTY AND DISTRICT JAILS

Accommodation.....	80
Ages.....	67
Committals.....	61
Comparative Statistics. Total of all jails.....	53-55
Crimes.....	56-57
Criminal History.....	66
Days' Stay.....	81
Educational Status.....	69
Escapes.....	64
Habits in relation to Intoxication.....	70
Historical Tables—Commitments and Convictions.....	83
Jail Officials and Salaries.....	58-59
Maintenance Costs.....	82
Movement of Population, each jail.....	60-65
Number of Prisoners (Greatest — Least — Average).....	80
Occupations.....	71-72
Ratio of Commitments and Convictions to Population of Ontario.....	83
Sentences, Length of.....	75-79
Social Status (Married or Single).....	68
Transfers.....	73-74

TO THE HONOURABLE, THE MINISTER,
Department of Reform Institutions.

SIR:

I have the honour and pleasure of submitting the Annual Report for the Department, for the fiscal year ending March 31st, 1963.

This fiscal year marked the completion of one stage in our long-term programme of providing those institutions necessary for an overall programme of classification, segregation, treatment and training, so basic to our total rehabilitation programme. Having reached this stage, we were able to evaluate our work at all institutions, to assess results and to make such modifications to programmes as indicated.

Equally we were able to take stock of and to consolidate those many services which are necessary for the efficient operation of an organization responsible for welfare of over 10,000 men and women during the course of a year.

In order to carry out legal obligations, maintain an effective rehabilitation programme and insure the welfare of prisoners under humanitarian principles, all aspects of the Department's organization must operate efficiently and certainly they must be progressive. Basic services in an expanding Department could easily stagnate and eventually reduce the effectiveness and efficiency of the rehabilitation programme. For this reason particular emphasis has been placed on reviewing and modernizing these basic services.

RECORDS

Any assessment of results in a rehabilitation programme must eventually depend on accurate initial records of inmates admitted to our institutions. We must have easy and clear identification and our records of previous criminal and institutional history must reflect modern trends. Until recently, inmates coming to our institutions for the first time were truly first offenders, but with the increased programme of probation, suspended sentence, etc., we now find that on their first committal many offenders have a long and detailed criminal history behind them. They are the hard cases which have not responded to the probation programme, have committed further offences or offences of such gravity that imprisonment is deemed the only reasonable sentence. In the light of these changing conditions and the increased co-operation between Federal and Provincial agencies, our system of records is under constant review.

ACCOUNTS DEPARTMENT

The overall operation of a Department financed by public funds and the many services within the Department are directly dependent on an efficient accounting system.

The expansion of the Department, with the diversification of institutions and services, inevitably strains a system and methods designed for a smaller and more compact organization. Consequently, we have reviewed all our accountancy and inventory control operations over the last few years, streamlining procedures and introducing modern mechanical methods of accountancy. This not only enables us to keep a closer check on all operations but also provides information for the immediate evaluation of the economics of programmes and services, and provides data for future development.

COMMUNICATION

It has long been recognized that the overall efficiency of our Department depended greatly on the effectiveness of our internal system of communication, both horizontally and vertically. Consequently, we have given special care to this basic aspect of our organization. Many methods of improved communication have been introduced, each designed to deal most efficiently with a particular problem or a special service. Conferences, group meetings, lectures, individual liaison, bulletins, printed and duplicated material have all been put to effective use both for internal departmental communication and for the improvement of co-operation and communications with interested groups and agencies outside the Department.

BASIC PHYSICAL WELFARE NEEDS

Under this heading we include accommodation, food, medical attention, recreation and sports, clothing and such other everyday necessities as are concerned with the physical well-being of those inmates under our care and supervision.

Accommodation

Individual cells or rooms provide about 30% of the accommodation in our institutions, dormitories provide about 70%. In general, dormitories are used in institutions where security can be reduced, cells for institutions of maximum security or where inmates are unable to adjust to the communal living provided in dormitories. Essentially all accommodation must be clean and provide such amenities as are necessary for maintaining a person's self-respect. All individual cells are provided with good ventilation and light, table, seat, locker, modern toilet facilities, bed and bedding. Dormitories are provided with individual lockers, communal tables, seats, toilets, washrooms, and all inmates in cells or dormitories have daily shower facilities. No food is permitted in areas of living accommodation and the highest standards of hygiene are maintained.

Clothing

All inmates are issued with clean clothing on admission and a complete set of clean clothes at least once per week. Most institutions maintain their own laundry and repair service, the smaller institutions make use of the facilities of nearby larger institutions.

Although it is obviously necessary to have a distinctive type of clothing, the use of blue shirts and jeans (brown at Training Centres) of the cut and texture similar to industrial clothing, is the least likely to take away a man's self-respect. Women do not wear uniforms. They are supplied with dresses of a modern design made from fabrics of various colours.

Food Services

For many years the Department has recognized the importance of Food Services within its institutions and has maintained a high standard of service and efficiency. Although it is very easy for food to become a subject of unrest amongst men who are incarcerated for long periods, it is noteworthy that there have been no major complaints about the food services for many years. Nevertheless, we recognize that this should not be accomplished by luxury, instead,

under the direction of our Food Services Administrator, we provide a planned, varied, balanced diet, of good quality food, attractively and hygienically prepared by skilled cooks, with due regard to cost.

Medical and Dental Services

In all institutions we have continued to maintain high standards of medical and dental care. This is necessary not only to deal with day to day ailments, but also to counteract the self-neglect evident in many inmates when committed to our institutions. Where physical disability or dental deformity presents a psychological factor in hindering adjustment, treatment within the institutions has often proven successful.

Of special note this year was the completion of the new T.B. Clinic at Guelph Reformatory. An entire floor area of the Tower Building at Guelph has been transformed into a completely isolated modern T.B. hospital, containing sections for active and inactive patients. The work was done entirely by inmate labour under the direction of our construction staff. This is the only hospital of its kind in Canada completely under the jurisdiction of a correctional institution.

Sports and Recreation

Purposeful exercise and recreation are recognized as important factors in our total programme. We have ensured that in addition to relieving the inevitable boredom of long incarceration, the recreation programme provides interest for many inmates in useful hobbies and activities. The physical education and sports programmes are designed to promote the physical well-being of inmates and provide a variety of sporting activities whereby inmates may get rid of surplus energy along controlled lines.

These basic services are essential in providing a suitable climate to carry out our total treatment, training and rehabilitation programme.

TRAINING

Academic

We were fortunate to start the year with a more numerous and more qualified staff than of recent years and the value of the work was enhanced by the overall enthusiasm shown by the teaching staff. The increase in the number of inmates regularly attending academic classes was appreciated by one Headmaster who stated, "While it is pleasing to have a number of students advance academically the real value is that a large number of inmates were reintroduced to school and study disciplines. If even a portion of the total number maintain their motivation after their release, that will be the measure of the true value of the school."

Library Services

During the year a steady increase in the use of the library services was noted with special emphasis on educational reading. Professional librarians attended all institutions regularly to assist inmates in the effective use of books. Over 150,000 books were issued in adult institutions during the year and many were obtained specifically to enable inmates to complete certain courses.

Vocational

In addition to the two Trade Training Centres at Brampton and Burtch, selected inmates at other institutions, who have the aptitude and the ability,

are given vocational training in appropriate trades. Individual instructors have increased the scope and content of their courses as more young men have attained the necessary academic standing to qualify for trade training.

RELIGIOUS PROGRAMME

Increased assistance from local organizations, churches and individual members of the clergy, along with an increase of our own chaplaincy staff, has enabled us to provide more adequate religious counselling and guidance. Since these services are so basic to the rehabilitation needs of the majority of the men and women in our care, at the end of the year we obtained the services of a full time Director of Chaplaincy Services. The Rev. M. Flint is particularly qualified for this position. In addition to being an ordained minister, he has a Ph.D. in Psychology as well as special training in the group therapeutic approach which has proven successful in other jurisdictions. During the year new chapels were planned for Burwash, Burtch and the Forestry Camp at Hendrie.

FARMING

The Departmental farms maintained steady progress with a gross production value during the fiscal year of over half a million dollars. The value of live-stock inventories increased by \$19,000.00 largely accounted for by expansion of the Burwash Beef Project. There was also a large increase in the quantity of beef slaughtered for consumption.

Milk production showed a satisfactory increase with a slight decrease in dairy cattle inventory. The composite index for production of milk was 125% of breed average and 129% for butter fat. Due to unfavourable weather conditions, field and garden crop yields were somewhat below normal.

The Ontario Reformatory Guelph herd of Holstein cattle maintained its reputation for high milk producing cows and during the year was awarded a record number of production certificates by the Canadian Holstein-Freisian Association.

INDUSTRIES

During the year, we continued to concentrate on quality control by further refinements in the modernization of equipment and methods in our industrial shops. The industrial staffs in our institutions can be justifiably proud of not only the gross production value of almost \$3,000,000.00 but more important is the therapeutic and rehabilitative value in permitting inmates to work with modern equipment in accordance with accepted manufacturing practice and standards.

Considerable opportunity for job sampling is available in our Brick and Tile Plant, Canneries, Planing Mill, Tailor Shops, Woollen Mill, Machine Shops, Marker Plant, Braille Shop, Block and Tile Plant and Carpentry Shops.

CONSTRUCTION

Projects undertaken during the fiscal year fall into two categories. Smaller projects are undertaken entirely by inmate labour, larger projects are carried out

by the Department of Public Works. The second category includes a new incinerator at the Ontario Reformatory, Guelph; rebuilding of institutional buildings at the Rideau Industrial Farm and a second dormitory at the Industrial Farm Monteith. Projects completed by inmate labour include a new cannery storage building and the renovation and conversion of the fourth floor tower into a T. B. hospital ward at the Ontario Reformatory Guelph; an addition to the cannery at the Burtch Industrial Farm; the complete renovation and expansion of an old farm house for a Treatment Centre for Women at Brampton; and new greenhouses at the Industrial Farm, Fort William and the Industrial Farm, Monteith. A new chapel for the inmates at the Burwash Industrial Farm, constructed entirely by inmate labour, was nearing completion at the end of the year.

TREATMENT SERVICES

With the appointment of additional staff, psychiatrists, psychologists and social workers, the treatment services continued to make progress during the year. Treatment meetings with clinical and administrative staff were held regularly at each institution concerned. During the year three members of the staff attended a special course on alcoholism at Rutgers University.

A special booklet, giving a complete picture of the classification, segregation, treatment and training services of the Department, was issued to all magistrates in the province. Prepared in looseleaf form to enable it to be kept up to date, the booklet deals with particular services available at each institution and the treatment programmes available for many classes of offenders.

REHABILITATION SERVICES

Stage two in the amalgamation of our rehabilitation programme has now been completed. The Ottawa District Office, which opened during the latter part of the year, is now in full operation and additional staff will be posted there as the case load increases.

Two female rehabilitation officers were appointed to the staff to work out of the Toronto office. This increases the supervision offered to the large number of juveniles on placement in the Metropolitan Toronto area.

Authorization for additional staff was received during the year and as they are recruited they will be posted to various locations throughout the province.

Plans were completed during the year for stage three of the programme which includes the opening of an additional office in Hamilton. The staff for the Hamilton office has been selected and will be transferred as soon as suitable office space is obtained.

The rehabilitation services now has offices located at seventeen institutions throughout the province. In addition, rehabilitation officers staff four district offices located in Port Arthur, Ottawa, London and Toronto.

STAFF TRAINING

During the year a supervising psychologist was appointed Director of Staff Training and Development in order to revise the courses at the Staff Training School. Plans are also being made to provide suitable training courses for senior, professional and semi-professional staff.

Members of the staff continued their extra-mural studies leading to a Certificate of Corrections at McMaster and Queen's Universities with commendable success. This next year should see the first graduates of this course.

PLANNING

Of major importance was the start made on the Women's Treatment Centre at Brampton. Under the direction of the Rev. Maurice Flint, a milieu therapy unit had been in operation for a number of years at the Andrew Mercer Reformatory for Women. The aim of the unit was to educate the participants to understand themselves, and to enable them to learn, in human relationships, the dynamics of their own inter-personal relationships. The girls in the group gained new insight into their confused thinking and inadequate ways of reacting and behaving with consequent positive reorientation in responsible community living.

The Department's evaluation of the project, based on statistical returns, post-group psychiatric interviews and the motivation of the girls to participate and continue in such a programme, indicated a decided success in this venture.

The Department, therefore, acquired a house near the Women's Guidance Centre at Brampton and converted it into a treatment centre, in order that more intensive and extensive group work of this kind may be carried out in a completely "open" setting. Selection criteria in the past have proven most satisfactory, but in the new unit greater emphasis is placed upon the needs of the younger female narcotic addicts.

The remodelling of the house to become a residence with a "home like" atmosphere was assigned to the staff and students of the Ontario Training Centre Brampton under the direction of our Superintendent of Construction. Nearing completion by the end of the fiscal year, the treatment centre is a tribute to the fine work of all concerned and fulfils our highest expectations.

RESEARCH

During the year, you took a personal active interest in the proposed centre of Criminology at the University of Toronto.

The Department envisaged the institute as having a threefold function; to conduct research; to teach; and to act in a consultant capacity to legislators and administrators. It would have as its concern the study of crime, its conditioning, its prevention and its treatment. It would conduct both theoretical and operational research, much of which would be carried out in appropriate field settings.

The acceptance of this idea and plans made to put it into operation is regarded by the Department as a major step forward in this important field.

CLASSIFICATION

Although the Department already maintains a most detailed classification and segregation programme, constant evaluation throughout the year has been made of the effectiveness of any extension possible to this programme. The great success of the forestry camps, the present trade training centres and other

minimum security institutions indicates that an extension of these facilities in order to provide an even greater depth of classification is a practical possibility.

We wish to express our appreciation for the continued co-operation received throughout the year from the many interested citizens, aftercare agencies, universities, church groups, service clubs, government departments, and employers who have greatly assisted us in this important and challenging work.

Yours sincerely,

A handwritten signature in black ink, appearing to read "J. Abraham". The signature is written in a cursive style with a large, looping initial "J" and a long, sweeping underline.

Deputy Minister.

TABLE No. 1

MOVEMENT OF POPULATION IN ONTARIO REFORMATORIES,
INDUSTRIAL FARMS AND TRAINING CENTRES

April 1st, 1962 to March 31st, 1963

	Brampton (O.T.C.)	Elliot Lake	Guelph	Millbrook	Mimico	Burtch (I.F.)	Burtch (O.T.C.)	Burwash	Fort William	Monteith	Rideau	Mercer	Brampton (O.W.G.C.)	TOTALS
Number remaining in custody, April 1, 1962.....	151	51	837	171	457	171	33	761	77	126	100	119	23	3,077
Committed during year.....	238	427	1,767	371	2,828	1,069	74	969	547	656	569	655	...	10,170
Received and transferred to Brampton O.T.C.....	238	238
Received and transferred to Burtch O.T.C.....	67	67
Transferred from other institutions.....	49	39	150	468	3	49	758
Re-admitted from penitentiaries Re-admitted from jails & other institutions.....	3	138	13	30	3	75	9	9	7	287
National Parole violators re-admitted.....	9	2	1	3	1	16
Ontario Parole violators re-admitted.....	2	56	1	4	16	10	89
TOTAL NUMBER IN CUSTODY DURING YEAR.....	441	519	3,112	708	3,788	1,243	110	1,824	624	782	678	794	79	14,702
Discharged on expiration of sentence.....	80	302	997	308	2,380	933	24	482	459	596	454	501	27	7,543
Discharged by payment of fines. Discharged by remission of sentence.....	1	38	9	14	431	52	2	91	38	15	81	1	773
Discharged by Order-in-Council Discharged by His Excellency the Governor General.....	2	1	1	4
Released by National Parole Board.....	61	5	8	6	80
Released by Ontario Parole Board.....	1	2	3
Released on bail.....	53	8	108	4	15	7	10	22	3	5	6	1	242
Transferred to hospital.....	105	38	355	28	73	29	126	25	22	801
Transferred to hospital for mentally ill.....	6	1	3	10
Returned to jails.....	1	40	5	46
Deported.....	13	3	7	3	1	1	2	3	33
Released or transferred for other reasons.....	28	43	538	93	27	60	5	222	4	36	58	49	1	1,164
Escaped and not recaptured up to March 31st, 1963.....	1	4	15	64	3	147	2	1	14	2	253
Died while in custody.....	1	5	4	2	12
TOTAL NUMBER RELEASED, DISCHARGED, DIED, ETC....	271	435	2,135	477	3,369	1,061	68	1,059	563	687	556	671	62	11,414
NUMBER REMAINING IN CUSTODY, MARCH 31, 1963..	170	84	977	231	419	182	42	765	61	95	122	123	17	3,288

TABLES No. 2 TO No. 7

**SOCIAL CONDITIONS; EDUCATIONAL STATUS; HABITS AS TO THE USE OF
INTOXICANTS AND DRUGS; NATIONALITIES; CRIMINAL HISTORY OF
ALL PRISONERS COMMITTED TO ONTARIO REFORMATORIES,
INDUSTRIAL FARMS AND TRAINING CENTRES**

	BRAMPTON(O. T. C.)	ELLIOT LAKE	GUELPH	MILLBROOK	MIMICO	BURICH (I.F.)	BURICH (O. T. C.)	BURWASH	FORT WILLIAM	MONTEITH	RIDEAU	MERCER	BRAMPTON (O. W. G. C.)	TOTALS	
2. Social Conditions															
Married.....	37	99	381	154	1,180	499	3	384	163	210	237	292	3,639	
Single.....	201	318	1,378	194	1,404	505	71	555	372	427	309	266	6,000	
Widowed.....	...	8	3	11	107	25	...	8	8	13	12	67	262	
Divorced.....	...	2	5	12	137	40	...	22	4	6	11	30	269	
3. Educational Status															
Illiterate.....	...	15	4	7	24	11	...	20	43	34	3	11	172	
Elementary.....	108	304	1,008	210	1,626	655	66	674	373	459	363	382	6,228	
High School.....	128	106	725	147	1,151	388	8	266	130	158	199	262	3,668	
College or University.....	2	2	30	7	27	15	...	9	1	5	4	102		
4. Habits as to use of Intoxicants—															
Abstainers.....	121	38	704	57	61	24	43	89	4	26	25	66	1,258	
Temperate.....	116	101	1,045	167	491	434	31	487	49	219	181	199	3,520	
Intemperate.....	...	1	288	18	147	2,276	611	...	393	494	411	363	390	5,392
5. Habits as to Use of Drugs—															
Abstainers.....	238	427	1,767	326	2,819	1,069	74	969	547	656	569	548	10,009	
Addicts.....	45	9	107	161	
6. Nationalities															
Canadian-born.....	210	403	1,557	315	2,364	988	65	907	467	600	528	569	8,973	
English.....	4	3	45	10	77	20	...	19	2	4	15	19	218	
Irish.....	1	1	5	7	71	5	...	2	10	2	4	21	129	
Scottish.....	2	...	16	11	104	18	1	5	6	2	11	13	189	
United States.....	2	1	12	7	38	5	...	9	1	4	4	9	92	
Other Countries.....	19	19	132	21	174	33	8	27	61	44	7	24	569	
7. Criminal History															
No previous adult institu- tional history.....	200	222	1,009	57	178	149	54	14	11	150	104	161	2,309	
No record available.....	6	164	158	2,159	653	44	...	184	50	99	3,517	
First time.....	135	78	158	59	66	22	4	6	12	75	16	161	792	
Second time.....	65	74	471	23	48	21	8	52	62	50	35	78	987	
Third time.....	23	58	401	17	44	25	7	65	39	51	33	66	829	
More than third time.....	9	53	737	114	511	348	11	846	250	430	386	350	4,045	

TABLES No. 8 AND No. 9

OCCUPATION AND AGES OF ALL PRISONERS COMMITTED TO ONTARIO REFORMATORIES, INDUSTRIAL FARMS AND TRAINING CENTRES

	BRAMPTON(O.T.C.)	ELLIOT LAKE	GUELPH	MILLBROOK	MIMICO	BURTON (I.F.)	BURTON (O.T.C.)	BURWASH	FORT WILLIAM	MONTEITH	RIDEAU	MERCER	BRAMPTON (O.W.G.C.)	TOTALS
8. Occupations														
Agricultural	9	1	57	10	41	47	8	20	4	5	23	225
Clerical	13	6	84	14	146	26	...	55	1	13	21	61	...	440
Commercial	24	7	117	30	148	...	1	31	...	9	35	71	...	473
Construction	15	50	157	49	315	175	5	141	10	70	95	1,082
Domestic	9	14	51	20	101	32	8	17	32	347	...	631
Fishing, Trapping, Logging . .	2	36	17	1	12	33	4	28	109	7	249
Labourers	100	222	711	135	1,080	353	40	298	216	355	205	56	...	3,771
Manufacturing	14	5	97	27	66	42	5	60	18	334
Mechanics	10	16	160	24	301	217	5	60	6	34	24	857
Mining	4	13	13	5	55	35	...	12	25	51	11	224
Personal Services	10	54	14	196	53	1	103	4	23	29	108	...	595
Professional	3	1	13	11	38	15	...	21	1	5	6	1	...	115
Transportation	25	99	24	301	64	4	100	1	37	39	694
No Occupation	16	11	7	5	...	9	...	6	3	17	3	11	...	88
Others	19	10	130	2	28	...	1	2	159	13	28	392
9. Ages of Prisoners														
Under 16 years														
16-20 years inclusive	175	138	1,175	21	22	31	58	128	7	43	23	120	...	1,941
21-24 " "	63	43	201	59	211	124	16	301	77	79	78	88	...	1,340
25-29 " "	25	140	46	238	132	...	165	75	72	68	93	...	1,054
30-34 " "	27	103	54	336	117	...	122	73	88	89	81	...	1,090
35-39 " "	39	69	59	427	147	...	87	74	101	74	73	...	1,150
40-44 " "	45	29	45	401	123	...	59	72	74	72	75	...	995
45-49 " "	34	26	30	412	139	...	42	26	64	66	48	...	887
50-54 " "	44	7	20	360	115	...	37	43	42	41	28	...	737
55-59 " "	13	10	24	247	77	...	17	52	55	24	24	...	543
60-64 " "	10	1	9	116	47	...	6	19	20	30	14	...	272
65-69 " "	3	5	3	52	14	...	5	23	18	3	7	...	133
70 years and over	6	1	1	6	3	6	...	1	4	...	28

TABLE No. 10

LENGTH OF SENTENCES RECEIVED BY PRISONERS COMMITTED TO ONTARIO REFORMATORIES, INDUSTRIAL FARMS AND TRAINING CENTRES

	BRAMPTON(O.T.C.)	ELLIOT LAKE	GUELPH	MILLBROOK	MIMICO	BURTC (I.F.)	BURTC (O.T.C.)	BURWASH	FORT WILLIAM	MONTEITH	RIDEAU	MERCER	BRAMPTON (O.W.G.C.)	TOTALS
10. Length of Sentences—														
Definite:														
Under 30 days	85			2	3	490			7	177	2	2		768
30 days and under 60	116	56	82	1,177	132		7	321	169	154	247			2,461
2 Months and under 3	57	97	52	921	183		11	85	49	71	139			1,665
3 " " " 4	60	260	44	381	65	1	22	72	148	137	104			1,294
4 " " " 5	9	75	13	94	27		8	26	20	22	20			314
5 " " " 6	6	29	11	34	93		42	7	2	20	2			246
6 " " " 9	34	24	219	34	148	19	21	96	23	63	104	33		818
9 " " " 12	14	4	75	4	7	59	3	149	1	9	23	5		353
12 " " " 15	32	4	137	38			10	72	5	19	36	9		362
15 " " " 18	2	1	24	6			3	49				2		87
18 " " " 21	4		50	10			2	60				1		127
21 " " " 24	3		82	11			1	40				1		138
Other Definite Sentences				3				3				1		7
TOTAL DEFINITE SENTENCES	89	366	1,104	310	2,765	1,068	41	559	547	656	569	566		8,640
Indefinite:														
3 months to 6 months	1	27	40	2	20			5				1		96
3 " " 9 "	3		5		2			4						14
3 " " 12 "			4	1	1									6
4 " " 6 "			9	3	6			3						21
4 " " 7 "			3											3
4 " " 8 "			4					1						5
4 " " 10 "	1													1
4 " " 12 "			1											1
6 " " 8 "		29		1	1									31
6 " " 9 "	25		46	2	8		6	30						117
6 " " 10 "			4					3						7
6 " " 12 "	25		91	6	6		9	45				7		189
6 " " 15 "	5		7	1			1	8						22
6 " " 18 "	5		7	1				6						19
6 " " 24 "	1						1	4						6
9 " " 12 "	9	3	25	3			2	16						58
9 " " 15 "	7		29	2			3	15						56
9 " " 18 "	1		10					6				1		18
9 " " 24 "			1					1						2
12 " " 15 "	16	2	54	1			1	36						110
12 " " 18 "	24		101	8		1	4	66				2		206
12 " " 21 "			5	1				2						8
12 " " 24 "	4		15	3			2	20						44
18 " " 21 "			3					3						6
18 " " 24 "	1		21	3			1	26						52
18 " " 30 "			6	1			1	16						24
24 " " 30 "			4	2				11						17
24 " " 36 "	3		8	2			1	5						19
24 " " 48 "			3	1				8						12
Not exceeding 3 months			1									11		12
" " 6 "			16	1									16	33
" " 12 "			39	2								8		49
" " 24 "			80	9								5		94
Other Indefinite Sentences	18		21	5	19			71				38		172
TOTAL INDEFINITE SENTENCES	149	61	663	61	63	1	33	410				89		1,530
TOTAL OF ALL SENTENCES	238	427	1,767	371	2,828	1,069	74	969	547	656	569	655		10,170

TABLES No. 11 AND No. 12
NUMBER OF PRISONERS WHO ESCAPED AND EVADED CAPTURE; NUMBER WHO ESCAPED AND WERE RECAPTURED; EMPLOYMENT OF PRISONERS

	BRAMPTON (O.T.C.)	ELLIOT LAKE	GUELPH	MILLBROOK	MIMICO	BURTON (I.F.)	BURTON (O.T.C.)	BURWASH	FORT WILLIAM	MONTEITH	RIDEAU	MERCER	BRAMPTON (O.W.G.C.)	TOTALS
11. Escapes	1	10	14		1	6	2	7	2	1	3	1	2	9
Escaped and evaded capture.....	11				6			93						151
Escaped and were recaptured.....														
12. Employment of Prisoners in The Institution During Year (Percentage)														
Clerical.....	2.0	20.5	5.19	3.4	1.29	39.0	32.5	1.66	45.87	58.9	1.9	45.15	30.0	
General Maintenance.....	5.0	2.5	23.13	15.2	18.03	2.5		58.16	7.81	4.7	2.3			
Construction.....	3.0	2.5		1.1	.48	3.0	.5	4.81	1.74	5.2	3.0			
Sick.....		60.0	5.68		3.15			1.01	1.10		.5			
Bush Operations.....		60.0	4.01		5.15			1.65						
Academic and Vocational Training.....	87.0	9.5	8.04	29.3	17.61	25.5	41.0	1.48				3.15	70.00	
Industrial.....			20.09	3.1	10.40	10.0	7.0	3.32			14.5	46.00		
Farm and Garden.....	2.0		9.43	3.1	10.40	10.0	1.0	13.46	29.74	21.1	20.0	4.06		
Land and Road Improvement.....			8.44	30.0	2.66			8.51	1.31		2.3			
Miscellaneous.....	1.0	7.5	15.99	17.9	41.23	20.0	18.0	5.94	12.43	10.1	15.0			

TABLES No. 13
NUMBER OF OFFICERS AND EMPLOYEES

	BRAMPTON (O.T.C.)	ELLIOT LAKE	GUELPH	MILLBROOK	MIMICO	BURCH (I.F.)	BURCH (O.T.C.)	BURWASH	FORT WILLIAM	MONTEITH	RIDEAU	MERCER	BRAMPTON (O.V.G.C.)	TOTALS
13. Number of Officers and Employees on March 31, 1963														
Superintendents.....	1	1	1	1	2	1	...	1	1	1	1	1	1	13
Assistant Superintendents.....	2	1	1	3	1	...	8
Bursars.....	1	1	1	1	1	1	...	1	1	1	1	1	1	12
Clerks, Stenographers, etc.....	7	2	30	7	16	5	...	15	2	3	4	5	1	97
Supply Supervisors.....	1	...	2	2	2	1	...	2	1	1	1	2	...	14
Captains.....	1	1	1	1	1	1	...	1	...	1	1	9
Lieutenants.....	9	2	3	10	1	25
Sergeants.....	6	2	8	5	7	7	...	9	2	5	6	57
Corporals.....	7	3	13	7	13	6	...	16	4	6	6	81
Guards.....	33	31	236	87	97	36	...	171	16	21	25	753
Senior Matrons.....	6
Matrons.....	41
Psychiatrists.....	4	2	8
Psychologists.....	1	...	3	2	1	1	11
Social Workers.....	1	2	3
Counsellors.....	2
Teachers.....	3	2	7	2	...	1	...	9	29
Trade Instructors.....	10	...	6	...	1	3	...	3	23
Physicians.....	1	1	3	1	1	1	...	2	1	1	14
Dentists.....	1	1	1	1	1	1	...	1	7
Nurses.....	5	1	1	2	11
Chefs, Cooks and Assistants.....	4	3	16	16	6	6	...	12	2	3	3	1	1	73
Farmers, Gardeners and Assistants.....	12	...	3	1	...	9	3	5	5	1	...	39
Stationary Engineers, Firemen, etc.....	5	...	11	6	6	7	...	14	1	6	5	6	...	67
Tradesmen and Mechanics.....	8	2	8	1	...	8	1	1	1	1	...	32
Industrial Plant Managers, Shop Foremen.....	10	7	12	2	...	3	1	2	...	37
All other Employees.....	20	5	2	8	4	...	39
TOTALS.....	82	48	410	160	184	82	...	300	36	55	60	74	20	1,511

TABLE No. 14

**OFFENCES FOR WHICH PRISONERS WERE COMMITTED DURING THE
YEAR TO THE ONTARIO REFORMATORIES,
INDUSTRIAL FARMS AND TRAINING CENTRES**

	BRAMPTON (O. T. C.)	ELLIOT LAKE	GUELPH	MILLBROOK	MIMICO	BURTON (I. F.)	BURTON (O. T. C.)	BURWASH	FORT WILLIAM	MONTEITH	RIDEAU	MERCER	BRAMPTON (O. W. G. C.)	TOTALS
A. Crimes Against the Person														
Abduction.....	1	1	10	1	2	1	2	18
Abortion.....	3	3	6
Assault Causing Bodily Harm.....	2	10	50	4	69	33	2	35	8	16	17	6	252
Assault, Common.....	2	3	23	9	27	14	14	13	12	5	1	123
Assault, with intent to commit an indictable offence.....	4	5	4	2	1	6	22
Assault on Peace Officer.....	5	23	1	31	11	6	3	6	3	2	91
Attempted Suicide.....	1	2	1	2	6
Carnal Knowledge.....	3	11	1	2	17
Manslaughter.....	1	1
Rape and Attempted Rape.....	1	1
Threatening and Intimidation.....	1	3	1	5
TOTALS.....	12	25	129	16	131	60	5	58	24	37	25	20	542
B. Crimes Against Property														
Arson and Attempted Arson.....	2	18	1	1	22
Breaking and Entering.....	5	6	9	6	12	23	8	60	7	10	20	2	168
Breaking, Entering and Theft.....	83	42	491	16	36	18	23	200	7	16	36	9	977
Conversion.....	2	9	6	1	1	1	20
Damage to Property.....	3	5	11	4	11	14	5	5	3	3	64
False Pretences.....	8	1	54	1	52	25	64	11	9	21	18	264
Forgery.....	6	4	19	9	5	1	7	1	6	4	62
Fraud.....	3	16	2	15	16	14	3	18	6	10	103
Housebreaking.....	1	1	2	1	1	6
Possession of Housebreaking Instruments.....	2	1	5	1	4	2	14	2	4	35
Possession of Property obtained by Crime.....	6	19	73	10	41	34	3	69	14	16	19	8	312
Robbery.....	14	65	1	6	3	9	2	4	6	5	115
Shopbreaking.....	1	2	3	32	38
Taking Without Owner's Consent.....	2	3	15	5	3	1	3	1	33
Theft and Attempted Theft.....	60	74	535	56	289	222	22	289	52	96	144	77	1,916
Trespass.....	1	7	1	4	13
Uttering.....	5	4	40	3	16	12	2	60	4	9	15	170
TOTALS.....	196	163	1,347	118	507	383	62	820	104	182	283	153	4,318

TABLE No. 14 (Cont'd)

	BRAMPTON (O. T. C.)	ELLIOT LAKE	GUELPH	MILLBROOK	MIMICO	BURTON (I. F.)	BURTON (O. T. C.)	BURWASH	FORT WILLIAM	MONTEITH	RIDEAU	MERCER	BRAMPTON (O. W. G. C.)	TOTALS
C. Crimes Against Public Morals and Decency														
Bigamy		1	8		2			1		1		1		14
Breach of Child Welfare Act					1							7		8
Breach of Deserted Wives' and Children's Maintenance Act		2	9	5	50	4			5					75
Breach of Venereal Diseases Act														
Buggery				1										1
Contributing to Juvenile Delinquency	2	1	20	23	9	2		5		1		2		65
Incest			2		1			1						4
Indecent Assault	1		28	50	8		2	10		4	4			107
Indecent Exposure or Other Indecent Act			9	29	3	3			1					45
Inmates and Frequenters of Houses of Ill-fame						3							16	19
Keeping Houses of Ill-fame			2	2	7					1	1	28		41
Non-support		1	2		7	5		6	7	21	2			51
Perjury			2		1		1	3						7
Prostitution								2				133		135
Seduction							1							1
TOTALS	3	5	82	110	89	17	4	28	13	28	7	187		573

TABLE No. 14 (Concluded)

	BRAMPTON (O. T. C.)	ELLIOT LAKE	GUELPH	MILLBROOK	MIMICO	BURTON (I. F.)	BURTON (O. T. C.)	BURWASH	FORT WILLIAM	MONTEITH	RIDEAU	MERCER	BRAMPTON (O. W. G. C.)	TOTALS
D. Crimes Against Public Order and Peace														
Breach of Excise Act.....			4		3	1					1			9
Breach of Indian Act.....					1	2								3
Breach of Opium and Narcotic Drug Act.....				5	2			1						8
Breach of Probation Act....	1	2	11		2			2			1	10		29
Breach of Railway Act.....					8				4					12
Breach of Recognizance.....		2	5		4	1				8	2			22
Carrying Unlawful Weapons.	2	3	22		12	9		11	3	4	6	1		73
Conspiracy.....	1		3		2	1		3			2			12
Causing Disturbance.....		5	10	2	9	13		1	13	13	11	2		79
Escaping from Prison of Jail.			18			1		6						25
Gambling.....			4	1	14	6					1	1		27
Incorrigibility.....														
Liquor Offences:														
Driving While Ability Impaired.....		12	8	8	47			1	4	28	8			116
Drunk Driving or Drunk in Charge of Automobile....		5		5	11			1	9	2	5			38
Intoxication or Drunkenness.....	139	29	58	1,456	284		11	197	188	123	233			2,718
Other Liquor Offences.....	29		14	186	101		7	137	49	24	20			567
Obstructing an Officer.....	1		5		5	11		4	2	3	1	2		34
Public Mischief.....	1	1	3			6		1	2	3	2	2		21
Traffic Offences:														
Careless Driving.....	3	1		2	1	6		1	5		3	2		24
Criminal Negligence in operation of Motor Vehicle.....	4		6			1			1		1			13
Driving While Licence Suspended or Without Licence.....	5	33	10	71	83		5	1	6	23	1			238
Leaving Scene of an Accident.....	1	4	2	10		6			2	6	2			33
Other Traffic Offences.....	4	20	2	15		1	1	8	15	6				72
Vagrancy.....	17	8	6	216	72		6	17	63	26	21			452
TOTALS.....	13	226	193	115	2,075	604	1	62	405	388	248	295		4,625
E. Other Offences Not Enumerated Above.....														
	14	8	16	12	26	5	2	1	1	21	6			112
GRAND TOTALS OF A, B, C, D AND E.....	238	427	1,767	371	2,828	1,069	74	969	547	656	569	655		10,170

TABLE No. 15
ONTARIO REFORMATORIES AND INDUSTRIAL FARMS
 COMPARATIVE STATEMENT OF EXPENDITURE, REVENUE, AND NET PER DIEM COSTS
 For Fiscal Years Ending March 31st, 1962 and March 31st, 1963

	ONTARIO REFORMATORY GUELPH		ONTARIO REFORMATORY MIMICO		ONTARIO REFORMATORY BRAMPTON		ONTARIO REFORMATORY MILLBROOK	
	Year Ending March 31/62	Year Ending March 31/63	Year Ending March 31/62	Year Ending March 31/63	Year Ending March 31/62	Year Ending March 31/63	Year Ending March 31/62	Year Ending March 31/63
Total Days' Residence of Inmates.....	334,624	319,726	161,416	151,334	57,910	55,763	64,652	73,080
Average Number of Inmates.....	916.8	875.9	442.2	414.6	158.6	152.8	177.13	200.22
EXPENDITURES								
Salaries.....	1,572,735.32	1,594,244.22	724,685.38	746,183.42	347,821.12	352,024.73	586,018.93	590,749.61
General Maintenance.....	662,088.66	649,558.57	364,777.38	349,096.37	148,135.49	156,283.69	138,213.10	139,947.58
Repairs to Buildings.....	76,987.02	52,558.58	34,538.78	26,511.90	17,342.79	17,232.33	24,912.35	23,286.05
Industrial Operations.....	1,758,846.55	1,805,017.89	151,763.74	134,820.25	344,547.55	373,826.55
TOTAL EXPENDITURE.....	4,070,657.55	4,101,379.26	1,275,765.28	1,256,611.94	513,299.40	525,542.75	1,093,691.93	1,127,809.79
Increase in Inventories—Deduct.....	49,290.78	9,170.04	4,739.70	24,936.55	36,548.05
Decrease in Inventories—Add.....	16,506.61	35,284.69	725.80
TOTAL COST.....	4,021,366.77	4,117,885.87	1,311,049.97	1,247,441.90	514,025.20	520,803.05	1,068,755.38	1,091,261.74
REVENUE								
Perquisites.....	23,587.97	8,107.78	9,937.58	3,402.06	5,815.71	3,521.99	2,618.00	Dr. 2,697.35
Casual Sales.....	62,463.08	87,495.92	33,552.85	36,362.12	1,251.78	1,275.52	11,329.89	11,184.07
Industrial Sales.....	1,715,178.28	1,792,730.57	95,799.57	69,560.05	417,391.63	433,781.57
TOTAL RECEIPTS.....	1,831,229.33	1,888,334.27	139,290.00	109,324.23	7,067.49	4,797.51	431,339.52	442,268.29
Increase in Accounts Receivable—Add.....	59,494.98	29,340.01	4,225.64	149.98	768.28	3,489.77
Decrease in Accounts Receivable—Deduct.....	777.91	19.76
TOTAL REVENUE VALUE.....	1,890,724.31	1,917,674.28	143,515.64	108,546.32	7,047.73	4,947.49	432,107.80	445,758.06
NET COST.....	2,130,642.46	2,200,211.59	1,167,534.33	1,138,895.58	506,977.47	515,855.56	636,647.58	645,503.68
Total Cost Per Capita Per Diem.....	12,0175	12,8794	8,1221	8,2429	8,8762	9,3395	16,5308	14,9324
Total Revenue Value Per Capita Per Diem.....	5,6502	5,9979	.8891	.7173	.1217	.0887	6,6836	6,0996
NET COST PER CAPITA PER DIEM.....	6,3673	6,8815	7,2330	7,5256	8,7545	9,2508	9,8472	8,8328

TABLE No. 15 (Cont'd)
ONTARIO REFORMATORIES AND INDUSTRIAL FARMS
 COMPARATIVE STATEMENT OF EXPENDITURE, REVENUE, AND NET PER DIEM COSTS
 For Fiscal Years Ending March 31st, 1962 and March 31st, 1963

	ONTARIO REFORMATORY ELLIOT LAKE		MERCER REFORMATORY TORONTO		ONTARIO REFORMATORY FOR WOMEN BRAMPTON		INDUSTRIAL FARM BURWASH	
	Year Ending March 31/62	Year Ending March 31/63	Year Ending March 31/62	Year Ending March 31/63	Year Ending March 31/62	Year Ending March 31/63	Year Ending March 31/62	Year Ending March 31/63
Total Days' Residence of Inmates.....	16,301	24,761	43,323	44,219	7,139	7,692	280,813	258,048
Average Number of Inmates.....	44.7	67.8	118.69	121.15	19.56	21.1	769.35	706.98
EXPENDITURES								
Salaries.....	112,832.63	173,634.83	263,615.68	264,901.89	50,165.18	52,100.30	1,202,347.62	1,225,317.42
General Maintenance.....	77,037.68	83,929.14	69,414.44	79,002.24	21,022.06	23,448.73	673,707.75	662,559.43
Repairs to Buildings.....	9,575.52	9,604.61	6,816.72	10,158.33	839.81	15,119.33	129,369.87	127,046.49
Industrial Operations.....			311,530.21	304,834.10			149,376.62	151,157.60
TOTAL EXPENDITURE.....	199,445.83	267,168.58	651,377.05	658,896.56	72,027.05	90,668.36	2,154,801.86	2,166,080.94
Increase in Inventories—Deduct.....	6,845.16	3,203.92	22,059.53	6,476.54	51.70	876.99		
Decrease in Inventories—Add.....							19,603.93	12,510.05
TOTAL COST.....	192,600.67	263,964.66	629,317.52	652,420.02	71,975.35	89,791.37	2,174,405.79	2,178,590.99
REVENUE								
Perquisites.....	7,548.45	6,086.90	10,879.17	10,106.15	1,009.56	815.30	78,493.06	65,303.65
Casual Sales.....	213.81	151.85	12,624.42	13,941.10	249.70	723.30	67,110.80	78,716.42
Industrial Sales.....			287,416.49	307,631.43			160,403.51	157,352.47
TOTAL RECEIPTS.....	7,762.26	6,238.75	310,920.08	331,678.68	1,259.26	1,538.60	306,007.37	300,872.54
Increase in Accounts Receivable—Add.....	9.10		12,700.37	12,213.16	27.80	23.95		7,501.54
Decrease in Accounts Receivable—Deduct.....							2,310.72	
TOTAL REVENUE VALUE.....	7,771.36	6,229.65	323,620.45	343,891.84	1,287.06	1,562.55	303,696.65	308,374.08
NET COST.....	184,829.31	257,735.01	305,697.07	308,528.18	70,688.29	88,228.82	1,870,709.14	1,870,216.91
Total Cost Per Capita Per Diem.....	11.8153	10.6605	14.5262	14.7542	10.0820	11.6733	7.7432	8.4425
Total Revenue Value Per Capita Per Diem.....	.4767	.2516	7.4700	7.7770	.1803	.2031	1.0814	1.1950
NET COST PER CAPITA PER DIEM.....	11.3386	10.4089	7.0562	6.9772	9.9017	11.4702	6.6618	7.2475

TABLE No. 15 (Concluded)
ONTARIO REFORMATORIES AND INDUSTRIAL FARMS
COMPARATIVE STATEMENT OF EXPENDITURE, REVENUE, AND NET PER DIEM COSTS
For Fiscal Years Ending March 31st, 1962 and March 31st, 1963

	INDUSTRIAL FARM MONTEITH		RIDEAU INDUSTRIAL FARM		BURTCH INDUSTRIAL FARM		INDUSTRIAL FARM WILLIAM FORT	
	Year Ending March 31/62	Year Ending March 31/63	Year Ending March 31/62	Year Ending March 31/63	Year Ending March 31/62	Year Ending March 31/63	Year Ending March 31/62	Year Ending March 31/63
Total Days' Residence of Inmates.....	40,766	35,862	44,064	46,305	76,863	77,919	27,724	24,802
Average Number of Inmates.....	111.7	98.25	120.72	126.86	210.58	213.47	75.95	67.95
EXPENDITURES								
Salaries.....	229,773.36	234,755.33	238,361.08	248,106.88	316,097.75	322,444.04	149,474.22	153,873.77
General Maintenance.....	112,125.17	108,495.55	107,415.06	122,478.19	137,853.39	145,095.44	61,957.01	59,225.65
Repairs to Buildings.....	21,205.05	13,679.64	10,412.98	13,323.52	37,687.57	22,425.40	21,944.36	15,867.18
Industrial Operations.....	132,281.21	111,076.36	262,312.64	274,418.91	483.46	53.94
TOTAL EXPENDITURE.....	363,103.58	356,930.52	488,470.33	494,984.95	753,951.35	764,383.79	233,859.05	229,020.54
Increase in Inventories—Deduct.....	3,541.05	17,487.95	14,893.23	750.81
Decrease in Inventories—Add.....	2,141.85	1,476.82	15,529.91	7,492.60
TOTAL COST.....	365,245.43	353,389.47	489,947.15	477,497.00	769,481.26	749,490.56	241,351.65	228,269.73
REVENUE								
Perquisites.....	14,795.72	13,540.48	5,094.51	3,134.35	6,817.60	3,266.01	4,377.06	2,160.01
Casual Sales.....	14,440.99	17,254.81	37,461.90	43,711.44	6,925.94	10,373.48	19,990.08	16,389.34
Industrial Sales.....	124,558.25	127,906.60	242,496.12	274,876.92	3,621.00	57.20
TOTAL RECEIPTS.....	29,236.71	30,795.29	167,114.66	174,752.39	256,239.66	288,516.41	27,988.14	18,606.55
Increase in Accounts Receivable—Add.....	16.00	510.88	16,338.81	699.16	104.88
Decrease in Accounts Receivable—Deduct.....	6,319.36	8,299.69	5,383.15
TOTAL REVENUE VALUE.....	29,220.71	31,306.17	183,453.47	168,433.03	247,939.97	283,133.26	28,687.30	18,711.43
NET COST.....	336,024.72	322,083.30	306,493.68	309,063.97	521,541.29	466,357.30	212,664.35	209,558.30
Total Cost Per Capita Per Diem.....	8.9595	9.8541	11.1189	10.3119	10.0110	9.6188	8.7055	9.2036
Total Revenue Value Per Capita Per Diem.....	.7167	.8730	4.1633	3.6374	3.2257	3.6337	1.0347	.7544
NET COST PER CAPITA PER DIEM.....	8.2428	8.9811	6.9556	6.6745	6.7853	5.9851	7.6708	8.4492

INDUSTRIAL PRODUCTION

Fiscal Year Ending March 31st, 1963

Institutions and Items Produced

	Sales Value of Production
ONTARIO REFORMATORY, GUELPH	
Abattoir	
3,352,498 lbs.—Fresh beef, pork, veal, lamb; pickled hams, picnics, tongues; smoked hams, bacon, cottage rolls; sausages, weiners, bologna, cooked meats and by-products.....	\$ 1,275,800.95
Cannery	
247,699 No. 10 Tins—Miscellaneous canned fruits and vegetables;	
23,881 No. 10 Tins—Jams, jellies and marmalades;	
16,713 lbs.—Mincedmeat	171,462.61
Machine and Sheet Metal Shops	
3,060 Items—Beds, spring fabrics, stainless steel ware, galvanized ware, steel tables, trucks and miscellaneous items.	
150 lbs.—Bed spring clips	13,781.99
Planing Mill	
994 Items—Chairs, tables, benches, bookcases and miscellaneous items;	
587 Items—Crates, boxes, trays, etc.;	
5,075 Items—Stakes;	
2,475 Items—Chequers, rulers, etc.	10,671.56
Picnic Tables	
2,801 only—Park picnic tables	40,054.30
Tailor Shop	
83,661 Items—Inmates' clothing (pants, shirts, smocks, coveralls, overalls, caps, pyjamas, discharge suits, windbreakers, station wagon coats, etc.); officers' uniforms and great- coats; hospital clothing and bedding (nightgowns, suits, sheets, mattresses, mattress shells and covers, etc.); upholstery and miscellaneous items	241,242.18
Woollen Mill	
3,678 Items—Blankets, white and grey;	
2,900 only—Toques;	
26,096 pairs—Wool and nylon socks;	
2,546 yards—Mackinaw cloth (grey and Khaki)	36,177.31
Ice Cream Industry	
153,358 Items—Redi-rolls	5,753.94
ONTARIO REFORMATORY, MIMICO	
Brick and Tile Plant	
1,210,000 pieces—Common, rug, back up and tapestry brick	30,062.50
95,436 pieces—Structural tile, assorted sizes	7,463.42
Machine Shop	
143 only—Skids;	
200 only—Park picnic tables;	
67 only—Steel doors and frames;	
550 only—Grilles, fireplace;	
151 only—Grilles, barbecue;	
Miscellaneous items	12,861.53
Shoe Shop	
5,043 pairs—Suede slippers;	
1,799 pairs—Boots and shoes repaired;	
Miscellaneous sales	15,238.10

INDUSTRIAL PRODUCTION (Cont'd)

	Sales Value of Production
ONTARIO REFORMATORY, MILLBROOK	
Auto Marker Plant	
2,508,235½ pairs—Automobile licence plates.....	351,152.97
15,518 only—Ashtrays.....	310.36
Tailor Shop	
35,316 Items—Inmates' clothing (blue denim pants, shirts, smocks, overalls, belts); men's and boys' khaki shirts; men's and boys' khaki pants with elastic; men's and boys' khaki pants, smocks, coveralls, overalls, warehouse coats; Karol cloth pants; broadcloth shorts; flannelette nightgowns, nightshirts; cooks' white pants and aprons, miscellaneous items, etc.....	68,285.11
Jobbing Shop	
2,765 only—Fireplace grilles;	
5,982 only—Campsite permit holders;	
35 only—Miscellaneous items, covering work orders for maintenance installations, etc., within the institution.....	14,103.24
Braille Shop	
788 only—Copies of Braille books.....	2,631.45
MERCER REFORMATORY, TORONTO	
Tailor Shop	
210,006 Items—Inmates' kimonas, nightgowns, nightshirts, underslips, dressing gowns, aprons, blouses; pillow slips, quilts, sheets, towels, facecloths, dishcloths, handkerchiefs, diapers, miscellaneous items.....	234,308.92
INDUSTRIAL FARM, BURWASH	
Tailor Shop	
34,103 Items—Inmates' clothing (blue denim coveralls, overalls, pants, smocks, belts, aprons, caps); khaki warehouse coats, coveralls, overalls, shirts, smocks, caps; discharge jackets and pants, grey flannel coats and pants; white drill pants, white duck aprons, white cooks' caps, coveralls, shirts, smocks; blue drill shirts; Mackinaw coats; bath towels, pillow slips, miscellaneous items.....	48,243.30
Saw and Planing Mill	
446,189 Ft. B.M.—Rough lumber produced from logs.....	27,012.50
117 Items—Manufactured—knee hole desk, doors, windows, sash, step ladders, miscellaneous items.....	559.80
RIDEAU INDUSTRIAL FARM	
Tailor Shop	
54,454 Items—Inmates' clothing (blue denim dungarees, coveralls, overalls, caps, shirts, smocks; khaki coveralls, warehouse coats, caps; white twill shirts, pyjama suits); chefs' white coats, pants, aprons; sportsheren pants (men's and boys'); Mackinaw coats, winter hats, white butchers' coats, white laboratory coats; men's nightshirts; men's and boys' coveralls; women's flannelette nightgowns; white milkers' coveralls; sheets, pillow slips, bath towels, tea towels, huck towels, white and coloured roller towels, facecloths, duck bags, cotton bags, miscellaneous items..	79,311.48
Planing Mill	
756 only—Park picnic tables, spruce top.....	10,810.80
500 only—Park picnic tables, pine top.....	8,750.00

INDUSTRIAL PRODUCTION (Concluded)

	Sales Value of Production
BURTCH INDUSTRIAL FARM	
Tailor Shop	
62,971 Items—Inmates' clothing (blue denim pants, shirts, smocks, overalls; khaki aprons, caps, coats, warehouse coats, overalls, short pants, men's and boys' shirts and smocks); white chefs' hats, kitchen hats, aprons; laboratory coats; attendants' coats, overalls, drill pants, shirts, smocks; men's and boys' pyjamas, white and coloured night-shirts; sansuede pyjama suits; women's white and coloured nightgowns; sheets, pillow slips, face cloths, tea towels, bath towels, white and coloured hand and roller towels.....	76,984.90
Cannery	
251,928 No. 10 tins—Assorted canned fruits and vegetables.....	130,817.88
344,088 lbs.—Assorted jams.....	52,976.94
Snow Fence	
398 rolls—Snow fence, 2 inch spacing.....	2,178.00
INDUSTRIAL FARM, FORT WILLIAM	
Carpentry Shop	
10 only—Park picnic tables.....	143.00
TOTAL.....	<u>\$ 2,969,151.04</u>

FARM RECOVERIES

Fiscal Year Ending March 31, 1963

(Field and Garden Crops—Milk—Livestock)

Ontario Reformatory, Brampton.....	\$ 585.52
Ontario Reformatory, Elliot Lake.....
Ontario Reformatory, Guelph.....	120,691.72
Ontario Reformatory, Millbrook.....
Ontario Reformatory, Mimico.....	53,617.66
Burtch Industrial Farm, Brantford.....	24,932.25
Industrial Farm, Burwash.....	121,068.09
Industrial Farm, Fort William.....	34,179.30
Industrial Farm, Monteith.....	35,347.44
Rideau Industrial Farm, Burritt's Rapids.....	60,968.00
Mercer Reformatory, Toronto.....	617.38
O.W.G.C. "Ingleside", Brampton.....
TOTAL.....	<u>\$ 452,007.36</u>

ANNUAL REPORT ONTARIO BOARD OF PAROLE

Year Ending March 31st, 1963

The third complete year of operation for the present Ontario Board of Parole saw no change in the composition of the Board and it remains as follows:

MR. D. C. MASON	Chairman
MR. J. S. MORRISON, B.A., M.ED.	Full-time Member
REV. D. M. KERR	Full-time Member
MRS. GLADYS COULTER	Part-time Member
MRS. J. ISOBEL ROSS	Part-time Member

The authority of the Ontario Board of Parole is set out in The Parole Act of 1946 and the Amendments of 1952 and 1960. New Regulations under the Act were approved in 1961.

The Board may grant parole to those prisoners serving indeterminate sentences in Ontario institutions. The prisoners eligible for consideration by the Ontario Board of Parole appear automatically and no formal application on their part is required.

In considering parole, two factors stand out above all others:

- (a) All committed to Ontario correctional institutions eventually return to society.
- (b) The majority of prisoners released from correctional institutions require assistance in rehabilitating themselves back into the community.

This being true, it is, therefore, more realistic for a prisoner who has indicated a desire to reform to spend part of his sentence in the community under supervision.

Parole may be considered to have a two-fold purpose:

- (1) It affords society protection, in that a prisoner who fails to comply with the conditions of parole may be returned to the institution on the authority of the Board.
- (2) Under supervision, the prisoner will receive the guidance and advice of a trained rehabilitation staff to assist him in making the change from institutional security to freedom in society.

The Board is aware of its obligations to society and in deciding to grant parole it must be convinced that the prisoner has changed and that there is a reasonable chance of his becoming a useful and law-abiding citizen. Naturally, we must expect failures. However, past experience has proven that the percentage of successful parole cases is extremely encouraging.

A total of 46 meetings were held at the Main Office in Toronto for the purpose of reviewing files of those prisoners scheduled to appear before the Board at the various institutions. At these meetings the Board also considers applications requesting a review of cases dealt with previously.

The Board meets at least once a month at each institution where prisoners serving indeterminate sentences are confined. The purpose of these meetings is to afford the prisoner an opportunity of a personal interview with the Board. Ninety-two meetings were held during the year at various institutions.

In deciding parole the Board considers many factors; circumstances of the offence, previous criminal history, personal background, presentence report from the probation staff, psychiatric and psychological reports, community assessment, previous employment history, institution report, and proposed parole plan. A review of each case history, together with a personal interview with the prisoner, affords the Board the opportunity of thoroughly assessing the prospects of successful rehabilitation.

The Rehabilitation staff of the Department is responsible for completing release plans and, where applicable, for supervision during the parole period. These dedicated officers provide counselling service as well as assistance in securing employment, board and lodging, tools, etc., where required. It is a most demanding role often requiring a great deal of patience and understanding in attempting to assist the parolee to re-establish himself in society. Periodic reports are submitted on the progress and adjustment of each parolee. If the conditions of parole are not kept, the case is reviewed by the Board and parole may be cancelled.

The Department is completing the third phase of a programme amalgamating the juvenile and adult supervisory staff. Rehabilitation Officers are located at all juvenile and adult institutions and offices have been established in Toronto, London, Port Arthur and Ottawa. Plans are being completed to open an additional office in Hamilton this year. The officers are responsible for the supervision of juveniles on placement from Ontario Training Schools and parolees from adult institutions in the Province. Each officer supervises juveniles and adults in a specific area and offers assistance to those people released at the expiration of sentence.

The Board is indebted to the staff in the Main Office, Rehabilitation Officers, the officials and staff at the institutions, Magistrates, Probation Staff and Police Forces for the valuable information which they supply. Appreciation is also extended to the many public and private community services and agencies, too numerous to mention, who have assisted the men and women released from our institutions, whether on parole or at the expiration of sentence.

D. C. MASON,
Chairman.

ONTARIO BOARD OF PAROLE

STATEMENT

Year Ending March 31, 1963

Number of meetings held 92
 Number appeared for parole consideration (Men and Women) 1,504

Number of paroles effected during fiscal year:

Men	749		
Women	47	Total	796

Number successfully completed parole:

Men	600 or 80.3%
Women	33 or 70.2%
Total	<u>633 or 79.5%</u>

Number violated parole during fiscal year:

Men	107 or 14.3%
Women	9 or 19.2%
Total	<u>116 or 14.6%</u>

Paroles incompleated as of August 31, 1963:

Men	42 or 5.4%
Women	5 or 10.6%
Total	<u>47 or 5.9%</u>

TOTAL NUMBER UNDER SUPERVISION ON PAROLE DURING FISCAL YEAR:

	Men	Women	Total
On parole as of April 1, 1962	297	12	309
Paroled during Fiscal Year	749	47	796
	<u>1,046</u>	<u>59</u>	<u>1,105</u>

REHABILITATION ANNUAL REPORT

Year Ending March 31, 1963

RECAPITULATION:

Total number of interviews.....	15,615
Total number assisted.....	6,625
Type of assistance given :—	
(a) Employment arranged.....	1,751
(b) Board and lodging arranged.....	2,217
(c) Meals.....	371
(d) Tools.....	17
(e) Clothes.....	1,506
(f) Other types of assistance.....	1,807
Employers contacted.....	2,105
Investigations completed.....	2,378
Expenditure.....	\$14,593.07
Refunds.....	\$ 449.73

The Department appreciates the assistance and co-operation received during the year from the National Employment Service, Elizabeth Fry Society, John Howard Society, Salvation Army, also other agencies and religious groups.

D. C. MASON,
Chairman.

NATIONAL PAROLE

ANNUAL REPORT

Year Ending March 31st, 1963

Number released on National Parole by the Department of Justice, Ottawa, and placed under the supervision of the Ontario Rehabilitation Service.....94

Of these:

57 or 60.6% successfully completed

3 or 3.2% violated

34 or 36.2% had not completed as of March 31, 1963.

Total 94

D. C. MASON,
Chairman.

THE SALVATION ARMY

REPORT OF POLICE COURT, PRISON, JAIL AND AFTER-CARE WORK IN THE PROVINCE OF ONTARIO

For the Year Ending Dec. 31, 1962

During 1962 we welcomed Brigadiers Victor MacLean and John Patterson to Correctional Services work in Ontario. Brigadier MacLean succeeded Major Ivan Jackson at the Ontario Reformatory, Mimico, and Brigadier John Patterson is devoting himself to Magistrates' Courts, particularly in the fine new court building at Scarborough.

Brigadier William Mercer, long a familiar figure in the courts at Kingston, Ontario and at the Frontenac County Jail every Sunday Morning, retired and handed this work on to Major I. Jackson. However the Brigadier continues his services at Collins Bay.

These changes in our Ontario staff accelerated rather than diminished the work of our correctional services and further additions to our staff are contemplated in 1963.

Cadets in our training college, preparing for officership in the Salvation Army have systematically visited Magistrates' Courts and correctional institutions in and near Toronto. They have taken part in interviewing, counselling and visiting the homes of youthful offenders, and also conducting meetings in the institutions. This will be a useful experience, fitting them for participation in work of this kind on their appointment to other centres throughout the Province.

These opportunities and experiences create a great desire for closer co-operation with the Department of Reform Institutions and hopes that workshops and short courses, to train still further, are often expressed. Since 'Research and Training' seems to have become the subject of many conferences these past months, I echo the hope that this programme will involve all of us more and more.

For the support given all our officers by superintendents and staff at the institutions, by the Minister, Deputy-Minister and staff from their offices in Toronto, I would express my heartfelt thanks.

Visits to prisons and police courts.....	9,334
Interviews in prisons and police courts.....	47,820
Religious services held.....	2,221
Bible classes, attendance.....	5,728
Total attendance at all religious services.....	76,444
Men and women handed to the Salvation Army care, met on discharge, or who came to Correctional Services office on release.....	33,781

Meals and beds supplied to former inmates.....	38,781
Assisted with fares.....	2,752
Letters written and telephone calls made.....	29,997
Employment secured, returned to former jobs or sent back to parents or friends.....	2,627

NOTE: The usual gifts of chocolate bars, pocket calendars, bags of fruit, etc. were given at Christmas time throughout all the penal institutions in Ontario. War Crys are delivered weekly.

J. CLINTON EACOTT, LIEUT.-COLONEL,
Director of Correctional Services.

THE SALVATION ARMY

CORRECTIONAL SERVICES IN THE PROVINCE OF ONTARIO, STATEMENT OF INCOME AND EXPENDITURE FOR THE YEAR ENDING DECEMBER 31, 1962

EXPENDITURE		INCOME	
Assistance to Prisoners and Dependents.....	\$ 27,630.16	Province of Ontario.....	\$ 32,500.00
TORONTO:		City of Toronto.....	5,000.00
Head Office—Salaries, rents, Office expense, Travelling, etc.....	9,418.17	City of London.....	1,443.60
Men's Section:		City of Hamilton.....	3,000.00
Salaries.....	\$ 16,739.35	Lydia Cheeseman Estate (Kingston).....	2,500.00
Rent Office.....	480.00	Dominion Government.....	3,000.00
Quarters...	5,313.50		
Incidentals.....	10,191.79		
	<u>32,724.64</u>		
Women's Section:			
Salaries.....	2,860.00		
Rent Office.....	240.00		
Quarters...	870.00		
Incidentals.....	1,304.93		
	<u>5,274.93</u>		
BURWASH:			
Salaries.....	2,960.96		
Rent Quarters...	210.00		
Incidentals.....	2,483.57		
	<u>5,654.53</u>		
BELLEVILLE.....	600.00		
GUELPH:			
Salaries.....	2,782.00		
Rent Quarters...	840.00		
Incidentals.....	3,193.79		
	<u>6,815.79</u>		
HAMILTON:			
Salaries.....	2,818.00		
Rent Quarters...	1,113.00		
Office.....	300.00		
Incidentals.....	4,920.76		
	<u>9,151.76</u>		
KINGSTON:			
Salaries.....	3,353.94		
Rent Quarters...	570.00		
Incidentals.....	3,747.78		
	<u>7,671.72</u>		
LONDON:			
Salaries.....	2,851.00		
Salaries (Local).....	725.00		
Rent Office.....	600.00		
Quarters...	639.00		
Incidentals.....	3,836.57		
	<u>8,651.57</u>		
OTTAWA:			
Salaries.....	2,384.00		
Salaries (Local) ¹	19.00		
Rent Office.....	960.00		
Quarters...	1,440.00		
Incidentals.....	6,097.64		
	<u>10,900.64</u>		
PETERBOROUGH:			
Salaries.....	2,814.00		
Rent Office.....	240.00		
Quarters...	1,044.00		
Incidentals.....	3,314.49		
	<u>7,412.49</u>		
MONTEITH.....	383.56		
	<u>\$ 132,289.96</u>	Deficit from S.A. Funds.....	47,443.60
			<u>84,846.36</u>
			<u>\$ 132,289.96</u>



Administration Building — Ontario Reformatory, Mimico.



Dairy Herd—Ontario Reformatory, Mimico



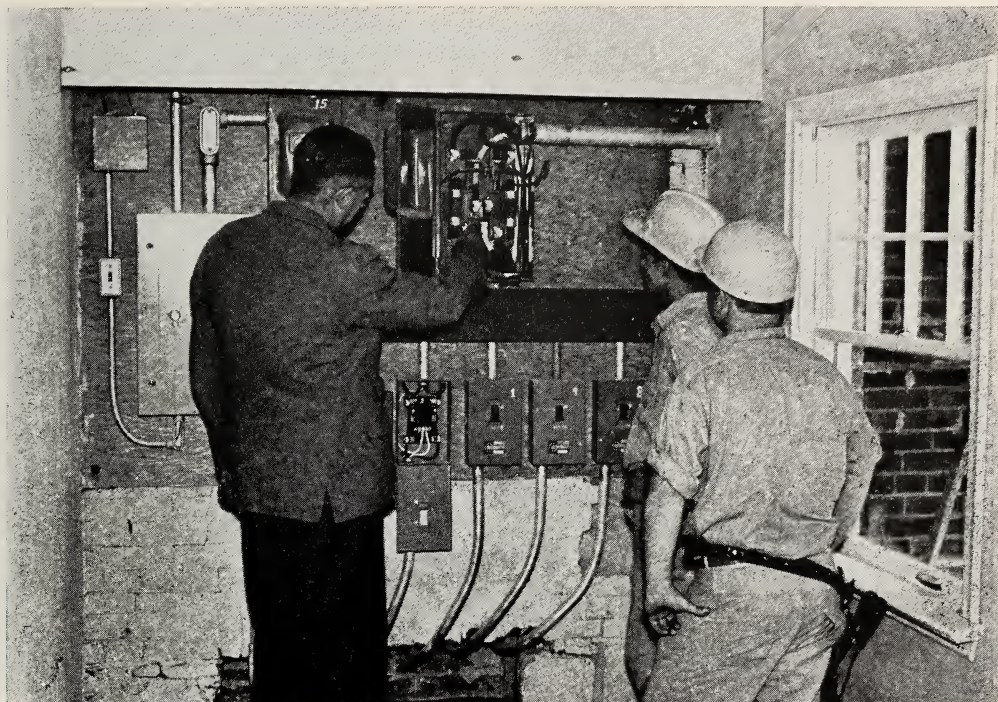
The Alex G. Brown Memorial Clinic, Mimico.



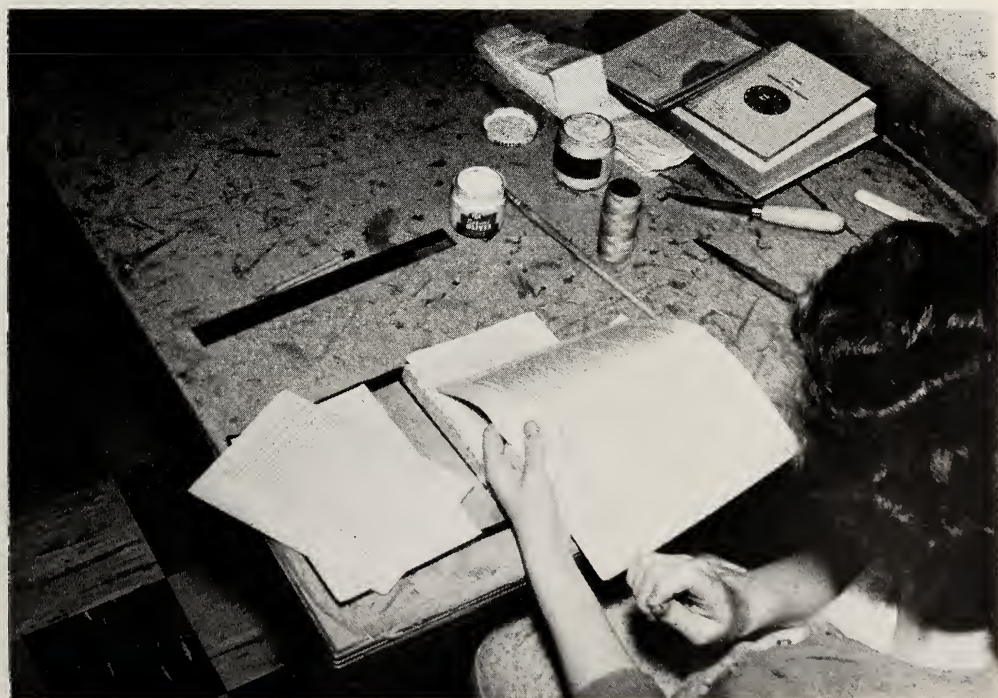
The Ontario Women's Treatment Centre, Brampton.



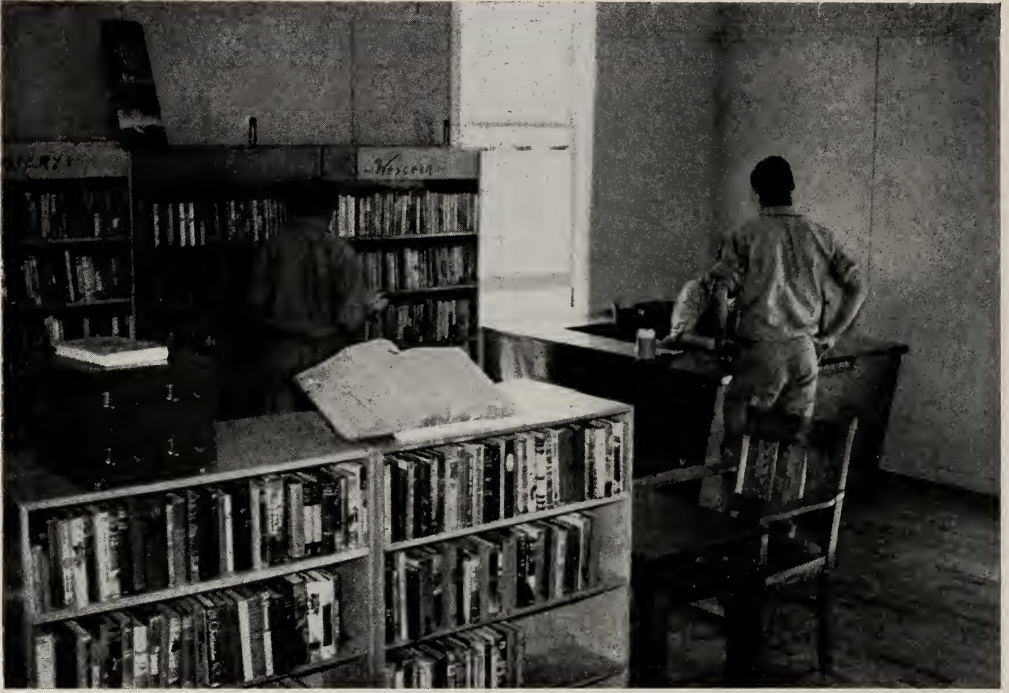
The Ontario Women's Guidance Centre, "Ingleside", Brampton.



Students at the Ontario Training Centre, Brampton, gained practical experience by converting a farm house into a Treatment Centre for Women.



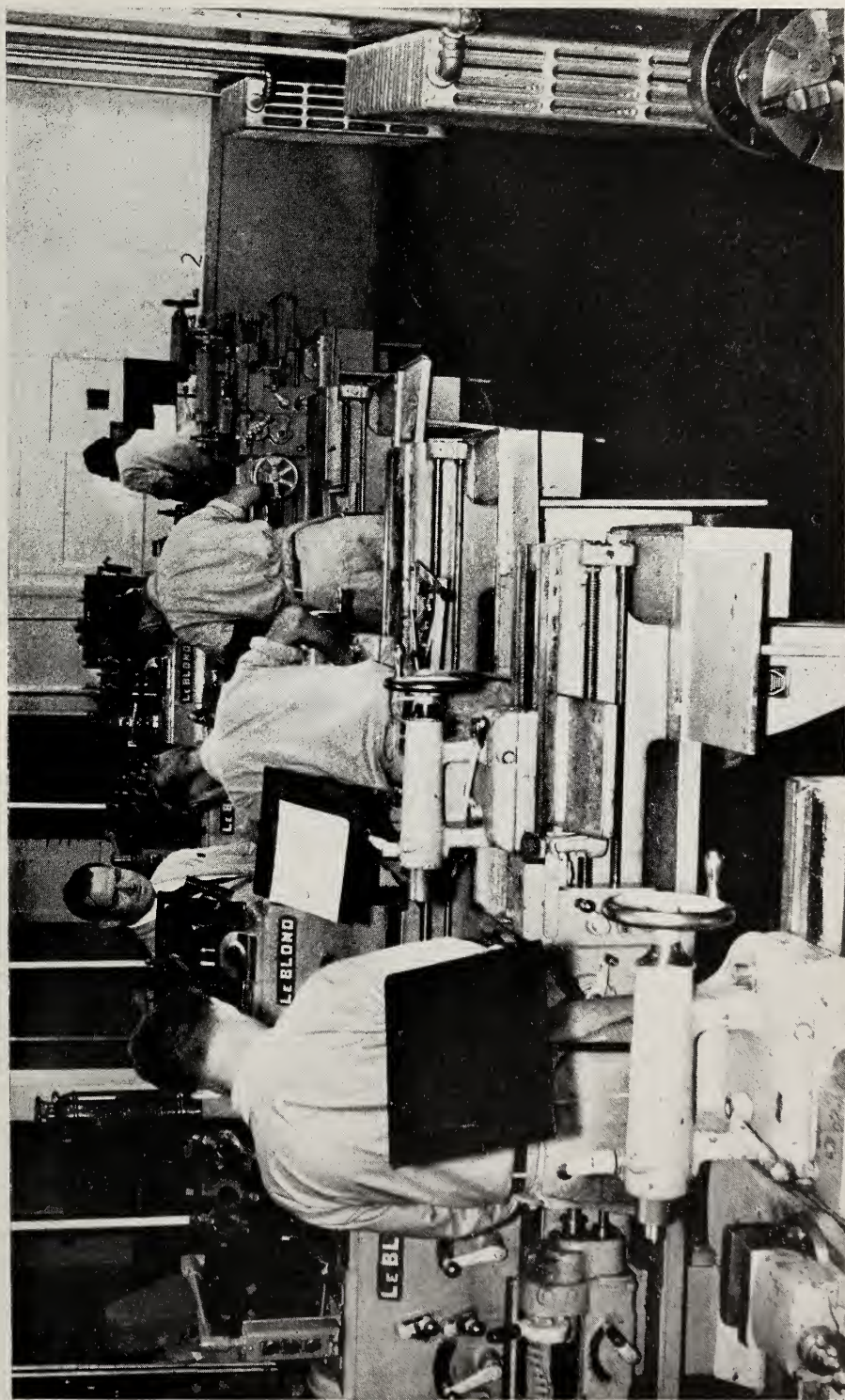
Bookbinding — Ontario Women's Guidance Centre, Brampton.



Library — Ontario Training Centre, Brampton.



Bible Study Class — Ontario Training Centre, Brampton.



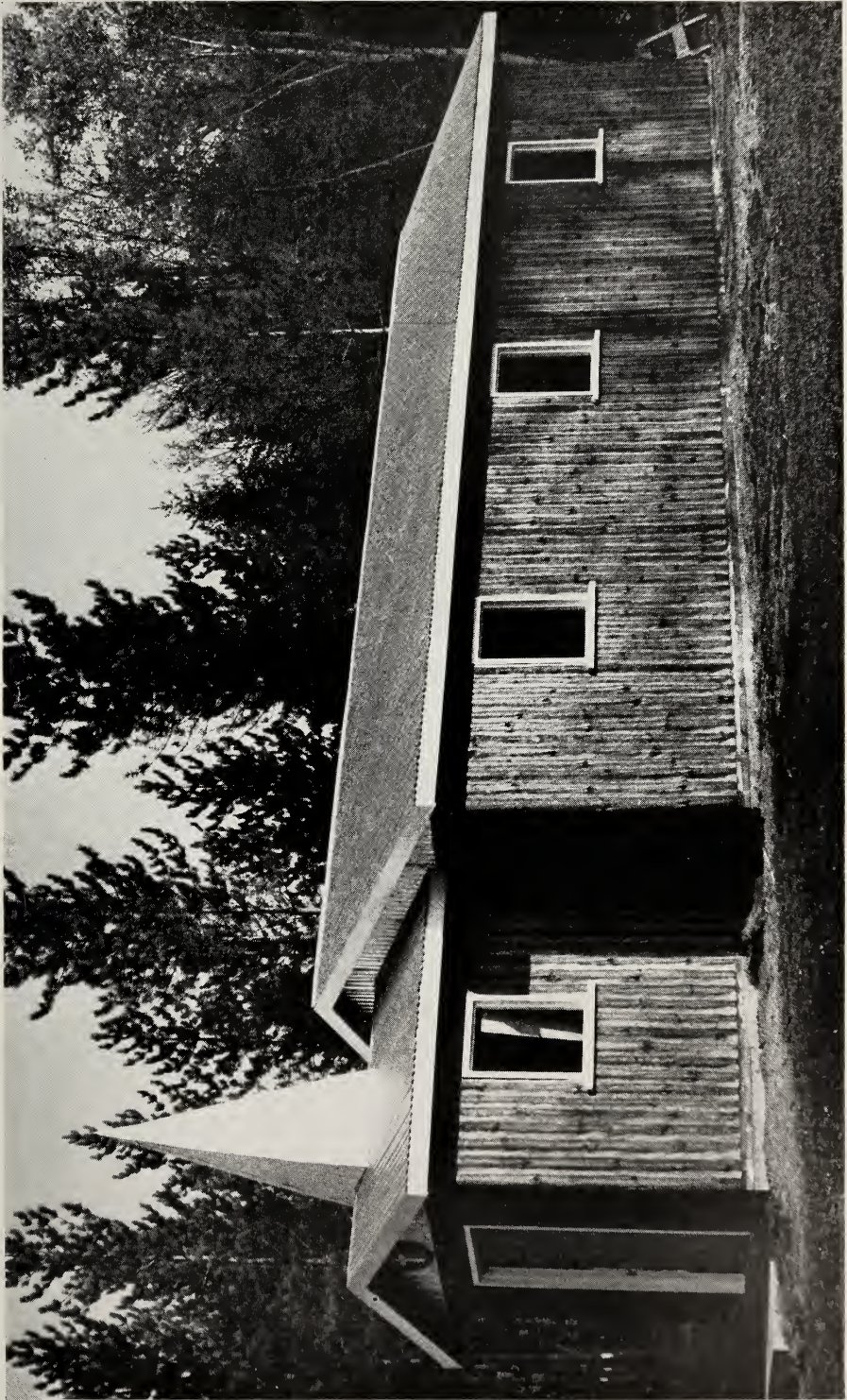
Machine Shop — Ontario Training Centre, Brampton.



Camp Hillsdale — a forestry camp in Simcoe County.



Durham Camp — on the property of the Ontario Reformatory, Millbrook.



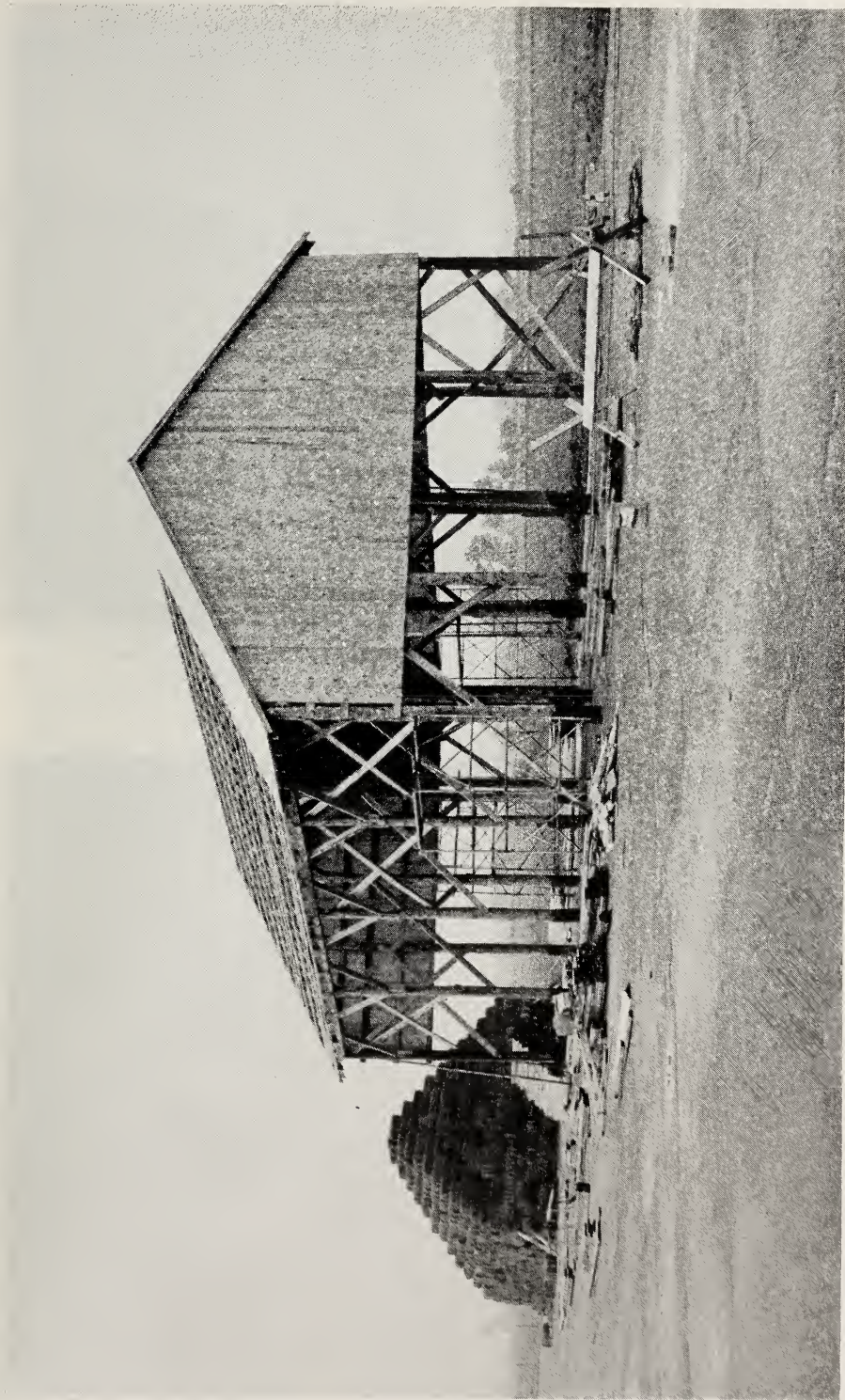
Chapel — Camp Hendrie — constructed entirely by inmate labour.



Foot Bridge — Simcoe County — constructed by the inmates from Camp Hendrie.



Burtch Industrial Farm, Brantford.



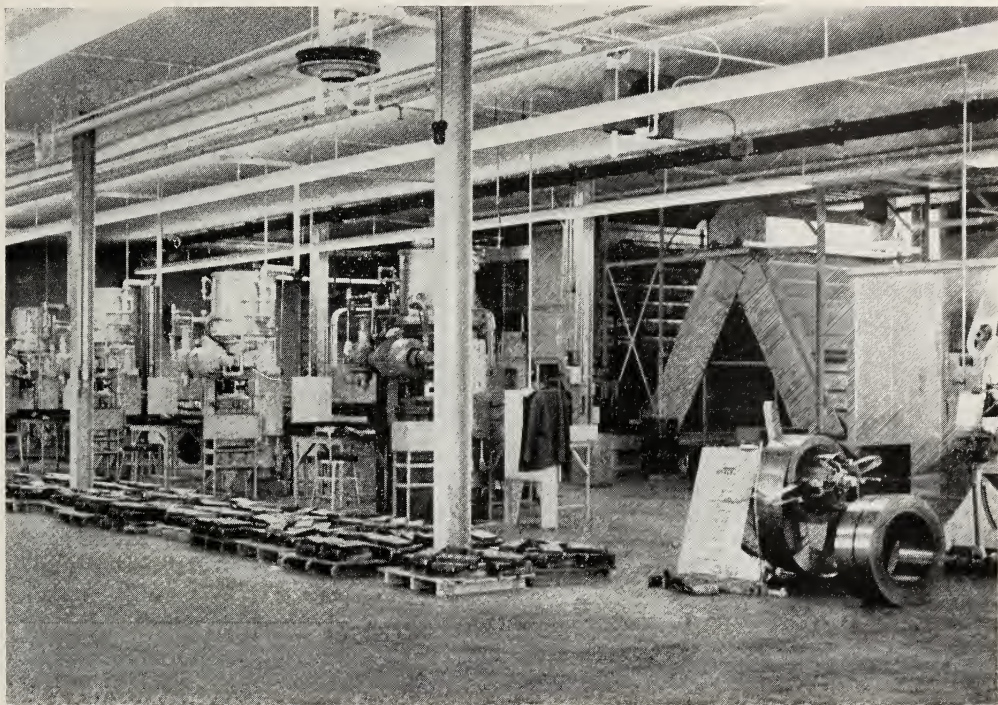
Hay Barn under construction using inmate labour, Burtch Industrial Farm, Brantford.



Chapel under construction — Burtch Industrial Farm, Brantford.



Sheet Metal Shop — Ontario Training Centre, Burtch.



Marker Plant — Ontario Reformatory, Millbrook.



Dental Treatment — Ontario Reformatory, Millbrook.



Andrew Mercer Reformatory for Women, Toronto.



Industrial Farm, Fort William.



Hospital — Industrial Farm, Burwash.



X-Ray Room — Ontario Reformatory, Guelph.



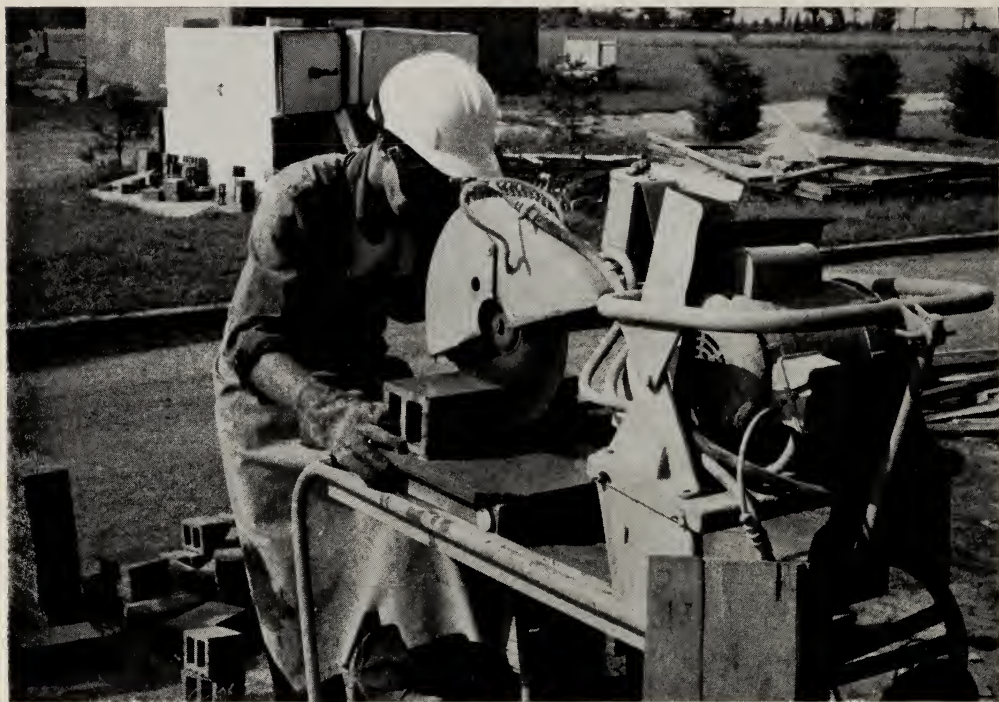
Tuberculosis Hospital Ward — Ontario Reformatory, Guelph.



Rideau Industrial Farm, Burritt's Rapids.



Reconstructed Dormitory — Rideau Industrial Farm, Burritt's Rapids.



Cutting brick tile for dormitory reconstruction — Rideau Industrial Farm, Burritt's Rapids.



Dining and Recreation Hall — Ontario Reformatory, Elliot Lake

ANNUAL REPORT UPON THE JAILS OF ONTARIO

FOR THE FISCAL YEAR ENDING MARCH 31st, 1963

1.	City Jails (Toronto and Hamilton)	2	
	County Jails	35	
	District Jails	8	
	Total Number of Jails in Ontario	45	
2.	Total expenditure for jail maintenance in Ontario:		
	For year ending March 31st, 1962	\$ 5,098,654.87	
	For year ending March 31st, 1963	5,158,288.72	
3.	Average maintenance cost per day per prisoner:		
	For year ending March 31st, 1962	6.59	
	For year ending March 31st, 1963	7.34	
4.	Average dietary cost per day per prisoner:		
	For year ending March 31st, 19625152	
	For year ending March 31st, 19635399	
5.	Number of prisoners committed:		
	For year ending March 31st, 1962	62,136	
	For year ending March 31st, 1963	60,536	
	Decrease	1,600	
6.	Number of prisoners convicted:		
	For year ending March 31st, 1962	55,177	
	For year ending March 31st, 1963	53,785	
	Decrease	1,392	

COMMITMENTS

	1961-62	1962-63	Decrease	Increase
Murder	37	62	25
Manslaughter	19	12	7	...
Crimes:				
Against the person	2,514	2,662	148
Against property	12,350	12,094	256	...
Against public morals and decency	1,816	1,891	75
Against public order and peace	44,503	42,931	1,572	...
Mentally Ill	522	257	265	...
Number of days' stay of prisoners	770,168	702,346	67,822	...
Escaped and not recaptured
Escaped and recaptured	4	2	2	...
Deaths in jails	16	12	4	...

THE FOLLOWING TABLES SHOW TOTAL SEX, SOCIAL CONDITIONS, HABITS,
EDUCATIONAL STATUS, NATIONALITY, OCCUPATIONS AND AGES OF ALL
PRISONERS COMMITTED

Sex	1961-62	1962-63
Male.....	57,749	56,272
Female.....	4,387	4,264

Social Conditions

Married.....	23,083	22,732
Unmarried.....	39,053	37,804

Habits

Abstainers.....	3,264	3,493
Temperate.....	24,543	25,329
Intemperate.....	34,329	31,714

Educational Status

Illiterate.....	1,092	1,245
Elementary.....	42,897	41,732
Advanced.....	18,147	17,559

Nationality

Canadian-Born.....	54,918	53,622
English.....	1,059	1,094
Irish.....	691	658
Scottish.....	883	852
United States.....	594	573
Other Countries.....	3,991	3,737

Occupations

Agricultural.....	1,572	1,522
Clerical.....	1,732	1,573
Commercial.....	2,420	2,380
Construction.....	4,915	4,809
Domestic.....	3,387	3,133
Fishing, Trapping, Logging.....	605	598
Labourers.....	31,499	30,803
Manufacturing.....	1,337	1,409
Mechanics.....	3,207	3,036
Mining.....	1,075	964
Personal Services.....	2,424	2,305
Professional.....	477	472
Transportation.....	3,706	3,367
No Occupation.....	1,158	1,418
Others.....	2,622	2,747

Ages of Prisoners Committed

Under 16 Years.....	98	143
16 years to 20 years inclusive.....	9,564	10,501
21 " " 24 " ".....	7,529	7,416
25 " " 29 " ".....	6,588	6,202
30 " " 34 " ".....	6,658	6,450
35 " " 39 " ".....	7,408	7,115
40 " " 49 " ".....	12,466	11,558
50 " " 59 " ".....	8,200	7,832
60 " " 69 " ".....	3,071	2,850
70 years and over.....	554	469

**THE FOLLOWING TABLES SHOW NUMBER OF TIMES COMMITTED,
NUMBER REPORTED AS DRUG ADDICTS AND
NUMBER SENTENCED TO CORPORAL PUNISHMENT**

Number of Times Committed	1961-62	Percent	1962-63	Percent
First Time.....	16,550	26.6	16,372	27.0
Second Time.....	8,910	14.3	8,868	14.6
Third Time.....	6,005	9.7	6,229	10.3
Over Three Times.....	30,671	49.4	29,067	48.0

Number of Prisoners Committed Reported as Drug Addicts

Hamilton.....	35	St. Catharines.....	3
Lindsay.....	1	Toronto.....	162
Peterborough.....	2		203

Number of Prisoners Sentenced to Corporal Punishment

Cayuga.....	1	Kitchener.....	1
-------------	---	----------------	---

OFFENCES FOR WHICH PRISONERS WERE COMMITTED

A. CRIMES AGAINST THE PERSON	COMMITMENTS			CONVICTIONS		
	M.	F.	T.	M.	F.	T.
Abduction.....	52	1	53	33	33
Abortion.....	5	5	10	3	5	8
Assault, Bodily Harm.....	1,004	27	1,031	762	18	780
Assault, Common.....	843	15	858	610	12	622
Assault, with intent to commit an indictable offence.....	45	45	27	27
Assault, on Peace Officer.....	238	7	245	200	6	206
Attempted Suicide.....	74	31	105	27	15	42
Carnal Knowledge.....	40	40	22	22
Manslaughter.....	8	4	12	8	3	11
Murder.....	58	4	62	14	14
Attempted Murder.....	3	3	2	2
Rape or Attempted Rape.....	111	111	36	36
Threatening or Intimidation.....	84	3	87	48	1	49
TOTALS.....	2,565	97	2,662	1,792	60	1,852

B. CRIMES AGAINST PROPERTY	M.	F.	T.	M.	F.	T.
Arson or Attempted Arson.....	64	5	69	45	1	46
Breach of Railway Act.....	204	204	201	201
Break, Enter and Theft.....	2,765	48	2,813	2,295	27	2,322
Conversion.....	29	29	21	21
Damage to Property.....	415	26	441	341	15	356
False Pretences.....	558	60	618	450	46	496
Forgery.....	127	14	141	112	10	122
Fraud.....	389	27	416	312	18	330
Possession of Housebreaking Instruments.....	106	1	107	58	58
Possession of Property Obtained by Crime.....	878	34	912	623	17	640
Robbery.....	360	9	369	287	4	291
Taking without Owner's Consent.....	198	4	202	162	4	166
Theft and Attempted Theft.....	5,079	274	5,353	4,358	212	4,570
Trespass.....	124	1	125	95	95
Uttering.....	262	33	295	246	28	274
TOTALS.....	11,558	536	12,094	9,606	382	9,988

C. CRIMES AGAINST PUBLIC MORALS AND DECENCY	M.	F.	T.	M.	F.	T.
Bigamy.....	22	5	27	19	4	23
Breach of Child Welfare Act.....	53	22	75	44	18	62
Breach of 'Deserted Wives' and Children's Maintenance Act.....	315	2	317	263	263
Breach of Venereal Disease Prevention Act.....	1	1	2
Buggery.....	9	9	6	6
Contributing to Juvenile Delinquency.....	228	6	234	171	5	176
Gross Indecency.....	85	3	88	66	3	69
Incest.....	21	1	22	15	15
Indecent Assault.....	375	375	241	241
Indecent Exposure or other Indecent Act.....	130	1	131	88	88
Inmates and Frequenters of Houses of Ill-fame	48	86	134	42	69	111
Keeping Houses of Ill-fame.....	43	137	180	31	104	135
Non-support.....	264	2	266	190	1	191
Perjury.....	17	1	18	17	17
Prostitution.....	6	6	6	6
Seduction.....	7	7	5	5
TOTALS.....	1,618	273	1,891	1,198	210	1,408

AND CONVICTED DURING THE YEAR

D. CRIMES AGAINST PUBLIC ORDER AND PEACE	COMMITMENTS			CONVICTIONS		
	M.	F.	T.	M.	F.	T.
Breach of By-laws (excluding Liquor or Traffic Offences).....	537	9	546	525	8	533
Breach of Excise Act.....	28	28	21	21
Breach of Game and Fisheries Act.....	31	31	28	28
Breach of Immigration Act.....	86	8	94	3	3
Breach of Income Tax Act.....	29	29	30	30
Breach of Indian Act (excluding liquor offences).....	2	2
Breach of Opium and Narcotic Drug Act....	53	41	94	31	24	55
Breach of Probation Act.....	193	12	205	153	7	160
Breach of Unemployment Insurance Act....	68	1	69	66	1	67
Carrying Unlawful Weapons.....	297	11	308	257	4	261
Conspiracy.....	71	2	73	52	1	53
Contempt of Court.....	441	8	449	413	8	421
Causing a Disturbance.....	1,285	105	1,390	1,165	81	1,246
Cruelty to Animals.....	7	7	5	5
Disorderly Conduct.....	18	18	15	15
Escaping from Constable.....	33	33	29	29
Escaping from Prison or Jail.....	135	1	136	123	1	124
Gambling.....	69	3	72	63	3	66
Liquor Offences:						
Driving while ability impaired.....	3,055	42	3,097	2,834	35	2,869
Drunk Driving or Drunk in charge of Automobile.....	827	13	840	740	11	751
Intoxication or Drunkenness.....	20,968	1,803	22,771	20,133	1,734	21,867
Other Liquor Offences.....	5,021	490	5,511	4,686	432	5,118
Obstructing an Officer.....	171	5	176	149	4	153
Public Mischief.....	116	5	121	95	5	100
Traffic Offences:						
Carless Driving.....	545	5	550	492	4	496
Criminal Negligence in operation of a Motor Vehicle.....	117	117	75	75
Drive while Licence Suspended or without Licence.....	1,292	11	1,303	1,236	10	1,246
Leaving the Scene of an Accident.....	345	4	349	318	4	322
Other Traffic Offences.....	1,907	24	1,931	1,845	24	1,869
Vagrancy.....	1,926	657	2,583	1,609	492	2,101
TOTALS.....	39,671	3,260	42,931	37,193	2,893	40,086
E. MISCELLANEOUS						
Material Witness.....	16	8	24
Mentally Ill.....	113	27	140
Offences not enumerated.....	731	63	794	416	35	451
TOTALS.....	860	98	958	416	35	451
GRAND TOTALS (A, B, C, D, E).....	56,272	4,264	60,536	50,205	3,580	53,785

TABLE

SHOWING THE NAMES AND SALARIES OF VARIOUS

CITY AND COUNTY JAILS	NAMES OF OFFICIALS		
	JAILERS	CHIEF MATRONS	JAIL SURGEONS
Barrie.....	W. J. Casey	Mrs. P. LeCollier	Dr. L. H. Bigelow
Belleville.....	T. C. Cook	" P. M. Scott	" V. Blakslee
		" A. W. English	" D. C. Heggie
Brampton.....	D. W. Simmons	" K. Holtz	" J. E. Roddick
Brantford.....	S. Rogers	" E. Rowley	" I. D. Matheson
Brockville.....	W. G. Rowsome	" H. Rowsome	" F. A. Vokes
Cayuga.....	W. A. Metcalfe	" E. Oates	" J. C. MacWilliams
Chatham.....	P. J. Daigneau	" C. Arnold	" F. N. Blackwell
Cobourg.....	E. A. Mottershead	" E. M. Mottershead	" J. A. McGuire
Cornwall.....	J. S. Dickey	" B. Dickey	" A. H. Taylor
Goderich.....	R. W. Bell	" G. Wilson	" A. B. McCarter
Guelph.....	A. M. Wilson	" E. M. Allen	" T. C. Gibson
*Hamilton.....	E. P. O'Neill	" L. Martin	" R. T. G. Milne
Kingston.....	E. W. Martin	" M. Smith	" C. R. Davidson
Kitchener.....	C. W. Smith	" A. Preater	" M. F. White
Lindsay.....	W. G. Hartwick	" G. Wallace	" J. S. Winder
London.....	J. E. Yorke	" G. Comtois	" G. Houle
L'Original.....	J. R. Comtois	" E. Ryder	" M. Maynard
		" E. P. Gilbert	" C. E. Lafrance
Milton.....	E. G. Ryder	" M. R. Coutts	" C. K. Stevenson
Napanee.....	S. W. Gilbert	" J. Ramage	" E. R. Ellicott
Orangeville.....	H. A. Coutts	" F. Chambers	" R. B. McGee
Ottawa.....	C. Clarke	" M. M. Beatty	" J. D. Caldwell
Owen Sound.....	T. A. Ramage	" H. Stacey	" D. W. Dyer
Pembroke.....	T. R. Chambers	" I. M. Swoffer	" G. L. Hermitte
Perth.....	B. E. Beatty	" N. Whitfield	" A. C. Fowler
Peterborough.....	J. A. Weyer	" A. Dickson	" W. W. Belch
Pictou.....	G. H. Swoffer	" D. V. Newell	" S. W. D. Hart
St. Catharines.....	S. P. Hollott	Miss I. F. MacKay	" K. O. Hawthorne
St. Thomas.....	R. S. Brown	Mrs. G. McDougall	" A. B. McCallum
Sarnia.....	D. M. Fraser	" D. K. Ellis	" W. B. Rutherford
Simcoe.....	J. Dickson	" O. M. Whatling	" K. M. McIntosh
Stratford.....	R. S. Newell	" J. Sutherland	" C. E. Sylvester
*Toronto.....	D. Dougall	" A. Morkin	" W. H. Hills
Walkerton.....	A. E. Ferguson	" R. Hamilton	" J. T. H. Robinson
			" A. L. Purdon
Welland.....	W. F. Crouchley		" F. A. Cuddy
Whitby.....	J. D. G. Sutherland		" A. J. Jacques
Windsor.....	J. M. Robinson		" G. A. C. Webb
Woodstock.....	J. Campbell		
DISTRICT JAILS			
Fort Frances.....	L. Carroll		" W. G. Boyle
Haileybury.....	G. H. Rutt		" G. Judson
		" A. C. Sharpe	" H. Dunning
Kenora.....	L. W. Goss		" S. M. Burris
North Bay.....	A. Celentano		" E. J. Brennan
Parry Sound.....	J. Crozier	" M. Syine	" A. J. L. Wright
Port Arthur.....	A. J. Rea	" M. P. Cormier	" C. E. Baker
Sault Ste. Marie.....	C. W. Swales	" M. E. Shillington	" J. E. Gimby
			" N. W. Fogg
Sudbury.....	R. J. Beavis		" C. C. Evans

*City Jails.

No. 1

JAIL OFFICIALS—For the Year Ending March 31, 1963

CITY AND COUNTY JAILS	No. ON STAFF MAR. 31ST, 1963	SALARIES OF OFFICIALS					TOTALS
		JAILERS	CHIEF MATRONS	OTHER OFFICIALS	SURGEONS'		
					SALARIES	FEES	
Barrie.....	22	6,475.00	2,525.00	71,775.32	2,500.00	272.00	83,547.32
Belleville.....	16	4,899.84	408.85	42,479.17	700.00	208.00	49,852.66
Brampton.....	14	5,041.67	1,469.36	47,868.95	1,200.00	344.00	55,923.98
Brantford.....	15	5,417.41	2,524.98	51,545.00	900.00	226.00	60,613.39
Brockville.....	12	5,675.00	1,000.00	32,013.00	700.00	112.00	39,500.00
Cayuga.....	10	3,793.98	1,200.00	26,891.60	1,000.00	54.00	32,939.58
Chatham.....	14	5,000.03	2,000.03	40,884.74	1,000.00	152.00	49,036.80
Cobourg.....	11	4,800.00	925.00	29,625.02	700.00	192.00	36,242.02
Cornwall.....	14	6,428.75	885.50	46,704.43	1,035.00	172.00	55,225.68
Goderich.....	6	4,724.94	13,950.79	700.00	95.00	19,470.73
Guelph.....	12	5,062.44	1,800.00	39,874.50	700.00	157.00	47,593.94
*Hamilton.....	53	7,645.00	4,315.87	218,283.33	2,400.00	924.00	233,568.20
Kingston.....	17	4,399.92	1,400.00	53,784.12	1,408.30	172.00	61,164.34
Kitchener.....	17	6,420.00	2,295.01	60,262.53	1,500.00	224.00	70,701.54
Lindsay.....	9	4,400.00	27,734.05	1,000.00	38.00	33,172.05
London.....	26	6,016.46	2,075.51	101,152.35	2,175.00	559.00	115,547.56
L'Orignal.....	10	3,575.00	1,070.00	23,379.00	116.66
Milton.....	14	5,508.00	1,208.00	43,147.00	1,200.00	282.70	51,345.70
Napanee.....	7	3,980.00	950.00	17,216.50	600.00	38.00	22,784.50
Orangeville.....	8	4,002.51	774.87	15,173.96	600.00	48.00	20,599.34
Ottawa.....	46	5,936.66	191,461.93	2,000.00	702.00	200,100.59
Owen Sound.....	9	4,875.00	1,000.00	28,541.00	1,000.00	102.00	35,518.00
Pembroke.....	14	5,550.00	1,400.00	44,242.00	1,200.00	567.00	52,959.00
Perth.....	13	4,250.00	950.00	30,929.70	700.00	36,829.70
Peterborough.....	14	4,625.02	1,999.99	42,876.25	766.82	50,268.08
Picton.....	9	3,791.00	600.00	22,087.76	450.00	65.00	26,993.76
St. Catharines.....	16	4,625.00	2,010.00	51,643.77	1,800.00	228.00	60,306.77
St. Thomas.....	12	4,749.93	35,517.65	1,000.00	70.00	41,337.58
Sarnia.....	23	5,999.97	82,434.66	1,000.00	50.00	89,484.63
Simcoe.....	12	5,200.00	1,625.12	38,455.58	750.00	234.50	46,265.20
Stratford.....	10	3,814.94	1,399.92	25,619.85	1,200.00	200.00	32,234.71
*Toronto.....	237	8,500.00	5,250.00	953,591.12	2,900.16	7,442.00	977,683.28
Walkerton.....	8	4,436.66	937.52	19,898.08	726.00	267.00	26,845.22
Welland.....	16	5,597.46	2,139.80	62,413.58	1,750.00	71,900.84
Whitby.....	27	5,490.00	3,450.00	98,581.44	2,340.00	104.50	109,965.94
Windsor.....	32	6,331.38	3,784.11	129,908.77	2,000.00	420.00	142,444.26
Woodstock.....	12	5,050.01	2,887.50	37,268.54	1,387.50	188.00	46,781.55
DISTRICT JAILS							
Fort Frances.....	14	5,749.92	61,859.68	900.00	68,509.60
Haileybury.....	25	5,749.92	103,171.34	1,125.00	110,421.26
Kenora.....	27	5,749.92	4,050.00	93,004.50	2,299.96	330.00	105,434.38
North Bay.....	26	5,749.92	98,968.31	1,800.00	148.00	106,666.23
Parry Sound.....	17	5,749.92	71,789.80	1,200.00	84.00	78,823.72
Port Arthur.....	36	6,300.00	4,600.00	137,792.60	2,400.00	151,092.60
Sault Ste. Marie..	28	6,300.00	4,050.00	110,531.83	494.42	122,881.75
Sudbury.....	35	6,300.00	4,050.00	133,633.87	2,400.00	146,383.87
TOTALS.....	1,025	239,738.58	80,317.94	3,709,968.97	60,188.65	15,585.70	4,105,799.84

*City Jails.

TABLE
MOVEMENT OF

CITY AND COUNTY JAILS	NUMBER REMAINING IN CUSTODY ON REMAND MARCH 31, 1962			NUMBER REMAINING IN CUSTODY AWAITING TRIAL MARCH 31, 1962			NUMBER REMAIN- ING IN CUSTODY SERVING UNEX- PIRED SENTENCES OR FOR OTHER REASONS MARCH 31, 1962			NUMBER RE-ADMITTED FROM BAIL WHERE RELEASED ON BAIL PREVIOUS YEAR		
	M.	F.	T.	M.	F.	T.	M.	F.	T.	M.	F.	T.
Barrie.....	7		7				10		10	49		49
Belleville.....	14		14				13		13	1		1
Brampton.....	16	1	17							32		32
Brantford.....	7		7	2		2	10	1	11	11		11
Brockville.....	3		3				10		10	8		8
Cayuga.....							4		4	9		9
Chatham.....	9		9				18		18	5		5
Cobourg.....	1		1	7		7	8		8	17		17
Cornwall.....	9		9				18		18	8		8
Goderich.....	4		4				4		4	5		5
Guelph.....	2		2	1		1	17		17			
*Hamilton.....	35	2	37	1		1	61	4	65			
Kingston.....	1		1				19		19			
Kitchener.....	9		9				12	1	13	4		4
Lindsay.....	6		6				3		3	2		2
London.....	15	2	17	1		1	66	1	67	7		7
L'Orignal.....				2		2	5		5			
Milton.....	7		7				6		6	26		26
Napanee.....	6		6				2		2			
Orangeville.....							1		1	15		15
Ottawa.....	32	3	35	3		3	44	2	46	49	1	50
Owen Sound.....	1		1				6		6	4		4
Pembroke.....	20		20				10		10	15	2	17
Perth.....	1		1				3		3			
Peterborough.....	6		6	2		2	20	1	21	6		6
Picton.....							4		4			
St. Catharines..	3		3	7	1	8	31		31			
St. Thomas.....	5		5	1		1	9		9	3		3
Sarnia.....	1		1	11		11	9		9	9		9
Simcoe.....	10		10	1		1	5	2	7	21		21
Stratford.....	10		10	2		2	5	1	6	2		2
*Toronto.....	121	26	147	25	1	26	516	21	537	174	10	184
Walkerton.....	3		3				9	1	10	1		1
Welland.....	10		10	2		2	24	1	25	16		16
Whitby.....	2		2				31		31	18	1	19
Windsor.....	13	1	14	7		7	36	2	38	17		17
Woodstock.....	9		9				3		3	16	1	17
DISTRICT JAILS												
Fort Frances...	7		7				5	1	6	1		1
Haileybury.....	14		14	2		2	13	7	20		1	1
Kenora.....	8		8				48	14	62			
North Bay.....	4		4	4		4	23	2	25	10		10
Parry Sound....	8		8				7		7	9		9
Port Arthur....	8		8				45	4	49			
Sault Ste. Marie	13		13				40	3	43			
Sudbury.....	12	2	14	1		1	49	5	54	10		10
I.F. Monteith (Used as a District Jail).												
TOTALS.....	472	37	509	82	2	84	1,282	74	1,356	580	16	596

*City Jails.

No. 2

JAIL POPULATION

CITY AND COUNTY JAILS	NUMBER TRANSFERRED FROM OTHER INSTITUTIONS			NUMBER COMMITTED DURING YEAR ENDING MARCH 31, 1963			TOTAL NUMBER IN CUSTODY DURING YEAR			NUMBER RELEASED ON BAIL		
	M.	F.	T.	M.	F.	T.	M.	F.	T.	M.	F.	T.
Barrie.....				1,359	32	1,391	1,425	32	1,457	33	2	35
Belleville.....	4		4	729	12	741	761	12	773	138	3	141
Brampton.....	16		16	779	17	796	843	18	861	53	1	54
Brantford.....				738	28	766	768	29	797	15		15
Brockville.....				384	7	391	405	7	412	6		6
Cayuga.....				203	2	205	216	2	218	3		3
Chatham.....				565	15	580	597	15	612	10		10
Cobourg.....				583	16	599	616	16	632	52		52
Cornwall.....	1		1	748	27	775	784	27	811	50		50
Goderich.....	3		3	200	1	201	216	1	217	5		5
Guelph.....				423	11	434	443	11	454	18		18
*Hamilton.....				3,379	177	3,556	3,476	183	3,659	59	6	65
Kingston.....				711	17	728	731	17	748	5		5
Kitchener.....				842	29	871	867	30	897	44		44
Lindsay.....				299	9	308	310	9	319	4		4
London.....				2,512	153	2,665	2,601	156	2,757	11	3	14
L'Orignal.....				299	6	305	306	6	312	97	2	99
Milton.....				572	30	602	611	30	641	25		25
Napanee.....				176	6	182	184	6	190	7	2	9
Orangeville.....				165	4	169	181	4	185	16	2	18
Ottawa.....				2,536	138	2,674	2,664	144	2,808	66	6	72
Owen Sound.....				323	14	337	334	14	348	6	3	9
Pembroke.....				900	33	933	945	35	980	31		31
Perth.....				325	7	332	329	7	336	1		1
Peterborough.....	1		1	597	31	628	632	32	664	21	1	22
Pictou.....				91		91	95		95	5		5
St. Catharines.....				1,076	35	1,111	1,117	36	1,153	104	11	115
St. Thomas.....				569	29	598	587	29	616	3		3
Sarnia.....				748	38	786	778	38	816	7		7
Simcoe.....				807	47	854	844	49	893	11		11
Stratford.....				280	13	293	299	14	313	5		5
*Toronto.....	81	3	84	19,256	2,136	21,392	20,173	2,197	22,370	190	12	202
Walkerton.....				423	34	457	436	35	471	7	1	8
Wellsford.....				934	50	984	986	51	1,037	14	3	17
Whitby.....				904	20	924	955	21	976	13	1	14
Windsor.....				1,449	63	1,512	1,522	66	1,588	30	2	32
Woodstock.....				378	13	391	406	14	420	13	3	16
DISTRICT JAILS												
Fort Frances.....				249	37	286	262	38	300	5		5
Haileybury.....	1		1	454	63	517	484	71	555	23		23
Kenora.....	6	7	13	1,211	399	1,610	1,273	420	1,693	2		2
North Bay.....				600	23	623	641	25	666	11		11
Parry Sound.....	11		11	449	22	471	484	22	506	13		13
Port Arthur.....		3	3	1,927	195	2,122	1,980	202	2,182	7		7
Sault Ste. Marie.....				1,034	81	1,115	1,087	84	1,171	5		5
Sudbury.....				2,431	144	2,575	2,503	151	2,654	27		27
I.F. Monteith (Used as a District Jail).				655		655	655		655	177		177
TOTALS.....	124	13	137	56,272	4,264	60,536	58,812	4,406	63,218	1,448	64	1,512

*City Jails.

TABLE
MOVEMENT OF

CITY AND COUNTY JAILS	NUMBER ACQUITTED AND RELEASED			RELEASED BY ORDER OF JUDGE OR COURT WITHOUT TRIAL			NUMBER WITH OPTION OF A FINE OR JAIL TERM WHO PAID FINES AND WERE RELEASED			NUMBER RELEASED ON PROBATION		
	M.	F.	T.	M.	F.	T.	M.	F.	T.	M.	F.	T.
Barrie.....	114		114	3		3	525	18	543	106	3	109
Belleville.....	9		9	15		15	119	6	125	1		1
Brampton.....	137	6	143				315	3	318	98	2	100
Brantford.....	41	3	44				144	5	149	25	2	27
Brockville.....	10		10	14		14	61	2	63	3		3
Cayuga.....	17	1	18				26		26	11		11
Chatham.....				3		3	90	4	94	2		2
Cobourg.....	5		5	3		3	233	7	240	20	2	22
Cornwall.....							192	5	197	22	1	23
Goderich.....	4		4	8		8	51	1	52	14		14
Guelph.....	35	2	37	6		6	72	3	75	8		8
*Hamilton.....	202	16	218	9	1	10	413	43	456	157	15	172
Kingston.....	1		1	24		24	169	5	174	19	1	20
Kitchener.....	70	7	77	4	1	5	83	2	85	55	4	59
Lindsay.....	16		16				113	2	115	27	1	28
London.....	33	3	36				278	34	312	73	15	88
L'Orignal.....	6		6	2		2	34		34	26		26
Milton.....	102	11	113				247	10	257	28	3	31
Napanee.....	11		11	6		6	55	2	57	21		21
Orangeville.....	19	2	21				100		100	3		3
Ottawa.....	532	44	576	3		3	211	12	223	146	12	158
Owen Sound.....	10	3	13				93	2	95	1		1
Pembroke.....	4		4				199	1	200	19	3	22
Perth.....	7		7	2		2	63	4	67	6		6
Peterborough..	56	8	64	1		1	99	2	101	60	4	64
Picton.....	2		2	1		1	24		24			
St. Catharines..	25	1	26				146	7	153	59		59
St. Thomas.....	55	5	60	4		4	224	9	233	25	1	26
Sarnia.....	87	6	93	1		1	256	20	276	42	2	44
Simcoe.....	1		1	2		2	299	10	309	65	5	70
Stratford.....	28		28				54	1	55	17	1	18
*Toronto.....	478	106	584				1,980	263	2,243	560	87	647
Walkerton.....	28	4	32				192	12	204			
Welland.....	91		91	4		4	202	9	211	47	8	55
Whitby.....	26		26	1		1	194	6	200	63	2	65
Windsor.....	108	11	119	22	1	23	46	2	48	132	8	140
Woodstock....	15	3	18	1		1	113	1	114			
DISTRICT JAILS												
Fort Frances...	14	2	16				101	10	111	11	1	12
Haileybury....	18	1	19	1		1	77	8	85	51	7	58
Kenora.....				74	7	81	188	77	265	2		2
North Bay.....	38	3	41	1		1	62		62	49	2	51
Parry Sound...	23		23	1	1	2	109	6	115	48	1	49
Port Arthur....	42	7	49				40		40	32		32
Sault Ste. Marie	46	3	49	33	2	35	181	12	193	4		4
Sudbury.....	1		1				770	57	827	152	7	159
I.F. Monteith (Used as a District Jail).												
TOTALS.....	2,567	258	2,825	249	13	262	9,243	683	9,926	2,310	200	2,510

*City Jails.

No. 2 (Cont'd)

JAIL POPULATION

CITY AND COUNTY JAILS	NUMBER RELEASED ON SUSPENDED SENTENCE WITHOUT PROBATION			NUMBER RELEASED FOR ANY OTHER REASON			NUMBER DISCHARGED ON EXPIRATION OF SENTENCE			NUMBER TRANSFERRED TO OTHER INSTITUTIONS		
	M.	F.	T.	M.	F.	T.	M.	F.	T.	M.	F.	T.
Barrie.....	4	1	5	12		12	405	5	410	194	3	197
Belleville.....	43		43	5		5	284	2	286	127	1	128
Brampton.....	47	1	48	13		13	67		67	102	4	106
Brantford.....	44		44				338	15	353	137	3	140
Brockville.....	28		28				211	1	212	57	1	58
Cayuga.....	37		37				78		78	33	1	34
Chatham.....	69	4	73	34		34	276	5	281	90	1	91
Cobourg.....	140	6	146				87		87	66	1	67
Cornwall.....	40	1	41	84	8	92	255	7	262	106	5	111
Goderich.....	7		7				99		99	22		22
Guelph.....	48	2	50				143	2	145	101	2	103
*Hamilton.....	338	22	360	73	2	75	1,373	44	1,417	766	28	794
Kingston.....	3		3	5		5	340	7	347	147	4	151
Kitchener.....	87	4	91	2	1	3	369	4	373	128	6	134
Lindsay.....	27	1	28	7	1	8	75	2	77	34	2	36
London.....				438	21	459	1,109	59	1,168	569	18	587
L'Original.....	6		6				65	1	66	62	3	65
Milton.....	49	2	51	8	2	10	63	1	64	72		72
Napanee.....							56	1	57	21	1	22
Orangeville.....	13		13				16		16	11		11
Ottawa.....	233	10	243	1		1	890	44	934	485	12	497
Owen Sound.....	52	3	55	1		1	96	1	97	64	2	66
Pembroke.....	63	5	68	77	9	86	479	13	492	49	4	53
Perth.....	22		22	21		21	157		157	45	3	48
Peterborough.....	23	4	27				215	2	217	132	7	139
Pictou.....	4		4				37		37	20		20
St. Catharines..	53	6	59	1		1	581	6	587	129	3	132
St. Thomas.....	32	6	38				197	5	202	33	1	34
Sarnia.....	22	3	25				249	5	254	84		84
Simcoe.....	151	15	166	73	9	82	131	8	139	102	2	104
Stratford.....	7	2	9				142	3	145	41	7	48
*Toronto.....	216	32	248	789	201	990	11,237	888	12,125	4,035	540	4,575
Walkerton.....	32	3	35				122	11	133	47	4	51
Welland.....	114	7	121		1	1	265	9	274	198	13	211
Whitby.....	28	2	30	12		12	418	7	425	180	3	183
Windsor.....	49	3	52	4		4	844	33	877	234	3	237
Woodstock.....	33	1	34				139	1	140	77	4	81
DISTRICT JAILS												
Fort Frances...	8	1	9				80	12	92	38	12	50
Halleybury....	32	3	35	6	1	7	120	20	140	132	26	158
Kenora.....	39	4	43				702	298	1,000	203	6	209
North Bay.....	31	2	33				324	13	337	99	5	104
Parry Sound...	13	2	15	6		6	194	10	204	67	2	69
Port Arthur....	48	6	54	14	5	19	1,194	175	1,369	560	7	567
Sault Ste. Marie	58	3	61	2		2	402	54	456	333	9	342
Sudbury.....	37	7	44	245	23	268	764	41	805	444	14	458
I.F. Monteith (Used as a District Jail)										478		478
TOTALS.....	2,430	174	2,604	1,933	284	2,217	25,688	1,815	27,503	11,154	773	11,927

*City Jails.

TABLE
MOVEMENT OF

CITY AND COUNTY JAILS	NUMBER SENTENCED AND DEPORTED DIRECT FROM JAIL			DIED BEFORE TRIAL			DIED WHILE UNDERGOING SENTENCE			SENTENCED TO DEATH AND EXECUTED			ESCAPED AND NOT RECAPTURED DURING YEAR		
	M.	F.	T.	M.	F.	T.	M.	F.	T.	M.	F.	T.	M.	F.	T.
Barrie.....															
Belleville.....															
Brampton.....															
Brantford.....	1		1												
Brockville.....	1	2	3												
Cayuga.....															
Chatham.....	1		1												
Cobourg.....															
Cornwall.....															
Goderich.....				1		1									
Guelph.....															
*Hamilton.....	6		6				1		1						
Kingston.....															
Kitchener.....															
Lindsay.....				1		1									
London.....							1		1						
L'Orignal.....															
Milton.....															
Napanee.....															
Orangeville.....	1		1												
Ottawa.....	4		4	1		1									
Owen Sound.....															
Pembroke.....															
Perth.....															
Peterborough.....															
Picton.....															
St. Catharines.....	1		1												
St. Thomas.....															
Sarnia.....	3	1	4												
Simcoe.....															
Stratford.....															
*Toronto.....	68	15	83	1		1	1		1	2		2			
Walkerton.....															
Welland.....	5		5	1		1	1		1						
Whitby.....															
Windsor.....	3	1	4												
Woodstock.....															
DISTRICT JAILS															
Fort Frances.....															
Haileybury.....	1		1												
Kenora.....				1		1	1		1						
North Bay.....															
Parry Sound.....															
Port Arthur.....															
Sault Ste. Marie.....															
Sudbury.....				1		1									
I.F. Monteith (Used as a District Jail).....															
TOTALS.....	95	19	114	7		7	5		5	2		2			

*City Jails.

No. 2 (Concluded)

JAIL POPULATION

CITY AND COUNTY JAILS	NUMBER REMAINING IN CUSTODY ON REMAND MARCH 31, 1963			NUMBER REMAINING IN CUSTODY AWAITING TRIAL MARCH 31, 1963			NUMBER REMAIN- ING IN CUSTODY SERVING UNEX- PIRED SENTENCES OR FOR OTHER REASONS MARCH 31, 1963			TOTAL		
	M.	F.	T.	M.	F.	T.	M.	F.	T.	M.	F.	T.
Barrie.....	14		14	1		1	14		14	1,425	32	1,457
Belleville.....	12		12	1		1	7		7	761	12	773
Brampton.....	1		1	1	1	2	9		9	843	18	861
Brantford.....	4		4				19	1	20	768	29	797
Brockville.....	4	1	5				10		10	405	7	412
Cayuga.....	6		6				5		5	216	2	218
Chatham.....	8	1	9	3		3	11		11	597	15	612
Cobourg.....				6		6	4		4	616	16	632
Cornwall.....	10		10				25		25	784	27	811
Goderich.....	1		1				4		4	216	1	217
Guelph.....	3		3	1		1	8		8	443	11	454
*Hamilton.....	40	3	43	2		2	37	3	40	3,476	183	3,659
Kingston.....	4		4	2		2	12		12	731	17	748
Kitchener.....	15		15				10	1	11	867	30	897
Lindsay.....	2		2	1		1	3		3	310	9	319
London.....	35		35				54	3	57	2,601	156	2,757
L'Orignal.....				3		3	5		5	306	6	312
Milton.....	11	1	12				6		6	611	30	641
Napanee.....	2		2				5		5	184	6	190
Orangeville.....	1		1				1		1	181	4	185
Ottawa.....	45	1	46	11		11	36	3	39	2,664	144	2,808
Owen Sound.....	6		6				5		5	334	14	348
Pembroke.....	15		15				9		9	945	35	980
Perth.....	2		2				3		3	329	7	336
Peterborough.....	11	3	14				14	1	15	632	32	664
Pictou.....							2		2	95		95
St. Catharines..	5		5				13	2	15	1,117	36	1,153
St. Thomas.....	4	2	6	2		2	8		8	587	29	616
Sarnia.....	8		8	6	1	7	13		13	778	38	816
Simcoe.....	3		3				6		6	844	49	893
Stratford.....	4		4				1		1	299	14	313
*Toronto.....	94	18	112	33	1	34	489	34	523	20,173	2,197	22,370
Walkerton.....	1		1				7		7	436	35	471
Welland.....	20		20	1		1	23	1	24	986	51	1,037
Whitby.....	8		8				12		12	955	21	976
Windsor.....	9	1	10	7		7	34	1	35	1,522	66	1,588
Woodstock.....	8	1	9				7		7	406	14	420
DISTRICT JAILS												
Fort Frances....	4		4				1		1	262	38	300
Haileybury.....	15	3	18	1		1	7	2	9	484	71	555
Kenora.....	7	3	10				56	25	81	1,273	420	1,693
North Bay.....	10		10				14		14	641	25	666
Parry Sound....	1		1				9		9	484	22	506
Port Arthur....	11		11				32	2	34	1,980	202	2,182
Sault Ste. Marie	6	1	7				17		17	1,087	84	1,171
Sudbury.....	28		28	1		1	33	2	35	2,503	151	2,654
I.F. Monteith (Used as a District Jail).										655		655
TOTALS.....	498	39	537	83	3	86	1,100	81	1,181	58,812	4,406	63,218

*City Jails.

TABLE No. 3
CRIMINAL HISTORY

CITY AND COUNTY JAILS	FIRST TIME		SECOND TIME		THIRD TIME		OVER THREE TIMES		TOTAL NUMBER COM- MITTED
	M.	F.	M.	F.	M.	F.	M.	F.	
Barrie.....	515	24	255	6	168	421	2	1,391
Belleville.....	228	7	128	1	143	3	230	1	741
Brampton.....	396	11	204	3	86	1	93	2	796
Brantford.....	273	17	110	3	68	287	8	766
Brockville.....	122	4	57	2	51	154	1	391
Cayuga.....	98	1	31	29	45	1	205
Chatham.....	199	10	54	1	60	2	252	2	580
Cobourg.....	229	12	129	4	90	135	599
Cornwall.....	261	18	127	3	84	2	276	4	775
Goderich.....	110	1	40	18	32	201
Guelph.....	135	7	81	3	51	1	156	434
*Hamilton.....	722	71	340	27	198	16	2,119	63	3,556
Kingston.....	289	11	84	1	26	2	312	3	728
Kitchener.....	233	16	170	2	90	2	349	9	871
Lindsay.....	173	8	20	11	95	1	308
London.....	505	35	270	13	219	8	1,518	97	2,665
L'Orignal.....	186	5	59	1	22	32	305
Milton.....	474	29	33	22	43	1	602
Napanee.....	42	2	34	1	25	1	75	2	182
Orangeville.....	78	1	27	2	13	1	47	169
Ottawa.....	1,133	57	164	13	101	13	1,138	55	2,674
Owen Sound.....	86	8	68	2	37	132	4	337
Pembroke.....	306	16	162	8	76	2	356	7	933
Perth.....	146	6	26	1	18	135	332
Peterborough.....	178	21	113	9	61	245	1	628
Pictou.....	27	11	8	45	91
St. Catharines.....	208	12	146	7	86	2	636	14	1,111
St. Thomas.....	87	9	77	4	68	7	337	9	598
Sarnia.....	174	17	120	8	93	5	361	8	786
Simcoe.....	338	15	130	11	87	12	252	9	854
Stratford.....	58	7	25	3	29	2	168	1	293
*Toronto.....	3,241	557	2,869	205	2,459	244	10,687	1,130	21,392
Walkerton.....	246	17	58	2	29	3	90	12	457
Welland.....	448	41	162	7	99	2	225	984
Whitby.....	322	13	173	5	93	1	316	1	924
Windsor.....	412	25	255	7	91	2	691	29	1,512
Woodstock.....	107	5	83	2	64	124	6	391
DISTRICT JAILS									
Fort Frances.....	116	19	33	4	32	4	68	10	286
Haileybury.....	142	19	99	10	35	7	178	27	517
Kenora.....	245	65	160	33	126	39	680	262	1,610
North Bay.....	258	15	53	34	1	255	7	623
Parry Sound.....	143	13	73	3	46	1	187	5	471
Port Arthur.....	212	33	376	39	204	20	1,135	103	2,122
Sault Ste. Marie..	286	21	196	10	87	10	465	40	1,115
Sudbury.....	579	42	433	21	219	24	1,200	57	2,575
I.F. Monteith (Used as a District Jail....	263	63	33	296	655
TOTALS.....	15,029	1,343	8,381	487	5,789	440	27,073	1,994	60,536

*City Jails.

TABLE No. 4
NUMBER UNDER AND OVER SIXTEEN YEARS

CITY AND COUNTY JAILS	UNDER 16 YEARS OF AGE			16 YEARS OF AGE AND OVER			TOTAL NUMBER COMMITTED		
	M.	F.	T.	M.	F.	T.	M.	F.	T.
Barrie.....				1,359	32	1,391	1,359	32	1,391
Belleville.....				729	12	741	729	12	741
Brampton.....		1	1	779	16	795	779	17	796
Brantford.....	3	1	4	735	27	762	738	28	766
Brockville.....	3		3	381	7	388	384	7	391
Cayuga.....				203	2	205	203	2	205
Chatham.....	3	1	4	562	14	576	565	15	580
Cobourg.....	8	1	9	575	15	590	583	16	599
Cornwall.....	1		1	747	27	774	748	27	775
Goderich.....				200	1	201	200	1	201
Guelph.....				423	11	434	423	11	434
*Hamilton.....	11	2	13	3,368	175	3,543	3,379	177	3,556
Kingston.....				711	17	728	711	17	728
Kitchener.....	1	1	2	841	28	869	842	29	871
Lindsay.....	4		4	295	9	304	299	9	308
London.....	1		1	2,511	153	2,664	2,512	153	2,665
L'Orignal.....	3		3	296	6	302	299	6	305
Milton.....				572	30	602	572	30	602
Napanee.....				176	6	182	176	6	182
Orangeville.....	2		2	163	4	167	165	4	169
Ottawa.....				2,536	138	2,674	2,536	138	2,674
Owen Sound.....	4		4	319	14	333	323	14	337
Pembroke.....				900	33	933	900	33	933
Perth.....	1		1	324	7	331	325	7	332
Peterborough.....	6	5	11	591	26	617	597	31	628
Picton.....				91		91	91		91
St. Catharines.....				1,076	35	1,111	1,076	35	1,111
St. Thomas.....				569	29	598	569	29	598
Sarnia.....				748	38	786	748	38	786
Simcoe.....				807	47	854	807	47	854
Stratford.....		1	1	280	12	292	280	13	293
*Toronto.....				19,256	2,136	21,392	19,256	2,136	21,392
Walkerton.....	6	3	9	417	31	448	423	34	457
Welland.....		1	1	934	49	983	934	50	984
Whitby.....	1		1	903	20	923	904	20	924
Windsor.....				1,449	63	1,512	1,449	63	1,512
Woodstock.....				378	13	391	378	13	391
DISTRICT JAILS									
Fort Frances.....	5		5	244	37	281	249	37	286
Haileybury.....	7	2	9	447	61	508	454	63	517
Kenora.....	23	13	36	1,188	386	1,574	1,211	399	1,610
North Bay.....	5	1	6	595	22	617	600	23	623
Parry Sound.....				449	22	471	449	22	471
Port Arthur.....				1,927	195	2,122	1,927	195	2,122
Sault Ste. Marie..				1,034	81	1,115	1,034	81	1,115
Sudbury.....	11	1	12	2,420	143	2,563	2,431	144	2,575
I.F. Monteith (Used as a District Jail....				655		655	655		655
TOTALS.....	109	34	143	56,163	4,230	60,393	56,272	4,264	60,536

*City Jails.

TABLE No. 5
SOCIAL STATUS

CITY AND COUNTY JAILS	MARRIED			UNMARRIED			TOTAL NUMBER COMMITTED
	M.	F.	T.	M	F.	T.	
Barrie.....	594	18	612	765	14	779	1,391
Belleville.....	309	10	319	420	2	422	741
Brampton.....	321	12	333	458	5	463	796
Brantford.....	261	14	275	477	14	491	766
Brockville.....	125	5	130	259	2	261	391
Cayuga.....	83	1	84	120	1	121	205
Chatham.....	274	10	284	291	5	296	580
Cobourg.....	243	11	254	340	5	345	599
Cornwall.....	293	18	311	455	9	464	775
Goderich.....	61	1	62	139	139	201
Guelph.....	156	4	160	267	7	274	434
*Hamilton.....	1,057	70	1,127	2,322	107	2,429	3,556
Kingston.....	277	9	286	434	8	442	728
Kitchener.....	272	12	284	570	17	587	871
Lindsay.....	114	4	118	185	5	190	308
London.....	946	56	1,002	1,566	97	1,663	2,665
L'Orignal.....	116	4	120	183	2	185	305
Milton.....	257	17	274	315	13	328	602
Napanee.....	100	4	104	76	2	78	182
Orangeville.....	51	51	114	4	118	169
Ottawa.....	851	66	917	1,685	72	1,757	2,674
Owen Sound.....	136	7	143	187	7	194	337
Pembroke.....	348	19	367	552	14	566	933
Perth.....	84	4	88	241	3	244	332
Peterborough.....	270	9	279	327	22	349	628
Picton.....	41	41	50	50	91
St. Catharines.....	292	21	313	784	14	798	1,111
St. Thomas.....	250	23	273	319	6	325	598
Sarnia.....	315	17	332	433	21	454	786
Simcoe.....	284	24	308	523	23	546	854
Stratford.....	104	104	176	13	189	293
*Toronto.....	7,475	1,127	8,602	11,781	1,009	12,790	21,392
Walkerton.....	163	13	176	260	21	281	457
Welland.....	383	24	407	551	26	577	984
Whitby.....	410	15	425	494	5	499	924
Windsor.....	500	30	530	949	33	982	1,512
Woodstock.....	132	9	141	246	4	250	391
DISTRICT JAILS							
Fort Frances.....	79	10	89	170	27	197	286
Haileybury.....	171	30	201	283	33	316	517
Kenora.....	345	199	544	866	200	1,066	1,610
North Bay.....	114	4	118	486	19	505	623
Parry Sound.....	161	15	176	288	7	295	471
Port Arthur.....	391	93	484	1,536	102	1,638	2,122
Sault Ste. Marie.....	330	41	371	704	40	744	1,115
Sudbury.....	776	77	853	1,655	67	1,722	2,575
Industrial Farm, Monteith (used as a District Jail).....	260	260	395	395	655
TOTALS.....	20,575	2,157	22,732	35,697	2,107	37,804	60,536

*City Jails.

TABLE No. 6
EDUCATIONAL STATUS

CITY AND COUNTY JAILS	ILLITERATE			ELEMENTARY EDUCATION			ADVANCED EDUCATION			TOTAL NUMBER COMMITTED
	M.	F.	T.	M.	F.	T.	M.	F.	T.	
Barrie.....	12		12	752	18	770	595	14	609	1,391
Belleville.....	16		16	590	10	600	123	2	125	741
Brampton.....	1		1	307	5	312	471	12	483	796
Brantford.....	30	2	32	706	25	731	2	1	3	766
Brockville.....	1		1	241	2	243	142	5	147	391
Cayuga.....				203	2	205				205
Chatham.....	3		3	317	6	323	245	9	254	580
Cobourg.....	2		2	322	7	329	259	9	268	599
Cornwall.....	59	7	66	675	17	692	14	3	17	775
Goderich.....	5		5	90		90	105	1	106	201
Guelph.....	2		2	371	9	380	50	2	52	434
*Hamilton.....	1		1	3,015	158	3,173	363	19	382	3,556
Kingston.....	2		2	516	13	529	193	4	197	728
Kitchener.....	21		21	545	21	566	276	8	284	871
Lindsay.....	4		4	148	6	154	147	3	150	308
London.....	15		15	1,708	113	1,821	789	40	829	2,665
L'Orignal.....	2		2	249	4	253	48	2	50	305
Milton.....				308	13	321	264	17	281	602
Napanee.....	4		4	126	6	132	46		46	182
Orangeville.....				98	3	101	67	1	68	169
Ottawa.....	16		16	2,319	130	2,449	201	8	209	2,674
Owen Sound.....	2		2	230	9	239	91	5	96	337
Pembroke.....	7		7	677	22	699	216	11	227	933
Perth.....				215	5	220	110	2	112	332
Peterborough.....	13	1	14	309	12	321	275	18	293	628
Picton.....	1		1	66		66	24		24	91
St. Catharines.....	1		1	1,007	31	1,038	68	4	72	1,111
St. Thomas.....				407	22	429	162	7	169	598
Sarnia.....	2		2	593	30	623	153	8	161	786
Simcoe.....	1		1	718	44	762	88	3	91	854
Stratford.....				166	10	176	114	3	117	293
*Toronto.....	402	9	411	12,077	882	12,959	6,777	1,245	8,022	21,392
Walkerton.....	2		2	352	33	385	69	1	70	457
Welland.....	2		2	651	34	685	281	16	297	984
Whitby.....	4		4	493	14	507	407	6	413	924
Windsor.....	5	3	8	714	23	737	730	37	767	1,512
Woodstock.....	3		3	307	12	319	68	1	69	391
DISTRICT JAILS										
Fort Frances.....	7	5	12	207	30	237	35	2	37	286
Haileybury.....				236	41	277	218	22	240	517
Kenora.....	213	115	328	964	281	1,245	34	3	37	1,610
North Bay.....	41	3	44	363	14	377	196	6	202	623
Parry Sound.....	5		5	286	19	305	158	3	161	471
Port Arthur.....	29	7	36	1,694	182	1,876	204	6	210	2,122
Sault Ste. Marie....	37	10	47	870	62	932	127	9	136	1,115
Sudbury.....	69	6	75	1,532	97	1,629	830	41	871	2,575
Industrial Farm, Monteith (used as a District Jail).....	35		35	515		515	105		105	655
TOTALS.....	1,077	168	1,245	39,255	2,477	41,732	15,940	1,619	17,559	60,536

*City Jails.

TABLE No. 7
HABITS AS TO USE OF INTOXICANTS

CITY AND COUNTY JAILS	ABSTAINERS			TEMPERATE			INTEMPERATE			TOTAL NUMBER COM- MITTED
	M.	F.	T.	M.	F.	T.	M.	F.	T.	
Barrie.....	160	5	165	368	4	372	831	23	854	1,391
Belleville.....	74		74	579	11	590	76	1	77	741
Brampton.....	91	1	92	546	10	556	142	6	148	796
Brantford.....	62	6	68	204	10	214	472	12	484	766
Brockville.....	38		38	233	7	240	113		113	391
Cayuga.....	14	1	15	10	1	11	179		179	205
Chatham.....	23	1	24	100	3	103	442	11	453	580
Cobourg.....	64	1	65	347	12	359	172	3	175	599
Cornwall.....	31	3	34	63	5	68	654	19	673	775
Goderich.....	4		4	119	1	120	77		77	201
Guelph.....	3		3	190	4	194	230	7	237	434
*Hamilton.....	171	23	194	898	56	954	2,310	98	2,408	3,556
Kingston.....	37	1	38	497	15	512	177	1	178	728
Kitchener.....	138	12	150	470	9	479	234	8	242	871
Lindsay.....	30		30	55	4	59	214	5	219	308
London.....	53	7	60	239	29	268	2,220	117	2,337	2,665
L'Orignal.....	1		1	270	4	274	28	2	30	305
Milton.....	3	2	5	453	13	466	116	15	131	602
Napanee.....	12	1	13	127	3	130	37	2	39	182
Orangeville.....		1	1	124	3	127	41		41	169
Ottawa.....	102	9	111	1,747	91	1,838	687	38	725	2,674
Owen Sound.....	13	1	14	22	6	28	288	7	295	337
Pembroke.....	15		15	380	22	402	505	11	516	933
Perth.....				227	6	233	98	1	99	332
Peterborough.....	53	11	64	420	18	438	124	2	126	628
Picton.....	7		7	29		29	55		55	91
St. Catharines.....	13	4	17	219	7	226	844	24	868	1,111
St. Thomas.....				255	10	265	314	19	333	598
Sarnia.....	49	3	52	435	26	461	264	9	273	786
Simcoe.....	2		2	398	23	421	407	24	431	854
Stratford.....	11		11	111	9	120	158	4	162	293
*Toronto.....	929	305	1,234	10,180	970	11,150	8,147	861	9,008	21,392
Walkerton.....	2	2	4	43	2	45	378	30	408	457
Welland.....	137	16	153	496	27	523	301	7	308	984
Whitby.....	83		83	326	11	337	495	9	504	924
Windsor.....	223	3	226	524	28	552	702	32	734	1,512
Woodstock.....	20	2	22	56	5	61	302	6	308	391
DISTRICT JAILS										
Fort Frances.....	18	22	40	112	5	117	119	10	129	286
Haileybury.....	43	7	50	192	19	211	219	37	256	517
Kenora.....	1		1	255	88	343	955	311	1,266	1,610
North Bay.....	49	3	52	170	10	180	381	10	391	623
Parry Sound.....	59	1	60	53	3	56	337	18	355	471
Port Arthur.....	19		19	285	27	312	1,623	168	1,791	2,122
Sault Ste. Marie...	102	7	109	51	13	64	881	61	942	1,115
Sudbury.....	44	1	45	492	27	519	1,895	116	2,011	2,575
Industrial Farm, Monteith (used as a District Jail)...	28		28	302		302	325		325	655
TOTALS.....	3,031	462	3,493	23,672	1,657	25,329	29,569	2,145	31,714	60,536

*City Jails.

TABLE No. 8
OCCUPATIONS

CITY AND COUNTY JAILS	AGRICULTURE	CLERICAL	COMMERCIAL	CONSTRUCTION	DOMESTIC	FISHING, TRAPPING, LOGGING	LABOURERS	MANUFACTURING
Barrie.....	26	6	4	80	23	629
Belleville.....	16	3	25	65	12	460	7
Brampton.....	18	42	62	56	8	2	273	78
Brantford.....	41	6	74	35	1	381	58
Brockville.....	11	14	10	54	17	193	2
Cayuga.....	7	17	2	1	148	2
Chatham.....	68	2	22	38	18	3	328	12
Cobourg.....	30	14	4	5	15	374
Cornwall.....	132	10	1	234	20	2	148	151
Goderich.....	26	14	24	1	4	61	3
Guelph.....	19	8	3	39	10	242	23
*Hamilton.....	37	26	397	140	145	18	2,403
Kingston.....	15	12	22	99	28	368	24
Kitchener.....	14	6	36	14	444
Lindsay.....	13	2	8	58	6	3	148	16
London.....	73	59	157	132	8	1,700	34
L'Orignal.....	23	4	9	27	6	174	3
Milton.....	16	11	31	77	26	1	216	27
Napanee.....	7	1	9	10	5	1	105	11
Orangeville.....	8	10	2	10	4	97	2
Ottawa.....	18	140	94	240	133	1,208	22
Owen Sound.....	5	2	18	19	15	2	227	7
Pembroke.....	15	12	7	73	31	24	515	3
Perth.....	25	4	21	91	14	17	82	17
Peterborough.....	7	12	34	63	19	12	297	51
Pictou.....	7	2	9	1	1	64
St. Catharines.....	26	13	24	89	58	8	608	26
St. Thomas.....	71	8	30	57	36	5	276
Sarnia.....	16	20	16	65	31	7	458	40
Simcoe.....	235	19	8	32	26	5	417	7
Stratford.....	12	4	4	11	6	201	4
*Toronto.....	288	918	935	1,681	1,231	16	9,988	520
Walkerton.....	33	11	22	41	26	6	258	2
Wellsford.....	9	6	50	128	56	1	422	18
Whitby.....	14	17	56	73	10	540	34
Windsor.....	42	27	91	140	42	6	689	130
Woodstock.....	25	5	5	22	10	245	18
DISTRICT JAILS								
Fort Frances.....	11	29	42	48	24	26	62	2
Haileybury.....	21	6	11	25	52	50	179	2
Kenora.....	9	12	55	398	134	866	4
North Bay.....	3	8	22	68	44	23	320	4
Parry Sound.....	2	8	12	51	23	247	15
Port Arthur.....	3	7	58	214	31	1,612
Sault Ste. Marie.....	4	9	10	87	102	58	687	1
Sudbury.....	19	36	43	300	121	124	974	29
Industrial Farm, Monteith (used as a District Jail).	2	10	1	44	7	6	469
TOTALS.....	1,522	1,573	2,380	4,809	3,133	598	30,803	1,409

*City Jails.

TABLE No. 8—Concluded
OCCUPATIONS

CITY AND COUNTY JAILS	MECHANICS	MINING	PERSONAL SERVICES	PROFESSIONAL	TRANSPORTATION	NO OCCUPATION	OTHERS	TOTAL NUMBER COMMITTED
Barrie.....	64	28	24	507	1,391
Belleville.....	33	6	22	1	31	10	50	741
Brampton.....	94	4	12	2	86	18	41	796
Brantford.....	26	1	27	3	31	22	60	766
Brockville.....	26	15	1	26	4	18	391
Cayuga.....	7	1	4	3	5	8	205
Chatham.....	24	11	2	35	4	13	580
Cobourg.....	9	1	2	19	28	98	599
Cornwall.....	12	4	35	14	12	775
Goderich.....	8	3	6	1	11	2	37	201
Guelph.....	27	1	40	1	10	6	5	434
*Hamilton.....	81	36	9	25	101	95	43	3,556
Kingston.....	41	8	26	3	26	56	728
Kitchener.....	16	5	22	141	45	4	124	871
Lindsay.....	17	2	7	2	15	7	4	308
London.....	100	5	26	32	202	137	2,665
L'Orignal.....	16	1	4	3	14	10	11	305
Milton.....	65	1	10	1	58	1	61	602
Napanee.....	9	1	7	8	7	1	182
Orangeville.....	11	4	21	169
Ottawa.....	158	14	45	8	201	222	171	2,674
Owen Sound.....	13	4	12	13	337
Pembroke.....	17	10	24	1	46	27	128	933
Perth.....	17	1	11	2	3	19	8	332
Peterborough.....	33	4	20	3	40	33	628
Picton.....	3	1	2	1	91
St. Catharines.....	43	2	37	12	97	21	47	1,111
St. Thomas.....	33	12	6	28	4	32	598
Sarnia.....	26	1	33	28	14	31	786
Simcoe.....	30	2	5	9	28	21	10	854
Stratford.....	28	9	4	3	2	5	293
*Toronto.....	1,481	245	1,375	175	1,662	306	571	21,392
Walkerton.....	14	2	6	36	457
Welland.....	59	9	43	2	97	14	70	984
Whitby.....	39	2	48	4	62	7	18	924
Windsor.....	76	3	38	17	109	38	64	1,512
Woodstock.....	8	2	7	3	20	15	6	391
DISTRICT JAILS								
Fort Frances.....	6	4	12	3	6	3	8	286
Haileybury.....	10	74	28	2	33	21	3	517
Kenora.....	12	32	59	6	23	1,610
North Bay.....	18	21	18	1	28	19	26	623
Parry Sound.....	16	3	18	5	23	29	19	471
Port Arthur.....	11	48	33	23	29	53	2,122
Sault Ste. Marie.....	40	29	1	3	39	15	30	1,115
Sudbury.....	140	340	171	4	135	111	28	2,575
Industrial Farm, Monteith (used as a District Jail).....	19	38	13	4	21	15	6	655
TOTALS.....	3,036	964	2,305	472	3,367	1,418	2,747	60,536

*City Jails.

TABLE No. 9
PRISONERS TRANSFERRED TO OTHER INSTITUTIONS

CITY AND COUNTY JAILS	SENTENCED TO JAIL AND AFTERWARDS REMOVED TO A REFORMATORY		SENTENCED TO JAIL AND AFTERWARDS REMOVED TO AN INDUS- TRIAL FARM	SENTENCED TO AND REMOVED TO A REFORMATORY		SENTENCED TO AND REMOVED TO AN INDUSTRIAL FARM	SENTENCED TO AND REMOVED TO A PENI- TENTIARY	
	M.	F.		M.	F.		M.	M.
Barrie.....	15	1	29	93	2	31	14	..
Belleville.....	32	...	62	11	..
Brampton.....	3	48	2	17	9	1
Brantford.....	55	2	49	14	..
Brockville.....	26	1	22	1	...	1	3	..
Cayuga.....	7	18	1	2	4	..
Chatham.....	43	...	30	2	6	..
Cobourg.....	39	...	20	2	..
Cornwall.....	16	1	44	20	2	14	11	..
Goderich.....	6	...	2	11	1	..
Guelph.....	24	...	6	45	6	..
*Hamilton.....	32	13	540	77	4	...	59	..
Kingston.....	35	1	86	15	3	...	10	..
Kitchener.....	27	...	15	71	6	...	11	..
Lindsay.....	2	...	7	9	...	4	2	..
London.....	102	9	340	79	9	...	43	..
L'Orignal.....	5	16	2	30	3	..
Milton.....	18	...	2	33	...	10	7	..
Napanee.....	2	...	8	4	5	..
Orangeville.....	8	...	1	2	..
Ottawa.....	82	12	192	90	...	61	59	..
Owen Sound.....	44	2	9	4	..
Pembroke.....	4	...	18	21	1	3
Perth.....	9	...	15	9	1	5	3	..
Peterborough.....	49	1	9	37	2	21	4	..
Picton.....	10	...	5	3	1	..
St. Catharines.....	45	2	21	35	12	..
St. Thomas.....	13	1	7	12	..
Sarnia.....	3	...	26	28	20	..
Simcoe.....	8	1	16	46	...	12	12	..
Stratford.....	14	5	13	12	1	...	2	..
*Toronto.....	3,058	495	472	349	17
Walkerton.....	10	3	9	16	1	...	5	..
Welland.....	19	3	17	83	8	45	12	..
Whitby.....	76	1	22	11	...	15	18	2
Windsor.....	9	...	13	96	2	80	35	1
Woodstock.....	8	1	24	24	2	...	16	..
DISTRICT JAILS								
Fort Frances.....	2	...	2	8	...	9	1	..
Haileybury.....	27	21	25	27	3	17	23	1
Kenora.....	115	46	1	...	18	1
North Bay.....	15	1	14	17	1	28	7	..
Parry Sound.....	3	...	6	23	...	9	10	..
Port Arthur.....	65	7	441	40	..
Sault Ste. Marie.....	189	3	45	66	6	3	18	..
Sudbury.....	112	5	102	103	5	...	107	1
I. F. Monteith (Used as a District Jail)...	478
TOTALS.....	4,276	590	2,884	1,426	67	924	1,011	24

*City Jails.

TABLE No. 9—Concluded
PRISONERS TRANSFERRED TO OTHER INSTITUTIONS

CITY AND COUNTY JAILS	SENTENCED TO AND REMOVED TO AN INDUSTRIAL REFUGE		TRANSFERRED TO A TRAINING SCHOOL		TRANSFERRED TO A MENTAL HOSPITAL OR TO SOME OTHER PLACE OF CONFINEMENT		TOTAL		
	M.	F.	M.	F.	M.	F.	M.	F.	T.
Barrie.....					12		194	3	197
Belleville.....			1		21	1	127	1	128
Brampton.....				1	25		102	4	106
Brantford.....			1		18	1	137	3	140
Brockville.....					4		57	1	58
Cayuga.....					2		33	1	34
Chatham.....			1	1	8		90	1	91
Cobourg.....				1	5		66	1	67
Cornwall.....					1	2	106	5	111
Goderich.....					2		22		22
Guelph.....			1	1	19	1	101	2	103
*Hamilton.....			8		50	11	766	28	794
Kingston.....					1		147	4	151
Kitchener.....					4		128	6	134
Lindsay.....					10	2	34	2	36
London.....					5		569	18	587
L'Orignal.....					8	1	62	3	65
Milton.....					2		72		72
Napanee.....					2	1	21	1	22
Orangeville.....							11		11
Ottawa.....					1		485	12	497
Owen Sound.....			3		4		64	2	66
Pembroke.....					3	3	49	4	53
Perth.....					4	2	45	3	48
Peterborough.....			4	3	8	1	132	7	139
Picton.....					1		20		20
St. Catharines.....					16	1	129	3	132
St. Thomas.....					1		33	1	34
Sarnia.....					7		84		84
Simcoe.....					8	1	102	2	104
Stratford.....				1			41	7	48
*Toronto.....					156	28	4,035	540	4,575
Walkerton.....			7				47	4	51
Welland.....					22	2	198	13	211
Whitby.....					38		180	3	183
Windsor.....					1		234	3	237
Woodstock.....			1	1	4		77	4	81
DISTRICT JAILS									
Fort Frances.....			4	1	12	11	38	12	50
Haileybury.....			8	1	5		132	26	158
Kenora.....			8	2	16	2	203	6	209
North Bay.....			2	1	16	2	99	5	104
Parry Sound.....					16	2	67	2	69
Port Arthur.....					14		560	7	567
Sault Ste. Marie..			6		6		333	9	342
Sudbury.....			3		17	3	444	14	458
I.F. Monteith (Used as a District Jail)....							478		478
TOTALS.....			58	14	575	78	11,154	773	11,927

*City Jails.

TABLE No. 10
SENTENCES—FINES, PROBATION, SUSPENDED SENTENCE

CITY AND COUNTY JAILS	PAID FINE			PLACED ON PROBATION			SUSPENDED SENTENCE WITHOUT PROBATION		
	M.	F.	T.	M.	F.	T.	M.	F.	T.
Barrie.....	525	18	543	106	3	109	4	1	5
Belleville.....	119	6	125	1	1	43	43
Brampton.....	315	3	318	98	2	100	47	1	48
Brantford.....	144	5	149	25	2	27	44	44
Brockville.....	61	2	63	3	3	28	28
Cayuga.....	26	26	11	11	37	37
Chatham.....	90	4	94	2	2	69	4	73
Cobourg.....	233	7	240	20	2	22	140	6	146
Cornwall.....	192	5	197	22	1	23	40	1	41
Goderich.....	51	1	52	14	14	7	7
Guelph.....	72	3	75	8	8	48	2	50
*Hamilton.....	413	43	456	157	15	172	338	22	360
Kingston.....	169	5	174	19	1	20	3	3
Kitchener.....	83	2	85	55	4	59	87	4	91
Lindsay.....	113	2	115	27	1	28	27	1	28
London.....	278	34	312	73	15	88
L'Orignal.....	34	34	26	26	6	6
Milton.....	247	10	257	28	3	31	49	2	51
Napanee.....	55	2	57	21	21
Orangeville.....	100	100	3	3	13	13
Ottawa.....	211	12	223	146	12	158	233	10	243
Owen Sound.....	93	2	95	1	1	52	3	55
Pembroke.....	199	1	200	19	3	22	63	5	68
Perth.....	63	4	67	6	6	22	22
Peterborough.....	99	2	101	60	4	64	23	4	27
Picton.....	24	24	4	4
St. Catharines....	146	7	153	59	59	53	6	59
St. Thomas.....	224	9	233	25	1	26	32	6	38
Sarnia.....	256	20	276	42	2	44	22	3	25
Simcoe.....	299	10	309	65	5	70	151	15	166
Stratford.....	54	1	55	17	1	18	7	2	9
*Toronto.....	1,980	263	2,243	560	87	647	216	32	248
Walkerton.....	192	12	204	32	3	35
Welland.....	209	2	211	47	8	55	114	7	121
Whitby.....	194	6	200	63	2	65	28	2	30
Windsor.....	46	2	48	132	8	140	49	3	52
Woodstock.....	113	1	114	33	1	34
DISTRICT JAILS									
Fort Frances.....	101	10	111	11	1	12	8	1	9
Haileybury.....	77	8	85	51	7	58	32	3	35
Kenora.....	188	77	265	2	2	39	4	43
North Bay.....	62	62	49	2	51	31	2	33
Parry Sound.....	109	6	115	48	1	49	13	2	15
Port Arthur.....	40	40	32	32	48	6	54
Sault Ste. Marie..	181	12	193	4	4	58	3	61
Sudbury.....	770	57	827	152	7	159	37	7	44
I.F. Monteith (Used as a District Jail)....
TOTALS.....	9,250	676	9,926	2,310	200	2,510	2,430	174	2,604

*City Jails.

TABLE
SENTENCES—TO JAILS,

CITY AND COUNTY JAILS	UNDER 30 DAYS			30 DAYS AND UNDER 60 DAYS			60 DAYS AND UNDER 90 DAYS		
	M.	F.	T.	M.	F.	T.	M.	F.	T.
Barrie.....	366	5	371	58	1	59	23		23
Belleville.....	224	2	226	64		64	33		33
Brampton.....	57		57	22	1	23	12		12
Brantford.....	277	11	288	67		67	22		22
Brockville.....	168	1	169	23		23	5		5
Cayuga.....	63		63	17		17	5		5
Chatham.....	204	3	207	63	2	65	13		13
Cobourg.....	69		69	22		22	9		9
Cornwall.....	217	7	224	55		55	8		8
Goderich.....	93		93	3		3	11		11
Guelph.....	125	4	129	29		29	38		38
*Hamilton.....	1,241	35	1,276	363	11	374	75	1	76
Kingston.....	222	7	229	147		147	25		25
Kitchener.....	337	4	341	51	1	52	15		15
Lindsay.....	39	1	40	32	1	33	13		13
London.....	1,007	25	1,032	225	25	250	44	8	52
L'Orignal.....	47	1	48	21		21	4		4
Milton.....	30	4	34	23		23	10		10
Napanee.....	44	1	45	10		10	7		7
Orangeville.....	14		14	2		2	2		2
Ottawa.....	734	30	764	236	14	250	45	3	48
Owen Sound.....	83		83	20	1	21	1		1
Pembroke.....	422	13	435	46		46	16		16
Perth.....	126		126	29		29	13	1	14
Peterborough.....	154		154	84	1	85	26	2	28
Picton.....	32		32	5		5	3		3
St. Catharines.....	505	7	512	56		56	12		12
St. Thomas.....	174	5	179	16		16	9		9
Sarnia.....	204	5	209	36		36	12		12
Simcoe.....	111	4	115	38	1	39	14	1	15
Stratford.....	95	3	98	40	1	41	13	1	14
*Toronto.....	8,921	744	9,665	3,273	414	3,687	780	134	914
Walkerton.....	94	10	104	23		23	21	2	23
Welland.....	192	6	198	75	3	78	25	3	28
Whitby.....	323	6	329	96	1	97	22		22
Windsor.....	751	31	782	63	3	66	33	2	35
Woodstock.....	123		123	22	1	23	11		11
DISTRICT JAILS									
Fort Frances.....	51	13	64	20	3	23	13	2	15
Haileybury.....	83	3	86	28	12	40	14	4	18
Kenora.....	393	183	576	254	99	353	72	10	82
North Bay.....	204	9	213	119	3	122	8		8
Parry Sound.....	155	10	165	32		32	30		30
Port Arthur.....	1,086	109	1,195	383	41	424	65	3	68
Sault Ste. Marie..	349	34	383	88	9	97	67	6	73
Sudbury.....	656	41	697	202	3	205	24		24
I.F. Monteith (Used as a District Jail)...	176		176	162		162	40		40
TOTALS.....	21,041	1,377	22,418	6,743	652	7,395	1,763	183	1,946

*City Jails.

No. 10 (Cont'd)

REFORMATORIES, PENITENTIARIES, ETC.

CITY AND COUNTY JAILS	3 MONTHS			4 MONTHS			5 MONTHS			6 MONTHS AND UNDER 9 MONTHS		
	M.	F.	T.	M.	F.	T.	M.	F.	T.	M.	F.	T.
Barrie.....	14		14	6	1	7	11	1	12	25		25
Belleville.....	16		16	1		1				10		10
Brampton.....	5		5	2		2				10	1	11
Brantford.....	26	2	28	1		1	2		2	7	1	8
Brockville.....	20		20				1		1	22	1	23
Cayuga.....	2		2							5		5
Chatham.....	20		20	1		1				27		27
Cobourg.....	11		11							1		1
Cornwall.....	25	1	26	1		1	1		1	16	1	17
Goderich.....	3		3							1		1
Guelph.....	9		9	4		4	1		1	8		8
*Hamilton.....	117	6	123	54		54	46	2	48	35	1	36
Kingston.....	21	1	22	8		8	7		7	17		17
Kitchener.....	26		26	5		5	3		3	4		4
Lindsay.....	8		8	1		1				3		3
London.....	54	3	57	15	1	16	1		1	35	3	38
L'Orignal.....	12	2	14	3		3	3		3	11		11
Milton.....	16		16							6		6
Napanee.....	3		3							2		2
Orangeville.....	1		1							2		2
Ottawa.....	57	2	59	13		13	12		12	43	1	44
Owen Sound.....	3	1	4	1		1				1		1
Pembroke.....	16		16							1	1	2
Perth.....	18		18	1		1				11		11
Peterborough.....	13	1	14	8		8	1		1	6		6
Picton.....	6		6									
St. Catharines.....	14	2	16	10		10	1		1	9		9
St. Thomas.....		1	1	1		1				3		3
Sarnia.....	9		9	1		1				5		5
Simcoe.....	2		2							1		1
Stratford.....	7	1	8	2	1	3				3	1	4
*Toronto.....	655	50	705	142	14	156	31	1	32	359	18	377
Walkerton.....	1		1									
Welland.....	20	3	23	7	5	12	3	1	4	25		25
Whitby.....	43		43	7		7	3		3	16		16
Windsor.....	21	1	22	17		17				37		37
Woodstock.....	21	1	22	5		5	2		2	4		4
DISTRICT JAILS												
Fort Frances.....	10	3	13	2		2				3		3
Haileybury.....	8	15	23	1	1	2				11	1	12
Kenora.....	41	7	48	5		5	3		3	8	1	9
North Bay.....	27		27	1		1				7		7
Parry Sound.....	4		4							5		5
Port Arthur.....	57	3	60	31		31	7		7	25	1	26
Sault Ste. Marie.....	68	6	74	9	1	10	2		2	30	1	31
Sudbury.....	137	5	142	8		8	2		2	24	2	26
I.F. Monteith (Used as a District Jail)....	68		68	7		7	1		1	15		15
TOTALS.....	1,735	117	1,852	381	24	405	144	5	149	899	35	934

*City Jails.

TABLE
SENTENCES—TO JAILS,

CITY AND COUNTY JAILS	9 MONTHS AND UNDER 12 MONTHS			12 MONTHS AND UNDER 18 MONTHS			18 MONTHS AND UNDER 24 MONTHS			INDETERMINATE WITH DEFINITE OR OTHER SENTENCES		
	M.	F.	T.	M.	F.	T.	M.	F.	T.	M.	F.	T.
Barrie.....	10		10	21		21	6		6	33		33
Belleville.....	3		3	7		7				16		16
Brampton.....				5		5	1		1	24		24
Brantford.....	1		1	1		1				58	2	60
Brockville.....				9		9	1		1	1		1
Cayuga.....	2		2	3		3	1		1	11	1	12
Chatham.....	1		1	15		15	5		5	1	1	2
Cobourg.....				1		1				32	1	33
Cornwall.....	2		2	12	1	13	1		1	17		17
Goderich.....				1		1				7		7
Guelph.....	2		2	1		1	1		1	33	2	35
*Hamilton.....	17	2	19	24	2	26	30		30	61		61
Kingston.....	1		1	9		9	5		5	12	3	15
Kitchener.....	2		2	6		6	6		6	44	6	50
Lindsay.....				4		4	1		1	13	1	14
London.....	3		3	28	3	31	15	1	16	74	4	78
L'Original.....	1		1	2		2	1		1	15		15
Milton.....	1		1	2		2	1		1	34		34
Napanee.....				2		2				7		7
Orangeville.....	1		1	2		2	1		1	2		2
Ottawa.....	9		9	5		5	2		2	155	6	161
Owen Sound.....				1		1	1		1	42	1	43
Pembroke.....										25		25
Perth.....				1		1	4		4			
Peterborough....	3		3	8		8	7		7	18	1	19
Picton.....				4		4				3		3
St. Catharines....	5		5	8		8	10		10	35		35
St. Thomas.....				1		1	1		1	11		11
Sarnia.....	1		1	3		3	2		2	29		29
Simcoe.....										43		43
Stratford.....	1		1	1		1				11	1	12
*Toronto.....	136	4	140	242	7	249	151	2	153	111	33	144
Walkerton.....										16	1	17
Welland.....	8	1	9	9		9	7		7	61		61
Whitby.....	4		4	15		15	5		5	18		18
Windsor.....	2		2	35		35	14		14	45	1	46
Woodstock.....	2		2				1		1	13	2	15
DISTRICT JAILS												
Fort Frances.....				4		4	1		1	3		3
Haileybury.....	1		1	11		11	8		8	55	4	59
Kenora.....							4		4	76	4	80
North Bay.....	1		1	5		5	5		5	28	2	30
Parry Sound.....	6		6	3		3	3		3	8		8
Port Arthur.....	8		8	3	1	4	6		6	23	2	25
Sault Ste. Marie..	5		5	11		11	10		10	54	2	56
Sudbury.....	1		1	13	1	14	2		2	47	1	48
I.F. Monteith (Used as a District Jail)....	2		2	7		7						
TOTALS.....	242	7	249	545	15	560	320	3	323	1,425	82	1,507

*City Jails.

No. 10 (Concluded)

REFORMATORIES, PENITENTIARIES, ETC.

CITY AND COUNTY JAILS	2 YEARS AND OVER TO PENITENTIARIES			SENTENCED TO DEATH			TOTAL NUMBER SENTENCED		
	M.	F.	T.	M.	F.	T.	M.	F.	T.
Barrie.....	14		14				1,222	30	1,252
Belleville.....	11		11				548	8	556
Brampton.....	9	1	10				607	9	616
Brantford.....	14		14				689	23	712
Brockville.....	3		3				345	4	349
Cayuga.....	3		3				186	1	187
Chatham.....	6		6				517	14	531
Cobourg.....	2		2				540	16	556
Cornwall.....	13		13				622	17	639
Goderich.....	1		1				192	1	193
Guelph.....	6		6				385	11	396
*Hamilton.....	59		59				3,030	140	3,170
Kingston.....	10		10				675	17	692
Kitchener.....	12		12				736	21	757
Lindsay.....	2		2				283	7	290
London.....	43		43				1,895	122	2,017
L'Orignal.....	3		3				189	3	192
Milton.....	7		7				454	19	473
Napanee.....	5		5				156	3	159
Orangeville.....	2		2				145		145
Ottawa.....	59		59				1,960	90	2,050
Owen Sound.....	3		3				302	8	310
Pembroke.....							807	23	830
Perth.....	3		3				297	5	302
Peterborough.....	3		3				513	15	528
Picton.....	1		1				82		82
St. Catharines.....	12		12				935	22	957
St. Thomas.....	12		12				509	22	531
Sarnia.....	20		20				642	30	672
Simcoe.....	12		12				736	36	772
Stratford.....	2		2				253	13	266
*Toronto.....	325	16	341	2		2	17,884	1,819	19,703
Walkerton.....	3		3				382	28	410
Welland.....	12		12				807	46	853
Whitby.....	15	2	17				852	19	871
Windsor.....	36	1	37				1,281	52	1,333
Woodstock.....	16		16				366	6	372
DISTRICT JAILS									
Fort Frances.....	1		1				228	33	261
Haileybury.....	23	1	24				403	59	462
Kenora.....	19	1	20				1,104	386	1,490
North Bay.....	7		7				554	18	572
Parry Sound.....	8		8				424	19	443
Port Arthur.....	40		40				1,854	166	2,020
Sault Ste. Marie..	18		18				954	74	1,028
Sudbury.....	107	1	108				2,182	125	2,307
I.F. Monteith (Used as a District Jail)....							478		478
TOTALS.....	982	23	1,005	2		2	50,205	3,580	53,785

*City Jails.

TABLE No. 11

ACCOMMODATION; GREATEST, LEAST, AVERAGE NUMBER OF PRISONERS

CITY AND COUNTY JAILS	MALE ACCOMMODATION	FEMALE ACCOMMODATION	GREATEST NUMBER OF MALE AND FEMALE PRISONERS DURING YR.	GREATEST NUMBER OF MALE PRISONERS DURING YEAR	GREATEST NUMBER OF FEMALE PRISONERS DURING YEAR	LEAST NUMBER OF MALE AND FEMALE PRISONERS DURING YR.	LEAST NUMBER OF MALE PRISONERS DURING YEAR	LEAST NUMBER OF FEMALE PRISONERS DURING YEAR	AVERAGE DAILY JAIL POPULATION
Barrie.....	50	9	59	59	3	14	14	35.3
Belleville.....	18	6	41	41	1	8	8	24.7
Brampton.....	24	7	32	30	2	3	2	15.7
Brantford.....	49	4	37	36	4	13	13	1	26.6
Brockville.....	24	4	25	25	1	5	5	14.3
Cayuga.....	10	5	17	17	1	1	1	7.7
Chatham.....	35	6	37	36	3	9	8	20.5
Cobourg.....	15	6	30	30	2	3	3	1	15.0
Cornwall.....	16	4	46	46	3	11	11	28.2
Goderich.....	9	3	13	13	1	1	1	5.4
Guelph.....	28	6	25	25	3	6	6	16.5
*Hamilton.....	131	18	142	136	13	55	54	1	102.5
Kingston.....	33	8	39	39	3	11	11	23.9
Kitchener.....	41	5	48	45	4	10	9	29.1
Lindsay.....	24	6	19	19	2	4	4	9.7
London.....	72	9	110	106	12	52	50	78.7
L'Original.....	18	6	21	21	2	4	4	9.7
Milton.....	28	3	28	28	3	4	4	15.5
Napanee.....	18	5	14	14	2	6.4
Orangeville.....	18	5	17	17	2	3.9
Ottawa.....	116	16	126	125	11	52	48	84.3
Owen Sound.....	32	2	24	24	2	2	2	13.5
Pembroke.....	24	8	35	34	4	9	9	21.2
Perth.....	18	6	23	23	2	2	2	10.3
Peterborough.....	18	6	41	41	5	11	11	22.5
Pictou.....	18	6	9	9	4.8
St. Catharines..	60	8	70	70	3	11	11	35.4
St. Thomas.....	17	4	28	28	3	3	3	14.5
Sarnia.....	48	7	36	34	4	13	13	26.2
Simcoe.....	22	5	54	48	7	6	6	21.0
Stratford.....	26	4	22	22	4	1	1	11.4
*Toronto.....	656	94	916	855	84	378	305	33	699.4
Walkerton.....	28	4	28	27	4	5	4	13.1
Welland.....	47	9	59	54	6	24	23	40.4
Whitby.....	50	4	54	54	4	15	15	29.5
Windsor.....	92	15	88	86	6	32	32	1	58.0
Woodstock.....	28	5	42	41	2	5	4	14.8
DISTRICT JAILS									
Fort Frances...	10	2	21	19	4	1	1	9.2
Haileybury.....	31	3	50	49	9	13	12	27.2
Kenora.....	51	10	113	83	33	39	32	7	79.1
North Bay.....	59	5	44	44	4	15	14	29.4
Parry Sound.....	20	4	33	32	3	6	6	18.2
Port Arthur....	82	9	92	86	16	28	24	1	55.1
Sault Ste. Marie	32	7	76	70	7	17	15	31.3
Sudbury.....	53	9	100	94	11	26	25	1	65.2
I.F. Monteith (Used as a District Jail).

*City Jails.

TABLE No. 12
NUMBER AND DAYS' STAY OF PRISONERS

CITY AND COUNTY JAILS	NUMBER COMMITTED DURING YEAR FOR INDICTABLE OFFENCES	NUMBER COMMITTED DURING YEAR FOR NON-INDICTABLE OFFENCES	TOTAL NUMBER OF PRISONERS COMMITTED DURING YEAR	NUMBER OF LOCK-UP PRISONERS AND THOSE IN TRANSIT TO OTHER INSTITUTIONS	DAYS' STAY OF PRISONERS COMMITTED FOR INDICTABLE OFFENCES	DAYS' STAY OF PRISONERS COMMITTED FOR NON-INDICTABLE OFFENCES	DAYS' STAY OF LOCK-UP PRISONERS AND THOSE IN TRANSIT TO OTHER INSTITUTIONS	TOTAL DAYS' STAY OF ALL PRISONERS
Barrie	304	1,087	1,391	12	4,592	8,268	27	12,887
Belleville	86	655	741	18	1,436	7,493	87	9,016
Brampton	440	356	796	1	3,797	1,944	1	5,742
Brantford	420	346	766	2	5,606	4,082	4	9,692
Brockville	119	272	391	143	2,263	2,771	193	5,227
Cayuga	39	166	205	233	509	1,980	332	2,821
Chatham	123	457	580	2	2,181	5,291	8	7,480
Cobourg	192	407	599	22	3,181	2,284	27	5,492
Cornwall	117	658	775	1,418	8,877	10,295
Goderich	56	145	201	679	1,307	1,986
Guelph	127	307	434	22	2,478	3,498	33	6,009
*Hamilton	900	2,656	3,556	8,037	29,380	37,417
Kingston	227	501	728	46	3,535	5,093	84	8,712
Kitchener	293	578	871	5	2,060	8,525	30	10,615
Lindsay	89	219	308	285	1,423	1,924	187	3,534
London	545	2,120	2,665	63	4,886	23,645	208	28,739
L'Orignal	112	193	305	6	2,148	1,392	9	3,549
Milton	60	542	602	10	739	4,923	10	5,672
Napanee	18	164	182	62	333	1,927	89	2,349
Orangeville	39	130	169	14	468	947	15	1,430
Ottawa	669	2,005	2,674	188	8,322	21,826	612	30,760
Owen Sound	56	281	337	3	1,638	3,290	5	4,933
Pembroke	217	716	933	21	3,954	3,749	42	7,745
Perth	70	262	332	136	896	2,741	129	3,766
Peterborough	167	461	628	264	3,183	4,692	333	8,208
Pictou	27	64	91	274	444	854	442	1,740
St. Catharines	358	753	1,111	313	5,649	6,912	355	12,916
St. Thomas	97	501	598	3	2,164	3,103	8	5,275
Sarnia	249	537	786	5,569	3,994	9,563
Simcoe	235	619	854	16	2,247	5,341	72	7,660
Stratford	61	232	293	9	1,217	2,916	11	4,144
*Toronto	5,183	16,209	21,392	8,292	97,221	149,083	8,974	255,278
Walkerton	103	354	457	6	2,255	2,511	9	4,775
Wellsburg	219	765	984	72	5,846	8,790	120	14,756
Whitby	439	485	924	34	6,066	4,322	379	10,767
Windsor	605	907	1,512	30	12,762	8,307	87	21,156
Woodstock	91	300	391	800	4,592	5,392
DISTRICT JAILS								
Fort Frances	81	205	286	307	1,450	1,642	258	3,350
Haileybury	277	240	517	22	6,762	3,078	96	9,936
Kenora	214	1,396	1,610	31	5,430	22,804	625	28,859
North Bay	200	423	623	506	3,513	5,742	1,488	10,743
Parry Sound	144	327	471	8	3,853	2,769	12	6,634
Port Arthur	368	1,754	2,122	111	6,578	13,147	400	20,125
Sault Ste. Marie	327	788	1,115	22	4,820	6,516	77	11,413
Sudbury	851	1,724	2,575	837	12,868	9,516	1,404	23,788
I.F. Monteith (Used as a District Jail)	301	354	655
TOTALS	15,915	44,621	60,536	12,451	257,276	427,788	17,282	702,346

*City Jails.

TABLE No. 13

**MAINTENANCE AND AVERAGE COST OF EACH PRISONER AND TOTAL COST
FOR YEAR IN CITY, COUNTY AND DISTRICT JAILS**

CITY AND COUNTY JAILS	COST OF FOOD	COST OF CLOTHING, FUEL AND ORDINARY MAINTENANCE	COST OF OFFICERS' SALARIES	COST OF ALTERATIONS, ADDITIONS AND REPAIRS TO BUILDINGS	TOTAL EXPENDITURE FOR MAINTENANCE FOR THE YEAR	AVERAGE COST OF EACH PRISONER PER DAY	AVERAGE COST PER DAY FOR CLOTHING, FUEL AND ORDINARY MAINTENANCE	DAILY PER CAPITA DIETARY COST
Barrie	4,653.42	8,228.54	83,547.32	1,597.46	98,026.74	7.61	.6385	.3611
Belleville	5,797.71	6,375.16	49,852.66	1,612.26	63,637.79	7.07	.7071	.6430
Brampton	3,857.15	7,185.31	55,923.98	1,911.01	68,877.45	12.00	1.2514	.6717
Brantford	6,621.77	6,756.82	60,613.39	965.19	74,957.17	7.73	.6972	.6832
Brockville	2,725.29	5,799.72	39,500.00	2,473.77	50,498.78	9.66	1.1096	.5214
Cayuga	1,620.80	1,696.51	32,939.58	426.55	36,683.44	13.00	.6014	.5745
Chatham	3,650.73	6,149.85	49,036.80	3,219.43	62,056.81	8.30	.8222	.4881
Cobourg	3,004.12	7,441.76	36,242.02	1,094.12	47,782.02	8.70	1.3550	.5470
Cornwall	7,339.75	6,606.75	55,225.68	1,882.45	71,054.63	6.90	.6417	.7129
Goderich	977.00	3,794.62	19,470.73	1,387.56	25,629.91	12.91	1.9107	.4919
Guelph	4,225.00	6,166.45	47,593.94	1,921.20	59,906.59	9.97	1.0262	.7031
*Hamilton	21,537.00	16,575.00	233,568.20	6,257.00	277,937.20	7.43	.4430	.5756
Kingston	3,519.17	7,904.13	61,164.34	968.76	73,556.40	8.44	.9073	.4039
Kitchener	6,269.96	9,164.88	70,701.54	1,323.87	87,460.25	8.24	.8634	.5907
Lindsay	2,724.87	4,495.09	33,172.05	1,990.62	42,382.63	11.99	1.2720	.7710
London	11,959.89	14,195.59	115,547.56	1,103.53	142,806.57	4.97	.4939	.4162
L'Original	2,345.88	2,898.70	28,837.99	1,015.95	35,098.52	9.90	.8168	.3610
Milton	2,931.17	2,105.72	51,345.70	779.26	57,161.85	10.08	.3712	.5104
Napanee	1,415.63	2,955.69	22,784.50	833.77	27,989.59	11.92	1.2583	.6027
Orangeville	703.60	2,264.24	20,599.34	301.78	23,868.96	16.69	1.5834	.4920
Ottawa	27,801.06	25,294.18	200,100.59	253,195.83	8.23	.8223	.9038
Owen Sound	2,339.63	3,692.21	35,518.00	599.48	42,149.32	8.54	.7485	.4743
Pembroke	4,113.81	2,658.66	52,959.00	599.76	60,331.23	7.79	.3433	.5312
Perth	1,877.57	7,157.94	36,829.70	1,788.09	47,653.30	12.65	1.9007	.4986
Peterborough	4,584.04	8,810.30	50,268.08	371.39	64,033.81	7.80	1.0734	.5585
Picton	1,371.80	4,766.77	26,993.76	343.94	33,476.27	19.24	2.7395	.7884
St. Catharines	7,788.87	15,351.44	60,306.77	1,922.40	85,369.48	6.61	1.1886	.6030
St. Thomas	3,097.59	5,443.23	41,337.58	1,968.30	51,846.70	9.82	1.0319	.5872
Sarnia	6,366.49	15,786.83	89,484.63	353.67	111,991.62	11.71	1.6508	.6657
Simcoe	3,793.35	6,755.70	46,265.20	150.44	56,964.69	7.44	.8819	.4952
Stratford	2,287.25	4,655.78	32,234.71	2,551.23	41,728.97	10.07	1.1235	.5519
*Toronto	119,731.00	169,842.00	977,683.28	36,700.00	1,303,956.28	5.11	.6653	.4690
Walkerton	2,326.17	847.86	26,845.22	30,019.25	6.29	.1776	.4872
Welland	9,887.02	6,050.08	71,900.84	1,508.26	89,346.20	6.05	.4100	.6700
Whitby	6,144.07	24,441.14	109,965.94	1,983.97	142,535.12	13.24	2.2700	.5706
Windsor	12,099.68	19,259.16	142,444.26	8,237.82	182,040.92	8.60	.9103	.5719
Woodstock	2,928.18	6,930.61	46,781.55	483.18	57,123.52	10.59	1.2853	.5431
DISTRICT JAILS								
Fort Frances	2,342.30	4,580.90	68,509.60	220.59	75,653.39	22.58	1.3674	.6992
Haileybury	5,716.75	18,219.26	110,421.26	639.78	134,997.05	13.59	1.8337	.5754
Kenora	16,237.87	23,296.61	105,434.38	1,482.61	146,451.47	5.07	.8073	.5627
North Bay	5,083.78	12,890.44	106,666.23	675.10	125,315.55	11.66	1.1999	.4732
Parry Sound	4,775.91	7,746.27	78,823.72	668.45	92,014.35	13.87	1.1677	.7199
Port Arthur	11,364.47	21,813.65	151,092.60	2,672.00	186,942.72	9.29	1.0839	.5647
Sault Ste. Marie	5,996.14	10,027.29	122,881.75	664.89	139,570.07	12.23	.8786	.5254
Sudbury	11,277.80	16,914.59	146,383.87	1,632.05	176,208.31	7.41	.7111	.4741
TOTALS	379,212.51	571,993.43	4,105,799.84	101,282.94	5,158,288.72	7.34	.8144	.5399

*City Jails.

TABLE No. 14
SHOWING NUMBER COMMITTED TO JAIL AND NUMBER CONVICTED,
ALSO RATIO TO POPULATION OF ONTARIO

For the Years 1913-1963

YEAR ENDING SEPTEMBER 30TH	APPROXIMATE POPULATION OF ONTARIO	PERSONS COMMITTED FOR TRIAL		PERSONS CONVICTED	
		NUMBER	RATIO PER 100,000 OF POPULATION	NUMBER	RATIO PER 100,000 OF POPULATION
1913	2,639,000	19,250	729	11,897	450
1914	2,705,000	22,777	842	14,801	547
1915	2,724,000	20,337	747	12,663	465
1916	2,713,000	16,100	593	9,364	345
1917	2,724,000	12,445	457	7,867	289
1918	2,744,000	13,242	483	7,874	287
1919	2,789,000	13,096	470	7,904	283
1920	2,863,000	14,756	515	8,643	302
1921	2,934,000	16,800	573	9,790	334
1922	2,980,000	14,800	497	9,312	312
1923	3,013,000	13,995	464	8,036	267
1924	3,059,000	15,879	519	8,834	289
1925	3,111,000	18,023	579	11,306	363
1926	3,164,000	18,033	570	11,371	359
1927	3,219,000	20,578	639	13,927	433
1928	3,278,000	23,786	726	16,358	499
1929	3,334,000	25,980	779	17,626	529
1930	3,386,000	29,126	860	21,421	632
1931	3,432,000	26,358	768	18,127	521
1932	3,473,000	25,235	727	15,804	455
1933	3,512,000	22,484	640	14,538	414
1934	3,544,000	20,916	590	13,509	381
YEAR ENDING MARCH 31ST					
1936	3,606,000	25,043	694	16,356	454
1937	3,637,000	27,592	759	20,618	567
1938	3,672,000	30,345	826	23,649	644
1939	3,708,000	34,914	942	27,926	753
1940	3,747,000	33,075	883	26,543	708
1941	3,788,000	30,875	815	25,627	677
1942	3,884,000	27,225	701	19,652	506
1943	3,915,000	25,411	649	18,551	474
1944	3,963,000	25,975	655	19,159	483
1945	4,000,000	26,229	655	19,132	478
1946	4,093,000	29,409	719	21,614	528
1947	4,176,000	32,541	779	25,355	607
1948	4,275,000	36,598	856	30,613	716
1949	4,378,000	39,429	900	33,627	768
1950	4,471,000	43,662	977	37,607	841
1951	4,598,000	46,858	1,019	40,743	886
1952	4,788,000	46,143	964	40,486	849
1953	4,941,000	46,003	931	40,573	821
1954	5,115,000	49,352	965	43,558	851
1955	5,266,000	52,818	1,003	46,899	891
1956	5,405,000	51,166	946	45,376	839
1957	5,633,000	52,111	925	46,194	820
1958	5,821,000	59,196	1,017	52,684	905
1959	5,969,000	56,565	948	50,022	838
1960	6,111,000	57,085	934	50,671	829
1961	6,236,000	61,704	989	54,555	875
1962	6,321,000	62,136	983	55,177	873
1963	6,448,000	60,536	939	53,785	834

NOTE.—The Fiscal Year was changed in 1935 to end March 31st.

