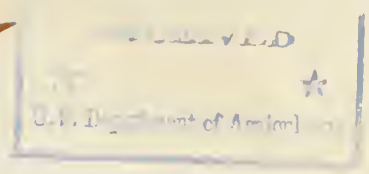


Historic, Archive Document

Do not assume content reflects current scientific knowledge, policies, or practices.

1913

V



The Phoenix Nursery Co.

Established 1852

Incorporated 1890



LANDSCAPE ARCHITECTURE OUR SPECIALTY

Bloomington, Illinois.

INDEX

- Achillea 7, 26
 Advicc Free 1
 Ageratum 8, 30
 Allanthus 4, 19
 Akebia 3, 24
 Alder European 4, 19
 Almond 2, 15
 Almond Dbl. Fl. 5, 21
 Althea 5, 21
 Alternanthera 8, 30
 Alyssum 8, 30
 Amaryllis 7, 29
 Ampelopsis 3, 24
 Anemone 7, 26
 Apples, Std. 2, 9, 10
 Apples, Dwarf 2, 11
 Apples, Crab 2, 11
 Apple, Crab fig. 4, 19
 Apple, Seedlings 3
 Apples, Grafts 3
 Apricot 2, 15
 Aquilegia 7, 26
 Araucaria 8, 30
 Arbor Vitae 3, 19
 Aristolochia 3, 24
 Asclepias 7, 26
 Ash 4, 19
 Ash, Weeping 5, 21
 Asparagus 3, 8, 18, 30
 Aspidistra 8, 30
 Aster, Hardy 7, 8, 26
 Azalea Indica 8, 30
 Balsam Fir 4, 19
 Beech 4, 19
 Begonia 8, 30
 Begonia Tuberous Rooted. 7, 29
 Berberry 3, 18, 21
 Bignonia 3, 24
 Birch 4, 19
 Birch, Cut Leaved, Weeping. 5, 21
 Bittersweet 3, 24
 Black Locust 3, 5
 Blackberry 2, 16
 Bleeding Heart 7, 26
 Bocconia 7, 26
 Boltonia Asteroides 7, 26
 Boston Ivy, see Ampelopsis Veitchii.
 Box Dwarf 4, 19
 Box Elder, see Maple Ash Leaved.
 Buckthorn 3, 18
 Buckeye 4, 19
 Bulbs, Hardy 30
 Butternut 2, 15
 Caladium 7, 29
 Calla Aethiopia 8, 30
 Calycanthus 5, 21
 Campanula 7, 26
 Cannas 7, 29
 Carnations 8, 30, 31
 Catalpas 4, 19
 Catalpa Bungei 4, 5, 19
 Celastrus 3, 24
 Centaurea, see Dusty Miller.
 Cherries 2, 13, 14
 Cherry Bird 4
 Cherries, Wild, Black 4, 19
 Cherry, Weeping 5, 21
 Chestnut 2, 15
 Chestnut, Horse 4, 19
 Chionanthus 5, 21
 Chrysanthemums 8, 31
 Chrysanthemums, Hardy 7, 26
 Cinnamon Vine 7, 26
 Clematis 3, 6, 24
 Cobia Scandens 8, 31
 Coleus 8, 30
 Coreopsis 7, 26
 Cornus 5, 21
 Cranberry, High Bush 6, 23
 Cuphea Cigar Plant 8, 31
 Currants, Flg. 6, 21
 Currants 2, 15, 16
 Cydonia Japonica, see Quince, Japan.
 Dahlias 7, 29, 30
 Daphne 6, 21
 Deciduous Ornamental Trees 4, 5, 19, 20, 21
 Delphinium 7, 26
 Desmodium 6, 21
 Deutzia 6, 21
 Dewberry 2, 15
 Dianthus 7, 26
 Dielytra 7, 26
 Digitalis 7, 26
 Dogwood 5, 21
 Dracena 8, 31
 Dusty Miller 8, 31
 Lutchman's Pipe 3, 24
 Eleanus 6, 22
 Elder 6, 22
 Elephants Ears, see Caladium.
 Elms 4, 19
 Elm Camperdown 5, 21
 Eulalia 7, 26, 27
 Euonymous 6, 22
 Euonymous Radicans 3, 24
 Evergreens 3, 19
 Ferns 8, 31
 Feverfew 8, 31
 Ficus Elastica 8, 31
 Flame Flower, see Tritoma.
 Forsythia 6, 22
 Fruit Tree Stocks and Cuttings. 3
 Fuchsias 8, 31
 Funkia 7, 27
 Gaillardia 7, 27
 Garden Roots 3, 18
 Geraniums 8, 31
 Gladiolus 7, 29
 Golden Bell, see Forsythia.
 Golden Glow, see Rudbeckia.
 Gooseberry 2, 16
 Grapes 3, 18
 Greenhouse and Decorative Plants. 8, 30, 31, 32
 Gypsophilla 8, 30
 Hackberry 4, 19
 Hedge Plants 3, 18
 Helianthus 7, 27
 Helioopsis 7, 27
 Heliotrope 8, 32
 Hemerocallis 7, 27
 Hemlock 4, 19
 Herbaceous Flowering Plants. 7, 26, 27, 28
 Heuchera 7, 27, 28
 Hibiscus 7, 8, 27, 32
 Hickory 2, 15
 Holly 4, 19
 Hollyhock 7, 27
 Honey Locust 3, 18
 Honeysuckle 6, 22
 Honeysuckle Cl. 3, 24
 Horse Chestnut 4, 19
 Horse Radish 3, 18
 Huckleberry 2, 15
 Hydrangeas 6, 8, 22
 Impatiens Sultana 8, 32
 Iris 7, 27
 Ivy 8, 32
 Ivy, Boston 3, 24
 Judas Tree 4, 19
 Juneberry 2, 4, 15
 Juniper 4, 19
 Kentucky Coffee Tree 4, 19
 Koelreuteria 6, 22
 Landscaping 32
 Lantana 8, 32
 Larch 4, 19
 Larkspur, see Delphinium.
 Lemon Verbena 8, 32
 Liatris 7, 27
 Lilac 6, 22
 Lilies 8, 30
 Linden 4, 19
 Linden, Weeping 5, 21
 Lobelia 7, 8, 27, 32
 Locust, Black and Honey 3, 5, 18
 Lychnis 7, 27
 Madeira Vine 7, 29
 Maiden Hair Tree, see Salisburia.
 Magnolias 5, 20
 Mahonia Holly 4, 19
 Maples 5, 20
 Matrimony Vine 3, 24
 Mock Orange, see Syringa.
 Moonflower 8, 32
 Mountain Ash 5, 20
 Mountain Ash, Weeping 5, 21
 Mulberry 2, 15
 Mulberry, Weeping 5, 21
 Nectarines 2, 15
 Nut Trees 2, 15
 Oak 5, 20
 Oleander 8, 32
 Ornamental Dept. 3, 18
 Ornamental Shrubs 5, 21, 22, 23
 Ornamental Trees 4, 5, 19, 20, 21
 Osage Orange 3, 18
 Paeonia 7, 23
 Palms 8, 32
 Pandanus Veitchii 8, 32
 Pansies 8, 32
 Paris Daisies 8, 32
 Paulownia 5, 20
 Paw Paw 2, 15
 Peaches 2, 14, 15
 Peaches, Double Flowering. 5, 20
 Pears, Standard 2, 11, 12
 Pears, Dwarf 2, 11
 Pears, Seedlings 3
 Pears, Grafts 3
 Pecan 2, 15
 Periploca Gracea 3, 24
 Persimmons 2, 15
 Petunia 8, 32
 Philadelphia, see Syringa.
 Phlox 7, 27
 Pine 4, 19
 Pinks, Hardy, see Dianthus.
 Planting and care of Trees. 1
 Platycodon 7, 27
 Plums 2, 12, 13
 Plums, Prunus Triloba 6, 23
 Plums, Prunus Pissardi 5, 20
 Poplars 5, 20
 Poplars, Cuttings 3
 Poppy Oriental 7, 27
 Price List 2, 3, 4, 5, 6, 7, 8
 Primrose 8, 32
 Privet 3, 18
 Purple Fringe 6, 23
 Pyrethrum 7, 27
 Quinces 2, 15
 Quince, Japan 3, 6, 23
 Raspberry 3, 17
 Red Bud, see Judas Tree.
 Red Cedar 4, 19
 Rhododendrons 4, 19
 Rhodotyus 6, 23
 Rhubarb 3, 18
 Root Grafts 3
 Roses 6, 25, 26
 Rose of Sharon, see Althea.
 Rudbeckia 7, 27
 Rubber Plant, see Ficus.
 Salisburia 5, 20
 Salvia 8, 32
 Shasta Daisy 7, 28
 Shrubs 5, 21, 22, 23
 Smoke Tree 6, 23
 Snowball 6, 23
 Silk Vine 3, 24
 Snowberry 6, 23
 Spirea 6, 8, 23
 Spruce 4, 19
 State Entomologist's Certificate 1
 Strawberries 3, 17
 Strawberry Tree 6, 22
 Sweet William, see Dianthus.
 Sycamore 5, 20
 Syringa 6, 23
 Table, Distance for Planting 1
 Tamarix 6, 23
 Trade Mark 1
 Tradescantia Zebrina 8, 32
 Tender Bulbs and Tubers. 7, 29
 Thorns 5, 20
 Tree Paeonia 6, 23
 Tree Cranberry 6, 23
 Tree Roses 6, 25
 Tritoma 7, 29
 Trumpet Creeper 3, 24
 Tuberoses 7, 29
 Tulip Tree 5, 20
 Verbenas 8, 32
 Veronica 7, 28
 Vinca Minor 7, 28
 Vinca Major Variegata. 8, 32
 Vines and Creepers 3, 24
 Virginia Creeper, see Ampelopsis.
 Walnuts 2, 15
 Weigella 6, 23
 Weeping Trees 5, 21
 White Fringe 5, 21
 Willows 5, 20
 Willow Cuttings 3
 Willows, Weeping 5, 21
 Wistaria 3, 24
 Yucca 6, 7, 23, 28

THE PHOENIX NURSERY CO.

A. E. DeMANCE, President SIDNEY TUTTLE, Vice-President W. E. ROSSNEY, Secretary and Treasurer

CAPITAL STOCK, \$200,000.00

1913

There is Nothing That Will Improve Your Property and Surroundings and Add to Their Value, and Your Pleasure, at So Small A Cost, as the Planting of Trees, Shrubs and Hardy Plants

OUR TRADE MARK—RED TAG TREES. We are the first nurserymen to adopt a Trade Mark for their entire stock. Some nurserymen have adopted a Trade Mark for one or two items for the purpose of restraining others from selling or propagating these items, while with us the purpose is entirely different. We have trade marked our product solely for the purpose of protecting our customers. The RED TAG identifies all our products, and we have had it registered in the Patent Office at Washington, D. C.

LOOK FOR THE RED TAG ON EVERY PHOENIX TREE; IT IS YOUR PROTECTION AND OUR GUARANTEE.

READ CAREFULLY

IN THIS CATALOGUE we have endeavored to make our prices as low as possible to furnish first class stock, consistent with the proper handling and careful packing. We have tried to make our terms and prices so plain that our patrons can at once make up their orders and figure out the cost, and thus avoid the necessity of sending their lists to us for prices, which in most cases, in the busy season, causes delay, and the prices if quoted by letter would be the same as contained in this catalogue.

FREE PACKING—Our prices include packing on all orders.

FREE DELIVERY—Freight Prepaid on all orders amounting to \$10.00 or more, where cash accompanies the order for the full amount at prices and terms in this catalogue.

All greenhouse plants should be sent by express or mail. All orders to be sent C. O. D. must be accompanied by one-fourth the amount in cash. When remitting please send us bank draft, express or postoffice money order, or send currency by registered mail. We cannot accept personal checks. **WE DO NOT FILL ORDERS FOR LESS THAN \$1.00.**

All shipments are guaranteed by us to reach you in good condition.

BOTH FRUIT AND ORNAMENTAL STOCK we grow in large quantities. All the desirable old and new varieties carefully grown, by the best skilled nursery men. We have unusual facilities for the handling of large and small orders, and feel confident that we can give entire satisfaction to all who may favor us with their orders.

ORDERS WILL BE PRICED AS FOLLOWS: 1, 2, 3, and 4 trees of a kind, variety and size at each rate; 5 to 30 trees of a kind, variety and size at ten rate; 30 to 300 trees of a kind, variety and size at hundred rate; 300 tree and over of a kind, variety and size at thousand rate. When an order is entitled to the hundred or thousand rates, the trees must be of the same kind, as all Apples, or all Peaches, Pears, Cherries, etc., and in sorts of not less than ten of a variety, as for instance, in apples, ten Ben Davis, ten Grimes' Golden, etc. In Pears, ten Keiffer, ten Bartlett, etc. In ornamental trees, shrubs, etc., the same rule will apply. Prices are for first class stock of the sizes and ages quoted and are subject to change without notice.

As to our responsibility we refer to the Peoples Bank, State National Bank, German-American Bank, and McLean County Bank of this city. We have been in business continuously for 60 years.

TIME OF SHIPMENT—We usually commence shipping in the SPRING about MARCH 10th and continue up to the last of May and in the FALL about OCTOBER 1st and continue into December.

OUR SHIPPING FACILITIES are unexcelled. Bloomington being an important railroad center, we are enabled to obtain very low freight rates, and forward promptly to all sections. With the Illinois Central R. R., Chicago & Alton R. R., Illinois Traction System, Lake Erie & Western R. R. (now of the Lake Shore System), and the C. C. & St. L. R. R. (Big Four) and their branches, we have direct communication with Chicago, St. Louis, Cleveland, Cincinnati, Louisville, Columbus, Kansas City, Indianapolis, Dubuque, Madison, Sioux City, Omaha, Cairo and New Orleans, by daily freight trains without transfer. **WE GUARANTEE OUR STOCK TO REACH YOU IN GOOD CONDITION.**

Direct all letters to THE PHOENIX NURSERY CO., P.O. Box 625, Bloomington, Ill.

PLANTING AND CARE OF TREES.

PREPARATION FOR PLANTING—Plow and subsoil repeatedly, so as to pulverize thoroughly to a depth of 12 to 18 inches. When planting on the lawn or grass plots, remove the sod for a diameter of 4 to 5 feet and keep this space well worked and free from weeds. Dig the hole deeper and larger than is necessary to admit all the roots in their natural position, keeping the surface and subsoil separate. Cut off broken and bruised roots and shorten the tops to half a dozen good buds, except for fall planting, when it is better to defer top pruning until the following spring. If not prepared to plant when your stock arrives, "heel in" by digging a trench deep enough to admit all the roots, and setting the trees therein as close as they can stand, carefully packing the earth about the roots, taking up when required. Never leave the roots exposed and "puddle" before planting.

PLANTING—Fill up the hole with surface soil, so that the tree will stand about as it did in the nursery after the earth is settled, except for dwarf pears, which should be planted deep enough to cover 2 or 3 inches of the quince stock upon which they are budded. Work the soil thoroughly among the roots, and, when well covered, tramp firmly. Set the tree firm as a post, but leave the surface filling (of poorer soil) light and loose. No staking will be required except for very tall trees. Never let manure come in contact with the roots.

MULCHING—After trees or bushes are planted it is a great advantage in Spring or Fall, to mulch with a layer of litter or coarse manure 4 to 5 inches deep, extending 2 to 3 feet out from the trunks all around and sufficient to cover all the roots beneath. This prevents the ground cracking or baking, and keeps the earth moist and of an even temperature.

AFTERCULTURE—No grass or weeds of any description should be allowed to grow around young trees or plants. To get the best results the ground should be kept clean and loose around them, at least until they begin to bear. Where the ground is poor, surface applications of manure are needed. Pruning should be done regularly every Spring before the buds swell; in this way removal of large branches is avoided.

FREE ADVICE—To our customers in reference to the care and culture of all trees and plants cheerfully given. Don't hesitate to write us.

DISTANCES FOR PLANTING.

Standard Apples	30 feet apart each way
Standard Pears and strong growing	
Cherries	20 " "
Duke and Morello Cherries	18 " "
Standard Plums, Apricots, Peaches,	
Nectarines	16 to 18 " "
Dwarf Pears	10 to 12 " "
Dwarf Apples	10 to 12 " "
Grapes.....	rows 10 to 16 feet apart 7 to 16 feet in rows
Currants and Gooseberries	3 to 4 feet apart
Raspberries and Blackberries	3 to 4 by 5 to 7 ft. apart
Strawberries, for field culture	1 to 1½ by 3 to 3½ "
Strawberries, for garden culture	1 to 2 feet apart

NUMBER OF TREES TO AN ACRE.

30 feet apart each way... 50	10 feet apart each way.. 435
25 feet apart each way... 70	8 feet apart each way.. 680
20 feet apart each way...110	6 feet apart each way..1210
18 feet apart each way...135	5 feet apart each way..1742
15 feet apart each way...205	4 feet apart each way..2723
12 feet apart each way...300	3 feet apart each way..4840

RULE—Multiply the distance in feet between the rows by the distance the plants are apart in the rows, and the product will be the number of square feet for each plant or hill, which, divided into the number of feet in an acre (43,560), will give the number of trees to the acre.

CERTIFICATE OF INSPECTION.

OFFICE OF THE ILLINOIS STATE ENTOMOLOGIST.

Urbana, Illinois, August 14, 1911.

This is to certify that the growing nursery stock and premises of The Phoenix Nursery Co., situated at Bloomington and Normal, Ill., have been inspected by H. J. VanCleave, a duly appointed inspector of this office, according to the provisions of an Act to prevent the introduction and spread in Illinois of the San Jose scale and other dangerous insects and contagious diseases of fruits, in force July 1, 1907, and that said nursery and premises are apparently free from the San Jose scale and other dangerous insects and dangerous plant diseases. This certificate applies only to the condition of this nursery for the year ending July 5, 1912.

S. A. FORBES, State Entomologist.

PRICE LIST

FRUIT DEPARTMENT

Freight Prepaid, on Orders of \$10.00 or More

APPLES AND CRABS

Standard	Each	10	100	1000
3 to 4 feet, 2 years	\$0.25	\$2.00	\$12.00 \$ 90.00
4 to 5 feet, 2 years30	2.50	17.50 135.00
5 to 6 feet, 5/8 to 3/4 inch35	3.00	25.00 200.00
5 to 7 feet, 3/4 inch and up40	3.50	30.00
Dwarf, Assorted			
3 to 4 feet50	4.00	

PEARS

Standard, Assorted	Each	10	100	1000
Extra quality, 5 to 7 feet, 3/4 inch and up	\$0.40	\$3.50	\$30.00 \$250.00
First quality, 5 to 6 feet, 5/8 to 3/4 inch35	3.00	25.00 200.00
4 to 5 feet, branched, nice trees30	2.50	20.00 150.00
3 to 4 feet, mostly branched20	1.50	12.00 100.00
2 to 3 feet, mostly whips15	1.00	8.00
Standard, Lincoln			
5 to 7 feet, first class60	5.00	
4 to 6 feet50	4.00	30.00
3 to 4 feet, branched30	2.50	20.00
Standard, Longworth's No. 1			
5 to 7 feet, 3/4 inch and up60	5.00	
4 to 6 feet, 5/8 to 3/4 inch50	4.00	
3 to 4 feet35	3.00	
Standard, Rossney			
5 to 7 feet, 3/4 inch and up60	5.00	
4 to 6 feet, first class, 5/8 to 3/4 in.50	4.00	30.00
3 to 4 feet35	3.00	25.00
Dwarf, Assorted			
3 to 4 feet, 3/4 inch and up40	3.50	30.00
2 to 3 feet, 5/8 to 3/4 inch30	2.50	20.00

PLUMS, on Plum

Native, European and Japanese Varieties	Each	10	100	1000
5 to 7 feet, 3/4 inch and up	\$0.40	\$3.50	\$30.00 \$250.00
4 to 6 feet, 5/8 to 3/4 inch35	3.00	25.00 175.00
3 to 4 feet, 1/2 to 5/8 inch25	2.00	15.00 100.00
3 to 4 feet, branched20	1.50	10.00 75.00

CHERRIES

Assorted, Sour Varieties, 2 and 3 years	Each	10	100	1000
5 to 6 feet, 3/4 inch and up	\$0.30	\$2.50	\$22.50 \$200.00
4 to 5 feet, 5/8 to 3/4 inch25	2.00	18.00 150.00
3 to 4 feet, 1/2 to 5/8 inch20	1.50	12.00 100.00
2 to 3 feet, branched15	1.00	8.00 60.00
Assorted, Sweet Varieties, 2 years			
5 to 7 feet, 3/4 inch and up35	3.00	25.00
4 to 5 feet, 5/8 to 3/4 inch30	2.50	20.00
3 to 4 feet, branched25	2.00	15.00

COMPASS CHERRY

On Plum			
3 to 4 feet35	3.00	
2 to 3 feet30	2.50	

PEACHES

Assorted	Each	10	100	1000
6 to 7 feet, 3/4 inch and up, extra quality	\$0.30	\$2.50	\$18.00 \$150.00
4 to 6 feet, 9-16 to 3/4 inch25	2.00	15.00 120.00
4 to 5 feet, 1/2 to 9-16 inch20	1.50	12.00 100.00
3 to 4 feet, 3/8 to 1/2 inch15	1.25	10.00 80.00
2 to 3 feet, branched10	.80	6.00 40.00
1 1/2 to 2 feet, mostly branched60	4.00	25.00
Mayflower and World's Fair			
4 to 6 feet30	2.50	18.00
4 to 5 feet25	2.00	15.00
3 to 4 feet20	1.50	10.00
2 to 3 feet15	1.00	6.00
1 1/2 to 2 feet75	5.00	

APRICOTS

Assorted	Each	10	100	1000
4 to 6 feet	\$0.30	\$2.50	\$20.00
3 to 4 feet25	2.00	15.00
2 to 3 feet20	1.50	10.00

NECTARINES

	Each	10	100	1000
4 to 6 feet	\$0.30	\$2.50	\$20.00
3 to 4 feet25	2.00	15.00
2 to 3 feet20	1.50	10.00

QUINCES

Assorted	Each	10	100	1000
3 to 4 feet	\$0.40	\$3.50	\$30.00
2 to 3 feet35	3.00	25.00

NUT TREES

Almonds, Hard and Soft Shell	Each	10	100	1000
2 to 3 feet	\$0.20	\$1.50	\$12.00
3 to 4 feet25	2.00	15.00
4 to 6 feet30	2.50	20.00
Butternut, White Walnut			
2 to 3 feet, transplanted25	2.00	15.00
3 to 4 feet, transplanted35	3.00	
4 to 5 feet, transplanted40	3.50	
Chestnut, American Sweet, Japan and Spanish			
4 to 5 feet, transplanted50	4.00	35.00
5 to 6 feet, transplanted60	5.00	40.00
Hickory, Shellbark			
2 to 3 feet, transplanted50	4.00	
Pecan			
4 to 6 feet, transplanted40	3.50	30.00
Walnut, American Black			
3 to 4 feet, transplanted25	2.00	10.00 80.00
4 to 6 feet, transplanted35	3.00	18.00 150.00
6 to 8 feet, transplanted50	4.00	
Walnut, English or Madeira Nut			
2 to 3 feet50	4.00	
Walnut, Japan			
4 to 6 feet, transplanted40	3.50	30.00

MISCELLANEOUS FRUITS

Dewberry Lucretia	Each	10	100	1000
1 year, first class plants	\$0.10	\$0.50	\$ 2.00 \$ 15.00
Huckleberry			
2 to 3 feet15	1.00	8.00
Juneberry			
2 to 3 feet25	2.00	15.00
Mulberries			
American White			
12 to 18 inch, seedlings			1.00 6.00
18 to 24 inch, seedlings			1.50 7.50
2 to 3 feet, seedlings			2.00 10.00
3 to 4 feet, transplanted25	2.00	15.00
4 to 6 feet, transplanted30	2.50	18.00
6 to 8 feet, transplanted40	3.50	25.00
Black English and Downing's			
Everbearing, 4 to 6 feet40	3.50	30.00
Hick's and New American, 4 to 6 feet40	3.50	30.00
Russian			
12 to 18 inches, seedlings			1.00 6.00
18 to 24 inches, seedlings			1.50 7.50
2 to 3 feet, seedlings			2.00 10.00
3 to 4 feet, transplanted25	2.00	15.00
4 to 6 feet, transplanted30	2.50	18.00
6 to 8 feet, transplanted40	3.50	25.00
Pawpaw			
4 to 6 feet, transplanted35	3.00	25.00
Persimmon			
4 to 6 feet40	3.50	30.00

SMALL FRUITS

Currants	Each	10	100	1000
Assorted, 2 years, first class	\$0.15	\$1.00	\$ 6.00 \$ 50.00
Assorted, 1 year, first class10	.75	5.00 40.00
Perfection, 2 years, first class35	3.00	20.00
Pomona, 2 years, first class20	1.50	7.00
London Market, 2 yr., first class20	1.50	7.00
Gooseberries			
Cluster, 2 years, first class20	1.50	12.00
Crown Bob, 2 years, first class25	2.00	15.00
Downing's Seedling, 2 years, first class25	2.00	15.00
Downing's Seedling, 1 year, first class20	1.50	12.00
Houghton, 2 years, first class20	1.50	12.00
Houghton, 1 year, first class15	1.00	9.00
Industry, 2 years, first class30	2.50	20.00
Keepsake, 2 years, first class30	2.50	20.00
Pearl, 2 years, first class25	2.00	15.00
Red Jacket, 2 years, first class25	2.00	15.00
Red Jacket, 1 year, first class20	1.50	12.00
White Smith, 2 yrs., first class30	2.50	20.00
Blackberries			
Ancient Briton10	.50	2.50 18.00
Early Harvest10	.50	2.00 15.00
Early King10	.50	2.50 18.00
Eldorado10	.50	2.50 20.00
Erie10	.75	2.50 20.00
Kittitiny10	.50	2.50 20.00
Mersereau10	.50	2.50 18.00
Rathbun10	.50	2.50 20.00
Stone's Hardy10	.50	2.50 20.00
Snyder10	.50	2.00 15.00
Taylor's Prolific10	.50	2.50 18.00
La Grange20	1.50	

EVERGREENS—Continued

Arbor Vitae—Continued	Each	10	100
Orientalis, Chinese			
12 to 18 inches	\$0.20	\$1.50
18 to 24 inches	.25	2.00
2 to 3 feet	.35	3.00
3 to 4 feet	.50	4.00
4 to 5 feet	.75	6.00
5 to 6 feet	1.00	7.50
Plicata			
12 to 18 inches	.25	2.00
18 to 24 inches	.30	2.50
2 to 3 feet	.40	3.50
Pyramidal			
18 to 24 inches	.40	3.50
2 to 3 feet	.50	4.00
Siberian, extra fine bushy plants			
2 to 3 feet	.60	5.00	\$40.00
3 to 4 feet	.75	6.00	50.00
Vervaeana, Variegated			
18 to 24 inches	.40	3.50
3 to 4 feet	.60	5.00
4 to 6 feet	1.00	9.00
Balsam Fir			
2 to 3 feet	.60	5.00
Box, Dwarf			
4 to 6 inches	.15	1.00	8.00
Hemlock			
18 to 24 inches	.75	6.00
Juniper			
English			
18 to 24 inches	.40	3.50	30.00
2 to 3 feet	.50	4.00	35.00
3 to 4 feet	.75	6.00
Irish			
18 to 24 inches	.40	3.50	30.00
2 to 3 feet	.50	4.00	35.00
3 to 4 feet	.60	5.00	40.00
4 to 6 feet	.75	6.00
Savin			
12 to 18 inches	.35	3.00	25.00
18 to 24 inches	.50	4.00	35.00
2 to 3 feet	.75	6.00
Swedish			
18 to 24 inches	.50	4.00	35.00
Trailing or Prostrate			
12 to 18 inches	.40	3.50	25.00
18 to 24 inches	.50	4.00	35.00
Mahonia Aquifolia (Holly)			
12 to 18 inches	.40	3.50
Pine			
Austrian			
18 to 24 inches	.40	3.50	30.00
2 to 3 feet	.50	4.00	35.00
6 to 8 feet	1.25	10.00
8 to 10 feet	Delivered prices quoted on application.		
10 to 12 feet	Delivered prices quoted on application.		
Scotch			
18 to 24 inches	.40	3.50	30.00
2 to 3 feet	.60	5.00	40.00
8 to 10 feet	Delivered prices quoted on application.		
10 to 12 feet	Delivered prices quoted on application.		
12 to 14 feet	Delivered prices quoted on application.		
White			
18 to 24 inches	.50	4.00
2 to 3 feet	.60	5.00
Red Cedar			
18 to 24 inches	.50	4.00	35.00
Rhododendron, grafted plants			
18 to 24 inches	1.75	15.00
24 to 30 inches	2.00	18.00
Spruce			
American White			
18 to 24 inches	.25	2.00	18.00
2 to 3 feet	.30	2.50	22.50
	Each	10	100
Norway			
18 to 24 inches	.25	2.00	15.00
2 to 3 feet	.30	2.50	20.00
3 to 4 feet	.50	4.00	35.00
4 to 6 feet	.60	5.00	40.00
300.00			
Koster's Blue—True Blue, Grafted			
18 to 24 inches, with ball of earth	2.50

ORNAMENTAL TREES—Continued

Ash—Continued	Each	10	100	1000
12 to 14 feet, 2 -inch stem	} Delivered prices quoted on application.			
12 to 14 feet, 2½ -inch stem				
12 to 14 feet, 3 -inch stem				
14 to 16 feet, 4 -inch stem				
European, Excelsior				
4 to 6 feet	\$0.35	\$3.00	\$25.00
6 to 8 feet	.50	4.00	35.00
8 to 10 feet	.75	6.00	50.00
10 to 12 feet, 1½ -inch stem	1.25	12.00
12 to 14 feet, 2 -inch stem—Delivered prices quoted on application.				
Alder				
European				
8 to 10 feet	.75	6.00	50.00
12 to 14 feet, 2-2½ -inch	2.00
Beech				
Purple Leaved				
4 to 6 feet	1.25	10.00
Birch				
European White				
3 to 4 feet	.35	3.00	25.00
4 to 6 feet	.50	4.00	35.00
6 to 8 feet	.75	6.00	50.00
8 to 10 feet	1.00	8.00
10 to 12 feet	1.50
Bird Cherry				
3 to 4 feet	.35	3.00
4 to 6 feet	.50	4.00
Box Elder				
See Maple, Ash Leaved (p. 5).				
Buckeye				
8 to 10 feet	1.25	10.00
Catalpa				
Bungei				
6 to 8 feet, strong heads	1.50	12.00	100.00
3 to 4 feet, strong heads	1.00	9.00
Speciosa				
Seedlings, 9 to 12 inches	1.00	7.50
Seedlings, 12 to 18 inches	1.25	10.00
Seedlings, 18 to 24 inches	2.00	15.00
4 to 6 feet	.25	2.00	15.00
6 to 8 feet	.30	2.50	20.00
8 to 10 feet	.60	5.00	40.00
10 to 12 feet	.90	8.00
12 to 14 feet, 2 -inch stem	} Delivered prices quoted on application.			
12 to 14 feet, 2½ -inch stem				
14 to 16 feet, 3 -inch stem				
Cherry				
Wild Black				
4 to 6 feet	.25	2.00
6 to 8 feet	.35	3.00
12 to 14 feet, 2 -inch stem	Delivered prices quoted on application.			
14 to 16 feet, 3 -inch stem	Delivered prices quoted on application.			
Crab				
Bechtel's Double Flowering				
3 to 4 feet	.75	6.00
4 to 6 feet	1.00	8.00
Elm				
American White				
Seedlings, 9 to 12 inches75	6.00
Seedlings, 2 to 3 feet	1.25	10.00
4 to 6 feet	.25	2.00	18.00
6 to 8 feet	.40	3.50	25.00
8 to 10 feet	.75	6.00	50.00
10 to 12 feet, 1½ -inch stem	1.00	9.00	75.00
12 to 14 feet, 2 -inch stem	1.50	12.50	100.00
English and Scotch				
4 to 6 feet	.25	2.00	18.00
6 to 8 feet	.40	3.50	25.00
8 to 10 feet	.75	6.00	50.00
10 to 12 feet, 1½ -inch stem	1.00	9.00	75.00
12 to 14 feet, 2 -inch stem	1.50	12.50
12 to 14 feet, 2½ -inch stem	Delivered prices quoted on application.			
12 to 14 feet, 3 -inch stem	Delivered prices quoted on application.			
14 to 16 feet, 4 -inch stem	Delivered prices quoted on application.			
Hackberry, Nettle Tree				
6 to 8 feet	.60	5.00	40.00
Horse Chestnut				
3 to 4 feet	.40	3.50	30.00
4 to 5 feet	.60	5.00	40.00
5 to 6 feet	.75	7.00	60.00
6 to 8 feet	1.00	9.00
8 to 10 feet	1.50	12.50
Judas Tree, Red Bud				
3 to 4 feet	.40	3.00
4 to 6 feet	.50	4.00
6 to 8 feet	.60	5.00
Juneberry—Dwarf—Shadbush				
2 to 3 feet	.25	2.00	15.00
Kentucky Coffee				
3 to 4 feet	.25	2.00	15.00
4 to 6 feet	.30	2.50	18.00
6 to 8 feet	.50	4.00	30.00
Larch				
European				
10 to 12 feet	1.25	12.00
Linden				
American				
6 to 8 feet	.80	7.50

ORNAMENTAL TREES

All nursery grown and transplanted, except items offered as 1 year and seedlings. For planting and shipping, we usually shorten in very tall tops.

Alanthus	Each	10	100	1000
3 to 4 feet	\$0.20	\$1.50	\$14.00
4 to 6 feet	.25	2.00	17.00
6 to 8 feet	.35	3.00	25.00
Ash				
White				
3 to 4 feet	.15	1.00	8.00
4 to 6 feet	.20	1.50	12.00
6 to 8 feet	.35	3.00	25.00
8 to 10 feet	.60	5.00	40.00
10 to 12 feet, 1½ inch stems	1.00	7.50	60.00

ORNAMENTAL SHRUBS—Continued

	Each	10	100
Currant, Fragrant Missouri			
2 to 3 feet	\$.30	\$2.50
3 to 4 feet	.35	3.00
Daphne, Mezeron, Red			
2 years	.35	3.00
Desmodium			
Penduliflorum, 2 years	.60	5.00
Deutzia			
Crenata Leaved, 2 to 3 feet	.30	2.50	\$15.00
Candidissima, 2 to 3 feet	.30	2.50	15.00
Gracilis, 18 to 24 inches	.30	2.50	15.00
Gracilis Marginata Aurea, 12 to 18 in.	.30	2.50
Lemoinei, 2 to 3 feet	.30	2.50	18.00
Pride of Rochester, 18 to 24 inches	.25	2.00	12.00
Pride of Rochester, 2 to 3 feet	.30	2.50	15.00
Euonymus, Strawberry Tree			
2 to 3 feet	.25	2.00	15.00
3 to 4 feet	.30	2.50	20.00
4 to 6 feet	.35	3.00
Elder			
Golden Leaved			
2 to 3 feet	.25	2.00	15.00
3 to 4 feet	.30	2.50	18.00
4 to 6 feet	.40	3.50	30.00
Cut Leaved			
18 to 24 inches	.25	2.00	12.00
2 to 3 feet	.30	2.50	15.00
3 to 4 feet	.35	3.00	25.00
Double Flowering			
2 to 3 feet	.30	2.50	20.00
3 to 4 feet	.35	3.00	25.00
Eleagnus Longipes			
2 to 3 feet	.30	2.50	18.00
3 to 4 feet	.35	3.00	22.50
Forsythia			
Viridis—Golden Bell			
2 to 3 feet	.25	2.00	15.00
3 to 4 feet	.30	2.50	18.00
Suspensa			
2 to 3 feet	.25	2.00	15.00
3 to 4 feet	.30	2.50	20.00
Fortunii, 2 to 3 feet	.30	2.50	20.00
Honeysuckle			
Bush or Upright			
2 to 3 feet	.25	2.00	15.00
3 to 4 feet	.30	2.50	18.00
4 to 5 feet	.35	3.00	22.50
5 to 6 feet	.40	3.50	30.00
Fragrantissima, 2 to 3 feet	.35	3.00	20.00
Hydrangea			
Paniculata Grandiflora			
18 to 24 inches	.25	2.00	15.00
2 to 3 feet	.30	2.50	18.00
3 to 4 feet	.35	3.00
Tree form, 3 to 4 feet	.75	6.00
Arborescens Grandiflora Alba, 2 to 3 feet	.40	3.50	30.00
Koeleruteria Paniculata			
2 to 3 feet	.40	3.50
3 to 4 feet	.50	4.00
Lilao			
Purple			
2 to 3 feet	.25	2.00	15.00
3 to 4 feet	.30	2.50	18.00
4 to 5 feet	.35	3.00	25.00
4 to 5 feet, clumps	.60	5.00	40.00
White			
2 to 3 feet	.30	2.50	18.00
3 to 4 feet	.40	3.50	25.00
Persian Purple			
2 to 3 feet	.30	3.00	25.00
3 to 4 feet	.40	3.50	30.00
Persian White			
2 to 3 feet	.35	3.00	25.00
3 to 4 feet	.50	4.00	35.00
Alfonse Lavalle, Belle de Nancy, Charles Joly, Condorcet, Congo, Conseiller Heyder, Emile Lemoine, Francisque Morel, Grand Duc Constantine, Hanach Charful, Josikae, Lemoinei, LaMaure, Madam Jules Finger, Marc Nichell, Monument, President Carnot, President Grevy, Souvenir de Louis Spath, Theo. Alens, Villosa, Wm. Robinson			
2 to 3 feet	.60	5.00
3 to 4 feet	.75	6.00
Josikae, Lamarck and Pres. Grevy, Tree Form, 3 to 4 feet	.75	6.00
Philadelphus—See Syringa.			
Purple Fringe or Smoke Tree			
2 to 3 feet	.30	2.50	18.00
3 to 4 feet	.35	3.00	25.00
4 to 5 feet	.50	4.00
Plum, Prunus Triloba			
18 to 24 inches	.30	2.50
2 to 3 feet	.35	3.00
Quince, Japan Scarlet			
18 to 24 inches	.20	1.50	12.00
2 to 3 feet	.25	2.00	15.00
3 to 4 feet	.30	2.50	20.00
Rhodotypos—Kerrioides			
2 to 3 feet	.30	2.50	20.00

ORNAMENTAL SHRUBS—Continued

	Each	10	100
Snowball			
2 to 3 feet	\$.25	\$2.00	\$12.00
3 to 4 feet	.30	2.50	15.00
4 to 5 feet	.35	3.00	20.00
5 to 6 feet	.40	3.50	30.00
Tree form—4 to 5 feet	.60	5.00
Tree form—5 to 6 feet	.75	6.00
Snowball—Japan			
2 to 3 feet	.35	3.00	25.00
3 to 4 feet	.40	3.50	30.00
Snowberry, White and Red			
18 to 24 inches	.25	2.00	12.00
2 to 3 feet	.30	2.50	15.00
3 to 4 feet	.35	3.00	20.00
Spiraea			
Billardi, Colosa Alba, Opulifolia, Semper-florens, Reevesii, etc.			
2 to 3 feet	.25	2.00	15.00
3 to 4 feet	.30	2.50	18.00
Opulifolia, 5 to 6 feet	.35	3.00	25.00
Van Houttei			
2 to 3 feet	.25	2.00	15.00
3 to 4 feet	.30	2.50	20.00
Anthony Waterer			
12 to 18 inches, bushy	.30	2.50	15.00
18 to 24 inches	.35	3.00	18.00
Thunbergii, 2 feet, very bushy	.30	2.50	18.00
Prunifolia			
2 to 3 feet	.30	2.50	15.00
3 to 4 feet	.35	3.00	20.00
Aurea, Golden Leaved			
3 to 4 feet	.35	3.00	18.00
4 to 6 feet	.40	3.50	25.00
Syringa, Mock Orange			
Coronarius, Dianthiflorus, Double White, Lemoinei and Sweet Scented			
18 to 24 inches	.25	2.00	12.00
2 to 3 feet	.30	2.50	15.00
3 to 4 feet	.35	3.00	20.00
Grandiflora			
2 to 3 feet	.30	2.50	15.00
3 to 4 feet	.35	3.00	20.00
Aurea, 12 to 18 inches, very bushy	.35	3.00
Tamarix			
African			
2 to 3 feet	.25	2.00	15.00
3 to 4 feet	.30	2.50	18.00
4 to 6 feet	.35	3.00	22.50
Japonica Plumosa			
2 to 3 feet	.40	3.50
3 to 4 feet	.50	4.00
Indica			
2 to 3 feet	.35	3.00	18.00
3 to 4 feet	.40	3.50	25.00
4 to 6 feet	.60	5.00
Tree Paeonia			
2 years	1.00	9.00
Tree Cranberry or High Bush			
18 to 24 inches	.25	2.00	15.00
2 to 3 feet	.30	2.50	20.00
Weigelia			
Rosea, Candida, Hortensis, Florabunda, Stelznerii, Groenewegenii, Levassieur (Yellow Flowering), Gegant, Pres. Du Chartre, Madam Billard and Verschaffelti			
2 to 3 feet	.30	2.50	18.00
3 to 4 feet	.35	3.00	25.00
Eva Rathke, 2 to 3 feet	.35	3.00	20.00
Variegated Leaved, dwarf, 2 to 3 feet	.35	3.00	20.00
Yucca Filamentosa			
3 to 5 years	.25	2.00	15.00

CLEMATIS

All on Own Roots—Home Grown

	Each	10	100
Duchess of Edinburgh, 2 years	\$.50	\$4.00	\$.....
Flamula, 2 years	.30	2.50	15.00
Henryii, 2 years	.40	3.50	30.00
Jackmanii, 2 years	.40	3.50	30.00
Jackmanii Alba, 2 years	.60	5.00
Madam Baron Veillard, 2 years	.50	4.00
Madam Edouard Andre, 2 years	.40	3.50	30.00
Paniculata, 2 years	.30	2.50	15.00
Ramona, 2 years	.40	3.50	30.00
Star of India, 2 years	.60	5.00
Virgin's Bower, 4 years	.30	2.50	15.00
Viticella, 3 years	.25	2.00

ROSES

Strong, 2 years, Dormant Plants

	Each	10	100
Thirty roses at hundred rates. Not less than five of a kind.			
Hybrid Perpetual			
Dormant, 2 years, field grown	\$.30	\$2.50	\$20.00
Climbing			
Dormant, 2 years, field grown	.25	2.00	15.00
Lady Gay—New Pink Rambler Rose			
Dormant, 2 years	.30	2.50	18.00

ROSES—Continued

Climbing Clothilde Soupert	Each	10	100
Dormant, 2 years, field grown	\$0.30	\$2.50 \$20.00
Moss			
Dormant, 2 years, field grown30	2.50 20.00
Ramblers			
Blue Rambler, dormant, 2 years60	5.00
Crimson, dormant, 2 years, strong30	2.50 20.00
Dorothy Perkins, 2 years strong25	2.00 15.00
Pink, dormant, 2 years25	2.00 15.00
White, dormant, 2 years25	2.00 15.00
Yellow, dormant, 2 years25	2.00 15.00
Miscellaneous			
Tausendschon, dormant, 2 years50	4.00
Rosa Rugosa Alba (white) and Rubra (red), dormant, 2 years30	2.50 20.00
American Beauty—The most popular of all American roses, 2 years, dormant30	2.50 20.00
Wichuriana, dormant, 2 years25	2.00 18.00
Flower of Fairfield, dormant, 2 years60	5.00
Setigera, dormant, 2 years25	2.00 15.00
Baby Ramblers, white, pink and red, dormant, 2 years30	2.50 20.00
Tree Roses			
Leading varieties, budded, 4 to 5 feet.	1.00	9.00 75.00

ROSES—From 4-inch Pots

Monthly, including Teas, China, Noisette and Bourbon	\$0.25	\$2.00 \$18.00
Hybrid Tea25	2.00 18.00

HARDY HERBACEOUS FLOWERING PLANTS

If wanted in larger quantities than quoted here, send list for prices. Our Herbaceous plants are all strong, field grown plants and not to be compared with small pot grown stock sent out by mail.

	Each	10	100
Anemone Japonica Alba	\$0.20	\$1.50 \$10.00
Anemone Whirlwind20	1.50 10.00
Achillea, The Pearl20	1.50 10.00
Asclepias, Tuberosa20	1.50 10.00
Aster, Tartarica, hardy, purple, white and yellow15	1.00
Aquilegia, Columbine20	1.50 10.00
Bocconia Cordata20	1.50 10.00
Boltonia Asteroides20	1.50 10.00
Callirhoe, Involucrata15	1.25
Cinnamon Vine10	.50 4.00
Campanula20	1.50
Chrysanthemums, hardy, field grown25	2.00 15.00
Coreopsis Lanceolata and Grandiflora15	1.00 8.00
Delphinium, Formosum, Blue Larkspur20	1.50 10.00
Delphinium, Pumilium Album25	2.00 12.00
Dielytra Spectabilis, Bleeding Heart20	1.50 12.00
Dianthus Barbatus, Sweet William20	1.50 10.00
Dianthus, Hardy Pinks20	1.50 12.00
Digitalis, Foxglove20	1.50 10.00
Eulalia, Japonica Variegata25	2.00 12.00
Eulalia, Japonica Zebrina25	2.00 12.00
Eulalia Gracilima Univitata20	1.50 10.00
Funkia, Day Lily20	1.50 10.00
Gaillardia Grandiflora20	1.50 10.00
Gypsophilla Paniculata20	1.50 10.00
Hardy Garden Pinks—See Dianthus.			
Helianthus, Multiflorus20	1.50 10.00
Helianthus, Maximilian20	1.50 10.00
Helopsis, Pitcheriana20	1.50 10.00
Heuchera, Sanguinea, Alum Root25	2.00
Heuchera, Sanguinea, Alba15	1.00
Hemerocallis, Orange Day Lily20	1.50 10.00
Hollyhock, separate colors, double20	1.50 10.00
Hollyhock, single, separate colors15	1.00 8.00
Hibiscus, Moscheutos20	1.50 10.00
Hibiscus, Crimson Eye20	1.50 10.00
Hibiscus Militaris25	2.00
Iberis, Sempervirens20	1.50
Iris, Japan Kaempferi, named25	2.00 12.00
Iris, German named20	1.50 8.00
Iris, German, mixed10	.75 6.00
Liatis Spicata, Blazing Star20	1.50
Lychnis, Haageana15	1.00 8.00
Lobelia, Cardinalis, Cardinal Flower20	1.50 8.00
Platycodon, Japanese Bellflower20	1.50 10.00
Poppy, Oriental25	2.00
Pyrethrum Uliginosum20	1.50 8.00
Pyrethrum Rosea25	2.00 10.00
Phlox, Hardy Perennial, from open ground, strong roots15	1.25 9.00
Alceste, large white shaded lilac.			
Amor, pink; center light flesh.			
Beranger, pure white.			
Bridesmaid, white; center crimson.			
Brilliant, bright pink.			
Coquelicot, scarlet; with crimson eye, considered the best of all.			
Cross of Honor, lilac; center striped white.			
Duqueslin, bluish violet; crimson eye.			
Esclairmonde, bluish violet; dark center.			
Etoile de Nancy, white, center pink.			
Hofgaertner Decker, magenta rose.			
Lothair, bright red.			
James Magnus, white, with crimson eye.			

HARDY HERBACEOUS FLOWERING PLANTS—Continued

Phlox—Cnotinued			
Jeanne de Arc, large; pure white.			
Jean Llabaud, rosy crimson; center darker.			
Mr. Gladstone, pink, beautiful.			
Lumineux, pink, crimson center.			
Mozart, white, center red.			
Molier, Salmon; flush rose.			
Prof. Schilleman, dark pink.			
Prime Minister, white.			
Pantheon, The King of Pinks.			
Bowrbaki, delicate pink.			
Irene, pink.			
Miss Lingard, white.			
Mme. Therese Levavasaur, variegated, pink and white.			
Nana Cerulea, dark pink.			
	Each	10	100
Rudbeckia, Double, Golden Glow, clumps	\$.15	\$1.00 \$ 8.00
Rudbeckia, Purpurea20	1.50 10.00
Shasta Daisy20	1.50 10.00
Vinca Minor, Periwinkle or Myrtle15	1.00 8.00
Veronica, Amethystica20	1.50
Yucca Filamentosa, 3 year roots25	2.00 15.00

HERBACEOUS PAEONIES

We have an unusually fine stock of the following named varieties:

	Each	10	100
Achilles	\$.25	\$2.00 \$15.00
Alba Plena25	2.00 15.00
Anemoneflora Plena30	2.50 18.00
Bicolor25	2.00 15.00
De Jessieu25	2.00 15.00
Delicatissima20	1.50 12.00
Duchess de Nemours (Calot)50
Duke of Wellington50
Edulis Superba25	2.00 15.00
Faust25	2.00 15.00
Festiva30	2.50 18.00
Festiva Maxima50
Formosa Rosea20	1.50
Fragrans20	1.50 12.00
Gen. Bertrand25	2.00 15.00
Gen. Cavaignac25	2.00 15.00
Grandiflora Superba25	2.00 15.00
Heriartiana20	1.50 12.00
Humei Carnea25	2.00 15.00
Isabelle Karlitsky25	2.00 15.00
Jeanne d'Arc50
L'Elegante20	1.50 12.00
Louis Van Houte30	2.50 20.00
Mad. Crousse50
Mad. de Verneville50
Mad. Emille Galle50
Mad. Furtado25	2.00 15.00
Madam Munier20	1.50
Marie Lemoine50
Mons. Krelage50
Officialis Rubra25	2.00 15.00
Officialis Rosea25	2.00 15.00
Odorata25	2.00 15.00
Posti Plena25	2.00 15.00
Princess Mathilde20	1.50 12.00
Purpurea25	2.00 15.00
Reevesii20	1.50 12.00
Reine des Francais35	3.00
Reine des Roses25	2.00 15.00
Rosea Elegans25	2.00 15.00
Rubens25	2.00 15.00
Tricolor Grandiflora25	2.00 15.00
Triomphe de l'Exposition Universalle50
Victor Lemoine25	2.00 15.00
Our selection of choice varieties20	1.50 12.00

TENDER BULBS AND TUBERS

	Each	10	100
Amaryllis			
Johnsoni	\$.35	\$3.00
Amaryllis			
Formosissima20	1.50
Begonia, Tuberos Rooted			
Single15	1.00
Double20	1.50
Caladium			
Esculentum, large bulbs15	1.25 \$10.00
Caladium			
Esculentum, first class bulbs10	.75 6.00
Canna			
Assorted, named varieties, 4 inch pots25	2.00 15.00
Dahlias			
Named varieties, dry roots20	1.50 12.00
Gladoliolus			
America—new pink, large flowers15	1.25 7.00
Mixed, all colors05	.47 3.00
Mixed, separate colors05	.46 3.00
Pink, Rose, Yellow and Orange10	.75 5.00
Striped and variegated, scarlet with white throat10	.75 5.00
Maderia Vine			
Strong bulbs05	.40 3.00
Tritoma Pfitzerii			
(The Everblooming Flame Flower)25	2.00
Tuberoses			
Pearl Dwarf05	.40 2.50

HARDY LILIES

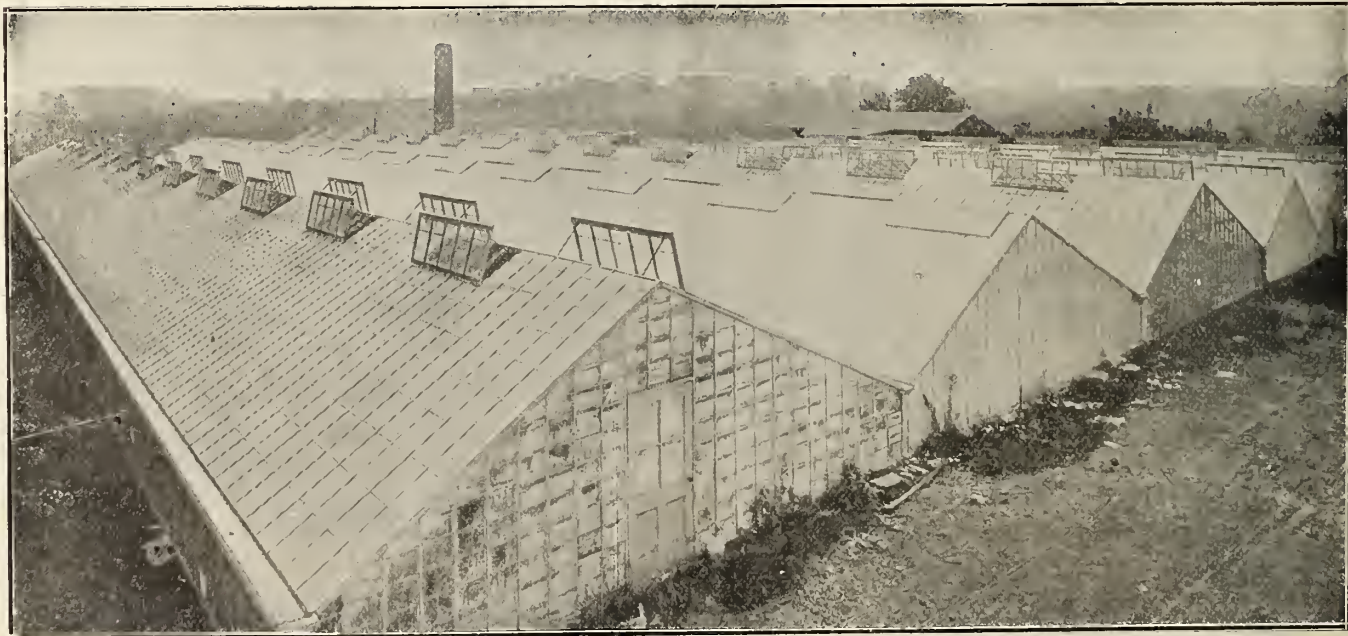
	Each	10	100
Auratum, Gold Banded	\$0.25	\$2.00	\$15.00
Candidum	.20	1.50	10.00
Elegans, Red	.25	2.00	15.00
Longiflorum	.20	1.50	10.00
Speciosum Melpomene	.25	2.00	15.00
Speciosum Album	.25	2.00	15.00
Speciosum Rubrum	.25	2.00	15.00
Speciosum Roseum	.25	2.00	15.00
Tigrinum, Single Tiger Lily	.20	1.50	10.00
Tigrinum Splendens, Improved Single Tiger Lily	.20	1.50	10.00
Tigrinum Flora Plena, double	.20	1.50	10.00
Lily of the Valley, Convalaria Majalis, clumps	.25	2.00	15.00

GREENHOUSE AND DECORATIVE PLANTS

	Each	10	100
Ageratum, Imperial Blue, 2½-inch pots	\$0.10	\$0.60	\$5.00
2 inch pots	.05	.40	3.50
Ageratum, Little Blue Star, 2½-inch pots	.10	.60	5.00
2 inch pots	.05	.40	3.50
Ageratum, white, 2½-inch pots	.10	.60	5.00
Alternanthera, 2½-inch pots	.10	.60	5.00
2 inch pots	.05	.40	3.50
Alyssum. (Sweet) 2½-inch pots	.05	.40	3.00
Araucaria Excelsa (Norfolk Island Pine), 5-inch pots, four whorls	1.50
6-inch pots, four whorls	2.00
6 inch pots, five whorls	2.50
Asparagus Plumosus Nanus, 2½-inch pots	.15	1.00
3 inch pots	.25	2.00
4 inch pots	.30	2.50
Asparagus Sprengeri, 2½-inch pots	.10	.75
3 inch pots	.15	1.00
4 inch pots	.25	2.00
Aspidistra Lurida, 6 inch pots	.75
Asters, Dwarf and Branching Varieties	.05	.40	3.00
Azalea Indica, fine bushy plants, 8 inch pots	1.50
Begonia, Flowering varieties, 2½-inch pots	.20	1.50
4 inch pots	.25	2.00
Carnations, 2 1-2 inch pots	.15	1.00	6.00
Calla—Lily of the Nile, 6 inch pots in bloom	.60	5.00
Chrysanthemum, 2½-inch pots	.10	.75	6.00
Cobea Scandens, 3 inch pots	.15	1.00	8.00
2 1-2 inch pots	.10	.75	6.00
Coleus, 2½-inch pots	.10	.60	4.00
Cuphea, Cigar Plant, 2 1-2 inch pots	.10	.75	6.00
Dracena Goddseffiana, 4 inch pots	.60	5.00
Dracena Indivisa, 4 inch pots	.40	3.50
Dusty Miller, 2½-inch pots	.10	.60	4.00
Fern, Adiantum Capillus Veneris (Maiden Hair Fern)
4 inch pots	.25	2.00
Bostoniensis, 4 inch pots	.40	3.50
Bostoniensis, 5 inch pots	.60	5.00
Bostoniensis, 6 inch pots	1.00	8.00
Bostoniensis, 7 inch pots	1.50
Bostoniensis, 8 inch pots	2.00

Greenhouse and Decorative Plants—Continued

	Each	10	100
Scotti, 4 inch pots	\$0.50	\$4.00
Whitmani, 4 inch pots	.50	4.00
Whitmani, 5 inch pots	.75
Whitmani, 6 inch pots	1.00
Assorted, for Fern Dishes, 2 1-2 inch pots	.15	1.00
Feverfew (Double white), 2 1-2 inch pots	.10	.75
Ficus Elastica (Rubber Plant), 5 inch pots	.75	6.00
Fuchsias, 2 1-2 inch pots	.15	1.00
Geraniums
Double, 2 1-2 inch pots	.10	.75	6.00
Single, 2 1-2 inch pots	.10	.75	6.00
Ivy Leaved, 2 1-2 pots	.10	.75
Variegated Leaved, 2 1-2 inch pots	.10	.75	6.00
Rose Scented, 2 1-2 inch pots	.10	.75
Assorted varieties, 4 inch pots	.25	2.00	12.00
Heliotrope, 2 1-2 inch pots	.10	.75
4 inch pots	.25	2.00
Hibiscus (Chinese), 4 inch pots	.25	2.00
Hydrangea Otaska, 7 inch pots, in bloom	1.25	10.00
Impatiens Sultana, 2 1-2 inch pots	.10	.75
Ivy, German, 2 1-2 inch pots	.15	1.00
English, 3 inch pots	.15	1.00
English, 4 inch pots	.25	2.00
Lantanas (Dwarf and Weeping), 2 1-2 inch pots	.10	.75	6.00
Lemon Verbena, 2 1-2 inch pots	.10	.75
Lilies, Easter, 5 inch pots, 3 to 5 blooms	1.00	9.50
Lobelia, 2 1-2 inch pots	.10	.75
Moon Flower, 2 1-2 inch pots	.10	.75	6.00
Oleander, Double pink, 5 inch pots	.50	4.00
Palms Areca Lutescens, 6 inch pots	1.00	7.50
Cycas Revoluta (Sago), 3 to 5 leaves, 6-inch pots	1.00
Kentia Belmoreana, 4 inch pots	.75
Kentia Belmoreana, 5 inch pots	1.00
Kentia Belmoreana, 6 inch pots	1.50 to	2.50
Kentia Forsteriana, 4 inch pots	.75
Kentia Forsteriana, 6 inch pots	1.50 to	2.00
Kentia Forsteriana, 7 inch pots	2.50 to	3.50
Pansies, Assorted, Blooming plants, transplanted	.05	.40	3.50
Pandanus Veitchii, 6 inch pots	1.50
8 inch pots	2.50
Paris Daisy—Queen Alexandra, 2½ inch pots	.10	.75	6.00
Petunias, double, assorted, 2 1-2 inch pots	.10	.75	6.00
Primrose
Baby-Forbesi, 4 inch pots	.25	2.00
Chinese single, 4 inch pots	.25	2.00
Obsconca, 4 inch pots	.30
Salvia, St. Louis, 2 1-2 inch pots	.10	.60	5.00
Spirea, Astilbe Japonica, 6 inch pots, in bloom	.75	7.00
Tradescantia Zebrina, 2 1-2 inch pots	.10	.75
Verbena, fine collection, 2 1-2 inch pots	.05	.40	3.50
Vinca, Major Variegata, 2 1-2 inch pots	.10	.75
4 inch pots	.25	2.00



PARTIAL VIEW OF OUR GREENHOUSE

FRUIT TREES

APPLES

The Apple is the first fruit, both in importance and general culture. Its usefulness, unlike that of other fruits, extends nearly through the year. Our collection comprises about all the best and most popular kinds, and with a judicious selection a constant succession of this indispensable fruit can be easily obtained for family use. Planted at the rate of 50 trees to the acre, rows of peach trees can be planted between the apple trees, and the peaches, growing more rapidly than the apples, can be removed after their usefulness is over, leaving the apple orchard all the better for their protection. Apple trees will thrive on nearly all well-drained soils.

GENERAL LIST OF APPLES

SUMMER VARIETIES

ASTRACHAN RED—Large; yellow, nearly covered with crimson; fine bloom; juicy, crisp, acid; tree a medium grower; bears young and profusely. The finest of all early apples. August.

BENONI—Pale yellow, marbled, with dark crimson; flesh yellow, juicy, tender; fruit rather below medium; roundish, conical; tree vigorous, hardy and productive. August 1st.

CAROLINA RED JUNE—Medium, dark red; flesh white, tender, sub-acid. August.

DUCHESS OF OLDENBURG—Large size, roundish; streaked with red and yellow; flesh whitish, juicy; flavor sprightly, subacid; tree a vigorous grower; very hardy; succeeds in the northwest where many kinds fail. August, September and October.

EARLY HARVEST—Medium to large; pale yellow; tender, rich, sub-acid, fine flavor; a superb apple. Middle to end of August.

EARLY RED STREAK—Medium, roundish; yellow, marbled and splashed with red; flesh white, tender, and juicy. September.

EARLY PENNOCK—Large, striped, showy; an early and profuse bearer; tree vigorous and hardy; a very profitable and popular kind. August and September.

GOLDEN SWEET—A large, handsome, yellow apple; fine; sweet; a free grower, rather spreading and irregular; productive. August and September.

KESWICK CODLIN—Large, pale yellow; oblong; excellent for cooking and market; erect grower, vigorous and hardy; profuse bearer; popular throughout the West. August and September.

SOPS OF WINE—Medium size; oblong, dark red; texture and flavor peculiar and highly esteemed; very hardy, erect and distinct growth; market. August and September.

SWEET JUNE—Rather small; roundish, regular; smooth, light yellow; flesh yellowish, very sweet and rich; free and upright grower; productive.

YELLOW TRANSPARENT—Medium, yellow; good quality; productive; excellent, bears early. Middle of August.

AUTUMN VARIETIES.

ALEXANDER—A large, beautiful, deep crimson apple, of Russian origin; good quality; moderate grower and rather shy bearer; tree very hardy. October.

AUTUMN STRAWBERRY—Medium; striped; crisp, juicy and of delicious quality; vigorous, upright grower; hardy, and bears young and abundantly. September and October.

BAILEY'S SWEET—Large, crimson, superb; sweet, tender, excellent, vigorous, hardy, and productive. October and November.

BUCKINGHAM—Very large; yellow, with bright red cheek and crimson stripes; flesh yellow, subacid, very rich and juicy; tree compact and vigorous grower, and bears young. A magnificent apple. Very popular South and West. October to December.

COLVERT—Large, flat; yellowish-green and brown; fine for cooking; tree hardy, beautiful and productive; a favorite variety. October and November.

CHENANGO STRAWBERRY—Large, oblong; red and yellow; handsome; best quality and very handsome appearance; vigorous and productive. September.

FALL ORANGE—Large, nearly round; yellow; sometimes shaded with red; rather acid; excellent for cooking; an early and abundant bearer. November.

FALL PIPPIN—Largest size; roundish oblong; flesh tender and rich; fine bearer. October to December.

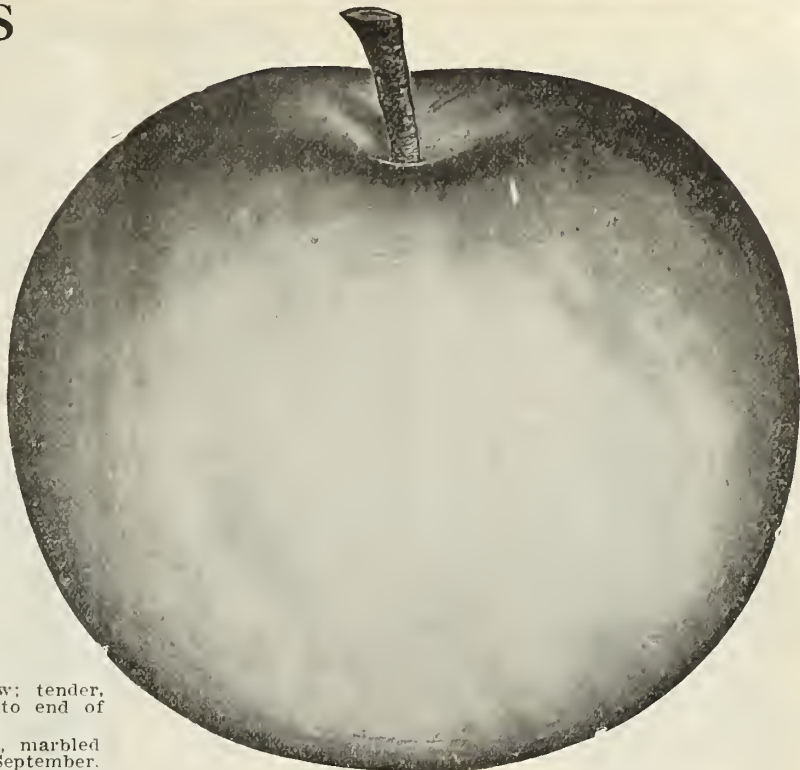
FAMBUSE—(Snow) Medium; deep crimson; flesh snowy white, tender melting and delicious; excellent quality; vigorous growth, dark wood. November to January.

FULTON—Medium; striped, with pink flesh; excellent quality; stout, vigorous growth; productive; September.

GRAVENSTEIN—Large, rather flat; yellow, beautifully dashed with light and deep red; flesh firm, tender, crisp and highly perfumed, and considered the finest flavored apple grown. October.

HAAS—Large, flat; yellowish-green striped with dull red; flesh white, tender, juicy, subacid, good; especially popular West and Southwest. September and October.

HUBBARDSTON'S NONESUCH—Large with yellow and red stripes; tender and juicy; fine; very productive. November to January.



WINTER BANANA—This valuable new variety was originated on the farm of D. M. Flory, Cass County, Indiana, and was introduced several years since by us. Fruit large, fine grained, a beautiful golden yellow shaded with bright red, unusually handsome. Flesh of golden yellow, very large and highly perfumed, and considered the finest flavored apple grown. An excellent table variety. Tree hardy and well adapted to the Northern states. An early and prolific bearer.

JERSEY SWEET—Medium, greenish-yellow with faint stripe; early and good bearer. August and September.

LOWELL—Large, roundish; green, changing to rich yellow; flesh yellowish-white; subacid, excellent; good bearer. September and October.

MAIDEN'S BLUSH—Large, flat; pale yellow with red cheek; very popular; good bearer. September and October.

MASON'S ORANGE—Extremely hardy; the strongest grower we have; fruit excellent, large golden yellow; very productive; late keeper.

RAMBO—Medium; striped immense grower and bearer; very popular. October to December.

RAMSDELL'S SWEET—Medium; striped; excellent; vigorous, upright grower; very productive; moderately hardy. October and November.

RED BIETIGHEIMER—Very large; pale cream, covered with dark crimson; firm, subacid, with brisk pleasant flavor; a good grower and an abundant bearer. September and October.

SWEET RUSSET—Small, roundish; yellow, covered with light russet; tender, juicy and rich; upright grower; productive. October.

TWENTY OUNCE—A very large, showy, striped apple, of fair quality; good grower and fine bearer; excellent for baking; popular market kind. October to January.

WEALTHY—Medium, roundish; smooth, nearly covered with dark red; flesh white, fine, juicy, subacid; quality very good; good grower and productive; valuable on account of extreme hardness. October.

WINTER VARIETIES

ARKANSAS BLACK—Large, round, smooth; often very black; flesh yellow, juicy and delicious; fine for cooking or market; vigorous, hardy and abundant; splendid keeper.

BALDWIN—Large; bright red; crisp, juicy, and rich; tree vigorous, upright and productive; popular market kind. November to February.

BEN DAVIS—Large, handsome, striped; good; hardy, vigorous and productive; late keeper; very showy; most profitable market variety. December to March.

BELLEFLOWER YELLOW—Large, yellow, delicious; quality best; fine keeper; fruit sells well; tree vigorous spreading, hardy. November to February.

BISMARCK DWARF—This most valuable new dwarf apple was introduced from New Zealand a few years ago, through the agency of a celebrated arboretum in Germany. It has already been fully tested in Russia, Germany, France, England, United States and Canada, and wherever grown it has proved a most astonishing revelation, not only in high quality, but also in hardness, and especially in earliness of fruiting. The color of the fruit is a beautiful golden yellow, and its size is the largest. The tree bears most profusely and the showy fruits are eagerly sought after, always bringing the highest market price.

APPLES--Continued

Bismarck trees bear at an earlier age than any other apple and the fruit keeps well into March. As a dessert apple it has no equal owing to its distinct and most delicious flavor. It is also found especially suitable for cooking purposes. It has been grown in large quantities as a pot plant for table and greenhouse decoration.

CLAYTON—Large; yellow, striped; flesh yellow, subacid; favorite cooking apple. January to May.

DETROIT RED—Large; dark polished purplish red; showy, with whitish specks. Early winter.

DELAWARE RED WINTER—Medium to large; bright red, highly colored; flesh fine grained, crisp, juicy, subacid; excellent quality; remarkable for its long keeping qualities; an early and abundant bearer.

ENGLISH GOLDEN RUSSET—Medium; very regular; greenish yellow, nearly covered with russet; flesh yellowish white, firm and crisp, with pleasant flavor. January to May.

FALLWATER—Very large and handsome; green; nearly covered with dull red; quality good; vigorous grower; bears young and abundantly. January to April.

FLORA BELLE—Medium; yellow; productive; thrifty and hardy.

GRIMES' GOLDEN PIPPIN—Medium; golden yellow, with white dots; crisp, tender and juicy; excellent; tree vigorous, hardy and productive. January to April.

GANO—Good size, smooth and very attractive; deep red; resembles Ben Davis, but is an improvement on that variety, being handsomer and better colored. December to March.

HUNTSMAN'S FAVORITE—Large; yellow, with brownish cheek; juicy, aromatic, delicious. December to February.

HAWLEY—Very large; pale green to yellow, sometimes with faint orange cheek, very tender, with mild, rich, fine flavor; rather slow grower.

HIBERNAL—Large; handsomely striped with red; keeps till mid-winter; very hardy.

INGRAM—Medium; yellow, covered with red; subacid, brisk, pleasant; hardy; good bearer; keeps till June.

ISHAM'S SWEET—Large, dark red; rich, sweet and juicy; irregular grower; hardy.

JANET—(Rawle's.)—Medium to small; yellow striped with dull red; juicy, rich, delicious; tree hardy and productive; blooms late; very popular West and Southwest. December to April.

JONATHAN—Medium; red and yellow; very showy; juicy, excellent; tree slender and spreading; bears early; very productive. November to February.

KING OF TOMPKINS COUNTY—Large, red, superb; tree vigorous, but tender; resembles Baldwin, but large, and less productive. November to January.

LIMBER TWIG—Medium; yellow shaded with dull crimson; flesh whitish, not very tender; juicy, with a brisk, subacid flavor.

LAWVER—Large, round; bright red, with small dots; flesh white, firm, crisp, mild subacid; fine keeper; shy bearer. January to May.

LONGFIELD—Medium to large; yellowish green, covered with red stripes; blush on sunny side; rich, sprightly; free, upright grower; early and abundant bearer. December to March.

MANN—Medium to large; deep yellow, shaded with brownish red; juicy and subacid; tree hardy and vigorous, keeps till April.

MILAN—Slightly below medium; red, handsome and popular; tree vigorous and productive, but not perfectly hardy. November to March.

MINKLER—Medium; red, handsome; very popular throughout the West; immense grower and very productive. December to April.

MISSOURI PIPPIN—Medium; dark, purplish crimson; striped; quality good; good grower; early and prolific bearer; highly esteemed throughout the Southwest.

MCINTOSH RED—Medium; dark red, with blush; very handsome flesh, very fine grained; tender, juicy and mild; very hardy and an enormous bearer; very popular in the Northwest. January.

MAMMOTH BLACK TWIG—Large; deep red; subacid; early and abundant bearer; keeps well; tree strong grower; resembles Winesap, but is superior in many ways, and fully a third larger. January to April.

NORTHWESTERN GREENING—Large, smooth, greenish yellow; flesh fine grained, firm and juicy; good quality; extremely hardy and a strong, handsome grower; is being largely planted. December to April.

NORTHERN SPY—Large; striped; magnificent; considered the best flavored apple grown; tree beautiful, hardy and blooms late. November to February.

PRICE'S SWEET—Medium, or above; yellow, with red cheek; fair quality; upright, strong grower; early bearer; very hardy valuable for the North. November to January.

FEWAUKEE—Large; reddish, mottled; very hardy, vigorous and productive; flavor moderate. December to March.

RHODE ISLAND GREENING—Large, greenish yellow; tender, juicy, and rich, with rather an acid flavor; strong, spreading grower; an abundant bearer. Good keeper.

ROCK PIPPIN—Medium size, yellow, and bronzed in the sun; flesh firm and a good keeper. Very hardy, strong, handsome grower.

ROMAN STEM—Medium; yellow, sometimes with red cheek; excellent, vigorous, upright, productive, profitable. November to February.

SEEK-NO-FURTHER—Medium to large; striped with dull red and slightly russeted; tender, rich and excellent; good grower. November to February.

SALOME—Medium; yellow and red; very handsome; hardy, productive, and of unsurpassed keeping qualities.

SUTTON BEAUTY—Large; roundish; yellow and crimson; slightly subacid. November to April.

SMITH'S CIDER—Medium, pale, striped; flavor moderate; tree productive. November to March.

STAYMAN'S WINESAP—Seedling of Winesap; vigorous grower; early and abundant; fruit medium to large, much resembling Winesap; quality unsurpassed; late keeper.

STRIPED SWEET PIPPIN—Rather large; roundish; striped rich red on bright yellow; very mild, subacid, of good quality. Early winter.

STARKE—Large; striped; tender and juicy; pleasant flavor; very productive and moderately hardy. December to March.

ST. LAWRENCE—Large, roundish, greenish yellow, striped with very dark red; very handsome and productive; of second rate flavor, early winter.

TALMAN'S SWEET—Medium; pale yellow; good; very hardy, vigorous, and productive; most popular winter sweet; greatly esteemed in the North. December to April.

UTTER'S LARGE RED—Large and handsome; very uniform in size; quality good; a profuse bearer; one of the most hardy sorts. December and January.

WALBRIDGE—Medium; striped; good; tree extremely hardy; an immense grower and a good bearer. December to March.

WAGENER—Medium to large; deep red in the sun; flesh firm; subacid and excellent; handsome, upright grower, and very productive. December to May.

WHITE WINTER PEARMAN—Medium; pale yellow, thickly sprinkled with brown dots, flesh yellowish, tender, crisp, juicy; very pleasant subacid flavor. December to April.

WHITE PIPPIN—Resembles Newtown Pippin in appearance, but quality not so good; an upright, vigorous grower, moderately hardy. November to February.

WINE SAP—Medium; roundish; deep red; firm, crisp, juicy; excellent quality; moderate grower and good bearer; succeeds well throughout the West; very profitable. December to May.

WILLOW TWIG—Large; striped; hardy here; vigorous, early and splendid bearer; very valuable and popular as a long keeper. December to April.

WOLF RIVER—Large and handsome; greenish-yellow, shaded with light and dark red; tree a strong grower and good bearer; extremely hardy and succeeds well throughout the Northwest. January and February.

YATES—Rather small; dark red, dotted with white spots; flesh firm, juicy and aromatic; immense bearer and good keeper.

YORK IMPERIAL—Medium to large; yellow, shaded with red; firm, juicy, subacid; an excellent shipper. December to April.



NORTHWESTERN GREENING

APPLES---Continued

CRAB APPLES

We call special attention to our list of new and popular well known crab apples. On account of their extreme hardness and fine bearing qualities, they are a boon to many less favored sections. All are valuable for preserving, and many for table use.

ALASKA—Fruit larger than Transcendent; long keeper; flavor excellent; tree a strong grower and perfectly hardy.

GEN. GRANT—Fruit large; yellow, striped with red; flesh white, fine grained, mild subacid; fruits in dense clusters. October.

GIDEON'S No. 4—Fruit large, about the size of Martha. Color waxy white, slightly golden on sunny side. Tree very much resembles Duchess of Oldenburg both in habit and growth. Very hardy and productive.

GOLDEN BEAUTY—Very large and handsome; fine amber or golden yellow color.

HYSLOP—Dark crimson, with bloom; very showy and popular on account of its hardness.

IRISH PEACH—Fruit large, handsome and of excellent quality; seedling of Transcendent.



DUCHESS OF OLDENBURG.

MARTHA—Bright glossy yellow, shaded with light red; surpasses all other crabs for cooking; bears enormously. September.

NORTHFIELD BEAUTY—Fruit of good size; light straw color with brownish cheek; one of the handsomest. November to February.

ORANGE—Medium size; rich yellow; flavor very good. Early winter.

QUAKEE BEAUTY—New; fruit good size; light straw color, with brownish cheek. November to February.

RED SIBERIAN—Rather small; yellow, with scarlet cheek; tree an erect grower and bears very young. September.

TETOFSKY—Pale yellow; tender, juicy; good quality; fruit large; slow grower; very early bearer. September.

TRANSCENDENT—Large; yellow, with red cheek and fine bloom, very beautiful and popular; growth rapid and irregular; a great bearer. October.

WHITNEY'S No. 20—Very large; green, striped and splashed with bright red; juicy and of a delightful flavor; a handsome and vigorous grower and perfectly hardy. September.

WHITE ARCTIC—Strong, upright grower; fruit very large; white, tender, rich and juicy; very valuable.

YELLOW SIBERIAN—Large, of a beautiful golden yellow color.

Dwarf Apples

- ASTRACHAN RED
- AUTUMN STRAWBERRY
- BALDWIN
- BISMARCK
- DUCHESS OF OLDENBURG
- KING OF TOMPKINS CO.
- MAIDEN'S BLUSH
- SWEET BOUGH
- WEALTHY
- YELLOW TRANSPARENT



BISMARCK DWARF APPLE

For description of these varieties see pp. 9, 10 and 11.

PEARS

The Pear is one of our most satisfactory fruits. The trees live long and bear regularly and abundantly. We do not offer a long list of varieties but we include about all that our experience warrants us in recommending for general planting.

We wish to call special attention to the New Rossney Pear, whose handsome appearance and fine flavor entitle it to first place, also to the Longworth's No. 1 Pear, whose extreme hardness seems to have solved the problem of pears for the Northwest.

We offer both Standard and Dwarf trees, indicating by the initial following each name, the way we propagate the variety. S., means that we can supply Standards only; D., Dwarfs only; S. D., either Standards or Dwarfs. Dwarf Pears bear earlier, but Standards are longer lived.

PEARS, DWARF

Dwarfs must always be planted sufficiently deep to cover the junction of the Pear and Quince stock, upon which they are budded, 2 to 3 inches, the soil made rich and well tilled, and about half the previous summer's growth cut off each spring. SPECIAL Varieties of STANDARD pears.

[Special Varieties of Standard Pears

LINCOLN PEAR

This is an excellent variety which originated at Lincoln, Illinois. Tree hardy, strong grower. Fruit large and of a beautiful golden yellow, of the best quality. An abundant bearer and it is said it has never been known to blight. We have propagated this variety for fifteen years or more, and it has never blighted with us, and is always in great demand.

LONGWORTH'S No. 1 PEAR

The Pear For the Northwest

This is a very hardy seedling pear of recent introduction; originated at Dubuque, Iowa, and was grown from seed some forty years since by the veteran nurseryman and horticulturist, Wm. Longworth. The tree is a strong upright grower, entirely FREE FROM BLIGHT, and an enormous bearer. Fruit, medium to large, nearly round; skin yellow with warm blush on the sunny side; flesh rather coarse, juicy, sugary, good flavor. Ripens from first to middle of September.

Having thoroughly tested this variety, we have no hesitancy in recommending it to the public for general planting. This pear has withstood our severest winters without the slightest injury, while other varieties were frozen to the ground. Being free from blight and EXTREMELY HARDY, it is a very desirable variety, and should be planted largely.

THE ROSSNEY PEAR

A chance seedling grown near Salt Lake City, Utah. Ripens about two weeks after Bartlett, averages larger, excellent keeper and shipper, uniform size, shape and color, one of the handsomest; creamy skin with crimson blush; flesh melting, juicy, sweet and tender, of superior flavor. A vigorous grower, hardy both in wood and fruit bud, and very productive. Combines excellent quality with large size, fine form and superior shipping qualities. Should be tested everywhere. Luther Burbank, the most noted horticulturist of the age, says: "The samples of Rossney Pear arrived in due season. The large size, handsome form, and creamy yellow skin with crimson blush gives the fruit a tempting appearance; and the tender creamy flesh, of just the right texture, with no hard spots and an unusually small core, with its superior flavor, makes it about the best pear so far seen. If the tree is vigorous, healthy and productive, would prefer it to any other, even the standards, Bartlett or Seckel." For history, description and colored plate of Rossney Pear, see page 402, Year Book of the Department of Agriculture, 1904.

SUMMER VARIETIES

BARTLETT—S. D. Large size; color rich yellow with often a beautiful blush next the sun. Buttery, very juicy and highly flavored. Bears early and abundantly. August and September.

DOYENNE D'ETE—S. Small; russet yellow, with rosy cheek; juicy and sugary; grows in clusters; ripens to perfection on the trees. July to September.

EARLY HARVEST—S. D. Large, golden yellow, with fine red cheek; flavor not the best but sells well on account of its handsome appearance. August.

KOONCE—S. D. Medium; yellow, with bright red cheek; very handsome; tree upright and vigorous; bears well; is profitable on account of earliness. August.

LAWSON—S. Showy; yellow and crimson; a profitable market variety.

LECONTE—S. Very productive; a strong upright grower decidedly ornamental; fruit pale lemon yellow; grows well anywhere. September.

PEARS--Continued

OSBAND'S SUMMER—S. One of the finest early pears; of medium size; clear yellow, with red cheek; melting, sweet and perfumed. August.

TYSON—S. D. Slightly above medium; melting, juicy and sweet, tree upright, hardy and vigorous; productive, but not so early to bear; admirable for the West. August and September.

WILDER'S EARLY—S. D. Medium; yellow, with dark red cheek; melting, sweet, good; very attractive; of vigorous and symmetrical growth. First of August.

AUTUMN VARIETIES

BARTLETT-SECKEL—S. Cross between the well known Bartlett and Seckel. Tree hardy, vigorous and productive; fruit above medium size, yellow and red; combines the richness and quality of these two well known sorts. Ripens September and October.

BELLE LUCRATIVE—S. Large; melting, delicious; tree a fine grower and abundant bearer; very successful throughout the West.

BEURRE D'ANJOU—S. D. Large; greenish yellow sprinkled with russet, sometimes with red cheek; melting, perfumed, excellent; productive. October.

BEURRE BOSCH—S. Large; beautiful, russety, melting, delicious, highly flavored; moderate, irregular grower; bears well October.

BEURRE CLAIRGEAU—S. Large; yellow, shaded with crimson; sugary; perfumed; beautiful; bears well; a magnificent pear. October and November.

BESSEMIANKI—S. Medium size; green russet, with blush on sunny side; flesh tender and juicy; upright grower.

BUFFUM—S. D. Medium, or below; fruit of variable quality; tree of remarkable vigor and beauty; rather hardy. September.

CLAPP'S FAVORITE—S. D. Large; yellow shaded with red; juicy, melting, perfumed; a great bearer. August and September.

DOYENNE BOUSSOCK—S. Large; buttery; excellent; strong grower and productive. September.

DUCHESS D'ANGOULEME—S. D. Fruit of largest size, often weighing over a pound; very juicy, with rich, excellent flavor; vigorous, bears heavily and regularly; succeeds especially well as a dwarf. October and November.

FLEMISH BEAUTY—S. Very large; pale yellow with reddish-brown cheek; sugary, rich, juicy, melting; vigorous; an enormous bearer; should be gathered and house-ripened. September.

FREDERICK CLAPP—S. Above medium; smooth, clear, lemon yellow; flesh fine-grained, very juicy and melting; rich, perfumed, and of best quality; vigorous grower. October.

GARBER—S. Resembles Keiffer very closely but ripens earlier; a thrifty grower.

GOODALE—S. Fruit large; flesh white, juicy, melting, of excellent flavor and quality; tree upright in growth, hardy and productive. October.

HOWELL—S. D. Large; light waxen-yellow; melting, sweet, rich, a vigorous grower and profuse bearer. September.

KEIFFER—S. D. A vigorous grower, with healthy, dark green foliage and an early bearer; very productive; fruit large, golden yellow, with red cheek; fine for preserving, but must be thoroughly ripened for eating. Excellent when ripened in cool, dry cellar. October.

LOUISE BONNE DE JERSEY—S. D. Large yellow and red, beautiful and good; vigorous grower and immense bearer; most esteemed as a dwarf. September and October.

ONONDAGA—S. Large; yellow; vinous, variable, early and good bearer; popular in the West. October and November.

SECKEL—S. D. A most delicious little pear, unsurpassed in flavor, small, yellowish-brown with red cheek; rich, spicy, sweet. September.

SHELDON—S. Medium; first rate in every way; tree vigorous and productive; very hardy and succeeds in the North.

VERMONT BEAUTY—S. Medium; yellow, with red cheek; rich, juicy, best quality; tree hardy and vigorous and an early and abundant bearer. October.

WASHINGTON—S. Medium; smooth, clear yellow with red dots on sunny side; very juicy, melting, perfumed and unusually sweet; growth vigorous.

WINTER VARIETIES

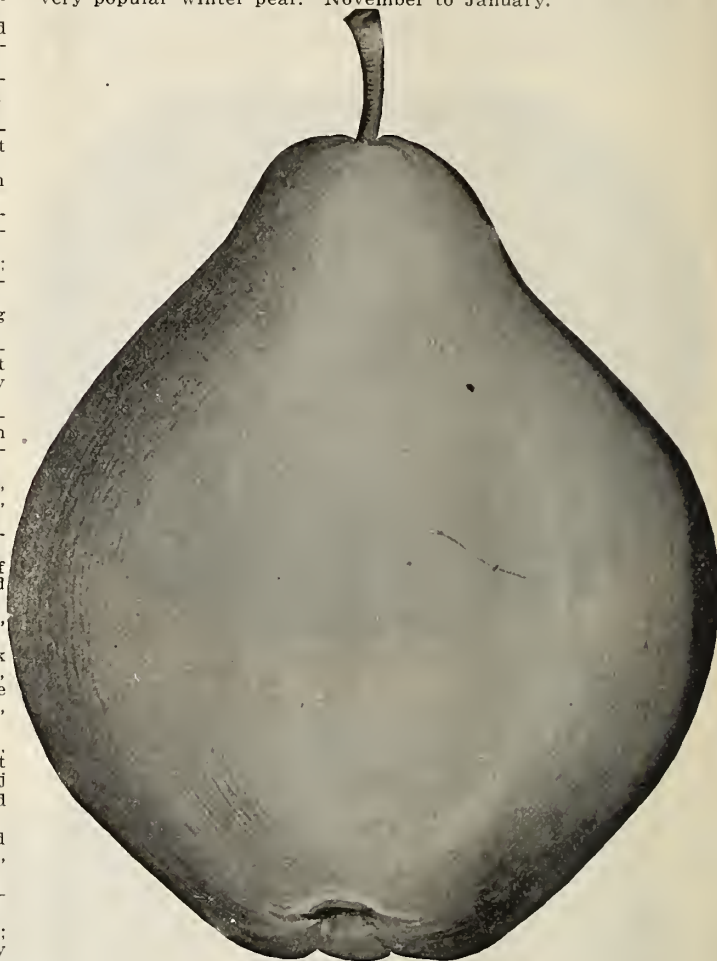
DUCHESS DE BORDEAUX—S. Large size, with a very thick, tough skin which renders it a most valuable keeper for winter use; flesh melting, juicy, rich. December to March.

LAWRENCE—S. Medium; pale, lemon-yellow with brown dots; sweet, juicy, good; tree a vigorous grower. November and December.

MOUNT VERNON—S. D. Medium; light russet, reddish in the sun; flesh yellowish, juicy and aromatic; early bearer. December.

PRESIDENT DROUARD—S. Very large and handsome; melting and juicy, with delicate perfume. March to May.

VICAR OF WINKFIELD—S. D. Large, long, beautiful, good; tree hardy, very vigorous and immensely productive; a very popular winter pear. November to January.



ROSSNEY PEAR

PLUMS

AMERICAN OR IMPROVED NATIVE PLUMS

Note our plums are all grown on plum roots, and made an unusually strong growth the past season. Nothing will yield better returns for the money invested than a plum orchard.

CHENEY—Large, roundish, oblong; color dull mottled red, on greenish yellow ground; flesh yellow, quite firm, quality good; very valuable variety.

DE SOTO—Medium size; bright red, of good quality; very hardy and productive. September.

FOREST GARDEN—Large dark red; good, very productive; vigorous grower.

HAWKEYE—Large, purplish red; superior quality; flesh firm; a good shipper; cling-stone; a regular bearer and very hardy.

MILTON—Large, fine, deep red; skin thin, and flesh firm; good quality;



ripens about a week earlier than Wild Goose; a strong grower, and very productive; clingstone; extremely hardy.

POTTAWATTOMIE—Large; yellow ground, overspread with red, and sprinkled with white dots; a strong, vigorous grower, and an immense bearer, hardy.

ROBINSON—Medium size; yellow, nearly covered with light red, showy; tree vigorous and enormously productive; a profitable market variety.

WEAVER—Large; very dark purplish red with blue bloom; good quality; a constant and regular bearer; prolific; tree very hardy. August.

WILD GOOSE—Hardy, native, large, deep red, with purplish bloom. Flesh yellow, juicy and sweet. Rapid grower, early and abundant bearer. One of the best natives. July and August.

WOLF—Large; a perfect freestone; very popular; immensely productive; vigorous grower and very hardy.

WYANT—Large; purplish red; flesh yellow, rich and juicy; excellent quality; semi-cling; early; perfectly hardy. Probably the most popular of the American Species.

PLUMS---Continued

EUROPEAN PLUMS

BEAUTY OF NAPLES—Large; greenish yellow; flesh firm, juicy and of fine flavor. September.

BRADSHAW—Large; dark, violet red; flesh green and juicy; a fine early plum; vigorous and productive. August.

COE'S GOLDEN DROP—Large; light yellow; fine; showy, late.

DAMSON—Fruit medium; juicy, rather tart; skin dark purple covered with thick blue bloom; fine for preserving; enormously productive. September.

GERMAN PRUNE—Large, long; purple, rich, popular; hardy and productive. September.

GUEH—Large; bluish purple; flesh yellowish green, rather coarse, sweet pleasant flavor. September.

IMPERIAL GAGE—Medium; greenish yellow; juicy, rich; very hardy and a good bearer. August.

JEFFERSON—Large; golden-yellow with purplish red cheek; rich, juicy, high flavored; regular bearer; poor grower. August.

LOMBARD—Medium and above; reddish purple; good quality; very hardy, vigorous and immensely productive, unsurpassed for the West. Last of August.

MOORE'S ARCTIC—Of medium size; very dark purple with blue bloom, flesh greenish yellow; juicy with sweet, pleasant flavor; long keeper; very hardy.

QUACKENBOSS—Large oval; deep purple; juicy and sweet, but rather coarse-grained; partial clingstone. September.

RED EGG—Large, red, firm flesh. Subacid. September.

REINE CLAUDE DE BAVAY—Large; greenish yellow; juicy, rich and excellent; very productive; hardy and popular. September.

SARATOGA—Medium size; reddish purple covered with handsome bloom; supposed to be a cross between Lombard and Bradshaw.

SHIPPER'S PRIDE—Large; dark purple; very showy; fine, juicy and sweet. September.

SHROPSHIRE DAMSON—Rather small; dark purple; immense bearer; one of the most prolific grown. September.

TATGE—Origin, Iowa. Very much resembles Lombard; fruit larger and of better quality; bears young; very productive and hardy. September.

WASHINGTON—Large; green, somewhat reddened, juicy, sweet, and fine; very productive. August and September.

JAPAN PLUMS

AMERICA—Originated by Luther Burbank and pronounced one of his best. The fruit is somewhat larger than the average of the Japan varieties, is much superior in size and quality to any of the native American sorts. Fruit is large to very large, glossy, coral-red; flesh light yellow, firm, of best quality; a splendid keeper and shipper. Ripens about two weeks earlier than Burbank.

ABUNDANCE—(Botan.) Beautiful lemon-yellow ground, nearly over-spread with bright cherry and with a heavy bloom. Large to very large, oblong, tapering to the point like Wild Goose. Flesh orange-yellow, melting, rich and highly perfumed. Abundant and annual bearer. Tree a vigorous, upright grower. Has been thoroughly tested. July.

BURBANK—Very similar to Abundance, but of deeper color, and ripens later in the season. The fruit is large, nearly globular, clear cherry-red, with a thin lilac bloom. Flesh a deep yellow, very sweet, with a peculiar and agreeable flavor. The tree is a vigorous grower with large and broad leaves; usually begins to bear second year after transplanting. August.

CHALCO—The fruit is large, flat like a tomato, deep reddish purple with very sweet, rather firm, exceedingly fragrant yellow flesh and small seeds. The fruit is as stemless as a peach and completely surrounds the older branches as thick as it can stick, like kernels on a huge ear of corn. A superior shipping



BURBANK PLUM

plum, ripens well when picked green, and keeps nearly or quite a month.

CLIMAX—Fruit heart shaped, as large as Wickson, and more highly colored, so fragrant that a whole house is perfumed with a single fruit; delicious as could be desired or imagined, and above all, it ripens nearly a month before Wickson.

OGON—Medium size. Clear lemon-yellow with light bloom. Flesh thick, meaty, dry, firm. Freestone, long keeper, excellent for canning, moderately productive. August.

RED JUNE—A vigorous, hardy, upright spreading tree, as productive as Abundance. Fruit medium to large, deep vermilion red, with handsome bloom, very showy. Flesh light lemon-yellow, slightly sub-acid, of good and pleasant quality. Half cling, pit small. Early. Best in quality of any of the early varieties. A thoroughly valuable market variety.

SATSUMA—Fruit medium to large; broadly conical, with a blunt short point. Suture very deep, skin very dark and dull red all over, with greenish dots and an under color of brown-red. Firm, very juicy, quality good, free. Midseason. It is a very valuable sort.

SHIRO—The fruit is produced in the utmost profusion, is medium to large, very uniform in size, clear light yellow, and so transparent that the pit can be seen through the flesh, which is firm yet juicy, rich, pleasant, subacid, clingstone; ripens two weeks before the Burbank, and is nearly, or perhaps, quite as productive.

SULTAN—The flesh is remarkably firm and solid fragrant, subacid or sweet; dark crimson, beautifully clouded and shaded with light pink, salmon and light yellow. Remarkable for the great proportion of flesh compared with the diminutive seed. The tree grows very rapidly, but is compact and with wood and leaves as much like the Napoleon cherry as like a plum. Exceedingly productive, ripening a week before Burbank; falls like apples as soon as ripe; a great keeper.

WICKSON—A sturdy upright grower, productive almost to a fault. Fruit remarkably handsome, deep maroon-red, covered with white bloom; stone small; flesh fine-textured, firm, sugary and delicious. Excellent keeper and shipper; will keep two weeks after ripening.

CHERRIES

The cherry everywhere requires a dry soil; they do best on our poorest and dryest soil and if planted in rich, black land, should be planted in the sod, and kept with low heads. Except in a few localities, the sweet varieties do not succeed well in the west.

GENERAL LIST OF CHERRIES.

Sour Varieties.

BELLE DE CHOISY—Medium, pale red; beautiful and delicious, but shy; last of June.

BELLE MAGNIQUE—Large, light red, juicy; moderate grower, productive; late, July and August. One of the most valuable for the west.

EARLY RICHMOND—(May of the West.) Medium; red; early; hardy, immensely productive; worth nearly all others for the West; ripens June 15th here.

DYHOUSE—A very early and sure bearer; fruit large; ripens a week before Early Richmond; very productive, color red.

EMPRESS EUGENIE—Fruit large, dark red, very rich, tender and subacid. A superior variety. July.

ENGLISH MORELLO—Large, nearly black; slow grower, but very hardy; rather late; immensely productive and valuable; fruit-bud hardest of all. July.

LATE DUKE—Large, light red; fine but very shy here; last week in June.

LATE KENTISH—(Common Red.) Like Early Richmond, but ten or twelve days later; hardy and very valuable. Worth the whole race of sweet cherries at the West.

LOUIS PHILIPPE—Large, dark red, almost black, slightly mild acid, stone small. July.

MAY DUKE—Large, dark red, delicious, early; tree hardy;

CHERRIES---Continued



MONTMORENCY ORDINAIRE

bears well usually (not always), and quite distinct; most valuable Duke variety.

MONTMORENCY ORDINAIRE—Mr. Ellwanger says of this variety, "This is no doubt, one of the finest red acid cherries in cultivation, ripening about a week after Early Richmond. The tree is a great bearer and very hardy; fruit of good size and fine flavor, of a shining red color."

NORTHWEST—Originated with D. B. Weir; medium; bright red; very good; hardy.

OLIVET—A French variety; this sort takes a place not heretofore occupied among early cherries. Fruit large and globular, with a very shining, deep red color; flesh red, tender, and vinous, sweet; subacid flavor.

OSTHEIM—Hardy; fruit large, dark red, juicy, almost sweet, productive. June.

REINE HORTENSE—Large, bright red, good; splendid but shy; July.

ROYAL DUKE—Splendid, large red, hardy; July. Moderate bearer.

WEAGG—Very hardy, productive and of fine quality. Nearly black, an excellent late market variety. July.

SWEET VARIETIES

BLACK EAGLE—Large, tender, rich; productive; last of June.

BLACK TARTARIAN—Very large, productive; popular, not the most hardy; last of June.

GOVERNOR WOOD—Large, light red on yellow; excellent, rather hardy; last of June.

KNIGHT'S EARLY BLACK—Large; productive and fine; 20th of June.

LUELLING—(Black Republican.) Originated in Oregon. A valuable acquisition; late, hardy, black and very sweet. Comes into bearing early; very profitable for market.

NAPOLEON—Large, firm; pale yellow with red cheek; productive; last of June.

ROCKFORT—Large, amber and red; sweet; new; last of June

WINDSOR—Fruit large, liver colored; distinct; flesh remarkably firm and of fine quality; very prolific. A valuable late variety. From Canada. July.

YELLOW SPANISH—Large, pale yellow, with red cheek; firm, juicy and excellent; one of the best light colored cherries; productive. June.

PEACHES

The peach will succeed best on light gravelly soil; with proper cultivation on almost any soil. Trees one year old from the bud are best suited for planting. The orchard should be kept cultivated and given an occasional dressing of wood ashes. Keep the heads low, the trunks ought not to exceed three feet in height. Every spring the orchard should be pruned and the shoots of the previous year's growth shortened in. This keeps the head round, full and well furnished with bearing wood. The weaker shoots should be cut back about one-half, and stronger ones one-third; but be sure that you leave a sufficient supply of fruit buds, as the fruit is produced on the wood of the last season's growth. In planting, prune the tops and the roots carefully, reducing the top to a clean whit, and removing bruised and broken roots.

We offer herewith an excellent collection of varieties which will afford good selection for any section of the country where peaches will succeed.

ALEXANDER—Logan county, Illinois. Fruit rather large, dark red; flesh thick, white, free; flavor rich, very good; tree vigorous and productive. July.

AMSDEN—Carthage, Mo. Medium, dark red, very promising; white flesh, partly free. July.

BEER'S SMOCK—Large size; yellow flesh; an improvement on Smock Free; a few days later and an annual bearer; September and October.

BLOOD-LEAVED—Leaves blood red, very ornamental; it also bears good, white fruit.

BOKARA, No. 3—Grown from seed imported from Bokara, Asia. Very hardy; free stone. Fruit yellow with red cheek. Skin tough and has good keeping qualities. Middle of August.

CARMAN—Large, broadly oval; pointed; color white dotted, splashed and flushed with shades of red. Flesh creamy white, tinged with red, vinous, sprightly, good. Claimed to have the same origin as Elberta. Season, early.

CHAMPION—Fruit large, delicious, sweet, juicy; best quality of all early varieties; skin creamy white, with red cheek; handsome, hardy and productive and a good shipper. Early August.

CHINA CLING—Large, white, excellent; fine quality; esteemed south. September.

CROSBY—Medium size; bright yellow, streaked with carmine; annual bearer; hardy. Last of August.

CRAWFORD'S EARLY—A magnificent American sort; very large; yellow with red cheek; productive and extremely popular for market. Middle of August.

CRAWFORD'S LATE—Superb; yellow and red. Like preceding, but two weeks later.

EARLY BARNARD—A large yellow peach of good quality; very rich and juicy; a hardy and heavy bearer; popular market variety. July.

EARLY CANADA—Resembles Alexander very closely; ripens same time; medium size; good quality; handsome freestone.

ELBERTA—Very large; yellow with red cheek; juicy and high flavor; flesh yellow; very profitable and an excellent shipping variety. Last of August.

FITZGERALD—Fruit large, bright yellow, covered with red; best quality. Early September.

FOSTER—Very large and handsome; similar to Crawford's Early but ripens a few days earlier.

GREENSBORO—Very large, color crimson, flesh white. Early July.

GLOBE—Very large, golden yellow; fine flavor. End of September.

GOLD DROP—Large, good quality; hardy, profitable; highly esteemed in Michigan. Last of August.

GOVERNOR GARLAND—From Ark. Fruit medium, of handsome form, roundish; deep red; fragrant; flesh thick, juicy, tender. Good keeper. July.

HEATH CLING—Large, white, productive. Late and very popular market variety.

HILL'S CHILI—Large, skin dull yellow; flesh yellow. Sweet, rich, hardy, productive. Always in demand. September.



CHAMPION PEACH. (Reduced.)

PEACHES—Continued

INDIAN BLOOD CLING—Very large and peculiar peach; flesh red, like that of a beet. Esteemed for pickling and preserving.

JACQUE'S RABERPE—Very large, surface deep yellow, marbled with red, flesh yellow, juicy. Middle of September.

LEMON CLING—Large, orange yellow and red. Superb. September.

LOVETT'S EARLY WHITE—Large to very large, roundish; color creamy white, with considerable bloom. Flesh, creamy white to the pit, tender; and quite rich. Free stone. A popular white variety East and South.

MARSHALL'S LATE—Large, deep yellow; productive. October.

MAYFLOWER—The introducers, claim for this new variety, that it is the earliest peach yet produced and nearly a week earlier than Sneed. The fruit is absolutely red all over, even before it gets ripe enough to ship. Fruit large, averaging eight inches in circumference. The tree is a strong, thrifty grower; very prolific, rather inclined to overbear and should always be thinned. Good shipper.

MOUNTAIN ROSE—Large, red skin, white flesh; excellent quality. First of August.

OLD MIXON CLING—Large, yellowish white and red; good. September first.

OLD MIXON FREE—Large greenish white and red; juicy and rich; most popular. September 15th.

SALWAY—Large yellow, mottled with red cheek; yellow flesh; very productive; very valuable late market variety. October.

SNEED—Medium, white, excellent quality, productive. The earliest peach known. July.

SCHUMAKER—Alexander type; larger, higher color; better shipper. July.

SUSQUEHANNA—Large, superb yellow peach; melting and fine; very handsome. September.

STUMP THE WORLD—Very large; creamy white with red cheek; white flesh, rich and high flavor; productive; valuable for market. September.

TRIUMPH—Fruit good size; yellow with crimson cheek; abundant bearer; the earliest yellow flesh peach. July 1st.

WAGER—Very large yellow; juicy and fine flavor. Last of August.

WHEATLAND—Large; quality best; deep golden yellow; great bearer. September 1st.

WONDERFUL—Large; yellow marbled with crimson; flesh yellow, rich, firm. Ripens very late.

THE WORLD'S FAIR PEACH

Originated in eastern Missouri; is a seedling and one of the earliest peaches ever known—ripening on the parent tree as early as the 4th of June. The tree is hardy and vigorous. Fruit very large, roundish and handsome. Color, deep red in the sun, softening to yellowish ground in shade. Juicy and of most excellent flavor. Ripens from 10th to 15th of June.

MISCELLANEOUS FRUITS AND NUT TREES

APRICOTS

An excellent, early, beautiful fruit. The tree is peculiarly adapted to thorough training on a fence, wall or trellis, where it can be easily protected.

ALEXANDER—(Russian.) A prolific bearer; fruit yellow, spotted red. July.

ALEXIS—(Russian.) An abundant bearer; yellow, with red cheek. July.

CATHERINE—(Russian.) Strong grower; productive; yellow. July.

BREDA—Small, orange and red; rich, productive. Last of July.

EARLY GOLDEN—Small; yellow and sweet; productive. Early in July.

GIBB—(Russian.) Fruit yellow; medium; early; productive. End of June.

J. L. BUDD—(Russian.) Vigorous grower; prolific bearer; fruit almost white, with dull red cheek. August.

MOORPARK—Large; yellow and red; productive and firm. August 1.

PEACH—Large; orange and yellow, mottled brown; excellent. August.

ROYAL—Large; yellow, with an orange cheek; juicy, rich and delicious. End of July.

NECTARINES

The nectarine is much like the peach, save that it has a smooth skin.

BOSTON—Large; yellow and red; flesh yellow, sweet and good. September 1.

EARLY VIOLET—Fruit rather large; skin pale yellow; flesh whitish; flavor delicious, melting, juicy, rich. End of August.

STANWICK—Late; above medium size; roundish oval; skin pale, greenish white; flesh white, tender, juicy, rich.

QUINCES

APPLES OR ORANGE—Large; roundish; bright golden yellow; cooks tender and is of very excellent flavor; valuable for preserves or flavoring; very productive; the most popular and extensively cultivated variety.

ANGERS—Somewhat later than the preceding; fruit rather more acid, but cooks well; an abundant bearer; much used as a stock for dwarfing pears.

CHAMPION—Originated in Connecticut; the tree is a prolific and constant bearer; fruit averages larger than the Orange, more oval in shape; the quality is equally fine, and it is a longer keeper.

REA'S MAMMOTH—A seedling of the Orange; one-third larger; of the same form and color; fair, handsome, equally as good, and productive.

ALMONDS

HARD SHELL—A fine hardy variety, with large, plump kernel; quite ornamental.

SOFT SHELL—(Paper Shell.) Rather tender; kernel large, white and sweet.

SMALL FRUITS

DEWBERRY

LUCRETIA—The best of all dewberries; extremely hardy and very productive; ripens a week to ten days earlier than any blackberry; fruit large and handsome, sweet luscious and a glossy black. The trailing habit renders winter protection very easy in severely cold climates without snow, where that protection may be necessary.

HUCKLEBERRY

Well-known in many parts of the country. Succeeds moderately well on the prairies, and is in growing demand for its excellent, well-known fruit.

BUTTERNUT

WHITE WALNUT—A fine native tree, producing large, roundish nut, which is prized for its sweet, oily, nutritious kernel.

CHESTNUT

AMERICAN SWEET—A valuable native tree; useful and ornamental; timber very valuable; nut sweet, of delicate flavor.

JAPAN—Dwarf in habit and distinct from other chestnuts. Bears three years after transplanting, producing nuts of immense size.

SPANISH—Makes a handsome round headed tree, bears abundantly; producing very large nuts that find a ready market at high prices.

HICKORY

SHELLBARK—This nut possesses a peculiar, rich, nutty flavor excelled by none. The tree is of sturdy growth; the wood, on account of its great strength, is highly prized.

PECAN

Well-known native; very valuable nut tree. Should be largely planted. Fruit delicious, popular and salable. Our stock is the paper shell variety.

WALNUTS

AMERICAN BLACK—Well-known and very valuable, both for the toothsome fruit and the timber.

ENGLISH or MADEIRA NUT—Excellent fruit; not quite hardy here.

JAPAN—(Sieboldi.) Perfectly hardy here; rapid grower; handsome form; large leaves; very ornamental; nuts produced in clusters; resembles butternut, but smaller, with smooth and thinner shell.

MULBERRIES

AMERICAN BLACK—Native, productive, valuable.

AMERICAN WHITE—Well-known, vigorous, productive, hardy.

DOWNING'S EVERBEARING—Fruit medium, black; in long succession; fine flavor; strong grower.

HICK'S and NEW AMERICAN—Both similar to Downing's Everbearing.

RUSSIAN—Well-known and largely planted; is a very rapid grower and early bearer; color of fruit varies some, but is generally black. Planted largely for hedges.

PERSIMMON, NATIVE

Well known, a pretty, small tree with glossy foliage; perfectly hardy as far north as Bureau county, Ill., fifty miles north of Bloomington. The fruit, after frost, is luscious and much liked.

PAWPAW

NORTHERN BANANA—Perfectly hardy here. Foliage ornamental and fruit relished by most people. Somewhat resembles the banana in flesh.

JUNE BERRY

SHAD or SERVICE BERRY—Tree, blossoms and fruit, all very ornamental and desirable, the latter very delicious fresh or cooked; very hardy.

CURRENTS

BLACK NAPLES—Fruit large and productive; the best black currant.

CHERRY—Largest; magnificent red; very vigorous and productive.

FAY'S PROLIFIC—Well-known; a great bearer; quality first-class; considered by some the best red.

BLACKBERRIES

ANCIENT BEITON—One of the hardy varieties; vigorous; berries of good size and fine quality; a good market berry.

EARLY HARVEST—One of the most valuable where it succeeds; not entirely hardy in the north, and needs winter protection; very early; one of the first to ripen; its good shipping qualities make it profitable.

EARLY KING—"The Money Maker." The finest early berry grown. Perfectly hardy, stands 28 degrees below zero and bears a good crop the following year. An annual bearer of choice fruit. Berries are as large or larger than Snyder and better quality. One acre of these berries will net the grower a handsome profit.

ELDORADO—Among the good points of this valuable new blackberry are great productiveness, hardness, extra fine quality and sweetness of flavor; without core; the berries are large, jet black, borne in clusters and ripen well together; sweet, melting, rich and pleasant to the taste.

ERIE—Vigorous, productive and early; berries large and of good quality.

KITTINNY—Usually quite hardy and immensely productive; fruit large, long and sweet.

THE LA GRANGE BLACKBERRY—This berry is a Russian product, having been brought from that Arctic country fourteen years ago, and has been fruited by Mr. La Grange in Vermilion county, Illinois, for the past twelve years and in that time has not received any injury from cold winters. It is the hardiest berry yet introduced; it grows on canes like the Lawton or Snyder, but differs from them as regards fruit stems. This plant sends out its fruit stems from the ground up and each fruit stem has ample foliage, each berry having a leaf. The fruit ripens in the shade, which materially adds to its flavor. Other varieties produce their fruit mostly at the top of the canes, which are almost bare of foliage, and consequently are often sun-scalded. When the berries from the first bloom are about two-thirds grown, there comes on a second crop of bloom as profuse as the first; in ripening one cannot tell when the berries from the first bloom end, and where fruits from second bloom begin. The first fruit ripens about July 10 and remains in bearing from thirty to thirty-five days. It is not an everbearer. It is very productive, one-ninth of an acre yielding 571 quarts. Rev. J. R. Reasoner estimated 5,000 quarts per acre. It is free from any hard core, and has but few seeds. The best and largest berry yet produced, sixty-five berries filling a quart box full; a single berry measuring four and a half inches in circumference. Prof. Forbes says it is freer from disease than any blackberries he has ever seen. (See report of Horticultural Society of Illinois, 1903, page 483.) The stock is limited and orders will be filled in rotation as received.

H. A. Aldrich, president of the Illinois State Horticultural Society, writes under date of November 14, 1904: Mr. Chas. La Grange—Dear Sir: When visiting your place this last summer, I must say I was agreeably surprised at the quality, size, and general appearance of your La Grange Blackberry, and was very anxious to obtain a few plants for my own family use, and have just learned that I can obtain them from Phoenix Nursery Co., as they inform me they have bought your stock of plants.

We are also in receipt of the following letter, dated December 31, 1904, from J. R. Reasoner, Vice-President of the Central Illinois Horticultural Society, and originator of the Dunlap Strawberry: I made several trips to Potomac, Ill., to inspect the La Grange Blackberry. I was favorably impressed with its appearance. The canes, which were very large, had been trellised, and trimmed to seven or eight feet high, and presented what seemed to be almost a solid wall of fruit from the ground up. The fruit was very large and delicious. I visited Mr. La Grange again last April, after one of the severest winters known to us, and found but little, if any, winter killing of the twigs. It came through rather better than Snyders, in adjacent lot. If the La Grange Blackberry will do as well on other soils, and under different treatment, it will be a valuable addition to our list of blackberries. I believe it is just what we have been looking for.

We have many other testimonials which will be mailed on application, as space here will not permit publishing them.

MERSEREAU—Prof. L. H. Bailey, in Bulletin 99, Cornell University Experiment Station, says: "Mersereau: Its advantages over Snyder are its large size, less tendency to turn red after being picked, better quality and a stronger habit. This variety originated with J. M. Mersereau, Cayuga County, N. Y., for whom I am glad to name it."

BATHBUN—Strong grower, hardy, having endured twenty degrees below zero and producing a good crop. Forms a neat, compact bush, producing its immense fruit abundantly. Fruit is sweet and luscious, no hard core, of extra high flavor, standing at the head of all for quality, jet black, small seeds. Firm enough to ship and handle well. Berries an enormous size.

STONE'S HARDY—Strong grower; stocky; ripens early; of medium size; black and glossy.

SNYDER—A strong grower; very hardy and very productive; of medium size. Good, salable and profitable. The fruit has no hard, sour core, but is sweet to the center; reliable. Seven acres yield 43,000 quarts.

TAYLOR'S PROLIFIC—One of the largest blackberries grown; fruit of the best quality, melting and without core.



LUCRETIA DEWBERRY

CURRENTS—Continued.

KNIGHT'S LARGE RED—This is a very choice, large red acid berry for family use; productive.

LEE'S PROLIFIC—(Black); considered one of the best black currants. Fruit large; produces abundantly. Never attacked by insects of any kind. Valuable for making jellies, jam and wine.

LONDON MARKET—For many years this variety has been fruiting in Michigan where it is now planted extensively and regarded as the best market variety of that great fruit state. Plant is extremely vigorous with perfect foliage, which it retains through the season, an enormous cropper. Ripens with Victoria, is larger in both bunch and berry, a better bearer. For any use—home garden or market—one of the best.

LONG BUNCH HOLLAND—Very hardy; of distinct growth and foliage; fruit large red in long clusters.

NORTH STAR—Very strong grower; should be given plenty of room; considered one of the best red varieties; very productive and hardy; good quality.

PERFECTION—Bright red, fruit large; cluster long. Very productive. Claimed to be superior to all other red currants. Quality unsurpassed.

POMONA—Fruit clear bright red, almost transparent; has but few small seeds; hangs a long time after ripe; vigorous, healthy, hardy; most productive; quality best; good shipper.

RED DUTCH—The good old standard red sort; immensely productive and always reliable; fruit medium and moderately acid, but good.

VERSAILLAISE—Large, deep red; bunches long; productive and good; much like Cherry.

VICTORIA—Splendid; large, bright red; very long bunches; growth slow; good.

WHITE DUTCH—Excellent; productive; popular.

WHITE GRAPE—Very large; yellowish white; sweet or very mild acid; quality excellent, the finest of the white sorts; very productive.

GOOSEBERRIES

CLUSTER—(American Seedling.) An immense grower and bearer, much like the Houghton, but fruit smaller, rounder, thicker skin.

CROWN BOB—(English.) Large, red, oblong, hairy; good.

DOWNING'S SEEDLING—One of the best American varieties; large, greenish, productive; fine; free from mildew; planted more largely than any other variety.

HOUGHTON—Hardy; entirely free from mildew; well known sort; color pale red; sweet, tender, good; enormously productive.

INDUSTRY—(English.) Berries of large size, excellent flavor, pleasant and rich; color dark red; strong upright grower; immense cropper; less subject to mildew than most foreign sorts.

KEEPSAKE—Fruit large; straw colored, excellent flavor; good market sort; one of the best English sorts for this climate.

PEARL—Very prolific; has been tested and ranks among the best in vigor of growth, freedom from mildew and productiveness; same color as Downing, fruit rather larger and just as prolific.

RED JACKET—(Josselyn.) Has no rival; an American seedling of large size; prolific and hardy; a success everywhere; entirely free from mildew both in leaf and fruit; a wonderful bearer; strong grower.

WHITE SMITH—(English.) Large, roundish oval; yellowish white; lightly downy; of good quality.

RASPBERRIES

We advise that Black Raspberry plants in small lots be shipped by express to insure safe arrival.

BLACK DIAMOND—From Michigan, 1901. Strong grower and hardy; berry medium, very sweet, highly recommended.

CARDINAL—New. The berries are large, dark red; firm, with an agreeable, pure, rich flavor, which is brought to its highest perfection when canned or cooked in pies. Season is rather late. Berry adheres well. Its growth is of the strongest, the canes growing 15 to 20 feet, and making from 10 to 15 canes from one hill or plant. Very few thorns. Foliage perfect. Wonderful producer and most hardy.

COLUMBIAN—New; deep purplish red; sweet and highly flavored; extra strong canes. Wonderfully productive; berry large.

CUMBERLAND—In size the fruit is simply enormous, far surpassing any other Black cap, quality equal to Gregg; very firm, excellent shipper; strong grower and unusually prolific. Mild season.

CUTHBERT—One of the best, most profitable berries for general planting; upright, very hardy, prolific; fruit brilliant red, juicy, excellent quality.

EUREKA—Very early and productive; fruit large; black; strong grower; hardy; an excellent market variety.

GREGG—Reliable; hardy; the very largest and most productive black cap.

GOLDEN QUEEN—The best yellow raspberry yet introduced; vigorous, hardy and remarkably productive; upright.

HAYMAKER—An Ohio seedling of the Columbian and Shaffer type, but more productive than either. Fruit larger and firmer. Claimed to be the most profitable Raspberry on earth.

HILBORN—New; black cap; superior quality; fruit large; very hardy; originated in Canada.

HOOSIER—Black cap is perfectly hardy. Does not winter kill in the least, and matures its entire crop of extra large, jet black, glossy and fine flavored berries. One week earlier than Cumberland and more productive. It resists drought, owing to its vigorous roots going so deep into the soil, and has positively never been injured by anthracnose. It is the pocket-book filler, and has well earned the distinction of being the "Dollar a gallon berry."

KANSAS—New; ripens just after Souhegan; berry as large or larger than the Gregg; very vigorous and productive; Black Cap.

LOUDON—The best red raspberry yet introduced and the most productive; large size; bright color; very hardy; good shipper.

MAMMOTH CLUSTER—Old and reliable; large black cap.

MILLER—New; red; large and very productive.

NEMEHA—New; black cap; very hardy; ripens with Gregg and resembles it in fruit.

OLDER—Very hardy, vigorous and productive; berries sweet and rich, of large size; jet black; ripens before Gregg.

PLUM FARMER—This is one of the greatest black cap raspberries that has been introduced for years. Succeeds everywhere; perfectly hardy. The plants are very healthy, free from anthracnose and a strong grower; have a silvery bluish appearance, when matured in the fall. The fruit is grayish black, very large and firm, attractive, of the very highest flavor, and is adapted for evaporating, as well as for fresh market or home use. It is simply enormously productive. The fruit ripens quite early and most of it in one week. An excellent shipper.

ST. REGIS EVERBEARING—The "early 'till late" Raspberry—Raspberries for four months—that's what you get when you plant St. Regis—the new everbearing variety. Moreover, they are not only raspberries, but raspberries of the very highest grade—in size, in brilliant crimson color, in firmness, in flavor. The variety has been very aptly termed "the early 'till late"

variety; for it is the first red raspberry to give ripe fruit, while it continues to produce berries without intermission until late in October. St. Regis is of pure American blood and of iron-clad hardiness; the canes enduring the severest cold uninjured and are wonderfully prolific. In addition to the bright crimson color and large size of its fruit, it is so firm and rich in sugar that it will stand shipping two hundred miles, arriving at market in first class order; and it can readily be kept in perfect condition for several days after being gathered. In brief, it is such a marvel as to size, beauty and excellence, it has been given the name St. Regis; the finest hotel in the world, with guests who are most fastidious and discriminating of all epicures. Unlike any other raspberry, the St. Regis yields a crop of fruit the season it is planted. Plants of it planted in early April gave ripe berries on June 20th of the same year. For four weeks thereafter the yield was heavy and the canes continued to produce ripe fruit freely without intermission, until the middle of October. The berries were large and beautiful, firm and full flavored to the very last. St. Regis was awarded a certificate of merit by the AMERICAN INSTITUTE, September 20, 1910.

SHAFFER'S COLOSSAL—New; purple; large, very productive.

SOUHEGAN—Early; black cap; very productive.

TURNER—Upright; almost thornless; vigorous; red; bears 125 to 150 bushels to the acre.

TYLER—Black cap; early; of best quality and very prolific.



LOUDON RASPBERRY

STRAWBERRIES

To insure safe arrival Strawberry plants must be sent by express or mail. Varieties marked S. are Staminate or self fertilizers and those marked P. are Pistillate or imperfect flowering varieties and should be planted with Staminate varieties.

(S) **BRANDY WINE**—

This is the handsomest berry grown. Fancy market variety of fine rich flavor and large size. It is dark red to center.

(S) **BEDERWOOD**—

Most productive. Considered the very best early variety.

(P) **BUBACH'S No. 5**

—Very strong, exceedingly stocky. Fruit large, wonderfully prolific, very popular.

(S) **CAPTAIN JACK**—

Vigorous, hardy, very early. One of the best.

(P) **CRESCENT SEEDLING**—

Celebrated, a wonderful bearer.

(S) **CHAS. DOWNING**

—Old reliable; one of the best.

SENATOR DUNLAP STRAWBERRY

(S) **CLYDE**—New; abundant bearer; fruit large; strong grower, succeeds everywhere.

(S) **EMPRESS**—Plant large and vigorous. Color dark red, beautiful form; very large, conical. Season late.

(S) **ENHANCE**—Very productive, well tested and satisfactory.

(S) **HAVILAND SEEDLING**—Said to be the earliest large berry yet produced.

(S) **JESSIE** From Wisconsin; it has no defects worth naming.

(S) **MANCHESTER**—Vigorous; enormously productive, fruit large, firm, late.

(S) **RUBY**—Fruit large; color bright crimson; firm; quality very best; exceedingly prolific; strong grower; succeeds everywhere; good shipper. When better known will be planted largely.

(P) **SAMPLE**—A vigorous grower; productive; berries medium to large in size; bright blood red. Quality fair. Season late.

(S) **SENATOR DUNLAP**—Introduced 1900, by Rev. J. R. Reasoner, Champaign county, Illinois; is in bearing here and has given the greatest satisfaction as to hardiness, productiveness and quality; blossoms perfect; fruit generally large, bright, or slightly dark red, very glossy, firm, a splendid keeper and shipper, and one of the best canning berries. Of the Warfield type.

(S) **SPLENDID**—From Northern Illinois; the best berry for home market and table use yet produced; better and larger than Crescent and ripens one week earlier; berries even in size, all ripening about the same time; very prolific; flavor excellent; self-fertilizer.

(S) **SHARPLESS SEEDLING**—Largest, most productive of all strawberries.

(S) **The "3W"**—We have tested this berry for four years and it has given satisfaction in every way. The plant is an extra strong grower and withstands drought and frost. Stools very strong. Foliage very abundant. Blooms perfect. An enormous bearer. Fruit, luscious, extra large dark red. The very best for shipping.

(P) **WARFIELD'S No. 2**—Most highly esteemed for its large, uniform size and good shipping qualities.



GRAPES

Our grapes are strong, healthy plants and will be graded up to the highest standard.

AGAWAM—(Roger's No. 15.) Old, reliable, large, red, one of the very best; ripens early.

BRIGHTON—Bunch large, well formed; berries above medium; excellent flavor and quality; early.

CAMPBELL'S EARLY—Strong grower; large healthy foliage; productive; good keeper and shipper; ripens with Moore's Early; bunch and berry large; glossy black.

CATAWBA—Berries large, round; copper color when fully ripe; one of the latest; sweet, rich, musky flavor.

CHAMPION—(Talman.) Black, very early; bunch and berry medium; quality good.

CLINTON—Black, bunch small to medium; compact; flesh juicy; berries small; wine grape.

CONCORD—Black, early; decidedly the most popular grape in America and deservedly so; bunch and berries large; hardy, healthy and productive.

COTTAGE—Black; a seedling of Concord; very similar in growth, size and quality; ripens a few days earlier.

DELAWARE—Red; bunch small; compact; skin thin but firm; flesh juicy, very sweet; of best quality; ripens with Concord; hardy and productive.

DIANA—Red; bunch medium, very compact; berries medium of good quality for both table and wine.

DRACUT AMBER—Red; very early; bunch and berry large; flesh quite foxy; hardy and productive; valuable in high altitudes.

EATON—Black; similar in foliage to Concord, in growth, health, hardiness of vine, and every other respect its equal. Bunch and berry much larger. Ripens a little before Concord.

ELVIRA—White; bunch and berry medium; very compact; strong, healthy and productive; ripens before Catawba.

EMPIRE STATE—White; bunch medium, long, compact, berries medium; quality best; ripens early.

EUMELAN—Black, bunch medium, shouldered, compact; berries medium; flesh tender, rich and vinous; ripens a little before Concord.

HARTFORD—Black; bunch large, shouldered; berries large; flesh sweet, pulpy; hardy and vigorous; productive; very early.

ISABELLA—Black; bunch large, berries large; quality good; vigorous; ripens late.

IVES—Black; bunch long, medium to large; berries medium; flesh sweet, somewhat foxy; hardy and vigorous; early.

JEFFERSON—Bright red; bunch large, double-shouldered; berry medium to large; skin thick, flesh tender; sweet of the very best quality; late.

LINDLEY—(Roger's No. 9.) Red, bunch medium; not usually shouldered, berries large, flesh tender; sweet, with high aromatic flavor, of best quality; vigorous and hardy; ripens with Delaware.

MCPIKE—We have in this new wonderful black grape, great size, superior quality, hardy wood and bud, very large leathery leaves; fruit ripens same as Worden. This new grape ripens evenly and has only one and two seeds. Skin tender and pulp melting.

MARTHA—(White Concord.) Bunch medium, compact; shouldered; tender; flesh very sweet; quality good; vigorous and healthy.

MERRIMAC—(Roger's No. 19.) One of Roger's best black grapes; bunch very large; berries large; flesh sweet, tender, good.

MOORE'S EARLY—Bunch large, berry round, black, very early; ripens ten days before Hartford Prolific. With high cultivation produces a heavy crop.

MOORE'S DIAMOND—White; well known; bunch and berries large, skin thin but tough; flesh tender; hardy, productive, early; fine quality.

MOYEE—A red grape from Canada; resembles the Delaware but more vigorous in growth; early.

NIAGARA—The most popular white grape; berry and bunch very large and handsome; ripens with Concord; very vigorous and productive.

NORTON'S VIRGINIA—Black; bunch long; berry small; flesh tender, very late. One of the most reliable wine grapes.

POCKLINGTON—Golden yellow; bunch large, very compact; berries large, covered with a beautiful white bloom; sweet and juicy; large, healthy foliage; vigorous and productive.

SALEM—(Roger's No. 53.) Berry large, round, coppery red; bunch large and compact; one of the very best; hardy and productive.

VERGENNES—Dark red; bunch medium to large, berries large, firm, sweet, juicy; quality best; hardy.

WORDEN—One of the best black grapes; berry and bunch large; very productive and hardy.

WOODBUFF RED—Strong and vigorous grower; very large, handsome, hardy; unusually productive; ripens with Concord.

WYOMING RED—Best early red; double the size of Delaware; ripens a week to ten days in advance of Concord.

GARDEN ROOTS

ASPARAGUS

To succeed with Asparagus the ground should be plowed thoroughly or spaded to a depth of not less than 12 inches, and well pulverized. For garden culture the plants should be set from 12 to 15 inches apart each way, and planted from 3 to 5 inches below the level of the ground. For cultivating with horse power, the plants should be set from 12 to 18 inches apart in rows, and rows 4 feet apart. Where planting for market the number of plants to the acre, 12 inches by 4 feet, 10,890; 15 inches by 4 feet, 8,712, and 18 inches by 4 feet, 7,260.

BARE'S PHILADELPHIA MAMMOTH—Enormous in size. With good cultivation comes in earlier and twice as large as Conover's Colossal.

COLUMBIAN MAMMOTH WHITE—This is a most distinct variety. Stalks are very large, produced abundantly and very early.

CONOVER'S COLOSSAL—The well known old standard variety.

PALMETTO—Large growing, bright green, productive sort; quite early.

STARKEY'S MAMMOTH EARLY PROLIFIC—A highly valuable, new, early sort, from ten days to two weeks earlier than other varieties. The color is notably different from other sorts. Stalks are mammoth in size, tender and succulent. It is beyond question the finest, largest, earliest and most profitable Asparagus yet produced. Keeps well after being cut.

HORSE RADISH

Well known; should have a place in every garden.

RHUBARB—(Pieplant)

LINNAEUS—Very large, productive, excellent.

VICTORIA—Very large, long, great market sort.

ORNAMENTAL DEPARTMENT

HEDGE PLANTS

BERBERRY Common—Very desirable, foliage green; hardy, red berries.

BERBERRY PURPLE LEAVED—Leaves, flowers and berries purple. One of the best hardy shrubs. Makes a beautiful hedge for the lawn or garden.

BERBERRY THUNBERGII—From Japan; of dwarf graceful habit; foliage small, changing to beautiful bright red early in autumn. Very showy.

BUCKTHORN FRANGULA—This variety of the Buckthorn makes a beautiful hedge. It is perfectly hardy and an unusually rapid grower. The foliage is very striking. It can be used either for a garden or lawn hedge. It will make a hedge ten feet in height if permitted to grow that tall, or it can be kept trimmed to any desired height. It is well adapted to the north on account of its hardiness.

BUCKTHORN ENGLISH—(Rhamnus Catharticus)—A robust, hardy shrub with dark green foliage. Flowers white. Black small fruit. Makes an excellent ornamental hedge.

HONEY LOCUST—Very rapid, thorny, useful, ornamental; hardy.

LOCUST—(Black or yellow.) Of rapid growth; very valuable for timber, as well as ornamental; flowers white, very fragrant, in long racemes.

OSAGE ORANGE—Best for hedges; rapid grower and defensive.

PRIVET—Amoor. (Amuriense.) This variety is of a slender, graceful growth. Foliage lighter than the Common Privet. Retains its color remarkably well during the winter. Is hardy and makes a fine hedge.

PRIVET—California. Makes one of the most handsome hedges, has proven very hardy here.

We also have other varieties suitable for ornamental hedges, such as Syringas, Upright Honeysuckles, Lilacs, Pyrus Japonica or Quince Japan, Hydrangea P. G., Snowberry, Spireas, etc., which will be found under shrubs.

EVERGREENS

ARBOR VITAE

AMERICAN—Fine form; lightish green, flat foliage; vigorous, excellent for screens and hedges.

CHINESE OR ORIENTALIS—Beautiful, upright, vigorous; foliage light colored; has proven hardy here; a great favorite South; stands the sun well.

COMPACTA—Of dwarf, compact habit, and deep green foliage.

GLOBOSA—Of dwarf globose form, with slender branches and bright green foliage. Perfectly hardy and very desirable.

PLICATA—A handsome hardy variety; foliage plaited, massive and of a rich, dark green color.

PYRAMIDAL—Very upright, same habit as Irish Juniper; growth very dense, with rich, dark, luxuriant, green foliage. Its superior hardiness entitles it to a place in every yard or lawn.

SIBERIAN—Of slow, compact, perfectly hardy growth and beautiful form; most esteemed ornamental variety.

VEEVAENEANA—A distinct, handsome variety, foliage beautifully marked with golden spots.

BALSAM FIR

The most popular American Evergreen; form pyramidal; foliage dark, rich green above, silvery beneath; hardy.

BOX DWARF

Very beautiful with fine, light green foliage. Used principally for borders and edging, for which purpose it is the best plant in cultivation.

HEMLOCK

A very beautiful native variety. Thrives well everywhere and is exceedingly ornamental.

JUNIPER

ENGLISH—A handsome, compact, small tree.

IRISH—The most esteemed variety; growth vigorous, very upright and compact; of excellent color, and hardy.

PROSTRATE OR TRAILING—Low, creeping, vigorous and pretty.

DECIDUOUS ORNAMENTAL TREES

AILANTHUS

Commonly known as the Tree of Heaven. Very tall, fast growing tree, transplants easily.

ASH

AMERICAN WHITE—Native, well known; hardy, vigorous, upright. Ornamental and exceedingly valuable.

EXCELSIOR—European. A tree of rapid growth with spreading head. Very desirable for the lawn or street planting.

ALDER

EUROPEAN—A very rapid growing tree, height 40 to 60 feet. Foliage roundish, wedge-shaped. Especially adapted to most situations.

BEECH

PURPLE LEAVED—Most superb; striking deep foliage; usually hardy and a fine lawn tree.

BIRCH

EUROPEAN WHITE—A very graceful tree, with silvery white bark. Vigorous grower which assumes an elegant weeping habit.

BUCKEYE

A fine native tree, having pale green leaves and yellow flowers. With age the tree forms a globular head twenty to forty feet in height.

CATALPA

BUNGEI—The beautiful umbrella-shaped Catalpa. Forms a symmetrical head. Leaves large, heart shaped, and of a very dark green. Very desirable for the lawn, park and cemetery.

SPECIOSA—(The hardy Catalpa.) Highly esteemed and is being largely planted as a timber tree; and while it is thus useful, there is no more ornamental tree grown. Large heart-shaped leaves and immense clusters of tri-colored flowers.

JAPAN—(Kaempferii.) This is one of the finest lawn trees. Blooms profusely when two or three years old. Flowers sweet scented. Hardy and vigorous.

CHEERRY

WILD BLACK—Extremely hardy. Most valuable timber tree. Unusually rapid grower. Very ornamental, and when in bloom a grand sight. Flowers sweet-scented.

CRAB APPLE, DOUBLE FLOWERING

BECHTEL'S DOUBLE FLOWERING CRAB—Most beautiful of all Flowering Crabs. At a distance the pretty medium sized tree seems to be covered with dainty little roses of a delicate pink color. Very fragrant, blooms when young.

ELM

AMERICAN WHITE—Most notable and desirable shade tree; succeeds everywhere. Used largely for street planting. Rapid grower and very hardy.

ENGLISH—(Campestris.) A lofty tree of rapid growth. Leaves smaller and finer cut than the American. Bark darker colored; makes a handsome tree of noble appearance.

SCOTCH—A rapid growing, spreading tree; with large, rough, dark green leaves. Very valuable

SAVIN—Low, spreading, with dense, rich, dark green foliage; unequalled for low screens or clumps; perfectly hardy; foreign.

SWEDISH—Very handsome, upright, hardy, with beautiful light green foliage; contrasts finely with the Irish.

MAHONIA AQUAFOLIA

HOLLY—Very beautiful, shining green leaves and red berries.

FINE

AUSTRIAN OR BLACK—Truly magnificent; growth hardy and remarkably strong, with long, stiff, yellowish leaves; thrives admirably west.

SCOTCH—Immense grower and very popular; of beautiful form and color; leaves short, bright green, a most superb tree.

WHITE—Noblest American sort; very vigorous here; excellent to transplant, and of fine form and color; in breadth and massiveness only equaled by the Norway Spruce.

RED CEDAR

Well known, valuable, very vigorous, fine for screens, and bears clipping into almost any shape.

RHODODENDRON

This, wherever known, is universally acknowledged to be the most showy, magnificent, hardy Evergreen shrub that grows. Blooming in June it is a grand sight. Should have partial shade during summer, and protected with leaves and brush over winter.

SPRUCE

WHITE AMERICAN—A well known native; growth moderate, regular, beautiful; considerably like the Norway Spruce and popular.

NORWAY—Most esteemed hardy Evergreen; of vigorous and regular growth; foliage bright green, dense; superb for screens and hedges.

KOSTER'S BLUE—A rare, elegant tree with foliage of a rich blue. One of the most distinct and striking of the Spruce family. A free grower and perfectly hardy.

HACKBERRY

NETTLE TREE—A rare native tree, with elm-like habit. Very hardy and ornamental. Makes a very fine street tree and is desirable.

HORSE CHESTNUT

EUROPEAN OR WHITE-FLOWERED—Well known. Forms a handsome, large sized tree of regular outline. Hardy and free from disease. Large spikes of white flowers slightly marked with red; May. As a lawn or street tree it has no superior.

JUDAS TREE

RED BUD—A beautiful, hardy native. Should be in every collection. Flowers reddish purple, appearing before the leaves.

KENTUCKY COFFEE TREE

Hardy native. Very sparse, coarse shoots. Foliage handsome. Splendid lawn tree.

LARCH

EUROPEAN—Elegant picturesque form. Valuable for timber. Should be planted in early spring. Does well here.

LINDEN

AMERICAN—(Basswood.) Foliage large, very vigorous and ornamental. Transplants well. When in flower, is most admirable for bees.



CATALPA BUNGEI

DECIDUOUS ORNAMENTAL TREES—Continued

MAGNOLIA

ACUMINATA—Magnificent, vigorous and valuable. Foliage large; blossoms bluish. Hardy.

SOULANGEANA—Large, beautiful purple and white flowers. Thrives well here. Blooms early and profusely.

MAPLE

ASH-LEAVED—(Box Elder.) An esteemed native variety. Fine form and peculiar foliage. Vigorous and hardy.

NORWAY—A compact, handsome tree with large dark green leaves. Perfectly hardy. One of the best for shade, lawn and park.

SCHWEDLERII—A handsome variety of Norway maple; young shoots and leaves bright purplish and crimson, changing to purplish green in the older leaves. Very desirable.

SILVER LEAVED—(White or soft.) A well known timber and shade tree. Very rapid grower, hardy. Can furnish in large quantities and of many sizes.

SUGAR—(Hard.) Most valuable and beautiful native Maple; of slow growth, great hardiness and permanence.

SYCAMORE LEAVED—A fine, hardy, vigorous variety, much resembling the Norway Maple.

WIER'S CUT LEAVED—A handsome variety of the Silver Leaved type. Equally hardy and vigorous. Of drooping, graceful habit. Leaves regularly cut. We consider this one of our handsomest lawn trees.



MAPLE, ASH LEAVED

MOUNTAIN ASH

EUROPEAN—Very hardy, vigorous and handsome, with superb clusters of scarlet berries. Popular, succeeds everywhere. Beautiful fine foliage.

OAK LEAVED—A variety of the preceding with dense, beautiful head and hoary, lobed leaves; fruits early and profusely; fine.

OAK

ENGLISH ROYAL—Of spreading, slow growth. Very ornamental and desirable.

PIN—(Palustris.) Foliage dark green, finely divided. Highly ornamental. Assumes drooping habit with age. Used largely for park planting.

PAULOWNIA

IMPERIALIS—A tree of tropical appearance from Japan. Of unusually rapid growth. Leaves, twelve to fifteen inches in diameter. Flowers in large upright panicles, in May.

PEACH

DOUBLE FLOWERING—Very ornamental. Flowers double, white and pink like small roses.

PLUM

PRUNUS PISSARDI—(Purple Leaved Plum.) Very ornamental; makes a beautiful, medium sized tree, with dark purple foliage. Desirable and hardy.

POPLAR

BALM OF GILEAD—Native species; large glossy leaves and vigorous growth.

CAROLINA—Of robust growth, pyramidal in form; large glossy leaves, pale to deep green; one of the best. Is now being used largely for street planting, wind breaks and screens.

LOMBARDY—Well known; remarkable for its erect, rapid growth, often attaining a height of 100 feet. Planted largely in landscape work.

SILVER LEAVED—A tree of remarkably rapid growth and spreading habit. Leaves large glossy green above and white or silvery beneath. Succeeds everywhere.

SALISBURIA

MAIDEN HAIR OR GINKGO—A rare and beautiful tree with fern-like foliage; tree medium size and rapid growth; desirable for lawn planting.

SYCAMORE

AMERICAN—(Buttonwood.) Large, well-formed, fast growing tree, bearing profusion of curiously pendant balls; excellent shade and street tree.

JAPAN—(Oriental Plane.) A lofty, wide-spreading tree; heart shaped leaves. Valuable for its handsome foliage and free growth, often attaining a height of 100 feet.

TULIP TREE

WHITEWOOD—Superb and valuable native tree of the Magnolia family; growth very rapid, with glossy foliage and tulip-like flowers succeeds admirably here. The timber is much used in cabinet work; has no superior as a shade or lawn tree. Have a fine stock of them.

THORNS

PAUL'S DOUBLE SCARLET—Very beautiful; flowers of a bright scarlet red. The best of its color.

DOUBLE WHITE—Very ornamental on account of both foliage and flowers; flowers small double white.

WILLOW

GOLD BARK—Rapid, stately growth, showy golden bark; ornamental, hardy, valuable.

LAUREL LEAVED—Large, shining leaves, resembling the Laurel; very beautiful tree.

ROSEMARY—A very distinct and ornamental tree, with long, glossy silvery foliage. Makes a beautiful tree for the lawn. Of medium size.

TRIANDRA—One of the very largest, most vigorous and hardy Willows. Foliage long, dark and glossy.

WHITE OR GRAY—Tall, hardy, vigorous grower; unsurpassed for wind breaks.



MAPLE, WIER'S CUT LEAVED

WEeping TREES

ASH

EUROPEAN WEEPING—Well known; rapid growing; one of the finest for lawns.

BIRCH

CUT LEAVED WEEPING—Erect, stately, rapid, hardy, with long, fine pendant branches and delicately cut leaves; the trunk very white; no tree more elegant for the lawn or yard. Undoubtedly the most popular of all weeping trees.

CHERRY

WEEPING—Very ornamental; makes a small round headed tree with very slender, drooping branches.

ELM

CAMPERDOWN—A Scotch variety; grafted five or six feet high, it forms a very umbrella-like head; large shiny leaves. Very fine.

LINDEN

WEEPING—White leaved. A distinct variety; grafted five or six feet high; magnificent large leaves, silver white below and dark green above; branches drooping, stout and heavy.

MOUNTAIN ASH

WEEPING—A strong growing and remarkably pendant; very striking with its handsome foliage and red berries. Hardy.

MULBERRY

TEAS' WEEPING—A variety of the well known Russian Mulberry. Forms a perfect umbrella-shaped head, with long, slender branches which droop to the ground, parallel with the stem. Very beautiful and hardy.

WILLOW

COMMON WEEPING—Our common, well known Weeping Willow. Always beautiful but sometimes not hardy.

KILMARNOCK WEEPING—Superb variety; hardy, vigorous, with a very regular, graceful pendant habit.

WILLOW—Continued

NEW AMERICAN—Slender, vigorous, hardy, very ornamental.

ROSEMARY—Forms a very handsome, striking, round headed small tree, with slender branches and silvery foliage.

WISCONSIN WEEPING—A large tree with long, drooping branches, similar to the Common Weeping, but much hardier.



TEAS WEEPING MULBERRY

ORNAMENTAL SHRUBS

ALMOND

DOUBLE FLOWERING—Dwarf, pink; flowers like small roses; very double; early; profuse.

DOUBLE FLOWERING—Dwarf, white; robust, hardy; flowers equally as profuse as the above. Exceedingly beautiful.

ALTHEA

ROSE OF SHARON—Esteemed for summer and autumn flowers. We have a select assortment of the best named varieties, double and single, some twenty sorts, including the following choice varieties:

- Ardens—Double, violet-rose.
 - Boule de Feu—Very Double, bright red, late bloomer.
 - De la Reine—Semi-double white.
 - Duc de Brabant—Very double dark red.
 - Fastuosus—Semi-double, rose-white.
 - Jeanne de Arc—Double white.
 - Lady Stanley—Large, semi-double rosy-white.
 - Pompon Rouge—Very double, purplish-red.
 - Pulcherrimus—Large, double, rosy-white.
 - Speciosus—Double, flesh-white.
 - Totus Albus—Single, pure white.
- We have them in Tree as well as Bush form.

VARIEGATED LEAVED—A very handsome variety with foliage finely marked with light yellow. Flowers double purple.

BERBERRY

RED-FRUITED—(Common.) Very hardy; growth dense; has nice little flowers, and becomes most profusely covered with tart, red berries all winter.



BERBERRY THUNBERGII

BERBERRY—Continued

PURPLE-LEAVED—Leaves, flowers and berries purple. One of the very best hardy shrubs. Makes a beautiful clump.

THUNBERGII—A very pretty variety from Japan; of dwarf, graceful habit; foliage small, changing to beautiful bright red early in fall; very showy.

CALYCANTHUS

CAROLINA ALLSPICE—Sweet scented shrub. Wood and flowers deliciously fragrant; hardy; very popular; flowers double, purple.

CHIONANTHUS

WHITE FRINGE—A very showy shrub, with large glossy foliage, and delicate, fringe-like white flowers in drooping racemes. May and June.

CORNUS—Dogwood

SANGUINEA—White leaves and red branches. Very striking in winter on account of its dark crimson bark.

MASCULA—(Cornelian Cherry.) A large bushy growing shrub, with a mass of bright yellow flowers in early spring.

FLOEIDA—White. Hardy small tree, beautiful; profuse, large white flowers in May. Exceedingly ornamental.

SIBERICA—A remarkable variety; very choice. Bark bright red in winter.

CUBERANT

FRAGRANT MISSOURI—Profuse, early, yellow, fragrant, hardy.

FLOEROSEA—Double flowering, pink; very beautiful; early.

DAPHNE

MEZEREON—A small, erect shrub; the earliest flowering shrub; pink, in clusters.

DESMODIUM

PENDULIFLORUM—From Japan. Makes a beautiful shrub with drooping branches, covered with numerous pea-shaped purple flowers. From August to frost.

DEUTZIA

CANDIDISSIMA—Double white flowering; very profuse.

CRENATA LEAVED—Profuse white flowers in May; fine and unusually hardy.

GRACILIS—Beautiful dwarf; flowers pure white. Fine for pot culture; blooms freely at a low temperature in winter.

GRACILIS MARGINATA AUREA—Same as the preceding except in foliage, which is streaked golden color.

PRIDE OF ROCHESTER—Large, double white flowers, slightly tinted rose; very popular.

WATERERII—Probably the most popular of all Deutzias. Flowers pure white, extra large, and flower spikes especially long.

ORNAMENTAL SHRUBS—Continued

EUONYMUS

STRAWBERRY TREE—Foliage handsome; fine crimson fruit in autumn.

ELDER

GOLDEN LEAVED—A striking variety with golden yellow foliage.

CUT LEAVED—A single variety with very finely cut leaves.

DOUBLE FLOWERED—A very beautiful shrub with double flowers.

ELEAGNUS

LONGIPES—A vigorous shrub only a few feet in height, producing fruit half an inch long, of a bright red color. Very ornamental.



ELEAGNUS—Longipes

FORSYTHIA—GOLDEN BELL

VIRIDIS—Deep green, very early, yellow flowering.

SUSPENS A—Large, rather lighter yellow bloom, very hardy, very profuse, extra fine.

FORTUNEI—A strong upright grower; very distinct foliage; flowers bright yellow.

HONEYSUCKLE

An upright, most admirable shrub of fine form; of vigorous growth, perfectly hardy, with profuse flowers, followed by different colored berries; varieties, Tartarian, pink and white; Alberti, violet colored flowers; Grandiflora, bright red.



TARTARIAN HONEYSUCKLE—IN FRUIT

HYDRANGEA

ARBORESCENS GRANDIFLORA ALBA—The Latest Novelty. This beautiful hardy American shrub is the finest addition to this class of plants found in many years. The blooms are very large, of pure snow-white color, resembling a little the hardy shrub so well known, the Snowball, in color and make-up, only they are much larger in size and much more striking. One of its most valuable features is its coming into bloom just after the passing of all the early spring shrubs, while its long season of bloom, from early June through August, renders it a valuable plant to the owner of every garden. It is perfectly hardy, standing twenty degrees below zero.

PANICULATA GRANDIFLORA—Too well known to require description. Probably the most popular of all shrubs. Blooms in August and September. Flowers white, borne in pyramidal panicles often a foot in length. We also have them in tree form.



HYDRANGEA ARBORESCENS

KOELREUTERIA

PANICULATA—A small round-headed tree; handsome foliage and large panicles of showy yellow flowers in July.

LILAC

ALFONSE LAVALLE—Double-flowering bluish lilac.

BELLE de NANCY—Pink with white center, double.

CHAS. JOLY—Dark purplish red, one of the darkest.

CHARLES TEE TENTH—A strong growing variety, with large, shining leaves; trusses large, reddish purple.

CONGO—Flowers large, wine red.

CONDORCET—Blue.

EMILE LEMOINE—Very large; globular form, rosy lilac.

FRANCISQUE MOREL—Large; center bluish rose.

GRAND DUC CONSTANTINE—Compact; lilac color.

JOSIKAE—Fine distinct species. Thick leaves, purple flowers in June; much later than common lilacs.

LA MARCK—Panicles large. Individual flowers large, double. Color rosy lilac. Superb.

LEMOINE—Lilac pink.

MADAME LEMOINE—Double pure white flowers, borne in large clusters.

MARC NICHELI—Lilac; beautiful; double.

MICHAEL BUCHNER—Dwarf; panicles erect, very large and double, color pale lilac, distinct and fine.

MONUMENT—Double. Very large. Light blue. Fine.

PERSIAN PURPLE—Flowers bright purple; foliage small; very desirable.

PERSIAN WHITE—Delicate white fragrant flowers. A superb variety.

PRESIDENT CARNOT—Double. Flowers pretty lilac tinted. Marked in center with white.

PRES. GREVY—Beautiful blue. Individual flowers double and large. The panicles magnificent and very large. One of the finest lilacs.

PURPLE—A standard variety; always good; profuse bloomer.

VILLOSA—From Japan. Large branching panicles. Flowers light purple in bud, white when open. Late, fragrant, handsome, very large.

WHITE—A well known white lilac, flowers slightly cream-colored.

WM. ROBINSON—Violet, double.

ORNAMENTAL SHRUBS—Continued

PURPLE FRINGE

SMOKE TREE—A beautiful shrub, much admired for its long feathery flower-stalks, which give it the appearance of being covered with a cloud of smoke. Hardy, very ornamental. July.

PLUM

PRUNUS TRILOBA—Splendid, flowers very early; beautiful, nearly full double, delicate pink; foliage like the plum; very desirable.

QUINCE

JAPAN SCARLET—Among our choicest shrubs; its brilliant flowers are among the first in spring, and they appear in great profusion, covering the entire bush, before the leaves are developed.

RHODOTYPUS

KERRIODES—Handsome foliage and single white flowers in May, followed by a small fruit. Very ornamental.



DEUTZIA PRIDE OF ROCHESTER

SNOWBERRY

WAX BERRY—White flowers and neat, small berries, white and wax-like, produced profusely all summer.

RED FRUITED (Dwarf)—Sometimes called Indian Currant. A very pretty shrub, pendulous. Fruit and flowers small.

SNOWBALL

COMMON—A magnificent old favorite, tall growing shrub with very showy, pure white flowers produced in large balls. No lawn or yard complete without it.

JAPAN—Handsome foliage. Globe shaped heads of pure white flowers, early in June. It surpasses the common variety in many respects. Very desirable.

SPIREA

AUREA—Golden Leaved, flowers tinted, very conspicuous, strong grower and distinct. June.

ANTHONY WATERER—New, dwarf, very beautiful. Flowers dark crimson, perpetual bloomer; very profuse.

BILLARDI—Rose colored, in long succession.

COLOSA ALBA—Dwarf, white.

OPULIFOLIA—A strong, growing variety, perfectly hardy; very striking. Flowers white. Suitable for single specimens or for hedge purposes.

PRUNIFOLIA—Flowers pure white like daisies. May; remains in flower a long time; very desirable.



SPIREA VA HOUTTEI

SPIREA—Continued

REEVESII—A charming shrub with narrow pointed leaves and large, round clusters of white flowers that cover the whole plant. June.

SEMPERFLORENS—Flowers red; a continuous bloomer; habit dwarf.

THUNBERGII—New, dwarf, white, flowering early in spring; very graceful habit.

VAN HOUTTEI—The most beautiful of all Spireas; immense bloomer. Pure snow white flowers; early; hardy; makes a beautiful hedge.

SYRINGA OR MOCK ORANGE

AUREA—A very handsome shrub, golden yellow foliage; very desirable.

COBONARIUS—Produces white very sweet-scented flowers, in profusion; very pretty.

DOUBLE WHITE—(Flora Plena.) Partially double, very fragrant flowers.

DIANTHIFLORUS—A handsome dwarf variety; double cream colored flowers.

GERBE DE NIEGE—A vastly improved variety, very large, sweetly fragrant flowers.

GRANDIFLOEA—Large, pure white flowers, later than others.

LEMOINEI—Very distinct; flowers creamy white, very fragrant and produced from the ground to the tips of the branches; very fine.



SYRINGA OR MOCK ORANGE

TAMARIX

A beautiful shrub with small leaves somewhat like the Juniper. A delicate small flower in spikes; June to August; rapid grower. In three different shades of foliage. **AFRICANA**, **JAPONICA PLUMOSA** and **INDICA**. Beautiful as single specimens or grouping.

TREE PAEONIA

MOUTAN—A remarkably handsome shrub. The flowers, which appear in May, are very large and numerous and of various brilliant colors, often measuring six to nine inches across. With proper care the plant has been known to attain a height of six to eight feet. Succeeds best with slight protection over winter.

TREE CRANBERRY

HIGH BUSH—Bears profuse clusters of beautiful berries; hardy and very ornamental.

WEIGELIAS

Beautiful shrubs that bloom in June and July; well known. The flowers are produced in great profusion, as almost entirely to hide the foliage. They are very desirable for the border or for grouping, and as specimen plants for the lawn. **ALBA**, white; **CANDIDA**, white; **FLORABUNDA**, rosy pink; **GROENE-WEGENII**, dark rose; **HORTENSIS**, deep red; **ROSEA**, rose colored, well known; **STELZNERII**, deep red; **VARIEGATED LEAVED**, flowers nearly white; **GEGANT**, white with pink center; **FRES. DUCHARTRE**, dark red; **MAD. BILLARD**, rose colored; **VERSCHAFFELTI**, rose colored, similar to Rosea; **EVA RATHKE**, new, flowers brilliant crimson, a continuous bloomer, a very distinct variety and valuable.

YUCCA FILAMENTOSA

SPANISH BAYONET—With its stout, lance-shaped foliage, and stems rising some four or five feet, forming a pyramid of branching panicles of large, drooping, cream-white flowers; it certainly presents a grand appearance and is truly handsome. Fine for borders or in clumps.

HARDY VINES AND CREEPERS

AKEBIA QUINATA

Hardy, climbing shrub, with fine foliage and dark purple flowers.

AMPELOPSIS

VIRGINIA CREEPER—Or American Ivy, vigorous, beautiful, an extra fine stock, Japan or well known.

VEITCHII—(Boston Ivy.) Hardy, clinging to the smoothest surface; colors finely in autumn to a bright red; most beautiful climber.

ARISTOLOCHIA SIPHO

DUTCHMAN'S PIPE—A very handsome climber of rapid growth, with light green foliage and curious pipe-shaped yellowish-brown flowers.

BIGNONIA

RADICAN'S GRANDIFLORA—(Trumpet Creeper.) Foliage handsome, flowers large scarlet; hardy; August.

CELASTROUS

BITTER SWEET—Vigorous, with yellow flowers and orange colored berries; hardy.

CLEMATIS

All hardy. Home grown. On own roots. An unusually fine stock.

DUCHESS OF EDINBURGH—Double white, of vigorous habit, free bloomer, very fragrant.

FLAMULA—Sweet scented. Produces large clusters of small white flowers. Most fragrant of all clematis.

HENRYII—New, and one of the best perpetual hybrids; of robust habit and very free bloomer. The flowers are large, white and very showy.

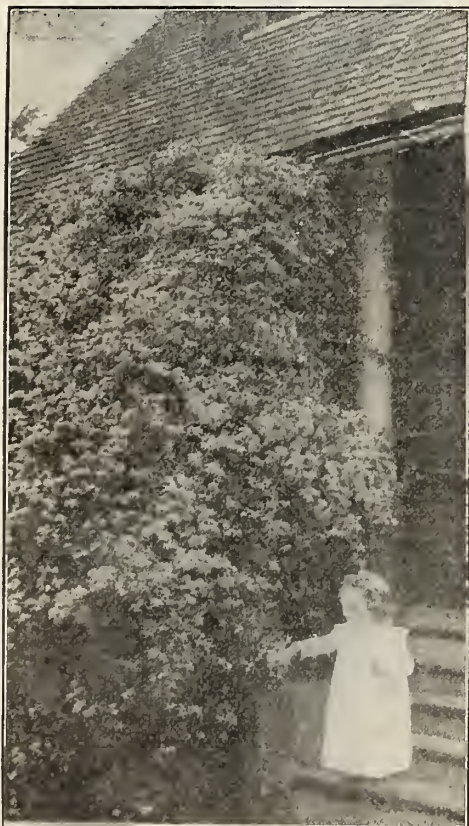
JACKMANII—Deep violet purple, flowers produced in masses; one of the best, especially for bedding.

JACKMANII ALBA—Without exception this is the best hardy climbing plant that has been sent out for many years. It has all the characteristics of the Jackmanii, being free blooming and as vigorous. The flowers are nearly pure white, and make a fine contrast when planted near Jackmanii. It has been tested for years and has always won favor wherever grown. Strong plants.

MADAM BARON VELLARD—The flowers are a satiny lavender pink. Very distinct.

MADAM EDOUARD ANDRE—A new French variety, entirely distinct and most novel. The nearest approach to a bright red yet produced. The plant is a strong, vigorous grower, being a hybrid of the popular Jackmanii variety, which it resembles in freedom of bloom, strong, vigorous growth, shape and size of flowers.

PANICULATA—A strong, vigorous grower, very free flowering, pure white, unusually fragrant.



CLEMATIS PANICULATA

CLEMATIS—Continued

RAMONA—A strong, rampant grower and very hardy. Free and perpetual bloomer; flowers large; color, a deep sky blue.

STAR OF INDIA—A very showy, free flowering sort, with large flowers, first of a reddish plum color, changing to a violet purple, with turkey red bar in the center of each flower leaf. A distinct variety of great merit. July to October.

VIRGIN'S BOWER—Common white flowering.

VITICELLA—Common purple.



CLEMATIS JACKMANII

EUONYMUS RADICANS

A hardy evergreen vine with small leaves of a rich lustrous green. Unsurpassed for covering stone or brick walls.

HONEYSUCKLE

ALBERTI—Bell-shaped violet colored flowers; leaves narrow. Hardy. Somewhat creeping.

FRAGRANT MONTHLY—(Belgica.) Blooms all summer; delightful fragrant, buff and pink.

HALLEYANA—Evergreen; of the greatest value, being hardy, strong and vigorous, with pure white, fragrant flowers changing to yellow.

JAPAN GOLD LEAVED—(Aurea Reticulata.) Variegated leaves, yellow, purple and green; flowers white, shaded yellow, and very fragrant; hardy.

SCARLET TRUMPET—One of the handsomest in cultivation; coral flowers; very vigorous and hardy; blooming all summer.

MATRIMONY VINE

(CHINESE.)—A vigorous climber, branching freely and covered with bright purple, star-shaped flowers, succeeded by brilliant scarlet berries almost an inch long; the contrast between the glossy, dark green foliage and shining scarlet fruit being exceedingly beautiful.

PERIFLOCA GRAECA

SILK VINE—A rapid growing beautiful climber, with dark glossy leaves and curious brown flowers; hardy.

WISTARIA

GLYCINE—(American.) One of the finest climbers, of rapid growth and perfectly hardy, with long, pendulous clusters of bluish purple flowers in June.

FRUTESCENS—Flowers pale blue, in short bunches. A fine free bloomer; hardy.

SINENSIS—(Chinese.) Hardy, rapid grower. Flowers in long pendulous clusters; pale blue. May and June and in autumn.

SINENSIS ALBA—(Chinese double white.) Pure white; borne in long drooping clusters. Very beautiful.

ROSES

We make the growing of roses a specialty. Our list of varieties has been carefully selected so as to include only the very best. We are constantly buying the newer varieties, and after giving them a fair trial, discard such as are not found worthy of cultivation and distinct character.

OUR ROSES are all our own growing either on their own roots from cuttings or layers or budded.

HYBRID PERPETUAL ROSES

2 YEARS, DORMANT, FIELD GROWN, STRONG PLANTS



MRS. JOHN LAING ROSE

- | | |
|---|--|
| Alfred Colomb, bright carmine. | Madam Charles Wood, bright fiery scarlet, changing to rosy crimson. One of the best. |
| Anna de Diesbach, brilliant crimson. | Madam Masson, dark red. |
| Barron de Bonstettin, large, very double, rich, dark velvety red. | Madam Alfred Carriere, white. |
| Caroline de Sansal, pale flesh. | Magna Charta, large, pink. |
| Coquette des Alps, white. | Marshall P. Wilder, bright cherry red carmine. |
| Earl of Dufferin, rich velvety crimson. | Madam Plantier, pure white. |
| Enfant Mt. Carmel, dark blush. | Mrs. John Laing, soft pink. |
| Fisher Holmes, rich crimson, shaded scarlet, large and free. | Mad. Gabriel Luizet, pink, large. |
| Francois Levet, cherry red. | Paul Neyron, large, pink. |
| Frau Karl Druschki, The White American Beauty. | Prince Camille de Rohan, deep velvety crimson. |
| Gen. Jacqueminot, deep cherry red. | Reine Marie Henrietta, rosy pink. |
| Gruss au Teplitz, bright scarlet crimson, free bloomer, superb. | Robert Duncan, bright rose, large, full, well formed. |
| John Keynes, rosy scarlet, full and double. | Ulrich Brunner, cherry red; good size and form. |
| La Reine, clear, rose pink. | Victor Verdier, bright rose, with carmine center, very free. |

CLIMBING ROSES

DORMANT, 2 YEARS, FIELD GROWN

Anna Maria, rosy pink. Baltimore Belle, blush, becoming white. Pride of Washington, red and crimson; very desirable. Prairie Queen, rosy, in clusters. Russel's Cottage, pale red. Seven Sisters, crimson, changing all shades to white.

CLIMBING CLOTHILDE SOUPERT—The best known and most popular Polyantha. It is as free-blooming as a rose can be, commencing to bloom when but three or four inches high, and is never after without bloom. The full double flowers are produced in sprays of three or more. The outer petals are pearl white, shading to a center of rosy pink.

MISCELLANEOUS HARDY ROSES

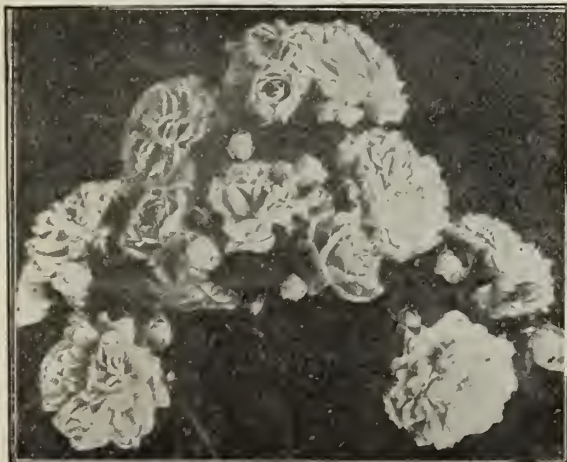
ROSA RUGOSA RUBRA—Foliage shiny bright green, flowers deep rose, produced in clusters. Beautiful bright red berries in autumn.

ROSA RUGOSA ALBA—Similar to above in habit of growth, freedom of bloom and form of flower. Pure white.

WICHURIANA—It readily adapts itself to any soil, and will do well under any conditions. The pure white single flowers appear in greatest profusion during the month of July, after the June Roses are past, while its almost evergreen foliage makes it very desirable at all seasons of the year.

AMERICAN BEAUTY—The most popular of all American roses, large, deep pink, shaded carmine.

DOROTHY PERKINS—This sort was originated from seed of the Japanese variety, Rosa Wichuriana, and hybridized with Mme. Gabriel Luizet. The qualities of both parents are combined to a remarkable degree in the hybrid, which was one of a lot of two hundred seedlings hybridized in the same manner. Very hardy, having withstood 20 below zero and not injured in the least. The flowers are large for this class rose, are borne in clusters of from ten to thirty, and are very double and sweet scented. The buds are remarkably pretty, being pointed. The color is a most beautiful clear, shell-pink and holds a long time without fading. A strong grower; single shoots making from ten to twelve feet in one season; in habit of growth it very much resembles the Crimson Rambler. The foliage is of a thick, leathery texture. An excellent stock for this season.



DOROTHY PERKINS ROSE

MOSS ROSES—Own roots

DORMANT 2 YEARS

- | | |
|-------------------------------------|------------------------------------|
| Blanche Moreau, pure white. | Princess Adelaide, blush. |
| Countess de Murinais, pure white. | Perpetual White, beautiful white. |
| Crested, blush pink. | Raphael, light blush. |
| Luxembourg, bright crimson scarlet. | Red Moss, delightful shade of red. |
| | Salet, fine pink. |

BABY RAMBLER—Crimson

THE EVER BLOOMING DWARF ROSE

The greatest bedding and house rose in existence. It blooms every day of the year in the house. Out of doors from May until November.

The plants are very vigorous, grow to a height of about 24 inches.

The foliage is dark, glossy, profuse and remarkably free from insects and fungus.

The flowers are borne in clusters, 20, 30 and 40 flowers to a cluster. They are in every way just like those of the Climbing Crimson Rambler and are produced perpetually.

It is certainly a fine Rose for indoors, and for bedding and massing in private grounds, parks, cemeteries, etc.

BABY DOROTHY—New Pink Baby Rambler. (Maman Levassieur.) This new pink Baby Rambler is the latest introduction of the well known introducers of the now famous Crimson Baby Rambler. It is similar in all respects to that variety, except the flowers are a clear, brilliant pink, and very freely produced, and while it is only a short time since its introduction, it has already become extremely popular for bedding purposes, and for pot plants.

WHITE BABY RAMBLER—A hardy Rambler Rose of the popular dwarf type. The flowers are delicately tinted, and borne in full clusters. It is perfectly double, and blooms with the unceasing freedom of the red and pinks of the Baby Rambler class. Very desirable and popular.

TREE ROSES

Budded 4 to 5 feet high, and consist mostly of the Hybrid Perpetual varieties and Crimson Rambler. Very beautiful when in bloom.

RAMBLER ROSE--LADY GAY

This new variety, a seedling from the popular Crimson Rambler, which it closely resembles in habit of growth and general effect, is destined to become one of the most popular Easter plants, for which purpose it is especially adapted on account of its delicately tinted flowers, which are of a delicate cherry-pink, which gradually changes to a soft-tinted white. The plant is a strong, vigorous grower, with profuse, glossy, deep green foliage.

ROSES—Continued

RAMBLER ROSES

CRIMSON RAMBLER—A grand rose from Japan. The plant is of very vigorous growth, making shoots of from 6 to 10 feet during the season, rendering it a charming pillar-rose. It is also magnificent in bush form. The flowers are of a glowing crimson, and are produced in great pyramidal panicles or trusses, each carrying from 30 to 40 blooms, the individual flowers measuring about 1 to 1 1/2 inches in diameter, and remain perfect on the plant for upwards of two weeks. The foliage is bright green and glossy and perfectly healthy. We find this rose perfectly hardy here. We have an unusually fine stock of well grown plants for this season.

PINK RAMBLER—Resembles Crimson Rambler in every respect but color, which in this is clear pink. One of the most attractive of the set. The mature flowers often change to creamy white when fully matured.

WHITE RAMBLER—A worthy companion plant for Crimson Rambler. It is similar in habit of growth and form of flowers, perfectly hardy, and flowers in good sized clusters. The pearly white flowers contrast nicely with those of Crimson Rambler, and make a beautiful display when planted with it. Its flowers are quite fragrant and last for a long time after being cut.

YELLOW RAMBLER—(Aglala.) This rose is, we are confident, an even more valuable introduction than the Crimson Rambler, for it is the hardiest yellow climbing rose yet introduced, and quality of hardiness has been an extremely difficult one to combine with yellow color. We believe that with very slight protection, it can be grown everywhere that other roses succeed. Yellow Rambler is a blood relation to the Crimson Rambler, which it much resembles in growth and foliage. It also blooms after the same manner as Crimson Ram-

We fully recommend pot-grown Monthly and Hybrid Tea Roses for spring planting. They are easier to transplant than larger dormant plants and especially for late planting. The pot plants we ship with ball of earth attached to roots, and they do not feel the shock of transplanting like dormant plants and start to grow at once and bloom all season.

HYBRID TEA AND MONTHLY—From 4 inch pots, including Teas, China, Noisette and Bourbon.

Bride, pure white.
Bridesmaid, beautiful pink.
Champion of the World, fine deep rose.
Clothilde Soupert, pinkish amber.
Duches de Brabant, clear pink.

Etoile de Lyon, clear yellow.
Golden Gate, white shade pink.
Gruss Au Teplitz, dark velvety red.
Helen Gould, the finest red.
Hermosa, light pink.
Kaiserin Augusta Victoria, pure white, center yellow.

La France, silvery rose.
Maman Cochet, the grandest pink.
Marchal Neil, golden yellow.
Mrs. DeGraw, deep pink.
Papa Gontier, cherry red.
President Carnot, beautiful flesh color.

Perle des Jardin, clear deep yellow.
Queen's Scarlet, scarlet.
Souv. de Malmaison, creamy flesh.
Sunset, coppery yellow.

HARDY HERBACEOUS FLOWERING PLANTS

The following assortment embraces the most desirable kinds and varieties, and is in great demand for permanent planting. They are all showy, beautiful plants, of easy cultivation, and flower at different periods, so that a succession of bloom will be obtained, from early in summer until after frosts in the fall. They do not have to be taken up in the fall, or replaced every spring, but remain in the ground for years. To obtain the best results they should be cultivated the same as other plants.

ANEMONE JAPONICA ALBA—A distinct and beautiful variety. Flowers 2 1/2 inches in diameter; pure white; center golden. Very profuse. September to November.

ANEMONE WHIRLWIND—A semi-double form of Anemone Japonica Alba, which is supposed to be a cross between this beautiful variety and a Japonica Rosea. In general style and habit it is identical with the white Anemone. It is of the same strong habit of growth, and is even more free-flowering than the original type. The flowers, which are 2 1/4 to 3 inches across, have several rows of pure white sepals, and the advantage of lasting much longer than the single varieties.

ACHILLEA—The Pearl. One of the very best white flowering border plants; fine for summer cut flowers.

ASCLEPIAS—Tuberosa. Butterfly flower, brilliant orange red.

ASTER, TARTARICA—One of the most showy of the Aster family. Makes strong clumps of bright green, out of which reaches its tall stems of bright purple flowers. Very satisfactory for the hardy border. We also have the white and yellow varieties.

AQUILEGIA—Columbine. Chrysantha, yellow and Bi-color plena, double. Popular hardy perennials that bloom very early during spring and summer.

BOCCONIA CORDATA—Beautiful in foliage and flower, and admirably adapted for planting in the shrubby borders, center of beds, and in bold groups in almost any position.

BOLTONIA ASTEROIDES—Showy plants growing 4 to 5 feet high, with broad heads of white. Aster-like flowers. Blooms throughout the season.

CINNAMON VINE—Climbing, very handsome, rapid grower. Strong roots.

CHEYSANTHEMUMS, Hardy—The queen of Fall flowers. Pompon varieties—Anglique, magnificent yellow; Aileen, deep lilac pink; Nita, beautiful rose pink; Princess Louise, bright red, excellent; Viola, very beautiful dark red. These varieties are very profuse bloomers.

CAMPANULA—Beautiful, large, bell-shaped flowers; effective plants for the border. Blue and white.

COREOPSIS GRANDIFLORA—A hardy perennial that should be planted in every garden. The flowers are a clear bright yellow, very attractive. A profuse bloomer and perfectly hardy. Thrives in almost any situation. Invaluable for summer cut flowers.

DELPHINIUM—Formosum—Blue Larkspur. They are about the only blue hardy flower of any note, and have a long season of blooming.

DELPHINIUM—Pumillum Album, Dwarf, white.
DIELYTRA SPECTABILIS—Bleeding Heart. One of the most beautiful hardy border plants. Flowers heart-shaped, rose colored. Perfectly hardy.

bler, in large trusses. The flowers are very sweetly fragrant and last three to four weeks without fading.



GENERAL JACQUEMINOT ROSE



COREOPSIS GRANDIFLORA

HARDY HERBACEOUS FLOWERING PLANTS—Continued

EULALIA—*Gracillima Unlvitata*. Narrow green leaves with a silvery white midrib.

FUNKIA—Day Lily. Very desirable border plant, especially for damp, shady places. White, blue and variegated.

GAILLARDIA, GRANDIFLORA—This is considered one of the most beautiful and desirable plants in cultivation, beginning to bloom in June; they continue one mass of bloom the entire season. Base of petals are scarlet crimson, bordered golden yellow. A most beautiful combination.

GYPSOPHYLA PANICULATA—(Baby's Breath)—A beautiful old-fashioned plant, possessing a grace not found in any other perennial, and attracting the eye of everyone. When in bloom during August and September, it forms a symmetrical mass 2 to 3 feet high, and as much through, of minute pure white flowers, forming a beautiful gauze-like appearance. For cutting purposes it is exquisite, especially in combination with high-colored flowers, and some most lovely effects can be produced with it.

HARDY GARDEN PINKS—See *Dianthus*.

HELIANTHUS—Multiflorus. Double, dwarf, Sunflower; dark golden yellow color; grows from 2 to 5 feet in height. Never fails to flower the first season of planting. One of the hardiest and best herbaceous plants.

HELIANTHUS—Maximillian. An elegant specie; the latest bloomer of its class, as well as one of the latest of all flowers. Clear yellow, from 3 to 5 inches across, with several rows of petals; center full. Handsome in bud and flower. Height, 8 feet.

HELIOPSIS—Pitcheriana. Very valuable for cut flowers; resembling Sunflowers, but covering a longer season of bloom and earliest in summer. A new form with dwarfer habit, giving a succession of deep orange yellow flowers from June to October.

HEUCHERA—Sanguinea. Alum Root. One of the very few red flowering, hardy perennials. Flowers in graceful spikes; very profuse.

HEUCHERA—Sanguinea. Alba, white flowering; splendid for cut flowers.

HEMEROCALLIS—The Orange Daily Lily.

HOLLYHOCK—These handsome, showy plants are at present great favorites. Their unique growth gives them a welcome everywhere. For planting in rows or groups on lawn, or interspersing among shrubs, they are invaluable. The flowers are large, handsome in form and of lively shades, white, salmon, yellow, crimson and pink.

HIBISCUS—Moscheutos. Flowers 6 inches in diameter; of a light rosy red color with darker eye.

HIBISCUS—Crimson Eye. The stems and wood are deep red, and foliage is beautifully veined. Flowers immense. Color a clear snow white, with a brilliant crimson eye.

HIBISCUS—Militaris. Tall growing. Delicate pink—deeper center.

IBIS—These magnificent perennials are among the most beautiful of our summer flowering plants. They commence blooming about the middle of June and continue in bloom for weeks. Our collection consists of many of the choicest kinds, in all colors, as follows:

IBIS JAPAN—Kaempferi. Named varieties.

IBIS GERMAN—Named varieties.



IBIS GERMAN.

LIATRIS—Spicata. Blazing Star. Deep purple flowers; June to August.

LYCHNIS—Haageana. Broad heads of showy flowers, varying from orange red to richest crimson.

LOBELIA—Cardinalis. Cardinal Flower. Long spikes of beautifully formed, deep, fiery, cardinal flowers; very effective.

PLATYCODON GRANDIFLOREM—Blooms constantly from July until late in September; flowers large, bell-shaped, of a deep shade of blue. An extremely rapid growing plant; will do well in any ordinary garden soil. Perfectly hardy, making a dense branching bush 2 to 3 feet high.

POPPY ORIENTAL—Very showy with large deep scarlet flowers.

PYRETHRUM ULIGINOSUM—This is considered by many the finest autumn flowering plant we have, growing 4 feet high, and covered with a profusion of large white flowers. Resembles the Paris Daisy in form of flowers. Very useful for fall cutting; August to frost.

PYRETHRUM ROSEUM—Bushy little plants with ornamental leaves; and abundant long stemmed Daisy-like flowers in shades of rose and pink.

PHLOX

Hardy Perennial. The improvement made in this beautiful class of plants the past few years is perhaps more marked than in any other section of the Hardy Herbaceous family. Instead of the small flowers produced by the older varieties, which were almost limited in color to lilac and white, we now have gorgeous flowers combining all the various tints of rose, carmine, red, purple, white and salmon, with their distinct eyes. They require no care but dividing and resetting every second year. Their vigorous growth and freedom of bloom make them very useful plants. Perfectly hardy everywhere.

We have an excellent list of named varieties. From open ground; strong roots. See page 11.



A Border of Perennial Phlox.

RUDEBECKIA DOUBLE

"Golden Glow." A glorious new plant and one that will find a place in every garden here and abroad; of fine habit, vigorous growth, with early, continuous and immense blooming qualities. It will be found excellent also cut flower purposes, inasmuch as the stems are long, and often carry a dozen flowers furnished with most beautiful foliage. A large vase filled with these flowers is a beautiful sight.

RUDEBECKIA PURPUREA

(Giant Purple Cone Flower)—Entirely distinct from all other perennials in the peculiar formation as well as the color of the flowers, which are of large size, about 4 inches.



RUDEBECKIA (Golden Glow)

HARDY HERBACEOUS FLOWERING PLANTS—Continued

SHASTA DAISY

Probably the most popular new hardy plant, and is sure to become a favorite for cut flower purposes. This daisy is a production of Luther Burbank, and is the result of crossing our native field Daisy with a choice European variety. The flowers are borne singly on stems about 12 inches long, and are a clear, glistening white, from 3 to 4 inches in diameter. The plant blooms continually through the summer and fall, and is perfectly hardy without any protection.



SHASTA DAISY.

VINCA—Minor.

Common Periwinkle or Myrtle, well known.

VERONICA—Amethystica.

Lavender blue. Very desirable border plants.

YUCCA FILAMENTOSA

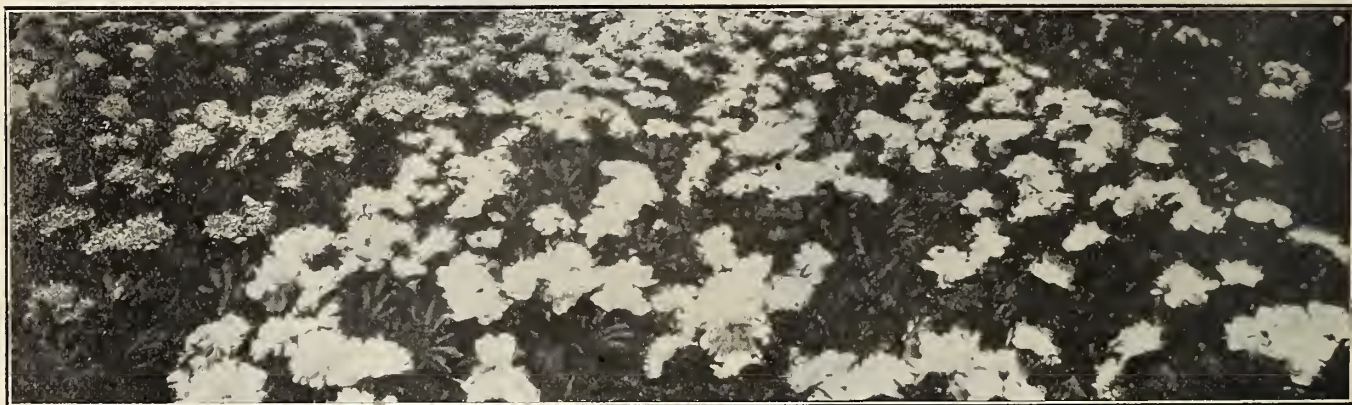
Spanish Bayonet. Four feet; June and July. Foliage evergreen and somewhat resembling the Century plant in habit of growth. The flower spikes are many branched and the flowers are borne in huge panicles above the sword-shaped foliage. Large white, waxy blooms.



YUCCA FILAMENTOSA

HERBACEOUS PAEONIES

THE GORGEOUS HERBACEOUS PAEONIA—Rivals the rose in beauty, form and exquisite coloring, and excels it in size. One of the chief points in favor of the paeonia is its hardness. In the severest climate the plants require no protection. Their vigorous habit, healthy growth, freedom from disease and insects are in favor of their cultivation. When the paeonia is once planted, all that is necessary has been done; they require no further care, and each succeeding year adds to their size and beauty. The foliage is rich and glossy, and of a beautiful deep green color, thus making the plants highly ornamental even when not in flower. The paeonia can be planted either singly, or it can be used to excellent advantage to plant as a border line between lots. A large bed makes a most magnificent appearance. The paeonia is the flower for the many, and a selection of sorts will give continuous bloom from May to July and in every shade of color from pure white to dark purplish crimson. These lovely flowers are indispensable in every garden. They not only combine stateliness of growth with gorgeous coloring, but many of the huge blossoms possess the delicious fragrance of a tea rose. We have a large stock and fine assortment including many of the newer varieties, both single and double.



A FIELD OF PAEONIES ON PHOENIX NURSERY

Achilles—Delicate flesh.
Alba Plena—Rosy white, pure white center.
Anemoneflora Plena—Guard petals deep crimson, center ligulated.
Bicolor—Pink; center yellowish white.
Delicatissimi—Deep rose, very large and fine.
De Jussieu—Light rose; center white.
Duchess de Nemours (Calot)—Very fine cup-shaped bloom, sulphur white, greenish reflex, fine bud.
Duke of Wellington—Very large, well formed, sulphur white bloom.
Edulis Superba—Clear rose, a few white petals.
Faust—Salmon pink, center grayish white.
Festiva—Pure white, a few carmine spots.
Festiva Maxima—Pure white, carmine spots, well known.
Formosa Rosea—Light Rose, center yellowish.
Fragrans—Fine Rose, very large, fragrant.
Gen. Bertrand—Rose, center salmon.

Gen. Cavaignac—Light rose; center curled.
Grandiflora Superba—Dark pink, center light rose.
Hercartiana—Salmon rose, center petals sulphury.
Humei Carnea—Clear rose.
Isabella Karlitsky—Violet rose; center creamy.
Jeanne d'Arc—Large soft pink flower, sulphur white and lively rose, center spotted carmine.
L'Elegante—Light rose bordered with creamy white.
Louis Van Houtte—Fine violet crimson flower.
Mad. Munier—Light rose; center creamy; carmine markings.
Mad. Crousse—Large bloom, pure white, fine bud.
Mad. de Verneville—Fine Anemone shaped flower, broad guard petals, center very compact, sulphury flesh white.
Mad. Emile Galle—Large cup shaped imbricated flowers, soft lilac, center shaded soft flesh and cream.

Mad. Furtado—Dark violet rose.
Mons. Krelage—Broad petals, bright currant red, amarantun center.
Marie Lemoine—Enormous bloom, sulphury white lightly shaded cham-ois.
Odorata—Deep rose, large and fragrant.
Officinalis Rubra—Red, very early.
Potsi Plena—Dark red.
Princess Mathilde—Lively, wine red.
Purpurea—Dark purplish red.
Reevesii—Large bright pink, lighter center.
Reine des Francais—Guard petals fleshy pink, center white shaded yellow; very free flowering.
Reine des Roses—Lilac rose, yellowish center.
Rosea Elegans—Soft rose and salmon yellow.
Rubens—Dark crimson red.
Triomphe de l'Exposition Universalle—Large blooms, bright cherry red, very brilliant.
Tricolor Grandiflora—Rose; center yellowish, with silvery reflex.
Victor Lemoine—Very lively crimson.

TENDER BULBS AND TUBERS

AMARYLLIS JOHNSONI.

This old favorite is almost too well known to need description. The immense trumpet-shaped flowers which measure six to eight inches across, are borne on strong fleshy flower spikes, and are a deep, rich velvety crimson, striped white.

AMARYLLIS FORMOSISSIMA.

This is a grand variety of the Amaryllis. They can be grown in soil, or water and pebbles, like the Chinese Lily. When grown in water they will bloom in from two to three weeks' time, with little care and attention, producing freely flowers of most intense deep scarlet.

CANNAS.

We offer the following choice collection of French Cannas, which we consider among the best standard sorts offered. We consider the Canna the grandest and most effective summer bedder, and constantly increasing in popularity.



SOUV. DE A. CROZY.

ALLEMANIA—Dark scarlet, border yellow. Flowers large. Foliage green. 4 to 5 feet.

BLACK BEAUTY—Broad tropical foliage of the deepest crimson bronze; the finest dark leaved canna; flowers red, 5 to 6 feet.

BURBANK—The orchid-flowered; having clear, beautiful yellow flowers. The plant is a very strong grower, 5 to 6 feet high, with leaves with a texture like rubber. Excellent for planting in shady situations. Foliage green.

CHAS. HENDERSON—The standard of excellence of all crimson Cannas. Bright crimson, with pencillings of golden yellow at center. Foliage green. About 4 feet.

CHICAGO—Clear deep vermilion with a purplish gloss; large flowers open up nearly flat; petals wide, five in number. Foliage green, 5 feet.

DISCOLOR—The strongest growing Canna; cannot be surpassed for tropical effect or massing with its very broad bronze foliage; flowers red, small; 7 feet.

DAVID HARUM—Dark bronze foliage; strong grower; one of the freest blooming cannas; large flowers with well rounded petals; bright vermilion scarlet, dotted with crimson spots. 3 to 3½ feet.

EGANDALE—One of the most popular dark leaved varieties. Foliage dark maroon, of compact habit of growth. Flowers bright cherry red, in good sized trusses. Height about 4½ feet.

EXPLORATEUR CRAMPBELL—Bright crimson, with darker markings. Foliage green.

FLORENCE VAUGHAN—Golden yellow, spotted red. Foliage green.

FLAMINGO—Finest scarlet bedder. Foliage green.

KATE GRAY—Immense flowers, five to ten inches across. Most of the flowers have five petals. The color is a rich orange scarlet, finely flaked and streaked with golden yellow tints.

KING HUMBERT—Large heart-shaped leaves of purple madder brown over bronze, the dark ribs sharply defined; crowned with immense heads of orchid-like flowers. Individual

CANNAS—Continued

petals measure two to two and one-half inches across; color, velvety orange-scarlet flecked carmine, rose tinted at margin and base. A combination of leaf and blossom incomparably beautiful.

MADAM CROZY—Vermilion scarlet, bordered yellow. Foliage green.

NIAGARA—We consider "Niagara" the best of the low-growing variegated Cannas. Great handsome trusses; broad, thick, durable petals; color, rich deep crimson with a wide irregular border of deep, golden-yellow. An excellent grower. Green foliage.

PENNSYLVANIA—"Orchid-flowered" type. It is really the only pure deep scarlet in this class of Cannas. The flowers are immense in size, often measuring 6 inches and over across, with single petals 2 to 2½ inches wide. Plant grows 5 to 6 feet high, with its bloom carried well above the handsome bright green foliage.

ROBUSTA—A very strong grower; takes its place beside Discolor; small orange flowers. 7 ft.

SOUV. DE ANTOINE CROZY—By far the brightest gilt edged Canna grown. Flowers brilliant crimson-scarlet, bordered by a broad band of golden yellow, which serves to set out the brightness of the scarlet. One of the most attractive in the entire collection. About 3½ feet.

BEGONIA TUBEROUS-ROOTED.

This showy flower has now become very popular. Beautiful foliage, larger and richer flowers, and color more intense than Geraniums. If planted outside they should have partial shade.

CALADIUM ESCULENTUM.

Or Elephant's Ears. One of the most effective plants in cultivation for planting out upon the lawn, growing five feet, with handsome leaves, often three feet long and twenty inches wide. They will grow in any good garden soil, and are of easiest cultivation. Can be stored in any warm place, in sand, during winter.

GLADIOLUS.

The most attractive of all summer-flowering bulbs are the Gladioli.

AMERICA—New, large flowers of soft pink, very attractive.

MIXED—All colors.

SEPARATE COLOR MIXTURES—White and light, scarlet and red.

PINK AND ROSE, YELLOW AND ORANGE.

STRIPED AND VARIEGATED, SCARLET WITH WHITE THROAT.

MADEIRA VINE.

This is a rapid grower, with dense and beautiful foliage. It grows anywhere. Strong bulbs.

TRITOMA.

PITZERII (Everblooming Tritoma Uvaria)—A vast improvement over the well-known Tritoma Uvaria; blooms more freely and shows less yellow. Pfitzerii is an intensely bright orange scarlet, with scarlet predominating.

TUBEROSES.

PEARL, DWARF—Pure white, very free blooming, with exquisite double flowers. The best.

DAHLIAS.

LARGE FLOWERING SHOW DAHLIAS.

A. D. LIVONI—Beautiful soft pink.

CLIFFORD W. BRUTON—The best yellow. Immense size.

GOLDEN AGE—Clear sulphur.

HECTOR—Orange red.

HENRY PATRICK—A superb pure white, borne on long stems.

KEystone—Pinkish lilac, striped crimson.

MAID OF KENT—Cherry red, tipped white.

MARY D. HALLECK—A fine quilled canary yellow.

MODESTY—Creamy white, shaded light pink. Beautiful.

MISS BROWNING—Yellow tipped white. Fine.

QUEEN OF YELLOWS—A beautiful clear yellow.

WHITE SWAN—Pearly white.

WILDFIRE MADGE—Beautiful fiery red.

ZULU—The black dahlia; jet black.



A. D. LIVONI
(About one-fifth size.)

TENDER BULBS AND TUBERS—Continued

DAHLIAS—POMPON.

These differ from the large varieties in being more dwarf in growth, with smaller flowers and added profusion of bloom.

ADMIRATION—Small red, tipped white.

CATHERINE—Bright yellow.

GOLDEN GEM—Pure yellow; small and fine.

GUIDING STAR—Pure white; a great favorite.

JULIETTE—Bright yellow, tipped vermilion.

LITTLE JULIA—Deep maroon, fine quilled.

PURE LOVE—Soft lilac.

RAPHAEL—Deep maroon.

CHOICE HARDY LILIES

AURATUM—(Gold Banded.) Justly famous as the most beautiful and fragrant of all lilies; flowers white, dotted crimson, with a clear, broad, golden band running through the center of each petal.

CANDIDUM—The old fashioned sweet scented white lily.

LONGIFLOREM—Bears clusters of beautiful snow-white, trumpet shaped flowers of rare fragrance; should be in every garden.

SPECIOSUM ALBUM—Very fragrant large flowers, pure white with a green band running through the center of each petal. One of the best.

SPECIOSUM MELPOMONE—Flowers good sized, satiny white, heavily spotted rich blood crimson. No other lily blooms more freely or is more beautifully colored.

SPECIOSUM ROSEUM—White, shaded and spotted with rose.

SPECIOSUM RUBRUM—Flowers are white, with a deep rosy or crimson band on each petal, with deeper colored spots between.

TIGRINUM—Single Tiger Lily; orange red, spotted with purple-black.

TIGRINUM SPLENDENS—Improved single Tiger Lily.

TIGRINUM FLORA PLENA—Double flowering.

LILY OF THE VALLEY—*Convallaria Majalis*. Fragrant and lasting. A bed of Lily of the Valley once planted flourishes with little attention and gives a wealth of bloom every spring.

HARDY BULBS—For Fall Planting

HYACINTHS, TULIPS, NARCISSUS, CHINESE SACRED LILY, SNOW DROPS, FREESIAS, CROCUS, ETC.
Descriptive Price List Ready in September—Mailed on Application.

GREENHOUSE AND DECORATIVE PLANTS

Where practicable, small plants will be sent by mail, cost of postage added; we shall, however, send all packages by express at purchaser's expense, unless specially ordered otherwise.

AGERATUM

Imperial Blue. An extremely free bloomer. The individual tufts are very large and dense. The color is intense blue; continuous bloomer; unequalled as a bedding plant. Height 12 to 15 inches.

AGERATUM

Little Blue Star. A new true dwarf Ageratum never attaining over six to eight inches in height. An extremely free bloomer. The individual tufts are very large and dense, and the color is an intense blue, the most beautiful ever seen in an Ageratum.

ALTERNANTHERA

Beautiful dwarf plants of compact habit, growing about 6 inches high. Adapted for edges, beds or ribbon lines. Highly ornamental. Bright yellow, red and dark colors.

ARAUCARIA

Excelsa. Norfolk Island Pine. This beautiful house plant resembles the pine somewhat in appearance, though much finer in texture.

ASPARGUS FLUMOSUS NANUS

A beautiful species of climbing habit; remarkable for the extreme delicacy of its foliage.

ASPARGUS SPRENGERI

A beautiful variety of this graceful class of plants, especially useful to grow as a pot plant, or to plant in hanging baskets, where it makes a graceful drooping plant with branches or fronds 4 to 5 feet in length, of a rich shade of green.

ASPIDISTRA LURIDA

A handsome and useful decorative plant, with heavy, dark green foliage. Will stand dry atmosphere.

ALYSSUM

These flower profusely throughout the season, thriving in flower garden, window boxes, vases, etc.

AZALEA, INDICA.

We have an extra fine lot of this well known house plant which we imported last fall from Belgium and can now furnish plants either in bud or bloom.

APOLLO—(Schulz), double, dark scarlet, early.

DEUTSCHE PEBBLE—Double, pure white, earliest.

EMPERESS OF INDIA—Double, rich rosy salmon, late.

MME. VAN DER CRUYSSSEN—Semi-double, crimson.

MME. MOREUX—Rosy pink, large white margin.

NIOBE—Double white, late.

SIMON MARDNER—Double pink, early.

VERVANEANA—Double rosy salmon, white margin, early.

BEGONIA

We have the following well-known flowering varieties. Alba Picta, Argyrostigma, Argentea Guttata, Ingrami, Parvifolia, Rubra, Sandersonia, Schmidtii, Semperflorens Alba, Semperflorens Rubra, Vernon, Weltoniensis and Rex Varieties.

CALLA AETHIOPICA or **WHITE CALLA** (Lily of the Nile)
—Valued alike for its intrinsic beauty and for its associations. The plants we offer will give the greatest satisfaction.

COLEUS—A choice selection of bedding varieties.



BEGONIA REX

CARNATIONS.

ARISTOCRAT—This is another variety of the Lawson shade. except that it is a trifle deeper in color. Makes fine, large blooms on splendid stems and is quite free in flowering.

ENCHANTRESS—Too well known to need any description except to say that in our heavy soil its beautiful daybreak color is intensified enough to make it especially pleasing.

LADY BOUNTIFUL—We have a splendid stock of this excellent white. Not quite so early as some varieties.

MRS. THOMAS W. LAWSON (Cerise Pink)—Large flower on stiff stem. One of the most productive of Carnations. Very largely grown and a popular favorite.

NELSON FISHER—Color an intense cerise bordering on scarlet; as compared with Lawson (its pollen parent) it is much deeper and more solid in color.

QUEEN—The new large flowering, snow white carnation, which bids fair to be queen of all snow white carnations yet produced. It is a clear, healthy grower, a most constant and abundant bloomer; the flowers are large, elegantly fringed and richly fragrant.

QUEEN LOUISE—This is a grand Carnation. Large, full, perfect flowers; clear snowy white; very fragrant and beautiful.

GREENHOUSE AND DECORATIVE PLANTS—Continued

CARNATIONS—Continued

ROBERT CRAIG—Color, bright vermillion scarlet, an exact match for the Holly berry; stands the sun perfectly. Color at its best with bright sun. Stems two feet long and up. Has never been beaten on the show table.

ROSE PINK ENCHANTRESS—A lovely rose-pink shade of color put on by the old favorite "Enchantress." The parent's practical, wide-awake habit of growth and trustworthy blooming qualities have always made it popular, and this new coloring but adds greatly to an already first-class reputation.

VARIEGATED LAWSON—Variegated sport of Mrs. Lawson. Has a longer stem and a better constitution than its parent. The best variegated on the market.

VICTORY (Scarlet)—A very nice habit and produces high grade flowers quite freely. One of the best standard scarlets on the market.

WHITE ENCHANTRESS—One of the best whites yet produced, of pure quality, large size and immense production. Shape and habit closely follow the parent Enchantress.

WHITE LAWSON—A pure white sport of Mrs. Lawson. An excellent variety.

WHITE PERFECTION—All that its name implies. Bloom is abundant, of large size, and immaculate whiteness.

WINSOR—Clear silvery pink, a shade intermediate between Enchantress and Lawson; larger than Lawson and of finer form; one of the best.

CHRYSANTHEMUMS.

A. J. BALFOUR—A grand Japanese. Color rose-pink; broad petals of great substance; nothing can touch it in color; a pink that is dazzling.

COL. APPLETON—The best, largest yellow up to date. Extra fine.

CROCUS—A strong growing, healthy variety, easily handled. Flowers are large, loosely incurved, with lower petals gracefully reflexing; colored a beautiful "Bonnaffon" yellow.

DR. ENGUEHARD—An excellent variety. Color, pink without any trace of purple; stem and foliage perfect; midseason.

GOLDEN WEDDING—Deep yellow, like burnished gold. Extra good.

IVORY—A gem among whites, either for cutting or for bush purposes.

JEANNIE NONIN—For Thanksgiving and later this has no rival; of the largest size, perfectly globular, finely finished pure white, a splendid keeper and shipper. Take second crown or terminal bud about Sept. 15.

JOHN K. SHAW—Very solid Japanese incurved; large in size, fine light pink, splendid stem and foliage; 3½ feet; October 15.

MAJOR BONAFFON—The most widely grown of yellow sorts. Beautifully incurved. One of the best.

MERRY CHRISTMAS—Very late white. Very productive and excellent for pot culture.

Mlle. JEANNE ROSETTE (1907)—An enormous pink; very full and compact; late; the stem and foliage are perfect, the blooms as deep as they are wide.

MONEOVIA—Grand yellow; probably the very best for its date, October 1st and later.

MRS. ELMER D. SMITH—A novelty of 1901. Intense golden yellow of the very brightest shade. Japanese, incurved.

MRS. HENRY ROBINSON—In actual beauty this variety is still unsurpassed. It reigns supreme among whites.

MRS. JEROME JONES—A beautiful glistening white, Japanese incurved, still widely grown and greatly admired. 4 feet. Midseason.

MUTUAL FRIEND—Jap., pure white; bush plant. Semi-dwarf.

OCTOBER FROST—The earliest blooming white. Flowers are seldom large; very early, and shows blossoms six inches and more in diameter. Its color is pure white, with creamy center.

OMEGA—October 15. A grand early yellow; a seedling of Sunderbruch, and extraordinarily fine; very large, even for mid-season; fine color.

POLLY ROSE—Fine for pots. The finest, largest and best of the very early whites.

QUEEN—The flower excels all in pure whiteness; is extra large, broad and deep; the petals are heavy and thick.

ROI D'ITALIE—This variety is an extremely handsome yellow of very brilliant color, incurved into a fine compact globe of rather narrow petals.

ROSIERE—A fine deep rose-pink. It is of dwarf habit, immense blooms.

TIMOTHY EATON—One of the largest of the Japanese incurved type. Purest white, of true globular shape.

WHITE BONAFFON (Late)—One of the most useful of the white varieties. Color very fine and pure, splendid form; one of the best; three feet; late midseason.

W. H. CHADWICK—Magnificent variety in both form and color, and unsurpassed in size. Not an easy idler, but repays extra trouble. White or blush. Four feet; very late midseason.

YANABIVA—A novelty of 1901. Very beautiful reflexing variety of an exquisite shade of light pink.

YELLOW EATON (Late)—Color soft chrome-yellow; a fine example of the broad-petaled incurving Japanese type, showing no center; very large; a fine grower with stiff stems; silver medal at Philadelphia, certificate at Indianapolis.

COBEA SCANDENS.

A popular vine of rapid growth attaining a height of twenty feet or more in a season, clinging closely by its tendrils to stone work or trellis. It produces, very freely, large bell-shaped flowers of a rich purple. It is very handsome and its quick growth renders it very desirable for covering unsightly objects.

CUPHEA PLATYCEUTRA.

Cigar Plant.

Scarlet, pendulous flowers; neat compact habit; constant bloomer.

DRACENA.

INDIVISA—This is the variety used so extensively as center plant for the vases, baskets, etc. Its foliage is very gracefully arranged and contrasts nicely with other foliage and flowering plants.

DUSTY MILLER.

Centaurea Gymnocarpa.

A well known decorative plant with beautiful silver-gray foliage; extensively used for border work, ribbon planting, baskets, tubs, etc. Excellent for mixing with other foliage. Entirely hardy.

FIGUS ELASTICA.

The well known Rubber Plant. Nothing better for table or house decoration. Its dark green, shiny, foliage, is always handsome, and its constitution is such that it is able to stand the excessive heat and dryness of the ordinary dwelling house without injury. Fine young plants.



BOSTON FERN.

FERNS.

NEW NEPHROLEPIS SCOTTI—Of much dwarfer and bushier growth than the Boston Fern. The fronds droop gracefully, and are not as long and coarse as the Boston. It is a rapid grower, and to see it in all stages of growth from a runner in the bench to a fourteen-inch pot specimen will convince you that it will be in great demand as a house fern.

BOSTON SWORD FERN—(*Nephrolepis exaltata* Bostoniensis)—A variation from the ordinary Sword Fern. These fronds arch and droop over very gracefully, on account of which it is frequently called the "Fountain Fern." This drooping habit makes it an excellent plant to grow as a single specimen on a table or pedestal.

NEPHROLEPIS WHITMANI—(Improved Ostrich Plume Fern.) The most valuable of this type, with handsome broad, plume-like fronds.

FEVERFEW.

Well known, double white. June to frost. Fine for cutting.

FUCHSIAS.

THE BLACK PRINCE—Bright, waxy carmine. Tube and petals large and broad, with pale green tips; large, open pale pink corolla. The best all-round Fuchsia we know of.

SPECIOSA—Pale red tube and sepals; dark red corolla. There are frequently from thirty to forty flowers on a single branch.

MONSTROSA SUPERBA—Very large, double flowers; pure white corolla, beautifully reflexed; bright scarlet sepals.

TRAILING QUEEN—The habit of this variety is much different from the other varieties in that it trails instead of growing upright. Pretty flowers borne in clusters.

GREENHOUSES AND DECORATIVE PLANTS--Continued

GERANIUMS.

Double.

- ALPHONSE RICARD**—Dwarf, brilliant shade of orange red.
BEAUTE POITIVINE—Light salmon pink.
BUCHNER—One of the finest whites.
E. H. TREGO—The best scarlet
JEAN VIAUD—The best pink bedder.
MME. LANDRY—One of the choicest and most beautiful of the Bruants. Very free and constant in bloom throughout the season. Trusses large, and florets of the finest size and circular in form. Color clear salmon, center shading to copper, with a white eye. Very distinct, and one of the best.
MARY GEERING—Bright pink.
RICHARD BRETT—Fine scarlet.
S. A. NUTT—Brilliant scarlet. The most popular variety.
WHITE SWAN—Pure white.

Single.

- GEN. GRANT**—Fine scarlet.
L'AUBE—Pure snow white.
M. CHALFANT—Bright red.
MRS. GAAR—Pure white.
MADAM BRUANT—White with purple edge.
MRS. E. G. HILL—Light salmon, enormous trusses.

Ivy Leaved.

- CHARLES MONSELET**—Fiery red.
JOAN DE ARC—White.
CHARLES TURNER—Deep bright pink:
ROSE SCENTED—Well known.

Variegated Leaved.

- MAD. SALLEROI**—Dwarf; foliage bright green edged white; excellent for border.

HELIOTROPE.

Well known, assorted, white and purple.

HIBISCUS.

(Chinese.) Strong growing tropical plants with handsome glossy foliage and large, brilliant, showy flowers. In a warm, sunny window they make fine decorative plants and bloom profusely.

IMPATIENS SULTANA.

One of the prettiest and most satisfactory house plants for winter blooming, as well as a charming feature of the summer garden. These plants commence blooming when very small, are seldom out of bloom, and when at their best display a gorgeous profusion of intense carmine-rose flowers against a rounded background of glossy green leaves.

LANTANA—DWARF.

- ALBA PERFECTA**—Pure white.
LEO DEX—Orange Scarlet, changing to dark crimson.
EMILE BAYARD—Dark crimson.
COUNT BLENCOURT—Lilac and yellow.
ULTIMA—Golden yellow.



LANTANA WEEPING

This plant has a most graceful drooping habit, grows very rapidly and blooms continually summer and winter, producing large clusters of flowers of the most delicate lilac or rosy-pink; foliage a beautiful dark green.

IVY, GERMAN OR PARLOR.

A most charming and decorative vine. Graceful and airy, yet vigorous, it can be grown in any situation, and is sure to do well even without direct sunlight.

ENGLISH IVY.

(Hardy Vine.)

This is the old hardy variety that clings to walls, trellises, etc., used also for planting on graves.

LEMON VERBENA.

Indispensable for the delightful fragrance of its leaves in the construction of bouquets.

LOBELIA.

A dwarf, dense-growing plant with small lace-like leaves that is entirely enveloped during the whole summer with a mass of pretty deep ultra-marine-blue flowers. Exceedingly useful and attractive for borders, succeeding under all conditions.

MOON FLOWER.

Strong, rapid climber; fine for porches.

OLEANDER.

ROSEA—Double pink flowers. The old favorite. Very sweet scented.

PALMS.

KENTIA BELMOREANA—In our estimation this is one of the very best for all purposes and places. Exceedingly graceful and one of the hardiest.

KENTIA FOESTERIANA—Much like Belmoreana, except that it grows taller, with larger, heavier foliage.

CYCAS REVOLUTA—(Sago Palm) one of the most valuable palms for lawn or house decoration. Have a nice lot of shapely plants.

ARECA LUTESCENS—One of the most graceful Palms in cultivation. The foliage is clear glossy green, on slender golden yellow stems. It grows rapidly and makes beautiful specimen plants in a short time.

PANDANUS.

VEITCHII—This plant, better known as Screw Pine because of the Spiral arrangement of its leaves, is extremely ornamental and makes a charming table or house decorative plant. The leaves are long and gracefully curved and are broadly striped with creamy white on a green ground. This plant is well adapted to culture in the living room. Requires plenty of light and water with good drainage.

PARIS DAISY.

QUEEN ALEXANDRA—This variety has pure white flowers from 2½ to 3 inches in diameter, the greater percentage coming full double. The remainder of the flowers on the same plant come semi-double and single, all of which are very handsome.

PANSIES.

INTERNATIONAL GIANT MIXTURE, embraces all shades and colors, including the richest reds, coppers and bronzes, together with the most delicate rose and pink shades. Blooming plants from cold frame, transplanted.

PETUNIA.

Fine double assorted, well known and very popular.

PRIMROSE.

CHINESE SINGLE—Assorted colors; fine plants.

OBSCONCA GRANDIFLORA—The new large flowering, ever-blooming primrose; pure white shading to lilac. Our plants are very fine.

THE BABY PRIMROSE (Forbesi)—Blooms early and continues throughout the season. Flowers a delicate rosy lilac with eyes of pale gold.

SALVIA.

ST. LOUIS—New. The finest Salvia yet produced. It is certainly without a rival. Beautiful flower spikes, fully 12 to 18 inches long and 3 inches in diameter. A very early bloomer and continues to be one mass of scarlet flowers from June until frost.

ZURICH—This is the earliest-flowering variety of all, beginning to bloom in June, continuing without interruption until frost. The plant is of very dwarf, compact habit, making it suitable for small beds or borders.

TRADESCANTIA.

ZEBERINA—Wandering Jew—Leaves not so highly colored as Multi-color, but are of a green, variegated with red and purple.

VERBENAS.

A fine collection of named varieties. All colors.

VINCA.

MAJOR VARIEGATA—Variegated, trailing vine, fine for baskets; well known and popular.

Landscaping

Our Landscape Department is prepared to furnish attractive planting plans for small city lots up to large private grounds, public parks, factory grounds, cemeteries, summer resorts, schools, colleges, libraries, hospital grounds, etc. Our landscape architect is one of the leading men in his profession in the country. In our work we use hardy, flowering shrubs, herbaceous plants and vines, ornamental and shade trees; aiming to give, not alone foliage and flowers from spring to autumn, but pleasing bark and berry effects during the winter months. This work is not expensive, costs but little, and pleases so much, besides enhancing the value of the property. If interested, write for information early as possible as we have many appointments ahead.

Cut Flower and Plant Store

We wish to call attention to our Cut Flower and Plant Store, 217 NORTH MAIN STREET, (Bell 'Phone 115, Kinloch 'Phone 954,) where we have on sale all varieties of Cut Flowers, Potted Plants, Seeds, Shrubs and all other Florists' Goods. Floral designs for every occasion made on short notice at very reasonable prices. Mail, telegraph and telephone orders receive our prompt attention. Safe delivery guaranteed.

J. O. WILLSON, President F. D. MARQUIS, Cashier
A. E. STEVENSON, Vice-President.

THE PEOPLES BANK

CAPITAL \$100,000.00

SURPLUS AND UNDIVIDED PROFITS, \$200,000

Bloomington, Ill., May 9, 1907.

To whom it may concern:

We are pleased to testify to the responsibility, integrity and business ability of The Phoenix Nursery Company, of this city, who conduct one of the largest nursery establishments in the United States. In our opinion you may feel perfectly secure in sending them your orders. The officers of the company are well and favorably known to us, and command our full confidence. Any transactions with them can be fully relied on. The business was established here over fifty years ago, and has been under the same management for the past twenty-seven years.

(Signed) J. O. WILSON, President.

JACOB FUNK, President

C. C. ALDRICH, Vice-Pres. R. GRAFF, Vice-Pres.
A. B. HOBLIT, Cashier. W. L. MOORE, Asst. Cashier

THE STATE NATIONAL BANK

CAPITAL AND SURPLUS, \$225,000.00

Bloomington, Ill., Aug. 18, 1908.

To whom it may concern:

The Phoenix Nursery Company, of Bloomington, Illinois, has been in the business of growing and propagating nursery stock in this locality for more than fifty years. It is an institution of financial responsibility, enjoying a high reputation for fair dealing and conservative business methods.

We have no hesitation in expressing the opinion that the Company will fulfill to the letter and with absolute fairness, whatever guaranty it may assume.

We have personal acquaintance with the men controlling the management of the Company, and know them to be men of high character, ability and business integrity.

Yours very truly,

(Signed) A. B. HOBLIT, Cashier.

LEE RUST, President W. D. MOORE, Cashier
J. P. HACKETT, Asst. Cashier

McLEAN COUNTY BANK

CAPITAL, \$100,000.00

Bloomington, Ill., Aug. 18, 1908.

To whom it may concern:

It gives us pleasure to state that The Phoenix Nursery Company has for some time been a valued depositor at this bank, and from our intimate business acquaintance, we can say that the management of the Company is under the control of men of the highest reputation for skill and commercial ability in the management of a nursery business, and they have high standing for reliability, integrity and business honor.

The Company is an old institution, having been in business in Bloomington and Normal for about fifty-six years.

To their patrons we state with confidence that they are entirely safe in forwarding remittances with orders, with the assurance that they will be treated with the utmost fairness and that the Company will carry out every obligation it incurs.

Yours very truly,

(Signed) W. D. MOORE, Cashier.

ALBERT WOCHNER, Pres. PAUL F. BEICH, Vice-Pres.
JAMES S. NEVILLE, Vice-Pres. and Cashier.

GERMAN-AMERICAN BANK

CAPITAL, \$100,000.00

Bloomington, Ill., Aug. 18, 1908.

To whom it may concern:

We have known The Phoenix Nursery Company of this city, for many years. The Company has large tracts of the richest central Illinois land planted to nursery stocks of all kinds, as well as extensive greenhouses, and has recently expended large sums of money for new improvements. It is one of the largest institutions in Central Illinois.

The men in charge of its business are of the highest character, and their reputation for fair dealing and business integrity is not excelled.

The Company's patrons, in placing their orders with them, may feel assured that they will receive every courtesy, and that every obligation or guaranty which the Company assumes will be fulfilled in both letter and spirit.

Yours very truly,

(Signed) ADOLPH WOCHNER, Cashier.

A GANG OF BUDDERS



A PARTIAL VIEW OF OUR GREENHOUSE



A FIELD OF HYDRANGEA
PANICULATA GRANDIFLORA



A FIELD OF GRAPE VINES



A FIELD OF PEACH
IN DORMANT BUD