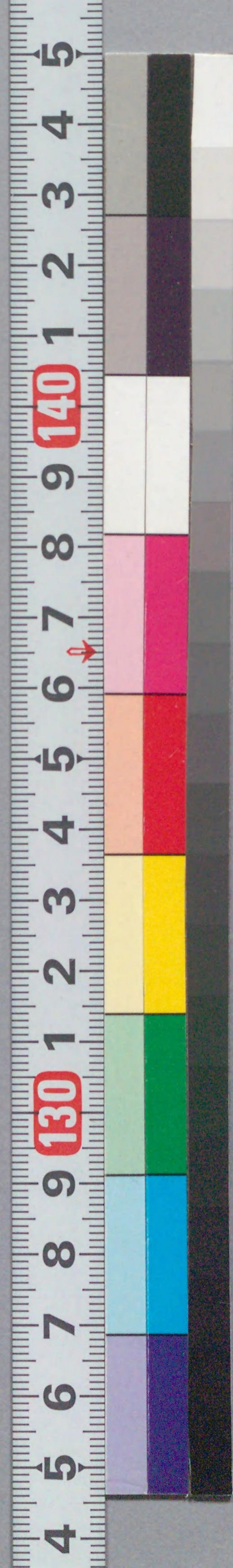


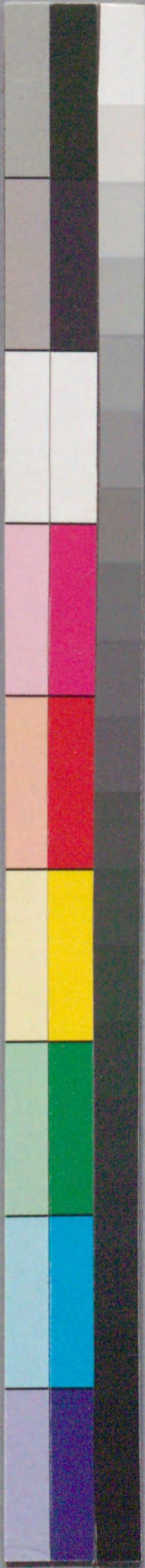
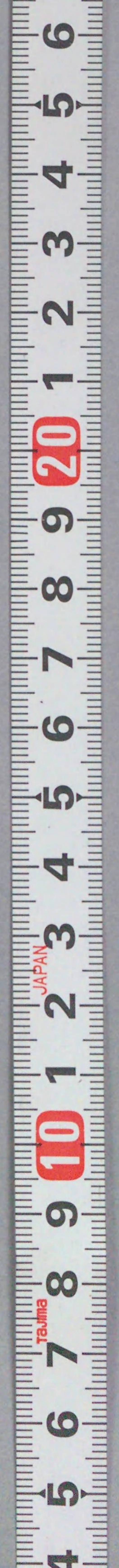


207
851

国立国会図書館 女名多右衛門 6巻 207-851



ガラス使用





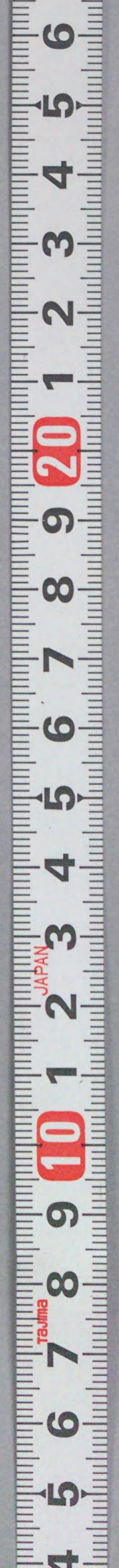
辛巳春

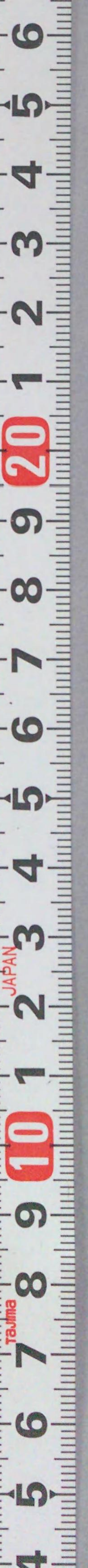
其泉堂持

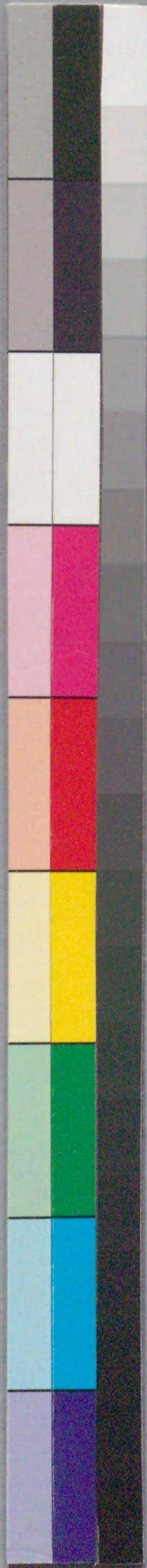
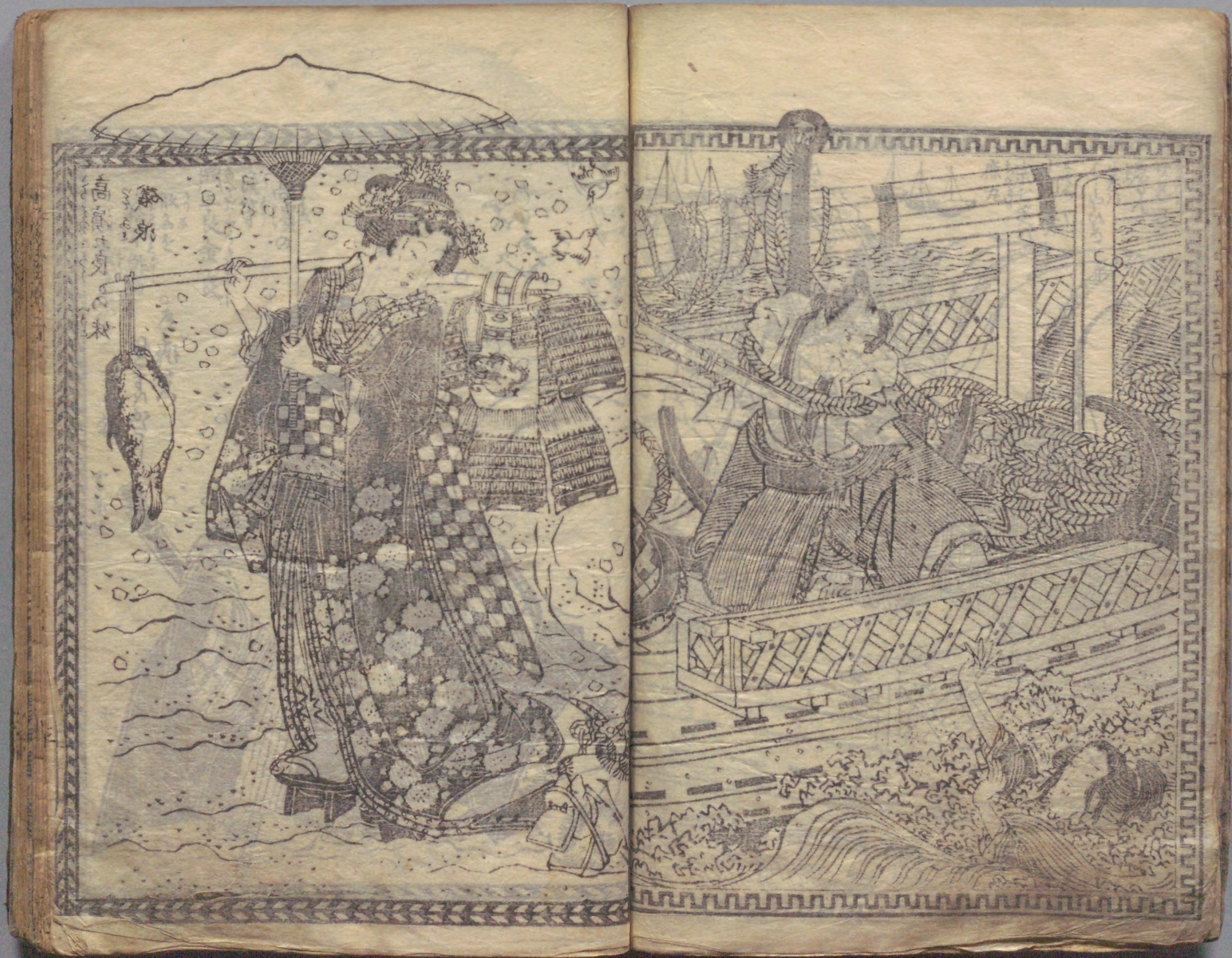
世話 女名多右衛門

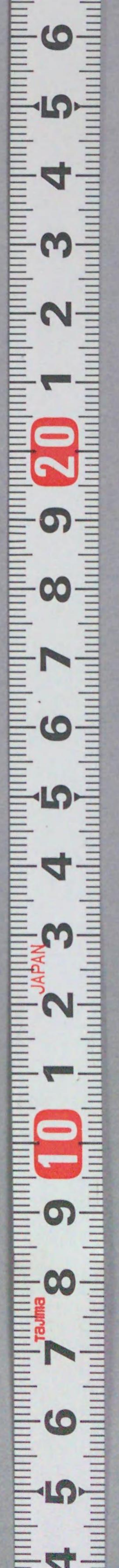
東西葺南北作
勝川春好画

前編

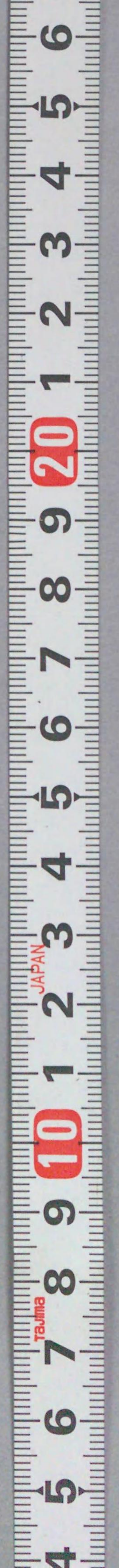


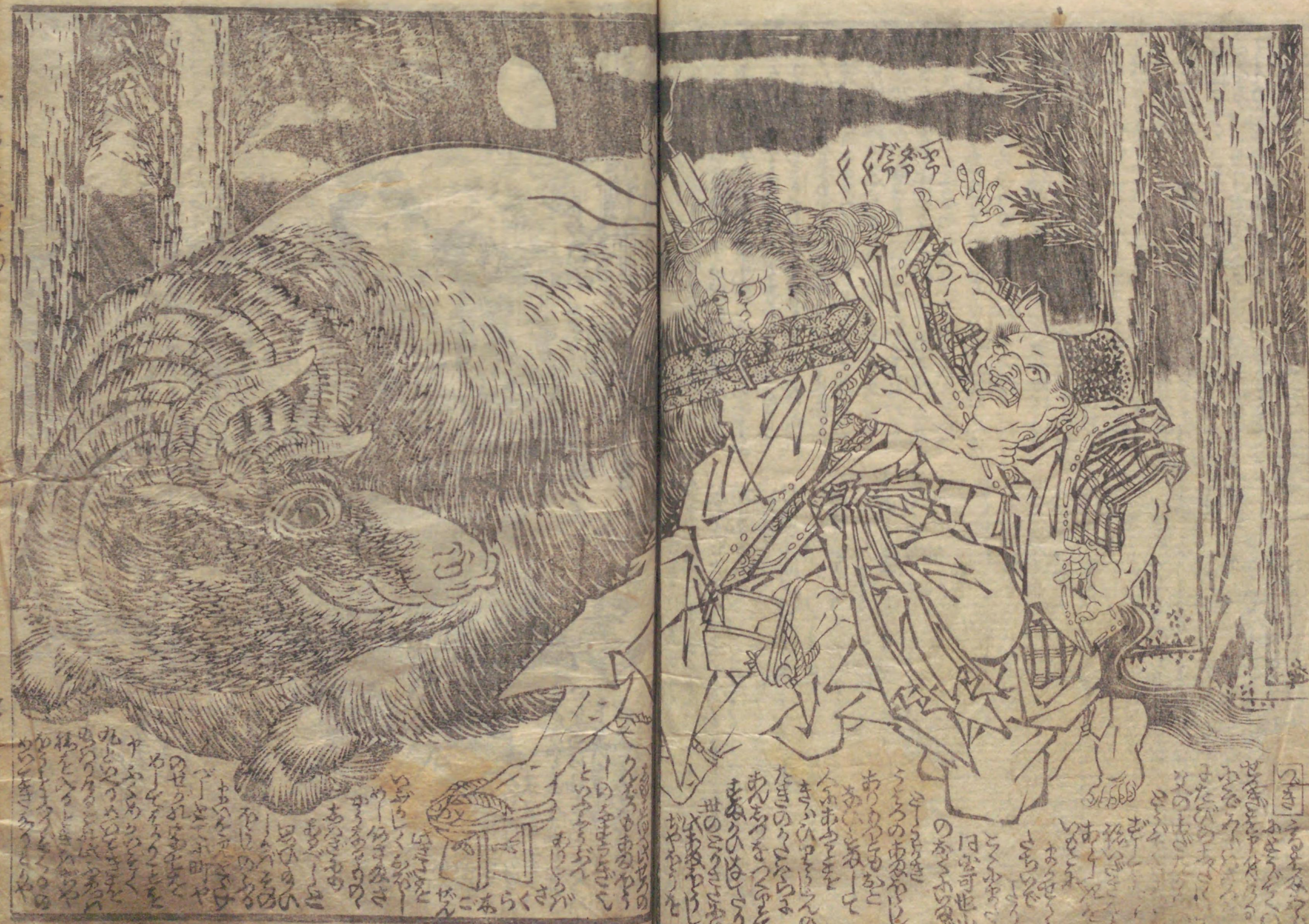






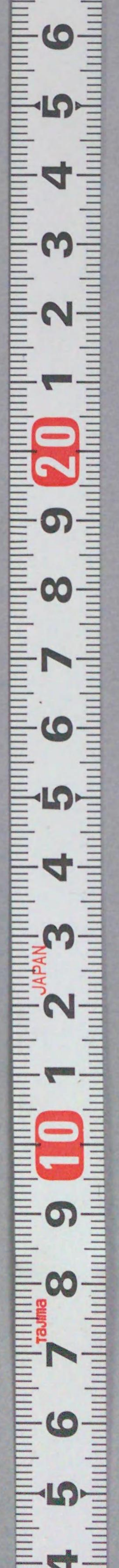






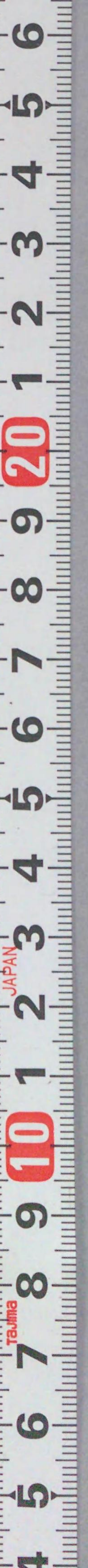
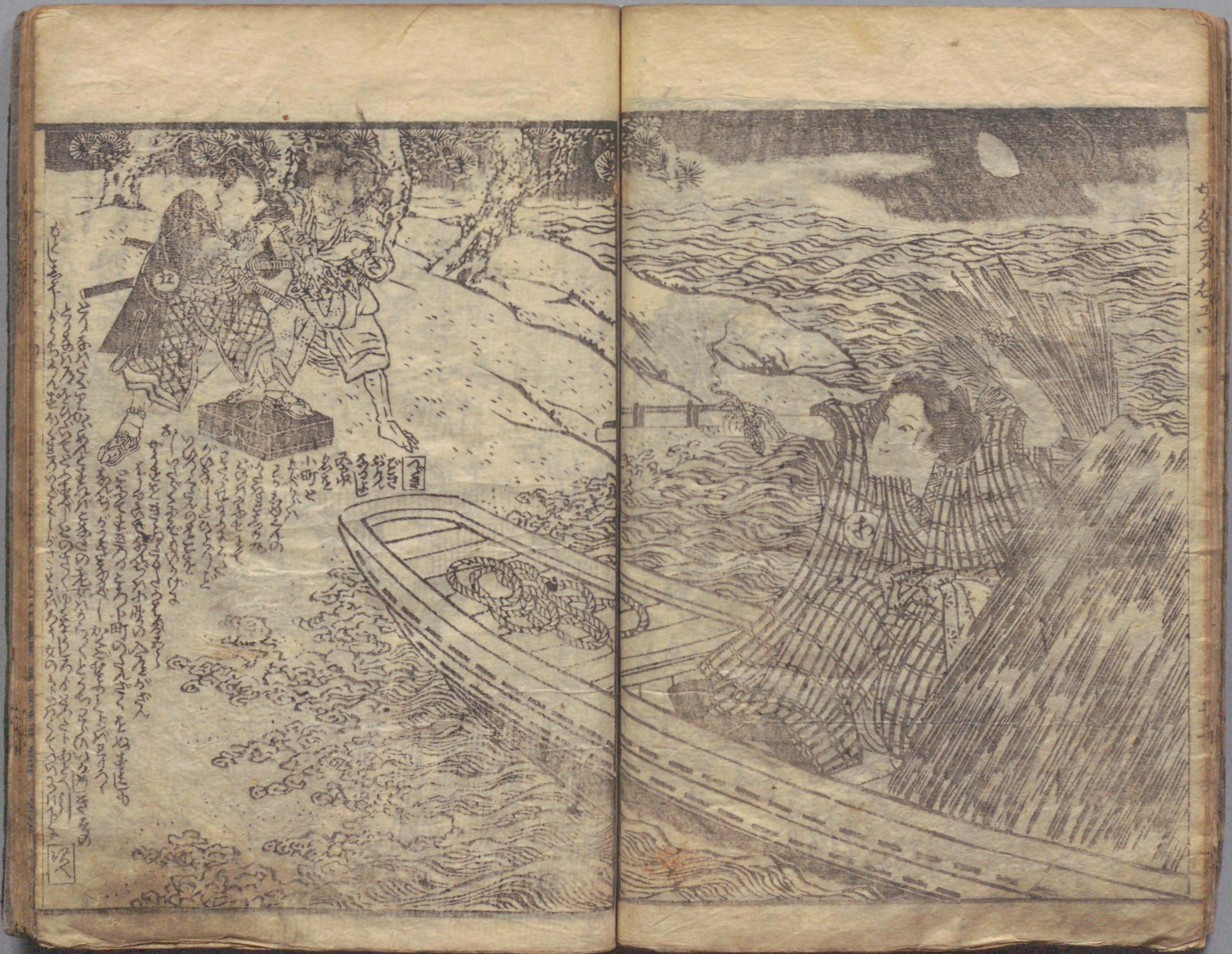


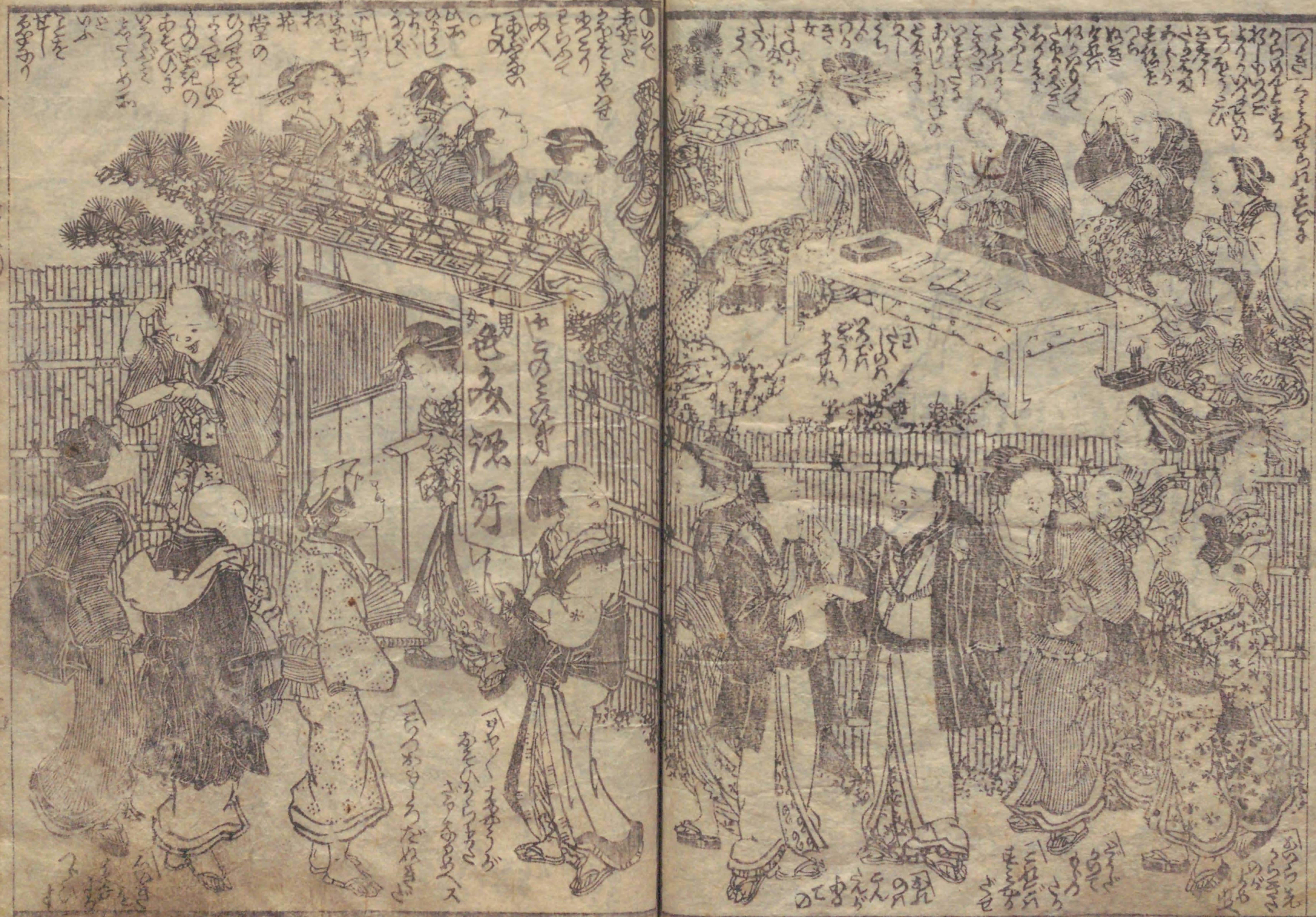
女名多右衛門

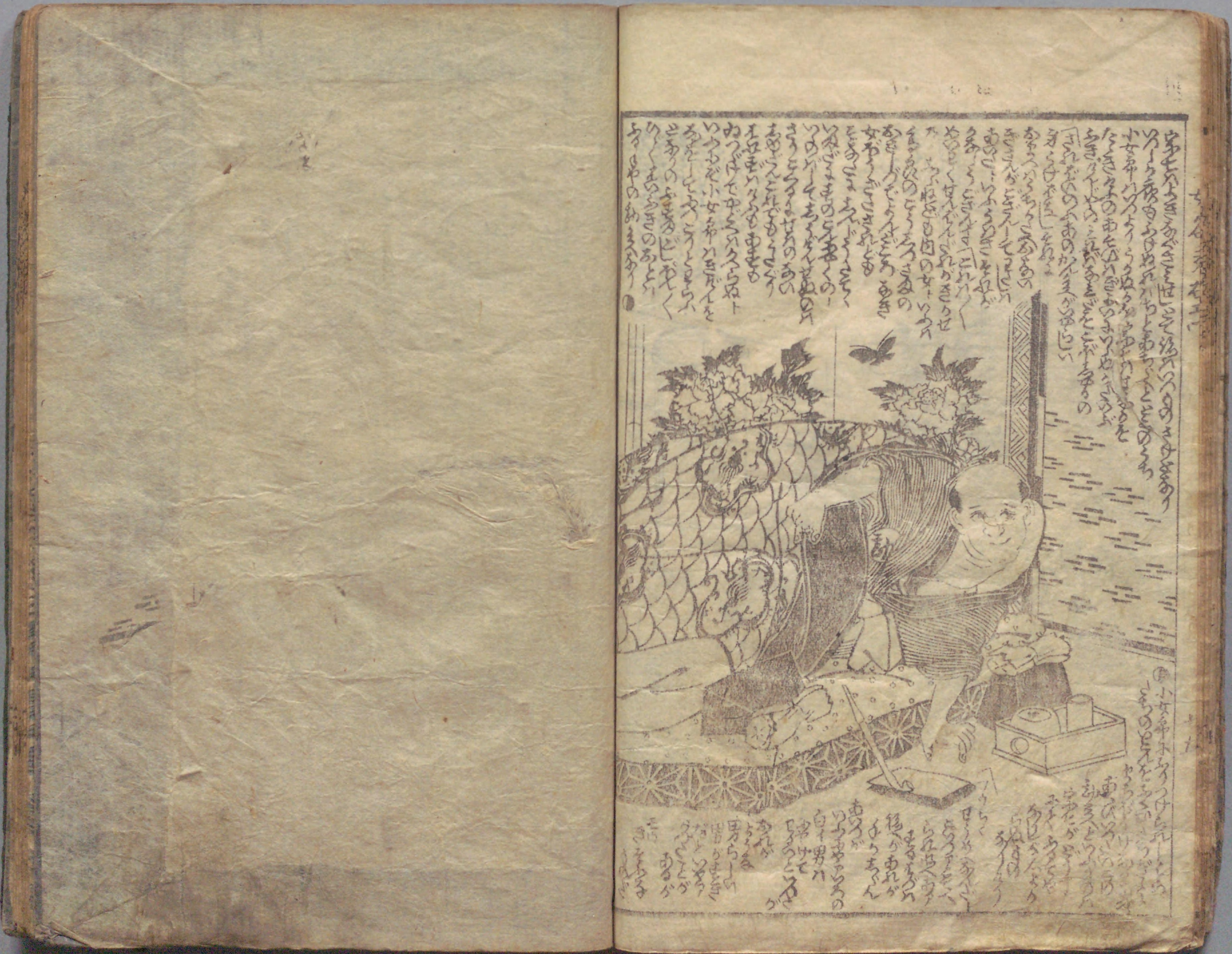
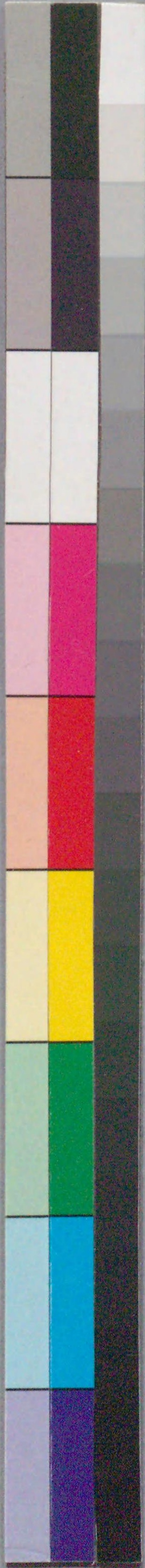








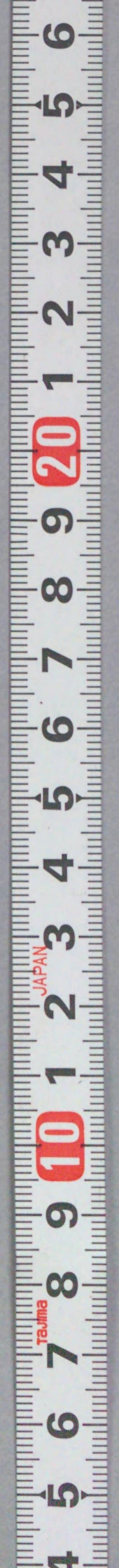




Handwritten Japanese text in vertical columns at the top of the right page.



Handwritten Japanese text in vertical columns at the bottom of the right page.





辛巳春販下

東西葎南北作
歌川豊國画

和泉屋市兵衛上梓



女名多右衛門 6巻 207-851



女名多右衛門

東西葺南北作
勝川春好画

後編

辛巳春

其泉堂梓

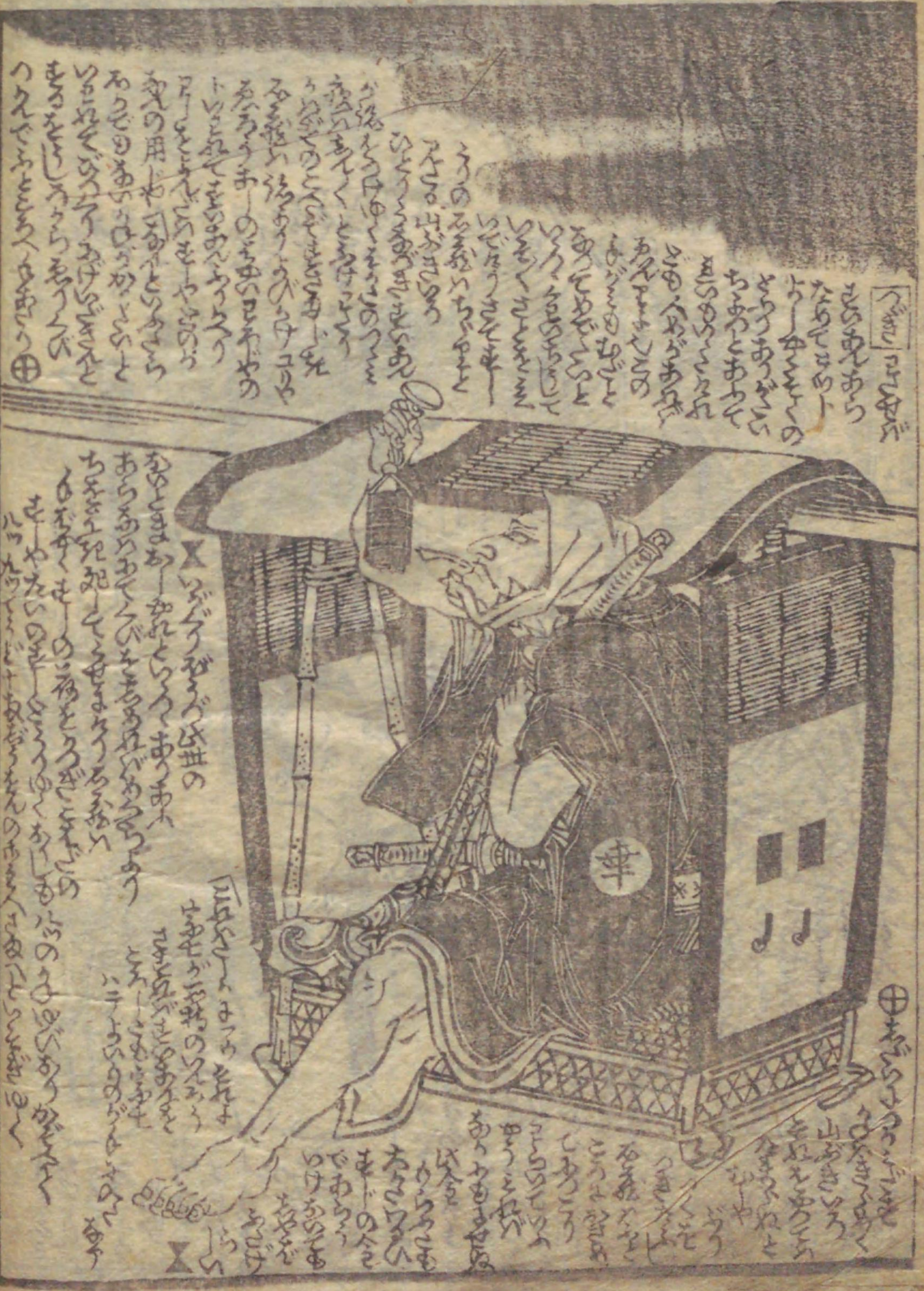


Handwritten text in a cursive style, likely a form of Japanese calligraphy or a specific dialect. The text is arranged in vertical columns, with some characters appearing to be in a different script or a highly stylized form. The text is densely packed and covers most of the page area.



Handwritten text in a cursive style, continuing from the left page. The text is arranged in vertical columns. There are some larger characters and some smaller characters interspersed throughout the text.





Handwritten text in a cursive script, likely a form of Japanese calligraphy, located at the top of the left page.

Handwritten text in a cursive script, located in the middle section of the left page, above the illustration.

Handwritten text in a cursive script, located at the bottom of the left page, below the illustration.



Handwritten text in a cursive script, located at the top of the right page.



Handwritten text in a cursive script, located at the bottom of the right page, below the illustration.



Handwritten text in a cursive script, likely a form of Japanese or Chinese characters, located at the top of the left page.



Handwritten text in a cursive script, located at the bottom of the left page.

Handwritten text in a cursive script, located at the top of the right page.



Handwritten text in a cursive script, located in the middle of the right page.

Handwritten text in a cursive script, located at the bottom of the right page.



Handwritten text in a vertical column on the left page, likely a commentary or a list of names. The text is written in a cursive style and includes several characters that are difficult to decipher, but some are clearly visible, such as '宗' (Mune) and '幸' (Sachi).

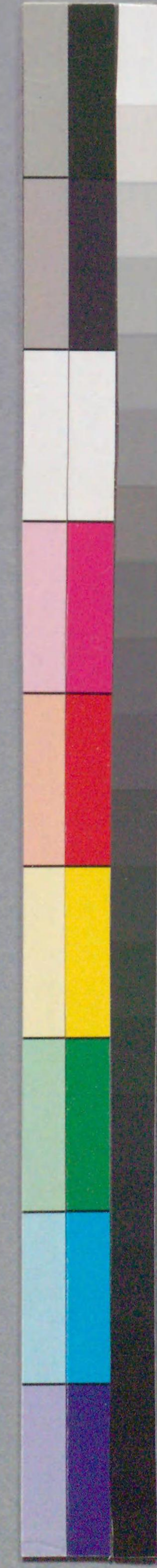


Handwritten text in a vertical column on the right page, continuing the commentary or list from the left page. It includes characters like '宗' (Mune) and '幸' (Sachi) on the figures.



Handwritten text in a cursive script, likely a historical record or account. The text is densely packed and covers most of the page.

Handwritten text in a cursive script, continuing from the previous page. It includes several lines of text with some larger characters or symbols interspersed.













国立国会図書館 女名多右衛門 6巻 207-851



ガラス使用

