

Historic, archived document

Do not assume content reflects current scientific knowledge, policies, or practices.

62.09
1916

1917

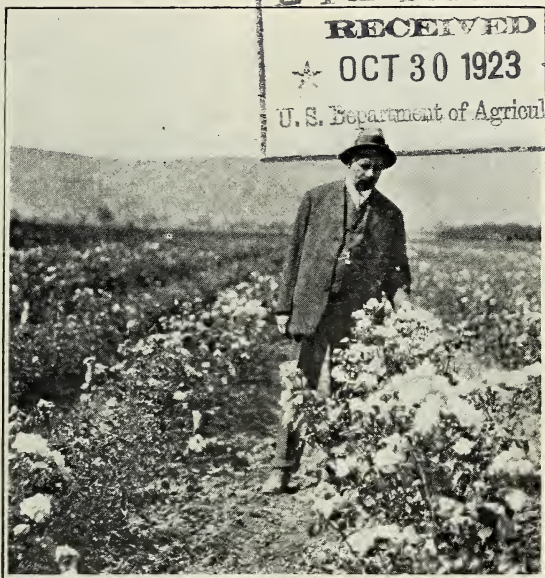
WHOLESALE PRICE LIST
OF
**BUDDED
ROSES**

LIBRARY

RECEIVED

★ OCT 30 1923 ★

U. S. Department of Agriculture



Mr. Geo. C. Roeding, President, personally inspecting one of our Rose blocks near San Jose, in the Santa Clara Valley, California.

**FANCHER CREEK
NURSERIES**

(Incorporated)

FRESNO, CALIFORNIA

GEORGE C. ROEDING

President and Manager



SEASON OF 1916-1917

Hardy, Vigorous Field-Grown Roses

Budded on Manetti

The growing of roses for the wholesale trade has become a very large and important feature of our business and each year we add many new pleased customers to our list.

The many "repeat orders" we receive from the trade in all parts of the country is the best evidence we can offer that our roses are proving satisfactory to our customers, and like-wise to those to whom they sell.

Nowhere are better roses grown than in the Coast Counties of California where our large Rose Nurseries are located. The climatic and soil conditions combine to produce the growth of a perfect, stocky, heavy rooted plant.

Contrary to the opinion sometimes expressed, our California roses become thoroughly dormant with no soft, unseasoned wood. The plants are completely ripened by November 1st and we begin our shipments at that time, continuing through the Winter and Spring seasons as desired. Early Fall shipments are forwarded direct from our Nurseries at San Jose, thus promptly supplying those who want stock for Fall deliveries.

Attention is called to the large list of Teas, Hybrid Teas, and Hybrid Perpetual Varieties which grow to such perfection in open field under our favorable conditions and are superior to Imported Plants.

If You Have Not Already Tried Our Roses Send For a Sample Order and be Convinced. Satisfaction Guaranteed.

TERMS:

All quotations are net. Actual cost of packing material additional.

As all plants are tied in bundles of 10 please order multiples of this number.

50 plants supplied at the 100 rate, 500 at the 1000 rate, when given, in not less than 10 of one variety.

Quotations are made subject to stock being unsold when the order is received, and with the understanding that if stock should become injured by frost, hail, fire or other causes beyond our control the order will be void.

We exercise the greatest care in keeping all varieties true to name, but it is mutually agreed between the purchaser and ourselves that we shall not at any time be liable for any amount greater than the original price of the stock.

Orders from unknown correspondents must be accompanied by remittances or satisfactory references.

ABBREVIATIONS

Ban., Banksia; **Ben.**, Bengal; **Bour.**, Bourbon; **H. B.**, Hybrid Briar; **H. N.**, Hybrid Noisette; **H. P.**, Hybrid Perpetual; **H. T.**, Hybrid Tea; **Misc.**, Miscellaneous; **M.**, Moss; **N.**, Noisette; **Poly.**, Polyantha; **Pr.**, Prairie; **Rug.**, Rugosa; **T.**, Tea; **Wich.**, Wichuriana.

BUSH ROSES

General Collection

\$10.00 per 100; \$90.00 per 1000, Net.

- Agrippina—Ben. Deep crimson.
American Beauty—H. P. Rosy crimson.
Baby Rambler—Mme. Norbert Levavesseur—Poly.
Dwarf, bright crimson.
Baroness Rothschild—H. P. Bright rose, shaded
white.
Black Prince—H. P. Dark crimson.
Bridesmaid—T. Clear pink.
Capt. Christy—H. P. Deep flesh.
Cherokee, Double—Misc. White.
Cherckee, Single—Misc. Pure white.
Cheshunt Hybrid—H. T. Cherry carmine.
Climbing Bridesmaid—T. Bright pink.
Climbing Devoniensis—T. White center blush.
Climbing K. A. Victoria—H. T. White.
Climbing Papa Gontier—T. Rosy crimson.
Climbing Meteor—H. P. Deep crimson.
Crimson Rambler—Poly. Bright crimson.
Climbing Wooton—H. T. One of the best red climb-
ers. A vigorous grower.
Dr. Grill—T. Clear buff pink, suffused yellow.
Dorothy Perkins—Wich. Clear shell pink.
Duchess of Albany or Red La France—H. T. Deep
pink.
Duchess de Brabant—T. Rosy pink.
Etcile de Lyon—T. Deep yellow.
Francisca Kruger—T. Coppery yellow, shaded peach.
Gen. Jacqueminot—H. P. Shining crimson.
Gloire de Dijon—T. Buff orange.
Gold of Ophir—N. Apricot yellow.
Greville or Seven Sisters—Pr. Light pink.
Gruss an Teplitz—Bour. Dark crimson.
Imp. Rainbow—T. Pink, striped crimson.
K. A. Victoria—H. T. Pure ivory white.
Killarney—H. T. Brilliant imperial pink.
La France—H. T. Silvery pink.
Lamarque—N. White, shaded sulphur yellow center.
Liberty—H. T. Crimson scarlet.
Louis Van Houtte—H. P. Rich crimson.
Mad. Wagram—T. Rosy pink.
Maman Cochet—T. Rosy pink.
Marie Van Houtte—T. Light yellow and rose.
Marchioness of Londonderry—H. P. Ivory white.
Meteor—H. P. Deep crimson.
Mme. Alfred Carriere—N. White and yellow.
Mme. C. Testout—H. T. Clear pink.
Mme. Jean Dupuy—T. Golden yellow.
Mme. G. Luizet—H. P. Clear coral rose.
Niphetos—T. Pure white.
Papa Gontier—T. Brilliant carmine, changing to rose
and lilac.

- Paul Neyron—H. P. Deep rose.
 Peace—T. Lemon yellow.
 Persian Yellow—Misc. Deepest yellow.
 Perle Von Godesburg—H. T. Deep yellow, merging to cream.
 Perle des Jardins—T. Bright straw color.
 Philadelphia Rambler—Poly. Very deep crimson.
 Pink Souper—Poly. Clear pink.
 Prairie Queen—Pr. Rosy red.
 Prince Camille de Rohan or La Rosier—H. P. Dark crimson.
 Reine Marie Henriette—H. T. Cherry red.
 Reine Olga de Wurtemberg—H. T. Cherry red.
 Reubens—T. White and rose.
 Reve d'Or—T. Fawn.
 Richmond—H. T. Deep scarlet.
 Rugosa Rubra—Rug. Rosy crimson.
 Rugosa Alba—Rug. Pure white.
 Safrano—T. Deep fawn.
 Soleil d'Or—Misc. Reddish gold.
 Souvenir du President Carnot—H. T. Rosy flesh, shaded deeper at center.
 Souvenir de Malmaison—Bour. Flesh, edged blush.
 Sunset—T. Golden amber, shaded ruddy copper.
 The Bride—T. Pure white.
 The Queen—T. Pure white.
 Ulrich Brunner—H. P. Cherry red.
 Viscountess Folkstone—H. T. Flesh color, shaded to pink.
 White Maman Cochet—T. Pure white, sometimes suffused with pink.
 White Bath—M. White center blush.
 Wm. A. Richardson—N. Orange yellow.
 Xavier Olibo—H. P. Violet crimson.

Choice Varieties

\$12.50 per 100; \$110.00 per 1000

- Aug. Guinoisseau or White La France—H. T. Pearly white, tinged fawn.
 Beauty of Glazenwood—Misc. Coppery carmine and salmon yellow.
 Belle Siebrecht—H. T. Imperial pink.
 Bessie Brown—H. T. Creamy white.
 Betty—H. T. Coppery rose.
 Climbing Belle Siebrecht—H. T. Rosy pink.
 Clara Watson—H. T. White with center flesh.
 Climbing Capt. Christy—H. P. Deep flesh.
 Climbing Perle des Jardins—T. Canary yellow.
 Climbing La France—H. T. Silvery pink.
 Climbing Caroline Testout—H. T. Clear pink.
 Climbing White Cochet—T. Identical with bush, but more profuse bloomer.
 Climbing M. Cecile Brunner—Poly. Rosy pink.
 Climbing Niphetos—T. Pure white.
 Clio.—H. P. Flesh color, center shaded rosy pink.
 Dean Hole—T. Silvery carmine with salmon shadings.

- Dr. Wm. Gordon—H. P. Pink, edged white.
- Etoile de France—H. T. Crimson velvet.
- Franz Deegan—H. T. Orange, yellow and white.
- Frau Karl Druschki—H. P. Snow white.
- Florence Pemberton—H. T. Creamy white suffused with pink.
- Flower of Fairfield—Poly. Crimson.
- Gen. McArthur—H. T. Vivid crimson.
- Geo. C. Waud—H. T. Glowing orange vermillion; flowers large.
- Geo. Dickson—H. T. Deep scarlet.
- Grace Molyneux—H. T. Creamy apricot, center flesh.
- Helen Gould—H. P. Carmine.
- Hon. I. Bingham—H. T. Pure pink; very large.
- Hugh Dickson—H. P. Carmine, shaded scarlet.
- John Cuff—H. T. Deep carmine pink, yellow at base of petals.
- Jubilee—H. T. Fiery maroon-crimson, often black.
- Juliet—H. B. Outside petals old gold, the interior rich rosy red, changing to deep rose as flowers expand.
- Lady Alice Stanley—H. T. Deep coral rose, inside pale flesh.
- Lady Battersea—H. T. Cherry crimson with pointed buds.
- Lady Ursula—H. T. Large, beautiful pink flowers.
- Mad. Abel Chatenay—H. T. ^{Pink} Deep sulphur yellow.
- Mildred Grant—H. T. Ivory white, flushed pale peach on edge of petals.
- Mme. Vermorel—T. Coppery yellow.
- Mme. Leon Pain—H. T. Silvery salmon.
- Molly Sharman-Crawford—T. Pure white, profuse bloomer.
- My Maryland—H. T. Bright pink—very fragrant.
- Nita Weldon—H. T. Bright pink with faint blush edge petals.
- Pink Cherokee—Misc. Shell pink.
- Yellow Maman Cochet—H. T. Fine yellow.
- Yellow-Rambler—Poly. Deep golden yellow.

Scarce Varieties

\$15.00 per 100; \$125.00 per 1000

- Cloth of Gold—N. Deep yellow, edged sulphur.
- Geo. Arends—H. P. Bright red carmine.
- Harry Kirk—H. T. Deep sulphur yellow, lighter at edge of petals.
- His Majesty—H. T. Dark crimson shaded deep vermillion at edge of petals.
- Jonkheer J. L. Mock—H. T. A mixture of bright red and salmon pink.
- Kronprinzessin Cecilie—H. T. Silver pink, exquisite form.
- Lady Ashtown—H. T. Pale rose, shading to yellow at base of petals; reflex of petals silvery pink.
- Lady Hillingdon—Orange yellow.
- Mary Countess of Lichester—H. T. Crimson carmine, delicately scented.
- Marquise de Sinety—H. T. Clear yellow.

- Melody**—H. T. Saffron yellow with primrose edges and tips.
- Miss Kate Moulton**—H. T. Pink, tinted silvery flesh.
- Mlle Cecile Brunner**—Poly. Salmon pink.
- Niles Cochet**—T. Pink edged red.
- Pharisaer**—H. T. Salmon pink.
- Rhea Reid**—H. T. Rose to carmine.
- Rosalind Or**—H. T. Deep waxy pink, everblooming. camellia double and fragrant.
- Schneikopf**—Poly. Snow white.
- Walter Speed**—H. T. Deep lemon, becoming white as it develops.
- Wellesley**—H. T. Fine shade of pink.
- White Killarney**—H. T. Pure white.
- White Dorothy Perkins**—H. Wich. White, same habit as its parent.

Late Introductions

\$2.50 per 10; \$20.00 per 100.

- Beaute de Lyon**—Pernetiana. Superb coral red lightly shaded yellow.
- Hiawatha**—H. Wich. Rich crimson with white centers.
- Lyon**—H. T. Salmon pink, shading into crome yellow.
- Mrs. Aaron Ward**—H. T. Indian yellow, suffused with salmon rose.
- Mrs. Cutbush**—Poly. Light pink tinted salmon.
- Mrs. Myles Kennedy**—T. Silvery white shaded buff, with pink center.
- Mrs. E. J. Holland**—H. T. Deep salmon.
- Sunburst**—H. T. Orange yellow buds, becoming deeper towards center.

New Varieties

\$3.00 per 10; \$25.00 per 100.

- Caroline Goodrich**—H. P. Light red; very fragrant.
- Farben-Konigin**—H. T. Carmine.
- Heinrich Munch**—H. T. Every characteristic of the Druschki, pink.
- Konigin Carola**—H. T. Satiny rose.
- Lieutenant Chaure**—H. T. Velvet crimson, shaded garnet.

\$4.00 per 10; \$35.00 per 100.

- Chateau de Clos Vougeot**—H. T. Deep scarlet.
- Erna Teschendorff**—Dwarf Poly. Brilliant carmine red.
- Excelsa**—H. Wich.. Bright scarlet double.
- Helvetia**—H. T. Fiery red; fine cut flower rose.
- Rayon D' Or**—H. T. Magnificent golden yellow.

