

G971.84
A42

ALBEMARLE
NORTH CAROLINA



STEPHEN B. WEEKS
CLASS OF 1896; PH.D. THE JOHNS HOPKINS UNIVERSITY

LIBRARY
OF THE
UNIVERSITY OF NORTH CAROLINA
THE WEEKS COLLECTION
OF
CAROLINIANA

Cp971.84
A42

9971.84-942

Advantages of
ALBEMARLE
North Carolina



The Finest Water in the country.

The Healthiest Location in the United States.

The Best Town of the population in South-eastern United States.

Nature has endowed it with all the requirements for a Health and Pleasure Resort.

Located on the great Southern Railway System, gives it the best transportation facilities.

The even temperature, the fine artesian water, the famous Rocky River Springs Mineral Water, the beautiful Mountain Scenery, the elegant Pine Groves, sweet-scented Southern Flowers, make this the greatest Health and Pleasure Resort in the United States.

*“Real Estate is the only Safe Investment.
--Solomon.”*

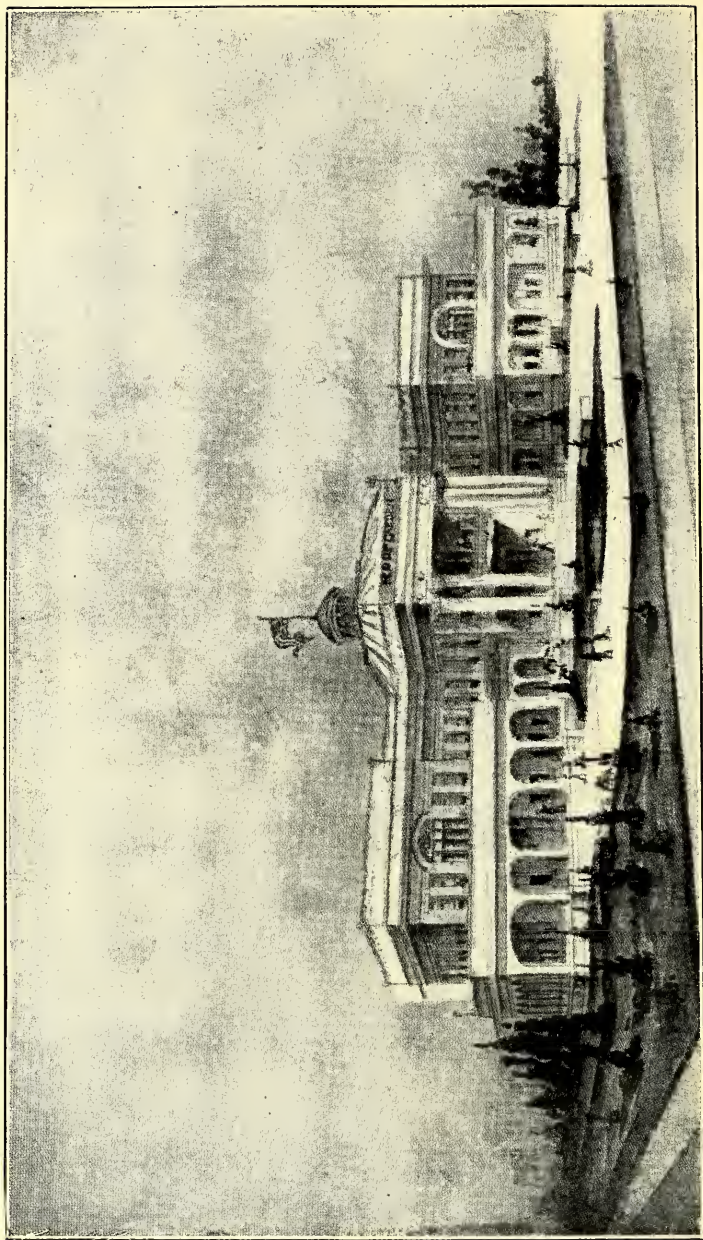
*"The mountains that shield from the rude northern blast—
Mute monitors, they, of the ages long past—
Like sentinels watch o'er the valley below,
Where the swift crystal streams unceasingly flow.
The pure, healthful breeze, the life-giving air,
The beautiful landscape, oft new, ever fair,
Are gifts that have come from the Father on High;
To Him be all praise for 'The Land of the Sky'."*

Advantages of Albemarle North Carolina

THE facts presented in this booklet are the result of a tireless investigation for a location for a Health and Pleasure Resort by experts in this particular line. When making this research every essential feature and advantage was given careful consideration with the view of establishing a modern and complete refuge for Health and Pleasure Seekers. No preference was shown to any location, but the particular merits of each locality investigated was considered with one view, viz: To find a location to give as nearly as possible every advantage necessary to make a resort productive of Health, Recreation and Entertainment. After a careful and impartial investigation of five different localities, Albemarle, North Carolina, was selected for the following conditions and advantages:

Mother Nature bestowed upon Albemarle every advantage necessary to make a popular Health and Pleasure Resort. Located as it is in the foot-hills of the Blue Ridge Mountains, and only a short distance from the sea, one enjoys the fresh Mountain air as well as the sea breeze. For the Pleasure Seeker, the Rivers and Streams are bountifully stocked with fish. In the Mountainous Country, wild game abounds, there being plenty of deer, turkey and small game. Albemarle has a Hunting and Fishing Club, whose members are a congenial, entertaining aggregation of gentlemen whose hospitality is ever extended to the visitor in the true Southern style. The climate is remarkably even and dry, the summers are delightful, the nights never getting so warm but what light covers are used and appreciated, while in winter, the temperature was never known to have been lower than 26 degrees above zero.

P 7843

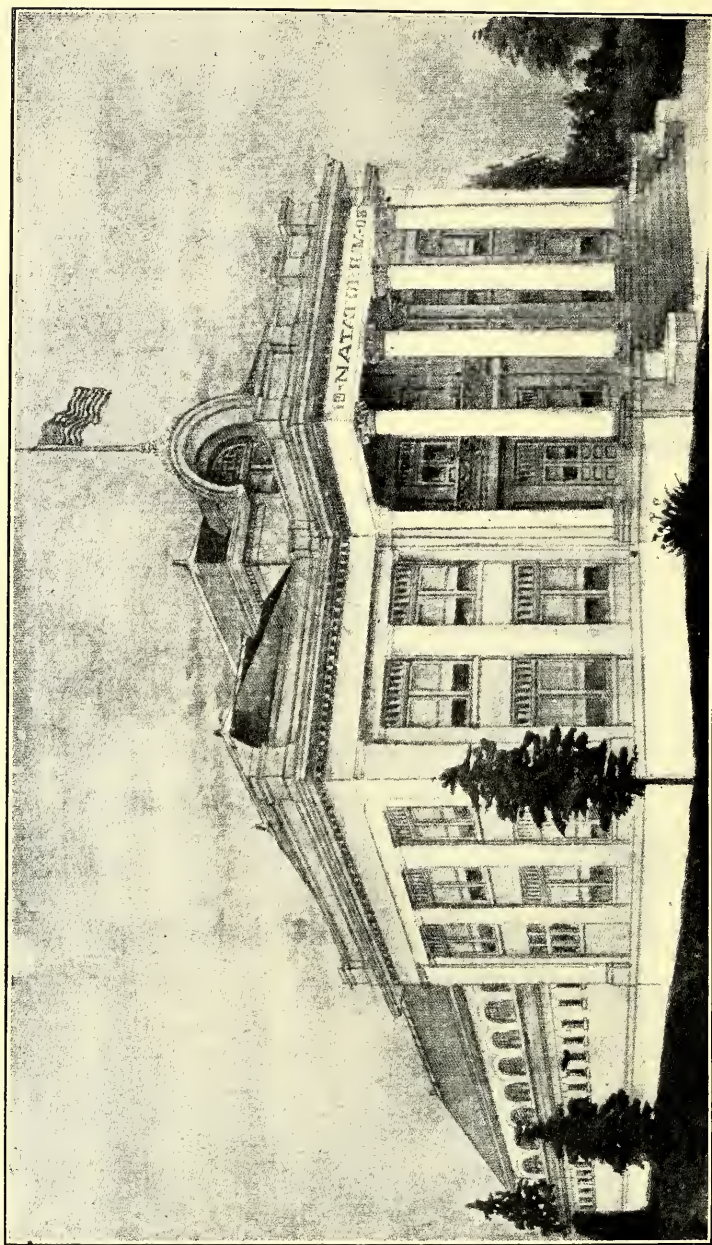


PARK HOTEL

This building is designed especially to meet conditions of the South. Every room an outside room; private bathroom, bedroom and parlor for each room in the house. Electric lights and fans, roof gardens, pool gardens, roof halls, tennis alleys, etc.

By request, the following is furnished by the Business Men of Albemarle:

ALBEMARLE, N. C., is situated in Stanly County, in the Piedmont section of the State, on the Yadkin Railroad, thirty miles south of Salisbury, N. C., on the main line from New York to New Orleans, among the foot-hills of the Blue Ridge Mountains. The country is rolling, abounding in hill and vale, and beautiful streams. No more beautiful or varied scenery can be found. The soil of the country is gray, red clay sub-soil with slate underlying. The elevation is about six hundred feet above the sea level, and the climate is even and dry. The average temperature of the summers is about 78 degrees, for the winter, about 26 degrees above zero. The sudden changes so common in other sections are entirely unknown here, as we are sheltered on the west by the Blue Ridge Mountains, still we are far enough away not to feel the severe cold of the high altitudes. On the east the Gulf Stream runs near our coast, which tempers our climate, but we are entirely free from fog and malaria of the low coast countries. The average rainfall is only about forty inches, while for the State it is fifty-two inches, which is more evenly distributed throughout the year than some sections. The character of the soil and the rolling nature of the lands cause it to dry off very quickly after it rains. Our streets are often muddy one day and dry the next. All these causes, together with an abundance of good pure water, contribute to make it one of the most Healthy Places to be found. The death rate being less than five per cent., while the average of the State being from sixteen to eighteen per cent. The people are remarkably long-lived. Pneumonia and Tuberculosis are almost unknown. The town has grown from the village of 300 population to between five and six thousand in the past few years. We have six Churches, two Graded Schools, one Female College, two Banks, five Doctors, three Drug Stores, thirty General Stores, six Cotton Mills, two Furniture Factories, three Lumber Plants, splendid System of Water-works, and the Electric Light Plant to be opened the first of the year.



SANTARIUM-NATORIUM

This building will be equipped for external water treatments, all classes of mineral water baths, electric baths, swimming pool, sanitarium for nursing and treating the sick, operating rooms, etc.

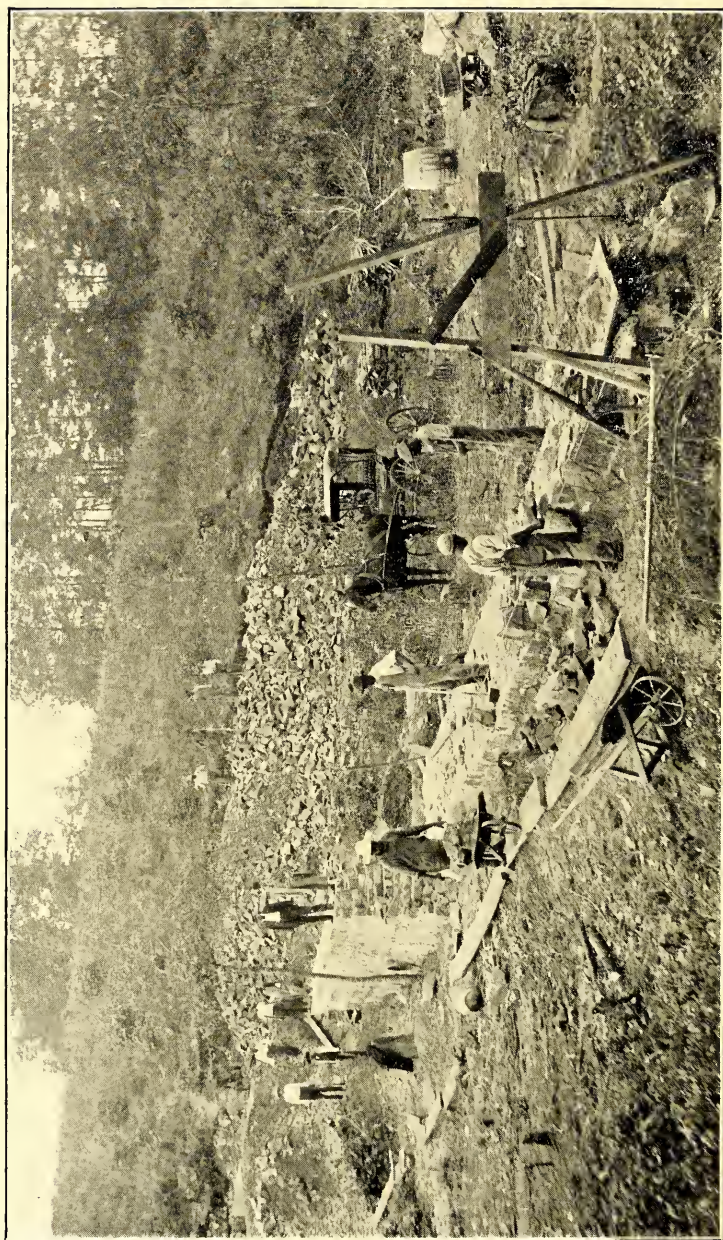
Albemarle is only a short distance, less than five miles, from the Whitney Reduction Plant that is under construction on the Yadkin River, which, when completed, will be the largest plant south of the Niagara, for the generation and distribution of electric power for all purposes. There has already been spent on this reduction plant five million dollars, and it is estimated it will be necessary to expend two million dollars more to complete it.

This the seventh day of November, 1908.

(Signed) J. R. Price, Atty-at-Law.
 Stanly County Loan & Trust Co., by J. M. Peeler, Cashier, and W. H. Whitey, Asst. Cashier.
 R. E. Austin, Attorney-at-Law.
 S. H. Hearne, Real Estate.
 T. C. Rivers, Mgr. Allen's Clothing Store.
 G. M. Dry, Merchant.
 L. A. Moody, Contractor.
 Albemarle Grocery Co., Per D. B. McCurdy.
 Farmers' Hardware Company.
 G. F. Almond.
 P. J. Hennycutt & Co., Furniture Dealers.
 J. M. Harris.
 Cabarrus Savings Bank of Albemarle, N. C., By M. J. Harris, Asst. Cashier.
 D. D. Parker, Treasurer Stanly County.
 Morrow Bros. & Heath Co., Per A. C. Heath.
 Albemarle Real Estate and Insurance Company,
 Per P. M. Asbury.

In addition to the above statement, it might be well to add that Albemarle is a town of refinement, where the environments of home may be retained and the vices of life left behind; where the flowers of the tropics, and those of the colder clime intermingle and one may pluck in the same garden the fruit and flowers of the tropical clime and enjoy the perfume of the Magnolia and Sweet Pea.

The best evidence of what a town can be made is its present condition and what is being done every day. Looking backward



VIEW OF LAKE UNDER CONSTRUCTION

ten years, we see the little village of Albemarle, with its two or three hundred population widely scattered in the foot-hills of the Blue Ridge Mountains. At that time the citizens of that quiet little village were not awakened out of their early morning slumber by the whistle of the various cotton mills, furniture factories, lumber plants and other industries that call them forth now.

Besides the Furniture Factories, and Cotton Mills which are being enlarged year by year, new plants are being established. Examine the figures below, which were furnished us by representative Business Men of Albemarle and are authentic, and add to that the business that would naturally result from this development, and you will agree that Albemarle will grow into a city of proportions.

The Commercial interests of the town of Albemarle are well represented by capable men in every line. No town of the same population can show any greater variety of business interests and industry. The mercantile business is as extensive as many towns with double its population, and every other interest in the town is proportionate, except that the manufacturing interests exceed those of many cities of three times the size of Albemarle.

The following facts will fully demonstrate the business of this wide-awake town:

Six Cotton Mills, with capital stock of \$2,000,000.00; surplus of \$600,000.00, with 1,500 operatives, with a pay roll of \$25,000.00 per month.

Two Knitting Mills manufacturing 1,500 pair of hose per day, employing 250 operatives.

One Mantel Factory, producing \$25,000.00 of mantels in 1908.

Two Furniture Factories, with an annual pay roll of \$10,000.00 each.

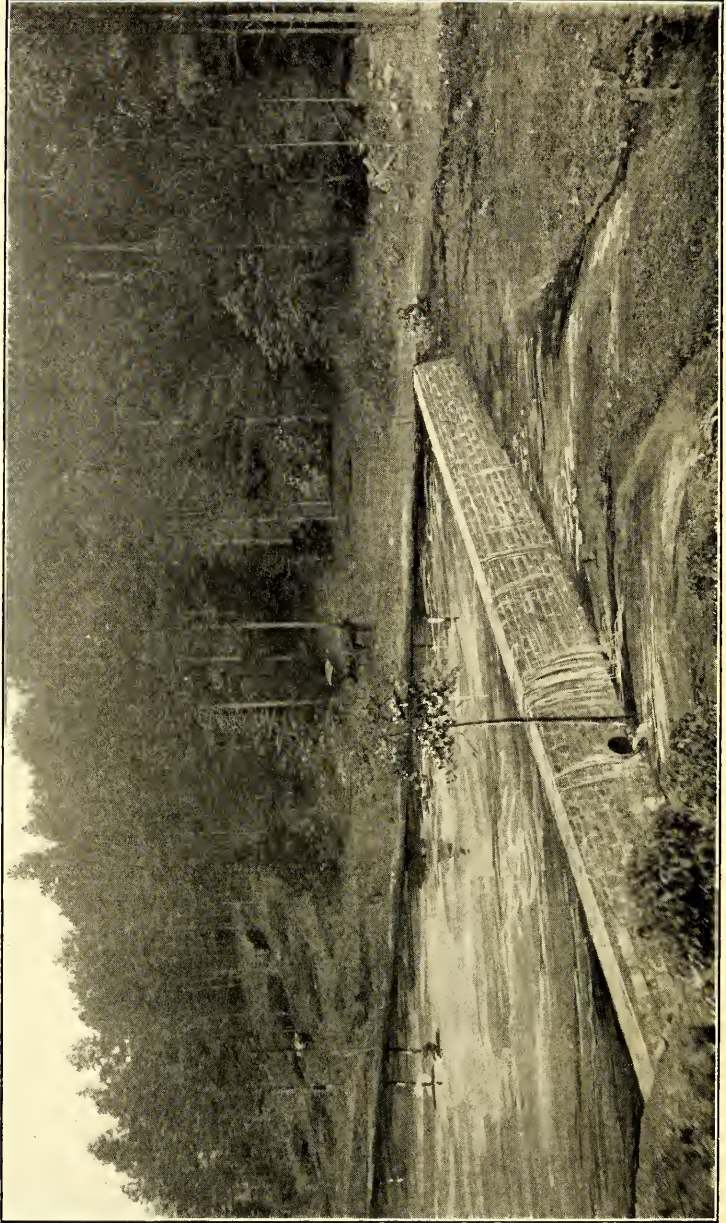
One Box Factory with a capacity sufficient to furnish the Cotton Mills and Knitting Factories boxes necessary for their use.

The annual sale of merchandise, \$2,000,000.00.

Production of wheat, 250,000 bushels.

Production of corn, 250,000 bushels.

Production of oats, 250,000 bushels.



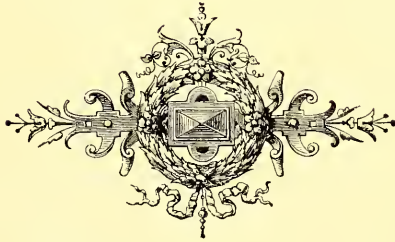
ARTIFICIAL LAKE, 3-4 MILE LONG

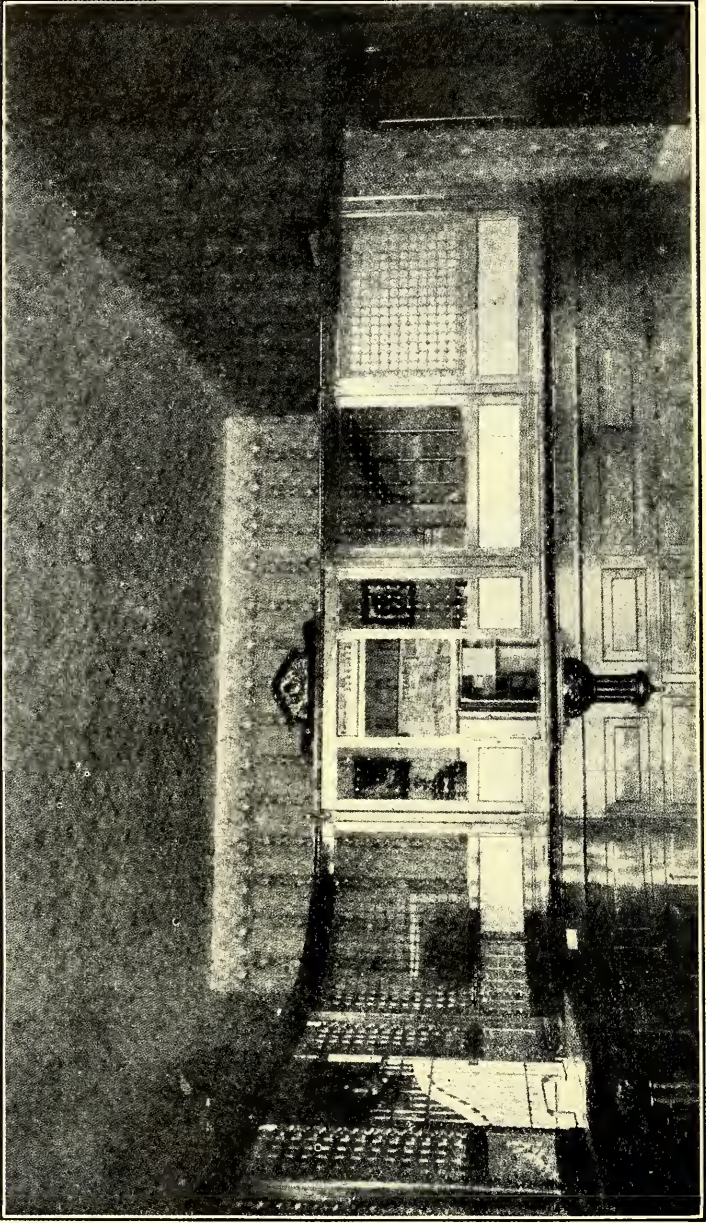
Production of cotton, 8,000 bales.

Production of poultry and eggs, \$250,000.

Two Banks of individual deposits of \$250,000 each.

It has also a Steam Laundry, Large Marble Works, Large Steam Cotton Gins, four Lumber Plants, four Livery Stables, two Newspapers, Water-works, Steam Bakery, two Flour Mills, one Iron Foundry, two more large Cotton Mills now under construction, and all other business and professional interests are well represented.

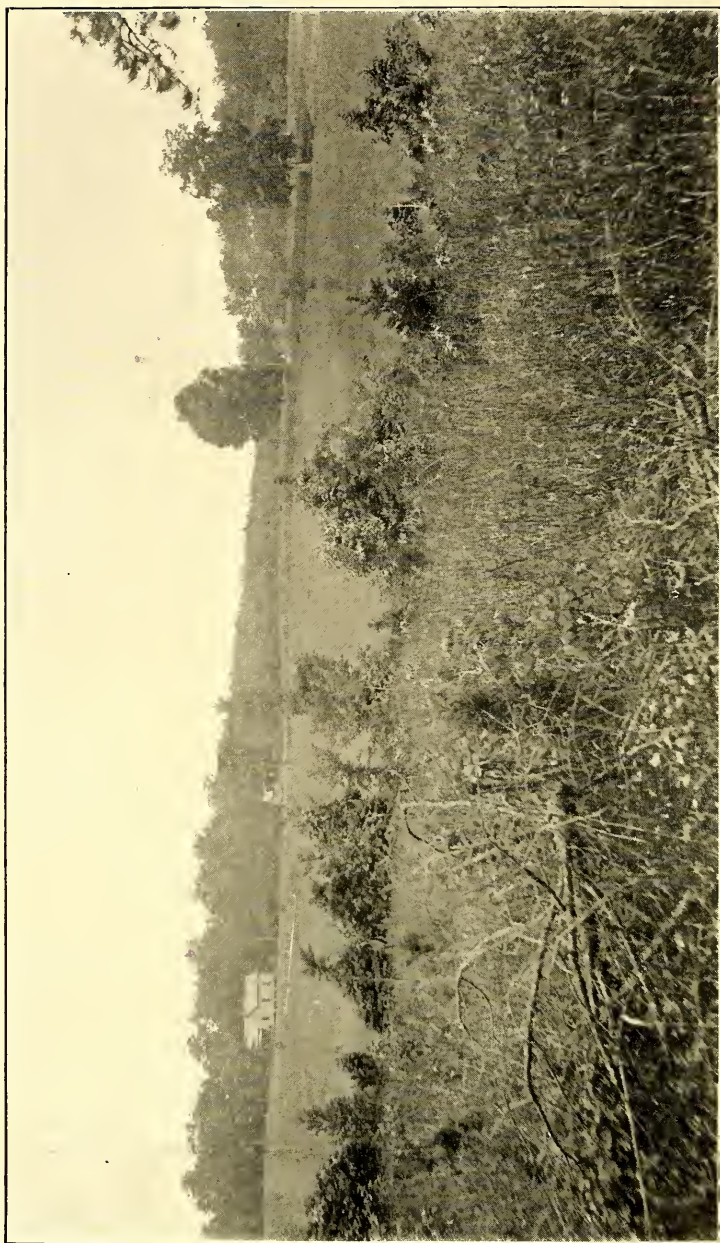




OFFICE OF ALBEMARLE DEVELOPMENT CO.

THE Mineral Waters of the Rocky River Springs contain exceptional medicinal qualities. Cures effected by the use of this water have demonstrated beyond question that no better Mineral Waters exist.

The foundation, and essential feature of a successful Health Resort, is Mineral Waters that contain varied medicinal properties. Without such water, every other advantage or facility would be inadequate to induce the public to visit such a place for health benefit. It is not sufficient to have a water that will give relief to a specific trouble; but there must be water with sufficient varied medicinal properties to give relief, and perfect cures of any disease that can be reached by the administration of Mineral Waters. One point which appealed to our experts more strongly than any other, was that, in one locality was found grouped together four springs, the waters of which, by analysis and practical demonstration, have been proven to be especially adapted for the treatment of rheumatism, dropsy, dyspepsia, asthma, stomach, kidney, liver, bladder and blood disorder. The submission of many waters to a number of capable chemists for the purpose of determining the best medicinal water for the location of a Health Resort on sound principle, proved the superior advantage of the Rocky River Springs Mineral Water over those of competing points. The analysis given below of spring number one by B. W. Kilgore, State Chemist of North Carolina, will convince the most skeptical of the real merits of this water.



PARTIAL VIEW OF LAND BEFORE IMPROVEMENT COMMENCED

CERTIFICATE OF ANALYSIS OF SPRING No. 1.

NORTH CAROLINA DEPARTMENT OF AGRICULTURE,

DIVISION OF CHEMISTRY.

B. W. Kilgore, M. S., State Chemist.

	Grains per U. S. Gallons.
Certificate of Analysis of Spring No. 2.	
Total Mineral Water	410.50
Sulphur Trioxide	198.00
Alkalies as Oxidies	46.89
Oxidies of Aluminum and Iron	9.90
Manganous Oxide	20.09
Calcium Oxide Lime	33.70
Magnesium Oxide	44.90
Chlorine	19.37
Organic Substances	36.00

These are probably combined to form the following salts:

Double Sulphate of Iron and Aluminum	28.03
Manganous Sulphate	42.82
Alkalies as Sulphates	95.00
Calcium Sulphate	81.84
Magnesium Sulphate (Epsom Salts)	101.70
Magnesium Chloride	25.97
Organic Matter	36.00



Partial View of Wiscassett & Effred Cotton Mills, Employing 1,500 Operatives, Using 18,000 Bales of Cotton Per Year

ADDITIONAL FORMULÆ.

NORTH CAROLINA DEPARTMENT OF AGRICULTURE,

DIVISION OF CHEMISTRY.

B. W. Kilgore, M. S., State Chemist.

Analysis No. 2992.

Raleigh, N. C., Dec. 12, 1908.

Dear Sir:—The sample of Drinking Water sent to the State Chemist for analysis, in a bottle marked No. 1, contains:

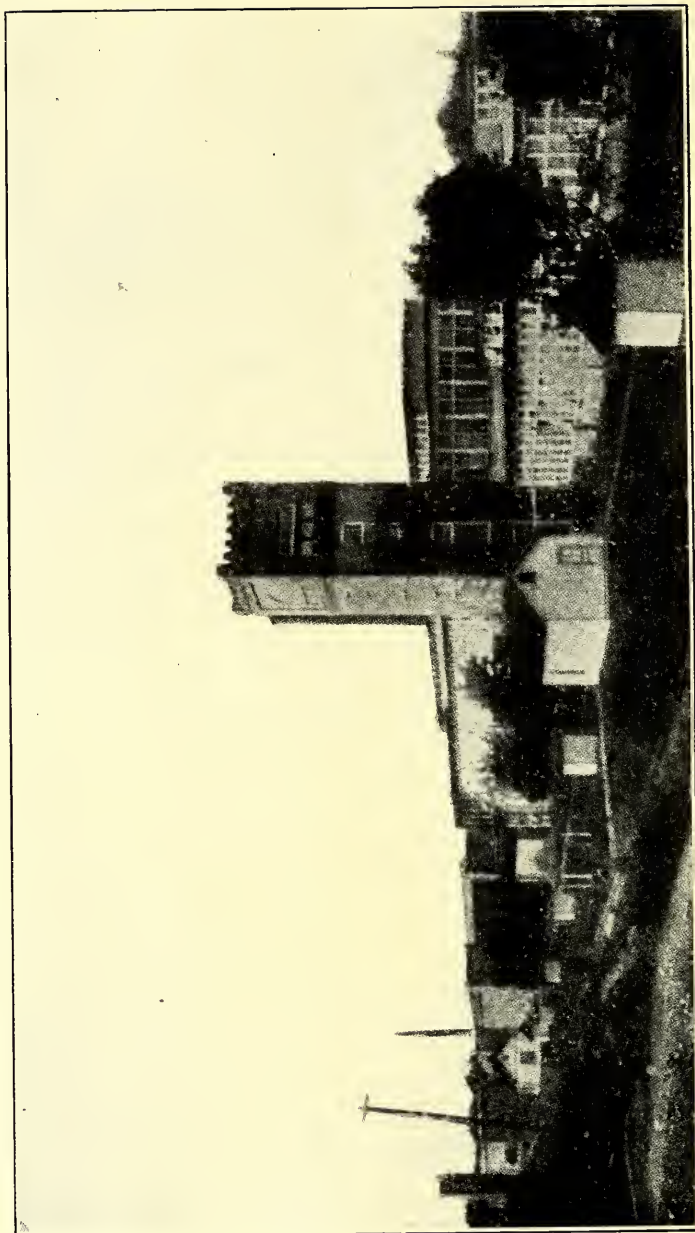
Total solid matter in solution and suspen- sion	9.3 grs. per U. S. gallon
Hardness	4.1 deg. Clarke's scales
Equivalent to calcium carbonate.....	3.7 grs. per U. S. gallon
Chlorine	0.5 grs. per U. S. gallon
Free ammonia	0.056 parts per million
Albuminoid ammonia	0.055 parts per million
Nitrogen as nitrates.....	Trace parts per million
Nitrogen as nitrites..... parts per million

Remarks: The indications of the analysis are that this is a good drinking water. It contains but little mineral matter (9.3 grains per U. S. gallon), and no lithia. The water contains noticeable quantity of iron and lime, and might be classed as a mild lime-iron water.

Very respectfully yours,

B. W. KILGORE, State Chemist.

To Mr. A. D. Candler, Porters, N. C.



WISCASSETT MILLS

NORTH CAROLINA DEPARTMENT OF AGRICULTURE,

DIVISION OF CHEMISTRY.

B. W. Kilgore, M. S., State Chemist.

Analysis No. 2993.

Raleigh, N. C., Dec. 12, 1908.

Dear Sir:—The sample of Drinking Water sent to the State Chemist for analysis, in a bottle marked No. 2, contains:

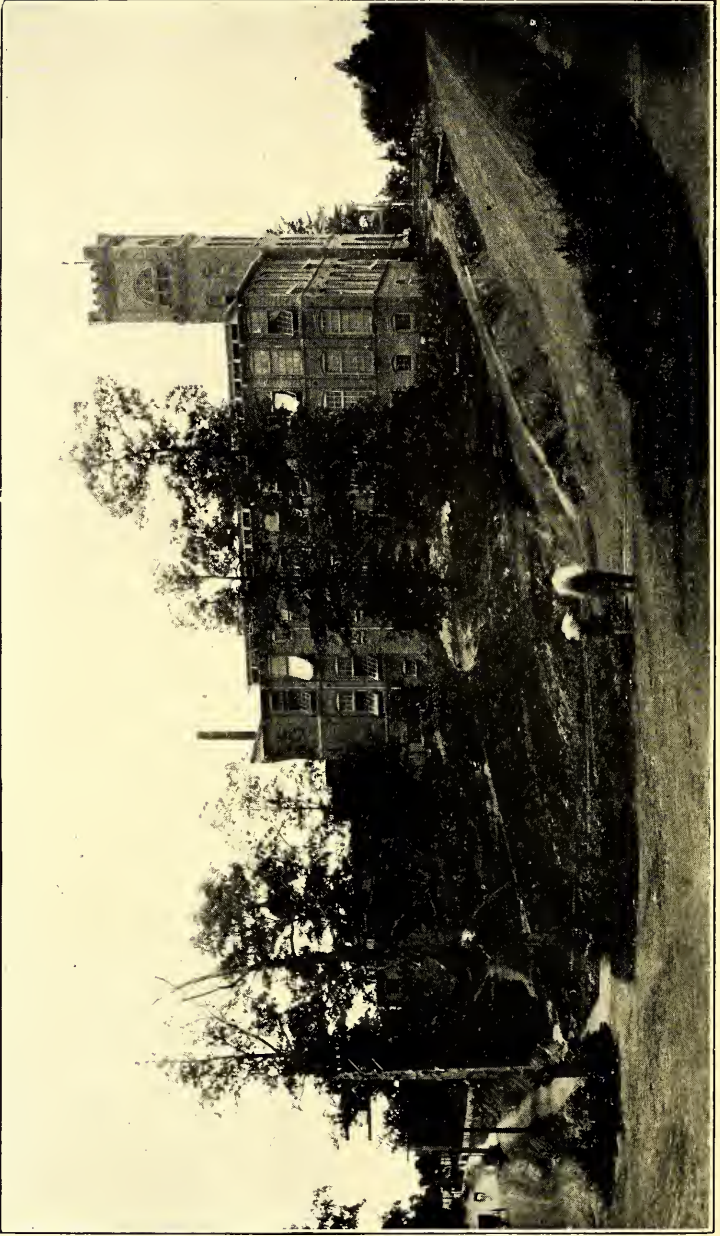
Total solid matter in solution and suspen-	
sion	10.3 grs. per U. S. gallon
Hardness	4.7 deg. Clarke's scales
Equivalent to calcium carbonate.....	4.3 grs. per U. S. gallon
Chlorine	0.57 grs. per U. S. gallon
Free ammonia	0.055 parts per million
Albuminoid ammonia	9.13 parts per million
Nitrogen as nitrates.....	Trace parts per million
Nitrogen as nitrites..... parts per million

Remarks: Practically the same as No. 2992, and the same remarks apply.

Very respectfully yours,

B. W. KILGORE, State Chemist.

To Mr. A. D. Candler, Porters, N. C.



LILLIAN KNITTING MILL

NORTH CAROLINA DEPARTMENT OF AGRICULTURE,

DIVISION OF CHEMISTRY.

B. W. Kilgore, M. S., State Chemist.

Analysis No. 2994.

Raleigh, N. C., Dec. 12, 1908.

Dear Sir:—The sample of Drinking Water sent to the State Chemist for analysis, in a bottle marked No. 3, contains:

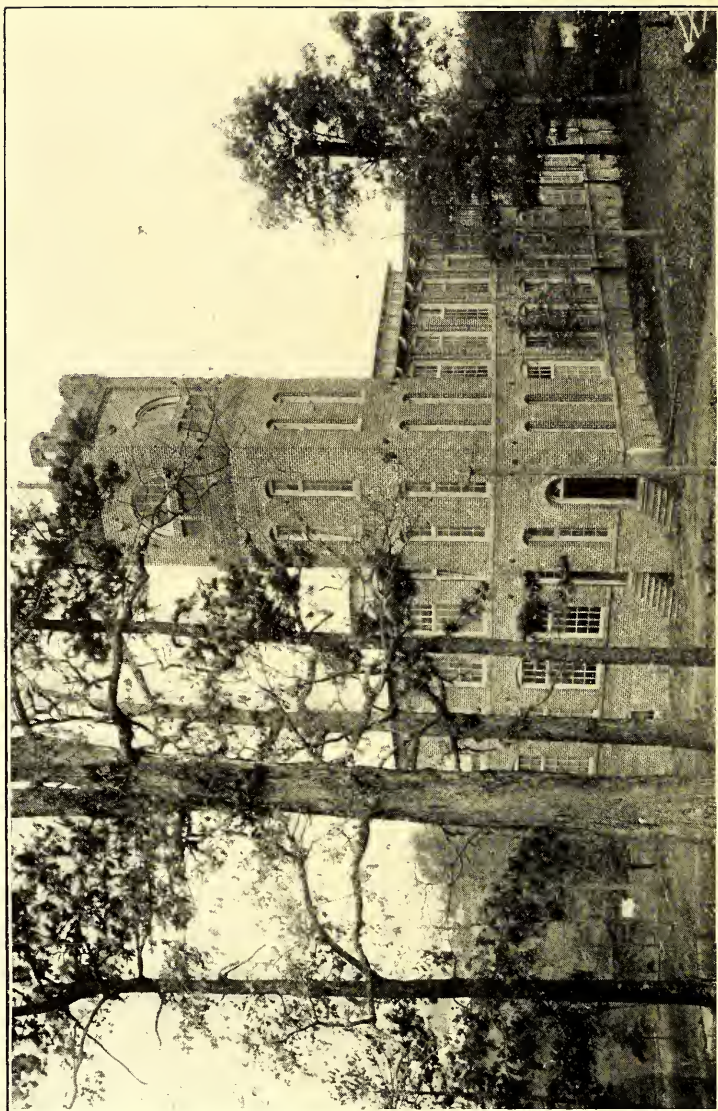
Total solid matter in solution and suspen- sion	9.8 grs. per U. S. gallon
Hardness	4.5 deg. Clarke's scales
Equivalent to calcium carbonate.....	4.1 grs. per U. S. gallon
Chlorine	0.55 grs. per U. S. gallon
Free ammonia	0.15 parts per million
Albuminoid ammonia	0.06 parts per million
Nitrogen as nitrates.....	Trace parts per million
Nitrogen as nitrites..... parts per million

Remarks: Practically the same as Nos. 2992 and 2993, and the same remarks apply.

Very respectfully yours,

B. W. KILGORE, State Chemist.

To Mr. A. D. Candler, Porters, N. C.



KNITTING MILLS

The statements below are from the Mayor of the City of Albemarle, N. C., and the Editor and Publisher of the Stanley Enterprise, published in the City of Albemarle, N. C., and from a number of people who have been benefited by the use of the Rocky River Springs Mineral Water.

The facts given in these statements are concurred in by every intelligent citizen of Stanly County, North Carolina, and everyone who has examined the water. For a further substantiation of these facts, we respectfully invite you to write any of the following persons for further particulars.

ALBEMARLE, N. C., Dec. 14, 1908.

To Whom It May Concern:

This is to certify that I am well acquainted with the curative properties of the Rocky River Spring Waters and know them to be of the very best. I am also acquainted with the Albemarle Development Company, and take pleasure in stating that their plans meet with the approval and encouragement of the people of Albemarle.

The property they own is located in the southern part of the City of Albemarle and is adjacent to the best residence section of the city.

Respectfully,

I. B. MILLER,
Mayor of Albemarle, N. C.

ALBEMARLE, N. C., Dec. 14, 1908.

To Whom It May Concern:

I have been acquainted with the waters of Rocky River Springs for years, and know them to be the equal and, in my opinion, the superior of any mineral water in this and adjoining States. In run-down conditions the waters are a superior tonic and appetizer. The arsenic water for its alterative, the iron for the tonic, the sulphur for its laxative, and the magnesia for its diuretic, make a combination which is superior to drugs used to obtain the same results.

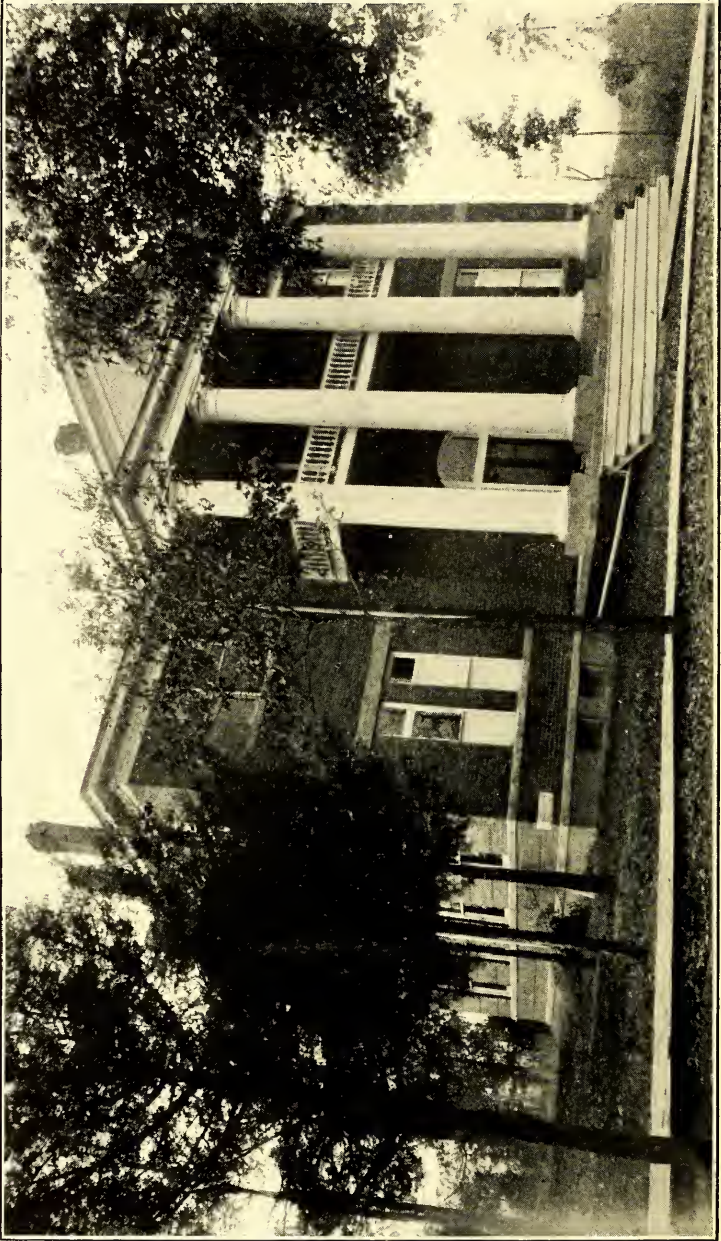
The natural conditions, combined with the Sanitarium-Natatorium, will make Albemarle an ideal health resort.

J. N. ANDERSON, M. D.

CEDAR HILL, N. C., July 1, 1908.

To Whom It May Concern:

My most serious trouble was inflammation of bladder and bowels, and being advised by my physician to try efficacy of the Rocky River Springs



PRESBYTERIAN FEMALE COLLEGE

Water, I immediately did so. The result was entirely satisfactory, for in three days there was a marked improvement, whereas in three weeks I was entirely cured.

MRS. EUGENIA DUNLAP.

MOUNT GILEAD, N. C., June 25, 1908.

To Whom It May Concern:

My wife was a great sufferer from asthma. By drinking Rocky River Spring Water she was relieved in twelve months. Prior to this time she had tried many other springs, but with fruitless result. I most heartily recomend this water for asthma.

W. S. INGRAM.

LITTLE'S MILLS, June 25, 1908.

To Whom It May Concern:

Myself and members of my family have visited Roeky River Springs about every year since 1851, and I know of no water its equal. We have derived great benefits from its use. I have known eases of dyspepsia and rheumatism and general debility greatly benefited by this water. The climate is delightful.

Yours truly,

JOHN P. LITTLE.

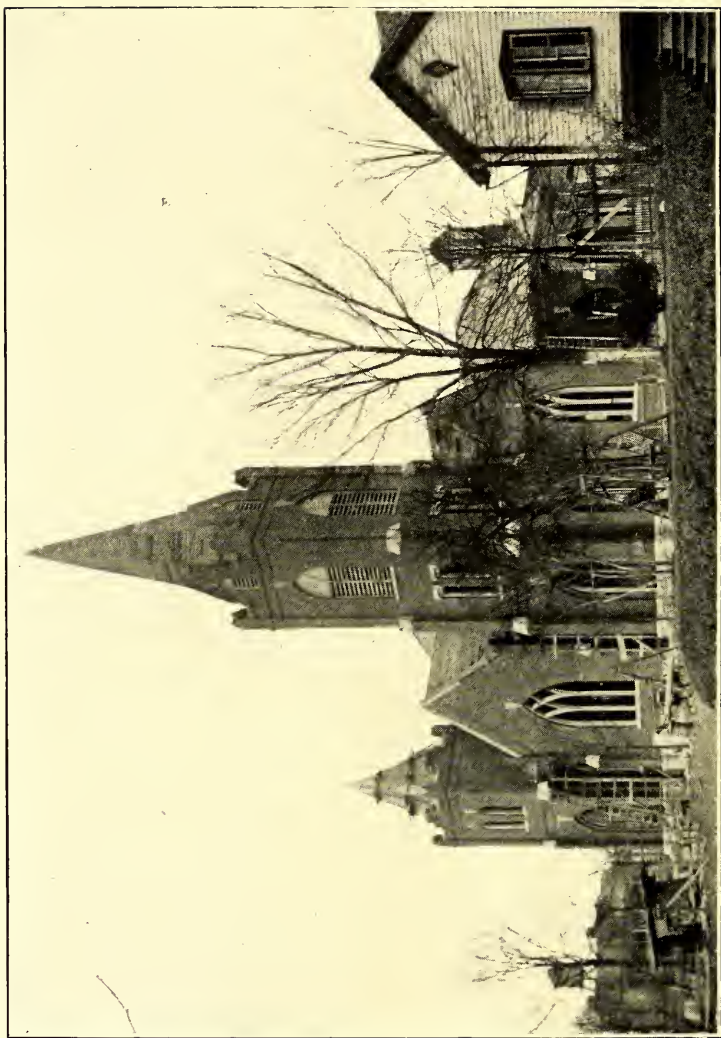
ALBEMARLE, N. C., Dec. 14, 1908.

To Whom It May Concern:

I have knowu the Roeky River Springs Water for forty years, and personally know of many eases of skin disease and indigestion which have been cured. The water is used both for bathing and drinking purposes; and for skin diseases, indigestion and general debilitated condition, I consider the water to be the best in the South.

Your truly,
THOMAS COLSON.





M. E. CHURCH

OUR IMPROVEMENTS

TWO Parks will be made, one immediately in front of the large and commodious Hotel, which will extend over in front of the Presbyterian Female College; the other will extend around the Sanitarium-Natatorium, taking in a part of the Springs, and extend over to the west side of the beautiful Lake. Fine walks will be laid through these parks, extending and winding around the beautiful pines, passing by a part of the Springs and down to the Boat House at the Lake, where a plentiful supply of canoes, electric yachts, etc., can be had for the pleasure of the visitors. Both of these parks will be beautified with flowers and shrubbery. No expense will be spared to make this a delightful place for guests. The flowers of the tropics and those of the Arctic climates will be cultivated in abundance, and their sweet fragrance will be a delight to those who lounge about the Lake and wander through the Parks.

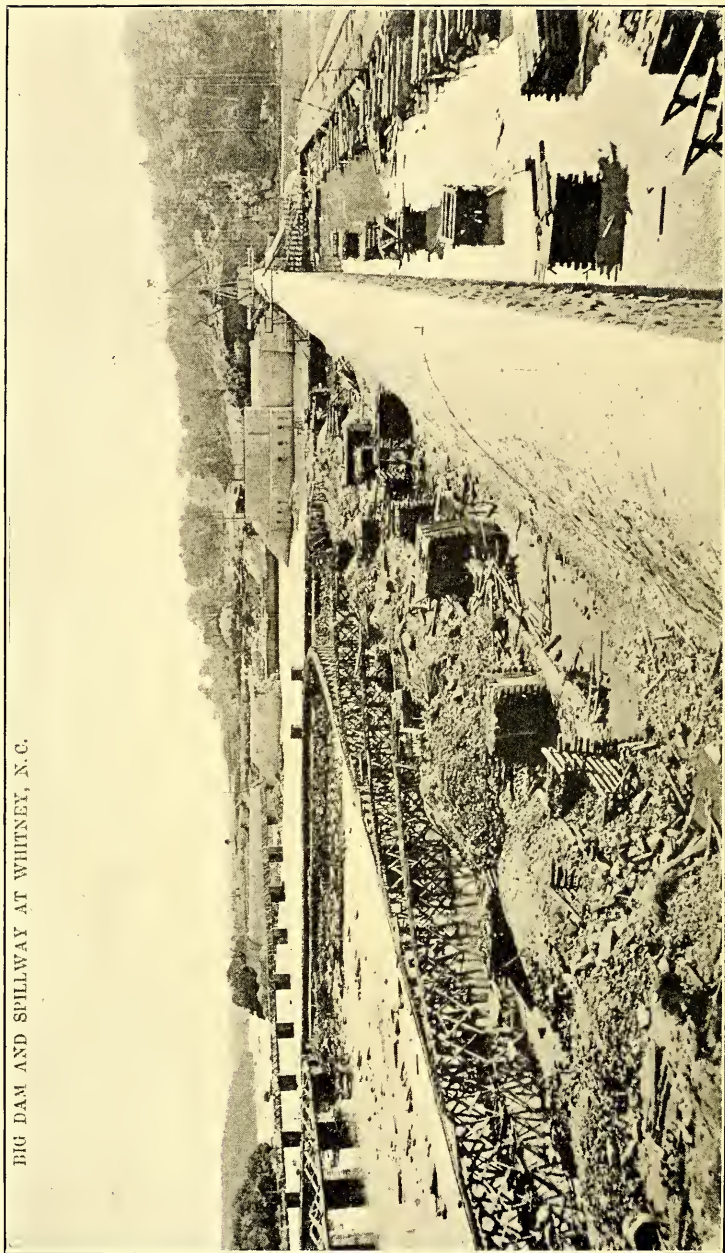
The Park north of the large and commodious Hotel and near the Presbyterian Female College, is beautifully located, being less than one-half mile from the Court House and Business section of the city, and special effort will be made to make it a delightful place for Pleasure Seekers and a paradise of rest and refreshment.

Lake Albemarle, located near the Sanitarium-Natatorium, surrounded by walks and driveways, will make it quite convenient for the guests to enjoy boating, fishing and other light sports. The long driveways around the Lake will give much pleasure to those who enjoy driving by the still waters of a cool and peaceful lake.

HOTEL

The imposing Hotel, which will soon be constructed, will be located on the beautifully terraced hill south of the Presbyterian Female College, surrounded by Parks, with a beautiful Lake on the east. The Hotel will be a building with all outside rooms, with broad halls, where the guests may gather and enjoy the cool southland breeze, and the perfumes of the flowers of the Parks. Every convenience adaptable to a Modern Southern Pleasure Resort

BIG DAM AND SPILLWAY AT WHITNEY, N. C.



THE LARGEST WATER ELECTRIC POWER PLANT IN THE SOUTH

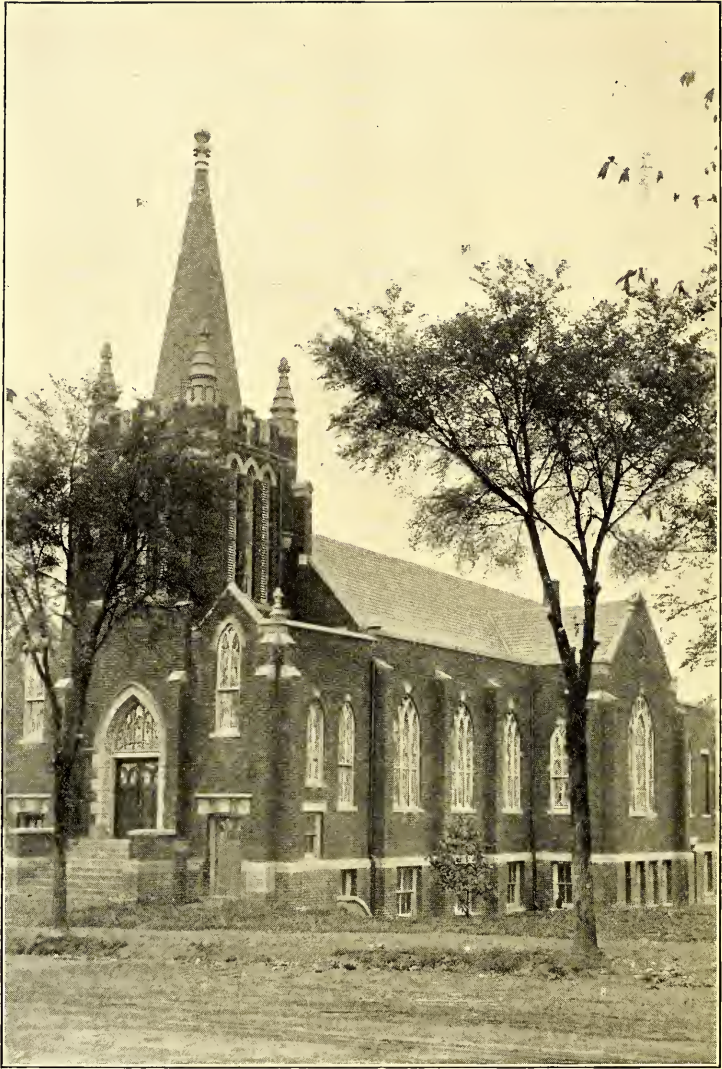
Hotel will be made a part of its construction. The commanding view of the town and the beautiful mountain scenery from the Hotel will add materially to the pleasure of this delightful place.

As the Committee who were sent to investigate this location stood upon the very site where this magnificent Hotel is to be erected, gazing into the azure skies fading away into the summits of the Blue Ridge Mountains, and inhaling the pure Mountain air, scented with the fragrant pines, as with one voice each and every one of them said that this was truly "The Land of the Sky," "The haven of rest" for the afflicted! the ideal place for the establishment of a suitable Sanitarium for the recuperation of the nervous, the worn-out, the tired and the sick.

The Sanitarium-Natatorium will be located south of the Hotel and nearer the bank of the Lake. This will be a large, commodious building, with every convenience for attending to the various needs of those who are taking treatment. Its lectures, addresses, exhibitions, exercises and school of health furnish sound training in health building. This Sanitarium-Natatorium will contain two hundred or more kinds of baths, including Nauheim and Electric Lights, besides electricity, Finsen Ray, Massage, Mechanical Vibrations, Manual Swedish Movement, Indoor Swimming Pool, Great Gymnasium with class and individual instructor, trained nurses, expert bath attendants, both men and women, etc., etc.

The Sanitarium-Natatorium will not merely be a place where people regain more or less health. It is far more than that. It is a great "University of Health," in which the fundamental principles of health are practiced; a place where the result of erroneous eating, drinking and living are shown clearly, and where the theory, principle and practices of right living are demonstrated by precept and example.

The appointments of the Sanitarium-Natatorium for the comfort and well-being of its patrons are of the finest, modern, luxuriant and Hygienic type. Its indoor palm garden, spacious parlors, quiet rest Foyers, Promenade Porches, Cheerful Dining-room with beautiful landscape views, Hygienic Bedrooms, Kitchen, etc., are all designed to add to the enjoyment and the sound health building of its patrons.



LUTHERAN CHURCH

There can be nothing monotonous about the Albemarle Sanitarium-Natatorium. A continual diversity of entertainment, wholly optional, to suit the wishes and purposes of all guests, will be prepared. Here one will meet interesting guests from every State and country. As a place of rest and recuperation, for the worn-out, the nervous, the tired and the sick, the Albemarle Health and Pleasure Resort will be known all over the world for the results it will accomplish.

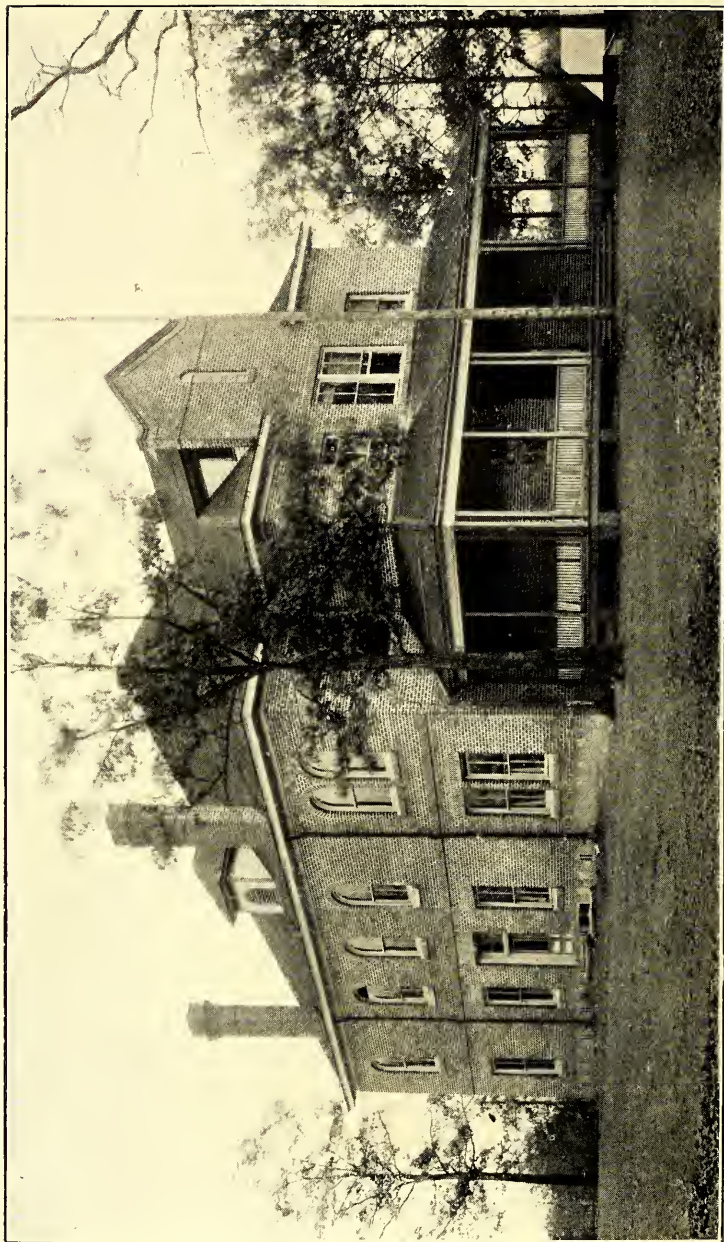
THE RATES WILL BE VERY MODERATE

There are numerous health and pleasure resorts established for the rich. It is our intention to place this Health Resort within the easy reach of all those in moderate circumstances. Board and Room, including bath, services of bath attendants and necessary medical attention, will cost less at the Albemarle Health and Pleasure Resort than board and room alone at any other first-class institution of this kind.

MUSIC HALL

The Music Hall, which will be located midway between the Sanitarium-Natatorium and the magnificent Hotel, will be fitted up with a stage, nicely seated with opera chairs, where entertainments may be given by the local talent of Albemarle and the visitors at our pleasure resort. A popular admission fee may be charged at the door by the societies or parties giving entertainments. Twenty-five per cent. of such admission to be given to the Albemarle Development Company for the benefit of its stockholders, the balance to be disbursed among the members of the society or parties giving the entertainment at its option. First-class entertainments will be well patronized, as in addition to the attendance at the Health and Pleasure Resort, the 7,000 inhabitants of the City of Albemarle would take advantage of these entertainments.

The above outline of the natural conditions existing around Albemarle is given that you may appreciate the situation surrounding this proposition, and that you may appreciate the improvement we are making and the proposition we offer below.



HIGH SCHOOL BUILDING

This Company has sub-divided 100 acres of land adjoining our improvements and in the City of Albemarle, into lots, which we are turning loose for \$12.00 each. This ground cost \$100.00 per acre, therefore, the Company will not make any money out of the lots at this price. We do not claim to make any money out of them. As stated in the beginning, the Company is doing a very extensive advertising, making an effort to interest the public in this proposition. We are turning loose these lots at this price for the purpose of creating an interest in this enterprise, and shipping out mineral water for a period of Three Months free to all certificate holders, by the certificate holder paying for retainers, advertising Albemarle as a Health Resort, advertising Rocky River Springs Mineral Water, establishing this enterprise throughout the country while we build it, thus we have created a co-operation necessary to successfully build and place an enterprise of this kind on a paying basis.

This is not a town site proposition in any sense of the word. Town site companies sell lots for speculation, collect the purchase price and leave the town and the value for the purchaser to make. In this case we are not speculating on this ground. We have a town of about seven thousand people already, with splendid railroad facilities, fine agriculture country, large manufacturing interests, and, above all else, the Mineral Waters, the foundation for these improvements.

This Company is not leaving the town after the sale is over, but instead we are spending large sums of money building Hotel, Sanitarium-Natatorium, Lake, Parks and other improvements necessary to make Albemarle a popular resort, by this means making values. We are not making money out of turning loose these lots for \$12.00 each; our money is made out of the enterprise.

It is done by this method: The Company issues certificates for \$12.00 each (limiting two to one individual) that guarantee the holder participation in the distribution of the lots in the Albemarle Development Company's addition to Albemarle, N. C., said distribution to be conducted by three Trustees, to be selected by the certificate holders who are present or represented on the day of the opening of this enterprise (in some entirely legal manner),



COURT HOUSE

thus giving each and every certificate holder an equal showing to get one of the one hundred and twelve front lots, worth, with this proposition completed, three hundred (\$300.00), or one of the two hundred corner lots, worth \$150.00 to \$300.00, or he may get one of the inside lots, which, we believe, to be worth fifty to seventy-five dollars. Every certificate holder is guaranteed returns on his investment.

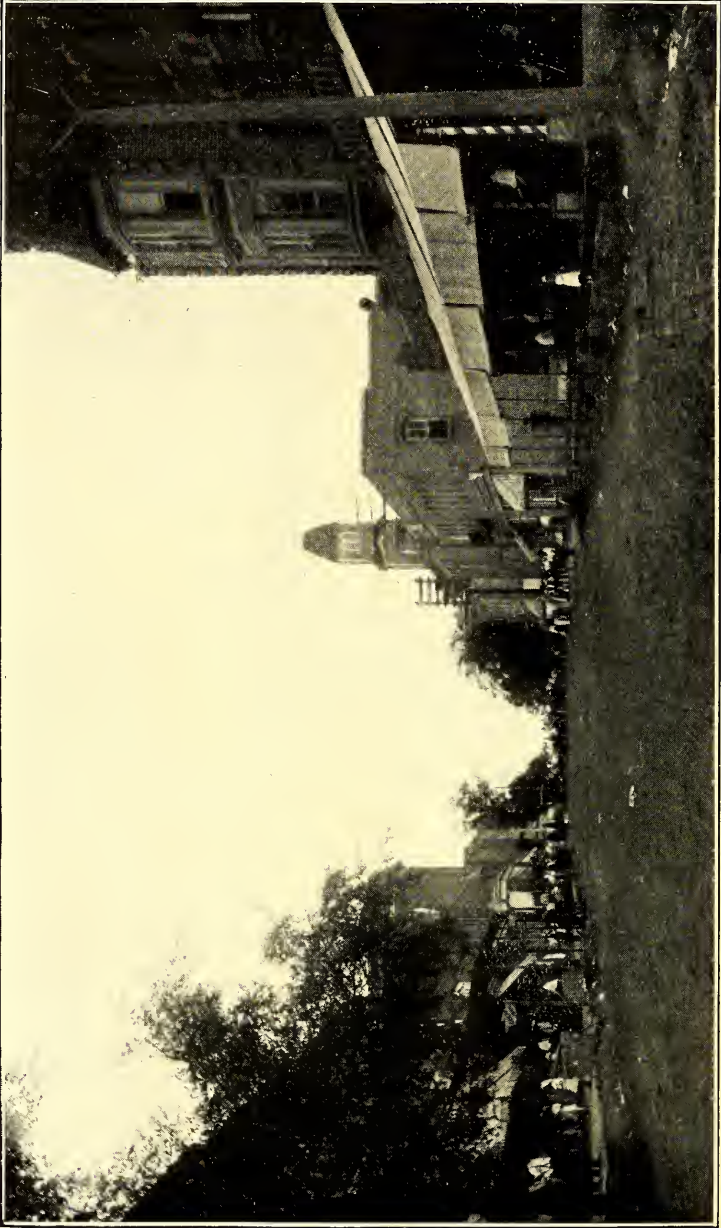
This Company also guarantees that if any certificate holder is dissatisfied with the lot assigned to his certificate, by the Distributing Committee, to buy same back at the original price of the certificate to which lot is assigned by the Distribution Committee, at any time within sixty days after the distribution, thus covering any possibility of there being any lot not worth the price paid for the certificate to which it is assigned, and even a profit.

This distribution is not a drawing in any sense of the word, since there are absolutely no blanks, and each and every investor is guaranteed returns on his money in addition to the paid-up privileges at the Resort for one year's use of the Water.

The ground lies perfect in every way. Beginning at the Hotel, and the Sanitarium-Natatorium, which are located on fine terraced hills, it gradually slopes back to the beautiful Lake, giving it perfect drainage. It is the most desirable part of the city; it is only a short half-mile from the railroad station and Court House; every lot will be within five blocks of the Hotel and Sanitarium-Natatorium, and eight blocks from the Court House, Banks and Post Office.

The distribution of the above lots will be made on the completion of this sale, or at the time of the opening of the Hotel, Sanitarium-Natatorium, Lake and Parks.

We appeal to investors who want the best results on money, we ask only a careful consideration of the merits of the above outlined proposition, and if it suggests itself to investors as a proposition of merit, we will appreciate such business as the investor may desire to give us, up to the limit (two certificates to one individual), and we guarantee to make every effort consistent with good business methods to give returns satisfactory to our investor.



STREET SCENE

AGENT'S AUTHORITY

No agent has any authority to make any contract, either verbal or written, only as contained in the literature of this Company, and the Company will not be responsible for any statement or contract otherwise.

NOTICE

All receipts for money paid for certificate to agent authorized by this Company must be signed by the Cashier of the Company; if any claims are made by applicants, their receipts will not be recognized if it is not signed by the Cashier of the Company.

Respectfully submitted,

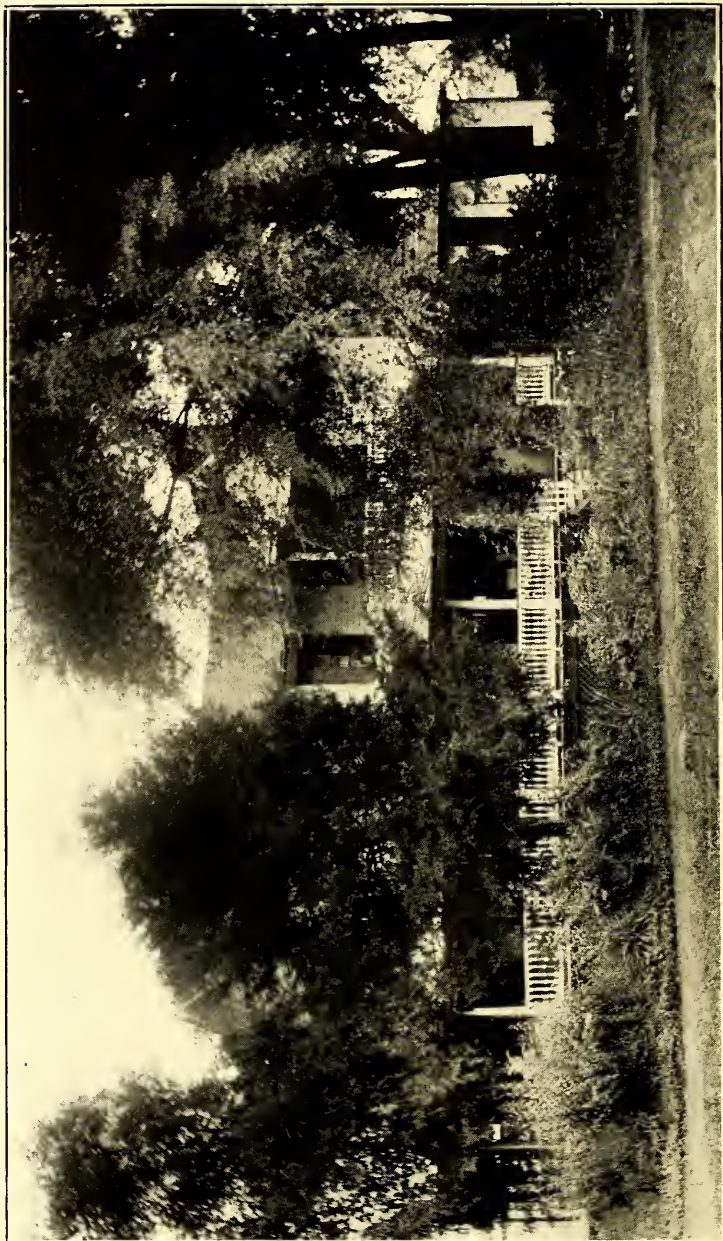
ALBEMARLE DEVELOPMENT COMPANY,

J. C. MASTERS, Sec. and Treas.

F. H. NEFF, Cashier.

Albemarle, N. C.





RESIDENCE OF S. H. HEARNE

REFERENCES

By permission, we give the following references:

STANLEY COUNTY LOAN AND TRUST COMPANY.

CABARRUS SAVINGS BANK.

J. R. PRICE, Attorney.

S. H. HERN, Ex-Director State Prison and Director of Efirid Manufacturing Company.

ALBEMARLE REAL ESTATE AND INSURANCE COMPANY.

J. S. EFIRD, Secretary and Treasurer of the Efirid Manufacturing Company.

REV. H. A. McCULLOUGH.

P. J. HUNECUTT & Co., Furniture Dealers.

J. E. EWING, Furniture Dealer.

W. B. MOOSE, Register of Deeds.

I. R. BURLEYSON, Attorney.

A. R. KIRK, Postmaster.

R. E. AUSTIN, Attorney.

H. B. HOWIE, Chief of Police.

L. A. MOODY, Contractor.

I. B. MILLER, Mayor.

W. L. MANN, Real Estate and Insurance.

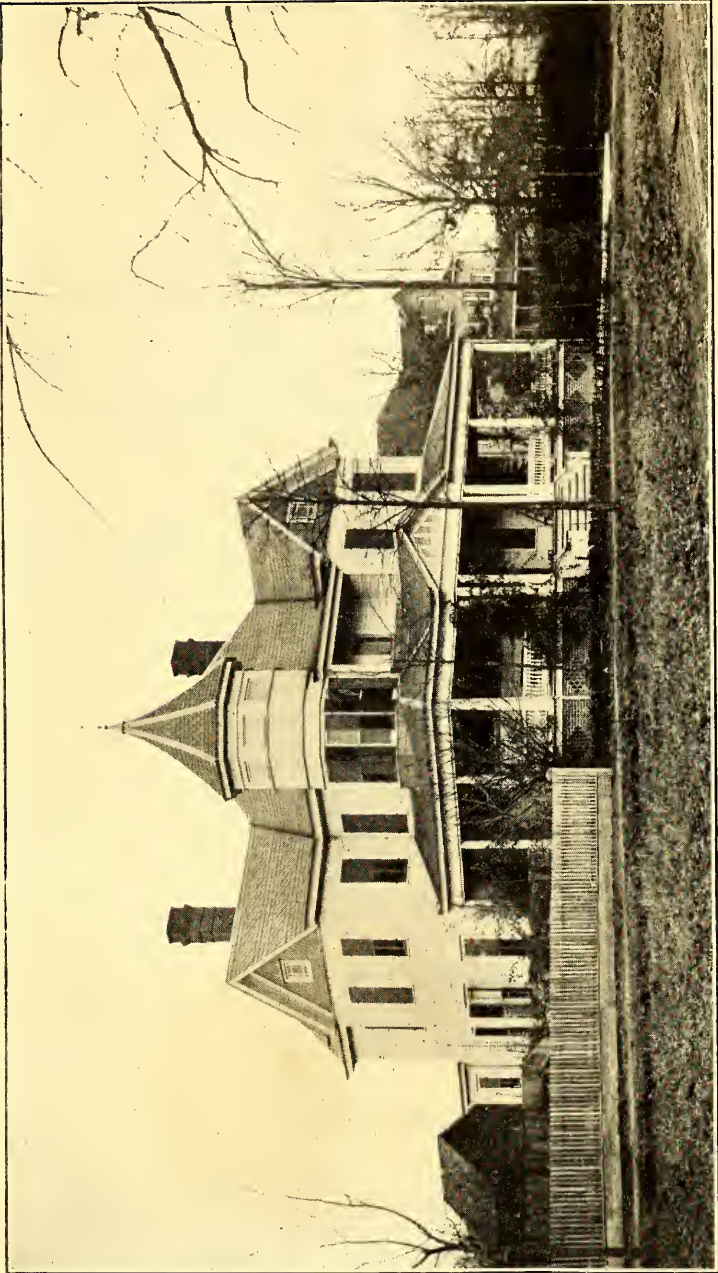
MORROW BROS. & HEATH Co., Per A. C. Heath.

Address Albemarle, N. C.

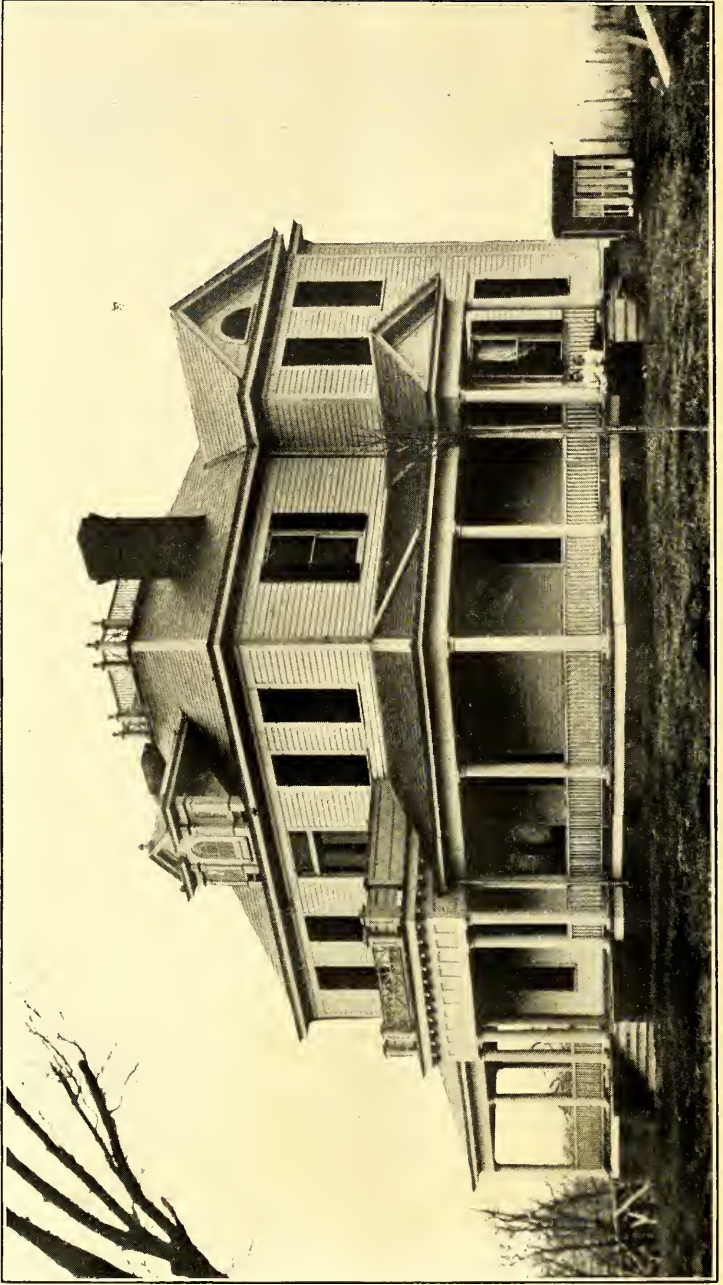
All parties wishing correspondence, will please enclose postage, as the above parties are financially disinterested.



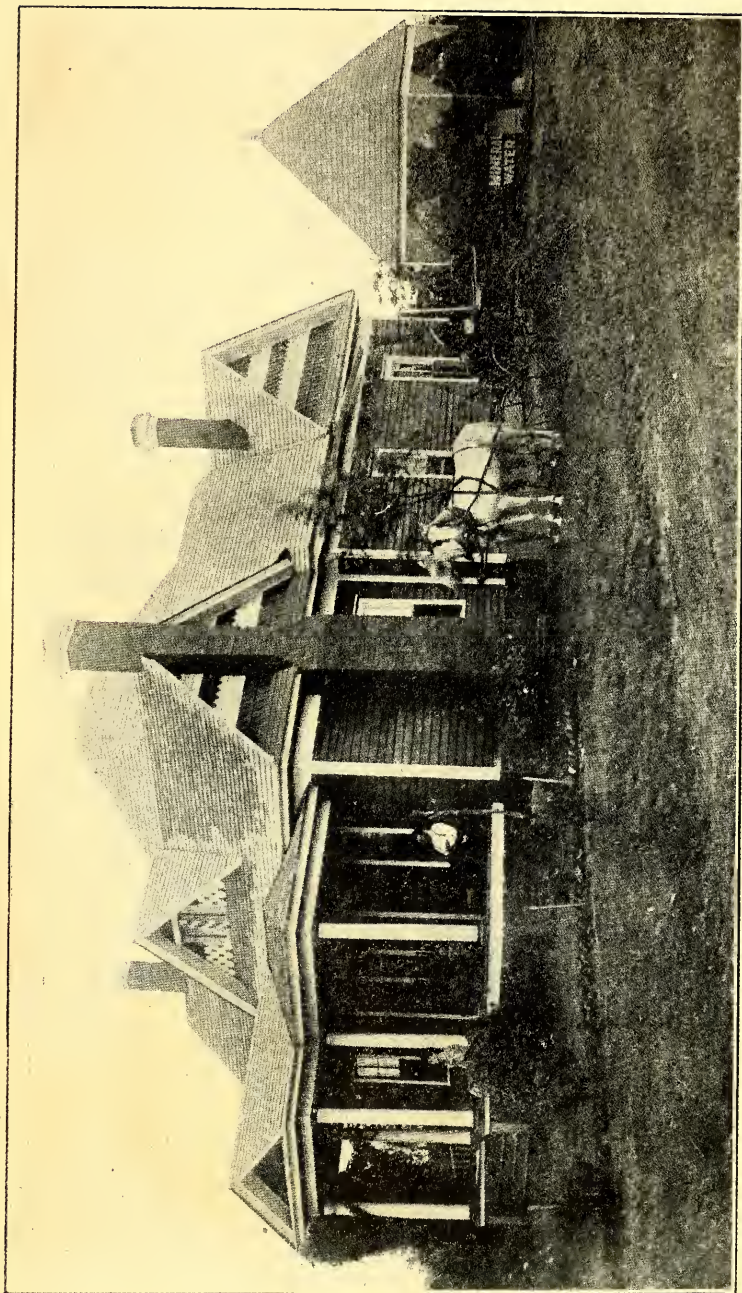
STREET VIEW



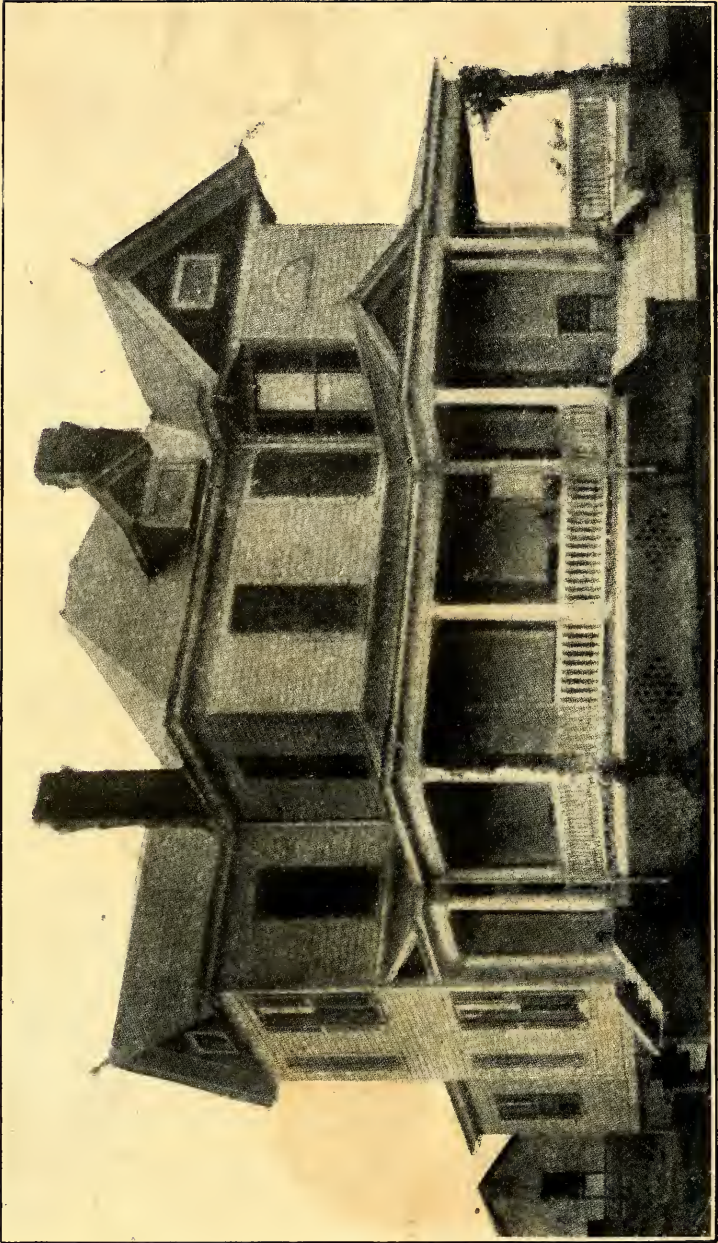
RESIDENCE OF E. M. ASBURY



RESIDENCE OF T. C. HEARNE



VIEW OF SPRING No. 1 AND BATH HOUSES



C. M. PALMER'S RESIDENCE