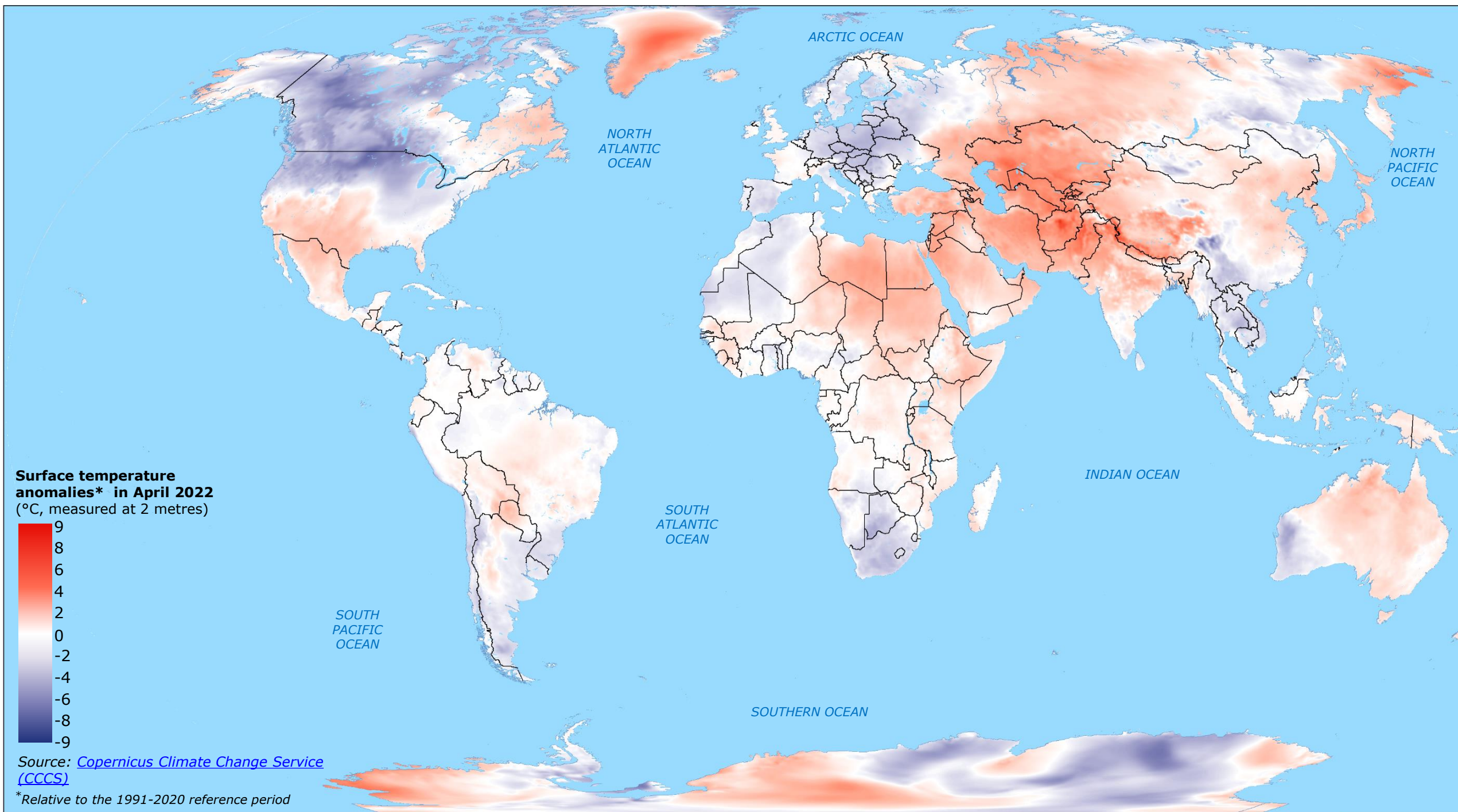


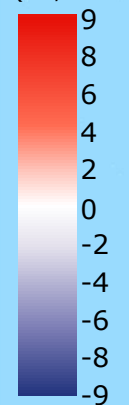
World | Temperature Anomalies in April 2022



The **global average temperature for April 2022 was about 0.28°C higher** than the 1991-2020 average for April, resulting in the sixth warmest April on record as according to the dataset from the Copernicus Climate Change Service/ECMWF.

Source: [Copernicus Climate Change Service: Surface air temperature for April 2022](#)

Surface temperature anomalies* in April 2022 (°C, measured at 2 metres)

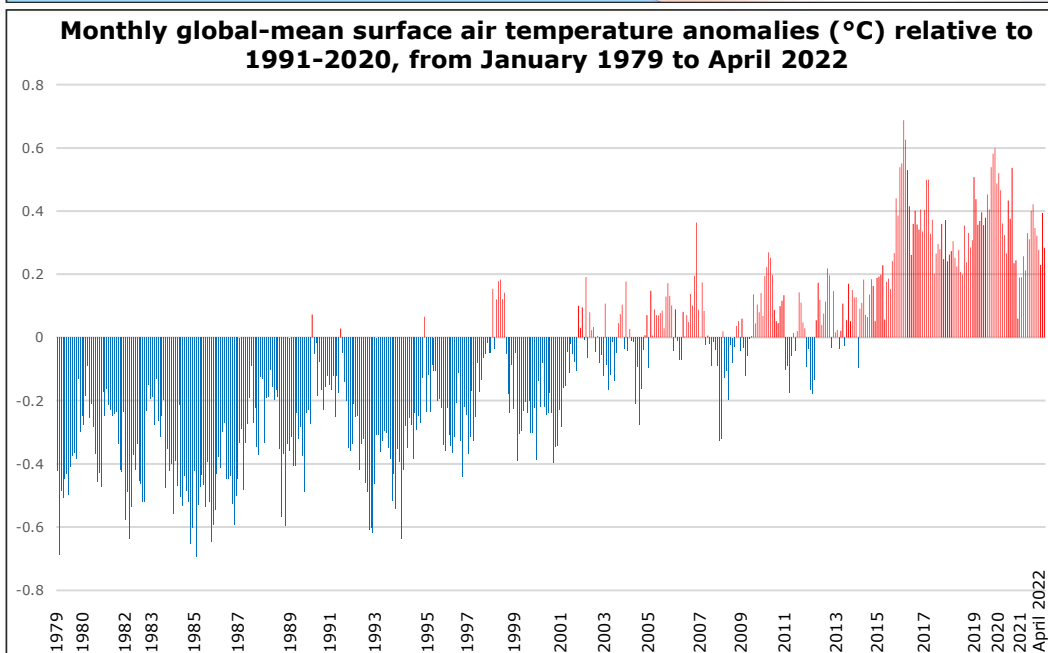


Source: [Copernicus Climate Change Service \(CCCS\)](#)

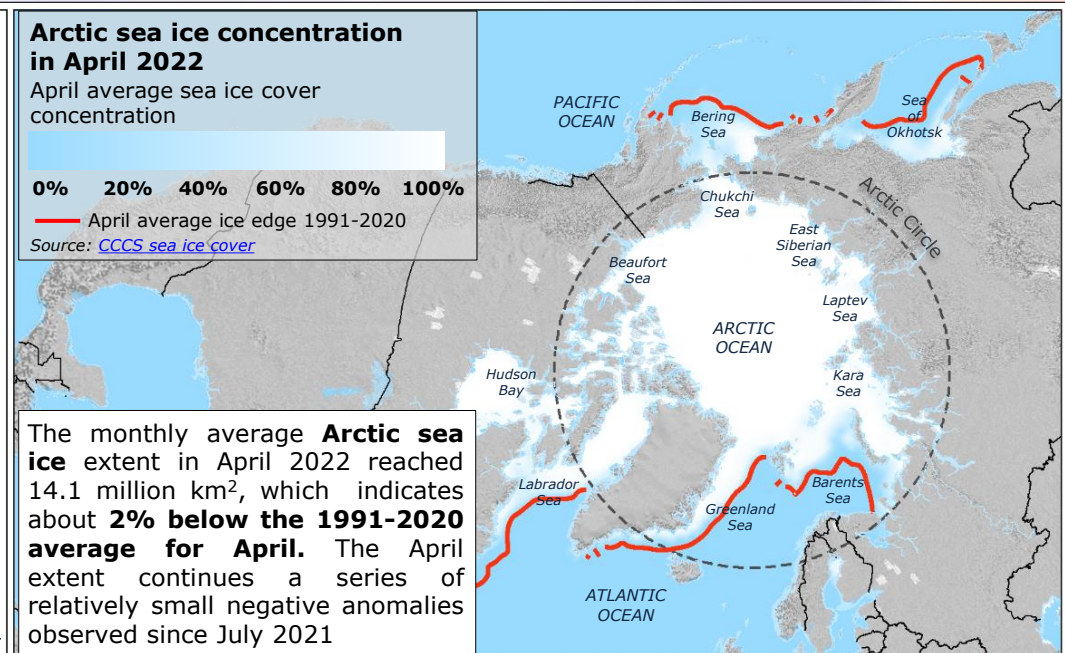
*Relative to the 1991-2020 reference period

Latest additional overview maps on Global temperature anomalies have been produced as DG ECHO Daily Maps, available on the ERCC Daily Map [Portal](#).

© European Union, 2022. Map produced by the JRC. The boundaries and the names shown on this map do not imply official endorsement or acceptance by the European Union.

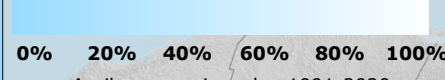


Monthly global-mean surface air temperature anomalies (°C) relative to 1991-2020, from January 1979 to April 2022



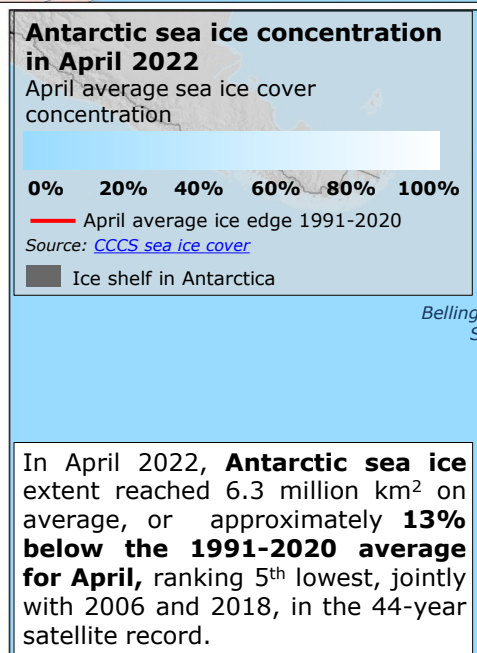
Arctic sea ice concentration in April 2022

April average sea ice cover concentration



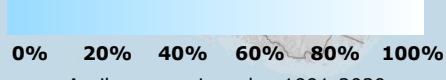
Source: [CCCS sea ice cover](#)

The monthly average **Arctic sea ice** extent in April 2022 reached 14.1 million km², which indicates about **2% below the 1991-2020 average for April**. The April extent continues a series of relatively small negative anomalies observed since July 2021



Antarctic sea ice concentration in April 2022

April average sea ice cover concentration



Source: [CCCS sea ice cover](#)

In April 2022, **Antarctic sea ice** extent reached 6.3 million km² on average, or approximately **13% below the 1991-2020 average for April**, ranking 5th lowest, jointly with 2006 and 2018, in the 44-year satellite record.