

Historic, archived document

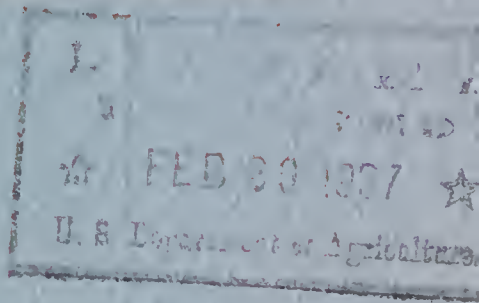
Do not assume content reflects current scientific knowledge, policies, or practices.

6257
DAHLIA IMPORTERS

**GROWERS OF LEADING
AMERICAN HONOR ROLLS**

AND

**IMPORTERS OF
EUROPEAN NOVELTIES**



**ENJOY
GROWING NEW NOVELTIES
FOR 1937**

**GARFIELD HEIGHTS
DAHLIA GARDENS**

9902 ROBINSON AVE.

GARFIELD HEIGHTS, OHIO

P. O. CLEVELAND, OHIO

TO TRADE

DISCOUNT

$33\frac{1}{3}\%$ Off

EXCEPT THOSE MARKED "NET"

Season's Greetings

In extending our warmest greetings to all dahlia lovers at the beginning of another dahlia season, we trust the past season brought happiness to you and that your dahlias were a success. We hope you are now planning a larger garden for 1937 and will enjoy growing the new novelties. We want to thank you for your generous patronage. To the newcomer and prospective customer, we solicit your patronage and assure you that your orders will receive personal attention. A trial order will convince you that our stock is not forced for show blooms.

You will find in this catalogue the newest introductions, the best Honor Roll varieties from all parts of the world. It was a pleasure to make your personal acquaintance at the various shows.

Thanks again for your splendid orders and letters.

Cordially yours,

Garfield Heights Dahlia Gardens

Your garden is not complete without the small flowering Dahlias.

GENERAL INFORMATION

A deposit of at least \$1.00 required with all orders, balance before delivery.

Order Early: By so doing you will be assured of getting all of the dahlias wanted, as the demand for some varieties exceeds the supply.

Time of Shipment: Roots will be shipped by May 15th. Green plants, May 1st to June 15th. Unless otherwise specified.

Remittance: We pay delivery charges on all retail orders of \$2.00 or over. On all plant orders, add 25 cents for special delivery. No goods sent C. O. D. If currency is sent, use registered mail.

Early Shipments: If your order is desired during severe weather, we will pack it as frost proof as possible, and send by insured Express. After the goods have left our place we are not responsible for damage or freezing in transit. If such damage occurs, put your claim at once to the Express Company.

Guarantee: All stock delivered by us is guaranteed to be true to name, free from disease, and in good growing condition, to the extent of replacement, if errors are reported as soon as apparent.

* * *

SALES TAX

Residents of Ohio must include the three per cent sales tax with remittance.

* * *

If you are a lover of Dahlias, join your nearest Dahlia Society, and partake of its benefits.

* * *

MEMBERS

American Dahlia Society

Ohio Dahlia Society

Akron Dahlia Society

Dahlia Society of Indiana

Central States Dahlia Society

Dahlia Society of Wisconsin, Inc.

Ohio Valley Dahlia Association

* * *

If you want to enjoy reading a good Dahlia magazine, subscribe for the Mid-West Dahlia News, to 170 Talmadge Street, Madison, Wisconsin. We are sure you will be anxious to get the next issue.

EXTRA STOCK ALLOWANCES WITH RETAIL ORDERS

With every order from \$5.00 to \$10.00, choose 10 per cent extra stock free.

With every order from \$10.00 to \$25.00, choose 15 per cent extra stock free.

With every order from \$25.00 to \$50.00, choose 20 per cent extra stock free.

These extra stock allowances cannot be taken as Cash Discounts.

Our stock inspected and approved by the State and Federal Inspection Department.

* * *

We are happy to state that for the second successive year we have won a Silver Cup for the best 150 square feet Commercial Display at the Great Lakes Exposition Dahlia Show, held in Cleveland, September 11, 1936. Also a special award for the most outstanding Commercial Display of the show. This display was acclaimed by many Dahlia fans as being the best commercial exhibit they had ever visioned. Picture on page 14.

* * *

Won our share of ribbons at the Mid-West Dahlia show, held in Cincinnati.

CONFIDENCE

Our Motto is: Business, as always, treat our customers as we would want others to treat us; so our quotations are for first-class stock only, and we guarantee the quality which will please you too. It is indeed a pleasure to receive so many letters from our customers telling us of the wonderful results they got from our stock and friendly service offered by Garfield Heights Gardens. It is letters like these that make Dahlia growing commercially a pleasure.

* * *

Eaton, Ohio

I recently called on a friend who is a Dahlia grower. He told me of the order he received from you, and that he was highly pleased. I asked him for your Dahlia list. Enclosed is money order for the following. C.R.E.

* * *

Lynchburg, Virginia

All the roots and plants you sent me did fine. I never saw such growth, and quantity of blooms, size and color. M. B. H.

* * *

Poughkeepsie, New York

Now that the shows are over and the roots dug, I wish to write you a line of appreciation for the plants you sent me. I won a few ribbons with your stock. Received several inquiries after the New York Show. I sent them a similar "rave" and referred them to you. W. R. B.

* * *

Waupaca, Wisconsin

I haven't written you a word about the clumps which I received from you. They were simply great and they all grew wonderfully. I wish you would send me your list of dahlia clumps for this fall, I will be wanting some more of them. W. H. L.

* * *

Hudson Falls, New York

The rooted cuttings I purchased from you all did wonderful. I liked your rooted cuttings and will send you an order in the near future. I have bought many from other places last Spring, which did not even have roots on. F. S. C.

* * *

If Commercial grower, please use letterhead.

* * *

If interested in rooted cuttings, write us and we will quote price on your wants.

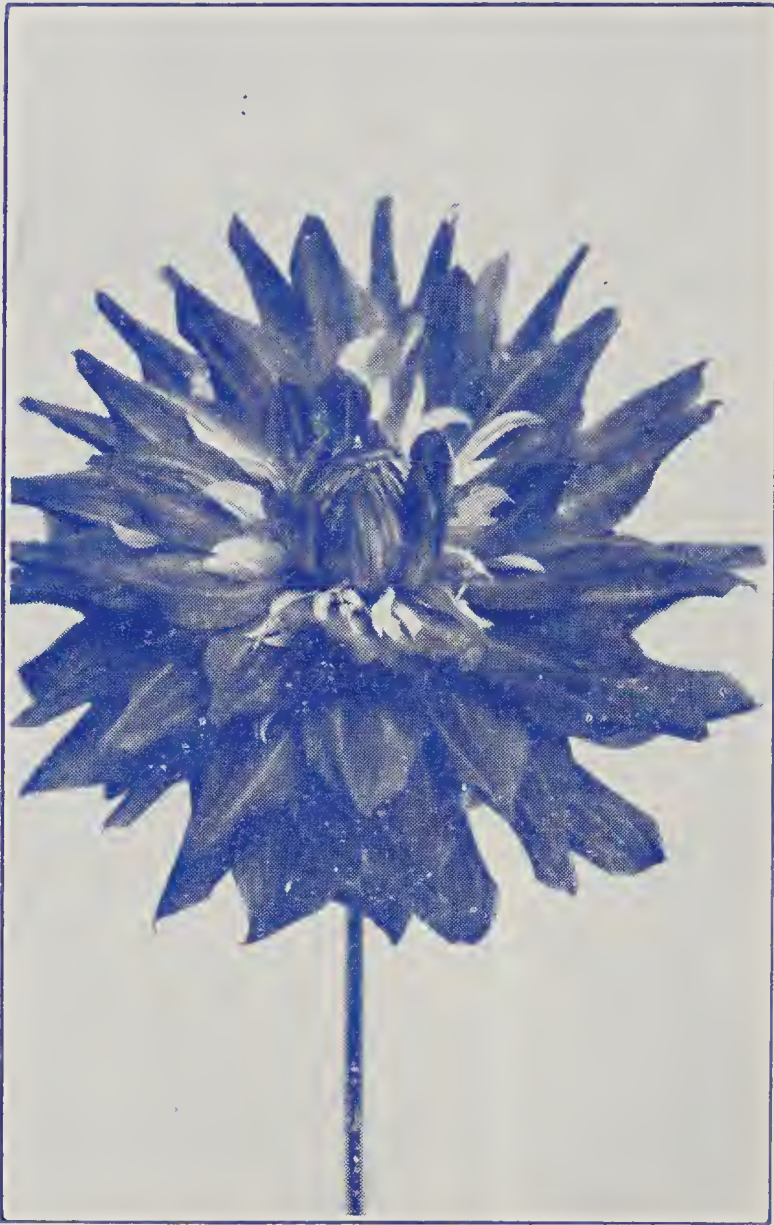
* * *

REFERENCE: The Bank of Cleveland.

* * *

ABBREVIATIONS

St. C.—Straight cactus In. C.—Incurve cactus S. C.—Semi cactus
I. D.—Informal decorative F. D.—Formal decorative



“MADAME SPIZZI” 1938 NOVELTY

MADAME SPIZZI (A. PEZANT) Large flowered semi-cactus with ruby petals, intermixed with small white florets at the center. Solid bloom held on long stems. Entirely new type. Height 5 feet. Certificate of Merit by the French Dahlia Society.

1937 AMERICAN AND EUROPEAN NOVELTIES

ANGE MARCELLE I. D. Giant flowers held on extra long, strong stems well above the foliage. A sturdy grower 6 feet tall. Old rose with copper shadings, reverse of petals, clear pink. Won high honors at all French shows. **Plants—\$2.00 net**

ALTENSTEIN S. C. This novelty was greatly admired in Germany. A very large semi-cactus Dahlia with well formed blooms. Color pink suffused lilac, shades lighter towards the tips. Strong stems, free bloomer. Exhibition type. **Roots—\$3.00 Plants—\$1.50**

ARARA F. D. Color golden salmon striped and dotted brick red. Tall grower, good stems and a good bloomer. A very good prize winner in the Formal Decorative class. A variety of striking beauty. It gained a Certificate of Merit in Germany. **Root—\$3.00 Plants—\$1.50**

AMERICAN PURITY S. C. (AMERICAN FARMS) Glistening white with petals tightly quilled at the tips, and the fullness in effect of the flower is helped by a multitude of petaloids. The physical make-up of the flower gives it an effect of sparkling animation and in this section it is certainly one of the things to be counted on. The straight stem carries the flower well and it looks as though we have got a really worth while addition to our exhibition varieties. Achievement medal and numerous other awards. Honor Roll. **Plants—\$7.50**

BUTTERFLY MIG. Color dark yellow, is especially recommended for, beds, borders and exhibitions and will display a gorgeous mass of flowers throughout the summer until late in the autumn. **Roots—\$1.50 Plants—\$0.75**

BURG GNANDSTEIN S. C. A beautiful novelty from Germany, it really was attractive. With flowers well formed, the large flowers are well above the foliage. Color, a striking pink with golden tips and a golden center, with long stems and a good show bloom. **Roots—\$4.00 Plants—\$2.00**

BRIGHT FLASH SINGLE (WIND) This wonderful single dahlia is a good show bloom, and very attractive for its size, the blooms average five inches. Color flame red, tall grower with very long stems. **Roots—\$1.00**

BALDRE S. C. Another great German Dahlia that created a sensation. Color, salmon shading to a light red, with beautiful, and rich looking flowers, on long stems, free bloomer. Extra for exhibitions. **Roots—\$3.00 Plants—\$1.50**

CERISE GIANT S. C. An outstanding Novelty. Color cerise-red with silver shading. Strong and long stems, with very large blooms. Exhibition type. **Plants—\$3.00 net**

DIRECTEUR PLUMECOCQ I. D. Easily the greatest dahlia ever created. It has been a sensation in France wherever shown. Awarded 98 points at the French Trial Grounds where the rules are the same as followed in this country. Further, it won several first class certificates with strong recommendation by the judges. It is a strong, sturdy grower with leathery foliage, and the long stems, 24 inches at least, hold the flowers erect above the foliage. Size is well over 14 inches with a depth of nine inches and over. Color is old gold with a touch of deep brown-red. This incomparable dahlia will get on big in this country. One bloom without the stem tipped the scales to over $\frac{3}{4}$ lb. Height, 5 ft. **Plants—\$4.00 net**

DOCTOR VERHAGE S. C. Dahlia perfectly formed. The flowers are exceptionally large, and of a bright pomegranate-red color, with orange-amber points at the petal-tips. Strong growing plant, very recommendable as show bloom. Certificates of Merit Haarlem and Amsterdam **Plants—\$3.00 net**

DAVID COPPERFIELD I. D. (SALEM) Another great giant. This bloom also has great depth and a very high center. A very beautiful violet purple in color and blooms are on top, and very long stems. The bush grows tall, midseason bloomer. You will want this one. Honor Roll. **Plants—\$5.00**

What flower can beautify your Home and garden like a Dahlia?

ENID CRANE I. D. Color the deepest yellow we have. Form perfectly and neatly reflexed, the florets being of medium width and numerous. Free in flowering, considering size of flowers, and plants particularly strong and healthy. Giant stems. English variety.

Plants - \$2.00 net

ECHO I. D. This most distinctive Dahlia was an attraction in Germany, very pleasing color, rose shading to blue. The effect is very attractive and most unusual. A great exhibition Dahlia.

Roots - \$7.50 Plants \$3.75

EVCHEN POM-POM This beautiful pom-pom was the center of attraction in Holland. Color orange with a golden tint. You will like it too. Free flowering with good long stems.

Plants - \$1.00



FIREBALL

FIREBALL F. D. (BISSELL) A beautiful novelty that was greatly admired, also the center of attraction at the Great Lakes Exposition. Color a brilliant scarlet which does not burn or fade. The foliage is heavy and absolutely insect resistant, with long stems. We recommend this welcome variety. Certificate at Lansing, winner of the Charles H. Ruscher Memorial cup, and numerous other awards, also an Honor Roll.

Plants - \$5.00

FRANZ VON PAPEN F. D. A wonderful rose pink, one you are looking for in the Formal Decorative class. Extra for exhibitions. Flowers well above the foliage, good strong and long stems. With extra large blooms, was greatly admired in our gardens. Don't miss this one.

Roots - \$4.00 Plants - \$2.00

- FRANCE BOIRON INC. C.** Deep flowers of a very attractive formation. Color, delicate, soft pink, tinted butter yellow at center. The stems are extra strong. The plant is vigorous and floriferous. Ht. 6 ft. Certificate of Merit. **Plants—\$2.00 net**
- GOLDEN BEAUTY I. D. (OAKLEIGH)** An ideal form within its type. Just naturally a large flower up to full exhibition size, and a seedling of Jane Cowl Bing Crosby. It achieved a Certificate at the Storrs Trial Grounds where the plant was noted also for good growth and the flowers carried on stout stems. **Plants—\$7.50**
- GOLDENER ARR S. C.** A very large flower, the stems are long and strong, the flowers are well above the foliage. Color golden yellow. A beauty. **Roots—\$4.00 Plants—\$2.00**
- GLOBUS B.** A very beautiful Ball Dahlia, with extra large blooms, with strong stems. With a very striking yellow color. Ideal for exhibitions. A novelty from Germany. **Roots—\$7.50 Plants—\$3.75**
- GELBE VOLLENDUNG INC. C.** A grand dahlia of wonderful formation. Color, a striking yellow. The blooms, which are very large, on strong, cane-like stems, well above the heavy insect-resistant foliage. It is an early and incessant bloomer. Good show bloom. **Roots—\$4.00 Plants—\$2.00**



GREATER GLORY

- GREATER GLORY CACTUS (SALEM)** Rose pink bloom of great size on extra long stems. Winner of eleven first prizes at National, Central States and other leading shows; also A. D. S. Medal. Honor Roll. **Plants—\$10.00**

- HILDE ENTRUP C.** A beautiful cactus Dahlia, with good strong stems, Free bloomer. Color scarlet orange, very pleasing. Good show bloom.
Plants—\$1.50
- HERZOG ULRICH STR. C.** This is unquestionably the finest cactus ever to come from Europe. Color a salmon pink with yellow center and a wonderful form. Good grower with long stems and a good cut flower and a free bloomer. Extra fine for exhibitions.
Roots—\$3.00 Plants—\$1.50
- HERZOGIN VON WURTHEMBERG INC. C.** This attractive novelty is from Germany. Color a light salmon with orange center, the petals are long curled and fluffy, with great depth, on good stems well above the foliage and robust-growing plant.
Roots—\$3.00 Plants—\$1.50
- JOPIE'S IDEEAL** Small Flowering semi-cactus Dahlia with finely formed flowers of a specially bright pink color, lighter at the center. Keeping very long in water and strong stemmed, it is par excellence a variety for cutting and show-blooms. Certificates of Merit, Haarlem and Amsterdam.
Plants—\$1.50 net
- JEAN PATURET ST. C.** A large flower held on ideal long stems well above the plants. It has fine petals which give the flower the appearance of a mum. Color brilliant yellow self. The bloom has good depth and last a long time when cut. Certificate at Tours.
Plants—\$2.00 net
- KARDINALL V. ROSSUM S. C.** Dahlia, beautiful deep purple-violet color, darkening towards the center, large flowers, perfectly formed, strong stem and richly flowering. Exhibition type. First class Certificate, Haarlem and Amsterdam.
Plants—\$3.00
- LANDMARK INC. C.** A very long stemmed cactus, Color yellow, tinted salmon. The flowers have a real Hybrid Cactus form. Free flowering with strong and long stems. A beautiful novelty from Germany.
Roots—\$2.00 Plants—\$1.00
- LUEDINGHAUSEN I. D.** A novelty from Germany which was greatly admired. A seedling of Jane Cowl. Color, satiny salmon pink, with very large flowers, good strong and long stems. A good show flower.
Roots—\$4.00 Plants—\$2.00
- LEIDEN'S ORANGE I. D.** A beautiful novelty from Holland that was greatly admired, and won seven Certificate's of Merit. One of the best in the orange class. Color vivid orange, free flowering with good stems. Extra for exhibitions.
Plants—\$4.00 net
- LITTLE MARY POM-POM** This beauty is very popular in Holland. Color a burgandy red. Free bloomer with good stems.
Plants—\$1.00
- MASON'S PURPLE BEAUTY F. D. (MASON)** Color, a dark, indelible purple, not like most purple dahlias which are usually on the wine or violet side. This one has a distinct silver reverse, which shows very plainly at center of flower. Certificate of Merit at Lansing for 1936.
Plants—\$3.75
- MDE. GEO. PEZANT INC. C.** A huge flower deep and held by extra long sturdy stems. Color, gorgeous blood red. A tall plant of unusual vigor. Won the highest honors. Extra good exhibition variety. Will be greatly admired by all.
Plants—\$2.00 net
- MELLE. LUCIE LAMOUREUX INC. C.** Scarlet red suffused garnet. A deep flower held on stems well over two feet long. Very free flowering. Ht. 5 ft. Also a prize winner at all shows in France.
Plants—\$3.00 net
- MARKET JEWEL** Small flowering semi-cactus Dahlia, velvet red in color. Keeps very well in water. Extra variety for cutting and exhibitions.
Plants—\$1.50 net

MARKET GLORY S. C. Dahlia with extra long stems. Color lilac-pink. Richly flowering. Extra variety for cutting and exhibitions. Certificate of Merit Amsterdam. **Plants—\$1.50 net**

MUSIC A medium to small flower of "Schiller" type having short cactus petals. Color a feature, being a delightful shade of rose overlaying a deeper ground. Good stems, and full bushy plants. English variety. **Roots—\$2.00 Plants—\$1.00**

MURILLO MIG. Color rose pink with a dark brown ring in the center. The design of the flowers is very unique. This novelty was greatly admired by all. Recommended for, beds, borders and exhibitions and will display a gorgeous mass of flowers throughout the summer until late in the autumn. **Roots—\$2.00 Plants—\$1.00**

MIA KONNERMANN S. C. A giant semi-cactus, with good habits. A beautiful salmon pink color. This German novelty was greatly admired. **Plants—\$2.00**



MISS OAKLAND

MISS OAKLAND F. D. (OAKLEIGH) One you are looking for in the Formal Decorative class. Extra for exhibitions and cutflowers that keep well. This is the white addition that fills the "long-felt want." The flower is well-rounded so that it has a ball contour although the petals are properly flat and overlapping with a very very good substance, produces freely, with long and strong stems, well above the foliage with a healthy, and bushy growth with large blooms. Was greatly admired in our gardens, also the center of attraction in our Commercial display at the Great Lakes Exposition. We recommend this welcome novelty. Certificated at both the Lansing and Storrs Trial Grounds, also on all the Honor Rolls. **Plants—\$5.00 Net**

MISS OHIO INC. C. (FRANK'S) We have seen this beautiful incurved cactus of lilac rose color, growing in the originator's gardens. Its prize-winning record speaks amply for the value of the variety. On long, stiff stems; an ideal exhibition and florist variety. One of the season's best winners, securing a certificate of merit, achievement medal and numerous other awards. On all Honor Rolls.

Plants—\$5.00

NAGELS BYOU S. C. Undoubtedly one of the most artistic colors we have ever seen. Winner of the Belgian Cup at the large World Exhibition Bruxelles as the best novelty show. Splendid new color, bright salmon rose with a soft salmon orange glow. Early and free flowering, strong and long stems, Extra for cutting and exhibitions.

Plants—\$4.00 net

OGRE I. D. Huge Flowers with prettily curled florets, giving a rippled effect to the perfectly circular blooms. The color is most peculiar, the ground being crimson maroon, but this is overlaid and veined with vermilion tints and lighter at tips. Very long stems. English variety.

Plants—\$2.00 Net

OSTY COL. An outstanding Collarette, this novelty was greatly admired in Germany, also in our gardens. Color brilliant bright red with a prominent gold center. Tall grower with long stems and a good cut flower. Recommended for exhibitions. Free bloomer throughout the summer until late in the autumn,

Roots—\$2.00 Plants—\$1.00

PLEASURE SINGLE. This novelty was greatly admired by all who viewed it. The design of the flowers is very unique and very striking indeed. Color mauve with a dark brown ring in the center. Tall grower with long stems and a good cut flower. Recommended for exhibitions. Free bloomer throughout the summer until late in the autumn. We are sure that you shall love it too. Don't miss and order this one.

Roots—\$2.00 Plants—\$1.00

POLICHINELLE ST. C. A glorious flower of good size, borne on ideal long stems. Color soft mauve pink with a creamy center. Won several first class certificates in France. A profuse bloomer all through the season.

Plants—\$3.00 Net

PRINCESS MARIE JOSE MIG. Color satin lilac rose is specially recommended for beds, borders and exhibitions and will display a gorgeous mass of flowers throughout the summer until late in the autumn.

Roots—\$1.50 Plants—\$0.75

RED FAVOURITE S. C. Dahlia of a brilliant red color. The stems are very long and very strong, flowering richly and keeping well in water. Extra variety for cutting and exhibitions. First class certificate, Haarlem and Amsterdam.

Plants—\$3.00 Net

ROYAL AUVERGNE S. C. Selected by the French judges as the best all around Dahlia ever grown and shown in France. Grand for exhibitions and cut flowers. The stems are nearly three feet long, holding the giant flowers quite erect. Color is cauldron red, shaded chrome yellow.

Plants—\$2.00 Net

ROSENKRONE S. C. Color, salmon with light pink. A beautiful novelty, was greatly admired by all. Certificate of Merit, Germany. Strong stems, free bloomer. Exhibition type.

Roots—\$3.00 Plants—\$1.50

ROTER KARDINAL I. D. Unusual beauty. Color, vivid cardinal red. Enormous large flowers, with good strong stems. An extraordinary Dahlia for the garden.

Roots—\$3.00 Plants—\$1.50

ROSELLA C. A beautiful sport of Zebra. Color, soft pink, tinged violet, which gives it unusual beauty. Stems are long and stiff. Flowers well above the foliage and a free bloomer.

Roots—\$3.00 Plants—\$1.50



ROBERT L. RIPLEY

ROBERT L. RIPLEY I. D. (SALEM) Rhodamine purple with rose suffusions. Immense, has been grown 16 x 12 inches. Many first prizes at National, Chicago and other exhibitions. Will develop a full flower from a cut bud not even showing color. Honor Roll.

Plants - \$10.00

RHEINLACHS STR. C. A striking dahlia of unusual beauty. Color, salmon rose. They are held facing sideways on strong, cane-like stems, in great profusion, well above the heavy, insect-resistant foliage.

Roots - \$3.00 Plants - \$1.50

ROYAL PENNANT F. D. (KEMP'S) It might be described as a rich purplish violet, nearest to a royal purple of any dahlia known. Very strong grower, tall and extra good foliage, with strong stems. Blooms average 8-9 inches in width, with corresponding depth. Honor Roll.

Plants - \$5.00

SCARLET ELEGANCE ST. C. This novelty is a great addition to the Cactus class. It has far greater substance than most Dahlias of this type. Color, pure fiery red; stiff stems, free bloomer. Best cut flower and good for exhibitions. Award of Merit at Haarlem and Amsterdam.

Plants - \$3.00 Net

SIEGERIN ST. C. A beautiful novelty from Belgium. Color, rose red on a cream ground and shading to yellow at the base, and heavenly sheened silver. On strong and long stems, well above the foliage. Free flowering.

Plants \$1.00

A trial order will convince you that our stock is not forced for show blooms.

STERN V. B. OPPELSDORF ST. C. A very striking German novelty of great beauty. Color, a cherry-red on yellow ground with red reverse, and shading to gold at the base, the colors blending in such a way as to give the flowers a radiating effect that is very pleasing to the eye. With long, strong stems, very free bloomer. Ideal for the table or exhibition.

Roots—\$2.00 Plants—\$1.00

SONNENROSCHEN POM-POM. A striking beauty from Holland. Color, a fine golden yellow with red tips. Free flowering with good stems.

Plants—\$1.00



SON OF SATAN

SON OF SATAN INC. C. This is one of the Dahlias that created a sensation at the Mid-West Show at Cleveland, and was greatly admired in our gardens. Recommendable show bloom of splendid formation. It is an Incurved Cactus, a large flower of brilliant red, with extra large stems, and a very good grower. Honor Roll.

Roots—\$15.00 Plants—\$7.50

THE WHIRLWIND I. D. (HENDRICKS) This new dahlia is entirely different in its aristocratic formation. Combined with its beautiful colors of apricot-buff on the face and a strawberry reverse, which shows as each petal twists completely around, with no tendency to become a cactus except at the tips where it shows its face color again. Extra long stems.

Plants—\$3.75

VOIT WEISSER RIESE INC. C. An outstanding variety that not only has size to recommend. The petals are crinkled and twisted, the stems long and strong, well above the foliage and a free bloomer. Also a good cut flower. Color, pure white and clean.

Roots—\$3.00 Plants—\$1.50

If you want a real hobby, grow Dahlias in your garden.

WARNER'S TRIUMPH F. D. A beautiful salmon orange, truly outstanding. Stems are long and strong, with bushy growth. Its resistance to insects is exceptional. **Roots—\$2.00 Plants—\$1.00**

WEISSE DAME S. C. Color, a glistening pure snow white of wonderful formation and substance; on long stems, well above the foliage. This novelty was greatly admired at the National Dahlia Show at Detroit; also a blue ribbon winner. **Plants—\$1.00**

WHITE ASTER POM-POM. If you are looking for a good white pom-pom this one will fill your wants. The stems are long and strong, and a free bloomer. Extra variety for cutting. From Holland. **Plants—\$1.00**

UBERRASCHUNG. A gorgeous cactus Dahlia of good size, depth and color. A bright lilac-blue with a well-formed, pure white center. Strong growing plant, that is always in bloom. The flowers are held facing sideways on strong stems well above the foliage. **Plants—\$2.00**

YELLOW COLOSSAL S. C. Gigantic flower, nine inches and more in diameter, with a beautiful lemon yellow color. Strong stems carrying the flowers erect above the foliage. Recommendable show-bloom of splendid formation. Award of Merit, Haarlem and Amsterdam. **Plants—\$3.00 Net**

GARFIELD "CACTUS" DAHLIA SEED

We have a limited number of seed, that grew in our gardens, from American and European cactus varieties, that are selected from large cactus blooms. In order to avoid disappointment, orders should be sent early. How can you go wrong in growing seed? Just think of the interesting and enjoyable hobby of growing Dahlias from seed. You will not only have blooms the same year, but you will also have a clump of roots that you can have for the future. Last but not least, you can have the pleasure of naming your own Dahlia.

PRICES ON "SELECTED CACTUS" DAHLIA SEED

25 Cactus Seed from large blooms	\$ 1.50
50 Cactus Seed from large blooms	2.75
100 Cactus Seed from large blooms	5.00

GARFIELD "SURPRISE" COLLECTION

To encourage beginners to start growing Dahlias and beautify their gardens at very little expense, here is an offer that is bound to appeal. Ten (10) roots of good blooming varieties for only \$1.50 postpaid, or twenty (20) roots for \$2.75. A garden full of beautiful and colorful Dahlias for just a few dollars. You will be greatly pleased with the quality and value.

The Garfield "Surprise" Collection is made up of surplus stock of our standard varieties.

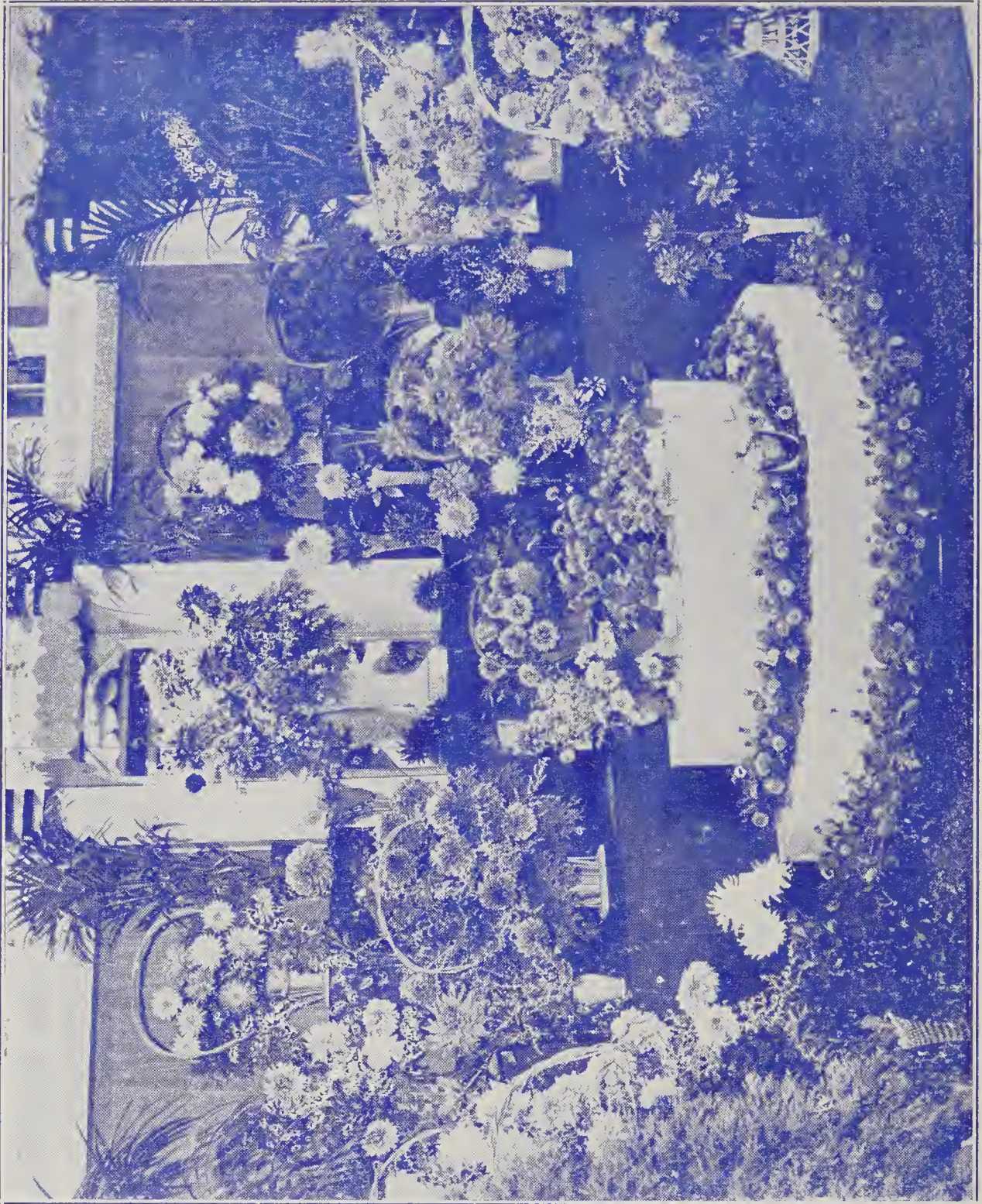
Roots will not be labeled at these low prices.

With each order a named and labeled Dahlia will be included.

We have surplus stock of the small flowering varieties that are bound to appeal: Ten (10) roots of good blooming varieties for only 75 cents postpaid. How can you go wrong?

Your garden is not complete without the small flowering varieties.

Commercial display of Garfield Heights Dahlia Gardens at the 1936 Great Lakes Exposition Dahlia Show which won a Silver Cup for the best display, 150 square feet, also a special award for the finest and most outstanding exhibit of the show. Officially judged by Mr. H. E. Shanabrock (Massillon, Ohio and Mr. G. A. Richardson (Cincinnati, Ohio).



GENERAL LIST OF VARIETIES

- ACE OF SPADES I. D.** A giant. Color, dark maroon.
Roots—\$1.50 Plants—\$0.75
- ADIRONDACK SUNSET I. D.** Vivid scarlet shading to bright canary yellow. A beauty.
Roots—\$1.50 Plants—\$0.75
- ADORABLE I. D. (BATTO)** At the Beacon, New York, Show this year, a high-quality show, a basket of Adorable won as the Best Dahlia Exhibit in the show, as well as best bloom in show. Certificate of Merit at Storrs in 1931. A luscious combination of peach-pink and gold. It is a beautiful flower in the garden, or in an arrangement. On Mr. Hart's 1936 Honor Roll.
Roots—\$1.50 Plants—\$0.75
- AIMY BARTLEY I. D.** A beautiful light yellow.
Roots—\$1.00 Plants—\$0.50
- ALBRECHT VON REGENSTEIN DEC. (FOREIGN)** This variety is of a splendid bright golden orange color with pink white tips. The backsides of the blossoms-leaves are of a dark rich red, they seem therefore to be flown through by a blood-red color. It is a coloring which you will up to the present never have found or met with. The effect of this combination of color is very, very harmonizing and may therefore be called a variety of striking beauty. It gained the mark "GOOD" from the German Dahlia Society.
Roots—\$3.00 Plants—\$1.50
- ALOIS NEELEN STR. G. (FOREIGN)** Color orange red, with gold yellow ground.
Roots—\$2.00 Plants—\$1.00
- ALTMARK S. C. (FOREIGN)** Rose cactus suffused lilac with white center.
Roots—\$0.75 Plants—\$0.50
- AMELIA EARHART S. C.** Apricot buff, base of petals primrose.
Roots—\$1.50 Plants—\$0.75
- AMERICAN LEGION I. D.** Giant clear light yellow.
Roots—\$0.75 Plants—\$0.50
- AMERICA'S SWEETHEART I. D.** An immense pure yellow chrysanthemum.
Roots—\$2.00 Plants—\$1.00
- AMERICAN TRIUMPH INC. C.** Bright red color. Plants—\$0.50
- ANNA MAY WONG I. D.** This is a huge flower. Bright spectrum red with a light reverse. Flowers well above the foliage on strong stiff stems, with good heavy insect-resistant foliage.
Roots—\$5.00 Plants—\$2.50
- ANALEE McCLURE I. D.** The best white to date, with perfect stems.
Plants—\$1.50
- ANDENKEN AN WALTER HAKER S. C. (FOREIGN)** Giant semi-cactus, chrome yellow, on ideal stems. About 11 inches in diameter.
Roots—\$2.00 Plants—\$1.00
- ANDENKEN AN WILHELM LINDENSMIT S. C. (FOREIGN)** Giant semi-cactus with fine color, salmon on light cream ground, with lacinated tips. The blooms are carried on long, strong stems, very free above the plants. On Mr. Hart's 1936 Honor Roll.
Roots—\$2.00 Plants—\$1.00
- ANDREA ERICSON I. D.** Pure white. Roots—\$0.75 Plants—\$0.50
- ANDRE CSIZIK S. C. (FOREIGN)** Well formed flowers of a deep violet rose color, free flowering, good stems. Winner Silver Cup for the best Dutch Cactus.
Roots—\$0.75 Plants—\$0.50
- ANGELO ROSSI I. D.** Color, vivid gold outer petals flushed a deeper shade of salmon gold. Flowers very large and deep strong stems; foliage good bush; very sturdy and attractive.
Roots—\$3.00 Plants—\$1.50
- ANNELIESE ROTII S. C. (FOREIGN)** Color, dark red.
Roots—\$3.00 Plants—\$1.50
- ARCTURUS F. D.** Large scarlet red suffused deep yellow with a yellow reverse.
Roots—\$1.00 Plants—\$0.50

- ARELDA LLOYD I. D.** Giant yellow Jane Cowl.
Roots—\$2.00 Plants—\$1.00
- ARIANE S. C. (FOREIGN)** Old gold and amber.
Roots—\$1.00 Plants—\$0.50
- ATHLETH I. D.** The giant blooms of this variety are of a pinkish buff, overcast with a golden sheen. Free bloomer.
Roots—\$1.00 Plants—\$0.50
- AUFGEHENDES LICHT S. C. (FOREIGN)** A large semi-cactus. Color bright yellow suffused terra-cotta with a darker center. **Plants—\$1.50**
- AUTUMN JUBILEE I. D.** Color orange flame.
Roots—\$1.00 Plants—\$0.50
- BABY SAGAMORE MIN. F. D.** A beautiful miniature formal decorative novelty. Color, bright golden-yellow, shading to orange at the center. In great demand as a cut flower. **Plants—\$0.75**
- BAERNE S. C. (FOREIGN)** This beautiful variety is the winner of a Dutch Cup. Color old pink with a soft deep salmon glow, a pure Semi-Cactus Dahlia with excellent stems, free flowering well above the foliage. A variety for exhibitions.
Roots—\$2.50 Plants—\$1.25
- BAUERS IDEAL I. D. (FOREIGN)** Enormous large flowers of a particular deep glowing red. Free flowering; and extraordinary dahlia for the garden. Winner Silver Cup for the best foreign dahlia.
Roots—\$1.50 Plants—\$0.75
- BALLEGO'S GLORY F. D. (FOREIGN)** Mahogany color with golden edges, free flowering extra for cutting purposes, lasts long, very early bloomer.
Plants—\$0.50
- BALLEGO'S SURPRISE IN. C. (FOREIGN)** No doubt this variety is one of the finest and best novelties of the season. The flowers have a real Hybrid Cactus form, they entirely remember to those of the variety "Frau O' Bracht" and have a pure white color. Specially suitable for cut flower, because they remain fresh for a long time, also for exhibitions. Awarded Certificate of Merit at England and Holland trial gardens.
Plants—\$1.25
- BERGER'S JEWEL STR. C (FOREIGN)** Rich lilac pink shade with blue suffusion at the base, tips nearly white. Stems are long and strong, holding the blooms well over the plants. A real acquisition which will be immensely popular. On Mr. Johnson's 1936 Honor Roll.
Roots—\$1.50 Plants—\$0.75
- BETTE DAVIS S. C.** Deep violet rose. Beautiful. **Plants—\$1.00**
- BETTER TIMES STR. C. (FOREIGN)** Color soft lilac pink. Very large.
Roots—\$1.00 Plants—\$0.50
- BETTY STONE POM (BADETTY BROS.)** A fine growing variety with attractive foliage that sets off the rich red blooms.
Roots—\$0.75 Plants—\$0.50
- BLACK KNIGHT I. D.** Bright velvety maroon.
Roots—\$1.25 Plants—\$0.75
- BUCKEYE KING F. D.** Amber yellow color.
Roots—\$1.00 Plants—\$0.50
- CALIFORNIA IDOL I. D.** Clear bright self-colored yellow. Extremely refined.
Roots—\$4.00 Plants—\$1.75
- CAVALCADE F. D.** Old rose or mulberry pink.
Roots—\$1.50 Plants—\$0.75
- CALIFORNIA PEACH S. C. (BALLY-SUCCESS)** A grand Dahlia of real distinction and beauty. Winner of the Achievement Medal in Boston, and a Dahlia that will make a high record of winning, because of its size and distinction. You can get a perfect idea of this flower if you imagine Satan in a clear coral-pink. On Mr. Hart's, Mr. Johnson's, Mr. Barron's and Mr. Eldredge's 1936 Honor Rolls. **Plants—\$5.00**
- CAVALIER PAEONY (FOREIGN)** Color crimson, heavily tipped with white. Large flowers, good stems. **Roots—\$1.00 Plants—\$0.50**

- CENTURY OF PROGRESS F. D.** Color royal purple. Good stems and beautiful formation. Plants—\$1.00
- CHALLENGER S. C.** Outstanding winner at the New York Show. A brilliant cardinal red with gold at the base of the petals. Honor Roll. Roots—\$3.00 Plants—\$1.25
- CHARLEY CHAPLIN I. D.** Rich golden yellow, tinted with tawny orange at the center. Roots—\$1.50 Plants—\$0.75
- CHAUTAUQUA SUNSET F. D.** Gold orange and peach-red. Roots—\$1.00 Plants—\$0.50
- CITY OF CLEVELAND I. D.** Vigorous grower, color rust red. Roots—\$1.00 Plants—\$0.50
- CLARA BARTON F. D.** Face of petals silvery orchid, reverse of petals deep lavender. Roots—\$1.25 Plants—\$0.75
- CLARA CARDER I. D.** Honor Roll. A very large bloom of soft pink color with a trace of yellow at the base of each petal. Plants—\$2.50
- COL. LEWIS I. D.** Rose mulberry. Great. Roots—\$1.50 Plants—\$0.75
- CONSERVATRIX INC. C. (FOREIGN)** Color red. Greatly admired. Roots—\$1.00 Plants—\$0.50
- COOMBELANDS HYBRID, C. (FOREIGN)** A most wonderful variety of exquisite and unique coloring, being amber yellow, decidedly tinted with salmon, one of the most favored introductions. The flowers are of unequalled Hybrid Cactus form, carried correct on strong wiry stems. Roots—\$2.50 Plants—\$1.25
- CORALLINA S. C. (FOREIGN)** Stone red, gorgeous bloom. Roots—\$1.25 Plants—\$0.75
- CORNCRAKE CACTUS (FOREIGN)** Another typical true Cactus, having petals narrow from tip to base, and neatly incurved. Color bright yellow deepening to light orange. Plants have an erect wiry growth and flower stem. Always full in center and good throughout the season. Selected for Trial at Wisley, England. Roots—\$2.50 Plants—\$1.25
- CORNELIA BRYCE PINCHOT I. D.** A heavy deep flower of a rich glowing burgundy red. Roots—\$1.50 Plants—\$0.75
- DADDY KEMP I. D.** Color, dark velvety maroon almost black, flowers are of great size. Roots—\$1.25 Plants—\$0.75
- DAISY TURNQUIST I. D.** Deep rose pink and salmon orange. Roots—\$1.50 Plants—\$0.75
- DEUTSCHER TRIUMPH S. C. (FOREIGN)** Large semi-cactus, color soft lilac on white base. Free flowering with long and strong stems. Greatly admired by all at Germany. Roots—\$1.50 Plants—\$0.75
- DOKOUPIL'S TRIUMPH I. D. (FOREIGN)** Straw yellow, center slightly tinged pink. Roots—\$1.00 Plants—\$0.50
- DORIS COOPER STR. C. (FOREIGN)** A beauty. Soft lilac. Roots—\$0.75
- DUTSCHE SAAR I. D. (FOREIGN)** Sport of Frau O' Bracht, broad petals with slightly curled points, an outstanding form, light yellow changing into white towards the edge and sulphur yellow in the center. Roots—\$1.50 Plants—\$0.75
- DULCINEA ST. C. (FOREIGN)** Has a very bright pure cardinal red color, we may recommend this Dahlia as one which shall win many prizes in 1936. An extraordinary fine color, free flowering with long and strong stems, an excellent keeper and cut flower, don't miss and order this one. We are sure that you shall love it too. Award of Merit at Haarlem, Holland. On Mr. Eldredge's 1936 Honor Roll. Roots—\$2.00 Plants—\$1.00
- DWIGHT W. MORROW I. D.** Rich velvety Red. Roots—\$0.50
- ECLIPSE, JR. MIN.** This is a most perfect formal decorative. Color, deep orange, is definitely attractive. Carried off highest honors in New York and was a prominent Honor Roll member. Plants—\$0.75

We also reserve your Dahlias now for spring delivery.

- EDITH A. LEHMAN I. D.** Old rose, with tawny sheen overlying the middle rear half of the petals. Exceptionally beautiful. **Plants—\$1.75**
- EEMLAND S. C.** Dark velvety purple red. Great. **Roots—\$1.50 Plants—\$0.75**
- EFFECTIVE S. C. (FOREIGN)** Color orange at center, burnished and flushed with reddish tints in an effective combination, long stems. **Plants—\$1.00**
- EIBSEE IN. C. (FOREIGN)** Lovely color, stone-red suffused orange with a yellow center. A real beauty. **Roots—\$2.25 Plants—\$1.00**
- ELEGANT CACTUS (FOREIGN)** A beautiful rose color. Very fine. **Roots—\$2.50 Plants—\$1.25**
- ELISSA LANDI F. D.** Jasper pink blended with warm buff, giving an effect of brilliant orange. **Roots—\$1.00 Plants—\$0.50**
- ELIZABETH RETHBERG I. D.** A clear pink that can be grown to 14 inches, with petals that roll back to stems. Plant is a tall grower, with strong and long stems. Good show-bloom. Honor Roll. **Plants—\$3.75**
- ELLA BRUIDEGON S. C. (FOREIGN)** Color, salmon rose. **Roots—\$1.00 Plants—\$0.50**
- ENDEAVOUR CACTUS (FOREIGN)** An exceedingly large flower for a Cactus, favoring the semi-cactus type, the petals being revolute but fairly broad. Color clean clear palest yellow; stiff erect stems. Selected for trial at Wisley, England. **Roots—\$2.50 Plants—\$1.25**
- ENFANT DE WILRIJCK C.** A wonderful cactus Dahlia, robust grower, with good stems and a free bloomer. Color, salmon rose. Good show-bloom and cut flower. **Plants—\$1.50**
- ENTRUP MONARCH I. D. (FOREIGN)** Giant, deep velvety blood red. **Roots—\$1.00 Plants—\$0.50**
- ENTRUP'S SULTAN F. D. (FOREIGN)** A monster, color carmine red. **Roots—\$0.50**
- ERLOSUNG S. C.** A beautiful semi-cactus novelty. Color a pure white and clean. Free bloomer with good stems. Extra for exhibitions. **Roots—\$1.50 Plants—\$0.75**
- ERNST VOGT I. D. (FOREIGN)** A monster bloom. Color, carmine pink with yellow base. Magnificent. **Roots—\$1.50 Plants—\$0.75**
- EVA HUNT I. D. (HUNT-BURNETT BROS.)** A fine white that grows about five feet and produces many twelve-inch flowers. It is a pure to creamy white with a cream center. An open grower with fairly dark foliage. It will give real opposition in the white class this coming year and it is Mr. Johnson's guess that it will win lots of prizes. On Mr. Johnson's, Mr. Hart's and Mr. Barron's 1936 Honor Rolls. **Plants—\$0.75**
- FEU FRANCOIS NAGELS F. D. (FOREIGN)** Enormous flowers of a warm velvet chestnut color held erect on long strong stems, very free flowering. Award of Merit in French. **Roots—\$1.50 Plants—\$0.75**
- FEUEROPAL CACTUS (FOREIGN)** Outstanding novelty. Color scarlet red. Award of Merit in Germany. **Plants—\$1.25**
- FIERY DAWN CACTUS (FOREIGN)** Mr. Stredwick's best scarlet Cactus for some years. The flowers are large and deep to the center, with long perfectly narrow florets incurving and interlaced. Growth upright and flower stems good. First rate for exhibition as well as other purposes. **Roots—\$2.50 Plants—\$1.25**
- FLAMING TORCH ST. C. (FOREIGN)** A deep orange color with a beautiful orange red glow. With Baerne was this variety the Dahlia who scored the highest total at Amsterdam. Very long and strong stems, a very prolific bloomer with exceptional keeping qualities, strong grower. **Roots—\$2.50 Plants—\$1.25**
- FOREST FIRE I. D.** Brilliant scarlet flame with blushes of yellow and yellow petaloids throughout. **Roots—\$1.25 Plants—\$0.75**

Prevent disappointment as stock is very limited of many new introductions.

- FORTUNA CACTUS** (FOREIGN) Wonderful huge flowers. Color scarlet with yellow tips, the backs of petals have a sandy color. With good strong stems. **Roots—\$1.50 Plants—\$0.75**
- FRANK SERPRA I. D.** General effect light amaranth pink, produced by petal tips of mallow pink that grow lighter towards the base of the petals, paling to a delicate orchid pink. **Roots—\$1.50 Plants—\$0.75**
- FRANZ BERGER S. C.** (FOREIGN) Similar to Frau O'Bracht, color coral red. Admired. **Roots—\$0.75 Plants—\$0.50**
- FRAU I. MANSFIELD STR. C.** (FOREIGN) Deep rich yellow, lacinated tips. Greatly admired. **Plants—\$0.50**
- FRAU MARIE KIPKE S. C.** Vivid orange, tipped yellow. A beauty. **Roots—\$1.50 Plants—\$0.75**
- FRAU META WAGSCHAL S. C.** (FOREIGN) A beautiful giant dahlia. Color golden sun, very striking. **Roots—\$2.50 Plants—\$1.25**
- FRAU O'BRACHT S. C.** (FOREIGN) Clear light yellow. Great. **Roots—\$0.65 Plants—\$0.40**
- FRIEDENSENGEL CACTUS** (FOREIGN) Color wax yellow with rose pink. Greatly admired. Award of Merit in Germany. **Plants—\$1.25**
- GARDEN DELIGHT I. D.** (STRASEN) Certificate winner at East Lansing. Greatly admired for its large size and color; of great depth, with center petals fluted. The color, a light purple shading to darker hue at base of petals. **Roots—\$5.00 Plants—\$2.50**
- GARTENDIRECTOR BARTEN S. C.** Color white with rose, tipped white. A beauty. **Roots—\$2.50 Plants—\$1.25**
- GEBET S. C.** (FOREIGN) Huge flowers and a splendid form. Color bright rose suffused lilac with dark rose center. **Roots—\$1.50 Plants—\$0.75**
- GEBR. VAN. RAEMDONCK S. C.** (FOREIGN) A very free flowering variety with excellent materials for flower work. The middle sized flowers have a brisk violet-rose color with salmon red ground. Award of Merit. **Roots—\$2.50 Plants—\$1.25**
- GENESEE F. D.** New color, solid burnt orange, the petals roll back to the stem. **Plants—\$1.00**
- GEO. L. FARNUM INC. C.** (FOREIGN) Color, crimson scarlet. Admired. **Roots—\$1.00 Plants—\$0.50**
- GOLDEN AGE S. C.** (FOREIGN) All its qualities are first class. The color is one of the most desired, viz.: warm amber colored orange. Awarded Silver Challenge Cup, also two Trial Ground Certificates. **Roots—\$1.50 Plants—\$0.75**
- GOLDEN ECLIPSE F. D.** Golden yellow. **Roots—\$0.75**
- GEORGE WASHINGTON I. D.** (SUTCLIFFE-PARRELLA) A great dahlia named in honor for the Father of our Country. Deep rose pink with silver tips, but the tips are not on all petals. Large flower and a very fine formation, looks something like Sharizad, but a more refined flower. The color deepens at the base of the petals. Perfect stems and has a wonderful growing habit. On Mr. Hart's 1936 Honor Roll. **Roots—\$5.00 Plants—\$2.50**
- GLORIOUS MIN. DEC.** (FOREIGN) A gold medal winner. Color, raspberry red. Extra good exhibition variety. On Mr. Johnston 1936 Honor Roll. **Roots—\$0.50 Plants—\$0.25**
- GRAND SLAM S. C.** Unusual and beautiful color combination, deep pink, citron yellow and light pink. Good stiff stems and the plant itself is a healthy, vigorous grower. Was chosen on three Honor Rolls. **Roots—\$5.00 Net Plants—\$2.50 Net**
- GREAT HARBOR I. D.** Very striking. Color, bright rich crimson carmine. Large flowers, on good strong stems. **Roots—\$1.00 Plants—\$0.50**
- GOLDEN OAK I. D.** Golden bronze. **Roots—\$1.50 Plants—\$0.75**

- GOLDEN STANDARD STR. C.** Golden tan blushed with tints of amber and bronze. Don't miss and order this one. Greatly admired.
Roots—\$1.25 Plants—\$0.75
- GOLDEN SWEEPSTAKES I. D.** A light buff flushed with apricot. A large flower on upright stems. Hart's H. R. **Plants—\$3.75**
- GOUVERNEUR WEYLER S. C. (FOREIGN)** One of the most beautiful formed varieties in this class, color violet, glowing purple, flowers are held on very long and strong stems well above the foliage.
Roots—\$2.50 Plants—\$1.25
- GUSTAV TWEER S. C. (FOREIGN)** Soft lilac shade. Stems four feet long. A seedling of Dr. Helmuth Spaeth, greatly admired.
Roots—\$2.50 Plants—\$1.25
- GRETEL STR. C. (FOREIGN)** A novelty from Austria. Greatly admired in our display at the Mid-West Show at Cleveland. It is Miss Belgium in a larger, deeper edition. The color is a bright henna, almost a bit red, and like varieties of this type can be grown to perfection for the exhibition hall.
Roots—\$1.25 Plants—\$0.75
- GUTER HIRTE I. D. (FOREIGN)** Large informal decorative, warm, pure pink with lighter center. Wonderfully free flowering. Stems and habits are ideal.
Roots—\$1.50 Plants—\$0.75
- HARFENSPIEL S. C. (FOREIGN)** With very large blooms of soft lilac color with yellow center. The elegant flowers are held over the five foot plant on strong and long stems. Award of Merit in Germany.
Plants—\$1.50
- HER MAJESTY S. C. (FOREIGN)** A splendid novelty, color blood red tipped gold. With good stems. **Plants—\$0.50**
- HEROS S. C. (FOREIGN)** Extra good, a beauty. Color, coppery brown red and old gold.
Roots—\$1.00 Plants—\$0.50
- HILLCREST SUNSET I. D.** Blending of sunset shades. Unusually attractive.
Roots—\$1.00
- HIMMELSGABE CACTUS (FOREIGN)** Color salmon rose with amethyst blue. A very striking novelty. Wonderful bloomer, with good stems and a good cut flower variety.
Plants—\$1.25
- HONOR BRIGHT F. D.** Peach red to light jasper red.
Roots—\$0.75 Plants—\$0.50
- HARRY MAAHS S. C.** Light orange red, early and free bloomer; strong, stiff stems. **Plants—\$1.50**
- HAPPY CHOICE I. D.** A massive Dahlia that can be grown to very large size, with a little disbudding. Color, light salmon orange with tones of coral pink. **Plants—\$0.75**
- HOSIANNA STR. C. (FOREIGN)** Primrose and bright salmon. Unusually attractive.
Roots—\$1.00 Plants—\$0.50
- HUNT'S VELVET WONDER I. D.** Rich burgundy red. Greatly admired.
Roots—\$1.50 Plants—\$0.75
- INSPIRATION (FOREIGN)** Color, dark elegant yellow self. **Plants—\$1.25**
- JAGUAR CACTUS (FOREIGN)** A beautiful cactus variety. Color golden-yellow streaked with red. Unique. **Plants—\$1.25**
- JANE DEW I. D.** Clear true pink. Admired.
Roots—\$1.00 Plants—\$0.50
- JANET SOUTHWICK I. D.** Burgundy red. **Roots—\$0.50**
- JAMES KIRBY I. D.** Rich cardinal red. **Roots—\$0.75**
- JEAN HARLOW F. D.** White Jersey's Beauty. **Roots—\$1.00**
- JEAN TRIMBEE S. C.** Petunia violet. **Roots—\$0.75 Plants—\$0.50**
- JEROME KERN I. D.** Rose and pink. **Roots—\$1.00 Plants—\$0.50**
- JERSEY'S BEAUTY F. D.** Eosine pink. **Roots—\$0.35**

A few Dahlias as a present, will make some one happy.

- JERSEY'S DAINTY INC. C.** A beautiful white. Great.
Roots—\$0.75 Plants—\$0.50
- JERSEY'S MELODY S. C.** Light red tipped white.
Roots—\$0.50
- JESSICA DRAGONETTE S. C.** A large type, and a beautiful color combination, peach, apricot and mauve. A strong, vigorous grower with fine stems and tough foliage.
Plants—\$1.00
- JOGER S. C. (FOREIGN)** Color, coral red with a touch of carmine scarlet.
Plants—\$2.00
- JUDGE S. SEABURY I. D.** Heliotrope to white. Great.
Roots—\$1.50 Plants—\$0.75
- JUGENPRACHT STR. C. (FOREIGN)** Rose and salmon. Great.
Roots—\$0.75
- JURGEN CACTUS (FOREIGN)** A beautiful novelty. Color dark rose. Award of Merit in Germany.
Plants—\$1.25
- KAREOL INC. C. (FOREIGN)** Salmon rose shaded yellow.
Roots—\$0.75
- KATHLEEN NORRIS I. D.** Mallow pink. Great.
Roots—\$0.50 Plants—\$0.50
- KAWEH I. D.** Rose cerise.
Roots—\$1.00 Plants—\$0.50
- KAY FRANCIS S. C.** Light lemon yellow. **Roots—\$1.25 Plants—\$0.50**
- KEMP'S VIOLET WONDER I. D.** Naphthaline violet.
Roots—\$0.50
- KEMP'S WHITE WONDER I. D.** A beautiful white.
Roots—\$0.50
- KENTUCKY SUN F. D.** A great yellow Dahlia. The best grower of the yellows. Hart's Honor Roll.
Plants—\$2.50
- KISMETH S. C. (FOREIGN)** Bright cardinal red.
Roots—\$0.50
- KITTIWAKE CACTUS (FOREIGN)** A true Cactus, clear yellow in color, florets quite narrow from tip to base, and sharply incurving at the tips, making up flowers of perfect form. Very free in flowering full in center, and equally good early and late. Selected for Trial at Wisley, England.
Plants—\$1.25
- KITTY MACK I. D. (KEMP)** A large, flat petaled flower of petunia purple approaching the formal in type. Not much competition in its color. On Mr. Hart's, Mr. Barron's 1936 Honor Rolls.
Roots—\$5.00 Plants—\$2.50
- KONIGSSEE CACTUS (FOREIGN)** A very striking dahlia. Color salmon rose.
Plants—\$1.00
- LADY MOYRA PONSONBY I. D. (FOREIGN)** Golden yellow.
Roots—\$1.00 Plants—\$0.50
- LAETARE S. C. (FOREIGN)** Color, red, with golden tips.
Roots—\$1.50 Plants—\$0.75
- LEMONIA STR. C. (FOREIGN)** A large cactus. Finest lemon yellow color, on giant three-foot-stems. Was on Mr. Eldredge's 1935 Honor Roll. Also on Mr. Johnson's 1936 Honor Roll. **Roots—\$1.00 Plants—\$0.50**
- LEYDEN ELEGANCE S. C. (FOREIGN)** A perfect dahlia, dark vermilion color.
Roots—\$1.50 Plants—\$0.75
- LIESEL KAUFMANN S. C. (FOREIGN)** Color, white with pink.
Plants—\$0.50
- LINING CACTUS (FOREIGN)** An outstanding novelty. Color salmon rose. Award of Merit in Germany. **Roots—\$2.50 Plants—\$1.25**
- LITTLE DREAM MIN. C. (FOREIGN)** A brilliant rose color with a light violet center, with straight stiff stems. Excellent cut flower or decorative work. On Mr. Hart's 1936 Honor Roll.
Roots—\$0.75 Plants—\$0.50

- LITTLE SNOW QUEEN MIN. C.** (FOREIGN) A small, pure white cactus novelty admired past season at all Exhibitions. If you want an excellent keeper as cutflower don't miss and order this one, very strong and sturdy stems well above the foliage.
Roots—\$0.75 Plants—\$0.50
- LORD OF AUTUMN I. D.** Bright clear golden yellow. Exceptionally beautiful.
Roots—\$1.50 Plants—\$0.75
- LOUISE ARDUINI HYBRID C.** (FOREIGN) Large and richly colored of good form, the color being deep red with a velvet sheen, which adds to the beauty and distinction of the blooms. The plant has great qualities; strong grower and a profuse bloomer. **Roots—\$3.00 Plants—\$1.50**
- LUDWIG WULLNER CACTUS** (FOREIGN) A beautiful novelty. Color scarlet. Award of Merit in Germany. **Roots—\$2.50 Plants—\$1.25**
- LYRIK S. C.** (FOREIGN) Cerise rose, with a chamois-yellow center, extra for cutting; lasts well in water; free flowering. **Plants—\$0.75**
- MAAGD VAN ANTWERPEN I. D.** Pure white flowers carried on long, strong stems well above the foliage. Extra show-bloom.
Plants—\$1.50
- MADAME FLOR BRAEME INC. C.** (FOREIGN) Rose pink and yellow. A beauty. **Roots—\$1.00 Plants—\$0.50**
- MAD. FRANCOIS PEZANT HYBRID C.** (FOREIGN) A very good variety with excellent stems and a very fine form. The color is bright rose. **Roots—\$2.50 Plants—\$1.25**
- MAD. GERMAINE VAN DEN BOGAERT STR. C.** (FOREIGN) A sport of the elegant Miss Belgium, colored soft salmon and straw-yellow. A very fine and delicate color. **Roots—\$1.50 Plants—\$0.75**
- MAJOR C. C. MESSERVY I. D.** (FOREIGN) Yellow, dark center. Immense. **Plants—\$0.75**
- MAN O' WAR I. D.** Cardinal red. **Roots—\$1.00 Plants—\$0.50**
- MARGA V. ETZDORF CACTUS** (FOREIGN) Color brick red with yellow base. Very fine. **Roots—\$2.50 Plants—\$1.25**
- MARGRACE I. D.** (BISSELL) Here is a great Dahlia. Made about the best record of the year. Certificate of Merit at both Storrs and East Lansing. At the Mid-West Show at Cleveland it won first in the Informal Decorative Class; Sweepstakes in the Seedling Classes, and first in the Informal Decorative Class at Michigan State Show. Outstanding at Bronx Park, and on the trial grounds at Fairmount, West Virginia. A tall, upright grower. The color is a brilliant scarlet, tipped and striped with gold. On Mr. Hart's, Mr. Johnson's, Mr. Barron's, and Mr. Eldredge's 1936 Honor Roll. **Roots \$5.00 Plants \$2.50**
- MARY RITZER S. C.** (RITZER) A sport of Edna Ferber; color, pink; size of bloom slightly larger than Edna Ferber. Good grower. On Mr. Eldredge's 1936 Honor Roll. **Roots \$1.50 Plants—\$0.75**
- MAY ROBSON S. C.** A true type flower of a clear, bright pink, about the same shade as Kathleen Norris, but a bit pinker and sharper in tone.
Plants—\$1.00
- MDE. FRANZ LORENZ S. C.** Velvet red tipped white. Extra fine.
Roots—\$2.25 Plants—\$1.00
- MEVROUW V. WUYCKHUISE HYBRID C.** (FOREIGN) A splendid fire-red Dahlia with velvet-black center. Very free-flowering. Certificate trial Garden. Award of Merit. **Roots—\$2.25 Plants—\$1.00**
- MEVR. WIJKHUIZEN S. C.** Color fire red, dark center. A brilliant Dahlia. **Roots—\$2.50 Plants—\$1.25**
- MIRIAM HOPKINS S. C.** The color and type are something like Amelia Earhart but shades to copper-orange. A tall grower. Among the best. Hart's Honor Roll. **Plants—\$2.50**
- MISS. BELGIUM STR. C.** (FOREIGN) A beautiful orange color. Great.
Roots—\$0.75 Plants—\$0.50



MARGRACE

- MISS LONG ISLAND I. D.** (JEFFORDS-PARRELLA) A tall grower with splendid habits and a very attractive plant. The color is bright watermelon pink. Some of the petals show tips of silver. It is a bright sparkling color and a very pleasing clean cut flower. Unusual and disease-resistant foliage and attractive shape. The petal of this dahlia has that rare ruffled formation which is unusual and beautiful. It is in a class by itself. If you want a garden full of blooms from beginning to the end of the season do not overlook Miss Long Island. On Mr. Hart's 1936 Honor Roll. **Roots—\$3.75 Plants—\$1.75**
- MILTON J. CROSS I. D.** (JOHNSON) Unquestionably the champion Dahlia of the eastern shows this year. Winner of the Achievement Medal, in New York; also Achievement Medal at Camden Show for Best Undisseminated Dahlia; also the Championship Seedling Award at Pennsylvania Show, as best Dahlia in the show. This is a magnificent flower and will unquestionably take its place with the outstanding exhibition varieties. It is a nicely proportioned, very large bloom of great depth and beauty. The color is a clear gold at the center of the flower, shading to a light orange-buff on the outer half of the petals. The color is bright, rich, and pleasing. On Mr. Hart's, Mr. Johnson's, Mr. Barron's, and Mr. Eldredge's 1936 Honor Rolls. **Roots—\$10.00 Plants—\$5.00**
- MISS GLORY S. C.** A luscious pale apricot, one of the outstanding Dahlias of the year. Hart's Honor Roll. **Plants—\$3.75**
- MISS WEST VIRGINIA INC. C.** The color is clear mauve on a large, heavily petalled bloom. A tall grower of splendid habits. Hart's Honor Roll. **Plants—\$2.50**
- MITTENWALD S. C.** (FOREIGN) An outstanding variety, with wonderfully formed flowers, with a beautiful glowing scarlet color. Elegant. **Roots—\$2.50 Plants—\$1.25**
- MME GUSTAVE VAN SIELEGHEM S. C.** (FOREIGN) A giant dahlia of an old rose, shaded violet rose, the flowers are of a perfect formation and are held on strong, straight stems, this variety was greatly admired at the exhibitions. **Plants—\$2.00**
- MONMOUTH SUNBURST F. D.** Sunset colors. **Roots—\$0.50**
- MOOI LIMBURG DEC.** (FOREIGN) It will be difficult to find for garden plant a variety which is more attractive than "Mooi Limburg." It is a free flowering variety with geranium-red flowers. The petals are a little turned round, so that this novelty has a beautiful and extraordinary form. Award of Merit Brussels. Certificate of Merit Garden and Award of Merit Holland. **Roots—\$5.00 Plants—\$2.50**
- MOON-GLO F. D.** (PARRELLA-HULIN) Color, lemon yellow. High center which gives it a distinct glow. A few occasional petals show a white streak along the edge which disappears as the bloom opens. On Mr. Johnston's 1936 Honor Roll. **Roots—\$3.75 Plants—\$1.75**
- MORNING MIST POM** (BADETTY BROS.) Certificate of Merit at Storrs, 1935. Color, white shaded lavender, with long stems. **Roots—\$0.75 Plants—\$0.50**
- MRS. ALFRED T. BUNYARD F. D.** (BADETTY BROS.) Winner as best undisseminated Formal at the 1935 New York Show. Splendid habits and rich golden-yellow color. It has achieved the place as the "yellow" most in demand for cut-flower market. On Mr. Barron's, Mr. Johnson's, Mr. Hart's 1936 Honor Rolls. **Roots—\$2.50 Plants—\$1.25**
- MRS. BRUCE COLLINS STR. C.** Light canary yellow, shading lighter towards tips. **Roots—\$1.25 Plants—\$0.75**
- MRS. HERBERT O'CONOR INC. C.** A bright rose pink, deepening at center. On long slender erect stems. Early continuous bloomers. Hart's Honor Roll. **Plants—\$2.50**
- MRS. W. F. LORD F. D.** Color, a bright gold with tints of peach pink on reverse. Gold deepens to a golden orange to the center of the flower. Honor Rolls. **Plants—\$5.00**

- MRS. CALVE S. C. (FOREIGN)** A beautiful variety of Dutch origin; the flowers have a fine brimstone-yellow color; a strong robust grower, was greatly admired at the trial grounds in Holland. **Plants—\$2.00**
- MRS. GEORGE LE BOUTILLIER I. D.** Giant of rich velvety carmine. Greatly admired. **Roots—\$1.50 Plants—\$0.75**
- MRS. J. K. ALEXANDER I. D.** A beautiful large yellow. **Roots—\$1.00**
- MRS. L. BREGAZZI INC. C. (FOREIGN)** A great exhibition variety, having very fine petals. Ten inch in size on stiff stems. Color, yellow at base, suffused pink and yellow tips. On Mr. Johnston 1936 Honor Roll. **Roots—\$1.50 Plants—\$0.75**
- MRS. R. FIELDER INC. C. (FOREIGN)** A cactus of a lovely color, reddish ground, yet definitely tinted with rosy shades, lighter at tips. Narrowest of petals, long and incurving. Flowers large for a true cactus. Selected for Trial at England. On Mr. Johnston 1936 Honor Roll. **Roots—\$1.50 Plants—\$0.75**
- MRS. RICHARD TWYFORD STR. C. (FOREIGN)** Brilliant scarlet, with a yellow disc at base of petals slightly incurved. **Roots—\$0.75**
- MUENCHHAUSEN F. D. (FOREIGN)** A fine bi-color, the ground being salmon red with large white conspicuous tips. Stems long and strong. Always constant and free flowering. **Roots—\$1.50**
- MURPHY'S MASTERPIECE I. D.** Color dark red to garnet. **Roots—\$1.00 Plants—\$0.50**
- NOCTURNO STR. C. (FOREIGN)** Nearly black, brown red, curly petals. Great. **Roots—\$0.75 Plants—\$0.50**
- NORMANDIE I. D.** A bright mellow pink. A splendid grower and needs no urging to produce. Blooms 12 to 14 inches. Hart's Honor Roll. **Plants—\$2.50**
- OAKLEIGH PRINCESS S. C. (HOOK)** Immense size and in a beautiful new color, lavender. A seedling of Satan and reported by many critics as better than its parent. Won a certificate at East Lansing this year. On Mr. Hart's, Mr. Eldredge's 1936 Honor Roll. **Roots—\$5.00 Plants—\$2.00**
- OBERRAMMERGAU S. C. (FOREIGN)** A white sport of Frau O' Bracht. A giant Cactus of same size, habits, stems and growth as Frau O' Bracht. Color, ivory white. **Roots—\$5.00 Plants—\$2.50**
- ODETTE MIN. C.** A beautiful miniature cactus Dahlia with a striking orange color. Free bloomer with good stems. **Roots—\$0.75**
- OLYMPIC SUNSET S. C.** Apricot orange and coral blended with bright yellow—striking, full high centers. Spectacular. **Roots—\$1.25 Plants—\$0.75**
- OMAR KHAYYAM F. D.** Orange to chinese scarlet. **Roots—\$0.40**
- ON PARADE F. D.** Color, a bright, clear lavender, slightly tinted lilac, on long, strong, sturdy, stiff stems. Good show-bloom. **Plants—\$1.00**
- ORANGE MOON F. D.** Deep orange. **Roots—\$1.25 Plants—\$0.75**
- ORCHID MOONLIGHT F. D.** A beautiful mauve pink. This is an excellent grower, the foliage of which is insect resistant and has good stiff stems. Certificate of Merit, also an Honor Roll. **Plants—\$2.50**
- ORINDA F. D.** Deep mauve pink. **Roots—\$0.40**
- OSTERGRUSS S. C. (FOREIGN)** This white flower with strong stems is excellent for forcing purposes. **Roots—\$1.00 Plants—\$0.50**
- O. S. U. I. F. (BUELL)** A novelty which appears to be scarlet and gray. The light reverse shows as artistic pedals twist and turn showing the two colors. It was at the suggestion of a student from Ohio State University that Mr. Buell named this O. S. U. for the University colors. Good foliage, good stems and face good. I know you will like it. **Roots—\$5.00 Plants—\$2.50**



OAKLEIGH MONARCH

OAKLEIGH MONARCH F. D. (Hook) Exhibition type; cerise red in color; blooms 10 to 14 inches; heavy stem, with canes two to three feet long; tough foliage and insect resistant; height, 6 feet; medium early bloomer; a strong, rugged grower; blooms keep well. Won a certificate at East Lansing this year. Scored 86.9. Grown in 10 different regions throughout the country, with excellent results. Without question, this variety will be a prominent winner next season. On Mr. Hart's, Mr. Johnston's, Mr. Eldredge's 1936 Honor Roll.

Roots—\$5.00 Plants—\$2.00

PAEONIA. PAEONY (FOREIGN) Color a very fine salmon rose with a yellow center. Wonderful for exhibition. Award of Merit in Germany.

Roots \$0.50

PALO ALTO S. C. Bright salmon and gold. **Roots—\$1.00 Plants \$0.50**

PAUL PFITZER STR. C. (FOREIGN) Primrose and bright salmon.

Attractive.

Roots—\$1.00 Plants—\$0.50

PEACH BLOSSOM CACTUS (FOREIGN) When we term this a colossal Cactus we are not exaggerating. The huge flowers are wonderful and are made up of very long narrow tubular petals which incurve and interlace. The color, too, is beautiful, being shades of peach pink. A bunch of six of this variety exhibited by Mr. Stredwick, the originator, at the N. D. S. Show, was the loveliest bunch we ever put up of Cactus Dahlias.

Plants \$2.50

PRIDE OF AMERICA S. C. A clear primrose-yellow with tints of pink. One of the most perfect formed Dahlias ever grown. Grows normally 10 to 12 inches on long stems well above the foliage. Hart's Honor Roll.

Plants—\$3.75

PETUNIA CACTUS (FOREIGN) This English novelty is the finest raised for years. It is a plant full of vigor, throwing up rod-like stems with amazing ease. Every flower comes good to the end of the season. The color is unique in Cactus, a beautiful lilac. It keeps for a long period when cut, and is a great acquisition for the garden or exhibition. The winner two years in succession of the Silver Cup, for the best stemmed narrow petalled true Cactus Dahlia at the N. D. S. Show.

Plants—\$1.25

PHANTOM I. D. (FOREIGN) A beautiful bicolor, violet purple tipped White. On Mr. Johnson's 1936 Honor Roll.

Roots—\$1.50 Plants—\$0.75

PINK DAILY MAIL DEC. (FOREIGN) This attractive variety is from British origin. The perfect formed flowers have a beautiful lilac-pink color on a white ground. Watch this variety at the exhibitions; undoubtedly a brilliant prize-winner, long and strong stems. On Mr. Johnson's 1936 Honor Roll.

Roots—\$2.50 Plants—\$1.25

PINK SPIRAL INC. C. (FOREIGN) A beautiful Holland novelty. The color is peach blossom-pink with a touch of primrose at the base and the center of the flower. The petals have a tendency not only to incurve, but to form a complete spiral arrangement around the center. On Mr. Hart's and Mr. Johnson's 1936 Honor Rolls.

Roots—\$1.50 Plants—\$0.75

PIONEER CITY BONFIRE F. D. (BUELL) A seedling from Girl of Hillcrest. Color, bonfire red. Healthy leathery foliage. 4½ to 5 feet excellent stems and faces just right; a splendid keeper. Only time shown in competition at the recent Akron, Ohio, Show, where it captured the blue ribbon in the undisseminated class. You will want this one in your garden. Certificate of Merit at East Lansing.

Roots—\$5.00 Plants—\$2.50

POESIA MORAVY I. D. (FOREIGN) Soft mauve pink, with white. A beauty.

Roots—\$1.00 Plants—\$0.50

POLLY INC. C. (FOREIGN) A yellow American Triumph. Great.

Roots—\$1.00 Plants—\$0.50

PRACHTKERL S. C. (FOREIGN) This German novelty created a sensation at the Mid-West Show at Cleveland. It is a seedling of Frau O'Bracht, but of a deeper yellow and of larger size. It is a Dahlia of nearly perfect form, and bids fair to duplicate its illustrious parent in American show rooms and gardens. On Mr. Hart's and Mr. Eldredge's 1936 Honor Rolls.

Roots—\$1.50 Plants—\$0.75

PREMIE F. D. (FOREIGN) Dark red center and red tips.

Roots—\$0.75

PRESIDENT JOS. DE WINTER. Cactus, an outstanding variety. Beautiful rose-lilac with yellow base. Selected for Belgian Dahlia Trial grounds.

Plants—\$1.50

PRIDE OF AUSTINBURG I. D. (STRASEN) Certificate of Merit at Storrs and East Lansing, 1935. Winner in the Show Seedling Contest and named officially at the Mid-West Show at Cleveland. Also a blue-ribbon winner at Milwaukee, 1935. The color is a bright pink suffused with light yellow. The center of the flower and the reverse of the Petals are a rich rose. The blooms average well over 10 inches through the season. The plant is a strong open grower, with splendid stems. A profuse bloomer. On Mr. Hart's and Mr. Eldredge's 1936 Honor Rolls.

Roots—\$5.00 Plants—\$2.50

PRUNKSTUCK MIN. CACTUS (FOREIGN) A wonderful dahlia. Color deep salmon rose.

Roots—\$1.50 Plants—\$0.75

- QUEEN CITY F. D.** (PECK) A Dahlia of great distinction, with a remarkable record for the season. Winner as Best Keeper in the Undisseminated Varieties at the Mid-West Show at Cleveland; also as Best Formal Undisseminated Variety at Mid-West Show at Cleveland and at Cincinnati. Winner of Ohio Dahlia Society Achievement Medal at Cincinnati, and the Achievement Medal at the Indiana Dahlia Show at Columbus, Indiana. Also outstanding at East Lansing and at the New York Botanical Gardens. Like Buckeye Bride, it is a splendid open grower. It blooms throughout the entire season. The color is a distinctive pink, a shade halfway between cherry-red and old-rose. Good cut-flower. On Mr. Hart's, Mr. Barron's and Mr. Eldredge's 1936 Honor Rolls. **Roots—\$7.50 Plants—\$3.75**
- RAJAH I. D.** An unusual coloring of tan, heavily streaked with red. Free bloomer, with good stems and a tall grower. **Plants—\$0.50**
- RED JUG S. C.** (PREAS-RUSCHMOHR) Certificate of Merit at Storrs this year. Winner of the American Home Achievement Medal at the West Virginia Show in 1934; in 1935, winner as Best Undisseminated Semi-cactus at Rockville Centre, and Camden, and also a blue ribbon winner at the Mid-West Show at Cleveland. An outstanding Dahlia. The color is a dark cardinal-red, sometimes with gold tips both at center and the ends of the petal. On Mr. Hart's, Mr. Johnson's, and Mr. Eldredge's 1936 Honor Rolls. **Roots—\$5.00 Plants—\$2.50**
- RED VICTOR I. D.** (STRASEN) A beautiful novelty. It is not a tremendously large flower but can be grown easily to exhibition size. The color is an unusual shade of rose-red, and under artificial light is a sparkling, brilliant flower. The plant is a nice clean grower, and free bloomer. On Mr. Hart's Honor Roll. **Roots—\$5.00 Plants—\$2.50**
- REICHARDT'S IDEAL CACTUS** (FOREIGN) Color terracetta gold with lilac over-tones, tipped yellow. Lacinated petals. Strong stiff stems. An outstanding Dahlia. **Roots—\$1.50 Plants—\$0.75**
- REICHARDT'S MASTERPIECE INC. C.** (FOREIGN) The most distinctive of all the foreign Dahlias shown this year. Greatly admired in our display at the Mid-West Show at Cleveland. No other color combination just like it; a clear canary-yellow with about one-third of the petal of clear amethyst. The effect is very pleasing and certainly most unusual. A very good exhibition Dahlia. On Mr. Hart's 1936 Honor Roll. **Roots—\$1.50 Plants—\$0.75**
- REICHARDT'S TRIUMPH S. C.** (FOREIGN) A fine companion to his Masterpiece, a large semi incurved Cactus of a rich color combination, purple violet, lighted white. **Roots—\$1.25 Plants—\$0.75**
- REMARKABLE DEC.** (FOREIGN) The flowers have an unique fiery red color, the long petals largely tipped white. Was greatly admired at all exhibitions, large flowers are held perfectly erect on long, straight and strong stems well above the foliage. Indeed a very remarkable dahlia. **Roots—\$1.50 Plants—\$0.75**
- RENATE MULLER INC. C.** (FOREIGN) Salmon pink, light yellow ground. Greatly admired. **Roots—\$0.75**
- RHEINFISCHER S. C.** (FOREIGN) Exceptionally large flowers. Color light salmon. This attractive variety is from German origin. Greatly admired. **Roots—\$1.25 Plants—\$0.75**
- RHEINISCHES MADEL S. C.** (FOREIGN) A beautiful lilac-violet, white tipped. Extra for cutting. **Roots—\$2.50 Plants—\$1.25**
- RIESEN DIAMANT CACTUS** (FOREIGN) Large cactus variety. Color cream with white ground. Greatly admired. **Plants—\$2.50**
- ROCKLEY MOON F. D.** Beautiful yellow, broad-petaled. **Roots—\$0.75**
- ROSTRAHL ST. C.** One of the brightest colors of the season. A splendid grower, holding the salmon-red blooms on perfect stems. **Plants—\$1.00**

- ROYAL BLACK S. C. (FOREIGN)** Everybody who saw this variety at the show admired it for its extraordinary color. A chestnut-brown tint with a lively glow. Award of Merit at Haarlem. If you want a new and brilliant color, order this one. **Roots—\$5.00 Plants—\$2.50**
- ROYALIST S. C.** This wonderfully formed novelty was greatly admired in our gardens. One of the best in the red class. With good habits. Good show-bloom. **Plants—\$1.50**
- ROYAL PURCHASE INC. C. (SALEM)** Color, yellow; outer petals suffused pink; blooms 10 to 11½ inches, field grown; the petals twist and turn, giving the big blooms a most pleasantly shaggy appearance; a long and straight stem; a profuse bloomer, blooms held high out of a clean bush. Winner of blue ribbons at Chicago and New York shows. On Mr. Eldredge's 1936 Honor Roll. **Roots—\$7.50 Plants—\$3.75**
- ROYAL ROBE I. D. (PARRELLA)** An exhibition type of a rich royal purple with silvery reverse; like Jane Cowl. On Mr. Hart's 1935 Honor Roll, and in 1936 on Mr. Eldredge's Honor Roll. **Roots—\$1.00**
- ROYAL WHITE I. D. (FOREIGN)** Fine white with long stems. **Roots—\$0.50**
- R. P. RUTHERFORD S. C. (FOREIGN)** A grand Dahlia. It is a huge flower neatly made up of bluntly pointed florets evenly arranged. Color, golden orange, flushed, veined and deepening to red. Dwarf plants, surprisingly free blooming. Splendid stems. On Mr. Johnson's 1936 Honor Roll. **Roots—\$1.50 Plants—\$0.75**
- RUBY TAYLOR F. D.** Carmine, darker shading. Great. **Roots—\$0.75 Plants—\$0.50**
- RUDOLF'S GIANT I. D. (RUDOLF-RUSCIMOHR)** One of the real giants of the dahlia world, good exhibition flower. The color is a clear golden-apricot with flushes of pastel-pink and golden-tan throughout. This Dahlia received a Certificate of Merit at Storrs in 1934, and won as the Best Undissemated Informal at the Rockville Centre Show in 1935. On Mr. Hart's, Mr. Johnson's, and Mr. Eldredge's Honor Rolls. **Plants—\$5.00**
- SAARLANDS HEIMKEHR ST. C. (FOREIGN)** A German cactus Dahlia of regular form and beautiful color, glowing salmon pink with fine amethyst overtone. Long, strong stems. **Roots—\$1.50 Plants—\$0.75**
- SAARTREUE S. C. (FOREIGN)** A beautiful semi-cactus. Color and outstanding dark blood red. **Roots—\$1.25 Plants—\$0.60**
- SACHSENLAND S. C. (FOREIGN)** A wonderful Dahlia. Semi-cactus, pure, old gold with luminous orange. Ideal stems. **Roots—\$0.75 Plants—\$0.50**
- SACRED FIRE I. D. (FOREIGN)** A giant. Color, lively cherry red. The growth is strong and the stems are similar to those on Frau O' Bracht. The roots are exceptionally fine keepers. A truly magnificent exhibition Dahlia. **Roots—\$0.75**
- SALEM STREAMLINE I. D.** An old rose suffused with carmine rose; very attractive. A high centered Dahlia. The petals fold almost back to the stem. Honor Roll. **Plants—\$3.75**
- SAMARKAND I. D. (CURTIS REDFERN)** Beautiful cerise rose colored flower. This large dahlia is the exact replica of Bagdad except in its color. Samarkand will win as enviable a place in the hearts of dahlia enthusiasts as has Bagdad. **Plants—\$2.50**
- SONNENSTRAHLEN S. C. (FOREIGN)** Color, yellow with red tips. **Roots—\$1.50 Plants—\$0.75**
- SONNY BOY I. D.** Old rose, overlaid old gold. **Roots—\$1.00 Plants—\$0.50**
- ST. AUGUSTUS I. D. (FOREIGN)** Australian giant. A beauty. Color, deep cerise and yellow. **Roots—\$0.75**

- SARA KAY S. C.** (HUNT-BURNETT BROS.) This was one of the outstanding dahlias in the New York Show. Mr. Hart believes it was the runner up to Milton J. Cross in the Achievement Medal Class. The color is rich golden-yellow on a large, long-petalled flower. The plant grows to six feet, and the normal size of the flower is 9 to 10 inches. On Mr. Hart's, Mr. Johnson's and Mr. Barron's 1936 Honor Rolls.
Roots—\$5.00 Plants—\$2.50
- SATAN S. C.** Flame red tipped gold. **Roots—\$0.50 Plants—\$0.50**
- SCHONE BAUERIN CACTUS** (FOREIGN) Color purple carmine with white tips. Fine stems and good size blooms.
Roots—\$0.75 Plants—\$0.50
- SELMA VON STRESSER S. C.** (FOREIGN) A beautiful dahlia. Color, yellow ground suffused magenta, tipped yellow.
Roots—\$1.50 Plants—\$0.75
- SEVERIN'S TRIUMPH F. D.** (FOREIGN) One of the most interesting of the new foreign introductions. The flower is a true Formal Decorative of a clear true pink. The color is bright and very pleasing. The Dahlia is a splendid grower. Normally the blooms grow seven to nine inches with good depth. On Mr. Hart's 1936 Honor Roll. **Plants—0.75**
- SHEKINAH S. C.** (CURTIS REDFERN) A beautifully formed pink that has compiled an enviable record. Shown but three times, it has won first each time. It won first as a seedling and this year was awarded the trophy of the City of San Francisco as the best individual bloom of a Dahlia in the show of the Dahlia Society of California. The plant is a sturdy grower and produces blooms from ten inches up, with great depth. On Mr. Hart's, Mr. Johnson's, Mr. Barron's and Mr. Eldredge's 1936 Honor Rolls.
Roots—\$12.50 Plants—\$6.25
- SHINTENCHI INC. C.** A perfectly formed exhibition variety, from Japan. Held erect on long, strong stems; very free flowering; color, are shade of red. Honor Roll. **Plants—\$1.00**
- SIDNEY JONES S. C.** This is a splendid variety, good English exhibition type. Color, salmon, shading to rose with a yellow tint. With good habits. **Plants \$1.50**
- SILBERBAUT S. C.** (FOREIGN) Color, snow white.
Roots—\$1.50 Plants—\$0.75
- SCHLOSS NEUSCHWANSTEIN CACTUS** (FOREIGN) A beautiful cactus with long and strong stems. An excellent pink color.
Roots—\$5.00 Plants—\$2.50
- SCHOEN DUSSELDORFERIN I. F.** A striking and outstanding bi-colored Dahlia. Color, light blood-red, shading to white at tips and on long, strong stems. Free bloomer, truly a great attraction.
Roots—\$3.00 Plants—\$1.50
- TANNENBERG S. C.** (FOREIGN) Gorgeous, blood red, tipped gold.
Roots—\$1.00 Plants—\$0.50
- THE DUCHESS F. D.** (FOREIGN) White, tipped yellow. Unusual.
Plants—\$0.50
- THE FIREMAN I. D.** Cardinal red, flushed gold.
Roots—\$0.75 Plants—\$0.50
- THELMA TODD S. C.** A beautiful pink and cream with a creamy yellow center, on perfect stems. Prolific bloomer and a good keeper. Hart's Honor Roll. **Plants—\$2.50**
- THOS. A. EDISON F. D.** Royal purple. **Roots—\$0.50**
- TOM MANNING I. D.** (WIND) An exhibition type; color, old rose center, outer petals ochraceous salmon blending into warm buff; a sport of Monmouth Champion with all its characteristics. An ideal variety for the garden. On Mr. Eldredge's 1936 Honor Roll.
Root \$3.00 Plant \$1.50
- TOWERS EMPIRE I. D.** Empire yellow, giant size. Extra fine.
Roots—\$1.50 Plants \$0.75

- TROPIC SUN S. C.** (FOREIGN) Its color is similar to Flaming Torch but the tint is now pure orange. The large flowers are perfectly held erect on long straight and strong stems well above the green foliage. An excellent variety for cutting purposes. **Roots—\$2.50 Plants—\$1.25**
- TRIOMPHE DE PARISIS ST. C.** (FOREIGN) The brilliant formed flowers have a splendid bright orange-red color with yellow base and yellow tipped petals. Do you want an excellent dahlia for the garden, as well as a perfect cutflower? Take this one; very free flowering, much admired, good strong stems carry the flowers well out of the foliage. **Roots—\$1.50 Plants—\$0.75**
- TRAUER UM LANGEMARCK STR. C.** (FOREIGN) Deep dark crimson, almost black. A beauty. **Roots—\$1.25 Plants—\$0.60**
- TYRUS ST. C.** (FOREIGN) A very attractive variety. The middle-sized flowers have a good Cactus form and a lively dark magenta-rose color. The stems are strong. Very rich flowering. **Roots—\$1.00 Plants—\$0.50**
- UNION BEAUTY.** A welcome addition to the Single Type class. Color, orange, red, and white. Certificate of Merit at Storrs. Very showy. **Plants—\$0.50**
- VOIT'S LIEBLING MIN. C.** (FOREIGN) Color, pink with red. **Roots—\$0.75 Plants—\$0.50**
- VOLKSKANZLER SINGLE** (FOREIGN) Seldom a single dahlia has met with such a success as this one. The design of the flowers is very unique indeed, viz.: peculiar salmon red with a dark brown to bright red ring in the center. When cut the flowers remain fresh for many days, they can be cut when half open. Selected for trial Garden at England, Award of Merit. **Roots—\$2.00 Plants—\$1.00**
- VREEWIJK STR. C.** Not large but very attractive, with a striking apricot color. On strong, straight stems, with beautiful keeping qualities. **Roots—\$3.00 Plants—\$1.50**
- WASHINGTON'S GIANT I. D.** Bright lavender, streaked silver. **Roots—\$1.25 Plants—\$0.60**
- WENOKA F. D.** A beauty. Color a brilliant purple. **Roots—\$2.00 Plants—\$1.00**
- WEPEZO S. C.** (FOREIGN) With bluntly pointed florets, color rich scarlet. Plants strong and sturdy growers, blooms well held above the foliage on long stems. **Roots—\$1.50 Plants—\$0.75**
- WHITE ABUNDANCE DEC.** (FOREIGN) A dahlia with enormous gigantic flowers of a beautiful pure white, the flowers are held on strong erect stems well out of the foliage; an excellent white variety for exhibitions as well as for the garden; rich flowering; one of the best dahlias of Dutch origin. Award of Merit at Amsterdam, France, and Belgium. Certificate at Haarlem. On Mr. Eldredge's 1936 Honor Roll. **Roots—\$1.50 Plants—\$0.75**
- WHITE TRIUMPH STR. C.** (FOREIGN) Pure snow white. Grand Dahlia. **Roots—\$0.75**
- WORLD WONDER S. C.** (FOREIGN) A hit amongst hits. Color similar to Frau O' Bracht. The center of the bloom is sulphur yellow shading down to creamy yellow towards the edge of the petals. The stems are very long and strong. The formation is like a huge chrysanthemum. Very free flowering. **Roots—\$1.50 Plants—\$0.75**
- YELLOW SURPRISE S. C.** (FOREIGN) Color, giant sulphur yellow. **Roots—\$2.50 Plants—\$1.25**
- YOUTH I. D.** (PARRELA-HULIN) A gorgeous bi-Color of medium size with an unusual formation resembling a water lily; color, American beauty shading to magenta towards the center, tipped white; a fine commercial variety with good keeping qualities. Awarded a national ribbon (special) at Kingston Show. On Mr. Eldredge's 1936 Honor Roll. **Roots—\$3.00 Plants—\$1.50**

If interested in rooted cuttings, write us and
we will quote price on your wants.

SMALL FLOWERING VARIETIES

Your garden is not complete with out the small flowering Dahlias. The following are among the best for cutting:

	Roots	Plants
Black Diamond B. Dark Maroon, Large.....	.50	
Bishop of Landaff Mig. Bright Scarlet.....	.50	
Baby Royal Min. Salmon and Gold.....	.25	
Beaver St. Mauve.....	.25	
Conge Belge Min. Dark Red.....	.50	.25
Dee Dee Pom. Light Lavender.....	.25	
Diadem Col. Mauve.....	.35	
Everest St. White.....	.25	
Edith Muller Pom. Yellow tipped Carmine.....	.25	.25
Fixlers Col. Red with White.....	.50	
Fairy Min. Pink.....	.50	
Gimpel Min. Cardinal Red.....		.50
Gertrude Pom. Bright Red.....	.25	
Honey Pom. Pale Yellow edged Red.....	.25	
Ideal Min. Shell Pink.....		.50
Jane Hobby Min. Cardinal Red with Bright Yellow Pol- lened Centers.....	.50	
Jessica Pom. Bronze Red.....	.25	
Jersey's Beacon B. Orange Scarlet.....	.35	
Johnny Pom. Dark Red.....	.35	
Little Nemo Min. A Red, tipped White.....		.25
Little Edith Pom. Light Yellow tipped Carmine.....	.25	
Little David Pom. Redish Orange.....	.25	
Little Othello S. Very Dark Maroon.....	.50	
Minnie Mouse Pom. Burgundy Red Tipped White.....		.25
Mary Helen B. Canary Yellow.....	.35	
Orchid Ball B. Orchid Lavander.....	.50	
Scarlet Queen Col. Cardinal Red.....	.25	
The Tiger Col. Red tipped White.....	.25	
Wilfred Col. Red.....	.35	
Yellow Gem Pom. Light Yellow.....	.35	

ABBREVIATIONS

Min.—Miniature Col.—Collarette St.—Star B.—Ball
Min. C.—Miniature cactus Pom.—Pom Poms S.—Single Mig.—Mignon

Visitors always welcome to our gardens.

Location: Turney Road on Route 17. Robinson Avenue off Turney Road. From here we will direct you to our dahlia farm.



