

Historic, archived document

Do not assume content reflects current scientific knowledge, policies, or practices.

6 2. 6 1

1906 amp

EVERYTHING FOR THE LAWN.
LAWN FORMATION AND CARE.



THE MOST BEAUTIFUL LAWNS
 ARE MADE WITH THE
 "HENDERSON" LAWN GRASS SEED.

PETER HENDERSON & CO.

35 & 37 GORTLANDT ST., NEW YORK.



LAWNS: Their Formation and Care.

THERE is nothing more charming than a well-designed house surrounded by artistically treated grounds; and of the essential features of home grounds none is so important as a beautiful lawn—the rich, velvety turf of the smooth, well-kept lawn, varying in tones of green with the play of sunlight and cloud shadows, being the heart and life of all.

“The Tropics may have their delights, but they have not the turf, and the world without turf is a dreary desert. The Teutonic races all love turf; they emigrate in the line of its growth.”—CHARLES DUDLEY WARNER.

A lawn may be formed either by laying turf or by sowing seed. The gain in time by sodding is mostly in anticipation, an advantage so slight as to scarcely be worthy of consideration, while the results obtained by both methods are not to be compared. Sods, no matter how carefully cut and closely laid, often separate, leaving crevices about which the grass dies out in dry weather; then the grasses that compose a pasture or roadside sod (generally the kind used for “sodding” lawns) are not at all the best sorts for forming a perfect lawn; besides, the smooth, elegant surface, such a desirable feature of a lawn, cannot be secured by sodding.

A perfect and enduring lawn, one of luxuriant richness with closely interwoven, firm, deep and elastic turf, is only created by sowing a composition of the various kinds of grass seeds suited to the conditions and the climate. Several varieties are needed, that the lawn may be verdure-clad during all seasons, and the seeds must be sown liberally (at the rate of from four to six bushels per acre), not only that a lawn may be produced quickly, but because the kinds of grasses suitable for perfect lawns are fine-leaved and should take entire possession of the ground promptly, thus checking the development of weeds, the seeds of which are in all soils. The coarse pasture and hummock-forming grasses will not produce a fine lawn. Good, rich, deeply worked soil, either of a friable texture or else under-drained, is as necessary for the production of a perfect lawn as for garden crops, although most grasses, being accommodating plants, if they do not get the requisites for best results, will do their best with what is supplied them. Early and frequent mowing and rolling, as well as the liberal application of water through a lawn sprinkler during dry seasons, is one of the secrets of maintaining beautiful green turf from snow to snow.

Grading. We not infrequently see, after a dwelling costing five, ten, twenty or thirty thousand dollars is erected, that the grounds surrounding it are left to the tender mercy of some ignorant pretender to grade and put in shape. The educated, intelligent architect's duties in many cases end with the completion of the building, and the “garden architect” is installed to grade for the lawn; and a common consequence is that the beauty of the place may be forever marred, for this matter really in many cases requires as much intelligence and good judgment as the construction of the dwelling itself. One of the first conditions for a perfect lawn is that the land be perfectly drained, either naturally or artificially; if the subsoil is sand or gravel, so that water can quickly pass through it, then there will be no need for artificial drains, but if there is a stratum of adhesive clay for a subsoil, then drains are indispensable every fifteen or twenty feet. As the formation of the lawn is the foundation of all subsequent operations, it is imperative that it be carefully done; for if badly done at first it cannot be changed or altered, unless to the great detriment of trees or shrubs that have been planted or flower beds or walks that have been laid out.

The first thing to be done is to get the ground shaped to the desired grade, taking care in grading that when hills or rocks are removed, sufficient subsoil is also removed to be replaced with top soil, so that at least five inches of good soil will overlay the whole in all places; and where trees are to be planted there should be twice that depth of good soil. When the grading is finished, if the nature of the ground requires it, drains should be laid wherever necessary; then the whole should be thoroughly plowed, a subsoil following in the wake of the common plow, until it is completely pulverized. A heavy harrow should then be applied until the surface is thoroughly fined down; all stones, roots, etc., should be removed, so that a smooth surface may be obtained. We have used, with great effect and saving of labor, the “Disc Smoothing Harrow,” which fines and levels the land equal to a steel rake; and wherever large areas are in preparation for lawns, or in fact for any field culture requiring a fine smooth surface, this implement will be found to be of great value.

Seeding. When the seed is sown a light harrow should be again applied, so as to sink the seed one inch or so in the soil, and after that a thorough rolling given, so that the surface is made as smooth and firm as possible. In the latitude of New York the seed may be sown any time from April to October. If the preparation has been good and the weather is not very dry and unfavorable, a good lawn will be in evidence in 8 or 10 weeks' time. Under very congenial conditions, new lawns are frequently ready for mowing in 6 weeks from sowing. If sown in the hot months of June and July, a sprinkling of oats should be sown at the same time, so that the shade given by the oats will protect the young grass from the sun. Lawns are very often sown during the early Fall months (September being the best) with excellent results. On lime soils Kentucky Blue Grass is sometimes used alone, but for a firm, carpet-like lawn the "Henderson" Lawn Mixture is preferable, as it contains some grasses which give quick results, and form a good turf the same year as sown, while a satisfactory turf cannot be established by using Kentucky Blue Grass alone under two or three years. For small plots, of course, digging, trenching and raking must be done instead of plowing, subsoiling and harrowing, and the surface after sowing should be patted down with the back of a spade or rolled with a roller.

Quantity of Seed Required. As a guide for the proper quantity of seed required to form a perfect lawn, we may state that one quart of Lawn Grass Mixture is sufficient to thoroughly sow an area 20 feet by 15 feet—300 square feet—or to cover an acre five bushels will be required. It should be borne in mind that, in order to produce the best results, grass seed for lawns should be sown at least twice as thick as if sown for hay. In fact, if very rapid results are wanted, a lawn will be much quicker obtained by using one-third more seed per acre—in a lawn of about an acre in extent, which we made, six bushels of the "Henderson" Mixture were sown on the 25th of April, harrowed well in, then rolled firmly with a heavy iron roller—the result was that by July 1st, or about sixty days from the date of sowing, a perfect lawn was obtained, having had to be twice mowed over by machine previous to that date.

Terraces and Slopes. On sloping banks it is often necessary to use sod, as the rains wash the soil off before the grass seed has time to germinate. It is sometimes even necessary, in sodding very steep banks, to use pins eight or ten inches in length to pin the sods in place, to prevent them from being washed down by excessive rains before the grass roots have had time to fasten in the soil. In small yards sodding is often done so as to get immediate results; but in all such cases great care should be taken to see that the sods used are of the proper quality, otherwise it is much better to wait a few weeks for the lawn seed to produce the lawn. The "Terrace Sod" mixture which we offer is composed of deep-rooting grasses, which, if once established, will hold the soil and prevent washing, and we advise liberal fertilizing and seeding so that the grasses may be quickly established.

Shady Lawns. When a lawn is much shaded, either in whole or in part, the shaded portions should be sown with the "Shady Nook" Lawn Grass Mixture, which is a combination of fine dwarf-growing evergreen varieties, which in their wild or natural state are to be found growing in the woods or other sheltered or shady spots. Under or in the immediate neighborhood of large trees fertilizers should be applied liberally and frequently, for the trees absorb the fertilizer and impoverish the ground. Ground much shaded is very frequently sour, and if the drainage is defective it is apt to be covered with moss. In such cases an application of lime raked into the soil is an excellent corrector and sweetener, but the moss should be first removed by means of a sharp rake.

Fertilizing. The question of fertilizers for the lawn is an important one. If the soil is naturally a deep, rich loam, it is not indispensable that manure at all be used the first season of sowing, although in every case it would be an advantage, and is really essential if the soil is poor or light. Perhaps the best way to apply *well-rotted* stable manure is to spread it thick enough to cover the ground after plowing or digging, and then harrow or rake it in; though a little more costly, the best plan to insure permanency for the lawn is to use from 2,500 to 3,000 lbs. per acre of coarse ground bone (or better still, about half the above quantity of bone and the other half of Henderson's Lawn Enricher), or in that proportion over lesser

areas, the bone decomposes slowly, giving lasting enrichment; while the Lawn Enricher gives immediate results, the combination of these two fertilizers is lasting in effect, insuring a "velvet lawn," under ordinary circumstances, for six or eight years without further application of manure.

When the land has not been fertilized before sowing, it is necessary to use some top-dressing of manure each season to keep up the fertility of the lawn, and nothing is better for this purpose than to spread over it late in the Fall (November or December) *well-rotted* short stable manure enough to partially cover the surface. On no account should *fresh* stable manure be used, or the lawn will be very apt to be ruined by the introduction of weed seeds. This should be allowed to remain on until such time as the grass shows signs of starting in the Spring, when the rough portion should be raked off and a heavy roller applied, so that the surface of the lawn be rendered smooth and firm for the mower. If the top-dressing of *well-rotted* stable manure has been omitted in the Fall, fine bone dust mixed with finely sifted wood ashes, in equal parts, may be sown on the lawn about as thick as sand is usually strewn on the floor, and rolled down, and we advise that the lawn be rolled several times during the Spring.

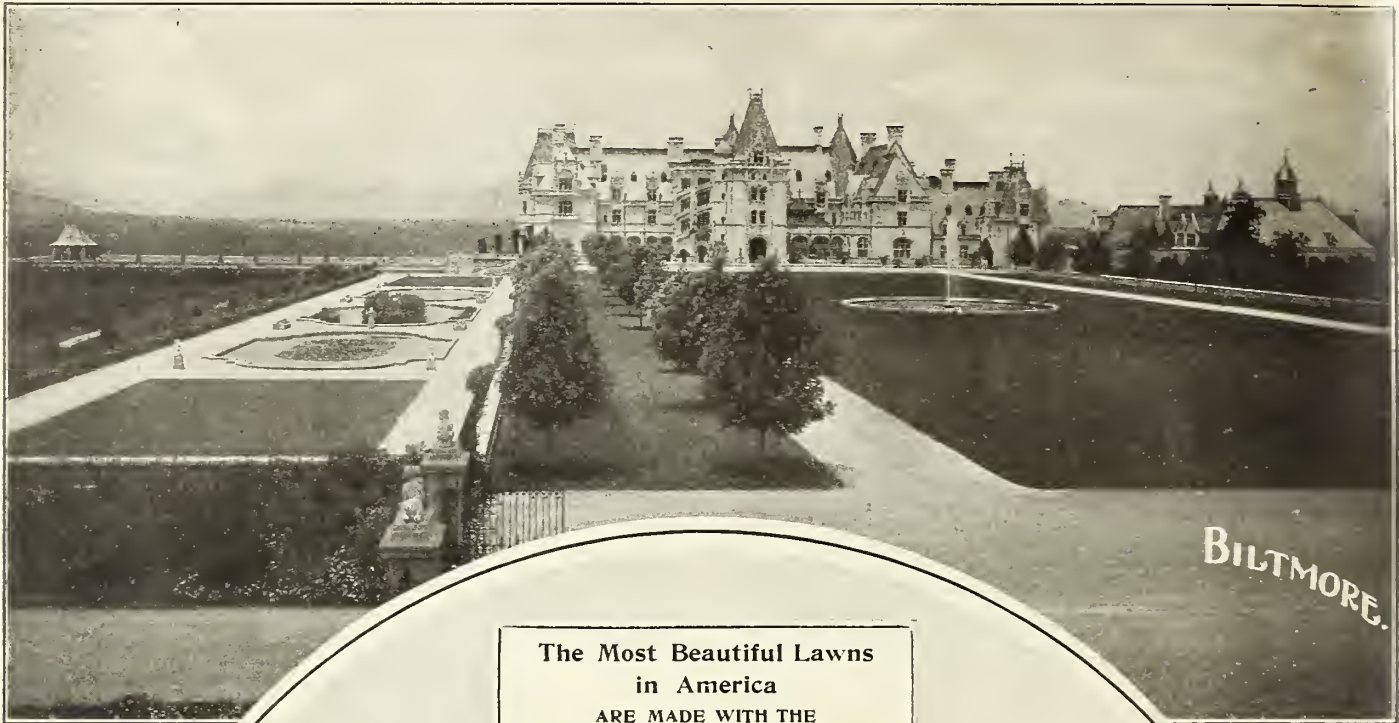
Stimulating. Where very quick results are required, or in case a lawn is becoming bare or patchy in spots, caused by wear and tear or otherwise, the grasses may be forced into a quick growth by applying nitrate of soda at the rate of 200 lbs. per acre. If put on in the dry state it should be applied just before a shower, otherwise it is apt to burn the grasses; but the safer plan is to dissolve one pound of the nitrate in thirty to forty gallons of water and sprinkle with the solution.

Mowing should be begun in Spring as soon as the grass is two or three inches high, and continue every seven or eight days until the cessation of growth in Fall. If the lawn is gone over with the mower once a week, the clippings are best left on, as the sun quickly shrivels them up, so that they never appear unsightly; but if mowing is delayed two or three weeks, then the grass must be raked off.

It sometimes happens that *the soil* contains seeds of perennial weeds; and such seeds are rarely found in the grass seed, such as dandelion, dock or thistles, which seriously interfere with the beauty of the lawn. When this occurs, there is no other remedy than the slow process of cutting them out with the knife or spud. Crab grass, known also as five-finger grass and summer grass, is one of the commonest pests to contend with, and is especially troublesome in dry seasons. It is, however, only an annual, coming up from seed each year. A mowing machine will not cut off all the seed stems, for some grow along the ground and bend before the mowing machine, and the best plan is to loosen it up with a rake and use the scythe a few times, cutting both ways so as to get all of the seeding stems. Lawn grass seed should be sown thickly on these spots and the lawn heavily fertilized in Spring. The crab grass seed does not usually germinate until warm weather, and if there is a good healthy turf at that time the seed is less likely to germinate. We therefore advise, so as to induce a good healthy growth, that when cutting the grass during May, the lawn mower be set high so that the grass will not be cut too short.

Rolling. The benefit derived from using a roller on the lawn, especially in the Spring, is not fully understood. The action of freezing and thawing causes the ground to heave, and if it is not firmly pressed back with a roller before hot weather, the grass is apt to be killed or injured, leaving the lawn full of bare spots. For use on the lawn always take a "*two or three section*" roller, as they can be turned without injuring the grass. A 300-lb. roller is about as heavy as one man can pull, though a 400-lb. will be better if you have two persons to operate it.

Renovating. To renovate lawns that have become worn out by neglect or other causes, and where it is not convenient or desirable to renew by plowing up, they may be greatly benefited by running a light harrow over, if the surface is large, or by a sharp steel rake for smaller areas. After stirring the surface by such means judiciously, so as not to hurt too severely the roots, lawn grass should be sown over the surface, harrowing or raking in about half the quantity advised for new lawns. After sowing, the surface should be harrowed or raked over, and firmly rolled or beaten down, but if spurious grass or other weeds have got possession of the lawn, then this way of renovation would not be satisfactory, and it had better be plowed under and sown afresh, in the manner already given for the formation of the lawn.



The Most Beautiful Lawns
in America
ARE MADE WITH THE
"HENDERSON" LAWN GRASS SEED.



THE HOME OF
PRESIDENT ROOSEVELT
OYSTER BAY, N.Y.

The "Henderson" Lawn Grass is used and praised from Maine to California.

SEE ECONOMICS ON PAGES
4 AND 5.

4 WEEKS FROM SOWING

The "HENDERSON" LAWN GRASS SEED

READY FOR MOWING



DELIVERED

FREE

Anywhere in the United States.

THE MOST BEAUTIFUL LAWNS IN AMERICA

Are Made With The

"Henderson" Lawn Grass Seed.

IN 4 TO 6 WEEKS' TIME

It produces a perfect and permanent sward of luxuriant richness;
It is equally valuable for quickly Renovating Imperfect, Old and Worn-Out Lawns.

THE "HENDERSON" LAWN GRASS SEED

DELIVERED FREE IN THE U. S.

IS USED AND PRAISED FROM MAINE TO CALIFORNIA.

THERE is nothing more charming than a well-designed house surrounded by artistically treated grounds; and of the essential features of home grounds none is so important as a beautiful lawn—the rich, smooth, velvety turf being the heart and life of all.

A lawn may be formed by laying turf or by sowing seed. The gain in time by sodding is so slight as to scarcely be worthy of consideration, while the results obtained by both methods are not to be compared. Sodds separate in dry weather, leaving crevices about which the grass dies out; then the grasses that compose a pasture or roadside sod (generally the kind used for "sodding" lawns) are not at all the best sorts for forming a perfect lawn, and will not give a smooth, elegant surface.

Regarding Kentucky Blue Grass, so widely advertised as an ideal lawn grass, it has merits and demerits. Where Blue Grass thrives it eventually makes a good lawn, but it is slow to thicken up, requiring not less than two years to form a good sward, and does not hold its color in hot weather; it will not thrive on acid soils and a large portion of soils in the lower altitudes, especially in the Coast States, are inclined to acidity. Kentucky Blue Grass is quite extensively used for lawns on the Pacific Coast and on the limestone soils of Kentucky, etc., but the results of this or any one grass in no way compare with the beauty and fine velvety texture of lawns made with an intelligently blended mixture of grasses of neat, close, interweaving growth, such as compose the "Henderson" Lawn Grass mixture; and besides, the latter will make a thick, close turf in a few weeks' time.

We have made the formation and renovation of lawns a study for years, and thousands of the finest lawns and grass plots in America were obtained by following our instructions and using THE "HENDERSON" LAWN GRASS SEED.

Full Directions for Making new Lawns and Renovating old ones enclosed in every Bag and Package.

The "Henderson" Lawn Grass Seed produces a perfect and enduring lawn of luxuriant richness, with closely interwoven, firm, deep and elastic turf, and it is often ready for cutting in four weeks from time of sowing. This celebrated Lawn Grass is composed of a thoroughly balanced combination of various native and foreign fine-leaved, deep-rooting grasses of interweaving habit, that flourish under our varied conditions, soils and climates, growing during different seasons of the year, so that a deep green, smooth, and velvety sward, free from clumps, is maintained from snow to snow, year after year, and without burning brown in summer, its constant luxuriance rivaling the famous lawns of Old England.

The Beautiful Lawns at the Pan-American Exposition, Buffalo, also at the World's Fair in Chicago and the Lewis and Clark Exposition in Portland, Oregon, were produced in less than six weeks' time with THE "HENDERSON" LAWN GRASS SEED, which was awarded the highest medal at these Expositions; but what we prize more than gold medals are the hundreds of letters of praise we have on file from the users of THE "HENDERSON" LAWN GRASS SEED in almost every State in the Union.

The "Henderson" Lawn Grass Seed is, relatively speaking, the cheapest seed offered, because, while other lawn grass mixtures on the market will not average over 14 lbs. to the bushel, this, being freed from chaff, weighs 20 lbs. per measured bushel. It is also the PUREST, CLEANEST and HEAVIEST lawn grass seed ever offered and it is absolutely free from weed seeds.

PRICE OF THE "HENDERSON" LAWN GRASS SEED.

DELIVERED FREE IN THE U. S.

(By Mail, Express or Freight, at our option)

in large and small quantities, for either the pretentious lawn or the modest door-yard plot.

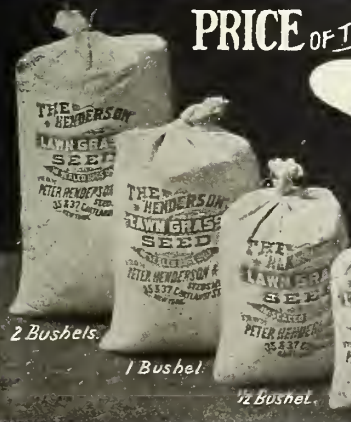
15c. per pint, 25c. per quart,
85c. for 4 qts., \$1.50 per peck,
\$5.00 per bushel of 20 lbs.

The quantity required for new lawns is 5 bushels per acre.

For a plot 15x20, or 300 square feet, use 1 quart.

For renovating old lawns, use one-fourth to one-half of above quantities.

FULL INSTRUCTIONS IN EVERY BAG.



THE MOST BEAUTIFUL
**LAWNS
 IN
 AMERICA**
 ARE MADE WITH THE

"The Lawn Grass Seed which I had from you this Spring was the most satisfactory of any I ever used. In five weeks after it was sown, it was ready for cutting, and in eight weeks it was cut three times, leaving the lawn like a velvet carpet. It is the most beautiful lawn I ever had."

J. LEWIS CREW,
 Shrewsbury,
 N. J.



"I sowed the Henderson Lawn Grass Seed last year in new soil and in three months' time I had as lovely a plot as any one wishes to see. I can't say enough in praise of the Henderson Lawn Grass Seed."

MRS. S. C. HATHAWAY,
 Johnsville,
 California.

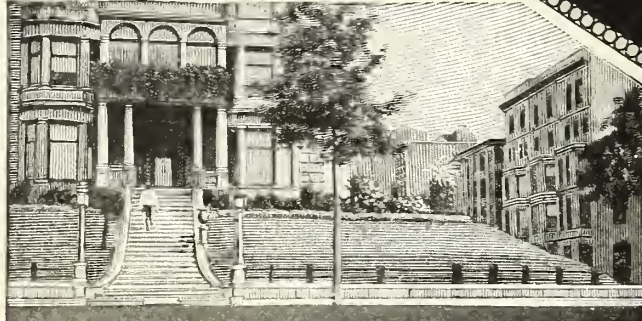
"We have as fine a lawn or 17½ acres grown from your Seed as was ever seen.

An expert in such matters said this A. M. that he never saw its equal."

THE LAKESIDE CEMETERY,
 Erie, Pa.,
 per Wm. H. Platt, Vice-Pres.

HENDERSON
LAWN GRASS SEED

ENTHUSIASTICALLY
**PRaised
 BY
 THOUSANDS**
 FROM MAINE TO CALIFORNIA



"A friend of mine purchased some 'Henderson' Lawn Grass Seed from you about a year ago, and he has the finest lawn in town to-day. Please send me one bushel of the same."
 W. S. GILBERT,
 Portland, Maine.

"I do not consider I would be doing you justice if I did not thank you for the Lawn Grass Seed that I got from you last Spring, and in doing so I must say it is the best seed I ever saw. I was more than surprised to see the very nice lawn that it produced. In six or eight weeks from the time it was sown it covered the ground so thick that every person who saw it thought that I must have had my ground sodded, but it far surpasses any sodding I ever saw, or any seeding. This is not only my testimony, but the opinion of every one who has seen it."

PETER FRAYNE, Exeter, Ont.



"The Henderson Lawn Grass Seed ordered of you in April was sown May 1st, and I am surprised and delighted at the results. In five weeks I have the finest grass to be seen in this city. I did not have quite enough seed so bought some here but it has not given satisfaction, so will sow more of yours."

C. C. ROSE, 3806 No. 22d Street, Omaha, Neb.

"Last Spring I had the most satisfactory results ever achieved with a certain Lawn Mixture obtained from you. Please look it up and send me two bushels of the same, and do not confound it with Kentucky Blue Grass, which on the advice of some parties I also purchased, but does not compare with the mixture you sent me."

F. M. CARTER, Washington, D. C.

"I got a peck of Henderson's Lawn Grass a year ago and I would like some more just like it as it has made the finest lawn in the neighborhood."
 ARTHUR H. McCALL, 117 Driving Park Ave., Rochester, N. Y.

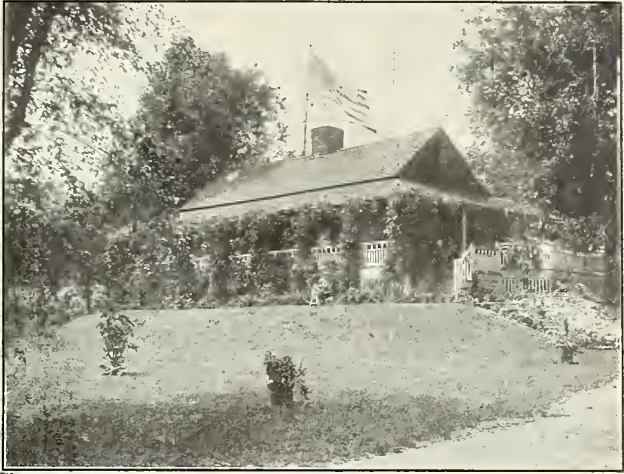


"I wish to let you know that your prepared Henderson Lawn Seed has given me entire satisfaction. After preparing the soil according to your instructions we sowed the seed on June 11 and on the 4th of July it was cut the first time. After that it had to be cut every week the whole summer long; it became a thick sod and was the wonder of all who saw it."
 Mrs. H. R. GROTHANS,
 800 South 8th St, Richmond, Indiana.

"We have on 'Crumwold Farms' about twenty acres of as fine lawns as can be found, and have never used anything but Henderson's Lawn Grass Seed. It grows quickly, makes a better sod, is of a darker green color and remains greener through hot, dry weather than any Lawn Grass I have ever seen. In fact, we think we cannot use any other than 'the Henderson' Lawn Grass Seed."
 JAS. HORROCKS,
 Manager for Archibald Rogers, Esq., Hyde Park, Dutchess Co., N. Y.

"Our home attracts much attention. Many persons ask 'How do you have such a lovely lawn?' Henderson's Lawn Seed, we tell them."
 Mrs. H. CHATTEN, Quincy, Ill.

"Please send me as soon as possible 10 bushels of Grass Seed. I intend to sow this upon my place, and am very anxious to have it clean and pure, and for this reason I send to you, believing that in this way I am most likely to receive just what I want."
 GROVER CLEVELAND.



"The lawns at 'Ellerslie' two years ago were looking very discouraging owing to inferior grades of grass seeds being sown. I entirely re-seeded with your 'Henderson' mixture, and our lawns now are admired by every one; the general remark is 'they never looked so rich.'"
 THOS. TALBOT,
 Gardener to Hon. L. P. Morton, Rhinecliff, N. Y.

"The Henderson Lawn Grass Seed sent me worked like magic; it made a good lawn in one month from sowing and has kept thickening up ever since. It was the wonder of the town to see such a lawn on June 1st on ground plowed on May 2d."
 S. R. PRENTISS, Bangor, Me.

"We have used your 'Henderson' Lawn Grass seed extensively and have never found its equal for quick growth—followed by a dense emerald green sward."
 JOSEPH DEXTER
 Gardener for Whitelaw Reid, Esq., Ophir Farm, White Plains, N. Y.



"Our lawn looks better this year than ever before. The improvement is due to my sowing some of 'the Henderson' Lawn Grass seed over it last September, which germinated freely in the fall and held its own well all summer."
 WM. EDWARDS,
 Gardener to Geo. Cameron, Esq., Mt. Erin, Petersburg, Va.

"It is just 6 weeks since I sowed your Lawn Grass seed and we have had to cut it three times; every one who goes by stops to look and remark the beauty of our lawn."
 Mrs. R. W. COLLINS,
 63 Chattanooga St., San Francisco, Cal.

"After 2 years' absence from our ranch we find the lawn in fine condition. A few places need new seed. That speaks well for Henderson's Lawn Seed, doesn't it?"
 Mrs. ROBERT HOMER,
 Laramie, Wyo.

"Your Lawn Mixture, 'the Henderson,' is the finest I ever got hold of."
 F. T. LAWTER,
 909 Maple St., Albion, Mich.

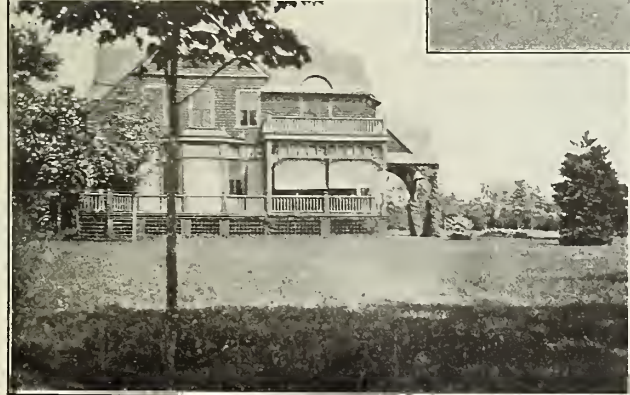
"I have used your Lawn Grass seed and recommend it to all desirous of obtaining a first-class lawn free from weeds."
 CHAS. R. RUSSELL,
 Superintendent to Hon. Jos. H. Choate, Stockbridge, Mass.



"The Lawn Grass which I bought of you in April gave entire satisfaction, although it had no opportunity to do its best on my place. It is a perfect piece of turf. It is exposed to the full glare of the sun all the year, and the first season after it was planted it had no water for six weeks, yet did not even turn brown. I think it an excellent grass for this climate, and one of its chief merits is its being such clean seed—my lawn is absolutely free from weeds."
 ELLA C. POND, Berkeley, Cal.

"Allow me to say that the lawn grass seed purchased of you in the spring has given perfect satisfaction. We sowed the seed on new ground the 3d of May, and, notwithstanding the dry, hot season, we have had a beautiful lawn all summer, having mowed it several times. It was a surprise to every one how quick we made a lawn, as they all told us we would have no grass this year. So much for Henderson's Lawn Grass Seed."
 Mrs. E. O. GARDINER, Clinton, Conn.

"The result from the Lawn Grass Mixture purchased of you last spring far surpasses my fondest expectations, and is a wonder and surprise to all who see it. I was told by many that it would take 2 or 3 years to get a perfect lawn, but in less than 2 months from seeding I have a fine lawn, far ahead of all others in town; the sod is a perfect mat."
 GEO. ROWLAND, Avoca, N. Y., Cashier Bank of Avoca.



"TERRACE SOD"

LAWN GRASS SEED.

A special mixture of grasses best suited for sowing on terraces, railroad embankments and side hills—grasses that produce strong, spreading roots, thus preventing heavy rains from washing them out; that will withstand drought and exposure, thrive on shallow soils, and at the same time produce a rich, velvety green turf throughout the season. There need be no fear of introducing coarse grasses into your lawn by sowing this mixture, for though strong-rooted, the grasses are equally as fine as those used in the "Henderson" mixture.

PRICE, DELIVERED FREE IN THE U. S.
 35c. qt., \$1.25 for 4 qts., \$2.00 pk., \$7.00 bush.
 of 20 lbs.

"I have used your 'Henderson' Lawn and Terrace Sod grass seeds on the lawns and banks here with most excellent effect."
 P. J. DONOHUE,
 Gardener to M. K. Jessup, Belvoir Terrace, Lenox, Mass.

"I have used several bushels of your 'Terrace Sod,' Lawn Grass Seed, and it has made our terraces beautiful and green, and has bound the soil so firmly that even the excessive rains of this summer have not caused a washout."
 ALFRED DONNELLY,
 Gardener to C. H. Mackey, Esq., Roslyn, N. Y.



"SHADY NOOK"

LAWN GRASS SEED.

On nearly all lawns there are unsightly bare spots under the shade of trees, which have baffled all efforts to get into grass, but with this mixture there need be no further difficulty. It is a combination of fine, dwarf-growing, evergreen varieties, which in their wild or natural state are to be found growing in the woods or other sheltered and shaded spots. Ground that has been densely shaded by trees is frequently "sour," and if the drainage is defective it is apt to be covered with moss and coarse bog grasses. In such cases an application of slaked lime, at the rate of one bushel to each thousand square feet, or forty bushels to the acre, is an excellent corrective and sweetener, but the moss should be first removed by the use of a sharp rake.

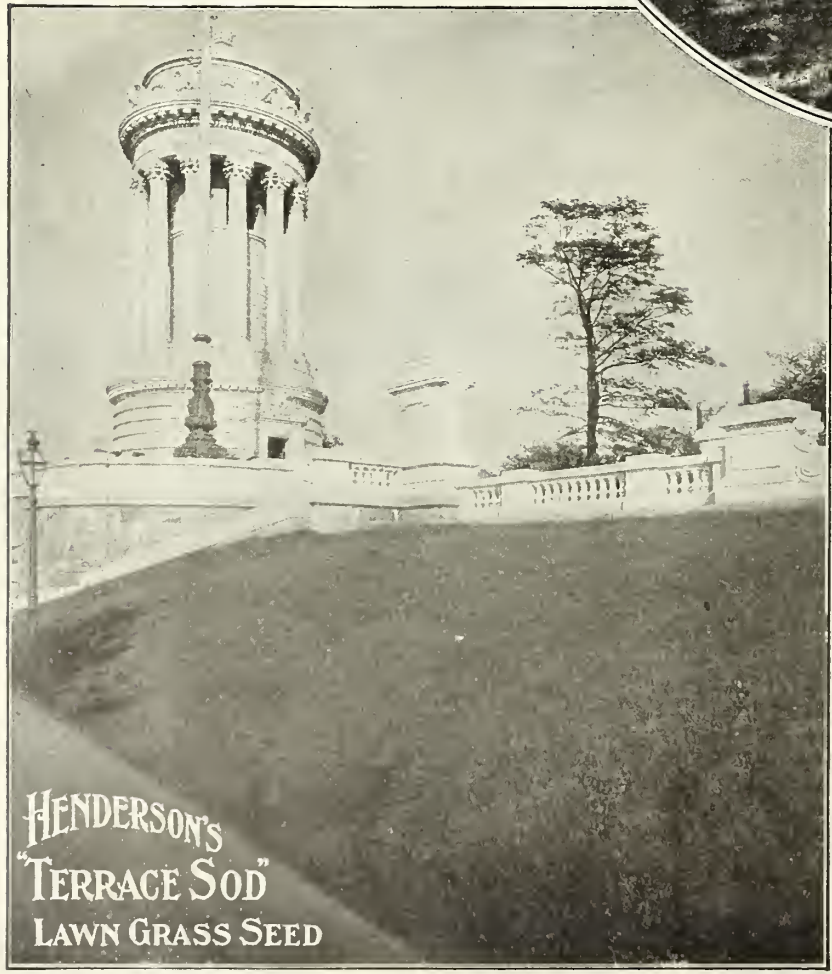
PRICE, DELIVERED FREE IN THE U. S.
 35c. qt., \$1.25 for 4 qts., \$2.00 pk., \$7.00 bush. of 20 lbs.

"Every one is surprised at the success of your 'Shady Nook' Grass Seed from the fact that our lawn—heavily shaded with large old horse chestnut trees—has now been covered with grass."
 S. R. P. SMITH,
 18 South Lafayette St., Grand Rapids, Mich.

"We are all pleased very well with your 'Shady Nook' seed. We have been enabled by the use of this mixture to get a good sod underneath large trees."
 PETER BISSETT,
 Gardener to Mrs. Gardiner G. Hubbard, "Twin Oaks," Washington, D. C.

"On July 15 we seeded many bare spots under the large trees with your 'Shady Nook' Grass Seed. Now in 35 days of mid-summer the spots are closely covered with beautiful green grass, greatly admired by all."
 D. E. HOWETT,
 Forest Hill, Cleveland, Ohio.

"Last year you furnished a bushel of 'Shady Nook' Grass Seed which did unusually well in our yard, where we have many oaks and sugar maples."
 Mrs. W. M. J. ROBERTSON, Charlottesville, Va.





"Sunny South"

LAWN GRASS SEED.

Where the grasses of the North approach the grasses of the tropics there is an irregular belt of territory—approximately from South Carolina westward (no definite line can be drawn on account of varying altitudes) where the heat and drought of summer burn out the favorite lawn grasses of the north unless liberally watered; and yet sections in this belt are subject to some freezing weather in winter, which excludes the satisfactory use of the St. Augustine and Bermuda grasses so extensively used for lawns in the extreme south and in warm semi-arid sections. Consequently, for localities where the above conditions apply our "Sunny South" mixture will be found thoroughly satisfactory. It is a blend of foreign and indigenous grasses naturally adapted to

withstand heat and drought, and also some freezing, and with a little attention to sprinkling occasionally during dry hot weather until established, will furnish a permanent lawn, green the year round.

PRICE, DELIVERED FREE IN THE U. S.
 35c. qt., \$1.25 for 4 qts., \$2.00 pk., \$7.00 bush. of 20 lbs.

"My grass, the 'Sunny South,' is just as fine as can be, although I should have put more seed on. Will put all the balance of the lawn in 'Sunny South,' it having stood the drought better than any of the others I sowed."

W. S. KEEPER, Thomasville, Ga.

"I would like to add my testimony to the excellence of your 'Sunny South' Grass Seed. It is all and more than you claim for it. My lawn is the admiration of all who see it."

Miss I. A. LEETE, Tarheel, N. C.

HENDERSON'S "SEA SIDE" LAWN GRASS SEED.

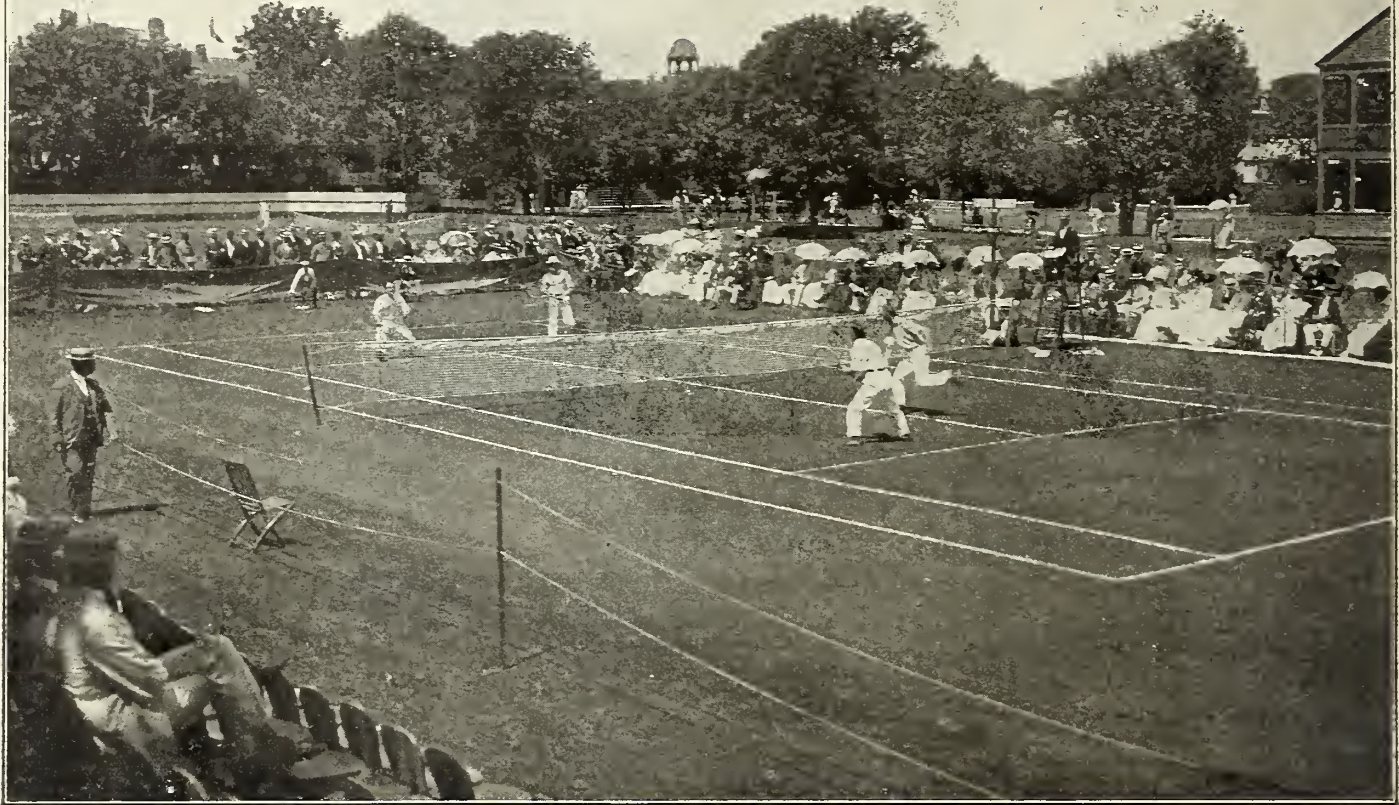
Along our sea coast there are many beautiful summer homes and resorts with such sandy saline surroundings that a turf of the favorite lawn grasses cannot be produced. We have so often made up a mixture of special grasses to thrive under these trying conditions that we have concluded to offer it for the benefit of others who may be having the same "trouble in getting grass to grow." We do not claim that our "Sea Side" lawn grass will make a lawn equaling in fine velvety texture those produced with the "Henderson Lawn Grass Seed," but our "Sea Side" mixture will make a good turf of green on sand where the finer grasses are not so likely to thrive, though of course the sand must be top dressed with not less than 2 inches of soil before even our "Sea Side" grass seed is sown, to enable the young grass to get a start, after which the long roots—peculiar to the varieties we use in this mixture—drive down deeply in the sand and remain permanently self-sustaining—if attention is given to sprinkling during dry weather.

The lawns surrounding the Manhattan Beach and Oriental Hotels illustrated below were made years ago under the exact conditions we describe above with our special "Sea Side" Lawn Grass mixture, and they still remain in beautiful condition, excepting in places where the salt spray dashes. Use at the rate of 1 quart for 300 square feet; 5 bushels per acre.

PRICE, DELIVERED FREE IN THE U. S.
 25c. qt., 75c. for 4 qts., \$1.25 pk., \$4.50 bu. h.



HENDERSON'S "TOUGH TURF" GRASS SEED.



HENDERSON'S "TOUGH TURF" GRASS SEED.

Quickly Forms
an
Indestructible Turf.

Smooth, Firm, Elastic.

Standing

Wear and Tear of Outdoor
Games.

Constantly Green.

A blend of grasses especially suited for

Tennis Courts, Groquet Grounds,
Bowling Greens, etc.

That outdoor games are becoming more popular in America every year is evident from the frequent applications that we receive from some newly organized outdoor club for a fine, durable grass. The turf required for these sports must be closely interwoven, firm, elastic, smooth and durable. These requirements are met in Henderson's "Tough Turf" Mixture, which is composed of native and acclimated foreign fine-leaved, fibrous, deep-rooting grasses, that spread and intermingle, the seeds of which are blended in the proper proportions to form and maintain a tough, matted evergreen sward, even in dry weather. These varieties, being low-growing and fine-leaved, require to be sown liberally if a playing turf is desired quickly; not less than one quart should be used for 300 square feet, or five bushels per acre; half that quantity will do for renovating.

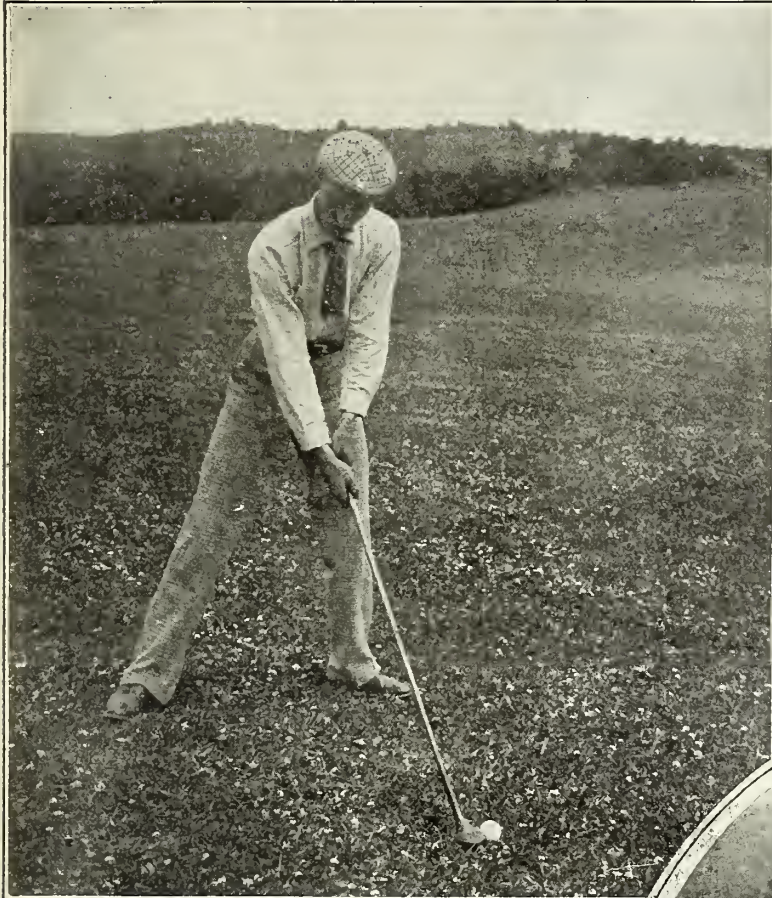
Price, delivered free in the U. S., 30c. qt., \$1.00 for 4 qts., \$1.75 pk., \$6.00 bush. of 20 lbs.

"You will perhaps be pleased to know that our tennis court, made last year by sowing your 'Tough Turf' grass seed, was a great success. We commenced mowing it in about 5 weeks, and were playing on it in 6 weeks' time, without any apparent injury, as the grass kept thickening up all the time, and is a beautiful bit of turf. We are all delighted."

Miss LOUISE MacDOWELL,
Lenox, Mass.

Under congenial conditions it will be ready for mowing four weeks from sowing, and in six weeks ready for playing.

PLEASE NOTICE THAT WE DELIVER FREE IN THE U. S. (By Mail, Express or Freight, at our option.) ALL LAWN GRASS MIXTURES.



HENDERSON'S "GOLF COURSE" GRASS SEED MIXTURES

FOR FAIR GREENS AND PUTTING GREENS.
IS USED ON THE CHAMPIONSHIP COURSES.

The Finest Courses in America to-day are those on which Henderson's Grass Seeds have been used.

Among which we mention and to which we refer:

- | | | | |
|----------------------------|-------|--------------------------------|-------|
| Essex County Country Club, | N. J. | Spokane Golf Club, | Wash. |
| Chicago Golf Club, | Ill. | Royal Montreal Golf Club, | Can. |
| Chey Chase Country Club, | D. C. | Quebec Golf Club, | Can. |
| St. Andrew's Golf Club, | N. Y. | Merion Cricket Club, | Pa. |
| Philadelphia Country Club, | Pa. | Westchester Country Club, | N. Y. |
| Shinnecock Golf Club, | N. Y. | Newport Golf Club, | R. I. |
| Essex County Club, | Mass. | Lakewood Golf Club, | N. J. |
| Garden City Golf Club, | N. Y. | Century Club, | N. Y. |
| Ardsley Golf Club, | N. Y. | Knollwood Country Club, | N. Y. |
| Tuxedo Golf Club, | N. Y. | N. Y. City Public Golf Course, | N. Y. |
| Portland Golf Club, | Ore. | | |

"I used your seed on the putting greens of the Allegheny Co. Club, and it was great stuff."
WM. COLLINS (Professional),
Bay Side, L. I.

"Please send me by express 2 bush. Putting Green Grass Seed. The success we had with the last lot was quite remarkable."
ANDREW MACPHAIL,
Royal Montreal Golf Club, 216 Peel St., Montreal, Can.

HENDERSON'S "GOLF COURSE" GRASS SEED

We have given much attention to grasses for Golf Courses. When Golf first became popular, one of our representatives visited several of the famous Scotch Links and found that most of the grasses which formed these Links can be grown here. The Mixtures we offer below are largely composed of such varieties as will thrive here with the addition of several equally fine American varieties, and are the result of experiments conducted on our grounds, as well as careful watching for several years of the practical results obtained on Golf Courses sown with our grass seeds, such as the Golf Courses named above, and nearly all well-known Courses in the United States. By the use of these Mixtures, and with proper care, the finest Fair Greens and Putting Greens in the world can be successfully rivaled, and if conditions are favorable, a good playing turf may be secured in eight weeks from time of sowing and lasting indefinitely.

Several members of our establishment are golfers, and we thoroughly understand the requirements, and will at all times be pleased to correspond with and advise Green Committees.

HENDERSON'S "PUTTING GREEN" GRASS MIXTURE. Price, delivered free in the U. S., 30c. qt., \$1.00 for 4 qts., \$1.75 pk., \$6.00 bush. of 25 lbs. Sow at the rate of 5 bushels per acre.

HENDERSON'S "FAIR GREEN" GRASS MIXTURE. Price, delivered free in the U. S., 20c. lb., per 100 lbs. at 18c. lb., per 1,000 lbs. at 16c. per lb. Sow 40 to 50 lbs. per acre.

Besides the Grass Mixtures for Lawns and other purposes offered by us, we shall at all times be pleased to make up mixtures for Special Requirements and Situations. Correspondence Invited.

"GOOD TURF KINDLES A GOLFER'S HEART" HARRY VARDON.



PLAYING 8 WEEKS FROM PLOWING
EAGLE NEST GOLF COURSE
SOWN WITH HENDERSON'S GOLF GRASS SEED



The above photograph was taken at the Eagle Nest Golf and Country Club in the Adirondack Mountains on July 15th. On May 15th, the ground was bare, having just been plowed and harrowed. It was then sown with our Grass Mixtures, the same as offered on this page, and the Course was in first-class PLAYING condition by July 15th, exactly eight weeks from time of sowing.

The photograph, though showing only a comparatively small portion of the turf, gives a fair idea of the results obtained in so short a time. HARRY VARDON is the central figure of the three players.

SEEDS OF
Special Grasses

adapted for lawns

...IN THE SOUTH...



THE BERMUDA GRASS LAWN AND GOLF COURSE AT PALM BEACH.

A Green Lawn the year round in Georgia produced with Bermuda Grass Seed and English Rye Grass Seed.

MESSRS. P. HENDERSON & CO.:

Gentlemen: I enclose you the details of my plan in maintaining a green lawn the year round in this climate, where ordinary grasses burn out in summer. The experiment has been a success in every way, and you may with confidence recommend this plan to your Southern customers.

Area $\frac{1}{2}$ acre, sowed the Bermuda Grass Seed Jan. 31st. Our soil is very light with clay subsoil. I put it in good condition, plowing in 200 lbs. Cotton Seed Meal on the $\frac{1}{2}$ acre, sowed the Bermuda Grass Seed Jan. 31st (6 lbs. per acre). Several subsequent rollings with a light roller had a good effect. On May 4th during a rain broadcasted 12 lbs. of Nitrate of

Soda over the $\frac{1}{2}$ acre with good results. This Bermuda Grass gave us a first-class green lawn all summer, it stands mowing and cares for no drought; the first frost kills it to the ground. October 2d applied a top dressing of rich soil and cotton seed meal and raked in English Rye Grass Seed in the proportion of 50 lbs. per acre and rolled the ground. The latter grass seed comes up in eight days, in six weeks it is a mass of green and gives a good lawn all winter; it dies out in May, leaving the ground clear for the Bermuda Grass, the roots of which survive in the ground here through the winter.

RICHARD A. WRENCH Thomasville, Ga.

BERMUDA GRASS SEED.

For Lawn Formation in the Semi-Tropics.

BERMUDA GRASS is the most important and valuable grass for lawns in the extreme South. A well kept lawn of this grass is a refreshing and beautiful sight. It is of low creeping habit, roots from the stem joints and forms a dense sod. It will grow on almost any soil, thriving best on rich land, but will also thrive on poor sandy land. In moist climates it will grow in nearly pure sand, making a good sand binder and bank holder. It revels in the heat and direct rays of the sun, remaining green through the long tropical and sub-tropical summers, when any other type of grass adapted for lawns would burn out. Although Bermuda Grass is especially adapted for lawn formation in the extreme South, and may be grown as far north as Richmond, Va., and St. Louis, without being winter killed, yet the further north it is grown the shorter will be its season of green, as the foliage turns brown after the first frost and does not "green out" until after frosts cease in spring. For this reason in sections subject to frosts an associate winter grass, usually English Rye Grass, is sown in the fall over the Bermuda Grass lawn after the surface has been scarified. These two associate grasses thus furnish a green lawn the year round in the Southern States. For lawn purposes sow 6 lbs. of Bermuda Grass Seed per acre. It is best sown in the spring, as it germinates best in warm weather. Price of Seed, 70c. per lb., 100 lbs. @ 60c. per lb.

...KENTUCKY BLUE GRASS SEED...

Often used for Lawns on Lime Stone Soils.

KENTUCKY BLUE GRASS. This grass so beautiful and famous in the limestone regions of Kentucky, etc., is so widely advertised as an ideal lawn grass, that we wish to inform our patrons as to its merits and demerits. Where Blue Grass thrives it does eventually make a good lawn. However, when used alone it is slow to thicken up, requiring not less than 2 years to form a thick sward, and does not hold its color in hot weather; it will not thrive on acid soils and a large portion of soils in the lower altitudes, especially in the coast states, are inclined to acidity. Kentucky Blue Grass is quite extensively used for lawns on the Pacific Coast, but the results of this or any one grass in no way compare with the beauty and fine velvety texture of lawns made with an intelligently blended mixture of grasses of neat close interweaving growth, such as compose the "Henderson" Lawn Grass mixture; and besides, the latter will make a thick, close turf in less than one summer.

For customers who know that Kentucky Blue Grass thrives on their land and who are satisfied with the slow results, we will state that we furnish the finest, cleanest, heaviest grade of seed on the market, freed from chaff and impurities by our elaborate seed-cleaning machinery, **Henderson's Superior Recleaned Kentucky Blue Grass Seed**, weighing 20 to 25 lbs per measured bushel. 20c. per lb. \$16.00 per 100 lbs., per standard bushel of 14 lbs., \$2.40.



Henderson's "Special Mixture" of Grass Seeds for...

CRICKET, POLO and BALL GROUNDS

This is a special blend of deep rooting fine leaved turf forming grasses especially suited for cricket grounds, polo grounds, ball grounds, etc. This mixture forms a thick, strong, enduring turf that will stand any amount of hard usage without showing wear and tear. It grows quickly, and if soil and conditions are at all favorable, with attention to rolling and mowing, should be ready for hard use in 8 weeks from sowing. The polo grounds at Lake-wood, Newport, Meadowbrook, Rockaway Hunt, Saratoga, and others, were laid with our Special Grass Seed. As for cricket and ball grounds on

'I have had from you at different times many bushels of Henderson's 'Special' Grass Seed Mixture for use on cricket grounds, and it has always given excellent satisfaction. In Lawrence we used it on the Merrimack Cricket Club grounds, and the course had a good name all over the State. Since I have been connected with the Mohair Cricket Club, in Lowell, we have used the same seed with the same result, that our wicket is considered the best in the State. I have recommended your seed to the Lynn Cricket Club, of Lynn.

JOS. W. HARRISON, Lowell, Mass.

which our grass seeds have been used, they are too many to mention.

Sow 50 to 100 lbs. per acre; the larger quantity if quick and very best results are desired.

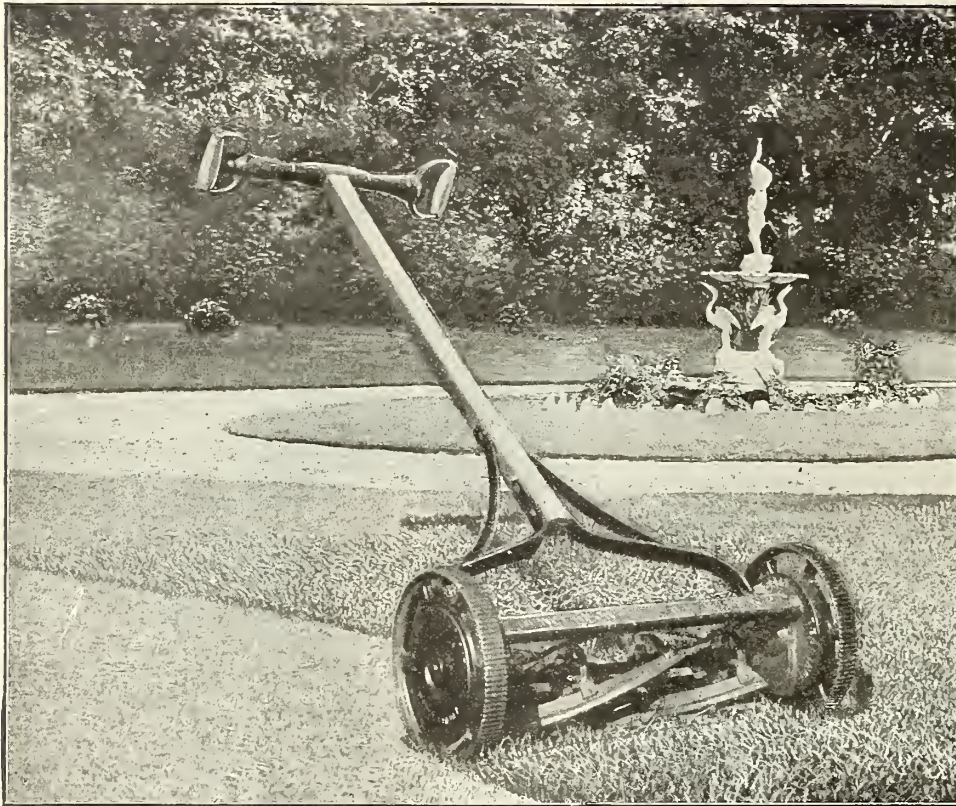
PRICE, DELIVERED FREE IN THE U. S., "Special Mixture" for Cricket, Polo, and Ball Grounds, 29c. per lb., per 100 lbs. at 18c. lb., per 1,000 lbs. at 16c. lb.

HENDERSON'S SUPERIOR RECLEANED GRASS SEEDS

For those who have preference for any one variety or for a special purpose or desire to make up Special Mixtures of their own.

	Weight per bush.	Per bush.	Per lb.	Per 100 lbs.
BERMUDA GRASS. (<i>Cynodon Dactylon</i> .) Valuable lawn grass for the extreme South, but does not thrive north of Virginia.	35 lbs.70	60.00
CANADA BLUE GRASS. (<i>Poa Compressa</i> .) Useful on hard clay and poor gravelly soils; resists drought.	14 lbs.	1.75	.14	11.00
CREeping BENT GRASS. (<i>Agrostis Stoloniifera</i> .) Excellent for lawns and putting greens; succeeds well in most situations.	20 lbs.	5.25	.28	25.00
CRESTED DOG'S TAIL. (<i>Cynosurus Cristatus</i> .) Should enter in moderate quantity in lawn and putting green mixtures.	21 lbs.	10.00	.50	45.00
ENGLISH RYE GRASS. (<i>Lolium Perenne</i> .) For quick results, it makes a good showing within a month.	24 lbs.	2.10	.10	8.00
FESCUE, FINE-LEAVED SHEEP'S. (<i>Festuca Ovina Tenuifolia</i> .) The finest bladed grass and valuable only for lawns.	14 lbs.	5.25	.40	36.00
" HARD. (<i>Festuca Duriuscula</i> .) A dwarf-growing grass, forming a dense, fibrous mat, succeeding well in dry situations.	12 lbs.	2.00	.18	15.00
" RED OR CREEPING. (<i>Festuca Rubra</i> .) Forms a close, rich sod, and is valuable in lawn and putting green mixtures.	14 lbs.	3.00	.24	20.00
" SHEEP'S. (<i>Festuca Ovina</i> .) Short and dense in growth. Valuable for lawns and putting greens.	12 lbs.	2.00	.18	15.00
" VARIOUS-LEAVED. (<i>Festuca Heterophylla</i> .) Valuable in lawn mixtures, forms a close rich sod.	14 lbs.	3.65	.28	25.00
" MEADOW. (<i>Festuca Pratensis</i> .) Of robust growth and useful in permanent mixtures.	22 lbs.	3.60	.18	15.00
ITALIAN RYE GRASS. (<i>Lolium Italicum</i> .) For quick one season results; thrives in almost any soil.	18 lbs.	1.60	.10	8.00
KENTUCKY BLUE GRASS. (<i>Poa Pratensis</i> .) Does best on lime stone soils in the higher altitudes, gradually making a good turf, but not the first year. Fancy or double extra clean. Though offered at the standard weight of 14 lbs. per bushel, the natural weight of this fancy seed is 20 to 25 lbs. per measured bushel.	14 lbs.	2.40	.20	16.00
RED TOP GRASS, CHOICE. (<i>Agrostis Vulgaris</i> .) Forms a close sod, thrives on moist clayey soil and even on slightly acid soils.	14 lbs.	1.65	.14	10.00
" " " FANCY or extra recleaned seed free from chaff and weighs 32 lb. per measured bushel.	32 lbs.	5.50	.18	16.00
RHODE ISLAND BENT GRASS. (<i>Agrostis Canina</i> .) Related to the Red Top, but much finer in texture; produces soft velvety turf.	14 lbs.	5.25	.40	35.00
ROUGH STALK MEADOW GRASS. (<i>Poa Trivialis</i> .) Adapted for shaded situations, particularly on damp soils.	14 lbs.	5.25	.40	35.00
SWEET VERNAL, TRUE PERENNIAL. (<i>Anthoxanthum Odoratum</i> .) Emits an agreeable odor when the lawn is mown.	10 lbs.	8.00	.90	45.00
WOOD MEADOW GRASS. (<i>Poa Nemoralis</i> .) Of early growth, thriving well under trees; makes a fine close sod.	14 lbs.	6.75	.50	45.00
WHITE CLOVER. (<i>Trifolium Repens</i> .) A hardy perennial of low creeping growth often used in lawns.	60 lbs.	15.50	.28	25.00

We shall be pleased to make Special Prices, where possible, to buyers of large quantities of Grass Seed. Write us.



Henderson's Ideal "Ball-Bearing" Lawn Mower

Will cut a lawn in one-half the time required with old style, narrow-cut Mowers.

THE HENDERSON "BALL-BEARING" LAWN MOWER is superior to all other Mowers in the following respects: The axles of the revolving cutter, like the axles of a bicycle, work in "ball-bearing" journal boxes or cups, which reduces the friction enormously. These parts are made of the finest case-hardened steel, and will last for years, though we have provided against wear should there be any—so that anyone, by simply loosening one screw and tightening another, can force the cup and balls higher up the cone-shaped ends of the revolving shaft, thereby taking up all possible wear. This adjustment is so simple, yet positive, that it can be set to a hair. Our Mower is also built scientifically correct in other respects, resulting in a phenomenally light running Mower. The castings are lathe-turned and hored, and the journals machine-trimmed, which insures trueness in fitting and smoothness in working, with no rattle and play. The knives, of the finest steel and temper, are sharp and cut like razors, and will keep so if the under knife is kept tightened up to the revolving knives; for then the blades wear to the same bevel, and, in consequence, are self-sharpening.

THE HENDERSON "BALL-BEARING" MOWER has high drive wheels, both of which are connected by gearing to the large, open, non-clogging cylinder placed far enough back to prevent any "kicking up" of the Mower when it strikes heavy grass. The spiral of the knives is correctly proportioned to give a continuous cut, leaving the lawn as smooth as if shaved, entirely free from the corrugated surface left by other Mowers. The handles are braced and reinforced to prevent twisting and breaking when one side of the Mower is held off the ground, and besides the handle is equipped with improved "grips," which keeps the hands in a natural position, gives more power, and is less tiresome than a continued grasp, with wrists twisted, on a horizontal grip. We wish to reiterate that our Henderson "Ball-Bearing" Mower is made without regard to cost—to be the best, most durable and the easiest-working Mower on the market, and while the prices are necessarily a little higher than those of Mowers simply made to sell, yet in the end our Mower will prove much cheaper, aside from annoying delays and repairs experienced with cheap Mowers.

GRASS CATCHERS for the Henderson "Ball-Bearing" Lawn Mowers are of superior heavy duck; bottom of galvanized iron that will not sag nor drag on the ground when filled; they are quickly attached, removed or dumped.

FOR CUTTING TERRACES, Henderson "Ball-Bearing" Mower is unequalled; it being a "train gear" Mower, the cutters remain close to the sod, without bobbing up and down; consequently, for cutting terraces it works just as well when the handle is removed. The "terrace iron" is attached to the roller hangers, then a rope is connected, which allows the operator to stand on the top of the terrace and guide the Mower, as its momentum carries it down the hill, operates the knives and cuts the grass, when it is pulled back by the rope for another swath. Terrace Iron are extra, 60c. each.

PRICES FOR HENDERSON'S IDEAL BALL-BEARING LAWN MOWERS.

(Strictly net; no charges for packing or cartage.)

16-inch cut, \$7.50;	Grass Catcher Extra, \$1.75
18-inch cut, 8.50;	Grass Catcher Extra, 1.85
21-inch cut, 9.50;	Grass Catcher Extra, 2.00
24-inch cut, 11.00;	Grass Catcher Extra, 2.50

HENDERSON'S IDEAL "BALL-BEARING" LAWN MOWER =:-

Has received hundreds of encomiums similar to the following;

"Your 24-inch Ball-Bearing Lawn Mower more than pleases me, and it has so excited the jealousy of my neighbor that he wishes me to order one for him exactly like mine. Please ship it by, etc."

DR. CHAS. R. SMITH, Tioga, Pa.

"Your 24-inch Ball-Bearing Mower I find exactly suited to my use. My man tells me that it runs easier than our old 16-inch Mower."

HORATIO R. NIGHTINGALE, Providence, R. I.

"We used your Henderson Ball-Bearing Mower all last summer, and must say that it is the best machine we have ever tried on our lawns, and we have about every make in use, but the men all agree that yours is the 'boss.'"

WM. H. PLATT, Comptroller, Lake Side Cemetery, Erie, Pa.

"I have just had my lawns cut with the 24-inch Mower (Henderson Ball-Bearing) that you shipped me. The ease with which it runs and the quality of the work done delights me. I have had several machines prior to this one, but none could compare with the Henderson."

JAMES HART, Christopher, King Co., Washington.

"I have used the Ball-Bearing Lawn Mower all summer, and it is the best machine I have ever used. It lays close to the turf in long grass, while other machines bob up and down, and the knives never clog up."

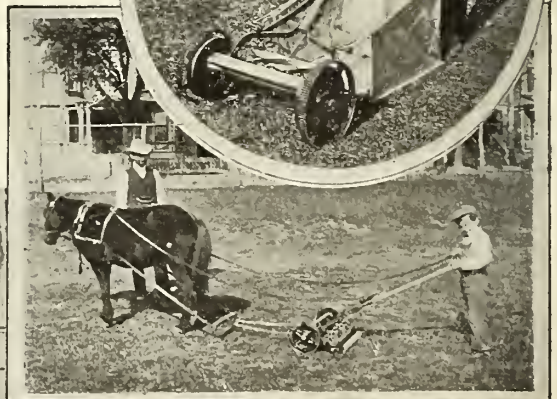
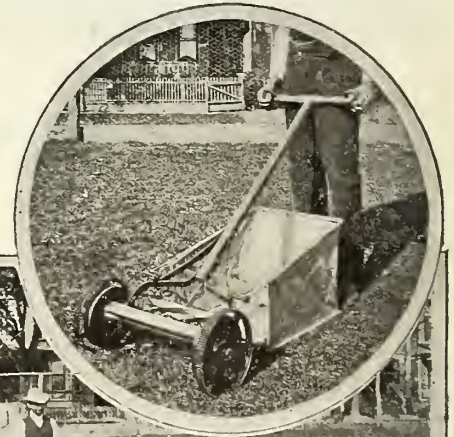
WILLIAM STEWART, Springfield, Mass.

"I am convinced that your Ball-Bearing Lawn Mower is not only constructed on scientific principles, but is superior to all others. In actual work it saves about half the time, and works easily and charmingly."

JOHN V. N. STANDISH, (Pres. Lombard University), Galesburg, Ill.

"We have thoroughly tested your most admirable Ball-Bearing Lawn Mower. It walks right through our wiry, tough Bermuda grass, cutting it as easily as if blue grass."

JAS. E. JOUETT, Rear Admiral, U. S. Navy, Orlando, Fla.



The above illustrates the "Henderson" Ball-Bearing Lawn Mower with Grass Catcher attached.

The 24-inch machine drawn by pony.

Mowing terraces.



**"RUNAWAY"
HIGH-WHEEL LAWN
MOWER.**

**THE HENDERSON
"PUTTING-GREEN" MOWER.**

**THE LATEST AND BEST. CLOSE AND SMOOTH CUTTING.
BALL BEARINGS. EASY RUNNING. SEVEN BLADES.**

We offer this new mower to Golf Clubs as the very best mower ever devised for smooth, close work on putting greens. It has a seven-bladed revolving cutter working in ball-bearings and speeded high, thus leaving the cut surface of the "green" absolutely free from corrugations, and almost as smooth as a billiard table. The knives can be set so low that they will fairly shave the ground if desired; though on a level, well-rolled green, with close, fine turf, a quarter to a half-inch clip leaves the surface in the nicest condition for putting. The aggravation experienced by many golfers after driving off in good shape and coming through the fair green equal to Col. Bogey, only to fall down in putting on account of the uneven surface of the "green," impresses the victim with the importance of having a mower used that will leave the surface as smooth as possible. Two of our firm are "golfy," and have been all through it, and this special new mower of ours is the result of our experience and experiment. We gave three or four of these mowers to various Golf Clubs for trial the past summer and all have reported on them in enthusiastic terms. Alexander Finlay, the well-known instructor and greenkeeper of the Newark Athletic Club, also of the Eagle Nest Golf and Country Club in summer, says: "It is the best mower for putting-greens that I have ever seen either in this country or in Scotland. It cuts the turf so short and even that it is like putting on a carpet."

Henderson's "Putting-Green" Mower is a thoroughly high-grade machine, carefully built of finest material, the knives especially being of finest steel. It runs easy considering the number of knives and fine cut. Guaranteed satisfactory.

Prices: (Strictly net; no charge for packing or cartage.)

16-inch cut.....	\$10.00	Grass Catcher (extra).....	\$1.75
18- " ".....	11.00	" " ".....	1.85
21- " ".....	12.50	" " ".....	2.00

"RUNAWAY" HIGH-WHEEL LAWN MOWER.

A first-class high-wheel lawn mower at a popular price; the four revolving knives give a continuous cut: made of best materials, easy running and fully warranted.

Prices: (Strictly net; no charge for boxing or cartage.)

12-inch cut.....	\$4.00	20-inch cut.....	\$6.00
14- " ".....	4.50	Canvas Grass Catchers, for	
16- " ".....	5.00	any size "Runaway" Mower	
18- " ".....	5.50	(extra).....	1.00

"In May I ordered a 'Runaway' high-wheel mower from you—my lawn is large so I had ample opportunity to test the merits of the machine. I am more than satisfied, I am delighted with its ease of movement and smoothness of execution."

Rev. J. E. SWITZER, Allendale, N. J.

"The 'Runaway' lawn mower bought of you two years ago has done a great deal of work and has given excellent satisfaction."

W. J. HALE, Youngstown, Ohio.

"UNIVERSAL" LOW-PRICE LAWN MOWER.

For the benefit of those who want a low-price mower, and for those who have but little grass to cut, we offer the best cheap mower made. While the prices are as low as "department store" prices, yet this mower will be found much better, both in quality of knives and quality of work.

Prices: (Strictly net; no charge for cartage or packing.)

10-inch cut.....	\$2.75	18-inch cut.....	\$3.75
12- " ".....	3.00	Canvas Grass Catcher, for any	
14- " ".....	3.25	size Universal Mower (extra).....	75c.
16- " ".....	3.50		



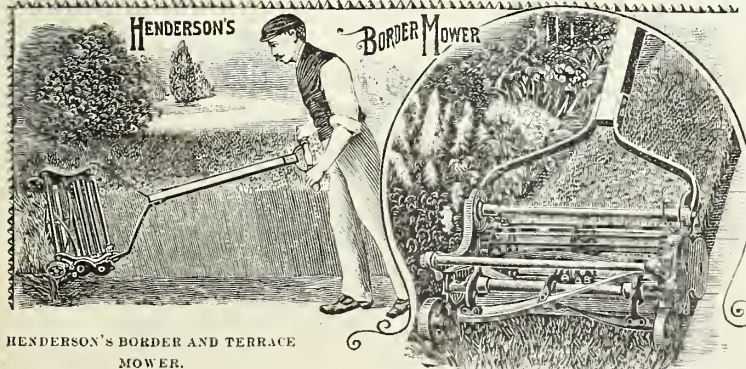
**HENDERSON
"PUTTING-GREEN"
MOWER.**

**HENDERSON'S
BORDER AND TERRACE MOWER.**

Especially designed to cut the grass on borders—the narrow strips of sod, sometimes only a few inches wide—between flower beds and walks, where a side-wheel mower would have one wheel down in the gutter, and in consequence the mower would cut into the sod. In our Border Mower a large light cylinder extends the full width of the mower and keeps the machine level with the surface and does perfect work. This machine is also useful for regular lawn work. It is very light running, and will give thorough satisfaction.

Prices: (Strictly net; no charge for boxing or cartage.)

10-inch cut.....	\$6.00	16-inch cut.....	\$9.00
12- " ".....	7.00	18- " ".....	10.00
14- " ".....	8.00	20- " ".....	11.00



**HENDERSON'S BORDER AND TERRACE
MOWER.**

We supply all Leading Lawn Mowers, including the following:

Chain Roller Mower. Four-Bladed.		Imperial High Wheel. Four-Bladed:			
Net Prices.	Grass Catcher.	Net Prices.	Grass Catcher.		
12-inch cut.....	\$10.50	\$1.70	14-inch cut.....	\$8.50	\$1.85
14- " ".....	11.75	1.85	16- " ".....	9.50	2.00
16- " ".....	13.00	2.00	18- " ".....	10.50	2.15
18- " ".....	14.25	2.15	20- " ".....	11.50	2.30
20- " ".....	15.50	2.30	With 5 blades, add 75c.		
With 6 blades, add \$1.00.					
Pennsylvania High-Wheel.		Philadelphia, Style E. High-Wheel (10-in.)			
15-inch cut.....	\$12.00	\$1.70	15-inch cut.....	\$8.50	\$1.70
17- " ".....	13.00	1.80	17- " ".....	9.50	1.80
19- " ".....	14.00	1.90	19- " ".....	11.00	1.90
21- " ".....	15.00	2.00	21- " ".....	13.00	2.00

THE HENDERSON NEW HORSE LAWN MOWER.



THE "HENDERSON" HORSE LAWN MOWERS ARE USED ON MANY GOLF COURSES

AND COUNTRY CLUBS IN THE UNITED STATES.

AMONG WHICH WE MAY MENTION:

- Dyker Meadow Golf Club, . . . N. Y.
- Thousand Island Yacht Club, . . . N. Y.
- Eagle Nest Country Club, . . . N. Y.
- Ottawa Golf Club, . . . Can.
- Niagara Golf Club, . . . N. Y.
- Misquamicut Golf Club, . . . R. I.
- Westchester Country Club, . . . N. Y.
- Chevy Chase Club, . . . Md.
- Essex County Country Club, . . . N. J.
- Ardslay Golf Club, . . . N. Y.
- Burlingame Country Club, . . . Cal.
- Crescent Athletic Club, . . . N. Y.
- Oyster Bay Golf Club, . . . N. Y.
- Eagle Nest Golf Club, . . . N. Y.
- Savannah Golf Club, . . . Ga.
- Florida Country Club, . . . Fla.
- Elizabeth Town & Country Club, . . . N. J.
- Jersey City Golf Club, . . . N. J.
- Seacliff Golf Club, . . . N. Y.
- Scarsdale Golf Club, . . . N. Y.
- Newark Athletic Club, . . . N. J.
- Hackensack Golf Club, . . . N. J.
- Mahopac Golf Club, . . . N. Y.
- Ekwanoek Golf Club, . . . Vt.

AND OTHERS TOO NUMEROUS TO MENTION.

The New Henderson Horse Lawn Mower

FOR LARGE LAWNS, GOLF COURSES, PARKS, CEMETERIES.

A COMBINED MOWER and ROLLER.

FULLY WARRANTED. THE LATEST AND BEST.

Knives can be raised or lowered instantly. Side draught (applicable to either side) keeps horse off uncut grass.

THIS is the best horse-power mower manufactured, simple in construction, very durable; nothing but the very best steel and iron are put in it. It is quickly adjusted to cut high or low, and the arrangement for throwing in and out of gear and for raising the knives when passing over stones, rough places or roads is operated from the seat. The side draught (applicable to either side) keeps the horse on the cut grass and prevents trampling down that which is to be mown. The revolving knives are "high speeded," making a continuous cut and leaving the surface of the lawn as smooth as velvet. These mowers are fitted with a two-section roller and weigh, exclusive of shafts, 30-inch cut, 445 lbs.; 35-inch cut, 490 lbs.; 40-inch cut, 540 lbs.; to this may be added the weight of the man if he rides, thereby rolling the lawn with a very respectable weight at the same time it is cutting; or the cutter may be thrown out of gear by the movement of a lever and the machine be used for rolling alone. The benefit to a lawn from rolling is not sufficiently appreciated. The action of freezing and thawing causes the ground to heave; moles and other pests loosen the roots of the grass, and if the sod is not kept pressed back the grass is apt to be injured or killed, leaving the lawn full of bad spots. Moles will not trouble lawns where frequently rolled. The most beautiful lawns in this country were improved and are now maintained with our horse mowers.

PRICES for the HENDERSON HORSE MOWER, complete with seat, shafts and side draught. Strictly net; no charge for cartage or boxing.

30-in. cut, \$60.00.
(Packed weight, with shafts, 610 lbs.)

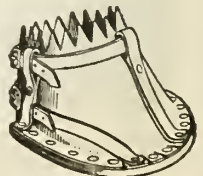
35-in. cut, \$67.00.
(Packed weight, with shafts, 660 lbs.)

40-in. cut, \$75.00.
(Packed weight, with shafts, 690 lbs.)

HENDERSON'S IMPROVED HORSE BOOTS.

THESE boots attach to horses' hoofs to prevent them from cutting into and marring the surface of the lawns, which is very apt to happen with naked feet when the ground is moist or soft. The leather used in these boots is of the very best quality, and will not stretch out of shape like that used in cheap boots. The soles are two thicknesses of best sole leather, well riveted together. The straps draw the upper part of the boot tightly around the average-sized hoof. If hoofs are wanted for a very large-footed horse, it should be so stated in ordering. Tall boots that fasten around the leg we no longer sell, for they often chafe the hair off.

PRICE: Henderson's Improved Horse Boots, per set of 4, \$9.00.



The Goldwell Improved Motor Mower and Roller

For Lawns, Parks, Golf and Country Club Grounds, &c.

THIS 1905 Motor Mower is the outcome of several years of experience in the manufacture and use of machines for this purpose. It is a simple, economical, compact, durable and low priced motor mower that anyone of ordinary intelligence can run. The gasoline motor is one of the simplest ever made, absolutely safe, has few parts and all accessible, the cylinders—water-cooled—are four inches in diameter making a 4-inch stroke, the fuel to operate costs no more per day than the feed of a horse, and when not in use consumes nothing. The lawn mower portion of this machine is practically identical with the Henderson Horse Mower offered opposite which combined with this motive power forms an invaluable machine for both mowing and rolling lawns. With it the work can be done twice as fast, or in other words, one motor mower will do the work of at least two horse mowers. The motor mower is easily handled, the movement of a lever instantly starts, stops or backs it and it is as quickly and easily guided and can be turned completely about in the space of 6 feet. It can be run close to shrubbery, trees and walls cutting within 6 inches of them, it will mow up to a 10% grade and cannot be upset. The knives can be stopped and started while the machine is in motion, they are speeded high and will cut taller grass than any lawn mower, and can be set to cut as high from or close to the ground as desired, the floating character of the cutting mechanism adapts itself to the contour of the lawn leaving the surface smooth and free from corrugations and no hoof prints are left in moist or soft sod.

As a **Motor Roller** it is almost as valuable as for mowing, for any lawn is greatly improved by frequent rolling if the weight is sufficient, and the weight of these machines with operator is just about right, though when soil is dry and hard, an extra load of stone or iron may be carried. When used exclusively for rolling, the cutting mechanism may be quickly elevated out of the way. The whole machine only occupies a space about 4 x 5 feet.

PRICES, strictly net cash, packed and put on board cars or steamer in New York, purchaser paying freight.

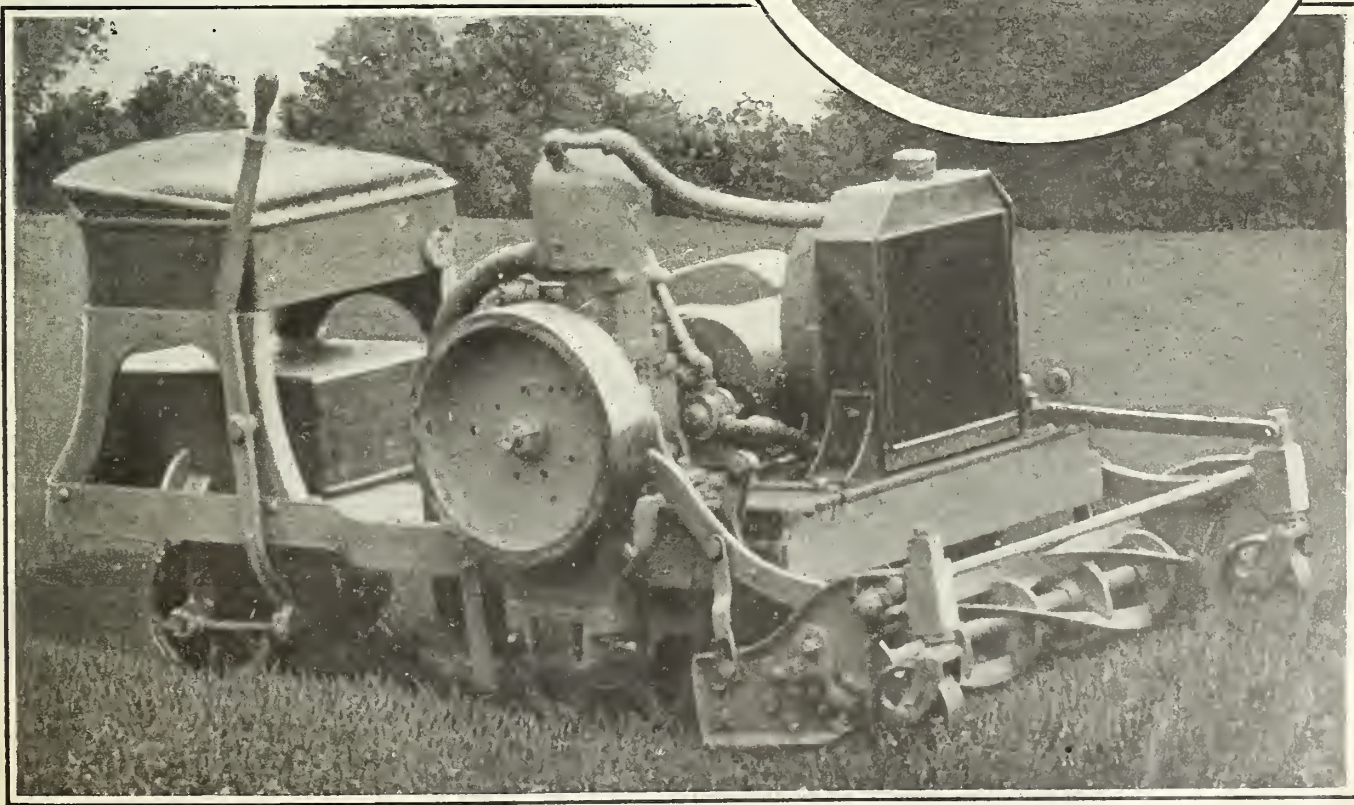
35-inch cut.	1 cylinder, 4x4 motor, 4 horse power. Total net weight about 1,250 lbs.	\$600.00
40 inch cut.	2 cylinders, 4x4 motor, 7 horse power. Total net weight about 1,500 lbs.	\$750.00

Grass Gatcher, for either size, \$35.00 extra.
Pulley, so the motor may be utilized for sawing wood, churning, pumping, cutting feed, shelling corn, etc., \$10.00 extra.
(Complete instructions for operating furnished with each machine.)

Can be operated by anyone capable of running an automobile.

DOES THE WORK OF TWO HORSE MOWERS.

The motor can be utilized for various purposes.





HENDERSON'S "CHAMPION" SOD-CUTTER.

A horse-power machine for cutting sod in long strips; an important and valuable implement for golf grounds, parks and other places which have much sod laying or repairing to do. It cuts the sod of uniform width and thickness, in any length, so that it is particularly adapted to giving solidity to slopes in cuts and on embankments, working equally well on level or uneven surface, cutting both ways with the land, and leaving no sod uncut, being light of draft, easily managed, strong, neat and durable. It is the best and cleanest sod-cutting machine in America. Has a REVERSIBLE KNIFE made of one piece of steel. While one side dulls, the opposite edge is getting sharpened; cannot get choked. An Adjustable Roller regulates the thickness of the sod from one-half inch to two inches; the front roller swings back under the guide-shoe and takes the weight when the machine is not cutting. The guide-shoe can be changed to either side in a minute; no friction or injury to the grass. The knife can be cleaned without turning over the machine.

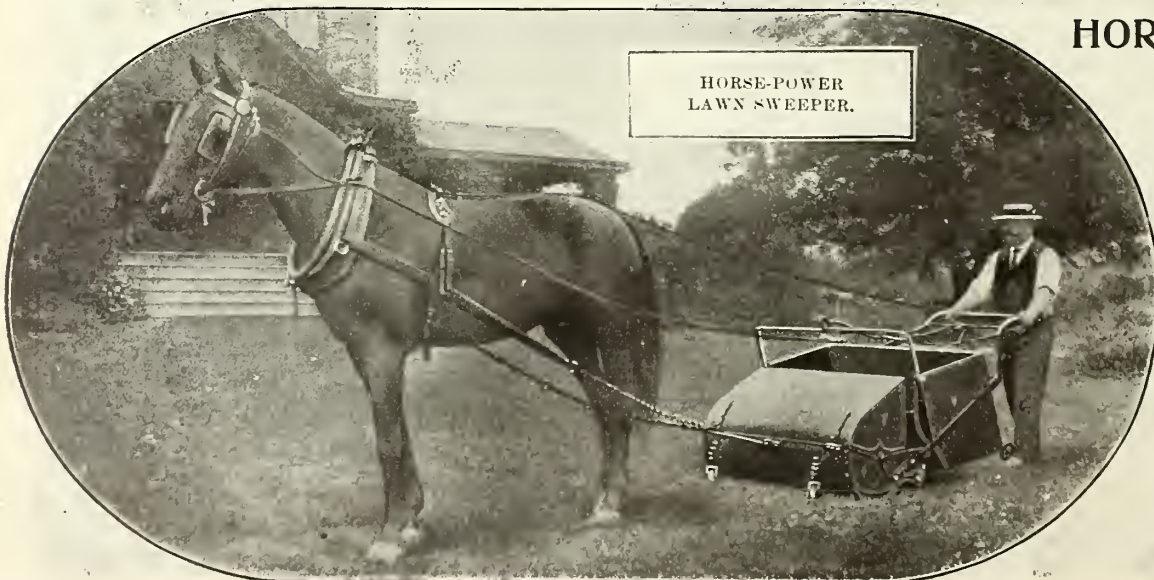
One machine will cut from 30,000 to 40,000 square feet per day, thus doing the work of forty men; the expense saved between cutting by hand and with horse power in one day to pay the price of our machine. Instructions for operating furnished with every machine. Price, \$25.00.

The Apollo Rotary Lawn Sweeper.

A thoroughly satisfactory machine for sweeping the lawn after mowing. It gathers up and throws into the large collecting box all cut grass, leaves, small stones, sticks, etc.; nothing escapes. When the box is full it is quickly dumped by pulling a cord. It works something like a carpet sweeper, having revolving flexible fibre brushes. It can be set low or high, as desired. It is simple, strong, and easily pushed by a man or boy, leaving the lawn in beautiful condition, clean, bright and green. While essentially a lawn sweeper, yet it is equally valuable for sweeping walks, stables, warehouses, etc., for which rubber-tired wheels can be supplied at an extra cost. Prices, 20-in. sweep, \$10.00; 28-in. sweep, \$12.00.



HORSE-POWER
LAWN SWEEPER.



HORSE-POWER LAWN . . . SWEEPER.

A revolving brush in front sweeps the sod clean and throws the sweepings backward into a large box in the rear. This box can be dumped without stopping. Sweeps 40 inches wide.

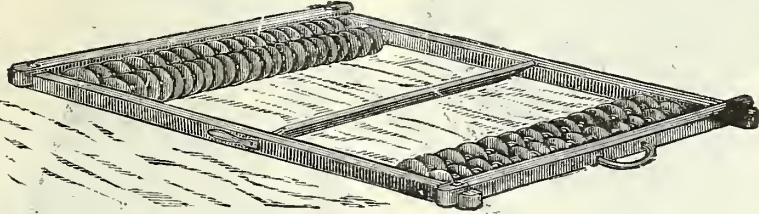
The sweeper gives you a perfect lawn as soon as the sweeping is finished instead of looking gray for several days owing to the withered cut grass.

If the sweeper and lawn mower are run in opposite directions, the lawn will be the same shade of color all over. Price, \$70.00.

GOLD MEDAL SUB-SOIL PLOW.

Deep preparation of soil in laying down new lawns is one of the elements insuring a good lawn, especially during hot dry weather. Of course the sub-soil must not be brought to the surface. By following the plow with a sub-soil plow the hard pan can be broken to a depth of from 15 to 20 inches, giving roots a wider range for food, and the grass is less susceptible to the effects of excessive drought or a wet season, as the deep soil absorbs all the rain like a sponge and gradually gives off moisture during dry, hot weather. The "Gold Medal" involves new principles and accomplishes the work without throwing any sub-soil on top. Its merits are ease of penetration, light draft, superior pulverization of hard pan, perfection of the "mole track" effect. The one-horse plow will reach to a depth equal to the height of its standard—15 to 16 inches—and the two-horse plow to the depth of 20 inches.

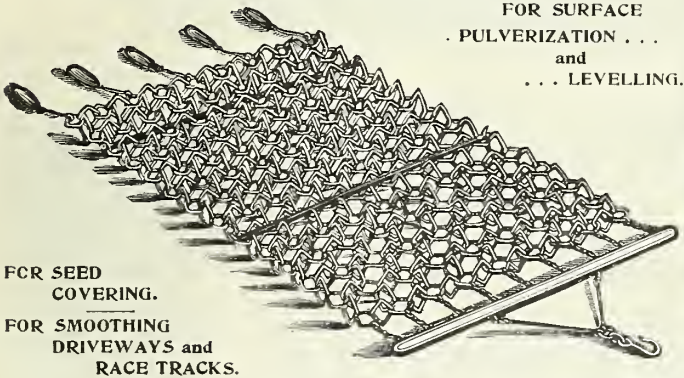
Prices for one-horse.....\$5.00; with wheel and draft rod, \$6.00
 " two-horse..... 7.00; " 8.50
 Extra shares: 1 horse, 50c.; 2 horse, 80c.



The Meeker Disc-Smoothing Harrow.

A most valuable implement in the preparation of soil for new lawns; it fines and levels the land equal to a steel rake.
 The frame is 6½ ft. x 6 ft., with four sets of rollers, having 58 discs. The discs on each set of rollers work between each other.
 The board in the centre is set at an angle; is adjusted up and down, and acts as a leveller.
 The discs grind all lumps so fine that seed must come up, and mashes small stones below the surface better than any field roller; it levels the ground at the same time, which a field roller does not do. Price \$20.00.

IMPORTED SCOTCH CHAIN HARROW.



FOR SURFACE
 PULVERIZATION . . .
 and
 . . . LEVELLING.

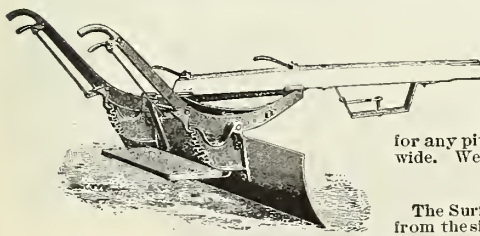
FOR SEED
 COVERING.
 FOR SMOOTHING
 DRIVEWAYS and
 RACE TRACKS.

The Scotch Chain Harrow is being now so much sought after for undermentioned purposes that we have imported and carry in stock a few of each size to prevent delay in filling hurry orders. It is one of the best implements for pulverizing the surface of the soil, levelling and smoothing, and is also splendid for covering grass seeds, etc., being superior to the Brush Harrow for this purpose. Used on driveways and race tracks, it smooths the surface, eliminating ruts and footprints. It is made of wrought-iron links, as illustrated above, and is very durable.

PRICES AND SIZES.

One-horse size, 5 x 6 feet,	- - - -	\$18.00
Medium two-horse, 6 x 7½ feet,	- - - -	25.00
Full two-horse size, 7½ x 7½ feet,	- - - -	30.00

Whiffletrees and neck yoke, extra, \$3.25.



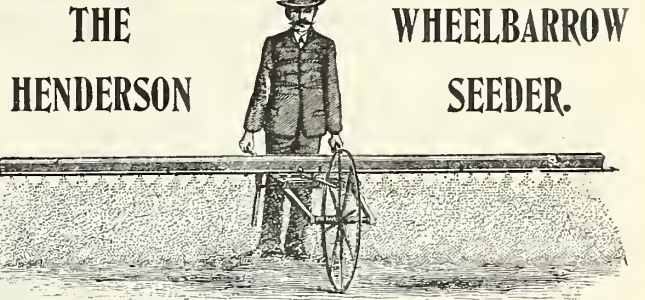
LIGHTNING ROAD SCRAPER.

LIGHTNING ROAD SCRAPER.

A popular and handy light road scraper and leveler for private places. It is also used extensively for shaping highways where the work required is not too heavy, being easily operated by two horses and one man. It has a solid steel blade and steel frames and can be quickly adjusted for any pitch or angle. The blade is 5 feet long by 17 inches wide. Weight of the machine, 206 lbs. Price, \$35.00.

SURFACE GRADER.

The Surface Grader is used for removing the plowed ground from the sides of the road. The steel blade measures 30 inches long by 15 inches wide. Light and handy. Weight, 60 lbs. Price, \$8.50.



THE HENDERSON WHEELBARROW SEEDER.

The Henderson DOUBLE WHEELBARROW SEEDER.

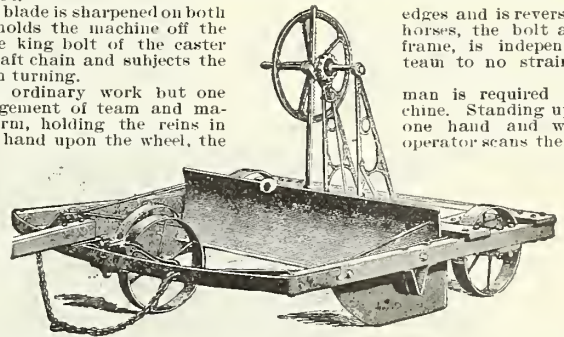
SOWS GRASS SEED MIXTURES AS WELL AS
 HEAVY SEEDS OR LIGHT CHAFFY SEEDS.

Lawn grass seed sown with this machine is more uniformly distributed than by hand, insuring an even stand of grass.
 This is a superior seeder. One side of the seed box is adapted for all such heavy seeds as clover, timothy, millet, alfalfa, Hungarian, etc. The opposite side handles the light chaffy seeds, as Red top, Kentucky blue, orchard grass, etc., as well as grass seed mixtures for golf, pasture, hay, lawns, etc. The machine may be easily regulated to sow any desired quantity per acre, sowing it accurately and evenly the whole length of the hopper—4 feet—and it does not clog up. The total weight of the machine is only 40 pounds. The hopper is perfectly balanced and is close to the large wheel—giving greatest force with least exertion, and leaving light weight on the operator. Every machine warranted to do good work, and of especial value on a windy day. Full directions with each seeder. Price \$10.00.

SHUART LAND GRADER

Especially adapted for Fine Grading, producing a beautifully even surface, paring down knolls and evenly distributing the earth in depressions.

This machine is borne on three wheels, the front one being a castor wheel, allowing the machine to be turned short about. The blade is raised and lowered by a hand wheel and can be locked at any point by a spring bolt operated by the foot.
 The blade is sharpened on both pole holds the machine off the to the king bolt of the castor the draft chain and subjects the ever in turning.
 For ordinary work but one management of team and ma-platform, holding the reins in other hand upon the wheel, the edges and is reversible. A horses, and the bolt attaches frame, is independent of team to no strain whatever man is required for the chine. Standing upon the one hand and with the operator scans the surface

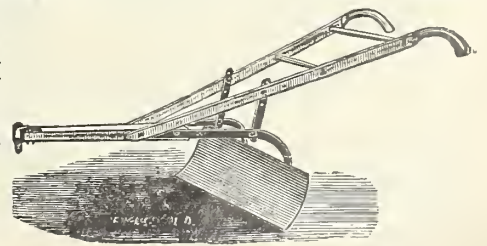


as he proceeds and adjusts the blade to the cut required. The scraper filled, he carries the load to its destination, and without stopping the team, readjusts the blade for spreading the earth, which passes beneath the blade in a smooth sheet as the machine proceeds. The earth can be dropped in a heap or can be spread as desired.

The blade is 5½ feet long by 14 inches in width, and as the fenders prevent the earth from escaping at the ends of the blades, the capacity of this machine for moving earth is much greater than that of other scrapers of equal blade area. The lightness of draft in view of the amount of earth moved is accounted for by the smooth, even cut with which it gathers its load and the fact that the load is in a measure borne by the wheels.

PRICES (including double trees and neck yoke):

No. 1, for lawn grading and simple levelling,	- - - -	\$80.00
No. 2, with digger attachment,	- - - -	90.00



SURFACE GRADER.

HENDERSON'S SUPERIOR IRON HAND ROLLERS.

These are very superior Rollers; the edges are beveled to prevent marking; the faces are ground smooth so they will not pick up and carry lumps of earth; the axles are of steel; the sections fit closely and the handles are of our improved design, will not break and are counterbalanced so they always keep up from the ground, clean and out of the way.

The weights given are actual, which fact should be taken into consideration in comparing prices with rollers of manufacturers that run 15% to 25% less than advertised weights.

The benefit derived from using a roller on the lawn is inestimable. Freezing and thawing causes the ground to heave, and if not firmly pressed back with a roller before hot weather, the grass is apt to be killed or injured, leaving the lawn full of bare spots. A lawn on which a roller is frequently used is never troubled with moles.

From 300 lbs. to 500 lbs. is the weight chosen for one-man power for average level lawns. Remember that the heavier the roller used on your lawn the finer sward you will have.

WEIGHT BOXES (see illustration) can be supplied on any roller larger than number 3, at an extra price according to the size of roller, as quoted in column to the right. The weight box weighs about 50 lbs. and may be loaded with stone or iron to any desired weight.

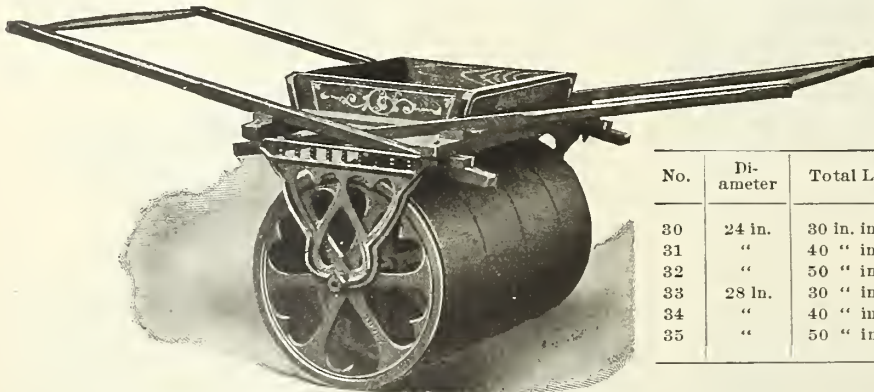


HENDERSON'S IRON HAND ROLLER.



No.	Di- ameter	Total Length	Actual Weight	Net Prices	Weight Box Extra
1	15 in.	15 in. in 2 sec.	150 lbs.	\$8.00	—
2	"	22 " in 3 "	200 "	10.50	—
3	20 in.	16 " in 2 "	225 "	11.50	—
4	"	20 " in 2 "	250 "	13.00	\$5.40
5	"	20 " in 1 "	250 "	13.00	5.40
6	"	24 " in 3 "	300 "	15.00	5.60
8	"	30 " in 3 "	350 "	18.00	5.85
9	24 in.	20 " in 2 "	400 "	20.50	6.00
11	"	24 " in 3 "	450 "	23.00	6.30
12	"	30 " in 3 "	500 "	26.00	6.50
14	28 in.	24 " in 3 "	500 "	26.00	6.50
15	"	30 " in 3 "	600 "	30.00	7.00
16	"	32 " in 4 "	650 "	33.00	7.25
17	"	36 " in 3 "	700 "	36.50	7.50

HENDERSON'S DOUBLE HANDLED LAWN ROLLER.



HENDERSON'S DOUBLE HANDLED LAWN ROLLER.

A new and very desirable style where a heavy two-man-power roller is required. The face is turned smooth and the outer edges are beveled to prevent marking the lawn or roadway—they have steel axles and the woodwork is handsomely painted.

Price includes weight box, which may be loaded with iron or stones to increase the weight of roller up to 25% additional.

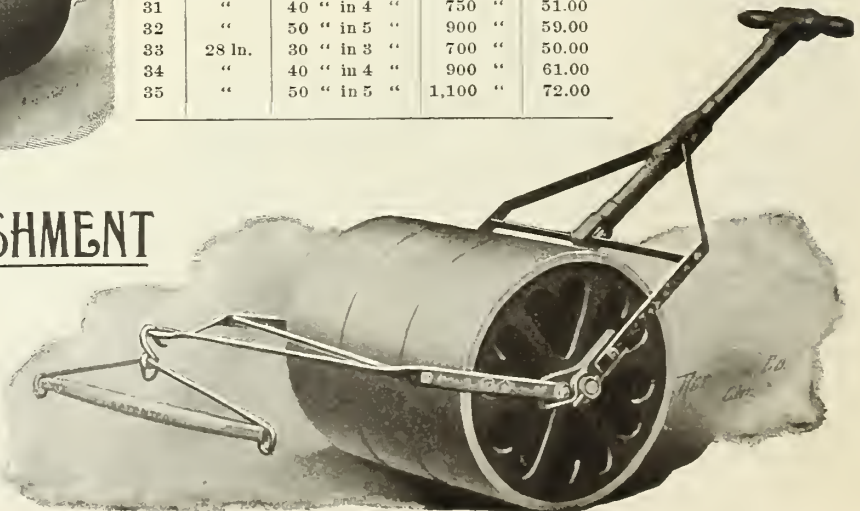
No.	Di- ameter	Total Length	Actual Weight	Net Prices
30	24 in.	30 in. in 3 sec.	600 lbs.	\$43.00
31	"	40 " in 4 "	750 "	51.00
32	"	50 " in 5 "	900 "	59.00
33	28 in.	30 " in 3 "	700 "	50.00
34	"	40 " in 4 "	900 "	61.00
35	"	50 " in 5 "	1,100 "	72.00

HORSE POWER ATTACHMENT

FOR OUR HAND ROLLERS.

This attachment (illustrated on the right) is sold as an extra. It can be applied to any of our Hand Rollers, but will only be needed on the heavier styles—on which it will often be found of service, especially on hilly lawns.

Price (not including roller), complete with whiffle-tree, \$5.50.



Henderson Patent Water Ballast Rollers.

For Lawns, Golf Grounds, Driveways, Etc.

Weight May be Increased
or Lightened
at Will.

THE advantages of a Roller, the weight of which can be increased or lightened at pleasure, can scarcely be overestimated. Often on light or sandy soil, or on newly-made lawns, or in early spring when the ground is moist, or after a rainy spell, a lighter weight Roller is a necessity; then on thick sward or on hard soil, on walks and roads, a heavy Roller is needed. With a **Henderson Water Ballast Roller** one can secure any weight desired, between minimum and maximum, by simply removing a thumb-cap from each end and filling the two hollow sections with as much water or sand as may be needed, which is easily and quickly done with a hose or through a funnel; and the Roller is as quickly emptied. The inside being heavily galvanized, it will last for years.

These are perfect Rollers, and do perfect work on lawns, tennis courts, golf grounds, roads, walks, etc. They are high grade in every respect, being carefully manufactured of best materials. They will be found practically noiseless and very durable. The rolling surfaces are very smooth and will not gather grass or soil; the sections fit closely, leaving no mark, and the diameters are large, insuring a lighter draft for a given weight than is usual with equivalent weight.



THE HENDERSON PATENT WATER BALLAST ROLLER—MAN POWER.



THE HENDERSON PATENT WATER BALLAST ROLLER—HORSE POWER.

THE HENDERSON PATENT Water Ballast Roller.

FOR MAN POWER.

Weighs 300 lbs.; loads with water or sand up to 600 lbs.; tracks, 24 inches; diameter of drums, 24 inches; counterbalanced handle, stands erect when not in use.

Price, \$26.00.

THE HENDERSON PATENT Water Ballast Lawn Roller.

FOR ONE HORSE.

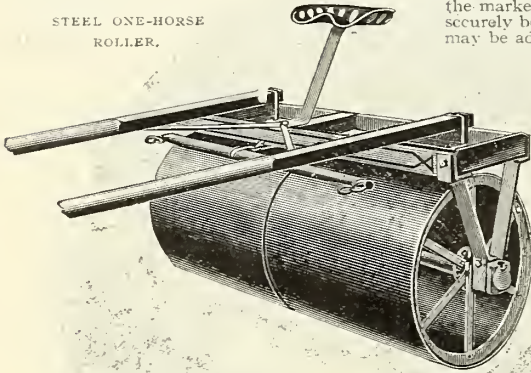
Weighs 900 lbs.; loads with water or sand up to 1,500 lbs., or with driver and extra weights in box up to about 1,800 lbs.; tracks, 3½ feet; diameter of drums, 28 inches.

Price, complete with seat, shafts and singletree, \$90.00.

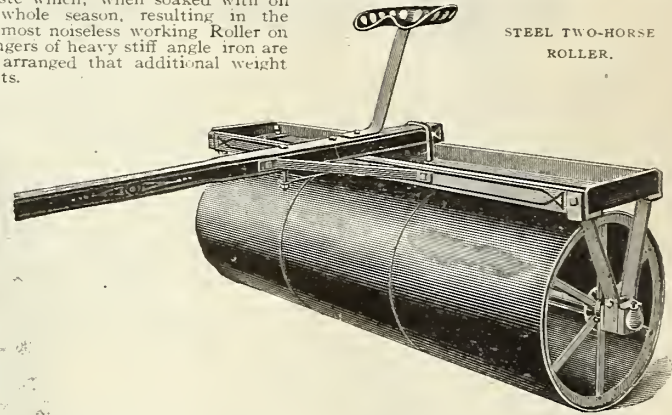
STEEL One-Horse and Two-Horse ROLLERS.

These Sheet Steel Rollers are the Most Popular Rollers on the Market. Unbreakable rolled sheet steel drums, with steel fellos and channel steel spokes; thoroughly riveted and practically indestructible; axle of heavy stiff steel with lathe turned ends, working in babbitted bearing boxes which are recessed below and filled with cotton waste which, when soaked with oil will lubricate the journals the whole season, resulting in the lightest draught, smoothest and most noiseless working Roller on the market. The frames and hangers of heavy stiff angle iron are securely bolted and the frame so arranged that additional weight may be added to suit requirements.

STEEL ONE-HORSE ROLLER.



STEEL TWO-HORSE ROLLER.



STEEL ONE-HORSE LAWN ROLLERS.

Especially designed to smooth and keep in perfection LAWNS, DRIVES, WALKS AND GROUNDS OF GOLF, TENNIS, ATHLETIC AND COUNTRY CLUBS AND GENTLEMEN'S PLACES.

(For details of construction and illustration see above.)

No. 1, 24 in. diam.; tracks 4 ft., 9 in.; 2 sections; weight 500 lbs. Price \$28.00
 No. 2, 24 " " 5 ft., 8 in.; 2 " " " 550 lbs. Price \$29.00

STEEL TWO-HORSE ROLLERS.

No. 13, 24 in. diam.; tracks 6 ft.; 2 sections; weight 550 lbs. Price, \$26.00.
 No. 15, 24 " " 7 " 2 " " 600 lbs. " \$28.00.
 No. 16, 24 " " 7 " 3 " " 650 lbs. " \$30.00.
 No. 33, 30 " " 8 " 2 " " 800 lbs. " \$36.00.
 No. 34, 30 " " 8 " 3 " " 850 lbs. " \$40.00.

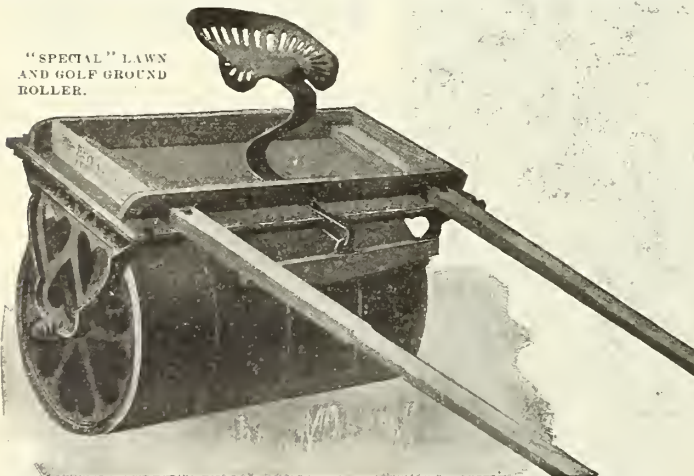
Price includes double trees and neck yoke.

HENDERSON'S SUPERIOR ONE-HORSE IRON ROLLERS.

For use on Lawn, Field, Golf Courses, Driveways, etc.

These rollers are of superior quality and finish, having smooth machine-turned faces and attractively decorated woodwork. They are the lightest draft rollers of equal weight on the market, being perfectly balanced and pulling directly from the axle, which is of steel. The weights given are actual, which fact should be taken into consideration in comparing prices with rollers of manufacturers that run 15% to 25% less than advertised weights.

"SPECIAL" LAWN AND GOLF GROUND ROLLER.



"SPECIAL" LAWN and GOLF GROUND ROLLERS.

For One Horse—Illustrated above.

This style is especially adapted for use on lawns, golf grounds, etc., where a heavy roller is desired. Outer edges beveled; can be loaded to increase weight.

Price includes shafts, seat and weight box.

No.	Diameter	Sections	Track	Actual Weight	Net Price
40	24 inches	3	30 inches	650 lbs.	\$52.00
41	24 "	4	40 "	800 "	61.00
42	24 "	5	50 "	950 "	70.00
43	28 "	3	30 "	800 "	67.00
44	28 "	4	40 "	1,000 "	75.00
45	28 "	5	50 "	1,200 "	88.00



"GENERAL PURPOSE" ONE-HORSE IRON ROLLERS.

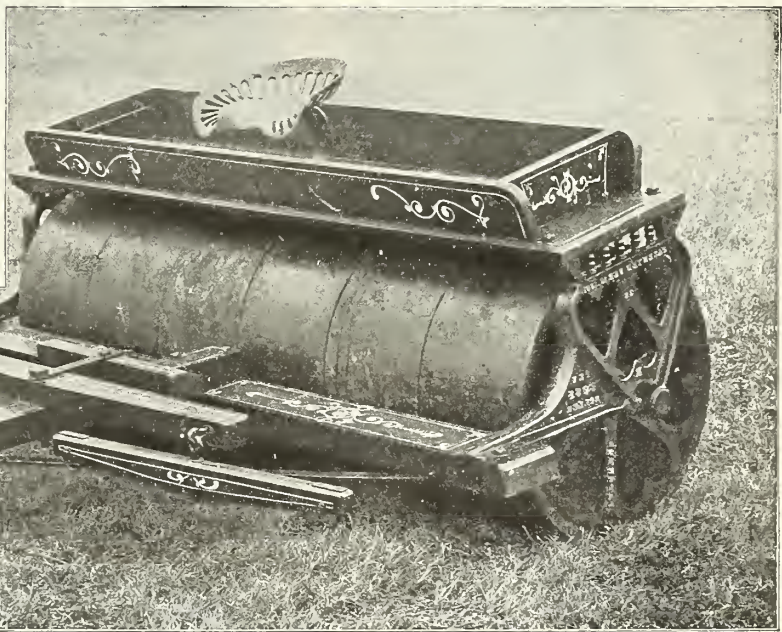
Illustrated above.

Complete, with weight box, shafts and seat, handsomely painted.

(If scraper is wanted, add \$6.00 per roller.)

No.	Diameter	Sections	Track	Actual Weight	Net Price
60	20 inches	4	4 feet	550 lbs.	\$55.00
61	20 "	5	5 "	1,150 "	64.00
62	24 "	4	4 "	1,200 "	69.00
63	24 "	5	5 "	1,450 "	81.00
64	24 "	6	6 "	1,700 "	92.00
65	28 "	4	4 "	1,350 "	77.00
66	28 "	5	5 "	1,650 "	91.00
67	28 "	6	6 "	1,950 "	106.00
68	32 "	4	4 "	2,200 "	123.00
69	32 "	5	5 "	2,600 "	143.00

Henderson's Superior Two-Horse General Purpose Iron Rollers



HENDERSON'S SPECIAL Road and Golf Ground Rollers

(ILLUSTRATED BELOW.)

Price includes weight box, seat, scraper and pole. If whiffletrees and neck yoke are wanted, add \$6.00 extra.

NUMBER	DIAMETER	SECTIONS	TRACK	ACTUAL WEIGHT	NET PRICE
80	36 inches	4	4 feet	3,000 lbs.	\$170.00
81	"	5	5 "	3,500 "	193.00
82	"	6	6 "	4,000 "	216.00
83	48 inches	3	3 3/4 "	4,000 "	224.00
84	"	4	5 "	5,000 "	274.00
85	"	5	6 1/4 "	6,000 "	324.00
86	54 inches	3	3 3/4 "	6,000 "	332.00
87	"	4	5 "	8,000 "	436.00
88	"	5	6 1/4 "	10,000 "	540.00

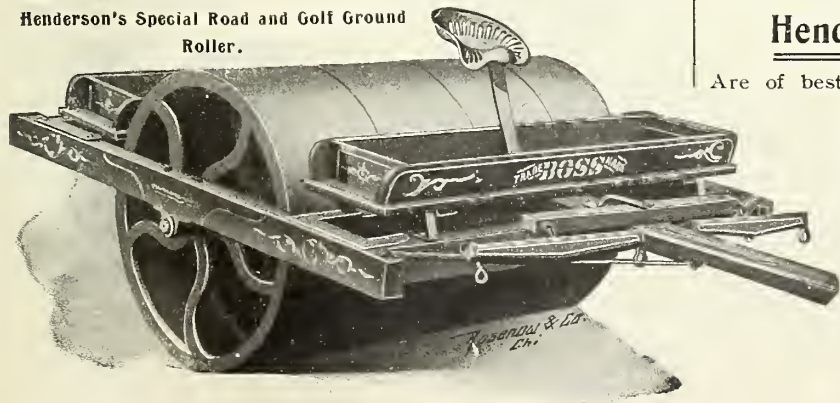
Henderson's Superior ... Two-Horse General Purpose Iron Rollers

(ILLUSTRATED ABOVE.)

Price includes weight box, pole and seat. If whiffletrees and neck yoke are wanted, add \$4.00; and for scraper, \$6.00.

NUMBER	DIAMETER	SECTIONS	TRACK	ACTUAL WEIGHT	NET PRICE
70	20 inches	5	5 feet	1,150 lbs.	\$64.00
71	"	6	6 "	1,300 "	71.00
72	24 inches	5	5 "	1,450 "	81.00
73	"	6	6 "	1,700 "	92.00
74	28 inches	4	4 "	1,350 "	77.00
75	"	5	5 "	1,650 "	91.00
76	"	6	6 "	1,950 "	106.00
77	32 inches	4	4 "	2,200 "	123.00
78	"	5	5 "	2,600 "	143.00
79	"	6	6 "	3,000 "	162.00

Henderson's Special Road and Golf Ground Roller.



Henderson's Superior Iron Rollers

Are of best quality iron, free from blow holes, and have smooth machine-turned faces; the axles are of steel, and they are the lightest draft rollers on the market, pulling directly from the axle, and so perfectly balanced that no weight is thrown on the horses' necks. The woodwork is handsomely painted and decorated.

The weights given are actual, which fact should be taken into consideration in comparing prices with rollers of manufacturers that run 15 to 25 per cent. below advertised weights.

The weight boxes on rollers allow them to be loaded with iron or stones when extra weight is required.

LEAF RACK.

HAND-CART BOX.

SPRINKLER.

"GEM" FORCE PUMP.



COPYRIGHT 1897 BY PETER HENDERSON

Henderson's WATER BARREL TRUCKS AND ACCESSORIES.

The Barrel is raised from the ground carried to the place desired, and can be readily disconnected from or attached to the truck while barrel is either full or empty. We supply as extra attachments the following: A Box with trunnions and spring catch making a very superior *dumping* Hand-cart. A Sprinkler, invaluable for watering lawns and sprinkling walks. Water is turned on and off by hand wheel and ball valve. A Leaf Rack, very useful for removing leaves and litter. A "Gem" Force Pump for spraying, etc.



Prices.—Truck and barrel, 1 1/2 in. tire.....\$10.00
 " " 2 1/2 " 11.00
 " " 3 1/2 " 12.00
 Extra barrel, with trunnions on..... 2.75

Extra trunnions, per pair.....\$0.50
 Hand-cart Box..... 3.00
 Leaf Rack..... 5.00
 Sprinkler Attachment..... 3.25

(If truck and trunnions without barrel are wanted, deduct \$2.25 from prices of trucks with barrel.)

GEM SPRAYING OUTFIT.
 Clamps to the barrel; fills the want for a low-priced pump for spraying a few trees, bushes, vines, etc., and for watering flowerbeds, washing windows, carriages, etc. For prices, see page 24

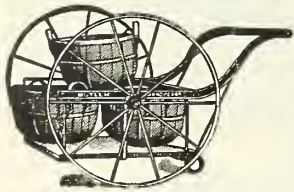


Fig. A.

Indispensable for handling fruit, garden truck, grain or anything in baskets, boxes or kegs. Platform hangs low, rides level, easily loaded and unloaded.

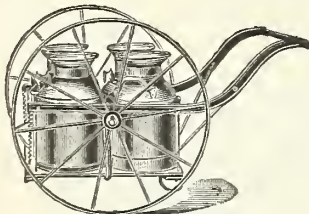


Fig. B.

Holds four milk cans. In great demand in the creamery and dairy; low platform saves heavy lifting.

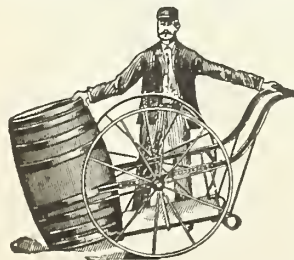


Fig. C.

Tilts forward and picks up a barrel or heavy article like a warehouse truck. Any barrel can be handled. Useful for spraying.

THE Butler Steel Hand Cart.

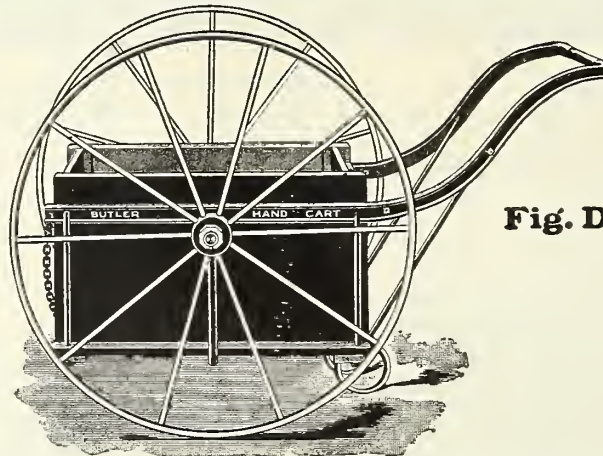


Fig. D.

The Butler Steel Hand Cart fills the want for a two-wheel cart better than any other invention. Its usefulness is unlimited, and is not confined to one special purpose.

It will handle fruit, garden vegetables, grain, leaves, cut grass, trash, ensilage, manure, fertilizer, tools, barrels, kegs, boxes, packages, etc. Nothing equals its perpetual usefulness about the lawn, yard, stable, farm, dairy, creamery, garden and orchard.

Light in weight, great strength and easily handled. If numbers sold is any criterion of merit, this is unquestionably the cart of the future.

DESCRIPTION.

Wheels.—Steel, 36 inches high. Tires.—Regular, 1 1/2 inch, or 3-inch. Width—Between wheels, 36 inches; from out to out of hub, 42 inches. Axle and all frame parts steel. Will easily sustain a load of 500 lbs. Platform.—Hard Wood, 28x32 inches. Side Boards.—15 inches high, hard wood, instantly removable, leaving cart in shape for handling barrels, boxes, milk cans, etc. Flaring Hopper.—Sides and ends extend 12 inches above the box. Painting.—Body blue, neatly striped; wheels bright carmine.

	PRICES, BUTLER STEEL HAND CARTS.		With 1 1/2 in. Tire.		With 3 in. Tire.	
	Price.	Weight.	Price.	Weight.	Price.	Weight.
No. 1. Plain, without box (Figs. A, B, C).	\$8.00	95 lbs.	\$10.00	125 lbs.		
No. 2. With detachable box (Figs. D, E, F)	10.00	125 "	12.00	155 "		
No. 3. With detachable box and Flaring Hopper (Fig G.).....	12.00	150 "	14.00	180 "		

Note.—Unless otherwise ordered, we send 1 1/2 inch tire wheels

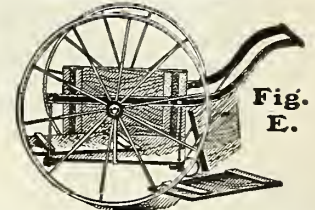


Fig. E.

Side boards and ends can be put on or taken off in a few moments. Easily loaded as a wheelbarrow.

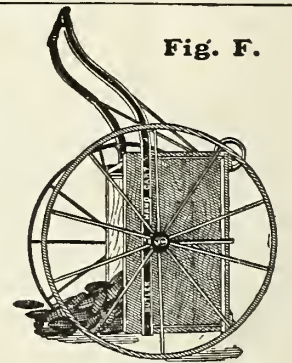


Fig. F.

Can be turned over and load dumped without shoveling.

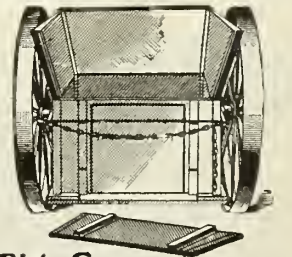
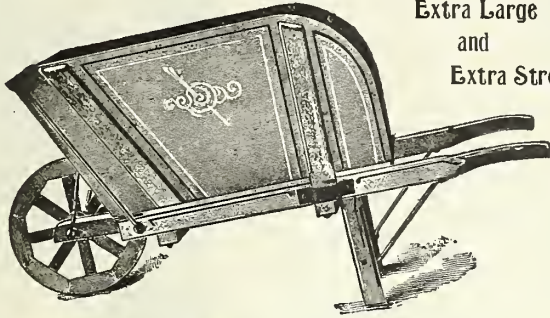


Fig. G.

Flaring Hopper.—Sides and ends 12 inches high, extend upward and outward from the regular cart box, for handling leaves, trash, grass, ensilage, manure, etc. Capacity, 13 cubic feet, or about 11 bushels. Showing wheels with 3-inch tires.

Lawn and Stable Barrow.

Extra Large
and
Extra Strong.

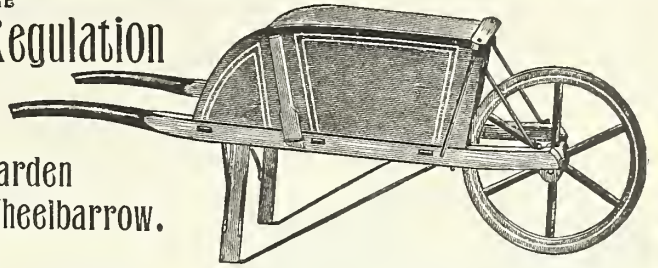


Our Lawn and Stable Barrow is designed for extra heavy work and has a large capacity, adapting it for manure, lawn litter, etc.; box 25 inches wide by 32 inches long by 18 inches deep.

Price, \$5.00.

THE Regulation

Garden Wheelbarrow.



A superior barrow, handsomely painted and striped; iron leg braces, bolted, not screwed on, run under the legs, forming a shoe to slide on, avoiding racking the harrow; iron bands shrunk on hubs. No pine used in these barrows.

Number.	Size.	Length Box.	WIDTH OF BOX.		Box Depth.	Diam. Wheel.	Tread.	Price.
			Wheel End.	Handle End.				
No. 2.	Boy's.	21 in.	15½ in.	18 in.	9 in.	16 in.	1¼ in.	\$2.75
No. 4.	Medium.	26½ "	18½ "	23 "	12 "	20 "	1½ "	3.50
No. 5.	Large.	28 "	20 "	24 "	12 "	22 "	1½ "	4.00

Steel Garden and Farm Barrow with Tubular Steel Frame.

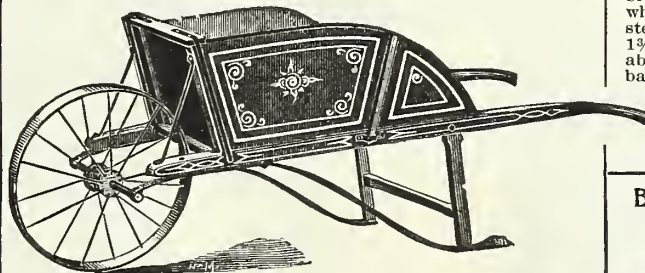


This style is especially adapted to wheeling dirt, manure, etc., having a deep steel tray, made in one piece, with the edges turned over a ½ inch steel rod; the frame, of tubular steel, is so constructed that in dumping forward the barrow does not run back. Size of tray, 27x33 inches; weight of barrow, about 70 pounds.

Price, \$6.00.

The "Henderson" Barrow.

This barrow is light, strong and durable, has a steel wheel and axle and oil-tempered springs, and we do not hesitate to say that it is the best barrow on the market and as well painted, striped and varnished as a huggy. While its carrying capacity is from 300 to 500 pounds, its weight is less than 40 pounds; fully warranted to stand the roughest usage.



The tire base made makes it more desirable for lawn and garden use and a stronger wheel for the pavements. The shoe brace, running from the rear of the body to the foot of leg, is a great protection to the leg against breakage, and prevents it from sinking into soft ground. The harrow is made of selected material, and will outlast several of the cheaper, heavy, clumsy barrows. Weight, 39 pounds; body, 26 inches by 22½ inches by 12 inches deep; diameter of wheel, 20 inches; width of tire, 1¼ inches.

Price, \$5.00.

Steel Tray, Wood Frame, Steel Wheel Canal Barrow.



Frame of selected hard wood; iron braces form a shoe so the barrow slides when set down, without racking it. Heavy steel wheels 17 inches in diameter; tread 1½ inch. Trays of one piece of sheet steel, about the size of an ordinary wood canal barrow, 28 inches long by 31 inches wide; the edges are turned over a ½ inch steel rod, passing entirely around the tray; painted one coat of heavy paint.

Price, \$4.00.

Bolted Wooden Canal Barrow with Steel Wheel.



One of the strongest canal barrows made. The front of tray is supported by a wooden cleat, bolted as well as by the heavy iron braces; handles and legs of hard wood. Tray full size with edges shaved; steel wheel that will not fall to pieces like the common wooden wheel.

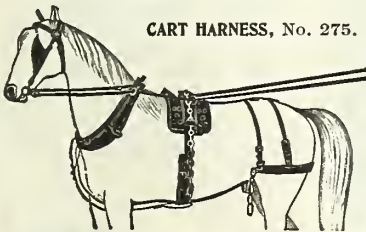
Price, with steel wheel, \$2.25; with wooden wheel, \$1.85.

CART HARNESS, No. 275.

Bridle, ¾ in.; pigeon wing blinds; lines, ¾ in.; saddle, kersey bottom; breeching, 2½ in.; collar, hogskin. \$18.00.

Heavier Grade (No. 280), \$22.00.

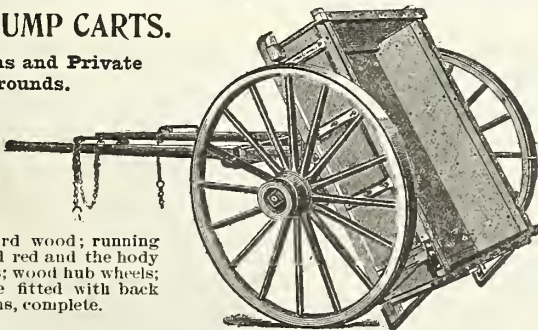
CART HARNESS, No. 275.



HORSE DUMP CARTS.

For Farms and Private Grounds.

These are first-class Carts in every particular; made entirely from hard wood; running gear is painted red and the body blue; iron axles; wood hub wheels; the shafts are fitted with back and draft chains, complete.



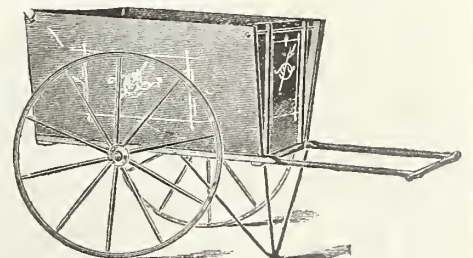
	Weight	Capacity	Inside Dimensions, Box				Size Axle	Height Wheel	Prices	
			Length	Width Front	Width Back	Depth			3 in. Tire	4 in. Tire
Lawn Cart ..	470 lbs.	1000 lbs.	5¼ ft.	3 ft.	40 in.	10 in.	1½ x 8 in.	4 ft. 4 in.	\$40.00	\$43.00
Farm Cart...	630 "	1300 "	5½ "	3 "	40 "	12 "	1¾ x 9 "	4 " 6 "	42.00	45.00
Contractor's	750 "	2500 "	5¾ "	3¼ "	31½ ft.	12 "	2 x 11 "	4 " 10 "		50.00

HENDERSON'S . . .

Lawn and Leaf Hand-Gart.

Especially adapted for carrying large quantities of light material, such as cut grass, leaves and litter; the box is deep and flaring—measures at the bottom 28 inches wide by 48 inches long, 10 inches wide at the top;

it is 24 inches deep; nicely painted green and vermilion, striped and varnished; 30-inch wheels.

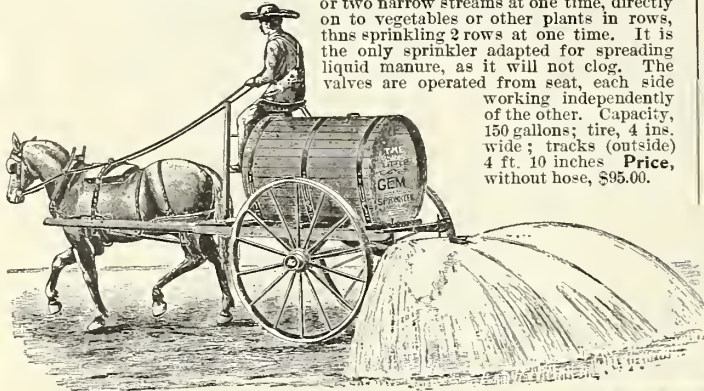


Price, \$15.00.

THE "LITTLE GEM" HORSE POWER SPRINKLER.

For Sprinkling Lawns, Driveways, Gardens, Etc.

Will spread water 18 feet wide, or the spread may be reduced to any desired width down to 1 foot, at the will of the operator; or it can be readily adjusted to apply one or two narrow streams at one time, directly on to vegetables or other plants in rows, thus sprinkling 2 rows at one time. It is the only sprinkler adapted for spreading liquid manure, as it will not clog. The valves are operated from seat, each side working independently of the other. Capacity, 150 gallons; tire, 4 ins. wide; tracks (outside) 4 ft. 10 inches. Price, without hose, \$95.00.



THE "HENDERSON" HAND BUCKET PUMP.

This is the best and most durable portable hand pump in the market. Working parts are made of solid brass with large air chamber, and is double acting, throwing an absolutely continuous stream, either solid or in a fine spray, as desired. Very light and easily carried, and works from any bucket or tub. Just the thing for throwing liquid insecticides and fungicides on low trees, shrubs, plants, etc., and by altering the nozzle it can be used for washing carriages, windows, etc. (See cut.) Price, with 4 feet of hose and combination spray and stream nozzle, \$3.75; or with extra 7 feet section of hose and pole connection for tree spraying, \$4.75.

HENDERSON'S "GEM" SPRAY PUMP.

Clamps to the chine or side of any barrel, but is made particularly for our Water Barrel and Truck outfits, offered on page 22. The "Gem" is intended to fill a want for a low-priced pump. It has not the power or capacity of the larger and more expensive spray pumps, but where there are only a few trees, bushes, vines, etc., to be treated, it will answer admirably for both applying insecticides and fungicides, and by altering the nozzle it is adapted for sprinkling walks, watering flower-beds, washing windows, carriages, etc. The pump can be quickly removed from the barrel.



"GEM" SPRAY PUMP.

Prices (without barrel or truck):

Gem Outfit "A." Pump fitted with two feet of suction pipe and brass strainer; 5 1/2 ft. 3/4 in. hose and nozzle, \$5.01.

Gem Outfit "B" is the same as "A." excepting the hose is 12 1/2 feet long, fitted with pole connection to spray trees, \$6.00. For prices of barrel and truck, see page 22.



"HENDERSON" BUCKET PUMP, WITH POLE CONNECTION.



THE ASBESTOS TORCH.

Attach the torch to the end of a pole of suitable length; saturate with kerosene oil, light and hold under the caterpillars' nests and pass quickly along the branches and around the trunk of the tree where the insects lodge. The heat instantly destroys the insects and will in no way injure the tree. Price, without pole, 25c. each, or by mail, 30c.

WOODASON'S POWDER AND FLUID BELLOWS.

FLUID VAPORIZING BELLOWS.

For Spraying Plants with Fluid Decoctions for Insects and Fungus.

This throws a spray as fine as mist, rendering the use of strong solutions perfectly safe on tender foliaged plants; it forces the fluids into every crevice, without using half the quantity required by syringe or sprinkler. (See cut.) Price, large size, \$2.00. Small size, (for house use) \$1.50.

DOUBLE CONE POWDER BELLOWS.

For Dusting Plants with Dry Powders for Insects and Fungus.

This bellows can be held in any direction without wasting powder, as it regulates its own supply, and it does not clog up. The best article ever invented for destroying insects in the conservatory, garden, orchard or field; it will kill every bug upon one acre of potatoes, under the leaves as well as on top, in an hour. (See cut.) Price, \$3.00.

SINGLE CONE POWDER BELLOWS.

Price, large size, \$2.00; small size (for conservatory and house use) \$1.25.



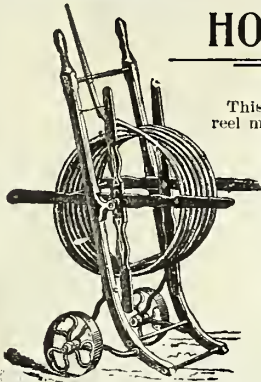
WOODASON'S DOUBLE CONE POWDER BELLOWS.



WOODASON'S FLUID VAPORIZING BELLOWS.

BENT LEG

HOSE REEL.



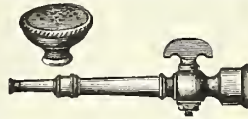
This is the best wooden reel made—not easily tipped over. By using a reel the hose is always drained, thus preventing it from rotting.

No. A, for 100 ft. of 3/4-inch Hose \$2.00
No. B, for 200 ft. of 3/4-inch Hose 2.25

We can also supply a Cheap Wooden Hose Reel for \$1.50 that will hold 100 feet of 3/4-inch hose.

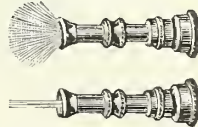
"BENT LEG" HOSE REEL.

Brass Hose Nozzle.



With stop-cock, spray rose and stream. Prices, for 1/2 and 3/4-inch hose, 75c.; for 1-inch, 90c.; postage, 10c. extra.

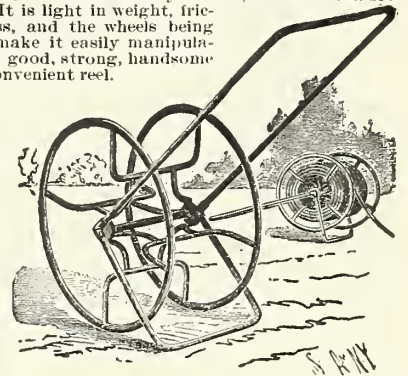
The "Graduating" Spray Nozzle.



Will throw a coarse or a fine spray or a solid stream. Price, 3/4-inch, 50c.; 1-in., 60c.; postage extra, 5c.

"ALL-IRON" HOSE REEL.

Is constructed entirely of iron, and is indestructible. It is light in weight, frictionless, and the wheels being high make it easily manipulated; a good, strong, handsome and convenient reel.



PRICES:

No. 10, 21-in. wheels, holds 100 ft. 3/4-in. hose, \$3.00
No. 20, 24 " " " 150 " " 3.25
No. 30, 30 " " " 500 " " 5.00

Lightning Hose Coupler.



Instantly attached or disconnected; no twisting of the hose, no bruising fingers, water-tight. (State if wanted to replace old couplings or to be attached to them.) Price, post-paid, per set two pieces, 3/4-in., 35c.; faucet attachment extra, 15c.



HENDERSON'S "BEST PARA" RUBBER HOSE.

This is the highest grade of garden hose, being made entirely from New Para Rubber, and will outlast cheap hose three times over. We guarantee it to stand a 200-pound water pressure, and it will be as resilient in three or four years' time as when new, while cheap hose of that age will be hard and rotten. Every length of Henderson's "Best Para" Hose is fitted with the new water-tight couplings, without extra charge. (Hose is furnished only in 25-foot and 50-foot lengths; the sizes 3/4 and 1 inch refer to the internal diameter of the bore.)

3/4-inch bore Para, per 25-foot length.....\$4.25
3/4 " " " " 50 " " 8.00
1 " " " " 25 " " 6.00
1 " " " " 50 " " 11.00

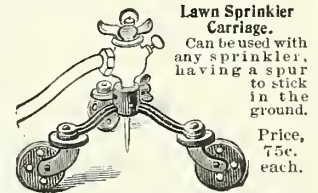
"STANDARD QUALITY" RUBBER HOSE.

This is a grade that is often sold as the "best." It is a good hose and will stand a 75-pound pressure. Each length is fitted with the regular couplings, without extra charge.

3/4-inch Standard, per 25-foot length.....\$3.00
3/4 " " " " 50 " " 5.75
1 " " " " 25 " " 3.75
1 " " " " 50 " " 7.00

"ARMORED" OR WIRE-WOUND HOSE.

Advised only for very rocky ground, as it is heavy to pull around. 3/4-inch bore "Armored" hose, per 25-foot length, with couplings on\$4.00
3/4 " " " " 50 " " " " " " 7.50



Lawn Sprinkler Carriage.

Can be used with any sprinkler, having a spur to stick in the ground.

Price, 75c. each.

Florists' and Gardeners' Hose Sprinkler.

A wide-face nozzle. The holes are small and numerous, so that a copious yet gentle shower is given without washing or packing the soil.

Price, for 3/4-in. hose, 3-in. face, 60c.; 4-in. face, 85c.; postage, 10c. each extra.



Caldwell's Hose Strap.

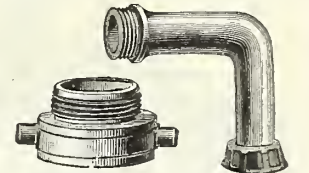


The best device for attaching hose couplings. Pliers, 35c., by mail, 50c. pair; hose straps for 1/2-in. hose, 50c. doz.; 3/4-in. hose, 60c. doz.; 1-in. hose, 80c. doz.

Hudson's Hose Mender.

Practical, simple, perfect. Box of 6 tubes, 20 bands and pliers, 75c.; or by mail, \$1.00. (Give size of hose.)

Tubes, 3/4-in., 3c.; 1-in., 4c. each. Bands, 20c. per doz. Pliers, 30c., by mail, 35c.



Hose Reducer.

For connecting hose of 1-in. bore with 3/2-in. (wailed free), 35c.

Hydrant Swivel.

Turns in any position, prevents hose from kinking. For 3/2-in. hose, 90c.; by mail, \$1.00.



PAT'D. SEPT. 22-96.

THE "COOPER" BRASS HOSE MENDER.

Made of thin brass tubing; will not rust or wear out; scarcely decreases the flow of water. Easily applied by any one; simply cut out your bad piece of hose and force the ends of the good hose over the mender until they meet in the centre. No other fastening is required; the barbs will hold it firm, and no matter what strain is put on the hose it will be as good as new at the point mended, and will not leak. Price, for hose with 1/2-inch bore, 7c. each, 75c. doz.; for hose with 3/4-inch bore, 7c. each, 75c. doz., for hose with 1-inch bore, 8c. each, 85c. doz. If wanted by mail, add 5c. per doz.; at the single price postage free.

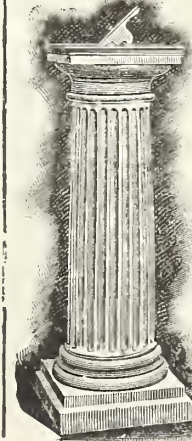


"Music in the Air."

THE "WIND SPIEL."

A Musical Weather Vane. This novelty, placed in any position that catches the wind, gives forth a harmony of soft tones varying with the intensity of the breeze. Made of gilded tin, 11 inches long. Price, with 14 in. iron support, 75c. each, or mailed \$1.00 ea. h.

SUN DIALS



Sun Dials are very unique and interesting ornaments for the lawn or garden. We supply the figured plates, all ready to screw on or cement to pedestal or post. The figures, etc., are of raised metal; diameter of plate, 10 inches.

Cast Iron, Japanned black, gilt figures.....\$1.50
Bronze, polished figures, etc., 6.00
(Prices do not include pedestals.)

SUN DIAL PEDESTAL No. 225.

Hard wood, painted white (three coats.) Price, without dial, \$12.00.

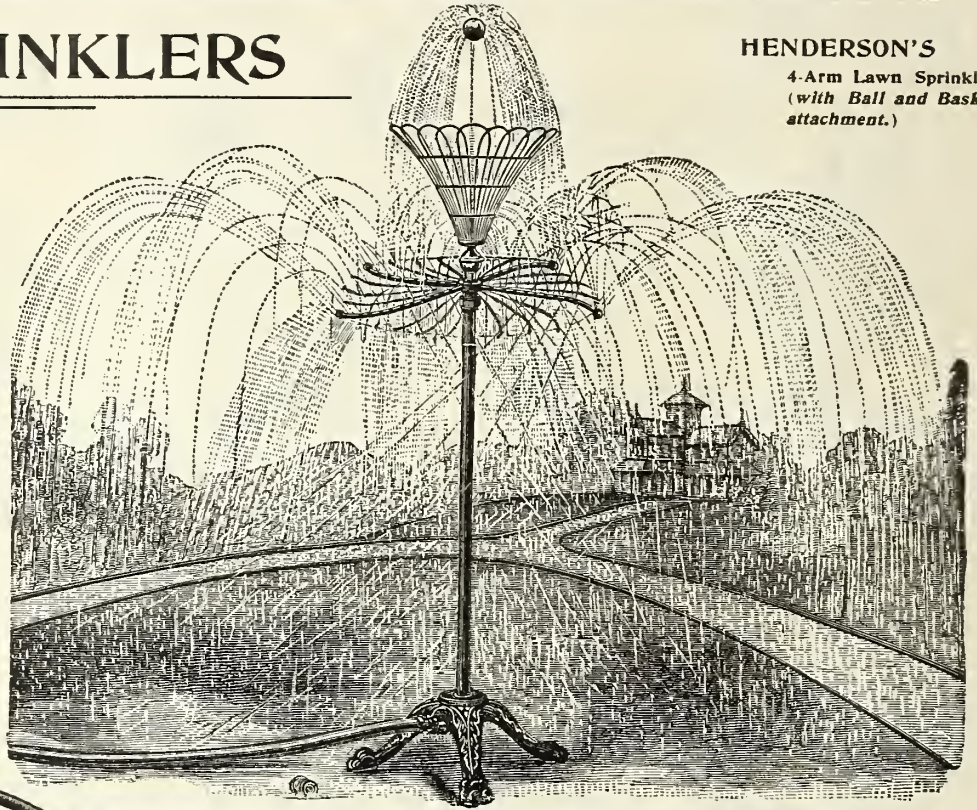
LAWN SPRINKLERS

HENDERSON'S
4-Arm Lawn Sprinkler
(with Ball and Basket
attachment.)

LAWNS need an abundance of water to enable their rich luxuriance to be maintained during hot dry weather. If the soil was originally prepared very deep, to induce deep root action, the necessity for artificial watering is less pronounced, but lawns intelligently laid down in this manner are in the minority in this country. It is therefore advisable on lawns with the average thin turf to water or "sprinkle" frequently. In such cases, a good lawn sprinkler is a necessary adjunct, being far superior to a hose nozzle—the latter usually throws too strong a stream, eventually washing the earth from the grass roots leaving them exposed to the injurious effects of the hot sun thus causing the grass to burn up. With a lawn sprinkler the same flow of water is broken up and uniformly distributed over a large area in the form of fine gentle rain, thoroughly saturating the ground covered without any injurious washing.

The "Water Witch" sprinklers work under a very low pressure better than any other sprinklers we know of. All sprinklers are fitted to attach to the regulation 3/4-inch bore garden hose.

We are frequently asked if a tank or pond of water at a certain elevation will work a lawn sprinkler. The following rule is applicable to all such cases, viz.: Water at every foot of elevation gives half a pound pressure. The force to work a sprinkler requiring 20 lbs. pressure, the tank or body of water would have to be elevated 40 feet, etc.



THE NEW CENTURY LAWN SPRINKLER

Is very efficient and satisfactory.

Will cover with a beautiful revolving spray, any area desired from three feet to fifty feet in diameter, and with an equal distribution of water.

Is mounted, with wheels, on a wide base, and may be drawn about from place to place without turning off the pressure and without danger of upsetting.

It is made with a bearing that prevents clogging and that allows it to operate under any water pressure.

All back pressure on the hose is relieved, thus saving wear and tear.

Durably made and handsomely finished. Body enameled black, wheels red, with head and arms of polished brass. Price, \$1.50 each.

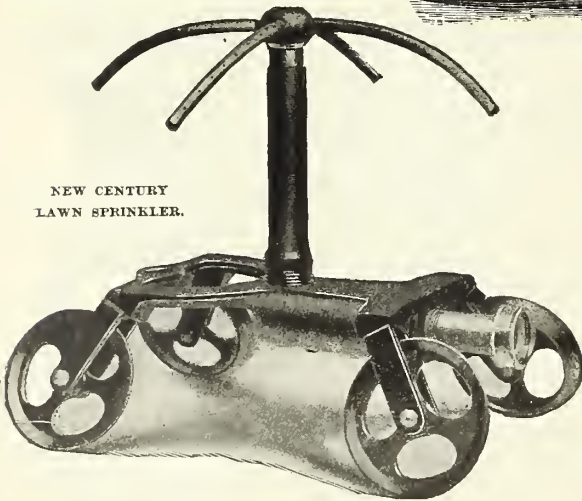
COMMON SENSE LAWN SPRINKLER.

There are no moving parts to get out of order, no arms to get bent, stopped up, etc. The Sprinkler may be cleaned in a moment, should it become choked; by simply loosening the nut, the force of water will drive out any dirt that has accumulated.

In use the most beautiful water effect is produced, there being a large umbrella spray, very fine, as well as jets nearly upright; these jets not only add to the beauty of the fountain, but by falling upon the umbrella spray break it up more and dash the water over all parts of the large circle. The parts all being rigid, there is little loss of pressure.

While the area covered is very large, yet the spray is so fine that comparatively little water is used; not only this, but the spray being very fine, the sunshine produces most beautiful rainbow effects.

The diameter of the circle will vary with the pressure; good to heavy pressure will wet a circle 20 to 30 feet in diameter. Price, \$1.25 each.

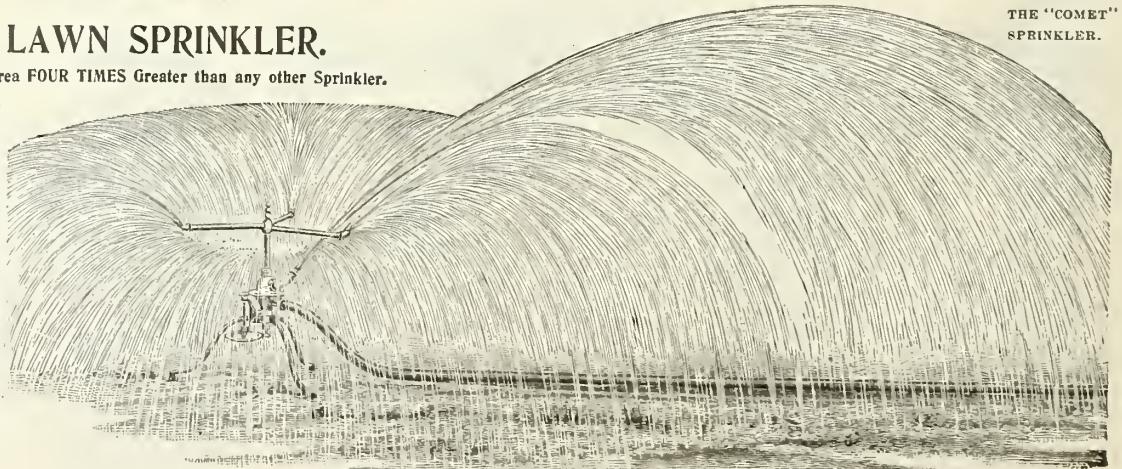


NEW CENTURY
LAWN SPRINKLER.

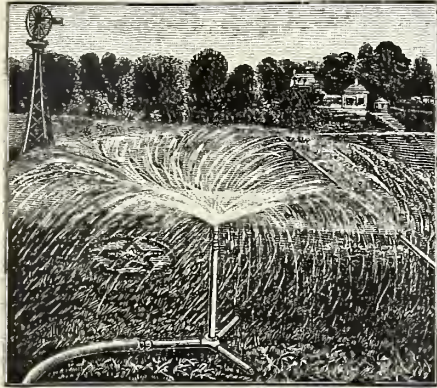
THE "COMET" LAWN SPRINKLER.

Will Sprinkle an Area FOUR TIMES Greater than any other Sprinkler.

By means of the swiftly revolving arms and intermediate gears the upper part of the body is made to revolve slowly around, carrying the hose nozzle, from which a large stream of water is thrown far out beyond that thrown by the arms, thereby covering four times the space of any other stationary sprinkler. With an ordinary force of water it will thoroughly sprinkle a space of 80 feet in diameter. The hose nozzle and tip on ends of arms are adjustable, so that it can be adapted to as small a space as desired. Excepting the legs, it is made of solid brass and nicely nickel-plated. Most substantial and durable as well as the most attractive and useful sprinkler ever made. Price, \$5.00.



THE "COMET"
SPRINKLER.



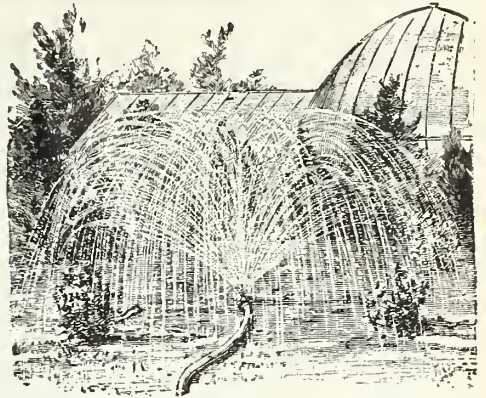
WATER WITCH LAWN SPRINKLER ON STAND.

"WATER WITCH" LAWN SPRINKLER.

An effective device for sprinkling lawns, gardens or flower beds. The water flows with unimpeded force, and is divided and deflected by the two lips of the swivel piece, which it causes to revolve rapidly, scattering the water in fine drops and evenly over a circular area of 25 to 40 feet diameter. It works more satisfactorily with a very low pressure of water than any sprinkler we know of.

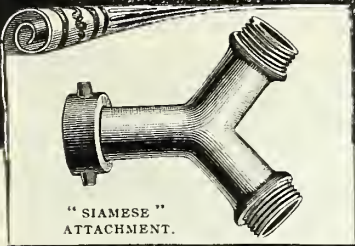
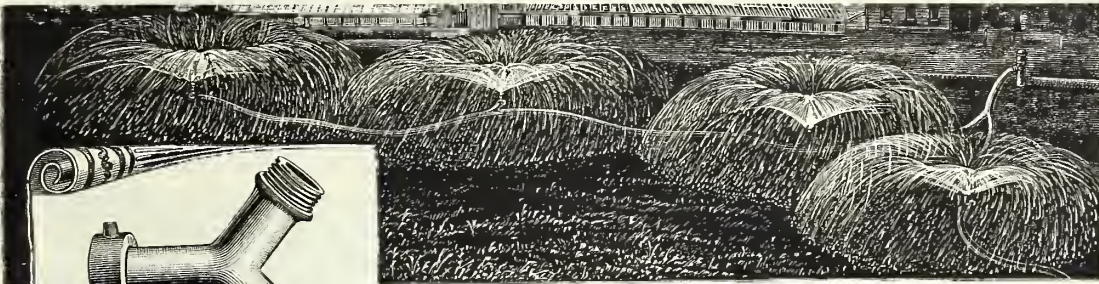
Price, without stand (i.e., with spur to stick in the ground (see cut)), 50c. each; by mail, 60c. each.

Price, with stand (cannot be mailed), \$1.00 each.



WATER WITCH LAWN SPRINKLER ON SPUR.

Henderson's "Siamese" Lawn Sprinkler Attachment.



"SIAMESE" ATTACHMENT.

By using these several sprinklers can be operated at one time,

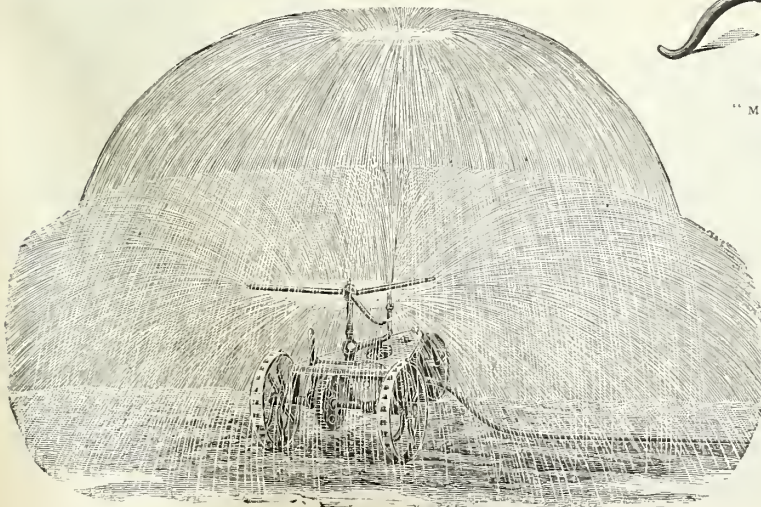
Providing the pressure and volume of water are sufficient. A three-quarter inch hose and thirty to forty pounds pressure will operate three sprinklers; a forty to fifty pound pressure, four sprinklers; with one inch hose and a good pressure, six sprinklers can be operated satisfactorily. This method of watering is valuable

and thoroughly than can possibly be done with a hose nozzle.

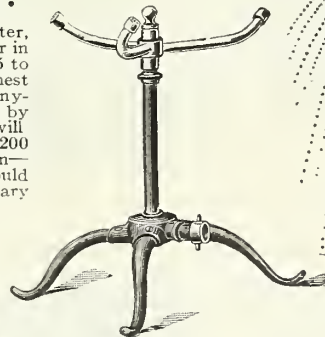
We found the "Water Witch" Lawn Sprinkler (with spur to stick in the ground), offered above, the best sprinkler for the purpose. One of these sprinklers and the "Siamese" was applied at the end of every twenty-five foot length of hose. Price, "Siamese" Attachment for 3/4 inch hose, 60c. by mail, 70c.; for 1 inch hose, 75c., by mail, 85c.

The "Travelling" Lawn Sprinkler.

A lawn sprinkler on three wheels and under an ordinary pressure of water, will roll itself slowly and steadily in any direction, either in a straight line or in a circle of any diameter desired. It can be set to travel anywhere from 15 to 500 feet per hour, as preferred. Can be changed from the lowest to the highest speed in a moment. It can be gauged to throw the water over a swath anywhere from 5 to 50 feet in width. It can be used as a stationary sprinkler by throwing it out of gear. With a pressure of water as low as 20 pounds it will drag 75 feet of hose, while with a pressure of 60 to 70 pounds it will carry 200 pounds extra weight and drag as many feet of hose. It works to perfection in fact, doing the work more thoroughly and in less time than a person could do it, and needs less attention. The Travelling Sprinkler even when stationary is equal to all others. Price, \$14.00.



THE "TRAVELLING" LAWN SPRINKLER



"MAID OF THE MIST."

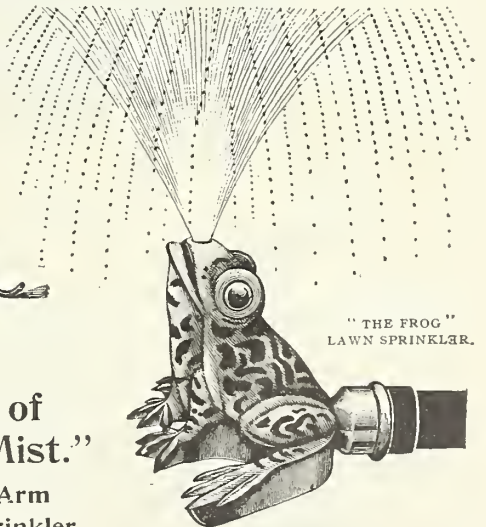
"Maid of the Mist."

Three-Arm
Lawn Sprinkler.

This fills the want for a low-priced arm Sprinkler; it is compactly and strongly made with phosphor-bronze bearing, and will cover a space 48 feet in diameter with suitable pressure of water. The top and arms are brass, nickel plated, stand and legs of iron, handsomely japanned. The water flows freely through an unobstructed channel, so there is no clogging—it stands 12 inches high. (See cut.) Price, \$1.25.

"The Frog" Lawn Sprinkler.

The "Frog" Lawn Sprinkler is an attractive novelty for watering lawns; it is handsomely enameled in green and mottled; it sprinkles an area of 20 to 40 feet in diameter, according to the water pressure; fits on 3/4-inch garden hose. (See cut.) Price, 50c. each, or mailed for 75c.



"THE FROG" LAWN SPRINKLER.

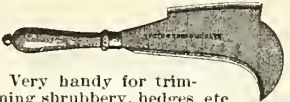


BASS BROOM WITH SCRAPER HOE.

For lawns and walks. It can be used to push, pull, sweep, chip or dig.

12 inch, 4 rows of bristles.....	\$0.75
14 " 5 " " " " " " " " "	90
16 " 5 " " " " " " " " "	1.00
18 " 5 " " " " " " " " "	1.15

ENGLISH BILL HOOK.



Very handy for trimming shrubbery, hedges, etc., where a long-handled hook cannot be used. Price, \$1.35.



HENDERSON'S SOD PERFORATOR.

An invaluable tool to aid in renovating bad spots in lawns, grass plots, putting greens, etc. It is operated like a rammer, the lower surface being provided with spikes which puncture the sod, leaving small holes into which much of the seed or fertilizer drops when broadcasted, thus preventing its being blown or washed away. The holes are filled with soil by the first rain, which covers the seed so it can germinate. Price, \$3.00.

BRUSH AXE.



This is an excellent tool for trimming out underbrush, cutting down old hedges, etc. Price, handled, \$1.00.

ENGLISH TURFING SPADE.

For lifting sod evenly, rapidly, and without breaking. \$5.00.



**Turf-Cutting
Axe,
\$2.25.**

**INDESTRUCTIBLE TREE PROTECTOR.
(THE ARNDT PATENT.)**

This Tree Protector is the most sightly, most indestructible and the most effective.

One band is sufficient to protect a tree for years, making them cost almost nothing.

It consists of a strip of thin brass, 1 1/2 inches wide, the lower edge slashed into fringe with tooth-like perforations above. When tacked around the tree no crawling insect can pass the protector. It will absolutely prevent Canker Worms, Caterpillars and all climbing and creeping insects from getting up the tree. Price, 15c. per foot, 10 feet and over, 14c. per foot.



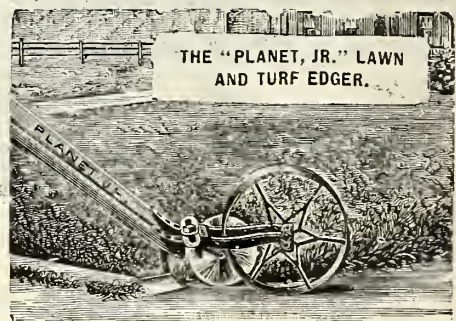
DANDELION AND PLANTAIN SPUD.



A handy tool for cutting dandelions, plantain and other weeds out of the lawn. Also useful when out botanizing. Price 40c.

"HALF MOON" GRASS AND TURF-EDGING KNIFE.

For trimming the sod around borders of walks, etc. Price, with handle, 50c. each.



THE "PLANET, JR." LAWN AND TURF EDGER.

"PLANET" LAWN AND TURF EDGER.

This little tool trims the turf around the edges of the flower beds, walks, roads, etc.; the revolving cutter does perfect work, either on a curved or straight border, edging accurately at just the correct angle, and at the speed of a mile an hour, while the hoe cleans the bottom of walk. The hoe can be removed if desired. It is invaluable in giving a finished appearance to the lawn. Weighs 26 pounds. Price, complete, \$6.00.



IMPORTED ENGLISH RIVETED-BACK GRASS HOOKS.

Thin, sharp blades, strengthened by a riveted back, light and rapidly handled.

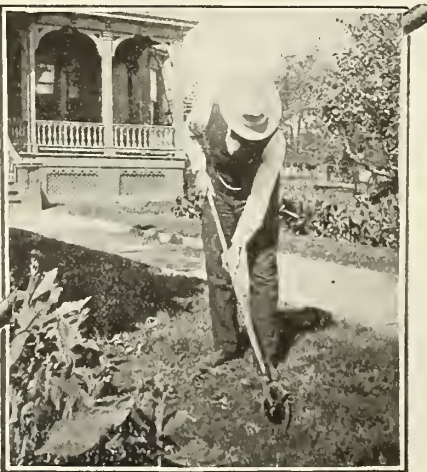
Small, 50c.
Medium, 55c.
Large, 60c.

REVOLVING SOD TRIMMER OR BORDER CUTTER.

A splendid tool for trimming the edges of walks and flower beds. A revolving knife enables the work to be done with rapidity.

TO OPERATE:—The forward hand, holding the tool, should rest against the forward leg just above the knee, and the knee should assist in pushing the trimmer (as is sometimes done in shoveling earth); this prevents the knife from cutting in too deep.

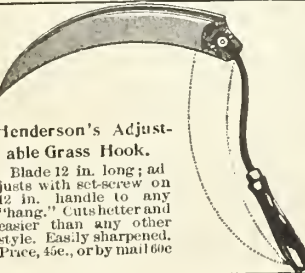
Price, \$1.25.



SERRATED GRASS HOOK.

The peculiar wavy cutting edge makes it a very rapid and easy grass trimmer.

Price, 50c.



Henderson's Adjustable Grass Hook.

Blade 12 in. long; adjusts with set-screw on 12 in. handle to any "hang." Cuts better and easier than any other style. Easily sharpened. Price, 40c., or by mail 60c.



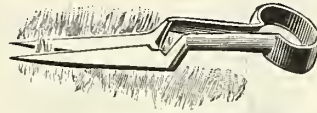
IMPORTED ENGLISH RIVETED-BACK LAWN SCYTHE.

Light and thin broad blades, strengthened by a riveted back. 32 inches, \$1.40; 34 inches, \$1.50; 36 inches, \$1.60; 38 inches, \$1.70. SCYTHE SATHS OR HANDLES. With patent fastening. Price, 86c. ea.



GRASS EDGING OR BORDER SHEARS.

For trimming overhanging grass around edges of walks, etc. Price, 9-inch blades, \$2.50; or with wheel, \$2.85.



"Trowel Shank" Grass Shears.

Solid steel, of finest quality and temper; 7-inch blades. The raised, trowel-like handles keep the knuckles off the ground and allow smoother cutting, \$1.00.

HEDGE SHEARS.



Used for both trimming hedges and cutting grass; English manufacture.

8-inch blades...\$1.25; with notch...\$1.50
9 " " ... 1.50; " " ... 1.75
10 " " ... 1.75; " " ... 2.00

The notch is at the heel of the blades and is for cutting small branches.



AUTOMATIC SELF-CLEANING LAWN RAKE.

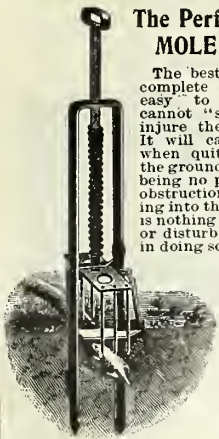
A backward motion of the operator will clean all the teeth at once, thus avoiding cleaning the teeth with the fingers. Made of best hickory.

26-teeth, 90c. each. 38 teeth, \$1.15 each. 52-teeth, \$2.00 each.



LAWN SHEARS.

For cutting grass under shrubs, fences, etc. Price, with two wheels, 9-inch blades, \$3.00.



The Perfection MOLE TRAP.

The best and most complete Mole Trap, easy to set and cannot "startle" or injure the operator. It will catch moles when quite deep in the ground, and there being no pin or other obstruction projecting into the run, there is nothing to frighten or disturb the mole as it passes, and in doing so raises the ground over the "run" just enough to spring the trigger, which must firmly rest on the soil over the "run." The points of the pins being constantly in the ground, it cannot catch or injure chickens or other domestic animals. Being made of metal it cannot warp or get out of order. It can be set close to plants without injuring them, and it can also be set touching a wall, fence, etc. \$1.25 each; 3 for \$3.50; \$13.00 per dozen.

LAWN WEEDERS.



HENDERSON'S LIFTING WEEDER.

HENDERSON'S LIFTING WEEDER.

A chisel blade cuts off the weeds; the trigger holds them so they can be pulled out. 60c. each.

Chisel Blade Weed Cutter.

Long handled with foot rest so it can be pressed, cutting off roots of weeds without marring. Price, 50c. each.

Reversible Weed Gouge.

A very useful tool for cutting weeds out of lawns. Reversible blade has two styles of cutting edges; handle 42 inch long. Price, 30c. each.

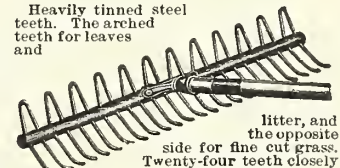


CHISEL WEEDER.

REVERSIBLE WEEDING GOUGE.

REVERSIBLE STEEL LAWN RAKE.

Heavily tinned steel teeth. The arched teeth for leaves and

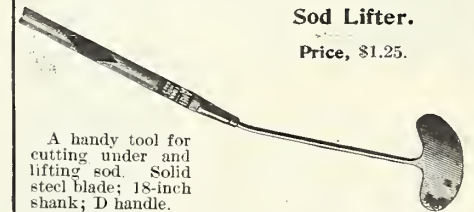
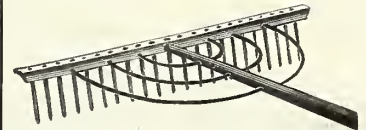


litter, and the opposite side for fine cut grass. Twenty-four teeth closely set in a 21-inch head.

Price, 50c. each.

WOODEN LAWN RAKE.

Best selected three bow, 24 teeth varnished head. 35c. each, \$3.50 per dozen.



Sod Lifter.

Price, \$1.25.

A handy tool for cutting under and lifting sod. Solid steel blade; 18-inch shank; D handle.



SQUARE PIAZZA LAMP

LAWN AND PIAZZA LAMPS. These superior Lawn Lamps take most of their air supply from above through the tubes; in consequence, the combustion is perfect. The oil never heats and they are absolutely safe. They will endure the strongest wind, and burn steadily. Never smoke, and give a brilliant white flame, far better than gas at 1-3 of the cost. The reservoir holds sufficient oil to burn 24 hours. No chimney. Outside wick regulator. Automatic extinguisher. Durably made of heavy tin, painted green.

SQUARE PIAZZA LAMP.

IMPROVED TUBULAR, IN THREE SIZES.

No.	Height	Width	Depth	Wick	Re-flector	Price
	Inches	Inches	Inches	Inches	Inches	
1	19	8½	9	1	6	\$4.50
2	21½	9½	10½	1½	10½	5.50
3	26	13¾	13	1½	12	7.25



LAWN LAMP BRACKET.

GLOBE LAWN LAMP.

FOR EITHER POST OR BRACKET. Improved tubular, can be filled, lighted, regulated and extinguished without removing globe with the new globe lifter. Number 3 burner. 1½-inch wick. Casts no shadow. Fits either bracket or post. One size only, price, \$5.25.

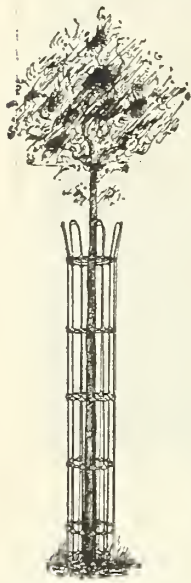
IRON BRACKET (short or long), Japaned black\$1.00
TURNED Wood Post, 6½ feet above and 2 feet below ground 2.00

GLOBE HANGING LAMP.

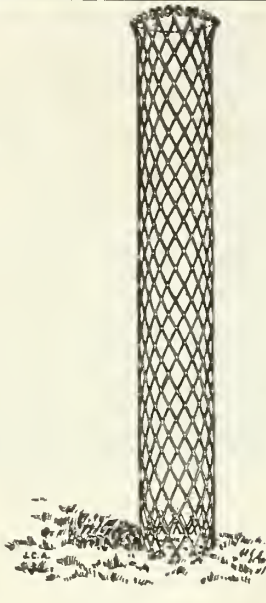
FOR PIAZZA OR LAWN.

This lamp is practically the same as the above, except that it is not fitted at the bottom to go on post or bracket, but in place has a wire bale or handle to swing from. Price, \$5. EXTRA GLOBES for either of the above two "Globe Lawn Lamps," viz.: clear glass, 50c. ea.; green or blue, \$3.25 each; ruby, \$4.25 each. GLOBE LAWN LAMP.





Anchor Tree Guards.



Expanded Metal.

TREE GUARDS.

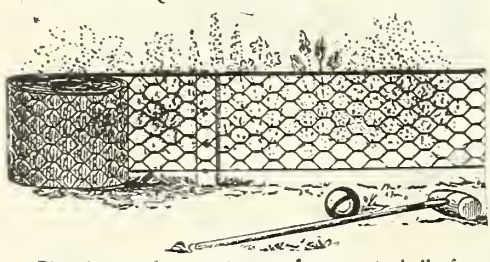
Anchor Tree Guard, constructed of No. 8 and No. 9 galvanized steel wire, the horizontal wires being locked to the uprights by the patent "Anchor" clamp. They cannot slip. Any one can put the "Anchor" Guard in place and it will last for years.

Size A. Diameter 8 inches; height 5 feet, 8 inches. \$1.25 each; \$12.00 per doz.
 Size B. 10 inches diameter, 5 feet 8 inches high. \$1.50 each; \$14.00 per doz.

EXPANDED METAL TREE GUARDS.

Made of two sheets of 2-inch Mesh, Expanded Metal, forming a cylinder 10 inches in diameter and 68 inches high. The two parts being bolted securely in place by malleable clamps. With this guard the best protection from vandals is given the tree, with good circulation of light and air. Price, \$2.25.

WIRE CROQUET OR GARDEN BORDER.



Placed around croquet grounds prevents balls from rolling beyond limits; placed around flower beds excludes dogs, chickens, etc. Galvanized.

12 inches wide.	Per bale	150 running feet.	\$1.00	\$1.35
18 " "	" "	" "	1.50	2.00
24 " "	" "	" "	2.00	2.70

5 ft. long x 5/8 in. dia.
4 ft. x 9/16 in.
3 ft. x 1/2 in.
2 ft. x 3/8 in.

WOODEN PLANT STAKES.

STAKES ROUND GREEN TAPERING.

Each.	Per doz.	Per 100
2 feet.....	5c.	50c. \$3.00
3 ".....	8c.	75c. 5.50
4 ".....	10c.	\$1.00 7.00
5 ".....	12c.	1.25 9.00

STAKES SQUARE GREEN TAPERING.

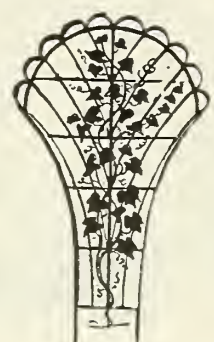
Each.	Per doz.	Per 100
2 feet.....	4c.	40c. \$2.50
3 ".....	6c.	60c. 4.50
4 ".....	8c.	75c. 6.00
5 ".....	10c.	\$1.00 7.00
6 ".....	12c.	1.25 8.00

DAHLIA STAKES OR POLES ROUND, FANCY TURNED TOPS.

Each.	Per doz.	Per 100
2 feet.....	8c.	75c. \$5.00
3 ".....	10c.	\$1.00 7.00
4 ".....	12c.	1.25 10.00
5 ".....	15c.	1.50 12.00
6 ".....	18c.	1.75 14.00



Wire Vine Trainer.



Wire Fan Trainer.

WIRE VINE TRAINERS.

Steel wire, with round iron frame and border. Green and bronze finish. Made any length required.

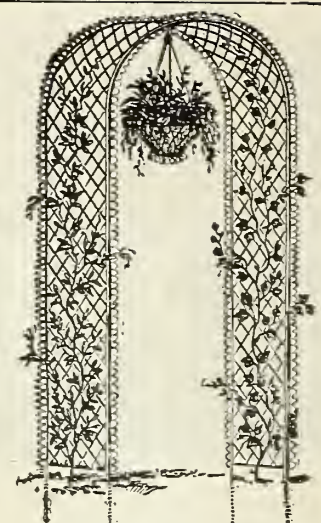
PRICE PER RUNNING FOOT.

6 inches wide....	26c.	24 inches wide....	55c.
12 " ".....	35c.	30 " ".....	65c.
18 " ".....	45c.	36 " ".....	75c.

WIRE FAN TRAINERS.

Steel Wire. Green and bronze finish.

No. 9. 12 inches high....	\$0.25 each,	\$2.50 doz.
" 10. 15 " ".....	.30 "	3.00 "
" 11. 18 " ".....	.35 "	3.50 "
" 12. 24 " ".....	.40 "	4.00 "
" 13. 30 " ".....	.55 "	5.50 "
" 14. 36 " ".....	.70 "	7.00 "
" 15. 42 " ".....	.90 "	10.00 "
" 16. 48 " ".....	1.25 "	12.50 "



Wire Lawn Arches for Climbers.

WIRE ARCHES.

FOR LAWNS AND GARDENS.

Steel wire, with round iron frame and border. Green and bronze finish. Made any size required.

PRICE PER RUNNING FOOT.

6 inches wide.....	26c.
12 " ".....	35c.
18 " ".....	45c.
24 " ".....	55c.
30 " ".....	65c.
36 " ".....	75c.

Wire Hanging Baskets.

Green and bronze finish, strong and well made. Just the thing for decorating piazzas of summer hotels and suburban residences.
 No. 4. 8 in. diam... 25c. each, \$2.50 doz.
 " 5, 10 " " " 30c. " 3.00 "

KEEP OFF THE GRASS



EVERLASTING SIGN, ENAMELED.

"Keep off the Grass."

Name Plate of iron; enamelled green with white letters; size 20 inches long by 4 inches wide; iron rod 26 inches long. Will last for years. Price, \$1.50 each; \$15.00 per doz.

WICKET LAWN GUARD.



A rigid, substantial and ornamental guard for bordering and protecting flowerbeds, walks, etc. The wickets, painted green, are 15 inches high and are made of two heavy steel wires twisted together, leaving a loop through which the next wicket is thrust and interlocks; they are easily placed in position by any person to conform to any desired outline, circular, straight, square, etc.; the height is regulated to suit by the distance the wickets are placed in the ground. It requires 12 wickets to 8 running feet. Price, 18c. each, \$2.00 per doz., \$16.00 per 100.

STEEL PLANT STAKES.

Made of stiff steel wire, double galvanized and practically indestructible. Tips looped for safety; bottoms A-shaped for stiffer support. They are suitable for roses and similar plants.

PRICES.

Length of Stake.	Per doz.	Per 100.	Per 1000.
1 1/2 ft. long.....	20c.	\$1.50	\$12.00
2 " ".....	25c.	1.75	16.00
2 1/2 " ".....	30c.	1.85	17.00
3 " ".....	35c.	2.00	18.00
4 " ".....	40c.	2.25	20.00
5 " ".....	45c.	2.50	23.00

Henderson's Giant Lawn Umbrella.

Eight feet across. Alternate stripes of bright colors. Very showy on a green lawn.

These giant framed umbrellas are the strongest and most durable umbrellas in the world. They are not only very useful but very attractive on a lawn; they spread 8 feet. The centre pole is thrust into a large hollow iron screw, which is easily turned into the ground; the screw can remain, if desired, and the umbrella can be closed and removed in a moment. It can be quickly set up in any soil with ease. The umbrella has 16 strong steel ribs covered with heavy cloth, in alternate bright colors, usually red, yellow, blue and buff; the edge is finished with an 8-inch curtain. Price complete, with ground fastenings, \$7.50.



GIANT LAWN UMBRELLA.

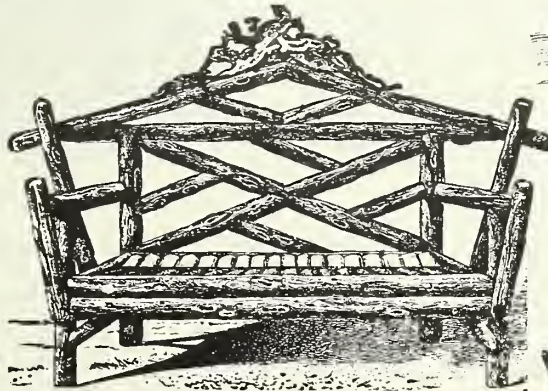


The Comfortable Settee.

This is the most comfortable seat imaginable; made of narrow strips of selected hard wood, varnished; heavy cast-iron legs.
 No. 1, 5 ft. long, \$9.00; with awning, \$19.00
 " 2, 6 " 10.00; " " 21.00
 " 4, 7 " 12.00; " " 24.00

"CHEAP" SETTEE.

An all-wooden settee, large enough for two persons; neatly finished.
 Price, each, \$1.75

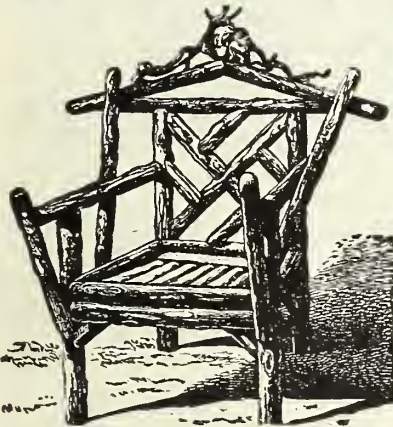


CEDAR SETTEE.

Park Settee.

A very popular settee, with varnished natural wood seat and back, with painted iron work.

No. 1, 3 1/2 ft. long, \$3.50
 " 2, 4 1/2 " 4.00
 " 3, 5 1/2 " 4.50



CEDAR CHAIR.

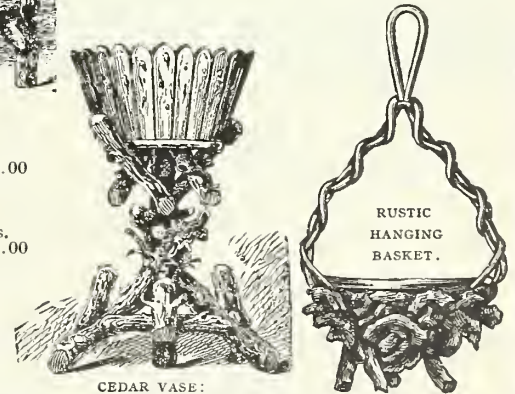
RUSTIC WORK.

Cedar Chairs, \$5.00 Cedar Rockers, \$6.00
 Cedar Settees, 4 ft., \$7.00; 5 ft., \$8.00; 6 ft., \$9.00.
 Cedar Vase, 16 in. diam., 3 1/2 ft. high, \$4.50.
 Cedar Stump Tubs, similar to the bowl of the vases, 16 in. diam., \$2.75 24 in. diam., \$5.00

Rustic Hanging Basket.

Wooden bowls, trimmed with laurel roots.

Ea.		Doz.	
8-in. bowl,	\$0.70	12-in. bowl,	\$1.35
9- "	.85	13- "	1.50
10- "	1.00	15- "	1.75
11- "	1.15		2.00



CEDAR VASE:

RUSTIC HANGING BASKET.

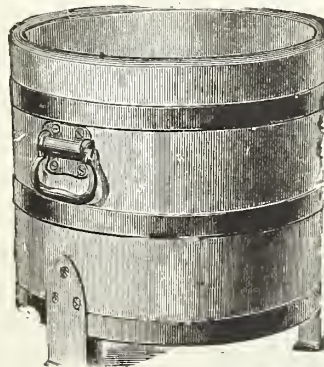
"Columbia" Flower Tubs.

Durable cypress staves, held by strong steel wire hoops, that can be tightened by draw screws connected with the handles. The "Fancy," (see cut) has staves finished like red wood, alternating with staves of natural finish all varnished. The "Plant" has smooth top, and is entirely natural wood.

Diam.	Height.	Fancy.	Plain.
No. A. 12 inches.	11 inches.	\$1.50	\$1.00
B. 15 "	14 "	2.25	1.50
C. 18 "	16 "	3.00	2.00
D. 21 "	18 "	3.75	2.50
E. 24 "	20 "	4.50	3.00



FANCY "COLUMBIA" TUB.



Cedar Tree Tubs.

Heavy iron hoops. Drop handles, serving as hooks for carrying poles. Iron legs. Removable perforated bottoms. Painted green outside and brown inside. Painted red, if desired, at an extra cost of 10 per cent.

No.	Outside Diam.	Length of Stave.	Price.
0.	27 inches.	24 inches.	\$6.00
1.	25 "	22 "	5.00
2.	23 "	20 "	4.50
3.	21 "	18 "	4.00
5.	18 "	16 "	3.50
6.	16 "	14 "	2.75
7.	14 "	12 "	2.25
8.	13 "	11 "	2.00
9.	12 "	10 "	1.75

"Perfection" Minton Tile Veranda Box.

Soil will not get soggy and sour, for water drains off, and yet no drip can escape to spoil things. The tiles are decorated under glaze.

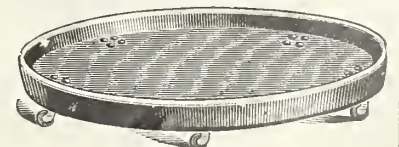


The frame and dripan are of heavy sheet-iron, enameled. Size of box (outside), 25 in long by 8 in wide; drip pan, 27 in. long by 10 in. wide. \$5.00.

Rolling Stands for Heavy Plants.

A very useful, unbreakable fibre arrangement on ball-bearing casters for holding, turning or moving heavy plants, and preventing injury to carpets from drip or dampness.

14 inch diam., on 3 casters, \$0.80
 18 " " " 4 " 1.00
 20 " " " 5 " 1.25
 22 " " " 6 " 1.50



ROLLING STAND.

Steven's Fertilizer Sower.

FOR HAND POWER. FOR TOP-DRESSING LAWNS.

It sows the "Henderson Lawn Enricher" and all kinds of commercial fertilizers, bone meal, wood ashes, lime, etc., in large or very small quantities. It can also be successfully used for fertilizing strawberry beds, and other garden and field work; is excellent for sifting wood or coal ashes, sawdust or dry sand on icy walks; will also sow damp sand by removing two blades.

The hopper is 34 inches long and holds one and one-half bushels. Weight of machine, 83 pounds. It is well made and nicely painted. Price, \$12.00.

LAWN FERTILIZING.

A permanent sward eventually exhausts the fertilizer in the soil, no matter how richly prepared it may have been originally. The constant growth of the grass, its frequent mowing, and the removal of the clippings also removes a certain proportion of digested plant food. Therefore if the luxuriant richness of a lawn is to be maintained, it must be top dressed, at least once a year, with suitable fertilizer.

Fine Bone Meal may be safely broadcasted on at any time at the rate of 500 to 1000 pounds per acre; although slow in action the effects are quite lasting. Price, 1 lb. pkg., 10c. (or by mail, 25c. lb.); 5 lb. pkg., 30c.; 10 lb. pkg., 50c.; 25 lb. bag, \$1.00; 50 lb. bag, \$1.50; 100 lb. bag, \$2.50; 200 lb. bag, \$4.25; per ton of 2000 lbs., \$37.00.

Nitrate of Soda broadcasted on a lawn, 300 to 500 pounds per acre, any time during the spring or summer stimulates the grass into quick rich growth, but the effect is not lasting. Price, per 5 lb. pkg., 30c.; 10 lb. pkg., 50c.; 25 lb. bag, \$1.25; 50 lb. bag, \$2.00; 100 lb. bag, \$3.50; per ton, apply.

Hard Wood Ashes, these are highly beneficial to grass, broadcast on at any time at the rate of 1 to 2 tons per acre. Price, per bbl. of about 200 lbs, \$2.25; per ton of 2000 lbs., in bbls., \$20.00. Special prices in bulk.

Raw Crushed Bone, a very coarse grained, valuable in the preparation of land for the laying down of new lawns. It should be applied after plowing and before harrowing at the rate of 1 to 2 tons per acre. It dissolves slowly in the soil, the effect lasting for several years. Price, per 100 lb. bag, \$2.50; 200 lb. bag, \$4.50; per ton of 2000 lbs., \$40.00.



"Henderson Lawn Enricher" Top-Dressing with the Stevens Fertilizer Sower

TOP-DRESSING LAWN ENRICHER WITH THE FERTILIZER SOWER.

Your Lawn, New or Old, may be Quickly Improved by

Top Dressing at Any Time with

THE "HENDERSON" { ODORLESS } LAWN ENRICHER.

LAWN ENRICHER

Can be Applied SPRING, SUMMER OR FALL. IT NEVER FAILS TO INDUCE A LUXURIANT, RICH GREEN GROWTH IN A FEW WEEKS' TIME.

FOR NEW OR OLD LAWNS,
Grass Plots, Tennis Courts,
Putting Greens,
Etc., Etc.

The Henderson Lawn Enricher is a clean, portable and convenient lawn dressing which we have found to be never-failing in inducing a rapid and rich green growth. It should be sown broadcast in the spring or fall, though it can be put on during the summer without injury or danger of burning the grass, and a remarkable improvement will soon be observed. It is in every way more desirable than manure, which is so often full of weed seeds. The use of "Henderson Lawn Enricher" entirely does away with the old practice of top-dressing lawns with stable manure, which was so objectionable on account of unsightliness and disagreeable odors.

QUANTITY REQUIRED. For forming a new lawn a 10-pound package is sufficient to go over an area of 300 square feet, or 1000 to 1500 pounds per acre, or as smaller quantity for renovating an old one.

PRICES—by Express or Freight—purchaser paying transit charges:

5-pound package,.....	\$.25	50-pound bag,.....	\$1.75
10- " " ".....	.45	100- " " ".....	3.00
25- " " bag.....	1.00	200- " " ".....	5.00
		Per ton of 2000 pounds.....	45.00

"After years of trial, I find for quick and permanent results, the 'Henderson Lawn Enricher' stands pre-eminent."—ROBERT CAMPBELL, Louisville, Ky., Superintendent Cave Hill Cemetery Co.

Henderson's Fluid Weed Destroyer. A New and Easy Way to Destroy Weeds, Moss, Grass, etc., in Garden Walks & Garriage Drives.

It completely destroys all weeds, wherever applied, and by its effect on the ground prevents the growth of fresh ones for a year afterwards, thus saving an immense amount of labor in hoeing, etc. For brick walls it is a boon. Its application is easy, being in a liquid form and only requiring to be mixed with water and applied with a watering can or sprinkling cart. If the ground is very dry it should first be sprinkled with clear water so the Weed Destroyer will not soak away too quickly. Where large weeds and docks are to be destroyed it is best to mow or chop off the tops first. Full directions for use with each package.

QUART CAN,	makes	6 gallons, sufficient for	150 square feet,	50c.
GALLON CAN,	"	25 " " " "	600 " " "	\$1.25
5-GALLON KEG	"	125 " " " "	3,000 " " "	5.00

"Your 'Weed Destroyer' is a boon to us here with our numerous garden walks and carriage drives to be kept clean and free of weeds. It used to be hoe, hoe, hoe, from morning till night, all summer long, but the last two seasons by sprinkling the walks thoroughly in the spring with your 'Weed Destroyer' diluted with water, it has kept the weeds and moss away and the walks in apple pie order."

CHAS. McGRATH, GR.,
Newton, Mass.

"I tried your 'Weed Destroyer' and found it so good that I want to order a 5-gallon can."
Mrs. N. H. PIFFARD, Passaic, N. J.

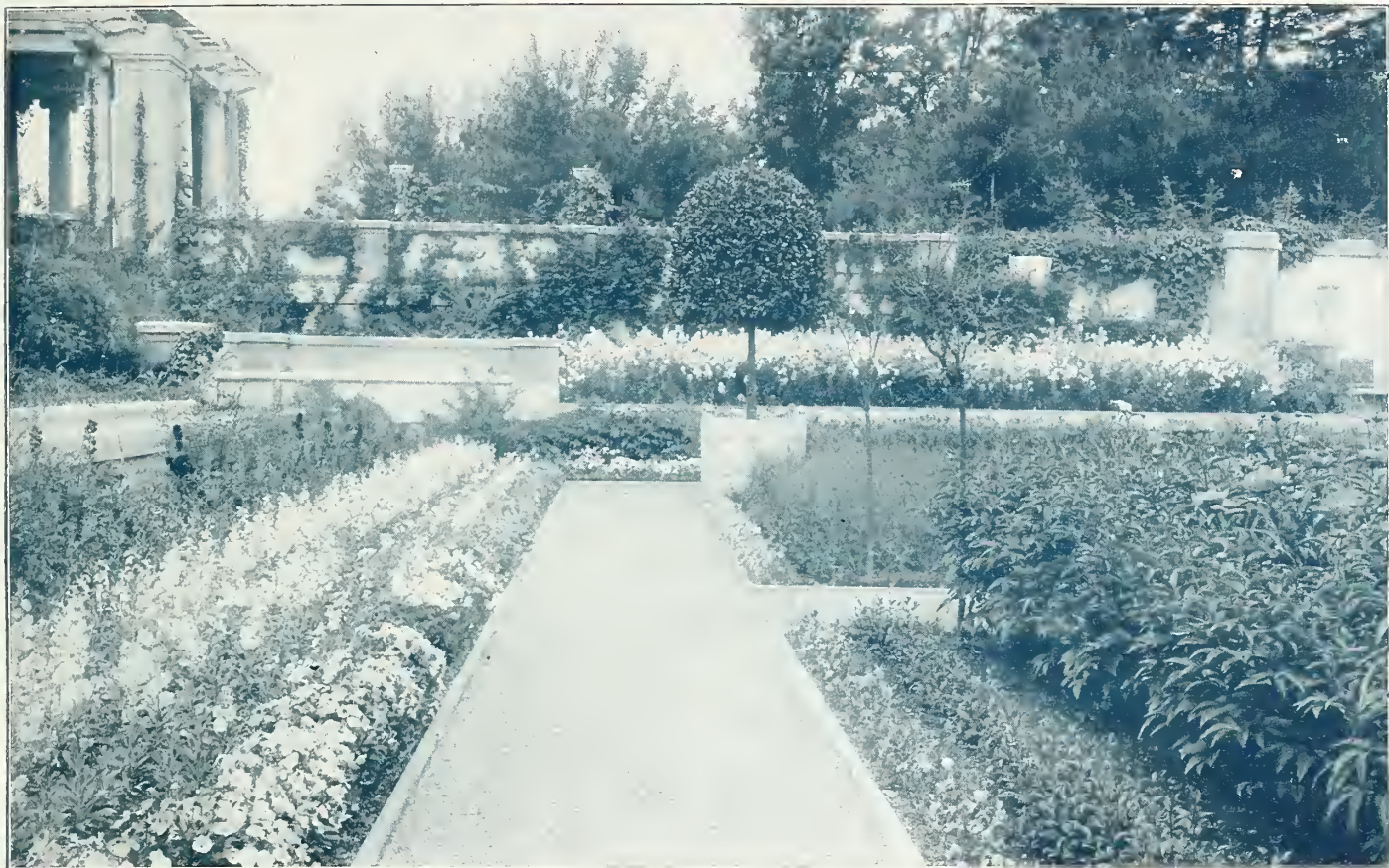
"The tests of your 'Weed Destroyer' have been entirely satisfactory. I congratulate you upon your success in manufacturing a product that meets a public want. We have a great many brick walls in Burlington that are most unsightly, with grass and weeds growing between the bricks, but when they have been treated with your fluid compound, 1 quart to 5 gallons of water, the unsightly vegetable growth was destroyed in a few hours. My brother-in-law, and next-door neighbor Judge Power, also use it with entire satisfaction."

J. L. WAIT, Editor Burlington Hawk-Eye,
Burlington, Iowa.



"Not a weed to be seen"

HENDERSON'S
FLUID WEED DESTROYER.
HAS KILLED THEM ALL.



Henderson's
New Book,

“PICTURESQUE GARDENS”

Ornamental
Gardening
Illustrated,

By CHARLES HENDERSON.

160 pages, 9 $\frac{3}{4}$ x 12 inches; 340 photographic illustrations. Price, \$2.50, post-paid.

THIS unique new book mirrors the charms of the prettiest parks, lawns and gardens of Europe and America. The picturesque, the natural and the gardenesque adornments are reflected in **over three hundred magnificent photographic illustrations from nature**—many of these views are 5 x 7 inches, some larger, few smaller; they are grouped and printed in a most artistic manner on heavy-coated paper, with just enough text matter to describe the view and name the plants, vines, trees and shrubs needed to produce a similar effect or design.

There are in this country many lawns, gardens and grounds which the owners would improve and embellish, but they do not know exactly what they want, what would look well nor how to go about it, and it is for the benefit of such that we have prepared this book, for, although there are countless works of exhaustive *precept* on landscaping and gardening, there have been none issued so rich with illustrations of *example*.

“Your ‘Picturesque Gardens’ is a very suggestive and useful book, and I am glad to have it in our library here.”

SAMUEL B. GREEN,

Prof. of Horticulture, University of Wisconsin.

“I have spent much delightful time with your book, ‘Picturesque Gardens,’ and the longer I look the better I like it; so full of suggestions that help one in planning improvements in our ornamental gardens.”

WM. H. GATES, 135 State Street, Auburn, N. Y.

“Your book, ‘Picturesque Gardens,’ is beautiful, admirably edited, and a credit to you in every way.”

A. B. FARQUHAR, York, Pa.

“I have derived a great amount of pleasure and useful information from your ‘Picturesque Gardens.’”

WM. HAYWARD, Nebraska City, Neb.

“I find Henderson’s ‘Picturesque Gardens’ an extremely interesting and helpful work.”

CARLETON R. BALL, Asst. Agrostologist,
U. S. Dept. of Agriculture, Washington, D. C.

In it we force no particular styles or fashions, but describe and picture such a great variety of lawn and garden creations that some fruitful suggestions must be found adaptable to the environment of every home, whether pretentious or modest.

Those who are fond of improving and embellishing their gardens, lawns and grounds, or who are planning new ones, will get many valuable ideas from this beautiful book.

The Range of Henderson’s “PICTURESQUE GARDENS”:

FLOWER GARDENS AND BEDDING.—Geometrical bedding and bedding designs—Formal gardens—Sunken and terrace garden—Gay parterres—Walled gardens—French, Italian, English and Japanese gardens—American gardens (city, villa and suburban)—Topiary and old-fashioned gardens—Subtropical gardens—Aquatic gardens—Rosariums, ferneries, rockeries—Herbaceous borders—Flower-tinged paths, etc.

LAWN VIEWS.—Lawn gardens—Park lawns—Shady nooks—Vista and landscape—Avenues, walks and drives—Terraces, steps and balustrades—Vases and statuary—Sun dials—Fountains—Entrance gateways—Ornamental and flowering trees, shrubs and plants, specimen or grouped—Ponds, lakes, streams, cascades, bridges.

UNIQUE AND ARTISTIC EFFECTS WITH PLANTS, VINES AND TREES.—Verdure arches and festoons—Rose bowers and arches—Screens and fancy hedges—Old trees, etc., embowered with vines—Vine-clothed rocks and banks—Vine-covered arbors, piazzas, windows, columns, arcades, pergolas, summer houses, etc.—Garden rests and retreats—Seats of stone, rustic, etc., old-fashioned and modern—Floral clocks—The Maze—Veranda decoration and decorative plants in tubs, etc., and numerous garden adornments.

HENDERSON'S NEW BOOK, "Picturesque Gardens," is handsomely bound, and will grace any library table, even as an album of the beautiful in gardens. Price, \$2.50, post-paid.

EVERYTHING FOR THE LAWN AND GOLF COURSE.



THE FINEST GOLF COURSES
ARE MADE WITH HENDERSON'S
FAIR GREEN AND PUTTING GREEN
GRASS SEED MIXTURES.

PETER HENDERSON & CO.

35 & 37 GORTLANDT ST., NEW YORK.

