

Historic, Archive Document

Do not assume content reflects current scientific knowledge, policies, or practices.

62.41

1926

80th Anniversary



"THE MONROE NURSERY"
LE. ILGENFRITZ' SONS CO.
MONROE MICHIGAN

TREES

PLANTS

ISRAEL E. ILGENFRITZ
FOUNDER



THE MONROE NURSERY
MONROE, MICH.

80 YEARS OF SATISFACTORY SERVICE



LHIS is our Anniversary Year. Eighty years ago, The Monroe Nursery was founded by I. E. Ilgenfritz. His home was originally in Pennsylvania, but he came west during the early days, looking for a place to establish a nursery. When he reached Monroe, Michigan, he knew that he had reached an ideal spot for the growing of dependable trees and plants. Here he planted his seedlings and prospered in spite of the hardships of pioneer days.

Today, when even the third generation is represented in the organization, we fully realize that the faith and confidence of The Monroe Nursery founder in our soil, climate, and market, was fully justified. At the present time we grow and distribute the same dependable class of plants that built up our business and reputation, only, today, we have thousands more to offer in all satisfactory varieties.

A CATALOG WHICH MEETS YOUR NEEDS

This catalog is designed to meet the needs of the average home owner in this section. In it we list varieties of plant materials particularly hardy and suitable for this locality. We grow many varieties not listed here, but which are listed in a much larger general catalog available to anyone who will write to us for a copy. You may select any varieties listed here with confidence, knowing you will get plants which are absolutely hardy and will be entirely satisfactory.

THE MONROE NURSERY
I. E. ILGENFRITZ' SONS CO.
MONROE, --- MICHIGAN

Visit us During our Anniversary Year

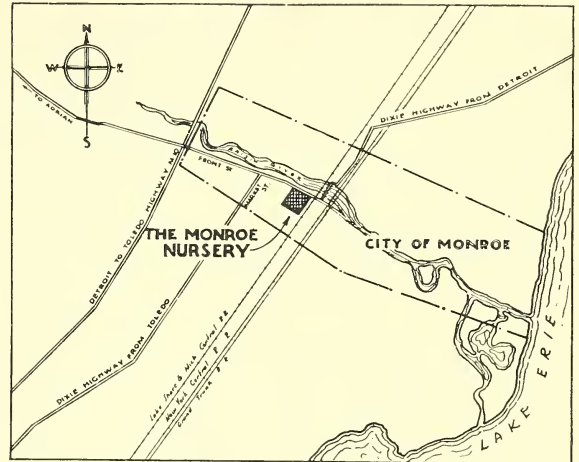
WE will be mighty glad to show you our nursery grounds and the many fine blocks of plants growing in our fields. We want you to know how welcome you are here and want you to feel free to drive in any time. On this, our anniversary year, we extend an urgent invitation to you to call.

A SIGHT WORTH SEEING

Rows of shrubbery in blossom; acres upon acres of fine fruit trees; long rows of perfect evergreens and many other interesting plants make a sight worth seeing. We know that you, as a lover of fine plants, will be inspired by the fine products and extent of our nursery. We know you can benefit by making selections direct from the nursery row. You will also profit by increasing your familiarity with different varieties.

The propagation and proper growing of nursery stock is a highly specialized business requiring scientific methods. In view of our extensive work along this line, we feel that you will find our nursery to be as interesting and as fine as any you might choose to see.

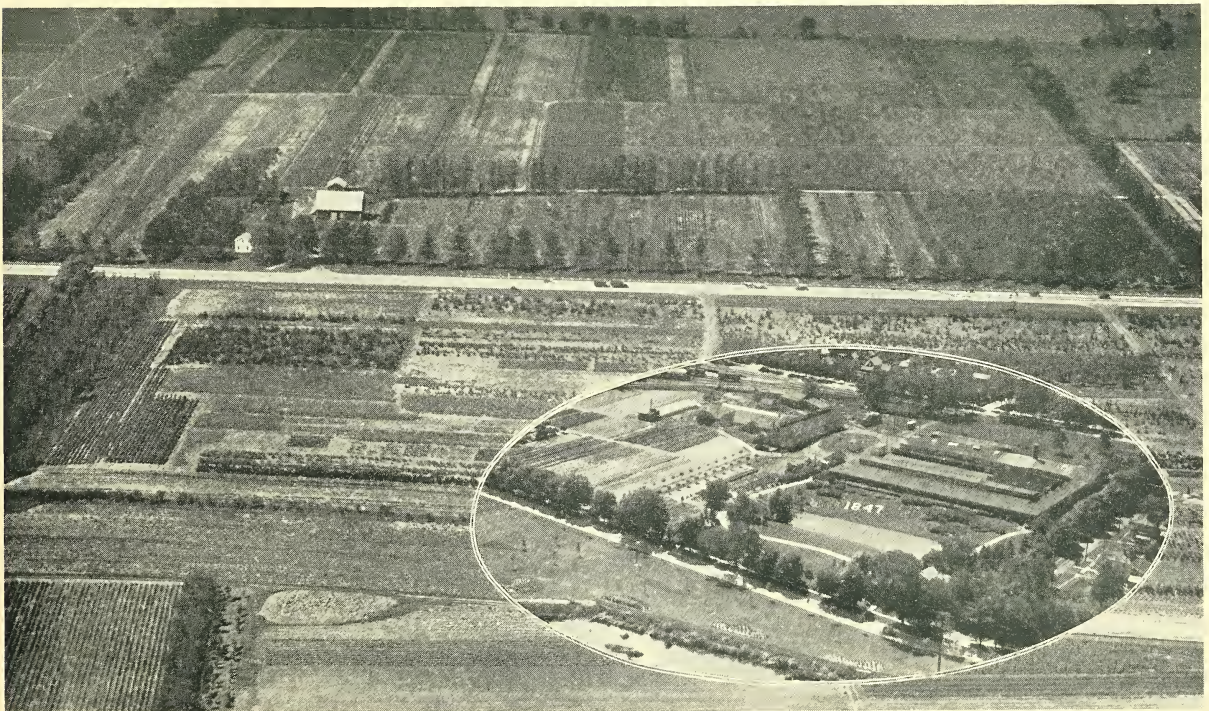
A visit to the Nursery will give us a chance to meet you personally and this means more to us than anything else. We hope you will accept this invitation and drive in at the first opportunity.



Map showing location of our office and display grounds. We have many fields of growing plants located away from our main nursery along the highways where they can be easily seen as you approach our office.

HOW TO REACH US

Our office and display grounds are located on Front Street, close to the Lake Shore and Michigan Central R. R. Tracks. We can be easily reached from State Highway 10 or the Dixie Highway. Many of our fine blocks of trees can be seen as you pass by on the highways many miles from our office.



An airplane view of a portion of our farms along M 10, Insert shows storage and shipping grounds.

WHAT OUR SERVICE MEANS to YOU

Trees the Right Size for Satisfactory Planting



WE go to a great deal of extra trouble in grading our planting materials. Contrary to the common practice of grading by length, our fruit trees are graded both as to diameter and height. We have found that neither measurement alone is sufficient to insure full size properly developed trees. Our stock will always be a little better than the minimum of the grade specified. It requires a large quantity of superior stock to grade in

this manner, but we go to this extra expense and trouble to give you trees the right size for satisfactory planting.

How We Ship

We are able to send your stock by New York Central, Pere Marquette, Pennsylvania, Grand Trunk, Electric Freight, Express and Parcel Post. During shipping season we also have a fleet of trucks with which we make truckload deliveries.

Special Insurance

A great many people want the nurseryman to stand all losses whether due to climatic conditions, planting, or after care. For such customers we offer the following insurance proposition. Upon payment on day of delivery, or before that date of full purchase price, plus twenty five per cent of same, we will insure the growth of such stock as we deliver except from injury sustained by fire, cattle, hogs, accidental, willful or malicious destruction and floods, until the first day of September after delivery. Purchaser is to notify us promptly

on or before the first day of September as to losses claimed, so we can investigate and issue proper credits. No claims will be honored unless plants are left undisturbed in the ground until we have had an opportunity to investigate, in case we should desire to do so.

Terms

To customers whose references are satisfactory to us, payment will be due at the time of customer's receipt of stock.

Substitution

It is customary, should the supply of a variety become exhausted (as will occasionally occur in all establishments) to substitute in its place a similar sort if there is such. Should it be desired for us not to do this it should be stated in the corner of the order "No Substitution".

GUARANTEE

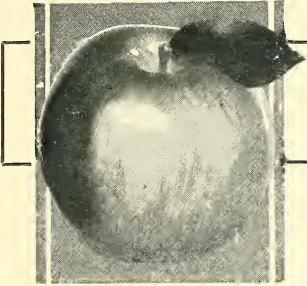
We guarantee our products to be of first quality, healthy, and true to name when delivered. Any stock not meeting this guarantee will be replaced without charge by stock of same kind and quality, or of equal value, upon immediate notification thereof. We are responsible for such errors only to the amount originally paid.



OUR SALESMEN are COURTEOUS and EAGER to SERVE

Experience has proven that our customers are benefitted by our having salesmen representatives who can assist them in determining their wants and making their selections. Our salesmen are courteous, efficient and reliable. When they call on you they do so with the idea of helping you improve and beautify your property. When they cannot be of service they will not bother you.

Our representatives can answer questions and provide you with the information you need. They can help you get assistance from our Landscape Department by relieving you of the details of making measurements of drawings. You will enjoy their visit and profit by it. We hope that you will welcome them.

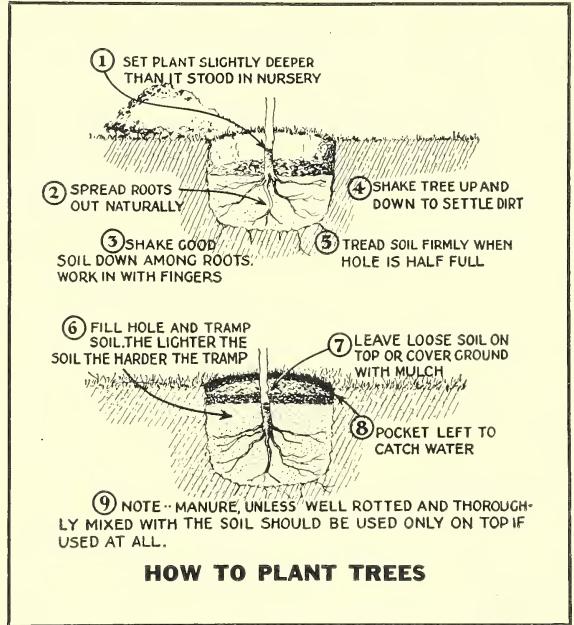


FRUIT DEPARTMENT

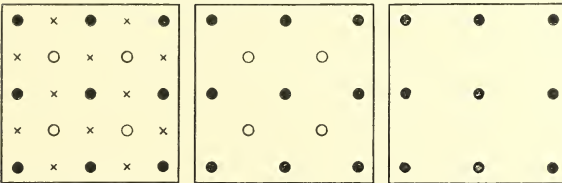
How To Plant An Orchard

ORCHARDS today are usually planted in a mixture of two or more varieties. There are good reasons for this. Some of the most desirable varieties do not come to bear for several years but eventually make large trees and are very long lived. Others are not long lived nor of large growing habit, but bear very young. We therefore classify the more important trees as "Permanent," "Semi-Permanent," and "Temporary". The general mode of planting is this: Permanent trees are spotted forty to fifty feet apart in squares. In the centers of these squares, also fifty feet apart, are the Semi-Permanent, or if none of these last are used, then Temporary trees may be substituted. Finally, at a point midway between every pair of Permanent trees, Temporary trees are planted.

These last come to bear very early and the orchard thereby begins to make immediate returns to the owner. Later, when the Semi-Permanents are bearing and need more room the Temporary trees are cut down. Still later, when the Permanent trees are fully developed and bearing, the Semi-Permanent trees are cut out and the orchard continues to bear at full capacity with no time lost. The time elapsing between the planting time and cutting out of the Semi-Permanent trees is usually 15 to 20 years. The land is much enhanced in value when the final trees are bearing. Altogether this is a very satisfactory arrangement. We show below a cut of an orchard so planted, and also give a list of apples classified as to their correct arrangement in such a plan.



TREE PLANTING ARRANGEMENT



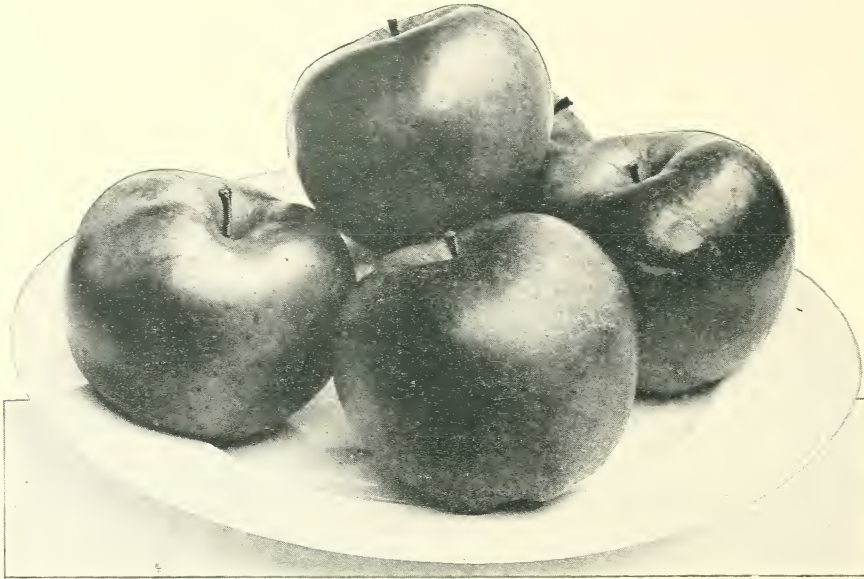
1. When first planted.
2. Temporary fillers removed.
3. Permanent trees only.

The solid black circles indicate permanent trees selected from the list below. The crosses indicate semi-permanent trees from the list below and the circles indicate temporary trees from the list below.

LATE OR PERMANENT	SEMI-PERMANENT	TEMPORARY
Delicious	Grimes	Yellow Transparent
Northern Spy	McIntosh	Wealthy
Stayman	Jonathan	Wagener
Fameuse	Jonathan	Oldenburg
Baldwin	Red Canada	Red Astrachan

NUMBER OF TREES PER ACRE

	Distance Apart	Number per Acre
Apples, Std.	20 x 20 ft.	108
	25 x 25 ft.	70
	40 x 40 ft.	27
	50 x 50 ft.	18
Apples, Dwarf	10 x 10 ft.	435
Apricots	15 x 15 ft.	193
Asparagus	(Field) 4 ft. x 18 in.	7,260
	(Garden) 2 x 1 ft.	
Blackberries	8 x 6 ft.	907
Cherries	(Sour) 20 x 20 ft.	108
	(Sweets) 25 x 25 ft.	70
Currants	4 x 4 ft.	2,722
Gooseberries	4 x 4 ft.	2,722
Grapes	8 x 8 ft.	680
Peaches	20 x 20 ft.	108
Pears, Std.	20 x 20 ft.	108
Pears, Dwf.	10 x 10 ft.	435
Plums	20 x 20 ft.	108
Quinces	10 x 10 ft.	435
Raspberries	6 x 4 ft.	1,815
Rhubarb	4 x 3 ft.	3,630
Strawberries	(Field) 4 x 1 ft.	10,890
	(Garden) 2 x 1 ft.	



Apples

YIELD PROFITABLE RETURNS



The descriptions given here below are brief and as accurate as space permits. They cover, as far as possible, season of bearing, color, size, quality, storage and shipping quality of the Apple, also desirability of tree as to hardiness and productiveness. We will be glad to answer any questions about particular varieties. F—Fall Apple; W—Winter Apple; S—Summer Apple.

Prices of The Monroe Nursery's Standard Apple Trees: (All varieties except Cortland).

Diameter	Height	Each	10
11/16 to 1 inch	5 feet and up	\$1.75	\$16.00
9/16 to 11/16 inch	4 feet and up	1.50	14.00

BALDWIN (F).

A good commercial variety in the North. Large red eating Apple, ripens November to December.

DELICIOUS (W).

November to March. Large brilliant red Apple of best eating quality. A good storage and shipping Apple. One of the best commercial varieties. Tree strong and vigorous bearer.

DUCHESS OF OLDENBURG (S).

A very valuable commercial variety. August to September. One of the best cooking Apples. Above medium size, attractive red stripe; good shipper. Tree has many good qualities to recommend it to the orchardist. Very reliable cropper, prolific.

FAMEUSE (W).

One of the best dessert Apples. White, tender flesh, dark red skin. Sells at a premium in market October through December. Medium size. Tree moderate grower, healthy and good bearer.

GRIMES GOLDEN (W).

November to January. Deep yellow with dots of russet. Medium to large fruit, very good quality, not a good keeper but much in demand in the market. Tree a good cropper, moderately vigorous.

WRITE FOR BOOKLET "BEST PLAN FOR PLANTING AN APPLE ORCHARD"



This compact little booklet contains much valuable and useful information for the fruit grower. It explains all about fruit growing, planting, spraying and trimming. This booklet is free for the asking. Simply send in your request.

We Sell only Tested Varieties of Apple Trees.

JONATHAN (W).

One of the best commercial varieties. For fancy holiday trade. Medium sized, brilliant dark red Apple, very good quality. November to January or later. Tree bears young, often biennially.

McINTOSH (F).

A Snow Apple, bright deep red, of good size, very delicious, perfumed. Fine for local market and fancy trade. October to December. Tree productive, coming into bearing young; hardy, slow grower.

NORTHERN SPY (W).

One of the best, most dependable, commercial varieties. Fine for both eating and cooking. A late bearer but very prolific; fruit large. November to March; highly colored, glossy bright or striped red. Tree vigorous and long lived.

RED ASTRACHAN (S).

July through September. Medium to large. Bright dark red. Good home Apple or for local market. For cooking and dessert. Tree young bearer, reliable cropper, producing good quantity.

RED CANADA (W).

November to March. Above medium size, very attractive deep red. Very fine quality for eating or cooking. One of the best commercial varieties, often bringing special prices. Tree of fair hardiness and bearing qualities. Can supply these top-worked if desired.

STAYMAN WINESAP (W).

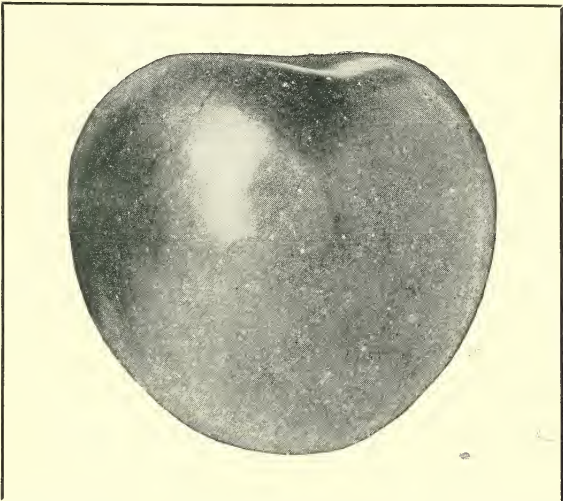
Often said to be the best Winesap. Fine southern Apple for market and home use. December to April. Medium to large red. Tree vigorous, young, annual heavy bearer.

WAGENER (W).

Beautiful bright red and pale yellow contrasting. October to February. Very good cooking, especially fine eating; tree comes to bear early and bears heavily.



Delicious



Winesap

ily, medium to large, bright light red Apples. Exceptionally good quality. Fine in commercial orchards for filling in between trees slow to come into bearing.

WEALTHY (F).

Particularly valuable for commercial orchards in cold climates. October to January. Bright red, medium to large, good quality. Tree good grower, young bearer and heavy producer.

YELLOW TRANSPARENT (S).

The best extra early Apple for commercial purposes. Reliable bearer, good quality, yellowish white Apple of large size. July to September. Tree comes into bearing very young. One of the best trees to plant with late bearing varieties.

CORTLAND, or IMPROVED McINTOSH (W).

An excellent Snow Apple, very large in size; excellent quality, and quite fragrant. The tree is very vigorous and bears at an early age. Crops are regular and heavy. The commercial orchardist will be especially interested to note that the Apples hold up much better in storage than those of its predecessor, the McIntosh. All our trees from the original strain.

Price—First class treesEach \$2.00

Crab Apples

The Crab Apples are much smaller than other Apples and differ in that they are decidedly acid. For this last reason, they are much desired for preserving and other cooking. Crab Apple Jelly is unsurpassed for both color and flavor.

Prices of The Monroe Nursery's Crab Apples:

Diameter	Height	Each	10
11/16 to 1 inch	5 feet and up	\$1.75	\$16.00
9/16 to 11/16 inch	4 feet and up	1.50	14.00

HYSLOP.

Fruit large, dark red, good for cooking. September and October. Tree hardy and reliable.

Our Grading System Insures You the Best.

Pears

A DELICIOUS EATING FRUIT

The Pear bears early if well cared for. It does best in rich, deep soil. Picked green and stored in a dark, cool place, it will ripen perfectly. European Pears are the finest for quality, but the Japanese are the most prolific.

BARTLETT

A good commercial, late summer, European Pear well known on the market. Large, clear, yellow blushed. Flesh sweet and of very good quality. Tree vigorous, productive, and hardy. Young bearer.

ANJOU

A large greenish pear, shaded with russet-crimson. The flesh is buttery and melting with a sprightly vinous flavor. Trees are vigorous and productive. One of the best varieties for late fall and early winter use. Ripens in October and keeps until mid-winter.

CLAPP FAVORITE

August to September. Lemon-yellow faintly splashed with crimson. Very good quality. Usually the first market Pear. Tree very productive, long lived, young and regular bearer, stands cold probably better than any other variety.

FLEMISH BEAUTY

September to October. Very sweet, large pale yellow. A choice variety as to quality. Tree not an early bearer, stands cold well.

SECKEL

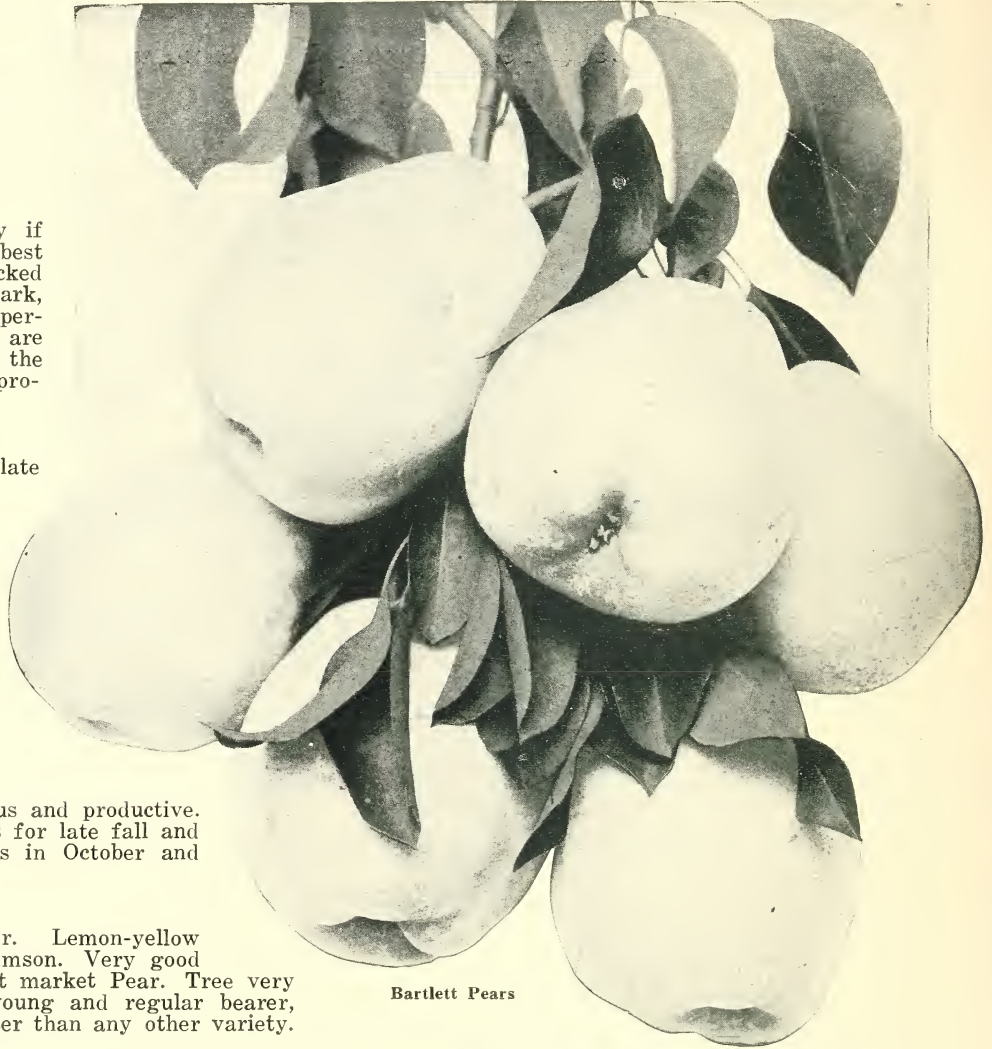
One of the richest, best flavored European Pears. August to October. Small, yellow with red cheek, with much russet. Very free from blight; bears about the fourth year. Late bloomer.

SHELDON

A fine Pear for eating or cooking. Above medium size, with russet skin and ruddy cheek. Quality very high. Good keeper and shipper and much in demand in the markets. Tree hardy and vigorous.

Prices of The Monroe Nursery's Pear Trees:

Diameter	Height	Each	10
11/16 inch and up	5 feet and up	\$2.00	\$18.00
9/16 to 11/16 inch	4 feet and up	1.75	16.00



Bartlett Pears

Dwarf Fruit Trees

The dwarf tree is peculiarly fitted for many positions where a large tree will not do at all. The fruit ripens a little earlier on the dwarf tree and is easily picked because the low, broad heads are accessible from the ground. The tree also bears much younger.

We offer the following lists of varieties of Apples and Pears worked upon dwarf stock. Please refer to standard tree lists for descriptions.

Prices of The Monroe Nursery's Dwarf Fruit Trees:

Diameter	Each	10
5/8 inch and up.....	\$2.00	\$18.00
1/2 to 5/8 inch	1.75	16.00

DWARF APPLE
 Delicious
 Fameuse
 Jonathan
 Wealthy
 Yellow Transparent

DWARF PEAR
 Bartlett
 Clapp Favorite
 Duchesse d'Angouleme
 Seckel

Consult our Landscape Department, See Page 32.

Peaches

NET HANDSOME PROFITS

We list the choicest varieties for this section. You will make no mistake in selecting any of these.

BILLMEYER

Our own introduction. A very large yellow freestone Peach ripening after Early Crawford. Very dark red flush and very small pit. Exceptionally good shipper. This variety is rising in commercial importance.

Diameter	Height	Each	10
9/16 inch and up	4 feet and up	\$1.25	\$11.00
7/16 to 9/16 inch	3 feet and up	1.10	10.00

CHAMPION

Fifteen days before Elberta. White with red center, semi-free to free. Medium size, very fine quality, honey sweet. Skin cream-white with dark red blush. Tree very productive, large and vigorous.

Diameter	Height	Each	10
9/16 inch and up	4 feet and up	\$1.00	\$ 9.00
7/16 to 9/16 inch	3 feet and up	.75	7.00

ELBERTA

The most widely planted and most popular market Peach. Very adaptable to different soils and climates. Trees always bear well, are very resistant to disease; are large, vigorous, early bearing, and long lived. Fruit is well flavored, yellow fleshed, free stone, very large, and good quality. It is an especially long keeping and good shipping fruit.

Diameter	Height	Each	10
9/16 inch and up	4 feet and up	\$1.00	\$ 9.00
7/16 to 9/16 inch	3 feet and up	.75	7.00

J. H. HALE

Five days before Elberta. One of the largest Peaches, yellow, freestone, and very good quality. Only twelve years on the market and already Elberta's strongest competitor. Slightly better quality, same beautiful coloring, larger, a better shipper and keeper. Like Elberta in other characteristics.

Diameter	Height	Each	10
9/16 inch and up	4 feet and up	\$1.00	\$ 9.00
7/16 to 9/16 inch	3 feet and up	.75	7.00

KALAMAZOO

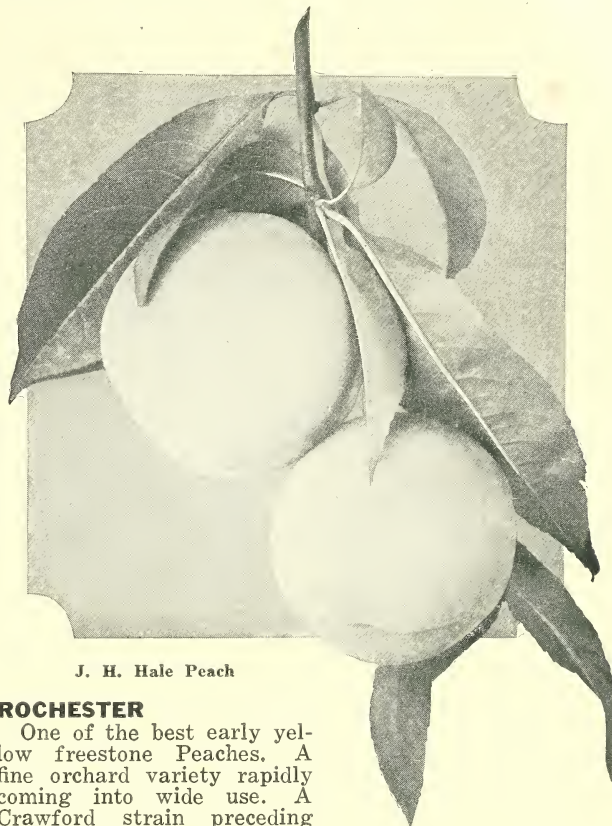
Another Elberta competitor, better quality but not so showy nor productive. Ripens with Late Crawford, a week after Elberta. Ordinarily a medium sized Peach but large if properly thinned. Fruit very high quality for eating or cooking. Skin light yellow with pink flush, flesh yellow, freestone. Tree large and vigorous.

Diameter	Height	Each	10
9/16 inch and up	4 feet and up	\$1.00	\$ 9.00
7/16 to 9/16 inch	3 feet and up	.75	7.00

LOCKWOOD

Three weeks before Early Crawford. Very earliest of yellow freestone Peaches. Large and handsome. Excellent flavor, fine for fancy market. Tree hardy, large, and very productive. This Peach is of our own introduction and of very fast growing popularity.

Diameter	Height	Each	10
9/16 inch and up	4 feet and up	\$1.25	\$11.00
7/16 to 9/16 inch	3 feet and up	1.10	10.00



J. H. Hale Peach

ROCHESTER

One of the best early yellow freestone Peaches. A fine orchard variety rapidly coming into wide use. A Crawford strain preceding Early Crawford several days. Large, covered with mottled red blush. Flesh yellow stained with red at the pit, very good quality.

Diameter	Height	Each	10
9/16 inch and up	4 feet and up	\$1.25	\$11.00
7/16 to 9/16 inch	3 feet and up	1.10	10.00

SUPERIOR

A new Peach rapidly coming into popularity for commercial orchards. It is a very good keeper and shipper. Yellow, exceptionally good quality, excellent bearer, hardy, and vigorous. Fruit ripens in early October just before Smock. Freestone.

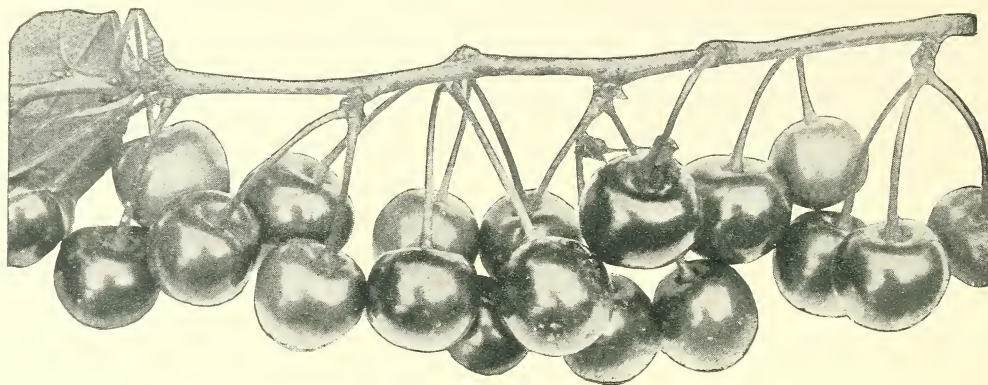
Diameter	Height	Each	10
9/16 inch and up	4 feet and up	\$1.25	\$11.00
7/16 to 9/16 inch	3 feet and up	1.10	10.00

WILMA

A splendid new variety coming from Elberta and promising to be a close competitor. It is hardy as to wood and blossoms; its growth is strong and stocky, and the foliage is large and colored dark green. It has all the fruitfulness of its parent, the Elberta, and its fruit is high in quality; orange yellow in color with deep red blush, yellow flesh with red rays in the center; freestone, and extra large in size. Flavor excellent and mild. Ten days earlier than Elberta.

Diameter	Height	Each	10
9/16 inch and up	4 feet and up	\$1.25	\$11.00
7/16 to 9/16 inch	3 feet and up	1.10	10.00

It Pays to Order Early.



Early Richmond Cherry

Cherries

PROFITABLE AND EASY TO GROW

WE divide Cherries into two groups, sweet and sour, although some varieties are rather midway between. The Sweet Cherry has the large leaves and tree, and makes a fine ornament, but generally is not so productive of fruit. The Sour Cherry is a heavy producer at an early age. The fruit is very valuable for canning and cooking of all sorts. Either sort of tree is satisfactory for the commercial orchard.

Prices of The Monroe Nursery's Sweet Cherry Trees:

Diameter	Height	Each	10
11/16 inch and up	4 feet and up	\$2.25	\$22.00
9/16 to 11/16 inch	3½ feet and up	2.00	19.00

MAY DUKE (Sweet)

One of the oldest, most popular Cherries. Fruit full, hardy, vigorous, and healthy. Fruit early, large, dark red and very good quality. A very good orchard variety were it not that Cherries require several pickings. This is an asset, however, in a tree for a home orchard.

NAPOLEON (Sweet)

The leading firm-fleshed sweet Cherry. Large size, handsome; high quality Bigarreau. Excellent for eating, cooking, or canning. Also a good keeper and shipper. Trees are very productive, come into bearing early, and are hardy, vigorous and healthy.

SCHMIDT (Sweet)

One of the largest black sweet Cherries. Of extra good quality and well suited to commercial orchards. Mid-season. Tree large, vigorous, and productive.

WINDSOR (Sweet)

A standard late Bigarreau. One of the most profitable of the hard-fleshed Cherries. Cherries are dark red to black, of very good quality and stand shipping well. Trees are said to be the hardiest of the Bigarraus, are very free from disease, and very fruitful, but do not bear young.

Prices of The Monroe Nursery's Sour Cherry Trees:

Diameter	Height	Each	10
11/16 inch and up	4 feet and up	\$2.00	\$19.00
9/16 to 11/16 inch	3½ feet and up	1.75	17.00

EARLY RICHMOND (Sour)

One of the leading sour Cherries and the earliest of the good ones. Cherries are light or dark red, medium size, and fair in quality. Used for canning. Can be grown profitably in almost any part of the country.

ENGLISH MORELLO (Sour)

The standard late sour Cherry of America. For home, market, and canning factory uses, not for eating. Large dark red, almost black. Trees small, vigorous, and productive.

KOONTZ (Sour)

Special market variety, very large dark red fruit, slightly acid. Last of June. Strong growing, good bearing tree.

MONTMORENCY (Sour)

Montmorency is the most widely grown Cherry in America. There is no question of its superiority over every other variety in its class. The so-called Large Montmorency is an inferior variety to the above, being a very shy bearer. We have a very excellent strain of the true Montmorency obtained by careful selection and we know that when our trees reach a bearing age they will be found to be superior to other strains. This Cherry is more in demand in the market than any other. It is of fair size, a dark color, and very good quality; being suited to every purpose, even eating from tree when fully ripe. The tree has every desirable characteristic. It is vigorous, hardy, and resistant to all diseases.

WELL PLEASSED

The fruit trees you shipped me were received in the best of condition, and I am very well pleased with all the stock I ordered from you.

H. J. Lange, Forest Lake, Mich.

The Monroe Nursery Salesman is a Helpful Salesman.

Plums

THE plum is equally suited to home and commercial orchard planting. The plum is such a delicious eating and canning fruit it remains ever popular. Give it a rich soil for best results.

Some Plum varieties habitually over-bear and should always be thinned to increase the size of fruit. There are three main groups of Plums and their hybrids. The European are the best in quality, the American are superior as to hardiness, and the Japanese are the earliest bearers.

Prices of The Monroe Nursery's Plum Trees:

Diameter	Height	Each	10
11/16 inch and up	5 feet and up	\$2.25	\$20.00
9/16 to 11/16 inch	4 feet and up	2.00	18.00

BURBANK (Jap.)

A Japanese Plum of very good quality, handsomely colored, dark red over yellow brown. Good shipper and keeper, is not susceptible to disease and is very hardy.

BRADSHAW (Eu.)

One of the most popular orchard varieties. Bears regularly and heavily. Very resistant to scale. Fruit mid-season, dark reddish purple, large, attractive and good shipper and keeper. Stone semi-free.

LOMBARD (Eu.)

Probably the most widely grown Plum. Very adaptable as to soil and climate, constant prolific bearer. Fruit medium size, dark purplish red, fair quality, stone nearly free.

GERMAN PRUNE (Eu.)

Large, vigorous, healthy, productive tree. Fruit small; fine for drying or cooking, tart, free-stone, dark purple.

GREEN GAGE (Reine Claude) (Eu.)

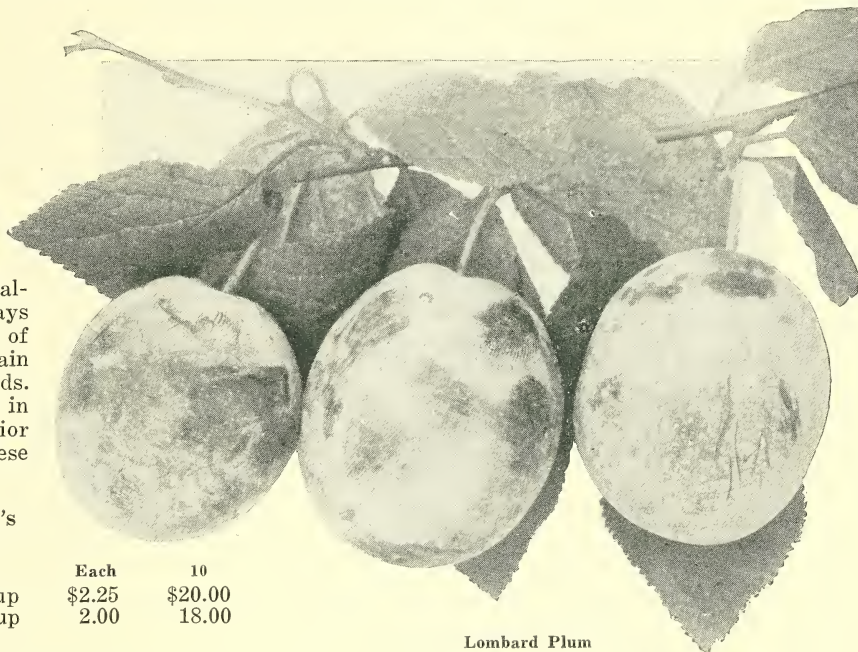
Tree small, very prolific. A profitable market variety. Fruit golden, very good quality, medium size. Semi-cling. Probably is the best canning plum.

MONARCH (Eu.)

Beautiful purple Plum above medium size. Cling-stone. Good quality all-purpose Plum. Tree medium size and vigorous.

SHROPSHIRE (Damson) (Eu.)

Enormously productive tree, easy to care for. Fruit small, dark purple, clingstone, excellent quality. A very good orchard variety.



Lombard Plum

Apricots

Apricots come at a season between Cherries and Peaches. They are bright yellow, sometimes blush with flesh pink. The flesh is delicate and sweet. The daintiness of this fruit makes it worthy of more consideration. By proper cultivation it is as hardy and productive as the Peach.

Prices of The Monroe Nursery's Apricots:

Diameter	Height	Each	10
9/16 to 11/16 inch	3 feet and up	\$2.00	\$18.00
7/16 to 9/16 inch	2½ feet and up	1.75	16.00

LAMALE

Large, round, deep yellow with red cheek; brisk flavor and high quality. The fruit matures about July 10th and the whole tree may be picked at one time, which is a decided advantage when fruit is to be preserved. Fruit is also delicious for dessert.

Quince

A most valuable fruit for canning purposes. Quince preserve is highly esteemed by all. The tree is hardy, free-bearing and remarkably disease-resistant.

ORANGE (Apple)

Large, with fine golden, firm flesh of excellent flavor. Tree prolific. Ripens soon after mid-season.

Diameter	Each
5/8 inch and up	\$ 2.00
1/2 to 5/8 inch	1.75

We grade our fruit and trees both as to diameter and height. This insures you full sized trees for satisfactory planting.

Just Think—Eighty Years of Continuous Service.

Currants

ESPECIALLY DELICIOUS FOR JELLIES AND JAMS

There is money in currants. They make a splendid in-between crop. Grow some for yourself and for those who can't have them. The fruit hangs well on the bush and may be picked when convenient. The bushes are small and take up very little room. Jelly, conserve, and pies of Currants are very delicious. Black Currants are prohibited by law. We do not sell them.

(No less than six plants in an order)

CHERRY

Very large dark red berries. Quite acid. Growth is tall and luxuriant. Bush very prolific.

Price—2 yr. 1st quality\$5.00 per Dozen

PERFECTION

A cross of Fay and White Grape. A bright red, larger than Fay. Flavor mild and rich. One of the most productive Currants and probably the best market variety.

Price—2 yr. 1st quality\$7.50 per Dozen

Raspberries

Most prominent of the bush fruits are the Raspberries. They are extremely valuable both to the market producer and to the home. The fruits are borne early on strong, vigorous, hardy plants. Their flavor and general excellence make them a first choice for the fruit lover; the red and yellow varieties being especially esteemed as a dessert. Raspberry pies, jams and jells need no comment.

Prices of The Monroe Nursery's Raspberry Plants:
\$2.50 per 10 \$4.50 per 25 \$16.00 per 100

(Not to be confused with the standard market Raspberries. These are large mature bearing plants.)

BLACK DIAMOND

American Blackcap. Large healthy plant. Fruit borne in mid-season, black with tinge of red. Quality good.

COLUMBIA (Purple)

A strong grower and unexcelled for productiveness. An excellent shipper and in great demand for canning. Very large, dark reddish purple, rich, juicy and delicious. Ripens in mid-season.

CUMBERLAND

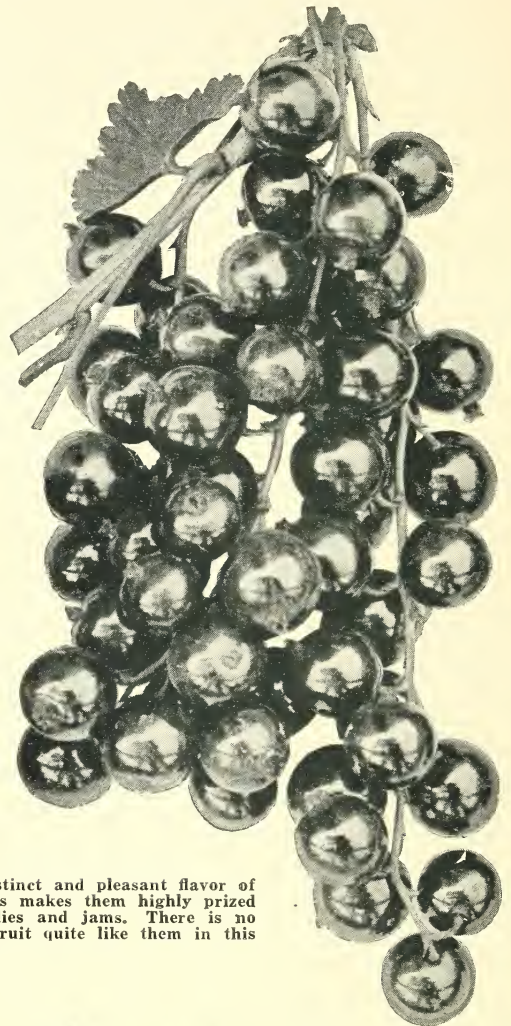
American Blackcap. Very large, oval, glossy black, firm fruit of best quality. Borne early. A standard variety.

CUTHBERT

Red. A very well known sort of high quality. A good shipper. Cuthbert is the most commonly grown red Raspberry. Is well adapted to many soils and climates. Plants are very healthy and productive.

RANERE (St. Regis)

Color bright crimson, firm, rich and delicious, and a splendid shipper. The canes will endure the severest cold without injury. Everbearing and exceptionally prolific.



The distinct and pleasant flavor of currants makes them highly prized for jellies and jams. There is no other fruit quite like them in this respect.

Gooseberries

The green fruit is very desirable for culinary purposes; the excellence of Gooseberry pies is well known. The ripe berries are a fine dessert fruit. The bushes are small, easily cared for, and pay good returns to the commercial planter.

DOWNING

Medium to large, pale green. Quality good. Upright productive bush. Mid-season. The most widely grown variety.

Price—2 yr. 1st quality.....\$0.50 each \$4.50 per 10

RED JACKET (Josselyn)

Medium size, oval, smooth, good flavor. Prolific, bushes bearing very early. Bush a vigorous grower.

Price—2 yr. 1st quality.....\$0.75 each \$6.50 per 10

We issue a much larger catalog than this in which we list every variety we grow. If you don't see what you want here, write us.

We Sell Only Tested Varieties of Fruits.

Grapes

ALWAYS IN DEMAND

Grapes are becoming more popular than ever. There is always a market for them. The attractive vines will climb on fences, trellises and arbors. The uses of the fruit are legion. The grape is easily grown and adapts itself to every soil and climate. With care it will yield profitable crops and is well worth growing.

BRIGHTON

A good commercial variety but self-sterile. A red Grape, handsome, and high in quality. Certain to ripen, being earlier than Concord. Vigorous growing, productive, and adaptable as to soils.

1st quality extra strong.....\$0.50 each \$4.50 per 10

CONCORD

The most widely known Grape in America. 75% or more of all the Grapes grown east of the Rockies are Concord. This is due to excellent quality and the fact that this variety is most adaptable to a great many localities. It is very fruitful, bearing heavily every year, is hardy, and early ripening, making it satisfactory for the North where seasons are short. Bunches and berries are of good size and color.

1st quality extra strong.....\$0.40 each \$3.50 per 10

MOORE EARLY

A Concord variety but two weeks earlier than its parent. One of the best of its season, especially recommended for the North. Large, black berries.

1st quality extra strong.....\$0.50 each \$4.50 per 10

NIAGARA

The Concord of green Grapes. Will stand a large range of soils and climates. Probably the best green Grape for the commercial vineyard. Vine very hardy and productive. Fruit ripens mid-season with Concord. Bunches and berries large and of good quality.

1st quality extra strong.....\$0.50 each \$4.50 per 10

WORDEN

A variety of Concord origin, ripening 10 to 14 days earlier and having larger berries of better quality. It is quite as hardy and healthy as Concord. Color dark purple.

1st quality extra strong.....\$0.50 each \$4.50 per 10

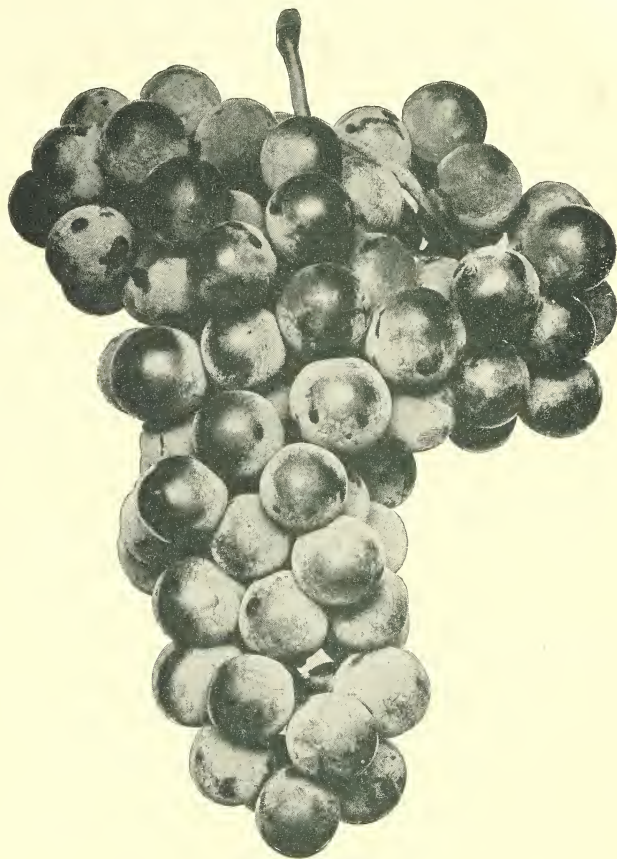
Blackberries

A good grower even in poor lands. Can be planted where other fruits would not succeed. Fine for eating and canning.

BLOWERS

A large, clean, bright berry of exceptionally good quality, with no perceptible core when fully developed. This is a first-class shipper, standing up well in the market for several days. The season of ripening is from the middle of July until frost with the bulk of the crop maturing in August. The bushes are upright growers, are very hardy and enormously productive.

Price \$3.00 per 10 \$5.00 per 25 \$18.00 per 100



Concord Grapes

ELDORADO

An early to medium season berry of great merit. The bushes are hardy and very productive. The berries are large, jet-black, borne in large clusters and ripen well together. They are sweet and melting, have no hard core and keep for 8 or 10 days after picking without quality impaired. We consider this the best variety for home and market use.

Extra quality root cuttings \$3.00 per 25; \$10.00 per 100

SNYDER

A very popular early variety, possibly the hardest of all, and very productive. The berries are of medium size, sweet, melting and delicious.

Price \$1.50 per 10 \$3.00 per 25 \$10.00 per 100

MERSEREAU

A dependable variety for market and home. Plant tall and vigorous. Fruit late mid-season, prolific, excellent quality.

Price \$1.50 per 10 \$3.00 per 25 \$10.00 per 100

Dewberries

LUCRETIA (Transplants)

The best and most dependable dewberry. Large jet black, highly flavored and hardy. A profitable market sort.

Price \$3.00 per 10 \$5.00 per 25 \$18.00 per 100

Consult our Landscape Department, See Page 32.

Strawberries

One of the earliest and most satisfactory plants is the Strawberry. Its luscious berries come at a time when there is a dearth of fresh fruit, and amply fill the place of the sole fruit of the season.

Varieties with so-called "Perfect" flowers may be planted alone, but those with "Imperfect" flowers must be planted with "Perfect" flowered plants to insure the setting of fruit.

Prices on Strawberries (except Progressive).

1st quality\$1.00 per 25; \$1.75 per 50; \$3.00 per 100

BUBACH

Imperfect flowering. An excellent market variety; plants vigorous, healthy, and productive. Fruit glossy bright crimson with red flesh. Quality very good.

DR. BURRILL

Perfect flowering. A very promising commercial variety. Plants numerous, intermediate in vigor, healthy, and productive. Fruit mid-season; large and regular; medium to dark red, with medium red flesh. Quality good.

DUNLAP

Perfect flowering. A favorite market variety. Plants are very numerous, vigorous, healthy and very productive. Fruit very large, mid-season; colored light and dark scarlet. Quality very good.

GANDY

Perfect flowering. A standard market variety with handsome, deep red, firm fruit of good quality; reaching the market at the very close of the Strawberry season. An excellent canning variety. Plants vigorous, low, spreading, and productive.

HAVERLAND

Imperfect flowering. For many years a favorite in home gardens and for local market trade. The crop ripens over a long season; the plant is very hardy, productive, large, upright, vigorous, and healthy. Fruit mid-season, medium to large; light scarlet; flesh light red.

WARFIELD

Imperfect flowering. An especially good variety for the middle West, being prized for its hardy, healthy, and productive plant. The fruits are especially well-liked by canners, as they retain their color, shape, and flavor very well. Plants are vigorous, and make runners very freely. Fruit early to mid-season. Medium size, dark red, well flavored: best quality.

PROGRESSIVE

Perfect flowering. Of the score or more everbearing Strawberries introduced in recent years, Progressive is the most widely known. Its outstanding characteristics are hardiness, freedom from disease and handsome, well-flavored fruits. The plants produce in the spring as well as in the fall. Fruit matures early; varies considerably in size; color medium to dark red; quality very high.

1st quality\$2.00 per 25; \$3.00 per 50; \$5.00 per 100



Warfield Strawberry

Asparagus

The finest delicacy of spring is fresh Asparagus. We list the most desirable varieties. The plants should not be laid deep in the ground, but planted like any other root. The long white stalks can then be obtained by hilling up around the crowns. An excess of fertilizer is recommended to give greatest success in producing the tender shoots. The beds should always be heavily mulched with manure on the approach of Winter.

CONOVER COLOSSAL

Very large, green shoots appearing very thickly. A good standard variety.

1st quality\$1.75 per 25 \$5.00 per 100

MARTHA WASHINGTON

A new variety gaining very rapidly in popularity. It was originated by Prof. Norton of the U. S. D. A. The stalks are large and tender, and have green tips. Plants are very productive.

1st quality\$2.00 per 25 \$6.00 per 100

Rhubarb

Often called wine plant. The long, tender stems are quite acid to taste and make fine pies. It is one of the earliest products of the garden, coming at a most welcome time in spring.

MYATT LINNAEUS

A good producer of medium sized stalks which are very tender and well flavored. Neither stringy or tough.

1st quality\$0.35 each \$2.50 per 10

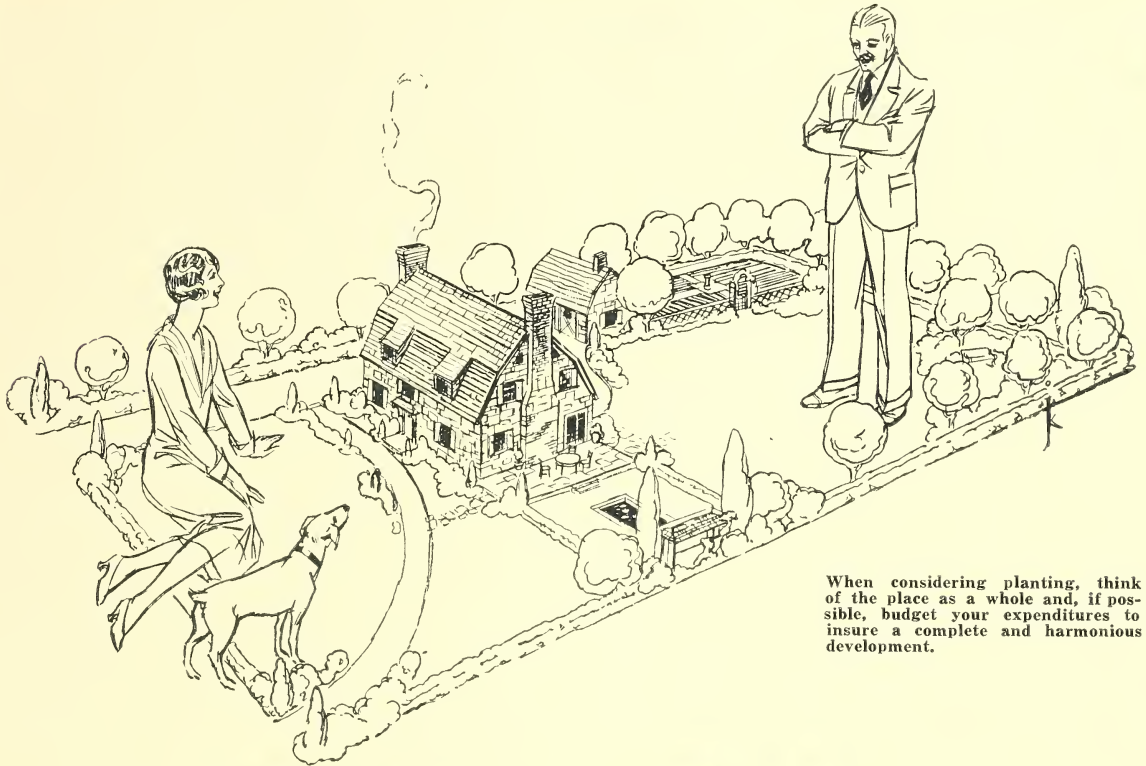
A COMPLIMENT WE APPRECIATE

Gentlemen:

We received stock from your company before and always has given the best satisfaction. We consider your Nursery stock as reliable as your firm has proven to be.

Yours very truly,
H. H. D. Langeris,
Grand Rapids, Mich.

Just Think—Eighty Years of Continuous Service.



When considering planting, think of the place as a whole and, if possible, budget your expenditures to insure a complete and harmonious development.

Ornamental Shrubs

ADD BEAUTY AND ADD VALUE TO YOUR GROUNDS

MUCH of the attractiveness of any well-planted home is due to the careful selection and placing of ornamental shrubs. They are needed about the foundation to give the house a finished look and make it seem a harmonious part of the grounds and also along the boundaries to define the property lines and tie in each man's property to make it appear as his own.

Here we list varieties which are perfectly hardy, each one having many characteristics of individual beauty. A careful selection will enable you to have flowers all through the blooming period—or shrubs with bright stems to gladden winter days. The small investment needed for shrubbery on any home is paid back many times over. Property values increase and everyone, including those who pass by and judge you by the appearance of your place, benefit by planting.

ALTHEA

Althea *Hibiscus syriacus*

Widely known for flower color in fall, foliage lasting late. Shrub is of compact, graceful outline, usually attaining a height of 5 to 8 feet. Native of Japan. Leaves compound, consisting of five to seven leaflets, bright green and shining. Flowers greenish, borne on long stalked clusters. The effect of the luxuriant glossy foliage crowning the arching

branches is very beautiful. May be had in flower colors, rose, red, white, purple, and striped.

Price—2 to 3 feet.....\$1.00 each \$ 9.00 per 10

Althea (Tree Form)

A striking plant for use as a solitary specimen, attaining a height of 10 to 12 feet. Red and white flowered only.

Price—4 to 6 feet.....\$2.00 each \$18.00 per 10

BARBERRY

Japanese Barberry *Berberis thunbergii*

Probably the most widely planted shrub. Very practical for nearly all purposes where beautiful foliage effect is wanted. Habit is dwarf, bushy, and rounding. Small leaves cover the thorny twigs. Some uses are: Edging for shrubbery groups, foundation screening, and hedging. In the last use it is especially desirable for dividing properties or confining lawns, being compact, impassible, and hardy. In fall, leaves are usually a fiery red and bush carries red berries through the winter.

Price—15 to 18 inch.....\$0.50 each \$ 4.50 per 10

18 to 24 inch..... .60 each 5.50 per 10

2 to 3 feet..... .75 each 7.00 per 10

BUTTERFLY BUSH

Butterfly-Bush *Buddleia magnifica*

Sometimes called "Summer Lilac". An interesting free-flowering shrub, recently introduced. The flow-

Our Special Grade of Shrubs Bloom First Year.



Japanese Barberry

ers, lilac, with an orange-yellow spot in the throat, are produced throughout the summer season in dense terminal panicles 4 to 6 inches long. Usually dies down to the ground in winter returning the next spring with renewed vigor.

Price\$0.75 each \$ 7.00 per 10

DEUTZIA

Lemoine Deutzia *Deutzia lemoinei*

Small shrub with spreading branches, usually about three feet tall of garden origin. Leaves bright green, 2 to 3 inches long. Flowers white, borne in thick wreaths along the branches in June. Very vigorous and floriferous.

Price—18 to 24 inch.....\$1.00 each \$ 9.00 per 10
2 to 3 feet..... 1.25 each 12.00 per 10

Pride of Rochester Deutzia]

The earliest bloomer of the Deutzias. A vigorous growing shrub, very distinct. The white flowers, borne in early June, are very large and double. A distinct and valuable variety.

Price—2 to 3 feet.....\$0.75 each \$ 7.00 per 10
3 to 4 feet..... 1.00 each 9.00 per 10

Slender Deutzia *Deutzia gracilis*

A small shrub, usually about 2 feet tall, with slender, often arching branches. Native of Japan. Leaves bright green, 1 to 2 inches long, slightly rough on the upper surface. Flowers white, in graceful nodding racemes. Very showy.

Price—12 to 18 inches.....\$0.75 each \$ 7.00 per 10
18 to 24 inches..... 1.00 each 9.00 per 10

DOGWOOD

Variegated Cornelian Cherry *Cornus elegantissima*

A new and remarkable variety with dark green foliage margined with silver and red. Branches very dark red, retaining their colors the entire winter. A very beautiful and attractive shrub for lawns and group planting. Grows 6 to 8 feet.

Price—2 to 3 feet.....\$1.50 each \$14.00 per 10
3 to 4 feet..... 2.00 each 18.00 per 10

Tatarian Dogwood *Cornus alba or siberica*

An upright shrub with blood-red branches. Native of Siberia. Leaves dark green, pale underneath, 2 to 3 inches long. Flowers creamy white, in numerous small flat-topped clusters. Fruit light blue or bluish white. Usually 6 to 10 feet tall. Very brilliant, in early spring, when the bark is intensely colored.

Price—2 to 3 feet.....\$0.90 each \$ 8.50 per 10
3 to 4 feet..... 1.25 each 12.00 per 10

Yellowtwig Dogwood *Cornus stolonifera flaviramea*

A spreading shrub with bright golden branches, attaining a height of from 4 to 6 feet. Leaves dark green above, whitened beneath. Flowers creamy white, in dense flat-top clusters. Berries white. Remarkably showy both in summer and winter.

Price—2 to 3 feet.....\$1.00 each \$ 9.00 per 10
3 to 4 feet..... 1.25 each 12.00 per 10

EUONYMUS

Winged Euonymus *Euonymus alatus*

A handsome shrub 6 to 8 feet tall, with corky-winged branches. Native of China and Japan. Leaves oval, bright green, fading in autumn with gorgeous tones of red and crimson. A capital shrub for an isolated specimen plant. Attracting attention wherever seen.

Price—18 to 24 inch.....\$1.25 each \$11.00 per 10
2 to 3 feet..... 1.50 each 14.00 per 10
3 to 4 feet..... 2.50 each 22.00 per 10

FORSYTHIA

Fortune Forsythia *Forsythia suspensa fortunei*

Branches arching, bearing dark lustrous green leaves, either simple or three-parted. Flowers golden yellow, often with twisted petals. A grand shrub, often growing 8 to 10 feet high. Valuable both for hedging and as a filler in massed shrub groups.

Price—3 to 4 feet.....\$1.00 each \$ 9.00 per 10
4 to 5 feet..... 1.50 each 14.00 per 10

HONEYSUCKLE

White Belle Honeysuckle *Lonicera bella albida*

Honeysuckles are the first shrubs to show leaves in spring. Flowering in early June. The plant attains a height of 8 or 10 feet and red berries which appear after flowering remain until autumn.

Price—2 to 3 feet.....\$0.75 each \$ 7.00 per 10
3 to 4 feet..... 1.00 each 9.00 per 10
4 to 5 feet..... 1.75 each 16.00 per 10



Deutzia

We Sell Fine Perennials—All Field Grown, See Page 29.



The Beautiful Snowhill Hydrangea

Red Tatarian Honeysuckle *Lonicera tatarica siberica*

A large shrub with numerous upright spreading branches. Leaves ovate, bright green, about 2 inches long. Flowers red, borne in great profusion in late spring. Fruit red or orange, ripening in summer and persisting until autumn. Height 8 to 10 feet.

Price—2 to 3 feet.....\$0.75 each \$ 7.00 per 10
3 to 4 feet..... 1.00 each 9.00 per 10

Rosy Tatarian Honeysuckle *Lonicera tatarica rosea*

Same as above but with pink flowers.

Price—2 to 3 feet.....\$0.75 each \$ 7.00 per 10
3 to 4 feet..... 1.00 each 9.00 per 10

Winter Honeysuckle *Lonicera fragrantissima*

Sometimes called evergreen honeysuckle. A large shrub with numerous spreading branches. Native of China and Japan. Leaves broadly ovate, bright green, persistent until mid-winter. Flowers creamy white or light yellow, expanding with the first breath of spring, deliciously fragrant. Height 6 to 8 feet. A grand shrub.

Price—2 to 3 feet.....\$1.00 each \$ 9.00 per 10
3 to 4 feet..... 1.25 each 11.00 per 10

HYDRANGEA

Peegee Hydrangea

Excellent for tall hedges. Undoubtedly the most popular variety of Hydrangea and one of the showiest shrubs in cultivation. The flowers are almost all ray-like and sterile, and are produced in very large panicles. When fully expanded the flowers are white, but soon assume tones of bronze on the exposed sides. This shrub requires severe pruning in early spring to insure the largest trusses of flowers. Very showy when planted in large groups and extremely conspicuous and effective in border plantings of various shrubs.

Price—18 to 24 inch.....\$1.00 each \$ 9.00 per 10
2 to 3 feet..... 1.25 each 11.00 per 10

Tree Form

Same as above but grown and cultivated with single leader, as a tree. Very desirable form for specimen planting.

Price—
3 to 4 feet....\$2.50 each \$22.00 per 10
4 to 5 feet.... 3.00 each 28.00 per 10

Smooth Hydrangea *Hydrangea arborescens*

Often called "Hills of Snow". Similar in a way to the "Snowball" in appearance. Excellent for solid low borders or foundation plantings. Should be trimmed to the crown each spring before growth starts. Ordinarily an upright shrub reaching 4 to 8 feet in height. Leaves bright green, flowers creamy white, generally with a few sterile rays borne in numerous flat-top clusters in early summer; lasting until fall. Hardy and attractive.

Price—
18 to 24 in...\$1.00 each \$ 9.00 per 10
2 to 3 ft... 1.25 each 11.00 per 10
3 to 4 ft... 1.50 each 14.00 per 10

JETBEAD

Jetbead *Rhodotypos kerrioides*

A handsome and distinct shrub, usually 4 to 5 feet tall. Native of Japan. Leaves ovate, with a long slender point, bright green and lustrous. Flowers pure white, an inch or more across, appearing in late spring. The black berries are retained throughout the winter.

Price—2 to 3 feet.....\$1.00 each \$ 9.00 per 10
3 to 4 feet..... 1.50 each 14.00 per 10

MOCKORANGE

Dwarf Golden Mockorange

A hardy shrub with arching upright branches. Native of Europe. Foliage yellow, and much prized for its bright effect. Flowers creamy white. This plant is decidedly dwarf especially valuable for bordering groups of larger shrubs.

Price—12 to 18 inch.....\$1.00 each \$ 9.00 per 10
18 to 24 inch..... 1.25 each 11.00 per 10



Mockorange

Our Grading System Insures Success.

Sweet Mockorange *Philadelphus coronarius*

A hardy shrub, with upright, often arching branches, attaining a height of 8 to 10 feet. Native of Europe. Leaves ovate, bright green, 2 to 4 inches long. Flowers creamy white, deliciously fragrant borne in great profusion. Very showy and desirable.

Price—2 to 3 feet.....\$0.75 each \$ 7.00 per 10
 3 to 4 feet..... 1.00 each 9.00 per 10
 4 to 5 feet..... 1.25 each 11.00 per 10

Virginal Mockorange

Magnificent new variety. Moderately tall with good foliage and compact habit. The flowers are extremely large and creamy white and very fragrant, long blooming.

Price—18 to 24 inch.....\$1.75 each \$16.00 per 10
 2 to 3 feet..... 2.00 each 18.00 per 10

PRIVET

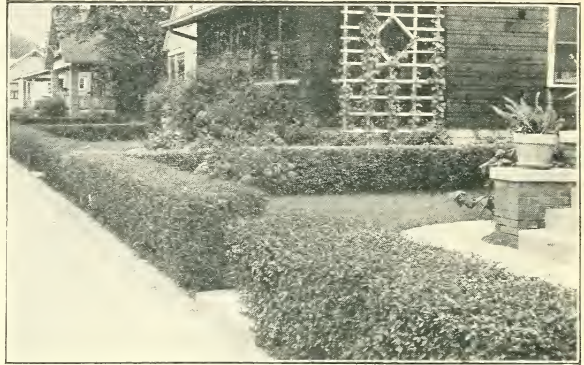
Amur Privet *Ligustrum amurense*

The strong growth and resistance to freezing down of this shrub make it especially useful in northern climates. The dark, lustrous, green leaves persist late in fall. The plant stands trimming well and is, therefore, excellent for formal hedges. If unchecked by trimming it will reach a height of 8 to 12 feet. Flowers white, conspicuous; in erect panicles.

Price—12-18 in.....\$0.30 ea.; \$2.50 per 10; \$15.00 per C
 18-24 in..... .40 ea.; 3.50 per 10; 18.00 per C
 2- 3 ft..... .50 ea.; 4.50 per 10; 25.00 per C

California Privet *Ligustrum ovalifolium*

A large shrub of compact upright habit. Native of Japan. Leaves dark green and glossy, broad and firm, about 2 inches long. Flowers white, in dense upright panicles 2 to 3 inches long. This is the most popular hedge plant but is not quite so hardy as the



Privet Makes an Excellent Hedge

other Privets. Privet. Nearly evergreen in the South. Height 8 to 12 feet.

Price—12 to 15 inch.....\$1.50 per 10 \$ 7.50 per C
 15 to 18 inch..... 2.00 per 10 9.00 per C
 18 to 24 inch..... 2.20 per 10 12.00 per C
 2 to 3 feet..... 2.70 per 10 15.00 per C
 3 to 4 feet..... 4.00 per 10 25.00 per C

ibota Privet *Ligustrum ibota*

A large shrub with graceful arching branches. Native of China and Japan. Leaves dark green and lustrous, 1 to 2 inches long, persisting until the advent of cold weather. Flowers white, numerous nodding clusters. Berries black with a bloom. A handsome shrub, valuable for specimen plants, mass planting, or hedges.

Price—12-18 in.....\$0.30 ea.; \$2.50 per 10; \$15.00 per C
 18-24 in..... .40 ea.; 3.50 per 10; 18.00 per C
 2- 3 ft..... .50 ea.; 4.50 per 10; 25.00 per C

Regel Privet *Ligustrum regelianum*

An almost dwarf type of privet; low, dense, and with almost horizontal spreading branches. It is absolutely hardy, graceful, and sufficiently dense for hedge purposes without trimming. Also especially adapted for foundation planting.

Price—18-24 in.....\$0.75 ea.; \$7.00 per 10; \$50.00 per C
 2- 3 ft..... 1.00 ea.; 9.00 per 10

QUINCE

Flowering Quince *Cydonia japonica*

A spiny shrub with bright green glossy leaves. Native of China and Japan. Flowers scarlet, large and showy. Fruits about 2 inches in diameter, yellowish green, aromatic, fragrant. They are invaluable for border or garden planting and make beautiful informal or clipped hedges.

Price\$1.25 each \$11.00 per 10

RUSSIAN OLIVE

Russian-Olive *Elaeagnus angustifolia*

One of the most excellent shrubs for all climates, striking in foliage color and so vigorous as to be unsurpassed where quick growth is needed. A large shrub, with silvery, often spiny branches. Leaves bright green above, silvery beneath, lanceolate, 2 to 3 inches long. Flowers yellow within, silvery on the outside, fragrant. Berries yellow, coated with silvery scales. Height 8 to 12 feet.

Price—2 to 3 feet.....\$0.75 each \$ 7.00 per 10
 3 to 4 feet..... 1.00 each 9.00 per 10
 4 to 5 feet..... 1.50 each 14.00 per 10
 5 to 6 feet..... 2.50 each 22.00 per 10



Cut Leaf Staghorn Sumac

It Pays to Order Early.



Vanhoutte Spirea (Bridal Wreath)

SUMAC

Cutleaf Sumac *Rhus glabra laciniata*

A very ornamental type little known, but extremely useful in any landscape scheme. Quite dwarf, dense growing, with leaves deeply cut giving a fern like appearance. A very distinctive shrub.

Price—18 to 24 inch.....\$1.00 each \$ 9.00 per 10
2 to 3 feet..... 1.50 each 14.00 per 10

Smooth Sumac *Rhus glabra*

Large rangy shrub of open appearance having large leaves suspended from long leaf-stalks. Bark very smooth; useful for group plantings of large shrubs. Very effective in autumn with crimson seeds and foliage.

Price—3 to 4 feet.....\$1.00 each \$ 9.00 per 10
4 to 5 feet..... 1.25 each 11.00 per 10
5 to 6 feet..... 1.75 each 16.00 per 10

Shredded Sumac *Rhus typhina laciniata*

The leaves are as beautifully cut as the most delicate fern. The foliage assumes most brilliant coloring in the fall. This combined with its showy clusters of crimson fruit, makes the Shredded Sumac unique for mass planting, where rich color effects are desired.

Price—3 to 4 feet.....\$1.25 each \$12.00 per 10
4 to 5 feet..... 1.50 each 14.00 per 10

Staghorn Sumac *Rhus typhina*

Picturesque and rugged in all stages of development to its small-tree maturity of about 30 feet. Flowers are borne during June and July in dense terminal panicles followed by striking red fruit clusters. Very useful in large shrub groupings. Will thrive in poor soil.

Price—3 to 4 feet.....\$1.25 each \$11.00 per 10
4 to 5 feet..... 1.50 each 14.00 per 10

SPIREA

Anthony Waterer Spirea

A remarkable free-flowering shrub with upright branches, attaining a height of about 2 feet. Of garden origin. Leaves bright green, often with variegations of yellow, with incised and serrate borders. Flowers bright crimson, disposed in dense corymbs, blossoming through the summer and fall. A valuable border plant of increasing popularity.

Price—12 to 18 inch.....\$0.75 each \$ 7.00 per 10
18 to 24 inch..... 1.00 each 9.00 per 10
2 to 3 feet..... 1.25 each 11.00 per 10

Douglas Spirea *Spiraea douglasii*

An upright shrub 5 to 7 feet tall, with reddish brown branches. Leaves narrowly oblong, green above, white woolly beneath. Flowers deep pink, in long dense panicles. Very showy and quite hardy.

Price—2 to 3 feet.....\$0.75 each \$ 7.00 per 10
3 to 4 feet..... 1.00 each 9.00 per 10

Thunberg Spirea *Spiraea thunbergii*

A very graceful shrub, flowering early in the spring, being among the first shrubs to bloom. Branches slender and drooping. Small, bright green leaves which give a light feathery appearance. Pure white flowers. Dwarf.

Price—18 to 24 inch.....\$1.00 each \$ 9.00 per 10
2 to 3 feet..... 1.25 each 11.00 per 10

Vanhoutet Spirea *Spiraea vanhouttei*

The most frequently used shrub of all. Grand and graceful with numerous arching branches; of garden origin. Probably the most widely known and planted of all shrubs. Leaves dark green, with incised borders, pale bluish-green beneath, persisting until late autumn. Flowers white, in numerous dense-flowered umbels in late spring. Quite hardy and attaining a height of 5 to 6 feet. Cannot be too highly recommended.

Price—2 to 3 feet.....\$0.50 each \$ 4.50 per 10
3 to 4 feet..... .75 each 7.00 per 10
4 to 5 feet..... 1.25 each 11.00 per 10

SWEETSHRUB

Common Sweetshrub *Calycanthus floridus*

Very unique ornamental shrub growing 3 to 4 feet in height. Foliage large and handsome generally rough on the upper surface. Flowers double, chocolate-colored, and having a pleasing spicy odor.

Price—18 to 24 inch.....\$1.00 each \$ 9.00 per 10
2 to 3 feet..... 1.25 each 11.00 per 10

SYMPHORICARPOS

Coralberry *Symphoricarpos vulgaris*

A grand shrub, producing a wealth of red or purple berries which remain on the branches all winter. Leaves ovate, bright green, often tinged with reddish purple when young, persisting until early winter. Flowers greenish red, in summer. Berries coloring in early autumn, very showy.

Price—2 to 3 feet.....\$0.75 each \$ 7.00 per 10
3 to 4 feet..... 1.00 each 9.00 per 10

Consult our Landscape Department.

See page 32 for details.

Visit our Nursery During Blooming Season.



Purple Lilacs

Common Snowberry *Symphoricarpos racemosus*

Much noted for its large clusters of milk white fruits produced in August and lasting through the winter. Graceful shrub, 3 to 5 feet tall, with slender branches. Leaves elliptic or broadly ovate, sometimes lobed on the shoots. Flowers white or pinkish, in loose, often leafy racemes, in summer.

Price—2 to 3 feet.....\$1.00 each \$ 9.00 per 10
 3 to 4 feet..... 1.25 each 11.00 per 10

LILAC

Common Lilac *Syringa vulgaris*

A large upright shrub with heart-shaped, bright green leaves. Flowers deliciously fragrant, varying from pink to shades of lilac, blue and purple. This is the lilac commonly found in many home-grounds bearing its clusters of blooms so plentifully during May and June.

Price—18 to 24 inch.....\$1.00 each \$ 9.00 per 10
 2 to 3 feet..... 1.25 each 11.00 per 10
 3 to 4 feet..... 2.00 each 18.00 per 10

Late Lilac *Syringa villosa*

An upright shrub with stout warty branches, attaining a height of 5 to 8 feet. Native of the Himalayas. Leaves broadly oblong, pointed at the apex, bright green, but without luster. Flowers pinkish, in broad panicles 3 to 6 inches long, expanding in late spring.

Price—2 to 3 feet.....\$1.25 each \$11.00 per 10
 3 to 4 feet..... 1.50 each 14.00 per 10
 4 to 5 feet..... 2.00 each 18.00 per 10

**Lilac—
 Named Varieties**

Belle de Nancy

Fine panicles of double flowers, beautiful satiny-pink in color.

Mme. Abel Chatenay

Very large trusses thickly set with purest white flowers.

Mme. Casimer-Perier

Excellent double white lilac. Blooms are immense in size and deliciously scented.

Michael Buchner

Dwarf and stalky. Delicately beautiful trusses with pale lilac colors.

**Souvenir de Ludwig
 Spaeth**

Single. Darkest of the blue. Long panicles of deep purple.

Price—2 to 3 feet.....\$1.25 each \$11.00 per 10
 3 to 4 feet..... 1.50 each 14.00 per 10

Persian Lilac *Syringa persica*

A graceful shrub with slender branches, attaining a height of 6 to 8 feet. Leaves broadly lanceolate, of a rich green color. Flowers pale lilac in broad panicles 3 to 4 inches long, opening in late spring.

Price—2 to 3 feet.....\$1.50 each \$14.00 per 10
 3 to 4 feet..... 2.00 each 18.00 per 10

White Common Lilac *Syringa vulgaris alba*

White variation of the common lilac.

Price—18 to 24 inch.....\$1.00 each \$ 9.00 per 10
 2 to 3 feet..... 1.25 each 11.00 per 10
 3 to 4 feet..... 2.00 each 18.00 per 10

White Persian Lilac *Syringa persica alba*

Like *Syringa persica* but white.

Price—2 to 3 feet.....\$1.50 each \$14.00 per 10
 3 to 4 feet..... 2.00 each 18.00 per 10

TAMARIX

African Tamarix *Tamarix africana*

A tall graceful shrub, with small foliage like a Juniper, and delicate, small, rosy purple flowers, produced in spikes in spring or early summer.

Price—3 to 4 feet.....\$1.00 each \$ 9.00 per 10

Fivestamen Tamarix *Tamarix pentandra, aestivalis*

Silvery green feathered foliage. Bush more dwarf and spreading than African Tamarix. Large panicles of lavender flowers, borne in July and August. A very interesting plant different from other shrubs and, therefore, suited to contrasting shrub groupings.

Price—3 to 4 feet.....\$1.25 each \$11.00 per 10

It is Easy to Succeed With Plants from Monroe Nurseries.

VIBURNUM

Common Snowball *Viburnum opulus sterile*

A grand hardy shrub, with handsome showy flowers produced in large globular clusters. All the flowers are sterile and radiant, and appear in numerous compact balls in spring. An old-time favorite and without doubt one of the best of flowering shrubs.

Price—2 to 3 feet.....\$1.25 each \$11.00 per 10
3 to 4 feet..... 1.75 each 16.00 per 10

Cranberrybush *Viburnum opulus*

A handsome tall growing shrub reaching a height of 6 to 8 feet. The berries, borne in late summer, persist through the winter on the bare branches. Leaves dark green with bronzy margins broadly ovate in outline. Very handsome. Flowers white, produced in flat-topped clusters with the marginal ones sterile and radiant. Berries red, changing to bluish black.

Price—2 to 3 feet.....\$1.25 each \$11.00 per 10
3 to 4 feet..... 1.75 each 16.00 per 10

Kentucky Viburnum *Viburnum molle*

A very robust shrub growing 5 to 6 feet. Leaves dark green, hairy. Flowers white and very large.

Price—2 to 3 feet.....\$1.00 each \$ 9.00 per 10
3 to 4 feet..... 1.50 each 14.00 per 10

Wayfaring Tree *Viburnum lantana*

A large shrub with scurfy branches, usually growing 10 to 15 feet tall. Native of Europe. Leaves heart-shaped, wrinkled, dark green above, downy beneath. Flowers white, disposed in dense flat-topped clusters. Usually with seven showy white ray-flowers on the margins. Berries bright red, changing to black. Splendid specimen plants.

Price—2 to 3 feet.....\$1.00 each \$ 9.00 per 10
3 to 4 feet..... 1.25 each 11.00 per 10

WEIGELA

Eva Rathke Weigela

A remarkable free blooming hybrid Weigela, the most distinct and one of the most attractive varieties. Flowers are very distinct in color, being rich

reddish purple, quite different from anything heretofore offered.

Price—18 to 24 inch.....\$1.25 each \$11.00 per 10
2 to 3 feet..... 1.75 each 16.00 per 10

Pink Weigela *Weigela rosea*

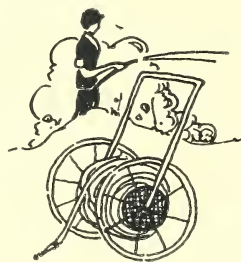
A free-flowering shrub, usually about 6 feet tall with numerous spreading branches. Leaves dark green, smooth except on the midrib and veins. Flowers rose-colored, large and showy, produced in great profusion.

Price—2 to 3 feet.....\$1.00 each \$ 9.00 per 10
3 to 4 feet..... 1.25 each 11.00 per 10

White Weigela

A slow growing but large sized shrub, vigorous and erect. Flowers pure white and produced in great profusion in June. Plants continue to bloom through the summer.

Price—3 to 4 feet.....\$1.50 each \$14.00 per 10



**SHRUBS
for
VARIOUS
PURPOSES**

SHRUBS FOR LOW FOUNDATIONS

- Spirea, several
- Japanese Barberry
- Coralberry
- Snowberry
- Hydrangea
- Rugosa Rose
- Weigela
- Deutzia

SHRUBS FOR SHADY LOCATIONS

- Van Houtte Spirea
- Japanese Barberry
- Snowberry
- Coralberry
- Hydrangea
- Honeysuckles
- Dogwoods
- Forsythias
- Privets
- Deutzias
- Mock Orange
- Viburnums

SHRUBS with COLORED BARK IN WINTER

- Tatarian Dogwood
- Yellow-twigged Dogwood
- Variegated Cornelian Cherry



Weigela Rosea

Our Salesmen are Courteous and Eager to Serve.

Trees for Shade and Beauty



THERE is growing constantly a deeper appreciation of trees. Greater attention than ever is being paid to the trees along the city's streets, and it is a well recognized fact that the shade and shelter given by trees not only adds to the beauty and comfort of the home, but greatly increases the value of the property.

The trees listed here are a selection from the many varieties we grow, are all thrifty, vigorous specimens which have, by cultivation, been encouraged to grow great quantities of fibrous roots, so essential to successful transplanting.

A list of trees for different purposes is given on page 22.



Umbrella Catalpa Used Effectively Along Entrance Walk

AILANTHUS

Ailanthus *Ailanthus glandulosa*

A rapid growing tree from China. Leaves odd-pinnate, with 13 to 25 leaflets, bright green. Flowers in large panicles, succeeded by dense fruit-clusters which are often very highly colored. Much used for street planting where smoke or dust affects other species. Price—6 to 8 feet.....\$2.50 each

CATALPA

Umbrella Catalpa *Catalpa bungei*

A very popular widely used ornamental tree. The appearance is very formal. It may be planted to

outline a drive or used as a single ornamental specimen. The dense, round head, grafted high on the great slender stem, has an appearance much in contrast to other trees or shrubs. Very hardy and vigorous.

Price—5 to 6 feet.....\$3.50 each

CRAB

Bechtel Crab *Malus ioensis plena*

A shrub or small tree with spreading or ascending branches, forming a wide head. Leaves ovate or oval, dark green and lustrous on the upper surface, paler and pubescent beneath, turning yellow in autumn. Flowers large and very double, resembling small roses, a delicate pink or blush color; fragrant. One of the most remarkable of double flowering crabs and worthy of a place in any garden.

Price—3 to 4 feet.....\$3.00 each

Redvein Crab *Malus neidzwetzkyana*

A new variety deserving of great popularity. The bark, twigs, branches, and stems are red, also the young leaves. The plant has great color value in winter landscapes. A wealth of large white flowers, shading to pink are produced early in spring.

Price—3 to 4 feet.....\$5.00 each

ELM

American Elm *Ulmus americana*

One of the most important of our street trees. The Elm grows slowly and presents a stately appearance not to be had from any other large tree. The large wide-spreading branches form a broad crown. Leaves are broadly obovate, sharply serrate, and somewhat incised, very rough, and of deep green color remaining bright and fresh until the end of the summer season.

Price—1½ to 2 inches diameter.....\$5.50 each



American Elm

Our Grading System Insures You the Best.

Camperdown Elm

A very graceful weeping tree. Large luxuriant deep green foliage on many-croched drooping branches, the whole being grafted on a tall trunk. A very excellent tree for relieving the monotony of a formal landscape.

Price—Specimens\$10.00 each

HAWTHORN

Paul Double Scarlet Hawthorn

A most beautiful specimen tree or large shrub with spreading branches. Flowers bright scarlet, large, full, and very double. Leaves ovate, 3 to 7 lobed, bright glossy green. This makes an excellent specimen for the lawn.

Price—4 to 5 feet.....\$5.00 each

MAIDENHAIR TREE

Maidenhair Tree *Ginkgo biloba*

This species, the only representative left of a large class of prehistoric trees. A beautiful lawn tree from Japan. Rich, glossy, fern-like foliage. A tall, upright, rapid grower. An elegant tree especially desirable on account of its rarity.

Price—5 to 6 feet.....\$3.00 each

MAPLE

Norway Maple *Acer platanoides*

A large handsome tree with spreading branches and a compact round head. Probably the best Maple for city planting. Leaves five-lobed, remotely toothed, bright green, paler beneath, smooth on both surfaces, fading with the tones of yellow and gold. The slowest grower of the Maples but possessing the most permanent characteristics.

Price—8 to 10 feet.....\$ 4.50 each \$40.00 per 10
 3 to 4 inch..... 20.00 each

Silver Maple *Acer dasycarpum*

A large tree with wide spreading branches and pendulous branchlets. Leaves deeply five-lobed, and divisions again lobed and toothed, bright green above, silver-white beneath, turning pale yellow in autumn. The fruit ripens usually before the leaves appear. This tree is widely cultivated and is probably the most satisfactory tree where quick growth is desired. It is much in demand for street plantings in cities.

Price—
 8 to 10 ft.....\$2.50 each \$22.50 per 10
 1½ to 2 in... 4.00 each 35.00 per 10

MULBERRY

Weeping Mulberry

A striking specimen tree. The slender stock is topped with a large crown of twisted limbs from which long leafy branches hang to the ground. In the landscape scheme the Weeping Mulberry has many uses among which are screening, marking points of interest, and making backgrounds. A veritable arbor may be built by planting these trees in double rows or in a circle and intertwining the young growth.

Price—Specimens\$6.00 each

Russian Mulberry *Morus alba tatarica*

A rapid growing tree, quite hardy and needing no care. It is especially useful where a fine large ornamental tree is needed. The fruit is very attractive to birds.

Price—5 to 7 feet.....\$2.00 each

OAK

Pin Oak *Quercus palustris*

A handsome tree with drooping branches forming a broad, shapely, pyramidal crown. Leaves deeply 5 to 7 lobed, the divisions toothed towards the apex with bristle-pointed teeth. They are ruddy green at the time of unfolding, dark green and glossy at maturity, fading in autumn with tones of deep and brilliant scarlet. Acorn is light brown, enclosed at the base in a thin cup. Makes one of the most shapely and graceful trees, the branches sweeping the ground.

Price—1½ to 2 inch.....\$7.50 each

White Oak *Quercus alba*

A tall, majestic tree with a broad, round-topped crown. Leaves mostly divided into 7 lobes, the larger segments usually shallowly lobed. They are highly colored with red at the time of unfolding, soon becoming silvery white, at maturity bright green above, pale or glaucous beneath, fading in autumn with rich tones of purple and vinous red, sometimes hanging until spring. One of the finest oaks for lawn or landscape, attaining great age.

Price—1½ to 2 inch.....\$7.00 each

PLUM

Flowering Plum *Prunus triloba*

Vigorous growth, semi-double flowers of a delicate pink, upward of an inch in diameter, thickly



Pin Oaks

Just Think—Eighty Years of Continuous Service.

set on slender branches in May. A choice and very attractive spring blooming plant, excellent as a lawn specimen.

Price—3 to 4 feet.....\$2.00 each

Purpleleaf Plum *Prunus pissardi*

A handsome small tree of garden origin with purple foliage. Very hardy and retaining its purple color throughout the summer. In spring the bluish-pink flowers are borne in great profusion, harmonizing with the color tone of the unfolding leaves. One of the best purple-leaved trees, the hot sun not affecting the leaves.

Price—4 to 6 feet.....\$3.00 each

POPLAR

Bolleana Poplar *Populus bolleana*

A tall columnar tree of formal aspect, the leaves deeply 3 to 5 lobed, silvery white beneath. Resembles the Lombardy Poplar and, like it, is useful for formal gardens or architectural effects.

Price—8 to 10 feet.....\$4.00 each \$36.00 per 10

Carolina Poplar *Populus eugeni*

A symmetrical and very rapid growing tree, making an upright or pyramidal head. Very satisfactory where a fast growing tree is desired.

Price—8 to 10 feet.....\$1.25 each \$11.00 per 10

Lombardy Poplar *Populus nigra italica*

A tall columnar tree of picturesque and very formal aspect. One of the characteristic trees of Lombardy and other parts of Italy. Widely planted; a very rapid growing and hardy tree. Leaves triangular, the border serrate, dark green, borne on flattened petioles moving freely in the wind.

Price—8 to 10 feet.....\$1.50 each \$14.00 per 10

RED BUD

American Red Bud *Cercis canadensis*

A small tree with a wealth of floral beauty. Leaves heart-shaped, deep rich green, fading with tones of bright, clear yellow. Flowers produced in early spring, almost concealing the branches, borne in clusters of 4 to 8, of a beautiful rose-pink color. One of the best of the flowering trees.

Price—3 to 4 feet.....\$4.00 each



Lombardy Poplars

WILLOW

Golden Willow *Salix vitellina*

A tree with intensely golden branches. Leaves lanceolate, silky when young, bright green, and smooth on the upper surface when mature. The bright colored bark is very attractive in winter, especially when contrasted with snow or trees of other colors.

Price—6 to 8 feet.....\$2.00 each

Thurlow Weeping Willow *Salix elegantissima*

A spreading weeping Willow with a massive symmetrical crown. Native of Japan. Branches long and pendulous, clothed with yellow-green bark.

Price—8 to 10 feet.....\$2.00 each \$18.00 per 10

HOW to SELECT TREES

TREES FOR STREET PLANTING

Elm
Maple
Pin Oak

FOR DRY PLACES

Junipers
Mugho Pine
Elm
Locust
Russian-Olive

TREES FOR WINTER BEAUTY

Golden Willow
Evergreens

TREES THAT FLOWER

Hawthorn
Catalpa
Red Bud
Linden
Crab Apple
Plum

TREES WITH ATTRACTIVE AUTUMN FOLIAGE

Maples
Oaks

TREES FOR QUICK EFFECT

Ailanthus
Catalpa
Silver Maple
Mulberry
Poplar
Willow

WEeping TREES

Camperdown Elm
Weeping Mulberry
Thurlow Weeping Willow

FOR MOIST PLACES

Willow
Poplar
Oaks
Linden
Elm

Consult our Landscape Department, See Page 32.

Vines

CLIMBING and Clinging Varieties

Fiveleaf Akebia *Akebia quinata*

A very ornamental vine of Japanese origin especially recommended for places where dense shade is not required. The leaves are compound, consisting of five dark green, almost evergreen leaflets. Flowers rosy purple, produced in axillary racemes in late spring or early summer. Fruit very showy, but unfortunately rarely produced. 3 to 5 inches long. Dark purple. Very dainty and desirable.

Price\$1.00 each \$ 9.00 per 10

Sweet Autumn Clematis *Clematis paniculata*

A vigorous, hardy climber with long stem, well adapted for covering porches, arbors, or trellis work, or for training against walls or sides of buildings. Native of Japan. Leaves compound, consisting of several bright green leaflets which persist until early winter. Flowers white, fragrant, profusely borne in axillary and terminal panicles literally covering the upper portions of the vine in late summer and early autumn. A grand plant.

Price\$0.75 each \$ 7.00 per 10



Boston Ivy



Clematis Paniculata

Henry Clematis

A large-flowering hybrid Clematis. Flowers creamy white.

Price\$1.50 each \$14.00 per 10

Dutchmans Pipe *Aristolochia siphon*

A grand, hardy vine producing a splendid dense shade. Leaves very broad and large, bright green. Flowers purplish and yellowish green, solitary or two or three together, from the axils of the leaves, resembling a Dutch tobacco pipe.

Price\$ 2.50 each

Halls Japan Honeysuckle *Lonicera japonica halliana*

A rampant evergreen climber with stems 10 to 15 feet long. Native of Japan. Leaves ovate, dark green, densely covering the vines and branches. Flowers white, changing to yellow, deliciously fragrant, borne in great profusion in the summer, and occasionally in the autumn. Grand for trellises and ground cover. One of the best.

Price\$0.75 each \$ 6.50 per 10

Boston Ivy *Ampelopsis veitchii*

A graceful vine, clinging to walls by means of disc-bearing tendrils. Native of China and Japan. Leaves three-lobed or often with three distinct leaflets, glossy green, coloring brilliantly in autumn. Berries blue, profusely borne in compound clusters. One of the most beautiful and one of the most popular vines.

Price\$1.00 each \$ 9.00 per 10

Vines go a Long Way Towards Making a House a Home.



A Mass Planting of Evergreens Will Grow More Beautiful Yearly

Evergreens

THE ARISTOCRATS OF THE GARDEN



which to group trees with beautifully colored leaves or branches, and for winter decoration.

ARBORVITAE

American Arborvitae *Thuja occidentalis*

Erroneously but commonly called White Cedar. Tree attaining 60 feet or more, with short horizontal branches ascending at the end and forming a narrow, pyramidal, rather compact head. One of the most commonly planted and popular Evergreens and the parent of a great number of other beautiful varieties; the standard tree for hedges, windbreaks and background work. It is often used as a specimen

THE Evergreens are indispensable in some features of ornamental planting. They are especially valuable for foundation planting, for screens, and windbreaks, for a background against

also. Its very flat and solid leaves are of attractive shades of solid dark and light green seldom having brown tints. It is very vigorous and well adapted to various soils and climates but does not hold up in city atmospheres as well as do Junipers and Spruces. Price—5 to 6 feet.....\$10.00 each

American Globe Arborvitae *Thuja occidentalis globosa*

A dwarf globose form of American Arborvitae forming a round, dense head. Especially desirable for formal effects.

Price—18 to 24 inch.....\$ 6.00 each

Berckmans Golden Arborvitae *Thuja orientalis aurea nanum*

Intensely golden foliage standing out boldly from green underfoliage, having a peculiar, sharp, contrasting effect. This little Evergreen is especially valuable to add points of interest to any planting. It is perfectly hardy and very unlike other Evergreens in color.

Price—15 to 18 inch.....\$ 5.00 each

Just Think—Eighty Years of Continuous Service.

American Pyramidal Arborvitae *Thuja occidentalis pyramidalis*

An upright, densely branched Evergreen, commonly used as single specimen. May be kept at any height by shearing. Thrives on moist land as well as on dry.

Price—3 to 4 feet.....\$ 8.00 each

Spiny Greek Juniper *Juniperus excelsa stricta*

A pyramidal tree with upright branches, bearing scale-like bluish green leaves; very sharp and dense. Very desirable where a conical dwarf form of striking color is wanted.

Price—18 to 24 inch.....\$ 7.00 each

Ware Arborvitae (Siberian) *Thuja occidentalis wareana*

A globose form becoming pyramidal with age. Foliage darker and denser than American Arborvitae. Branchlets short, rigid, and much flattened; larger and thicker than the type. Color dark bluish strong green.

Price—18 to 24 inch.....\$ 6.00 each

Yellow Column Arborvitae *Thuja orientalis elegantissima*

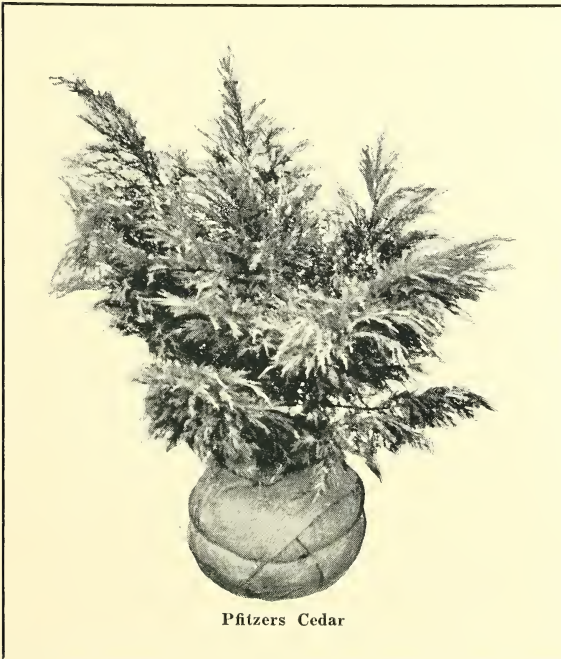
A low columnar tree with a typical Oriental Arborvitae foliage, colored bright yellow in spring and yellowish-green afterward. A peculiar variety of very interesting type.

Price—2 to 3 feet.....\$ 4.00 each

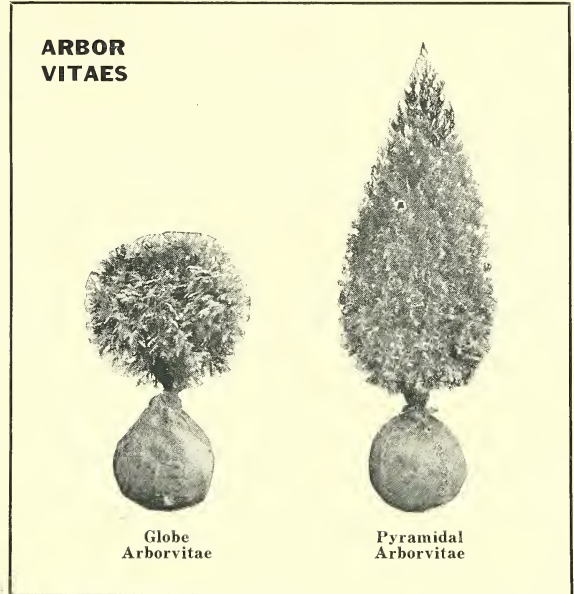
Irish Juniper *Juniperus communis hibernica*

Columnar formed, narrow at the top and bottom. Branches upright growing; leaves a bright silvery green, sharp. This is one of the most formal shaped Evergreens. It is admirably suited to decorate formal doorways or other points of interest. It stands city smoke and gases well.

Price—3 to 4 feet.....\$ 7.50 each



Pfizers Cedar



Globe Arborvitae

Pyramidal Arborvitae

Pfitzer Juniper *Juniperus chinensis pfitzeriana*

A many-branched spreading form of Chinese Juniper of unusual and striking appearance. The branches have many bends, imparting a gnarled appearance, and foliage forms have no symmetry. This Evergreen is very popular and promises to be one of the best known of decorative plants in the future.

Price—2 to 3 feet.....\$10.00 each

Savin Juniper *Juniperus sabina*

A spreading Evergreen shrub sometimes reaching a width of 10 feet. Leaves needle-shaped, dark green. The general effect of this shrub is one of very graceful pointed plumes. The habit of growth is informal, but the solid dark green color and symmetrical branch forms make it suited to formal planting. Also well adapted to group plantings.

Price—18 to 24 inch.....\$ 7.00 each

Plume Retinospora *Retinospora plumosa*

A dense conical tree with branches almost erect, with slender branchlets of feathery appearance. Foliage soft and light; color a dark, dull green of very harmonious shade. This tree is admirably adapted to backgrounds for other Evergreens, hedge-making, and filling in spaces where green color is desired that does not draw undue attention. A very useful tree in landscape.

Price—3 to 4 feet.....\$ 7.50 each

Norway Spruce *Picea excelsa*

A tree sometimes reaching 100 feet in height with spreading branches and usually pendulous branchlets. One of the most extensively planted ornamental Evergreen trees. Growth is very rapid; habit is graceful; foliage is dark green and dense. It is one of the best Conifers to plant for shelters and wind-breaks.

Price—3 to 4 feet.....\$ 5.00 each

It Pays to Order Early.

Roses

THE QUEEN OF FLOWERS



R OSES are the most beautiful of flowers and are among the easiest to raise. We have given great care to the culture of the plants we offer and the following list will be found worthy and well suited to our climate.

They thrive best in a good, well-drained clay soil, where they can have plenty of sunlight. Make the ground rich with well-rotted manure, and in spring severely prune all varieties except climbers.

As all hybrid roses bloom on new wood only, they should be cut off from eight to ten inches above the ground each spring; thus they will send up good, strong shoots each spring, which will produce much larger blooms than will the weak, slow growth of the old wood if left untrimmed. Clipping off the seed pods will also aid in the blooming. They should be protected in winter by throwing a mound of earth around them ten or twelve inches high during the fall, removing same in spring.

Alfred Colomb

A Hybrid Tea Rose. Flower, very fragrant, of fine globular form, compact, color brilliant carmine-crimson. Foliage large and handsome.
 Price\$1.00 each \$ 9.00 per 10

American Pillar

A Hybrid Multiflora. Beautiful flowers of brilliant crimson with a large white center and many golden stamens. Flowers fade after maturity to a pleasant shade of light pink.
 Price\$1.25 each \$11.00 per 10

Baby Rambler

This is a cross between Crimson Rambler and Glory of Polyanthus. It is as free blooming as the latter, and of the same color as the former. It is very vigorous and quite hardy; foliage is of a beautiful deep glossy green. It flowers in large clusters from June to November; always in bloom.
 Price\$1.00 each \$ 9.00 per 10

Clio

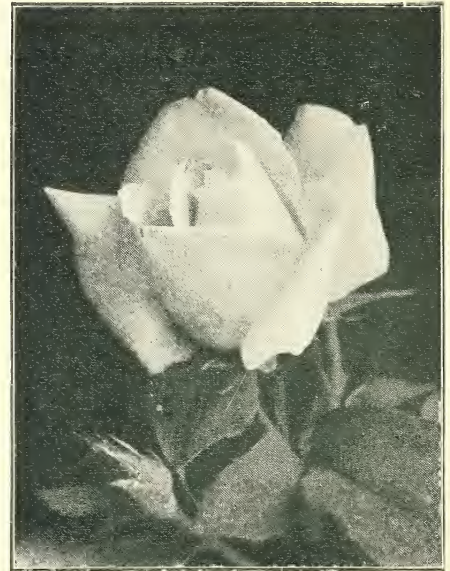
Hybrid Perpetual. A rose of perfect form, beautiful from pointed bud to fully open flower. Color a delicate satiny blush pink with slightly deeper center. Plant strong and free blooming, the large flowers boldly displayed against rich green leaves.
 Price\$1.00 each \$ 9.00 per 10

Conrad Ferdinand Meyer

Hybrid Rugosa. A very strong growing Rose producing immense branches in a single season. The flowers are very large, double and fragrant. Color, bright gleaming rose.
 Price\$1.25 each \$11.00 per 10

Crimson Rambler (Climbing)

A very vigorous Rose useful for many purposes, desirable for trailing upon walls, trellises and banks. Can be kept to bush by pruning. It is also very successfully grown as a pot plant and much used by



Frau Karl Druschki

florists. The foliage is exceptionally large and glossy and plant when in bloom is a mass of double crimson flowers.

Price\$1.00 \$ 9.00 per 10

Dorothy Perkins (Pink Rambler) (Climbing)

Hybrid Wichuraiana. A Rose of widely known merit scarcely needing description. Blooms are very double, medium sized, and have peculiar petals of soft blush pink. They are abundantly produced on strong, vigorous, hardy plants.

Price\$1.00 each \$ 9.00 per 10

Dr. Van Fleet (Climbing)

Hybrid Wichuraiana. One of the best of climbing Roses. Very vigorous and adaptable. Its beautiful perfect flowers compare favorably with the best Hybrid Tea Roses. Color is a deep, clear pink changing to lighter pink as flowers mature. Flowers are of immense size and borne on long stems. Plant is desirable even after flowering on account of excellent foliage.

Price\$1.00 each \$ 9.00 per 10

Earl of Dufferin

Hybrid Perpetual. Bush a heavy producer of large round fragrant flowers of clear velvety crimson.

Price\$1.00 \$ 9.00 per 10

BEST STOCK EVER RECEIVED

Gentlemen:

We have our trees all set and wish to inform you they are the best stock we ever set. We will remember you this fall with a nice order.

Yours truly,
Bennett's Fruit Grove,
Augusta, Michigan.

Gentlemen:

I received all the goods ordered, and everything looks just fine. I thank you for sending me such fine stock.

Very truly yours,
C. P. Damstra,
Raton, New Mexico.

You can Depend on Roses From the Monroe Nursery.

Excelsa

Hybrid Wichuraiana. Improved Crimson Rambler or Red Dorothy Perkins. Much like the well known Crimson Rambler but of much greater excellence in all characteristics. Flowers are of bright scarlet-pink produced in great clusters. Plants very strong growers.

Price\$1.00 each \$ 9.00 per 10

Fisher Holmes

Hybrid Perpetual. Buds are long and pointed, opening to an immense flower of excellent shape. Color bright crimson-scarlet. Very beautiful.

Price\$1.00 each \$ 9.00 per 10

Flower of Fairfield (Climbing)

Multiflora. The perpetual flowering Crimson Rambler. Flowers are very profuse; more brilliant than Crimson Rambler. Growth is vigorous.

Price\$1.25 each \$11.00 per 10

Frau, Karl Druschki

Hybrid Perpetual. The most popular white Rose in the market. Flowers are absolutely pure snow-white, of immense size. Sometimes almost 6 inches across and borne on good stems. Not fragrant. Plant flowers profusely in June but if kept growing well, will produce flowers throughout the summer and autumn. Bush is very vigorous grower.

Price\$1.00 each \$ 9.00 per 10

Gardenia (Climbing)

Hybrid Wichuraiana. One of the most excellent of yellow climbing Roses. Plant a strong grower and producer of many flowers. Buds yellow, turning white upon expanding.

Price\$1.00 each \$ 9.00 per 10

General MacArthur

Hybrid Tea. An American Rose bearing abundant, large, full, and well-shaped flowers. A velvety scarlet to bright crimson. Plant strong growing and vigorous.

Price\$1.50 each \$14.00 per 10

Grootendorst

A cross of Rugosa with the Baby Rambler. Flowers borne in profuse clusters, small, red, the edges of each petal cut. A new Rose of rapidly growing popularity. Foliage thick and wrinkled, quite disease-resisting.

Price\$1.25 each \$11.00 per 10

Gruss an Teplitz

Hybrid Tea. A very steady blooming Rose producing many blossoms from early June until early frost; very adaptable to soils and climates. Flower color dark, rich crimson, changing to velvety, fiery red. Flowers large, compact, fragrant; very showy and handsome. Foliage dark green, changing to rich maroon even in summer. Plant will produce a strong hedge if well cared for.

Price\$1.50 each \$14.00 per 10

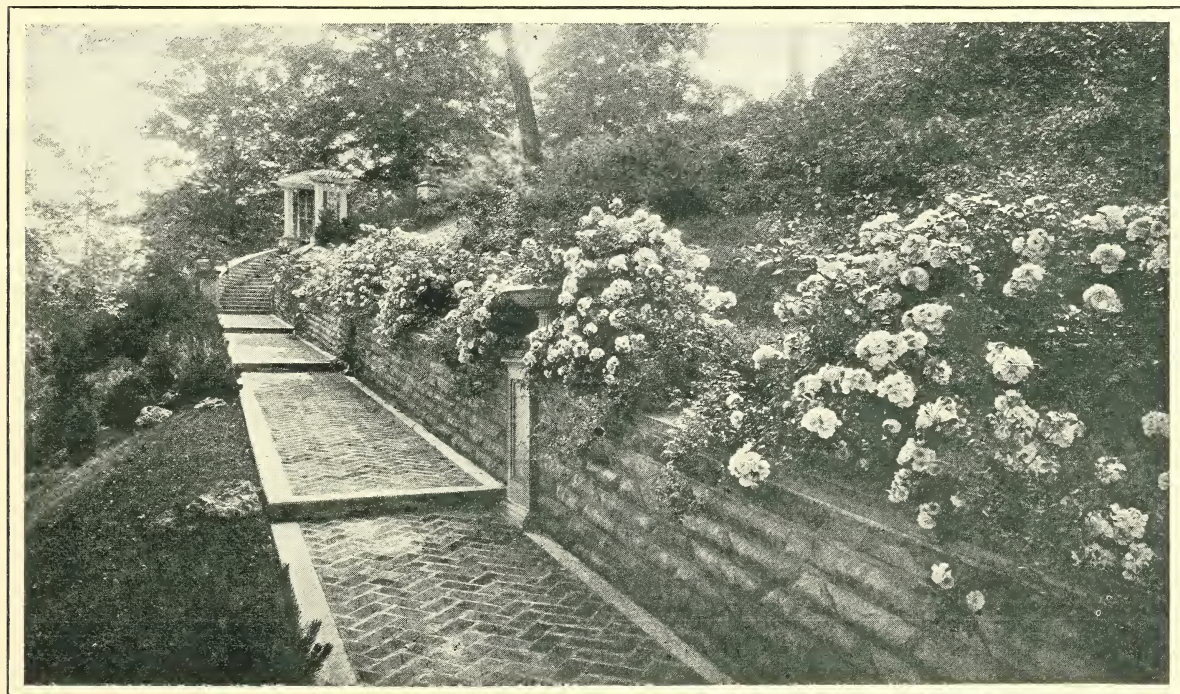
Jonkheer J. L. Mock

Hybrid Tea. Flowers very large and well shaped varying from lively carmine-red to a pure white inside. A very unique color combination in the Rose. Flowers bloom well in fall.

Price\$1.50 each \$14.00 per 10

Killarney

A very well known Hybrid Tea Rose, exceptional because of its long pointed bud, opening in large



A Gorgeous Display of Climbing Roses

Our Grading System Insures You the Best.

blooms of delicate flesh-color, deliciously perfumed. Plant a vigorous large grower.
 Price\$1.50 each \$14.00 per 10

Lady Hillingdon

Tea. Bud long-pointed; blooms double, of peculiar and pleasing deep apricot-yellow. Free bloomer; a fine Rose.
 Price\$2.00 each \$18.00 per 10

Marshall P. Wilder

Hybrid Perpetual. A strong Rose producing very full flowers of rich fire-red and semi-globular form.
 Price\$1.00 each \$ 9.00 per 10

Mme. Caroline Testout

Hybrid Tea. A very strong, vigorous bush much used in the West for street planting. Petals wide, of satiny Rose color. Flowers large and globose, shaded dark at the center and light on the outside.
 Price\$1.50 each \$14.00 per 10

Mme. Edouard Herriot

Pernetiana. This Rose is often called "The Daily Mail" because of its winning a large prize offered by an English newspaper. A strong growing bush, producing flowers perfect in size and form, coral red in the bud but when in full bloom shading to yellow and carmine.
 Price\$1.50 each \$14.00 per 10

Mrs. John Laing

Hybrid Perpetual. This plant is a very strong grower and bloomer. Flowers are very large, clear pink, from long tapered buds. This is a very popular variety.
 Price\$1.00 each \$ 9.00 per 10

Paul Neyron

Hybrid Perpetual. A pink Rose so large as to often measure 6 inches across, borne on strong, vigorous plants. Probably the largest Rose suited for general use.
 Price\$1.00 each \$ 9.00 per 10

Paul Scarlet (Climbing)

Hybrid Wichuraiana. Probably the most excellent red climbing Rose. Brilliant, vivid red flowers, large and nearly double, remaining for a long time without fading on the plants. The plant is very vigorous and may be used either as a climber or a pillar Rose, giving an unusual flame-like effect.
 Price\$1.50 each \$14.00 per 10

Prince Camille de Rohan

Hybrid Perpetual. A moderately vigorous plant producing unusually colored flowers, shading from blood-red to maroon.
 Price\$2.00 each \$18.00 per 10

Rosa rugosa

Rugosa. Selected seedlings of Rugosa producing red flowers but otherwise like the Pink Rugosa Rose.
 Price\$1.00 \$ 9.00 per 10

Silver Moon (Climbing)

Hybrid Wichuraiana. A continuous producer of faint yellow buds and immense pure white flowers, often 4 inches across. These blooms are nearly double, but have bright yellow stamens. Bush is a



Gruss an Teplitz

very vigorous climber and especially desirable because of its deep, rich, green foliage. A white Rose which should be found in every Rose garden.
 Price\$1.25 each \$11.00 per 10

Souvenir de Claudius Pernet

Pernetiana. Probably the finest Rose ever produced in Europe and of rapidly growing popularity. The color is an excellent sunflower-yellow deepening in the center. Bush is vigorous, very branchy, with canes upright, growing almost thornless; foliage very green and attractive. This Rose fills the long felt want for a good double Rose.
 Price\$2.00 each \$18.00 per 10

Tausendschoen

Hybrid Multiflora. Buds first opening are cherry-pink, varying during development of the flower to almost white. Plant is vigorous and almost thornless. An excellent variety.
 Price\$1.00 each \$ 9.00 per 10

Ulrich Brunner

Hybrid Perpetual. Flowers very large and freely produced on long stems. Color a peculiar shade of clear red seen only in this variety. An excellent standard Rose.
 Price\$1.00 each \$ 9.00 per 10

White Killarney

Hybrid Tea. Exactly like the Pink Killarney with the exception of the flowers, which are pure white.
 Price\$1.50 each \$14.00 per 10

Willomere

Pernetiana. The long-pointed coral-red buds develop into very large, open, double flowers of a rich shrimp-pink, shaded yellow in the center. A vigorous upright grower of bush habit, with many thorns.
 Price\$2.00 each \$18.00 per 10

Our Grading System Insures You the Best.

Hardy Perennial Flowers



THESE flowers which bloom year after year, coming forth each season with renewed vigor and larger flowers, are loved by everyone. There are hundreds of varieties but we have selected a few from our growing list of the kinds that we know will please and be suitable to ordinary purposes.

May it be said that these plants thrive better in fertile ground, and with plenty of moisture; should be well cultivated, and kept free of weeds for best results. For the sake of neatness, after the blooming period, the flower stems should, in part, be cut out, being careful to leave sufficient foliage to conduct the natural functions of the plant. Mulching for winter protection is necessary, care must be taken not to smother the plants by covering the crowns.



Delphinium

American Columbine *Aquilegia canadensis*

Stems 1 to 2 feet high, usually much branched, bearing numerous nodding flowers, yellow within, deep red on the outer surfaces. Very showy.

Price\$2.40 per 6 \$4.00 per 12

Colorado Columbine *Aquilegia coerulea*

A stocky plant producing bright blue, long-spurred flowers. This variety has been adopted as the emblem of the State of Colorado.

European Columbine *Aquilegia vulgaris*

Stems 18 to 24 inches tall with numerous branches, and flowers. Native of Europe. Flowers nodding, variously shaded in violet tones.

Belladonna Larkspur *Delphinium*

The praises of this variety have been sung by every lover of the hardy border. Light turquoise blue flowers are borne in spikes, the first coming in June. These may be cut away and young growth will start from the crown, producing blossom all summer. Height 3 to 4 feet. Mulch lightly, as crown sometimes rots in winter.

Chimney Bellflower *Campanula pyramidalis*

Very floriferous, with clustered stems 4 to 5 feet tall. Flowers blue, in dense pyramidal racemes. August to September.

White Carpathian Bellflower *Campanula carpatica*

A charming little plant growing in dense tufts 6 to 12 inches high. Flowers large, often an inch or more across varying from white to deep blue. Very free-flowering, producing blossoms almost throughout the summer.

Chrysanthemum

(Red, White, Yellow, and Pink.) Very satisfactory when planted in sheltered locations, suited to positions near the base of walls, buildings, or shrubbery. They are effective long after ordinary garden flowers are destroyed by frost. It is sometimes possible to cut uninjured flowers even after light falls of

snow. They should not be planted in the fall, the best time being middle of April to middle of May. Quite hardy if given a little protection in winter.

Shasta Daisy *Chrysanthemum*

A very fine flowering plant with large and showy Daisy-like flowers 3 to 4 inches across, blossoming profusely throughout the summer and autumn. Flowers white, with golden center.

Common Foxglove *Digitalis purpurea*

This biennial is an old garden favorite. The flowers are borne on long stems (3 to 4 feet), and during their period of blossom are the most attractive thing in a border. These plants are not offered as to color, but are mixed seed from best plants. They are, ordinarily, very easy to grow, thriving in loose, rich soil. May and June.

Common Perennial Gaillardia *Gaillardia aristata*

One of the showiest hardy plants, growing 2 feet high and beginning to flower in June, they continue the entire season. The gorgeous large flowers are dark red-brown in the center and petals marked with rims of brilliant crimson, orange, and vermilion. Excellent for cutting.

Hollyhock *Althea rosea*

A necessary adjunct to any old-fashioned garden, and also excellently suited to be planted with shrubbery. These tall stately plants grow from 6 to 8 feet in height. We offer the following strains:

Maroon, Red, White, Yellow, Salmon Rose, Bright Rose.

Prices on all Perennials

2.40 except where noted
\$2.00 per 6 \$4.00 per 12

We Grow the Finest Flowering Shrubs, See Page 13.

Celeste Iris

Standard lavender; falls deep lavender; large and free flowering; 2½ feet in height.

Canary Bird Iris *I. Flava*

A delicate shade of pale yellow. 20 inches.

Her Majesty Iris

Standards rosy pink; falls pink, fading to crimson. 25 inches.

Honorable Iris

Standards golden yellow; falls deep, rich brown. Especially fine for massing. 18 inches.

Mme. Chereau Iris

White, elegantly frilled azure-blue; very beautiful. 30 inches.

Grass Pink (Scotch Pink) *Dianthus plumarius*

Stems tufted, about 1 foot tall, arising from a dense mass of silver-blue foliage. Flowers very fragrant, varying from white to shades of pink and purple with petals deeply fringed. A great favorite for border planting or rock garden.

Pink Beauty Pink *Dianthus*

Stems 10 to 18 inches tall, from a tufted, very leafy base. Flowers very numerous, disposed in compact round topped clusters of various shades and in both double and single flowered forms. Every garden should have this old-fashioned favorite.

Velvety Black Maroon Pink *Dianthus*

The same as above except it has Velvety Black Maroon color.

Oriental Poppy *Papaver orientale*

One of the most popular flowers in cultivation; deep scarlet, cup-shaped and borne on long, graceful swaying stems. May be used in borders, or may be planted in solid beds of mixed annuals.

Prices for the Above^{2.40}\$2.00 per 6 \$4.00 per 12

PEONIES

Duchesse de Nemours

Flower medium-size, pure white crown and sulphur-white collar. Plant a vigorous grower of medium height. Early. See prices below.

Festiva Maxima

Probably the most popular white Peony. Flower very large and full. Pure white with a few center petals tipped with blood-red. Fragrant. Very vigorous bush with massive foliage and long stiff stems.

Louis Vanhoutte

Medium size, rose type, color deep crimson-rose tipped with silver. One of the best dark reds. Bush strong, medium height, and a late bloomer.

Maria (Kelway)

Flowers medium size, flat, compact, semi-rose type; lilac-white, fading to milk-white; golden yellow



Phlox Lassburg in the border

low stamens or short narrow petals surround the collar; petals changing to yellow at base. Very tall free bloomer.

Marie Lemoine

Enormous, sulphur-white full, well built flower, delicately shaded chamois with narrow carmine edge. The massive bloom comes late on a very stout, erect stem of medium height.

Rubra Triumphans

Large, globular, semi-double flowers; dark, crimson, leaning almost to purple. Medium height; early bloomers.

Prices on all peonies\$1.00 each \$9.00 per 10

PHLOX

Anna Cook Flesh Pink.

B. Comte Rich satiny amaranth.

Beacon Brilliant cherry red. A very effective shade.

Eclair Large carmine, with salmon center.

Fernand Cortez Orange and purple, very large flowers.

Frau Anton Buchner Very large pure white flowers.

Gefion Tender peach-blossom pink with bright rose eye. Flowers and truss very large on erect, compact stem.

La Vague Warm mauve with prominent carmine eye. A great improvement over old varieties of similar color. Immense conical heads borne in great profusion.

Lassburg Splendid pure white. Trusses very large; plant a free bloomer.

Lumineux Rosy red.

Mme. Paul Dutrie Soft pink with white spots.

Mrs. Charles Dorr. New. Extra tall; with extra long, compact pyramidal spikes of moderate sized florets. Its color is unique and attractive, a solid blue mauve.

Mrs. Jenkins White flowers in immense panicles. Very free bloomer.

Obergartner Wittig Brilliant magenta in shades; crimson eye.

Pantheon Deep salmon rose.

Peachblossom Flowers soft pink, borne in large heads.

Rheinlander Soft salmon-pink, with deep red eye.

Richard Wallace Pure white with violet rose center.

Rijnstroom Deep pink in large masses.

R. P. Struthers Carmine, claret red eye.

Sunshine Aniline red with crimson eye and white rim.

Thor Flowers rose pink, extra large.

Prices on all Phlox\$2.40 per 6 \$4.00 per 12

Bonfire Torch Lily *Kniphofia*

The freest flowering of all *Kniphofia*; orange-scarlet shading to salmon-rose at the edge; invaluable for cutting. 2 to 3 feet. August-September.

Clump Speedwell *Veronica longifolia subsessilis*

An elegant, free-flowering plant, producing long spikes of showy flowers. Stems upright, 2 to 3 feet tall. Flowers intense blue, thickly distributed on long spikes in late summer and early autumn. A hardy, desirable border plant producing handsome flowers, valuable for cutting.

Common Yucca *Yucca filamentosa*

Among hardy plants there is nothing more effective and striking for isolated positions on the lawn or on dry banks where few other plants thrive. It is also indispensable for the rockery. Its broad, sword-like, evergreen foliage and immense branching spikes of drooping, creamy white flowers, rising to a height of 6 feet, render it a bold and handsome subject wherever placed. Should be planted in spring.

Bulbs and Tubers

Bulbs for Spring Planting Only

Cannas

This is the most popular bedding plant for formal gardens arranged in circles, squares and other shapes. It blooms profusely all the season. The foliage is green and bronze or brown. The flowers are red to yellow.

Price\$0.40 each \$ 3.50 per 10

Caladium (Elephant Ear)

An excellent large foliaged plant often seen in front yards. The leaves are silvery green and from 3 to 4 feet long; the plant sometimes reaching a height of 7 feet.

Price\$0.50 each \$ 4.50 per 10

Dahlias

One of the most important of our Autumn flowers, blooming from early August until frost. There are many classes of Dahlias and many varieties. Our selection contains Cactus, Single, Pompon, Decorative and Peony-Flowered in various colors. Order by following colors; dark red, red, pink, purple, white, yellow.

Price\$0.50 each \$ 4.50 per 10

GLADIOLI

Gladiolus is greatly admired during the Summer months for its magnificent flowers of rich coloring. To obtain succession of bloom it should be planted fortnightly from the first of April to June. It will then produce a succession of flowers from July until November. In Autumn when the leaves turn yellow the bulbs may be removed from the soil, dried, and stored for the Winter.

Alice Tiplady Orange-Saffron.

Baron J. Hulot The leading purple variety.

Crimson Glow Brilliant Crimson.

Golden Measure A rich gold.

Byron L. Smith Lavendar pink on white ground.

Purple Glory Maroon red with black blotches.

Roseash Old rose.

Scarlet Wonder Brilliant scarlet.

White Wonder Large white, tints pink.

Wilbrinck From Halley. Early delicate pale pink.

Prices\$0.30 ea. \$2.50 per 10 \$20.00 per 100

Gladioli varieties not named

Prices\$0.15 ea. \$1.25 per 10 \$10.00 per 100

Lillies (By colors)

Price\$0.75 each \$ 6.00 per 10

Lily, Gold Banded

Price\$1.00 each \$ 9.00 per 10

Tuberoses

A beautiful summer flowering plant producing spikes from 2 to 3 feet high of double waxy white flowers; delightfully fragrant. An excellent cut flower.

Price\$0.15 ea. \$1.25 per 10 \$10.00 per 100

Bulbs for Fall Planting Only

Crocus

Naturalized in the grass, or planted thickly in irregular lines, as a border for taller growing bulbs, or grown in any manner whatever, the Crocus is always a cheery and charming little flower. It opens among the first flowers of early spring, while the snow yet lies white on north hillsides, in a cold dull time, when its bright colors are much appreciated. Blue, white and yellow.

Price\$0.60 per 10 \$ 4.50 per 100

Galanthus nivalis (Snowdrop)

This, the earliest of spring flowering bulbs, is to be admired for its elegant snow-white drooping blossoms. Frequently this plant blossoms before the snow entirely disappears.

Price\$0.60 per 10 \$ 4.50 per 100

Hyacinths

A very popular hardy bulb, satisfactory both as a house plant in winter and a garden plant in spring. The beautiful trusses of wax-like flowers have a wide range of colors and delicate perfume. We offer the following colors; pink, white, light blue, dark blue and purple.

Prices\$0.30 ea. \$2.50 per 10 \$20.00 per 100

Narcissus

Spring-flowering plant desirable for borders in front of other white-flowering plants or shrubs.

Prices\$0.25 ea. \$2.00 per 10 \$12.00 per 100

Tulips

Excellent as bedding plant or for bordering thick masses of foliage. May also be used as house plant during the winter. We offer three classes: single, small plants with beautifully colored flowers; Darwin, very long stemmed and large flowers of solid color only, late. Double shorter stemmed than Darwin, but large double flowers in wide range of colors. Order by color.

Red, white, yellow, purple, pink.

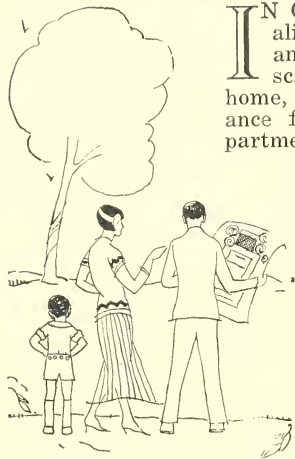
Prices\$0.12 ea. \$1.00 per 10 \$ 8.00 per 100

Darwin Tulips

Red, pink, mauve.

Prices\$0.15 ea. \$1.25 per 10 \$10.00 per 100

CONSULT OUR LANDSCAPE DEPARTMENT



IN ORDER that you may realize the ultimate in beauty and satisfaction in the landscape development of your home, we offer practical assistance from our Landscape Department. This department is made up of experts trained and experienced in planning and developing all types of landscape projects, large or small.

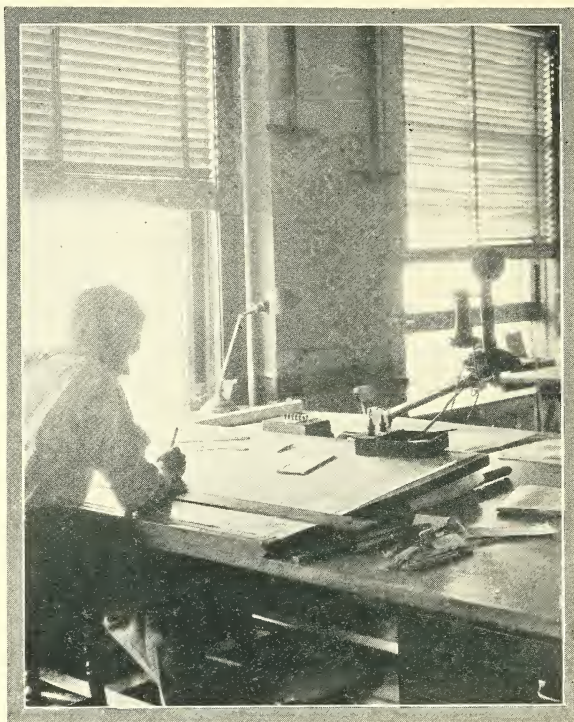
Landscape Architecture is a highly developed art. Through its application unsuspected beauties of a property are brought into display. This is just as true of the small and modest property as it

is of the larger and more pretentious.

Planting Plans

No matter how extensive or how small your problem, we can develop a planting plan for you that will be a source of pleasure through the years.

Write us and give us a rough sketch of your property and, if possible, a photograph of your home and grounds. With this information we will be able to analyze your landscape problem for you and we will write fully giving our recommendations.



Or, if you wish, we will have one of our salesmen call upon you, make a sketch of your grounds, and send it into the office with his notations. We will then send you a landscape layout for your grounds, embodying the ideas of our experts. We would appreciate it if you would write us as early in the season as possible.



Effective planting is the result of careful planning. An example of some of the work we do.



INDEX



A		G			
Acer	21	Gaillardia	29	Plum, Purpleleaf	22
Ailanthus	20	Galanthus	31	Poplar	22
Akebia	23	Ginkgo	21	Poppy	30
Althea	13	Gladiolas	31	Populus	22
Althea Rosea	29	Gooseberries	10	Privet	16
Ampelopsis	23	Grapes	11	Prunus	21, 22
Apples	3, 4, 5				
Apricots	9	H		Q	
Aquilegia	29	Hawthorn	21	Quercus	21
Arborvitae	24, 25	Hibiscus	13	Quince	9, 16
Aristolochia	23	Hollyhock	29		
Asparagus	12	Honeysuckle	14, 15, 23	R	
		Hyacinths	31	Raspberries	10
		Hydrangea	15	Redbud	22
B				Retinospora	25
Barberry	13	I		Rhodotypos	15
Bellflower	29	Iris	30	Rhubarb	12
Berberis	13	Ivy	23	Rhus	17
Blackberries	11			Roses	26-28
Buddleia	13	J		Russian Olive	16
Bulbs and Tubers	31	Jetbead	15		
Butterfly Bush	13	Juniper	25	S	
		Juniperus	25	Salix	22
				Shasta Daisy	29
C				Shrubs	13-19
Caladium	31	Kniphofia	30	Snowball	19
Calycanthus	17			Snowberry	18
Campanula	29	L		Snowdrop	31
Cannas	31	Larkspur	29	Speedwell	31
Catalpa	20	Ligustrum	16	Spiraea	17
Cercis	22	Lilac	18	Spruce	25
Cherries	8	Lilacs	31	Strawberries	12
Chrysanthemum	29	Lonicera	14, 15, 23	Sumac	17
Clematis	23			Sweetshrub	17
Columbine	29	M		Symphoricarpos	17, 18
Coralberry	17	Maidenhair	21	Syringa	18
Cornus	14	Malus	20		
Crab Apples	5	Maple	21	T	
Crab, Flowering	20	Mockorange	15, 16	Tamarix	18
Cranberrybush	19	Morus	21	Thuja	24, 25
Crocus	31	Mulberry	21	Torchlily	30
Currants	10			Trees	20-22
Cydonia	16	N		Tuberoses	31
		Narcissus	31	Tulips	31
D					
Dahlias	31	O		Z	
Delphinium	29	Oak	21	Ulmus	20, 21
Deutzia	14	Ornamental Shrubs	13-19		
Dewberries	11			V	
Dianthus	30	P		Veronica	31
Digitalis	29	Papaver	30	Viburnum	19
Dogwood	14	Peaches	7	Vines	23
Dutchman's Pipe	23	Pears	6		
Dwarf Fruit Trees	6	Peonies	30	W	
		Perennials	29-31	Wayfaring Tree	19
E		Philadelphus	15, 16	Weigela	19
Elaeagnus	16	Phlox	30	Willow	22
Elephant Ear	31	Picea	25		
Elm	20, 21	Pink	30	X, Y, Z	
Euonymus	14	Plums	9, 21, 22	Yucca	31
Evergreens	24, 25				
		F			
Flowering Crab	20				
Flowering Plum	21, 22				
Flowering Quince	16				
Forsythia	14				
Foxglove	29				

