

Historic, archived document

Do not assume content reflects current scientific knowledge, policies, or practices.

RESERVE
1.9
Ec 714

Inv

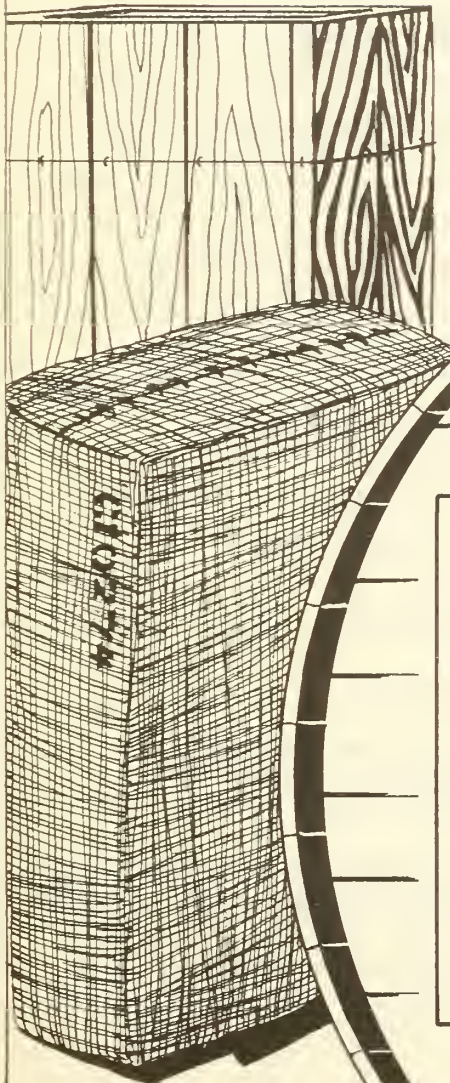
U.S. DEPT. OF AGRICULTURE
NAT'L AGRIC. LIBRARY
RECEIVED

DEC 29 '73

PRODUCTION SECTION
CURRENT SERIAL RECORDS

TOBACCO STOCKS

APRIL 1, 1973



CONTENTS

	Page
Discussion	3- 5
Conversion factors for adjusting for losses in weight	6
Stocks of leaf tobacco, by types, converted to a FARM-SALES-WEIGHT equivalent	7
Summary of tobacco leaf represented in inventories of tobacco sheet	8
Stocks of leaf tobacco, by types, showing separately quantities owned by dealers and manufacturers	9
Stocks of leaf tobacco, summary by types	10

BRIEF CLASSIFICATION OF LEAF TOBACCO

(Covering classes and types)

CLASS 1, FLUE-CURED TYPES

- Type 11: Old Belt flue-cured; produced principally in the Piedmont sections of Virginia and North Carolina.
- Type 12: Eastern North Carolina flue-cured; produced principally in the coastal sections of North Carolina, north of the South River.
- Type 13: South Carolina flue-cured; produced principally in the coastal sections of South Carolina, the southeastern counties of North Carolina, south of the South River.
- Type 14: Georgia and Florida flue-cured; produced principally in southern Georgia and northern Florida.

CLASS 2, FIRE-CURED TYPES

- Type 21: Virginia fire-cured; produced in the Piedmont and mountain sections of Virginia.
- Type 22: Tennessee-Kentucky fire-cured, eastern district, Clarksville, Springfield, and Hopkinsville; produced principally in a section east of the Tennessee River, in southern Kentucky and northern Tennessee.
- Type 23: Kentucky-Tennessee fire-cured, western district, Mayfield, and Murray; produced principally in a section between the Tennessee, Ohio, and Mississippi rivers in western Kentucky and northwestern Tennessee.

CLASS 3, AIR-CURED TYPES

LIGHT AIR-CURED (CLASS 3a)

- Type 31: Burley; produced principally in Kentucky, Tennessee, Ohio, Indiana, West Virginia, Virginia, North Carolina, and Missouri.
- Type 32: Southern Maryland; produced principally in five counties of southern Maryland--Prince Georges, Anne Arundel, Calvert, Charles, and St. Marys.

DARK AIR-CURED (CLASS 3b)

- Type 35: One Sucker; produced in north-central Tennessee and south-central Kentucky.
- Type 36: Green River; produced in the northern part of Kentucky in the territory adjacent to Owensboro and Henderson.
- Type 37: Virginia sun-cured; produced principally in central Virginia, north of the James River.

CLASS 4, CIGAR-FILLER TYPES

- Type 41: Pennsylvania Seedleaf; produced principally in Lancaster County, Pa., and the adjoining counties.
- Type 42-44: Ohio filler; produced principally in the Miami Valley section of Ohio and extending into Indiana.
- Type 46: Puerto Rican sun-grown, including primed (Deshojado) and stalk-cut (Mata); produced on the Island of Puerto Rico

CLASS 5, CIGAR-BINDER TYPES

- Type 51: Connecticut Broadleaf; produced in the Connecticut Valley sections of Connecticut and Massachusetts.
- Type 52: Connecticut Havana Seed; produced in the Connecticut and Housatonic Valley sections of Connecticut and Massachusetts.
- Type 53: New York and Pennsylvania Havana Seed; produced in the Big Flats and Onondaga sections of New York, and extending into Pennsylvania.
- Type 54: Southern Wisconsin; produced in Wisconsin, south and east of the Wisconsin River.
- Type 55: Northern Wisconsin; produced in Wisconsin, north and west of the Wisconsin River, and in eastern Minnesota.

CLASS 6, CIGAR-WRAPPER TYPES

- Type 61: Connecticut Shade; produced in the Connecticut Valley sections of Connecticut and Massachusetts.
- Type 62: Georgia and Florida Shade; produced in southwestern Georgia and north-central Florida.

MISCELLANEOUS TYPES OF DOMESTIC TOBACCO

- Type 72: Louisiana Perique.
- Type 73: All domestic types of tobacco not otherwise classified.

FOREIGN TYPES

- Type 81: Cuba
- Type 82: Indonesia
- Type 83: Philippine Islands
- Type 84: Brazil
- Type 85: Colombia
- Type 86: Dominican Republic
- Type 87: Paraguay
- Type 88: Mexico
- Type 89: Other foreign-grown cigar leaf
- Type 91: Foreign-grown Oriental and Aromatic
- Type 92: Foreign-grown flue-cured
- Type 93: Foreign-grown burley

STOCKS OF LEAF TOBACCO OWNED BY DEALERS AND MANUFACTURERS 1/ 2/

Total stocks of leaf tobacco lower than a year ago.

Leaf tobacco stocks in the United States and Puerto Rico totaled 4,460 million pounds as of April 1, 1973. This was a decline of 71 million pounds from the previous April 1. The 1972 crop was in stocks by April 1 with the exception of Maryland and some cigar tobacco.

Domestic tobaccos were responsible for the decline with the flue-cured and cigar filler leading the way. Imported tobaccos showed large gains, especially foreign burley and flue-cured.

Stocks as of April 1, 1973, included 749 million pounds of leaf tobacco under Government loan. This was 260 million less than a year ago. There were substantial reductions in flue-cured and burley, and fire-cured loan holdings were extremely low. These loan stocks were divided as follows:

flue-cured	443.6 million pounds		
burley	288.9	"	"
fire-cured	1.2	"	"
dark air-cured	13.1	"	"
cigar leaf	2.7	"	"

1/ Figures quoted for type totals in this summary are the farm-sales-weight equivalent of reported stocks. (See table in body of report for reported weight basis.) This report is issued quarterly.

2/ All Government loan stocks are reported by grower cooperatives, which are considered dealers for stocks reporting purposes.

CIGARETTE LEAF STOCKS

All but Maryland decline.

Flue-cured stocks totaled 2,037 million pounds on April 1, 1973, a drop of 121 million pounds.

Holdings of burley at 1,530 million pounds were only 4 million below the April 1972 inventory. One reason was a larger crop of 588 million pounds which was in stocks by April 1.

Maryland inventories increased 3.2 million pounds to 42.9 million. The 1972 crop of 26.0 million is now being sold.

Stocks of foreign-grown cigarette and smoking tobacco totaled 432.0 million pounds--55 million above last year.

DARK TOBACCO STOCKS

Fire-cured steady, dark air-cured lower.

Fire-cured stocks reported at 82.8 million pounds this April 1 showed no change from last year. Virginia fire-cured stocks were down 2.3 million at 9.3 million pounds. Kentucky-Tennessee Eastern District recorded 62.4 million, and Western District, 11.7 million pounds, both small gains over April 1972.

Holdings of dark air-cured, totaling 56.5 million pounds, were lower by 1.9 million. Inventories were: One Sucker, 34.0 million; Green River, 18.8 million, and Virginia sun-cured, 3.7 million pounds.

CIGAR LEAF STOCKS

Domestic leaf continues decline.
Imported leaf higher.

Inventories of all domestic and Puerto Rican cigar tobacco totaled 158.7 million pounds on April 1, 1973. This was a drop of 30.0 million pounds. Holdings of foreign-grown cigar leaf were up 27.1 million pounds to 113.6 million.

Cigar filler leaf accounted for the bulk of the declines. Pennsylvania seed leaf stocks at 65.1 million were down 23.6 million--the smallest on record. Ohio filler was 8.7 million pounds--down 0.7 million; and Puerto Rican, 9.4 million--down 2.1 million pounds.

Cigar binder stocks totaled 55.9 million pounds--down 1.4 million from last year. Connecticut Valley Broadleaf inventories were 5.6 million; Connecticut Valley Havana Seed, 2.4 million; Southern Wisconsin, 24.2 million; and Northern Wisconsin, 23.6 million pounds.

Shade-grown cigar leaf stocks declined 2.1 million to 19.6 million pounds. Connecticut Valley stocks of 11.4 million were down 2.6 million pounds, but Georgia-Florida was up 0.5 million pounds at 8.2 million.

Stocks of Cuban leaf had shrunk to 0.4 million pounds by April 1.

Philippine Islands	were up 4.5 million pounds at 36.9 million.
Indonesian stocks	were 6.6 million
Brazil	8.1 million
Colombia	8.7 million
Dominican Republic	19.9 million
Paraguay	7.8 million
Mexico	5.7 million
Other foreign-grown	19.5 million

STOCKS OF TOBACCO SHEET

Stocks of leaf represented in inventories of "tobacco sheet" totaled 26.5 million pounds (reported weight) compared with 29.4 million on the previous April 1. Of the total in "sheet" this April, 24.7 million was for use in cigarettes and smoking tobacco, and 1.8 million for cigar binder and wrapper.

TABLE 1.--Factors for adjusting stocks reported by dealers and manufacturers to a farm-sales-weight equivalent, by types of tobacco

AUCTION MARKET AREAS (Types 11-37) 1/

Type name	Type number	Factors to multiply by to convert -			
		Stemmed stocks to -		Unstemmed stocks to -	
		Unstemmed equivalent	Farm-sales weight equivalent	Farm-sales-weight equivalent	From packed weight 1/
Flue-cured	11-14	1.295	1.450		1.12
Virginia fire-cured	21	1.299	1.598		1.23
Tennessee and Kentucky fire-cured	22-23	1.324	2/ 1.471		1.04
Burley	31	1.345	1.506		1.12
Southern Maryland	32	1.373	1.400		1.02
One Sucker	35	1.413	1.554		1.10
Green River	36	1.389	1.570		1.13
Virginia sun-cured	37	1.326	1.538		1.16
Miscellaneous domestic	72-73	1.333	1.493		1.12

DOMESTIC-GROWN CIGAR LEAF (Types 41-62)

	Type number	Stemmed stocks to -	Unstemmed stocks to -	Sweated	Marked	Farm-	Average for
				weight 3/	weight 3/	sales-weight 3/	Apr. 1, 1973 report 3/
Pennsylvania Seedleaf	41	1.444	1.718	1.19	1.05	1.00	1.02
Ohio	42-44	1.454	1.730	1.19	1.05	1.00	1.12
Puerto Rican	46	1.314	1.551	1.18	1.16	1.00	1.16 - U. S. 1.17 - P. R.
Connecticut Broadleaf	51	1.375	1.622	1.18	1.04	1.00	1.08
Connecticut Havana Seed	52	1.386	1.635	1.18	1.04	1.00	1.13
Southern Wisconsin	54	1.383	1.687	1.22	1.06	1.00	1.02
Northern Wisconsin	55	1.404	1.713	1.22	1.06	1.00	1.04
Connecticut Shade	61	1.245	1.419	1.14	1.10	1.00	1.07
Georgia and Florida Shade	62	1.235	1.408	1.14	1.10	1.00	1.11

IMPORTED LEAF (Types 81-93)

Cigar leaf	81-89	1.400	1.624			1.16
Foreign-grown Oriental and Aromatic	91	1.333	1.466			1.10
Foreign-grown flue-cured	92	1.295	1.450			1.12
Foreign-grown burley	93	1.345	1.506			1.12

1/ Types 11-37 are reported on the basis of packed weight.

2/ Farm-sales-weight equivalent based on unstemmed sweated weight factor.

3/ The instructions for reporting unstemmed cigar-leaf of the domestic types require that dealers and manufacturers indicate the weight basis on which the tobacco is reported, namely, farm-sales-weight, marked weight, or sweated weight. The stocks are converted to the farm-sales-weight equivalent on the basis of average factors reflecting the percentage reported each quarter in each of these three categories.

TABLE 2.--Stocks of leaf tobacco owned by dealers and manufacturers, by types, converted to a farm-sales-weight equivalent, April 1, 1973, compared with other quarters 1/

FARM-SALES WEIGHT

Type number	U.S. type number	April 1,			January 1,	October 1,	July 1,
		1973	1972	1971	1973	1972	1972
		1,000 lb.	1,000 lb.	1,000 lb.	1,000 lb.	1,000 lb.	1,000 lb.
Flue-cured	11-14	2,037,117	2,158,050	2,234,212	2,326,847	2,340,116	1,910,176
Virginia fire-cured	21	9,392	11,676	12,414	7,463	8,266	10,257
Tennessee and Kentucky fire-cured (Eastern District)	22	62,427	61,222	63,212	40,344	47,108	53,816
Kentucky and Tennessee (Western District)	23	11,015	9,930	12,397	7,742	9,107	9,368
Total fire-cured	21-23	82,834	82,828	88,023	55,549	64,481	73,441
Burley	31	1,530,262	1,534,301	1,627,671	1,550,837	1,248,469	1,390,121
Southern Maryland	32	42,871	39,673	41,092	46,565	54,470	60,898
Total light air-cured	31-32	1,573,133	1,573,974	1,668,763	1,597,402	1,302,939	1,451,019
One Sucker	35	34,022	36,340	38,217	31,055	29,417	33,283
Green River	36	18,827	18,455	21,081	17,193	16,772	17,691
Virginia sun-cured	37	3,694	3,649	3,668	3,105	2,999	3,294
Total dark air-cured	35-37	56,543	58,444	62,966	51,353	49,188	54,268
Pennsylvania Seedleaf	41	65,106	88,729	108,712	60,369	70,179	79,117
Ohio Filler (Miami Valley)	42-44	8,683	9,396	9,798	6,139	7,035	8,278
Puerto Rican:							
in United States	46	3,688	4,112	5,506	3,342	3,475	3,809
in Puerto Rico	46	5,711	7,432	8,514	6,618	9,196	11,059
Total cigar filler	41-46	83,188	109,669	132,530	76,468	89,885	102,263
Connecticut Valley Broadleaf	51	5,621	5,926	4,749	5,215	5,152	5,587
Connecticut Valley Havana Seed	52	2,413	2,678	3,090	2,504	2,286	2,329
Southern Wisconsin	54	24,236	24,845	23,750	17,944	20,256	22,495
Northern Wisconsin	55	23,645	23,841	23,474	17,464	18,959	21,480
Total cigar binder	51-55	55,915	57,290	55,063	43,127	46,653	51,891
Connecticut shade	61	11,394	13,992	15,314	11,545	12,175	13,168
Georgia and Florida shade	62	8,196	7,735	9,845	8,336	7,930	6,652
Total cigar wrapper	61-62	19,590	21,727	25,159	19,881	20,105	19,820
Perique	72	659	747	825	625	948	694
Other miscellaneous domestic 2/	73	5,204	4,617	5,456	5,081	5,303	5,465
Total miscellaneous domestic 2/	72-73	5,863	5,364	6,281	5,706	6,251	6,159
Cuba	81	350	539	760	416	486	503
Indonesia	82	6,644	4,437	3,496	6,698	4,604	4,337
Philippine Islands	83	36,864	32,430	44,954	37,296	37,677	33,923
Brazil	84	8,074	6,306	7,274	8,022	7,200	8,019
Colombia	85	8,730	6,771	6,826	7,048	10,553	11,120
Dominican Republic	86	19,883	12,707	13,316	17,115	10,426	11,950
Paraguay	87	7,843	5,451	8,058	6,866	4,339	4,112
Mexico	88	5,740	6,139	6,011	6,463	6,713	6,007
Other foreign-grown cigar leaf	89	19,495	11,732	12,975	16,513	13,155	13,791
Total imported cigar leaf	81-89	113,623	86,512	103,670	106,437	95,153	93,762
Foreign-grown Oriental and Aromatic	91	377,054	356,554	370,542	369,373	360,000	389,429
Foreign-grown flue-cured	92	31,277	11,610	10,637	31,131	19,495	24,402
Foreign-grown burley	93	23,657	8,573	4,752	17,086	10,504	9,370
Total imported cigarette and smoking tobacco leaf	91-93	431,988	376,737	385,931	417,590	389,999	423,201
Total all types	11-93	4,459,794	4,530,595	4,762,598	4,700,360	4,404,770	4,186,000

1/ Totals include stocks of leaf tobacco sheet. See separate reporting in table 3.

2/ Type 73 is defined as all domestic tobacco not otherwise classified.

TABLE 3.--Summary of tobacco leaf represented in inventories of tobacco sheet, for cigar binder and wrapper, and for cigarettes (including smoking tobacco), separately

REPORTED WEIGHT

		Cigar Binder and Wrapper					
		April 1,			January 1,	October 1,	July 1,
U. S.	:	1973	1972	1971	1973	1972	1972
type	:						
number	:	1,000 lb.	1,000 lb.	1,000 lb.	1,000 lb.	1,000 lb.	1,000 lb.
11-14	: Stemmed	8	0	2	7	6	0
32	: Stemmed	46	46	1	43	52	48
	: Unstemmed	532	512	660	649	574	788
41	: Stemmed	507	482	463	447	401	577
	: Total	1,039	994	1,123	1,096	975	1,365
42-44	: Stemmed	30	35	2	34	40	37
46	: Stemmed	8	9	7	10	9	9
51	: Unstemmed	61	34	35	55	46	24
52	: Unstemmed	51	73	59	88	72	67
54	: Stemmed	328	223	146	268	153	393
	: Unstemmed	4	20	73	16	17	21
55	: Stemmed	23	66	17	52	26	69
	: Total	27	86	90	68	43	90
	: Unstemmed	9	17	24	8	17	15
61	: Stemmed	23	20	33	32	19	10
	: Total	32	37	57	40	36	25
62	: Stemmed	1	10	17	1	1	10
81	: Stemmed	6	4	0	5	5	3
	: Unstemmed	6	7	14	13	9	8
82	: Stemmed	17	7	4	25	15	7
	: Total	23	14	18	38	24	15
	: Unstemmed	0	8	13	0	0	7
83	: Stemmed	79	91	44	97	87	93
	: Total	79	99	57	97	87	100
84	: Stemmed	13	12	11	25	11	12
85	: Stemmed	8	9	8	15	8	9
	: Unstemmed	11	11	28	25	14	14
86	: Stemmed	12	14	19	24	13	14
	: Total	23	25	47	49	27	28
87	: Stemmed	34	25	0	35	34	26
88	: Stemmed	0	2	1	0	2	2
89	: Stemmed	23	15	26	37	20	20
	: Unstemmed	674	682	906	854	749	944
Total	: Stemmed	1,166	1,070	801	1,157	902	1,339
	: Total	1,840	1,752	1,707	2,011	1,651	2,283
Cigarettes (including smoking tobacco)							
11-14	: Unstemmed	1,200	1,847	1,823	1,431	1,514	1,628
	: Stemmed	10,794	9,653	9,932	10,004	9,755	9,909
	: Total	11,994	11,500	11,755	11,435	11,269	11,537
	: Unstemmed	816	1,114	2,010	626	759	963
31	: Stemmed	6,096	5,375	5,670	5,029	4,624	6,410
	: Total	6,912	6,489	7,680	5,655	5,383	7,373
32	: Stemmed	390	110	150	293	200	114
	: Unstemmed	842	2,364	4,598	1,165	1,505	1,919
41	: Stemmed	254	668	1,055	330	449	573
	: Total	1,096	3,032	5,653	1,495	1,954	2,492
	: Unstemmed	27	29	91	29	30	38
61	: Stemmed	31	107	316	49	57	74
	: Total	58	136	407	78	87	112
	: Unstemmed	0	4,660	4,590	3,535	3,931	4,394
91	: Stemmed	4,238	1,134	1,165	1,325	1,254	1,245
	: Total	4,238	5,794	5,755	4,860	5,185	5,639
92	: Stemmed	0	563	0	0	315	374
	: Unstemmed	2,885	10,014	13,112	6,786	7,739	8,942
Total	: Stemmed	21,803	17,610	18,288	17,030	16,654	18,699
	: Total	24,688	27,624	31,400	23,816	24,393	27,641
Grand Total							
Total	: Unstemmed	3,559	10,696	14,018	7,640	8,488	9,886
all	: Stemmed	22,969	18,680	19,089	18,187	17,556	20,038
types	: Total	26,528	29,376	33,107	25,827	26,044	29,924

TABLE 4.--Stocks of leaf tobacco, by types, showing separately quantities owned by dealers and manufacturers, April 1, 1973, compared with April 1, 1972 1/ 2/

REPORTED WEIGHT

U.S. type number	Reported as owned by manufacturers 3/			Reported as owned by dealers (including loan stocks) 2/				
	April 1, 1973			April 1, 1972	April 1, 1973			April 1, 1972
	Unstemmed	Stemmed	Total		Unstemmed	Stemmed	Total	
	1,000 lb.	1,000 lb.	1,000 lb.	1,000 lb.	1,000 lb.	1,000 lb.	1,000 lb.	1,000 lb.
11-14	32,954	865,262	898,216	1/ 863,367	347,680	245,639	593,319	745,858
21	4,356	18	4,374	5,079	3,107	114	3,221	4,394
22	36,941	326	37,267	36,710	22,598	18	22,616	21,972
23	4,418	615	5,033	5,386	5,294	7	5,301	4,126
21-23	45,715	959	46,674	47,175	30,999	139	31,138	30,492
31	36,531	756,442	792,973	770,004	261,067	38,347	299,414	346,304
32	296	19,284	19,580	19,482	3,543	8,541	12,084	12,792
31-32	36,827	775,726	812,553	789,486	264,610	46,888	311,498	359,096
35	12,330	7,057	19,387	21,418	8,612	12	8,624	9,483
36	8,293	1,083	9,376	9,759	6,665	143	6,808	6,016
37	1,321	1,395	2,716	2,697	12	1	13	60
35-37	21,944	9,535	31,479	33,874	15,289	156	15,445	15,559
41	22,861	14,551	37,412	49,599	13,503	1,755	15,258	23,913
42-44	6,020	219	6,239	7,221	1,383	8	1,391	1,002
46 4/	2,835	1,907	4,742	5,083	2,441	183	2,624	4,450
41-46	31,716	16,677	48,393	61,903	17,327	1,946	19,273	29,365
51	1,107	670	1,777	1,964	2,732	239	2,971	3,049
52	830	31	861	947	1,254	4	1,258	1,437
54	17,406	2,863	20,269	21,727	1,174	270	1,444	593
55	12,448	5,220	17,668	19,105	1,501	115	1,616	550
51-55	31,791	8,784	40,575	43,743	6,661	628	7,289	5,629
61	7,492	1,193	8,685	11,032	1,548	20	1,568	1,737
62	5,648	322	5,970	5,961	848	379	1,227	877
61-62	13,140	1,515	14,655	16,993	2,396	399	2,795	2,614
72	4	364	368	370	54	35	89	147
73 5/	0	3,467	3,467	3,069	13	9	22	56
72-73	4	3,831	3,835	3,439	67	44	111	203
81	3	94	97	227	44	88	132	148
82	1,387	1,176	2,563	1,771	2,608	62	2,670	1,610
83	6,465	5,889	12,354	14,087	10,424	4,747	15,171	9,152
84	1,238	1,321	2,559	3,004	3,102	551	3,653	1,729
85	1,215	2,501	3,716	3,619	2,672	98	2,770	1,331
86	9,589	3,365	12,954	8,744	2,489	251	2,740	948
87	1,330	1,073	2,403	1,158	3,897	23	3,920	3,183
88	1,737	982	2,719	4,092	1,829	6	1,835	625
89	5,589	1,671	7,260	6,487	8,314	402	8,716	2,699
81-89	28,553	18,072	46,625	43,189	35,379	6,228	41,607	21,425
91	335,095	5,322	340,417	320,635	376	159	535	775
92	4,740	7,466	12,206	2,971	7,088	4,968	12,056	6,228
93	878	7,589	8,467	3,586	5,729	3,206	8,935	2,638
91-93	340,713	20,377	361,090	327,192	13,193	8,333	21,526	9,641
11-93	583,357	1,720,738	2,304,095	2,230,361	733,601	310,400	1,044,001	1,219,882

1/ Total includes stocks of leaf reported in tobacco sheet. See separate reportings in table 3.

2/ These statistics represent the quantity of leaf tobacco reported as owned by all leaf tobacco dealers, manufacturers, quasi-manufacturers, growers' cooperative associations, warehousemen, brokers, holders, and owners subject to provisions of the Tobacco Stocks and Standards Act approved January 14, 1929, and the amendments thereto passed in the 72nd and 74th Congress. The quantities owned by dealers and manufacturers have been tabulated separately on a type total basis.

3/ This table should be considered as representing only the approximate quantities owned respectively by dealers and manufacturers. The quantities shown as owned by manufacturers represent domestic manufacturers only. All Government loan stocks are dealers' holdings.

4/ Includes stocks on the island of Puerto Rico.

5/ For explanation of stocks included in this classification see footnote 2 on page 7.

TABLE 5.--Stocks of leaf tobacco owned by dealers and manufacturers, summary by types, April 1, 1973, compared with other quarters 1/ 2/

REPORTED WEIGHT

Type number	U.S. type number	April 1, 1973 3/			April 1, 1972	January 1, 1973	October 1, 1972
		Unstamped	Stamped	Total			
		1,000 lb.	1,000 lb.	1,000 lb.	1,000 lb.	1,000 lb.	1,000 lb.
Flue-cured	11-14	380,634	1,110,901	1,491,535	1,609,225	1,709,226	1,735,236
Virginia fire-cured	21	7,463	132	7,595	9,473	6,035	6,710
Tennessee and Kentucky fire-cured (Eastern District)	22	59,539	344	59,883	58,682	38,637	45,120
Kentucky and Tennessee fire-cured (Western District)	23	9,712	622	10,334	9,512	7,258	8,566
Total fire-cured	21-23	76,714	1,098	77,812	77,667	51,930	60,396
Burley	31	297,598	794,789	1,092,387	1,116,308	1,135,953	909,408
Southern Maryland	32	3,839	27,825	31,664	32,274	35,525	41,848
Total light air-cured	31-32	301,437	822,614	1,124,051	1,148,582	1,171,478	951,256
One Sucker	35	20,942	7,069	28,011	30,901	26,405	24,922
Green River	36	14,958	1,226	16,184	15,775	14,748	14,290
Virginia sun-cured	37	1,333	1,396	2,729	2,757	2,245	2,182
Total dark air-cured	35-37	37,233	9,691	46,924	49,433	43,398	41,394
Pennsylvania Saeleaf	41	36,364	16,306	52,670	73,512	47,913	56,576
Ohio Filler (Miami Valley)	42-44	7,403	227	7,630	8,223	5,240	6,025
Puerto Rico:							
in United States	46	1,476	1,274	2,750	3,273	2,579	2,709
in Puerto Rico	46	3,800	816	4,616	6,260	5,356	7,668
Total cigar filler	41-46	49,043	18,623	67,666	91,268	61,088	72,978
Connecticut Valley Broadleaf	51	3,839	909	4,748	5,013	4,338	4,301
Connecticut Valley Havana Saeleaf	52	2,084	35	2,119	2,384	2,205	1,977
Southern Wisconsin	54	18,580	3,133	21,713	22,320	15,732	17,955
Northern Wisconsin	55	13,949	5,335	19,284	19,655	13,285	14,504
Total cigar binder	51-55	38,452	9,412	47,864	49,372	35,560	38,737
Connecticut shade	61	9,040	1,213	10,253	12,769	10,290	10,954
Georgia and Florida shade	62	6,496	701	7,197	6,838	7,290	7,029
Total cigar wrapper	61-62	15,536	1,914	17,450	19,607	17,580	17,983
Perique	72	58	399	457	517	439	668
Other miscellaneous domestic	73 4/	13	3,476	3,489	3,125	3,407	3,552
Total miscellaneous domestic	72-73	71	3,875	3,946	3,642	3,846	4,220
Cuba	81	47	182	229	375	283	338
Indonesia	82	3,995	1,238	5,233	3,381	5,248	3,576
Philippine Islands	83	16,889	10,636	27,525	23,239	28,204	27,735
Brazil	84	4,340	1,872	6,212	4,733	6,174	5,533
Colombia	85	3,887	2,599	6,486	4,950	5,213	8,051
Dominican Republic	86	12,078	3,616	15,694	9,692	13,335	7,500
Paraguay	87	5,227	1,096	6,323	4,341	5,554	3,470
Mexico	88	3,566	988	4,554	4,717	5,000	5,135
Other foreign-grown cigar leaf	89	13,903	2,073	15,976	9,186	13,362	10,595
Total foreign-grown cigar leaf	81-89	63,932	24,300	88,232	64,614	82,373	71,933
Foreign-grown Oriental and Aromatic	91	335,471	5,481	340,952	321,410	333,898	325,102
Foreign-grown flue-cured	92	11,828	12,434	24,262	9,199	24,849	15,696
Foreign-grown burley	93	6,607	10,795	17,402	6,224	13,156	7,710
Total imported cigarette and smoking tobacco leaf	91-93	353,906	28,710	382,616	336,833	371,903	348,508
Total all types	11-93	1,316,958	2,031,138	3,348,096	3,450,243	3,548,382	3,342,641

1/ Totals include stocks of leaf reported in tobacco sheet. See separate reporting in table 3.

2/ These statistics represent the quantity of leaf tobacco reported as owned by all leaf tobacco dealers, manufacturers, quasi-manufacturers, growers' cooperative associations, warehousemen, brokers, holders, and owners except (a) the original growers of tobacco; (b) manufacturers who in the first three quarters of 1971, according to the returns of the Commissioner of Internal Revenue, manufactured less than 35,000 pounds of tobacco, less than 185,000 cigars, or less than 750,000 cigarettes, pursuant to the provisions of the Tobacco Stocks and Standards Act approved January 14, 1929, and the amendments thereto passed in the 72nd and 74th Congress.

3/ Subject to revision.

4/ For explanation of stocks included in this classification see footnote 2 on page 7.

UNITED STATES DEPARTMENT OF AGRICULTURE
WASHINGTON, D. C. 20250

POSTAGE AND FEES PAID
U.S. DEPARTMENT OF
AGRICULTURE
AGR-101



OFFICIAL BUSINESS

PENALTY FOR PRIVATE USE, \$300

NOTICE

If you no longer need this
publication, check here
return this sheet, and your name will
be dropped from the mailing list.

If your address should be changed,
write the new address on this sheet
and return the whole sheet to:

Tobacco Division
Agricultural Marketing Service
U. S. Department of Agriculture
Washington, D. C. 20250

Tobacco Inspection Services are available to all
residents of the United States regardless of race,
creed, or national origin. Violations should be
reported to the Secretary of Agriculture, Washington,
D. C. 20250