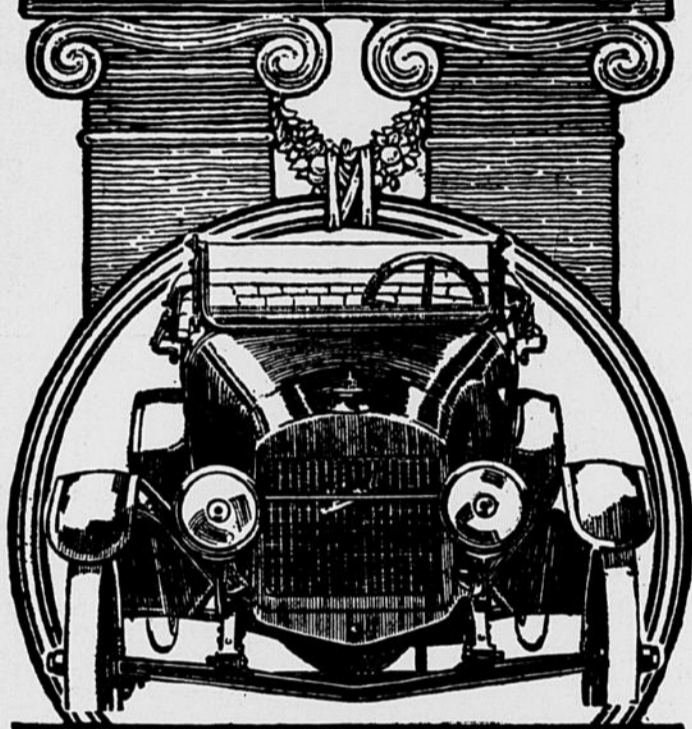


New Price  
\$695

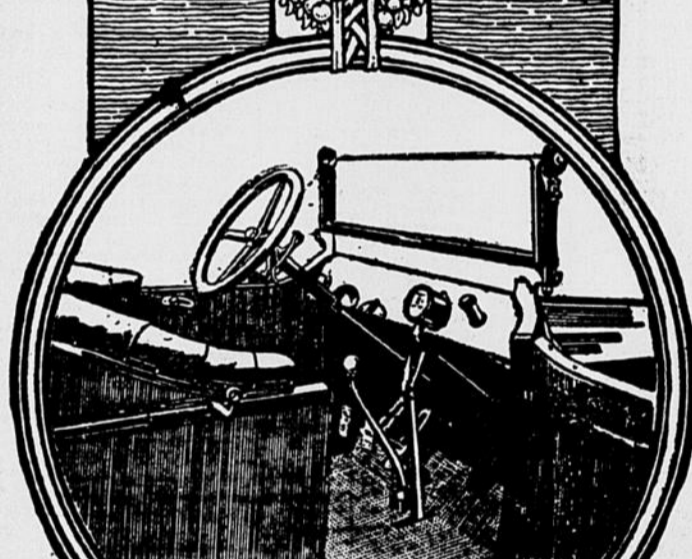
# The Beautiful New 1915 Maxwell "25"

New Price  
\$695

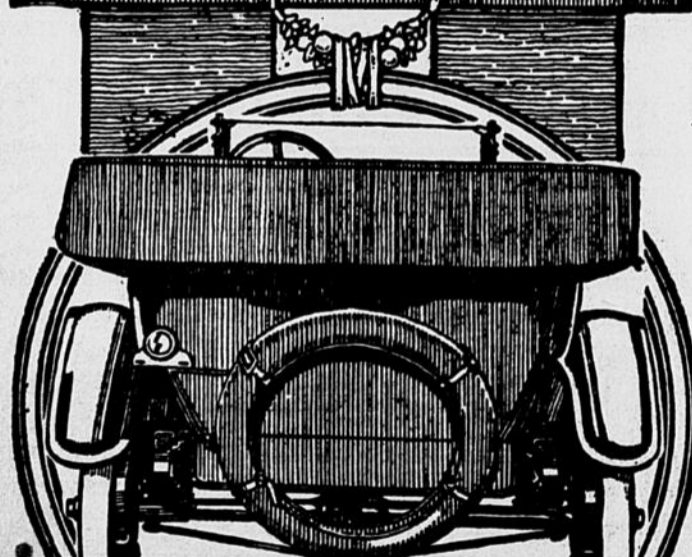
With 17 New Features



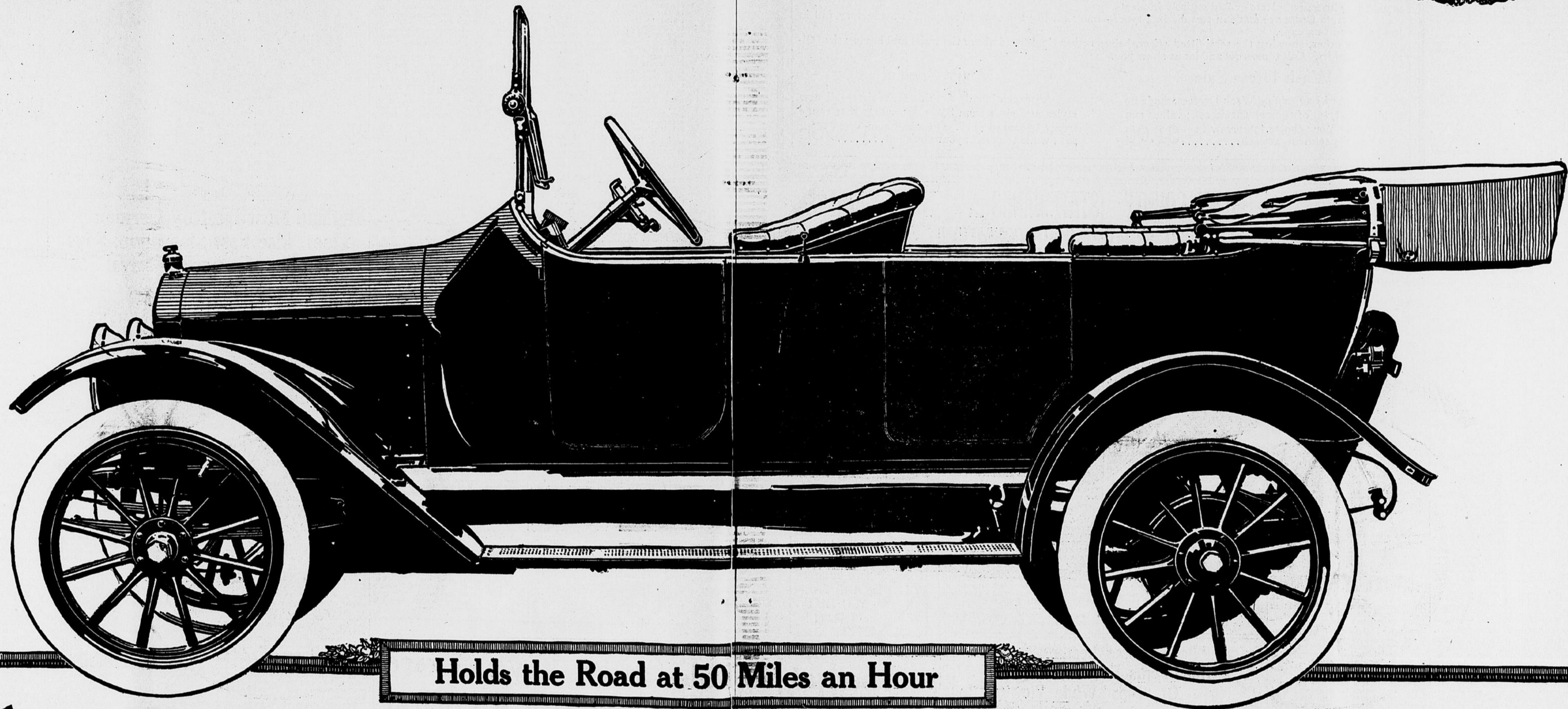
**Cool Radiator and Other New Features**  
Reduced front view showing Headlights—Crown Fenders—Semi-elliptic front springs—Drop-forged front Axles same as in the highest priced cars.  
All included in the Price, \$695.



**Left Hand Drive and Other New Features**  
Interior view of driver's position showing Carburetor adjuster—Control Console—Levers—Speedometer—Gasoline Filter mounted on Dash and Foot-Accelerator.  
All included in the Price, \$695.



**New Crown Fenders and Other New Features**  
Reduced rear view showing the beautiful New Crown Fenders—the splendid, easy-riding three-quarter elliptic rear springs—New Light with license bracket—and Tire Carrier on rear.  
All included in the Price, \$695.



Holds the Road at 50 Miles an Hour

## The Sensation of the Automobile Year

The biggest automobile value ever offered for less than \$1,000 Our production of 60,000 cars makes the new price of \$695 fully equipped (with 17 new features) possible.

### Here are the Seventeen New Features

- |                                         |                              |                                                  |                                                                                        |                                                                                                                                           |
|-----------------------------------------|------------------------------|--------------------------------------------------|----------------------------------------------------------------------------------------|-------------------------------------------------------------------------------------------------------------------------------------------|
| 1.—Pure stream-line body.               | 5.—Tire brackets on rear.    | 9.—Foot-rest for accelerator pedal.              | 13.—Head lights braced by rod running between lamps.                                   | 17.—Improved steering gear; spark and throttle control on quadrant under steering wheel; electric horn button mounted on end of quadrant. |
| 2.—Adjustable front seat.               | 6.—Spring tension fan.       | 10.—Tail lights, with license brackets attached. | 14.—Famous make of anti-skid tires on rear.                                            |                                                                                                                                           |
| 3.—Sims high-tension magneto.           | 7.—Kingston carburetor.      | 11.—Gasoline tank located under dash cowl.       | 15.—Gracefully rounded, double-shell radiator equipped with shock absorbing device.    |                                                                                                                                           |
| 4.—Three-quarter elliptic rear springs. | 8.—Clear Vision Wind Shield. | 12.—Crown fenders with all rivets concealed.     | 16.—Instrument board, carrying speedometer, carburetor adjustment and gasoline filler. |                                                                                                                                           |
- Powerful—fast—unusually graceful and beautiful in its lines—roomy, comfortable and completely equipped with Top, Windshield and Speedometer the New 1915 Maxwell at \$695 has more high priced car features than ever put in an automobile before for less than \$1,000.
- Automobile experts have refused to believe that anyone could produce a full grown five passenger really beautiful fully equipped car—a car with real high tension magneto—a car with sliding gear transmission—left hand drive center control, a car with practically every high priced car feature for less than \$1,000.
- Here it is. Here is a real automobile. Here is the easiest car to drive in the World—here is the greatest all around hill climbing car in the world. Here is an automobile to be really proud of.

Built complete by three gigantic Maxwell Factories at Detroit, Dayton and Newcastle.

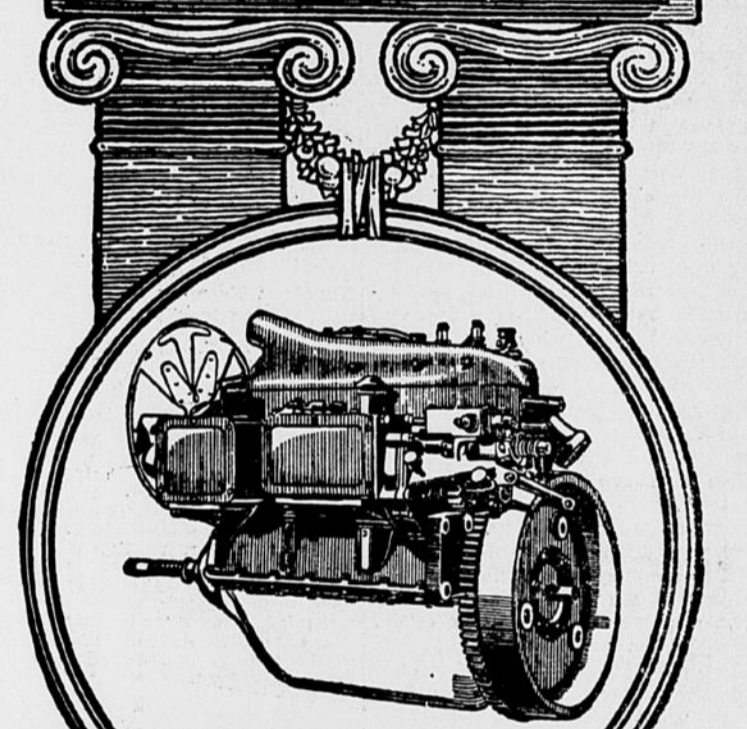
**With Electric Self-Starter and Electric Lights \$55 Extra**

The new 1915 "Wonder Car" is on display at Maxwell dealers. See it at once. If there is no dealer in your town, write or wire us. Send your name and address for the New 1915 Catalog.

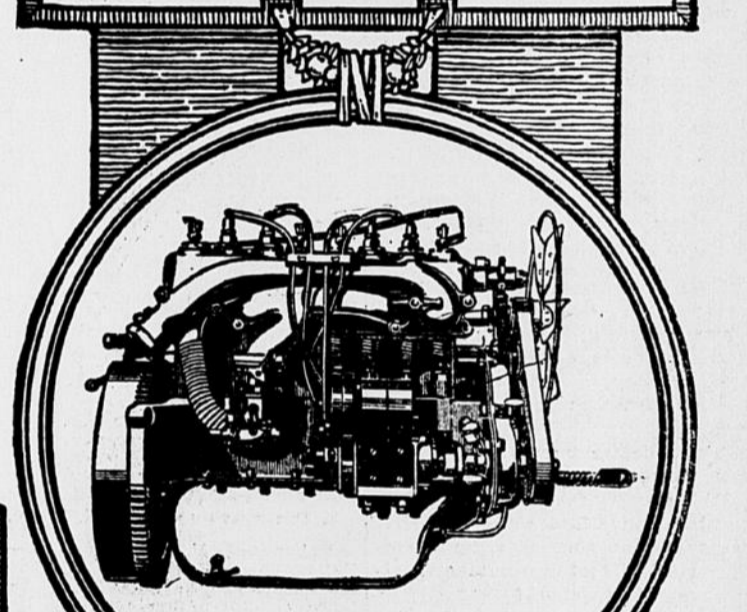
Maxwell Motor Co., Inc., Detroit, Mich.

Every car backed by the great Maxwell Motor Co. Inc. Service Stations in principal Cities.

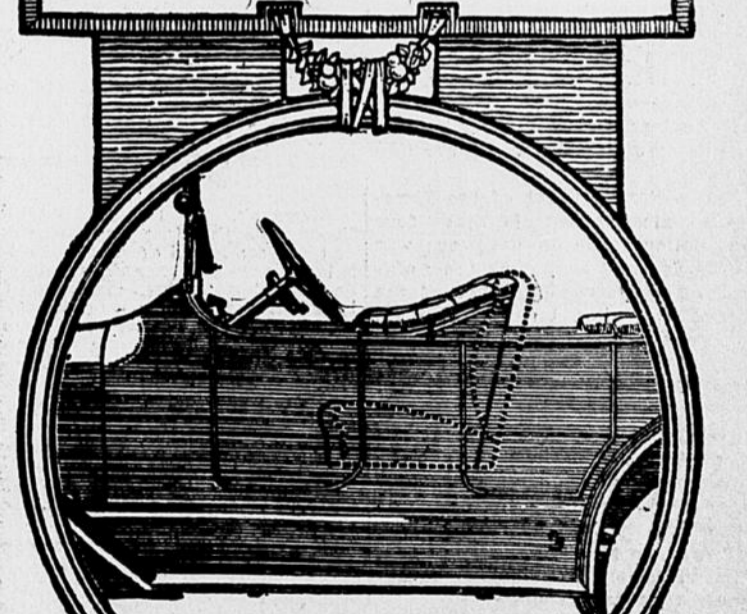
With 17 New Features



**Gray & Davis Self-Starter, \$55 extra**  
Technical view of Motor showing the Famous Gray & Davis Self-Starter—Electric Light Generator—Some Electric Lamps System and Self-Starter in use on the leading highest priced car.  
With Self-Starter and Electric Lights, \$55 extra.



**Sims High Tension Magneto**  
Technical view of Motor, showing Famous Sims High Tension Magneto—Carburetor and short Intake Pipe—The Sims High Tension Magneto is used on high priced cars.  
All included in the Price, \$695.



**The New Adjustable Driving Seat**  
Technical view of driver's seat showing the New adjustable seat for drivers of different leg length. A new feature only found on a few highest priced cars. Note the Clear Vision Wind Shield.  
All included in the Price, \$695.