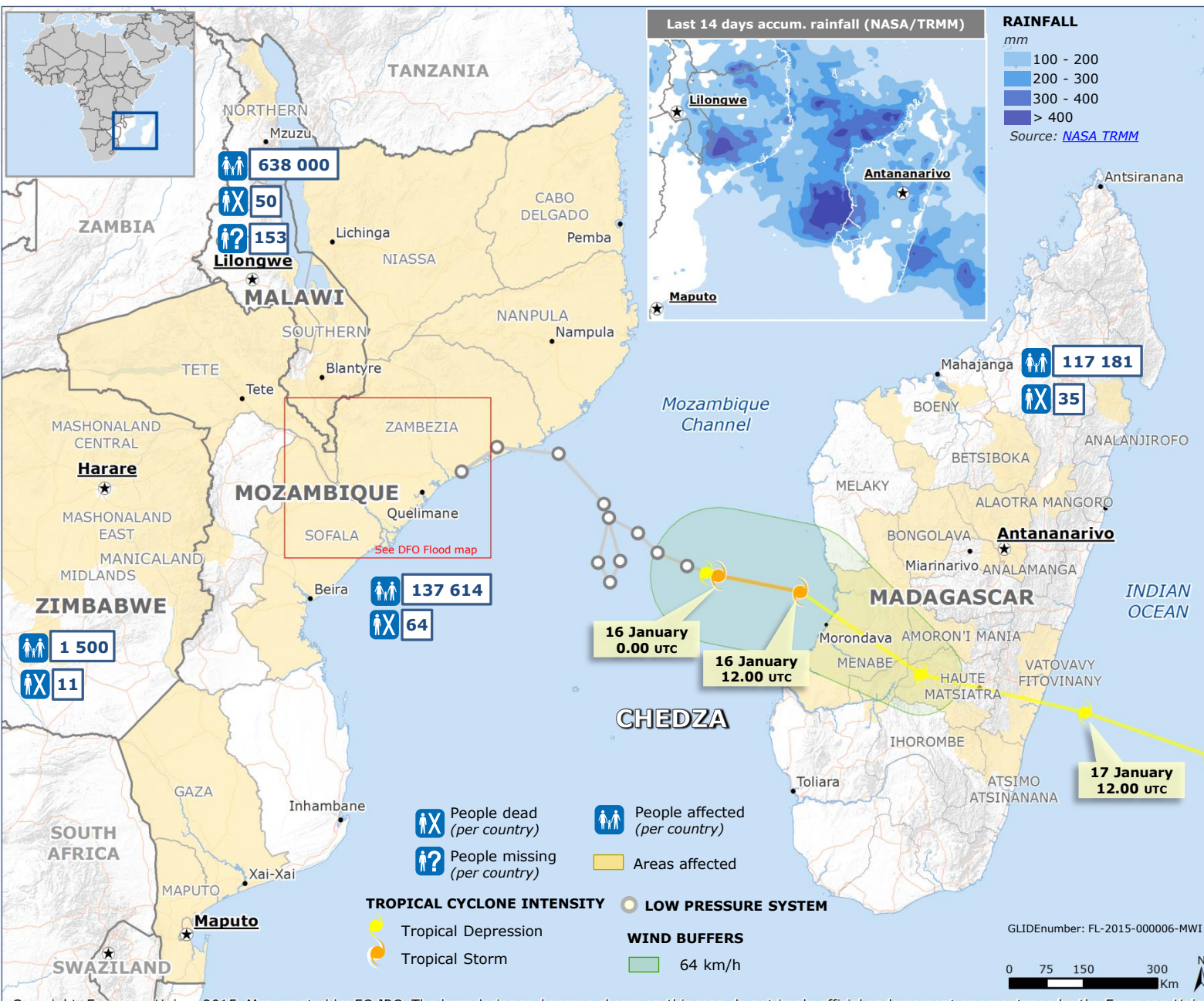


21 January 2015: South-eastern Africa – Floods



SITUATION

Madagascar - Tropical Cyclone and Flood

- Due to the recent heavy rains and the passage of the Tropical Storm CHEDZA, 35 people have died, and 117 181 are affected. In addition, there were 44 389 people displaced, 2 322 houses destroyed, 1 451 houses damaged, 200 schools damaged, eight health centres flooded and about 1 650 ha of crop-land inundated.

Mozambique - Flood

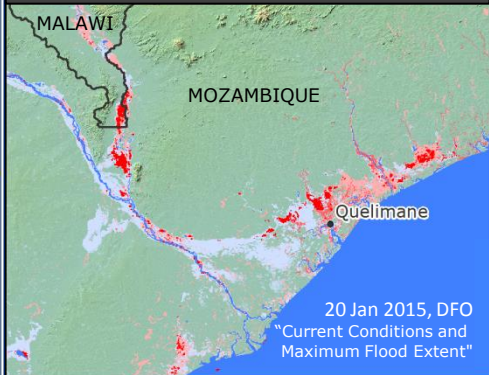
- Total number of affected population stands at 137 614, including provinces of Zambezia, Nampula, Cabo Delgado and Tete. There are a total of 117 685 people affected by the floods in Zambezia province. The floods have destroyed 4 963 houses, 378 classrooms, six health centers and 51 bridges. Death toll due to flooding, lightning and house collapse is 64. Currently 50 481 people are hosted in 49 accommodation centers.

Malawi - Flood

- The floods have affected 638 000 people; 121 000 people remain displaced and more than 50 people are killed and 153 missing.
- Parts of the southern region continue to receive light to moderate rainfall. As soils are already saturated, additional flooding remains a concern. According to OCHA, search and rescue operations continue, with relief supplies being dispatched to affected areas.

Sources: ECHO, GDACS, JTWC, Météo France - La Reunion, Mauritius MS, NOAA, BNGRC, UNOCHA, DFO, UNOSAT-UNITAR, Government of Malawi, Government of Mozambique, Media

2015 Flooding in Malawi and Southern Mozambique, DFO Event 4219 Dartmouth Flood Observatory (DFO)



Red: Flooding within past 14 days (MODIS automated product). Light Red: Flooded during this event, from earlier MODIS coverage or non-automated MODIS mapping. Darker Red: Flooded areas from high resolution Sentinel 1 or Landsat 8 data. Dark blue, Permanent water, February, 2000 (SWBD*). Very light blue, All flooding mapped by DFO since yr 2000.

<http://floodingobservatory.colorado.edu/Version3/2015Malawi4219.html>