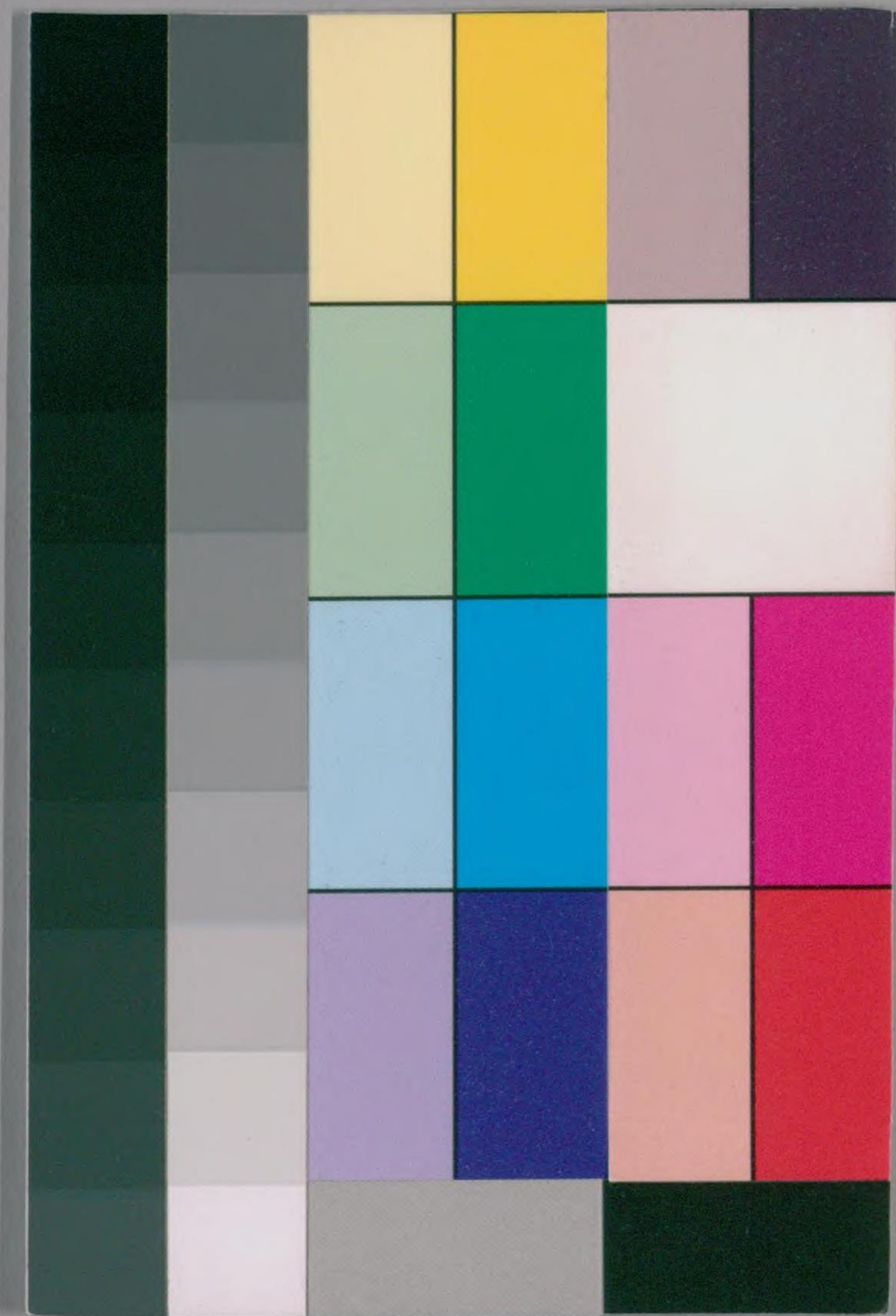
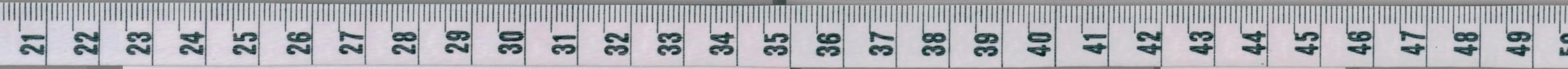


別 17  
23



目蓮記  
三所目 屋 寶



国立国会図書館 タイトル『目蓮記』 請求記号 本別17-23

ガラス使用











Handwritten text in a cursive script, likely a historical record or diary. The text is densely packed and covers the entire page.

Handwritten text in a cursive script, likely a historical record or diary. The text is densely packed and covers the entire page.





Handwritten text in a cursive script, likely a diary or journal entry, covering the left page of the manuscript. The text is densely packed and spans the entire width of the page.

Handwritten text in a cursive script, likely a diary or journal entry, covering the right page of the manuscript. The text is densely packed and spans the entire width of the page.





Handwritten text in a cursive script, likely a historical record or diary entry. The text is densely packed and covers the upper portion of the page.

52

Handwritten text in a cursive script, continuing from the previous page. It includes several lines of dense handwriting.

Handwritten text in a cursive script, continuing from the previous page. It includes several lines of dense handwriting.

53





Handwritten text in a cursive script, likely a historical record or diary entry. The text is densely packed and covers most of the page.

Handwritten text in a cursive script, continuing from the previous page. The text is densely packed and covers most of the page.

21 22 23 24 25 26 27 28 29 30 31 32 33 34 35 36 37 38 39 40 41 42 43 44 45 46 47 48 49 50







Handwritten text in a cursive script, likely a historical record or diary entry, covering the left page of the manuscript.

Handwritten text in a cursive script, likely a historical record or diary entry, covering the right page of the manuscript.



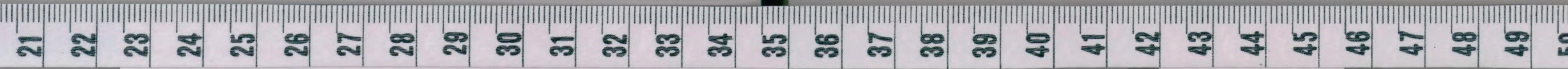


Handwritten text in a cursive script, likely a historical record or diary entry. The text is densely packed and covers the entire page.

Handwritten text in a cursive script, continuing from the previous page. The text is densely packed and covers the entire page.









Handwritten text in a cursive script, likely a historical record or diary. The text is densely packed and covers the entire page. A large, stylized initial or section marker is visible near the top center of the page.

Continuation of handwritten text in a cursive script, matching the style of the previous page. The text is densely packed and covers the entire page.





Handwritten text in a cursive script, likely a historical record or diary entry. The text is densely packed and covers the entire page.

Handwritten text in a cursive script, continuing from the previous page. The text is densely packed and covers the entire page.









別 17  
23

貞享二年述石橋建奉成

貞享二年記  
（貞享四年）  
（享和五年）



貞享二年

大傳馬三町目

大傳馬三町目

大傳馬三町目

右外中者有...  
一息...  
...

Handwritten text in a cursive style, likely a diary or record.



別17  
23

水高利...  
...

大傳馬三町目  
...

貞吉宛

大傳馬三町目

...

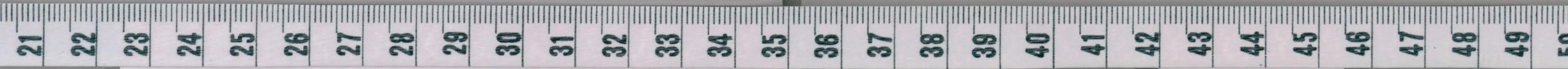
...

右件年者...

...

...





国立国会図書館 タイトル『目蓮記』 請求記号 本別17-23

ガラス使用