

Historic, archived document

Do not assume content reflects current scientific knowledge, policies, or practices.



62.37

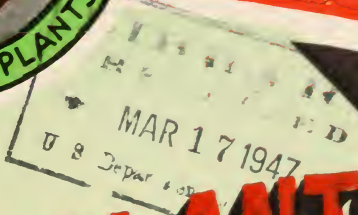


TOWNSEND'S

1947

CATALOG OF

STRAWBERRY PLANTS



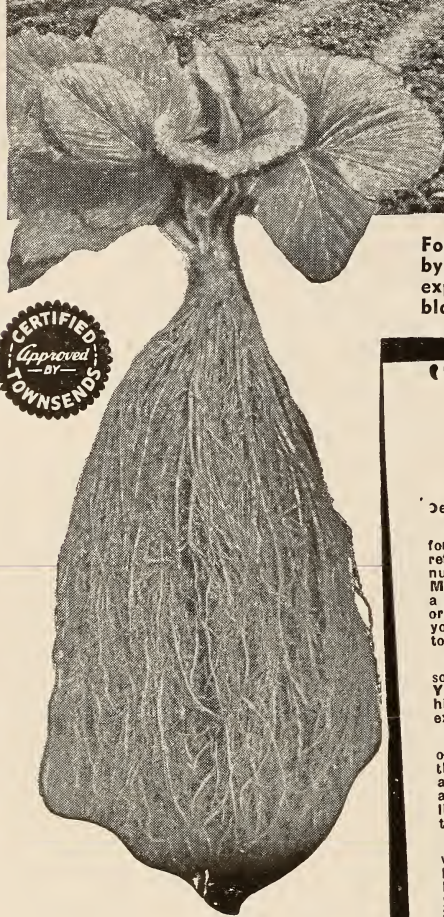
DORSETT
New Early
Strawberry
Page 8

**FRUIT
TREES
AND OTHER
FRUIT PLANTS**

**TOWNSEND NURSERIES
SALISBURY - MARYLAND**



Following the breeding and plant selection methods as practiced by the founder of Townsend Plant Farms. The above photo shows experienced men making "plant selection" from a forty-two acre block of new ground grown Premier.



The results of Townsend's plant breeding methods. Note heavy crown and fibrous root system

"A friendly word to our folks"

Dear Friend:

It is with sense of deep gratification that we offer you our sincere thanks for the patronage of you and your friends during the past year. It was reflected into what was the most successful year we ever experienced in the nursery business. We handled about 11,000 more orders than ever before. Many reported that our service was supreme. We assure you that it was a pleasure to once again give so prompt service. We are glad to report our organization is now better than ever, and ready to continue to give the service you have the right to expect in keeping with our slogan "Make Every Customer A Personal Friend".

To our prospective customers, we only ask that you give us a trial order, so that we may also show you how to be a Townsend Satisfied Customer. You folks that have already purchased our products in the past know the high quality Select-Strain stock which has given you larger yields "at no-extra-cost".

The weather conditions here with us have been ideal for the production of berry plants, and we have not spared any effort nor expense to produce the highest quality plants. Our plants are packed full of vitality carrying a heavy fibrous root system which makes them transplant easily. They make a quicker growth too, for you when grown under the above conditions. Our list of varieties are up to date. We offer only the tried and proven varieties that come up to our high standards. Others we discard.

Our production cost have advanced but by increased production and larger volume of sales, we have been able to keep berry plant prices on as low a level as last year. In some respects we have made new low prices. In looking through this catalog you will find that we have added new items for your convenience. One of the outstanding items are our Baby Chicks (Page 35). In response to numerous requests from our old customers, we have been asked to supply various products, pertaining to the Farm and Suburban, home owner. Thus there has been added a special department for this service, and you will receive from time to time literature on what we have to offer along these lines, when the products are available. Of course every item that we offer is backed by our broad—**MONEY BACK GUARANTEE IF NOT SATISFIED.**

Thanking you for your business and trusting that we may have the pleasure of serving you this season, we are, with kindest regards,

Sincerely yours

Townsend Nurseries.

Per: L. Sherman Townsend, Mgr.

LST/EB



Cultivating a large field of strawberry plants, grown under the supervision of L. Sherman Townsend, Mgr.

THE TOWNSEND RECIPE FOR *Satisfaction...*



L. SHERMAN TOWNSEND
Manager

**LOW PRICES
+ HIGH QUALITY =**

Value

TOWNSEND

"Value cannot be measured by price alone. If quality is lacking, value is destroyed. Only when you have the combination of high quality and low prices does real value exist."

WE ARE PACKING CONFIDENCE IN EVERY BUNDLE PLANTS SENT OUT

For more than forty years the Townsend's Nurseries have been run on a square deal plan. We have tried to pack confidence and value into every package of plants that we have ever sent out.

We realized in the beginning that first we must gain your confidence, and in order to hold it we must give you the same square deal every time you come to us with your order.

WE NEVER SACRIFICED QUALITY TO MAKE A LOW PRICE

Every Townsend plant has all the quality built into it that such an organization knows how to build. We contribute this quality, together with our fair and courteous treatment of every customer to our success. Mass production and low prices without quality may go for a time, but no lasting trade can be built on any product except where Quality is present. Our motto has always been to grow the best quality plants possible, and to make the lowest possible price.



Townsend's Plants are known the country over as one of the heaviest yielding strains grown

CLAIMS AND ADJUSTMENTS

All claims if any must be made within five days from date you received your shipment, along with a signed statement from your Express Agent or Postmaster, showing extent of damage, so that we can make the proper adjustment with you if necessary. We are not responsible for stock purchased after this time expires. Continued growth, as we all know, depends on weather conditions, soil, planting and care, which is out of our hands and have no control over.

Our Guarantee

Every plant shipped by Townsends' is guaranteed to be strictly first class, true-to-name, free from all injurious diseases, and carefully packed to reach you in a good growing condition. Any stock that proves otherwise we will replace free of charge.

Townsend Nurseries

THE TOWNSEND FOUR-POINT GUARANTEE and What It Means to You

● QUALITY

The good name of this firm and good will of its customers have been built and preserved by always handling nothing but the highest grade stocks available. Every plant or tree is the best that can be produced.

● TRUTH

Old customers know that they will always get the variety they order. They have faith in us and we will not break it.

● HEALTH

Every plant we ship is healthy, thrifty, and free from all injurious diseases. Diseased plants will produce dividends for neither you nor us.

● PRODUCTIVENESS

Every plant that goes into our propagation fields is selected for its heavy fruiting crowns. In this manner our stock is kept on its high level in both productiveness and vitality. All plants are carefully packed so that you receive them in condition to grow strongly and to produce as you have the right to expect from plants bearing the Townsend name.

Any stock received by you that does not meet these high standards will be replaced free. It is also understood and agreed that in no case will we be liable for any sum larger than the purchase price.



MILLIONS OF SELECT
STRAIN PREMIER ARE
GROWN ANNUALLY
AT OUR PLANT
FARMS

Premier

THE MOST WIDELY PLANTED *Early*
STRAWBERRY EVER PRODUCED

THE Premier strawberry is really premier because (1) No other early variety has ever received so much praise, enjoyed such universal acceptance under all possible growing conditions. (2) No other variety has made as much money for growers. There may be others that will supplant Premier in certain localities, but for good all-around consistency, we predict that Premier will continue to lead for years to come.

By careful plant selection and our select strain method of growing, we have maintained all the high qualities that made Premier the immediate sensation of the strawberry world when we first introduced it to our trade. Millions of select strain new ground grown Premier plants are grown and shipped annually from our nursery to the Largest Berry Growing Associations and thousands of individual growers in every section of the country. These growers realize the heavy yielding quality of our strain of Premier plants, and today Townsend's are recognized as headquarters for the original strain of **HEAVY YIELDING PREMIER**.

Our new ground planting of Premier is one of the largest in the country and have made a nice growth. The quality was never better. If you are looking for a heavy yielding strain of Premier send along your order after receiving this catalogue. We will reserve plants for you, digging and shipping whenever you are ready to set.

While Premier is well known by the majority of berry growers, for the benefit of the new planters we describe Premier as follows:

Color—Medium bright red and very attractive with its large green cap that shows off the berry to advantage when placed on the market.

Size—Under favorable growing conditions the berries will run large to extra large and very uniform size, holding up well to the last picking.

Firmness—Premier can be classed as a long distant shipper where trucks are used. For the market gardener its firmness will be found to be very satisfactory.

Vigor—Premier is a strong, healthy

grower, making a good fruiting bed on a wide range of soils and climatic conditions.

Quality—Stands out as one of the best flavored berries grown.

Season of Ripening—In the North Premier is one of the first varieties to ripen. It can be put on the market from a week to ten days ahead of the mid-season varieties.

Frost Resistant—Premier has long been noted for its frost resistance and I have never heard tell of a Premier crop failure due to late frosts.

— Premier and Howard 17 are one and the same variety. The variety was originated by A. B. Howard Sons of Belchertown, Mass., and in many sections Premier is known by the name, Howard 17.

● **YOU!** can increase your yields and profits at "No Extra Cost" by planting Townsend's Select Strain New Ground Grown Premier "Known in every berry growing section as the heaviest yielding strain grown."

ALL DOUBLE INSPECTED — STATE CERTIFIED — WE SELL ANNUALLY MILLIONS OF TOWNSEND SELECT STRAIN PREMIER

TOWNSEND'S

Our strain of Premier is direct from the original planting and has been consistently bred each year for heavier yields.

**DOUBLE INSPECTED—
STATE CERTIFIED**

Every bundle of Townsend's Premier has been double inspected and certified by Maryland State Dept. of Entomology. Why take a chance. Order your Premier from Townsend. They cost no more than just ordinary plants.

**"THE BEST PLANTS EVER
RECEIVED"**

Stepney Depot, Conn.
May 7th, 1946

L. Sherman Townsend, Mgr.
Dear Mr. Sherman:

Thanks for the strawberry plants received May 4th; nice plants and received at late date in very good condition, planted same May 5th.

I must also add, my brother and I received the Blueberry plants also in splendid condition. And they are without question the best plants that we have seen out of any nursery. Again thanking you for your **FAIR DEALING METHODS**, I remain,

Yours truly,
Thomas Stewart.



Complete
Strawberry
Prices
Page 46



Experienced men making Plant Selection in a 35 acre field
Fairfax and Dorsett.

YOU RECEIVE TOWNSEND'S

Famous PLANT SELECTION

at no extra cost!



THE forty-five years of our experience in growing and propagating small fruit plants has taught us the vital importance of plant "strain". For, in selecting plants, it is just as important to continually improve the "strain" as it is with horses, cows and other animals. Every Townsend plant is an offspring of a selected plant that has special merits back of it. Throughout the year, experienced men under the personal supervision of one of the Townsends' go into the fields and personally select the plants that are to be used for mother plants. Only plants that show outstanding vigor and productiveness for the specific variety, are used. These selected breeding plants are reset into a plot; and during their period of growth (until the following spring), numerous strong, healthy runner plants are produced. These are taken up during the spring at proper planting time and set in large acreages on our farms to grow for our numerous customers throughout the country.

Even after all this we do not consider our work finished. We continue selecting this stock, constantly striving to keep our strain as close to perfection as our forty-five years experience has taught us. Only in this way can we be sure of giving our customers plants of better quality and greater yield.



Townsend Select Strain Premier As Grown By Our Mr. L. Sherman Townsend

Pronounced by Visitors Who Examined the Field as One of the Finest Blocks They Had Ever Seen Grown in Any Section.



we have a particularly fine stock of high quality plants—and respectfully solicit your order “fully confident that we can please you.”

Northern Growers Recognize the *Hardiness* of TOWNSENDS' Select Strain Plants

HERE, at our nurseries the temperature often falls around zero, and even lower. This is very cold weather for any plants—but Townsends' select strain varieties prove their worth even under these conditions by not being affected by this bitter cold! During these spells our plants are not protected by mulch of any kind, but have hardened themselves against frigid temperatures, unlike plants grown by northern nurserymen under mulch. This fact has become so well known that many northern growers are convinced that they cannot obtain hardier plants anywhere else in the country!

TOWNSENDS' PLANTS OUT AHEAD IN TEST 97% PERFECT

GENTLEMEN: St. Peter, Minn.
I find that your plants in test make best growth, than any other nursery, and I have tested eleven nurseries plants in fourteen varieties. One nursery registers Zero—others 40%-80%, Townsends' plants are out ahead at 97% Perfect. I am well pleased with your plants and Promptness in filling orders, in the future you can be sure of my orders.
KONRAD M. OLSON.

CANADA FOLKS—LIKE TOWNSENDS' HARDY PLANTS

DEAR SIR: Woodville, Ontario, Canada.
Years ago I planted your Strawberry Plants, since then I have used no others. People depend on me for their berries and I get six cents a quart more than my neighbors, and I could have sold several thousand more quarts this year if I had them to offer. Advise me on other varieties to plant if you have any better.
E. W. MARSHALL.

FINEST STRAWBERRY PLANTS EVER RECEIVED DEAR SIR: Doniphan Co., Kansas.

I want to thank you for the finest strawberry plants that I ever received. Will have another order for plants later.
ALBERT PHILIPP.

YOU CAN Cash in

- MORE SALES and
- BIGGER PROFITS

with Townsends' SELECT STRAIN PLANTS!

More sales and bigger profits are easy for you with Townsends' select strain plants. Our method of plant selection has been acclaimed in every state in the union for greater yields and hardy growth. No matter in what section you live, you will find several varieties, suitable to your requirements, contained in this catalogue. And regardless of where you live, our low express rates and method of packing insure you safe arrival at cheap transportation costs. This year

"CONNECTICUT GROWER WILL BE BACK"

June 17th, 1946
Manchester, Conn.

Mr. L. Sherman Townsend, Mgr.
DEAR MR. SHERMAN:

Just a few words to let you know how much I appreciate your good service and nice plants. They are Chesapeake, Premier and Gem, everbearing, all received in good order. Thanks for your kindness very much, will send you another order next year.
MR. PHILIP FARR.

COUNTY AGENT OFFICE RECOMMENDS TOWNSENDS' NURSERIES

GENTLEMEN: Allegheny Co., Penna.
The Office of the County Agent has recommended your nursery as a good place to buy fruit trees, plants, I would appreciate your catalog.
MRS. ETHEL KITCHEN.

TOWNSENDS' PLANTS MAKING A REPUTATION FOR MR. JOHNSON

DEAR SIR: Plymouth Co., Mass.
Townsends' Strawberry plants have made a wonderful reputation for our roadside fruit & vegetable market. Our customers tell us we have the best berries, passing up many markets along the highway until they reach our place. Your plants always produce larger—brighter berries with big yields.
EDWARD J. JOHNSON.

TOWNSENDS' EXPERIENCED GRADERS & PACKERS SATISFY

DEAR SIR: Ripley Countr, Indiana.
Received plants in fine condition, thanks to the packers for their care in grading and packing, they are the nicest plants I ever transplanted.
JAMES F. HOOVER.

TOWNSENDS' SELECT-STRAIN PLANTS PRODUCE— QUALITY—QUANTITY—QUICK SALES

GENTLEMEN: Schenectady Co., N. Y.
I am very much pleased with your Select-Strain Strawberry plants, including QUALITY-QUANTITY and their fruit—which is easy to sell—in fact we could nowhere fill all our orders. I would like to have 2,000 plants of your Premier, how soon can I get them?
LELAND N. SOMERS.

STRAWBERRY

Culture

DIRECTIONS

Write us if you are confronted with any special problems.



Just right



Too deep



Too shallow

VARIETY SELECTION. Perhaps the most important task of all is the correct selection of varieties for the particular territory in which they are to be planted. A careful study of the variety recommendations in this catalog, and personal communication with the Townsend Nurseries will eliminate the possibility of the buyer purchasing varieties which have not the greatest profit-making possibilities in his territory.

SOIL PREPARATION. In the first place, be sure that the land is reasonably fertile and as nearly as possible free of weeds and grass. Plow the land to be used carefully in the fall or spring and spread a liberal coat of barnyard manure over the plot during the winter or early spring. Potato fields, tomato or cow-pea plots, or any site where the land has been enriched by growing truck crops makes an ideal plot for the strawberry patch.

If manure is not available, broadcast a heavy application of commercial fertilizer over the plot just before the plants are set in the spring. (Two or three weeks in advance is just about right). Sheep manure or a mixture of 1500 pounds of tankage and 500 lbs. of acid phosphate is good, distributed at the rate of 1000 lbs. per acre. Raw bone meal will not injure the plant roots and is the only fertilizer recommended for use directly under the plants.

The soil should be worked up into as good condition as possible before setting the plants. If the ground is manured, drag the soil level, marking the rows with a light marker, setting the plants on the side of the mark, using the same side of the mark on each row for equal width.

CARE OF PLANTS ON ARRIVAL. Townsends' plants come to you properly cleaned and bunched ready to set.

If the roots are too long to set in a stony soil, clip off a portion of them cleanly.

If the plants are received before the soil is ready, open the boxes and take the plants out, dampen the roots up to the string, redampen the moss and repack in the same box, place in a cool cellar and the plants, if still dormant, will keep from 7 to 10 days without injury. Heeling in is permissible, if done by an experienced man but it is slow and tedious and the tops and crowns may get wet. The first method is best.

SETTING THE PLANTS. For large plantings, a horse drawn transplanter is good to use if a good operator is available. For small plots, or in stumpy new land, the garden trowel is best to use. On stony soils use a spade. Set the plant roots straight down without crowding and pack the earth firmly around them.

PLANTING DISTANCE FOR MATTED ROW SYSTEM. Generally, the matted row system is considered the best and most practical. Plant rows $3\frac{1}{2}$ to $4\frac{1}{2}$ feet apart, depending on varieties used. A matted row should be 3 feet wide when the plants are laid by, and sufficient room should be left for the pickers. Keep the space between the rows cultivated as long as the runner plants form. Plants should be set 15 to 24 inches apart. Good, rank growing varieties like the Premier, Aberdeen, Blakemore, Dunlap, Howard Supreme and Jupiter should be set 24 inches apart in the row, with rows 4 feet apart.

EVERBEARING IN HILL SYSTEM. The hill system is the only way to grow everbearing strawberries successfully. Keep the runner plants cut off, not allowing more than five or six well-spaced runner plants to form. This produces large, vigorous plants, each plant set often yielding a quart of berries during the summer and fall. Space these rows 30 inches apart to allow for horse cultivation. The two rows in the bed are spaced 12 inches part, and the plants set 18 inches apart down the rows. With this spacing, 16,000 plants will set an acre. Such spacing allows room to work with a hoe around the plants at all times. Plant food can easily be applied as the cultivation continues through the summer months. Feeding the plants while they are fruiting is easily done without injury by broadcasting fertilizer or chicken manure around the plants. Cultivation is easy, as such spacing affords sufficient room around the plants to keep down all grass and properly mulch by shallow working with the hoe during dry weather.

CULTIVATING. Tillage in newly set strawberry fields should be thorough in the early part of the season, in order to preserve moisture so that plants can become established thoroughly in the soil and later in the season to conserve moisture so that the plants can develop runners. Weeds and grass should be kept out of the fields at all times, as they will take the moisture needed by the strawberry plants. Most successful growers use the cultivator as often as once each week throughout the first growing season, and during periods of drought even more frequently. Hoeing should be done as often as it is found necessary to clean out all weeds and grass. Cultivating should be shallow near the plants, both because of the danger of loosening them in the soil and because if too deep the roots near the surface will be broken. The teeth on each side of the cultivator should be shortened, so they will not stir the soil near the row to a depth of more than 1 or 2 inches, as many kinds of weeds continue to grow in late autumn and start to grow in early spring. We advise working the plants until hard frosts occur. The field will then be free from weeds, and in the following year very few will have time to grow before the harvest season.

● ONE OF THE SECRETS IN GROWING STRAWBERRIES

While there should be no secrets in the growing of Strawberries when every grower is exchanging ideas with his neighbors, there seems to be one point that has not been given enough publicity by the neighbor, journals and nurserymen. With the majority of the plant growers in the North it has always been a practice to hold off setting plants until all frosts and freezing is over. On low springy type soils this probably is a logical practice. However, on land with a good drainage and which dries out early in the spring this practice should not be followed. Strawberry plants, when properly grown and hardened, will stand considerable cold weather after setting.

MULCHING STRAWBERRIES

In regions of heavy snowfall Strawberries should have a mulch to keep the ground from freezing and thawing in early winter and in the spring. In the Northern part of the Middle West all varieties should be protected in the winter against the severe drying winds which occur in those regions. A mulch conserves moisture in the spring and in certain localities the crop may be increased from one-third to one-half by its use.

The mulch should be applied as soon as the ground is frozen from one to two inches deep. In some localities growers have found it unsafe to await freezing weather because of the danger of severe storms or heavy falls of snow which remain throughout the winter, mulch being put on as soon as active growth has ceased. The mulch should be scattered over the fields so that some will fall on the plants, but more of it between the rows. In the spring the plants will grow up through the straw and the berries will be kept clean. If mulch is put on heavy, some of it should be raked off into the middle of rows at time growth starts. Wheat, rye, oats and buckwheat straw are more commonly used. From 3 to 5 tons of straw is required per acre. Marsh hay is also used to advantage when obtainable, 1 to 3 tons per acre being required.

● NUMBER PLANTS REQUIRED TO SET AN ACRE

	Number Plants	Plants Spacing
Strawberries, Field Culture.....	8000	$3\frac{1}{2}$ x $1\frac{1}{2}$
Strawberries, Garden Culture.....		$2\frac{1}{2}$ x $1\frac{1}{2}$
Everbearing Strawberries, Field.....	8000	$3\frac{1}{2}$ x $1\frac{1}{2}$
Everbearing Strawberries, Garden.....		$1\frac{1}{2}$ x $1\frac{1}{2}$
Everbearing, Double Row Hill System.....	16000	$2\frac{1}{2}$ x $1\frac{1}{2}$ x 12
Blackberries.....	1700	8x3
Red Raspberries, Hill System.....	2400	6x3
Red Raspberries, Hill System.....	1800	5x5
Black Raspberries.....	1700	7 x $3\frac{1}{2}$
Dewberries, Solid Rows.....	2400	6x3
Grapes.....	490	9x10
Asparagus.....	3200	7x2

● Complete Culture Guide on Small Fruits Will Be Sent Free to Anyone Requesting This Booklet



Dorsett

A 38 Acre Block of New Ground
Grown Select Strain Dorsett
Grown by L. Sherman Townsenc

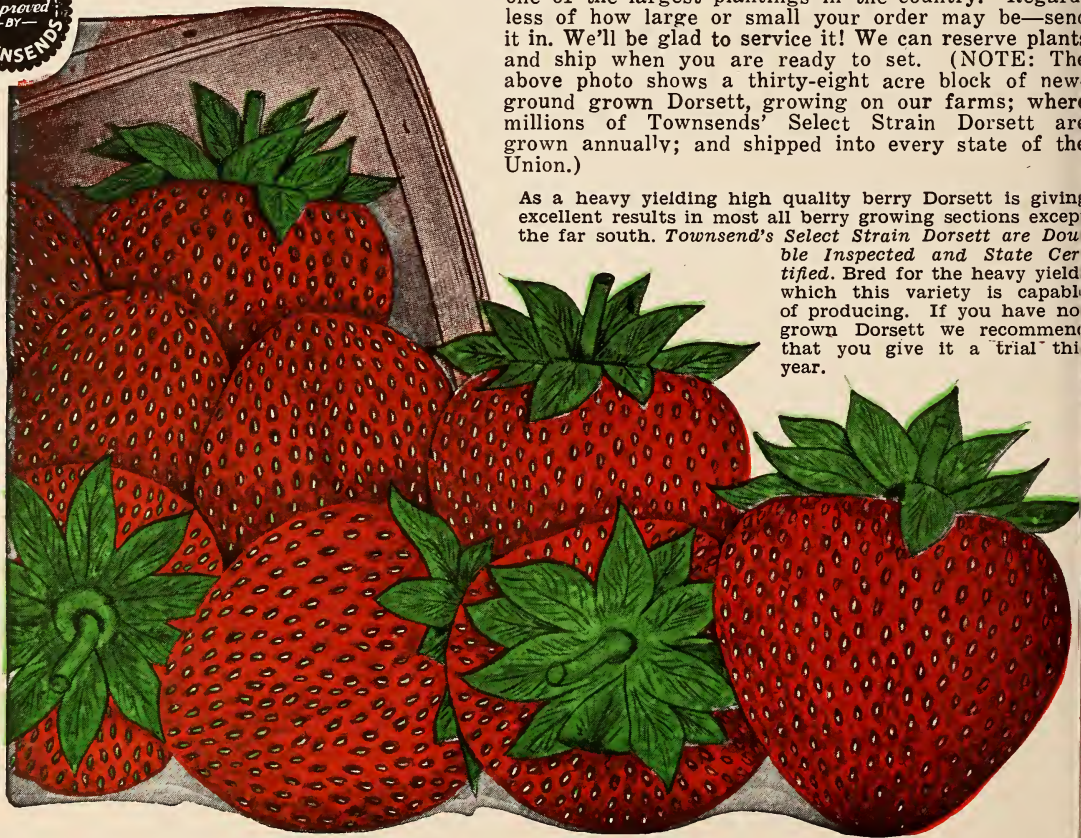
A PROFITABLE NEW *Early* STRAWBERRY

Although the Dorsett was introduced only a few years ago—after its development from a cross of Royal Sovereign X Premier (Howard 17) by the U. S. Dept. of Agriculture—it has been widely planted in practically every berry growing section of the country.

PRICES OF DORSETT
PLANTS ON PAGE 46

Its ready adaptability to almost any type of soil and climatic conditions; its quick, easy growth; its heavy yielding qualities make Dorsett a popular favorite everywhere. Dorsett strawberries are firm and attractive; and carry well even on long distance hauls. Therefore, we sincerely urge you to try Dorsett. You'll find it one of the best money-making early berries it is possible to grow. Each year finds a greater demand for Dorsett, and each year we grow one of the largest plantings in the country. Regardless of how large or small your order may be—send it in. We'll be glad to service it! We can reserve plants and ship when you are ready to set. (NOTE: The above photo shows a thirty-eight acre block of new-ground grown Dorsett, growing on our farms; where millions of Townsends' Select Strain Dorsett are grown annually; and shipped into every state of the Union.)

As a heavy yielding high quality berry Dorsett is giving excellent results in most all berry growing sections except the far south. Townsends' Select Strain Dorsett are Double Inspected and State Certified. Bred for the heavy yield which this variety is capable of producing. If you have no grown Dorsett we recommend that you give it a trial this year.





For Genuine Townsend Select Strain Plants—Mail Your Order To: L. SHERMAN TOWNSEND, Mgr. Townsend Nurseries, Salisbury, Maryland.

Fairfax

A LEADER ON THE *Early* MARKET

The annual rise in sales of Fairfax has been steady and sensational. No doubt much of this success is due to the tough skin texture and consequent good shipping characteristics. Even during the dry weather and droughts of Spring 1936, Fairfax produced crops far above the average. The fine, sturdy appearance, exceptional firmness, and high dessert qualities have made Fairfax famous since its introduction. We earnestly recommend that you devote a good portion of your acreage to Fairfax, thus insuring yourself a good crop of strawberries, regardless of weather conditions. All

of Townsend's Select Strain Fairfax are Double Inspected and State Certified, recognized by leading berry-growers as the heaviest yielding strain grown. Let us reserve some of these plants for you. Will ship whenever you are ready to plant.

Note These Features

Season of Ripening—Fairfax ripens about the same time as Premier. In some few sections two or three days later.

Quality is an outstanding point with FAIRFAX. Its firmness and wonderful flavor make it ideal for commercial marketing or home consumption. It is without question one of the finest eating berries on the market.

Production—The yield of Fairfax compares favorably with Dorsett and Premier. It probably will not set as much fruit as these two varieties, however it makes up in yield with the size. In the number of crates picked per acre it yields with the best.

Vigorous Grower—The foliage and root system of Fairfax are extremely vigorous. Foliage is a dark green of strong growth protecting berries from hot suns during the harvest season. Its root system is long and fibrous, which accounts for Fairfax giving a good crop of berries during dry seasons. It will make a good fruiting bed in most all types of soils and climates, and is being planted by berry growers over a wide area of the U.S.A.

Size of Fruit—Large to extra large being very uniform. Makes an attractive package which has always brought top market prices.



FAIRFAX
PRICES
PAGE 46



ORDER THIS ASSORTMENT For Your Early Strawberry Garden

Be the first in your neighborhood to have large delicious strawberries; order one of these gardens today at special prices.

50 Big Joe, 50 Fairfax, 50 Premier 2 Gardens
—150 Plants All for for

\$3.95

\$7.45



Chesapeake



TOWNSEND'S SELECT STRAIN

Chesapeake

are
Vigorous Growers

Several years ago when Chesapeake was originated, it was noted to be a shy plant maker; however through our method of "plant selection" we have built up the strain of this fine variety to such a high degree of plant making quality that a good fruiting bed under ordinary growing conditions is assured; — meaning larger yields and profits; as Chesapeake is a sure cropper if weather conditions are at all favorable.

Townsend's Plant Farms have become headquarters for Select Strain Chesapeake of outstanding quality, and this year, as always we have a nice stock on hand to take care of your order regardless of whether it be for one hundred or one million.

All Plants Double Inspected

DOMINATES THE *Late* VARIETIES Because

- A**—sure Cropper.
- B**—Bright rich red color.
- C**—Doesn't discolor after picking and retains bright red color for several days.
- D**—Average size, 20 to 30 berries to a quart.
- E**—Exceptionally late and a good shipper.
- F**—Doesn't come into bearing until all the early varieties are practically through and extends berry season fully two weeks.
- G**—Distinctly a high quality berry, which brings top market price.

● LATE BERRIES BRING HIGHER PRICES

IN sections where late berries command higher prices than early varieties, we recommend Chesapeake as a well-known profit-maker. In most sections Chesapeake begins to ripen three or four days after Townking.

Best results can be obtained on rich loam or springy type soil, where Chesapeake produces excellent yields of fine, beautiful berries — attractive in size, color and shape. There is always a ready market for berries of this nature and good prices can easily be obtained.

Enthusiastic growers throughout the Northern States, Illinois, Indiana, Michigan, Wisconsin, Ohio, West Virginia, North Carolina and Virginia report annually increasing demands for Chesapeake. To meet these demands we constantly devote more and more acreage to this fine late variety.

If a superior late fruiting variety is needed in your section be sure to order and set Chesapeake — You'll be delighted with the results.

SPOT- LIGHT SPECIAL

500 Chesapeake
500 Premier

1000 Select Plants
Cat. Value \$19.40

Only

\$14.95

We ask for your order "fully confident" that we can please you.

2 BERRIES YOU CAN'T AFFORD TO PASS UP . . .

Big Joe

Midseason to Late FRUITING
LARGE FANCY BERRY

THE twenty-one year history of Big Joe has been studded with flattering reports from berry growers throughout the country. Big Joe takes its place as the leading midseason variety along with Premier, the leading early variety and Town King, the leader of the late group. Its size and beauty have brought Big Joe nothing but praise. Big Joe begins to ripen at about the time of the last pickings of Premier and Dorsett—just the time when large fancy berries like Big Joe can command a handsome price on the market. To those who have not been successful with Big Joe, we recommend Catskill.

Some of the Outstanding Good Points About Big Joe Size—Large to very large berries. Color—Rich red, double green cap. Quality—Ranks with the best in flavor and shipping. Productiveness—Under favorable growing conditions very few varieties its equal. Vigor—Strong grower in most all types of soil. At its best on clay or well drained, springy loam soil.



Senator Dunlap

(DR. BURRILL)

Medium Early VARIETY

SENATOR DUNLAP (or as others call it—Dr. Burrill), one of the leading varieties for western states, has long been one of our popular favorites. We grow, annually, hundreds of thousands of this variety and always find ourselves sold out before the planting season is over. Mute testimony to the virtues of Senator Dunlap! The tremendous demand of our western trade speaks eloquently that Senator Dunlap is unequalled in that territory.

Vigorous Grower—Dunlap has a deep feeding habit and will withstand considerable amount of dry weather; more so than any other variety. For this reason it is well adapted to the Western States. It usually makes a good fruit bed under favorable growing conditions.

Fruit is of good size and a beautiful bright red color, with plenty of gloss and very firm. It is a splendid shipper and of excellent quality when grown in the regions adapted to it.

Complete Prices
on Page 46

Polar - Queen
 "Trade Mark"
 Registered

**THE "QUEEN" OF ALL STRAWBERRIES
 FOR QUICK FREEZING!**



**Mr. L. Sherman Townsend, Mgr. Townsend Nurseries
 Introduces to the Frozen Food World**

● POLAR QUEEN ●

—This grand variety is so outstanding in so many fine respects that it is difficult to pick out its best merit.

THE STRAWBERRY BRED FOR QUICK FREEZING

FIRST —It is adaptable to practically every locality where strawberries are grown. If you can grow Missionary and Blakemore then you can grow POLAR-QUEEN. If you can grow PREMIER, FAIRFAX CATSKILL, then you can grow POLAR-QUEEN. Like most varieties of strawberries it flourishes on moist, fertile soil.

SECOND —POLAR QUEEN, is at least 40 per cent larger than Blakemore and holds its size even to the last picking compared to the latter, at its best.

THIRD —POLAR QUEEN, is firm. Can be classed with Blakemore, again in this respect. POLAR-QUEEN, has NO green tip, and has a SOLID-RED COLOR through and through. Color is a very bright shining red, its cap has a tendency to grow away from the berry and thus is very easily removed and POLAR QUEEN'S, solid red color runs well up under the cap showing a minimum of light red, this is another outstanding feature of POLAR QUEEN.

FOURTH —POLAR-QUEEN, is a strong healthy vigorous producer, making a good fruiting bed on a wide range of soils, and is one of the heaviest producers of strawberries on the market.

POLAR-QUEEN, strawberry plants are sold only for the production of berries, and the plants are not to be used for propagation by anyone.

Grow Polar-Queen For Market and Freezing.

MANY GROWER'S
PROFITS ABOVE
\$2,000.00
PER ACRE
1946

WE HAVE OVER
150 ACRES TO
SELECT YOUR
TEMPLE
PLANTS



THE NEW! TEMPLE

- Deep Feeder ● Drought Resistant
- Good Plant Maker ● Heavy Yields

● *Quality*—Not surpassed by any variety on our list. Wonderfully flavored, fine for canning. Color deep red. Firm with excellent keeping qualities.

● *Size*—*Temple* is noted for its extra large size fruit with a dark green cap. It is one of the most attractive of all strawberries. Bring top price on market.

● *Strong Grower*—Grows vigorous in all soils. Plants are fibrous rooted, having a deep feeding habit. It will make a good fruiting bed even under unfavorable growing conditions.

● *Production*—*Temple* is from a cross of Aberdeen X Fairfax. Thus its parents which are outstanding for their vigorous growing habits have passed this along also to the new *Temple*. Foliage is resistant to leaf spot, and dark green. Can be classed as a free plant maker. *Temple* is an extra heavy yielding variety, and can be classed as frost resistant, coming into fruit about the same season as Dorsett, and a far better shipper than Dorsett. Thus we look in the future, that *Temple* will take the place of Dorsett, especially with the commercial growers.

● BRED FOR
HEAVY YIELDS

● IMMUNE
FROM DISEASE

● *Resistant To Disease*—The Red-Steele root rot, was a very serious disease to strawberry growers in the northern half of this country a few years ago, on poorly drained soils. With the kind help of Prof. C. E. Temple, of the University of Maryland, whose efforts finally started the cross breeding of varieties of strawberry plants that seemed most likely to be resistant to this disease. This work has been carried on co-operatively by the University of Maryland and U. S. Dept. of Agri., who have produced this grand variety since Prof. Temple has retired and which variety carries his name—TEMPLE.

Place your order early—SUPPLY PLANTS LIMITED—Prices on Page 46

VALUE-QUALITY

Satisfied Customers



Townsend's Plants are known the country over as one of the heaviest yielding strains grown

"ALWAYS MORE THAN PLEASED"

North Springfield, Ohio

Mr. L. Sherman Townsend, Mgr.
Townsend Nurseries
Salisbury, Maryland

DEAR MR. SHERMAN:

Please find enclosed order for 1,000 plants your SPOT-LIGHT SPECIAL. I am your old established customer and have been more than pleased with your personal SERVICE and PLANTS always.
MIKE PORADA.

OUR LADY CUSTOMERS ALSO LIKE TOWN-KING

Jamestown, N. Y.

April 4th, 1946

Your TOWN-KING did so well last year that I am ordering more again this Spring.

MRS. IDA THOMPSON.

"THANKS." MR. L. SHERMAN TOWNSEND WILL BE HERE TO SERVE YOU

Kingsport, Tenn.

April 24th, 1946

From now on my plants will come from L. Sherman Townsend. The 5,000 plants were excellent and in fine shape, the finest and largest plants I ever received.

MR. JAMES W. GOODMAN.

Note—To any one interested Complete address of the above Testimonials will be gladly furnished.

PRICES OF STRAWBERRIES ARE STEADILY ADVANCING

Strawberries have been making a consistent gain in prices on the Wholesale Market. This means higher prices to the consumer and better prices are obtained at the Roadside Markets. Part of the advance in price is due to short crops and the heavy consumer demand. If you have been getting low yields and unsatisfactory returns from your investment, place your order this year for some of our "Select Strain" stock. Get the yields that you have a right to expect and cash in with a bumper crop, while the demand for this fruit is becoming larger and the prices advancing. You will not be disappointed with the results obtained from Townsend's "Select Strain" stock.

"WE SAY—IT'S A PLEASURE TO SERVE YOU"

Apponaug, R. I.

April 8th, 1946

Mr. L. Sherman Townsend, Mgr.

Townsend Nurseries

Salisbury, Maryland.

DEAR MR. TOWNSEND:

It is a pleasure for me to send this order to you as I have been more than pleased with the plants you have shipped to me in the past. And will probably buy more later if I have time to plant.

Yours very truly,

R. E. TAYLOR.

"BIG YIELDS AND LARGE BERRIES"

Lisbon, N. H.

August 2nd, 1946

Mr. L. Sherman Townsend

Townsend Nurseries

Salisbury, Maryland

GENTLEMEN:

The strawberry plants I purchased from you last year done wonderfully well the past Spring and Summer. I am well pleased with the crop of large berries. Thanks very much.
MRS. E. K. BEAN.

LIKES OUR HIGH QUALITY PLUS SQUARE DEALING

East Haven, Conn.

April 29th, 1946

Mr. L. Sherman Townsend, Mgr.

DEAR SIR:

I received your shipment of strawberry plants and am very much satisfied. I want to express my thanks and am happy to do business with such a reliable firm.

GAETANO VERGATI.



The foundation for your success in berry growing starts at the nursery



XTRALATE

The *Latest* Fruiting
Strawberry *Grown!*

XTRALATE has been developed by Townsends especially to meet the great demand for a strawberry that would fruit after other varieties were through. The record compiled by Xtralate bears evidence to whether we have been successful in our development. For not only is this variety the latest standard variety existent, but it has proved itself one of the latest and heaviest fruiting varieties on the market. Seven years testing on our trial grounds bear this out. Reduced prices on Xtralate now bring it within the reach of everyone—and we strongly urge you to try it. Thousands of satisfied growers have thrilled at the sight of this plant laden with choice fruit at harvest time—why not you?



**NO OTHER STANDARD VARIETY
IS AS LATE AS "XTRALATE"**

- COLOR—Rich, Bright Red
- SIZE—Medium Large to Large
- QUALITY—The Very Best

**TOWNSEND'S SELECT-STRAIN PLANTS
ARE PREFERRED BY SUCCESSFUL
FRUIT GROWERS**

RED STAR

**ANOTHER LATE VARIETY ORIGINATED
BY U. S. DEPARTMENT AGRICULTURE**

By the same crossing of varieties which Starbright was originated from (Fairfax & Chesapeake). Red Star is a strong, healthy plant maker. Berries very large, attractive bright red when grown in moist soil, and well mulched. U.S.D.A. advises Red Star can be grown as far South as Virginia, as far west as Missouri, and all Northern States. We have an extra large planting of Red Star to fill your orders with this season. Order a few thousand today.



Complete
Prices on
Page 46





The Ideal

Mid-Season

Frost Resistant Berry

Catskill

THE rapid rise in popularity of Catskill has been nothing short of phenomenal. Because of its size, flavor, heavy yields, vigorous growth, and its adaptability to a wide range of soils and climates, this variety has, in a short time, become a universal favorite. While our strain of Catskill is direct from the originators at Geneva, New York, we have thru careful plant selection produced a strain that is considered by some of the largest berry growers in the country to be one of the most vigorous growers and heaviest yielding strains in the country. We do not hesitate in recommending Catskill to you as one midseason variety that is certain to prove satisfactory.

**Millions of Select Strain Catskill,
All Double Inspected, Await Your Order**

To keep up with the increased demand of Townsend's Select Strain Catskill, we have again increased our acreage, plants at this writing look fine with the nice heavy crowns and fibrous roots. We are looking again for a heavy demand for this special Strain of Catskill and would advise placing order early as possible to insure getting your needed supply.

Prices of Catskill Page 46

Proclaimed Winner in Size, Yields and Profits

RICH COLOR—Bright rich red, similar to Big Joe. The large double green cap stands up well on the berry and makes a very attractive looking package when offered to the buyer.

SIZE—These rich red berries are large to extra large in size, keeping its size well until the last fruit is harvested. The large size of the Catskill is one of its outstanding values, demanding top of the market prices!

QUALITY—In flavor it compares favorably with such varieties as Premier, Dorsett, Fairfax, Big Joe, and Chesapeake. The texture is such that Catskill can be classed as a long distance shipper. Holding up well after picking, it has a high commercial value appreciated by all berry growers.

PRODUCTIVENESS—Growers in all sections East of the Mississippi River and several states West advise us that it is the heaviest producing mid-season berry they have grown, in our own test plots it has proven itself far ahead of any other mid-season variety. In fact our test plots gave us more genuine enthusiasm that this was a midseason berry than nothing short of a calamity could keep our customers from making big profits on.

STANDS ALONE

TOWNKING
TRADE MARK COPYRIGHTED



The MOST PERFECT *Late* STRAWBERRY!

Comparing Townking With Other Late Varieties

Annual Strawberry Report from Allegheny County Agriculture Extension Association of Pennsylvania

The Lupton and Townking are similar in most respects and each produce enormously large berries. Lupton is a poor plant maker which probably accounts for its standing. Townking surpassed Big Joe, Chesapeake, and Lupton in yield. Recommend Townking for exceptionally large late berries.

NOTHING BUT TOWNKING WILL DO

Gettysburg, Pa.

Your letter received in answer to my inquiry. Please send me the TOWNKING strawberry plants. I want no other variety.

V. A. SCHWARTZ.

LIKES OUR TOWNKING-AND-SERVICE

Kensington, Conn.

We have received your shipment of strawberry plants (5,000 TOWNKING). Thank you for the good plants, and delivery which arrived on time.

WM. HRUBIEC.

**TOWNKING PRICES
ON PAGE 46**

TOWNKING stands alone—as the most perfect late strawberry! A strong, healthy grower, it produces a fine fruiting bed on a wide variety of soils and climatic conditions. Regardless of what section of the country you may live in, you know that a good, late fruiting berry is a profitable variety. Realizing this fact, we say with full knowledge of the importance of this claim, that **Townking** is the most profitable late variety on the market today!

Premium prices are always paid for **Townking**, for its color, shape, size and appearance are all outstanding and attractive. From the Atlantic to the Pacific; and from Maine to Florida and Texas, **Townking** has taken its rightful place as the King of all late berries. Give it a trial this year.

• SOME OF THE OUTSTANDING POINTS OF TOWNKING

Color—Extra bright, rich red.

Firmness—A good shipper for long-distance markets. Stands up well after picking. Will keep on vines several days after ripe.

Quality—Superior to Lupton or Gandy, and equals Chesapeake.

Productiveness—Stands at the top of the late variety list for yields.

Growth—Makes good fruiting beds under ordinary growing conditions. Foliage free from rust and of dark green color.

Size—Large to extra large, making attractive pack that appeals to buyers.

You can buy **Townking** from Townsends' Nurseries only. We guarantee that **Townking** will please you or money will be refunded.

• COULD NOT ASK FOR A BETTER LATE BERRY

Suffolk Co., N. Y.
Please enter my order for 9000 **Townking**. In all my experience growing strawberries I have never seen anything like it. In size, color, and heavy yields, I could not want for a better late berry.

W. TOMPKINS.

FINEST LATE BERRY HE EVER SAW

Washington Co., Ohio.
Find enclosed my check for 11,000 **Townsend's Select Strain Townking**. Please ship at once. If I had to grow only one variety of strawberries it would be **Townking**. I get yields far above any other late variety and quality fruit that brings top of the market. It's the finest late berry I ever saw.

F. SHAW.

Our Customers recommend **Townking** as the best late variety. So do We.

Blakemore (EXTRA EARLY)

PLANT
TOWNSEND'S
Double Inspected
State Certified
BLAKEMORE



The IDEAL Commercial BERRY

THE BLAKEMORE, originated several years ago by the U. S. Department of Agriculture as a scientific cross between the Premier and Townsends' Missionary, has become one of the leading varieties throughout all states south of the Mason-Dixon line, extending even to Texas, Missouri, Arkansas and Indiana, and in many instances replacing the Klondyke and Missionary. The Blakemore may also be safely grown in those sections of Pennsylvania and New Jersey where plant control is practiced, but for best results in these sections, the beds should be kept down to a maximum width of two feet.

Shipping Qualities—Fruit of Blakemore is very firm and holds up well on long distance hauls. It will also withstand heavy rains while ripening on the vines, showing very little loss of fruit.

Production—Produces 80% of its crop one week after first picking making it valuable to berry growers who need a heavy early producer to supply the early berry market in large quantities.

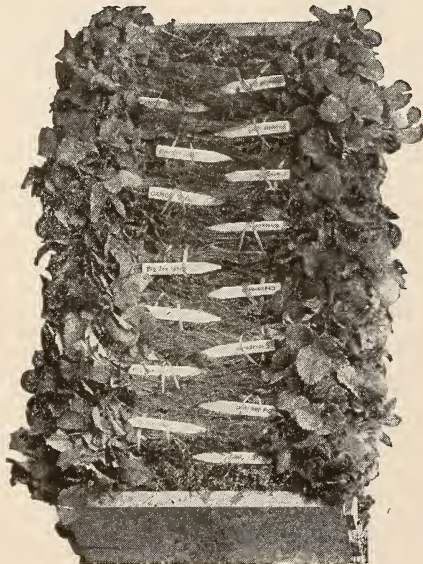
Size—A uniform, medium to large fruit with a sprightly flavor, which has made it a leading canning and preserving variety.

Vigorous Grower—Blakemore will make a heavy plant growth on practically any soil and its rich, dark green foliage stands up well above the berries. For an ideal early variety, we recommend Blakemore.

● BLAKEMORE Now Free of Yellow Leaves!

At last we are able to announce a Blakemore entirely FREE of yellow. Four years of continual searching, elimination, replanting and proper selection have at last resulted in a perfect variety. When you place your order this year for this new, extra select strain Blakemore, you will be buying an outstanding plant—strong, select, sturdy and pure. Success in entirely eliminating all trace of yellow will undoubtedly result in a tremendous demand for Blakemore, so we suggest you place your order early advising us to ship at your proper planting time.

SEE PAGE 46 FOR PRICES ON YELLOW-RESISTANT STRAIN BLAKEMORE



● HERE'S *Real* VALUE IN *Surplus Strawberry Plants*

Very often when filling daily orders we dig a slight surplus of various varieties. Since our business policy does not allow us to carry plants over to the following day, we are in a position to sell these at a sacrifice. The grower who is not especially particular about varieties can buy these plants at a sensational saving. Every plant is freshly dug, labelled and true to name. Because of these low prices, we regret that we cannot assume any responsibility for variety selection—please do not ask for particular varieties.

EVERY BUNDLE OF SURPLUS PLANTS LABELLED AND OF APPROVED VARIETIES

SURPLUS STRAWBERRY PLANT PRICES

1000 Plants \$13.00 per 1000
5000 Plants \$12.00 per 1000

PRICE LIST ON PAGE 46
Shows Complete Surplus
Plant Prices

Select Strain ASPARAGUS ROOTS

PRICES

	25	50	100	250	500	1000
1 year No. 1 Grade.....	\$1.25	\$2.25	\$3.75	\$ 7.75	\$12.25	\$19.50
2 year No. 1 Grade.....	2.00	3.50	5.75	11.00	17.50	27.50
3 year—Jumbo Grade.....	3.00	4.75	8.50	17.50	27.50	42.50

Write for Quantity Prices on Lots of 5000 or more. If Asparagus is wanted by Parcel Post Add 8c each 25 Roots.



NEW PARADISE

• **MARY WASHINGTON.** A heavy yielding strain producing uniform, long, tender, rapidly growing shoots. An excellent variety for market or home gardeners.

• **MARTHA WASHINGTON.** A selected strain from the Washington variety, much heavier stalk and a greater producer than the original Washington variety; practically blight-resistant.

• **PEDIGREED WASHINGTON.** A vigorous and heavy yielding asparagus with uniform, good tight buds of bluish purple. Tender and delicious.

PARADISE (New). Matures earlier than any other known variety. Good cuttings can be had one year after planting even from our 1 year size roots. In looks Paradise asparagus is similar to other varieties of the Washington type. The flavor of Paradise is much milder than other varieties. Even if you only have a few square feet of space in your garden get some of the new Paradise this year. You will be well repaid for the small investment made.

RHUBARB

GIANT CHERRY. This fine Rhubarb was originated in California. Color a beautiful cherry red, entire length of stalks. The stalks are extra large, but so tender they do not require peeling when cooked. Less acid and better flavored than most varieties. Prices: Each, \$0.60; 3 for \$1.65; 6 for \$3.00; 12 for \$5.75; 25 or more only \$0.45 each.

McDONALD. A new early producing Rhubarb of exceptionally fine quality, originated in Canada, a true pink variety, and a good forcer. Prices: Each, \$0.60; 3 for \$1.65; 6 for \$3.00; 12 for \$5.75; 25 or more only \$0.45 each.



PLANT ASPARAGUS NOW FOR YOUR PERMANENT VEGETABLE CROP!

MYATTS LINNAEUS. Produces large, tender stalks, flavor sprightly fine for pies and sauce.

QUEEN. Extra strong grower, extremely large stalks, color dark pink, a good commercial variety.

RHUBARB PRICES—ABOVE VARIETIES

Each	\$0.30	25 for	\$5.75
6 for	1.65	50 for	9.95
12 for	3.00	100 for	19.50

Rhubarb by parcel post add 3c each root to cover postage.



Above field: Maryland Golden averaged 415 bushels U. S. No. 1 to the Acre

MARYLAND GOLDEN SWEET POTATOES

We are again offering to our customers thru this small space in our catalogue one of the outstanding sweet potatoes on the market—Maryland Golden. As stated in our last year's catalogue, this variety of potatoes was

Prices of MARYLAND GOLDEN

Ready After May the 25th

100 Plants	\$1.50
250 Plants	3.25
500 Plants	6.00
1000 Plants	10.00

CERTIFIED SEED STOCK

For Growers who wish to grow their own plants, we offer this stock. Delivery any time from our storage house.

\$5.50 Per Bushel

Write for special prices on lots of 10 bushels or more.

just what the country has been looking for and, from the reports received by our customers this year, who ordered Maryland Golden from us, and the market reports throughout the country, we are entirely convinced that there is not a sweet potato on the market today that has the money making possibilities for the commercial grower as well as the satisfaction obtained by the small growers for table use, as the Maryland Golden. The demand far exceeds the supply and we look for it to remain so for a good many years. Be the first in your community to grow this wonderful potato and benefit by the profits you will receive from them.

The color is all that the name implies—a deep, rich, golden yellow with a slight pinkish cast, holding its color perfectly when cooked. It is not of the dry type like Little Stem Jersey or of the wet type like the Nancy Hall or Yams, only slightly moist at any state of maturity. It produces a crop very early, therefore, is one of the best varieties for our Northern customers to grow where early maturing varieties are a necessity.

We want to tell you more about this variety; however, space will not permit it here. Therefore, we have printed an illustrated folder on Maryland Golden which will be sent to you free on request.

We offer you Maryland Golden plants and certified seed stock at prices shown on the left. Let us reserve your supply early this year as last year found us sold out long before the season was over.



Pink Rhubarb brings top prices at any market



The New Everbearing GEM



New Gem

FALLBEARING

Large Rich Red
Heavy Producer

Mastodon

FALLBEARING

True Blue
Strain

A heavy fruiting. Big, rich, red berry of very fine flavor and quality. It does exceptionally well in all the Northern States and as far west as Missouri. It seems to be a good producer in most any type of soils; and at its best on rich loam. Gem is a little better plant maker than the Mastodon, therefore, would suggest putting the plants a little farther apart in the row, about 16 inches is a good distance. Gem is also a very valuable variety for its spring crop. It produces a nice crop about the same time as the midseason varieties do. We grow several acres on our farms for their berries and like Gem very much. This season we picked Gem as late as November the 14th, and noticed quite a few green berries and blossoms on the plants. It surely will give you a long fruiting season and it takes a mighty cold freeze to stop them.

THE MASTODON is one of the largest and most popular of all fallbearing varieties. The color of this large berry is of bright rich red, has a nice large green cap which accounts for its attractive appearance that is admired by all who see it. Texture of the berry is good and stands up well after picking. Can be shipped by truck several hundred miles without injury. The quality of our True Blue Strain Mastodon far excels the old strain. You now have a Mastodon berry with a rich delicious flavor of the highest quality.

COMPLETE PRICES FALL BEARING STRAWBERRIES
PAGE 46

Townsend Nurseries (L. Sherman Townsend, Mgr.) Salisbury, Maryland, is the original establishment of Townsend Plant Farms, founded in the year 1900.

Townsend's Big Cropping Fall Bearing Gardens

Collection "A"
SMALL BACK YARD
FALL BEARING GARDEN

50 Mastodon
50 Townking

100 Plants ONLY

\$4.35

Collection "B"
LARGE BACK YARD
FALL BEARING GARDEN

Will furnish plenty of delicious
berries for a large family.

100 Premier
100 Gem

200 Plants FOR

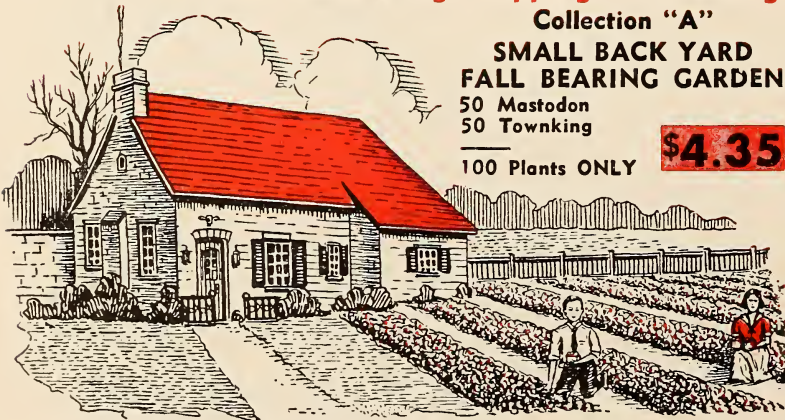
\$6.35

BIG PROFIT MAKING
FALL BEARING GARDEN

500 Mastodon
100 Gem

1000 Plants

\$31.50



Grow a Townsend's Strawberry Garden this year. It's fun and profitable.

Big Bargain

STRAWBERRY GARDENS

GROW FRESH "DELICIOUS" STRAWBERRIES IN YOUR OWN GARDEN



Plenty of fresh berries direct from the vines at a very small cost

All Season

1 GARDEN

This garden will furnish the average family with rich red, delicious berries from early in the season to late fall.

- 25 Premier
- 25 Catskill
- 25 Townking
- 25 Gem-Everbearing

100 Plants **SPECIAL \$3.95**

CATALOG VALUE \$5.20



Geo. Miller and his brother Jr. of Mt. Pleasant, Pa., in their Townsend's strawberry garden

2 Garden of Big Berries

This garden will yield extra large berries of the very best quality and plenty of them from early season to late.

- 100 BLAKEMORE (Early)
 - 100 PREMIER (Early)
 - 100 Big Joe (Midseason)
 - 100 TOWNKING (Late)
- 400 Plants **ONLY \$7.95**

CATALOG VALUE \$11.00

No matter where you live there is a Townsend's strawberry garden suitable for your section

Special Test

3 GARDEN

Be the First in Your Neighborhood to Pick Ripe Strawberries

Here's two of the greatest budding, early fruiting varieties ever introduced. The quality of fruit is of the best and all strong vigorous growers, that have proven a success in practically all states. Set this Garden and have the first berries in your section.

- 250 Blakemore
- 250 Premier

500 Plants **ALL FOR \$6.95**

CATALOG VALUE \$10.00

Townsend Own Selection Garden

4

Our selection will have a catalogue value of \$4.80 or more and contains best varieties suitable for your section.

- 25 BEST EXTRA EARLY
- 25 BEST EARLY
- 25 BEST MIDSEASON
- 25 BEST LATE
- 25 BEST VERY LATE

125 PLANTS

Special \$2.98

Catalog Value \$4.80 or More



SPARE TIME GARDEN

5

With little attention you can realize a nice profit from this garden, should pick at least 400 quarts.

- 50 PREMIER
- 50 FAIRFAX
- 50 SEN. DUNLAP
- 50 TOWNKING

200 PLANTS

Only \$4.85

CATALOG VALUE \$7.20





These bushes produced 12 to 20
pts. per bush at 6 yrs. of age.

Giant Cultivated
BLUEBERRIES

are producing big profits for alert
growers!

25c to 75c per pint

\$1,000.00
Per Acre

The cultivated blueberry is here to stay. A careful survey shows that it will take years, before there will be sufficient planting stock to meet the great demand. Thus we sincerely advise all our good customers, to take advantage of this golden opportunity, and to get their blueberry plantings started without further delay.

Remember—once planted, blueberry plants will last for a good many years. This means planting now for permanent profits.



Hybrid Blueberry Plant in Bearing



Commercial Blueberry Planting

Photo by U. S. D. A

SELECTIVE LIST

GIANT *Cultivated* BLUEBERRIES

Adaptability Soils

Cultivated blueberries are being successfully grown from North Carolina to Maine, and in any section where wild blueberries are found. The natural blueberry soil has an abundance of humus, which naturally runs acid. And with a high water level, this type of soil must have a good surface drainage, or the plants will become injured after heavy rainfall. This can be overcome by planting the plants on wide ridges, 6-10 inches high.

Mulching — Fertilizers — Yields

Now to hold the moisture in the upper part of soil, which is very important, to a blueberry planting. Is to apply, a heavy and permanent mulch around the plants, and to widen this mulch out to the middle of the rows as the plants get larger each year. The standard commercial 5-10-12 fertilizer, is being used successfully, at the rate of about 600 pounds per acre. This is the rate of about one-half pound per plant. Cultivated blueberries are very productive, third year plants should produce 1900 pts., fourth year 2800 pts., fifth year and on 5,000 pts. per acre.

Selective List New-Better Varieties Giant Blueberries

● CABOT (Season Early)

Cabot is an early variety, for many years the earliest of the named varieties and has been planted very extensively by blueberry growers. It is slightly acid, fruit of attractive purple color, of an unusually large size.

● RANCOCAS (Medium Early)

Rancocas is a second-yearly variety, ripening its berries later than Cabot and earlier than Pioneer. The original bush bore berries up to 18 mm in diameter. Berries in commercial plantations sometimes exceed 19 mm. Rancocas tends to the production of heavy crops on young and healthy bushes, so heavy indeed that unusual care must be taken to prune the bushes severely in order to insure a good crop in the following year. The leaves of Rancocas have finely toothed margins. The berries have a small, dry scar and are very easily picked.

● CONCORD (Midseason)

The Concord blueberry was so named because of its large clusters of berries, which, all ripe at the same time, resemble clusters of Concord grapes. Concord berries are delicious when they are allowed to remain on the bush until fully ripe and have lost the excessive acidity they possess when they first turn blue. Concord is a mid-season variety, ripening at about the same time as Pioneer.

● PIONEER (Midseason)

Pioneer was so designated because it was the first named variety developed as a result of blueberry breeding. Its berries are of light blue color, sweet, of excellent flavor, and when fully ripe are without acidity. We recommend Pioneer for a fine mid-season variety.

● RUBEL (Large Mid-season Variety)

This variety ripens about two weeks later than Cabot. The bush is an upright grower, very vigorous, hardy and productive. Fruit is medium large of a light blue, very firm; can be shipped long distance. Some of the largest blueberry plantings in New Jersey have a good proportion of their plantings to this variety. The quality is considered to be fairly good, although somewhat acid. From the standpoint of growth, yields and other characteristics this variety can be classed almost ideal.

● JERSEY (Season Late)

The berries of Jersey are large to extra large and, until dead ripe, too acid for the taste of most persons. It is a good shipping berry and one which stands up well in transit. It is considered by commercial growers to be one of the leading late varieties. Jersey is of remarkably robust growth and makes an attractive ornamental plant when grown in the home garden.

● PRICES ●

TOWNSEND SELECTED STRAIN GIANT BLUEBERRIES

	Each	3-9 Plants Each	10-29 Plants Each	30-99 Plants Each	100-299 Plants Each	300 or more Plants Each
1 year 3-6 inch grade.....	\$0.75	\$0.65	\$0.55	\$0.45	\$0.40	\$0.35
2 year 7-12 inch grade.....	1.40	1.15	1.00	.85	.75	.70
3 year 12-18 inch grade.....	1.85	1.55	1.35	1.15	1.00	.95
4 year 18-24 inch grade.....	2.75	2.35	2.00	1.75	1.50	1.40

● Blueberry culture bulletin mailed free on request



Grow FALL BEARING

**PLANTS SET THIS
SPRING FRUIT IN TEN WEEKS**

Plenty of Fruit Until Snow Flies

EVERMORE

**True Blue
Strain**

FALLBEARING

— ALSO KNOWN AS MINNESOTA —

This new ever-bearing variety has taken the country by storm. Originated in the State of Minn.—No. 116 noted as a rugged everbearing variety. Berries big and dark red all the way through, not too acid good flavor.

FRUITS JULY—Until—HEAVY FROST

Within a few months after plants are set, thus you do not have to wait a year for fresh berries from your own garden.



**NEW
EVERMORE**

One of the Largest
Fallbearing Varieties



STREAMLINER

Another new everbearing strawberry for your garden or commercial plantings. It will bear 60 to 90 days after planted and will fruit right up until frost. Also fruits again the following Spring. This is really a favorite wherever strawberries are grown, fine flavor, large size, heavy bearer. If you have never planted STREAMLINER, don't miss this Spring!

Here's **BIG VALUES** in

**Small Family
Fallbearing Garden**

- 50 Evermore
- 50 Gemzata
- No. 6**
- 100 Select Strain Plants

All For **\$4.65**

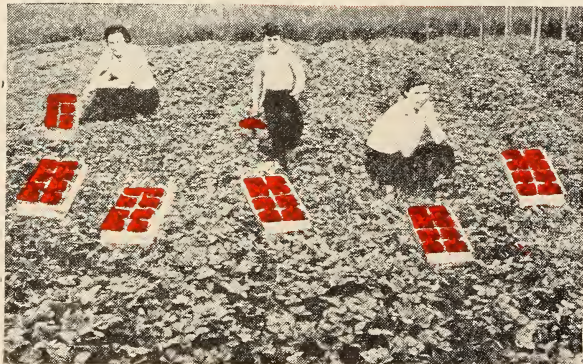
FALLBEARING

Will furnish berries for a
50 Streamliner
50 Evermore
50 Gemzata

150 Select Strain Plants

Only

● Write for FREE Culture Guide on Growing Fallbearing Berries

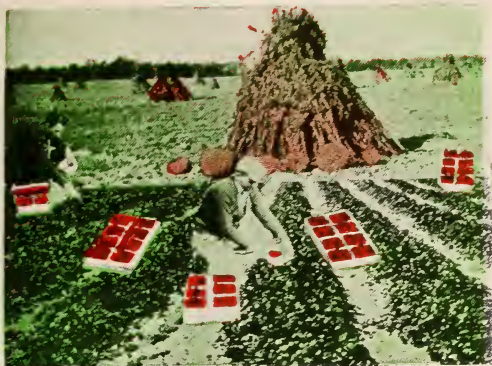


Big Luscious, Red Strawberries 6 Months in the Year from a Townsend's Fallbearing Garden

**PLEASE ORDER ABOVE
COMPLETE PRICE LIST FA**

STRAWBERRIES!

Pick
BIG RED
 DELICIOUSLY FLAVORED
BERRIES
6 MONTHS
 IN THE
year!



All Summer and Fall Townsend's Fallbearing Will Furnish You with an Endless Flow of Big Red Delicious Berries

New Gemzata Large Rich Red Heavy Producer
FALLBEARING

Thousands of HOME GARDENERS, hailed this rather new variety, the past year as the greatest ever-bearing strawberry. By our plant-selection, we have brought all the good merits out on this variety, and we do not hesitate to recommend GEMZATA, for your garden regardless of where you are located. A vigorous grower, berries large, bright red, fine flavor.

WHY NOT GROW YOUR OWN FRESH STRAWBERRIES?

By planting our EVER-BEARING strawberry plants this Spring . . . You can pick FRESH STRAWBERRIES out of your own garden from—

JULY Until NOVEMBER

These plants can be set along the border in the flower garden (as you would violets and boxwood) or if you have a vegetable garden the plants can be set in rows, 3 feet apart and spaced 12 inches apart down the row. For steady supply of berries we recommend 50 plants, planted for each person in the family.

Mr. W. A. McLEOD, writes from Long Island, N. Y., the Gemzata, strawberry plants are certainly true everbearing. I even had strawberries from them November 4th. Mrs. Ralph Webster, writes from Penna., I am now picking STRAWBERRIES from my flower border instead of Violets, and my neighbors are admiring our November Sunday desert, fresh from our gardens.

**COMPLETE PRICES
 FALL BEARING STRAWBERRIES
 PAGE 46**

Fall Bearing GARDENS!

**GE
 G GARDEN**

nty of delicious
 e family.

er

No. 7

rain Plants

6.85

GET ACQUAINTED STRAWBERRY GARDEN

A garden that will furnish you with plenty of delicious berries for family of two

25 Gemzata

25 Town-king **No. 8**

50 Select Strain Plants

All For **\$2.35**



**NEW
 GEMZATA**



Grow FALL BEARING STRAWBERRIES!

PLANTS SET THIS SPRING FRUIT IN TEN WEEKS!

Plenty of Fruit Until Snow Flies

EVERMORE True Blue Strain
FALLBEARING

— ALSO KNOWN AS MINNESOTA —

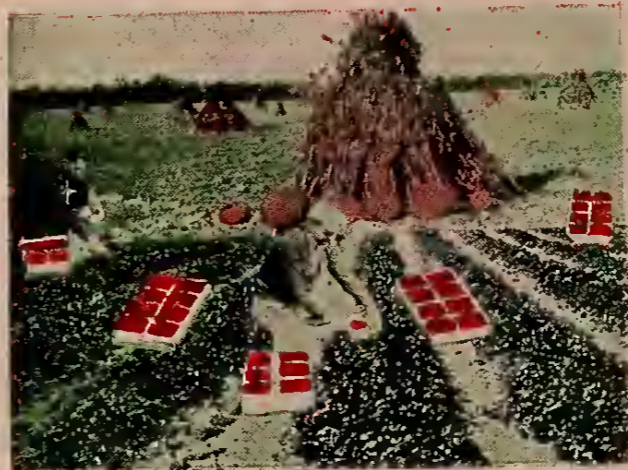
This new ever-bearing variety has taken the country by storm. Originated in the State of Minn.—No. 1166, noted as a rugged everbearing variety. Berries big, dark red all the way through, not too acid good flavor.

FRUITS JULY—Until—HEAVY FROST

Within a few months after plants are set, thus you do not have to wait a year for fresh berries from your own garden.

STREAMLINER

Another new everbearing strawberry for your garden or commercial plantings. It will bear 60 to 90 days after planted and will fruit right up until frost. Also fruits again the following Spring. This is really a favorite wherever strawberries are grown, fine flavor, large size, heavy bearer. If you have never planted STREAMLINER, don't miss this Spring!



All Summer and Fall Townsend's Fallbearing Will Furnish You with an Endless Flow of Big Red Delicious Berries

WHY NOT GROW YOUR OWN FRESH STRAWBERRIES?

By planting our EVER-BEARING strawberry plants this Spring . . . You can pick FRESH STRAWBERRIES out of your own garden from—

JULY Until NOVEMBER

These plants can be set along the border in the flower garden (as you would violets and boxwood) or if you have a vegetable garden the plants can be set in rows, 3 feet apart and spaced 12 inches apart down the row. For steady supply of berries we recommend 50 plants, planted for each person in the family.

Pick **BIG RED** DELICIOUSLY FLAVORED **BERRIES** 6 MONTHS IN THE year!

New Gemzata Large Rich Red Heavy Producer
FALLBEARING

Thousands of HOME GARDENERS, hailed this rather new variety, the past year as the greatest ever-bearing strawberry. By our plant-selection, we have brought all the good merits out on this variety, and we do not hesitate to recommend GEMZATA, for your garden regardless of where you are located. A vigorous grower, berries large, bright red, fine flavor.

Mr. W. A. McLEOD, writes from Long Island, N. Y., the Gemzata, strawberry plants are certainly true everbearing. I even had strawberries from them November 4th. Mrs. Ralph Webster, writes from Penna., I am now picking STRAWBERRIES from my flower border instead of Violets, and my neighbors are admiring our November Sunday dessert, fresh from our gardens.

COMPLETE PRICES FALL BEARING STRAWBERRIES PAGE 46



NEW EVERMORE

One of the Largest Fallbearing Varieties



Here's BIG VALUES in Fall Bearing GARDENS!

Small Family Fallbearing Garden

- 50 Evermore
- 50 Gemzata No. 6
- 100 Select Strain Plants

All For **\$4.65**

• Write for FREE Culture Guide on Growing Fallbearing Berries

LARGE

FALLBEARING GARDEN

Will furnish plenty of delicious berries for a large family.

- 50 Streamliner
- 50 Evermore
- 50 Gemzata No. 7
- 150 Select Strain Plants

Only **\$6.85**

GET ACQUAINTED STRAWBERRY GARDEN

A garden that will furnish you with plenty of delicious berries for family of two

- 25 Gemzata
- 25 Town-king No. 8
- 50 Select Strain Plants

All For **\$2.35**



Big Luscious, Red Strawberries 6 Months in the Year from a Townsend's Fallbearing Garden

PLEASE ORDER ABOVE COLLECTIONS BY NUMBER COMPLETE PRICE LIST FALLBEARING VARIETIES PAGE 46



NEW GEMZATA



Townsend's
Certified
SELECT
STRAIN
Raspberry Plants
Is Your Insurance
For
Bigger Profits

FRUIT GROWERS
in 48 States
Set Townsend's Select Strain
RASPBERRY PLANTS
1946



A fine block of Townsend's Certified Cumberland that averaged 5,300 pints of berries first year's crop. Get good plants. Treat them right and profitable yields will be yours.

IT PAYS! **TO BUY STATE CERTIFIED DOUBLE INSPECTED RASPBERRY PLANTS**

Heavier yields and bigger profits are a sure thing for the raspberry grower who invests in a patch of Townsend's Select Strain certified plants. We leave no stone unturned to grow plants that are worthy of the Townsend's reputation for excellence. Our propagating field is set in proper soil to produce a well balanced plant with vigorous root system and grown under the supervision of a specialist on raspberries. They are carefully watched during the growing season for any kind of disease that might appear. Twice a year State Inspectors visit our plantings and carefully inspect all growing plants. Townsend's plants come to you doubly inspected and carry with them a certified seal pronouncing them free from mosaic and other injurious disease.

Because of this conscientious thorough method of disease-prevention, growers in forty-eight states set Townsend's Raspberry plants last year. Realizing that the one sure method of stepping up their yields was to purchase plants which have been grown right, properly packed, and delivered to them in a fresh growing condition. We feel sure that with normal care after planting that Townsend's Select Strain certified raspberry plants will practically double your yields, thereby cutting cost of production and increasing profits.

A raspberry planting is good for several years, don't gamble on your planting stock, get the best plants obtainable. They will cost you less in the long run. You will find our prices reasonable and we know you will be pleased with the plants we send you.

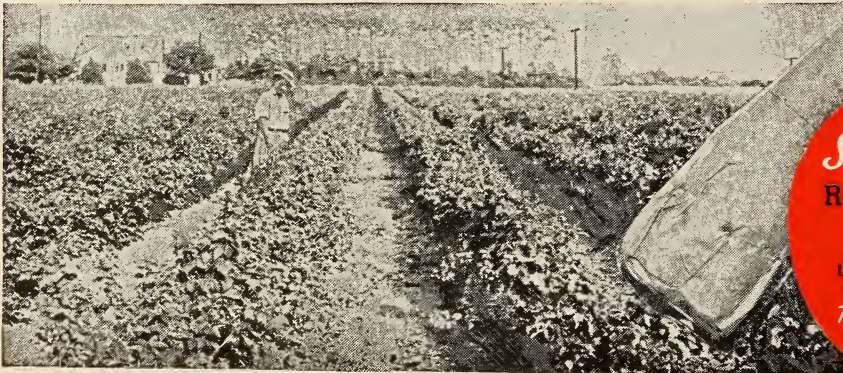
COMPLETE PRICES ALL VARIETIES RASPBERRIES ON PAGE 47

A bundle of Cumberland. Note heavy canes and fibrous roots.



Don't OVERLOOK "This"

48
Select 1 Year
Red Raspberries
 FOUR VARIETIES
 12 PLANTS EACH
 LATHAM, KATHERINE,
 NEWBURGH, CHIEF
 Reduced \$1.95
 Price



A field double inspected certified Latham 1 year after set.

BLACK RASPBERRIES

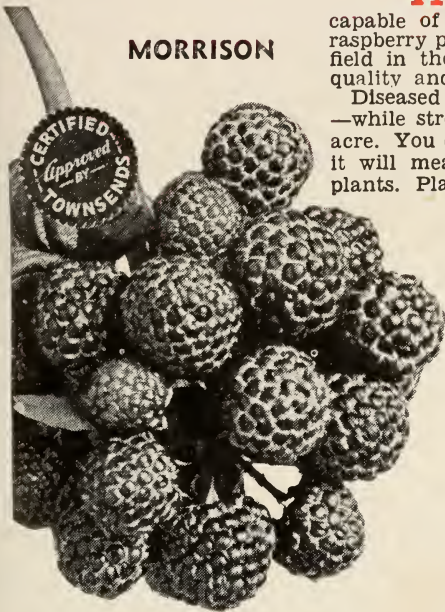
Double Inspected - State Certified

Refer To Page 47 For Complete Prices All Varieties Raspberry Plants

A GOOD Black Raspberry patch is one of the most profitable of farm crops — providing you have strong, healthy canes capable of maturing a large crop of berries! Our select strain certified raspberry plants are beyond doubt the finest obtainable — and will lead the field in their respective sections. These plants are definitely superior in quality and the greatest bargains ever offered!

Diseased and run out fields average only from 400 to 800 quarts per acre — while strong, disease-free plants will yield from 1600 to 3000 quarts per acre. You can see from these figures how much more in dollars and cents it will mean to you if you invest in Townsend's Select Strain Certified plants. Place your orders now—we'll ship when you're ready to set.

MORRISON



New Mammoth MORRISON

Its jet black berries are as large or larger than the old favorite Cumberland, often going an inch in diameter. This new variety is just about immune to disease, thus we are discontinuing Logan in its favor, since the berries of Morrison are larger, more attractive, firm in texture, high in quality, and not near as seedy as other black raspberry varieties, and without question, outyields all other varieties.

Prices On 1-Year Raspberry Plants Page 47

FOR QUICK FRUIT

Turn to page 33 for prices on "Bearing-Age" plants that will fruit this summer in your own garden.

CUMBERLAND

The outstanding leader among black raspberries—the most widely planted variety grown today! Cumberland is unsurpassed by any other black raspberry in both hardiness and productiveness. The large, sweet flavorful fruit is very firm and can be safely shipped a long distance in spite of its size. The bushes are vigorous, being very capable of supporting their large crop of fruit. The ripening season extends from mid-season to late. For those customers looking for a fine quality, profitable black raspberry, we highly recommend Cumberland. We have a nice stock of Certified Cumberland plants this year at reasonable prices, and are confident of the fine results you will obtain from this fruit. For a continuous fruit crop covering a long period, plant Cumberland and Logan.



CUMBERLAND

PLANT A "VICTORY"

Raspberry Garden
THIS YEAR

Here are two fine Raspberry Gardens which we have selected for home planting. The plants are our best grade of 1 year #1 size and priced to save you money.

- 12 NEW MORRISON
- 12 LATHAM

- 25 CUMBERLAND (Black Rasp.)
- 25 LATHAM (Red)

ALL FOR **\$3.86**

Special Offer **\$6.95**

2 Collections of above\$6.85

2 Collections of above\$11.95



The Fallbearing Raspberry Is Also One of the Earliest Spring Fruiting Varieties

Commercial growers and home gardeners alike have found Fallbearing Raspberries to be a profitable investment. Growers in practically every state east of the Mississippi are reaping the benefits of having raspberries throughout the entire summer and fall. Fallbearing Raspberries are easily grown, fruit the first year set, and continue to do so for several years after the original planting. To increase fall production, the new growth should be sheared back about 18 inches after the spring crop is harvested.



Indian Summer Two crops a year! That's the performance record of this new Fallbearing Raspberry. It yields a bumper crop at the regular season and then another crop of giant size berries on the new canes in late Autumn! Indian Summer is certainly the most worthwhile red raspberry to be introduced since the coming of Latham. Be sure to order a good supply.

KATHERINE

(Everbearing Red)
Katherine, one of the best red raspberries ever grown, is a persistently heavy producer from early spring to late fall. Fruits a large, firm berry of excellent flavor.

ST. REGIS

(Everbearing Red)
Valuable for both the market or home gardener. Produces medium to large fruit, ripens within 80 days of setting and succeeds on all types of soil. Exceptionally heavy canes.

Fallbearing

RASPBERRIES

Pick Berries

Summer

and Fall



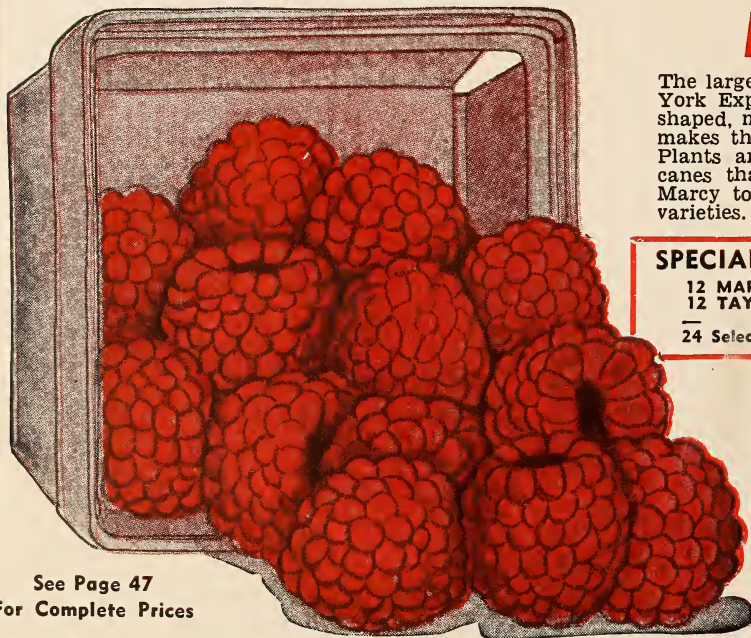
SPECIAL!

Home Planting Offer
12 Latham
12 Indian Summer
24 Select Plants

for **\$3.95**

● FALLBEARING RASPBERRIES
MAKE DELICIOUS DESSERTS

2 Outstanding New Reds



MARCY



The largest raspberry grown by the New York Experimental Station. Long, conic shaped, moderately firm and thick flesh makes this variety an excellent shipper. Plants are tall and hardy with stalky canes that hold fruit well. Test shows Marcy to be the biggest of all leading varieties.

SPECIAL COLLECTION OFFER

12 MARCY
12 TAYLOR
24 Select Plants for

\$3.95

TAYLOR



Has a record of 10 years New York Exper. Stat. successful testing. Large size, new oblong shaped berries of snappy, luscious flavor. Holds to plant well — no crumbling. Rigid tree-like canes. You can depend on Taylor for heavy yields of beautiful fruit and for greater profits.

See Page 47

For Complete Prices

The Largest Size and Heaviest Yielding Raspberry **Latham**



IT'S easy to be enthusiastic about Latham because it is the finest looking berry on the market—and because it produces more berries to the acre than any other variety (and does so with the least amount of care).

This KING of all raspberries will mean Real Profits for you. Townsend's Select Strain Latham yields large, luscious rich red fruit—so appetizing in its appearance and flavor that it meets with instant approval! Commercial growers average over \$1,000 per acre of plants. Latham, which is entirely free of mosaic, more than measures up to the most exacting standards, producing fruit that is excellent for long distance shipping. Order some Townsend's Latham — you'll be pleased with your success, whether you raise to sell or to serve!

this big value

RED RASPBERRY OFFER

12 NEW CHIEF, 1 Year Size

12 LATHAM, 1 Year Size

Special Price **\$3.95**
24 Select Plants

25 SELECT LATHAM

25 SELECT CHIEF

Special Price **\$6.75**
50 Plants

SUNRISE

Early Raspberry

Bright, glowing red, and extra large berries make this New variety stand out above any other early red-raspberry. Plants are healthy and good growers. Fruit fine for shipping or canning. Introduced by the New Jersey Experiment Station. Supply limited order early.

Price, See Page 47



CHIEF the Earliest Raspberry of them all



Absolutely Hardy — Easy to Grow

**READY FOR MARKET
WHEN PRICES ARE
HIGHEST**

CHIEF, the earliest raspberry of all, is the only real rival of Latham. It was selected from a planting of 4,000 Latham seedlings by the Minnesota State Breeding Farm, and has become the best early red for general planting, surpassing all others. The fruit, while not quite as large as Latham, is extremely hardy, firm, bright red in color, practically immune from mosaic and mildew, keeps and ships well, and is an unusually heavy producer. Its brilliant coloring and appealing flavor, together with its early ripening makes Chief a good money maker for the commercial grower, and the home gardener as well.





TOWNSEND'S
 ORIGINAL SELECT STRAIN
 OF STRAWBERRY PLANTS

SELECT STRAIN
BLACKBERRIES

● All Grown from Root Cuttings

THE SAME high standard that we have set for our strawberry plants is duplicated in our blackberry plants which transplant very easily and produce larger canes and superior fruit than the average nursery grown plants. They are grown from strong root cuttings because we know that this method of propagating is far superior to sucker plants making a much more fibrous rooted plant than sucker plants and grow off much quicker after setting. During the first year, the varieties listed on this page grow mostly on the ground, but after the first crop, grow upright standing in bunches, obtaining a height of 4 to 6 feet. One planting will last you several years, and while we sell several hundred thousand plants to commercial growers each year, we believe that every home garden should contain a few of these easily grown plants, as they will furnish plenty of big, rich-flavored, juicy berries for making delicious cobbler wines, jams and jellies.



Prices all varieties Page 47

Elderado

THE MOST WIDELY PLANTED OF ALL BLACKBERRIES

Elderado, the most widely planted blackberry on the market, is of fine quality with glossy, black berries and very little core, and is unexcelled for making jams, jellies, and pies. Because of its hardness, it does well in the extreme North. You can depend on Elderado to give you satisfactions as a midseason to late variety.

New ALFRED Blackberry
LARGE, SWEET AND A HEAVY PRODUCER



A recently introduced, sweet, juicy, extremely large berry, coreless and practically free from seeds. Alfred is grown throughout the Northwestern States, and is heavily planted in Ohio, West Virginia, Indiana, Illinois, New York, and Pennsylvania. For a fine midseason variety we recommend Alfred.

For PRICES BEARING AGE Blackberries SEE PAGE 33

BLOWERS

Heavy Yielding Blackberry



The blowers has proven to be a very profitable blackberry, especially for the Northern States; quality is good; heavy producer; and a very vigorous grower.

EARLY HARVEST



Earliest of all Blackberries

One of the earliest ripening—most productive of the early varieties. Fruit very firm, medium large. Growth vigorous and canes hardy. For a very early blackberry, plant Early Harvest.

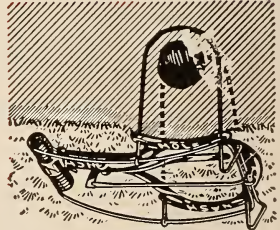
● SELECT Bush CHERRIES ●



Large, glistening black, sweet, hybrid Bush Cherries. Good to eat fresh or canned. They bear in cold climates, where standard Cherries fail. Borne in great quantities on low-growing bushes. The white blooms in spring make them very ornamental. Leaves color red in autumn. Trim to desired shape and size. Set bushes 3 feet apart. Thrive in any good garden soil, or in the shrub border.

PRICE: 2-yr., field-grown (QUICK-BEARING BUSHES): 69c each; 3 for \$1.79.

KILL MOLES



Choker Loop Traps

The one sure way to get moles in any type of ground—proven by 52 successful years. Harmless to children and pets. Approved by Dept. of Agriculture.

Price \$2.25 Parcel Post Prepaid

Actual
Size

New Boysenberry

HARDY, QUICK GROWER—HEAVY YIELDER

● Profitable FOR COMMERCIAL OR HOME PLANTING

● A NEW DEWBERRY

By Far the Largest and Heaviest Producing Berry of the Blackberry or Dewberry Family

- Berries measure 2 inches in length
- Averages 35 berries per quart box
- 2200 pints picked from 100 2-year-old plants
- Gross returns from one acre \$1760.00

For certain success and greater profits be sure to include Boysenberries in your plantings. It is an established fact that Boysenberry brings prices from 30% to 50% higher than Youngberry and other blackberry varieties. The tremendous yields and higher prices will cut down your cost of production considerably and give you an excellent crop of luscious, large, attractive berries.

Our experience has shown that Boysenberry is perfectly hardy. Commercial growers share with home gardeners their delight in the admirable qualities of both its plant and fruit. Leading horticulturists say "Plant a row of Boysenberry and it will be the pride of your garden." We say "order early—plants are limited."

PRICES BOYSENBERRY PLANTS ON PAGE 47

DEWBERRIES

THE DEWBERRY is a trailing blackberry and a little less hardy. It is grown on a large commercial scale in the central and southern states. With the introduction of the Youngberry and Boysenberry, and Nectarberry varieties, which are harder than the Lucretia, the planting sections of the Dewberry have been advanced some two hundred miles north, and growers now are reporting good results as far north as Rhode Island and Western New York. Dewberries ripen earlier than Blackberries, are much larger, and have a very fine flavor. We consider the dewberry an ideal addition to the home garden. They are becoming very popular on the market. On account of the texture of the Dewberry it should be placed on the market soon after picking and long hauls be avoided. Unless weather is cool and favorable for such trips, they should not be picked when dew is on or when fruit is damp.

LUCRETIA. Exceptionally hardy vines that may be successfully planted in the Northern States, also grown on large scale in the South—large, firm, juicy fruit.

NEW - THORNLESS BOYSENBERRY. If you are troubled with the thorns when picking some of your dewberries we suggest this grand new thornless variety. This berry bears the same description as its parent, which we describe at top of this page, only it's thornless.

YOUNGBERRY. The Youngberry, a trailing variety of the Dewberry family, has built up for itself a reputation for size and eating qualities, which make it highly prized by growers everywhere. For sheer productivity and high market prices, it's tops. For the home gardener, the Youngberry offers real pleasure from a small investment.

NEW—NECTARBERRY. This variety of dewberry has proven hardy under drought and cold, being grown in New York without winter injury. Fruit is little larger than Boysenberry, is of fine flavor. Ripens about two weeks later than Youngberry, thereby extending fruiting season of the dewberry. A fine flavored variety, very productive, valuable for market gardeners and home plantings.



Don't Miss
This Special
Boysenberry
Garden Offer

12 BOYSENBERRY
12 YOUNGBERRY

24 Strong 1 yr. Plants
Special Price

\$3.95

2 Collections
for \$6.95

Victory Garden

COMPLETE CULTURE DIREC-
TION FREE ON REQUEST



Thornless Boysenberry

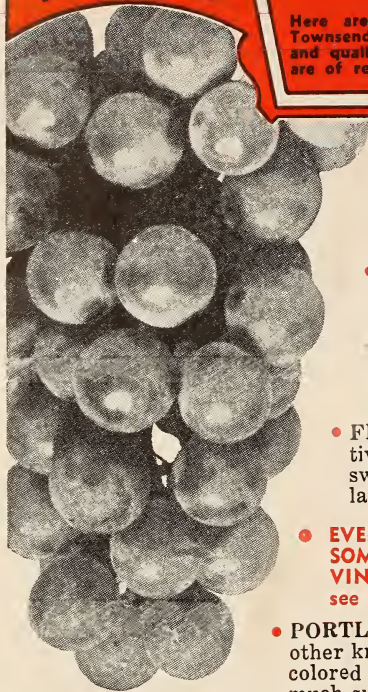


Lucretia (Dewberry)

COMPLETE PRICES DEWBERRIES ON PAGE 47

**BIGGER
YIELDS****XTRA new VARIETIES
GRAPES****BETTER
QUALITY**

Here are four new grapes that have been approved by Townsends' for their early fruiting habits, heavy yields and quality fruit. They are the best of the new, and all are of recent introduction.

**NEW CACO****NEW PORTLAND**

- **CACO (Red)**. A large, red, fine-flavored grape which holds fruit well after ripening.
- **CHAMPAGNE (Amber)**. A deliciously flavored amber colored grape, producing large, compact bunches of fruit. The strong growing vine yields fruit at an early age. Champagne is one of the best varieties on our list.
- **FREDONIA (Black)**. A very attractive, early-ripening variety with large, sweet, juicy berries. Its bunches are large and compact.
- **EVERY "VICTORY GARDEN" NEEDS SOME GRAPE VINES. ORDER YOUR VINES TODAY.** For Bearing Age Vines see Prices on Page 33.
- **PORTLAND (White)**. Ripens earlier than any other known grape. Its large, beautiful yellow-colored (like Niagara) berries contain so much sugar that they can be eaten long before they are fully ripe.

**LEADING
STANDARD
VARIETIES OF****GRAPES** *all***OUTSTANDING FOR
YIELD & QUALITY!**

- **CONCORD (Black)**. The most extensively planted black grape. Bunches are compact and of excellent quality, ripening midseason to late. As a commercial variety, Townsend's winter-hardened Concord stands supreme; while the home gardener in any section of the country will find that it brings excellent results.
- **CATAWBA (Red)**. A late ripening, large, firm, very sweet, copper-red colored fruit, used extensively for making wine.

- **MOORE'S EARLY (Black)**. A seedling of Concord which ripens two weeks earlier; a heavy producer of excellent quality large, black fruit, it is planted extensively by commercial planters.
- **NIAGARA (White)**. One of the largest white grapes, delicious flavored, its handsome compact bunches ripen with Concord.
- **WORDEN (Black)**. A very popular bluish-black excellent flavored, hardy growing grape whose large, compact bunches ripen two weeks earlier than Concord.

Big value! Grape Offers**GRAPES FOR
ARBOR PLANTINGS****ALL 2-YEAR SELECT VINES!****PLANT GRAPES
FOR ORNAMENTAL EFFECT**

1 Fredonia, Black
1 Caco, Red
1 Champagne, Amber
1 Moore's Early Black
1 Niagara, White
1 Catawba, Red
1 Worden, Black
1 Concord, Black

8
Select
Vines
All for

\$3.65

2 COLLECTIONS
\$6.95

14
Select
Vines
for

\$5.98

2 Champagne, Amber
2 Caco, Red
2 Fredonia, Black
2 Portland, White
2 Concord, Black
2 Moore's Early
2 Catawba, Red

2 COLLECTIONS
\$10.85



FOR QUICK RESULTS

SET *Townsend's*
BEARING-AGE
Berry Plants.

PICK FRUIT THE *First* YEAR!

Bearing age plants are selected one year grade when transplanted into our nursery rows. Here we grow them a full year under ideal growing conditions, taking full advantage of our twenty-acre irrigation system. In order that we can supply our customers with a well balanced plant plenty of humus is added to the soil before setting. Careful cultivation and pruning is made throughout the season. We further protect plants by tying them into bundles the full length of the cane wrapping them carefully that they may reach customers in perfect condition. Although the cost of these plants slightly higher than our first year will more than pay for the difference in price.

"VICTORY GARDENS"

BEARING AGE GRAPE COLLECTION

- 2 New Caco. Red
- 2 New Portland White
- 2 New Fredonia Black
- 2 Concord. Blue

8 SELECT VINES \$4.65

BEARING AGE RASPBERRY COLLECTION

- 12 Heavy Yielding Latham. Red
- 12 Cumberland. Black
- 12 St. Regis, Everbearing. Red

36 Plants \$9.95
Special Price

TOWNSEND'S SPECIAL BEARING AGE BLACKBERRY OFFER

- 12 Eldorado Blackberry
- 12 Boysenberry Dewberry

24 PLANTS ALL FOR \$4.75

MONEY SAVING COLLECTION OFFERS

• BEARING AGE PLANTS ADAPTABLE FOR THE HOME GARDENS

Bearing age plants are especially adapted for the Home Garden. Results are quick, fruiting same season set, increasing in yield as they grow older. Raspberry, Blackberry, and Dewberry plantings will produce good crops every year for three to five years from original planting. Grapes for eight to twelve years. If you are not now enjoying fresh berries from your garden, include some of these ready-to-bear plants in your next order. Better still, have a complete Berry Garden this year by combining a Fallbearing Strawberry Garden listed on page 16. These will also fruit same season set, continuing until cold weather and again following spring. From a small investment you can have plenty of Fresh Delicious Berries direct from your own garden at a cost that will be surprisingly low.

• SUPPLY OF BEARING AGE STOCK

While we try to grow enough Bearing Age Plants to furnish all our customers, the increased demand on them this fall has again cut down our supply considerably. Under the circumstances, we would advise placing your order for this particular stock as soon as possible for we feel certain that we shall be sold out early in the season.

• PRICES BEARING AGE PLANTS

BEARING AGE RED RASPBERRY PLANTS

	6	12	25	50	100
	Plants	Plants	Plants	Plants	Plants
CHIEF	\$2.25	\$3.90	\$6.15	\$10.60	\$18.50
INDIAN SUMMER EVERBEARING	2.25	3.90	6.15	10.60	18.50
LATHAM	2.25	3.90	6.15	10.60	18.50
SUNRISE	2.25	3.90	6.15	10.60	18.50

BEARING AGE BLACK-RASPBERRY PLANTS

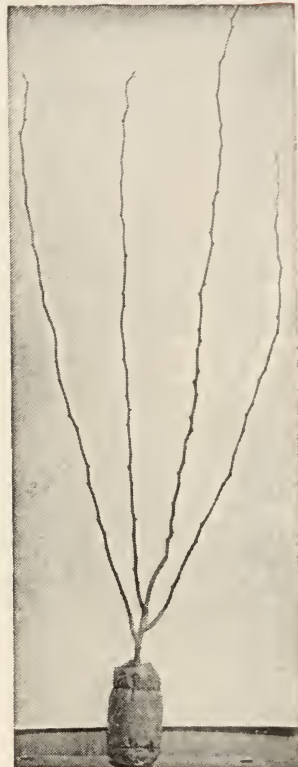
CUMBERLAND	2.25	3.90	6.15	10.60	18.50
MORRISON (NEW)	2.50	4.35	6.95	11.45	19.95

BEARING AGE BLACKBERRY AND DEWBERRY PLANTS

ALFRED BLACKBERRY	1.75	2.95	4.65	7.95	13.45
ELDORADO BLACKBERRY	1.75	2.95	4.65	7.95	13.45
EARLY HARVEST (Earliest)	1.75	2.95	4.65	7.95	13.45
BOYSENBERRY—NEW DEWBERRY	1.95	3.25	4.95	8.65	14.95

BEARING AGE GRAPES

	Each	3	6	12	25
	Plants	Plants	Plants	Plants	Plants
CONCORD—Blue	\$.90	\$2.25	\$3.65	\$ 6.25	\$12.75
CACO—Red90	2.25	3.65	6.25	12.75
CHAMPAGNE—Amber90	2.25	3.65	6.25	12.75
FREDONIA—Black90	2.25	3.65	6.25	12.75
MOORES EARLY—Black90	2.25	3.65	6.25	12.75
NIAGARA—White90	2.25	3.65	6.25	12.75
PORTLAND—White90	2.25	3.65	6.25	12.75
WORDEN—Black90	2.25	3.65	6.25	12.75



Bearing Age Red Raspberries. Strong, Health Canes That Will Fruit This Year



Blight-Resistant Chestnut Tree in bearing only 2 years after planted.

Townsend's Blight - Resistant Chestnut Trees

It is again possible to harvest your own crop of chestnuts in the Fall. By planting now Townsend's BLIGHT-RESISTANT trees, you can start to gather these nuts the second year after the trees are planted.

Some-thing new for the younger generation, since very few of this age have seen chestnuts growing and had the pleasure of roaming the woods at Autumn gathering these tasty nuts, and at the same time will bring back pleasant memories to the older folks, whom have had the pleasure of gathering wild chestnuts in the woods before disease came along and destroyed most of the chestnuts throughout the country.

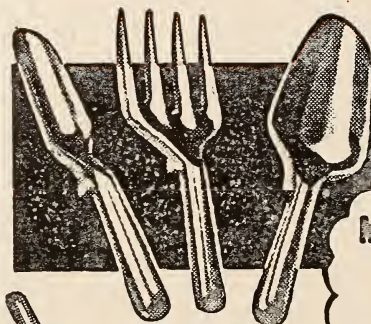
Blight - Resistant, Chestnut trees are disease free, easy to grow. Any well drained soil will do. No spraying necessary.

PRICES: 1 to 5 trees, \$1.95 each; 6 to 10 trees, \$1.75 each; 11 trees or more, \$1.50 each.

The World's Finest Hand Garden Tools!

with 8 Irresistible
New Features

- 1—PATENTED FINGER REST.
- 2—AMAZING STRENGTH.
- 3—FEATHERWEIGHT.
- 4—NON-RUSTING.
- 5—SELF SHARPENING
- 6—SCIENTIFIC BALANCE.
- 7—LONG LIFE. Featherlite.
- 8—UNSURPASSED BEAUTY.



"The Finger Rest
Banishes Fatigue"



"I Enjoy
Gardening
More Than
Ever With



MARKLE ALUMINUM
FEATHERLITE
GARDEN TOOLS

One piece aluminum alloy construction provides super-strength, featherweight lightness, perfect balance, brilliant, sparkling finish. The finger rest prevents slipping, eliminates fatigue. These world's finest garden tools will last a lifetime. Set of three (garden trowel, cultivating fork and bulb trowel) only \$3.95.

MATCHED SET OF 3 TOOLS
(1 of each, boxed as gift) \$3.95

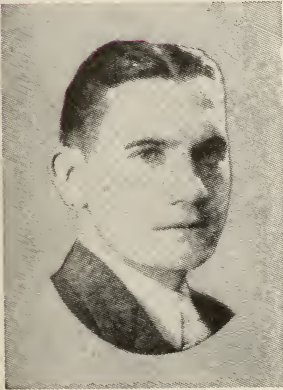


BABY CHICK SUPPLEMENT

(7 pages)

FEATURING THE *Famous*

WENE EXTRA-PROFIT CHICKS



L. SHERMAN TOWNSEND
Manager
 TOWNSEND NURSERIES

Wene Chicks have produced such amazing results, confirming their high reputation, that we are proud, indeed, to continue our offer, giving in this supplement more complete information than was possible before. You buy Baby Chicks with actually a **DOUBLE GUARANTEE**—the **TOWNSEND REPUTATION** backed by the **WENE GUARANTEE** of **QUALITY!**"

"Last Spring, we concluded arrangements enabling us to offer our customers Baby Chicks of outstanding quality and reputation — Wene Chicks. We have followed our customers' experiences in raising these famous chicks. Despite the high cost and poor quality of feed,

"I am pleased to provide WENE Extra-Profit CHICKS for the customers of Townsend Nurseries. Our guarantee of breeds, quality and livability is in full force and effect when you place your orders for WENE CHICKS through Mr. Townsend. Our breeding program, controlled hatching methods and years of experience in producing quality chicks in volume assures you of the best possible value when you send your order to Townsend's for WENE CHICKS."



ELMER H. WENE
Owner
 WENE CHICK FARMS

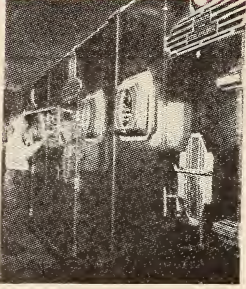
Growth From 22,000 to over 6,000,000 Annually



OVER A QUARTER CENTURY OF SERVICE TO POULTRY RAISERS



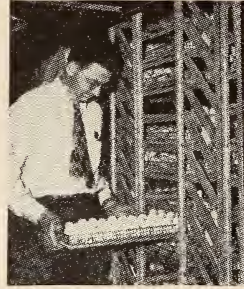
Careful Hatching Puts the Finishing Touch On the Fine Breeding of WENE CHICKS



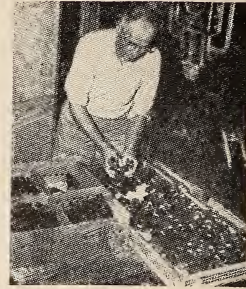
Checking the automatic controls of our Buckeye Streamliner incubators before a setting of eggs is put in.



The hatching eggs are carefully weighed and trayed before setting.



The trays of large selected hatching eggs are set in the incubators.



The chicks are removed from the separate hatching units and put in chick boxes.



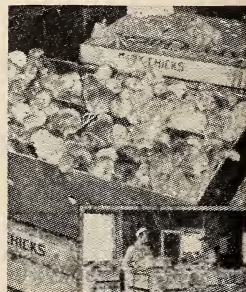
From the hatching units the chicks are transferred to these racks awaiting sorting.



The chicks are next carefully selected, sorted, and counted to fill the orders.



Pullets and cockerels are separated by expert sexers for those who order sexed chicks.



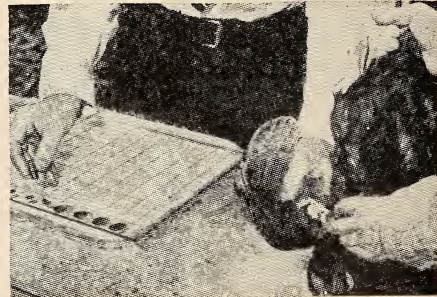
Finally the sturdy selected chicks go back into boxes for shipment.

Bloodtesting . . .

Wene was one of the Pioneers

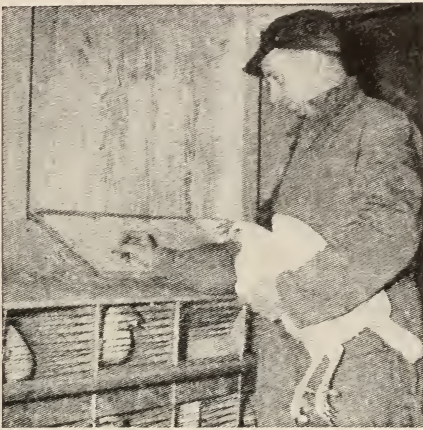
Now has U. S. - N. J. Pullorum
Controlled Rating

The Wene Chick Farms was one of the first in the East to initiate a bloodtesting program for the control and prevention of pullorum disease and carry out the testing work on all breeding flocks. We were one of the earliest subscribers to the National Poultry Improvement Plan and our present official rating is U. S. - N. J. Pullorum Controlled. The requirement under this stage of the N.P.I.P. is that we can use hatching eggs only from flocks that have had less than 2% reaction on the last bloodtest. However, we have gone beyond this official requirement, and this year most of our flocks have had at least one clean test before any eggs were used for hatching purposes. A clean test is one in which no reactors whatever were found. Our program requires that we continue testing throughout the season in order to be doubly sure that the chicks you get will be free of pullorum. As you can readily see, such a strict blood-testing program is a difficult one to carry out; but we feel it is well worth while, for it means that in Wene Chicks you get, in addition to the fine breeding qualities behind them, chicks that are as nearly free of disease as it is possible to get them with care and vigilant efforts.

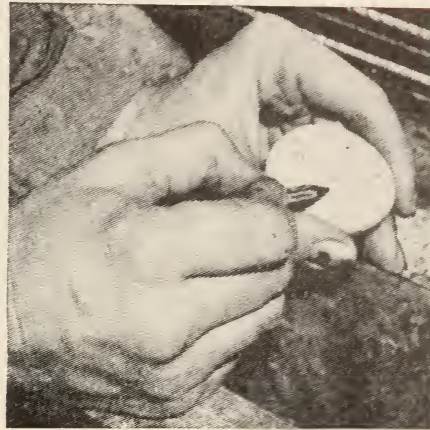


In order to accelerate our program to establish disease-free flocks we have built up a large number of breeding flocks in the State of Maine, where the clear, cold climate and free ranges make it possible to rear exceptionally healthy stock. The flocks from which we get these eggs are Maine - U. S. Pullorum Clean and this year approximately 50% of our Super and Super X chicks will come from these breeders.

Advanced Breeding Program Develops R. O. P. Sires for Wene's Super and Super-X Baby Chicks



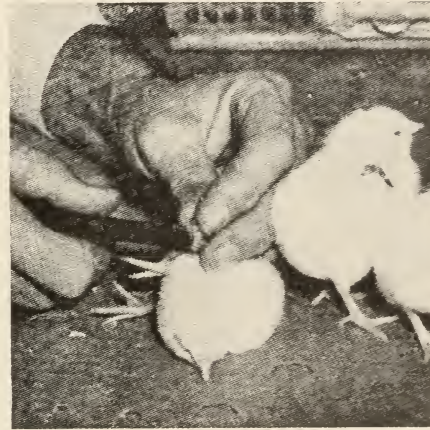
1 Every hen is trapnet 365 days a year, and each egg laid is carefully recorded.



2 The sire's and dam's legband number is written on every hatching egg.



3 The eggs of just one sire and dam go into each compartment of the pedigree hatching tray.



4 When the eggs hatch the parentage of every chick is known. The chicks are identified by wingband so the family can be progeny tested.

The above described method is used to produce R.O.P. chicks. The R.O.P. Cockerels of high egg production background that we produce and buy . . . the U.S. - N.J. Certified hen breeders that we carefully select not only for their own good points but also for their prepotency (the ability to transmit their good points to their offspring) . . . all these birds are kept for just one purpose: to improve the chicks Wene customers buy every year. The same care is employed in developing the flocks that the Wene Chick Farms have bred to produce highest quality chicks for Broilers, Fryers, Roasters and Capons.

EGG PRODUCTION

BROILER PRODUCTION

ROASTER PRODUCTION

We worked with the leading white egg producers of the Atlantic Coast and the brown egg producers of New England to get chickens best suited for profitable production of quality eggs. If white eggs are your main interest, we recommend our White Leghorns or our white egg hybrid, Leghorn-Minorcas. For brown eggs select any of our heavy breeds or our sex-linked Red-Rock cross.

The great broiler specialists of the Del-Mar-Va peninsula and other broiler-producing sections worked with us to improve the broiler characteristics of our strains. See any of our heavy breeds or crosses — and especially Wyan-Rocks. Wene's original blend developed especially for New Jersey broiler growers.

As with egg producers and broiler producers, we consulted the East's foremost roaster raisers to get their ideal specifications for the kind of chickens they wanted. For roasters we suggest WENECross Red Rocks, WENECross Wyan-Rocks or White Plymouth Rocks.

WENE CHICKS for BIGGER EGGS, Better BROILERS and ROASTERS



Large and Small
Flock Owners
Enjoy Extra-Profits
with WENE CHICKS

Gets Premium New York Prices

Mrs. Sanford Reed, Pennsylvania: "I send my eggs to a well-known egg broker in New York . . . get as much as 30c per dozen more for my eggs than anyone around here. Also get more for any chickens I have to sell. Pullets laid no pee-wees and very few pullet eggs . . . mostly medium, large and very large eggs to date."

Likes Wene's Leghorn-Minorcas

For the past two years I have bought Leghorn-Minorca cross from you and they certainly beat anything I ever had on every count. They grow very fast from start and develop into fine large birds that weigh 5 and 6 lbs. on an average, also heavy layers of large chalk white eggs which were graded extra large and we get very few mediums after they have been laying for a time.

We are just as pleased this year. They are laying fine. I like them so much I have ordered 500 pullet chicks for the Spring, of the Leghorn-Minorca cross, as you know.

George P. Parmalee,
Munnsville, New York

Wene Sex-Links Big Egg Producers

Mr. Michael Fenelli, New Jersey: "Have bought 15,000 Sex Link chicks from you . . . had better results from your chicks than any others I ever purchased. During past winter I received 68% (egg production) all winter and 72% in spring-time."

Small Side-Line Flock Profitable

I have always had the best of luck with Wene Chicks. I am a poultry raiser only as a small side line, I am a cowman.

Of the 100 Wene chicks I received from you April 28, 1945, I have raised 96, 92 hens, 4 roosters. The pullets are weighing from 4½ to 5¼ lbs. and I got 4 eggs from them today. I have always made money on Wene chickens. I always raise Wene Barred Rocks. Frank L. Baker, Wellsboro, Pa.



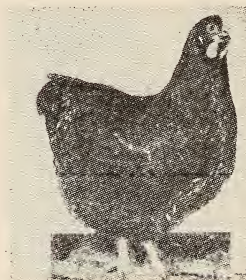
WENECross LEGHORN-MINORCAS

"Minorcas are generally considered to lay some of the biggest white eggs produced by any chicken. White Leghorns of the breeding shown above are crossed with this fine chicken to produce one of the most rugged, heaviest-laying large-type white fowl known to egg farmers. Phenomenal egg production. Extra big chalk-white eggs. Many prefer these chickens above all."



WENECross Red Rocks Sex-Link

"WENECross Sex-Link Red Rocks are produced by crossing our select Rhode Island Red males described below with heavy-laying Barred Rock females (next page). Many farmers are switching to this heavy laying cross. It's so extra rugged that even in the coldest climates it produces phenomenally in zero weather. Many big broiler specialists choose these cockerels to produce fat, fast-maturing fowl for the fancy broiler market."



RHODE ISLAND REDS

In the egg-laying contests, Rhode Island Reds hold the World's Record over all breeds. Individual records of 300 eggs and over are frequent. Our birds have long rectangular bodies with abundant breast meat; they dress out well, with a rich yellow skin. The pullets make excellent layers of good-sized brown eggs. For a number of years now we have mated all our U. S. Certified flocks 100% with R.O.P. males for our Super X Rhode Island Red Chicks. They are money-makers.



WENE SEXED PULLETS Don't overlook the opportunity to buy sexed pullets if you are only interested in egg production. It takes one-half the brooding space to produce the number of mature pullets desired and you get better growth when the pullets are raised alone.

Send Your Orders For WENE CHICKS to TOWNSEND NURSERIES, SALISBURY, MARYLAND

WENE CHICKS for BIGGER EGGS, Better BROILERS and ROASTERS



WYAN-ROCKS

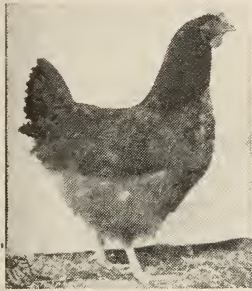
"Wyan-Rocks" is a copyrighted name for WENE'S special blend developed 20 years ago to meet the demand of New Jersey broiler growers for quick growth at low cost. This special breed was so successful we now have to produce one million annually to meet the widespread demand. In combining White Wyandottes and White Rocks we have intensified their good qualities and offer you an outstanding three-way, Extra-Profit breed that is without comparison. You get ROASTERS in less time than it takes purebreds; you get BROILERS in 10 to 15 days earlier than purebreds; you get early production of large brown EGGS. Truly, a 3-Way Profit Producer available only from WENE.



You, Too, Can Enjoy
Extra-Profits with
WENE CHICKS

\$65 Profit in 6 Weeks

"I have been buying chicks for over 20 years from a good many different hatcheries; but I can truthfully say I had rather buy from Wene's on account they always fill orders when they say, chicks arrive in good condition and the 14-day livability guarantee reduces loss cost. I will take the 100 New Hampshire Reds I purchased last Spring. These I found a ready sale for at \$1 each when six weeks old. I sold 88. I figure I made a profit of \$65."—Mrs. Catherine Davis, New York.



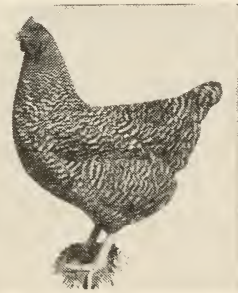
WENE NEW HAMPSHIRE

Here is a breed that will perform well on the average farm, under ordinary Poultry-Raising conditions, because of their Breeding Background. They make broiler weight fast . . . 2½ to 3 pounds at 9 to 10 weeks is common. In building up Wene New Hampshires we have gone to the finest breeders in New England for eggs and R.O.P. cockerel chicks. With this background, our Super X Mating has all the reputation qualities of a true New Hampshire and we use

these flocks to supply replacements for our other matings.

WENE BARRED ROCKS AND WHITE ROCKS

When a customer asks for an all-round, dual-purpose bird—for both eggs and meat—we can recommend WENE Barred Plymouth Rocks or WENE White Plymouth Rocks with complete confidence that ordinary care will produce fine results. Our Barred Rocks are hard to beat and command a premium on most live fowl markets. However, many broiler and roaster growers particularly select our White Rocks because they sell well due to their dressed qualities of rich yellow skin and exceptional plumpness.



Likes Barred For Broilers

During March, 1945, I ordered 100 Barred Rock Chicks from you. I received the chicks the first week in April, 1945—they were the prettiest baby chicks I had ever seen. My friends all said they never seen chicks shipped that distance, be so alive and hearty. They all went right to eating and drinking, at eight weeks old, I sold them for Broilers, they weighed 2½ lbs. each and I was so surprised at my profits, feed was high. But I doubled the amount spent for feed.

It will always be Wene Chicks for me.
Thomas J. Nelson,
Charlottesville, Virginia

BROILER GROWERS LIKE THESE WENE BARRED RED-ROCK CROSS

Profit Three Ways: (1) Broilers (2) Roasters (3) Eggs

Wene Barred RED-ROCK cross are exceptionally vigorous birds that grow unusually fast into plump, well-meated broilers and capons. These chicks are produced by mating our best meat producing strains of New Hampshire Red females and Barred Rock males. In the cross both pullets and cockerels look very much like Barred Rocks. They develop rapidly and evenly into prime broilers and they make excellent tender-meated capons. The pullets mature rapidly into the finest kind of layers.

STEEN BROS., DELAWARE, write: "Bought 100,000 Wene Red-Rock Cross. Had better than average livability."





CHOOSE WITH CONFIDENCE from these WENE CHICK MATINGS

(Prices on Next Page)

U.S.-NEW JERSEY APPROVED

UTILITY MATING

★ Wene's Utility Mating chicks are distinctly better than the ordinary standard grade chicks; for these are U. S.-New Jersey Approved just as our finest grade is. This means that they are produced under the same high standards and with the same care as our Super and Super X Mating Chicks. The difference, of course, is in the egg-production breeding background. However, these Utility Mating chicks represent unusually big value for the money. All the eggs from which these chicks are hatched come from breeding birds that have been individually culled, legbanded, and bloodtested under the supervision of U. S. and New Jersey authorities.

U.S.-NEW JERSEY APPROVED

SELECT MATING

★ In the case of the Leghorns in this grade, all the dams are breeders weighing four pounds or more. The majority of the sires are cockerels hatched from our State Certified R.O.P. Super Matings—grandsons from dams with records of 200 to 288 eggs. The eggs set from these matings average from 25 to 30 ounces and the shells must be absolutely chalk-white.

In the case of Select Mating Heavy Breeds, the eggs must average at least 25 ounces to the dozen. The breeders are carefully selected for size, skin color, plumpness, and plumage as well as egg-production qualities. Many breeders are bloodtested twice during the year.

U.S.-NEW JERSEY APPROVED

SUPER MATING

★ In the Super Mating, White Leghorns are U. S. - N. J. Approved, all Hen Breeders mated in many cases to Pedigree Cockerels with Dam Records of 200 eggs or more. The females are 2, 3 and 4-year-old hens of approved laying ability, weighing 4 lbs. or more. The eggs from these matings average over 25 to 30 oz. per dozen. Shells are pure chalk-white.

In the case of Heavy Breeds, females from our Super Mating are carefully selected for size, skin color, plumpness and plumage. They are mated to outstanding vigorous males backed by high egg records. Eggs set from our Super Matings average at least 25 to 30 oz. per dozen.

Many of our Super Mating heavy breeds are hatched from eggs produced in the State of Maine from U. S. Pullorum clean flocks.

U.S.-NEW JERSEY APPROVED

SUPER-X MATING

★ In our Super X Mating White Leghorns are U. S. - N. J. Certified "All HEN Breeders" mated to Official State R.O.P. Cockerels with dam records of 200 to 300 eggs. The females are 2, 3 and 4 year old HENS of exceptional laying ability, weighing 4 lbs. or more. Eggs from our Super X Matings average from 25 to 30 oz. per dozen. The shells are pure chalk-white.

In our Super X Mating Barred and White Rocks, R. I. Reds and New Hampshires, over 20,000 Breeders are U. S. - N. J. Certified. All females are headed by Official State R.O.P. Cockerels with Dam records of 200 to 300 eggs. All eggs set must average 25 to 30 oz. per dozen.

A number of our Super X Chicks are hatched from eggs produced in the State of Maine. The flocks from which these eggs are secured are Maine U. S. Pullorum clean in addition to being Maine - U. S. Certified.

WHEN ORDERING:

Please tell us which breed and mating you desire, the quantity wanted and whether or not you want sexed chicks. Note terms of payment and guarantees for your protection. Shipping charges are prepaid on Wene Chicks.

TERMS: for Day-Old Chick orders: A deposit of \$1.00 per 100 with your order reserves chicks for delivery any date you wish. Balance due 10 DAYS before delivery. Transportation charges prepaid. Note: Prices subject to change without notice. Orders filled for Leghorn Cockerels only according to supply on hand. Deduct $\frac{1}{4}$ cent per chick if called for.

C.O.D. PLAN for Day-Old Chick orders: A deposit of \$1.00 per 100 chicks with your order reserves chicks for delivery any date you wish. We pay transportation charges on C.O.D. shipments. You pay balance due on arrival of chicks plus C.O.D. charges. Please specify when you order if you wish the chicks sent C.O.D. Transportation prepaid.

NOTE: WE CAN FILL ORDERS FOR COCKEREL CHICKS ONLY AS ORDERS MAY BE IN HAND FOR PULLET CHICKS. WE WILL ACCEPT COCKEREL ORDERS WITH THE PROVISO THAT STRAIGHT-RUN MAY BE USED, IF COCKERELS ARE NOT AVAILABLE WHEN ORDER IS FILLED.

THE WENE GUARANTEE PROTECTS YOU

In shipping, we guarantee 100% live delivery and full count of good, strong, healthy chicks. We assume all the risk of shipping and will replace, free of charge, any shortages on arrival. Please open boxes at once and COUNT THE LIVE CHICKS you receive and if there are less than the number ordered, note the amount. In addition to this guarantee, we will make replacement of chicks that die during the first 14 days after delivery as follows: FULL REPLACEMENT in our SUPER X (R.O.P.) MATING and replacement at HALF PRICE on all OTHER MATINGS. This liberal guarantee is based on maintaining normal brooder temperature, not overcrowding, proper feeding and reasonable care. If you wish, we will make immediate replacement of chicks on receipt of your report, OR will

issue a Credit Certificate, according to the above guarantee, which may be redeemed later at your convenience. There is no guarantee on losses after the 14 day period. PLEASE NOTE: It is not possible to ship fewer than 25 chicks, and it is not practical to run together chicks with more than three days difference in age. The letters in this chick supplement are not printed with the intention of making you think that everyone gets the same results. Your own success will depend on the care and management you give to your chicks, as well as the grade of chicks you buy. These letters are quoted to show that with the right care, equipment and management and under the right conditions, good breeding pays its way—and that Wene has good breeding to offer you.

95% PULLETS GUARANTEED: Should you receive more than 5% cockerels, we will refund the difference in price between cockerels and pullets on all over 5%.

Send Your Orders For WENE CHICKS to TOWNSEND NURSERIES, SALISBURY, MARYLAND

WENE'S U. S.-N. J. APPROVED . . . PULLORUM CONTROLLED

UTILITY MATING CHICKS

S. C. WHITE LEGHORNS (Not Sexed)	\$13.90	\$13.50	\$12.90	\$.16
R. I. Reds or N. H. Reds; WENE'S WYAN-Rocks or Barred Rocks; WENEcross REDrocks or White Rocks	13.90	13.50	12.90	.16

PRICES PER 100 IN LOTS OF

100 to 2000	2000 to 4000	4000 or more	25 - 100 each
-------------	--------------	--------------	---------------

SELECT MATING CHICKS

S. C. WHITE LEGHORNS (Big Type)	Not Sexed	\$15.90	\$15.50	\$14.90	\$.18
From Hen Breeders	95% Pullets	31.90	31.50	30.90	.34
Weighing 4 lbs. or more	95% Cockerels..	6.90	6.50	5.90	.09
R. I. REDS or N. H. REDS	Not Sexed	\$15.90	\$15.50	\$14.90	\$.18
	95% Pullets	27.90	27.50	26.90	.30
	95% Cockerels..	10.90	10.50	9.90	.13
WHITE ROCKS or BARRED ROCKS ...	Not Sexed	\$15.90	\$15.50	\$14.90	\$.18
	95% Pullets	25.90	25.50	24.90	.28
	95% Cockerels..	14.90	14.50	13.90	.17
WENE WYAN-ROCKS (White)	Not Sexed	\$15.90	\$15.50	\$14.90	\$.18
WENEcross REDrocks (Barred)	95% Pullets	25.90	25.50	24.90	.28
	95% Cockerels..	14.90	14.50	13.90	.17
WENEcross "SexLink" REDrocks	Straight Run ...	\$15.90	\$15.50	\$14.90	\$.18
(Famous "Dual-Purpose" Cross)	95% Pullets	25.90	25.50	24.90	.28
	95% Cockerels..	14.90	14.50	13.90	.17
WENEcross Leghorn-Minorcas	Not Sexed	\$15.90	\$15.50	\$14.90	\$.18
(Outstanding White Egg Cross)	95% Pullets	31.90	31.50	30.90	.34
	95% Cockerels..	6.90	6.50	5.90	.09
Assorted Heavies		\$13.50	—	—	.16

PRICES PER 100 IN LOTS OF

100 to 2000	2000 to 4000	4000 or more	25 - 100 each
-------------	--------------	--------------	---------------

SUPER MATING CHICKS

S. C. WHITE LEGHORNS (Big Type)	Not Sexed	\$17.90	\$17.50	\$16.90	\$.20
From Hen Breeders	95% Pullets	34.90	34.50	33.90	.37
Weighing 4 lbs. or more	95% Cockerels..	10.90	10.50	9.90	.13
R. I. REDS or N. H. REDS	Not Sexed	\$17.90	\$17.50	\$16.90	\$.20
	95% Pullets	29.90	29.50	28.90	.32
	95% Cockerels..	15.90	15.50	14.90	.18
WHITE ROCKS or BARRED ROCKS ...	Not Sexed	\$17.90	\$17.50	\$16.90	\$.20
	95% Pullets	26.90	26.50	25.90	.29
	95% Cockerels..	15.90	15.50	14.90	.18
WENE WYAN-ROCKS (White)	Not Sexed	\$17.90	\$17.50	\$16.90	\$.20
WENEcross REDrocks (Barred)	95% Pullets	27.90	27.50	26.90	.30
	95% Cockerels..	15.90	15.50	14.90	.18
WENEcross "SexLink" REDrocks	Straight Run ...	\$17.90	\$17.50	\$16.90	\$.20
(Famous "Dual-Purpose" Cross)	95% Pullets	27.90	27.50	26.90	.30
	95% Cockerels..	15.90	15.50	14.90	.18
WENEcross Leghorn-Minorcas	Not Sexed	\$18.90	\$18.50	\$17.90	\$.21
(Outstanding White Egg Cross)	95% Pullets	35.90	35.50	34.90	.38
	95% Cockerels..	10.90	10.50	9.90	.13
Assorted Heavies		\$15.50	—	—	.18

PRICES PER 100 IN LOTS OF

100 to 2000	2000 to 4000	4000 or more	25 - 100 each
-------------	--------------	--------------	---------------

SUPER X MATING CHICKS

S. C. WHITE LEGHORNS (Big Type)	Not Sexed	\$19.90	\$19.50	\$18.90	\$.22
From Hen Breeders	95% Pullets	37.90	37.50	36.90	.40
Weighing 4 lbs. or more	95% Cockerels..	12.90	12.50	11.90	.15
R. I. REDS or N. H. REDS	Not Sexed	\$19.90	\$19.50	\$18.90	\$.22
	95% Pullets	32.90	32.50	31.90	.35
	95% Cockerels..	17.90	17.50	16.90	.20
WHITE ROCKS or BARRED ROCKS ...	Not Sexed	\$19.90	\$19.50	\$18.90	\$.22
	95% Pullets	29.90	29.50	28.90	.32
	95% Cockerels..	17.90	17.50	16.90	.20

PRICES PER 100 IN LOTS OF

100 to 2000	2000 to 4000	4000 or more	25 - 100 each
-------------	--------------	--------------	---------------



APPLE TREES

FOR COMMERCIAL and HOME PLANTINGS

Here's a fine lot of Heavy Fruiting varieties selected by Townsend's. They are the choicest of Standard Varieties and the best of the new sorts, good for keeping or cooking giving you delicious apples throughout the season and far into the winter. For your benefit we have listed the varieties according to their ripening season.

Yellow Transparent being one of the earliest and BALDWIN one of the latest fruiting varieties. We have a nice stock of fine quality, two-year grown trees and know they will please you. Would advise having apple trees come by Express or Freight.

YELLOW TRANSPARENT—The best early yellow apple, mild and juicy.

LODI—Same quality and flavor as Yellow Transparent but is much larger and more firm. Ripens few days later than Transparent. Early bearing.



DOUBLE RED DELICIOUS

EARLY McINTOSH—Red, handsome resembles McIntosh in appearance and flavor, but earlier.

IMP. ALL RED JONATHAN—Medium size apple, of highest quality, very attractive good keeper.

IMP. ALL RED McINTOSH—A special selected strain of McIntosh, solid red coloring, firm, good shipper and for storage, very attractive.

GRIMES GOLDEN—Needs no introduction, one of the best varieties. Yellow, fall apple, firm, mild flavor. Highly recommended.

DOUBLE RED DELICIOUS—An outstanding new deep red apple with all the flavor and quality that goes to make a supreme apple. Good keeper, hardy grower. The most popular apple grown in America.

YELLOW DELICIOUS—One of the new early bearing yellow varieties, has unique quality, growing more popular each year. Consistent heavy brearer.

DOUBLE RED STAYMAN—New Red variety, of the famous Stayman. Growers can pick 3 weeks before the old Winesap, fine for cold storage, one of the best keepers in this respect. Big cropper, fine for home cooking and commercial markets.

GALLIA BEAUTY (RED ROME)—Clear bright red, considered one of the best apples grown. One of the best keepers, juicy very large.

BALDWIN—Recommended for our New England customers. Red, sub-acid good quality.

CRAB APPLES

DOLGO—A handsome Red Crab Apple of medium size. Fruit jellies easily and makes rich red, ruby jelly. Tree is hardy, vigorous grower.

HYSLOP—Large, well shaped very brilliant colored with dark purplish red. Excellent for jelly, good bearer.

TOWNSEND'S
Big Bargain Apple Offers

<p>1—Big 5-6 ft. tree, each variety:—</p> <p>Lodi Imp. All Red Jonathan Imp. All Red McIntosh Grimes Golden Double Red Delicious Double Red Stayman</p> <p>6 Trees All For \$7.95</p>	<p>All Red Varieties—three early—three late.</p> <p>1—Select 4-5 ft. tree, each variety:—</p> <p>Early McIntosh Imp. All Red Jonathan Imp. All Red McIntosh Double Red Delicious Double Red Stayman Gallia Beauty</p> <p>6 Trees All For \$6.85</p>
--	--

APPLE TREE PRICES

For All Varieties Listed On This Page

	1-9	10-50	51-or More
Fancy 5-6 Ft.	\$1.85	\$1.55	\$1.75
Select 4-5 Ft.	1.45	1.20	.95



PEACHES



Leading Varieties for Home or Commercial Use

Every fruit tree sent out by Townsend's must pass the same rigid inspection and grading as required by us on our berry plants. We guarantee safe arrival and satisfaction.

PRICES PEACH TREES

	1-9	10-49	50 & Up
Large Select Trees 4-6 ft. 9-11/16 in. Cal.....	\$1.35	\$1.20	\$.95
Sturdy Select Trees 3-4 ft. 7-9/16 in. Cal.....	1.20	1.00	.90

HALE HAVEN

A delicious flavored yellow freestone peach of attractive appearance. Very hardy and frost resistance. Ripens two weeks earlier than Elberta. Fruits at an early age. One of the best peaches on our list for commercial or home planting.

Note: Ripening order of varieties designated by numbers after name.

REDHAVEN (1) A Hardy variety that stands temperatures as low as 13 degrees below zero, and still has a full crop. Ripens just before the old favorite Golden Jubilee. Fruit is large and highly colored, yellow and a freestone. We recommend it for the Home and Commercially.

GOLDEN JUBILEE (2) No planting of peaches complete without a few trees of this outstanding hardy peach. Great for Home and a leading commercial variety. Tree good grower, fruit ripens about four to five weeks before Elberta. Fruit a beauty to look at, flesh deep yellow, freestone.

HALEHAVEN (3) Generally **RECOGNIZED AS ONE OF THE BEST PEACHES FOR "QUICK FREEZING"**—we know of none better. Tree is extremely hardy, where ever you are located you cannot go wrong in planting Halehaven. Yellow flesh and a freestone.

EARLY ELBERTA (4) Where Top Quality Is Desired Plant **OUR ORIGINAL STRAIN OF EARLY ELBERTA—HAS SIZE TOO**—Ripens about 3 to 8 days before regular Elberta, bears consistently. Skin blushed with bright red, makes this peach more than attractive. Size large, flesh yellow and a freestone. You cannot go wrong with Early Elberta.

BELLE OF GEORGIA (5) The **LEADER OF ALL WHITE PEACHES**. Known as the peach that has withstood the test of time. Fruit large, bright red almost covers the entire peach. Tree vigorous and productive, flavor unexcelled.

ELBERTA (6) **THE PEACH THAT IS AMERICA'S FAVORITE**. Without question this is the greatest peach ever introduced, and is widely grown. Fruit very large, a freestone yellow flesh, best flavor of any peach "says many."

BRACKETT (7) Fine quality yellow freestone, follows Elberta about 5 days. Fine for canning and market.

LIZZIE (8) **RIPENS ABOUT 12 to 16 DAYS AFTER ELBERTA**. Has size, firmness, fine color thus making it an excellent variety where a very late peach is wanted.



Nothing is so delicious as strawberries and peaches
Fresh from your own Garden

← **TWO** →
MONEY SAVING OFFERS

SPECIAL OFFER "C"
100 Premier
100 Townking
Strawberry Plants
Only
\$3.95

EXTRA HEAVY PEACH TREES
WE WILL SEND TO YOU ONE TREE OF EACH OF THE ABOVE VARIETIES ALL FOR **\$9.45**



CHERRY TREES

Prices Strong Stocky Trees

	1-9	10-49	50-100
4-6 ft. Heavy Selects.....	\$2.60 each	\$2.20 each	\$1.75 each
Above Prices for Sweet Cherries-Sour Cherries \$.45 per Tree Less		

SWEET CHERRIES

The best in the sweet cherry class

BLACK TARTARIAN. Makes a beautiful erect growth; a heavy bearer. Ripens in late June and July. Fruit is purplish in color, rich

and juicy.

GOVERNOR WOOD. A healthy grower and abundant bearer. Large, yellow fruit, covered with bright red. Ripens middle of June.

NAPOLEON. Deep yellow tinged with red.

YELLOW SPANISH. Ripens end of June. Fine for canning. Fruit large, with golden coloring tinted with crimson.

SENECA. Soft, juicy, flesh richly flavored, best early cherry.

WINDSOR. Large, dark purplish red, flesh firm, crisp, sweet, good quality and an excellent shipper, fruits late.

SOUR CHERRIES

For quick results plant the sour varieties

EARLY RICHMOND. June. Sour red, the earliest of Sour Cherries. Fruit round, skin thin, rather tough and easily separated from the pulp and requires small amount of sugar when canning.

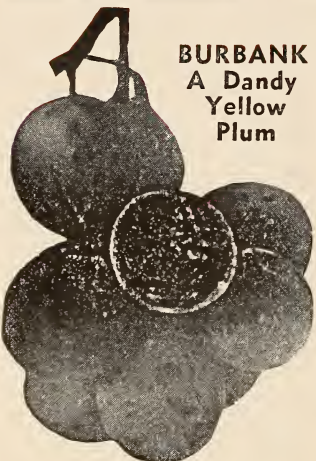
ENGLISH MORELLO. Late July and early August. The only real late cherry. Tree grows quite small and of dwarf habit. Fruit good size, nearly black.

MONTMORENCY (Large). Late June. A commercial variety in popular demand. Tree bears young, within 2 years after planting. Fruit of good size, bright, clear red.



MONT-MORENCY
Big Early
Sour
Cherry

Special Plum and Cherry Offer	
OFFER 1	OFFER 2
1 Abundance	1 Tree Each Napoleon,
1 Burbank	Montmorency, Black Tartar-
1 Bradshaw	ian, Early Richmond.
Three Heavy	Four Heavy
Select	Select Trees
Plum Trees \$5.95	Only \$8.75



BURBANK
A Dandy
Yellow
Plum

PLUM TREES

We consider the following list of plums to be among the best varieties on the market. We have selected only varieties that are hardy and heavy bearers. Always plant several varieties together so they can cross pollenate. They will fruit much better.

PLUM PRICES

	1-9	10-49	50-100
4-6 Ft. Heavy Selects.....	\$2.25	\$1.85	\$1.40

ABUNDANCE. (Japanese). Skin pinkish red, changing to dark red. Ripens late August or early September. Fruit medium size, roundish; flesh yellow, tender and sweet.

BRADSHAW. Large dark violet-red, flesh yellowish green, very productive and vigorous grower, August ripening.

FRENCH DAMSON. A large beautiful plum of good quality surpassing all other plums in this class.

HALL. Dark purple, large, greenish yellow flesh, good quality excellent for roadside stands or market.

STANLEY. Dark blue, with splendid quality for dessert or culinary purposes.

2 OUTSTANDING PLUMS

BURBANK. A triumph of the genius of "The Master Horticulturist." Remarkably successful all over the country. It seems to succeed in any soil. Fruit large, dark red or purplish with thin lilac bloom. Flesh amber yellow with rich sugary flavor. It's a dandy.

ITALIAN PRUNE (Fellenberg). Excellent for drying, preserving or dessert. Large fine fruit that is firm, sweet and delicious. We have nothing to offer that will take its place. Every home should have a few trees.

SPECIAL OFFER	
2 BURBANK PLUM	
2 ITALIAN PRUNE	
4-6 ft. Trees	\$7.95
All For.....	

PEAR OFFER	
Choice Medium Grade	
all strong 4-5 ft. trees	
1 New Douglas	
1 Bartlett	
1 Anjou	
1 Kieffer	
1 Duchess	
All 5 Trees	\$8.95
FOR	

ALL
2 YEAR
GROWN

PEAR TREES

HEAVY
ROOTED

PRICES

	1-9	10-49	50-100
4-6 Ft. Heavy Select.....	\$2.25 each	\$1.85 each	\$1.40 each
3-5 Ft. Heavy Select.....	1.95 each	1.65 each	1.20 each

ANJOU. A heavy yielding late variety, good keeper, very juicy and fine flavor.

BARTLETT. One of the finest dessert and eating Pears. Heavy producer. Golden yellow with red cheek.

CLAPPS FAVORITE. Large pale yellow with red cheek. Tree hardy and does well everywhere. Fruit fine grained, sweet and highly flavored.

DUCHESS (d'Angouleme). Dull yellow, netted with russet. Very large. Tree blight resistant and heavy producer.

KIEFFER. Large yellow of fine quality. Trees hardy and bears very late.

SECKEL. Small, attractive in color. Trees vigorous, bears late.
NEW DOUGLAS. Beautiful large smooth golden yellow pear flecked with russet, sweet and juicy, blight resistant and hardy in most all climates.



BARTLETT PEAR



POTTED PLANTS



HEAVY CARTONS



SHOPPING NET BAGS



TRASH REMOVAL



TRUNKS & BAGS



SO LIGHT A CHILD CAN CARRY IT
ALL-STEEL AND STURDY IT HOLDS 150 POUNDS



SLIDING, LOCKING, ADJUSTABLE HOOK HOLDS LOAD SECURELY



BRICK OR TILE



SHOPPING BAGS



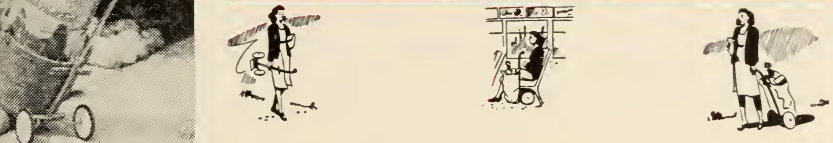
SHOPPING BASKET



GARBAGE CANS



GARDEN FLATS



CARRY TO MARKET OR STORE • WHEEL IT HOME!

Here's the **ONE CART** Everybody Wants

Mi-Chore-Cart

PERFORMS EVERY HOUSEHOLD, MARKET AND GARDEN CHORE

Designed and made by America's leading wheeled goods and cart manufacturer, Mi-Chore-Cart happily provides Mrs. America with the answer to her every moving problem. Sturdy all-steel, in gleaming rust-proof metal and enamel finish, adjustable to every height for every type of household, market and garden use, Mi-Chore-Cart easily picks up and wheels a thousand burdens on its real rubber tires. In the house, in the garden—to and from the market it goes—and, best of all, it takes but little standing room in closet, hall or service porch—or it may be hung from a convenient hook. Over 3 feet high, 14" wheelbase, solid steel axles, contoured steel white enamel wheels and 6" rubber tires, unbreakable steel tubing.

\$6.95 ea.

ORDER A CART NOW—YOU'LL NEVER REGRET IT!



TOWNSEND'S

ORIGINAL SELECT STRAIN
OF STRAWBERRY PLANTS

TRUE TO NAME
PLANTS

1947 PRICES STRAWBERRY PLANTS

GUARANTEED
SATISFACTION

All prices quoted below are F.O.B. Salisbury, Maryland, and in effect from January the 1st until Dec. 31, 1947. Customers ordering plants send Parcel Post prepaid. See Parcel Post Rates on page 47. We ship a limited number of strawberry plants in late summer and fall. Customers wanting plants for planting at that time, may send their order along any time after June 15th. All plants are tied 25 to bundle. No less than 25 plants of variety sold.

Description of varieties
on page

EARLY VARIETIES		25 Plants	50 Plants	100 Plants	200 Plants	250 Plants	400 Plants	500 Plants	1000 Plants	3000 Plants of One Variety Per 1000	5000 Plants of One Variety Per 1000
20	BLAKEMORE	\$.75	\$1.25	\$2.00	\$ 3.50	\$ 4.00	\$ 5.00	\$ 6.00	\$ 9.50	\$ 8.90	\$ 8.50
8	DORSETT	1.15	1.90	3.00	5.00	5.95	7.95	9.25	14.50	13.90	13.50
9	FAIRFAX	1.15	1.90	3.00	5.00	5.95	7.95	9.25	15.00	14.40	14.00
6	HOWARD 17	1.15	1.90	3.00	5.00	5.95	7.95	9.25	14.50	13.90	13.50
0	MISSIONARY75	1.25	2.00	3.50	4.00	5.00	6.00	9.50	8.90	8.50
6	PREMIER	1.15	1.90	3.00	5.00	5.95	7.95	9.25	14.50	13.90	13.50
12	POLAR-QUEEN (NEW)	2.30	3.80	6.00	10.00	11.90	15.90	18.50	29.00	25.00	20.00
MID-SEASON VARIETIES											
11	BIG JOE	1.15	1.90	3.00	5.00	5.95	7.95	9.25	15.00	14.40	14.00
10	CATSKILL	1.15	1.90	3.00	5.00	5.95	7.95	9.25	14.50	13.90	13.50
11	SENATOR DUNLAP90	1.50	2.40	4.20	4.80	6.50	7.50	12.00	11.40	11.00
13	TEMPLE (NEW)	1.15	1.90	3.00	5.00	5.95	7.95	9.25	14.50	13.90	13.50
LATE TO VERY LATE											
15	TOWN-KING	1.15	1.90	3.00	5.00	5.95	7.95	9.25	15.00	14.40	14.00
16	CHESAPEAKE	1.20	2.00	3.20	5.60	6.40	8.65	10.00	16.00	15.40	15.00
17	RED STAR	1.20	2.00	3.20	5.60	6.40	8.65	10.00	16.00	15.40	15.00
0	FAIRPEAKE (NEW)	1.20	2.00	3.20	5.60	6.40	8.65	10.00	16.00	15.40	15.00
0	LUPTON	1.15	1.90	3.00	5.00	5.95	7.95	9.25	16.00	15.00	14.00
17	XTRALATE	1.20	2.00	3.20	5.60	6.40	8.65	10.00	16.00	15.40	15.00
20	SURPLUS PLANTS—NOT LESS THAN 1000 PLANTS SOLD AT THESE SPECIAL LOW PRICES.....									12.50	12.00
EVERBEARING (OR FALLBEARING) VARIETIES											
18	GEM	1.75	3.00	5.00	8.75	10.00	13.50	15.50	24.00	23.40	20.00
18	MASTODON	1.75	3.00	5.00	8.75	10.00	13.50	15.50	24.00	23.40	20.00
24	EVERMORE (MINN. 1116)	1.75	3.00	5.00	8.75	10.00	13.50	15.50	24.00	23.40	20.00
24	STREAMLINER	1.75	2.50	4.00	7.50	8.50	10.00	11.50	20.00	19.00	18.00
25	GEMZATA	1.75	3.00	5.00	8.75	10.00	13.50	15.50	24.00	23.40	20.00

We Are The
Original

Make All Checks or Money Orders Payable to:

TOWNSEND NURSERIES

P. O. Box 110, Salisbury, Maryland

Your Visit
Is
Invited

L. Sherman Townsend, Mgr.

● WRITE FOR SPECIAL PRICES, ON LARGER QUANTITIES THAN QUOTED ABOVE

Townsend's plants are used exclusively by the largest strawberry associations in the country. Any association, group of growers who wish to pool their orders, or any large grower interested in purchasing a variety in larger quantities than quoted above, should write us for our special price.

When writing, just give Variety or Varieties wanted and approximately amount needed. You will be under no obligation to buy. It is part of Townsend's Service which we are rendering our customers, and which has helped us to build our business to the present standing as The World's Largest Growers—Shippers of Strawberry Plants.

ORDERS CAN BE BOOKED IN ADVANCE OF SHIPPING DATE. You can send along your order on receipt of this catalogue. A 25% deposit will reserve stock for you. We will dig and ship whenever we receive your shipping instructions. Thousands of our customers annually take advantage of this service. On long lists of varieties it insures them of getting varieties wanted.

MAKE ALL REMITTANCES TO:

Townsend Nurseries

PLANT FARMS

BABY
CHICK

ORDER
BLANK

BABY CHICK DEPARTMENT

Salisbury, Maryland....., 194.....

DO NOT WRITE IN THIS BLOCKED SPACE

Received In Payment Money Order..... Check..... Cash..... C.O.D.....

Forward To Your Name (First Name)..... (Middle Initial)..... (Last Name).....

Street Address..... Rural Route..... Box No.....

Post Office.....

State..... County.....

Express Office..... (If Different From Your Post Office)

Advise Earliest Shipping Date..... Second Choice..... Latest.....

Enclosed Amount \$..... Balance C.O.D. \$..... (If Any)

Check Here How To Ship:

Parcel Post Express

Check Mating Or Grade Ordered

Utility Super

Select Super X

NO. OF CHICKS	BREED	PRICE PER 100	TOTAL PRICE FOR BROOD
	White Leghorns (Not Sexed)	\$	\$
	White Leghorns - Pullets 95%		
	White Leghorns - Cockerels 95%		
	Wyan-Rock Cross		
	Red Rock "BARRED"		
	Broiler Chicks, from Maine Eggs		
	Bram Rocks		
	White Giants		
	Barred Rocks		
	White Rocks		
	Rhode Island Reds		
	New Hampshire Reds		
	White Wyandotte		
	Sexlink Red-Rocks		
	Sexlink Pullets 95%		
	Sexlink Cockerels 95%		
	Leghorn Minorca Cross		
	Leghorn Pullets 95%		
	Leghorn Cockerels 95%		
	Heavy Assorted		
TOTAL		\$	

YOU TAKE NO RISK WHEN PLACING YOUR ORDER FOR CHICKS WITH TOWNSEND. YOU GET THE BEST THAT MONEY WILL BUY "AT NO EXTRA COST" PLUS THE EXPERIENCE OF ONE OF THE COUNTRY'S LARGEST HATCHERIES.

FROM _____

ST. & NO. _____

P. O. _____

STATE _____

Townsend Nurseries
PLANT FARMS

SALISBURY,

MARYLAND

Form 6001

POST OFFICE DEPARTMENT
THIRD ASSISTANT POSTMASTER GENERAL
DIVISION OF MONEY ORDERS

No. _____

Stamp of Issuing Office

FEE _____

The Postmaster
will insert

here _____
the office drawn on, when the office
named by the remitter does not trans-
act money-order business

Spaces above this line are for the Postmaster's record, to be filled in by him

Application for Domestic Money Order

Spaces below to be filled in by purchaser, or, if necessary,
by another person for him

Amount—

USE FIGURES, DO NOT SPELL _____ Dollars _____ Cents

TOWNSEND NURSERIES

To be paid to } _____
(Name of person or firm for whom order is intended)

P. O. BOX 110

Whose address is } _____ Street

SALISBURY,

City and State } _____

MARYLAND

Sent by _____
(Name of sender)

_____ Street
City and State } _____

PURCHASER MUST SEND ORDER AND COUPON TO PAYEE

(FOR FEES SEE OTHER SIDE)

o16-8391-2

Fees for Money Orders Drawn on Domestic Form

Payable in the United States, including Hawaii, Puerto Rico, and the United States Virgin Islands, or in Guam and Tutuila (Samoa); also for orders payable in Antigua, Bahamas, Barbados, Bermuda, British Guiana, British Honduras, British Virgin Islands, Canada, Canal Zone, Cuba, Dominica, Grenada, Jamaica, Montserrat, Nevis, Newfoundland, Philippine Islands, St. Kitts, St. Lucia, St. Vincent, and Trinidad and Tobago.

For Orders	From \$0.01 to	\$2.50.....	6 cents.
	From \$2.51 to	\$5.00.....	8 cents.
	From \$5.01 to	\$10.00.....	11 cents.
	From \$10.01 to	\$20.00.....	13 cents.
	From \$20.01 to	\$40.00.....	15 cents.
	From \$40.01 to	\$60.00.....	18 cents.
	From \$60.01 to	\$80.00.....	20 cents.
	From \$80.01 to	\$100.00.....	22 cents.

Memoranda of Issuing. Postmaster:

If order is purchased through Rural Carrier, he will fill spaces below:

Carrier's receipt No. -----

-----, Carrier.

NOTE.—The maximum amount for which a single Money Order may be issued is \$100. When a larger sum is to be sent, additional Orders must be obtained. Any number of Orders may be drawn on any Money Order office on any one day.

Applications must be preserved at the office of issue for three years from date of issue.

**Certified
PLANTS**

PRICE LIST OF

**Approved
VARIETIES**

**SPRING
1947
FALL**

RASPBERRIES—BLACKBERRIES DEWBERRIES—GRAPES

**SPRING
1947
FALL**

All prices quoted below are F.O.B. Salisbury, Maryland, and in effect from January 1st, 1947 until December 31st 1947. Customers ordering plants sent PARCEL POST, PREPAID, see PARCEL POST RATES at bottom of page.

Description of varieties on page

RED RASPBERRY PLANTS

For Prices on Bearing Age Plants, See Page 33

	12 Plants	25 Plants	50 Plants	100 Plants	200 Plants	300 Plants	400 Plants	500 Plants	1000 Plants
29 LATHAM, Select 1 year No. 1	\$2.60	\$4.10	\$7.00	\$12.35	\$22.50	\$30.00	\$37.50	\$43.00	\$75.00
28 TAYLOR, Select 1 year No. 1	2.60	4.10	7.00	12.35	22.50	30.00	37.50	43.00	75.00
29 CHIEF, Select 1 year No. 1	2.60	4.10	7.00	12.35	22.50	30.00	37.50	43.00	75.00
28 MARCY, Select 1 year No. 1	2.60	4.10	7.00	12.35	22.50	30.00	37.50	43.00	75.00
29 SUNRISE, Select 1 year No. 1	2.60	4.10	7.00	12.35	22.50	30.00	37.50	43.00	75.00
28 KATHERINE (Evgb) Select 1 yr. No. 1	2.60	4.10	7.00	12.35	22.50	30.00	37.50	43.00	75.00
28 ST. REGIS (Evgb) Select 1 yr. No. 1	2.60	4.10	7.00	12.35	22.50	30.00	37.50	43.00	75.00
28 INDIAN SUMMER (Evgb) Sel. 1 yr. No. 1	2.60	4.10	7.00	12.35	22.50	30.00	37.50	43.00	75.00

BLACK RASPBERRY PLANTS

For Prices on Bearing Age Plants, See Page 33

27 CUMBERLAND, Select 1 yr. No. 1	2.00	3.25	5.75	9.95	16.75	24.25	29.95	34.75	59.95
27 NEW MORRISON, Select 1 yr. No. 1	2.00	3.25	5.75	9.95	16.75	24.25	29.95	34.75	59.95

BLACKBERRY PLANTS

For Prices on Bearing Age Plants, See Page 33

30 ALFRED, Select 1 yr. No. 1	2.00	3.25	5.75	9.95	16.75	24.25	29.95	34.75	59.00
30 BLOWERS, Select 1 yr. No. 1	2.00	3.25	5.75	9.95	16.75	24.25	29.95	34.75	59.00
30 ELDORADO, Select 1 yr. No. 1	2.00	3.25	5.75	9.95	16.75	24.25	29.95	34.75	59.00
30 EARLY HARVEST, Select 1 yr. No. 1	2.00	3.25	5.75	9.95	16.75	24.25	29.95	34.75	59.00

DEWBERRY PLANTS

For Prices on Bearing Age Plants, See Page 33

31 BOYSENBERRY THORNLESS, 1 yr. No. 1	2.60	4.45	7.95	11.45	26.95	34.95	43.75	49.95	75.00
31 BOYSENBERRY (Std. Type) No. 1	2.60	4.45	7.95	11.45	26.95	34.95	43.75	49.95	75.00
31 LUCRETIA, Select 1 yr. No. 1	1.75	2.75	4.75	8.00	15.00	19.95	24.95	28.95	50.00
31 NECTARBERRY, Select 1 yr. No. 1	2.60	4.45	7.95	11.45	26.95	34.95	43.75	49.95	75.00
31 YOUNGBERRY, Select 1 yr. No. 1	2.60	4.45	7.95	11.45	15.00	19.95	43.75	49.95	75.00

GRAPES

For Prices on Bearing Age Plants, See Page 33

	Each	3 Vines	12 Vines	25 Vines	50 Vines	100 Vines	
32 Concord, 2 yr. No. 1	\$0.60	\$1.65	\$4.50	\$9.95	\$15.00	\$25.00	Take advantage of these low prices on Grape Vines. Your order will be filled from one of the largest plantings in the country.
32 Catawba, 2 yr. No. 1	.60	1.65	4.50	9.95	15.00	25.00	
32 Moore's Early, 2 yr. No. 1	.60	1.65	4.50	9.95	15.00	25.00	
32 Niagara, 2 yr. No. 1	.60	1.65	4.50	9.95	15.00	25.00	
32 Worden, 2 yr. No. 1	.60	1.65	4.50	9.95	15.00	25.00	
32 Caco, 2 yr. No. 1	.60	1.65	4.50	9.95	15.00	25.00	
32 Champagne, 2 yr. No. 1	.60	1.65	4.50	9.95	15.00	25.00	
32 Fredonia, 2 yr. No. 1	.60	1.65	4.50	9.95	15.00	25.00	
32 Portland, 2 yr. No. 1	.60	1.65	4.50	9.95	15.00	25.00	

Customers Ordering Plants By Mail, Use Following Tables for Correct Postage

Be sure to include sufficient postage for your order if plants are to be sent Prepaid. We will return every penny due you if you send too much. If insufficient postage is sent, we will credit amount paid and send balance C.O.D.

Parcel Post Rates on Strawberry and Potato Plants

	Zones 1-2	Zone 3	Zone 4	Zone 5	Zone 6	Zone 7	Zone 8
100 Plants	\$0.09	\$0.15	\$0.21	\$0.27	\$0.33	\$0.41	\$0.48
200 "	.11	.23	.35	.49	.61	.77	.92
300 "	.21	.31	.49	.70	.89	1.13	1.36
400 "	.23	.37	.61	.89	1.15	1.49	1.80
500 "	.27	.45	.75	1.11	1.43	1.85	2.24
600 "	.31	.53	.89	1.31	1.73	2.21	2.68
700 "	.35	.63	1.03	1.53	1.98	2.57	3.12
800 "	.39	.69	1.17	1.74	2.27	2.93	3.58
900 "	.43	.77	1.31	1.95	2.55	3.29	4.00
1000 "	.47	.85	1.45	2.16	2.83	3.65	4.44

Parcel Post Rates on Grape Vines, Raspberries, Blackberries, Currants, Gooseberries, and Dewberries

	Zones 1-2	Zone 3	Zone 4	Zone 5	Zone 6	Zone 7	Zone 8
1 to 2 Plants	\$0.08	\$0.09	\$0.10	\$0.11	\$0.12	\$0.14	\$0.15
3 to 6 "	.13	.17	.24	.33	.40	.50	.59
7 to 12 "	.14	.19	.28	.38	.47	.59	.70
13 to 20 "	.15	.21	.31	.43	.54	.68	.81
21 to 25 "	.18	.23	.35	.49	.61	.77	.92
26 to 35 "	.23	.35	.56	.80	1.03	1.31	1.58
36 to 50 "	.33	.53	.87	1.23	1.66	2.12	2.57
51 to 75 "	.35	.57	.94	1.39	1.80	2.30	2.79
76 to 100 "	.40	.67	1.12	1.65	2.15	2.75	3.34

These figures are average—the rate varies according to variety. On all orders of 500 or more plants, the rate is cheaper by Express after the second zone.

On all orders of 100 plants or more of Cane Stock Items listed above, the rate is cheaper by Express after the second zone.

Townsend's

4 Leading Blueberries

Selected especially for their adaptability to all sections of the country.

This is just the right size garden collection for the average family.

- 1—Cabot (Early)
- 1—Rancocas (Midseason)
- 1—Rubel (Midseason)
- 1—Jersey (Late)

4 Plants 7 to 12 inch grade
catalog value \$4.60

For Only **\$3.45**

Place Your Order To-Day.

We Will Ship at the Proper Planting Time.

BLUEBERRIES

New Cultivated

TOWNSEND'S GIANT BLUEBERRIES, ARE PROFITABLE TO GROW, DELICIOUS TO EAT. Plants start to yield large delicious, berries, when three years old. Thus if you plant this season, our selected plants in either the 7- to 12 inch and 12-18 inch grade, you can be assured of berries next Spring.

Fruit is ideal to eat right off the bushes, excellent for canning, quick freezing and the well known and popular Blueberry Pie.

The period of ripening, covers several weeks, plants bear more and more fruit each and every time—therefore your first cost for the plants is all. Every garden should have a few plants, and be sure to plant two or more varieties for cross pollination, also which will help to give you that many more berries when plants are young. The berries bring up to (and late years even more) than 75c per quart or commercially speaking \$800.00 per acre the third year after planted. Blueberries demand the highest prices on the fruit market. If you are a market gardener and fruit grower, it will pay you big profits, to get started now growing blueberries. See page 22 for further information.

VERY ORNAMENTAL

As an ornamental, the blueberry bush cannot be surpassed. Picture if you can in your mind, a cluster of these bushes in your own garden, or along the border of your lawn, full of lovely pink blooms, which open to a bell-shaped white flower, in June.

The plants are compact, low growing, having waxy green leaves which turn to red, during the fall. Twigs are reddish, and very showy during the winter.

BLUEBERRIES EASY TO GROW

They can be classed as one of the easiest plants to transplant. For the Home Planting set the plants about 5 ft. apart (commercial plantings, set in rows 8 to 10 ft. apart and space plants 4 ft. apart down the row) Blueberries require a somewhat ACID SOIL, (ranging in test P.H.3.8 to 5.5). If your soil is not acid, it may be made so very easy by mixing, with some pulverized PEAT and Sand, half and half, mix thoroughly with water, and place in hole where the plant is to be set, below the root and above the roots. Fruit ripens over a period of several weeks.

See Pages 22 and 23
For Blueberries.



TOWNSEND NURSERY

SALISBURY MARYLAND