

Historic, archived document

Do not assume content reflects current scientific knowledge, policies, or practices.

62.61

VICK'S WHOLESALE PRICE LIST FOR 1922

RECEIVED
★
U.S. Department of Agriculture



VICK'S
CANDYTUFT

GIANT
EMPRESS

JAMES VICK'S SONS

Growers, Importers, Exporters of
Seeds, Plants, Bulbs, Shrubs, Trees, Etc.

ROCHESTER, N. Y.

"The Flower City."



A FIELD OF VICK'S IMPERIAL PURITY ASTERS ON ONE OF OUR FARMS

All signs indicate a healthy demand for practically all kinds of flower, vegetable and farm seeds, plants, bulbs, fruits, etc. Our Fall wholesale business has exceeded that of any past season, with one exception, and the orders on hand for spring deliveries are far ahead of any previous year. Moreover, inquiries and correspondence which we are receiving indicate that florists and dealers are looking for a good year. It gives us pleasure to say that we are better prepared to handle an increased volume of business than ever. We have reasonable supply, but not a large surplus, of practically all kinds of stocks either of our own growing or coming from sources which we consider reliable. We know our stocks are good from actual trial, having made more than twice as many field, greenhouse and machine tests than any previous season. Moreover, practically every person in any responsible position in filling orders or handling seeds have sufficient experience to safe-guard the interest of our customers and ourselves in the matter of furnishing Service that Satisfies. We solicit the orders of our customers both old and new, confident that we can furnish stocks second to none and service unsurpassed.

It is scarcely necessary to remind our readers that the country is reported to be full of seeds from various foreign, inexperienced and doubtful sources. Unquestionably these surplus stocks have forced down the price of all seeds, even the best. Consequently prices of many of the stocks which we list in this catalogue are below their real value. The fact that our prices are low, however, must not be taken as an indication that we have any desire to compete with cheap and inferior grades.

Finally, we have a very efficient correspondence department. Your inquiries for prices and information will receive instant, cheerful and expert attention. We are here to serve you for our mutual benefit.

Awaiting your favors, we remain

Very sincerely yours,

JAMES VICK'S SONS The President

TABLE OF CONTENTS

Vegetable Seeds	2-21	Dahlias and Gladioli	50-53
Grass and Clover Seeds	22	Tender Bulbs and Tubers	54
Lawn Grass Seed	23	Tender Plants	55-56
Misc. Field Seeds	24	Hardy Plants, Bulbs and Roots	57-60
Aster Seeds	25-27	Hardy Vines, and Shrubs	60
Other Flower Seeds	28-49	Roses	60 61
Swee Peas	46 47	Fertilizers, Insecticides, Misc.	62-64

TERMS

To all regular customers, all bills, with exceptions hereafter noted, for seeds, bulbs, or plants, will be due 30 days from date of invoice. A discount of $1\frac{1}{2}$ per cent. from such bills will be allowed if paid within ten days. **Growing contract orders, 60 day acceptance upon delivery. Grass Seed, Clover Seed, Potatoes, and Onion Sets, invariably net cash.** Satisfactory references required from all new or unknown correspondents desiring credit. All orders from new customers amounting to less than \$5.00 must be accompanied by cash. We decline to send perishable goods **C. O. D.** unless a partial remittance is made in advance as guarantee of good faith. All **C. O. D.** charges are to be paid by purchaser. We are not bound by these prices for any length of time. All quotations herein are subject to advance without notice.

We send out no seeds on commission. All shipments **F. O. B. Rochester. Cable Address, Vick, Rochester.**

Our responsibility ceases on delivery of goods to transportation company in good condition. Claims for all losses or damage in transit should be made against the transportation company.

Prices of Flower and Vegetable Seeds

FIVE CENT PAPERS—Per 100, \$2 50; per 1000, \$25 00.

TEN CENT PAPERS—Per 100, \$5.00; per 1000, \$50.00.

Not less than 100 papers at the 100 rate, nor less than 1000 papers at the 1000 rate. Dealers who prefer can make their own selection from our Retail Catalogue at the above rates, provided not less than 100 papers are ordered, nor less than five papers of a kind. Where less quantity is desired a discount of 40 per cent. from retail prices will be allowed, except in cases where the price per packet is plainly stated in this catalogue.

All **Novelties** at packet prices are net, from which there are no discounts.

Ounces and fractions thereof of vegetable seed 40 per cent. discount from retail prices. Flower Seeds by the ounce and pound, and Vegetable Seeds by the pound and bushel are priced net in the body of this catalogue—ten pounds the minimum amount at the hundred rate, except that in case of Peas, Beans and Corn 20 pounds is the minimum amount at the 100 pound rate; $\frac{1}{4}$ pound at the pound rate; $\frac{1}{4}$ bushel at the bushel rate. Smaller quantities at a slight advance. For scale of prices on Flower Seeds in fractional parts of an ounce see Flower seed pages. No quantity of seed packed from bulk for less than ten cents. When smaller quantities are required use the five or ten cent papers, taking advantage of the discounts indicated above.

Boxes of Flower Seeds

For the convenience of seed dealers we put up boxes of seeds in papers, embracing those varieties most in demand, and in such proportions as our long experience has taught us are called for.

THE BOX OF FLOWER SEEDS contains \$5.00 worth of retail papers; price to dealers \$2.50; also, \$10.00 worth for \$5.00. As these boxes are filled early in the season, before the rush of spring orders begin, no changes can be made from the assortments we have put up.

SHIPPING

Purchasers will please send explicit shipping instructions with each order. Where no such instructions are given we shall exercise our best judgment in the matter: but when goods have been so delivered at the freight or express station, in Rochester, in first-class condition, addressed as ordered, we disclaim all responsibility for any accident, damage, or delay en route. When goods are desired sent by mail, postage must be added at the rate of 10 cents per pound, otherwise we will deduct enough from the order to cover postage or add the postage to invoice as the case may require.

While we exercise great care to send out Seeds, Plants and Bulbs of the best types and of high germination, we give no warranty, express or implied, as to description, quality, productiveness, or any other matter, of any seeds, bulbs or plants we send out, and we will not be in any way responsible for the crop. If the purchaser does not accept goods on these terms they are at once to be returned and any payments made in advance for same will be refunded.



Harvesting a heavy crop of Marvelous Beans on one of our farms.

MARVELOUS BEANS

In our judgment here is one of the most valuable introductions in field beans in recent years. Every seedsman and bean expert who has visited our farms this year has expressed admiration at its many good qualities. First and primarily it is a big handsome, very productive, very hardy, vigorous growing white kidney bean. It seems to be absolutely immune from all diseases that have attacked other field beans in this locality. Our crop shows no signs of anthracnose or rust and has never failed to ripen a crop. Its wonderful productiveness is indicated in the accompanying photograph. As a green shell bean for succotash or a dry bean for baking it cannot be beat for fine appearance and cooking qualities. In trials with other varieties of field beans it stands out conspicuously on every point. We know of no other bean which offers so many valuable qualities, for both commercial, field and home garden purposes. The Experiment Station of one our largest bean growing states has made a thorough test of this bean and expects in the near future to issue a report on it. In a letter that we received from them recently they state that the

trouble with most beans that are prolific is that the pods hang so low that they become badly weather stained and many of them rot because of actually lying on the ground, whereas, Marvelons is a stiff, erect grower, holding its pods well above ground so that there is little or no danger from weather stain. Price: Per lb., 15 c.;

10 lbs., \$1.25 Per 100 lbs., \$10.00.

HUBAM CLOVER

A new annual legumious forage crop.

Price: Per lb., \$1.25; 10 lbs. or over,
\$1.15, Per lb.

The following is what the
Rural New-Yorker thinks about it
Send for our special illustrated circular
on Hubam Clover.


It does in one season what alfalfa or the old sweet clover requires two years for doing. It will make faster and stronger growth than any other plant yet tested in this country. We firmly believe that Hubam Clover is the most useful manurial plant ever introduced on the Atlantic slope.

Editorial, Rural New-Yorker,

June 18, 1921



Vick's Trade List for 1922

 A Telegraphic Cipher is attached to each article, which will enable orders to be sent by wire at comparatively little expense. For example:

Sixty Balcon means sixty pounds Improved Rustless Golden Wax Beans; or
Fifty Berg means fifty pounds Detroit Dark Red Beet, etc.

This Telegraphic Cipher cancels all formerly printed.

Ten pounds or more will be charged at 100 pound rates, except Peas, Beans and Corn on which 20 lbs. is the minimum at 100 lbs. rate; quantities of one pound and less than ten pounds at the pound price. For quantities of less than one-fourth pound a slight increase over the pound price is necessary. Bags and boxes at cost. No quantity of seeds packed from bulk for less than 10 cents.

For some few articles, in larger lots than herein quoted, we will make special prices by mail or wire. Our supply is adequate for all reasonable requirements. Varieties shown in **black face type** are especially recommended for those who grow for the market.

ARTICHOKE.	Tel. Cipher.	Per lb.	100 lbs
Green Globe	Abbott	\$7	00
ASPARAGUS.			
Conover's Colossal	Abject	45	\$40 00
Conover's, Roots, two years old	Aboma		
\$1.00 per 100; \$9.00 per 1,000.			
Columbian Mammoth White	Above	55	50 00
Palmetto	Aborn	45	40 00
Palmetto, Roots	Abeam		
\$1 00 per 100; \$9.00 per 1,000.			
Vick's New Mammoth	Abib	50	45 00
Vick's New Mammoth, Roots	Abhor		
\$1.00 per 100; \$9 00 per 1,000.			

BEANS, DWARF GREEN-POD

	Per lb.	100 lbs.	Per Bu.
Bountiful	Baboon	\$0 14 12 00	7 20
Dwarf Horticultural	Babcock	16 14 00	8 40
Extra Early Refugee	Bayhill	12 10 00	6 00
Extra Early Red Valentine	Bacon	14 12 00	7 20
Full Measure	Bacoon	17 15 00	9 00
Keeney's Stringless Refugee	Bacoff	14 12 00	7 20
Long Yellow Six Weeks	Babe	14 12 00	7 20
Longfellow	Baby	14 12 00	7 20
New "Giant Stringless" Green-Pod	Baffler	15 14 00	8 40
Peas or Navy	Baff	12 10 00	6 00
Stringless Green Pod (Burpee's)	Banner	15 14 00	8 40
Refugee, 1000 to 1	Bank	14 12 00	7 20
Red Kidney	Bahn	14 12 00	7 20
White Kidney	Bantu	14 12 00	7 20
White Marrow	Bard	14 12 00	7 20

BEANS, DWARF WAX-POD

Davis White Wax	Balborn	15 13 00	7 80
Hardy Wax	Balboy	15 13 00	7 80
Improved Rustless Golden Wax	Balcon	14 12 00	7 20
Keeney's Rustless Wax	Balk	14 12 00	7 20
Pencil Pod Black Wax	Ball	15 13 00	7 80
Prolific German Black Wax	Bahar	15 13 00	7 80
Refugee Wax	Bahut	14 12 00	7 20
Sure Crop Stringless Wax	Baland	14 12 00	7 20
Wardwell's Kidney Wax	Baptist	15 13 00	7 80

DWARF OR BUSH LIMA

Henderson's Bush Lima	Bart	15 13 00	7 80
Improved Bush Lima (Burpee's)	Bartul	20 18 00	10 80
Fordhook Bush Lima	Bart	20 18 00	10 80
Prolific Bush Lima (Wood's)	Barton	19 14 00	8 40
True Bush Lima (Burpee's)	Barter	20 18 00	10 80



IMPROVED RUSTLESS GOLDEN WAX

Improved Rustless Golden Wax. A strong grower, positively free from rust. Pods are meaty and well filled, of fine quality, and stringless from first to last. With its fine quality, hardiness, productiveness and freedom from rust, it has become a general favorite and a great improvement over the old-fashioned Golden Wax.

No item charged at less than 10 cents.

BEANS, POLE OR RUNNING.

	Tel. Cipher.	Per lb.	100 lbs.	Per Bu.
White Dutch Case Knife	Bazaar . . .	\$0 19	\$17 00	10 20
Early Golden Cluster Wax	Bawn	22	20 00	12 00
Lima—Extra Early Jersey	Baxter . . .	19	17 00	10 20
“ Small or Carolina Sieva	Baxlay . . .	17	15 00	9 00
“ King of the Garden	Baying . . .	18	16 00	9 60
“ Large White	Bazat	18	16 00	9 60
“ Siebert's Early	Baze	18	16 00	9 60
London Horticultural, or Cranberry	Bawl	17	15 00	9 00
Old Homestead (Kentucky Wonder)	Bawrel . . .	16	14 00	8 40
Scarlet Runner	Bawling . .	18	16 00	9 60

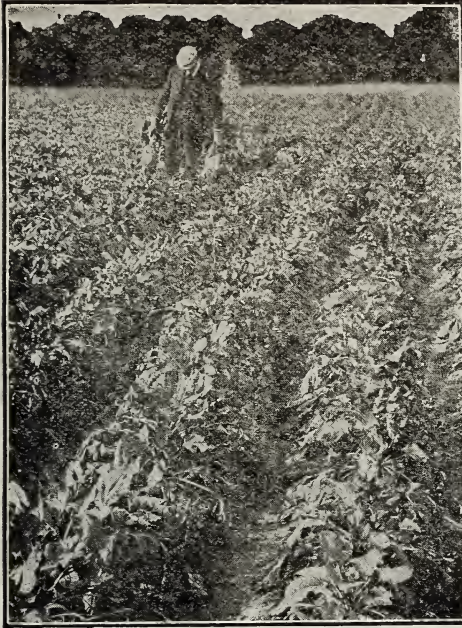
BEET.

		Per lb.	100 lbs.
Albani. (Quite similar to Bassano)	Began	\$0 40	35 00
Bastian's Early Blood Turnip	Bepale	30	25 00
Crimson Globe	Bedding . . .	40	35 00
Crosby's Early Egyptian	Behalf	35	30 00
Detroit Dark Red, Best Main Crop	Berg	50	45 00
Dewing's Early Blood Turnip	Belfry	40	35 00
Early Wonder, Splendid Extra Early	Belton	45	40 00
Extra Early Egyptian Blood Turnip	Beget	40	35 00
Eclipse, Extra Early	Behest	40	35 00
Improved Early Blood Turnip	Bema	40	35 00
Long Smooth Blood Red	Betide	35	30 00
Rochester	Betwixt . . .	45	40 00
Vick's Early Market	Betwine . . .	45	40 00

SUGAR BEETS.

Klein Wanzleben Sugar	Bevoke	40	35 00
Vilmorin's Improved Red-top Sugar	Bewake	40	35 00
White French Sugar	Beware	40	35 00

Varieties listed in **black face type** are especially recommended for those who grow for the market



Mangel Wurzel

Mangel Wurzel Beets are of especial value to stockmen and dairymen. They act as a mild laxative and keep the stock in good health, thus tending to produce flesh and increase the flow of milk. Especially now when all kinds of grain are so expensive stock owners should grow plenty of Mangels, Carrots, and other root stock for winter feeding, since they furnish the largest amount of food value at least expense. More tons of high class stock feed can be produced from an acre of Mangel Wurzel Beets, Sugar Beets or Carrots than from any other food stock that we know of.

MANGEL WURZEL. 10 lbs., or over will be charged at the 100 rate.
No item charged at less than 10 cents.

	Tel. Cipher.	Per lb.	100 lbs.
Danish Taaroje, extra fine for heavy soil . . .	Beckoning . . .	\$0 30	\$ 25 00
Danish Sludstrup, extra fine for deep soil . . .	Beaux . . .	30	25 00
Giant Half Sugar Rose	Bever	30	25 00
Golden Giant, great cropper	Beck	30	25 00
Golden Tankard, Splendid for dairy cattle . . .	Becalm	30	25 00
Champion Yellow or Orange Globe	Bedlam	35	30 00
Kelways Best of All, rich in saccharine . . .	Bedlar	35	30 00
Red Globe, a good variety for stock	Bedral	25	20 00
Giant Yellow Intermediate	Bell	35	30 00
Vick's Mammoth Long Red	Beautify	30	25 00
Vick's Best of All	Becker	40	35 00
SWISS CHARD. (Salad Beet)			
Large-Ribbed Silver	Beator	45	40 00
Large-Ribbed Scarlet Brazilian	Bead	45	40 00
Large-Ribbed Yellow Brazilian	Beacon	45	40 00
Lucullus, an improved variety large stalks . . .	Beacoy	45	40 00
Becks Sea Kale, Best European Strain, . . .	Beadle	55	50 00
BORECOLE (See Kale page 9).			
BRUSSELS SPROUTS.			
Improved Dwarf or Dalkeith	Brush	1 25	
CHICORY.			
Large-Rooted Long Magdeburg	Chafe	1 50	
Witloof French Endive, a fine Salad . . .	Chaff	1 25	
CORN SALAD.	Cogitate	75	

Vick's improved strain of Danish Ballhead Cabbage has given the greatest satisfaction ever since its introduction. Many of the leading cabbage growers have used our seed for years and pronounce it much superior to any other strain in productiveness, solidity and long keeping qualities.



Vick's Improved Danish Ballhead Cabbage

Of the many varieties of Cabbage introduced within the past few years none have attained a greater popularity, or given such general satisfaction as Vick's Improved Danish Ballhead. The fame of this particular strain has become world wide. It commands a higher price in the market than any other variety. It is remarkable for the solidity of its head and long keeping qualities. The heads are of medium size, with few outer leaves, admitting of close planting; exceedingly fine-grained, hardest of all, tender, crisp, solid, with no waste heart, will average six to eight pounds per head. Our stock comes direct from the best growers in Denmark.

CABBAGE.

10 lbs. or over will be charged at the 100 rate.

	Tel. Cipher.	Per lb.	100 lbs.
Vick's Improved Danish Ballhead . . .	Cabined	\$1 50	\$140 00
Allhead Early.	Cabloot	1 60	150 00
All Seasons (choice strain)	Caboose	1 75	160 00
Autumn King or World Beater	Cabalist	1 50	140 00
Charleston Wakefield (extra large)	Cabaner	2 00	190 00
Chinese (Pe Tsai)	China	1 50	140 00
Copenhagen Market. Best Danish grown	Caboxet	2 25	210 00
Danish Stonehead or Round Red	Caboose	2 25	210 00
Extra Early Drumhead	Cab	1 75	160 00
Early Jersey Wakefield	Cabaniss	2 00	190 00
Early Spring	Cabby	1 75	160 00
Early Winnigstadt	Cable	1 50	140 00
Glory of Enkhuizen	Cabless	2 00	190 00
Improved American Savoy.	Cabric	1 50	140 00
Improved Early Summer	Cabal	1 50	140 00
Large Late Drumhead American.	Caburns	1 50	140 00
Louisville Drumhead.	Cabin	1 50	140 00
Mammoth Rock Red or Stone	Cabral	2 25	210 00
Premium Late Flat Dutch	Cabool	1 50	140 00
Surehead	Cabriol	1 50	140 00
Succession, Improved Strain	Cabaret	1 50	140 00
Vick's 20th Century, Earliest of All	Cay	2 00	185 00
Vick's Short-Stemmed Danish Ballhead	Cabinet	1 50	160 00
Volga or Green Stonehead	Cabot	2 00	185 00

CARROT.

to lbs., or over will be charged at the 100 rate.

	Tel. Cipher	Per lb.	100 lbs
Chantenay Stump-rooted	Carbox	\$0 45	\$ 40 00
Coreless	Carbon	55	50 00
Danvers Half Long Orange	Card	45	40 00
Earliest French Forcing	Car	80	75 00
Early Scarlet Short Horn	Carat	60	55 00
Oxheart, or Guerande	Caravan	40	35 00
Half Long Scarlet Nantes	Carboy	50	45 00
Improved Long Orange	Careful	45	40 00
Long White Belgian Green-Top	Care	40	35 00
Large White Vosges	Careen	45	40 00
St. Valerys Intermediate, Fine long red	Carom	50	45 00

CAULIFLOWER. (Grown in Denmark.)

		Per oz.	Per lb.
Algiers, best of the late sorts	Caulk	60	5 00
Danish Perfection	Caudet	1 50	18 00
Erfurt Earliest Dwarf	Caudal	1 50	20 00
Early Snowball	Caudex	1 50	18 00
Extra Early Paris, For forcing	Caught	85	7 50
Vick's Danish Giant, or Dry Weather	Caulis	1 50	20 00
Vick's Ideal, 1/4 oz., 75 cents	Caucus	1 50	20 00
Veitch's Autumn Giant	Causal	60	5 00

CRESS, OR PEPPERGRASS.

		Per lb.
Australian or Golden Yellow	Credit	40
Fine Curled True Pepper grass	Cream	40
Broad Leaved Garden	Coad	40
True Water	Creed	3 00



A glimpse of a field of Golden Self Blanching Celery grown near Rochester in 1919 from Vick's Special French grown seed which brought its owner more than five thousand dollars, a premium being paid

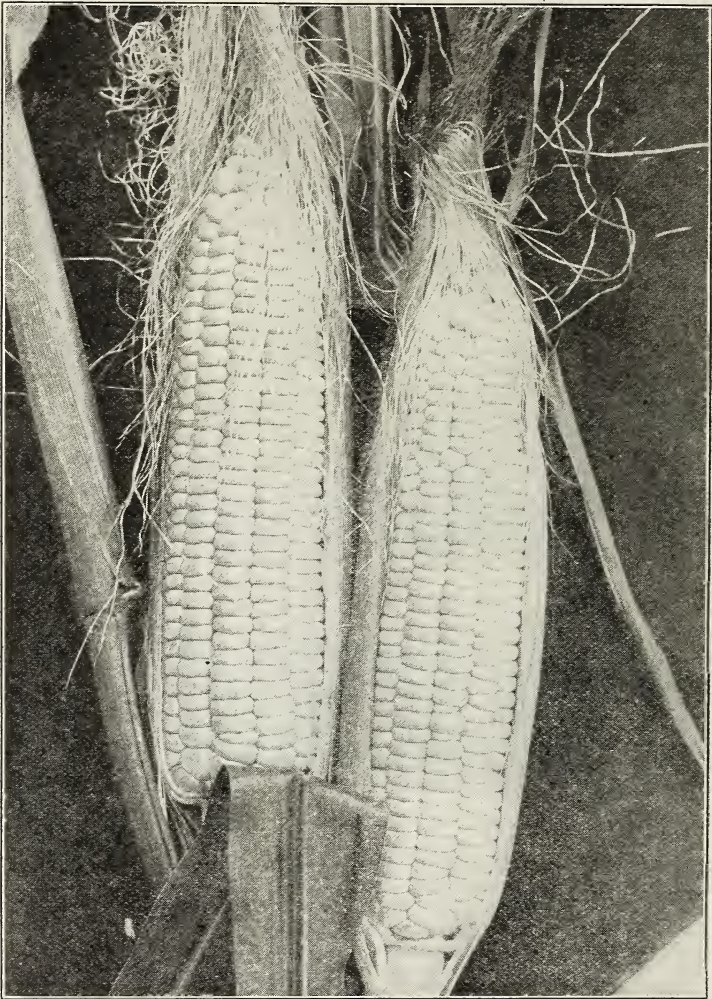
because of the high quality, a characteristic of plants grown from our special seed.

CELERY.

		Per lb.	100 lbs.
Golden Dwarf Self-Blanching. (French) City. 1 oz., 50c.		\$5 00	\$
Golden Dwarf Self-Blanching (American) Civic 1 oz., 30c.		3 00	
Celeriac, Large Smooth Prague.	Celtic	1 10	100 00
Columbia Rich Golden Yellow	Ce'ton	2 50	
Easy Blanching, Truckers variety	Celibate		
	30 cents 1 oz.,	3 00	
French Success Green Foliage	Celton	2 75	265 00
Giant Golden Heart	Celeste	1 25	115 00
Giant Pascal	Celia	1 25	115 00
Improved White Plume	Celebrate	2 00	190 00
Rose Ribbed Self-Blanching	Celerite	3 00	
Winter Queen	Celto	1 25	115 00
Celery for flavoring	Celsius	50	45 00
Celery Tape. (Red) 1000 yard spool. \$1.90			

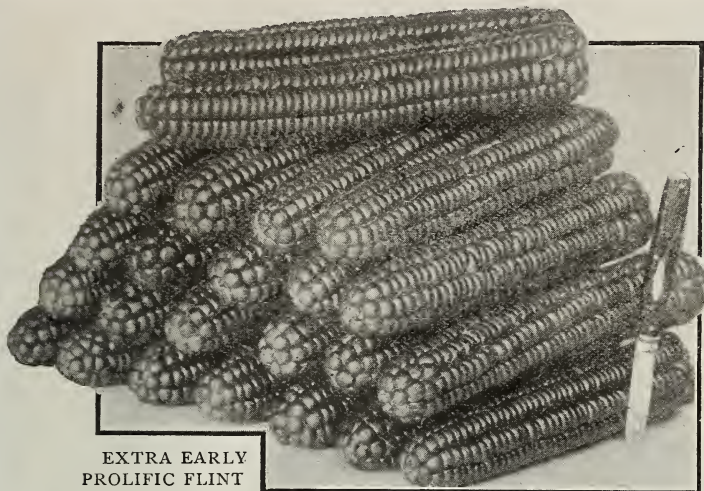
CORN—SWEET or SUGAR.

		Per lb.	100 lbs.	Per Bus. of 45 lbs.
Black Mexican	Codicil 14	10 00	4 50	
Bantam Evergreen	Cappo 15	12 00	5 40	
Country Gentleman	Copper 14	10 00	4 50	
Dreers Aristocrat	Copless 14	10 00	4 50	
Early Dawn	Coplen 15	12 00	5 40	
Early Golden Bantam	Conter 15	11 00	4 95	
Early Minnesota	Coral 14	10 00	4 50	
Extra Early Dighton	Corala 17	15 00	6 75	
Howling Mob	Contro 14	10 00	4 50	



Vick's Golden Nugget Corn. This extra fine variety was introduced by us in 1892. It is now the largest selling variety we catalogue, and steadily growing in popularity with our customers. Ears are twelve rowed, large and handsome. The color is a rich creamy yellow. In flavor it is unusually sweet and delicious. As a variety it is one of the most productive, frequently having from two to four ears to the stalk. In season it follows a few days after the early varieties. Ears larger and more prolific than Golden Bantam, tender and unusually sweet. Ready for market only a few days after the earliest.

	Tel. Cipher.	Per lb.	100 lbs.	Per Bus. of 45lbs.
Vick's Golden Nugget, extra fine	Course	14	10 00	4 50
Early Evergreen	Conto	12	9 00	4 05
Extra Early Red Cory	Cooper	14	10 00	4 50
Mammoth White Cory	Cordons	14	10 00	4 50
Vick's Extra Early Morning Dew	Cordet	14	10 00	4 50
Pocahontas, very early	Coger	14	12 00	5 40
Stowell's Evergreen	Cogent	12	9 00	4 05
Vick's Earliest of All	Commander	14	10 00	4 50
Whipples Early, New, Extra fine	Command.	15	14 00	6 30



EXTRA EARLY
PROLIFIC FLINT

This is the earliest variety of corn we have ever grown. It has been so satisfactory in every way that we highly recommend it for a locality where earliness is a deciding factor. This corn has never failed to mature a crop in the vicinity of Rochester.

CORN, FIELD

	Tel. Cipher	Per bu. of 56 lbs.	10 bu. or over per bu.
Vick's Extra Early Prolific Flint	Cornelian	\$1 65	1 50
Drought Proof Yellow Dent	Corinthian	1 65	1 50
Early Mastodian	Cortex	1 65	1 50
Genesee Valley Early Yellow, 8-rowed Flint.	Corbel	1 65	1 50
Improved Leaming, Early Yellow Dent	Cornwall	1 25	1 15
Longfellow, Early Yellow 8-rowed Flint	Corono	1 65	1 50
Pride of the North, 90-day Yellow Dent	Cordage	1 50	1 40
Sweet Fodder	Corner	1 75	1 65
Vick's Snow Capped Gold Mine	Cornus	1 20	1 10
Early Wonder White Dent.	Corliss	1 50	1 40

Above prices on Field Corn subject to market changes. Write for special prices on large quantities.

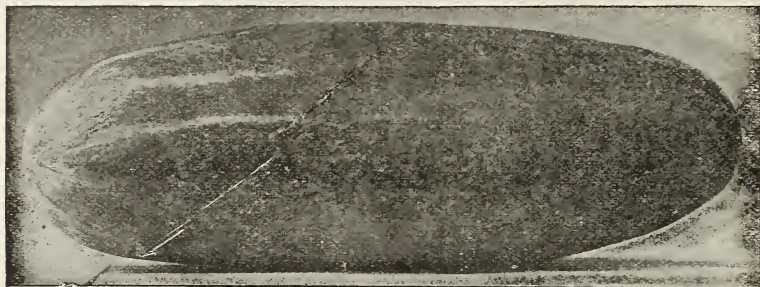
10 lbs., or over will be charged at the 100 rate.

POP CORN (Shelled)

	Tel. Cipher	Per lb.	100 lbs.
Queens Golden	Corten	\$0 10	\$ 8 00
Red Beauty. Grown on Vick Seed Farms	Cortel	10	8 00
White Rice	Coeval	10	8 00

CUCUMBER.

Chicago Pickling	Culm ^m	\$0 70	\$65 00
Cool and Crisp	Cubic.	90	85 00
Davis' Perfect	Cultor.	1 00	90 00
Early Frame or Short Green	Cuddle	75	70 00
Early Green Cluster	Cuckoo	70	65 00
Earliest of All	Cuckooed	90	85 00
Extra Early Long Green	Cupboard.	1 25	115 00
Green Prolific or Boston Pickling	Culminate	75	70 00
Vick's Abundance	Cuped		(Crop failure)
Improved Early White Spine (fine strain)	Cudgel.	75	70 00
Improved Long Green (extra choice)	Cumbersome	1 25	115 00
Japanese Climbing	Current.	1 10	100 00
Thorburn's Everbearing	Cunning	85	80 00
Vick's Lemon	Cubage	1 50	



Vick's Perfection White Spine

Unrivaled in shape, size, color and productiveness. Without doubt White Spine and Long Green Cucumbers have larger sales than any other varieties. Now, there is a good deal of difference in the quality of the various kinds of seed sold under the above names. Our strains of these varieties have been carefully developed through selections from year to year, until in our estimation the fruit from our seed surpasses both in quality and yield any other strains.

	Tel. Cipher.	Per lb.	100 lbs.
Vick's Perfection White Spine	Cubby	\$ 90	\$85.00
EGG PLANT.			
Black Beauty	Egis	5	00
Improved New York Purple Spineless	Egbert	4	50
ENDIVE.			
Broad-Leaved Batavian	Engrave	70	65 00
Green Curled	End	60	55 00
Moss Curled	Endear	60	55 00
White Curled	Engine	60	55 00
FENNEL.			
Florence	Herbod	1	00
Giant Messina (Best for Market garden)	Herban	1	00
HORSERADISH.			
Maliner Kren, root sections	Horse		
Per 100, \$1.25; per 1,000, \$10.00.			
KALE, or BORECOLE.			
Dwarf Green Curled or Scotch Kale	Boast	75	70 00
Half Dwarf Curled	Boat	60	55 00
Siberian.	Boatman.	45	
Tall Green Curled or Scotch Kale	Bob	70	
KOHL RABI.			
Early White Vienna	Koumiss	1 50	140 00
Early Purple Vienna	Konite	1 50	140 00
Large Green or White.	Korat	1 70	160 00
LEEK.			
Broad Flag, American	Lee	1 75	165 00
Monstrous Carenton	Leeds	1 75	165 00



KALE



EGG PLANT



KOHL RABI



Field of Our Special Strain of BIG BOSTON LETTUCE near Rochester

Our improved strain of Big Boston is so popular with commercial growers that our sales double about every three years.

LETTUCE.

to lbs., or over will be charged at the 100 rate.

	Tel. Cipher.	Per. lb.	100 lbs.
All Seasons	Luther	\$0 65	\$60 00
Big Boston, Leading Commercial Variety.	Luggage	75	70 00
“ “ Vick's Special Strain.	Luck	1 10	100 00
Black-Seeded Simpson	Luke	75	70 00
Crisp as Ice	Leñt	1 00	90 00
Early Curled Simpson or Silesia	Lush	60	55 00
Golden Queen Forcing	Lucelle	1 25	115 00
Grand Rapids Forcing, Improved	Luce	75	70 00
Iceburg	Lurr	1 75	165 00
Improved Early Hanson	Lucifer	70	65 00
May King	Lucinatus	75	70 00
New York Cabbage	Lucius	1 25	115 00
Paris White Cos, Self-folding	Lunatic	75	70 00
Express Cos-Earliest.	Lute	90	85 00
Prize Head	Lunar	75	70 00
Satisfaction or Salamander	Luff	75	70 00
Vick's Premium Cabbage, best for all uses.	Lubric	1 35	125 00

We sell more Big Boston Lettuce Seed than any other variety, and the demand is annually increasing. Why? Because growers can depend on it.



INSPECTING A FIELD OF OUR IRONDEQUOIT MELONS GROWN EXCLUSIVELY FOR SEED FOR OUR CHOICEST TRADE

VICK'S IRONDEQUOIT MUSKMELON

Without doubt the finest Muskmelon ever grown, either for commercial purposes or for gardens. The flesh is a beautiful dark orange, skin is finely netted, yellow when ripe, possessing a most attractive appearance. The fruit is large; the flavor is delicious, sweet, rich and spicy. Every ounce of seed we offer comes from melons grown under our own supervision, and the seed stock selected by the most experienced men we employ. This melon holds the Rochester market to the practical exclusion of all other varieties. Moreover, whenever Vick's Irondequoit Muskmelon is offered on the markets of other large cities, it brings higher prices than any other kind **MELON, MUSK.** to lbs., or over will be charged at the too rate.

	Tel. Cipher.	lb.	100 lbs.
Bender's Surprise	Muffin	\$ 90	80 00
Burrells Gem	Mury	65	60 00
Early Knight, Best Early	Muddler	85	80 00
Extra Early Hackensack	Muddle	75	70 00
Emerald Gem, orange flesh	Muff	80	75 00
Honey Dew (True).	Mufless.	1 00	90 00
Jenny Lind, extra early	Muse	75	70 00
Montreal Market	Muskets	75	70 00
Osage, or Miller's Cream	Mutation	85	80 00
Paul Rose or Petosky	Muddy	80	75 00
Rocky Ford Green flesh	Mud	70	65 00
" " "Gold Lined"	Mur	70	65 00
Surprise, orange flesh	Mutilate	75	70 00
Vick's Irondequoit.	Mute	per oz. 50cts.	
Irondequoit Commercial Stock	Mula	1 00	90 00
Vick's Prolific Nutmeg	Mussel	75	70 00
MELON, WATER			
Citron, for preserves, red seed	Mach	\$0 50	\$45 00
Citron, green seed	Mate	50	45 00
Cole's Early	Machine	50	45 00
Cuban Queen	Mackey	50	45 00
Florida Favorite	Made	50	45 00

WATERMELON—Continued

	Tel. Cipher.	Per lb.	100 lbs.
Fordhook Early	Madder	50	45 00
Georgia Rattlesnake	Madone	50	45 00
Ice Cream, or Peerless	Madras	50	45 00
Jordans Gray Monarch	Maddock	50	45 00
Kleckley Sweets	Magic	50	45 00
Prize Jumbo	Monacle	60	55 00
Sweetheart.	Mandate	50	45 00
Tom Watson.	Mandarin	55	50 00
Vick's Extra Early	Master	55	50 00

MUSHROOM SPAWN

Bottle Spawn is the latest scientific development of Spawn Culture. By actual experience under growing conditions it has proven the most prolific Spawn ever developed. Each bottle will plant about fifty square feet. This Spawn must be used while fresh. It is shipped by us direct from the laboratories on receipt of your order. Will keep for several months at a temperature of 32 degrees. Packed 12 bottles to a case. Price per case \$12.00. Single bottle \$1.35. Shipped express not prepaid. Full cultural directions with each shipment.

Pure Culture Brick Spawn

The best and most reliable brick Spawn in cultivation. Per brick 20 cents, 25 Bricks at 18 cents per brick; hundred bricks at 15 cents per brick.

MUSTARD.

	Tel. Cipher	Per lb.	100 lbs
Chinese Broad Leaf.	Musty.	40	35 00
Southern Giant Curled	Mushet	40	35 00
White	Mush	40	35 00
Ostrich Plume	Muston	40	35 00

OKRA.

Perkins' Mammoth Green-Pod	Oath	30	25 00
White Velvet	Obey	30	25 00

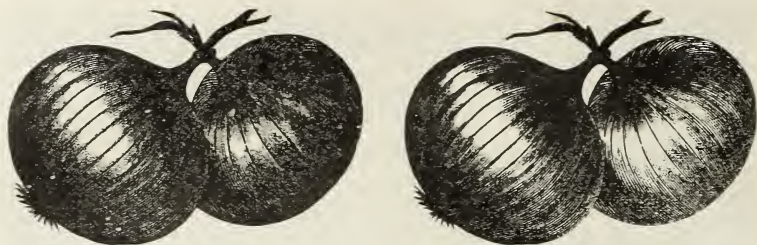
ONION.

10 lbs., or over will be charged at the 100¢ rate.

If you want Onion Seed that will produce bright colored, well shaped, small necked stock that will keep, we recommend that you try some of the varieties listed below. Our prices are right and our stock always gives uniformly satisfactory results.

		Per lb.	100 lbs.
Australian Brown	Occurrence	90	85 00
Crystal White Wax	Occident	3 00	275 00
Danvers Yellow Globe, extra selected	Offer	1 25	115 00
Danver's Yellow Globe, Commercial Stock	Ofre	1 00	90 00
Extra Early Red Flat	Octavo	1 00	90 00
Large Red Wethersfield	Object	1 00	90 00
Large Yellow Dutch, or Strasburg	Ogre	1 00	90 00
Mammoth Prize Taker	Olio	1 00	90 00
Red Bermuda	Oller	1 90	175 00
Silver King	Optic	1 00	90 00
Southport Early Red Globe.	Occur	1 35	125 00
Southport Red Globe	Ocean	1 35	125 00
Southport Yellow Globe	Office	1 10	100 00
Southport Yellow Globe, Finest Selected.	Official	1 25	115 00
Southport White Globe	Oil	1 60	150 00
White Bermuda	Olivate	1 60	175 00
White Portugal or Silver Skin	Oliver	1 50	140 00
White Queen	Outlet	2 00	190 00

ONION SETS. *Prices on application.*

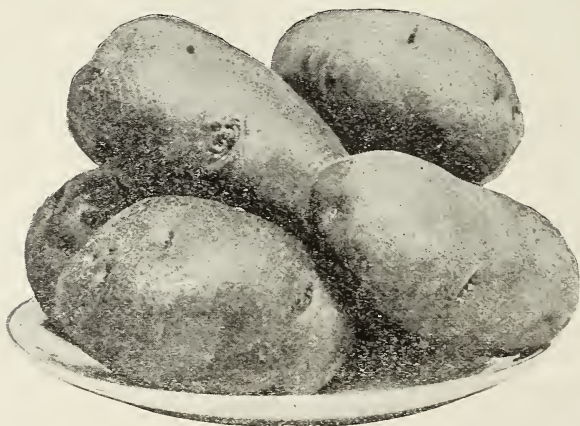


VICK'S SPECIAL STRAIN YELLOW GLOBE DANVERS ONION

PEDIGREED STOCK OF PROVED VALUE IS WORTH A PREMIUM and we offer you as fine a lot of seed as was ever grown, every pound of which was raised from hand selected roots. We KNOW just when, where and how it was grown as well as the wonderful results that have been obtained from this strain. A great many onion seeds are being offered on the market at low prices. Don't take a chance of disappointing your customers by giving them seed of doubtful value. When our customers say, "Send us the same kind of Onion seed we had last year" you KNOW the stock is right.

ONION SETS

Our Onion Sets are true globe stock, clean, sound and dry- We can not make prices so far in advance, but will be pleased to quote prices in season. Ready for delivery in March.



Our Potatoes are very carefully selected from crops grown largely on our own farms. Only Potatoes that are true to type and free from disease are used.

All the prices quoted on this page, are f. o. b. Rochester, and are subject to market changes. We make no charge for packing. Prices on larger quantities on application.

We always ship Potatoes and other heavy goods by Freight, except when ordered sent by Express, or when the quantity is such that to send by Express is cheaper.

Per bag of 165 lbs.

Per bag of 165 lbs.

Early		Main Crop.	
Ohio Jr.	\$7 00	New No. 9.	5 75
Early Six Weeks.	7 00	Rural New Yorker.	5 25
Bliss Triump	7 00	Imp. Green Mountain	5 25
Medium Early.		Vt. Gold Coin.	5 25
Bovee.	6 75	Imp. Russet.	6 00
Early Rose.	6 75	Heavyweight.	5 25
Irish Cobbler.	6 50		

LONG HOLLOW
CROWN PARSNIP



PARSNIP. Genuine European Grown	Tel. Cipher.	Per lb.	100 lbs
Elcombes Giant	Parsed	\$0 35	\$30 00
Harris Model	Parson	35	30 00
Improved Guernsey	Pacific	35	30 00
Long Hollow Crown	Parcel	35	30 00
PARSLEY.			
Champion Moss Curled	Padale	\$ 55	50 00
Fine Triple Curled	Paidle	55	50 00
Fern-leaved	Palatine	55	50 00
Hamburg Large-rooted	Paltry	55	50 00
Vick's Exquisite Moss Curled	Palter	55	50 00
Plain	Palmas	55	50 00

PEAS. *Those marked * are wrinkled varieties. Prices subject to market changes*

Prices are back to pre-war level, We still maintain the highest quality that it is possible to obtain in the production of seeds. As there is likely to be some fluctuation in prices in commodities that are going through a period of re-adjustment we will be glad to have you write us should our prices appear out of line as the season advances. We have an excellent stock of Peas this year and you will find listed below some of the very best varieties on the American market. For your convenience we are this year listing Peas, Beans and Corn by the pound, hundred pounds and per bushel you will get advantage of the lowest price where twenty pounds or over are ordered. Your order whether large or small will receive our prompt attention.

EXTRA EARLY VARIETIES.

		Per lb.	100 lbs	Per Bus.
Alaska, or Earliest of all	Peale	\$0 14	\$11 00	\$6 60
Abundance	Peonel	14	12 00	6 75
*American Wonder	Pease	19	16 00	9 00
Carter's Six weeks	Peast	21	18 00	10 10
*Extra Early Premium Gem	Pecos	19	16 00	9 00
First and Best (Philadelphia Extra Early)	Pearsall	14	11 00	6 00
*Little Marvel	Pearcey	21	18 00	10 10
Market Surprise	Peat	18	15 00	8 40
*Nott's Excelsior	Peach	19	16 00	9 00
*Surprise or Eclipse	Peak	19	16 00	9 00
*Thomas Laxton	Peacran	23	20 00	11 20
*Gradus (Prosperity)	Peahen	23	20 00	11 20
Vick's Extra Early (first of all the extra earlies)	Peacock	18	15 00	8 40
World's Record	Peaten	21	18 00	10 80

Varieties shown in black face type are especially recommended for those who grow for the market.

PEAS—Continued

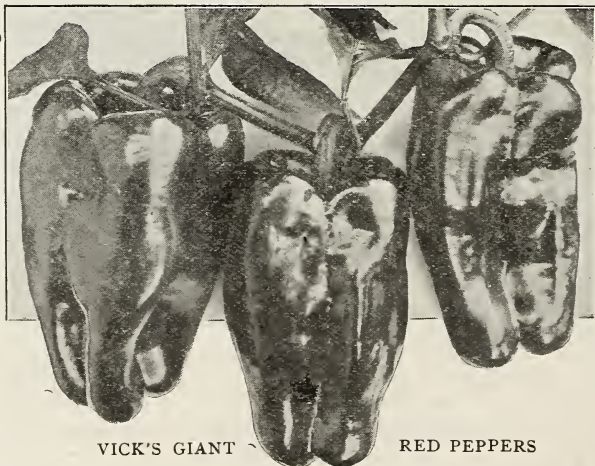
SECOND EARLY SORTS.		Tel. Cipher.	Per lb.	100 lbs	Per Bus.
*Alderman (Admiral Dewey or Dark Pod Telephone)		Pedor	.20	17 00	9 55
*Bliss' Everbearing.		Pedro	.16	13 00	7 30
*Laxtonian		Peepton	.22	19 00	10 65
Potlatch		Peaceful	.19	16 00	9 00
prodigious		Peoceleble	.20	17 00	9 55
*Telephone (fine market garden stock)		Peace	.19	16 00	9 00
Gray Dwarf Sugar, Edible Pod		Peart	.19	16 00	9 00
Vick's Daisy (Dwarf-Telephone)		Pean	.21	18 00	10 10

LATE OR MAIN CROP.

Canada Field	Pellot	.10	7 00	4 20
*Champion of England	Peggy	.19	16 00	9 00
*Improved Stratagem	Peel	.19	16 00	9 00
Laxton Superb	Pelly	.25	22 00	12 25
Large White Marrowfat (hand-picked)	Pelican	.13	11 00	6 60
Large Black-eyed Marrowfat (hand-picked)	Pella	.12	10 00	6 00
Melting Sugar	Pelt	.19	16 00	9 60

PEPPER.

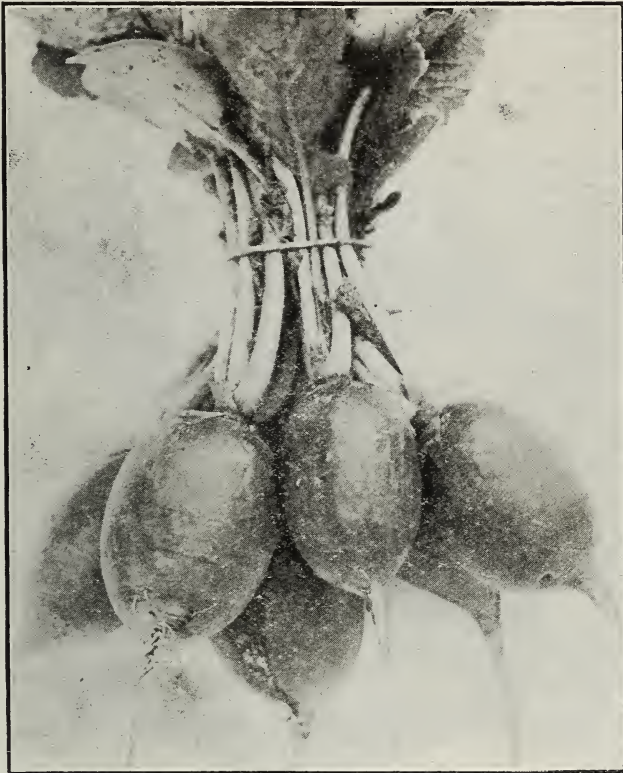
		Per lb.
Celestial, bright scarlet	Pretty	4 00
Chinese Giant	Pradhan	4 50
Chili, very small, for Pepper sauce	Prim	3 50
Golden Dawn or Queen, bright yellow	Pratt	4 00
Large Bell or Bull Nose	Prague	3 25
Long Red Cayenne	Pride	3 00
Neopolitan extra early sweet	Prince	4 50
Pimiento extra fine sweet	Prize	3 25
Red Cluster	Prill	4 00
Ruby Giant large sweet, fine	Prexy	4 50
Ruby King, bright red	Praise	3 50
Sweet Mountain, or Mammoth	Prairie	3 00
Vick's Giant Red	Praid	4 50



VICK'S GIANT

RED PEPPERS

PUMPKIN.		10 lbs., or over will be charged at the 100 ^o rate	Per lb.	100 lbs.
Connecticut Field	Pulse		\$0 40	\$35 00
Cushaw, or Crookneck, striped	Pueblo		1 ^o 00	90 00
Golden Oblong	Pugh		80	
King of the Mammoths or Jumbo	Purcell		85	80 00
Large Tours, or Mammoth	Pullet		70	65 00
Large Sweet Cheese, or Kentucky Field	Pucker		45	40 00
Mammoth Red Etampes	Purchase		90	
Tennessee Sweet Potato	Pump		85	80 00
Small Sugar or Pie	Pulaski		70	65 00
Winter Luxury	Pultney		80	75 00



Vick's Early Scarlet Globe Radish

As a forcing Radish Vick's Early Scarlet Globe has established a reputation as the leading sort—the best in every way. It is handsome in form and color—a beautiful oval and rich scarlet. The amount of its foliage is small compared with other varieties, and small for the size of the Radish. The peculiar merit of this variety as a forcing Radish is that it will bear the heat requisite for forcing without becoming pithy or spongy. The flesh is crisp, tender, juicy and mild. It is equally as good for open garden culture as for forcing, and therefore it commends itself equally to the amateur and the market gardener. The dealer who sells this stock sells the best.

Price per pound 75 cents, per Hundred pounds \$70 00

Our sales of this variety are rapidly increasing every year.

10 lbs., or over will be charged at the 100 rate.

RADISH.		Tel. Cipher.	Per lb.	100 lbs.
Vick's Early Scarlet Globe, best forcing variety ever introduced. (French grown.)	Radiant		\$0 75	\$ 70 00
Vick's Early Scarlet Globe (American grown)	Radiator		70	65 00
All Seasons	Raccoon		70	65 00
Black Spanish Winter, Round	Rancocas		50	45 00
Black Spanish Winter, Long	Randall		50	45 00
California Mammoth White Winter	Roudolph		45	40 00
Chartier	Radmon		45	40 00
Cincinnati Market	Randack		50	45 00
Chinese Rose Winter	Ranch		65	60 00
Cooper's Sparkler	Radiator		50	45 00
Vicks Early Crimson Giant	Rancher		60	55 00
Early Round Dark Red, forcing	Radney		60	55 00
French Breakfast	Rainbow		50	45 00
Golden Yellow Turnip	Rattler		50	45 00
Icicle	Rally		60	55 00
Improved Long Scarlet Short Top	Ralston		50	45 00
Japanese Sahurajima Mammoth	Racall		90	85 00
Large White Spanish Winter	Randolph		55	50 00
Long Brightest Scarlet	Randorn		50	45 00
Long White Vienna, or Lady Finger	Ramapo		50	45 00
Non Plus Ultra, forcing	Ratsey		75	70 00
Scarlet Turnip, White Tip, for forcing	Recoil		55	50 00
Vick's "Three Weeks,"	Rattan		80	75 00
White Strasburg	Ramona		50	45 00
Wood's Early Frame	Ralph		50	45 00

RHUBARB.

Linnaeus	Rhea	75	70 00
St. Martins	Rhine	75	70 00
Victoria	Rhone	75	70 00

RHUBARB ROOTS, per 100, \$8.00 . . . Rhode Per doz. 1 25



SALSIFY.

Mammoth Sandwich Island Salina 1 10 100 00

SPINACH.

		Per lb.	100 lbs.
Bloomsdale, Savoy-Leaved (Norfolk)	Spinner	32	30 00
Imp. Thick-Leaved or Long Standing	Spikenard	22	20 00
Monstrous or Viroflay	Spillman	22	20 00
New Zealand	Spivey	50	45 00
Prickly or Fall	Spirit	22	20 00
Round or Summer Broad-Leaf	Spicer	22	20 00
Victoria, fine long-standing sort	Spindle	22	20 00
Vick's All Seasons	Spinner	24	22 00

SQUASH.

	Tel. Cipher.	Per lb.	100 lbs.
Boston Marrow	Squantum	\$0 45	\$ 40 00
Chicago Warded Hubbard	Squander	1 10	100 00
Delicata	Squally	90	85 00
Delicious	Squire	1 10	100 00
Early White Bush Scallop (Patty Pan)	Squib	80	75 00
Fordhook	Squelch	85	80 00
Improved Hubbard.	Squaw	1 10	100 00
Mammoth Yellow Bush Summer Crook-neck	Squab	90	85 00
Mammoth White Bush (Silver Custard)	Squabble	85	80 00
New Golden Bronze	Squinter	1 00	90 00
New Red or Golden Hubbard.	Squadron	1 00	90 00



A valuable food for man and stock. Hubbard Squash is the standard Winter variety. Fruit is large, heavy, moderately warted, flesh orange-yellow fine grained sweet and dry, very prolific.

IMPROVED

HUBBARD SQUASH

TOMATO.

Acme (Improved Strain)	Toano	2 00	190 00
Beauty.	Token.	2 25	
Bonny Best	Tokart	2 25	215 00
Chalk's Early Jewel (Vick's Selected)	Tom	2 25	215 00
Dwarf Champion	Todd	3 25	300 00
Dwarf Stone	Toady	3 25	300 00
Earliana--Our own growing	Town	2 50	235 00
Earliana, Spark's Improved	Towline	2 25	215 00
Favorite*	Tome	2 25	215 00
Greater Baltimore.	Tone	2 25	215 00
Husk or Strawberry or Winter Cherry	Toxine	3 50	
Improved Trophy	Tomah	2 25	215 00
Improved June Pink	Toxati	(Crop Failed)	
John Baer.	Toxicate	2 25	215 00
Keye's Prolific,	Tonnage	2 25	
Large Yellow or Golden Queen	Toney	2 50	235 00
Livingston's Globe	Tonics	3 00	
Magnus	Tobit	2 25	215 00
Matchless	Tamax	2 25	215 00
Paragon	Tommy	2 00	190 00



TOMATO—Continued

	Tel. Cipher.	Per lb.	100 lbs.
Peach, Yellow	Topaz	3 25	
Peach, Red	Toport	3 25	
Perfection	Toll	2 00	
Pear-shaped Red	Tongue	3 50	
Pear-shaped Yellow	Tong	3 50	
Plum-shaped Yellow	Tonti	4 00	
Ponderosa	Toy	4 00	
Red Cherry	Top	4 00	
Red Rock	Topped	2 00	190 00
Royal Purple	Togane	2 00	190 00
Royal Red	Toga	2 00	190 00
Sterling Castle for forcing	Tolbert	4 00	375 00
Stone	Tocsin	2 00	190 00
Yellow Cherry	Tolbox	3 50	

TOBACCO.

	Tel. Cipher.	Per oz.	Per lb.
Connecticut Seed-Leaf	Tobax	\$0 60	\$6 50
Havana, Cuban grown (Vuelto de Abajo)	Tobane	60	6 50
White Burley	Toboggan	50	5 00

TURNIP. Table Varieties.

		Per lb.	100 lbs
Early White Flat Dutch Strap-Leaf	Tuck	\$0 30	\$25 00
Early White Six Weeks, or Snowball	Tug	35	30 00
Extra Early Purple Top Milan	Turbot	80	75 00
Extra Early White Milan	Turin	80	75 00
Golden Ball or Orange Jelly	Tuny	45	40 00
Pomeranian White Globe	Tunis	30	25 00
Purple Top, Strap-leaved	Tufft	30	25 00
Purple Top White Globe (Own Grown	Tunica	35	30 00
Purple Top White Globe Imperial	Turkey	30	25 00
Seven Top or Southern Prize	Turnkey	30	25 00
White Egg	Tumble	35	30 00
Yellow Amber Globe	Turtle	40	35 00

TURNIPS for Stock Feed.

Danish Bartfielder. (Large, Long Yellow)	Tuscany	35	33 00
Grey Stone	Tunor	30	25 00
Long White Cowhorn	Tub	30	25 00

SWEDES, or RUTA BAGAS.

American Purple Top	Rutic	30	25 00
Bangholm	Rotall	45	40 00
Budloughs White Rock	Rote	35	30 00
Butter Yellow Table Sweed	Roter	35	30 00
Purple Top Yellow Sweed	Ruther	30	25 00
Vick's Imperial Purple Top	Ruthven	30	25 00
White Sweet or Russian	Rutan	40	35 00

HERBS. Not less than 1/4 pound at the pound rate.

		Per oz.	Per lb
Anise	Herald	\$0 25	
Balm	Herbaceous	30	
Basil, Sweet.	Herbage	20	
Borage	Herbal	15	
Caraway	Herbalist	15	
Catnip	Herbar	40	
Coriander	Herbarium	10	
Dill	Herbelet	10	\$1 00
Fennel, Large Sweet	Herbid	10	
Fennel, Florence	Herbod	15	1 75
Fennel, Messina	Herban	15	1 75
Hoarhound	Herbivora	20	
Lavender (Lavendula spica)	Herborist	50	
Lavender (Lavendula vera)	Herbox	50	
Marjoram, Sweet	Herborize	40	
Rosemary	Herby	50	
Rue	Herbit	25	
Saffron	Herder	20	
Sage, Broad-leaved English	Herder	50	
Savory, Summer.	Herdling	25	
Savory, Winter	Herdsmen	40	
Sorrel (French)	Here	25	
Tansy	Hermit	25	
Thyme, Broad-leaved or Winter	Heresy	50	
Thyme, Summer, (French)	Heretic	50	
Wormwood	Hero	40	4 00

Grass and Clover Seeds

Net cash. Prices subject to market fluctuations.

Prices quoted on this page are for best grades only. We do not attempt to compete with much of the stock offered in the grass seed markets. Believing that our business is best advertised by high quality rather than competitive price we solicit orders only from those who believe that the best is always the cheapest. We can furnish any variety of the Fancy Grasses and will mail special prices on application. Ten pounds at 100-pound rate.

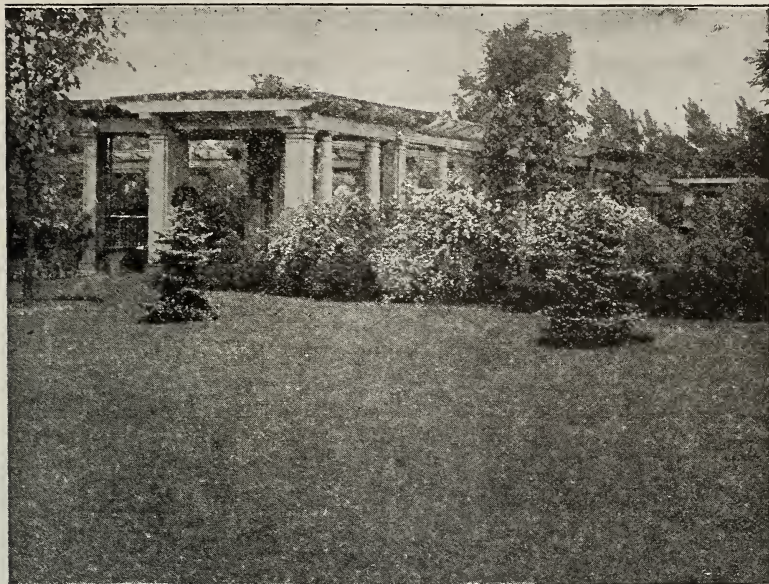
	Tel. Cipher.	Per lb.	100 lbs.
Agrostis canina (Rhode Island Bent)	Gracile	\$1 50	\$125 00
Agrostis vulgaris (Red Top), Fancy	Grace	35	30 00
Agrostis stolonifera (Creeping Bent Grass)	Grab	1 75	150 00
Anthoxanthum odoratum (Perennial Sweet Vernal)	Grade	50	45 00
Avena elatior (Tall Meadow Oat Grass)	Gracefully	40	35 00
Bermuda Grass	Graceless	55	50 00
Bromus inermis (Awnless Brome Grass)	Grapist	40	35 00
Cynosurus cristatus (Crested Dog's Tail)	Gradation	55	50 00
Dactylis glomerata (Orchard Grass)	Granary	25	23 00
Festuca duriuscula (Hard Fescue)	Gradiel	50	45 00
“ ovina (Sheep's Fescue)	Gradual	50	45 00
“ pratensis (Meadow Fescue)	Granite	28	25 00
“ rubra (Red Fescue)	Granons	1 05	90 00
Lolium italicum (Italian Rye Grass)	Grange	12	10 00
“ perenne (Perennial Rye Grass)	Grand	12	10 00
Phleum pratense, Timothy	Gravel Per bu.	\$4.25	
Poa nemoralis (Wood Meadow Grass)	Graredo		(Very scarce)
Poa pratensis (Kentucky Blue Grass), for pasture mixture (14 lbs. per bush.)	Graves	55	50 00
Poa pratensis (Kentucky Blue Grass), fancy or double extra clean, weighs from 20 to 25 lbs. per bushel, fine for lawns	Gravely	60	55 00
Poa trivialis (Rough Stalked Meadow Grass)	Grasey		
Vick's Velvet Lawn Grass (20 lbs. per bush.)	Gravity	30	28 00
Vick's Exposition Park Mixture (14 lb. per bu.)	Gavitous	40	38 00
Vick's Shady Spot Lawn Grass	Graver	35	32 00

CLOVER SEEDS, ETC.

White Clover, first quality	Clock	45	40 00
Medium Red	Closter	28	26 00
Mammoth Red	Cloud	28	26 00
Alsike	Clove	25	23 00
Lucerne (Alfalfa)	Cloyd	26	24 00
Scarlet or Crimson	Clod	14	11 00
Sweet, or Bokhara	Clough	14	12 00

Hubam Clover; A new annual leguminous forage and hay crop, See page 2 of this catalogue for more complete description. 1 25 115 00

Sell your customers Vick's Lawn Grass Mixtures and they will get satisfaction



VICK'S FAMOUS GRASS SEED MIXTURES

VICK'S "VELVET LAWN"

To make a perfect lawn, good seed is absolutely essential. Vick's "Velvet Lawn" Grass Seed Mixture is composed of several grasses of the highest standard of purity and germination, and unsurpassed by any other mixture, regardless of price. Under ordinary conditions a velvet lawn is absolutely assured in a few weeks after sowing. Price per lb. 30 cents; per 100 lbs. \$28.00.

VICK'S "SHADY SPOT"

For any spot so shaded that the ordinary Grass Seed will not grow.

This is a combination of dwarf growing evergreen grasses especially adapted to secure a good growth of grass in shady locations.

Per lb., 30 cents. Per 100 lbs., \$28.00

VICK'S "EXPOSITION PARK"

Special Mixture for Public Parks and Picnic Grounds. See Retail Catalogue for full description.

Per lb., 40 cents. Per 100 lbs., \$38.00

GRASSES FOR SPECIAL PURPOSES

An Opportunity For Florist. Perhaps no class of merchants come in more intimate contact with the people who own their homes than florists and certainly no one has the same opportunity to sell grass seeds. Nearly every home for which you fill a porch box or set out a flower bed buys grass seed and if you let them know that you have had it or can get it they will buy it from you rather than from anyone else. It is not necessary for you to carry a large quantity of grass seed in stock. You can order it from us for every job, if you want to, although it would be best to have a little of our Velvet Lawn grass on hand. It is so far superior to seed usually on sale in pound packages that you would be doing your customer a real favor to supply with Velvet Lawn grass. If you want a special mixture for shady places or for any other special purposes we will be only too glad to give you the benefit of our experience as to the best grass to use for that particular purpose. Your inquiries will have our immediate reply.

MISCELLANEOUS SEEDS

New and Standard Grains, Forage and Silo Seeds

Prices variable and subject to market fluctuations.

We are in a position to fill all orders for field seed at reasonable prices and it will be to your advantage to write for our special Quotations based on actual value at date of shipment if you are in the market for large quantities.

Not less than 10 lbs. at 100 lb. rate

	Per bu.	Per lb	100 lbs.
BARLEY —Champion Beardless (Bu. of 56 lbs.)	\$2 25		
Early Spring “ “	1 75		
BROOM CORN , Improved Evergreen (Market price)			
BUCKWHEAT , New Japanese (Bu. of 45 lbs.)	1 40		
Silver Hull “ “	1 40		
COW PEAS , New Era (Bu. of 60 lbs.)	(Write for prices)		
Whippoorwill “ “	(Write for prices)		
Mixed “ “	(Write for prices)		
MILLET , Golden (Bu. of 48 lbs.)		05	4 00
Hungarian “ “		05	4 00
Japanese or Billion Dollar Grass. (Bu. of 32 lbs.)		08	7 00
OATS (Bu. of 32 lbs.)			
Swedish or Washington. Extra heavy “ “	1 00		
Bumper Crop. Extra fine side oat “ “	1 15		
Welcome (Valuable New Variety) “ “	1 15		
RAPE , Dwarf Essex		10	9 00
RYE , Excelsior White Winter	1 80		
Spring	2 50		
SORGHUM , Amber Sugar Cane		07	5 00
SUDAN GRASS , Fancy		10	8 00
SOY BEANS , Mammoth Yellow	4 00		
Medium Early Green	5 00		
SUNFLOWER , Mammoth Russian Fancy Manchurian		12	10 00
SUNFLOWER , Mammoth Russian Native Fancy.		10	8 00
TEOSINTE (Reana luxurians)		50	45 00
HAIRY OR SAND VETCH (<i>Vicia villosa</i>) Winter		18	16 00
Spring.		10	8 00
WHEAT , (New crop) Spring	2 40		
Winter, Rochester Number Six, white, beardless	1 80		
BIRD SEEDS —Canary, Sicily		12	10 00
Hemp		11	9 00
Rape Japanese		12	10 00
Millet Golden.		07	6 00
Lettuce for Birds		18	15 00
Mixed Bird Seeds.		13	12 00

Big Boston Lettuce is more extensively used for market than any other variety. Plants are sure headers and stand a long time before seeding. Get the best Vick's Special Selected Strain.

VICK'S FLOWER SEEDS

THE flower seeds we offer are grown largely upon our own farms; others we have grown for us on contract and under our personal supervision by the very best specialists both at home and abroad; and in climates and soils best adapted for each particular variety. The seeds used in mixtures are selected from flowers the *brightest in color* and *most perfect in form* and can be relied upon for purity and vitality.

VICK'S FAMOUS ASTERS

The Aster is now the most important, commercially, of the summer and autumn flowers, and we are very proud of the part we have taken in its development. We are now the largest growers in the world of high grade Aster Seed, and we have introduced more good varieties than all other American seedmen combined.

For the benefit of Florists and others especially interested in Asters we issue a Florists' Aster Book giving illustrations of all the leading varieties. The handsomest work of its kind ever published. Free.



A CORNER OF AN ASTER FIELD ON VICK SEED FARMS

VICK'S NEWEST ASTERS

Peerless Yellow. Best yellow. Per packet 20 cents; two for 35 cents.

EXTRA EARLY VARIETIES

Earliest Rose, In packets only, each 20 cts; two for 35 cts.

	1-64 oz.	1-32 oz.	1-16 oz	1-8 oz.	1-4 oz.	1-2 oz,	oz.
Earliest Purple	20	35	50	75	1 25	2 25	4 00
Earliest Snowdrift	20	35	50	75	1 25	2 25	4 00

Fredonia, N. Y., Jan. 14th, 1920.

I am bound to buy Vick's Asters. Your aster seed helps to build up a man's aster business. Why? Because they are grand, large blooms.

F. T. Kusneske.

ASTERS—Continued

EARLY VARIETIES		1-32 oz.	1-16 oz.	1-8 oz.	1-4 oz.	1-2 oz.	oz.
Lavender Gem.	1-64 20 cents	35	50	75	\$1 25	\$2 25	\$4 00
Queen of the Market.	White, Peach Blossom or Pink, Rose, Light Blue, Dark Blue, Scarlet, Lavender, Crimson and mixed			25	40	60	1 00
Vick's Royals.	White, Shell Pink, Lavender Pink, and mixed Lavender, Rose and Purple in pkts., only, each 10 cts.	20	30	50	85	1 50	2 50

MIDSEASON VARIETIES

Early Branching.	Rosy Red, White, Lavender, Pink, Rose, Lavender, Crimson, Purple, Dark Violet, Shell Pink and mixed	20	30	50	80	1 50	
Early Upright.	Shell Pink and White	20	30	50	85	1 50	2 50
Heart of France		25	40	60	1 00	1 75	3 00
Mikado.	Shell Pink, Rose, Dark Violet, White and mixed	20	35	65	1 20	2 00	
Perfection.	White, Blush, Shell Pink, Rose, Lavender, Purple and mixed . Crimson, in packets only, each 15 cts.; two for 25 cts.	20	35	65	1 20	2 00	
Silvery Pink	1-64 20 cents	35	50	75	1 25	2 25	4 00
Silvery Rose		25	40	60	1 00	1 75	3 00
Triumph Comet.	Shell Pink, Rose, Purple, White, Lavender, and mixed Cerise New, packets only, each 25 cents, 2 for 40 cents	20	35	65	1 20	2 00	

Vick's Giant Daybreak	20	35	65	1 20	2 00	
Vick's Giant Purity	20	35	65	1 20	2 00	

Vick's Imperials.	Blue Bird, Lavender, Purple, Dark Violet Lilac, Rose, and mixed Salmon, Yellow and Sunset, in packets only, each 10 cts.	20	35	65	1 20	2 00	
--------------------------	---	----	----	----	------	------	--

Vick's Pink Enchantress.	One of the best Asters of recent years,	25	40	60	1 00	1 75	3 00
---------------------------------	---	----	----	----	------	------	------

MAIN CROP, LATE VARIETIES

Rochester.	Lavender Pink, the original "Rochester." White, Shell Pink, Lavender, Rose, Purple, Crimson, and mixed	25	40	60	1 00	1 75	3 00
		25	40	60	1 00	1 75	3 00

Cerise Rochester in packets only
each 25 cents, 2 for 40 cents

Vick's Late Branching.	Lavender, Lavender Pink, Purple, Shell Pink (Mary Semple), Rose, Scarlet Gem, Dark Violet, White and mixed . . . Crimson, in packets only, each 10 cts.			20	35	65	1 25
-------------------------------	--	--	--	----	----	----	------

	1-32 oz.	1-16 oz.	1-8 oz.	1-4 oz.	1-2 oz.	oz.
ASTERS —Continued						
Vick's Late Branching (Non-Lateral Type). Peach Blossom, Peerless Pink, Rosy Pink, Lavender, Lavender Pink Rose and mixed			30	50	80	\$1 50
Vick's King Asters (Branching Type). White, Violet and mixed	20	35	65	1 20	2 00	
Crimson, Shell Pink, Rose, Lavender, in pkts. only, each 20 cts.; 2 for 35 cts.						
Vick's King Asters (Upright Type). White, Shell Pink, Lavender Pink, Crimson and mixed	20	35	65	1 20	2 00	
American Comet. Purple, Rose, White Shell Pink, Lavender, and mixed . .	20	30	50	80	1 50	
Improved Crego. Shell Pink, Rose, White, Purple, Lavender, and mixed .	20	30	50	80	1 50	
Late Upright. Crimson, Purple, White, Peach Blossom and mixed	20	30	50	85	1 50	2 50
Amethyst, Rose, and Rosy Red Packets only 10 cents each.						
VERY LATE						
Autumn Glory	20	30	50	80	1 50	
All Classes and Colors mixed . . .	15	25	45	75	1 25	
Novelty mixture	25	40	60	1 00	1 75	3 00

OTHER FLOWER SEEDS

SPECIAL NOTICE REGARDING PRICES

Smaller quantities than those priced on the following pages will be charged at a slightly higher rate. No quantity of seed packed from bulk for less than ten cents. Where smaller quantities are wanted, use the five and ten cent papers, taking advantage of the wholesale discounts as stated on first page.

	Per oz.	Per lb.
ABUTILON		
Extra fine varieties mixed	¼ oz., 75 cents.	\$2 50
ACHILLEA (The Pearl)	¼ oz.	\$1.00. 3 00
ACROCLINIUM (Everlasting) See page 35.		
Single Mixed varieties		35
Double Mixed		40 \$4 00
ACONITUM FISHERI	¼ oz., 50 cents.	1 50
ADLUMIA CIRRHOSA (Allegheny Vine). ⅛ oz., 35 cts.;		
¼ oz., 50 cents		1 50
AGERATUM		
Mexicanum cœruleum, blue		25
Little Dorritt, Azure Blue		40
Little Dorritt, White		40
Blue Perfection, dwarf, dark blue, ½ oz., 35 cents		60
Mixed varieties		25
AGROSTEMMA CORONORIA Crimson . ¼ oz., 15 cents		35
AGROSTIS		
Nebulosa, Cloud Grass (Ornamental)	1-4 oz., 25c.	75
ALYSSUM		
Benthami (Sweet Alyssum)		15 1 75
Benthami compactum erectum, "Little Gem"		35 4 00
Benthami compactum procumbens, "Carpet of Snow"		35 4 00
(Perennial) saxatile compactum, "Gold Dust," splendid for edging		60

Ask for our Aster-Book. Its free.

AMARANTHUS

Per. oz. Per. lb.

Sunrise, very showy plant, our own growing.	$\frac{1}{8}$ oz., 30c	\$ 2 00
Sunset	$\frac{1}{8}$ oz., 30c	2 00
Tricolor (Joseph's Coat)		40
Caudatus (Love Lies Bleeding) Red		20
Mixed varieties		20 \$ 1 50

AMPELOPSIS (Shrubby Climber)

Veitchii, Boston or Japan Ivy	$\frac{1}{4}$ oz., 10 cents.	25
---	------------------------------	----

ANCHUSA ITALICA

Dropmore	$\frac{1}{8}$ oz., 25c.	1 00
--------------------	-------------------------	------

ANTHEMIS TINCTORIA $\frac{1}{8}$ oz., 25 cents. 1 00**ANTIRRHINUM NANUM GRANDIFLORUM**

A new type of Stocky Giant Flowered Half Dwarf Antirrhinum, bred especially for cut flowers. This splendid class, magnificently colored, has very large spikes or heads and can be grown with success either under glass or out of doors and we believe you will find it more desirable for Greenhouse culture than some of the taller varieties. See cut for type of flowers, we can supply the following varieties.

$\frac{1}{8}$ oz.; 35 cts.; $\frac{1}{4}$ oz., 20 cts

$\frac{1}{4}$ oz., 60 cts.; 1 oz. \$2.00.

Pink and Terra-Cotta Shades, a new class of art shades, ranging from pink and orange to terra-cotta, very showy.

Amber Queen, canary yellow overlaid chamois pink, golden lip.

Coral Pink, rich deep rose, white throat.

Fair Maid, (New.) deep flesh pink, white centre.

Golden Morn, raspberry red and old gold with golden lip.

Morning Glow, bright terra-cotta orange.

Purity, (New.) pure glistening white, very fine.

ANTIRRHINUM MAJUS**New Giant-Flowered**

Giant flowered bedding type.

$\frac{1}{8}$ oz. 20 cts., $\frac{1}{4}$ oz. 30 cts.

1 oz. \$1.00.

Silver Pink, (Special Florists) strain.

Venus, Shell Pink.

Queen Victoria, large pure white.

White.

Brilliant, (scarlet, yellow and white.)

Deep Scarlet.

Light Rose.

Deep Rose.

Firefly, (scarlet with white throat.)

Bright Crimson.

Striped.

Yellow.

Yellow Orange Striped.

Ruby King.

Pink.



ANTIRRHINUM NANUM GRANDIFLORM TYPE

	Per oz.	Per lb.
ANTIRRHINUM MAJUS —Continued.		
New Giant-flowered, choicest mixed	¼ oz., 20 cents.	50
Tall Varieties, fine mixed		30 3 00
Dwarf Mixed, extra choice		40 5 00
ARUNDO		
Donax fol. var., (Ornamental Grass)	¼ oz., 15c.	50
AQUILEGIA (Columbine.)		
Cœrulea, flowers sky-blue and white	½ oz., 25 cts.	\$1 60
Vick's Large-flowered Hybrids, splendid large flowering strain and beautiful colors	1-4 oz., 35 cts.; ¼ oz., 35 cts.	2 00
New Hybrids, large spurred	¼ oz., 50 cts.	1 75
Chrysantha, golden yellow	1-4 oz., 50 cts.	1 75
Rose Queen	1 8 oz., 50 cts.	3 00
Skinneri, yellow, with scarlet spurs	½ oz., 50 cts.	3 00
Double, fine mixed	¼ oz., 20 cts.	60
Single varieties mixed	¼ oz., 15 cts.	40
Mrs. Scott Elliotts Hybrids (True)	½ oz., \$1 25	
ARABIS ALPINA , White Perennial	¼ oz., 20 cts.	50
ASPARAGUS (Greenhouse grown)		
Sprengeri 100 seeds 20 cts.; 250 seeds, 45 cts.; 1000 seeds, \$1 50		
Plumosus nanus	100 seeds, 50 cts.; 1000 seeds, 3 50	
ASPERULA		
Azorea setosa, blue or lavender flowers, sweet-scented	¼ oz., 20 cts.	50
BACHELORS BUTTON. (See Centaurea page 31)		
BALLOON VINE		15
BALSAM		
Improved Camellia-flowered, extra fine White, Scarlet, Light Pink, Deep Blood Red or mixed	¼ oz., 25 cts..	75
Fine mixed. A splendid Camellia flowered mixed		30
BALSAM APPLE	pkt. 10 cts.;	30
BALSAM PEAR	pkt. 10 cts.;	30
BAPTISIA AUSTRALIS , Deep blue perennial	½ oz., 25 cts.;	\$1 00
BEGONIA , Rex-Diadema	(Sold out.)	
BELLIS PERENNIS (See Daisy page 33).		
BRACHYCOME , Swan River Daisy	½ oz. 20 cts.;	75
BRIZA MAXIMA		
Quaking Grass, (Ornamental Grass)		25
CALCEOLARIA		
hybrida grandiflora, large, self-colored	1-128 oz., \$1 00	
“ “ tigrina, finest spotted,	1-128 oz., \$1 50	
CALENDULA		
Meteor, double yellow, striped with orange	¼ lb., 50 cts.;	15 1 40
Le Proust, nankeen yellow	¼ lb., 60 cts.;	20 1 40
Prince of orange, darker than Meteor	¼ lb., 50 cts.;	15 1 40
Double Sulphur		20 1 40
Mixed varieties	¼ lb., 30 cts.;	15 1 00
Orange King	¼ lb., 55 cts.;	20
CALLIOPSIS. (See also Coreopsis page 32).		
coronata, yellow, fine		25 2 50
Drummondii (Golden Wave)		25 2 50
Tall varieties, mixed		15 1 50
Dwarf varieties, mixed		20 1 75
CAMPANULA. (See also Canterbury Bell, page 31).		
Capatica, White	¼ oz., 35 cts.;	1 00
“ Blue	¼ oz., 35 cts.,	1 00
“ Mixed	¼ oz., 25 cts.;	75
Persicifolia alba	½ oz., 35 cts.;	2 50
“ coerulea	½ oz., 35 cts.;	2 50
Pyramidalis Chimney Bell Flower, White	½ oz., 25 cts.,	1 25
“ “ “ “ Blue	½ oz., 25 cts.;	1 25
“ “ “ “ Mixed	½ oz., 20 cts.;	1 00
Platycodon Grandiflora White	½ oz., 25 cts.;	1 00
“ “ Blue	½ oz., 25 cts.;	1 00
“ “ Mixed	¼ oz., 25 cts.,	75
Medium. (See Canterbury Bell, page 31).		

	Per oz	Per lb.
CANARY BIRD FLOWER , (<i>Tropæolum peregrinum</i>), . . .	40	4 50
CANDYTUFT (<i>Iberis</i>),		
Rocket, White. Large pyremidal heads	$\frac{1}{4}$ lb. 35 cts.	15 1 00
Empress , Giant white hyacinth flowered Very choice $\frac{1}{4}$ lb. 75 cts.	25	2 75
See illustration on front cover.		
	Per oz.	Per $\frac{1}{2}$ lb.
Carmine	\$ 25	\$ 70
Flesh-colored, splendid for Florist	25	70
Dunnett's Extra Dark Crimson	25	70
Lilac	25	70
Pinnata, white, blooms all summer sweet scented	15	40
	Per oz.	Per lb.
Mixed colors (annual sorts)		20
Perennial—Iberis Gibraltarica. Pink or white	$\frac{1}{16}$ oz., 15 cts.	1 25
" " sempervirens, white	$\frac{1}{16}$ oz., 15 cts.	1 25
CANNA (Indian Shot).		
Madam Crozy		30 3 25
Crozy's New Hybrids, mixed in splendid variety		40 3 50
Dark Leaved, mixed		45 4 00
Latest named varieties, mixed		30 4 00
Tall Varieties, mixed		25 3 00
CARDIOSPERMUM (See Balloon Vine, page 29)		
CARDINAL CLIMBER . $\frac{1}{8}$ oz., 50 cts.; $\frac{1}{4}$ oz., 75 cts.;		2 00
CARNATION (See also Dianthus, page 33).		
Hardy. Fragrant. Fine for Cutting.		
Extra fine double, mixed	1-16 oz. 20 cts.; $\frac{1}{8}$ oz., 30 cts.	1 50
Dwarf, Early-flowering Vienna, extra fine double, mixed	$\frac{1}{4}$ oz., 35 cts.	1 25
Dwarf, Early-flowering Grenadin, double, bright scarlet, extra fine	$\frac{1}{8}$ oz., 40 cts.; $\frac{1}{4}$ oz., 70 cts.	2 00



CARNATION, MARGUERITE

See Page 31.

CARNATION—(Continued)

Per oz. Per lb.

Perpetual-flowering. Bloom First Season.

Marguerite, White	1/8 oz., 25c.	\$1 75
“ Pure yellow	1/8 oz., 25c.	1 50
“ Mixed	1/4 oz., 30c.	75
“ Giant, or Malmaison, mixed, extra large-flowered strain	1/8 oz., 25c.	1 25
Chaubauds Everblooming	1/4 oz., 50c.	1 75

CANTERBURY BELL (Campanula Medium).

Single Light Pink, beautiful	1/4 oz., 15 c.	50
Single varieties mixed,		25 \$3 00
Double varieties mixed	1/4 oz., 30c.	1 00
Calycanthemum (Cup and Saucer), mixed	1/8 oz., 25c.	1 50

CASTOR BEANS—See Ricinus, page 43.

CELOSIA—Feathered. See also Cockscomb, page 43.

plumosa superba, beautiful crimson feathered	1-8 oz., 10c.	50
Golden Plume	1/4 oz., 20c.	60
Thompson's feathered (Thompsoni Magnifica)	1-8 oz., 20c.	75
Pride of Castle Gould, large brilliant colored tresses	1-32 oz., 25c.	5 00
Chinese Woolflower, immense Pink feathery tresses	1/8 oz., 50c.	3 00
Feathered Varieties, mixed		30
Dwarf, mixed	1/4 oz., 35c.	1 00

CENTAUREA

Americana, lilac	1/4 oz., 25c.	75
Americana alba	1/4 oz., 20c.	50
Candidissima, heavy seed	1-8 oz., 40c.; 1/4 oz., 65c.	2 00
Gymnocarpa, very fine	1/4 oz., 20c.	60
Cyanus (Bachelor's Button, Blue Bottle, Corn Flower) mixed colors		25
“ Double, dark blue. One of the best.	1-4 oz., 15c.	35
“ Emperor William, dark blue,		20
“ Pure White	1/4 lb., 70c.	20
Imperialis (Sweet Sultan), mixed colors	1/4 oz., 20c.	50
Odorata, light blue	1/4 oz., 15c.	40
“ Marguerite, pure white, very large, sweet-scented, fine for cutting	1/4 oz., 20c.	50
Suaveolens (Sweet Sultan) yellow	1/4 oz., 15c.	40

CERASTIUM TOMENTOSUM—White 1/4 oz., 50c. 1 50

CHINESE PRIMROSE—see Primula Sinensis, page 43.

CHRYSANTHEMUM

Inodorum, Bridal Robe, Double, pure white, fine for cutting,	1-8 oz., 20c.	1 00
Carinatum, Single varieties mixed. Annual		20
“ Double varieties mixed. Annual		35
Coronarium, Double White	1/8 oz., 10c.	50
“ Double Yellow	1/8 oz., 10c.	50

CINERARIA

Hybrida, choicest mixed, first quality . Pkt. 25c.; 1-32 oz., \$1.50		
Grandiflora, Extra choice, Prize Strain Pkt. 50c.; 1-32 oz., \$2.50		
Maritima (candidissima, Dusty Miller) silver foliage, 1/4 oz., 10c.		25

CLARKIA—Single mixed	1/4 oz., 20c.	60
Double mixed	1/4 oz., 20c.	60

CLEMATIS PANICULATA 1/4 oz., 15c. 40

COBCEA (Ornamental Climber)

Scandens, blue	1/4 oz., 10c.	30
--------------------------	---------------	----

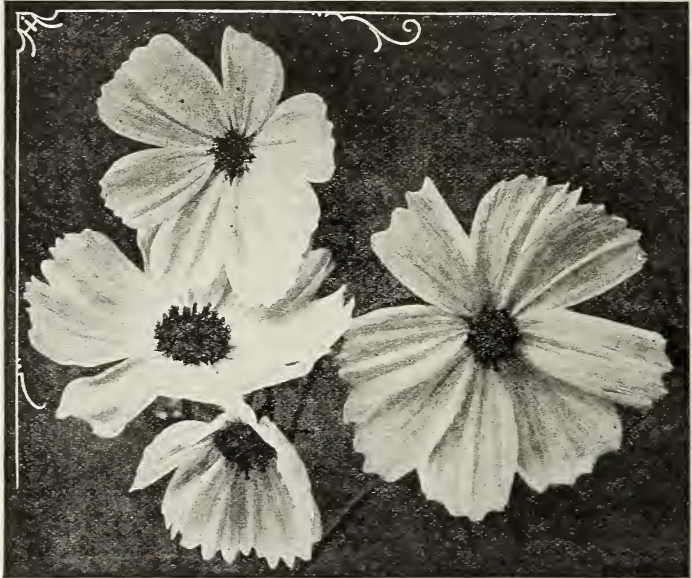
COCKSCOMB—see also Celosia.

Glasgow Prize, fine dwarf sort, dark red	1-16 oz., 20c.	1 75
Empress, “ “ dark maroon	1-16 oz., 20c.	1 75

COIX LACHRYMA—(Job's Tears,) Ornamental Grass 10 50

Our strain of Celosia, Pride of Castle Gould, is grown on our farm from carefully selected plants. It is one of the best of the Feathered Celosias.

COLEUS —Finest mixed	1-16 oz., 50c; 1/8 oz., 90c.	Per oz. 5	Per lb. 00
Prize Strain.	1-16 oz., 75c; 1/8 oz., \$1 25		
COLUMBINE —see Aquilegia.			
CONVOLVULUS			
Major (Tall Morning Glory), mixed colors	1/4 lb., 25c.	\$0 10	\$0 75
Minor (Dwarf Morning Glory), mixed colors	1/4 lb., 30c.		15
COREOPSIS —perennial (See also Calliopsis page 29).			
Grandiflora, flowers large. Our own growing		25	2 50
CORNFLOWER ASTER —see Stokesia page 44.			



COSMOS NEW PERFECTION

COSMOS

Three Splendid New Cosmos. Doubled and Crested with full centers somewhat on the order of a small flower within a large one. Very graceful and attractive.

White Queen, Doubled and Crested	1/8 oz., 25c.	1 75
Crimson King, " " "	1/8 oz., 25c.	1 75
Pink Beauty, " " "	1/8 oz., 25c.	1 75

Vick's Extra Early.

Earliest of all. Is a new strain developed by us, selected especially for earliness and size of bloom. Plants grown from seed sown in the open ground in May, on our own farm, begins to bloom in July and continues to bloom until frost. The plants are about three feet in height. Flowers are as large and fully as beautiful as the best late flowering kinds.

Vick's Extra Early, Pure White		40	4 00
" " " Soft Pink		40	4 00
" " " Crimson		40	4 00
" " " Mixed Colors		30	3 00
Perfection large-flowered, Pink		15	2 00
" " " White		15	2 00
" " " Crimson		15	2 00
" " " Mixed		15	1 25
Early Dawn, white tinged Rose		25	2 00
Lady Lencx, Giant White		20	2 00
" " " Giant Pink		20	1 75

	Per. oz.	Per lb
CYCLAMEN —Vick's special florists strain		
Persicum, fine mixed (selected stock) 100 seeds, 50c.; 1/8 oz., \$1.50		
Persicum, giganteum, extra choice mixed		
. 100 seeds, 60c.; 1-16 oz., \$1.25; 1/8 oz., \$1.75		
Amsterdam Giants 100 seeds, 65c.; 1-16 oz., \$1.40; 1/8 oz., \$2.00		
CYPRESS VINE (Ipomœa Quamoclit)		
Scarlet	\$0	35
White		35
Mixed		30
DAHLIA		
From our choice collection of named double sorts 1/16 oz., 15c.	1	50
Choicest single varieties mixed (Collarette) 1/8 oz., 20c.	1	00
DATURA —Finest mixed double		30
Wrightii, white, tinged with lilac (Fine)	30	\$3 00
Cornucopia		40
DAISY (Bellis perennis)		
Double White 1-8 oz., 30c.	2	00
Snowball, large double, pure white 1-8 oz., 30c.	2	00
Longfellow, large double, rosy pink 1-8 oz., 30c.	2	00
Mixed, large double, choicest strain 1-8 oz., 25c.	1	50
Montrous or Mammoth.		
Pink 1-8 oz., 80c; 1/4 oz., \$1.25		
White 1-8 oz., 80c; 1/4 oz., 1.25		
Red 1-8 oz., 80c; 1/4 oz., 1.25		
Mixed 1-8 oz., 60c; 1/4 oz., 1.00		
Shasta, Alaska 1-8 oz., 20c.	1	25
DELPHINIUM —See Larkspur. Page 37.		
DIANTHUS —Pink (See also Carnation) Page 30.		
Chinensis, best double mixed	35	4 00
Heddewigii, finest single-flowering, mixed 1/4 oz., 15c.	40	4 00
“ extra fine double-flowering, mixed 1/4 oz., 20c.	65	
“ best double white, fine for cutting 1/4 oz., 25c.	75	
“ atropurpureus albo-marginatus, (Double Mourning Cloak) 1/4 oz., 25c.	0	75
“ diadematus pl., (Diadem Pink,) 1/4 oz., 35c.	1	00
“ laciniatus, single-flowering mixed, extra, fringed . .	50	
“ laciniatus, choicest double fringed varieties mixed . .		
. 1/4 oz., 25c.	0	75
Double Imperial (Imperialis) 1/4 oz., 15c.	40	
DIANTHUS (Hardy Pinks).		
Plumarius (Pheasant's Eye), single fine mixed 1/4 oz., 20c.	50	
“ double and semi-double mixed 1/4 oz., 35c.	1	00
“ semperflorens (Florists' perpetual Pinks) 1-16 oz., 15c.	1	00
“ Cyclops, rose with crimson eye 1-8 oz., 20c.	1	00
DICTAMNUS (Gas Plant). Perennial White or Red. 1/4 oz., 15c.	50	
DIGITALIS (Foxglove). Hardy Gloxiniaeflora,		
Alba white	50	
Purple 1/4 oz., 20c.	60	
Lotia Yellow 1/4 oz., 20c.	60	
Rosea, Pink 1/4 oz., 20c.	60	
Splendid mixed 1/4 oz., 20c.	50	4 00
DIMORPHOTHECA		
aurantiaca hybrida, Hybrid African Daisy 1/4 oz., 25c.	75	
DOLICHOS		
Lablab, (Hyacinth Bean,) Ornamental Climber, purple	20	1 50
New Japanese	20	1 50
DRACENA —Indivisa 1/4 oz., 10c.	30	
ECHINOCYSTIS LOBATA (Wild Cucumber)	15	1 50
ERIANTHUS —Ravennæ (Ornamental Grass).	30	
ESCHSCHOLTZIA (California Poppy), White.	20	
Golden West, new, large-flowered	20	
Rose Cardinal, large carmine flowers	25	
Mikado, deep orange-scarlet 1/4 oz., 20c.	50	
Yellow	20	
Single Orange	30	

ESCHSCHOLTZIA—Continued		Per oz.,	Per lb.
Double White		45	
“ Orange		45	
Burbanks Crimson		50	
Mixed varieties		15	1 50
Double mixed		50	
EUPHORBIA,			
Hetrophylla, Fire on Mountain	¼ oz., 25c.	50	
Variiegata, Snow on the Mountain	¼ oz., 15c.	30	
FEVERFEW —see Pyrethrum. Page 45.			
FORGET-ME-NOT —see Myosotis. Page 39.			
FOUR O’CLOCK —see Marvel of Peru. Page 37.			
FOXGLOVE —see Digitalis. Page 33.			
GAILLARDIA			
Lorenziana fl. pl., saved from very double flowers		30	3 00
Annual varieties, single mixed		30	
Grandiflora, perennial varieties, finest mixed		25	2 50
Picta, single mixed		30	
GERANIUM (Pelargonium) Zonale, finestmixed	1.4 oz., 40c.	1 25	
GLADIOLUS —(Hybrid) Mixed, fine assortment	¼ oz., 15c.	50	
GLOXINIA —(Grandiflora)			
Finest Mixed. All classes in unrivalled mixture	1.64 oz., 50c.		
GOURDS, Ornamental Cucurbitaceæ.			
Dipper or Calabash (Luffa)	¼ oz., 10c.	25	
Dish-Cloth Gourd	¼ oz., 10c.	20	1 50
Echinocystis lobata, (Wild Cucumber)	¼ oz., 10c.	15	1 50
Egg-formed, (True Nest-egg Gourd)	¼ oz., 10c.	25	2 00
Knob Kerrie-slender stem with ball-like knob on end	¼ oz., 15c.	40	
Hercules’ Club	¼ oz., 10c.	20	2 00
Momordica balsamina, (Balsam Apple)	¼ oz., 10c.	30	3 00
Mixed varieties	¼ oz., 10c.	15	1 00
GOMPHRENA —(Everlasting)			
Globosa, Mixed colors		25	
GRASSES —(Ornamental)			
Agrostis Nebulosa, Cloud Grass	⅛ oz., 25c.	1 00	
Arundo Donax variegata, Giant Reed	¼ oz., 15c.	50	
Briza Maxima, Quaking Grass	¼ oz., 10c.	25	
Coix Lacryma, Job’s Tears	¼ lb., 25c.	10	
Erianthus Ravennae, Plume Grass	¼ oz., 10c.	30	
Eulalia Japonica, varigat	¼ oz., 15c.	50	
Pennisetum Longistylum, Fountain Grass	¼ oz., 15c.	50	
Pennisetum Ruypellianum, Purple			
Fountain Grass	¼ oz., 15c.	50	
Mixture of above Grasses	¼ oz., 15c.	40	
GREVILLEA			
Robusta	1.4 oz., 15c.	50	
GYPSOPHILA (Baby’s Breath)			
Elegans, alba annual, dwarf, white	1.4 oz., 15c.	30	
Paniculata, perennial, white, fine for cutting	1 4 oz., 15c.	40	3 50
Paniculata fl. pl. (Dbl.) white.	1 16 oz., 75c; ¼ oz., \$2 00	7 00	
Carmine		15	1 80
HEARTSEASE —see Pansy. Page 39.			
HELIANTHUS (Sunflower).			
Chrysanthemum-flowered, finest of all		25	3 00
Dwarf Extra, Double		25	
New Dwarf Golden, variegated foliage		25	
New Red		25	3 00
Mixed, All Varieties		15	
Mammoth Russian. See Page 24.	per 100 lbs.	\$11 00	18
HELICHRYSUM —monstrosum (Everlasting or Straw Flower)			
Fire Ball, red	} See Page 35	1.4 oz., 20c.	60
Silver Ball, white		1 4 oz., 20c.	60
Golden Ball, yellow		1.4 oz., 20c.	60
Rose Queen, carmine-rose		1.4 oz., 20c.	60



STRAW FLOWER

HELICHRYSUM

Florists find a ready sale for the so called everlasting flowers. They are so little trouble to handle that you should plant a good supply of each of the following varieties during the coming season. We have grouped them all here for your convenience.

EVERLASTINGS

	Per 1/4 oz.	Per 1/2 oz.	Per oz.
Acroclinium Single Mixed		\$0 20	\$0 35
“ Double Mixed		25	40
Gomphrena Globosa Mixed		15	25
Rhodanthe	\$0 15		50
Helichrysum Straw Flower	20		60
“ Fire Ball	20		60
“ Golden Ball	20		60
“ Rose Queen	20		60
“ Salmon Queen	20		60
“ Silver Ball	20		60
“ Violet	20		60
“ Double mixed		25	40

HELIOTROPE

	Per oz.	Per lb.
Queen Marguerite, large, dark blue	1-16 oz., 20c.	
New Large-flowering, finest mixed	1-4 oz., 60c.	\$2 00

HIBISCUS

Crimson Eye	1-4 oz., 25c.	75
Moschentos Rose Pink	1-4 oz., 15c.	50
Mixed varieties	1-4 oz., 15c.	50

GRACEFULLY
NODDING
CHARMINGLY
BEAUTIFUL
HOLLYHOCKS



DOUBLE HOLLYHOCK

The demand for hardy perennials has increased steadily from year to year until it taxes the capacity of our nursery to supply the increasing demand. Hollyhocks are one of the most popular of all the perennials. We grow on our farms the best and choicest varieties both for seeds and plants and the list below which includes the justly celebrated Newport Pink is composed of varieties all of which are of proven value. The seeds for these perennials should be sown during July or August and will bloom the second year from seed usually. Some few varieties, however, will bloom the following season. In addition to supplying you with perennial seeds you will find on the pages immediately following the flower seed pages a complete list of hardy perennial plants, all of which are heavy field grown stock and most of which will stand dividing.

HOLLYHOCK Double.

	Per oz.	Per lb.
Separate Colors, White, Pink, Crimson, Rose, Scarlet, Yellow		
Blood Red, All double	1-4 oz., 30c.	\$1 00
Newport Pink, Enchantress color	1-8 oz., 25c.	1 50
Extra Choice, double mixed (Our own growing)	1-4 oz., 20c.	75
Mammoth Fringed Allegheny, choice mixed colors		50 \$6 00

HUMULUS

Japonicus (Japanese Climbing Hop)	1-4 oz., 15c.	35
“ “ “ “ variegated foliage	1-4 oz., 20c.	50

HUNNEMANNIA (Giant Yellow Tulip Poppy)

Fumariæfolia, fine for cutting	1-4 oz., 15c.	35
--	---------------	----

HYACINTHUS

Candicans. Large spreading heads of white flowers	10	1 00
---	----	------

HYACINTH BEAN See Dolichoæ page 33.

IBERIS See Candytuft page 30.

	Per oz.	Per lb.
ICE PLANT (<i>Mesembryanthemum</i>) Useful in porch boxes 1-8 oz.,	10c.	30
IPOMŒA		
Bona Nox, (white-seeded Moonflower)		30 3 00
Giant Pink Hybrid Moonflower		30 3 50
Imperial Japanese Morning Glory		15 1 00
Vick's New Morning Glory, Rochester		(Sold Out)
Quamoclit—see Cypress Vine. Page 33.		
Setosa (Brazilian Morning Glory)		20 2 50
JAPANESE HOP —see <i>Humulus</i> . Page 36.		
JERUSALEM CHERRY , <i>Solanum capsicastrum nanum</i> . $\frac{1}{4}$ oz.,	10c.	35
JOB'S TEARS — <i>Coix lachryma</i>		10 50
KOCHIA —We grow our own Kochia, as well as many other varieties.		
Tricophylla, True Summer Cypress		10 80
Christmas. New long season variety	$\frac{1}{4}$ oz.,	25 10c.
LANTANA —Finest mixed.	$\frac{1}{4}$ oz.,	40 15c.
LARKSPUR, ANNUAL		
Double Dwarf Rocket, mixed	$\frac{1}{4}$ oz.,	25 10c.
Double Tall Rocket, mixed	$\frac{1}{4}$ oz.,	25 10c.
Double Stock-flowered, mixed	$\frac{1}{4}$ oz.,	35 15c.
New Emperor, Vick's Improved mixed, brilliant colors. Our own special strain.	$\frac{1}{4}$ oz.,	40c 15c.
LARKSPUR, PERENNIAL		
Delphinium formosum, dark blue	$\frac{1}{4}$ oz.,	35c \$1 25
“ “ coelestinum, sky blue	$\frac{1}{4}$ oz.,	40c 1 60
“ nudicaule, dwarf scarlet	1-16 oz.,	25c 3 00
“ elatum, fine mixed	$\frac{1}{8}$ oz.,	20c 1 00
Belladonna, Best light blue, for florist	$\frac{1}{8}$ oz.,	50c 3 00
Chinese, mixed		50
LATHYRUS —See Peas perennial page 42.		
LINARIA (<i>Kenilworth Ivy</i>)	$\frac{1}{4}$ oz.,	10c 30
LOBELIA		
cardinalis, perennial, (Cardinal Flower,) brilliant scarlet, spikes erect growing 1-32 oz., 30c.; 1-16 oz., 50c.; 1-8 oz., 85c.		3 00
Barnard's Perpetual, deep blue, with white eye, very choice trailing.	1-8 oz.,	25c. 1 75
Erinus, (<i>gracilis</i>), blue, 6 to 12 in.	1-4 oz.,	20c. 60
“ White, 6 to 12 in., border plant.	1-8 oz.,	20c. 1 00
“ Mixed, 6 to 12 in., border plant.	1-4 oz.,	25c. 75
Erecta (<i>compacta</i>), Crystal Palace, dark blue, for edging and carpet bedding	1 4 oz.,	60c. 2 25
“ Emperor, light blue, very effective	1-4 oz.,	40c. 1 50
“ White Gem (best dwarf)	1-4 oz.,	50c. 1 50
LINUM		
Grandiflorum rubrum, scarlet flax, Annual.	$\frac{1}{4}$ oz.	10c., 20
Perennial varieties mixed	1-4 oz.,	10c. 25
LOVE-IN-A-MIST —see <i>Nigella</i> . Page 36.		
LUPINUS — <i>Polyphyllus</i> , mixed	1-4 oz.	10c. 30
Blue.	1-4 oz.,	15c. 40
Rose.	1-4 oz.,	25c. 75
White	1 4 oz.,	15c. 80
LYCHNIS		
Chalcedonica, bright scarlet	1-4 oz.,	15c. 35
Haageana hybrida, fine mixed.	1 8 oz.,	30c. 1 75
Viscaria splendens, fine scarlet	1-4 oz.,	15c. 35
LYTHRUM — <i>Roseum Superbum</i>	1-4 oz.,	15c. 40
MARVEL OF PERU (<i>Four O'Clock</i> or <i>Mirabilis</i> .)		
Mixed colors		10 75
Striped-leaved varieties		15 1 25

DELPHINIUM BELLADONNA. Our own select strain of this superb Perennial Larkspur is the best variety for forcing or bedding.

MARIGOLD—see also *Calendula*. Page 29.

	Per ¼ oz.	Per oz.	Per lb.
Double African, Lemon Queen	15	50	
“ “ Pride of the Garden, dwarf golden, early	15	40	
“ “ Prince of Orange	15	50	
“ “ Mixed varieties	10	30	3 00
Double French, Striped	15	50	
“ “ Gold Margined, single, new, dwarf	15	50	
“ “ Little Brownie or Legion of Honor , dwarf, yellow and brown	10	30	
“ “ Dwarf varieties mixed	15	40	
“ “ Tall varieties mixed	10	30	
<i>Tagetes signata pumila</i> , fine for edgings	15	40	

MATRICARIA CAPENSIS—see *Pyrethrum*. Page 43.**MAURANDYA** (Fine Ornamental Climbers).

Finest mixed	40	1 25
------------------------	----	------

MESEMBRYANTHEMUM—*crystallinum*, (Ice Plant,) 10 30**MIGNONETTE**

Sweet, (<i>Reseda odorata</i>)	15	1 25
Giant Pyramidal	30	4 00
Golden Queen	35	3 75
Ameliorata, red flowers	25	
Machet, true, dwarf, finest for pot culture and borders 1-4 lb. 1 00	35	
Allen's Defiance 1-4 lb. 1 35	40	
Goliath, extra choice; mammoth Red-spikes . . . 1-4 oz. 25c.	75	
Improved Machet From Vick's Farms	50	
White Pearl. Best white. 1-4 oz., 35c.	1 00	

MIMULUS (Monkey Flower.)

<i>hybridus tigrinus, grandiflorus</i> , prize strain. . . . ⅛ oz., 40 cts.
<i>moschatus</i> , (Musk Plant) ⅛ oz., 60 cts.
Mixed varieties (all sorts) ⅛ oz., 25 cts.

MIMOSA

<i>pudica</i> , (Sensitive Plant) 1-4 oz., 15 cts.	50
--	----



A MILE OF MIGNONETTE, FLANKED BY POPPIES AND ASTERS ON OUR FARMS

MOMORDICA—see Gourds, page 34.

MOON FLOWER—see Ipomœa, page 37.

MORNING GLORY—see Convolvulus and Ipomœa, pages 32 and 37.

MOURNING BRIDE—see Scabiosa, page 45.

MUSK PLANT—see Mimulus, page 38.

	Per oz.	Per lb.
MYOSOTIS (Forget-me-not). Alpestris, blue, rose and white, each		
.	1-4 oz., 25 cts.	75
" Indigo blue, very fine	1-4 oz., 25 cts.	80
" Robusta grandiflora (Eliza Fonrobert)	1-4 oz., 30 cts.	1 00
" Victoria, sky blue, for pots	1-4 oz., 40 cts.	1 25
" Mixed	1-4 oz., 20 cts.	60
Palustris semperflorens everblooming blue	1-8 oz., 65 cts.	3 00
Perfection, extra large	1-16 oz., 50 cts.	7 00

NASTURTIUM, TALL (Tropæolum Majus).

	Per oz.	¼ lb.	Per lb.
Atropurpureum, dark crimson	\$0 10	30	1 00
" yellow-leaved	10	30	1 00
Coccineum, bright scarlet	10	30	1 00
Dunnett's Orange	10	30	1 00
Edward Otto, bronze, silky and glittering	10	30	1 00
Heinemanni, chocolate	10	30	1 00
Hemisphæricum, orange, very handsome	10	30	1 00
Jupiter, large golden yellow	10	30	1 00
King Theodore, black	10	30	1 00
Luteum, pale yellow	10	30	1 00
Prince Henry, marbled yellow and scarlet	10	30	1 00
Pearl, creamy white	10	30	1 00
Regelianum, purple-violet	10	30	1 00
Scheuerianum, straw-colored, spotted	10	30	1 00
Scheuerianum coccineum, scarlet striped	10	30	1 00
Schillingii, yellow, brown spotted	10	30	1 00
Schultzii, brilliant scarlet, dark-leaved	10	30	1 00
Vesuvius, brilliant salmon-rose	10	30	1 00
Von Moltke, blush rose	10	30	1 00
Variegated foliage, white-marbled leaves, mixed	15	50	1 50
Lobbianum, finest mixed	10	25	90
Fine mixed	10	25	75
Extra choice mixed from named sorts	15	30	1 00
Peregrinum (Canariense) (Canary Bird Flower)	40	1 50	4 50
Ivy-Leaved, Princess Juliana, rich golden orange	25		
" Emma Alida, golden yellow and orange	25		

TROPÆOLUM LOBBIANUM

Hybrids of Madame Gunther, splendid mixed 15 40 1 25

NASTURTIUM, DWARF (Tropæolum Nanum).

Tom Thumb Aurora, Salmon-rose, mottled and veined	15	40	1 25
Tom Thumb Beauty, orange and vermilion	15	40	1 25
" " Bronze-colored, distinct	15	40	1 25
" " Carters Scarlet	15	40	1 25
" " Chamæleon, variegated	15	40	1 25
" " Cloth of Gold, golden foliage	15	40	1 25
" " Cœrulea rosea	15	40	1 25
" " Crystal Palace Gem, Sulphur, Maroon spots	15	40	1 25
" " Dark crimson	15	40	1 25
" " Empress of India, Dark leaves and very dark crimson flowers	15	40	1 25
" " Golden King	15	40	1 25
" " Golden Queen	15	40	1 25



NASTURTIUM, DWARF (<i>Tropæolum</i>)—Continued.		Per oz.	¼ lb.	Per lb.
Tom Thumb King Theodore, very dark	\$0 15	\$0 40	\$1 25	
“ “ King of Tom Thumbs, brilliant scarlet	15	40	1 25	
“ “ Lady Bird Golden Yellow, flamed crimson	15	40	1 25	
“ “ Pearl, light cream color	15	40	1 25	
“ “ Prince Henry, marbled yellow and scarlet	15	40	1 25	
“ “ Regelianum, purplish violet	15	40	1 25	
“ “ Rose	15	40	1 25	
“ “ Ruby King, foliage very dark	15	40	1 25	
“ “ Scheuerianum coccineum	15	40	1 25	
“ “ Spotted, yellow, spotted with crimson	15	40	1 25	
“ “ Spotted King	15	40	1 25	
“ “ Yellow, brilliant	15	40	1 25	
“ “ Vick's Special Mixture from choicest varieties	15	40	1 25	
“ “ Dwarf Variegated Leaved	15	40	1 25	
“ “ Mixed varieties. . . Per 100 lbs., \$60.00	10	30	1 00	
NEMOPHILA—Mixed varieties	15			

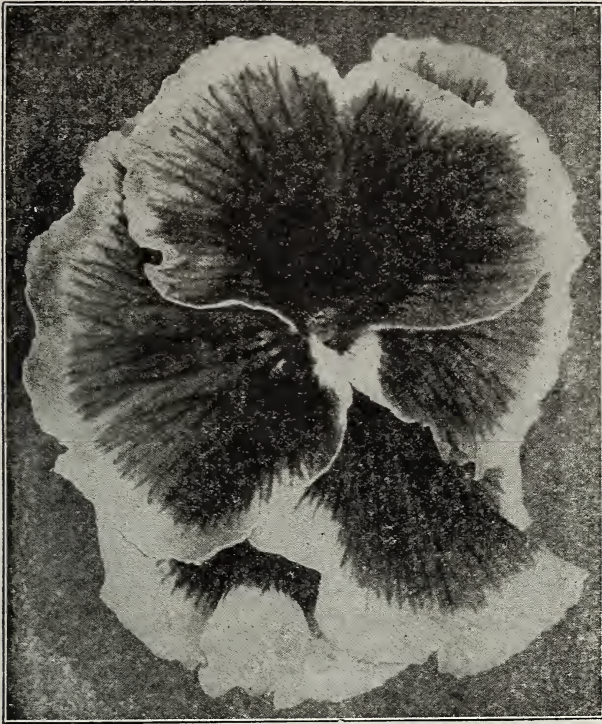
NICOTIANA

		Per oz.	Per lb.
Affinis large white flowers, very fragrant	1-4 oz., 10cts.	25	\$3 00
“ hybrids.	1-4 oz., 15cts.	35	4 00
Sanderæ , finest strain	1-4 oz., 15cts.	40	
“ hybrids.	1-4 oz., 15cts.	50	
Sylvestris	1-4 oz., 15cts.	50	

NIGELLA (Love-in-a-mist)

Damascena , double mixed Improved from Vick's farms.	1-4 oz., 10cts.	30	3 00
---	-----------------	----	------

All varieties of pansies offered on the following pages are first thoroughly tried out on our own trial grounds before they are catalogued and those that we list have proven themselves in this locality the very best of their class. Vick's Giant Superb Mixture is made up of the most superb varieties to be found in the pansy fields of America and Europe and several of these varieties could not be had separately for many times the value of this mixture. The special mixtures are listed on page 42



VICK'S GIANT FLOWERING PANSIES

Pansies are one of the most important spring crops of most florists and others who grow plants for the spring trade. Seed of dependable quality is unusually scarce. We have been fortunate in getting a fair supply of English grown stock of unusual quality and varieties that enter into our mixtures come from the section of England where the world's most noted pansies are grown. Many of these varieties if bought individually would cost you several times what you pay for the mixtures but by blending them in proper proportion with select strains of Giant Pansies we are able to offer in our Superb Mixture pansies of unusual merit. Our Masterpiece mixture is well worthy of the name it bears while our Peerless Mixture is the best value for the money that we know anything of. All of our mixtures as well as our named varieties are tried out on our own trial grounds before they are placed on the market and only those that come up to the standard of Vick Quality are ever catalogued.

We have dropped the old fashioned "Standard" or ordinary sized Pansies from our list of named varieties.

1-16 oz., 35 cts.; 1-8 oz., 60 cts.

Giant		Per oz.
" Adams, light blue	1-4 oz., \$0 85	\$3 00
" Bridesmaid, rose blotched fine	1-4 oz.,	85 3 00
" Emperor, blue, purple eye.	1-4 oz.,	85 3 00
" Fire King, golden yellow purple edge	1-4 oz.,	85 3 00
" Golden Queen, pure yellow, extra fine	1-4 oz.,	85 3 00
" King of the Blacks, extra fine strain	1-4 oz.,	85 3 00
" Lord Beaconsfield, purple-violet, shading to white	1-4 oz.,	85 3 00

PANSY—Continued

		Per oz.
Giant Madame Perret, extra, large flowers, rose and crimson shades.	1.4 oz.	85 3 00
“ Premier Lloyd George, formerly Prince Bismarck, light brown shades, with dark eye, fine	1.4 oz.,	85 8 00
“ Marshall Foch, formerly Prince Henry, new, darkest blue, extra large.		85 3 00
“ Ruby King, Red Shades	1.4 oz.,	60 2 00
“ Snowflake, extra fine pure white		60 2 00
“ Yellow, with dark eye	1.4 oz.,	85 3 00
“ White, with purple eye	1.4 oz.,	85 3 00
“ Choice Giant Flowered, mixed varieties	1.4 oz.,	75 2 75

MASTODON PANSIES.

Originated and grown in America. The largest strain of named Pansies ever produced. Offered in the following varieties:

Prices: 1-8 oz., \$1.10; 1.4 oz., \$2.10; 1.2 oz., \$4.00; 1 oz., \$7.50.

Mastodon, Adonis, Light Blue.	Mastodon, Madame Perret, Red Shades.
Mastodon, Black.	Mastodon, Madame Steele, Purple.
Mastodon, Bronze.	Mastodon, Panama Pacific, Yellow.
Mastodon, Grand Duke, White.	Mastodon, Parisian Yellow.
Mastodon, Prince Henry, Blue.	Mastodon, White.
Mastodon, Mixed. 1/8 oz., \$1.00; 1/4 oz., \$1.90; 1/2 oz., \$3.75; oz., \$7.00.	

PANSIES—Special mixtures.

		Per oz.	Per lb.
Bugnotts, superb blotched mixed	1.4 oz.,	85c.	\$3 00
Elite, Extra large flowering mixed choice English strain	1.8 oz., 60c.	1.4 oz.,	1 00 3 25
Masterpiece, new class of Giant Blotched varieties, fine rich colors	1-16 oz., 50c.; 1/8 oz., 75c.; 1/4 oz., \$1.25		4 50
Vick's Giant Superb, mixed, Florists' Choicest Strain	1-32 oz., 50c.; 1-16 oz. 85c.; 1/8 oz., \$1.50; 1-4 oz., \$2.50		8 00
Vick's Peerless, mixed.	1-32 oz., 30c.; 1-16 oz., 50c.; 1/8 oz., 75c.; 1-4 oz., \$1.25		4 00
Trimardeaux, Giant's mixed	1.4 oz.,	75	2 00
Standard varieties mixed			90

VIOLA CORNUTA (Tufted Pansy), Fine strain of our own growing. Perfectly Hardy

Dark Blue	1.8 oz., 45c.; 1.4 oz., 75c.;	2 50
Light Blue.	1.8 oz., 45c.; 1.4 oz., 75c.;	2 50
Mauve Queen	1.8 oz., 45c.; 1.4 oz.; 75c.;	2 50
Perfection White.	1.8 oz., 45c., 1.4 oz., 80c.;	2 80
Yellow	1.8 oz., 30c.; 1.4 oz., 50c.;	1 75
Mixed.	1.8 oz., 35c.; 1.4 oz., 65c.;	2 25

PAPAVER—see Poppy. Page 44.

PASSIFLORA, cœrulea, the most hardy of the Passion Flowers 1 00

PEAS, PERENNIAL (Everlasting Pea)

Latifolius, White.		50
“ Rose		50
“ Crimson		60
Mixed		40

PENNISETUM (Fountain Grass)

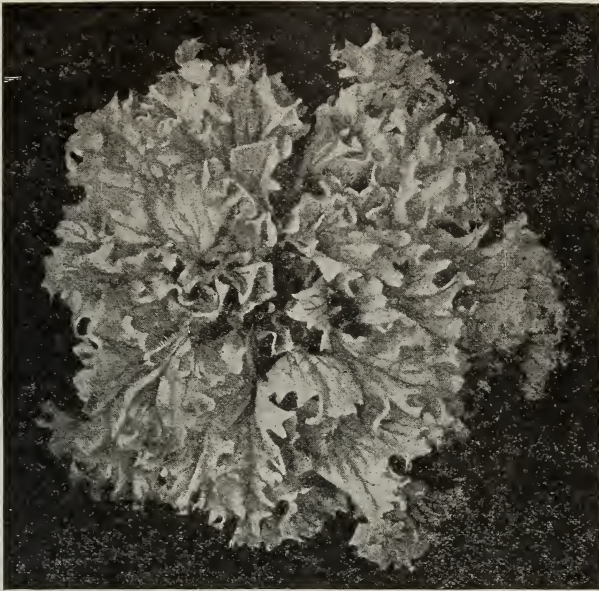
Longistylum	1.4 oz. 15c.	50
Rueppelianum, (Purple Fountain Grass)	1.4 oz. 15c.	50

PENTSTEMON

Cœruleus, Hardy, fine blue	1.4 oz. \$1 00	3 00
Barbatus (Perennial Red)	1.4 oz. 35c.	1 00

PERILLA (Bedding Plant)

Nankinensis—Foliage Bronze Purple	1.4 oz. 10c.	20
---	--------------	----



PETUNIA HYBRIDA

Per oz. Per lb.

Belle Etoile, beautifully striped and blotched	1-8 oz., 20c.; 1 4 oz., 35c.	\$ 1 00
Countess of Ellesmere, dark rose with white throat.	1 4 oz., 35c.	1 00
General Dodds, dark red	1 4 oz., 40c.	1 25
Extra choice mixed, superb strain	1-8 oz., 20c.; 1 4 oz., 35c.	1 00
Single bedding, Rosy Morn. Color, soft pink	1 4 oz., 60c.	2 00
“ “ Snowball	1 4 oz., 50c.	1 50
“ “ Blotched and striped	1 4 oz., 40c.	1 25
“ “ Mixed	1 4 oz., 40c.	1 25

Grandiflora, large-flowering single,

“ superbissima, fringed.	1-64 oz.	\$1.00
“ Giants of California	1-64 oz., 60c.	1-32 oz., 1.00
“ Vick's Choicest Ruffled Mixed, Our Own Special Strain. Extra Fine. Pkts. only 25c. each.		

Grandiflora, double large-flowering fringed,

“ Choice mixed, quality unsurpassed, 1000 seeds	\$1.50
---	--------

PHLOX DRUMMONDII—We grow large quantities of Phlox on our own farm, selecting the most brilliant colors.

Per oz. Per lb.

Grandiflora alba pura, pure white	1-4 oz. 35c.	1 10
“ Black Warrior, dark red	1-4 oz 35c.	1 10
“ Brilliant, deep pink shaded lighter at edges	35c.	1 10
“ Chamois Rose, salmon pink	1-4 oz. 35c.	1 10
“ Chamois alba oculata. Rose, with white eye	35c.	1 10
“ Coccinea, scarlet.	1-4 oz 35c.	1 10
“ Cream color	1 4 oz. 35c.	1 10
“ Isabellina (lutea), yellow	1 4 oz. 35c.	1 10
“ Kermesina alba oculata.	1 4 oz. 35c.	1 10
“ Kermesina Splendens	1-4 oz. 35c.	1 10
“ Rosea, White eye	1-4 oz. 35c.	1 10
“ Splendens, brilliant scarlet.	1-4 oz. 35c.	1 10
“ Stellata Splendens, scarlet white center	1-4 oz. 35c.	1 10
“ Striata, rose striped white	1 4 oz. 35c.	1 10
“ Violet, with white eye.	1-4 oz. 35c.	1 10
“ Extra Choice Mixed. This stock is extra fine, being a well balanced mixture of the most brilliant colors		75 12 00



ELEVEN ACRES OF ANNUAL PHLOX ON ONE OF OUR FARMS

PHLOX DRUMMONDII—Continued

	Per oz.	Per lb.
Star Phlox (Star of Quedlinburg), mixed	1-4 oz. 25c.	75
Nana compacta, Fireball, fiery scarlet	2	50
“ “ Snowball, pure white	2	50
“ “ Best dwarf varieties mixed	2	00

PHYSALIS FRANCHETI. Chinese Lantern plant $\frac{1}{4}$ oz., 15c. 50

PINK—see Dianthus. Page 33.

PLATYCODON—(see Campanula, page 29.)

grandiflorum, blue	1-8 oz. 25c.	1 00
“ white	1-8 oz. 25c.	1 00

POPPY—Many of these varieties are grown on our own farms.

California, see Eschscholtzia, on page 34.

SINGLE ANNUAL VARIETIES

Danebrog (Danish Flag), white cross on scarlet ground	15	1 50
Golden Gate. Single and semi-double flowers, in a great variety of colors	30	3 00
Miss Sherwood, satiny white and rose	15	1 50
Shirley, extra fine, our own growing	20	1 50
The Tulip, single scarlet	40	
The Bride, large pure white	20	

DOUBLE ANNUAL VARIETIES

American Flag, white striped	20	2 00
Carnation-Flowered, splendid, large, mixed.	1-4 lb., 50c.	15 1 25
Cardinal, new hybrid, in splendid mixture	20	
Mikado, white and scarlet striped	20	
Peony-Flowered, mixed	20	1 25
Ranunculus-flowered, dwarf	20	
White Swan, large purest white, fringed	20	
Vick's Florists Mixture, Single	20	2 50
“ “ Double	20	2 50
“ Special “ Single and Double	20	2 50

PERENNIAL VARIETIES

Excelsior Hybrids of the Oriental Poppy. The result of several years' careful selection. Ranges from the most delicate salmon to deep crimson		
	1-4 oz., 35c.	1 25
Oriental, darkest red, purple spots	1-4 oz., 20c.	75 8 00
Nudicaule, yellow	1-4 oz., 35c.	1 00
“ white	Iceland Poppies 1-4 oz., 35c.	1 00
“ orange	flower from May to October. 1-4 oz., 35c.	1 00
“ mixed	1-4 oz., 25c.	75

PORTULACA

	Per oz.	Per lb
Grandiflora , single, finest mixed.		50
“ double, choicest of all mixtures.		
. 1 16 oz., 25c.; 1-8 oz., 40c.; 1-4 oz., 75c.	\$2	00

PRIMULA

Obconica , grandiflora, mixed	1 64 oz., 35c.	
Forbesii , free-flowering, for pots; rosy lilac . . .	1-16 oz., 75c.	
Sinensis frimbriata . Choicest varieties, mixed	1 64 oz., 25c.; 1-32 oz., 50c.	
Malacoides . Lilac (Baby Primrose)	1-16 oz. 75c.	
Auricula , choicest, from prize flowers, Perennial	1-32 oz., 20c.	
Elatior . (Polyanthus), FIRST QUALITY , finest mixed, large-flowered		
Perennial	1-8 oz., 20c.	1 00
Elatior . (Polyanthus) gold-laced Perennial	1-8 oz., 50c.	
Vulgaris , the True English Yellow Primrose.	(Crop failure)	

PRIMROSE—see Primula.

PYRETHRUM

Roseum hybridum , single mixed	1-4 oz., 50c.	1 75
Roseum hybridum , double mixed	1-16 oz. 60c.; 1 8 oz., \$1 00	
Double White Feverfew (<i>Matricaria capensis</i>), . . .	1-4 oz., 15c.	30
Golden Feather , (true yellow)	1-4 oz., 15c.	50

RICINUS (Castor Beans)

Borboniensis arboreus , large leaves, stalk 10 feet high	15	1 25
Cambodgensis , leaves and stems nearly black	15	1 25
Sarguineus ,	15	1 25
Zanzibariensis , in finest mixture	15	1 00
Mixed varieties	15	1 00

RHODANTHE (Everlasting) mixed 1 4 oz., 15c. 50

RUDBECKIA Purpurea. Reddish purple 1-4 oz., 35c. 1 25
Newmani, hardy yellow 1/8 oz., 25c. 1 40

SALPIGLOSSIS Grown on our own Farm

Yellow , Pink, Purply Crimson, Scarlet, Violet, Yellow with white edge, Black Purple, Velvety Violet, Dark Scarlet, Velvety Red		
Light Blue with gold , Negro, Dark Garnet Red, Rosy Chamois, Purple Red Striped	1-4 oz., 35c.	1 25
Emperor , large-flowered, mixed.	1-4 oz., 30c.	1 00
Variabilis All colors, Mixed	1-4 oz., 25c.	75

SALVIA

America , Globe of Fire, new dwarf. 1-8 oz., 1 00	1-4 oz. 1 75	4 00
Ostrich Plume (new) (Crop failure)		
Patens , splendid sky blue 1-16 oz., 60c.; 1-8 oz., \$1.00		
Pratensis , perennial. Fine, blue flowers	1-8 oz., 10c.	25
Splendens , (true, large-flowered, scarlet)	1-4 oz., 50c.	1 50
“ Bonfire (Clara Bedman) . 1-8 oz., 45c.	1 4 oz., 75c.	2 50
Zurich , early dwarf, extra fine 1-8 oz., 75c.	1-2 oz., 2.00	4 00

SCABIOSA (Mourning Bride).

Tall double , mixed colors	1-2 oz. 20c.	30	2 50
Double tall white (Snowball)	1-2 oz. 30c.	50	
Double yellow , tall	1-2 oz. 30c.	50	
Double Lilac , Tall	1-2 oz. 30c.	50	
Dwarf double , mixed colors	1-2 oz. 25c.	40	
Fire Scarlet	1-2 oz. 30c.	50	
Royal Purple	1-2 oz. 30c.	50	
Caucasica Lilac Perennial	1-4 oz. 75c.	2 00	

SCHIZANTHUS—Mixed Hybrids 1-4 oz. 25c. 75

“ **Wisetonensis**, splendid pot plant 1-16 oz. 20 . 1 50

SENSITIVE PLANT, *Mimosa pudica*... . 1-4 oz., 15c. 40

SHASTA DAISY—see Daisy. Page 33.

SMILAX BOSTON *Myrsiphyllum asparagoides*, 1-4 oz., 15c., 30

SNAPDRAGON—see *Antirrhinum*. Page 28.

SOLANUM CAPSICASTRUM NANUM Jerusalem Cherry 40

Best Spencer Sweet Peas

Progressive florists are growing increasing quantities of the splendid large-flowering Spencer varieties of Sweet Peas. We have made thorough trials of all the newer varieties with especial reference to their value for market-purposes. We believe that the carefully selected list offered below includes all of the Spencer Sweet Peas now in cultivation, that are of value to the commercial grower.

	Per oz.	¼ lb.	Per lb.
Agricola Spencer, White flushed with heliotrope	\$0 30	\$0 95	\$3 50
America, Spencer, striped red and white	30	1 00	3 75
Asta Ohn, Spencer, light lavender	30	95	3 50
Captain of the Blues, Spencer, clear purplish blue	35	1 25	4 80
Clara Curtis, Spencer, cream or primrose color	35	1 25	4 00
Constance Hinton, Large white	50	1 50	5 00
Countess Spencer, rich pink, deeper at edges	30	95	3 50
Dainty, Spencer, delicate light pink	35	1 25	4 00
Dobbie's Cream, primrose. Best of its class	50	1 50	5 50
Elfrida Pearson Spencer, mammoth light pink	50	1 50	5 00
Evelyn Hemus, Spencer, buff and rose	30	95	3 50
Fiery Cross, intense orange-scarlet	50	1 75	6 00
Florence Morse, Spencer, clear light pink	35	1 25	4 00
Geo. Herbert, Spencer, rich rose-crimson	35	1 25	4 00
Helen Pierce. Clear blue marbled on ivory white	40	1 25	4 80
Hercules, a large-flowering Countess Spencer	35	1 25	4 00
Illuminator, gorgeous orange-salmon	50	1 75	6 00
King Edward, Spencer, crimson-scarlet	40	1 25	4 50
King W. white	50	1 60	6 00
Margare Atlee, Spencer, pink-cream, suffused with salmon	35	1 25	4 00
Margaret Madison, Spencer, clear azure blue	50	1 50	5 00
Miriam Beaver, soft shell pink and salmon	40	1 25	4 50
Mrs. Cuthbertson, standard rose - pink wings, nearly white	40	1 35	5 00
Mrs. Hugh Dickson, Spencer, mammoth apricot and buff	35	1 25	4 00
Nubian, Spencer, rich maroon	35	1 25	4 00
Primrose, Spencer.	35	1 25	4 80
Rosabelle, fine large rose-colored flower	40	1 25	4 50
Royal Purple, large flower, rich purple	40	1 25	4 50
The President, brilliant scarlet	50	1 60	6 00
Thos. Stevenson, Spencer, orange scarlet	50	1 60	6 00
Tom Bolton, dark maroon	40	1 25	4 50
Vermillion Brilliant.	40	1 25	4 50
White Spencer, splendid pure white	50	1 60	6 00
Wedgewood, the best blue	40	1 25	4 80
Yarrowa, bright rose pink, creamy base, early.	75	2 50	7 50
Spencer mixed	15	50	1 75
Cupid Dwarf, mixed	20	60	2 00

Choicest Grandiflora Sweet Peas

	Per ¼ lb.	Per lb.
America, white, striped scarlet	\$0 40	\$1 25
Aurora, white, flaked orange-salmon, hooded	40	1 25
Dorothy Eckford, large, pure white	30	1 00
Gladys Unwin, clear, bright, light pink, large waved petals	40	1 25
Hon. Mrs. E. Kenyon, primrose, fine	40	1 50
King Edward VII. a large bright red or crimson-scarlet self	40	1 25
Lady Grisel Hamilton, lavender	40	1 50
Lovely, shell-pink, extra fine flower	25	1 00
Lord Nelson, Dark blue.	40	1 25
Miss Willcott, large orange pink	40	1 25
Mrs. Geo. Higginson, delicate lavender	40	1 25
Nora Unwin, a giant white, extra fine	40	1 50
Othello, dark glossy maroon, extra fine	30	1 00
Prima Donna, soft, clear pink	40	1 25
Prince of Wales, Rose crimson	40	1 50
Vick's Invincible Mixture	20	60

Early or Winter-Flowering SPENCER SWEET PEAS

The growing of Early Winter-Flowering Sweet Peas has now become as much a part of the regular growing plan of all florists as is the carnation bed. Although there are a few recognized varieties that florists have used for a number of years, new sorts of proven merit are being introduced from year to year and the following list contains several of the best of these new introductions as well as a number of the best of the older varieties. Even where you do not have space to grow Sweet Peas in the greenhouse, if you will plant these extra early flowering varieties in a warm, sunny location out-of-doors during January or February you will get your flowers unusually early in the spring.

Sweet Peas sown in greenhouses need more care in planting than those sown in the open ground in order to prevent damping off. Sow very thinly and thin out to about three inches in the row. It is best to sow the tender varieties, such as whites and light pinks, in sand and transplant. Sow ninety to one hundred days ahead of the time that you want the bloom. For Christmas blooming the seeds should be sown about the middle or latter part of September.

Early-Flowering Sweet Peas bloom in one hundred to one hundred and ten days in the open ground under normal conditions. Time required to bring into bloom in the greenhouse will vary more or less according to the amount of sun light and heat.

Our customers tell us that Winter Flowering Sweet Peas are one of their best paying crops and a row through the center of a wide ground bench is a good investment.

Prices of the following varieties.

Per oz., 85 cts.; per 1-4 lb., -3.00.; per lb., \$10.00.

Asta Ohn. Fine lavender. Same form as late-flowering Asta Ohn.

Blanche Ferry. Pink and white. Standards bright crimson. Wings white, tinted pink.

Cream. A primose Spencer of fine shape and size, similar to late-flowering Dobbie's Cream.

Heather Bell. Rich lavender mauve. Flowers are very large borne in threes and fours on long stems.

Liberty. Brilliant crimson. Good form and size.

Lavender Pink. Large flowers borne in threes and fours on large stems.

Melody. Rose pink on white ground.

Morning Star. Orange scarlet. Flame color standard with orange pink wings.

Rose Queen. Unusually long stem, large flowered rose pink..

Snow Flake. Magnificent early white, a superb form, three or four flowers on long stems.

Song Bird. Pale rose pink with white ground. Flowers profusely. Long stems.

Venus. Standard white, slightly flesh pink. Very fragrant.

Prices of the following varieties.

Per oz., 75 cts.; per 1-4 lb., \$2.50.; per lb., \$7.50.

Mrs. A. A. Skatch. Clear pink. One of the best of the pink Spencers.

Spring Maid. Crimson pink. A very beautifully shaded flower. Strong grower, long stem, prolific.

Warbler. Extra large, beautifully formed, rich mauve purple.

Yarrowa. Best Spencer form. Bright rose pink with light wings.

GRANDIFLORA TYPE

Prices all Varieties :

Per oz., 20 cents ; 1-4 lb., 50 cents.

Christmas White (Mont Blanc).

Earliest of All. Pink and white.

Mrs. C. H. Totty. Lavender.

Mrs. F. J. Dolansky. Blue and pink.

STOCK

Winter Flowering, Ten Weeks

	Per oz.	Per lb
White	1-4 oz., \$0 60	\$2 00
Carmine Rose	1-4 oz., 60	2 00
Blood Red	1-4 oz., 60	2 00
Snow Flake	1-4 oz., 60	2 00
Princess Alice (White)	1-4 oz., 60	2 00
All Colors Mixed	1-4 oz., 50	1 75
Largest Flowering Dwarf Pyramidal	1-4 oz., 60	2 00

Beauty of Nice, Early Large Flowering

Flesh Pink	1-4 oz., 75	2 50
Giant white	1-4 oz., 75	2 50
Giant Yellow	1 4 oz , 75	2 50
Giant Crimson	1-4 oz., 75	2 50
Queen Alexandra (rosy lilac)	1-4 oz., 75	2 50
Mixed	1-4 oz., 60	2 00

Dresden Perpetual

Empress Augusta Victoria	1-4 oz., 75	2 25
Rose	1-4 oz., 60	2 00
Blue	1-4 oz., 60	2 00
Blood Red	1-4 oz., 60	2 00
Yellow	1-4 oz., 60	2 00
Mixed	1-4 oz., 50	1 75

STOKESIA *Cyanea*, (Cornflower Aster) 1-4 oz., 35 1 00

SUNFLOWER—see *Helianthus*. Page 34.

SWAN RIVER DAISY—see *Brachycome*. Page 29.

SWEET SULTAN—see *Centaurea*. Page 31.

SWEET WILLIAM

Holborn Glory, extra large flowers, <i>oculata marginata</i>	50	\$3 50
Dunnett's dark Crimson	50	3 50
Double White	1 4 oz., 50c.	1 50
Single White	40	3 00
Double, finest mixed	60	4 00
Single, finest mixed	35	2 50
Pink Beauty	1-4 oz., 30c.	1 00 8 00
Scarlet Beauty	1-4 oz., 30c.	1 00 8 00

THERMOPSIS

Caroliniana, perennial	\$0 20	\$2 00
----------------------------------	--------	--------

THUNBERGIA

\$0 60 6 00

TROPÆOLUM (See *Nasturtium*, page 39).

VERBENA HYBRIDA

Aricula Flowered	1/8 oz., 25c.	1 50
Candidissima, mammoth pure white	1/8 oz., 25c.	1 50
Scarlet Defiance, true, excellent for bedding	1/8 oz., 25c.	1 50
Cœrulea, blue shades	1/8 oz., 25c.	1 50
Pink	1/8 oz., 25c.	1 50
Striped	1/8 oz., 25c.	1 50
Purplish-violet	1/8 oz., 25c.	1 50
Yellow	1/8 oz., 25c.	1 50
Mammoth mixed, all colors in finest mixture	1/8 oz., 25c.	1 50
Extra fine mixed	1/8 oz., 20c.	1 00

VINCA

	Per oz.	
Alba pura, pure white.	1-4 oz., 25c.	\$0 75
Delicata, a new color; beautiful, soft, delicate pink	1-8 oz., 15c.; 1-4 oz., 25c.	75
Rosea, rose.	1-4 oz., 25c.	75
Rosea alba, white, rose center	(Sold out)	
Mixed colors	1-4 oz., 20c.	60

VIOLA

Viola cornuta, Tufted Pansies, finest mixed. See page 42.

WALLFLOWER

Finest double, tall sorts, mixed.	1-16 oz., 25c.	3 00
Finest single annual varieties, mixed	1-4 oz., 10c.	30

WILD CUCUMBER Per oz. Per lb.
ZINNIA Double Giant, (Grandiflora Robusta.) \$0 15 \$1 50

We take special pride in our strain of Giant-Flowering Double Zinnias. The flowers are full double and the separate colors come true to name.

Double white, purple, rose, scarlet, yellow, striped orange and crimson, each 1-4 oz., 25c. \$0 75

Giant Zinnia, mixed, a distinct class of enormous flowers.

Grandiflora robusta plenissima, mixed. 1-4 oz., 20c. 60

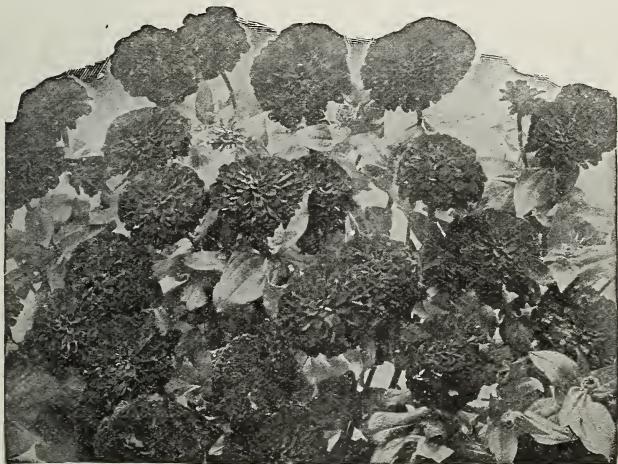
Double, choicest mixed 35

Curled and Crested, finest mixed 1-4 oz., 15c. 50

Lilliput, small very double flowers; charming class for bouquets; mixed colors 1-4 oz., 15c. 50

New Dahlia Flowered Zinnia, The largest and most gorgeously colored Zinnias grown, Flowers resemble an immense dahlia and the shading of colors are unusually attractive. †

Mixed Colors 1/8 oz., 50c . . . 1/4 oz., 75c . . . 1 oz. \$2 00



ZINNIA

VICK'S ASTER OFFERINGS

See pages 25, 26 and 27 for list of varieties.

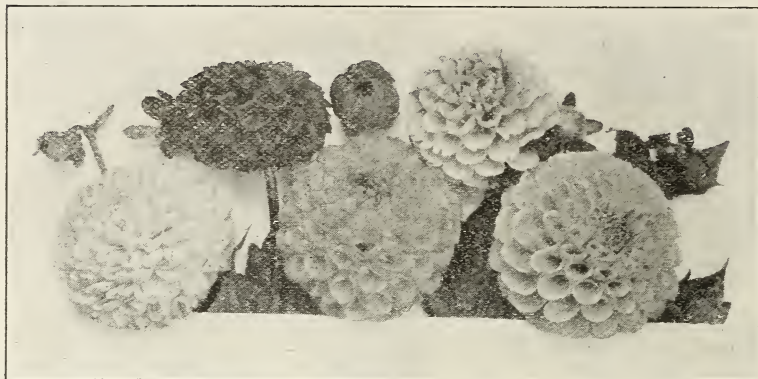
Florists' Offer No. 1—For the benefit of florists who want only a small quantity of each variety for trial purposes, we offer one retail packet each of any six of our newer varieties, your choice, including our booklet, "How to Grow Asters," regular price 10 cents for \$1.25

Florists' Display No. 2—One packet each of any twelve varieties, twelve packets in all, including "How to Grow Asters," \$2.00.

Florists Exhibition Offer No. 3—Twenty five packets, your choice of any color or variety offered in this catalogue, not more than one packet of each kind, including our booklet, "How to Grow Asters," \$3.50.

Florists' Prize Offer No. 4—Fifty packets, your choice, one each of any fifty kinds mentioned in this catalogue, including all our novelties, our booklet, "How to Grow Asters," and a handsome lithographed picture of Asters with no wording or advertising of any sort, \$6 00.

Florists' Gold Medal Offer No. 5—For florists who desire to make the largest possible displays in varieties and colors of high grade Asters, we offer one packet each of seventy-five varieties of Asters, including all that are offered in this catalogue and additional varieties from our retail catalogue, seventy-five packets in all, amounting to nearly \$15.00 at regular retail prices, our booklet, "How to Grow Asters," and the Aster picture described above, \$7.50.



VICK'S DAHLIAS

CACTUS VARIETIES

Cactus Dahlias have large, loosely formed flowers. The long, narrow petals are variously rolled or twisted. The flowers, many of which are nodding on slender stems, are the most graceful and artistic of all the Dahlias.

Dozen, \$2.00; 100, \$15.00; except as noted.

Not less than 6 at the dozen rate; 25 at 100 rate.

Countess of Lonsdale. Rich salmon, tinted apricot. Hardy and very free flowering.

Kriemhilde. Exquisite combination of ivory white and pink. "Queen of the Cactus Dahlias."

Matchless. Dark, velvety maroon.

J. H. Jackson, Largest and best Dark Red.

Princess. Pure white.

Volker. Clear lemon yellow.

DECORATIVE VARIETIES

Decorative Dahlias are intermediate between Cactus and Show. The massive flowers are not so globular as the Show and the petals are broad and somewhat flattened.

Dozen, \$1.50; 100, \$10.00. Except as noted.

Emily. Pink and White.

Sylvia. White, Heavily edged pink.

Jack Rose. Rich velvety crimson, early and free flowering. One of the most satisfactory of all. See illustration on opposite page.

Lord Lyndhurst. Rich glowing scarlet. Fine long stemmed flowers.

C. W. Bruton. Large Canary Yellow.

Dozen, \$1.75; 100, \$12.00.

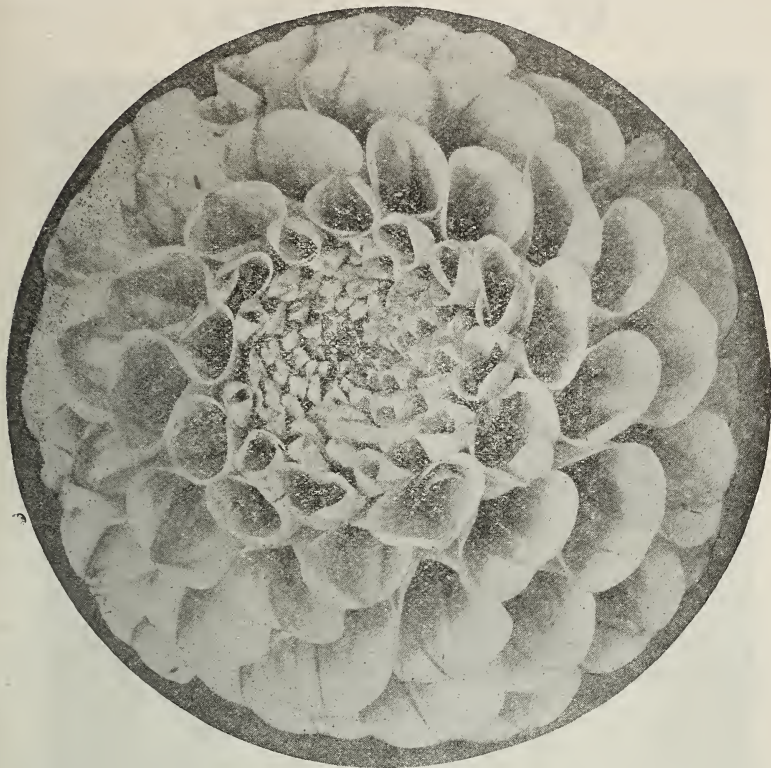
Princess Juliana. Finest White.

Dozen, \$2.00; 100, \$15.00.

VICK'S MIXTURE OF NAMED DAHLIAS

A Fine Mixture of the Leading Named Varieties Listed Above—Cactus, Decorative and Show.

Dozen, 1.00; 100, \$8.00.



JACK ROSE DAHLIA

Jack Rose. One of the best of the Decorative Dahlias. Flowers medium size and produced in great profusion. They bloom continuously over a long season and are unexcelled for decorative purposes. Color bright Carmine overlaid Violet.

SHOW VARIETIES

The old fashioned double Dahlia. Ball-shaped flowers; the petals quilled or tubular. As a class they are more formal than the Cactus or Decorative. They still retain their old time popularity, on account of their long stiff stems and their lasting qualities as cut flowers.

Dozen, \$1.50, 100, \$10.00.

Ada Tiffin. Light peach, tinged with rose.

Arabella. Pale primrose, tipped lavender and shaded rose. A charming color and an early, free blooming flower.

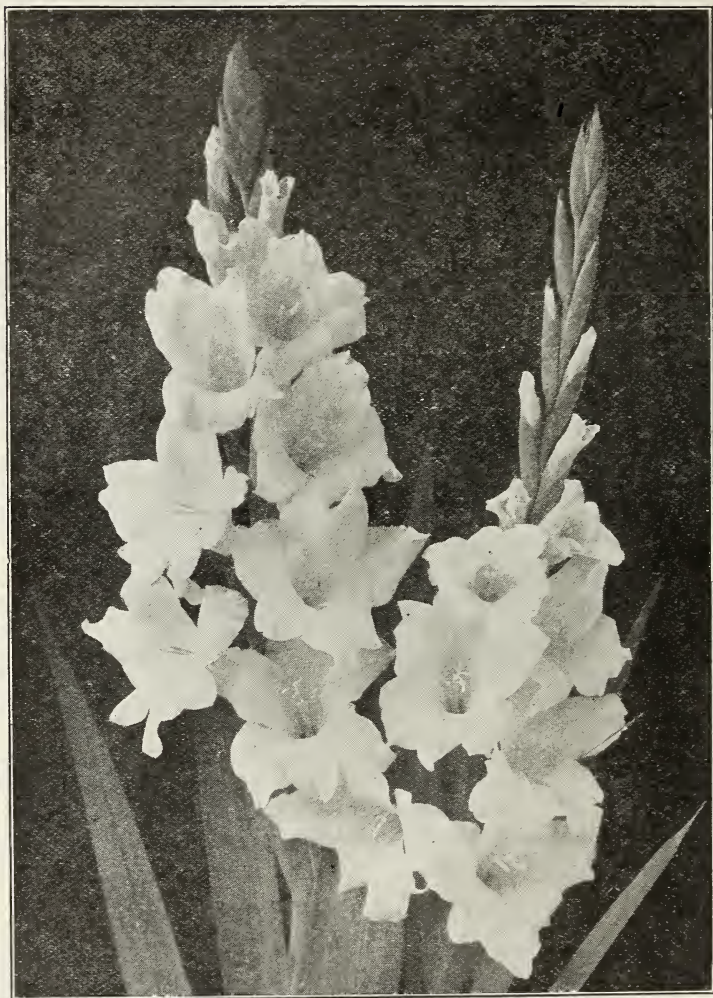
Bird of Passage. White, tipped with pink.

Miller's Red. Dark crimson scarlet. Large and free flowering.

Red Hussar. Brilliant glowing scarlet. Lighter shade than Miller's Red and not quite so large. Free flowering.

Red Warrior. Rich Crimson scarlet, full to the center, very free blooming.

VICK'S GLADIOLI



PEACE GLADIOLI

Per doz. Per 100. Per 1000.

America. The most popular gladiolus yet introduced. Splendid flowers of a beautiful clear flesh pink color .	\$0 60	\$3 00	\$25 00
Annie Wegman. A clear yellow flower marked with a blotch of dark crimson.	75	5 00	45 00
Attraction. Flowers very large. A soft shade of carmine rose. The large throat is pure white	75	4 75	40 00
Augusta. Fine white, faintly tinged with lavender. Free bloomer and a long season	50	3 50	30 00
Peace. Pure white penciled mauve. Strong grower. . . .	60	4 00	35 00

	Per doz.	Per 100	Per 1000
Baron Hulot. Violet blue. Dark and velvety. Best of the blues	1 00	7 50	65 00
Brenchleyensis. Vermilion-scarlet. Fine old variety. Early, vigorous and free bloomer	75	5 00	45 00
Canary Bird. Clear canary yellow, without markings. The best yellow	1 25	8 00	
Chicago White. Well known and very popular white, lavender markings in throat	55	3 50	30 00
Holley. Delicate rose, with white blotch, extra early and very popular	55	3 50	30 00
Ida Van. Beautiful deep salmon-red or flaming orange-pink. Very rich color	90	6 00	50 00
Independence. A brilliant rose pink with richly marked throat; spikes long and strong; one of the best	60	3 00	25 00
Jean Dieulafoy. Large flower of cream pink, blotched crimson in throat	1 00	8 00	
May. Beautiful light flesh-pink	50	3 00	25 00
Mrs. Beecher. Immense broadly open flower of deepest crimson. Scarlet with white throat	1 00	7 00	
Mrs. Francis King. Extremely vigorous, long spikes, bright scarlet	50	3 00	25 00
Mrs. Frank Pendleton. Very large. Salmon-pink with carmine blotched throat	75	4 75	40 00
Niagara. Immense flowers of soft primrose yellow slightly tinted rose, pink in throat	60	4 00	35 00
Primulinus. The flowers are small, of a primrose-yellow color and very early	1 75	12 00	
Princepine. Immense broadly opened flowers of clear brilliant scarlet	75	4 75	40 00
Shakespeare. Light pink suffused with carmine	75	5 00	
Schwaben. Sulphur yellow, dark blotch in center	1 00	6 50	55 00
War. Deep blood red	1 00	6 50	55 00

GLADIOLI MIXTURES

Vick's Named Mixtures. This is a mixture of over 150 named varieties to which we are adding every year. It comprises every class, and will furnish a profusion of bloom from July until frost. Many of these varieties cost us several times as much as we charge for the mixed.

Dozen, 50 cents; 100, \$3.00; 1,000, \$25.00.

Choice Mixed. All colors in fine assortment.

Dozen, 50 cents; 100, \$2.75; 1,000, \$22.50.

VICK'S HYBRID GLADIOLI

In Mixtures Only

Light and White Hybrids. Beautiful collection of light and dainty shades; very fine for florists' use. Dozen, 50 cents; 100, \$3.00; 1,000, \$25.00.

Red Hybrids. All shades of red, scarlet and crimson.

Dozen, 50 cents; 100, \$2.75; 1,000, \$22.50.

Mixed Hybrids. All shades in grand mixture.

Dozen, 50 cents; 100, \$3.00; 1,000, \$25.00.

Waterville, Me. Oct. 14, 1920.

*I have had wonderful results from my purchase of Gladioli Bulbs
Mrs. F. A. Wing, 13 Morrill Ave.*

Kittery Point, Me. Feb. 15, 1921.

I have had seeds and bulbs from you for over forty years. They have always been up to date and alright.

Margaret Amee.

Tender Bulbs and Tubers

	Per doz.	Per 100
Amaryllis Johnsoni , first size each, 25 cents	\$2 60	\$20 00
<i>Formosissima</i> (Jacobean lily)	1 25	8 00
<i>Chlidanthus fragrans</i>	1 25	8 00
Caladium <i>esculentum</i> , 5—7 inches	60	4 50
" medium size, 7—9 inches	85	6 50
" extra large size, 9—11 inches	1 75	12 00
" mammoth size, 11—12 inches	2 00	15 00
Calla , Spotted (<i>Richardia albo-maculata</i>).	2 60	20 00
Cannas ,—Dormant roots. <i>Alemania</i> , Alphonse Bouvier, Burbank, Charles Henderson, Florence Vaughan, Mademoiselle Berat, Pres. Faivre, Robusta, per 1000, \$25.00	55	3 50
Alsace, Cinnabar, David Harum, Evolution, Fairfield, Italia, J. D. Cabos, Jean Tissot, Mme. Crozy, Secretary Chabanne, Souvenir de Antoine Crozy per 1000, \$30 00	60	4 00
Brandywine, Beaute Poitevine, Egandale, King Humbert, President Meyer, Parthenope, Pennsylvania, Queen Charlotte, Semaphore	75	5 00
Pot Plants of the above furnished in season	1 50	10 00



Vick's Cannas are the best that can be grown.

	Per doz.	Per 100.
Giant Ismene, a beautiful white Amaryllis	1 50	\$12 00
Hyacinthus candicans , first size per 1000, \$20.00	50	3 00
Madeira Vine , extra large selected tubers " " \$12.00	40	2 00
Oxalis , Deppii and lasiandra " " \$5.00		1 00
Tuberose , Double Pearl, 4 to 6 inches " " \$30.00	50	3 50

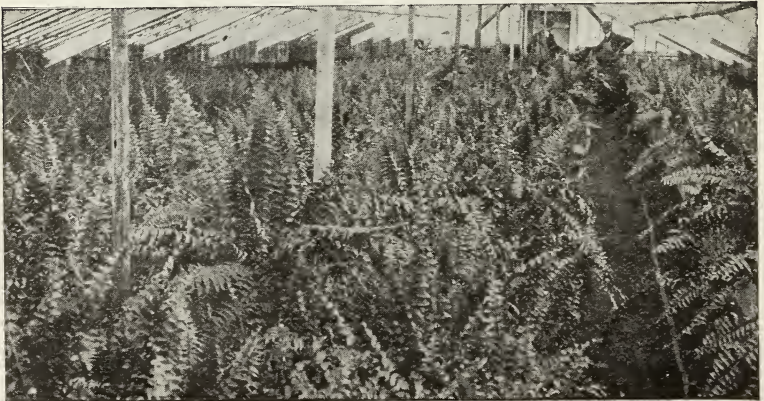
Vick's Tender Plants

Abutilons , in variety	\$0 75	\$5 00
Achania Malvaviscus	75	5 00
Alternantheras , in variety per 1000, \$35.00	60	4 00
Asparagus Sprengeri , 3 inch pots	1 25	8 00
" Plumosus nanus , 3 inch pots	1 25	8 00
Begonias (flowering sorts)—See G. and F. Guide, page 101	85	6 00
Rex varieties , 2½ inch pots	1 50	12 00
Calceolaria , Creole Queen	85	6 00
Calla , Little Gem	75	5 00
Cannas . Pot plants are ready about April 1st. For list of varieties see "Tender Bulbs and Tubers," page 54.	1 50	10 00



REX BEGONIA

	Per doz.	Per 100
Carnations —See Garden and Floral Guide, page 101	85	6 00
Carnations, Rooted Cuttings ready in Feb.	Market	Prices
Carex Japonica, variegata	75	5 00
Chrysanthemums —See Garden and Floral Guide, page 100.	75	5 00
Hardy Pompons	75	5 00
Coleus —See Garden and Floral Guide, page 101		
General collection.	75	5 00
Cuphea platycentra.	75	5 00
Cyperus altermfolius, 2½ inch pots	75	5 00
Dracæna indivisa, 4 inch pots	2 75	20 00
" " 5 " "	4 35	35 00
Ferns —Boston . . 2½ inch pots, strong	1 25	8 00
Whitmani. . . . " " " "		(Sold out)
Teddy, Jr. . . . " " " "	1 25	8 00
Scotti. " " " "		(Sold out)
Assorted, for fern dishes, from 2½-inch pots	85	6 00
Fuchsias —General collection, see G. and F. Guide, page 102	75	5 00
Feverfew, Little Gem, White	75	5 00
Geraniums, in variety, 2½-inch pots	85	6 00
" 3-inch pots	1 25	8 00
" 3½-inch pots	1 75	12 00
Heliotropes, in variety. Lady Cook, Madam de Blonay.	75	5 00
Ivy, German	75	5 00
Isolepis gracilis	75	5 00
Ipomœa Bona Nox (Moonflower) and Leari	75	5 00
Jasminum grandiflorum	75	5 00
Lantanas, in variety, see Garden and Floral Guide, page 102.	75	5 00
Lemon, Ponderosa, young plants.	1 75	12 00
Lemon Verbena	75	5 00
Manettia Vine.	75	5 00
Othonna crassifolia.	60	4 00
Otaheite Orange, 3 inch pots	1 75	12 00



FERNS IN ONE OF OUR GREENHOUSES

	Per doz.	Per 100
Passiflora, Constance Elliot	75	5 00
Primroses, Mexican	75	5 00
Petunias, Vick's Ruffled Giants, extra fine	85	6 00
Pilea serpyllifolia or Artillery Plant	75	5 00
Pilogyne suavis (Melothria punctata)	75	5 00
Roses, Monthly, 3 inch pots	2 00	15 00
Salvia, splendens and Clara Bedman	75	5 00
Eliazbeth Dunbar, White, 2½ inch pots	75	5 00
Smilax	75	5 00
Swainsonia Alba	75	5 00
Vinca major variegata, 2½ in. pots; field rooted, extra strong, one to three leads	75	5 00
" " " 3½ " " 	1 50	12 00
" " " 4 " " 	1 75	13 00
" " " strong, fall rooted cuttings . 1000, \$20.00	50	2 25

Hardy Plants, Bulbs and Roots

Our Perennials are all Strong, Field Grown

	Per doz.	Per 100
Achillea, The Pearl and Millefolium roseum	\$1 75	\$12 00
" Serica and tomentosa	1 75	12 00
Anchusa Italica, Dropmore Variety. One of the best blue-flowered hardy plants in cultivation	1 75	12 00
Alyssum, saxatile compactum	1 50	10 00
Aegopodium Podagraria variegatum	1 50	10 00
Agrostemma Flos-Jovis	1 50	10 00
Anemone, Whirlwind, Queen Charlotte and Japonica alba	(Sold out)	
Anthemis tinctoria	1 50	10 00
Aquilegia, six varieties	1 75	12 00
Arabis alpina	1 75	12 00
Armeria splendens (Thrift)	1 50	10 00
Artemesia Lactiflora	(Sold out)	
Asters, assorted (Michaelmas Daisy)	1 50	10 00
Boltonia asteroides, Latisquama	1 50	10 00
Campanula, persicifolia, persicifolia alba, Canterbury Bell, carpat- ica, blue and white	1 50	10 00
" pyramidalis, White and Blue,	1 50	10 00
Cerastium tomentosum	(Sold out)	
Chives	1 50	10 00
Cinnamon Vine tubers 4 to 6 inches.	60	4 00
" " " 6 to 9 " 	75	5 00
" " " 8 to 12 " 	85	6 00
Clematis Paniculata, 2 ½ in. pots	75	5 00
Coreopsis lanceolate grandiflora	1 75	12 00
Delphinium, belladonna, formosum, formosum collestinum, Bee Larkspur, Chinese, per 1,000 \$110.00.	1 75	12 00
Digitalis, (Foxglove)	1 75	12 00
Erianthus Ravennæ	1 50	10 00
Eulalia Japonica variegata, gracillima univittata and zebrina	1 50	10 00
Funkia Japonica, light blue, with narrow foliage	1 50	10 00
" subcordata grandiflora, white	2 00	15 00
" undulata media picta	1 75	12 00
Gaillardia grandiflora,	1 75	12 00
Genista tinctoria, bright yellow pea-shaped flower	1 50	10 00

	Per doz.	per 100
Gypsophila paniculata	1 75	12 00
Helenium autumnale superbum , golden yellow flowers, late summer and fall, 5 to 6 feet	1 50	10 00
Helianthus , lataefrons, Maximilliana, multiflorus plenus and rigidus	1 50	10 00
Melianthemum vulgare , suitable for border or rockery	1 50	10 00
Hemerocallis , flava, Yellow Day Lily, (Lemon Lily)	1 75	12 00
" dumortieri, bronze yellow	1 75	12 00
" Midendorfi, chrome yellow	1 75	12 00
Hibiscus , Hardy Crimson Eye	1 75	12 00
" militaris	1 75	12 00
" Moschentos	1 75	12 00
Hollyhock , Double	1 25	8 00
" Allegheny	1 25	8 00
Iris Kämpferi , named	1 50	10 00
" " mixed, extra heavy	1 50	10 00
" Germanicica, mixed	85	6 00
" " named	1 00	7 00



IRIS

The Iris is yearly becoming more popular. They are easy to handle adapted to nearly all soils and climate and can be used by the landscape gardener along walks, next to houses, under trees and in positions where no other plants will thrive.

	Per doz.	Per 100
Lavender (pot plants)	\$1 00	\$7 00
Lamium purpureum	1 50	10 00
Lilies, auratum, extra strong bulbs.	3 50	25 00
Canadense	2 00	15 00
Elegans Atrosanguineum	2 40	18 00
" Batemani	2 40	18 00
" Best Light Red	2 40	18 00
" Incomparable	2 40	18 00
" Wallacei	2 40	18 00
" Mixed	2 40	18 00
Longiflorum Giganteum	2 50	20 00
Pardalinum	2 00	15 00
Speciosum album	2 50	20 00
" Melpomene	2 50	20 00
" Rubrum	2 50	20 00
" Magnificum	2 50	20 00
Superbum	1 75	12 00
Tigrinum splendens, Single Tiger	2 40	18 00
" " fl. pl. Double Tiger	2 40	18 00
Lobelia cardinalis, rich, fiery cardinal red	1 75	12 00
Lupinus polyphyllus	1 50	10 00
Lychnis, Chalcedonica and Viscaria splendens fl. pl.	1 75	12 00
Lysimachia clethroides, pure white	1 75	10 00
Lythrum roseum superbum	1 75	12 00
Monarda didyma	1 75	12 00
Myosotis (Forget-me-not) alpestris and palustris	85	6 00
Pansies. Extra fine strains, strong blooming plants	50	3 00
Papaver orientale, brilliant scarlet	1 75	12 00
Pardanthus Sinensis. Blackberry Lily	1 75	12 00
Pentstemon coerulea	1 75	12 00
Perennial Pea, red, pink and crimson	1 75	12 00
Peonies, fine collection. See Garden and Floral Guide, page 88.	3 25	25 00
" White	3 25	25 00
Perennial Phlox, 2 inch pot plants, ready in April	75	5 00
" " named varieties, field grown, white, pink and purple.	1 75	12 00
Phlox subulata, white, pink Eye.	1 00	7 00
Pinks, assorted varieties, 2½ inch pots	60	4 00
" " " clumps	1 75	12 00
Platycodon grandiflorum, blue and white	1 75	12 00
Physostegia Virginica, white and bright pink	1 75	12 00
Pyrethrum, mixed colors	1 75	12 00
Rudbeckia, Golden Glow	1 75	12 00
" Newmani and purpurea	1 75	12 00
Sage, Broad-leaved, pot plants	85	6 00
Salvia pratensis, flower spikes of deep blue	1 75	12 00
Sedum, in variety	1 75	12 00
Shasta Daisy, strong field grown	1 75	12 00
Spirea, herbaceous. Palmata Elegans	(Sold out)	
Stokesia cyanea	2 00	15 00
Sweet William, assorted varieties	1 00	7 00
Thermopsis Carolinian;	1 75	12 00
Veronica spicata, Rupestris, bright blue flowers	1 75	12 00

Hardy Vines and Shrubs

	Per doz.	Per 100
Ampelopsis Veitchii , well branched, 2 year	\$3 25	\$25 00
“ quinquefolia	2 00	15 00
Akebia quinata , 1 year	1 50	10 00
Aristolochia Siphon 2 year	(Sold Out)	
Altheas , Double White, Red and Pink. 18 to 24 inches	2 40	20 00
Berberis Thunbergii , 12 to 18 inches	3 25	25 00
“ “ 18 to 24 “	4 00	30 00
Bignonia radicans , (Trumpet Vine)	2 40	18 00
Buddleia variabilis veitchiana . Butterfly shrub or summer lilac, spikes 20 inches long	2 60	20 00
Clematis , paniculata 2 year	2 00	15 00
3 years old	2 60	20 00
Forsythia Fortunei , 18-24 inches	2 00	15 00
Hydrangea paniculata grandiflora , 2 year, 2 feet	4 75	35 00
Honeysuckle , Hall's evergreen. Strong.	2 00	15 00
Ivy , English, 2½ inch pots	85	6 00
“ “ 3½ “ “	2 00	15 00
Spirea , Anthony Waterer, Callosa alba, Bumaldi	2 75	20 00
“ Van Houttei	2 40	18 00
Syringa grandiflora . 18 to 24 inches	1 75	15 00
Snowball, Japan , 18 to 24 inches	4 50	35 00
“ common, 18-24 inches.	2 25	18 00
Tamarix Africana , 2 to 3 feet	1 60	12 00
Trumpet Vine , 2 to 3 feet	2 00	15 00
Weigela , Eva Rathke, nana variegata, rosea. 18 to 24 inches	3 25	25 00

Vick's Hardy Roses

VICK'S HARDY PERPETUALS. Each, 50 cts.; doz., \$5.00.

Frau Karl Druschki. White American Beauty. Snow white flowers of immense size and beautiful form, one of the best bloomers of the H. P. division. Very strong, vigorous growers.

General Jacqueminot. Brilliant red; large and full, very fragrant. Hardy and robust.

Mrs. John Laing. Shell pink. Easily one of the best pinks in the H. P. class. Flowers are beautifully formed, finely colored, very fragrant. Long stemmed.

Paul Neyron. The largest of all rose blooms. Clear beautiful pink. Blooms all summer. Stems almost thornless.

Soliel d'Or or Sun of Gold. Golden yellow shaded red. Flowers large and full. Free blooming and extremely hardy.

EVERBLOOMING HYBRID TEA ROSES. Ea., 50 c.; doz., \$5.

Gruss an Teplitz. A hardy free growing rose with sweetly fragrant dazzling fiery crimson blooms on long stems.

Kaiserin Augusta Victoria. Easily the most popular white in the H. T. class. Flowers are large, very full and beautifully formed, bush vigorous and healthy.

Pink Killarney or Irish Beauty. Brilliant sparkling pink with large pointed buds and broad silvery edged petals. A flower of rare beauty and one of the finest forcers.

Lady Hillingdon. Growth is strong and vigorous, new foliage and stems dark violet changing to deep green. Flower beautiful apricot yellow.



Vick's Hardy Roses—Continued.

THE RAMBLER ROSES. 2 years old, doz., \$3.50; per 100 \$25.00.

Grimson Rambler. Old favorite bright crimson.

White Rambler. Great clusters of white flowers.

Pink Rambler. Large clusters of pink flowers.

Yellow Rambler. Very prolific, yellow flowers.

VICK'S MOSS ROSES. Doz. \$3.60; per 100, \$28.00.

Henri Martin. Deep rosy carmine.

Madam de la Rochlambert. Bright pink.

Princess Adelaide. Pale Rose, of good form.

White Bath. Best of the white Moss Roses.

VICK'S HARDY CLIMBING ROSES. Doz. \$3.50; per 100, \$25.00.

Dorothy Perkins. Flowers very double, pink.

Red Dorothy Perkins. Decided improvement over Crimson Rambler.

Lady Gay. Delicate cherry pink, fragrant.

Tausendschon. Strong plants. Delicate pink, large flowers in clusters.

Doz. \$3.75; per 100, \$30.00.

FERTILIZERS

The Prices on this page are Net Cash. F. O. B. Rochester.

PULVERIZED SHEEP MANURE

Pulverized Sheep Manure is thoroughly dried and finely ground. There is hardly a florist and but very few gardeners who do not use it in considerable quantities. The fertilizer that we offer is of the highest chemical analysis and there is nothing better for mixing in bench soil and for top dressing for roses, carnations, etc. Being thoroughly dry and comparatively free from odor it makes a splendid dressing for lawns. You get better results and quicker results than from stable manure without the unsightly appearance of the latter.

Price: Per hundred pounds, \$2.50; five hundred pounds, \$10.00; thousand pounds, \$19.00; one ton \$37.50

Nitrate of Soda (Chili Saltpetre). The best and cheapest form of Nitrogen for plants. Highly concentrated and immediately available. Nothing like it to make plants grow. 5 lbs., 50 cts.; 25 lbs., \$1.50; 50 lbs., \$2.50; 100 lbs., \$4.50.

Imported Scotch Soot. Original sack (about 108 lbs.), \$4.00.

Pure Raw Bone Meal. Per sack of 100 lbs., \$4.25; 500 lbs., \$18.00; ton, \$65.00.

Bone flour for Florists. Per 100 lbs., \$4.50; 500 lbs., \$20.00; ton, \$72.00.

Hard Wood Ashes; used by all florists. Per bbl. of about 200 lb. \$4.00.

Insecticides and Appliances

Prices of Insecticides are F. O. B. Rochester and subject to market change.

(Note—Liquids and poisonous powders cannot be sent by mail).

Directions for using printed on each package.

Arsenate of Lead. Paste. Takes the place of Paris Green. 1 lb., 35 cents; 5 lbs., \$1.50; 25 lbs., \$5.00; 50 lbs., \$8.50; 100 lbs., \$16.00;

Arsenate of Lead, Powdered. Much superior to the Paste. 1 lb. 55 cents; 5 lbs., \$2.50; 10 lbs. \$4.50; 25 lbs., \$10.50; 50 lbs., \$19.00; 100 lbs., \$36.00;

Bordo-Lead. A combined insecticide and fungicide. 1 lb.; 40 cts.; 5 lbs., \$1.50, 10 lbs., \$2.50; 25 lbs., \$5.25; 50 lbs., \$9.00; 100 lbs., \$17.00.

Bordeaux Mixture Powder. Recommended by all the leading experts for general spraying, 1 lb. 50 cents; 5 lbs. \$2.25; 25 lbs., \$6.50.

Black Leaf 40. A concentrated solution of Nicotine-sulphate which does not evaporate, like "free" nicotine, in ordinary temperatures. Therefore especially valuable for spraying in the gardens, nursery, or orchard. 1 oz. bottle, 35 cents; ½ lb. can, \$1.25; 2 lb. can, \$3.75; 10 lb. can, \$15.50.

Fish Oil Soap. Used as a wash for roses, trees, and plants affected with insects. 1-lb. box, 20 cents; 5 lbs. for 65 cents; 10 lbs. for \$1.25.

Hellebore. Pure and fresh; used largely for currant worms, etc. ¼ lb., 20 cents; ½ lb., 35 cents; 1 lb., 65 cents.

Kerosene Emulsion. 65 per cent. oil. For scale insects, aphids, etc. Used in large quantities. Highly recommended. Quart, 60 cents; gallon, \$1.45; 5 gallons, \$5.00.

Improved Kil-Tone. A combined insecticide and fungicide. To control leaf-eating insects. 1 lb. package, 35 cts.; 10 lbs., \$2.50.

Lime Sulphur Solution. Use in proportions 1 gal. to 40 gals. of water. Apply in fall or spring. Quart, 40 cents; gal., \$1.00; 5 gals., \$4.00; 30 gals., \$9.00.

Lime Sulphur Powdered. Most economical form for shipping. Just as good as liquid. One and one half pound will make 5 gallons of solution of standard strength. 1 lb., 35 cents; 5 lbs., \$1.25.

Nicofume Liquid. Used for same purposes as Nicotinic. Guaranteed 40 per cent. Nicotine. ¼ lb., 65 cents; 1 lb., \$2.00; 4 lbs., \$7.50; 8 lbs., \$14.50

Paris Green. A poisonous, insoluble powder, used extensively for potato bugs, etc. Applied as a powder, mix with plaster or flour; in a solution, mix one pound in 200 to 300 gallons of water. ½ lb., 35 cents; 1 lb., 65 cents.

FUMIGATING LAMP, complete for use with Nikoteen Liquid, Nicofume Liquid or any other liquids used in fumigating Greenhouses. Each 85 cents; two for \$1.50.



FUMIGATING LAMP, Glass, uses alcohol fuel, complete with stand, for use with any liquid insecticide. Each, 85 cents.

Nicofume Paper. Handy method of fumigating, packed in special friction top cans. Per can (24 sheets) \$1.25; 1-gross cans (144 sheets), \$5.00; 2-gross cans (288 sheets), \$9.50.

Nikoteen Liquid. Thirty per cent. strength for spraying; strongest, purest and most economical. Death to Aphis or Green Fly, Red Spider, Mealy Bug, Thrip and other forms of pests. 1/2 lb. bottle, \$1.10; 1 lb., \$2.00; 4 lbs., \$7.00.

Pyrox (Bordeau-Arsenate). A combined insecticide and Fungicide for general use on apples, grapes and garden truck. Per 1 lb., 45 cents; 5 lbs., \$1.75; 10 lbs., 3.00; 25 lbs., \$6.00; 50 lbs., \$10.50; 100 lbs., \$18.50.

SCALECIDE. Used for the destruction of the San Jose Scale. Dilute at the rate of one gallon Scalecide to 20 gallons of water. Scalecide does not clog hose, nozzle or pump, and is pleasant to use. 60 cents per qt.; \$1.50 per gal.; \$5.50 per 5 gals.

Slug Shot. Non-poisonous powder for potato bugs, cabbage lice and worms, currant worms, etc. 1 lb., 20 cents; 5 lbs., 55 cents; 10 lbs., \$1.10.

Sulpho-Tobacco Soap. Used as a wash for roses, trees, and house plants. Also for insects on animals. Small size, 3-oz. cake, 12 cents; dozen, \$1.00; large size, 8-oz. cake, 20 cents; dozen, \$2.25.

Tobacco Dust. (Extra good quality). Per lb., 6 cents; 10 lbs., 50 cents; 100 lbs. \$4.50.

Tobacco Stems. Bales of about 50 lbs., \$1.00.

WEED KILLER (Liquid). Destroys weeds in Paths, Roads and Gutters. Kills roots as well as tops of all Weeds and Grass. 1 qt., 60 cents; 1 gal., \$1.45; 5 gal., \$6.00.

Vick's Excelsior Insect Exterminator. Destroys Striped Fleas, Cabbage Lice, Green Cabbage Worms, Potato Bugs, Aphis, Squash Bugs, etc. Harmless to plants or vegetables. Sure death to all plant insects, particularly the Green Cabbage Worm



Apply exterminator by means of the Bellows illustrated. The Bellows can be worked as fast as a person would ordinarily walk.

Powder, per pound, 35 cents; 10 lb. lots at 28 cents per pound; 100 lbs. . . \$25.00
Bellows, ten-inch 4.00

Horticultural Requisites



GLAZETITE, Glazing Cement, (formerly Nebelastick)

A perfect compound for glazing, reglazing and repair work on greenhouses and sash. It is superior to putty, as it never gets hard or brittle. It will outlast putty three or four times—no loose or sliding glass to bother for many years. It contracts and expands with the greenhouse, thereby eliminating broken glass to a minimum. Its elasticity remains under atmospheric conditions, regardless of how hot or cold the weather may be. Glazetite is always ready for instant use and will not harden on your hands and we sell it under a money back guarantee. Its color is black, being made from long fibre asbestos and elastic gums. In glazing, three gallons will set one thousand feet of glass. We offer you this Glazetite Cement at the following prices:

35 and 55 gallon steel drums, \$1.50 per gallon. 5 gallon cans, \$1.70 per gallon; gallon can, \$1.75; 1 Glazing Gun gratis with each 35 or 55 gallon drum. Glazing Gun alone, \$3.00. New One-Hand Glazing Gun, \$5.00 each.

All prices on this page are net cash F. O. B. Rochester.

Labels. Wooden. Painted. Packed 1000 to a package.

4 x 5/8 inch, pot, . per 1000	\$1 55	6 x 7/8 inch, pot. . . per 1000	\$2 50
4 1/2 x 5/8 inch, pot. "	1 85	10 x 1 inch, Garden Labels "	9 60
5 x 5/8 inch, pot. . "	2 10	12 x 1 inch, " " "	11 40

Tree Labels. 3/2 in., notched and wtrd, 1000 to package, \$2.50.

Grafting Wax. 1/4 lb. 12 cents; 1/2 lb. 20 cents; 1 lb., 35 cents.

Raffia. The demand for Raffia is speedily growing, largely induced by the attention given to basket making in public and industrial schools. Dealers who do not carry a full line of Raffia are neglecting opportunities to increase sales materially. Samples of Raffia on application.

Colors Indian Red, Pink, Bright Green, Yellow, Black, Sage Green, Dark Navy, Brown, Emerald, Christmas Red, Light Orange, Lavender.

Prices: 1/4 lb., 40 cents; 1/2 lb., 75 cents; 1 lb., 1.40 cents.

Natural, per pound, 20 cents; 5 lbs., or over, 19 cents, lb.

Vick's Hand Weeder and mulcher made of best spring steel. Each 15 cents.

PAPER FLOWER POTS

(Neponset Waterproof)

For starting plants in hot beds or greenhouses that are to be transplanted to the field.

	Per 100.	Per 1000.	Wt. 1000.		Per 100.	Per 1000.	Wt. 1000.
2 1/4 inches	45	3 90	12 Lbs.	4 inches	1 20	10 20	46 Lbs.
2 1/2 inches	55	4 55	16 "	5 inches	1 85	15 90	74 "
3 inches	70	6 20	24 "	6 inches	2 35	20 35	102 "
3 1/2 inches	95	8 10	34 "				

Auto-Spray No. 1

The Auto-Spray No. 1 is the best compressed air sprayer made. Strongly built and guaranteed to be satisfactory and without defect. Will handle all solutions, including whitewash, and can be used in all kinds of work. All parts are instantly accessible and easily replaced. Equipped with 2 feet of 1/2-inch hose, nozzle for fine spray, cap for solid stream and either stop-cock or our patented self-cleaning shut-off ("auto-pop") as ordered. Express or Postage paid to your station.

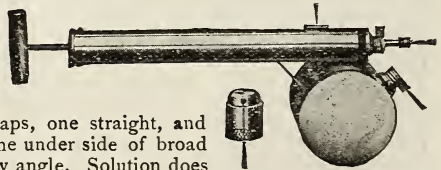
- Auto-Spray No. 1-A—Brass tank with stop-cock \$ 9 00
- Auto-Spray No. 1-B—Brass tank with auto-pop . 9 50
- Auto-Spray No. 1-C—Galvanized tank with stop cock 6.00
- Auto-Spray No. 1-D—Galvanized tank with auto-pop 6.50
- Auto-Spray Nozzle.50
- Brass Extension, 2 feet50
- Brass Elbow35
- Brass Strainer 1.20



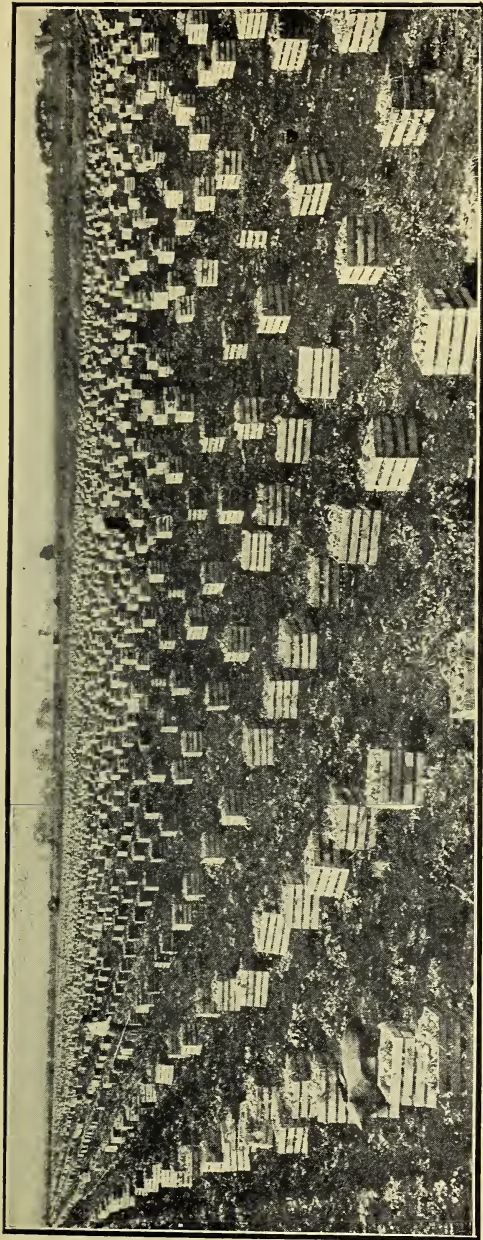
Auto-Spray No. 25

Express Buyers Expense

Compact design. Will handle all solutions. The entire front is removable by unscrewing the front cap, permitting the syphon tube to be withdrawn, should it become clogged. Fitted with two spray caps, one straight, and the other at an angle for reaching the under side of broad leaves. Will spray with tank at any angle. Solution does not come in contact with pump cylinder



	Each.	Per doz.
Auto-Spray No. 25-A—All tin, one quart	\$1 00	\$ 9 00
Auto-Spray No. 25-B—Galvanized reservoir, one quart	1 25	11 28
Auto-Spray No. 25-C—Brass reservoir, one quart.	1 50	13 56
Auto-Spray No. 25-D—Galvanized tank, 1/2 gallon	1 50	13 56
Auto-Spray No. 25-E—Brass tank, 1/2 gallon.	1 75	15 84



ELEVEN THOUSAND BUSHELS DANVERS YELLOW GLOBE ONIONS A MONEY MAKING CROP

The man who makes a business of growing onions, planting a normal acreage year after year nearly always makes a substantial profit. The man who gambles in onion growing, who guesses whether the market will be high or low next year, making large plantings the year after high prices and keeping out of the business the year after onions are plentiful loses at least three times out of five. This year the gamblers are going to stay out, while the wise business men are going to plant their usual acreage and will in all probability make a good profit, provided, of course, good seed is used. The best growers take no chances with poor seed, but use **Vick's Special Strain Yellow Globe Danvers** whose merit is established beyond question.

Successful Onion Growers use **Vick's Own Selected Strain Danvers Yellow Globe Onions** in preference to all others. Our seeds are **northern grown**, therefore adapted to growing in any section or climate. This variety is the standard in all the leading Eastern markets, both for local use and shipping. It produces bulbs of usable size early in the season so that it is a very profitable variety all summer. The perfect globe shape and the beautiful brownish yellow skin makes it very attractive. It is hard and solid and in size, the bulbs average three inches in diameter. The flesh tender, pink and white, the flavor sweet and mild. All these characteristics make it by far the best and most popular sort for both the home gardener and for those who grow for the market.

VICK'S SPECIAL STRAIN OF BIG BOSTON LETTUCE

The very best
Lettuce for the
Market
Gardener

Leads all
Others as a
Shipping
Variety

Sure Header
and Stands a
Long Time
Before Seeding

North, South,
East and West,
in every State
it is Wonder-
fully Popular

A five acre field of Vick's Special Strain of Big Boston Lettuce. We supply many of the largest growers with their seed, and our stock is considered unsurpassed by any other strain, regardless of price.

